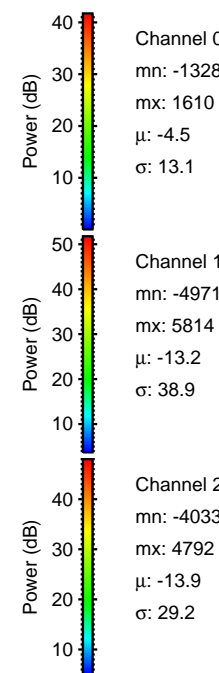
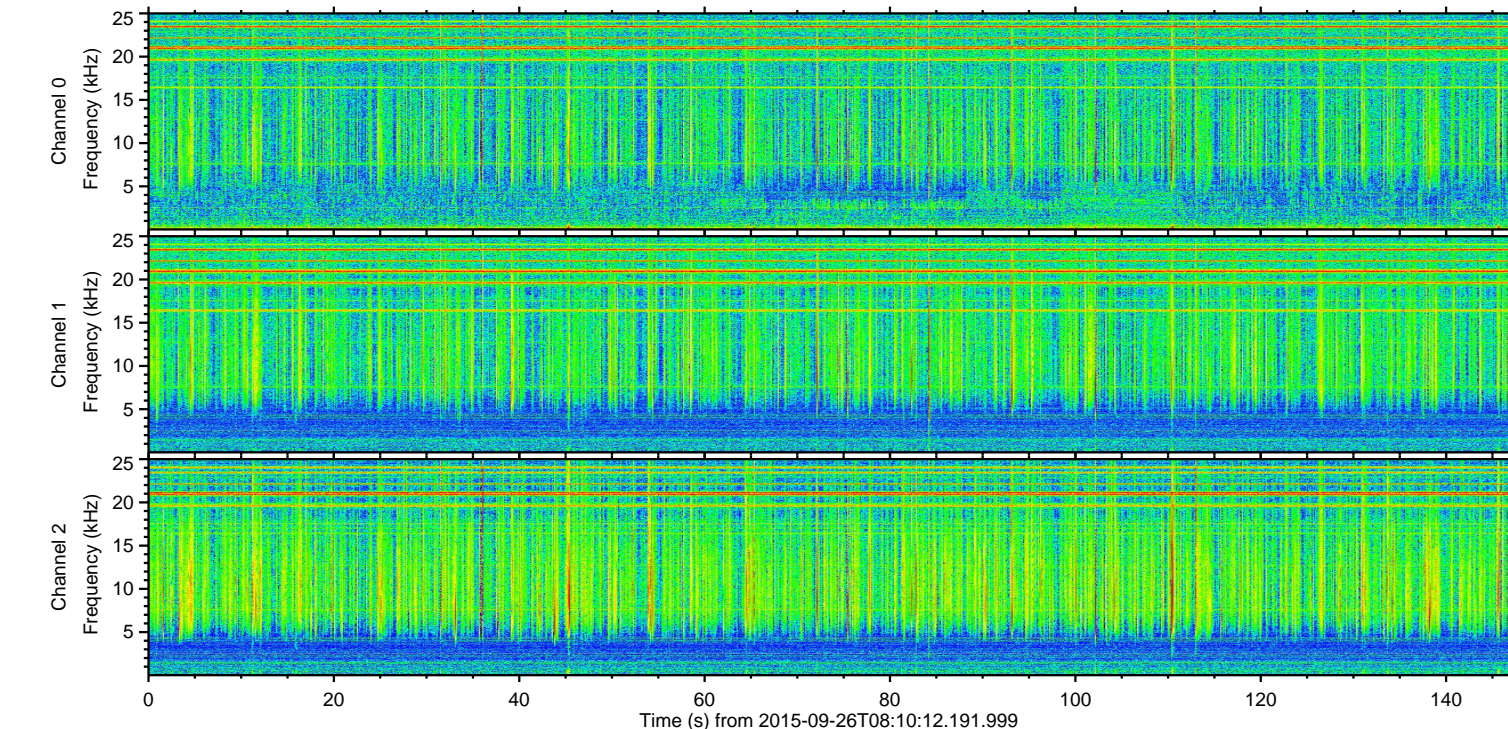
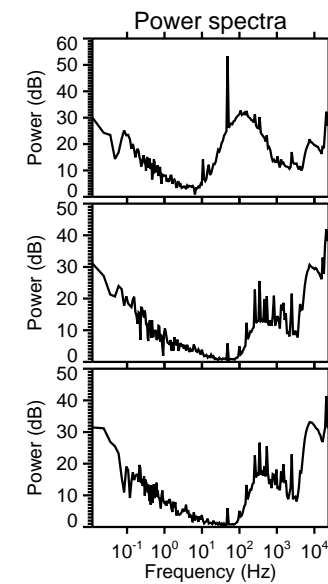
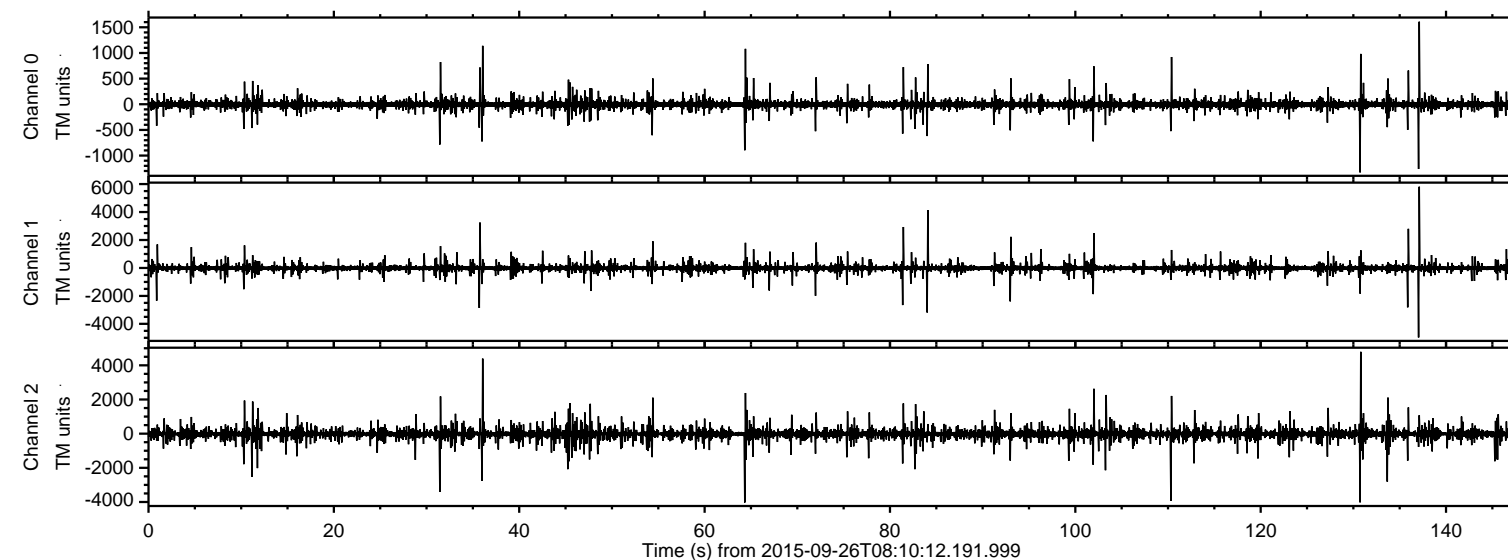


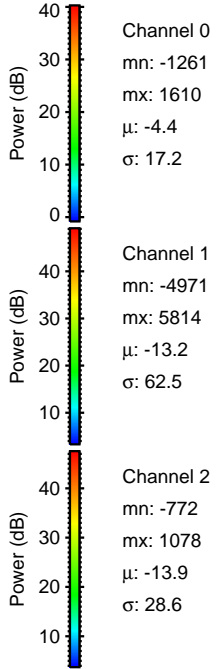
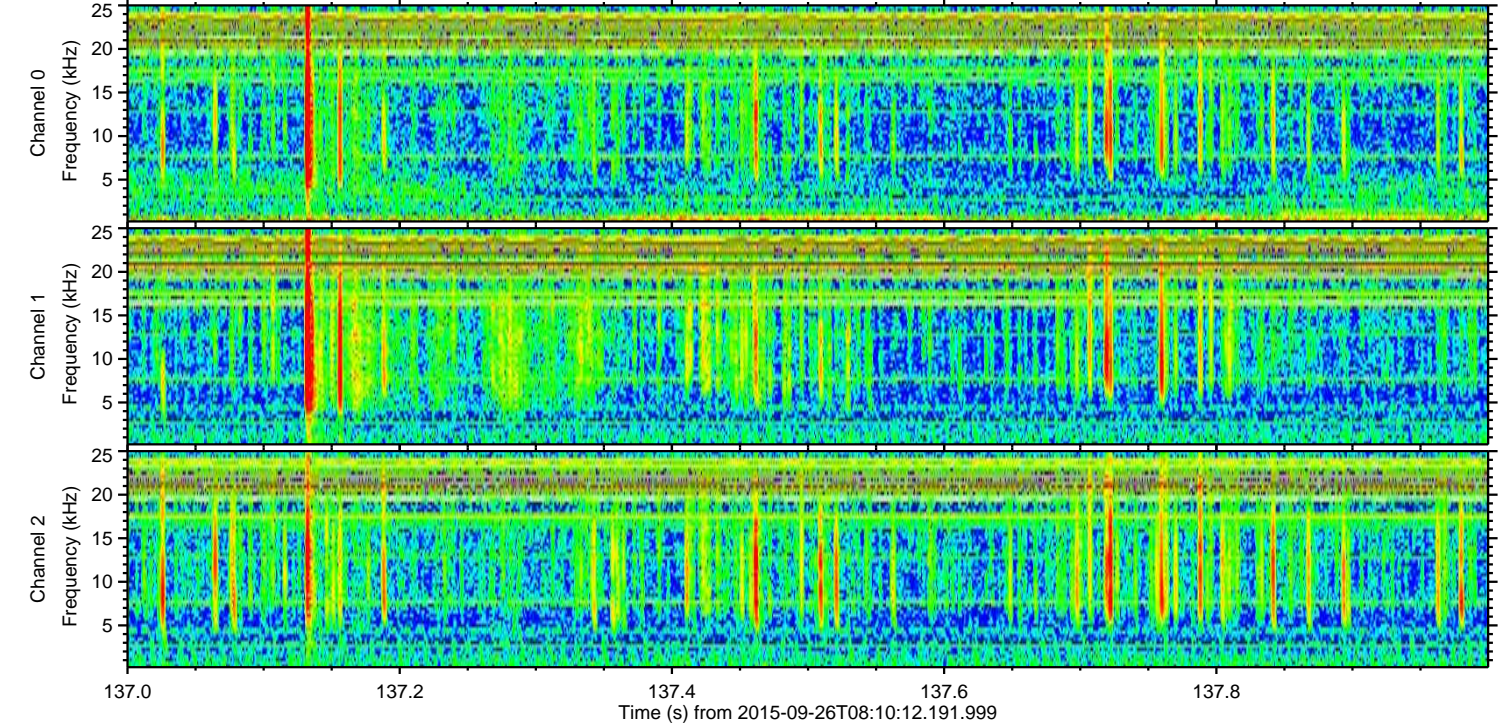
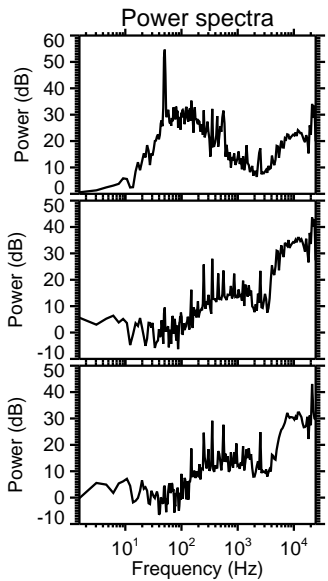
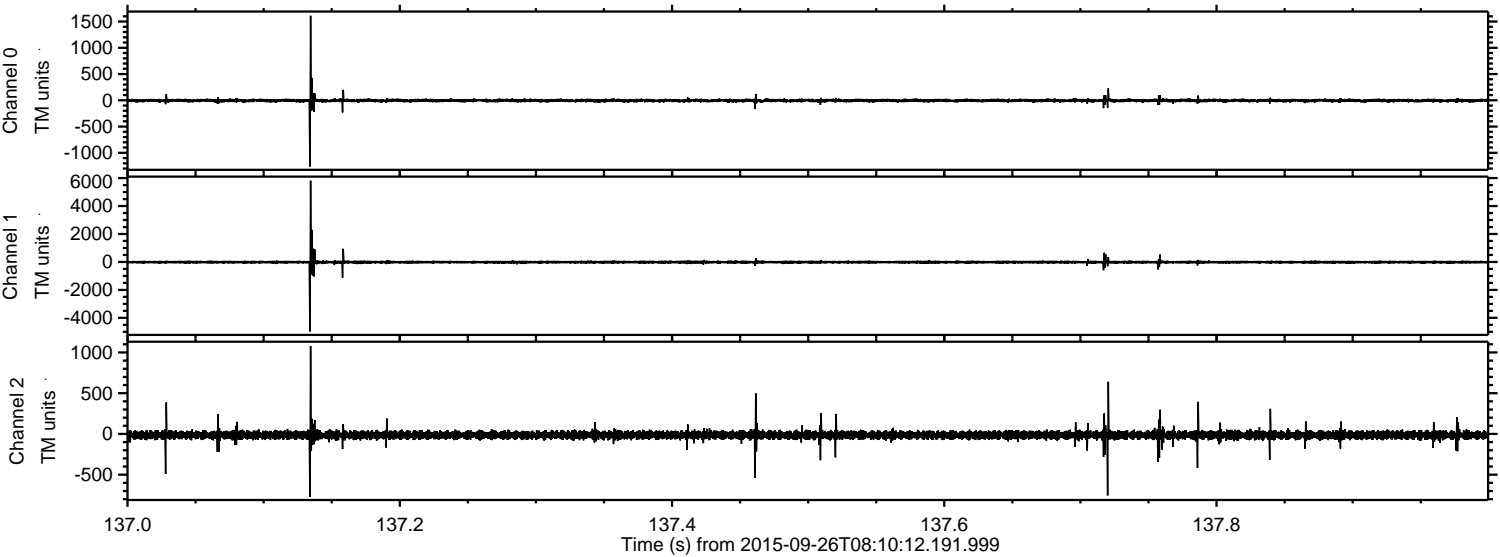
ELMAVAN 3D WAVEFORMS (Measured data sampled at 50 kHz) 51000 packets of 144 samples from 2015-09-26T08:10:12.191.999.

Processed Fri Oct 16 14:07:34 2015 by ELM ver.2012-10-06 from 001__elm20150926_081011__dat00.bin



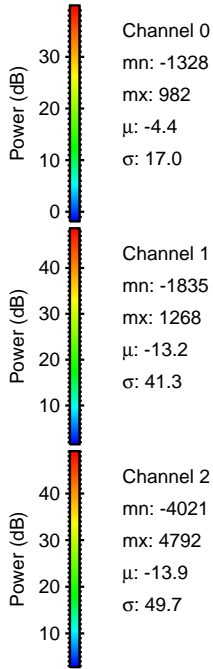
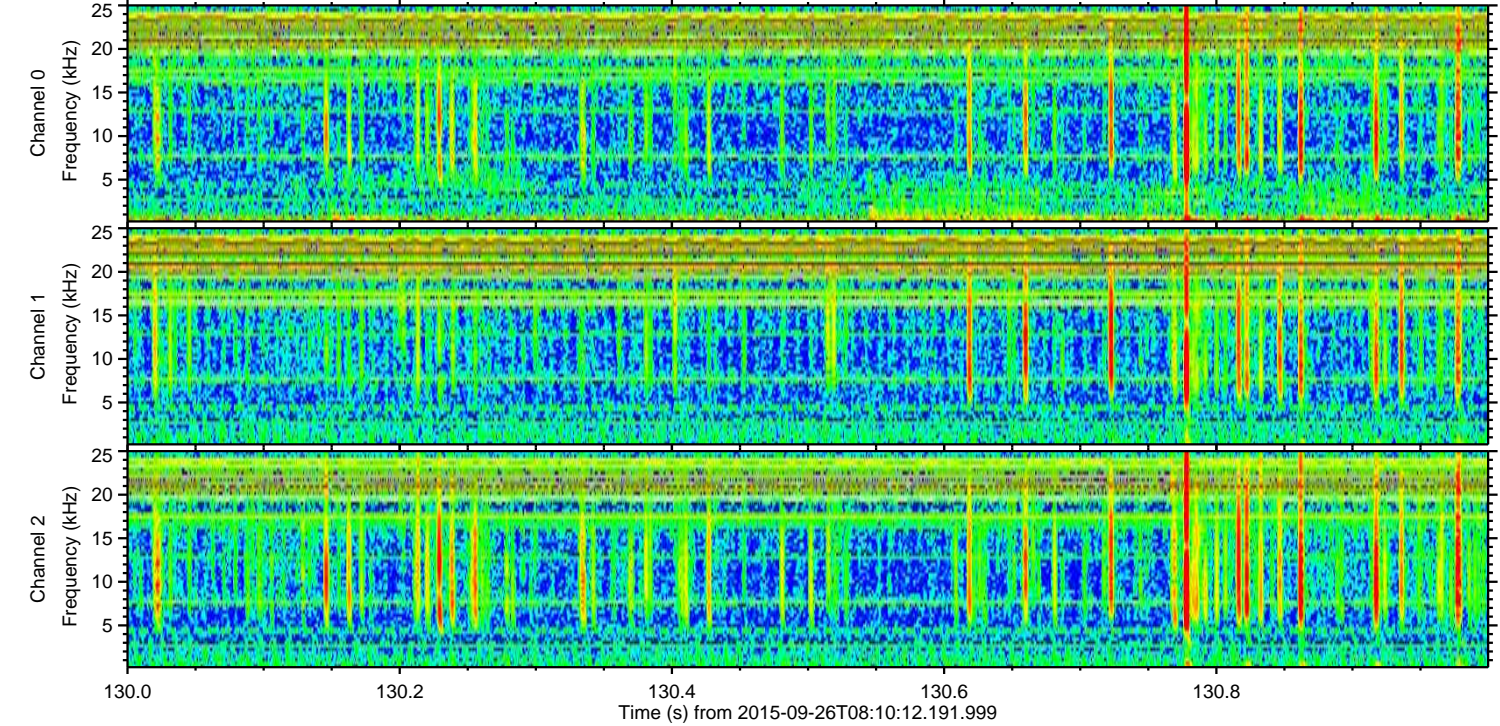
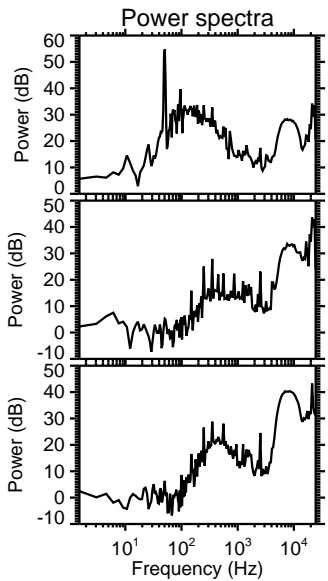
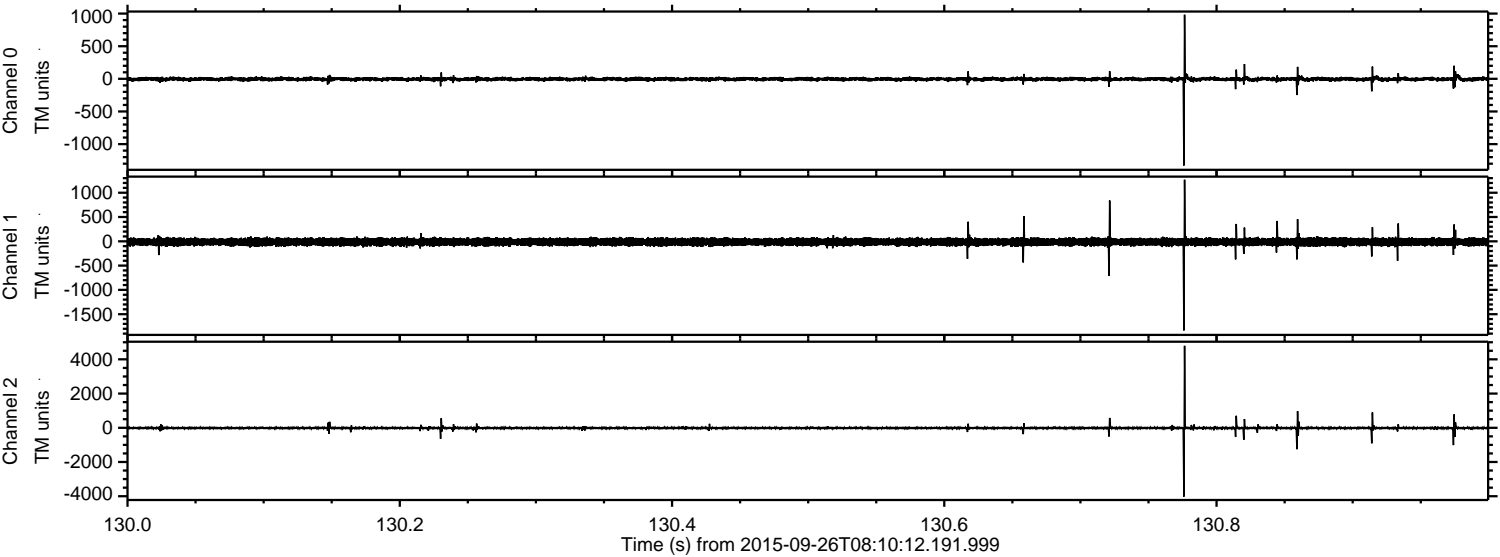
ELMAVAN 3D WAVEFORMS (Measured data sampled at 50 kHz) 51000 packets of 144 samples from 2015-09-26T08:10:12.191.999. Part 138/147

Processed Fri Oct 16 14:07:54 2015 by ELM ver.2012-10-06 from 001__elm20150926_081011__dat00.bin



ELMAVAN 3D WAVEFORMS (Measured data sampled at 50 kHz) 51000 packets of 144 samples from 2015-09-26T08:10:12.191.999. Part 131/147

Processed Fri Oct 16 14:07:57 2015 by ELM ver.2012-10-06 from 001__elm20150926_081011__dat00.bin



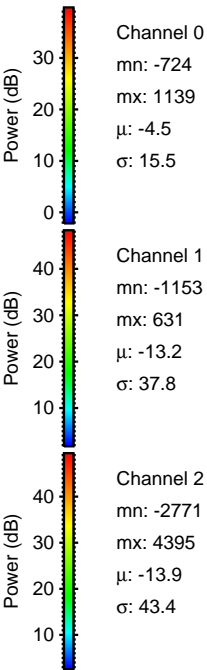
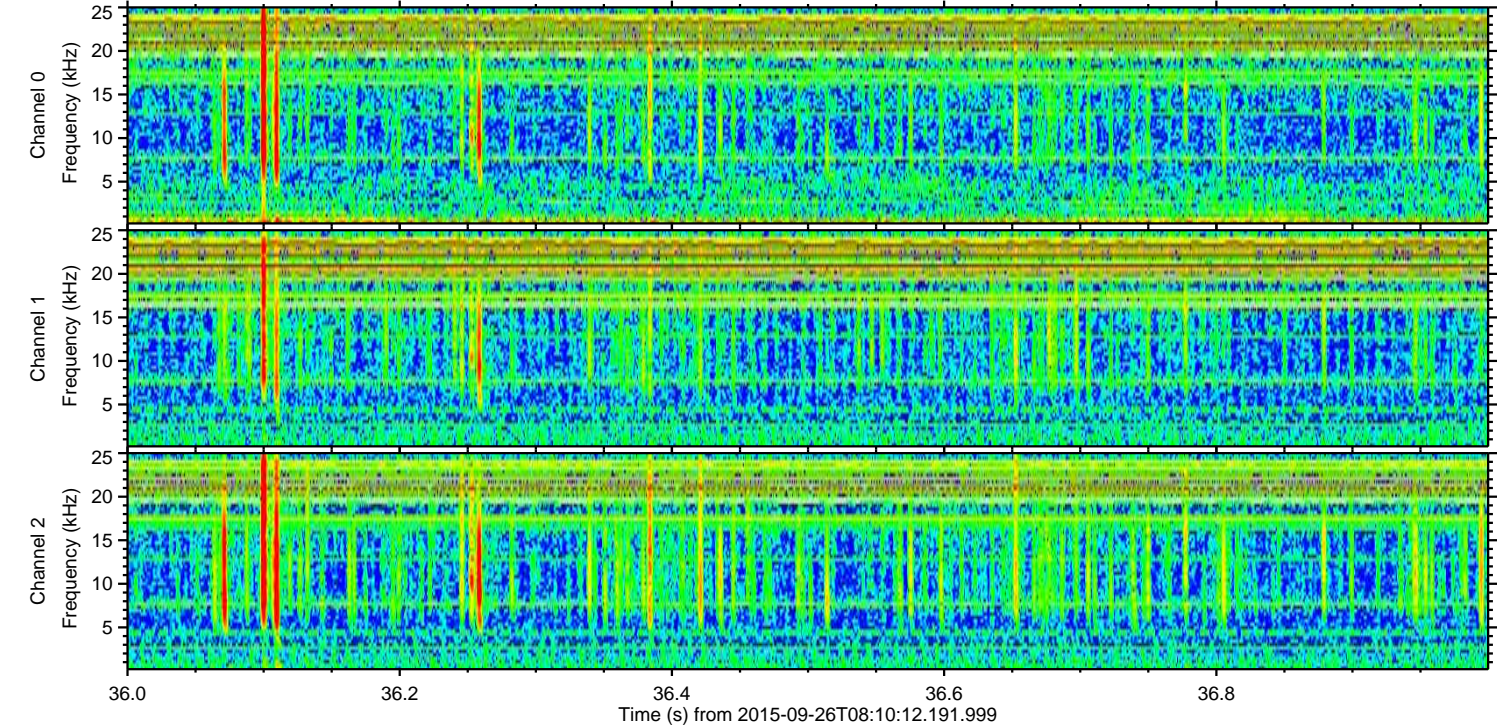
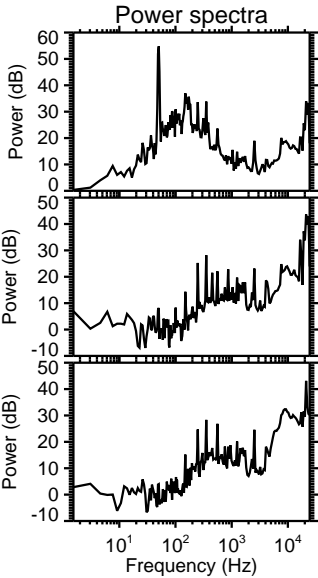
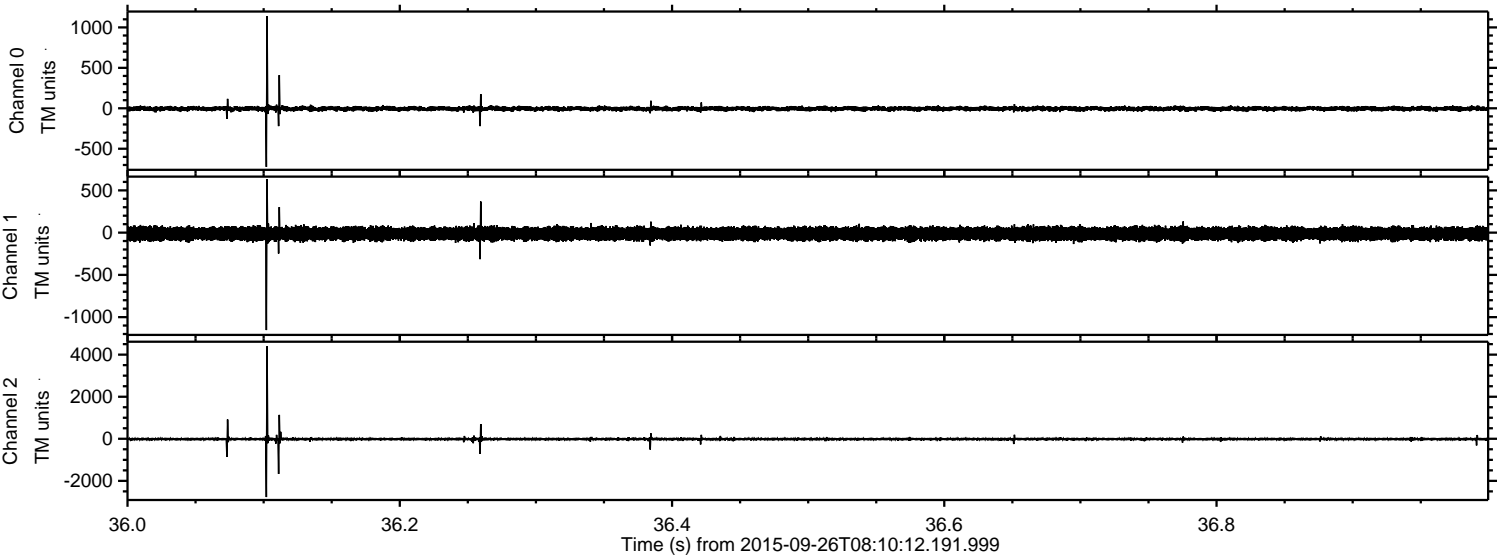
Channel 0
mn: -1328
mx: 982
 μ : -4.4
 σ : 17.0

Channel 1
mn: -1835
mx: 1268
 μ : -13.2
 σ : 41.3

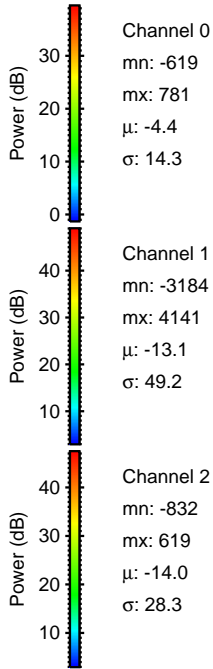
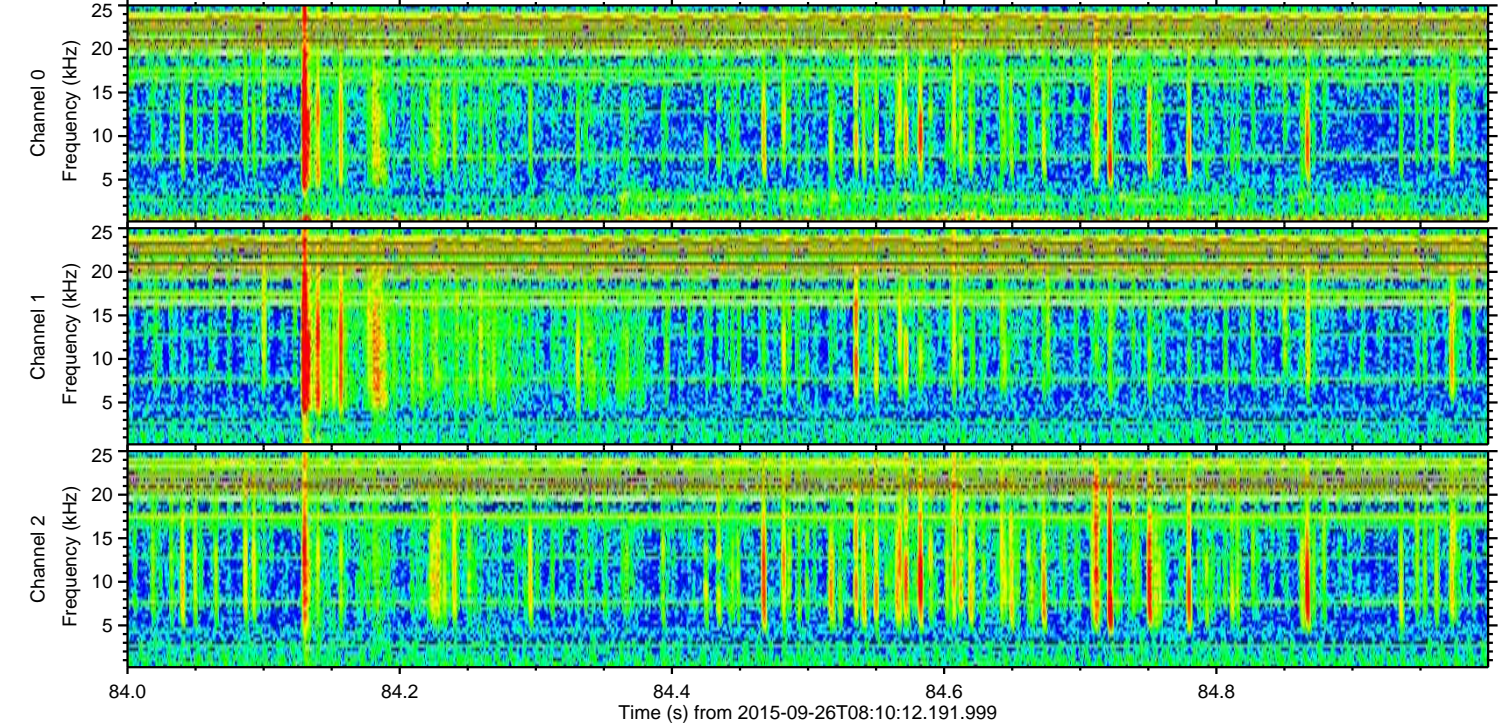
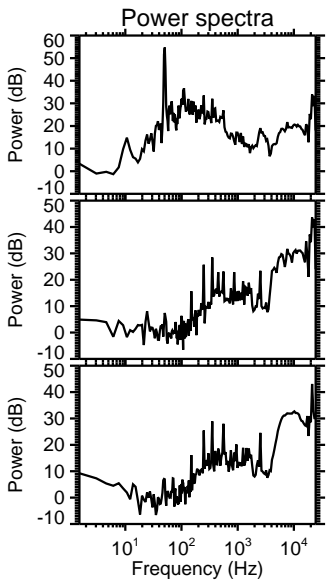
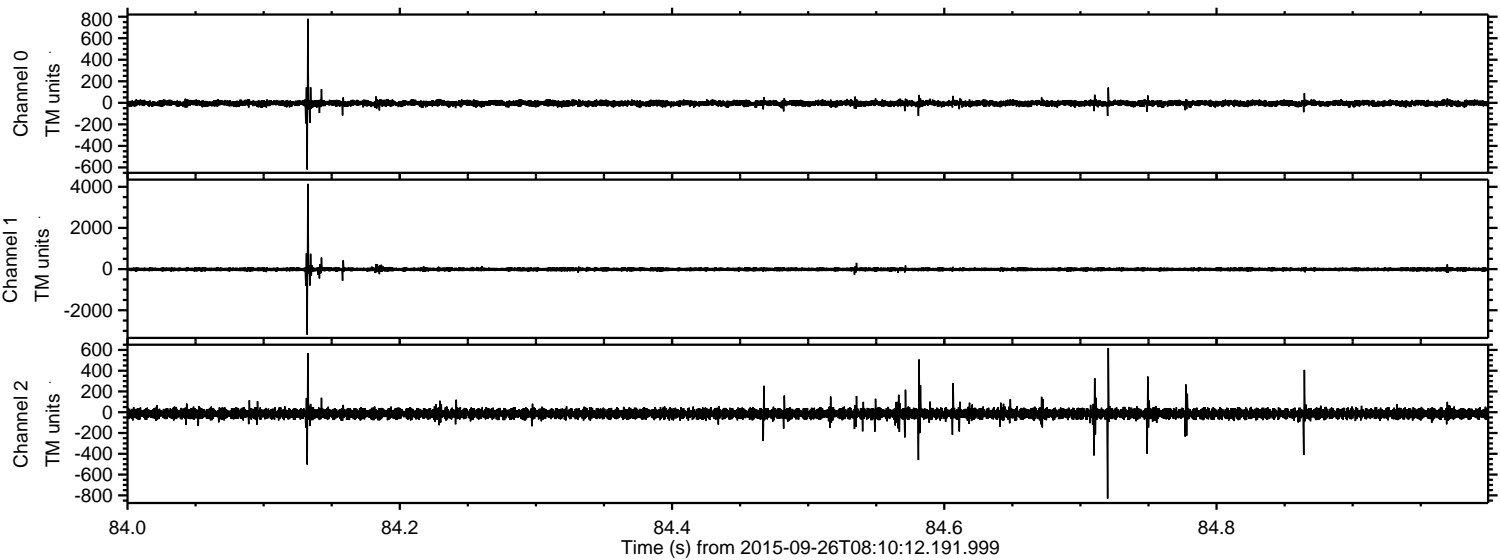
Channel 2
mn: -4021
mx: 4792
 μ : -13.9
 σ : 49.7

ELMAVAN 3D WAVEFORMS (Measured data sampled at 50 kHz) 51000 packets of 144 samples from 2015-09-26T08:10:12.191.999. Part 37/147

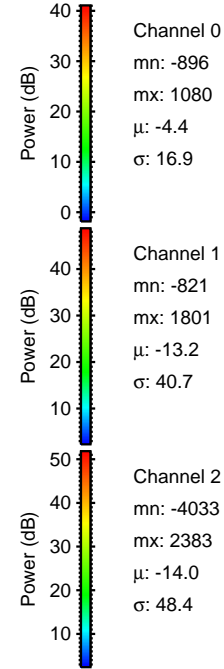
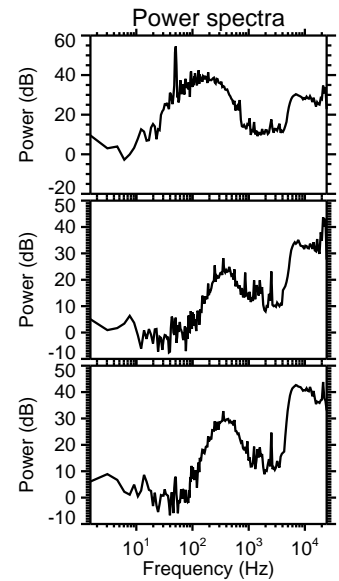
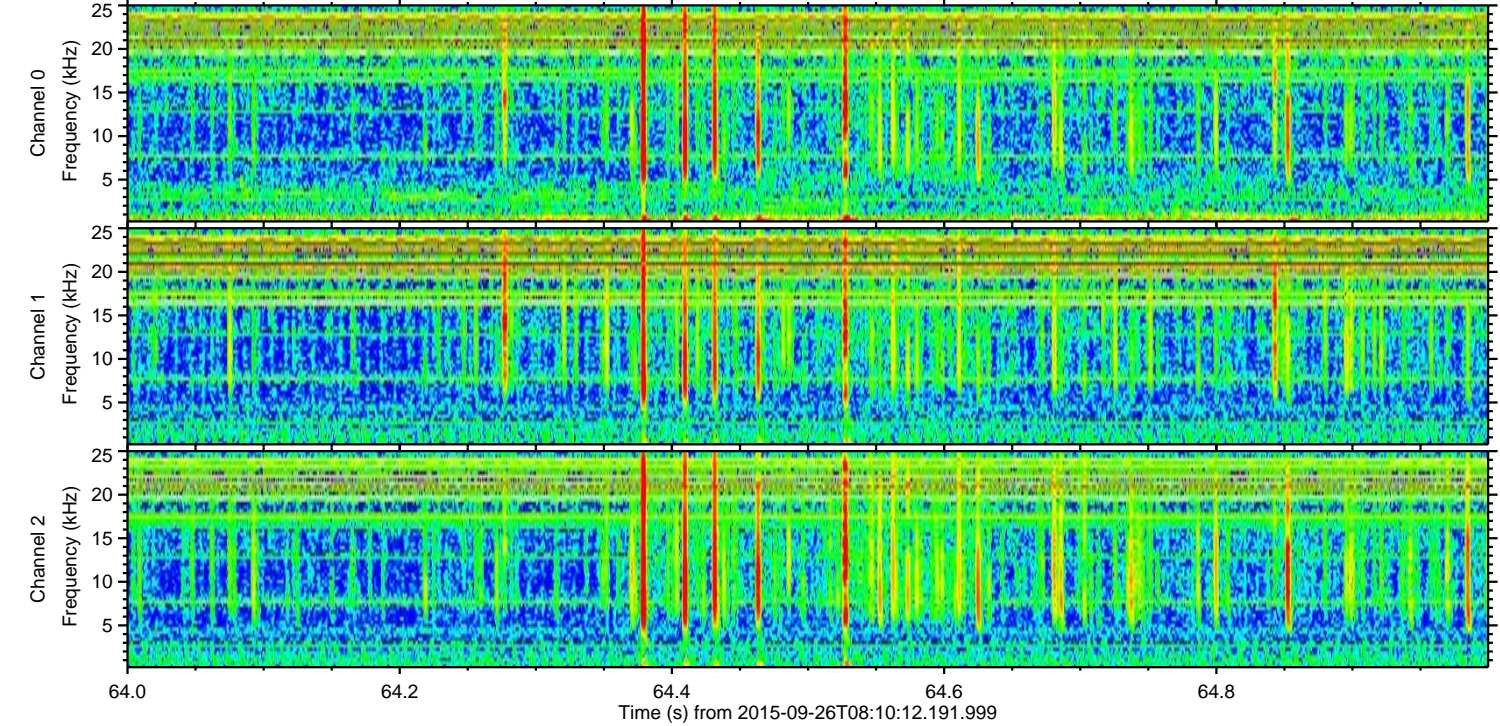
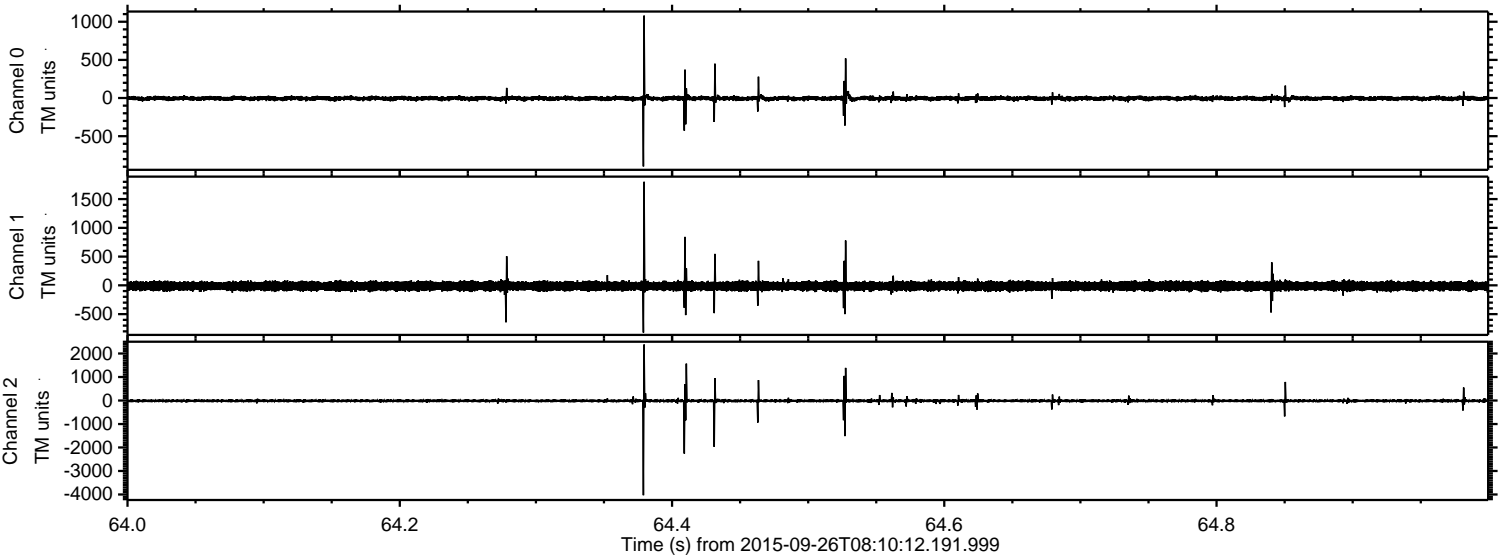
Processed Fri Oct 16 14:07:58 2015 by ELM ver.2012-10-06 from 001__elm20150926_081011__dat00.bin



Processed Fri Oct 16 14:07:59 2015 by ELM ver.2012-10-06 from 001__elm20150926_081011__dat00.bin

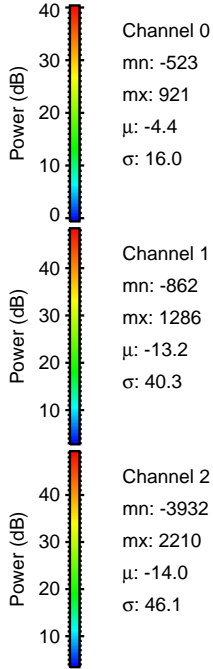
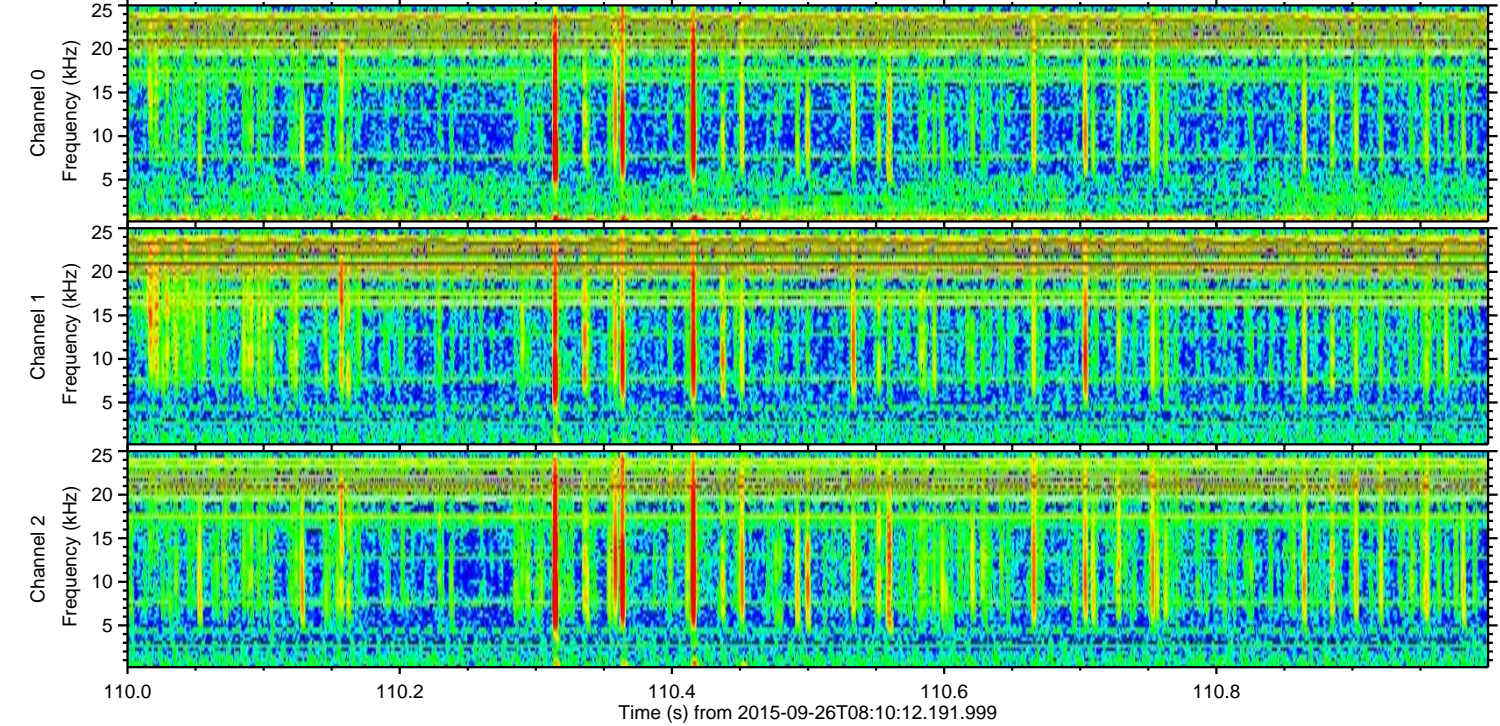
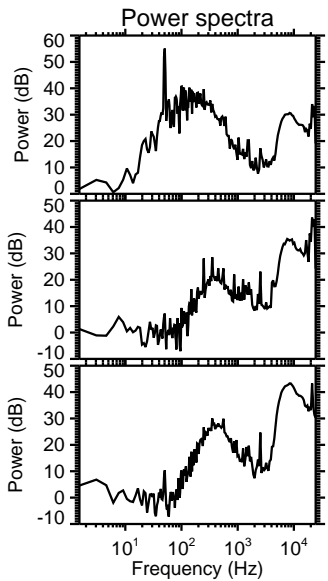
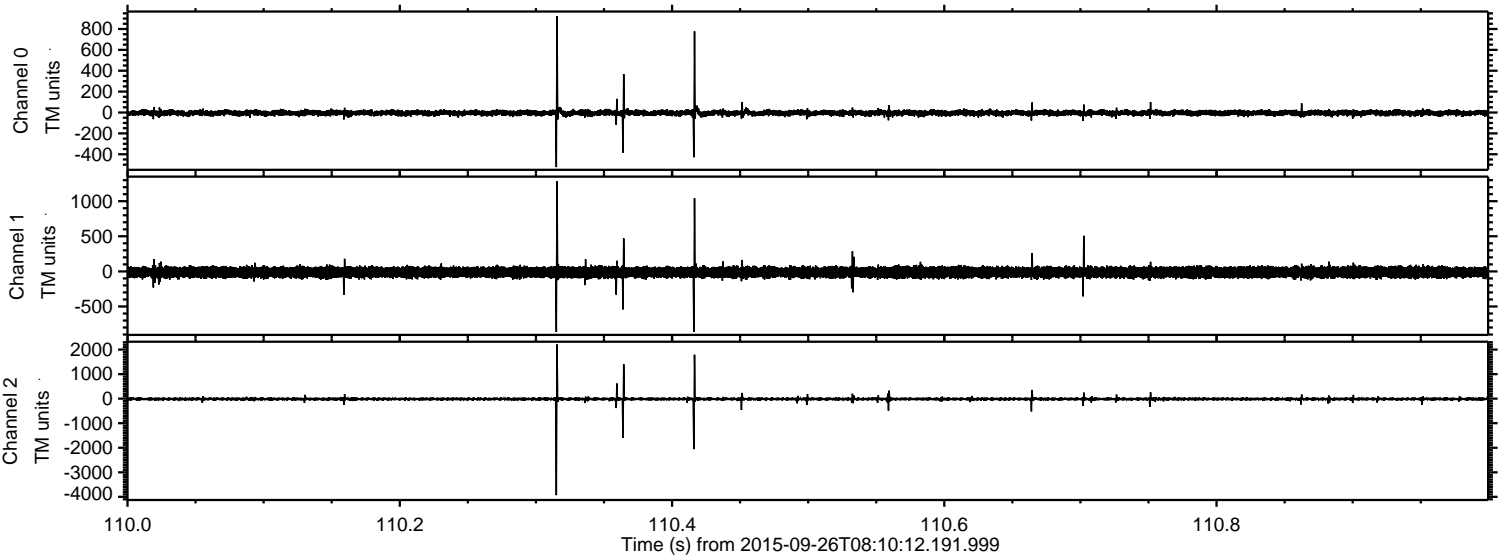


Processed Fri Oct 16 14:08:00 2015 by ELM ver.2012-10-06 from 001__elm20150926_081011__dat00.bin

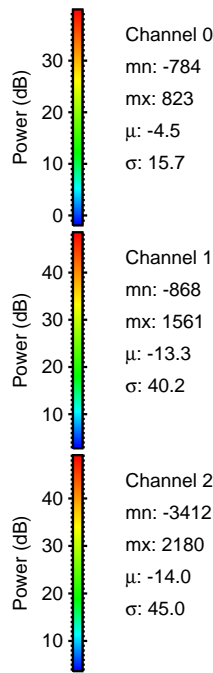
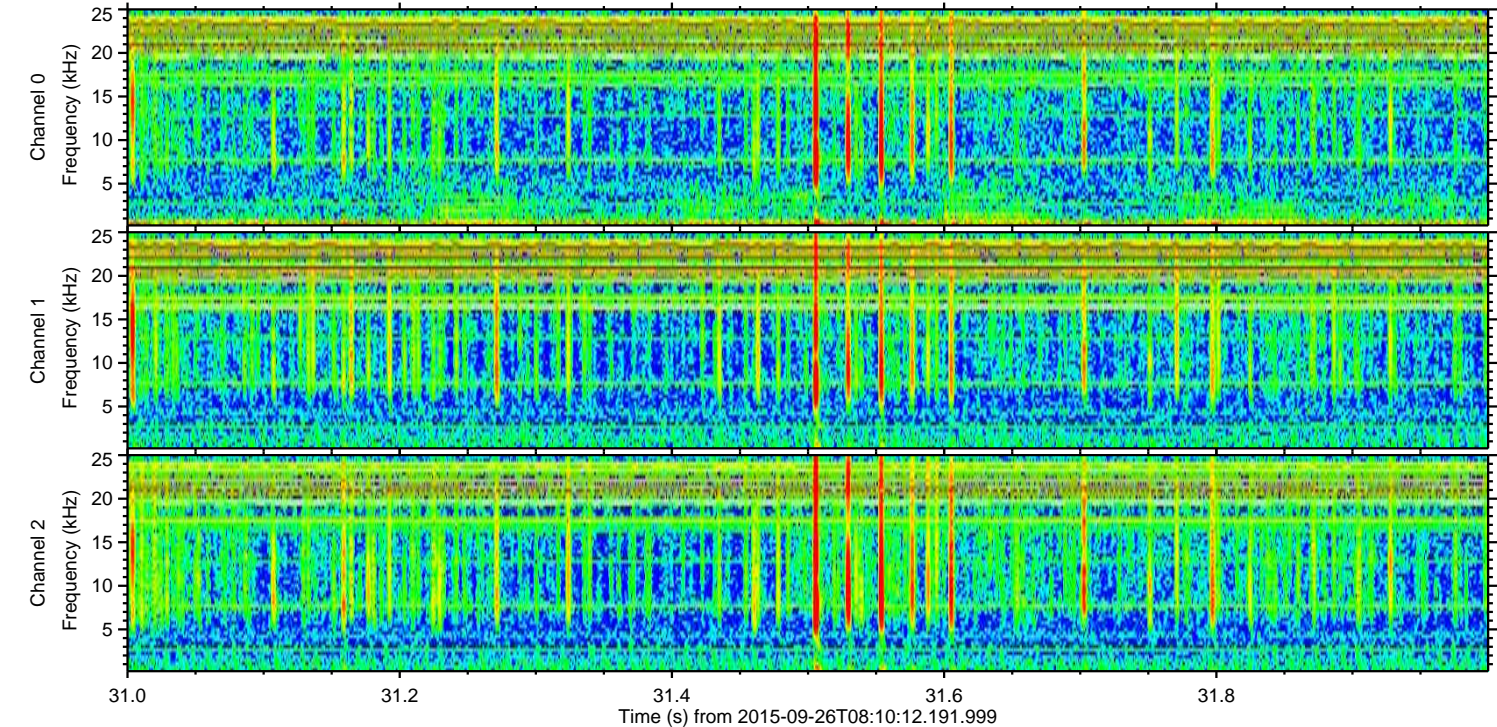
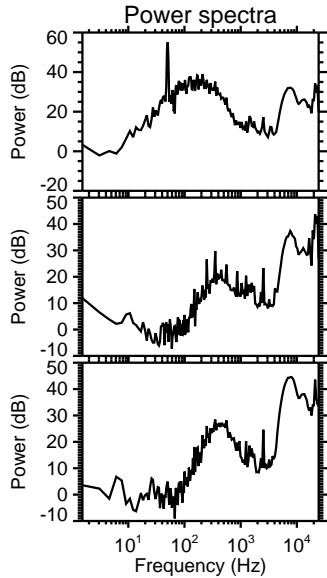
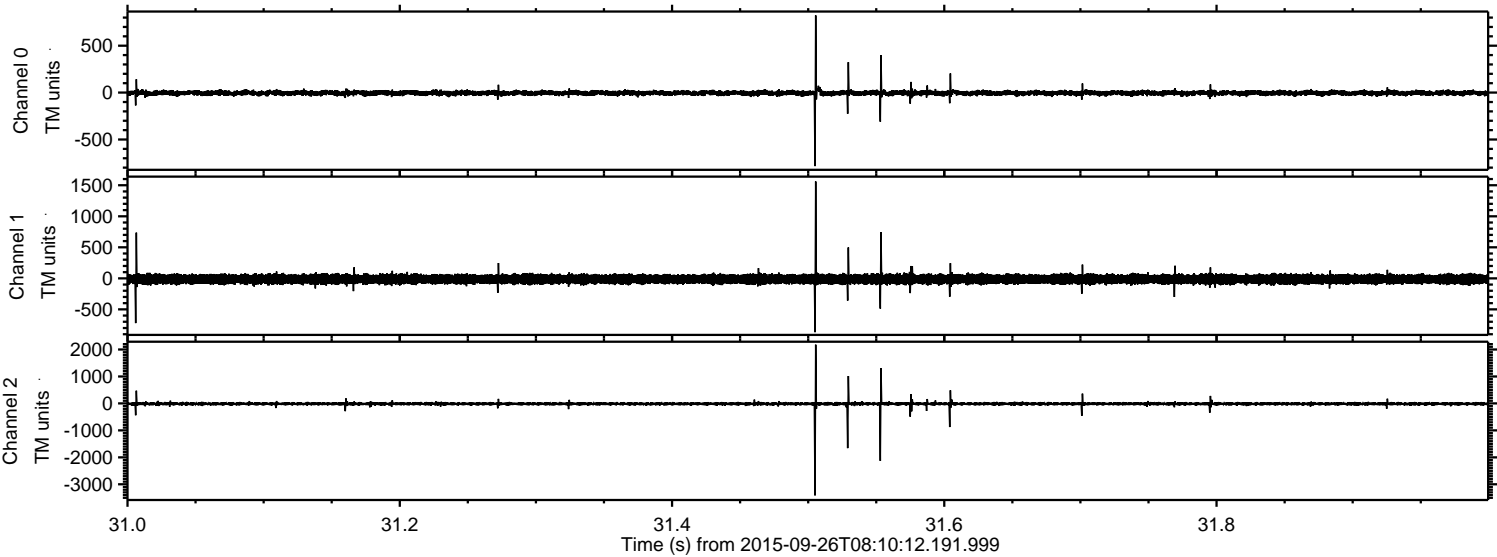


ELMAVAN 3D WAVEFORMS (Measured data sampled at 50 kHz) 51000 packets of 144 samples from 2015-09-26T08:10:12.191.999. Part 111/147

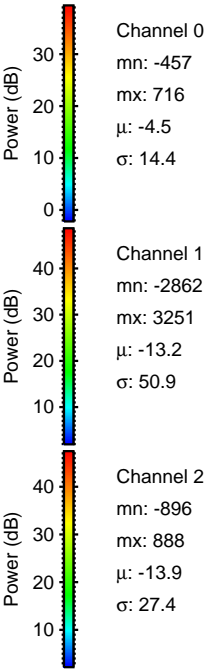
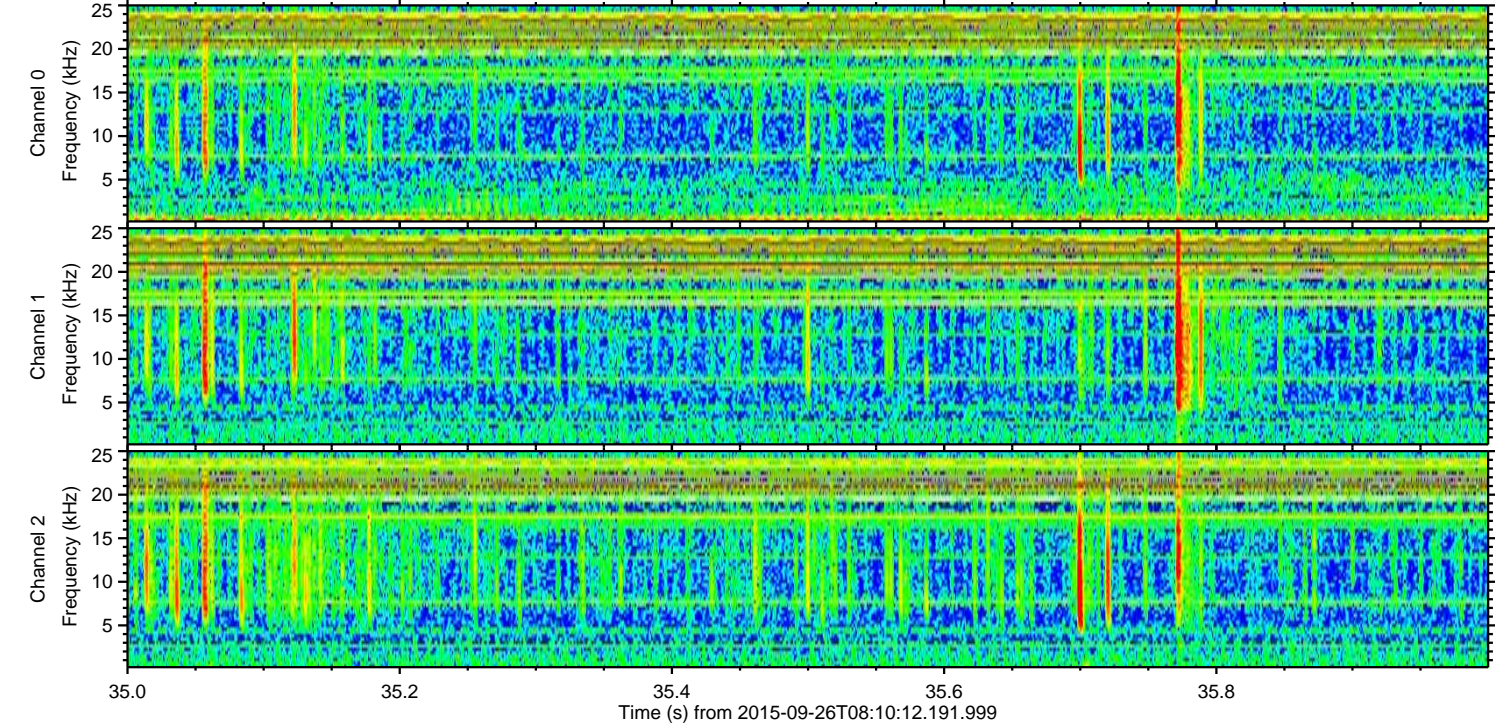
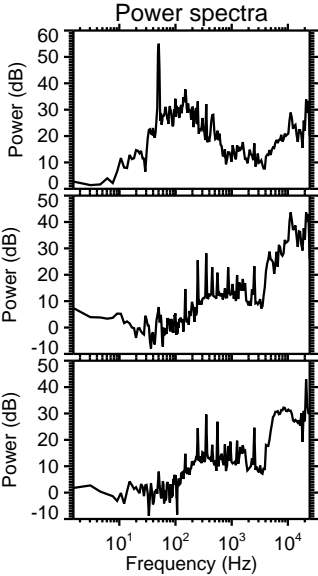
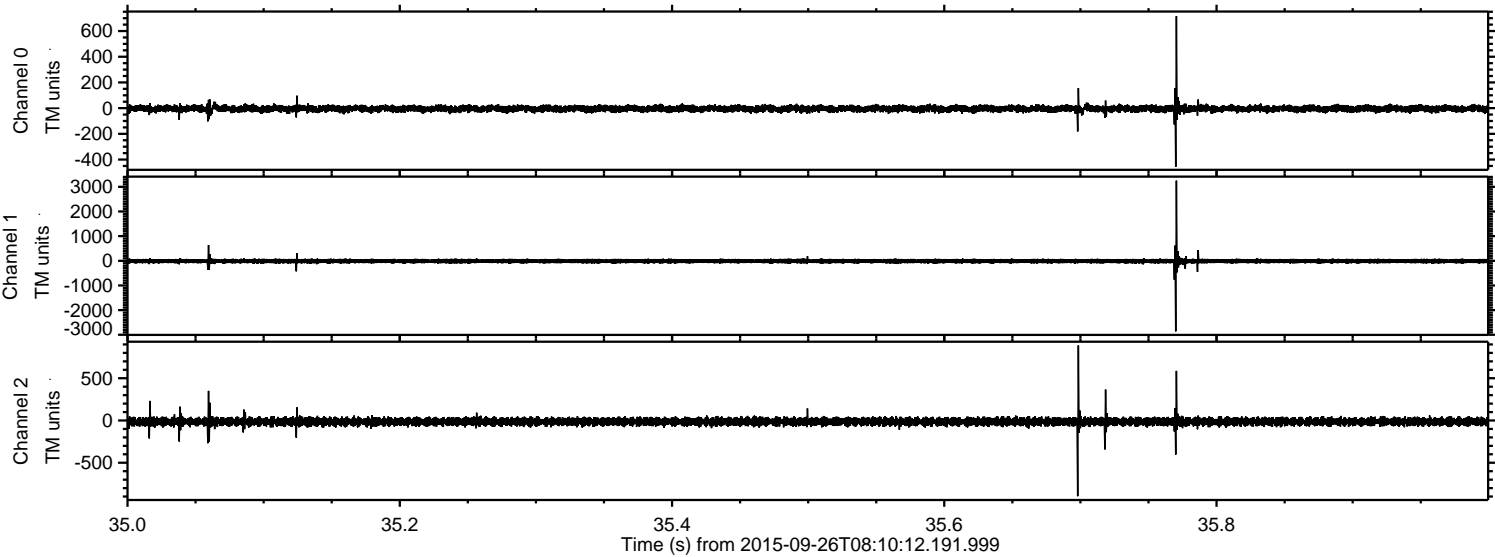
Processed Fri Oct 16 14:08:01 2015 by ELM ver.2012-10-06 from 001__elm20150926_081011__dat00.bin



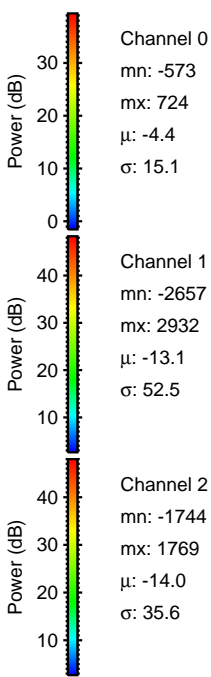
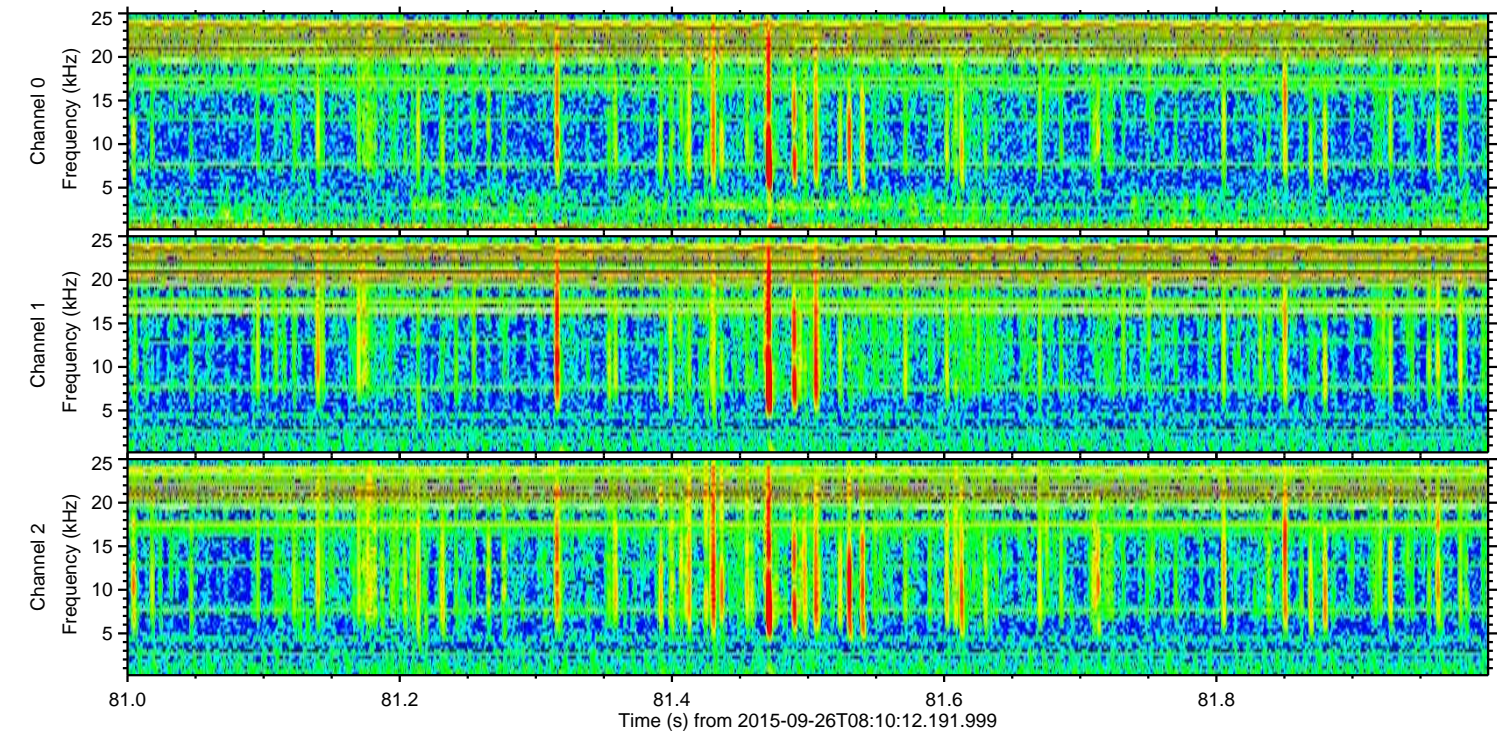
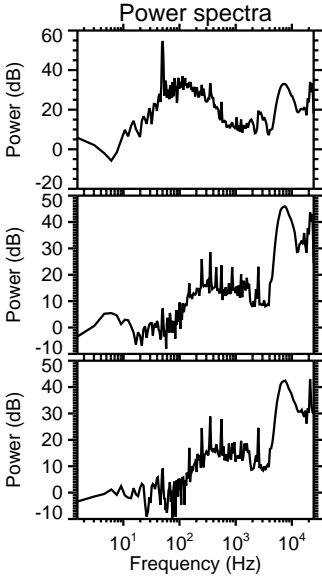
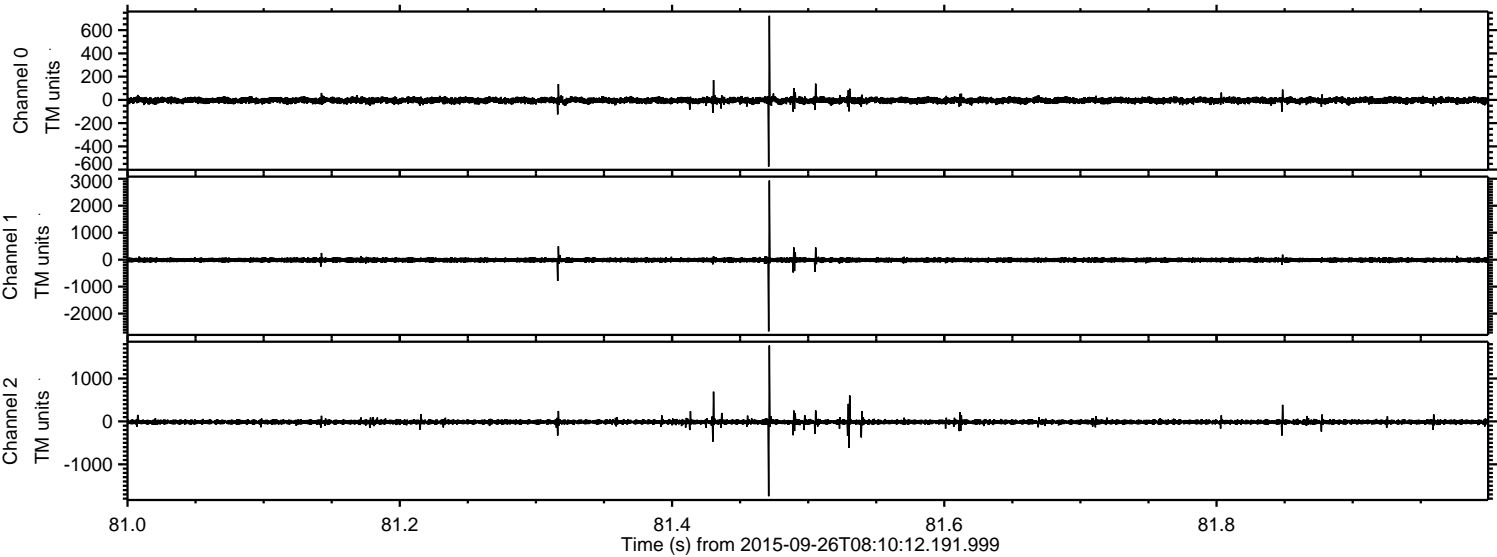
Processed Fri Oct 16 14:08:02 2015 by ELM ver.2012-10-06 from 001__elm20150926_081011__dat00.bin



Processed Fri Oct 16 14:08:03 2015 by ELM ver.2012-10-06 from 001__elm20150926_081011__dat00.bin



Processed Fri Oct 16 14:08:04 2015 by ELM ver.2012-10-06 from 001__elm20150926_081011__dat00.bin



Channel 0
mn: -573
mx: 724
 μ : -4.4
 σ : 15.1

Channel 1
mn: -2657
mx: 2932
 μ : -13.1
 σ : 52.5

Channel 2
mn: -1744
mx: 1769
 μ : -14.0
 σ : 35.6

