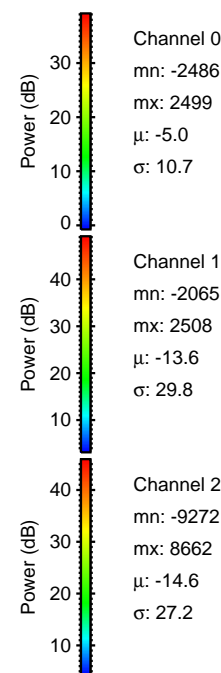
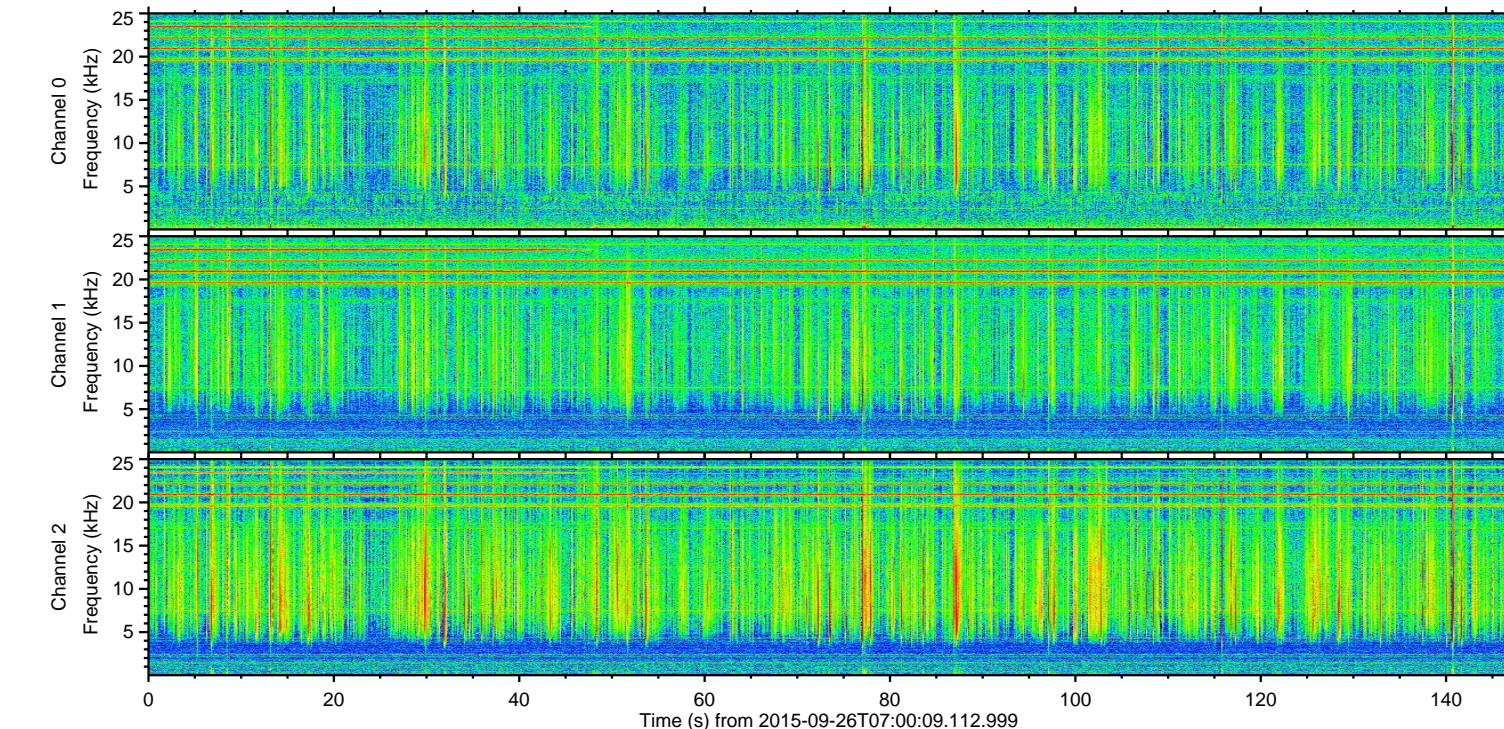
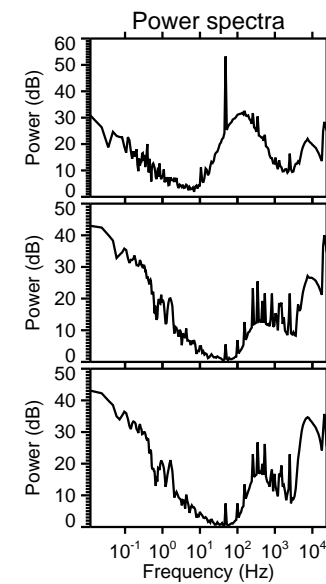
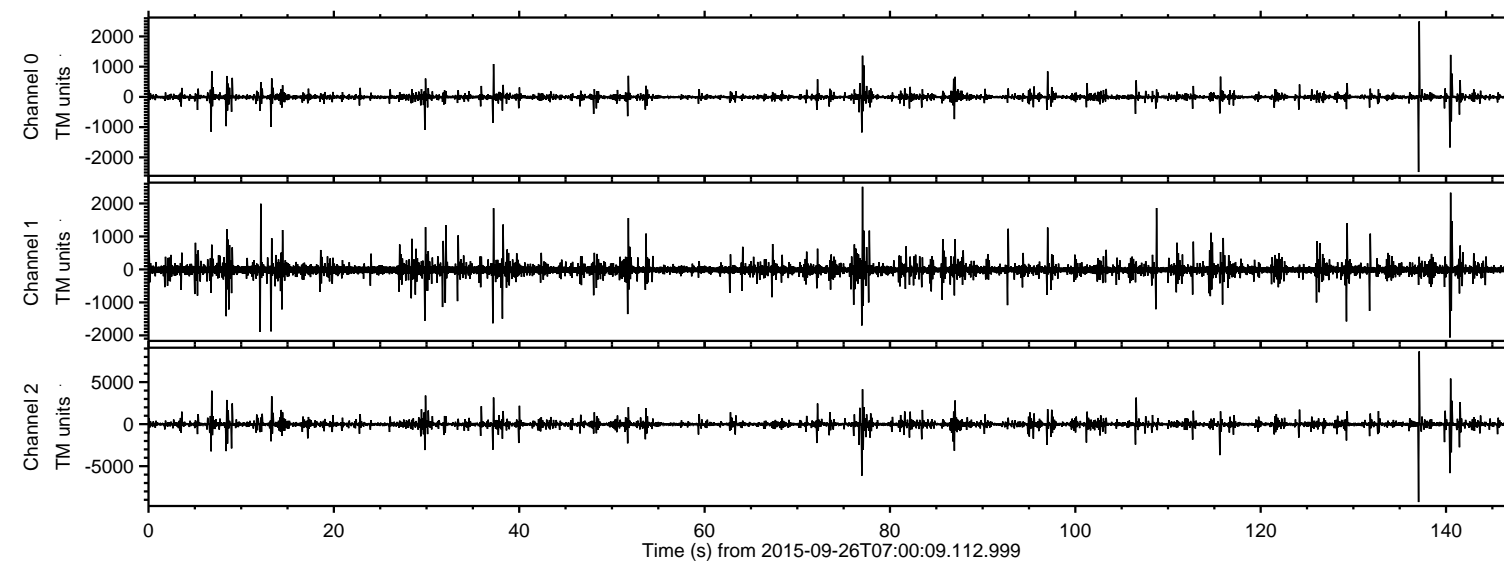


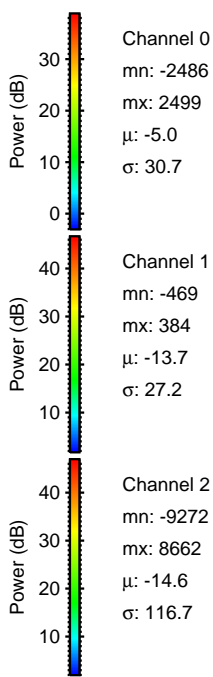
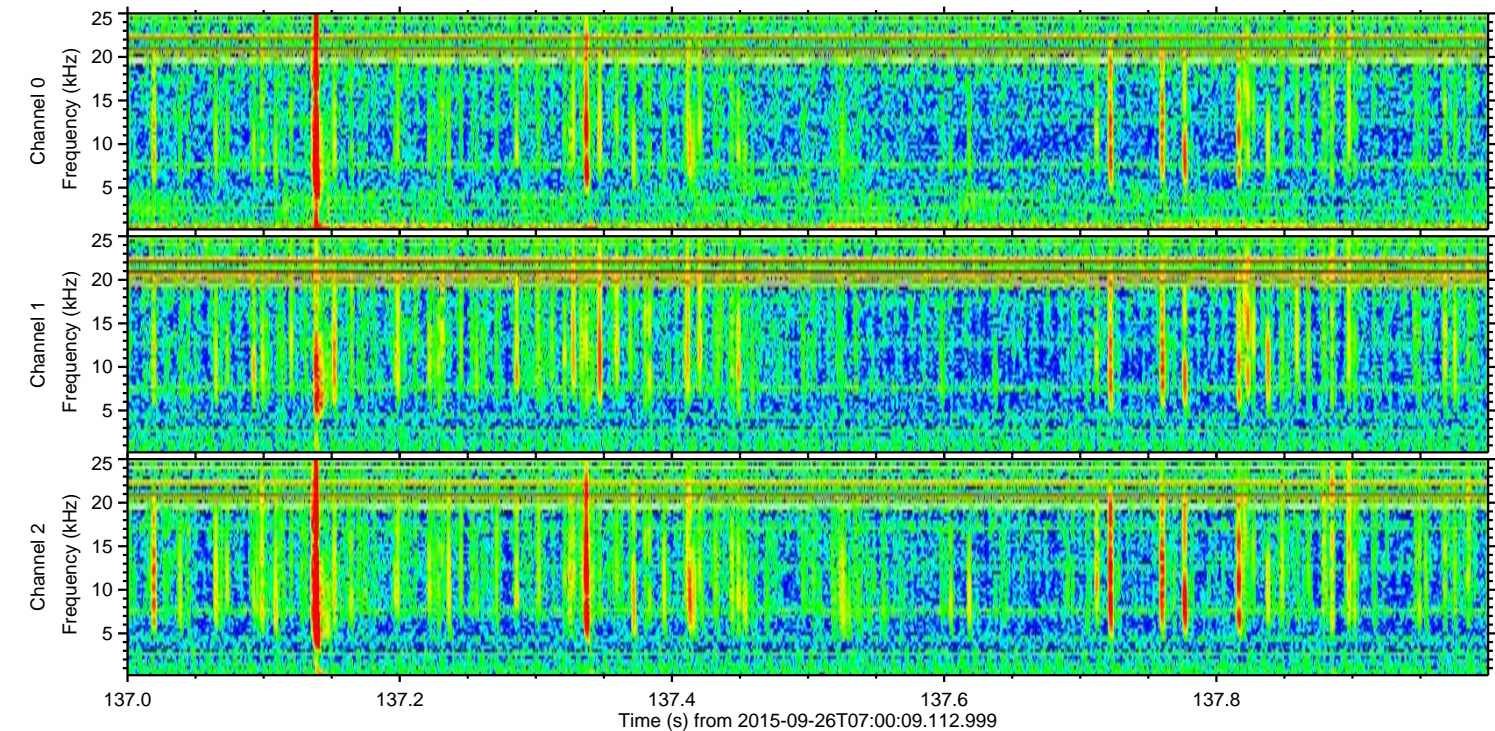
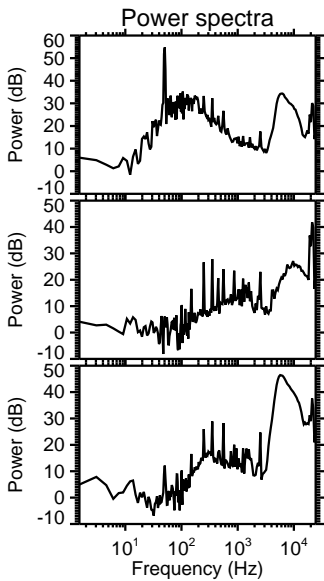
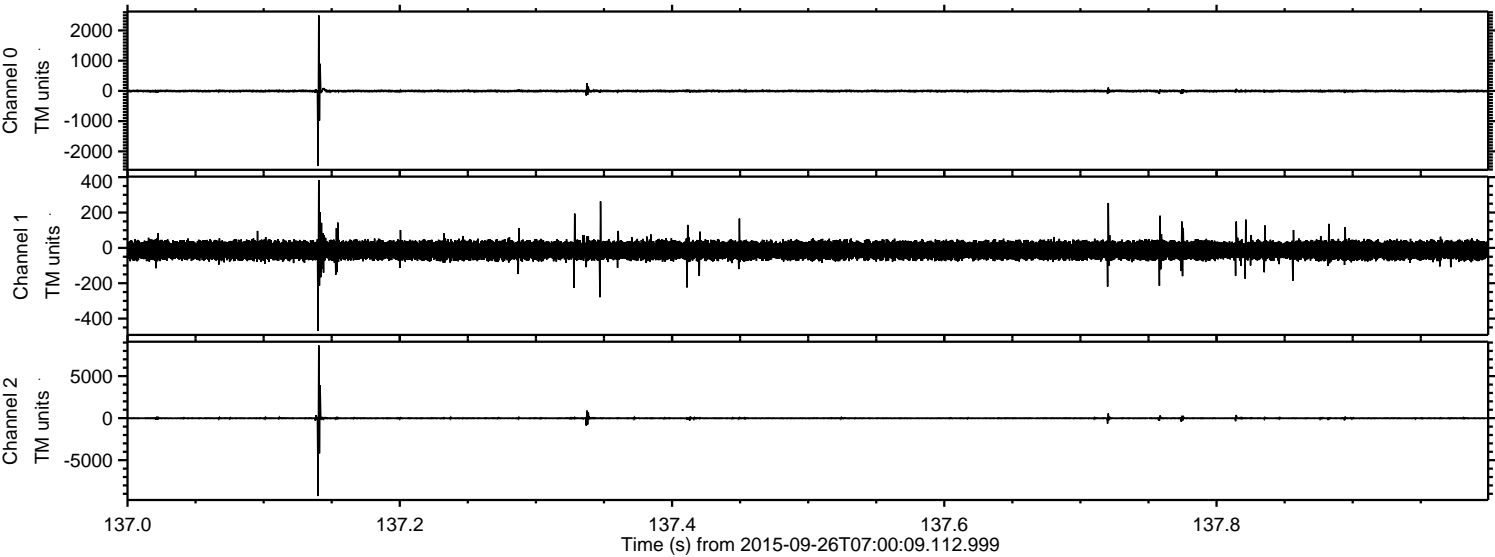
ELMAVAN 3D WAVEFORMS (Measured data sampled at 50 kHz) 51000 packets of 144 samples from 2015-09-26T07:00:09.112.999.

Processed Fri Oct 16 13:48:29 2015 by ELM ver.2012-10-06 from 001__elm20150926_070008__dat00.bin

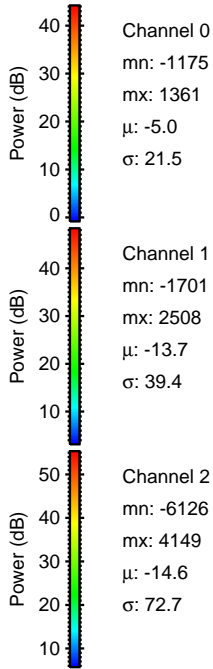
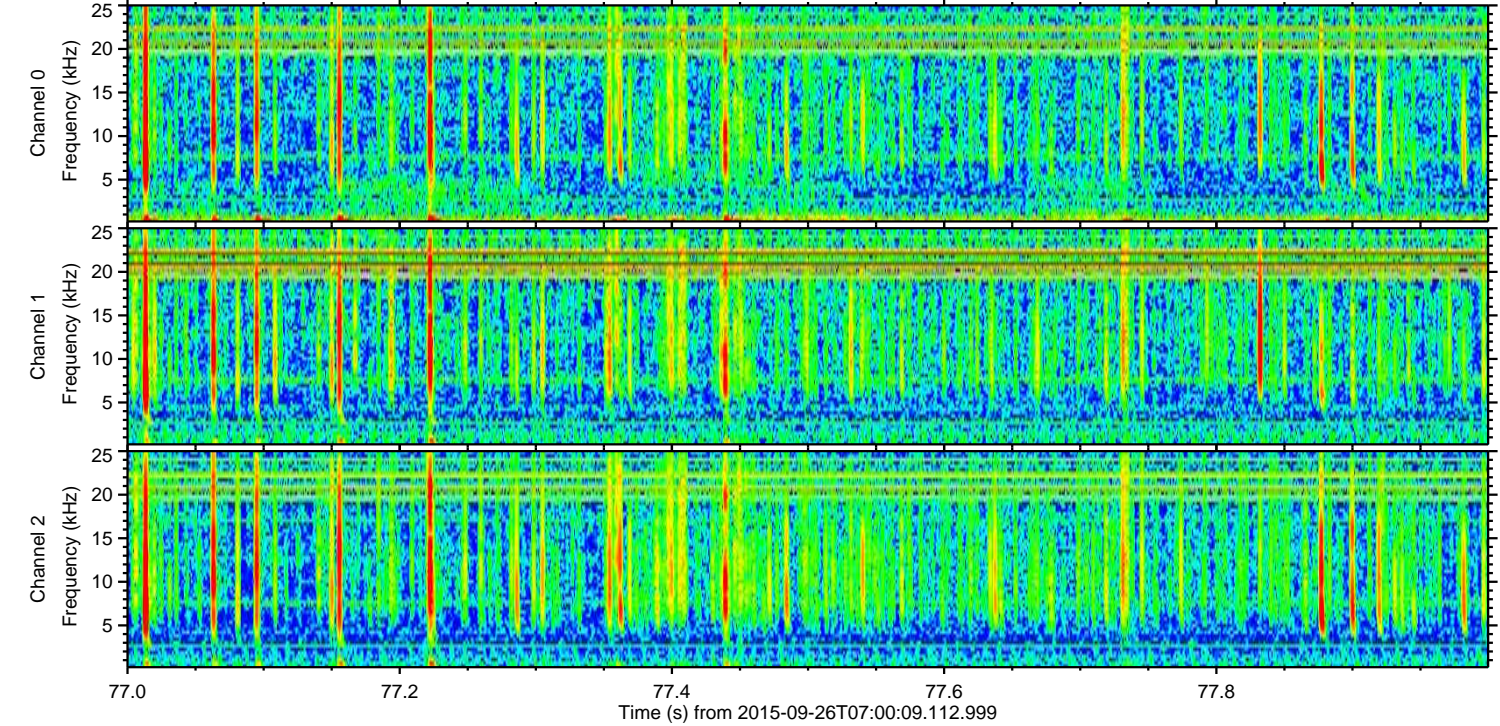
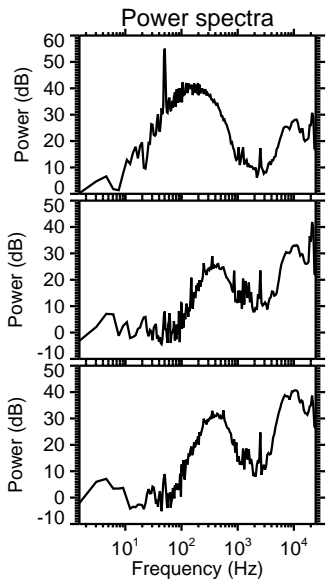
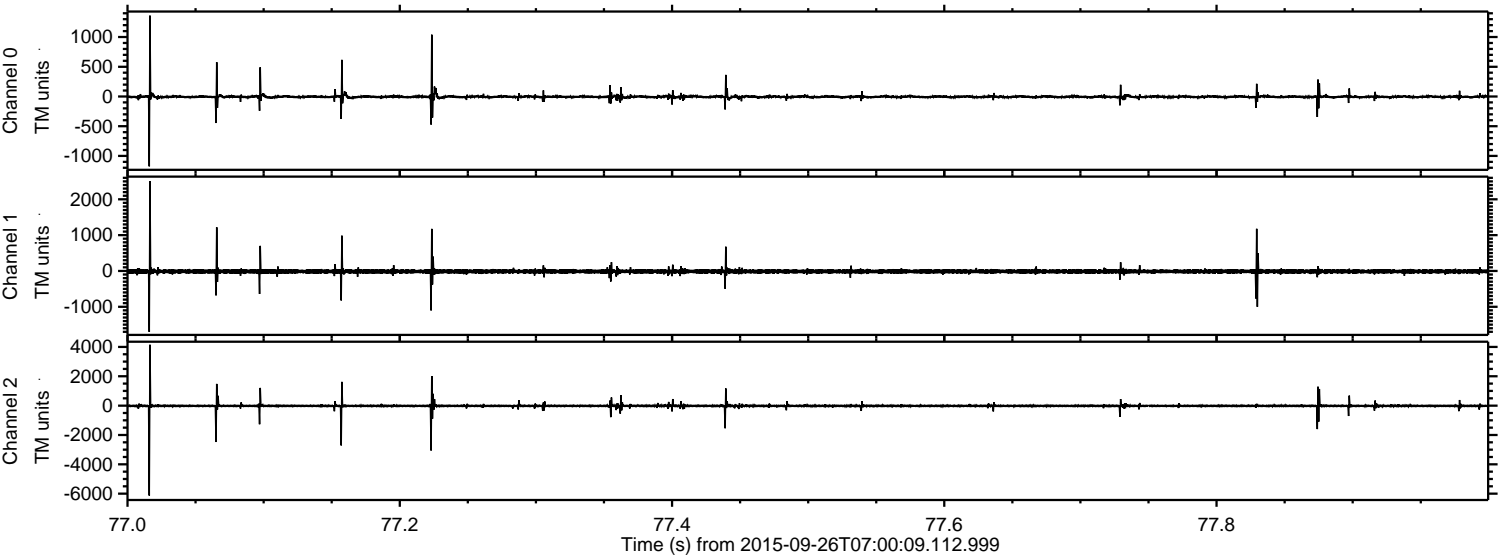


ELMAVAN 3D WAVEFORMS (Measured data sampled at 50 kHz) 51000 packets of 144 samples from 2015-09-26T07:00:09.112.999. Part 138/147

Processed Fri Oct 16 13:48:44 2015 by ELM ver.2012-10-06 from 001__elm20150926_070008__dat00.bin



Processed Fri Oct 16 13:48:45 2015 by ELM ver.2012-10-06 from 001__elm20150926_070008__dat00.bin



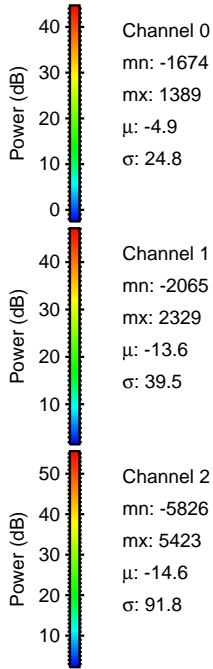
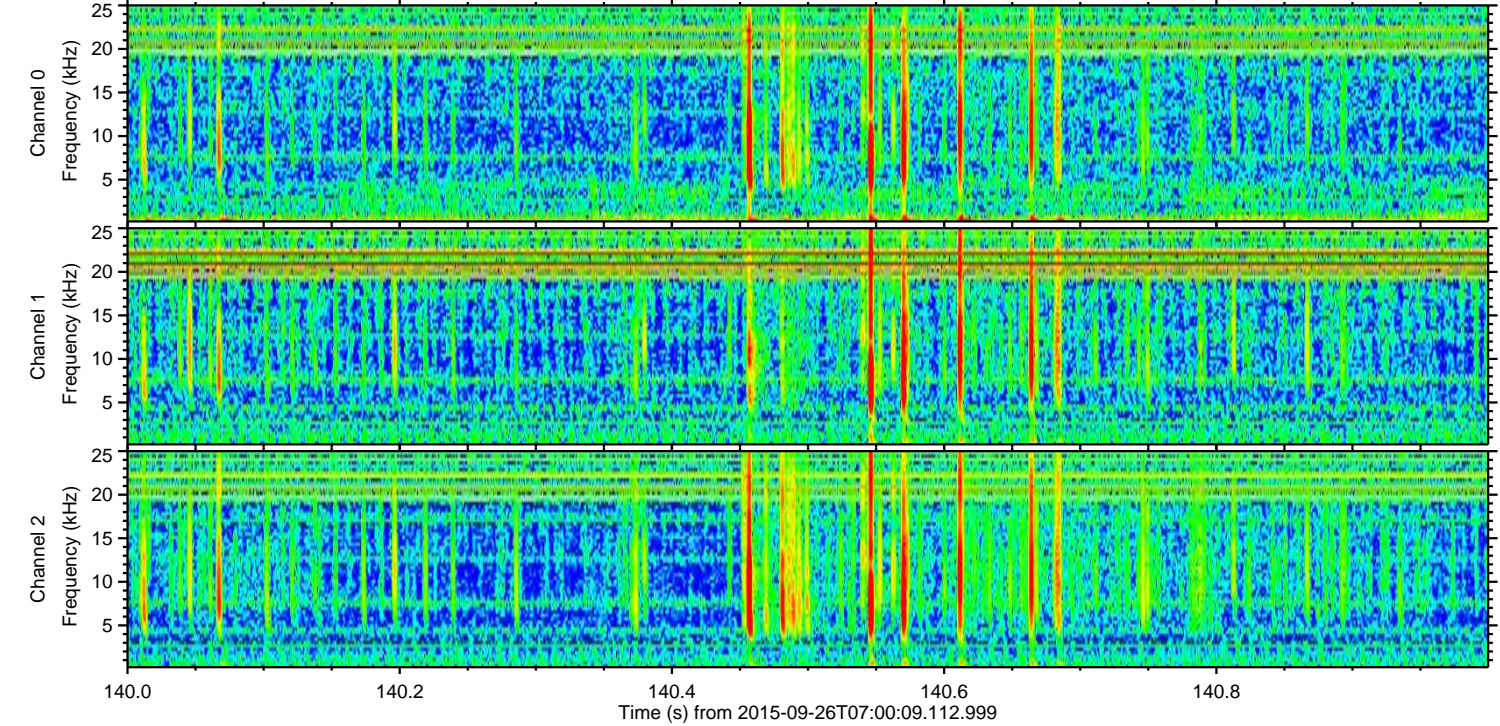
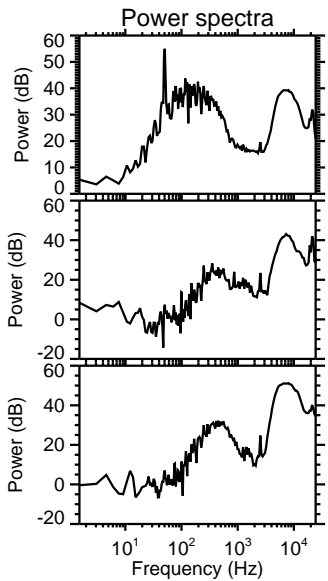
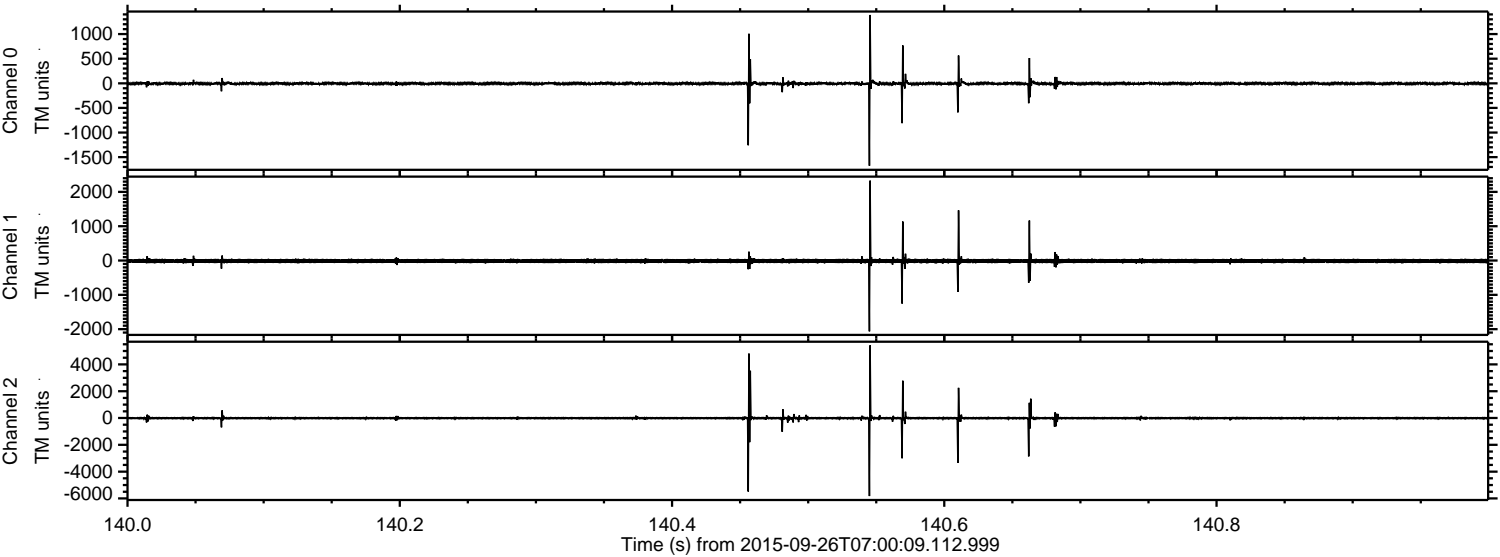
Channel 0
mn: -1175
mx: 1361
 μ : -5.0
 σ : 21.5

Channel 1
mn: -1701
mx: 2508
 μ : -13.7
 σ : 39.4

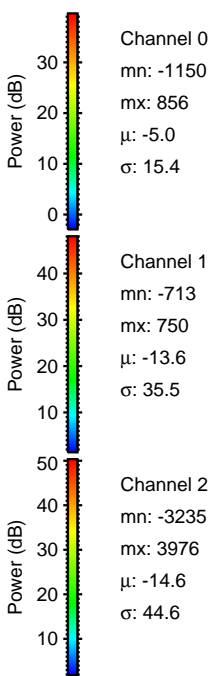
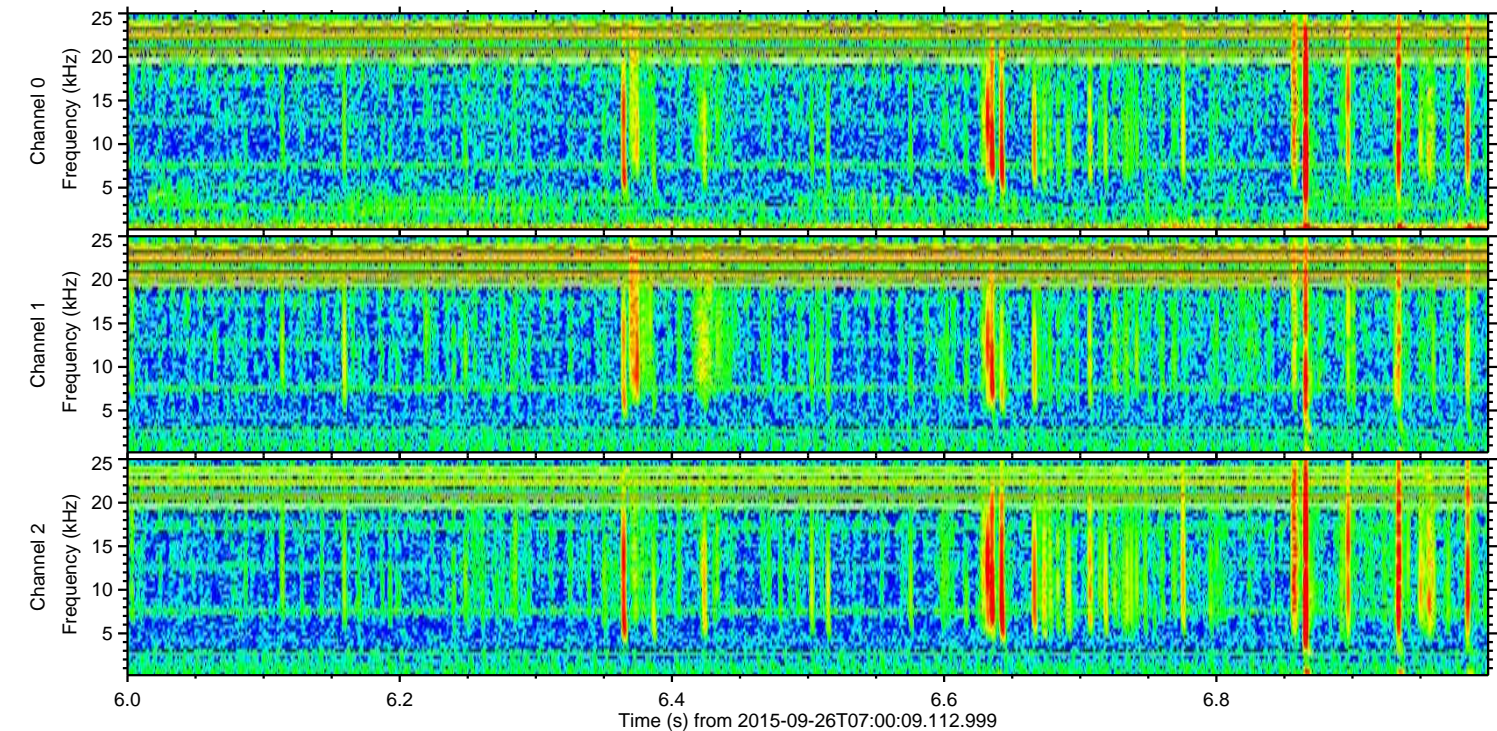
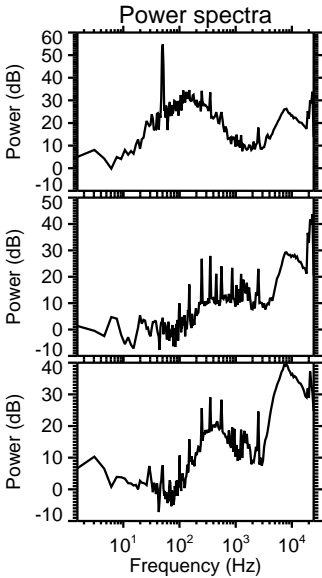
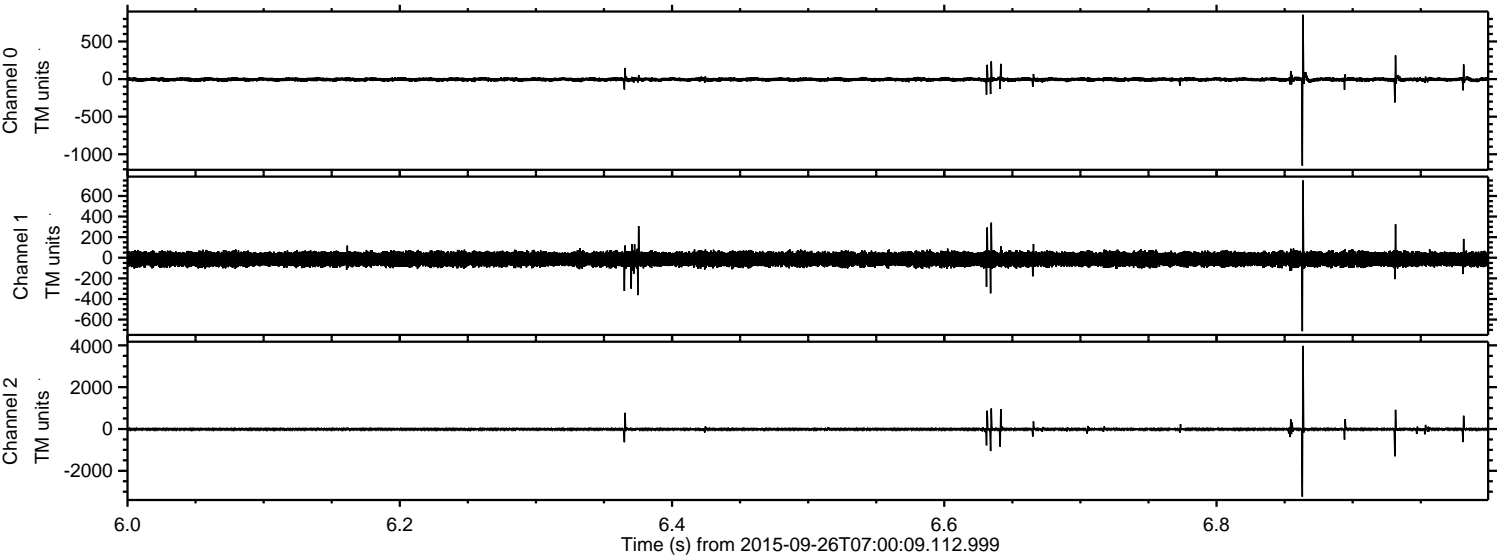
Channel 2
mn: -6126
mx: 4149
 μ : -14.6
 σ : 72.7

ELMAVAN 3D WAVEFORMS (Measured data sampled at 50 kHz) 51000 packets of 144 samples from 2015-09-26T07:00:09.112.999. Part 141/147

Processed Fri Oct 16 13:48:46 2015 by ELM ver.2012-10-06 from 001__elm20150926_070008__dat00.bin

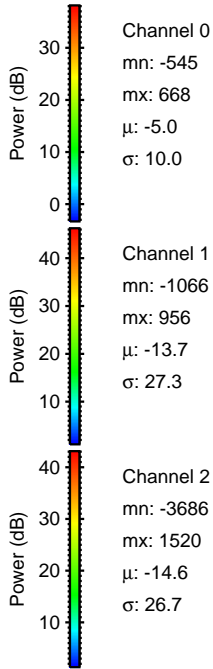
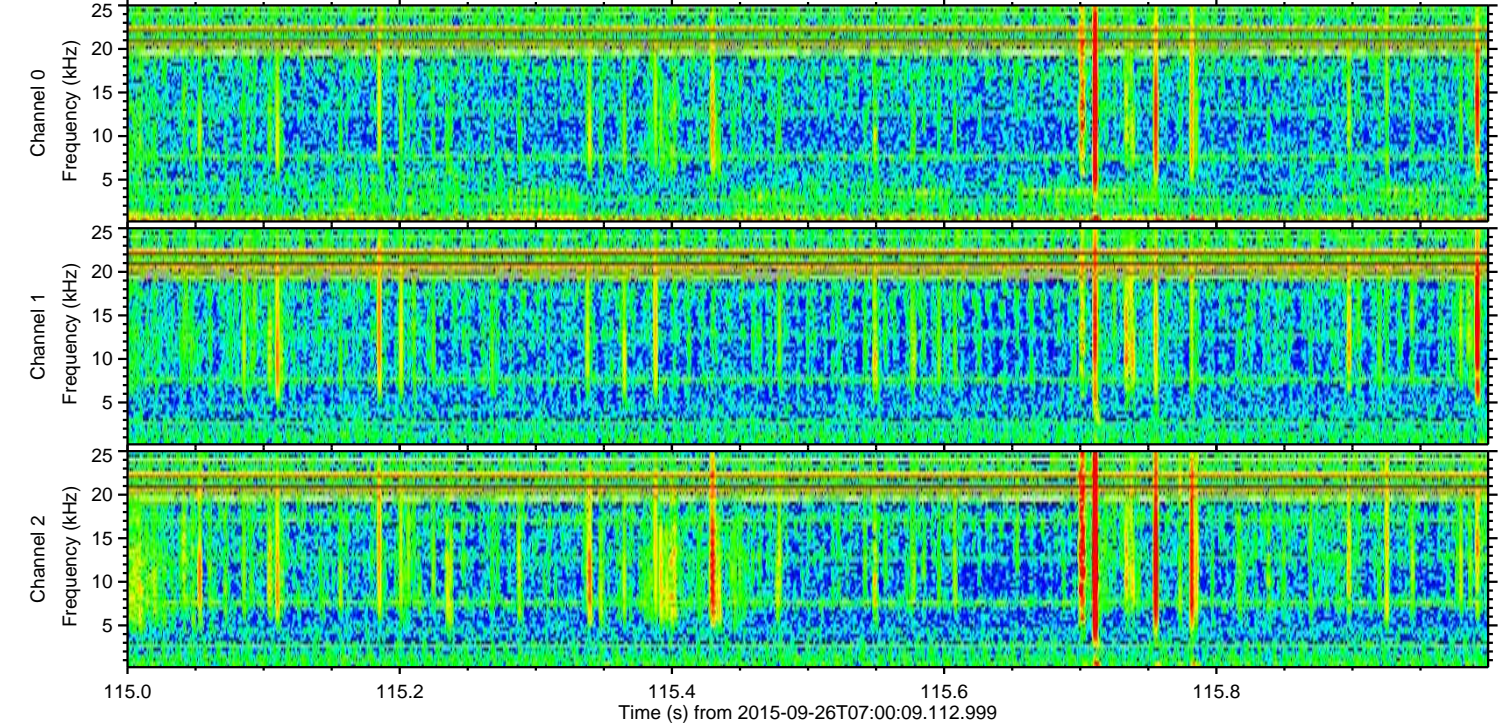
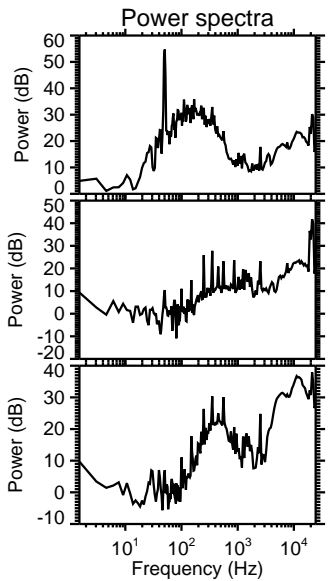
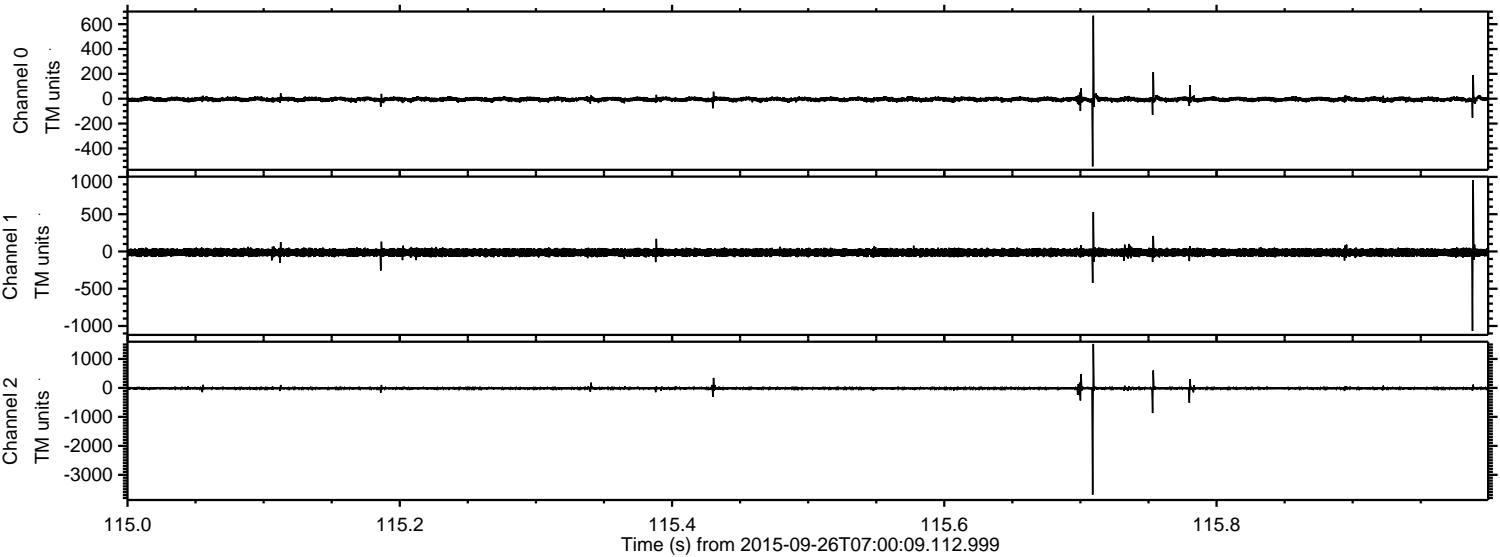


Processed Fri Oct 16 13:48:47 2015 by ELM ver.2012-10-06 from 001__elm20150926_070008__dat00.bin

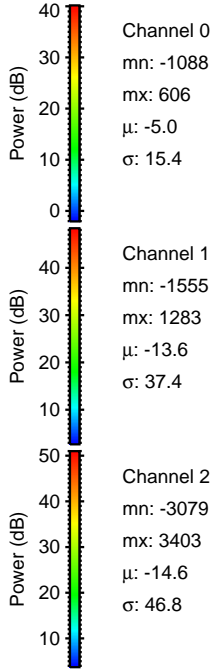
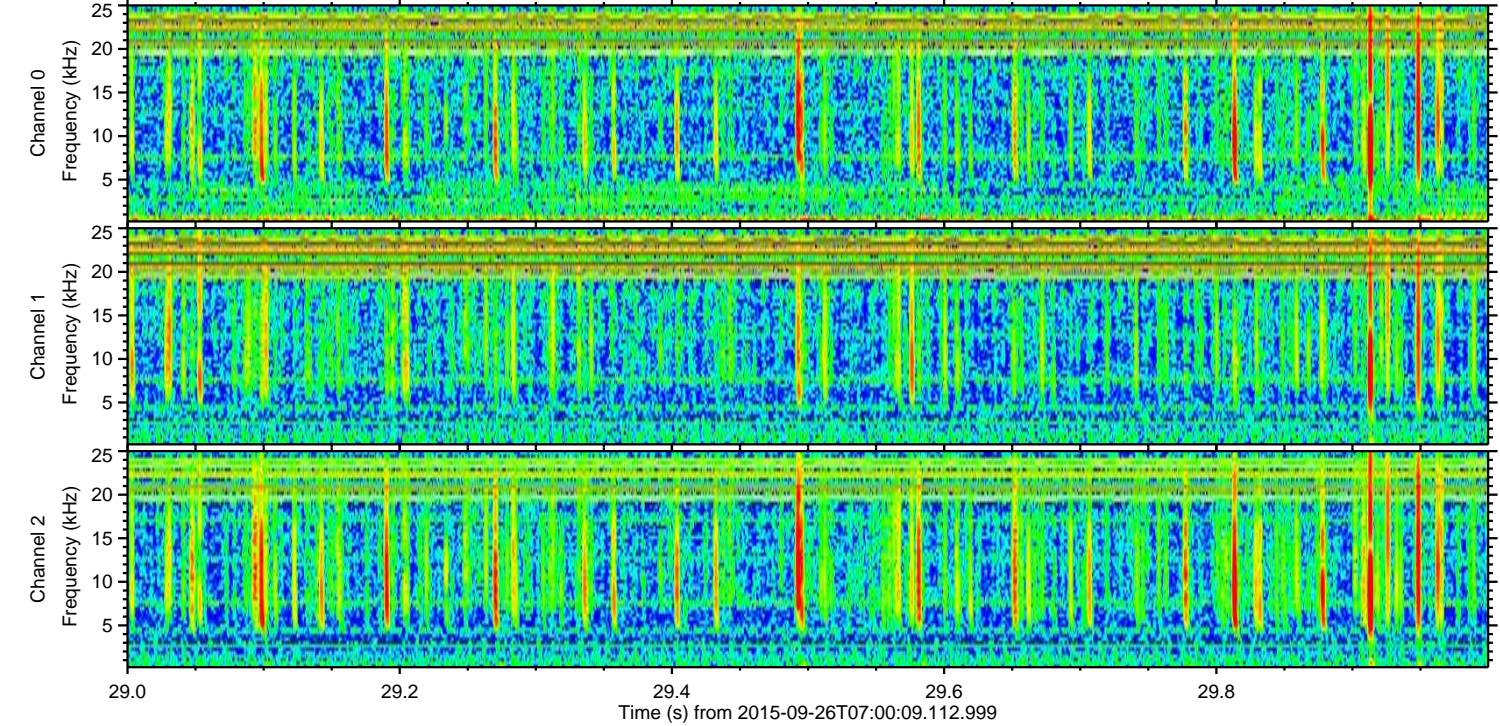
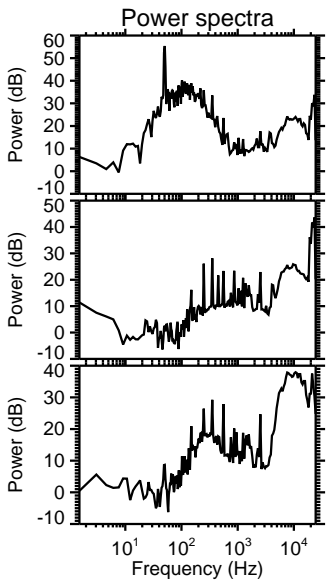
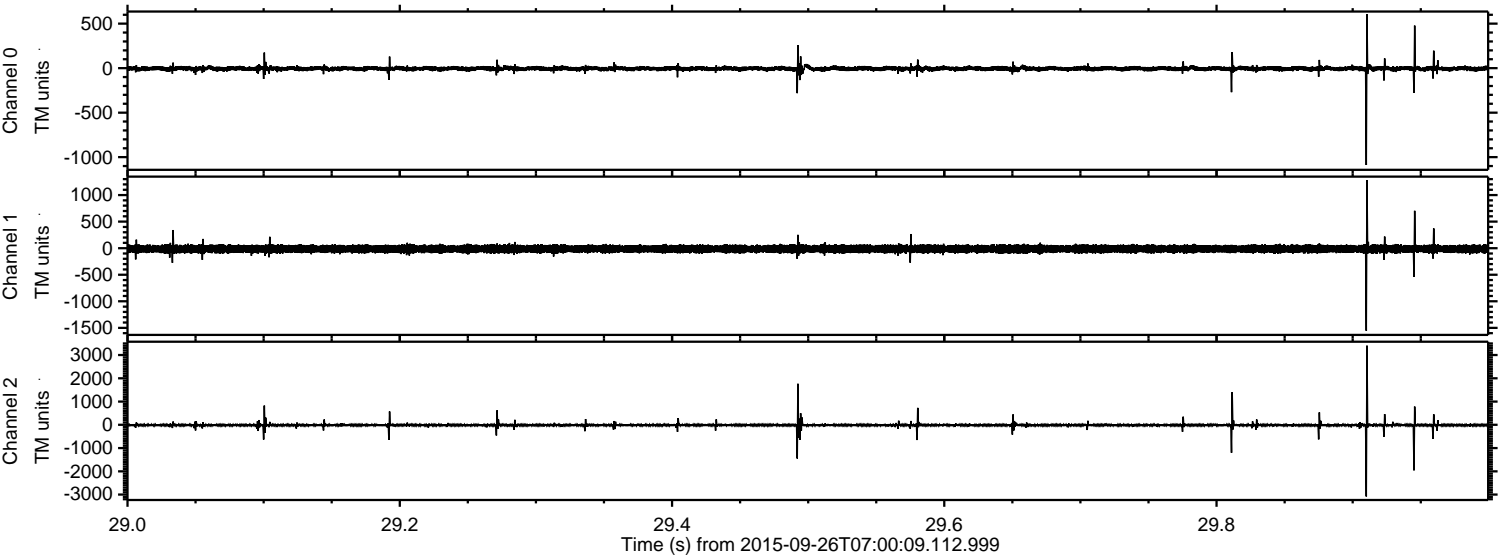


ELMAVAN 3D WAVEFORMS (Measured data sampled at 50 kHz) 51000 packets of 144 samples from 2015-09-26T07:00:09.112.999. Part 116/147

Processed Fri Oct 16 13:48:49 2015 by ELM ver.2012-10-06 from 001__elm20150926_070008__dat00.bin



Processed Fri Oct 16 13:48:50 2015 by ELM ver.2012-10-06 from 001__elm20150926_070008__dat00.bin

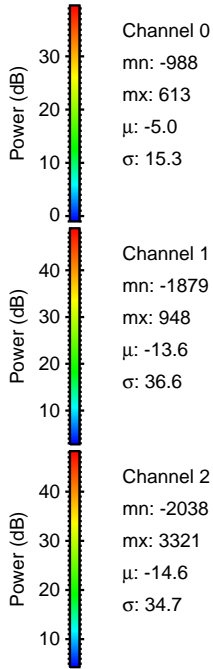
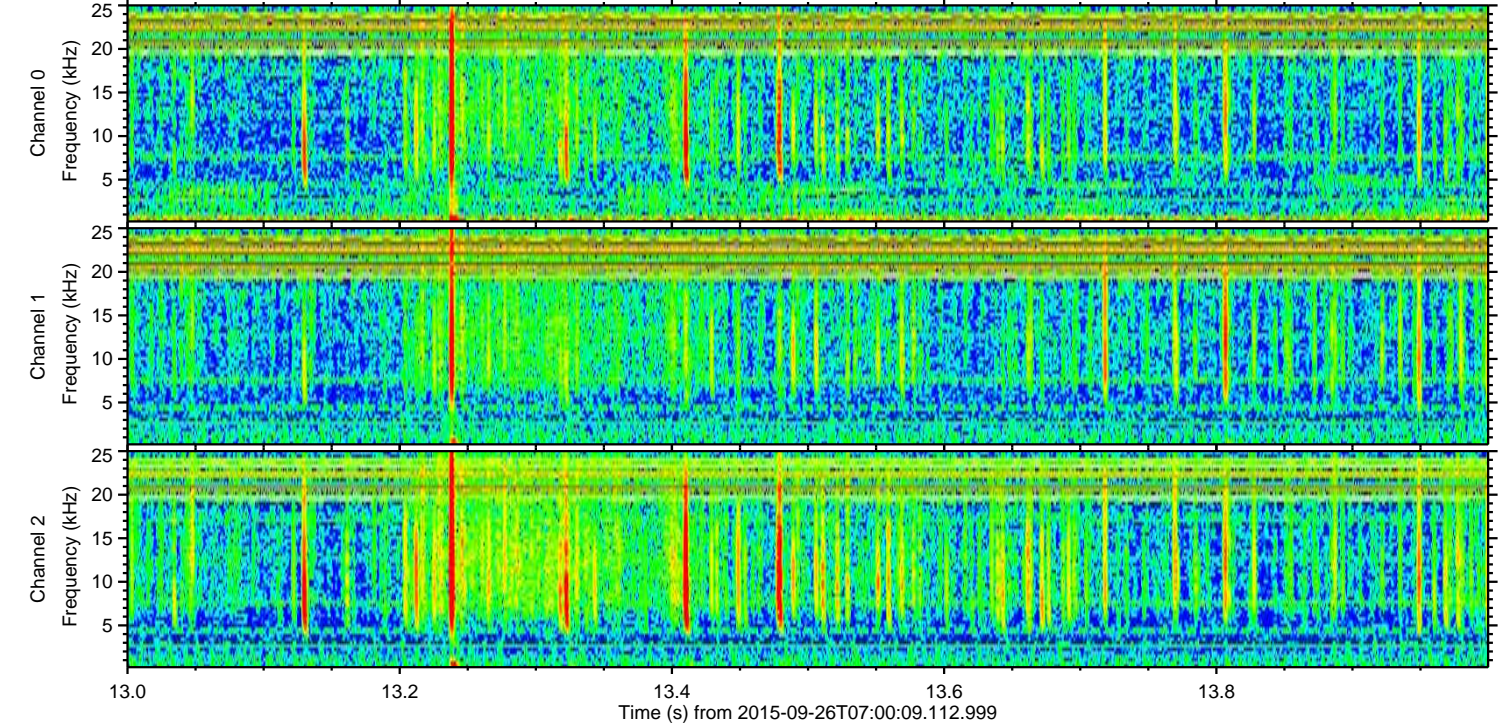
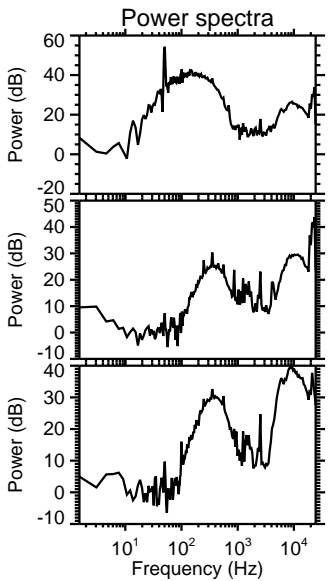
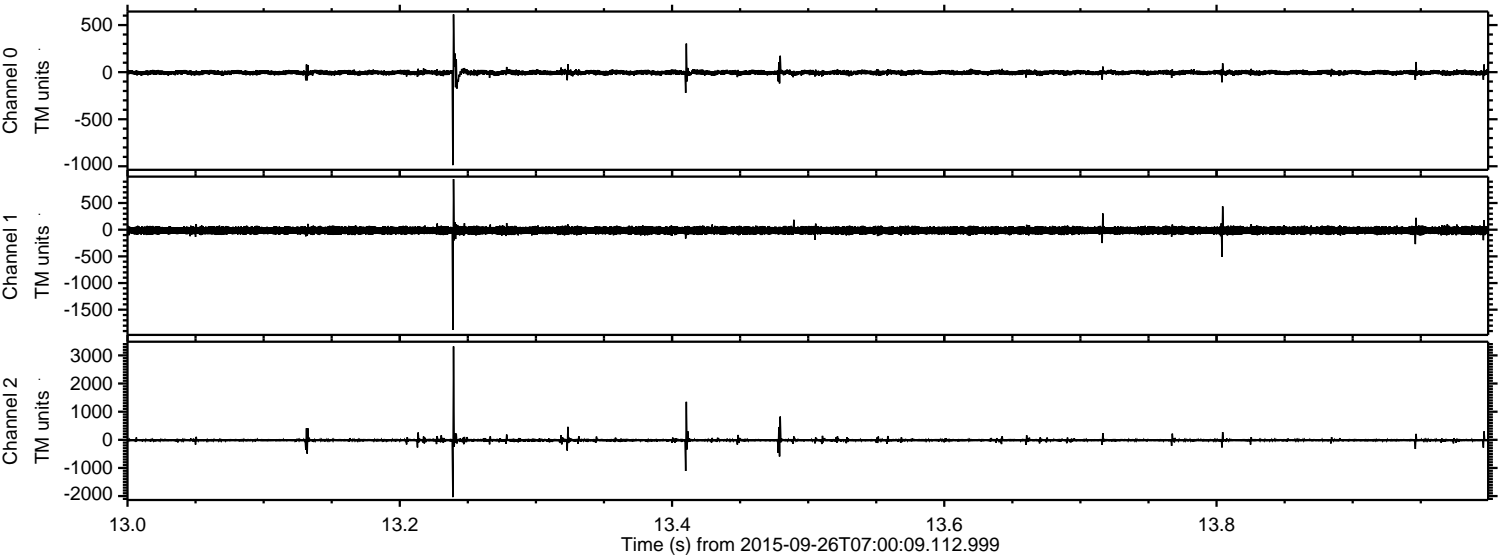


Channel 0
mn: -1088
mx: 606
 μ : -5.0
 σ : 15.4

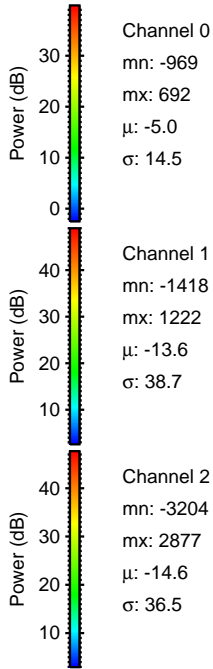
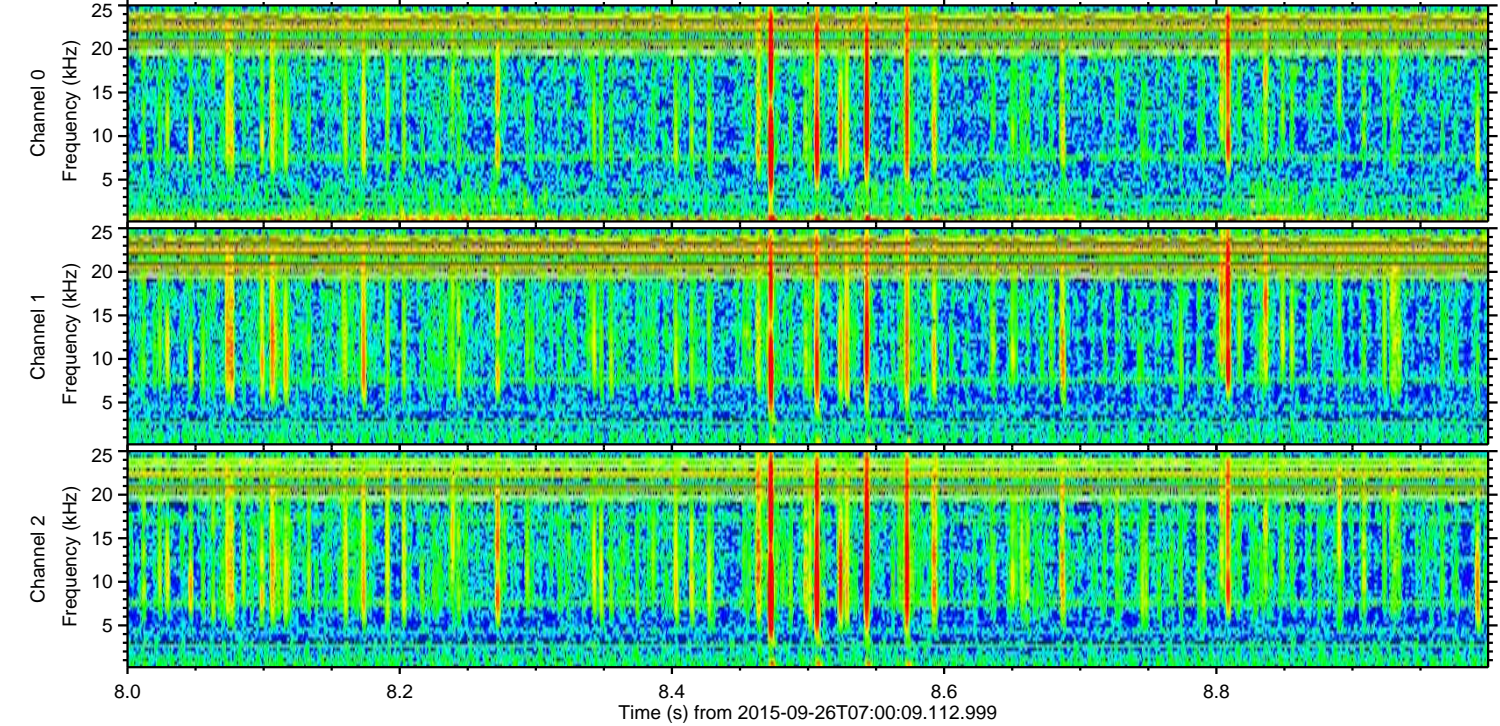
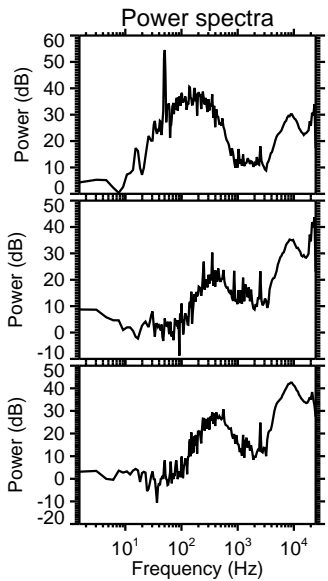
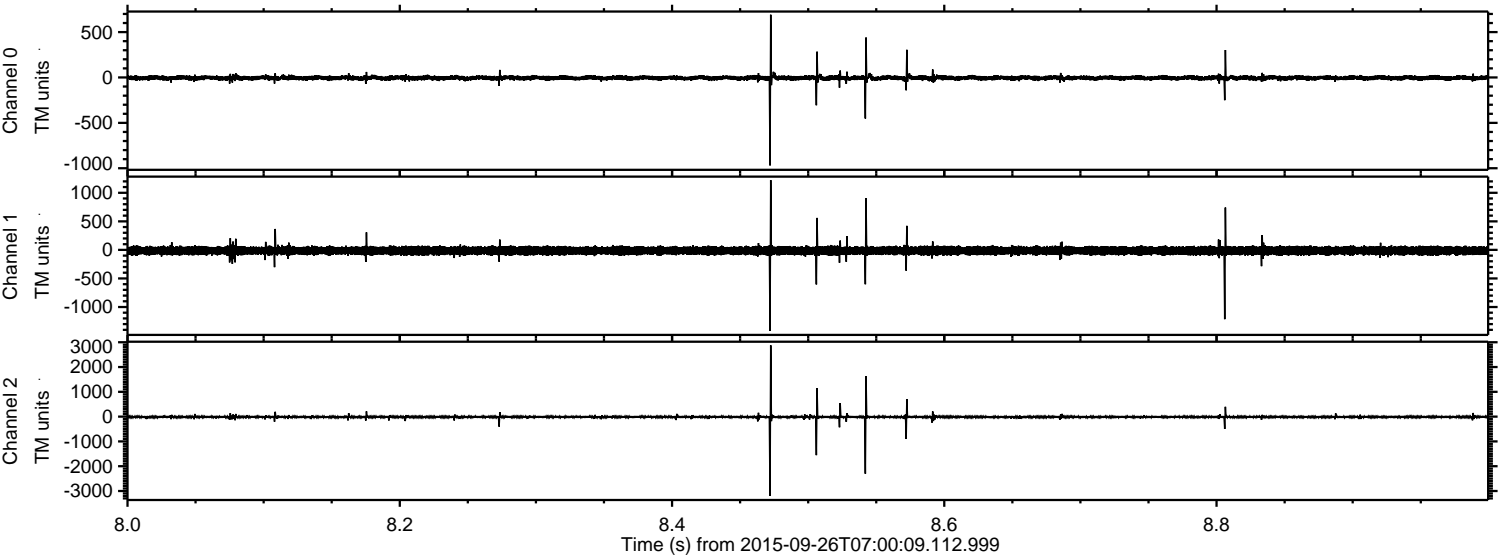
Channel 1
mn: -1555
mx: 1283
 μ : -13.6
 σ : 37.4

Channel 2
mn: -3079
mx: 3403
 μ : -14.6
 σ : 46.8

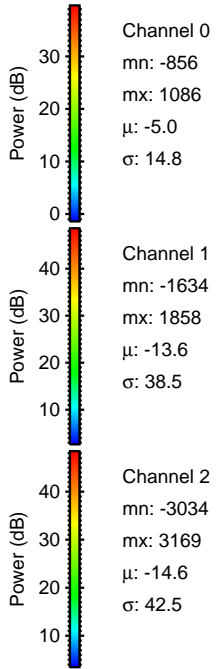
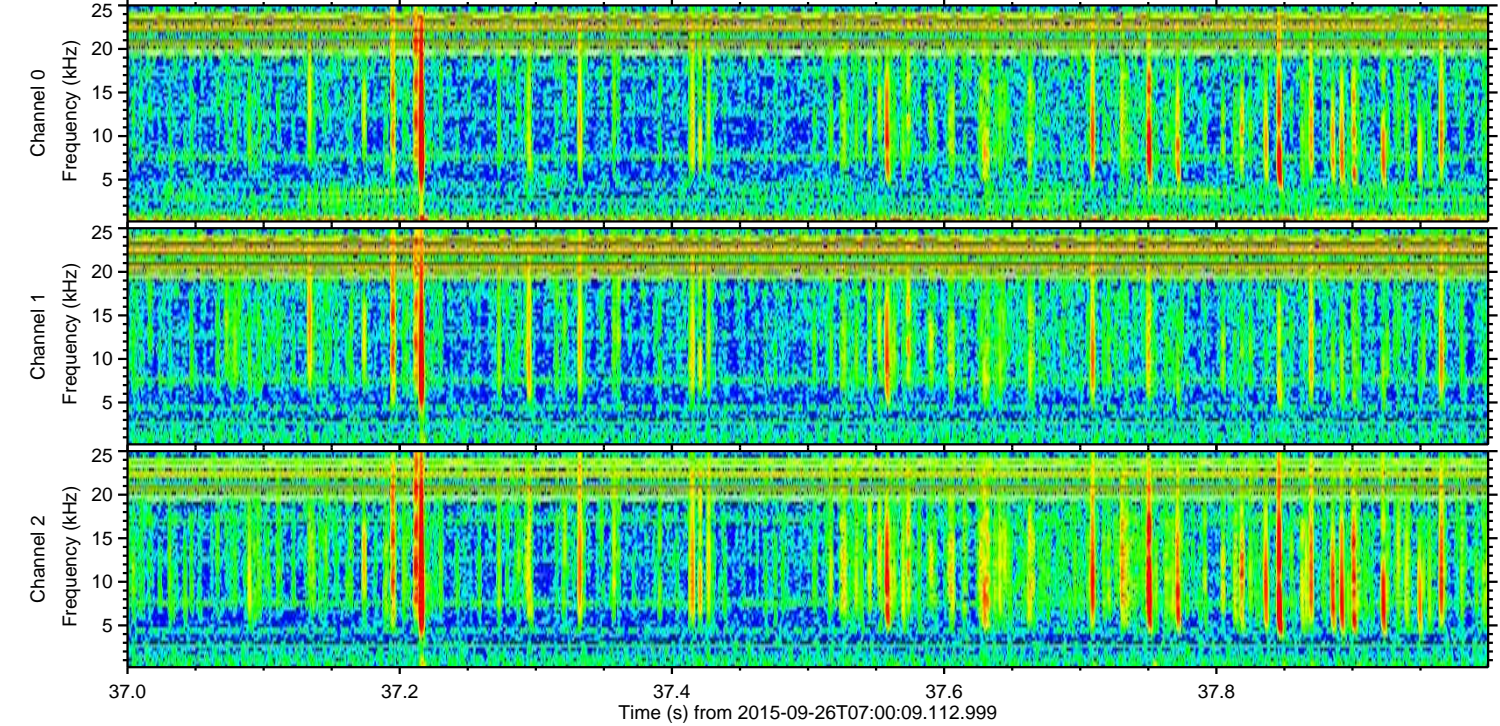
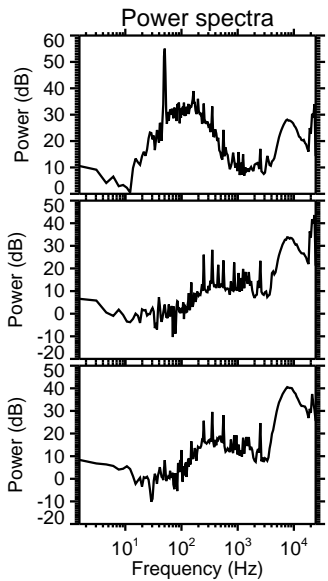
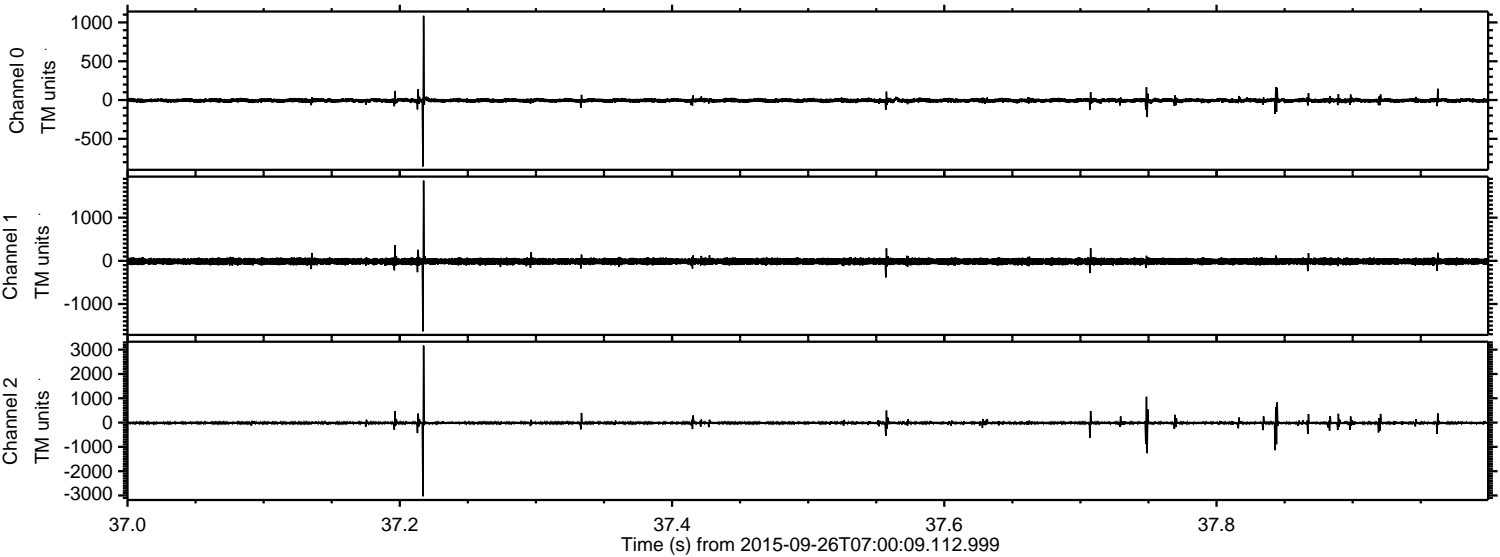
Processed Fri Oct 16 13:48:51 2015 by ELM ver.2012-10-06 from 001__elm20150926_070008__dat00.bin



Processed Fri Oct 16 13:48:52 2015 by ELM ver.2012-10-06 from 001__elm20150926_070008__dat00.bin



Processed Fri Oct 16 13:48:53 2015 by ELM ver.2012-10-06 from 001__elm20150926_070008__dat00.bin



Processed Fri Oct 16 13:48:54 2015 by ELM ver.2012-10-06 from 001__elm20150926_070008__dat00.bin

