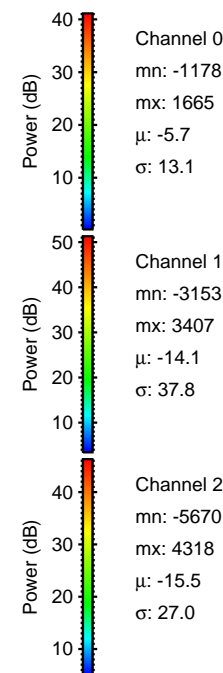
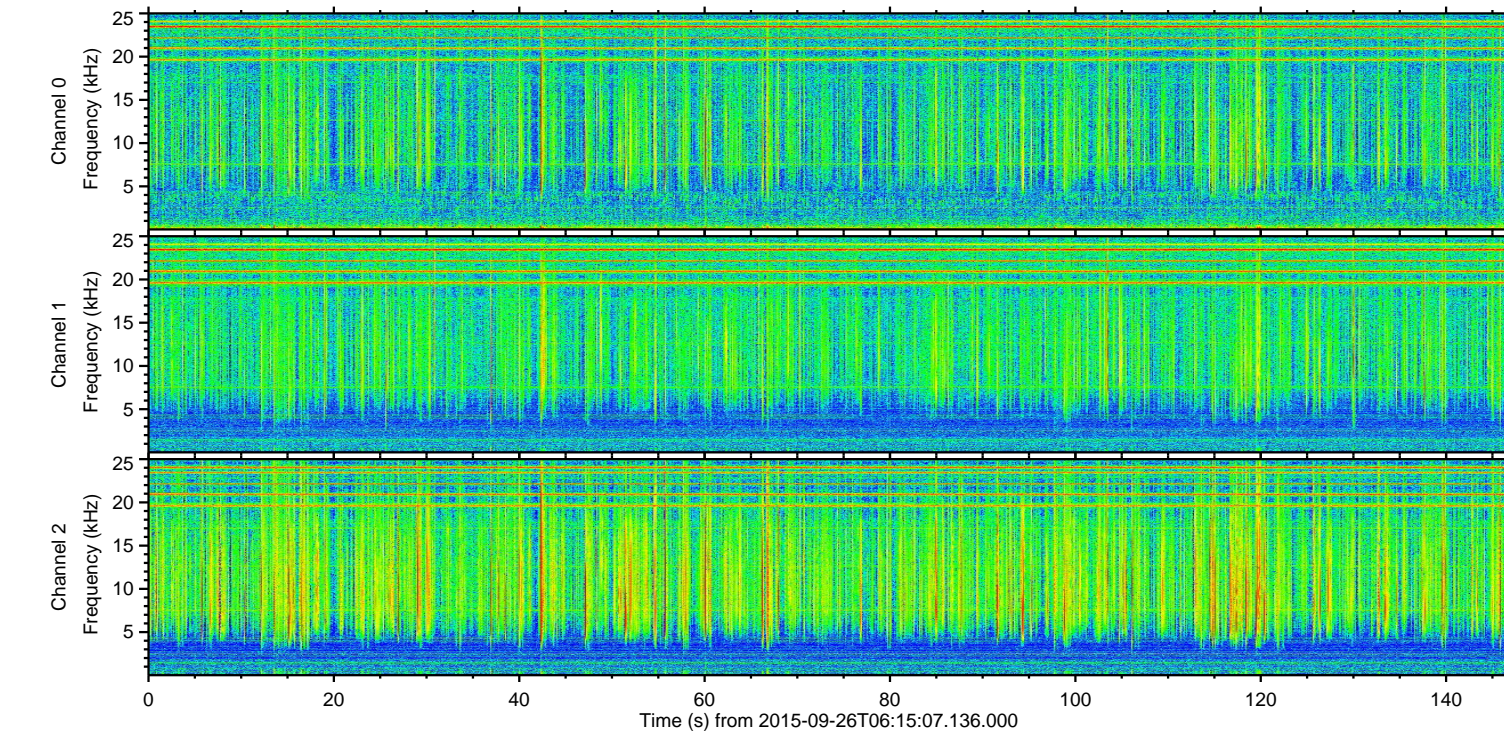
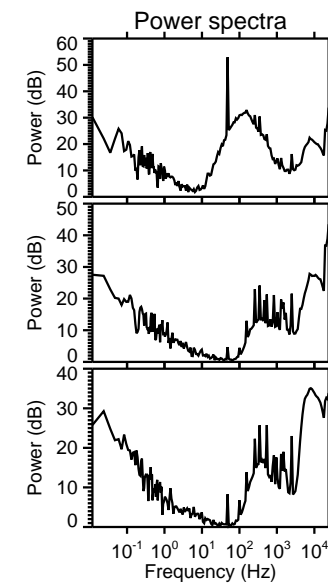
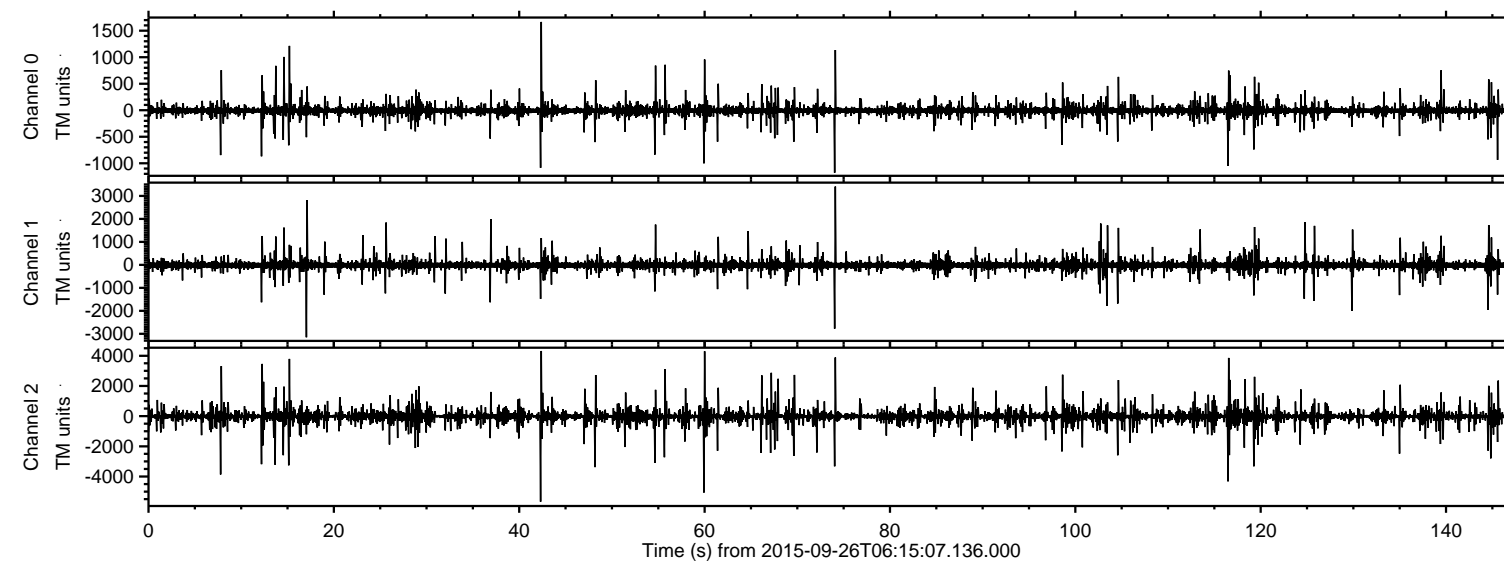


ELMAVAN 3D WAVEFORMS (Measured data sampled at 50 kHz) 51000 packets of 144 samples from 2015-09-26T06:15:07.136.000.

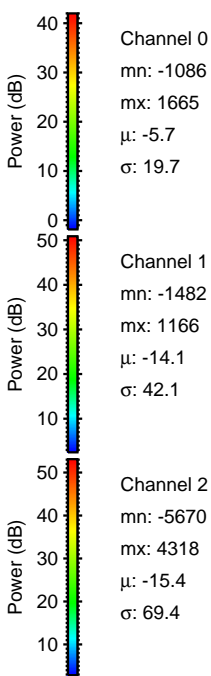
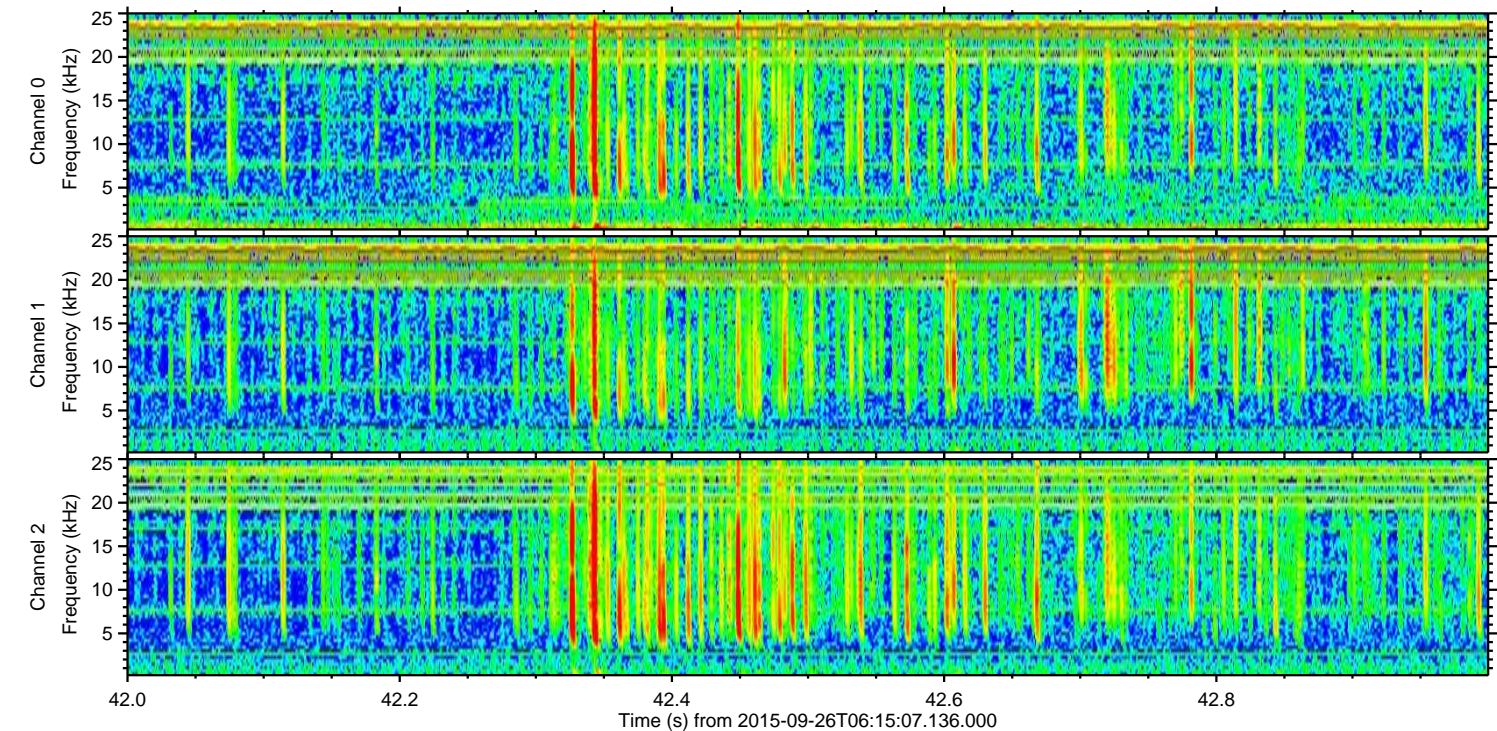
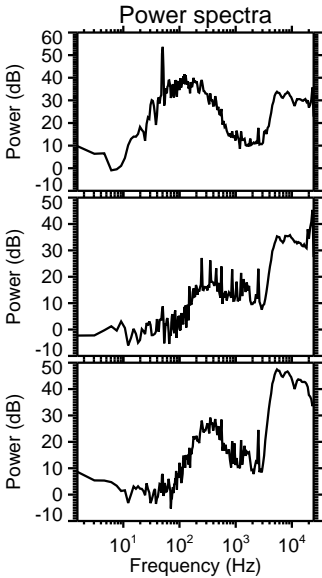
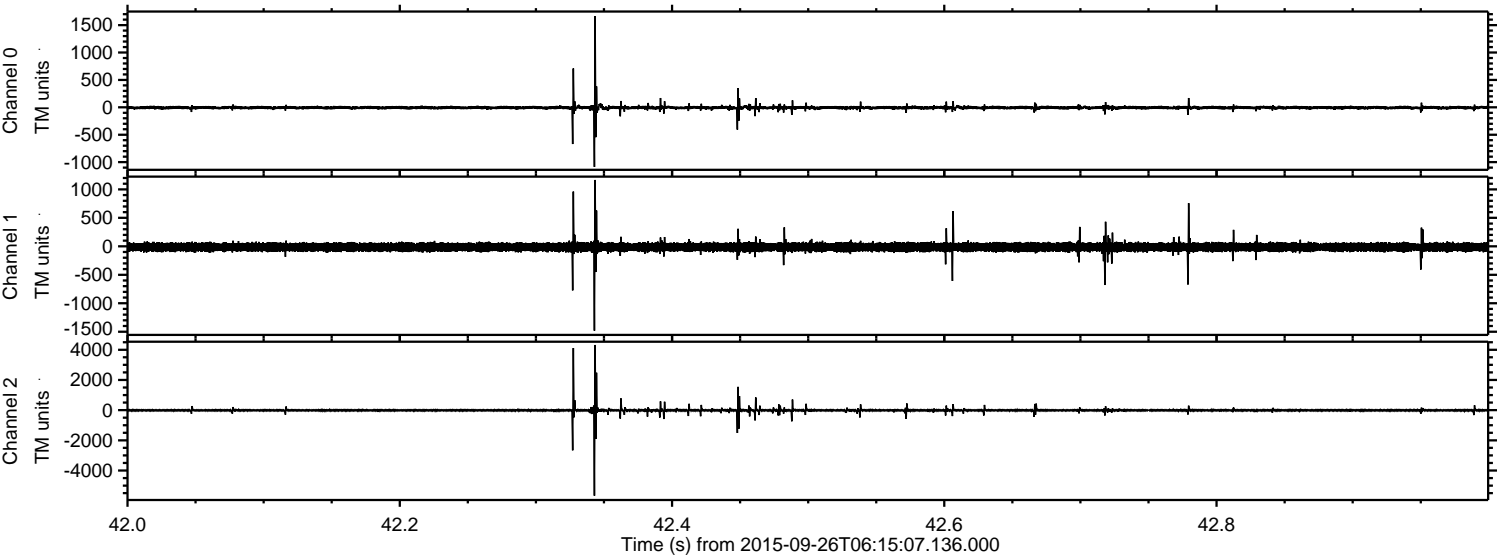
Processed Fri Oct 16 13:36:09 2015 by ELM ver.2012-10-06 from 001\_\_elm20150926\_061506\_\_dat00.bin





ELMAVAN 3D WAVEFORMS (Measured data sampled at 50 kHz) 51000 packets of 144 samples from 2015-09-26T06:15:07.136.000. Part 43/147

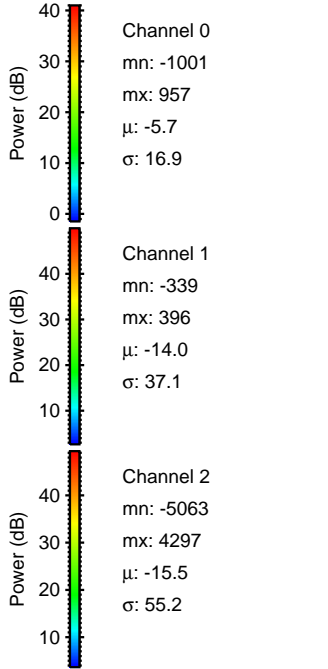
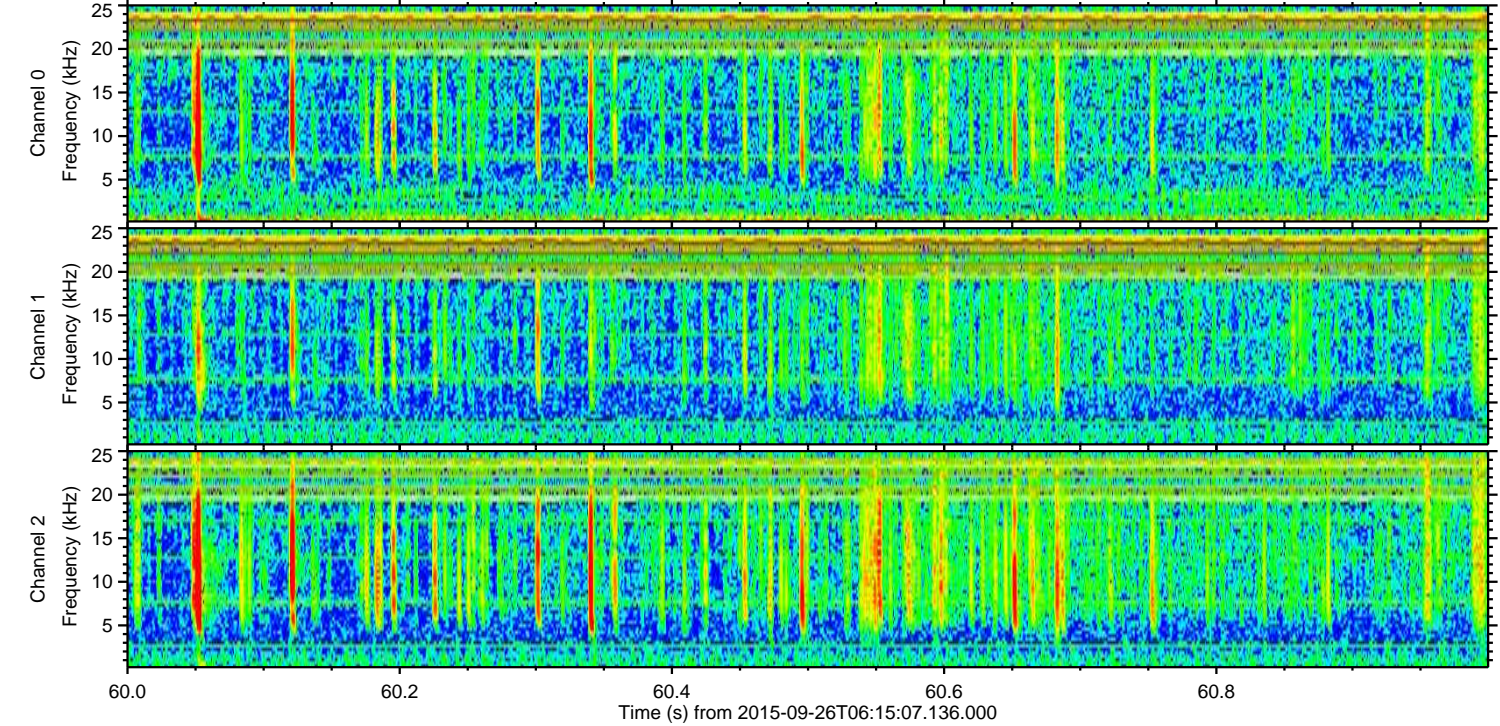
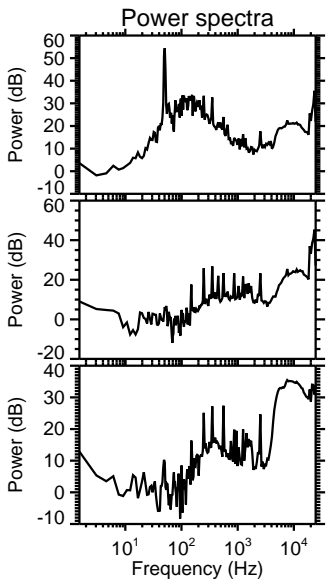
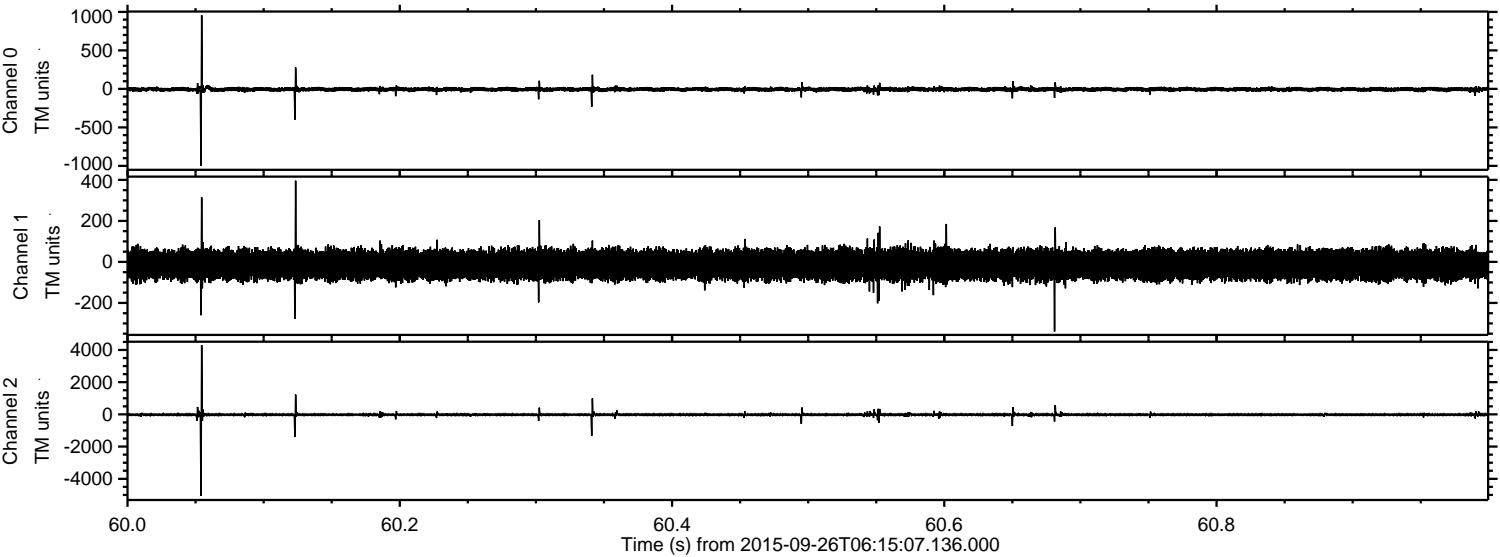
Processed Fri Oct 16 13:36:25 2015 by ELM ver.2012-10-06 from 001\_\_elm20150926\_061506\_\_dat00.bin





ELMAVAN 3D WAVEFORMS (Measured data sampled at 50 kHz) 51000 packets of 144 samples from 2015-09-26T06:15:07.136.000. Part 61/147

Processed Fri Oct 16 13:36:26 2015 by ELM ver.2012-10-06 from 001\_\_elm20150926\_061506\_\_dat00.bin



Channel 0  
mn: -1001  
mx: 957  
 $\mu$ : -5.7  
 $\sigma$ : 16.9

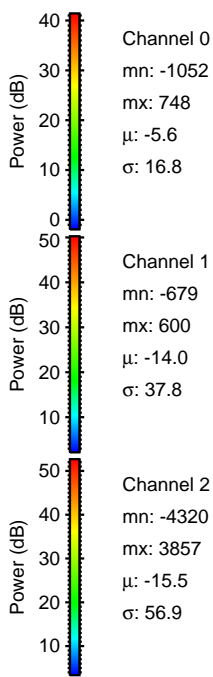
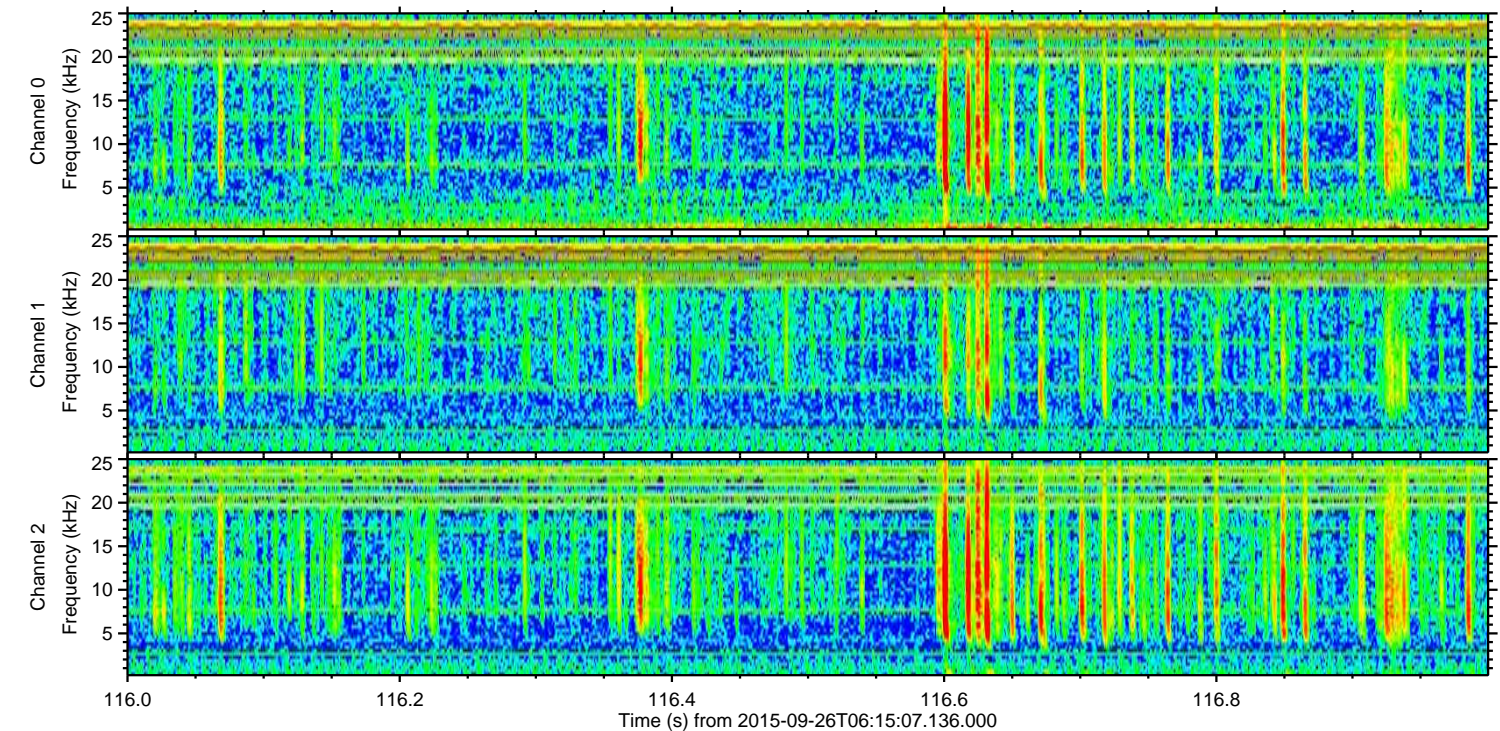
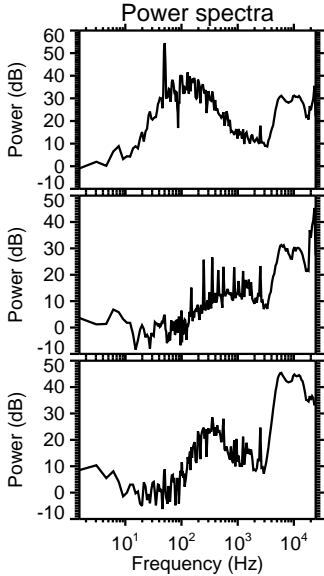
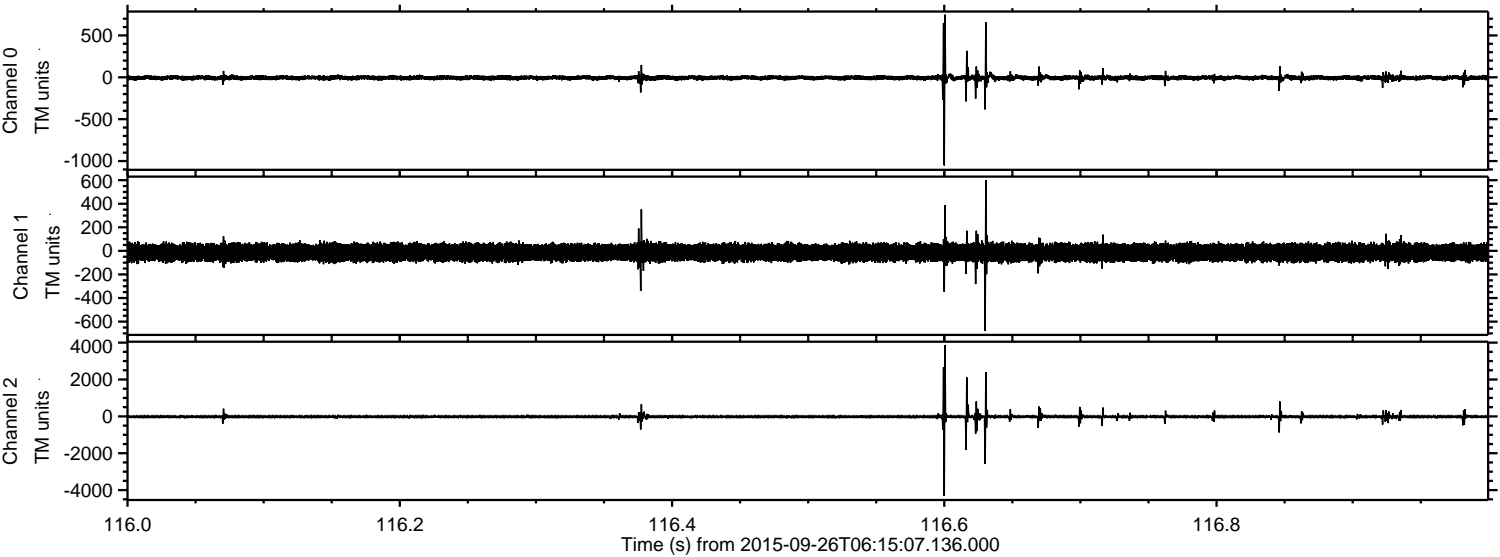
Channel 1  
mn: -339  
mx: 396  
 $\mu$ : -14.0  
 $\sigma$ : 37.1

Channel 2  
mn: -5063  
mx: 4297  
 $\mu$ : -15.5  
 $\sigma$ : 55.2



ELMAVAN 3D WAVEFORMS (Measured data sampled at 50 kHz) 51000 packets of 144 samples from 2015-09-26T06:15:07.136.000. Part 117/147

Processed Fri Oct 16 13:36:27 2015 by ELM ver.2012-10-06 from 001\_\_elm20150926\_061506\_\_dat00.bin



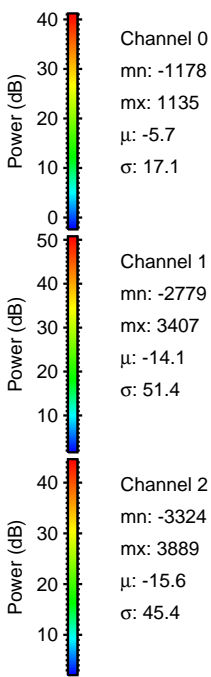
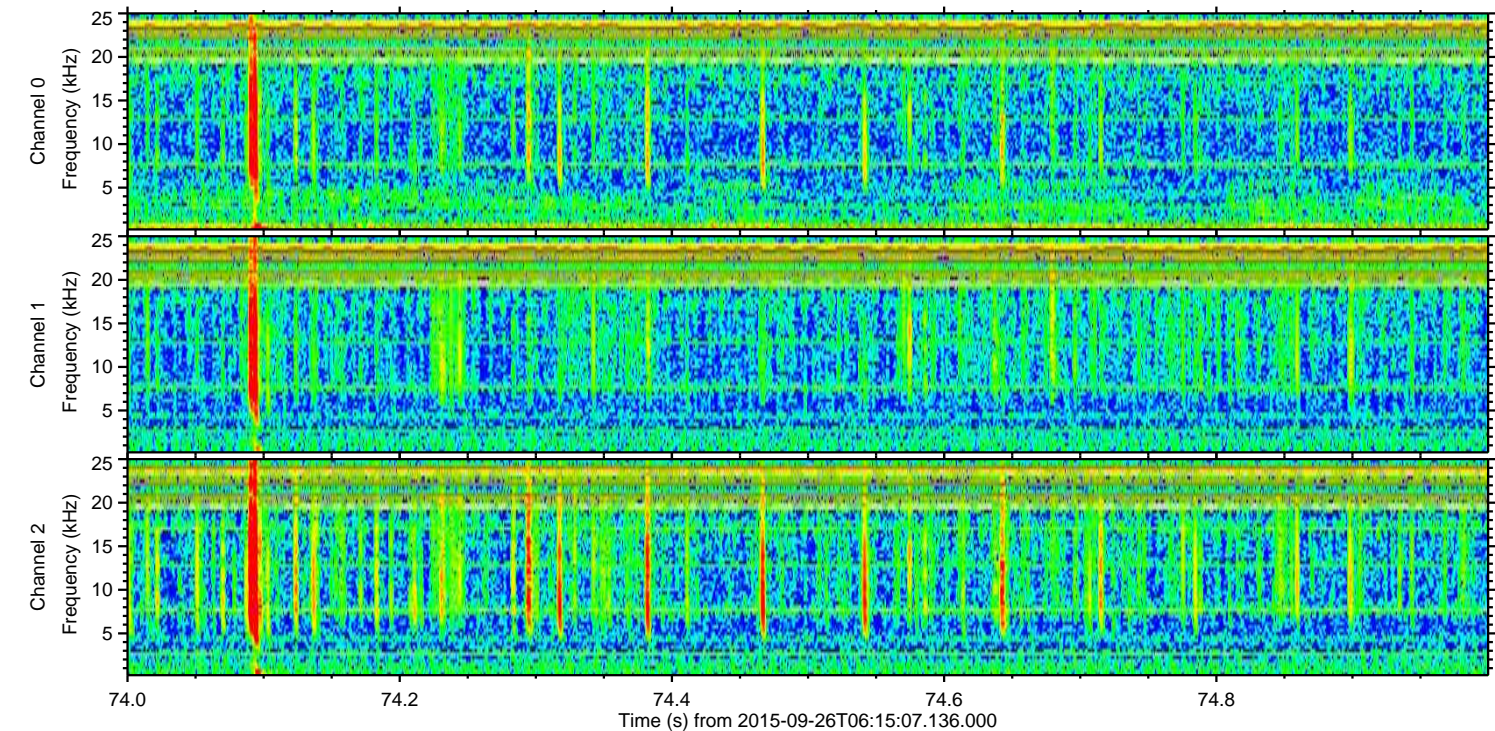
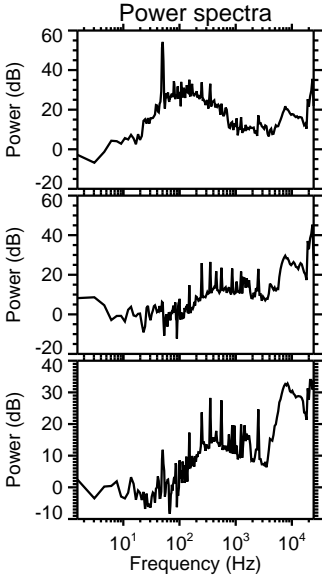
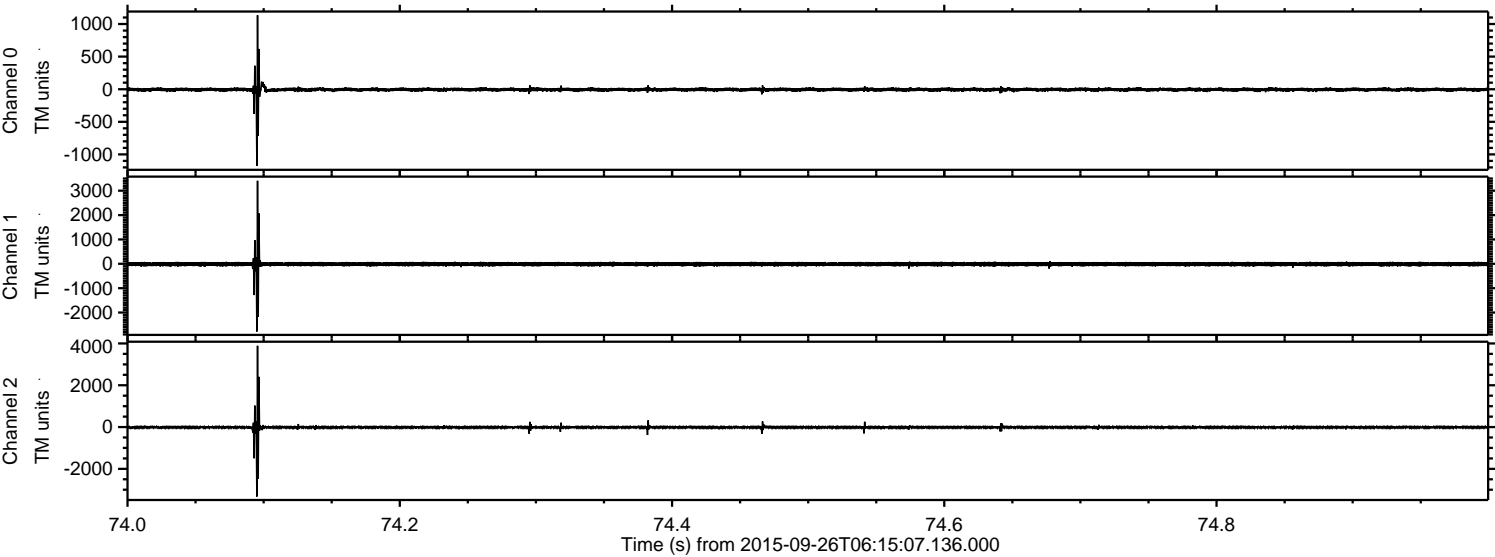
Channel 0  
mn: -1052  
mx: 748  
 $\mu$ : -5.6  
 $\sigma$ : 16.8

Channel 1  
mn: -679  
mx: 600  
 $\mu$ : -14.0  
 $\sigma$ : 37.8

Channel 2  
mn: -4320  
mx: 3857  
 $\mu$ : -15.5  
 $\sigma$ : 56.9

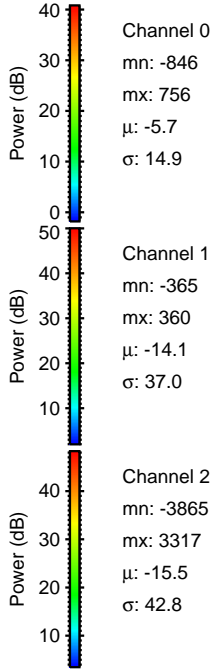
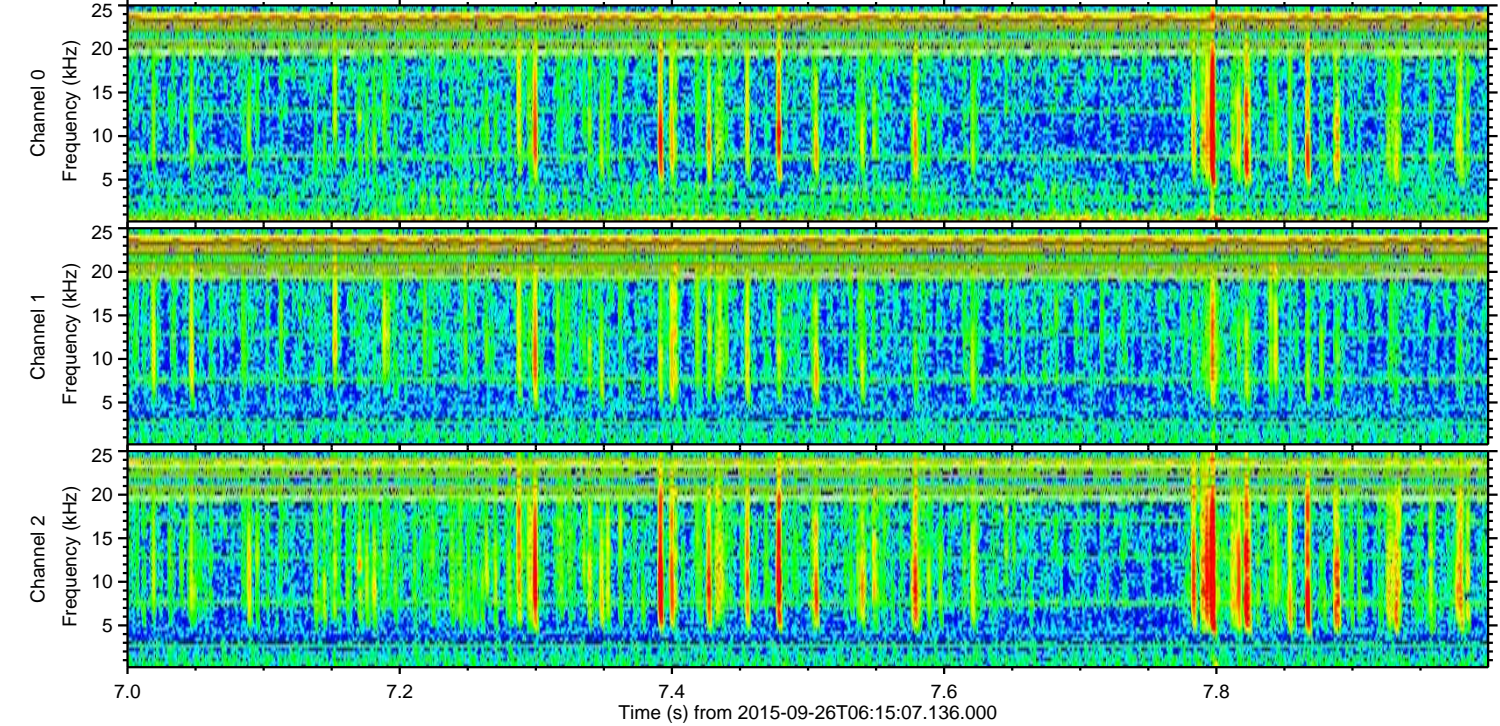
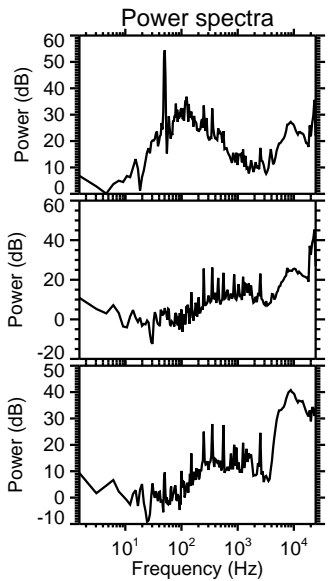
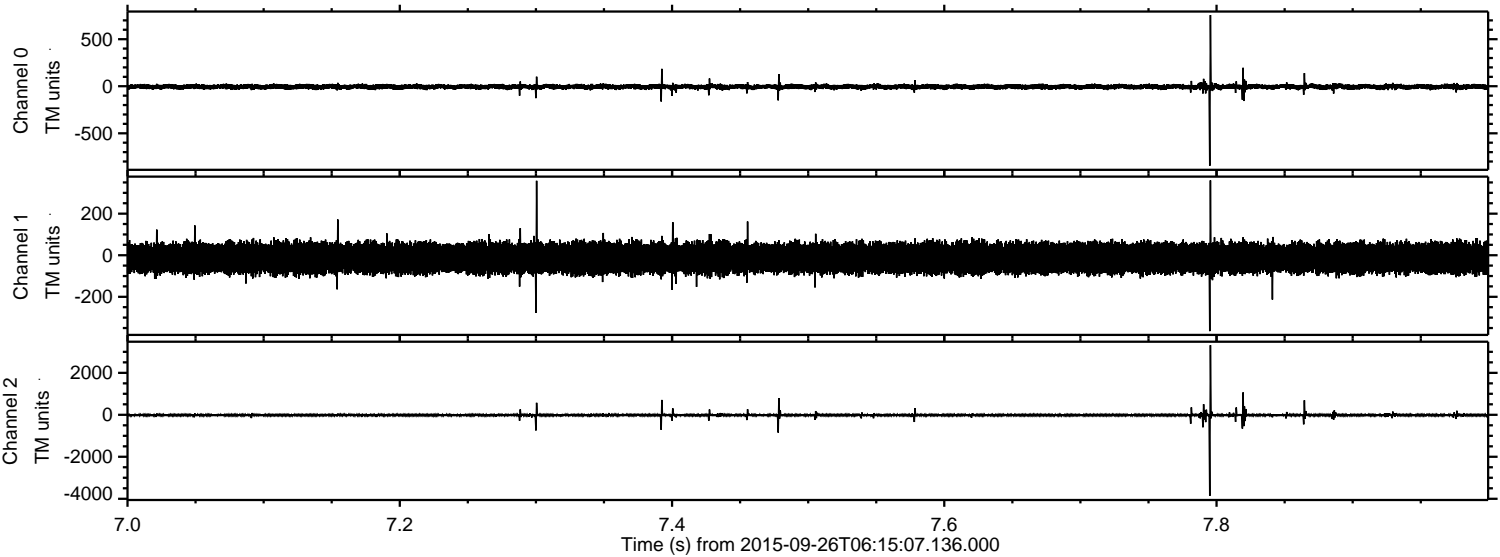


Processed Fri Oct 16 13:36:28 2015 by ELM ver.2012-10-06 from 001\_\_elm20150926\_061506\_\_dat00.bin



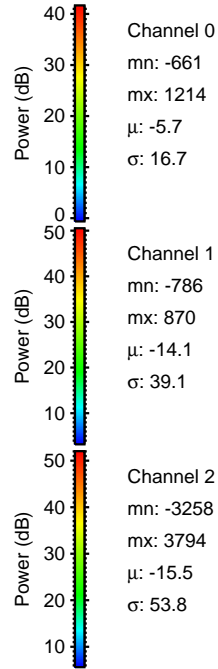
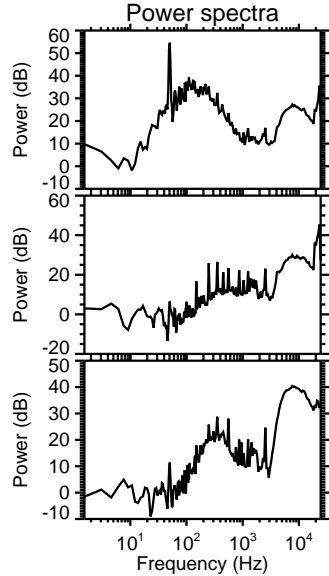
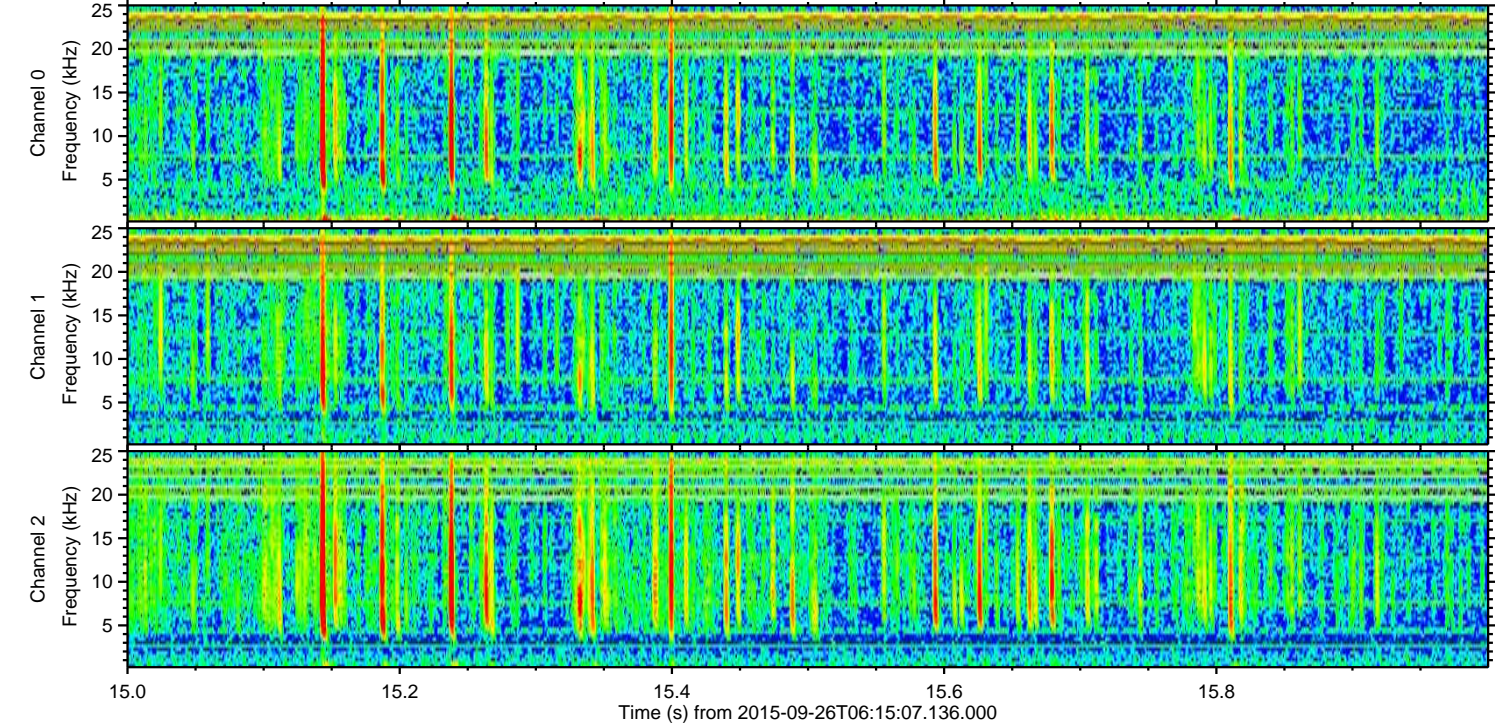
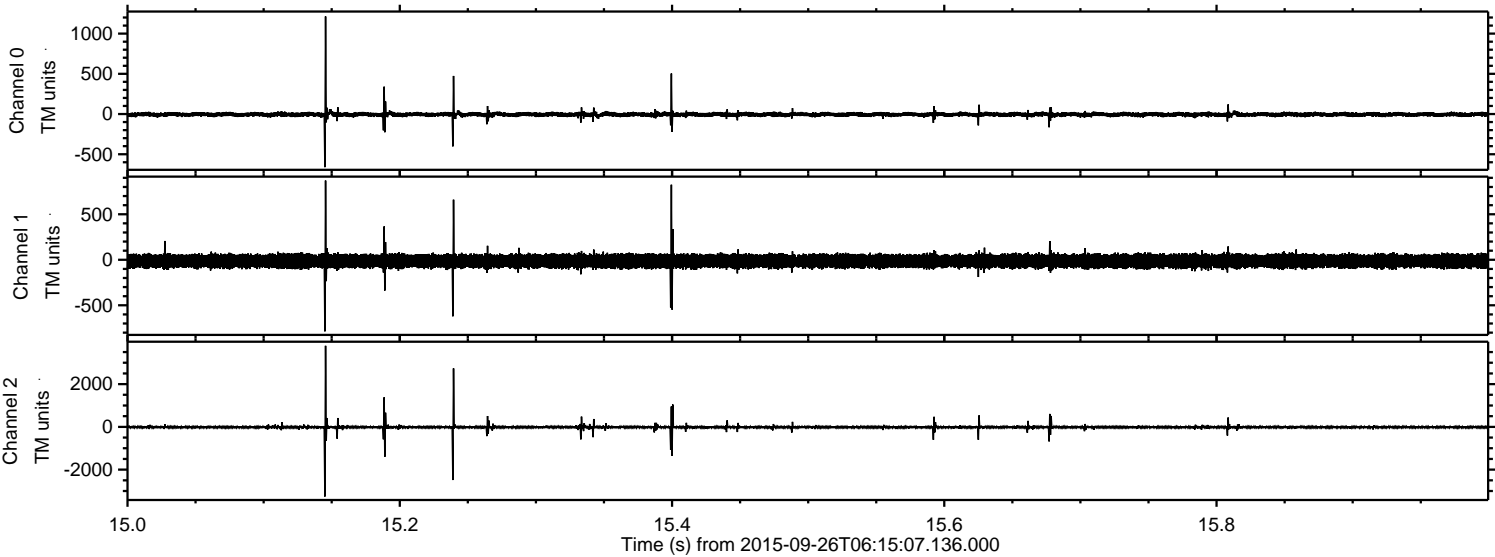


Processed Fri Oct 16 13:36:29 2015 by ELM ver.2012-10-06 from 001\_\_elm20150926\_061506\_\_dat00.bin



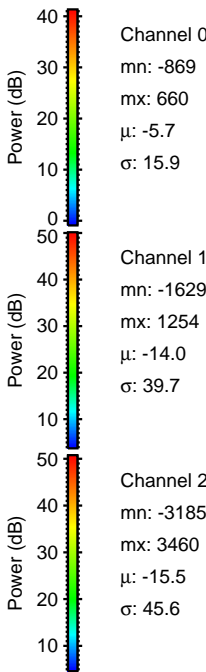
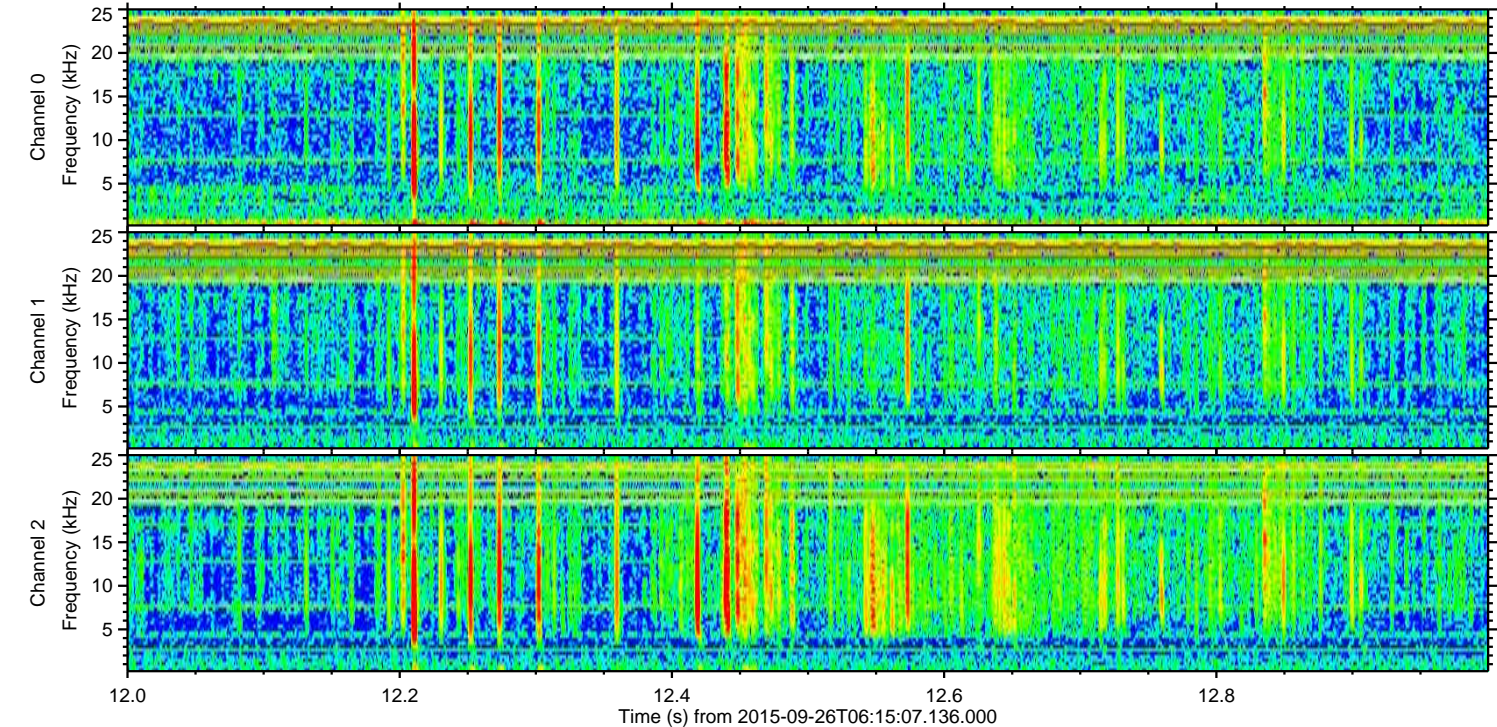
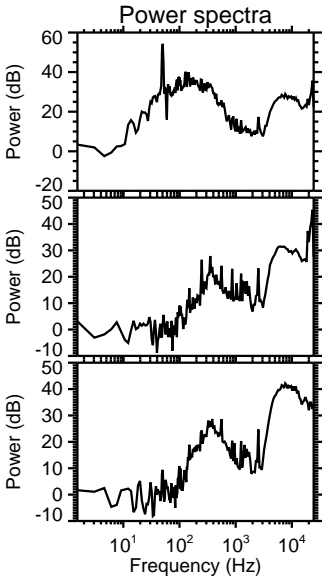
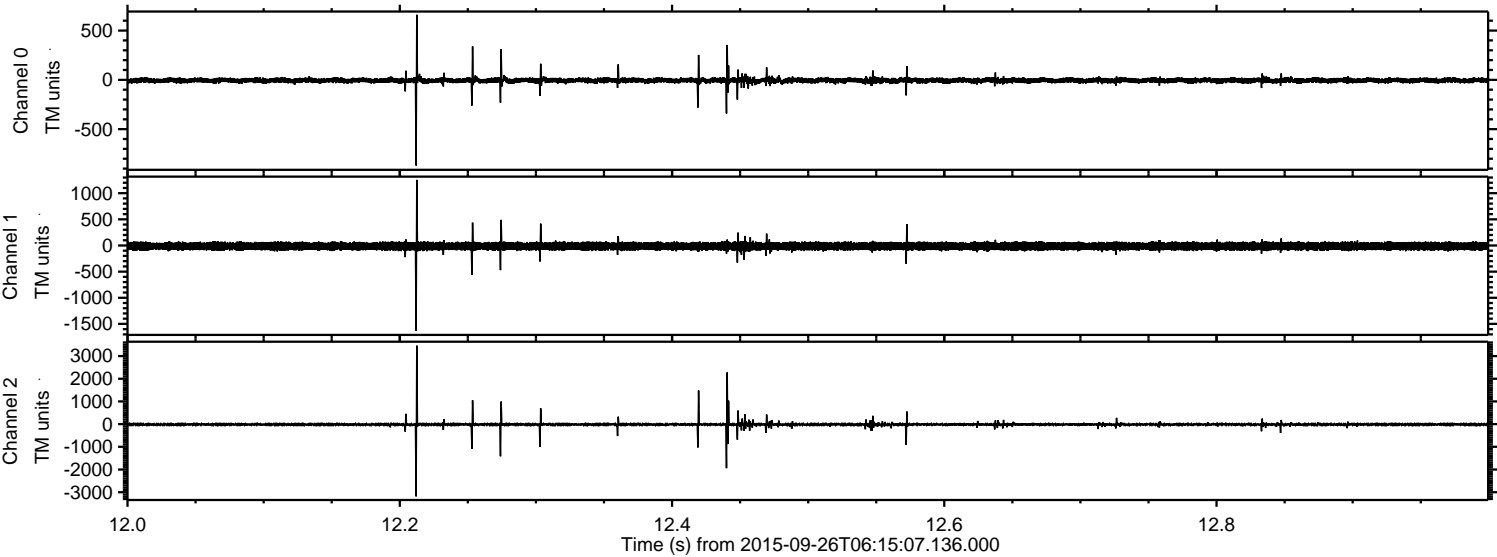


Processed Fri Oct 16 13:36:30 2015 by ELM ver.2012-10-06 from 001\_\_elm20150926\_061506\_\_dat00.bin





Processed Fri Oct 16 13:36:31 2015 by ELM ver.2012-10-06 from 001\_\_elm20150926\_061506\_\_dat00.bin



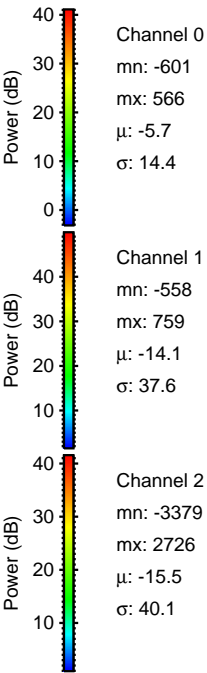
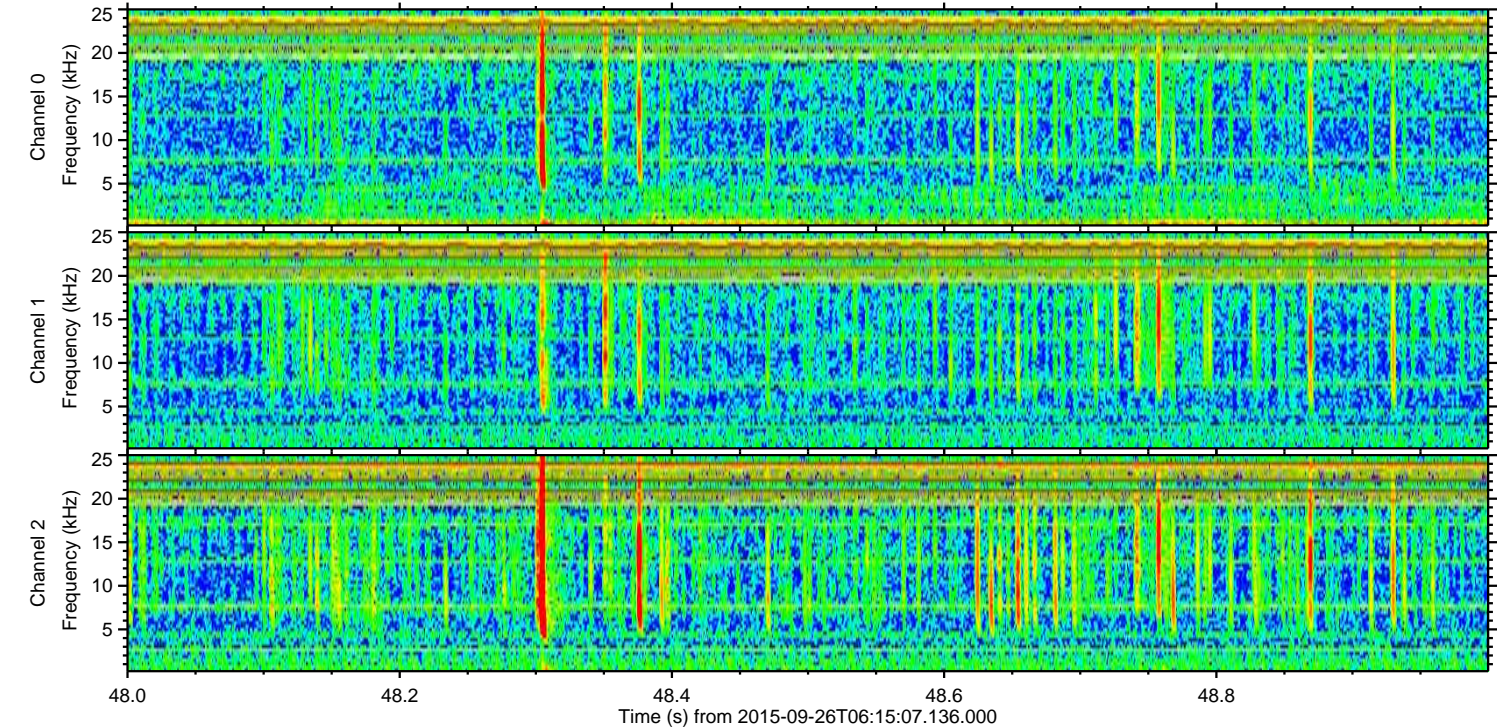
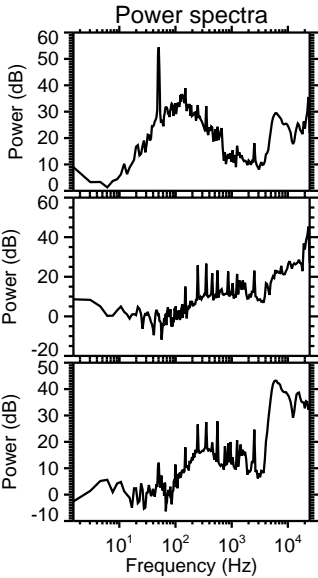
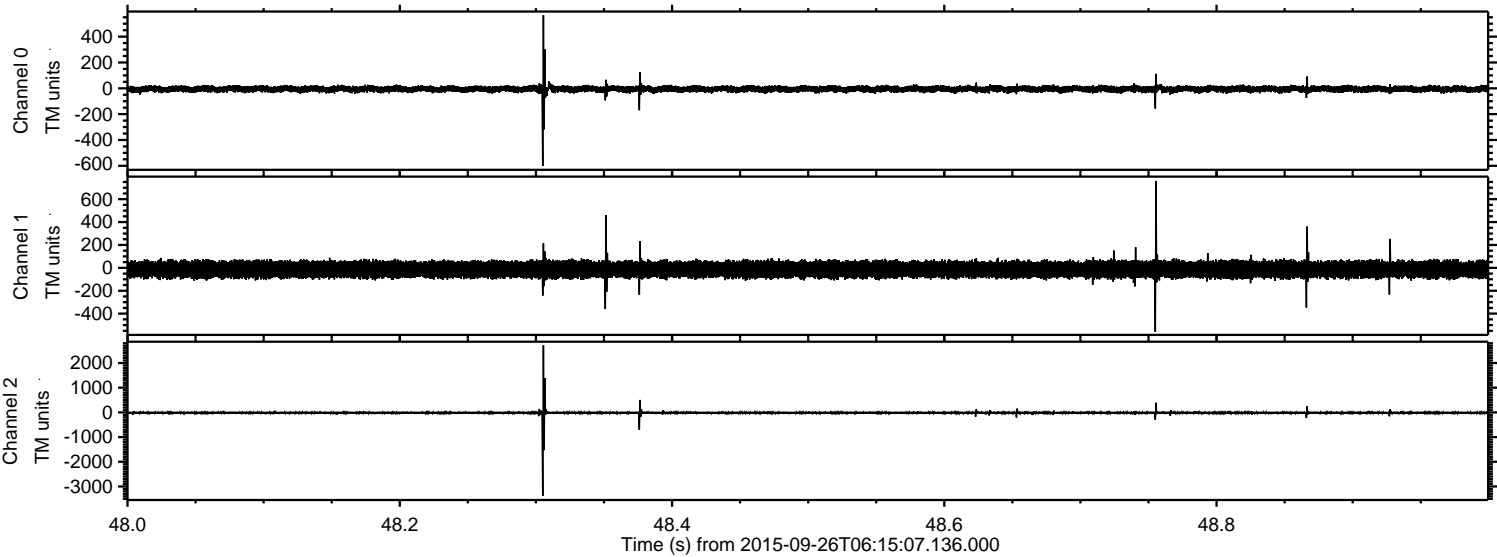
Channel 0  
mn: -869  
mx: 660  
 $\mu$ : -5.7  
 $\sigma$ : 15.9

Channel 1  
mn: -1629  
mx: 1254  
 $\mu$ : -14.0  
 $\sigma$ : 39.7

Channel 2  
mn: -3185  
mx: 3460  
 $\mu$ : -15.5  
 $\sigma$ : 45.6



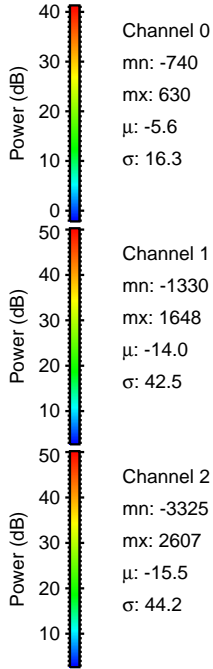
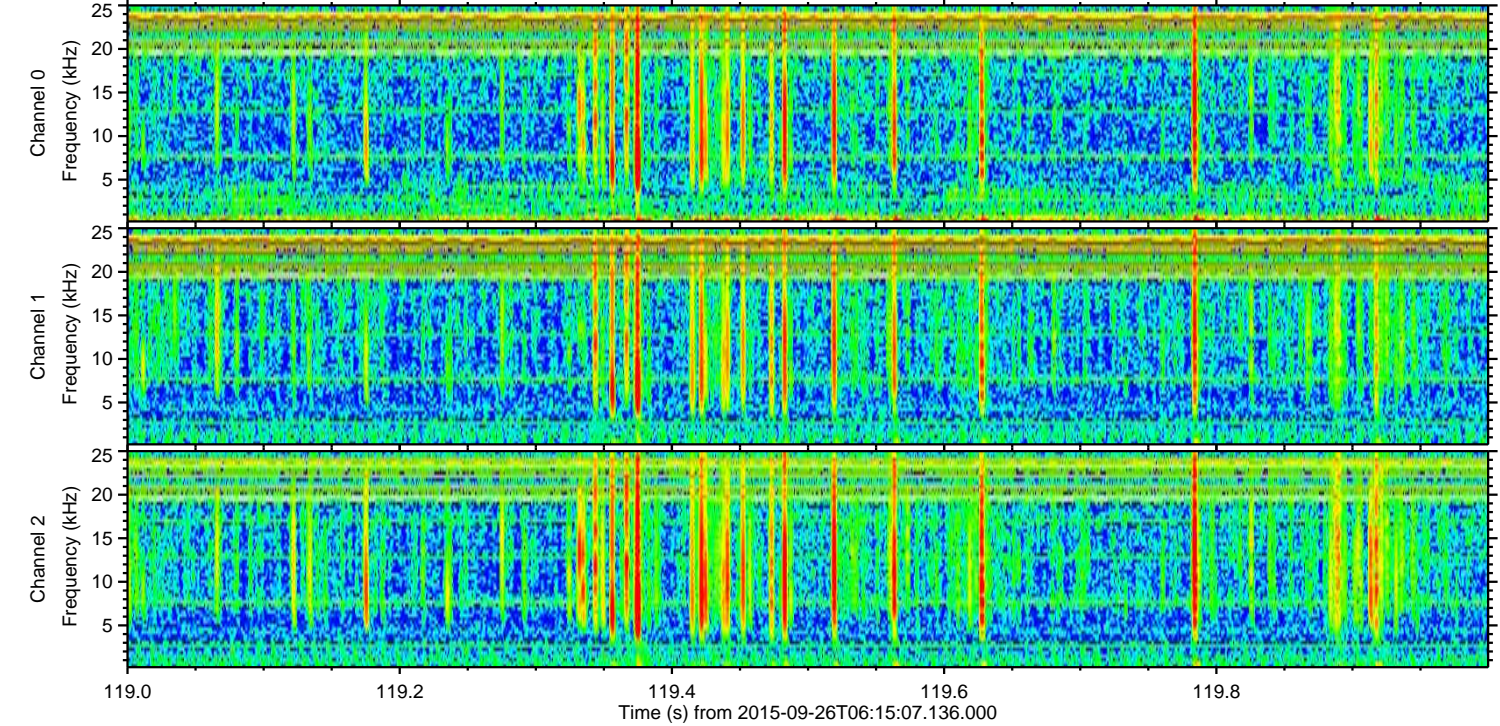
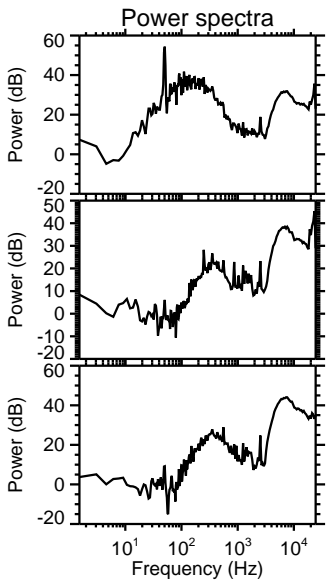
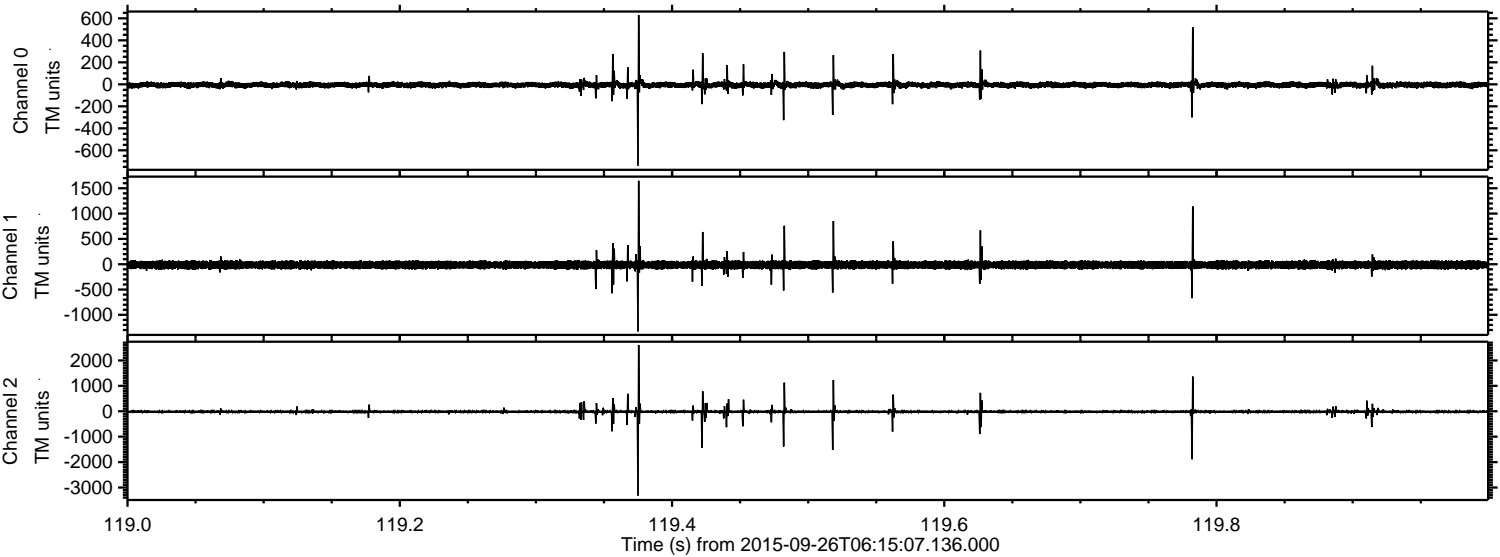
Processed Fri Oct 16 13:36:33 2015 by ELM ver.2012-10-06 from 001\_\_elm20150926\_061506\_\_dat00.bin





ELMAVAN 3D WAVEFORMS (Measured data sampled at 50 kHz) 51000 packets of 144 samples from 2015-09-26T06:15:07.136.000. Part 120/147

Processed Fri Oct 16 13:36:34 2015 by ELM ver.2012-10-06 from 001\_\_elm20150926\_061506\_\_dat00.bin



Channel 0  
mn: -740  
mx: 630  
 $\mu$ : -5.6  
 $\sigma$ : 16.3

Channel 1  
mn: -1330  
mx: 1648  
 $\mu$ : -14.0  
 $\sigma$ : 42.5

Channel 2  
mn: -3325  
mx: 2607  
 $\mu$ : -15.5  
 $\sigma$ : 44.2



