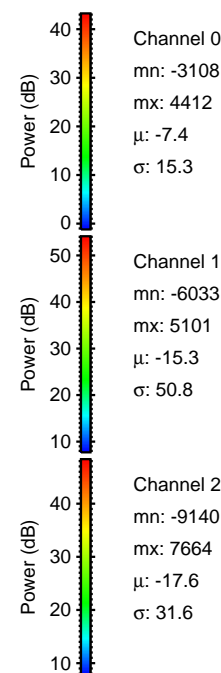
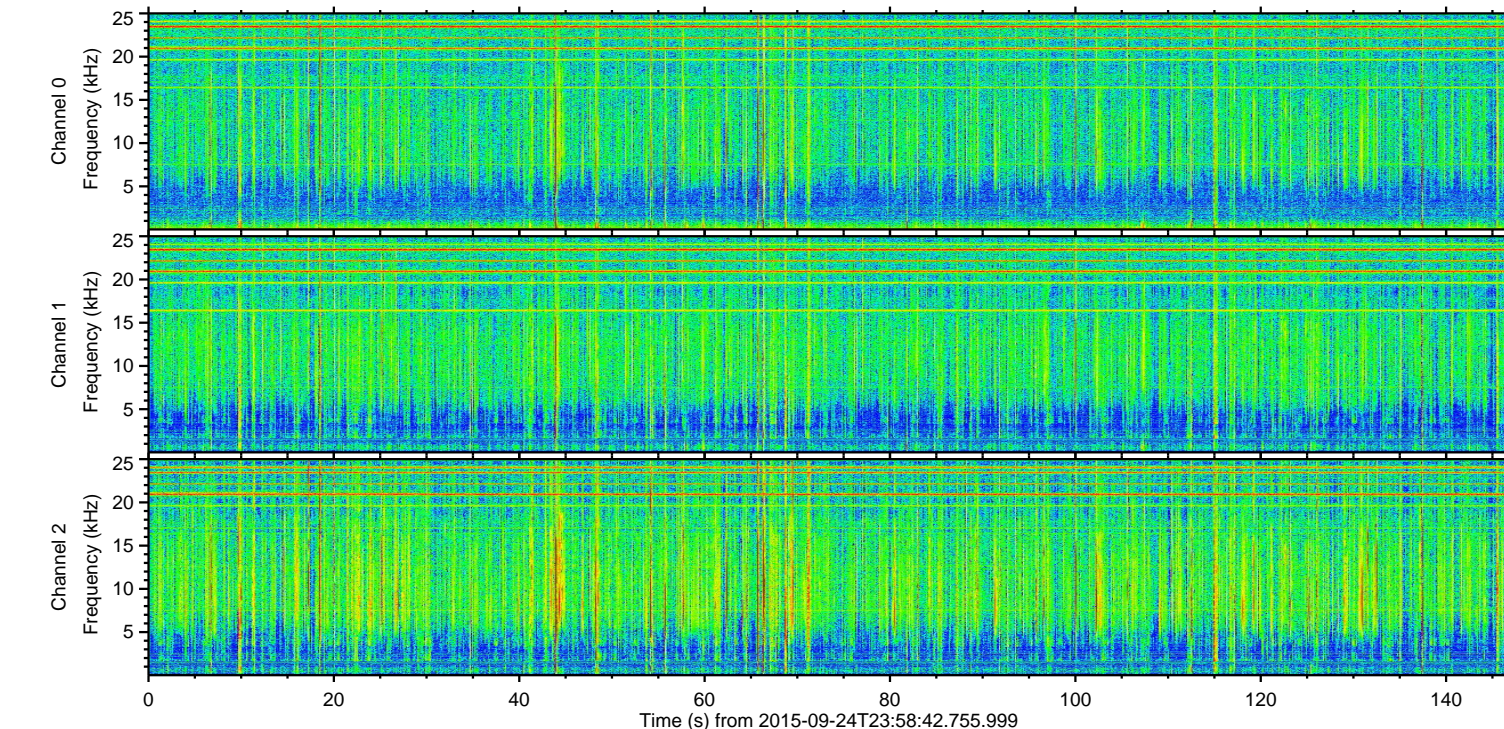
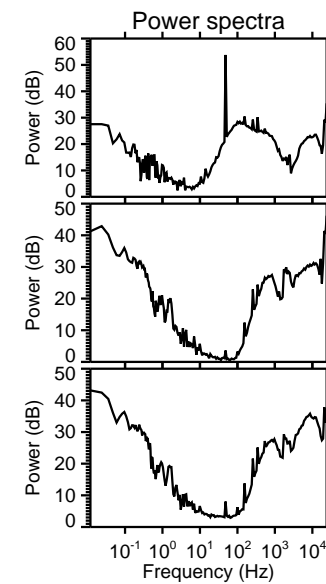
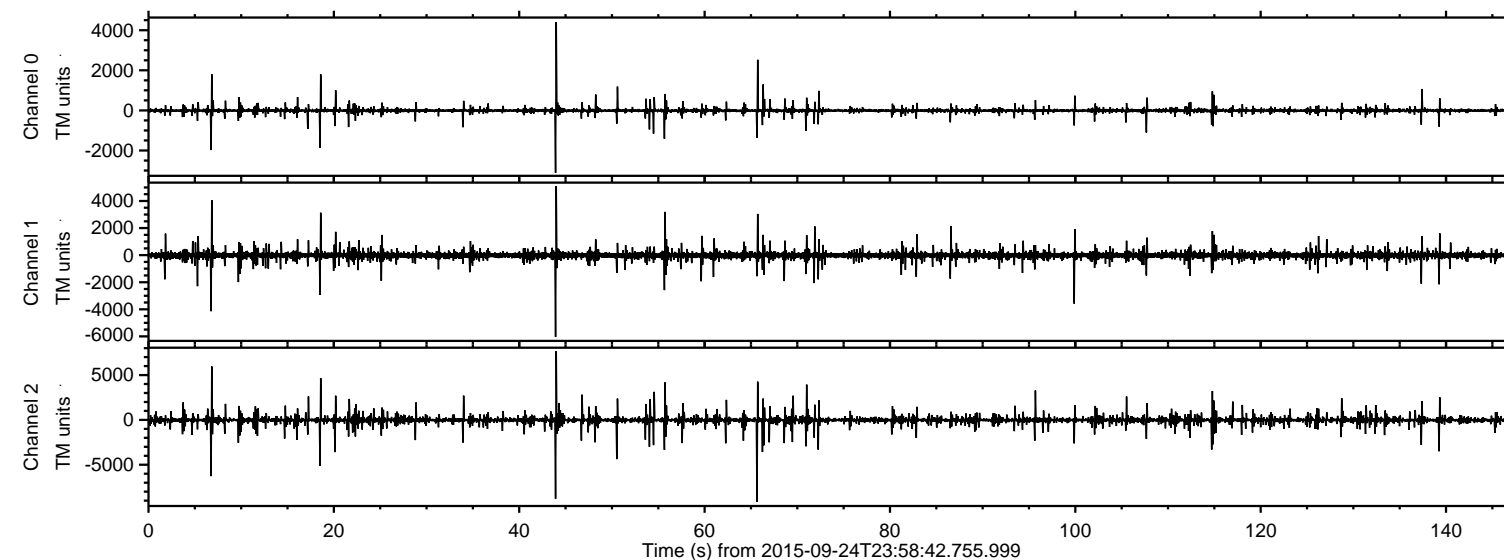
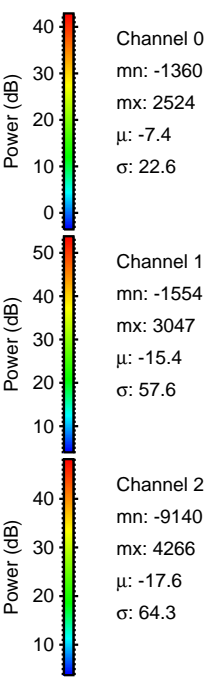
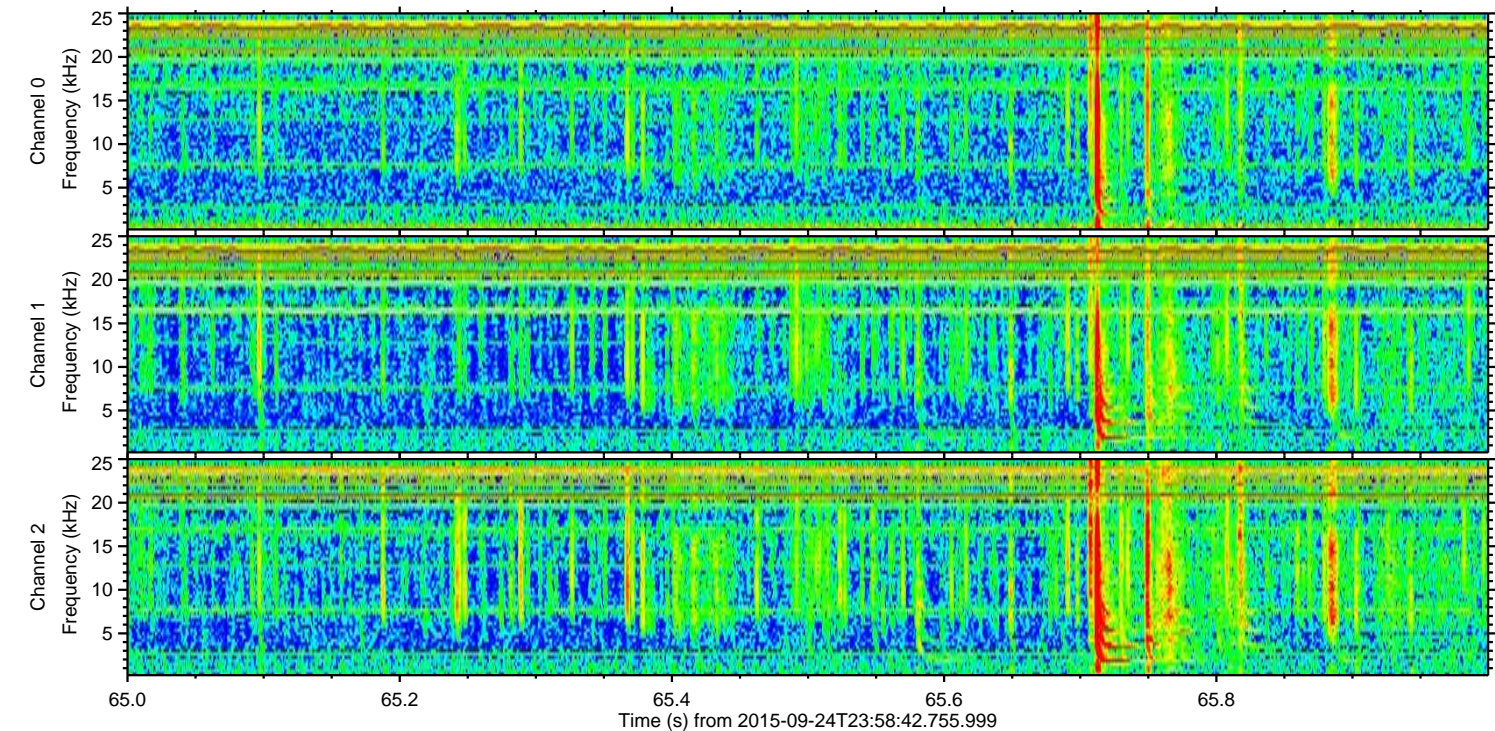
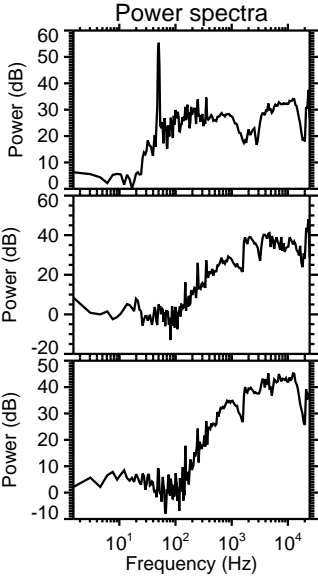
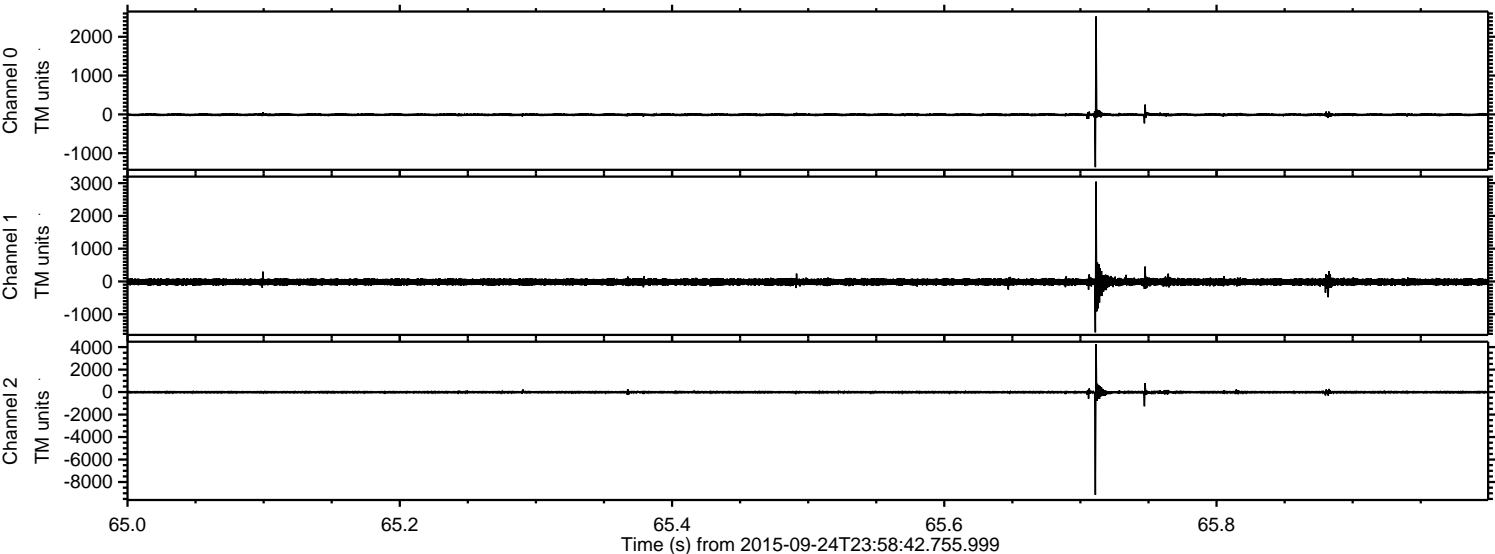


ELMAVAN 3D WAVEFORMS (Measured data sampled at 50 kHz) 51000 packets of 144 samples from 2015-09-24T23:58:42.755.999.

Processed Fri Oct 16 04:24:29 2015 by ELM ver.2012-10-06 from 001__elm20150924_235841__dat00.bin

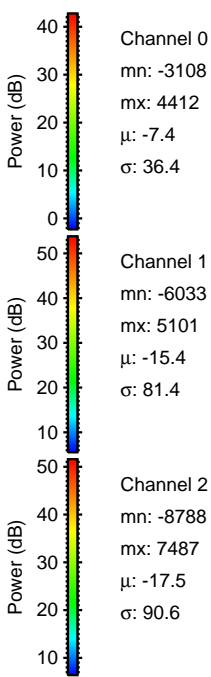
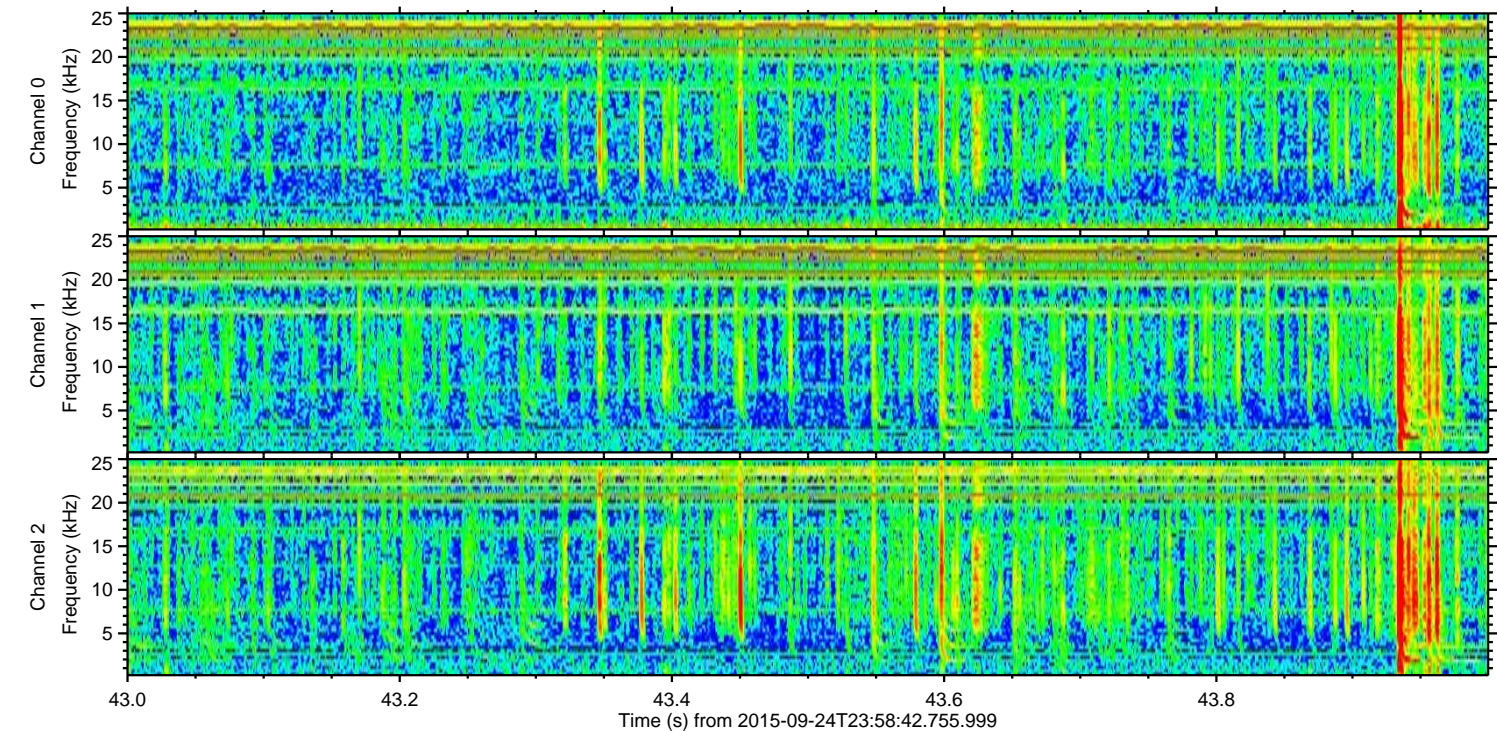
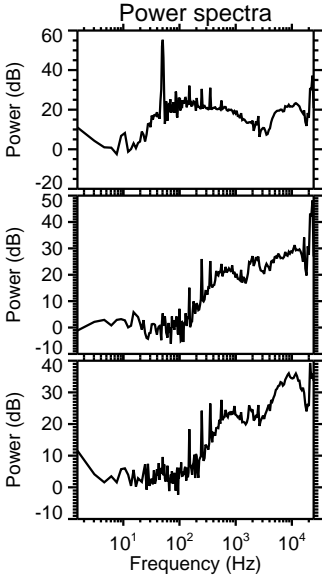
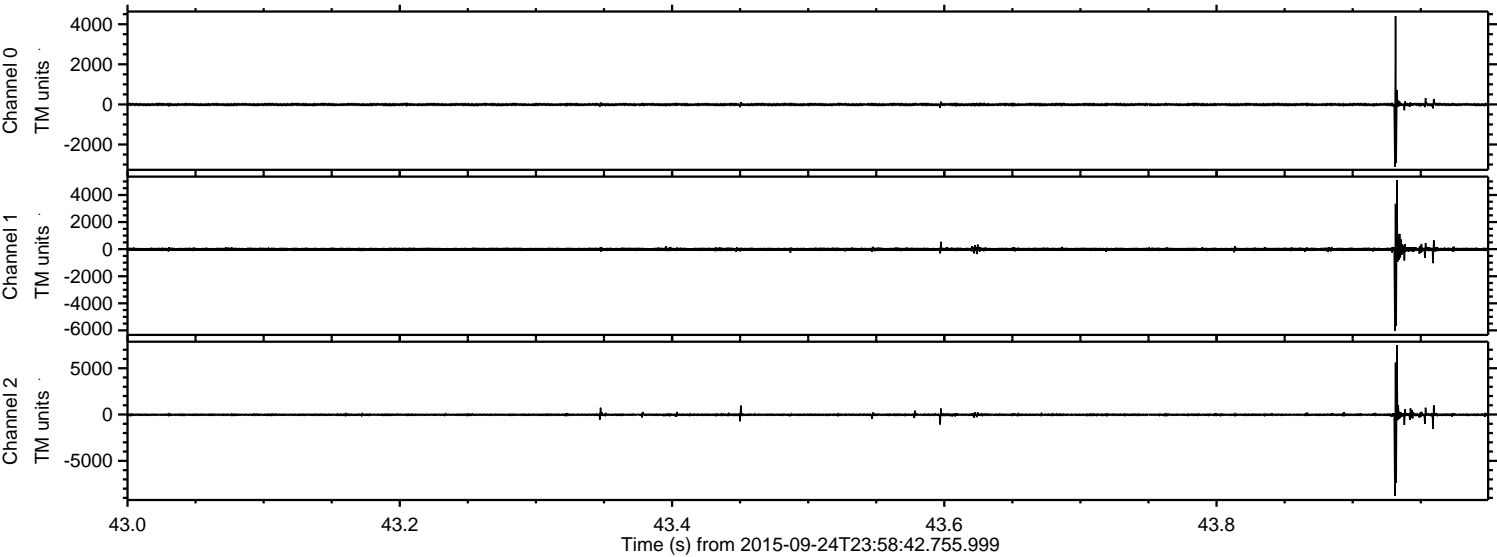


Processed Fri Oct 16 04:24:45 2015 by ELM ver.2012-10-06 from 001__elm20150924_235841__dat00.bin



ELMAVAN 3D WAVEFORMS (Measured data sampled at 50 kHz) 51000 packets of 144 samples from 2015-09-24T23:58:42.755.999. Part 44/147

Processed Fri Oct 16 04:24:46 2015 by ELM ver.2012-10-06 from 001__elm20150924_235841__dat00.bin

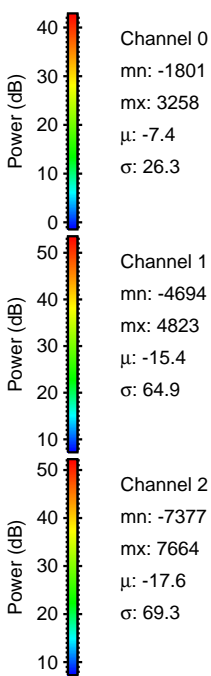
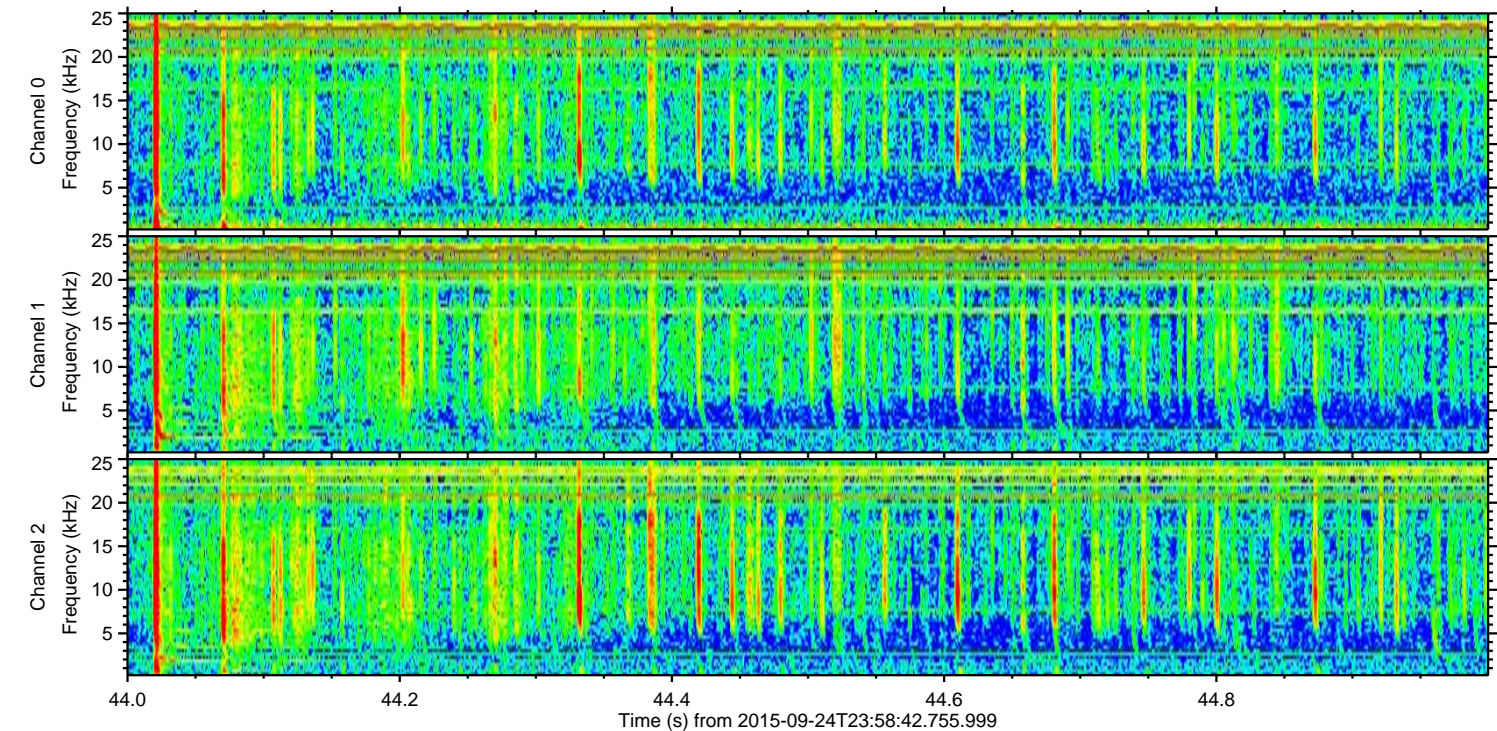
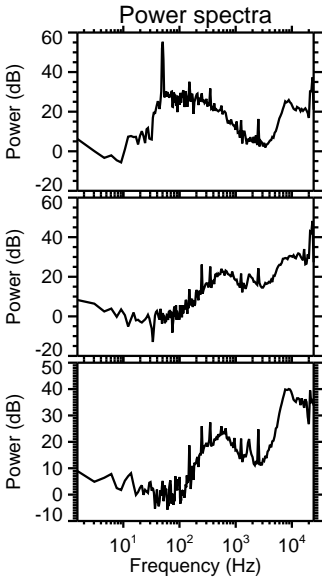
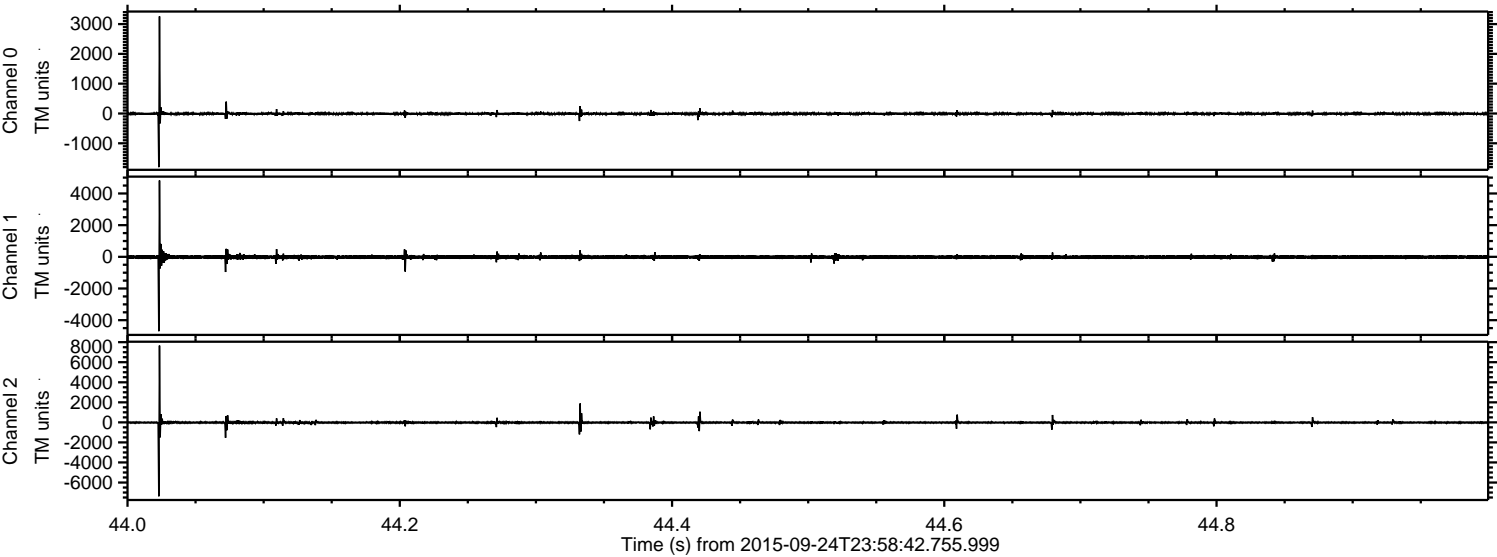


Channel 0
mn: -3108
mx: 4412
 μ : -7.4
 σ : 36.4

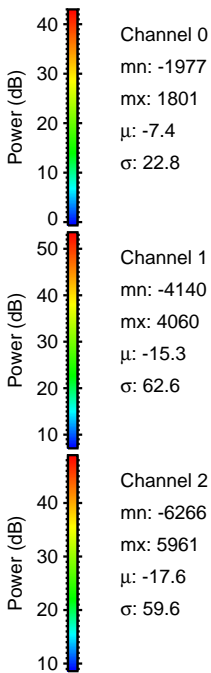
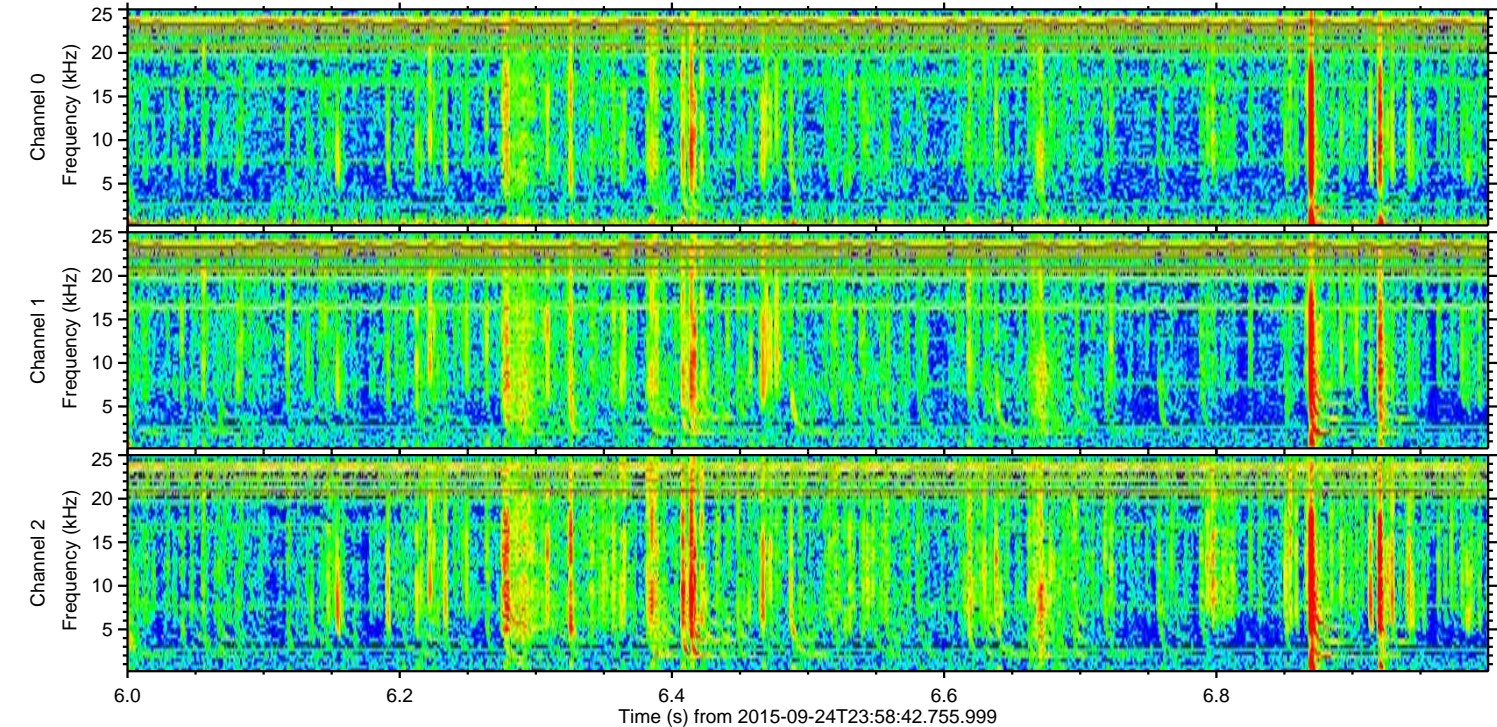
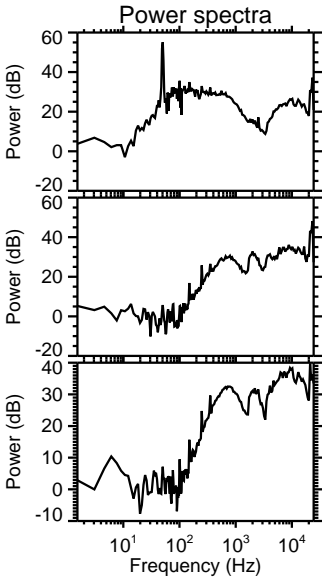
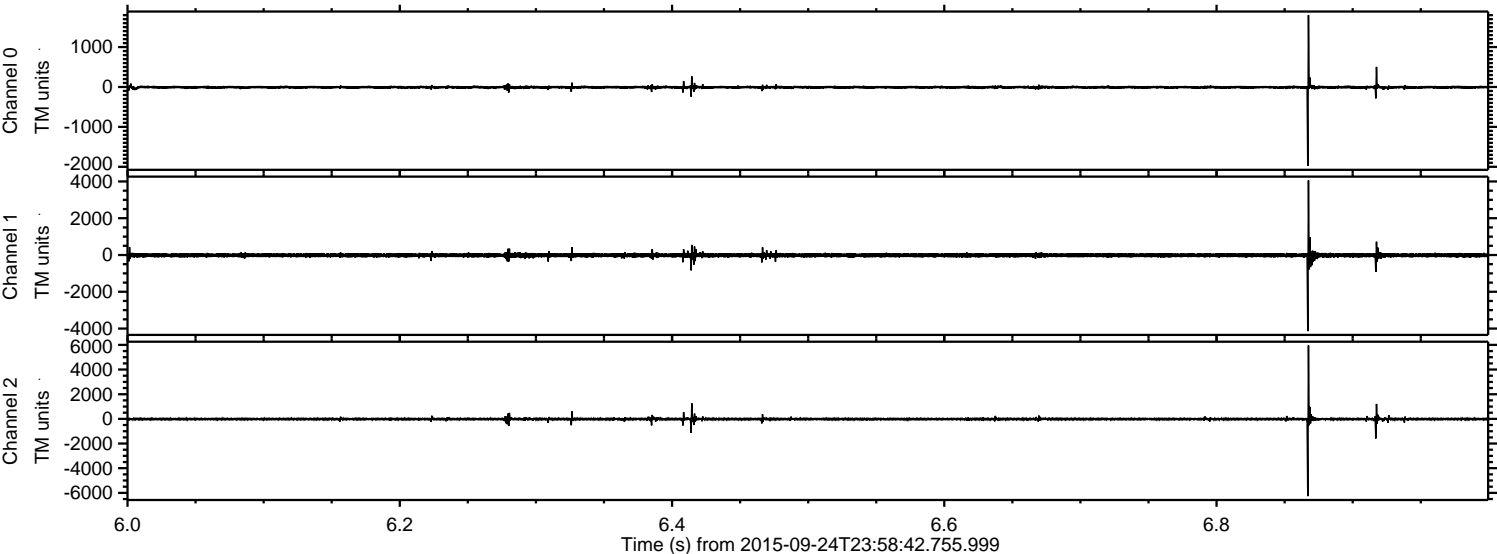
Channel 1
mn: -6033
mx: 5101
 μ : -15.4
 σ : 81.4

Channel 2
mn: -8788
mx: 7487
 μ : -17.5
 σ : 90.6

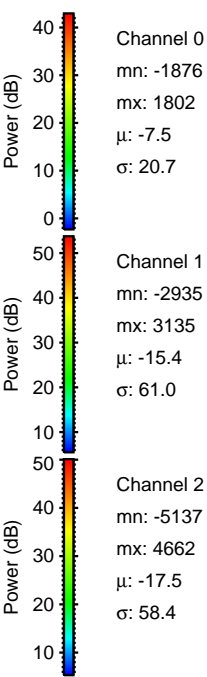
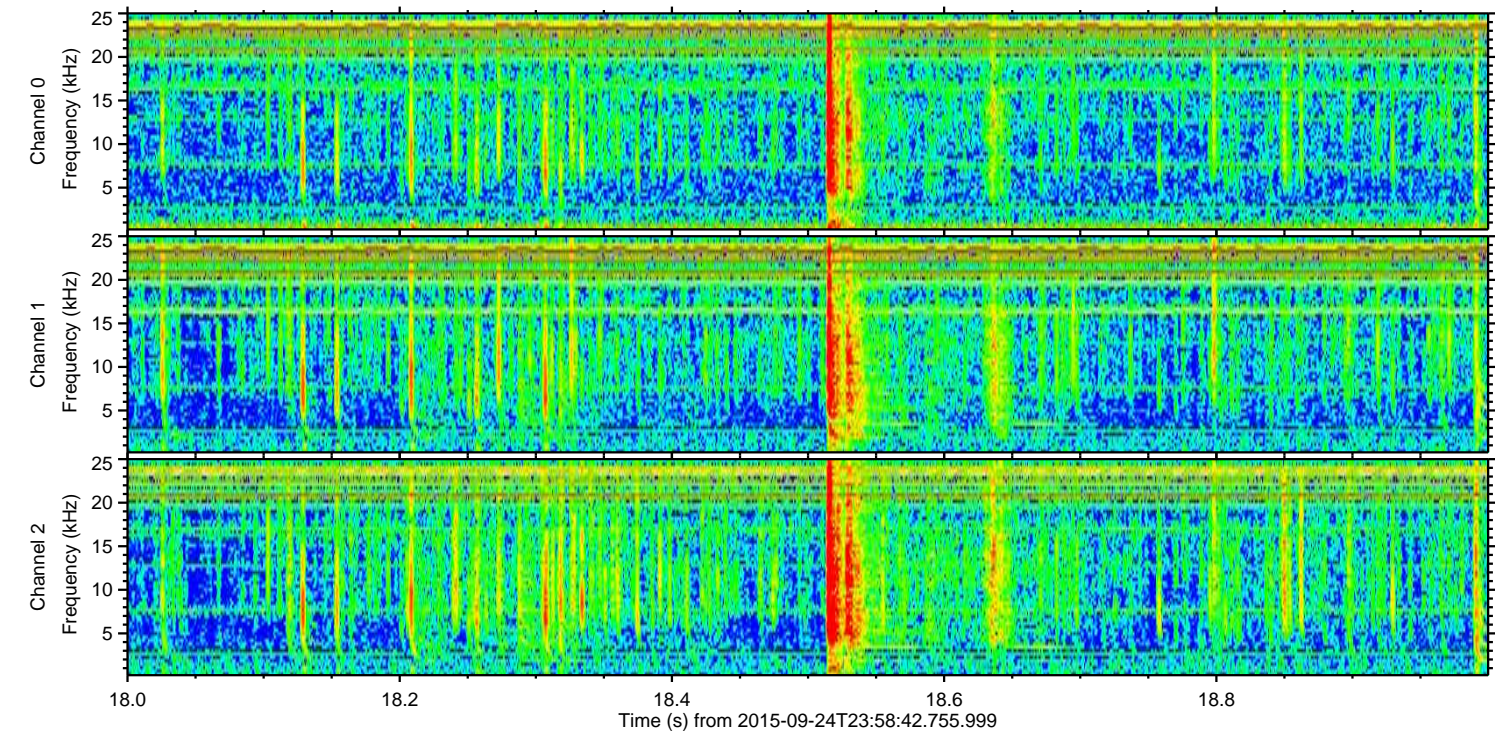
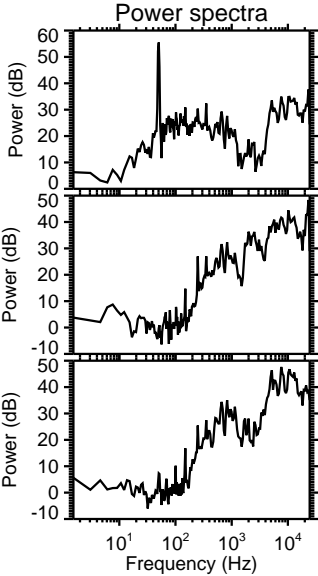
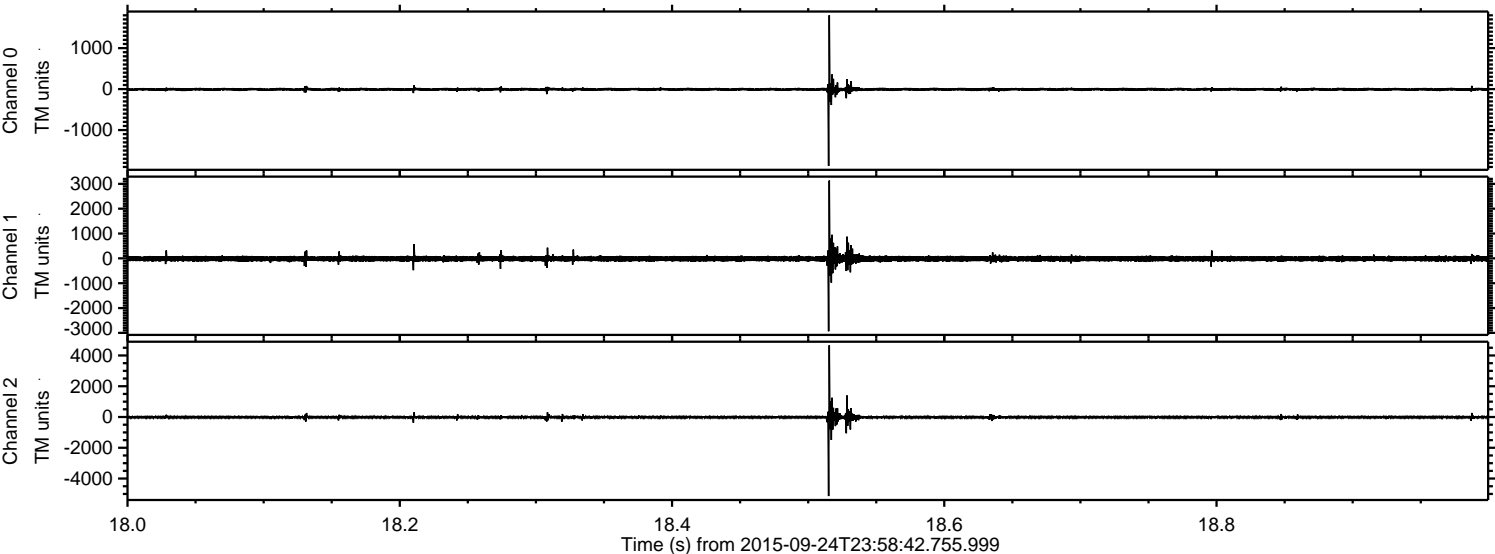
Processed Fri Oct 16 04:24:47 2015 by ELM ver.2012-10-06 from 001__elm20150924_235841__dat00.bin



Processed Fri Oct 16 04:24:48 2015 by ELM ver.2012-10-06 from 001__elm20150924_235841__dat00.bin

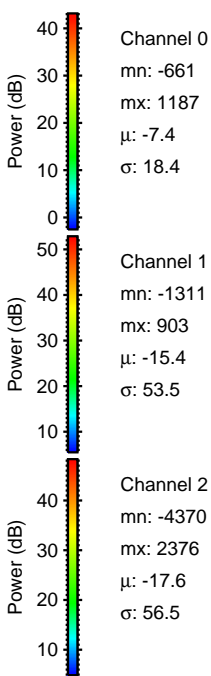
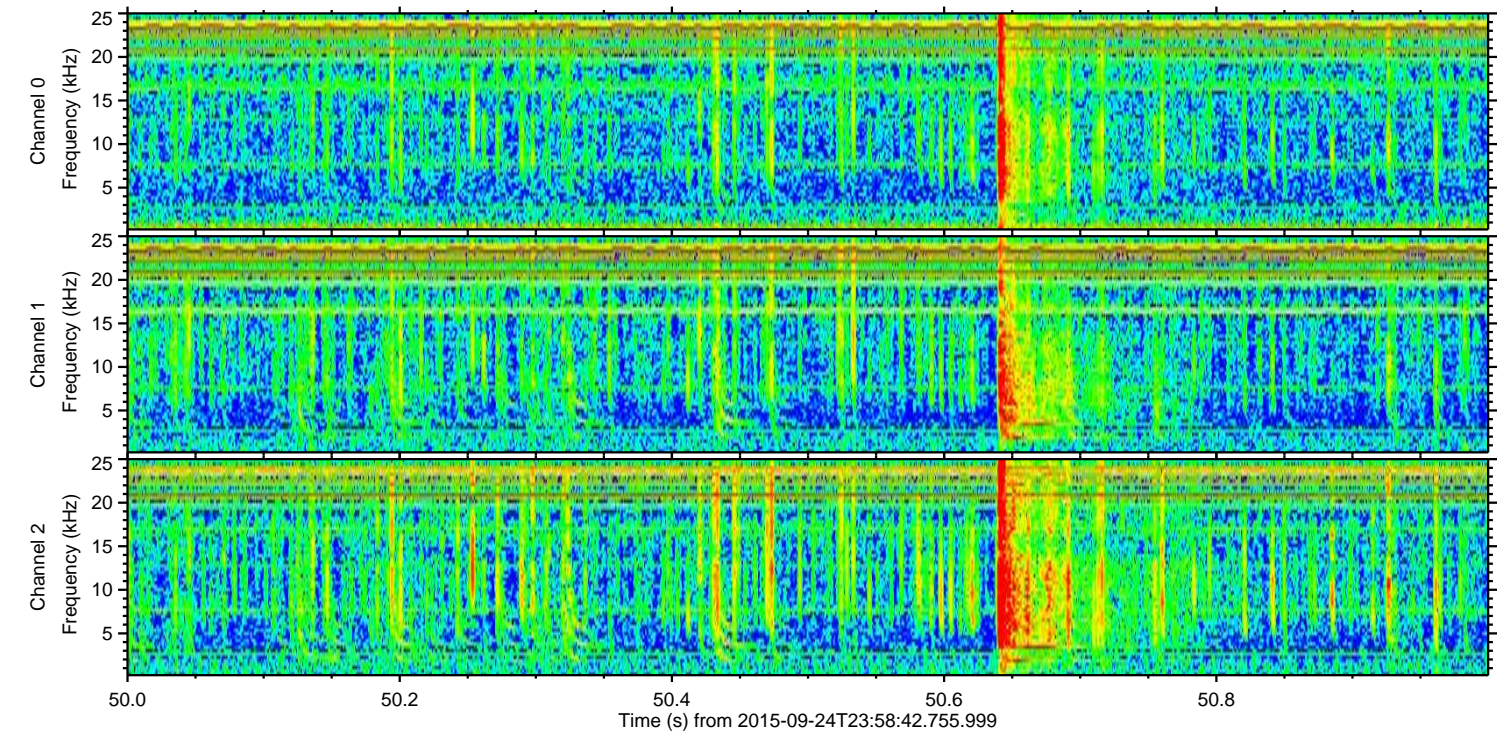
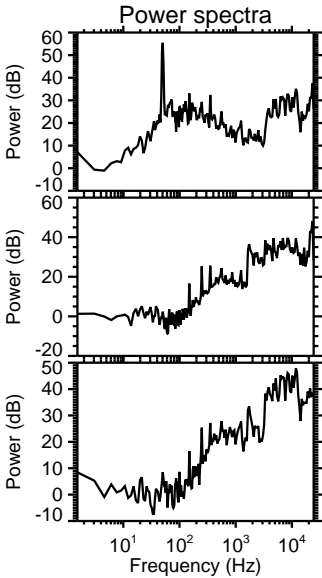
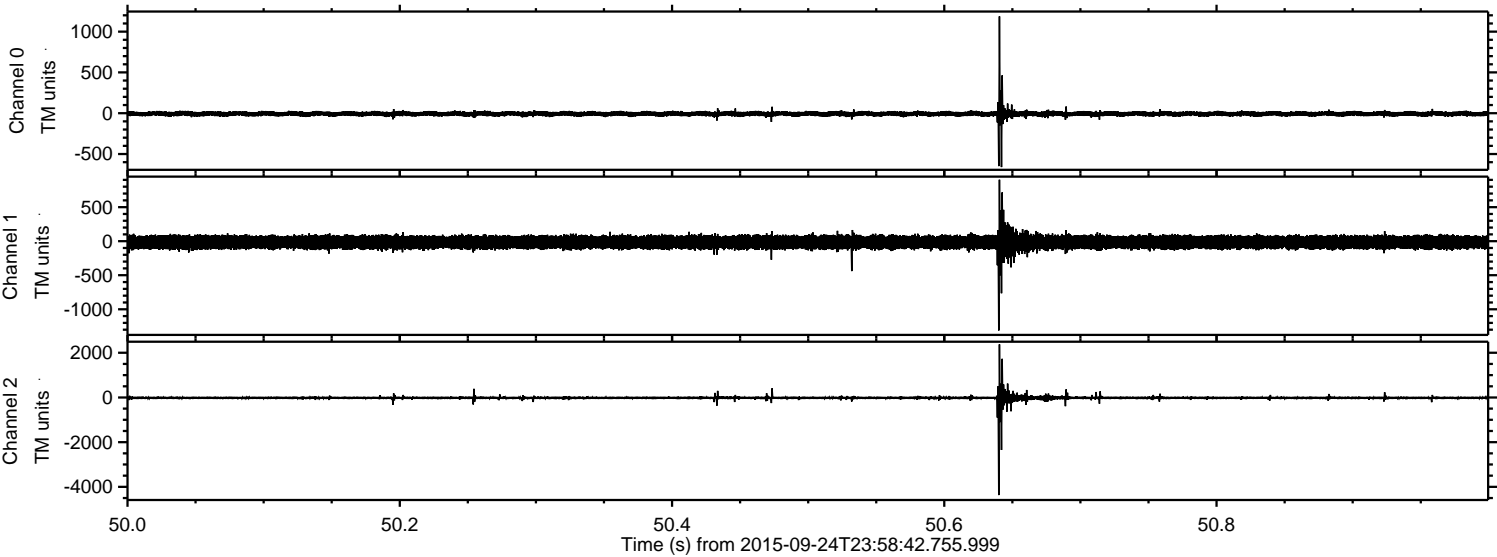


Processed Fri Oct 16 04:24:49 2015 by ELM ver.2012-10-06 from 001__elm20150924_235841__dat00.bin

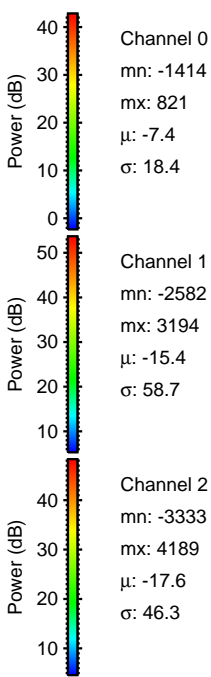
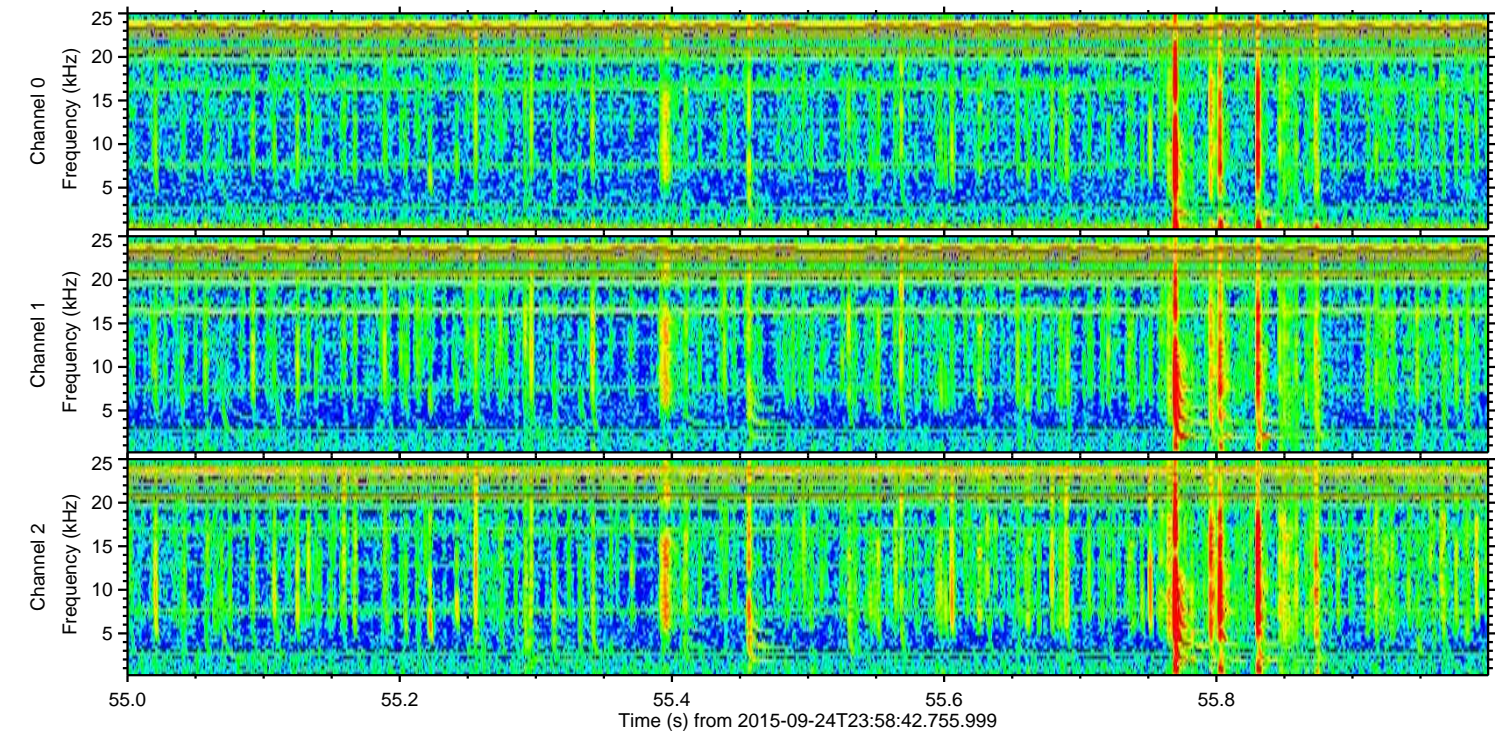
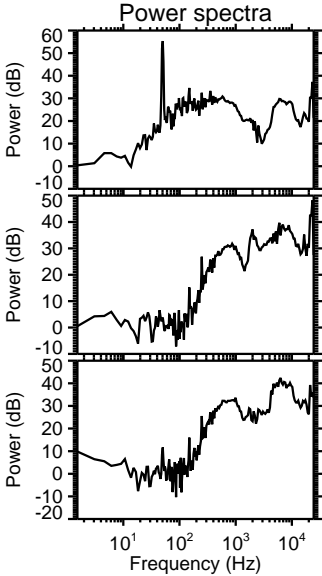
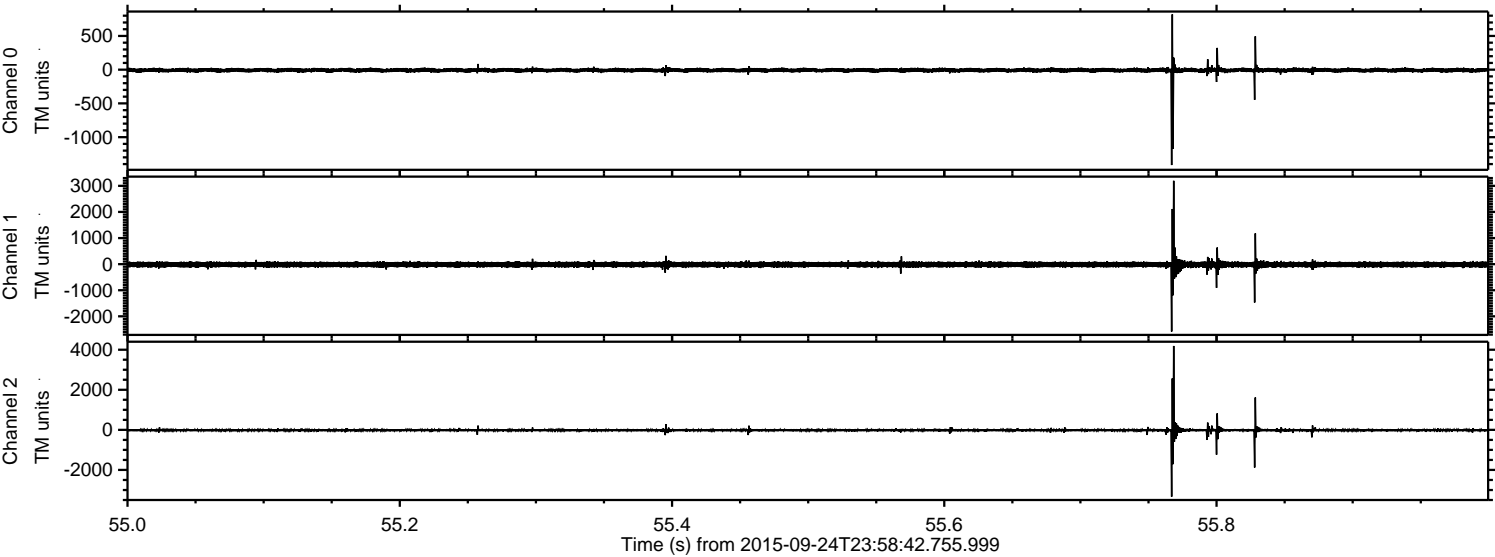


ELMAVAN 3D WAVEFORMS (Measured data sampled at 50 kHz) 51000 packets of 144 samples from 2015-09-24T23:58:42.755.999. Part 51/147

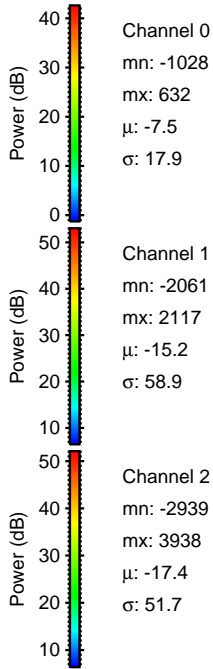
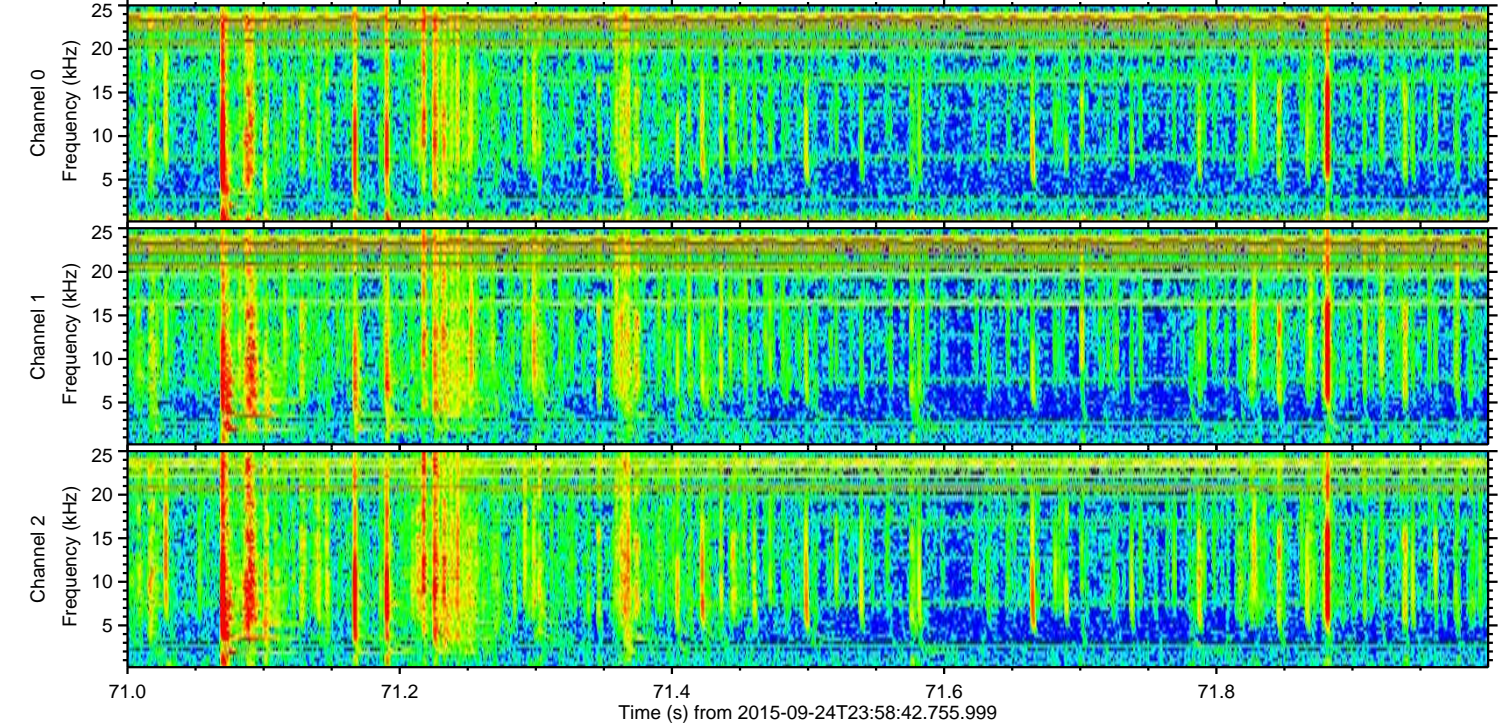
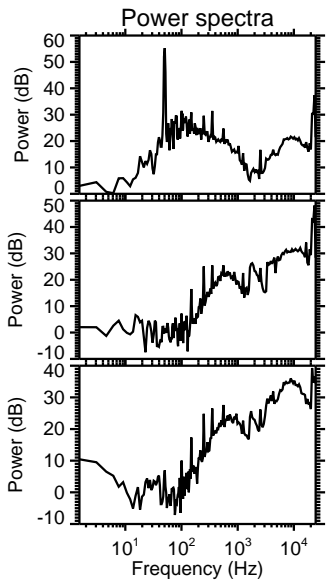
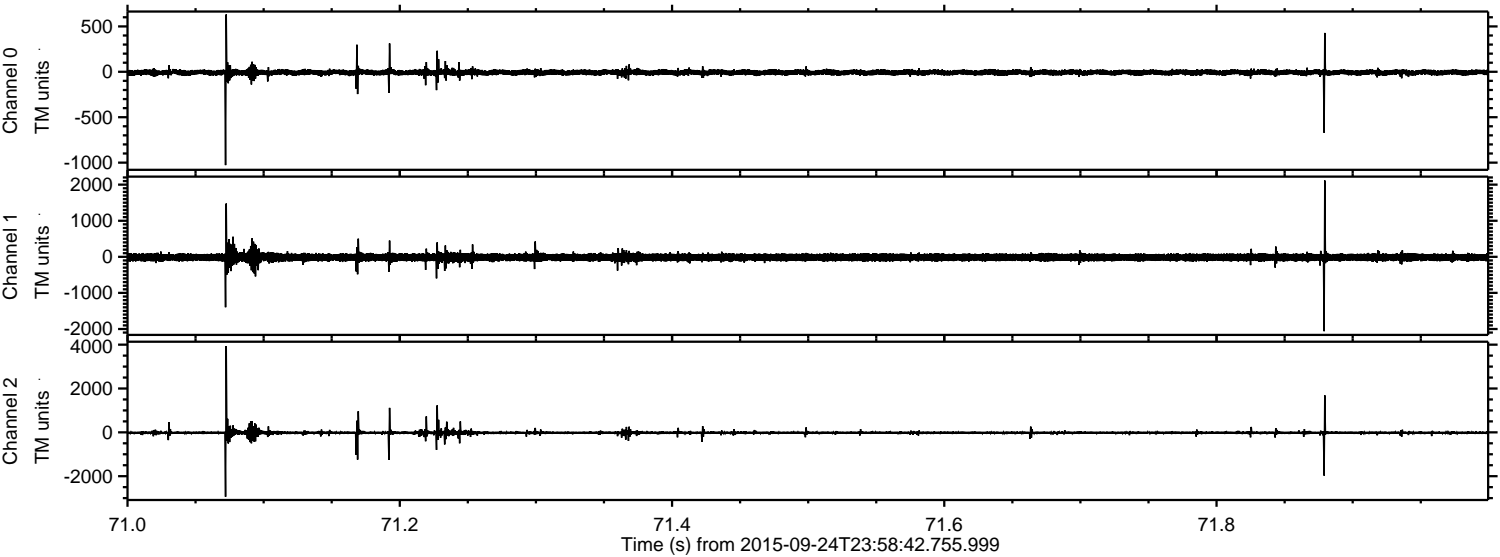
Processed Fri Oct 16 04:24:51 2015 by ELM ver.2012-10-06 from 001__elm20150924_235841__dat00.bin



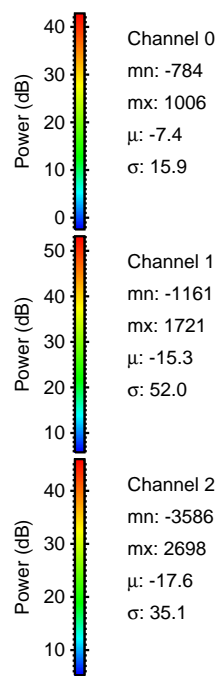
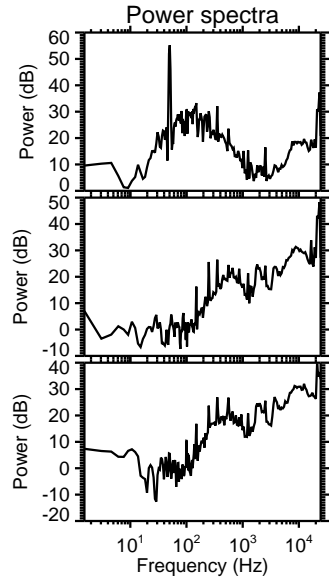
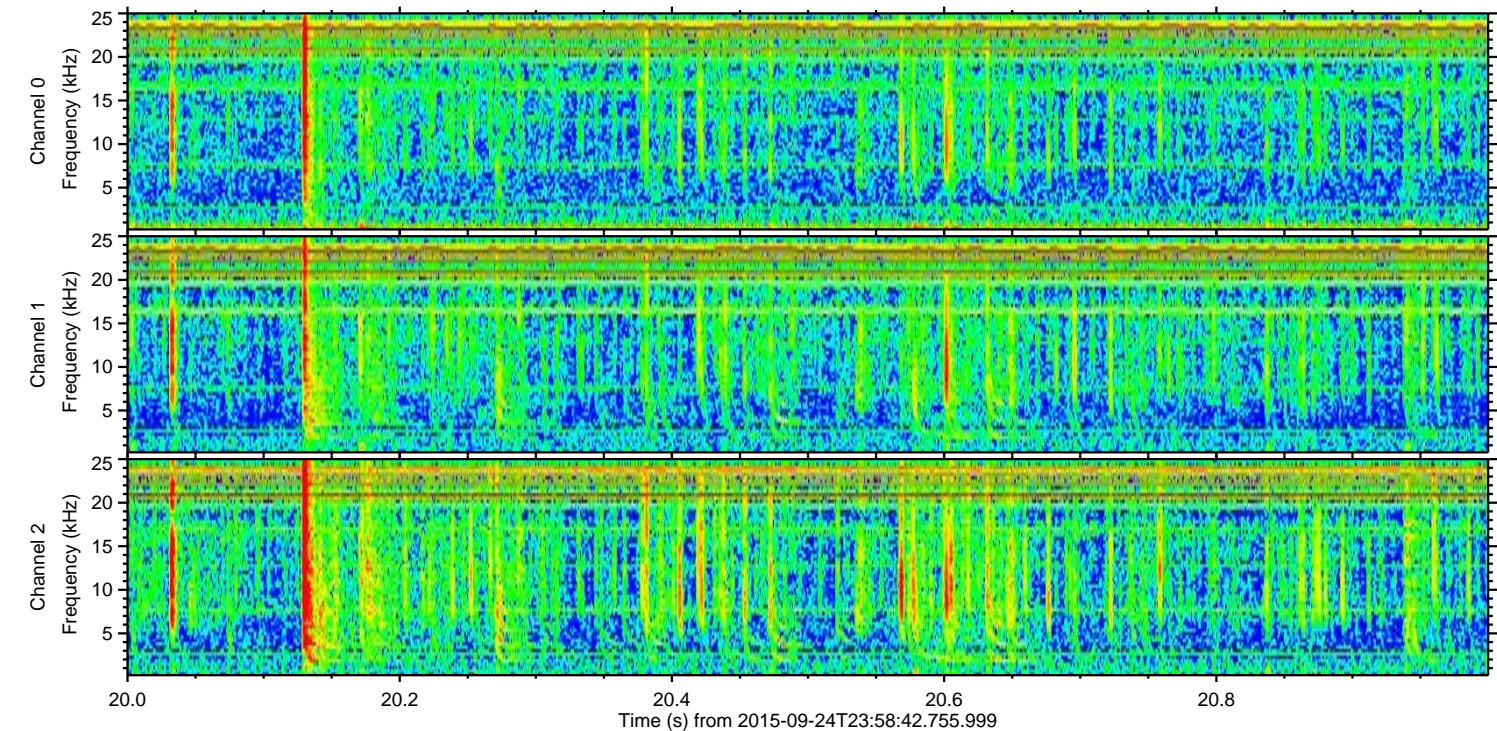
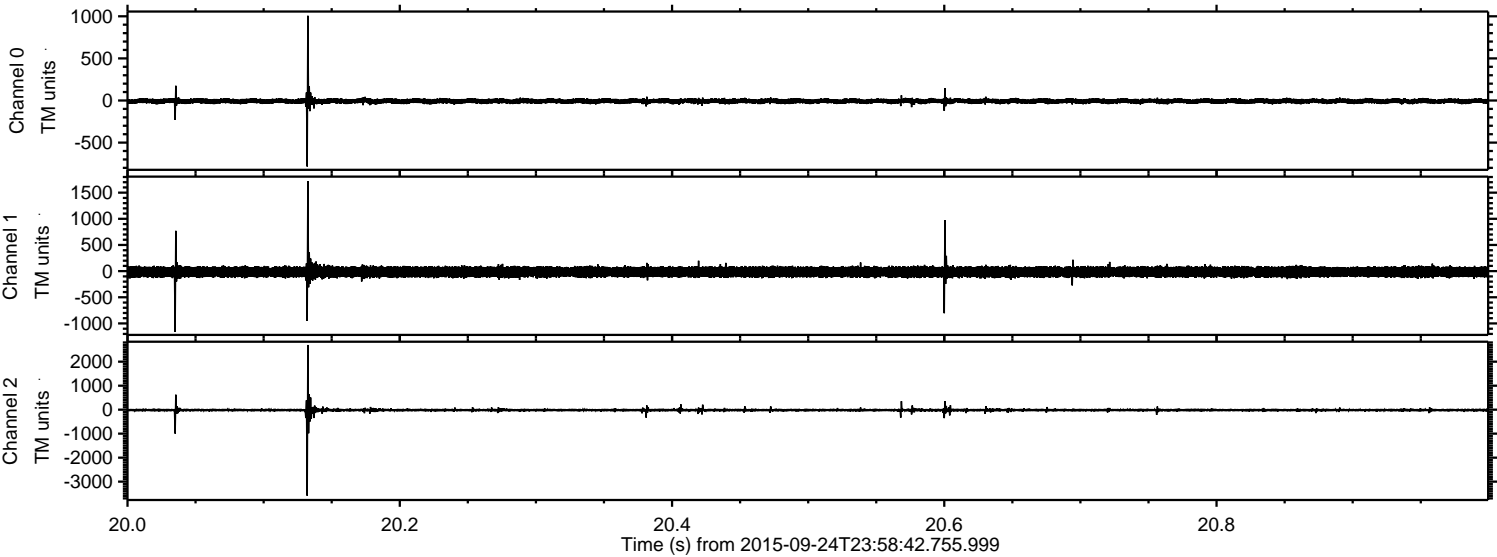
Processed Fri Oct 16 04:24:52 2015 by ELM ver.2012-10-06 from 001__elm20150924_235841__dat00.bin



Processed Fri Oct 16 04:24:53 2015 by ELM ver.2012-10-06 from 001__elm20150924_235841__dat00.bin



Processed Fri Oct 16 04:24:54 2015 by ELM ver.2012-10-06 from 001__elm20150924_235841__dat00.bin



Power spectra

Channel 0
mn: -784
mx: 1006
 μ : -7.4
 σ : 15.9

Channel 1
mn: -1161
mx: 1721
 μ : -15.3
 σ : 52.0

Channel 2
mn: -3586
mx: 2698
 μ : -17.6
 σ : 35.1

Processed Fri Oct 16 04:24:56 2015 by ELM ver.2012-10-06 from 001__elm20150924_235841__dat00.bin

