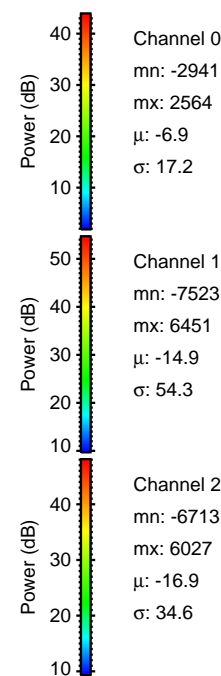
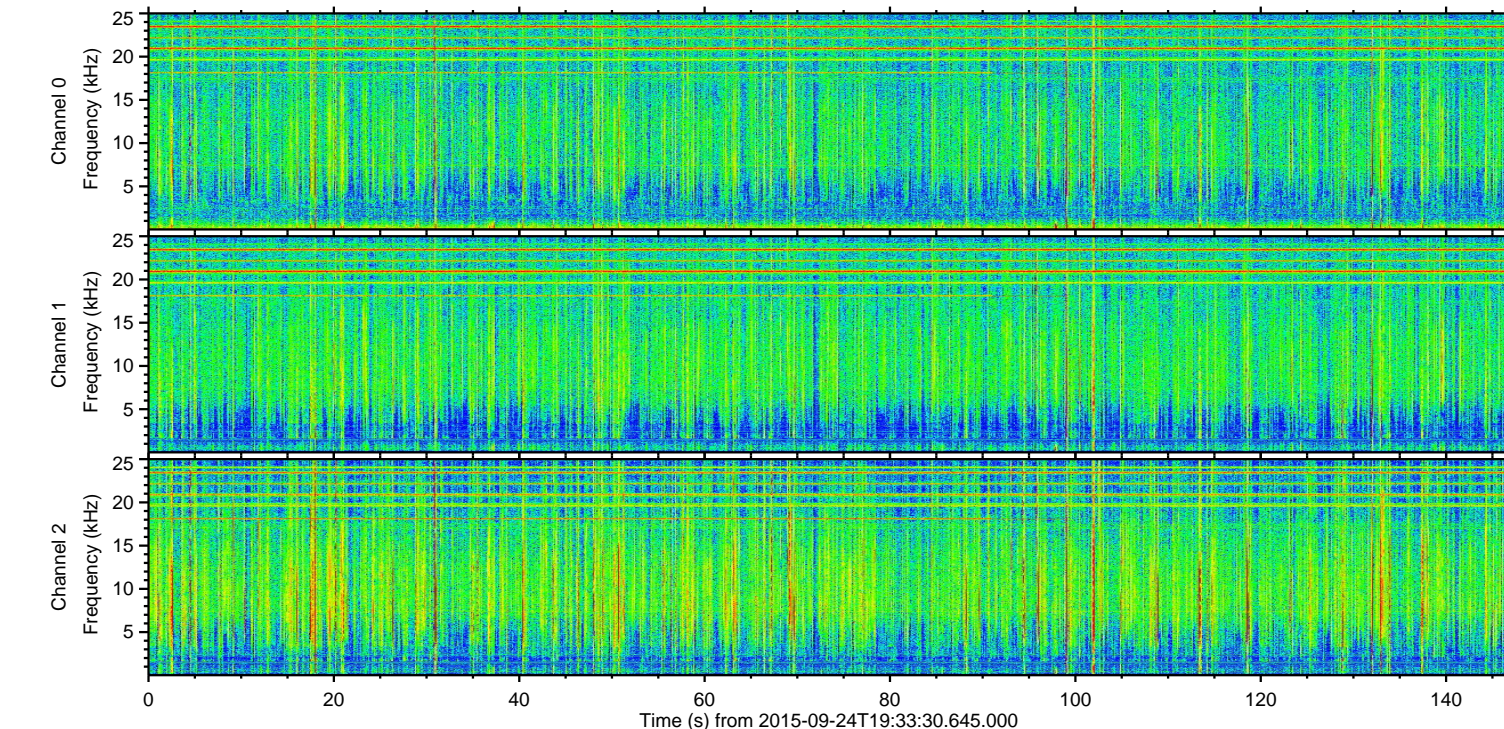
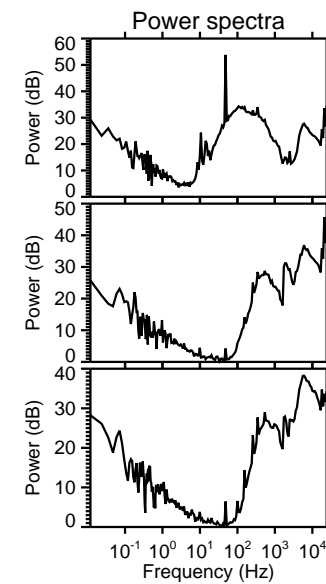
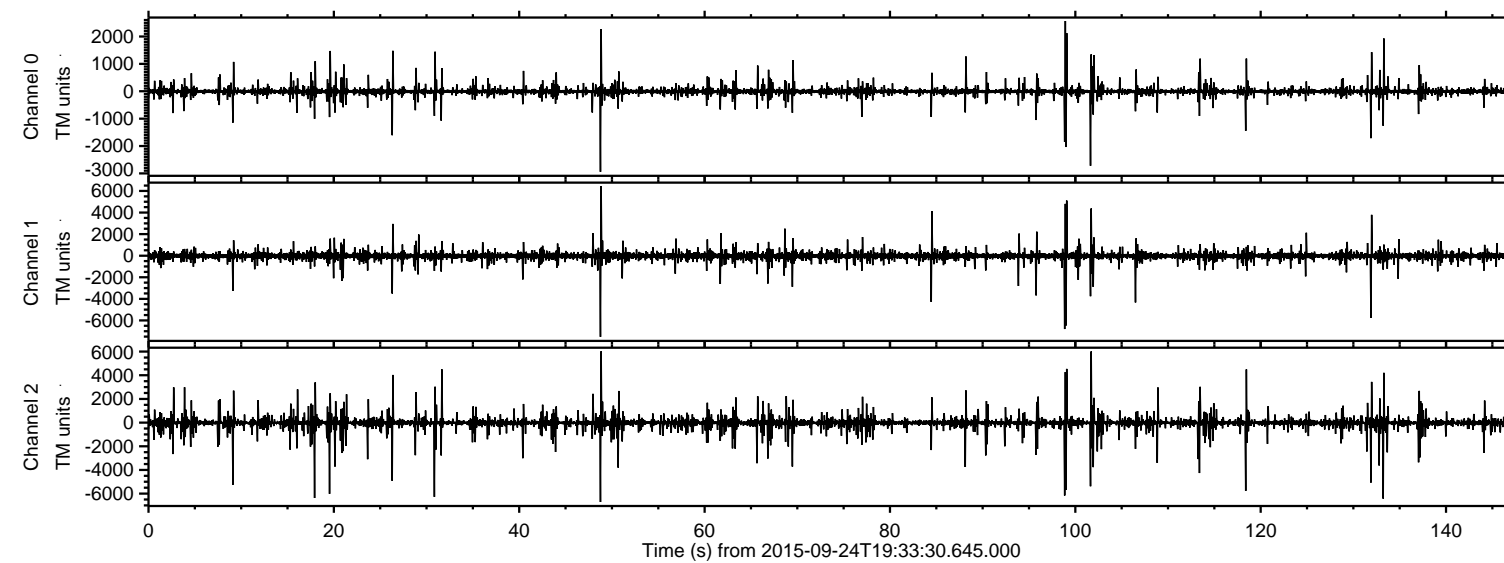
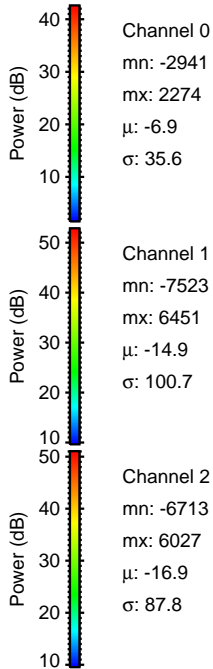
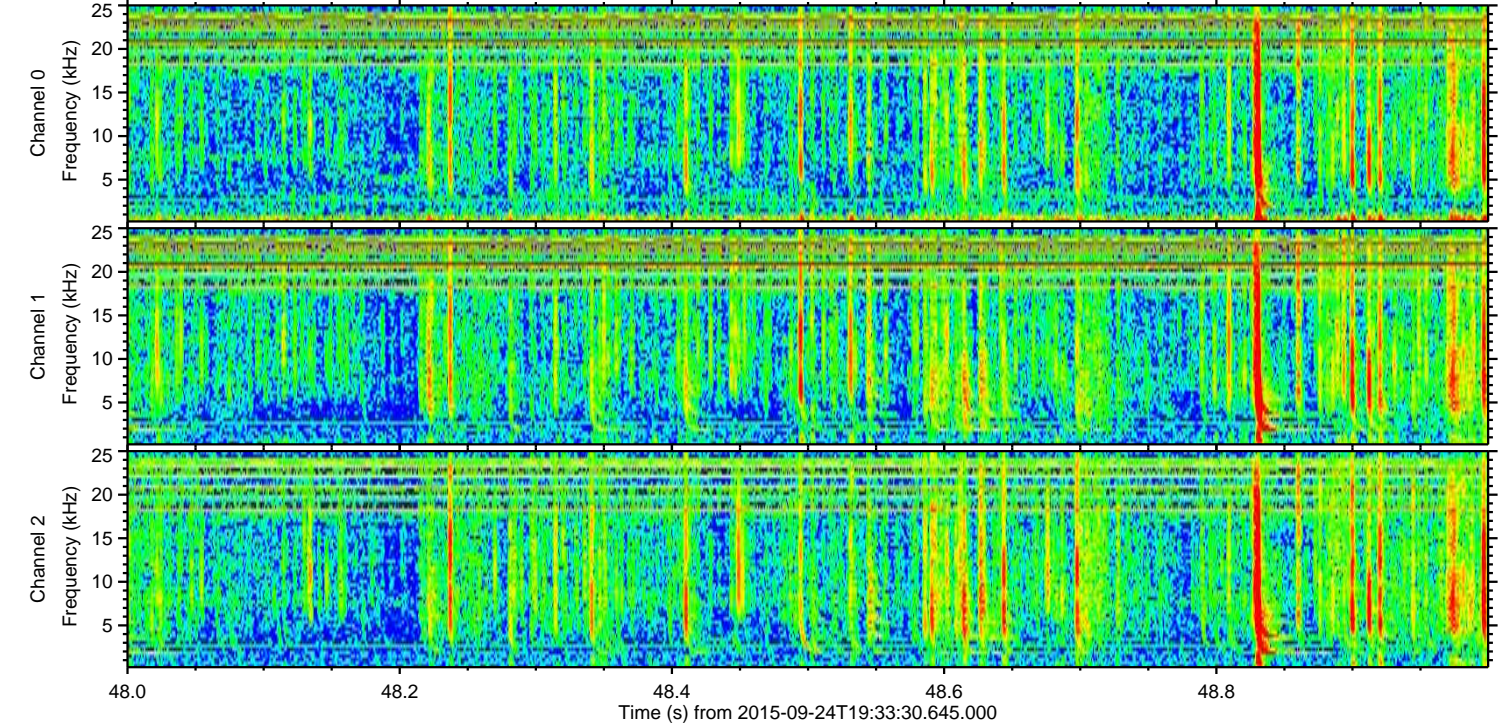
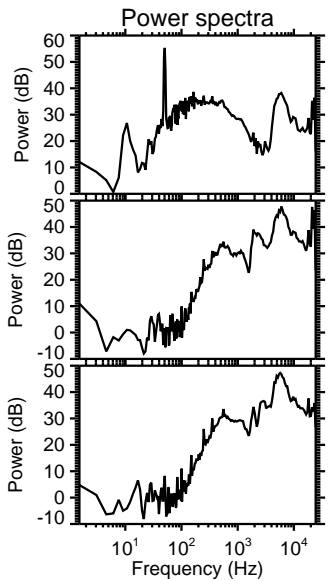
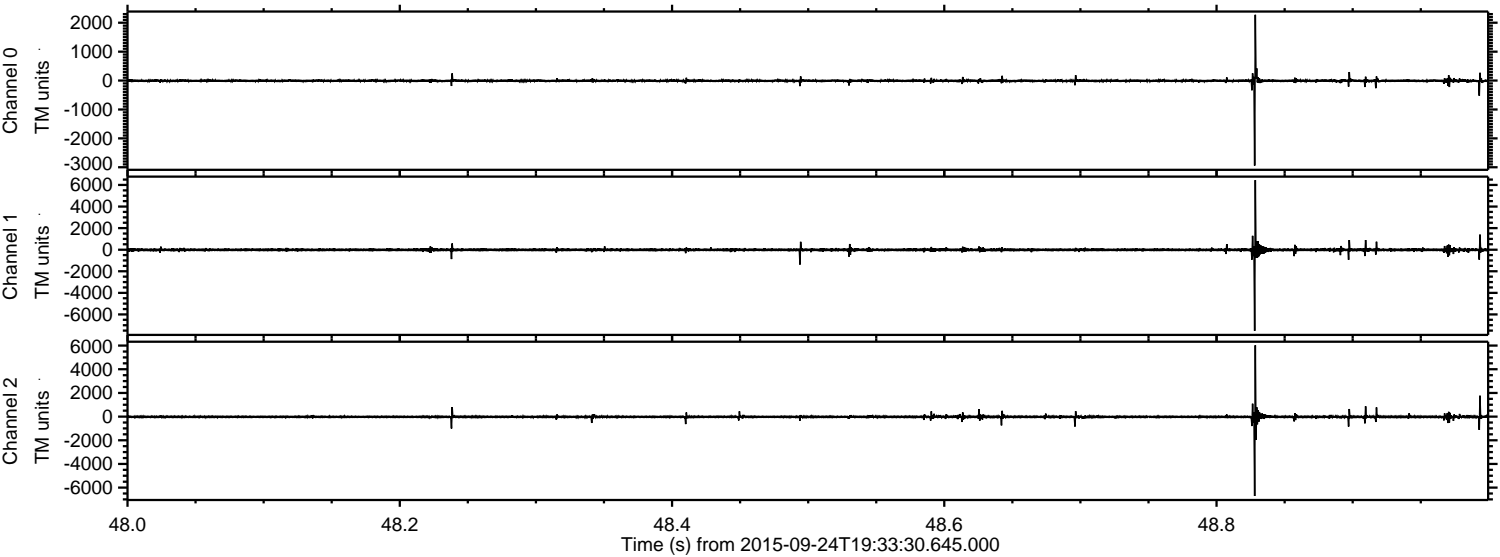


ELMAVAN 3D WAVEFORMS (Measured data sampled at 50 kHz) 51000 packets of 144 samples from 2015-09-24T19:33:30.645.000.

Processed Fri Oct 16 02:56:41 2015 by ELM ver.2012-10-06 from 001__elm20150924_193329__dat00.bin



Processed Fri Oct 16 02:57:00 2015 by ELM ver.2012-10-06 from 001__elm20150924_193329__dat00.bin



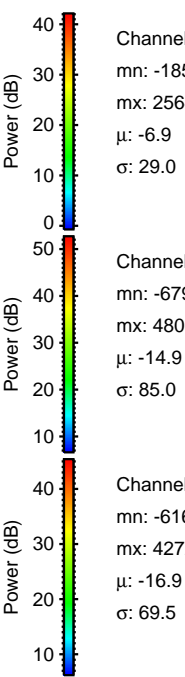
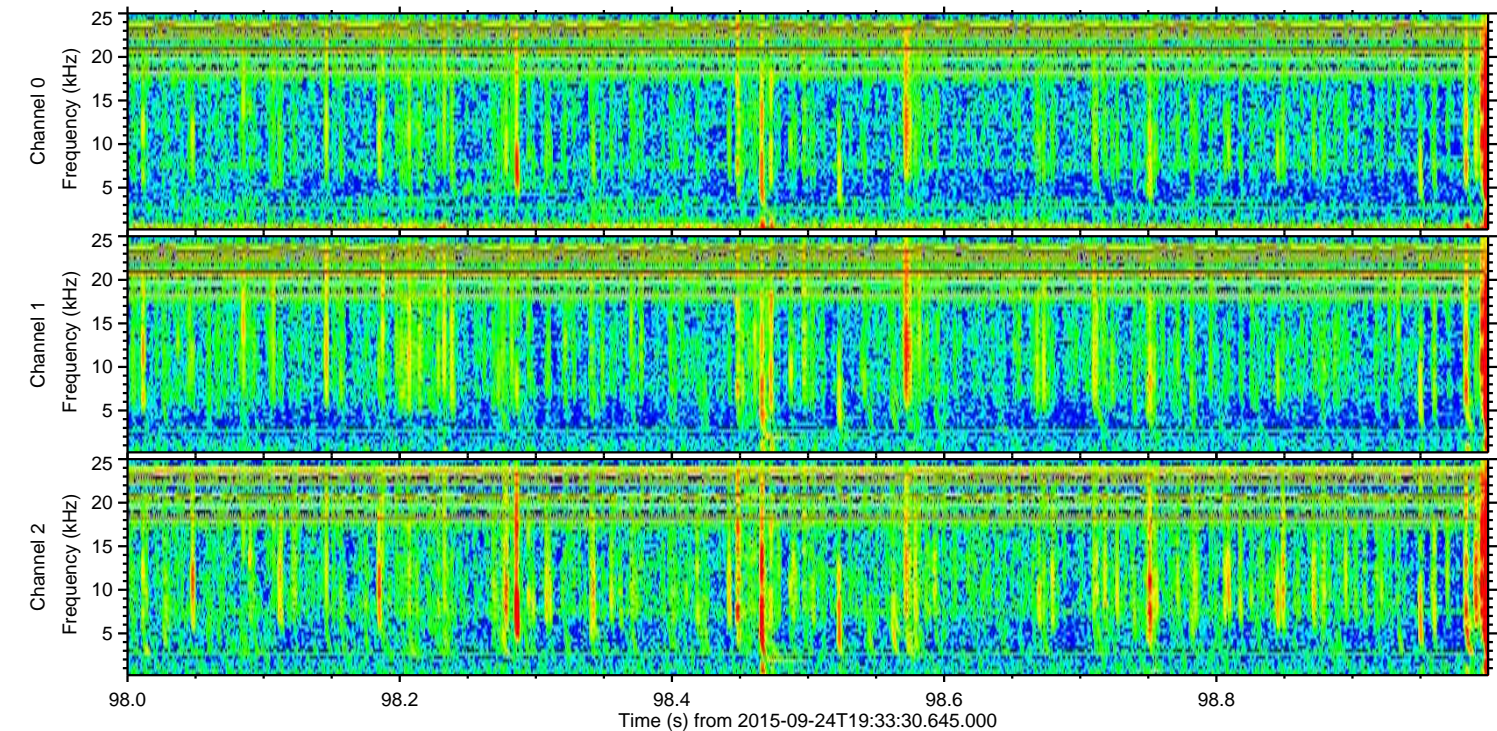
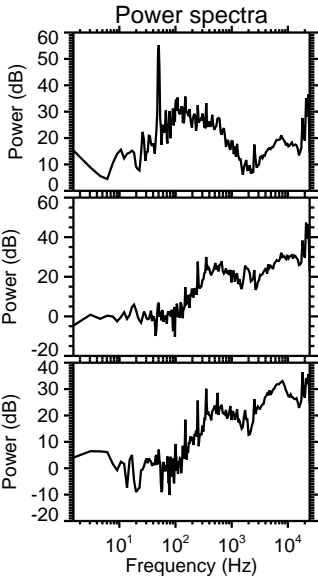
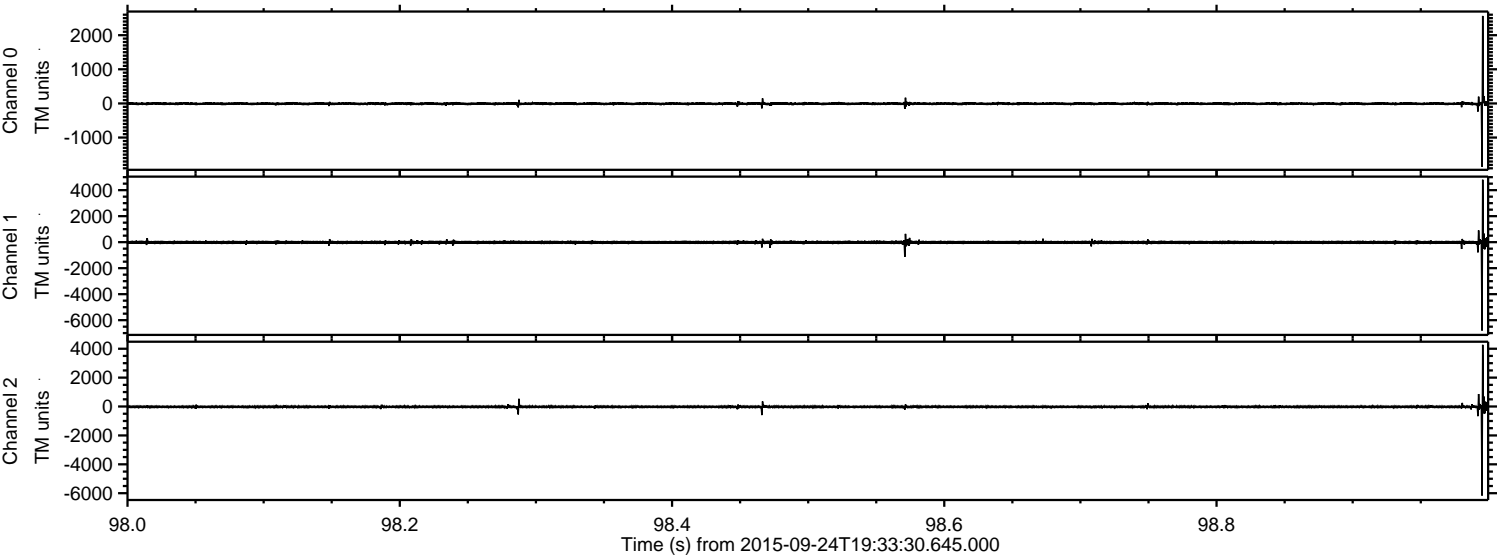
Channel 0
mn: -2941
mx: 2274
 μ : -6.9
 σ : 35.6

Channel 1
mn: -7523
mx: 6451
 μ : -14.9
 σ : 100.7

Channel 2
mn: -6713
mx: 6027
 μ : -16.9
 σ : 87.8

ELMAVAN 3D WAVEFORMS (Measured data sampled at 50 kHz) 51000 packets of 144 samples from 2015-09-24T19:33:30.645.000. Part 99/147

Processed Fri Oct 16 02:57:01 2015 by ELM ver.2012-10-06 from 001__elm20150924_193329__dat00.bin



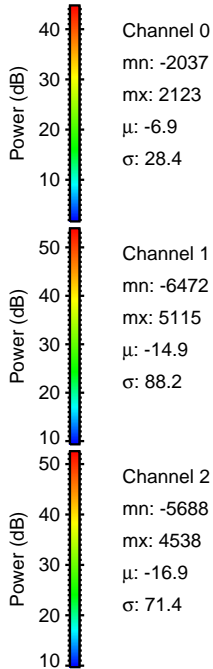
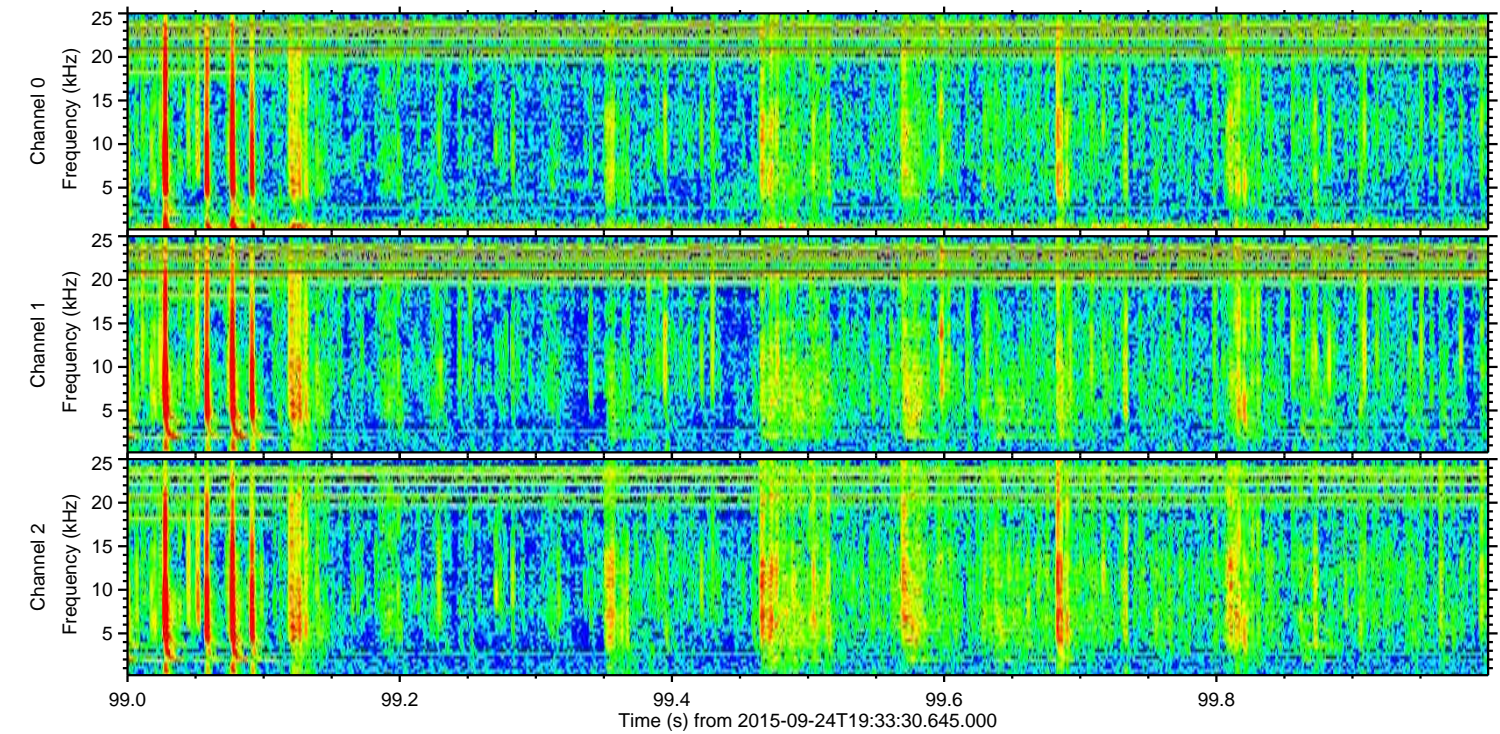
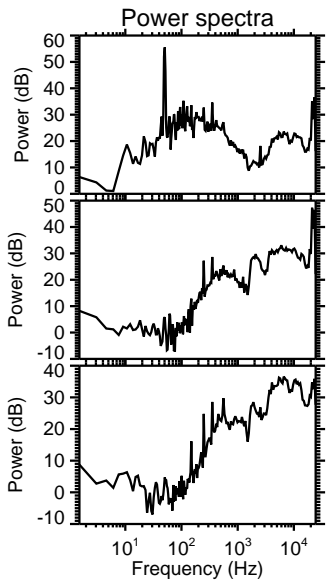
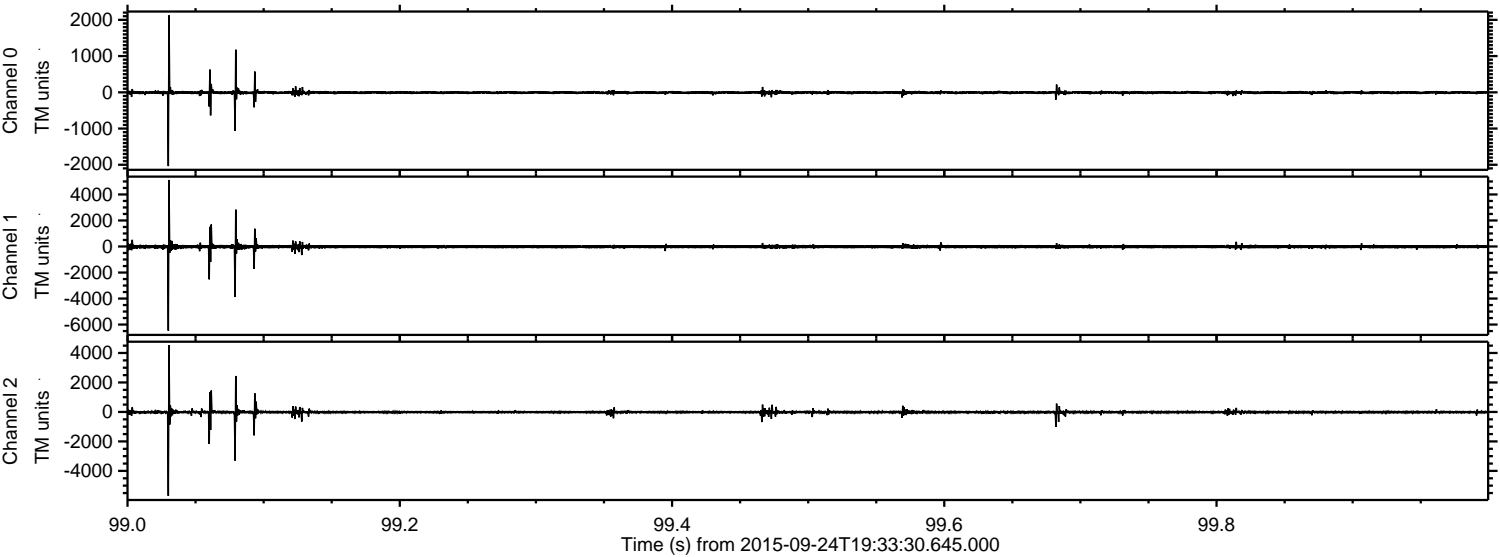
Channel 0
mn: -1852
mx: 2564
 μ : -6.9
 σ : 29.0

Channel 1
mn: -6797
mx: 4803
 μ : -14.9
 σ : 85.0

Channel 2
mn: -6161
mx: 4272
 μ : -16.9
 σ : 69.5

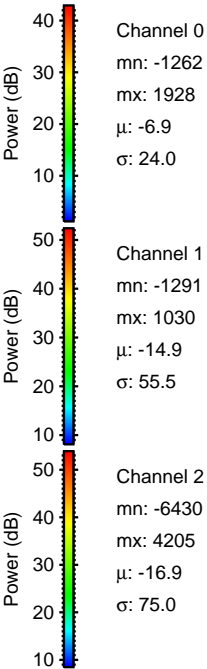
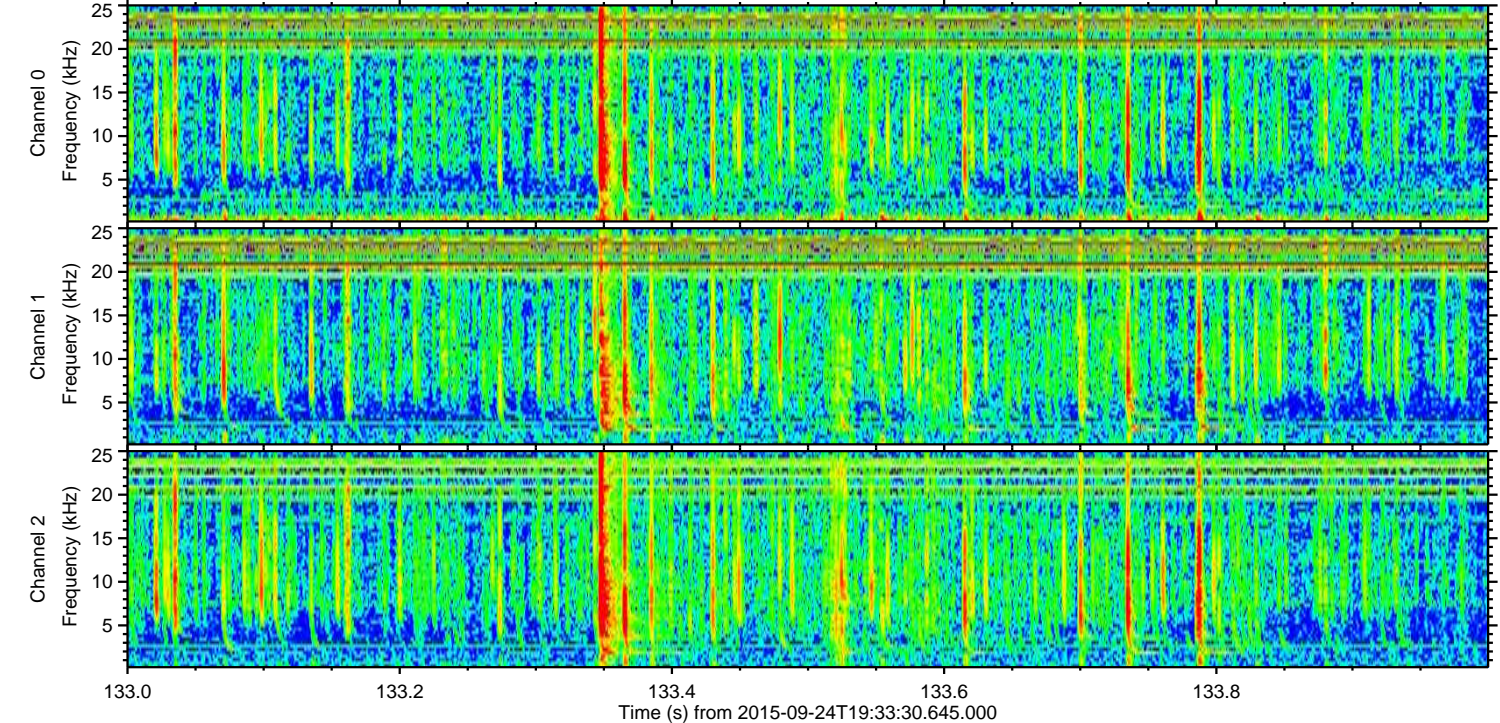
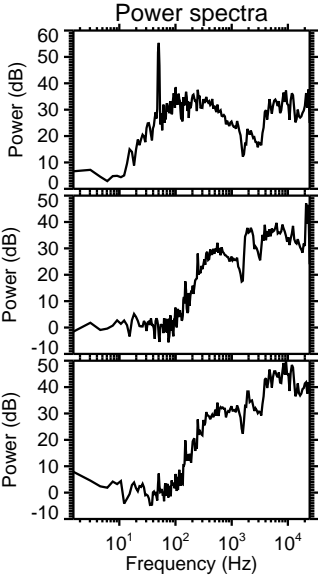
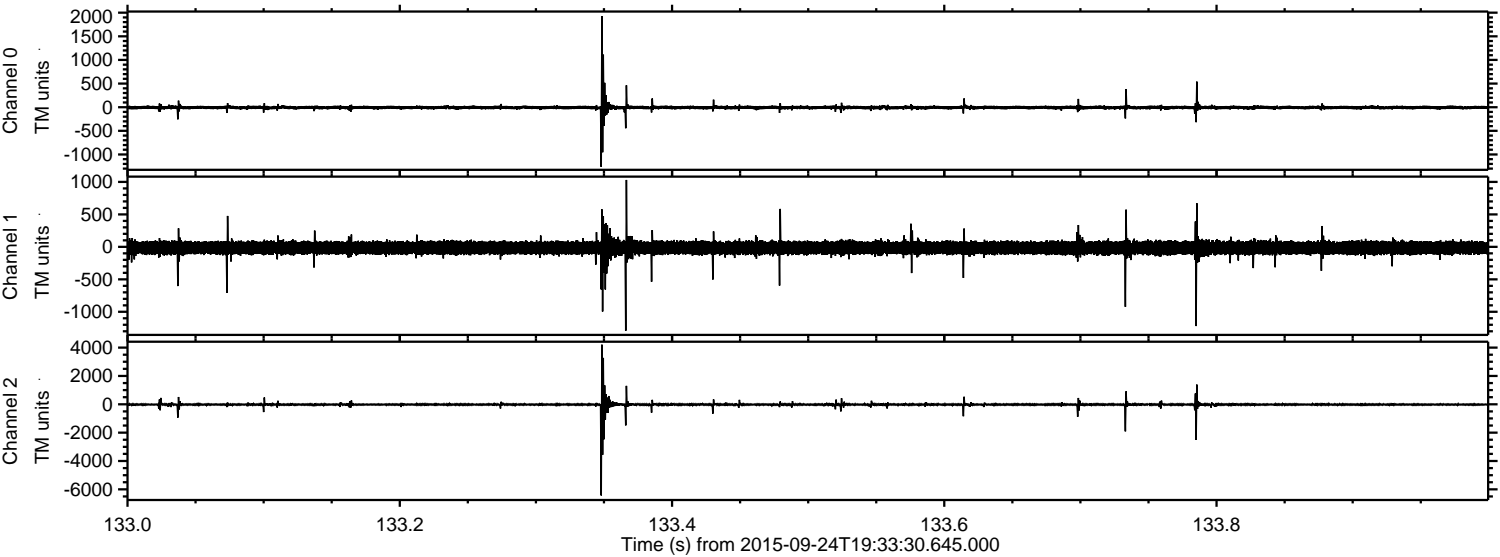
ELMAVAN 3D WAVEFORMS (Measured data sampled at 50 kHz) 51000 packets of 144 samples from 2015-09-24T19:33:30.645.000. Part 100/147

Processed Fri Oct 16 02:57:03 2015 by ELM ver.2012-10-06 from 001__elm20150924_193329__dat00.bin

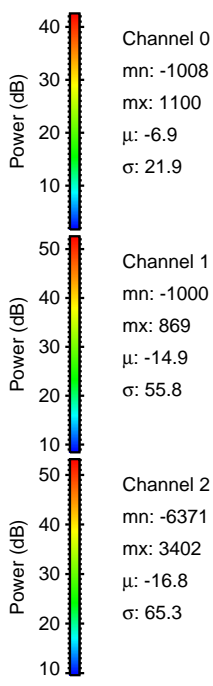
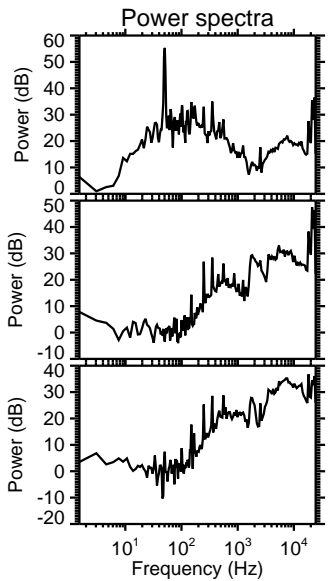
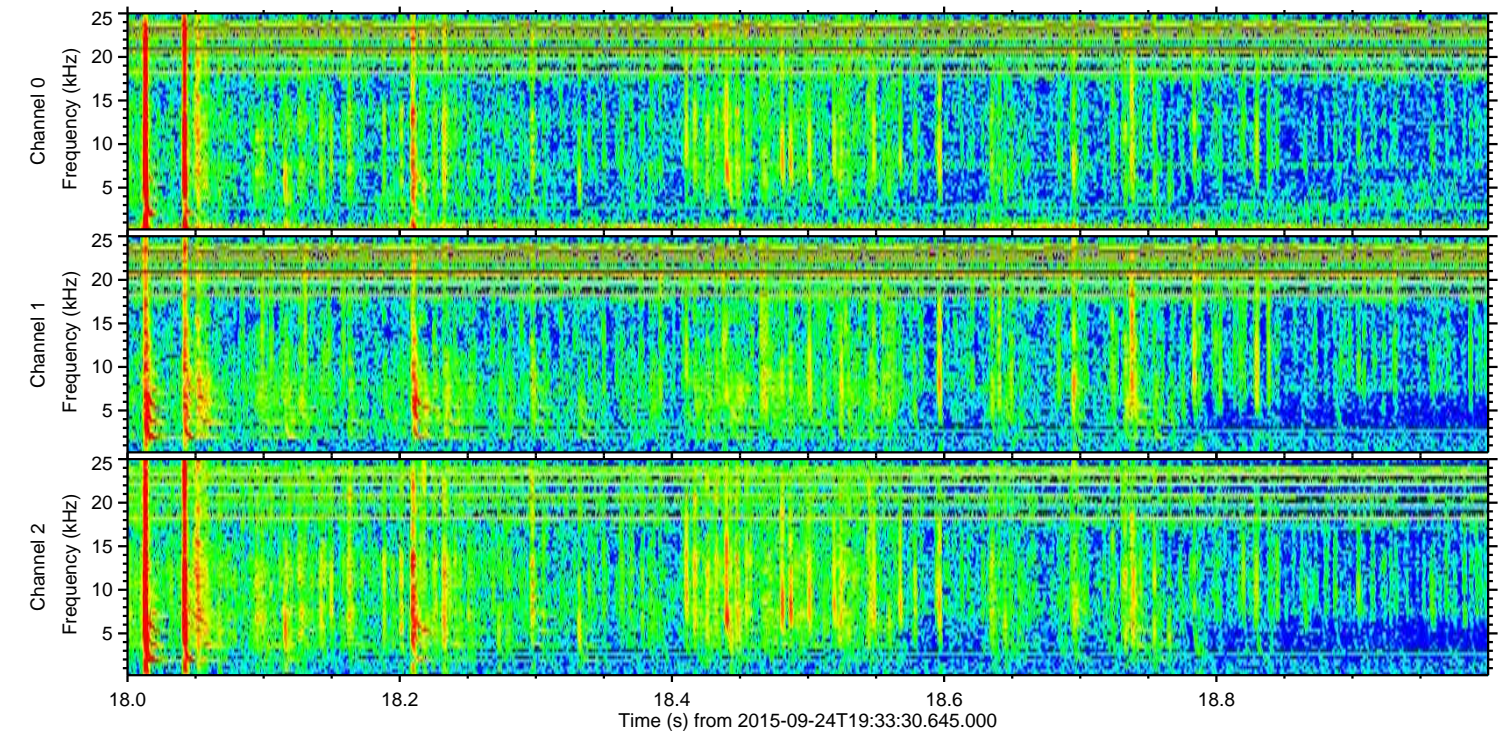
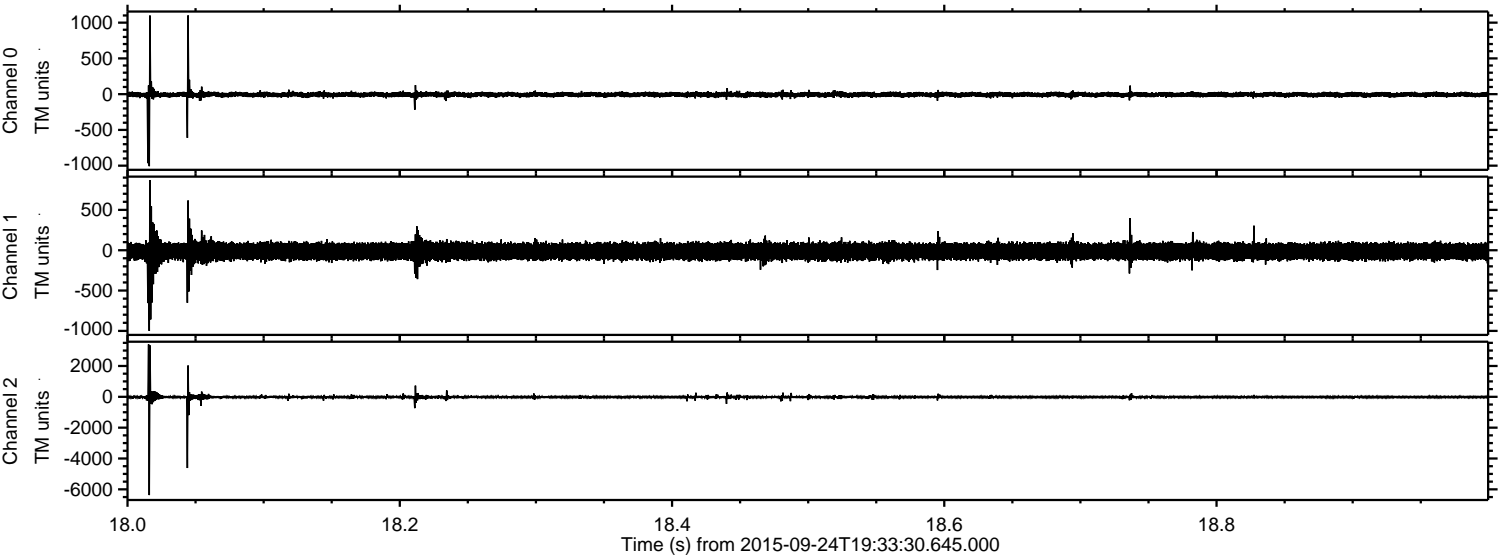


ELMAVAN 3D WAVEFORMS (Measured data sampled at 50 kHz) 51000 packets of 144 samples from 2015-09-24T19:33:30.645.000. Part 134/147

Processed Fri Oct 16 02:57:04 2015 by ELM ver.2012-10-06 from 001__elm20150924_193329__dat00.bin

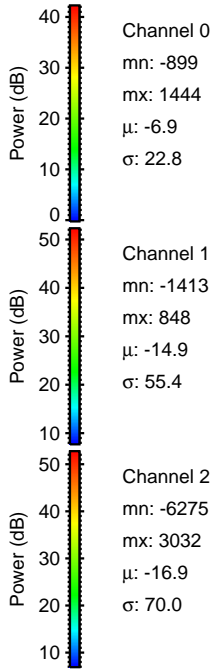
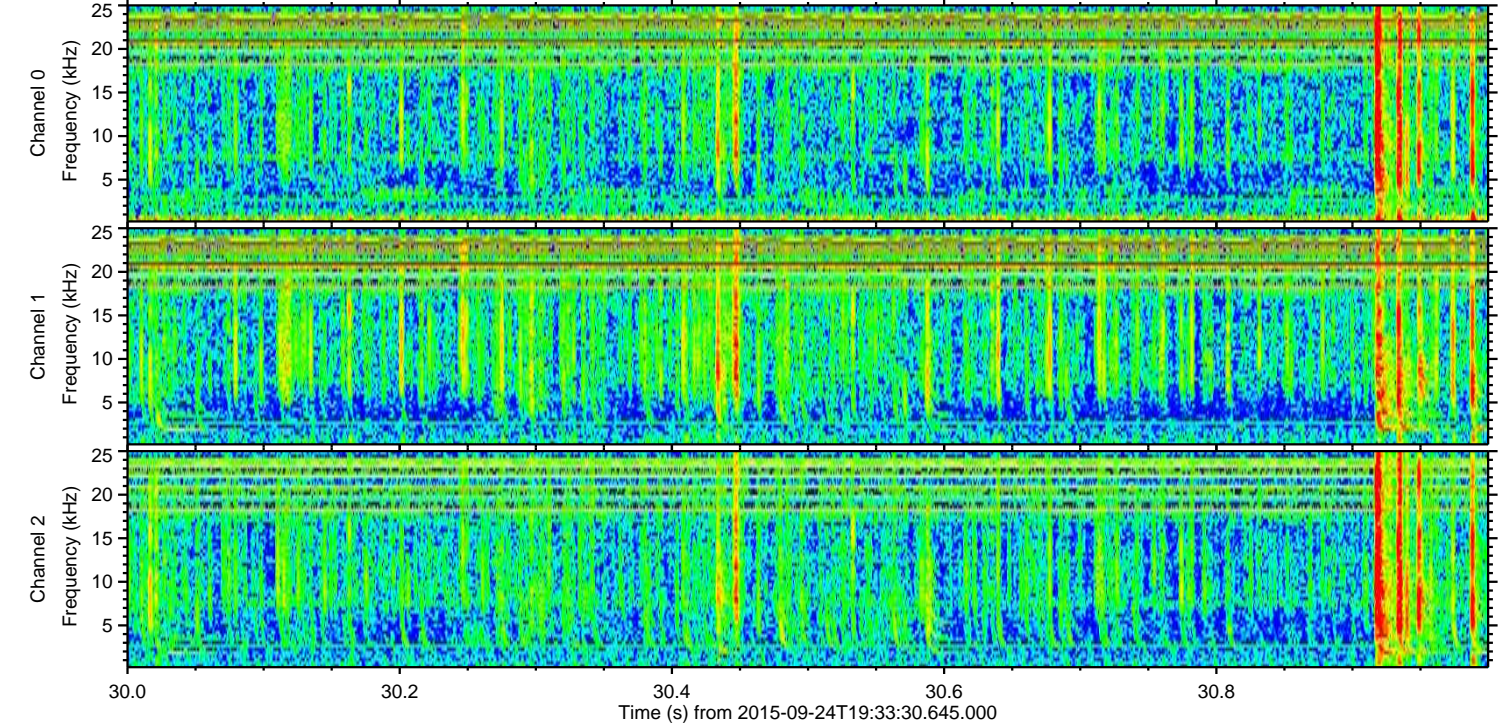
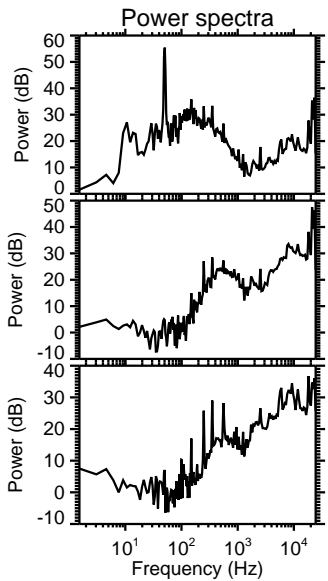
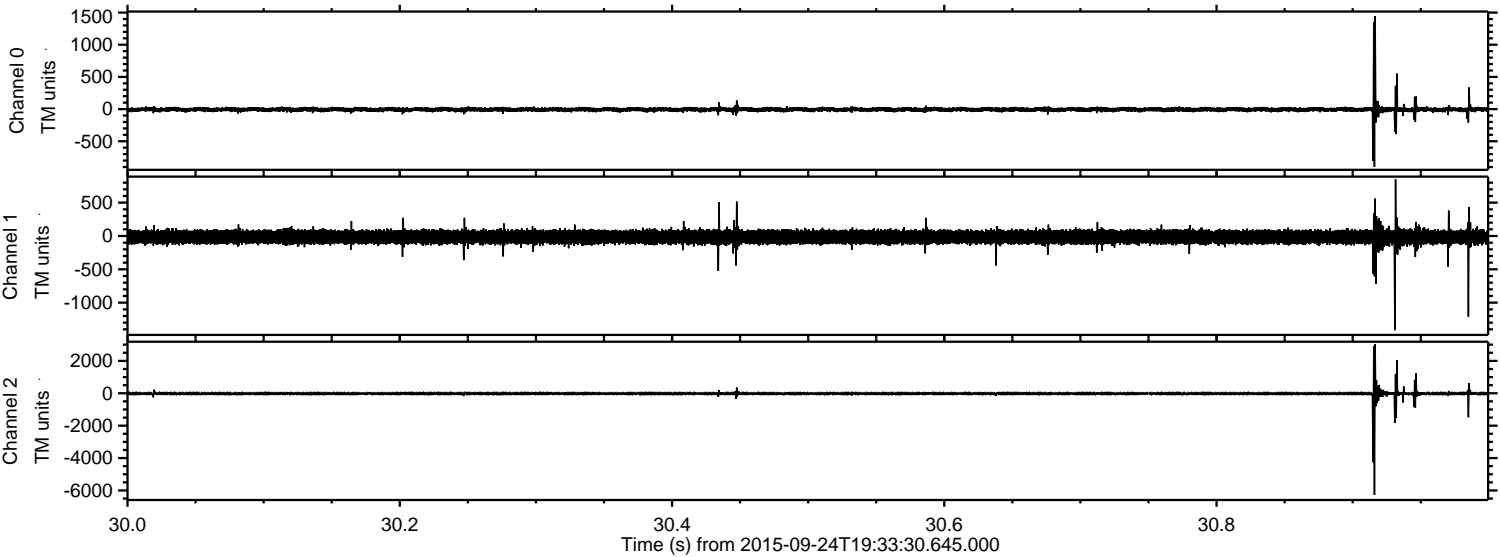


Processed Fri Oct 16 02:57:06 2015 by ELM ver.2012-10-06 from 001__elm20150924_193329__dat00.bin

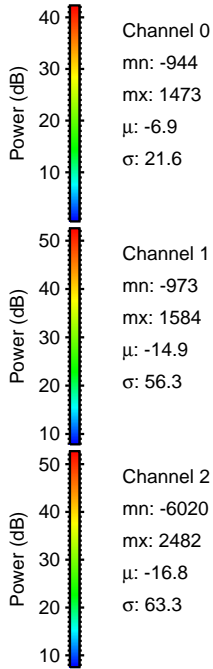
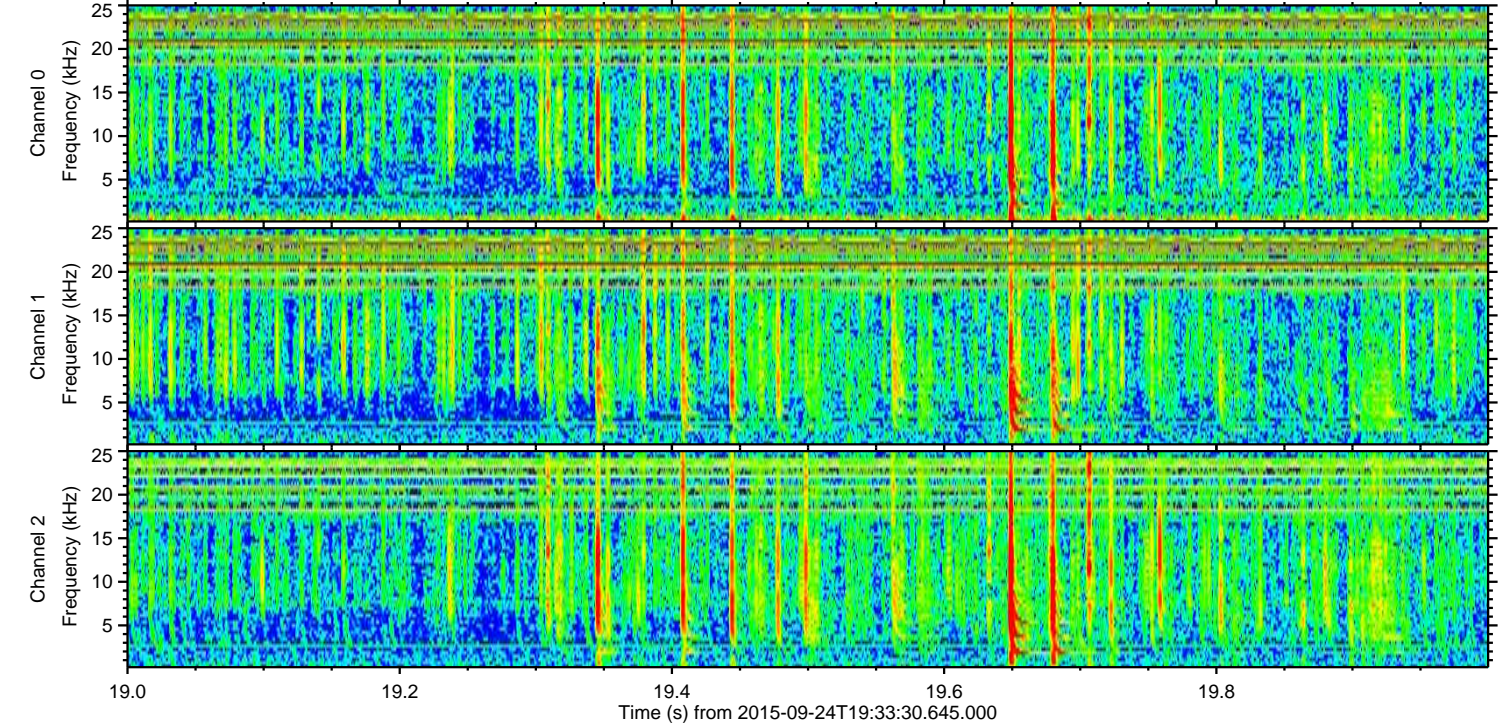
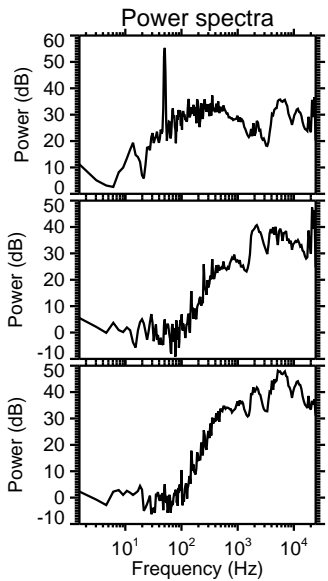
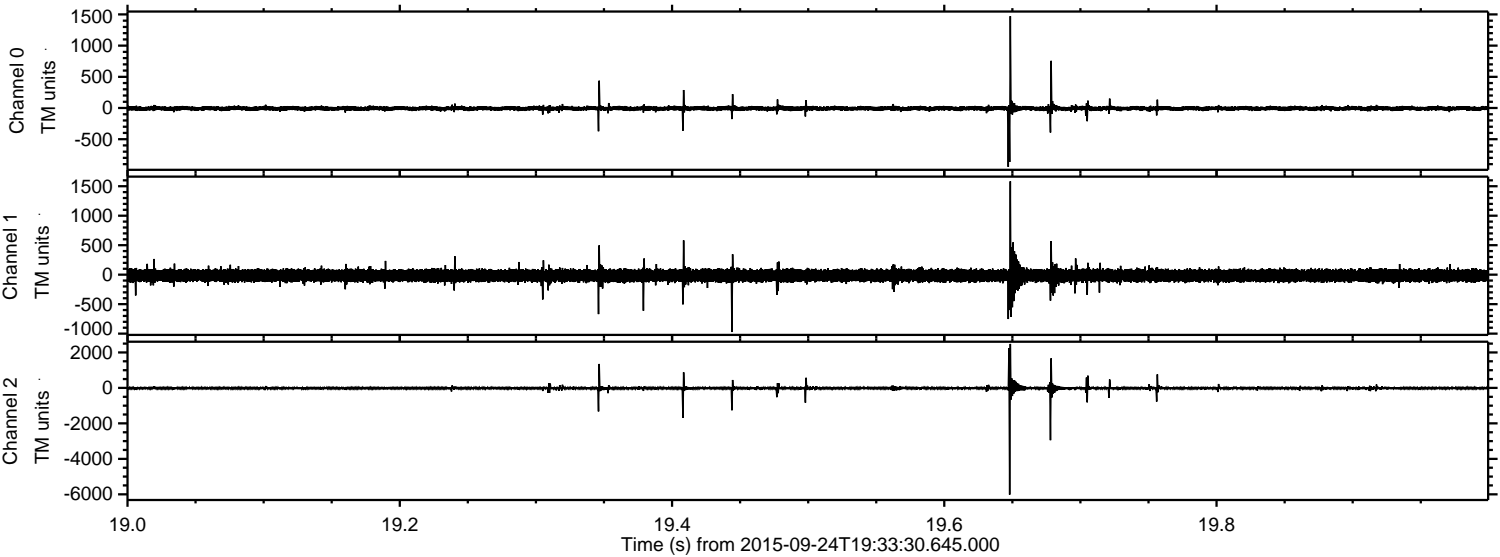


ELMAVAN 3D WAVEFORMS (Measured data sampled at 50 kHz) 51000 packets of 144 samples from 2015-09-24T19:33:30.645.000. Part 31/147

Processed Fri Oct 16 02:57:07 2015 by ELM ver.2012-10-06 from 001__elm20150924_193329__dat00.bin



Processed Fri Oct 16 02:57:09 2015 by ELM ver.2012-10-06 from 001__elm20150924_193329__dat00.bin



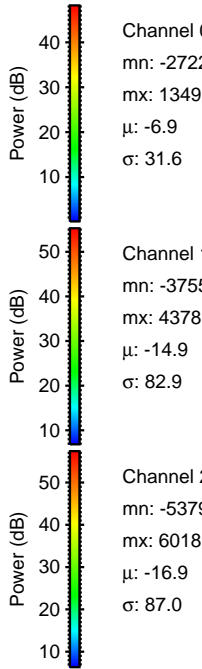
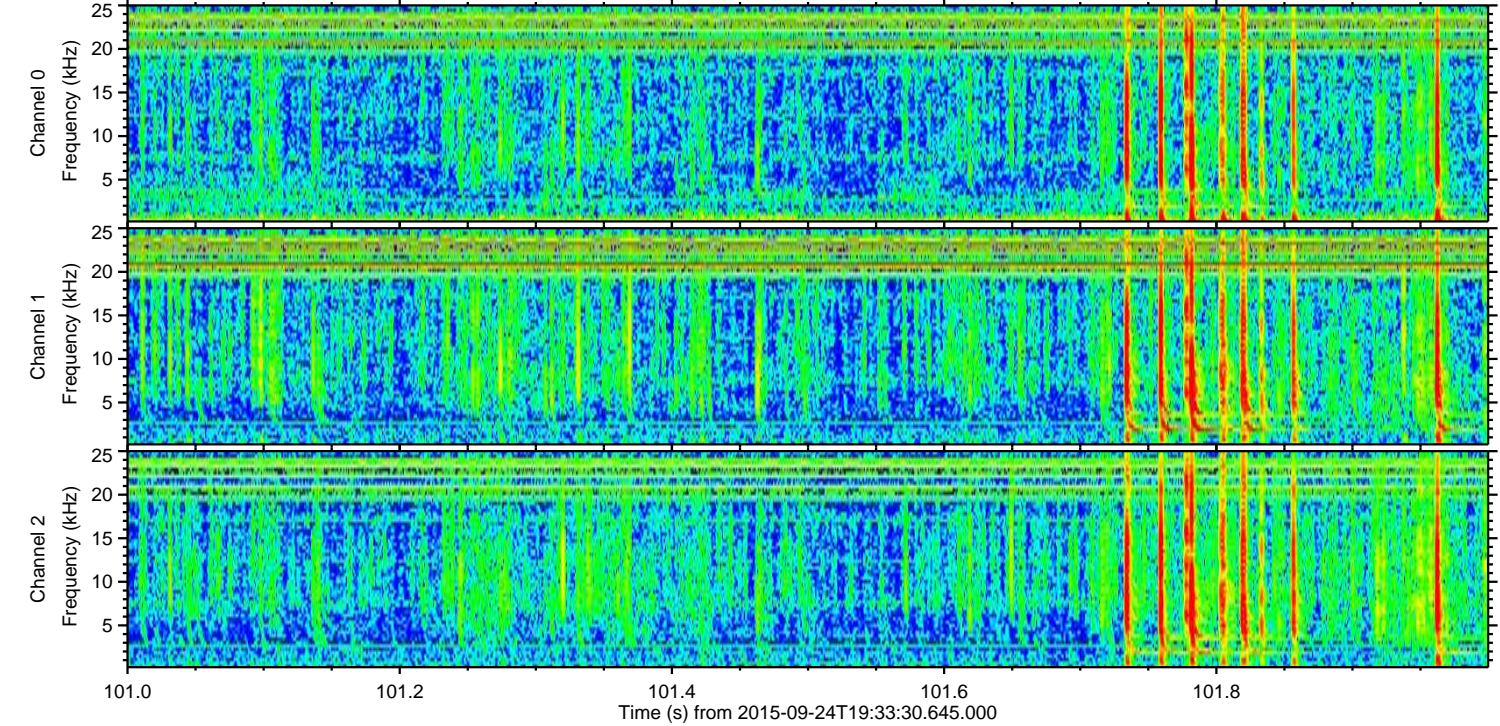
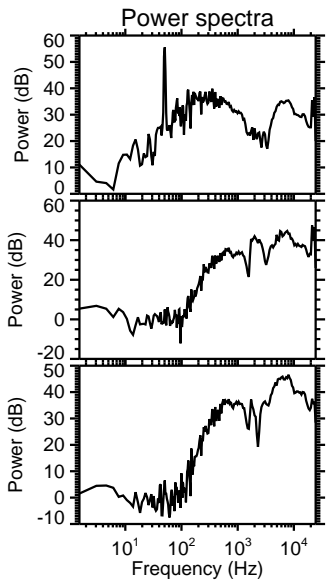
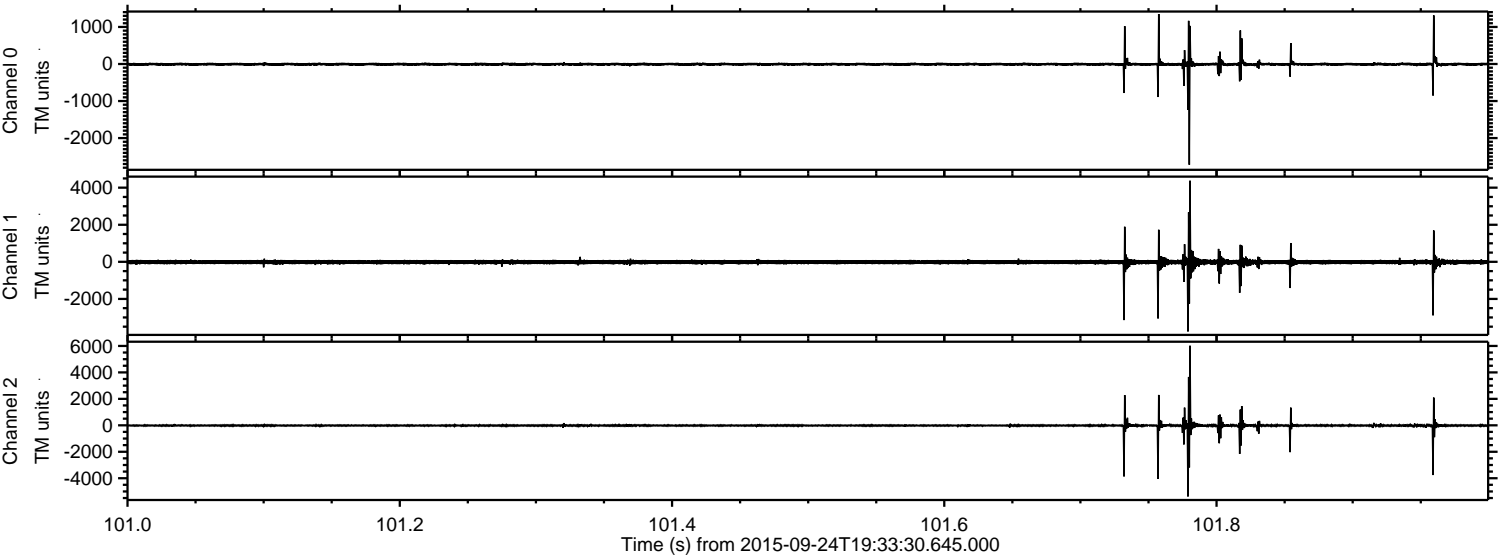
Channel 0
mn: -944
mx: 1473
 μ : -6.9
 σ : 21.6

Channel 1
mn: -973
mx: 1584
 μ : -14.9
 σ : 56.3

Channel 2
mn: -6020
mx: 2482
 μ : -16.8
 σ : 63.3

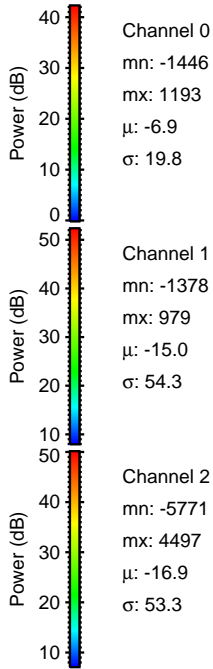
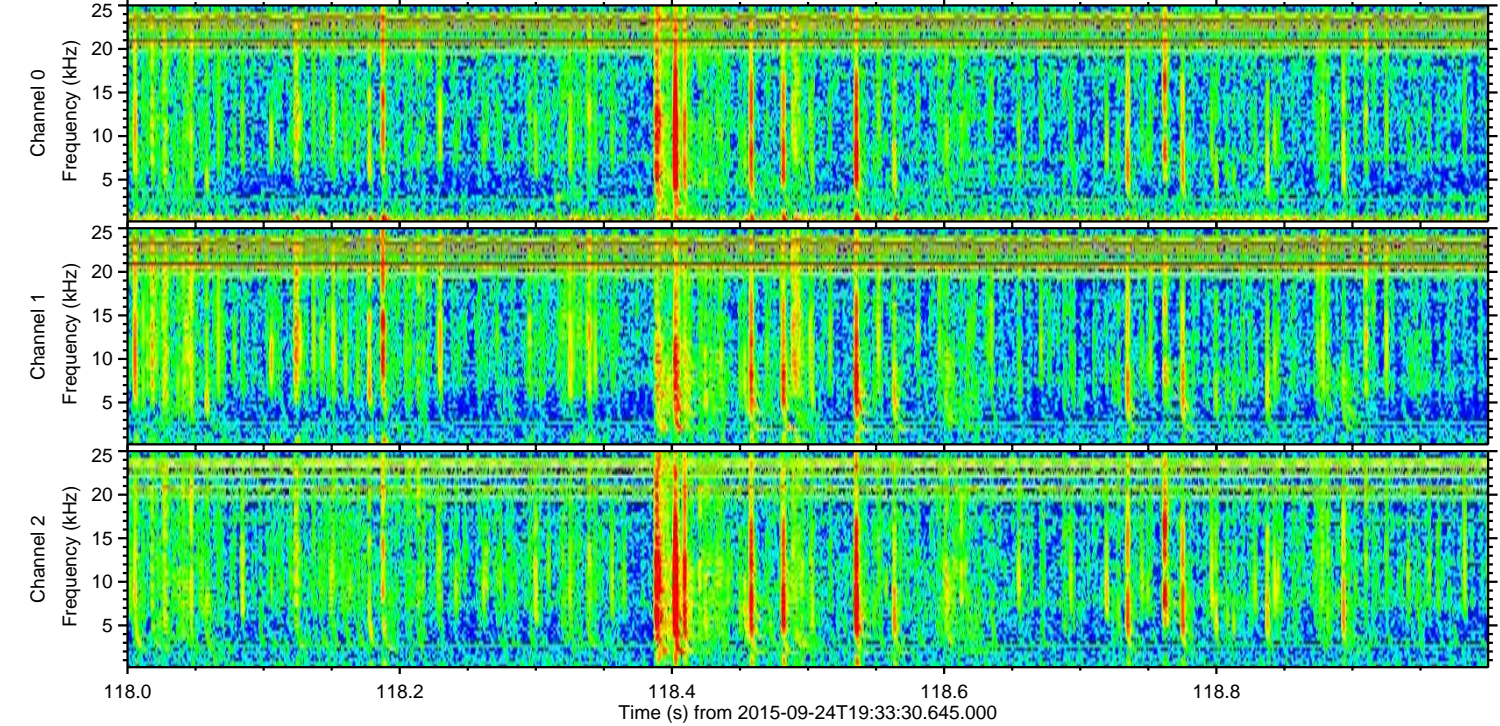
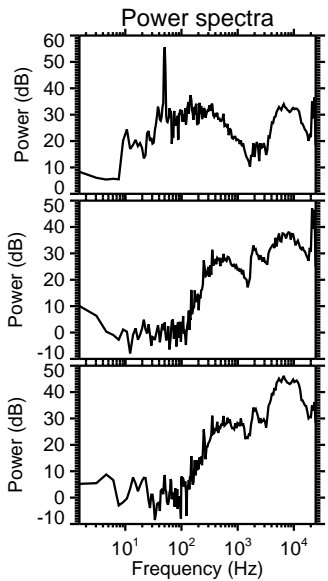
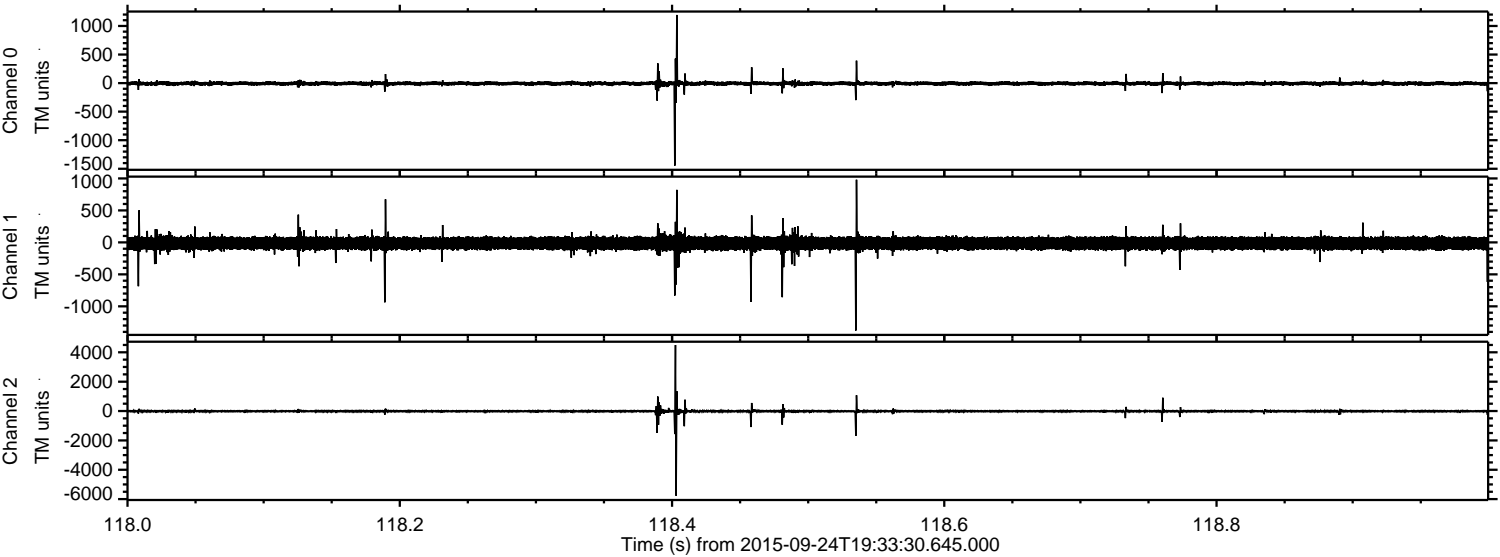
ELMAVAN 3D WAVEFORMS (Measured data sampled at 50 kHz) 51000 packets of 144 samples from 2015-09-24T19:33:30.645.000. Part 102/147

Processed Fri Oct 16 02:57:12 2015 by ELM ver.2012-10-06 from 001__elm20150924_193329__dat00.bin



ELMAVAN 3D WAVEFORMS (Measured data sampled at 50 kHz) 51000 packets of 144 samples from 2015-09-24T19:33:30.645.000. Part 119/147

Processed Fri Oct 16 02:57:15 2015 by ELM ver.2012-10-06 from 001__elm20150924_193329__dat00.bin



Channel 0
mn: -1446
mx: 1193
 μ : -6.9
 σ : 19.8

Channel 1
mn: -1378
mx: 979
 μ : -15.0
 σ : 54.3

Channel 2
mn: -5771
mx: 4497
 μ : -16.9
 σ : 53.3

ELMAVAN 3D WAVEFORMS (Measured data sampled at 50 kHz) 51000 packets of 144 samples from 2015-09-24T19:33:30.645.000. Part 127/147

