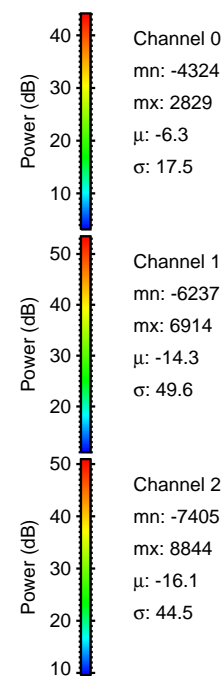
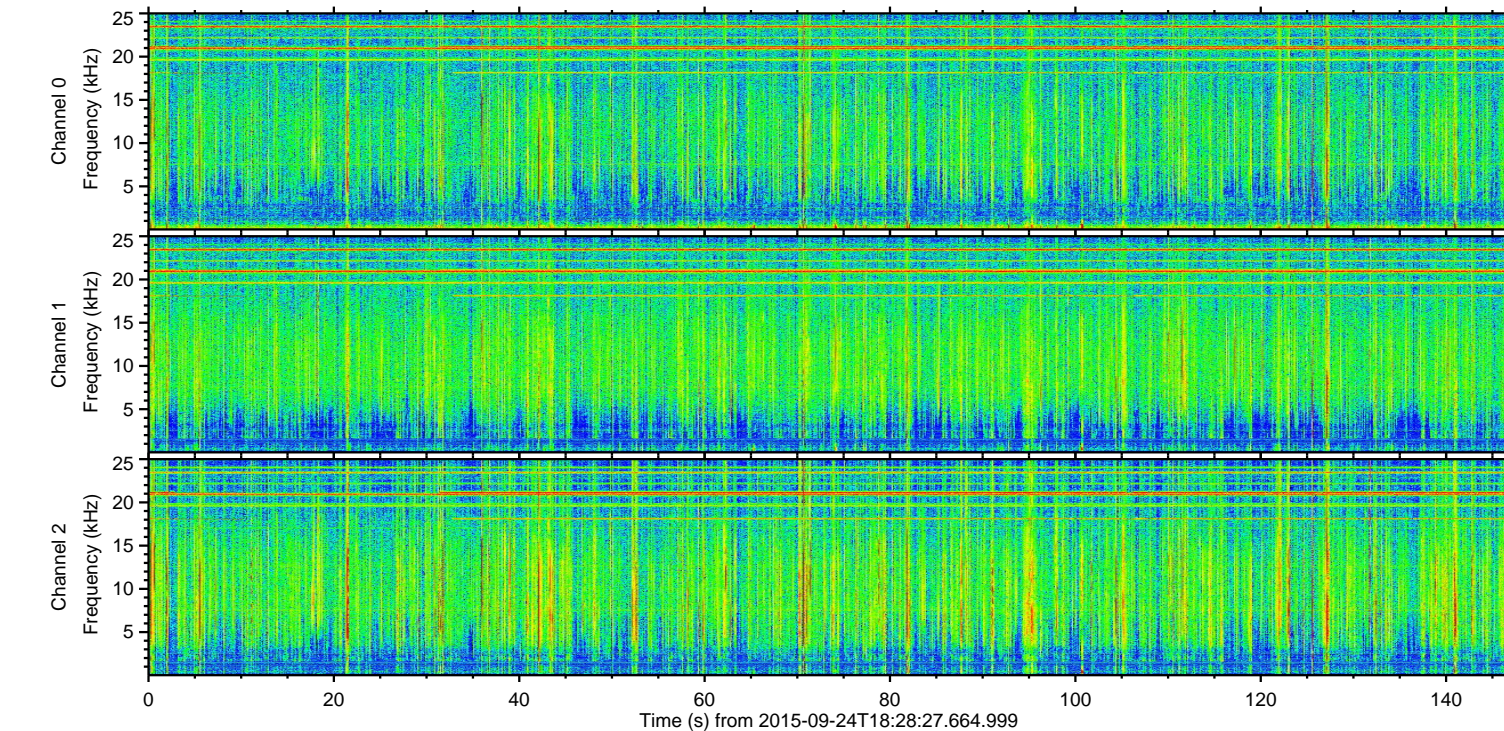
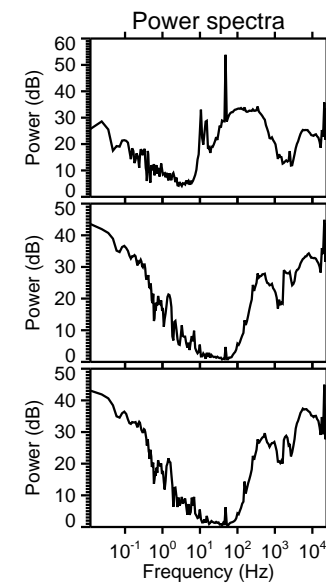
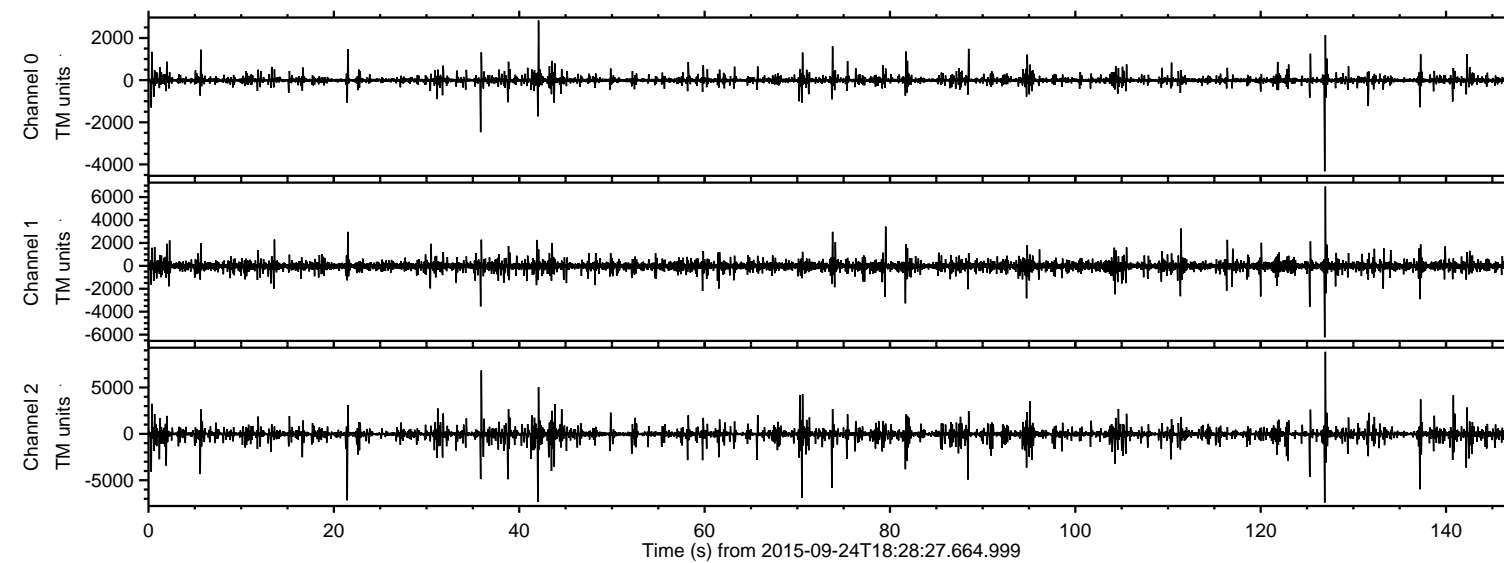


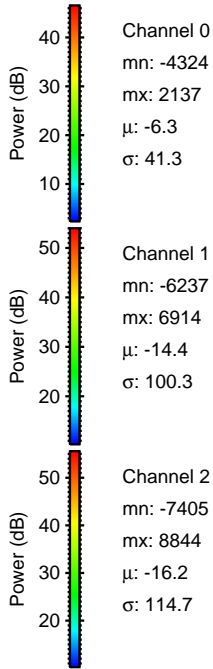
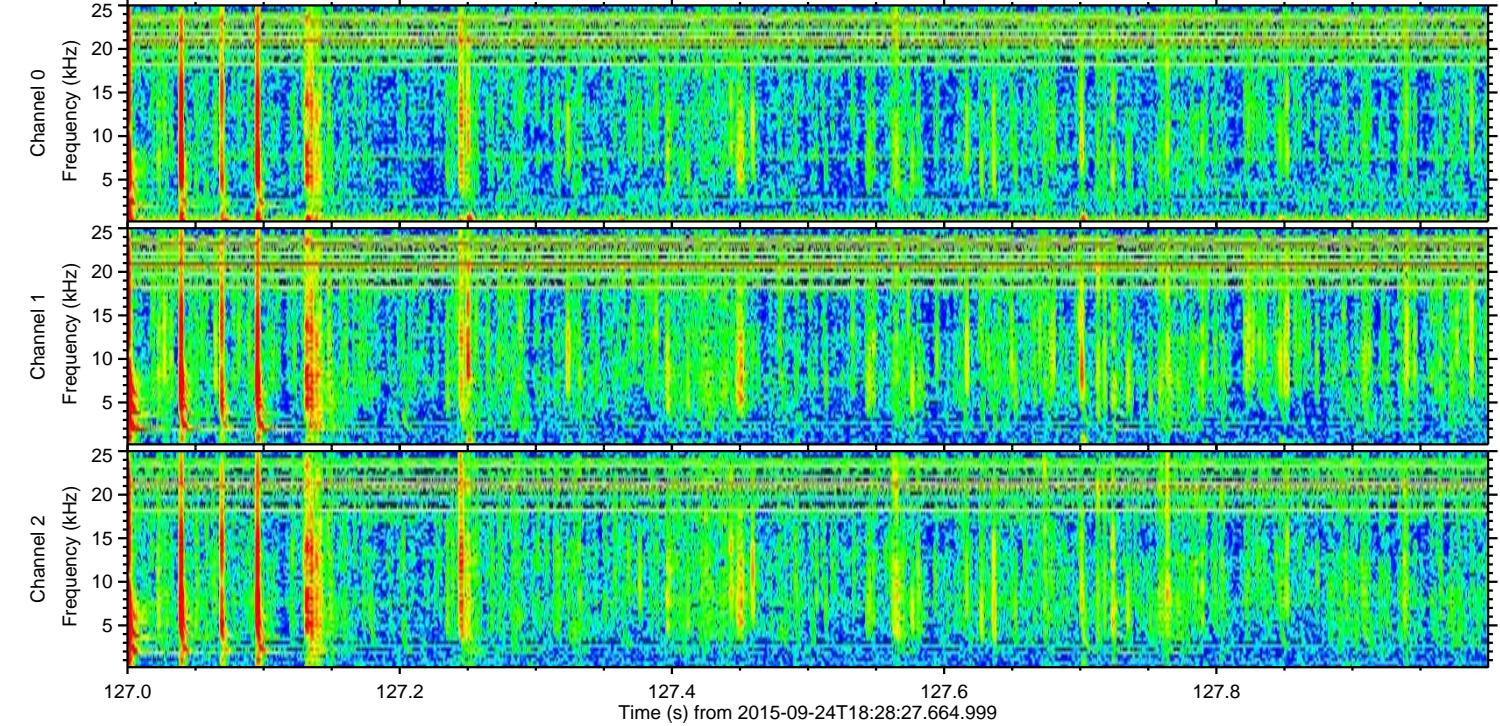
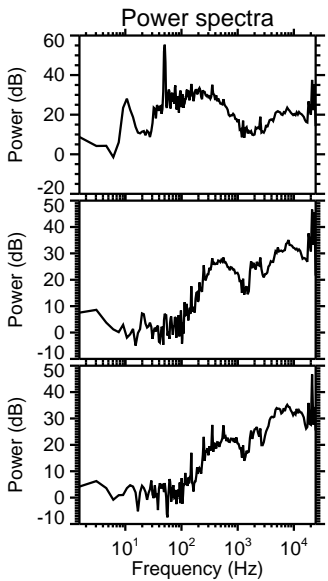
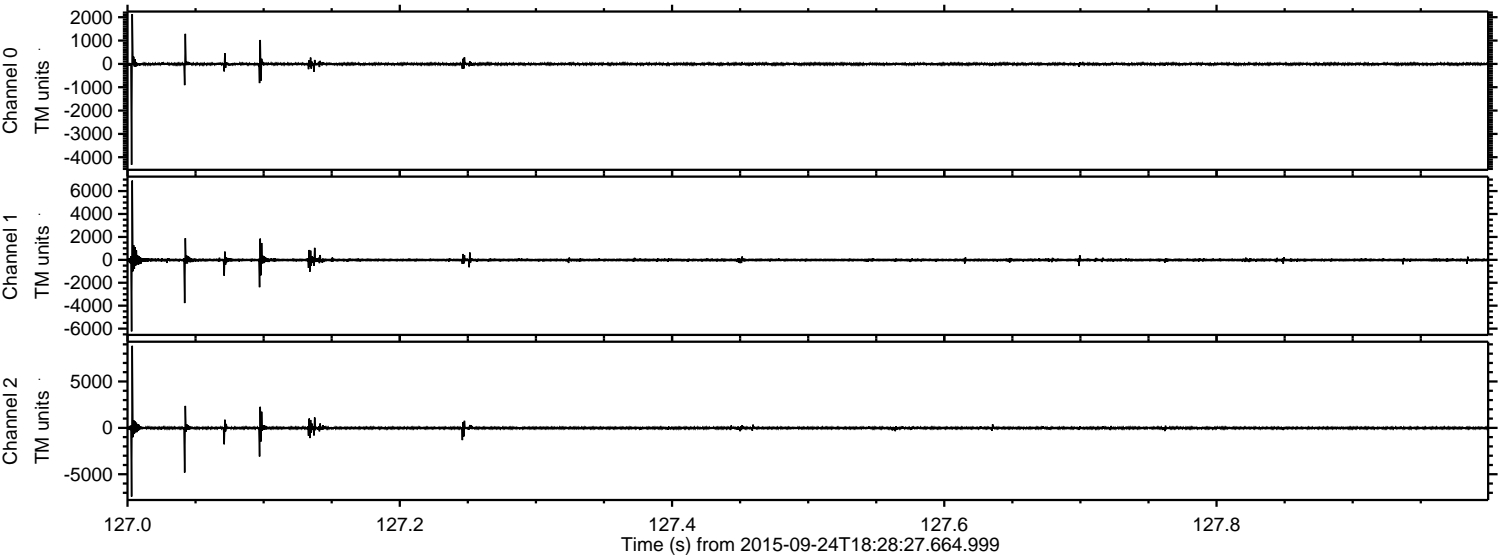
ELMAVAN 3D WAVEFORMS (Measured data sampled at 50 kHz) 51000 packets of 144 samples from 2015-09-24T18:28:27.664.999.

Processed Fri Oct 16 02:34:48 2015 by ELM ver.2012-10-06 from 001__elm20150924_182826__dat00.bin



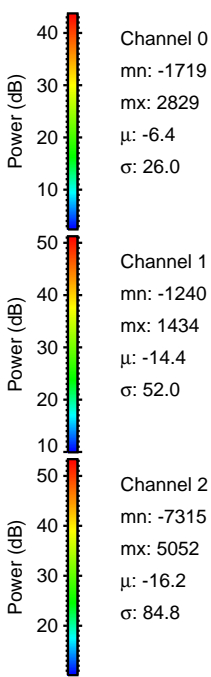
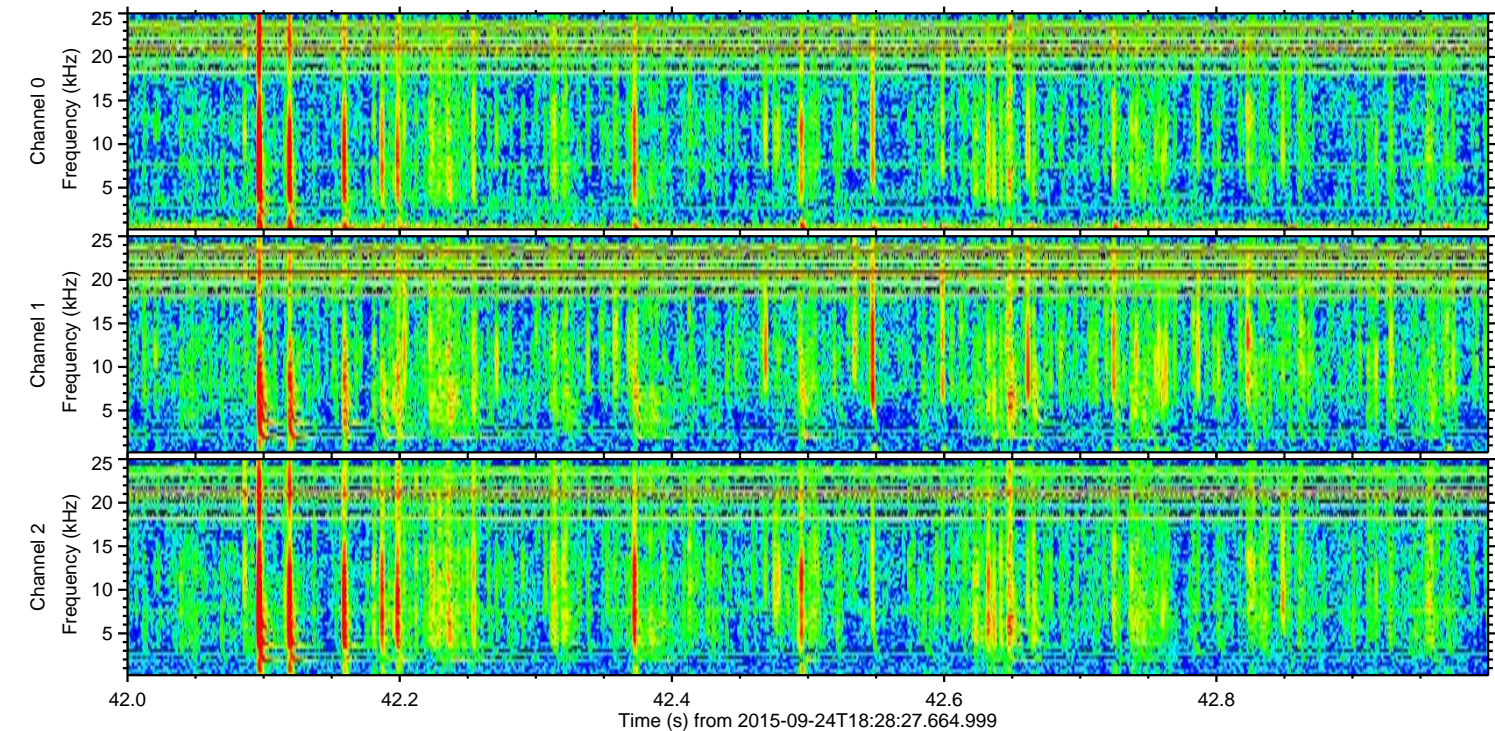
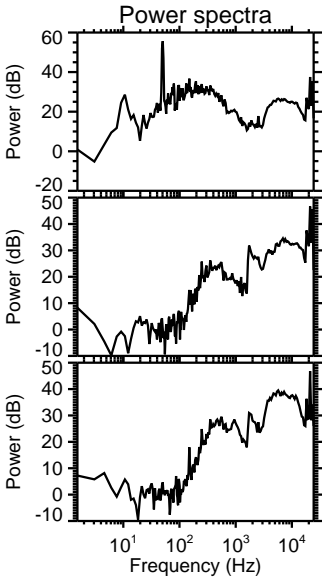
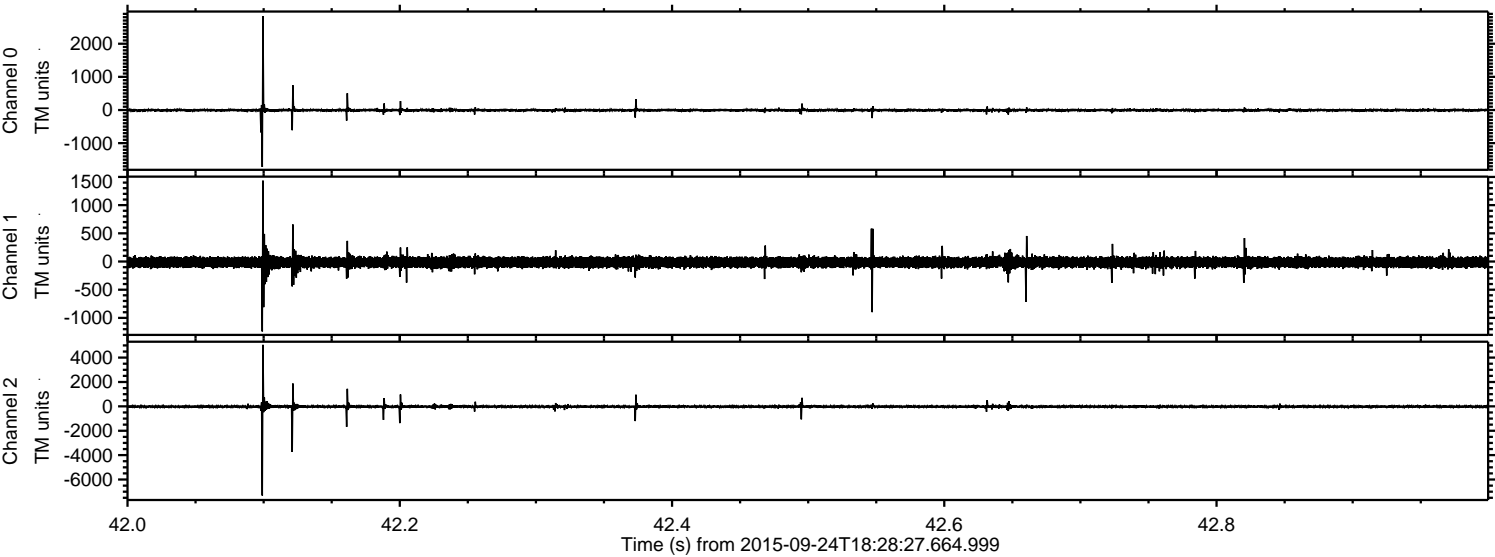
ELMAVAN 3D WAVEFORMS (Measured data sampled at 50 kHz) 51000 packets of 144 samples from 2015-09-24T18:28:27.664.999. Part 128/147

Processed Fri Oct 16 02:35:06 2015 by ELM ver.2012-10-06 from 001__elm20150924_182826__dat00.bin



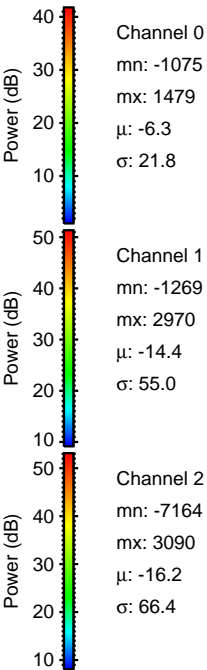
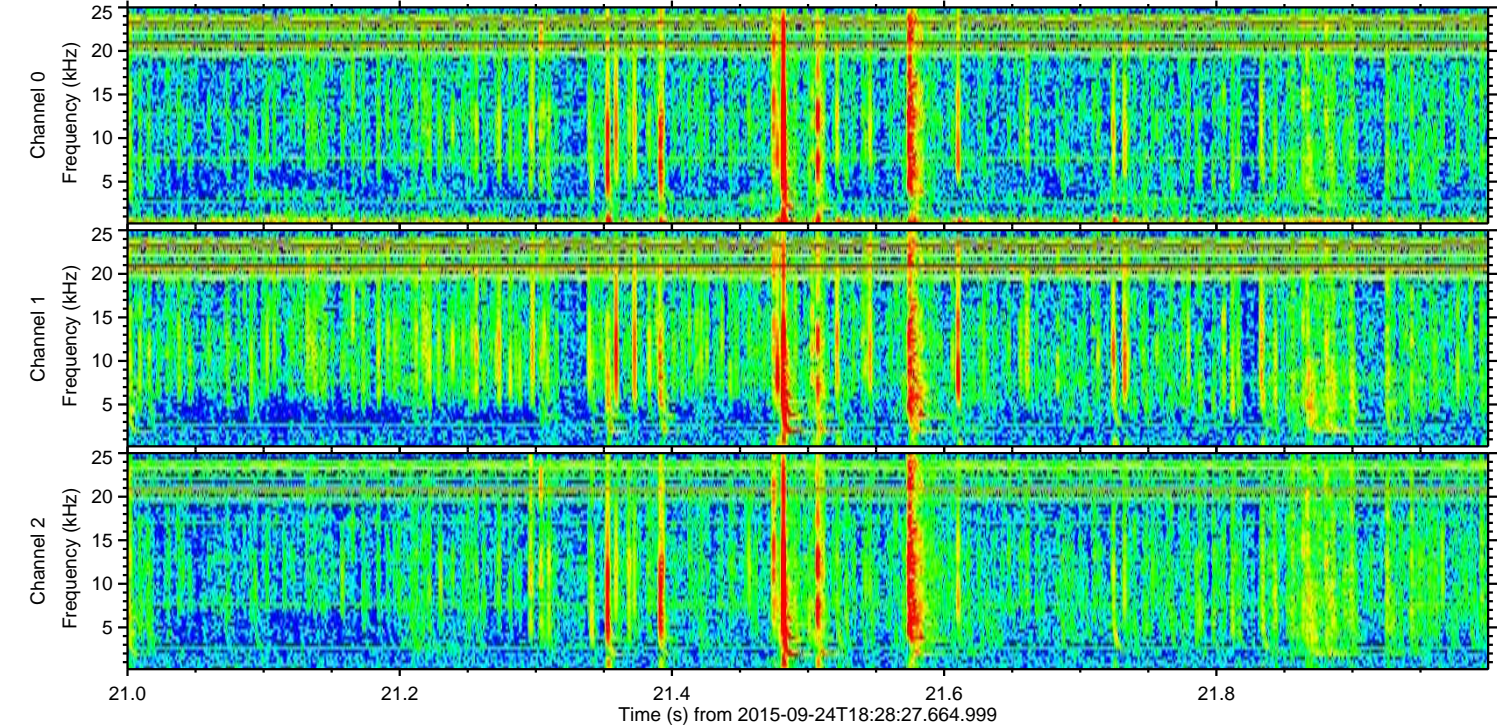
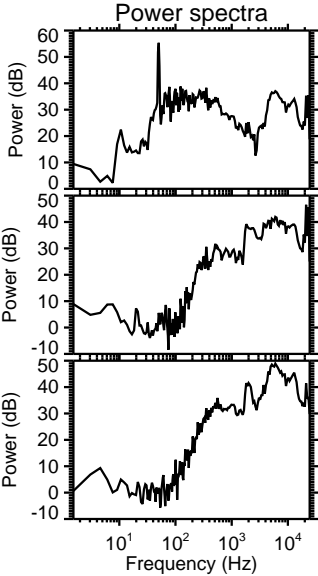
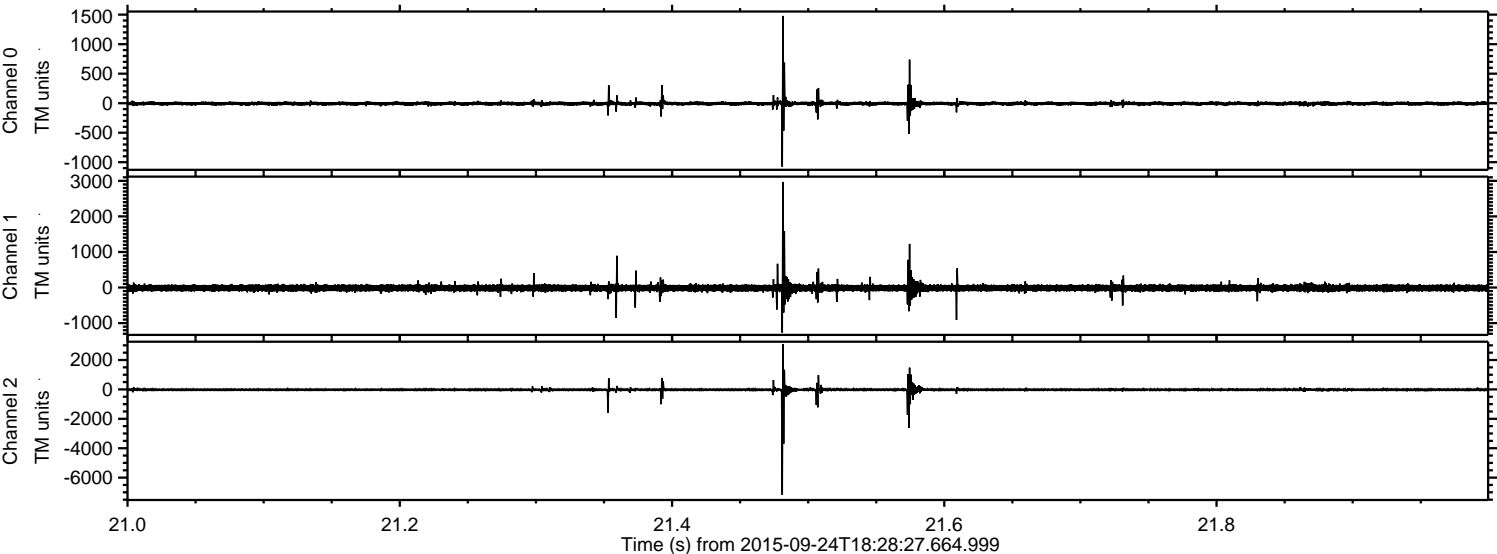
ELMAVAN 3D WAVEFORMS (Measured data sampled at 50 kHz) 51000 packets of 144 samples from 2015-09-24T18:28:27.664.999. Part 43/147

Processed Fri Oct 16 02:35:08 2015 by ELM ver.2012-10-06 from 001__elm20150924_182826__dat00.bin

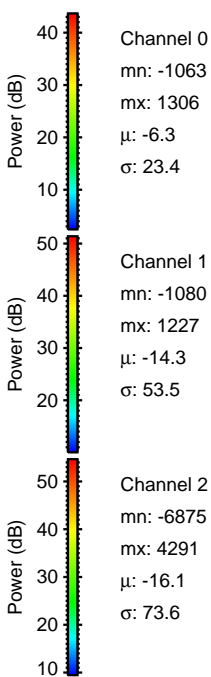
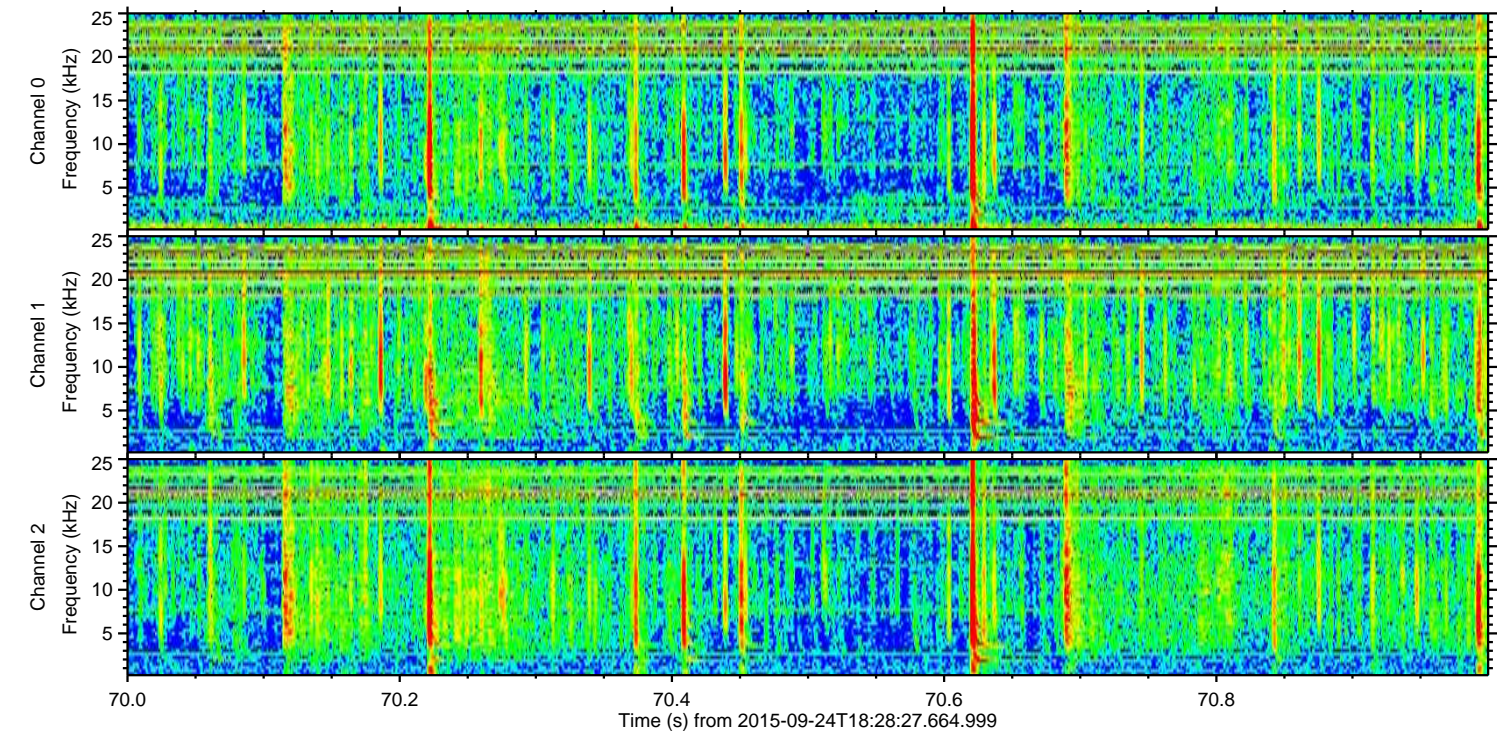
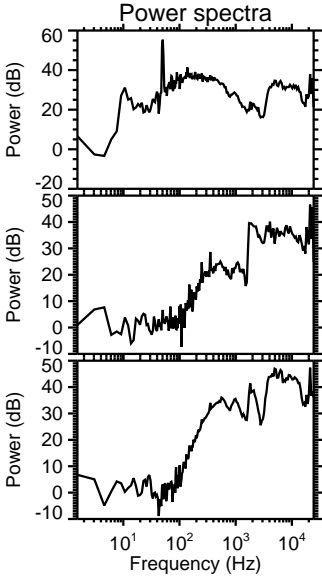
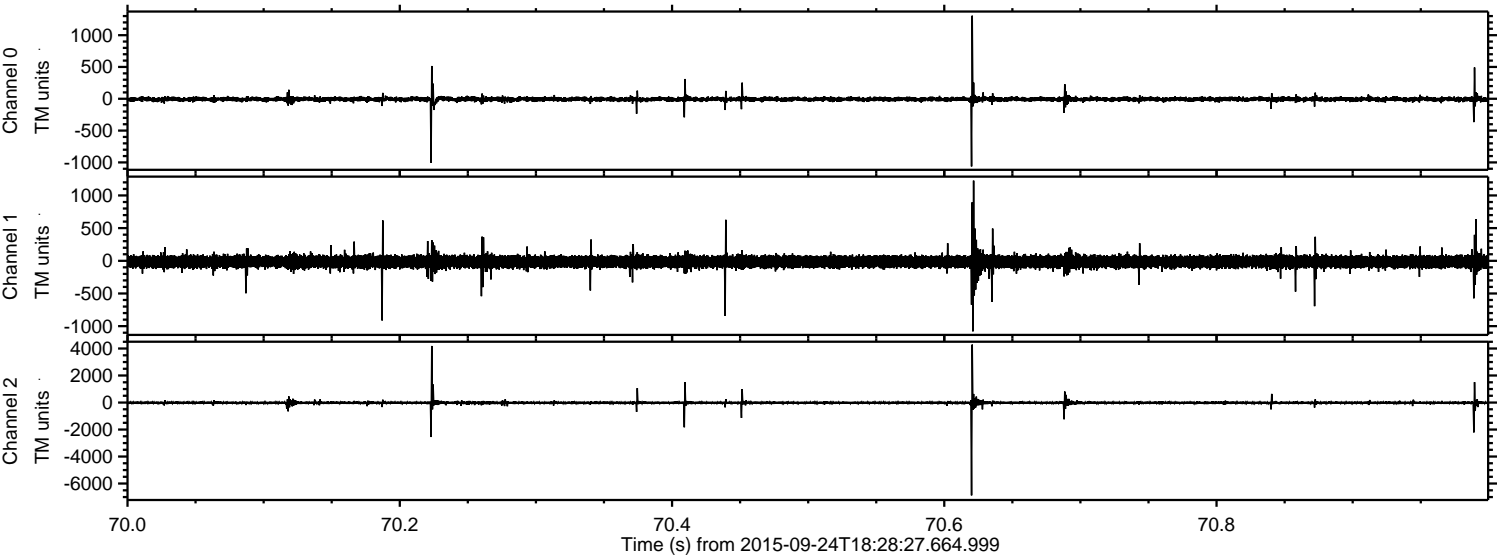


ELMAVAN 3D WAVEFORMS (Measured data sampled at 50 kHz) 51000 packets of 144 samples from 2015-09-24T18:28:27.664.999. Part 22/147

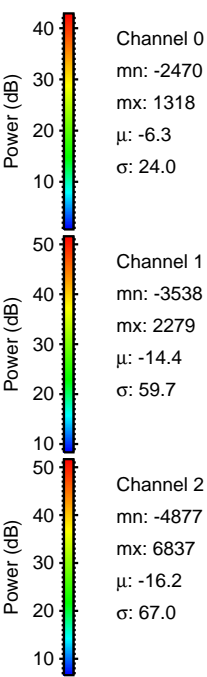
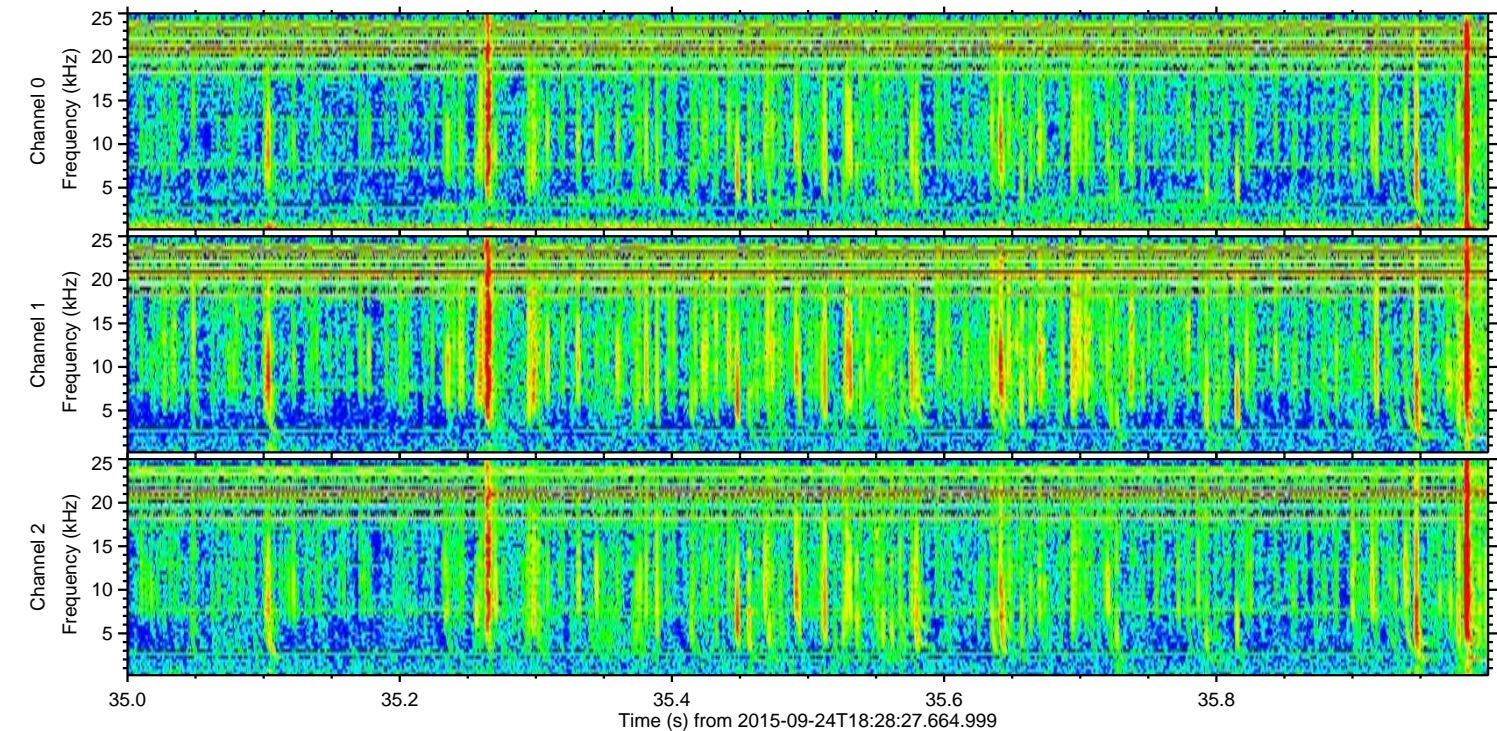
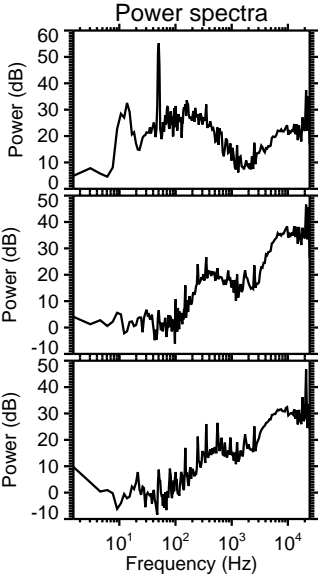
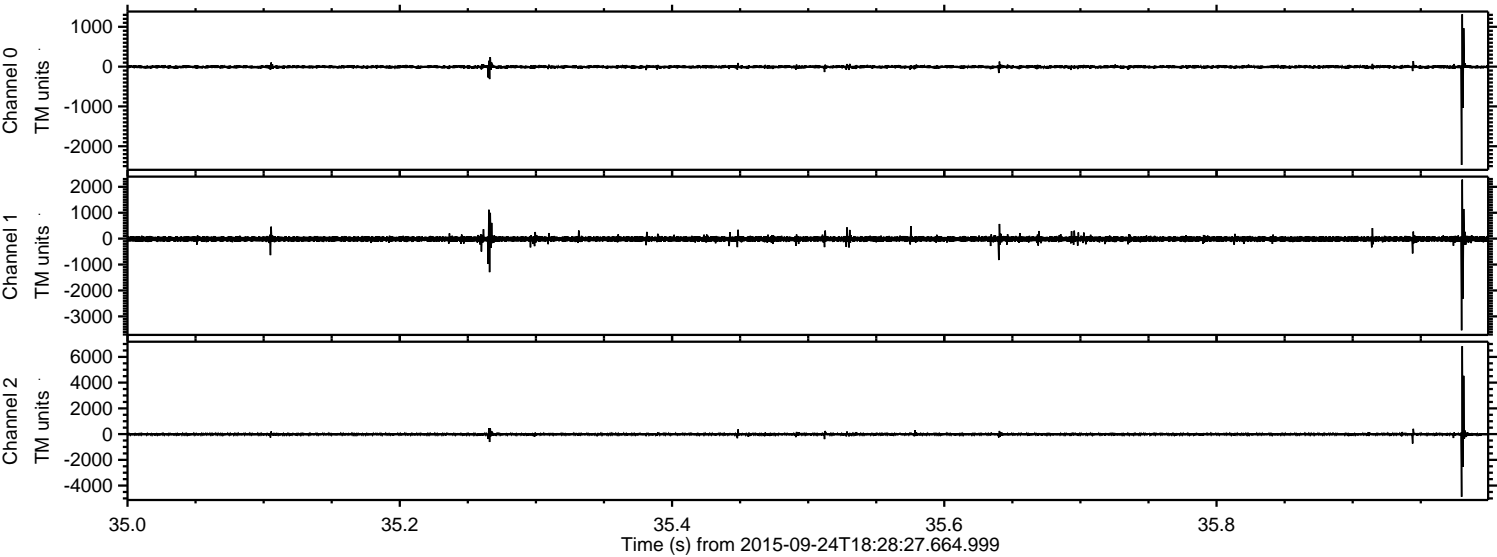
Processed Fri Oct 16 02:35:10 2015 by ELM ver.2012-10-06 from 001__elm20150924_182826__dat00.bin



Processed Fri Oct 16 02:35:11 2015 by ELM ver.2012-10-06 from 001__elm20150924_182826__dat00.bin



Processed Fri Oct 16 02:35:13 2015 by ELM ver.2012-10-06 from 001__elm20150924_182826__dat00.bin



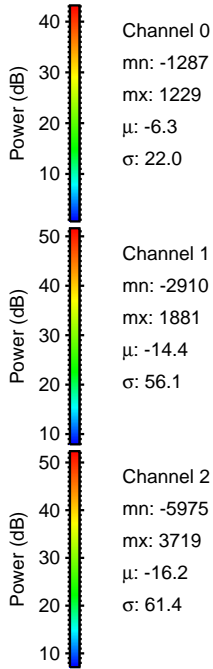
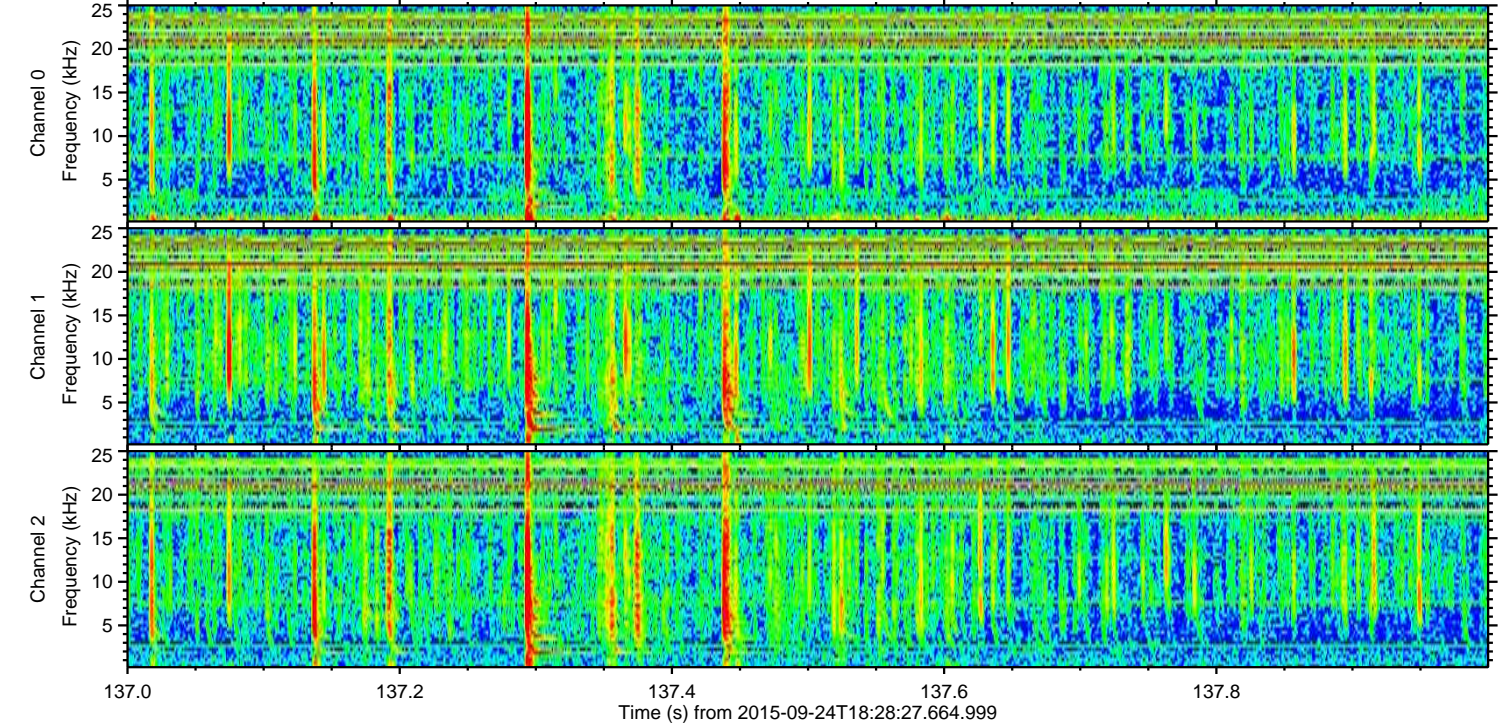
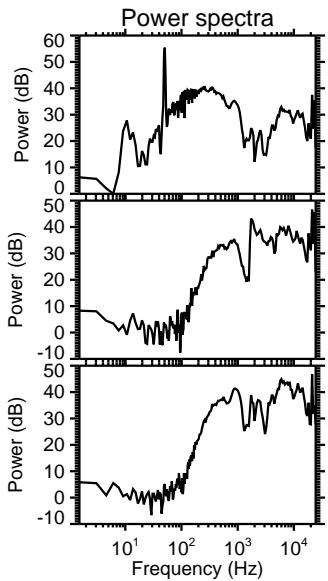
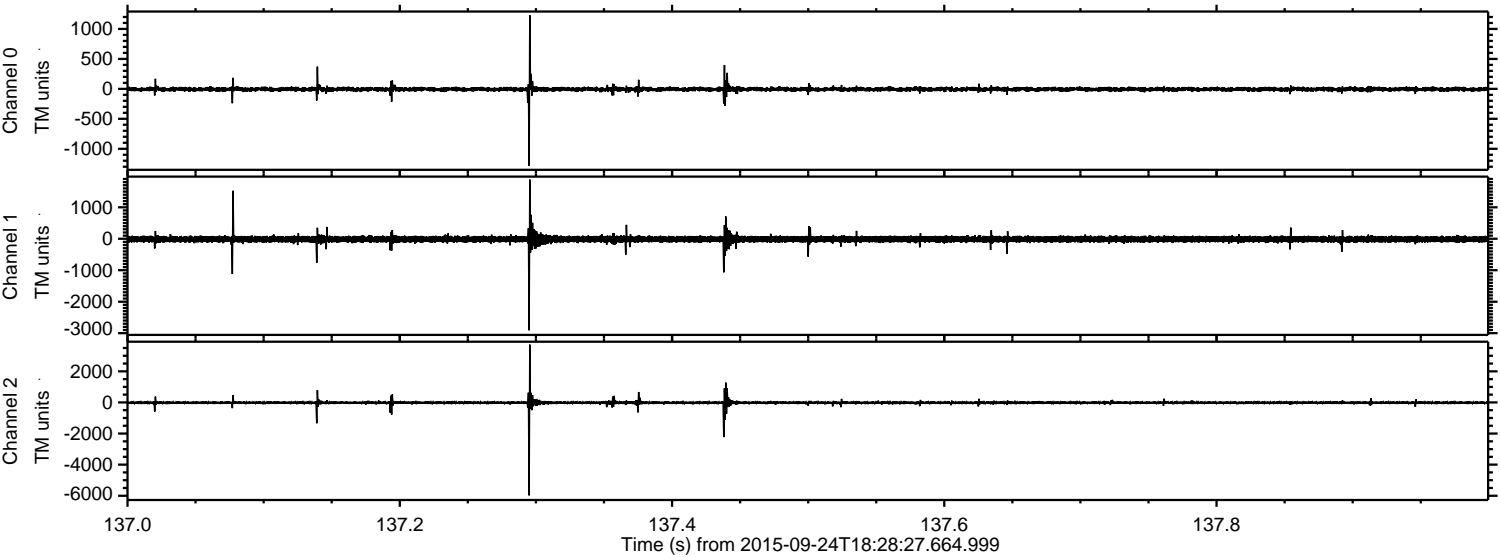
Channel 0
mn: -2470
mx: 1318
 μ : -6.3
 σ : 24.0

Channel 1
mn: -3538
mx: 2279
 μ : -14.4
 σ : 59.7

Channel 2
mn: -4877
mx: 6837
 μ : -16.2
 σ : 67.0

ELMAVAN 3D WAVEFORMS (Measured data sampled at 50 kHz) 51000 packets of 144 samples from 2015-09-24T18:28:27.664.999. Part 138/147

Processed Fri Oct 16 02:35:14 2015 by ELM ver.2012-10-06 from 001__elm20150924_182826__dat00.bin

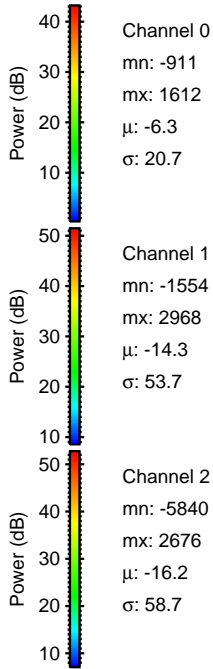
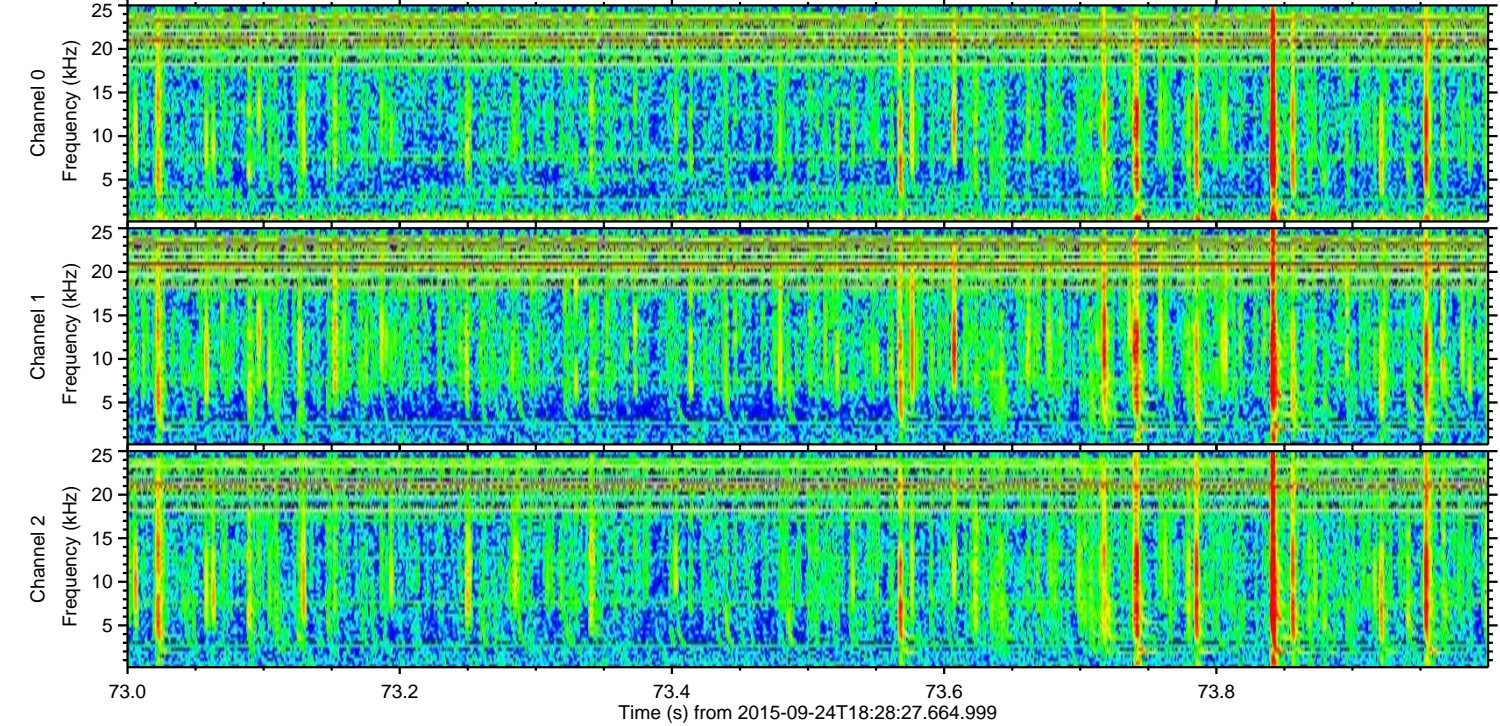
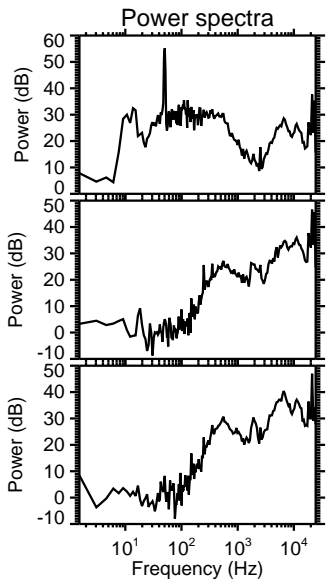
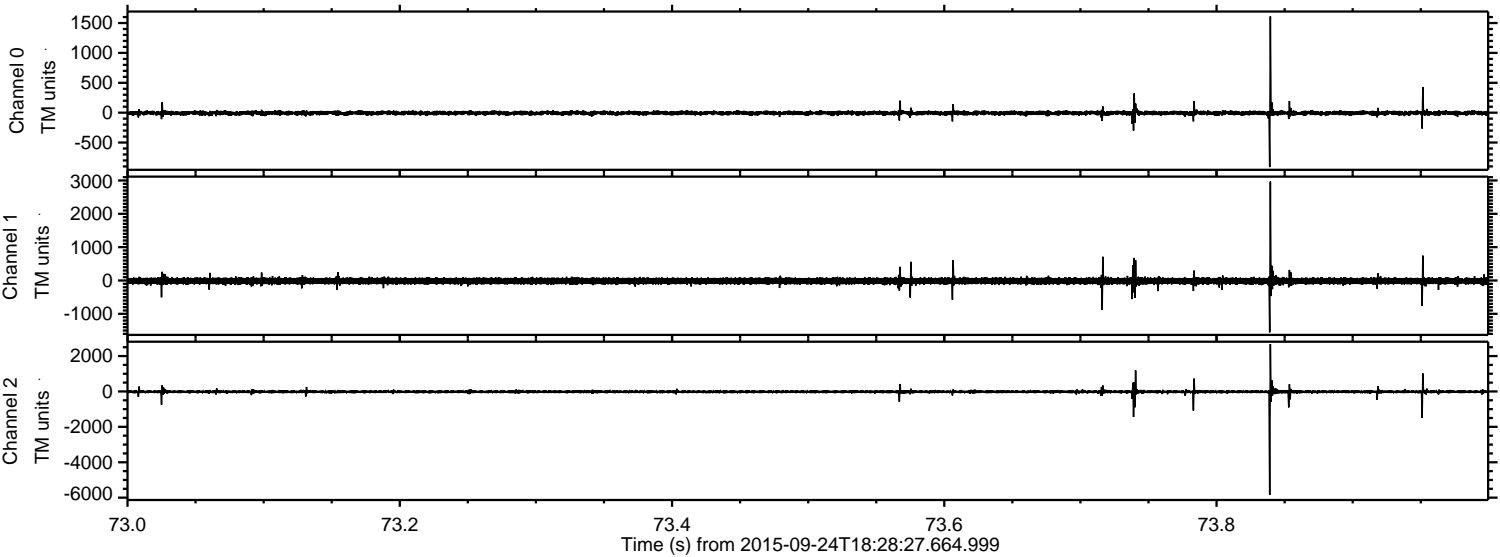


Channel 0
mn: -1287
mx: 1229
 μ : -6.3
 σ : 22.0

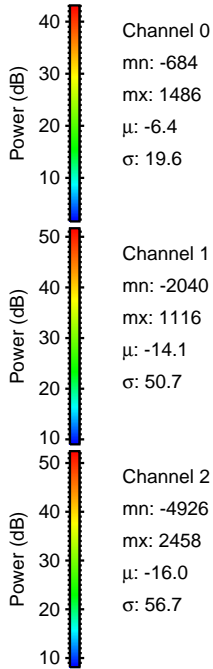
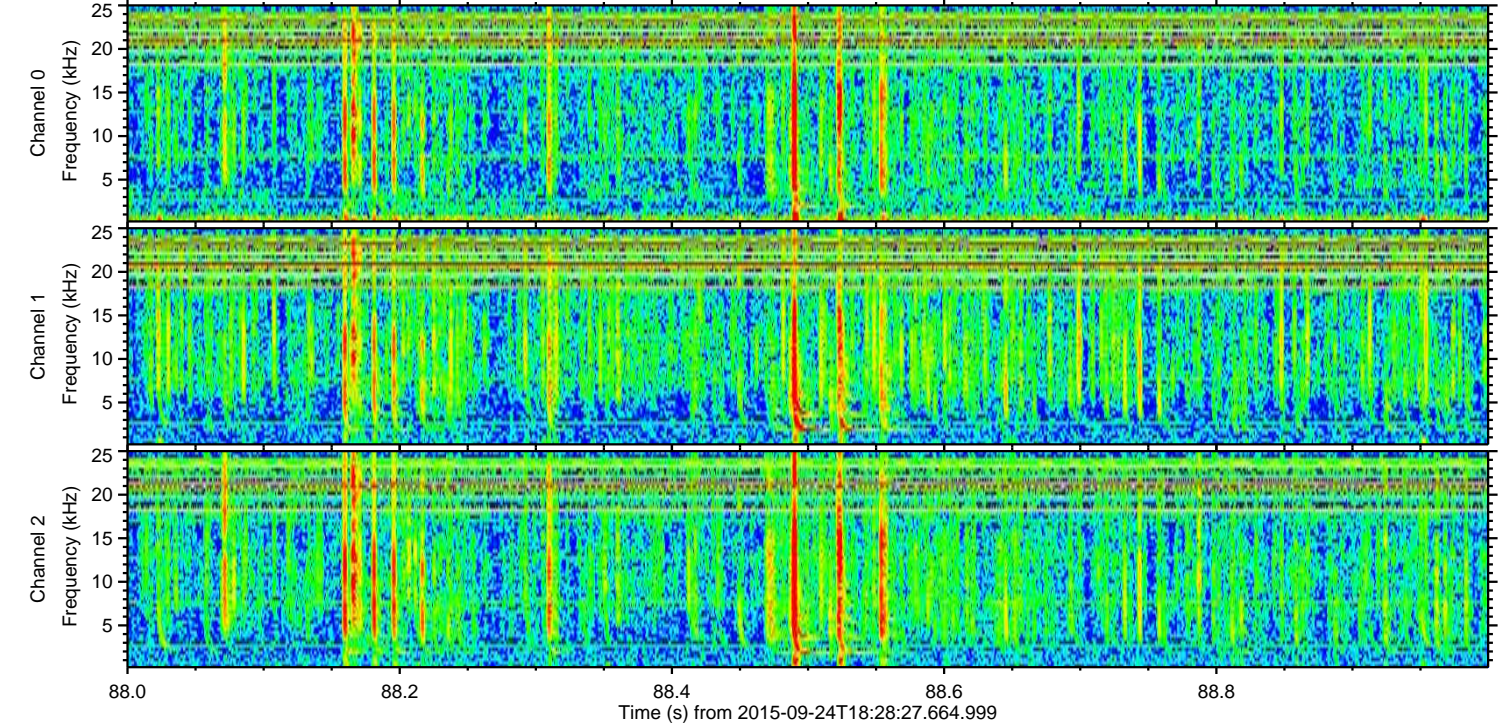
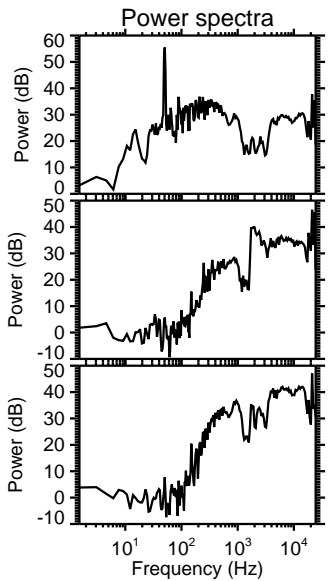
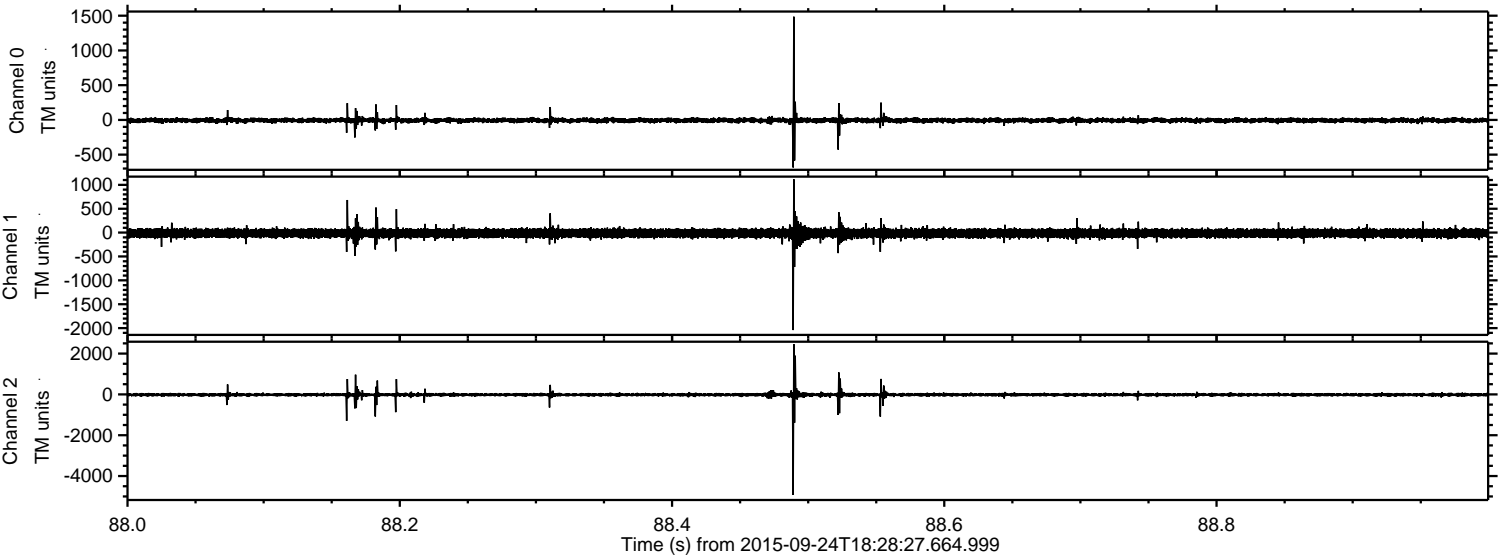
Channel 1
mn: -2910
mx: 1881
 μ : -14.4
 σ : 56.1

Channel 2
mn: -5975
mx: 3719
 μ : -16.2
 σ : 61.4

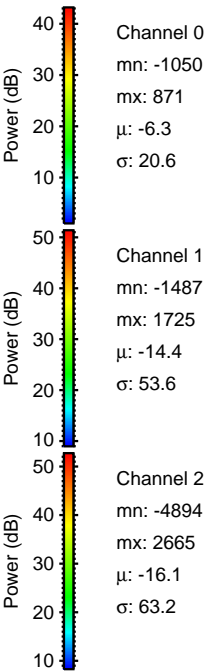
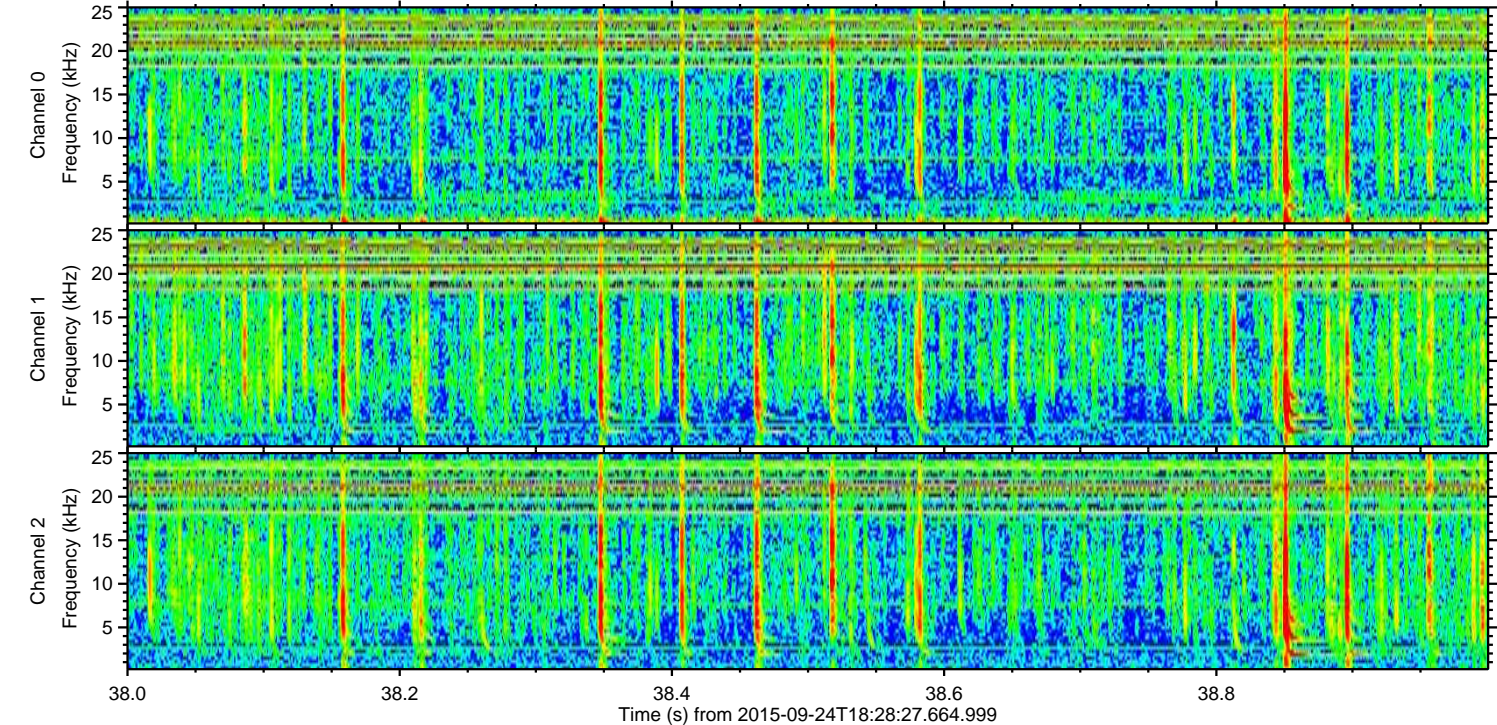
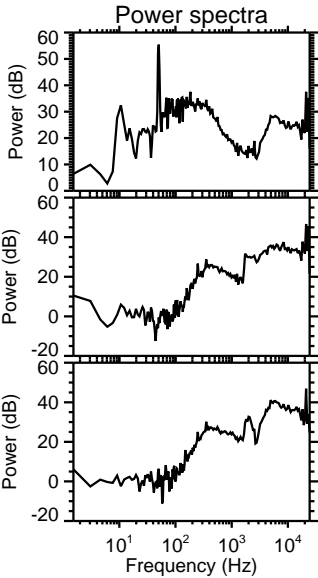
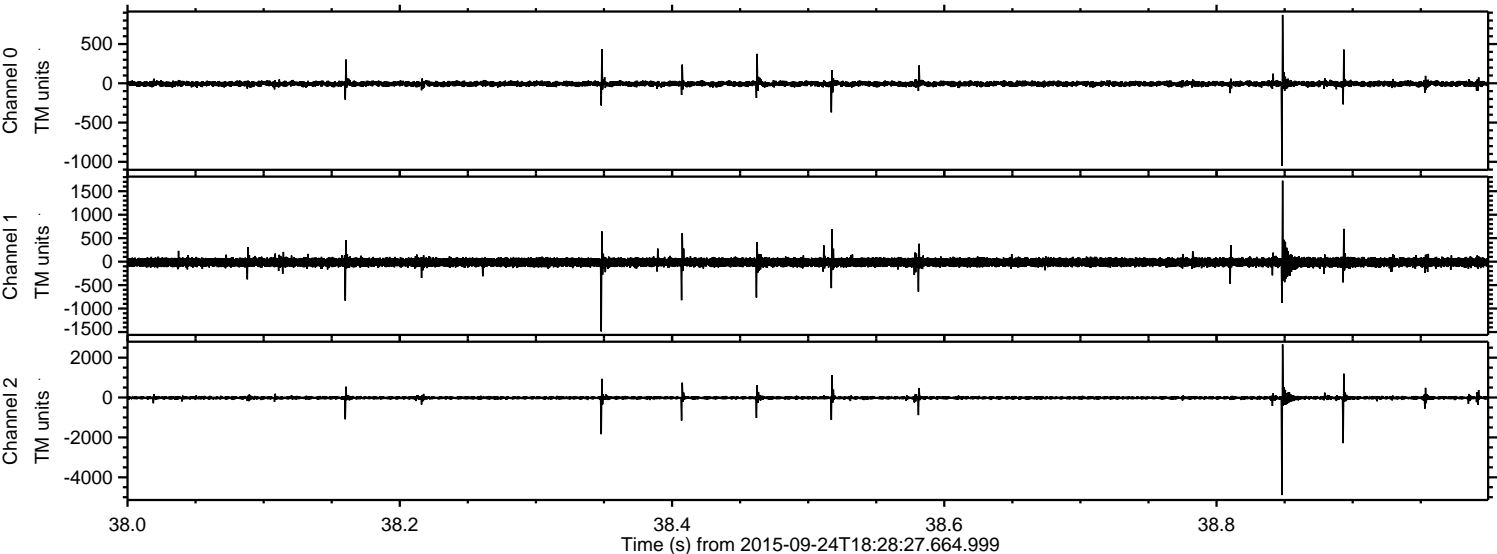
Processed Fri Oct 16 02:35:15 2015 by ELM ver.2012-10-06 from 001__elm20150924_182826__dat00.bin



Processed Fri Oct 16 02:35:16 2015 by ELM ver.2012-10-06 from 001__elm20150924_182826__dat00.bin



Processed Fri Oct 16 02:35:17 2015 by ELM ver.2012-10-06 from 001__elm20150924_182826__dat00.bin



Processed Fri Oct 16 02:35:18 2015 by ELM ver.2012-10-06 from 001__elm20150924_182826__dat00.bin

