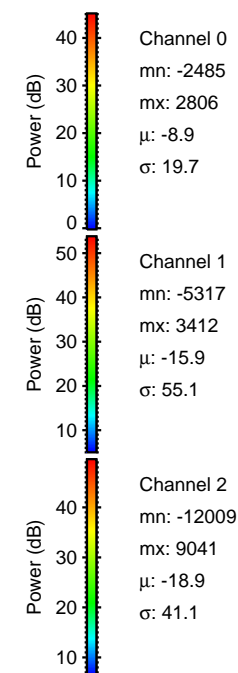
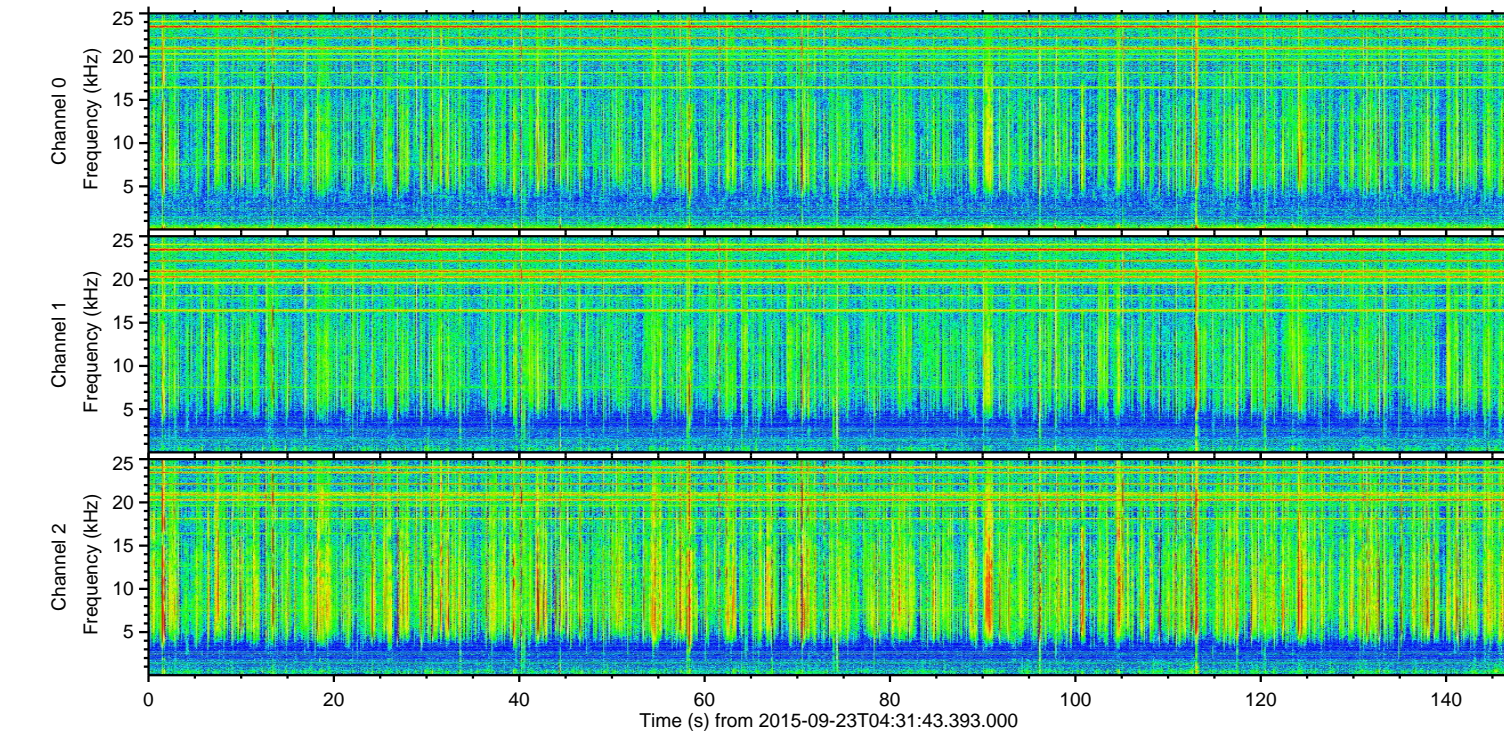
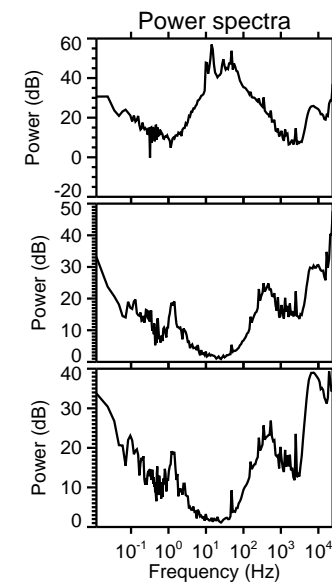
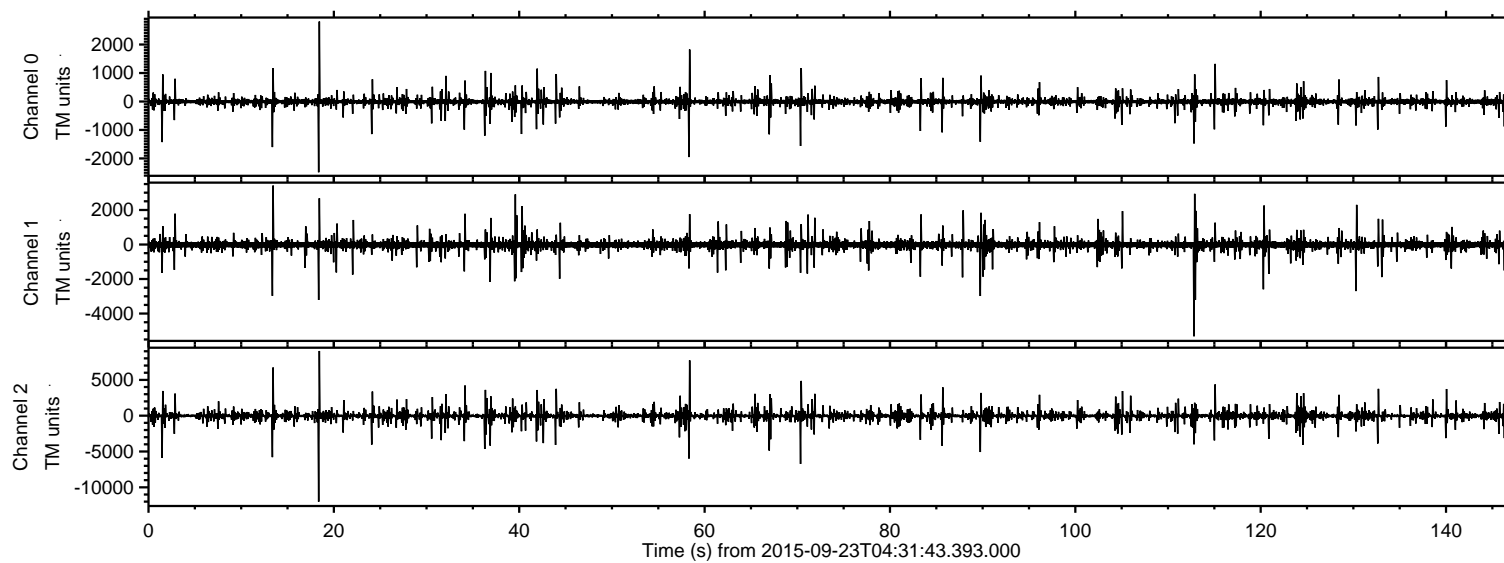
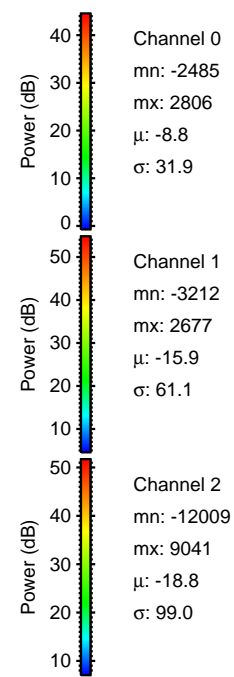
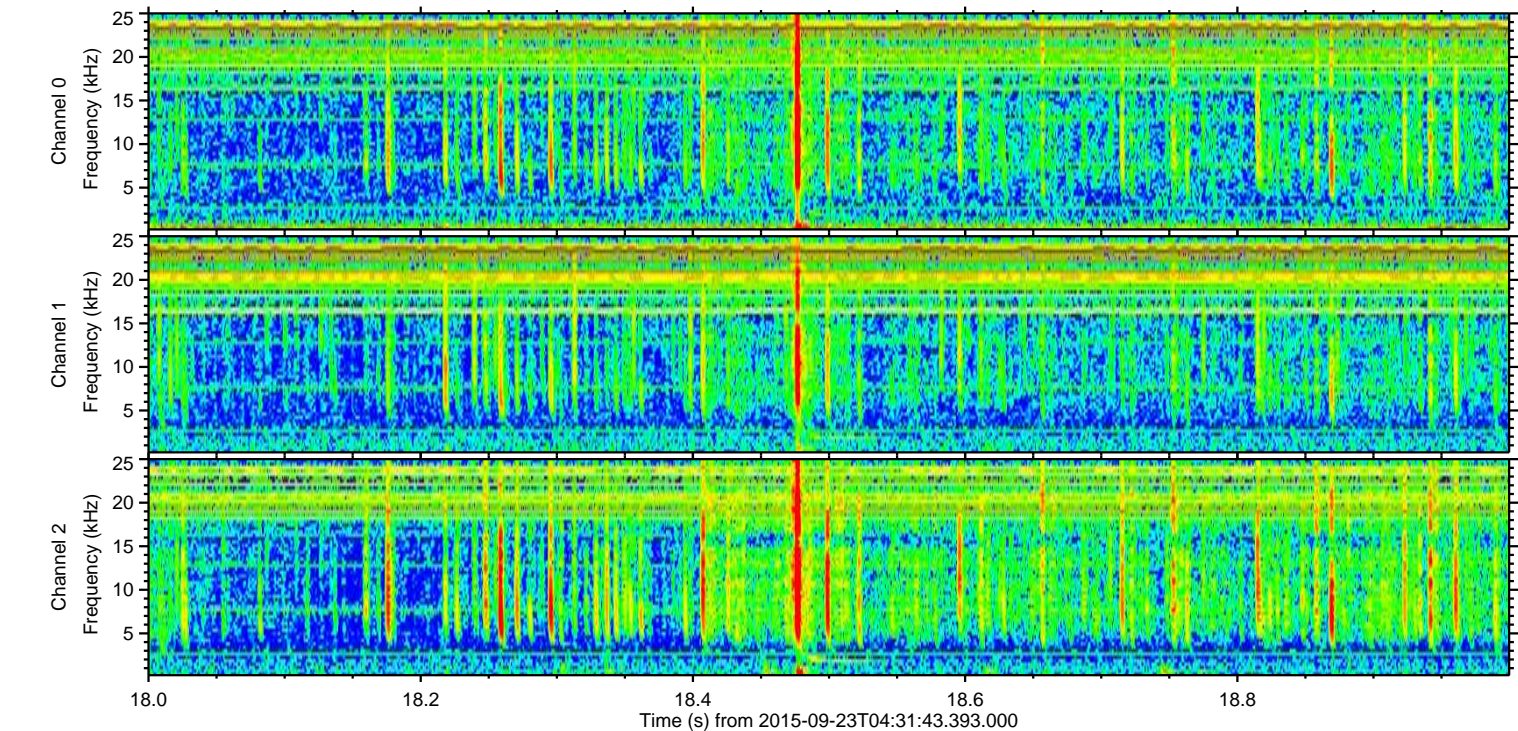
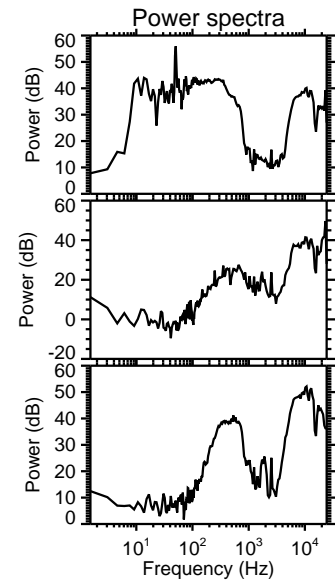
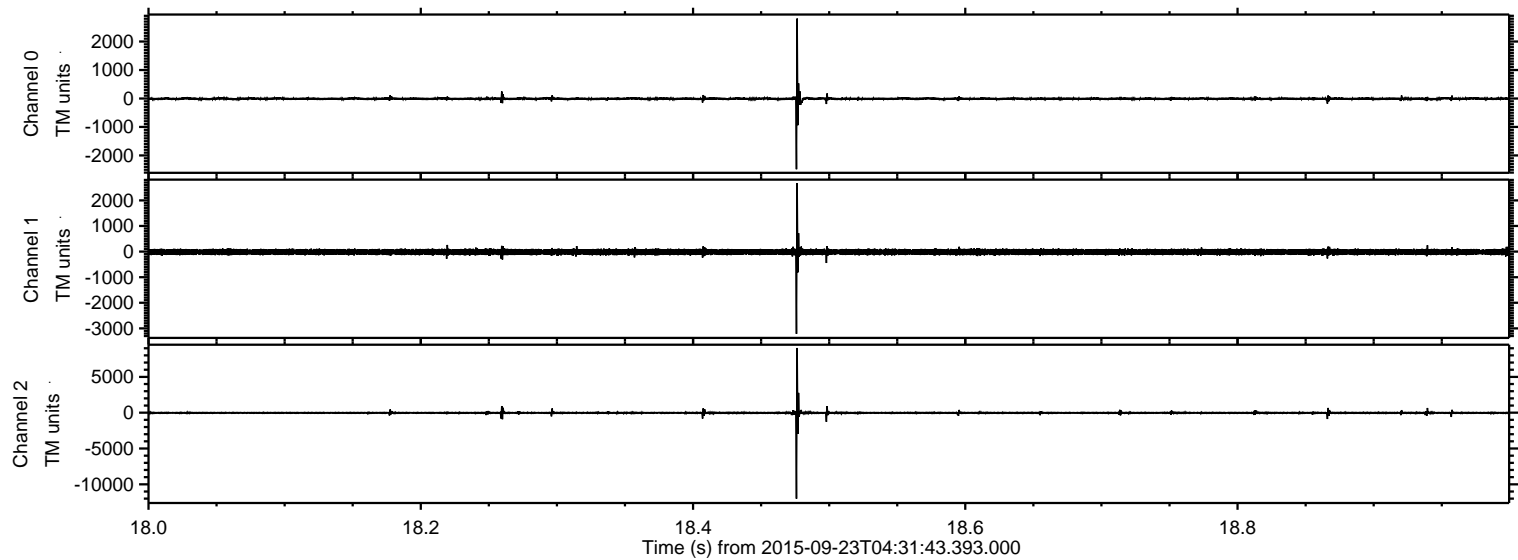


ELMAVAN 3D WAVEFORMS (Measured data sampled at 50 kHz) 51000 packets of 144 samples from 2015-09-23T04:31:43.393.000.

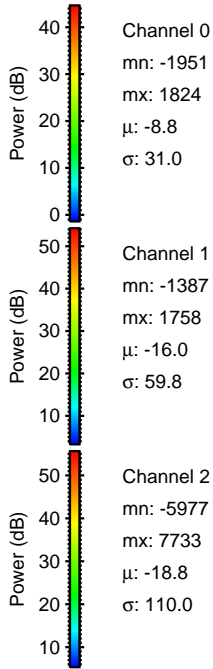
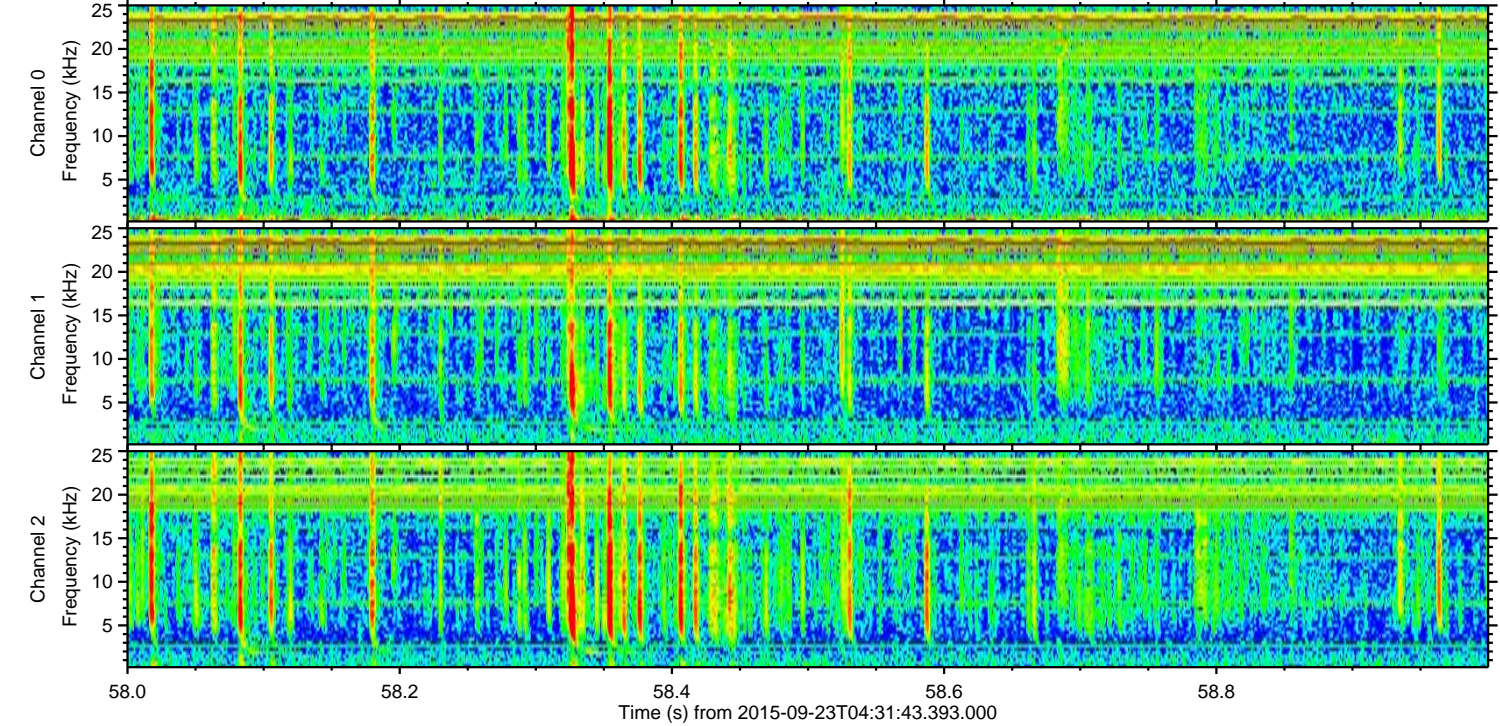
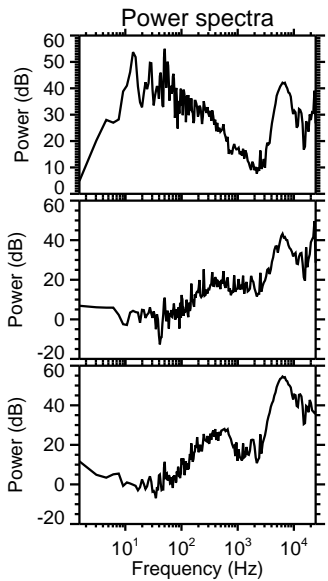
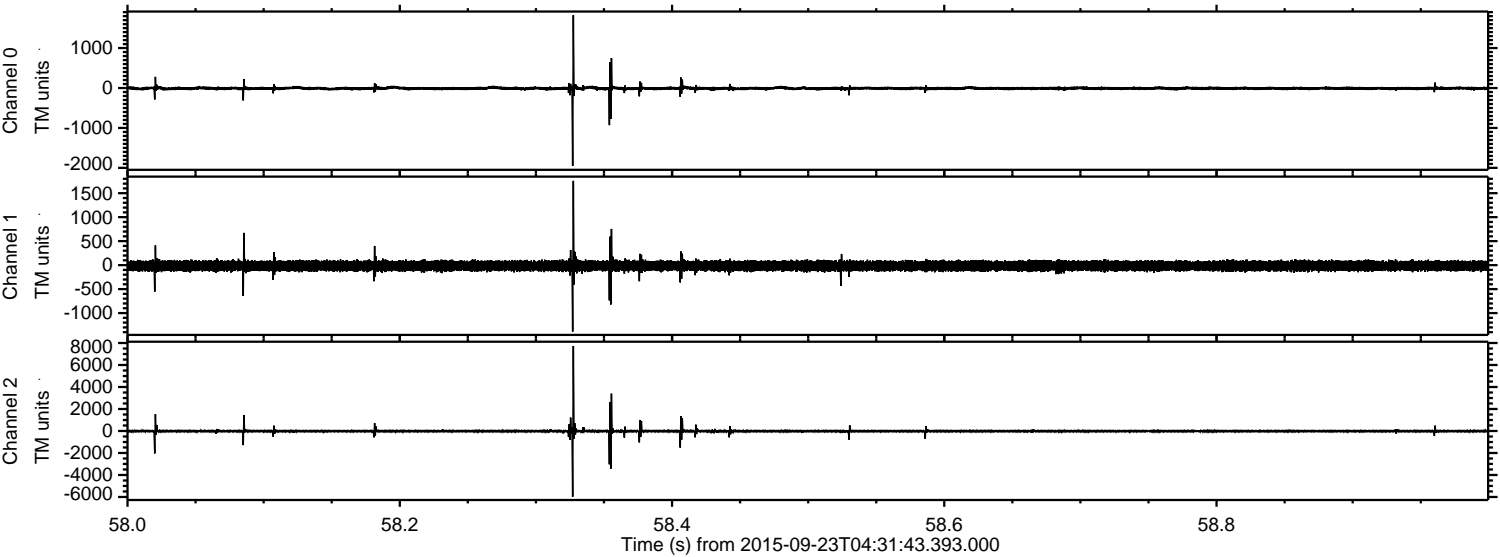
Processed Thu Oct 15 13:49:04 2015 by ELM ver.2012-10-06 from 001__elm20150923_043142__dat00.bin



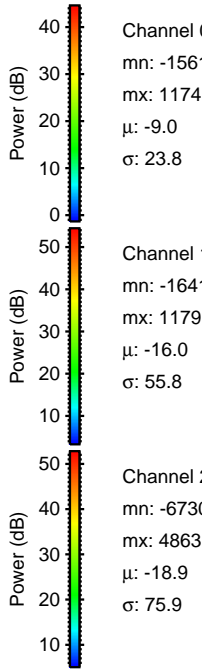
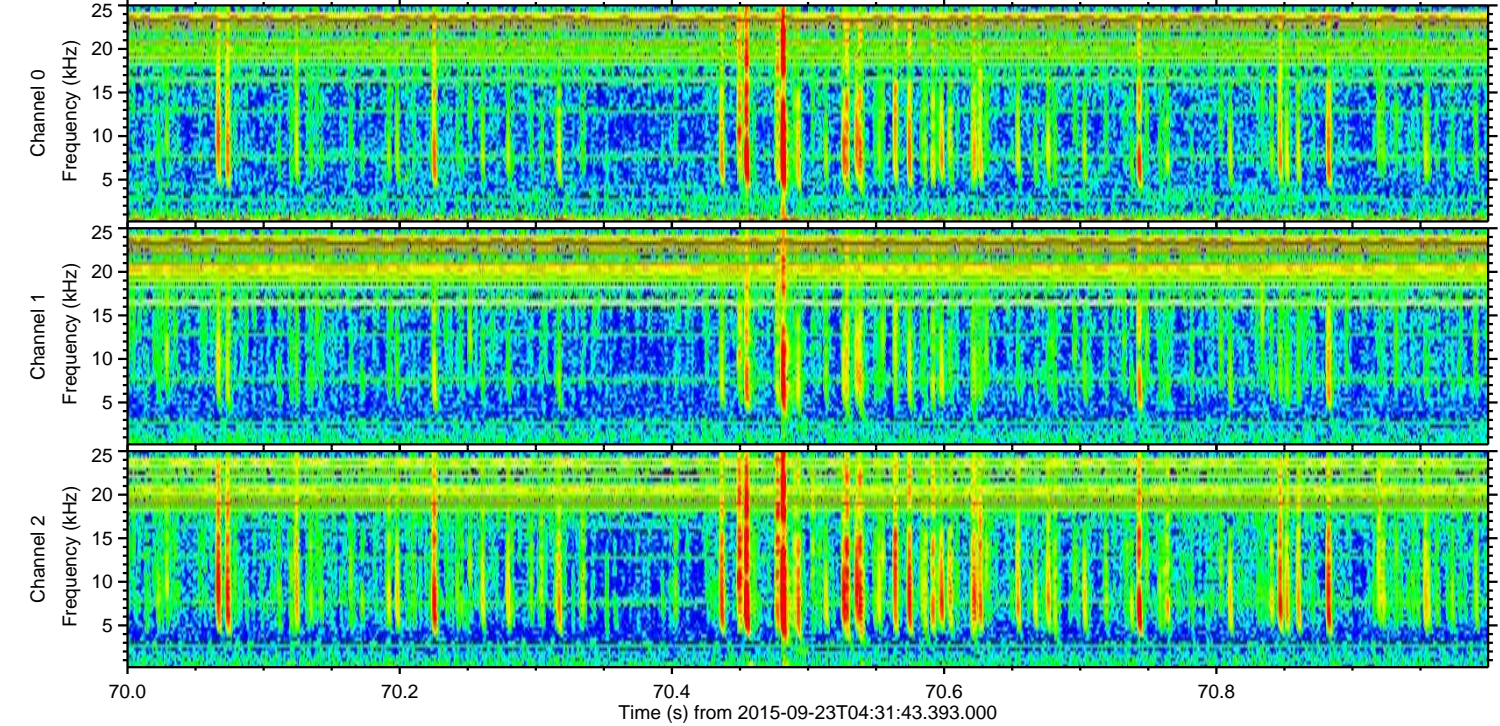
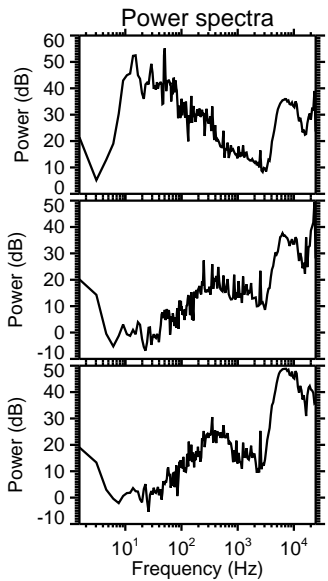
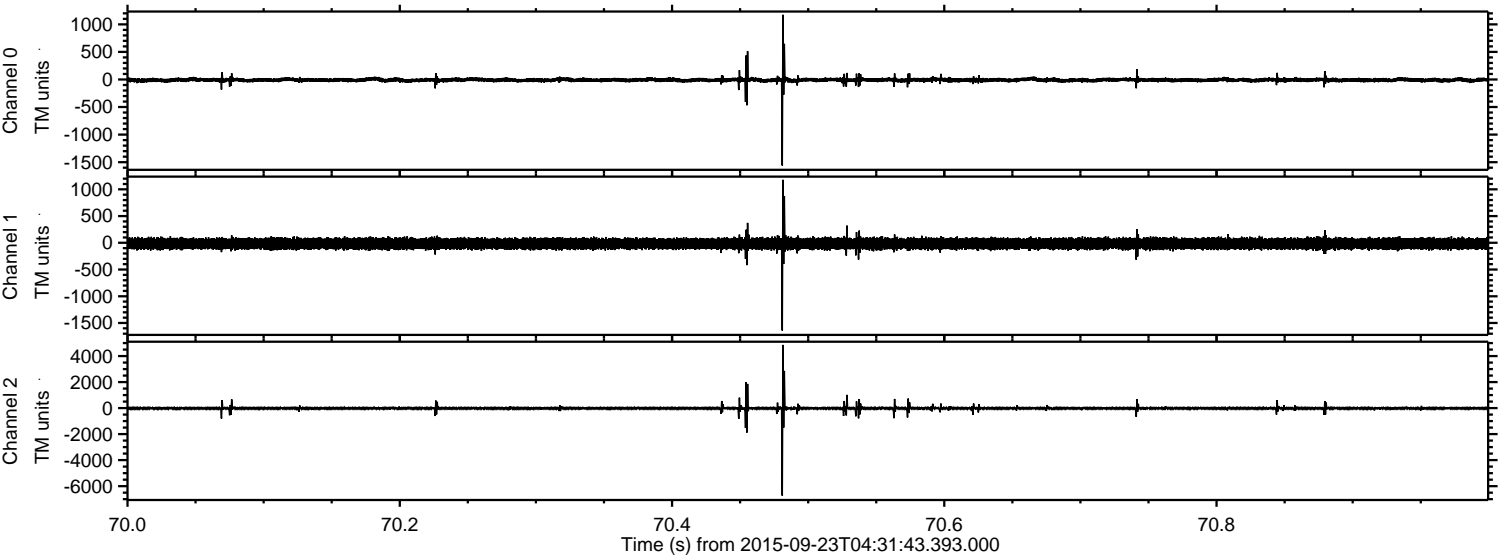
Processed Thu Oct 15 13:49:24 2015 by ELM ver.2012-10-06 from 001__elm20150923_043142__dat00.bin



Processed Thu Oct 15 13:49:25 2015 by ELM ver.2012-10-06 from 001__elm20150923_043142__dat00.bin



Processed Thu Oct 15 13:49:26 2015 by ELM ver.2012-10-06 from 001__elm20150923_043142__dat00.bin



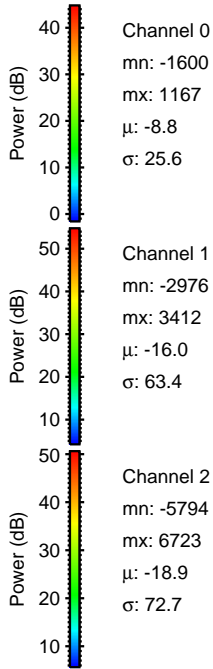
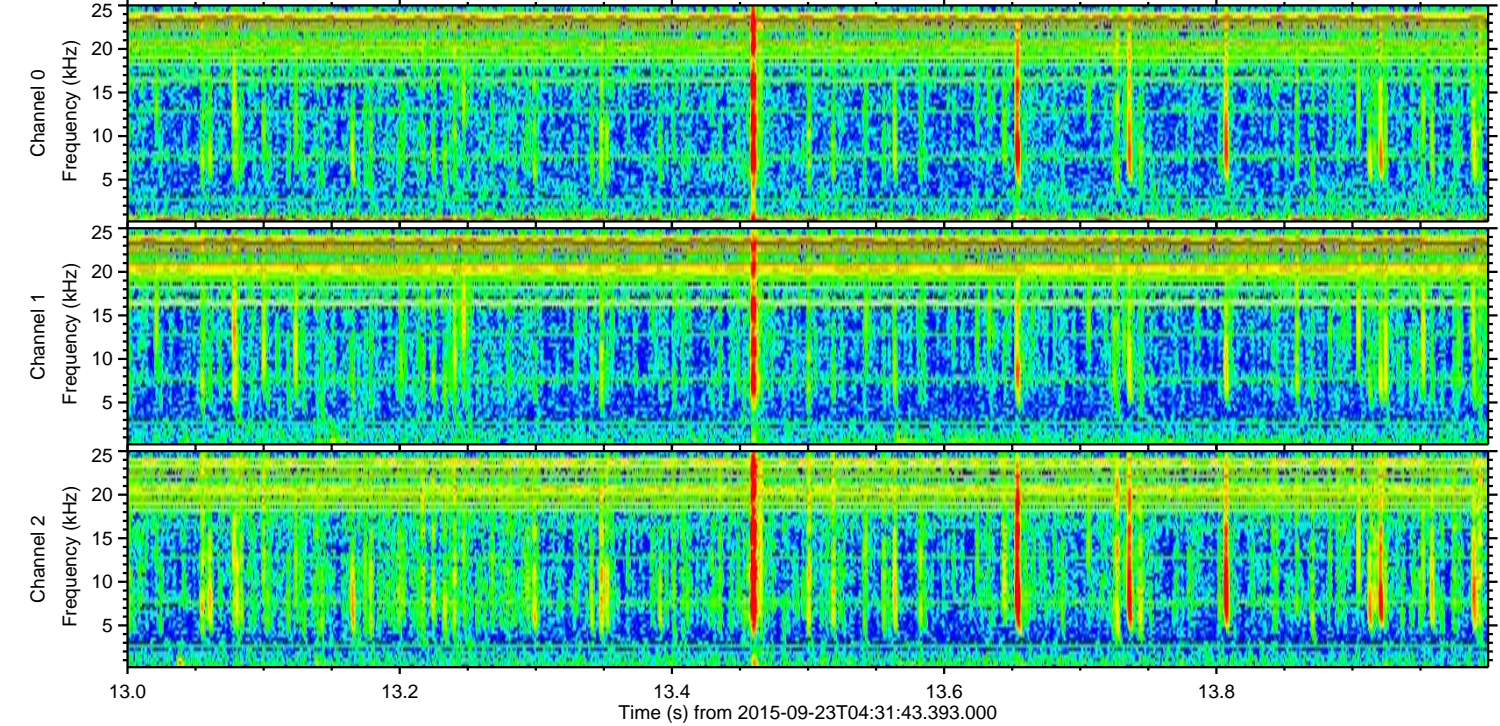
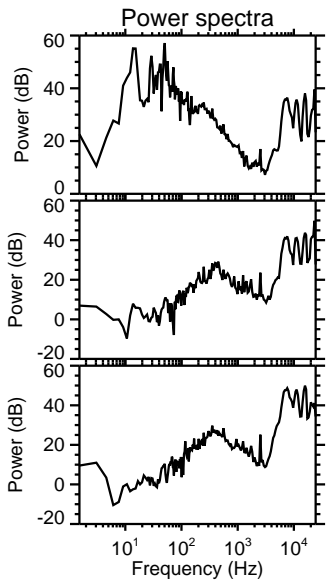
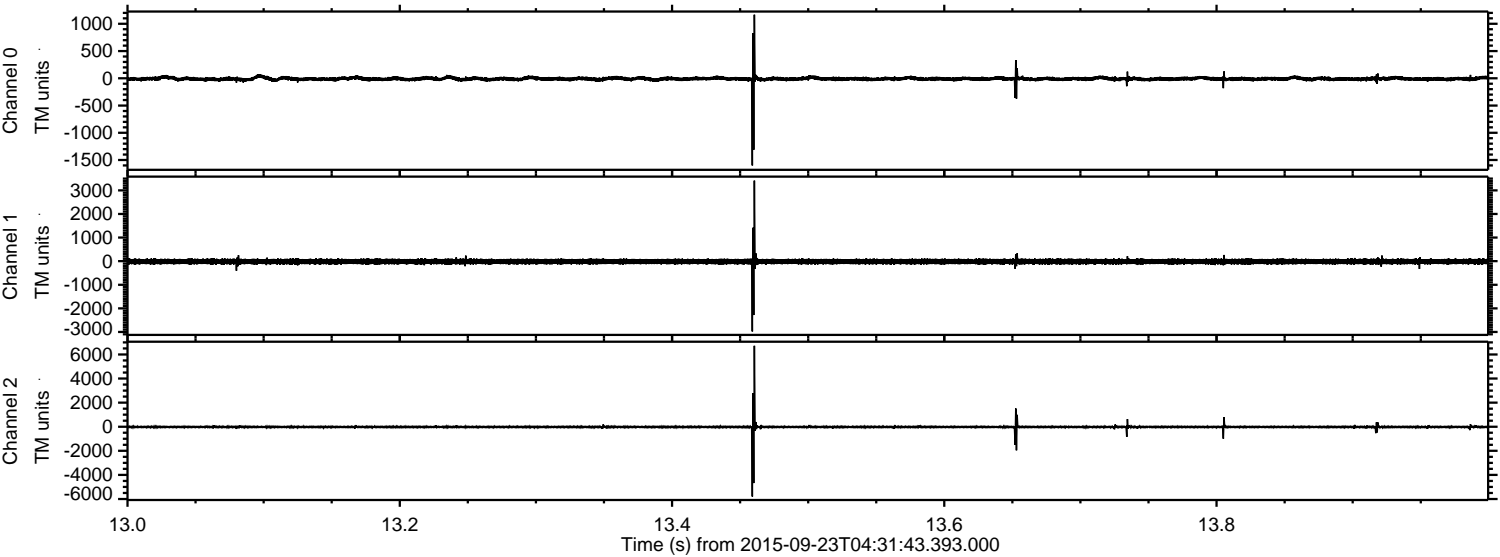
Channel 0
mn: -1561
mx: 1174
 μ : -9.0
 σ : 23.8

Channel 1
mn: -1641
mx: 1179
 μ : -16.0
 σ : 55.8

Channel 2
mn: -6730
mx: 4863
 μ : -18.9
 σ : 75.9

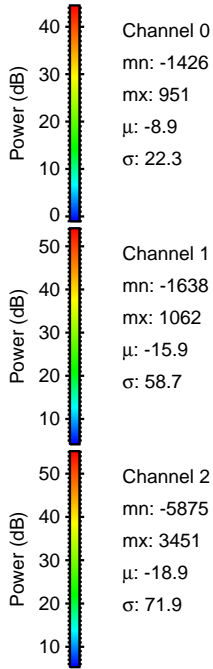
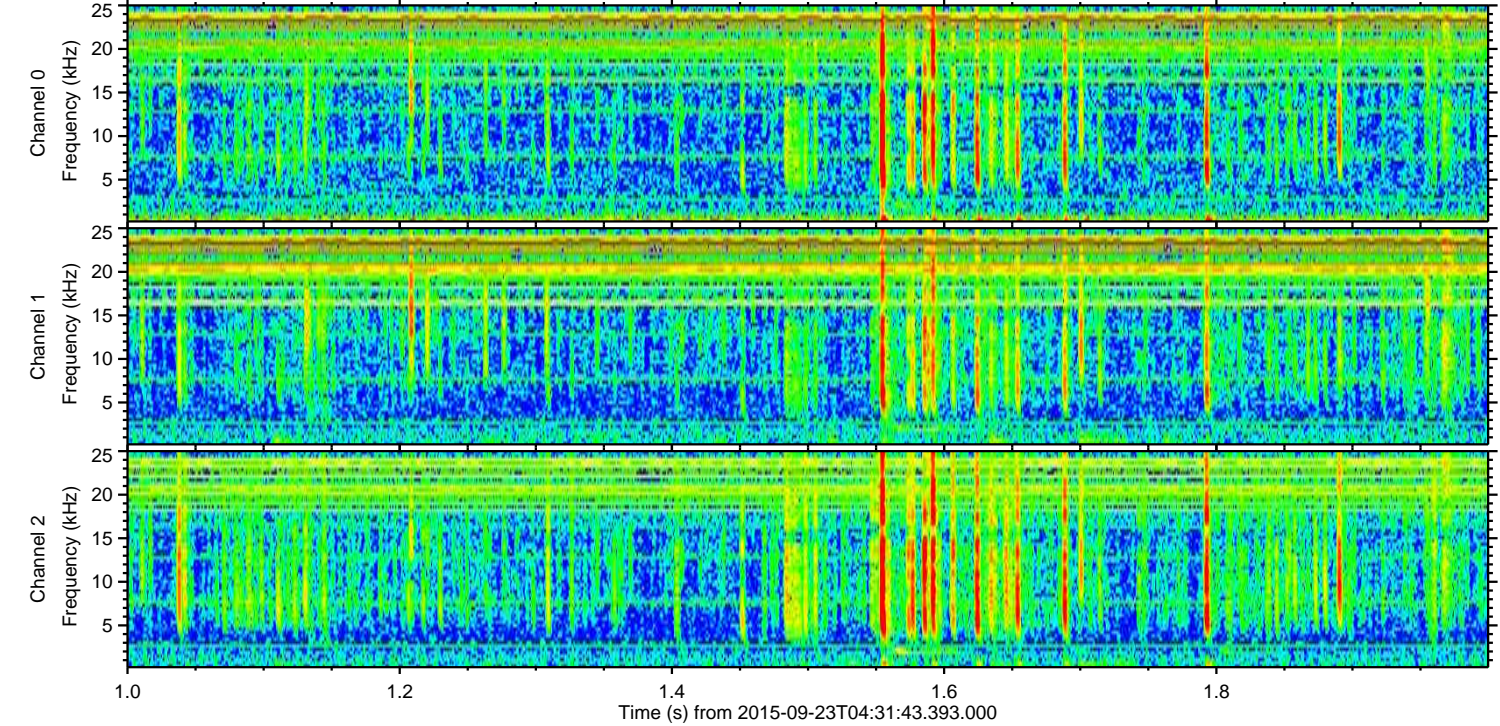
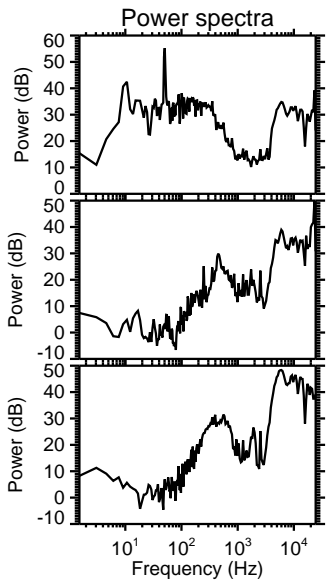
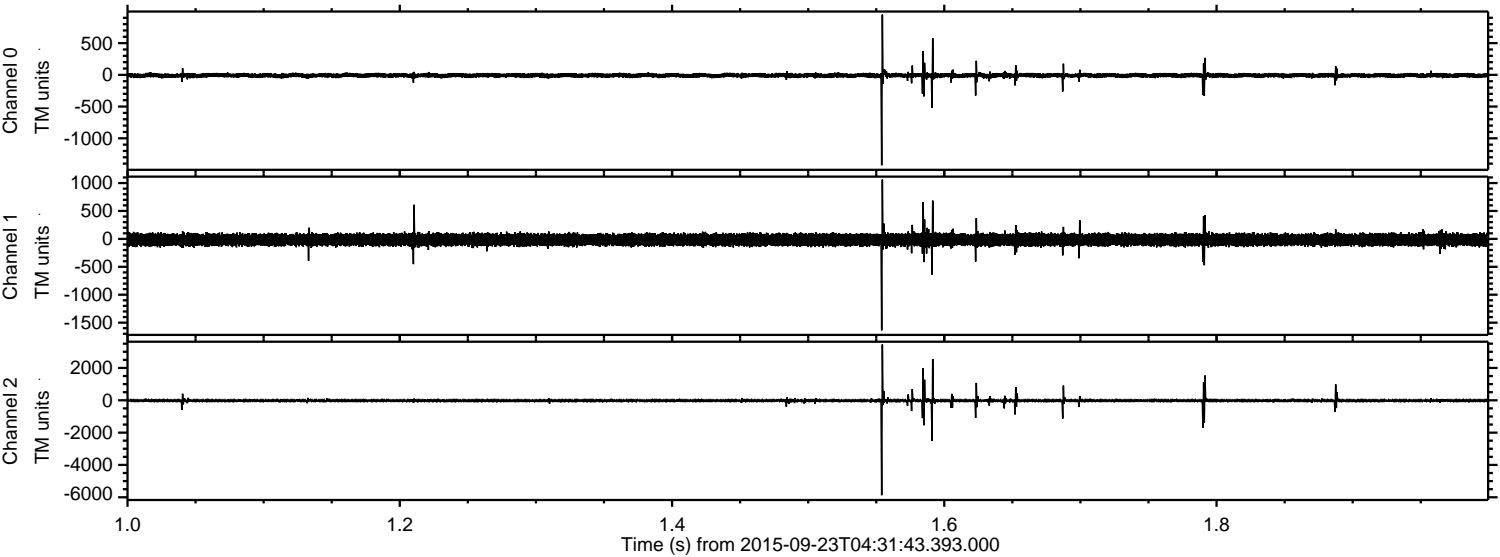
ELMAVAN 3D WAVEFORMS (Measured data sampled at 50 kHz) 51000 packets of 144 samples from 2015-09-23T04:31:43.393.000. Part 14/147

Processed Thu Oct 15 13:49:28 2015 by ELM ver.2012-10-06 from 001__elm20150923_043142__dat00.bin



ELMAVAN 3D WAVEFORMS (Measured data sampled at 50 kHz) 51000 packets of 144 samples from 2015-09-23T04:31:43.393.000. Part 2/147

Processed Thu Oct 15 13:49:29 2015 by ELM ver.2012-10-06 from 001__elm20150923_043142__dat00.bin



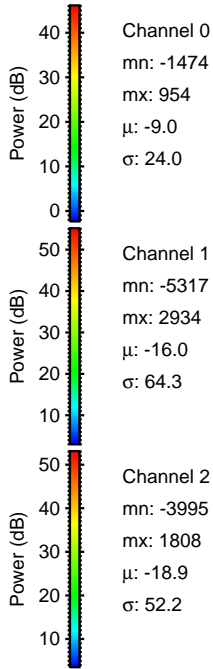
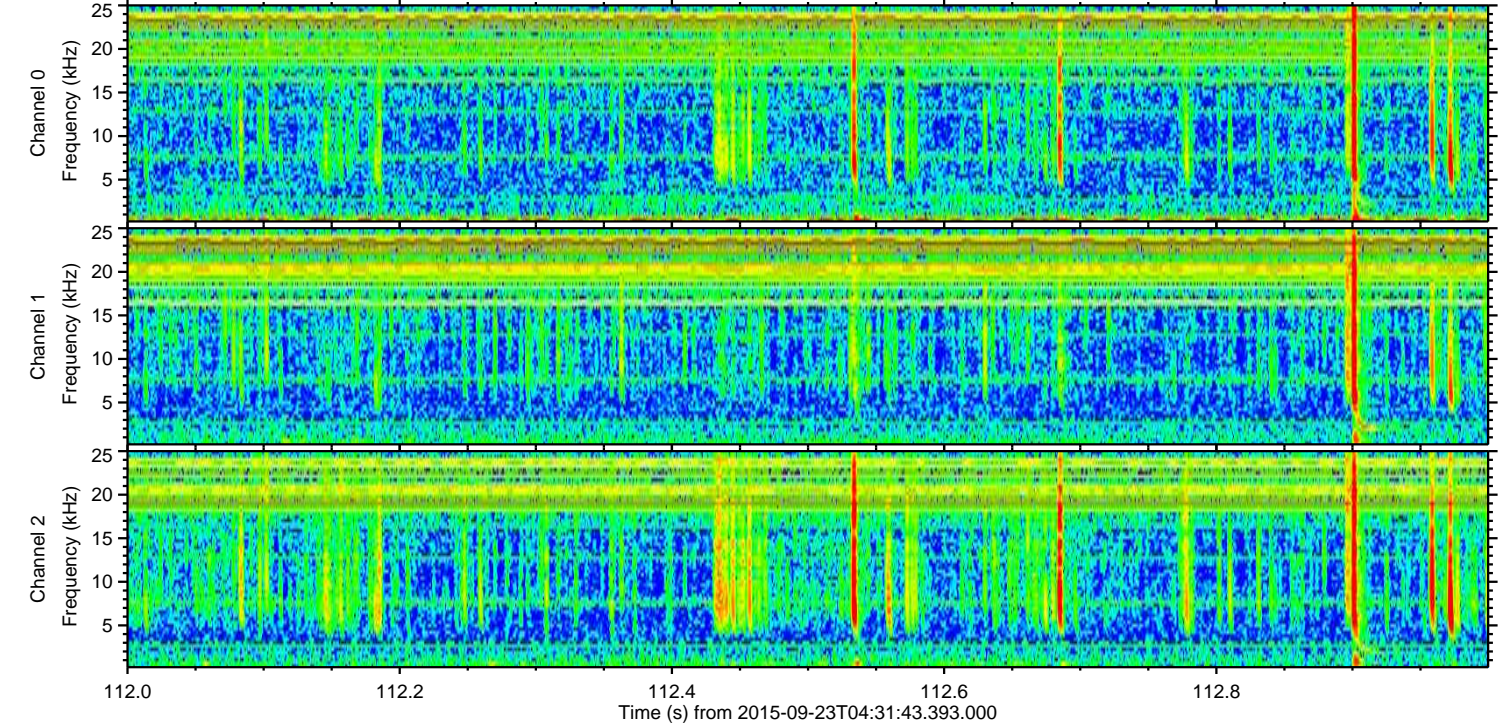
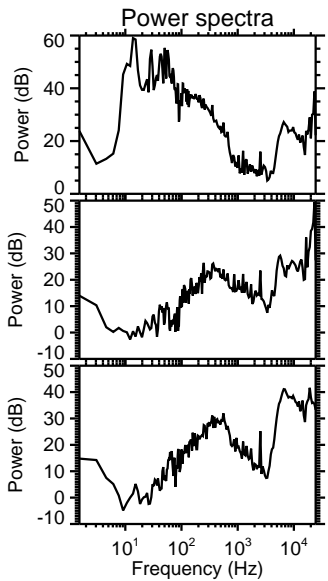
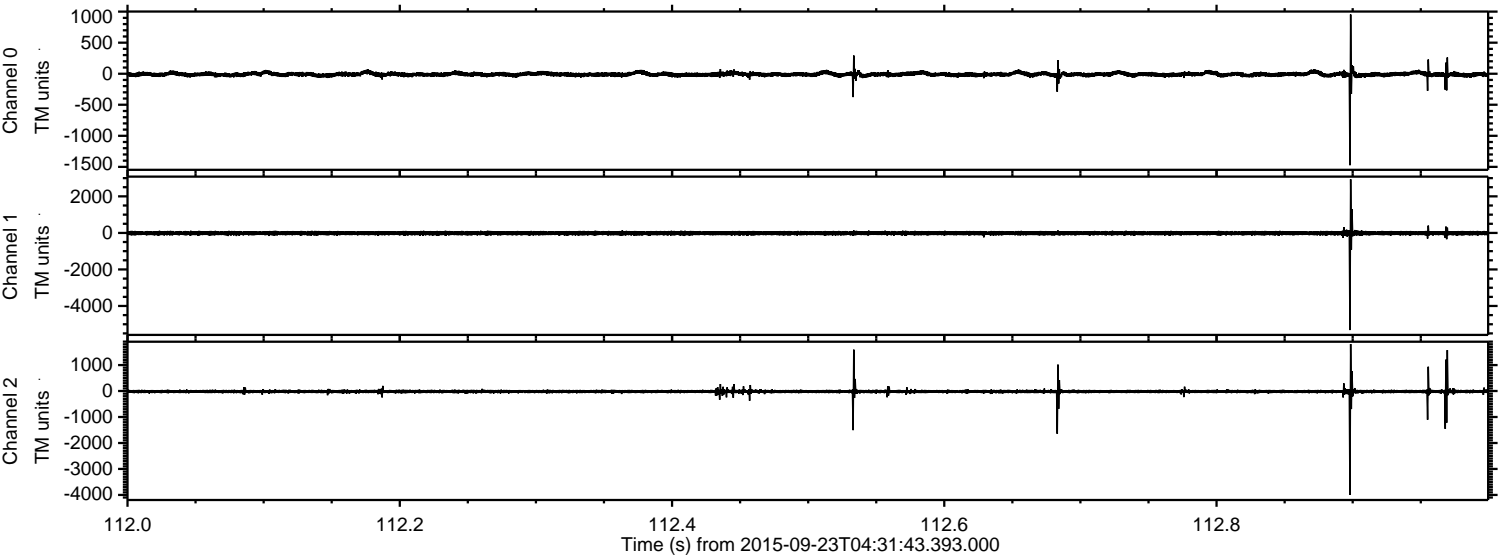
Channel 0
mn: -1426
mx: 951
 μ : -8.9
 σ : 22.3

Channel 1
mn: -1638
mx: 1062
 μ : -15.9
 σ : 58.7

Channel 2
mn: -5875
mx: 3451
 μ : -18.9
 σ : 71.9

ELMAVAN 3D WAVEFORMS (Measured data sampled at 50 kHz) 51000 packets of 144 samples from 2015-09-23T04:31:43.393.000. Part 113/147

Processed Thu Oct 15 13:49:31 2015 by ELM ver.2012-10-06 from 001__elm20150923_043142__dat00.bin

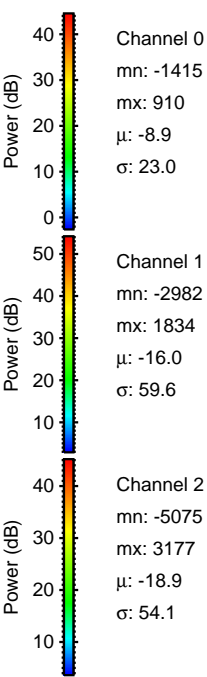
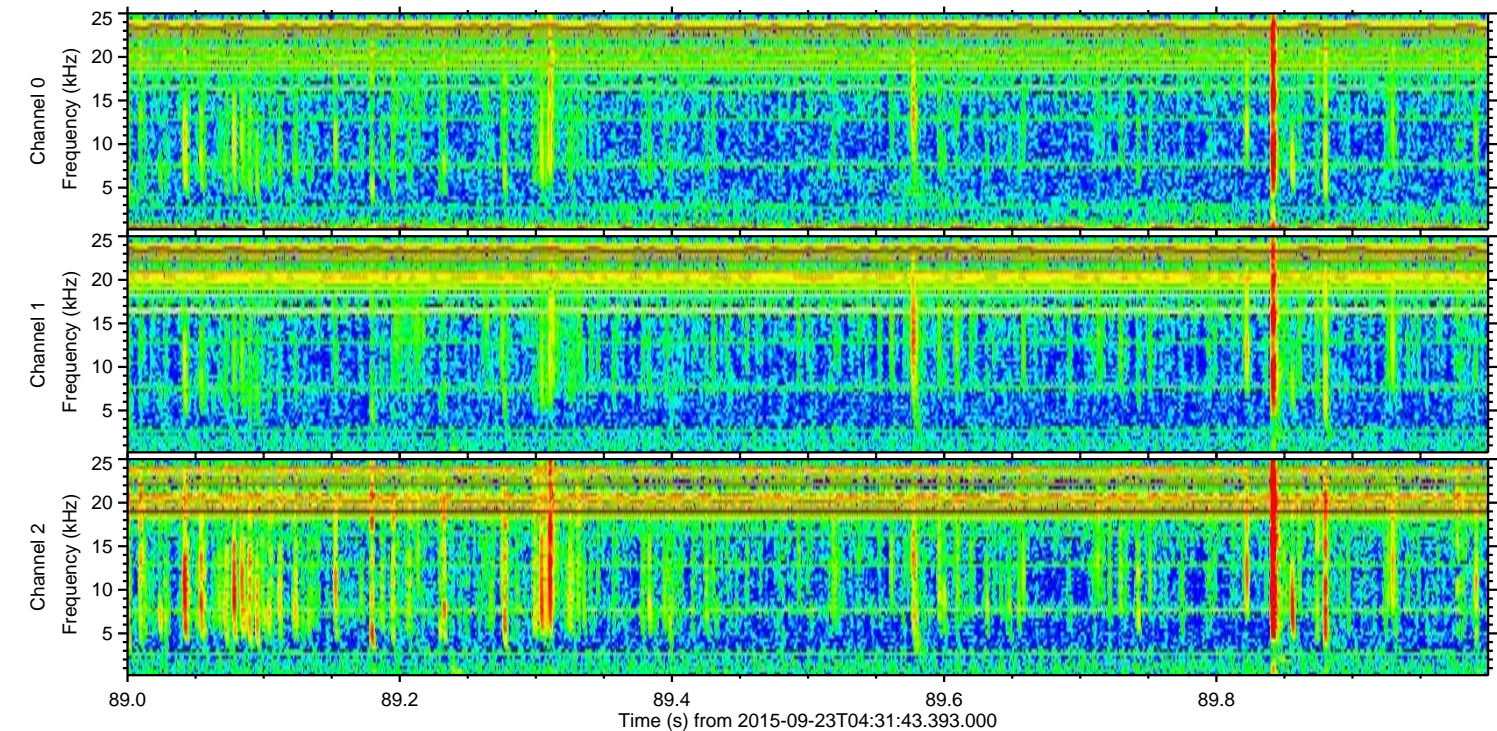
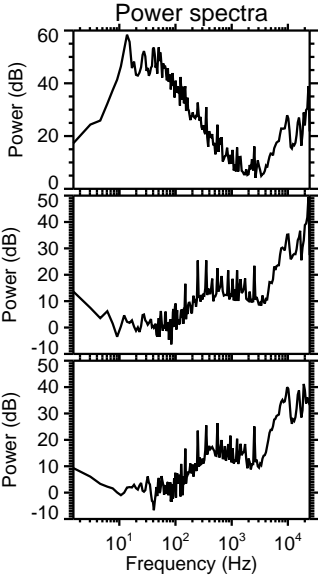
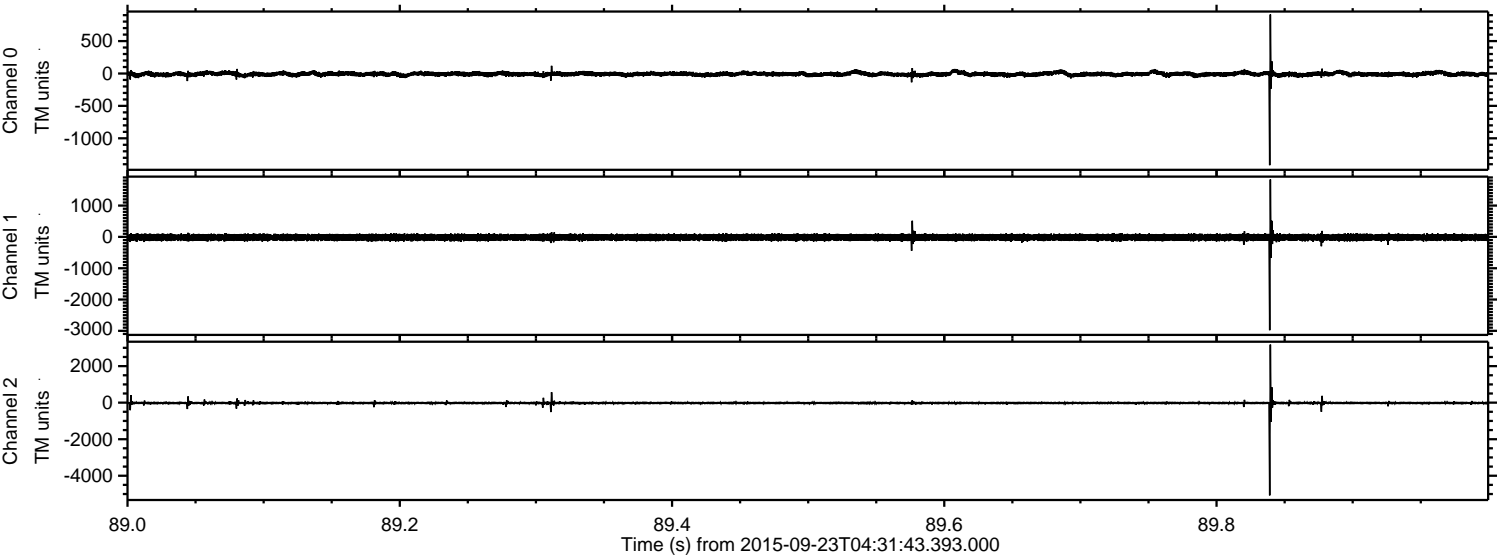


Channel 0
mn: -1474
mx: 954
 μ : -9.0
 σ : 24.0

Channel 1
mn: -5317
mx: 2934
 μ : -16.0
 σ : 64.3

Channel 2
mn: -3995
mx: 1808
 μ : -18.9
 σ : 52.2

Processed Thu Oct 15 13:49:33 2015 by ELM ver.2012-10-06 from 001__elm20150923_043142__dat00.bin



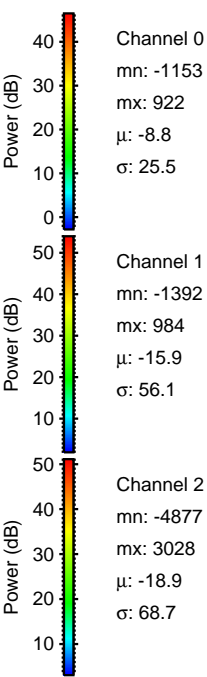
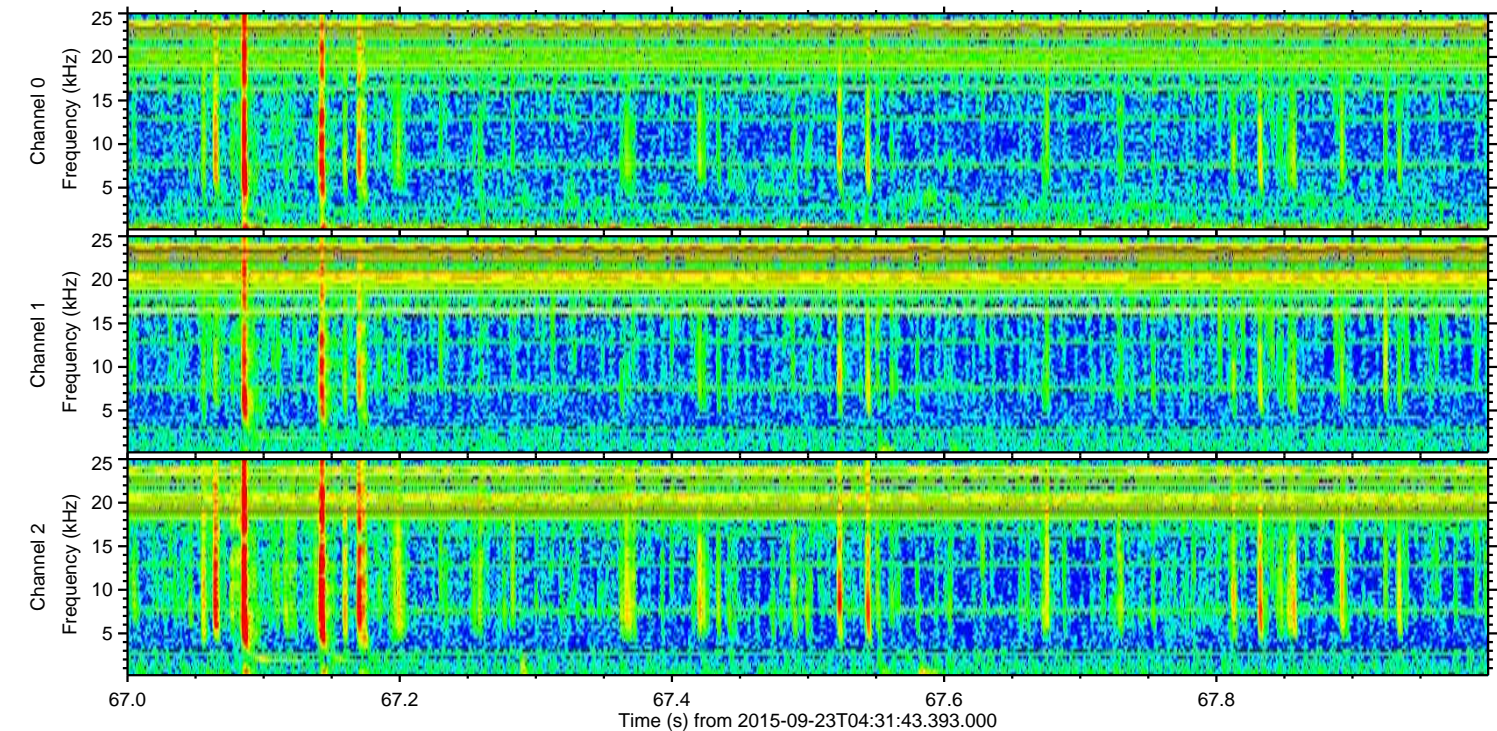
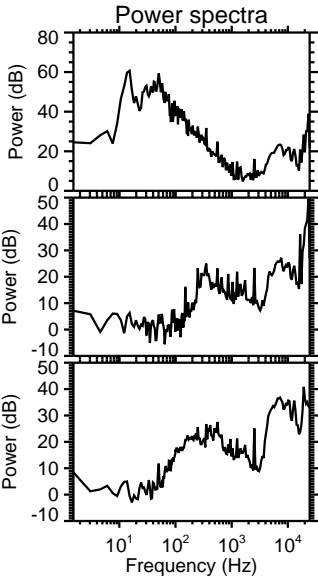
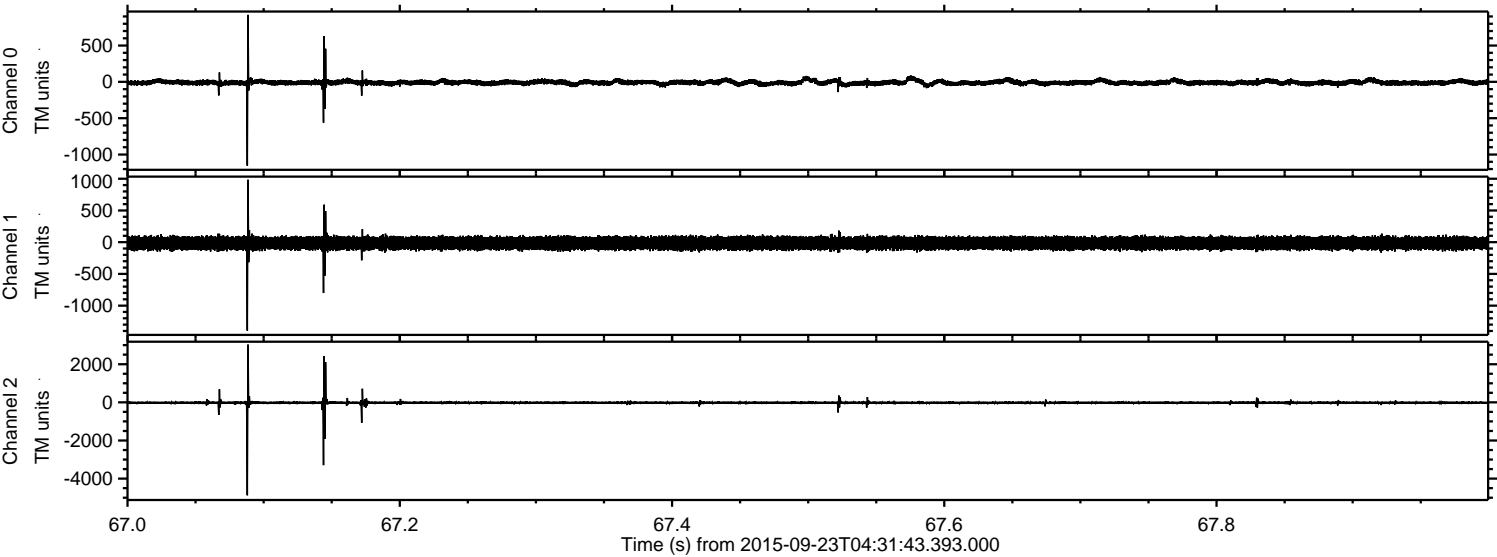
Channel 0
mn: -1415
mx: 910
 μ : -8.9
 σ : 23.0

Channel 1
mn: -2982
mx: 1834
 μ : -16.0
 σ : 59.6

Channel 2
mn: -5075
mx: 3177
 μ : -18.9
 σ : 54.1

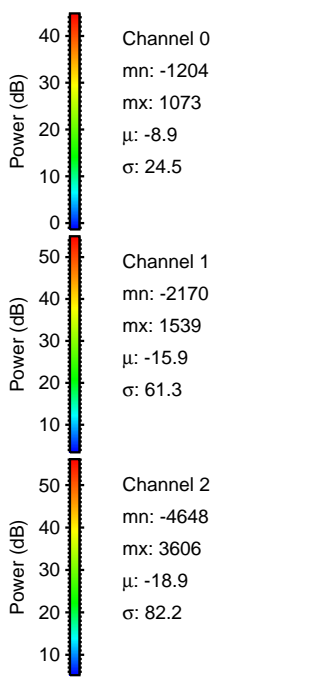
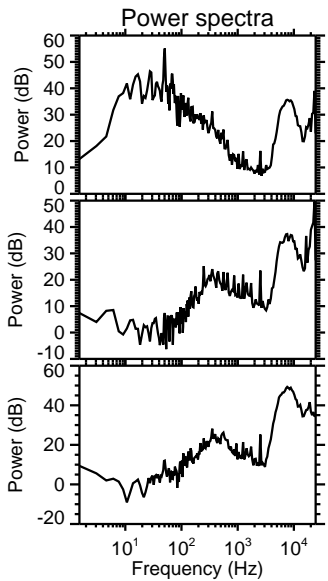
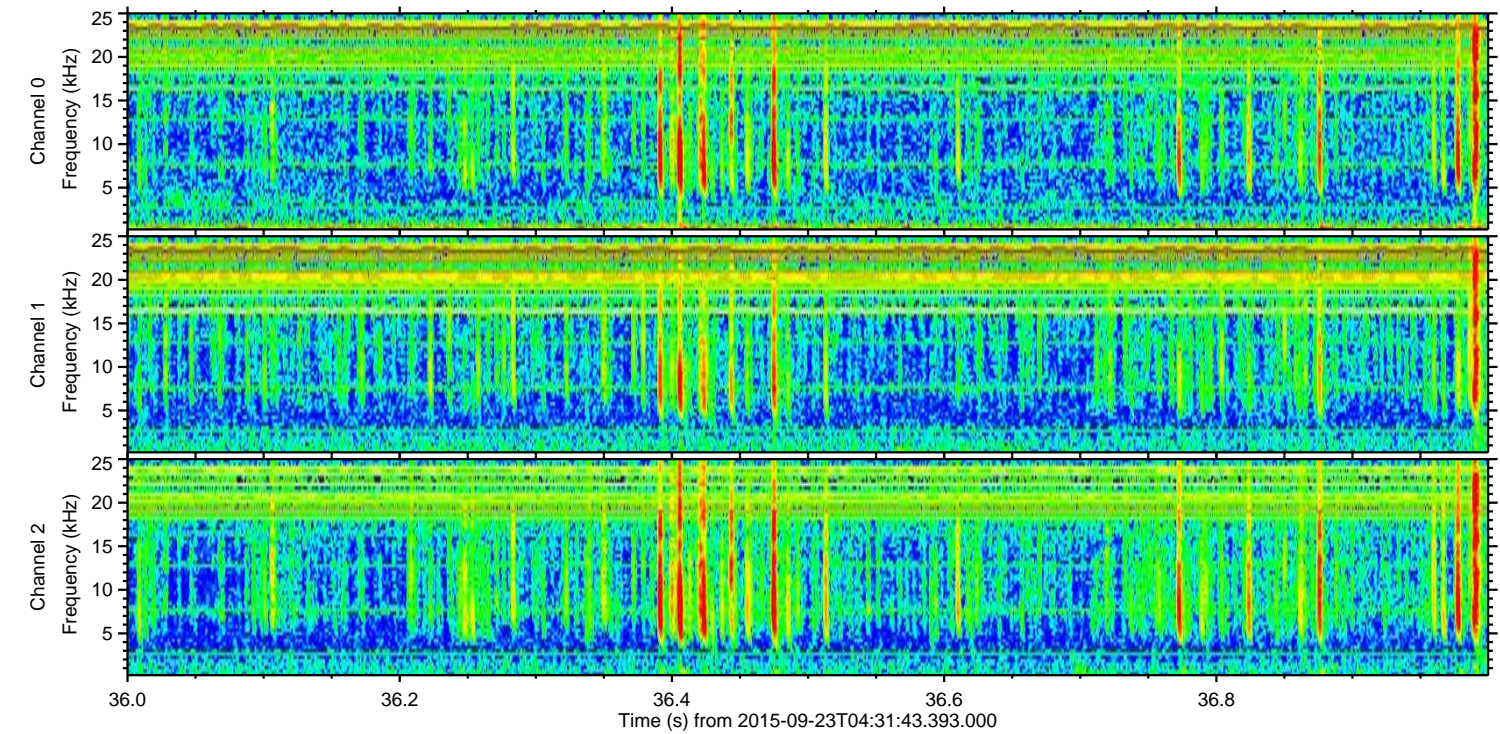
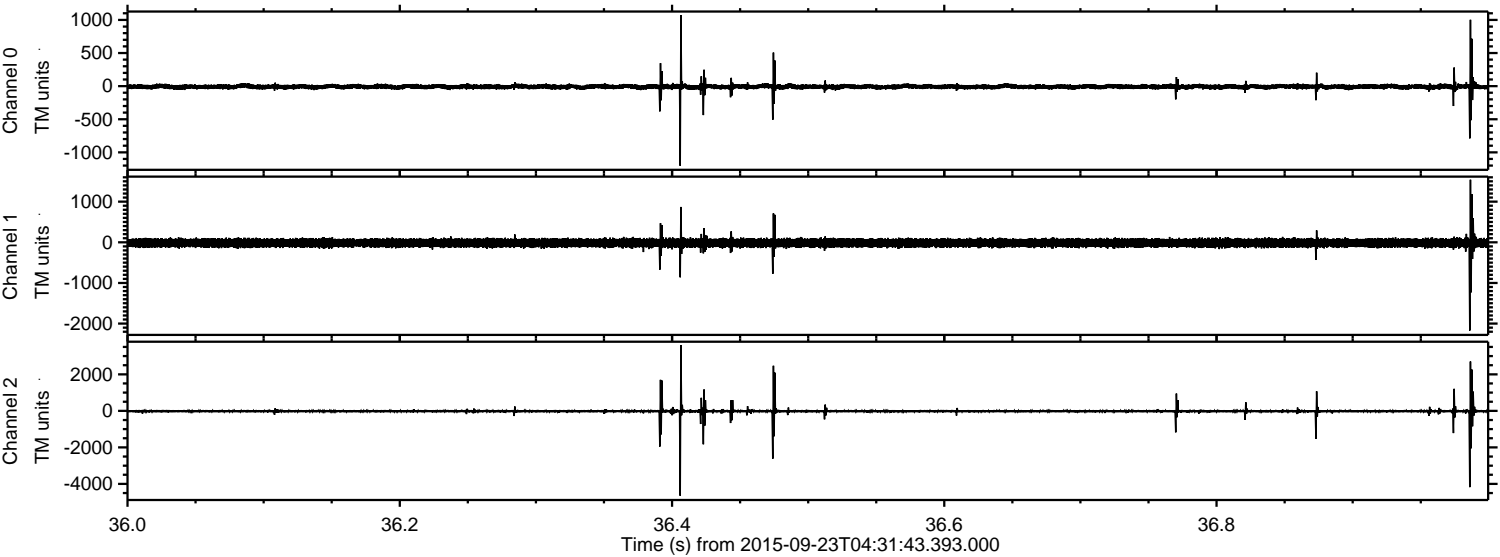
ELMAVAN 3D WAVEFORMS (Measured data sampled at 50 kHz) 51000 packets of 144 samples from 2015-09-23T04:31:43.393.000. Part 68/147

Processed Thu Oct 15 13:49:35 2015 by ELM ver.2012-10-06 from 001__elm20150923_043142__dat00.bin



ELMAVAN 3D WAVEFORMS (Measured data sampled at 50 kHz) 51000 packets of 144 samples from 2015-09-23T04:31:43.393.000. Part 37/147

Processed Thu Oct 15 13:49:37 2015 by ELM ver.2012-10-06 from 001__elm20150923_043142__dat00.bin



Processed Thu Oct 15 13:49:38 2015 by ELM ver.2012-10-06 from 001__elm20150923_043142__dat00.bin

