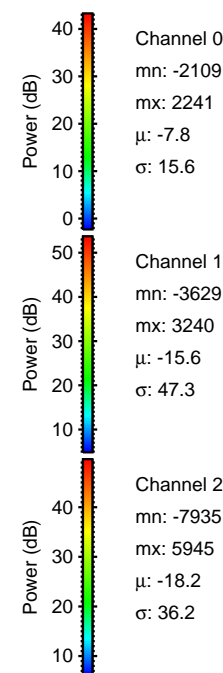
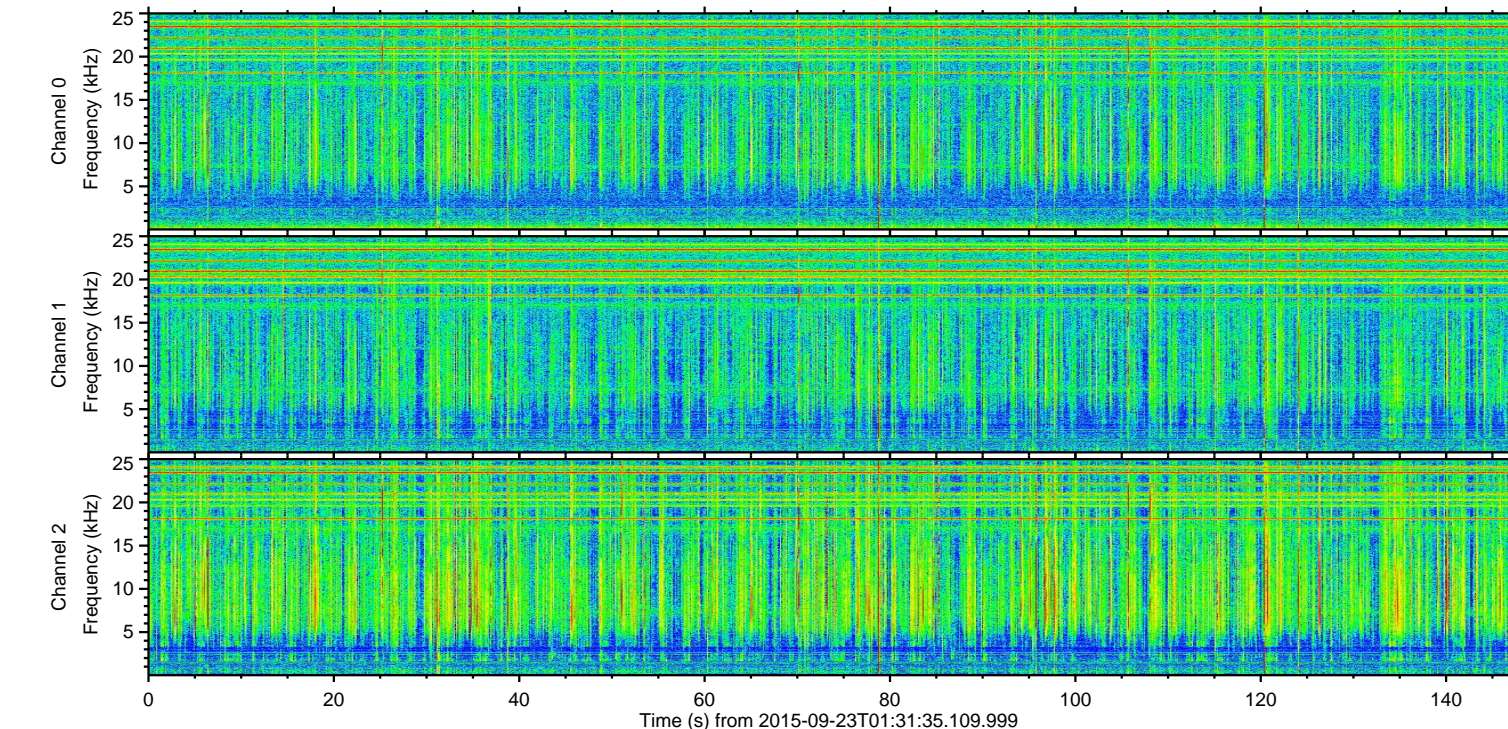
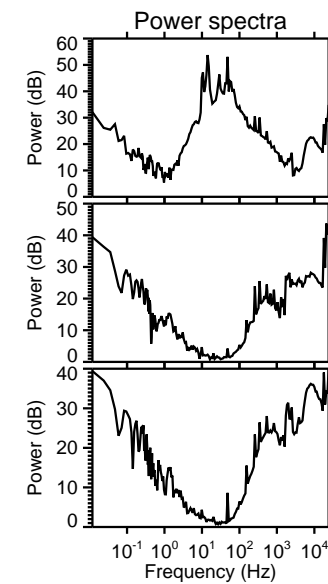
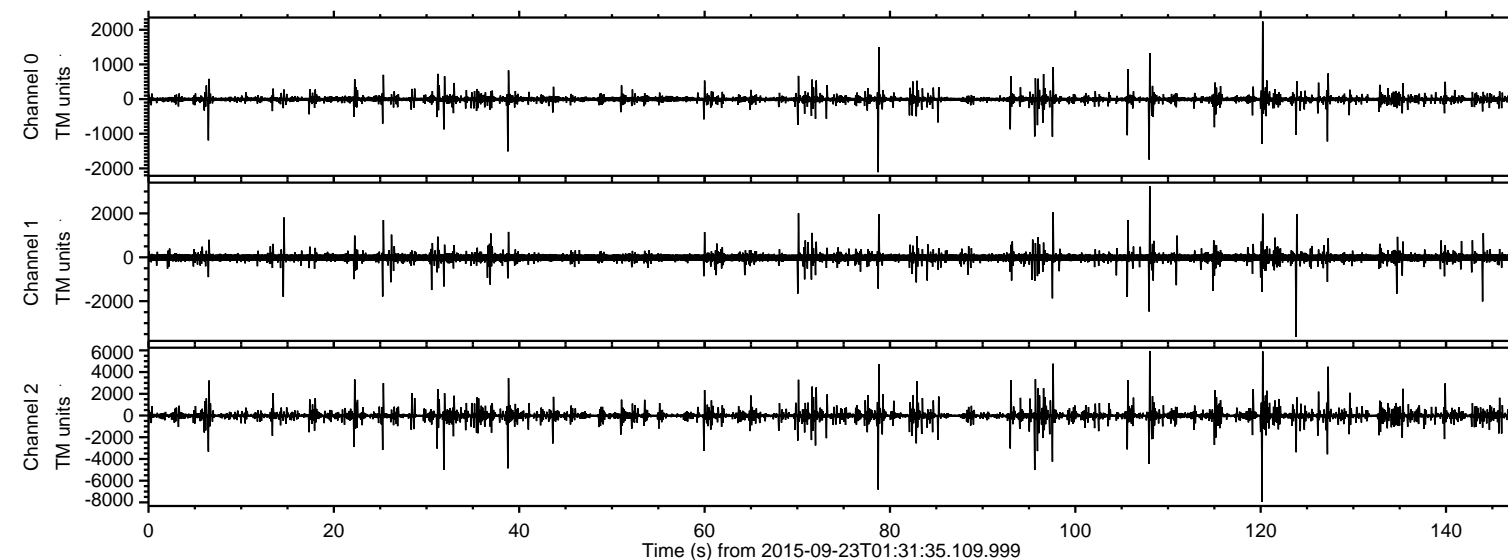


# ELMAVAN 3D WAVEFORMS (Measured data sampled at 50 kHz) 51000 packets of 144 samples from 2015-09-23T01:31:35.109.999.

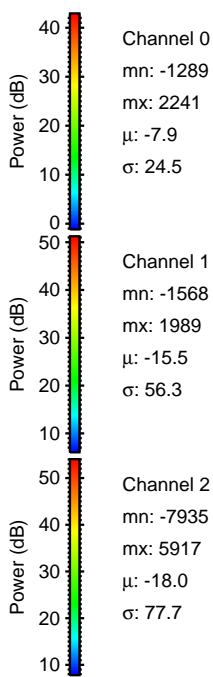
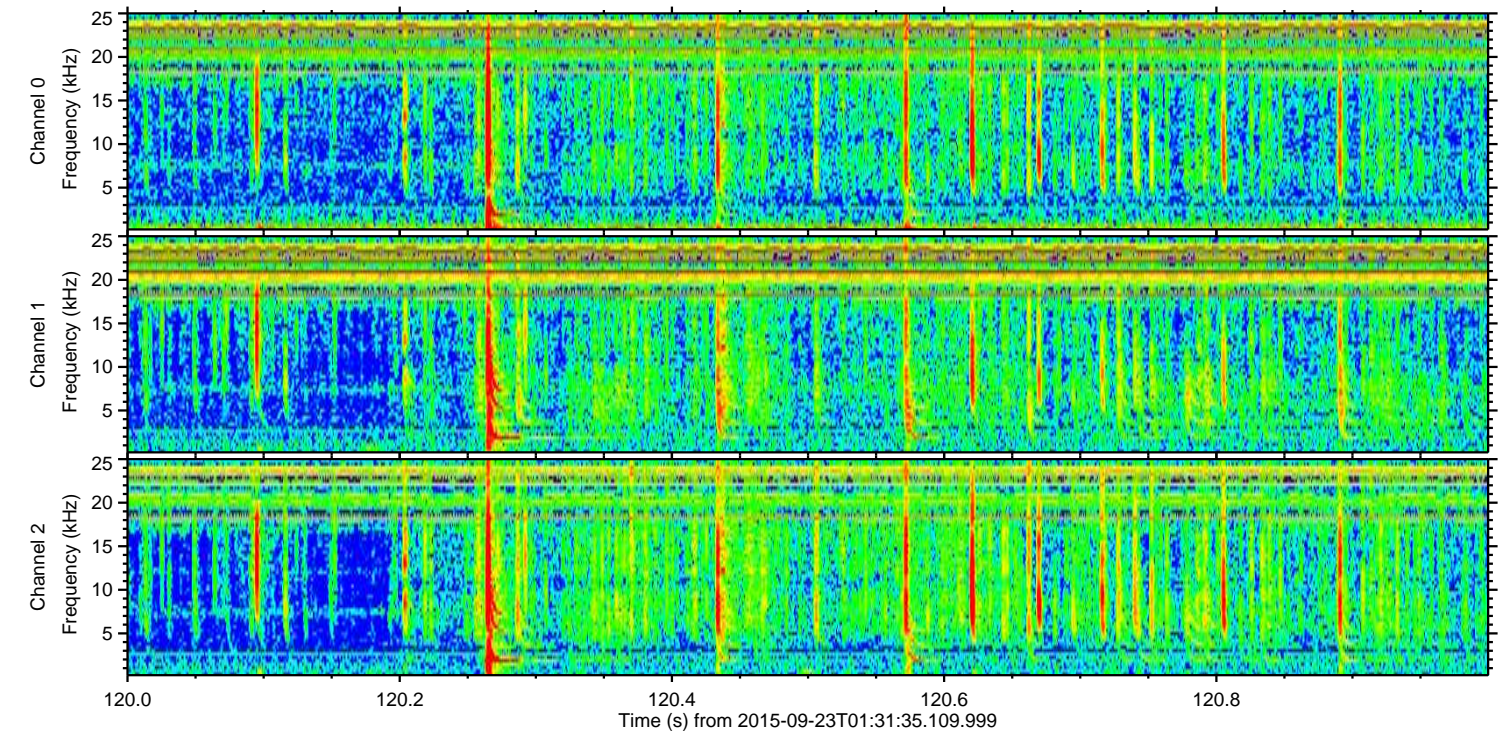
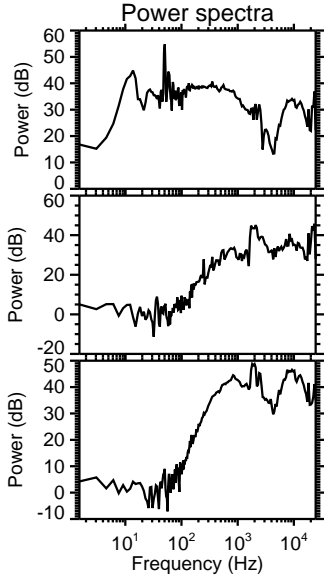
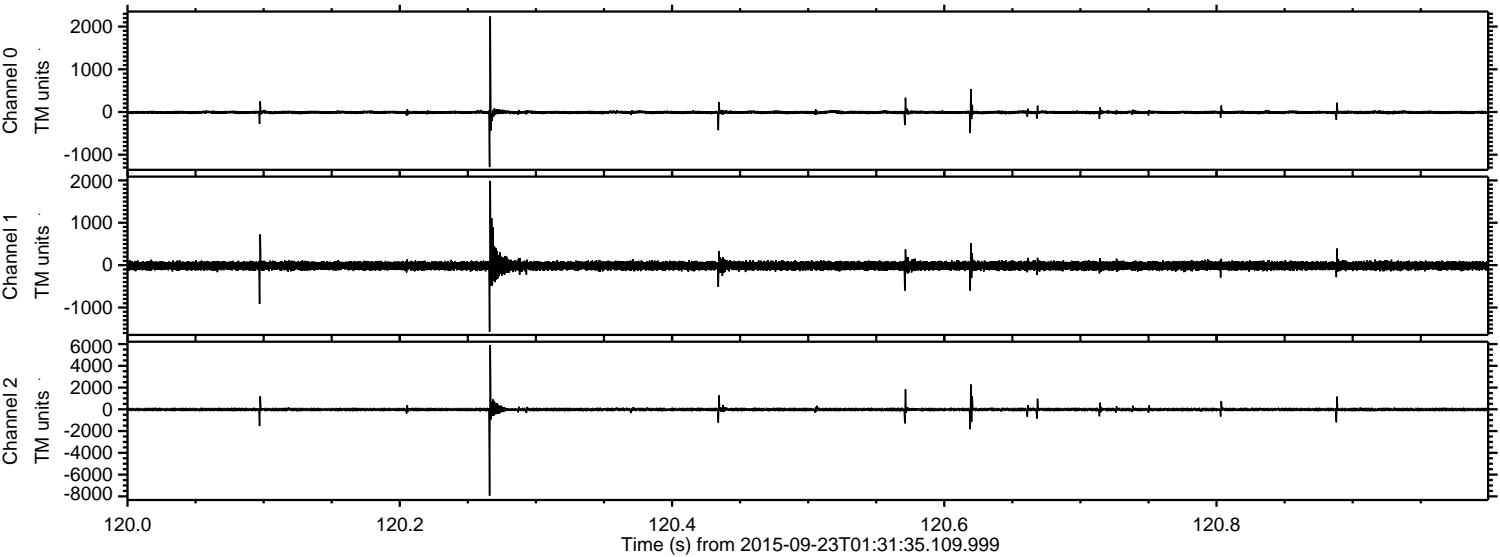
Processed Thu Oct 15 12:49:46 2015 by ELM ver.2012-10-06 from 001\_\_elm20150923\_013134\_\_dat00.bin





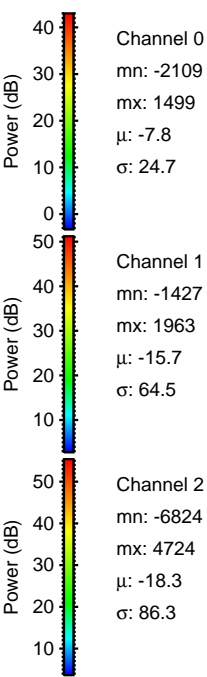
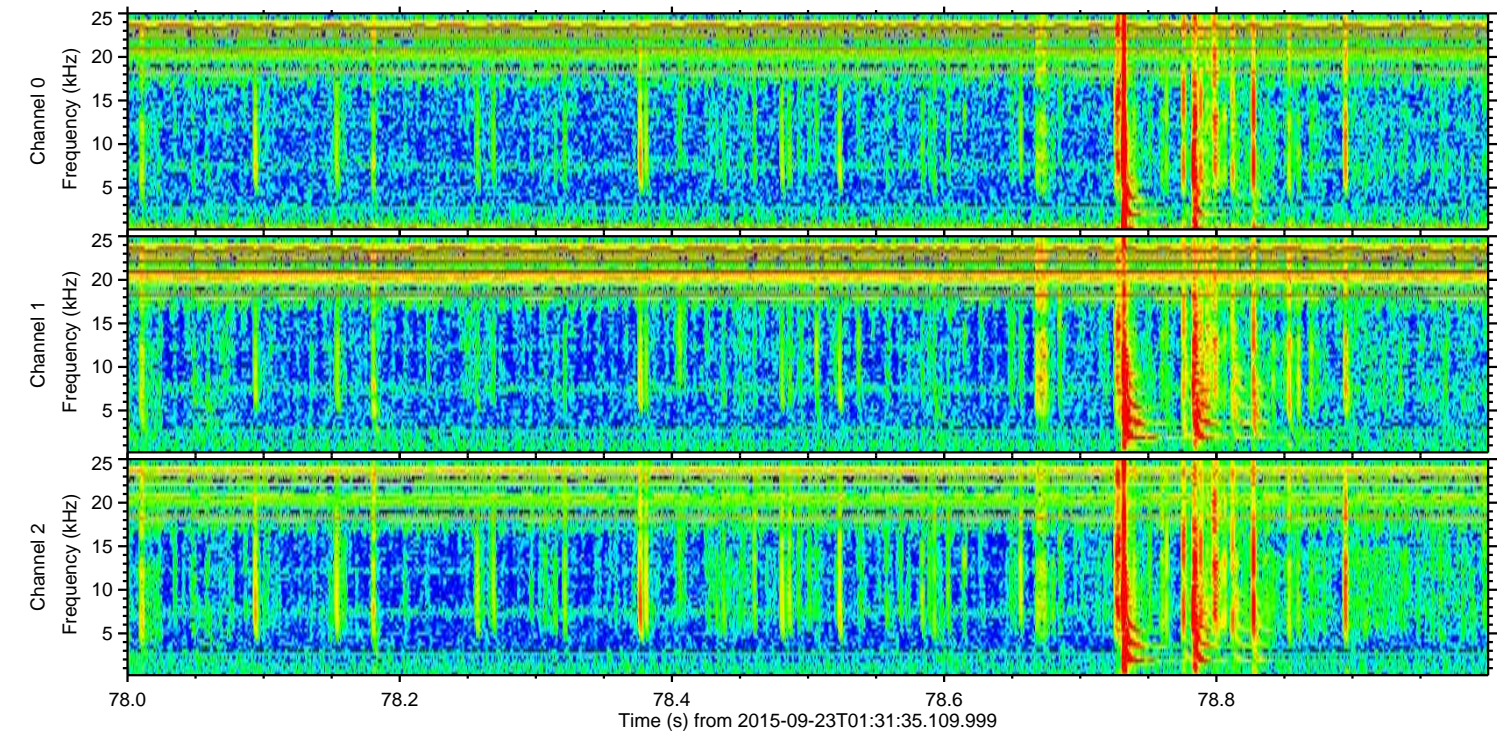
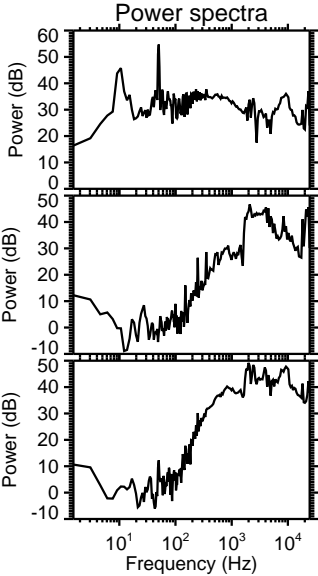
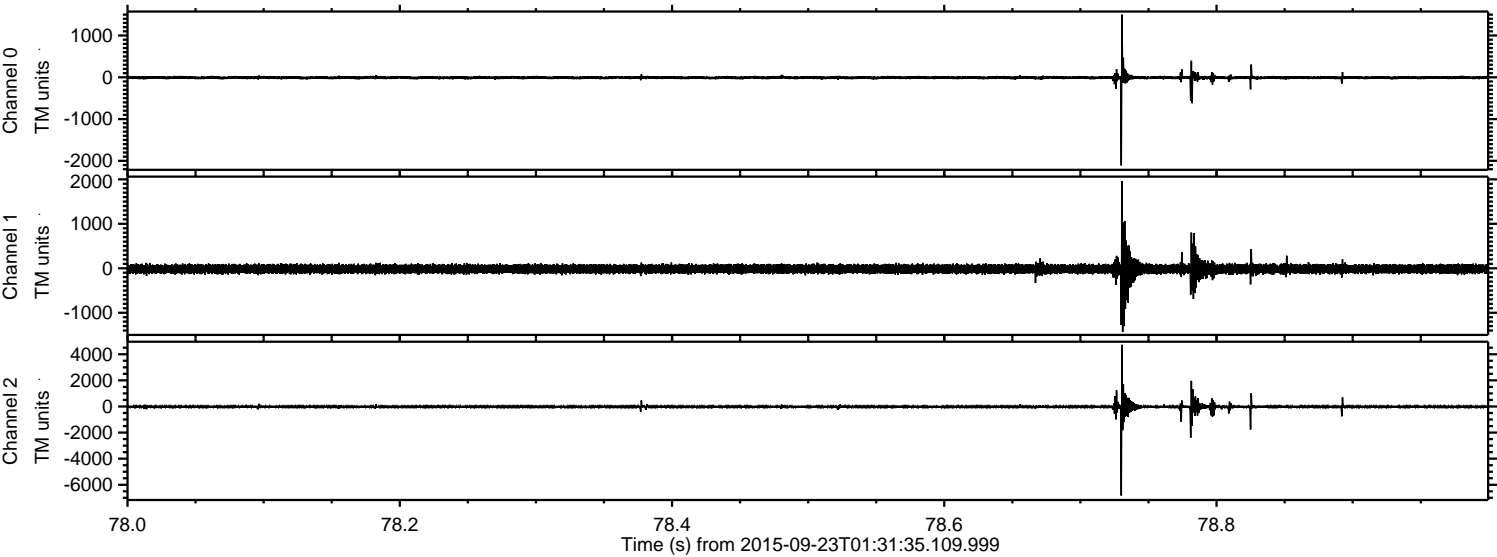
ELMAVAN 3D WAVEFORMS (Measured data sampled at 50 kHz) 51000 packets of 144 samples from 2015-09-23T01:31:35.109.999. Part 121/147

Processed Thu Oct 15 12:50:05 2015 by ELM ver.2012-10-06 from 001\_\_elm20150923\_013134\_\_dat00.bin





Processed Thu Oct 15 12:50:06 2015 by ELM ver.2012-10-06 from 001\_\_elm20150923\_013134\_\_dat00.bin



Channel 0  
mn: -2109  
mx: 1499  
 $\mu$ : -7.8  
 $\sigma$ : 24.7

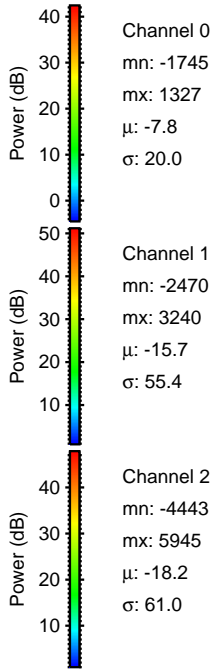
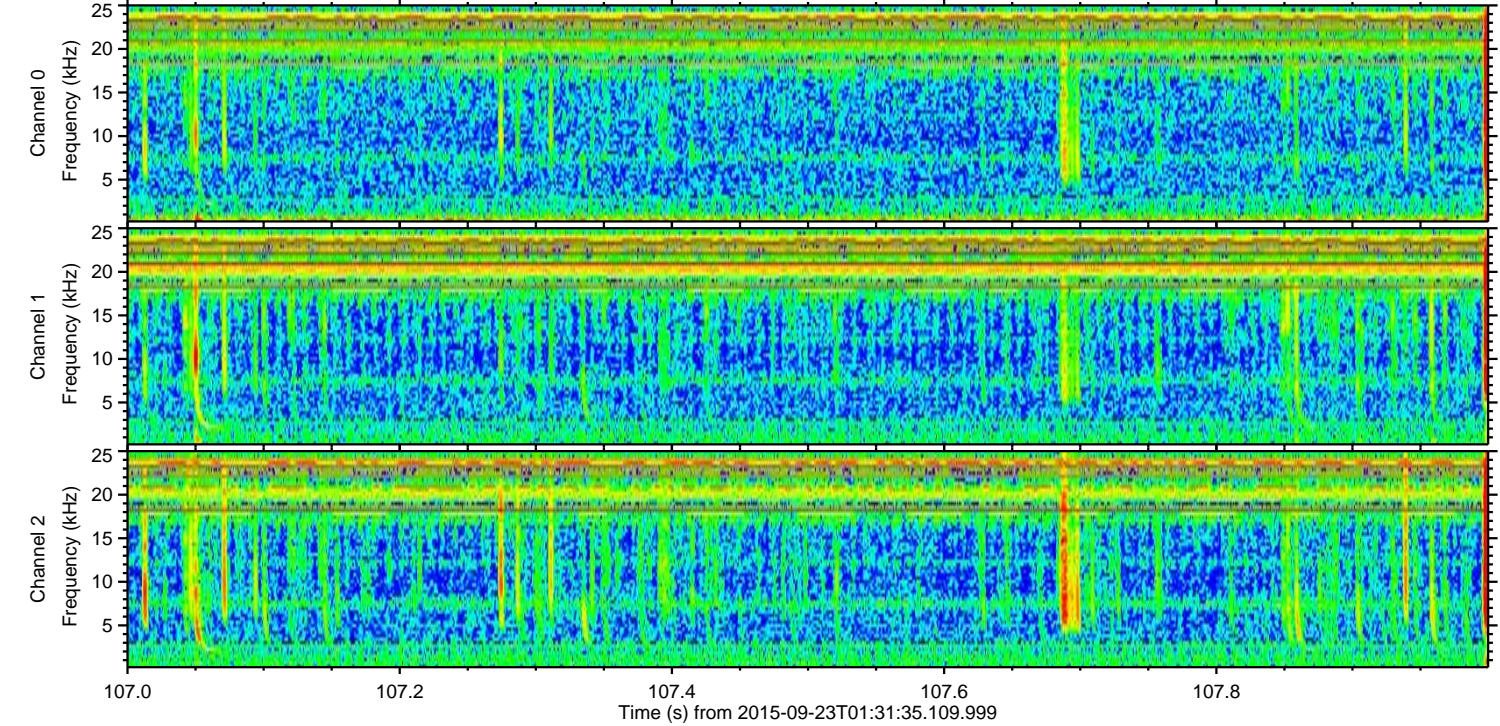
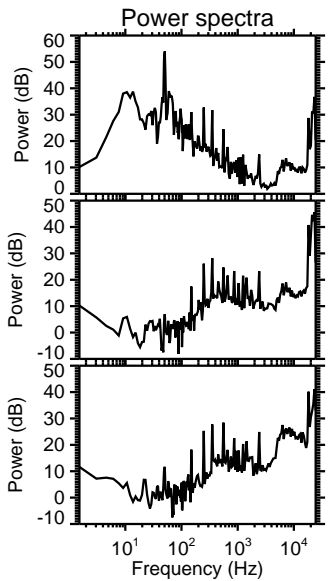
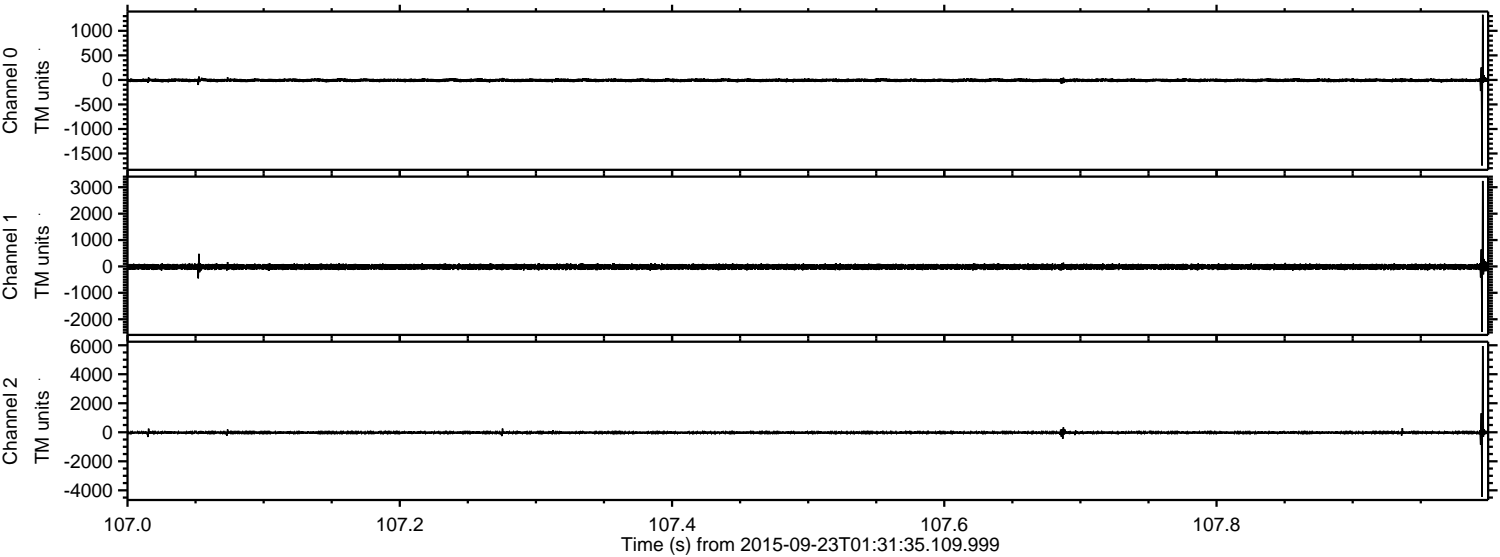
Channel 1  
mn: -1427  
mx: 1963  
 $\mu$ : -15.7  
 $\sigma$ : 64.5

Channel 2  
mn: -6824  
mx: 4724  
 $\mu$ : -18.3  
 $\sigma$ : 86.3



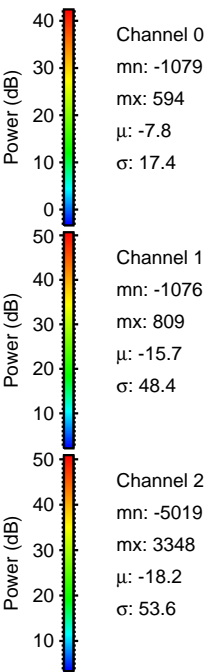
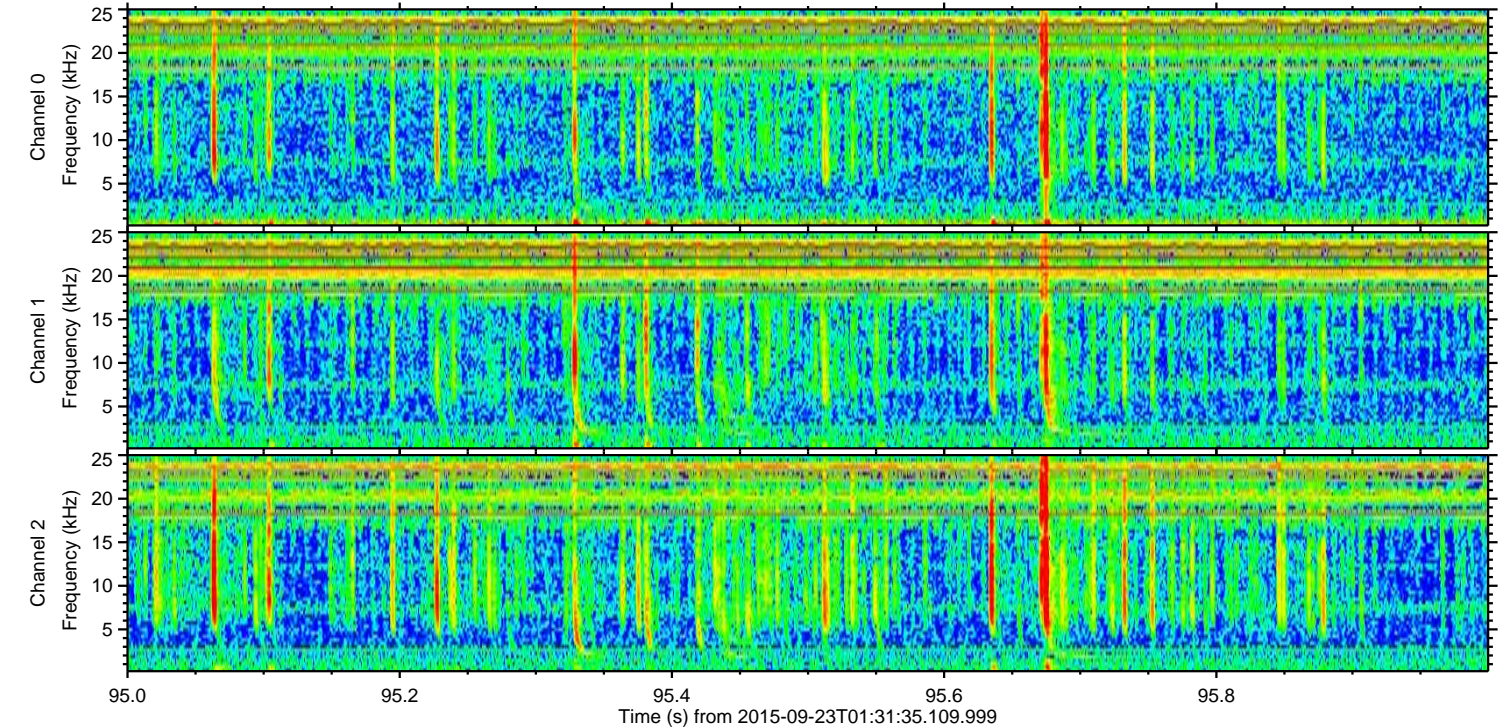
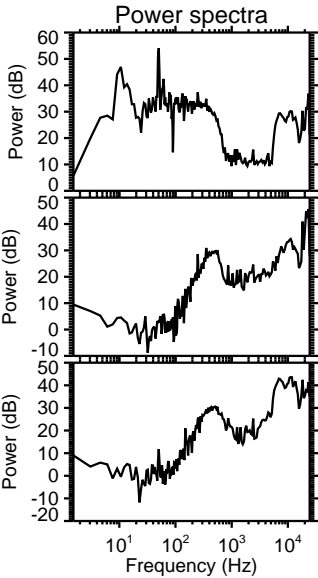
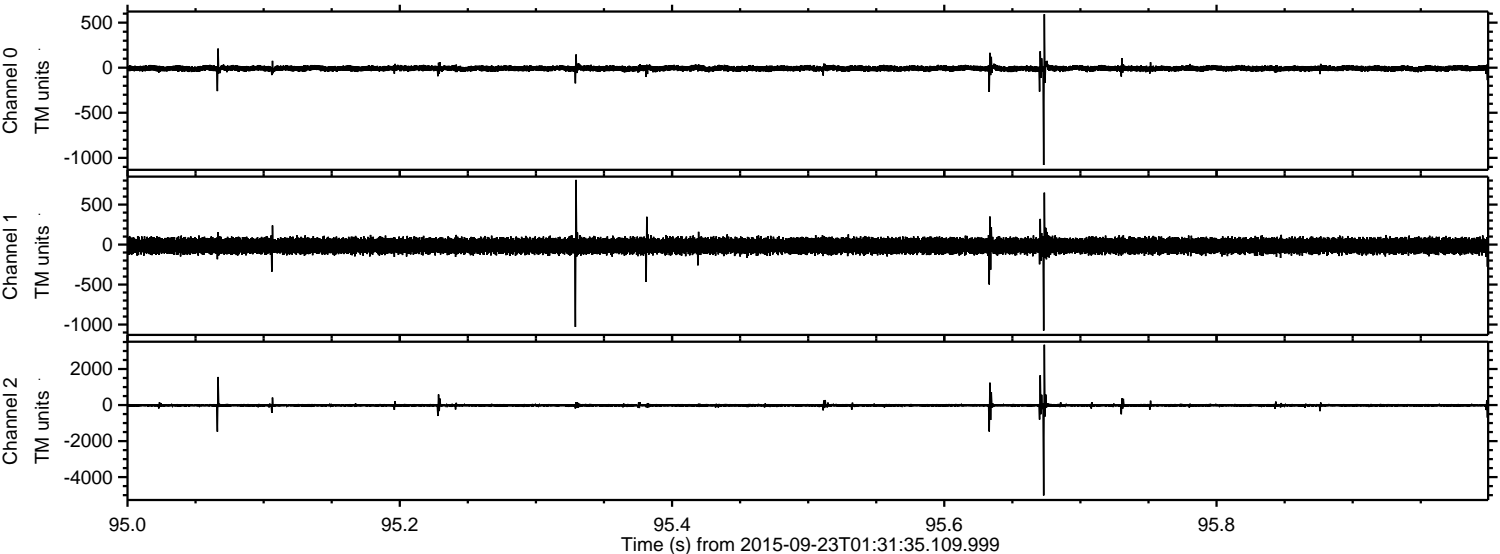
ELMAVAN 3D WAVEFORMS (Measured data sampled at 50 kHz) 51000 packets of 144 samples from 2015-09-23T01:31:35.109.999. Part 108/147

Processed Thu Oct 15 12:50:07 2015 by ELM ver.2012-10-06 from 001\_\_elm20150923\_013134\_\_dat00.bin



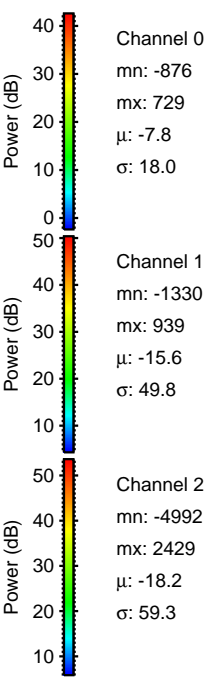
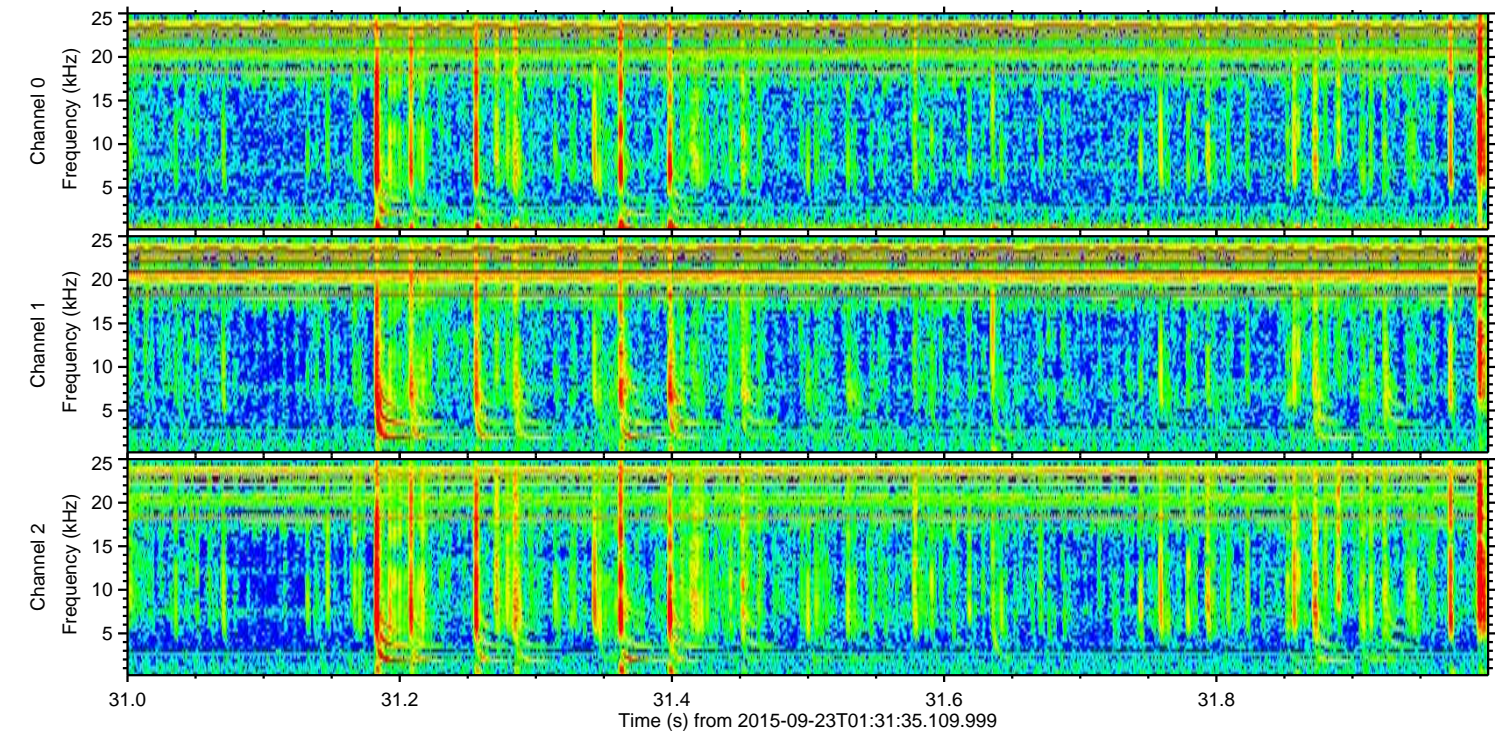
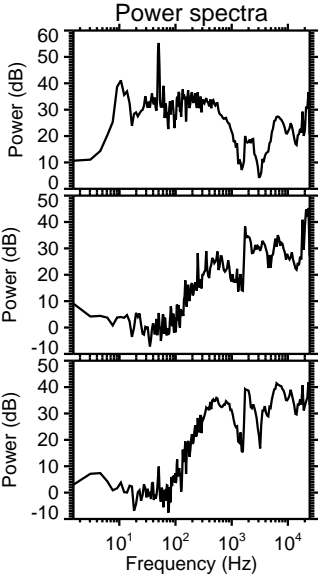
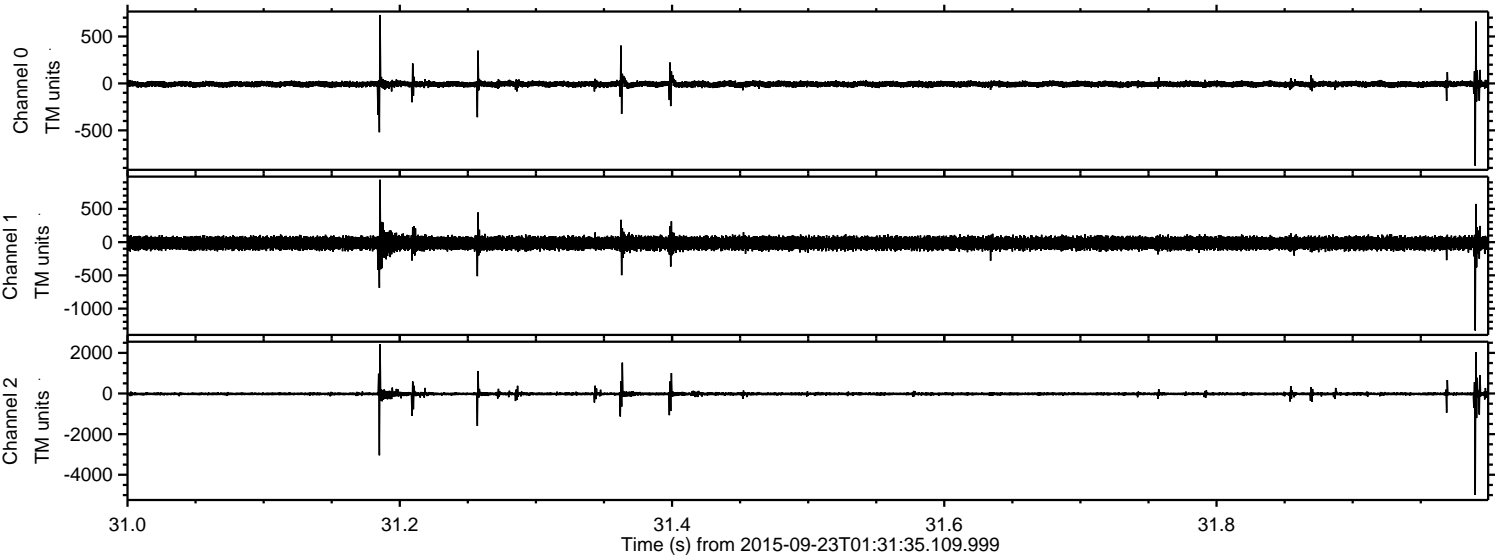


Processed Thu Oct 15 12:50:09 2015 by ELM ver.2012-10-06 from 001\_\_elm20150923\_013134\_\_dat00.bin





Processed Thu Oct 15 12:50:10 2015 by ELM ver.2012-10-06 from 001\_\_elm20150923\_013134\_\_dat00.bin



Channel 0  
mn: -876  
mx: 729  
 $\mu$ : -7.8  
 $\sigma$ : 18.0

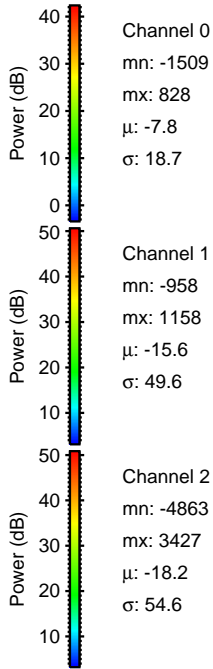
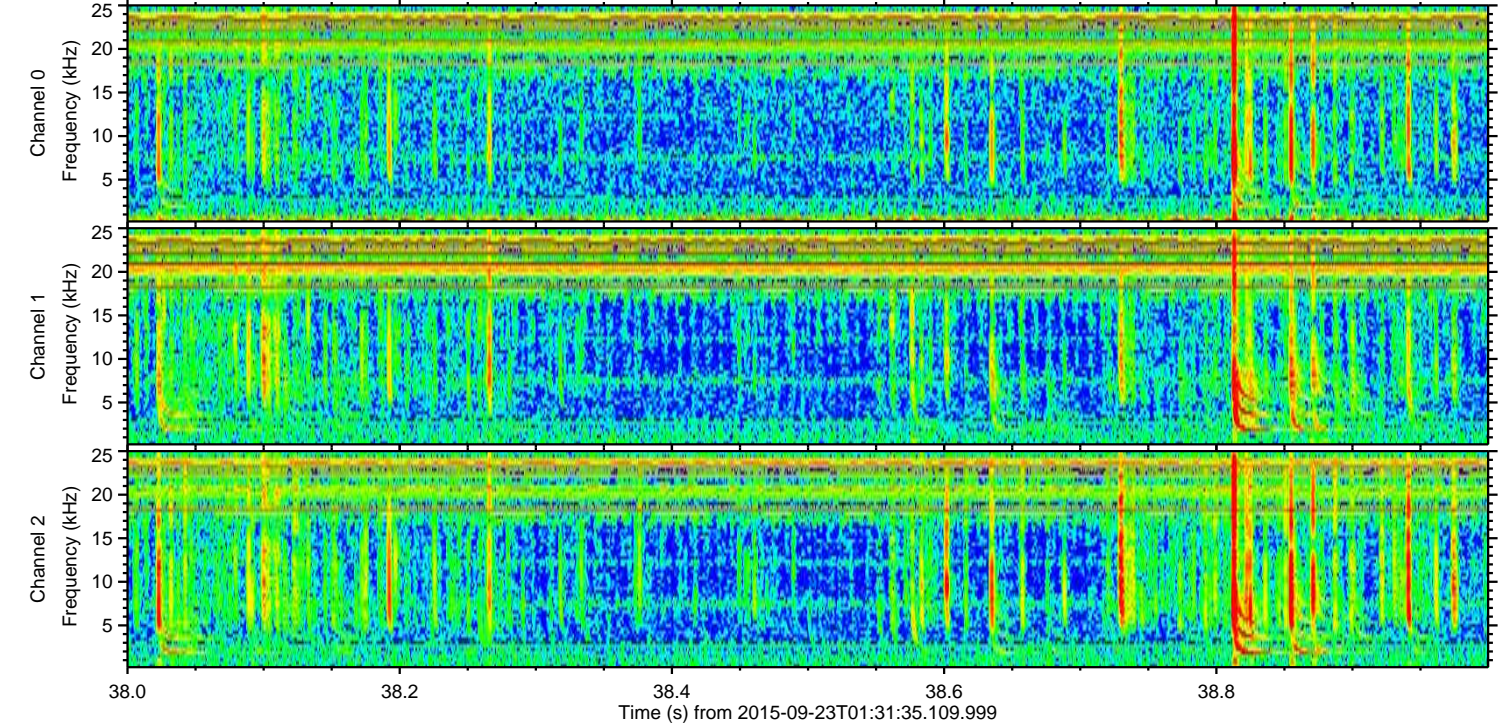
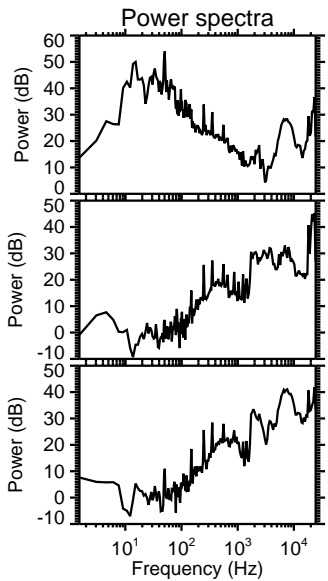
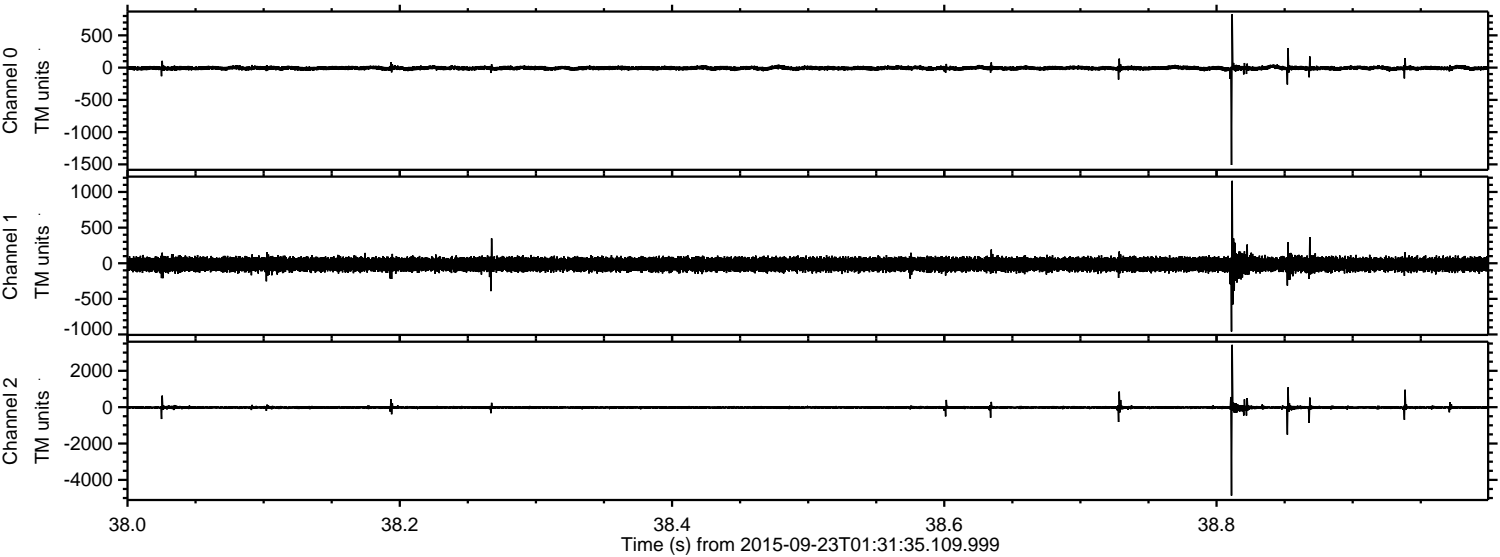
Channel 1  
mn: -1330  
mx: 939  
 $\mu$ : -15.6  
 $\sigma$ : 49.8

Channel 2  
mn: -4992  
mx: 2429  
 $\mu$ : -18.2  
 $\sigma$ : 59.3



ELMAVAN 3D WAVEFORMS (Measured data sampled at 50 kHz) 51000 packets of 144 samples from 2015-09-23T01:31:35.109.999. Part 39/147

Processed Thu Oct 15 12:50:12 2015 by ELM ver.2012-10-06 from 001\_\_elm20150923\_013134\_\_dat00.bin



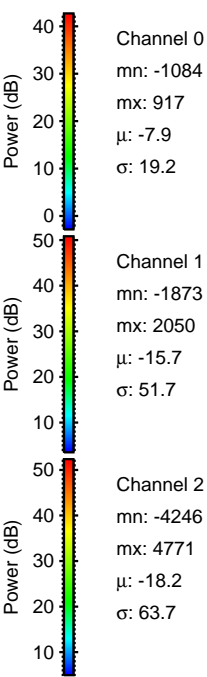
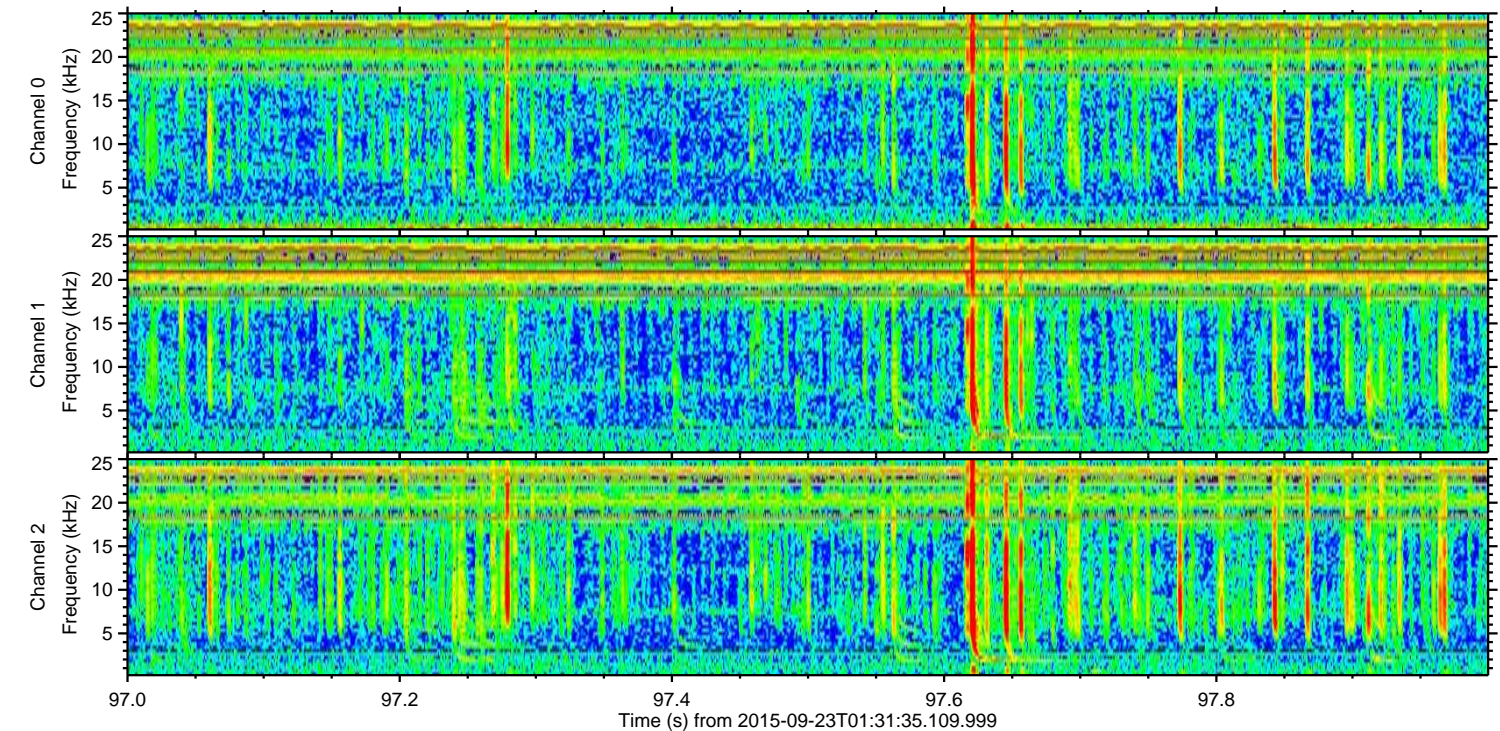
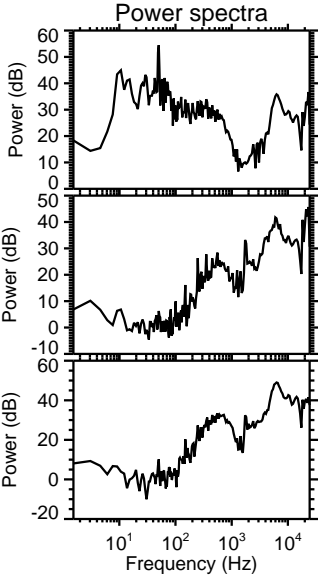
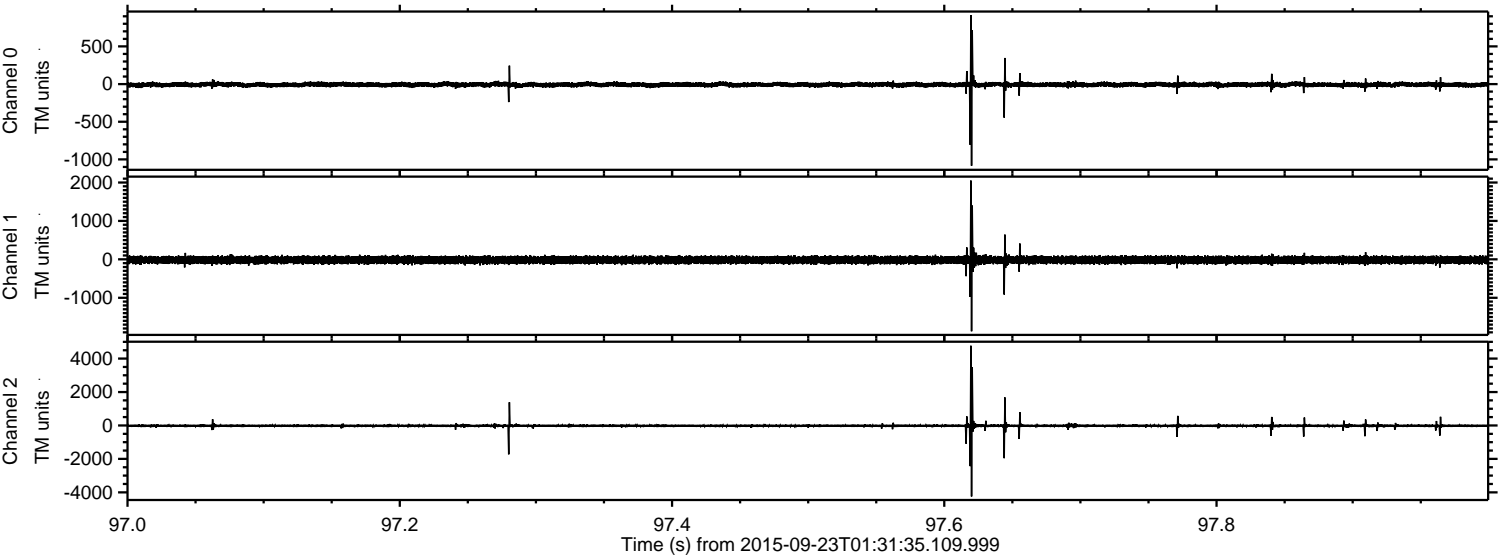
Channel 0  
mn: -1509  
mx: 828  
 $\mu$ : -7.8  
 $\sigma$ : 18.7

Channel 1  
mn: -958  
mx: 1158  
 $\mu$ : -15.6  
 $\sigma$ : 49.6

Channel 2  
mn: -4863  
mx: 3427  
 $\mu$ : -18.2  
 $\sigma$ : 54.6



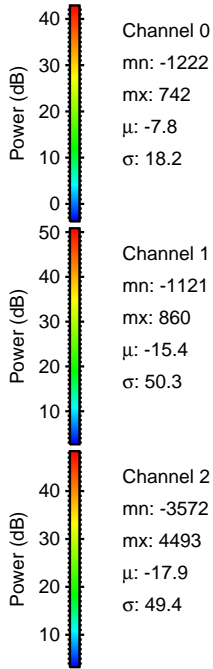
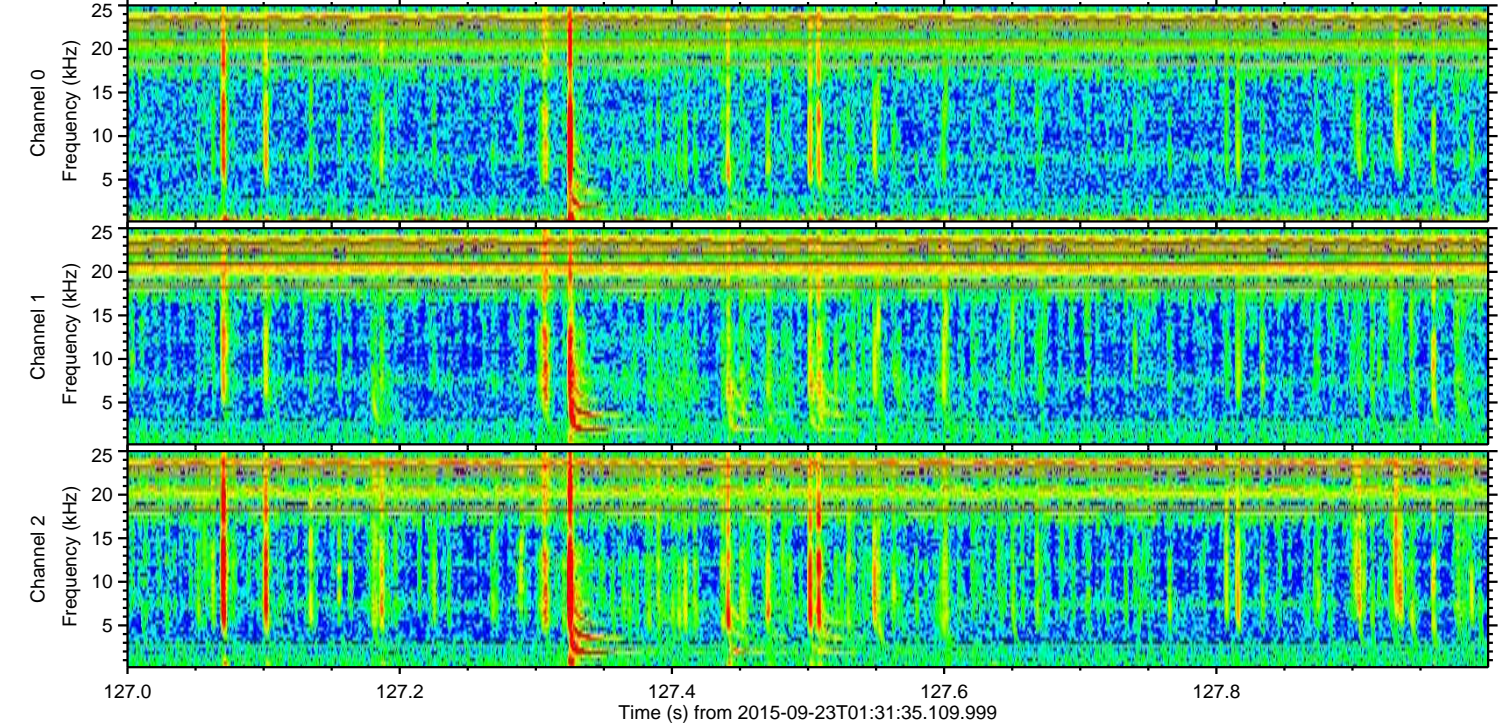
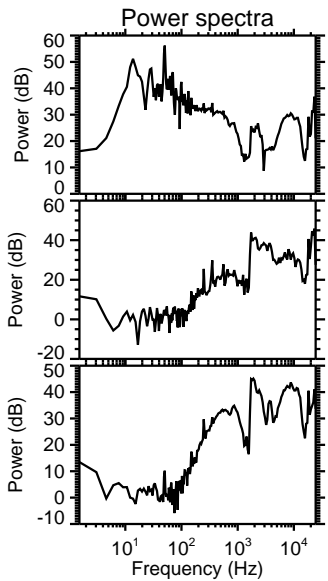
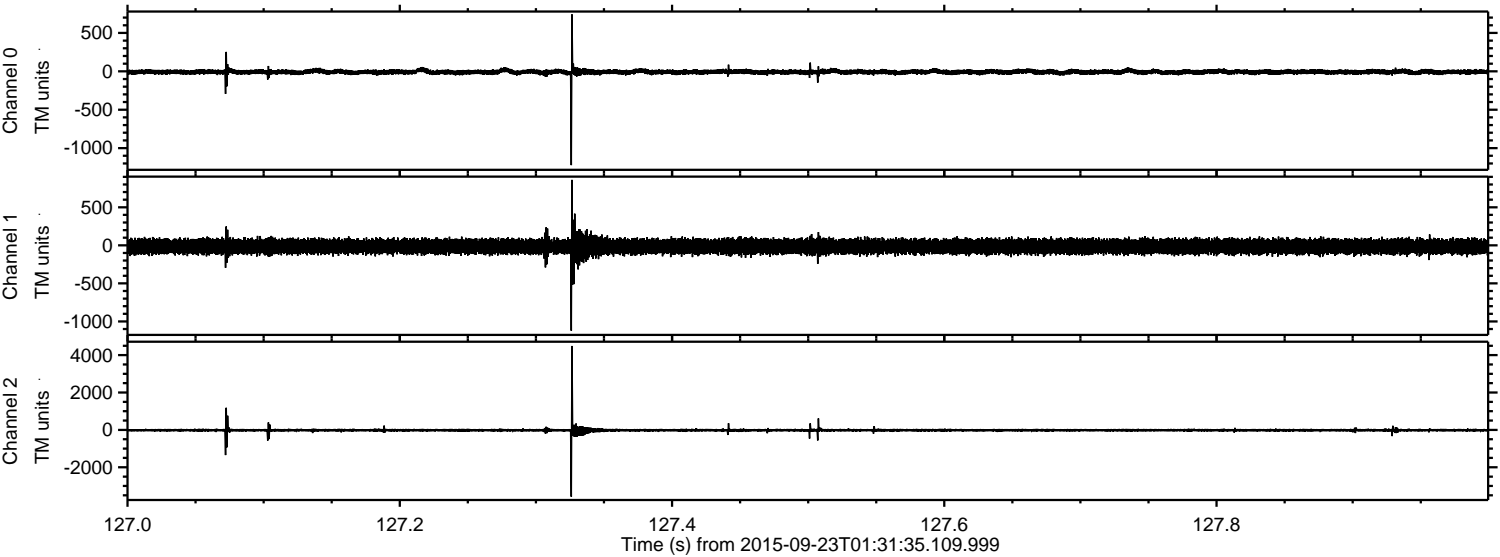
Processed Thu Oct 15 12:50:13 2015 by ELM ver.2012-10-06 from 001\_\_elm20150923\_013134\_\_dat00.bin





ELMAVAN 3D WAVEFORMS (Measured data sampled at 50 kHz) 51000 packets of 144 samples from 2015-09-23T01:31:35.109.999. Part 128/147

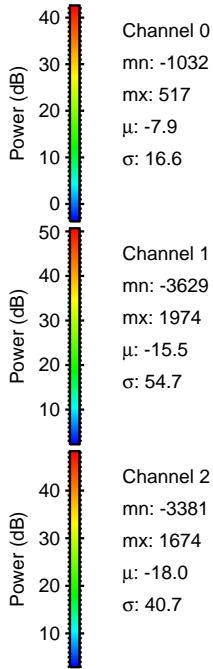
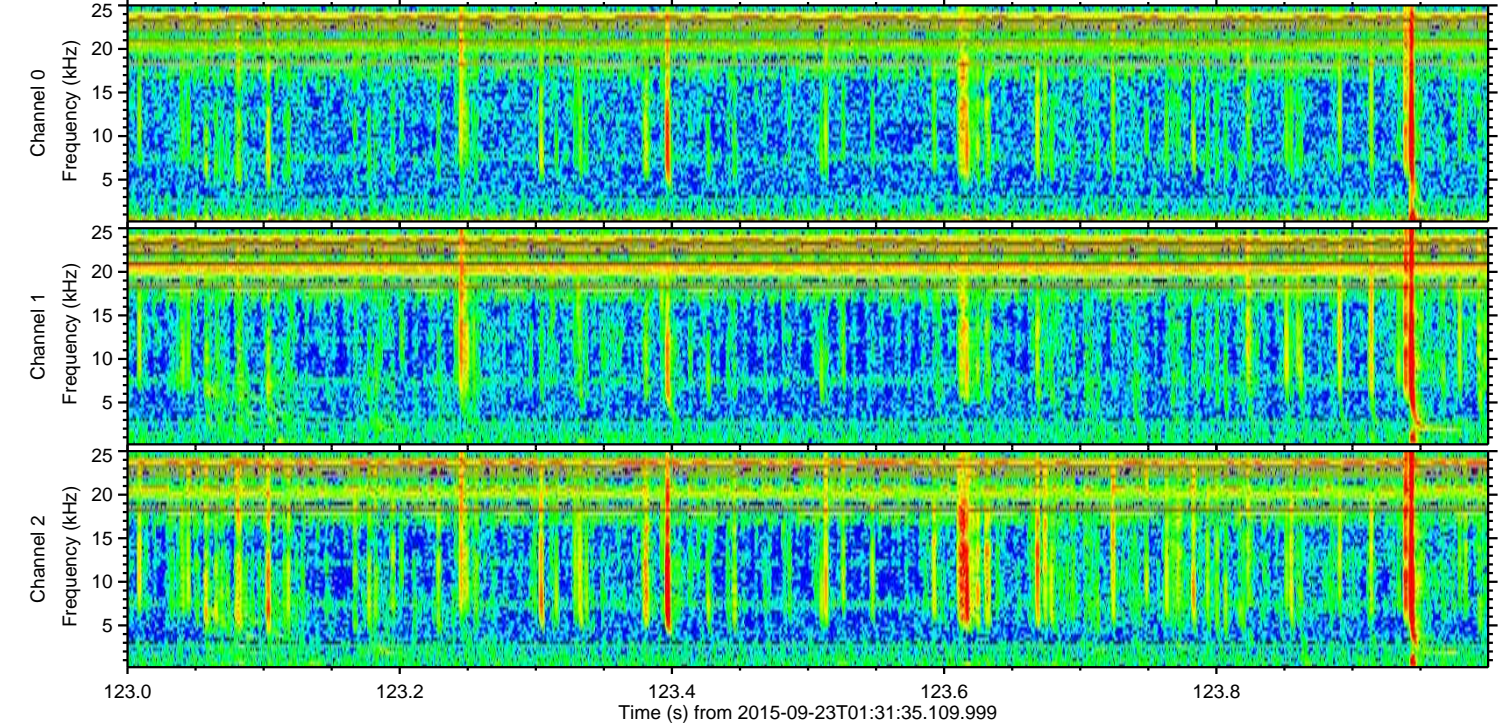
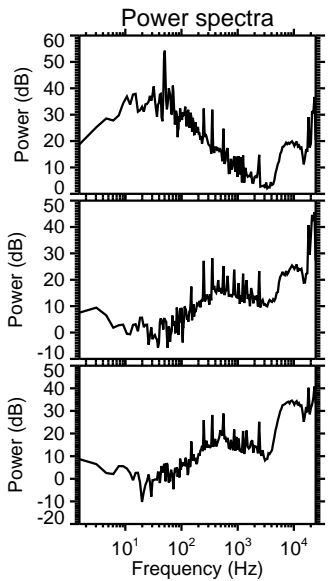
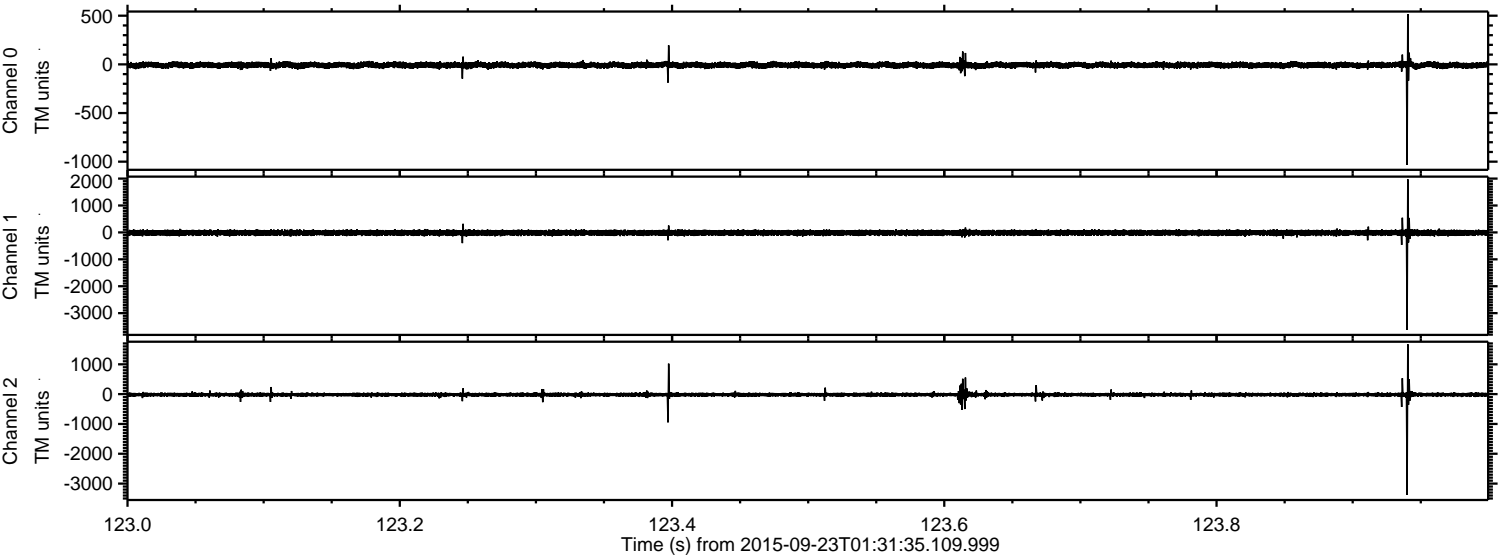
Processed Thu Oct 15 12:50:15 2015 by ELM ver.2012-10-06 from 001\_\_elm20150923\_013134\_\_dat00.bin





ELMAVAN 3D WAVEFORMS (Measured data sampled at 50 kHz) 51000 packets of 144 samples from 2015-09-23T01:31:35.109.999. Part 124/147

Processed Thu Oct 15 12:50:16 2015 by ELM ver.2012-10-06 from 001\_\_elm20150923\_013134\_\_dat00.bin





Processed Thu Oct 15 12:50:18 2015 by ELM ver.2012-10-06 from 001\_\_elm20150923\_013134\_\_dat00.bin

