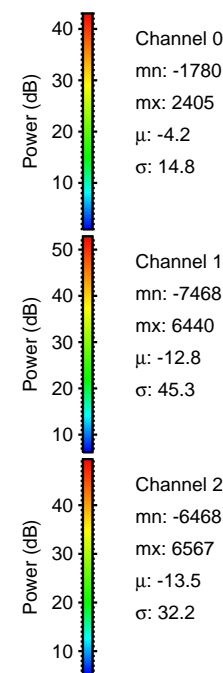
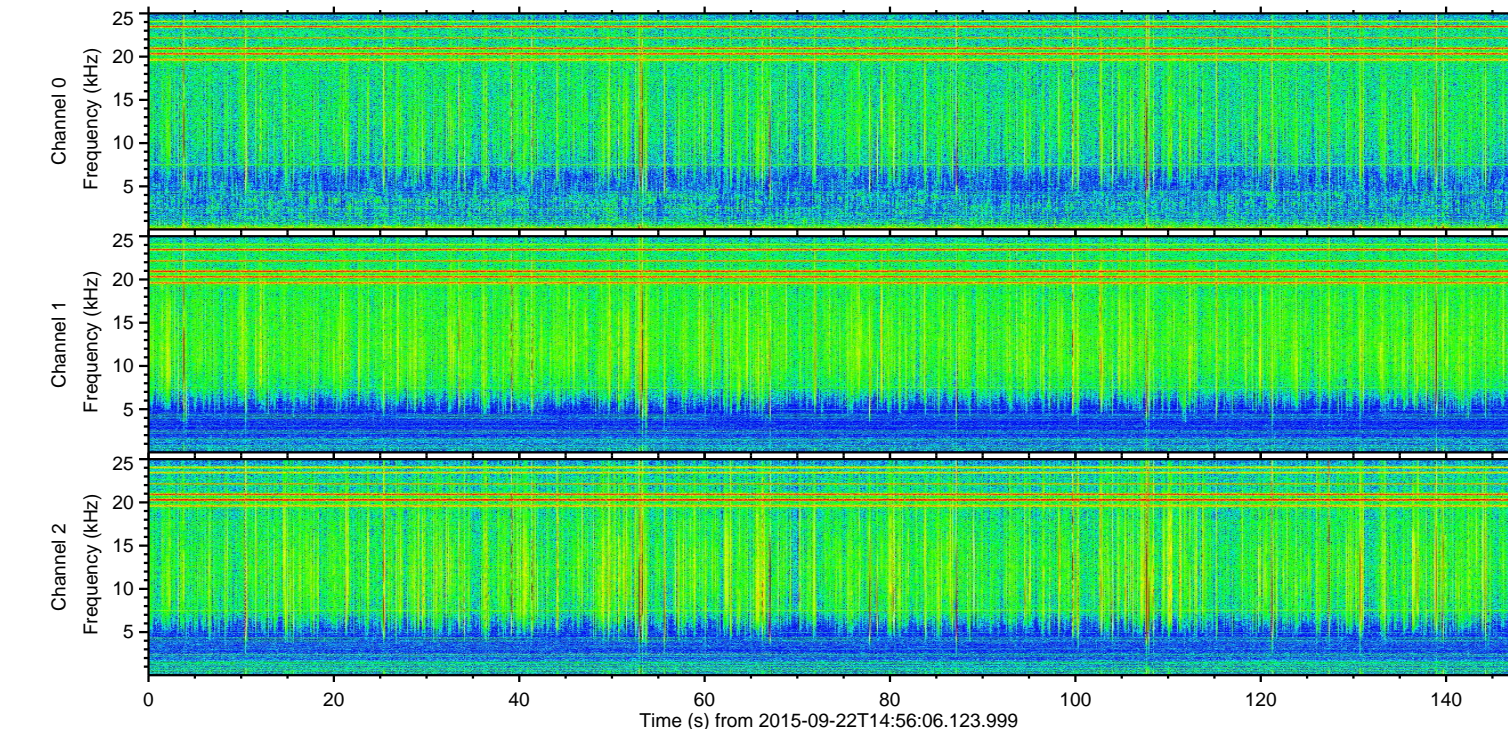
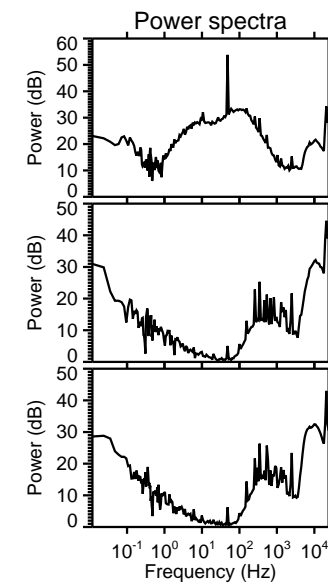
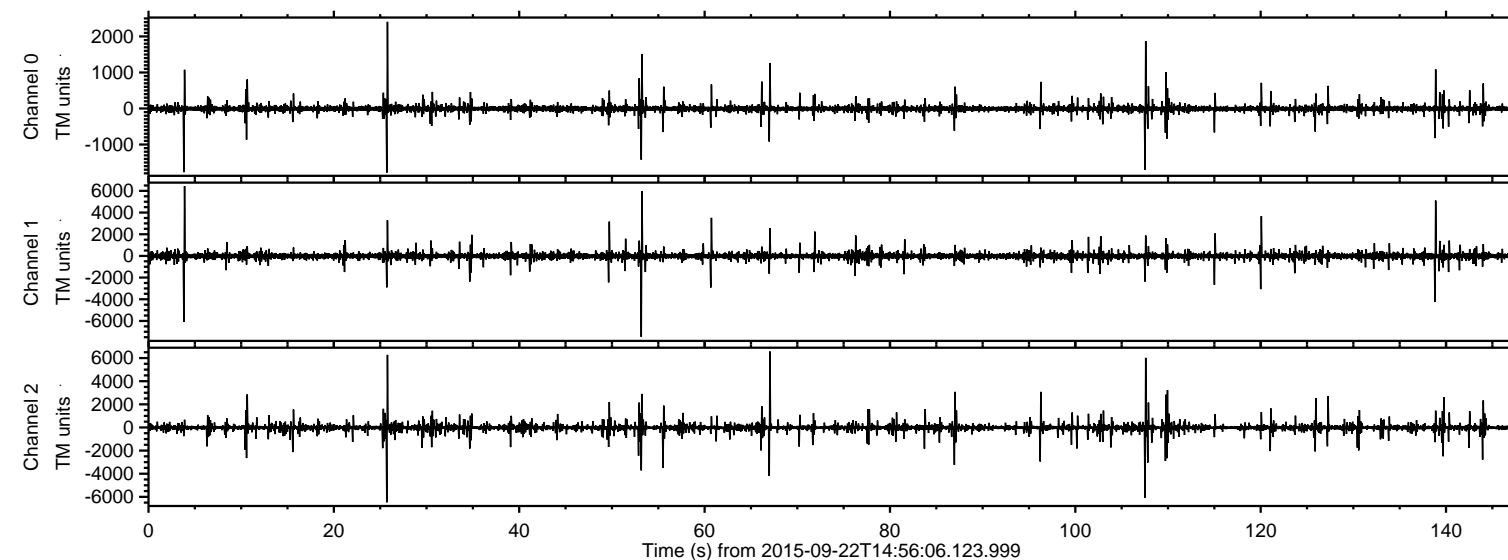
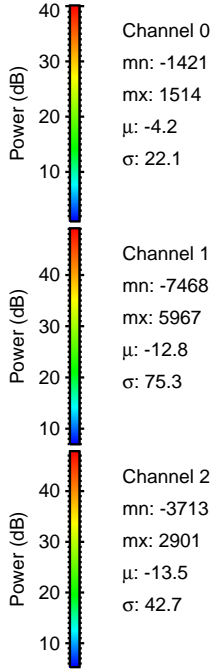
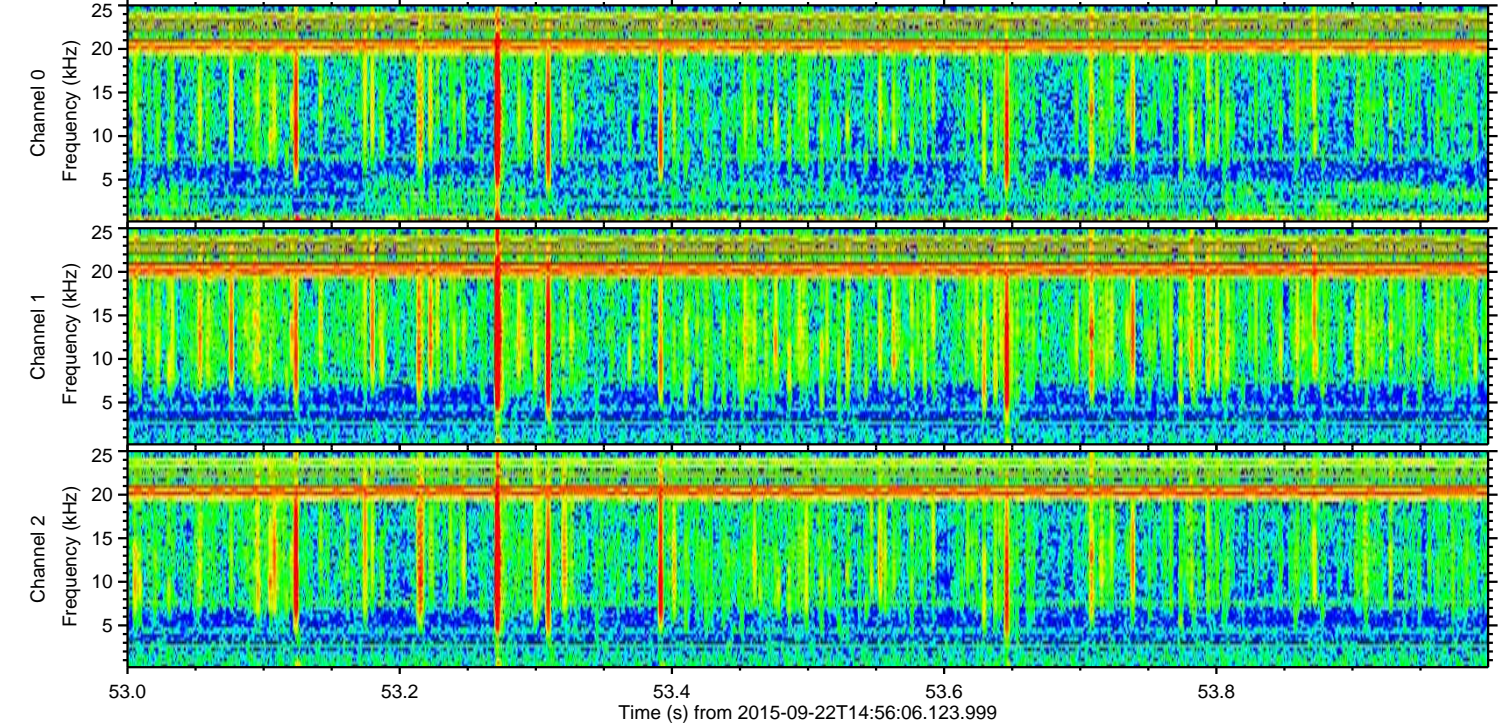
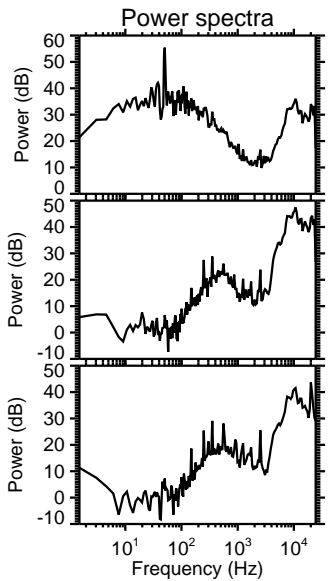
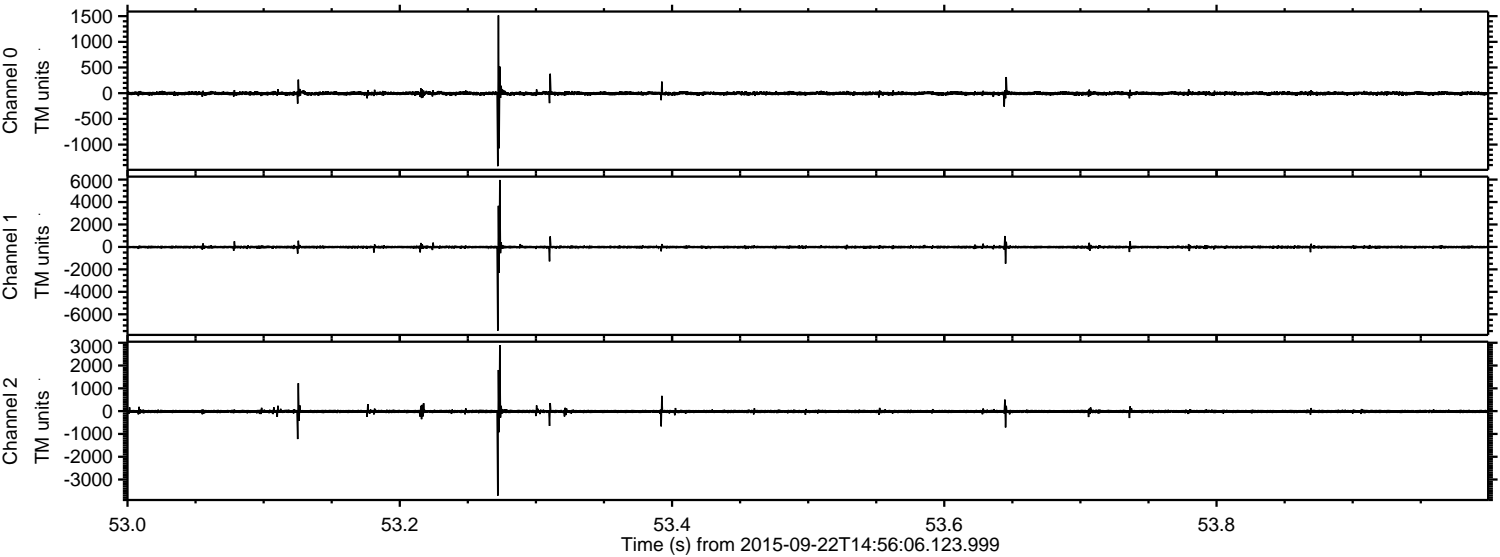


ELMAVAN 3D WAVEFORMS (Measured data sampled at 50 kHz) 51000 packets of 144 samples from 2015-09-22T14:56:06.123.999.

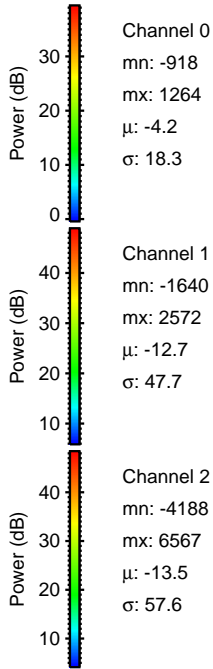
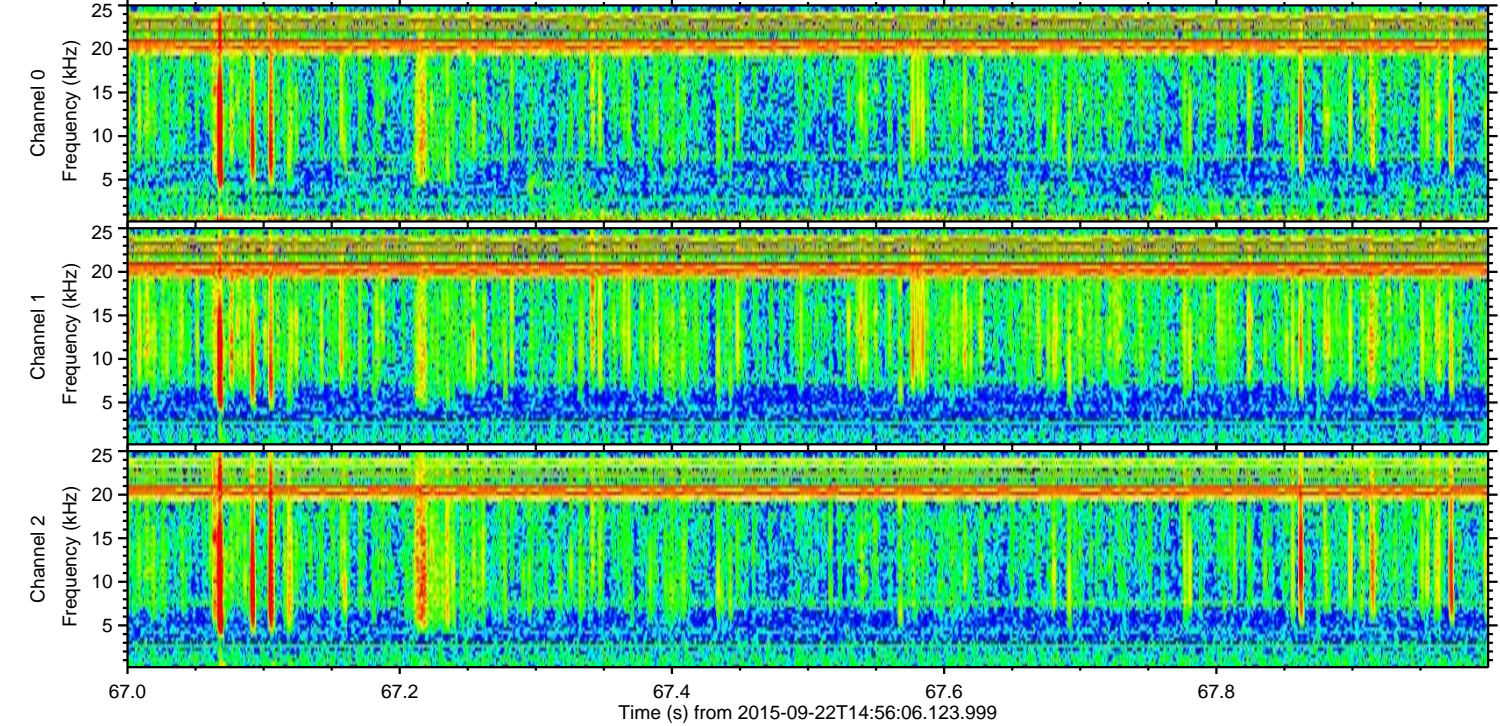
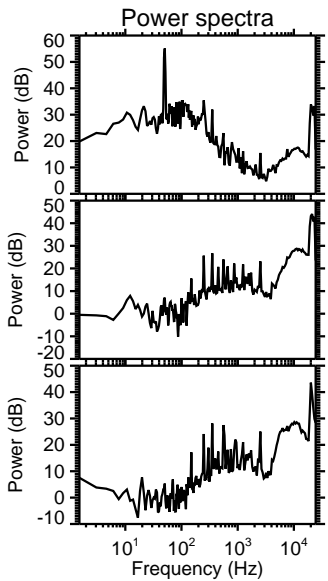
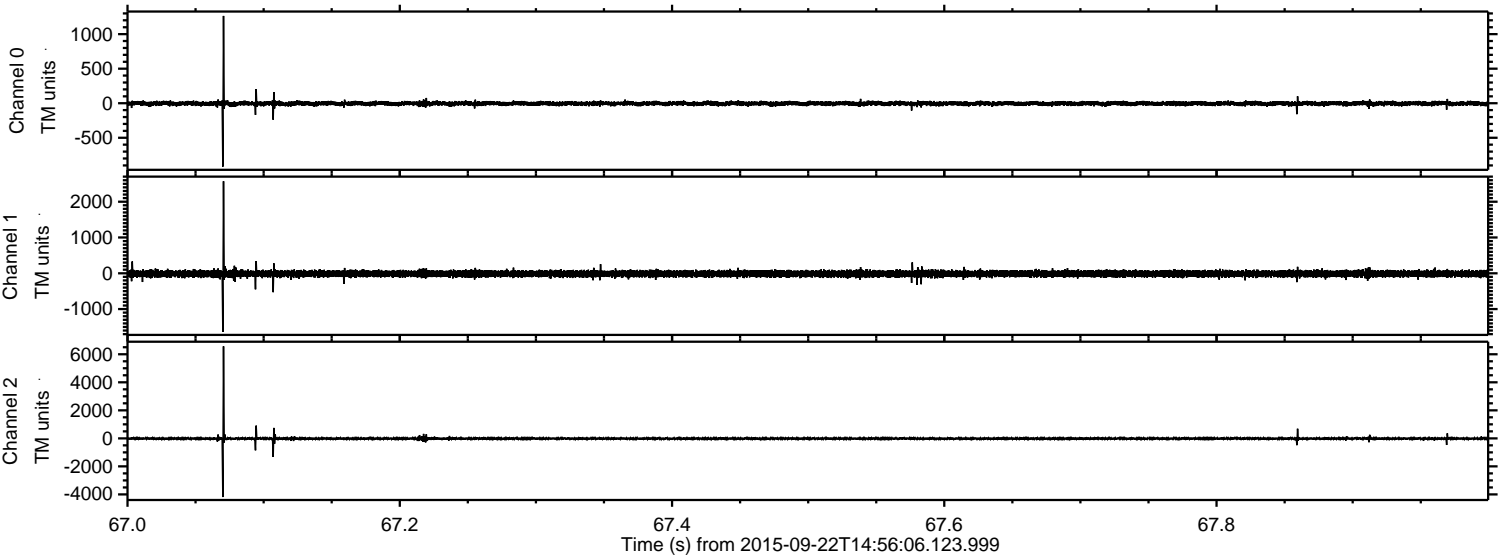
Processed Thu Oct 15 09:18:28 2015 by ELM ver.2012-10-06 from 001__elm20150922_145605__dat00.bin



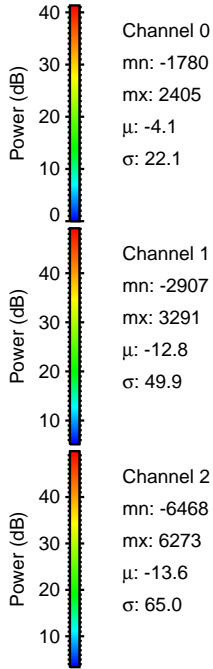
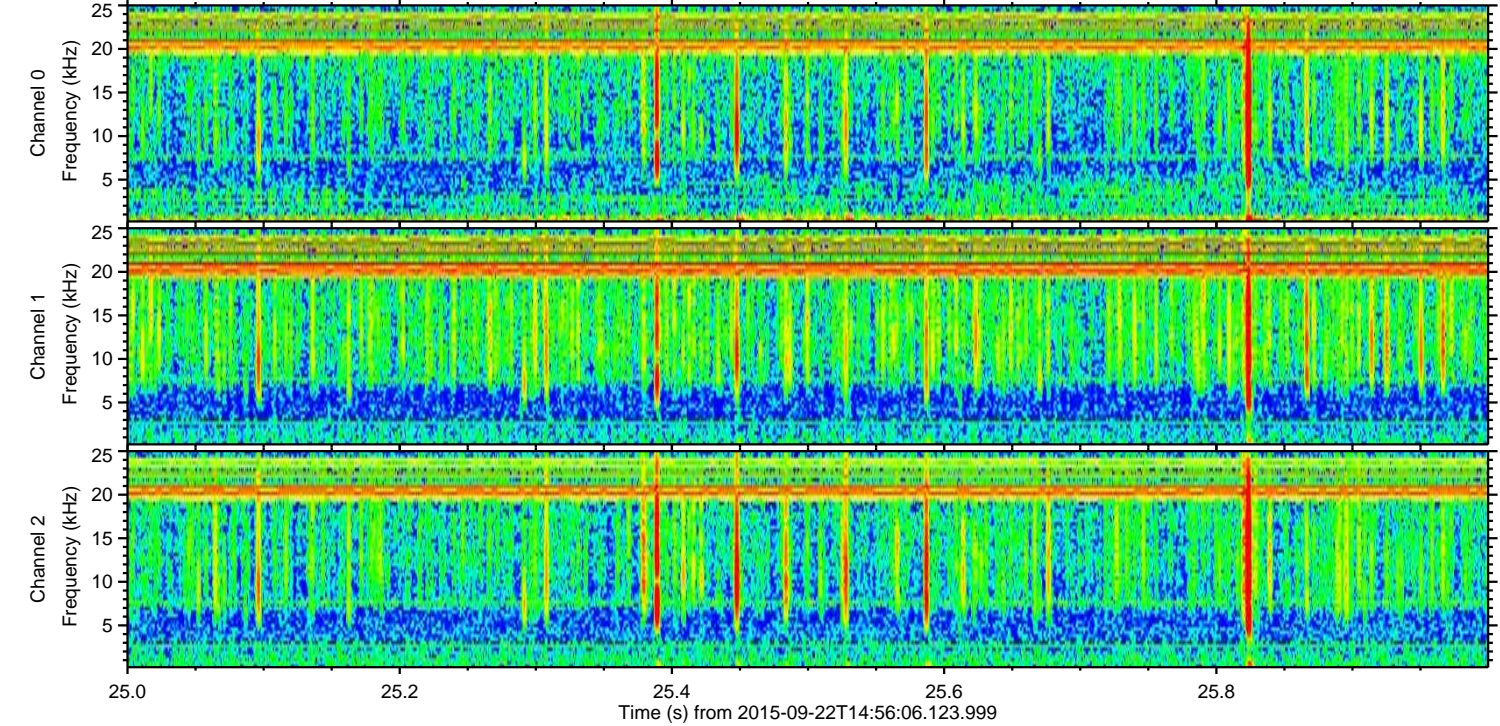
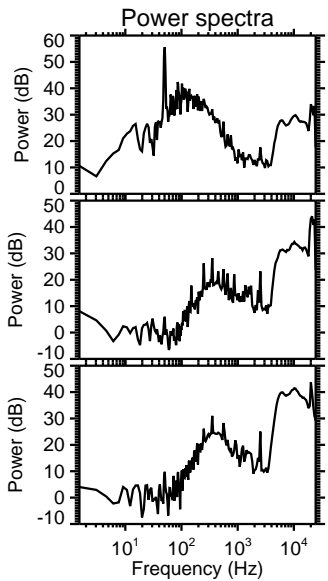
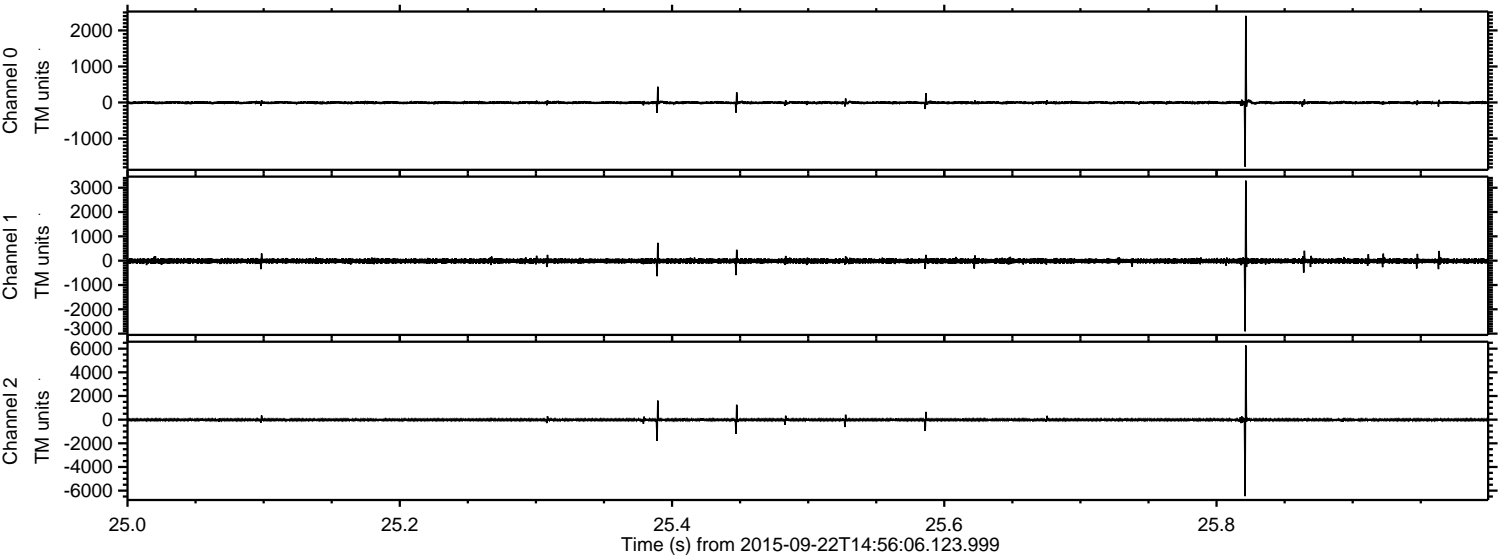
Processed Thu Oct 15 09:18:47 2015 by ELM ver.2012-10-06 from 001__elm20150922_145605__dat00.bin



Processed Thu Oct 15 09:18:49 2015 by ELM ver.2012-10-06 from 001__elm20150922_145605__dat00.bin

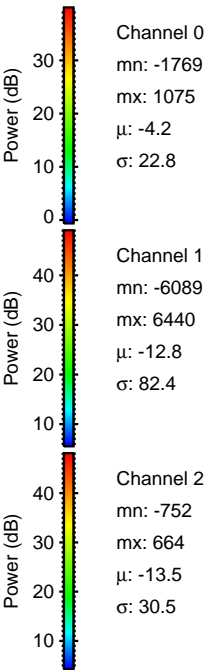
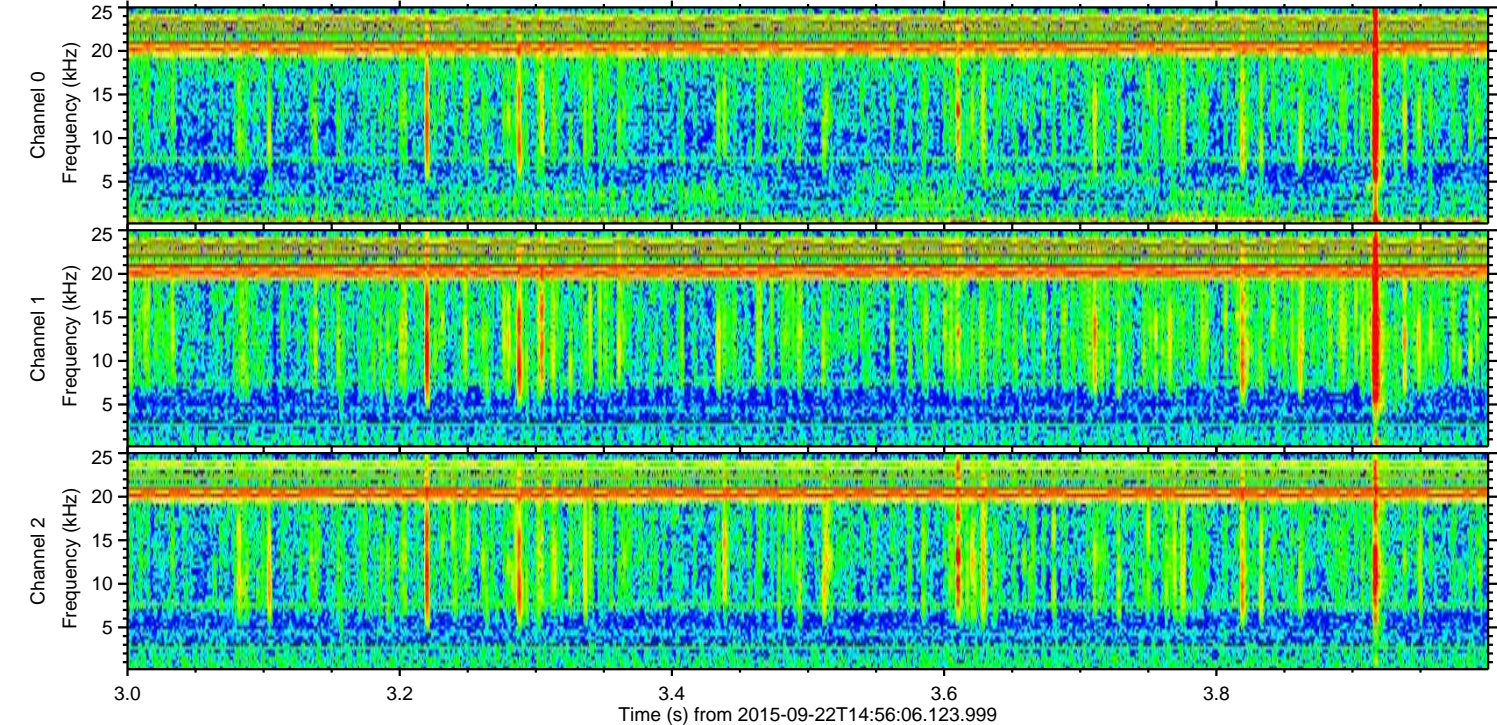
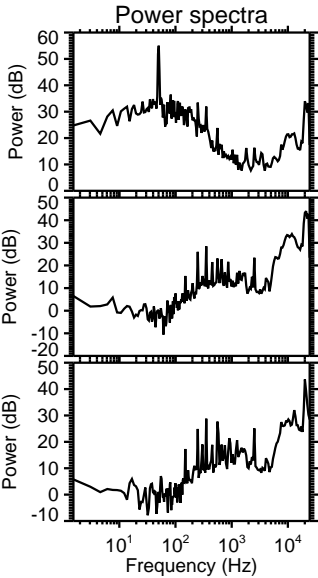
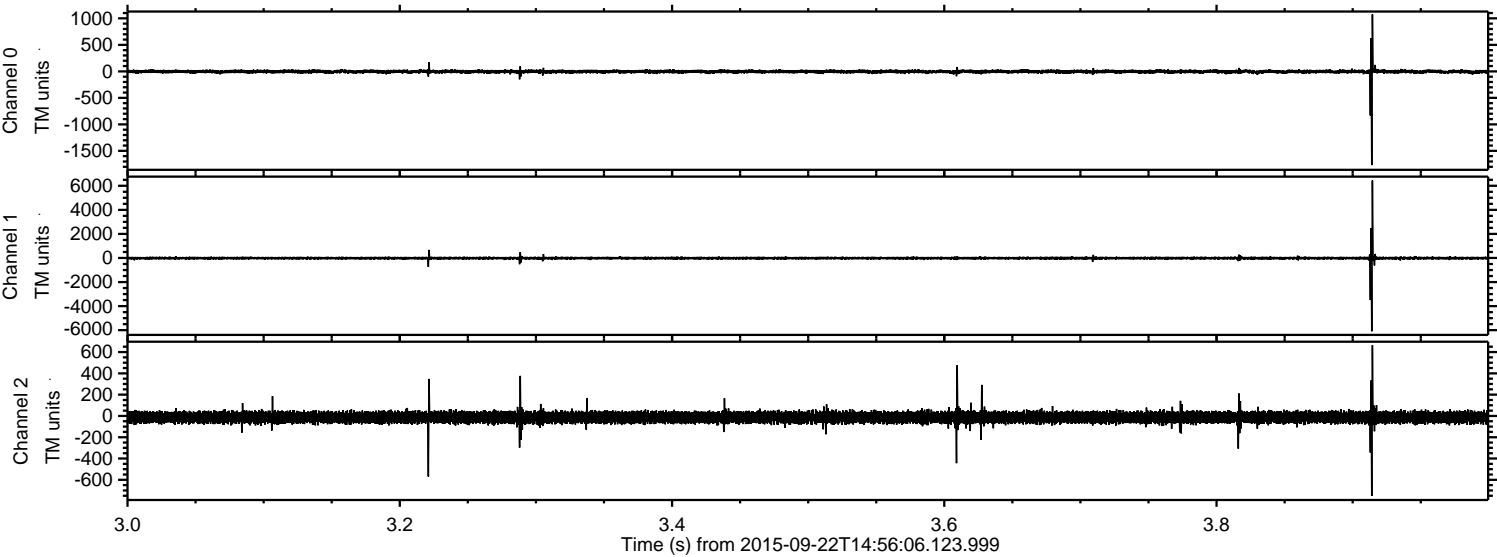


Processed Thu Oct 15 09:18:51 2015 by ELM ver.2012-10-06 from 001__elm20150922_145605__dat00.bin



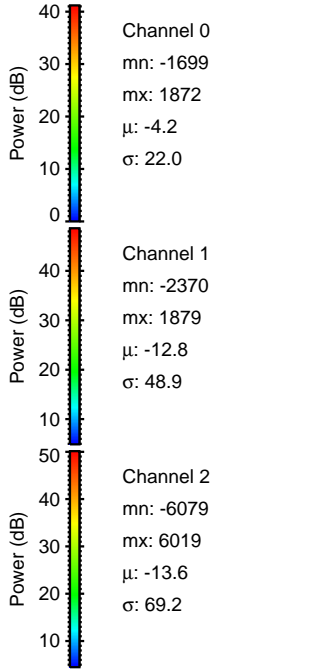
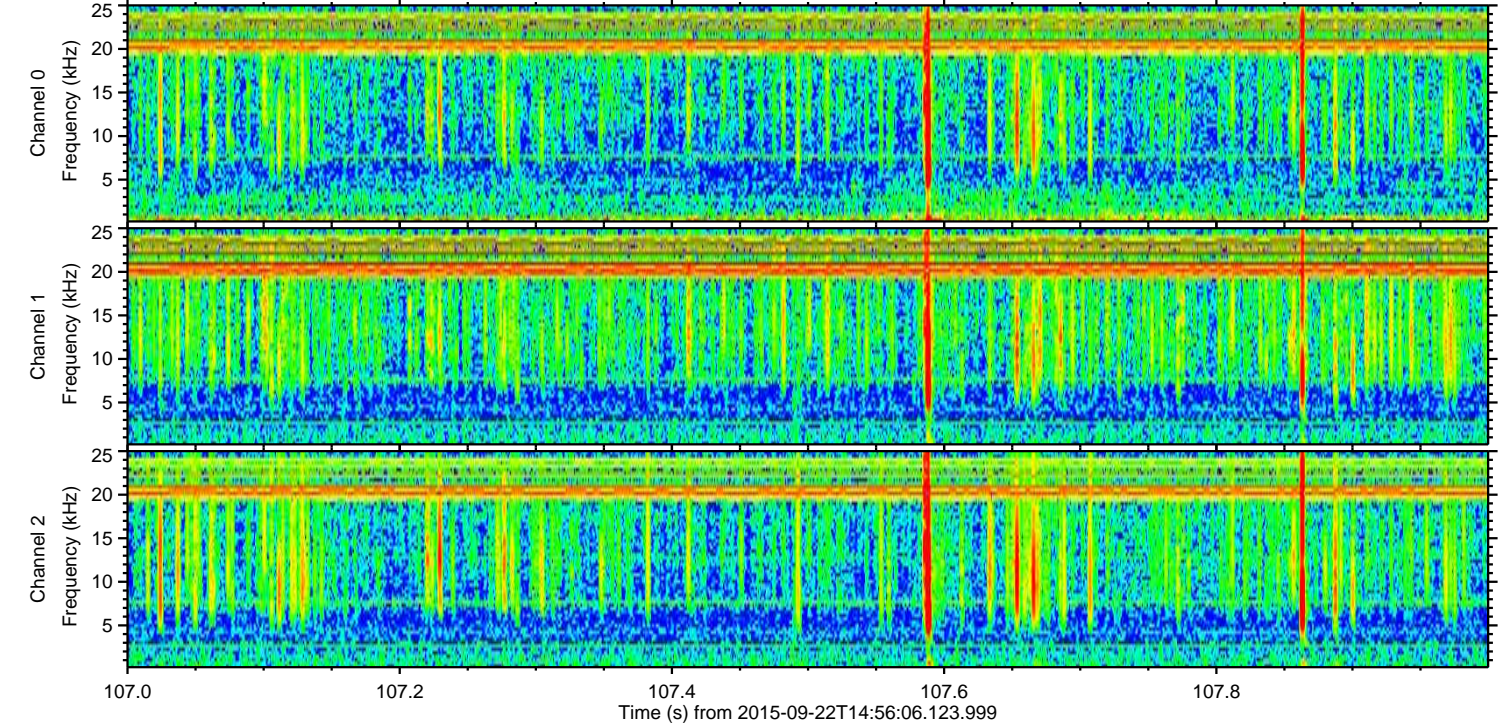
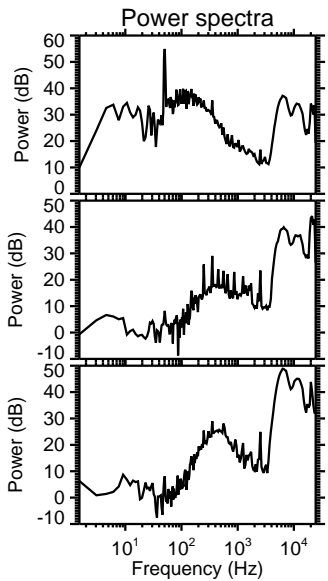
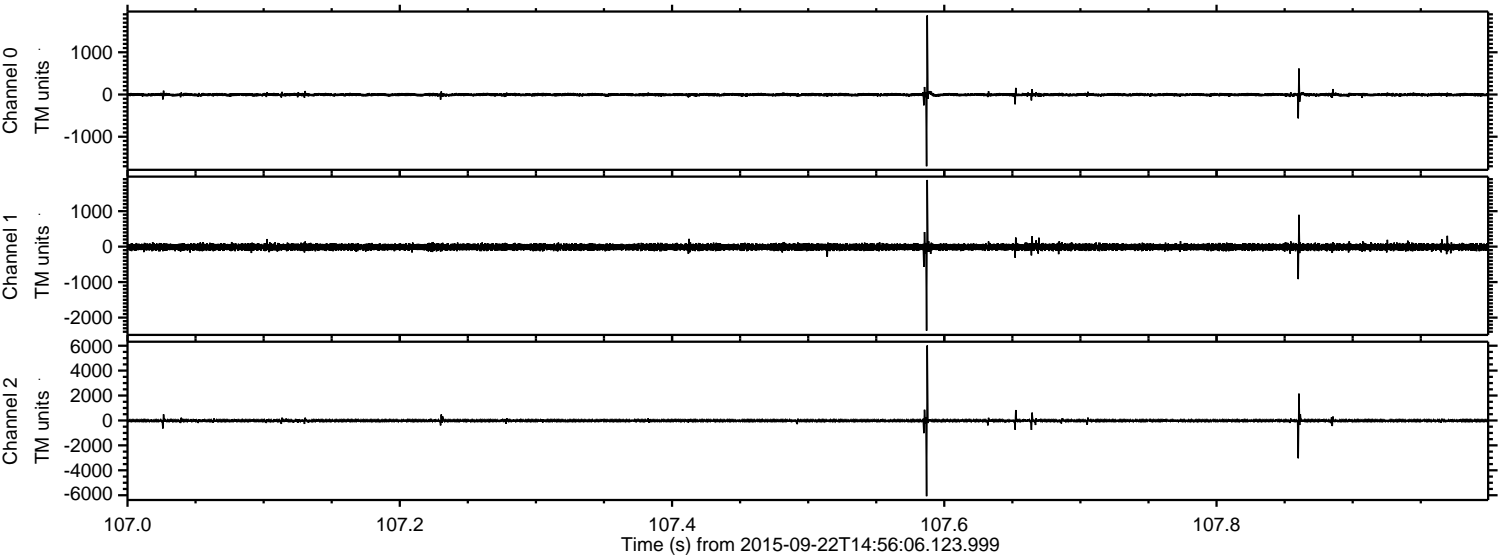
ELMAVAN 3D WAVEFORMS (Measured data sampled at 50 kHz) 51000 packets of 144 samples from 2015-09-22T14:56:06.123.999. Part 4/147

Processed Thu Oct 15 09:18:52 2015 by ELM ver.2012-10-06 from 001__elm20150922_145605__dat00.bin



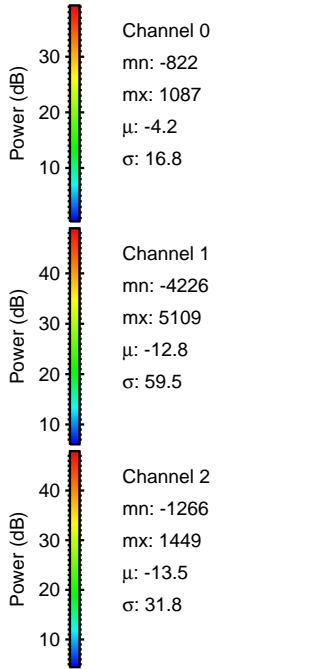
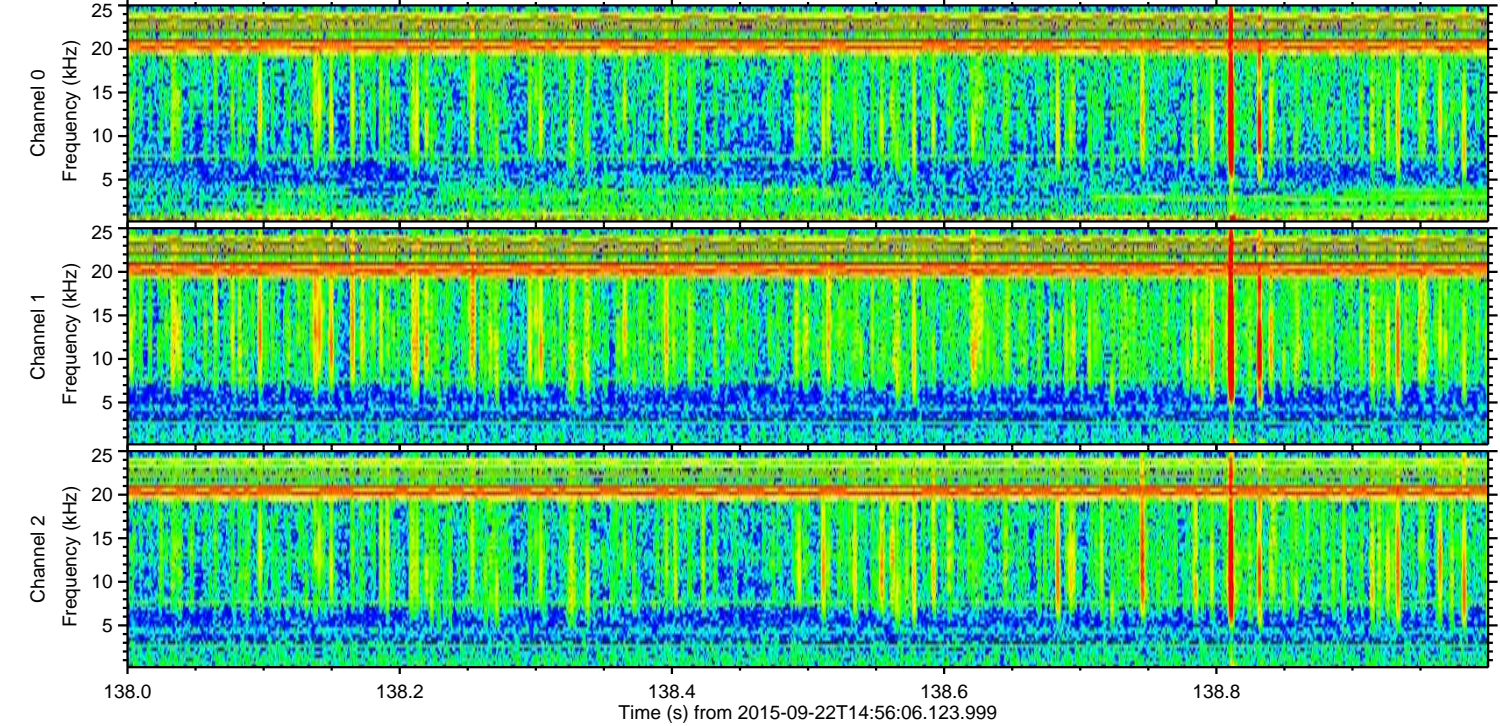
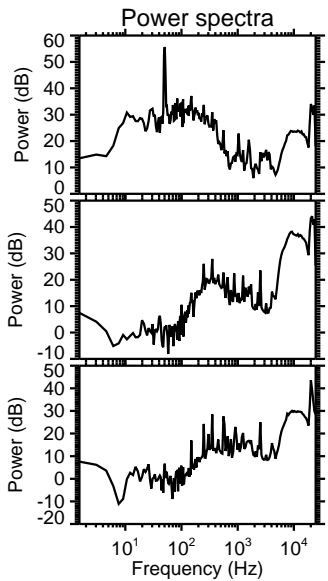
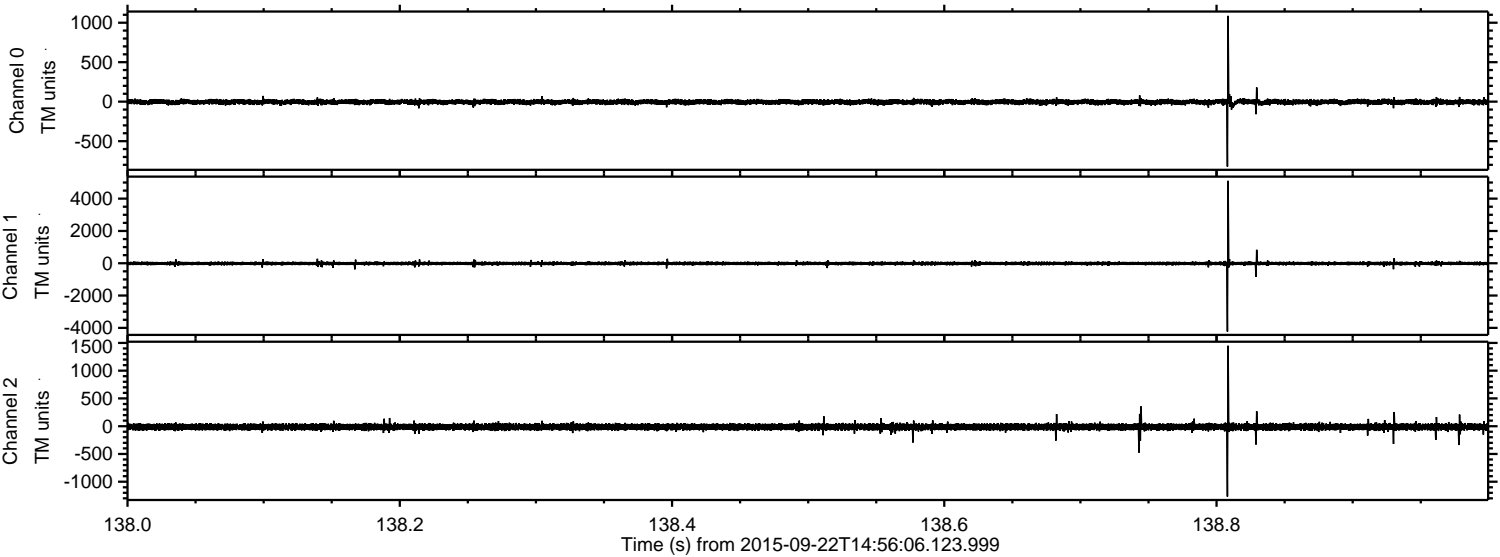
ELMAVAN 3D WAVEFORMS (Measured data sampled at 50 kHz) 51000 packets of 144 samples from 2015-09-22T14:56:06.123.999. Part 108/147

Processed Thu Oct 15 09:18:53 2015 by ELM ver.2012-10-06 from 001__elm20150922_145605__dat00.bin



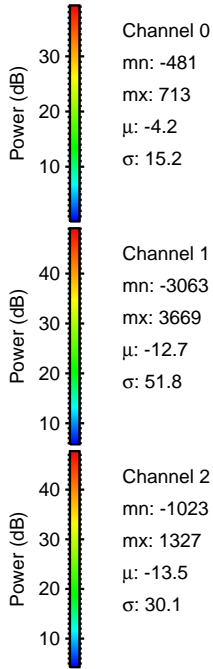
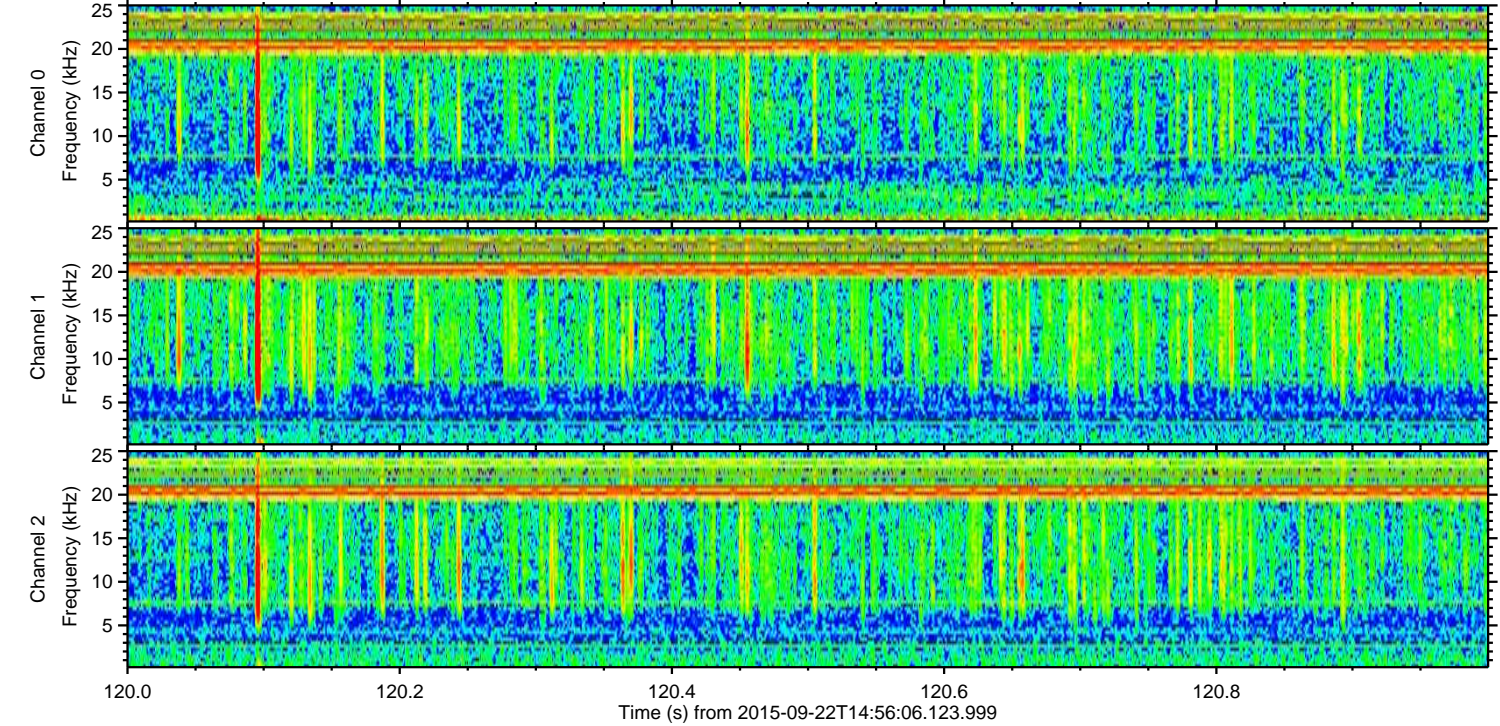
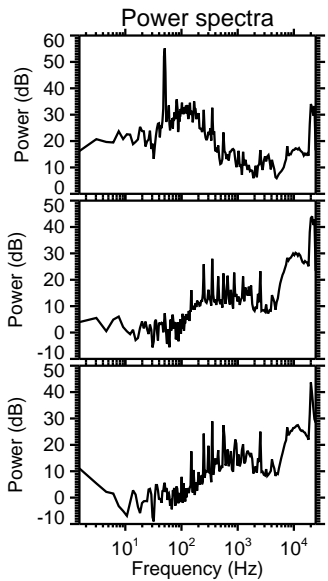
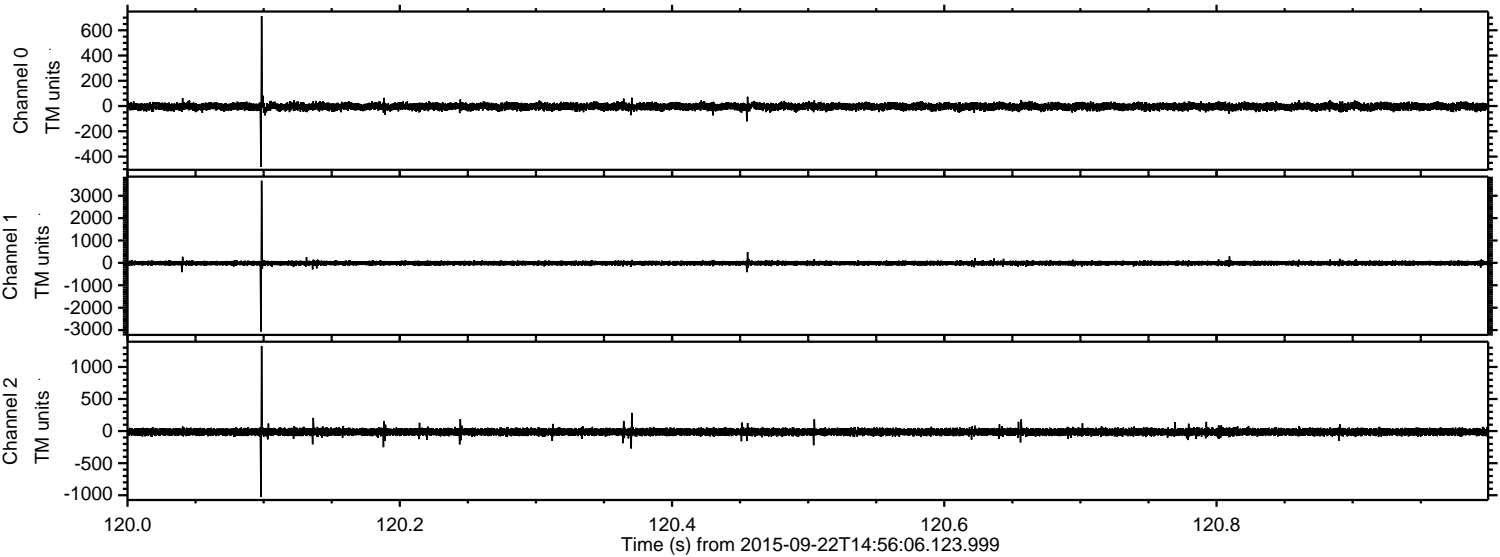
ELMAVAN 3D WAVEFORMS (Measured data sampled at 50 kHz) 51000 packets of 144 samples from 2015-09-22T14:56:06.123.999. Part 139/147

Processed Thu Oct 15 09:18:54 2015 by ELM ver.2012-10-06 from 001__elm20150922_145605__dat00.bin

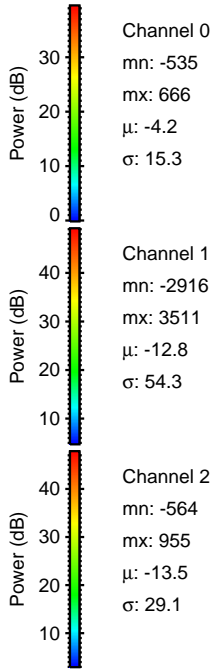
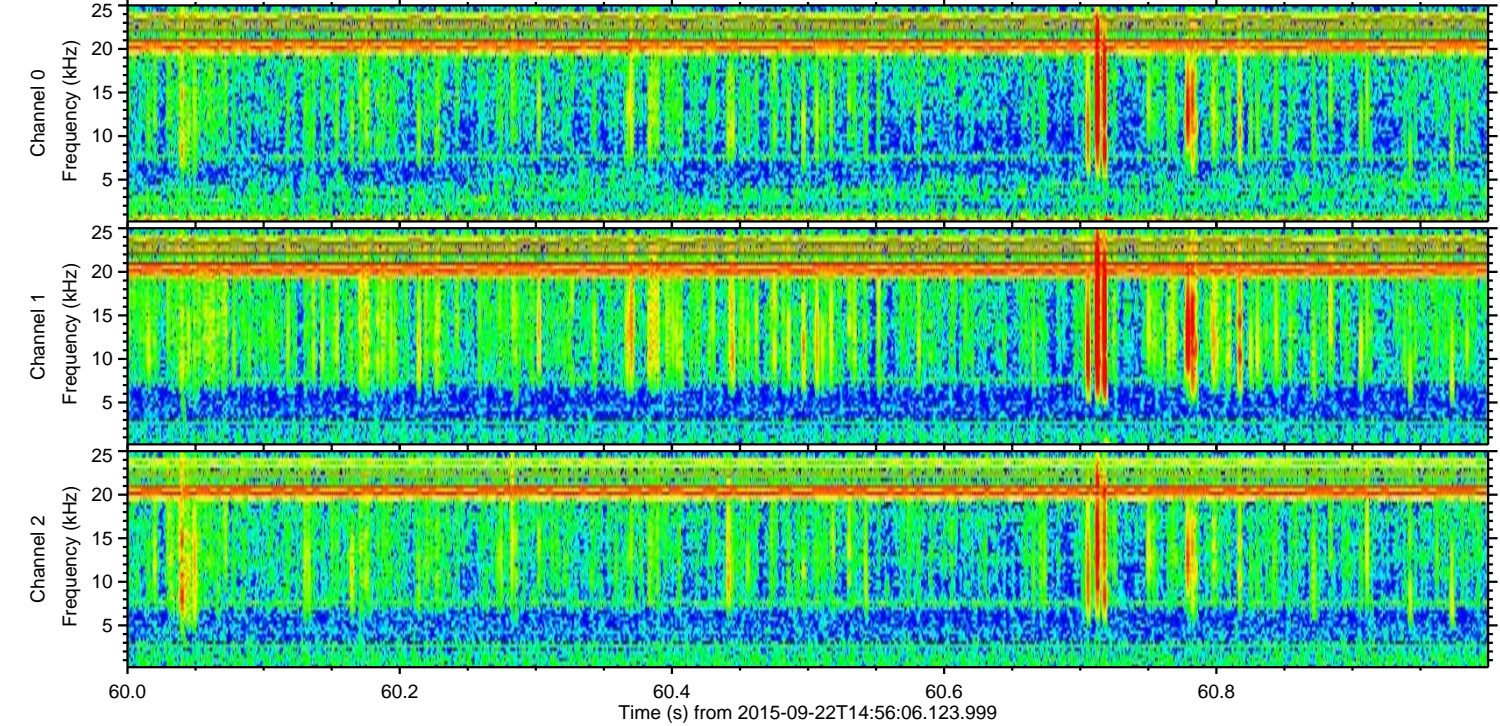
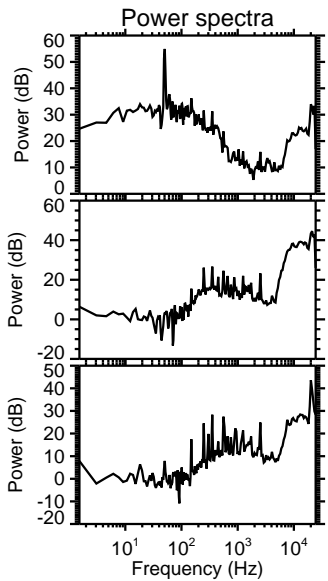
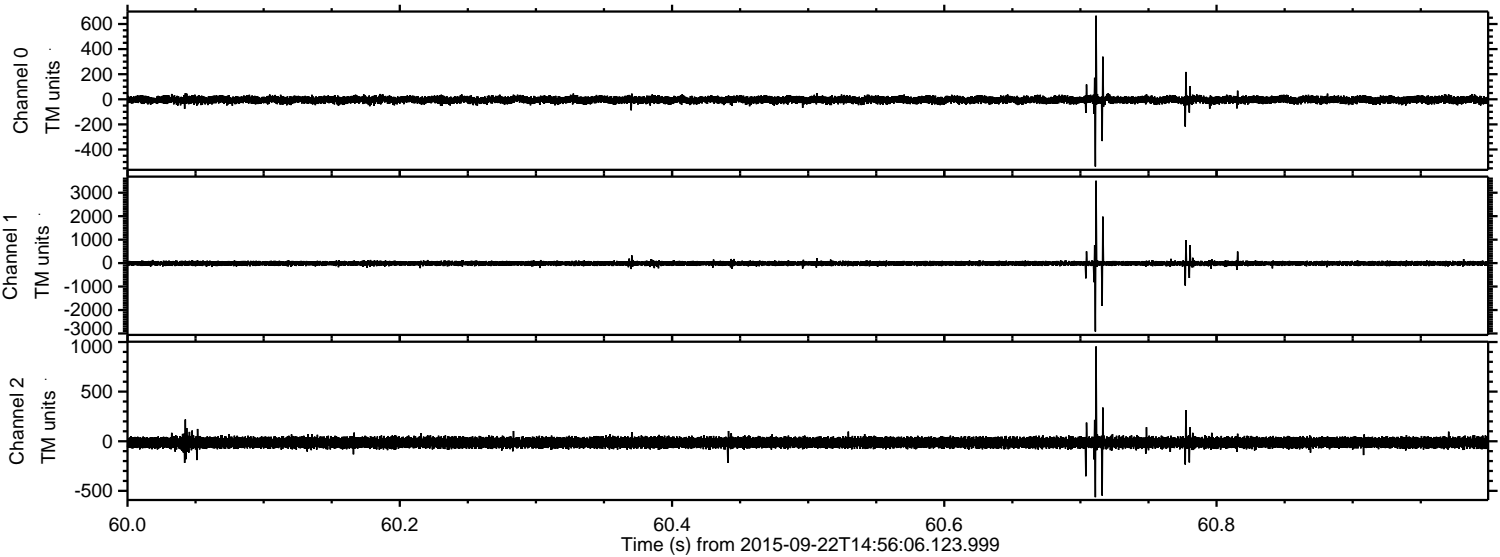


ELMAVAN 3D WAVEFORMS (Measured data sampled at 50 kHz) 51000 packets of 144 samples from 2015-09-22T14:56:06.123.999. Part 121/147

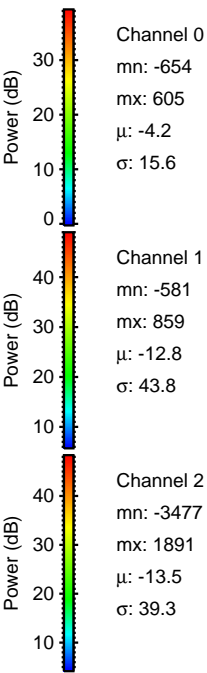
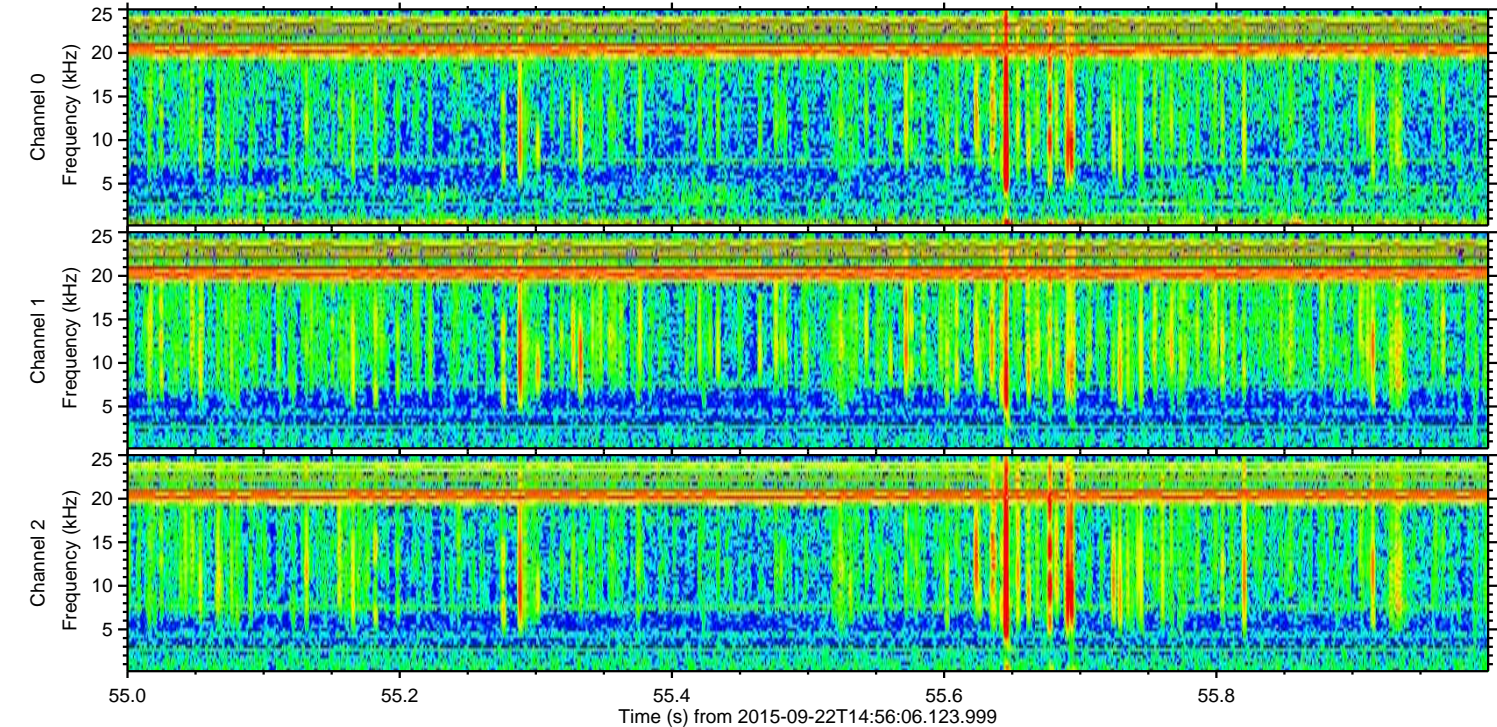
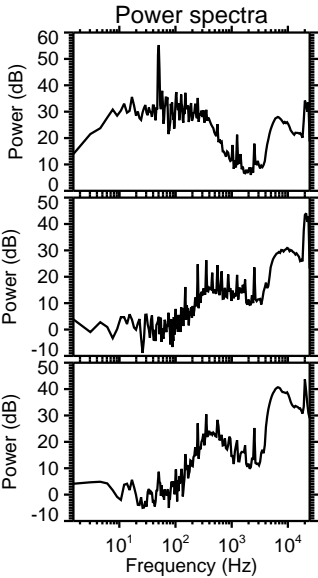
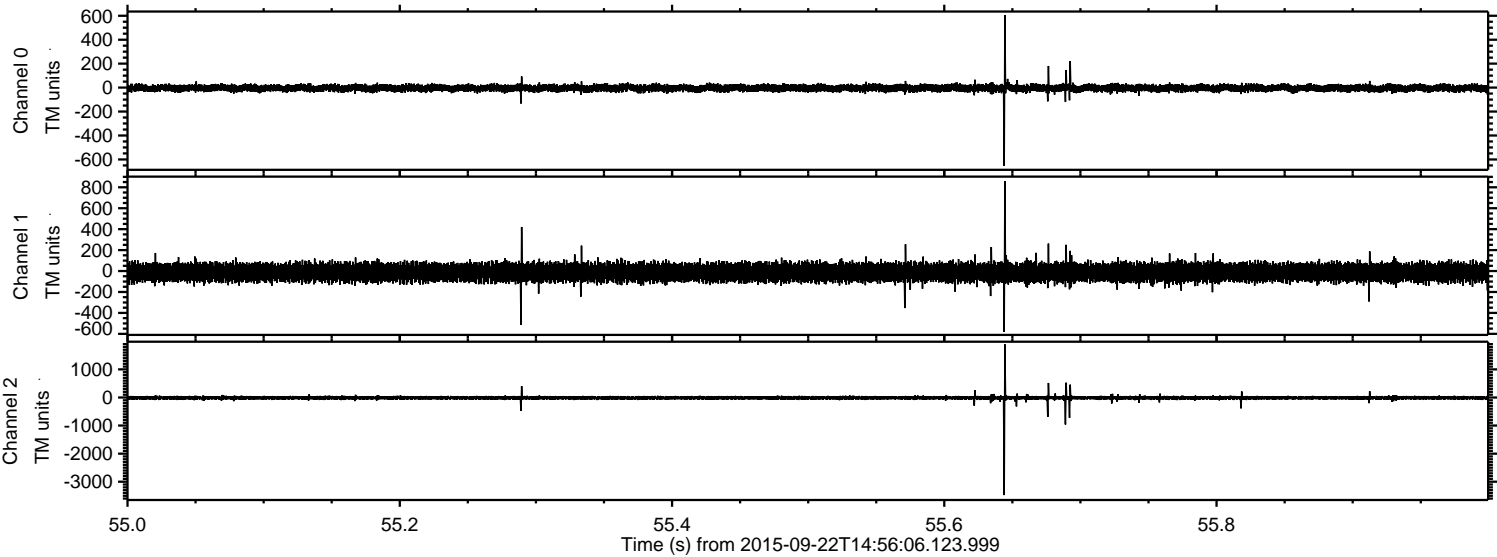
Processed Thu Oct 15 09:18:56 2015 by ELM ver.2012-10-06 from 001__elm20150922_145605__dat00.bin



Processed Thu Oct 15 09:18:57 2015 by ELM ver.2012-10-06 from 001__elm20150922_145605__dat00.bin



Processed Thu Oct 15 09:18:58 2015 by ELM ver.2012-10-06 from 001__elm20150922_145605__dat00.bin



Channel 0
mn: -654
mx: 605
 μ : -4.2
 σ : 15.6

Channel 1
mn: -581
mx: 859
 μ : -12.8
 σ : 43.8

Channel 2
mn: -3477
mx: 1891
 μ : -13.5
 σ : 39.3

Processed Thu Oct 15 09:18:59 2015 by ELM ver.2012-10-06 from 001__elm20150922_145605__dat00.bin

