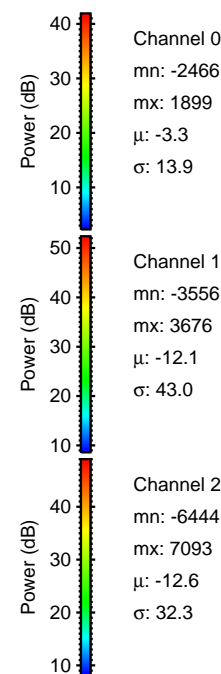
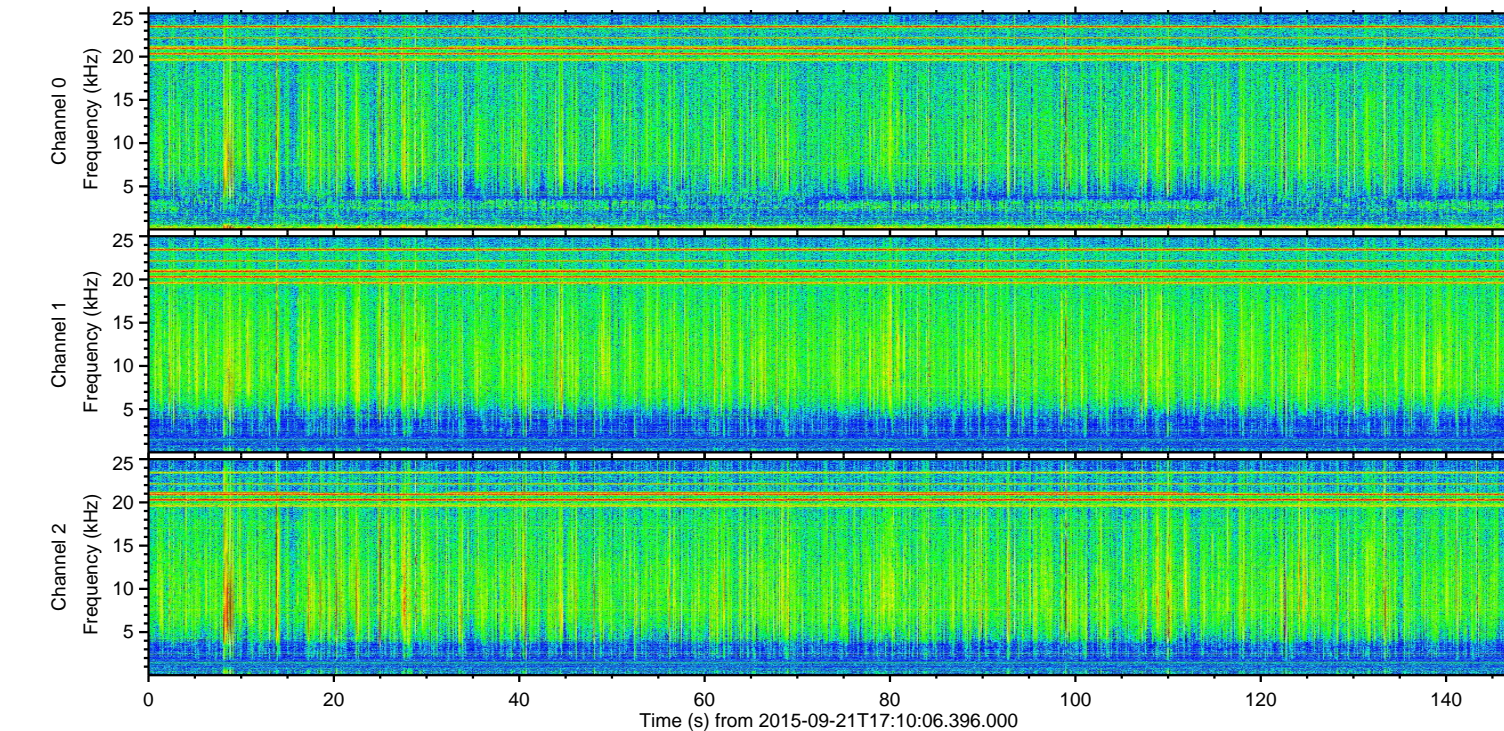
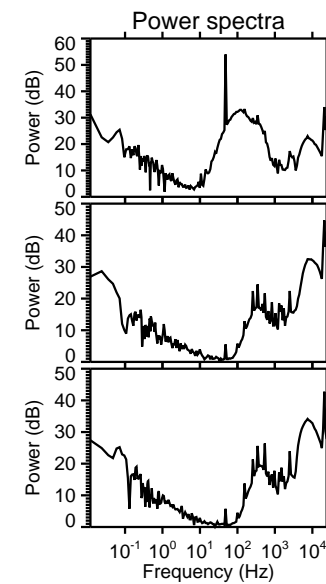
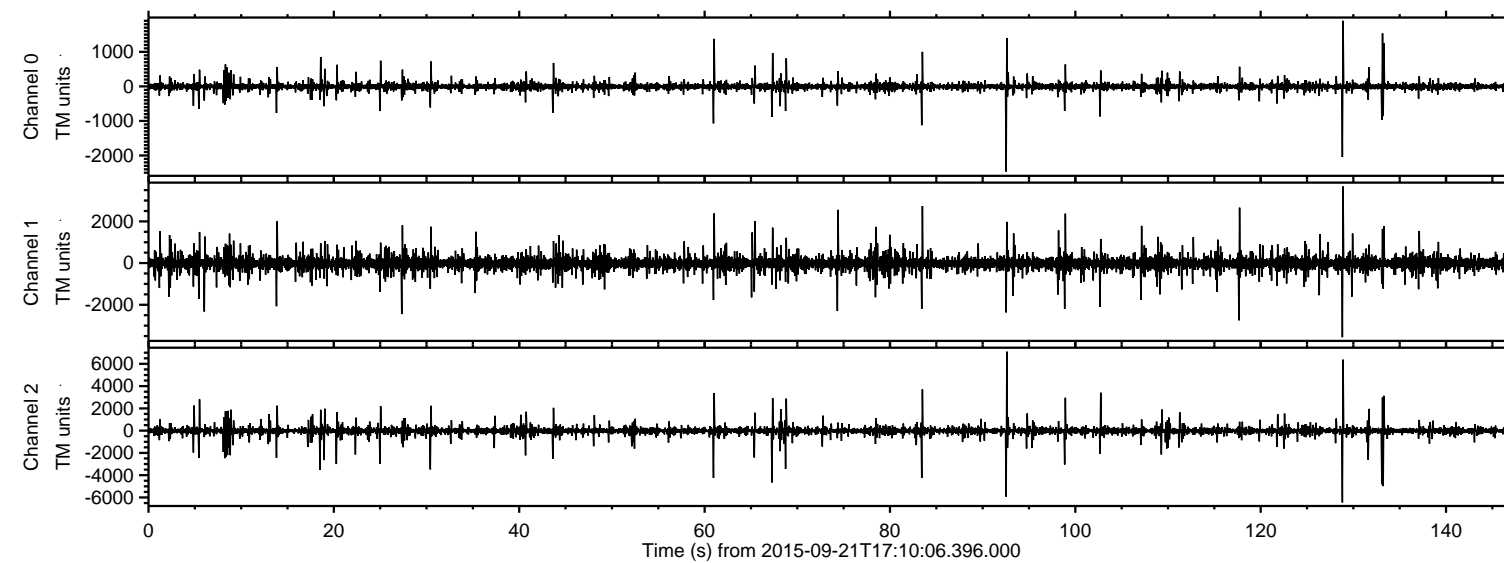


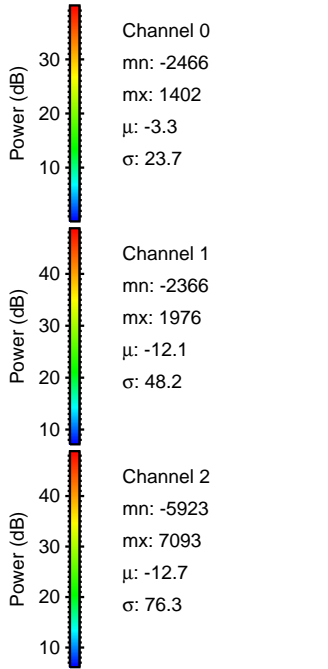
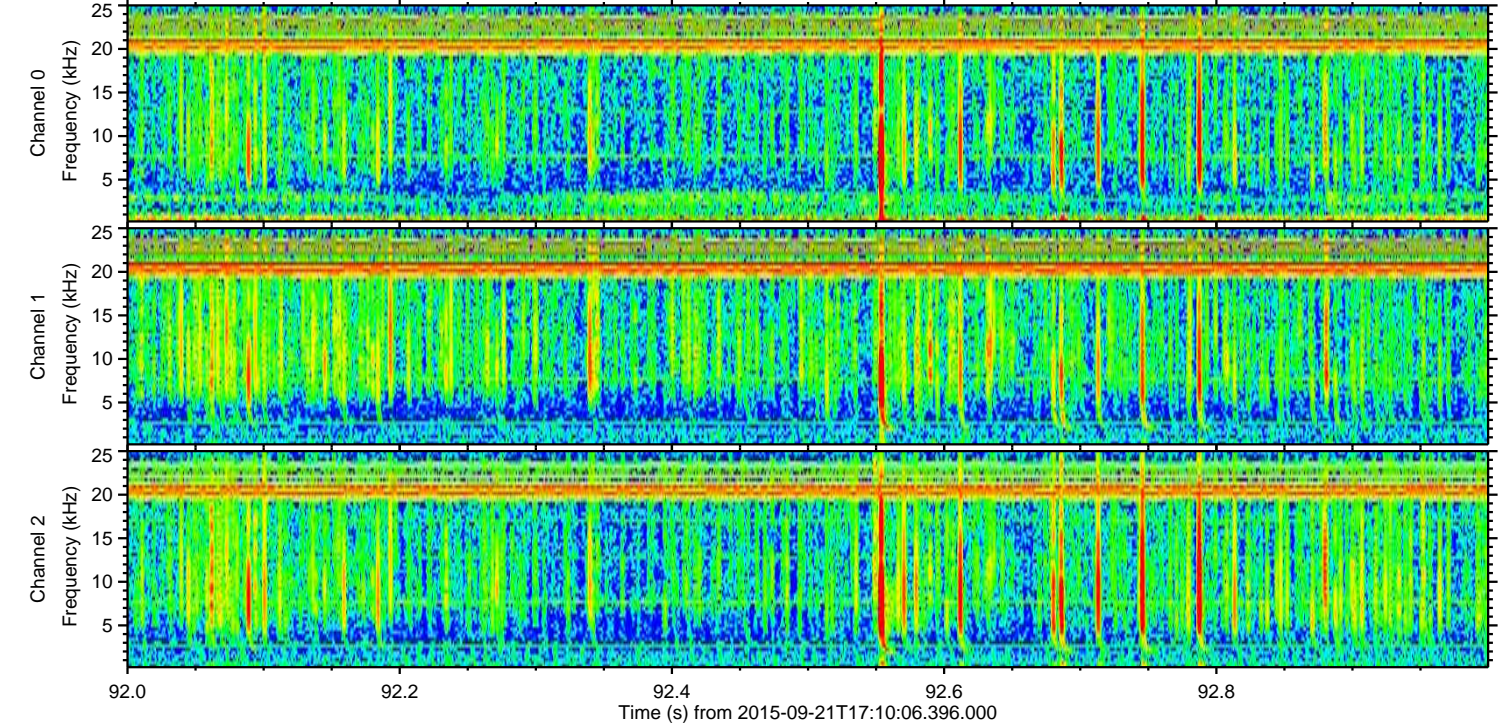
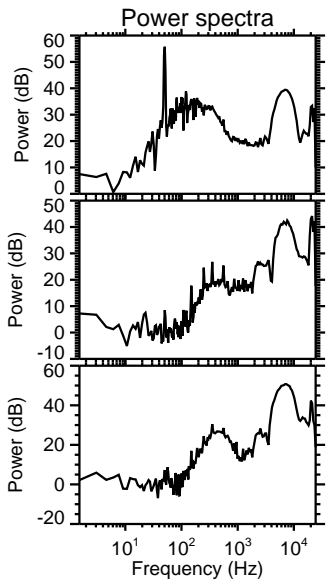
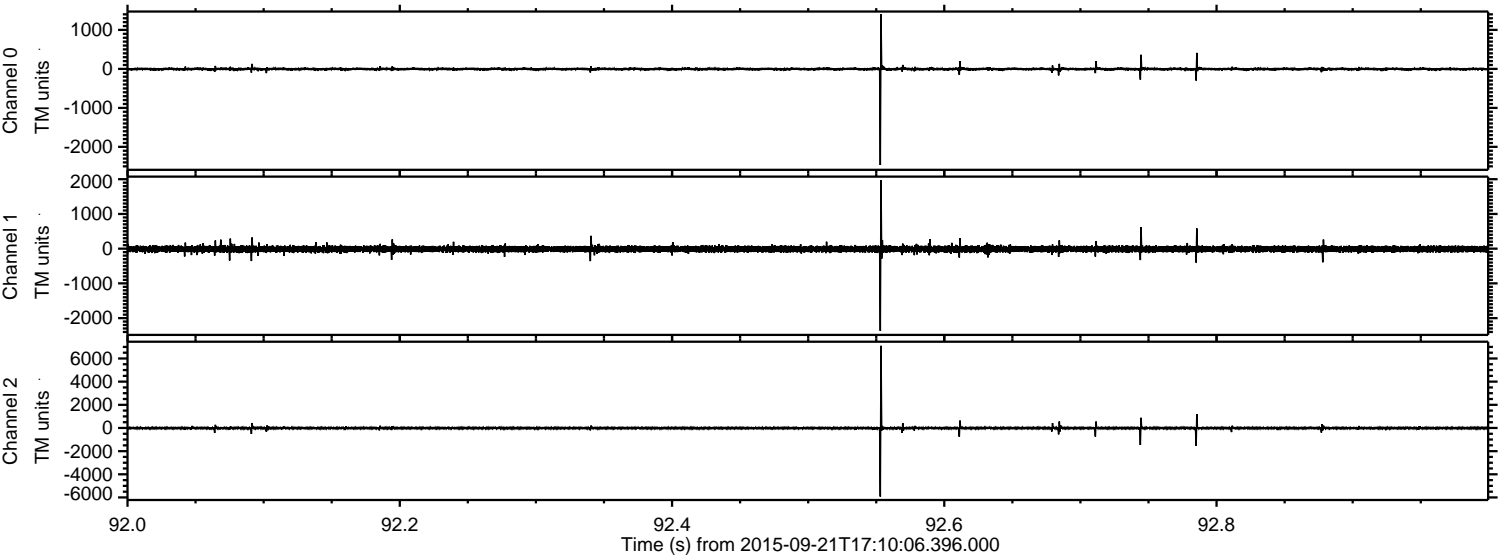
# ELMAVAN 3D WAVEFORMS (Measured data sampled at 50 kHz) 51000 packets of 144 samples from 2015-09-21T17:10:06.396.000.

Processed Thu Oct 15 01:39:06 2015 by ELM ver.2012-10-06 from 001\_\_elm20150921\_171005\_\_dat00.bin





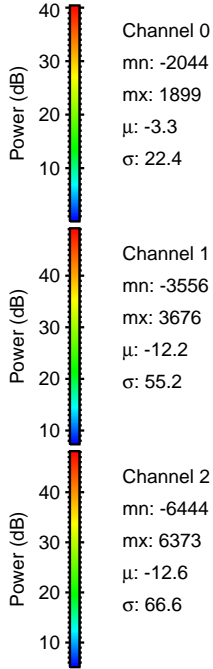
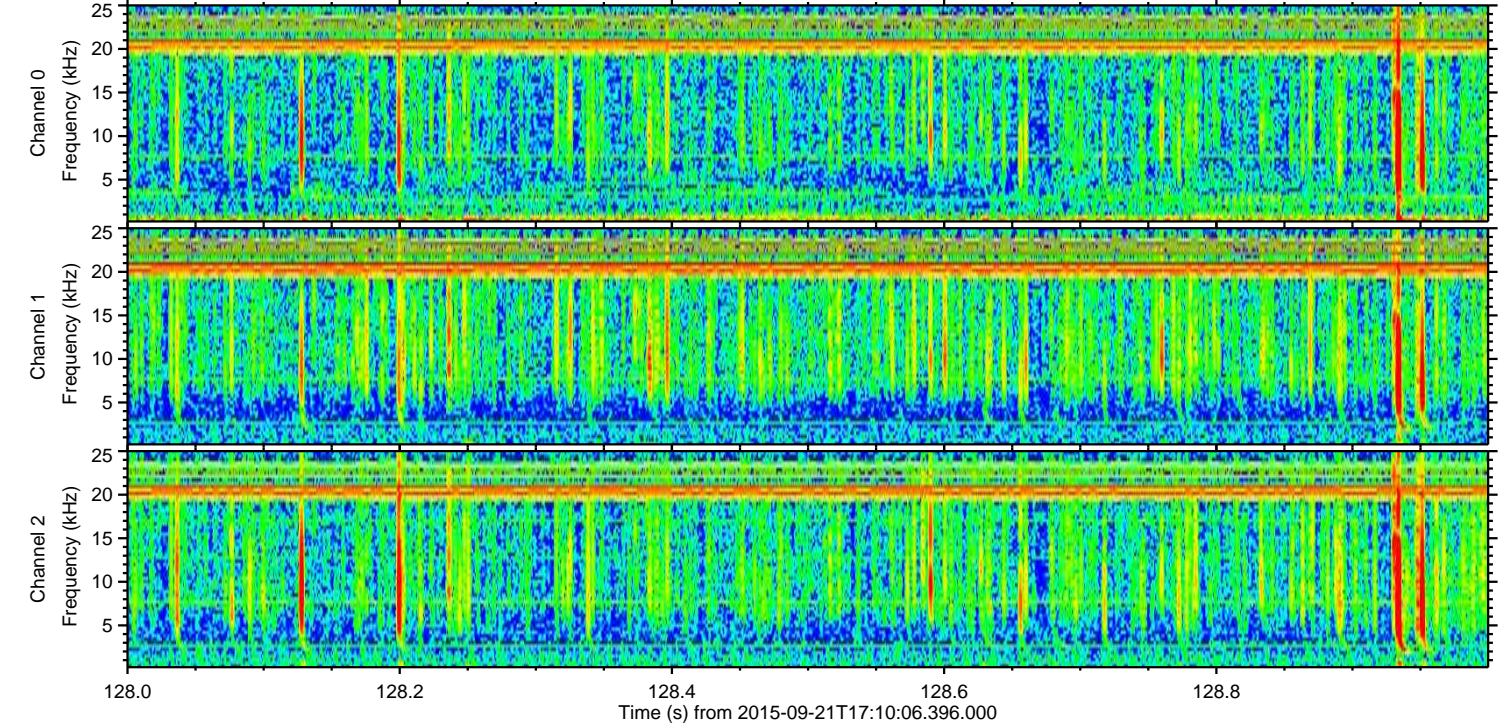
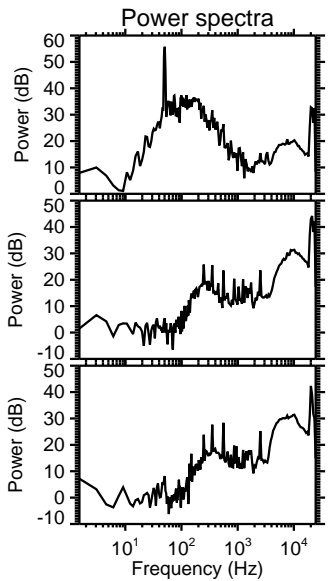
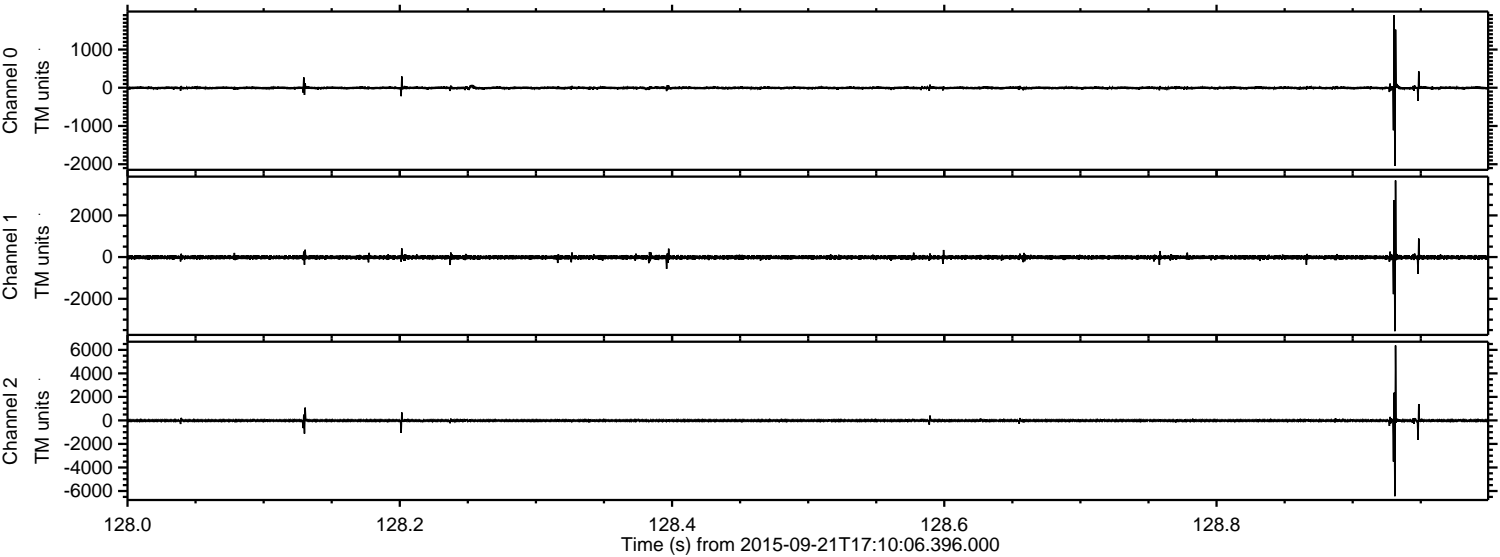
Processed Thu Oct 15 01:39:23 2015 by ELM ver.2012-10-06 from 001\_\_elm20150921\_171005\_\_dat00.bin





ELMAVAN 3D WAVEFORMS (Measured data sampled at 50 kHz) 51000 packets of 144 samples from 2015-09-21T17:10:06.396.000. Part 129/147

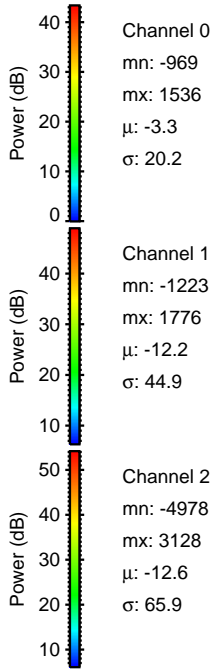
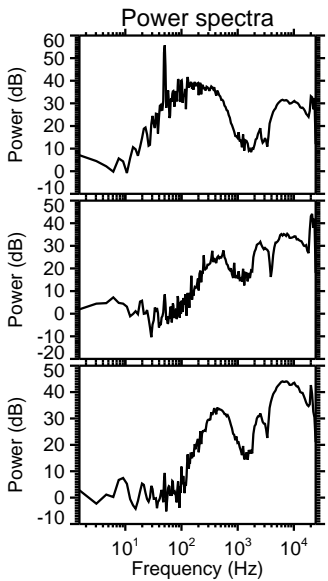
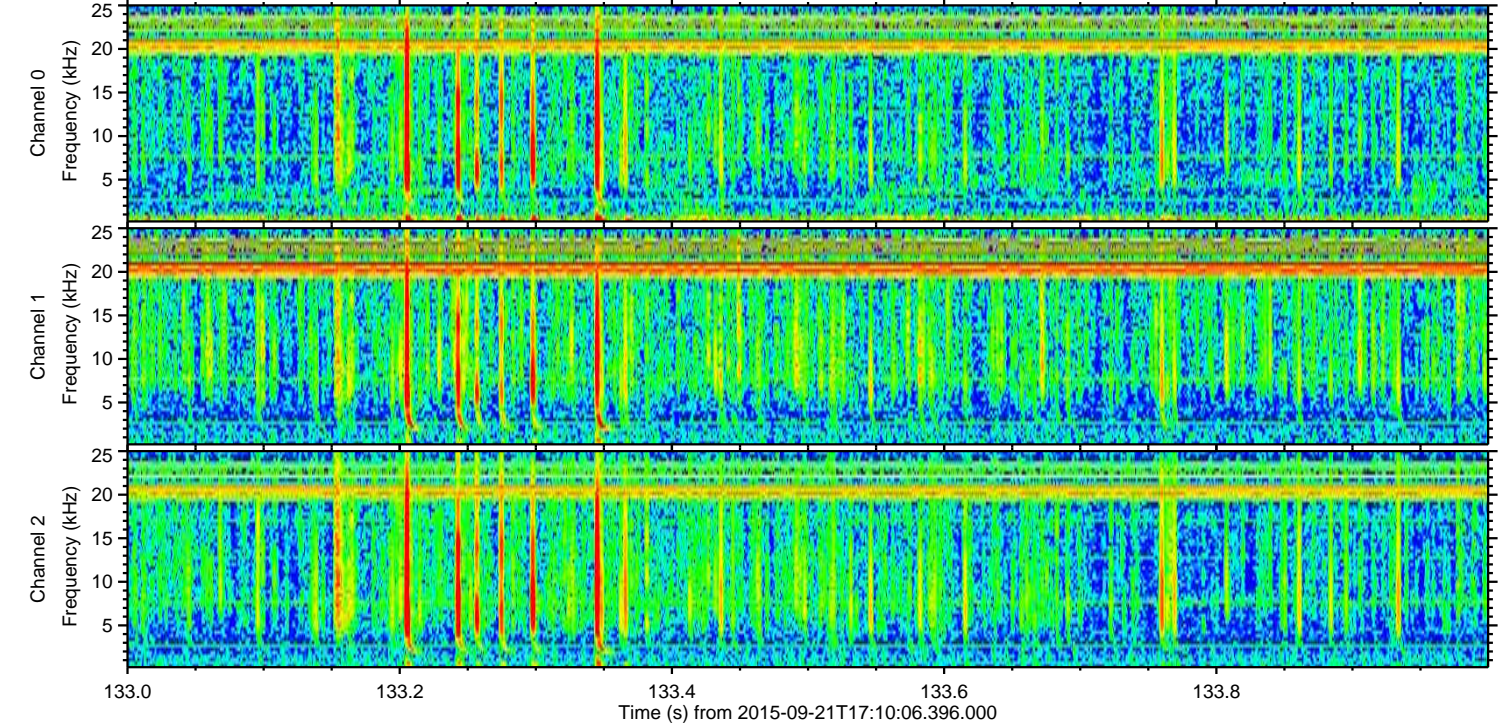
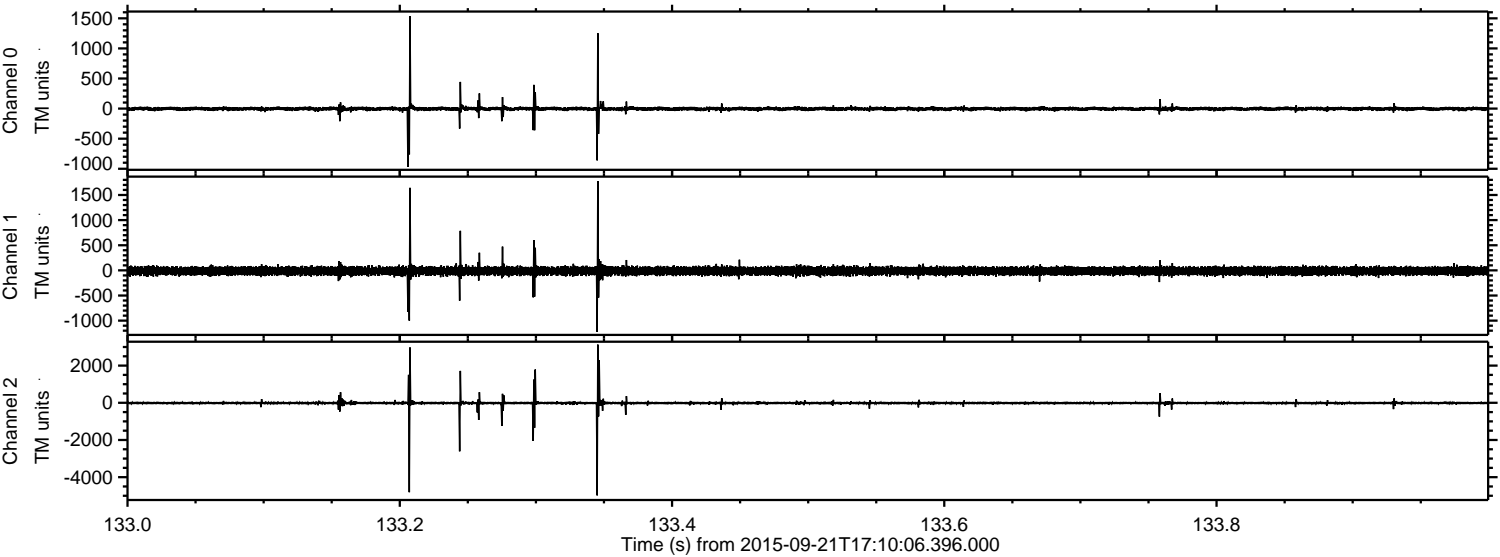
Processed Thu Oct 15 01:39:25 2015 by ELM ver.2012-10-06 from 001\_\_elm20150921\_171005\_\_dat00.bin





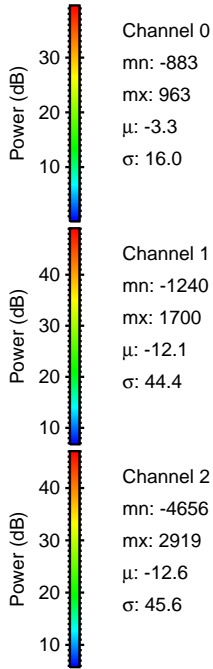
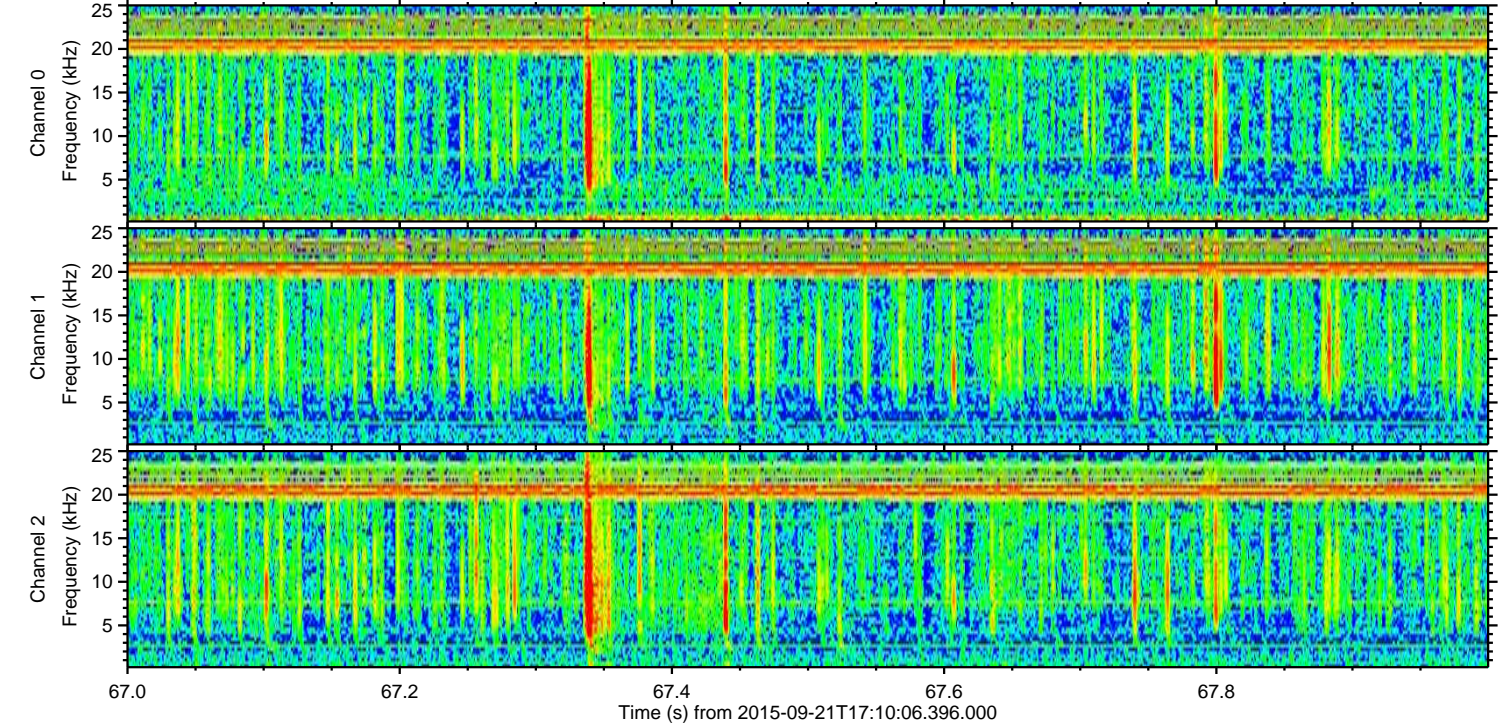
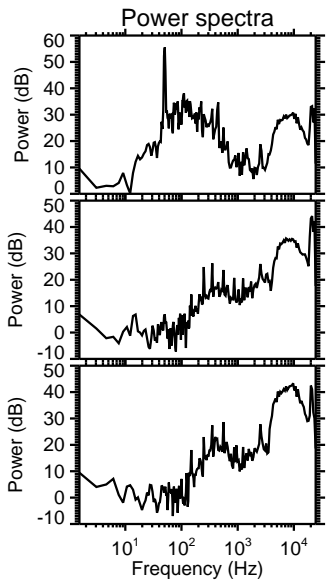
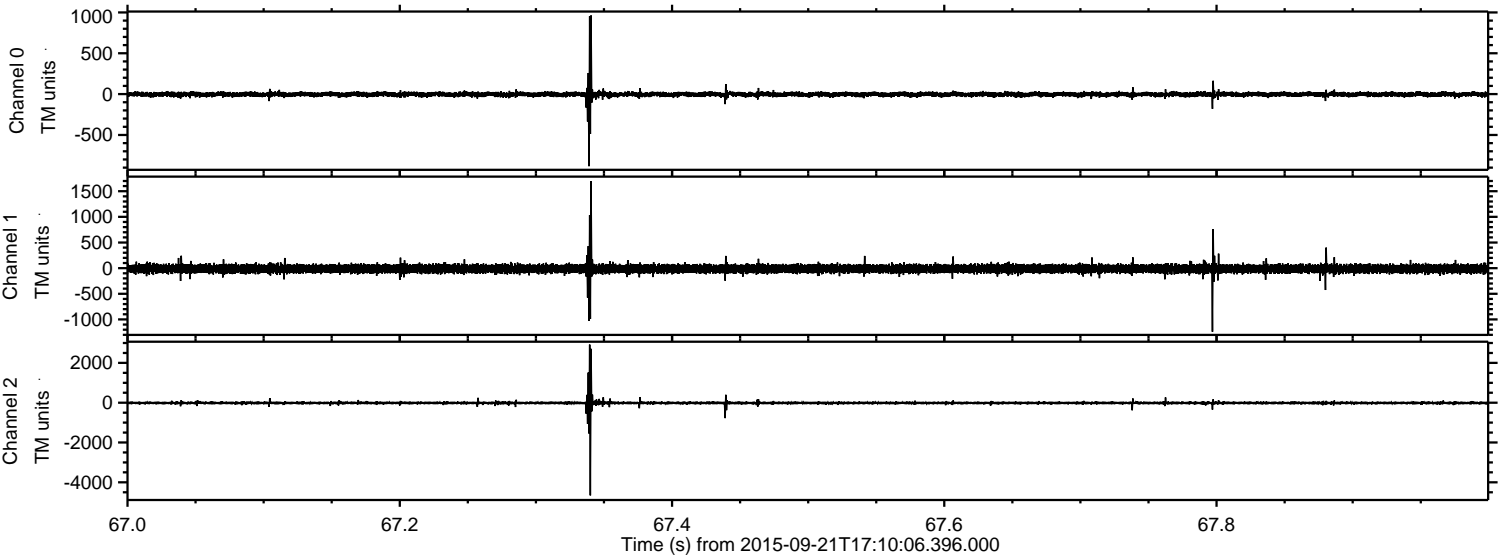
ELMAVAN 3D WAVEFORMS (Measured data sampled at 50 kHz) 51000 packets of 144 samples from 2015-09-21T17:10:06.396.000. Part 134/147

Processed Thu Oct 15 01:39:26 2015 by ELM ver.2012-10-06 from 001\_\_elm20150921\_171005\_\_dat00.bin



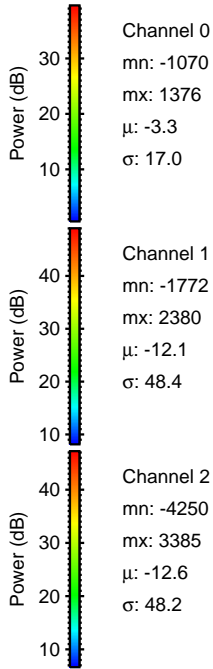
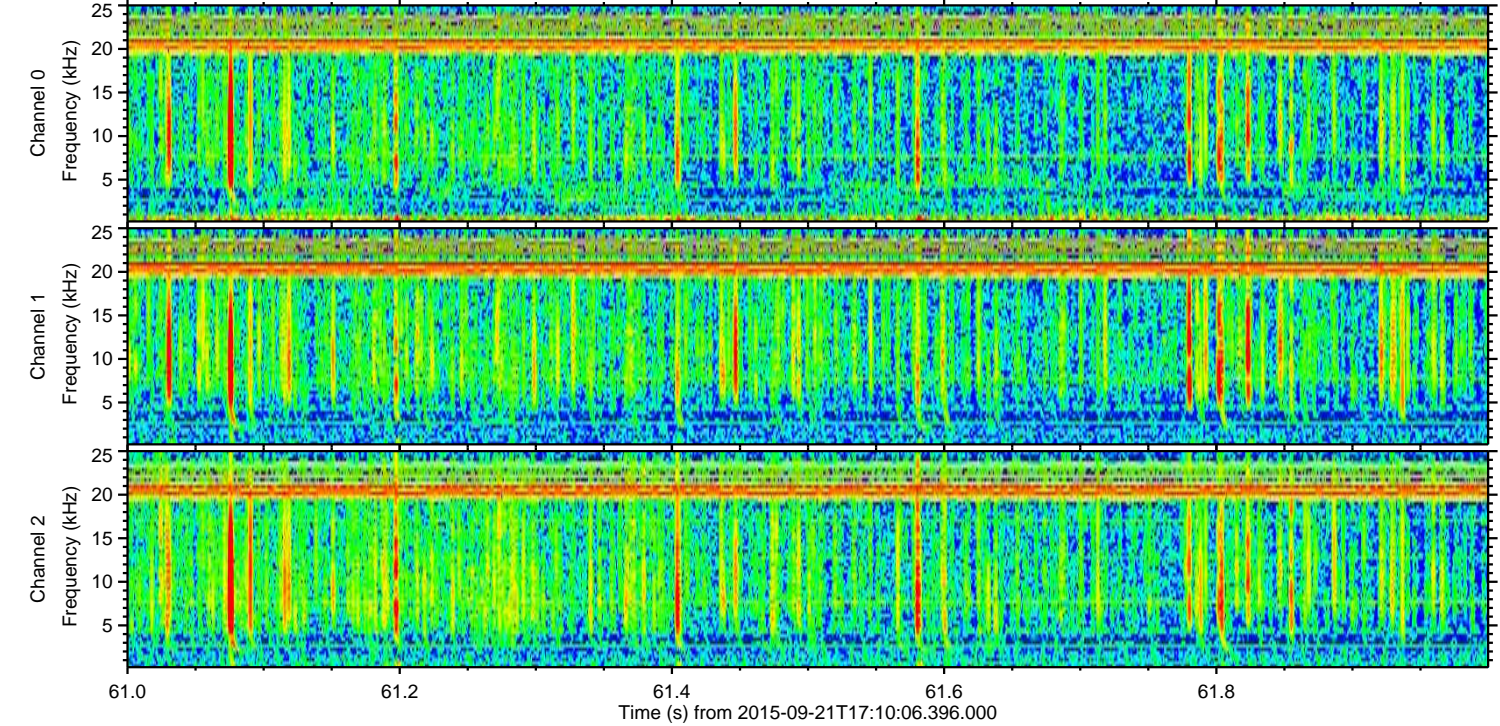
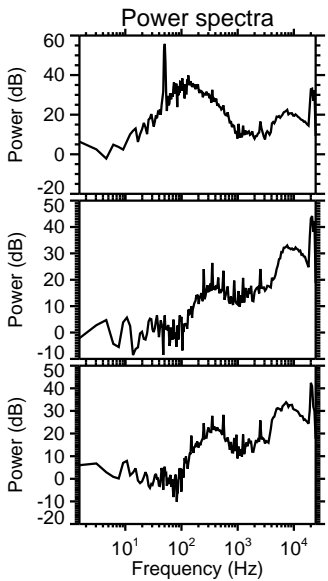
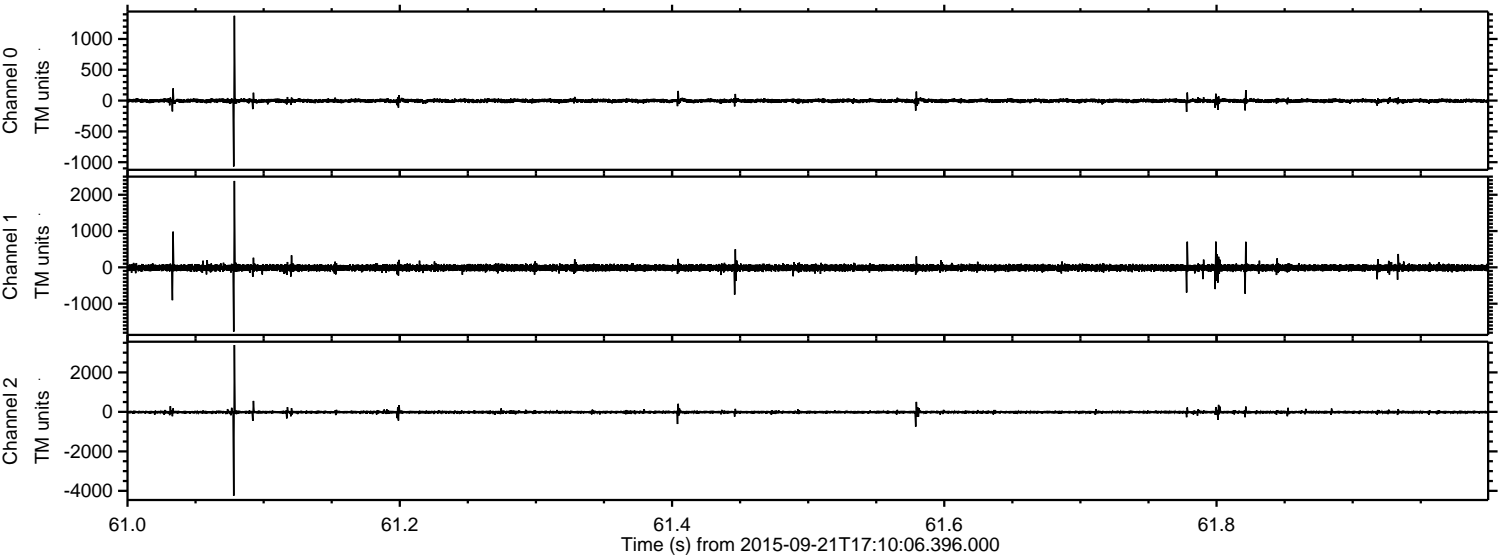


Processed Thu Oct 15 01:39:28 2015 by ELM ver.2012-10-06 from 001\_\_elm20150921\_171005\_\_dat00.bin





Processed Thu Oct 15 01:39:29 2015 by ELM ver.2012-10-06 from 001\_\_elm20150921\_171005\_\_dat00.bin



Channel 0  
mn: -1070  
mx: 1376  
 $\mu$ : -3.3  
 $\sigma$ : 17.0

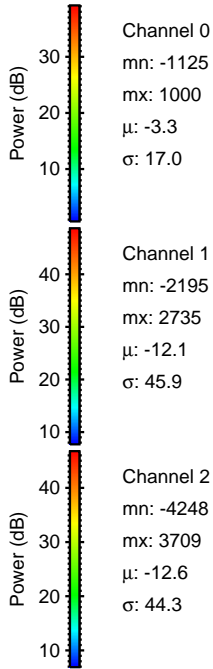
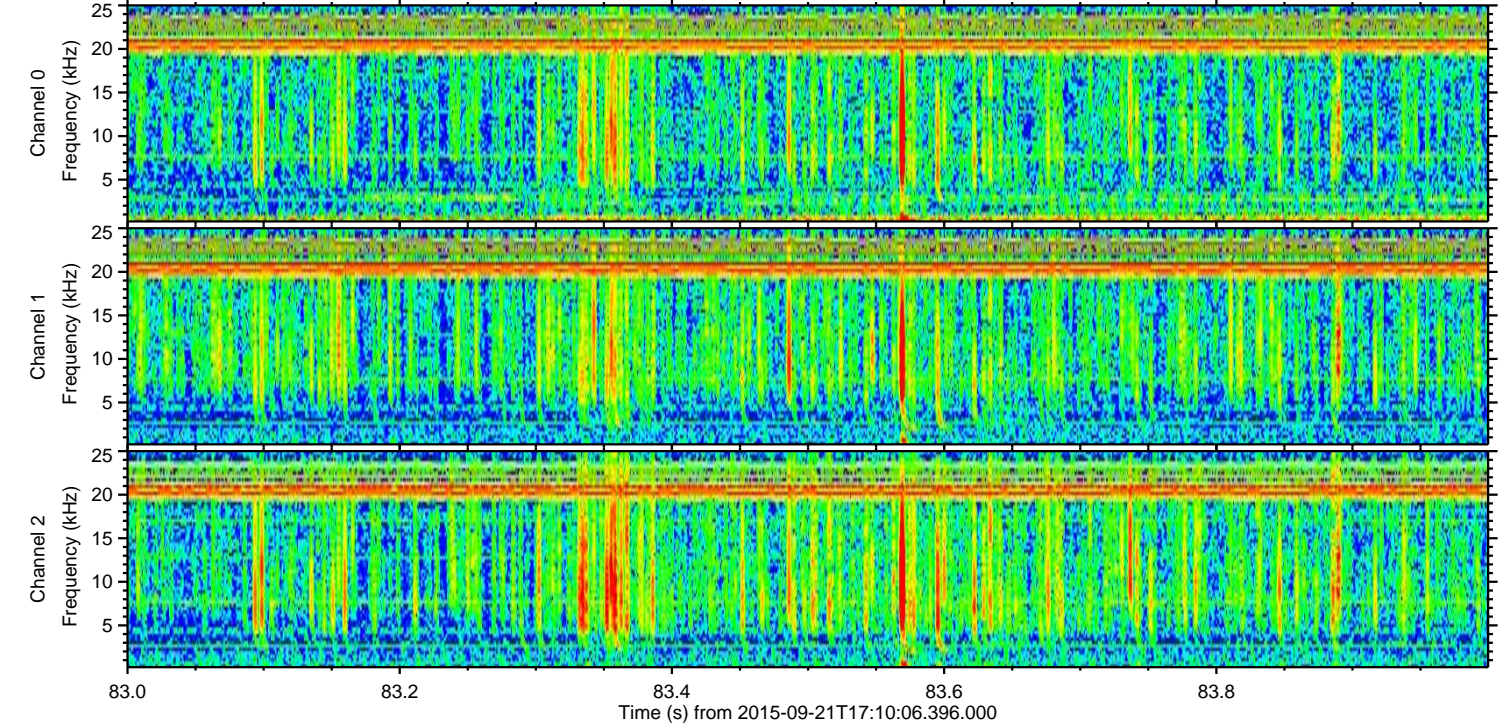
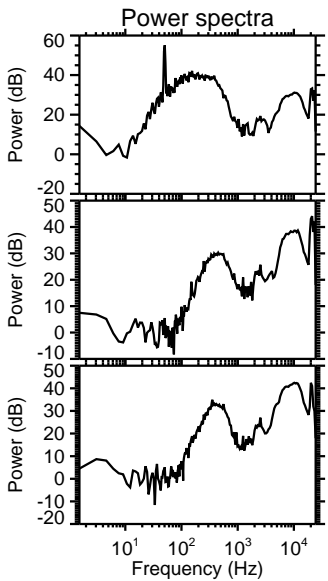
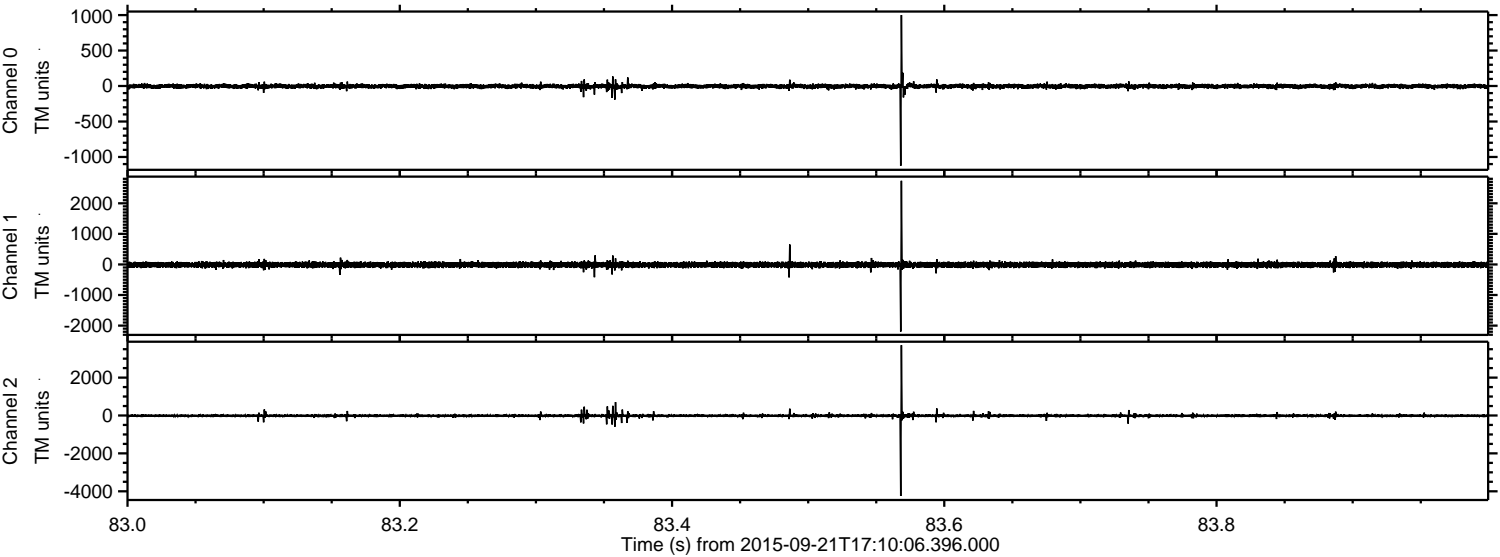
Channel 1  
mn: -1772  
mx: 2380  
 $\mu$ : -12.1  
 $\sigma$ : 48.4

Channel 2  
mn: -4250  
mx: 3385  
 $\mu$ : -12.6  
 $\sigma$ : 48.2



ELMAVAN 3D WAVEFORMS (Measured data sampled at 50 kHz) 51000 packets of 144 samples from 2015-09-21T17:10:06.396.000. Part 84/147

Processed Thu Oct 15 01:39:32 2015 by ELM ver.2012-10-06 from 001\_\_elm20150921\_171005\_\_dat00.bin



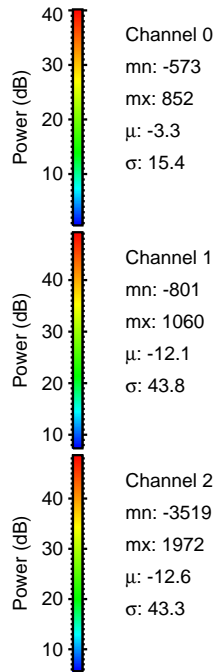
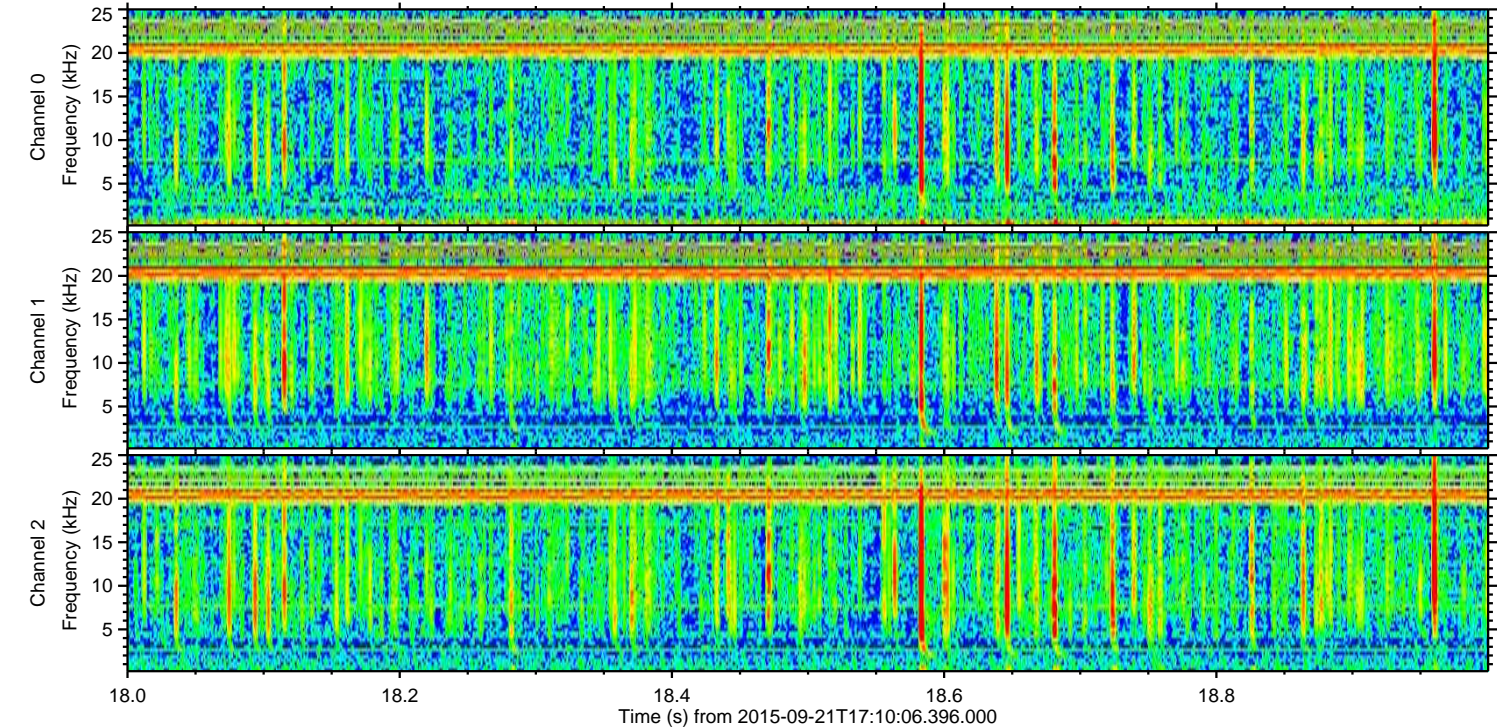
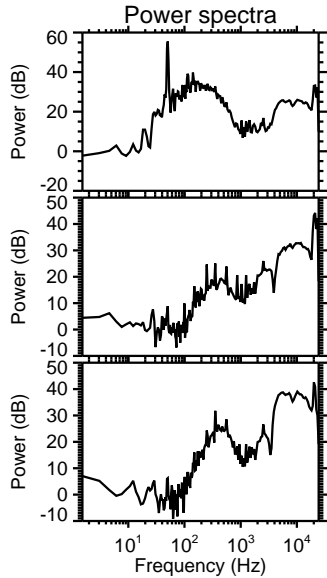
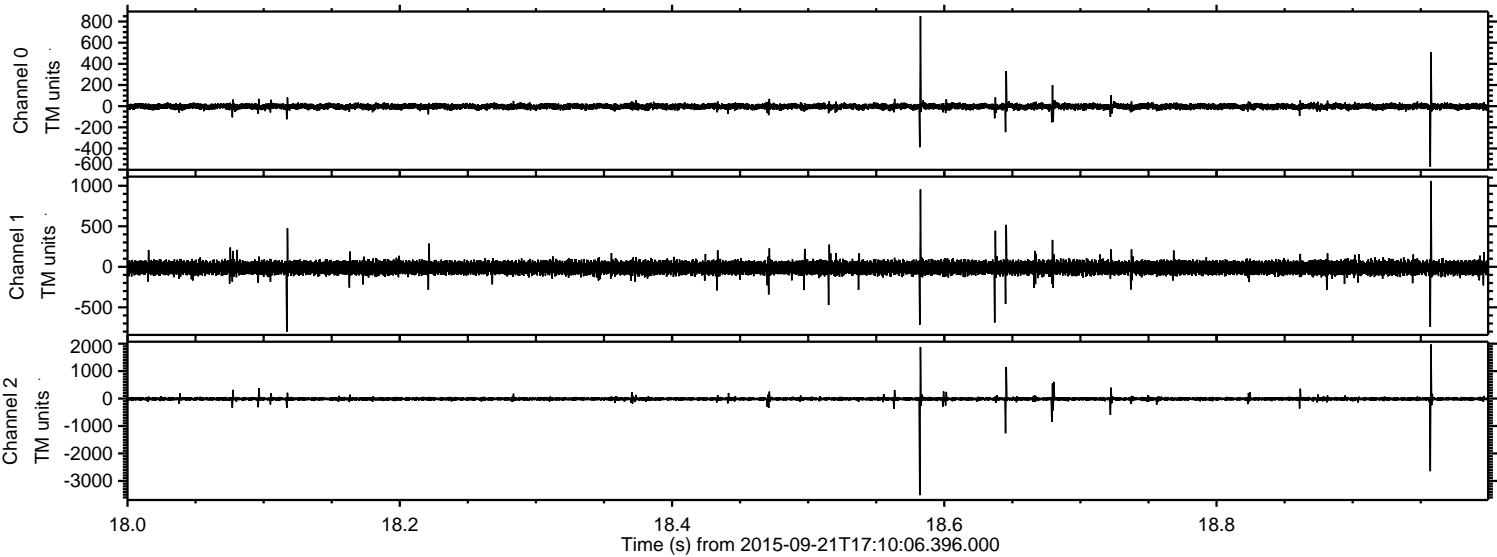
Channel 0  
mn: -1125  
mx: 1000  
 $\mu$ : -3.3  
 $\sigma$ : 17.0

Channel 1  
mn: -2195  
mx: 2735  
 $\mu$ : -12.1  
 $\sigma$ : 45.9

Channel 2  
mn: -4248  
mx: 3709  
 $\mu$ : -12.6  
 $\sigma$ : 44.3

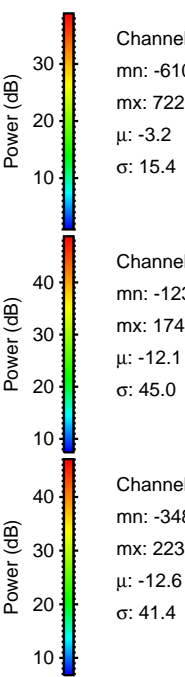
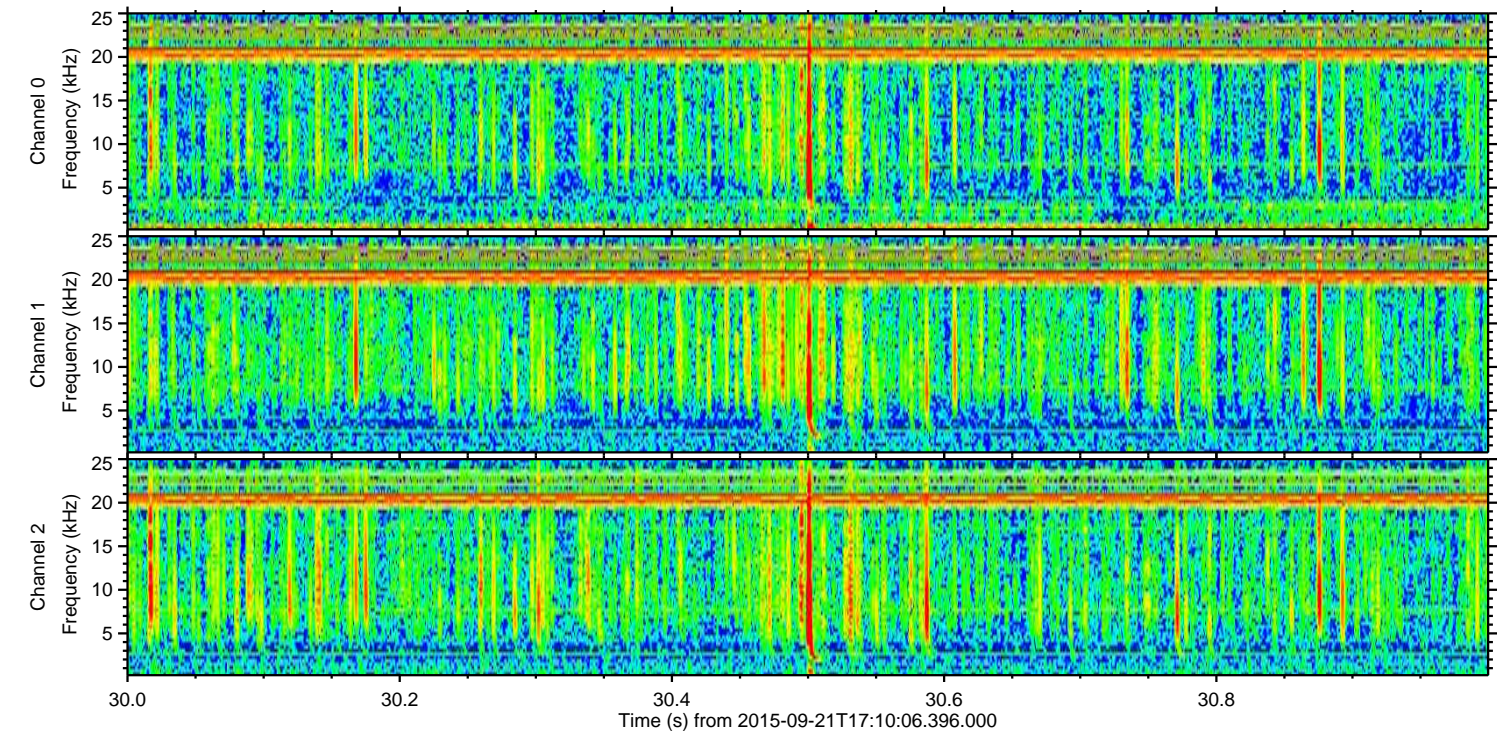
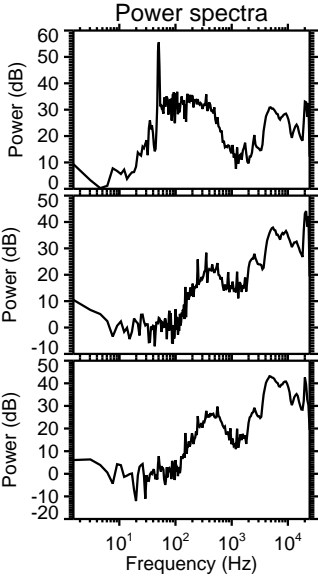
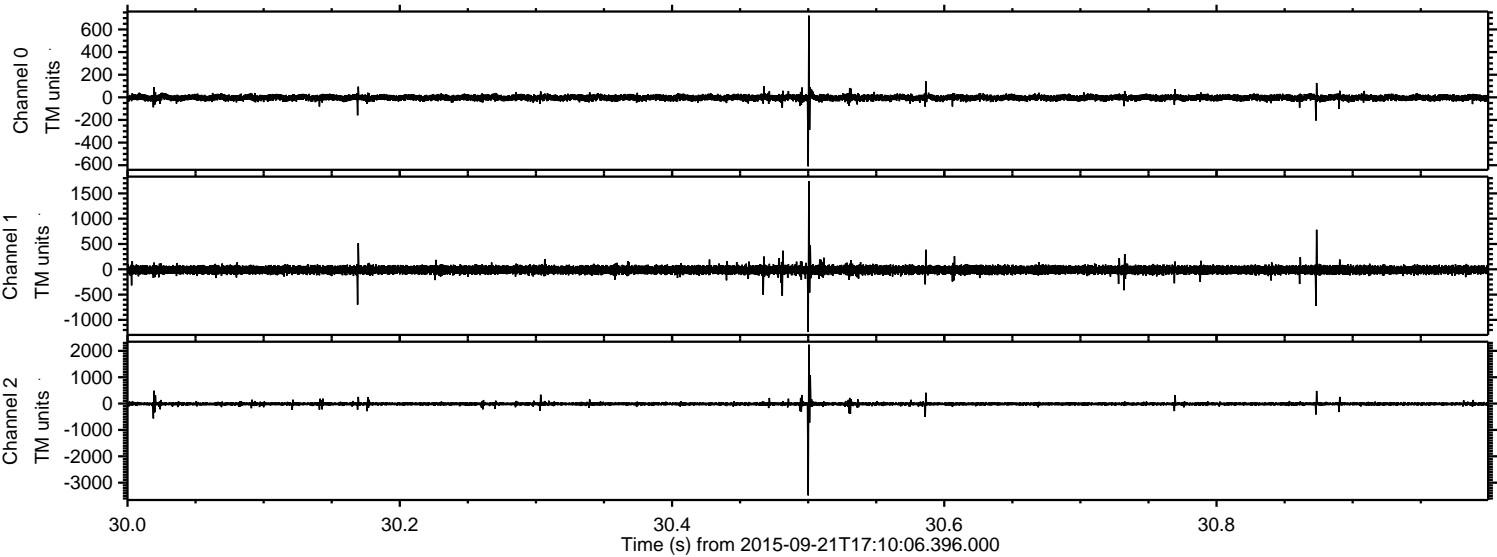


Processed Thu Oct 15 01:39:33 2015 by ELM ver.2012-10-06 from 001\_\_elm20150921\_171005\_\_dat00.bin





Processed Thu Oct 15 01:39:34 2015 by ELM ver.2012-10-06 from 001\_\_elm20150921\_171005\_\_dat00.bin



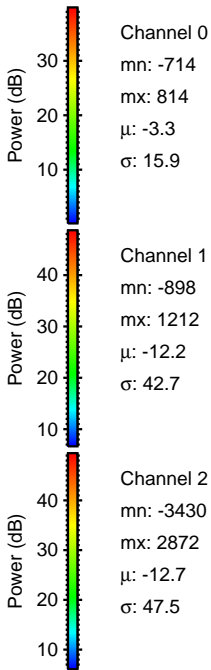
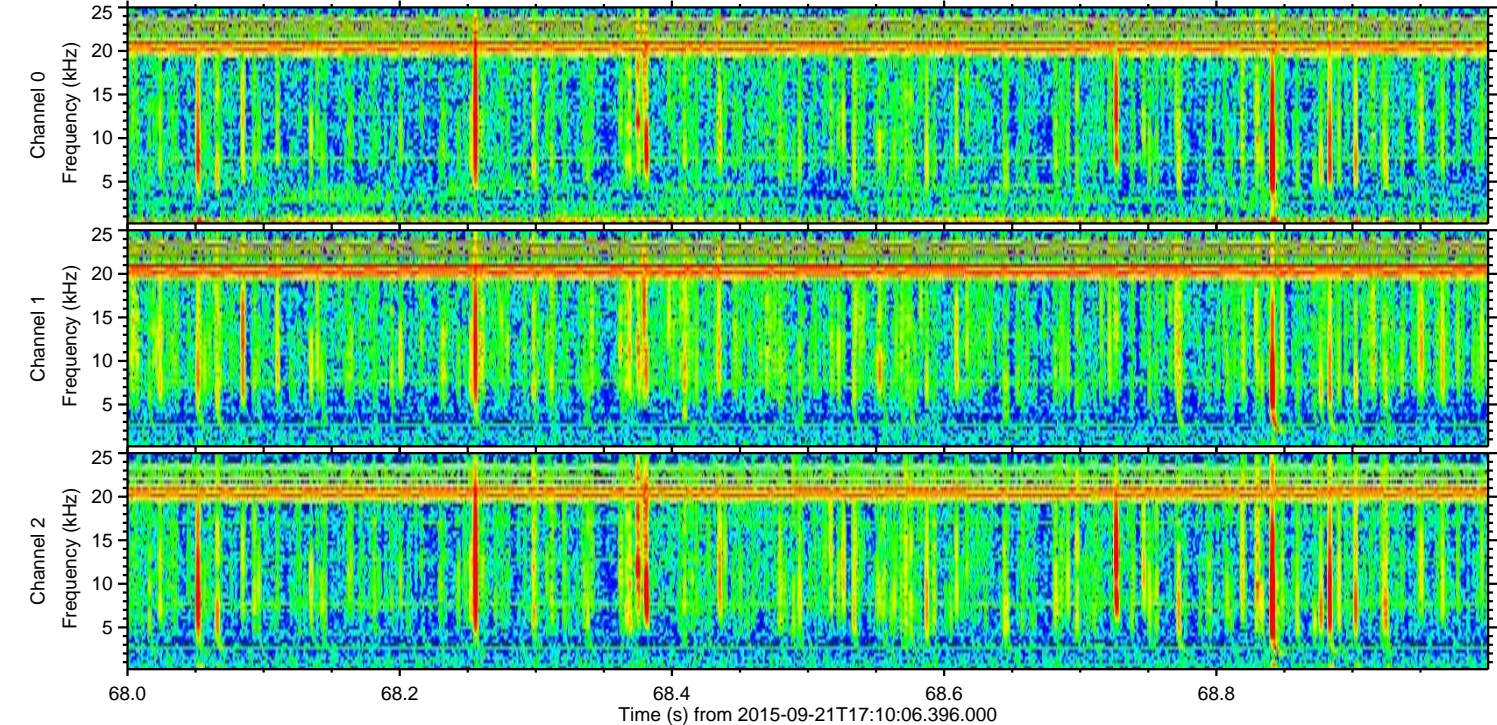
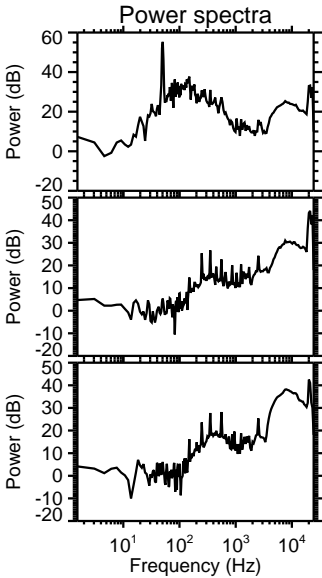
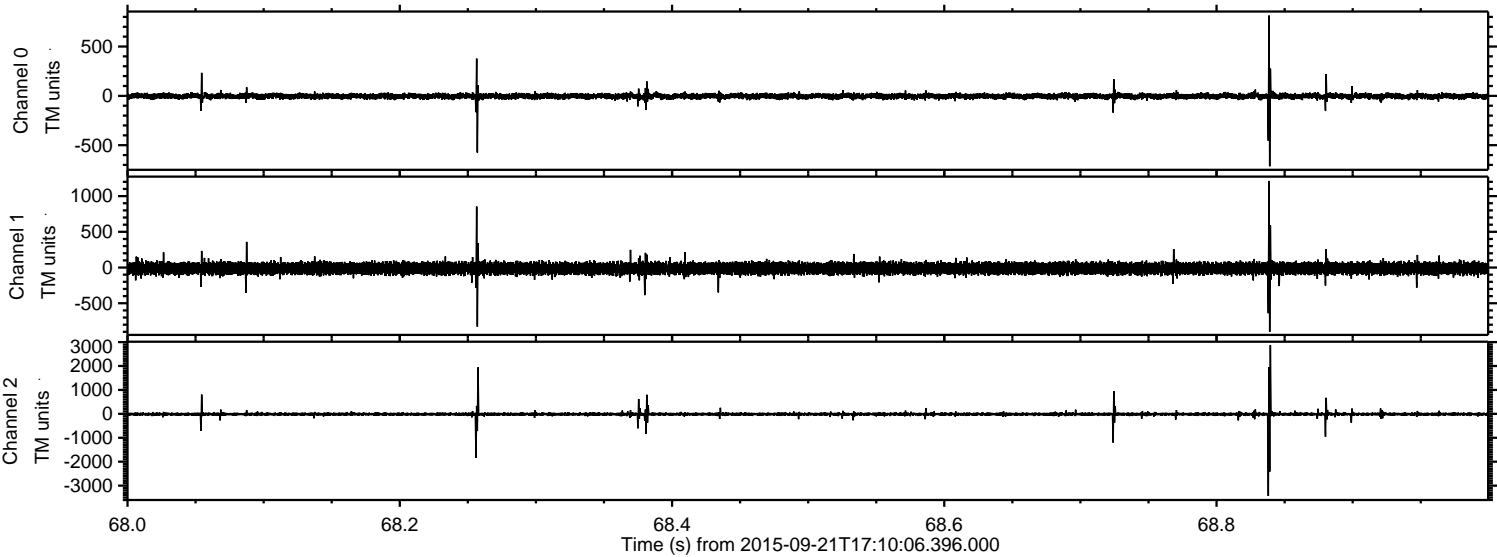
Channel 0  
mn: -610  
mx: 722  
 $\mu$ : -3.2  
 $\sigma$ : 15.4

Channel 1  
mn: -1235  
mx: 1744  
 $\mu$ : -12.1  
 $\sigma$ : 45.0

Channel 2  
mn: -3483  
mx: 2235  
 $\mu$ : -12.6  
 $\sigma$ : 41.4



Processed Thu Oct 15 01:39:36 2015 by ELM ver.2012-10-06 from 001\_\_elm20150921\_171005\_\_dat00.bin





Processed Thu Oct 15 01:39:37 2015 by ELM ver.2012-10-06 from 001\_\_elm20150921\_171005\_\_dat00.bin

