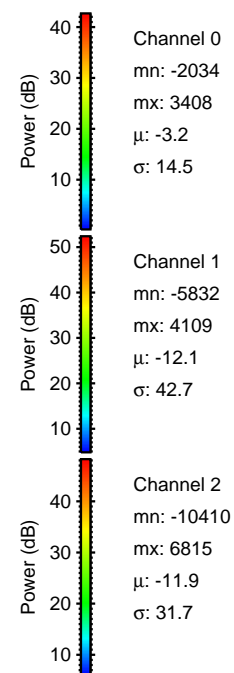
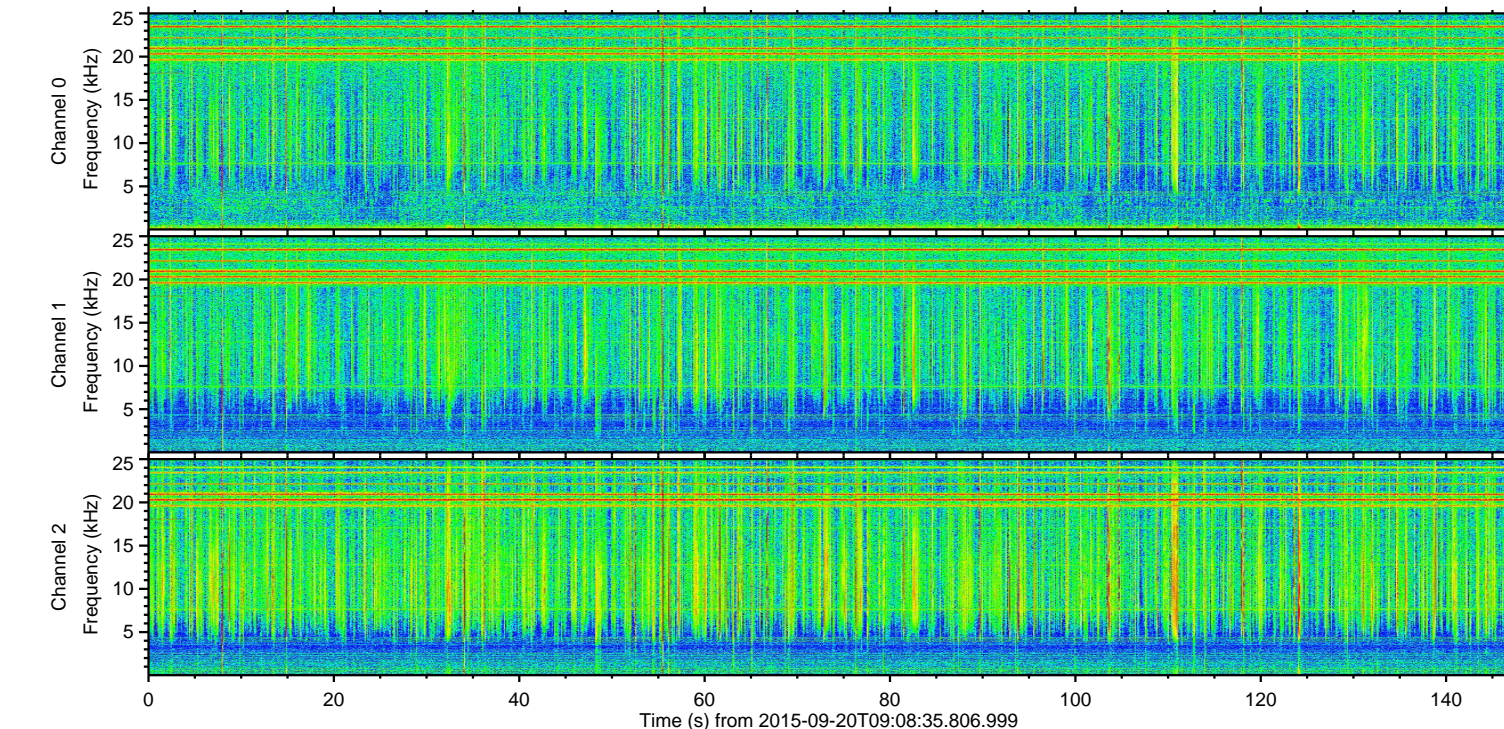
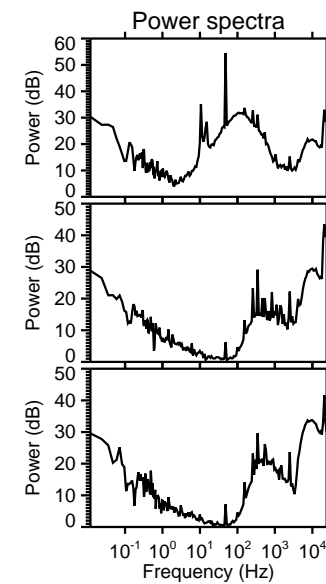
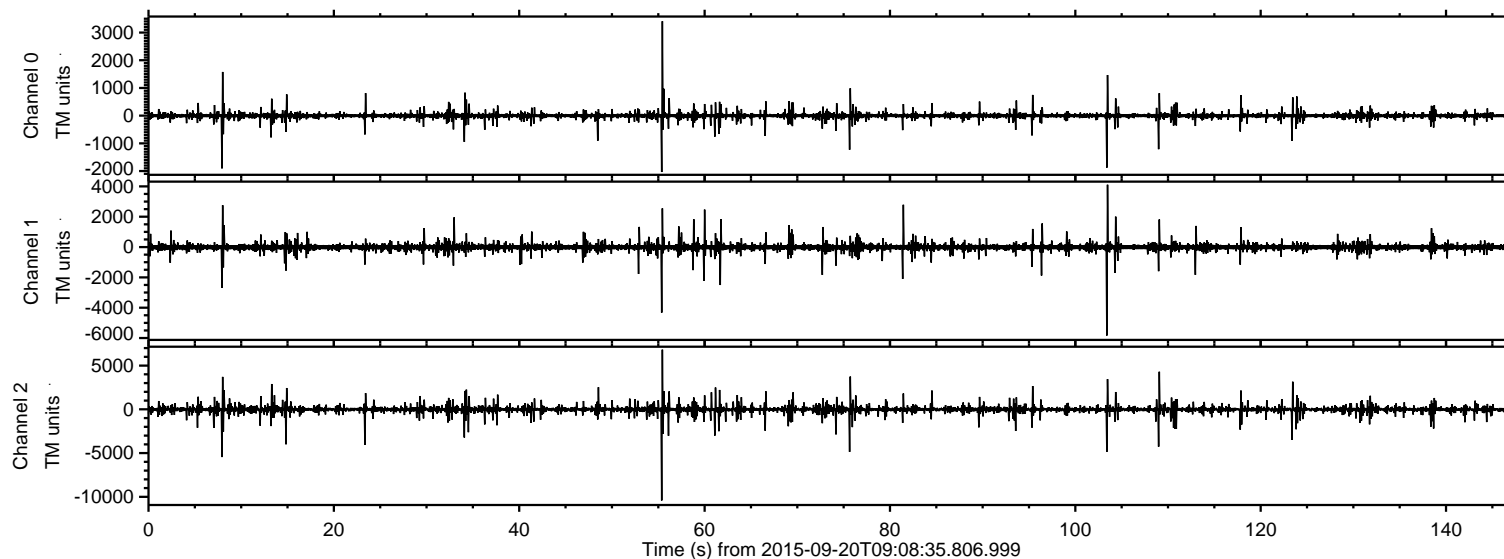
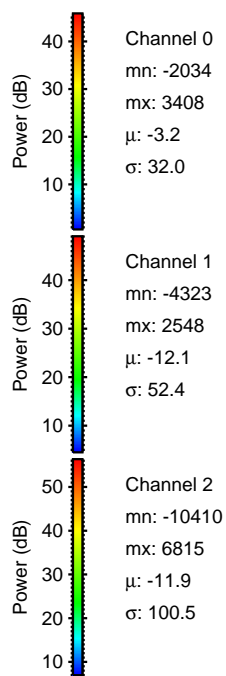
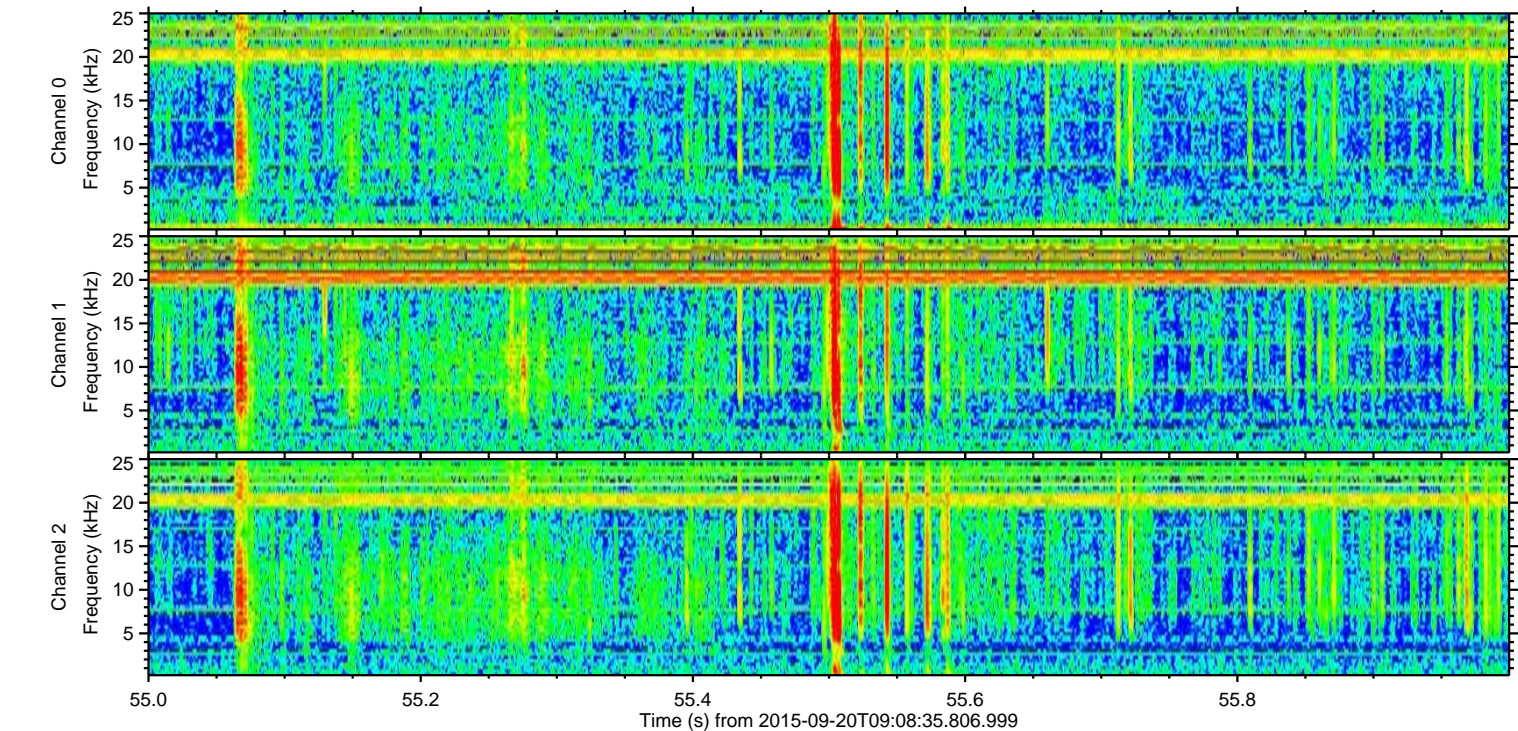
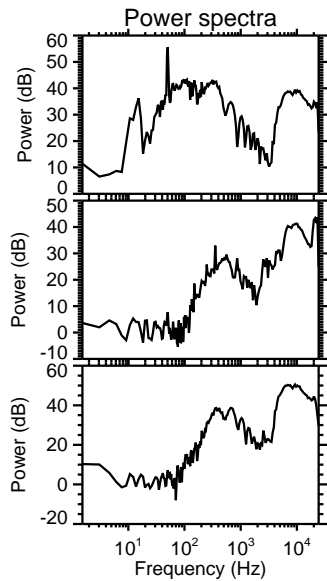
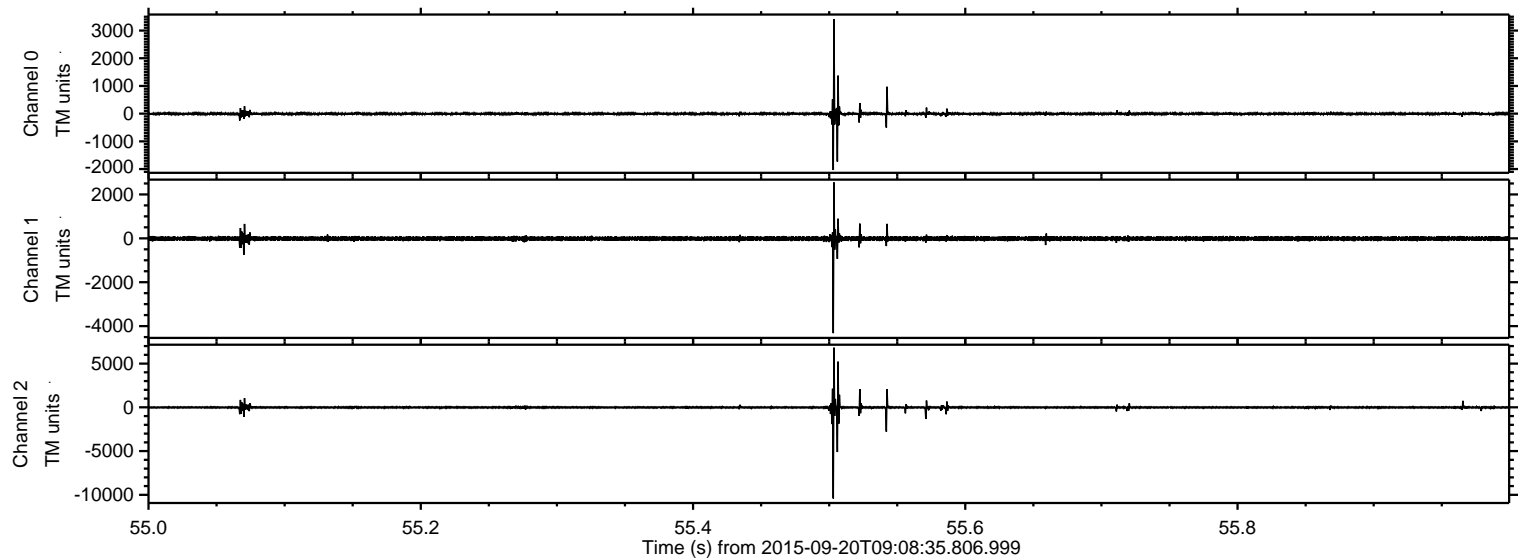


ELMAVAN 3D WAVEFORMS (Measured data sampled at 50 kHz) 51000 packets of 144 samples from 2015-09-20T09:08:35.806.999.

Processed Wed Oct 14 14:25:51 2015 by ELM ver.2012-10-06 from 001__elm20150920_090834__dat00.bin

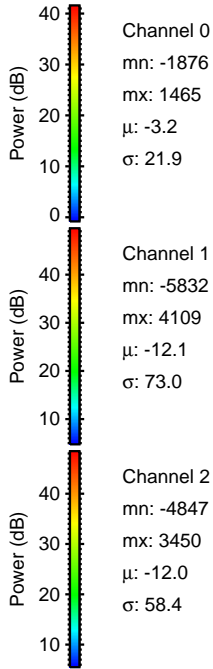
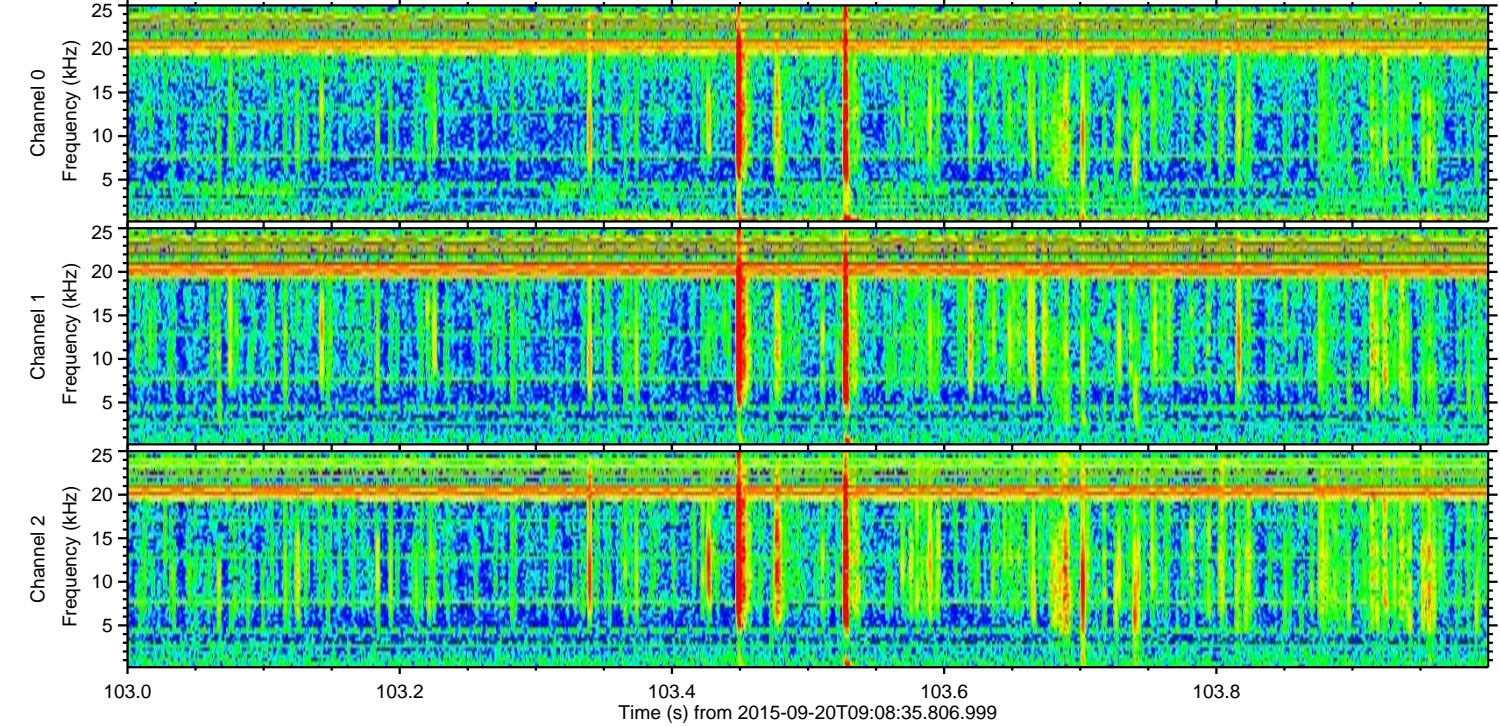
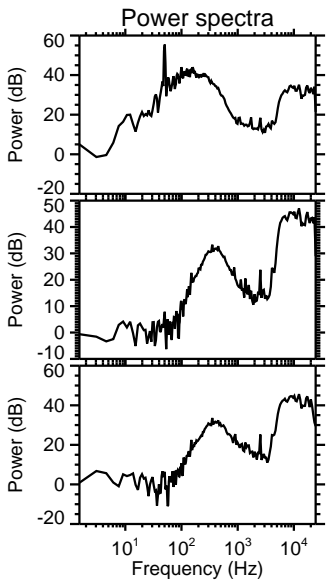
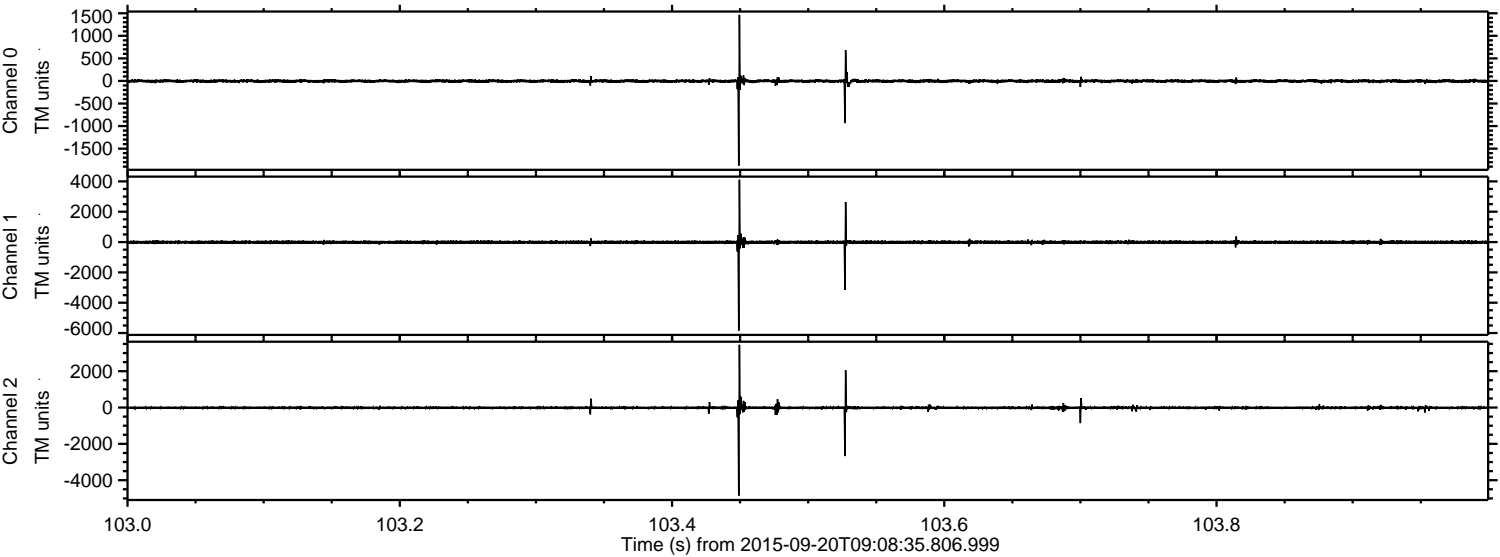


Processed Wed Oct 14 14:26:11 2015 by ELM ver.2012-10-06 from 001__elm20150920_090834__dat00.bin

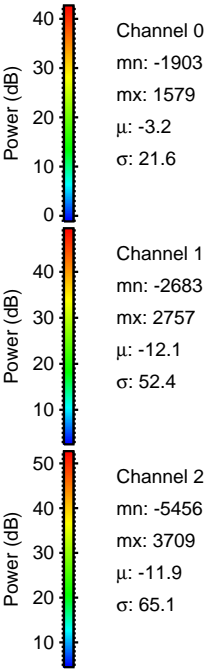
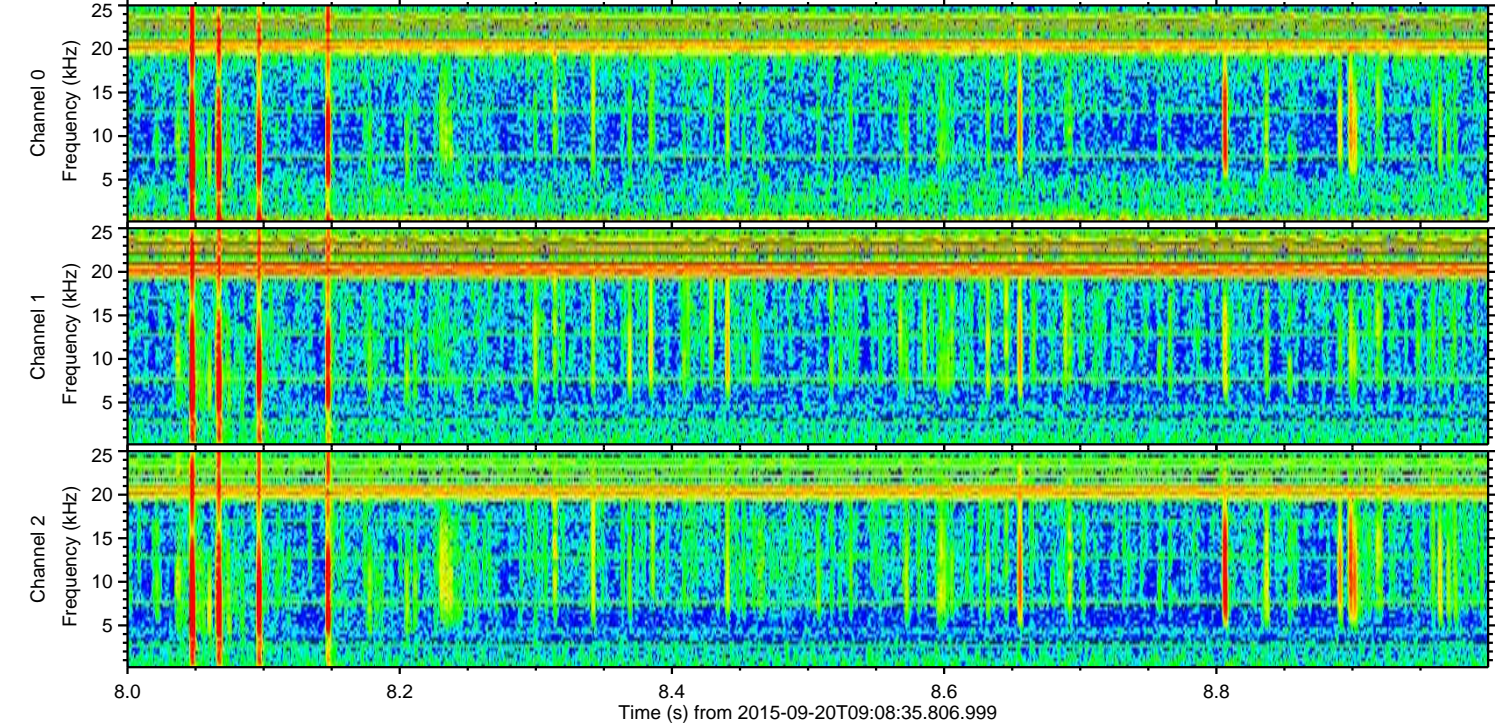
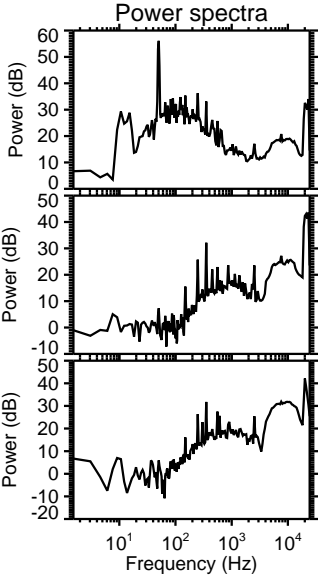
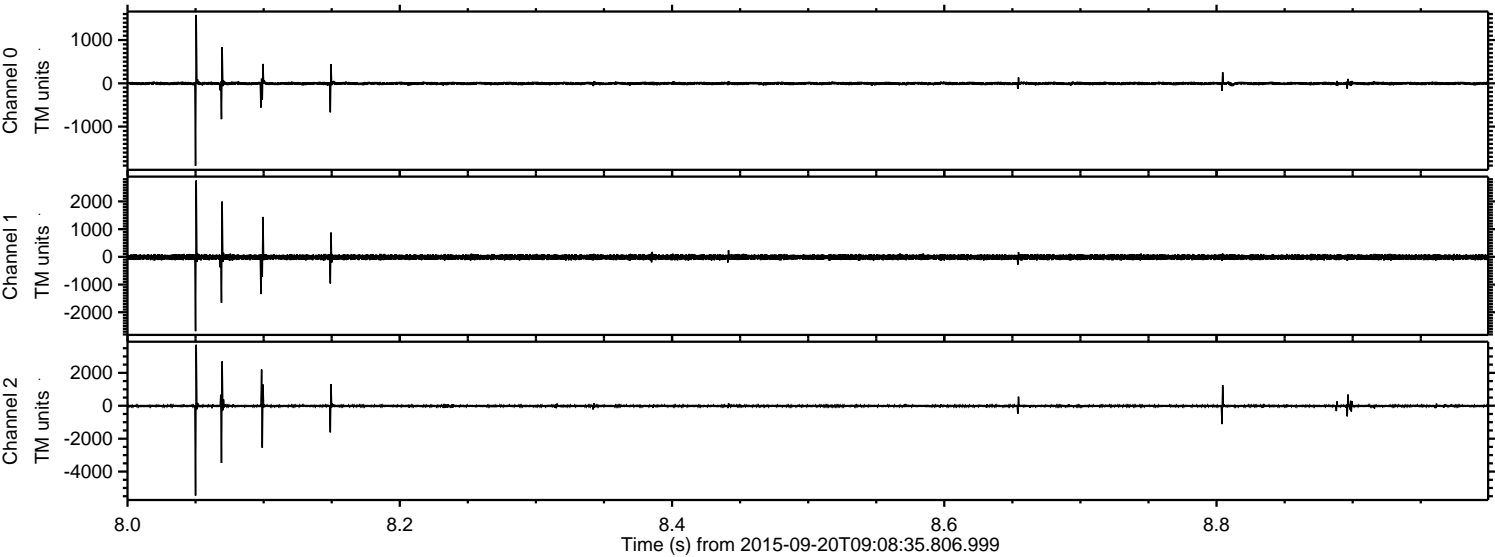


ELMAVAN 3D WAVEFORMS (Measured data sampled at 50 kHz) 51000 packets of 144 samples from 2015-09-20T09:08:35.806.999. Part 104/147

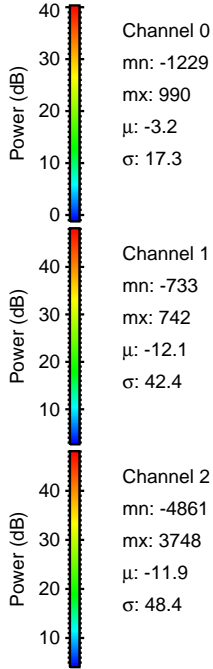
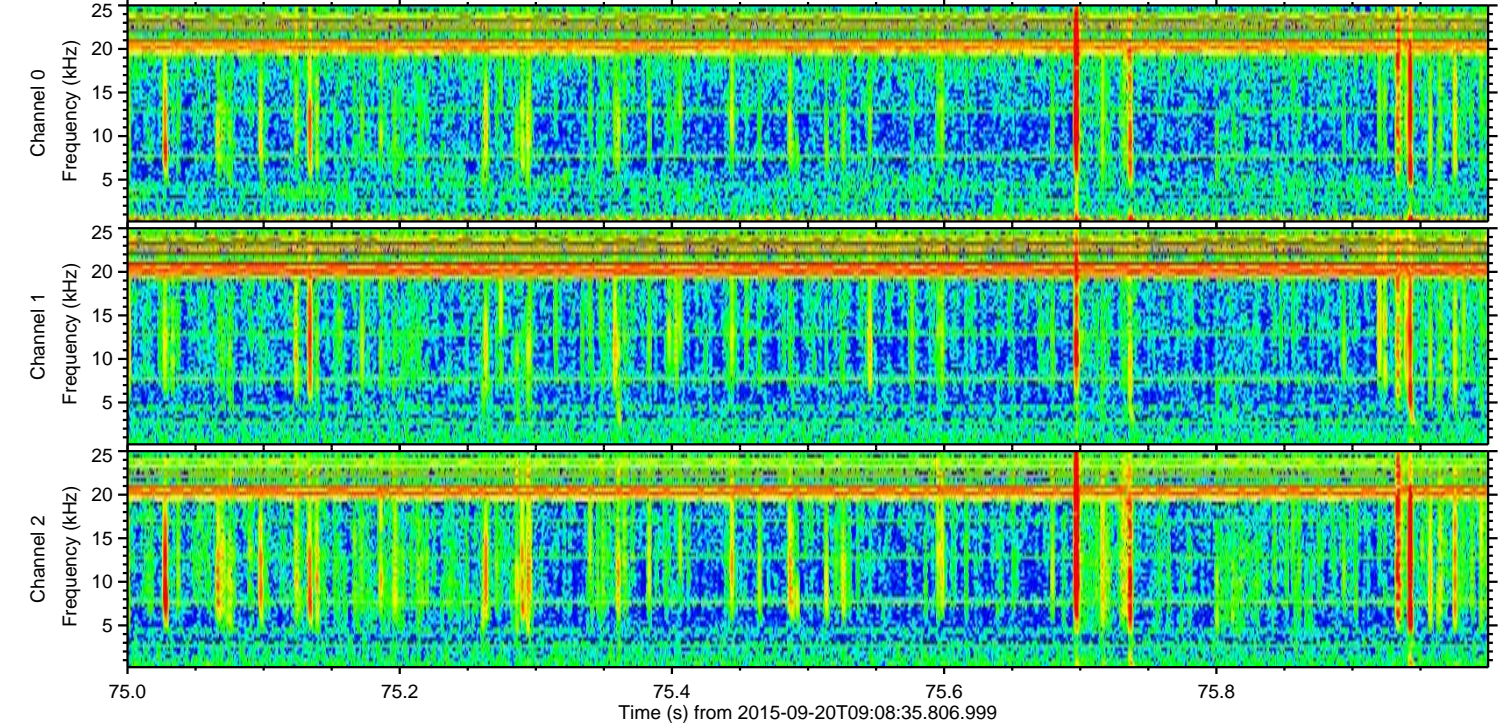
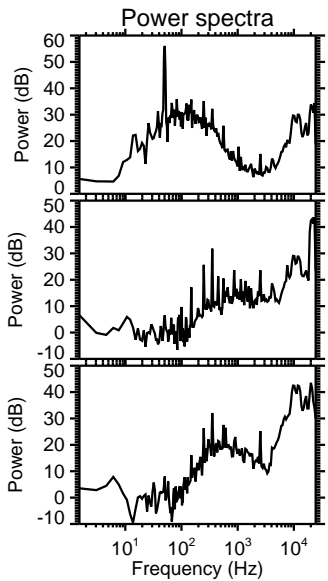
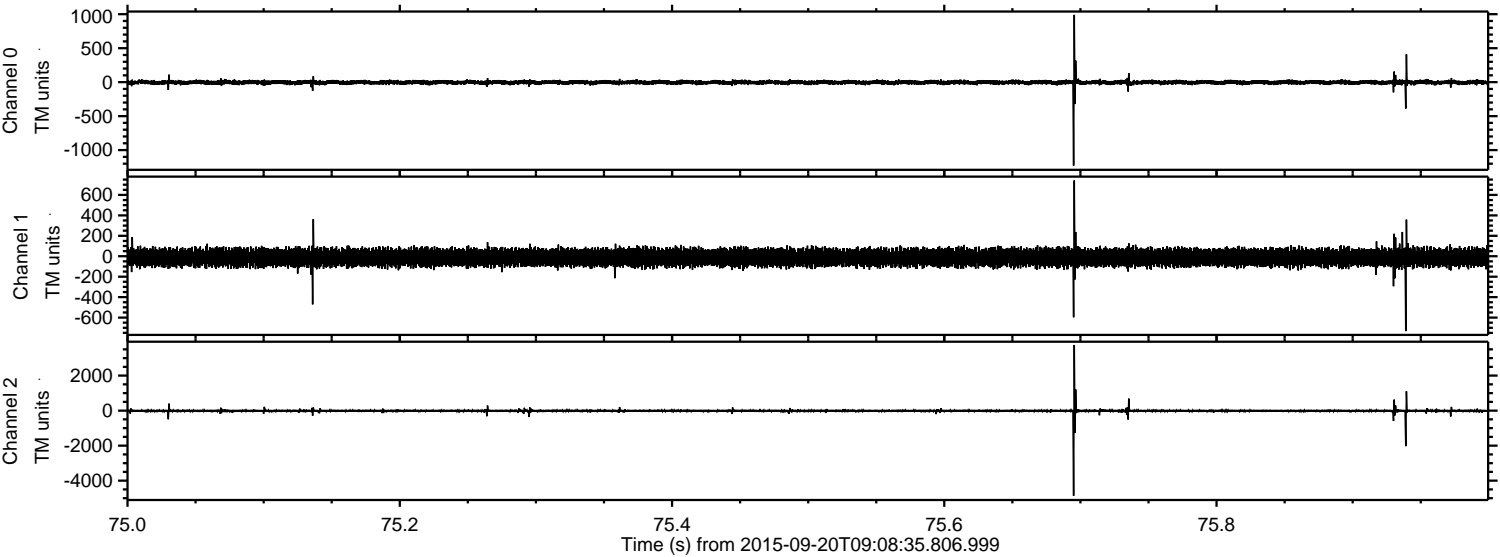
Processed Wed Oct 14 14:26:12 2015 by ELM ver.2012-10-06 from 001__elm20150920_090834__dat00.bin



Processed Wed Oct 14 14:26:13 2015 by ELM ver.2012-10-06 from 001__elm20150920_090834__dat00.bin

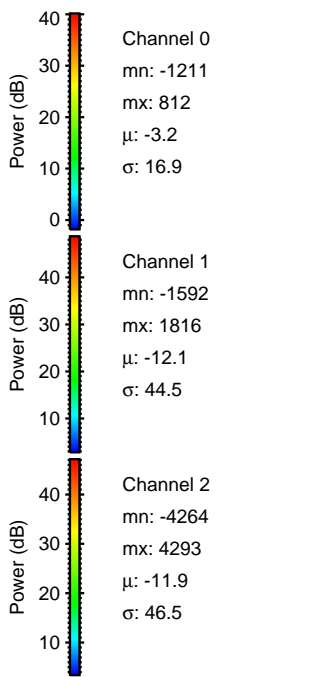
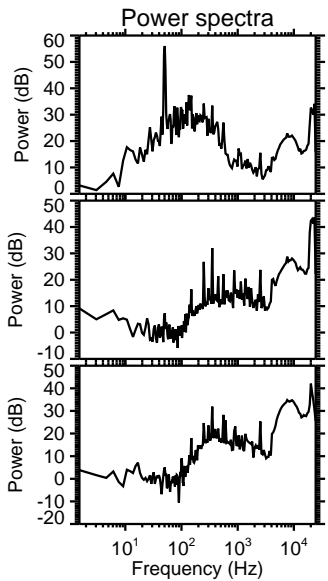
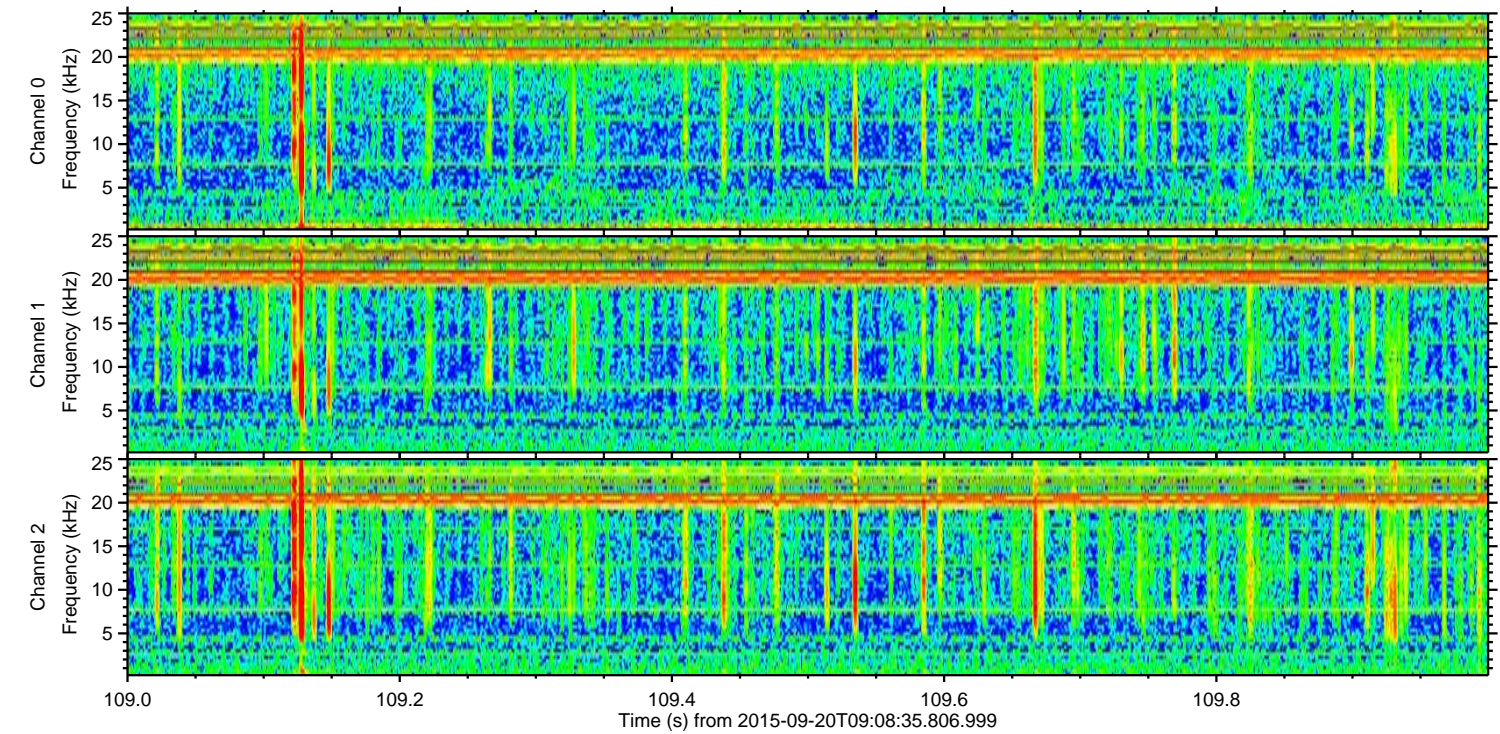
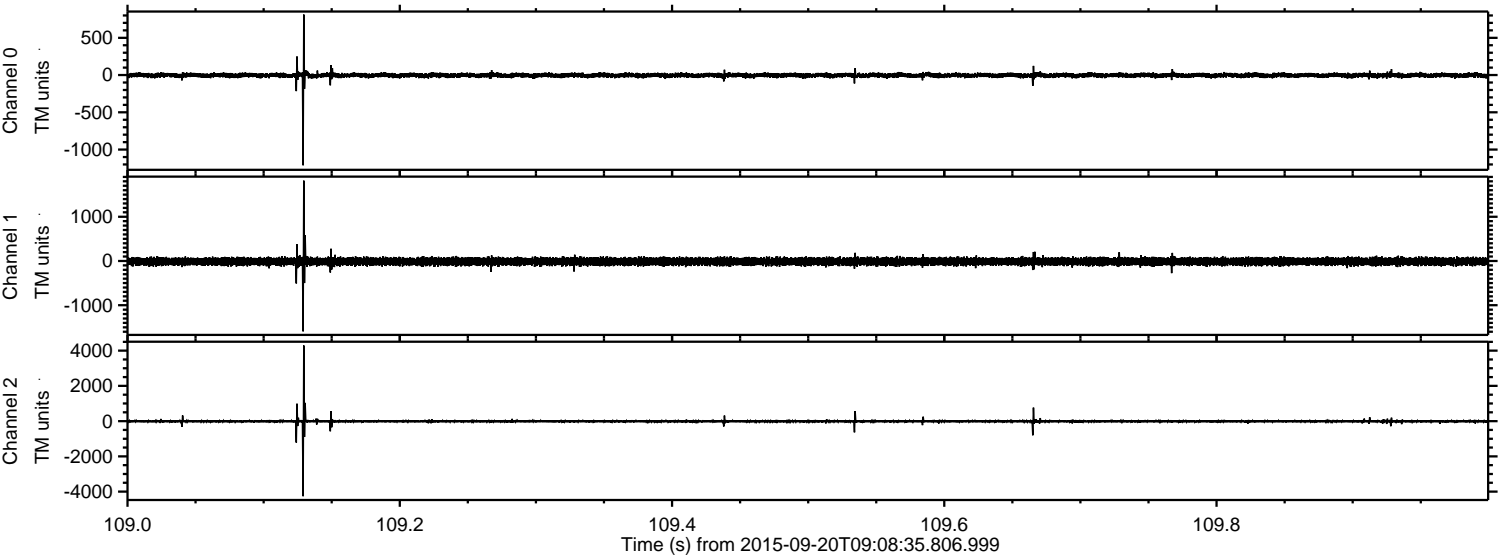


Processed Wed Oct 14 14:26:14 2015 by ELM ver.2012-10-06 from 001__elm20150920_090834__dat00.bin

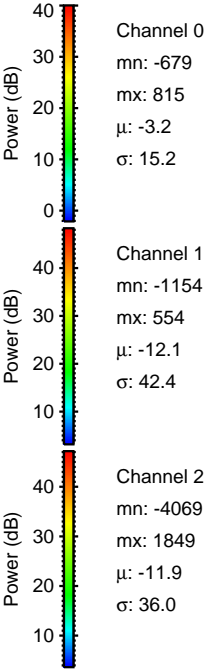
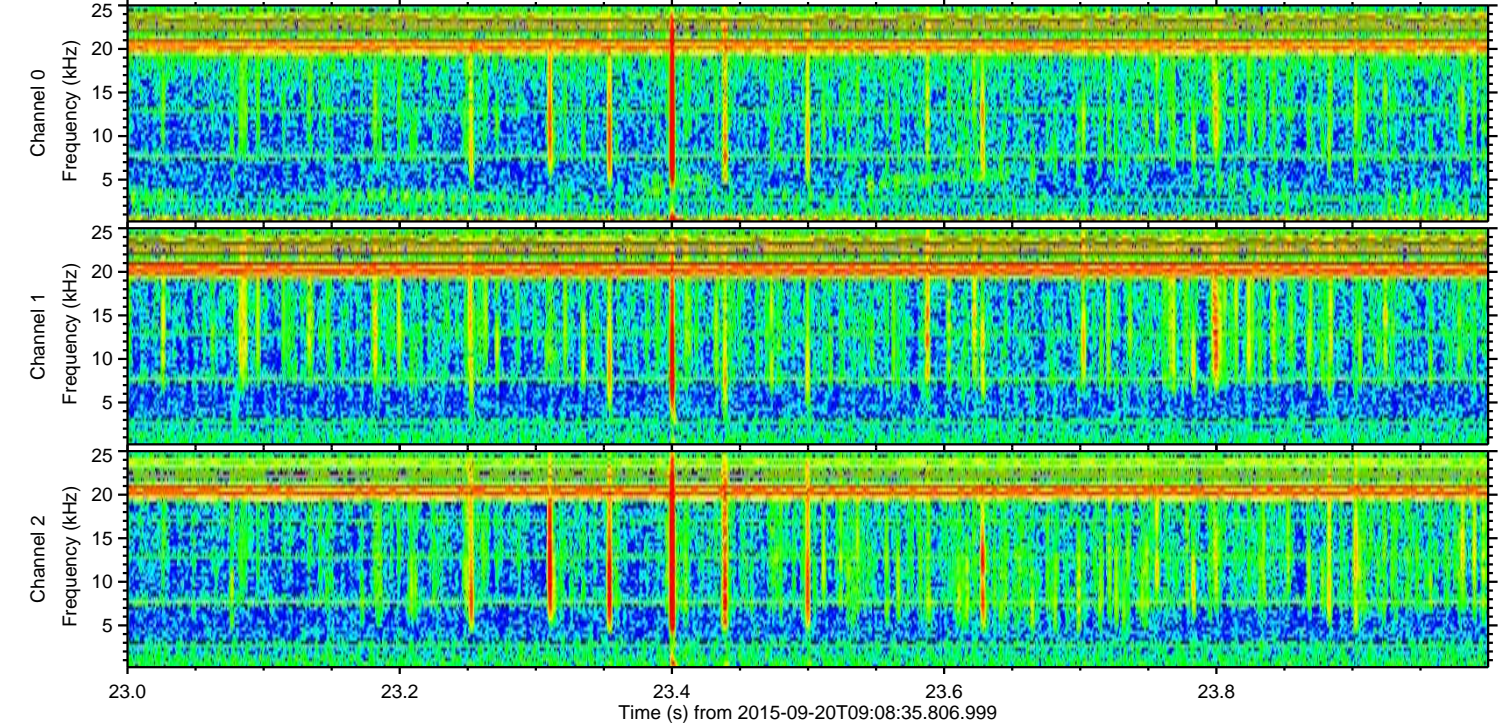
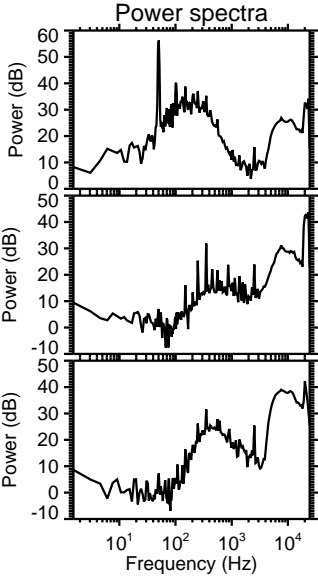
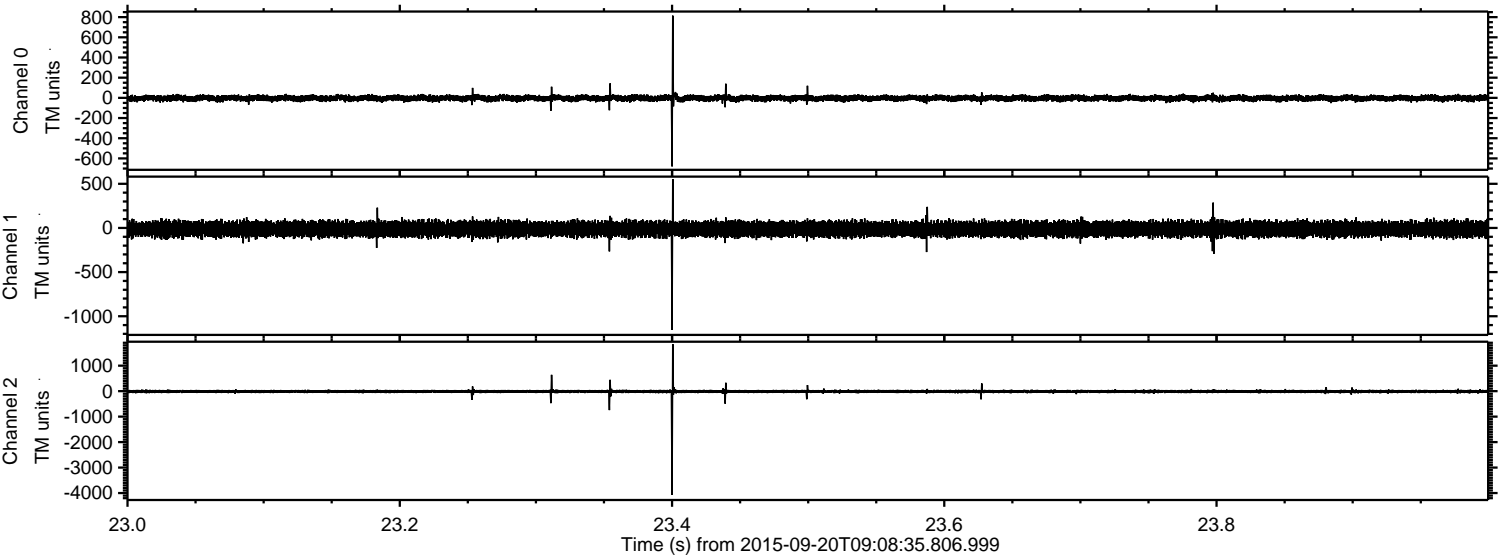


ELMAVAN 3D WAVEFORMS (Measured data sampled at 50 kHz) 51000 packets of 144 samples from 2015-09-20T09:08:35.806.999. Part 110/147

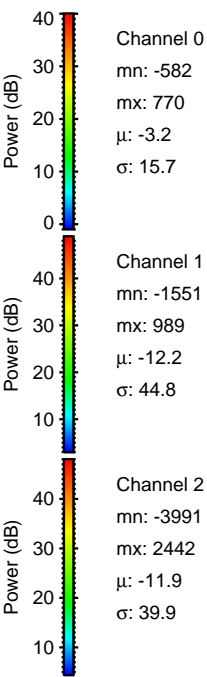
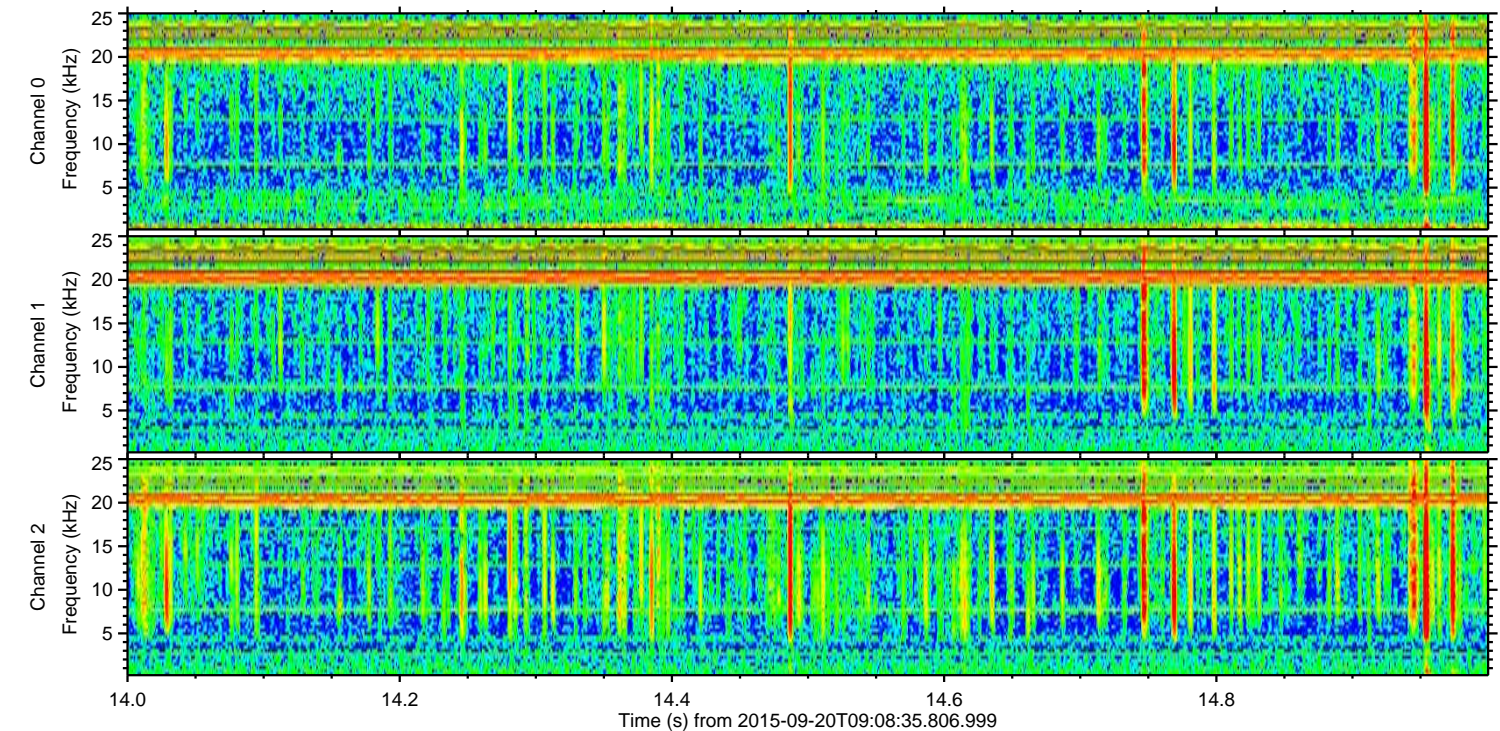
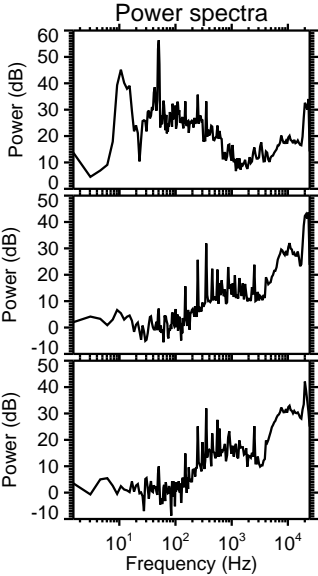
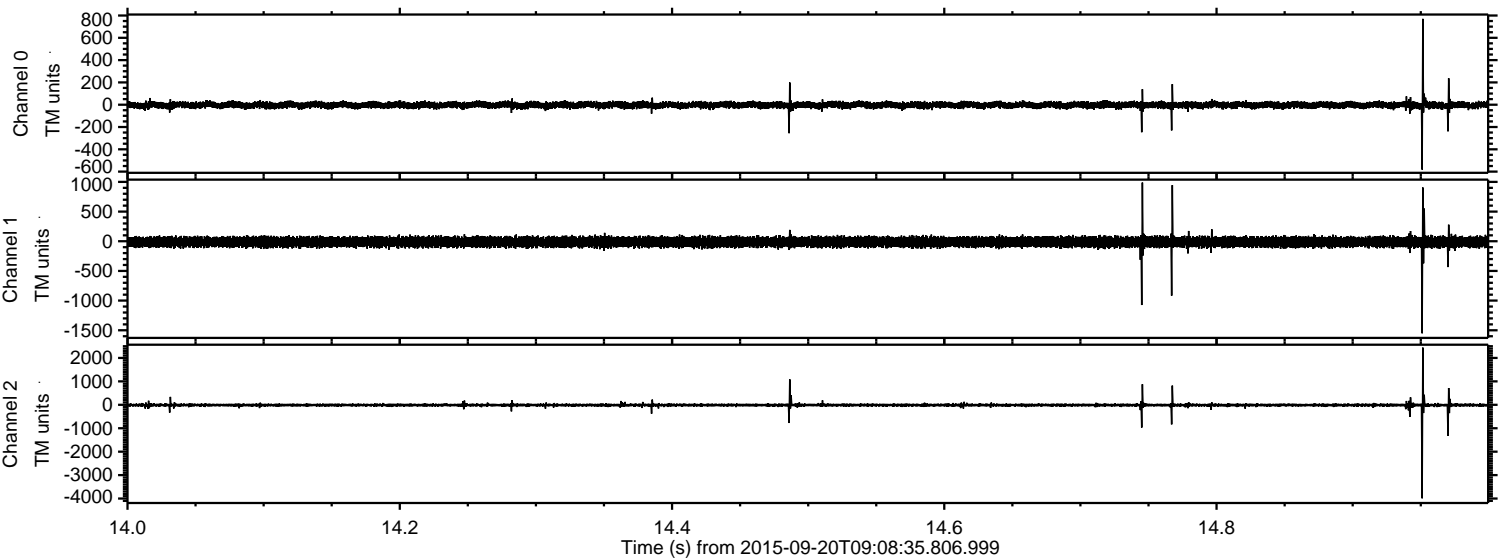
Processed Wed Oct 14 14:26:15 2015 by ELM ver.2012-10-06 from 001__elm20150920_090834__dat00.bin



Processed Wed Oct 14 14:26:16 2015 by ELM ver.2012-10-06 from 001__elm20150920_090834__dat00.bin

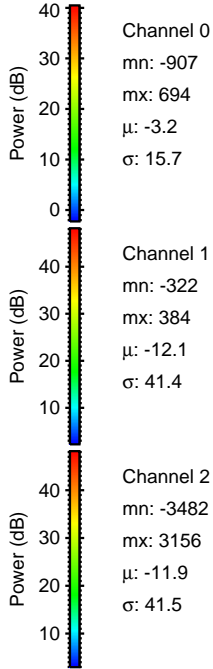
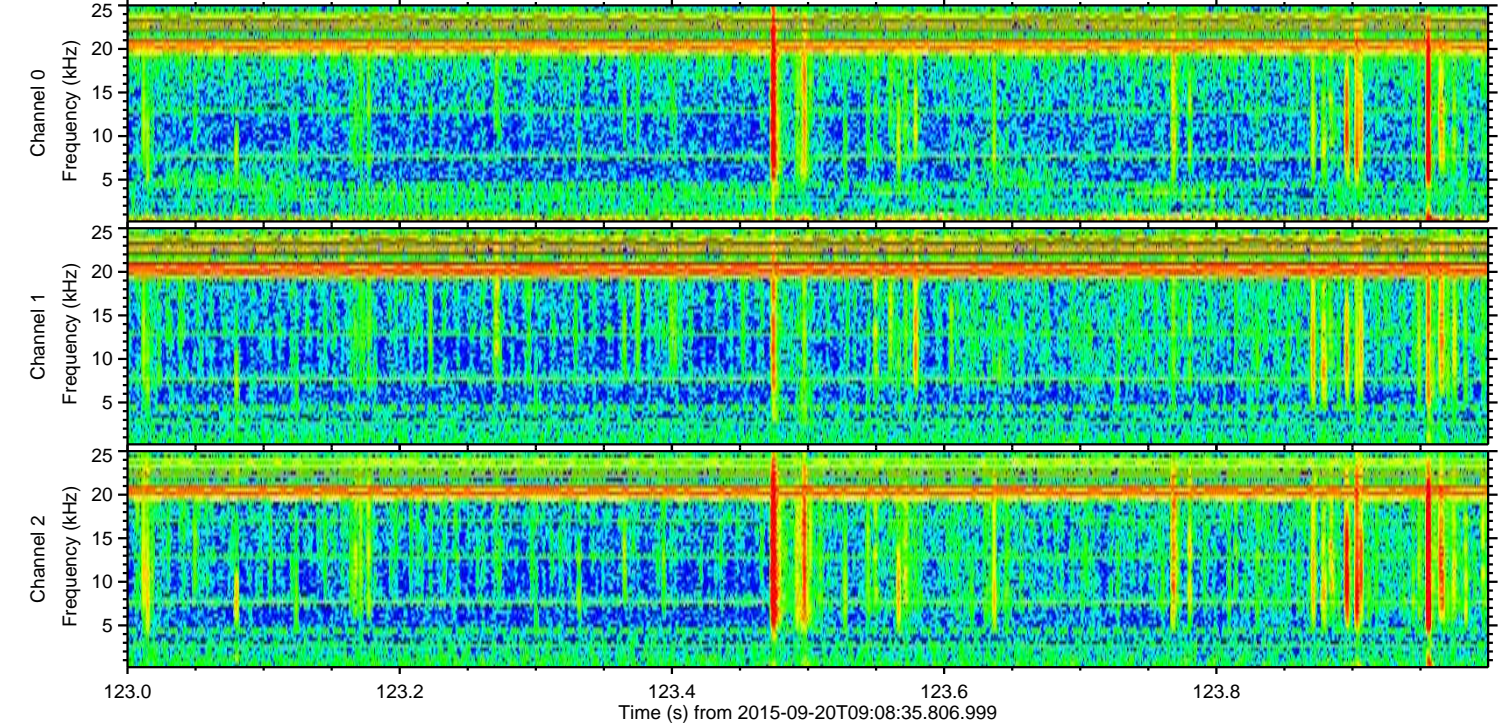
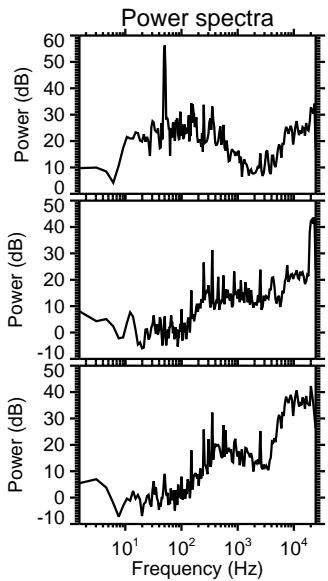
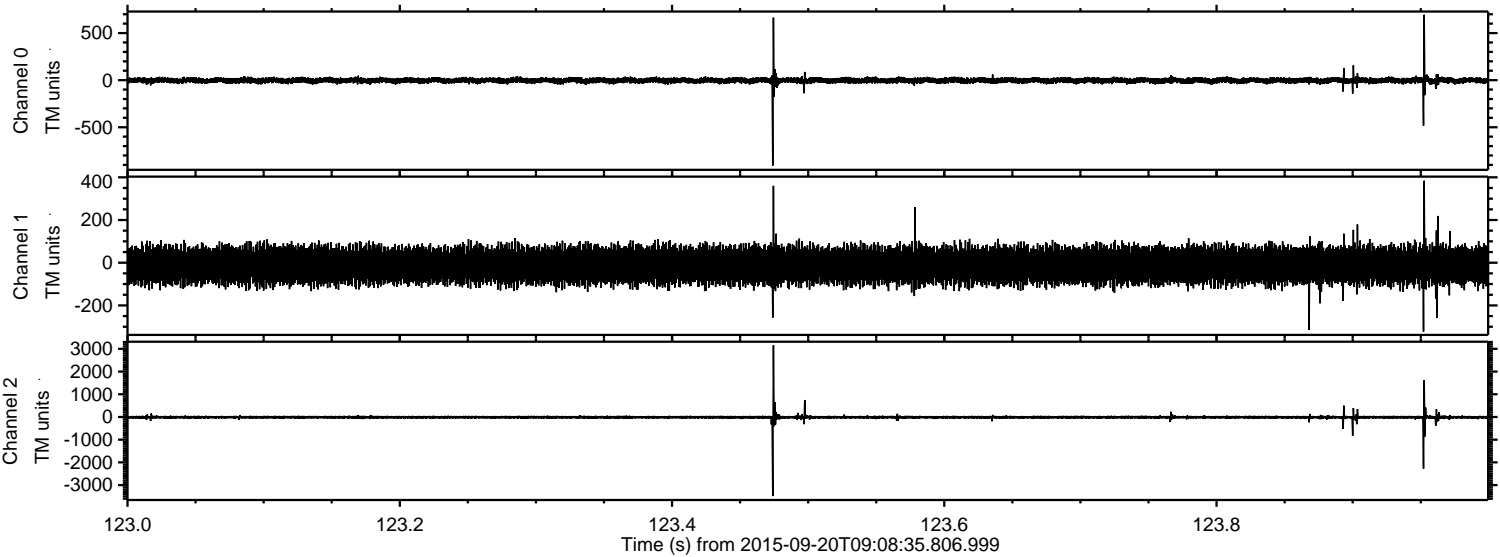


Processed Wed Oct 14 14:26:18 2015 by ELM ver.2012-10-06 from 001__elm20150920_090834__dat00.bin

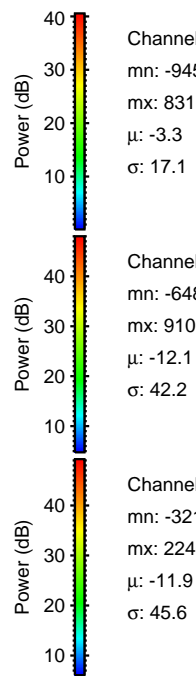
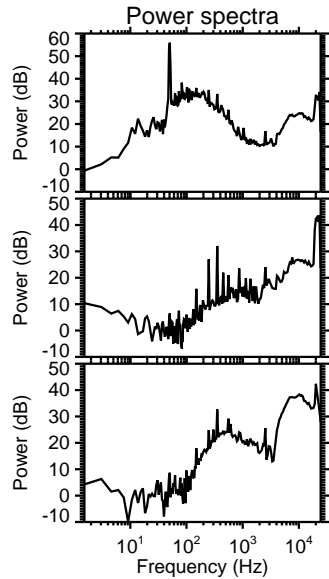
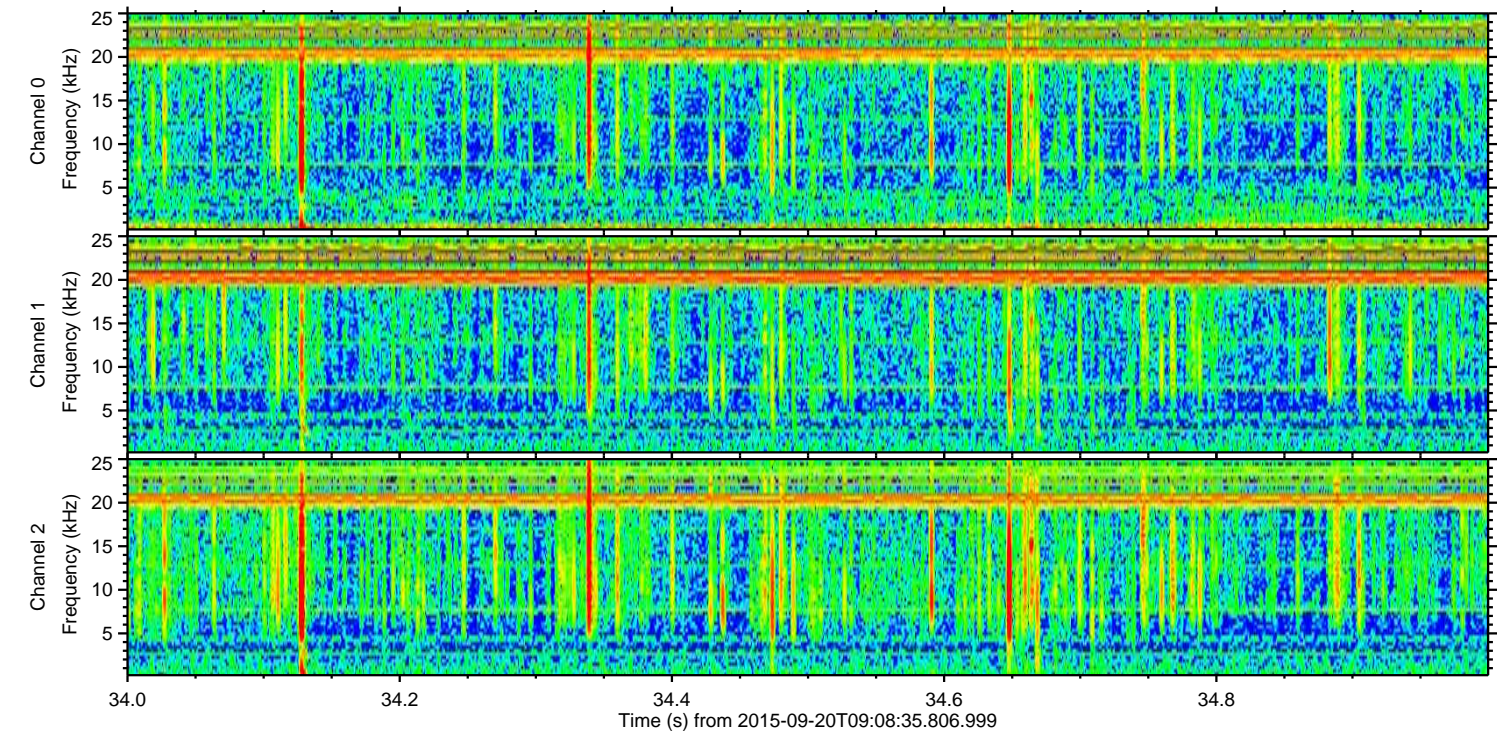
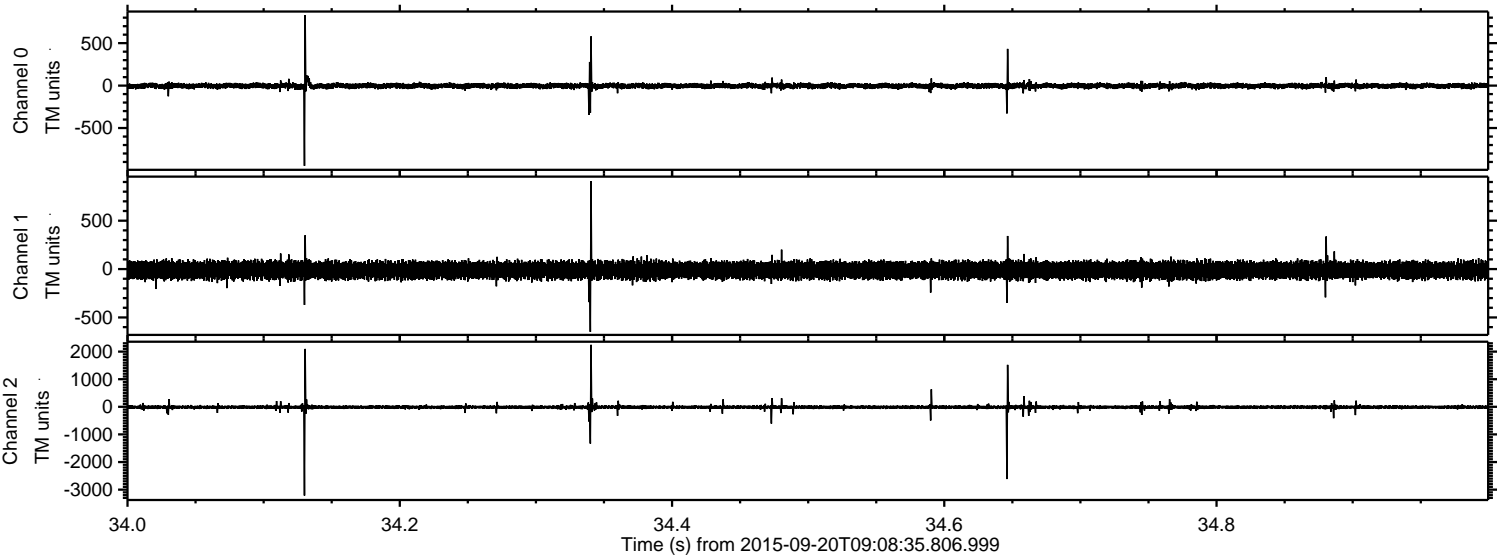


ELMAVAN 3D WAVEFORMS (Measured data sampled at 50 kHz) 51000 packets of 144 samples from 2015-09-20T09:08:35.806.999. Part 124/147

Processed Wed Oct 14 14:26:19 2015 by ELM ver.2012-10-06 from 001__elm20150920_090834__dat00.bin



Processed Wed Oct 14 14:26:20 2015 by ELM ver.2012-10-06 from 001__elm20150920_090834__dat00.bin



Channel 0
mn: -945
mx: 831
 μ : -3.3
 σ : 17.1

Channel 1
mn: -648
mx: 910
 μ : -12.1
 σ : 42.2

Channel 2
mn: -3215
mx: 2246
 μ : -11.9
 σ : 45.6

