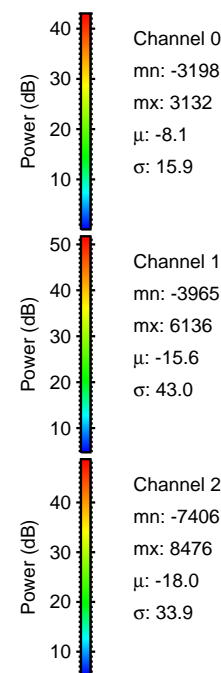
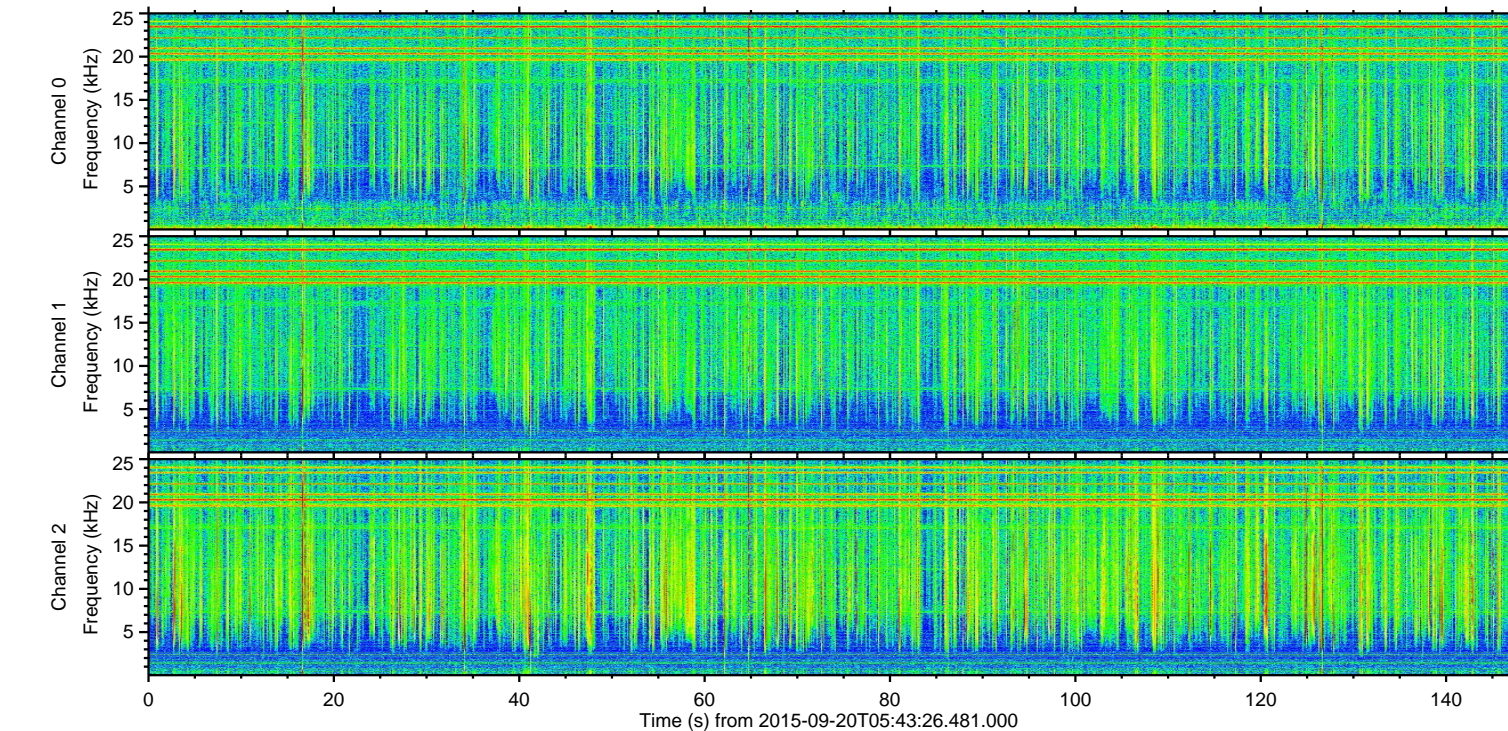
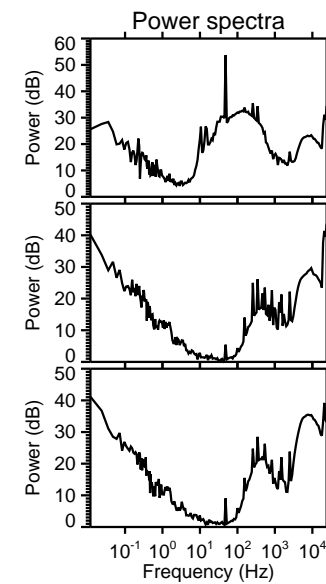
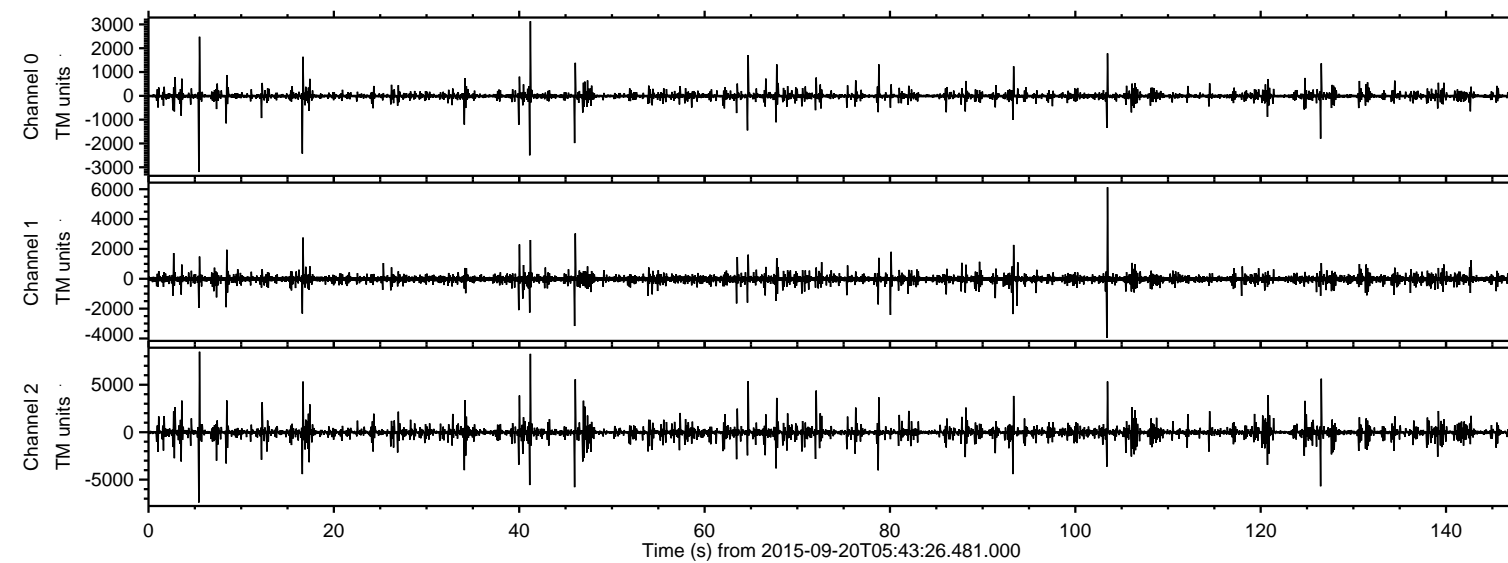


ELMAVAN 3D WAVEFORMS (Measured data sampled at 50 kHz) 51000 packets of 144 samples from 2015-09-20T05:43:26.481.000.

Processed Wed Oct 14 13:18:42 2015 by ELM ver.2012-10-06 from 001__elm20150920_054325__dat00.bin

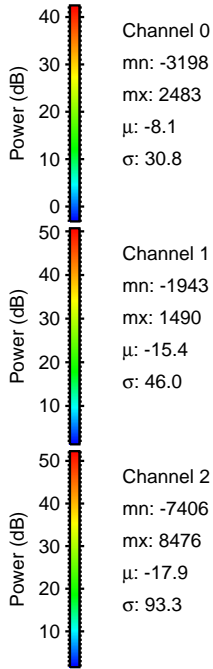
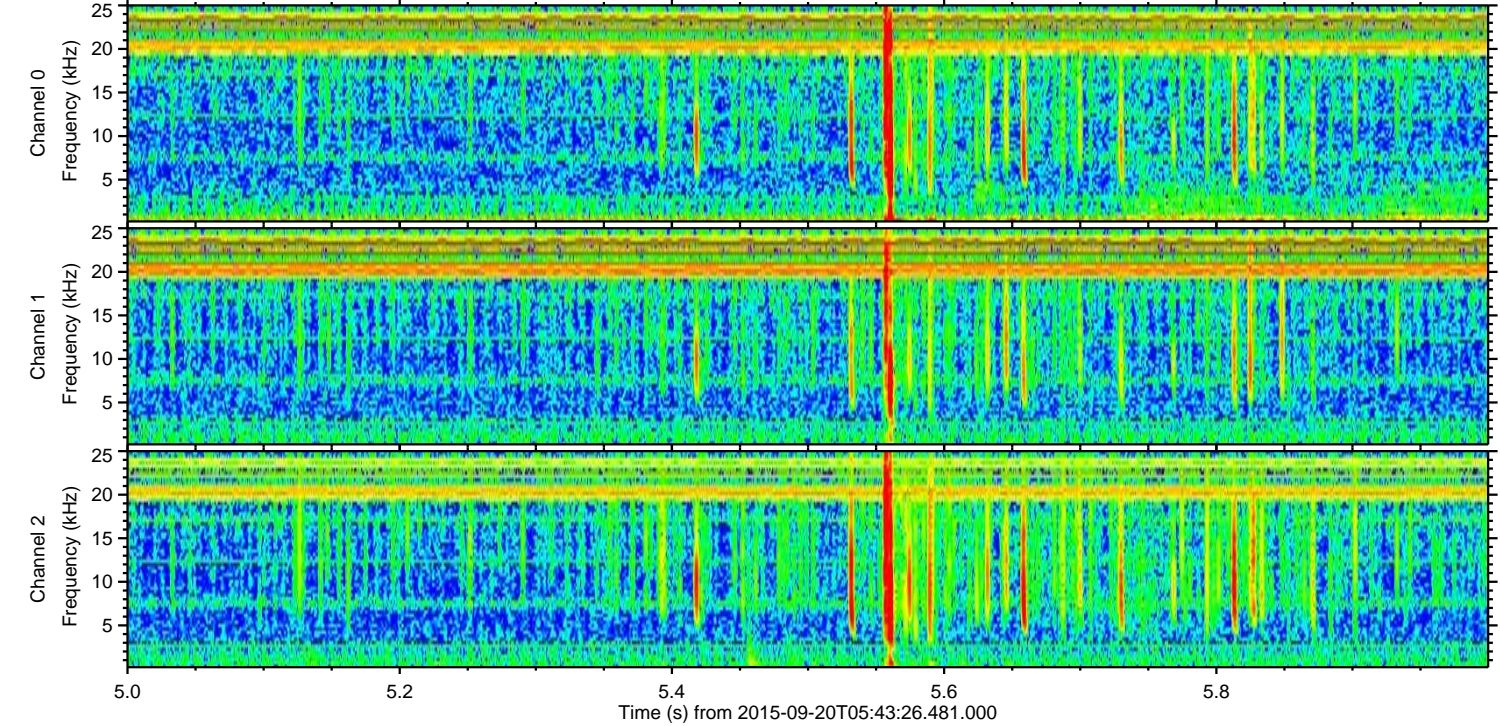
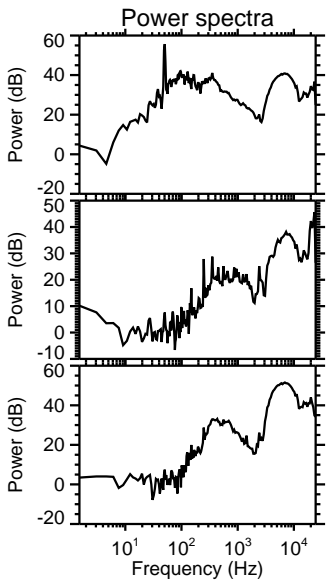
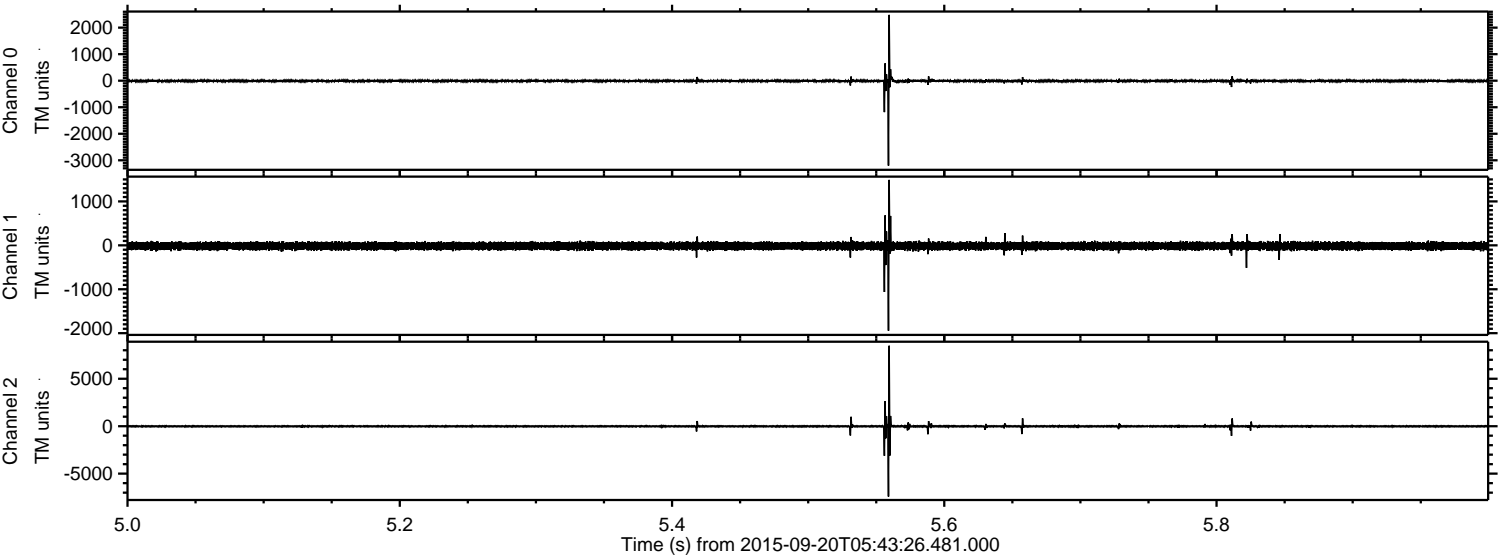


Channel 0
mn: -3198
mx: 3132
 μ : -8.1
 σ : 15.9

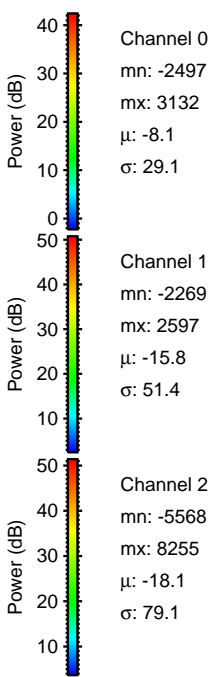
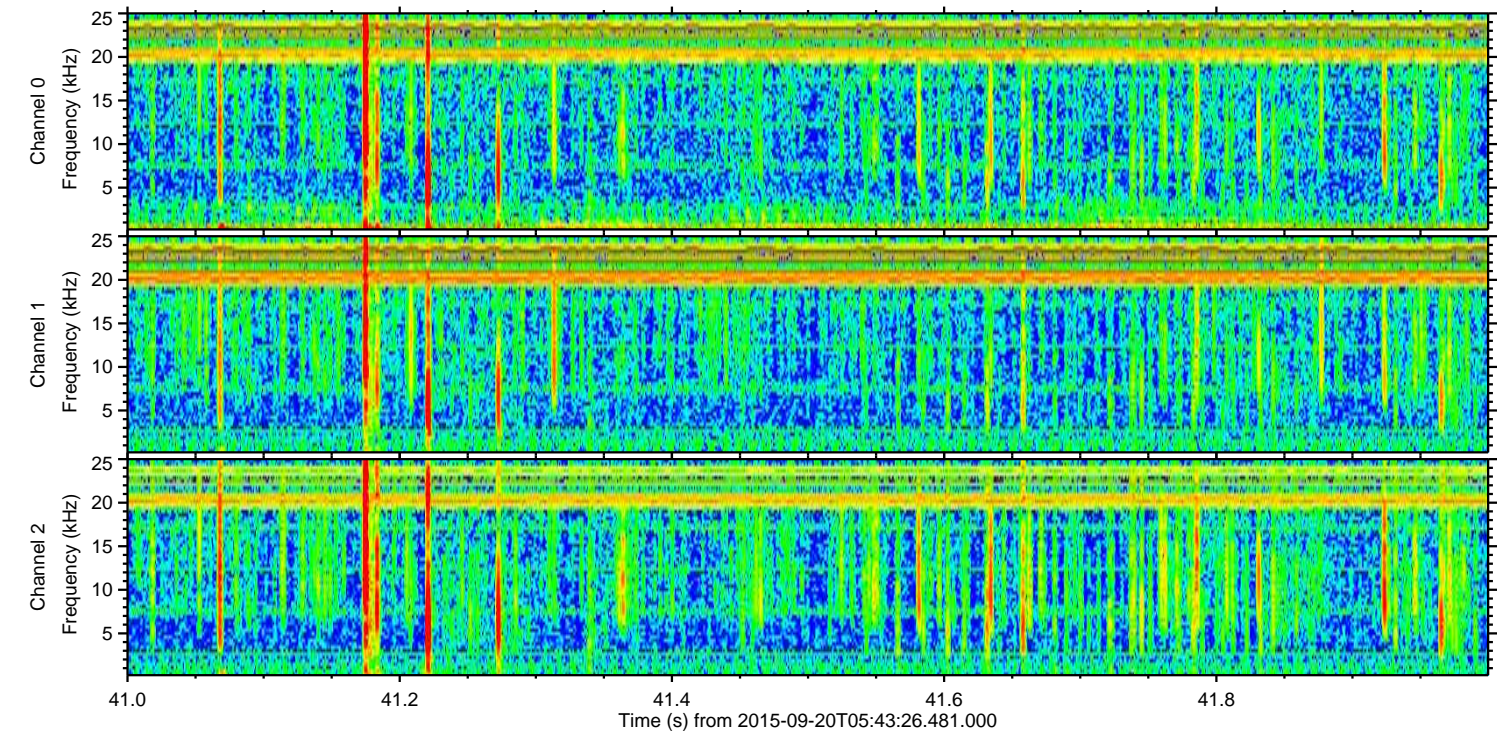
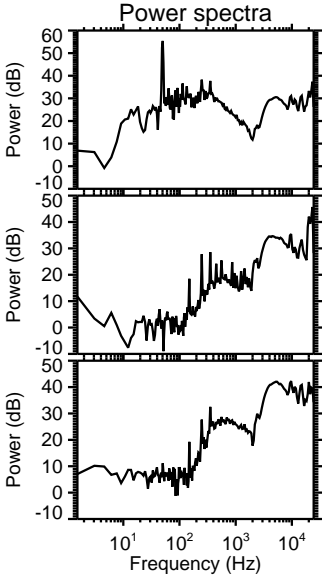
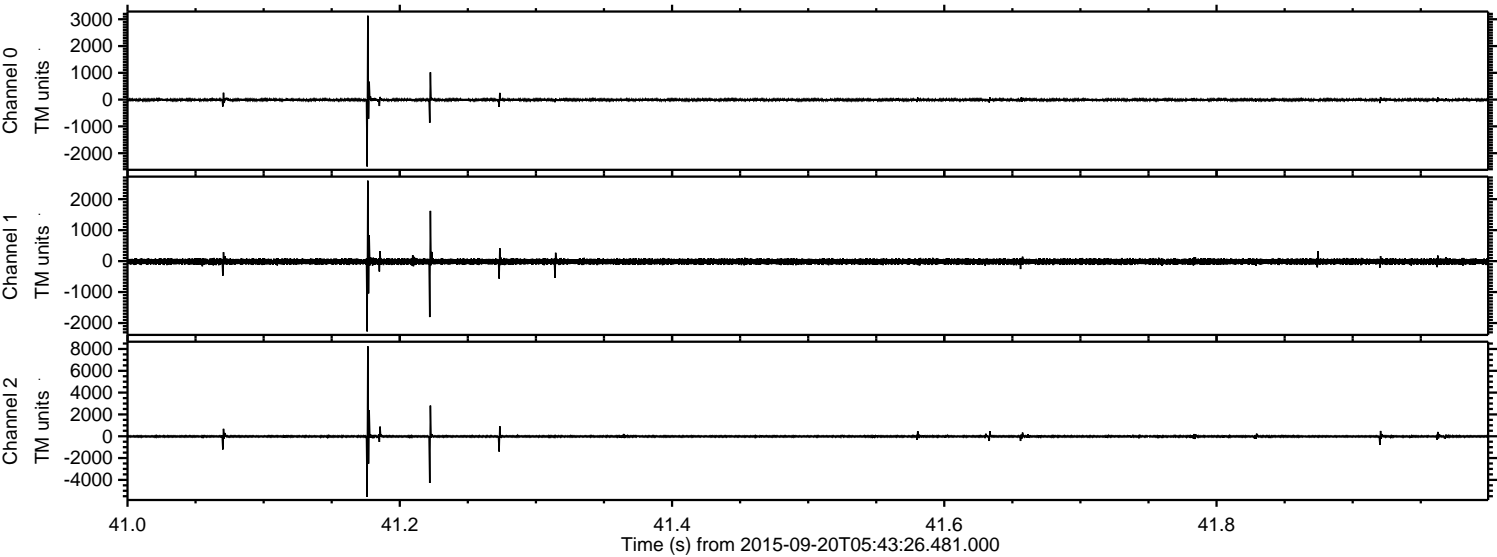
Channel 1
mn: -3965
mx: 6136
 μ : -15.6
 σ : 43.0

Channel 2
mn: -7406
mx: 8476
 μ : -18.0
 σ : 33.9

Processed Wed Oct 14 13:19:02 2015 by ELM ver.2012-10-06 from 001__elm20150920_054325__dat00.bin



Processed Wed Oct 14 13:19:03 2015 by ELM ver.2012-10-06 from 001__elm20150920_054325__dat00.bin



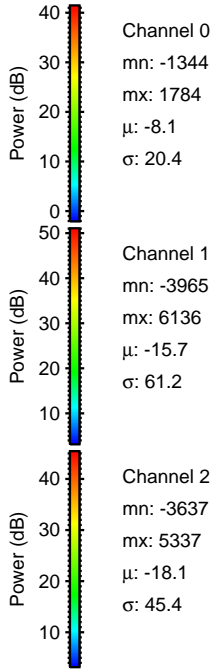
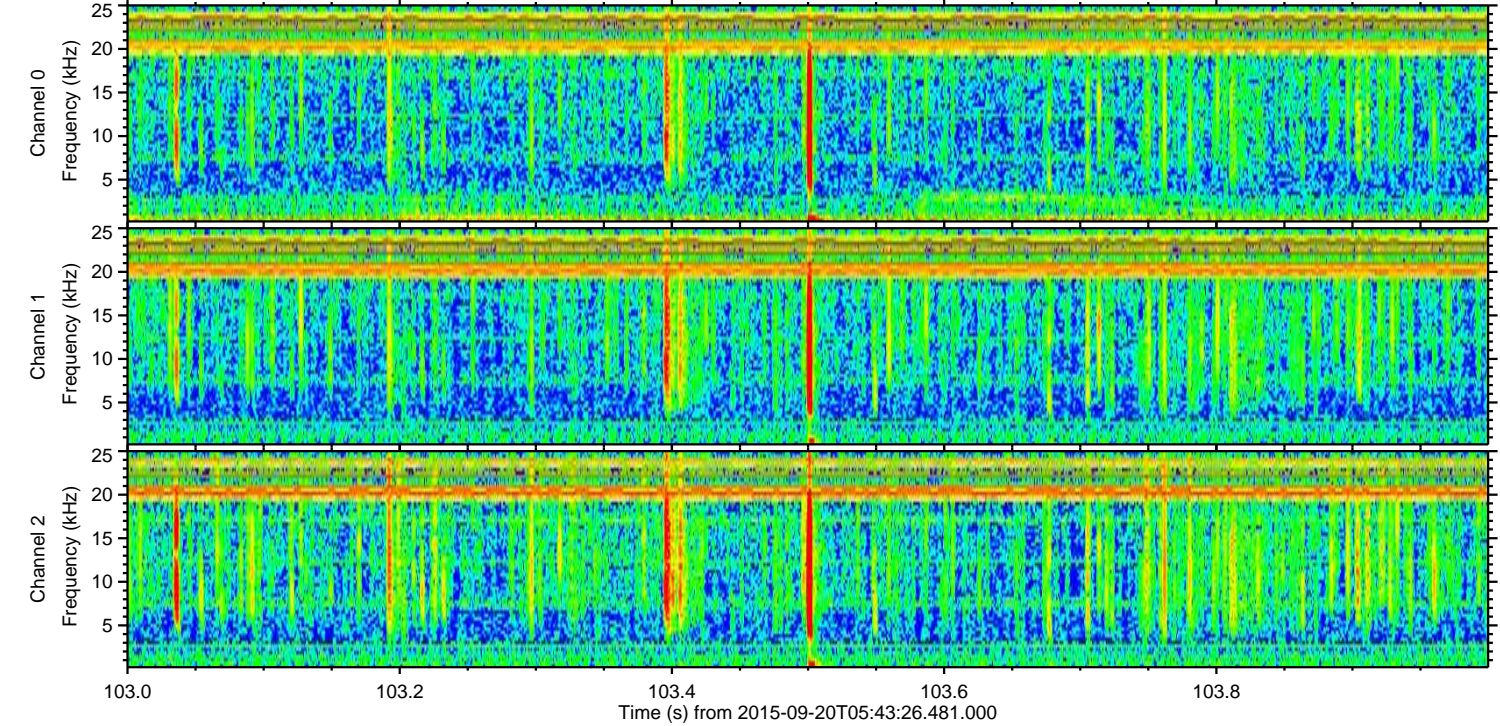
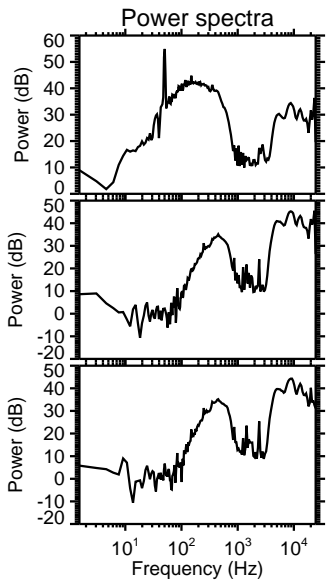
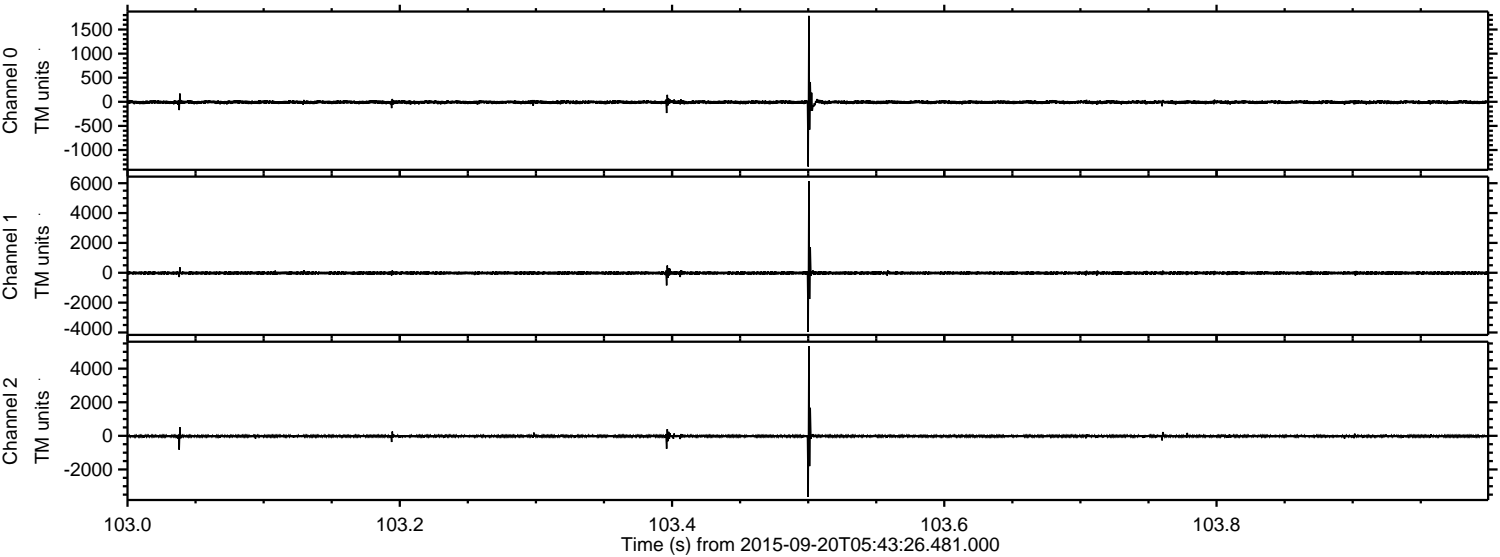
Channel 0
mn: -2497
mx: 3132
 μ : -8.1
 σ : 29.1

Channel 1
mn: -2269
mx: 2597
 μ : -15.8
 σ : 51.4

Channel 2
mn: -5568
mx: 8255
 μ : -18.1
 σ : 79.1

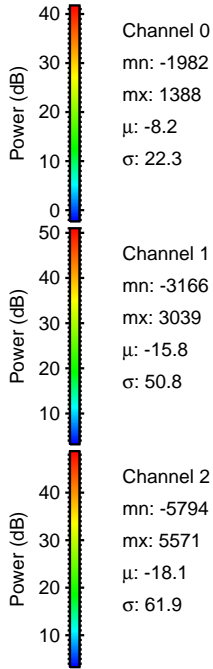
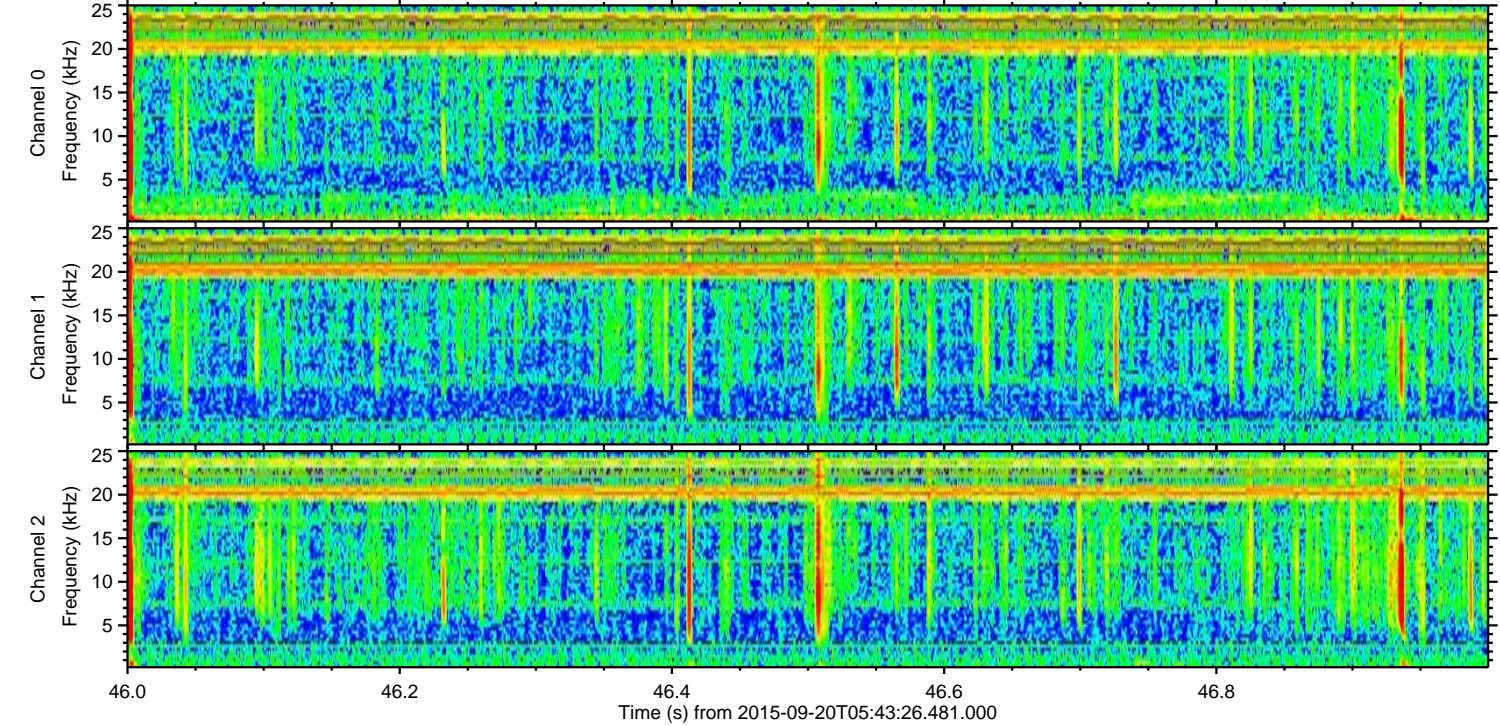
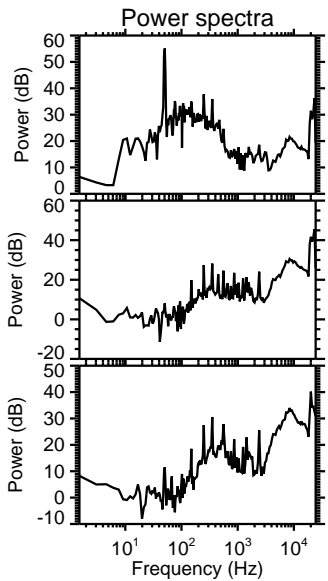
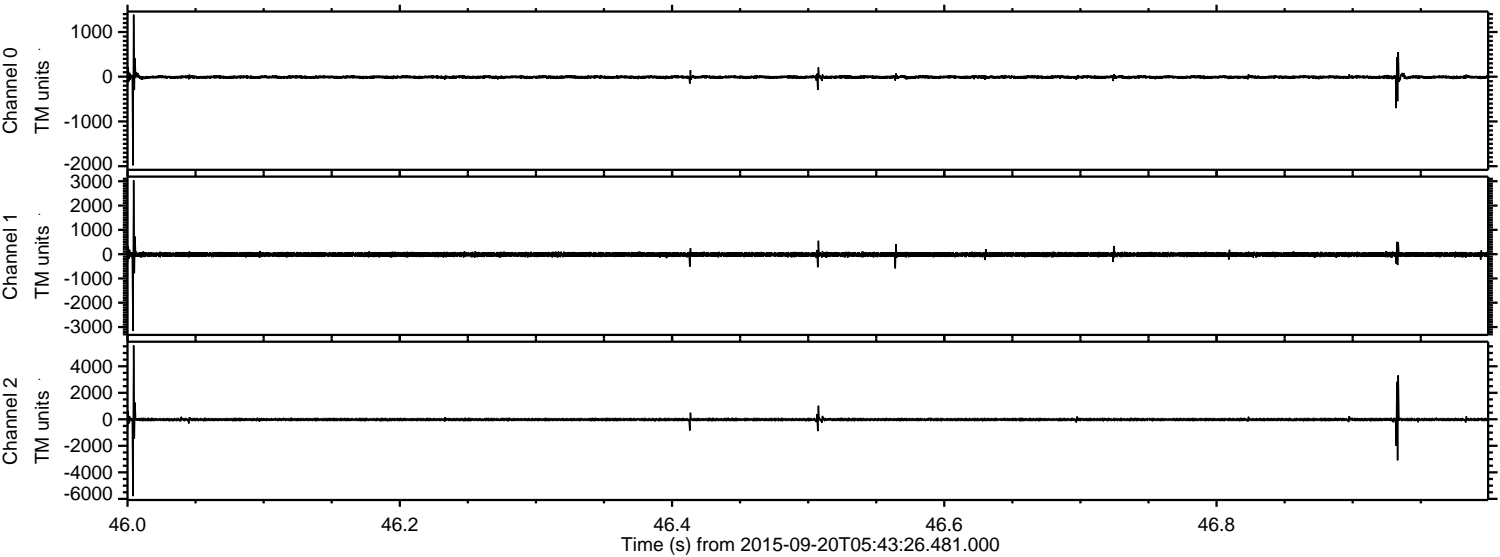
ELMAVAN 3D WAVEFORMS (Measured data sampled at 50 kHz) 51000 packets of 144 samples from 2015-09-20T05:43:26.481.000. Part 104/147

Processed Wed Oct 14 13:19:04 2015 by ELM ver.2012-10-06 from 001__elm20150920_054325__dat00.bin



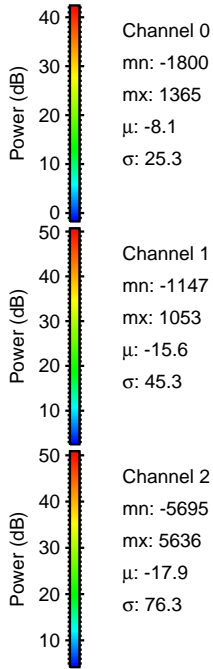
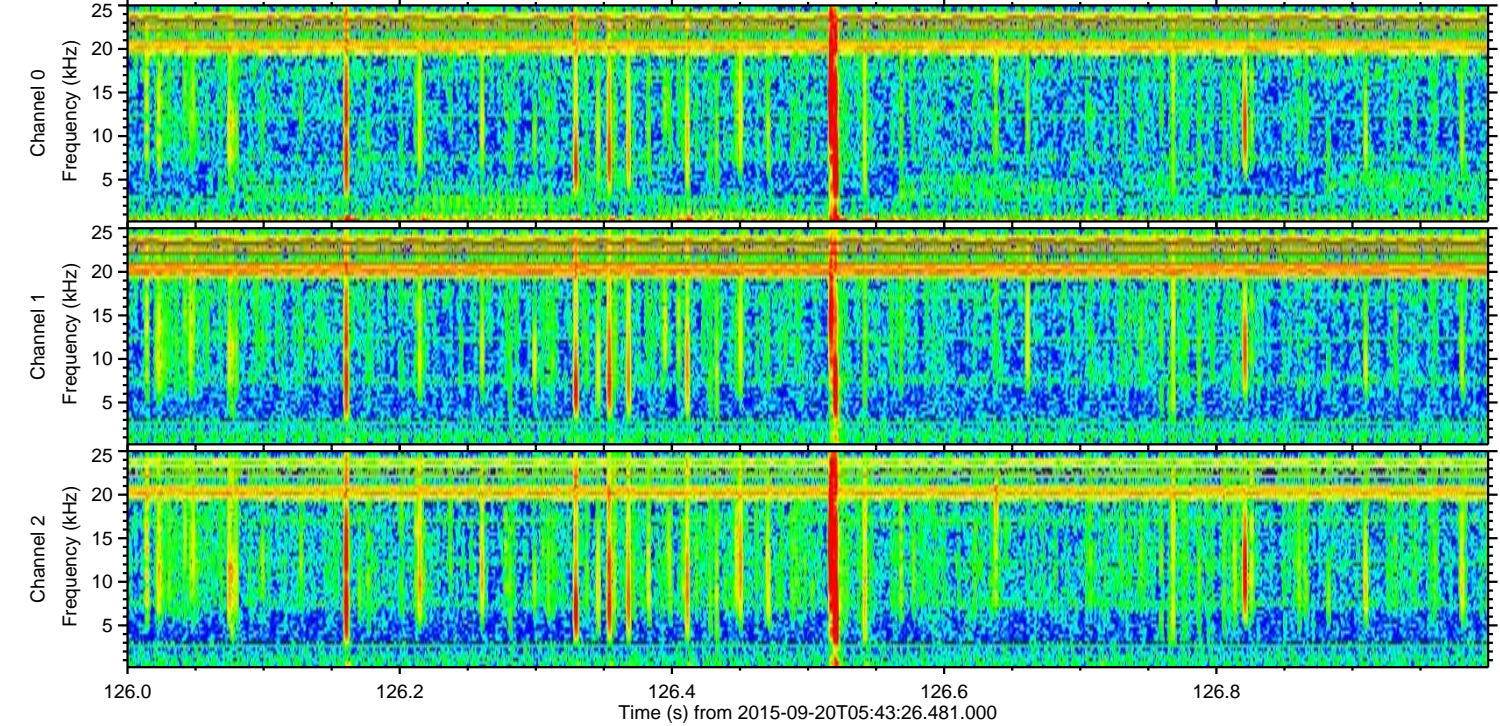
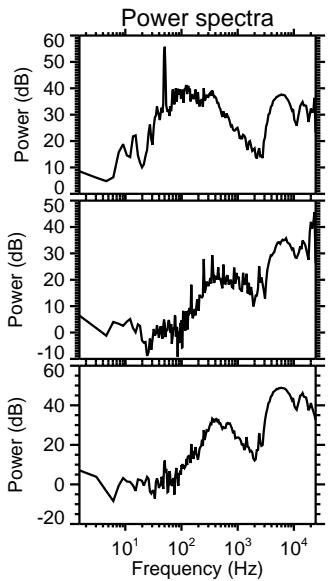
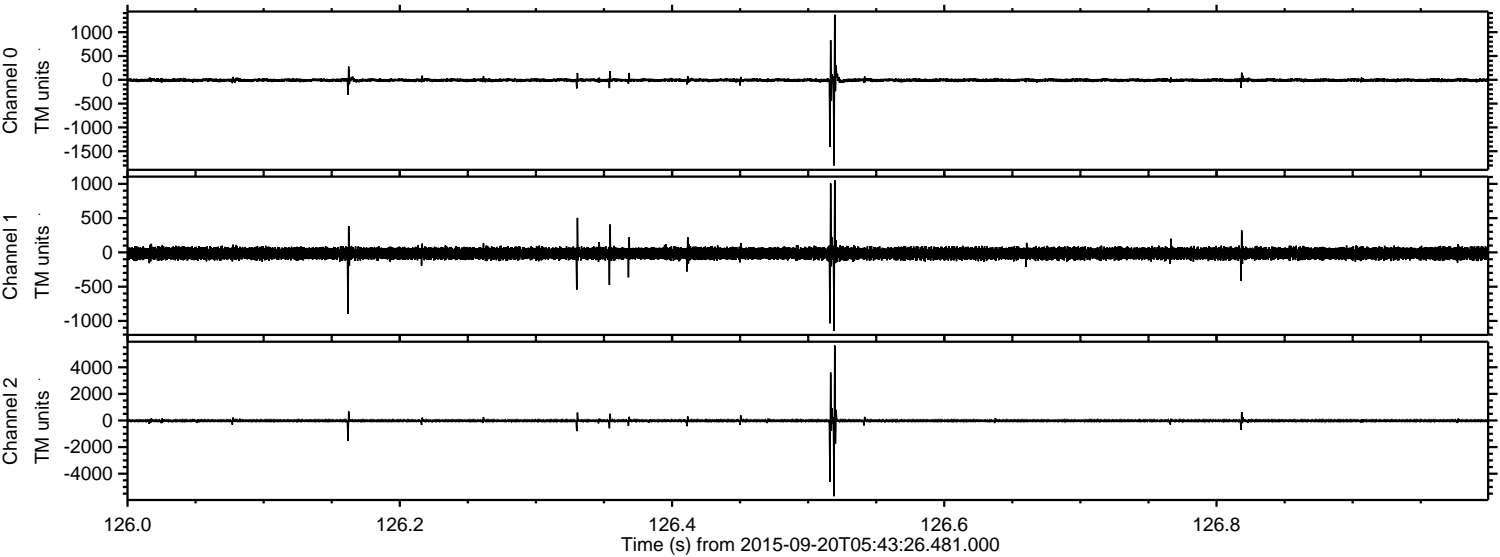
ELMAVAN 3D WAVEFORMS (Measured data sampled at 50 kHz) 51000 packets of 144 samples from 2015-09-20T05:43:26.481.000. Part 47/147

Processed Wed Oct 14 13:19:05 2015 by ELM ver.2012-10-06 from 001__elm20150920_054325__dat00.bin



ELMAVAN 3D WAVEFORMS (Measured data sampled at 50 kHz) 51000 packets of 144 samples from 2015-09-20T05:43:26.481.000. Part 127/147

Processed Wed Oct 14 13:19:06 2015 by ELM ver.2012-10-06 from 001__elm20150920_054325__dat00.bin

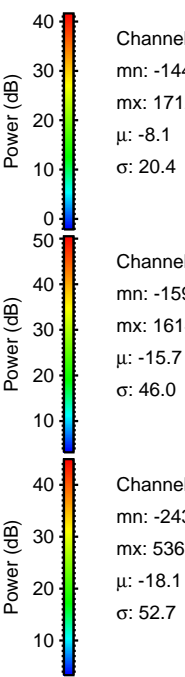
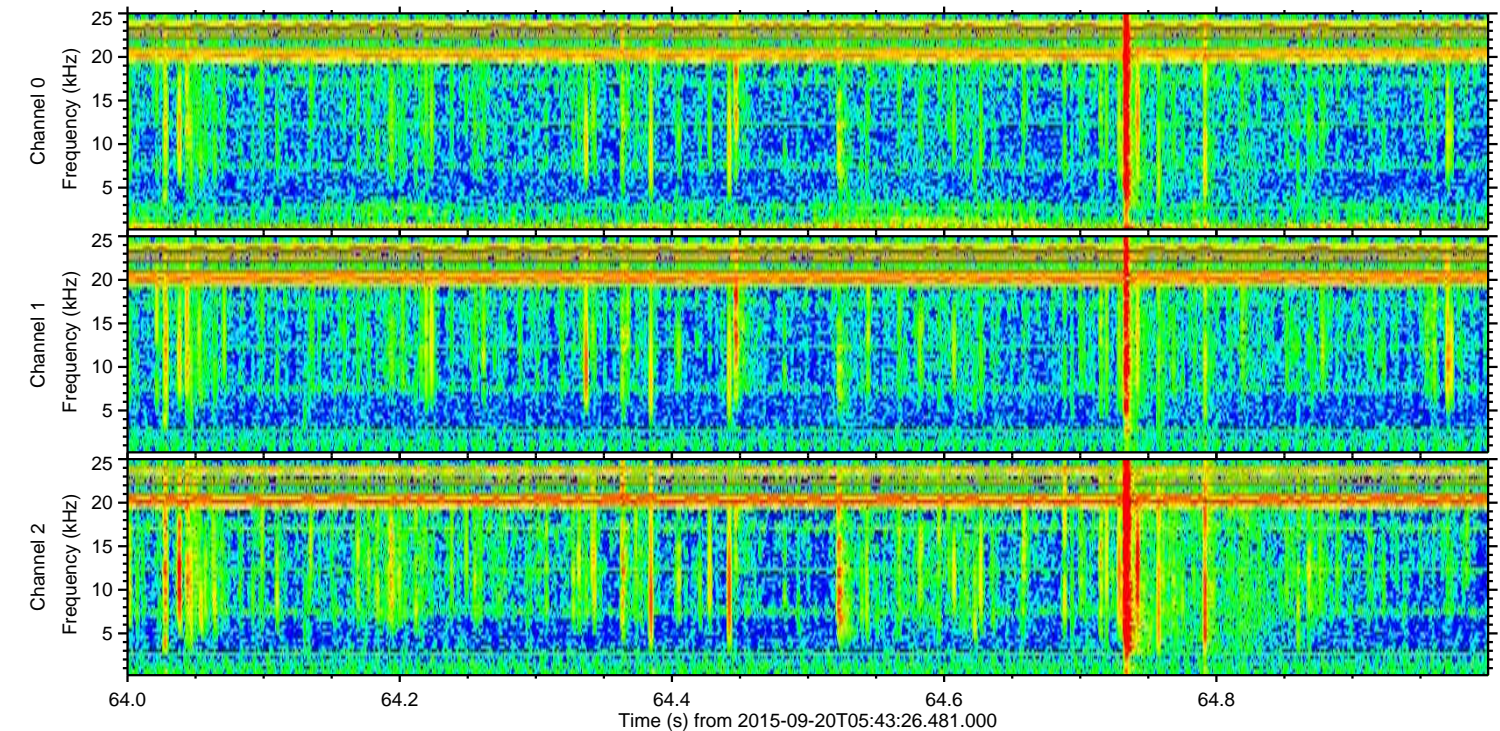
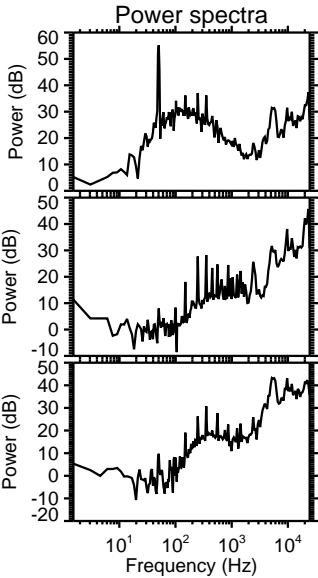
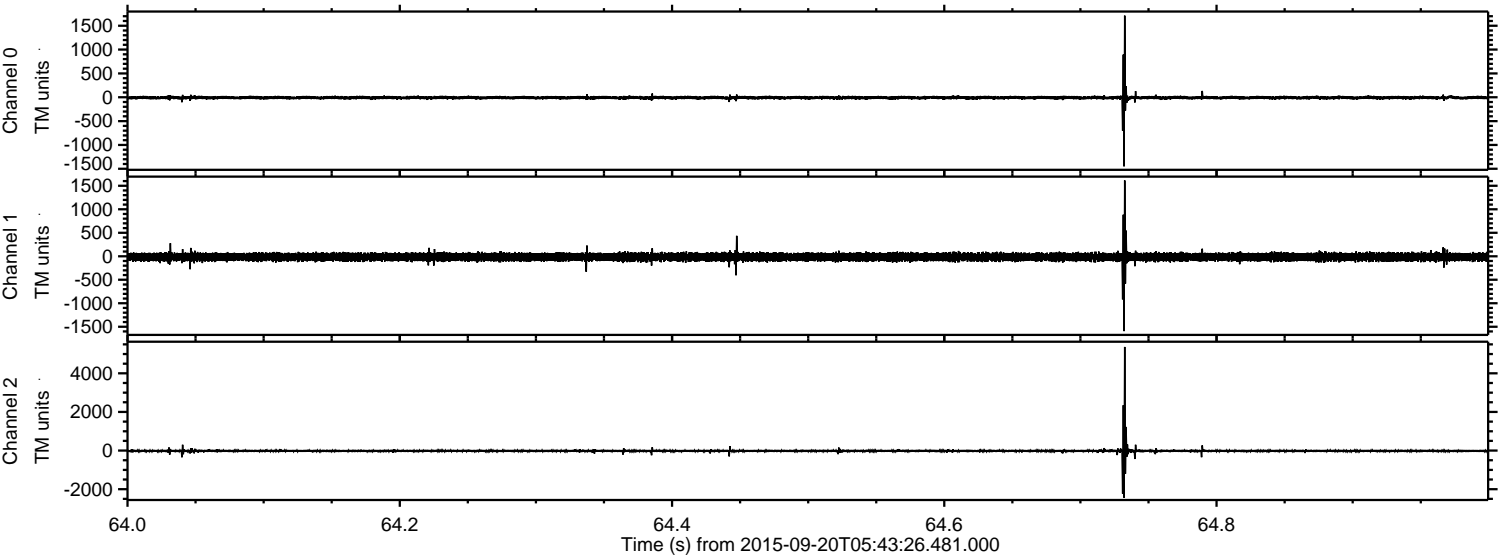


Channel 0
mn: -1800
mx: 1365
 μ : -8.1
 σ : 25.3

Channel 1
mn: -1147
mx: 1053
 μ : -15.6
 σ : 45.3

Channel 2
mn: -5695
mx: 5636
 μ : -17.9
 σ : 76.3

Processed Wed Oct 14 13:19:07 2015 by ELM ver.2012-10-06 from 001__elm20150920_054325__dat00.bin

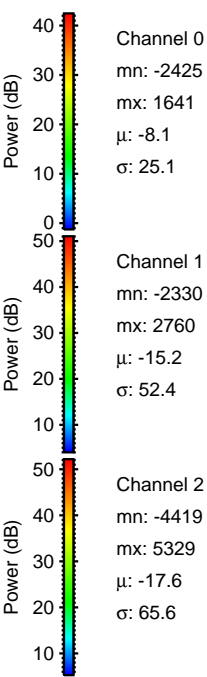
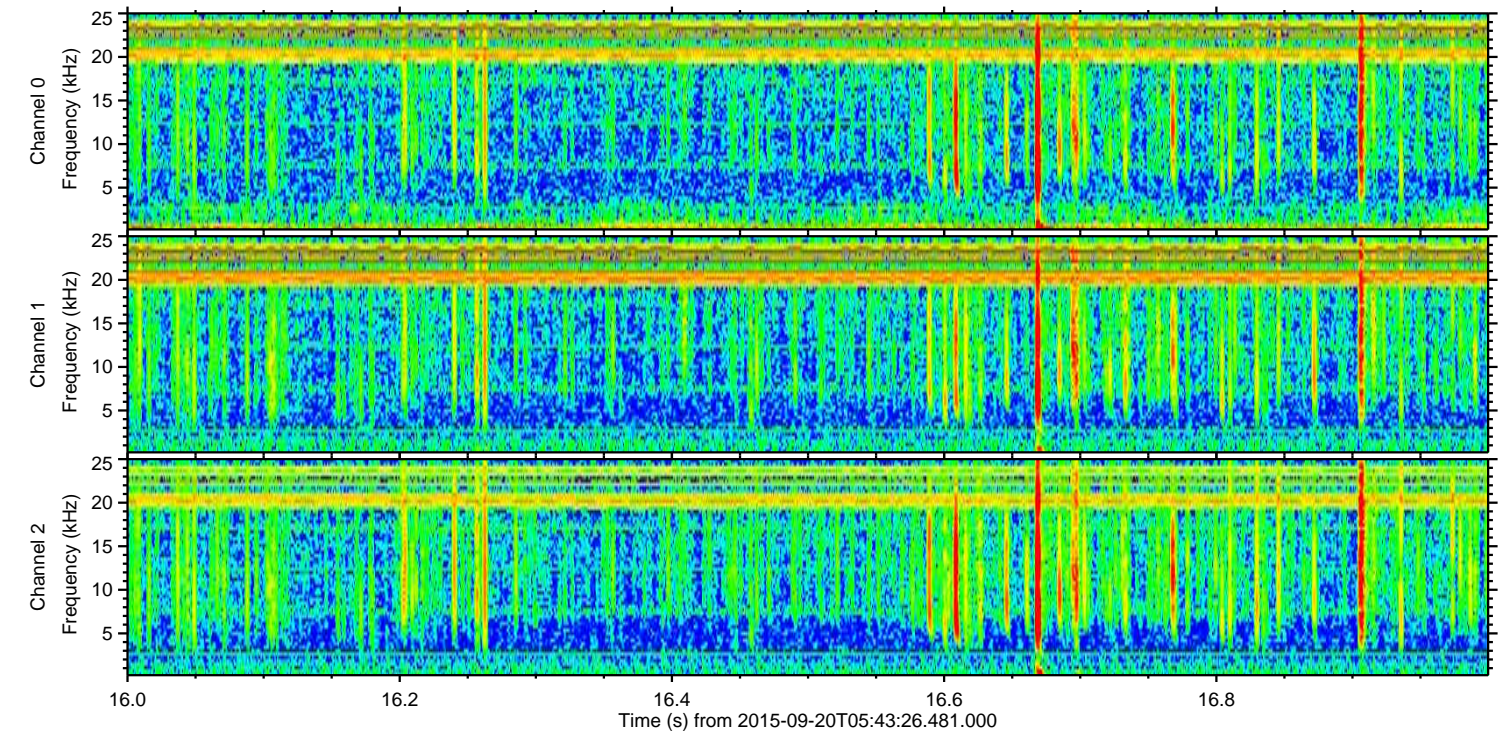
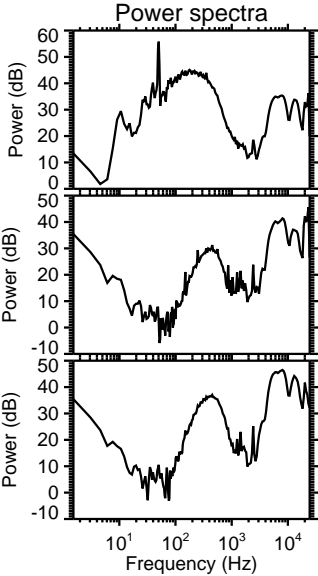
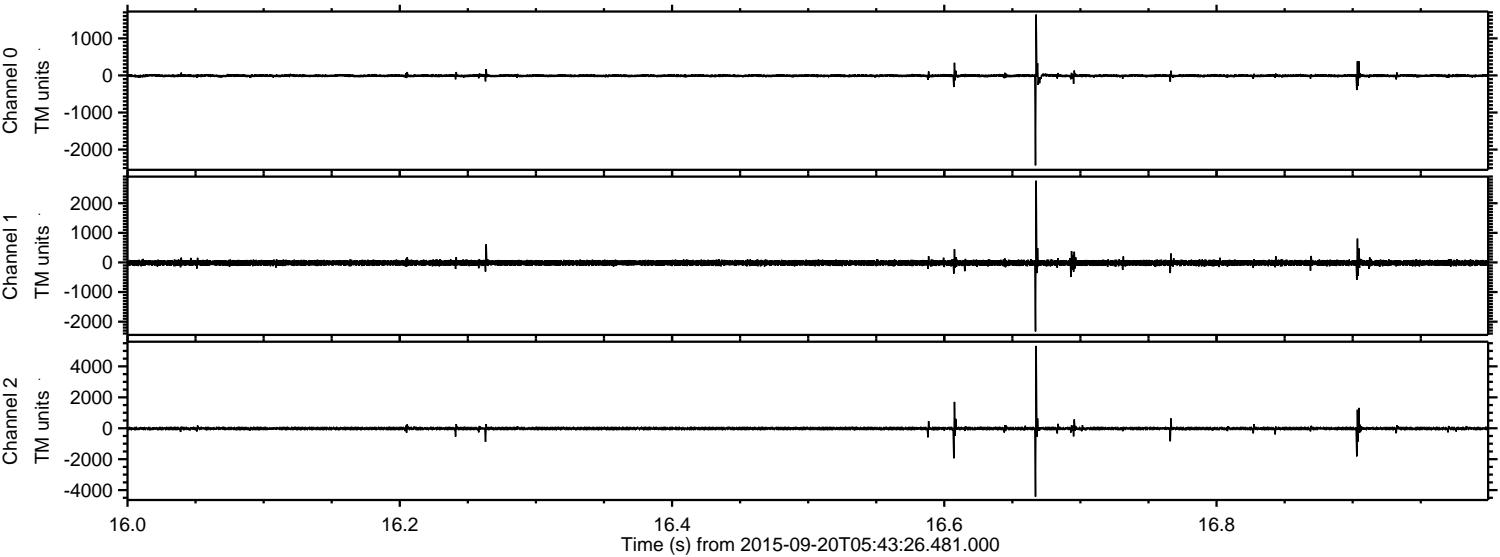


Channel 0
mn: -1449
mx: 1712
 μ : -8.1
 σ : 20.4

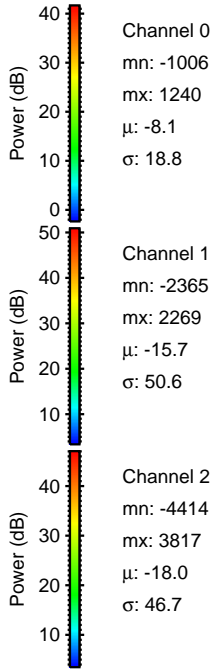
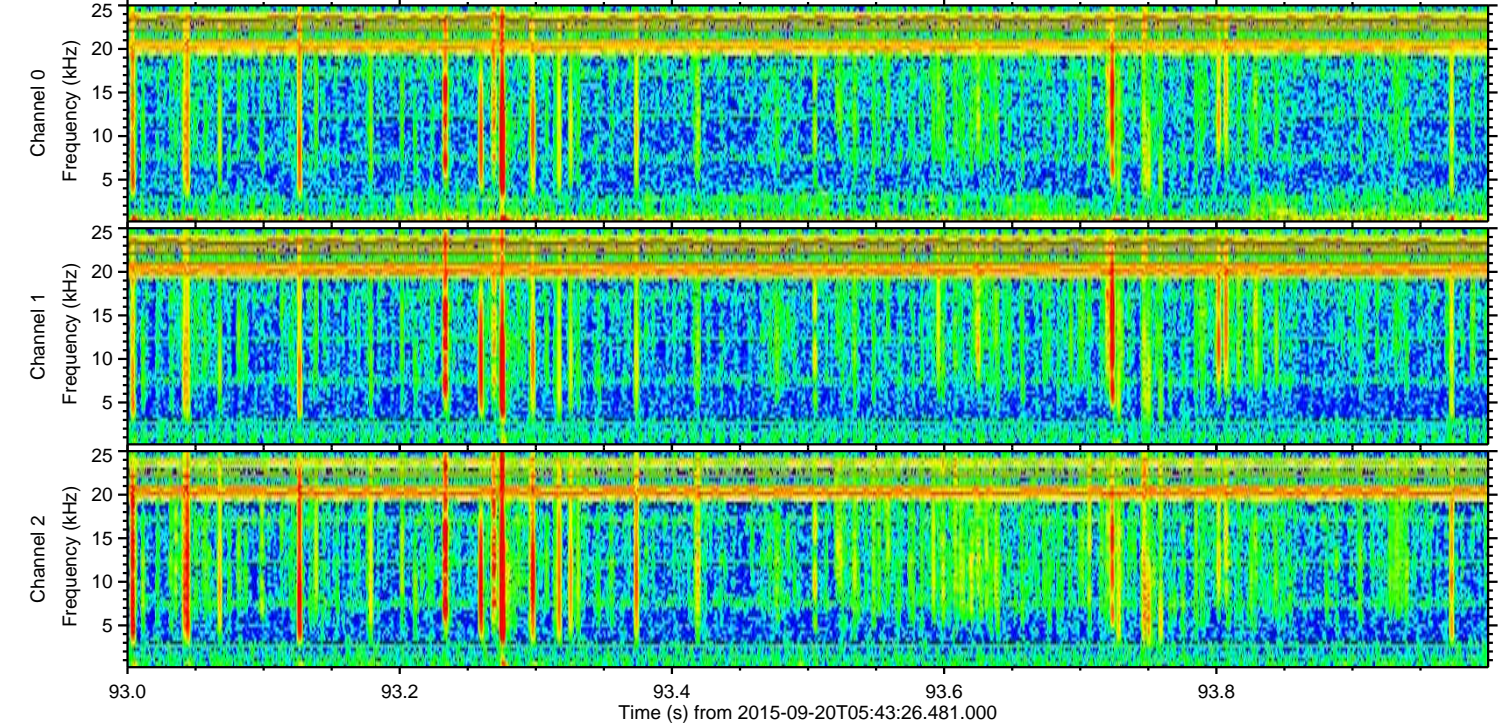
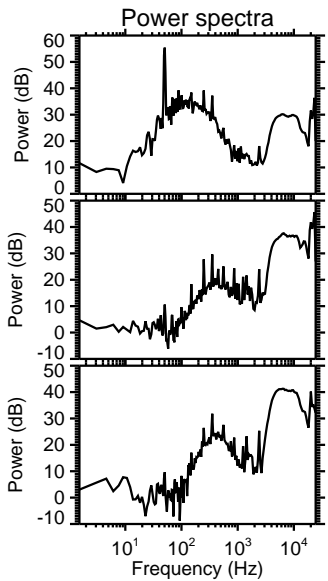
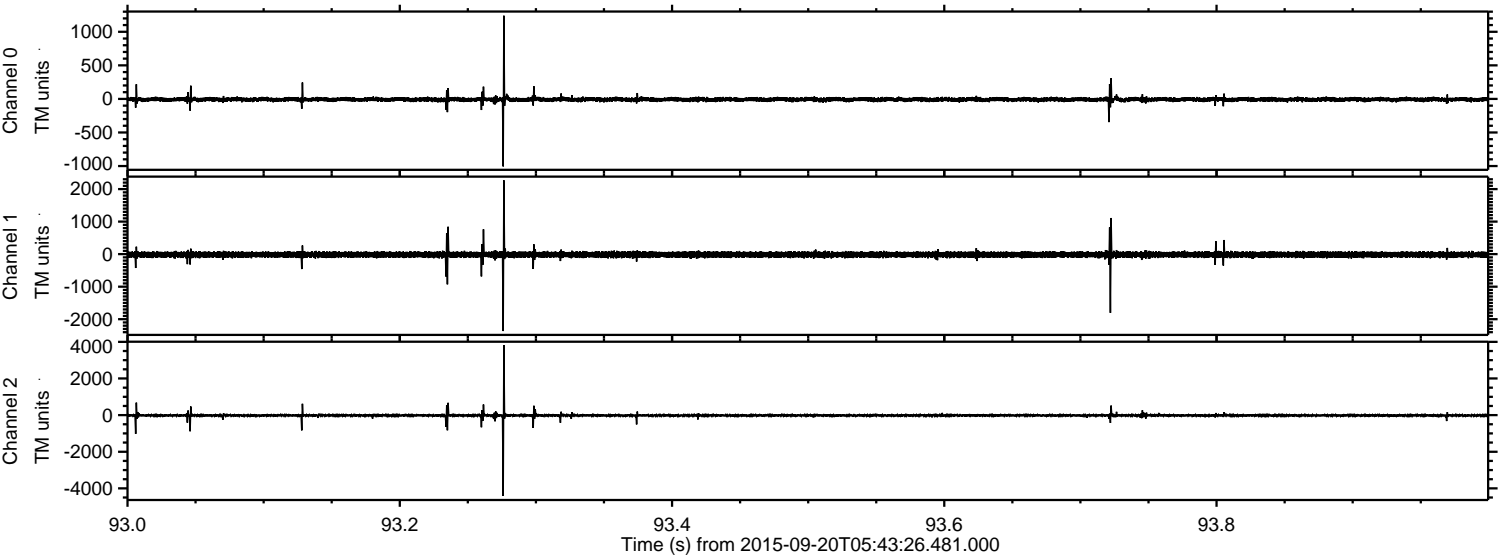
Channel 1
mn: -1594
mx: 1614
 μ : -15.7
 σ : 46.0

Channel 2
mn: -2438
mx: 5369
 μ : -18.1
 σ : 52.7

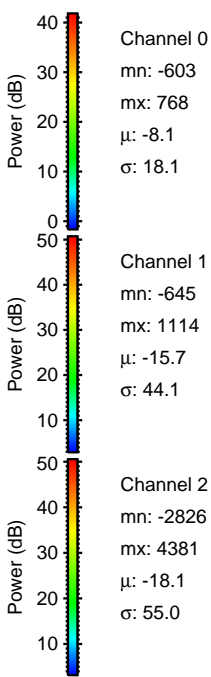
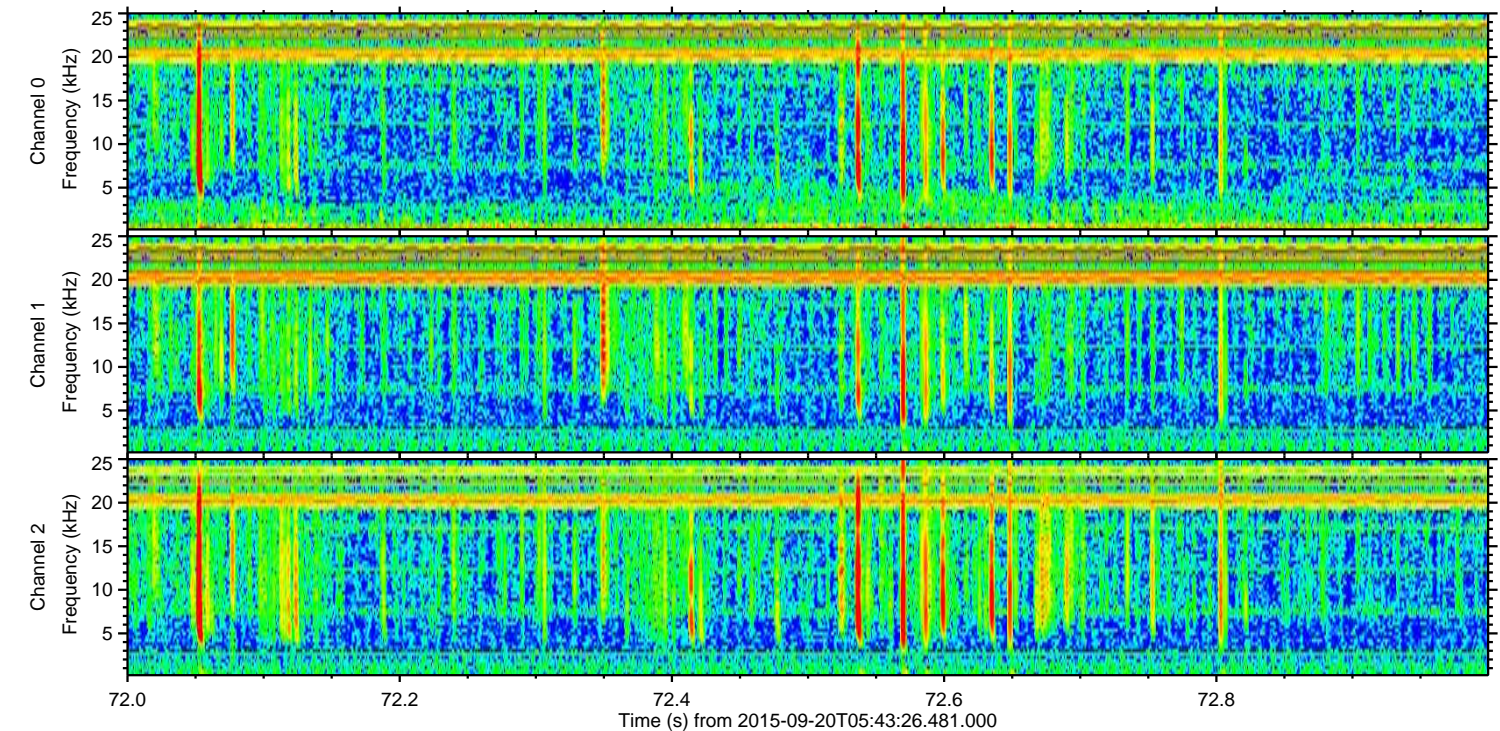
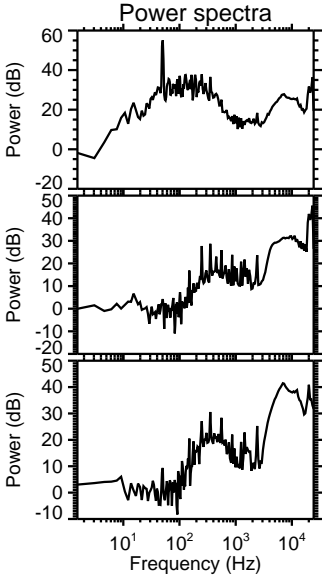
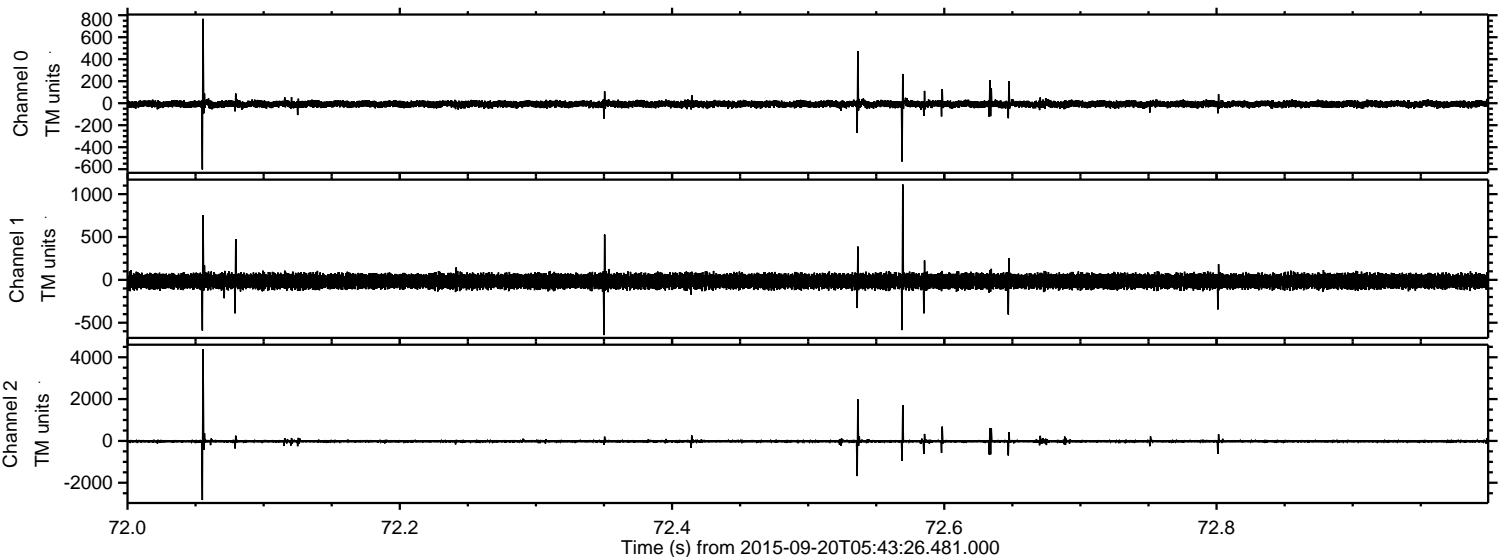
Processed Wed Oct 14 13:19:08 2015 by ELM ver.2012-10-06 from 001__elm20150920_054325__dat00.bin



Processed Wed Oct 14 13:19:09 2015 by ELM ver.2012-10-06 from 001__elm20150920_054325__dat00.bin



Processed Wed Oct 14 13:19:10 2015 by ELM ver.2012-10-06 from 001__elm20150920_054325__dat00.bin



Processed Wed Oct 14 13:19:11 2015 by ELM ver.2012-10-06 from 001__elm20150920_054325__dat00.bin

