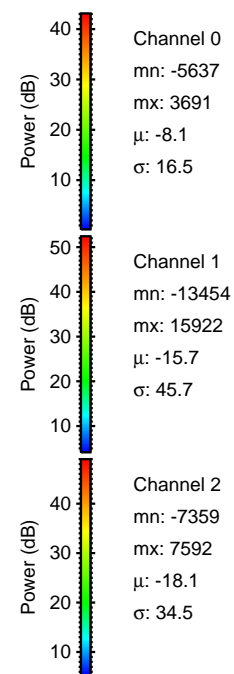
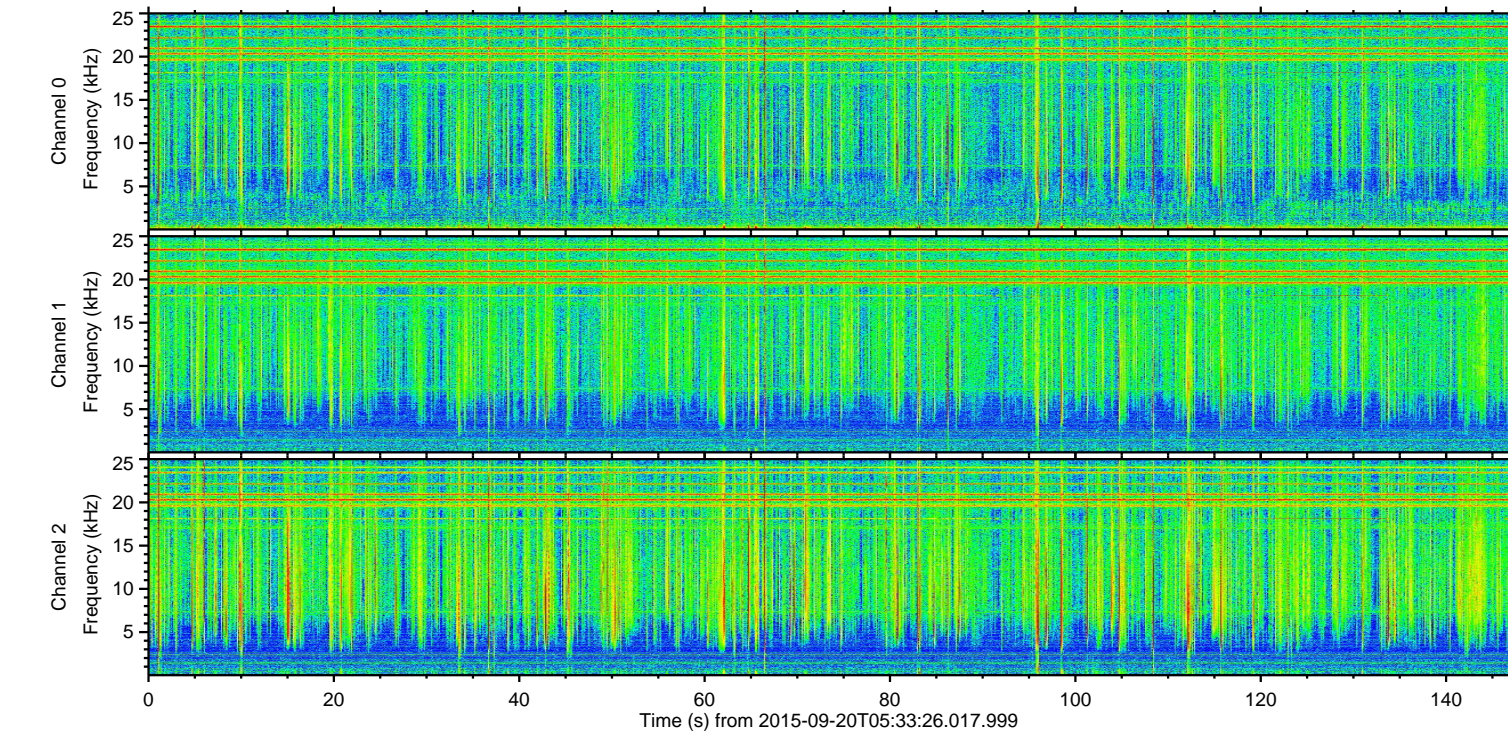
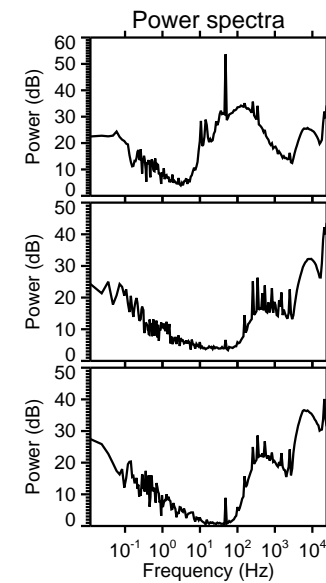
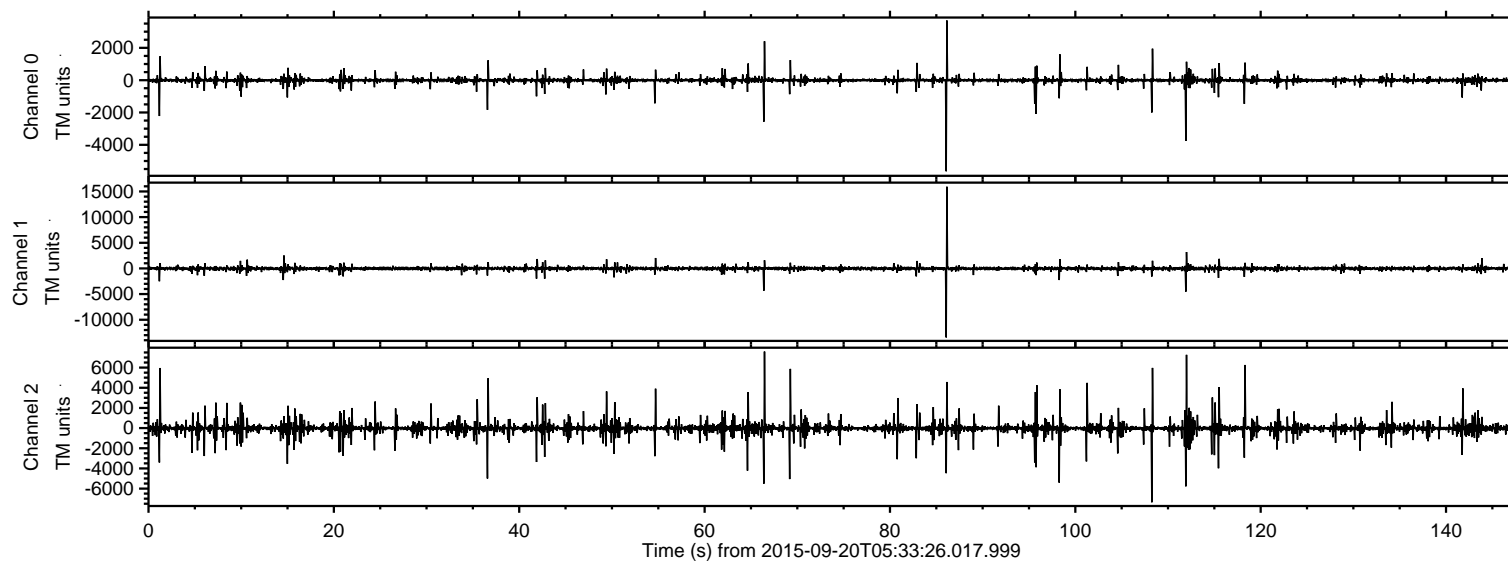
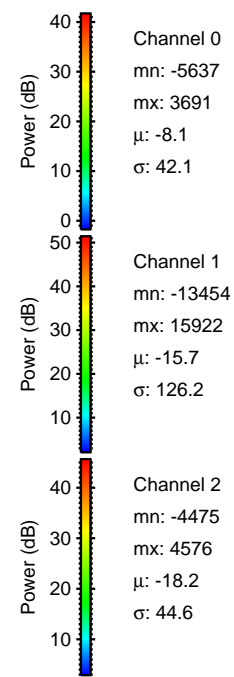
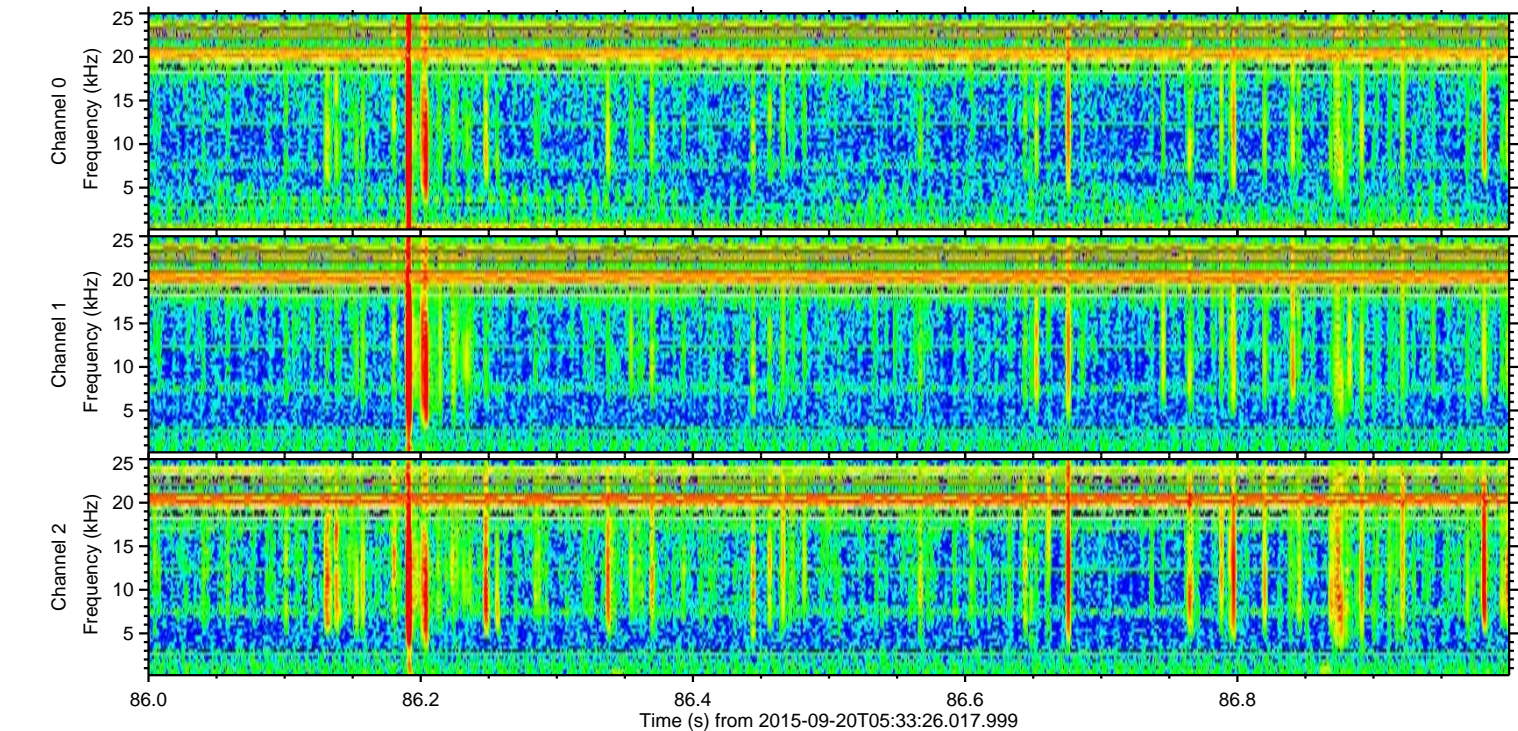
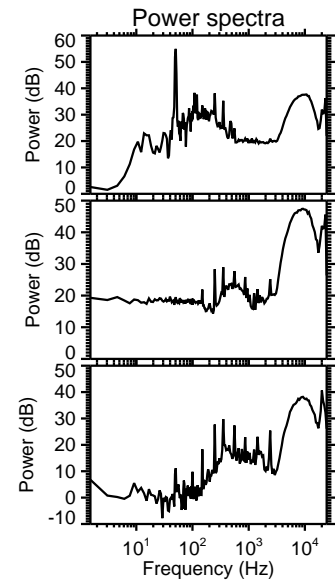
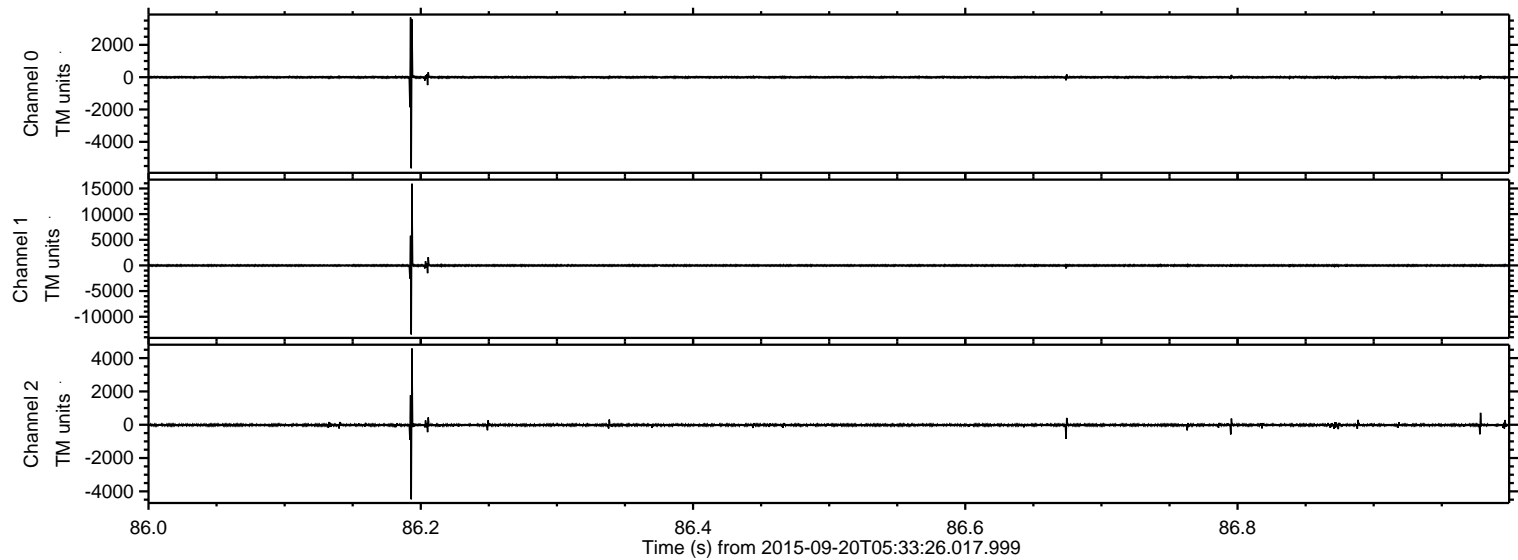


ELMAVAN 3D WAVEFORMS (Measured data sampled at 50 kHz) 51000 packets of 144 samples from 2015-09-20T05:33:26.017.999.

Processed Wed Oct 14 13:15:21 2015 by ELM ver.2012-10-06 from 001__elm20150920_053325__dat00.bin

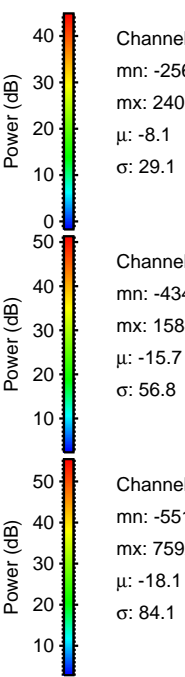
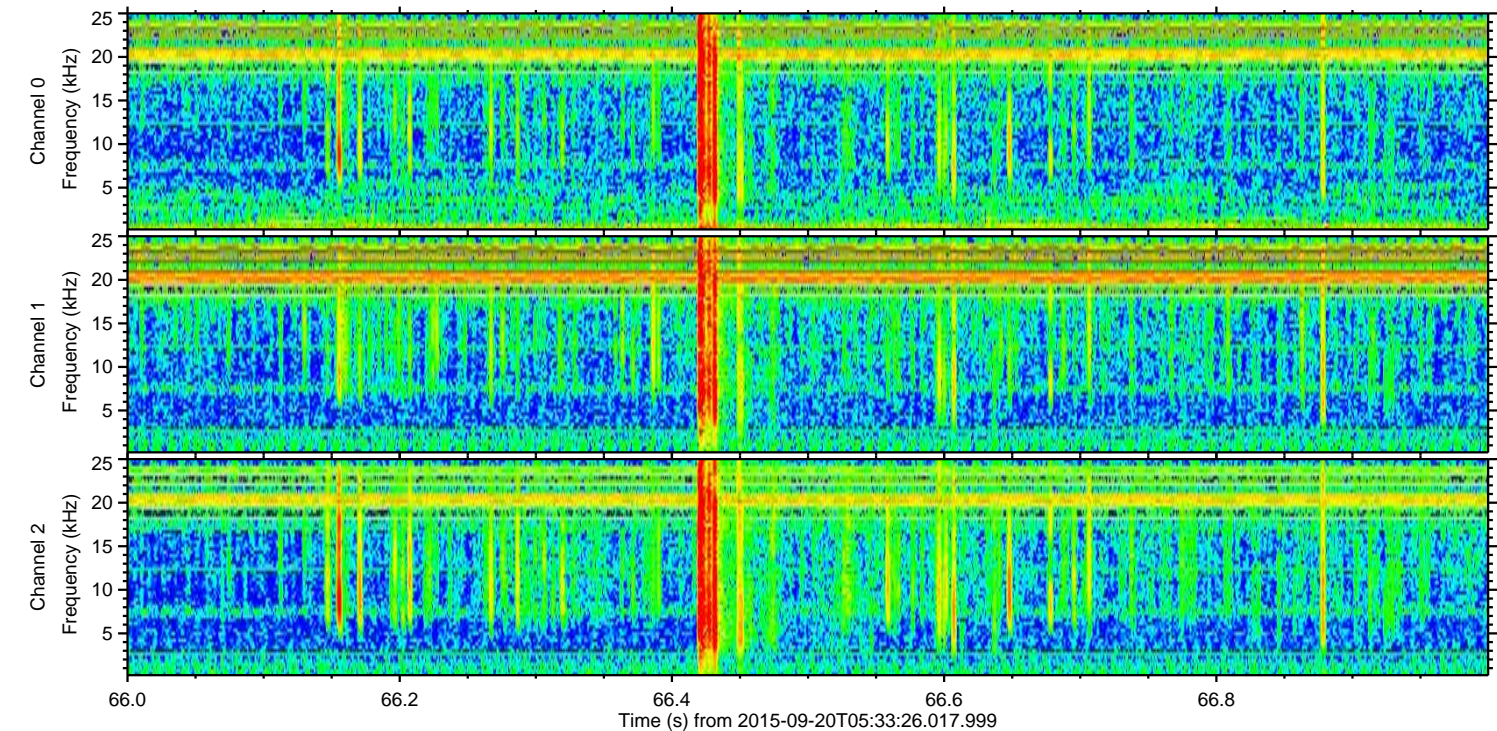
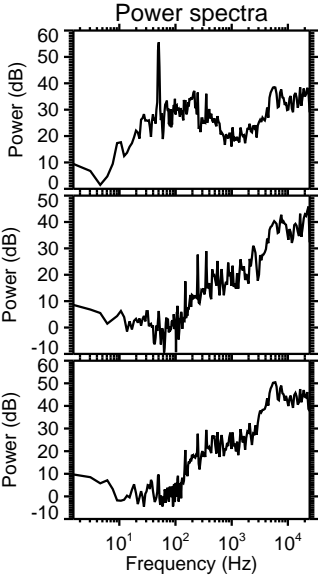
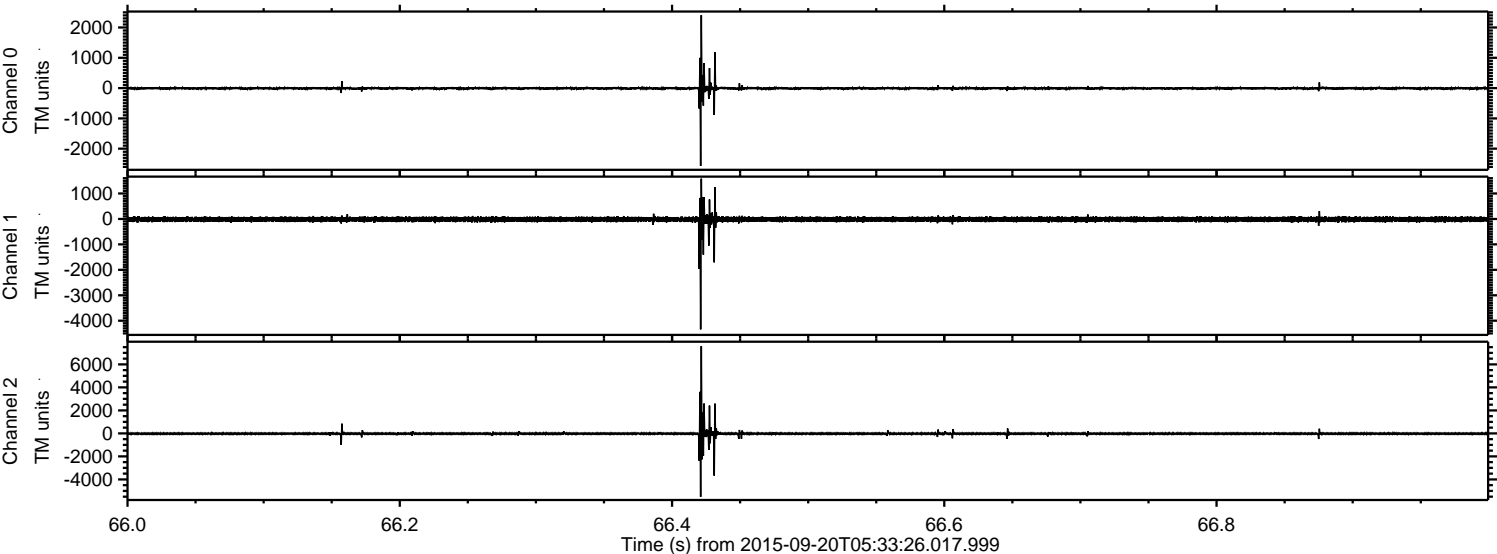


Processed Wed Oct 14 13:15:41 2015 by ELM ver.2012-10-06 from 001__elm20150920_053325__dat00.bin



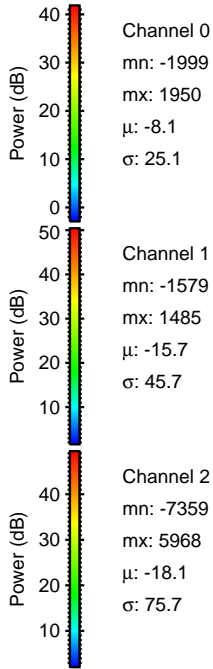
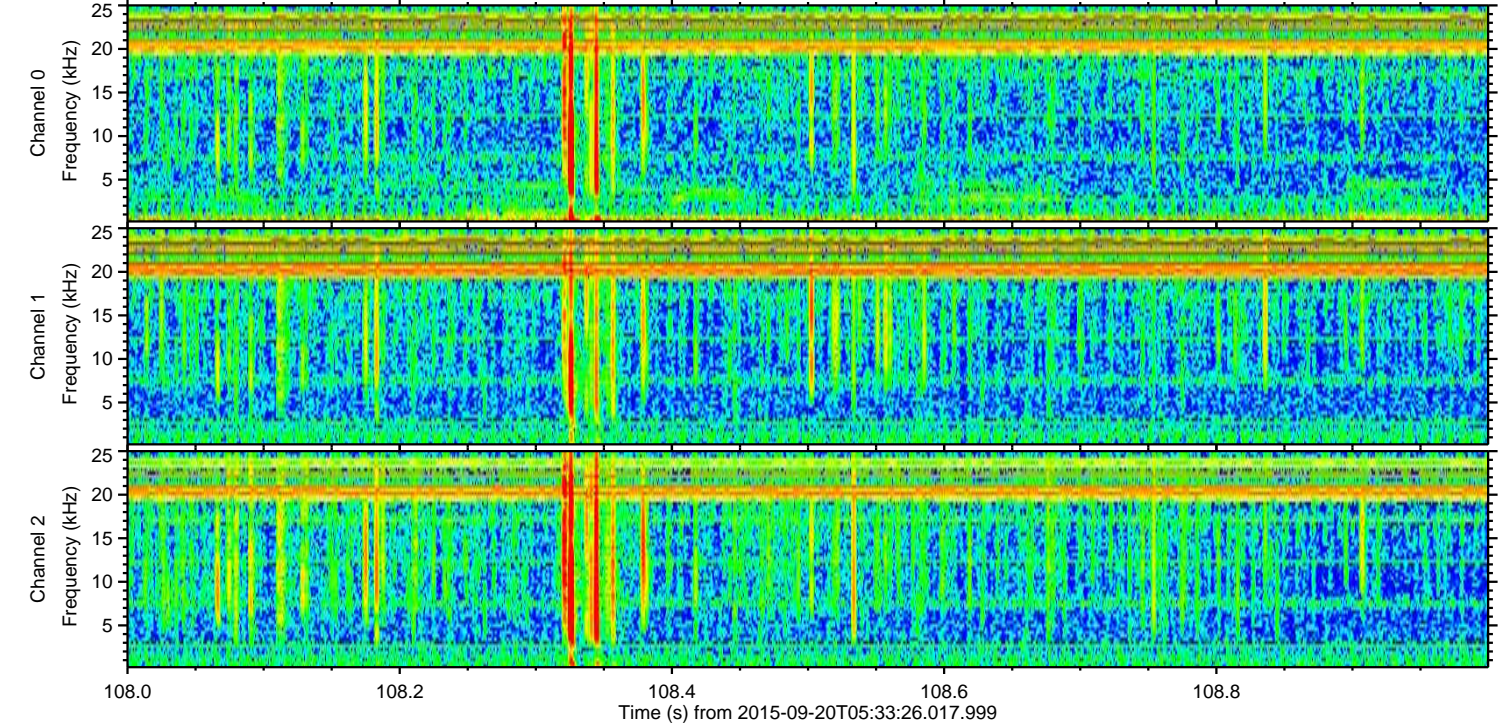
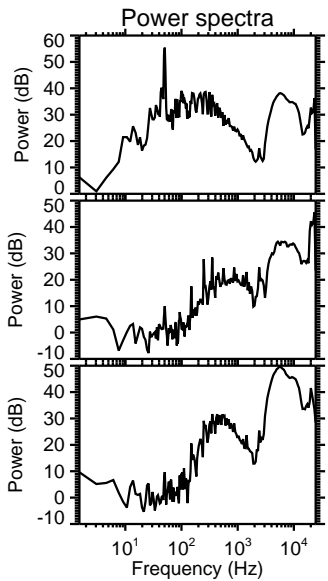
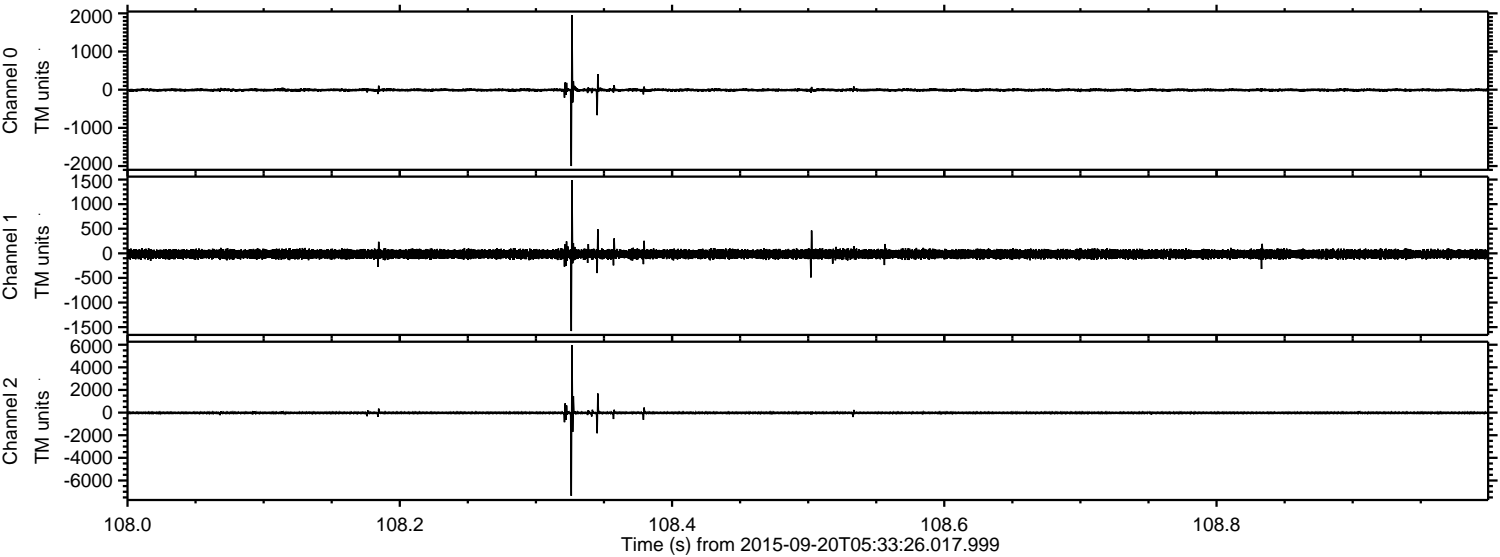
ELMAVAN 3D WAVEFORMS (Measured data sampled at 50 kHz) 51000 packets of 144 samples from 2015-09-20T05:33:26.017.999. Part 67/147

Processed Wed Oct 14 13:15:42 2015 by ELM ver.2012-10-06 from 001__elm20150920_053325__dat00.bin



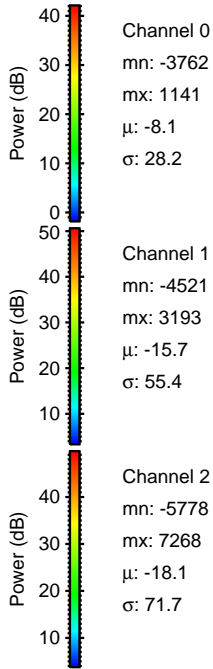
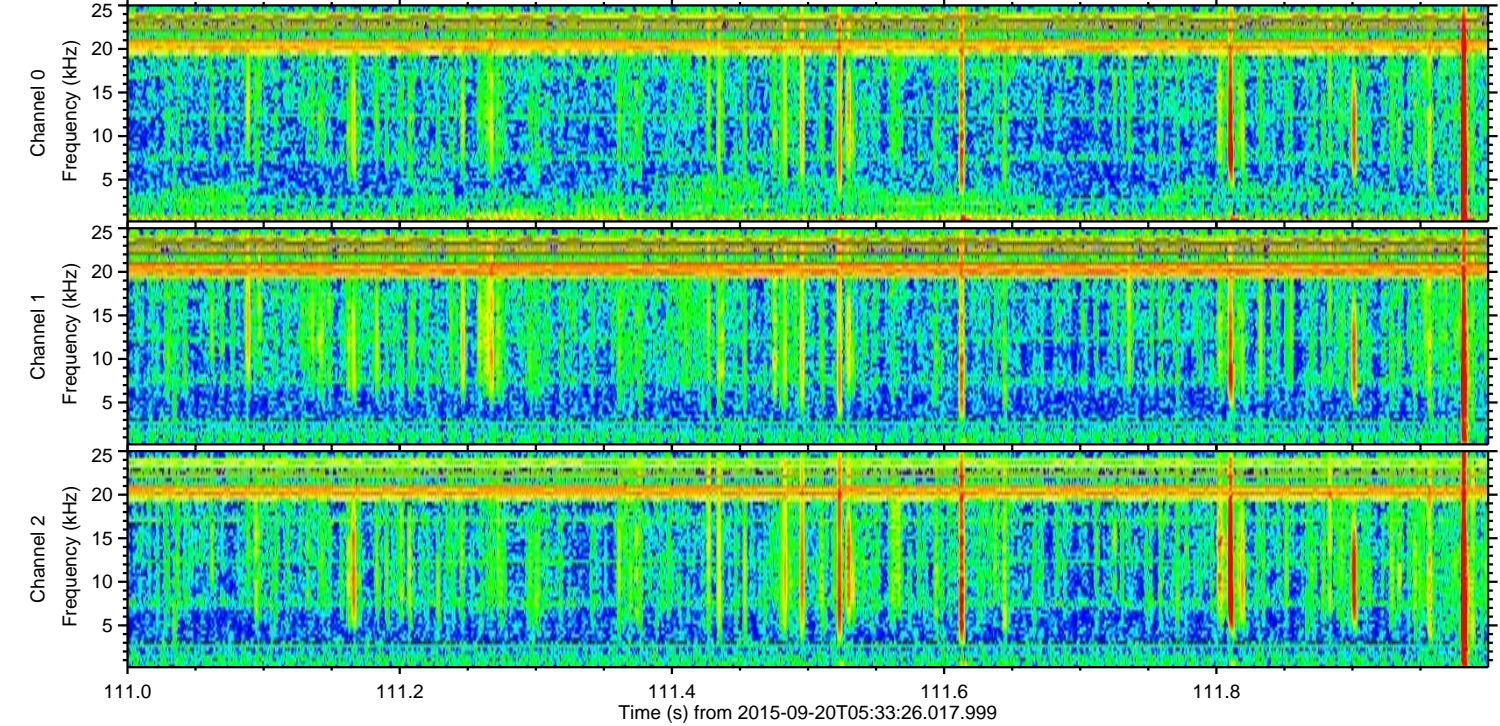
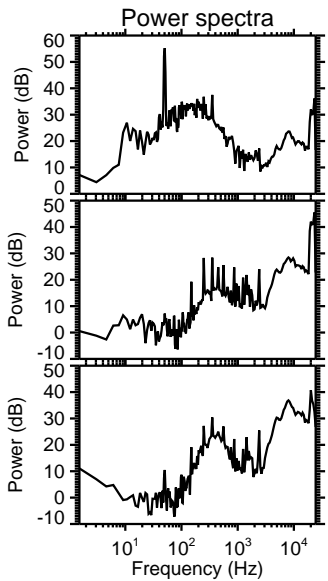
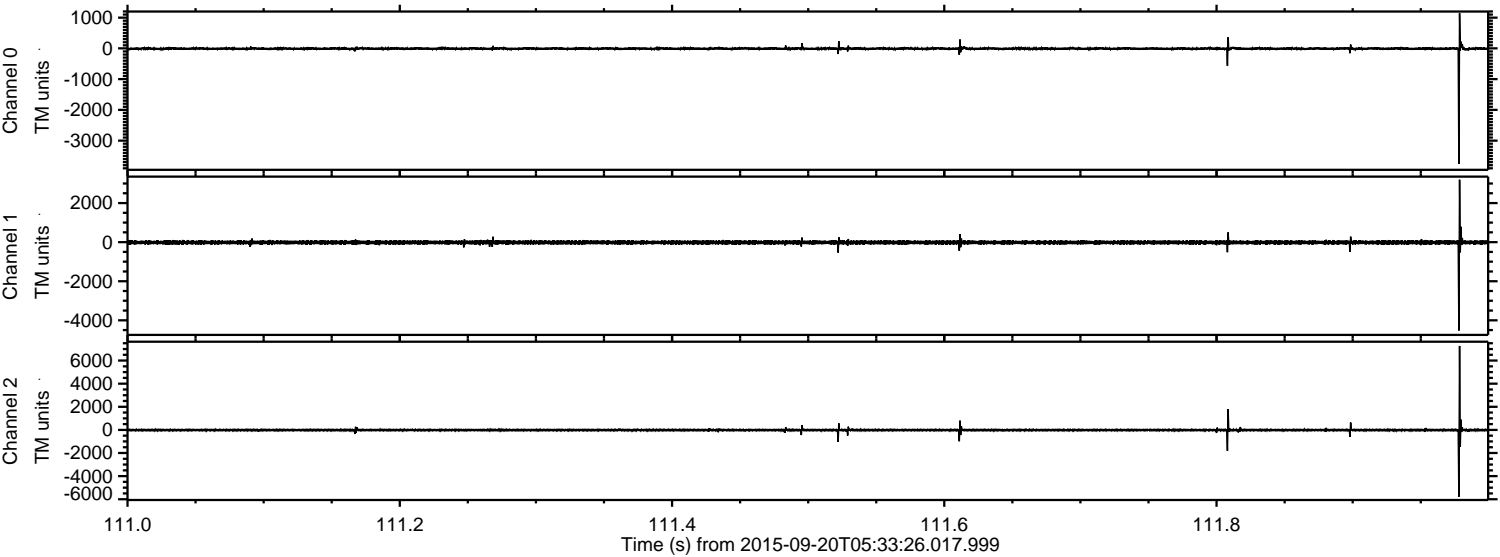
ELMAVAN 3D WAVEFORMS (Measured data sampled at 50 kHz) 51000 packets of 144 samples from 2015-09-20T05:33:26.017.999. Part 109/147

Processed Wed Oct 14 13:15:44 2015 by ELM ver.2012-10-06 from 001__elm20150920_053325__dat00.bin



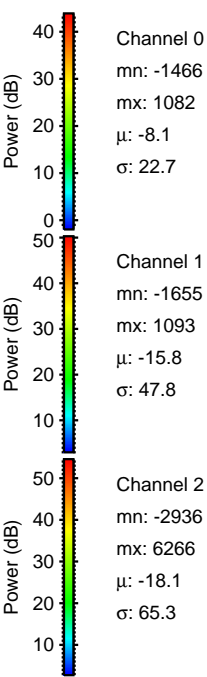
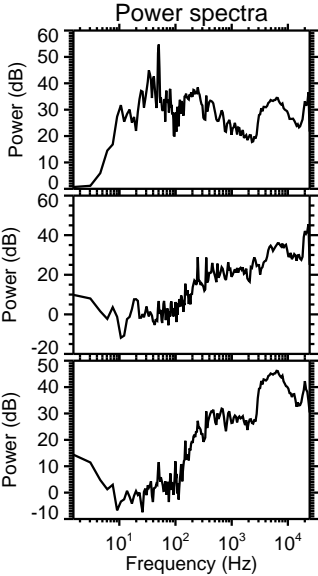
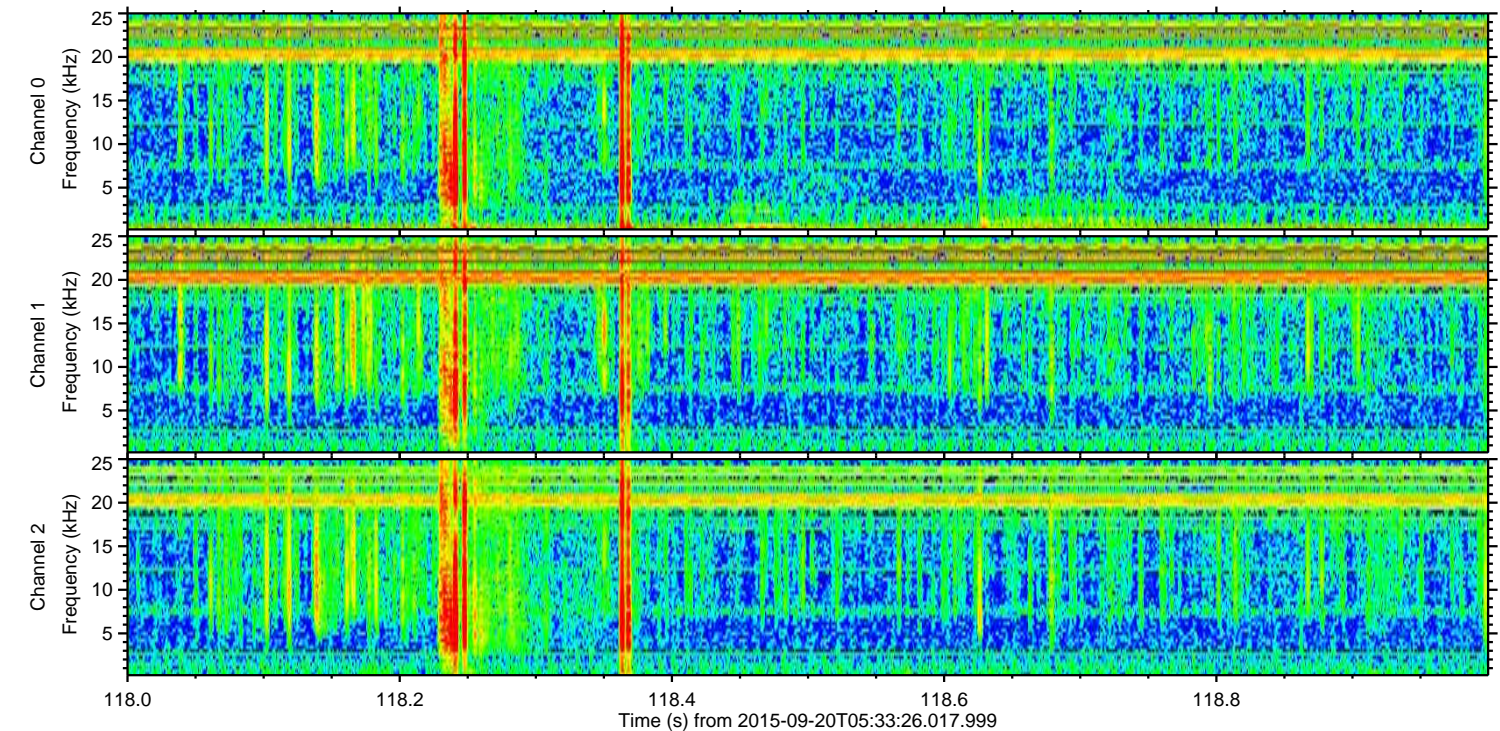
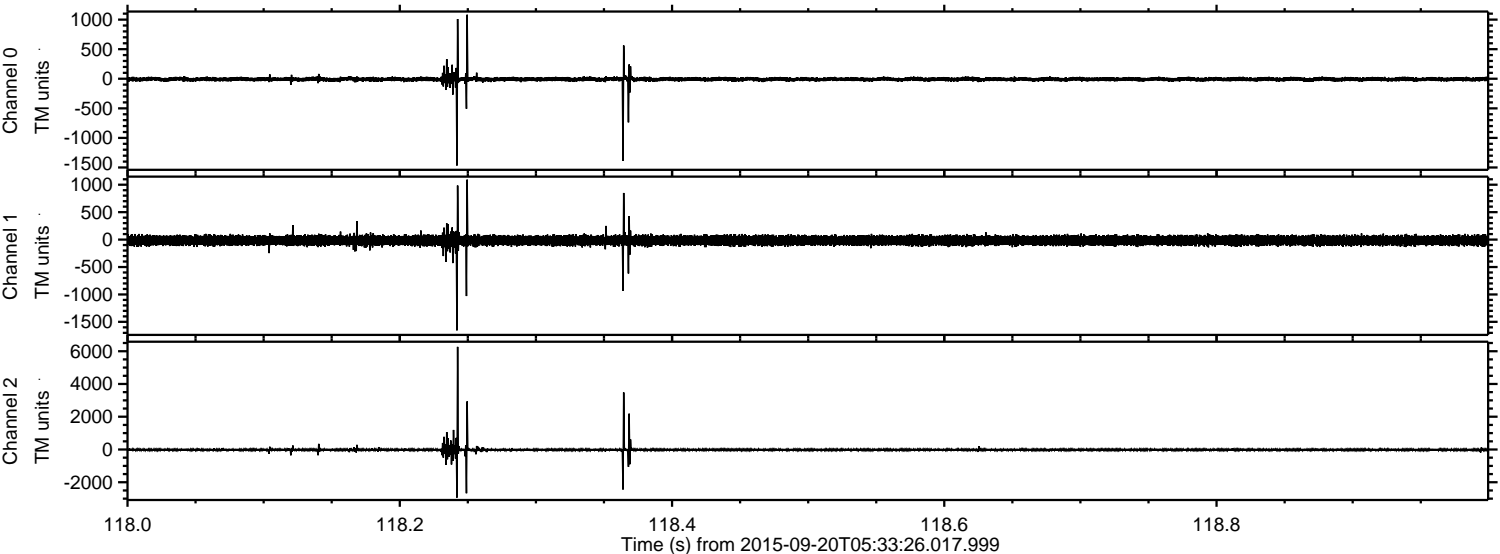
ELMAVAN 3D WAVEFORMS (Measured data sampled at 50 kHz) 51000 packets of 144 samples from 2015-09-20T05:33:26.017.999. Part 112/147

Processed Wed Oct 14 13:15:46 2015 by ELM ver.2012-10-06 from 001__elm20150920_053325__dat00.bin



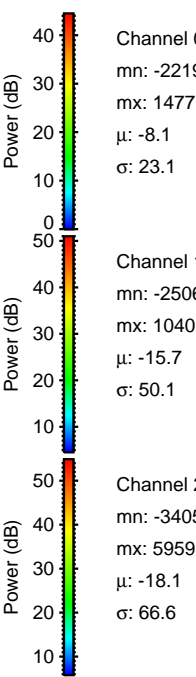
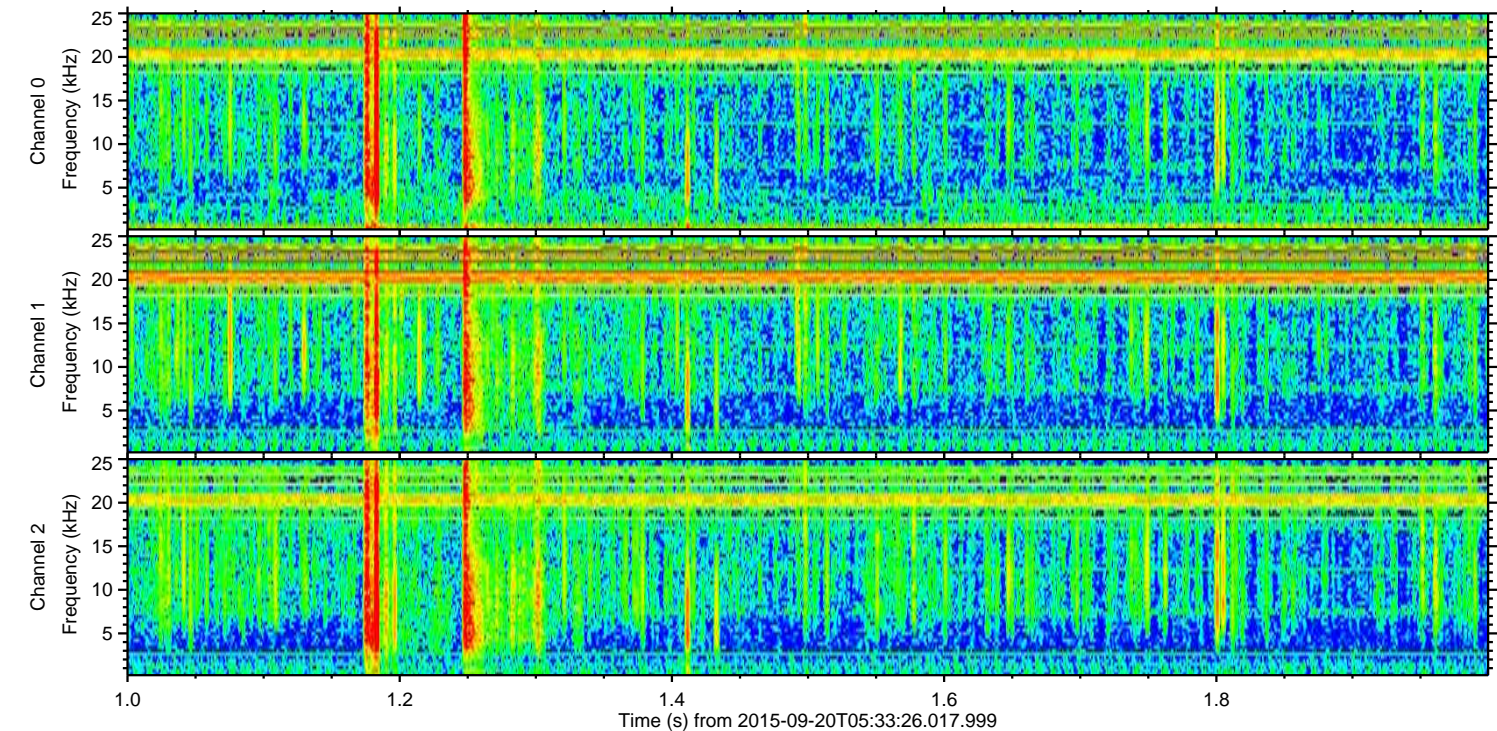
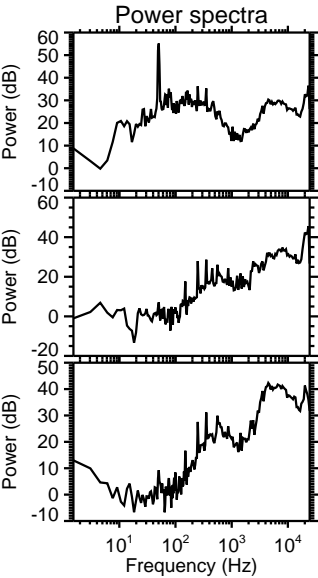
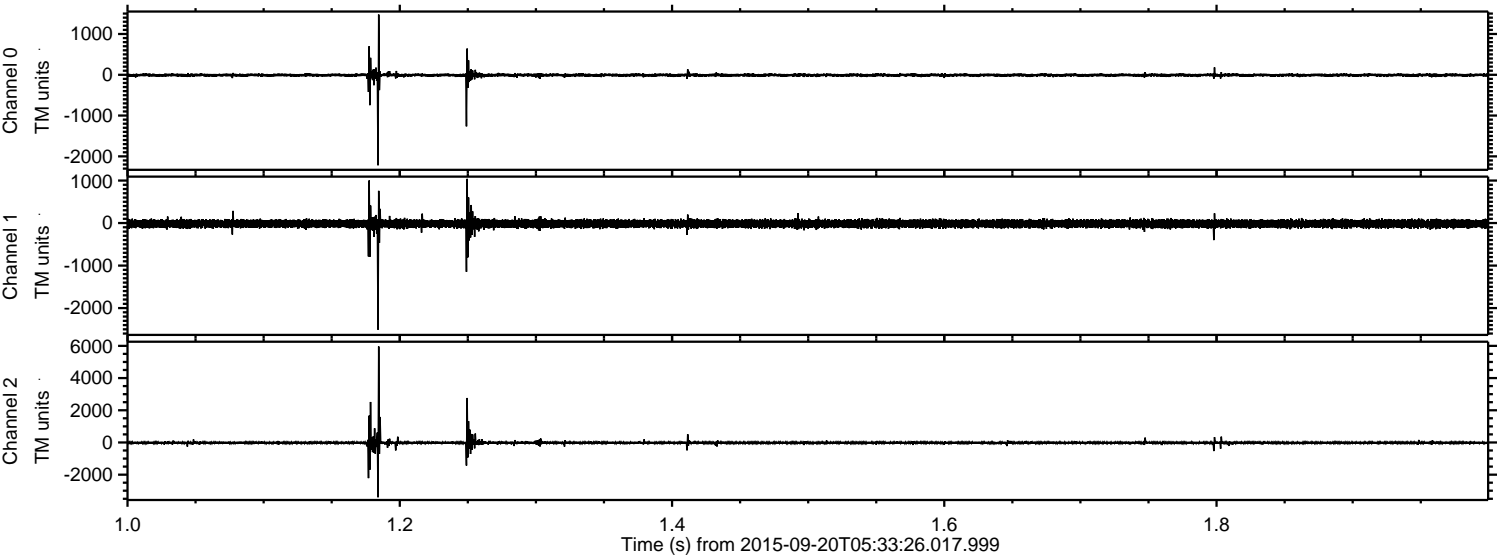
ELMAVAN 3D WAVEFORMS (Measured data sampled at 50 kHz) 51000 packets of 144 samples from 2015-09-20T05:33:26.017.999. Part 119/147

Processed Wed Oct 14 13:15:48 2015 by ELM ver.2012-10-06 from 001__elm20150920_053325__dat00.bin

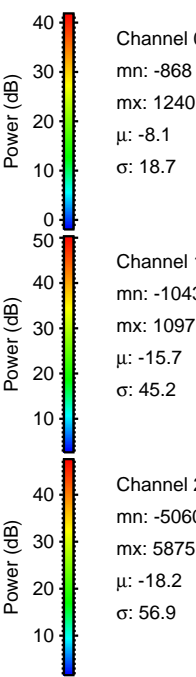
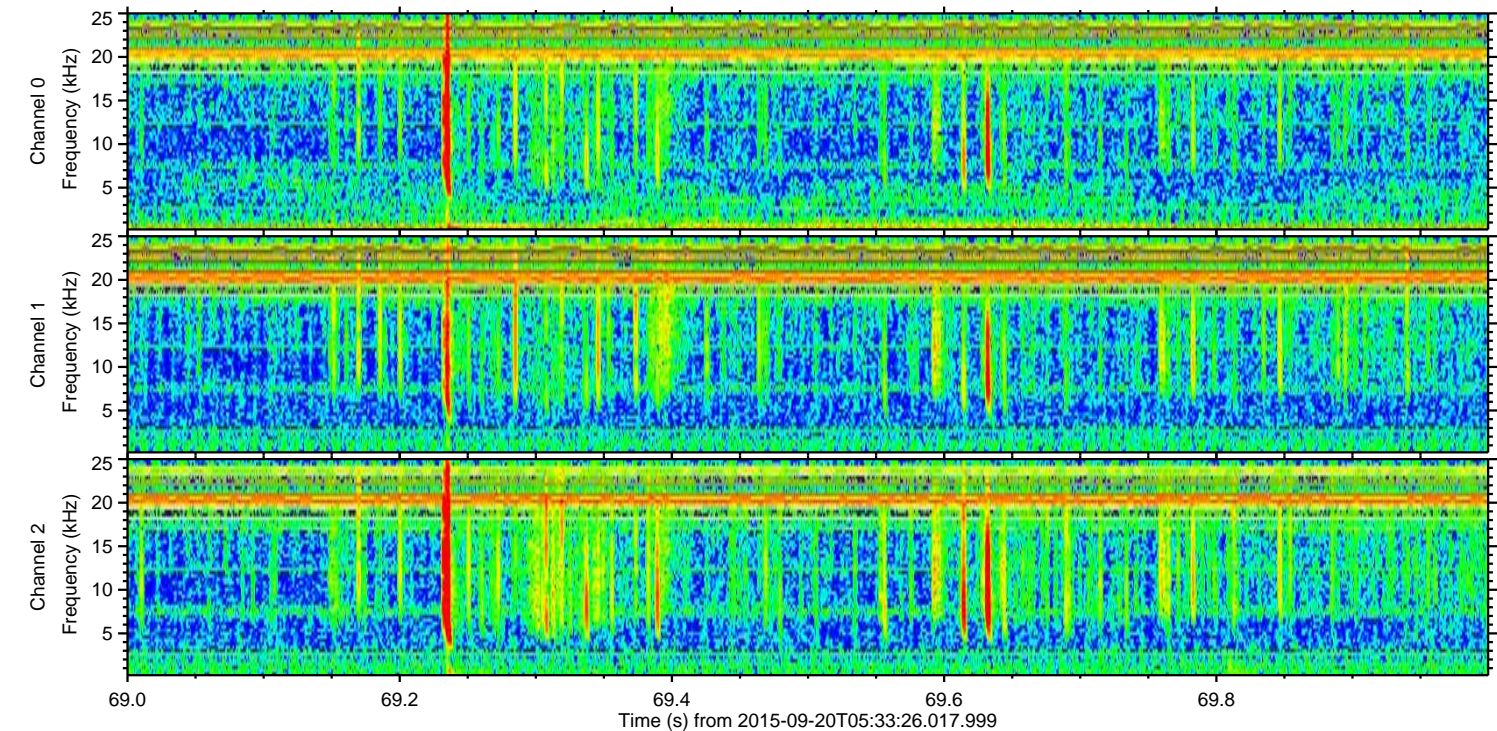
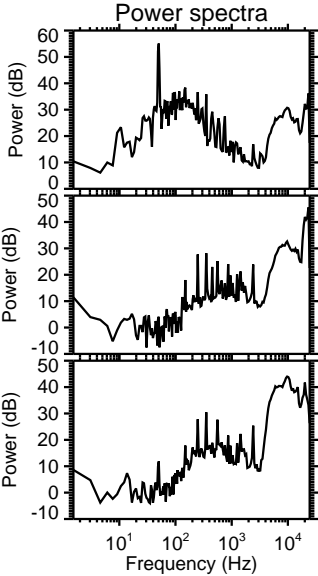
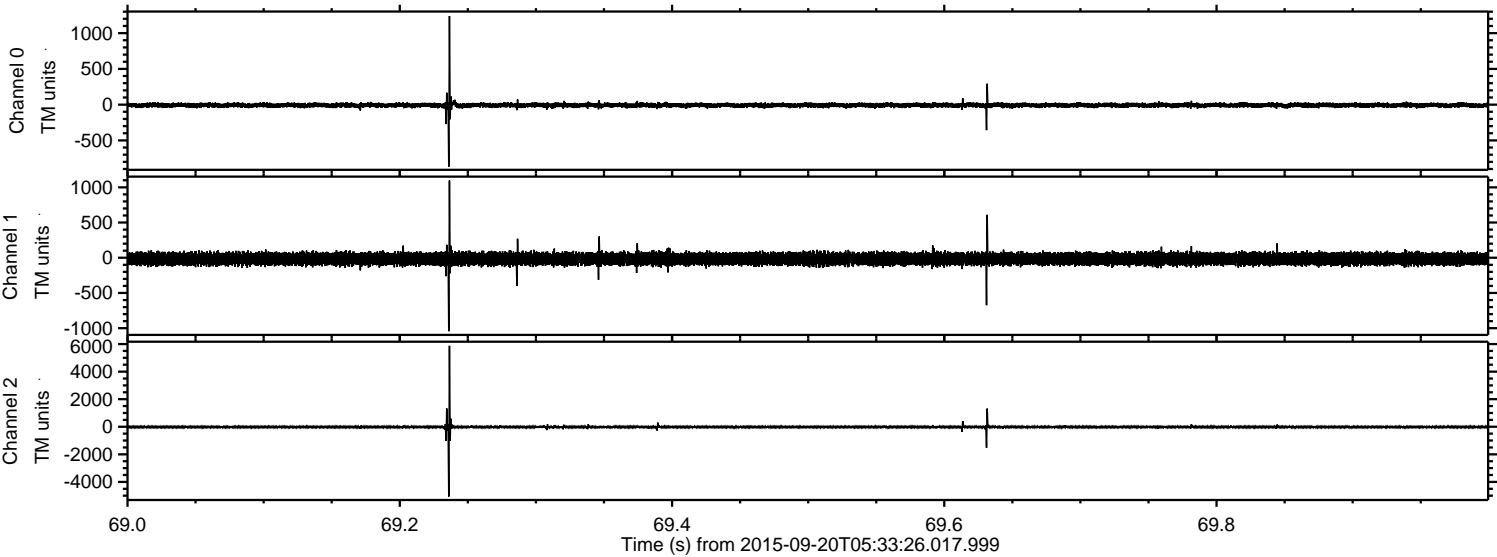


ELMAVAN 3D WAVEFORMS (Measured data sampled at 50 kHz) 51000 packets of 144 samples from 2015-09-20T05:33:26.017.999. Part 2/147

Processed Wed Oct 14 13:15:49 2015 by ELM ver.2012-10-06 from 001__elm20150920_053325__dat00.bin



Processed Wed Oct 14 13:15:51 2015 by ELM ver.2012-10-06 from 001__elm20150920_053325__dat00.bin

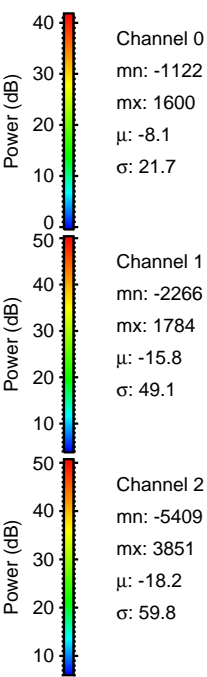
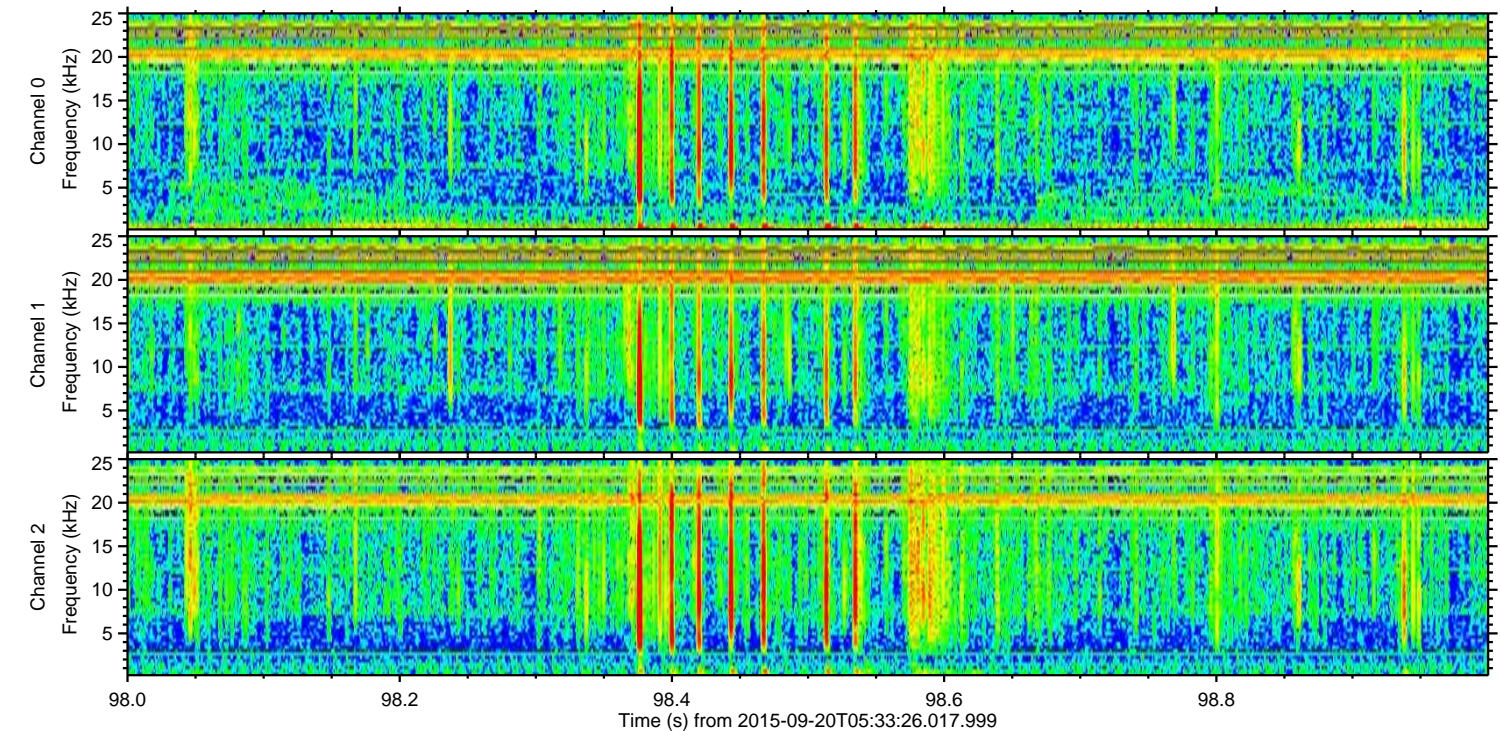
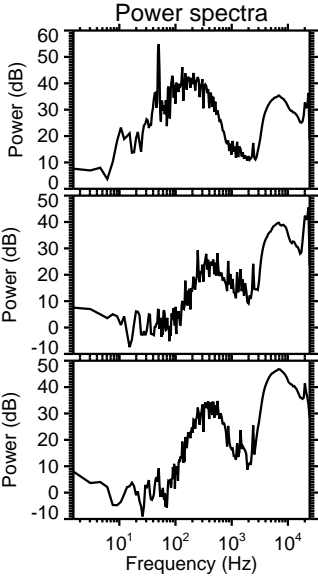
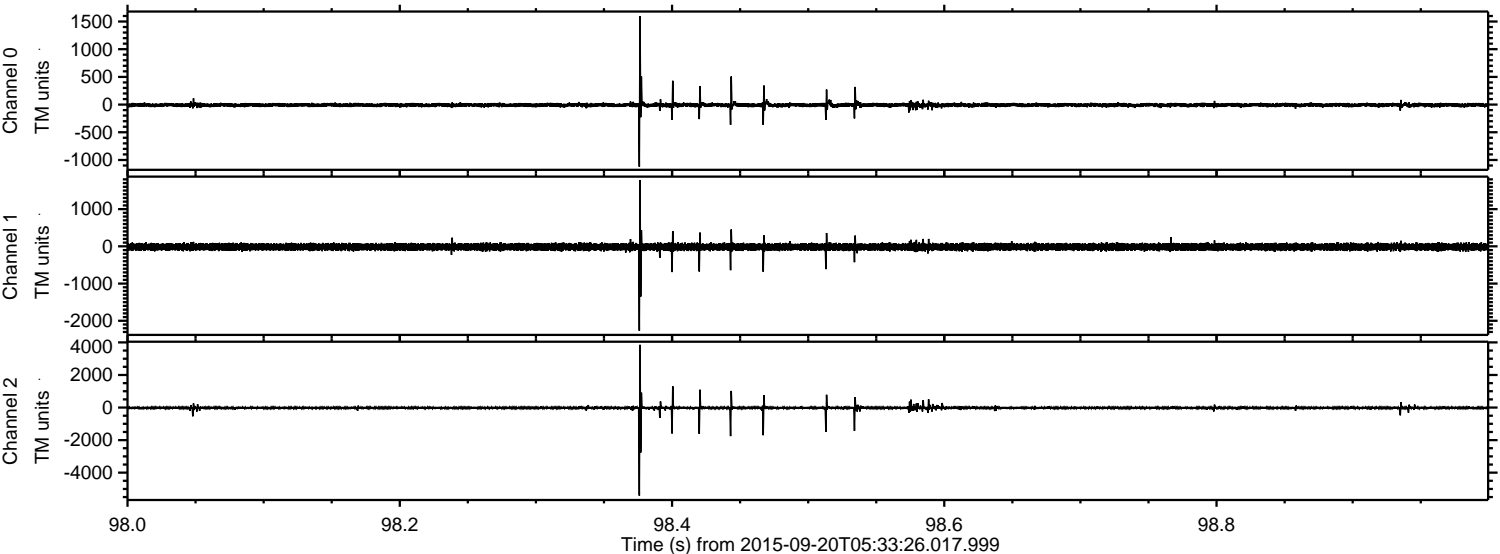


Channel 0
mn: -868
mx: 1240
 μ : -8.1
 σ : 18.7

Channel 1
mn: -1043
mx: 1097
 μ : -15.7
 σ : 45.2

Channel 2
mn: -5060
mx: 5875
 μ : -18.2
 σ : 56.9

Processed Wed Oct 14 13:15:52 2015 by ELM ver.2012-10-06 from 001__elm20150920_053325__dat00.bin

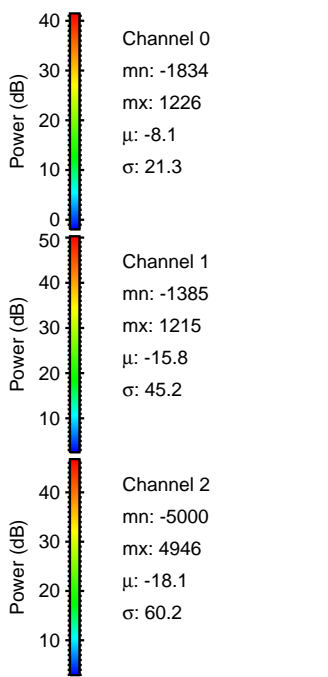
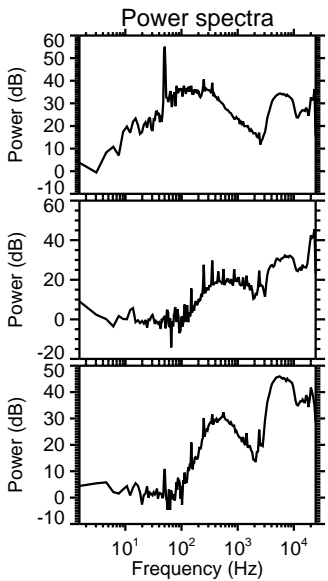
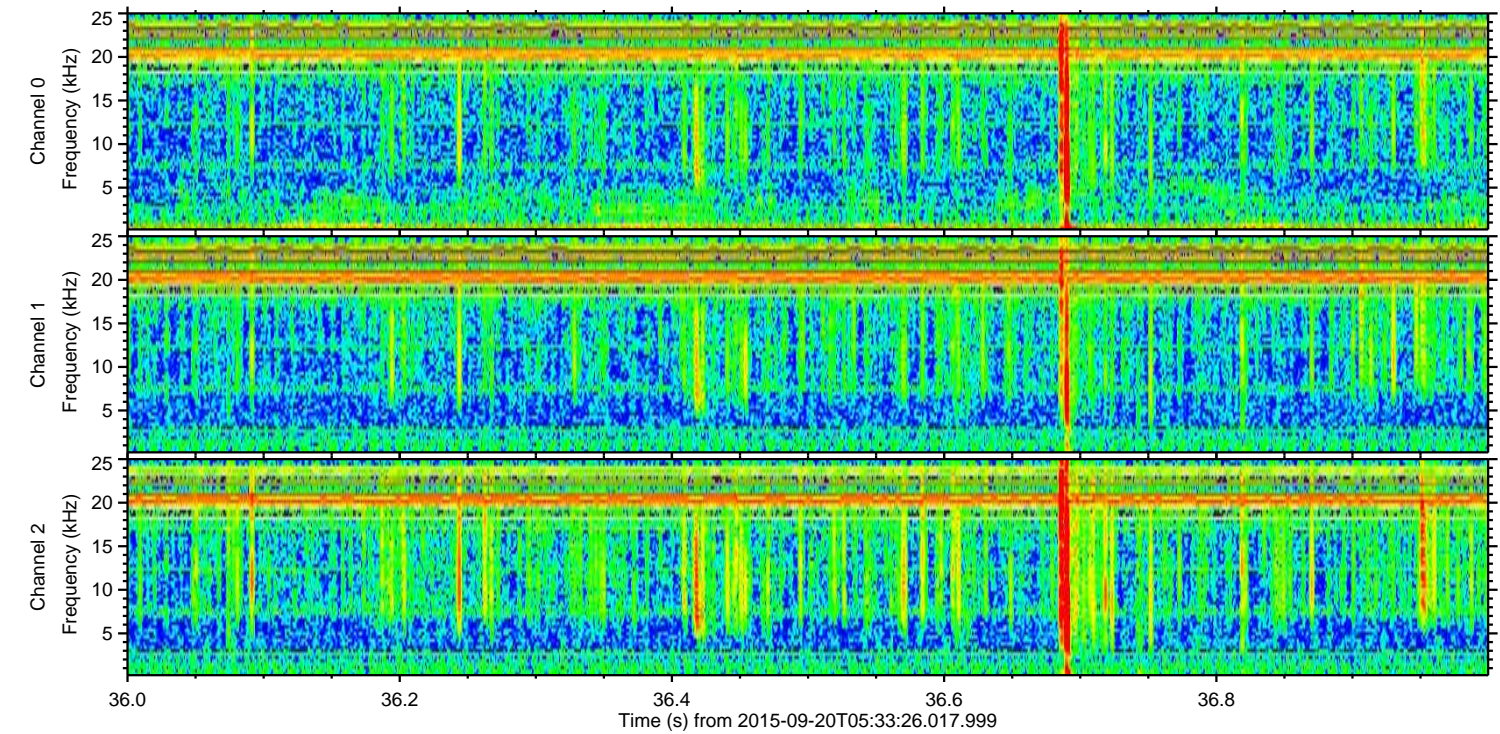
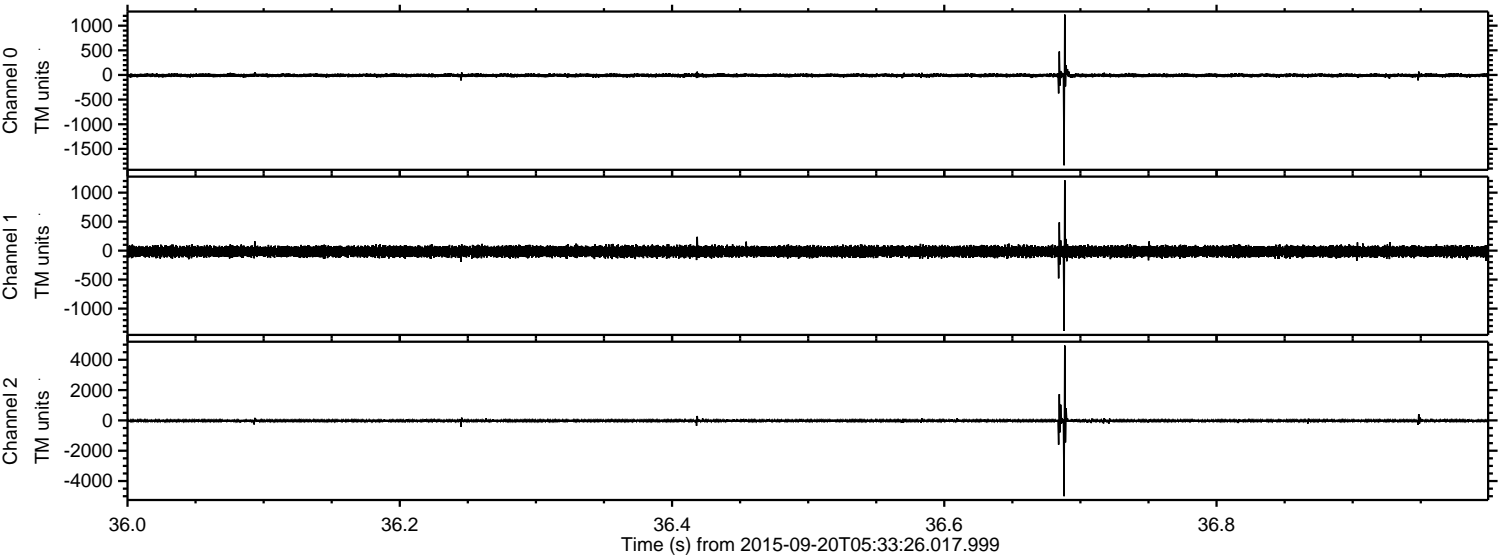


Channel 0
mn: -1122
mx: 1600
 μ : -8.1
 σ : 21.7

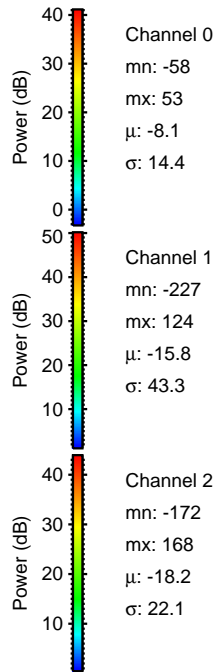
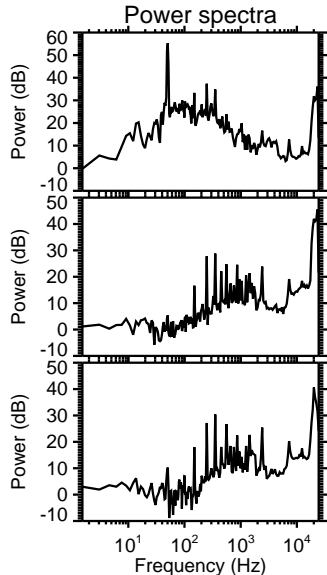
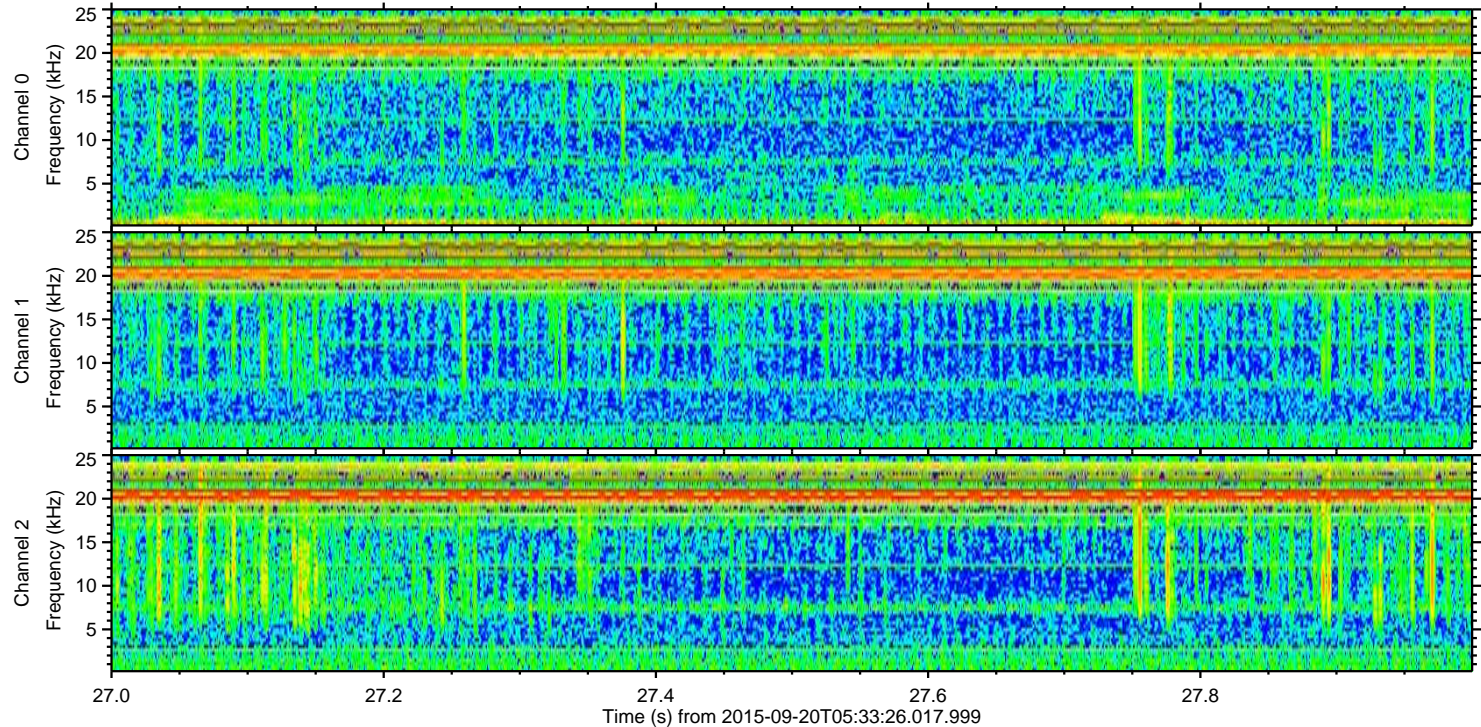
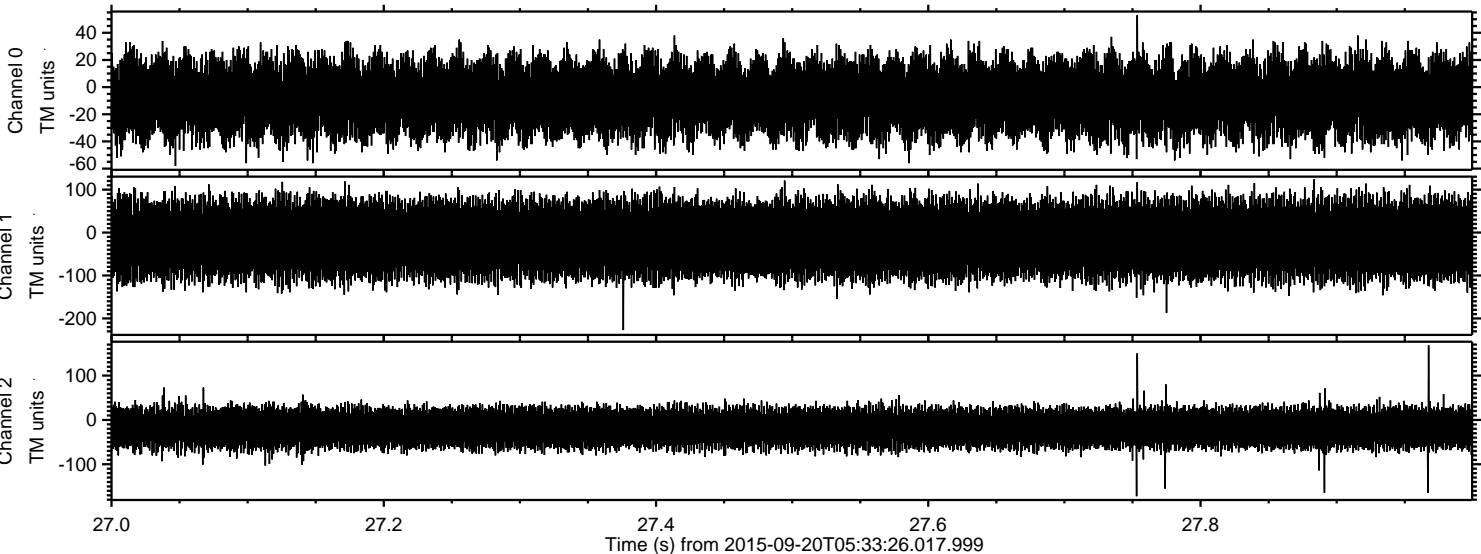
Channel 1
mn: -2266
mx: 1784
 μ : -15.8
 σ : 49.1

Channel 2
mn: -5409
mx: 3851
 μ : -18.2
 σ : 59.8

Processed Wed Oct 14 13:15:53 2015 by ELM ver.2012-10-06 from 001__elm20150920_053325__dat00.bin



Processed Wed Oct 14 13:15:54 2015 by ELM ver.2012-10-06 from 001__elm20150920_053325__dat00.bin



Power spectra

Channel 0
mn: -58
mx: 53
 μ : -8.1
 σ : 14.4

Channel 1
mn: -227
mx: 124
 μ : -15.8
 σ : 43.3

Channel 2
mn: -172
mx: 168
 μ : -18.2
 σ : 22.1