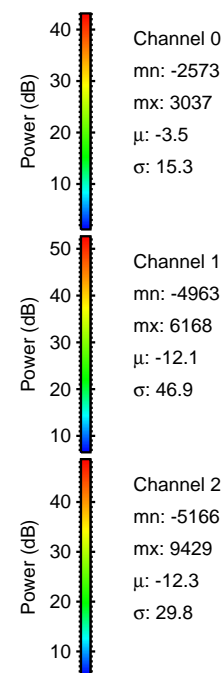
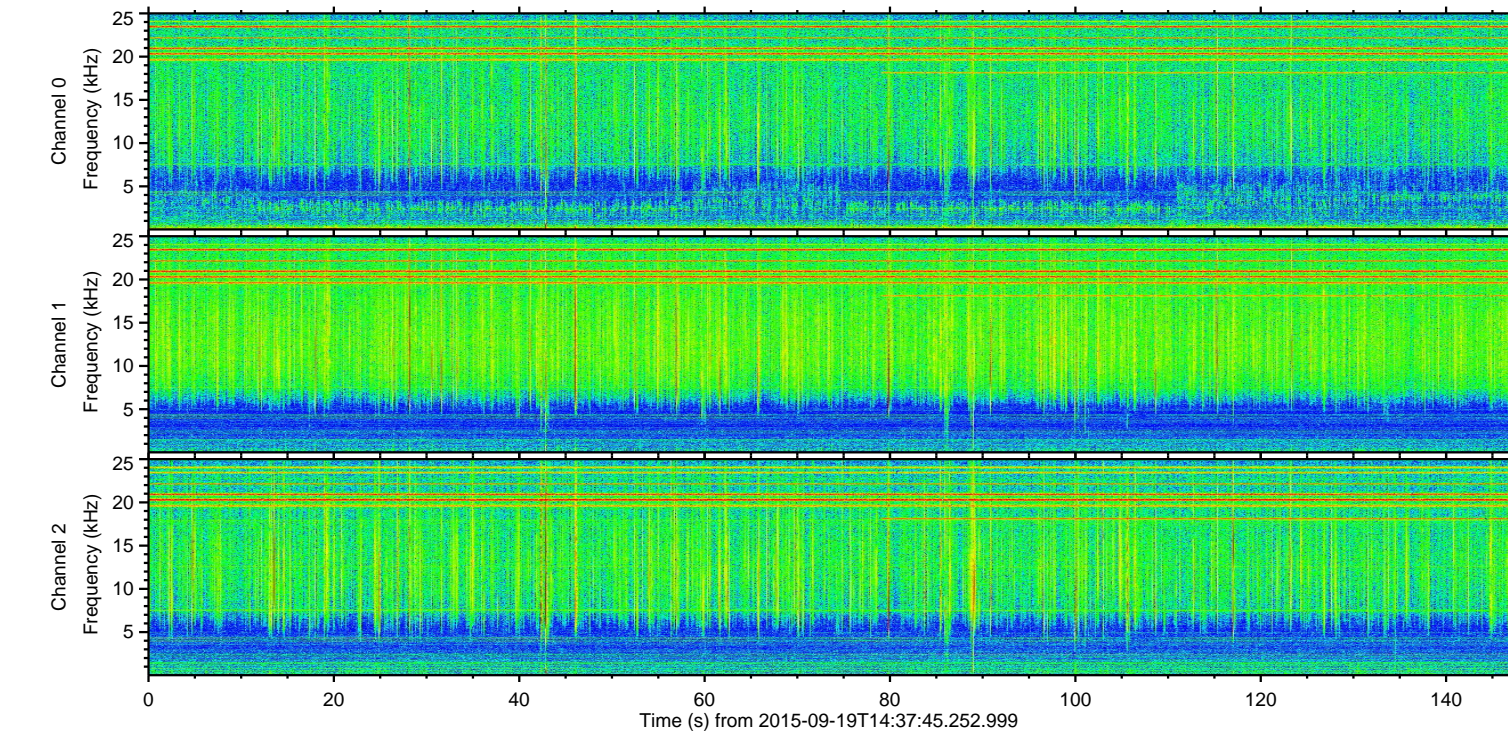
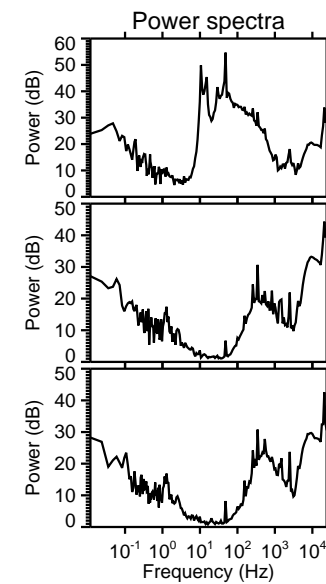
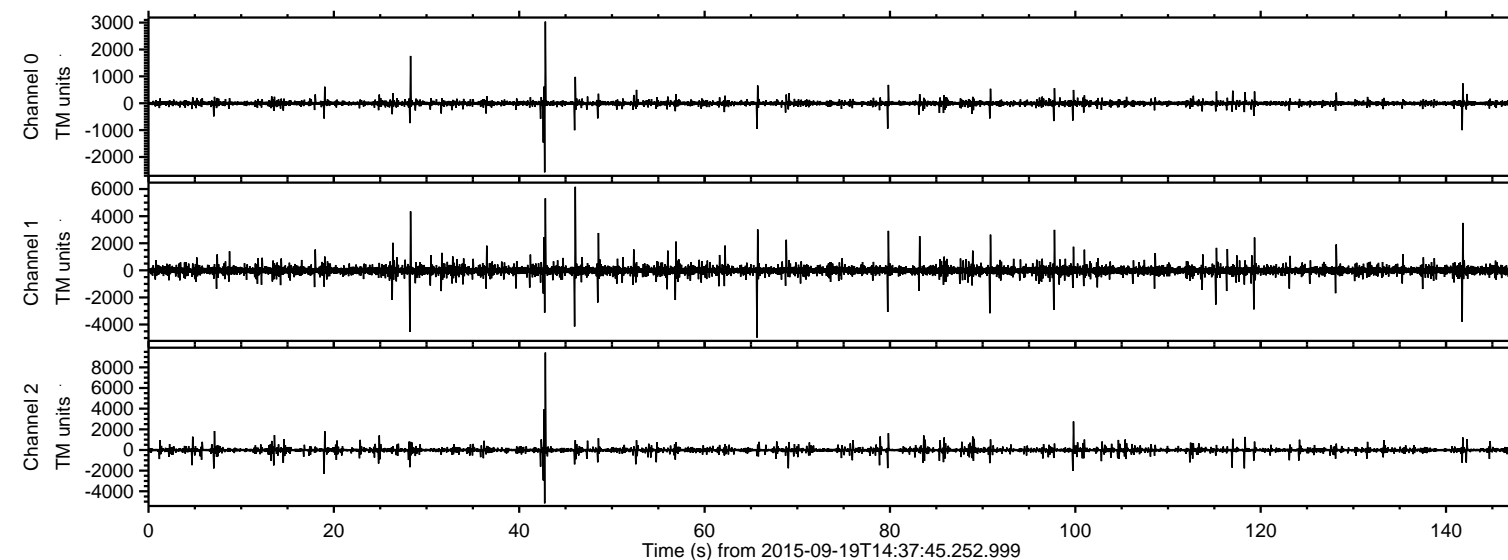


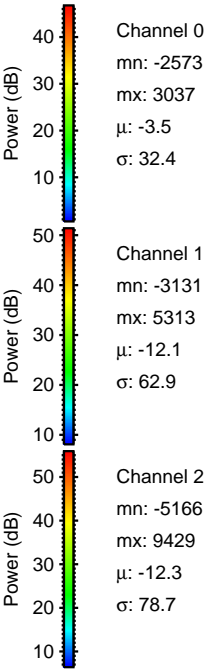
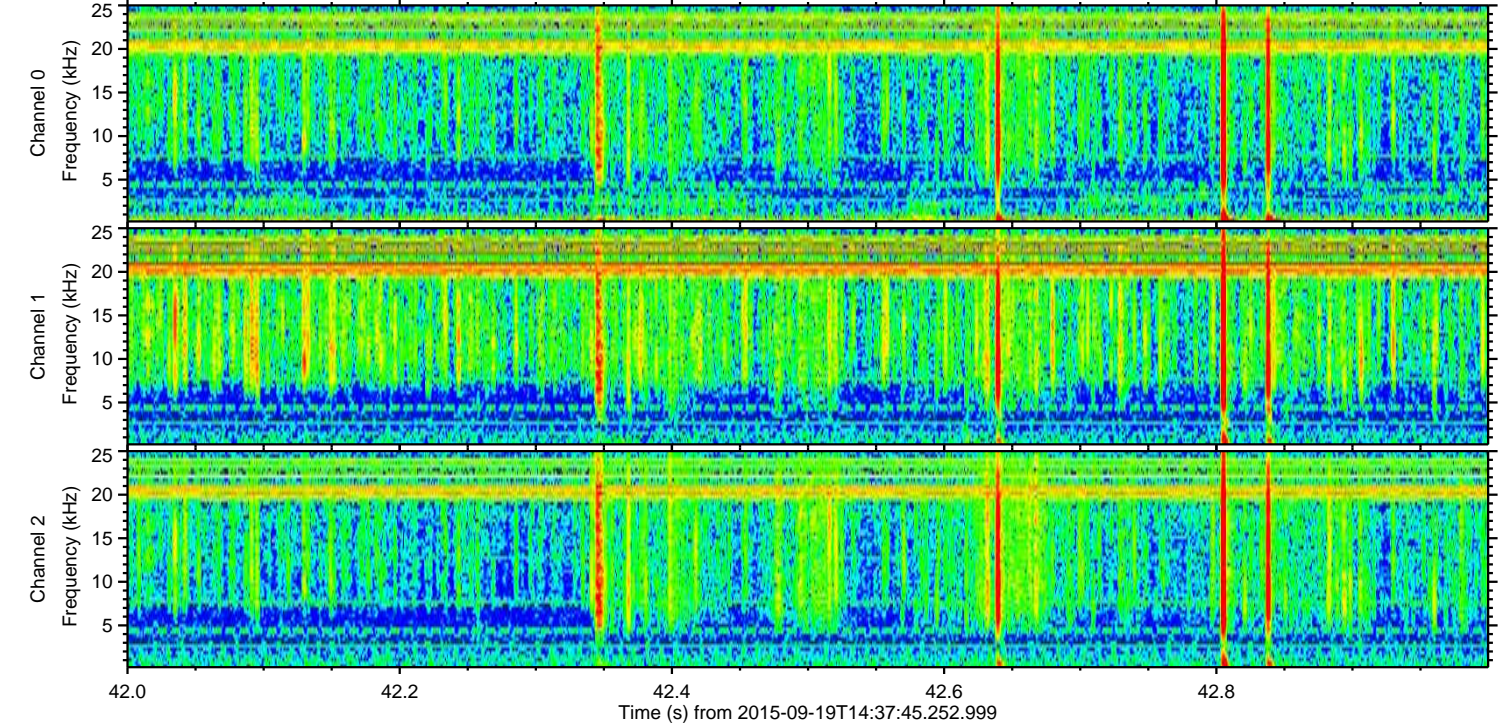
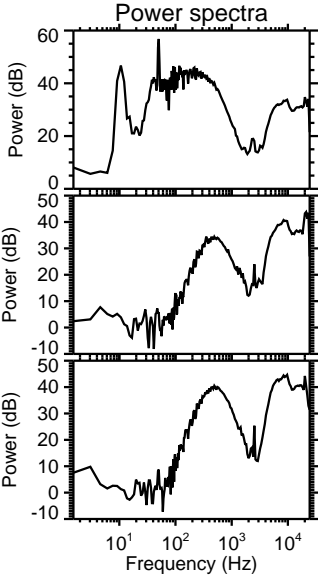
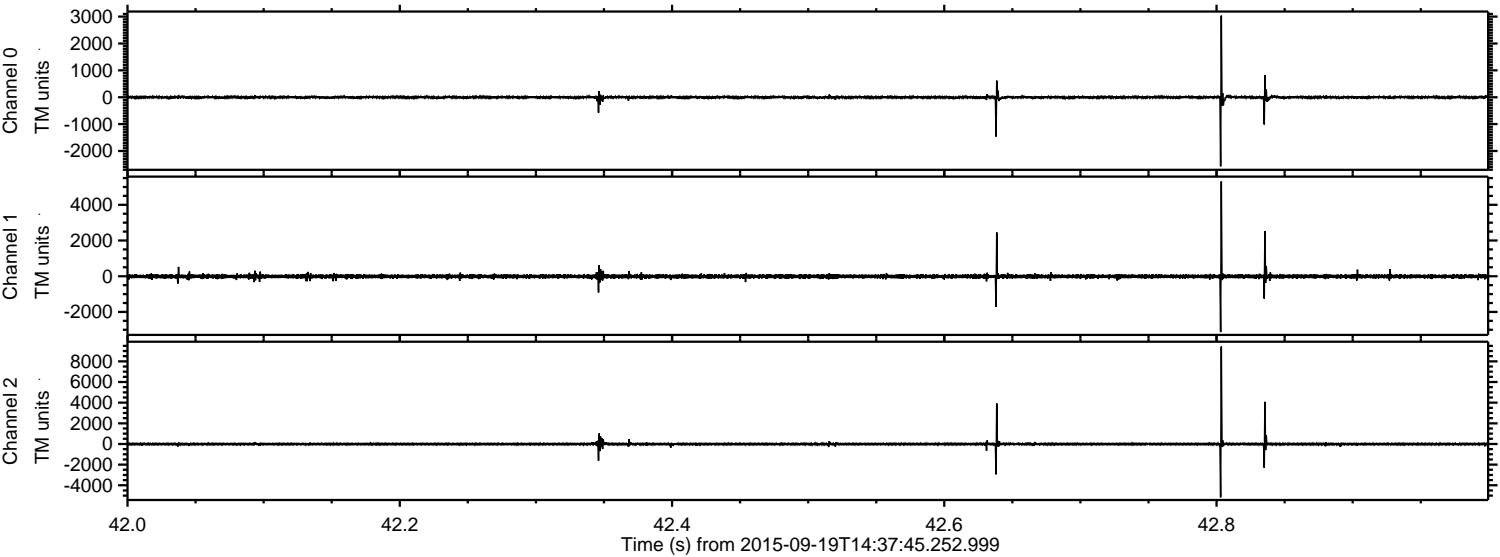
# ELMAVAN 3D WAVEFORMS (Measured data sampled at 50 kHz) 51000 packets of 144 samples from 2015-09-19T14:37:45.252.999.

Processed Wed Oct 14 08:18:52 2015 by ELM ver.2012-10-06 from 001\_\_elm20150919\_143744\_\_dat00.bin





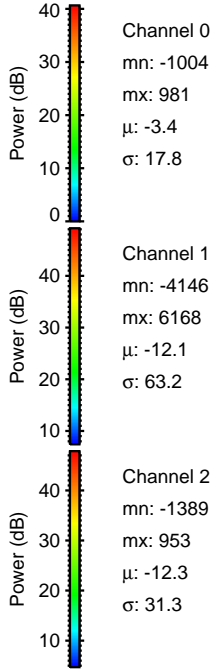
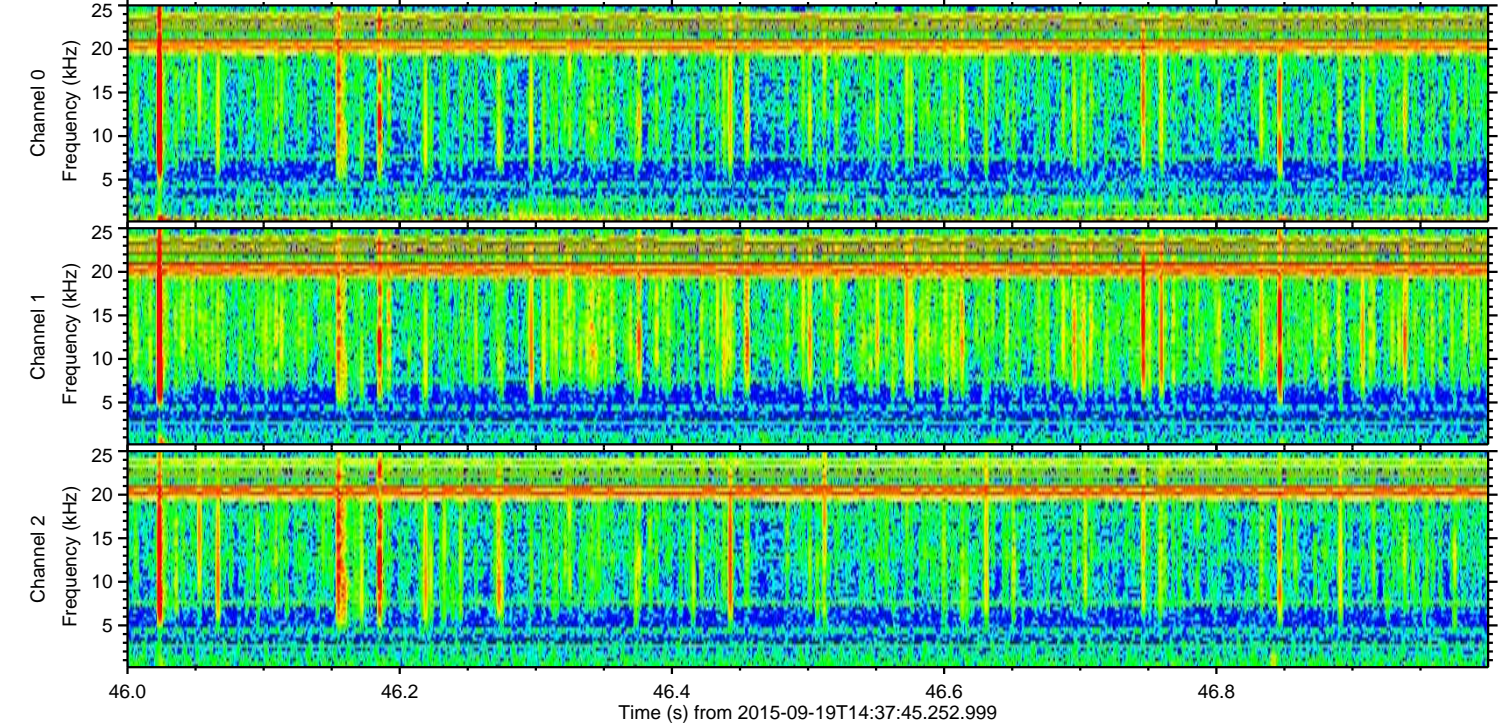
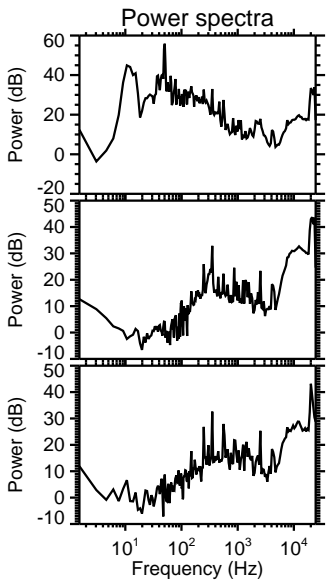
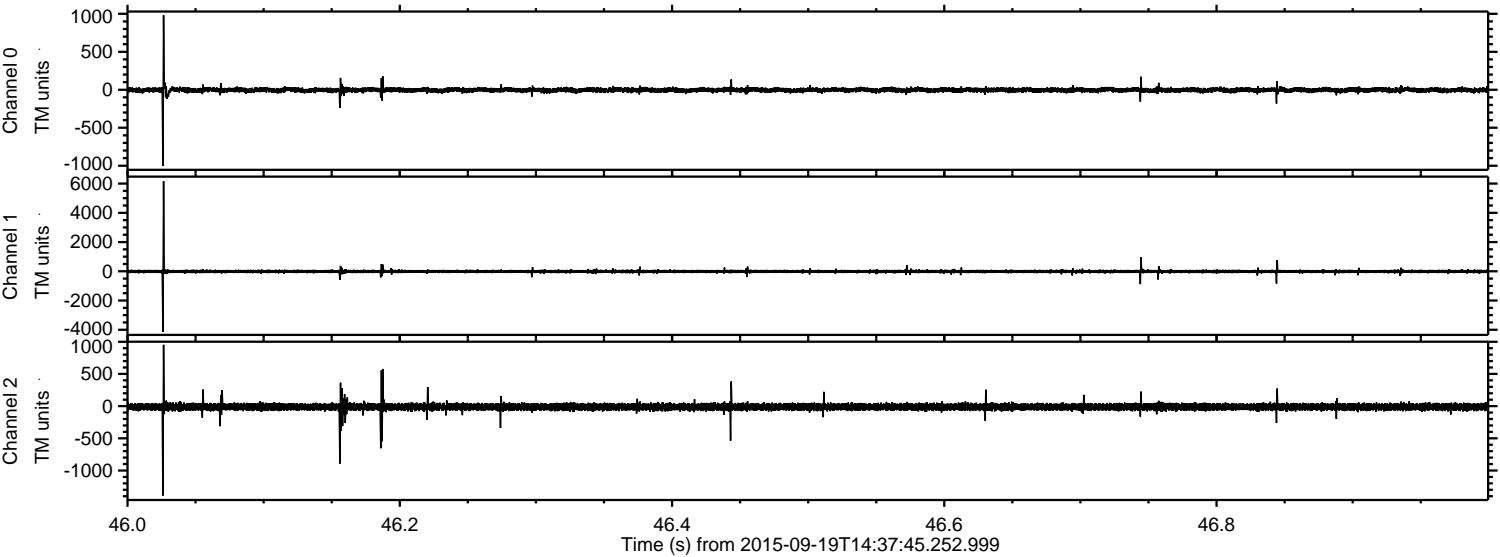
Processed Wed Oct 14 08:19:09 2015 by ELM ver.2012-10-06 from 001\_\_elm20150919\_143744\_\_dat00.bin





ELMAVAN 3D WAVEFORMS (Measured data sampled at 50 kHz) 51000 packets of 144 samples from 2015-09-19T14:37:45.252.999. Part 47/147

Processed Wed Oct 14 08:19:11 2015 by ELM ver.2012-10-06 from 001\_\_elm20150919\_143744\_\_dat00.bin



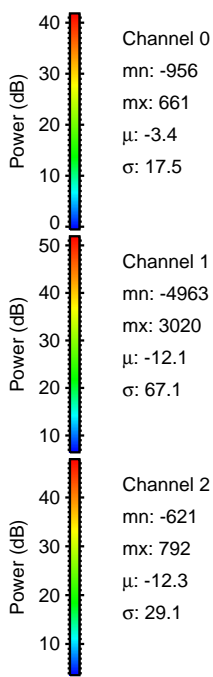
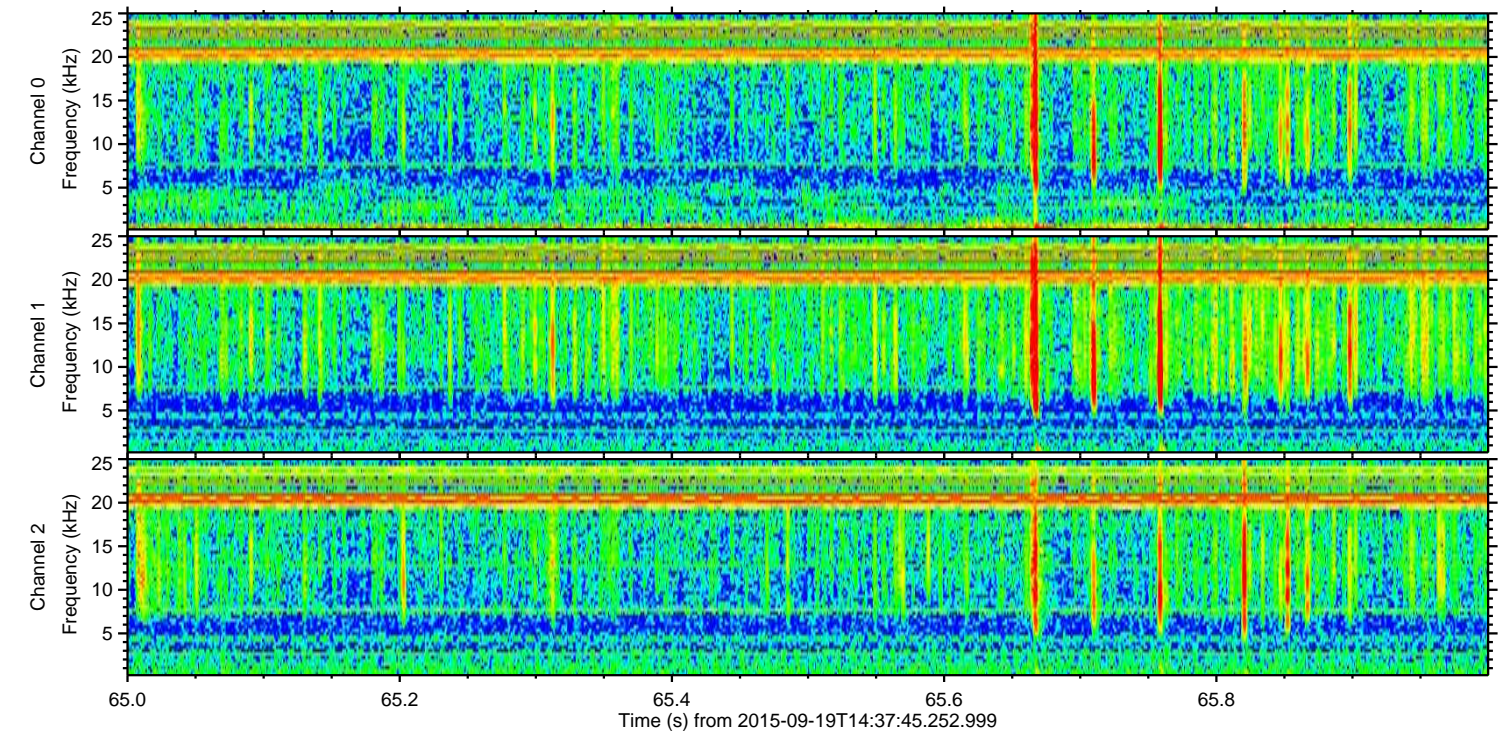
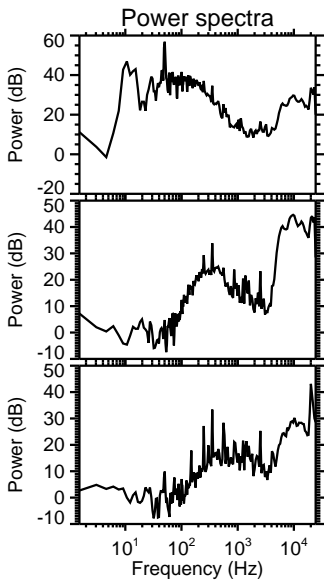
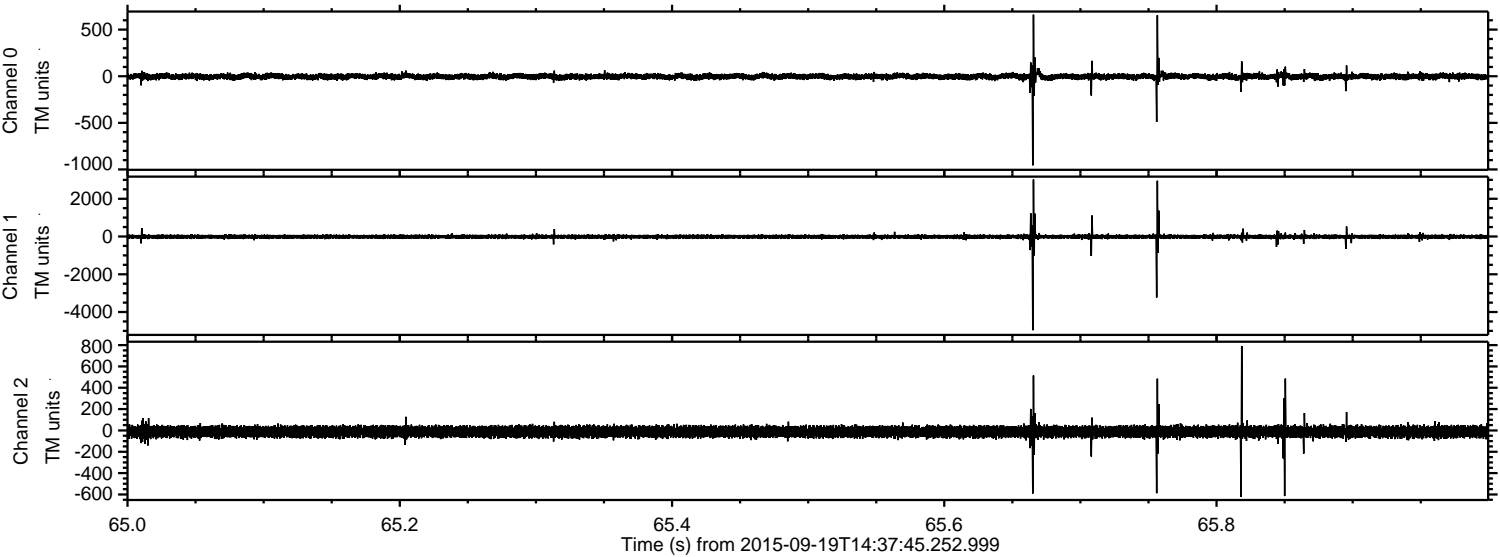
Channel 0  
mn: -1004  
mx: 981  
 $\mu$ : -3.4  
 $\sigma$ : 17.8

Channel 1  
mn: -4146  
mx: 6168  
 $\mu$ : -12.1  
 $\sigma$ : 63.2

Channel 2  
mn: -1389  
mx: 953  
 $\mu$ : -12.3  
 $\sigma$ : 31.3



Processed Wed Oct 14 08:19:12 2015 by ELM ver.2012-10-06 from 001\_\_elm20150919\_143744\_\_dat00.bin



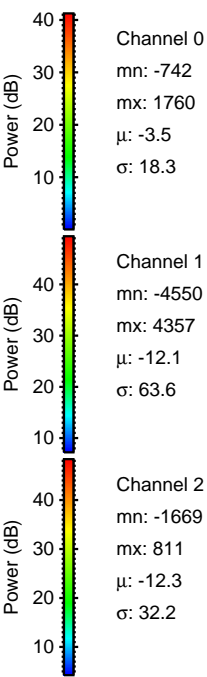
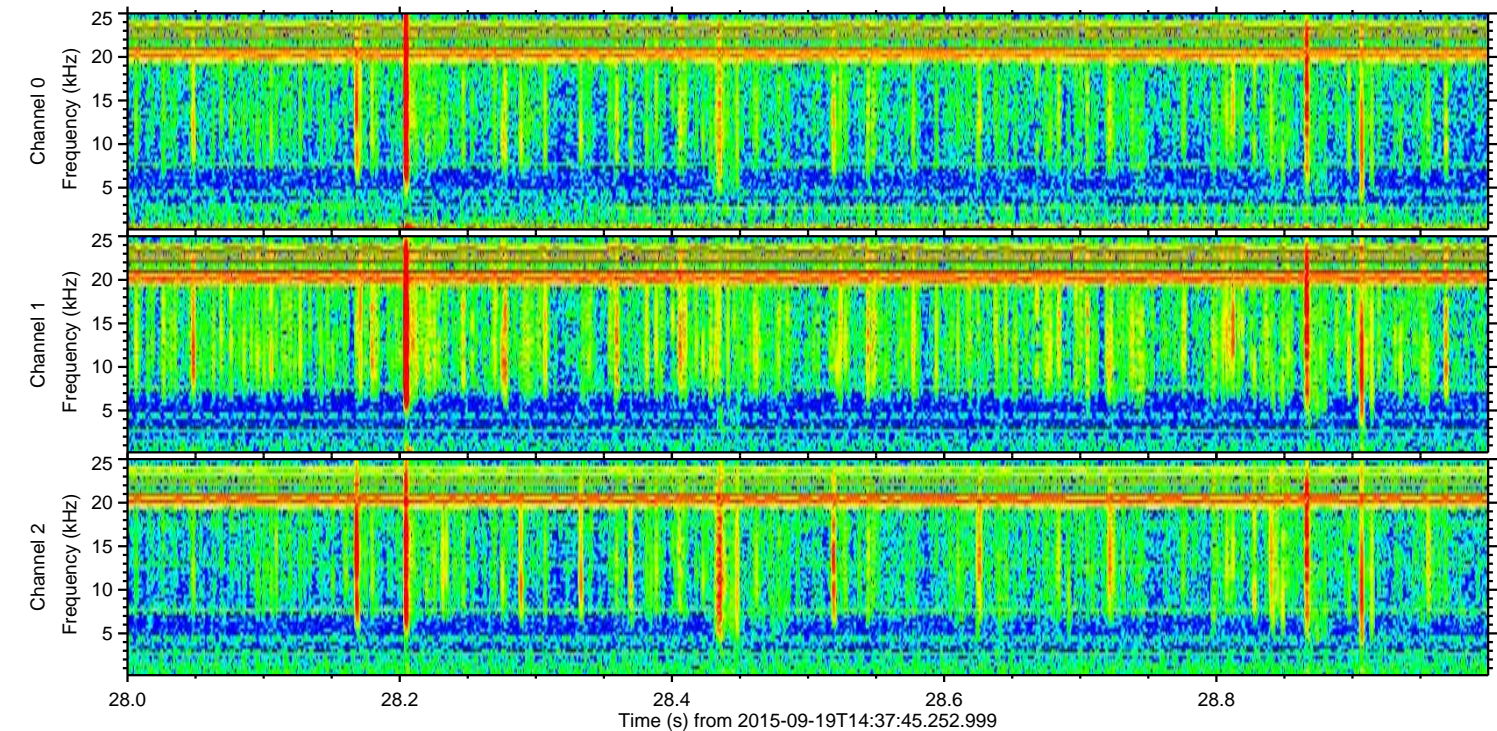
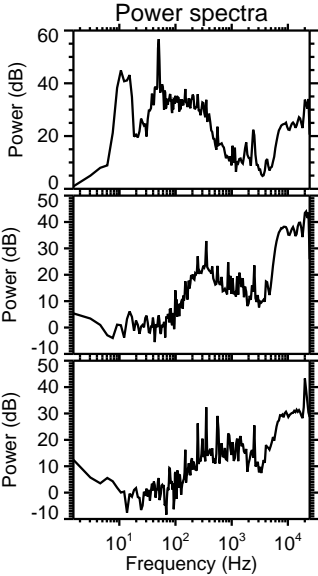
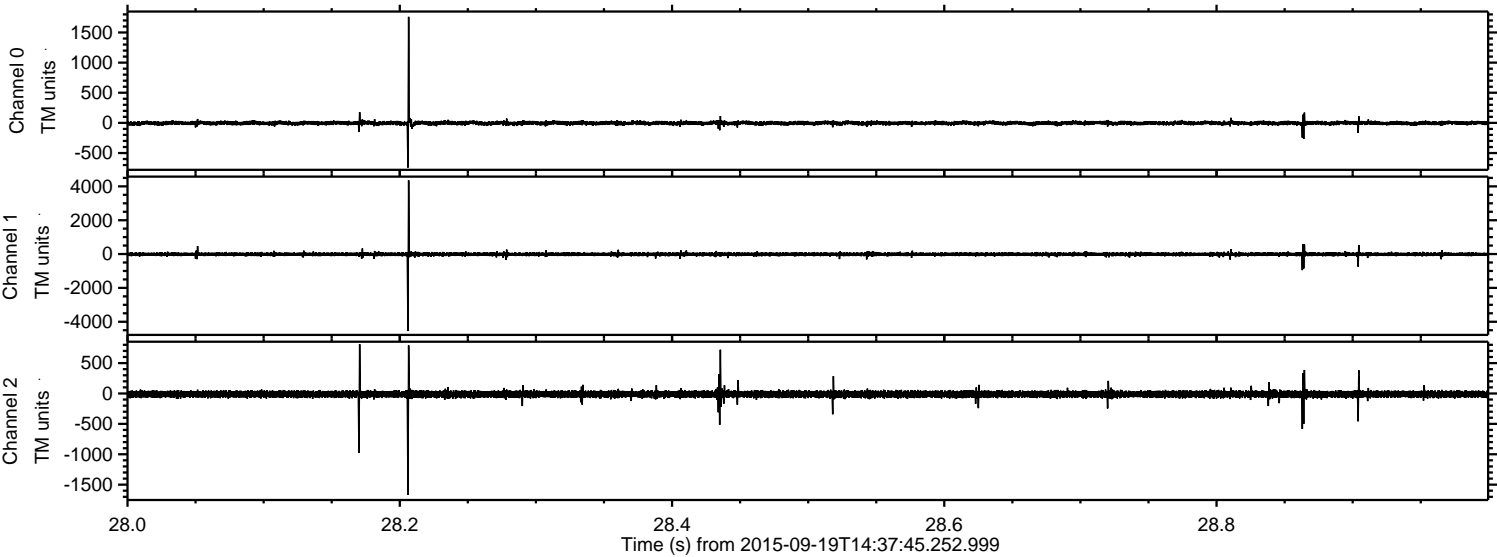
Channel 0  
mn: -956  
mx: 661  
 $\mu$ : -3.4  
 $\sigma$ : 17.5

Channel 1  
mn: -4963  
mx: 3020  
 $\mu$ : -12.1  
 $\sigma$ : 67.1

Channel 2  
mn: -621  
mx: 792  
 $\mu$ : -12.3  
 $\sigma$ : 29.1



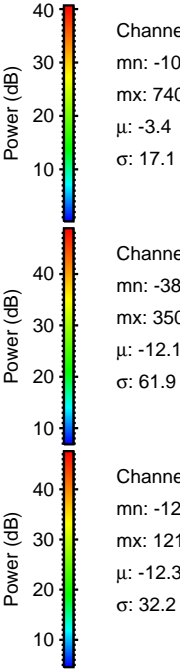
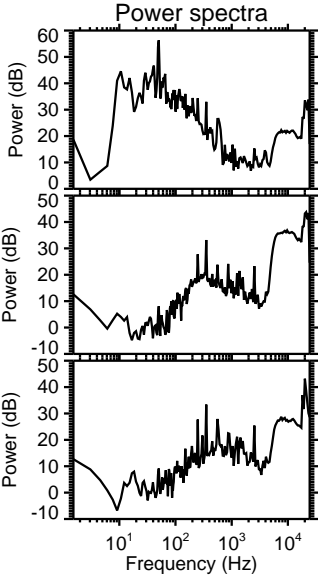
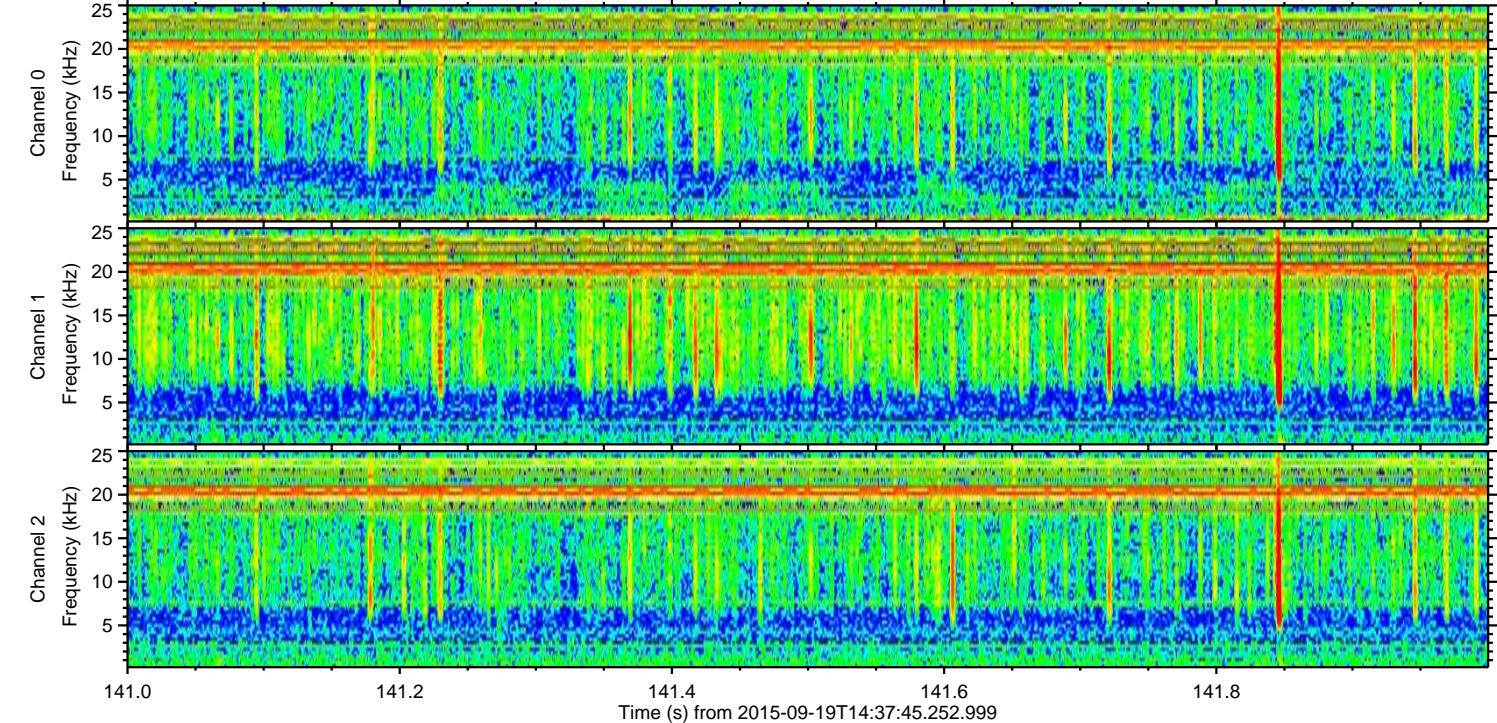
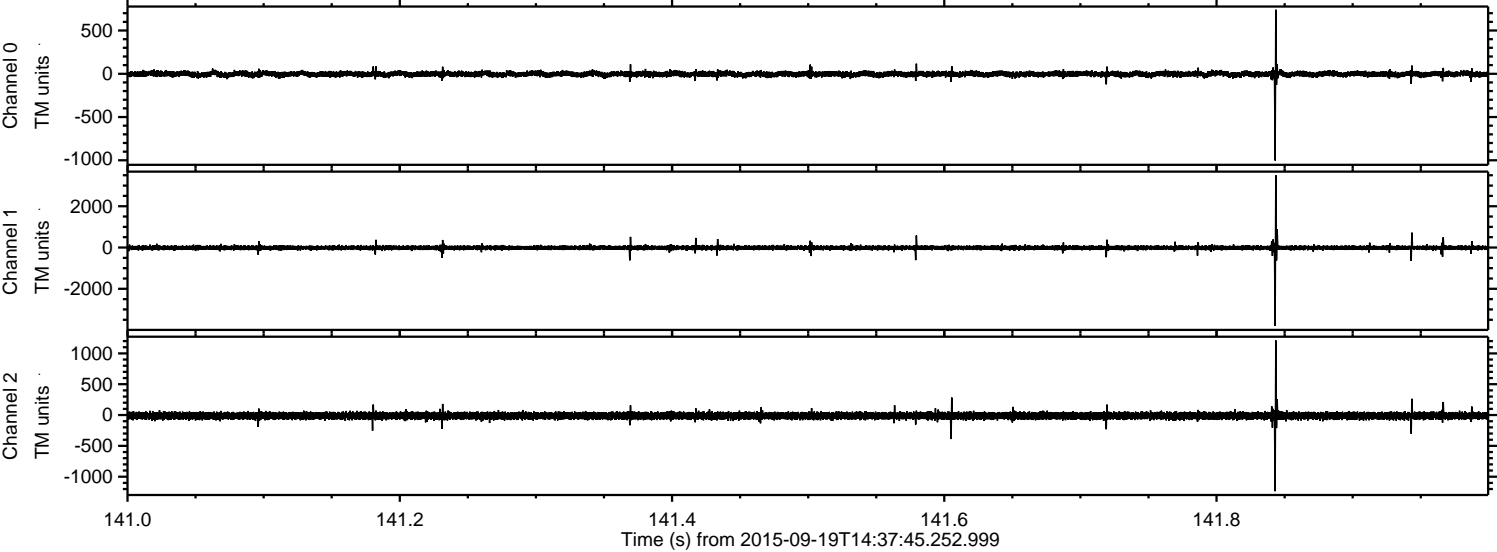
Processed Wed Oct 14 08:19:14 2015 by ELM ver.2012-10-06 from 001\_\_elm20150919\_143744\_\_dat00.bin





ELMAVAN 3D WAVEFORMS (Measured data sampled at 50 kHz) 51000 packets of 144 samples from 2015-09-19T14:37:45.252.999. Part 142/147

Processed Wed Oct 14 08:19:15 2015 by ELM ver.2012-10-06 from 001\_\_elm20150919\_143744\_\_dat00.bin



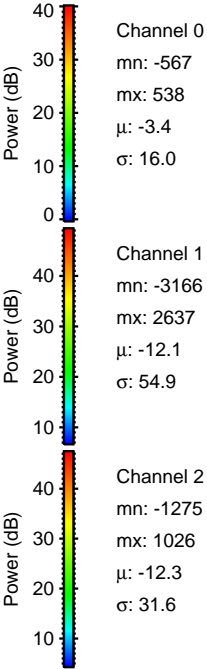
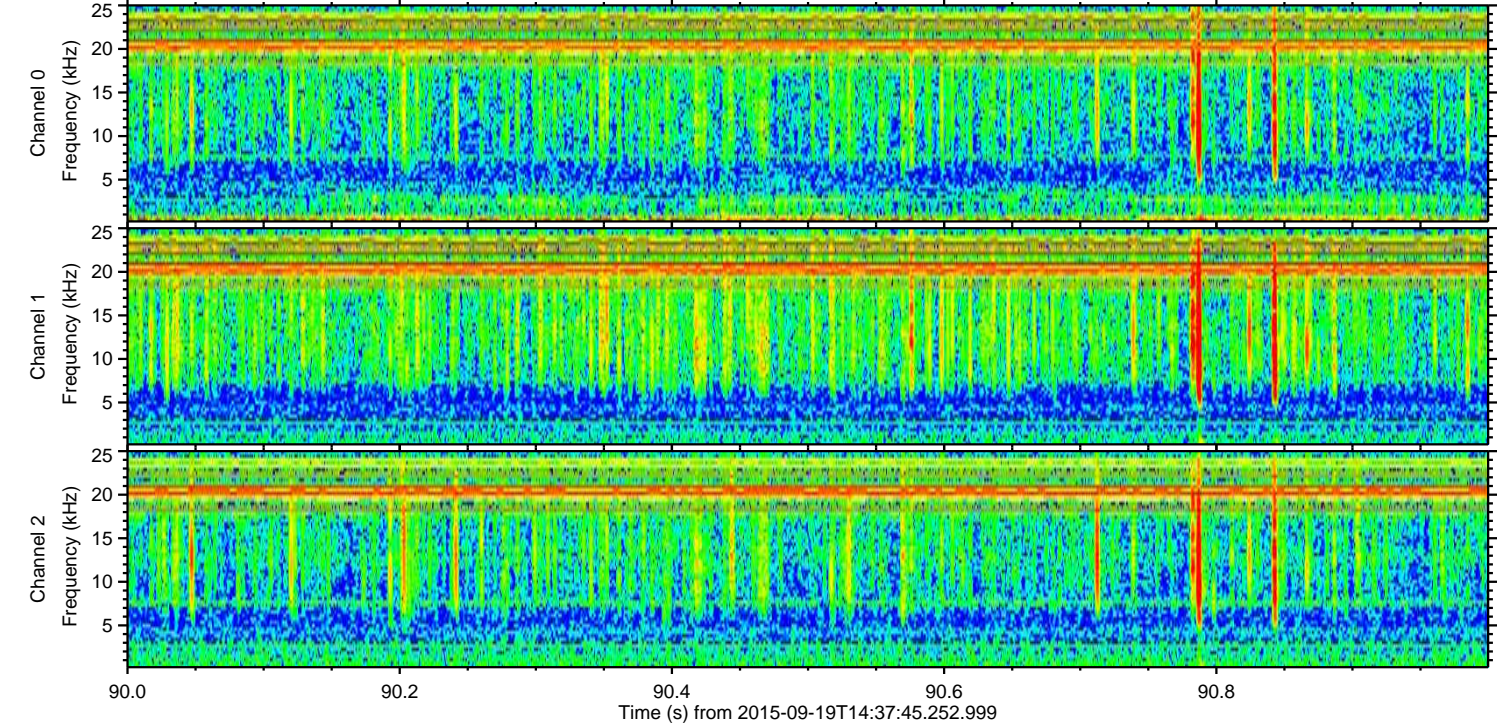
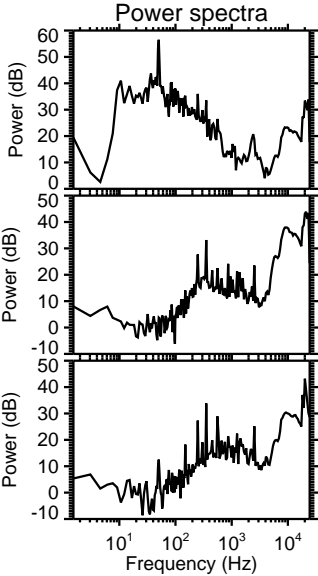
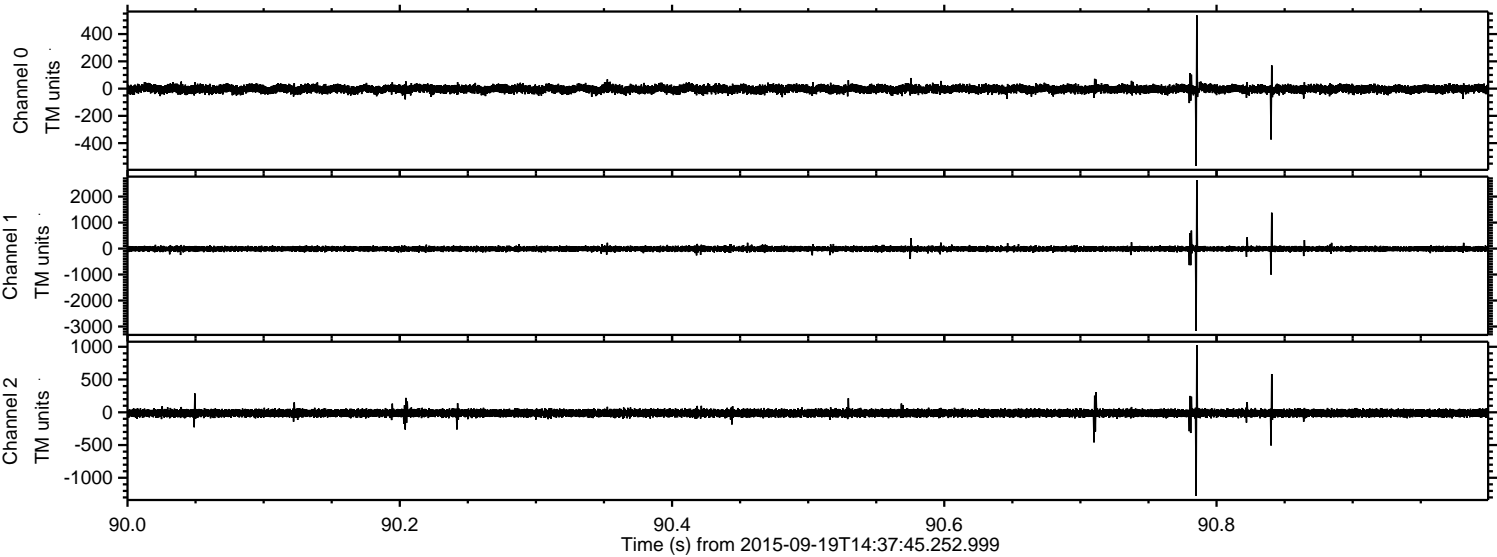
Channel 0  
mn: -1002  
mx: 740  
 $\mu$ : -3.4  
 $\sigma$ : 17.1

Channel 1  
mn: -3801  
mx: 3501  
 $\mu$ : -12.1  
 $\sigma$ : 61.9

Channel 2  
mn: -1235  
mx: 1210  
 $\mu$ : -12.3  
 $\sigma$ : 32.2

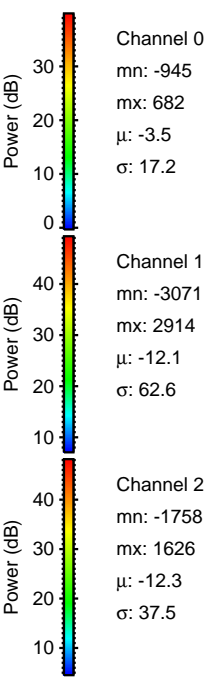
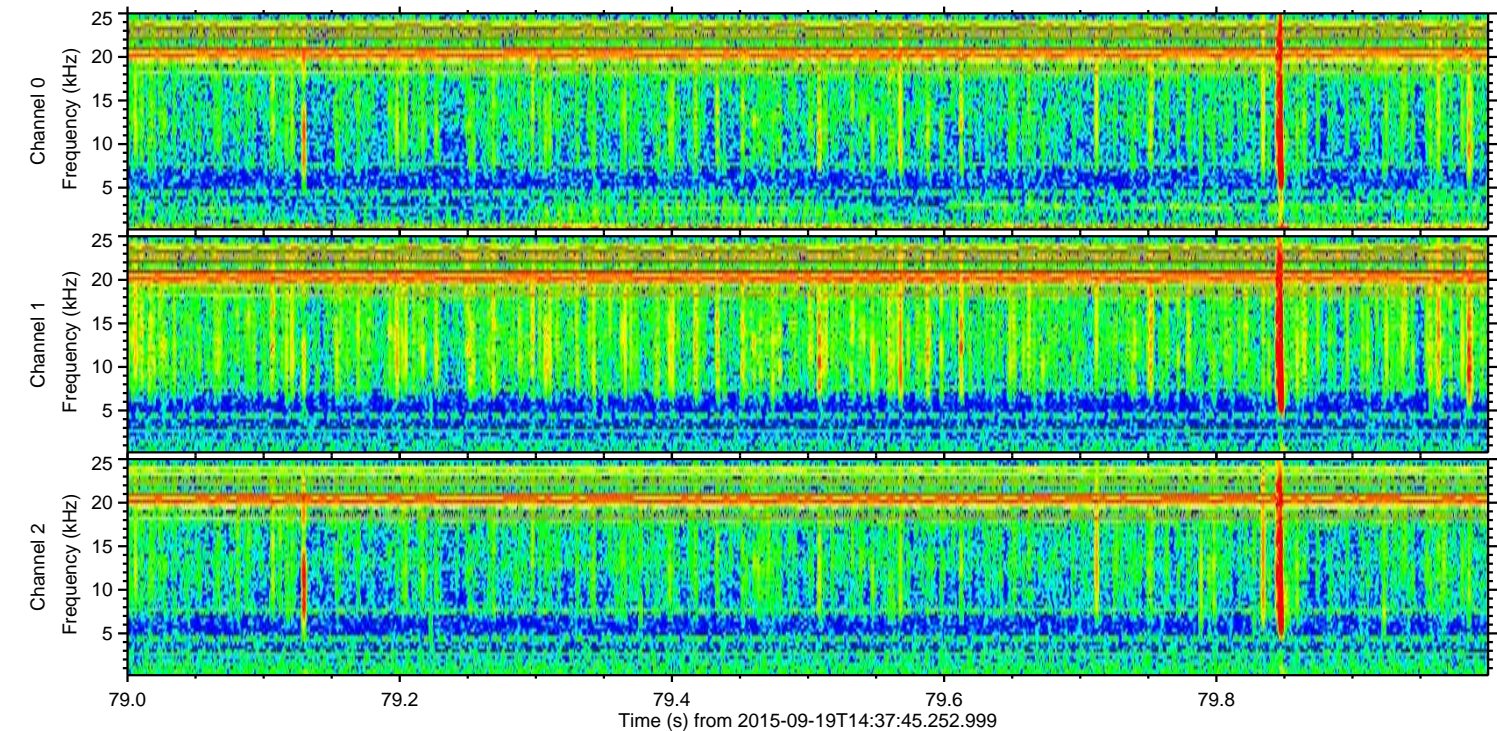
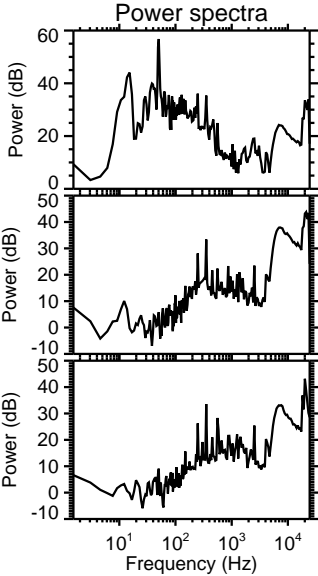
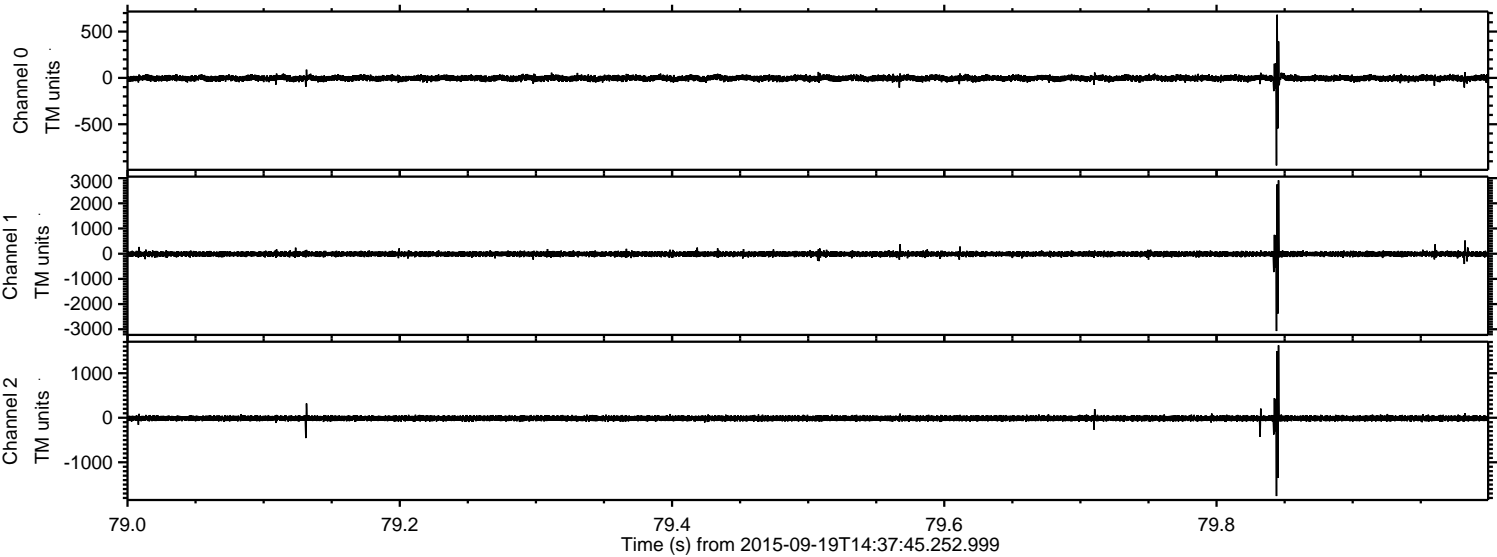


Processed Wed Oct 14 08:19:16 2015 by ELM ver.2012-10-06 from 001\_\_elm20150919\_143744\_\_dat00.bin



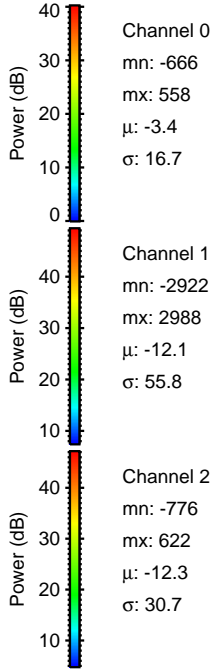
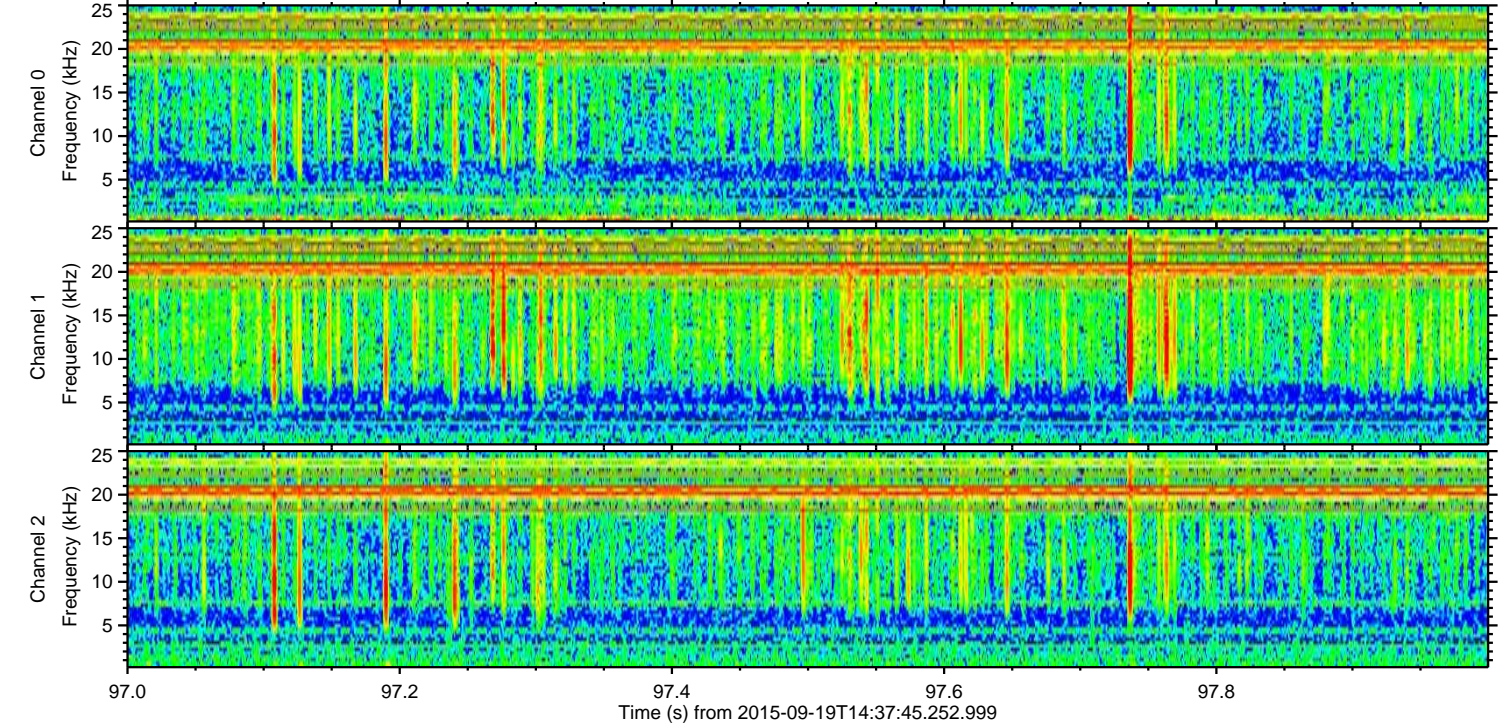
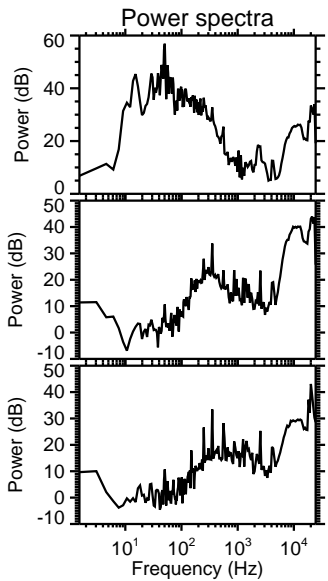
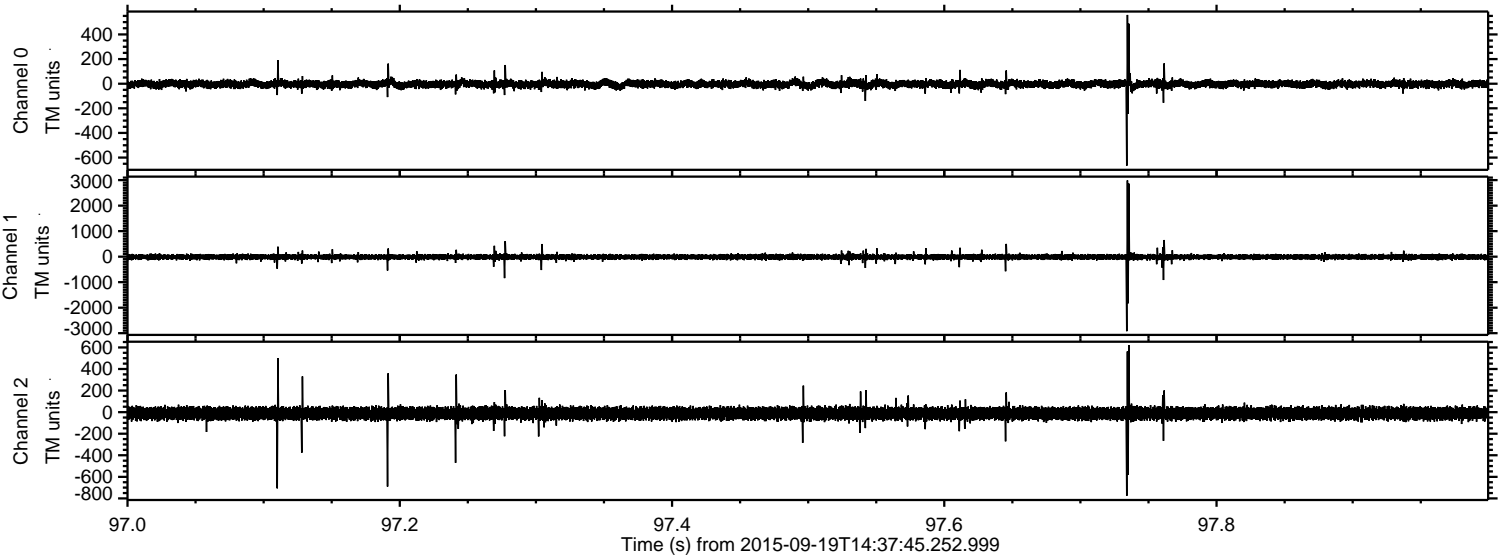


Processed Wed Oct 14 08:19:17 2015 by ELM ver.2012-10-06 from 001\_\_elm20150919\_143744\_\_dat00.bin





Processed Wed Oct 14 08:19:18 2015 by ELM ver.2012-10-06 from 001\_\_elm20150919\_143744\_\_dat00.bin



Channel 0  
mn: -666  
mx: 558  
 $\mu$ : -3.4  
 $\sigma$ : 16.7

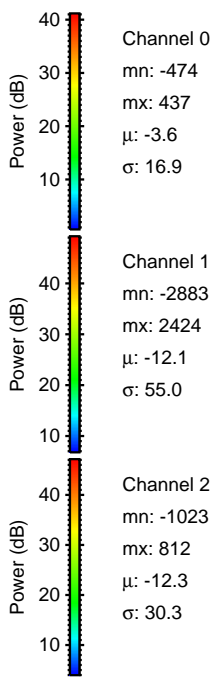
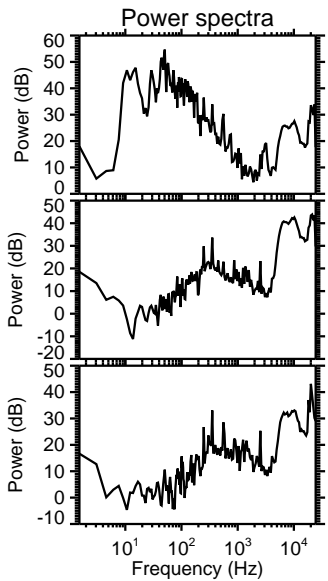
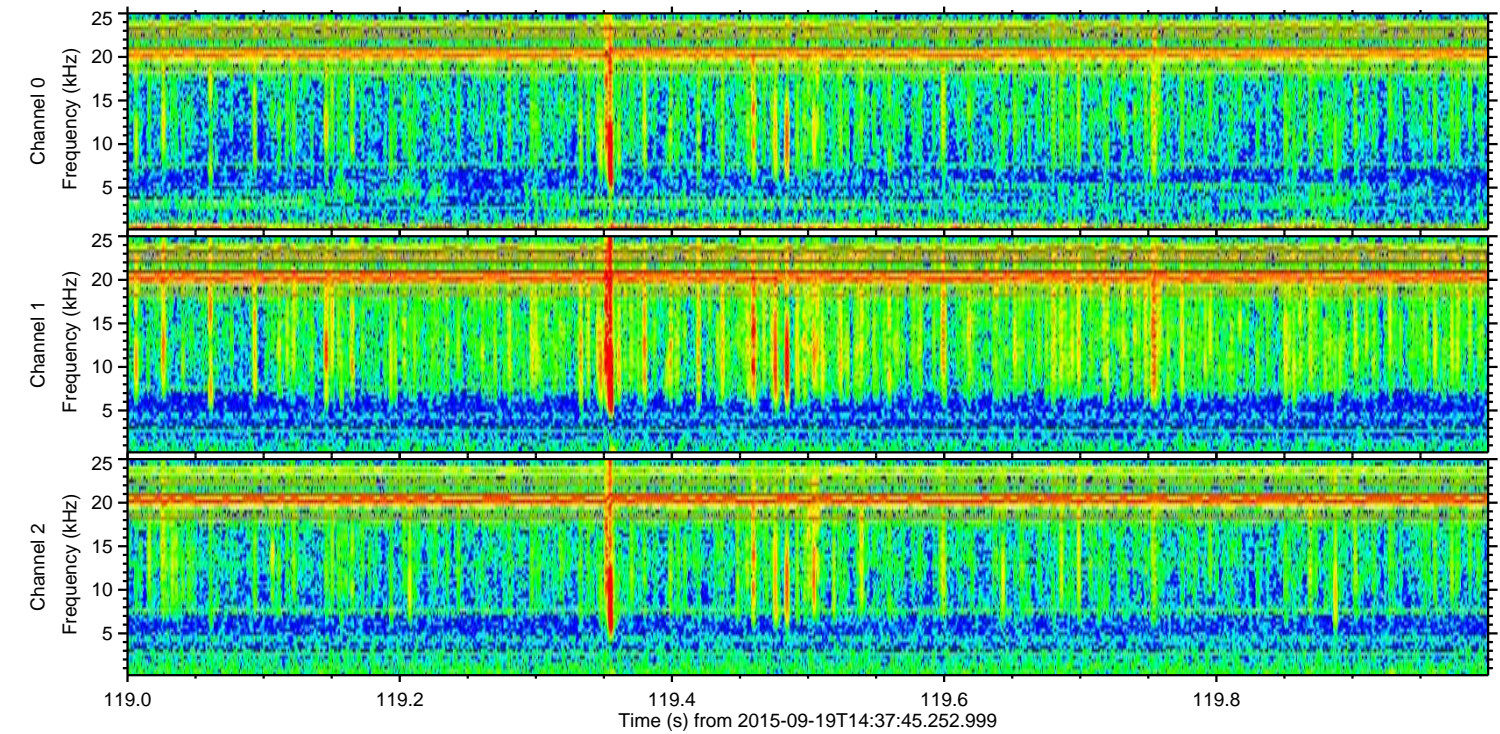
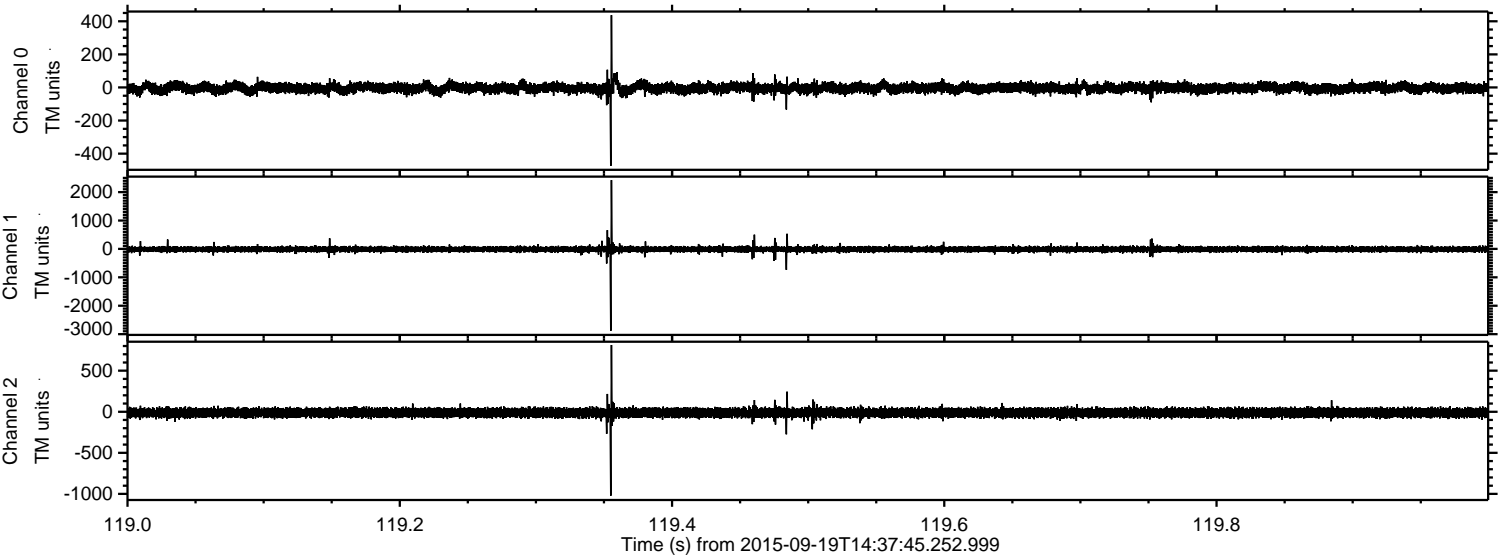
Channel 1  
mn: -2922  
mx: 2988  
 $\mu$ : -12.1  
 $\sigma$ : 55.8

Channel 2  
mn: -776  
mx: 622  
 $\mu$ : -12.3  
 $\sigma$ : 30.7



ELMAVAN 3D WAVEFORMS (Measured data sampled at 50 kHz) 51000 packets of 144 samples from 2015-09-19T14:37:45.252.999. Part 120/147

Processed Wed Oct 14 08:19:19 2015 by ELM ver.2012-10-06 from 001\_\_elm20150919\_143744\_\_dat00.bin





ELMAVAN 3D WAVEFORMS (Measured data sampled at 50 kHz) 51000 packets of 144 samples from 2015-09-19T14:37:45.252.999. Part 130/147

