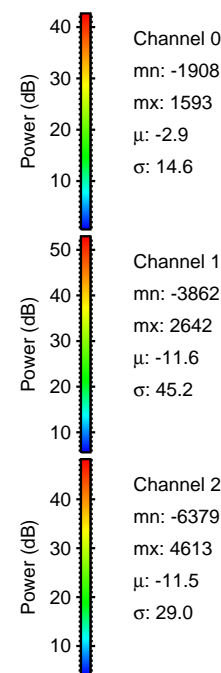
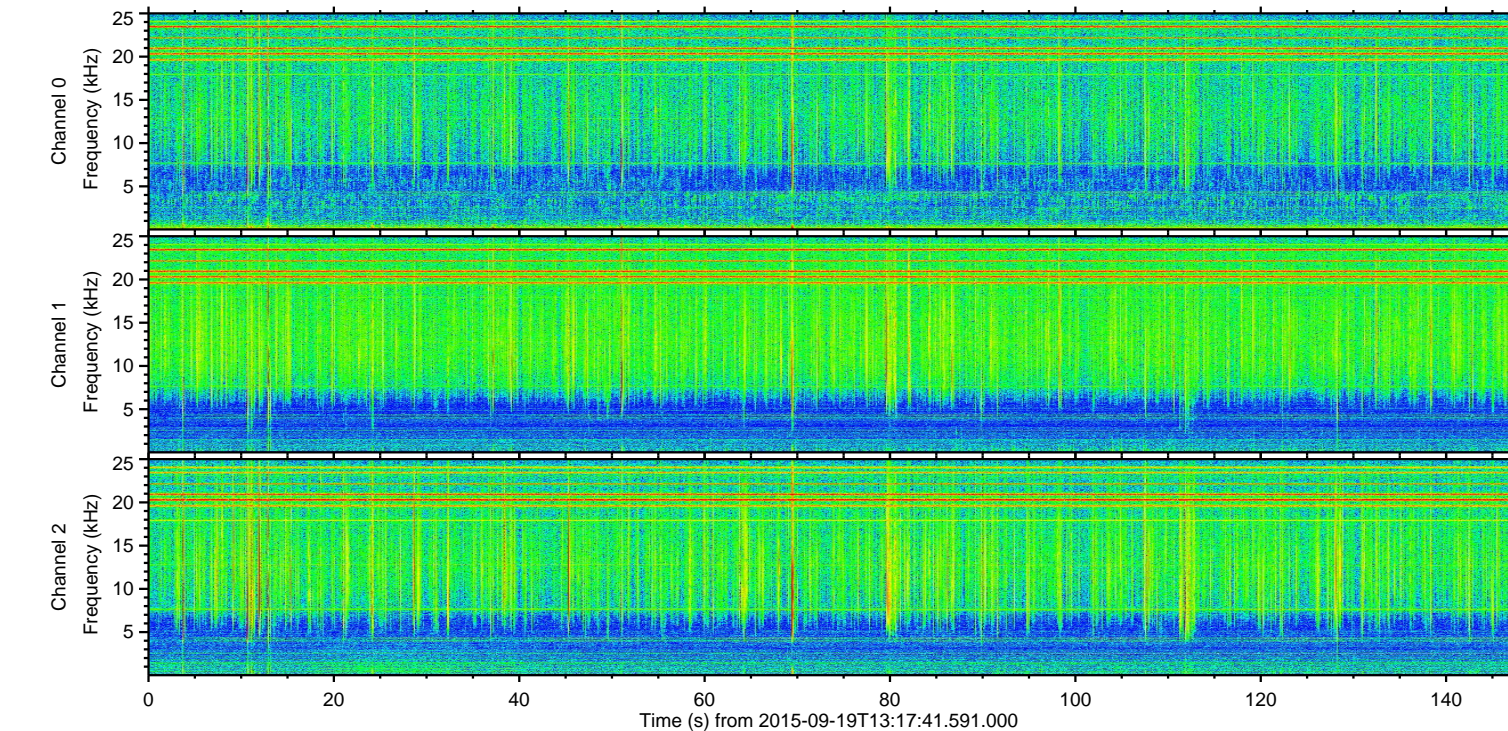
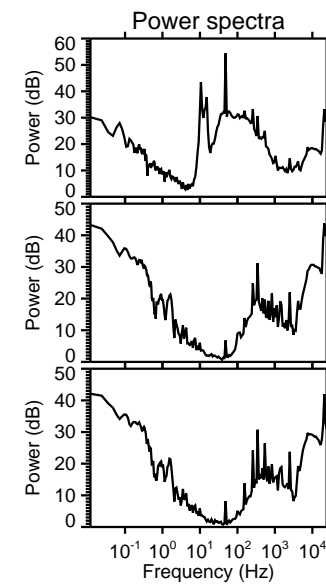
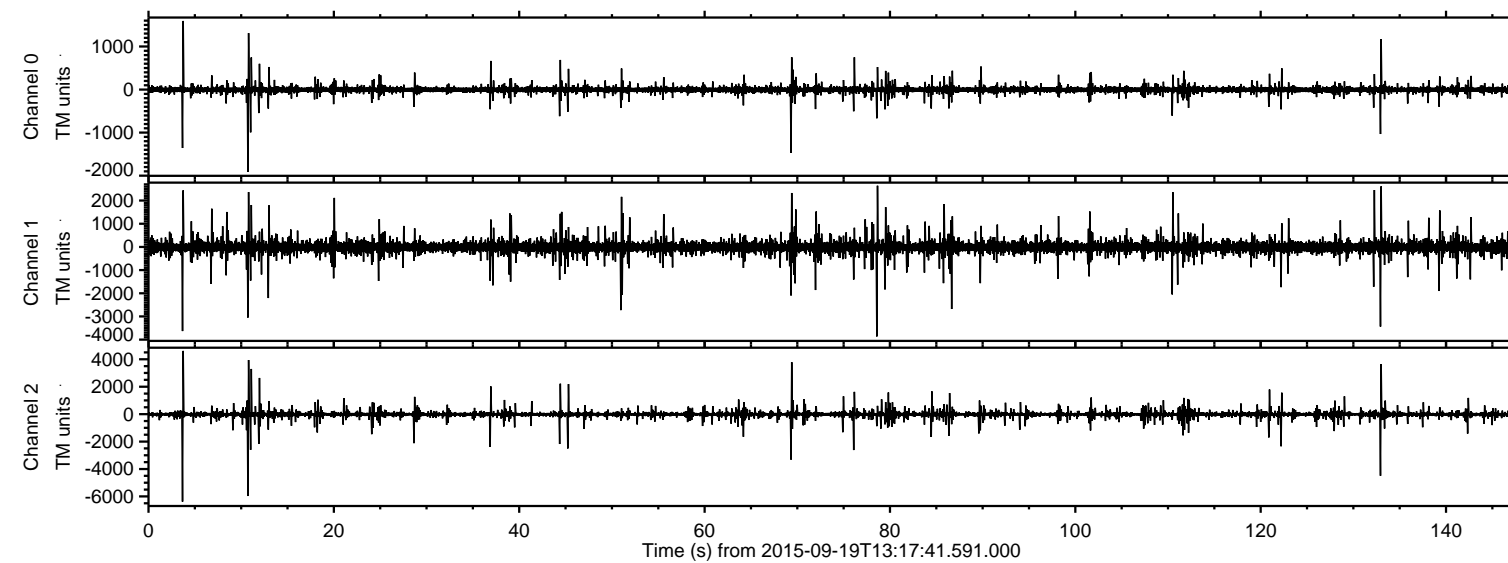


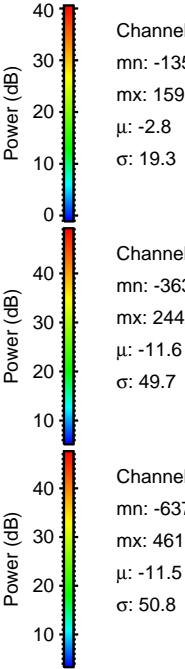
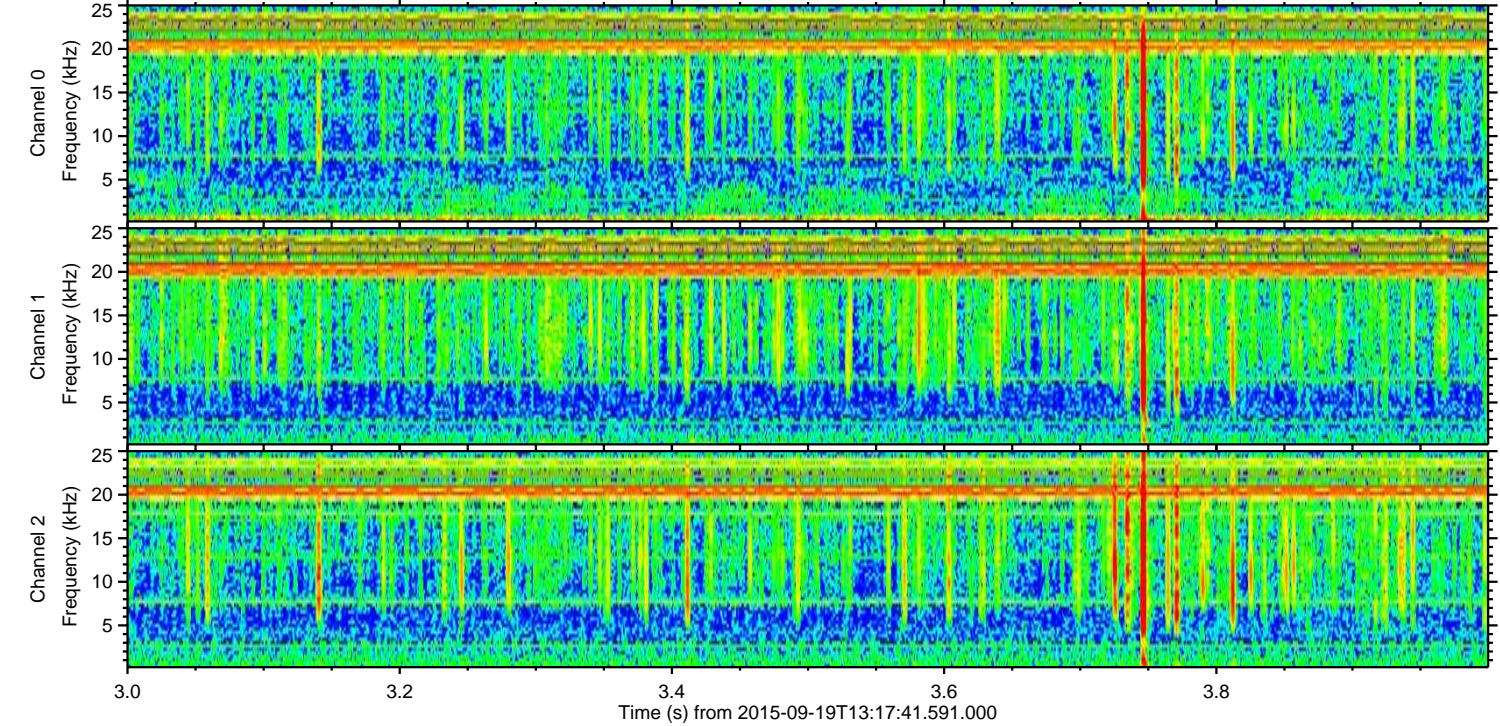
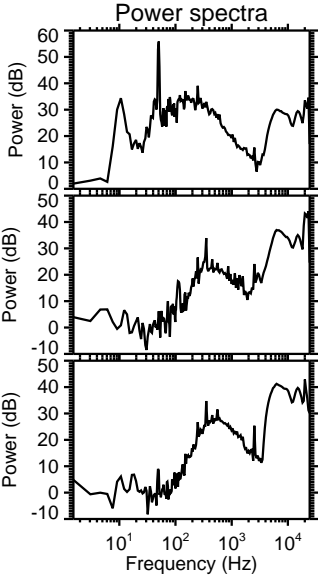
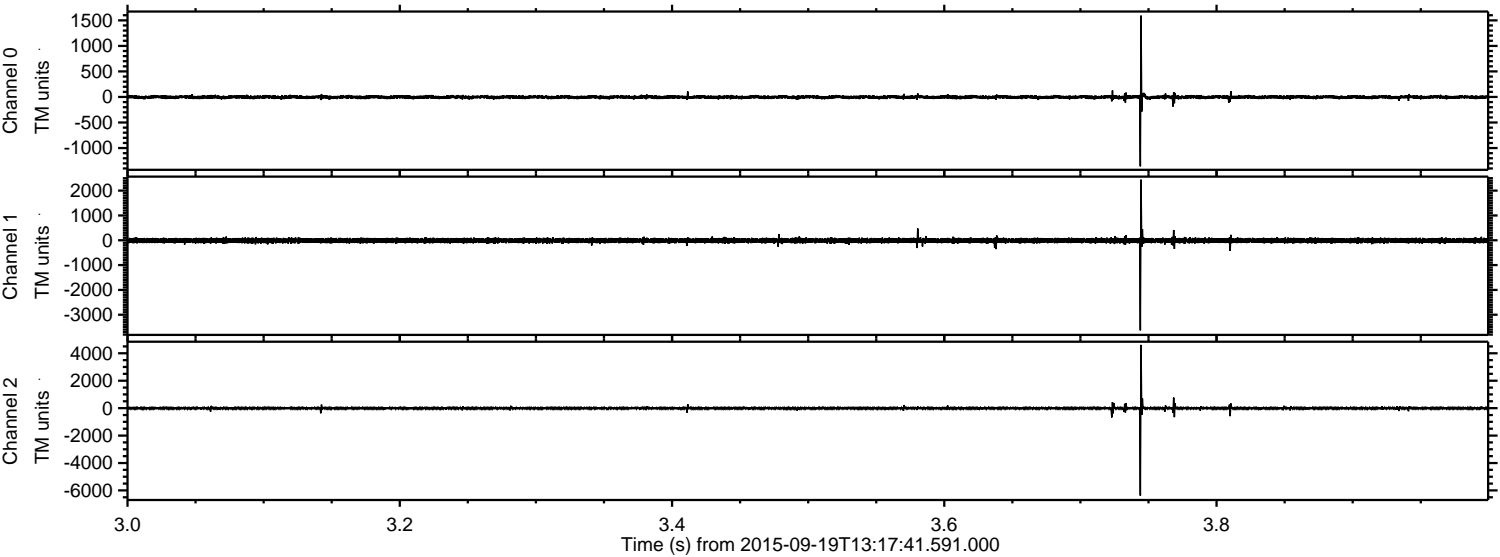
# ELMAVAN 3D WAVEFORMS (Measured data sampled at 50 kHz) 51000 packets of 144 samples from 2015-09-19T13:17:41.591.000.

Processed Wed Oct 14 07:51:57 2015 by ELM ver.2012-10-06 from 001\_\_elm20150919\_131740\_\_dat00.bin





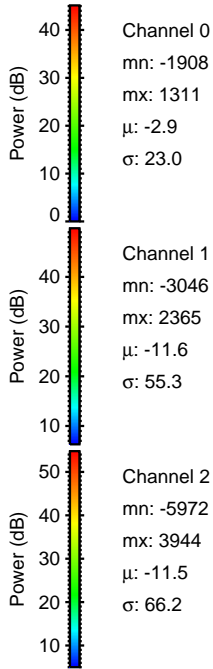
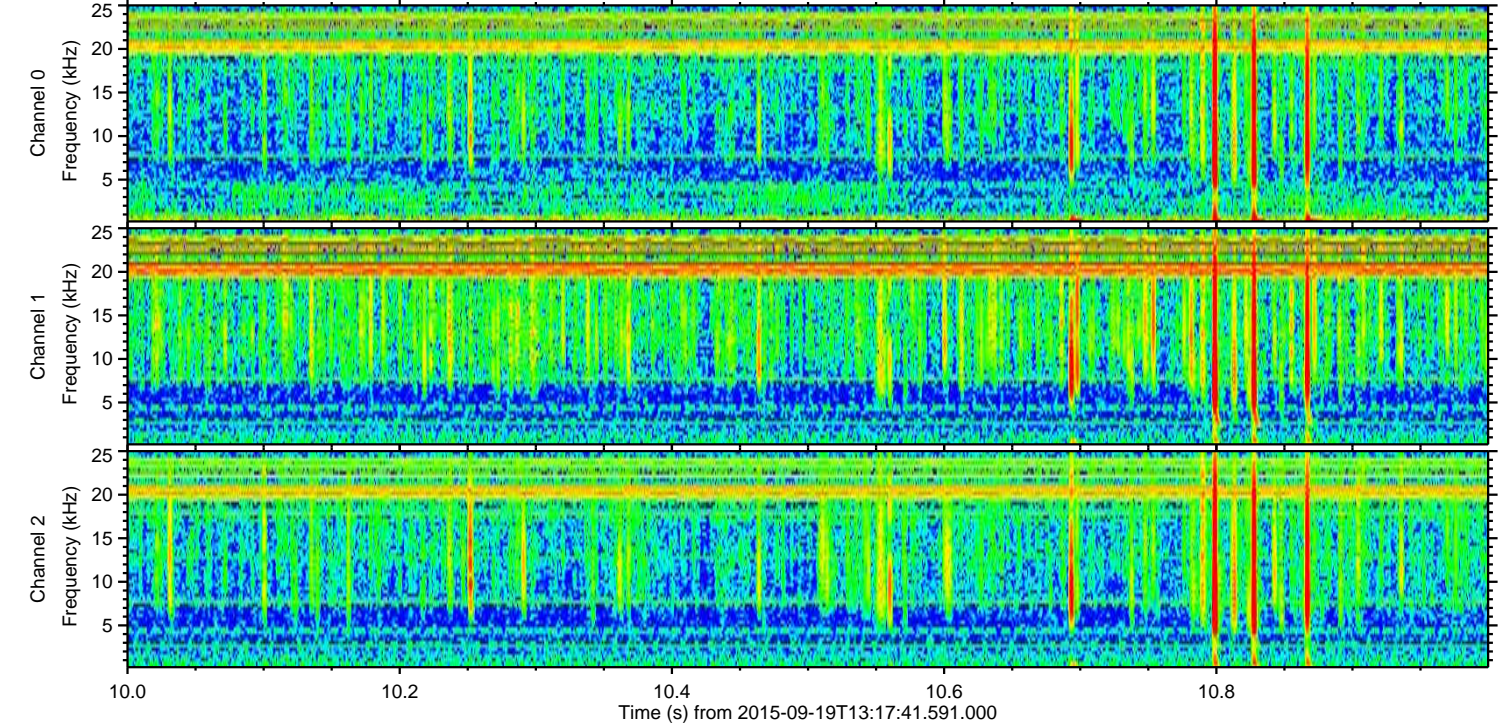
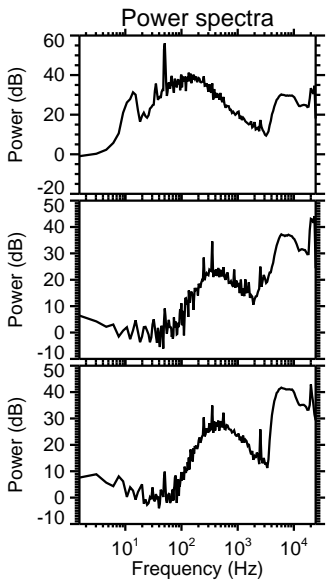
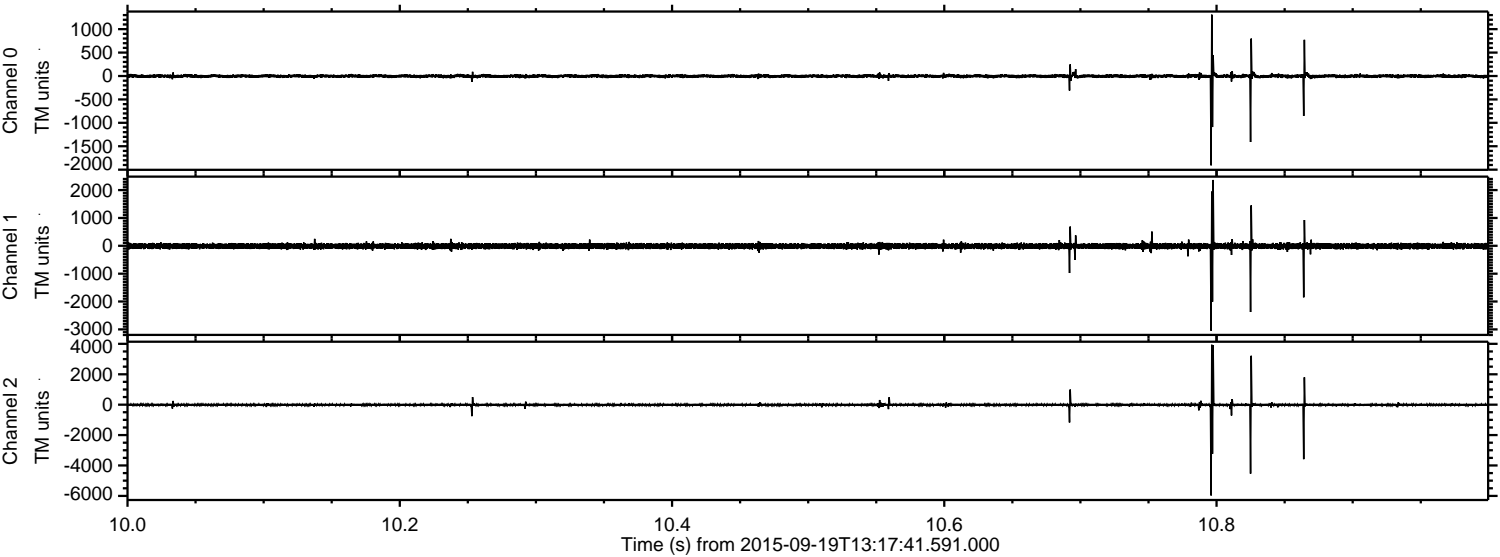
Processed Wed Oct 14 07:52:20 2015 by ELM ver.2012-10-06 from 001\_\_elm20150919\_131740\_\_dat00.bin





ELMAVAN 3D WAVEFORMS (Measured data sampled at 50 kHz) 51000 packets of 144 samples from 2015-09-19T13:17:41.591.000. Part 11/147

Processed Wed Oct 14 07:52:23 2015 by ELM ver.2012-10-06 from 001\_\_elm20150919\_131740\_\_dat00.bin



Channel 0  
mn: -1908  
mx: 1311  
 $\mu$ : -2.9  
 $\sigma$ : 23.0

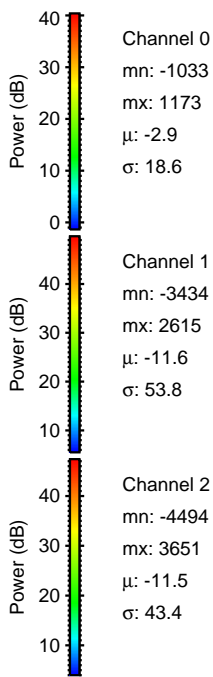
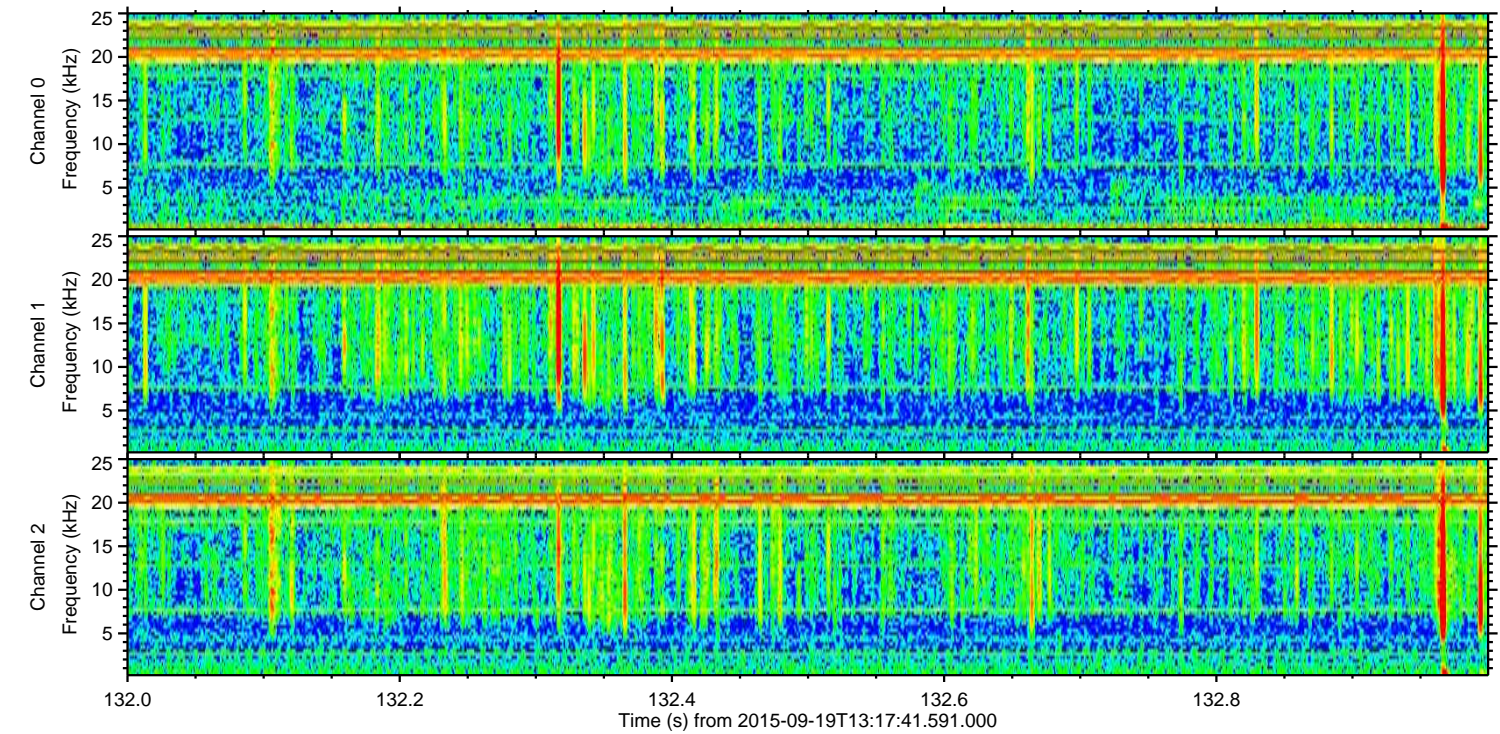
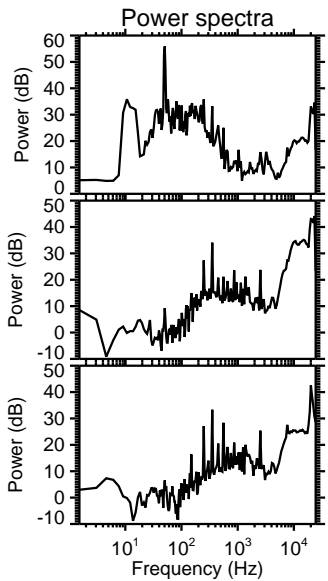
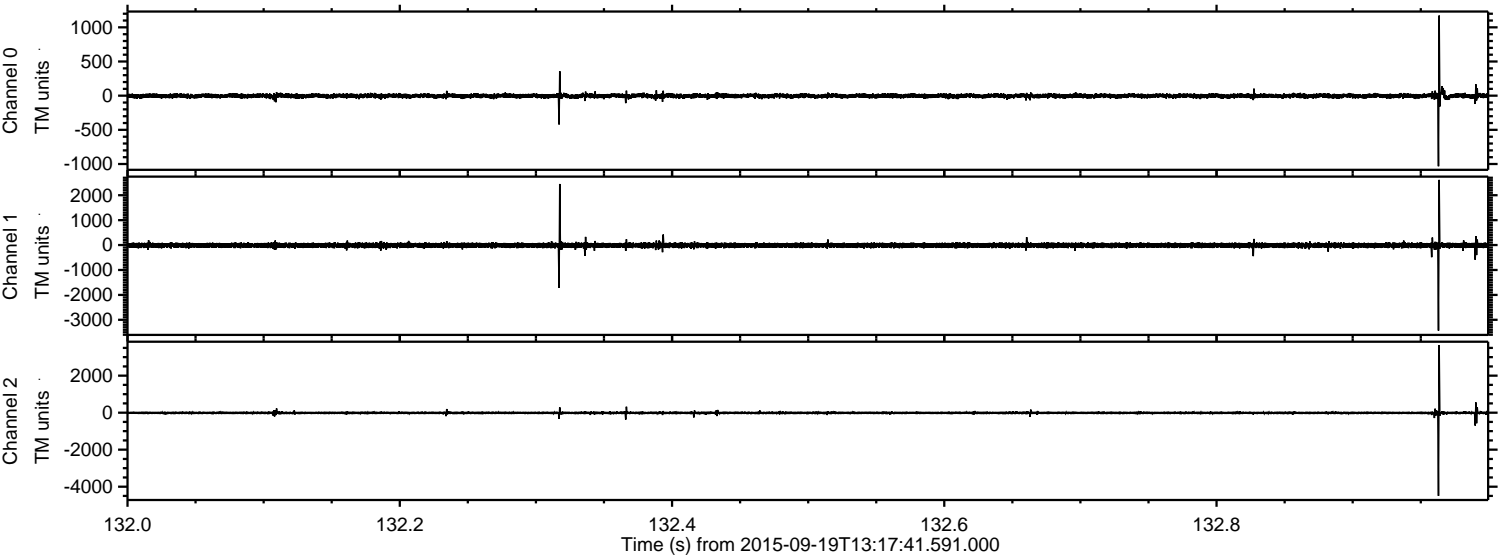
Channel 1  
mn: -3046  
mx: 2365  
 $\mu$ : -11.6  
 $\sigma$ : 55.3

Channel 2  
mn: -5972  
mx: 3944  
 $\mu$ : -11.5  
 $\sigma$ : 66.2



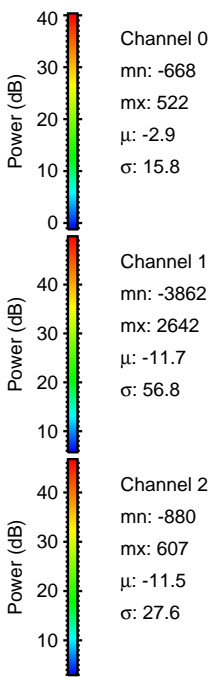
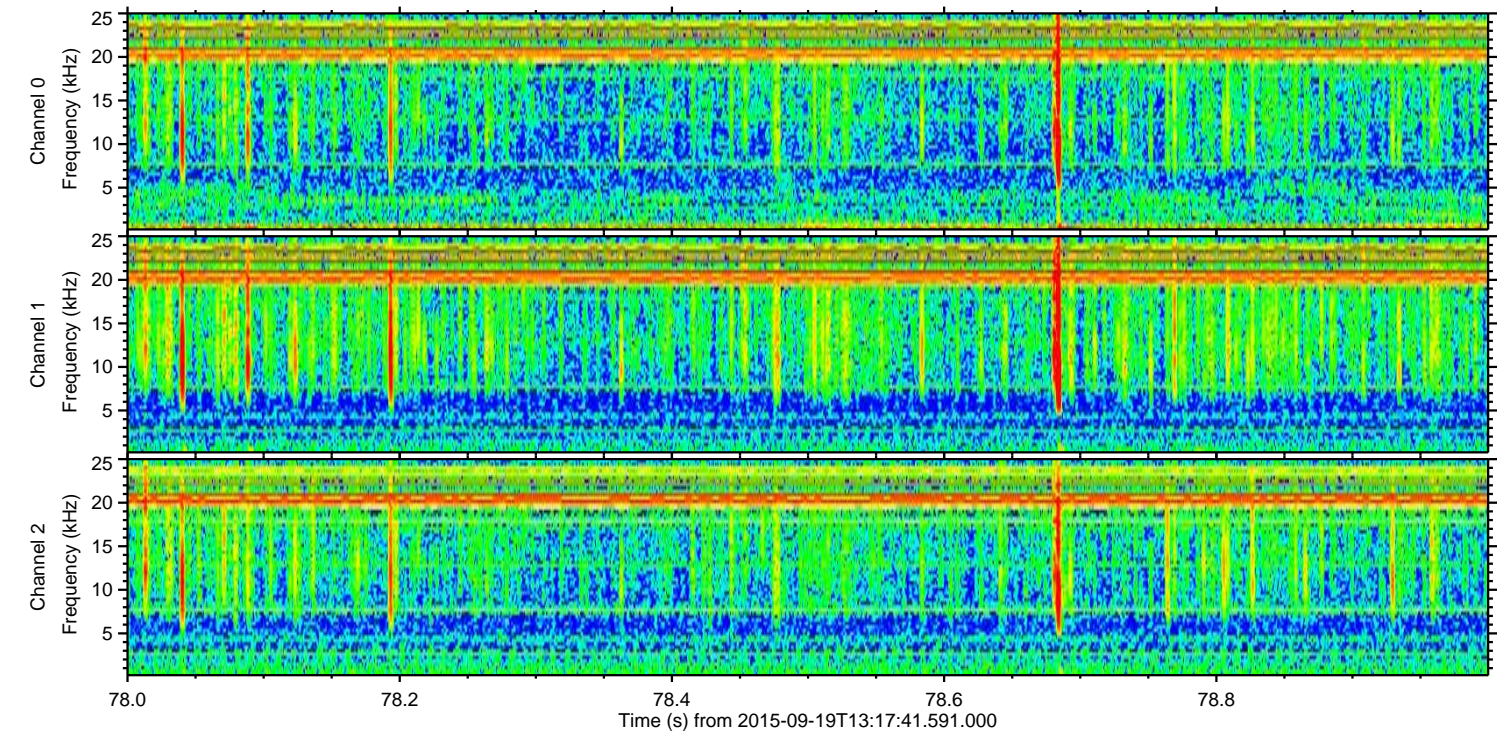
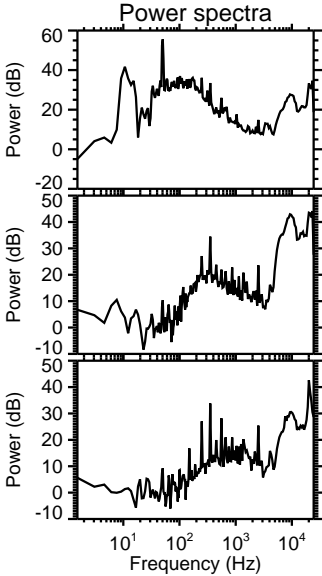
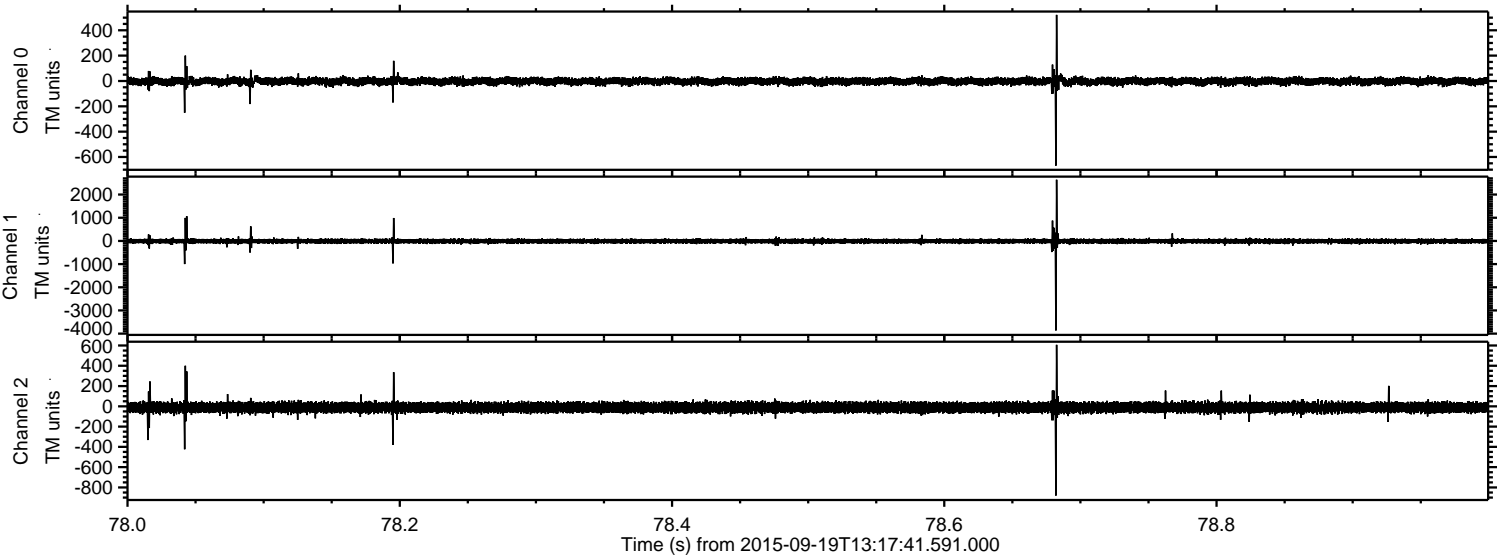
ELMAVAN 3D WAVEFORMS (Measured data sampled at 50 kHz) 51000 packets of 144 samples from 2015-09-19T13:17:41.591.000. Part 133/147

Processed Wed Oct 14 07:52:24 2015 by ELM ver.2012-10-06 from 001\_\_elm20150919\_131740\_\_dat00.bin



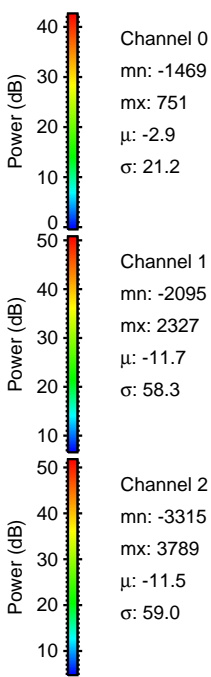
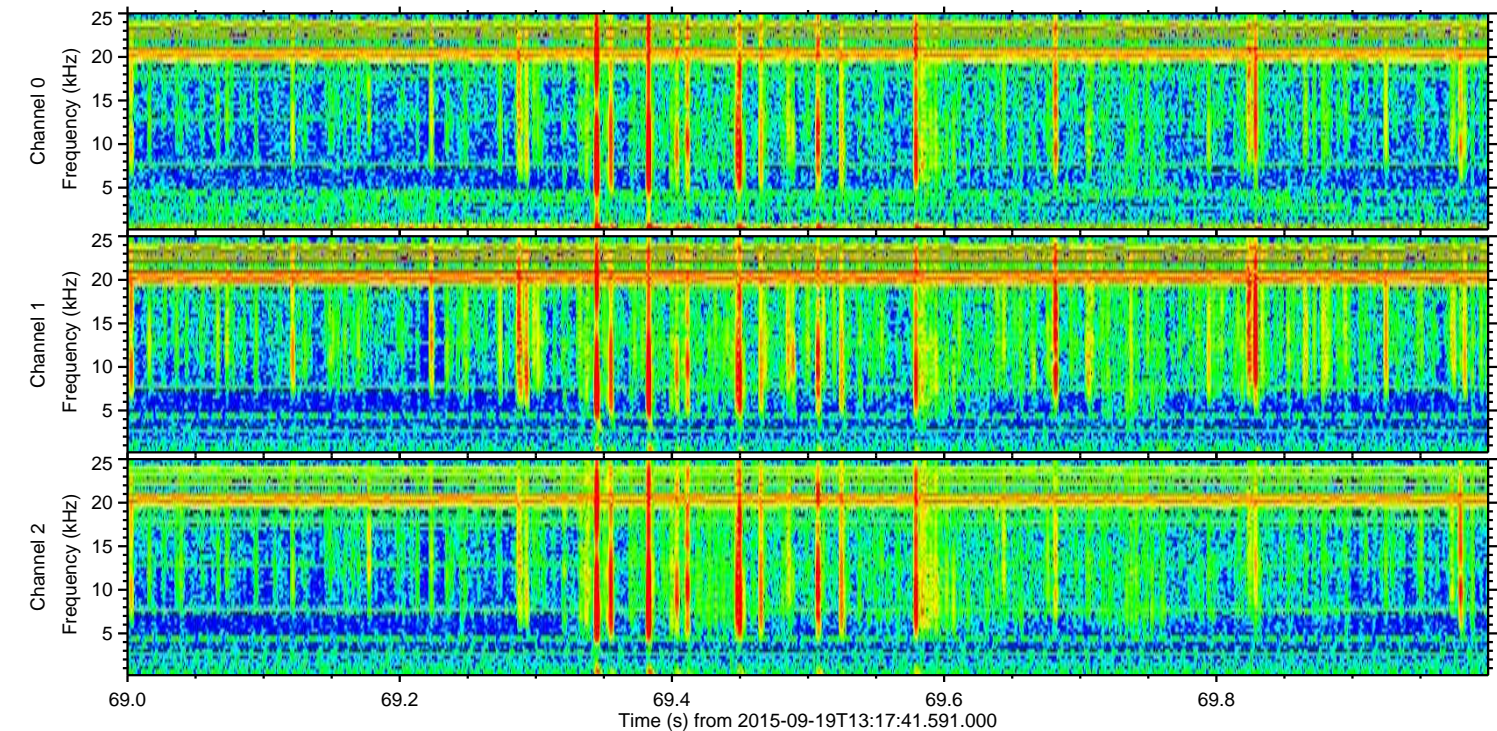
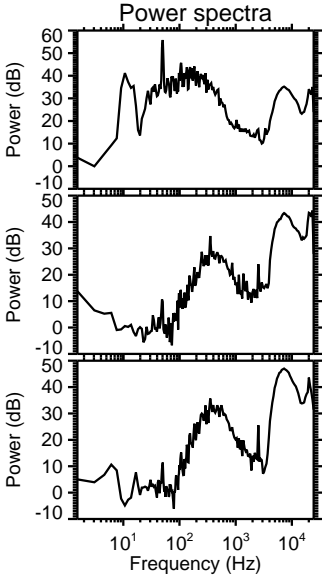
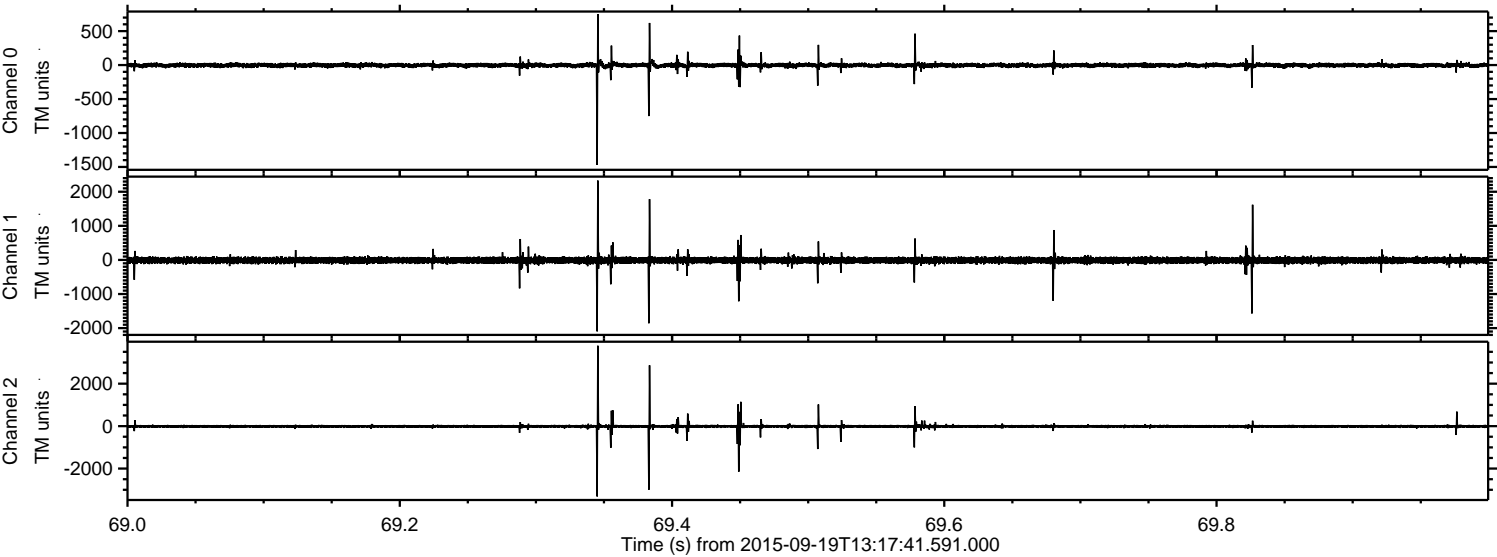


Processed Wed Oct 14 07:52:25 2015 by ELM ver.2012-10-06 from 001\_\_elm20150919\_131740\_\_dat00.bin





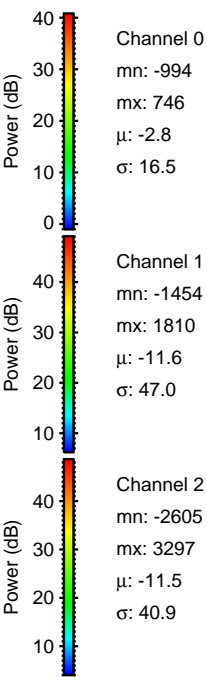
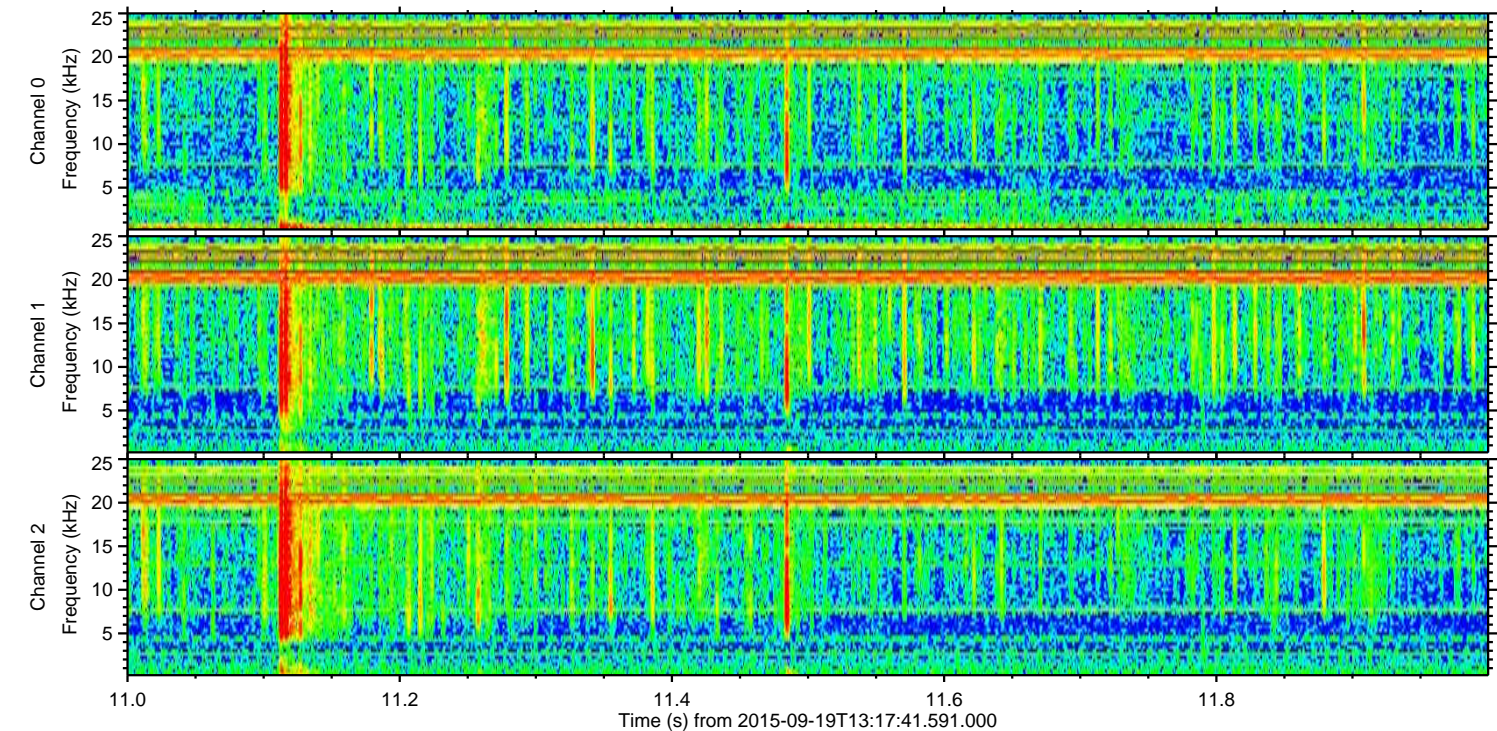
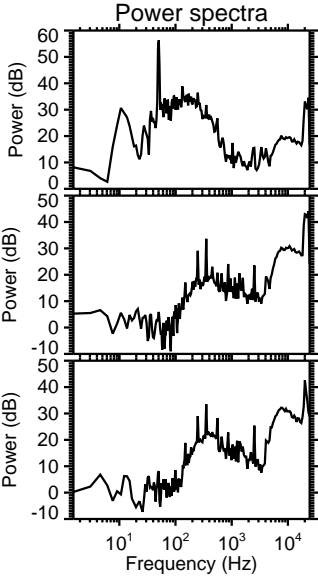
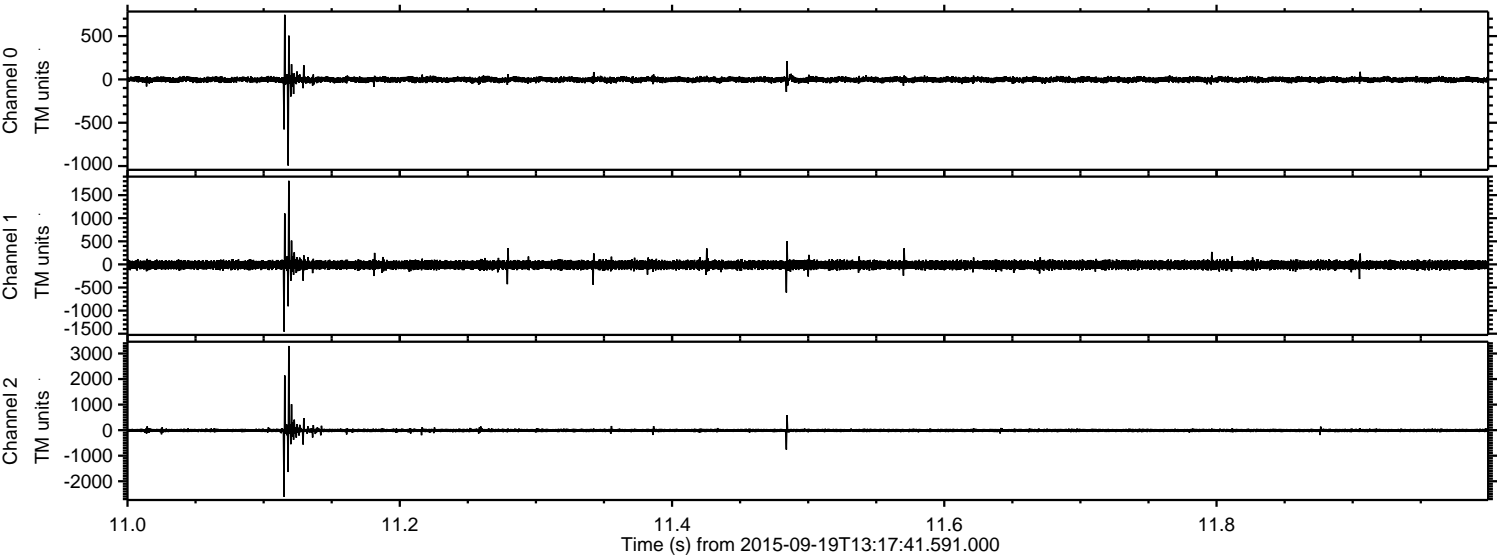
Processed Wed Oct 14 07:52:27 2015 by ELM ver.2012-10-06 from 001\_\_elm20150919\_131740\_\_dat00.bin





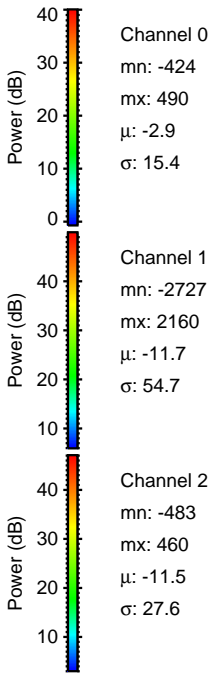
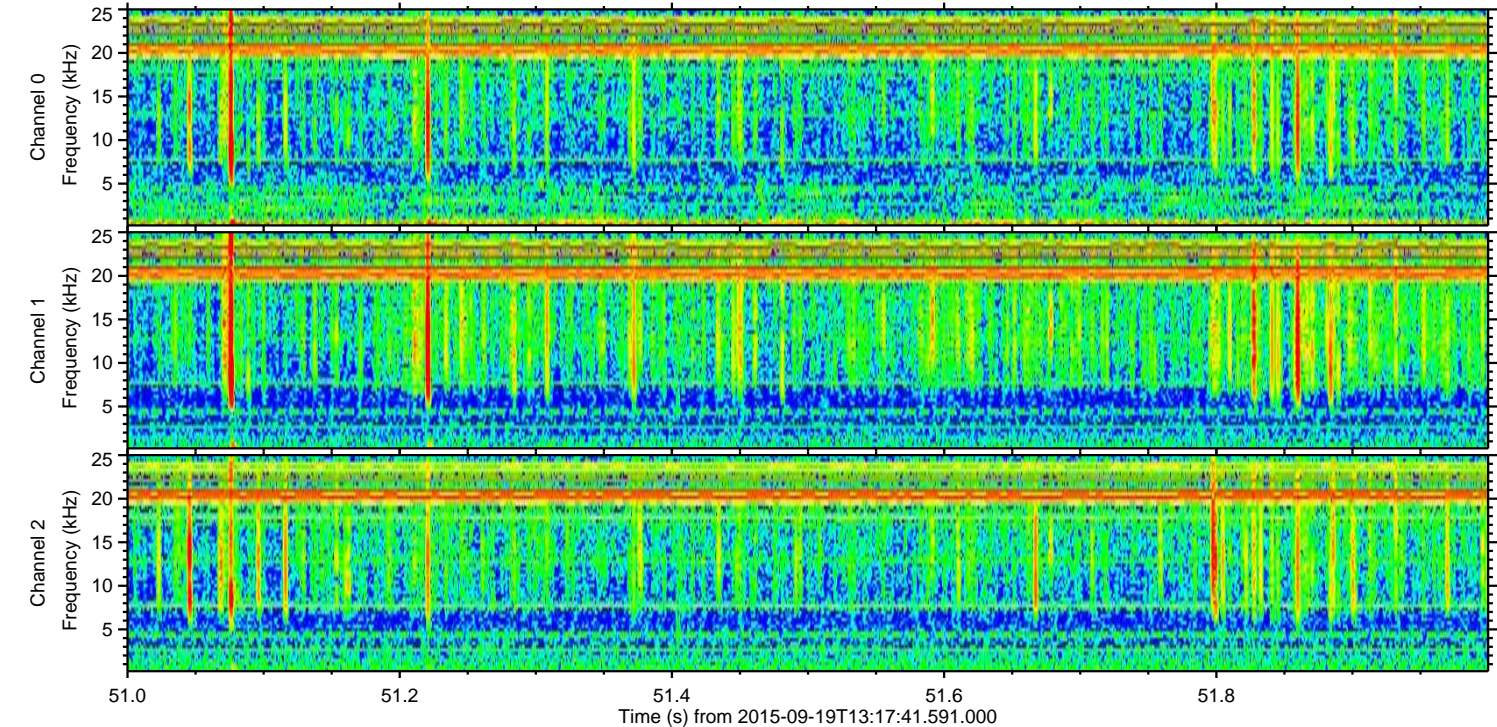
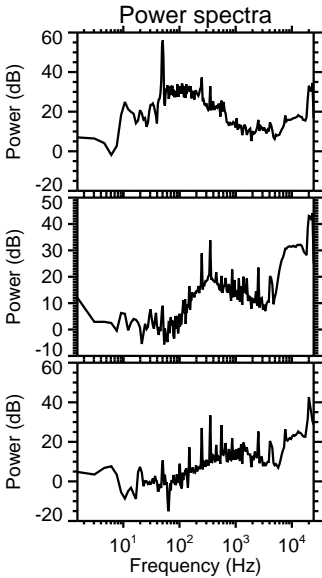
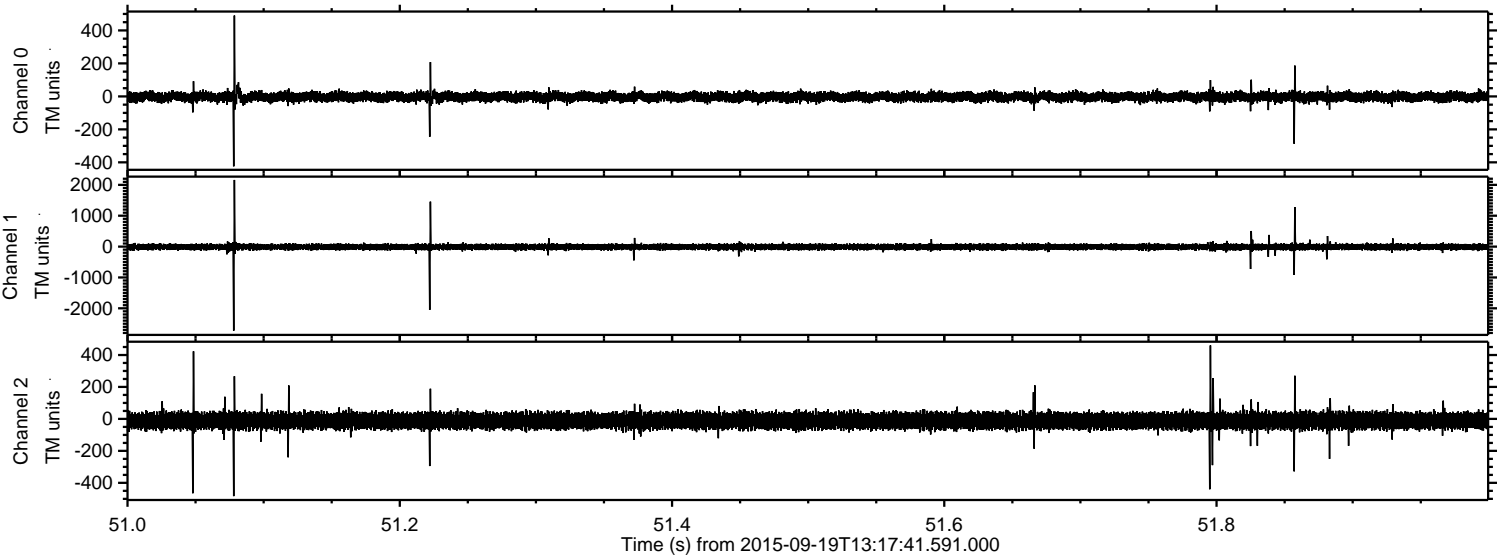
ELMAVAN 3D WAVEFORMS (Measured data sampled at 50 kHz) 51000 packets of 144 samples from 2015-09-19T13:17:41.591.000. Part 12/147

Processed Wed Oct 14 07:52:28 2015 by ELM ver.2012-10-06 from 001\_\_elm20150919\_131740\_\_dat00.bin



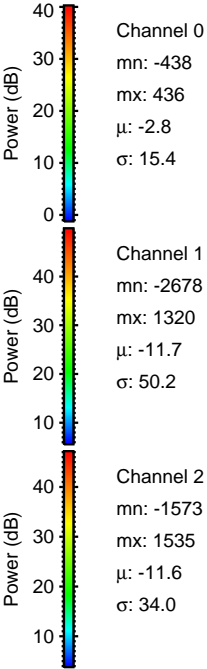
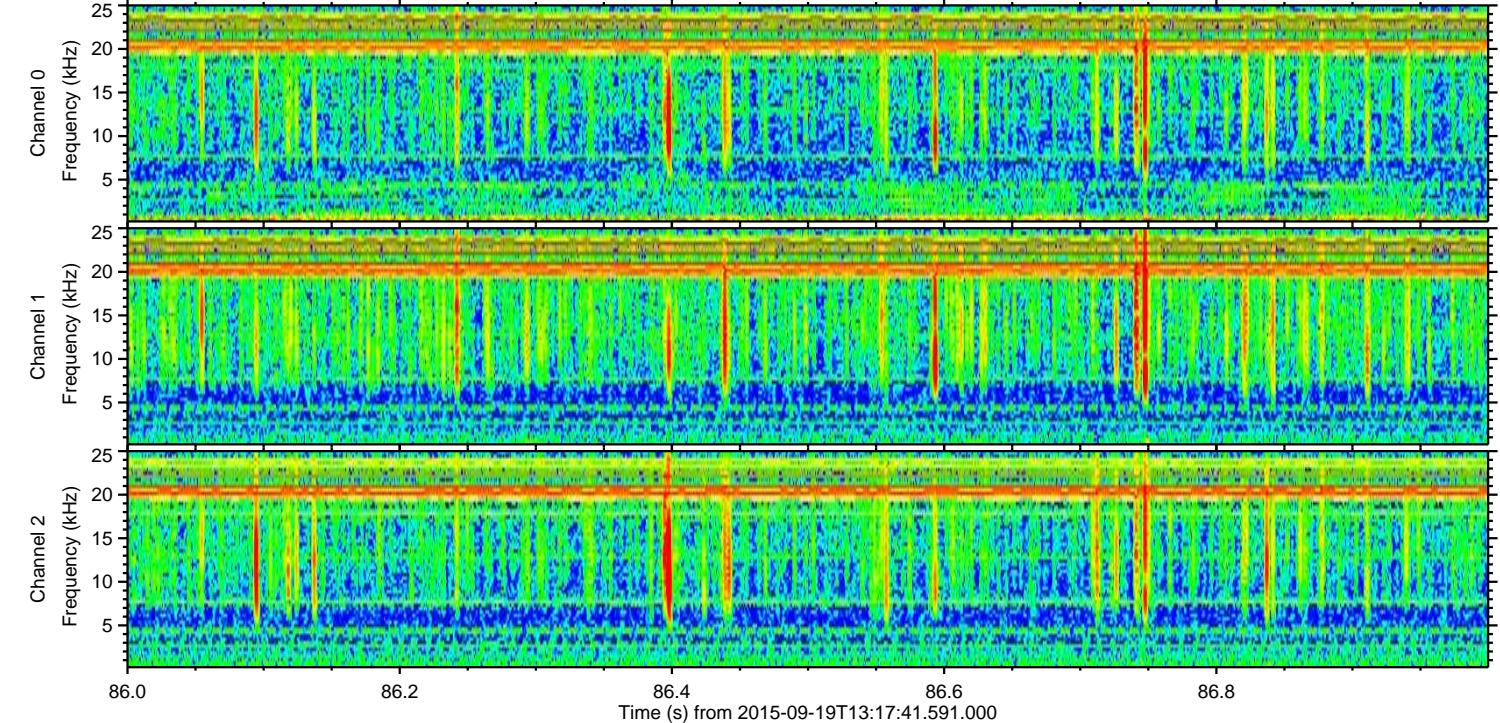
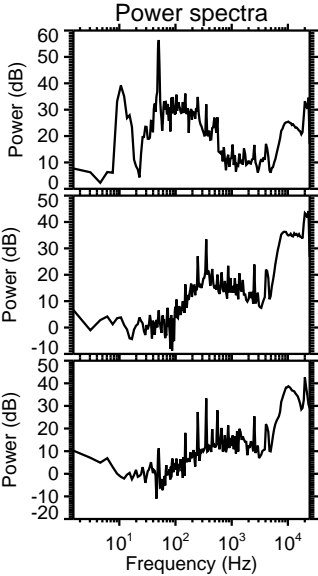
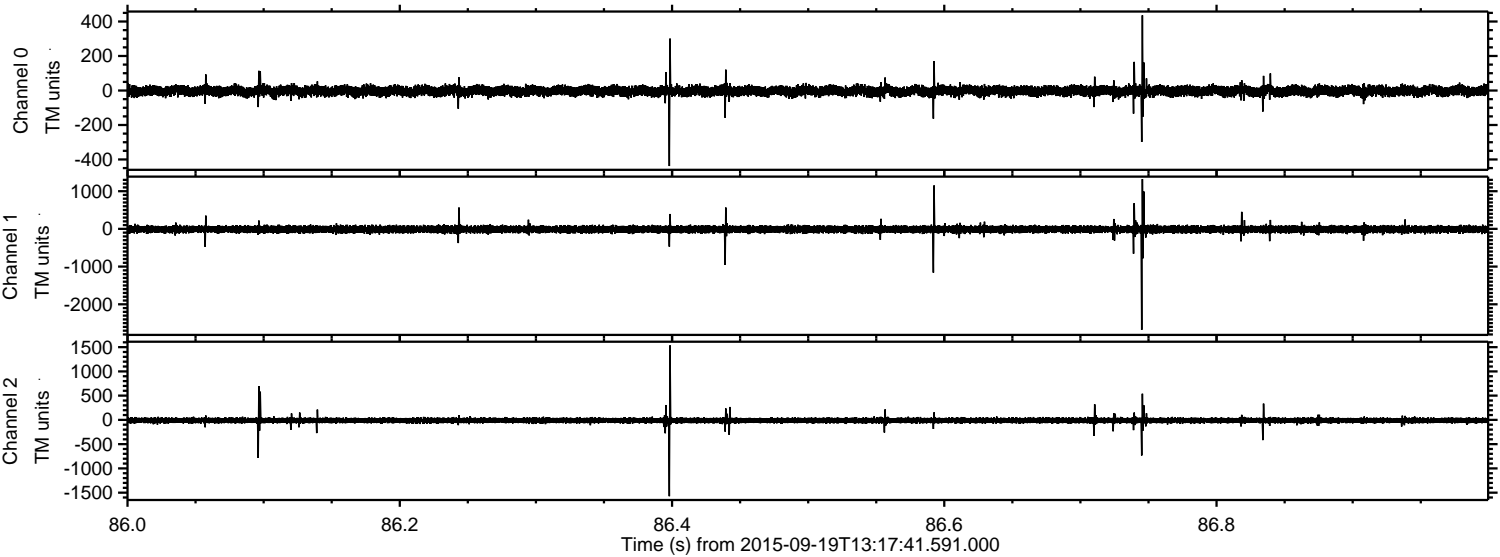


Processed Wed Oct 14 07:52:30 2015 by ELM ver.2012-10-06 from 001\_\_elm20150919\_131740\_\_dat00.bin



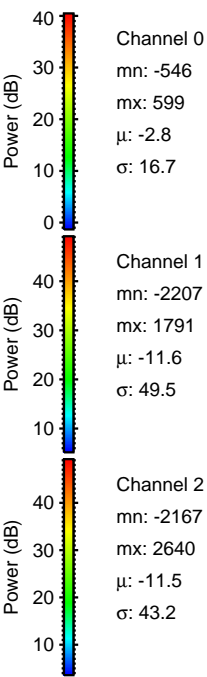
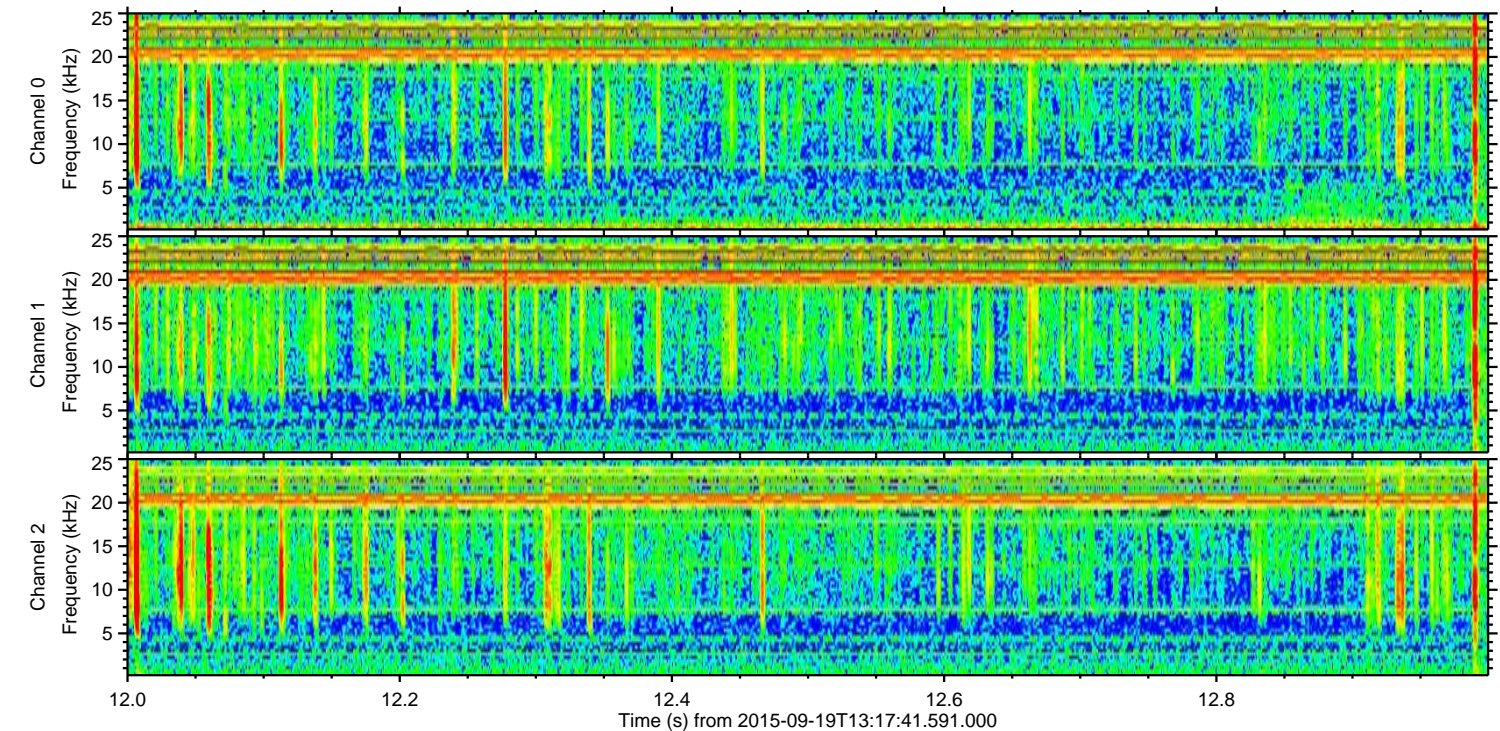
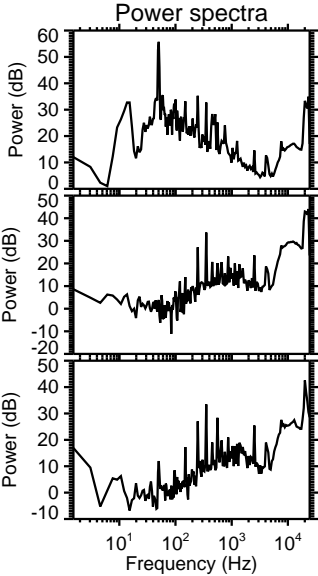
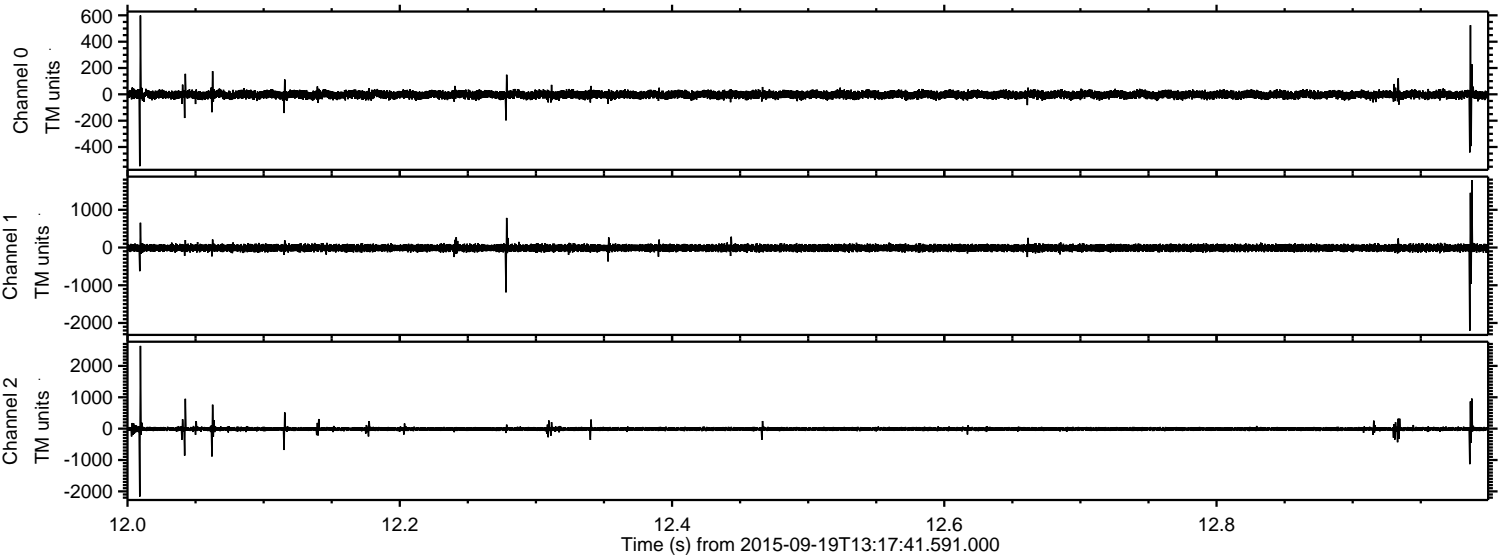


Processed Wed Oct 14 07:52:31 2015 by ELM ver.2012-10-06 from 001\_\_elm20150919\_131740\_\_dat00.bin





Processed Wed Oct 14 07:52:32 2015 by ELM ver.2012-10-06 from 001\_\_elm20150919\_131740\_\_dat00.bin



Channel 0  
mn: -546  
mx: 599  
 $\mu$ : -2.8  
 $\sigma$ : 16.7

Channel 1  
mn: -2207  
mx: 1791  
 $\mu$ : -11.6  
 $\sigma$ : 49.5

Channel 2  
mn: -2167  
mx: 2640  
 $\mu$ : -11.5  
 $\sigma$ : 43.2



Processed Wed Oct 14 07:52:33 2015 by ELM ver.2012-10-06 from 001\_\_elm20150919\_131740\_\_dat00.bin

