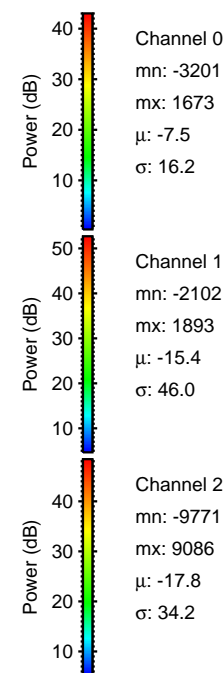
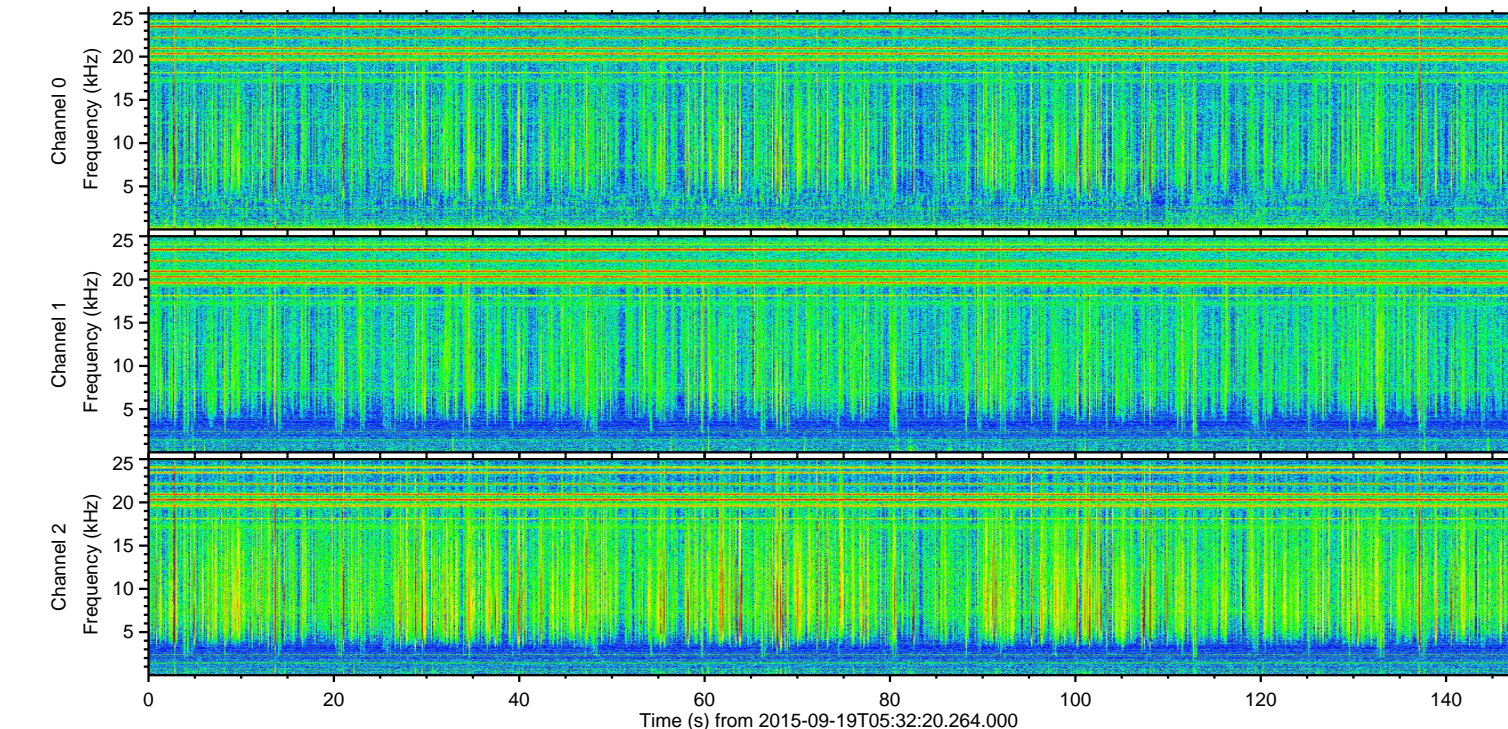
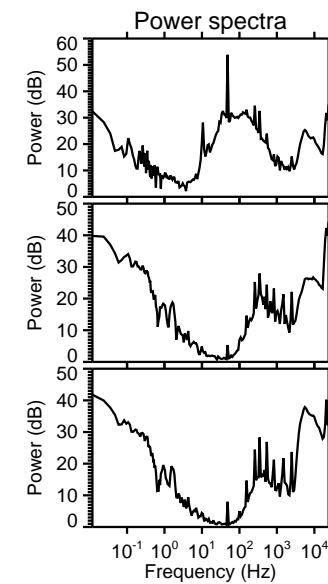
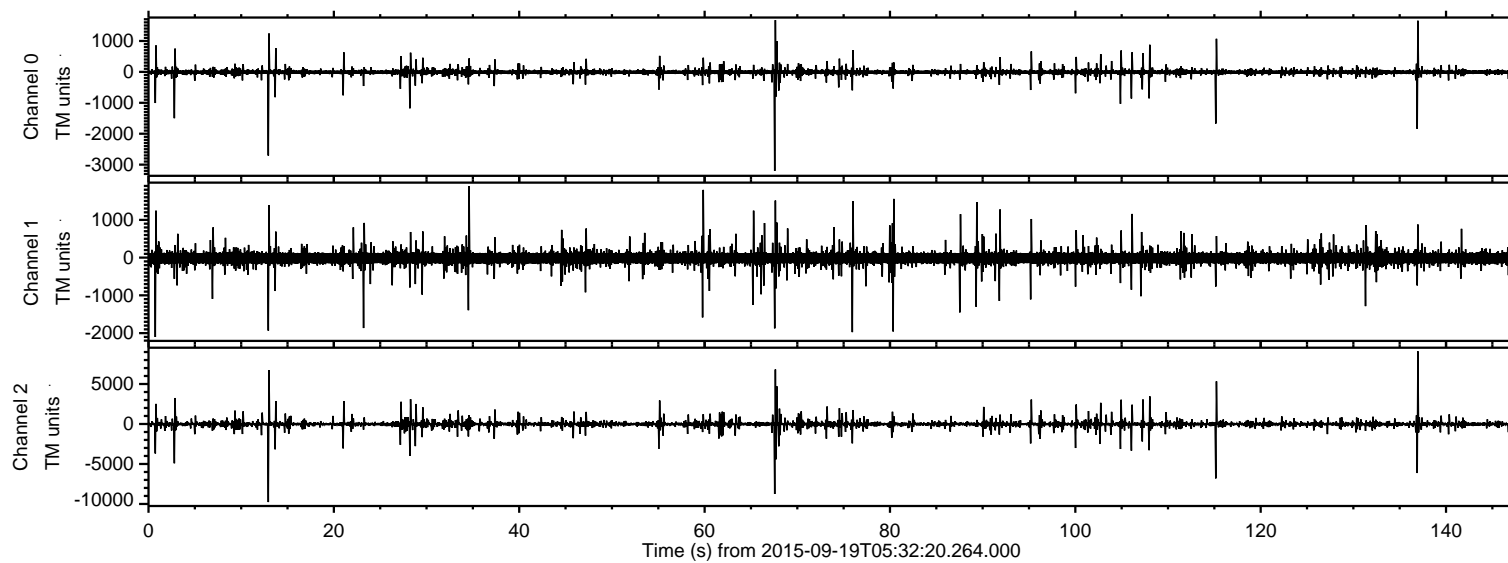


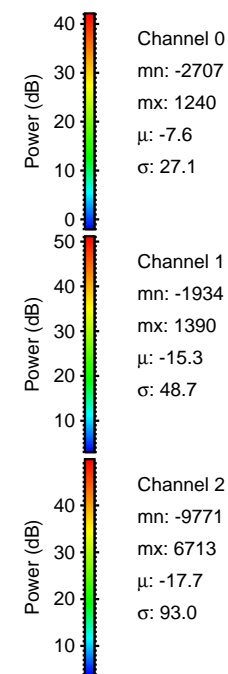
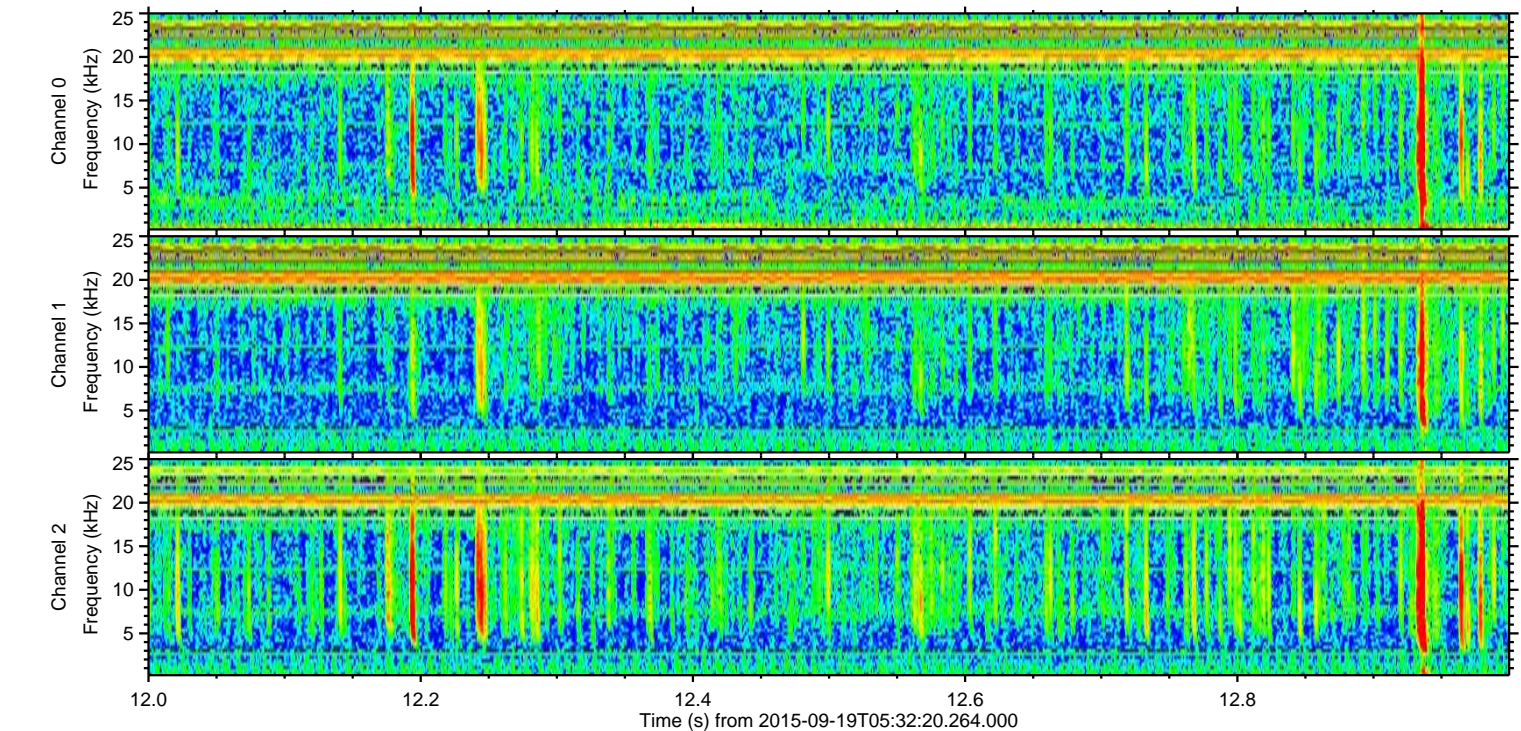
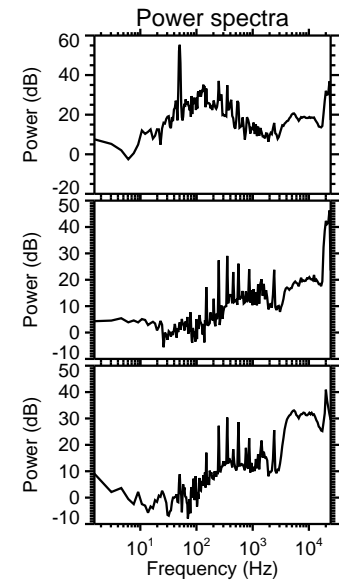
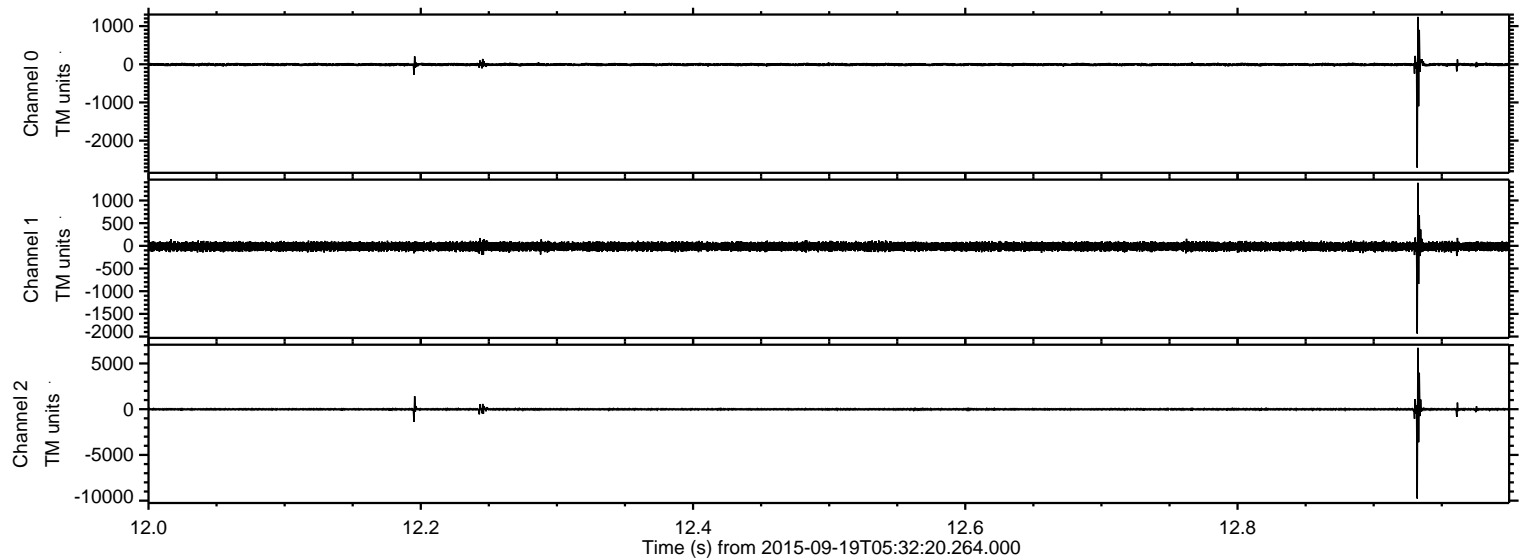
ELMAVAN 3D WAVEFORMS (Measured data sampled at 50 kHz) 51000 packets of 144 samples from 2015-09-19T05:32:20.264.000.

Processed Wed Oct 14 05:16:43 2015 by ELM ver.2012-10-06 from 001__elm20150919_053219__dat00.bin



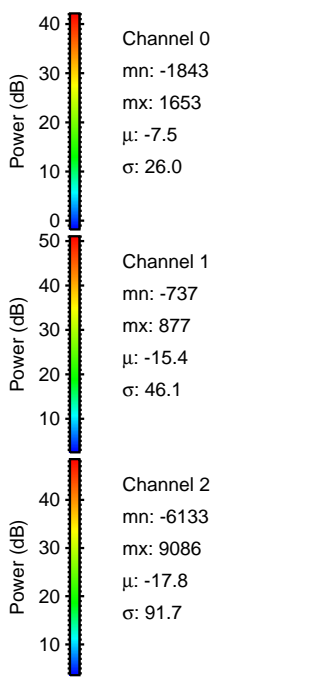
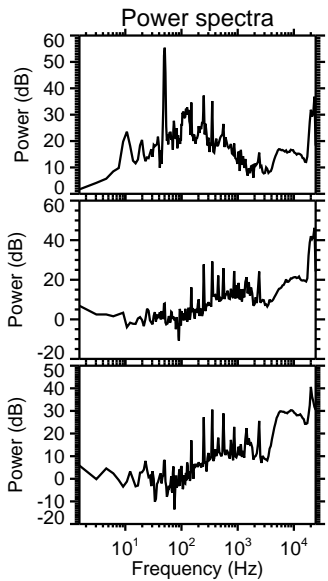
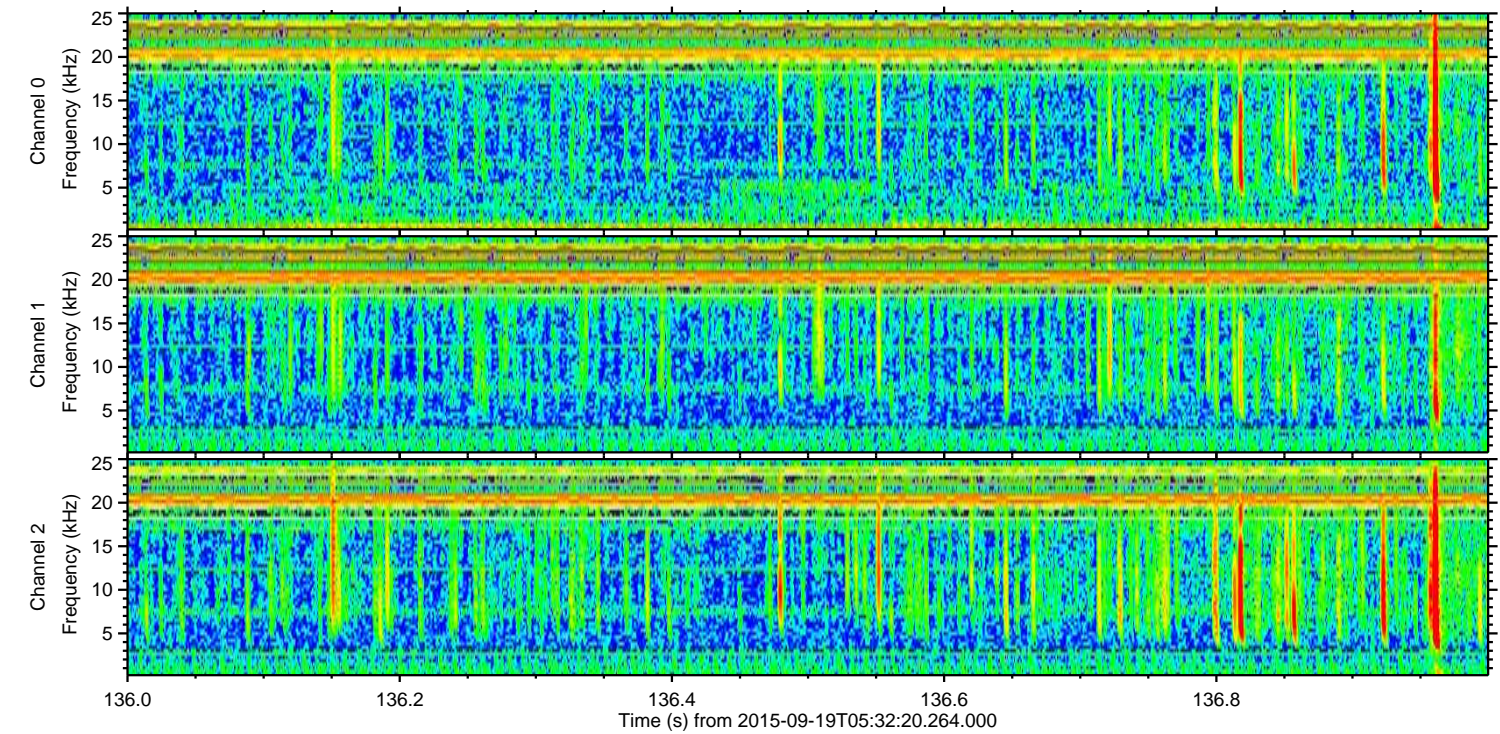
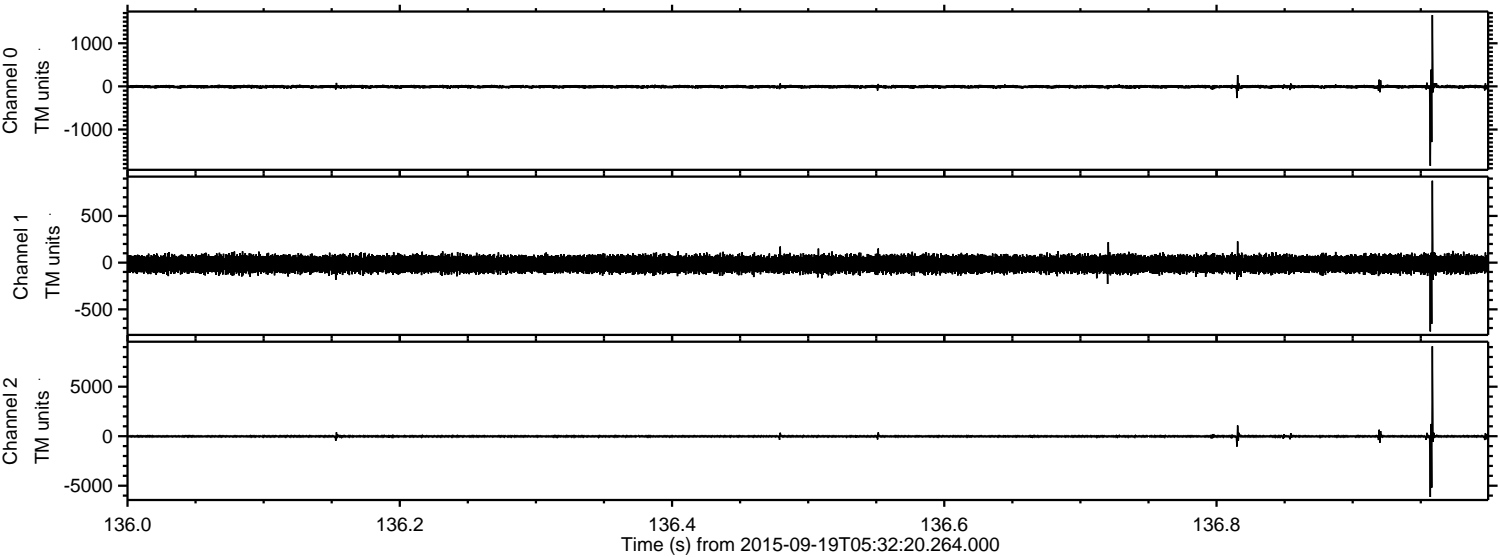
ELMAVAN 3D WAVEFORMS (Measured data sampled at 50 kHz) 51000 packets of 144 samples from 2015-09-19T05:32:20.264.000. Part 13/147

Processed Wed Oct 14 05:17:00 2015 by ELM ver.2012-10-06 from 001__elm20150919_053219__dat00.bin

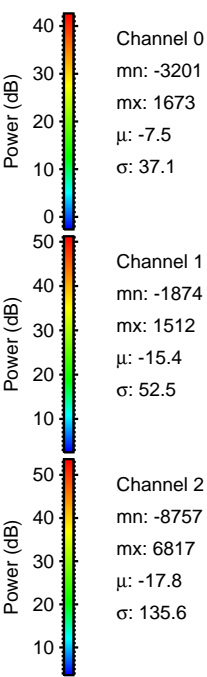
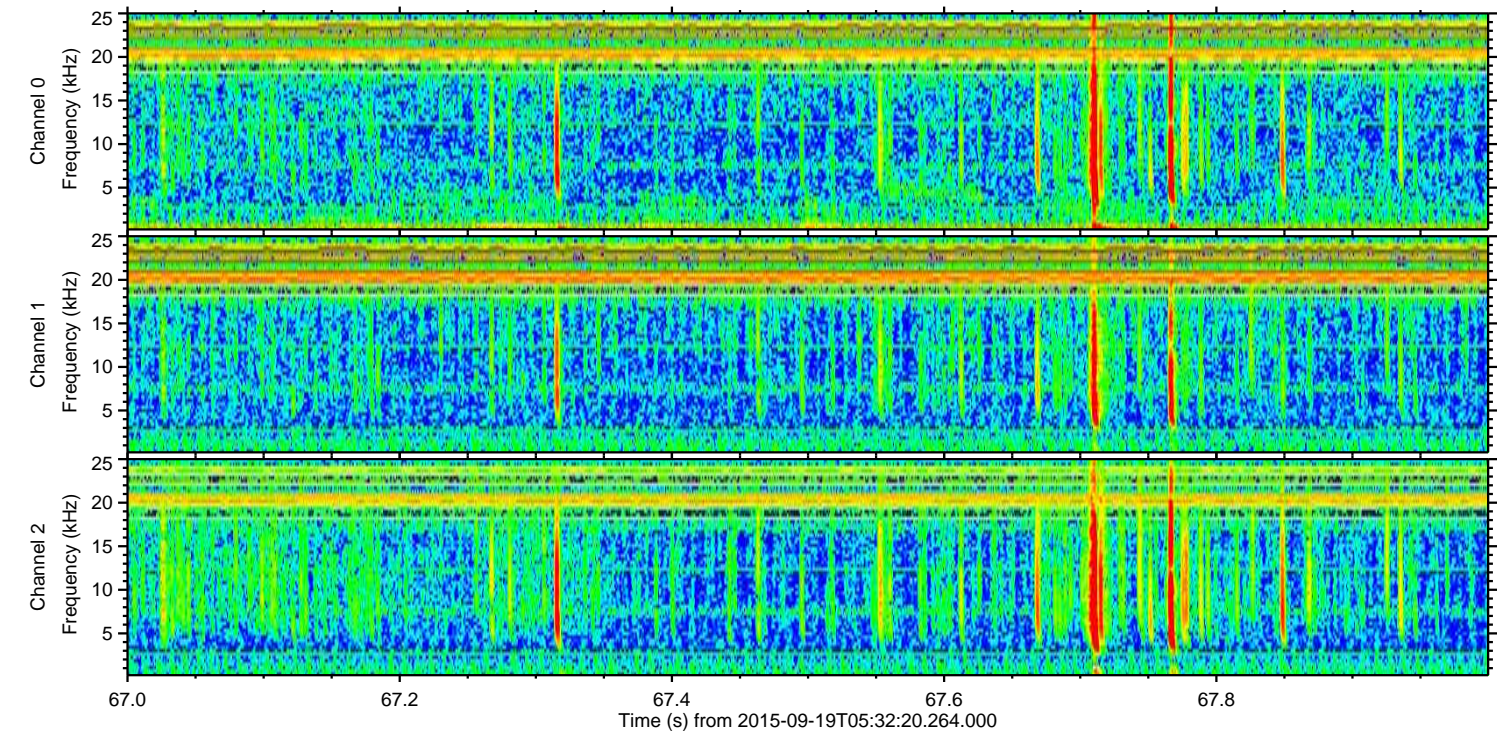
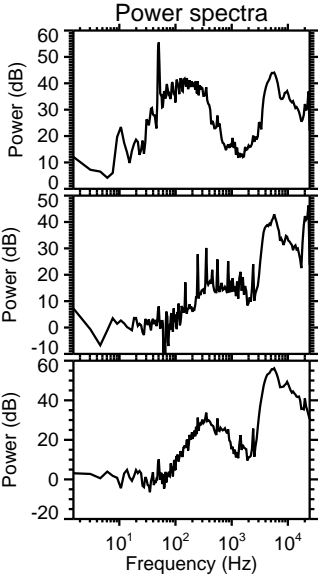
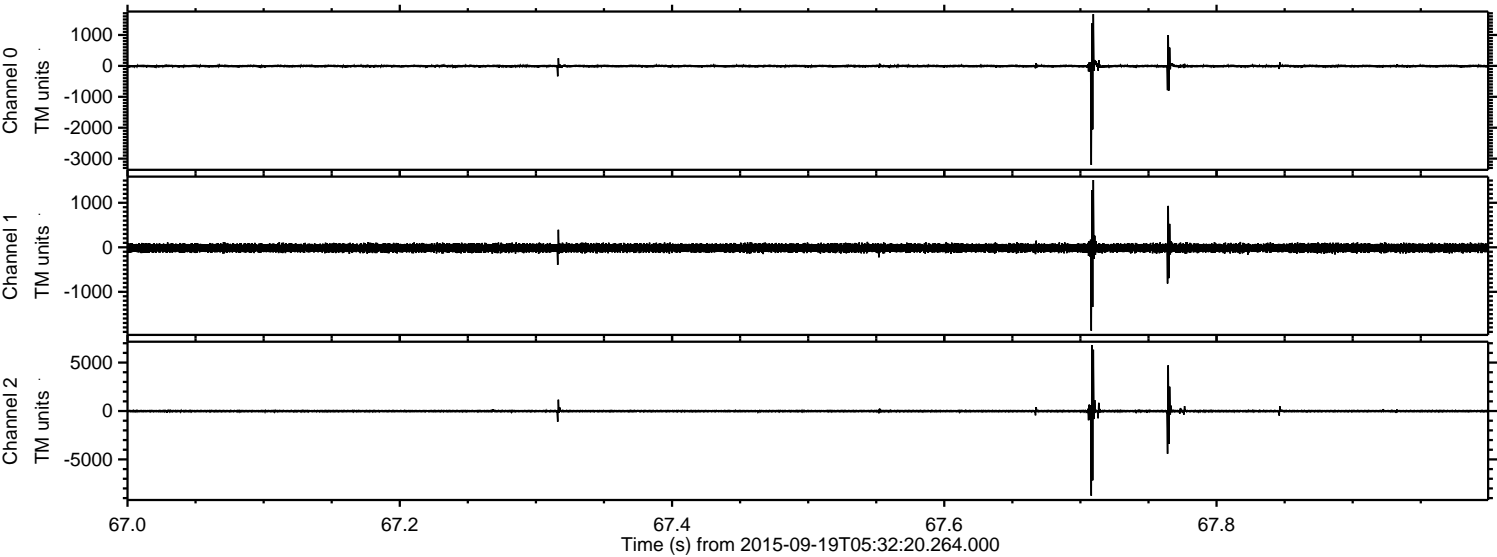


ELMAVAN 3D WAVEFORMS (Measured data sampled at 50 kHz) 51000 packets of 144 samples from 2015-09-19T05:32:20.264.000. Part 137/147

Processed Wed Oct 14 05:17:02 2015 by ELM ver.2012-10-06 from 001__elm20150919_053219__dat00.bin



Processed Wed Oct 14 05:17:04 2015 by ELM ver.2012-10-06 from 001__elm20150919_053219__dat00.bin



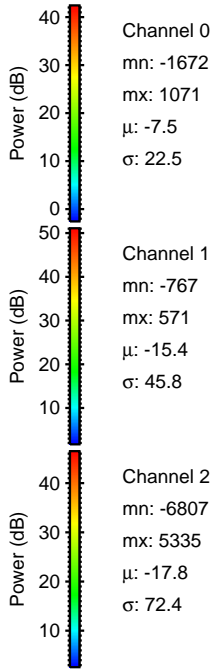
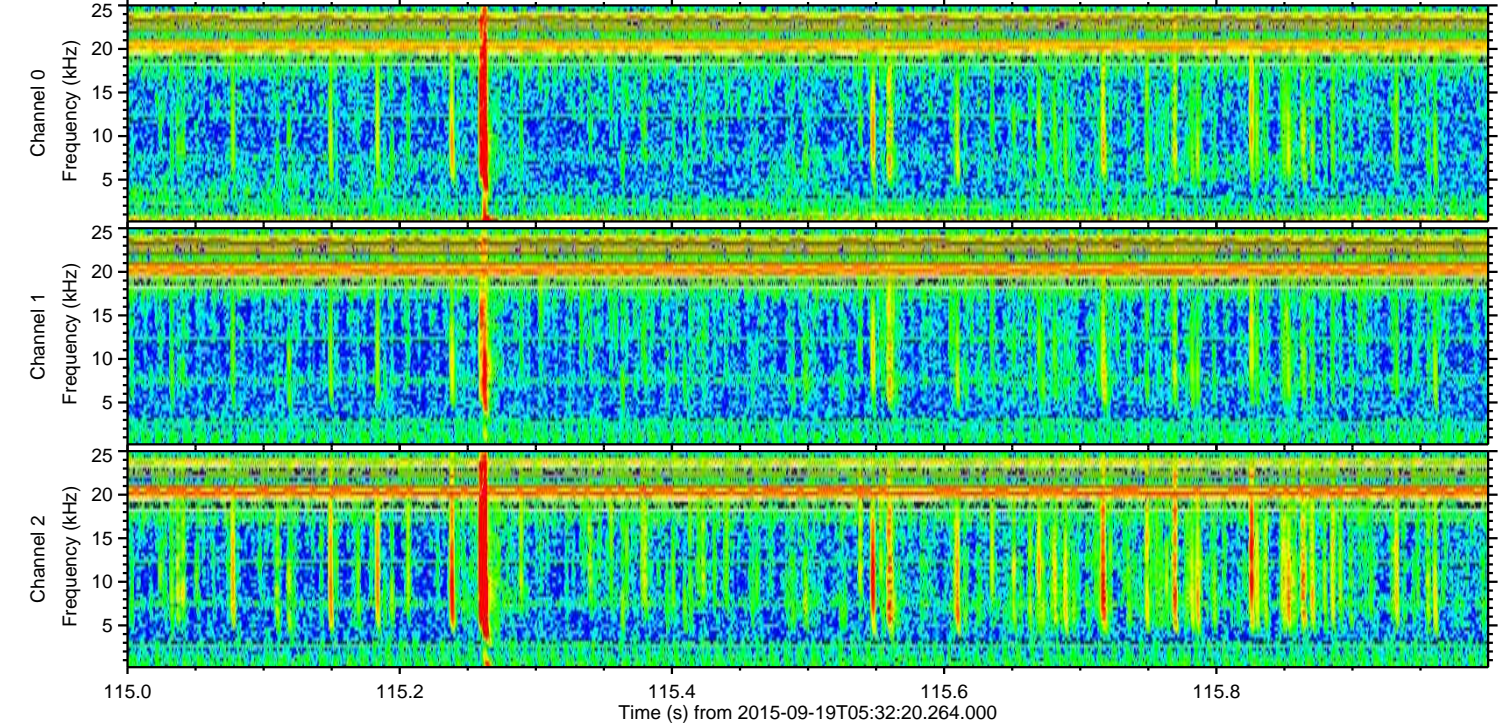
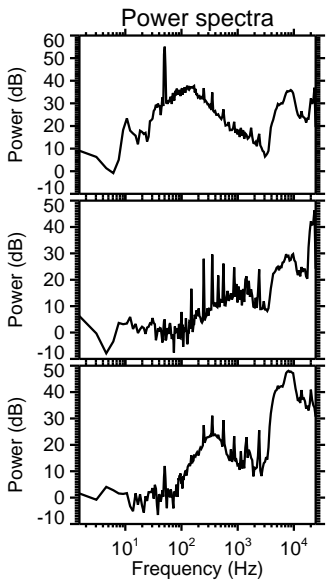
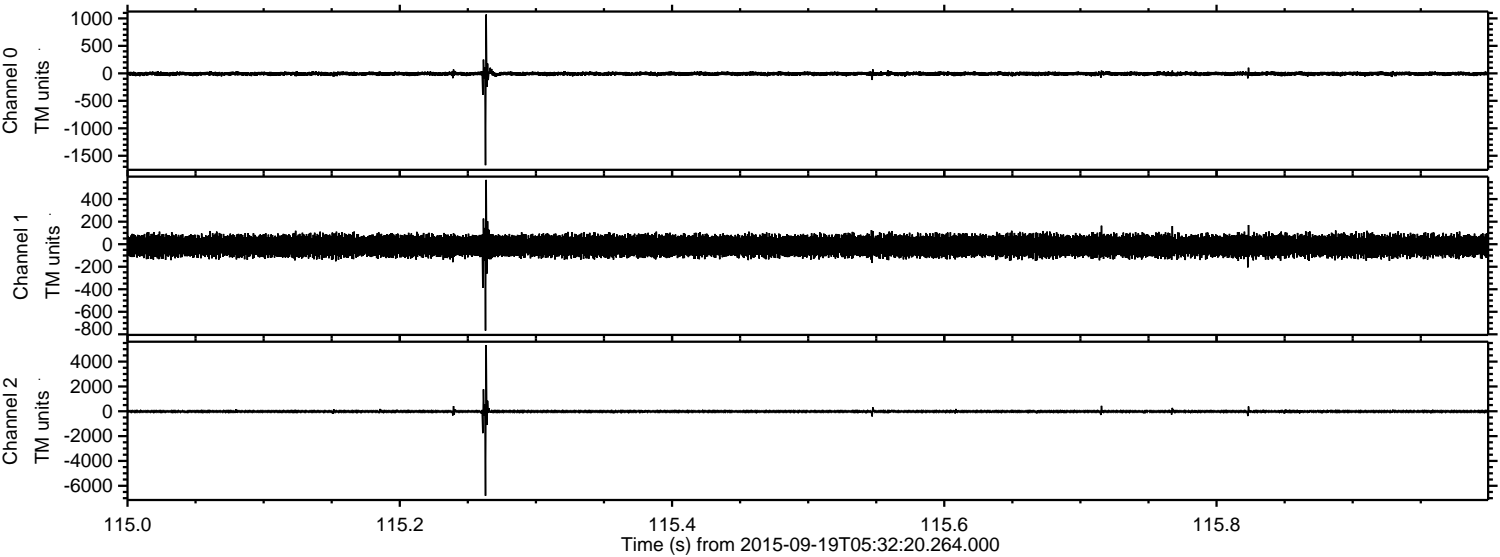
Channel 0
mn: -3201
mx: 1673
 μ : -7.5
 σ : 37.1

Channel 1
mn: -1874
mx: 1512
 μ : -15.4
 σ : 52.5

Channel 2
mn: -8757
mx: 6817
 μ : -17.8
 σ : 135.6

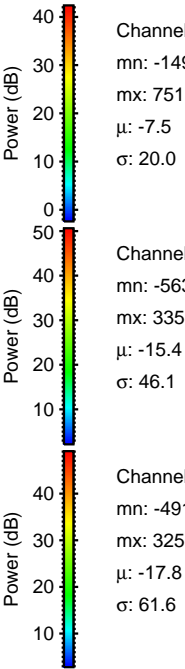
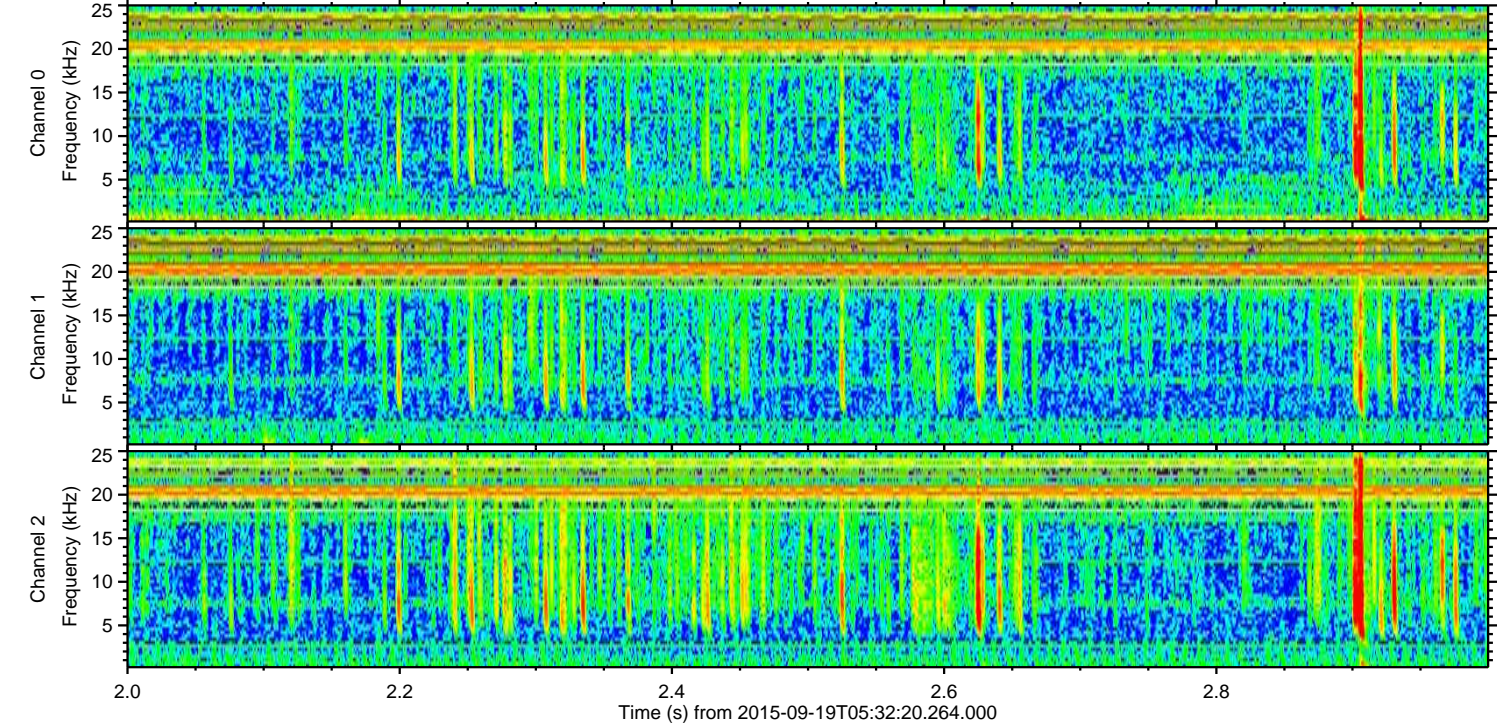
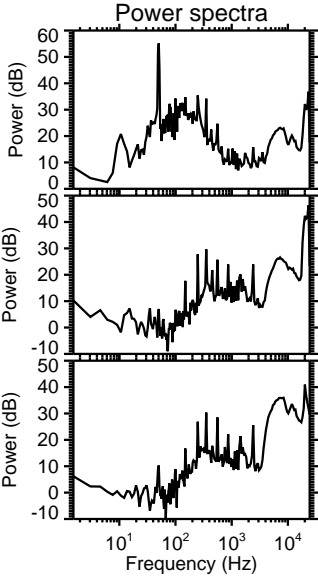
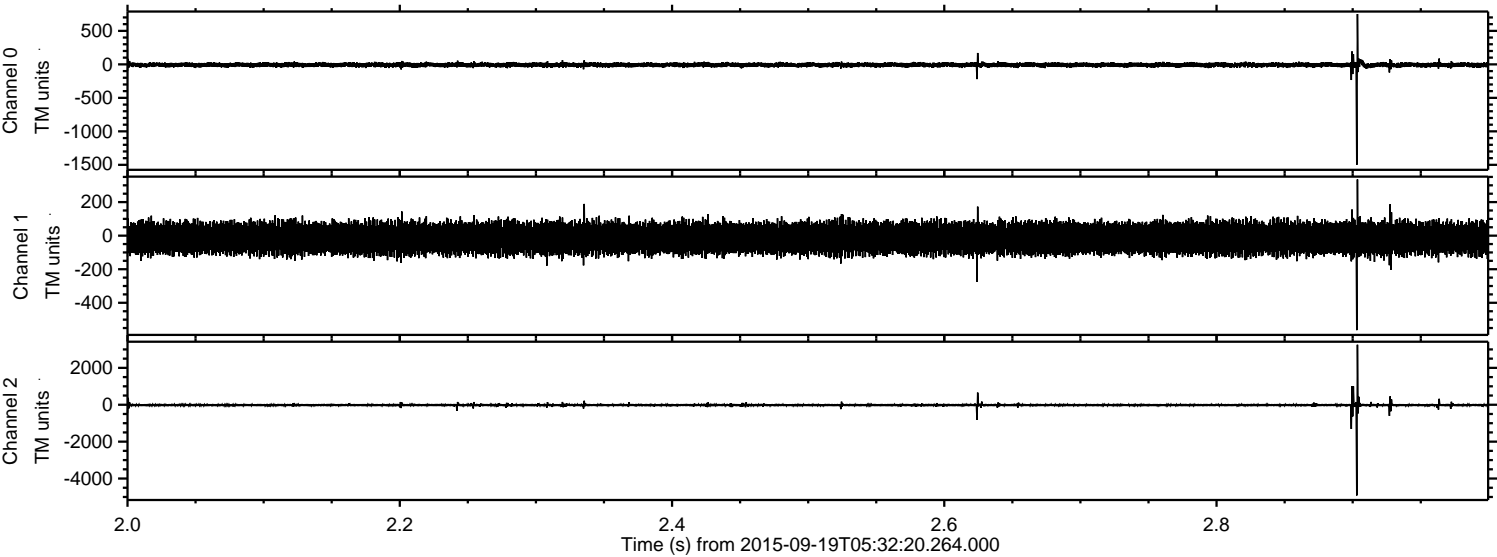
ELMAVAN 3D WAVEFORMS (Measured data sampled at 50 kHz) 51000 packets of 144 samples from 2015-09-19T05:32:20.264.000. Part 116/147

Processed Wed Oct 14 05:17:05 2015 by ELM ver.2012-10-06 from 001__elm20150919_053219__dat00.bin

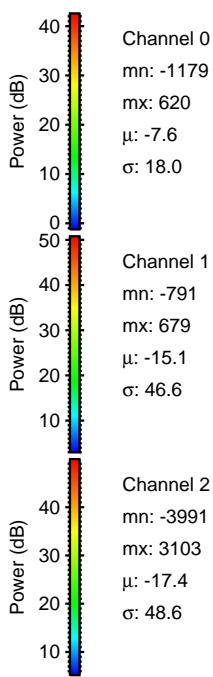
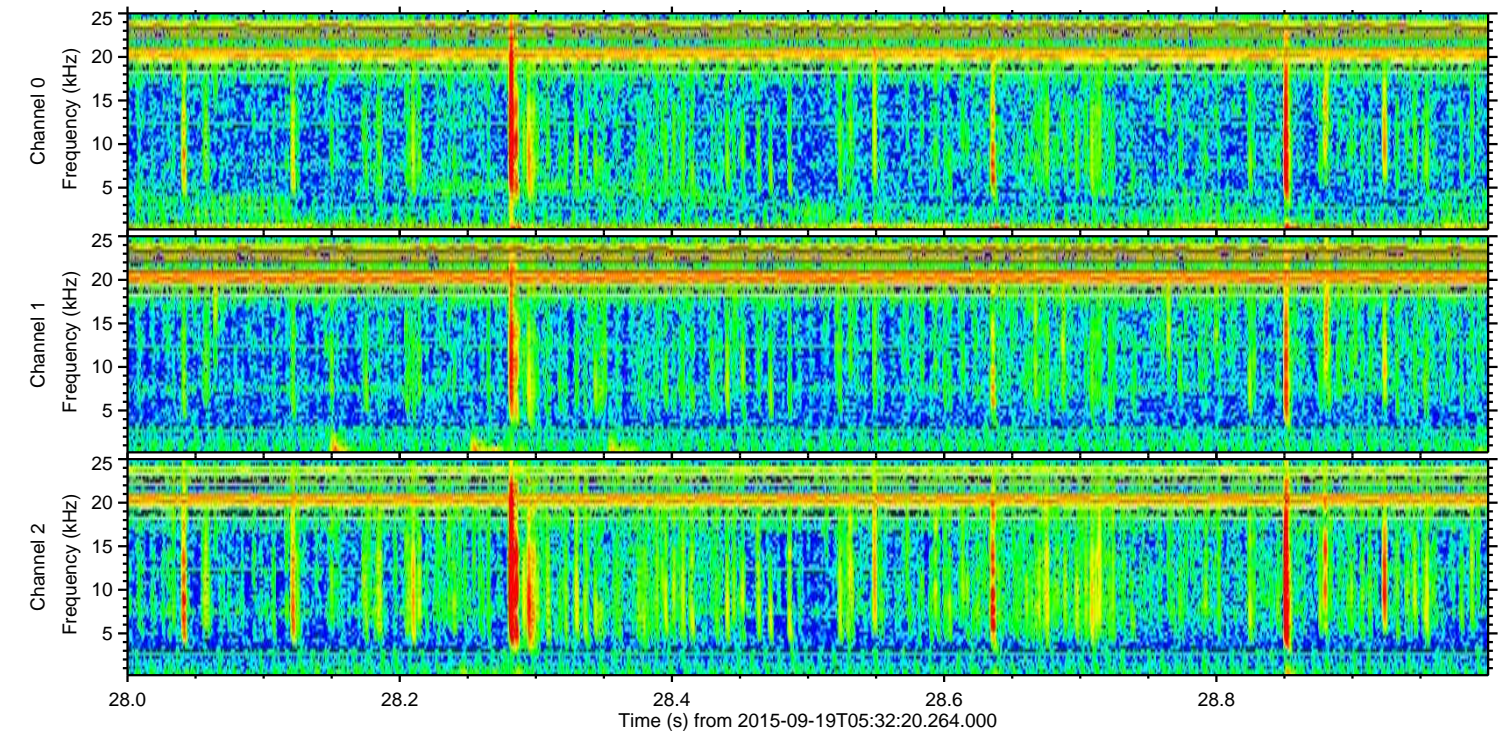
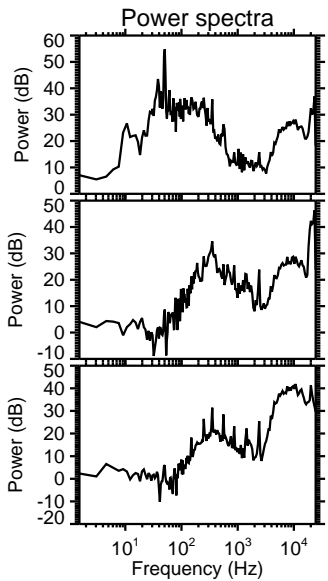
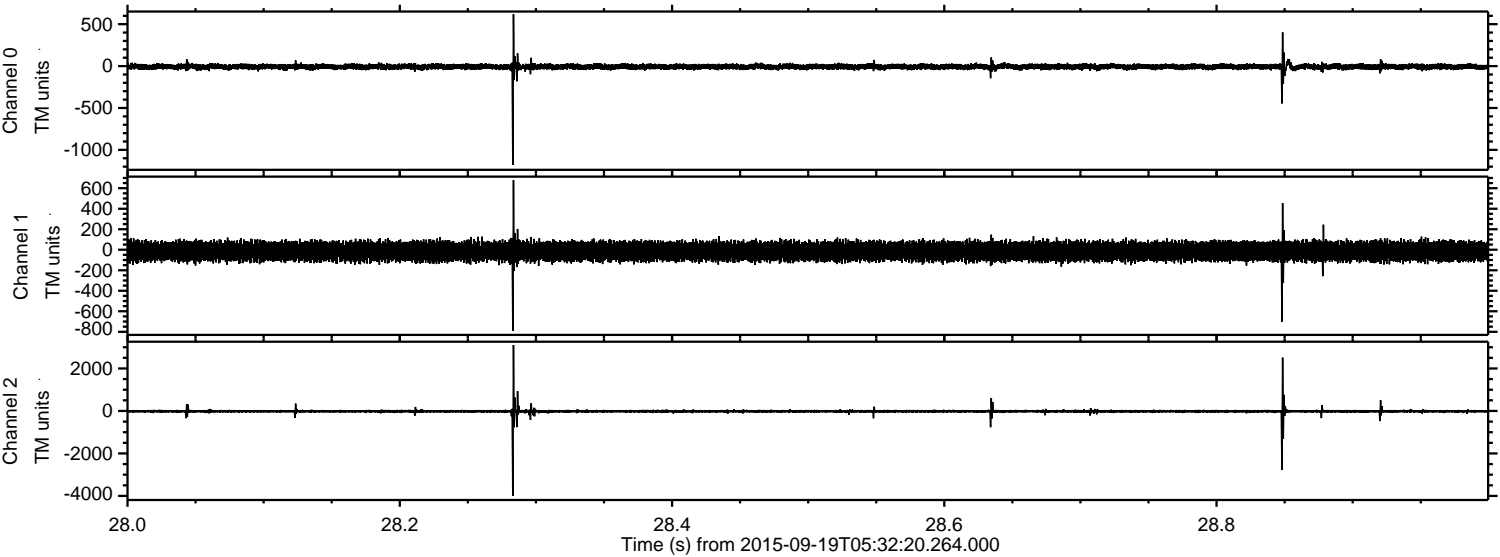


ELMAVAN 3D WAVEFORMS (Measured data sampled at 50 kHz) 51000 packets of 144 samples from 2015-09-19T05:32:20.264.000. Part 3/147

Processed Wed Oct 14 05:17:07 2015 by ELM ver.2012-10-06 from 001__elm20150919_053219__dat00.bin



Processed Wed Oct 14 05:17:09 2015 by ELM ver.2012-10-06 from 001__elm20150919_053219__dat00.bin



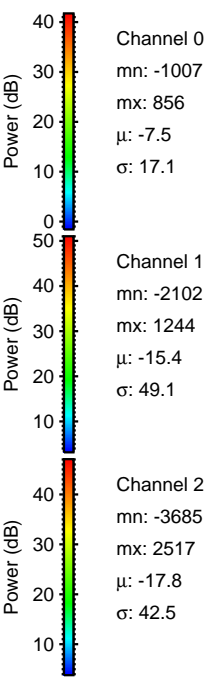
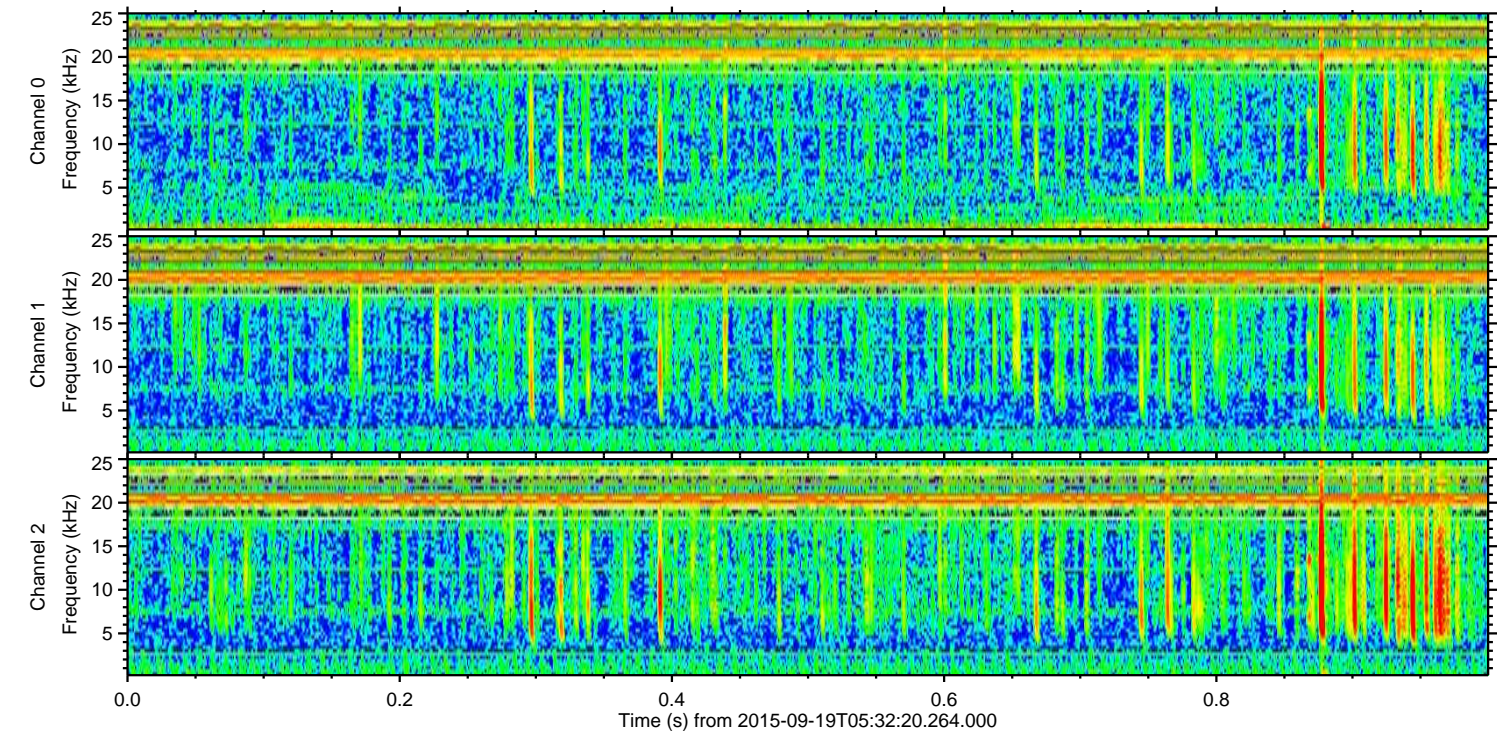
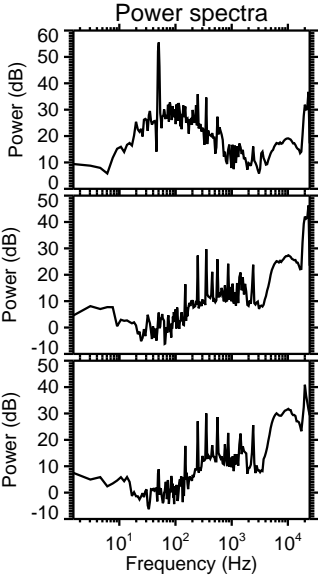
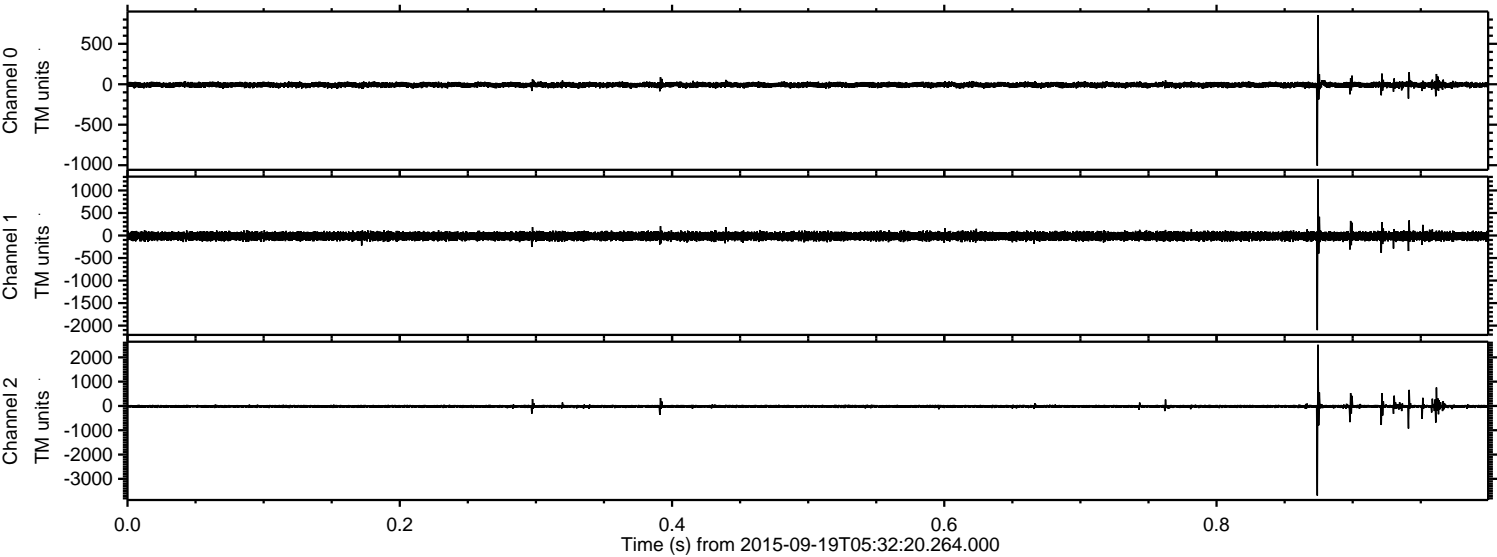
Channel 0
mn: -1179
mx: 620
 μ : -7.6
 σ : 18.0

Channel 1
mn: -791
mx: 679
 μ : -15.1
 σ : 46.6

Channel 2
mn: -3991
mx: 3103
 μ : -17.4
 σ : 48.6

ELMAVAN 3D WAVEFORMS (Measured data sampled at 50 kHz) 51000 packets of 144 samples from 2015-09-19T05:32:20.264.000. Part 1/147

Processed Wed Oct 14 05:17:11 2015 by ELM ver.2012-10-06 from 001__elm20150919_053219__dat00.bin



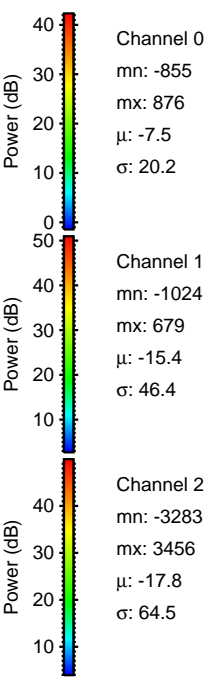
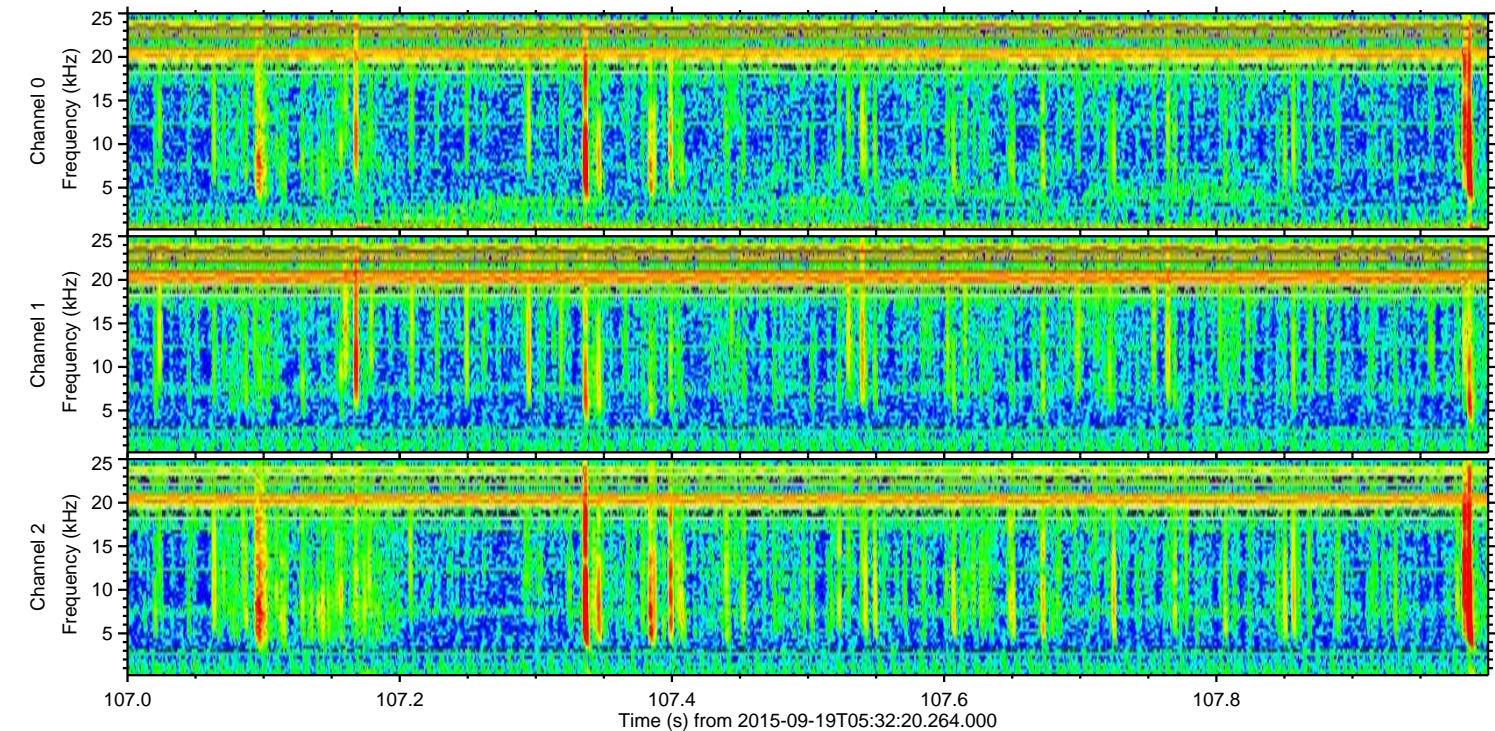
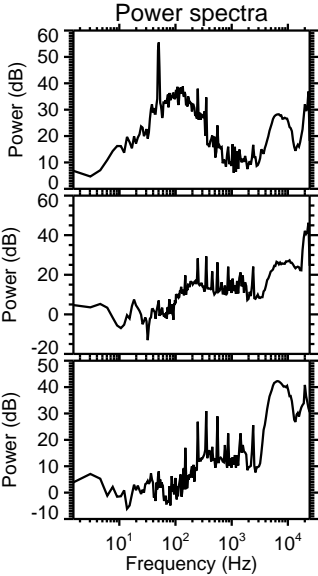
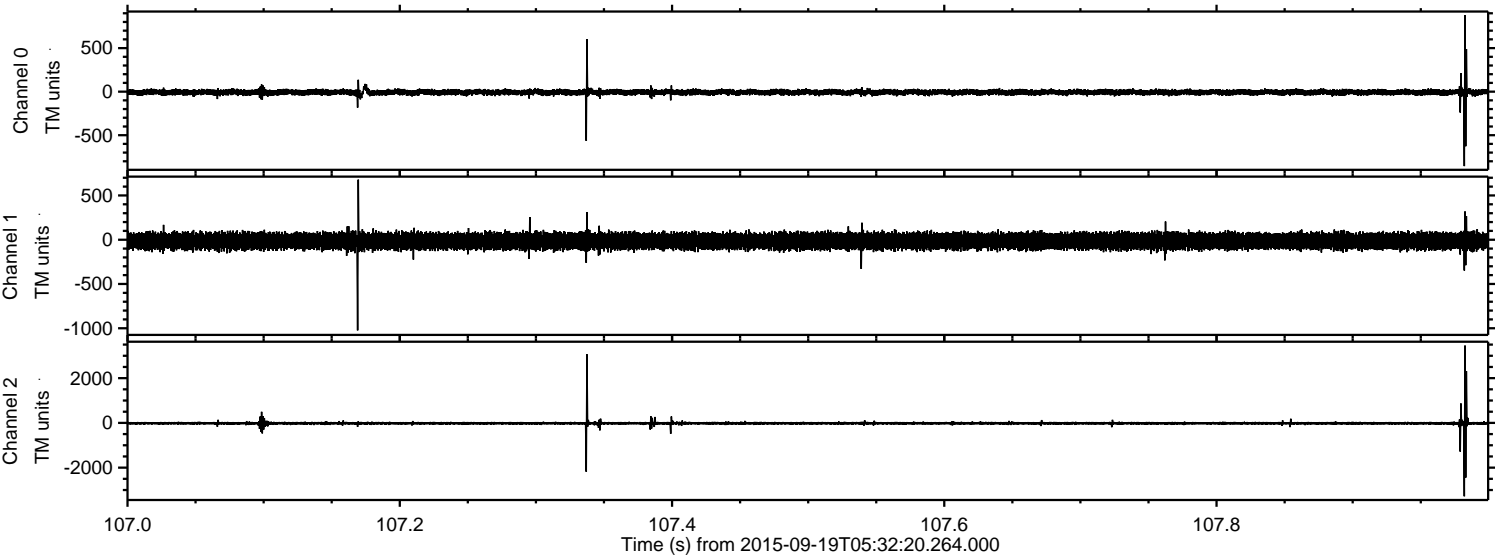
Channel 0
mn: -1007
mx: 856
 μ : -7.5
 σ : 17.1

Channel 1
mn: -2102
mx: 1244
 μ : -15.4
 σ : 49.1

Channel 2
mn: -3685
mx: 2517
 μ : -17.8
 σ : 42.5

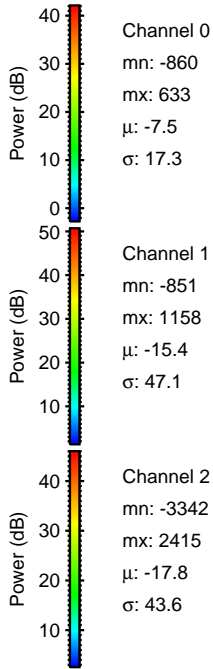
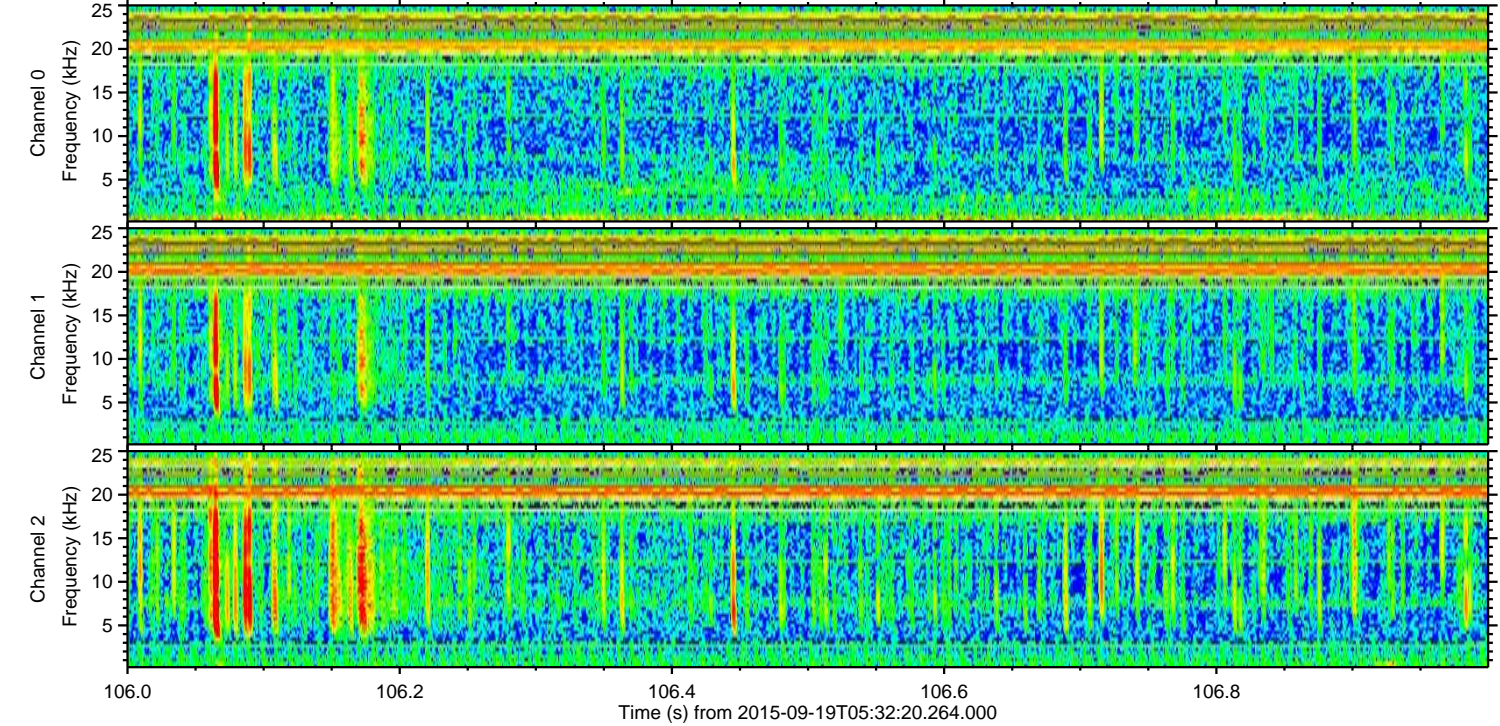
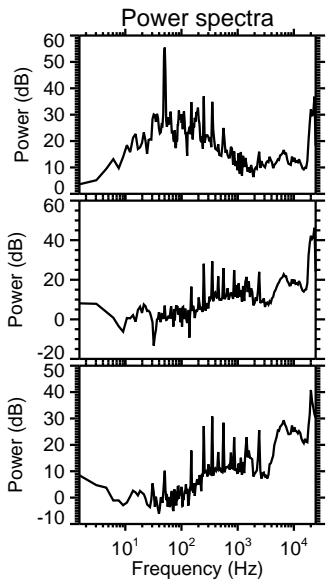
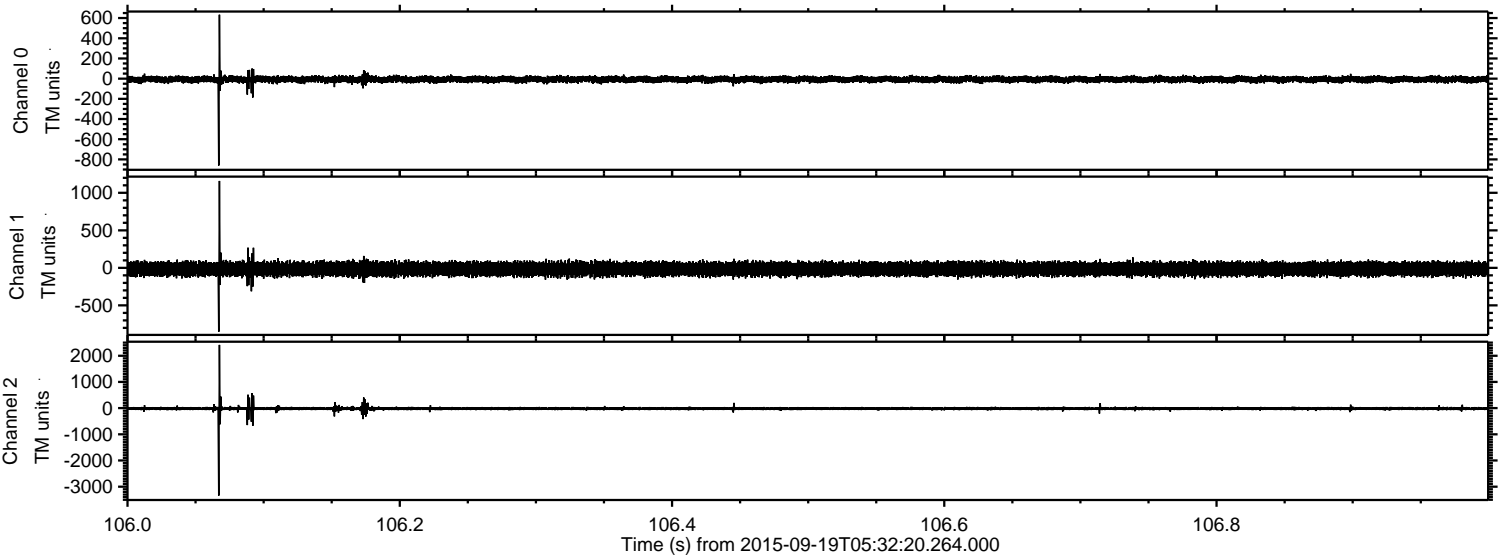
ELMAVAN 3D WAVEFORMS (Measured data sampled at 50 kHz) 51000 packets of 144 samples from 2015-09-19T05:32:20.264.000. Part 108/147

Processed Wed Oct 14 05:17:13 2015 by ELM ver.2012-10-06 from 001__elm20150919_053219__dat00.bin



ELMAVAN 3D WAVEFORMS (Measured data sampled at 50 kHz) 51000 packets of 144 samples from 2015-09-19T05:32:20.264.000. Part 107/147

Processed Wed Oct 14 05:17:14 2015 by ELM ver.2012-10-06 from 001__elm20150919_053219__dat00.bin



Channel 0
mn: -860
mx: 633
 μ : -7.5
 σ : 17.3

Channel 1
mn: -851
mx: 1158
 μ : -15.4
 σ : 47.1

Channel 2
mn: -3342
mx: 2415
 μ : -17.8
 σ : 43.6

Processed Wed Oct 14 05:17:15 2015 by ELM ver.2012-10-06 from 001__elm20150919_053219__dat00.bin

