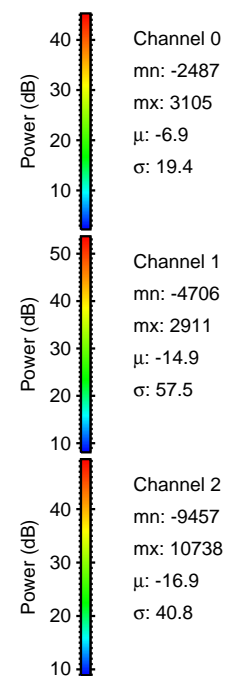
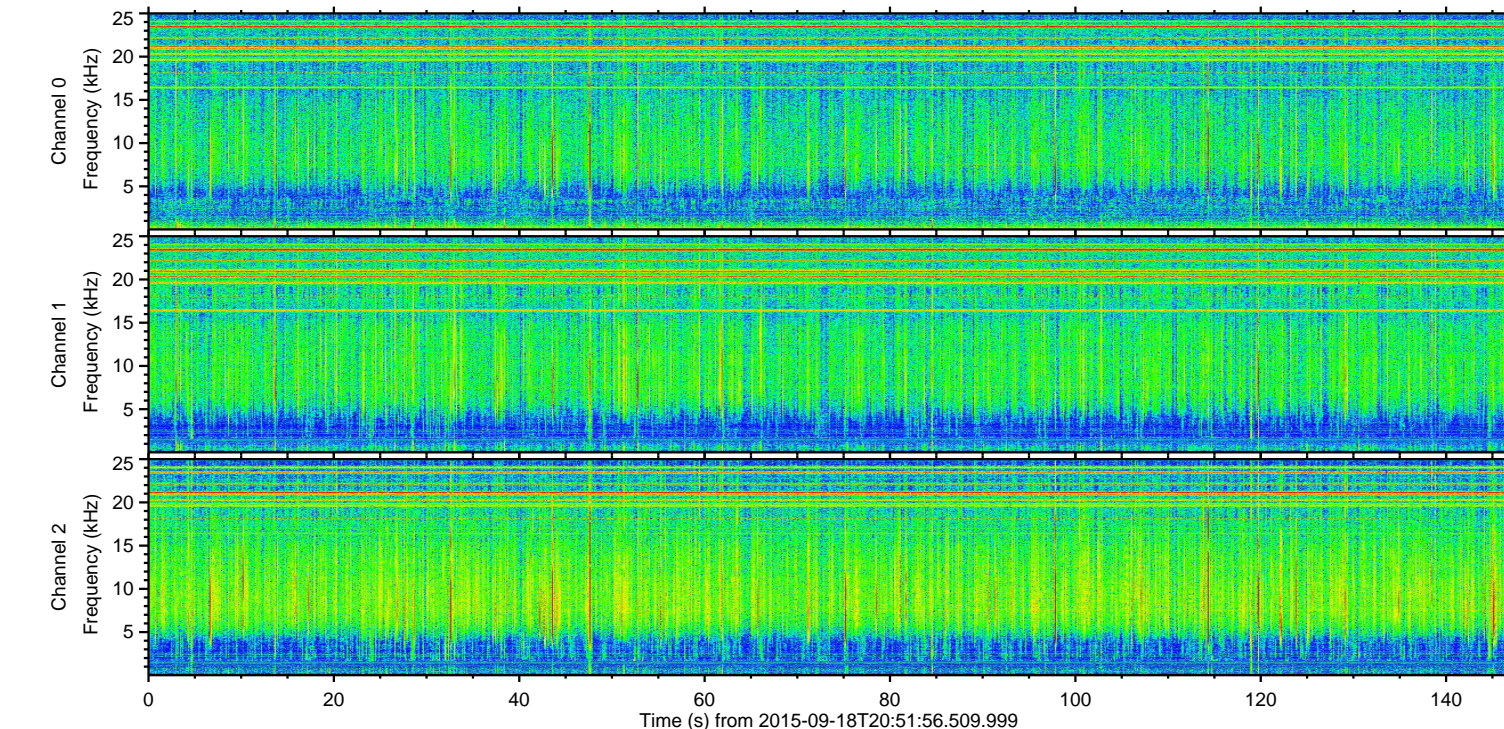
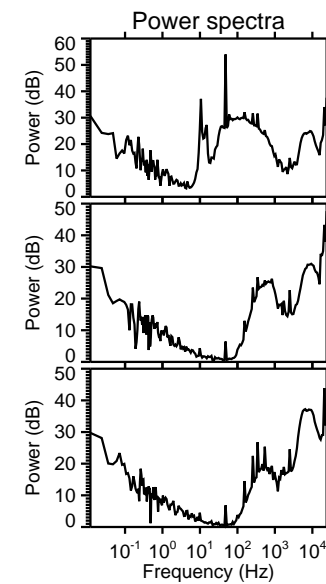
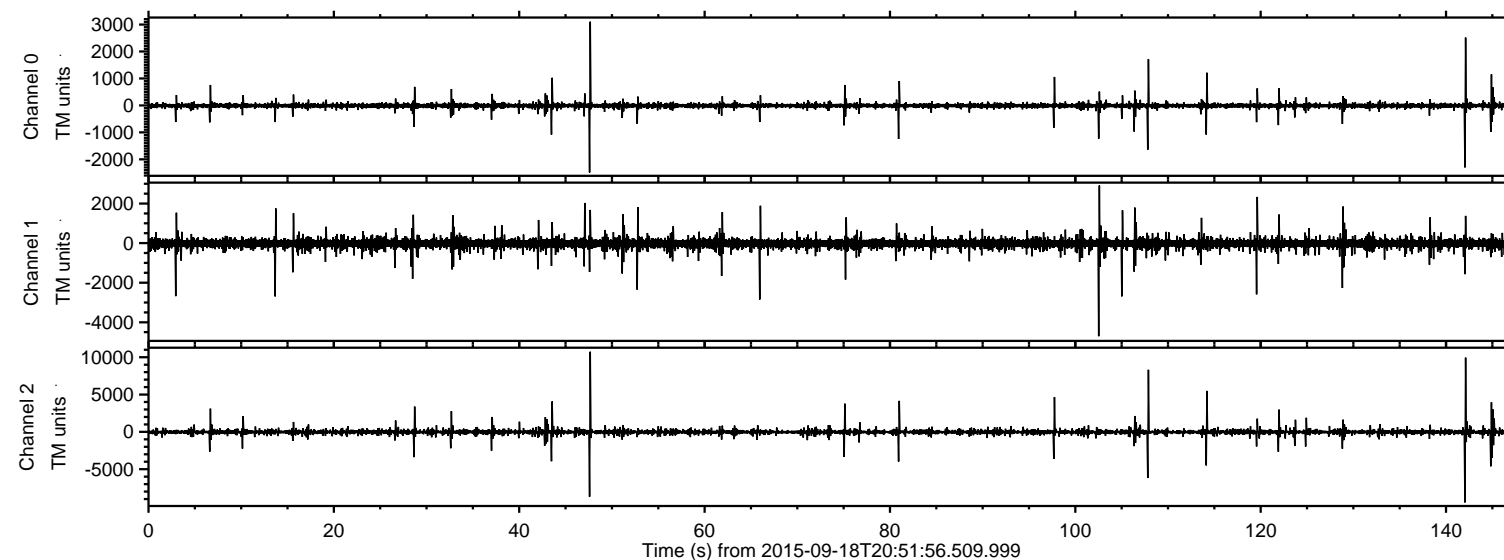
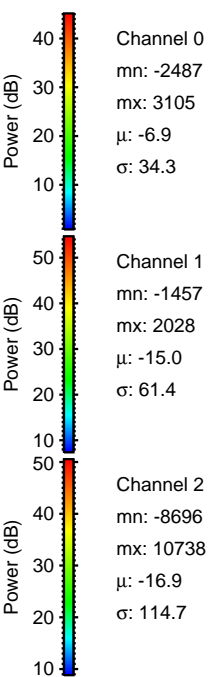
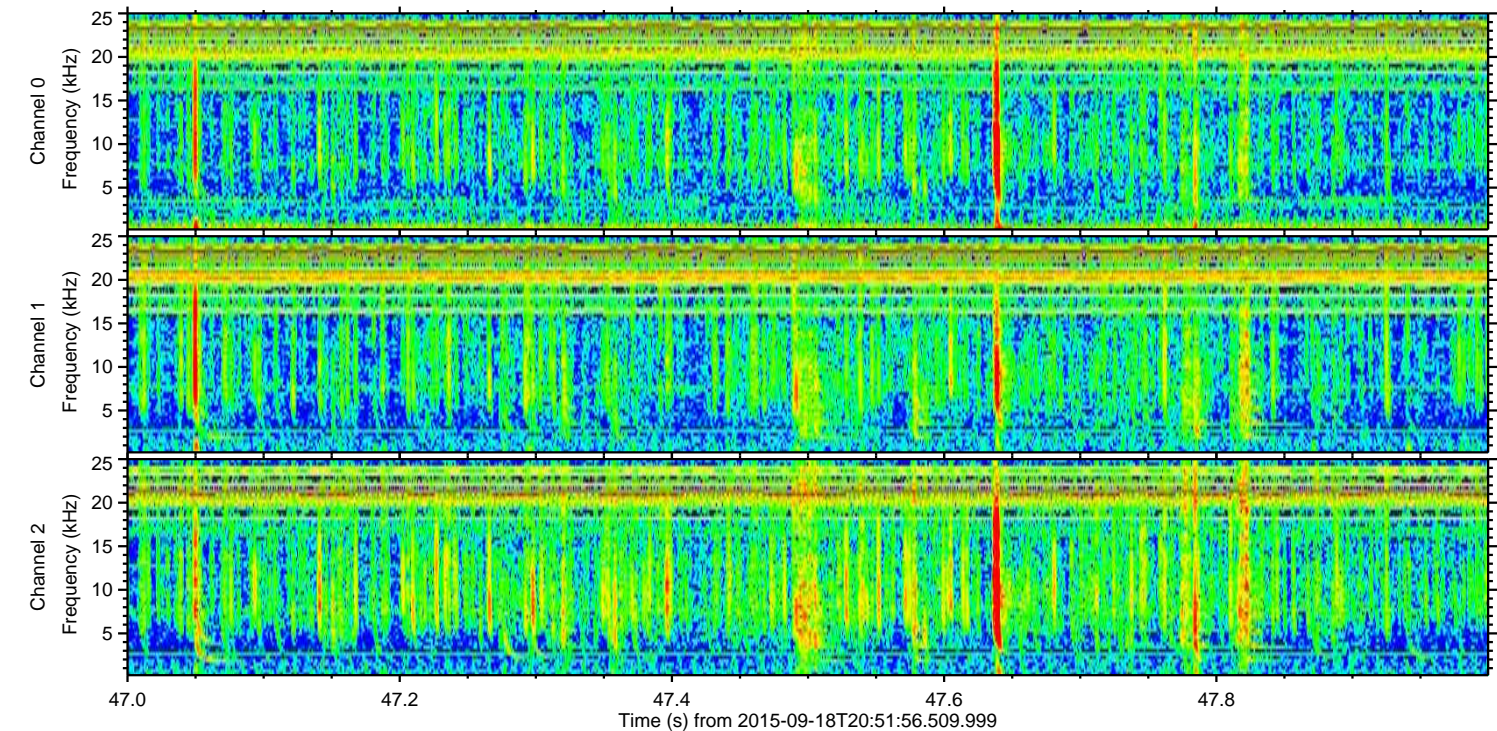
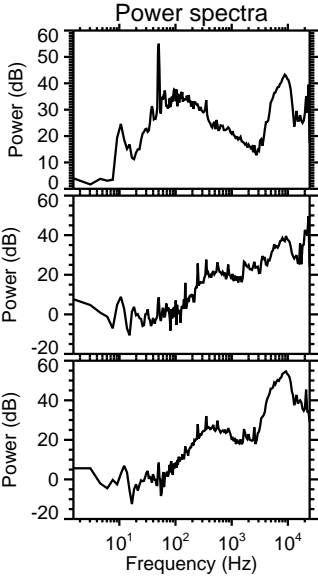
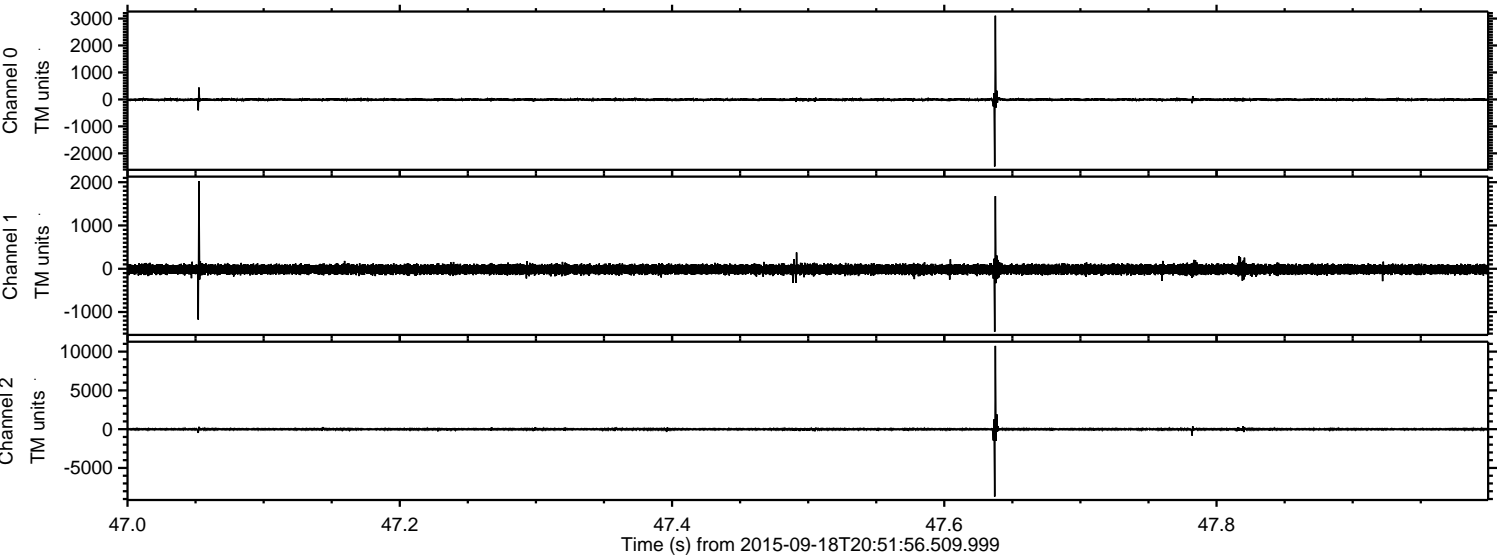


ELMAVAN 3D WAVEFORMS (Measured data sampled at 50 kHz) 51000 packets of 144 samples from 2015-09-18T20:51:56.509.999.

Processed Wed Oct 14 02:24:03 2015 by ELM ver.2012-10-06 from 001__elm20150918_205155__dat00.bin

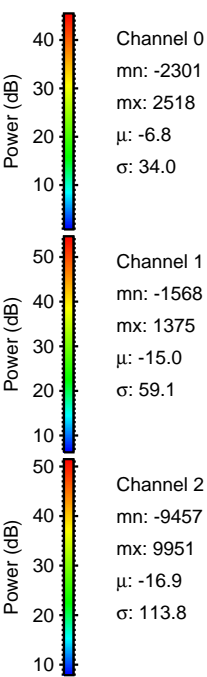
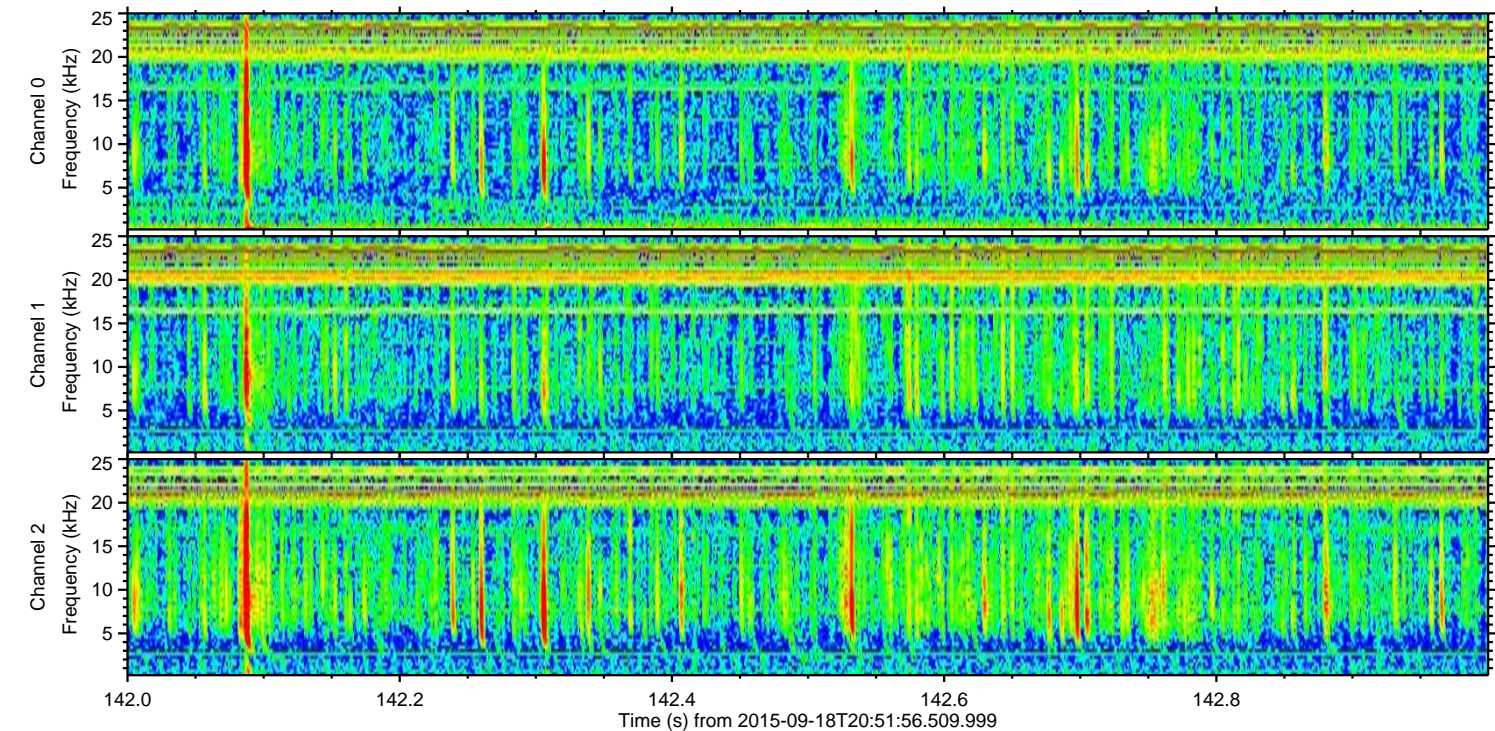
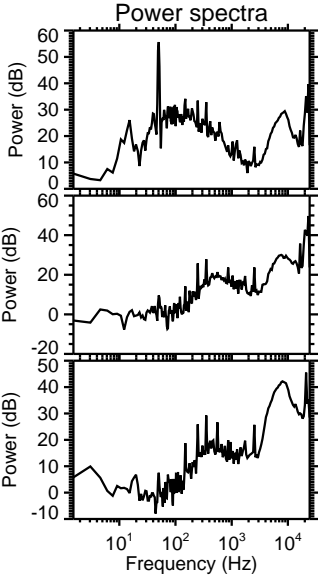
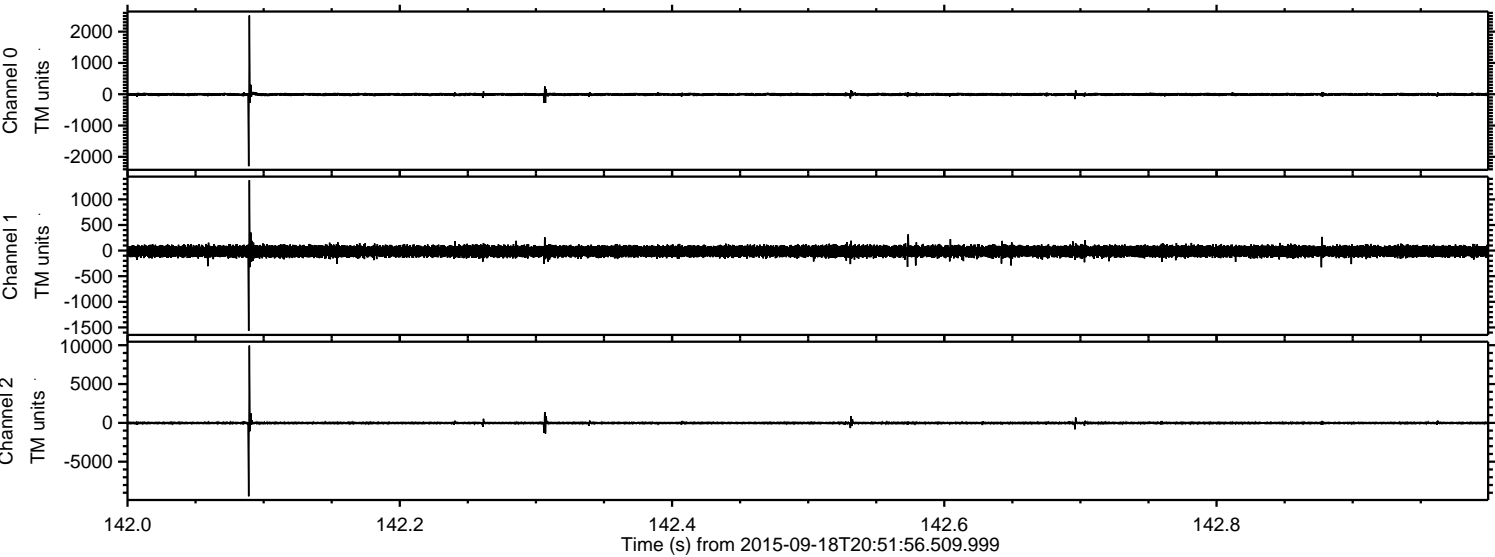


Processed Wed Oct 14 02:24:23 2015 by ELM ver.2012-10-06 from 001__elm20150918_205155__dat00.bin



ELMAVAN 3D WAVEFORMS (Measured data sampled at 50 kHz) 51000 packets of 144 samples from 2015-09-18T20:51:56.509.999. Part 143/147

Processed Wed Oct 14 02:24:24 2015 by ELM ver.2012-10-06 from 001__elm20150918_205155__dat00.bin



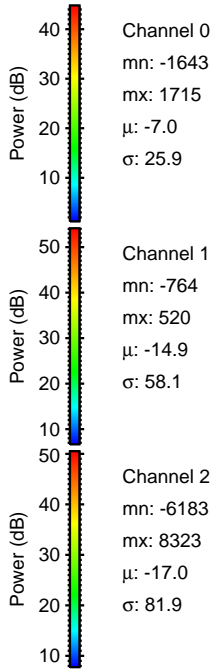
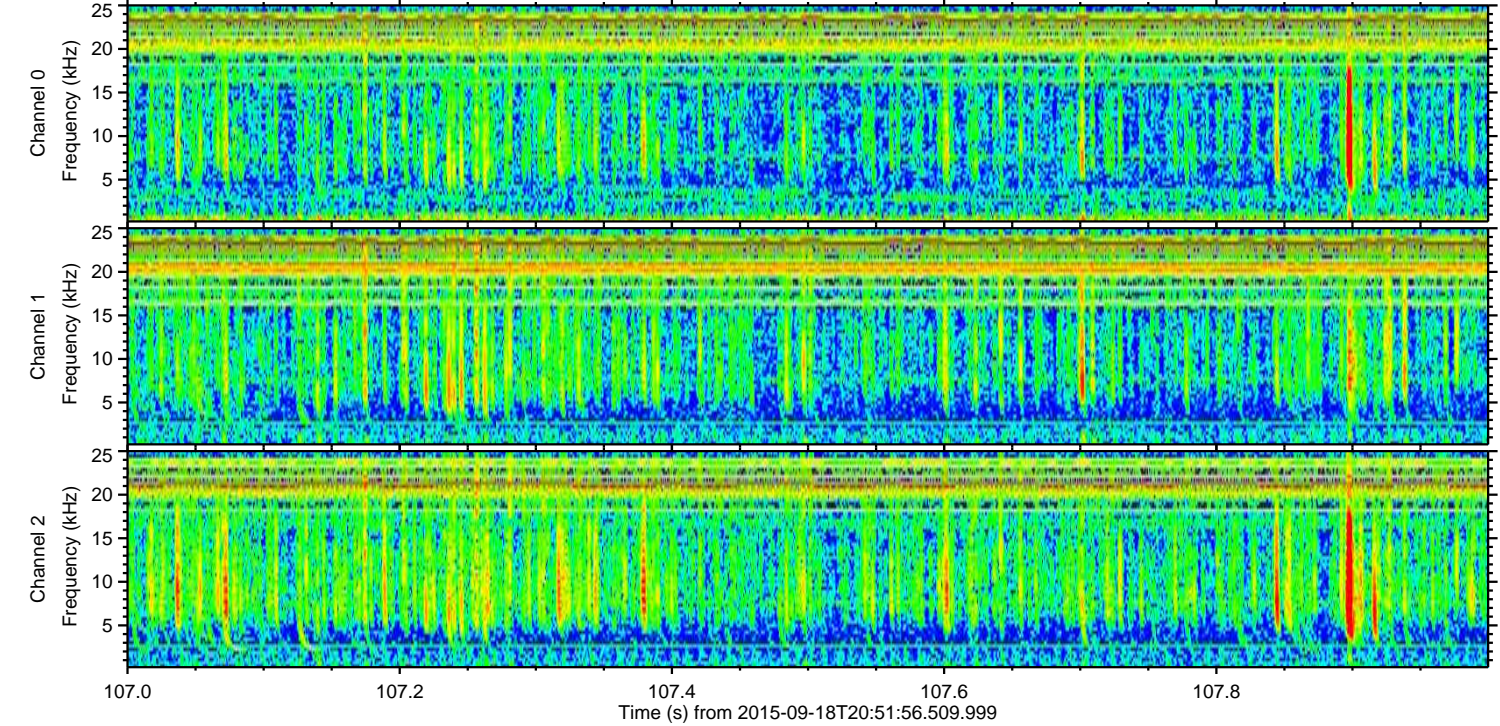
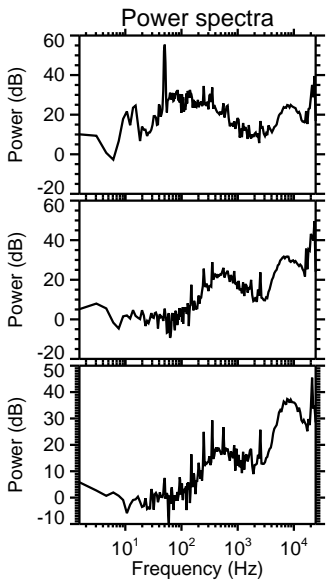
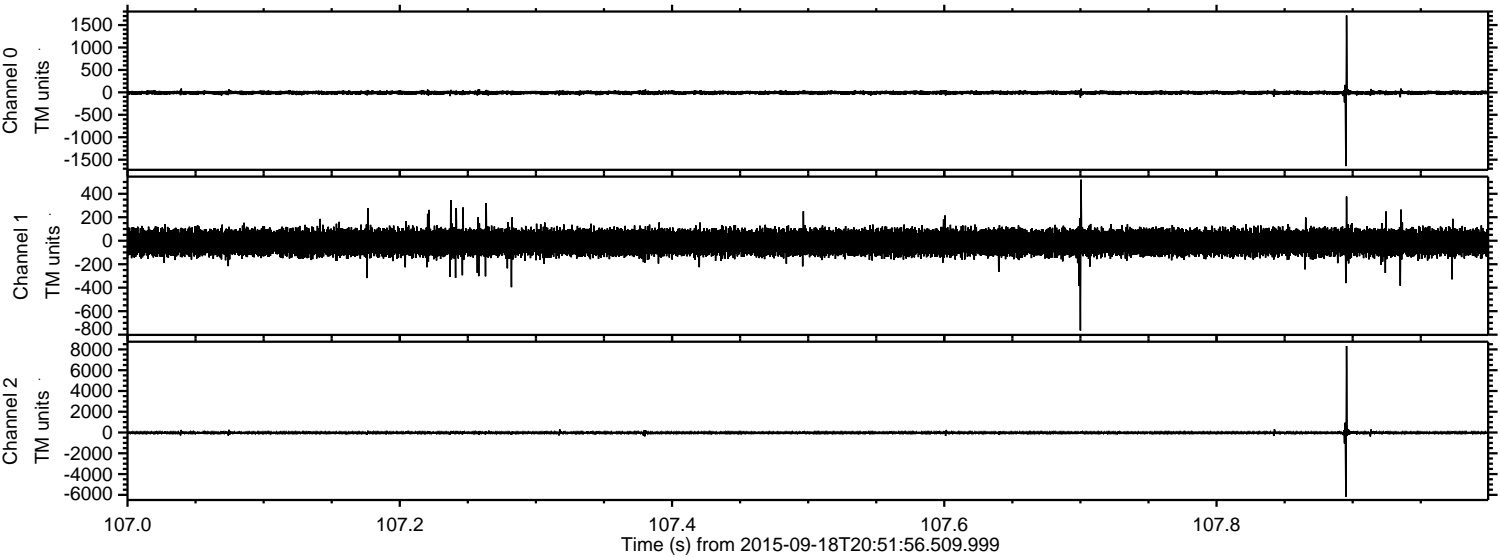
Channel 0
mn: -2301
mx: 2518
 μ : -6.8
 σ : 34.0

Channel 1
mn: -1568
mx: 1375
 μ : -15.0
 σ : 59.1

Channel 2
mn: -9457
mx: 9951
 μ : -16.9
 σ : 113.8

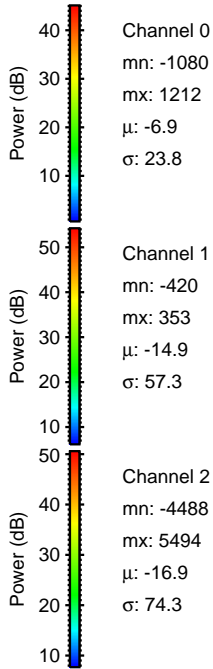
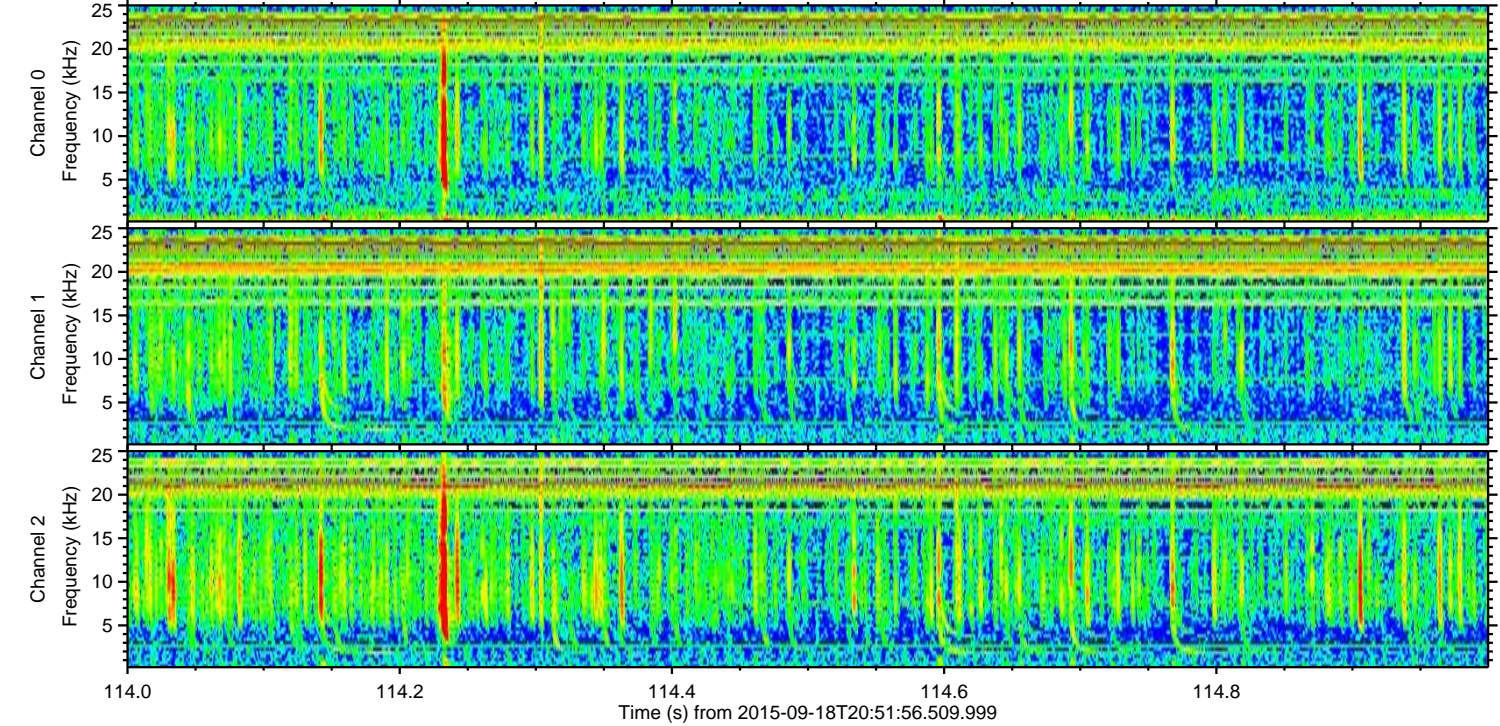
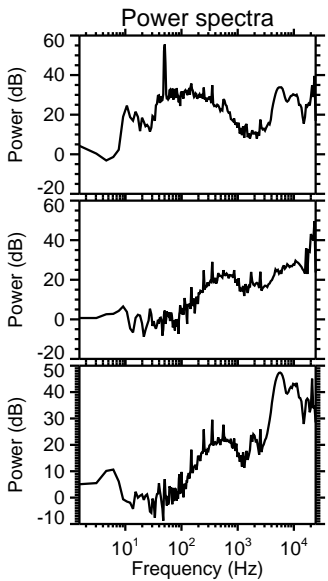
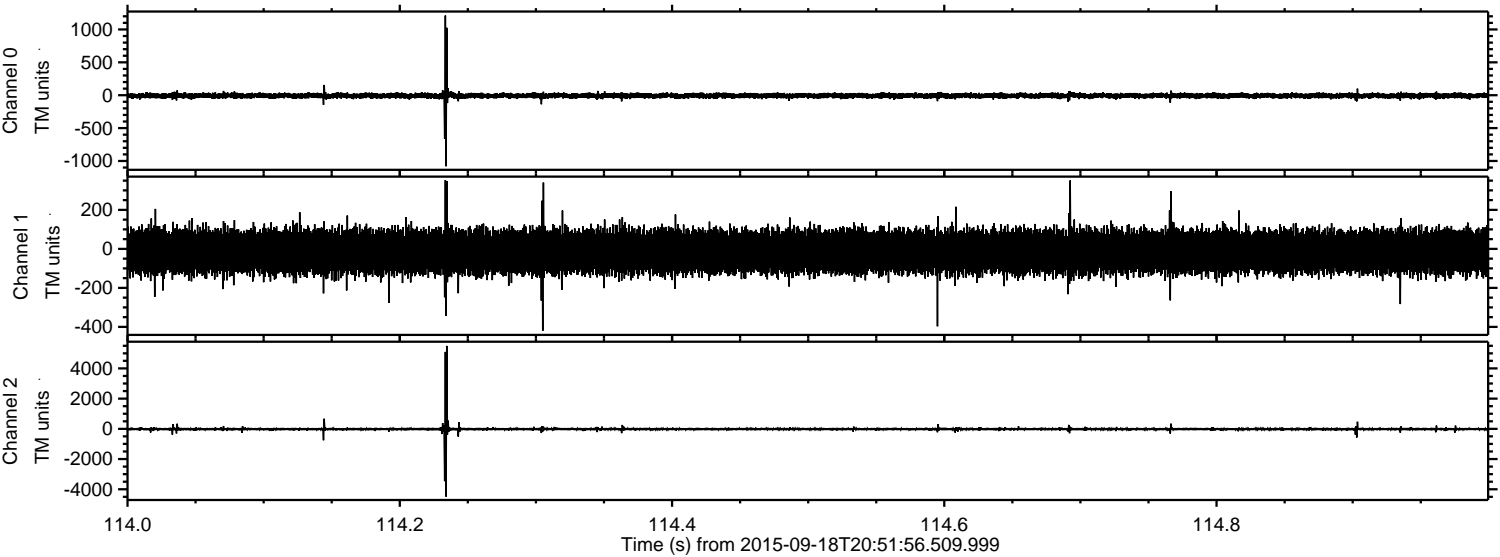
ELMAVAN 3D WAVEFORMS (Measured data sampled at 50 kHz) 51000 packets of 144 samples from 2015-09-18T20:51:56.509.999. Part 108/147

Processed Wed Oct 14 02:24:25 2015 by ELM ver.2012-10-06 from 001__elm20150918_205155__dat00.bin



ELMAVAN 3D WAVEFORMS (Measured data sampled at 50 kHz) 51000 packets of 144 samples from 2015-09-18T20:51:56.509.999. Part 115/147

Processed Wed Oct 14 02:24:26 2015 by ELM ver.2012-10-06 from 001__elm20150918_205155__dat00.bin



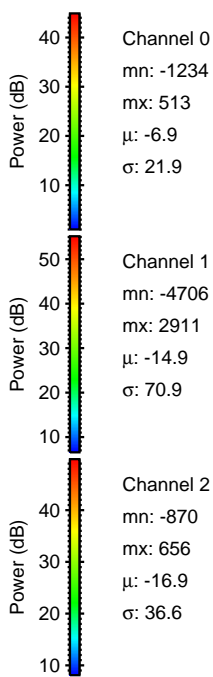
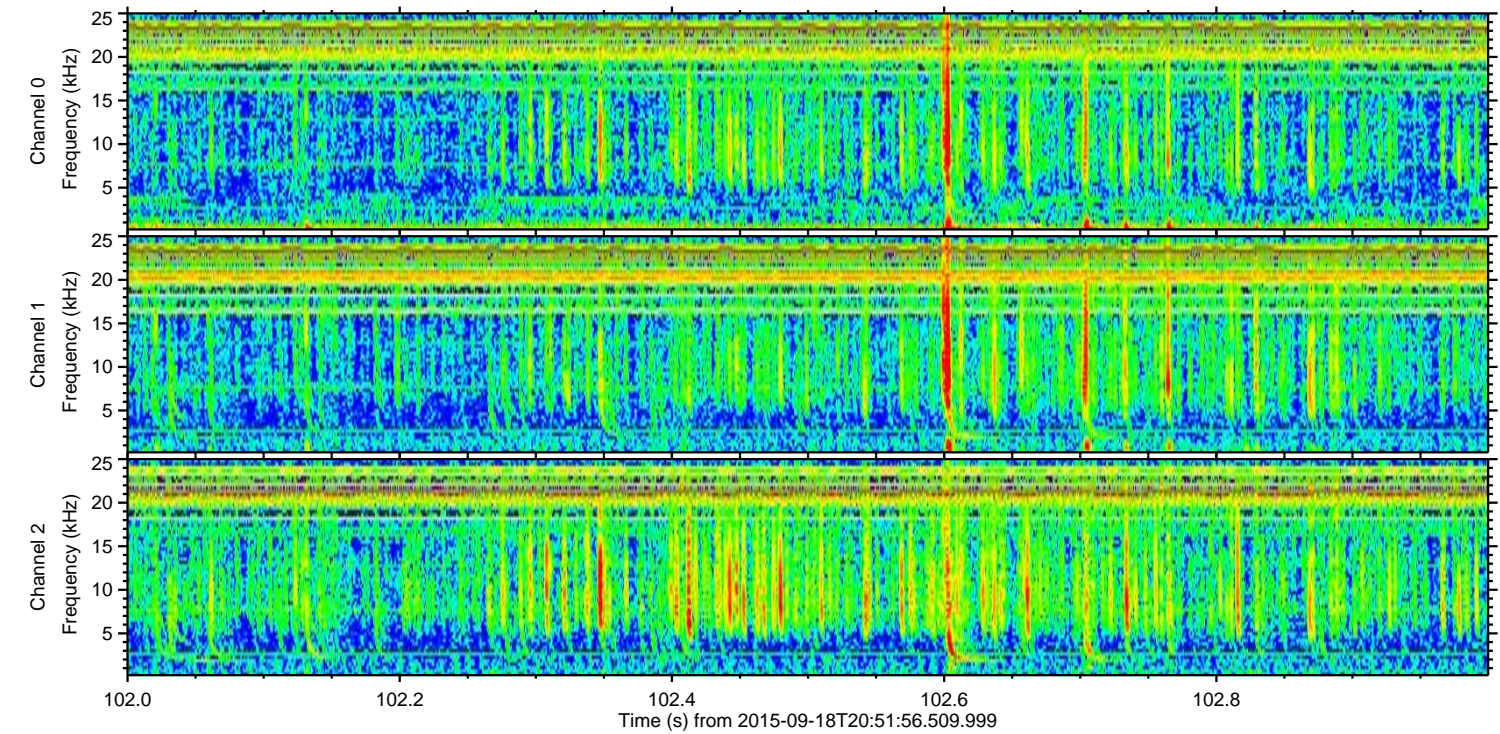
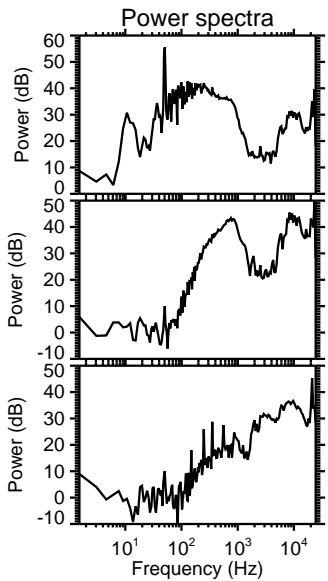
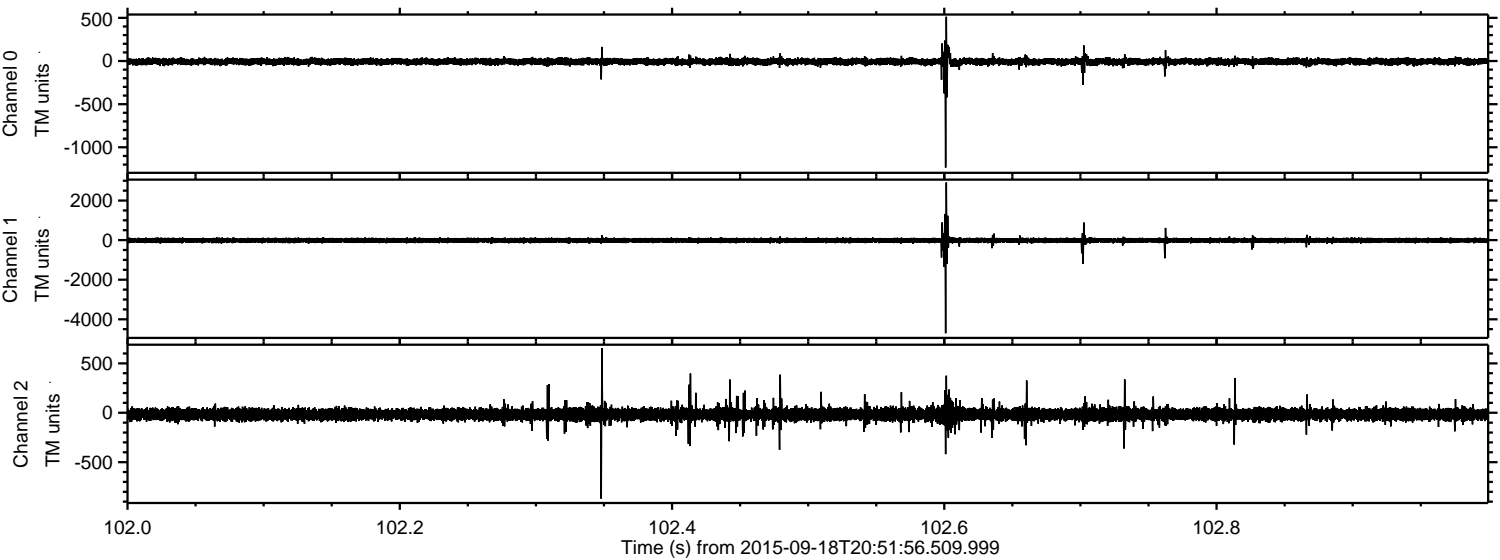
Channel 0
mn: -1080
mx: 1212
 μ : -6.9
 σ : 23.8

Channel 1
mn: -420
mx: 353
 μ : -14.9
 σ : 57.3

Channel 2
mn: -4488
mx: 5494
 μ : -16.9
 σ : 74.3

ELMAVAN 3D WAVEFORMS (Measured data sampled at 50 kHz) 51000 packets of 144 samples from 2015-09-18T20:51:56.509.999. Part 103/147

Processed Wed Oct 14 02:24:28 2015 by ELM ver.2012-10-06 from 001__elm20150918_205155__dat00.bin

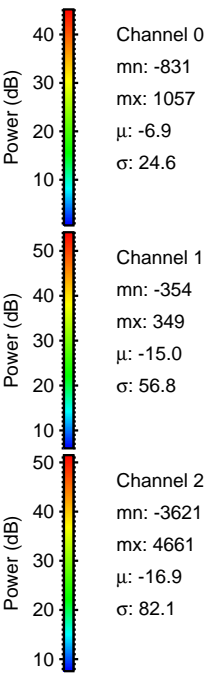
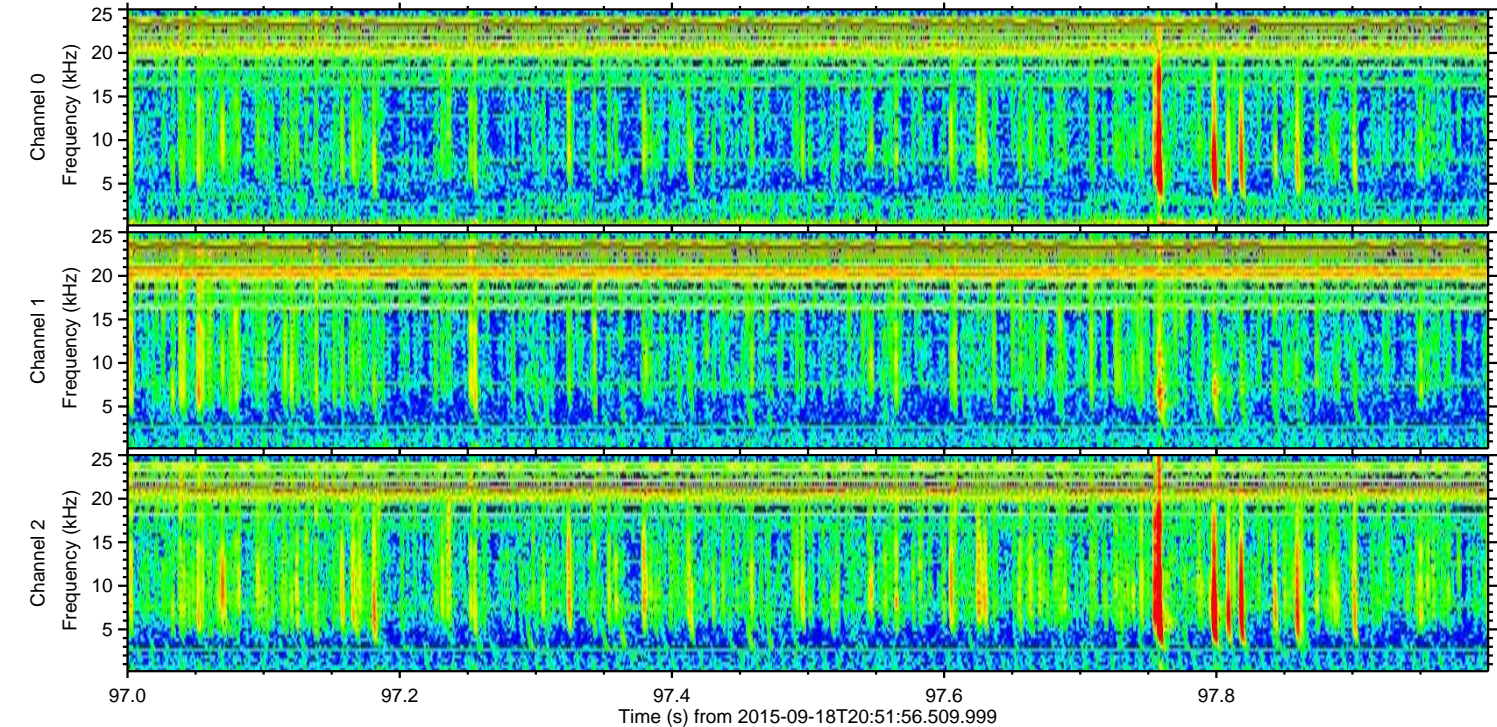
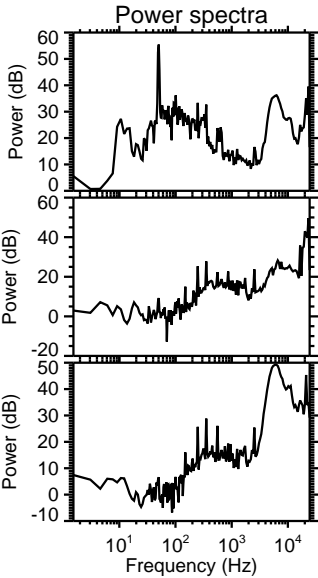
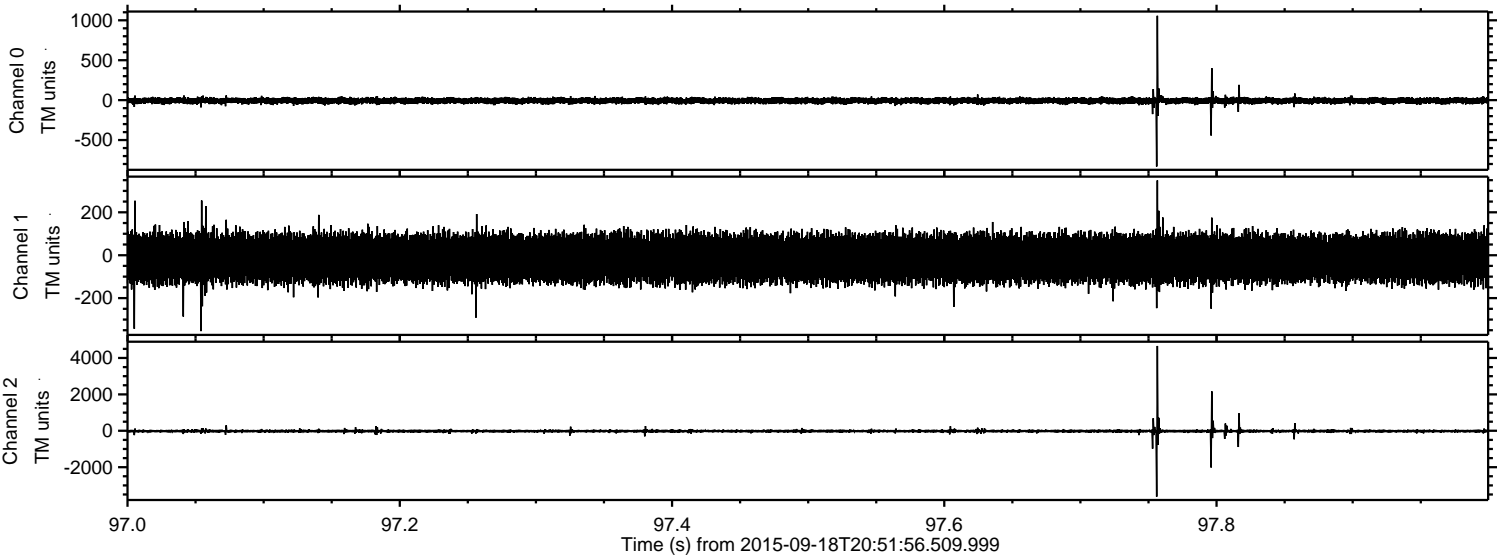


Channel 0
mn: -1234
mx: 513
 μ : -6.9
 σ : 21.9

Channel 1
mn: -4706
mx: 2911
 μ : -14.9
 σ : 70.9

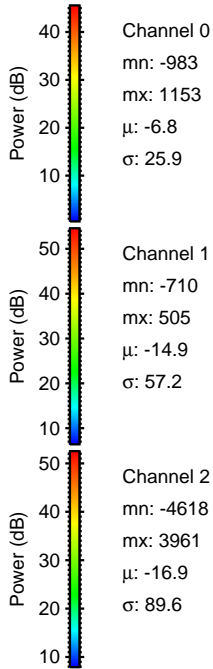
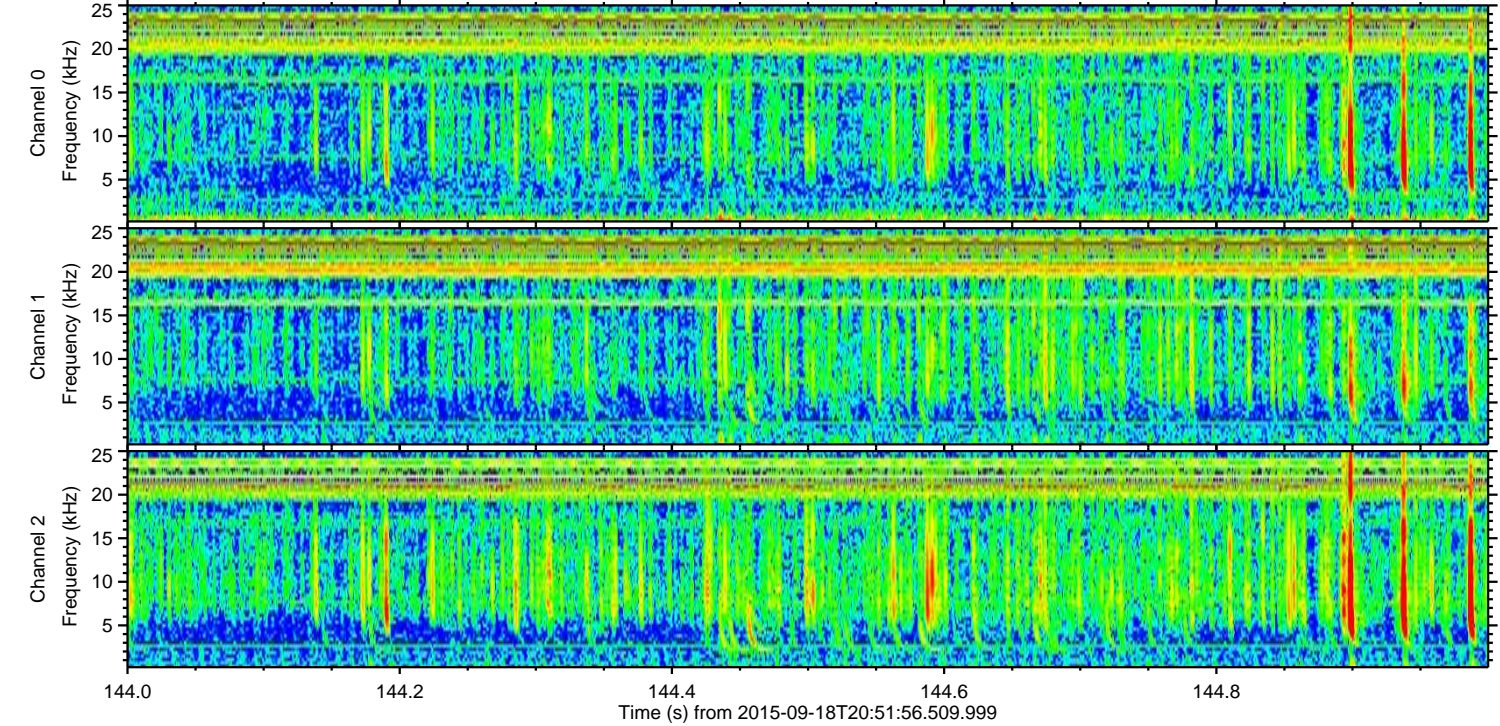
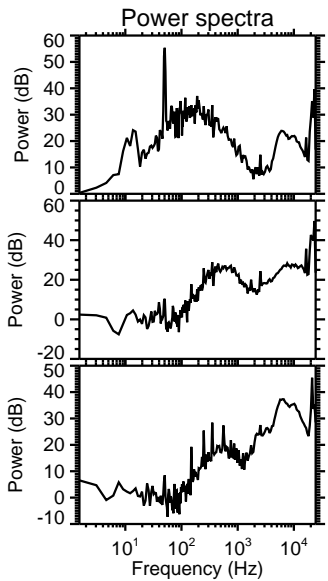
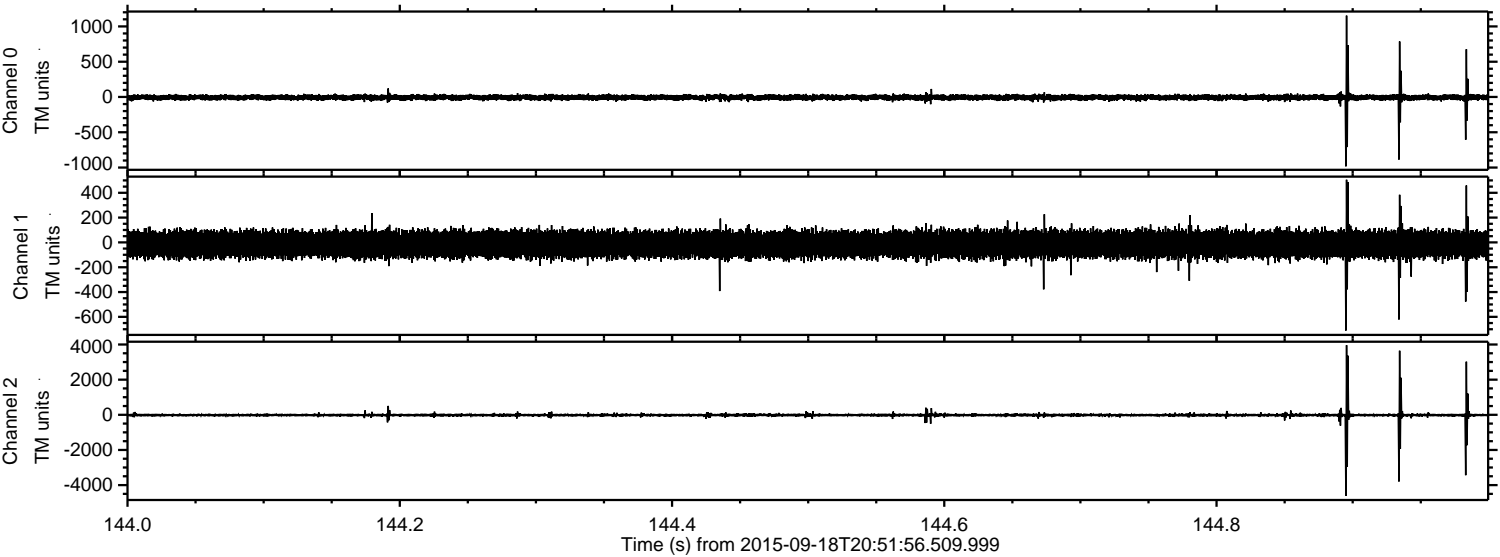
Channel 2
mn: -870
mx: 656
 μ : -16.9
 σ : 36.6

Processed Wed Oct 14 02:24:29 2015 by ELM ver.2012-10-06 from 001__elm20150918_205155__dat00.bin



ELMAVAN 3D WAVEFORMS (Measured data sampled at 50 kHz) 51000 packets of 144 samples from 2015-09-18T20:51:56.509.999. Part 145/147

Processed Wed Oct 14 02:24:31 2015 by ELM ver.2012-10-06 from 001__elm20150918_205155__dat00.bin

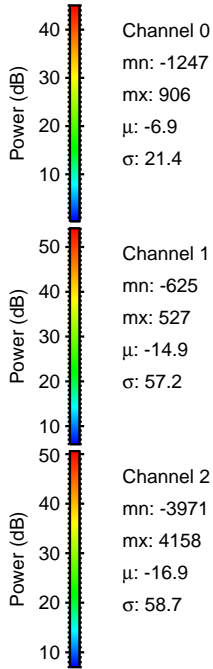
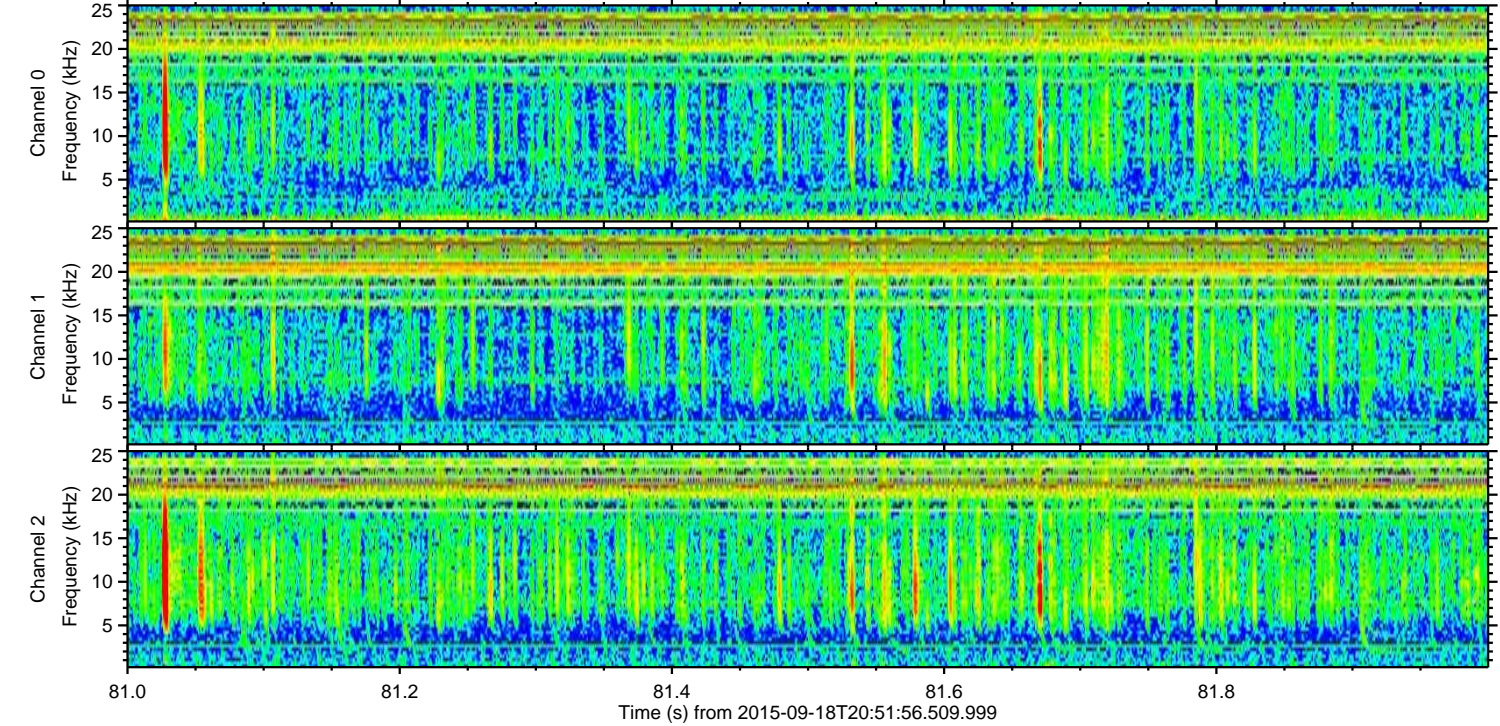
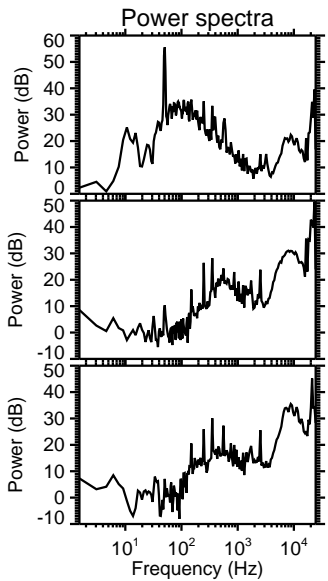
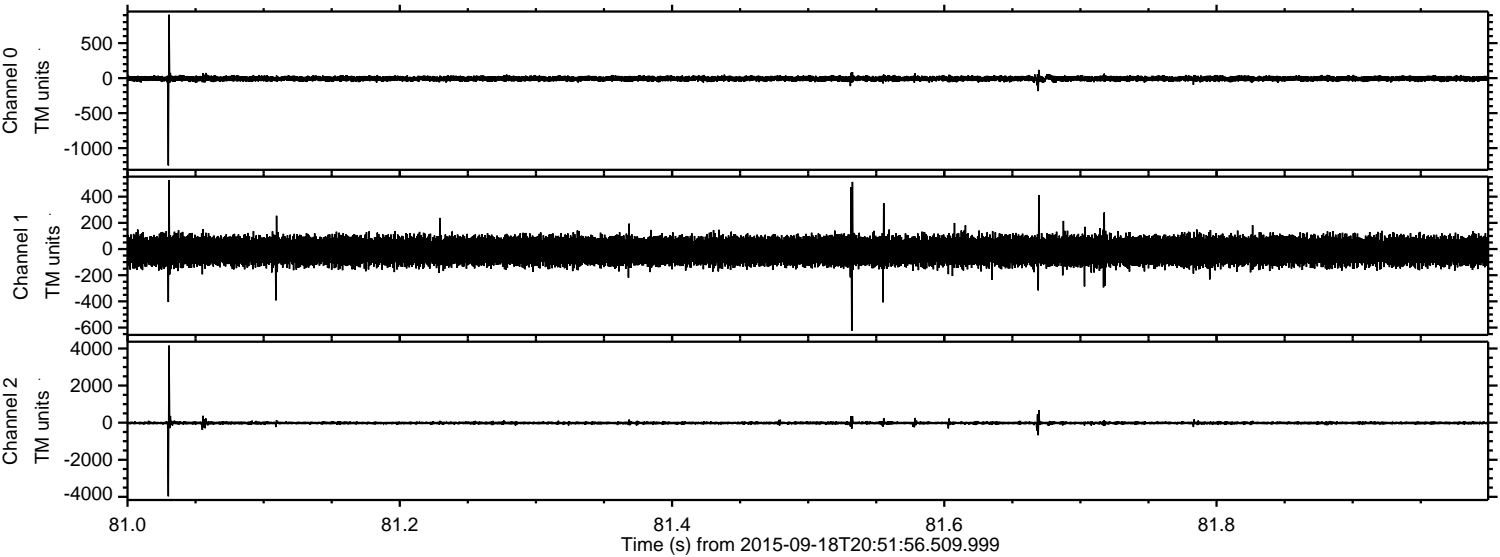


Channel 0
mn: -983
mx: 1153
 μ : -6.8
 σ : 25.9

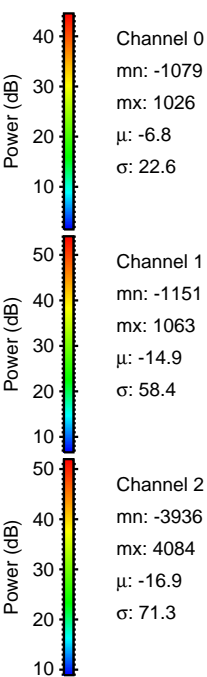
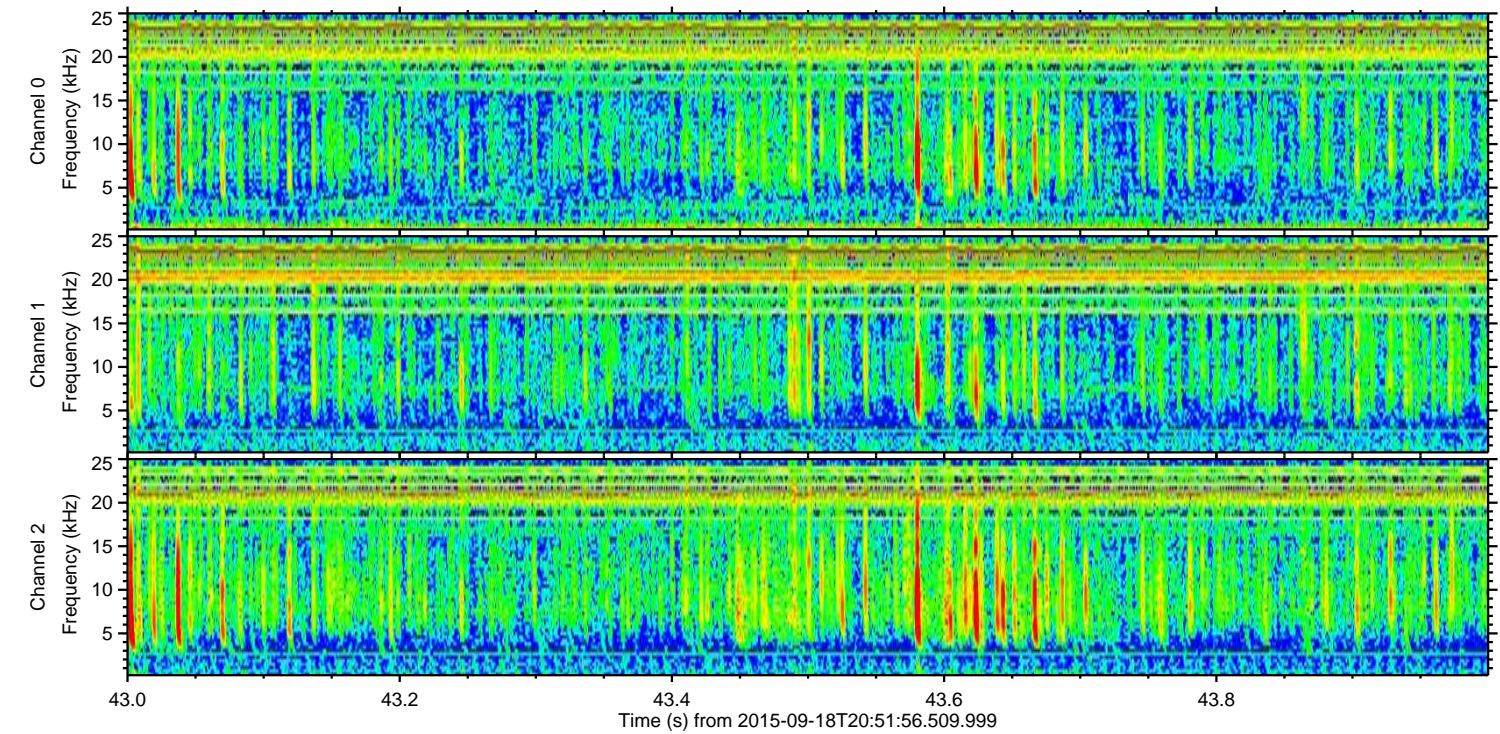
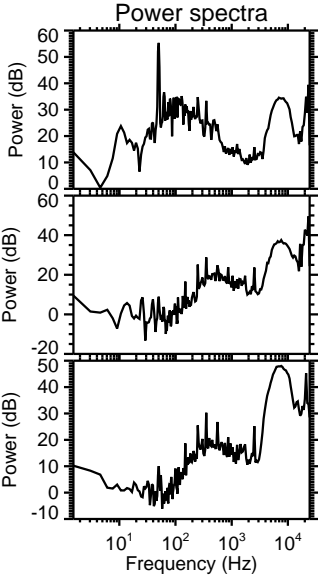
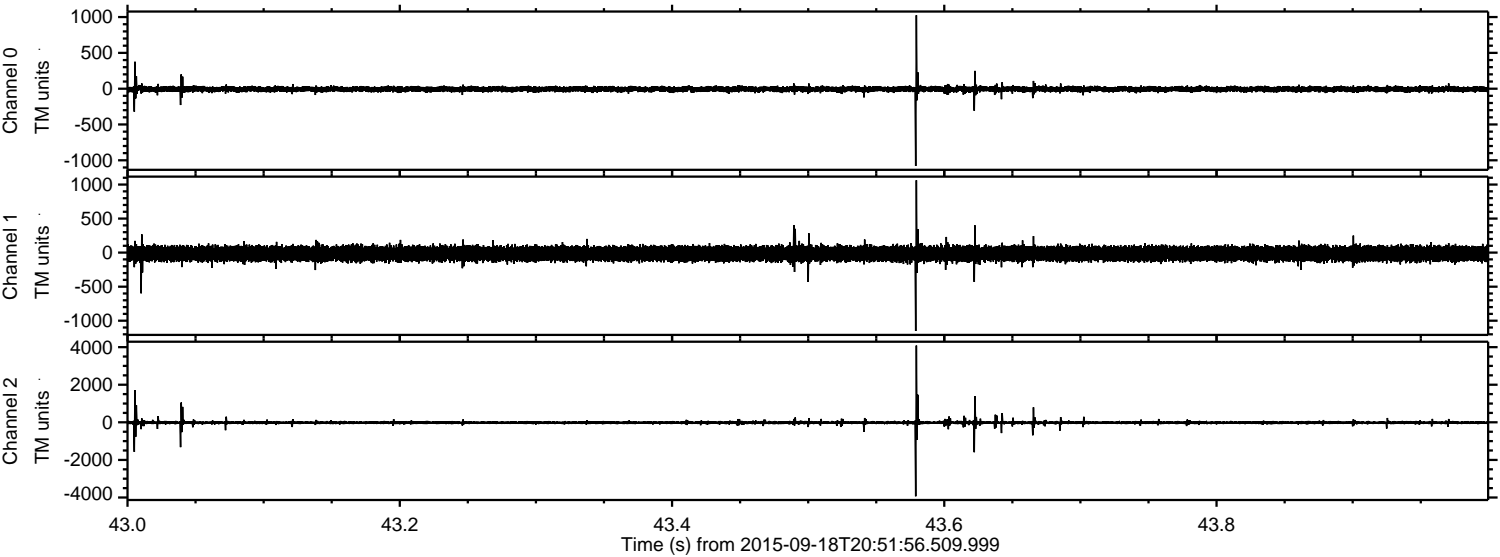
Channel 1
mn: -710
mx: 505
 μ : -14.9
 σ : 57.2

Channel 2
mn: -4618
mx: 3961
 μ : -16.9
 σ : 89.6

Processed Wed Oct 14 02:24:32 2015 by ELM ver.2012-10-06 from 001__elm20150918_205155__dat00.bin



Processed Wed Oct 14 02:24:33 2015 by ELM ver.2012-10-06 from 001__elm20150918_205155__dat00.bin



ELMAVAN 3D WAVEFORMS (Measured data sampled at 50 kHz) 51000 packets of 144 samples from 2015-09-18T20:51:56.509.999. Part 113/147

Processed Wed Oct 14 02:24:35 2015 by ELM ver.2012-10-06 from 001__elm20150918_205155__dat00.bin

