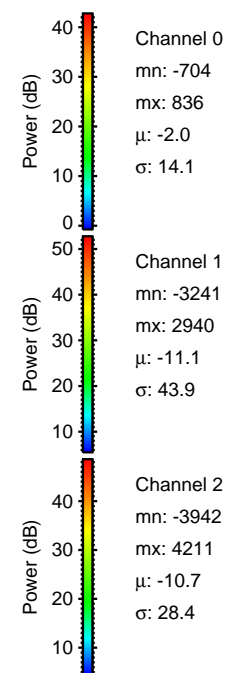
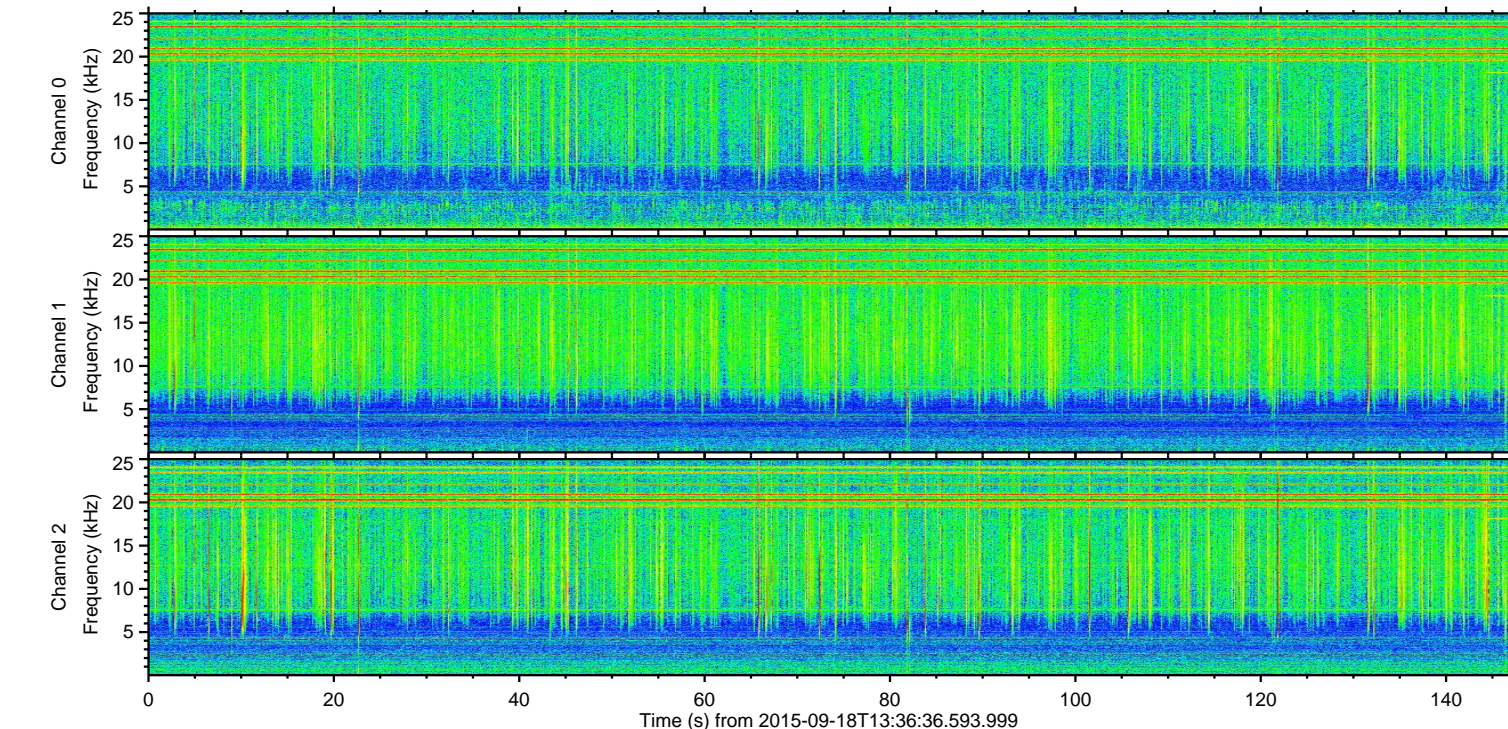
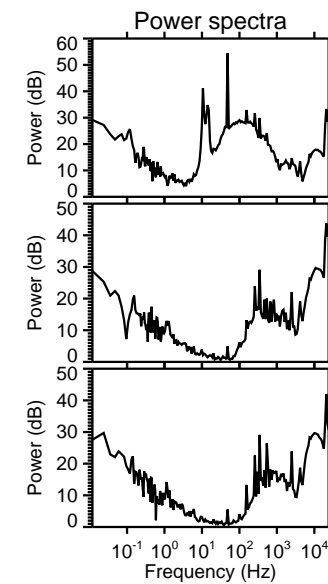
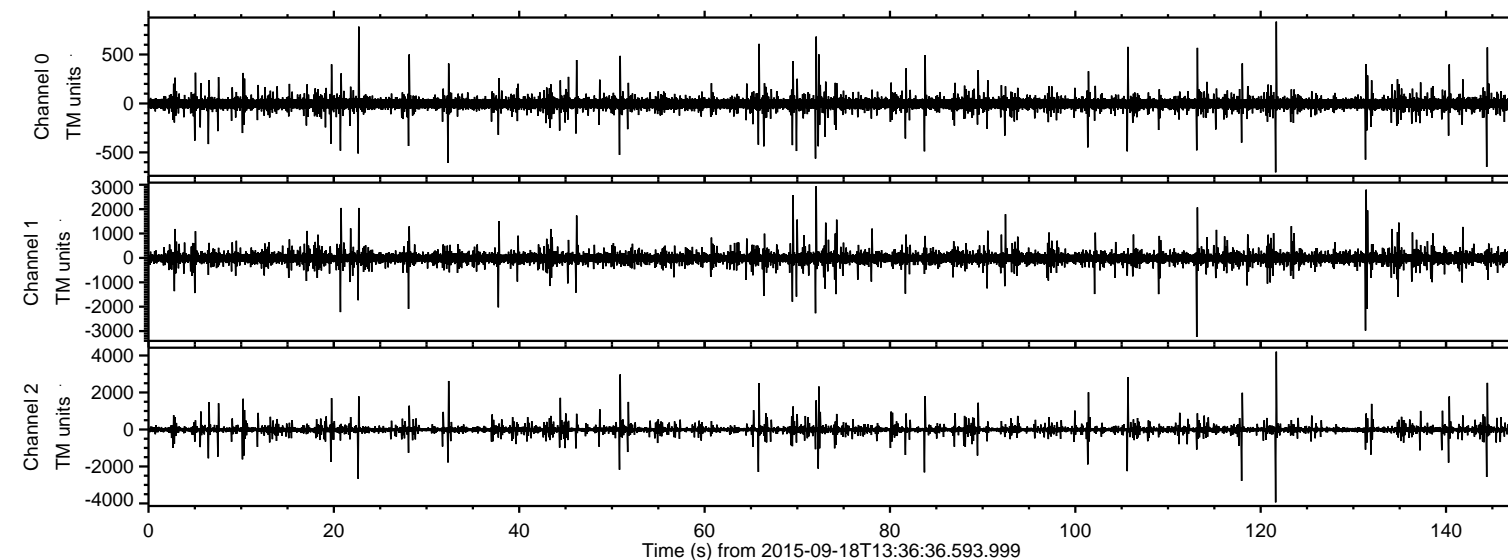


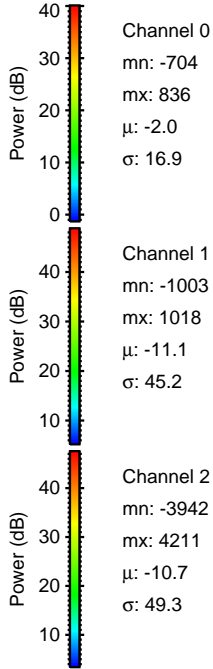
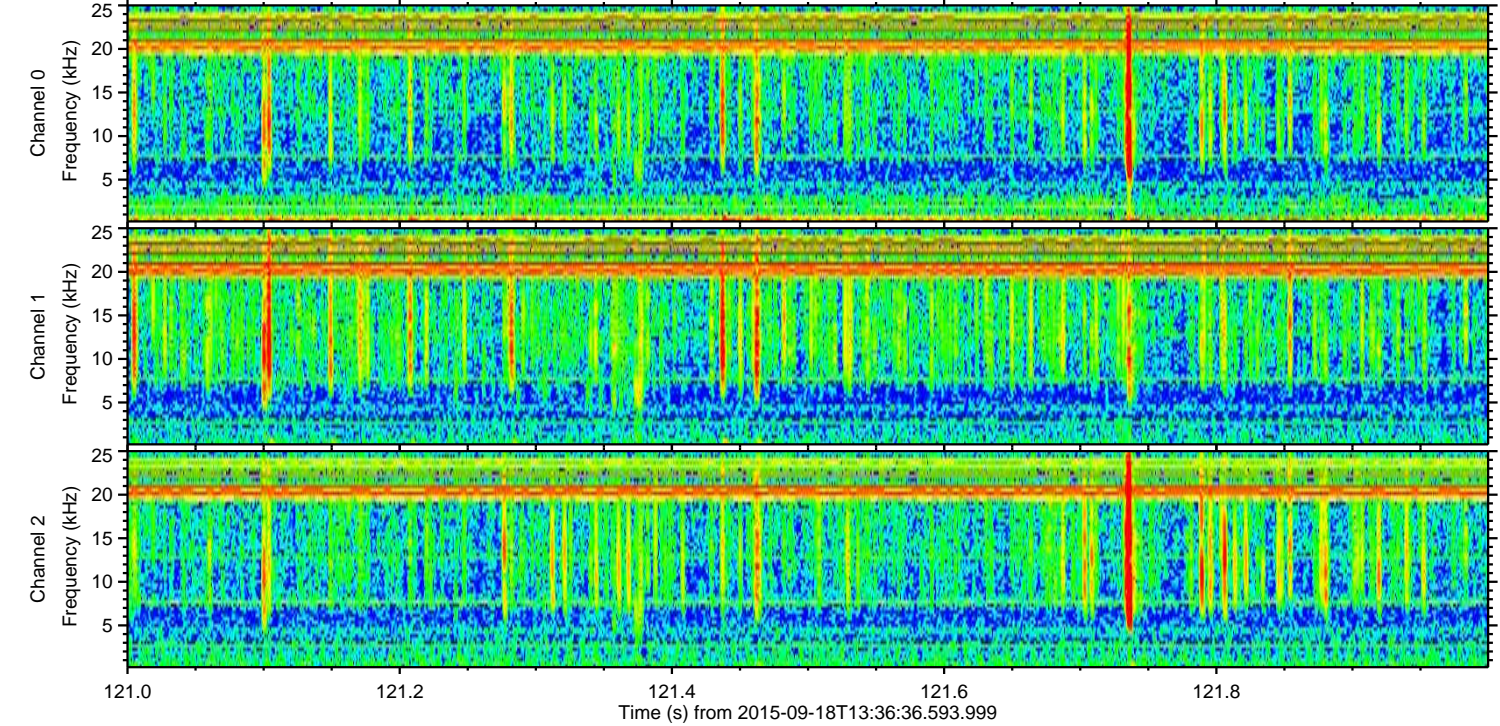
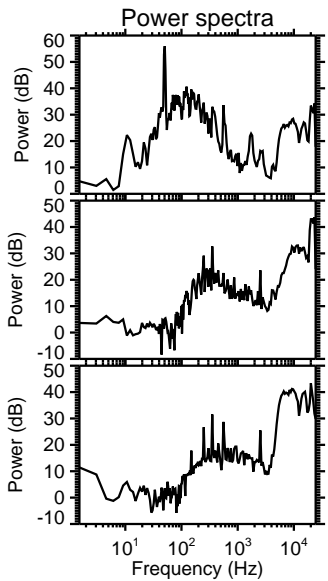
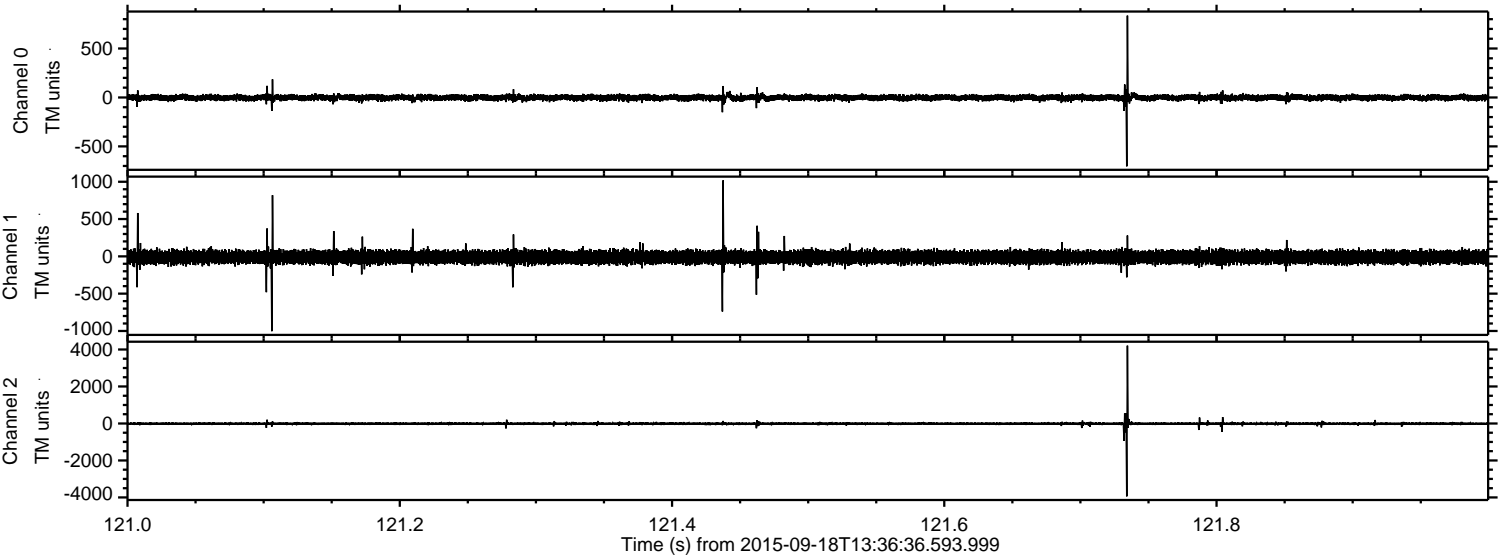
ELMAVAN 3D WAVEFORMS (Measured data sampled at 50 kHz) 51000 packets of 144 samples from 2015-09-18T13:36:36.593.999.

Processed Tue Oct 13 23:53:12 2015 by ELM ver.2012-10-06 from 001__elm20150918_133635__dat00.bin



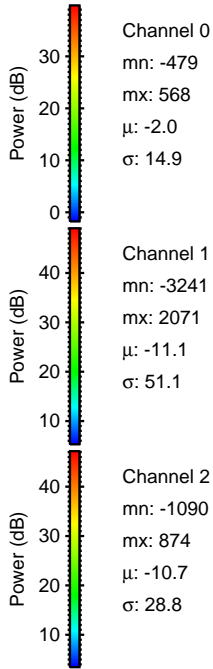
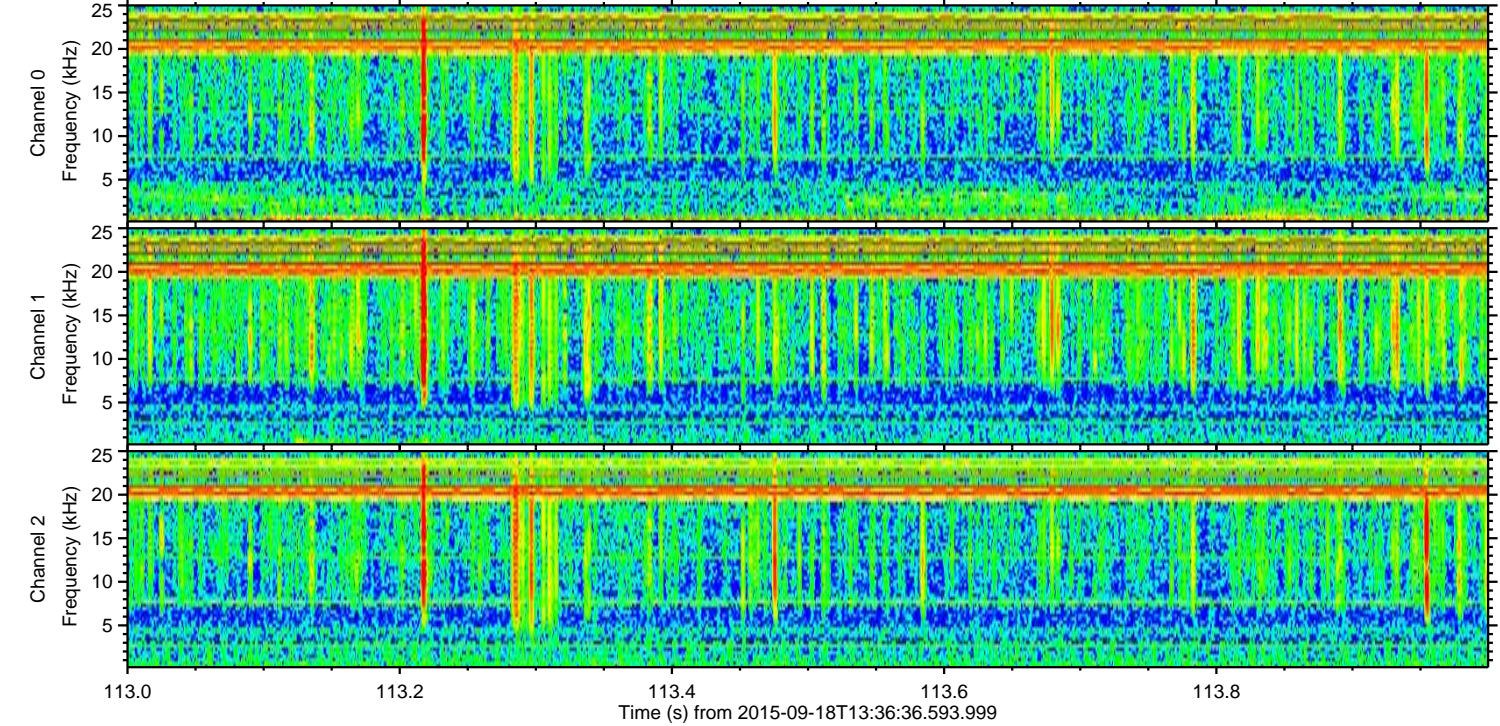
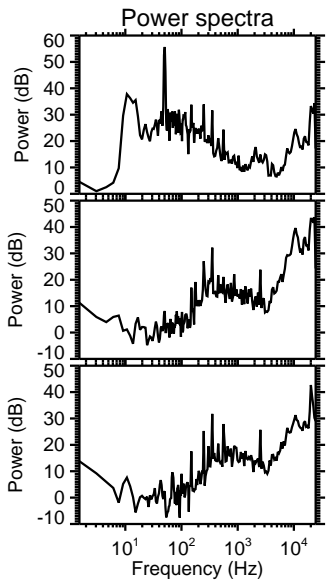
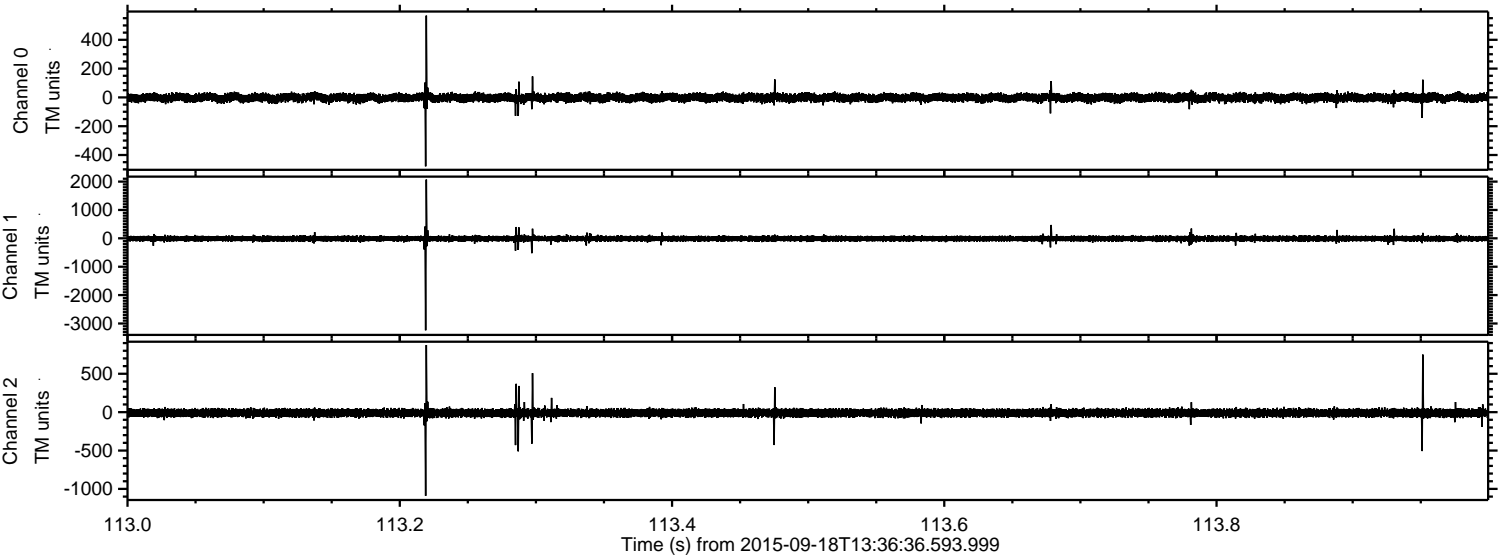
ELMAVAN 3D WAVEFORMS (Measured data sampled at 50 kHz) 51000 packets of 144 samples from 2015-09-18T13:36:36.593.999. Part 122/147

Processed Tue Oct 13 23:53:37 2015 by ELM ver.2012-10-06 from 001__elm20150918_133635__dat00.bin

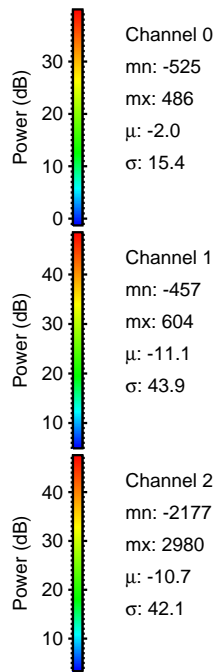
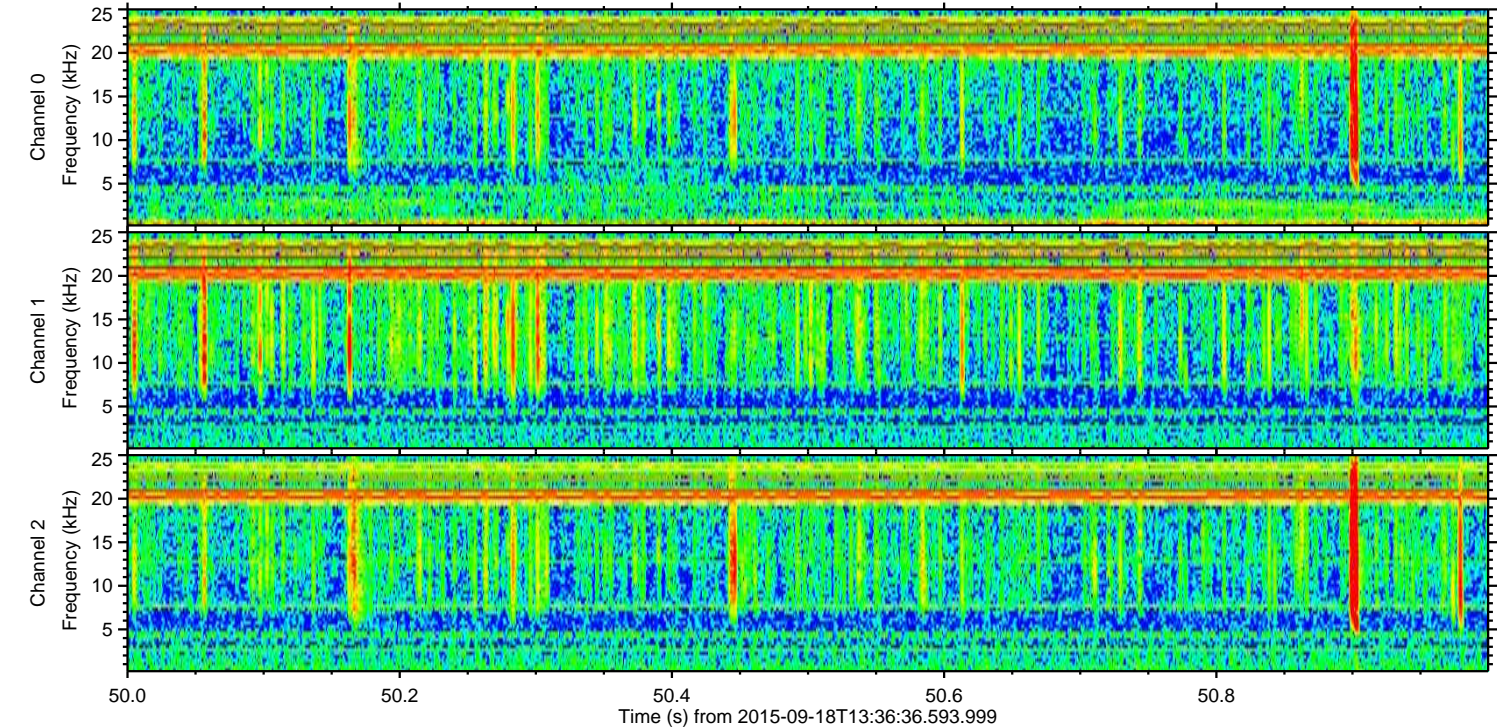
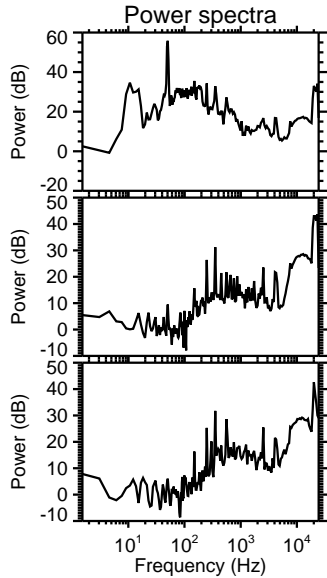
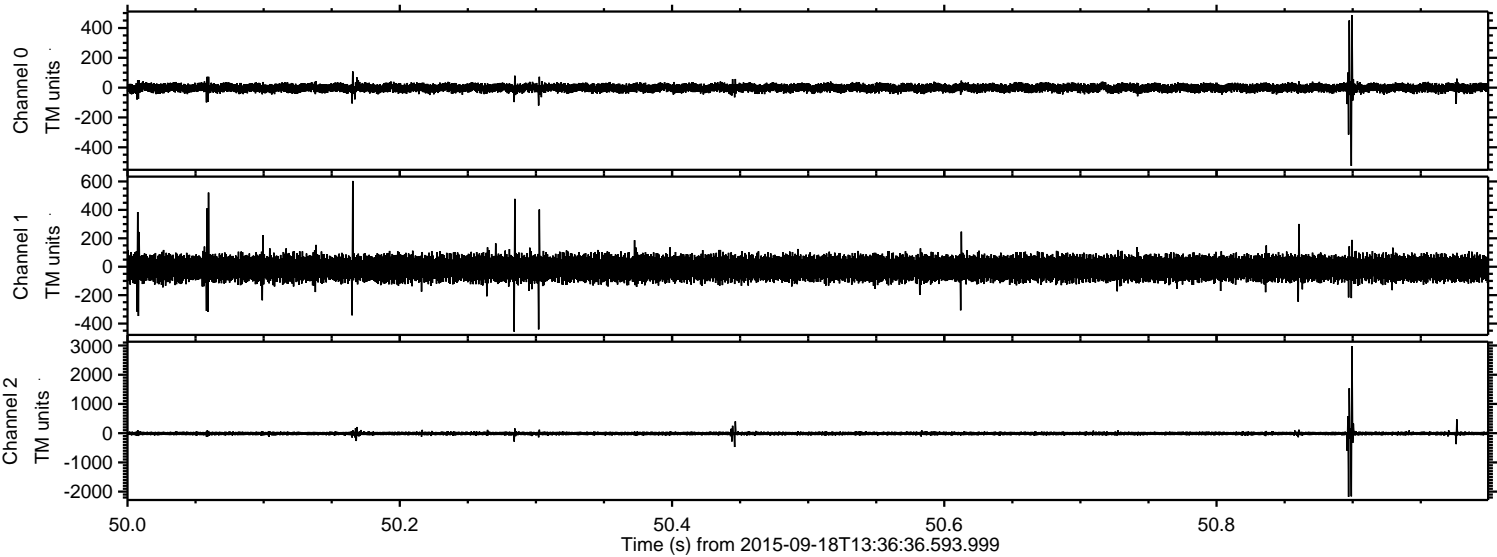


ELMAVAN 3D WAVEFORMS (Measured data sampled at 50 kHz) 51000 packets of 144 samples from 2015-09-18T13:36:36.593.999. Part 114/147

Processed Tue Oct 13 23:53:39 2015 by ELM ver.2012-10-06 from 001__elm20150918_133635__dat00.bin

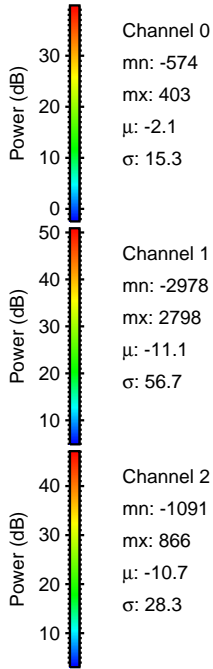
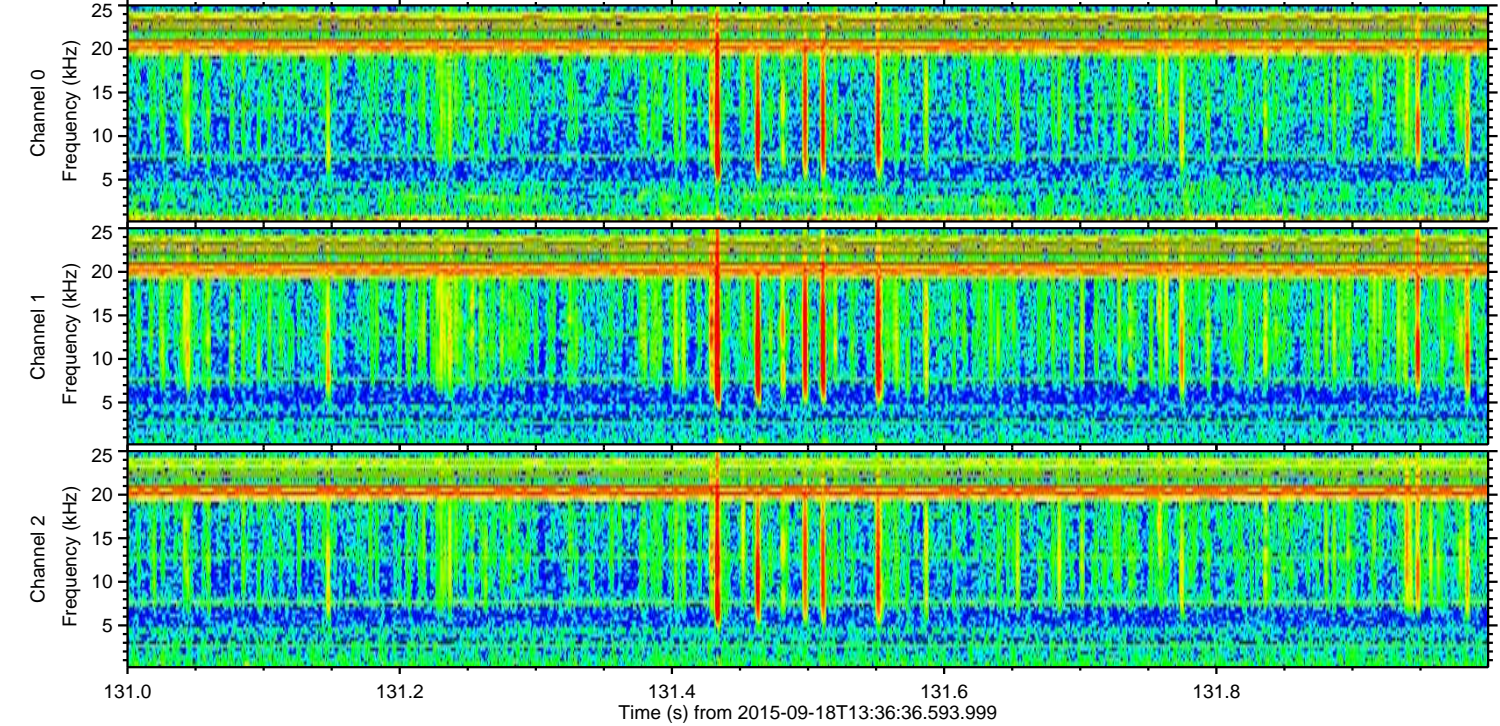
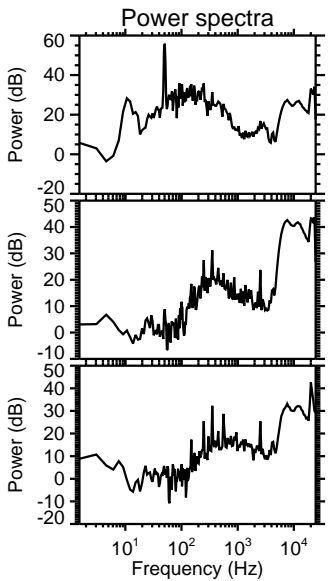
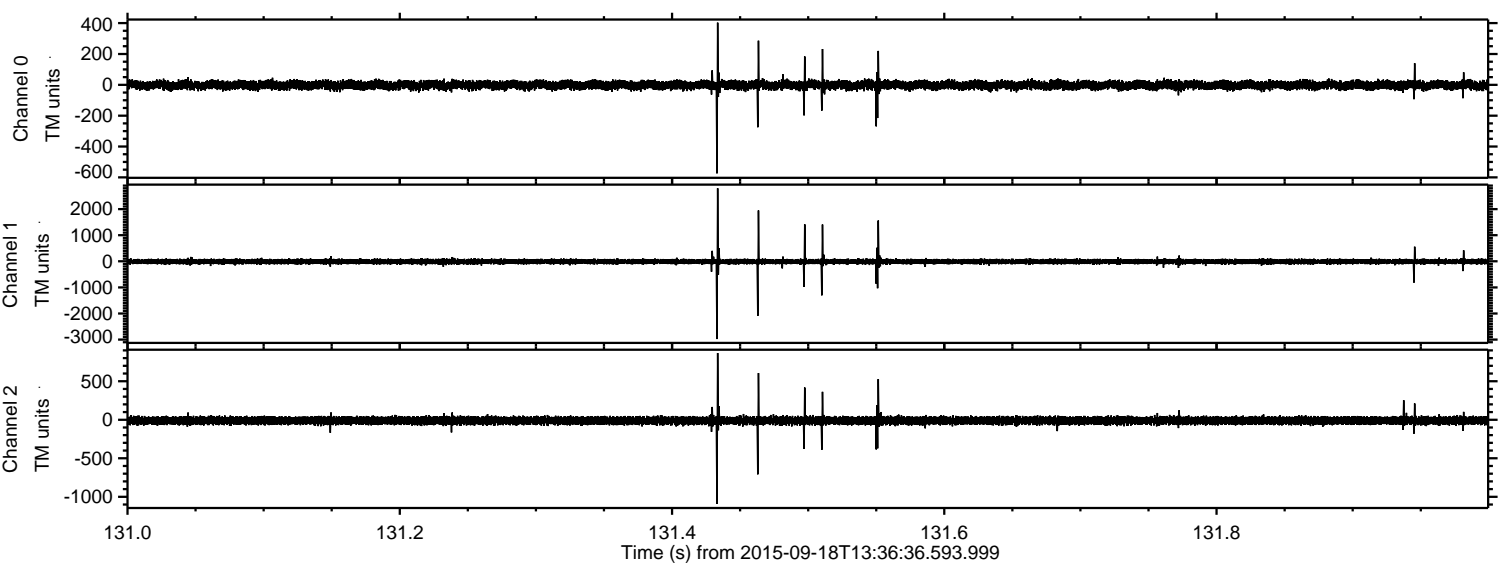


Processed Tue Oct 13 23:53:41 2015 by ELM ver.2012-10-06 from 001__elm20150918_133635__dat00.bin

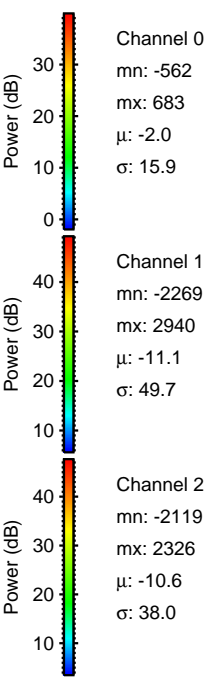
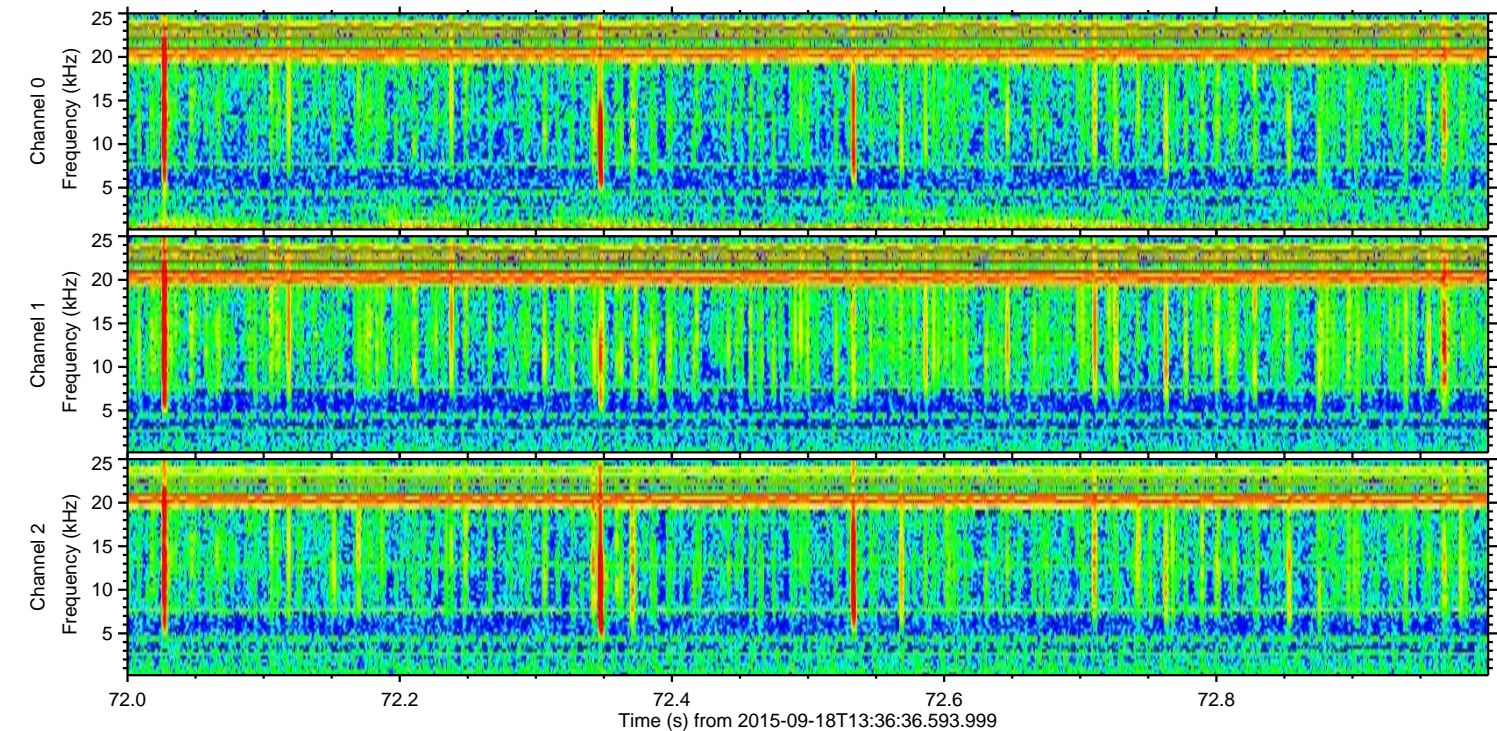
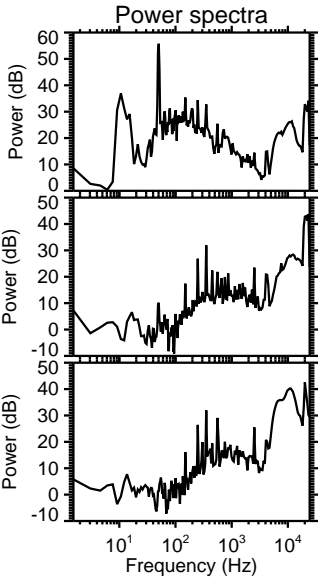
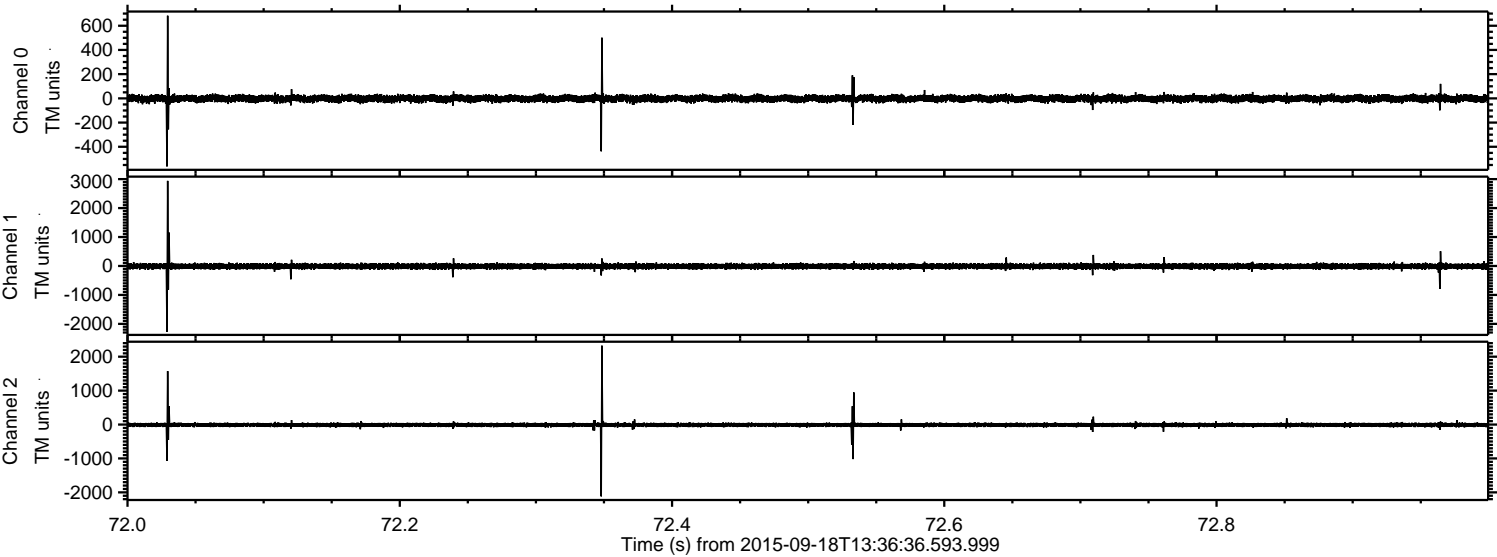


ELMAVAN 3D WAVEFORMS (Measured data sampled at 50 kHz) 51000 packets of 144 samples from 2015-09-18T13:36:36.593.999. Part 132/147

Processed Tue Oct 13 23:53:44 2015 by ELM ver.2012-10-06 from 001__elm20150918_133635__dat00.bin

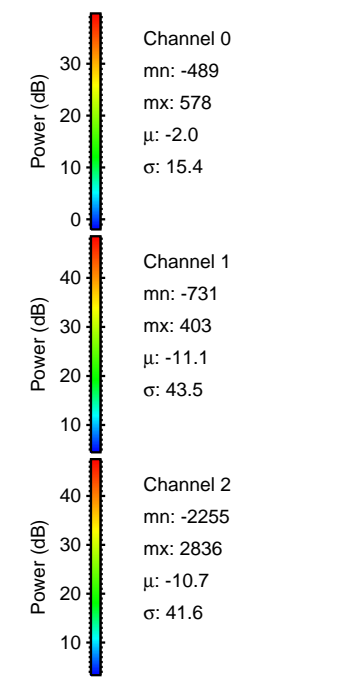
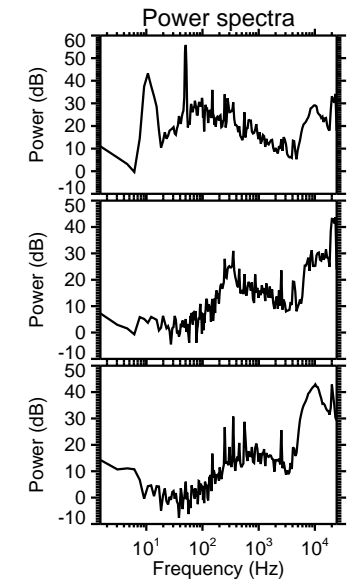
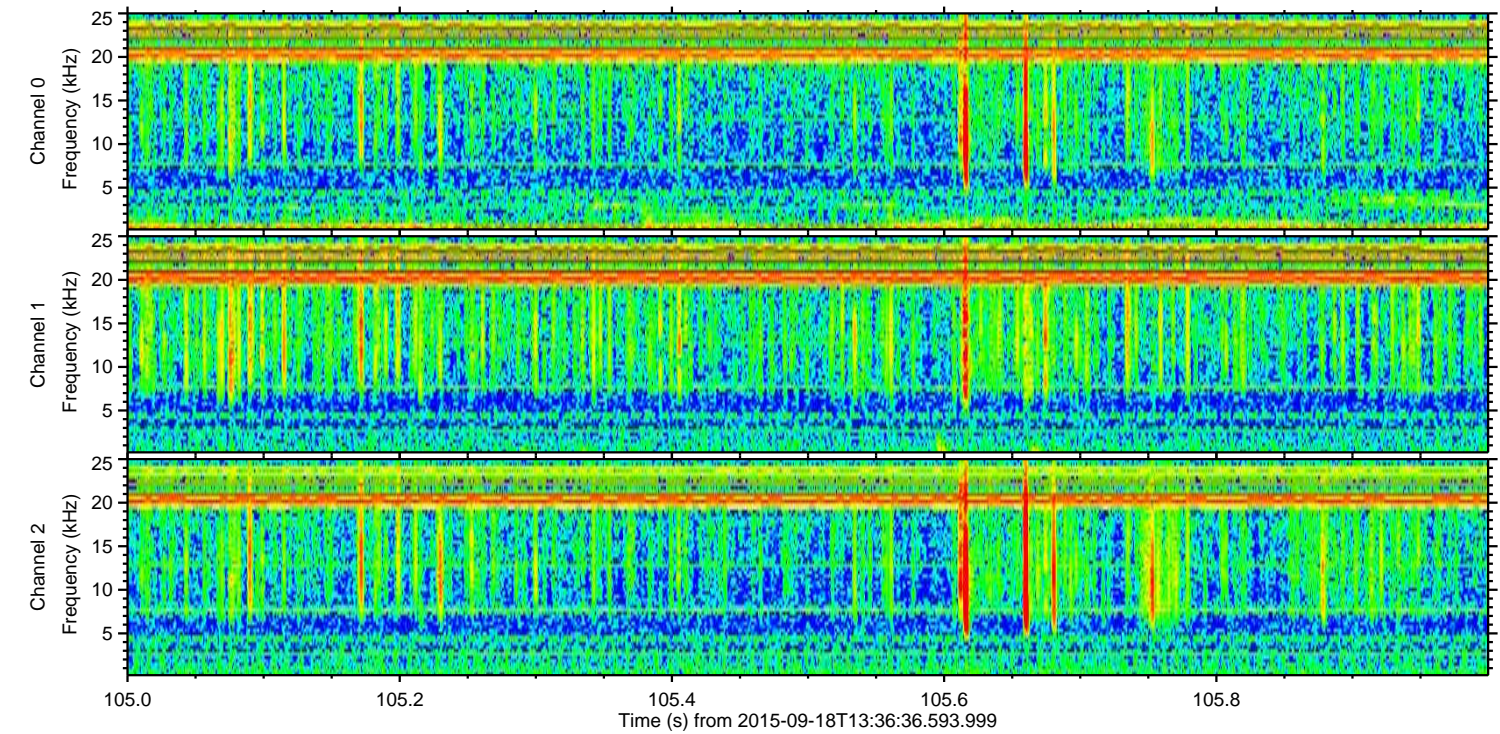
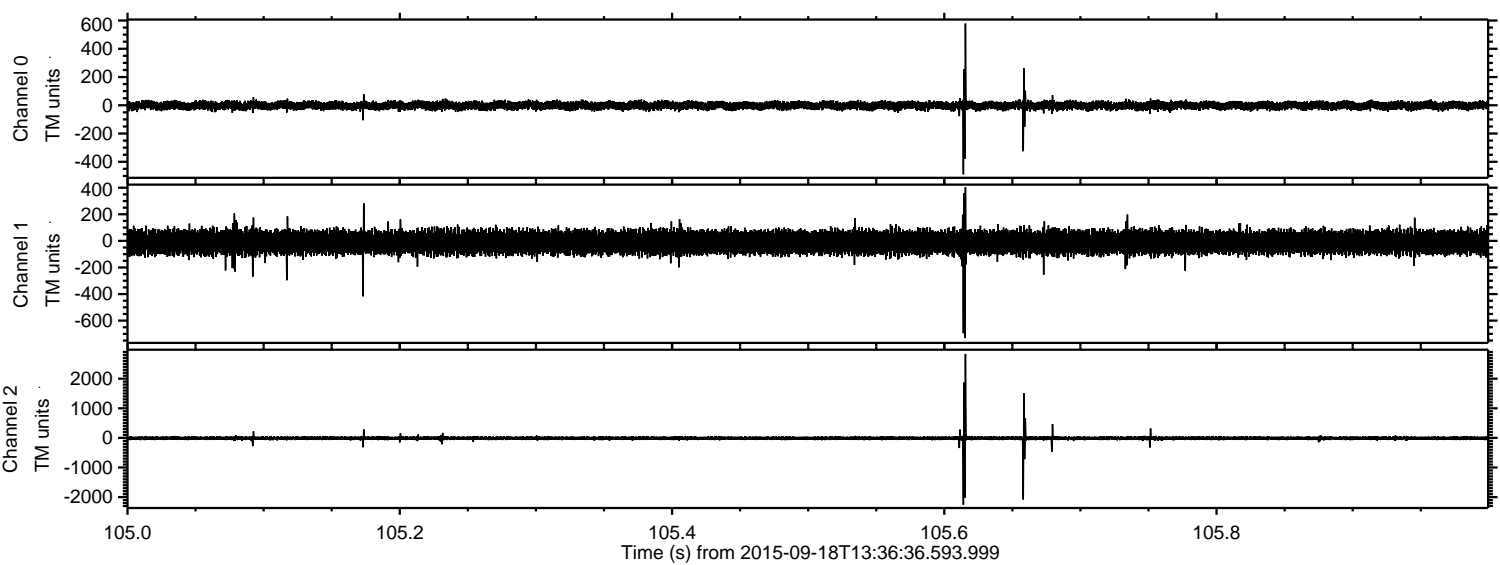


Processed Tue Oct 13 23:53:46 2015 by ELM ver.2012-10-06 from 001__elm20150918_133635__dat00.bin



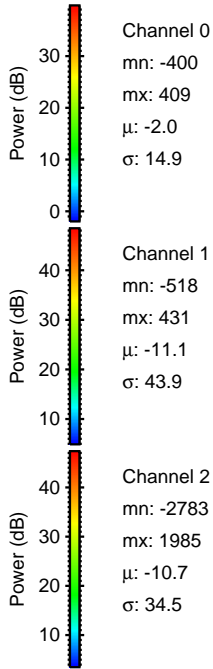
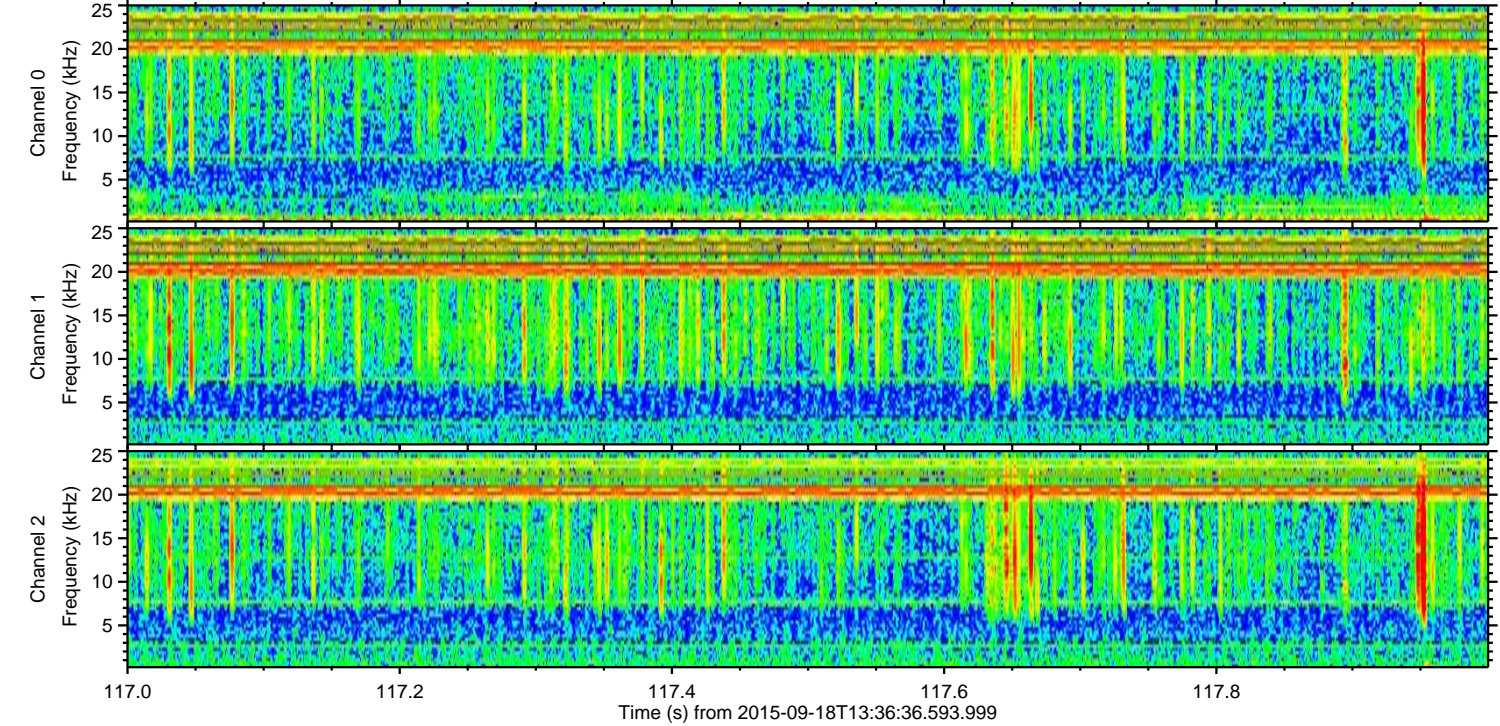
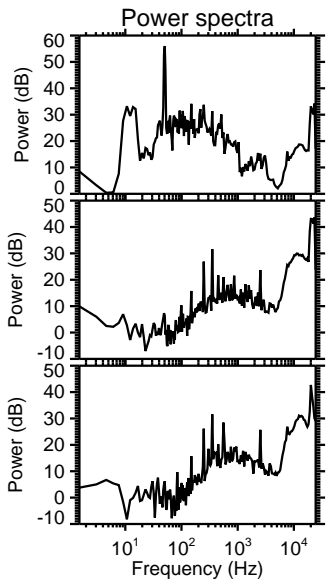
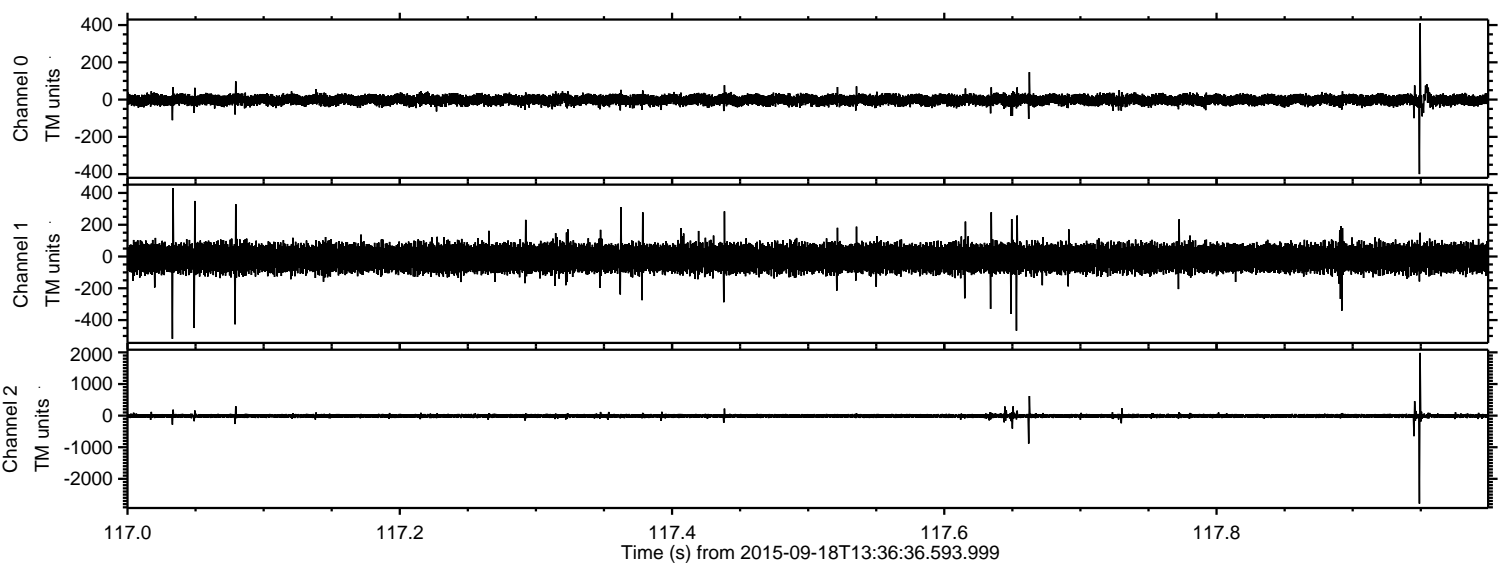
ELMAVAN 3D WAVEFORMS (Measured data sampled at 50 kHz) 51000 packets of 144 samples from 2015-09-18T13:36:36.593.999. Part 106/147

Processed Tue Oct 13 23:53:48 2015 by ELM ver.2012-10-06 from 001__elm20150918_133635__dat00.bin

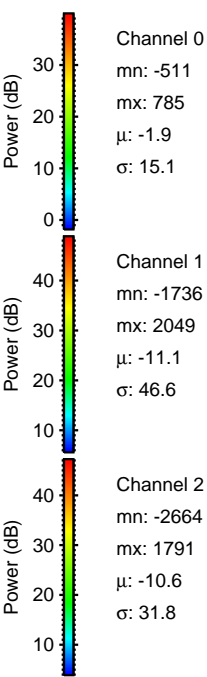
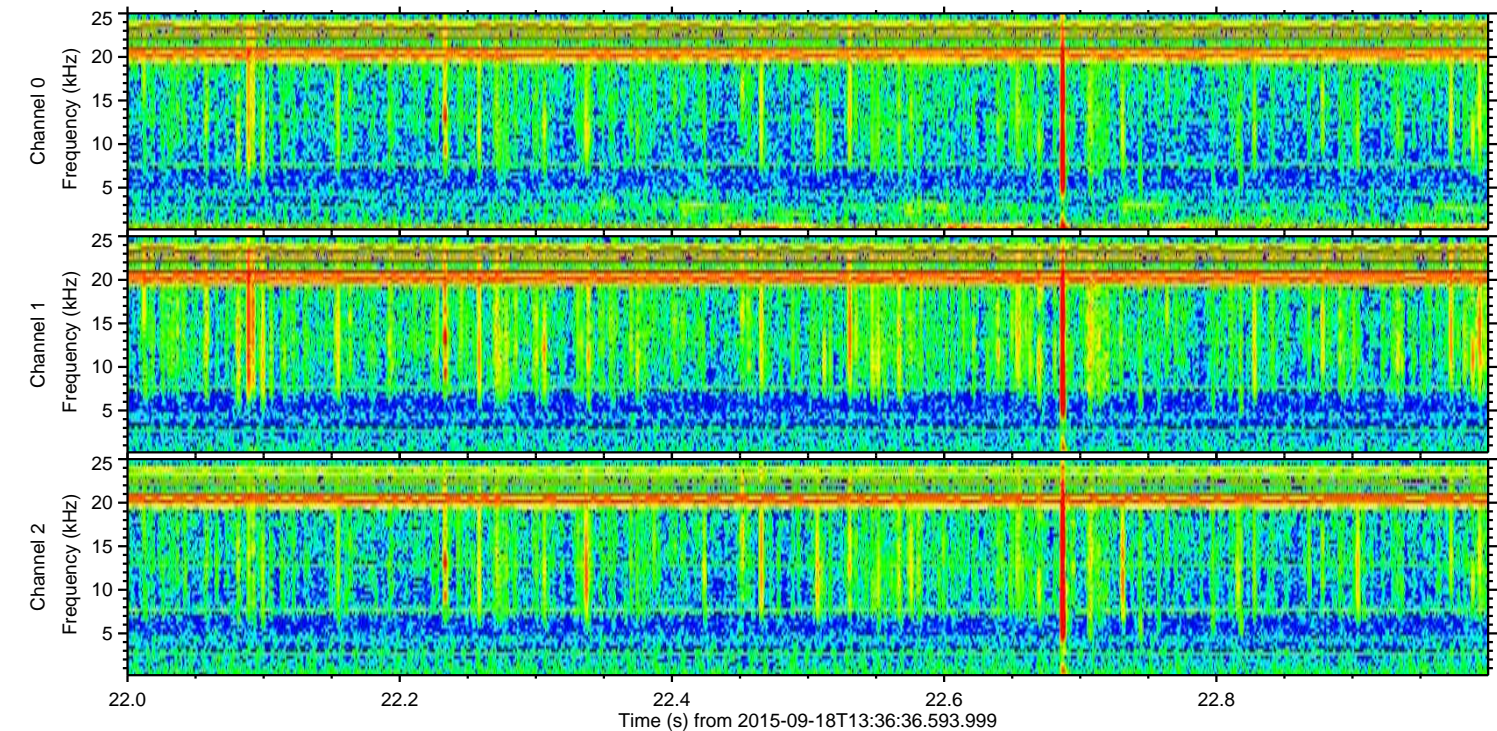
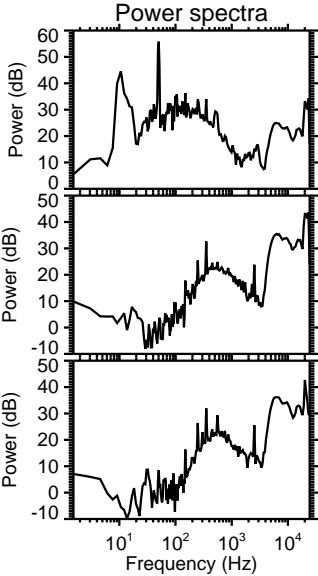
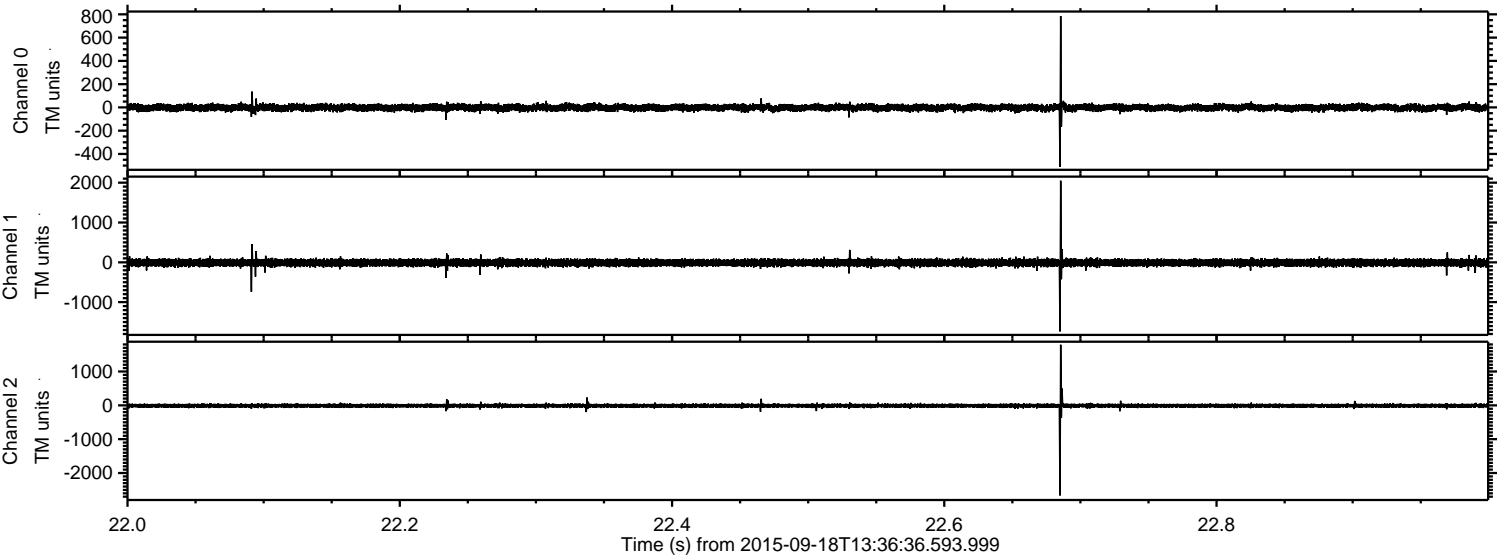


ELMAVAN 3D WAVEFORMS (Measured data sampled at 50 kHz) 51000 packets of 144 samples from 2015-09-18T13:36:36.593.999. Part 118/147

Processed Tue Oct 13 23:53:50 2015 by ELM ver.2012-10-06 from 001__elm20150918_133635__dat00.bin



Processed Tue Oct 13 23:53:52 2015 by ELM ver.2012-10-06 from 001__elm20150918_133635__dat00.bin

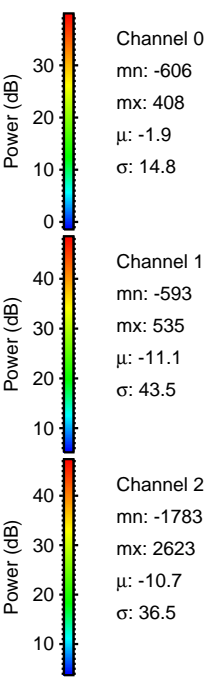
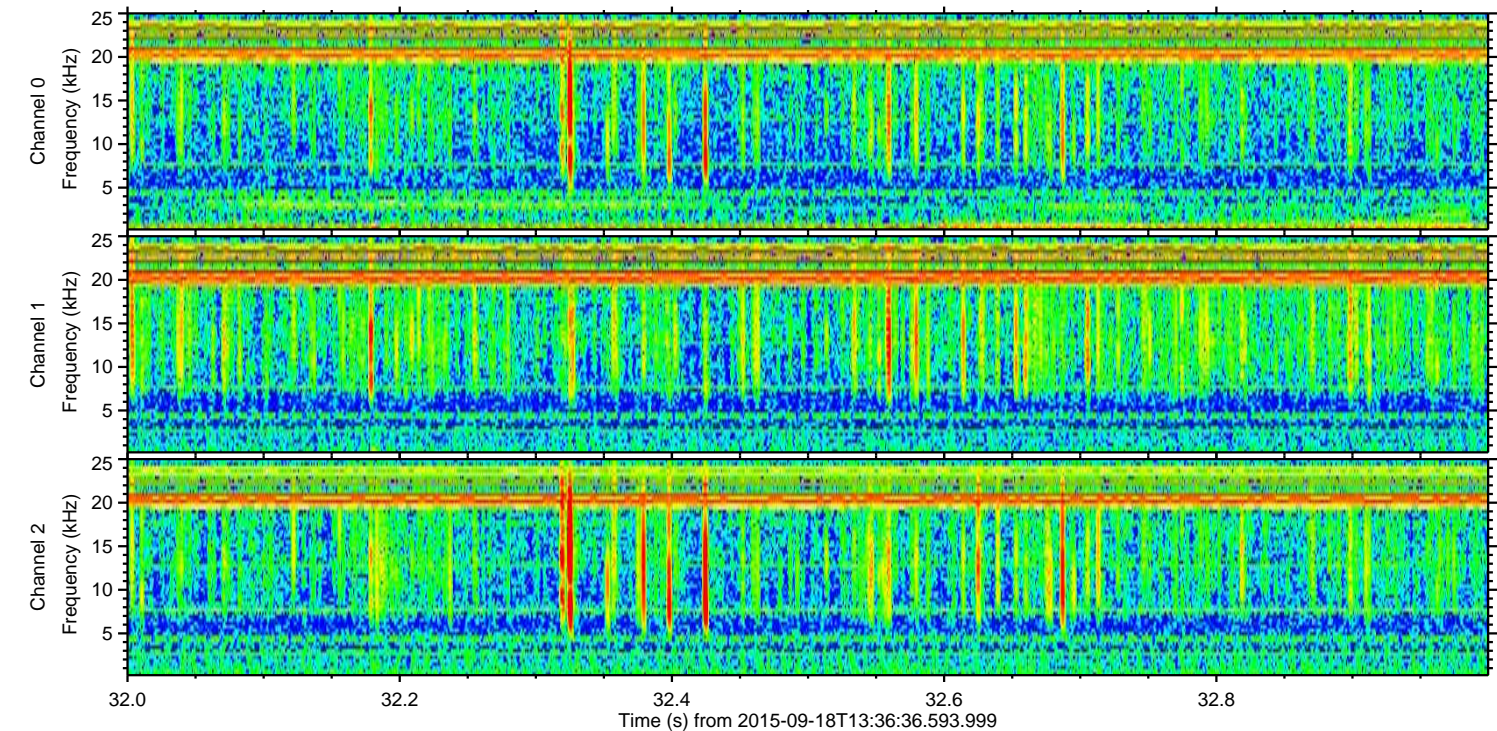
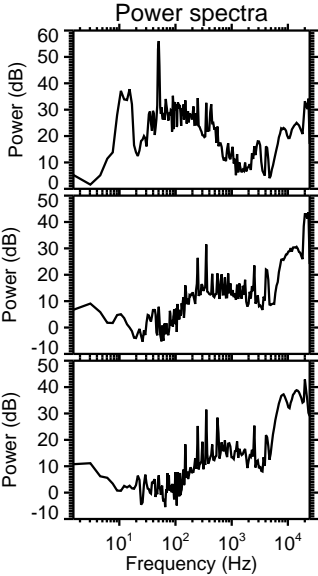
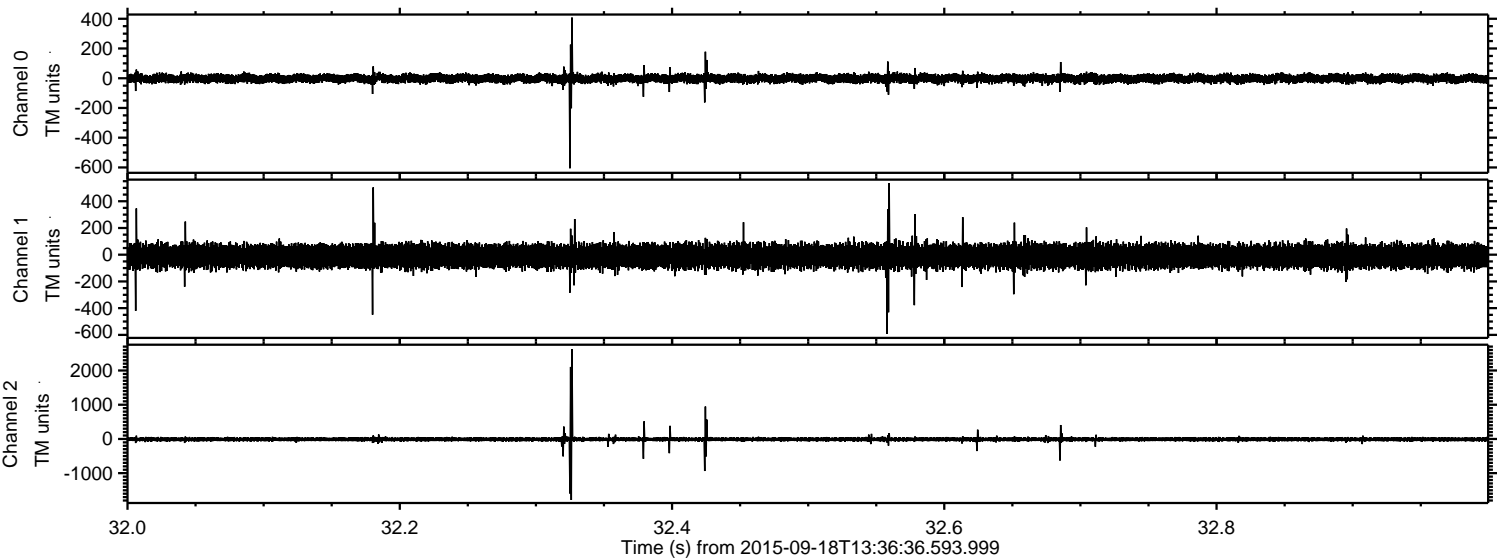


Channel 0
mn: -511
mx: 785
 μ : -1.9
 σ : 15.1

Channel 1
mn: -1736
mx: 2049
 μ : -11.1
 σ : 46.6

Channel 2
mn: -2664
mx: 1791
 μ : -10.6
 σ : 31.8

Processed Tue Oct 13 23:53:53 2015 by ELM ver.2012-10-06 from 001__elm20150918_133635__dat00.bin



Processed Tue Oct 13 23:53:56 2015 by ELM ver.2012-10-06 from 001__elm20150918_133635__dat00.bin

