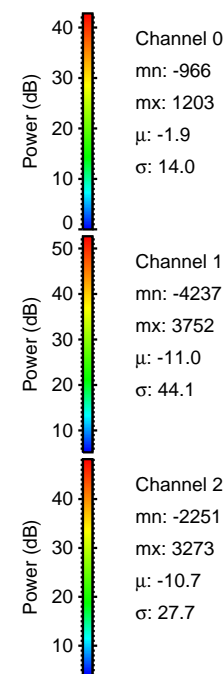
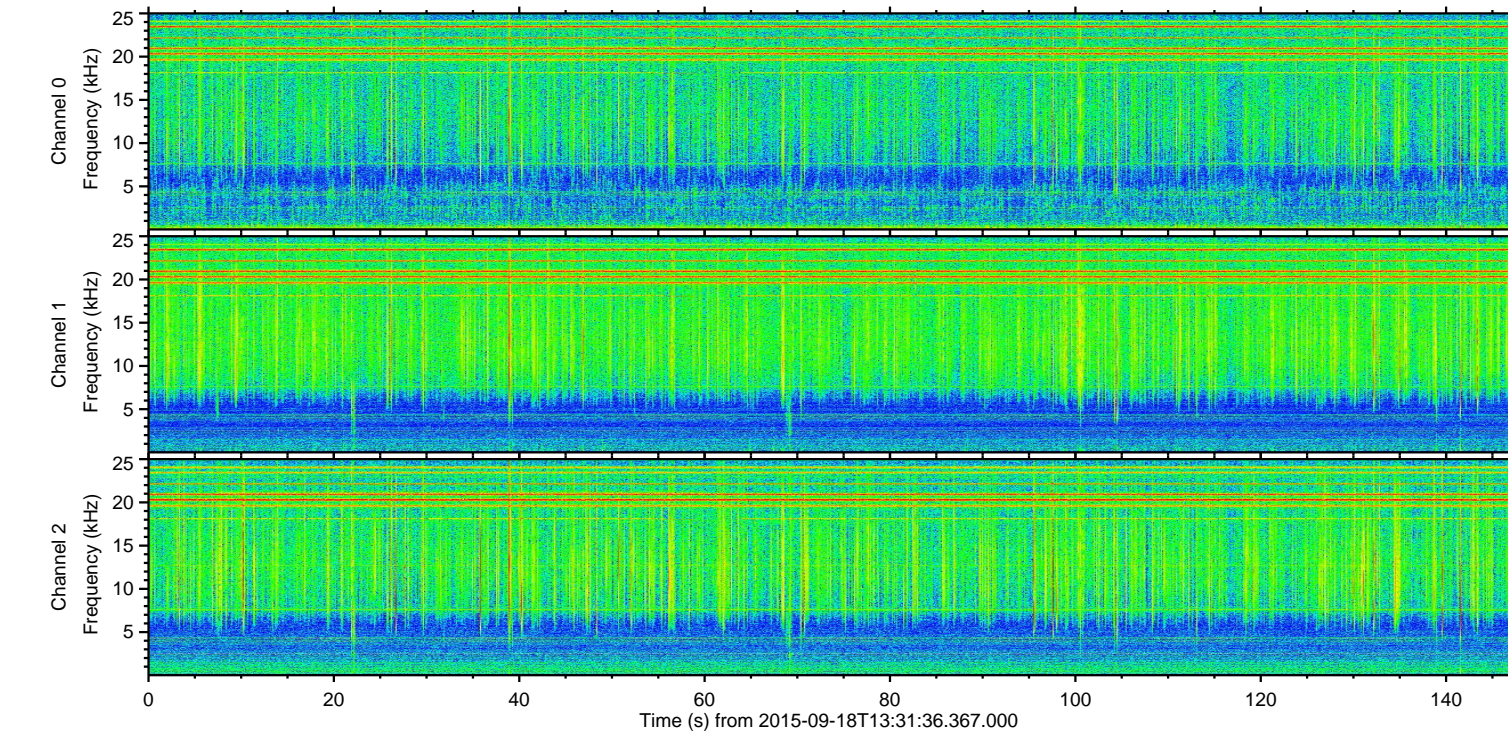
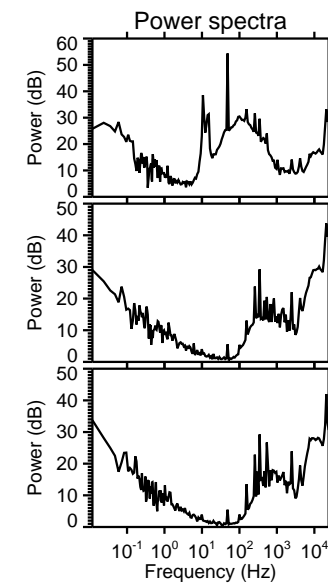
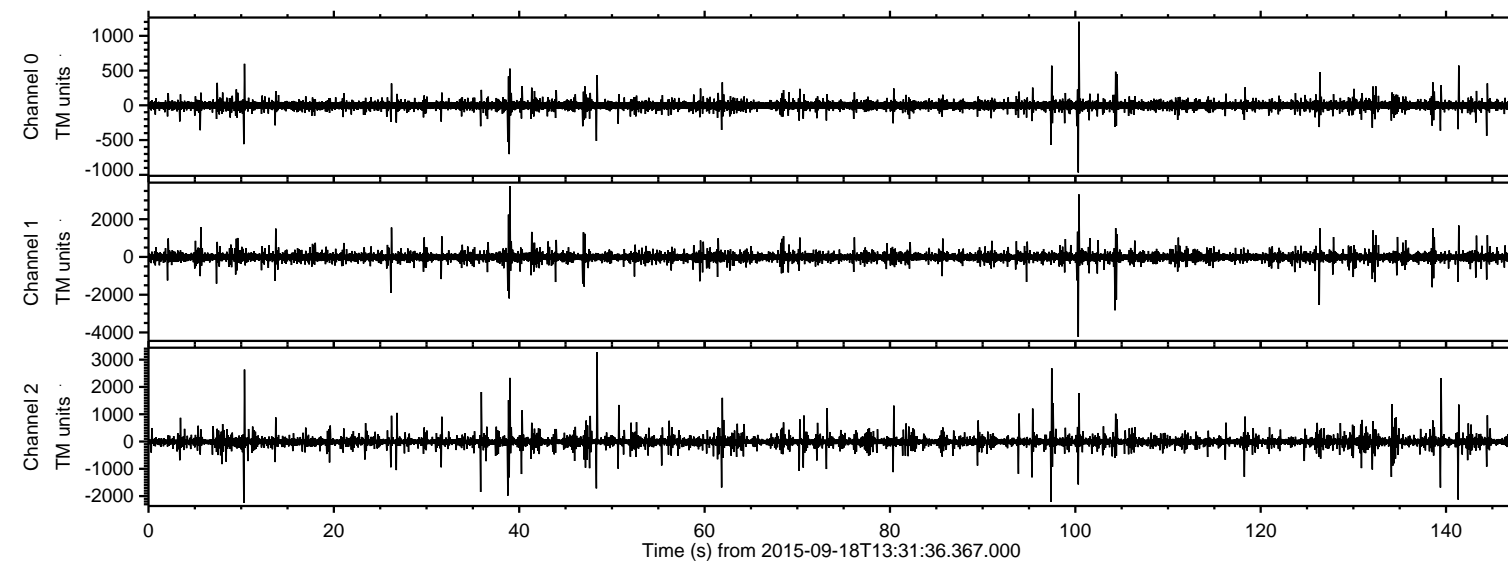


# ELMAVAN 3D WAVEFORMS (Measured data sampled at 50 kHz) 51000 packets of 144 samples from 2015-09-18T13:31:36.367.000.

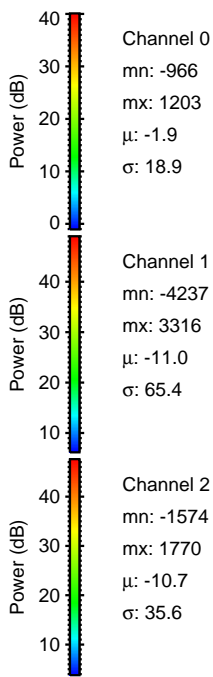
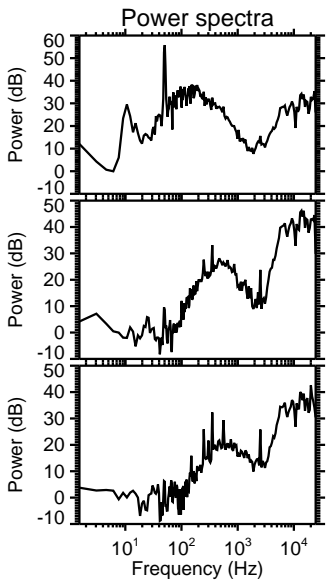
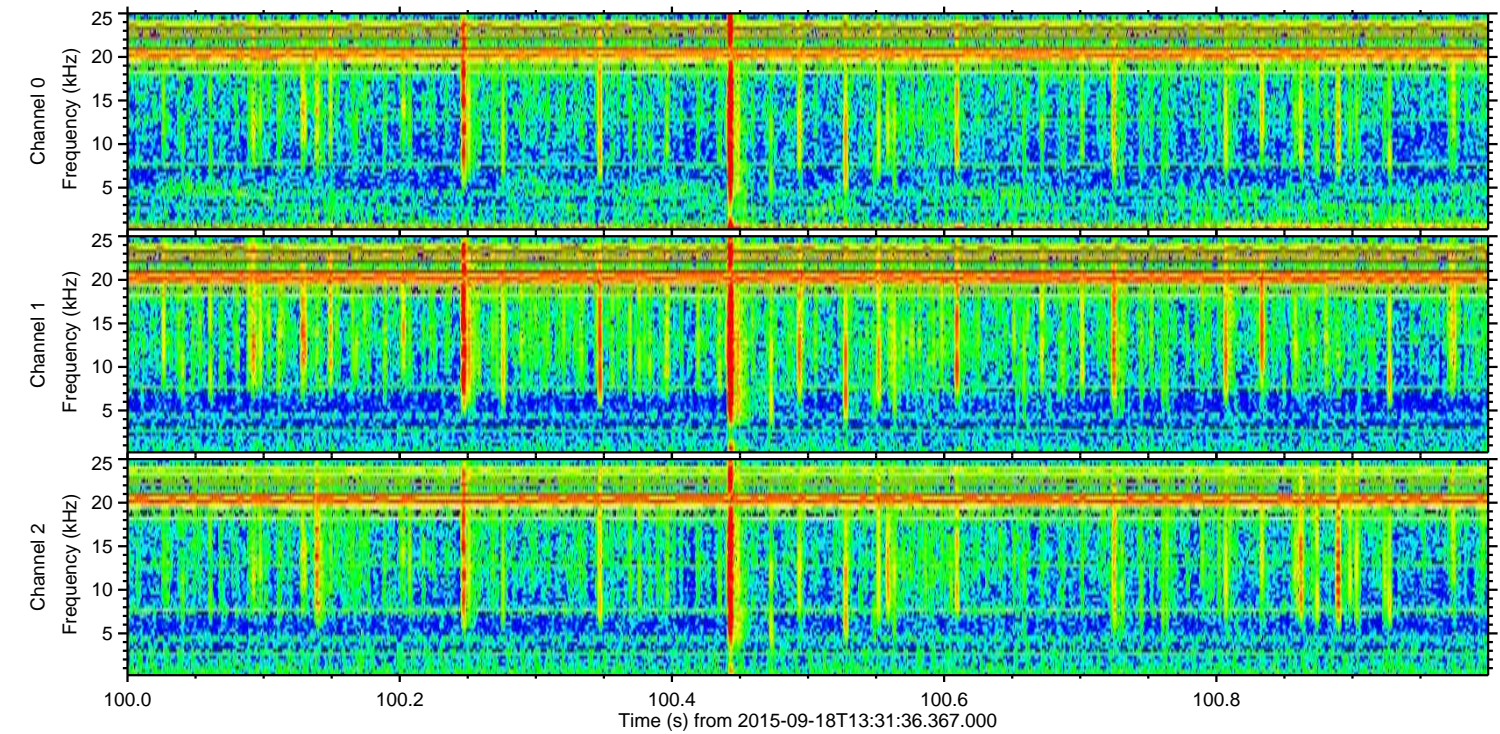
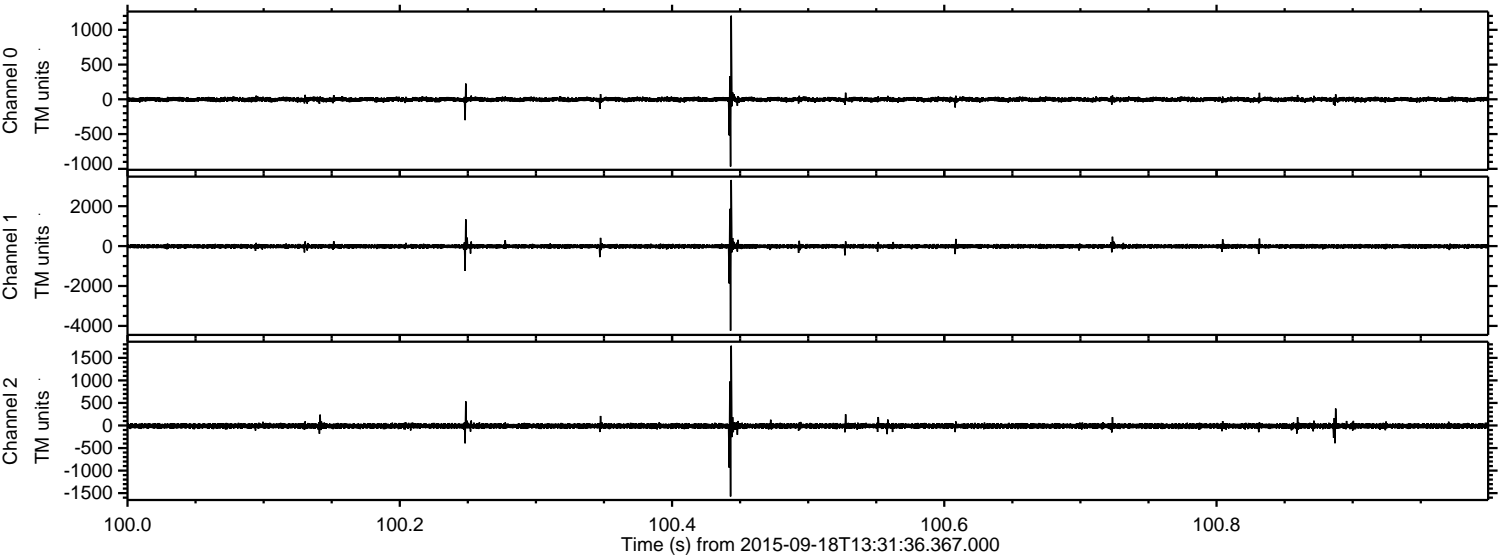
Processed Tue Oct 13 23:50:50 2015 by ELM ver.2012-10-06 from 001\_\_elm20150918\_133135\_\_dat00.bin





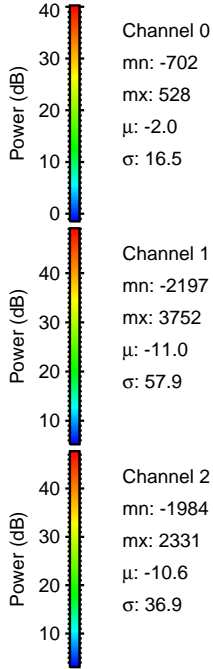
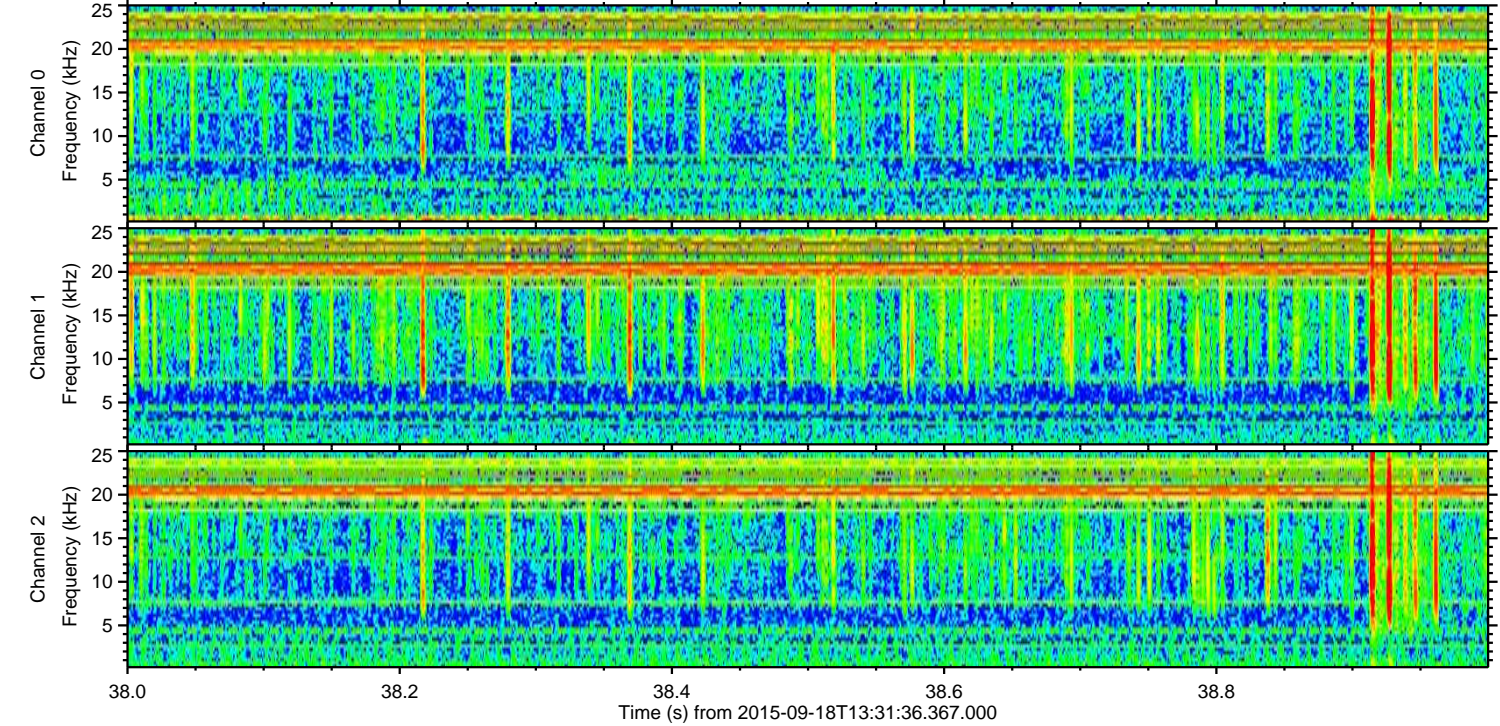
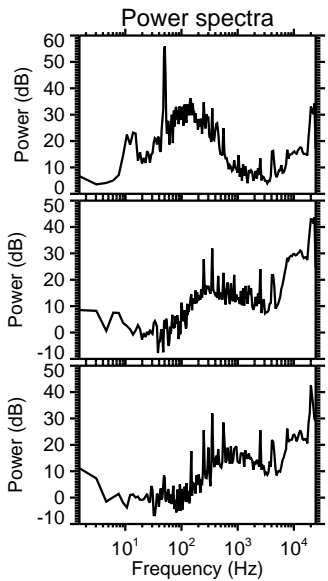
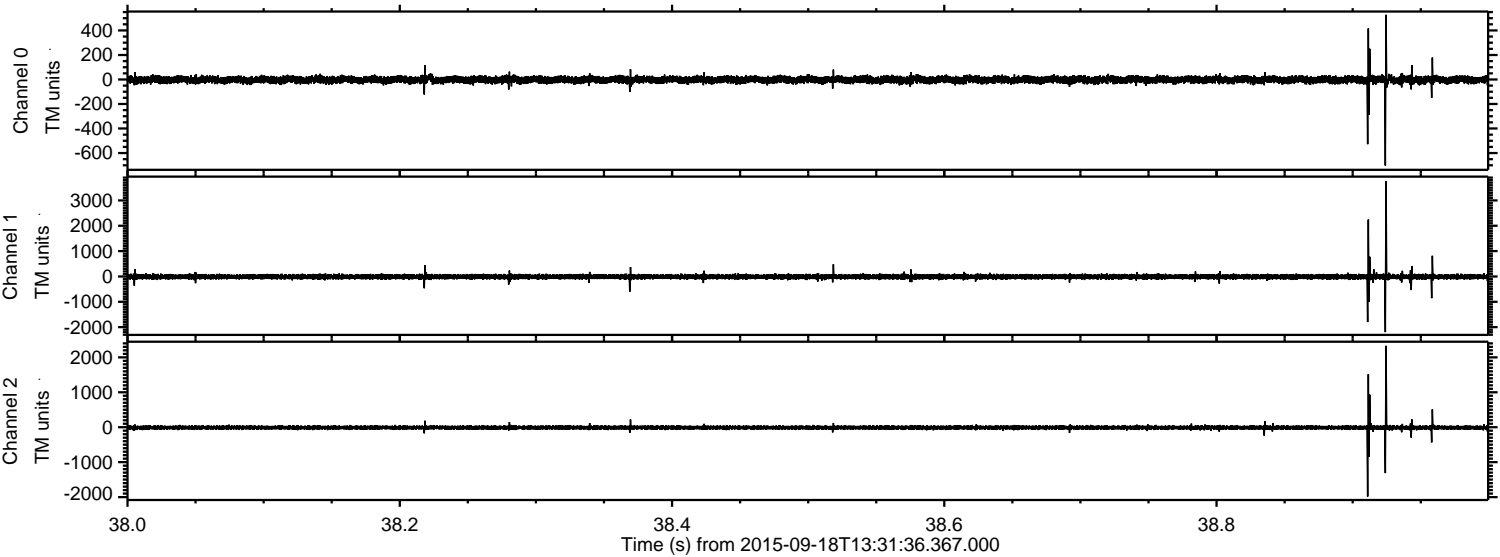
ELMAVAN 3D WAVEFORMS (Measured data sampled at 50 kHz) 51000 packets of 144 samples from 2015-09-18T13:31:36.367.000. Part 101/147

Processed Tue Oct 13 23:51:13 2015 by ELM ver.2012-10-06 from 001\_\_elm20150918\_133135\_\_dat00.bin





Processed Tue Oct 13 23:51:15 2015 by ELM ver.2012-10-06 from 001\_\_elm20150918\_133135\_\_dat00.bin



Channel 0  
mn: -702  
mx: 528  
 $\mu$ : -2.0  
 $\sigma$ : 16.5

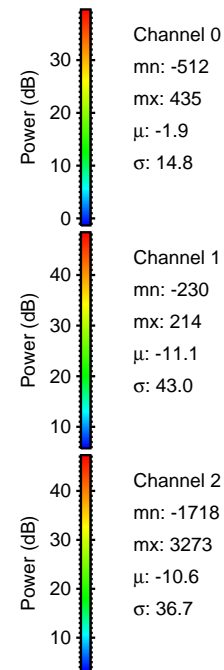
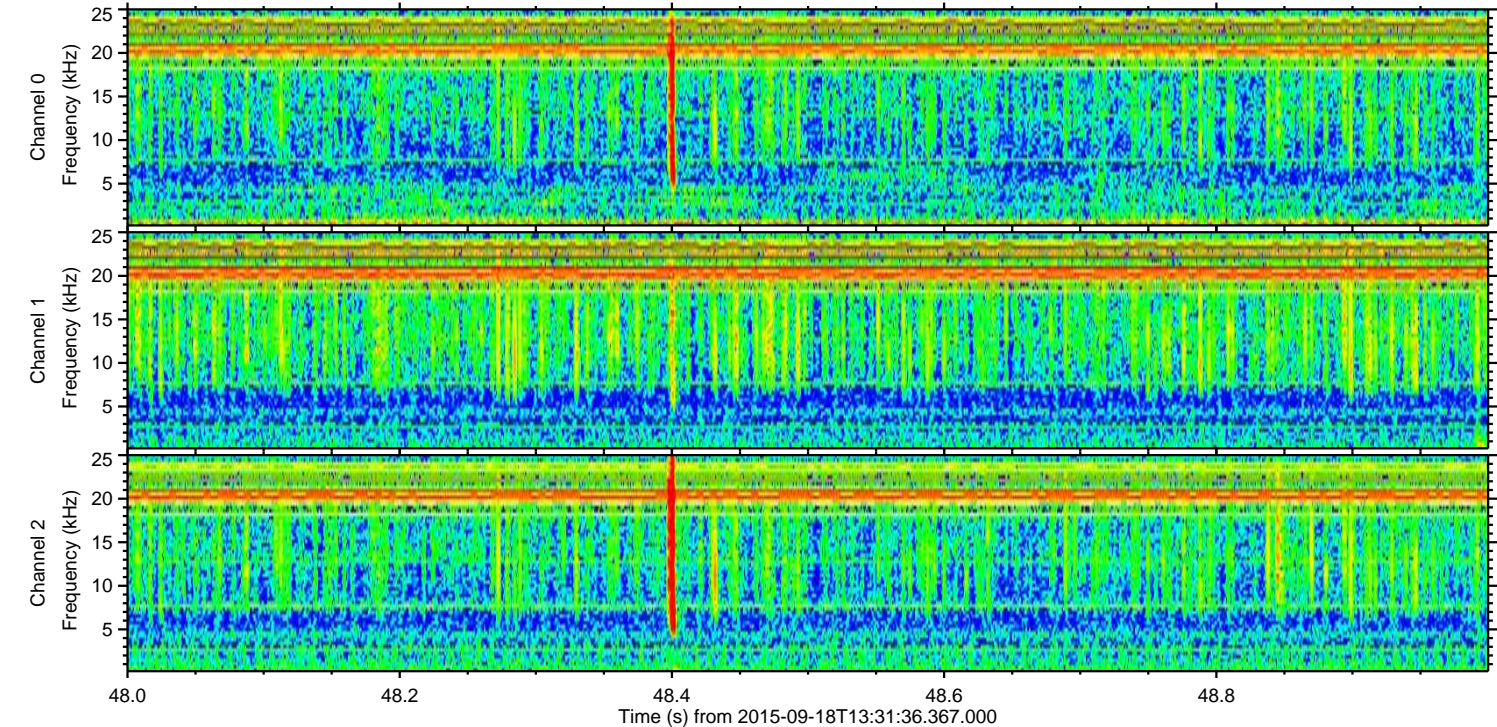
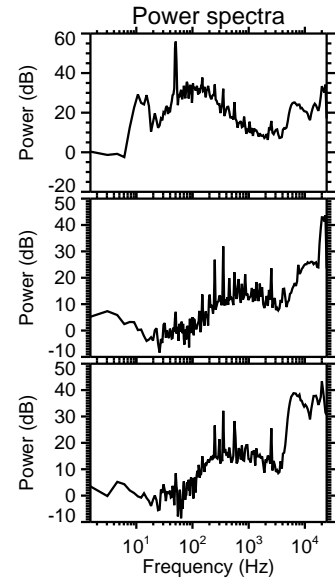
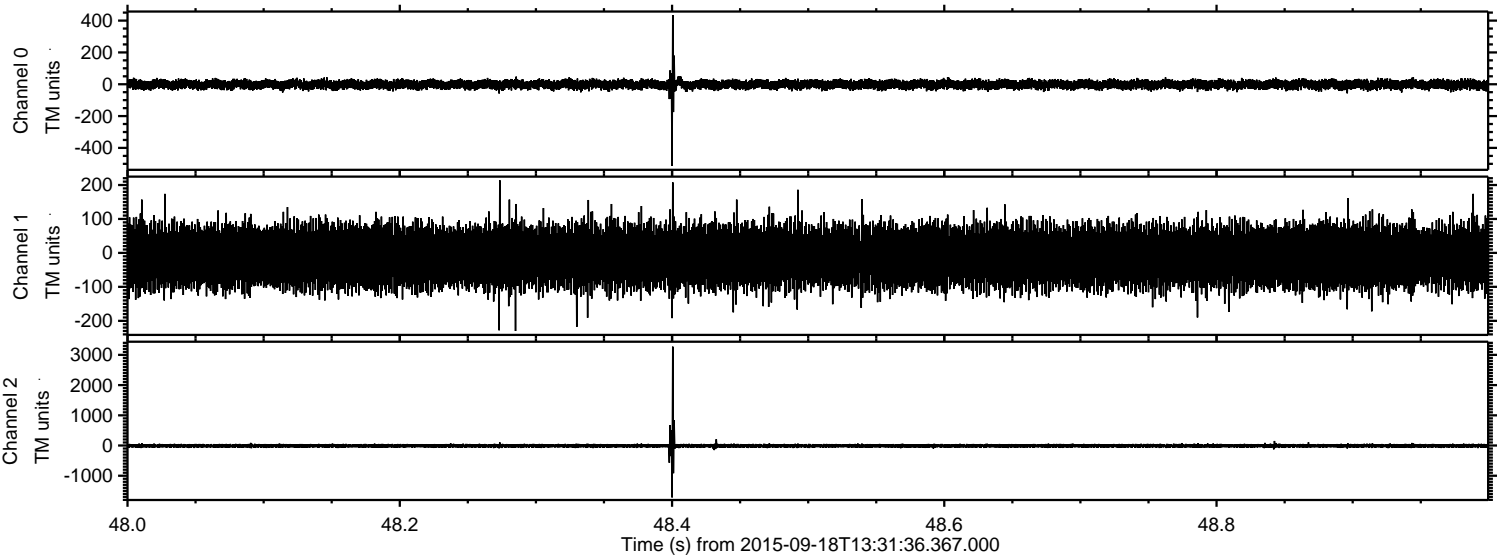
Channel 1  
mn: -2197  
mx: 3752  
 $\mu$ : -11.0  
 $\sigma$ : 57.9

Channel 2  
mn: -1984  
mx: 2331  
 $\mu$ : -10.6  
 $\sigma$ : 36.9



ELMAVAN 3D WAVEFORMS (Measured data sampled at 50 kHz) 51000 packets of 144 samples from 2015-09-18T13:31:36.367.000. Part 49/147

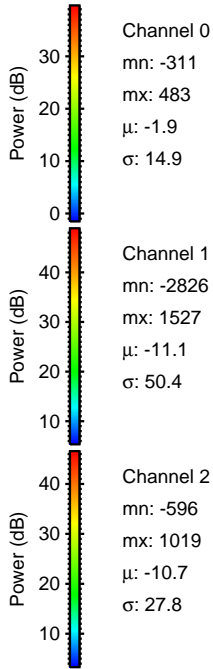
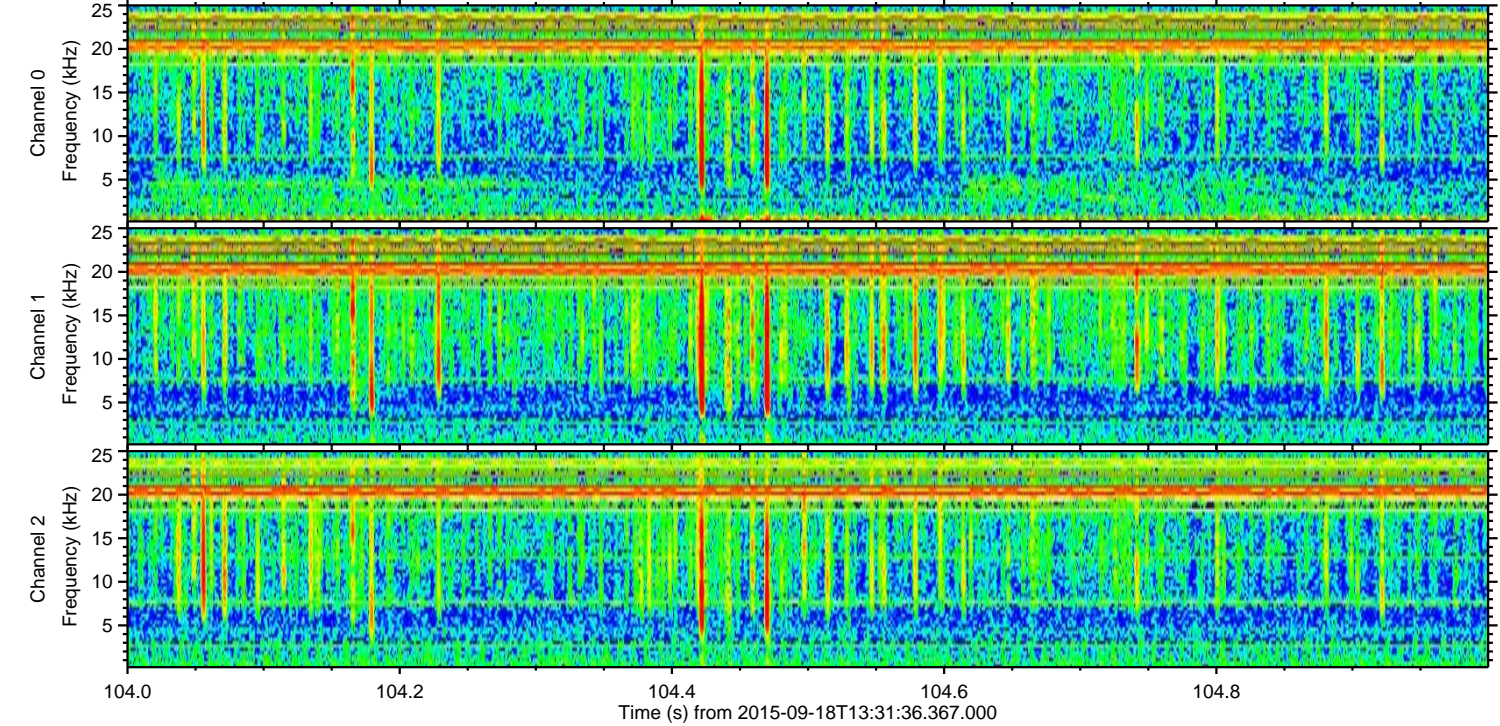
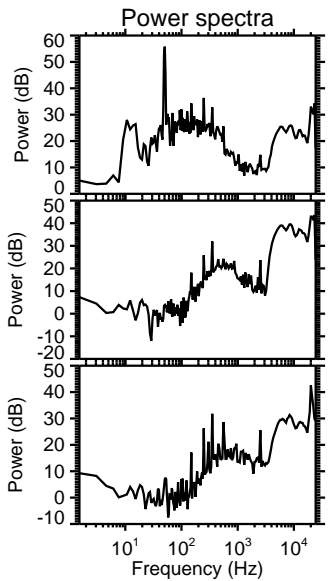
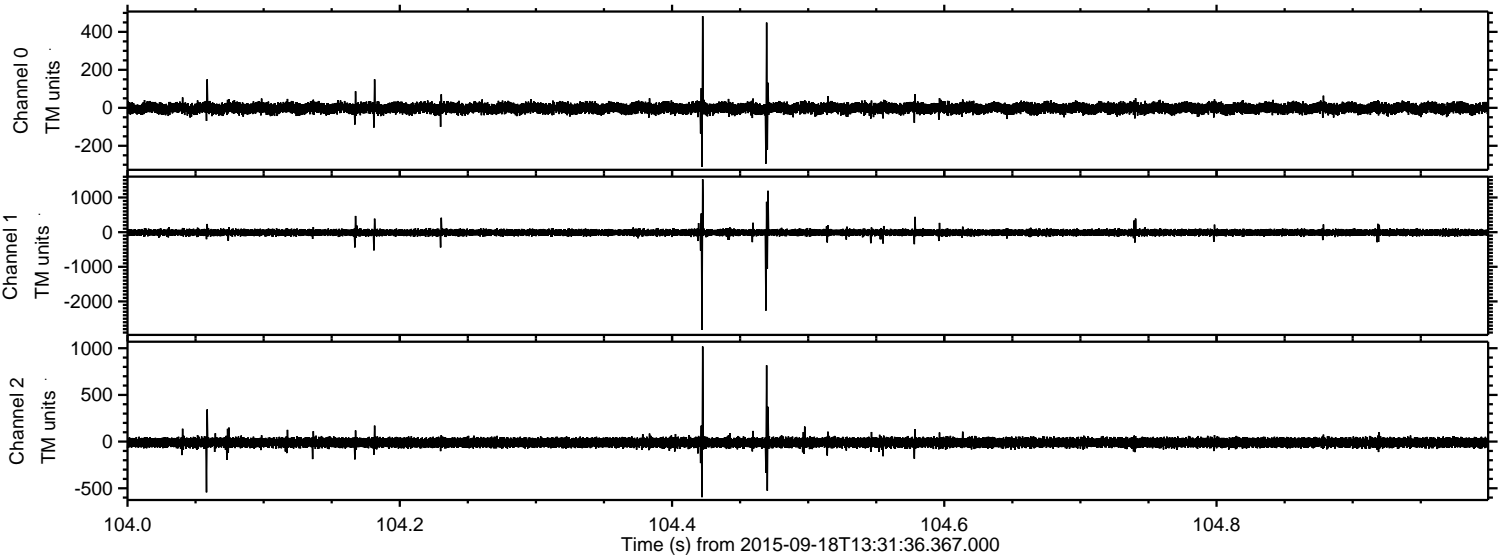
Processed Tue Oct 13 23:51:16 2015 by ELM ver.2012-10-06 from 001\_\_elm20150918\_133135\_\_dat00.bin





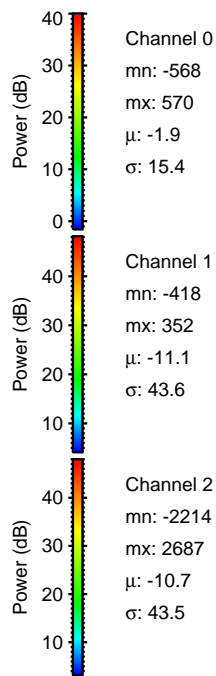
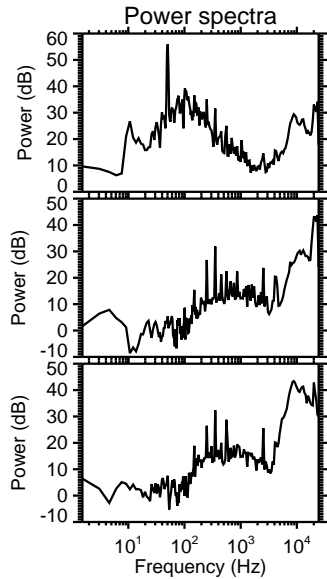
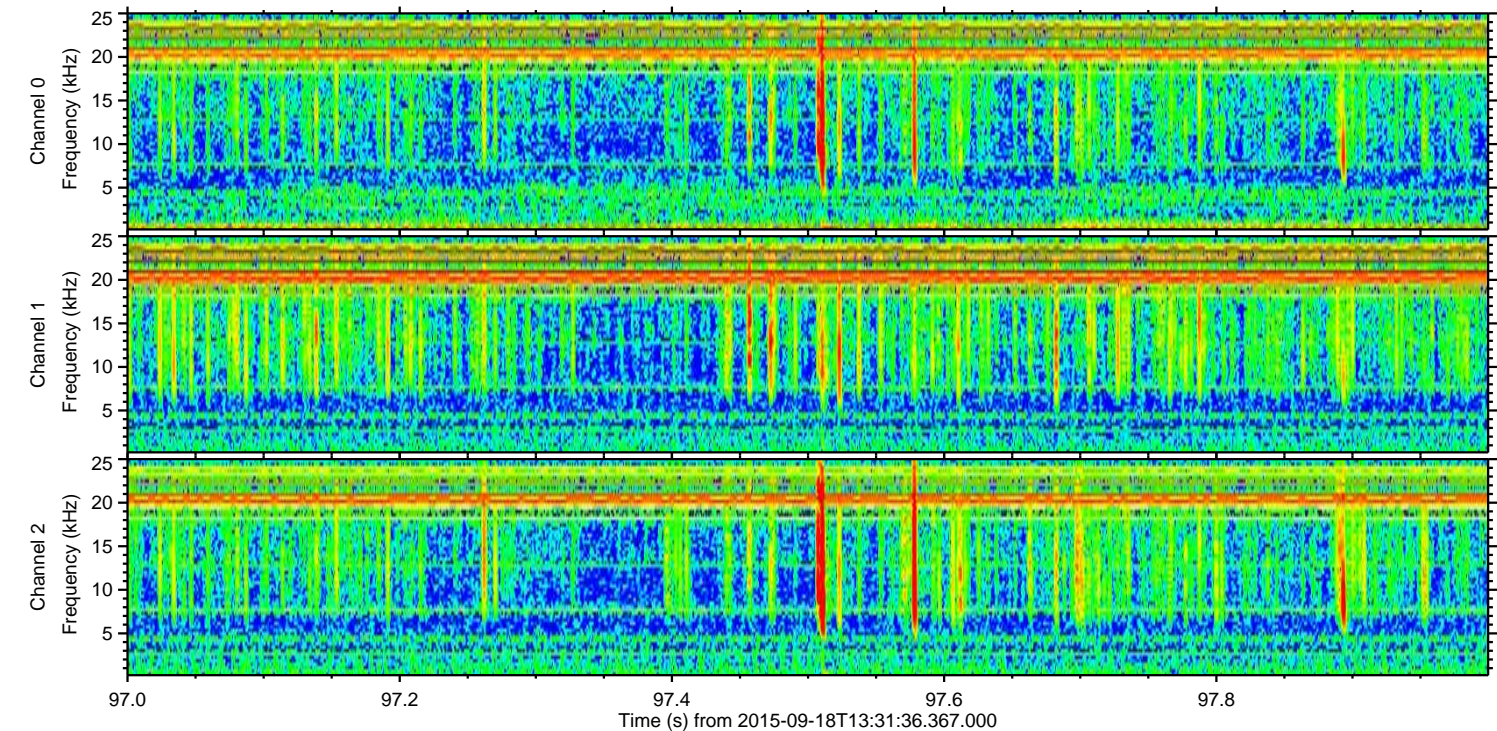
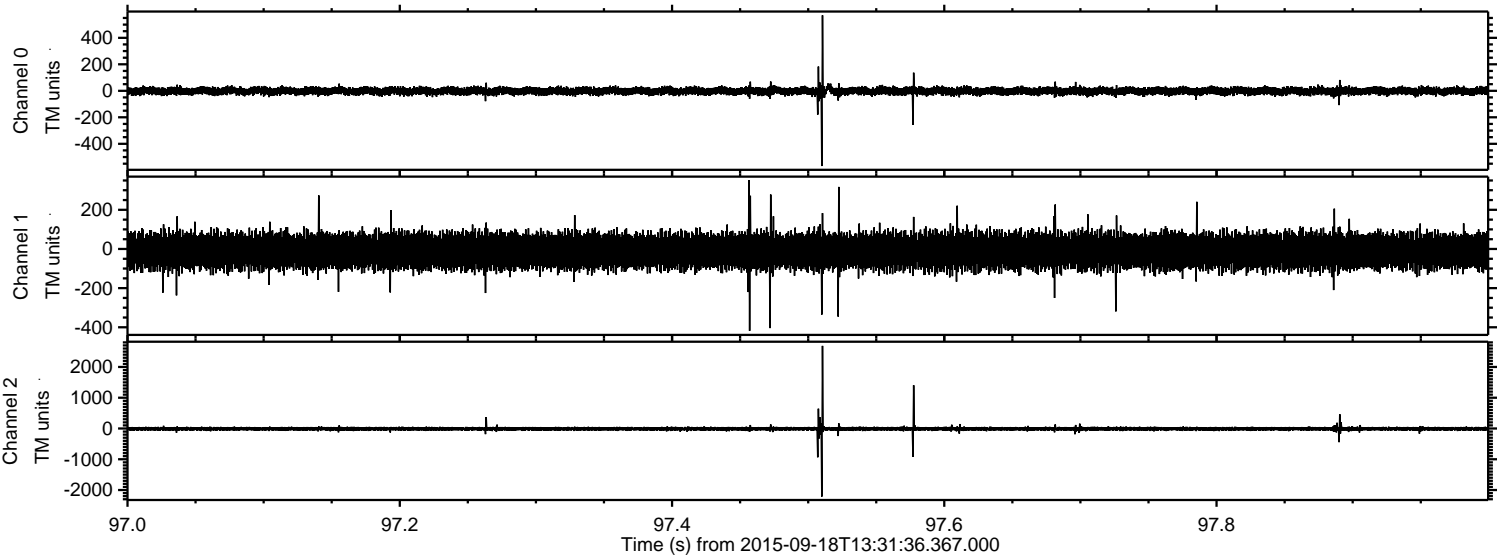
ELMAVAN 3D WAVEFORMS (Measured data sampled at 50 kHz) 51000 packets of 144 samples from 2015-09-18T13:31:36.367.000. Part 105/147

Processed Tue Oct 13 23:51:18 2015 by ELM ver.2012-10-06 from 001\_\_elm20150918\_133135\_\_dat00.bin



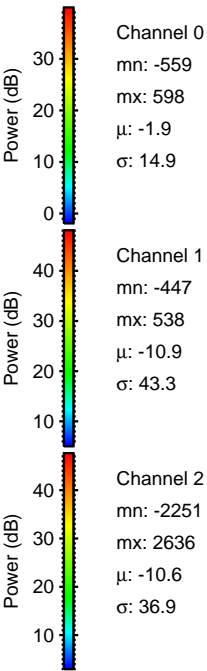
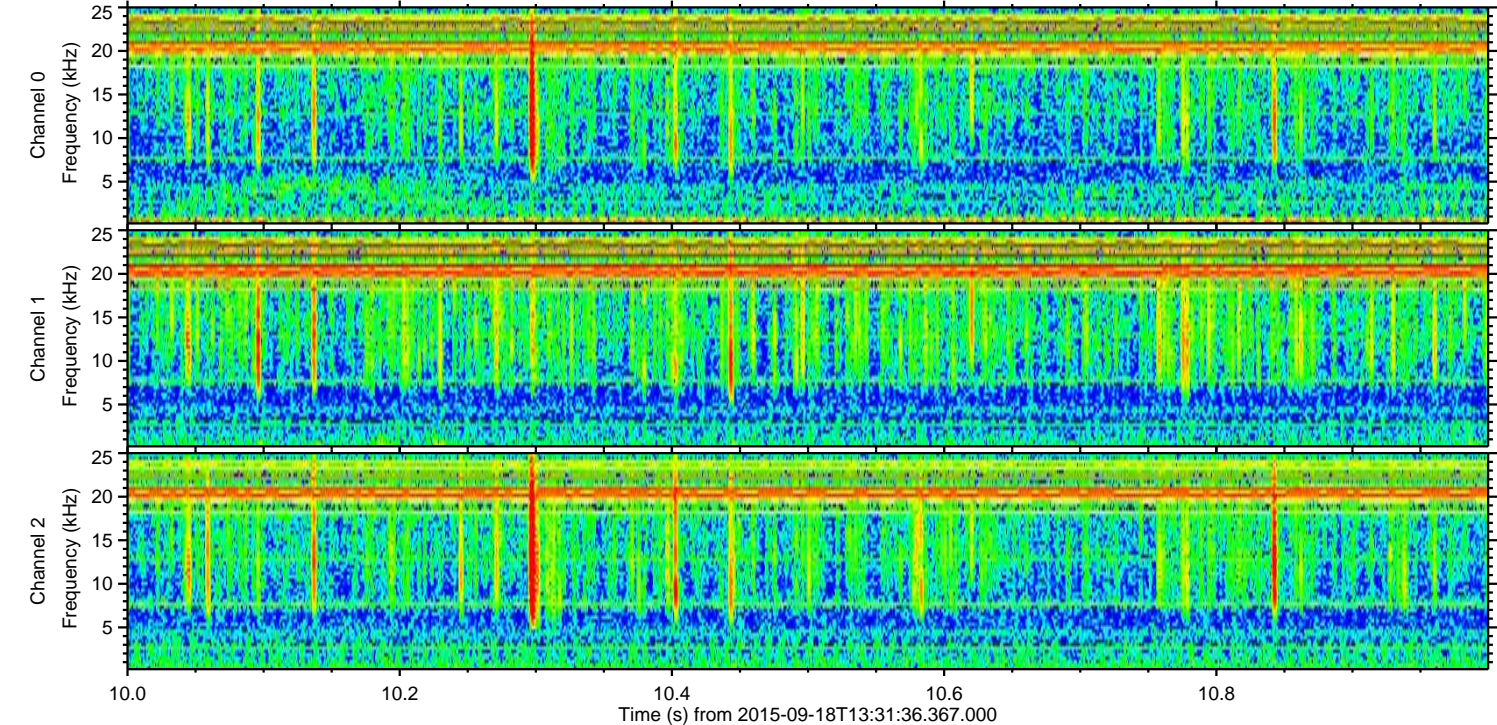
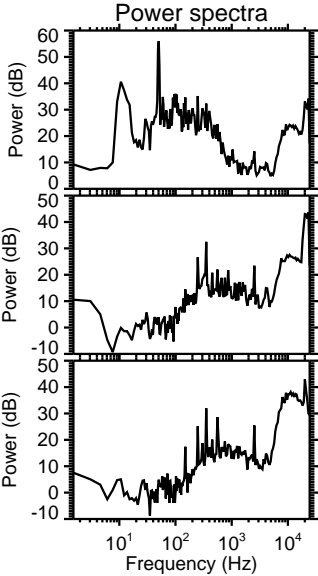
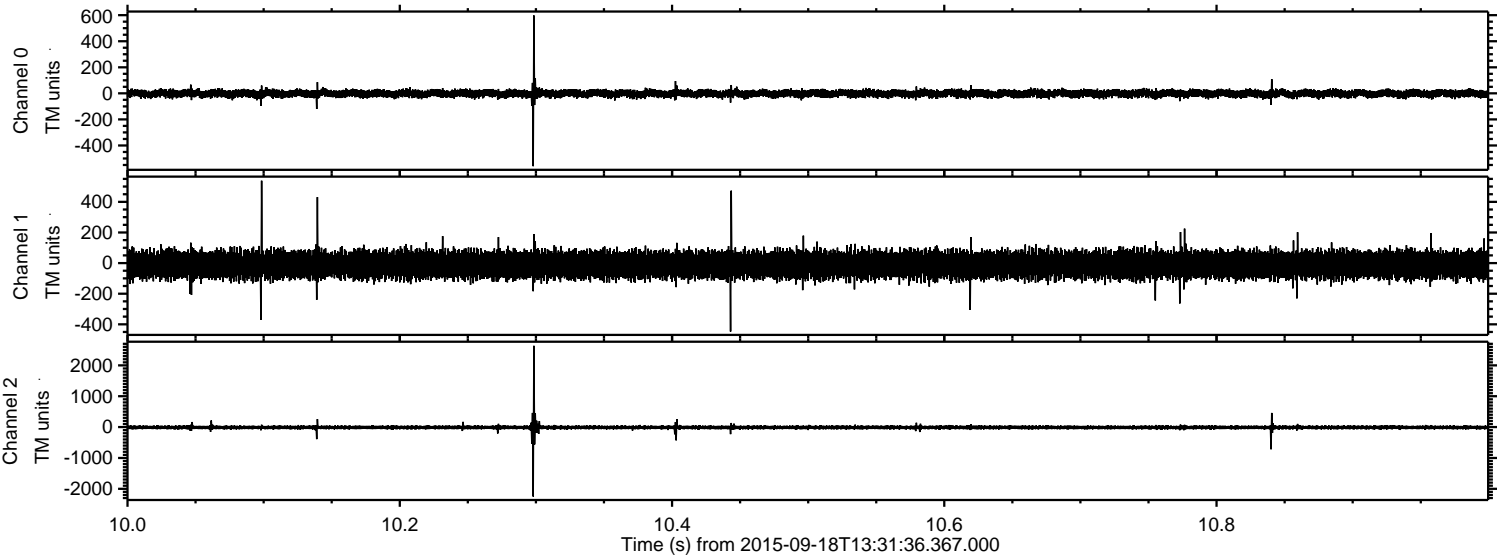


Processed Tue Oct 13 23:51:21 2015 by ELM ver.2012-10-06 from 001\_\_elm20150918\_133135\_\_dat00.bin





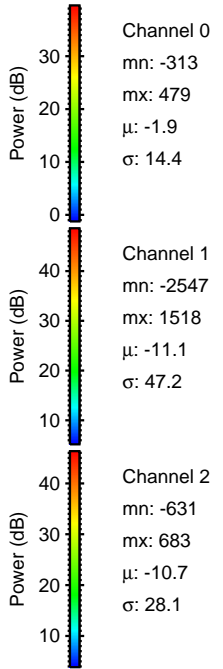
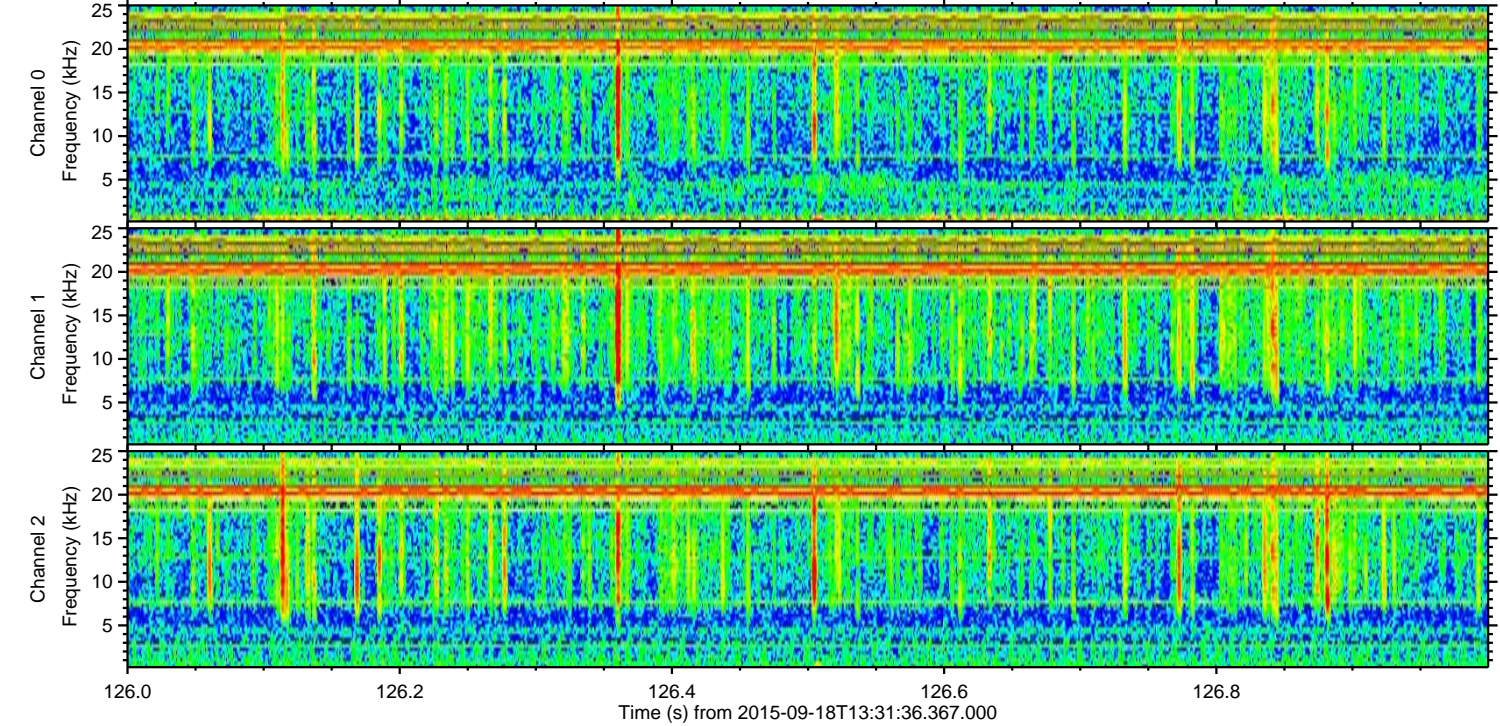
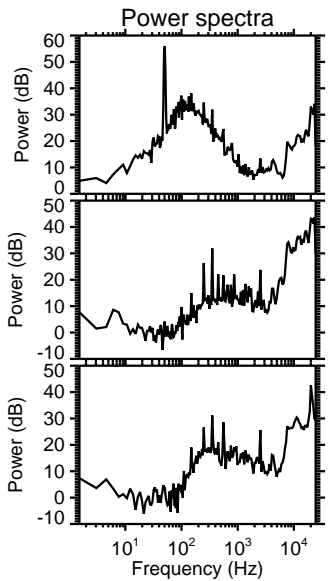
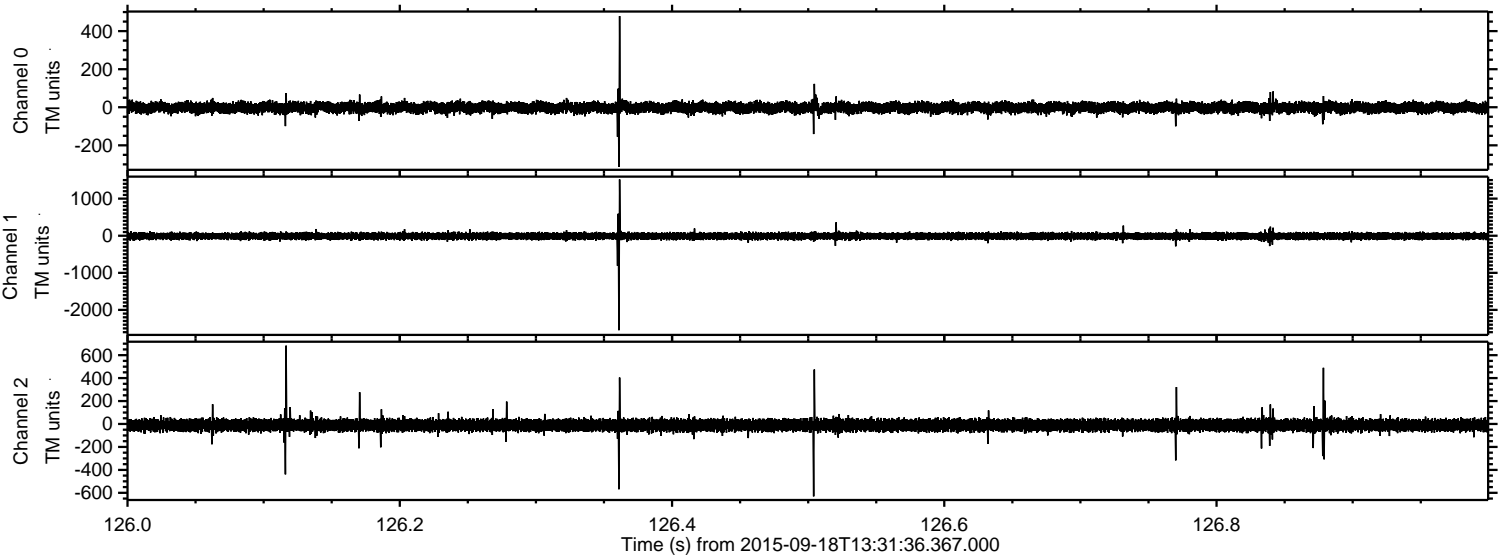
Processed Tue Oct 13 23:51:23 2015 by ELM ver.2012-10-06 from 001\_\_elm20150918\_133135\_\_dat00.bin





ELMAVAN 3D WAVEFORMS (Measured data sampled at 50 kHz) 51000 packets of 144 samples from 2015-09-18T13:31:36.367.000. Part 127/147

Processed Tue Oct 13 23:51:25 2015 by ELM ver.2012-10-06 from 001\_\_elm20150918\_133135\_\_dat00.bin



Channel 0  
mn: -313  
mx: 479  
 $\mu$ : -1.9  
 $\sigma$ : 14.4

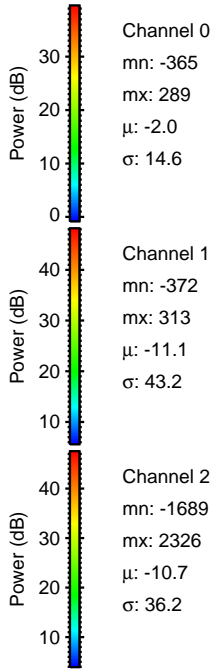
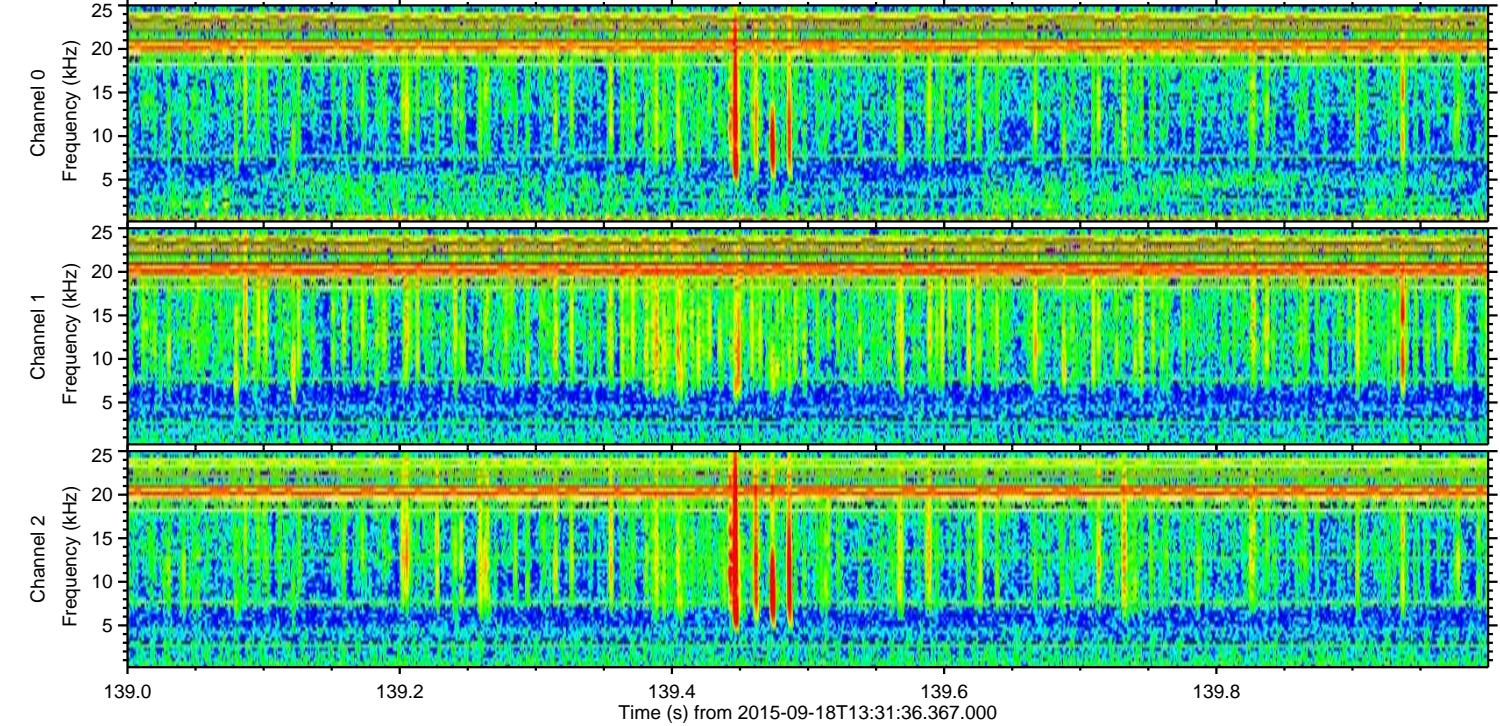
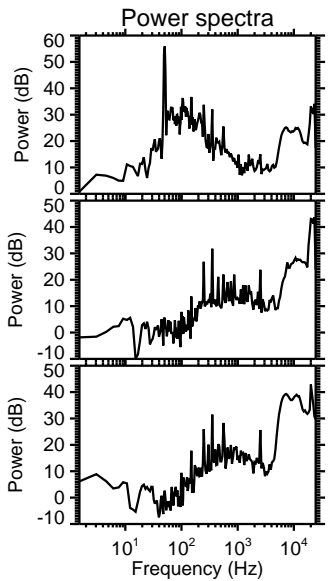
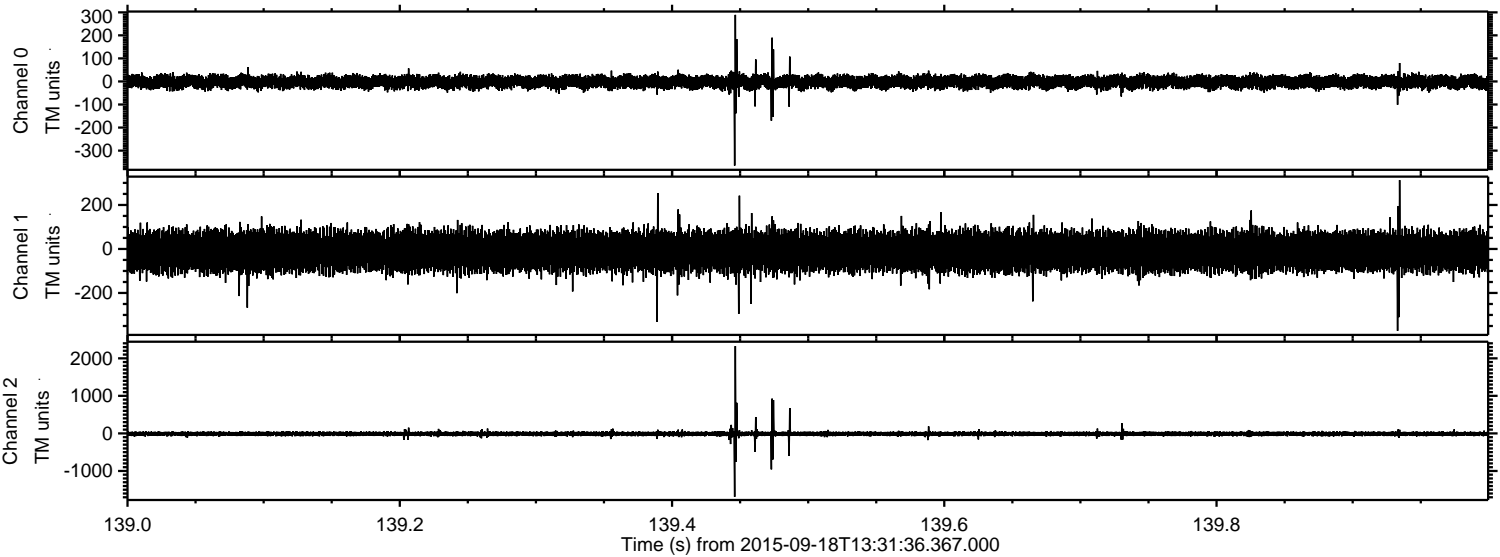
Channel 1  
mn: -2547  
mx: 1518  
 $\mu$ : -11.1  
 $\sigma$ : 47.2

Channel 2  
mn: -631  
mx: 683  
 $\mu$ : -10.7  
 $\sigma$ : 28.1



ELMAVAN 3D WAVEFORMS (Measured data sampled at 50 kHz) 51000 packets of 144 samples from 2015-09-18T13:31:36.367.000. Part 140/147

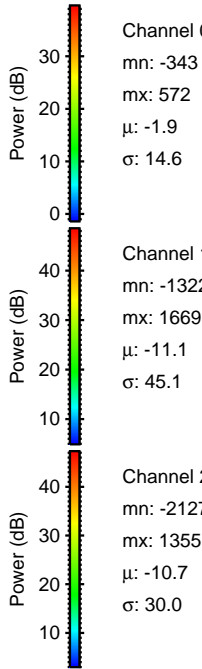
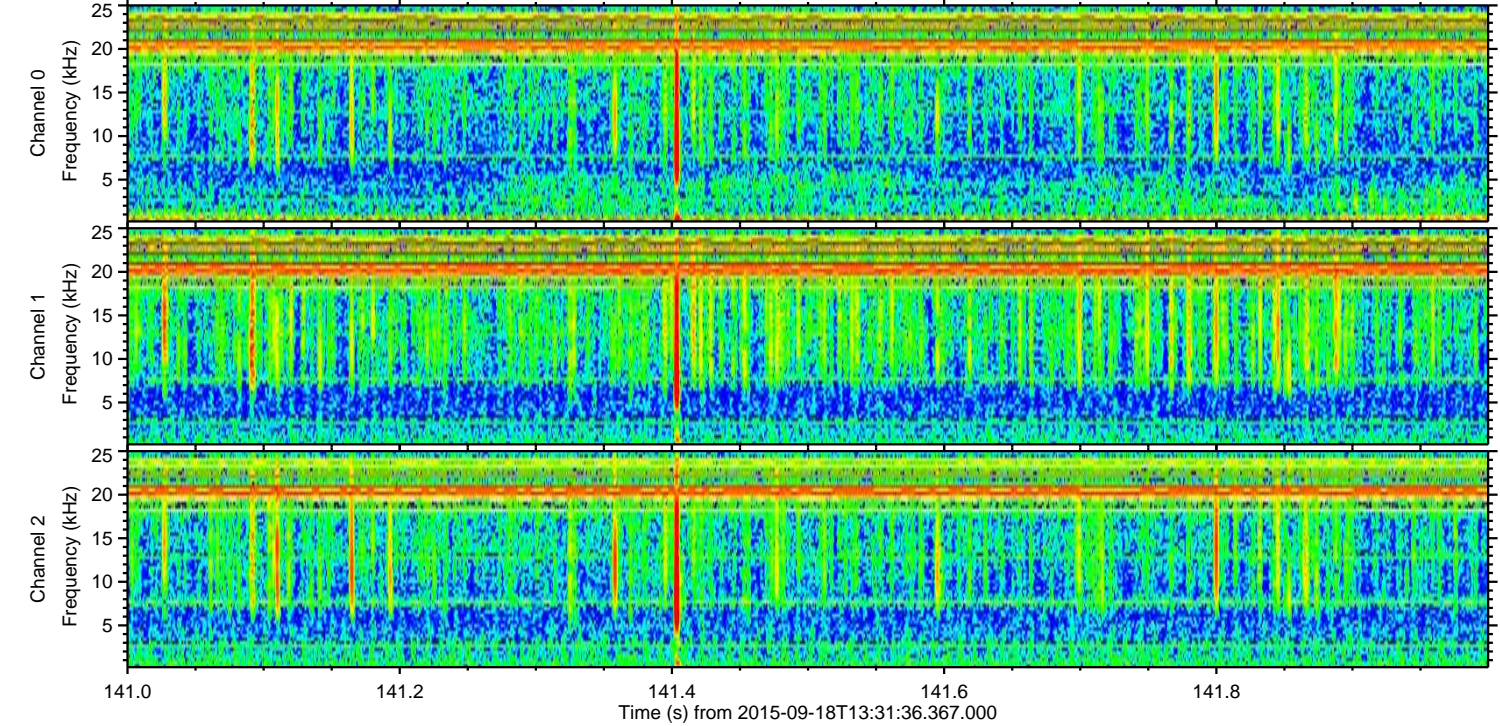
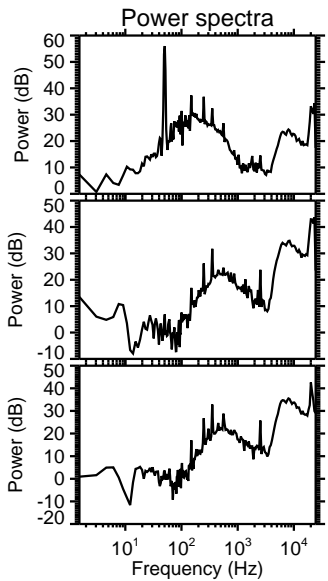
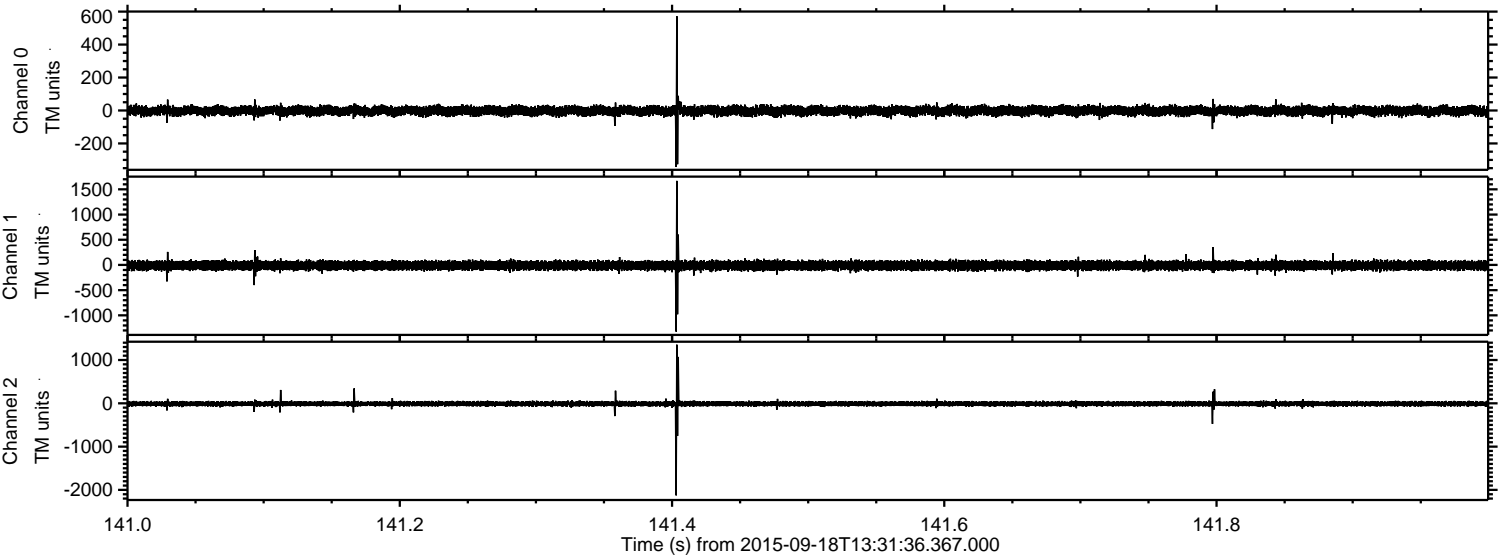
Processed Tue Oct 13 23:51:27 2015 by ELM ver.2012-10-06 from 001\_\_elm20150918\_133135\_\_dat00.bin





ELMAVAN 3D WAVEFORMS (Measured data sampled at 50 kHz) 51000 packets of 144 samples from 2015-09-18T13:31:36.367.000. Part 142/147

Processed Tue Oct 13 23:51:29 2015 by ELM ver.2012-10-06 from 001\_\_elm20150918\_133135\_\_dat00.bin



Channel 0  
mn: -343  
mx: 572  
 $\mu$ : -1.9  
 $\sigma$ : 14.6

Channel 1  
mn: -1322  
mx: 1669  
 $\mu$ : -11.1  
 $\sigma$ : 45.1

Channel 2  
mn: -2127  
mx: 1355  
 $\mu$ : -10.7  
 $\sigma$ : 30.0



ELMAVAN 3D WAVEFORMS (Measured data sampled at 50 kHz) 51000 packets of 144 samples from 2015-09-18T13:31:36.367.000. Part 137/147

