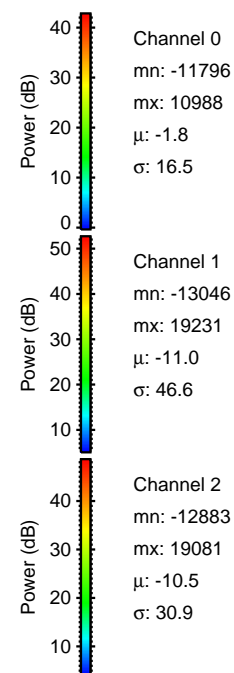
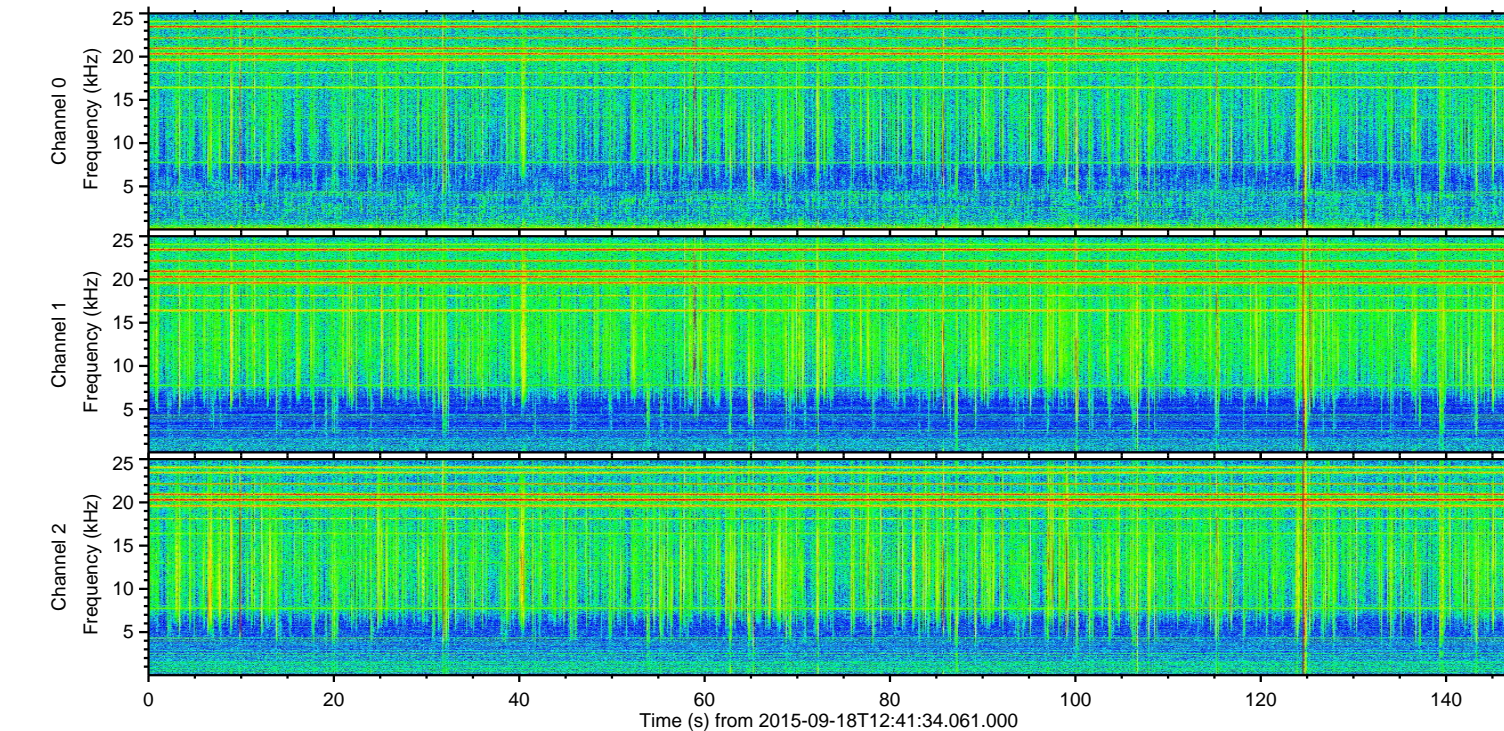
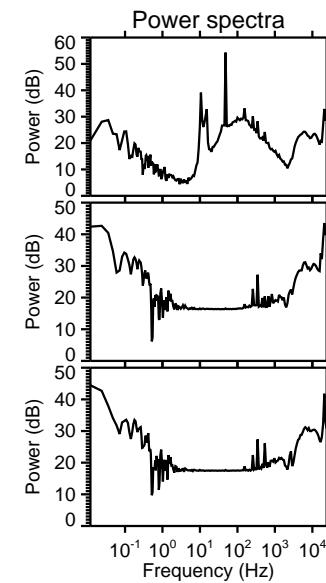
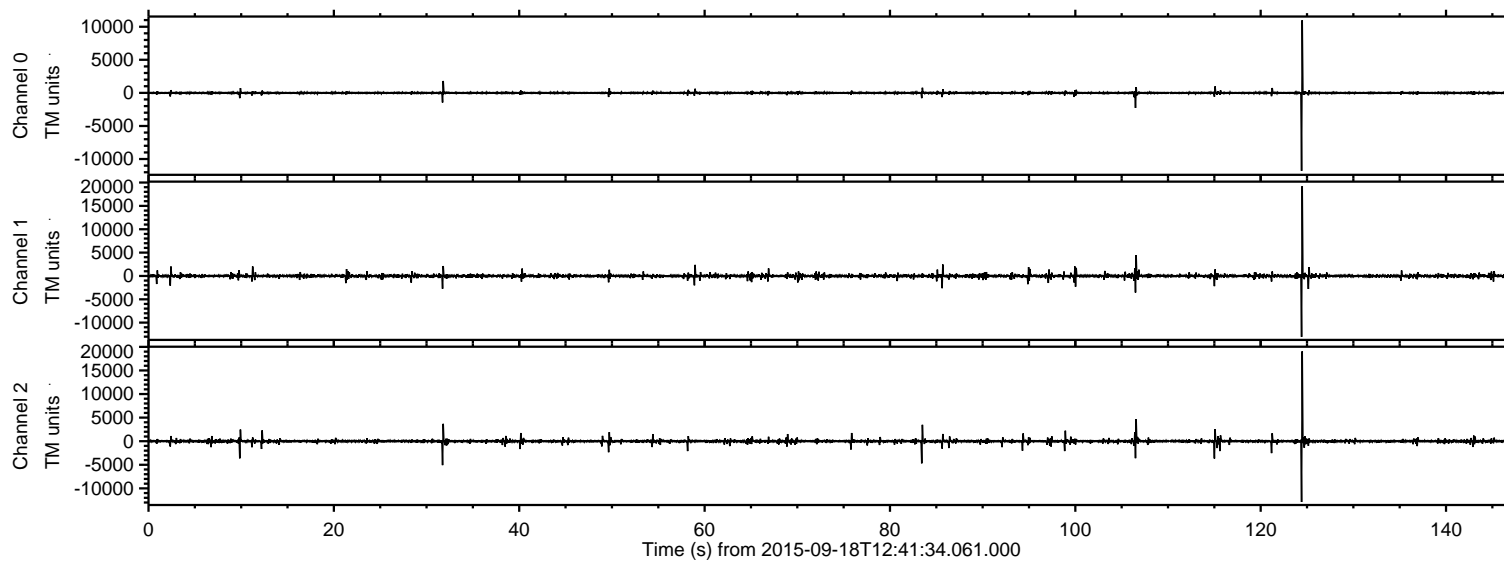


# ELMAVAN 3D WAVEFORMS (Measured data sampled at 50 kHz) 51000 packets of 144 samples from 2015-09-18T12:41:34.061.000.

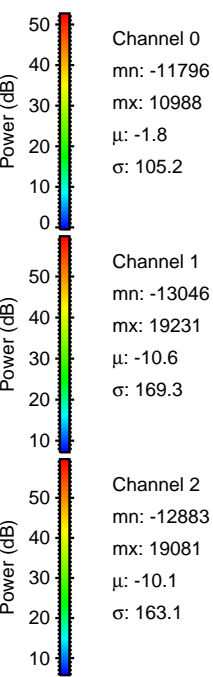
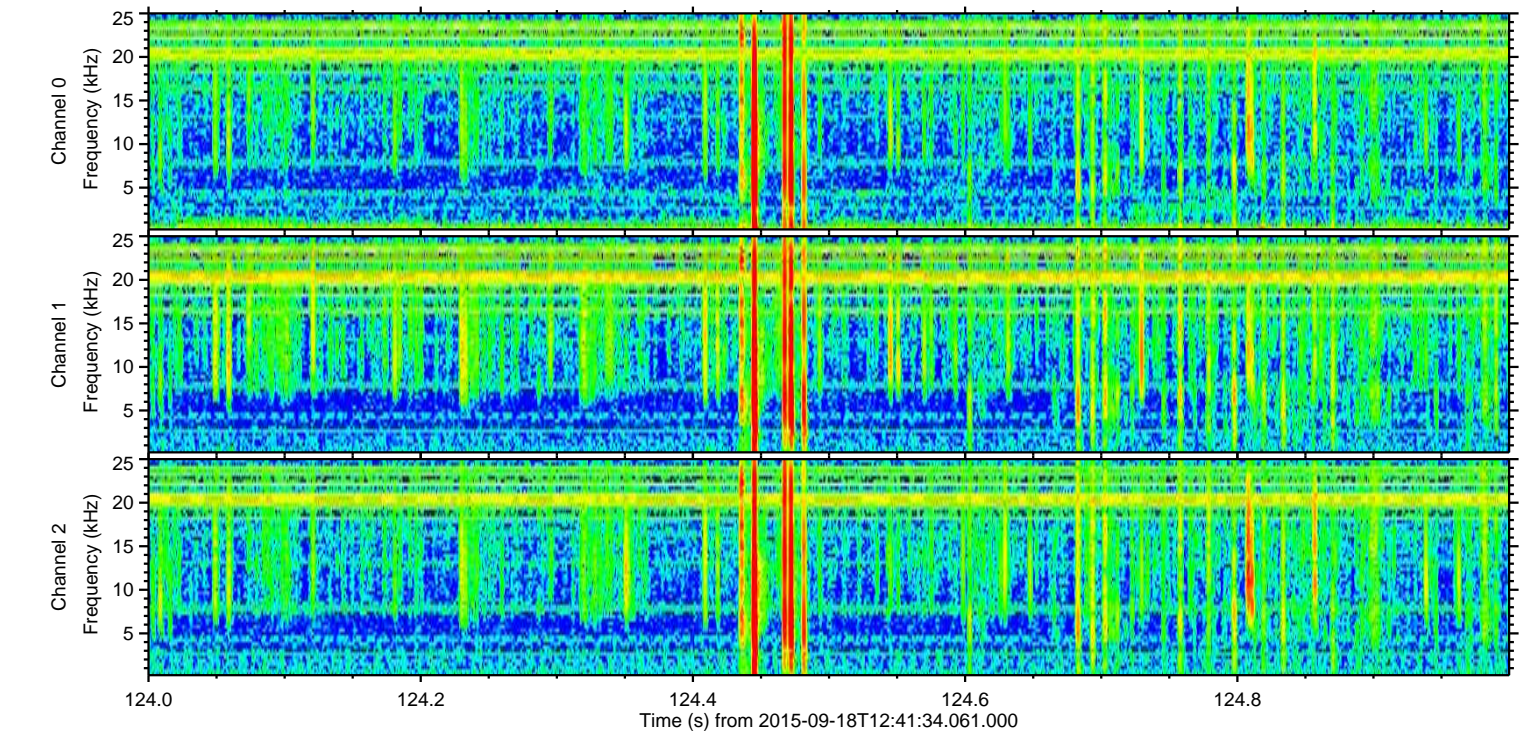
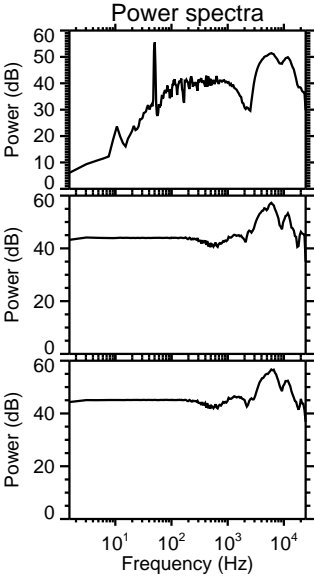
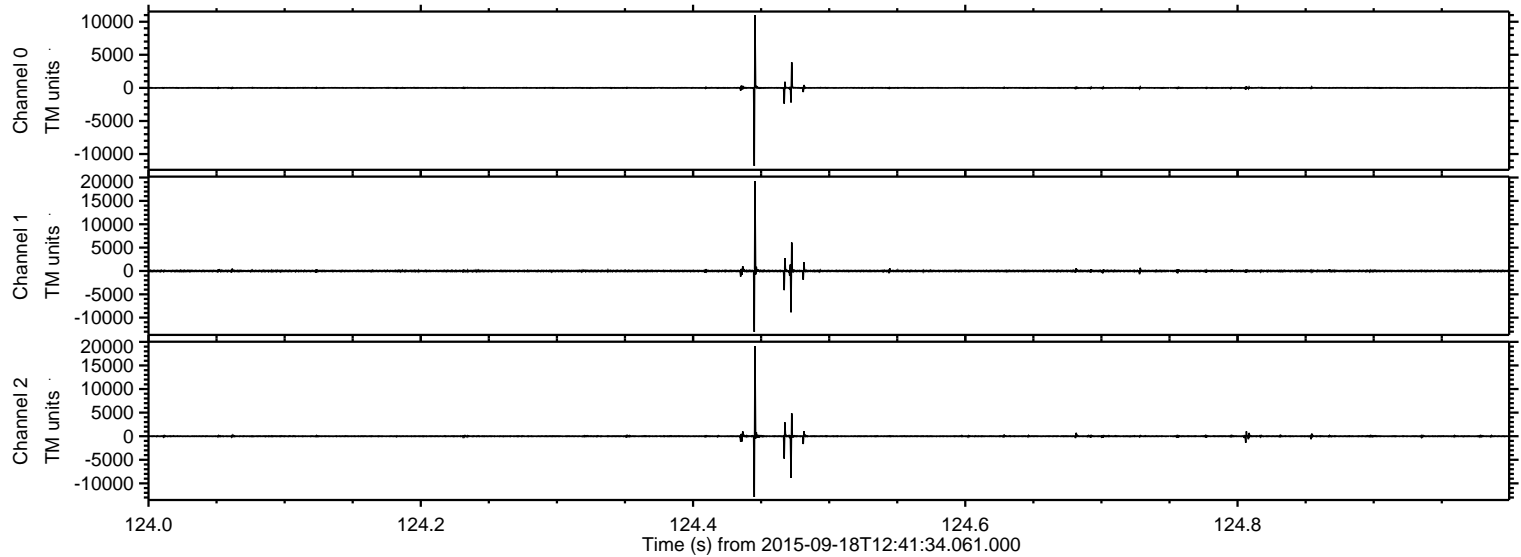
Processed Tue Oct 13 23:30:21 2015 by ELM ver.2012-10-06 from 001\_\_elm20150918\_124133\_\_dat00.bin





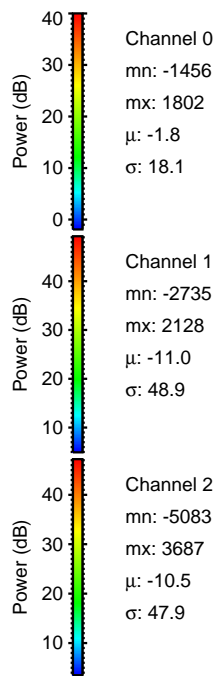
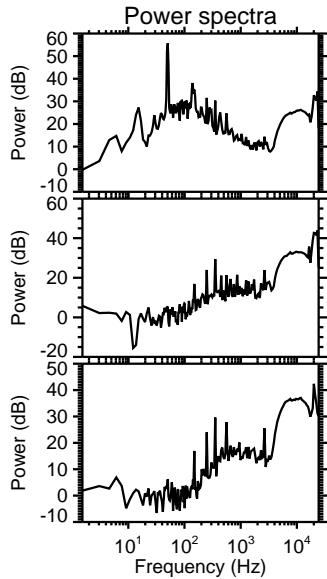
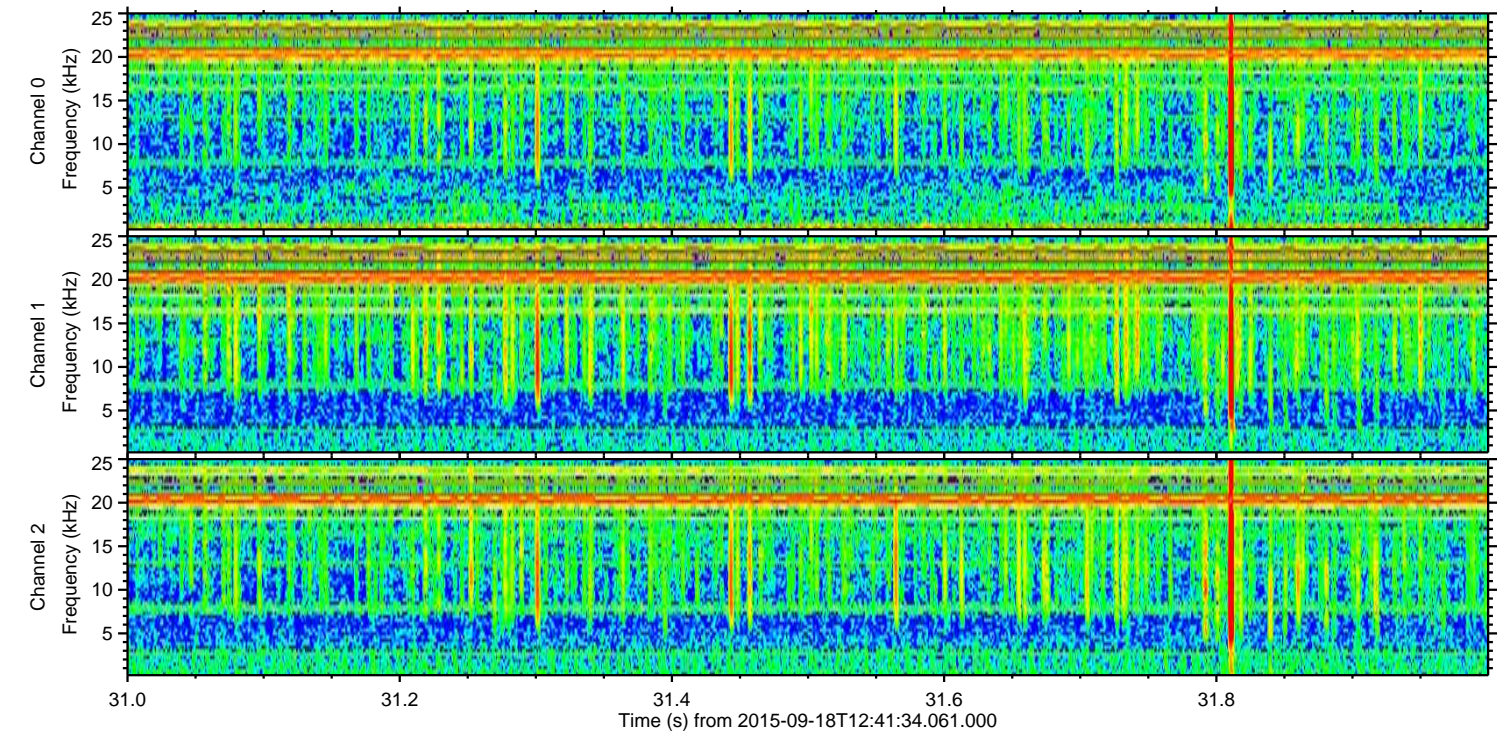
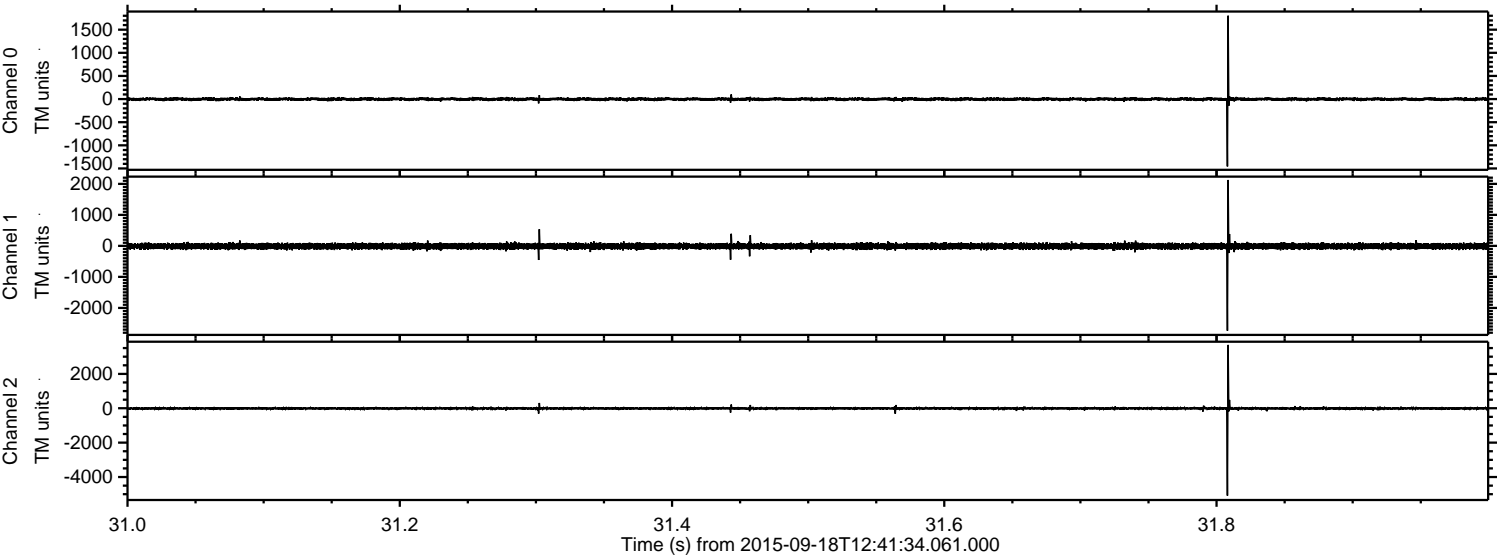
ELMAVAN 3D WAVEFORMS (Measured data sampled at 50 kHz) 51000 packets of 144 samples from 2015-09-18T12:41:34.061.000. Part 125/147

Processed Tue Oct 13 23:30:39 2015 by ELM ver.2012-10-06 from 001\_\_elm20150918\_124133\_\_dat00.bin





Processed Tue Oct 13 23:30:41 2015 by ELM ver.2012-10-06 from 001\_\_elm20150918\_124133\_\_dat00.bin



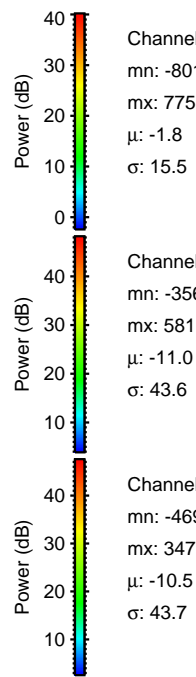
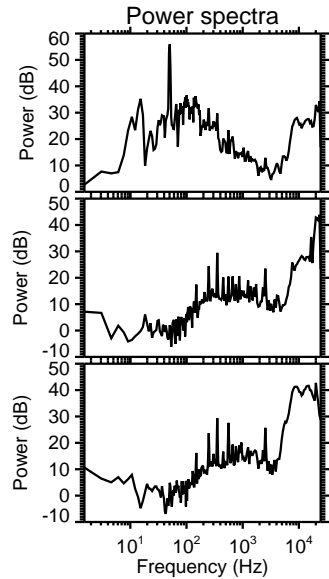
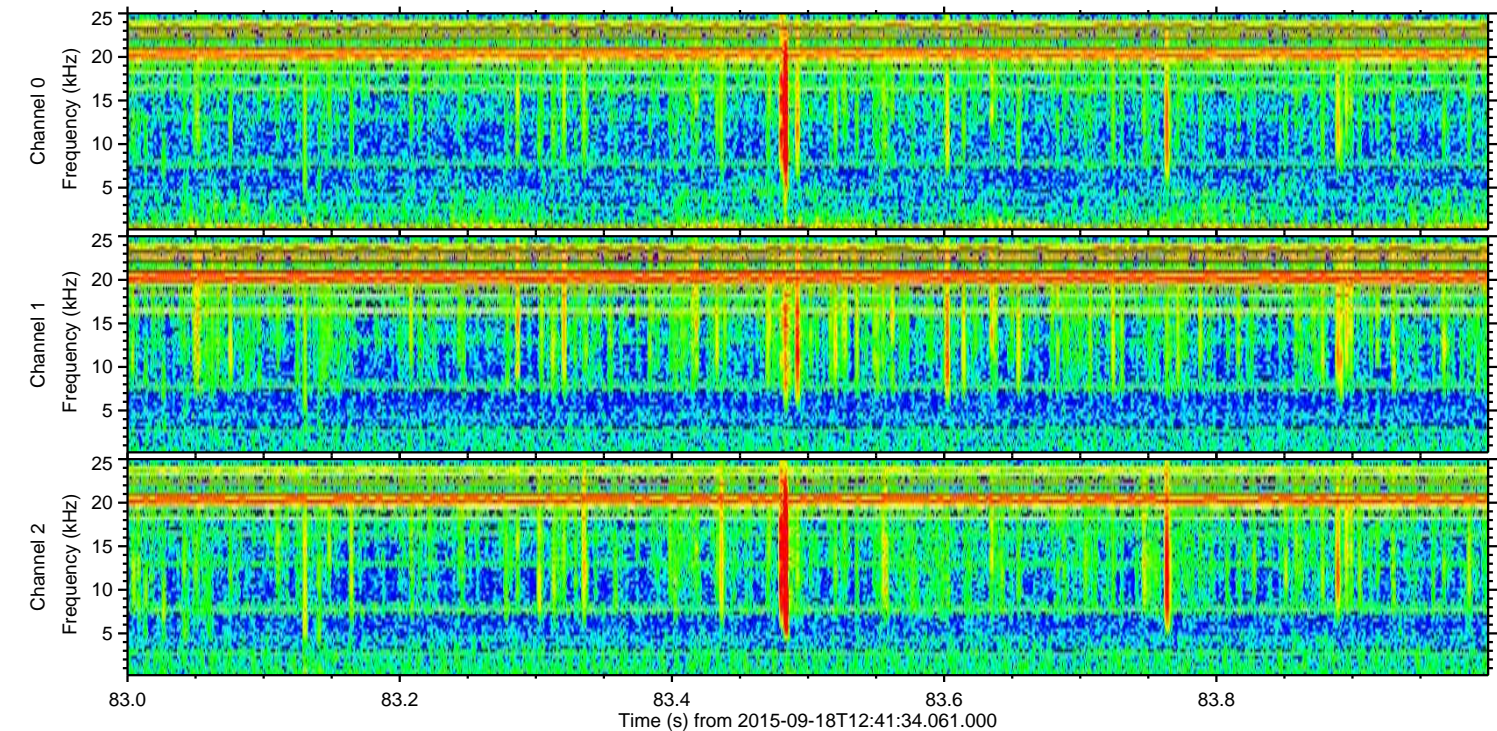
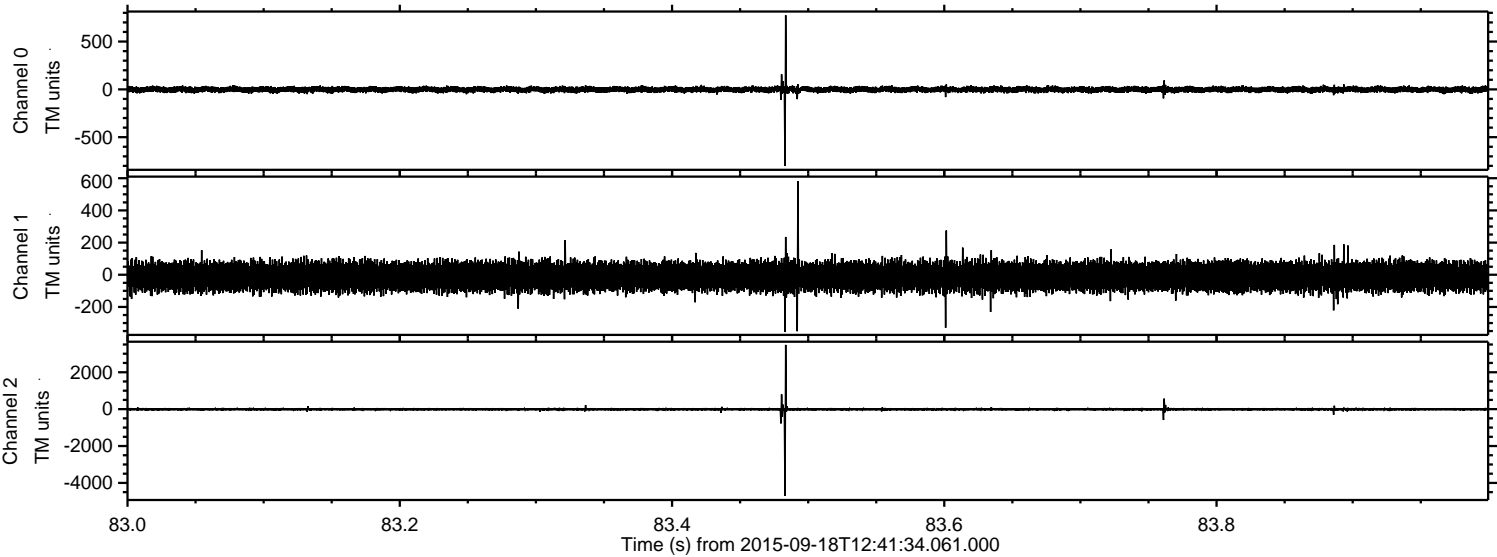
Channel 0  
mn: -1456  
mx: 1802  
 $\mu$ : -1.8  
 $\sigma$ : 18.1

Channel 1  
mn: -2735  
mx: 2128  
 $\mu$ : -11.0  
 $\sigma$ : 48.9

Channel 2  
mn: -5083  
mx: 3687  
 $\mu$ : -10.5  
 $\sigma$ : 47.9



Processed Tue Oct 13 23:30:43 2015 by ELM ver.2012-10-06 from 001\_\_elm20150918\_124133\_\_dat00.bin



Channel 0  
mn: -801  
mx: 775  
 $\mu$ : -1.8  
 $\sigma$ : 15.5

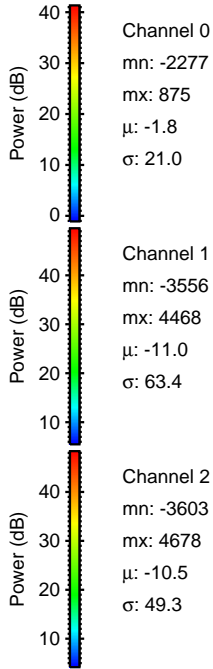
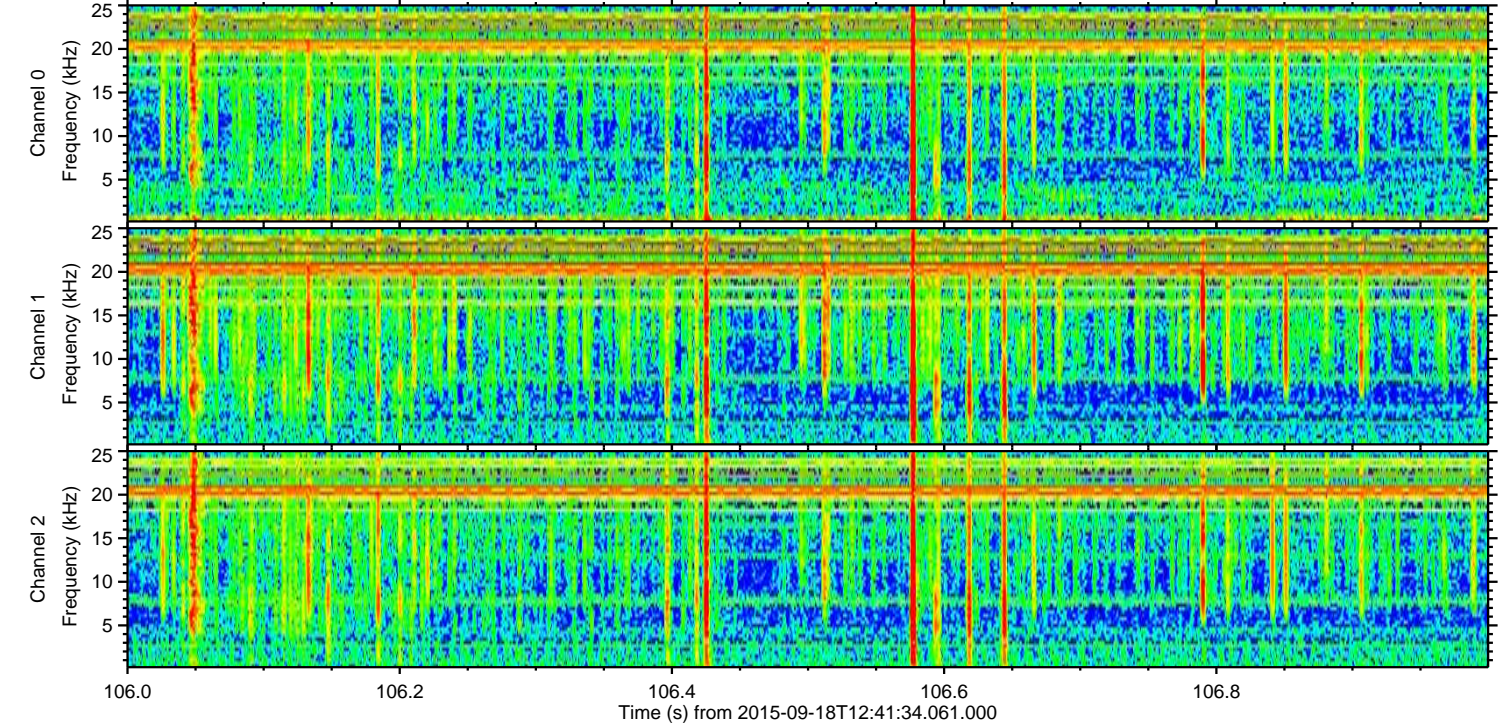
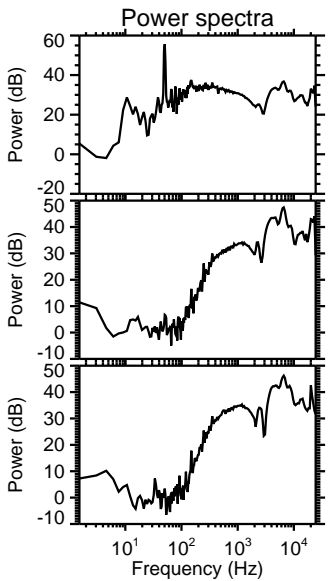
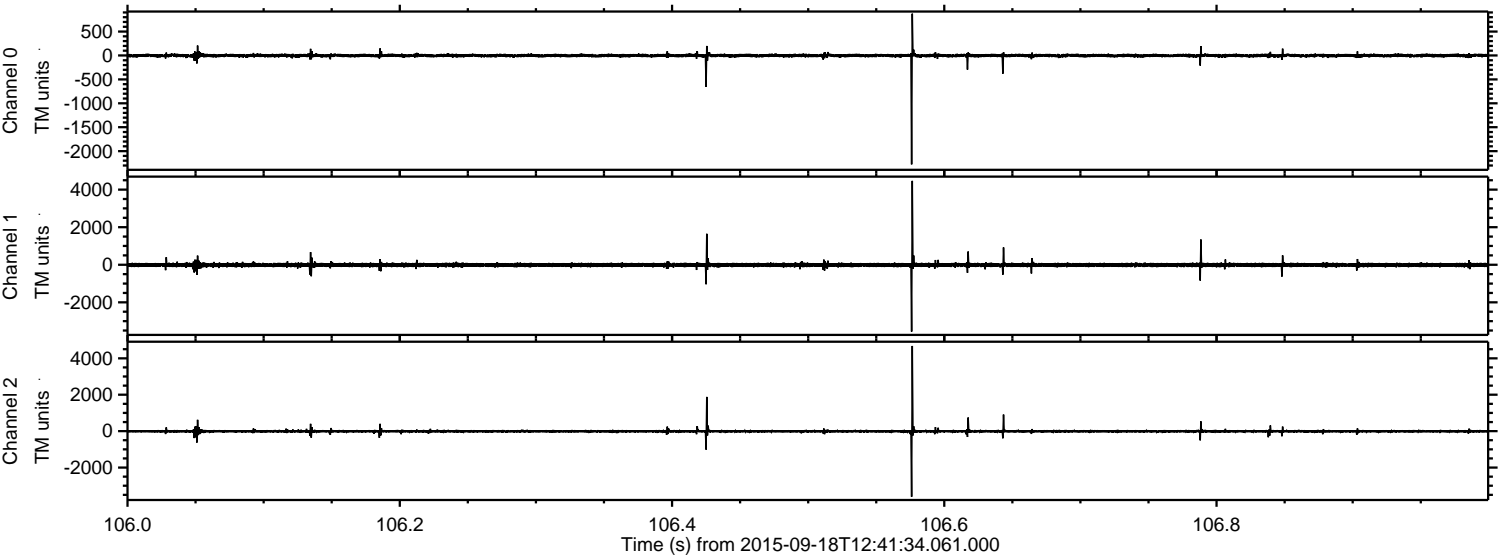
Channel 1  
mn: -356  
mx: 581  
 $\mu$ : -11.0  
 $\sigma$ : 43.6

Channel 2  
mn: -4690  
mx: 3479  
 $\mu$ : -10.5  
 $\sigma$ : 43.7



ELMAVAN 3D WAVEFORMS (Measured data sampled at 50 kHz) 51000 packets of 144 samples from 2015-09-18T12:41:34.061.000. Part 107/147

Processed Tue Oct 13 23:30:45 2015 by ELM ver.2012-10-06 from 001\_\_elm20150918\_124133\_\_dat00.bin



Channel 0  
mn: -2277  
mx: 875  
 $\mu$ : -1.8  
 $\sigma$ : 21.0

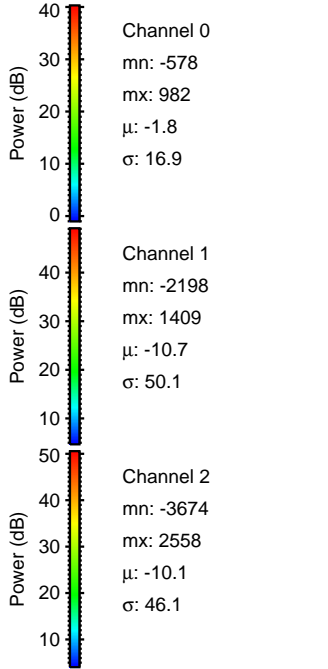
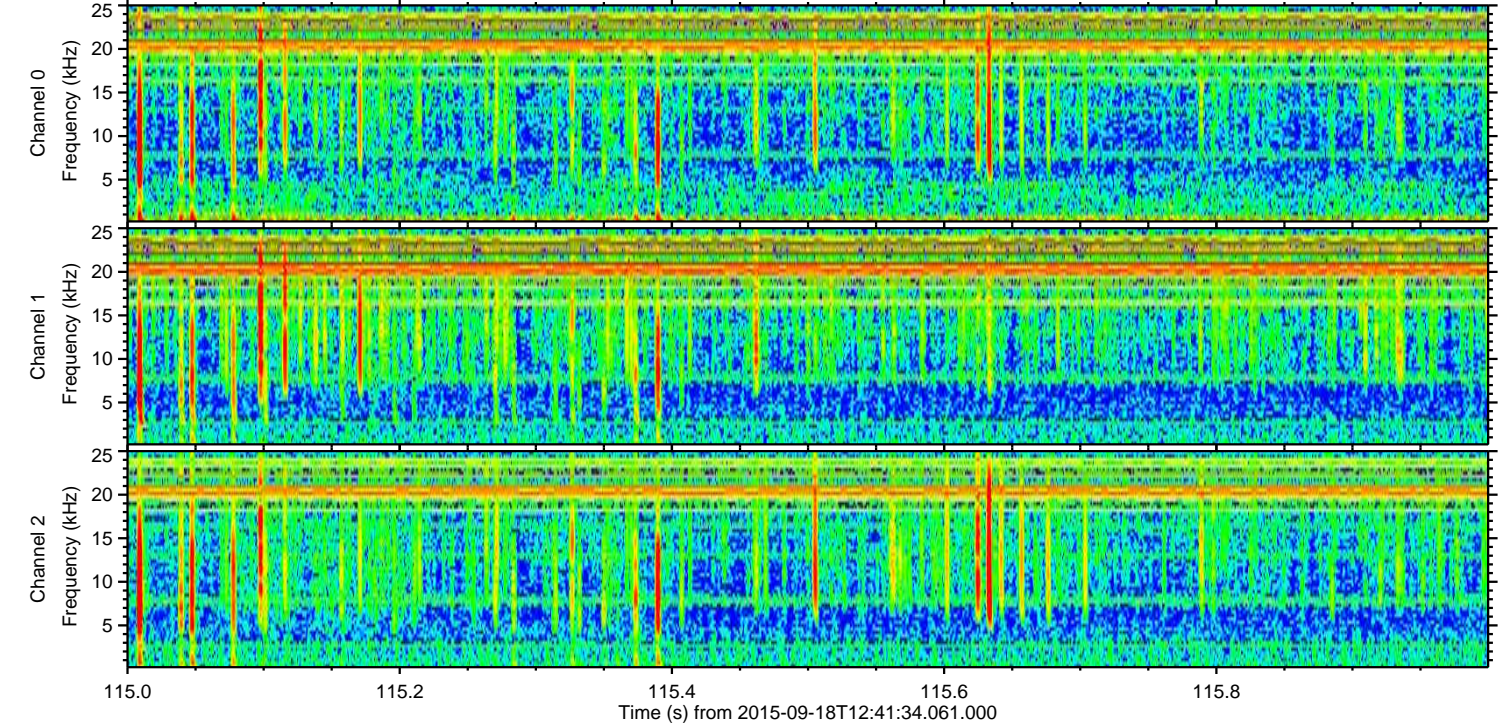
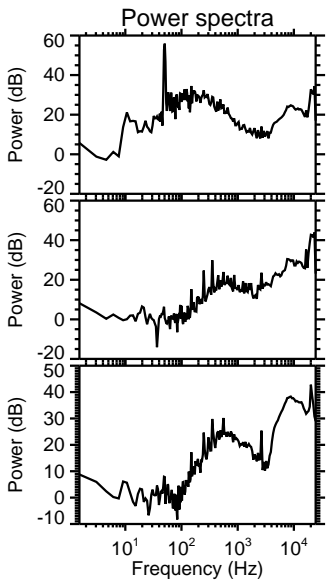
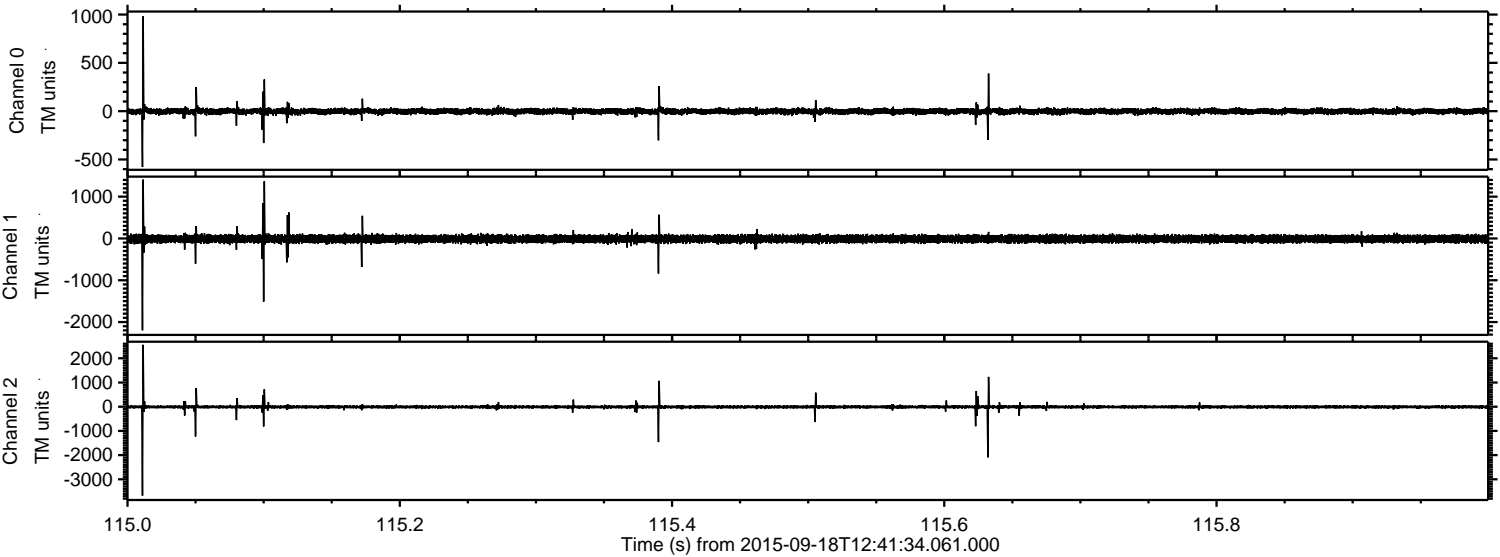
Channel 1  
mn: -3556  
mx: 4468  
 $\mu$ : -11.0  
 $\sigma$ : 63.4

Channel 2  
mn: -3603  
mx: 4678  
 $\mu$ : -10.5  
 $\sigma$ : 49.3



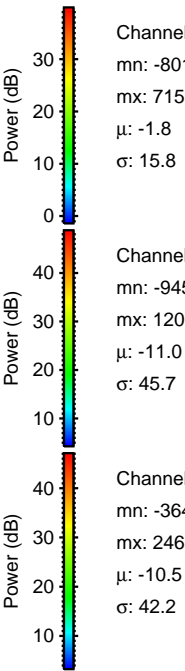
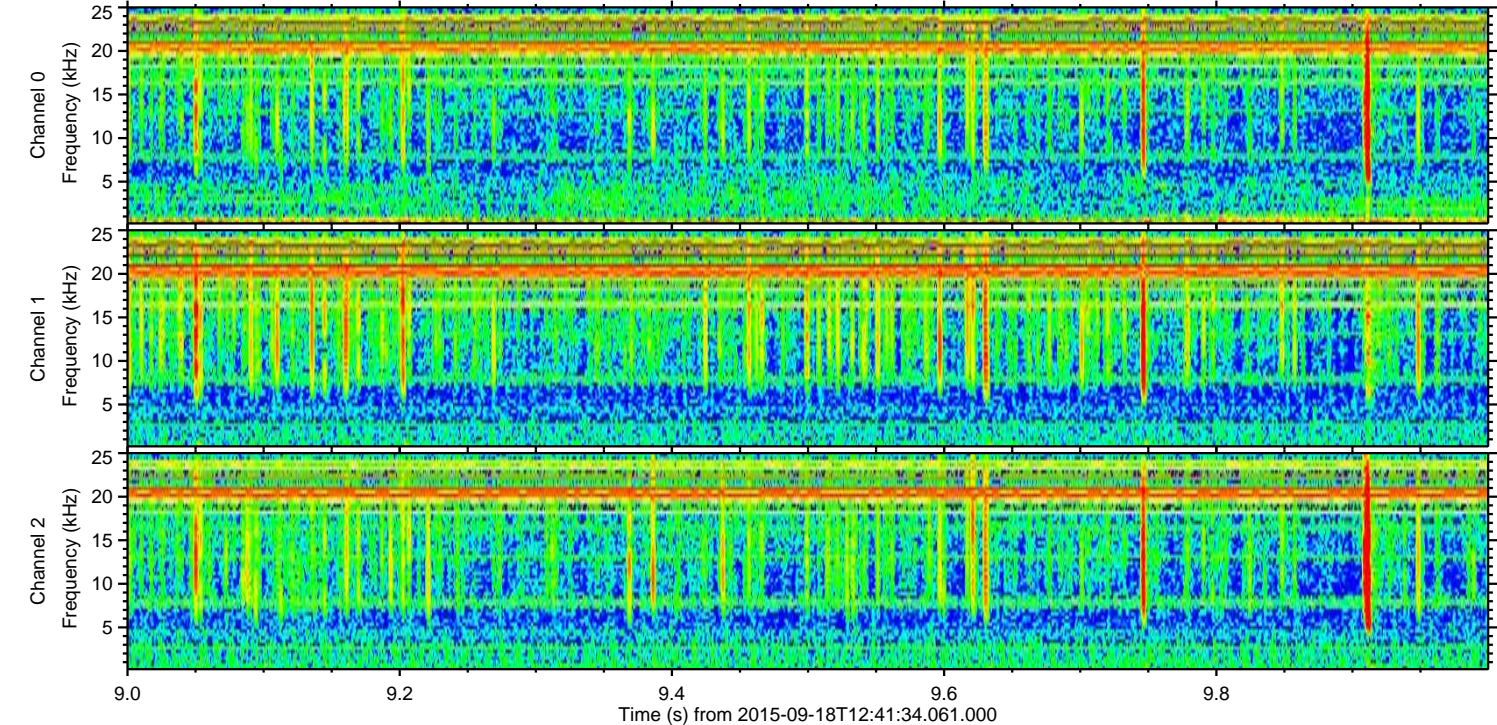
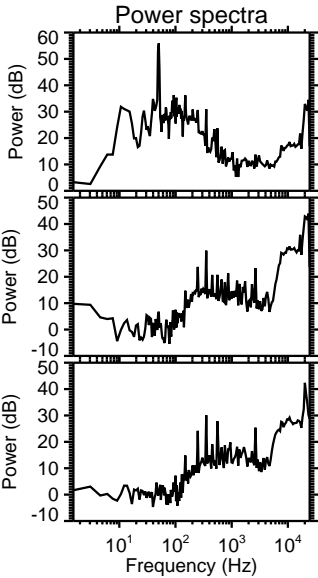
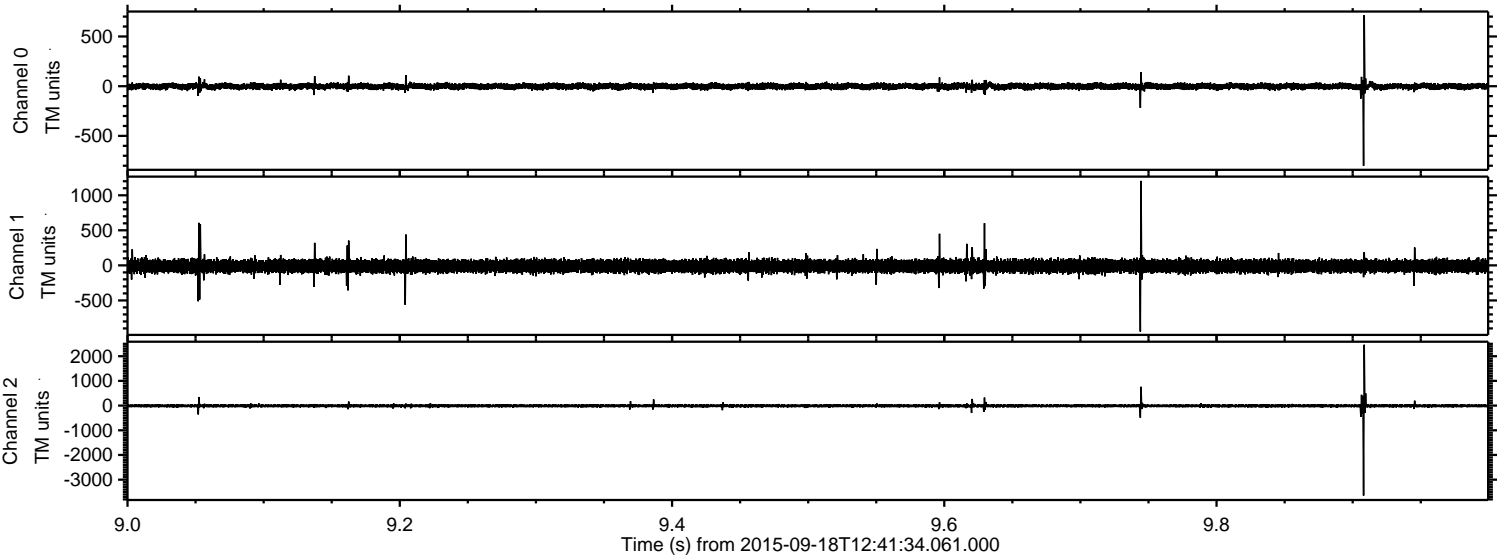
ELMAVAN 3D WAVEFORMS (Measured data sampled at 50 kHz) 51000 packets of 144 samples from 2015-09-18T12:41:34.061.000. Part 116/147

Processed Tue Oct 13 23:30:46 2015 by ELM ver.2012-10-06 from 001\_\_elm20150918\_124133\_\_dat00.bin





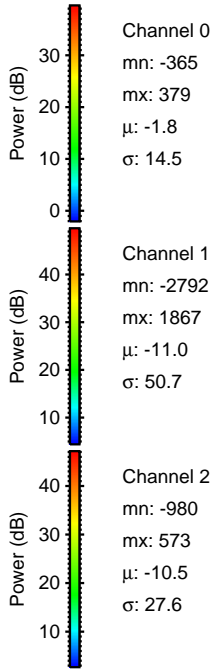
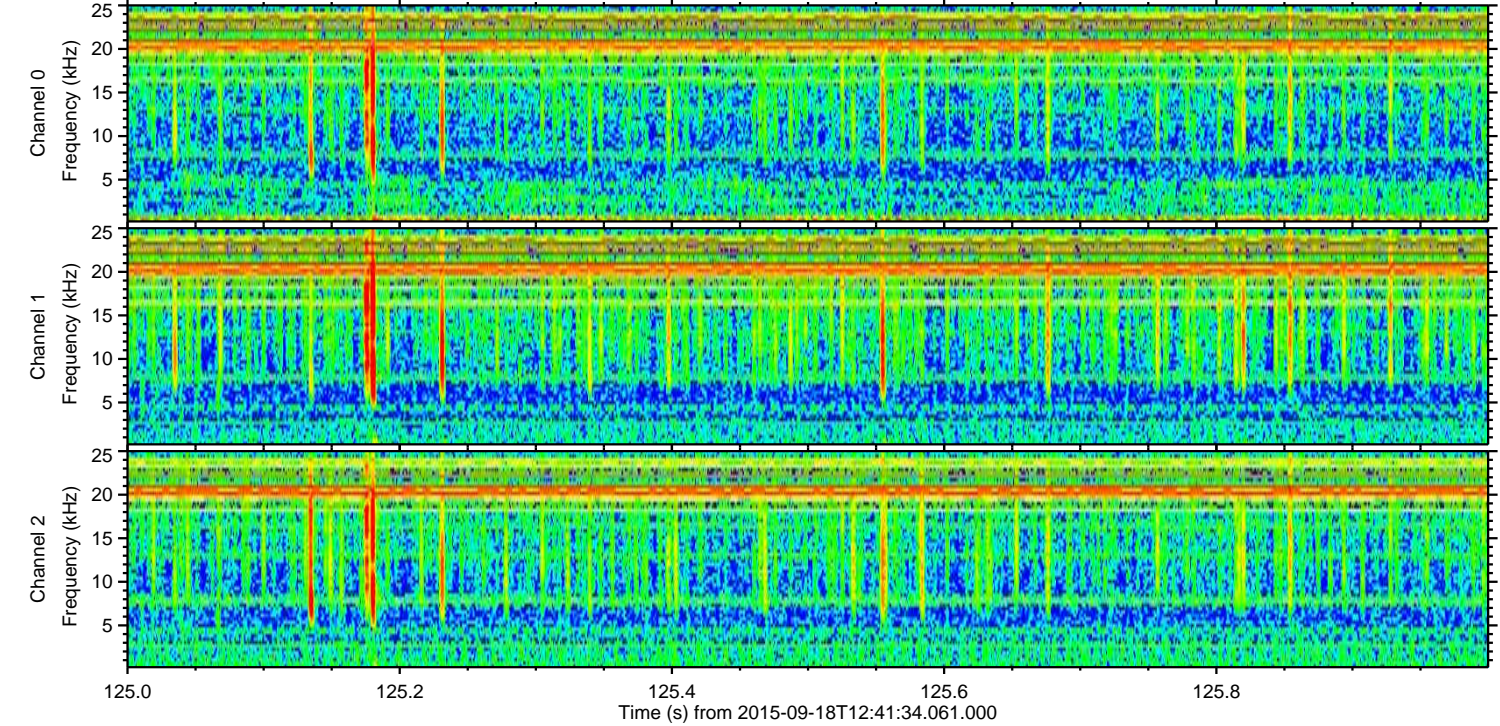
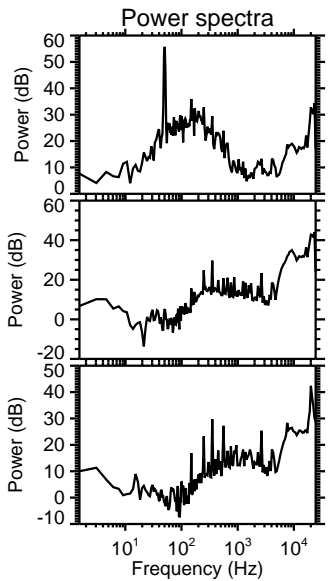
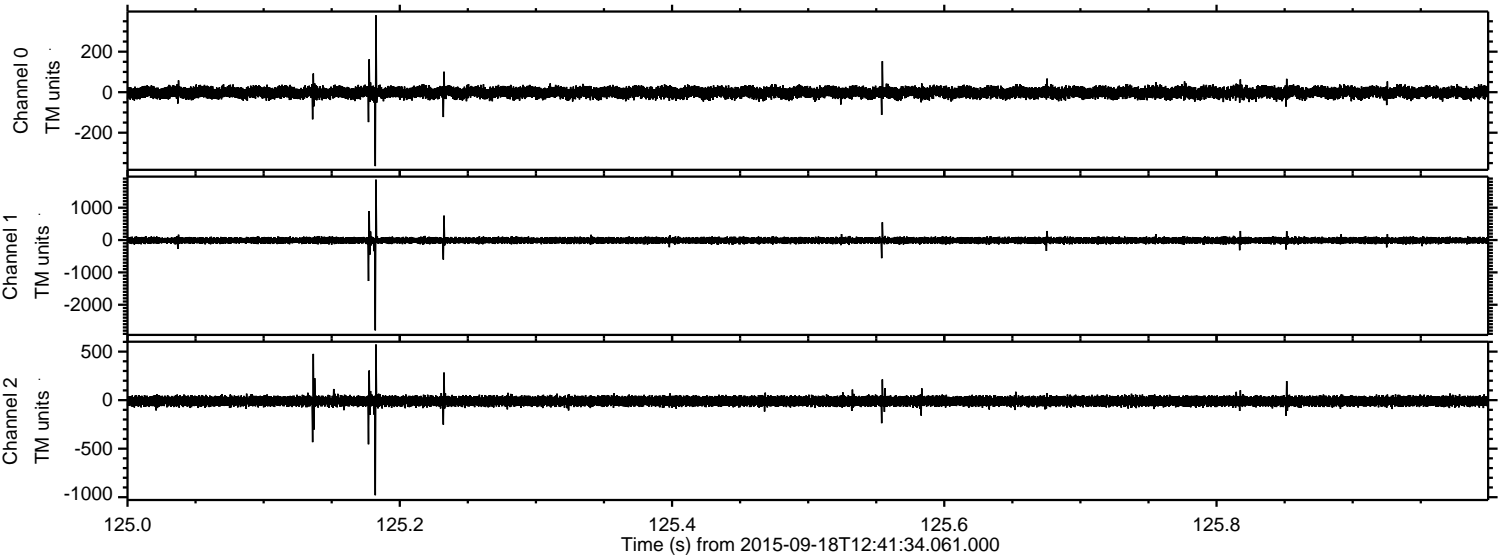
Processed Tue Oct 13 23:30:48 2015 by ELM ver.2012-10-06 from 001\_\_elm20150918\_124133\_\_dat00.bin





ELMAVAN 3D WAVEFORMS (Measured data sampled at 50 kHz) 51000 packets of 144 samples from 2015-09-18T12:41:34.061.000. Part 126/147

Processed Tue Oct 13 23:30:49 2015 by ELM ver.2012-10-06 from 001\_\_elm20150918\_124133\_\_dat00.bin



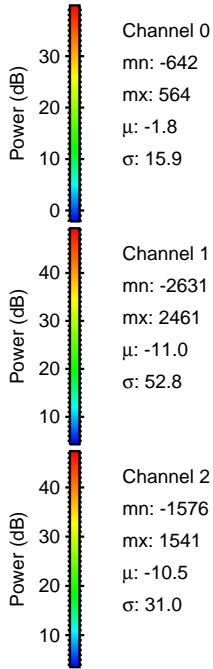
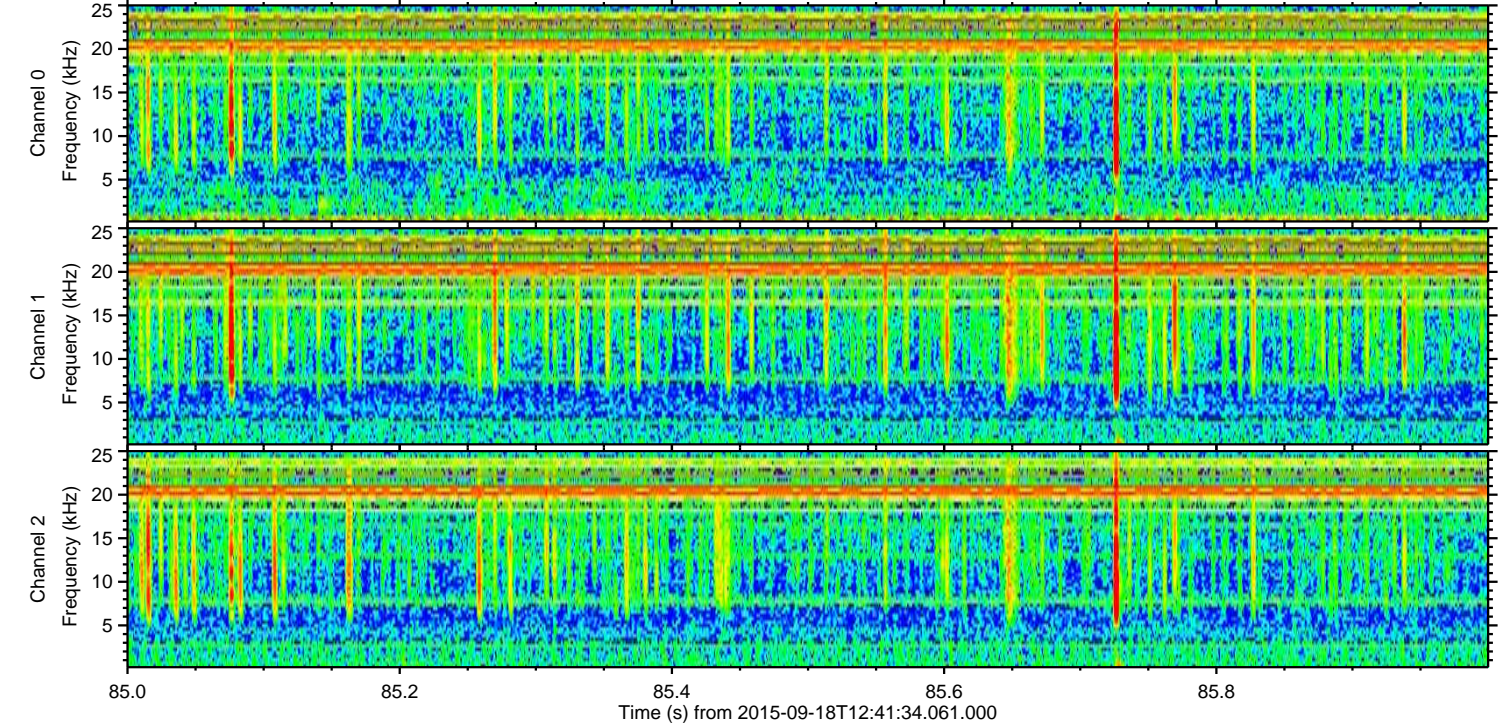
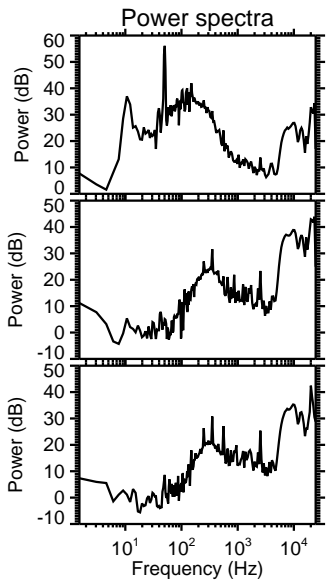
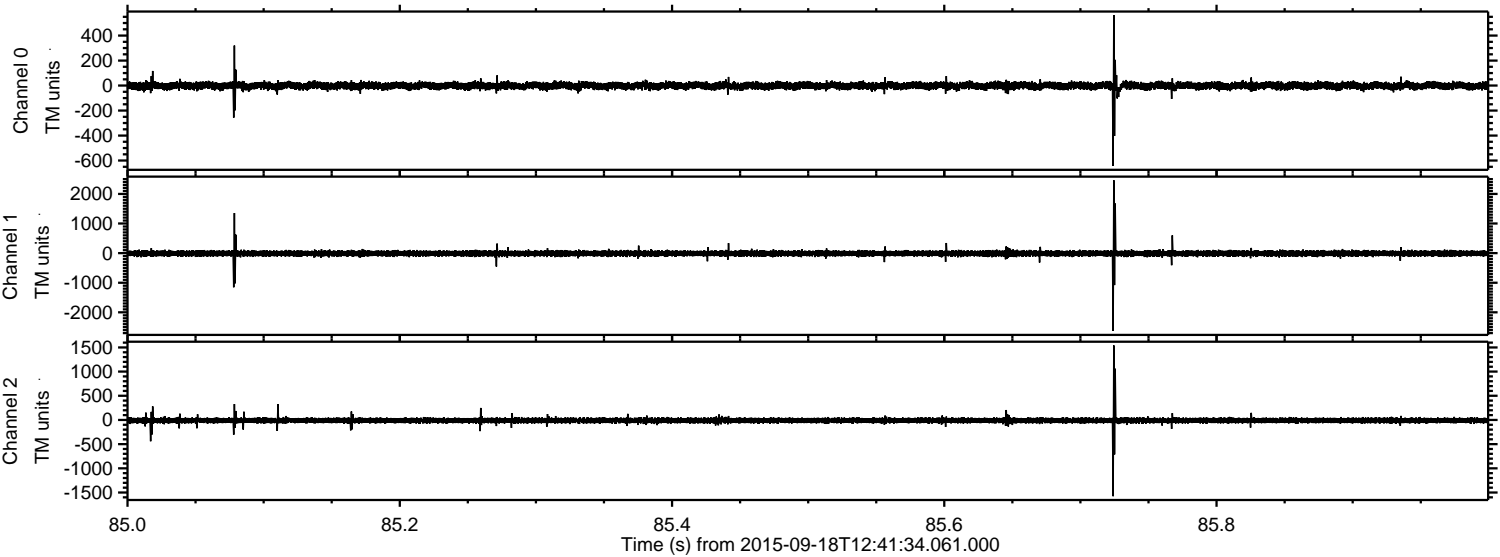
Channel 0  
mn: -365  
mx: 379  
 $\mu$ : -1.8  
 $\sigma$ : 14.5

Channel 1  
mn: -2792  
mx: 1867  
 $\mu$ : -11.0  
 $\sigma$ : 50.7

Channel 2  
mn: -980  
mx: 573  
 $\mu$ : -10.5  
 $\sigma$ : 27.6



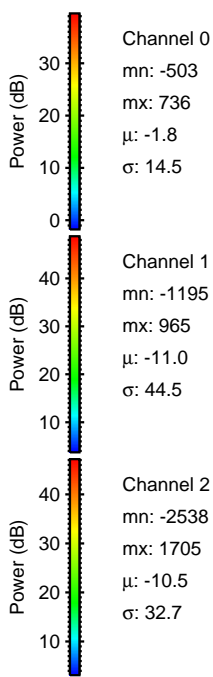
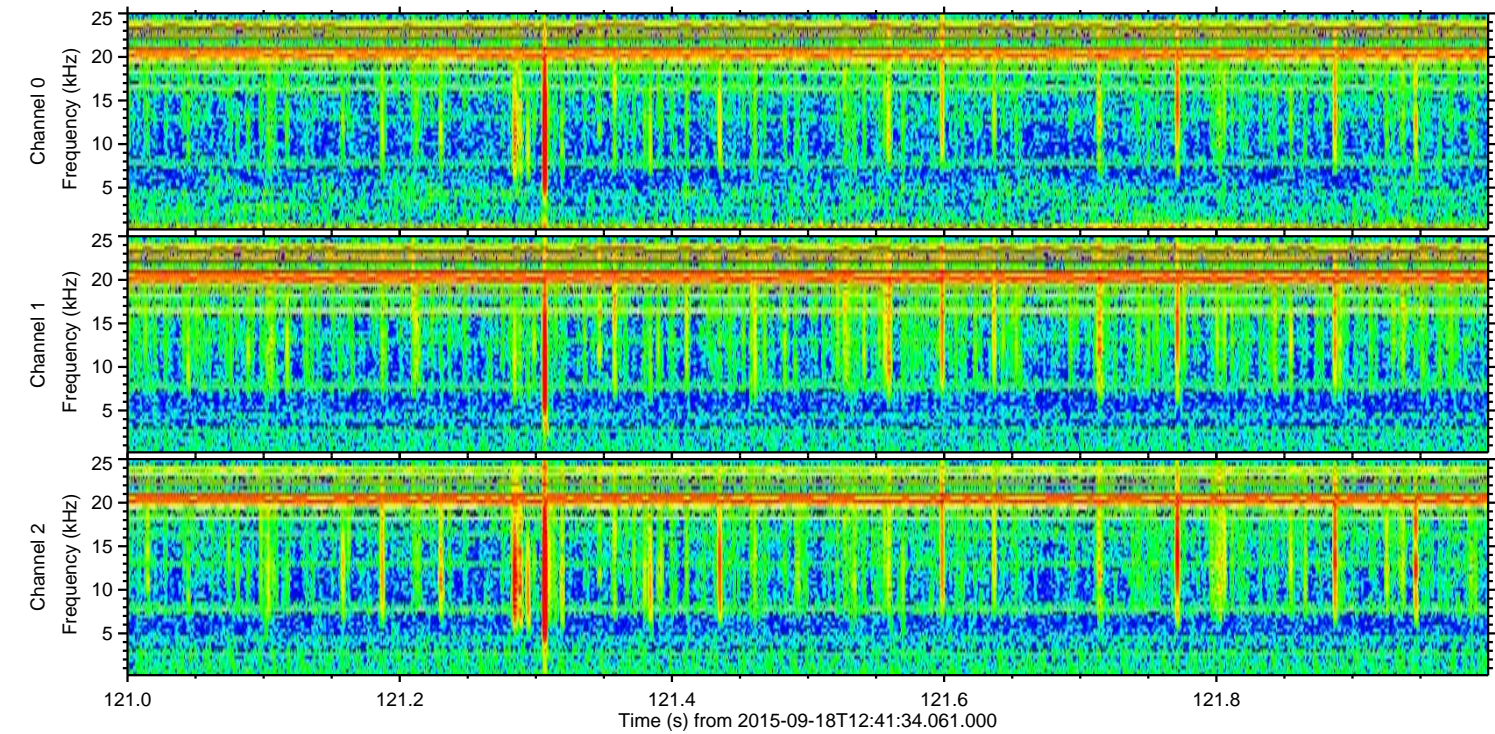
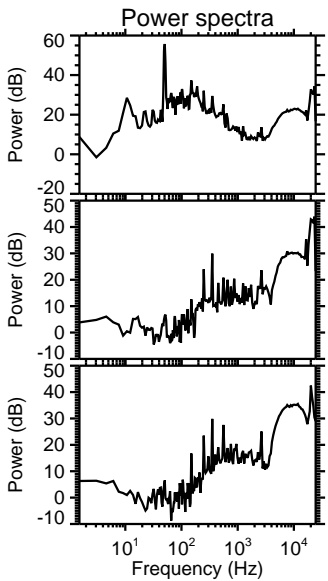
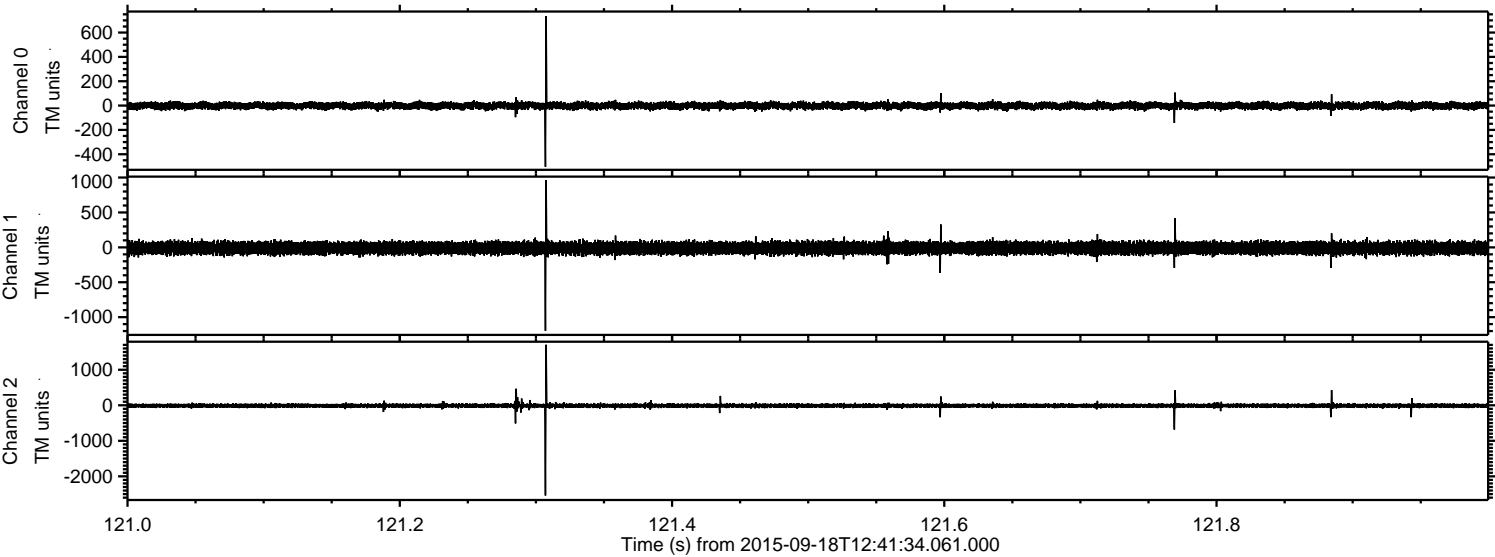
Processed Tue Oct 13 23:30:50 2015 by ELM ver.2012-10-06 from 001\_\_elm20150918\_124133\_\_dat00.bin





ELMAVAN 3D WAVEFORMS (Measured data sampled at 50 kHz) 51000 packets of 144 samples from 2015-09-18T12:41:34.061.000. Part 122/147

Processed Tue Oct 13 23:30:52 2015 by ELM ver.2012-10-06 from 001\_\_elm20150918\_124133\_\_dat00.bin





Processed Tue Oct 13 23:30:54 2015 by ELM ver.2012-10-06 from 001\_\_elm20150918\_124133\_\_dat00.bin

