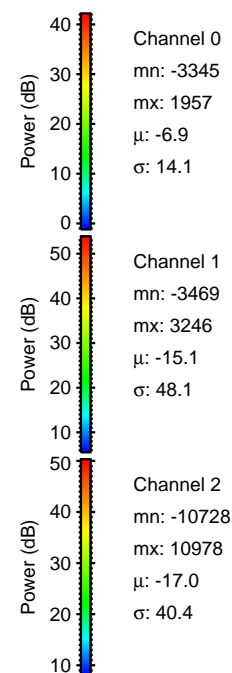
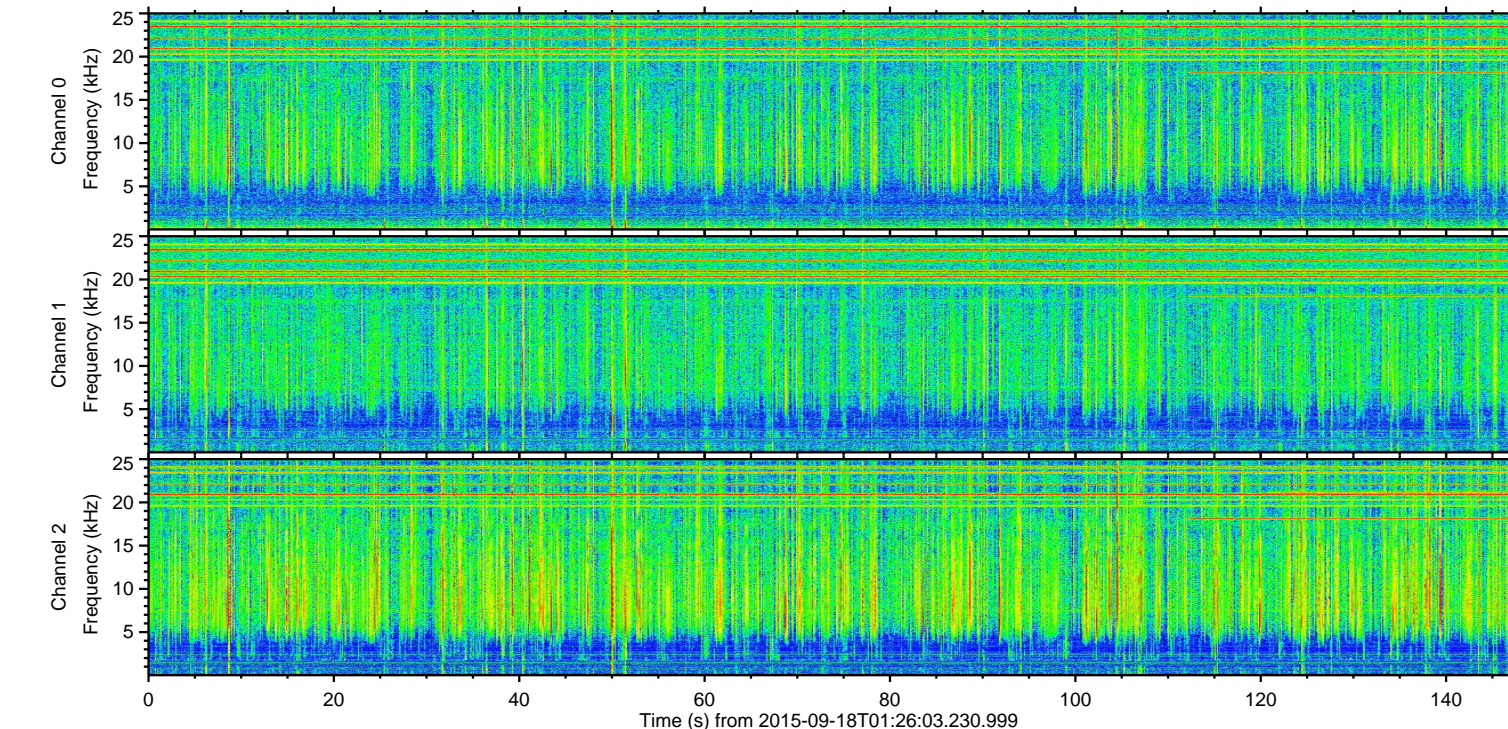
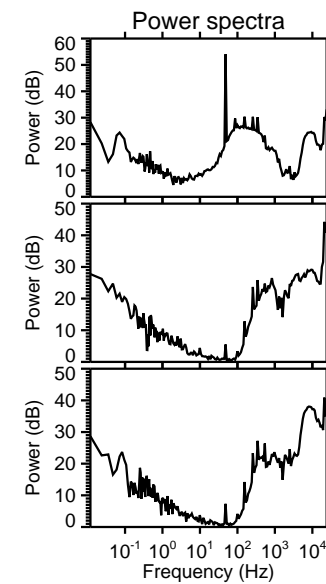
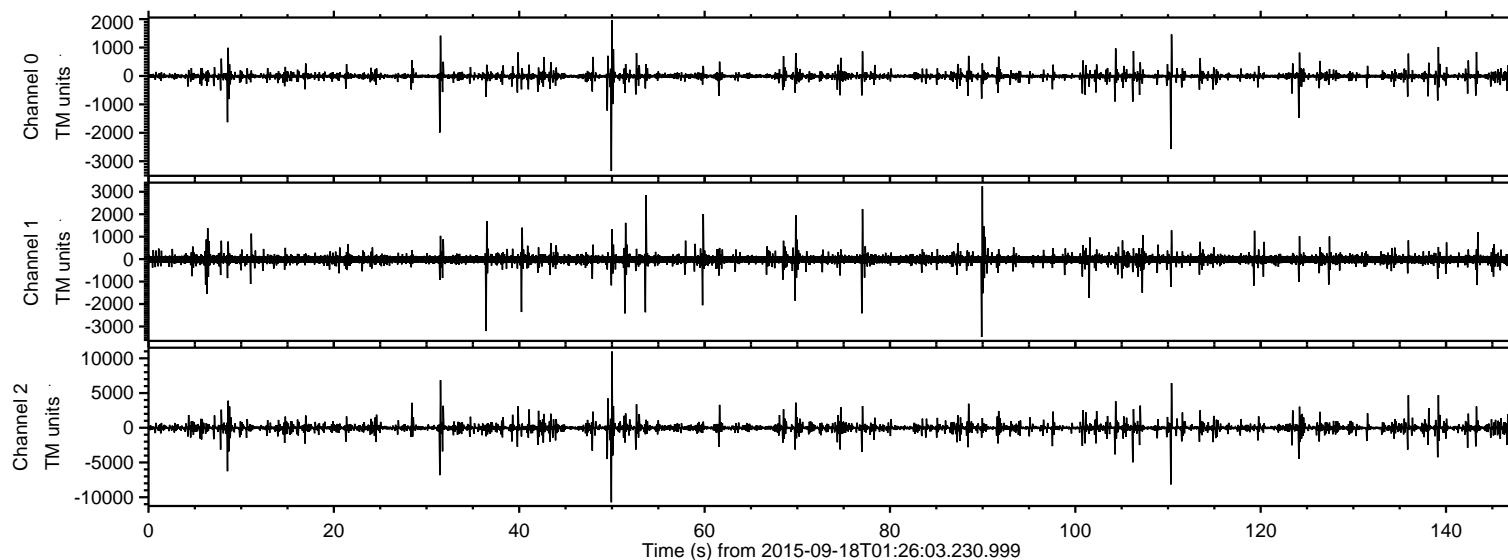


# ELMAVAN 3D WAVEFORMS (Measured data sampled at 50 kHz) 51000 packets of 144 samples from 2015-09-18T01:26:03.230.999.

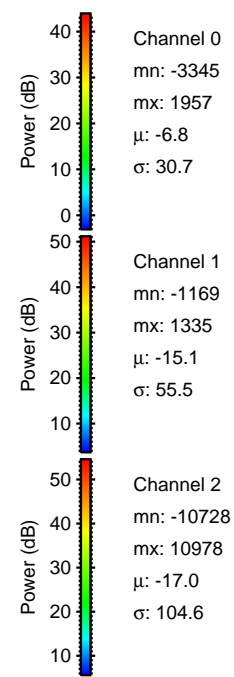
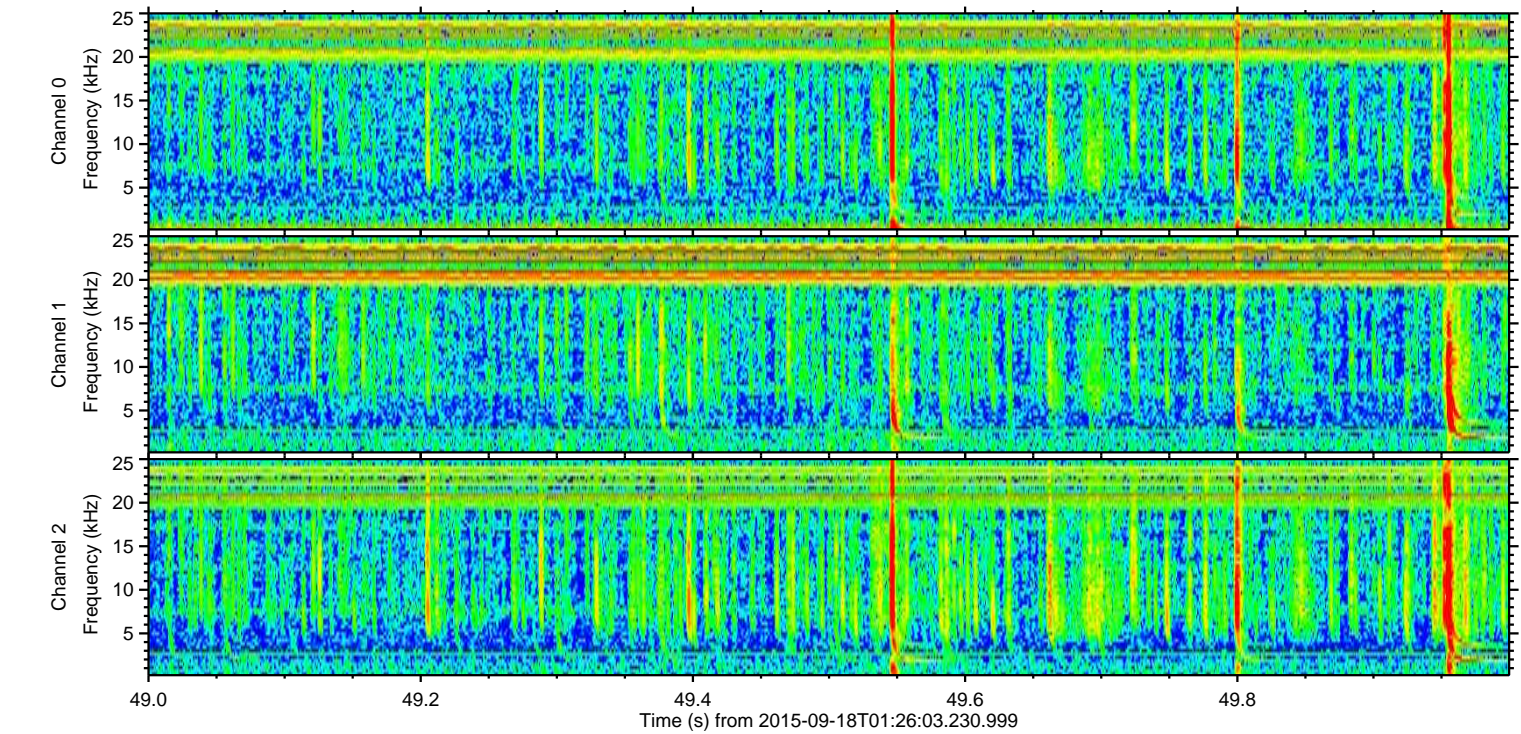
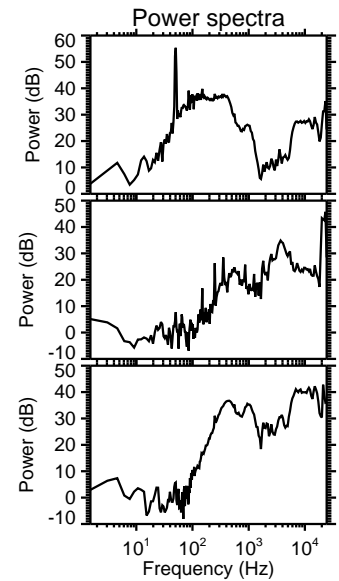
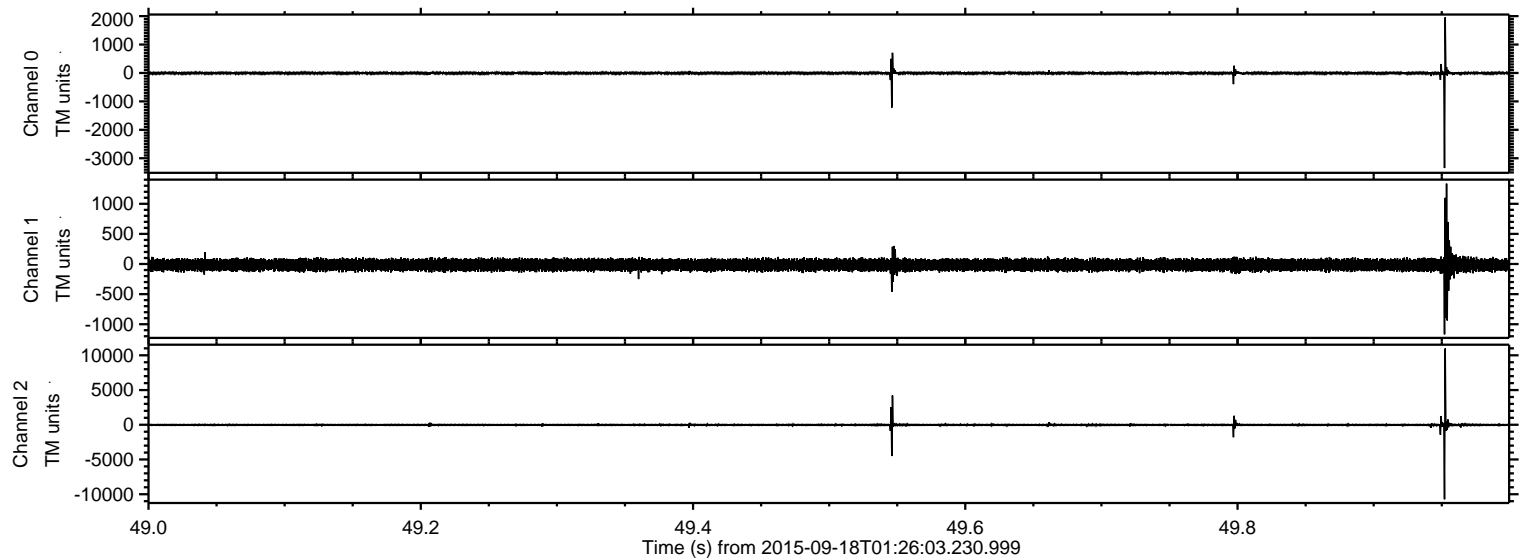
Processed Tue Oct 13 18:46:32 2015 by ELM ver.2012-10-06 from 001\_\_elm20150918\_012602\_\_dat00.bin





ELMAVAN 3D WAVEFORMS (Measured data sampled at 50 kHz) 51000 packets of 144 samples from 2015-09-18T01:26:03.230.999. Part 50/147

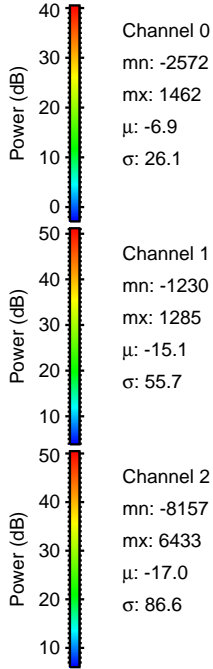
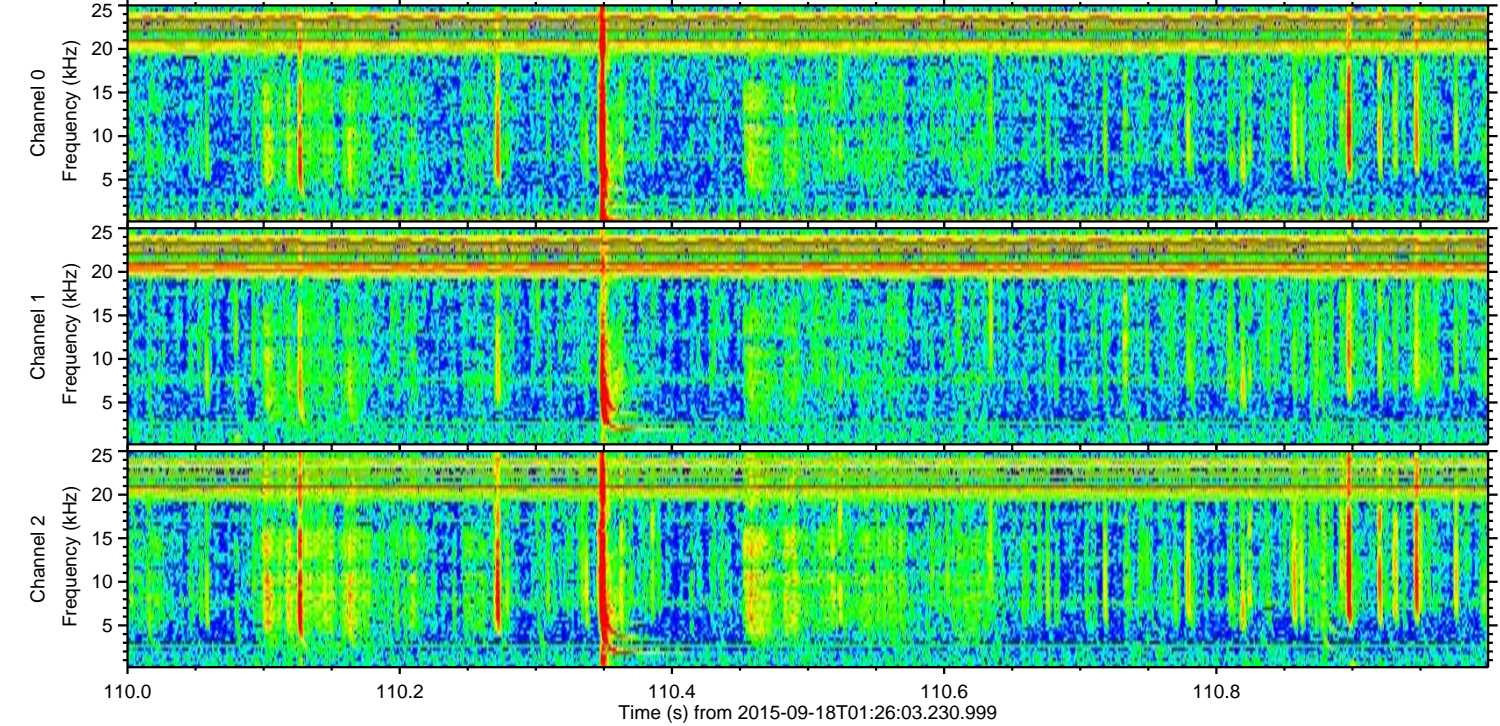
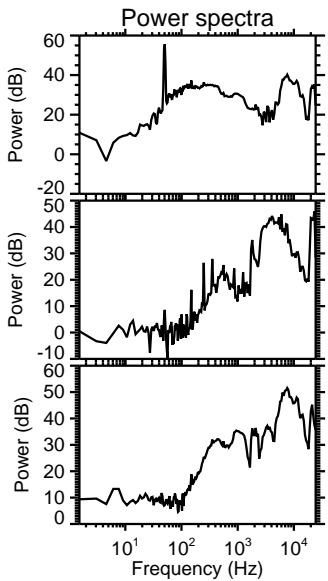
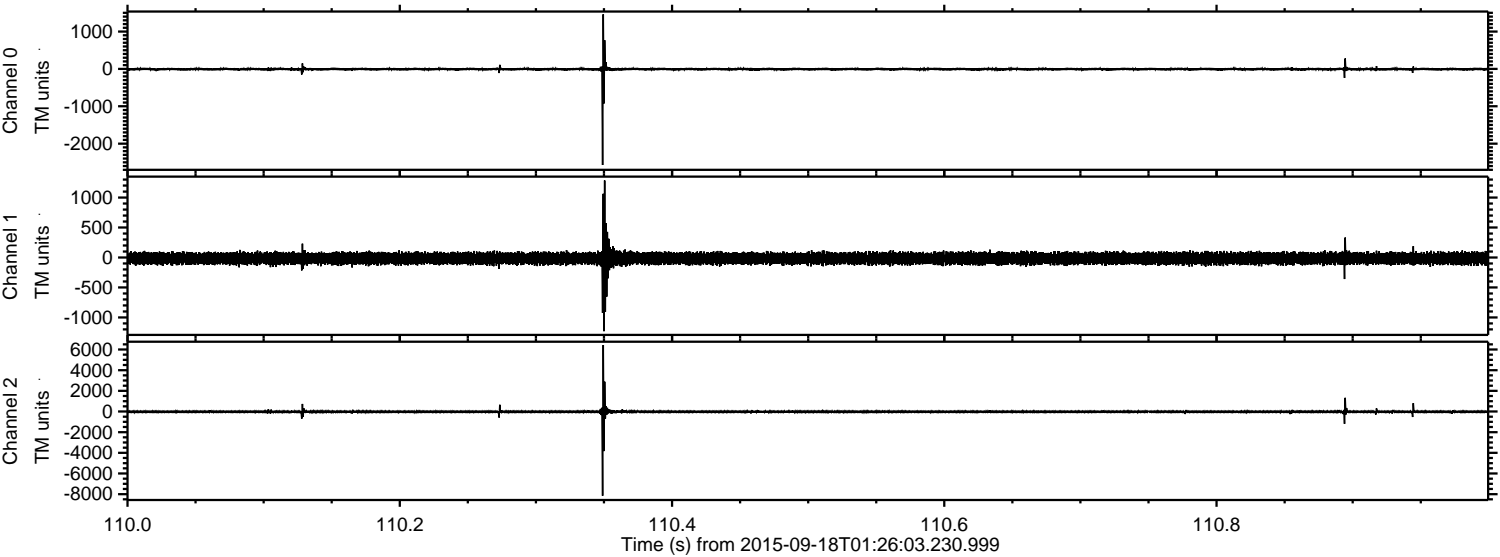
Processed Tue Oct 13 18:46:55 2015 by ELM ver.2012-10-06 from 001\_\_elm20150918\_012602\_\_dat00.bin





ELMAVAN 3D WAVEFORMS (Measured data sampled at 50 kHz) 51000 packets of 144 samples from 2015-09-18T01:26:03.230.999. Part 111/147

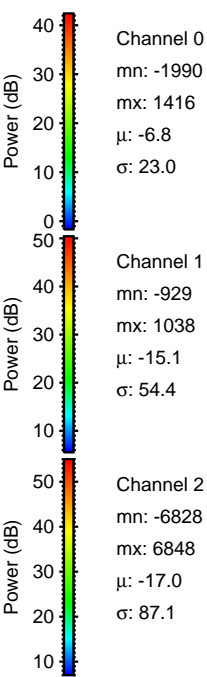
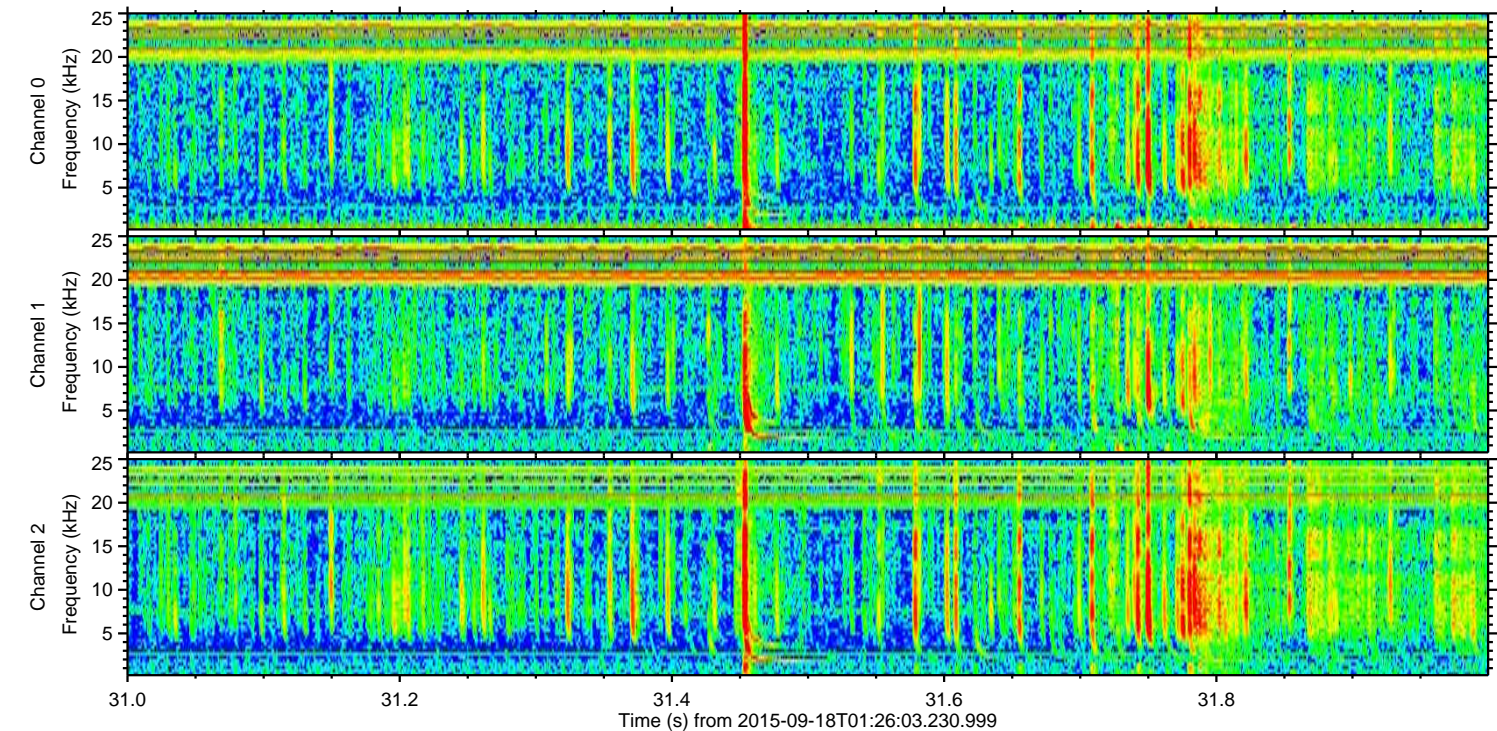
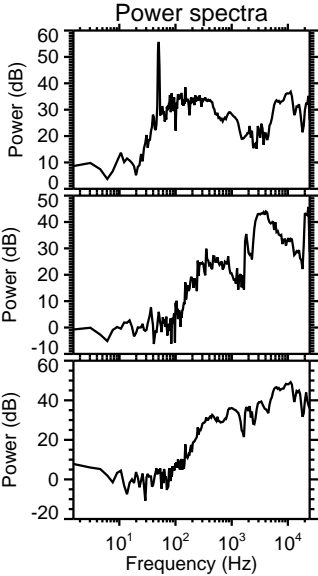
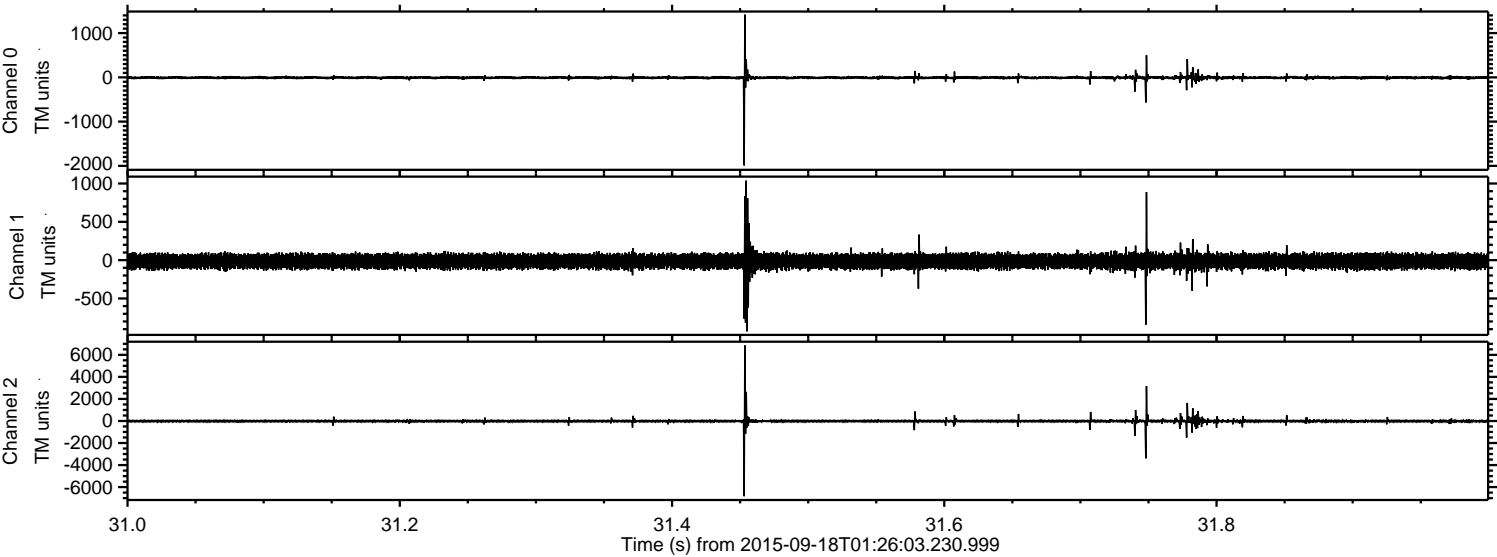
Processed Tue Oct 13 18:46:57 2015 by ELM ver.2012-10-06 from 001\_\_elm20150918\_012602\_\_dat00.bin





ELMAVAN 3D WAVEFORMS (Measured data sampled at 50 kHz) 51000 packets of 144 samples from 2015-09-18T01:26:03.230.999. Part 32/147

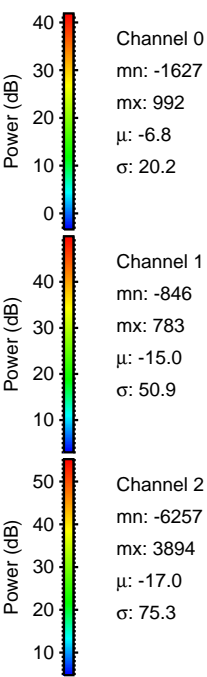
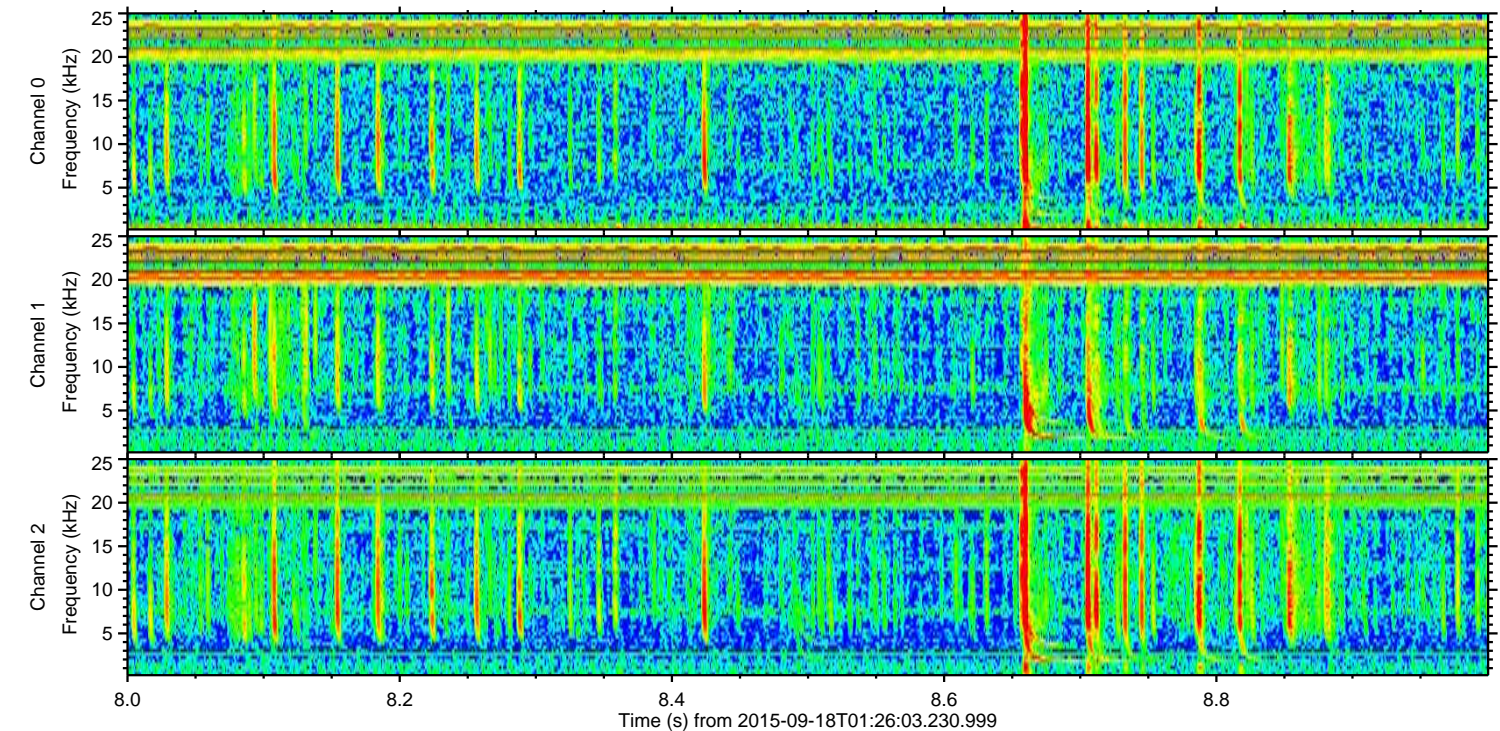
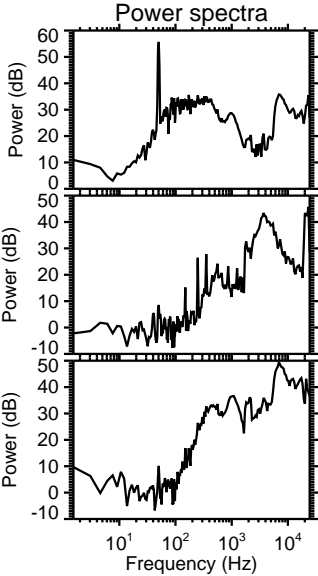
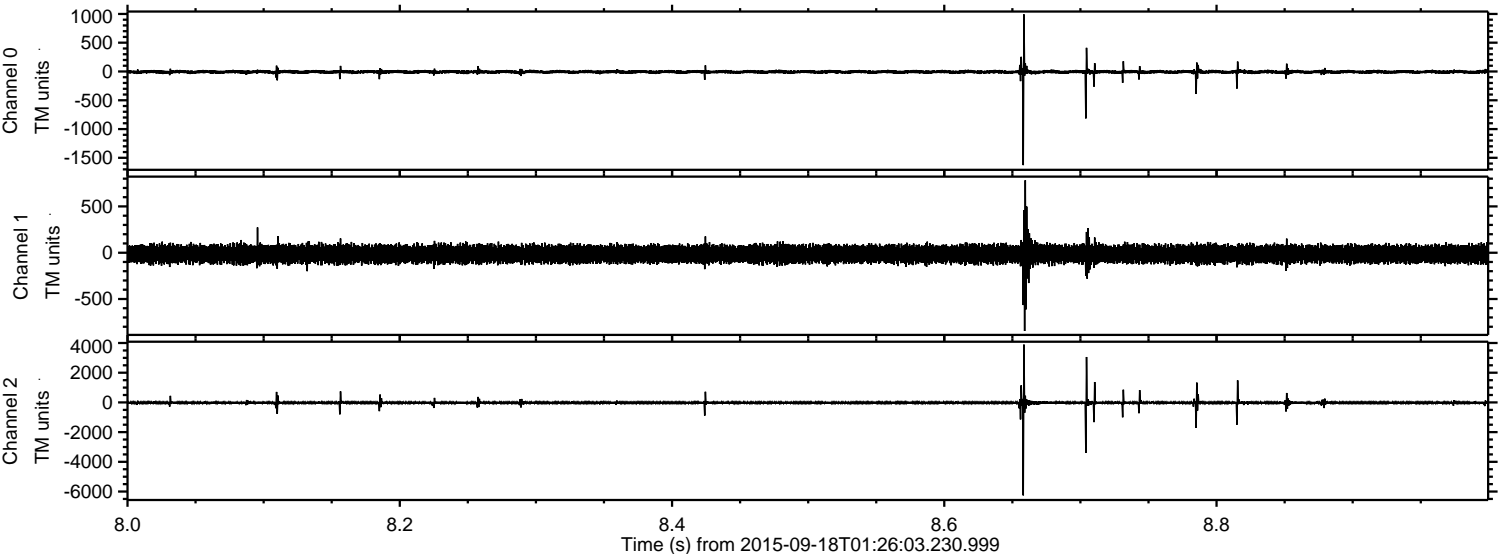
Processed Tue Oct 13 18:47:00 2015 by ELM ver.2012-10-06 from 001\_\_elm20150918\_012602\_\_dat00.bin





ELMAVAN 3D WAVEFORMS (Measured data sampled at 50 kHz) 51000 packets of 144 samples from 2015-09-18T01:26:03.230.999. Part 9/147

Processed Tue Oct 13 18:47:02 2015 by ELM ver.2012-10-06 from 001\_\_elm20150918\_012602\_\_dat00.bin



Channel 0  
mn: -1627  
mx: 992  
 $\mu$ : -6.8  
 $\sigma$ : 20.2

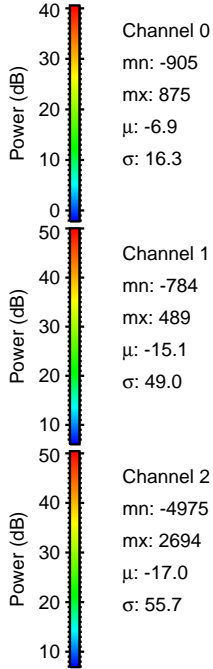
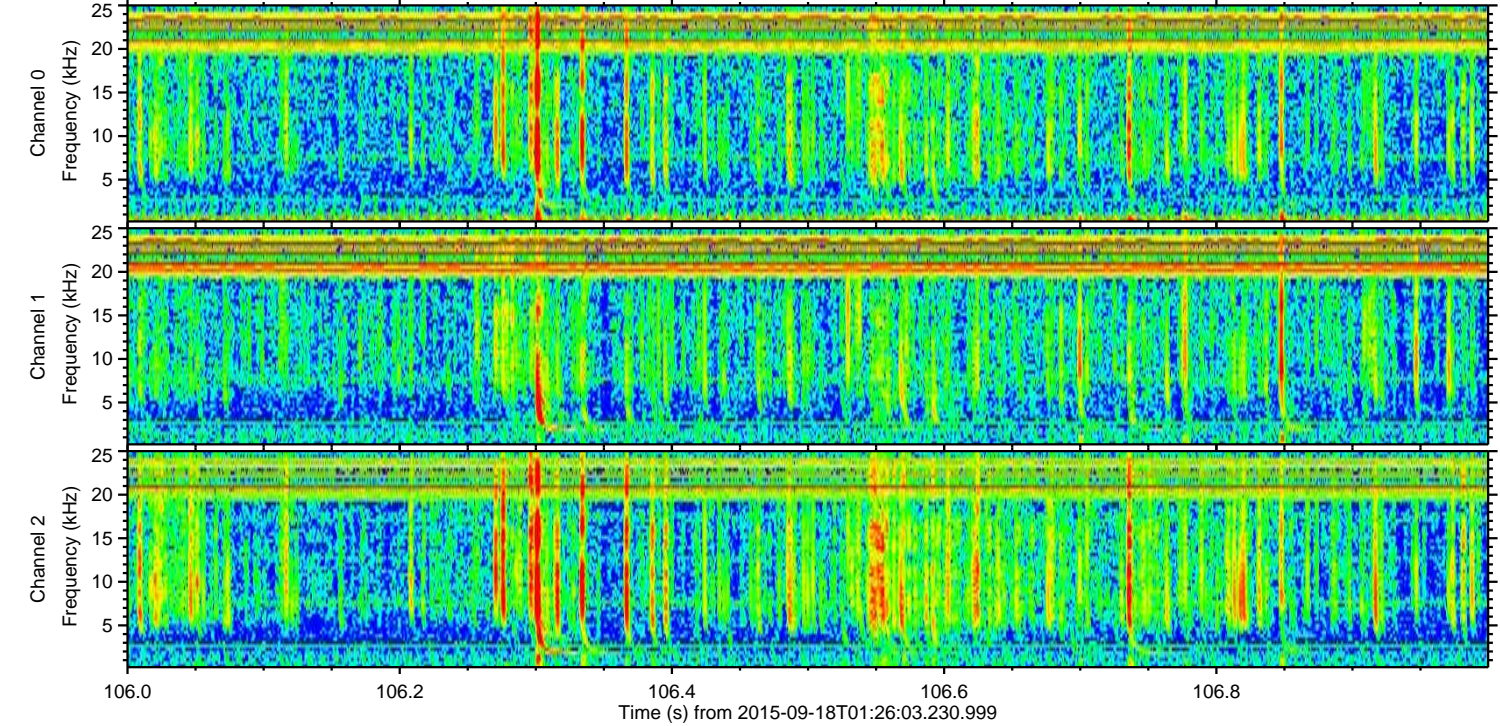
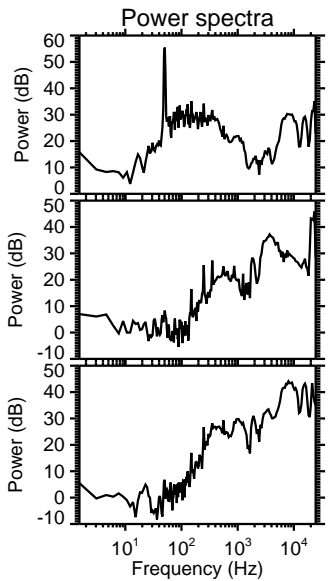
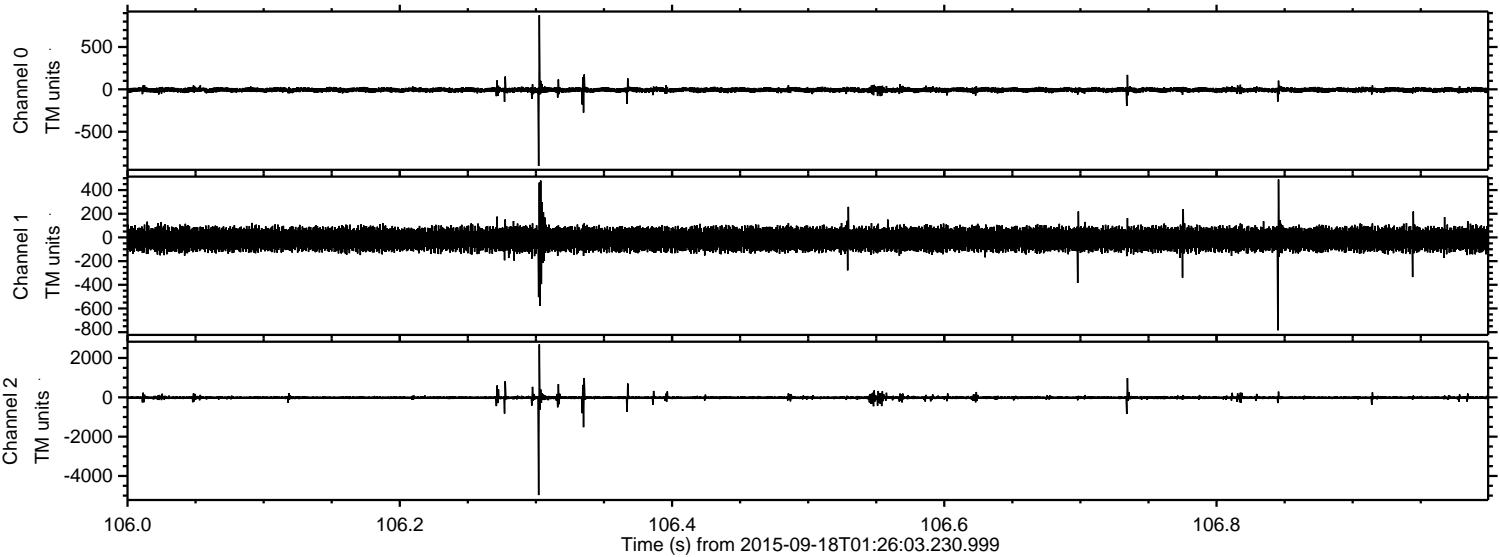
Channel 1  
mn: -846  
mx: 783  
 $\mu$ : -15.0  
 $\sigma$ : 50.9

Channel 2  
mn: -6257  
mx: 3894  
 $\mu$ : -17.0  
 $\sigma$ : 75.3



ELMAVAN 3D WAVEFORMS (Measured data sampled at 50 kHz) 51000 packets of 144 samples from 2015-09-18T01:26:03.230.999. Part 107/147

Processed Tue Oct 13 18:47:03 2015 by ELM ver.2012-10-06 from 001\_\_elm20150918\_012602\_\_dat00.bin



Channel 0  
mn: -905  
mx: 875  
 $\mu$ : -6.9  
 $\sigma$ : 16.3

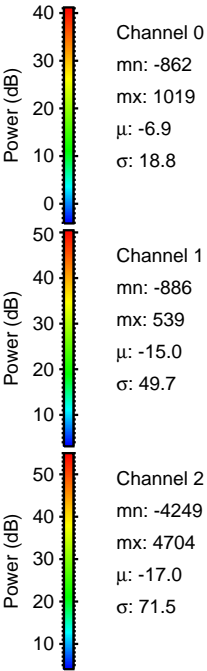
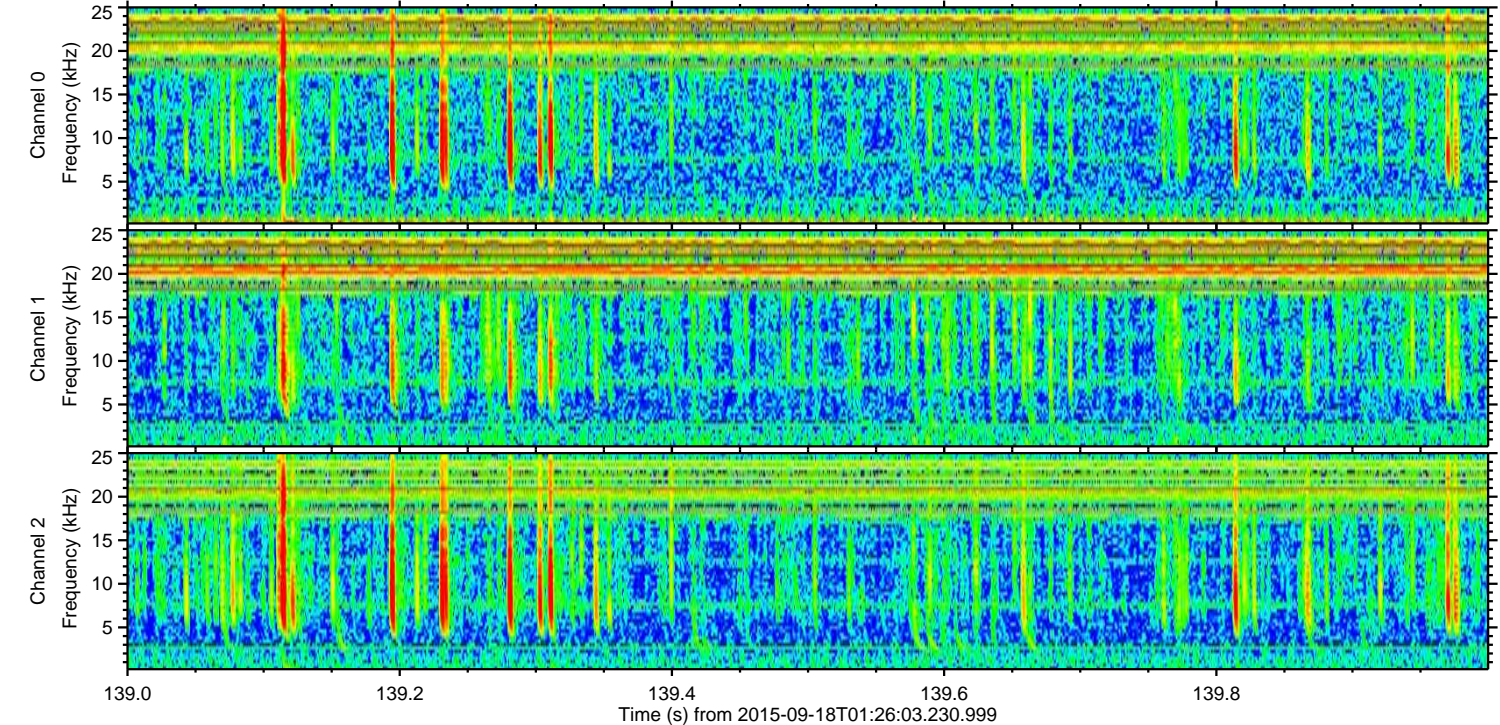
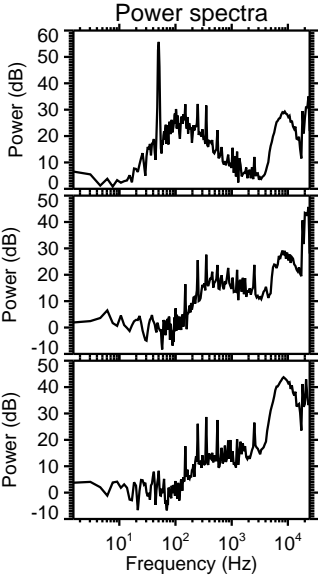
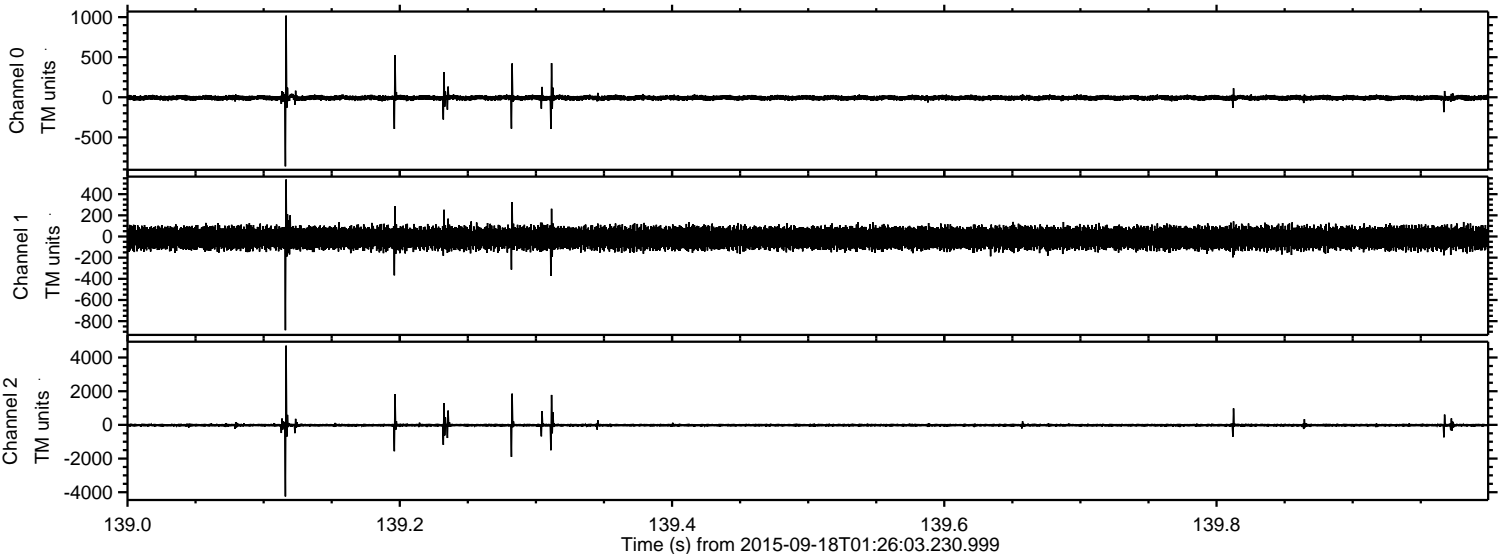
Channel 1  
mn: -784  
mx: 489  
 $\mu$ : -15.1  
 $\sigma$ : 49.0

Channel 2  
mn: -4975  
mx: 2694  
 $\mu$ : -17.0  
 $\sigma$ : 55.7



ELMAVAN 3D WAVEFORMS (Measured data sampled at 50 kHz) 51000 packets of 144 samples from 2015-09-18T01:26:03.230.999. Part 140/147

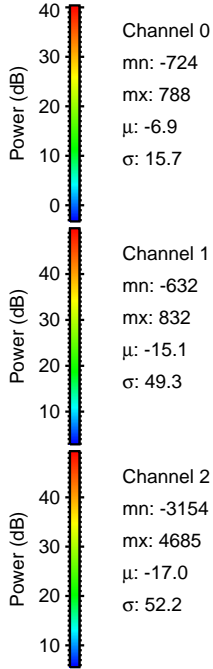
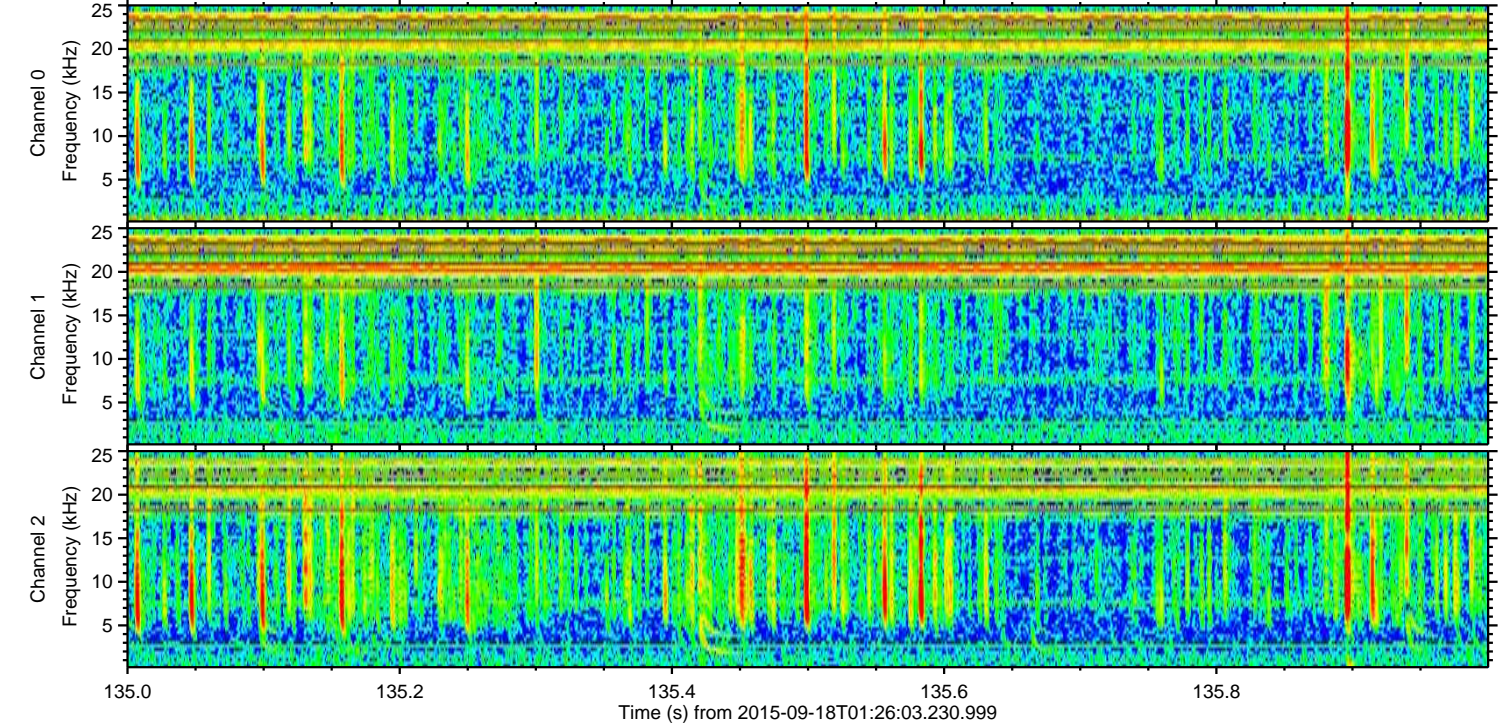
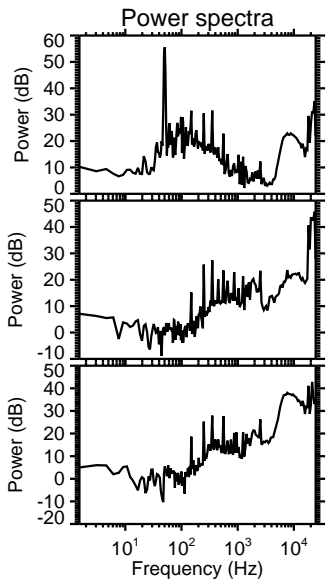
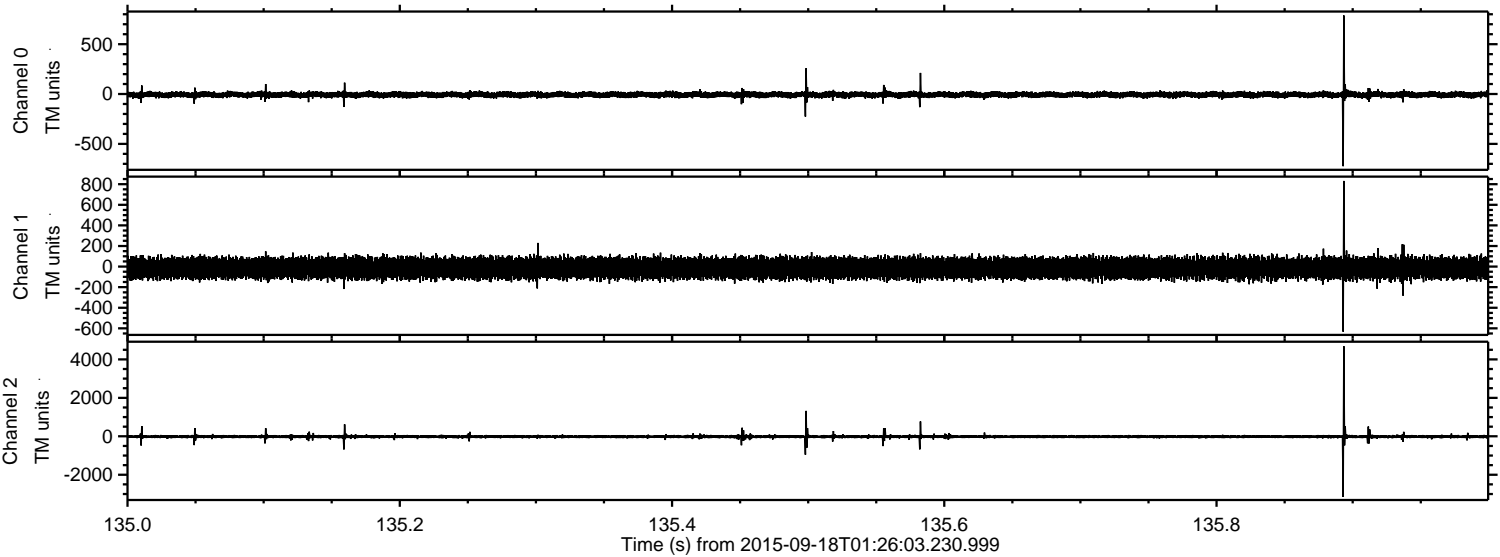
Processed Tue Oct 13 18:47:05 2015 by ELM ver.2012-10-06 from 001\_\_elm20150918\_012602\_\_dat00.bin





ELMAVAN 3D WAVEFORMS (Measured data sampled at 50 kHz) 51000 packets of 144 samples from 2015-09-18T01:26:03.230.999. Part 136/147

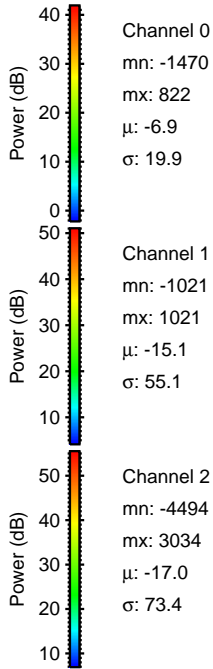
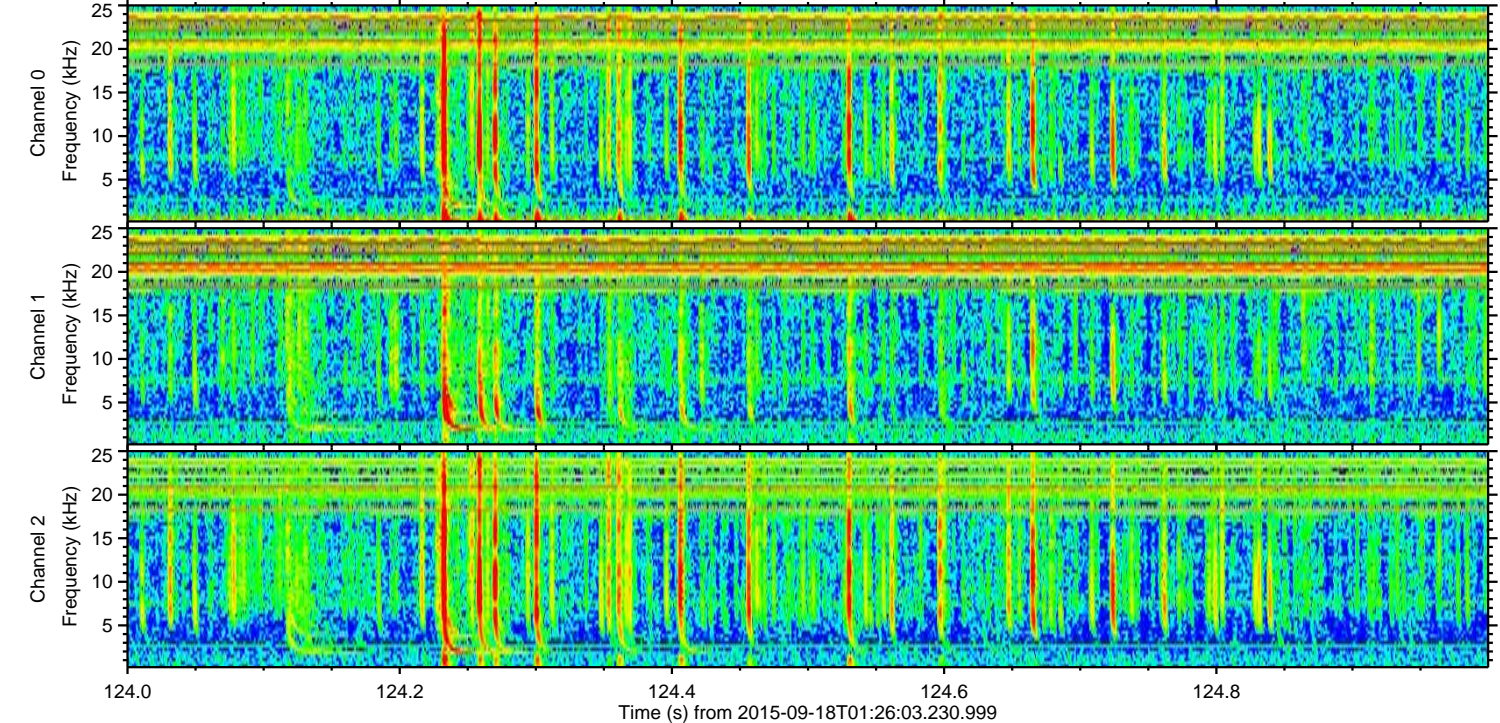
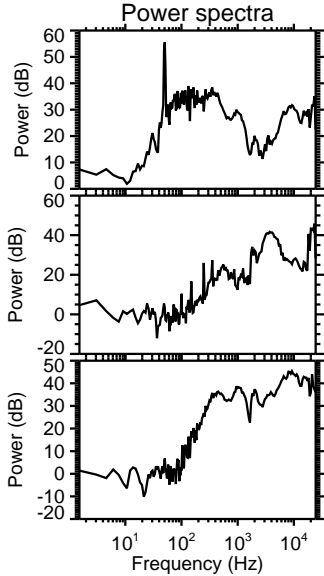
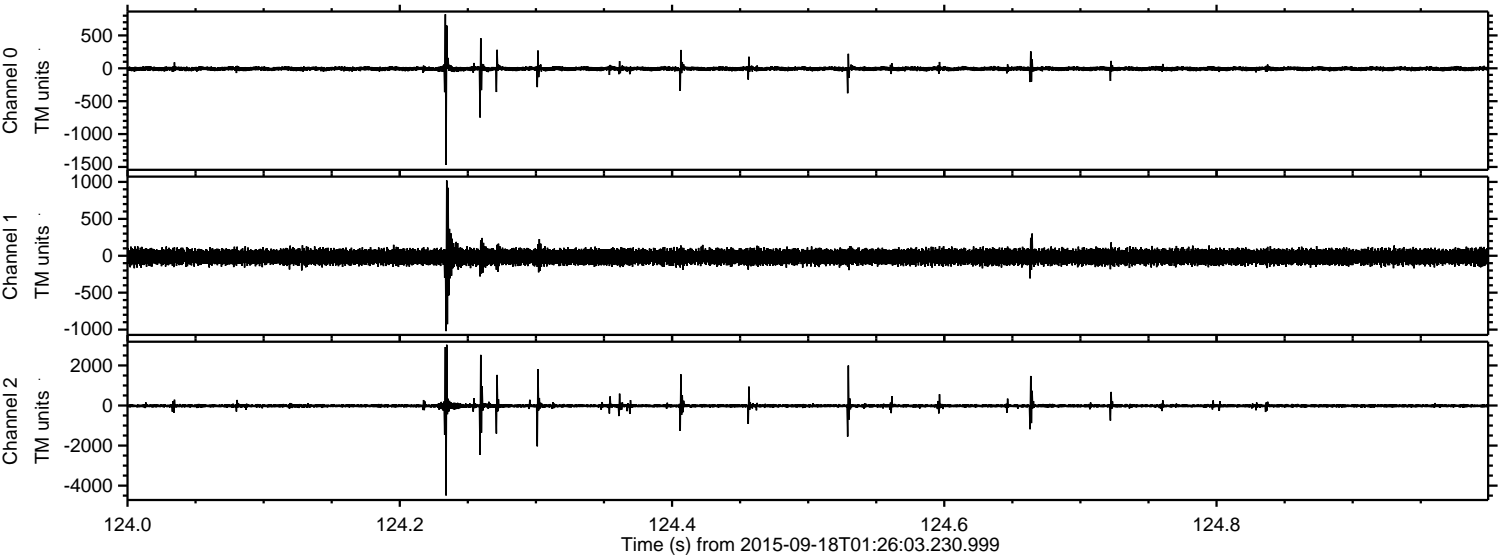
Processed Tue Oct 13 18:47:07 2015 by ELM ver.2012-10-06 from 001\_\_elm20150918\_012602\_\_dat00.bin





ELMAVAN 3D WAVEFORMS (Measured data sampled at 50 kHz) 51000 packets of 144 samples from 2015-09-18T01:26:03.230.999. Part 125/147

Processed Tue Oct 13 18:47:08 2015 by ELM ver.2012-10-06 from 001\_\_elm20150918\_012602\_\_dat00.bin



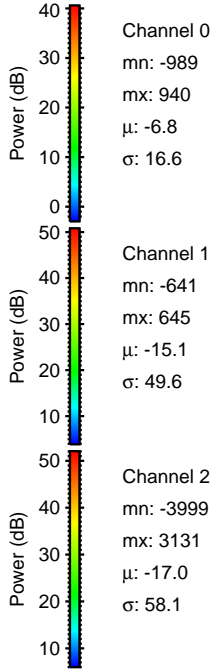
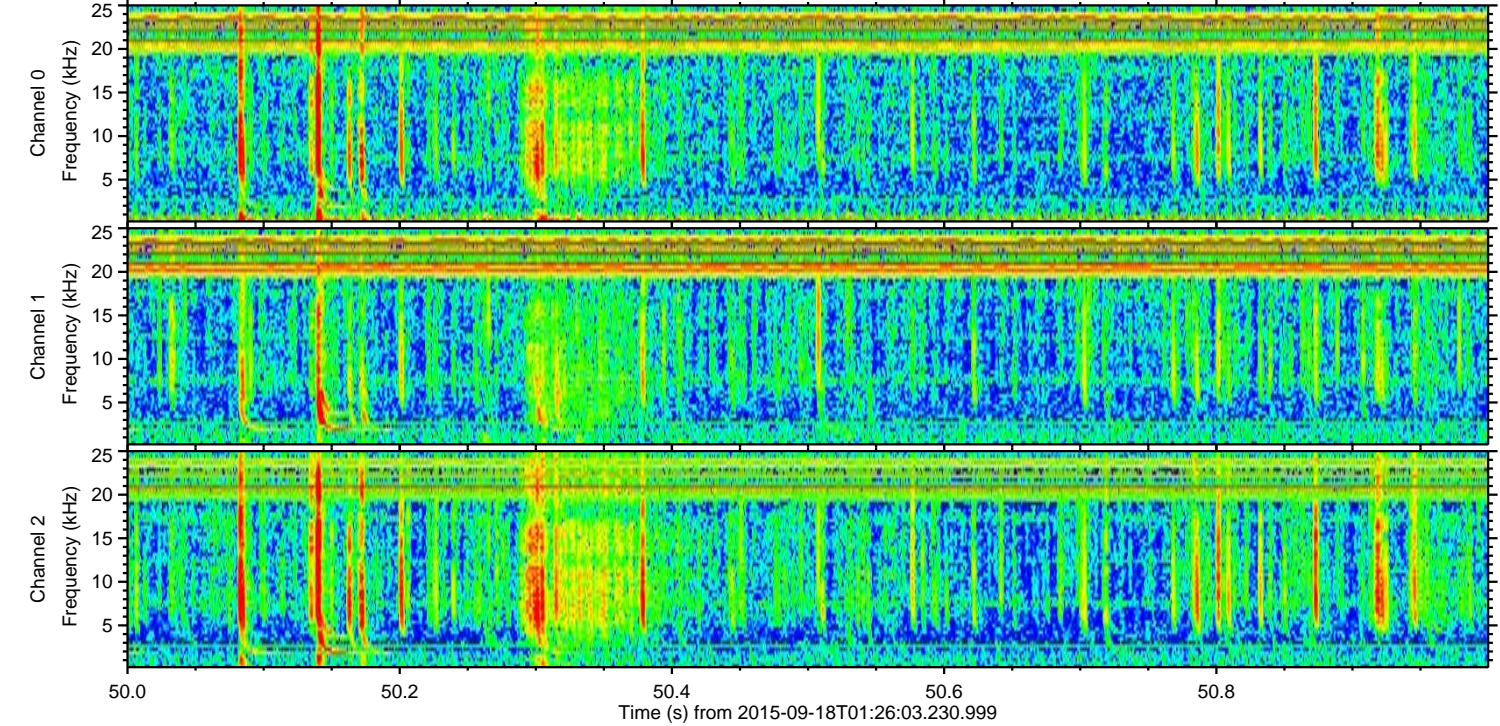
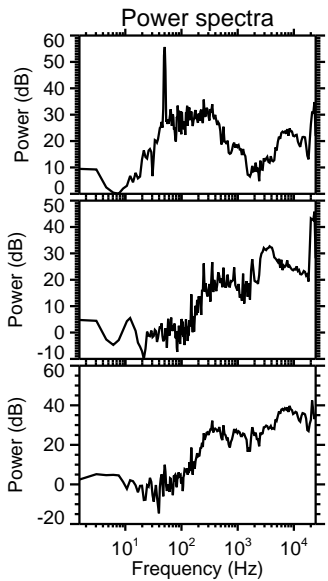
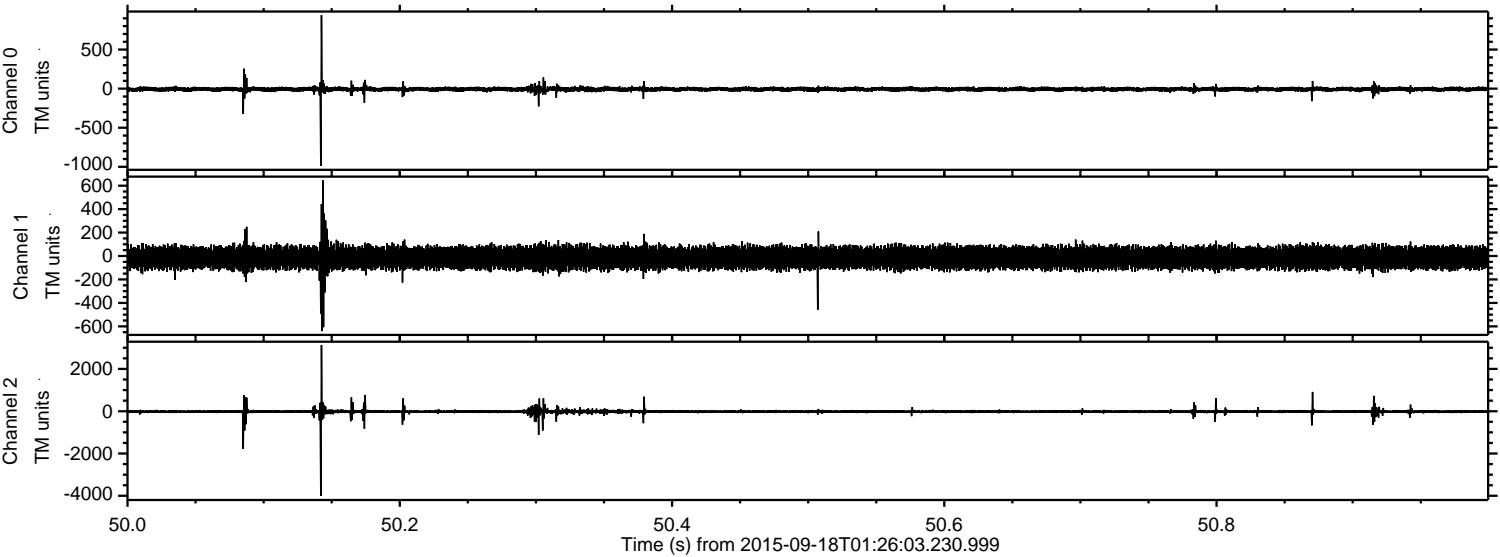
Channel 0  
mn: -1470  
mx: 822  
 $\mu$ : -6.9  
 $\sigma$ : 19.9

Channel 1  
mn: -1021  
mx: 1021  
 $\mu$ : -15.1  
 $\sigma$ : 55.1

Channel 2  
mn: -4494  
mx: 3034  
 $\mu$ : -17.0  
 $\sigma$ : 73.4



Processed Tue Oct 13 18:47:10 2015 by ELM ver.2012-10-06 from 001\_\_elm20150918\_012602\_\_dat00.bin





ELMAVAN 3D WAVEFORMS (Measured data sampled at 50 kHz) 51000 packets of 144 samples from 2015-09-18T01:26:03.230.999. Part 133/147

