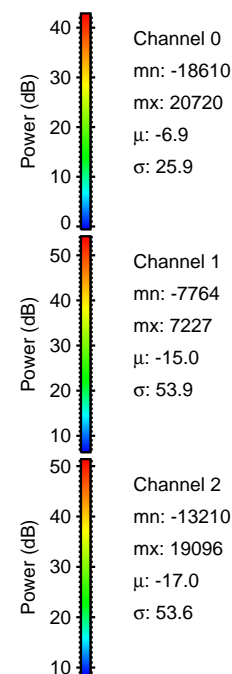
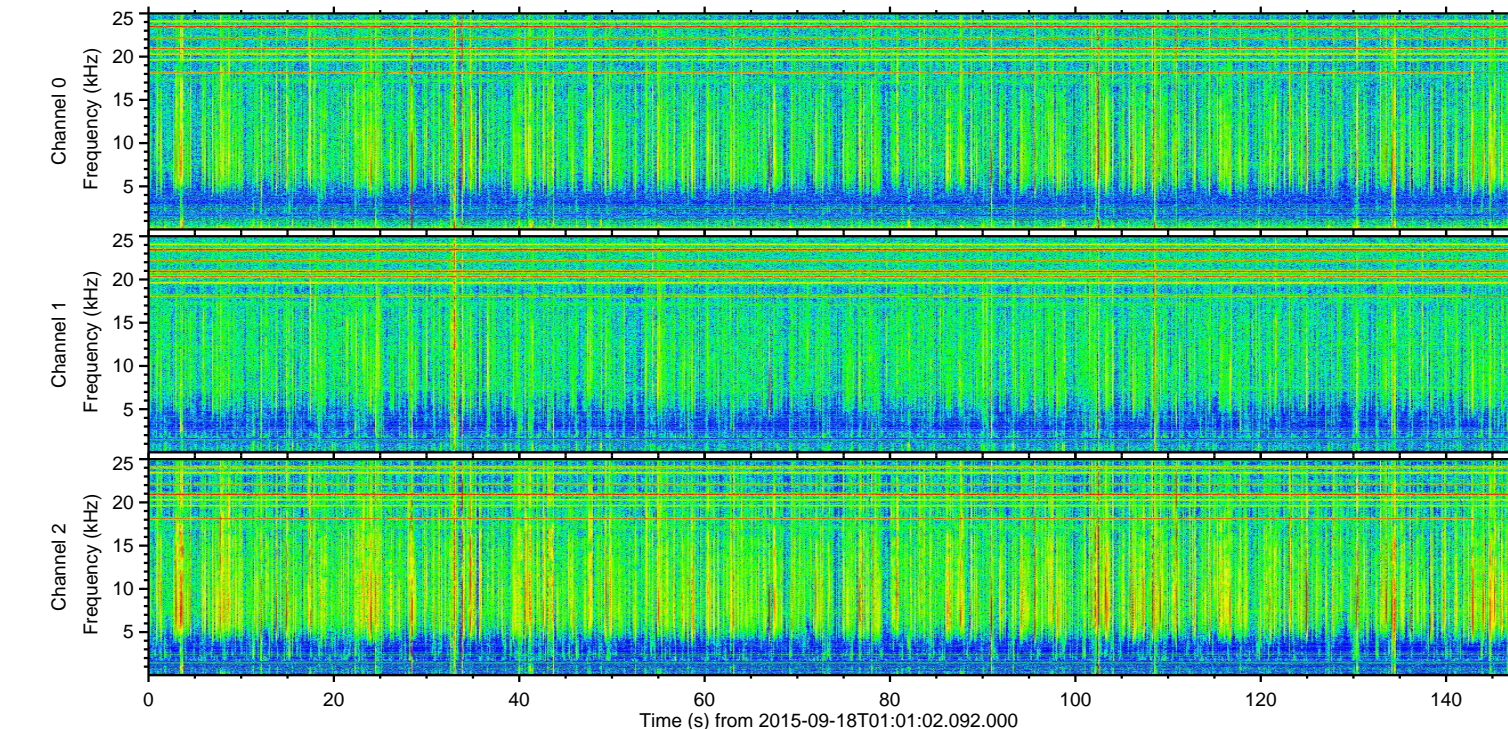
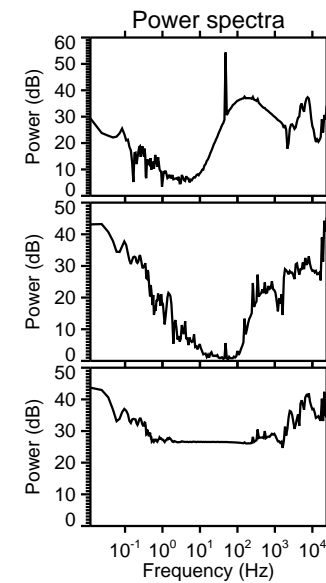
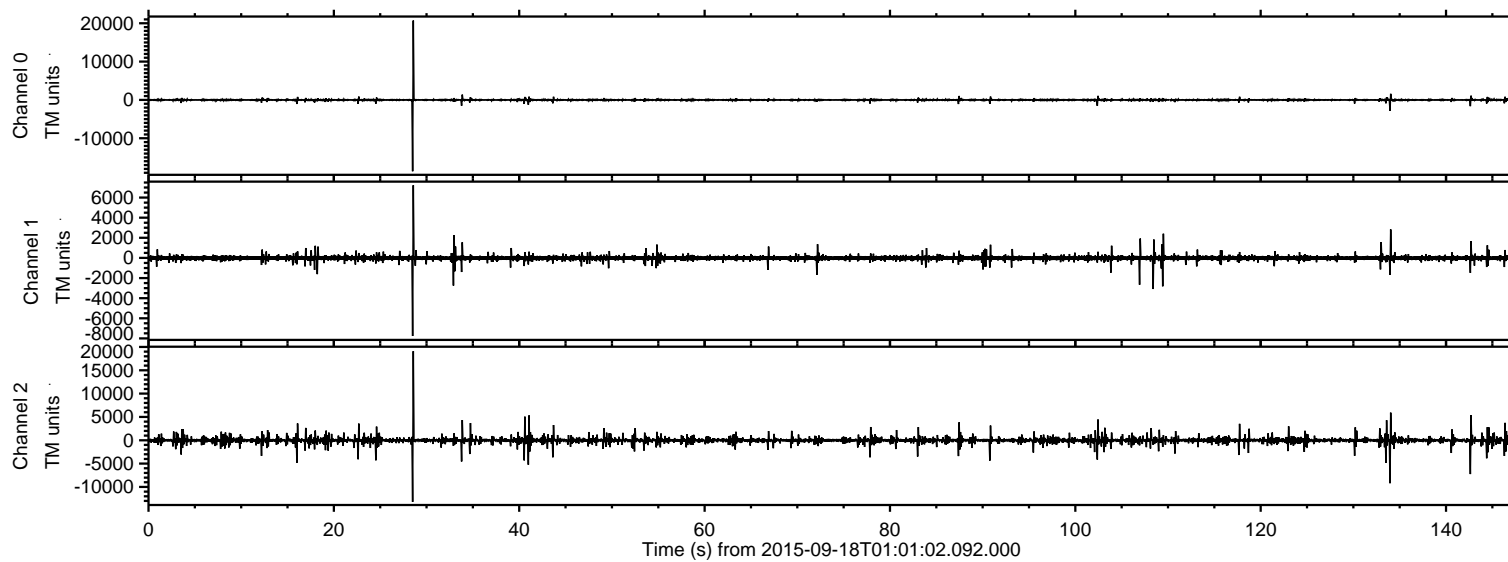


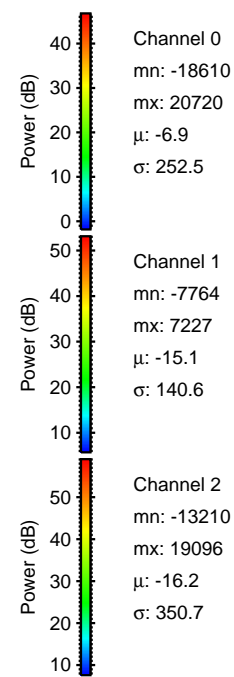
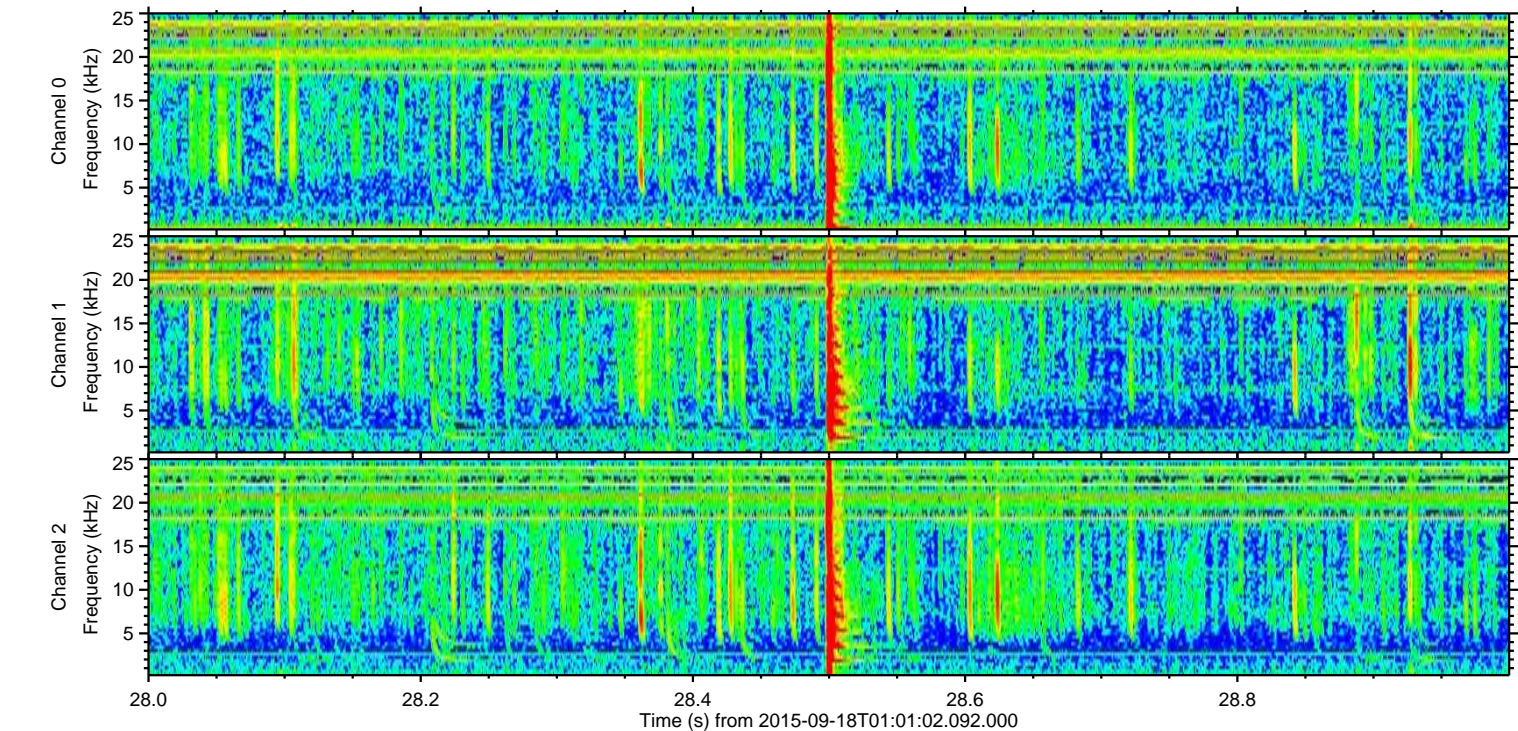
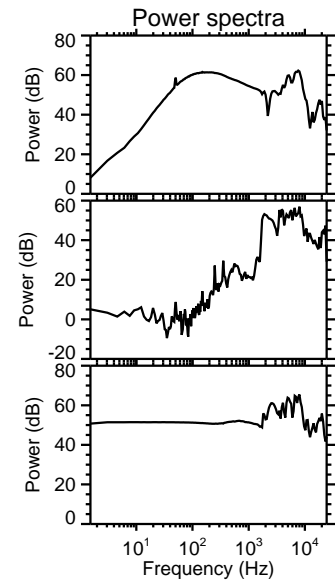
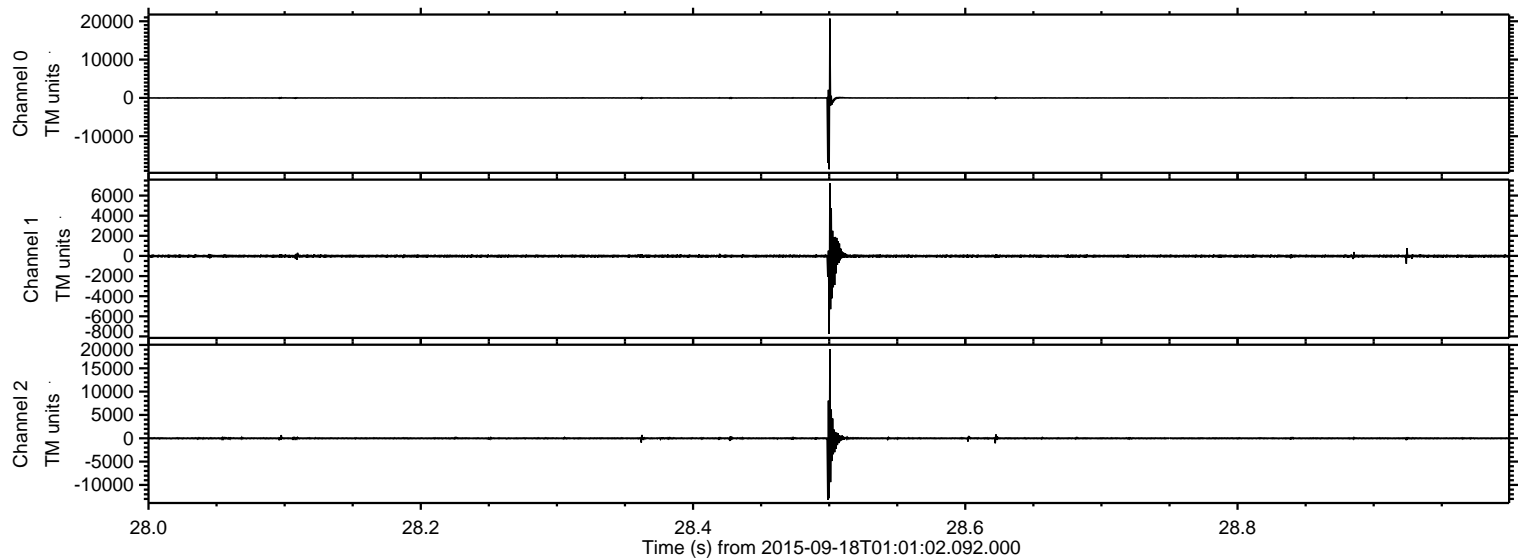
# ELMAVAN 3D WAVEFORMS (Measured data sampled at 50 kHz) 51000 packets of 144 samples from 2015-09-18T01:01:02.092.000.

Processed Tue Oct 13 18:36:08 2015 by ELM ver.2012-10-06 from 001\_\_elm20150918\_010101\_\_dat00.bin





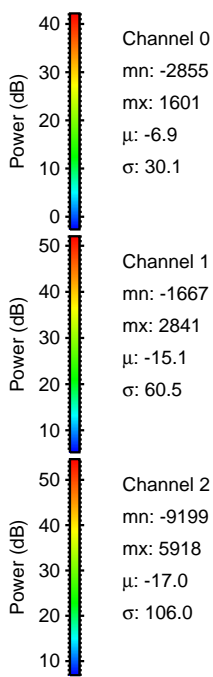
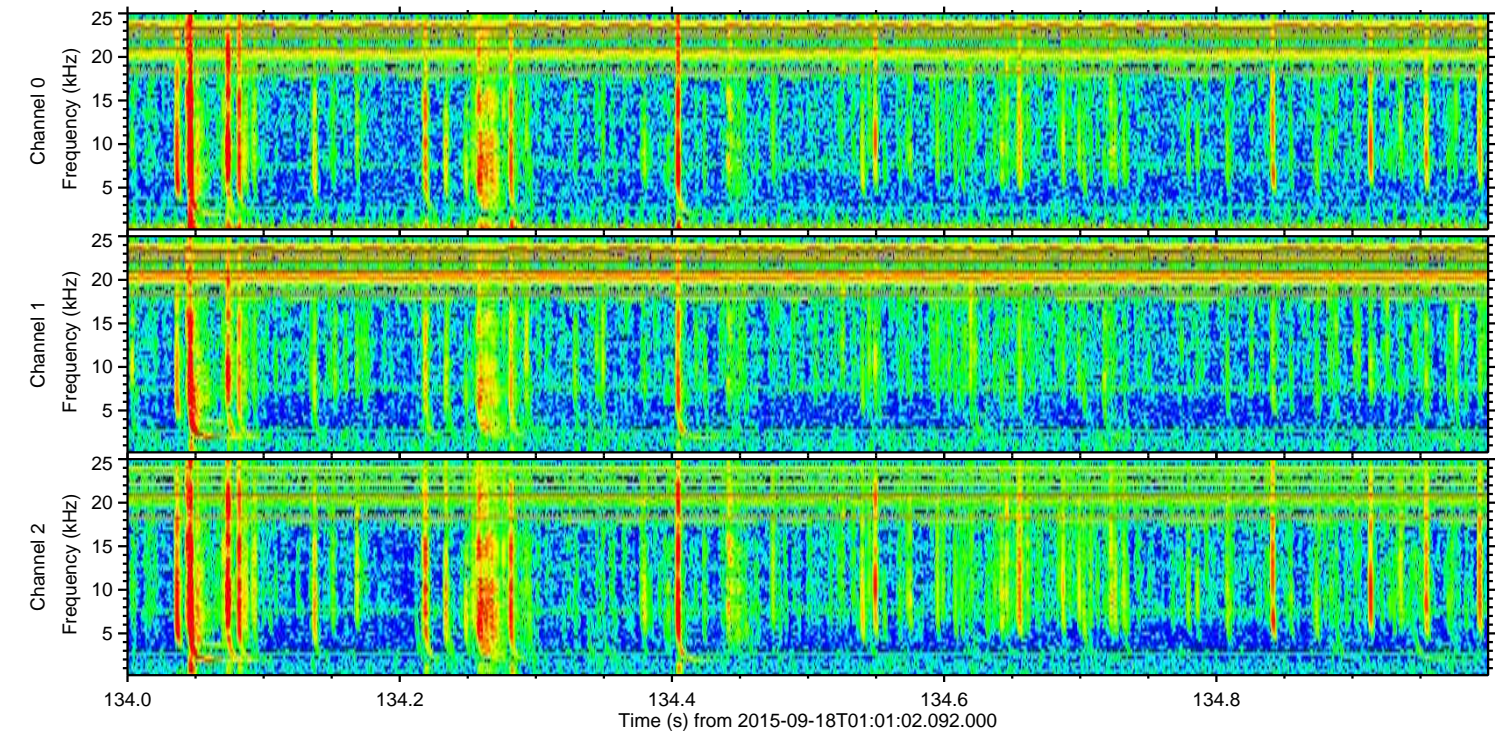
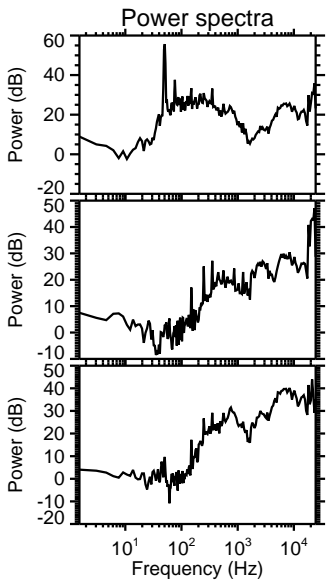
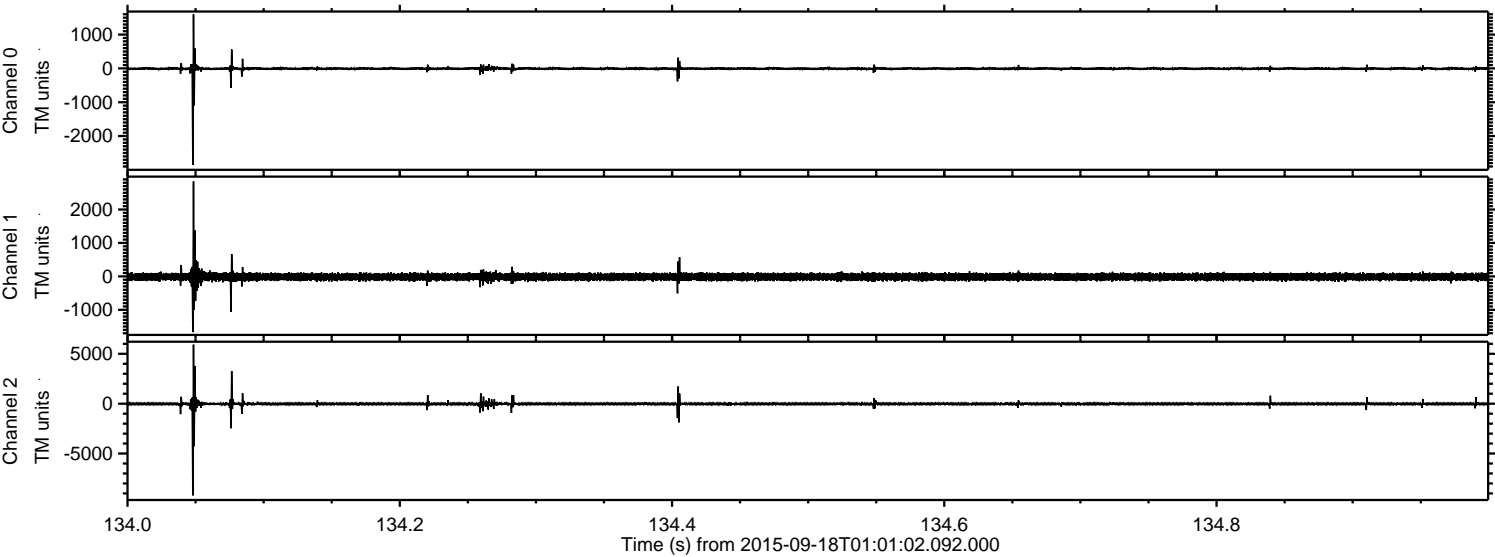
Processed Tue Oct 13 18:36:36 2015 by ELM ver.2012-10-06 from 001\_\_elm20150918\_010101\_\_dat00.bin





ELMAVAN 3D WAVEFORMS (Measured data sampled at 50 kHz) 51000 packets of 144 samples from 2015-09-18T01:01:02.092.000. Part 135/147

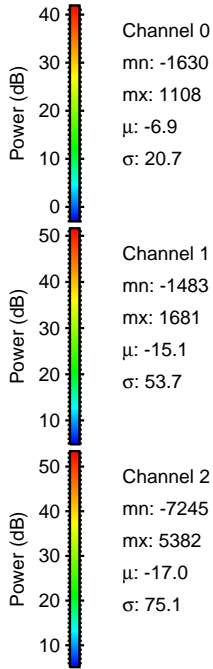
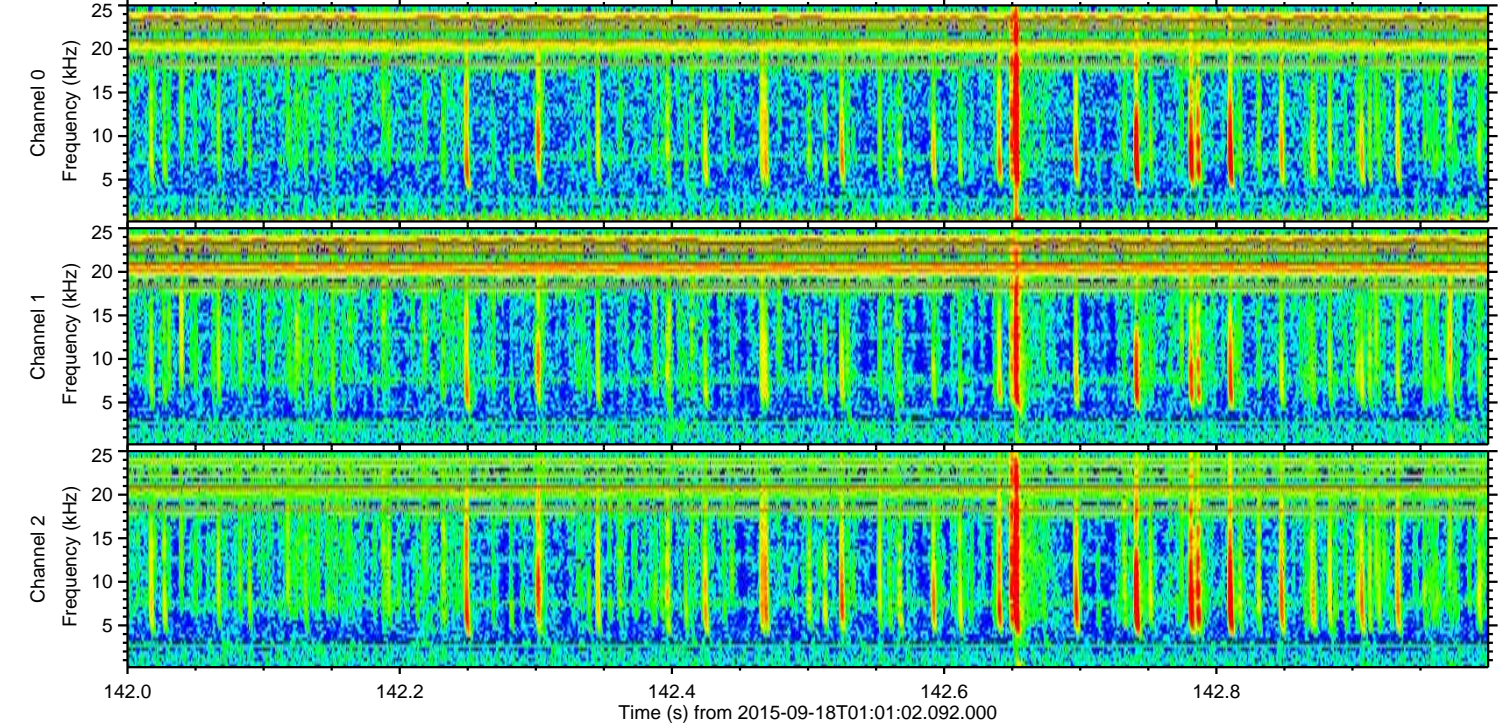
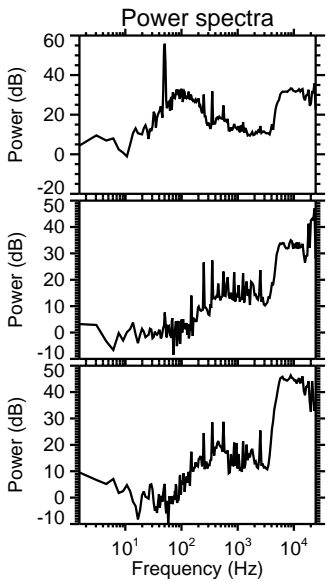
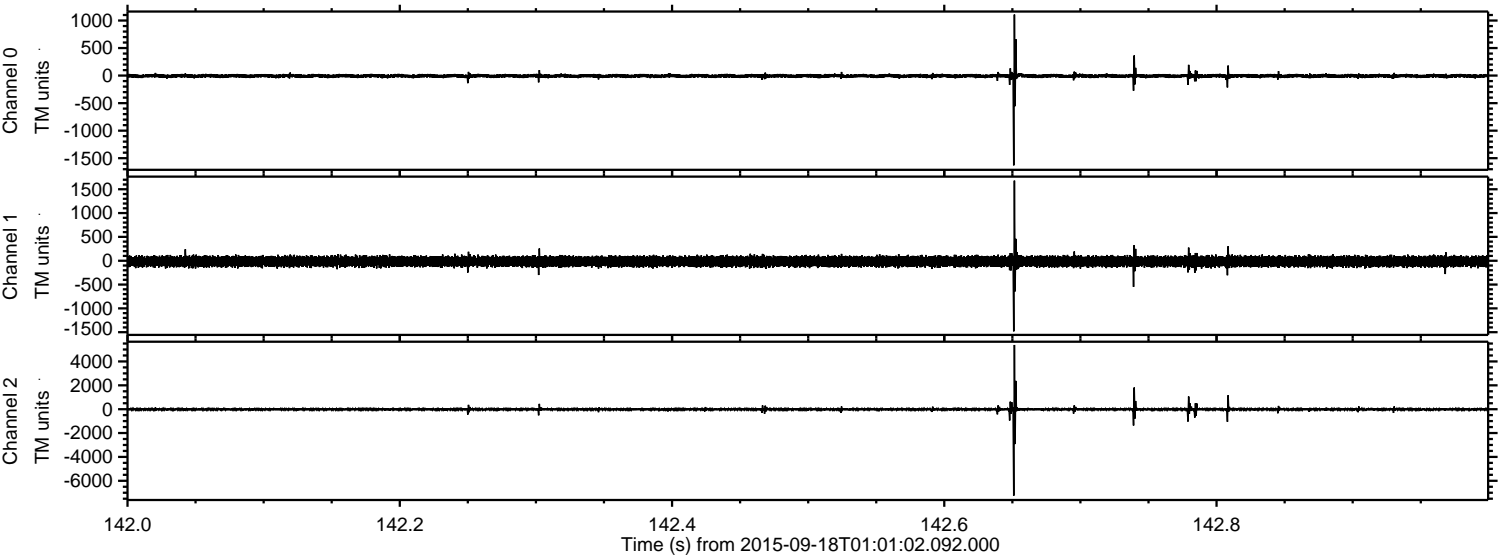
Processed Tue Oct 13 18:36:38 2015 by ELM ver.2012-10-06 from 001\_\_elm20150918\_010101\_\_dat00.bin





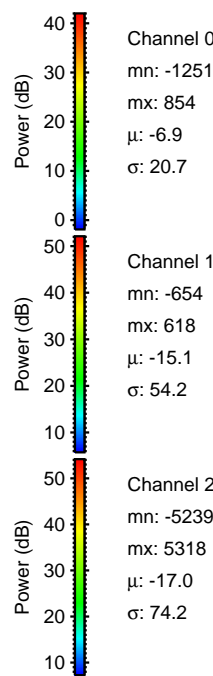
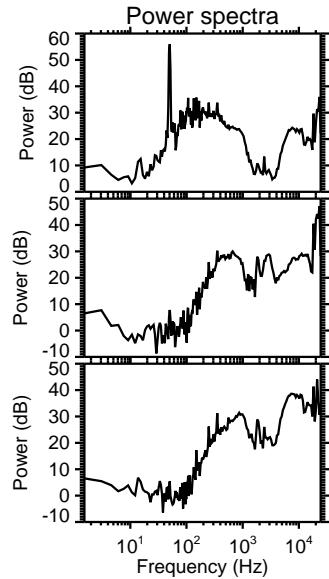
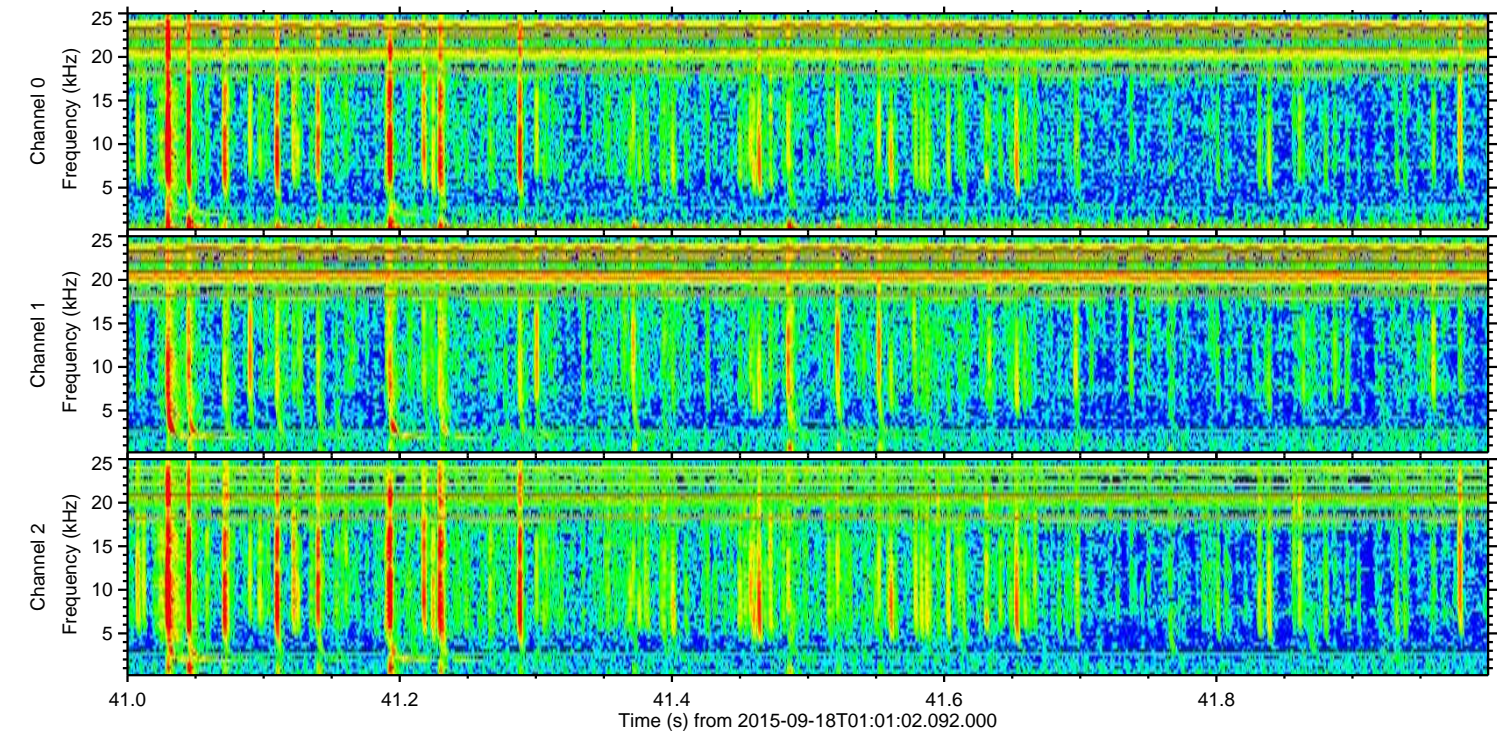
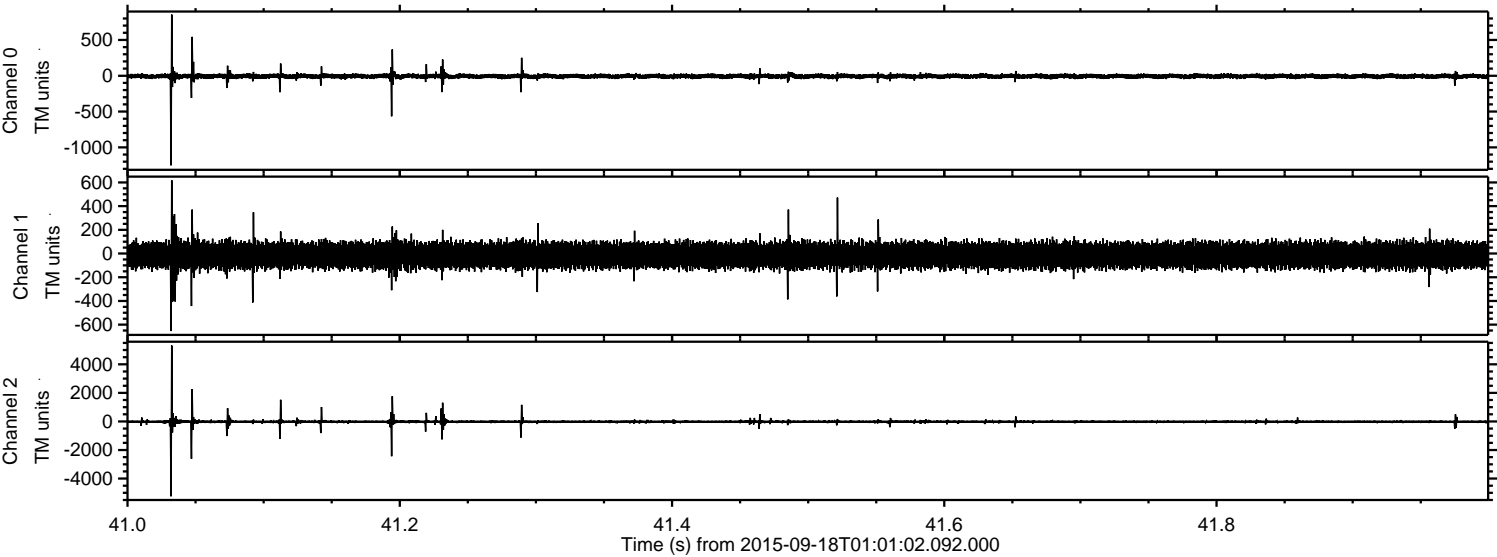
ELMAVAN 3D WAVEFORMS (Measured data sampled at 50 kHz) 51000 packets of 144 samples from 2015-09-18T01:01:02.092.000. Part 143/147

Processed Tue Oct 13 18:36:40 2015 by ELM ver.2012-10-06 from 001\_\_elm20150918\_010101\_\_dat00.bin





Processed Tue Oct 13 18:36:42 2015 by ELM ver.2012-10-06 from 001\_\_elm20150918\_010101\_\_dat00.bin



Channel 0  
mn: -1251  
mx: 854  
 $\mu$ : -6.9  
 $\sigma$ : 20.7

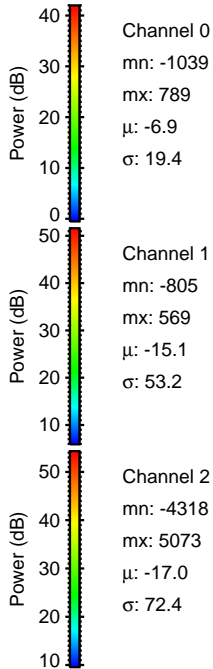
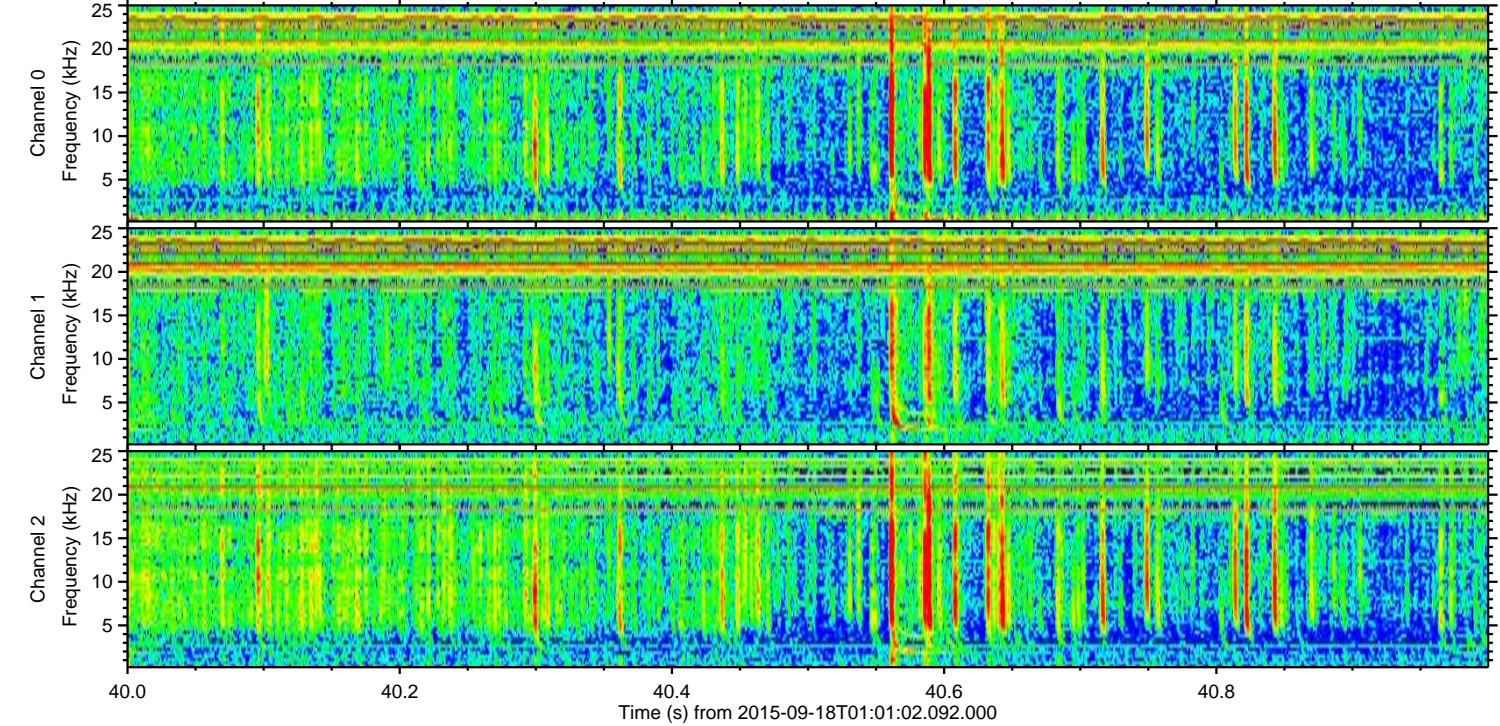
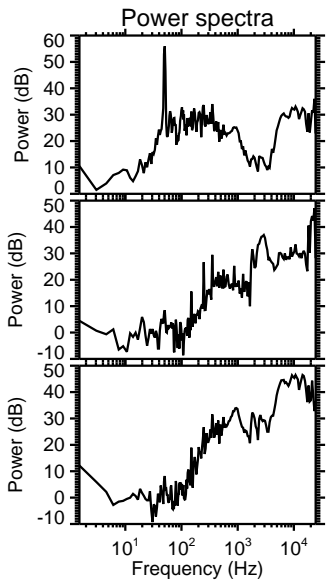
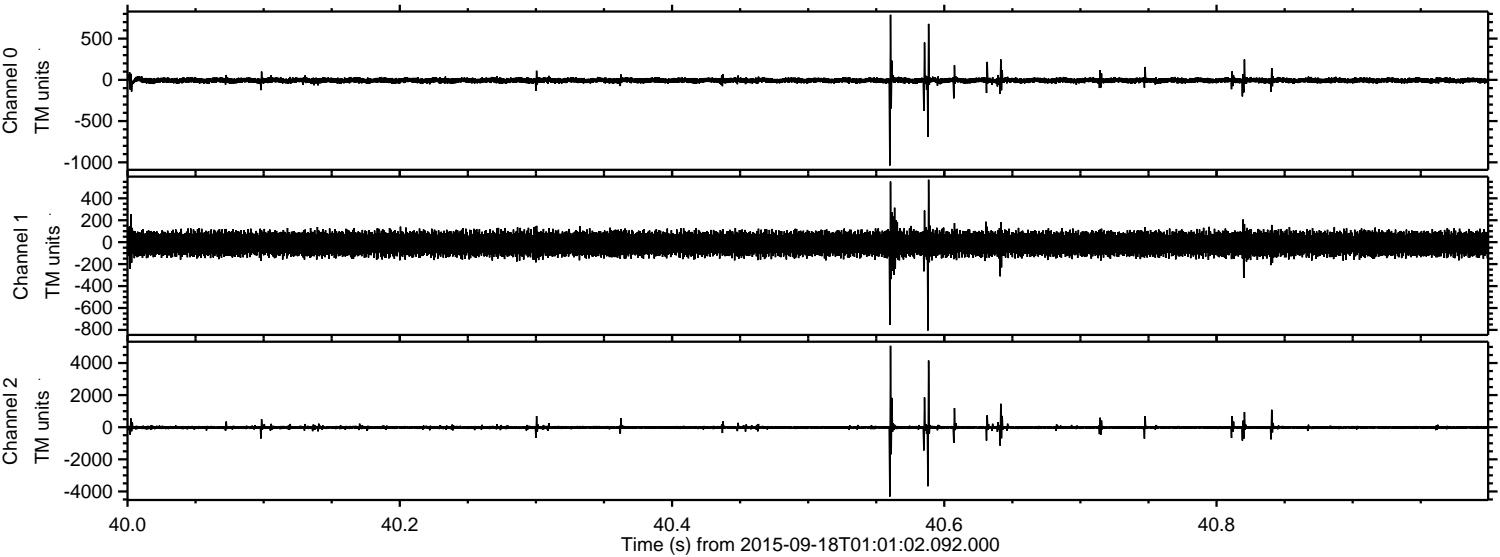
Channel 1  
mn: -654  
mx: 618  
 $\mu$ : -15.1  
 $\sigma$ : 54.2

Channel 2  
mn: -5239  
mx: 5318  
 $\mu$ : -17.0  
 $\sigma$ : 74.2



ELMAVAN 3D WAVEFORMS (Measured data sampled at 50 kHz) 51000 packets of 144 samples from 2015-09-18T01:01:02.092.000. Part 41/147

Processed Tue Oct 13 18:36:44 2015 by ELM ver.2012-10-06 from 001\_\_elm20150918\_010101\_\_dat00.bin



Channel 0  
mn: -1039  
mx: 789  
 $\mu$ : -6.9  
 $\sigma$ : 19.4

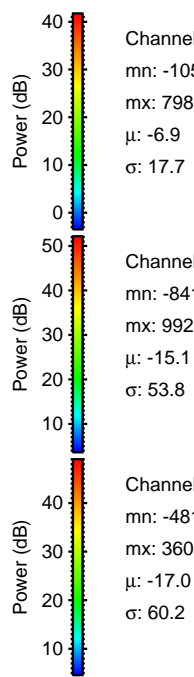
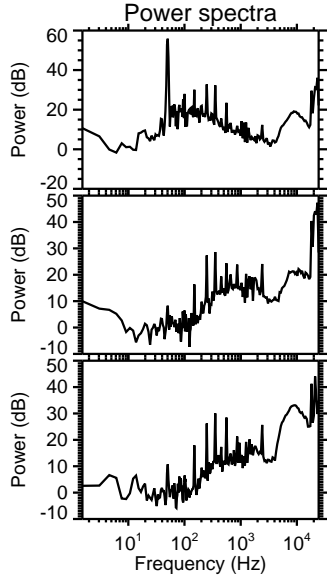
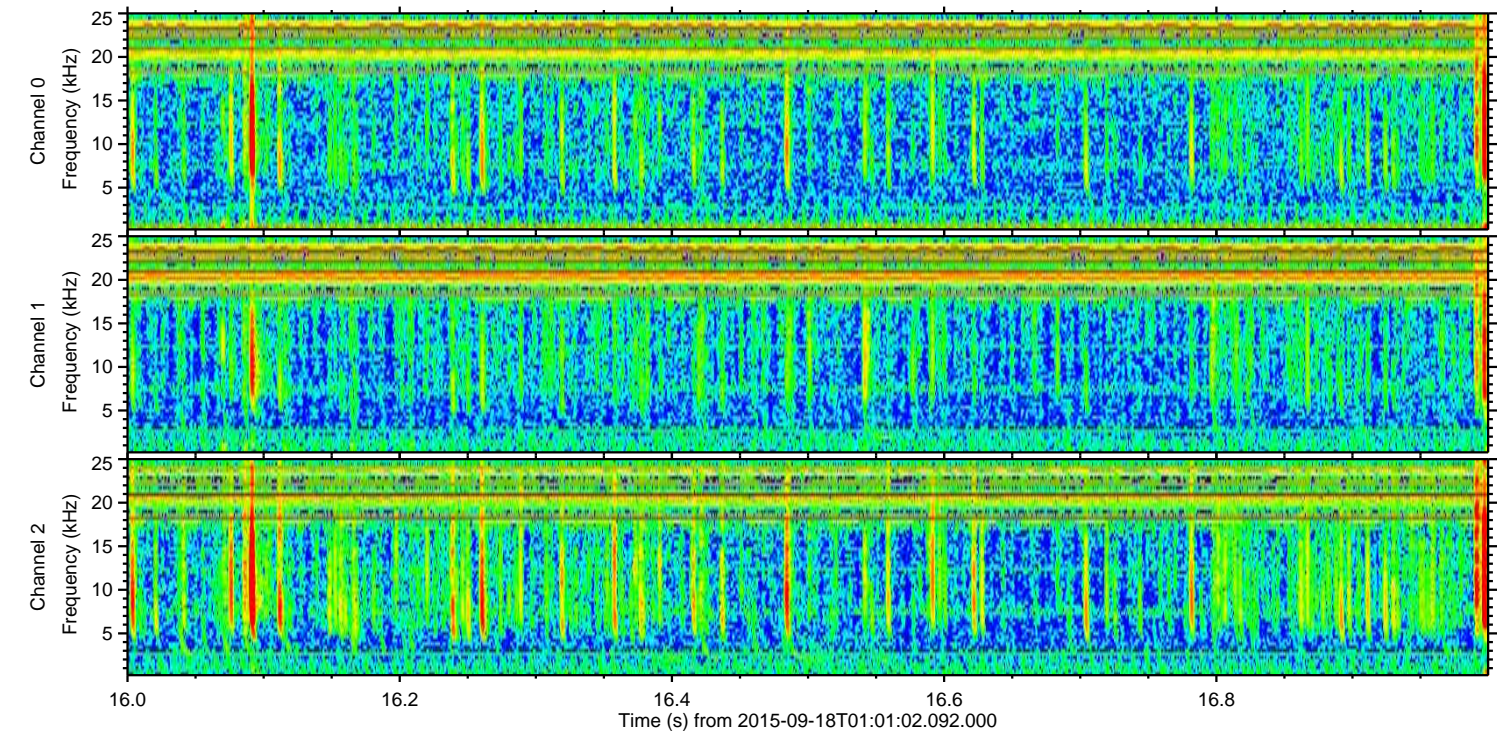
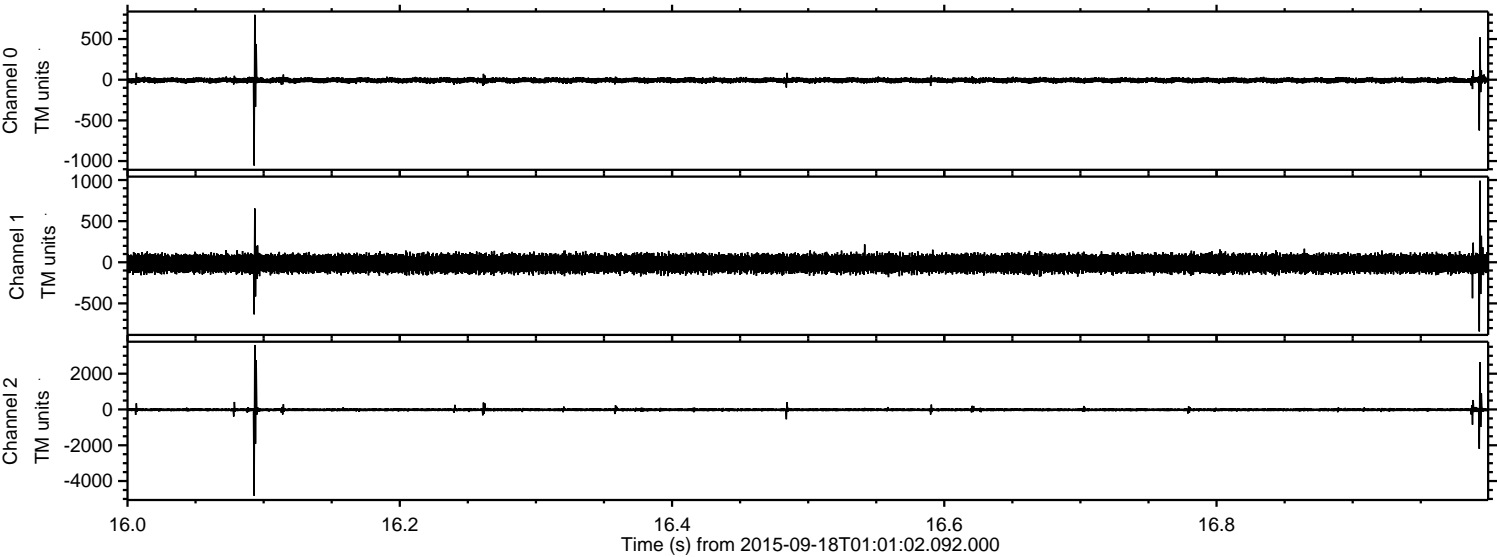
Channel 1  
mn: -805  
mx: 569  
 $\mu$ : -15.1  
 $\sigma$ : 53.2

Channel 2  
mn: -4318  
mx: 5073  
 $\mu$ : -17.0  
 $\sigma$ : 72.4



ELMAVAN 3D WAVEFORMS (Measured data sampled at 50 kHz) 51000 packets of 144 samples from 2015-09-18T01:01:02.092.000. Part 17/147

Processed Tue Oct 13 18:36:47 2015 by ELM ver.2012-10-06 from 001\_\_elm20150918\_010101\_\_dat00.bin



Channel 0  
mn: -1055  
mx: 798  
 $\mu$ : -6.9  
 $\sigma$ : 17.7

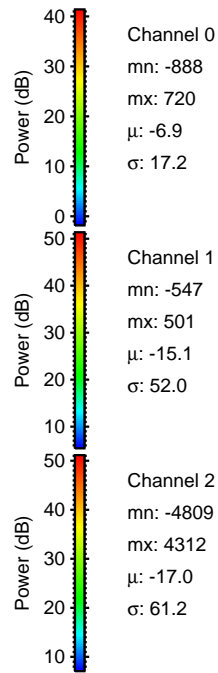
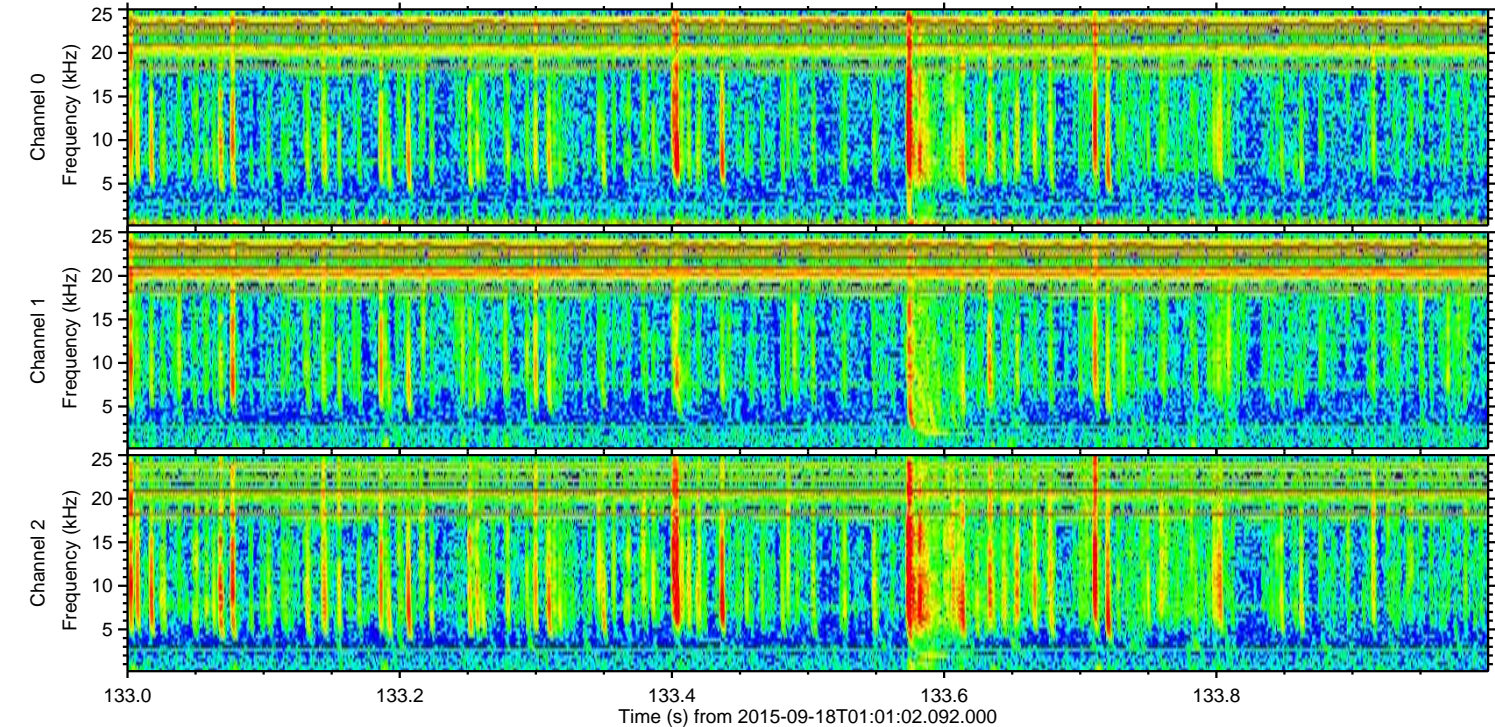
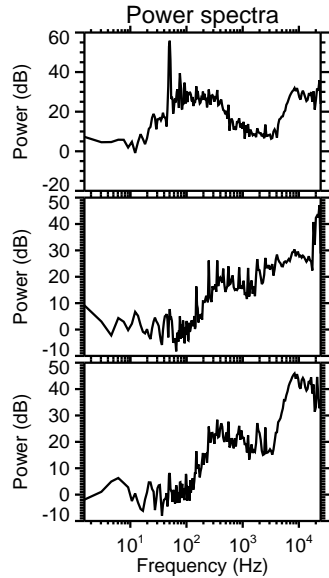
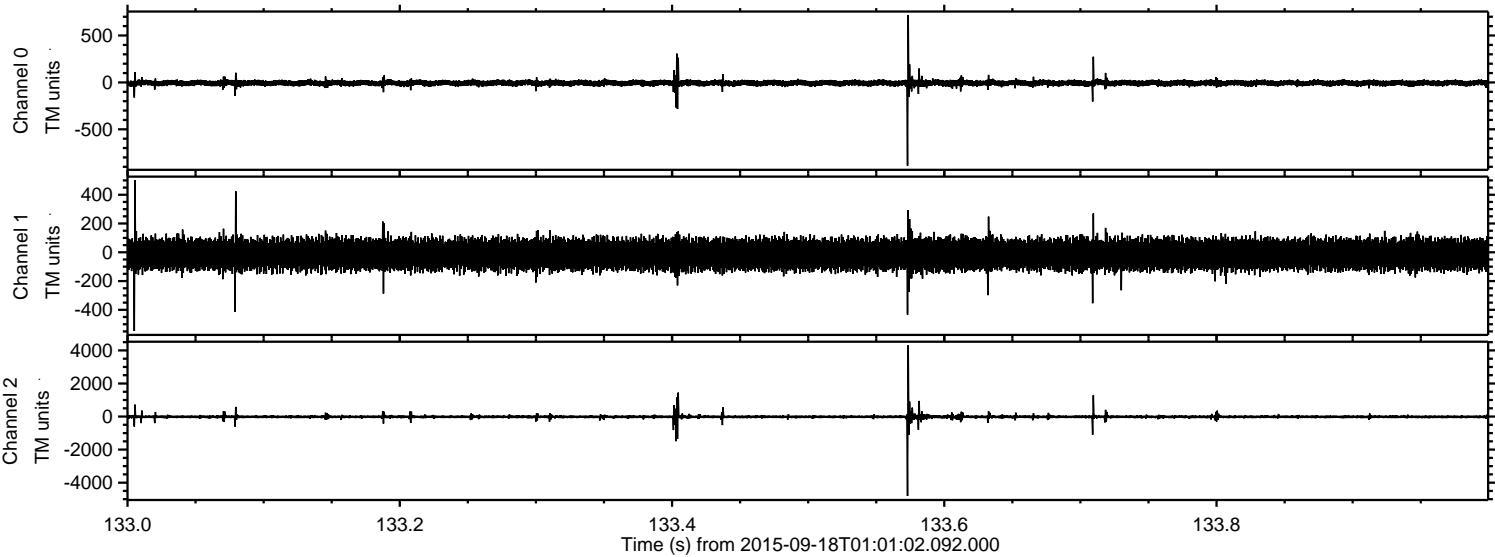
Channel 1  
mn: -841  
mx: 992  
 $\mu$ : -15.1  
 $\sigma$ : 53.8

Channel 2  
mn: -4817  
mx: 3604  
 $\mu$ : -17.0  
 $\sigma$ : 60.2



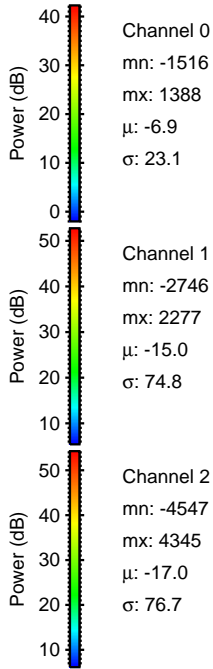
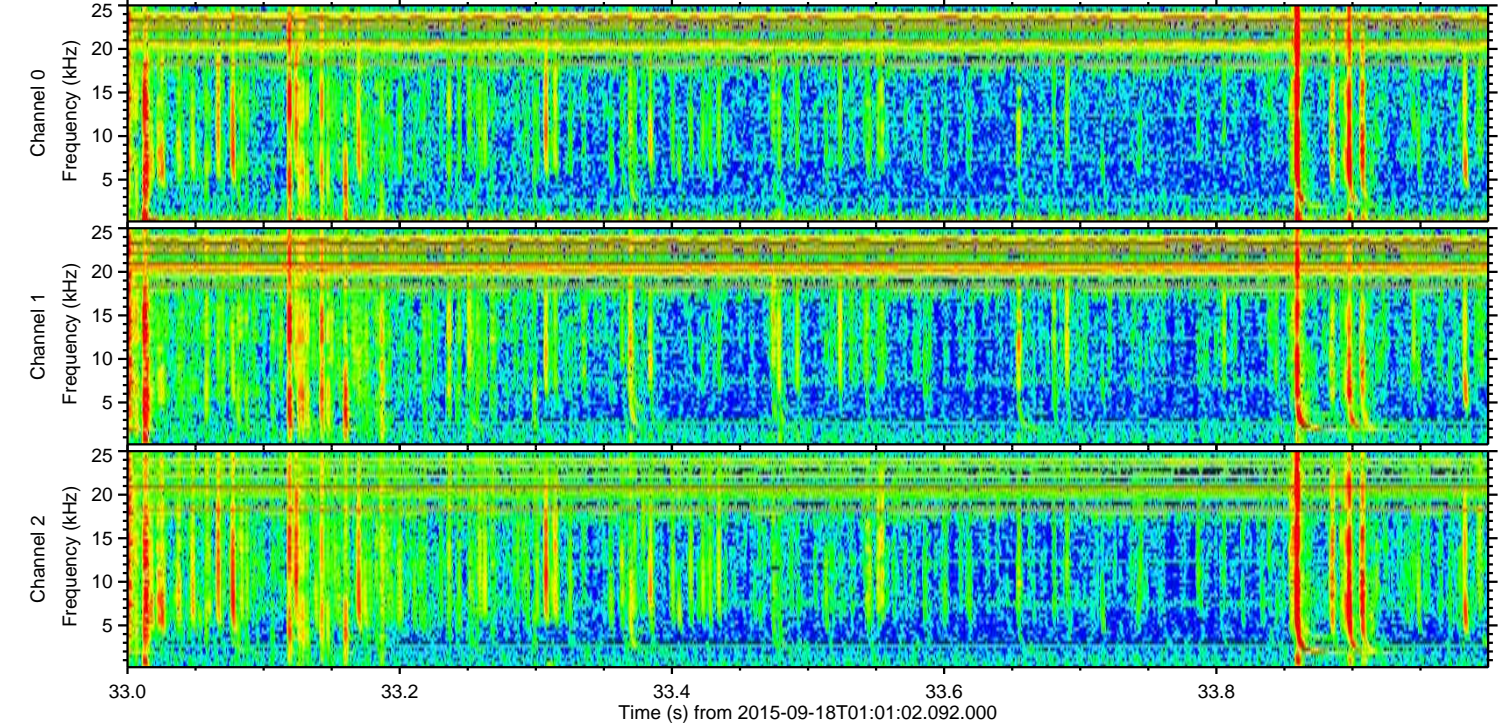
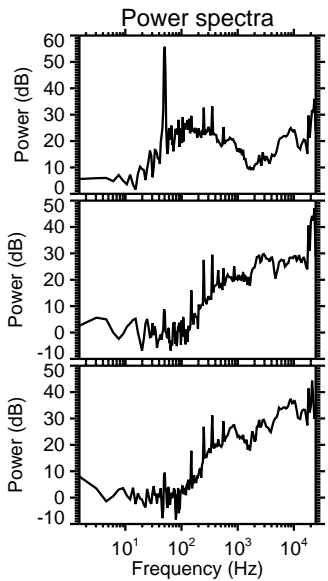
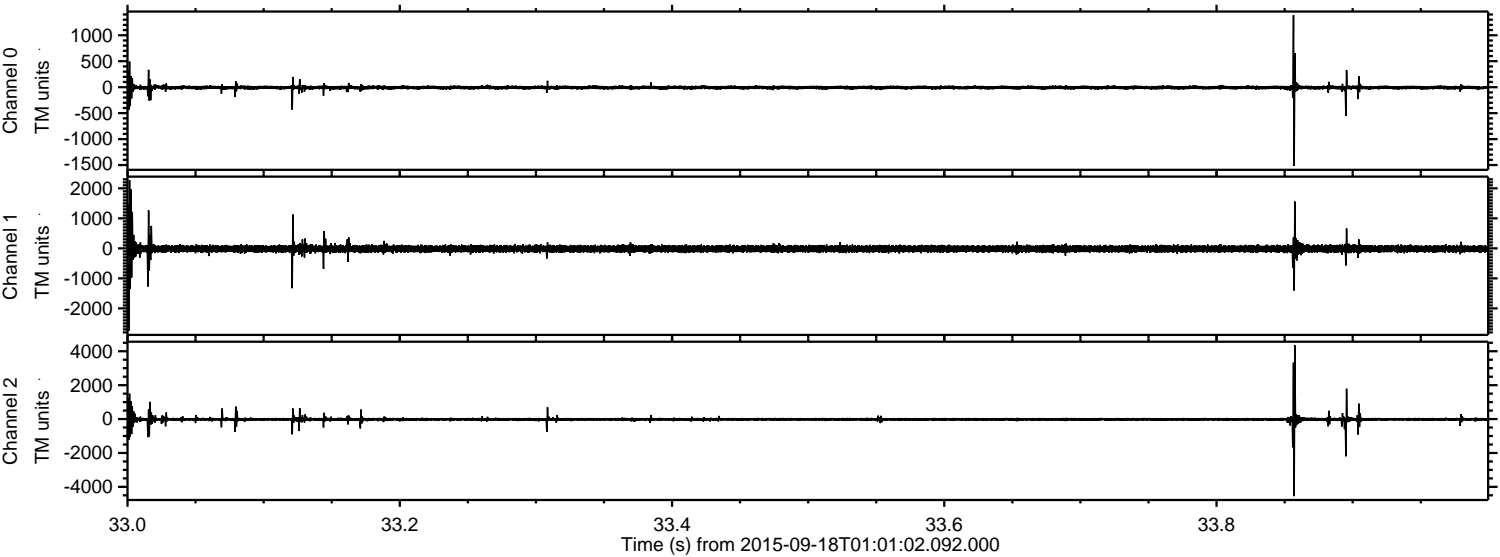
ELMAVAN 3D WAVEFORMS (Measured data sampled at 50 kHz) 51000 packets of 144 samples from 2015-09-18T01:01:02.092.000. Part 134/147

Processed Tue Oct 13 18:36:49 2015 by ELM ver.2012-10-06 from 001\_\_elm20150918\_010101\_\_dat00.bin





Processed Tue Oct 13 18:36:51 2015 by ELM ver.2012-10-06 from 001\_\_elm20150918\_010101\_\_dat00.bin



Channel 0  
mn: -1516  
mx: 1388  
 $\mu$ : -6.9  
 $\sigma$ : 23.1

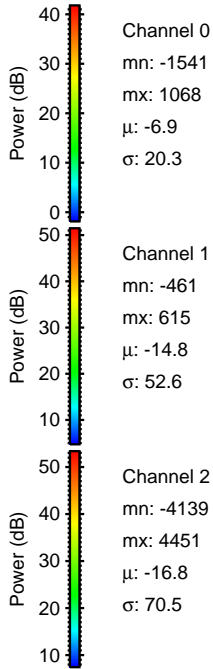
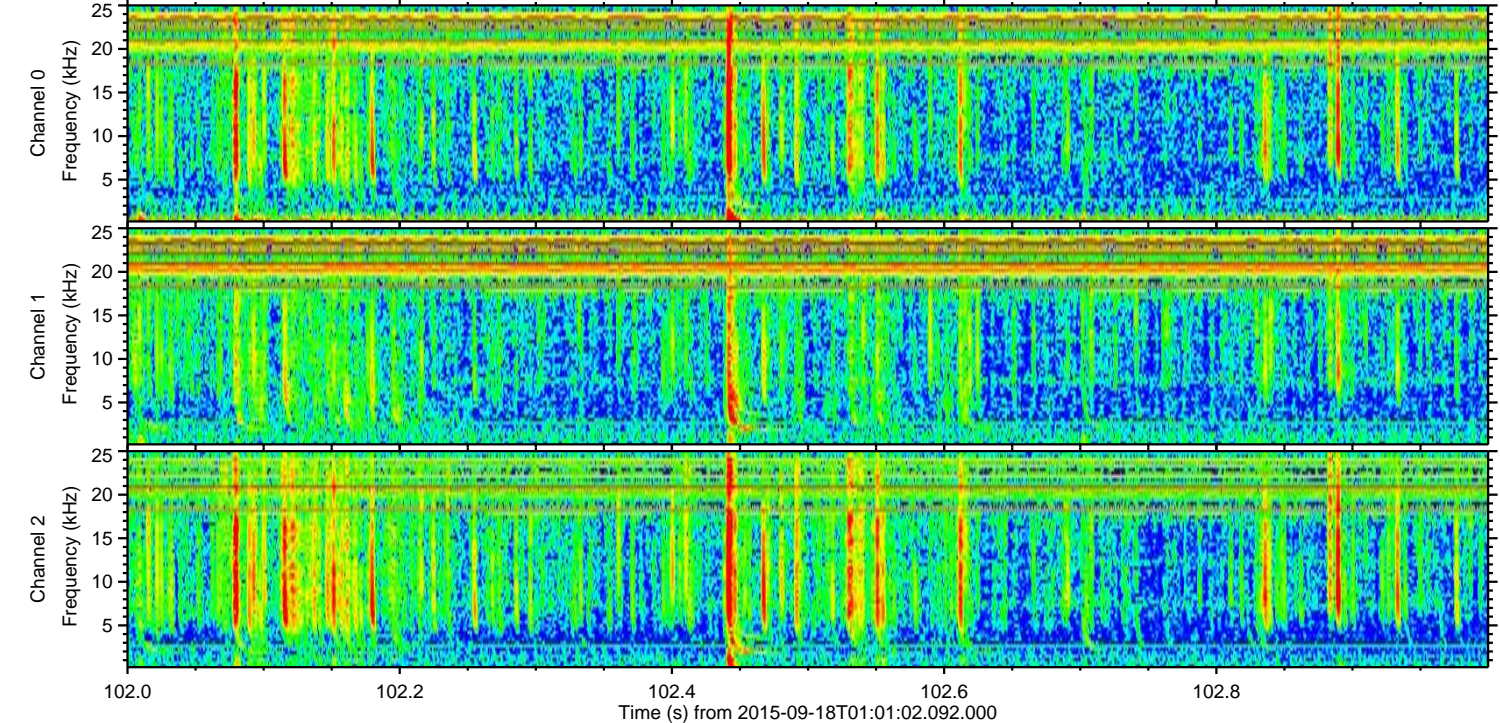
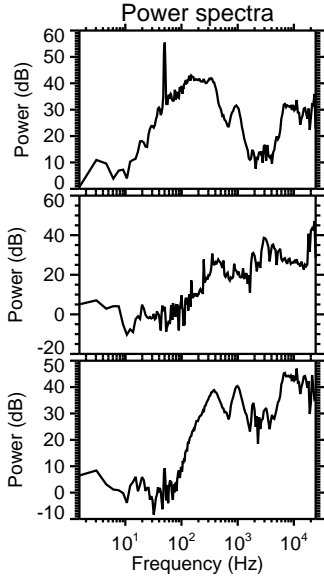
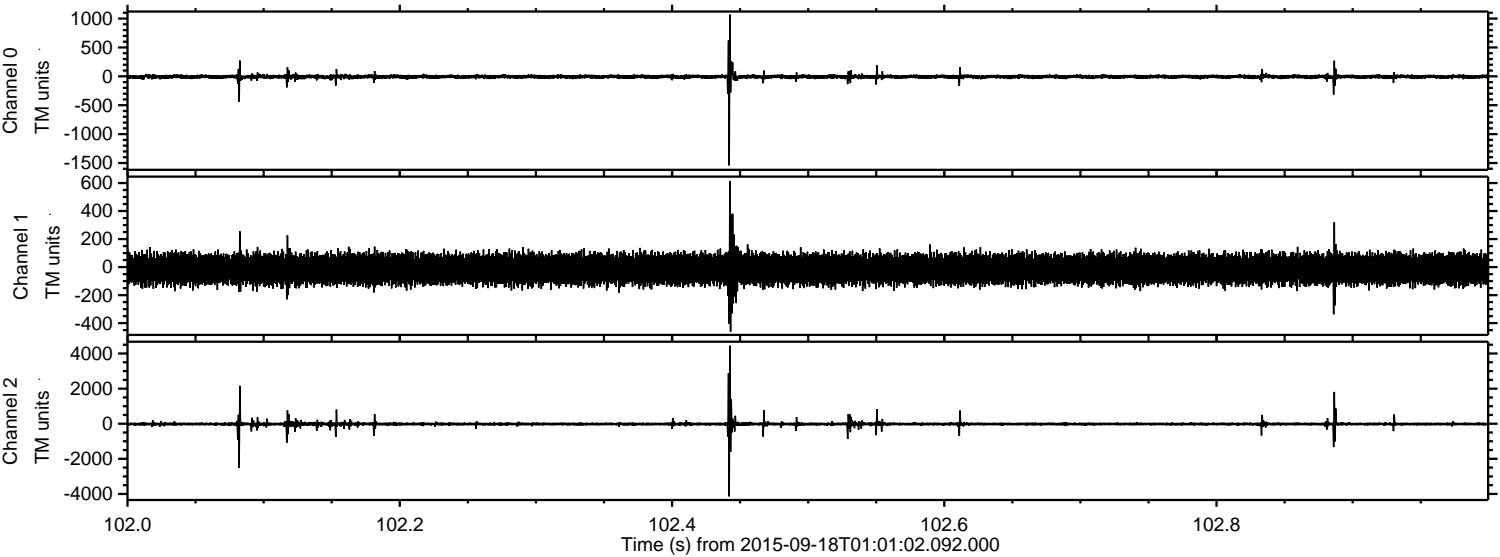
Channel 1  
mn: -2746  
mx: 2277  
 $\mu$ : -15.0  
 $\sigma$ : 74.8

Channel 2  
mn: -4547  
mx: 4345  
 $\mu$ : -17.0  
 $\sigma$ : 76.7



ELMAVAN 3D WAVEFORMS (Measured data sampled at 50 kHz) 51000 packets of 144 samples from 2015-09-18T01:01:02.092.000. Part 103/147

Processed Tue Oct 13 18:36:53 2015 by ELM ver.2012-10-06 from 001\_\_elm20150918\_010101\_\_dat00.bin



Channel 0  
mn: -1541  
mx: 1068  
 $\mu$ : -6.9  
 $\sigma$ : 20.3

Channel 1  
mn: -461  
mx: 615  
 $\mu$ : -14.8  
 $\sigma$ : 52.6

Channel 2  
mn: -4139  
mx: 4451  
 $\mu$ : -16.8  
 $\sigma$ : 70.5



ELMAVAN 3D WAVEFORMS (Measured data sampled at 50 kHz) 51000 packets of 144 samples from 2015-09-18T01:01:02.092.000. Part 74/147

Processed Tue Oct 13 18:36:54 2015 by ELM ver.2012-10-06 from 001\_\_elm20150918\_010101\_\_dat00.bin

