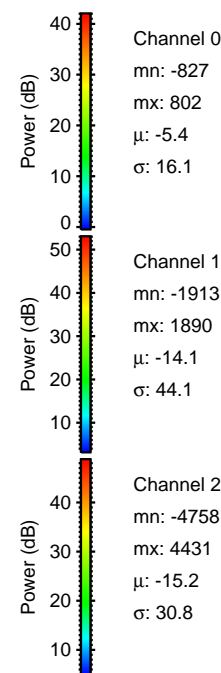
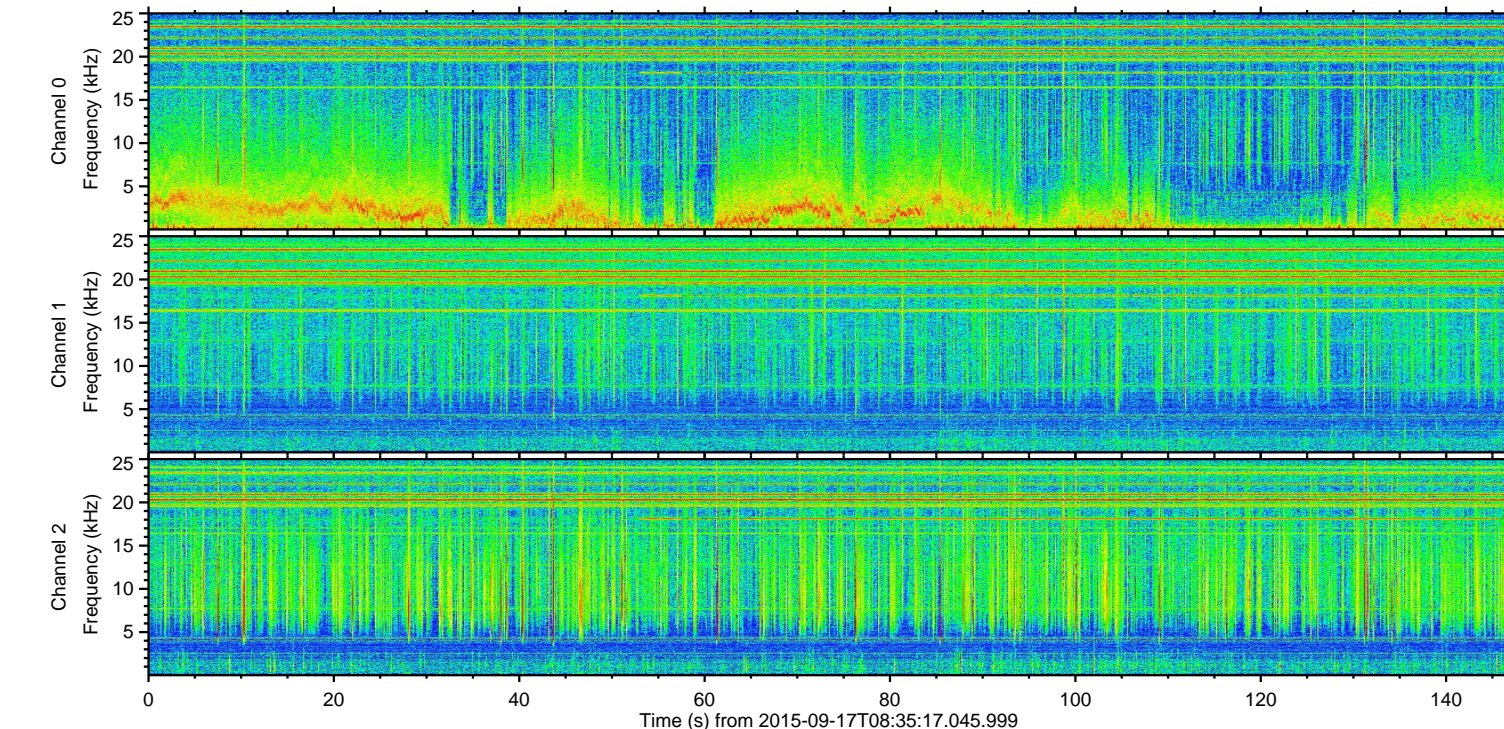
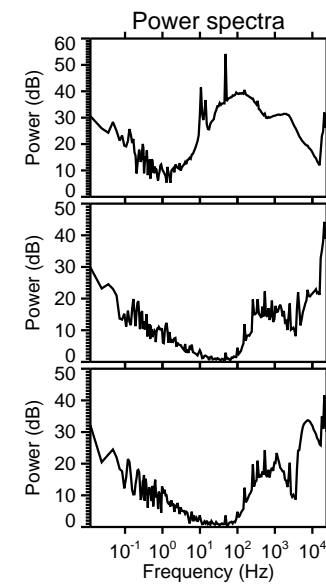
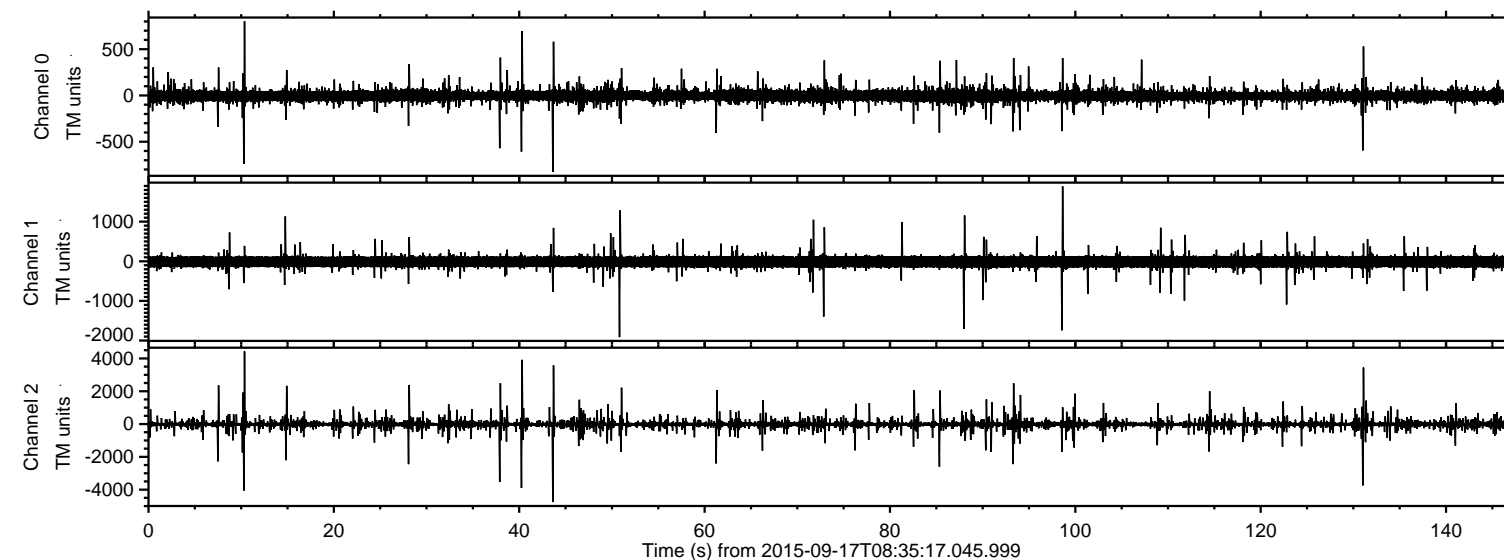
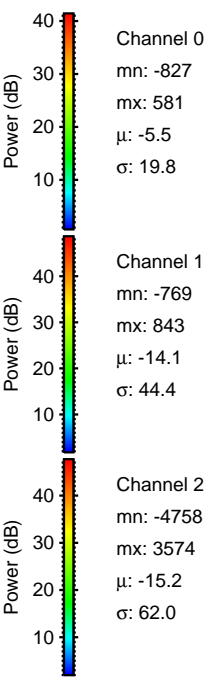
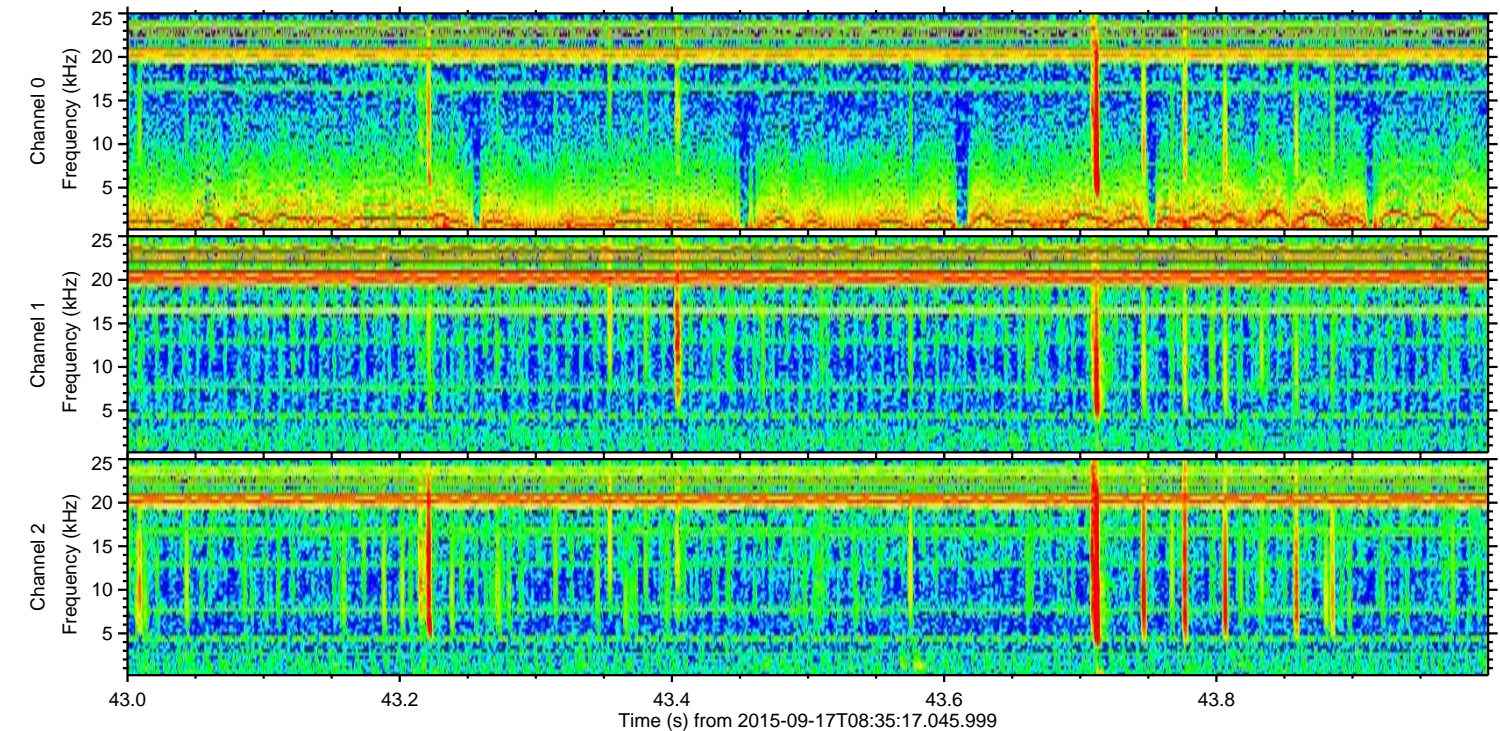
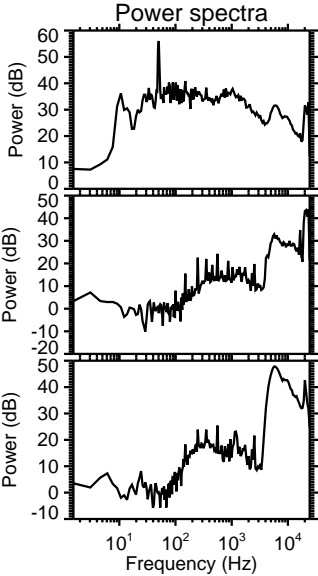
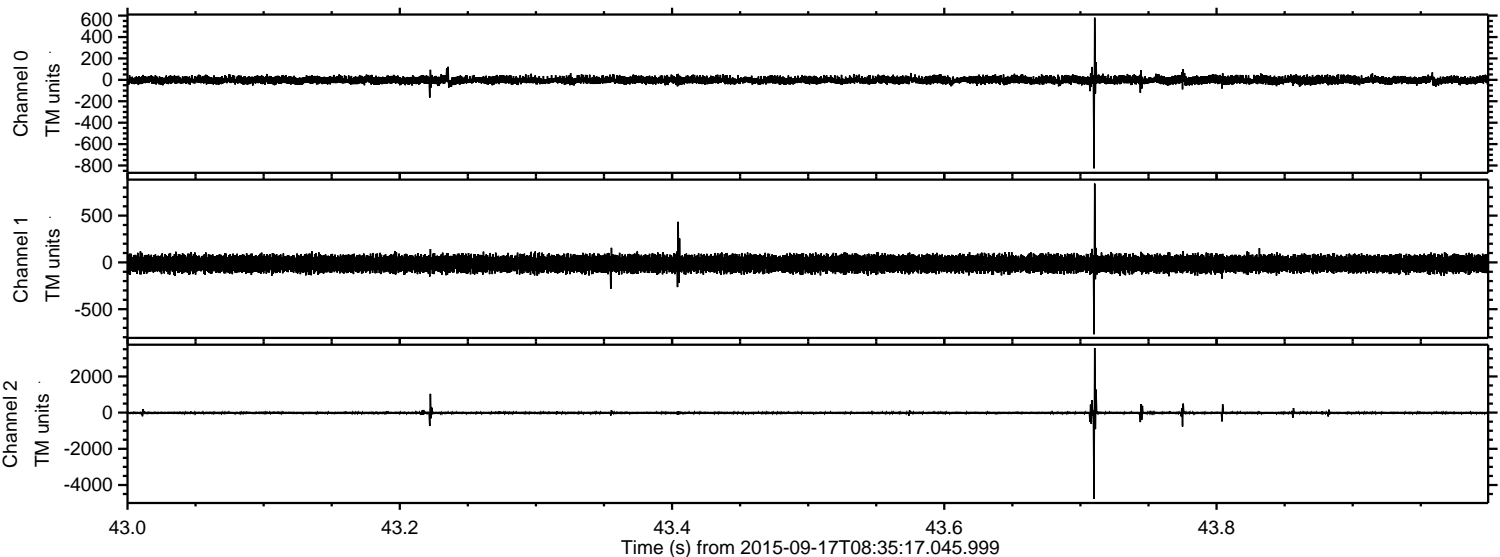


ELMAVAN 3D WAVEFORMS (Measured data sampled at 50 kHz) 51000 packets of 144 samples from 2015-09-17T08:35:17.045.999.

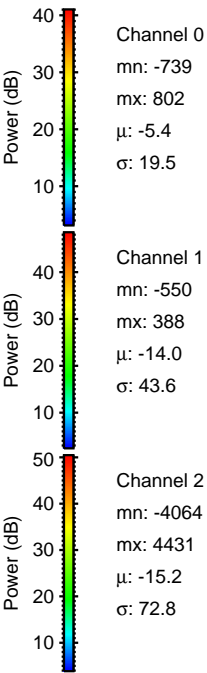
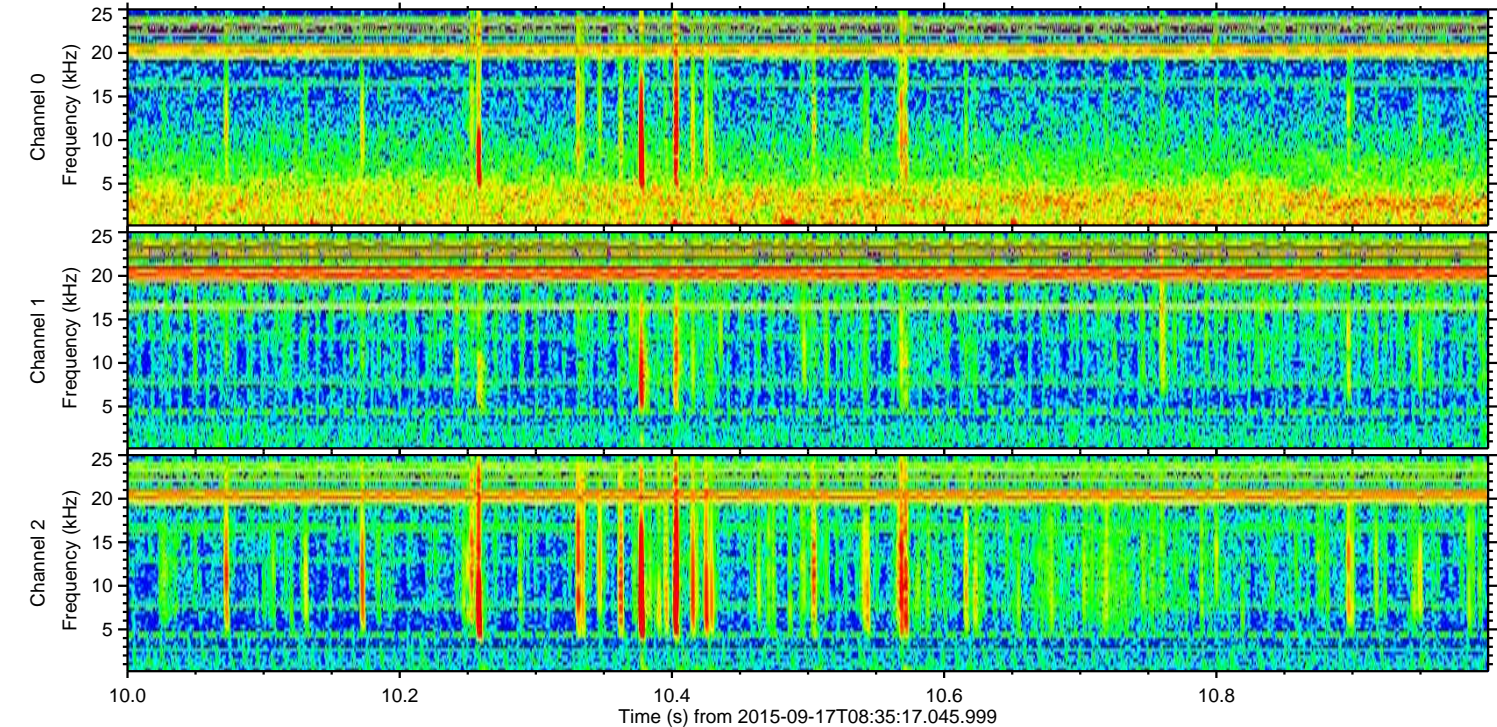
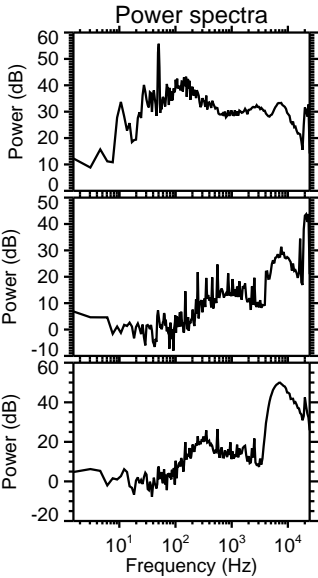
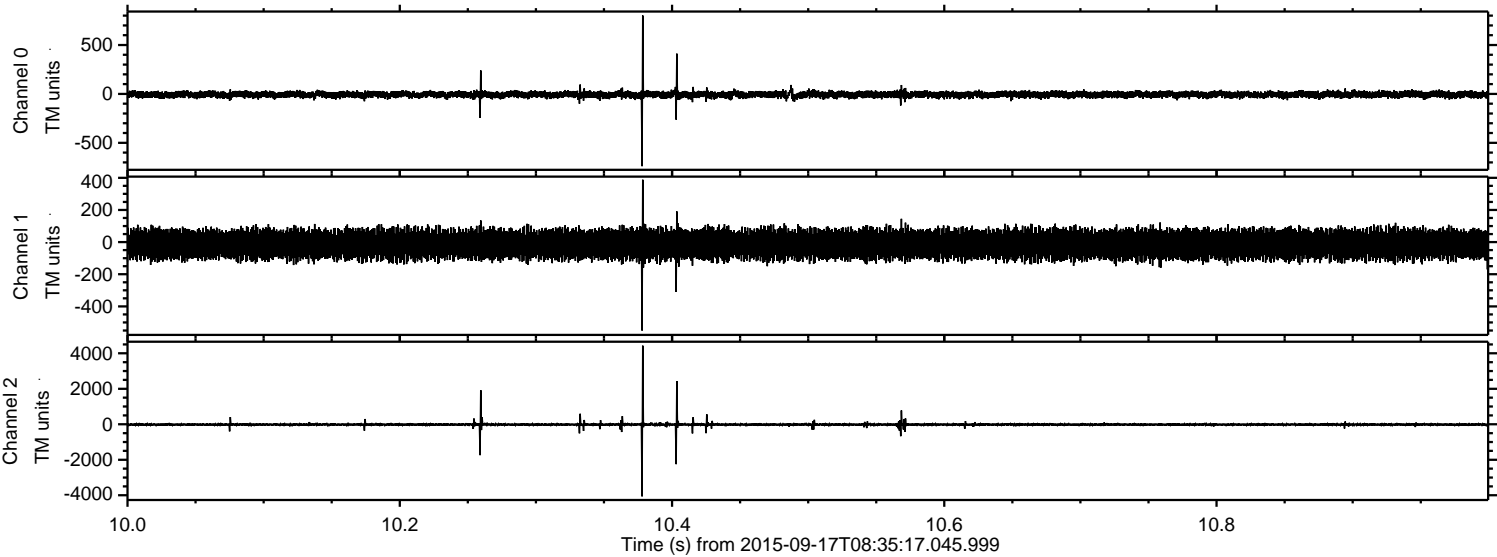
Processed Tue Oct 13 11:42:34 2015 by ELM ver.2012-10-06 from 001__elm20150917_083516__dat00.bin



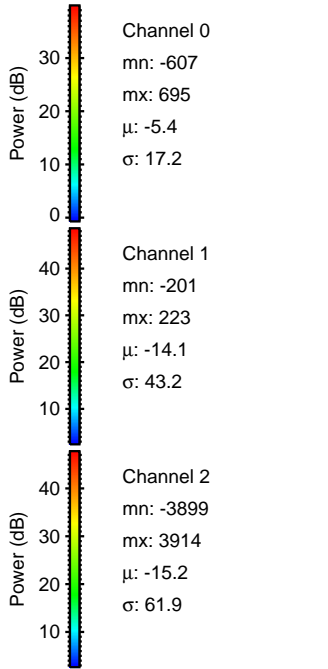
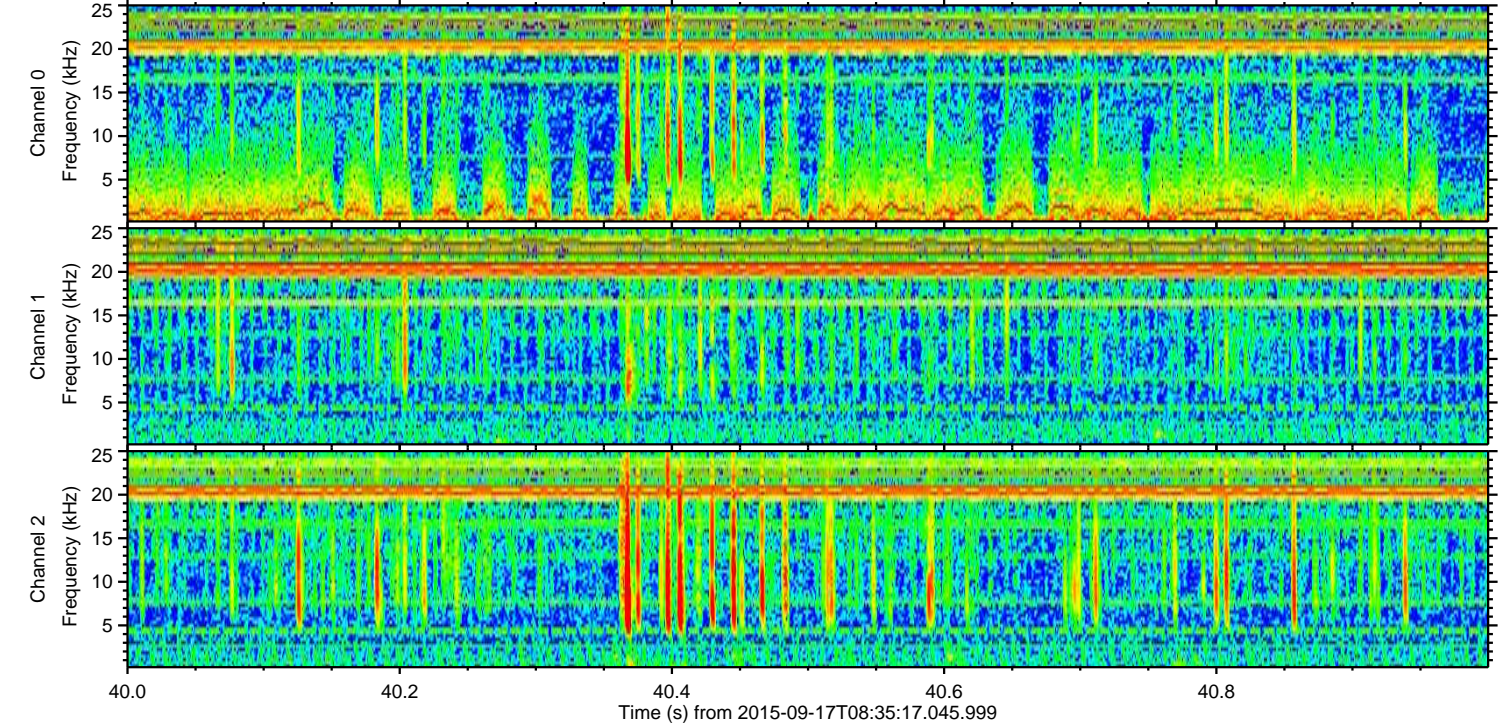
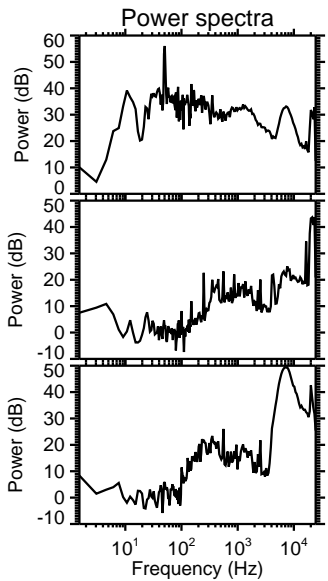
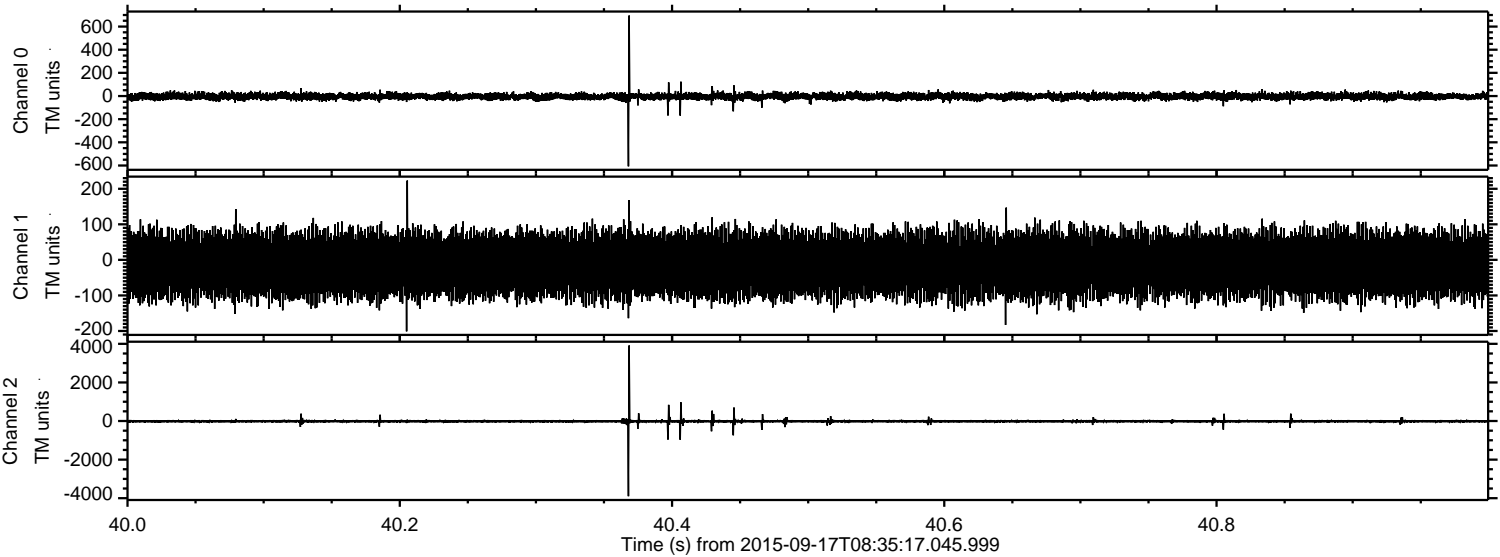
Processed Tue Oct 13 11:42:58 2015 by ELM ver.2012-10-06 from 001__elm20150917_083516__dat00.bin



Processed Tue Oct 13 11:43:01 2015 by ELM ver.2012-10-06 from 001__elm20150917_083516__dat00.bin

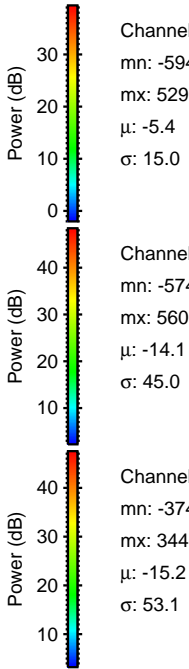
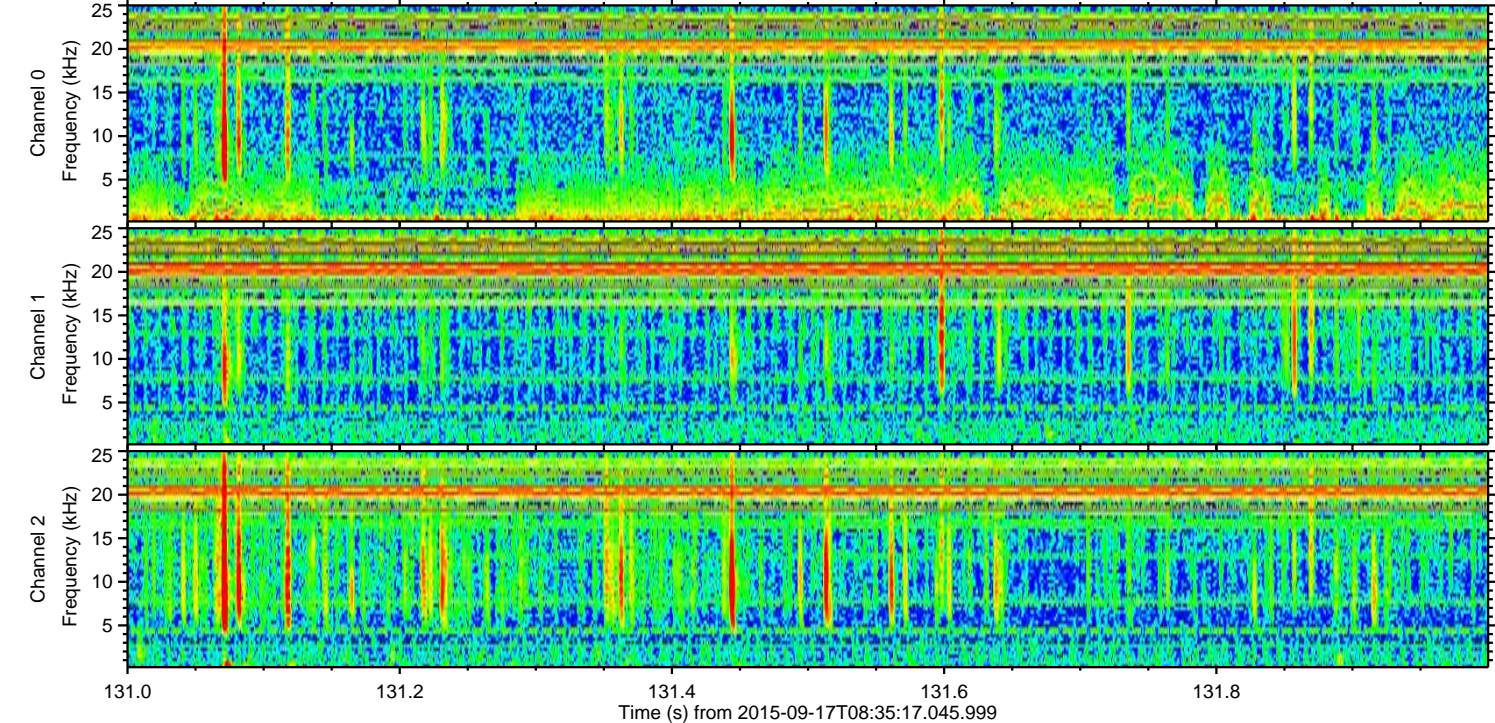
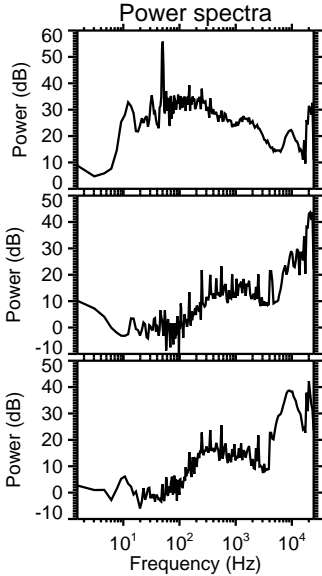
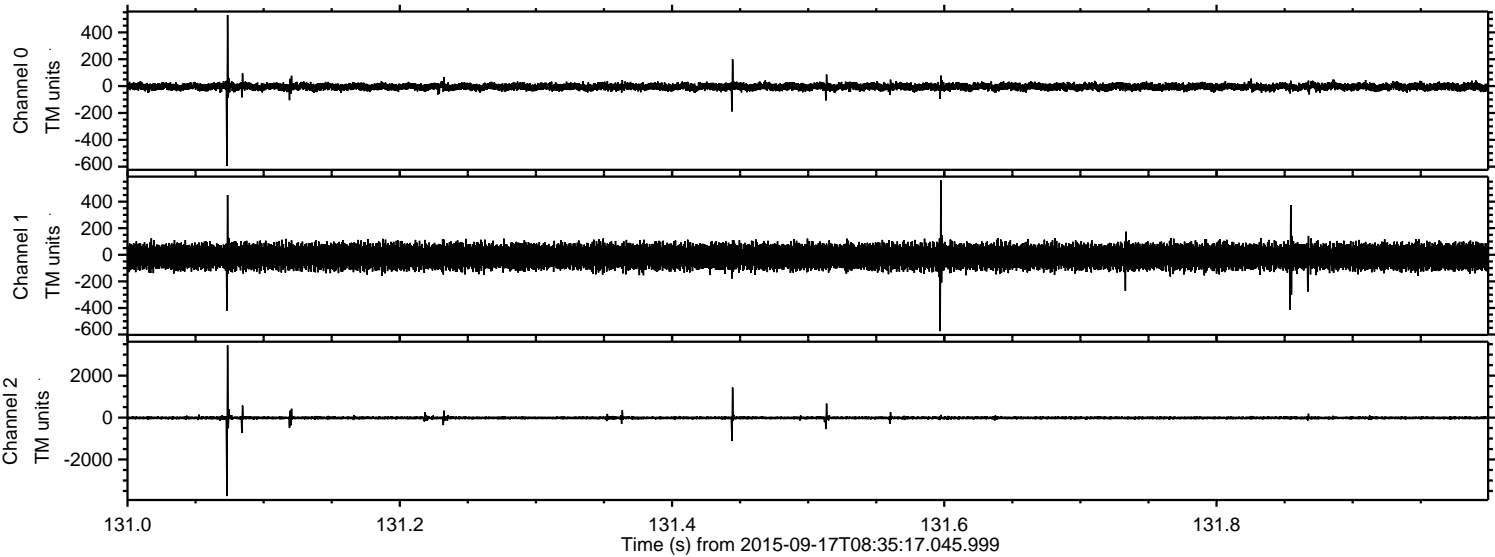


Processed Tue Oct 13 11:43:03 2015 by ELM ver.2012-10-06 from 001__elm20150917_083516__dat00.bin

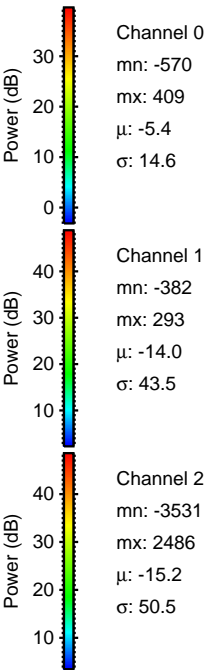
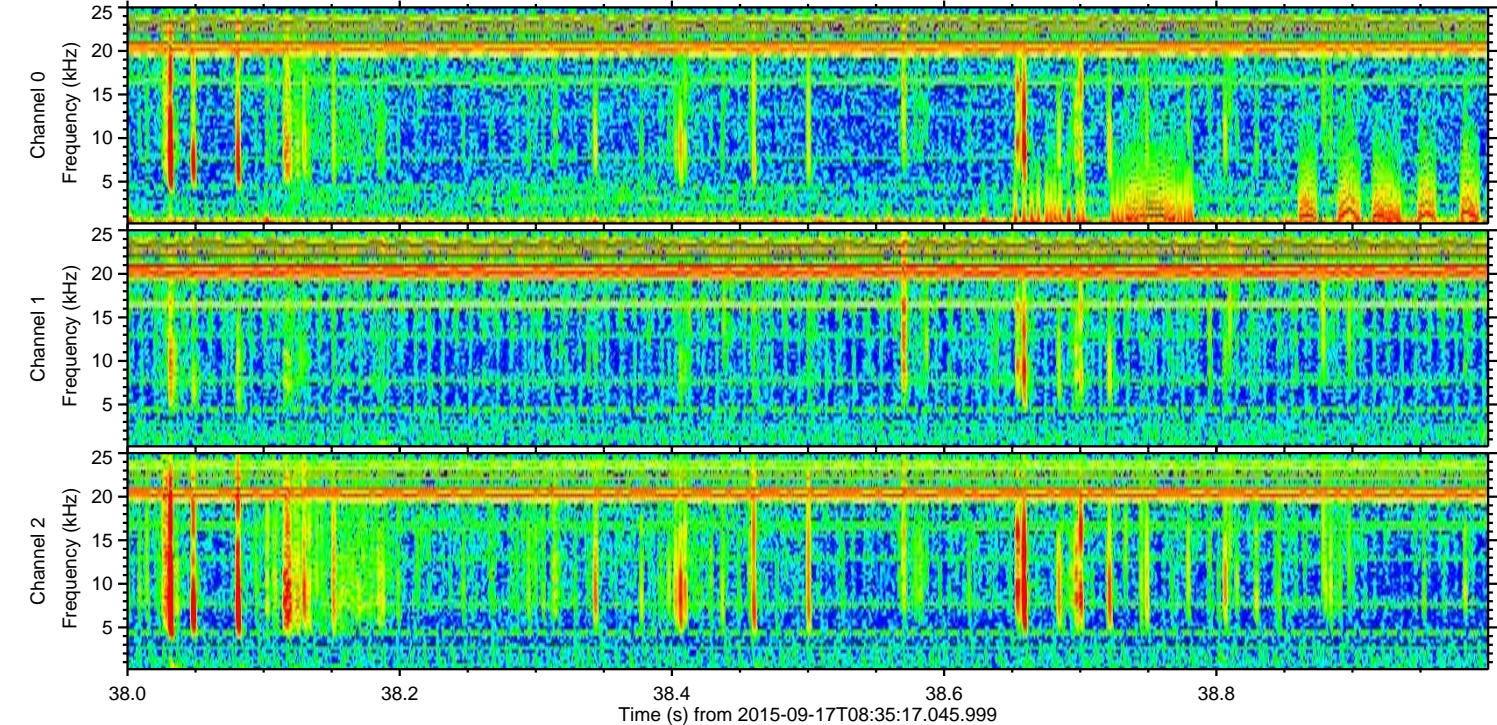
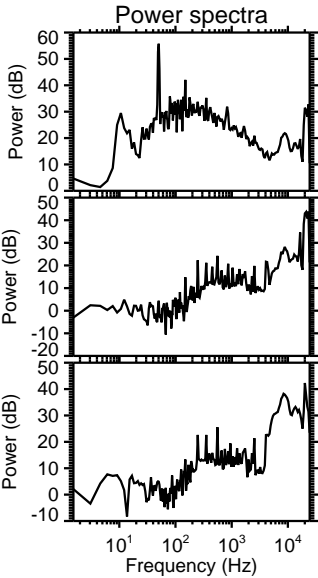
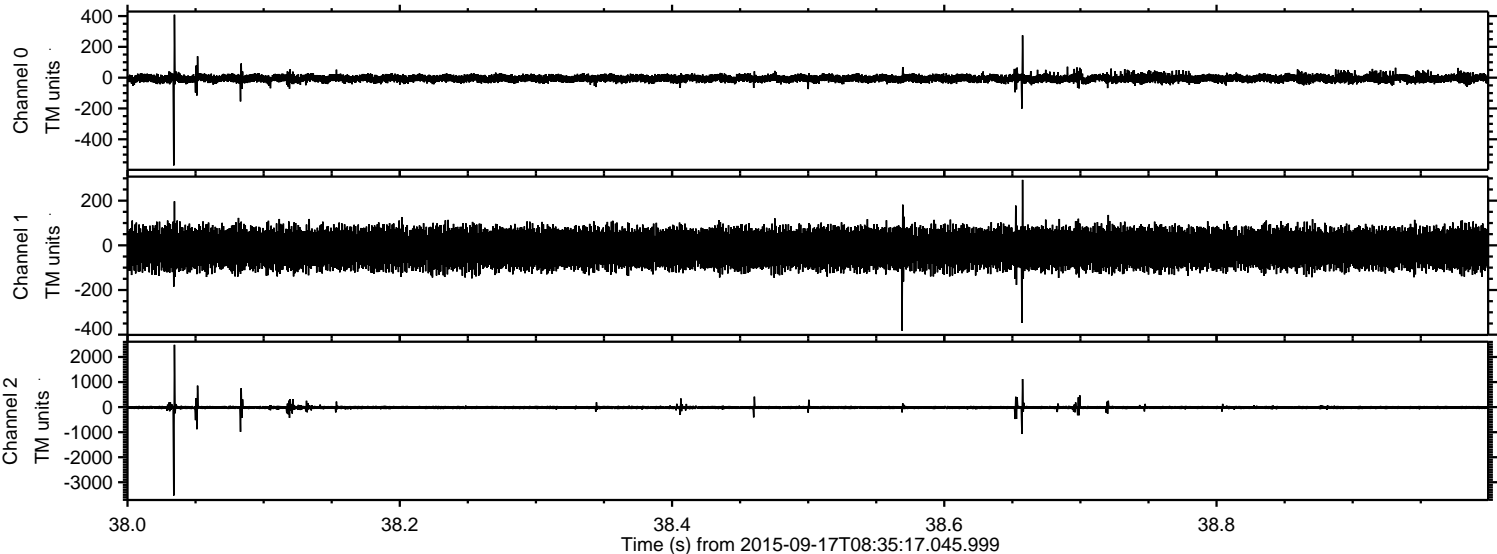


ELMAVAN 3D WAVEFORMS (Measured data sampled at 50 kHz) 51000 packets of 144 samples from 2015-09-17T08:35:17.045.999. Part 132/147

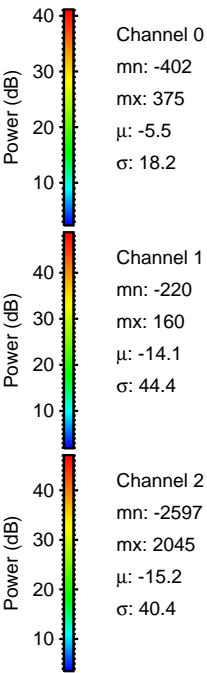
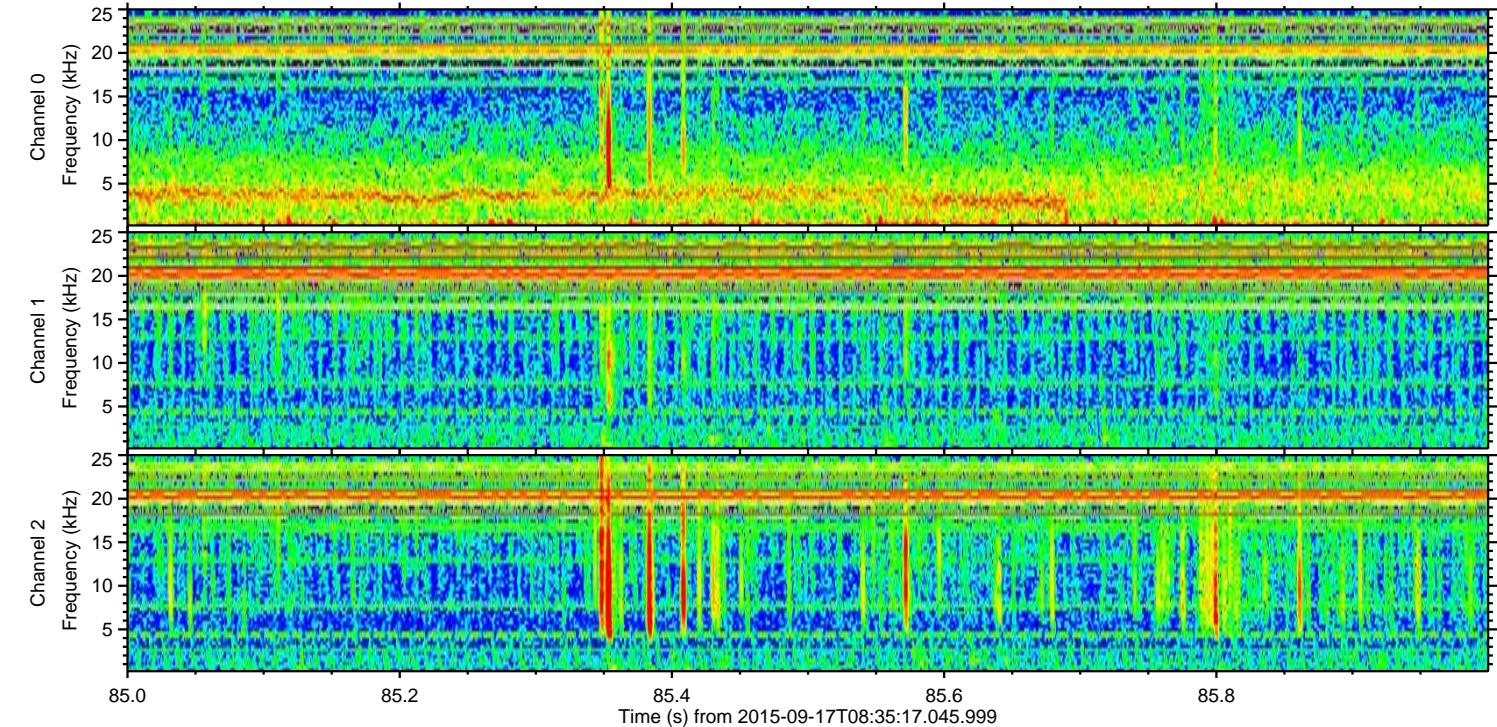
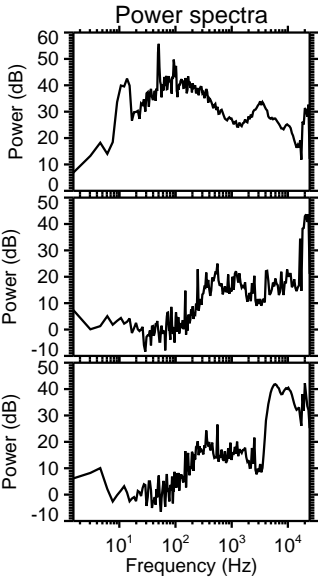
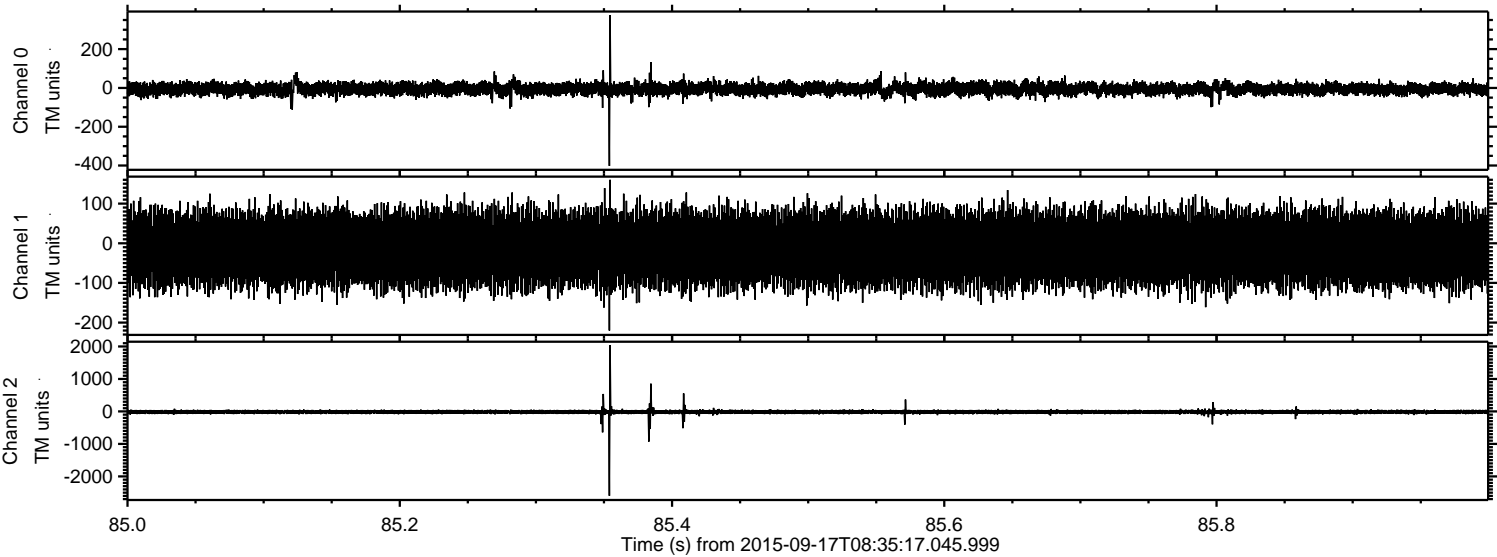
Processed Tue Oct 13 11:43:05 2015 by ELM ver.2012-10-06 from 001__elm20150917_083516__dat00.bin



Processed Tue Oct 13 11:43:06 2015 by ELM ver.2012-10-06 from 001__elm20150917_083516__dat00.bin



Processed Tue Oct 13 11:43:08 2015 by ELM ver.2012-10-06 from 001__elm20150917_083516__dat00.bin



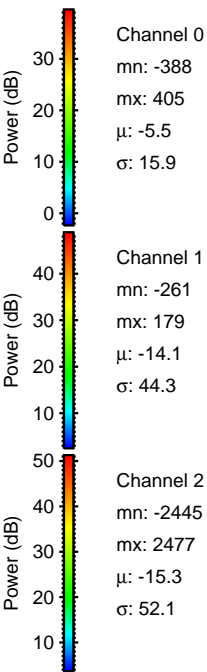
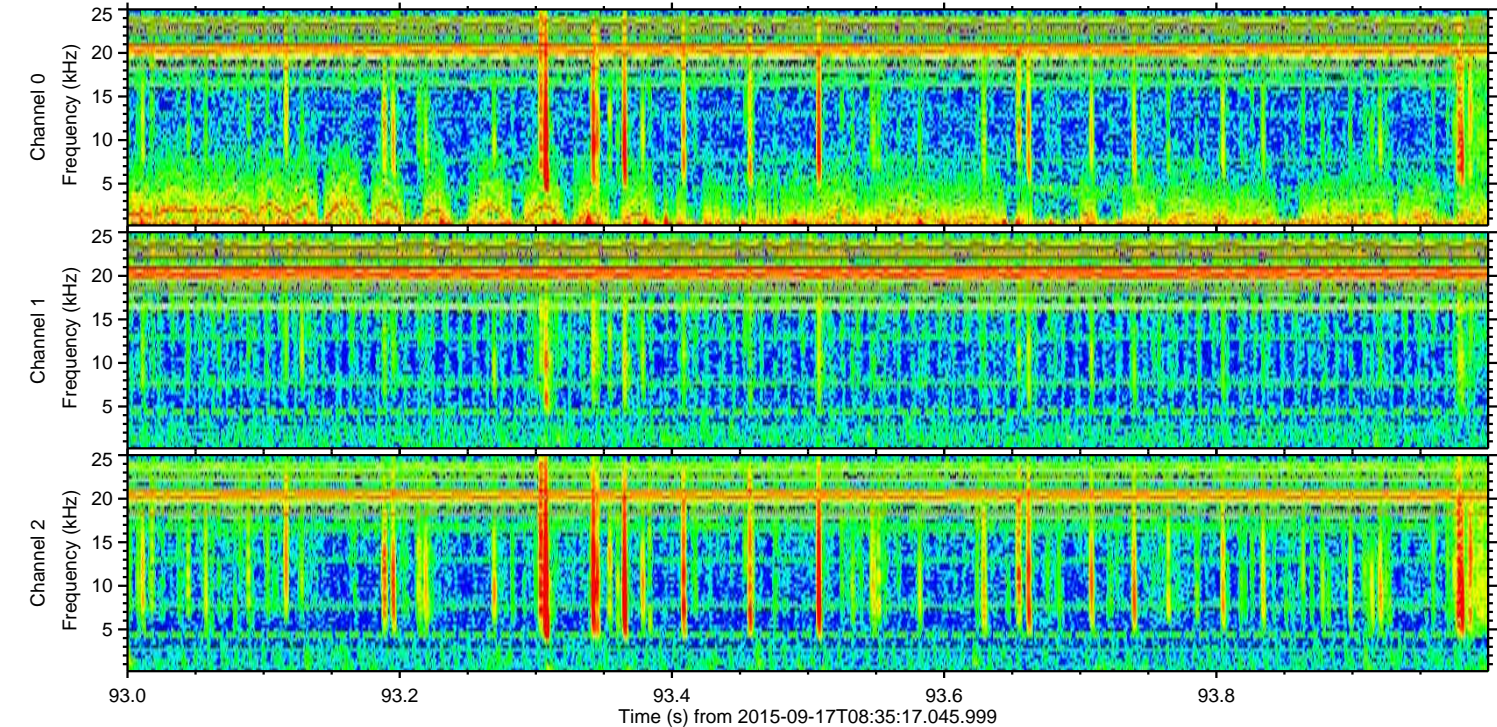
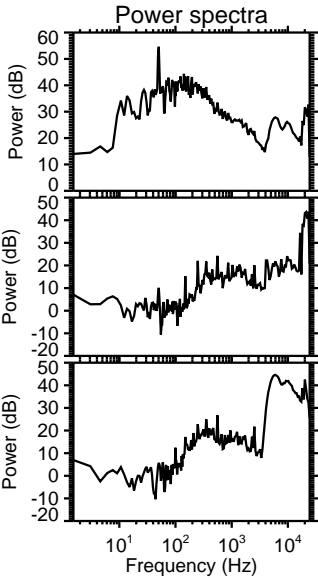
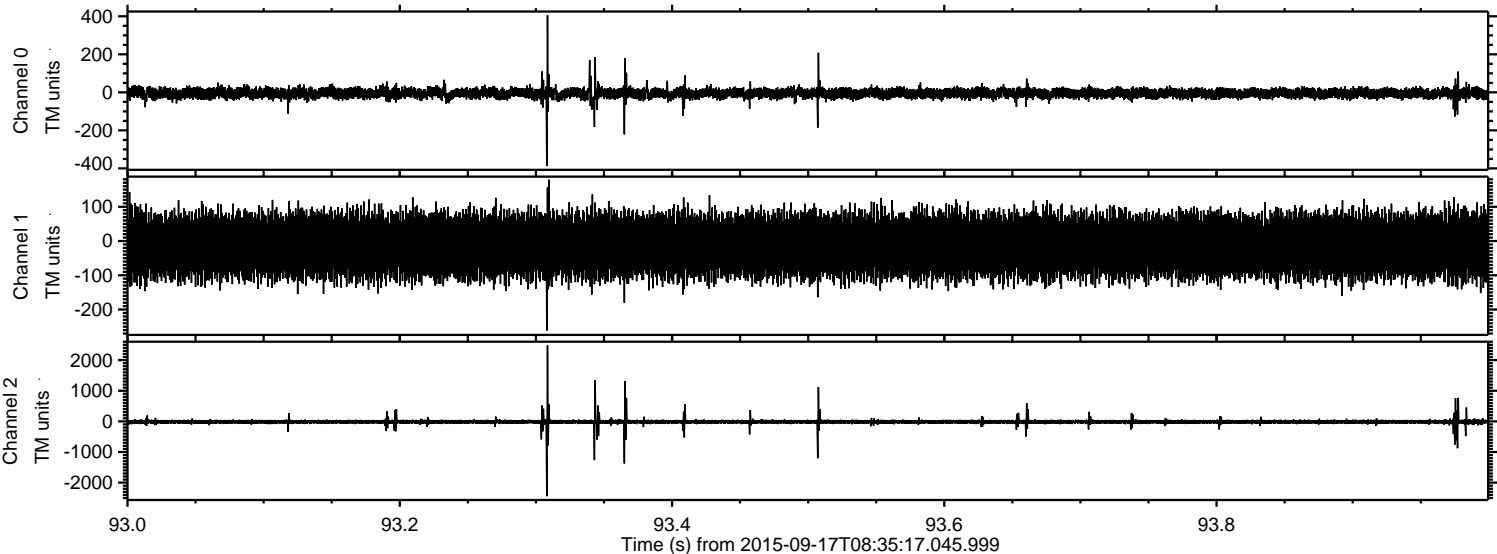
Channel 0
mn: -402
mx: 375
 μ : -5.5
 σ : 18.2

Channel 1
mn: -220
mx: 160
 μ : -14.1
 σ : 44.4

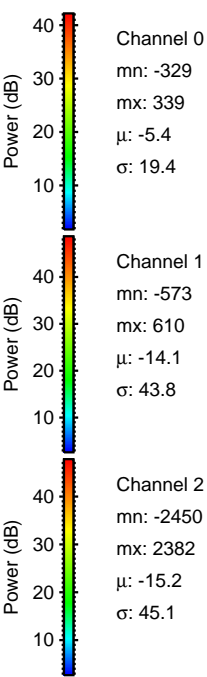
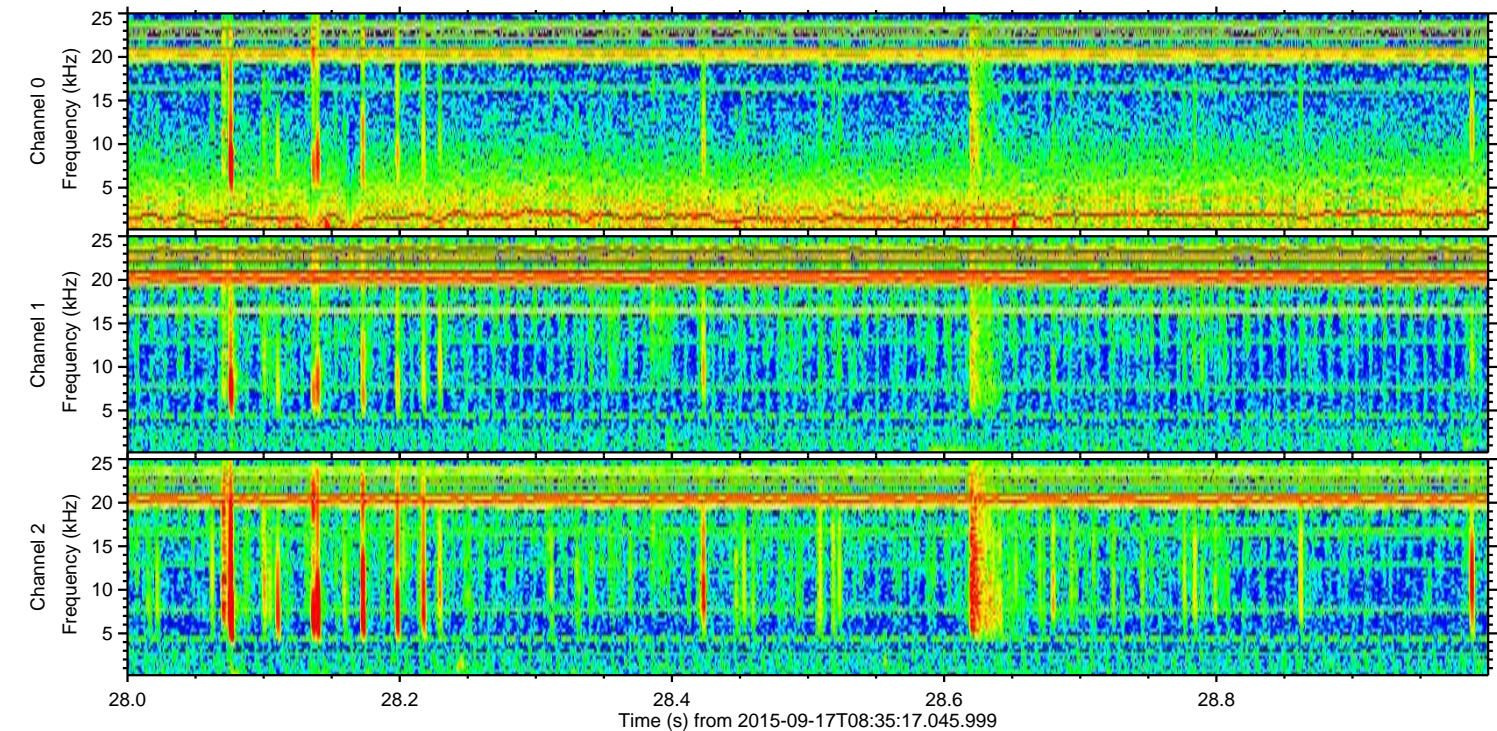
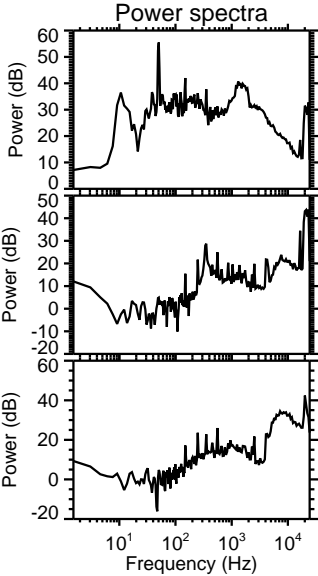
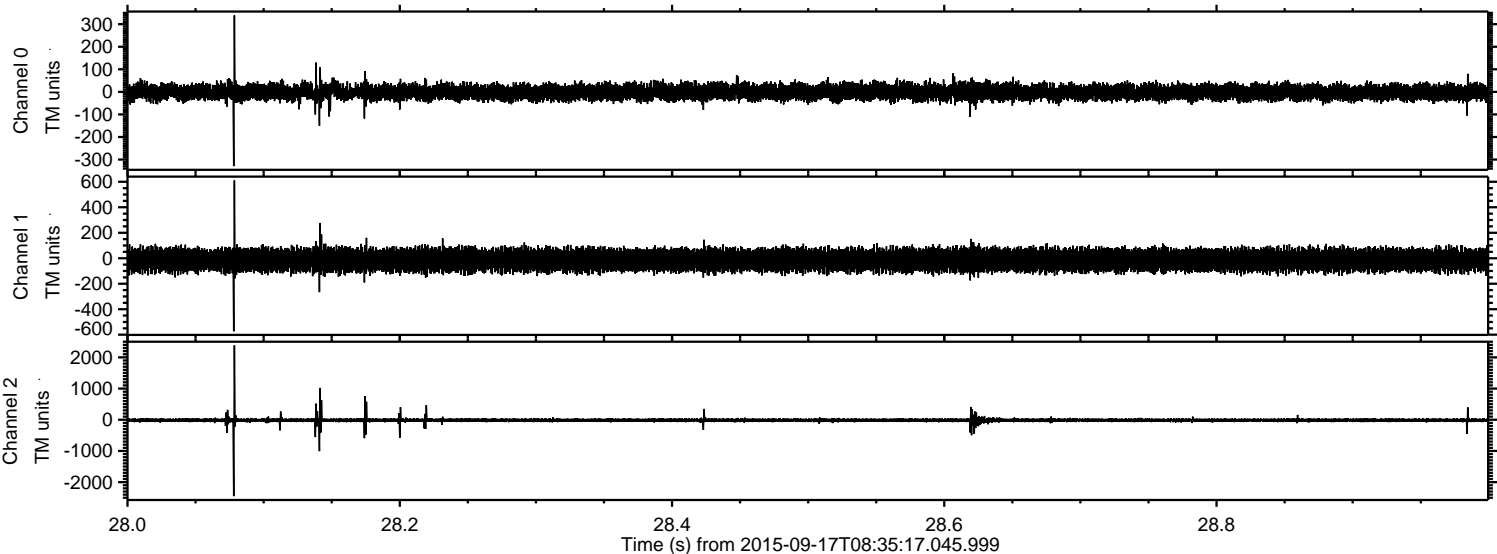
Channel 2
mn: -2597
mx: 2045
 μ : -15.2
 σ : 40.4

ELMAVAN 3D WAVEFORMS (Measured data sampled at 50 kHz) 51000 packets of 144 samples from 2015-09-17T08:35:17.045.999. Part 94/147

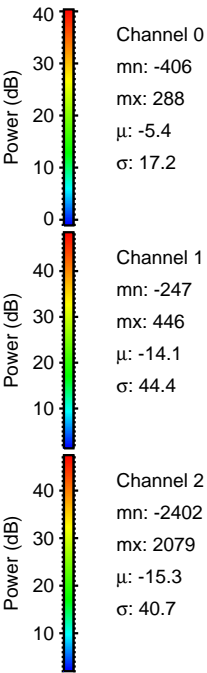
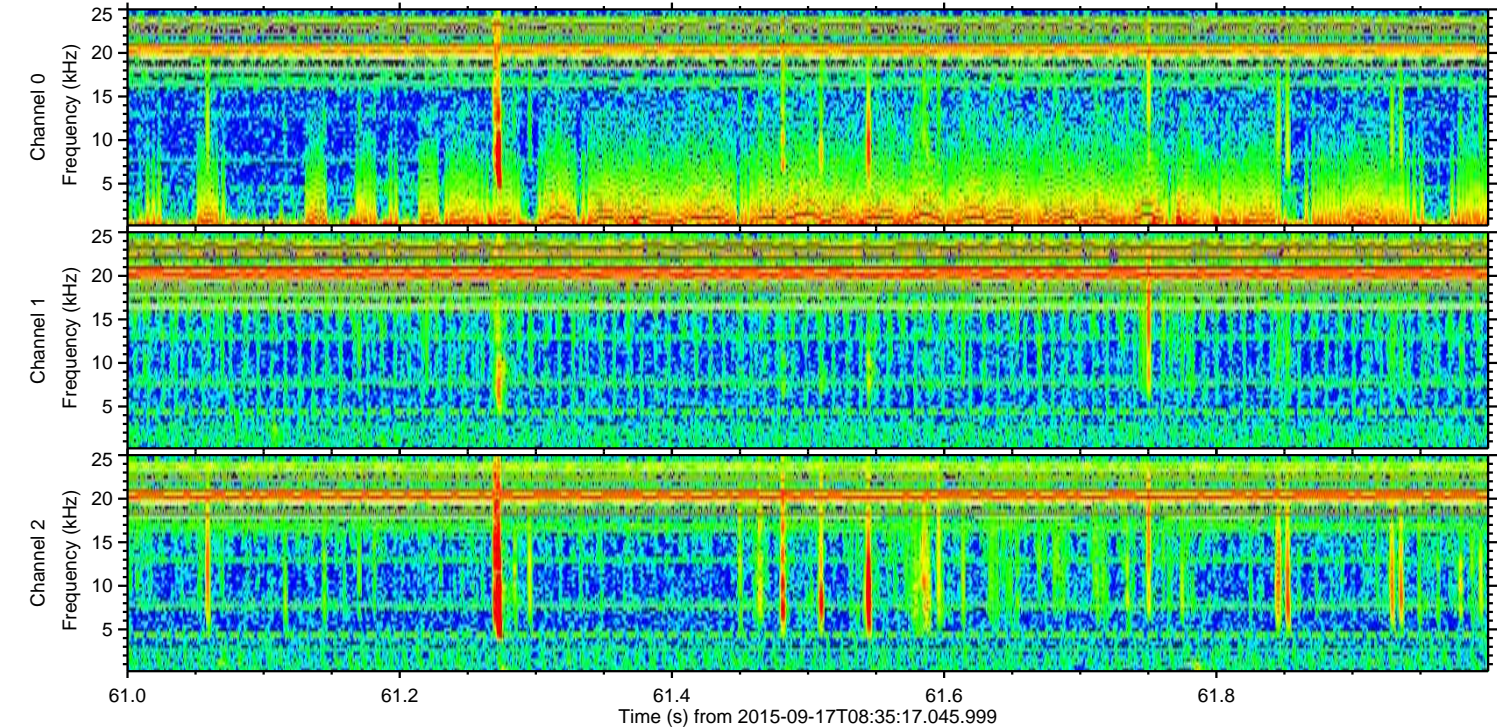
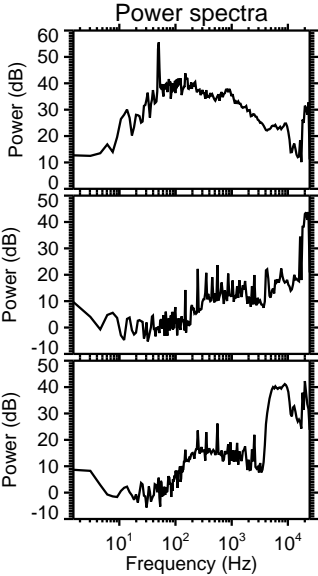
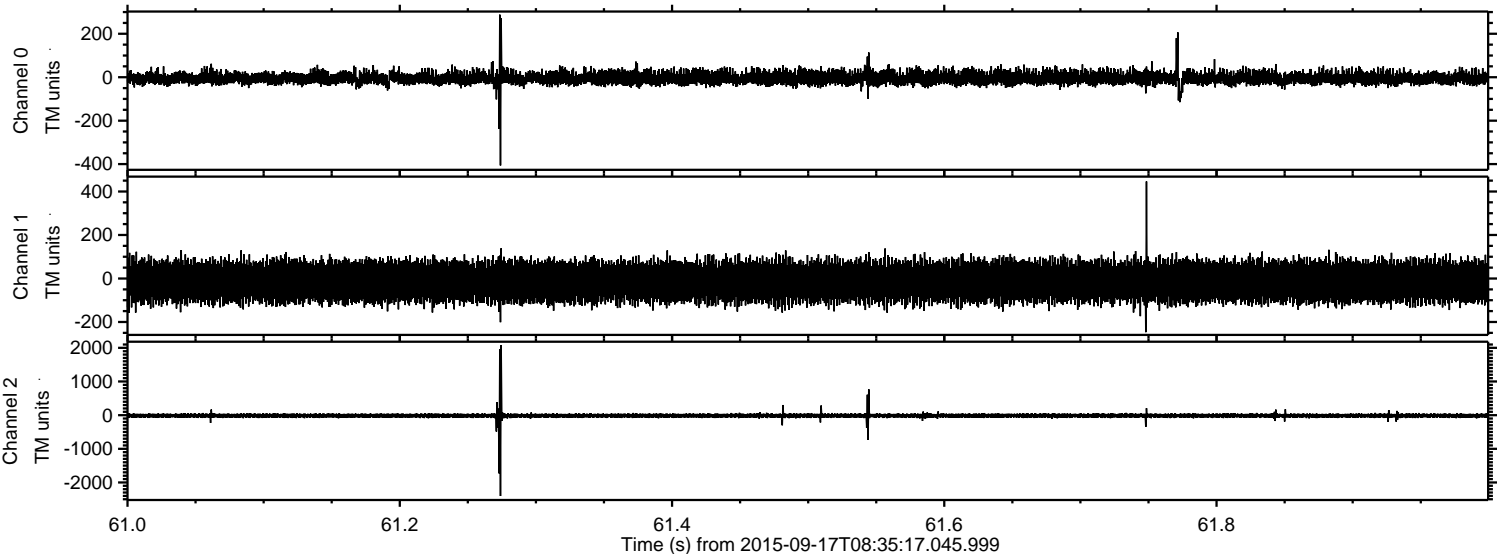
Processed Tue Oct 13 11:43:09 2015 by ELM ver.2012-10-06 from 001__elm20150917_083516__dat00.bin



Processed Tue Oct 13 11:43:11 2015 by ELM ver.2012-10-06 from 001__elm20150917_083516__dat00.bin



Processed Tue Oct 13 11:43:12 2015 by ELM ver.2012-10-06 from 001__elm20150917_083516__dat00.bin



Processed Tue Oct 13 11:43:13 2015 by ELM ver.2012-10-06 from 001__elm20150917_083516__dat00.bin

