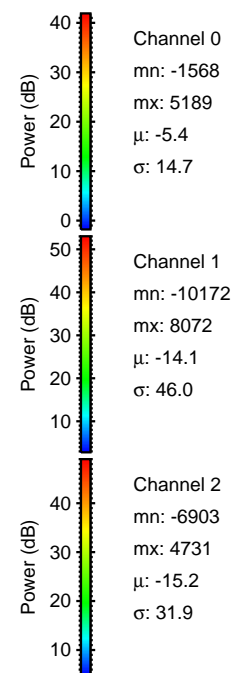
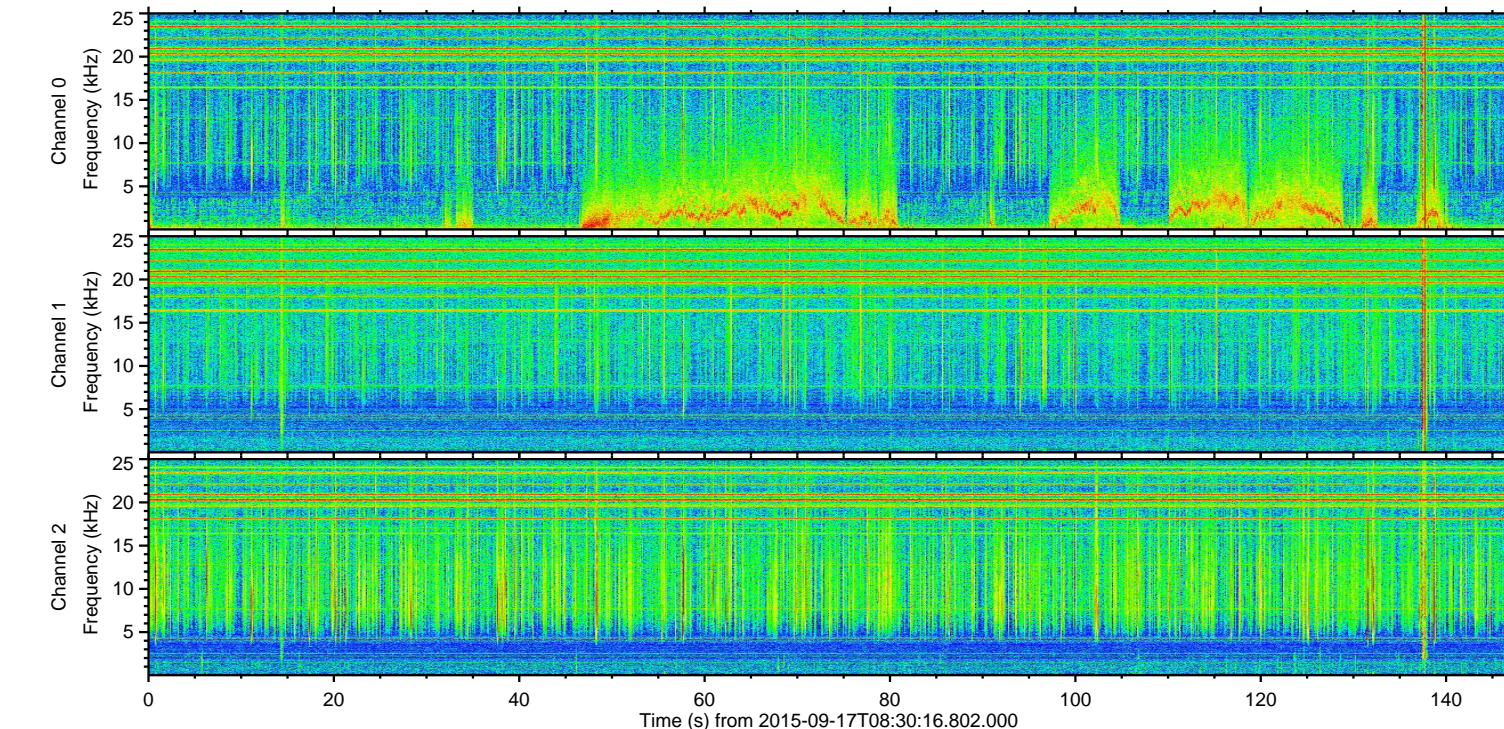
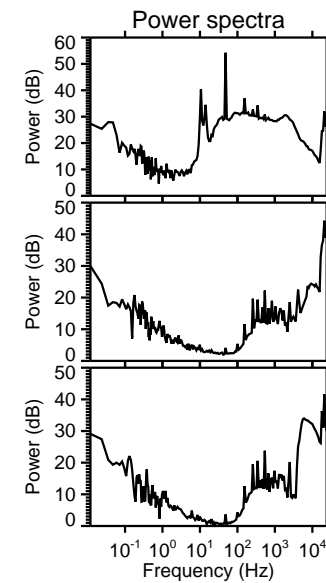
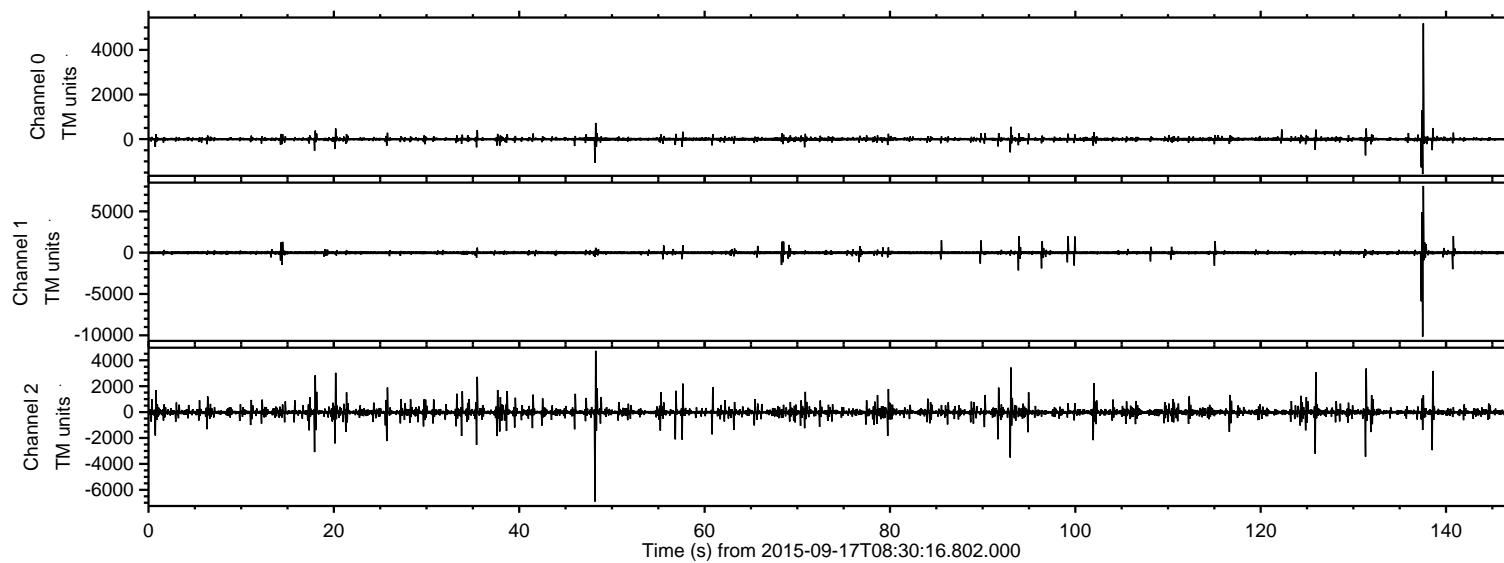


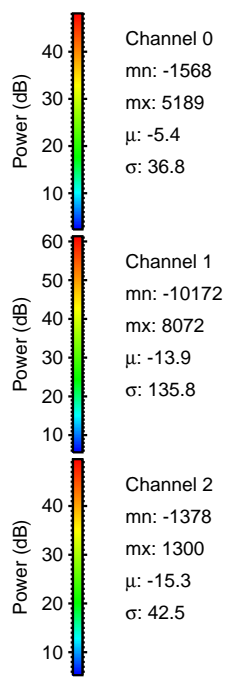
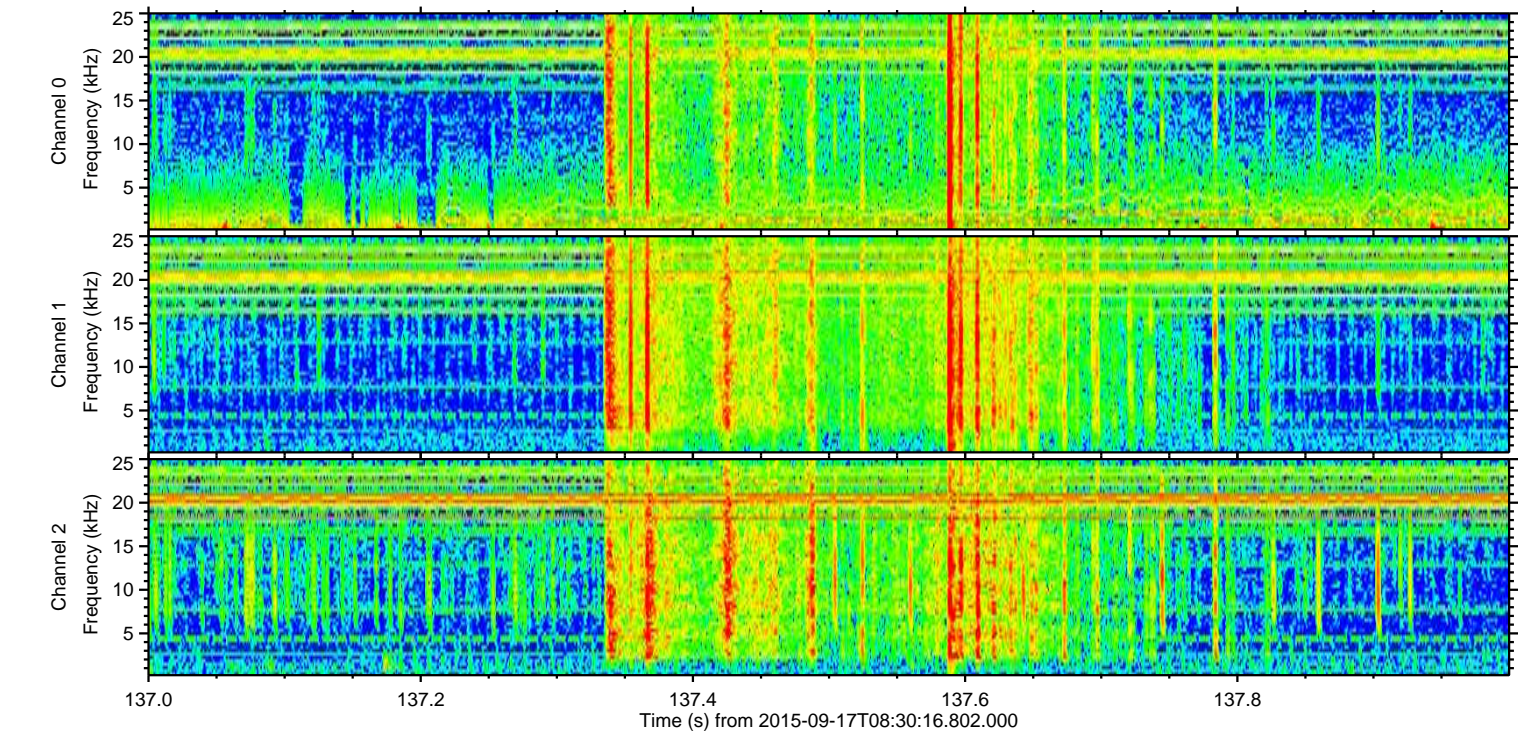
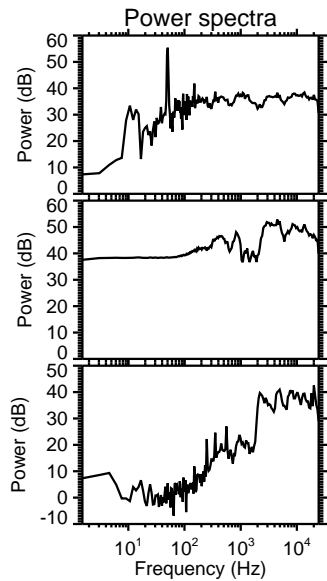
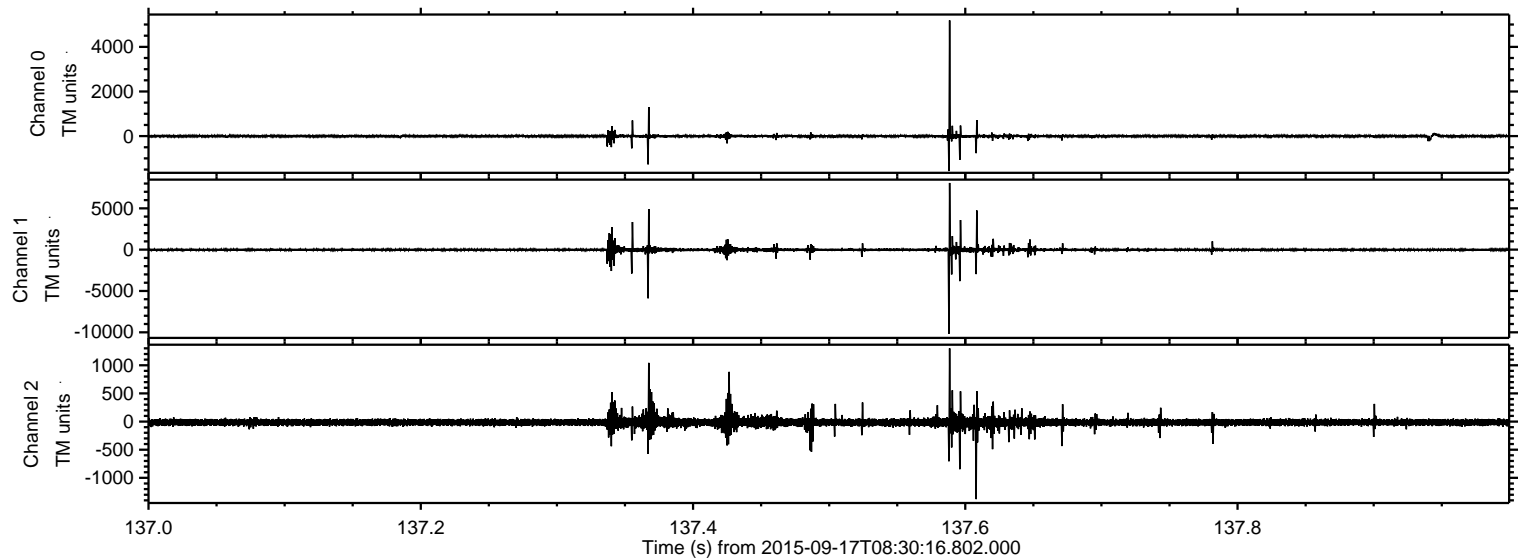
ELMAVAN 3D WAVEFORMS (Measured data sampled at 50 kHz) 51000 packets of 144 samples from 2015-09-17T08:30:16.802.000.

Processed Tue Oct 13 11:40:28 2015 by ELM ver.2012-10-06 from 001__elm20150917_083015__dat00.bin

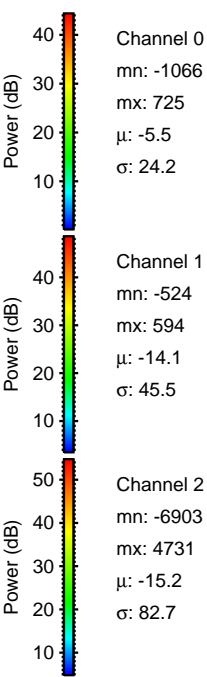
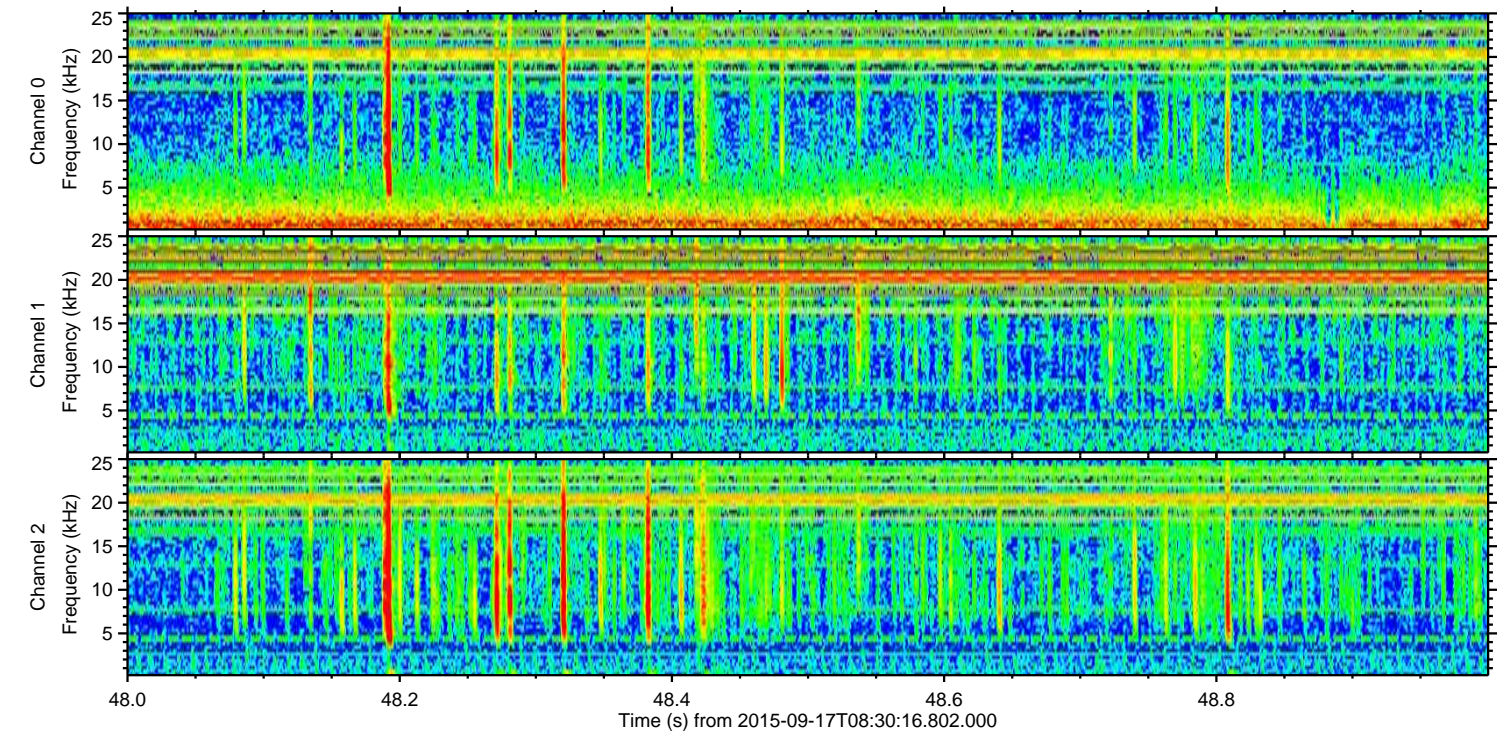
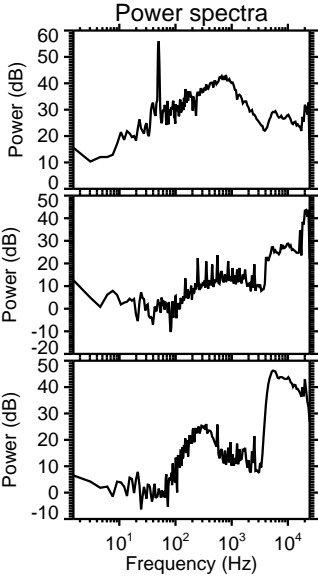
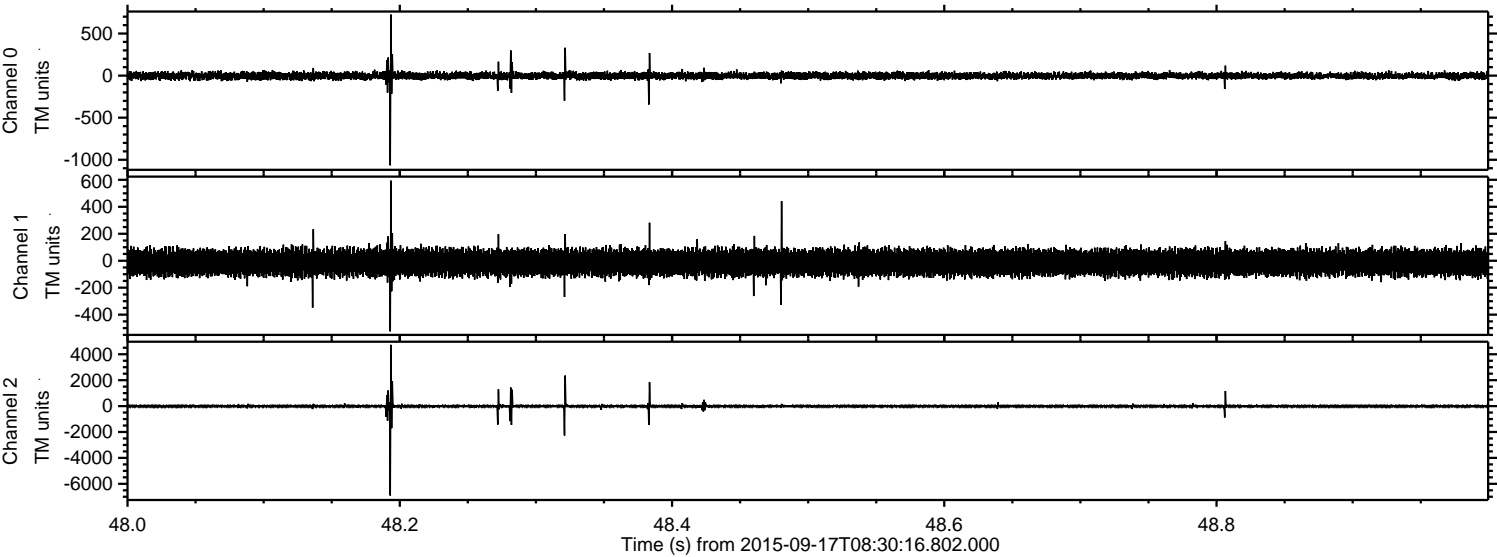


ELMAVAN 3D WAVEFORMS (Measured data sampled at 50 kHz) 51000 packets of 144 samples from 2015-09-17T08:30:16.802.000. Part 138/147

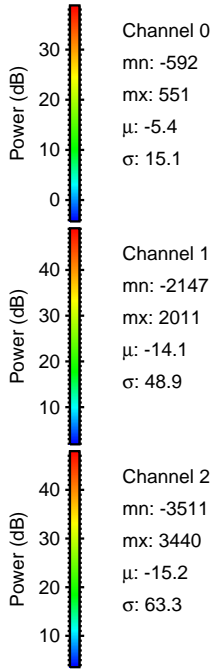
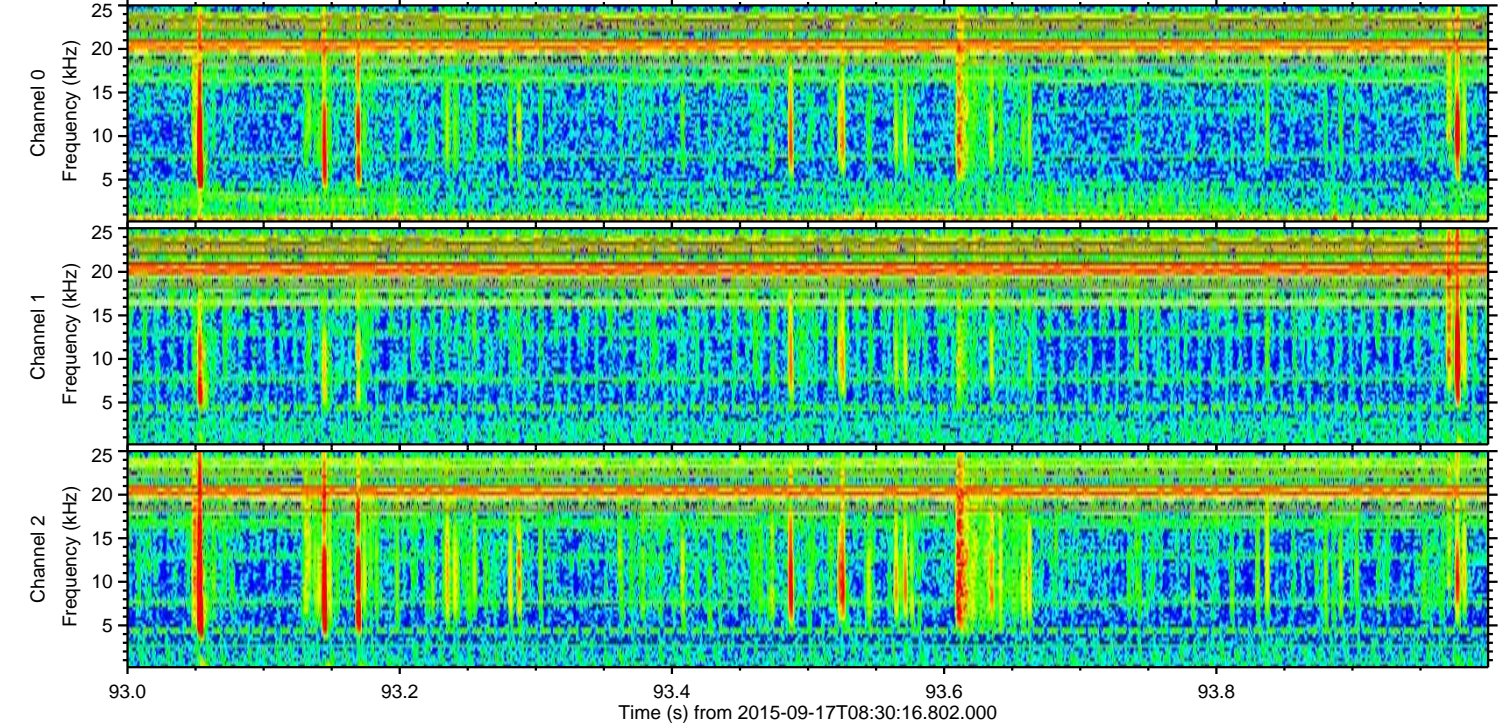
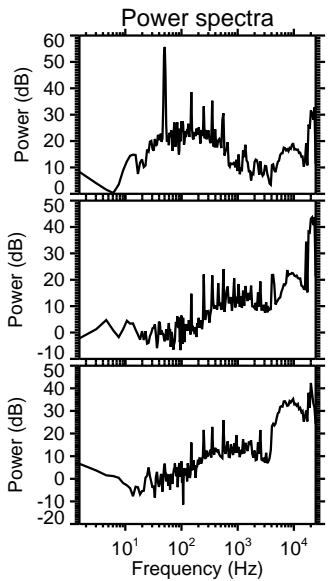
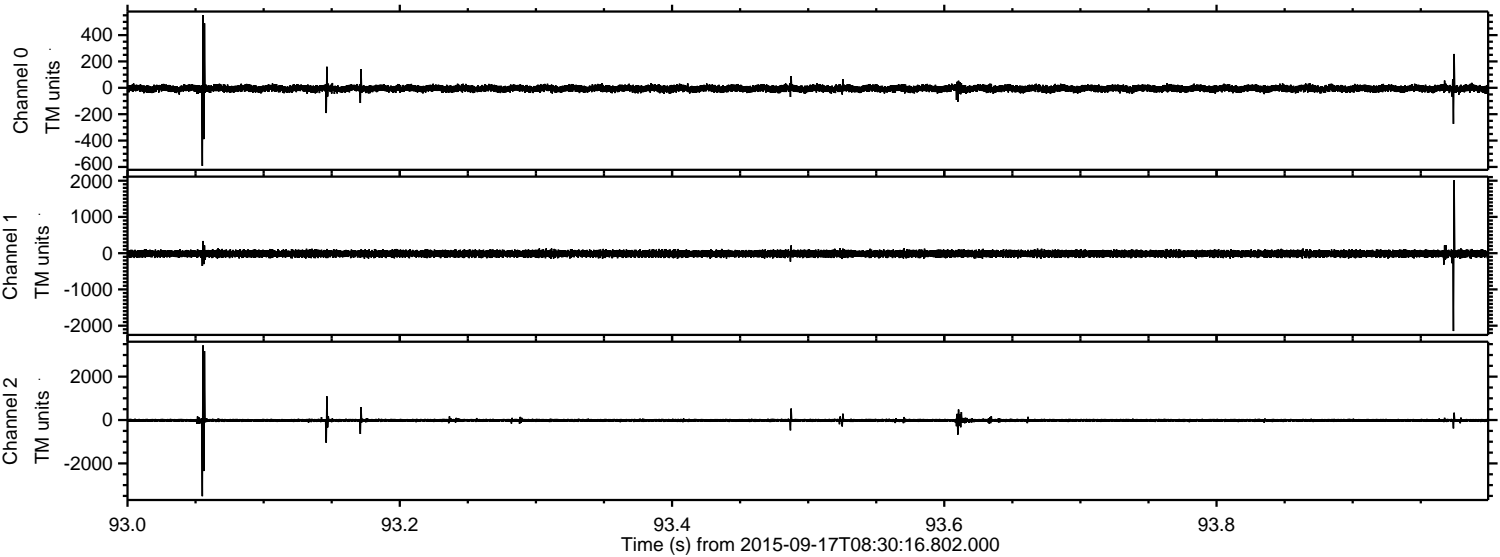
Processed Tue Oct 13 11:40:53 2015 by ELM ver.2012-10-06 from 001__elm20150917_083015__dat00.bin



Processed Tue Oct 13 11:40:56 2015 by ELM ver.2012-10-06 from 001__elm20150917_083015__dat00.bin

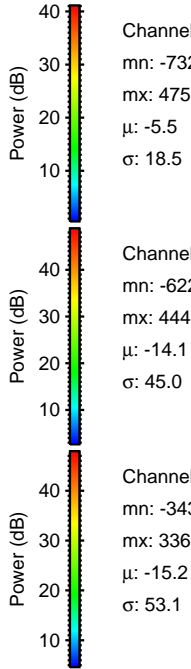
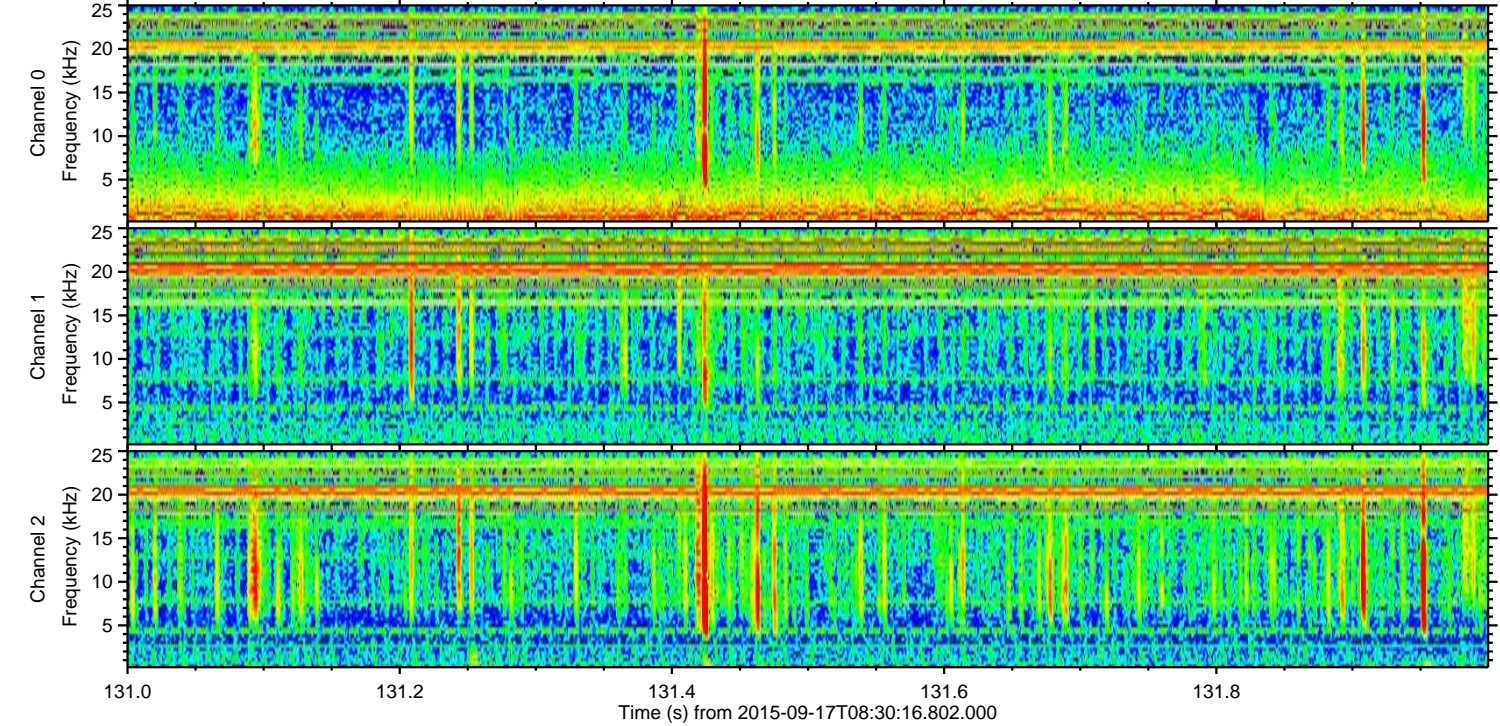
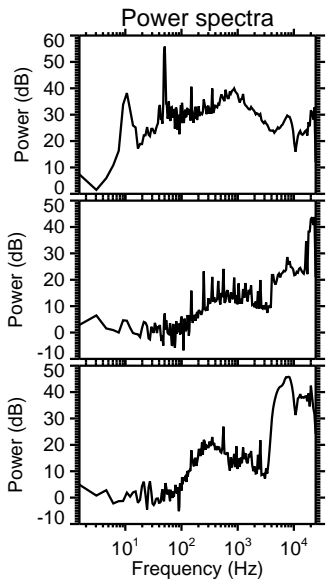
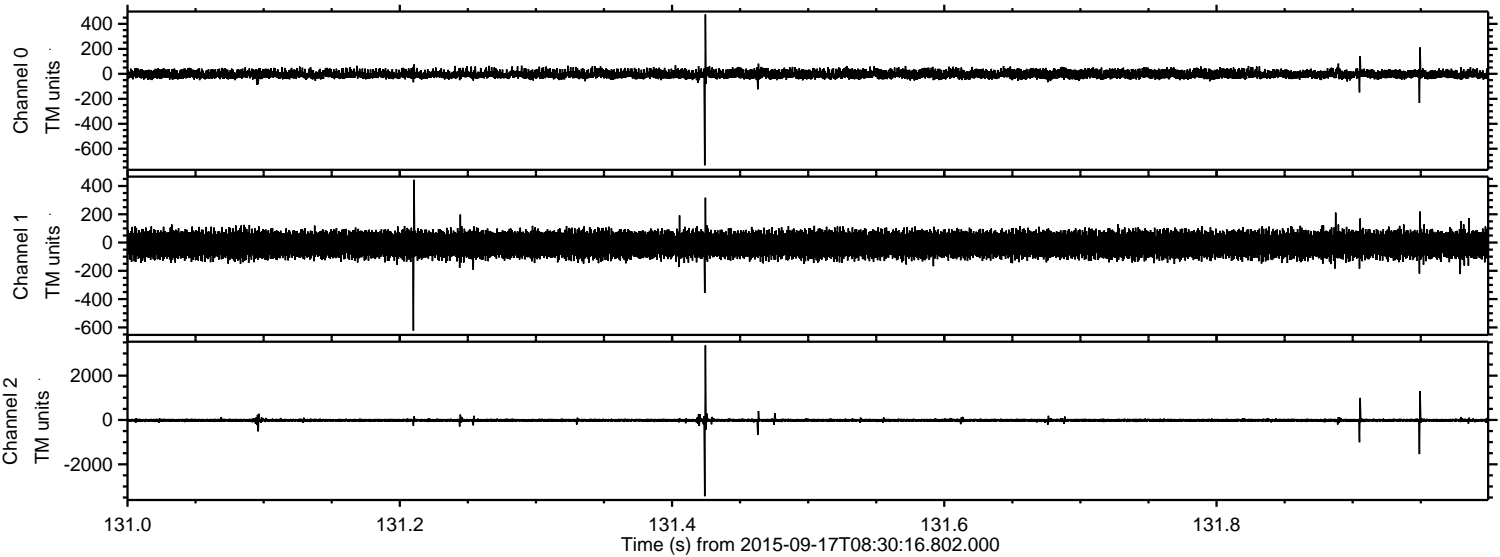


Processed Tue Oct 13 11:40:58 2015 by ELM ver.2012-10-06 from 001__elm20150917_083015__dat00.bin



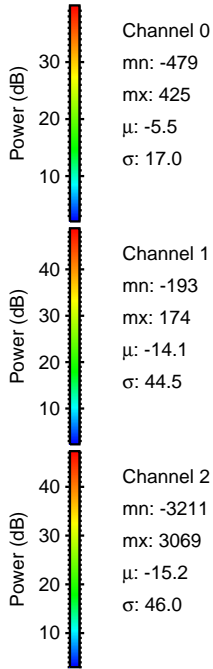
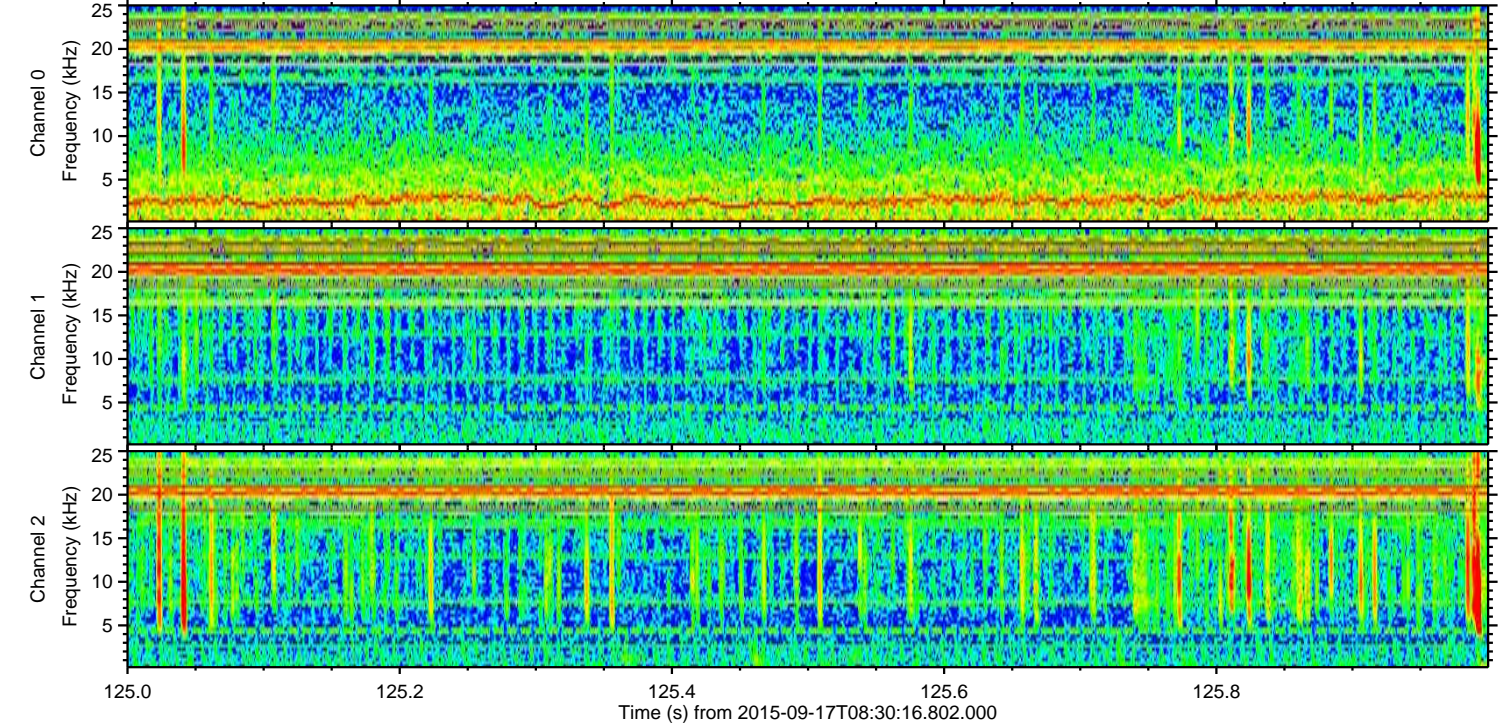
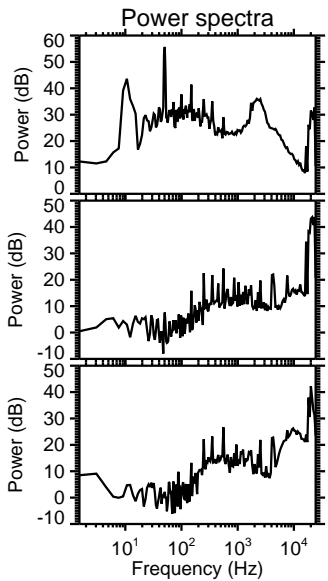
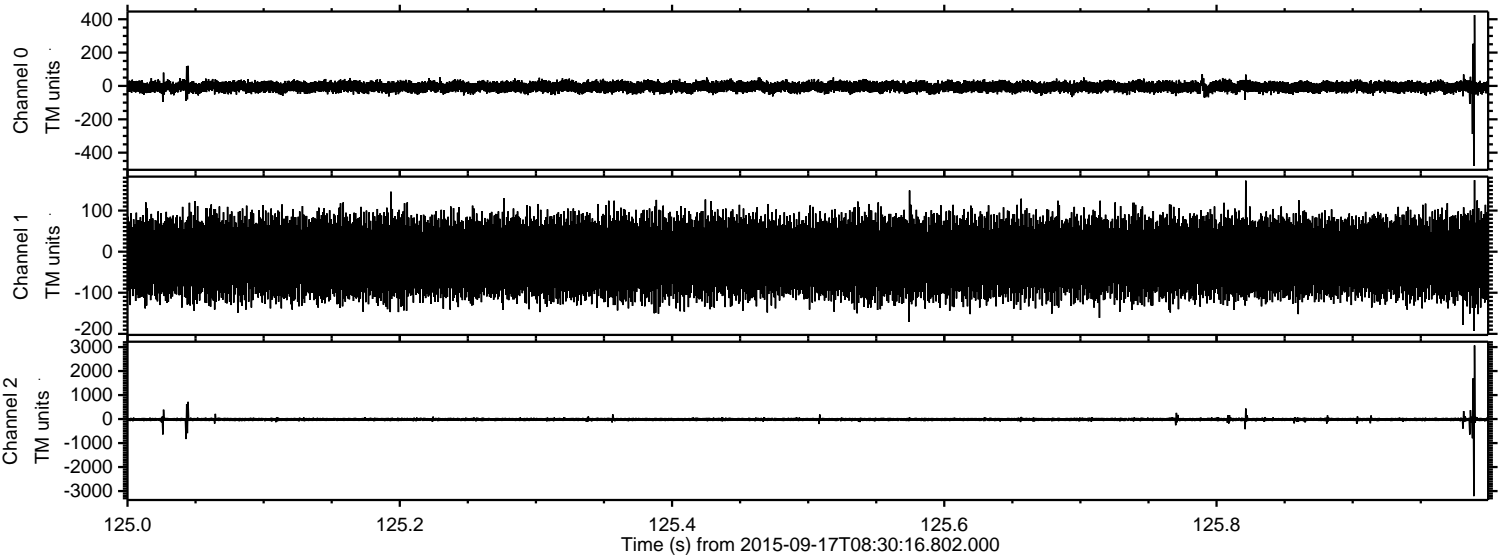
ELMAVAN 3D WAVEFORMS (Measured data sampled at 50 kHz) 51000 packets of 144 samples from 2015-09-17T08:30:16.802.000. Part 132/147

Processed Tue Oct 13 11:41:00 2015 by ELM ver.2012-10-06 from 001__elm20150917_083015__dat00.bin



ELMAVAN 3D WAVEFORMS (Measured data sampled at 50 kHz) 51000 packets of 144 samples from 2015-09-17T08:30:16.802.000. Part 126/147

Processed Tue Oct 13 11:41:02 2015 by ELM ver.2012-10-06 from 001__elm20150917_083015__dat00.bin



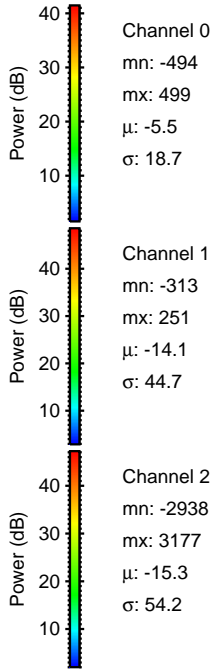
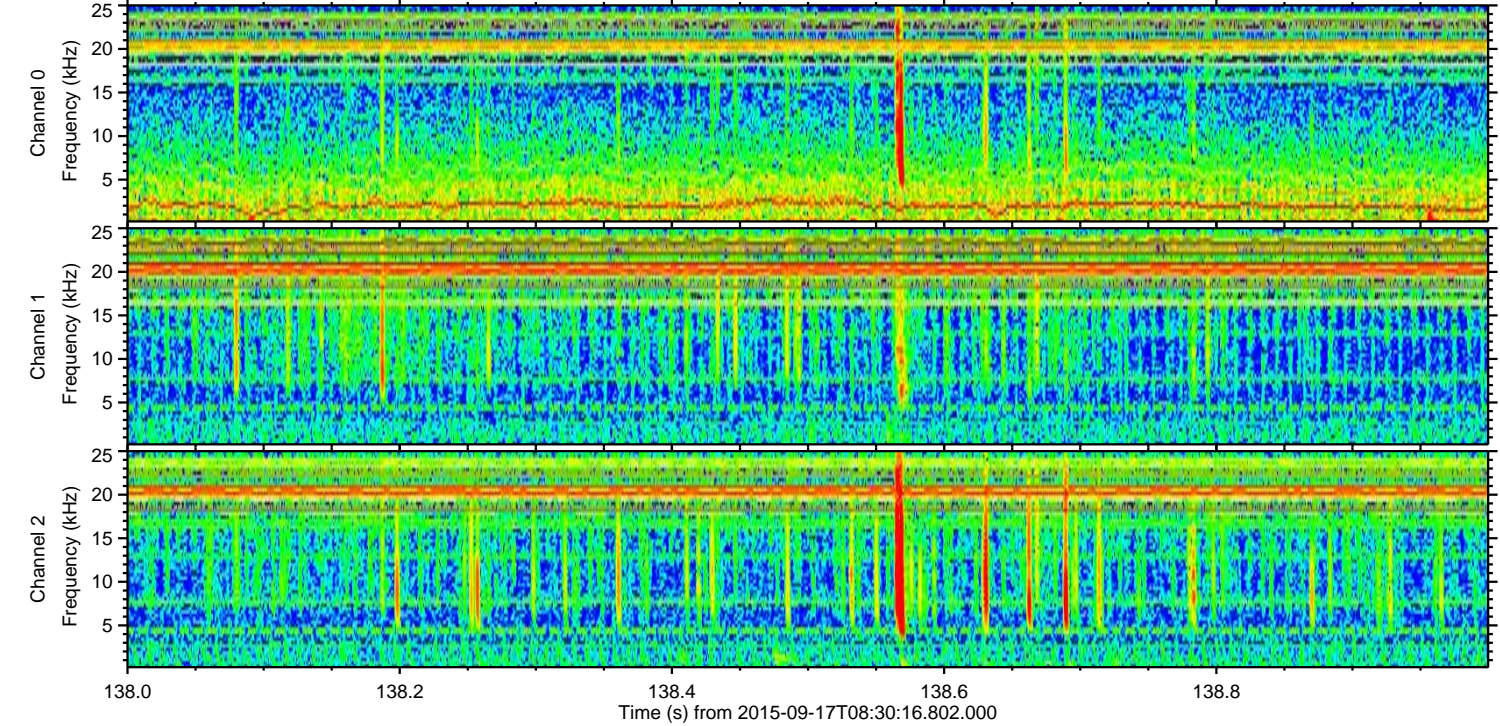
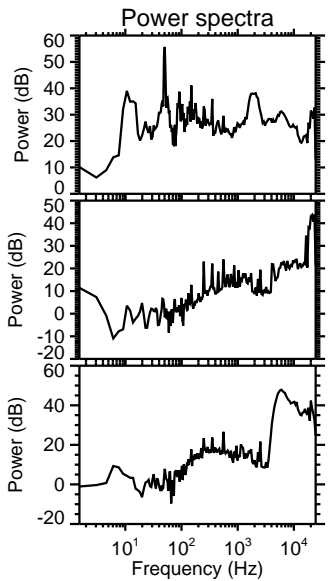
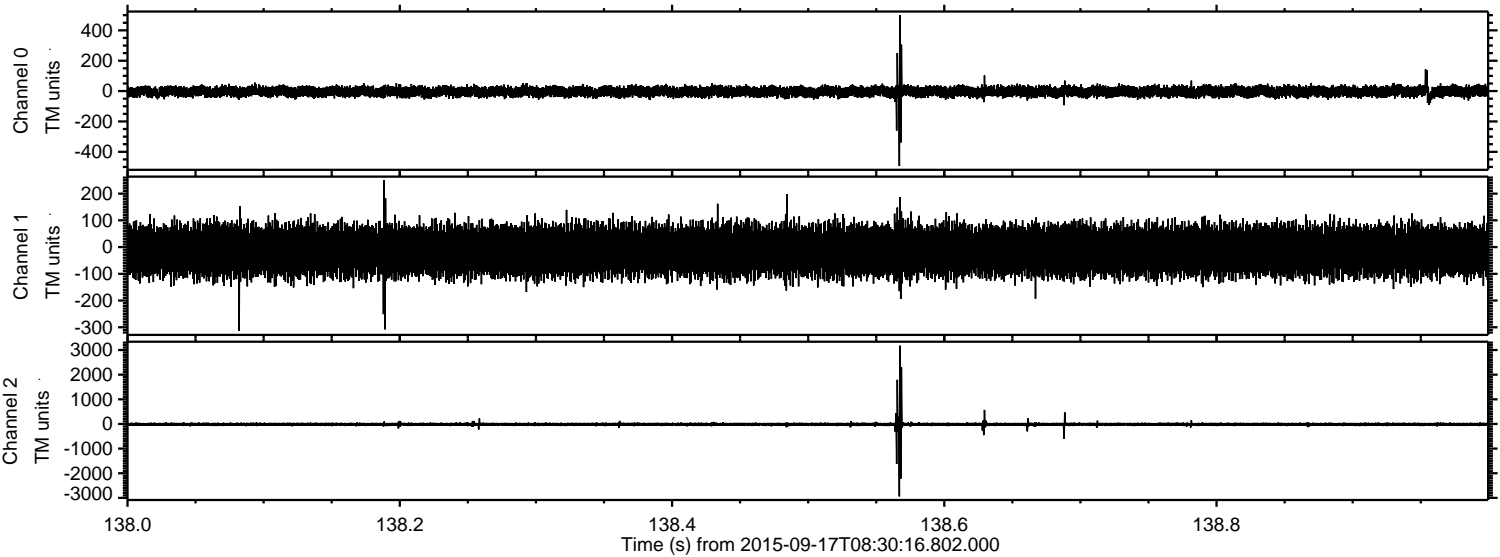
Channel 0
mn: -479
mx: 425
 μ : -5.5
 σ : 17.0

Channel 1
mn: -193
mx: 174
 μ : -14.1
 σ : 44.5

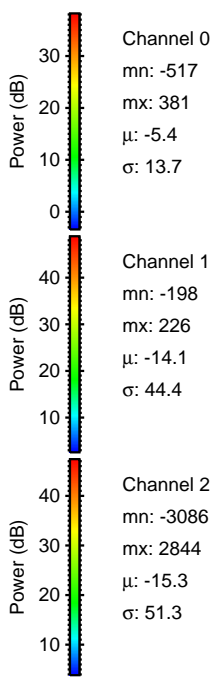
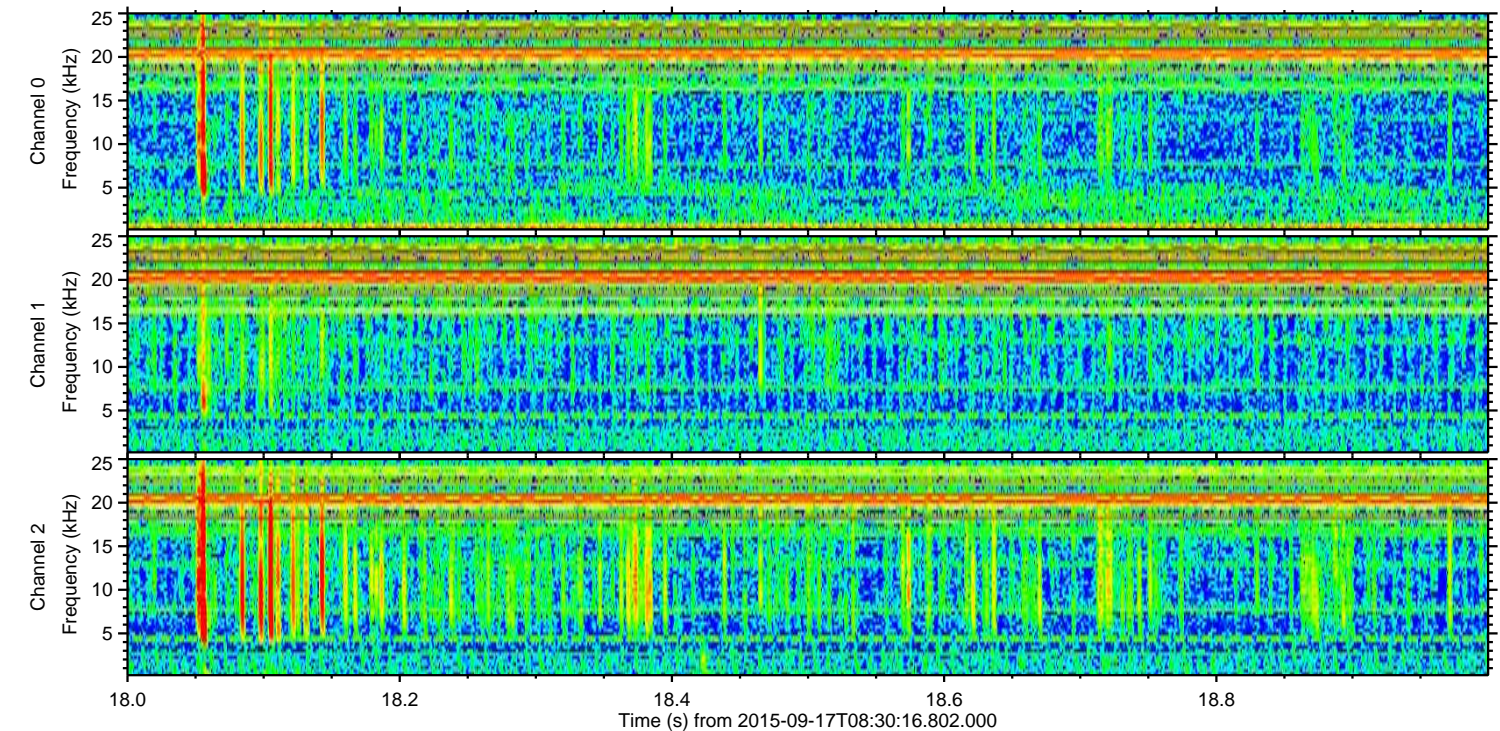
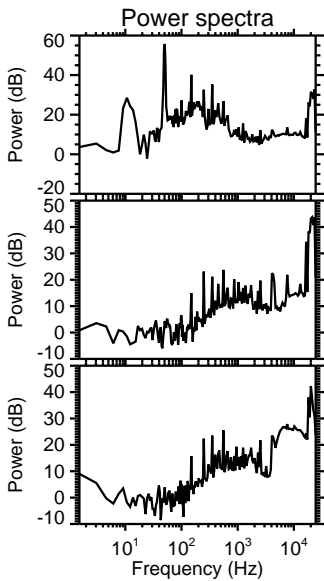
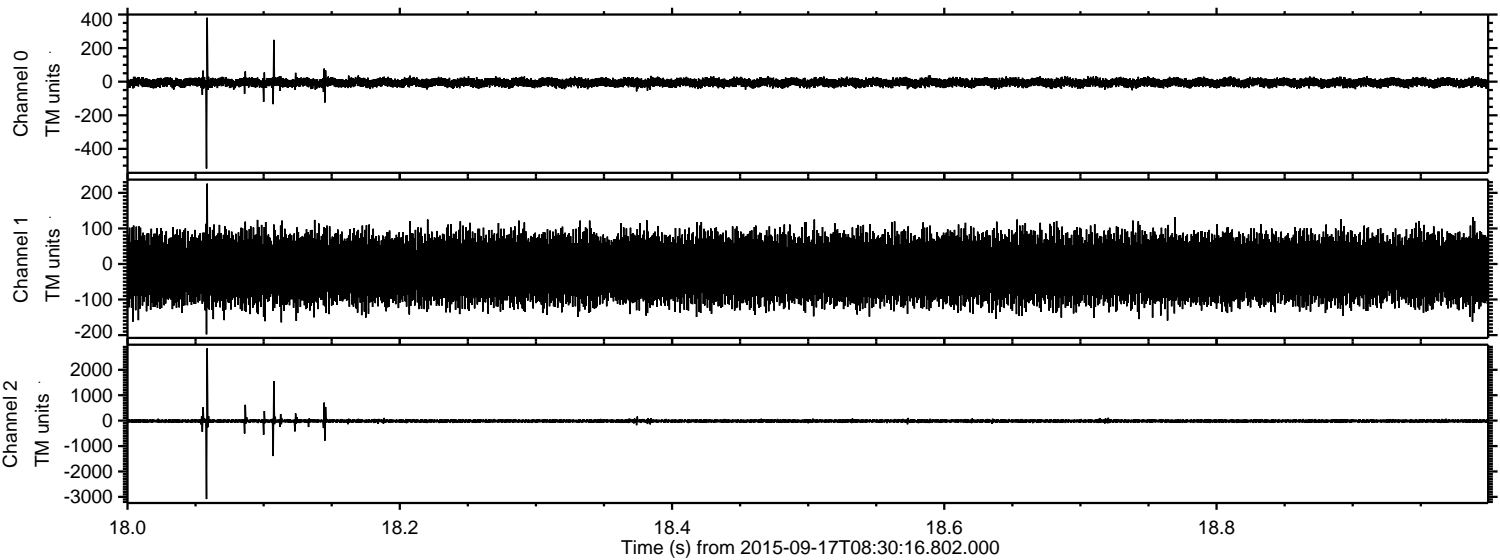
Channel 2
mn: -3211
mx: 3069
 μ : -15.2
 σ : 46.0

ELMAVAN 3D WAVEFORMS (Measured data sampled at 50 kHz) 51000 packets of 144 samples from 2015-09-17T08:30:16.802.000. Part 139/147

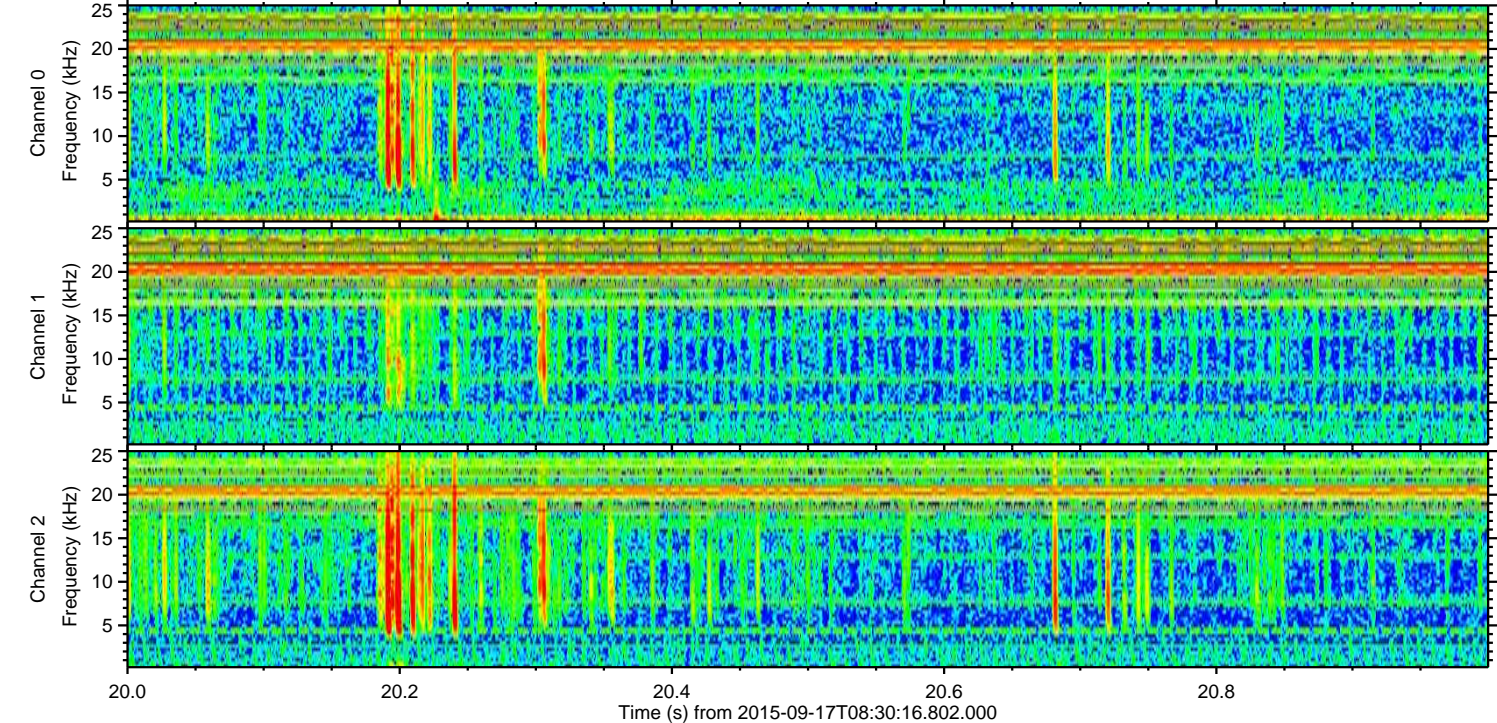
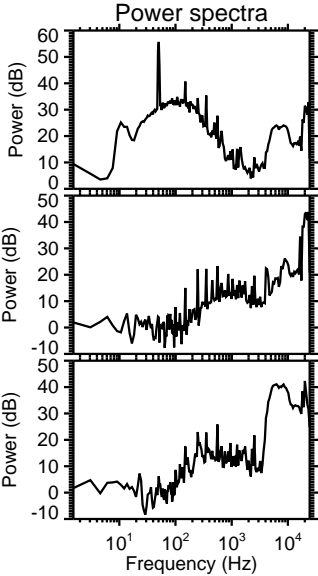
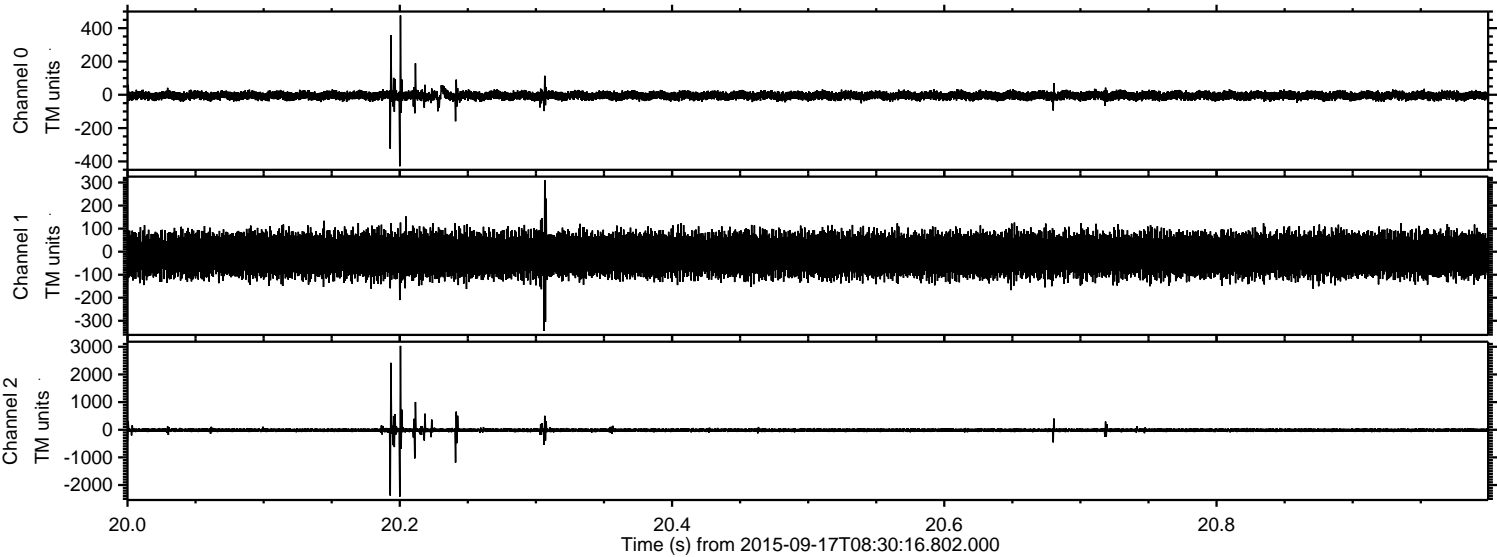
Processed Tue Oct 13 11:41:04 2015 by ELM ver.2012-10-06 from 001__elm20150917_083015__dat00.bin



Processed Tue Oct 13 11:41:05 2015 by ELM ver.2012-10-06 from 001__elm20150917_083015__dat00.bin



Processed Tue Oct 13 11:41:06 2015 by ELM ver.2012-10-06 from 001__elm20150917_083015__dat00.bin

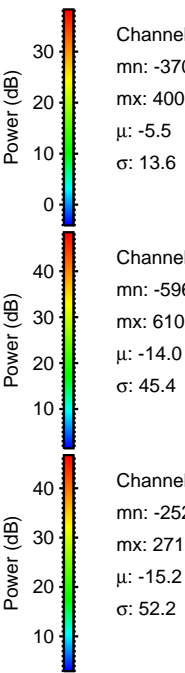
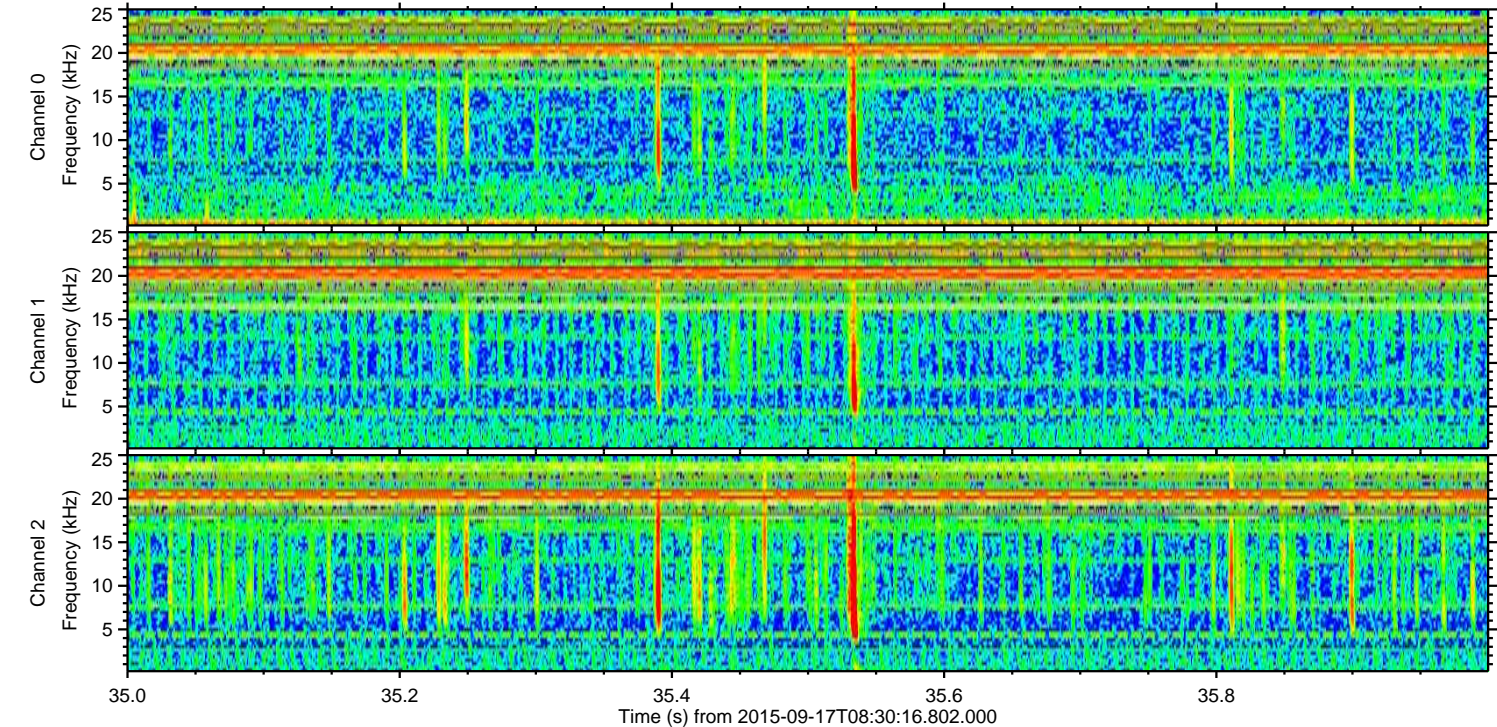
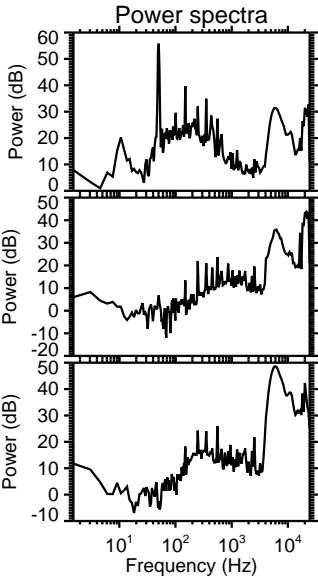
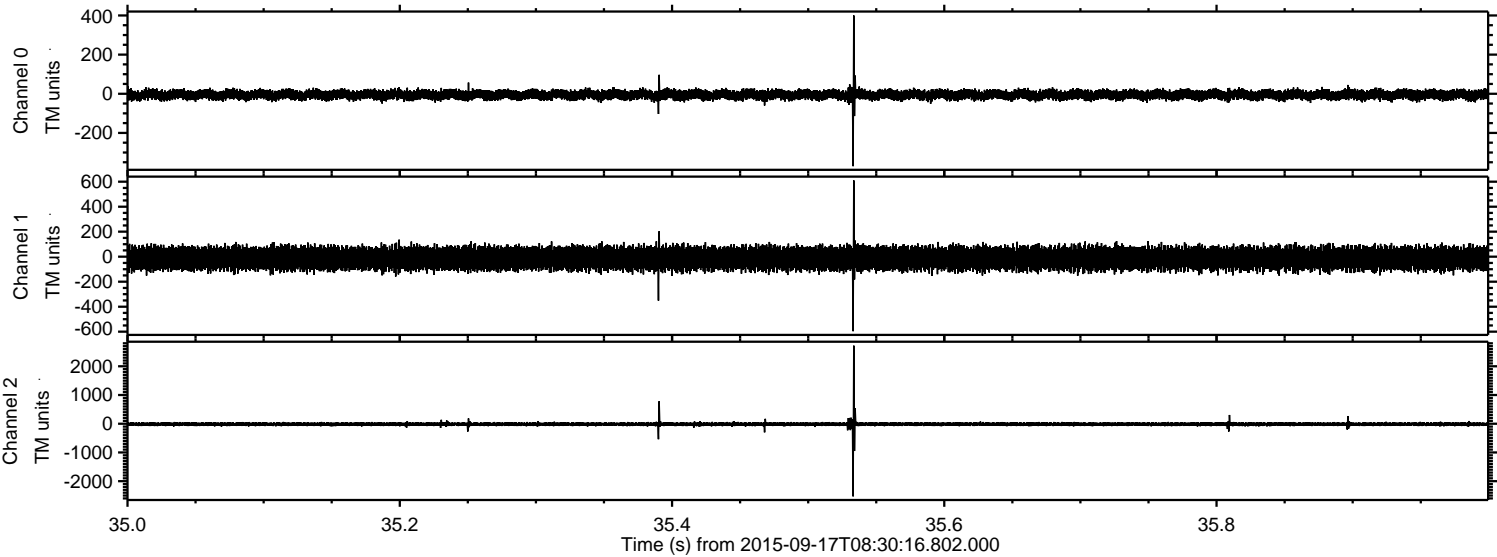


Channel 0
mn: -429
mx: 476
 μ : -5.4
 σ : 14.2

Channel 1
mn: -344
mx: 310
 μ : -14.1
 σ : 44.6

Channel 2
mn: -2419
mx: 3031
 μ : -15.2
 σ : 54.0

Processed Tue Oct 13 11:41:08 2015 by ELM ver.2012-10-06 from 001__elm20150917_083015__dat00.bin



Channel 0
mn: -370
mx: 400
 μ : -5.5
 σ : 13.6

Channel 1
mn: -596
mx: 610
 μ : -14.0
 σ : 45.4

Channel 2
mn: -2529
mx: 2719
 μ : -15.2
 σ : 52.2

Processed Tue Oct 13 11:41:10 2015 by ELM ver.2012-10-06 from 001__elm20150917_083015__dat00.bin

