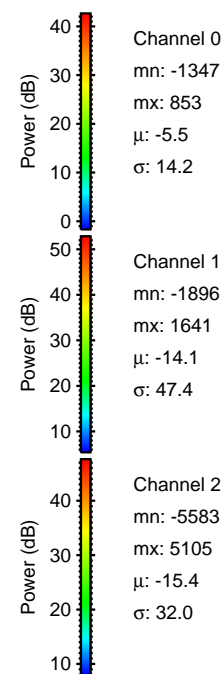
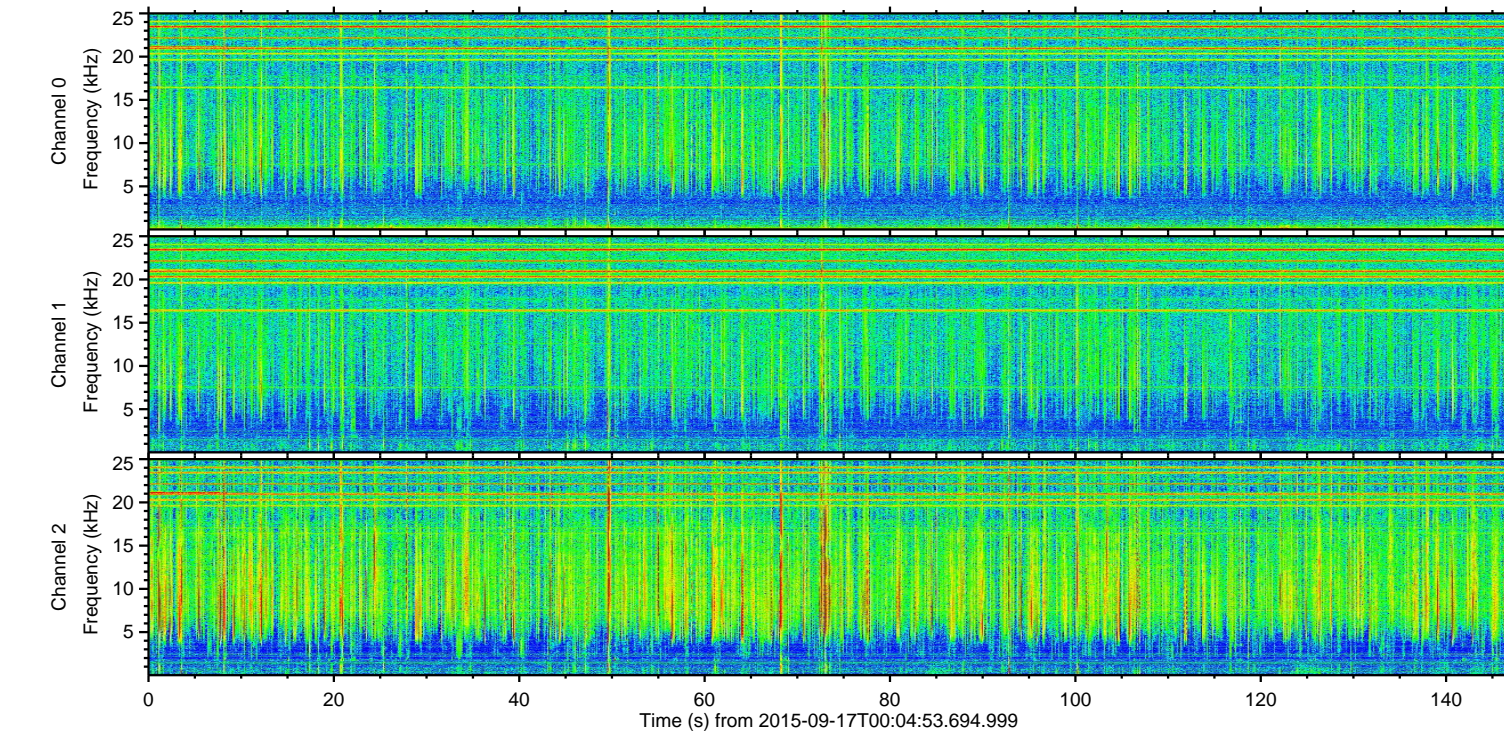
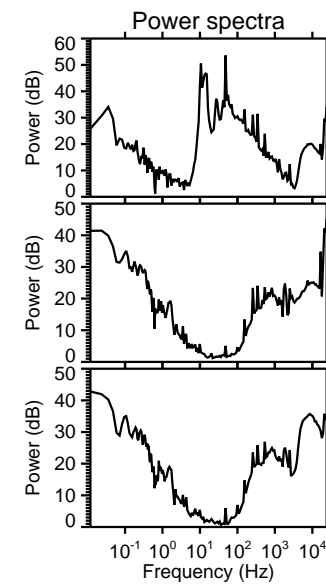
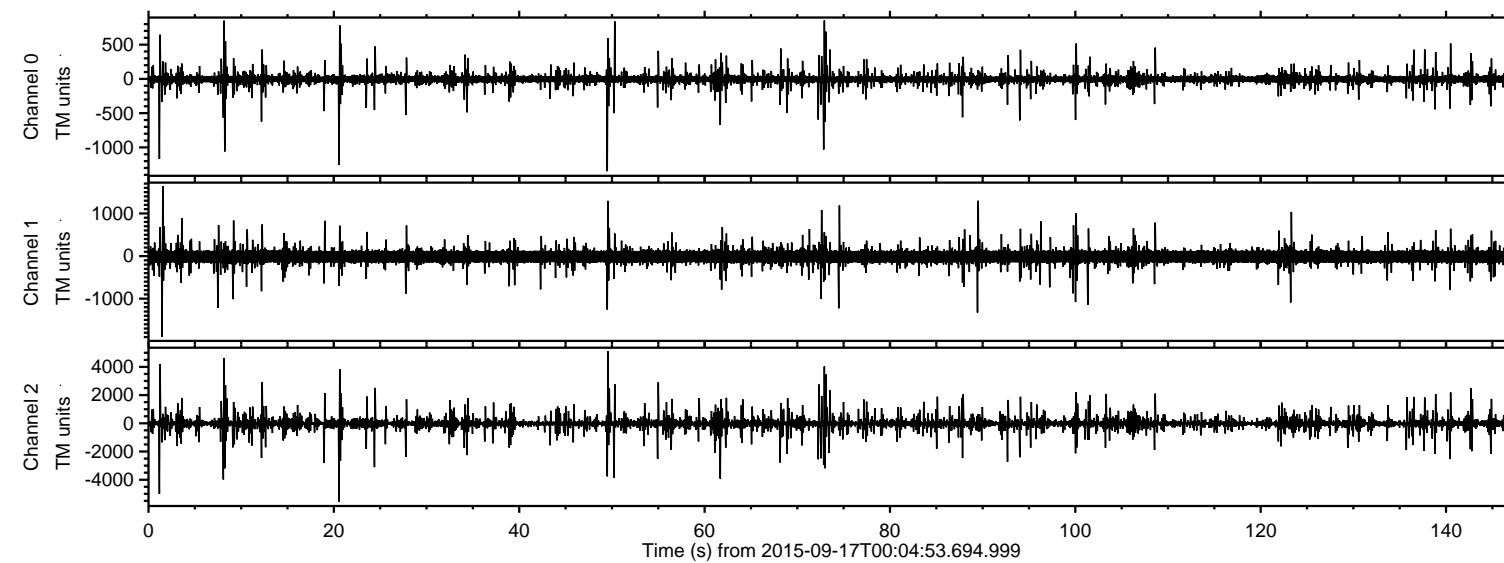


# ELMAVAN 3D WAVEFORMS (Measured data sampled at 50 kHz) 51000 packets of 144 samples from 2015-09-17T00:04:53.694.999.

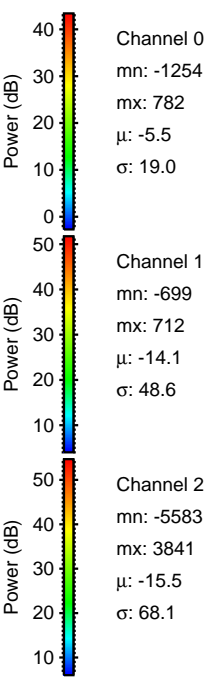
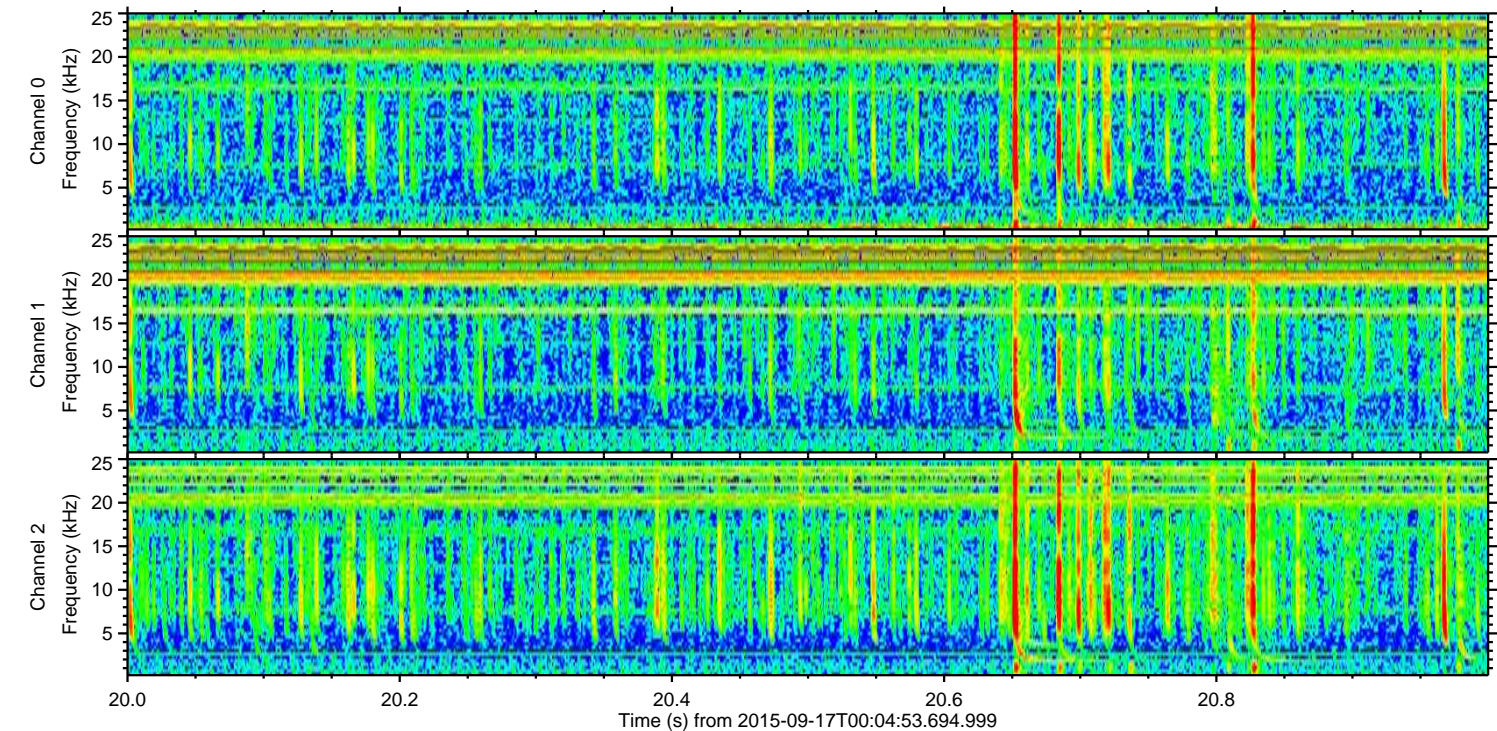
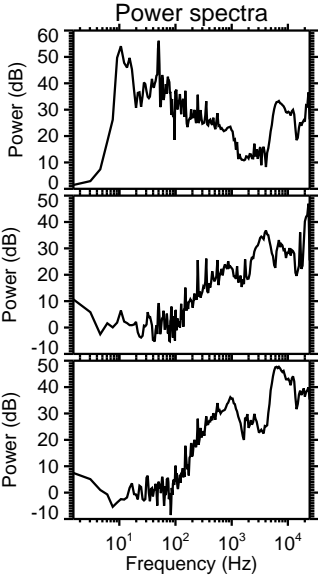
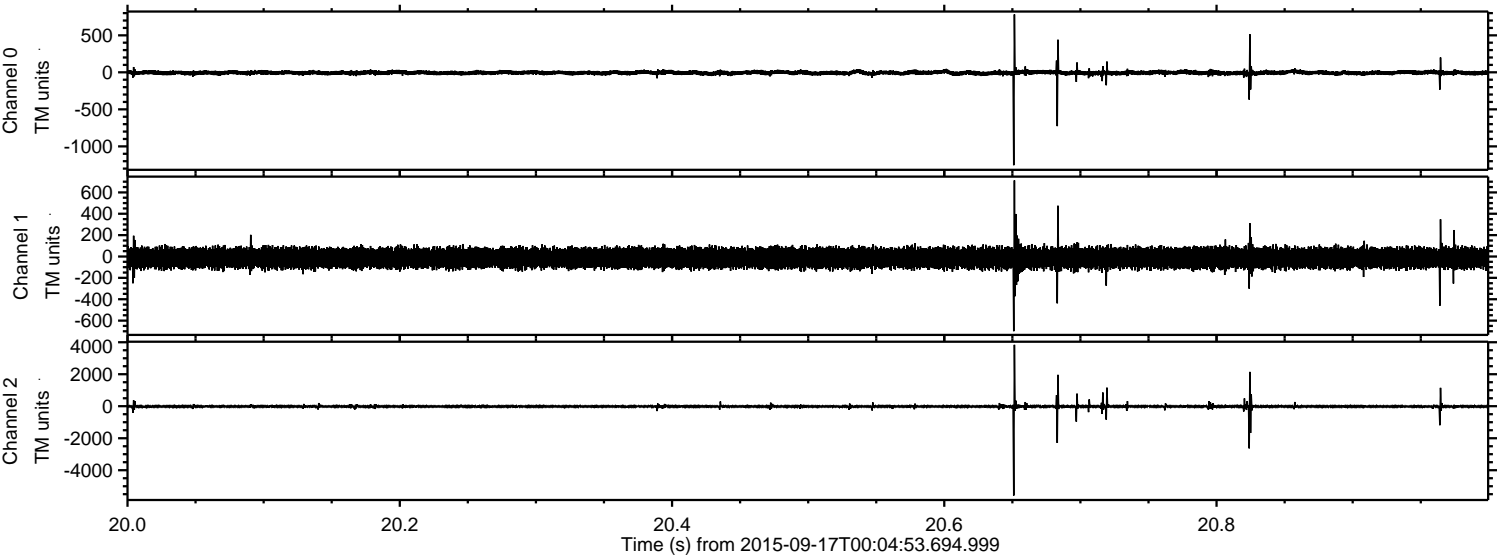
Processed Tue Oct 13 08:10:16 2015 by ELM ver.2012-10-06 from 001\_\_elm20150917\_000452\_\_dat00.bin





ELMAVAN 3D WAVEFORMS (Measured data sampled at 50 kHz) 51000 packets of 144 samples from 2015-09-17T00:04:53.694.999. Part 21/147

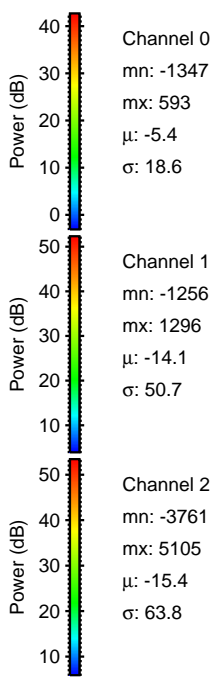
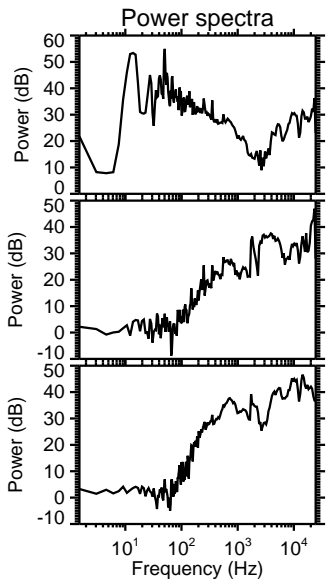
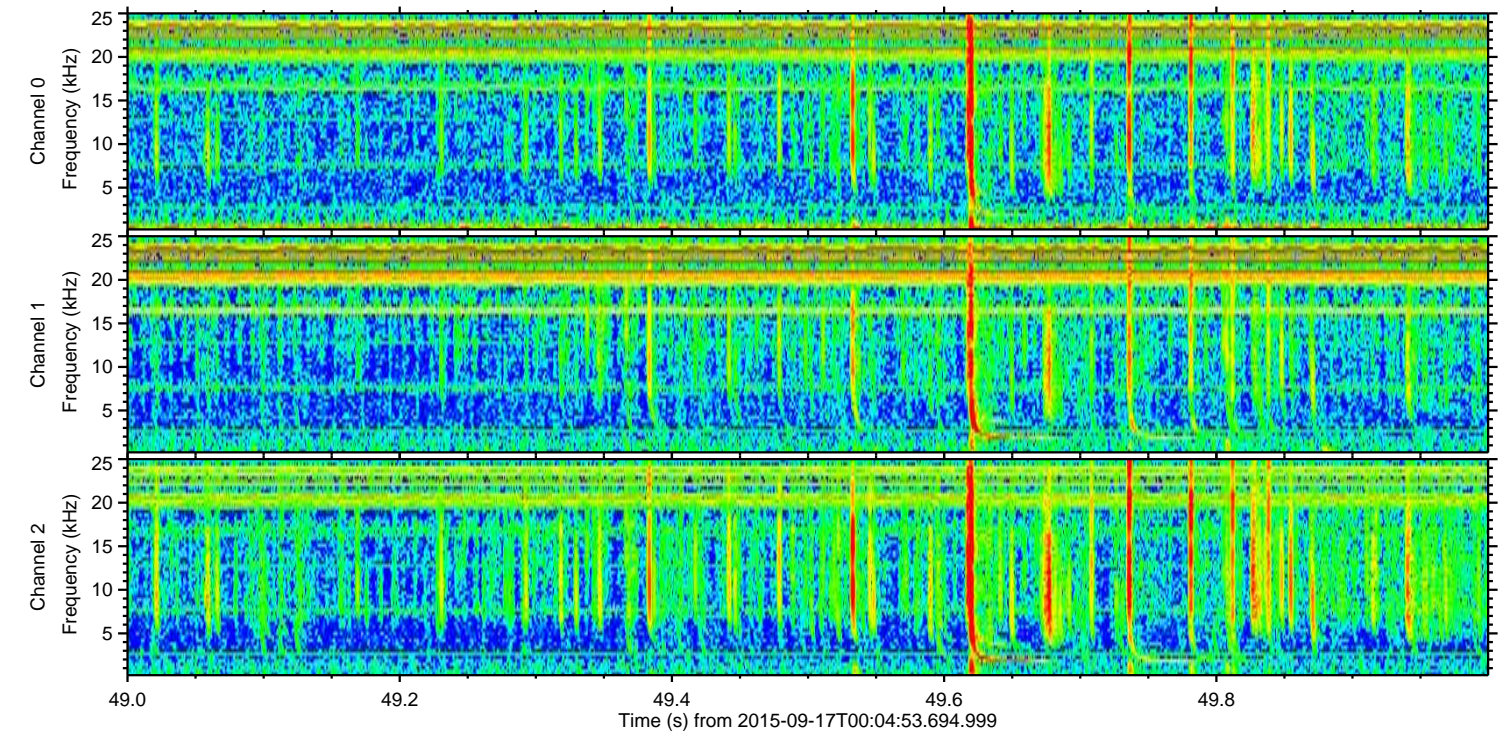
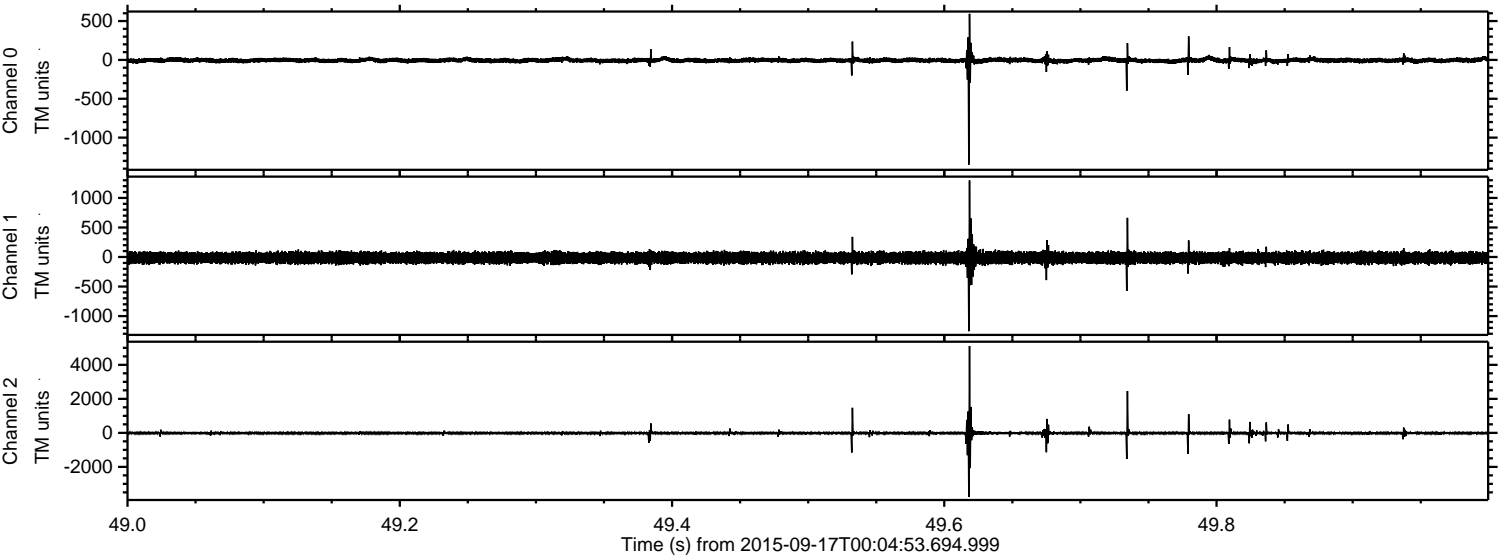
Processed Tue Oct 13 08:10:32 2015 by ELM ver.2012-10-06 from 001\_\_elm20150917\_000452\_\_dat00.bin





ELMAVAN 3D WAVEFORMS (Measured data sampled at 50 kHz) 51000 packets of 144 samples from 2015-09-17T00:04:53.694.999. Part 50/147

Processed Tue Oct 13 08:10:34 2015 by ELM ver.2012-10-06 from 001\_\_elm20150917\_000452\_\_dat00.bin



Channel 0

mn: -1347  
mx: 593  
 $\mu$ : -5.4  
 $\sigma$ : 18.6

Channel 1

mn: -1256  
mx: 1296  
 $\mu$ : -14.1  
 $\sigma$ : 50.7

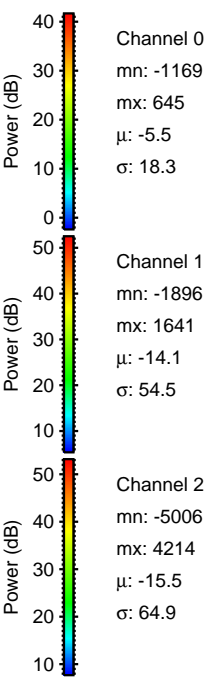
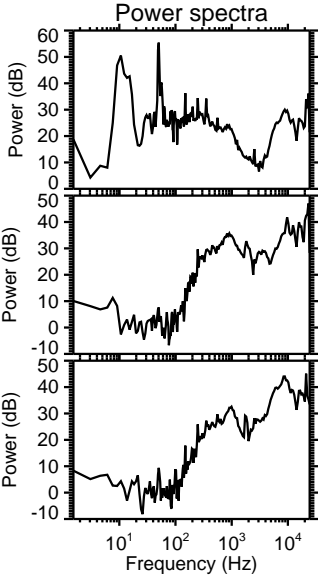
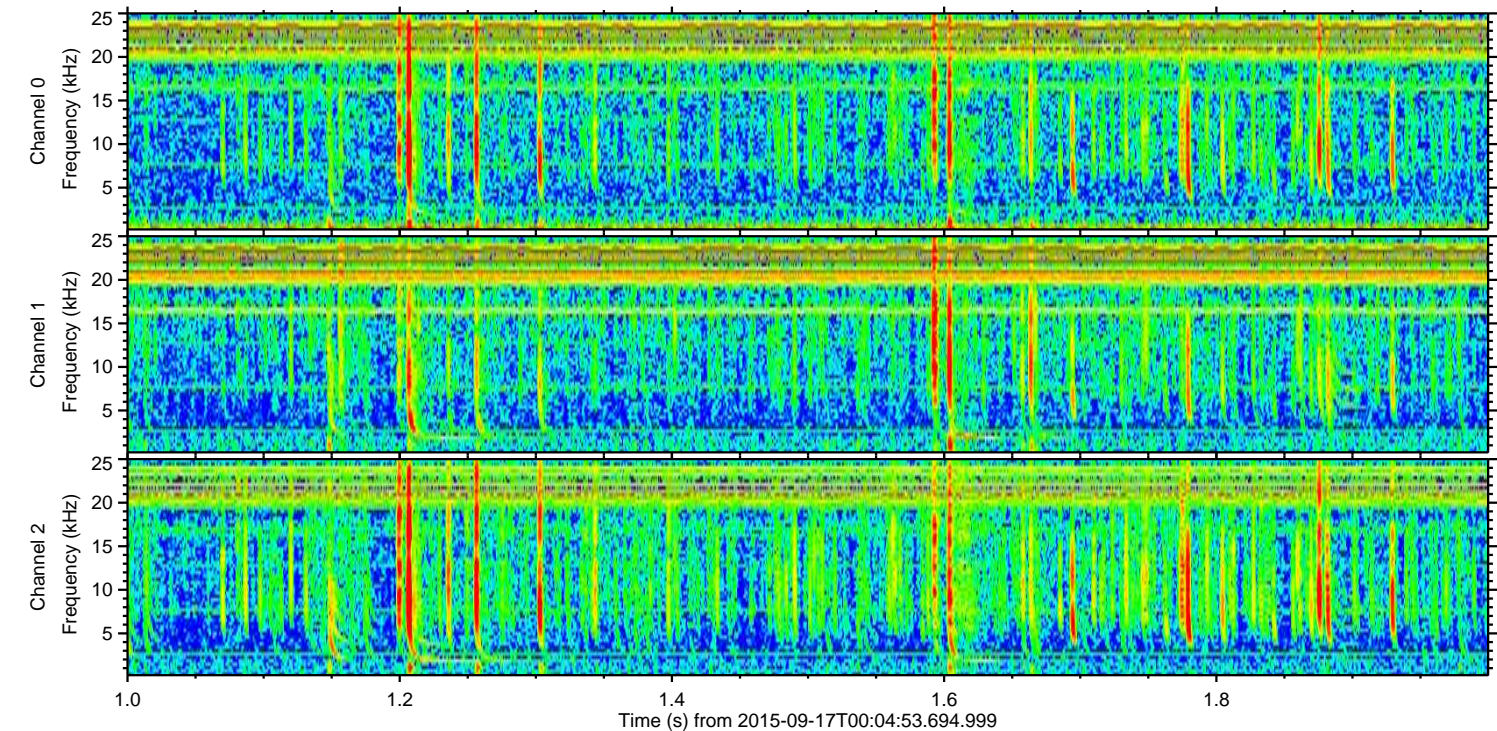
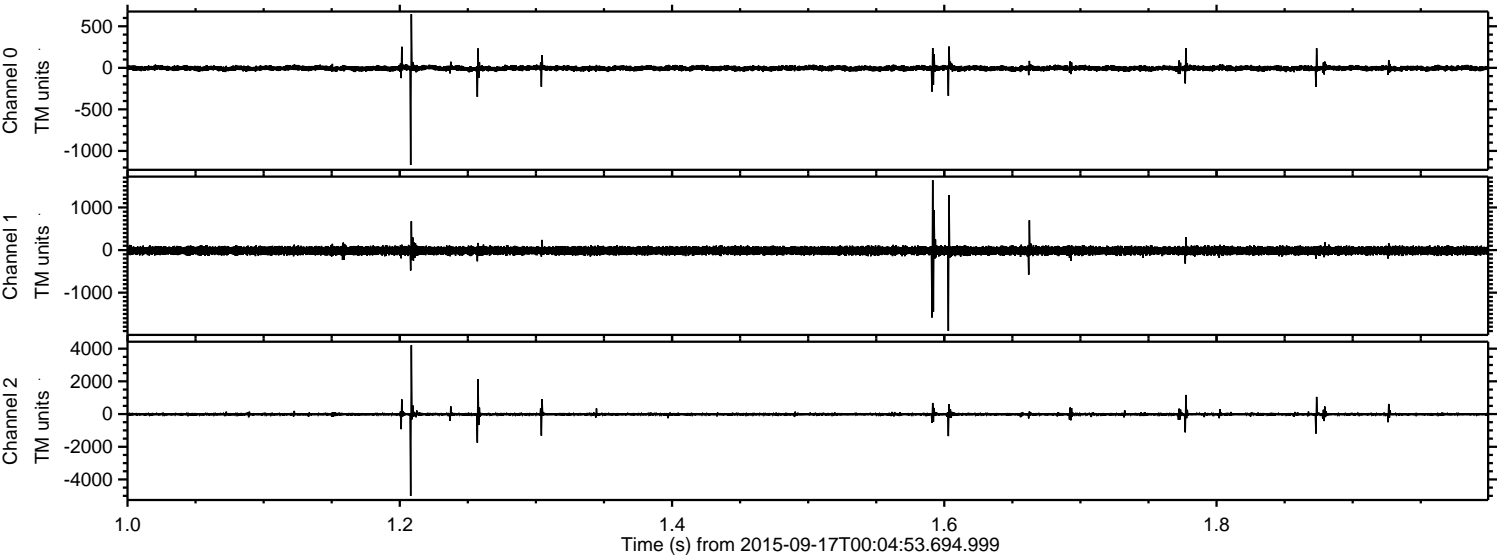
Channel 2

mn: -3761  
mx: 5105  
 $\mu$ : -15.4  
 $\sigma$ : 63.8



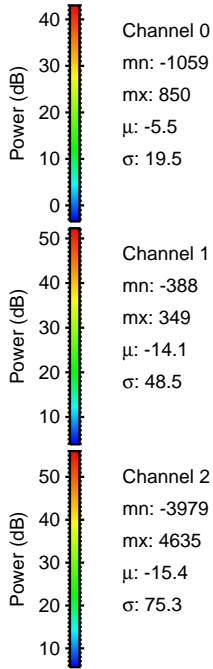
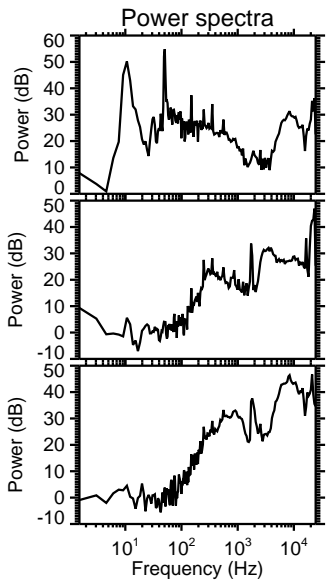
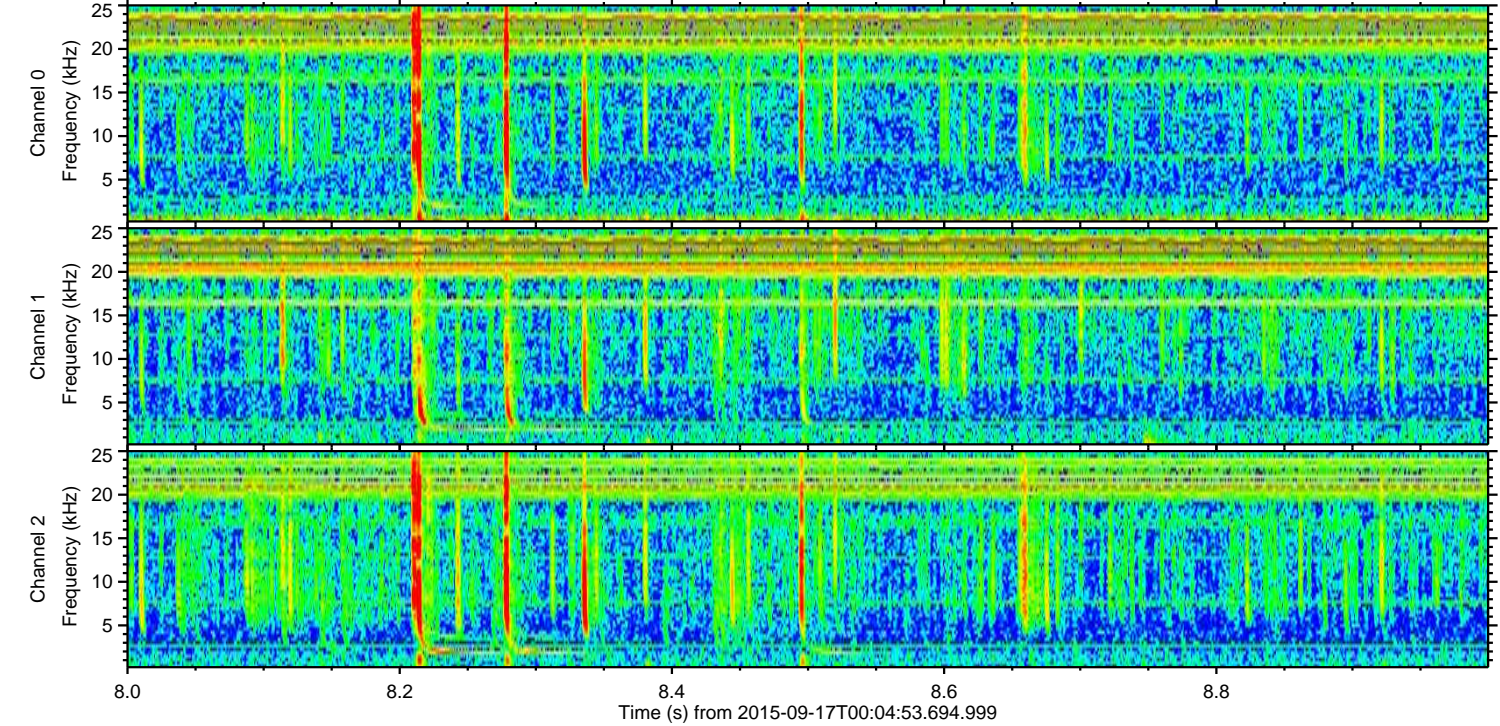
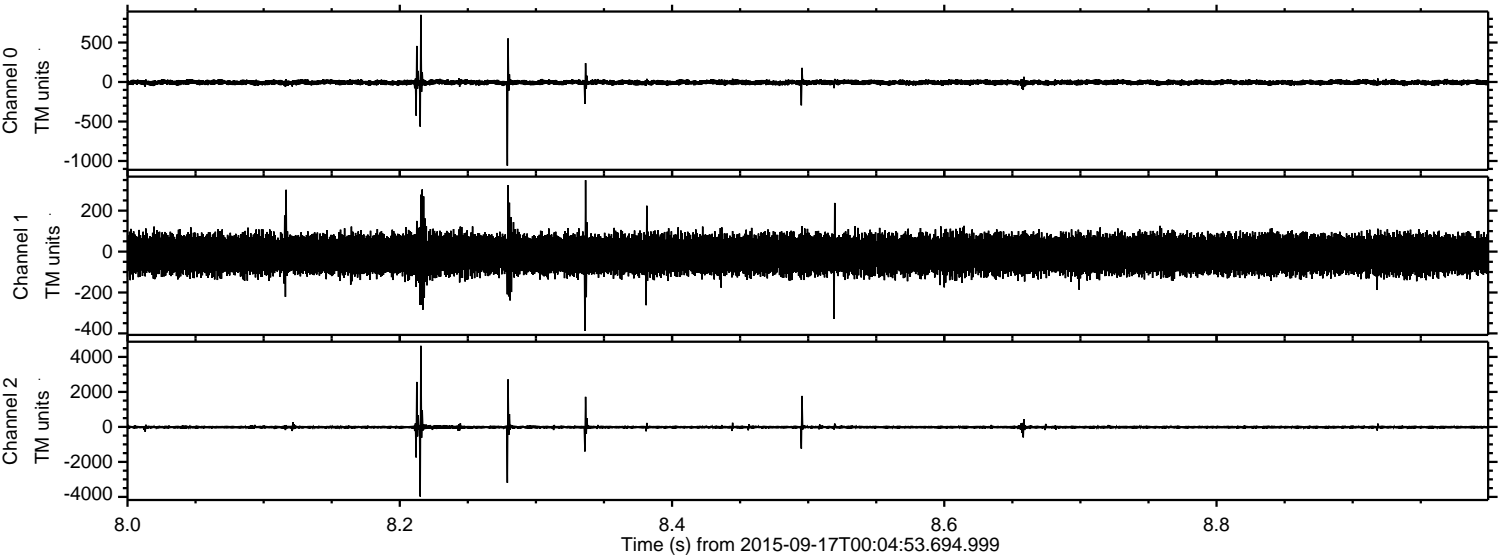
ELMAVAN 3D WAVEFORMS (Measured data sampled at 50 kHz) 51000 packets of 144 samples from 2015-09-17T00:04:53.694.999. Part 2/147

Processed Tue Oct 13 08:10:35 2015 by ELM ver.2012-10-06 from 001\_\_elm20150917\_000452\_\_dat00.bin





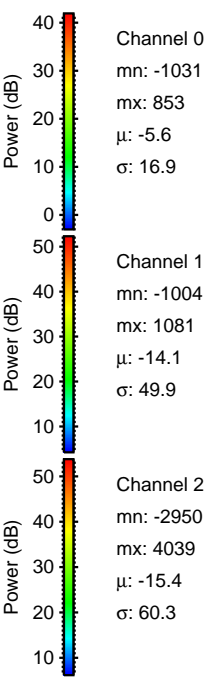
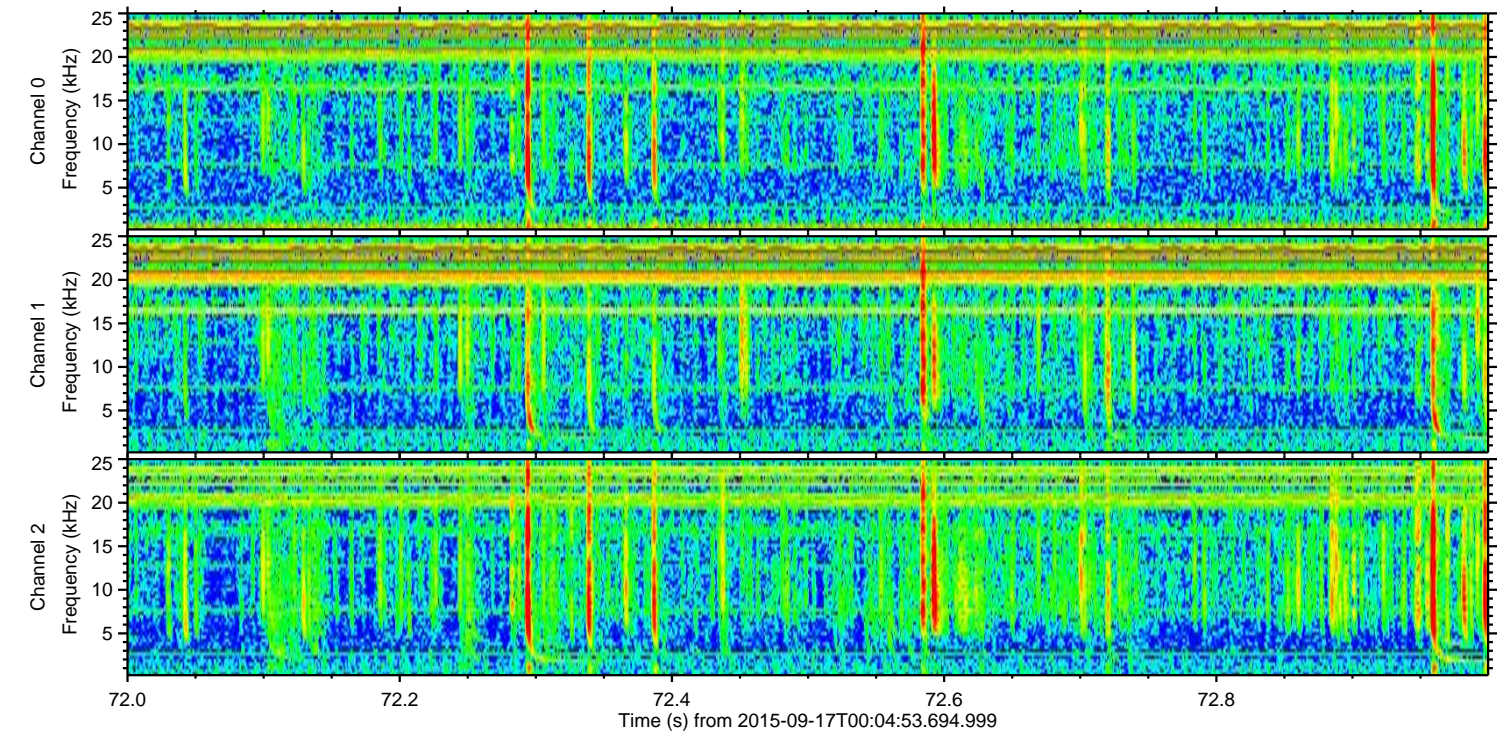
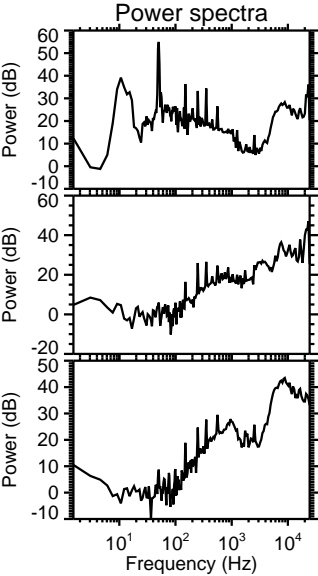
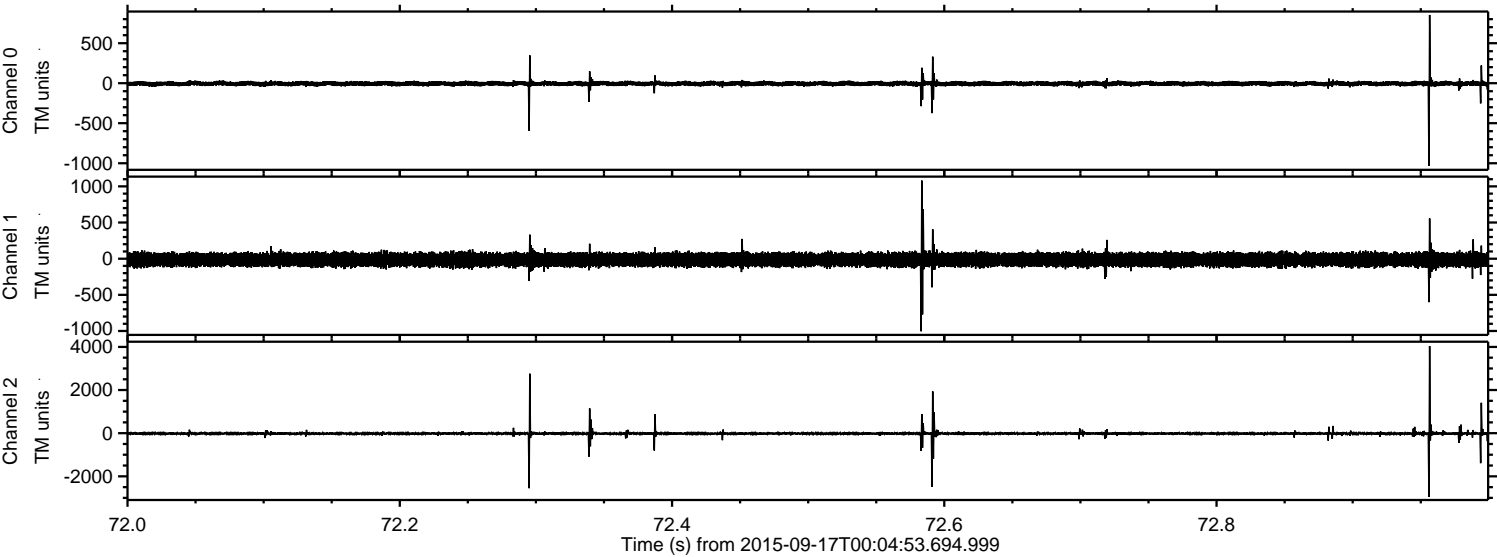
Processed Tue Oct 13 08:10:37 2015 by ELM ver.2012-10-06 from 001\_\_elm20150917\_000452\_\_dat00.bin





ELMAVAN 3D WAVEFORMS (Measured data sampled at 50 kHz) 51000 packets of 144 samples from 2015-09-17T00:04:53.694.999. Part 73/147

Processed Tue Oct 13 08:10:39 2015 by ELM ver.2012-10-06 from 001\_\_elm20150917\_000452\_\_dat00.bin



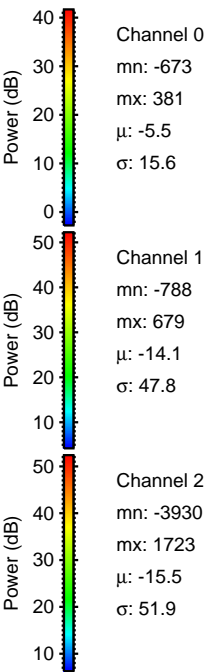
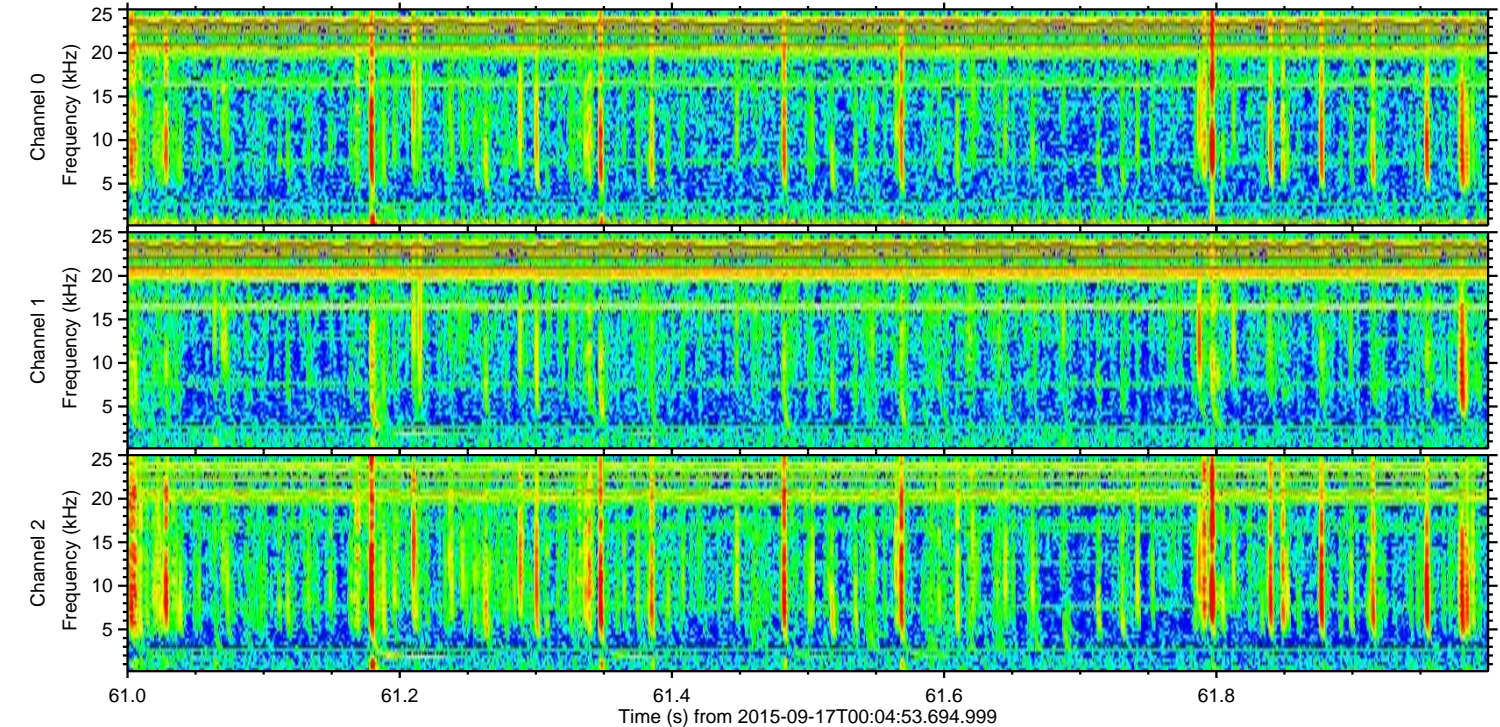
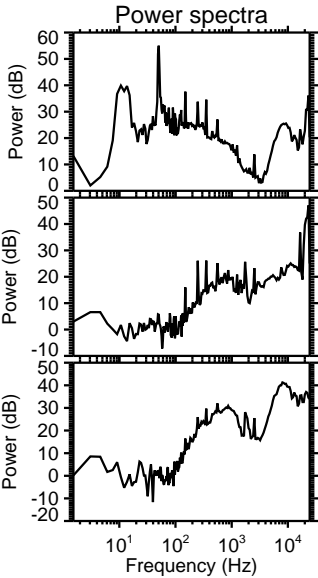
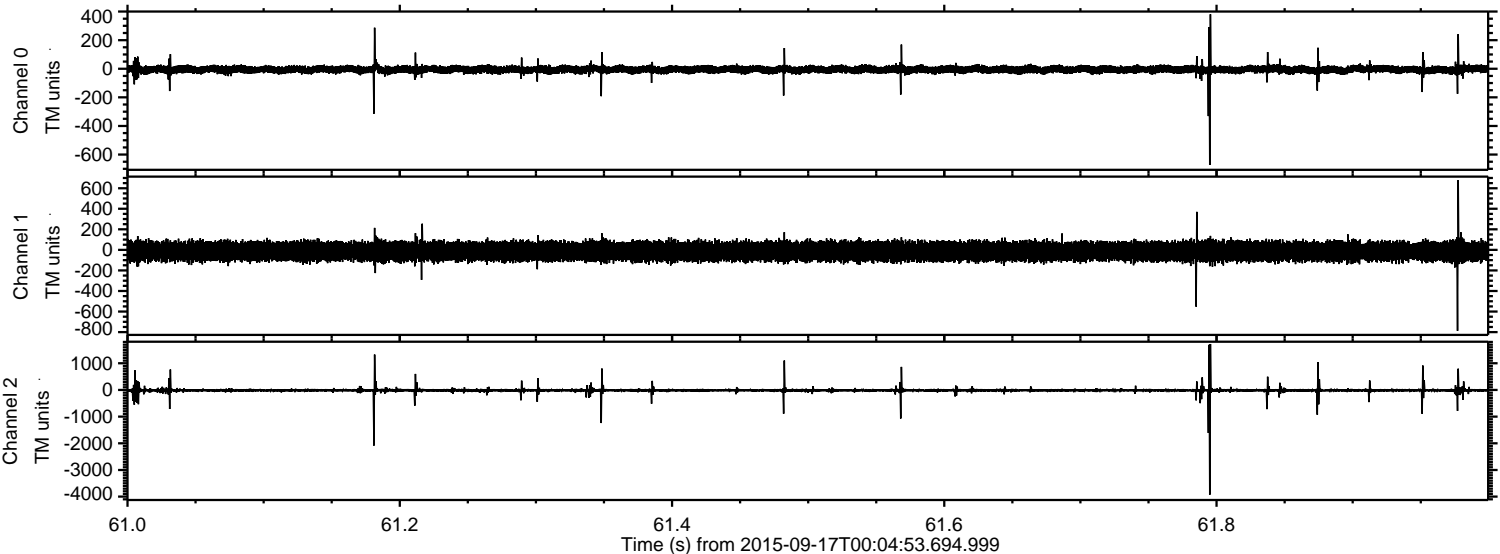
Channel 0  
mn: -1031  
mx: 853  
 $\mu$ : -5.6  
 $\sigma$ : 16.9

Channel 1  
mn: -1004  
mx: 1081  
 $\mu$ : -14.1  
 $\sigma$ : 49.9

Channel 2  
mn: -2950  
mx: 4039  
 $\mu$ : -15.4  
 $\sigma$ : 60.3

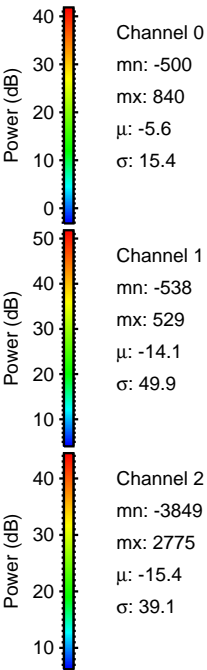
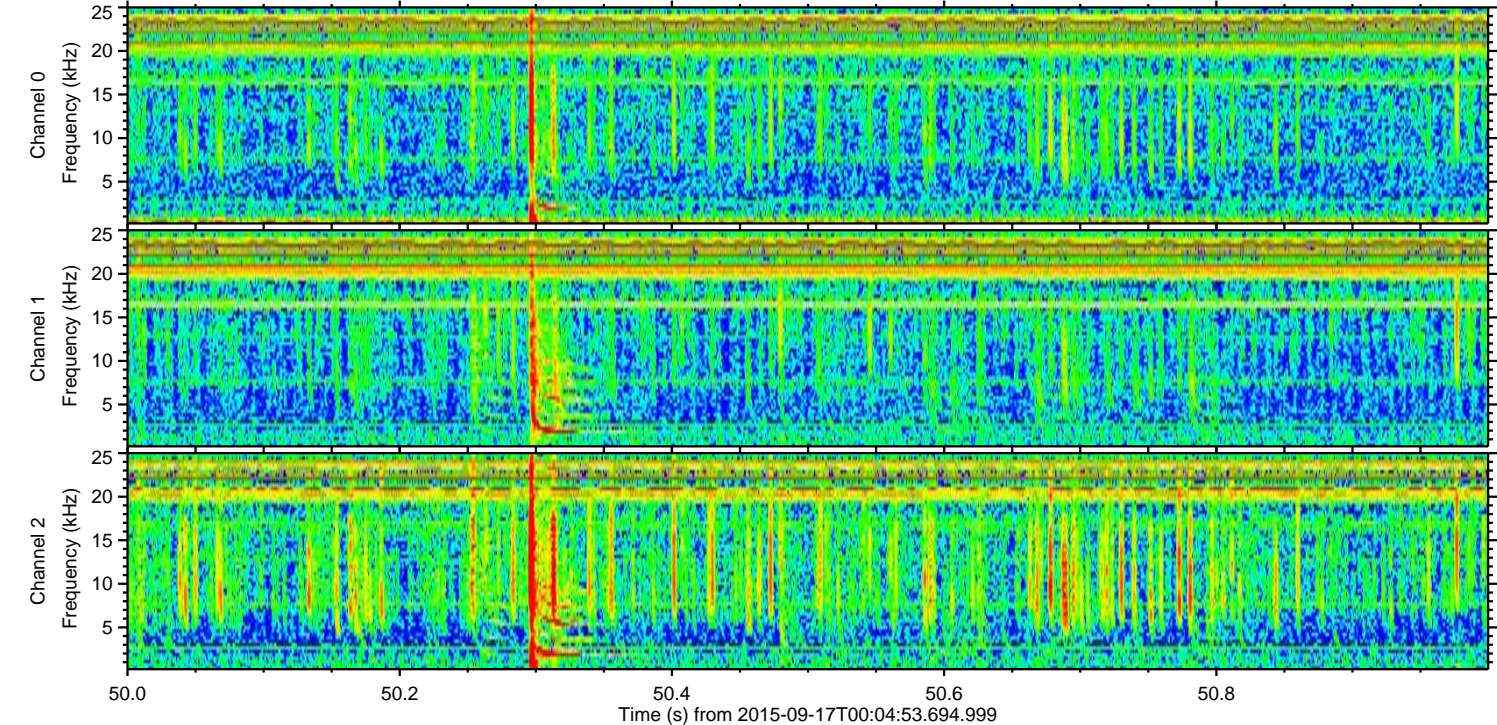
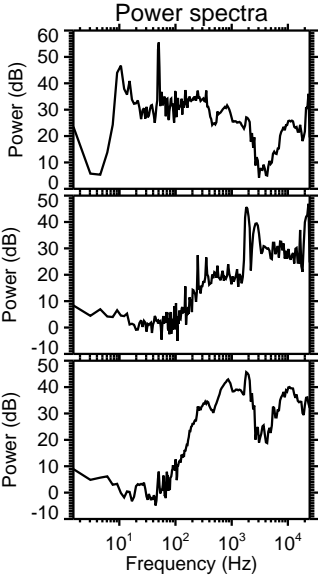
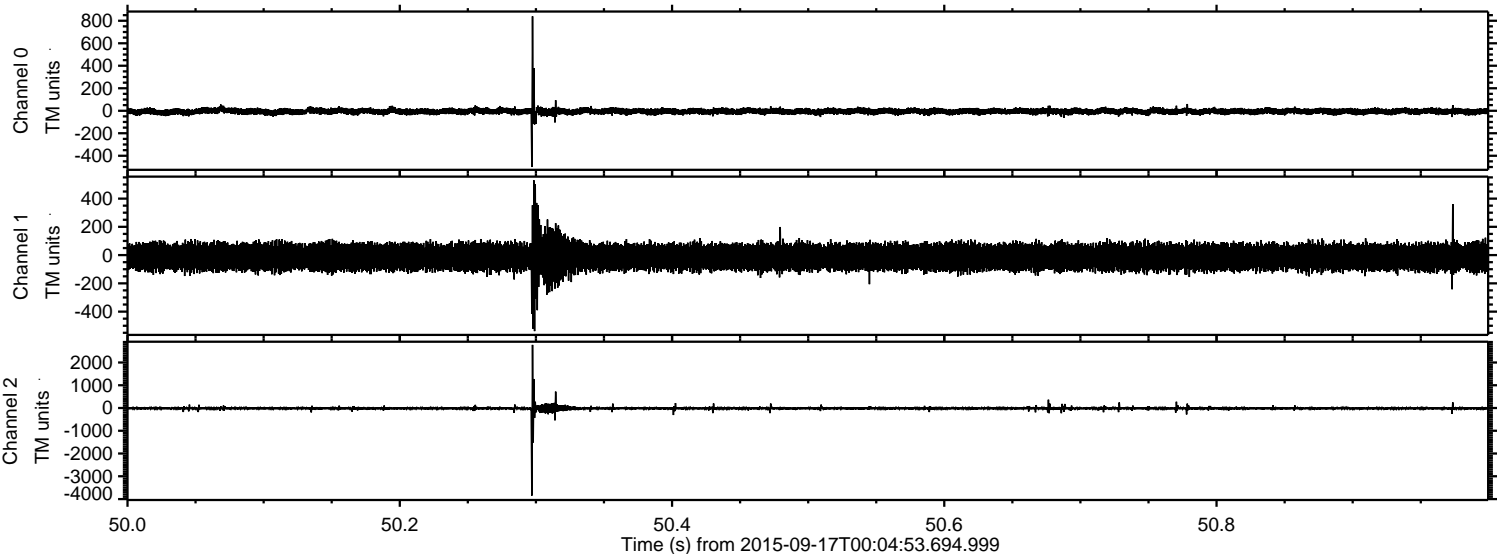


Processed Tue Oct 13 08:10:41 2015 by ELM ver.2012-10-06 from 001\_\_elm20150917\_000452\_\_dat00.bin



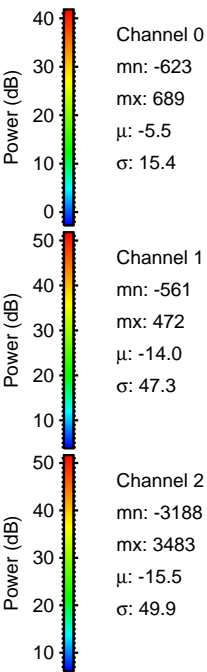
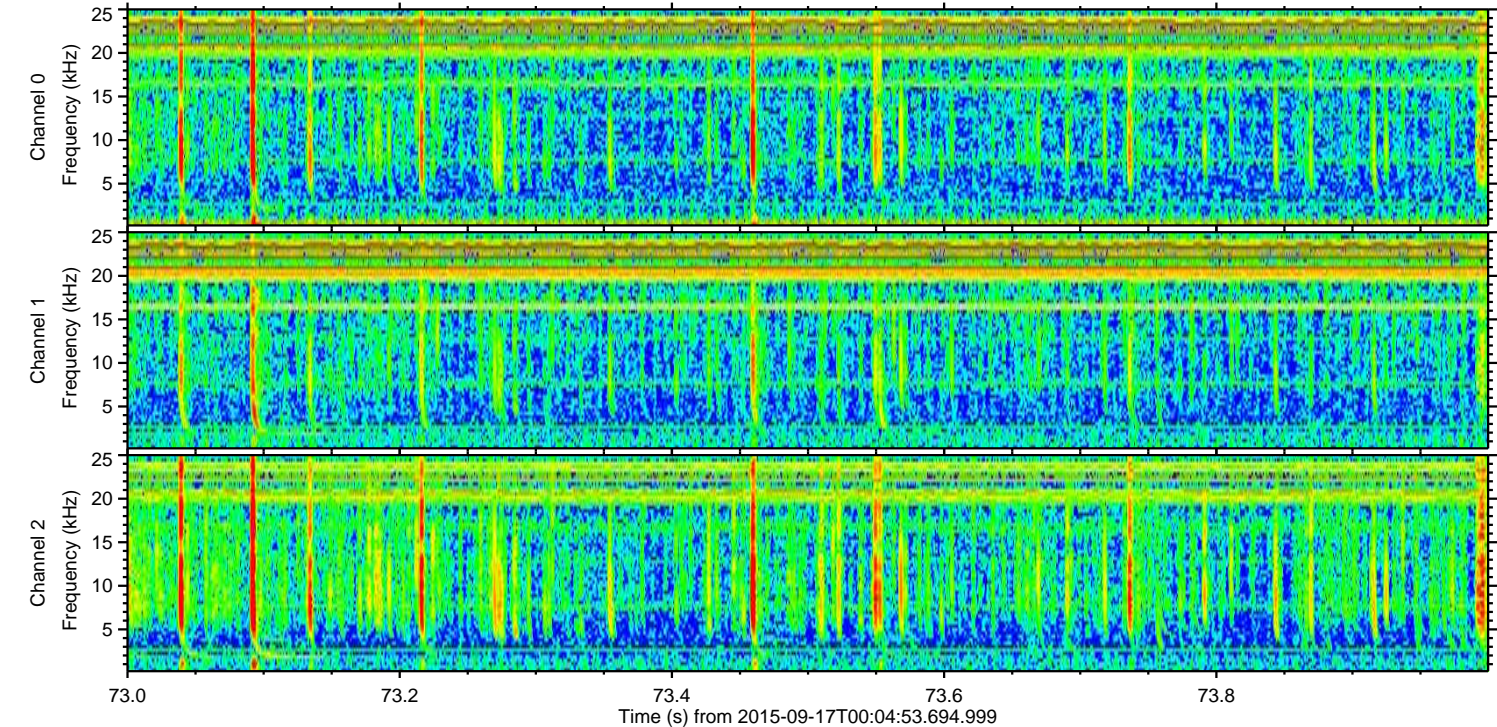
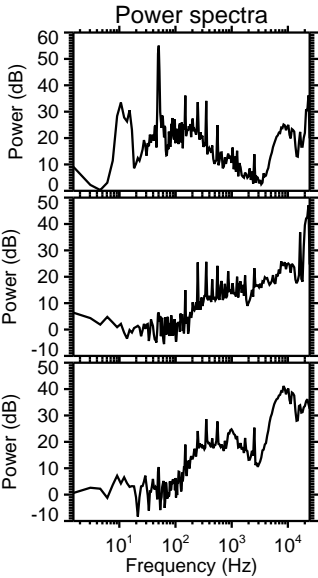
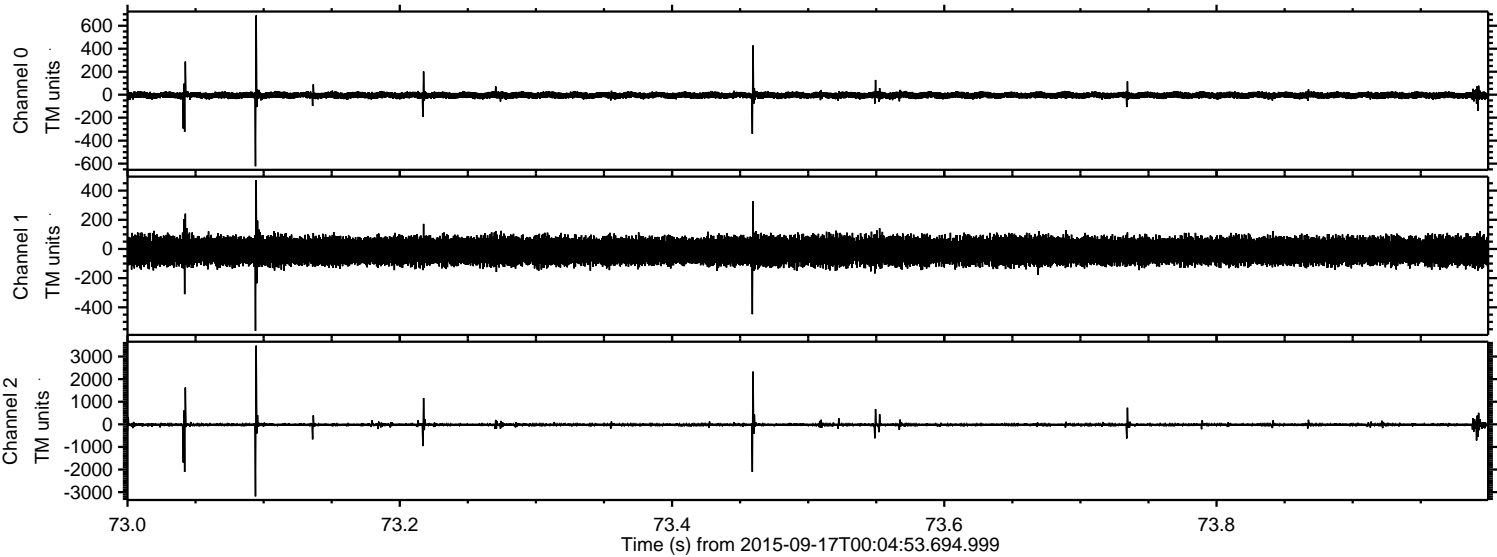


Processed Tue Oct 13 08:10:43 2015 by ELM ver.2012-10-06 from 001\_\_elm20150917\_000452\_\_dat00.bin



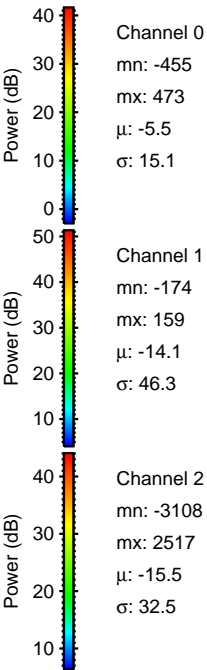
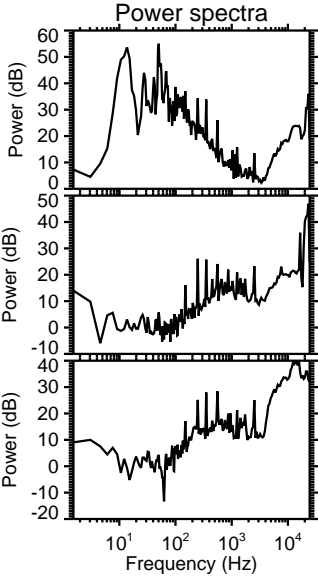
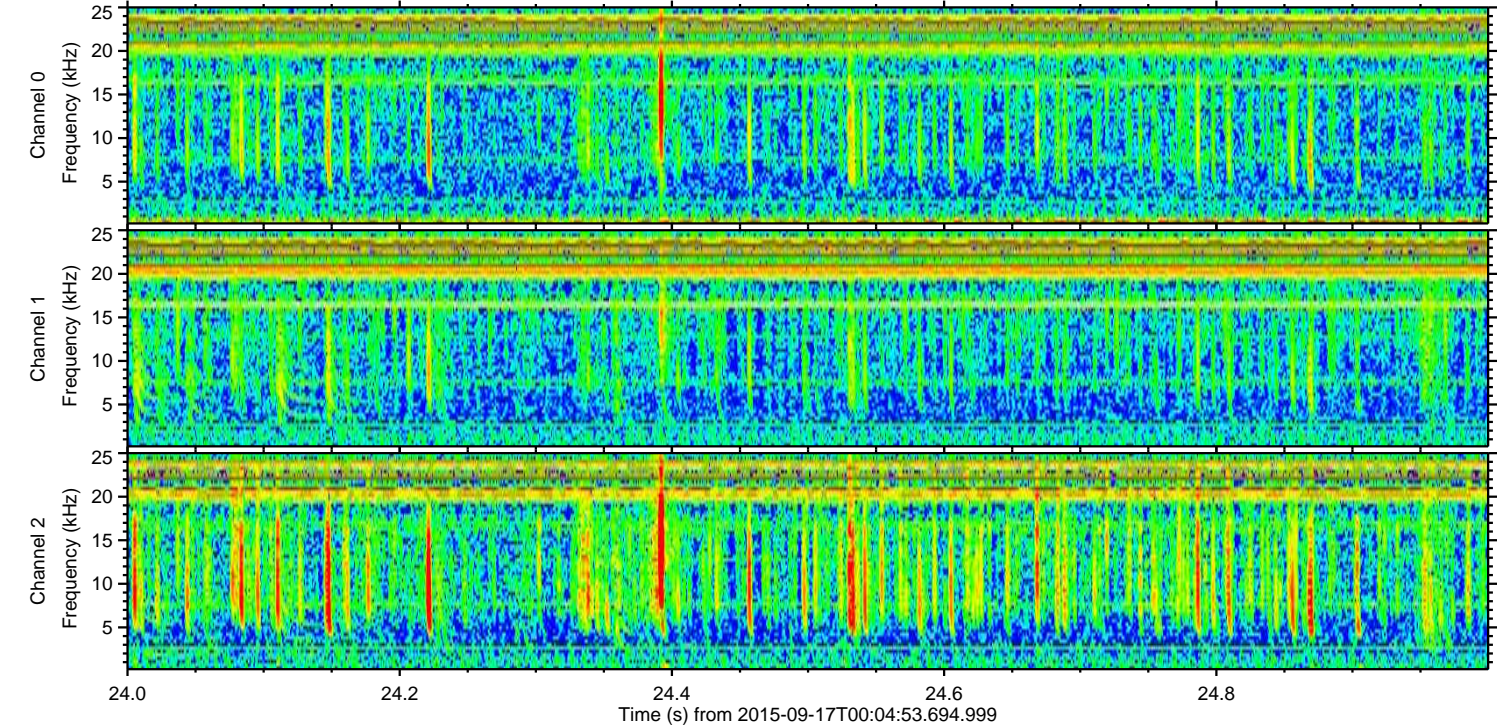
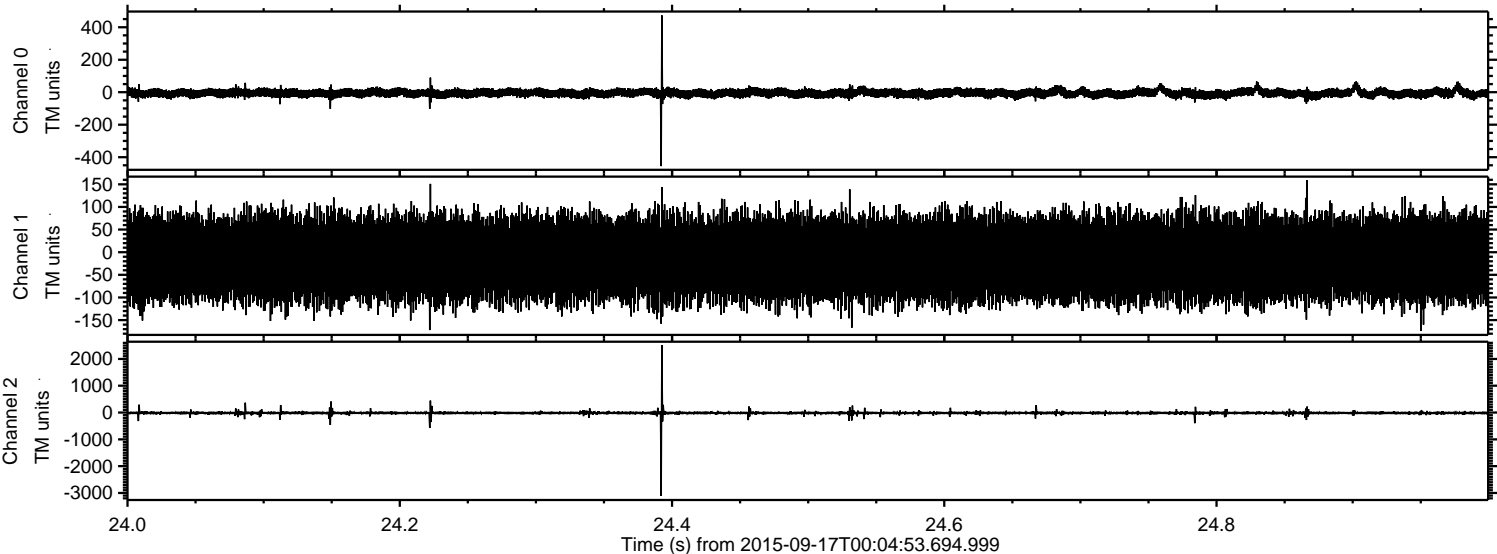


Processed Tue Oct 13 08:10:45 2015 by ELM ver.2012-10-06 from 001\_\_elm20150917\_000452\_\_dat00.bin





Processed Tue Oct 13 08:10:46 2015 by ELM ver.2012-10-06 from 001\_\_elm20150917\_000452\_\_dat00.bin





Processed Tue Oct 13 08:10:48 2015 by ELM ver.2012-10-06 from 001\_\_elm20150917\_000452\_\_dat00.bin

