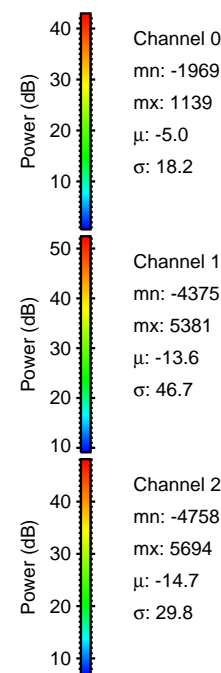
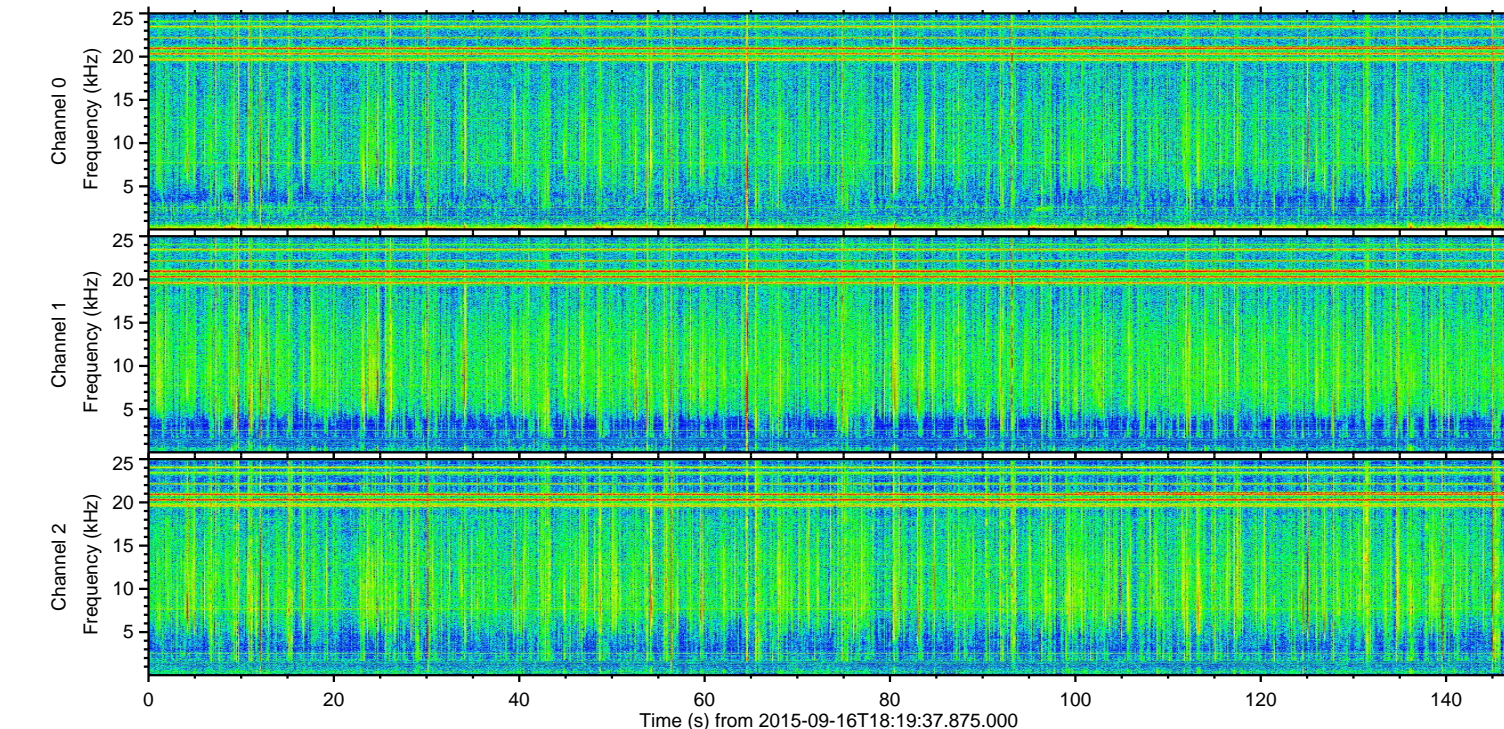
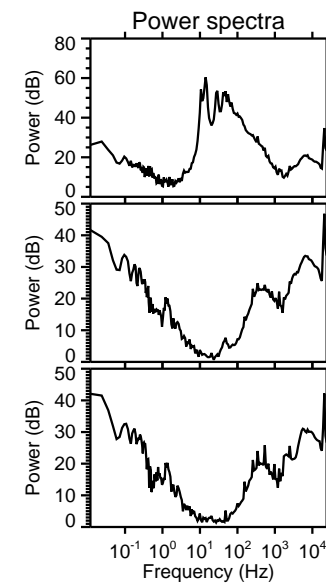
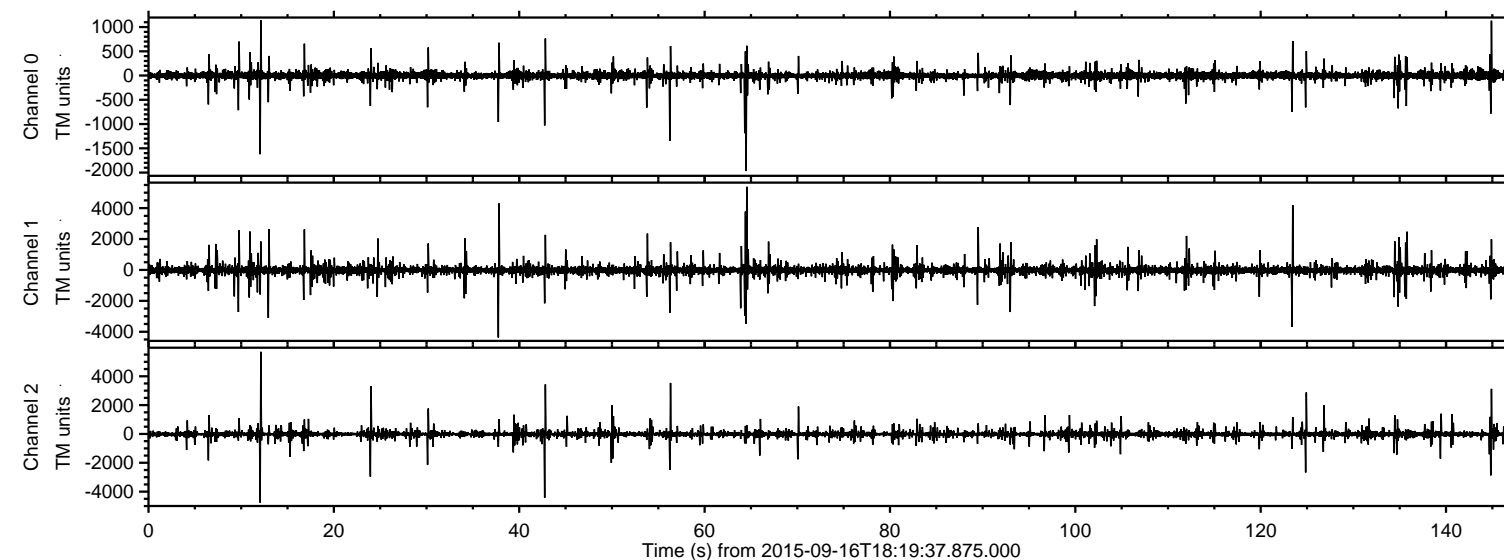
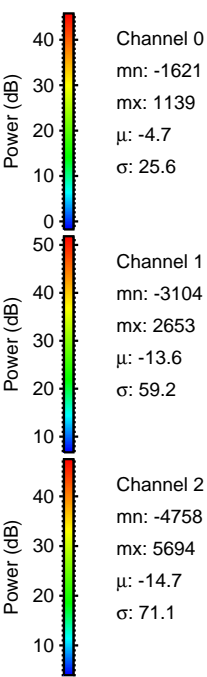
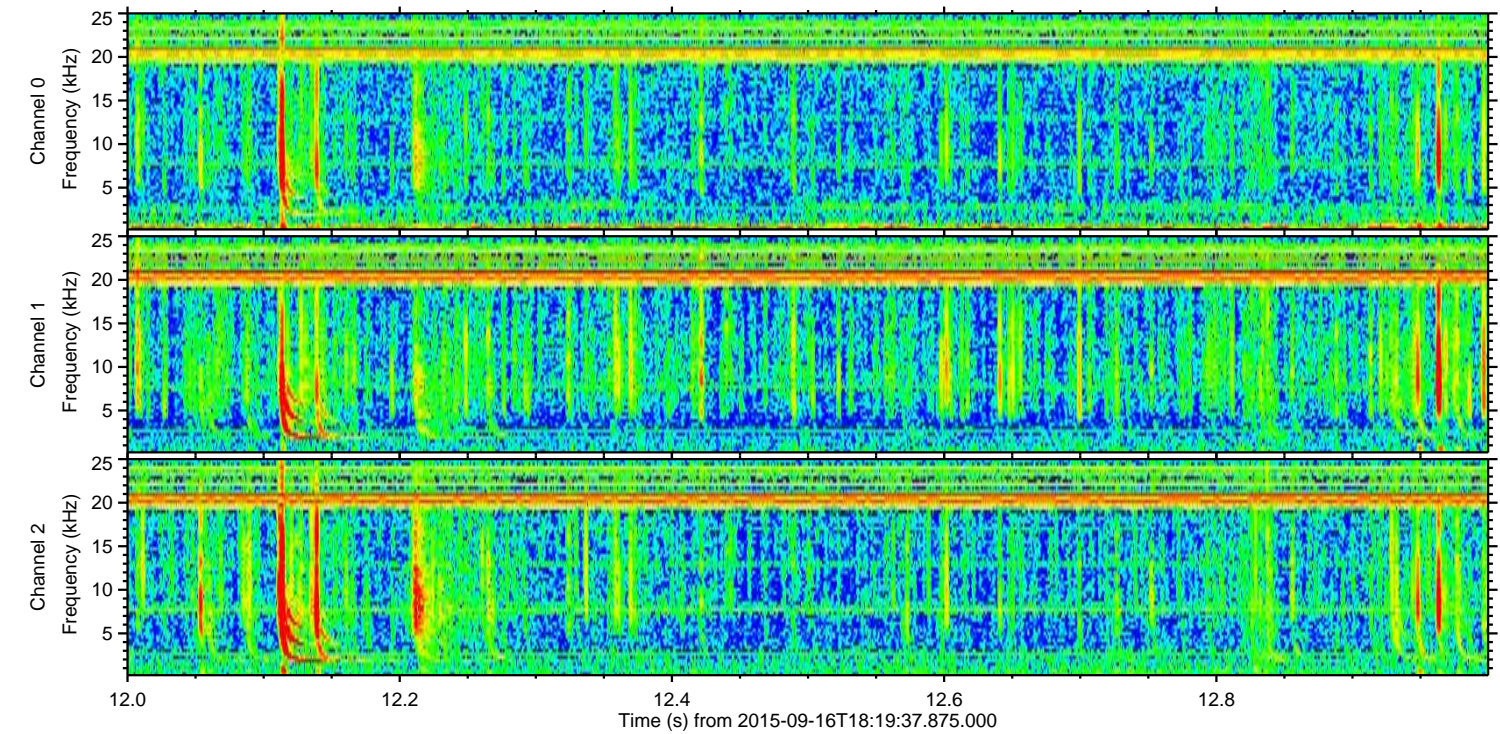
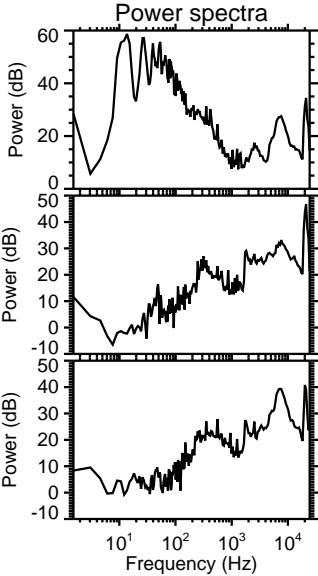
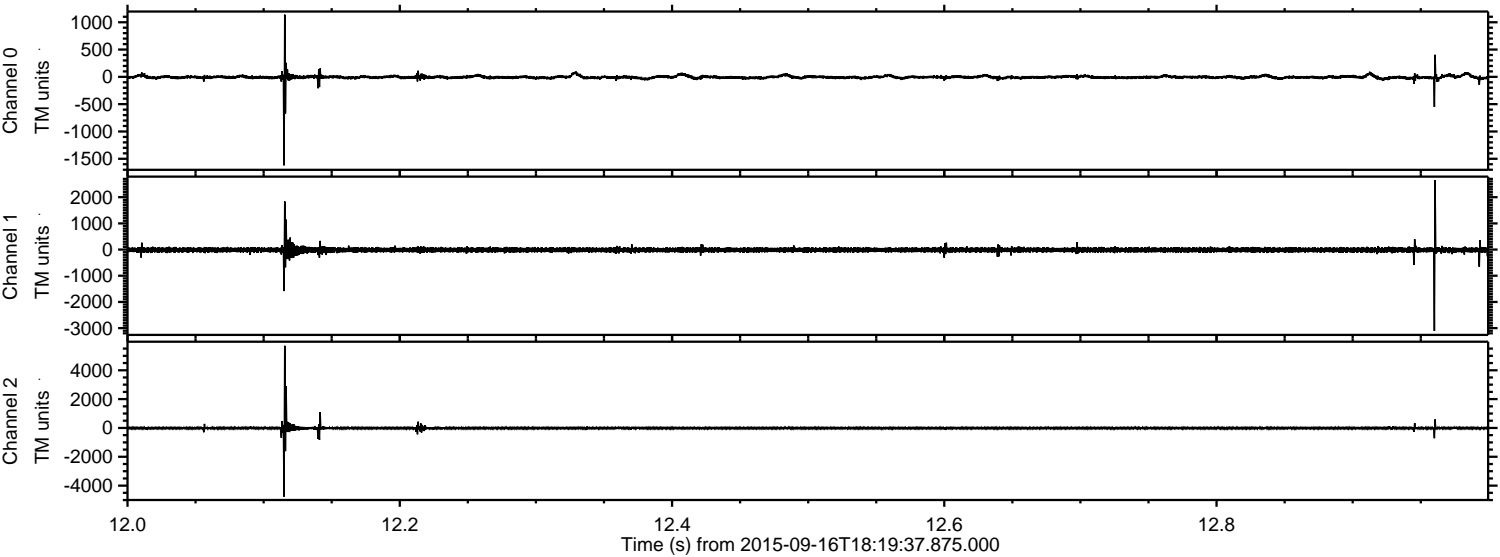


ELMAVAN 3D WAVEFORMS (Measured data sampled at 50 kHz) 51000 packets of 144 samples from 2015-09-16T18:19:37.875.000.

Processed Tue Oct 13 05:46:38 2015 by ELM ver.2012-10-06 from 001__elm20150916_181936__dat00.bin



Processed Tue Oct 13 05:46:58 2015 by ELM ver.2012-10-06 from 001__elm20150916_181936__dat00.bin

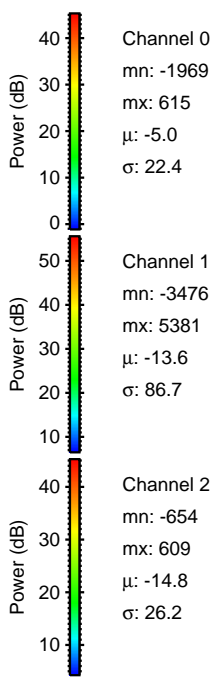
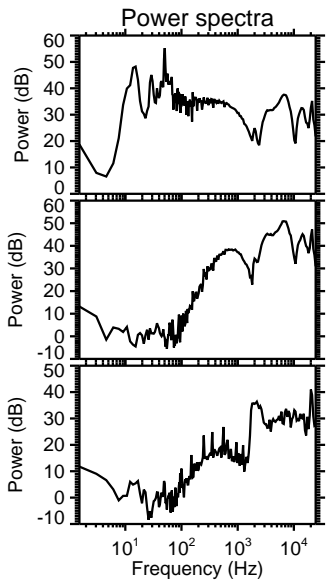
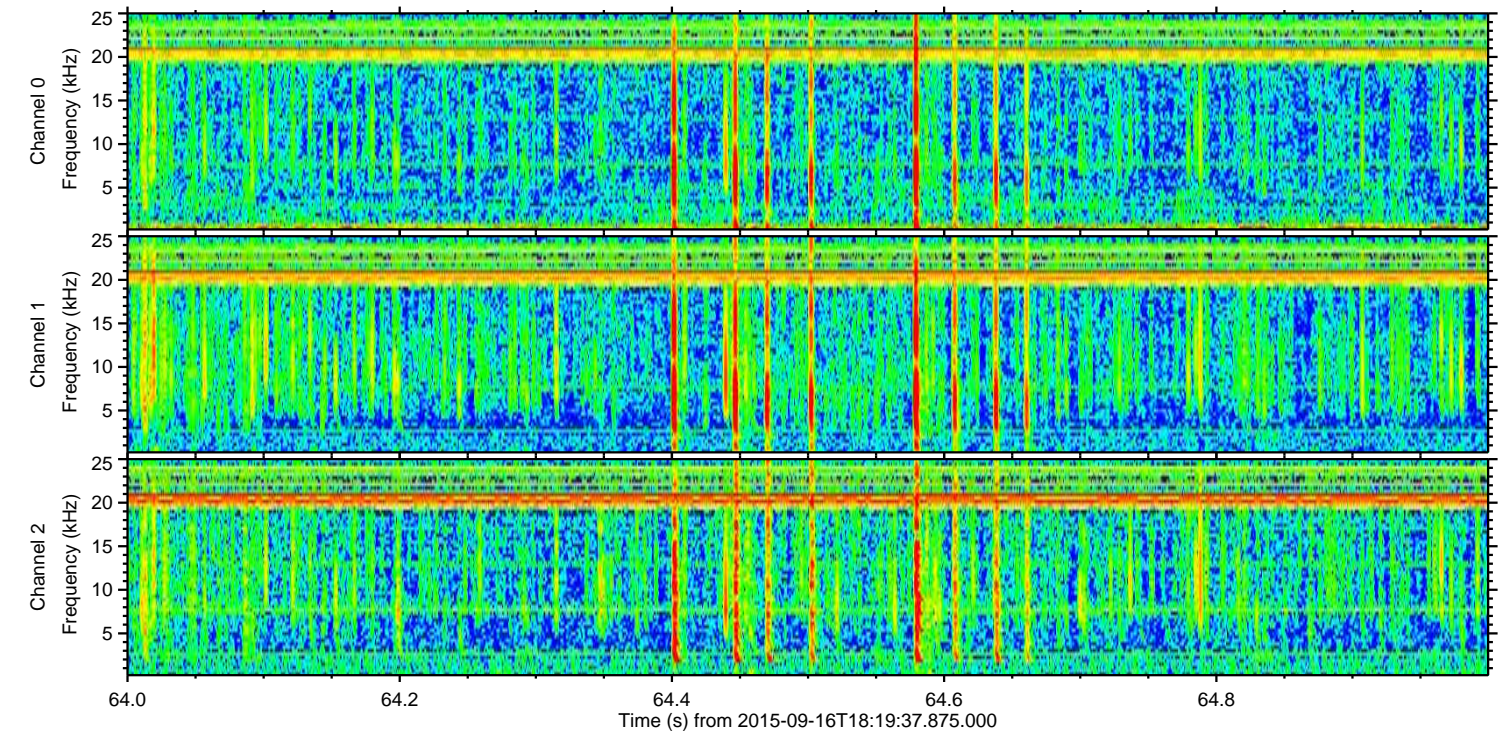
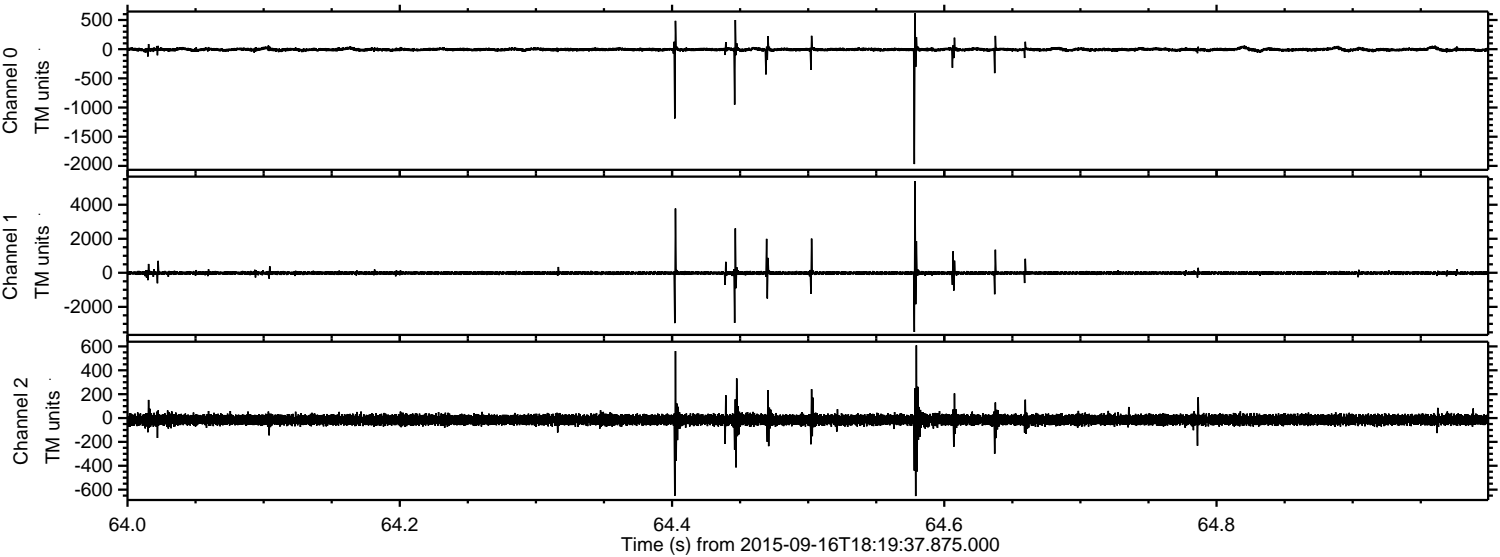


Channel 0
mn: -1621
mx: 1139
 μ : -4.7
 σ : 25.6

Channel 1
mn: -3104
mx: 2653
 μ : -13.6
 σ : 59.2

Channel 2
mn: -4758
mx: 5694
 μ : -14.7
 σ : 71.1

Processed Tue Oct 13 05:47:00 2015 by ELM ver.2012-10-06 from 001__elm20150916_181936__dat00.bin

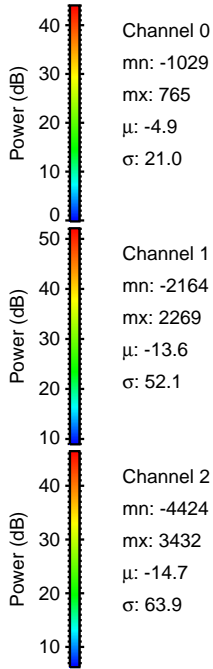
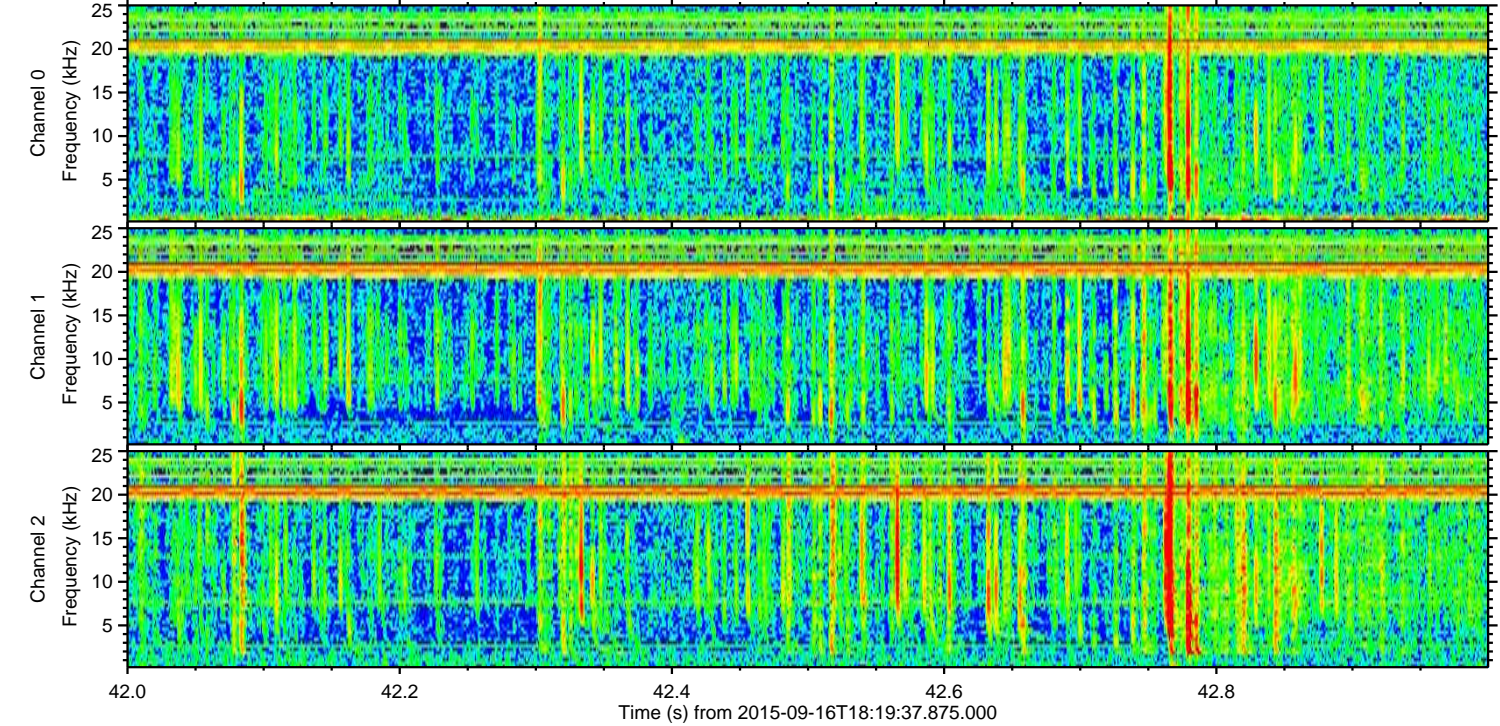
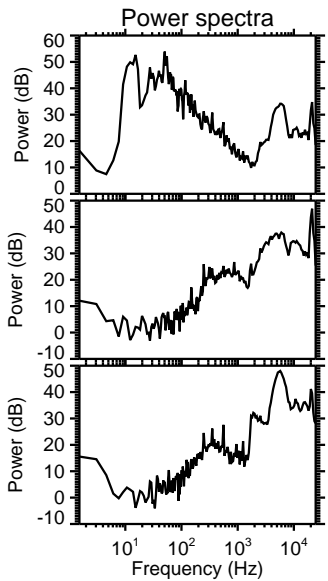
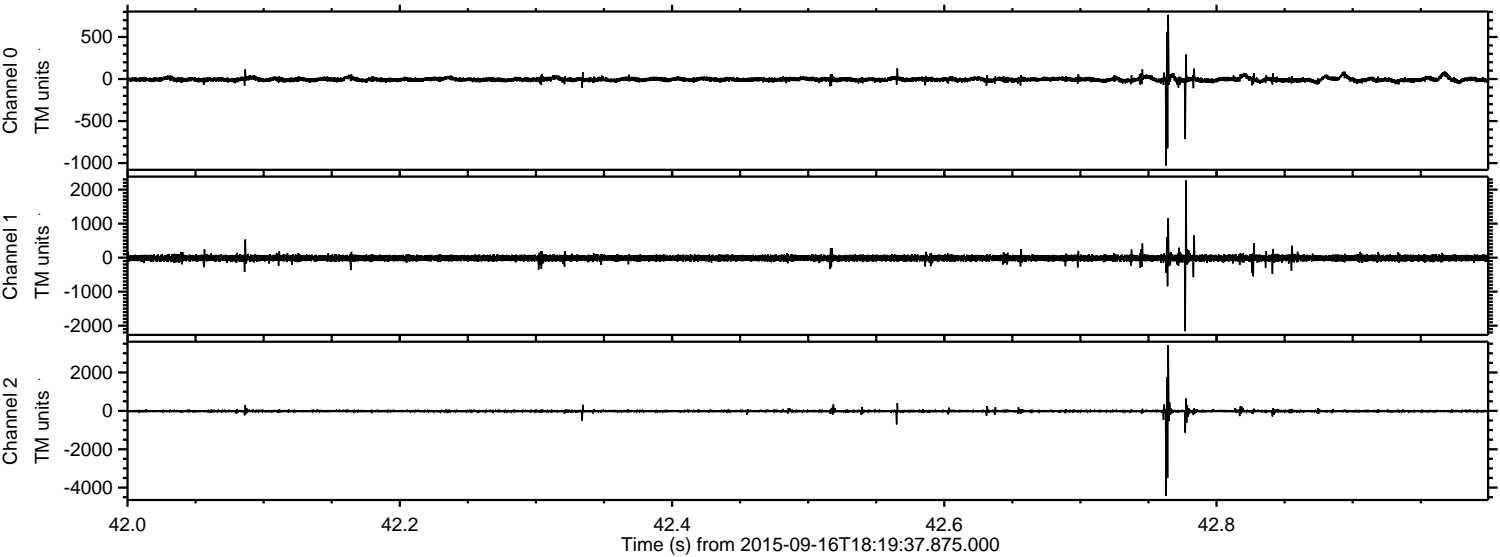


Channel 0
mn: -1969
mx: 615
 μ : -5.0
 σ : 22.4

Channel 1
mn: -3476
mx: 5381
 μ : -13.6
 σ : 86.7

Channel 2
mn: -654
mx: 609
 μ : -14.8
 σ : 26.2

Processed Tue Oct 13 05:47:02 2015 by ELM ver.2012-10-06 from 001__elm20150916_181936__dat00.bin

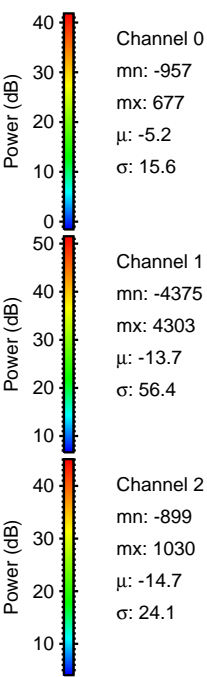
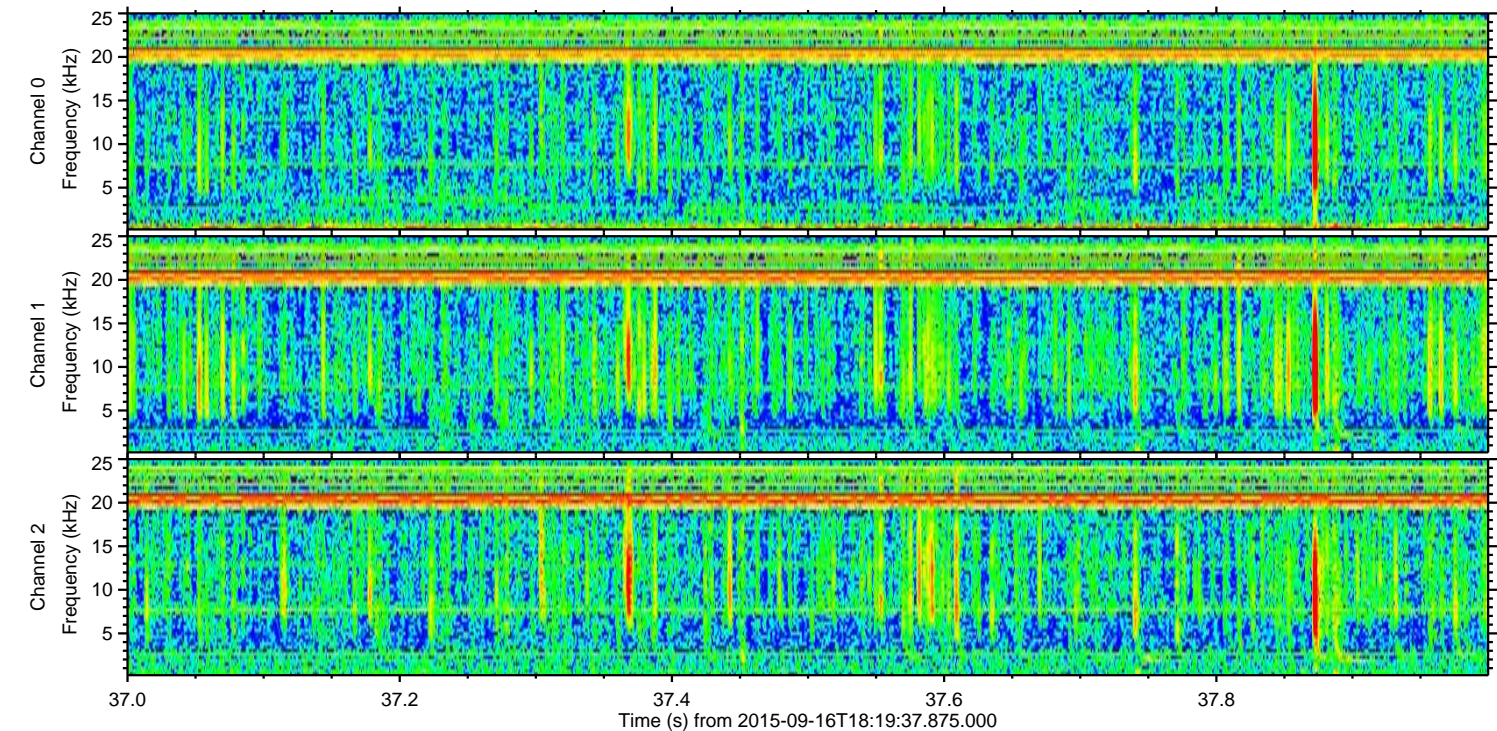
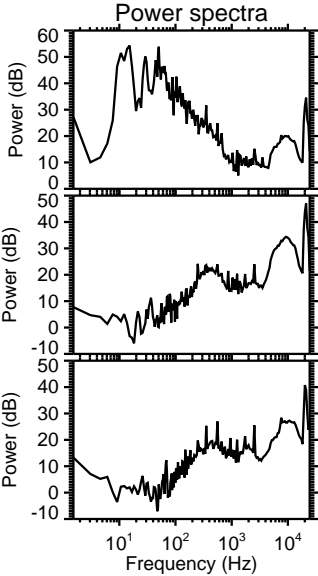
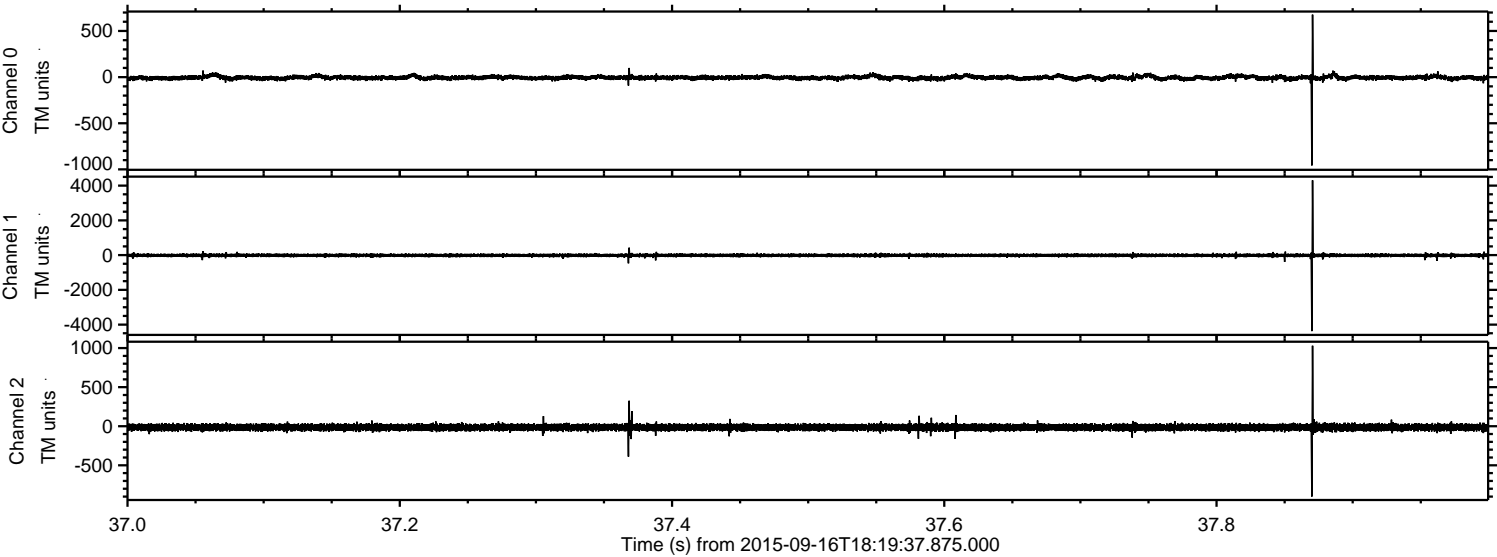


Channel 0
mn: -1029
mx: 765
 μ : -4.9
 σ : 21.0

Channel 1
mn: -2164
mx: 2269
 μ : -13.6
 σ : 52.1

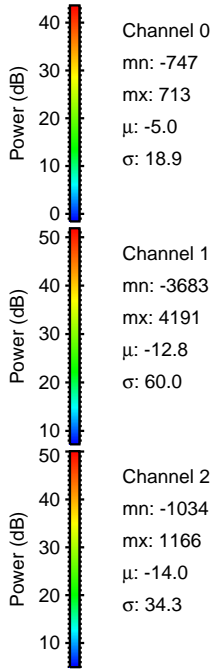
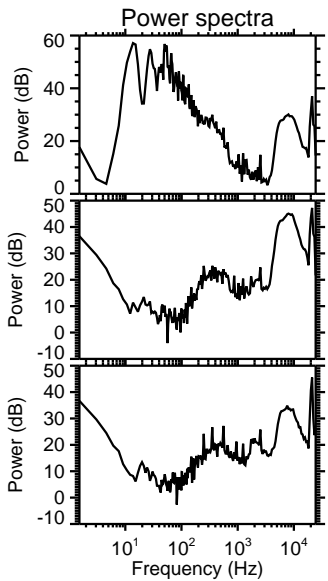
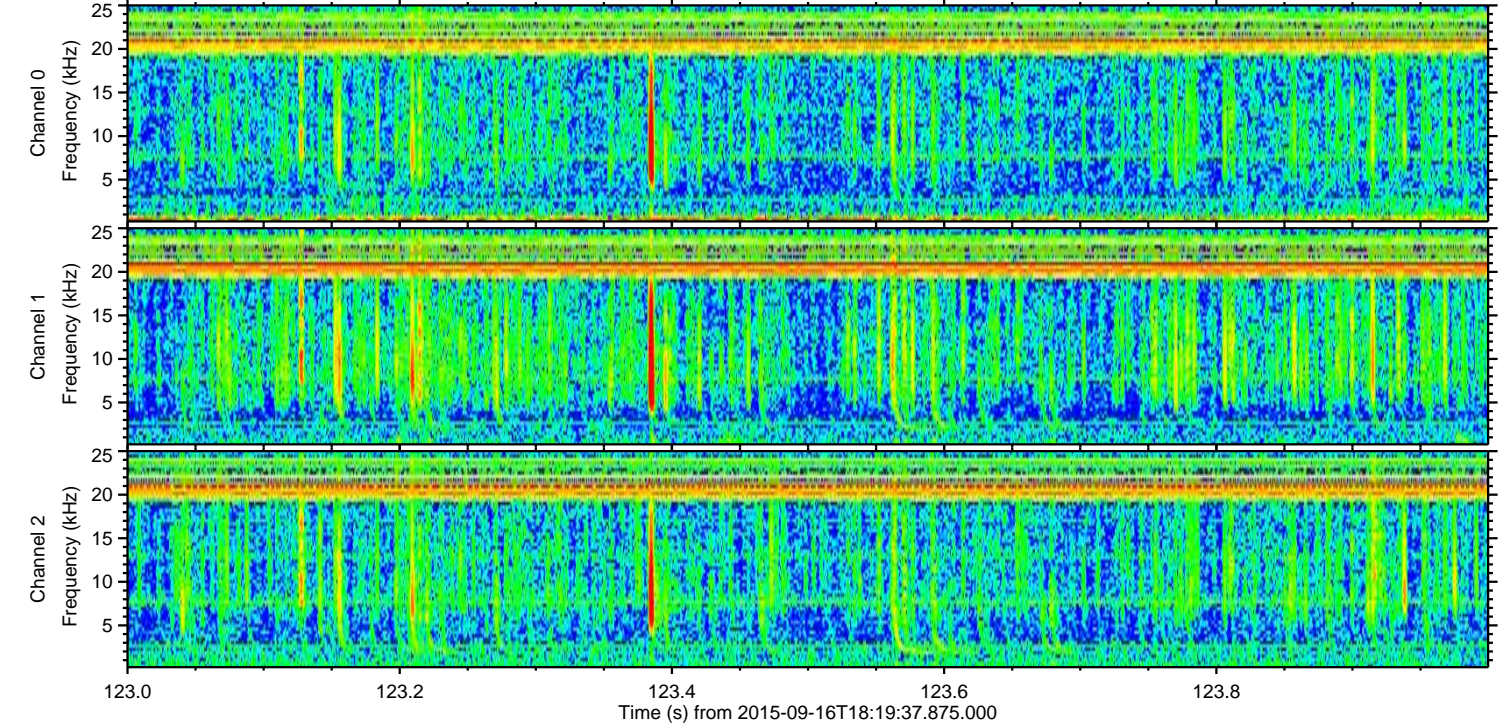
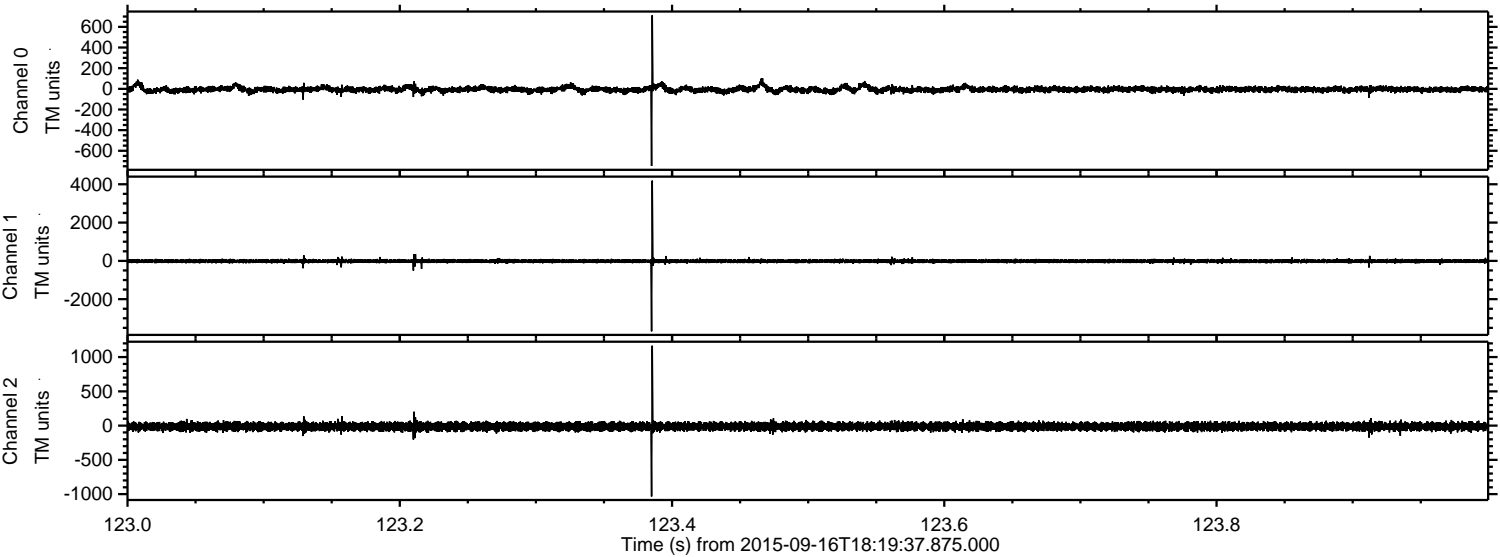
Channel 2
mn: -4424
mx: 3432
 μ : -14.7
 σ : 63.9

Processed Tue Oct 13 05:47:03 2015 by ELM ver.2012-10-06 from 001__elm20150916_181936__dat00.bin

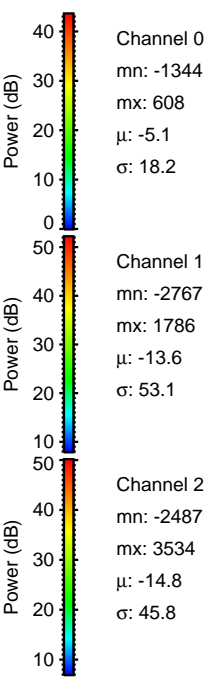
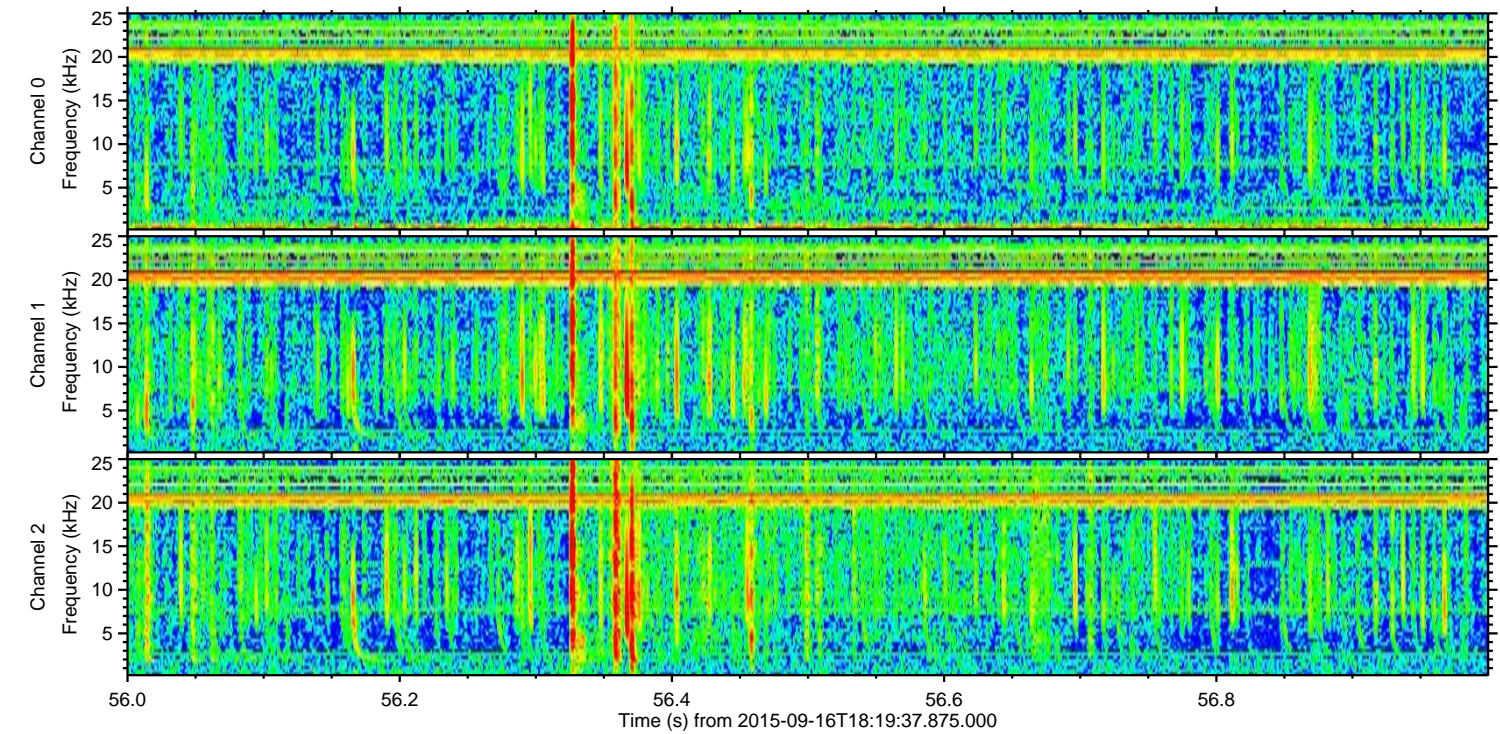
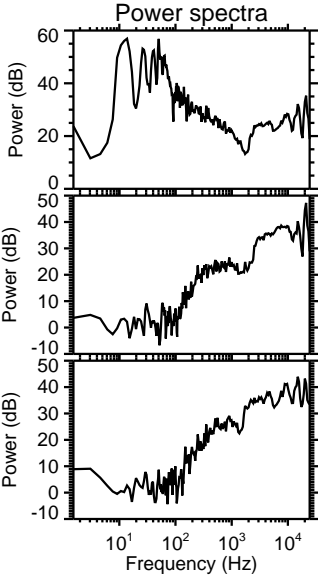
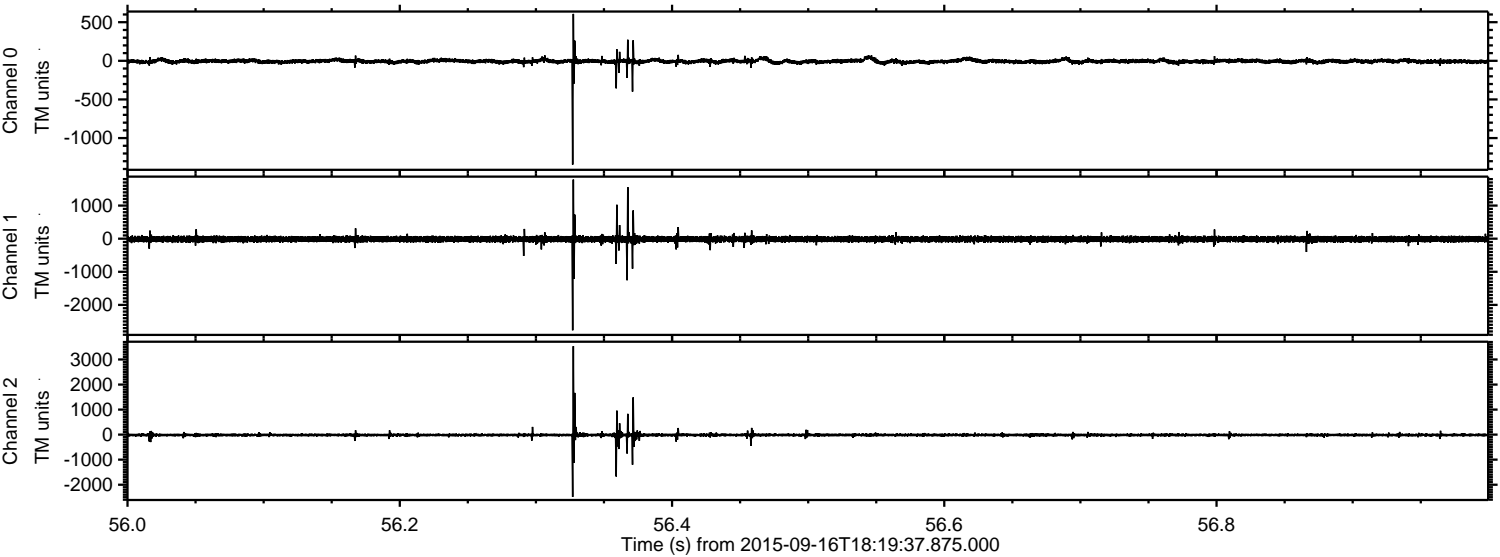


ELMAVAN 3D WAVEFORMS (Measured data sampled at 50 kHz) 51000 packets of 144 samples from 2015-09-16T18:19:37.875.000. Part 124/147

Processed Tue Oct 13 05:47:06 2015 by ELM ver.2012-10-06 from 001__elm20150916_181936__dat00.bin



Processed Tue Oct 13 05:47:08 2015 by ELM ver.2012-10-06 from 001__elm20150916_181936__dat00.bin

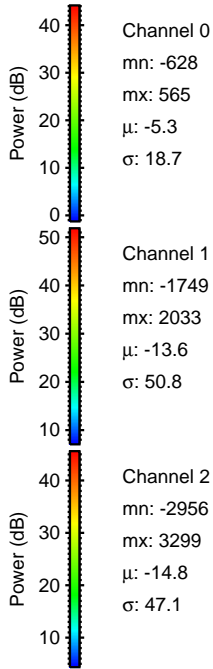
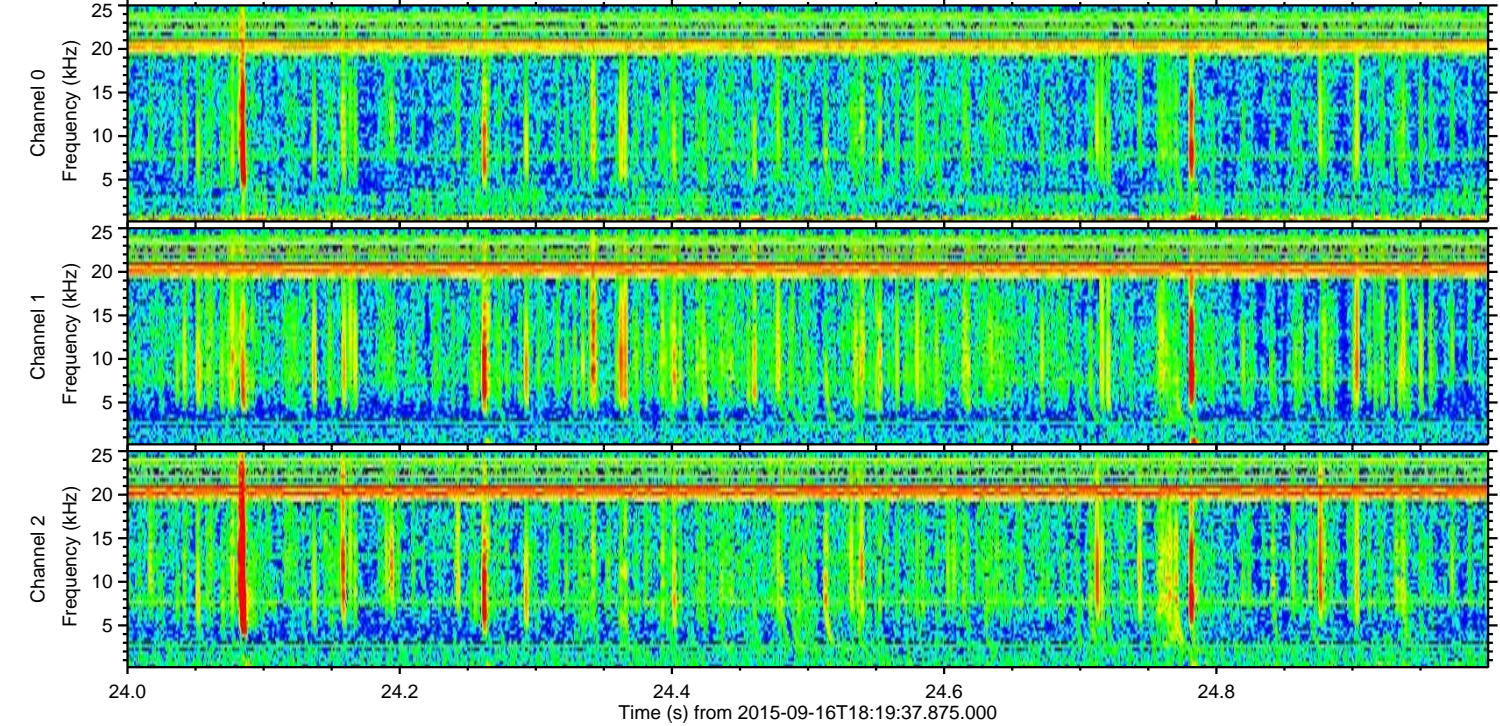
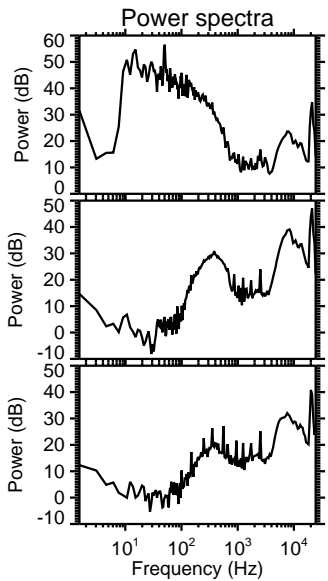
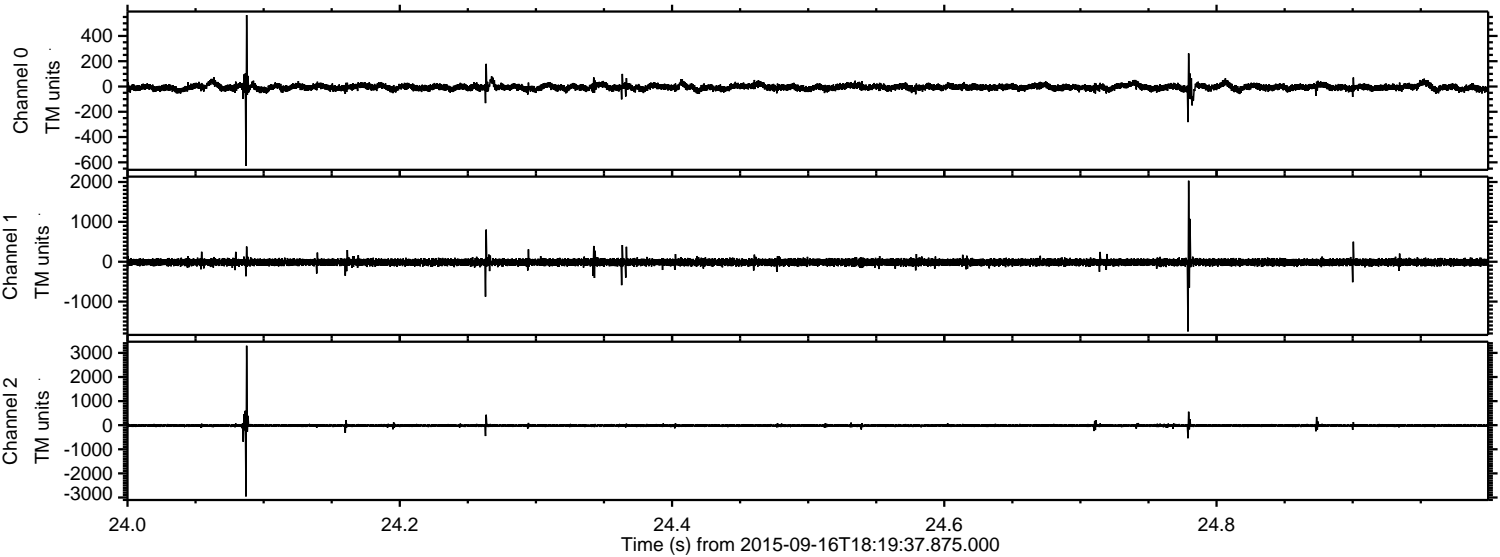


Channel 0
mn: -1344
mx: 608
 μ : -5.1
 σ : 18.2

Channel 1
mn: -2767
mx: 1786
 μ : -13.6
 σ : 53.1

Channel 2
mn: -2487
mx: 3534
 μ : -14.8
 σ : 45.8

Processed Tue Oct 13 05:47:09 2015 by ELM ver.2012-10-06 from 001__elm20150916_181936__dat00.bin



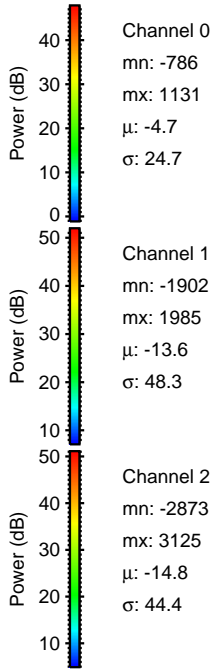
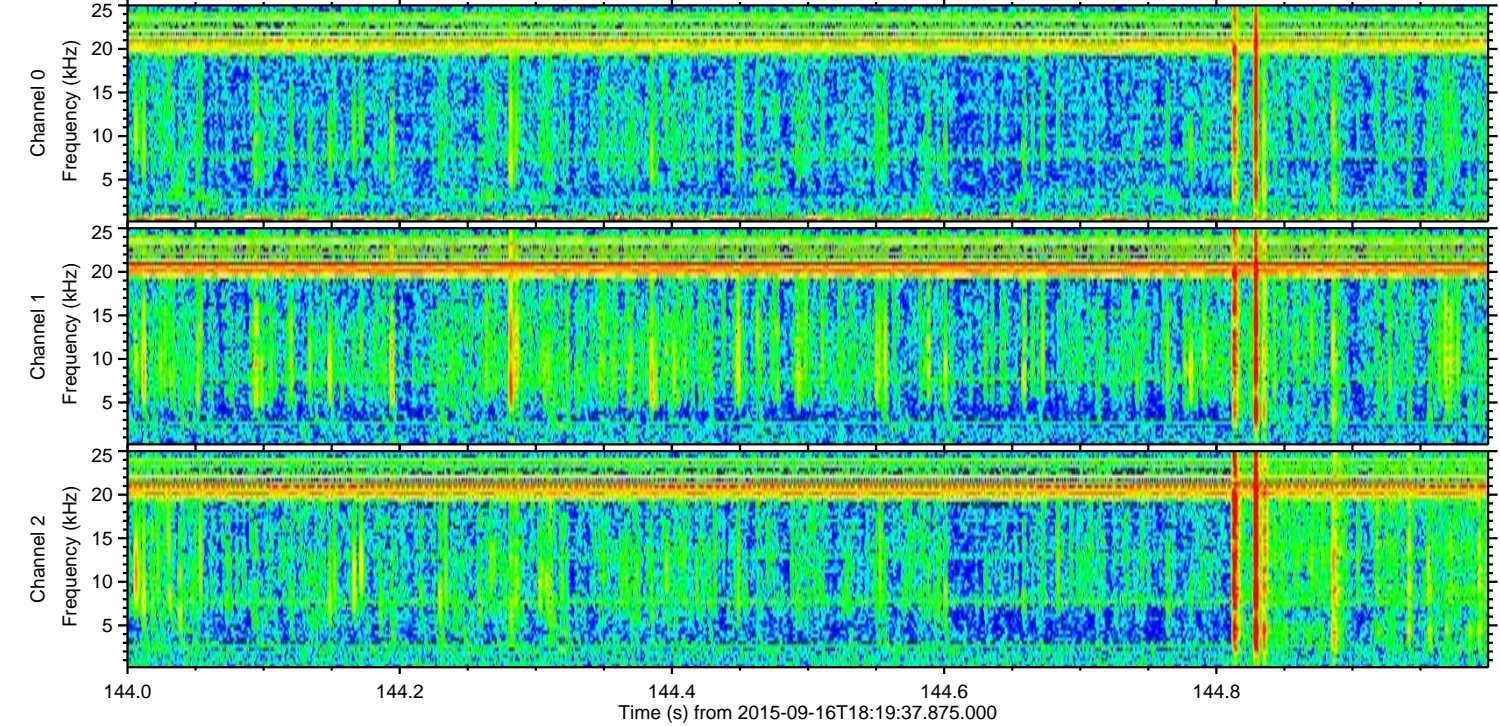
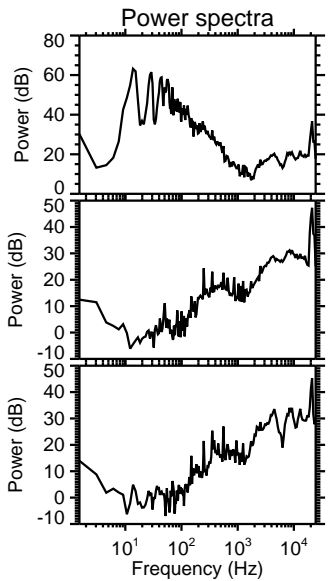
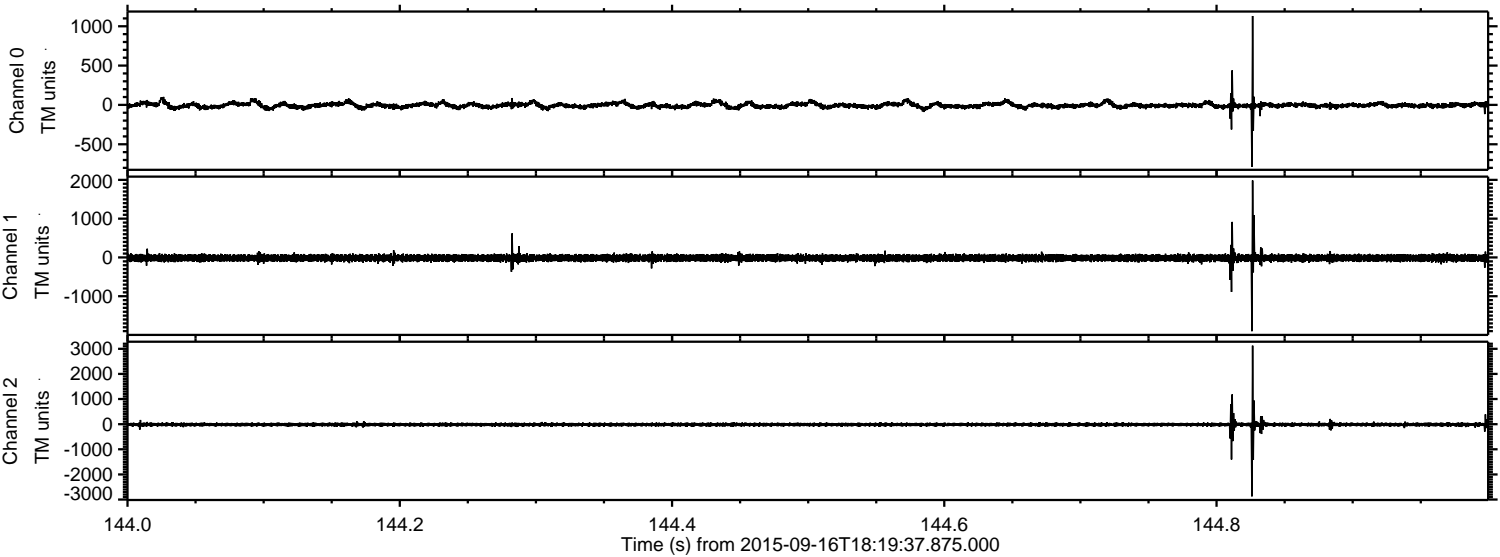
Channel 0
mn: -628
mx: 565
 μ : -5.3
 σ : 18.7

Channel 1
mn: -1749
mx: 2033
 μ : -13.6
 σ : 50.8

Channel 2
mn: -2956
mx: 3299
 μ : -14.8
 σ : 47.1

ELMAVAN 3D WAVEFORMS (Measured data sampled at 50 kHz) 51000 packets of 144 samples from 2015-09-16T18:19:37.875.000. Part 145/147

Processed Tue Oct 13 05:47:11 2015 by ELM ver.2012-10-06 from 001__elm20150916_181936__dat00.bin



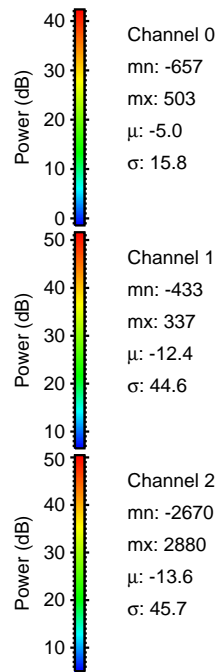
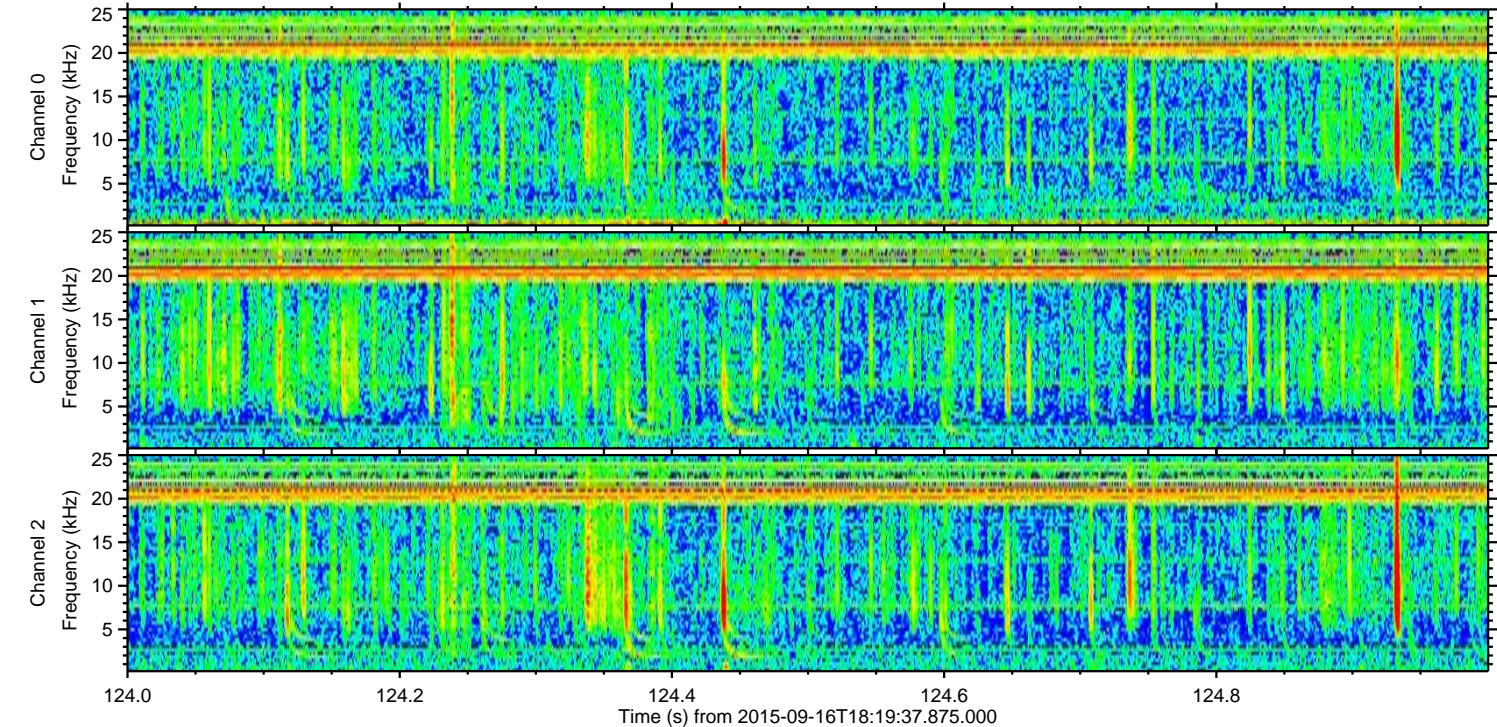
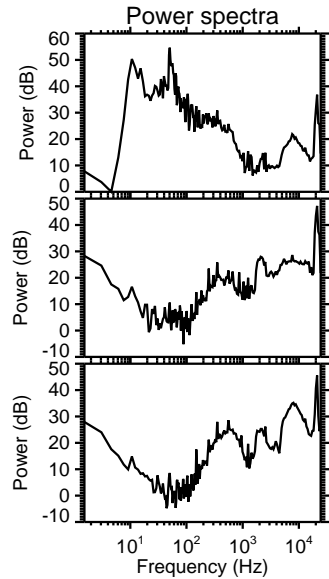
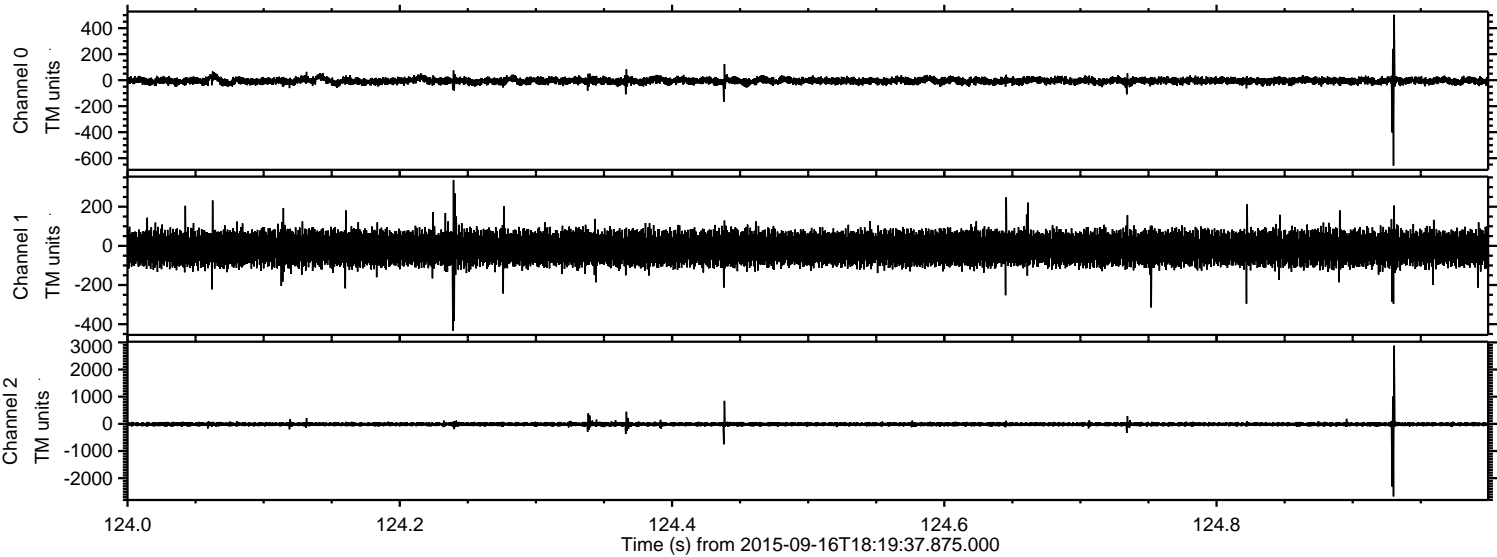
Channel 0
mn: -786
mx: 1131
 μ : -4.7
 σ : 24.7

Channel 1
mn: -1902
mx: 1985
 μ : -13.6
 σ : 48.3

Channel 2
mn: -2873
mx: 3125
 μ : -14.8
 σ : 44.4

ELMAVAN 3D WAVEFORMS (Measured data sampled at 50 kHz) 51000 packets of 144 samples from 2015-09-16T18:19:37.875.000. Part 125/147

Processed Tue Oct 13 05:47:12 2015 by ELM ver.2012-10-06 from 001__elm20150916_181936__dat00.bin



ELMAVAN 3D WAVEFORMS (Measured data sampled at 50 kHz) 51000 packets of 144 samples from 2015-09-16T18:19:37.875.000. Part 119/147

