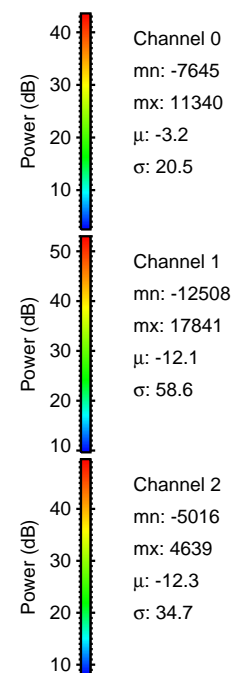
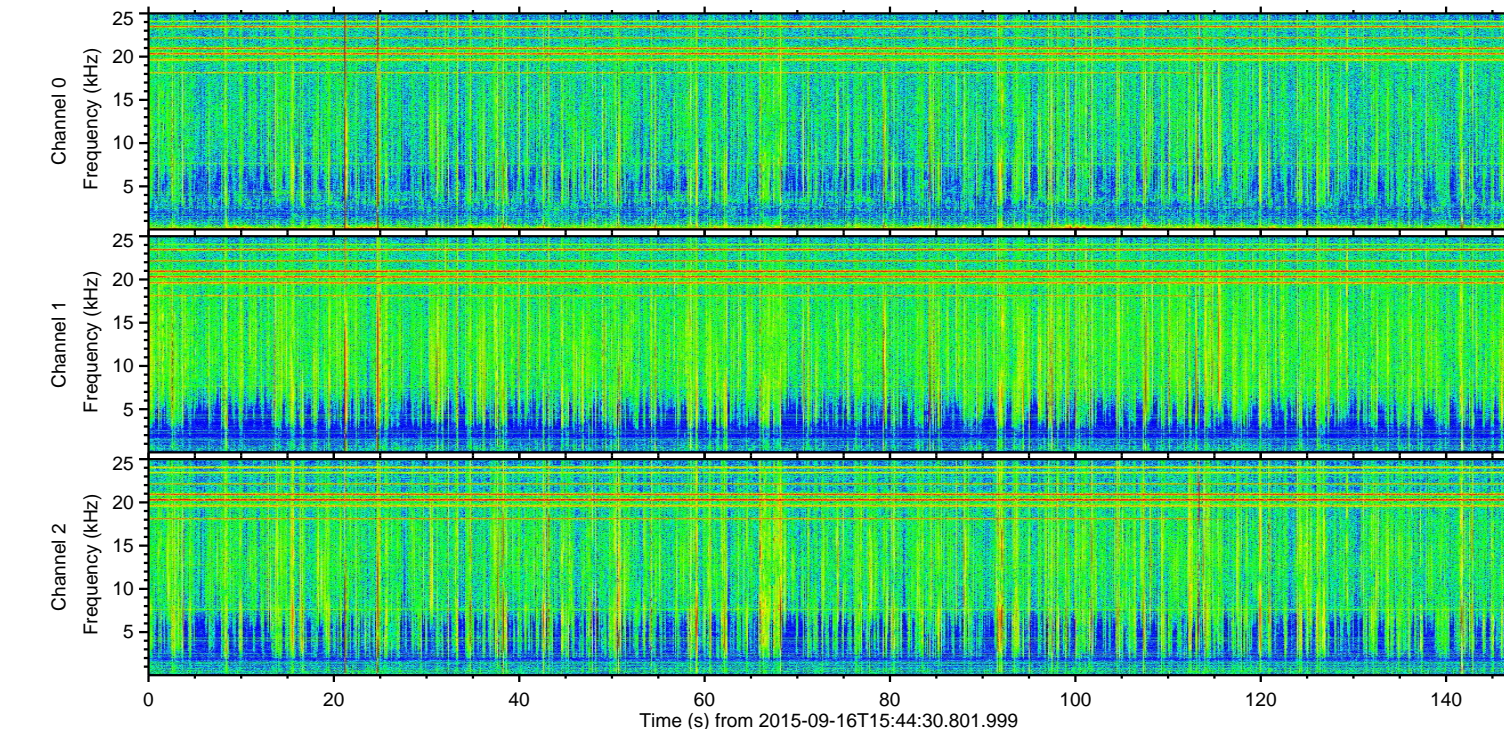
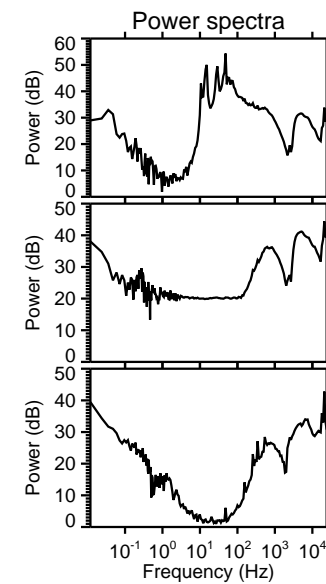
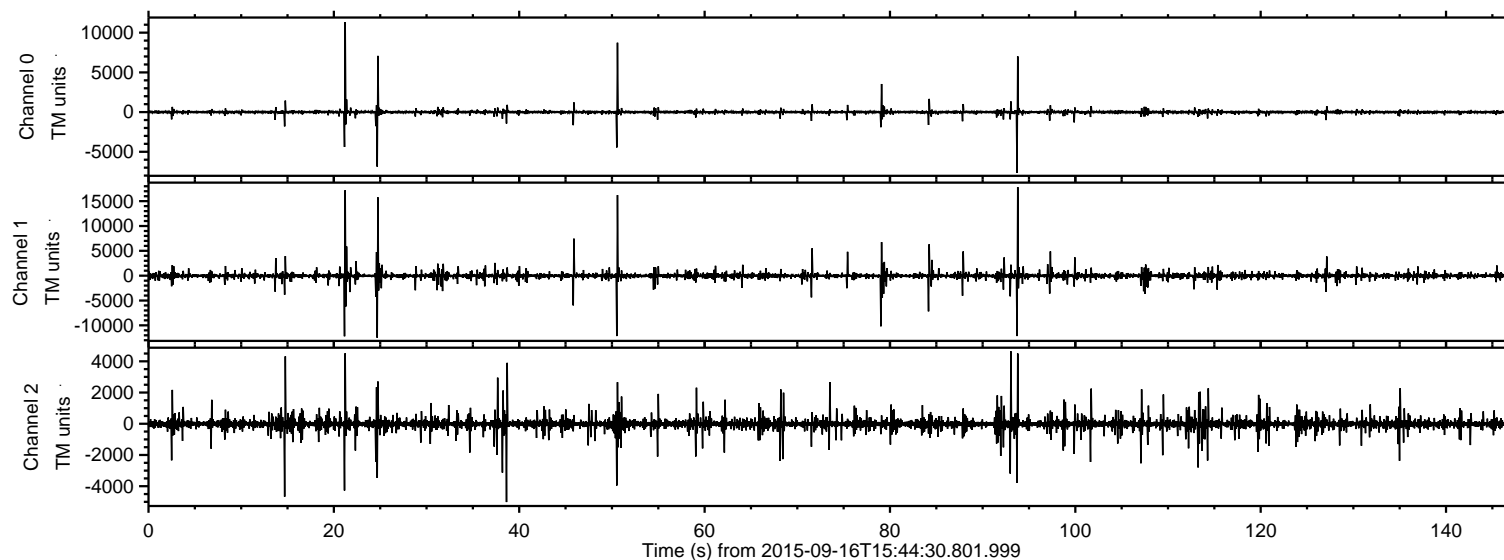
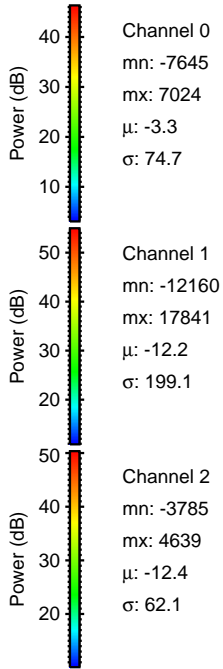
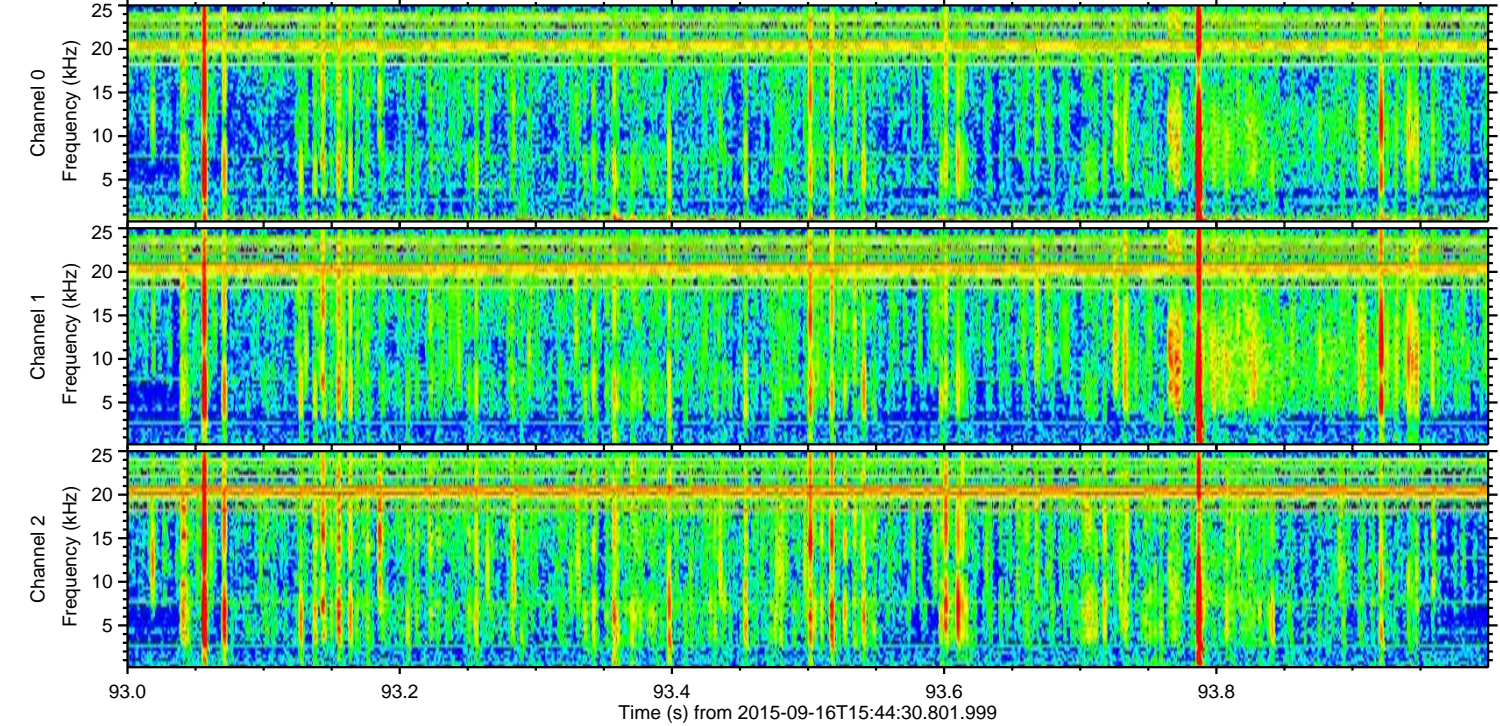
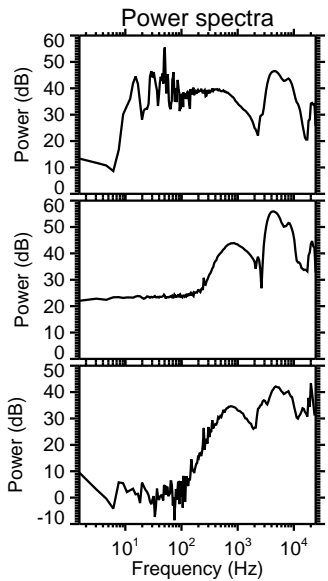
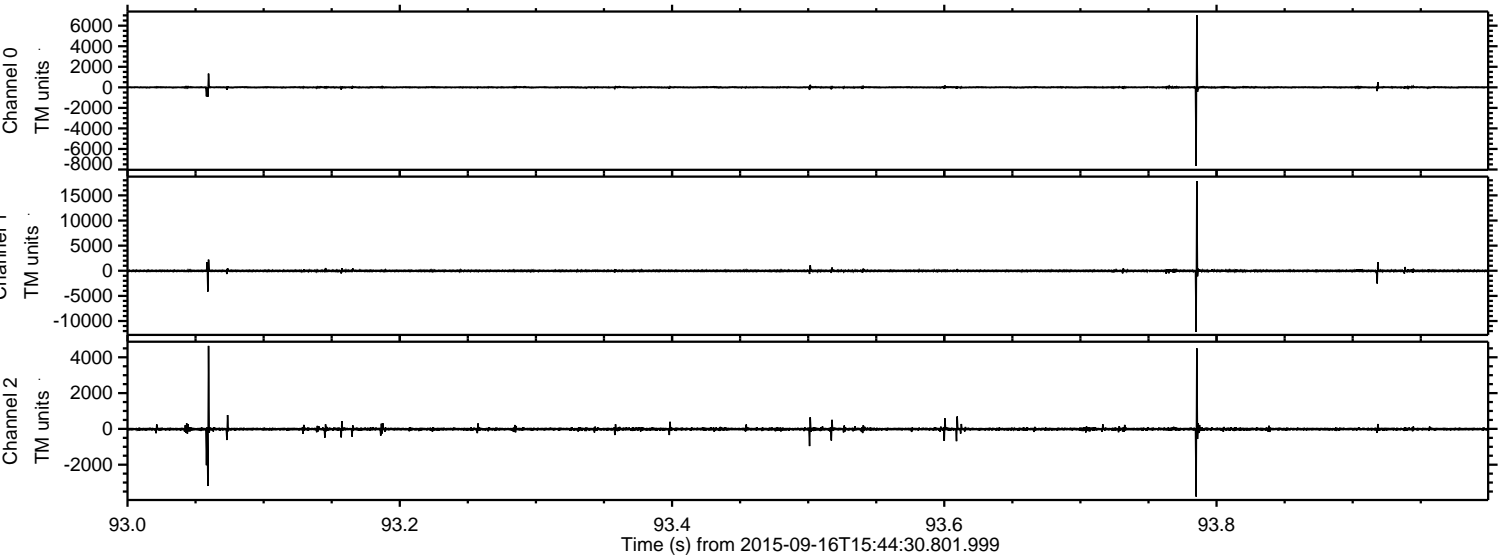


ELMAVAN 3D WAVEFORMS (Measured data sampled at 50 kHz) 51000 packets of 144 samples from 2015-09-16T15:44:30.801.999.

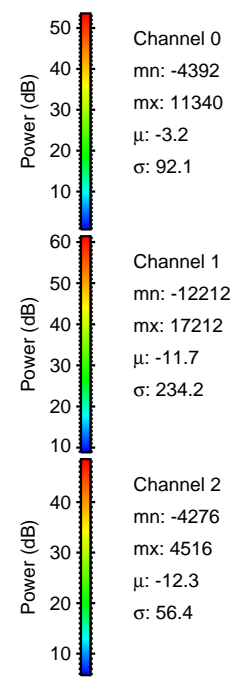
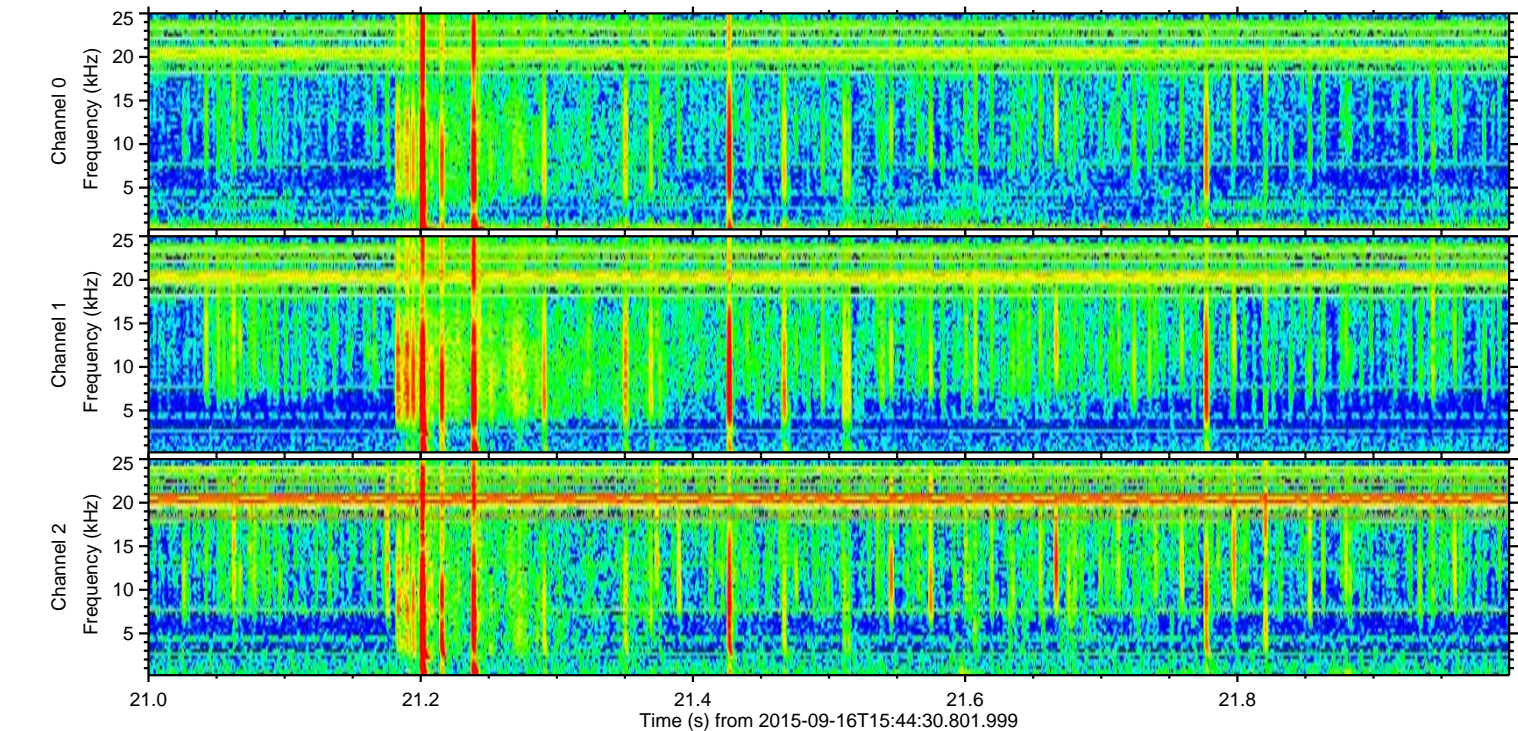
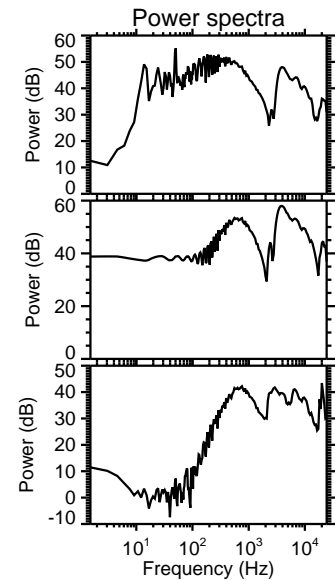
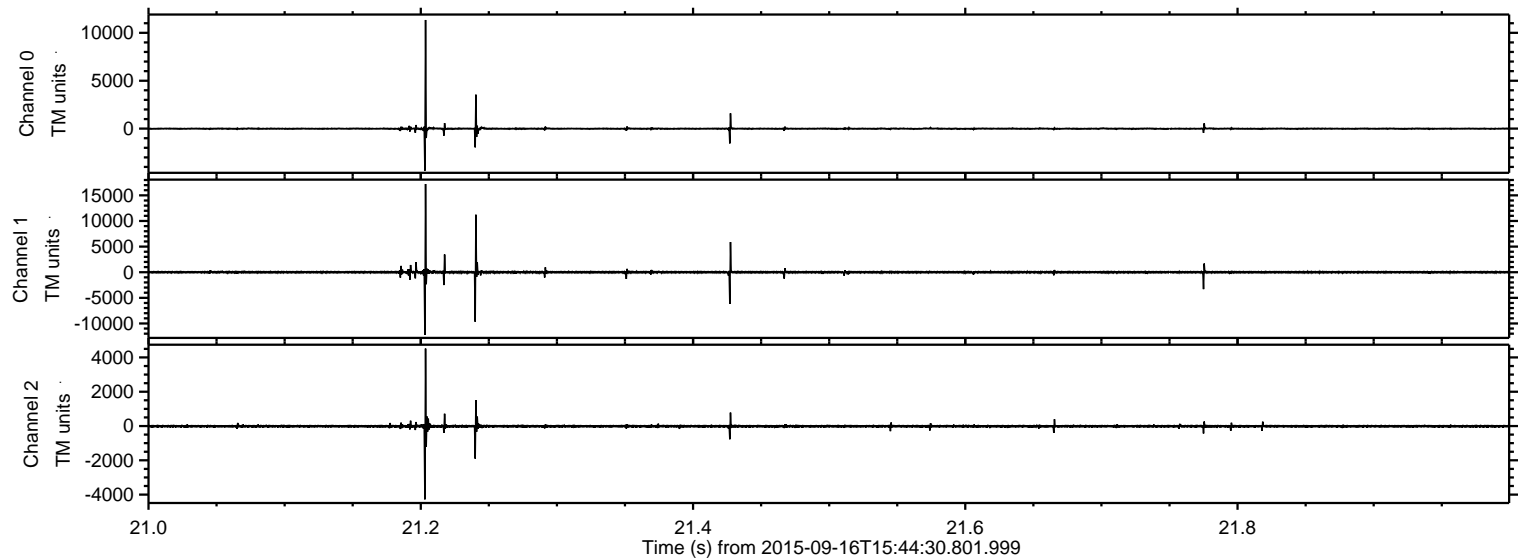
Processed Tue Oct 13 04:45:02 2015 by ELM ver.2012-10-06 from 001__elm20150916_154429__dat00.bin



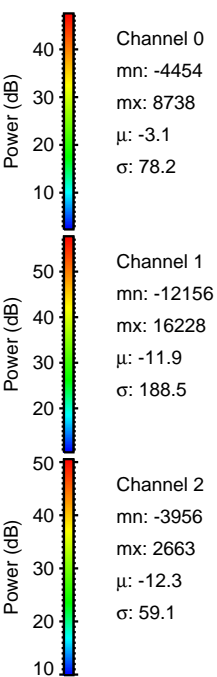
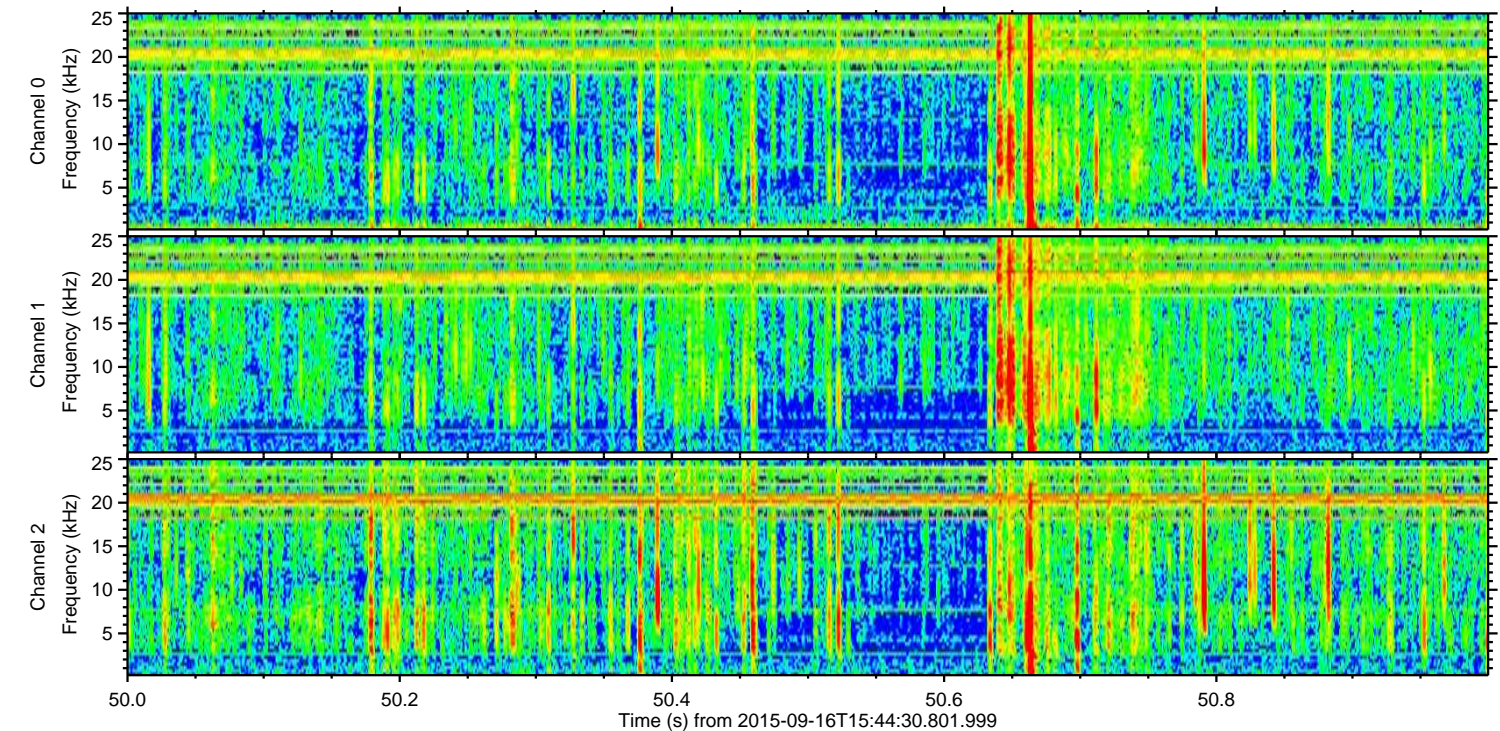
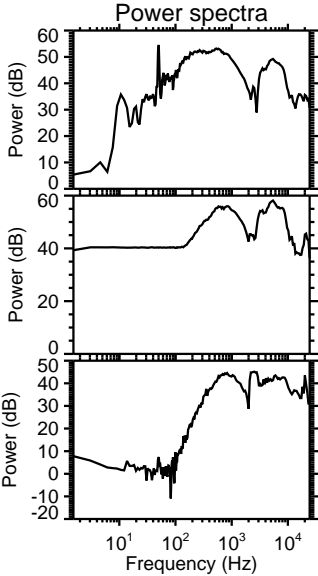
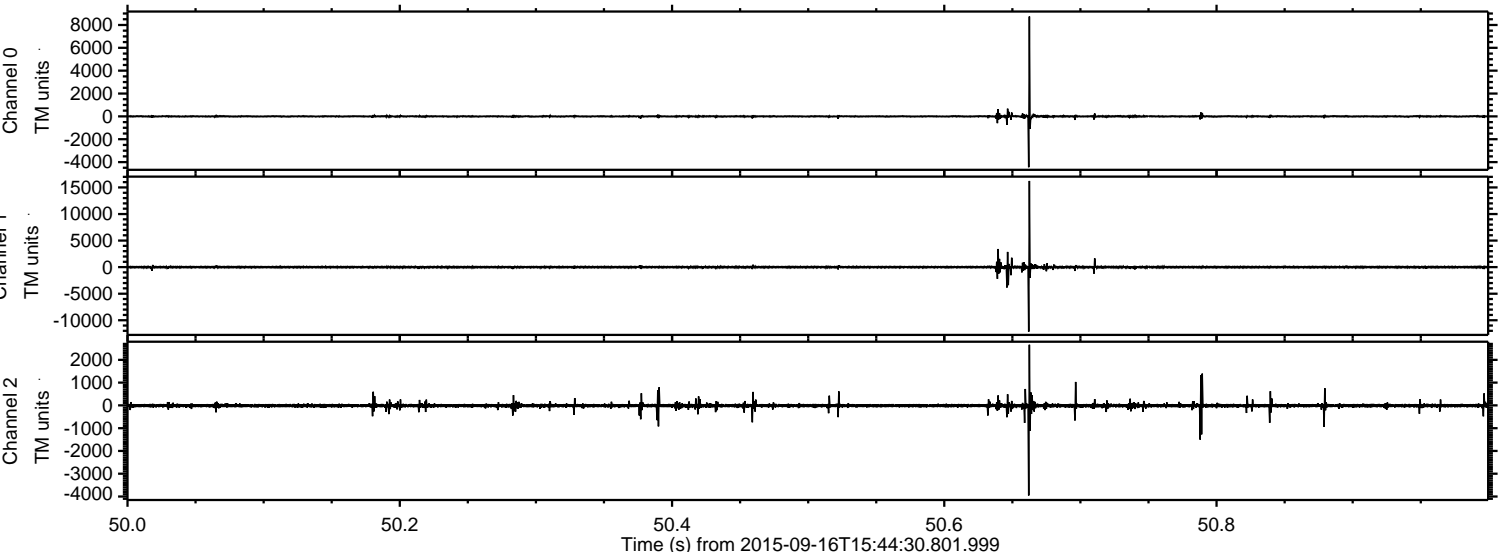
Processed Tue Oct 13 04:45:23 2015 by ELM ver.2012-10-06 from 001__elm20150916_154429__dat00.bin



Processed Tue Oct 13 04:45:25 2015 by ELM ver.2012-10-06 from 001__elm20150916_154429__dat00.bin

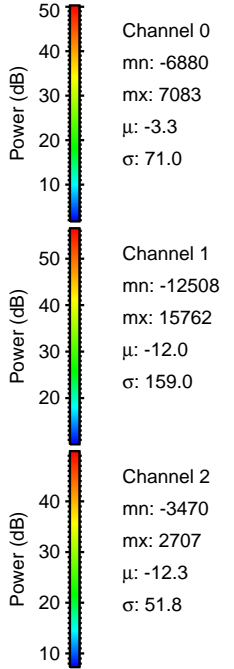
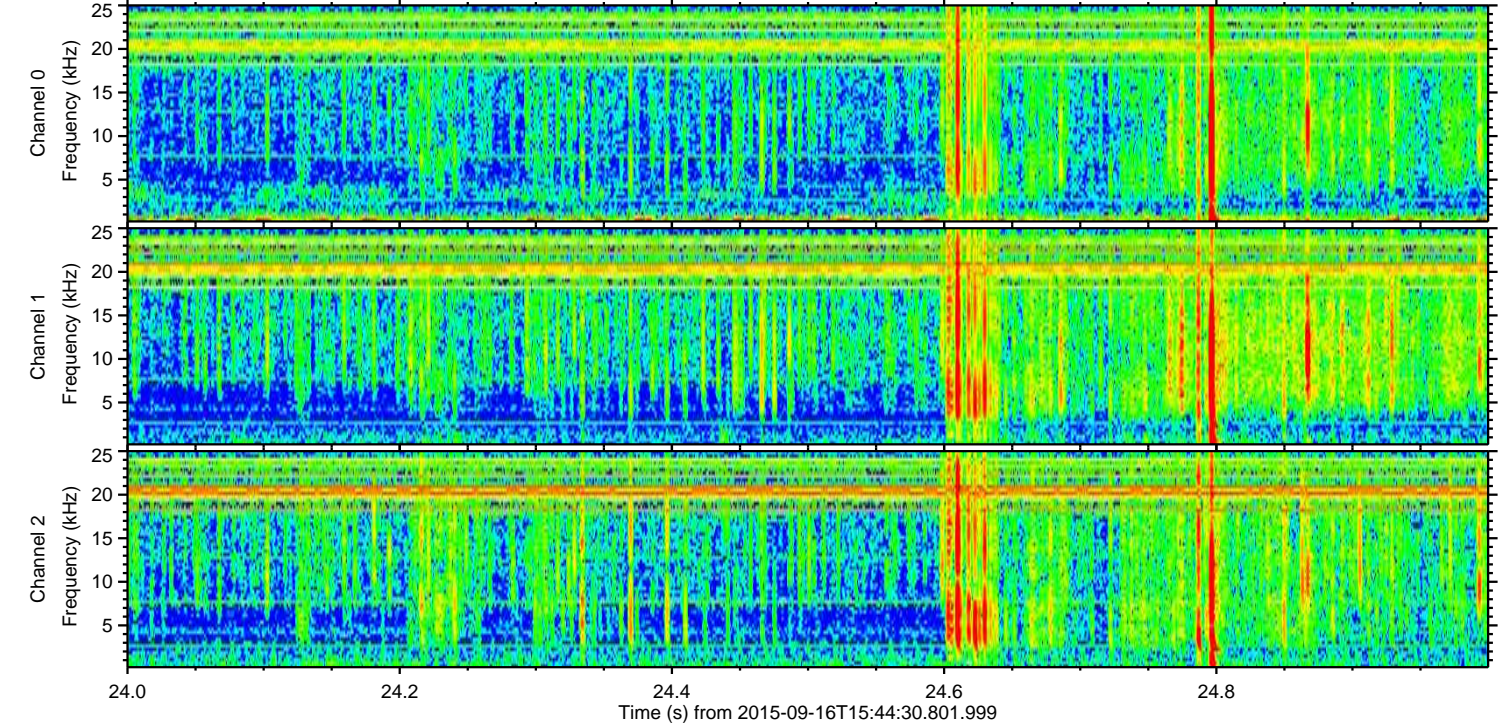
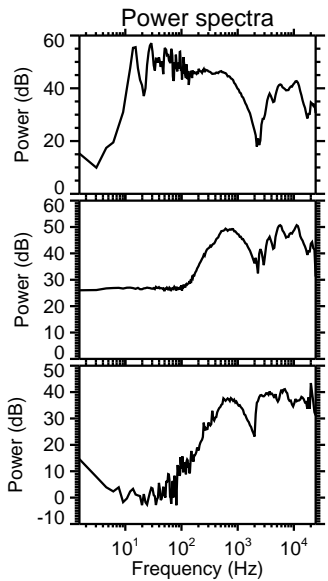
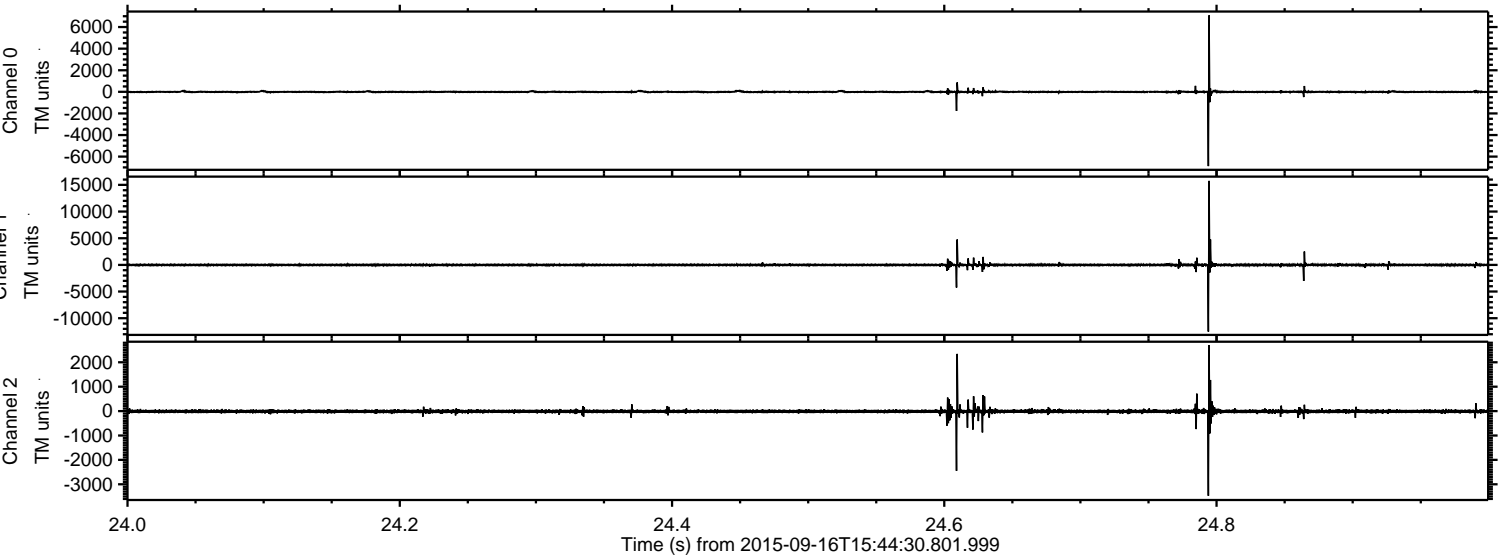


Processed Tue Oct 13 04:45:26 2015 by ELM ver.2012-10-06 from 001__elm20150916_154429__dat00.bin

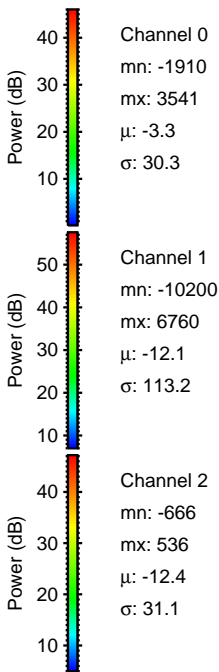
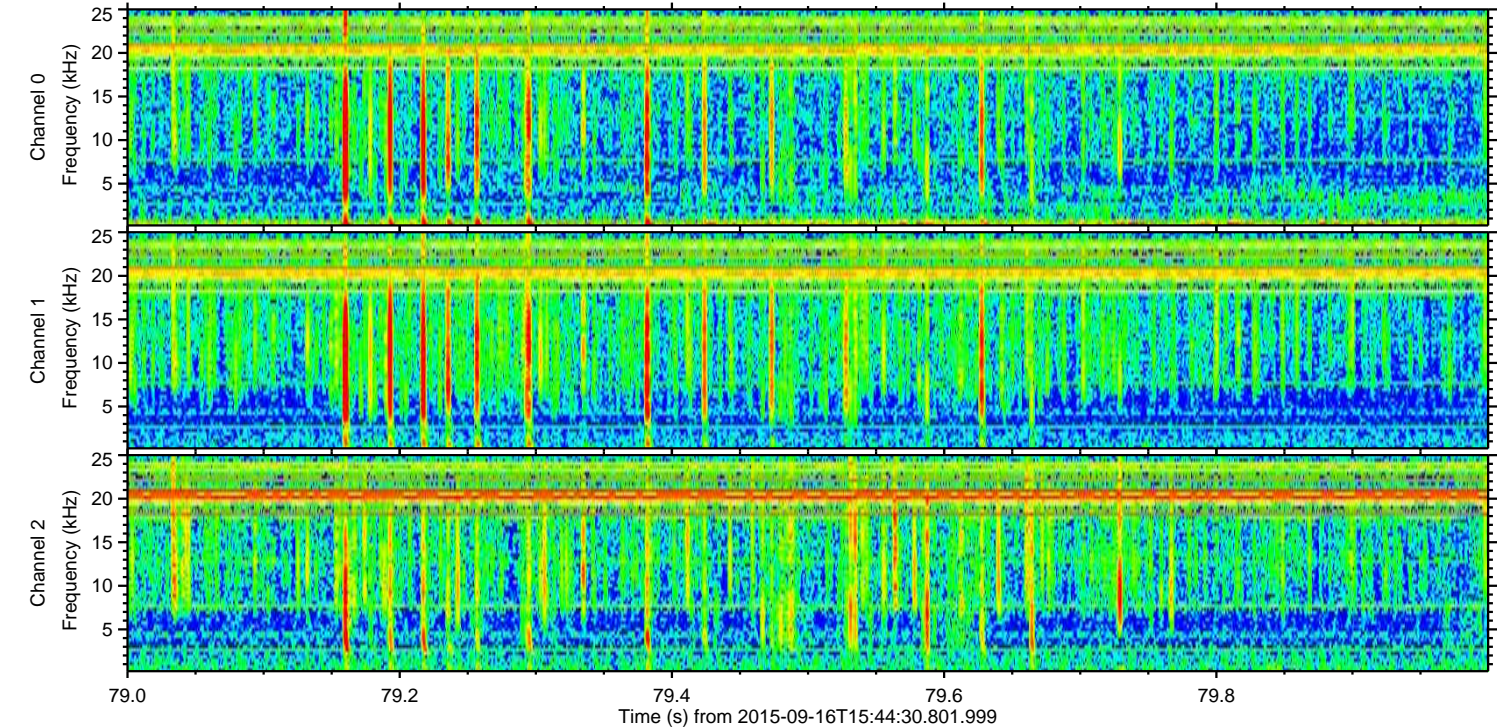
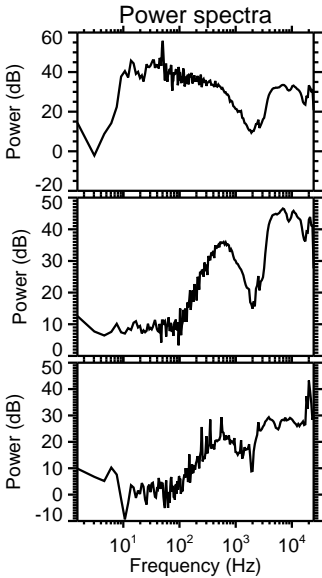
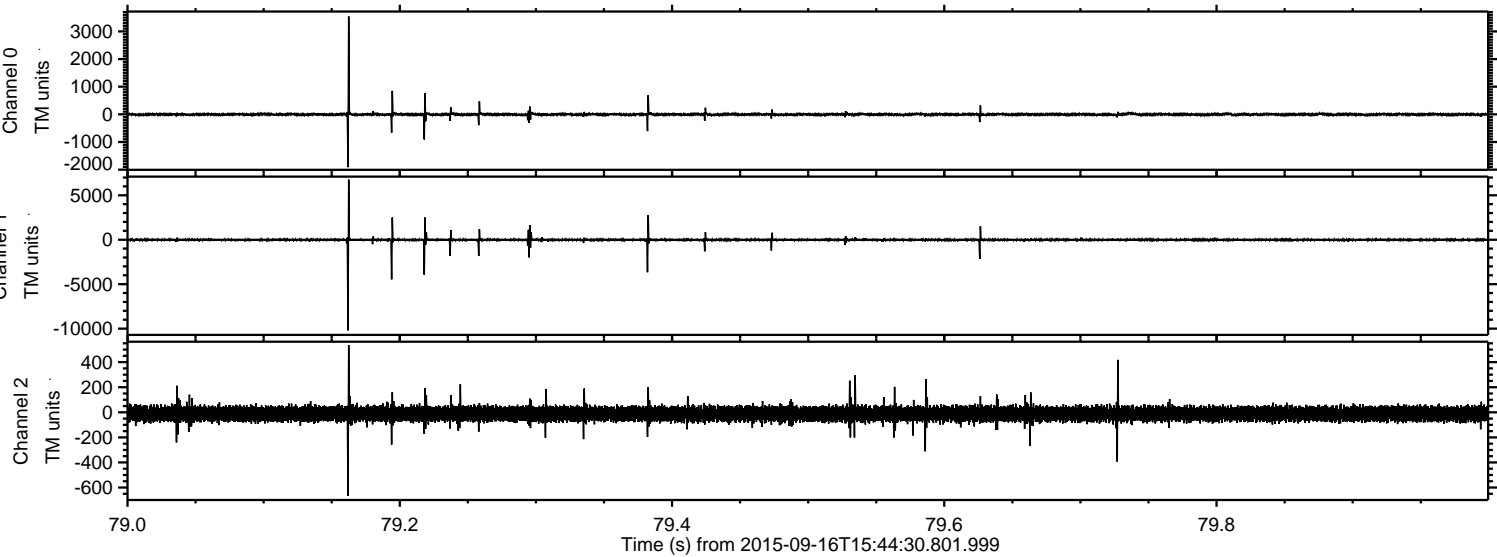


ELMAVAN 3D WAVEFORMS (Measured data sampled at 50 kHz) 51000 packets of 144 samples from 2015-09-16T15:44:30.801.999. Part 25/147

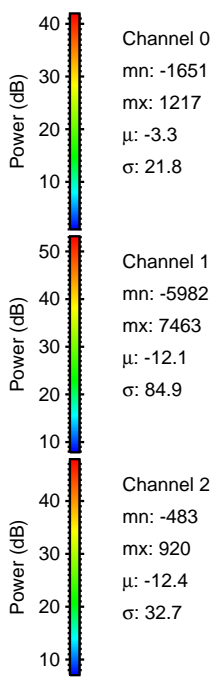
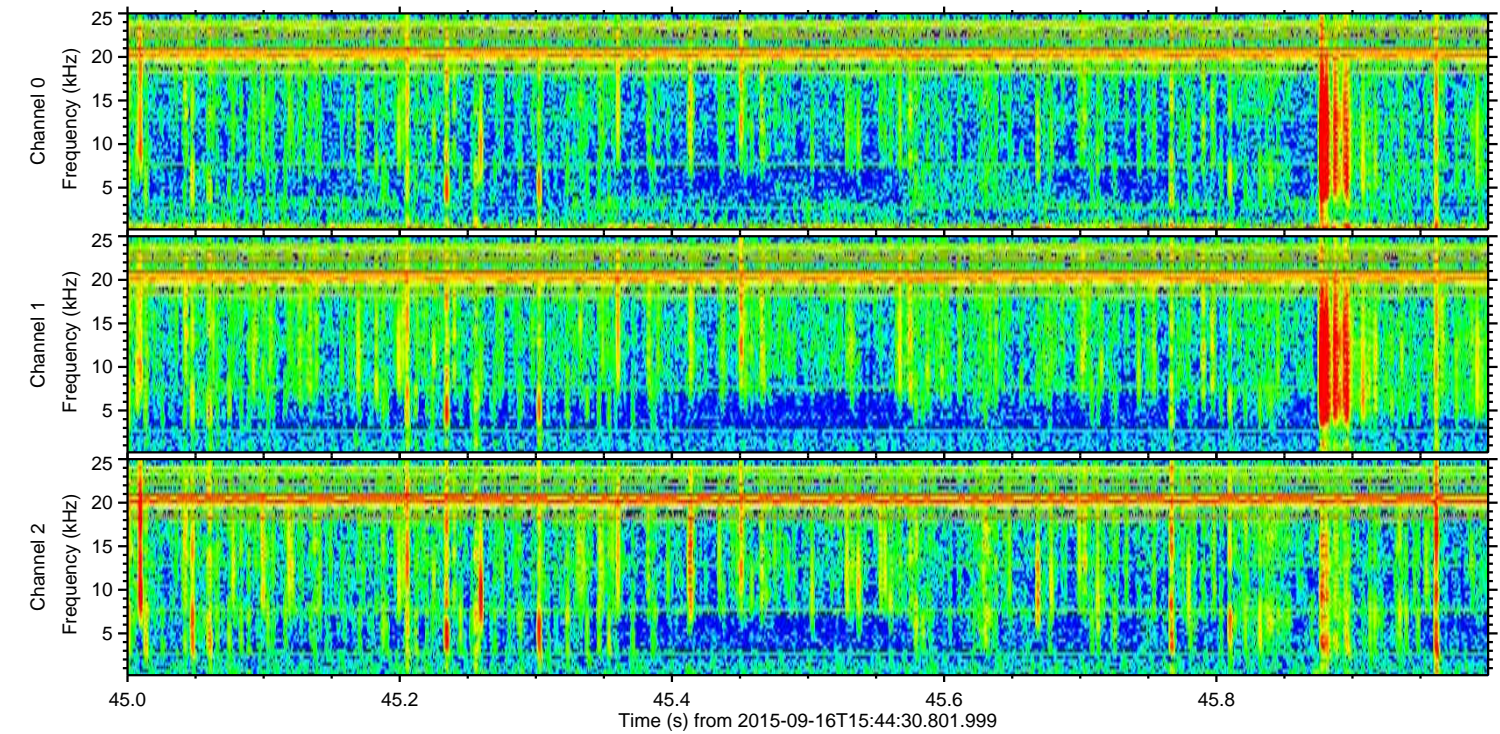
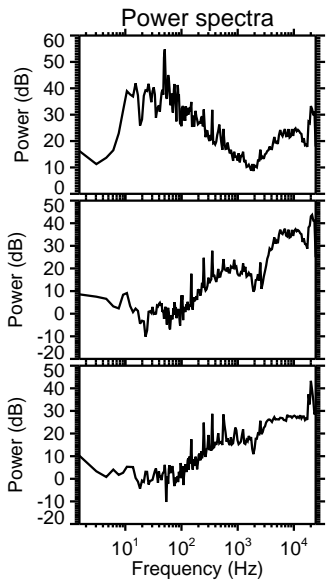
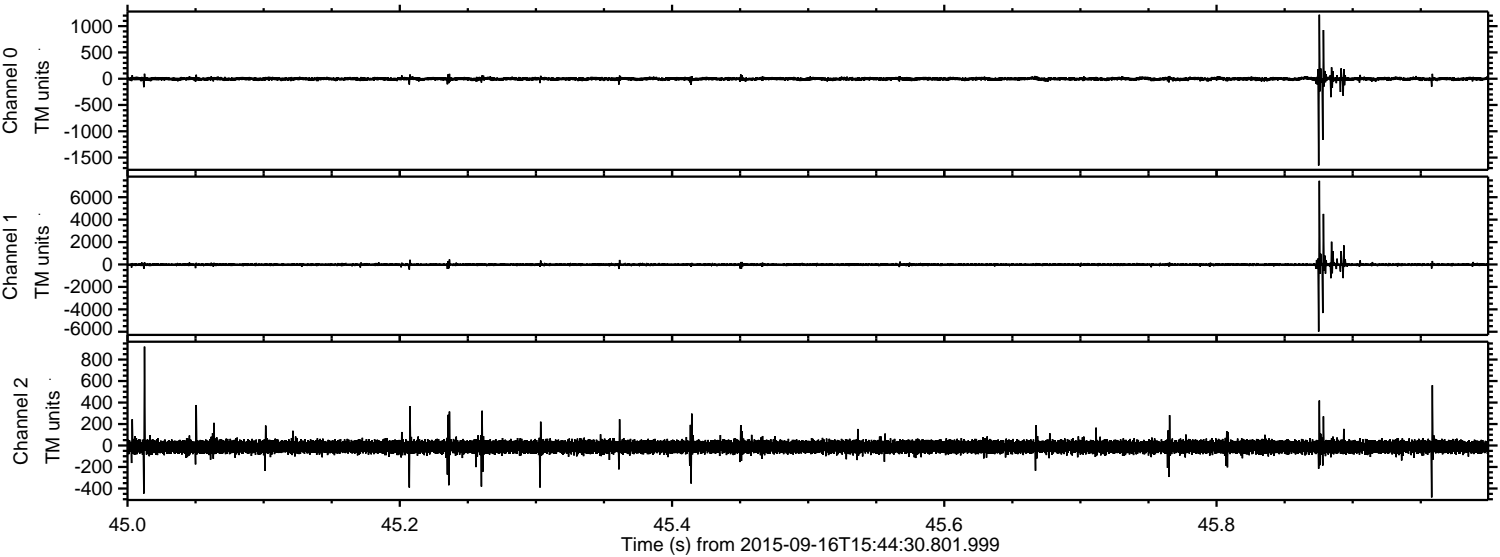
Processed Tue Oct 13 04:45:28 2015 by ELM ver.2012-10-06 from 001__elm20150916_154429__dat00.bin



Processed Tue Oct 13 04:45:29 2015 by ELM ver.2012-10-06 from 001__elm20150916_154429__dat00.bin



Processed Tue Oct 13 04:45:31 2015 by ELM ver.2012-10-06 from 001__elm20150916_154429__dat00.bin

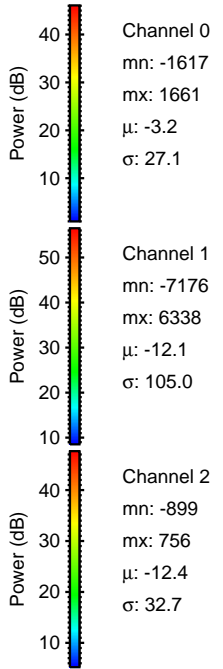
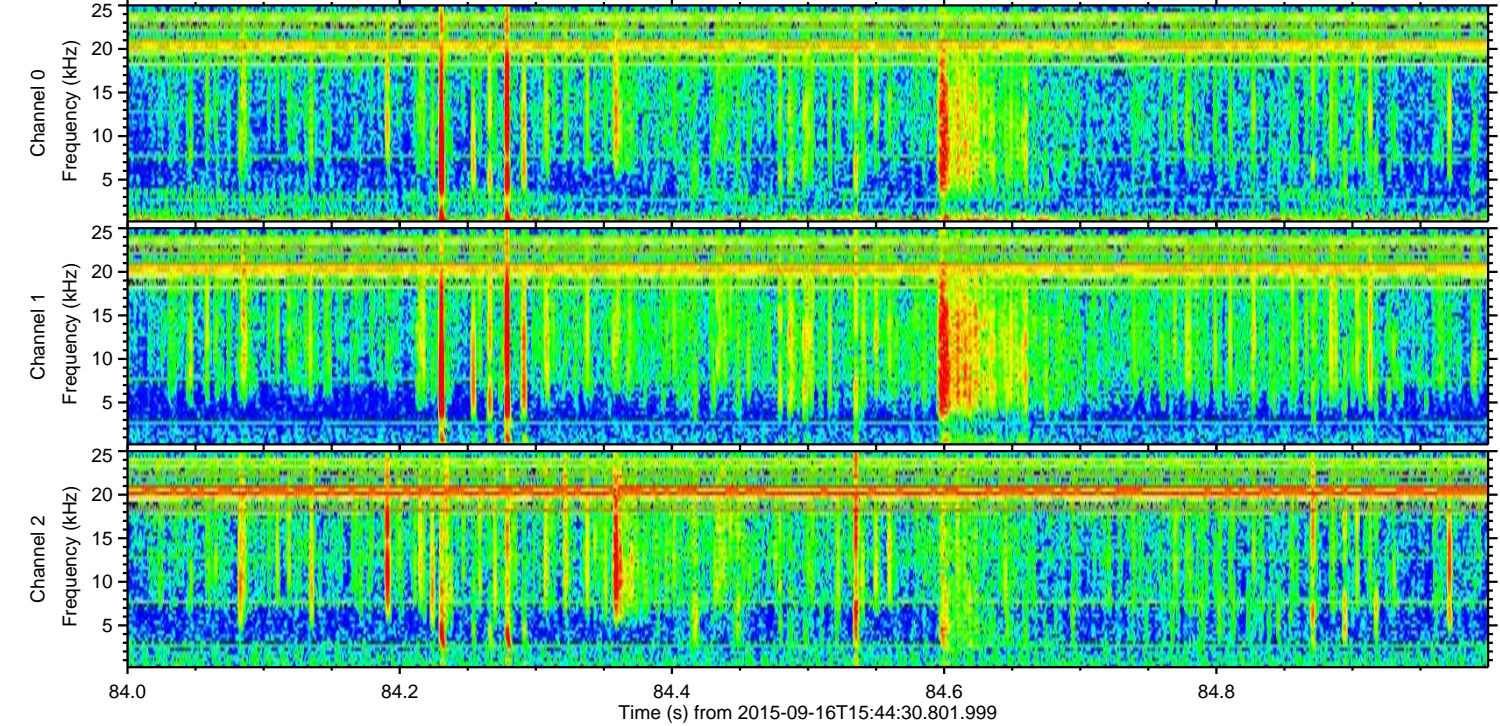
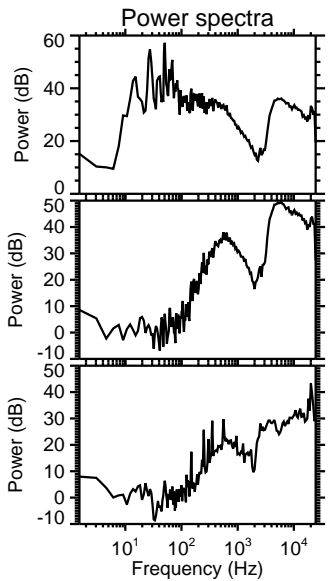
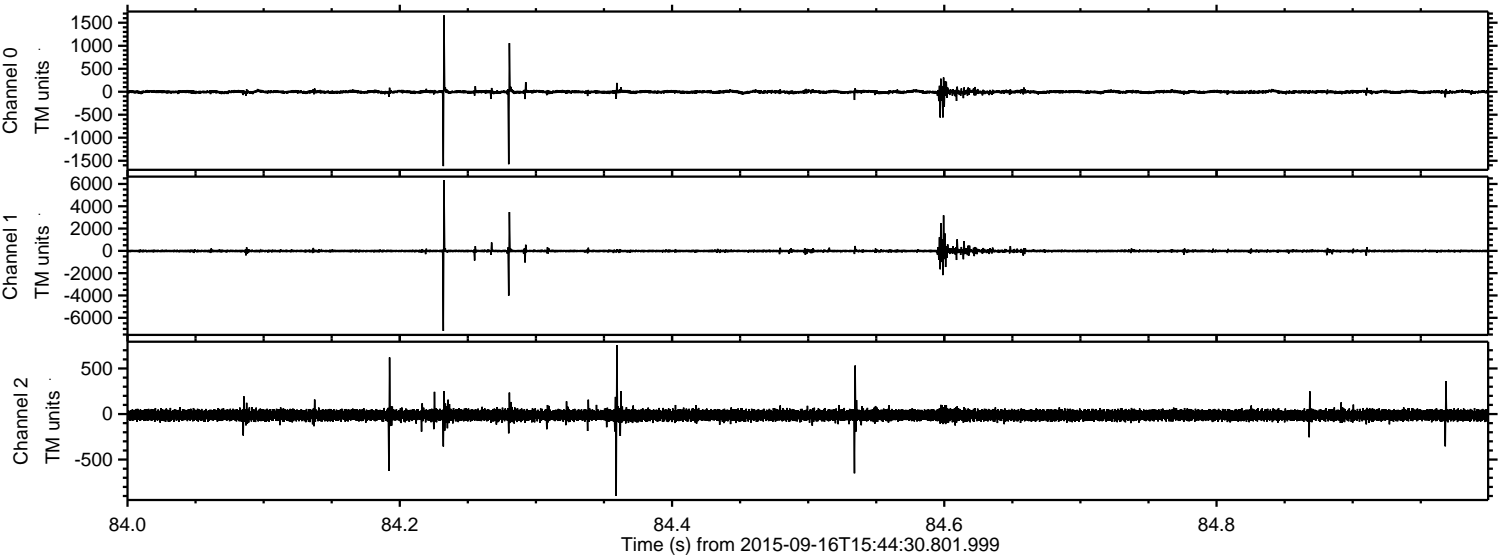


Channel 0
mn: -1651
mx: 1217
 μ : -3.3
 σ : 21.8

Channel 1
mn: -5982
mx: 7463
 μ : -12.1
 σ : 84.9

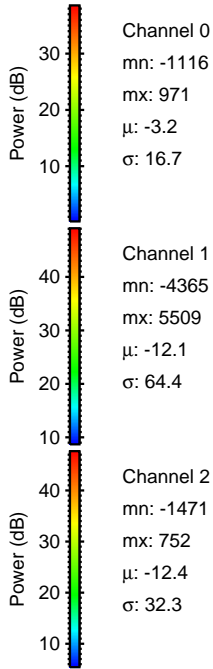
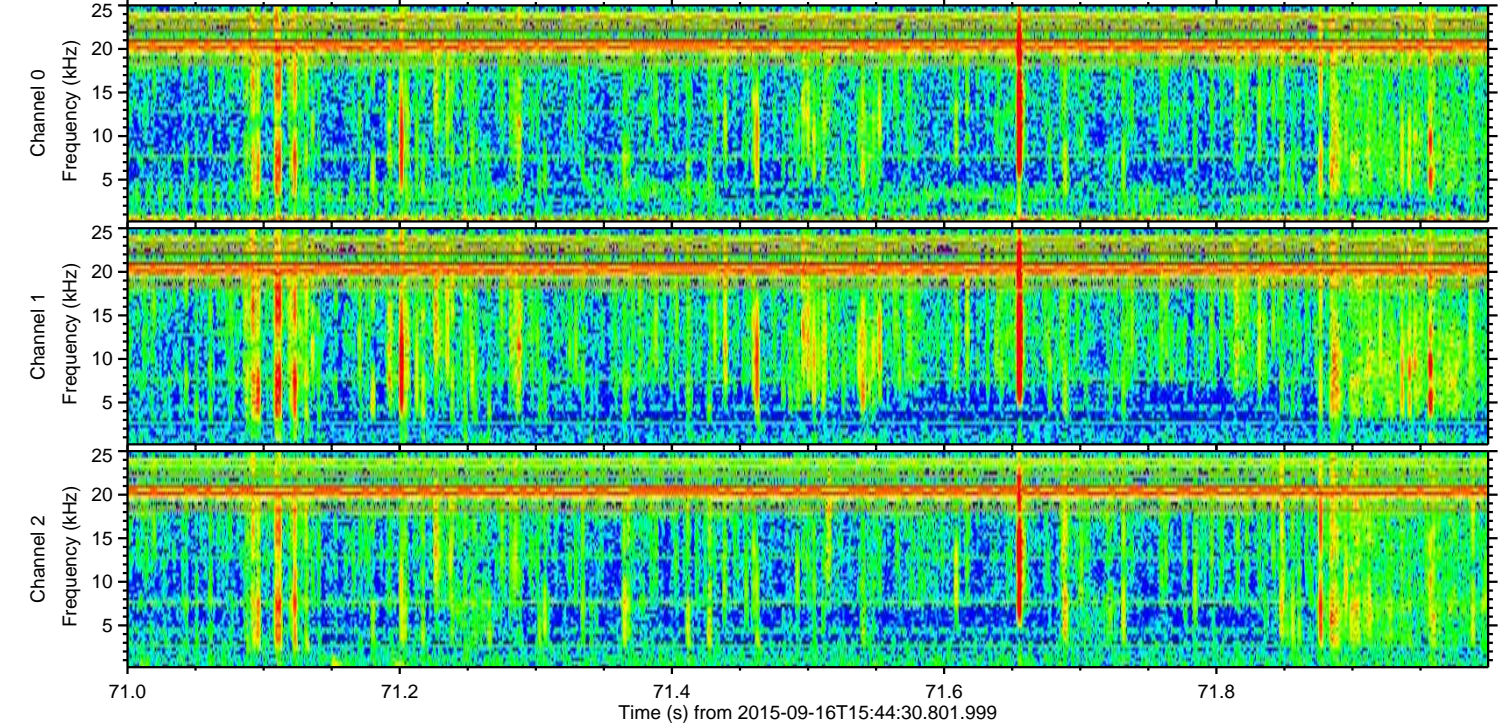
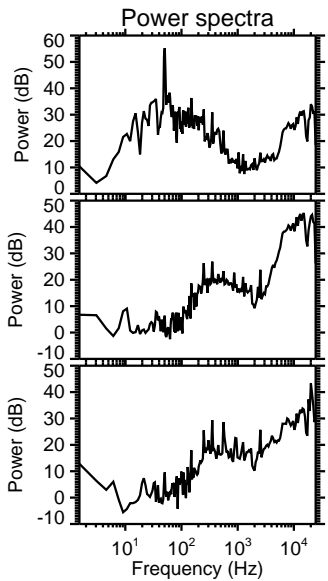
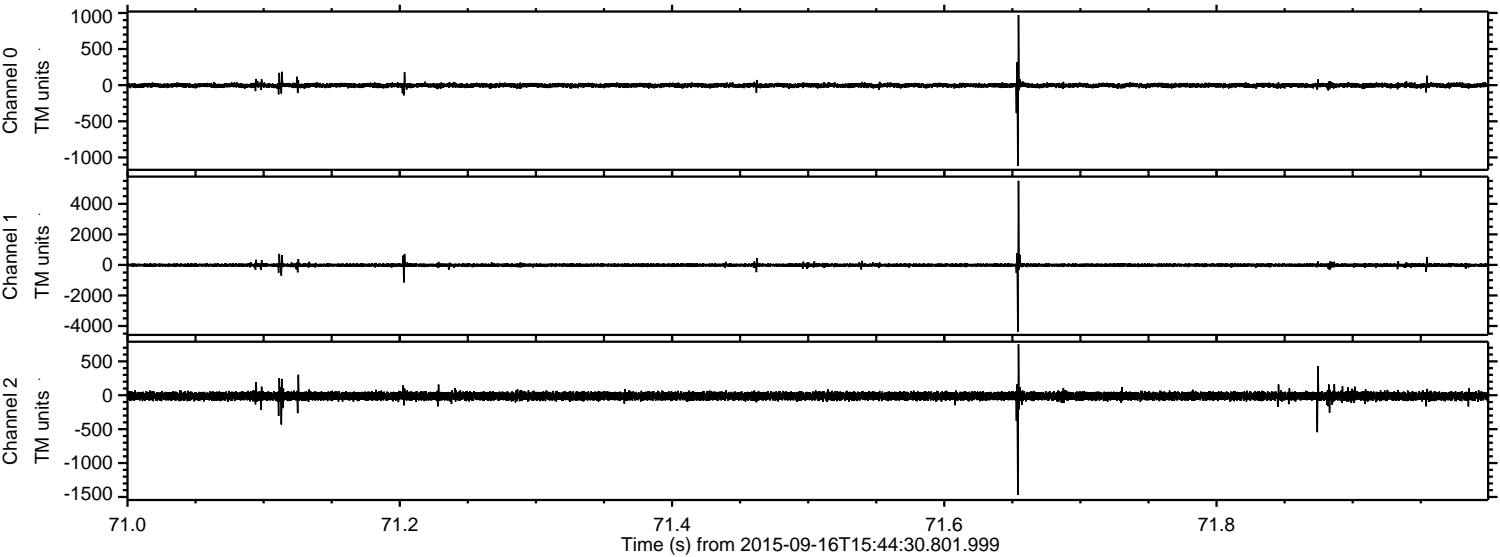
Channel 2
mn: -483
mx: 920
 μ : -12.4
 σ : 32.7

Processed Tue Oct 13 04:45:32 2015 by ELM ver.2012-10-06 from 001__elm20150916_154429__dat00.bin

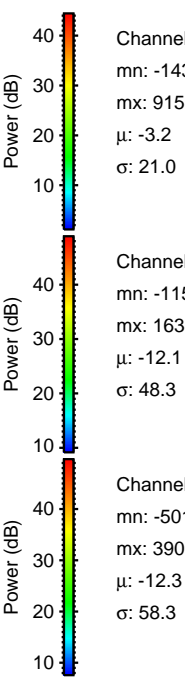
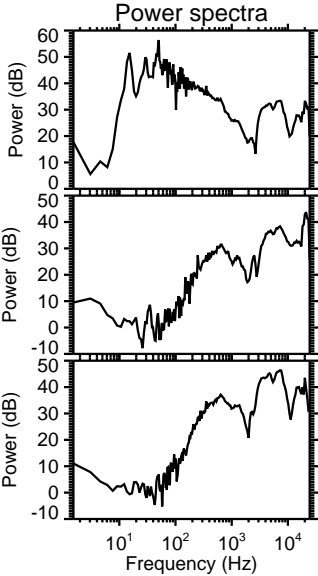
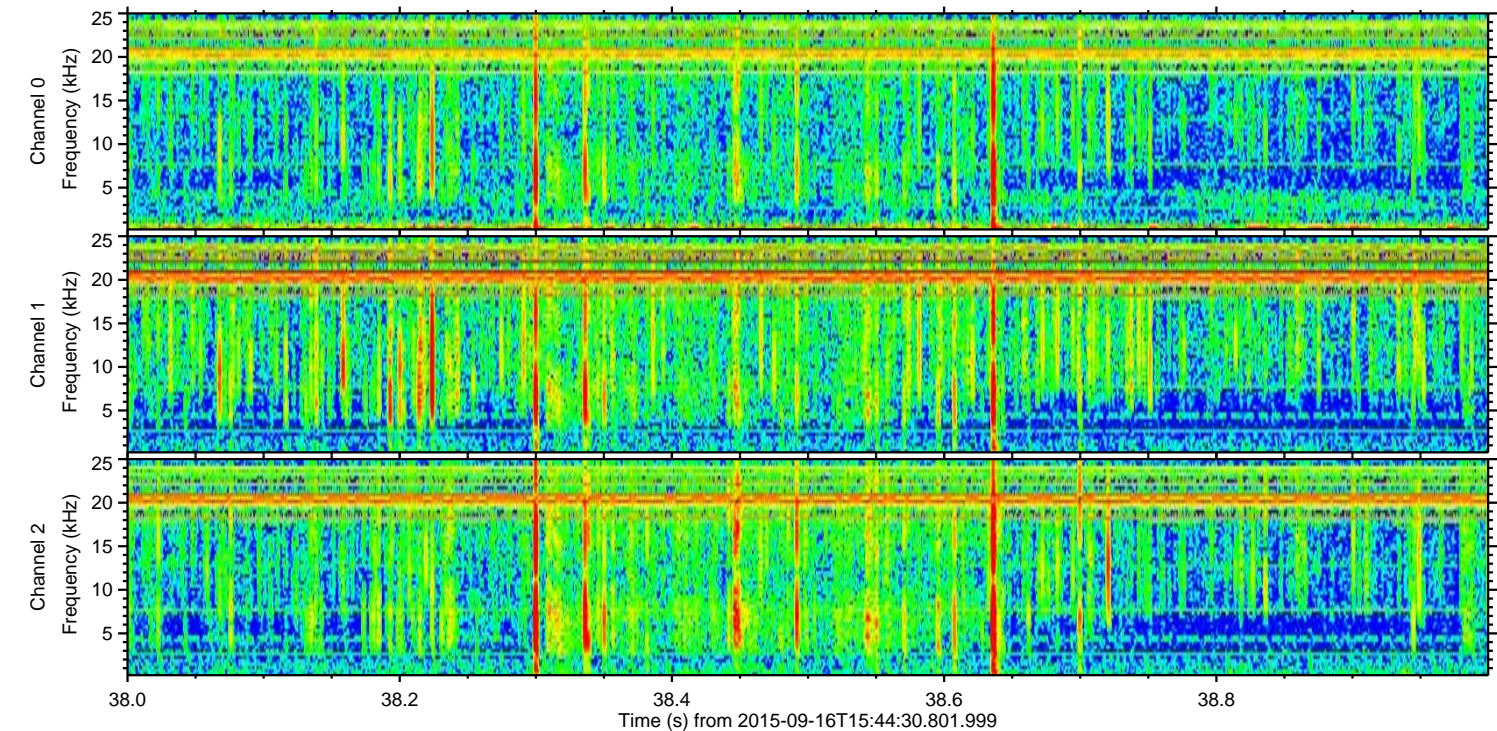
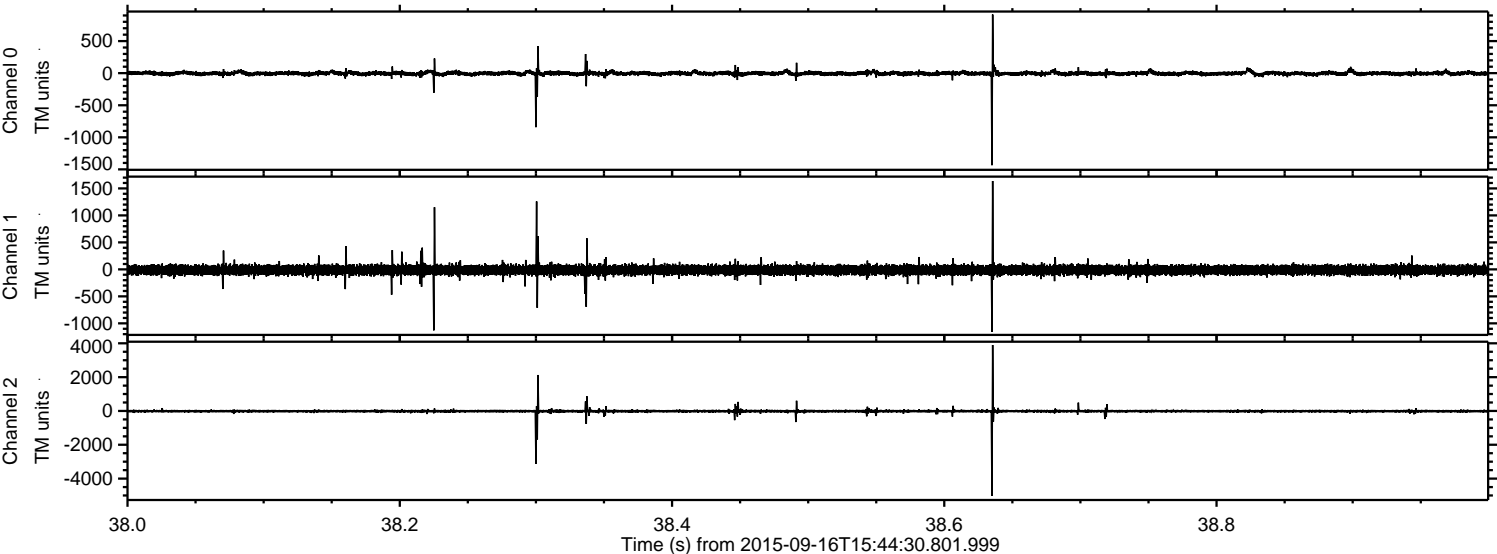


ELMAVAN 3D WAVEFORMS (Measured data sampled at 50 kHz) 51000 packets of 144 samples from 2015-09-16T15:44:30.801.999. Part 72/147

Processed Tue Oct 13 04:45:33 2015 by ELM ver.2012-10-06 from 001__elm20150916_154429__dat00.bin



Processed Tue Oct 13 04:45:34 2015 by ELM ver.2012-10-06 from 001__elm20150916_154429__dat00.bin



Channel 0
mn: -1435
mx: 915
 μ : -3.2
 σ : 21.0

Channel 1
mn: -1156
mx: 1636
 μ : -12.1
 σ : 48.3

Channel 2
mn: -5016
mx: 3901
 μ : -12.3
 σ : 58.3

Processed Tue Oct 13 04:45:35 2015 by ELM ver.2012-10-06 from 001__elm20150916_154429__dat00.bin

