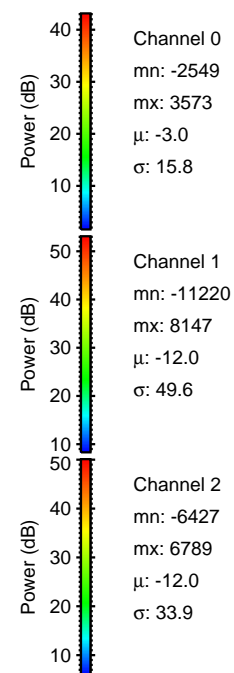
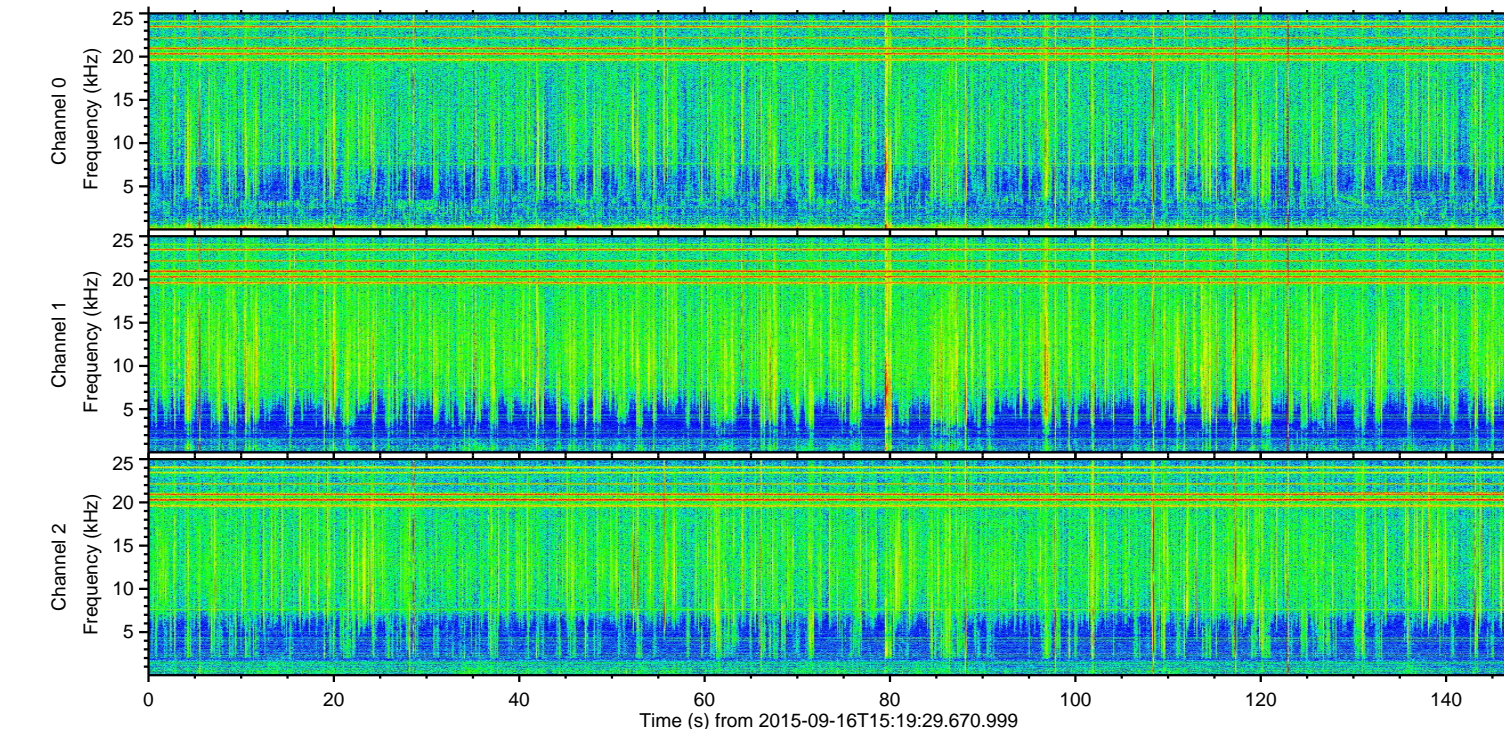
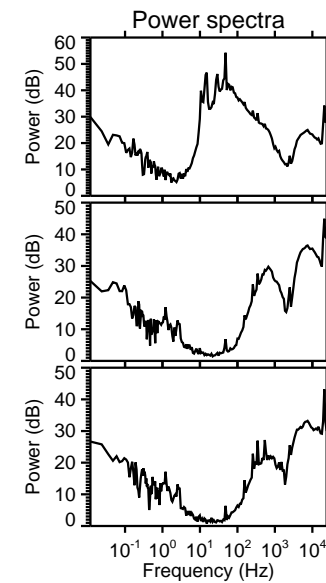
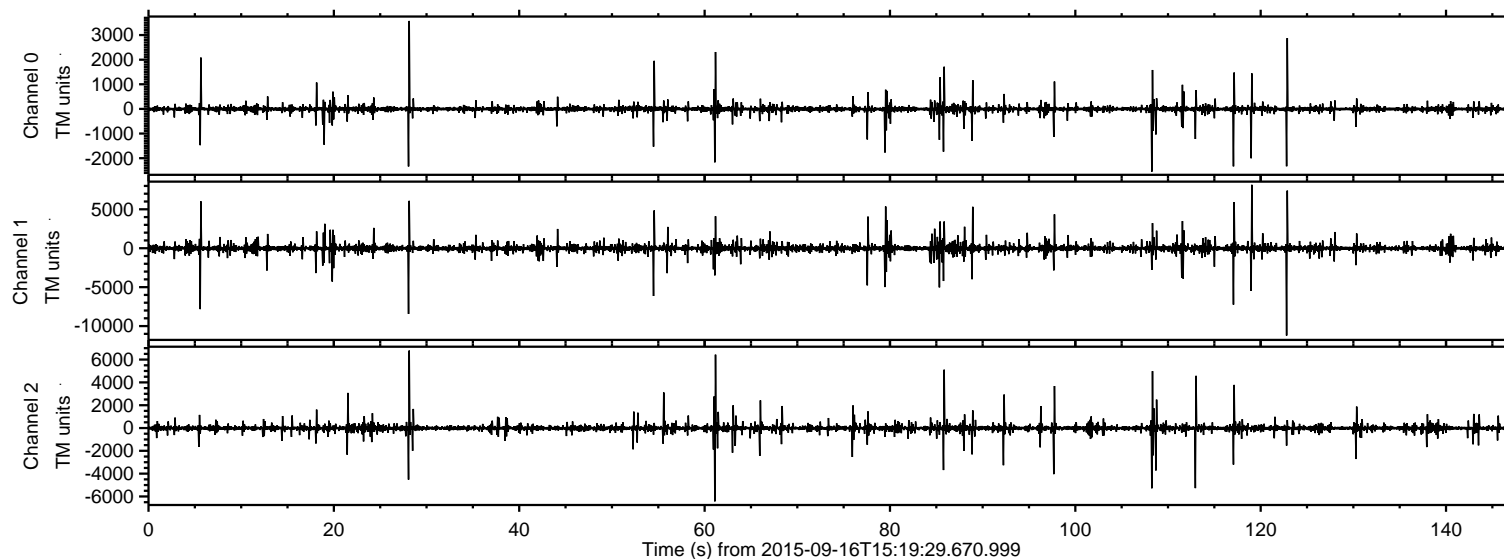


# ELMAVAN 3D WAVEFORMS (Measured data sampled at 50 kHz) 51000 packets of 144 samples from 2015-09-16T15:19:29.670.999.

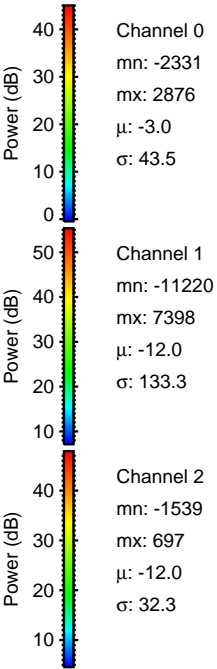
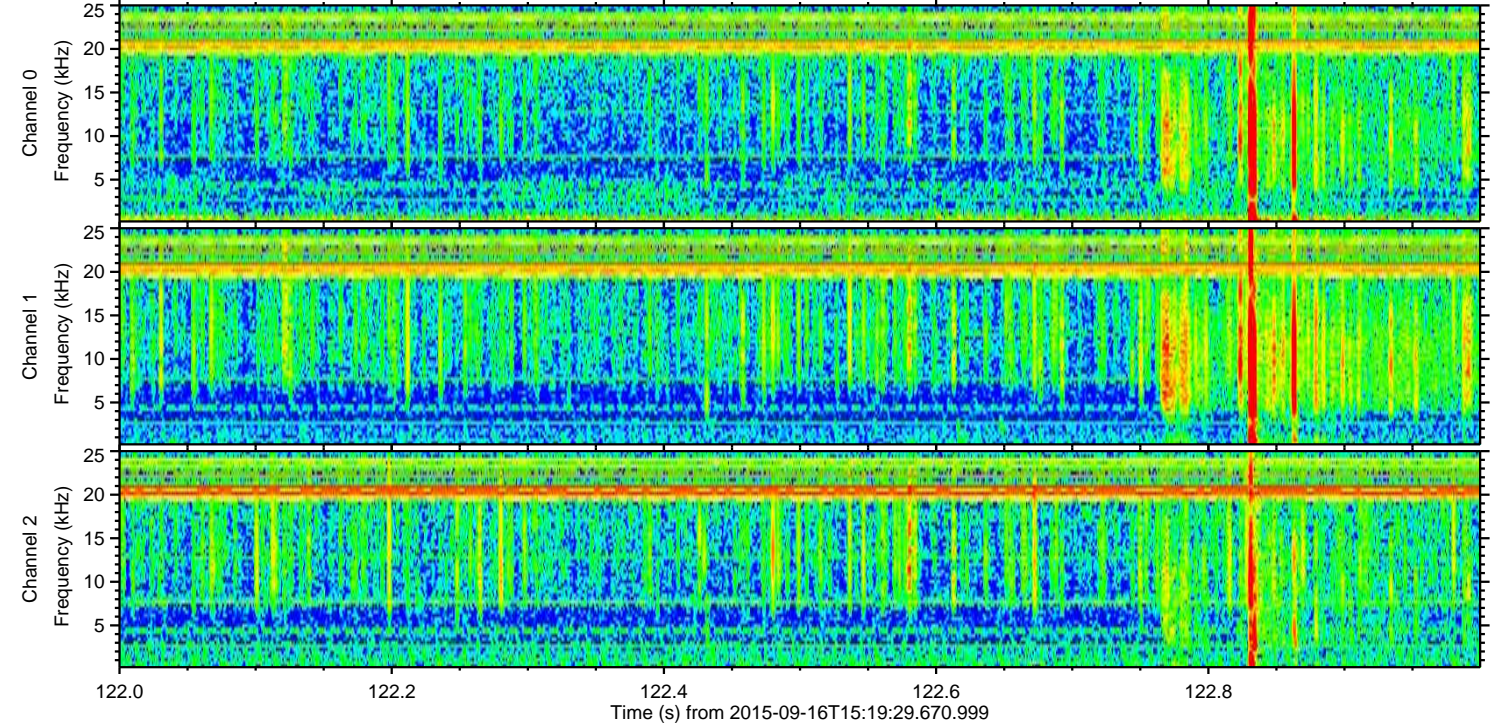
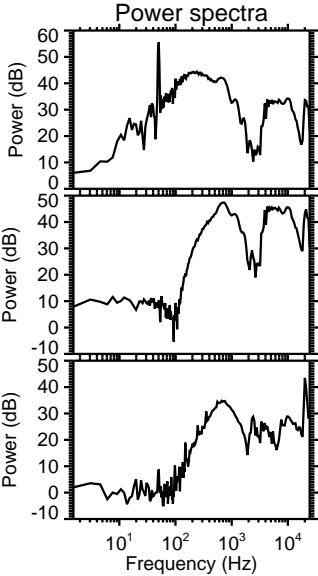
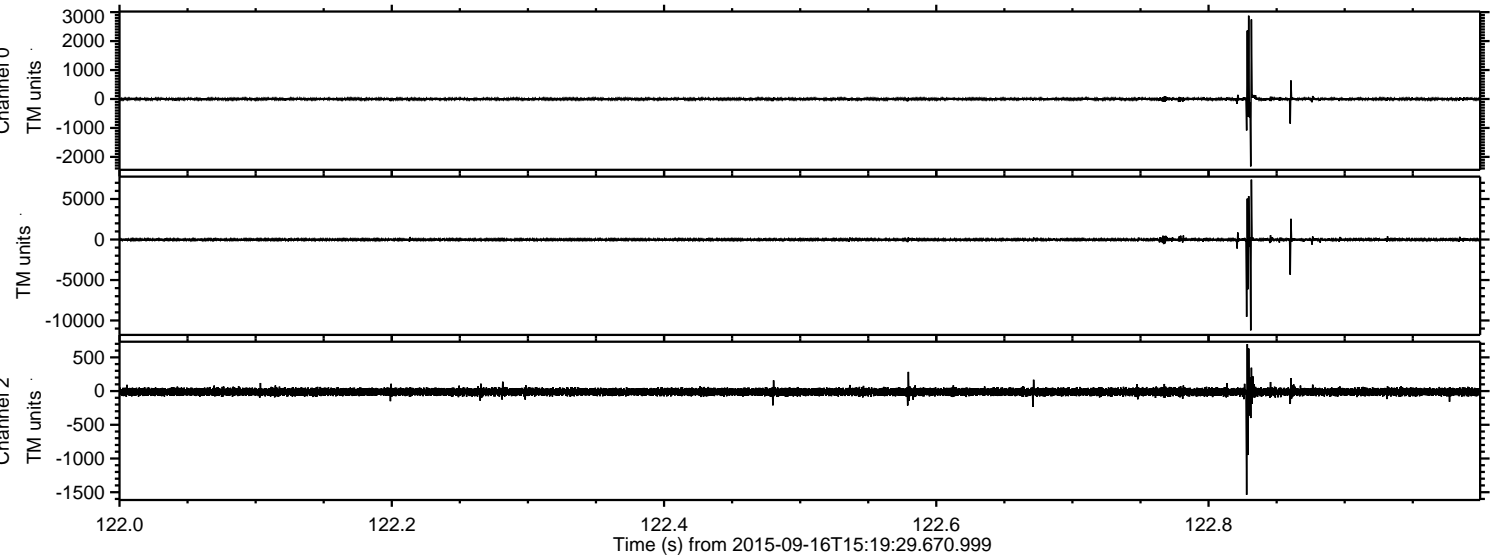
Processed Tue Oct 13 04:34:36 2015 by ELM ver.2012-10-06 from 001\_\_elm20150916\_151928\_\_dat00.bin





ELMAVAN 3D WAVEFORMS (Measured data sampled at 50 kHz) 51000 packets of 144 samples from 2015-09-16T15:19:29.670.999. Part 123/147

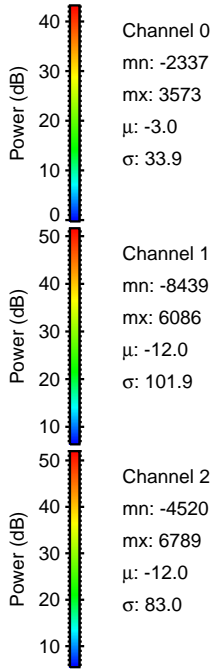
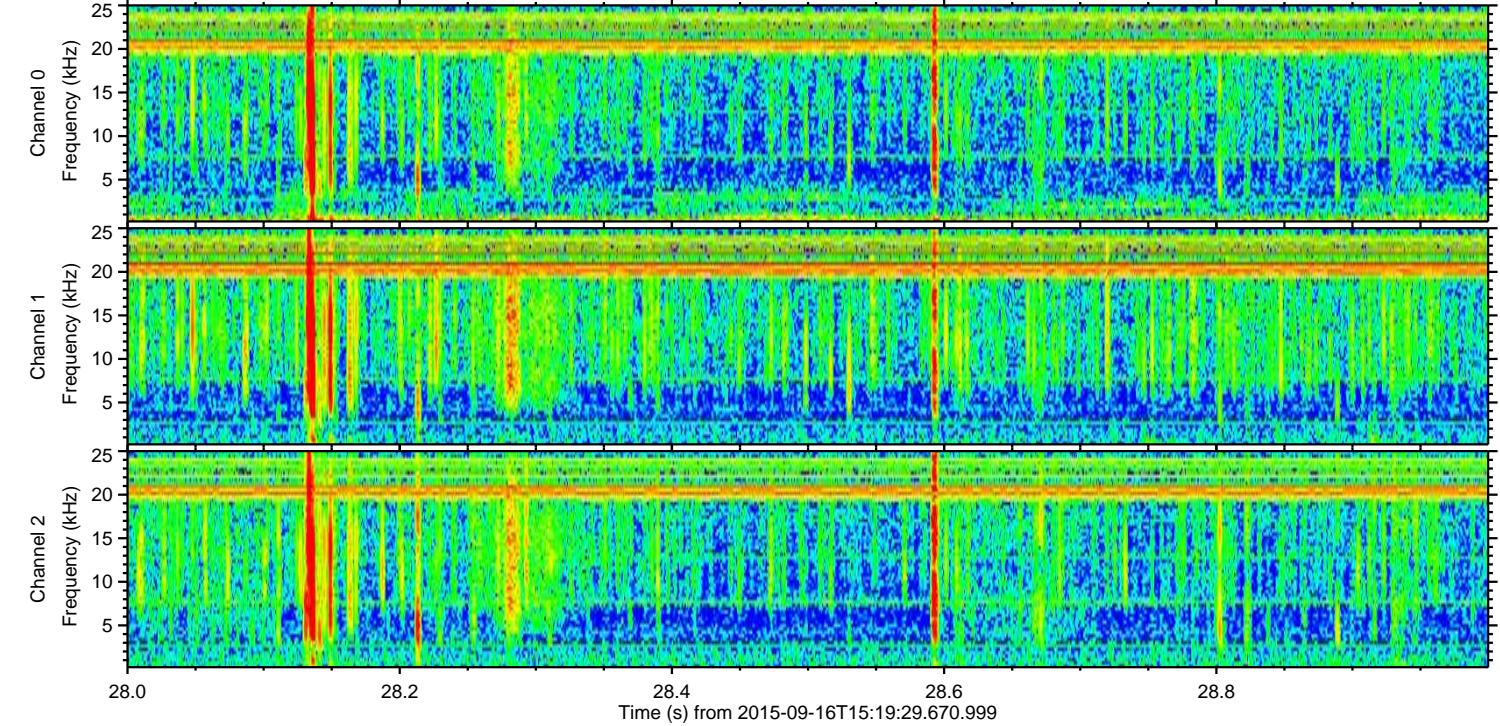
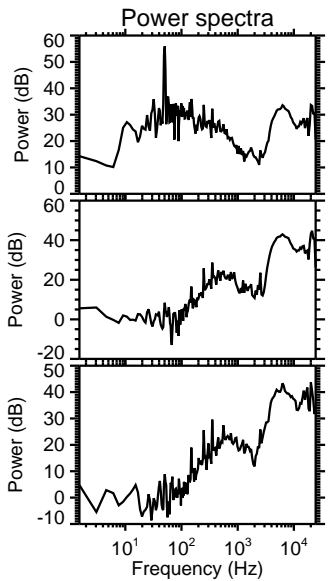
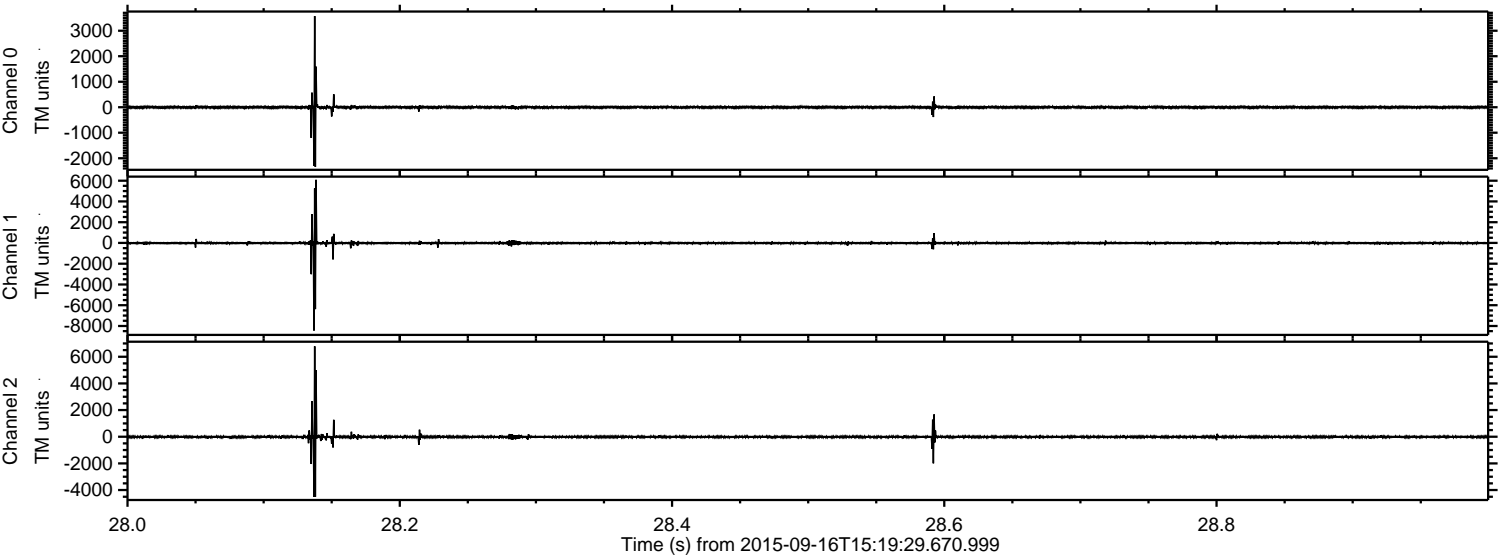
Processed Tue Oct 13 04:35:00 2015 by ELM ver.2012-10-06 from 001\_\_elm20150916\_151928\_\_dat00.bin





ELMAVAN 3D WAVEFORMS (Measured data sampled at 50 kHz) 51000 packets of 144 samples from 2015-09-16T15:19:29.670.999. Part 29/147

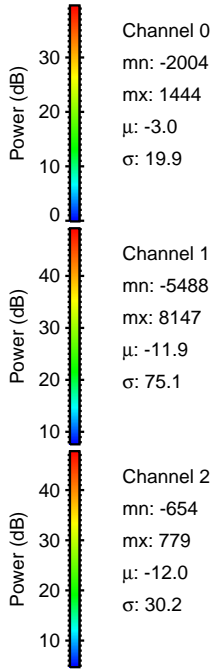
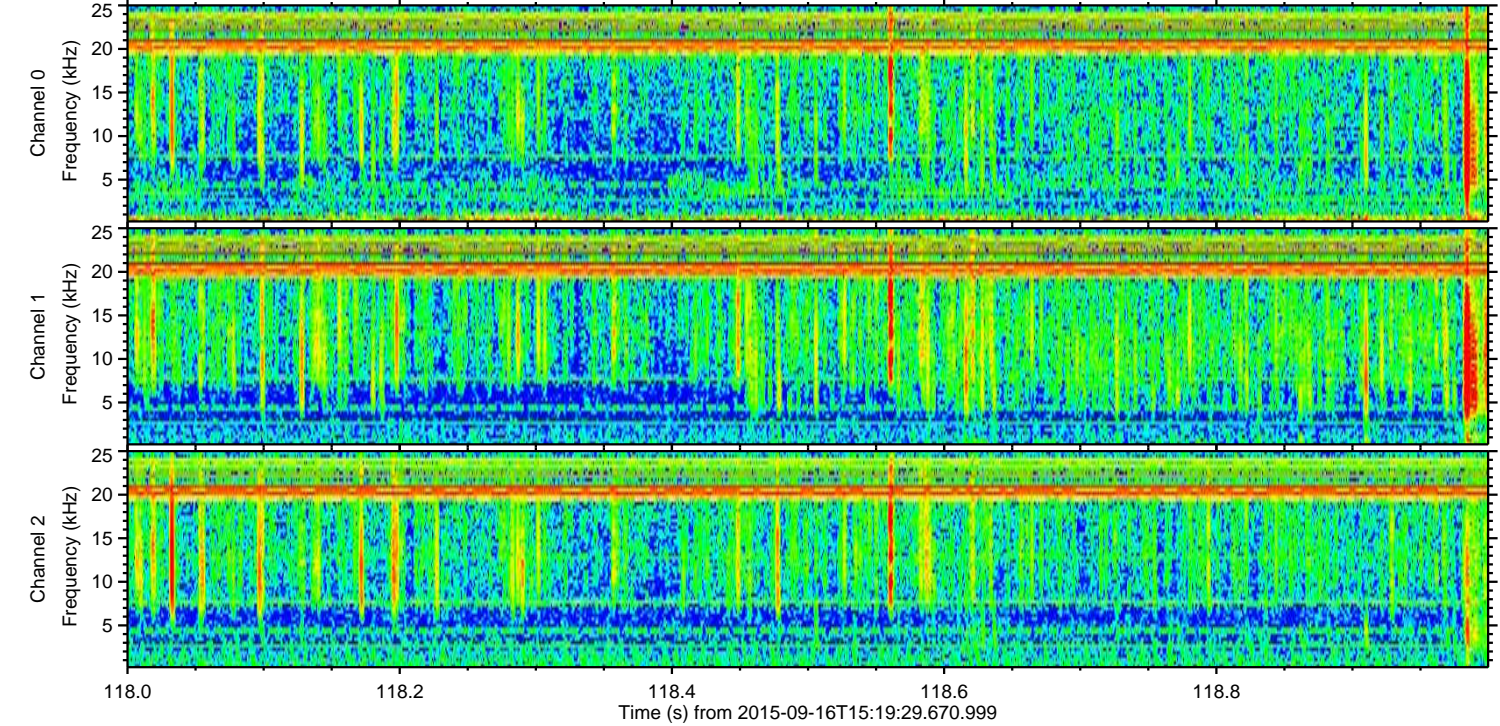
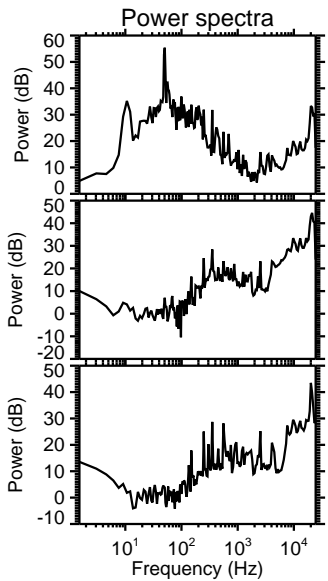
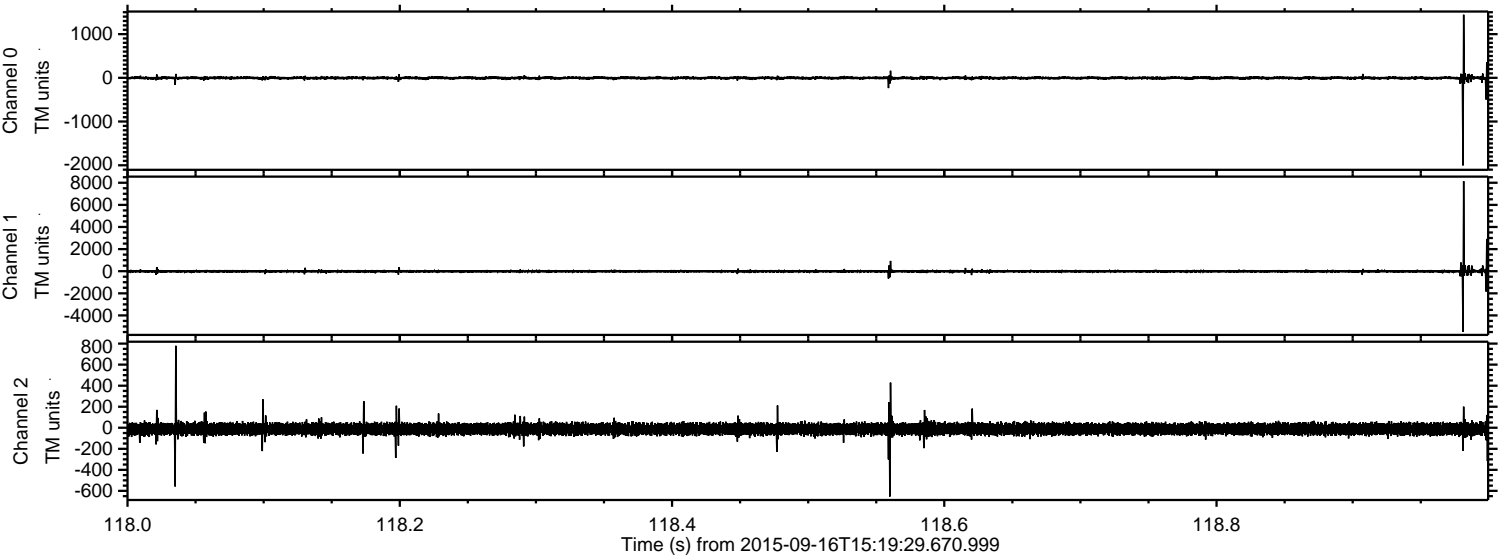
Processed Tue Oct 13 04:35:01 2015 by ELM ver.2012-10-06 from 001\_\_elm20150916\_151928\_\_dat00.bin





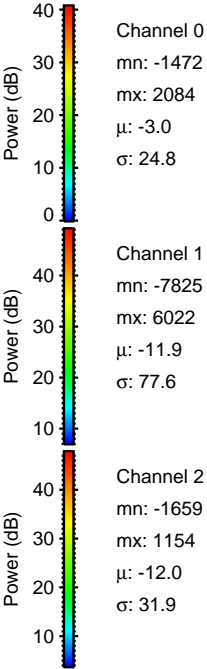
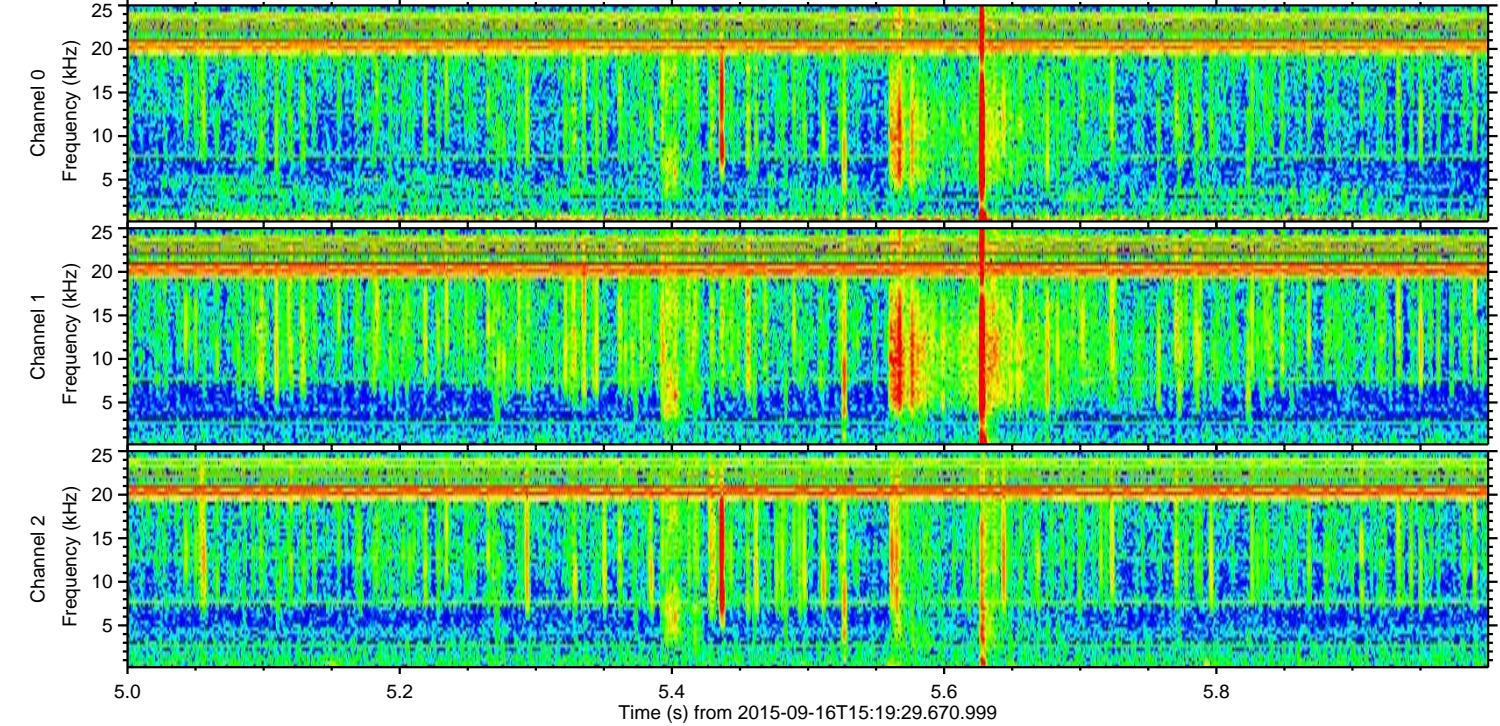
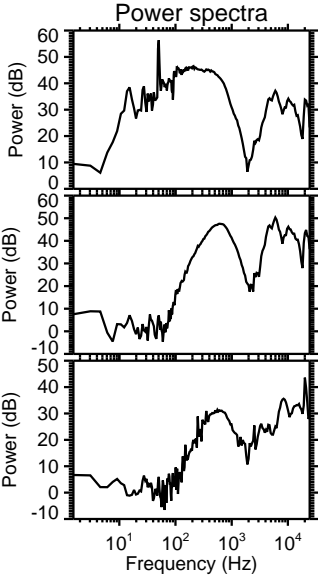
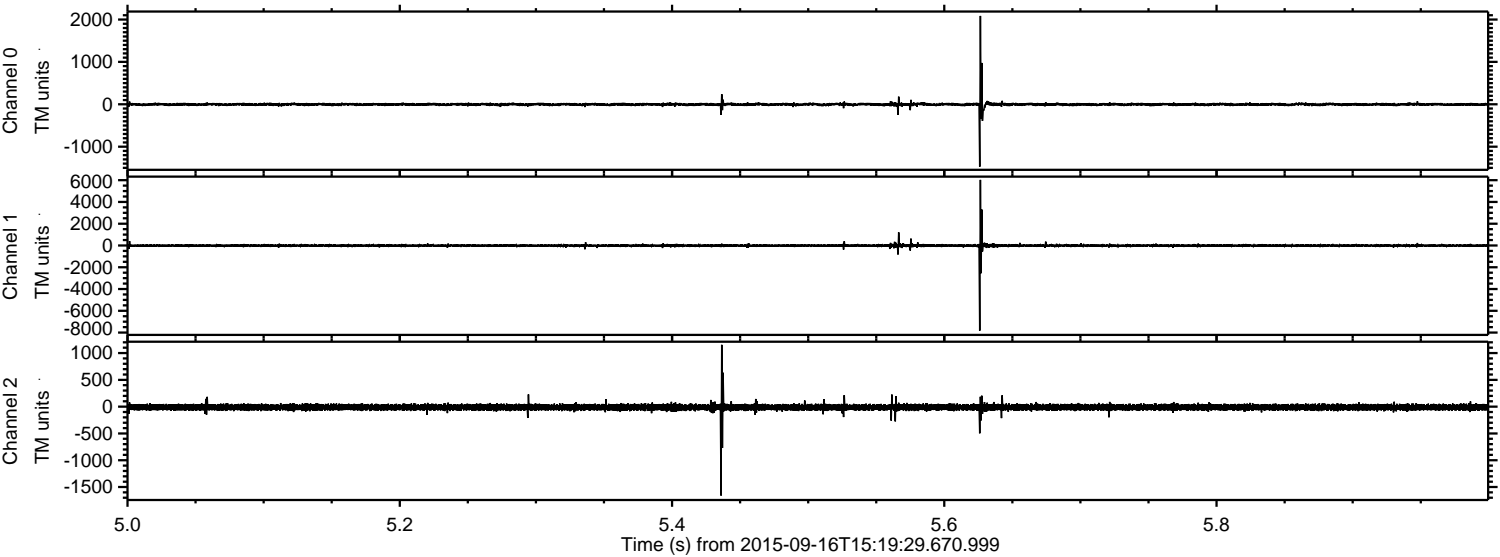
ELMAVAN 3D WAVEFORMS (Measured data sampled at 50 kHz) 51000 packets of 144 samples from 2015-09-16T15:19:29.670.999. Part 119/147

Processed Tue Oct 13 04:35:03 2015 by ELM ver.2012-10-06 from 001\_\_elm20150916\_151928\_\_dat00.bin





Processed Tue Oct 13 04:35:05 2015 by ELM ver.2012-10-06 from 001\_\_elm20150916\_151928\_\_dat00.bin



Channel 0  
mn: -1472  
mx: 2084  
 $\mu$ : -3.0  
 $\sigma$ : 24.8

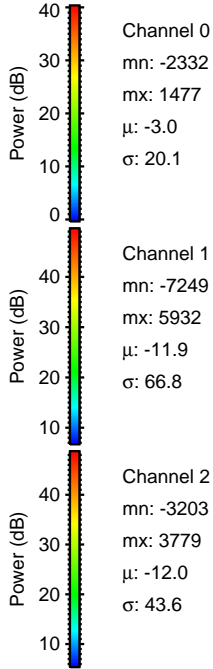
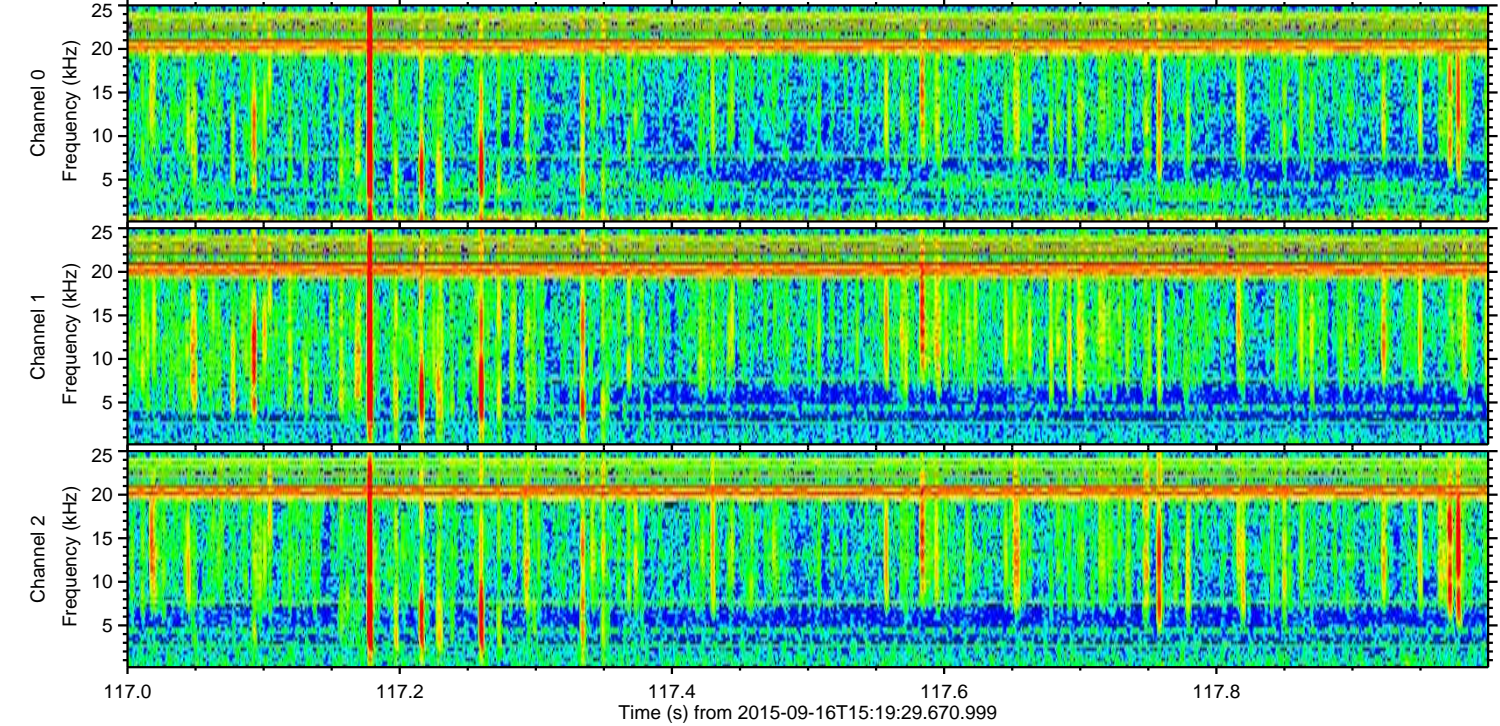
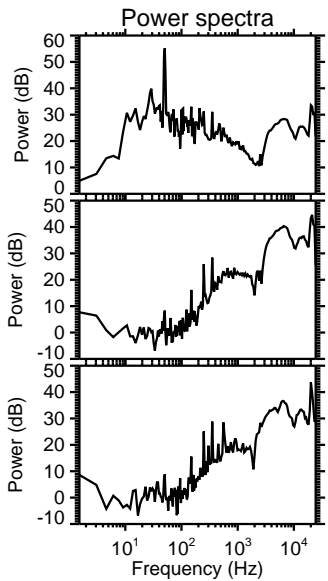
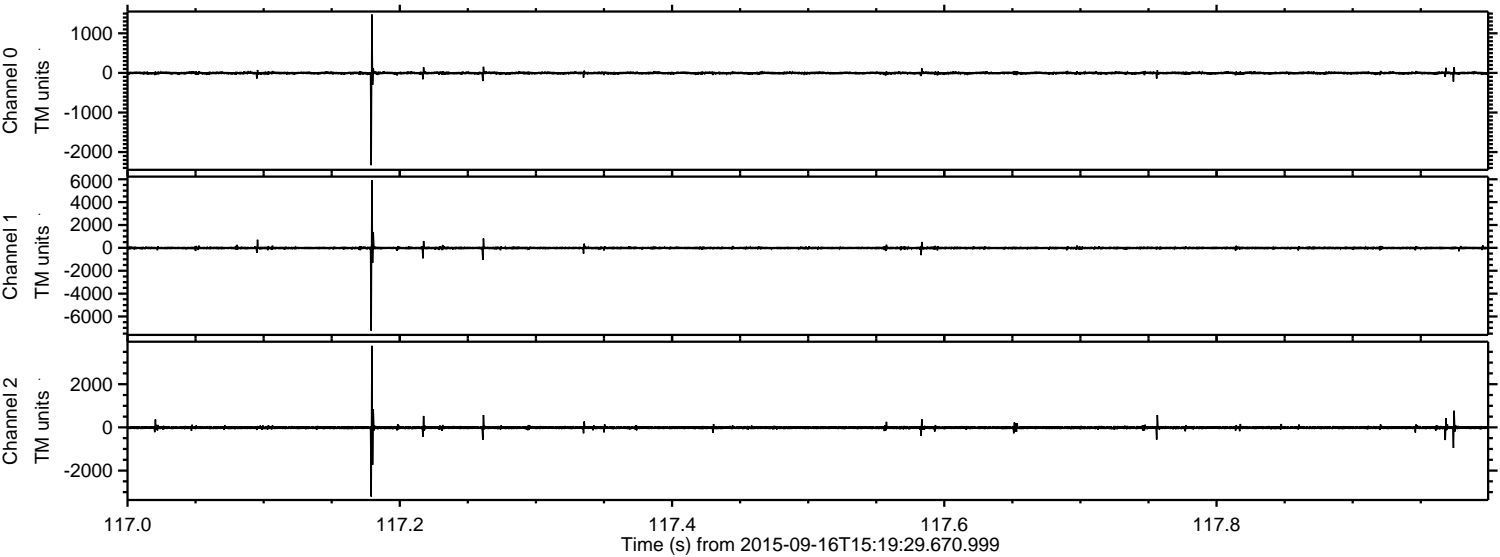
Channel 1  
mn: -7825  
mx: 6022  
 $\mu$ : -11.9  
 $\sigma$ : 77.6

Channel 2  
mn: -1659  
mx: 1154  
 $\mu$ : -12.0  
 $\sigma$ : 31.9



ELMAVAN 3D WAVEFORMS (Measured data sampled at 50 kHz) 51000 packets of 144 samples from 2015-09-16T15:19:29.670.999. Part 118/147

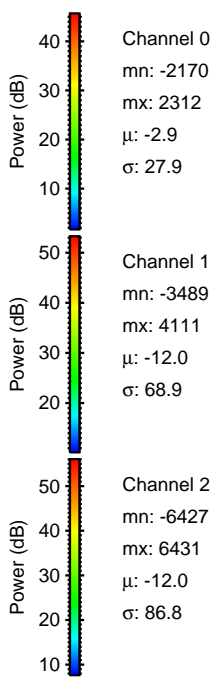
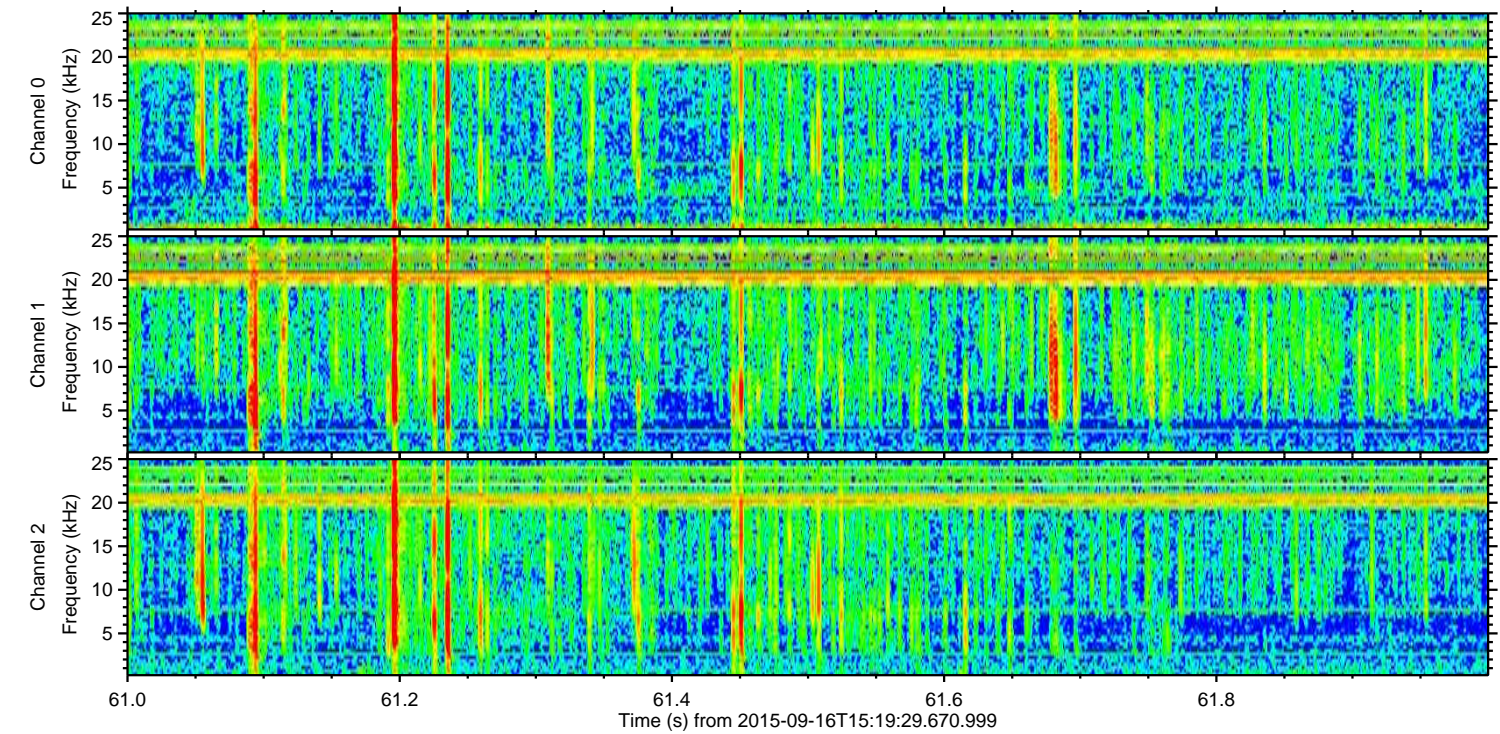
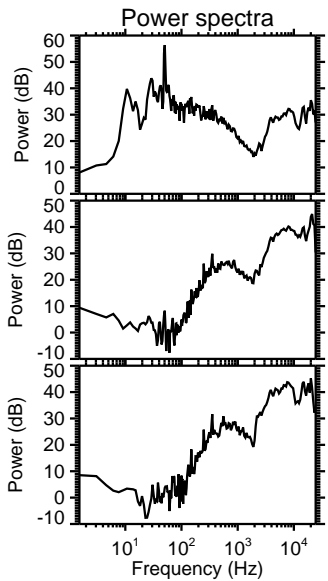
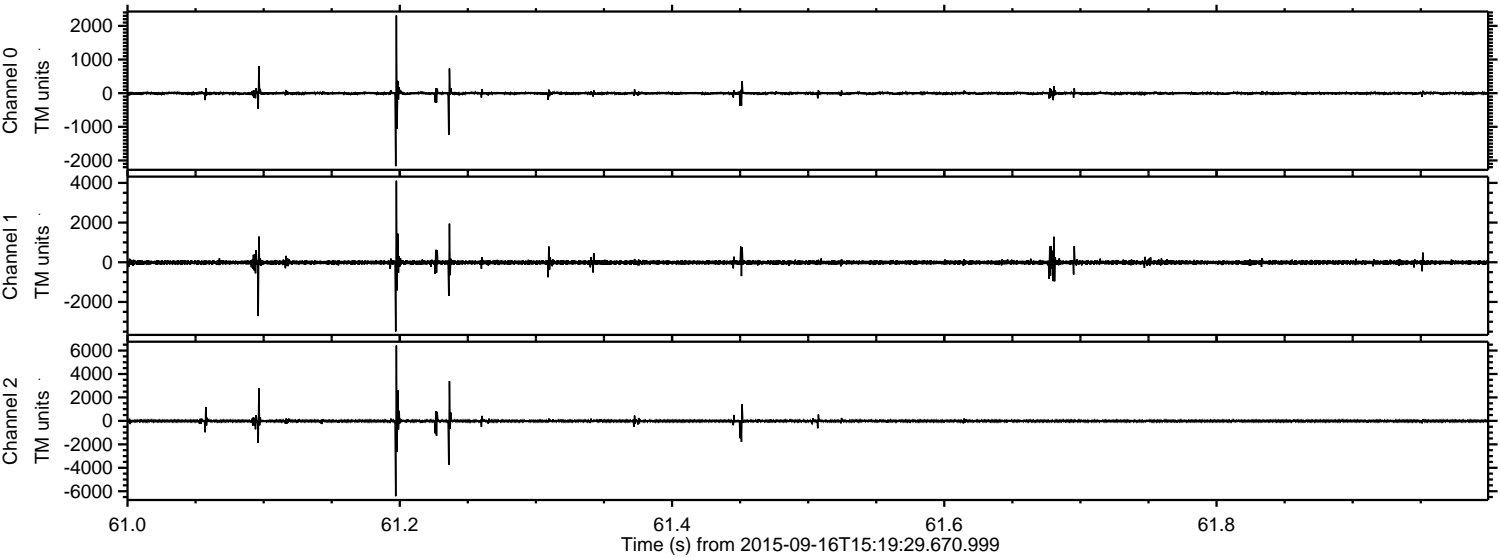
Processed Tue Oct 13 04:35:06 2015 by ELM ver.2012-10-06 from 001\_\_elm20150916\_151928\_\_dat00.bin





ELMAVAN 3D WAVEFORMS (Measured data sampled at 50 kHz) 51000 packets of 144 samples from 2015-09-16T15:19:29.670.999. Part 62/147

Processed Tue Oct 13 04:35:08 2015 by ELM ver.2012-10-06 from 001\_\_elm20150916\_151928\_\_dat00.bin



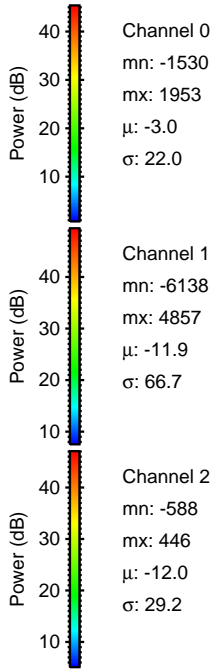
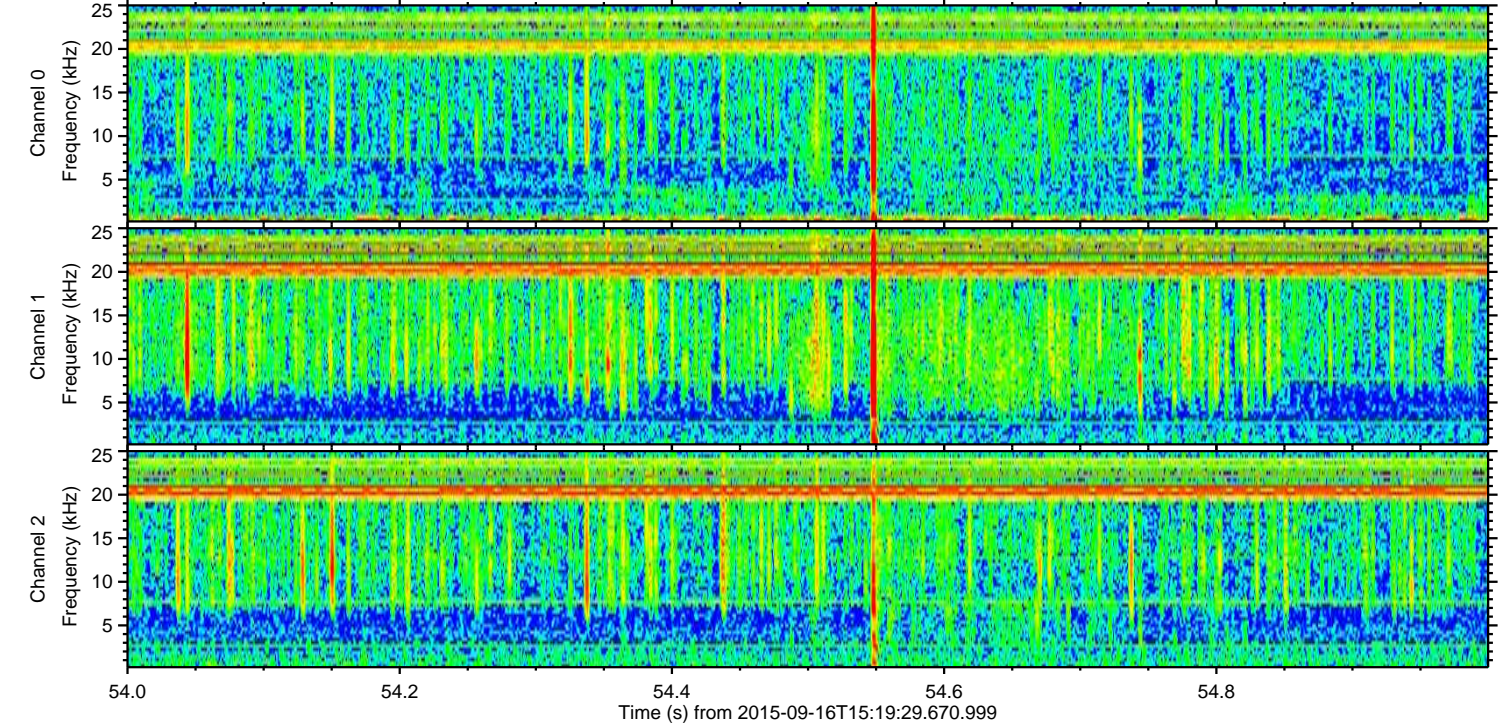
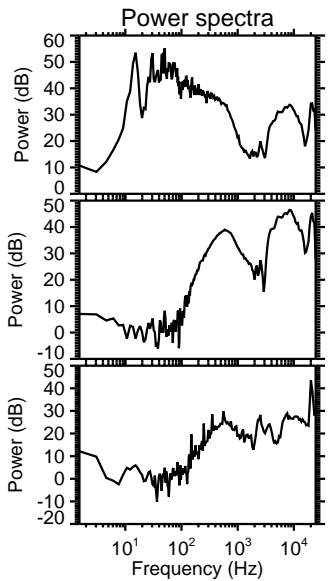
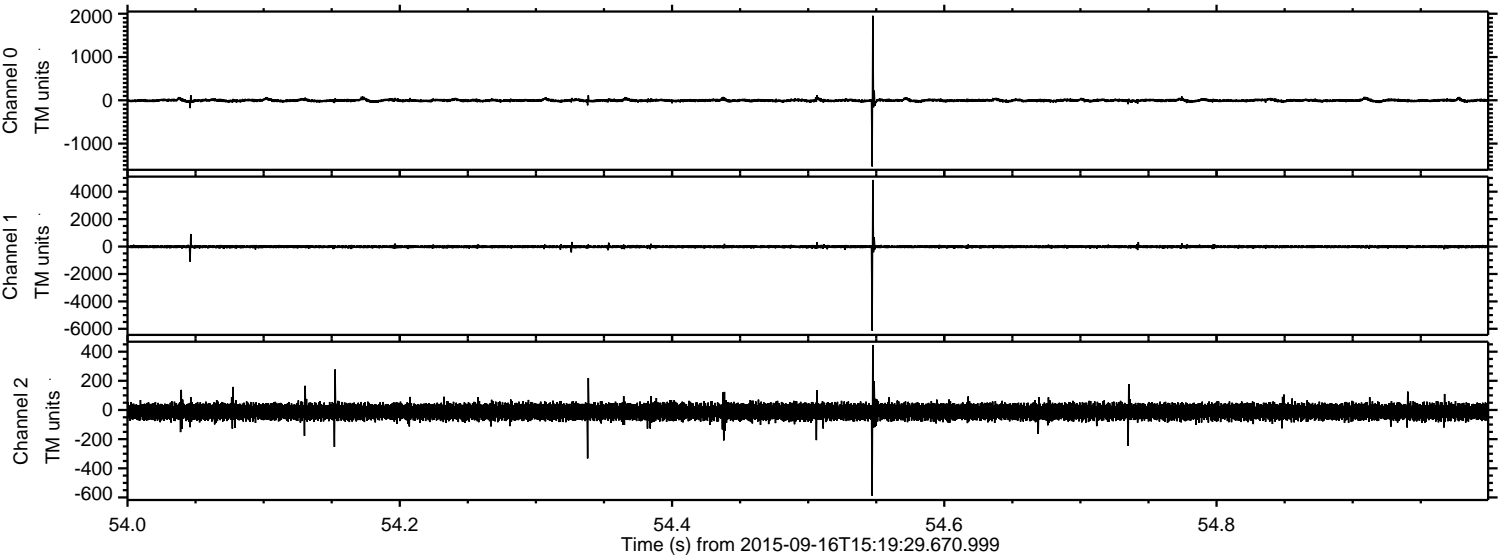
Channel 0  
mn: -2170  
mx: 2312  
 $\mu$ : -2.9  
 $\sigma$ : 27.9

Channel 1  
mn: -3489  
mx: 4111  
 $\mu$ : -12.0  
 $\sigma$ : 68.9

Channel 2  
mn: -6427  
mx: 6431  
 $\mu$ : -12.0  
 $\sigma$ : 86.8

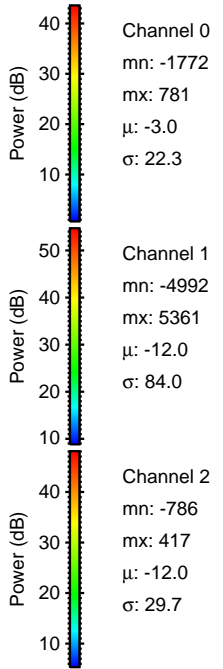
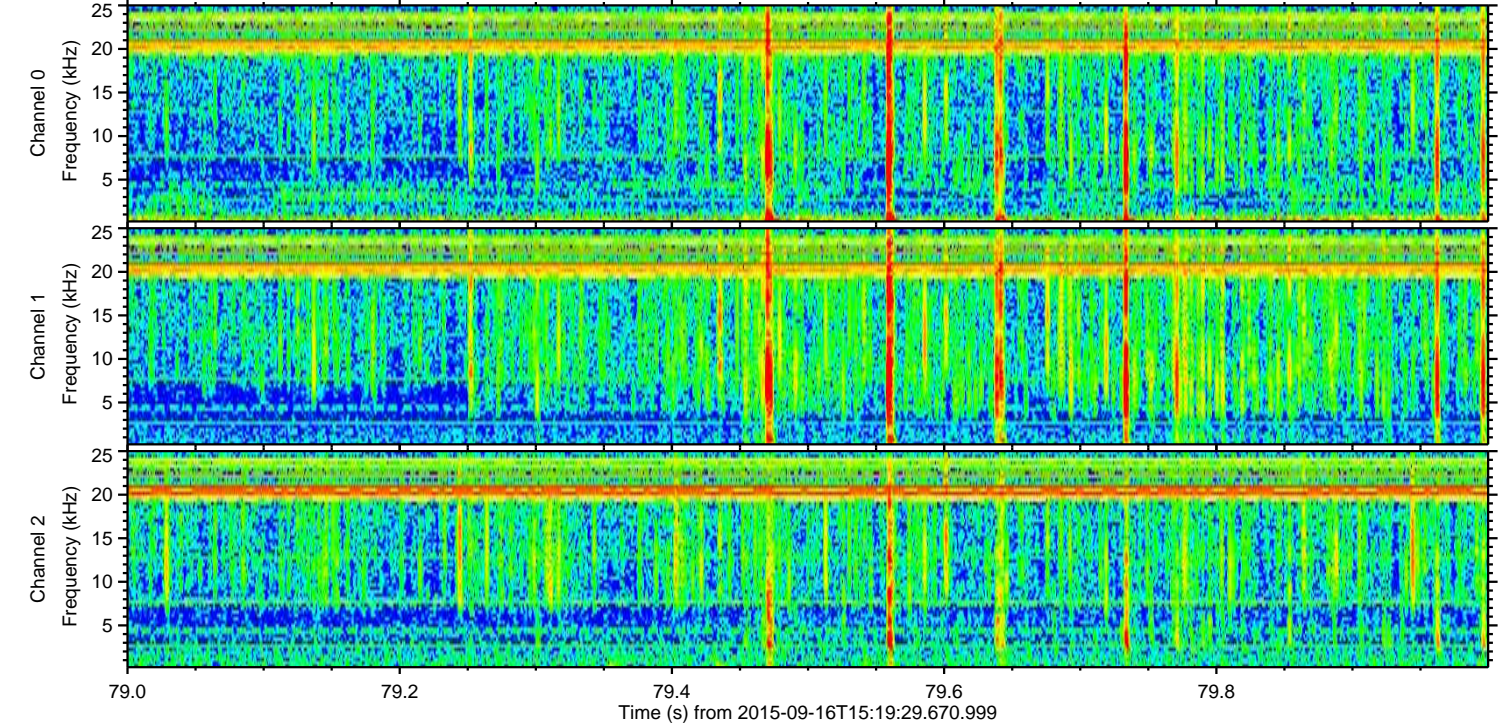
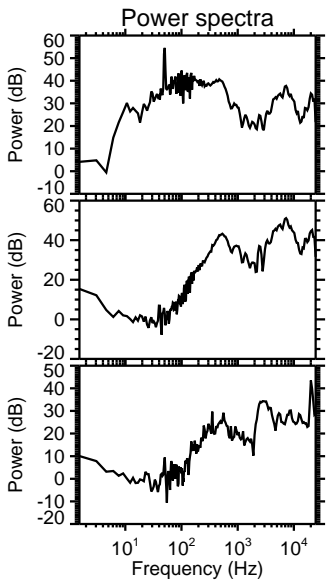
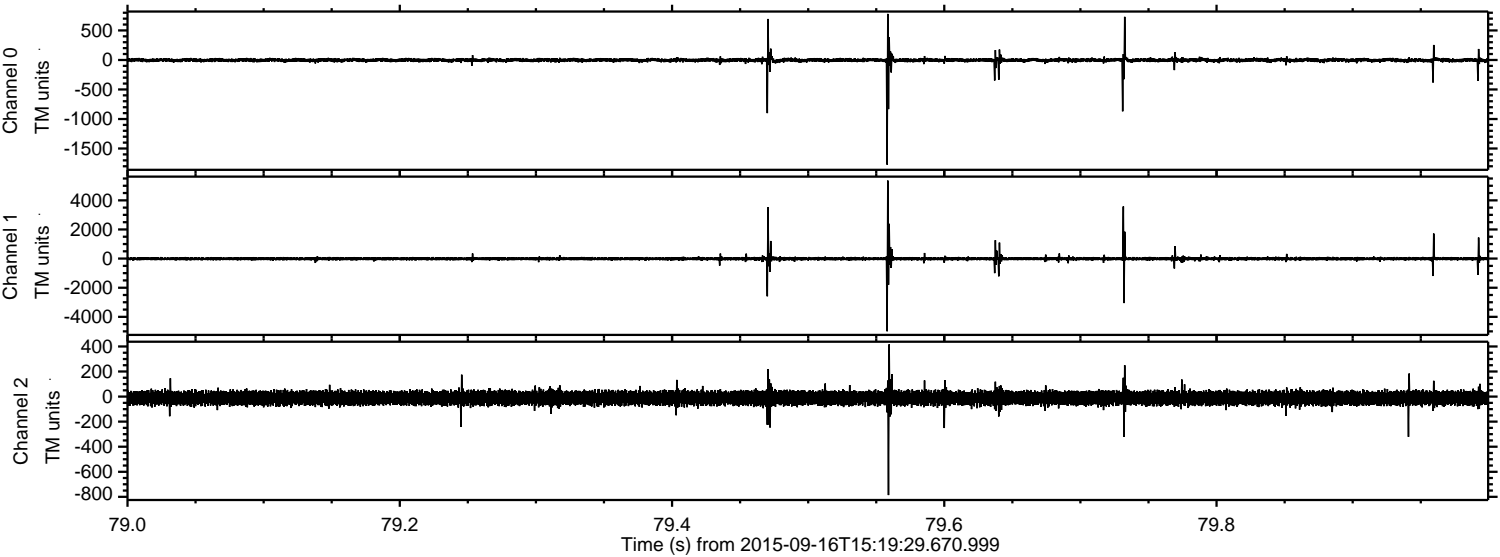


Processed Tue Oct 13 04:35:11 2015 by ELM ver.2012-10-06 from 001\_\_elm20150916\_151928\_\_dat00.bin



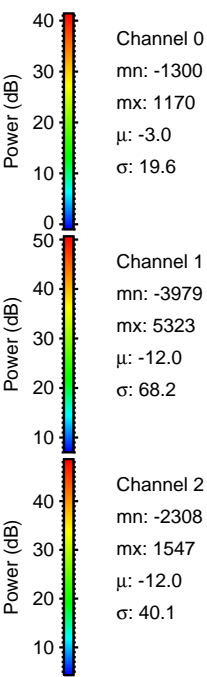
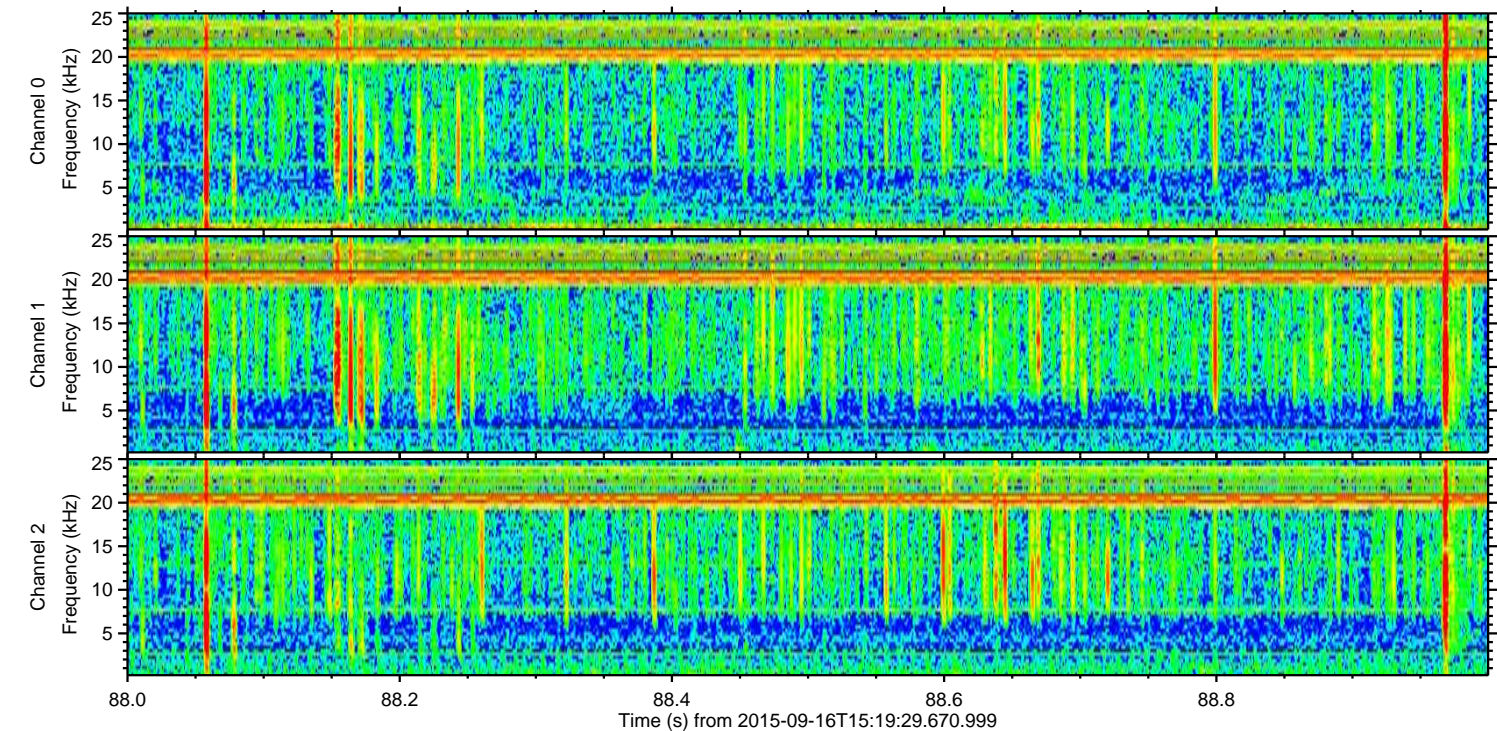
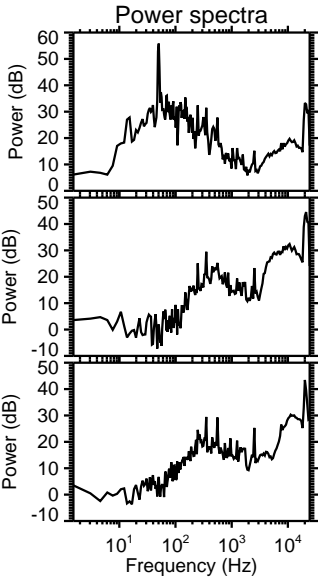
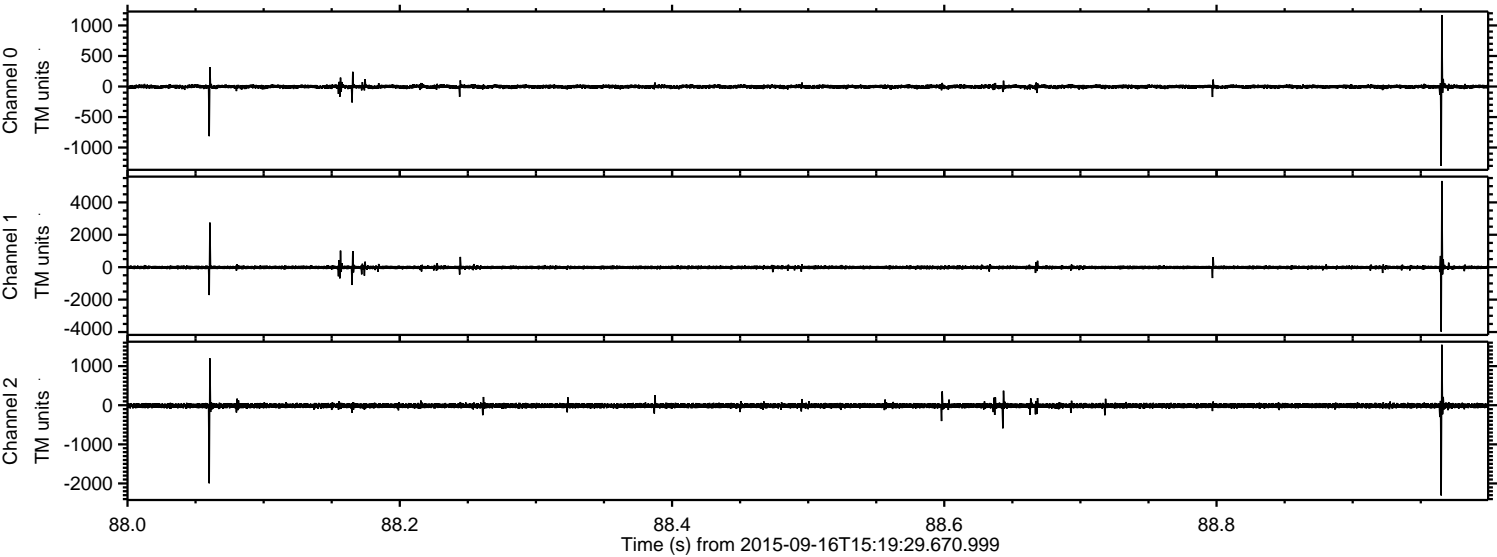


Processed Tue Oct 13 04:35:13 2015 by ELM ver.2012-10-06 from 001\_\_elm20150916\_151928\_\_dat00.bin





Processed Tue Oct 13 04:35:15 2015 by ELM ver.2012-10-06 from 001\_\_elm20150916\_151928\_\_dat00.bin





Processed Tue Oct 13 04:35:17 2015 by ELM ver.2012-10-06 from 001\_\_elm20150916\_151928\_\_dat00.bin

