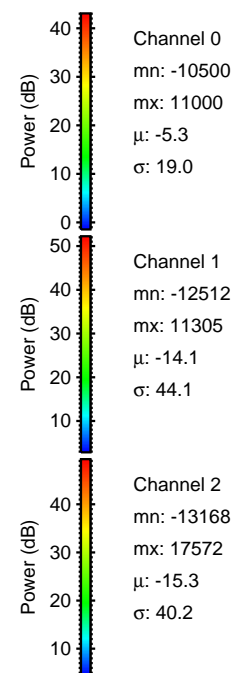
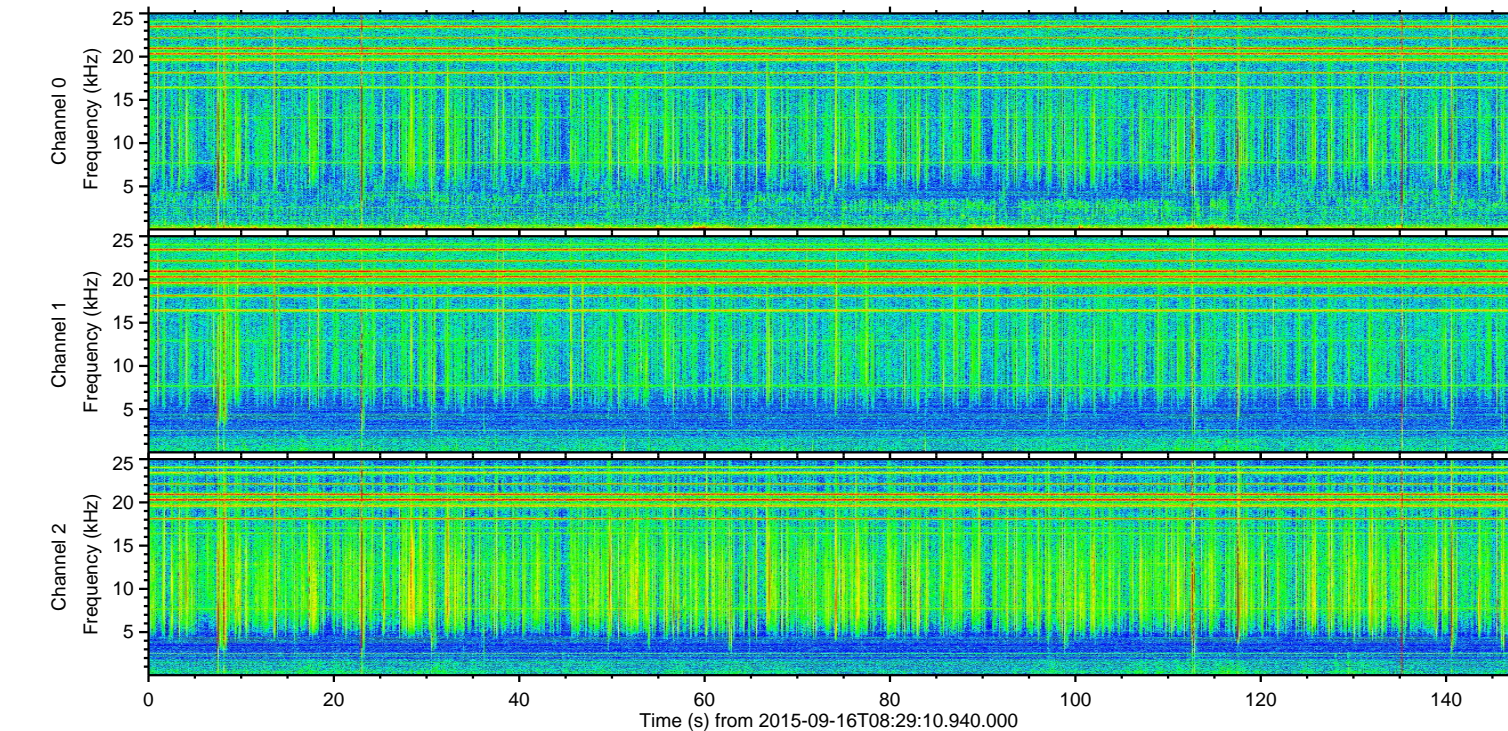
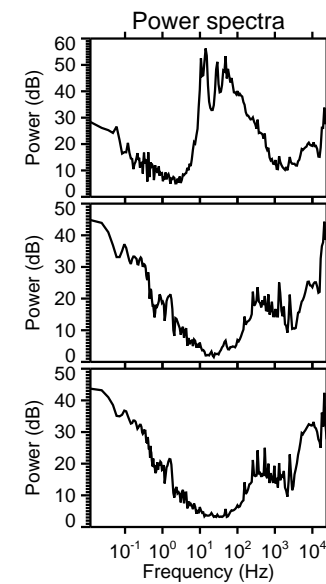
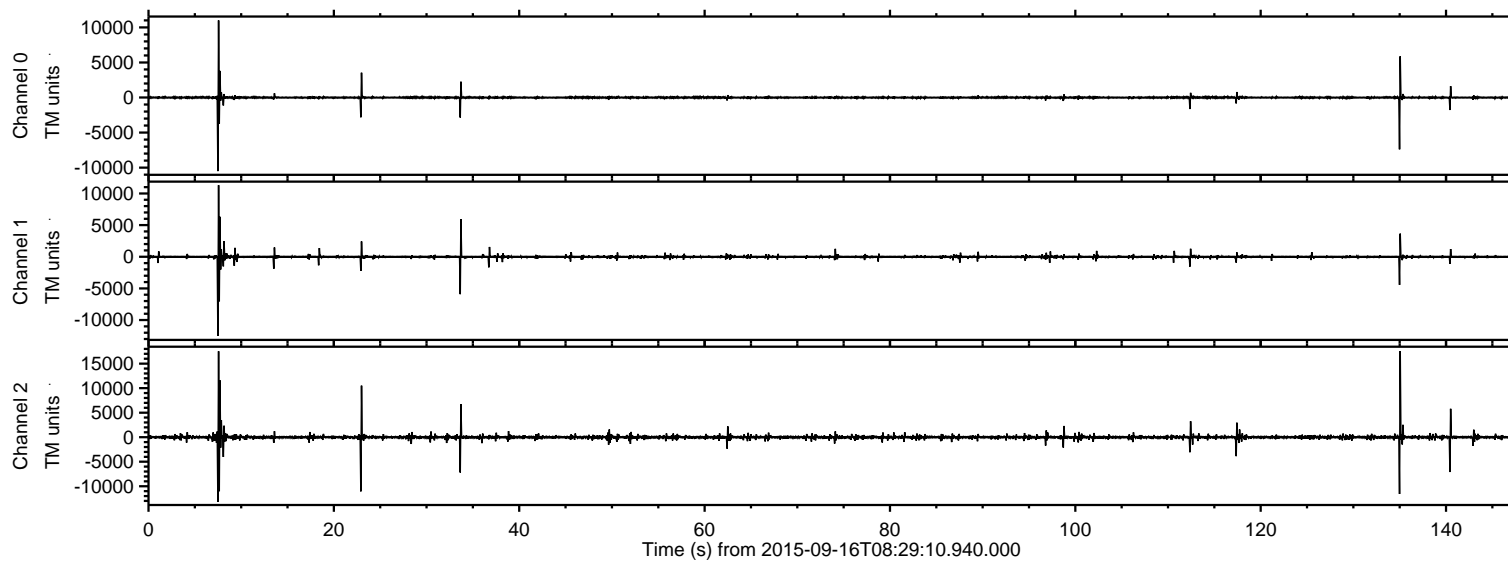


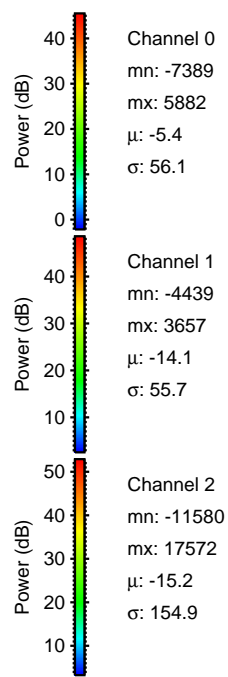
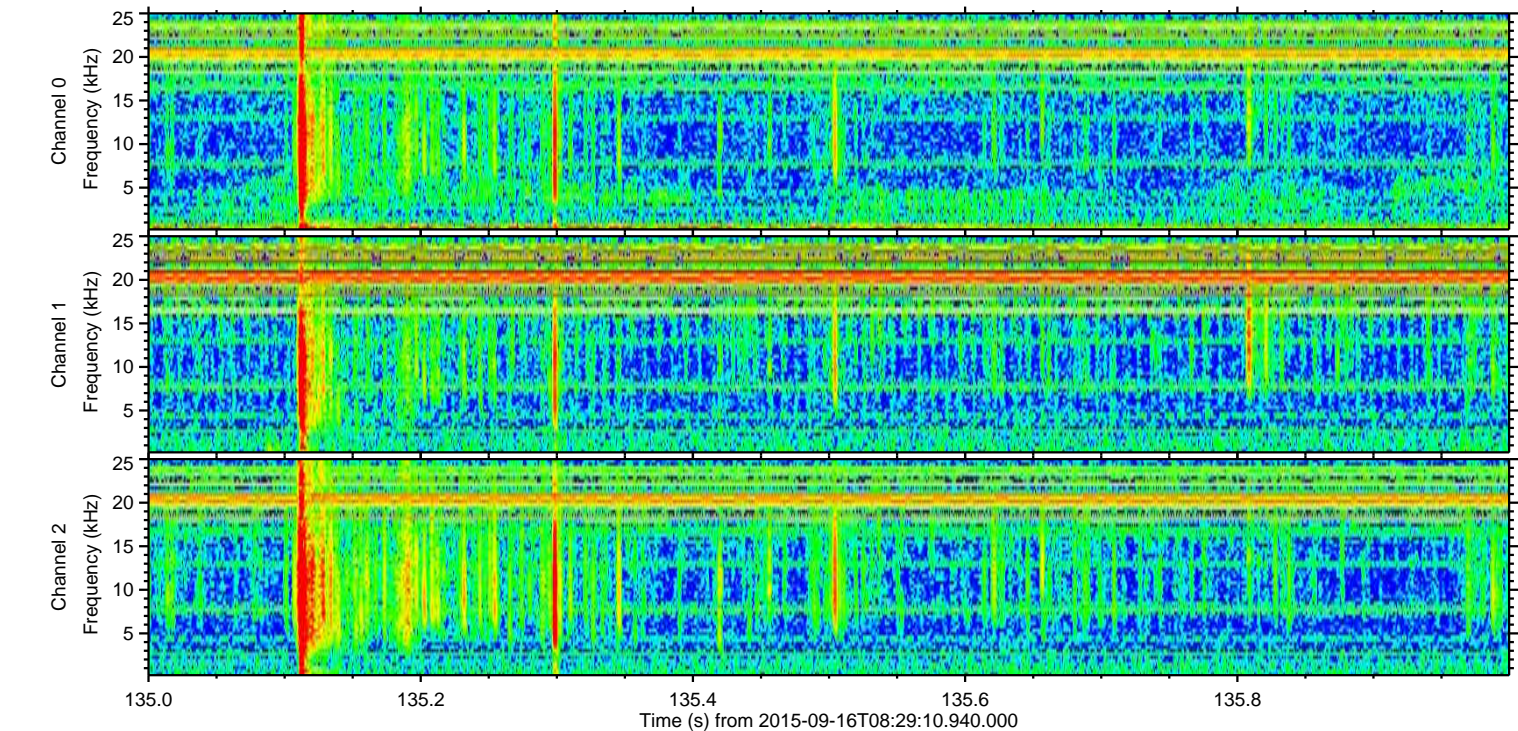
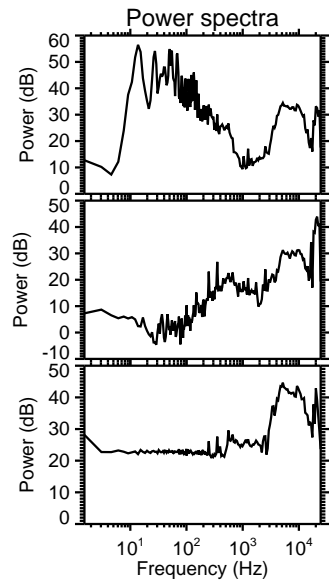
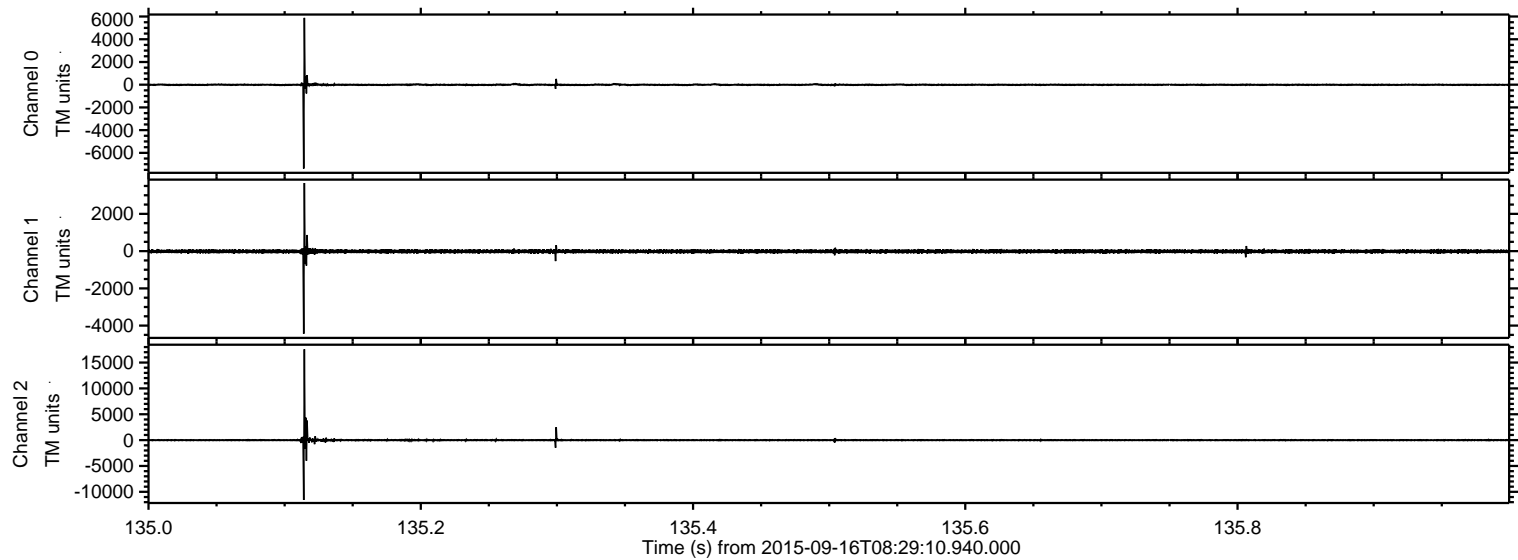
ELMAVAN 3D WAVEFORMS (Measured data sampled at 50 kHz) 51000 packets of 144 samples from 2015-09-16T08:29:10.940.000.

Processed Tue Oct 13 01:41:41 2015 by ELM ver.2012-10-06 from 001__elm20150916_082909__dat00.bin

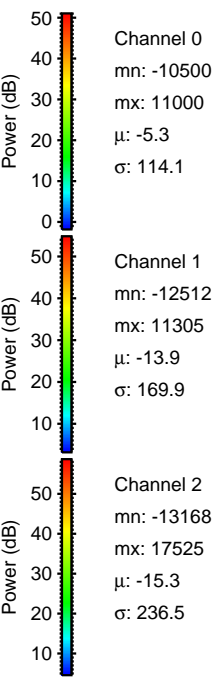
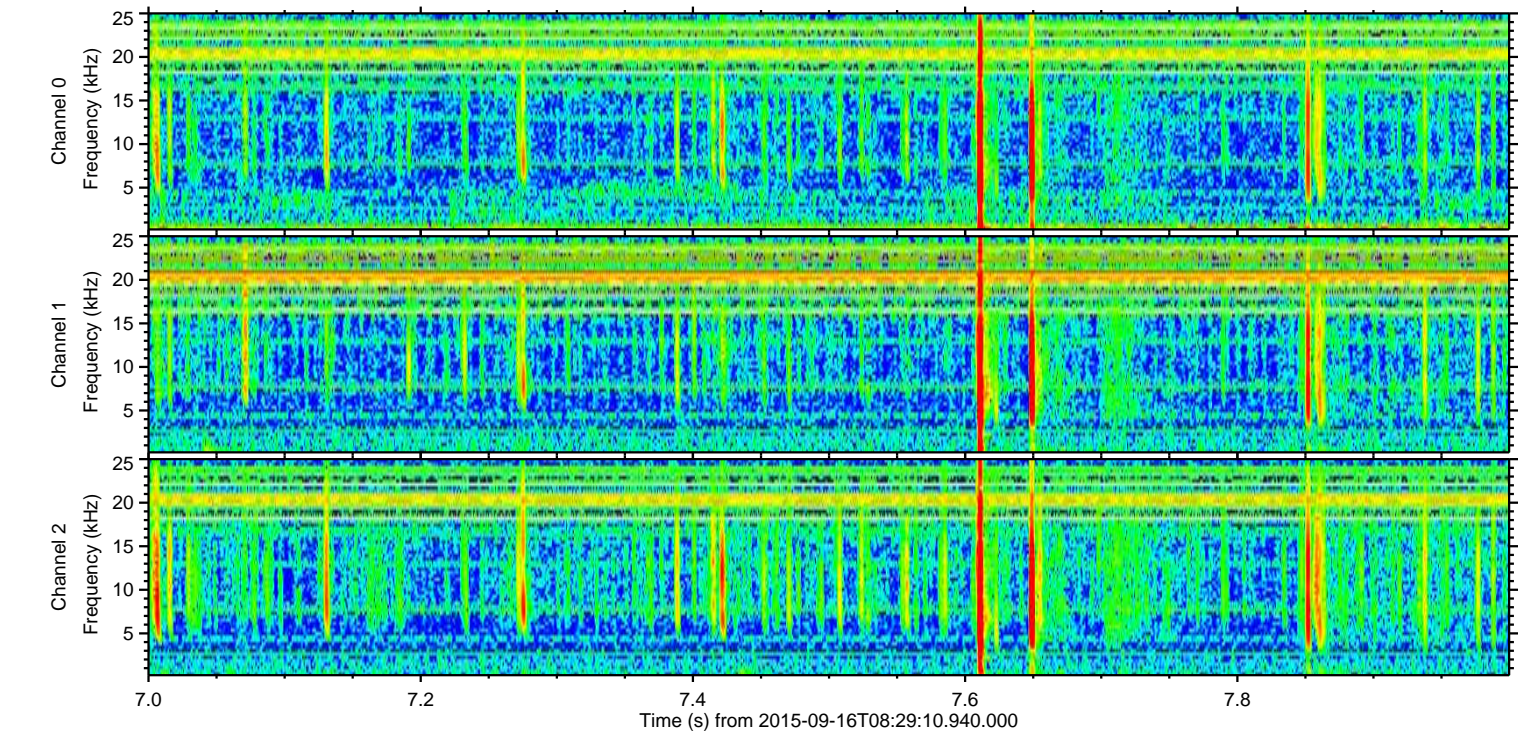
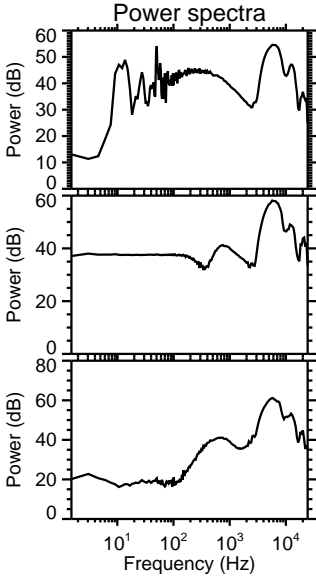
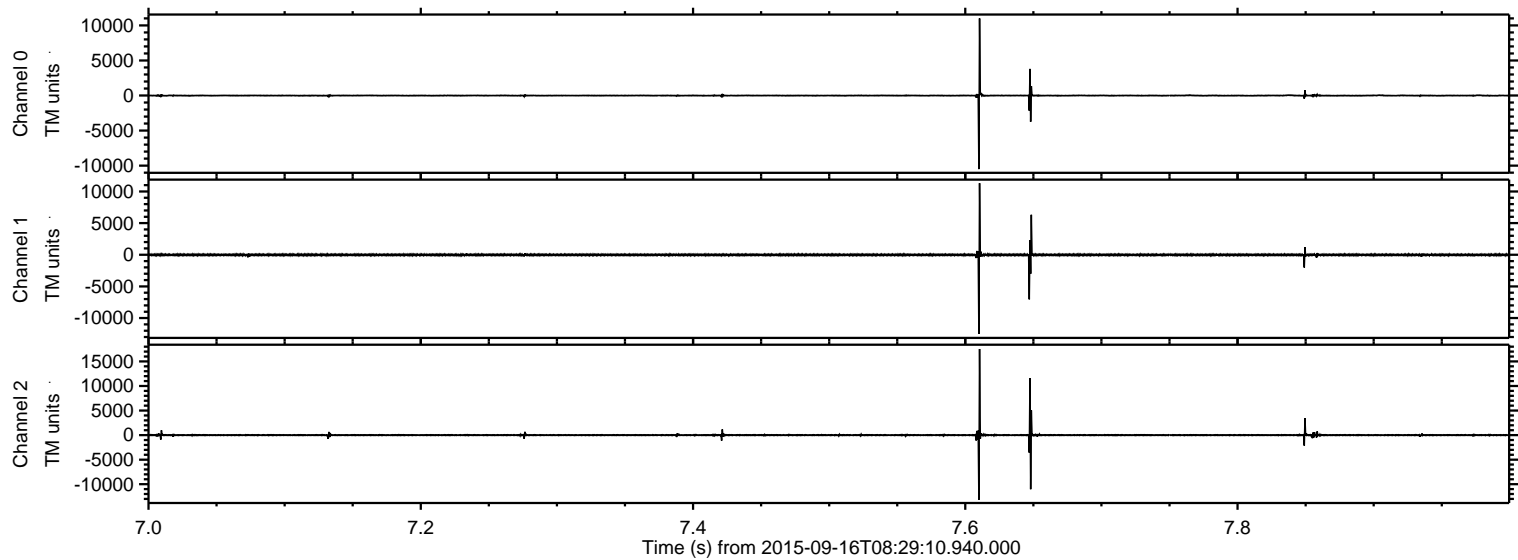


ELMAVAN 3D WAVEFORMS (Measured data sampled at 50 kHz) 51000 packets of 144 samples from 2015-09-16T08:29:10.940.000. Part 136/147

Processed Tue Oct 13 01:42:08 2015 by ELM ver.2012-10-06 from 001__elm20150916_082909__dat00.bin

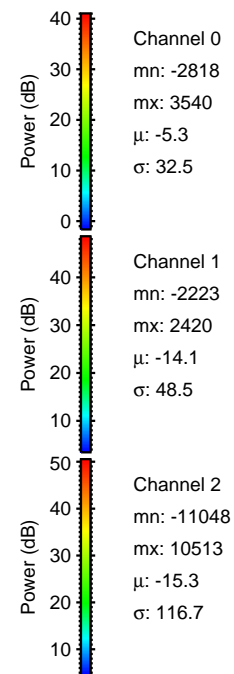
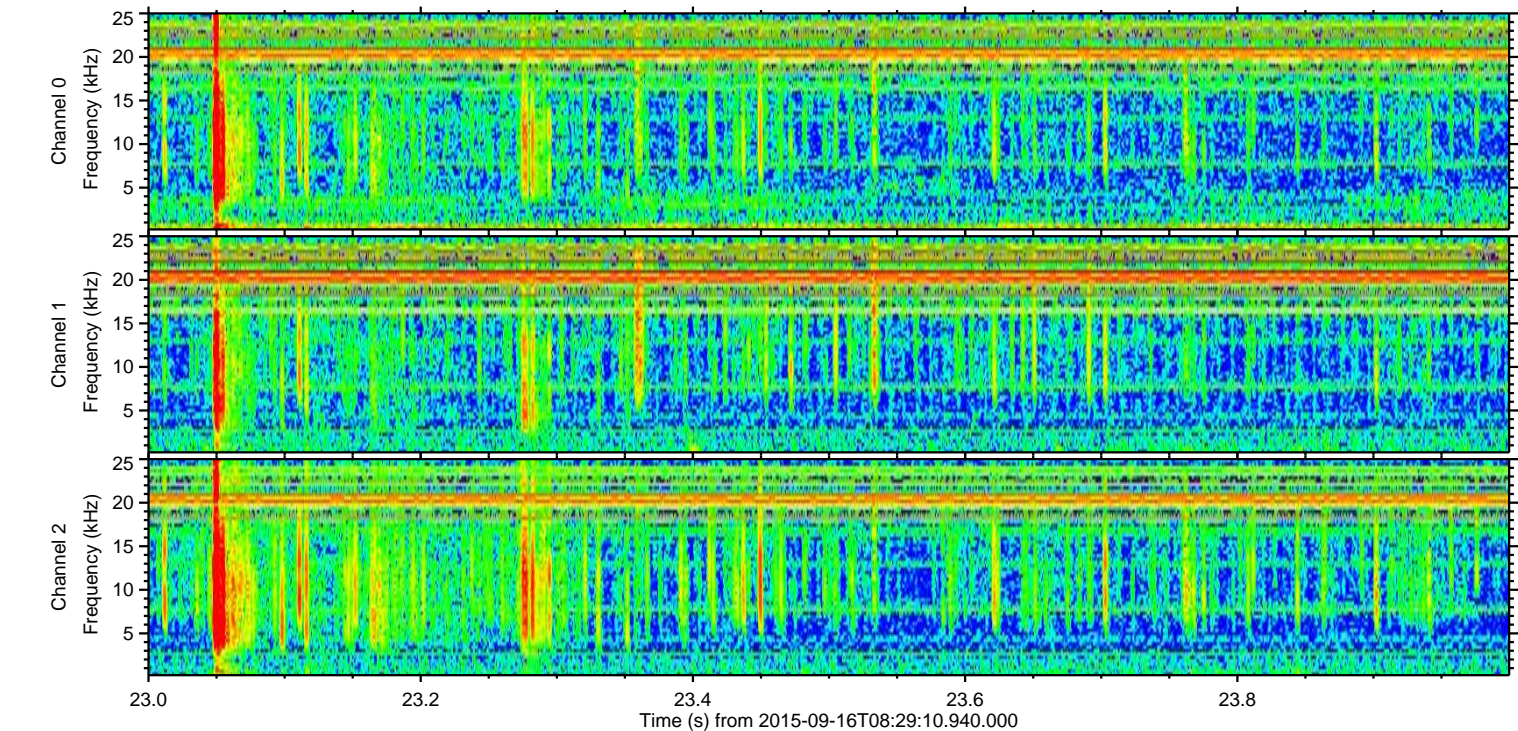
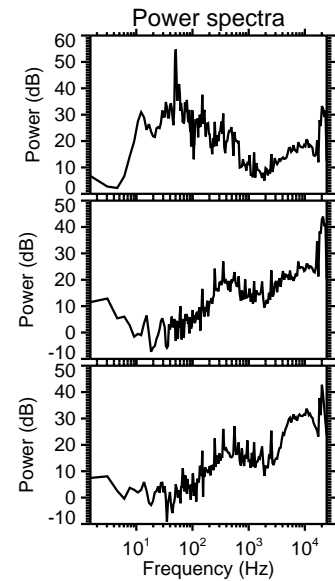
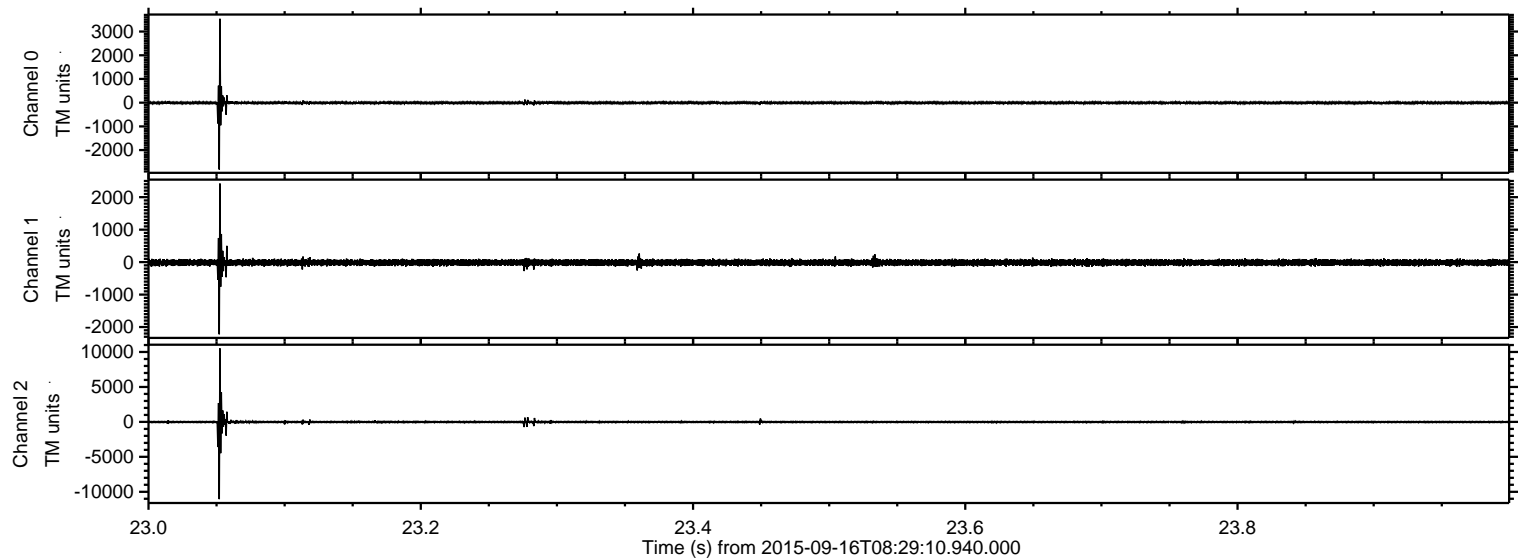


Processed Tue Oct 13 01:42:10 2015 by ELM ver.2012-10-06 from 001__elm20150916_082909__dat00.bin

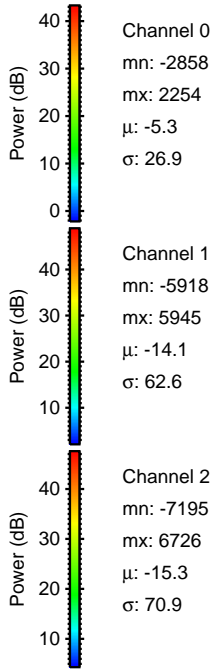
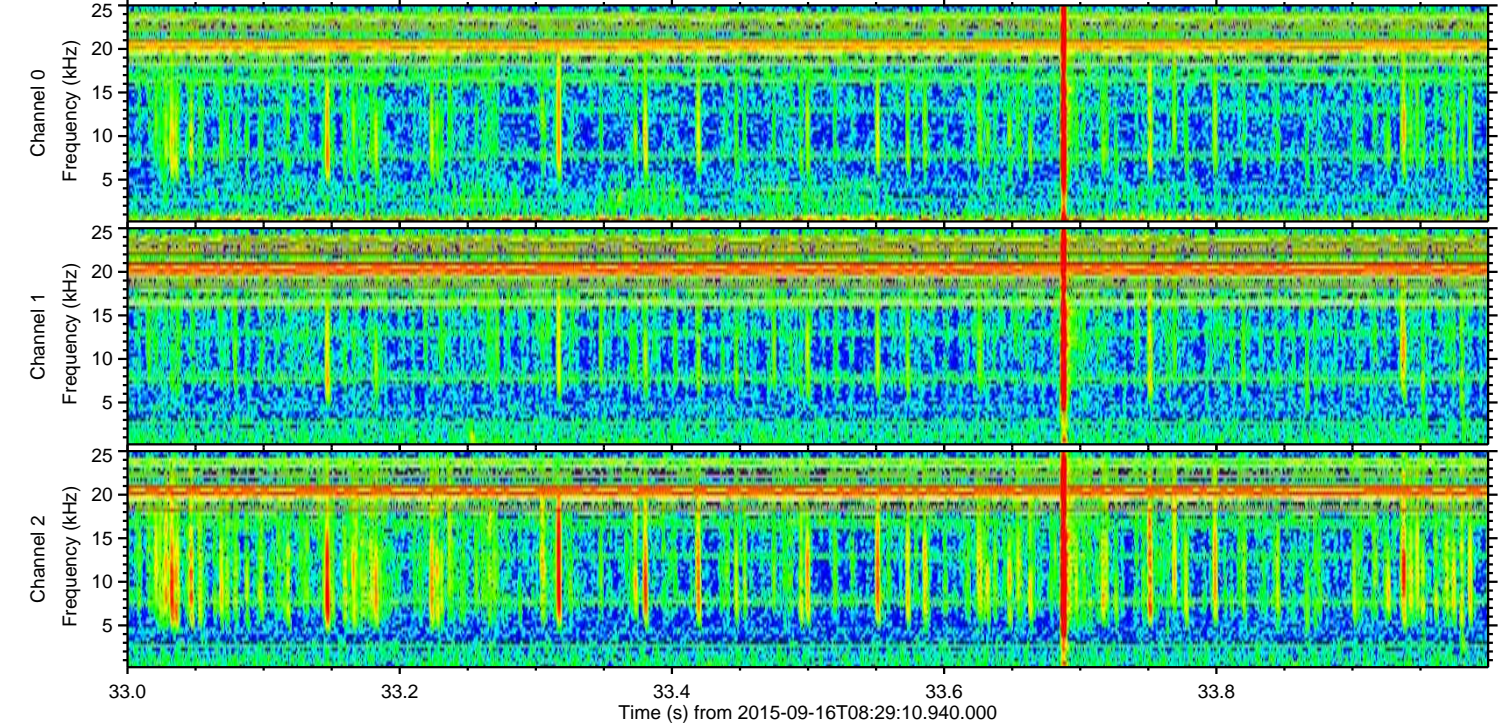
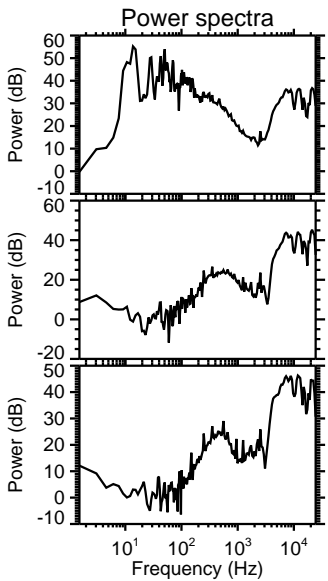
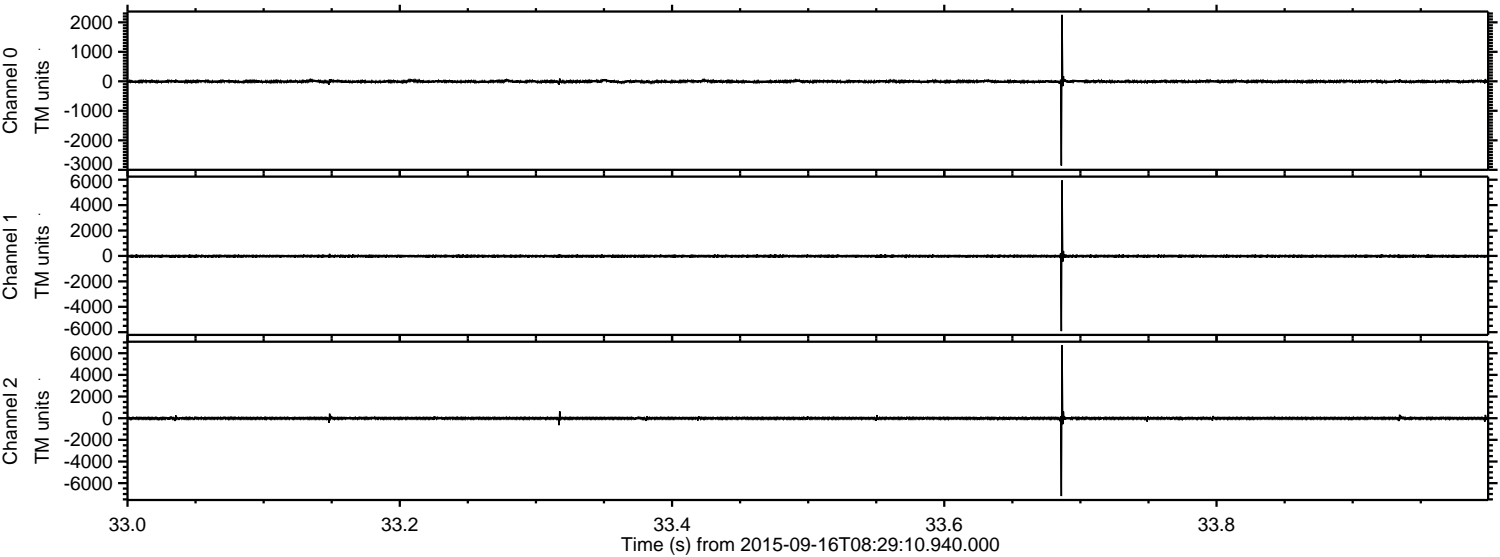


ELMAVAN 3D WAVEFORMS (Measured data sampled at 50 kHz) 51000 packets of 144 samples from 2015-09-16T08:29:10.940.000. Part 24/147

Processed Tue Oct 13 01:42:13 2015 by ELM ver.2012-10-06 from 001__elm20150916_082909__dat00.bin



Processed Tue Oct 13 01:42:15 2015 by ELM ver.2012-10-06 from 001__elm20150916_082909__dat00.bin



Channel 0

mn: -2858

mx: 2254

μ : -5.3

σ : 26.9

Channel 1

mn: -5918

mx: 5945

μ : -14.1

σ : 62.6

Channel 2

mn: -7195

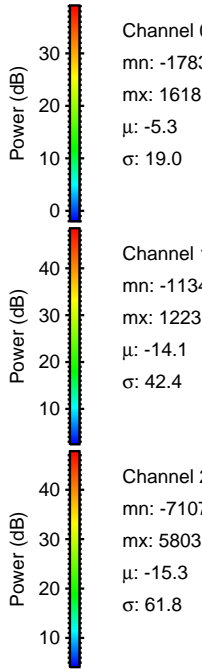
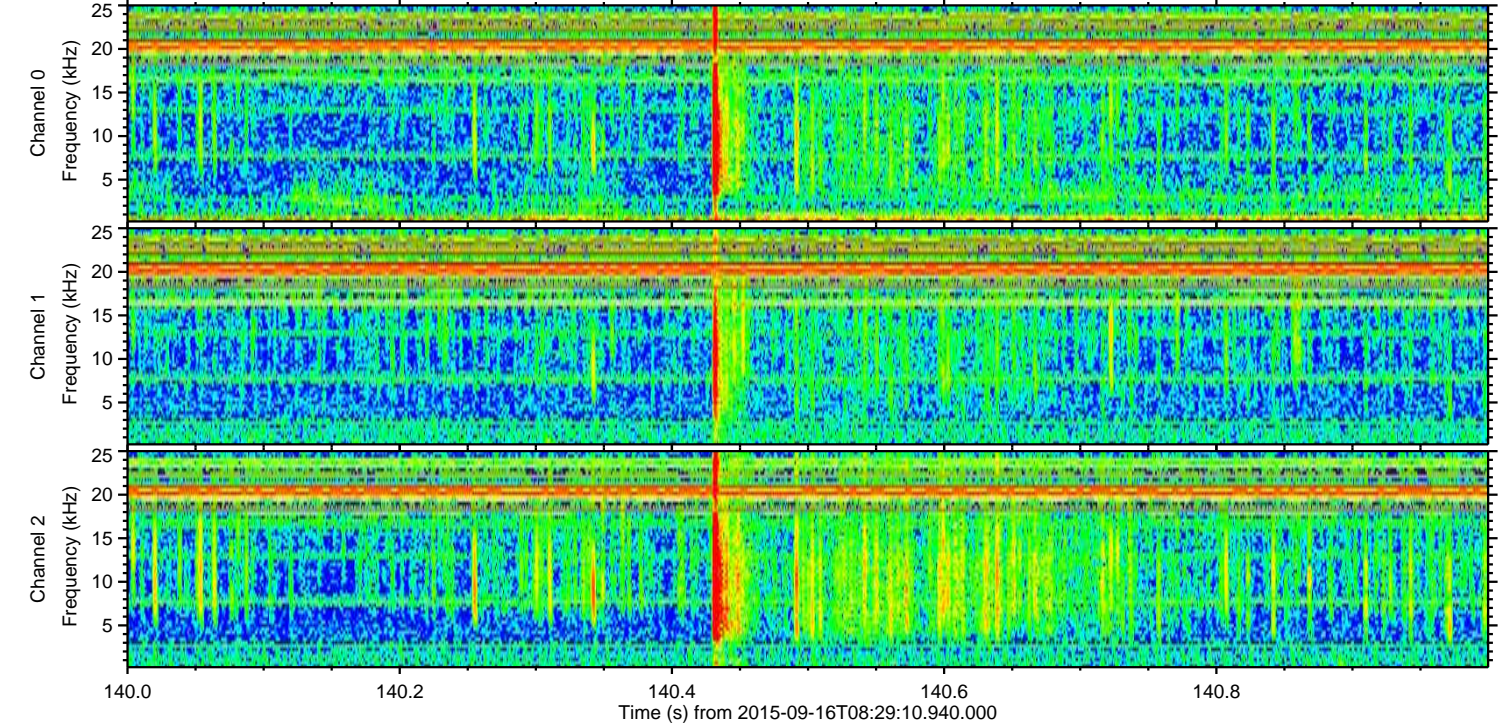
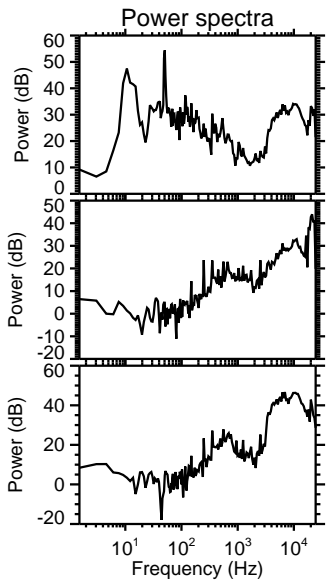
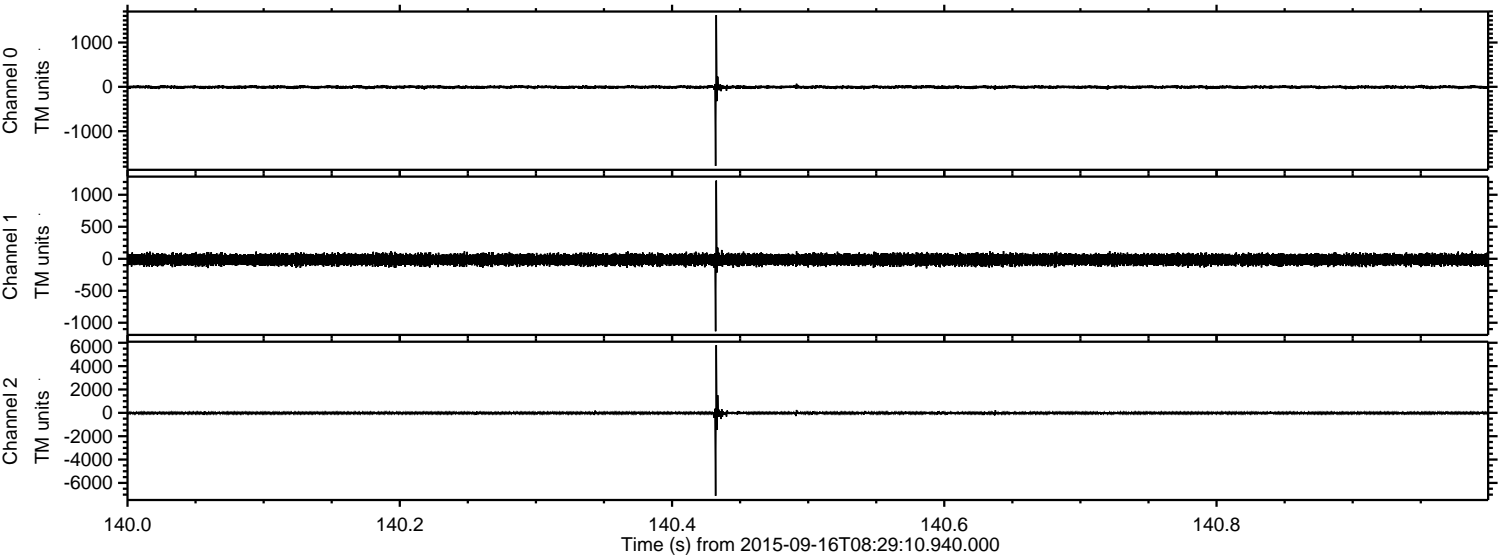
mx: 6726

μ : -15.3

σ : 70.9

ELMAVAN 3D WAVEFORMS (Measured data sampled at 50 kHz) 51000 packets of 144 samples from 2015-09-16T08:29:10.940.000. Part 141/147

Processed Tue Oct 13 01:42:18 2015 by ELM ver.2012-10-06 from 001__elm20150916_082909__dat00.bin



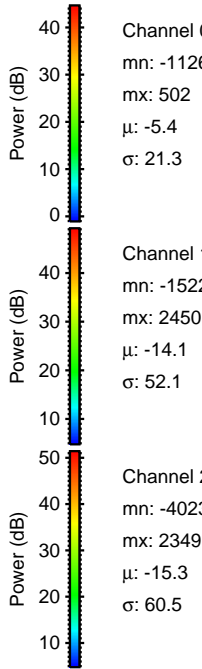
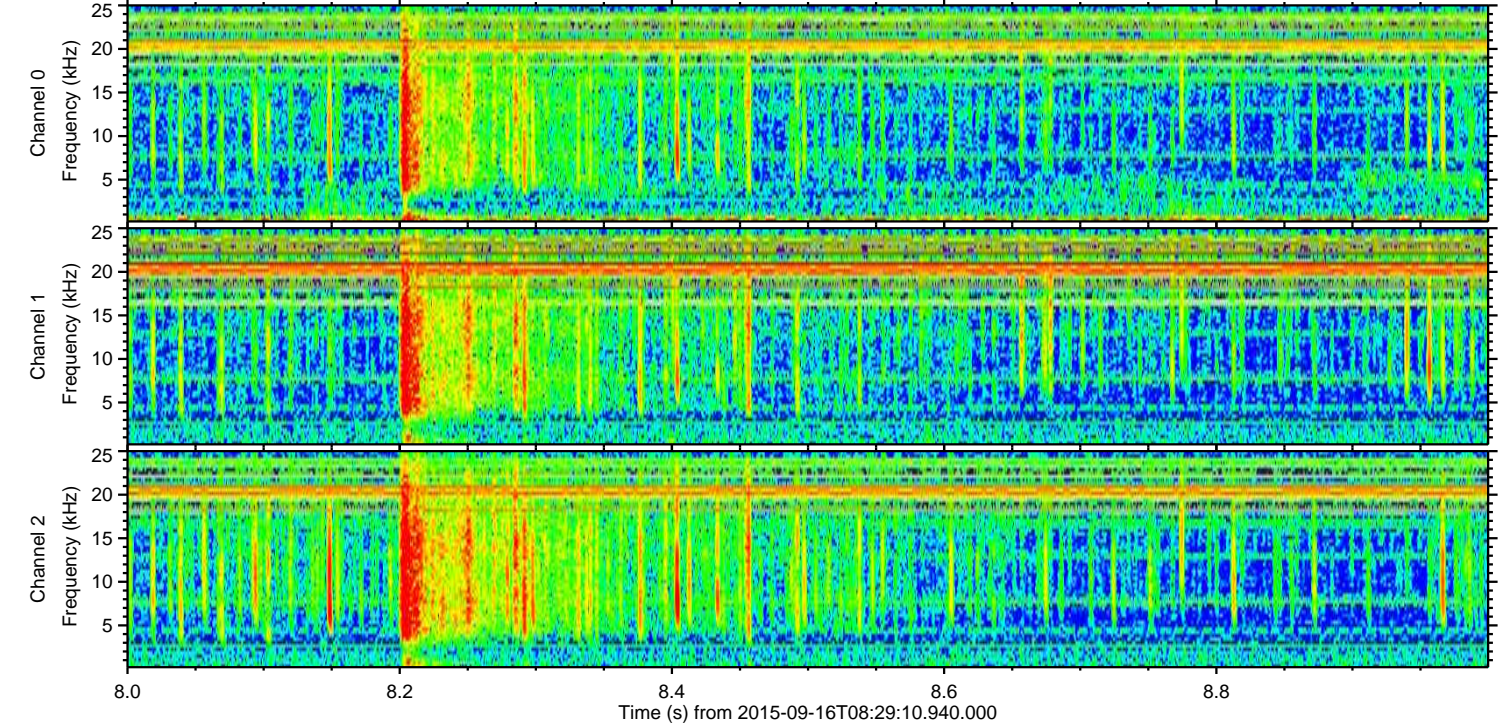
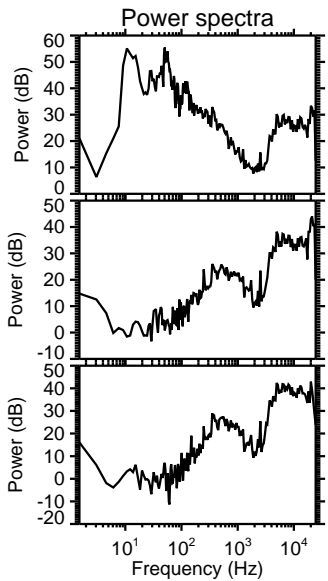
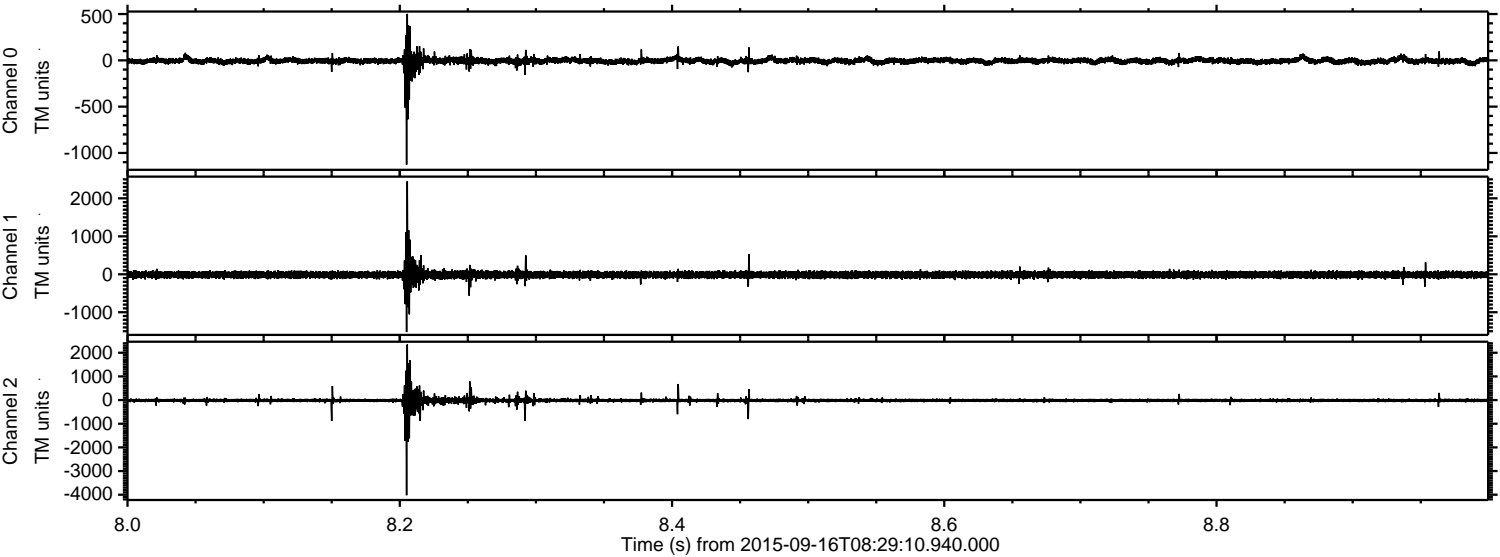
Channel 0
mn: -1783
mx: 1618
 μ : -5.3
 σ : 19.0

Channel 1
mn: -1134
mx: 1223
 μ : -14.1
 σ : 42.4

Channel 2
mn: -7107
mx: 5803
 μ : -15.3
 σ : 61.8

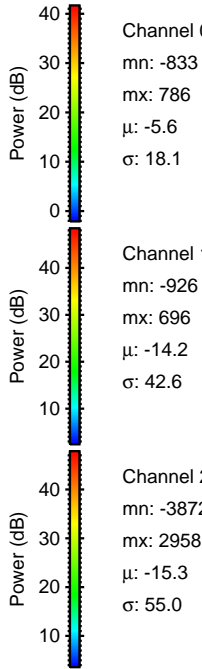
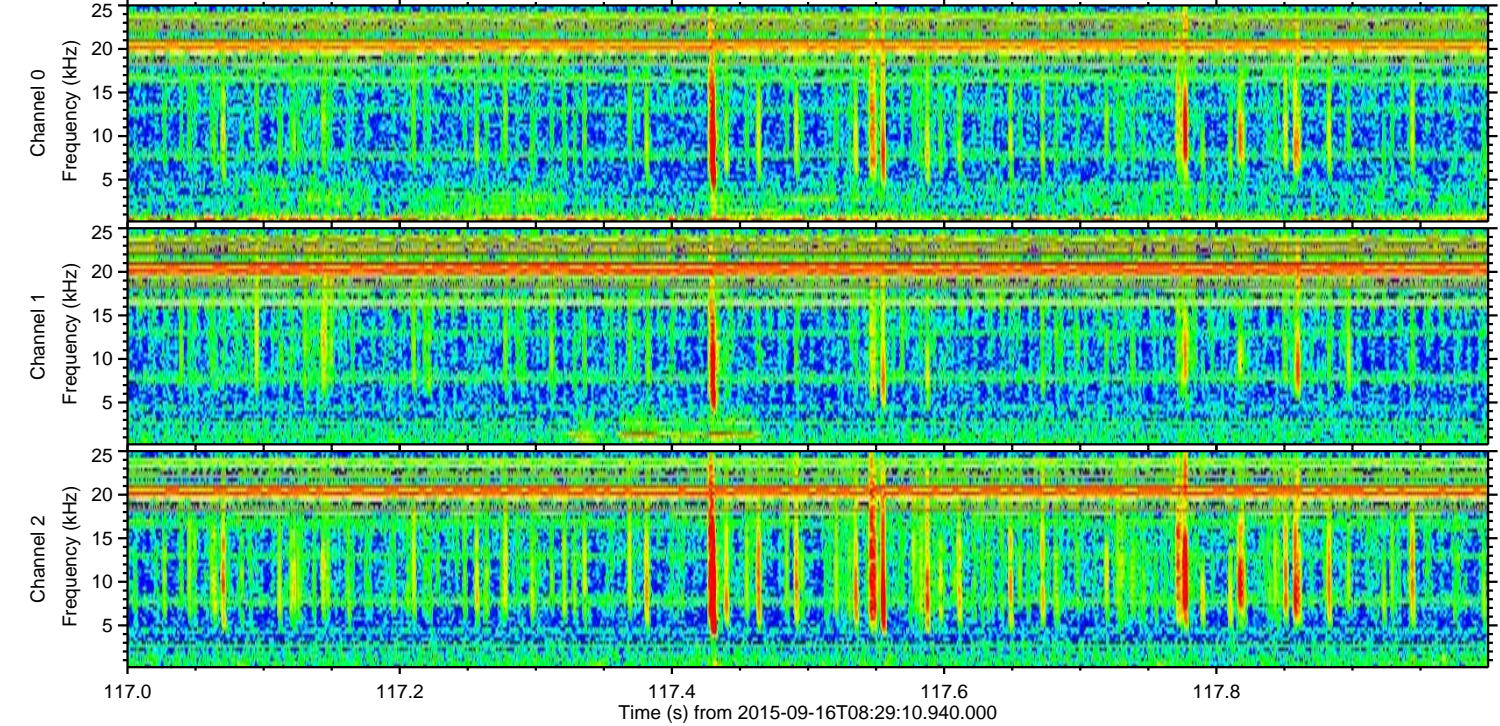
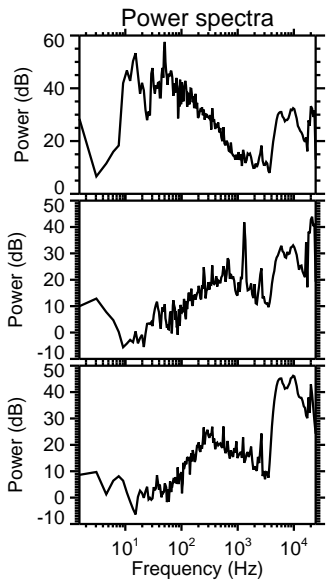
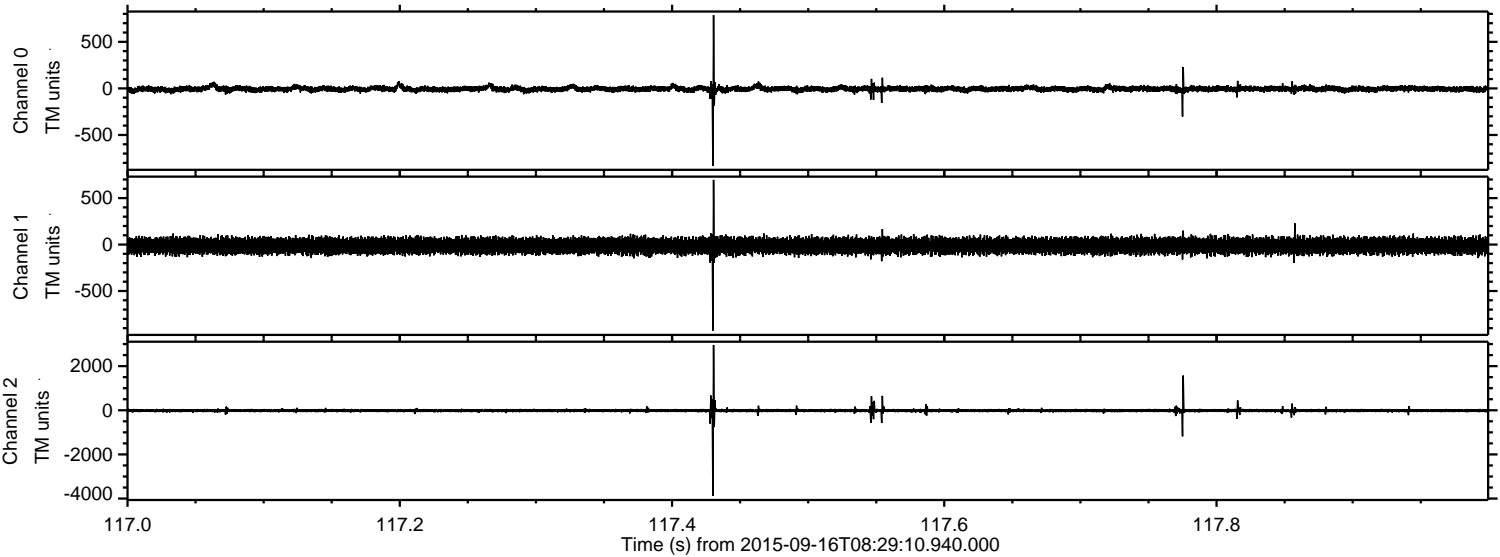
ELMAVAN 3D WAVEFORMS (Measured data sampled at 50 kHz) 51000 packets of 144 samples from 2015-09-16T08:29:10.940.000. Part 9/147

Processed Tue Oct 13 01:42:19 2015 by ELM ver.2012-10-06 from 001__elm20150916_082909__dat00.bin



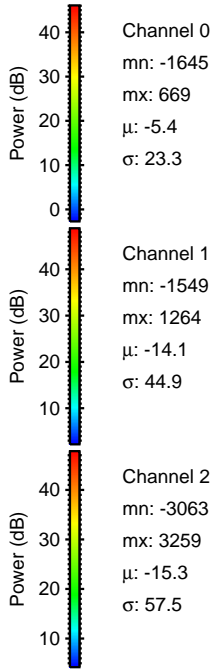
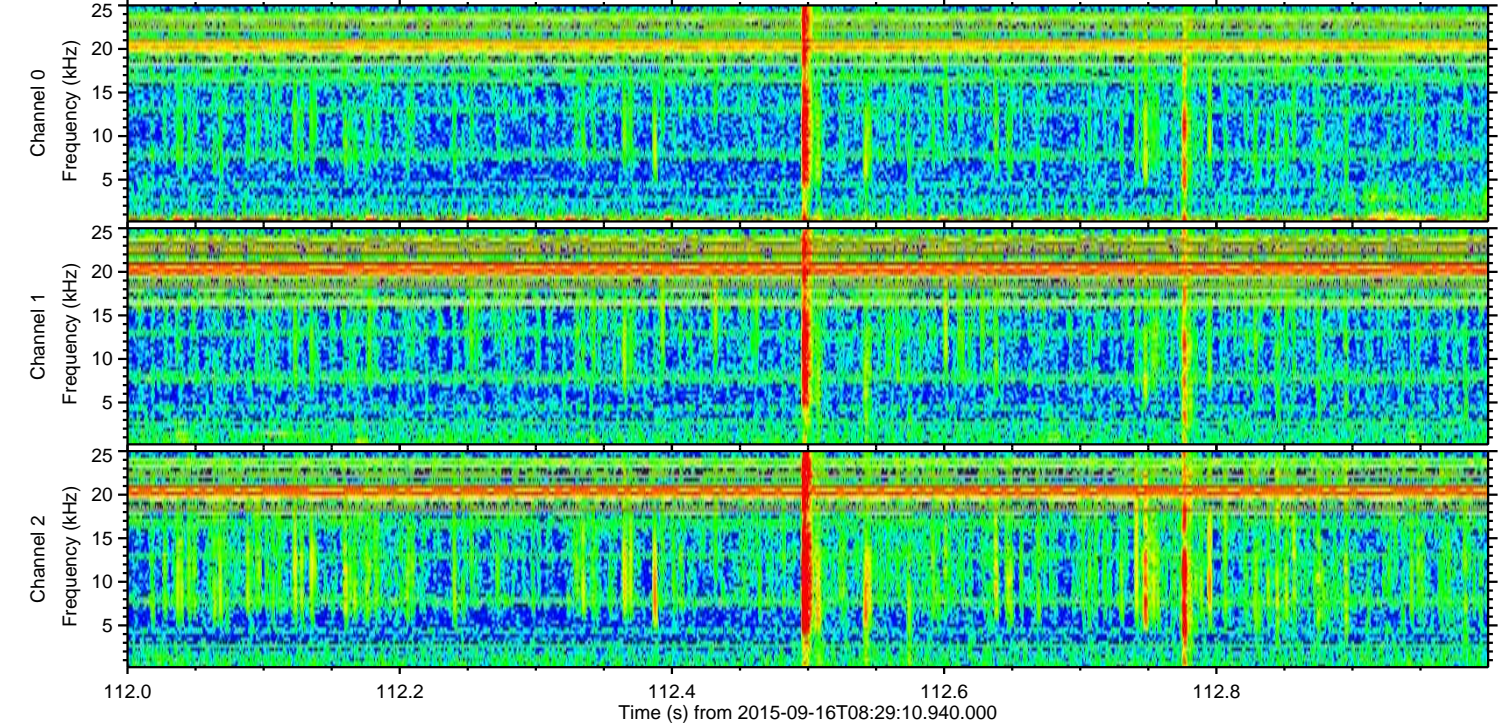
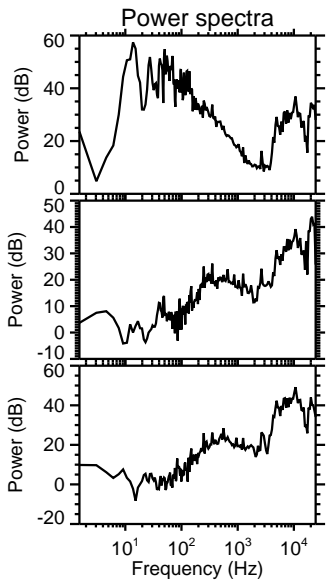
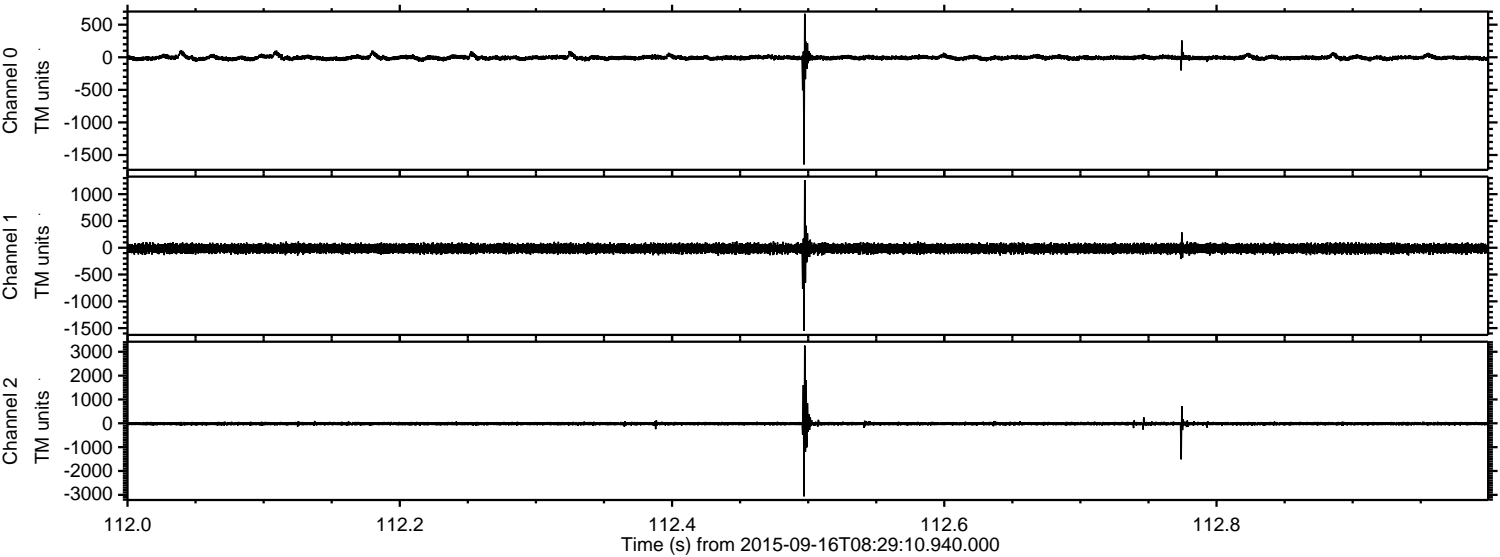
ELMAVAN 3D WAVEFORMS (Measured data sampled at 50 kHz) 51000 packets of 144 samples from 2015-09-16T08:29:10.940.000. Part 118/147

Processed Tue Oct 13 01:42:21 2015 by ELM ver.2012-10-06 from 001__elm20150916_082909__dat00.bin



ELMAVAN 3D WAVEFORMS (Measured data sampled at 50 kHz) 51000 packets of 144 samples from 2015-09-16T08:29:10.940.000. Part 113/147

Processed Tue Oct 13 01:42:23 2015 by ELM ver.2012-10-06 from 001__elm20150916_082909__dat00.bin

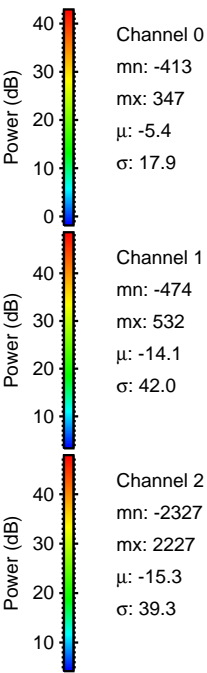
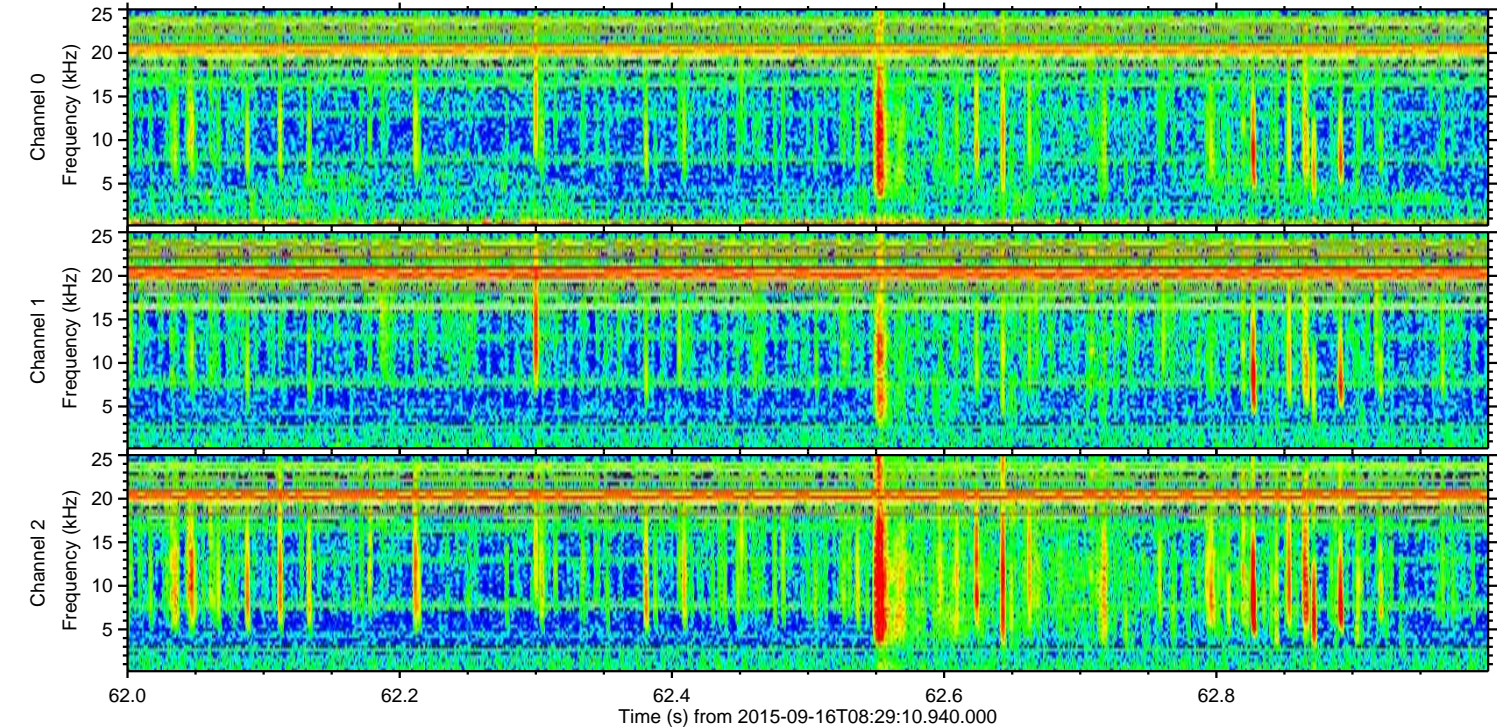
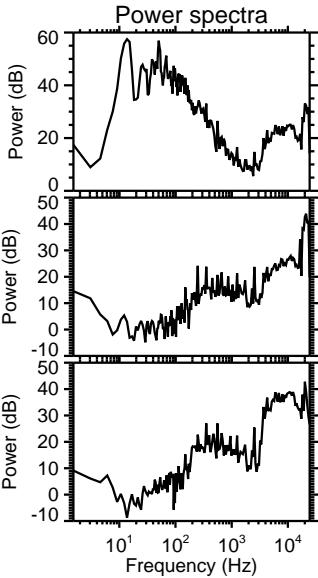
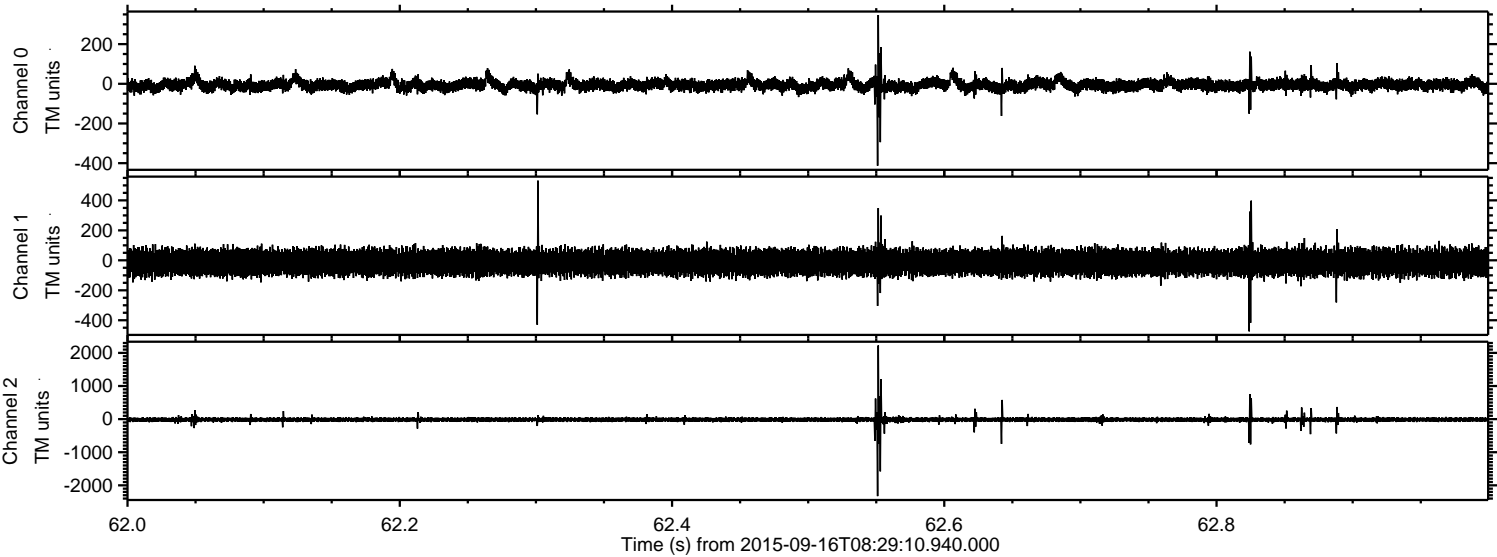


Channel 0
mn: -1645
mx: 669
 μ : -5.4
 σ : 23.3

Channel 1
mn: -1549
mx: 1264
 μ : -14.1
 σ : 44.9

Channel 2
mn: -3063
mx: 3259
 μ : -15.3
 σ : 57.5

Processed Tue Oct 13 01:42:25 2015 by ELM ver.2012-10-06 from 001__elm20150916_082909__dat00.bin



ELMAVAN 3D WAVEFORMS (Measured data sampled at 50 kHz) 51000 packets of 144 samples from 2015-09-16T08:29:10.940.000. Part 143/147

Processed Tue Oct 13 01:42:27 2015 by ELM ver.2012-10-06 from 001__elm20150916_082909__dat00.bin

