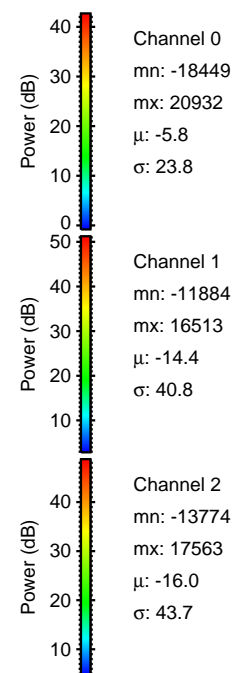
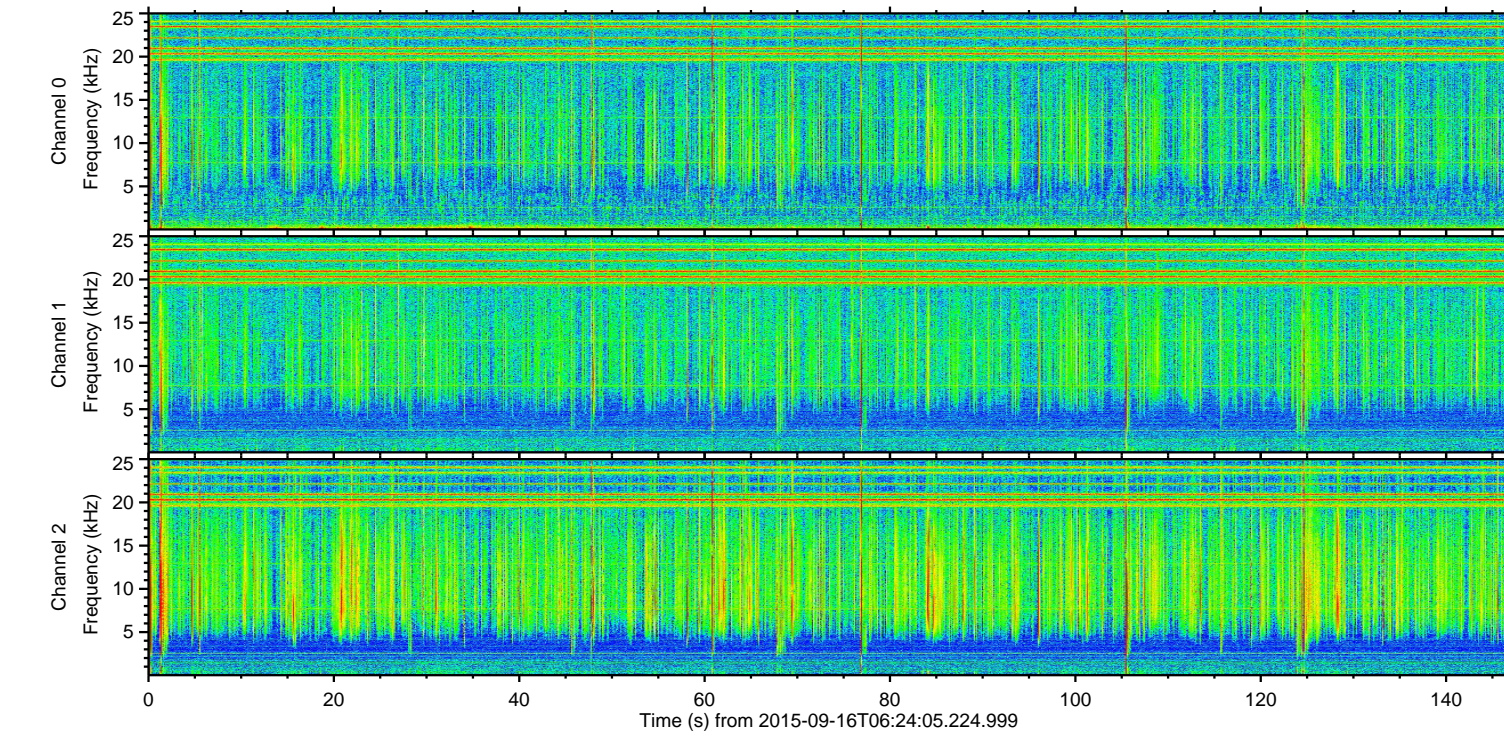
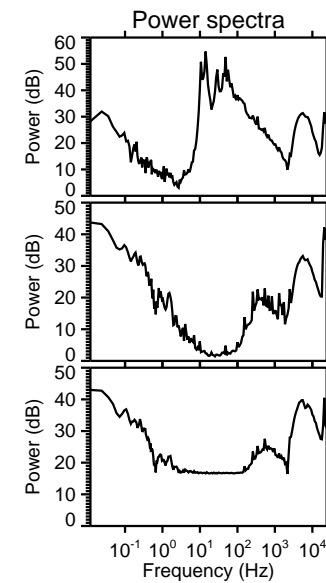
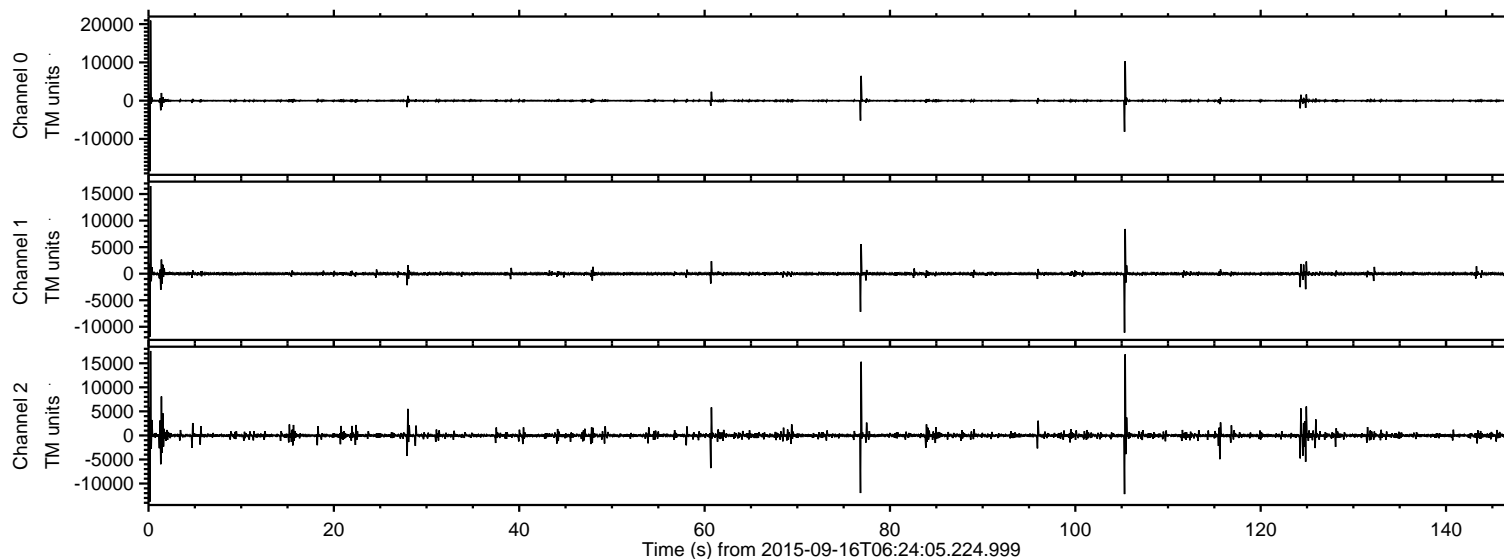


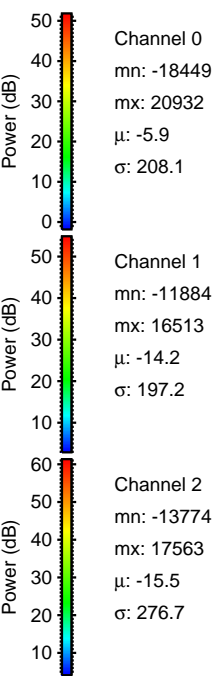
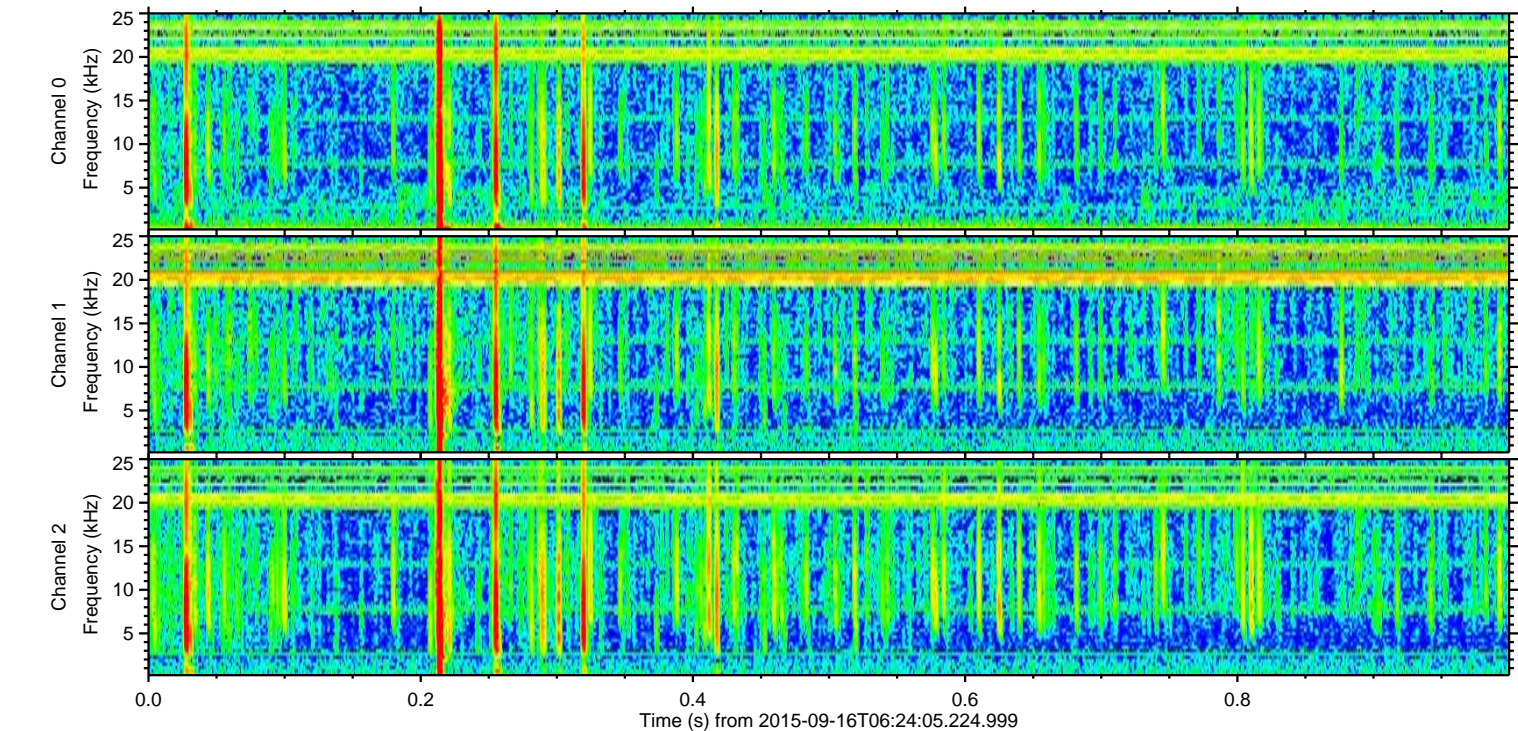
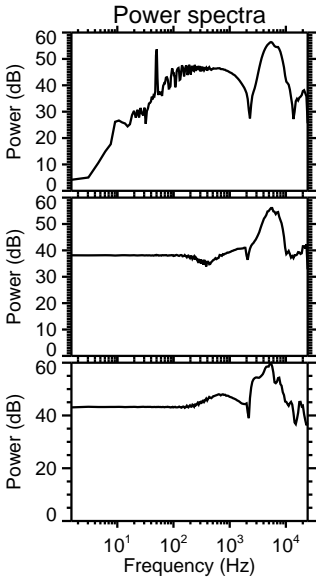
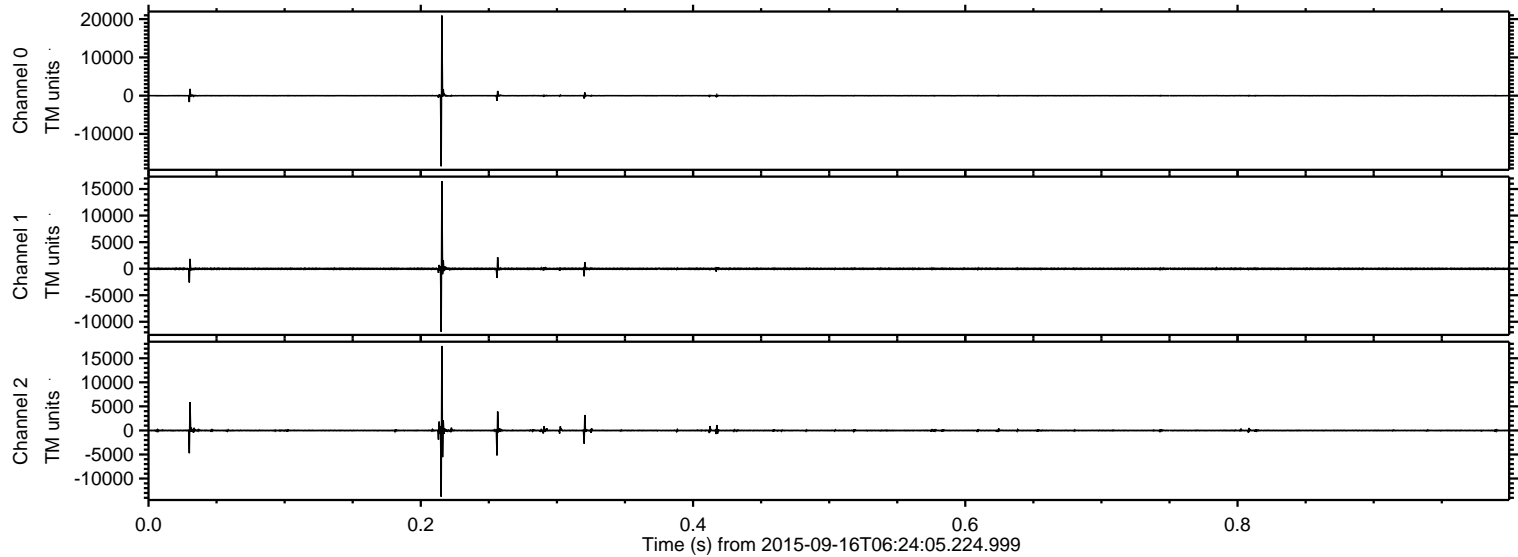
ELMAVAN 3D WAVEFORMS (Measured data sampled at 50 kHz) 51000 packets of 144 samples from 2015-09-16T06:24:05.224.999.

Processed Tue Oct 13 00:48:43 2015 by ELM ver.2012-10-06 from 001__elm20150916_062404__dat00.bin



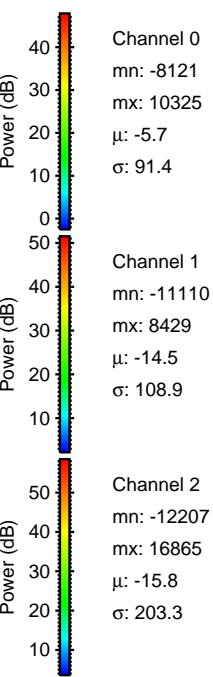
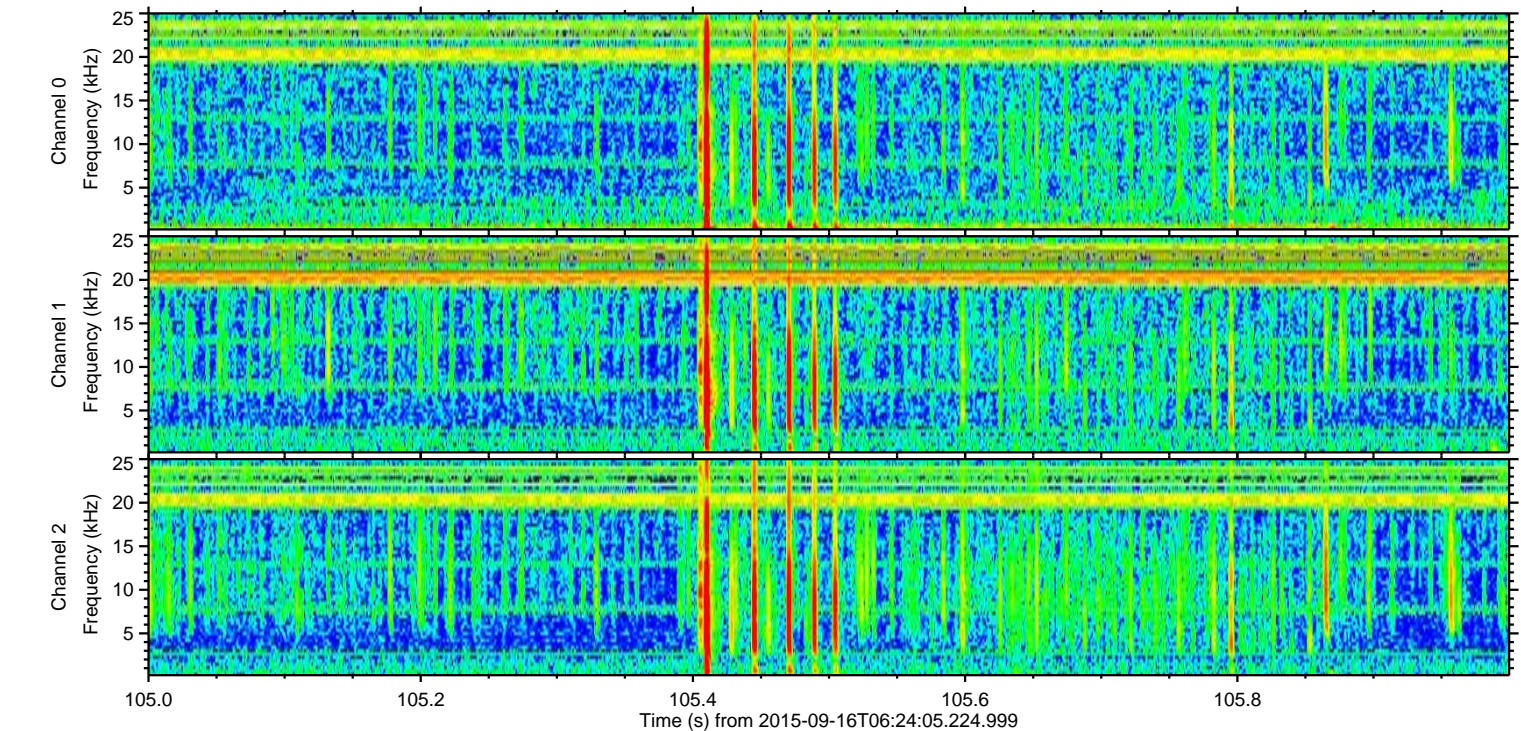
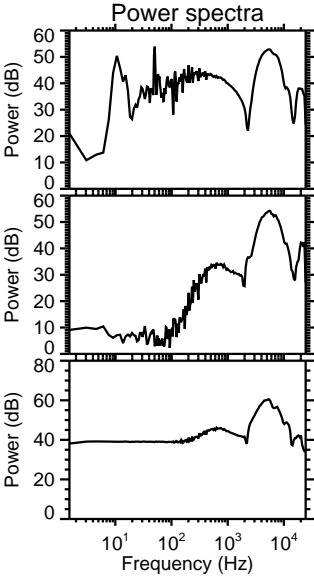
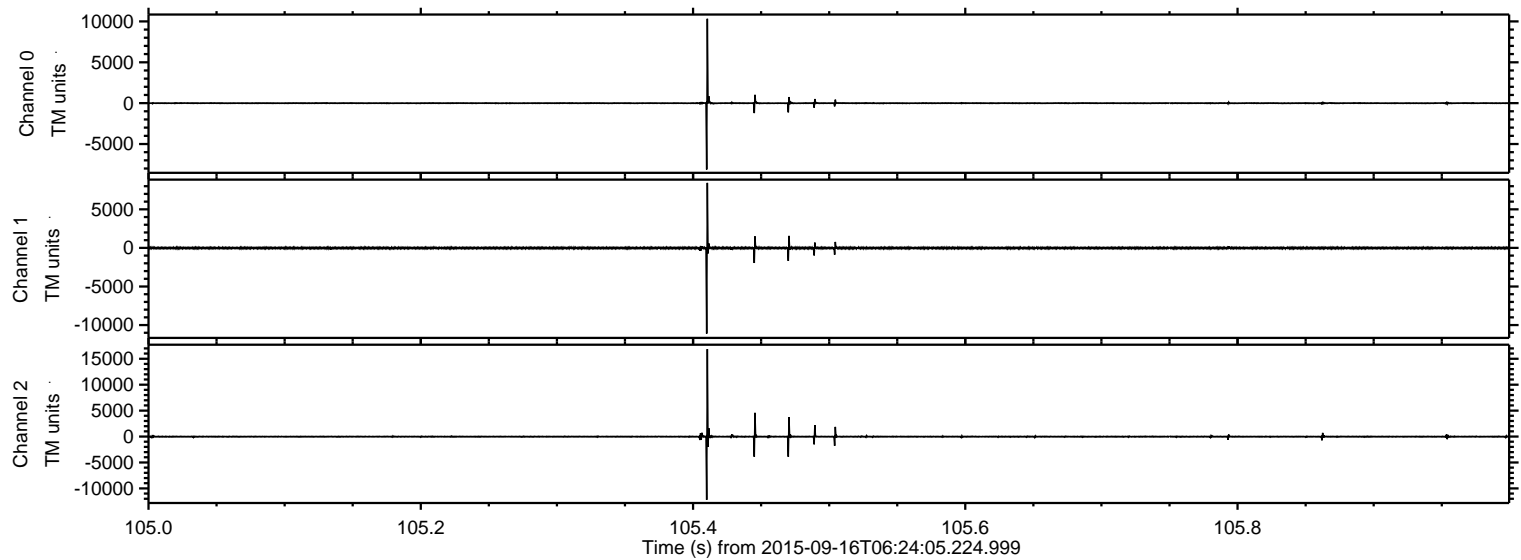
ELMAVAN 3D WAVEFORMS (Measured data sampled at 50 kHz) 51000 packets of 144 samples from 2015-09-16T06:24:05.224.999. Part 1/147

Processed Tue Oct 13 00:49:07 2015 by ELM ver.2012-10-06 from 001__elm20150916_062404__dat00.bin



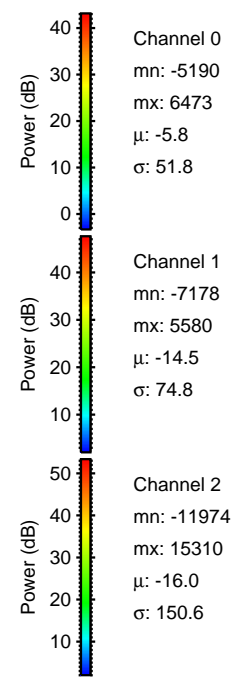
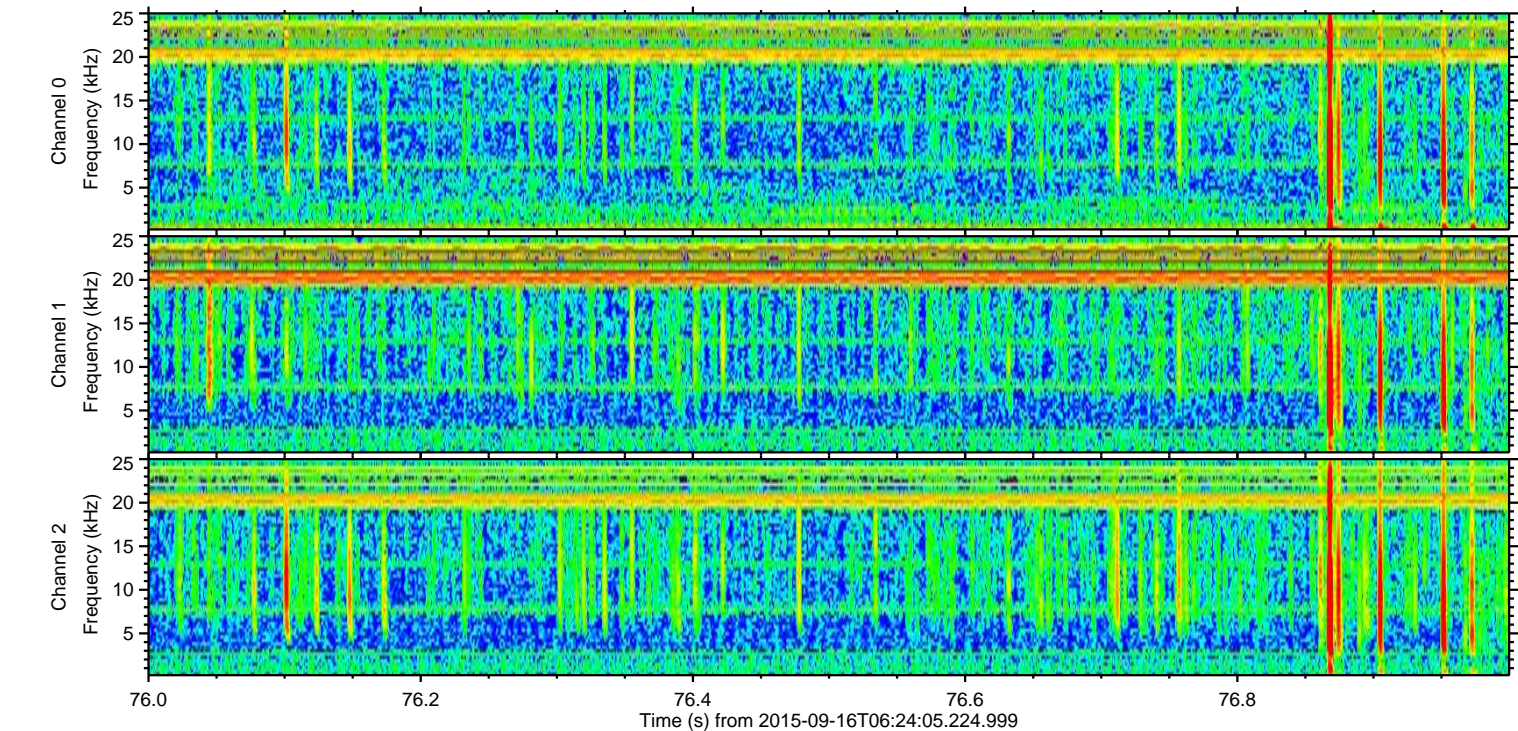
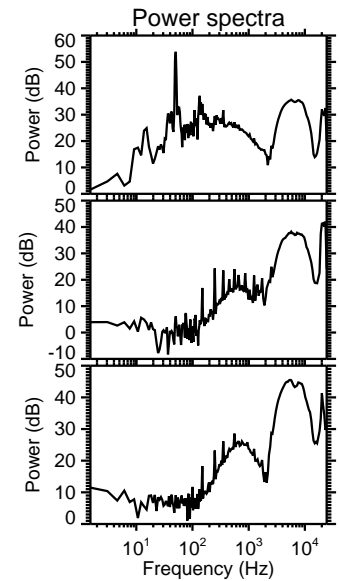
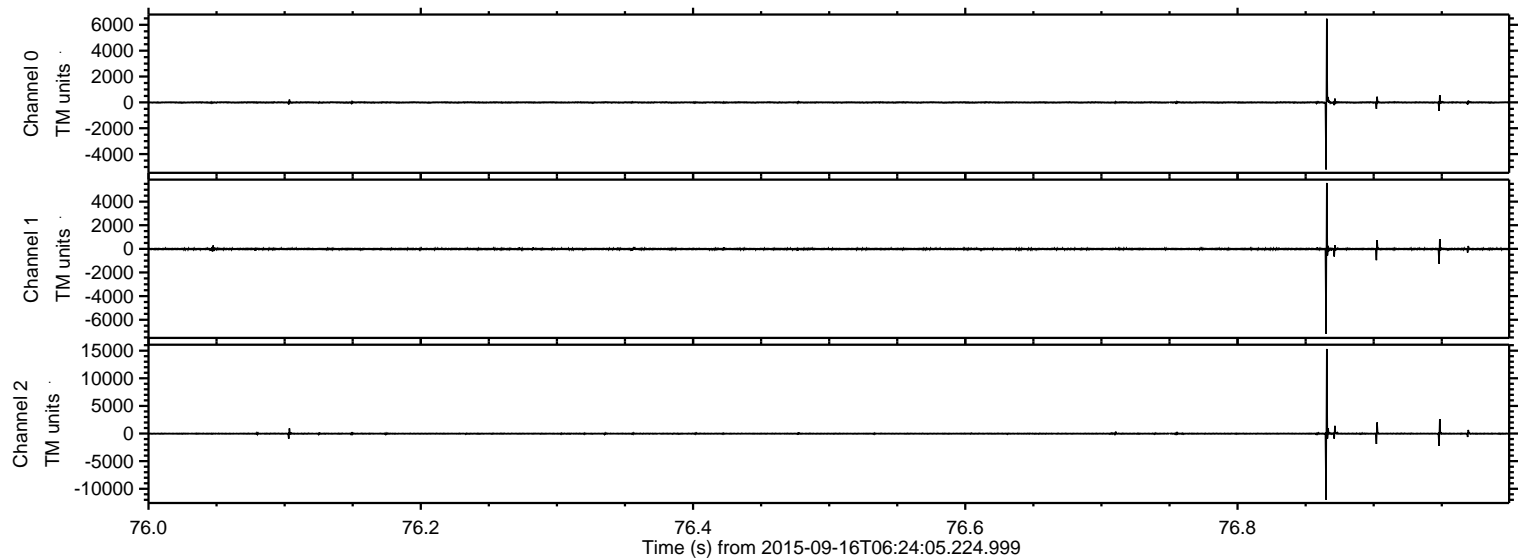
ELMAVAN 3D WAVEFORMS (Measured data sampled at 50 kHz) 51000 packets of 144 samples from 2015-09-16T06:24:05.224.999. Part 106/147

Processed Tue Oct 13 00:49:09 2015 by ELM ver.2012-10-06 from 001__elm20150916_062404__dat00.bin



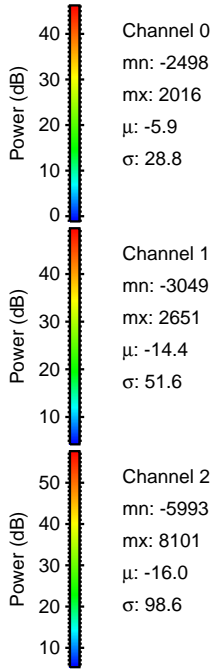
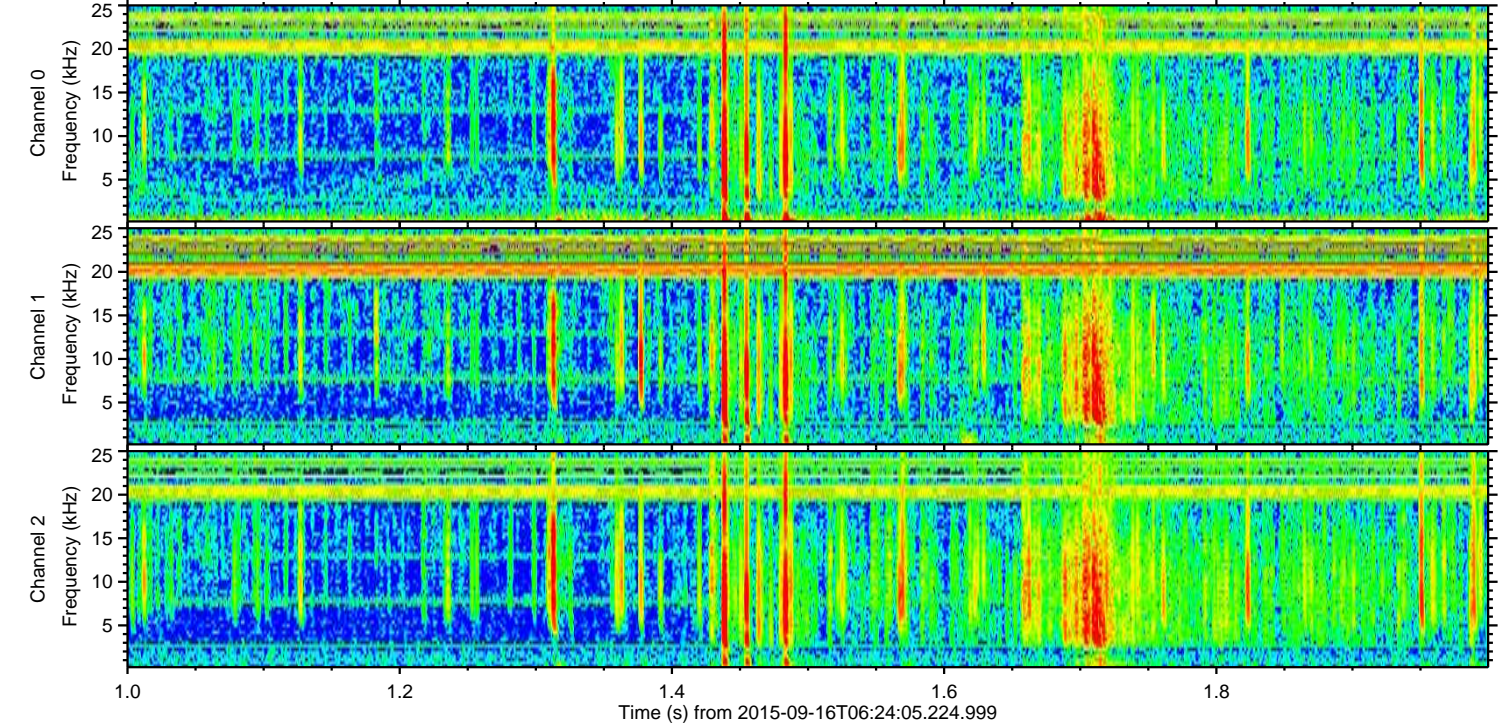
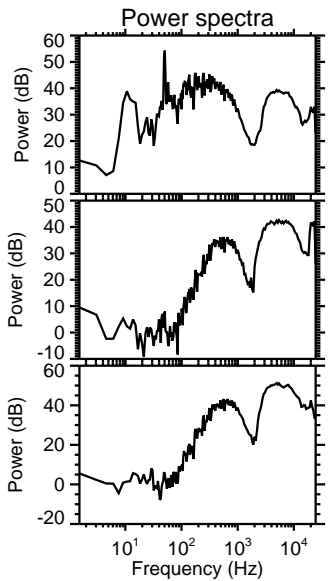
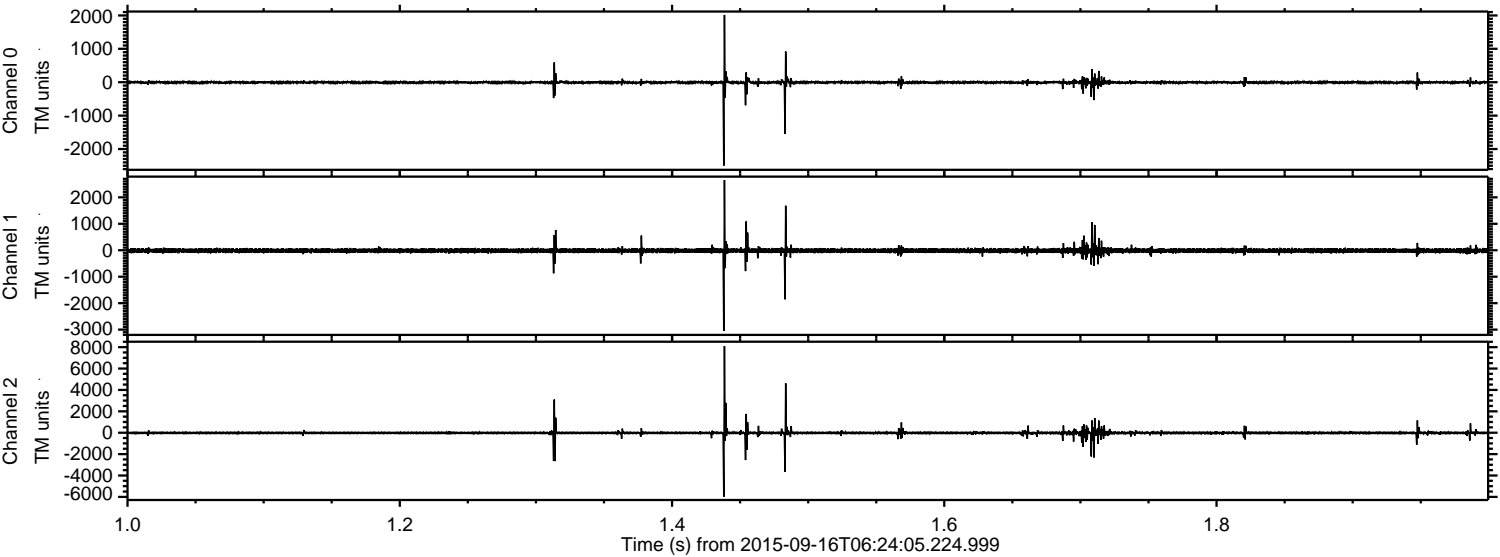
ELMAVAN 3D WAVEFORMS (Measured data sampled at 50 kHz) 51000 packets of 144 samples from 2015-09-16T06:24:05.224.999. Part 77/147

Processed Tue Oct 13 00:49:10 2015 by ELM ver.2012-10-06 from 001__elm20150916_062404__dat00.bin

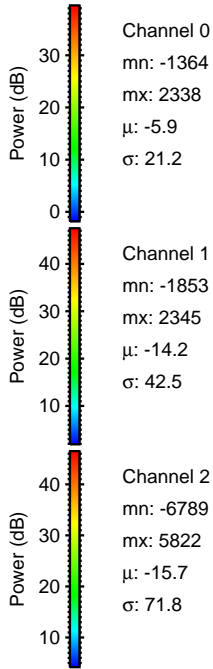
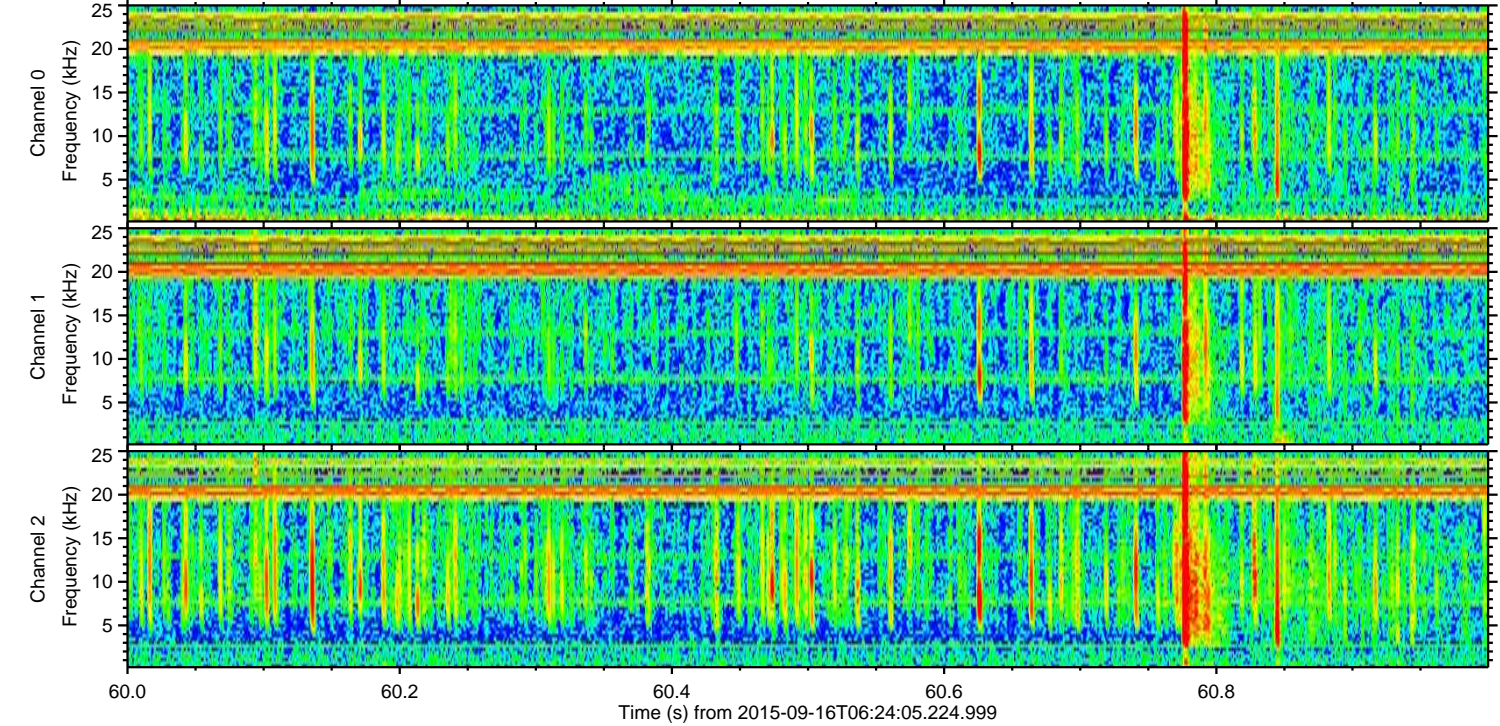
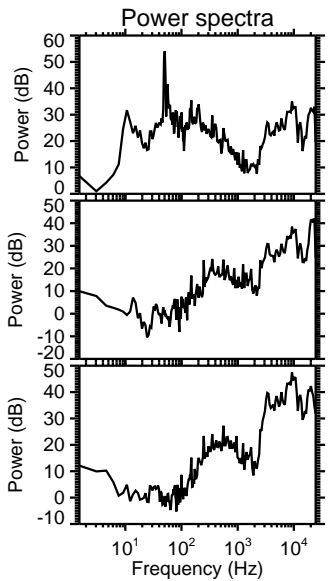
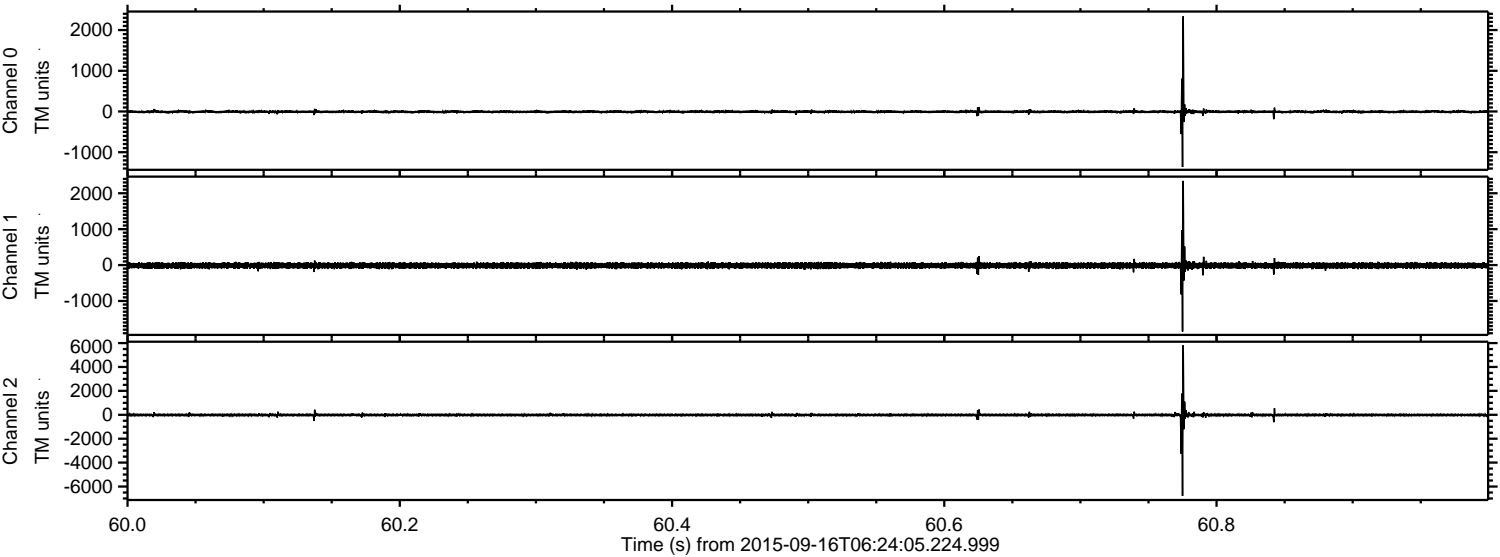


ELMAVAN 3D WAVEFORMS (Measured data sampled at 50 kHz) 51000 packets of 144 samples from 2015-09-16T06:24:05.224.999. Part 2/147

Processed Tue Oct 13 00:49:12 2015 by ELM ver.2012-10-06 from 001__elm20150916_062404__dat00.bin



Processed Tue Oct 13 00:49:14 2015 by ELM ver.2012-10-06 from 001__elm20150916_062404__dat00.bin



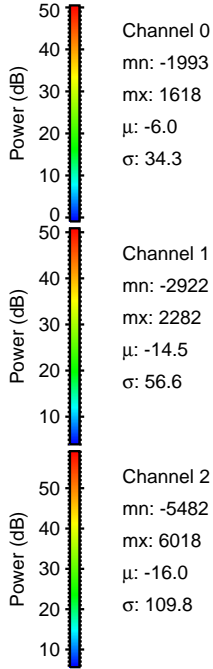
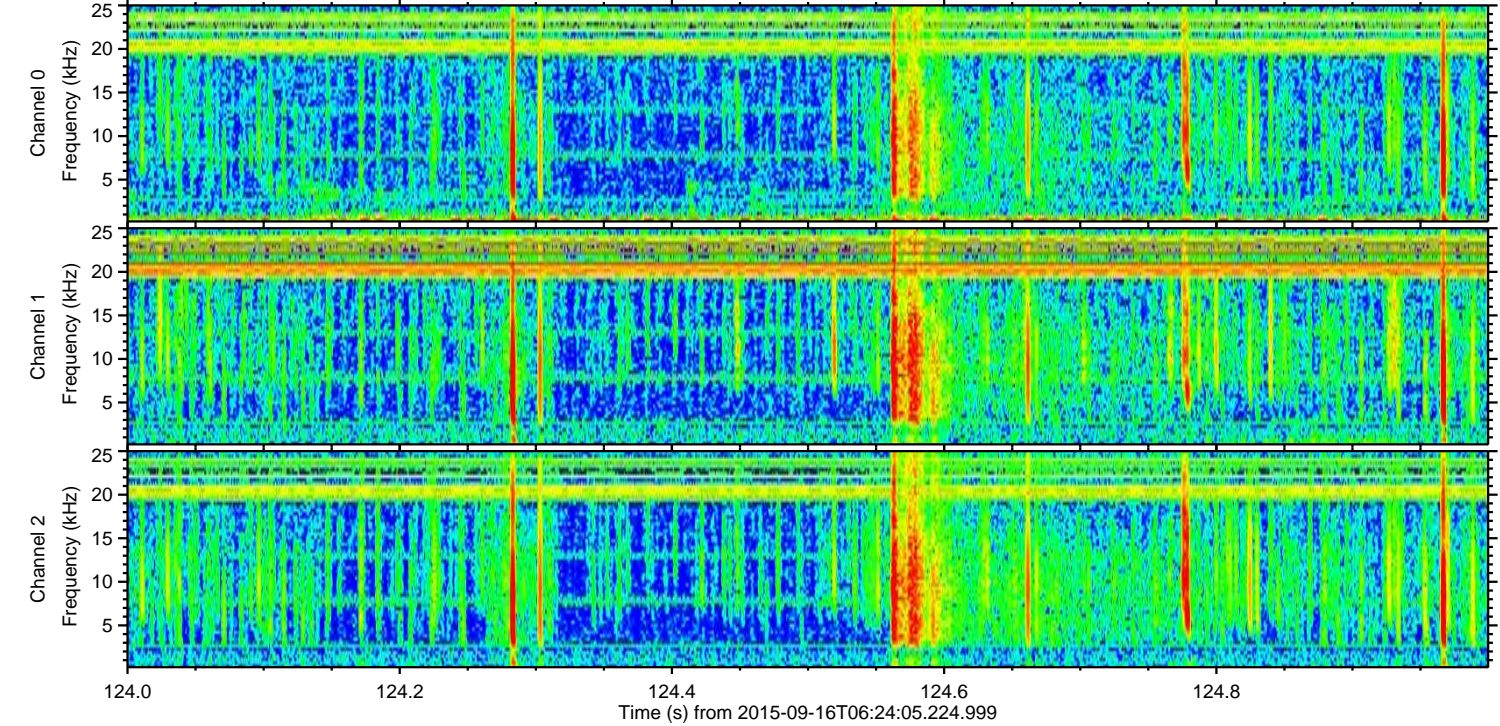
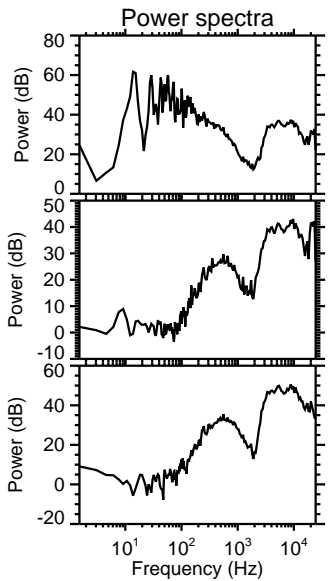
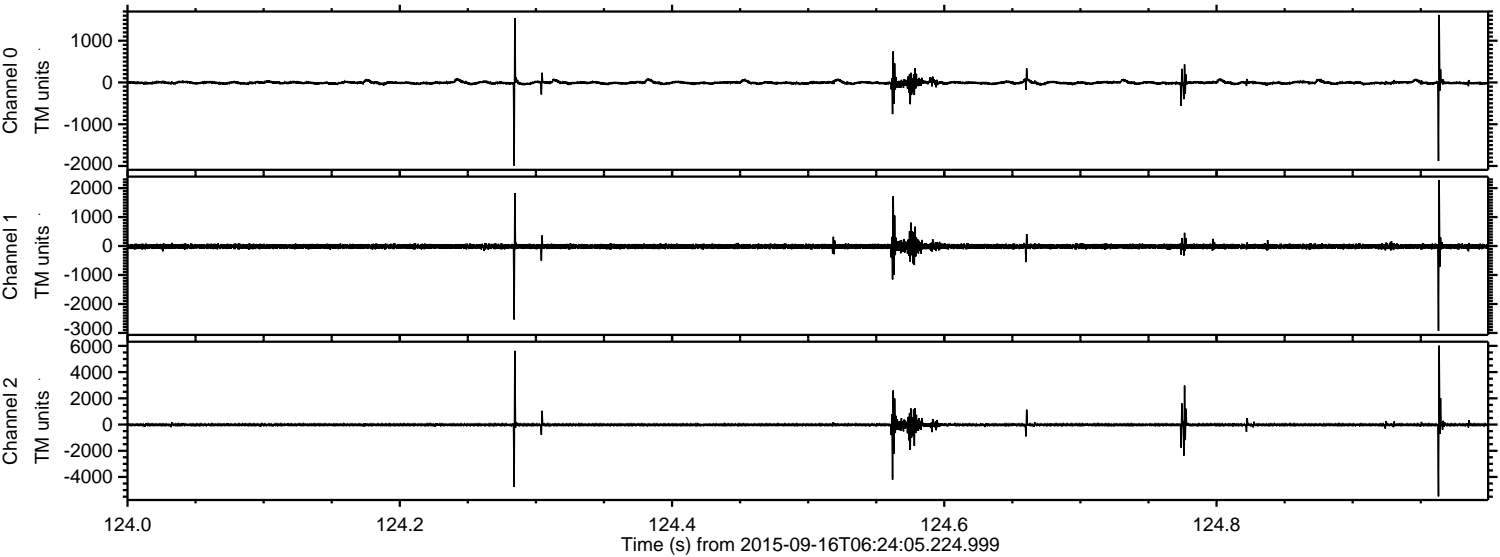
Channel 0
mn: -1364
mx: 2338
 μ : -5.9
 σ : 21.2

Channel 1
mn: -1853
mx: 2345
 μ : -14.2
 σ : 42.5

Channel 2
mn: -6789
mx: 5822
 μ : -15.7
 σ : 71.8

ELMAVAN 3D WAVEFORMS (Measured data sampled at 50 kHz) 51000 packets of 144 samples from 2015-09-16T06:24:05.224.999. Part 125/147

Processed Tue Oct 13 00:49:15 2015 by ELM ver.2012-10-06 from 001__elm20150916_062404__dat00.bin

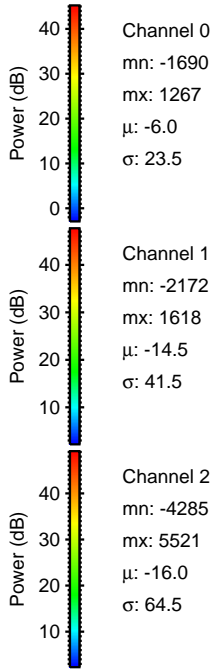
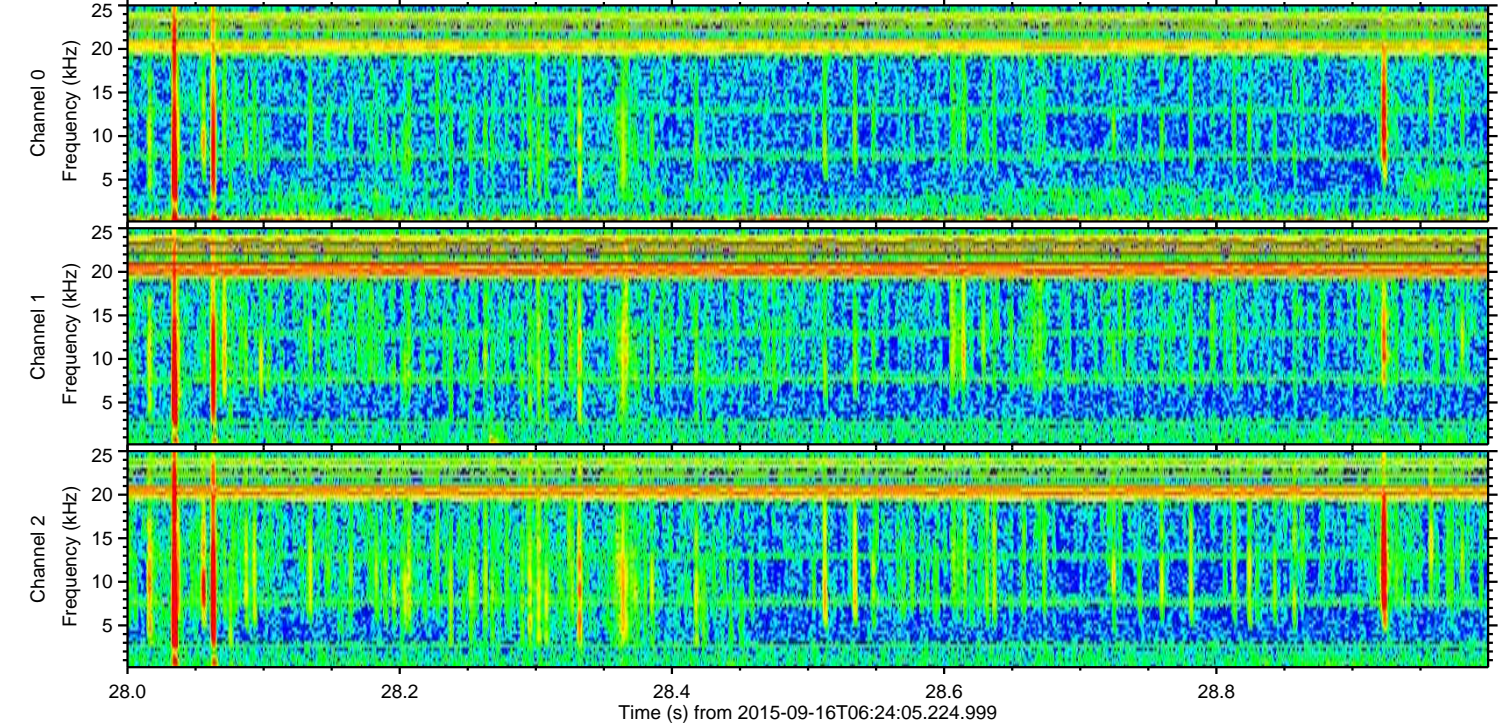
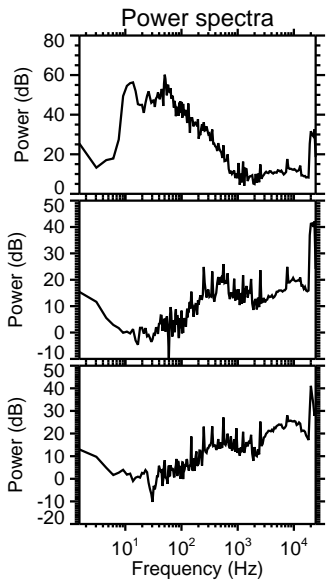
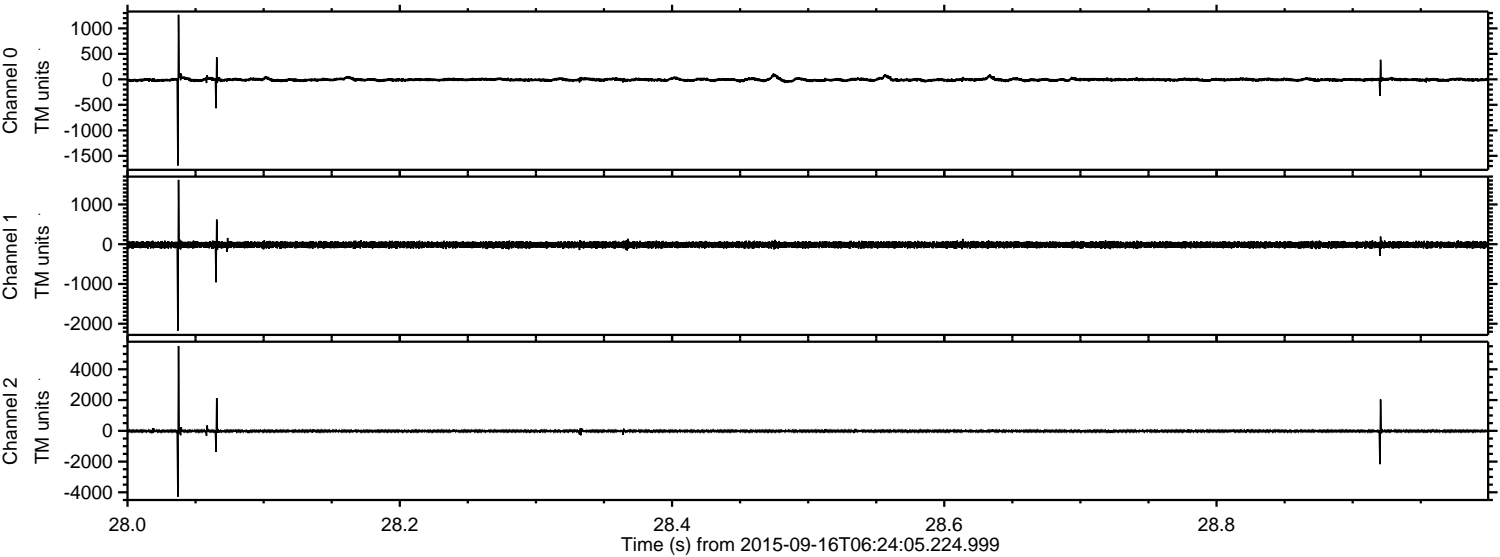


Channel 0
mn: -1993
mx: 1618
 μ : -6.0
 σ : 34.3

Channel 1
mn: -2922
mx: 2282
 μ : -14.5
 σ : 56.6

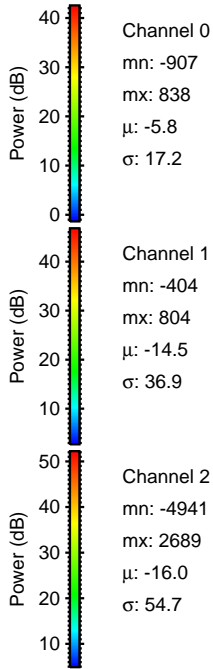
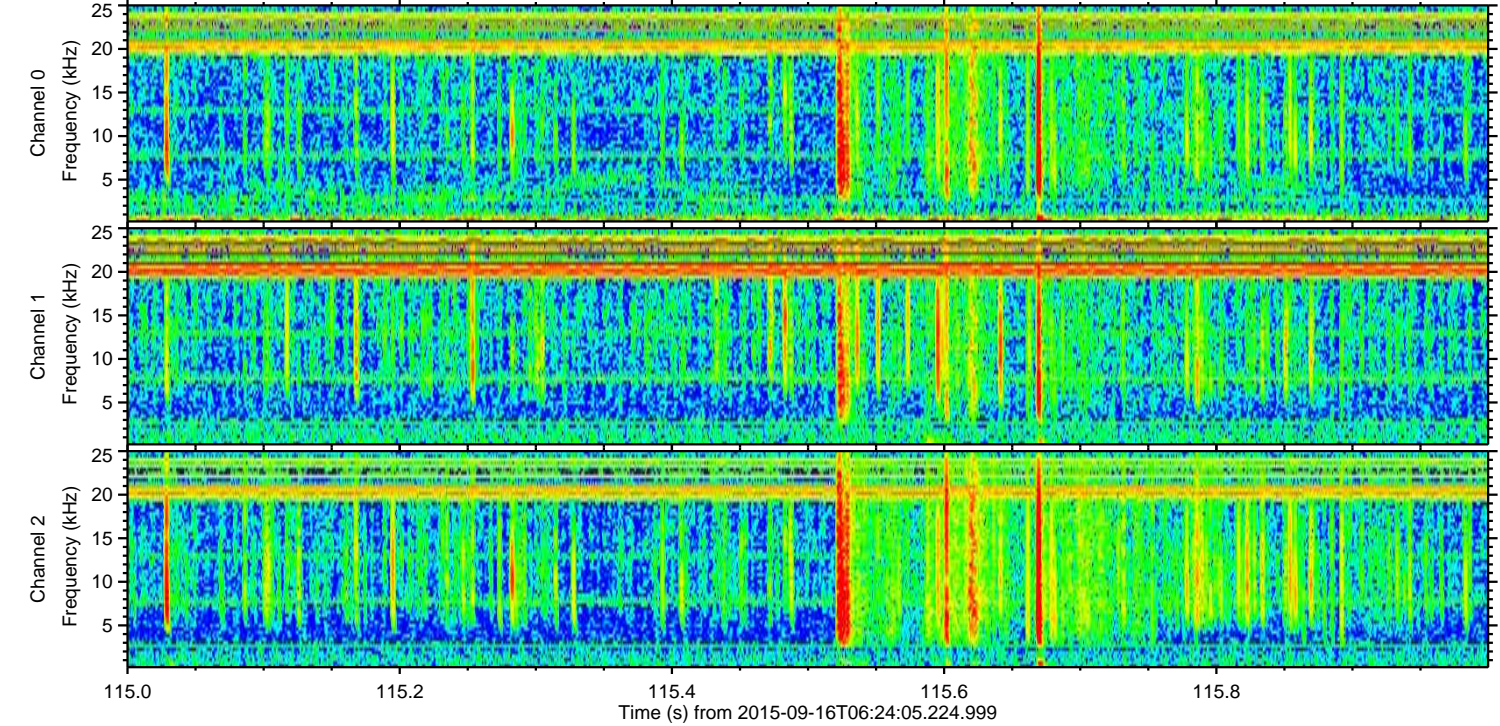
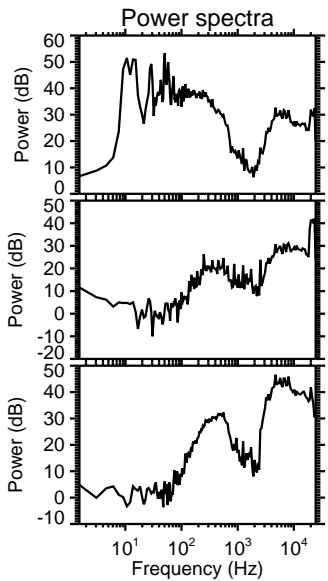
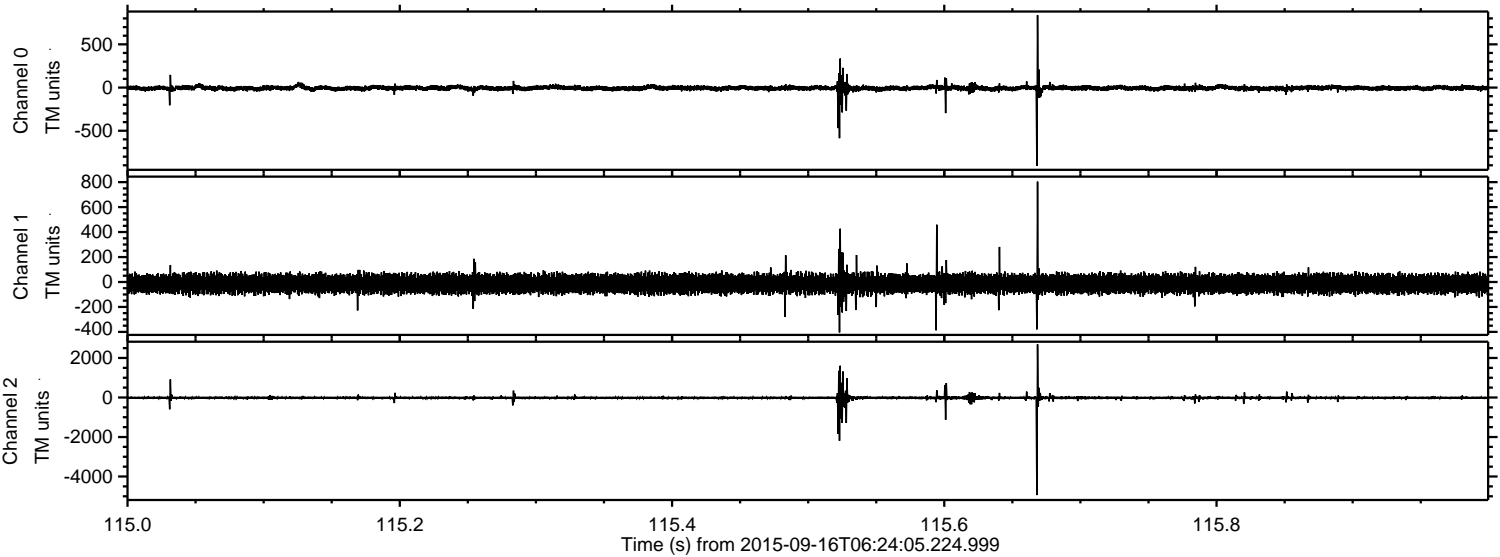
Channel 2
mn: -5482
mx: 6018
 μ : -16.0
 σ : 109.8

Processed Tue Oct 13 00:49:17 2015 by ELM ver.2012-10-06 from 001__elm20150916_062404__dat00.bin



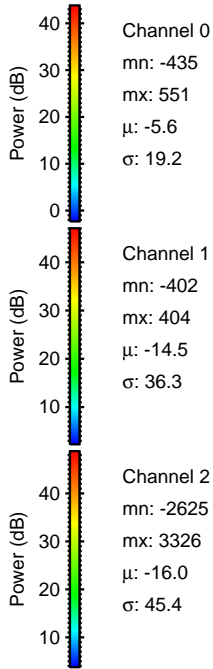
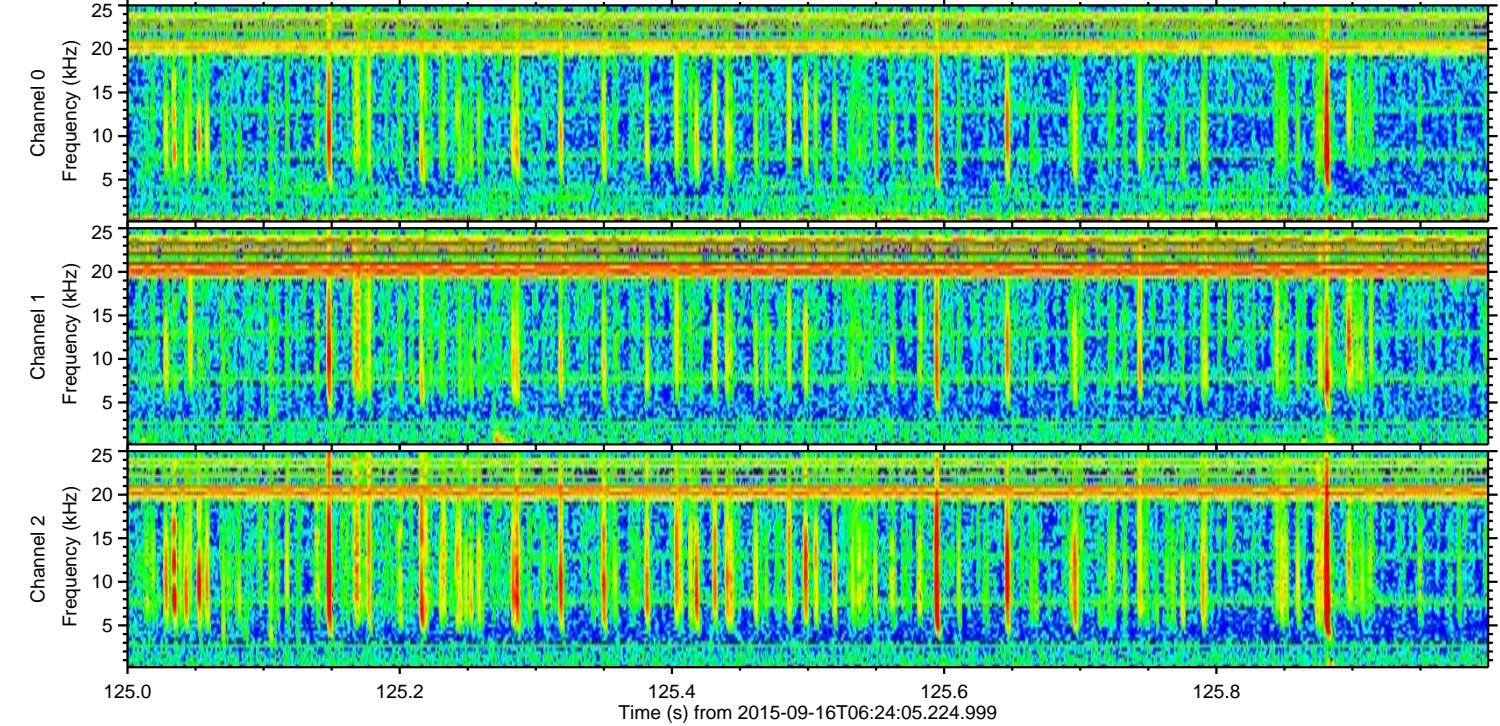
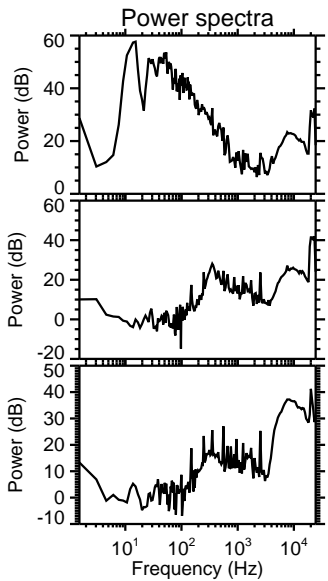
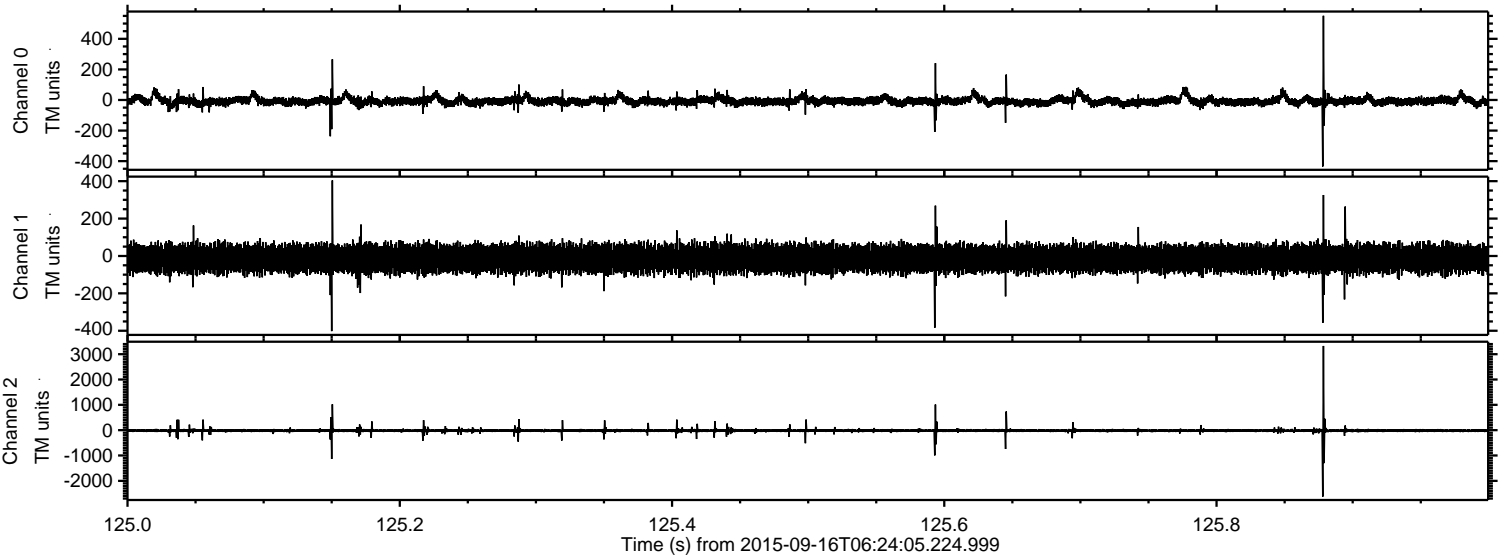
ELMAVAN 3D WAVEFORMS (Measured data sampled at 50 kHz) 51000 packets of 144 samples from 2015-09-16T06:24:05.224.999. Part 116/147

Processed Tue Oct 13 00:49:19 2015 by ELM ver.2012-10-06 from 001__elm20150916_062404__dat00.bin



ELMAVAN 3D WAVEFORMS (Measured data sampled at 50 kHz) 51000 packets of 144 samples from 2015-09-16T06:24:05.224.999. Part 126/147

Processed Tue Oct 13 00:49:21 2015 by ELM ver.2012-10-06 from 001__elm20150916_062404__dat00.bin



Channel 0
mn: -435
mx: 551
 μ : -5.6
 σ : 19.2

Channel 1
mn: -402
mx: 404
 μ : -14.5
 σ : 36.3

Channel 2
mn: -2625
mx: 3326
 μ : -16.0
 σ : 45.4

Processed Tue Oct 13 00:49:23 2015 by ELM ver.2012-10-06 from 001__elm20150916_062404__dat00.bin

