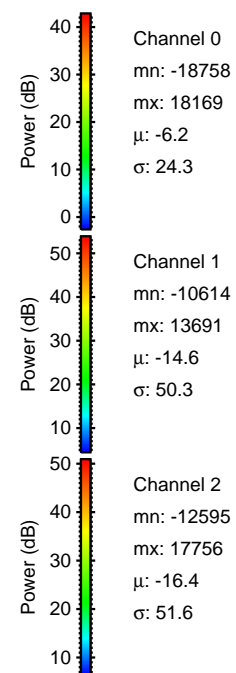
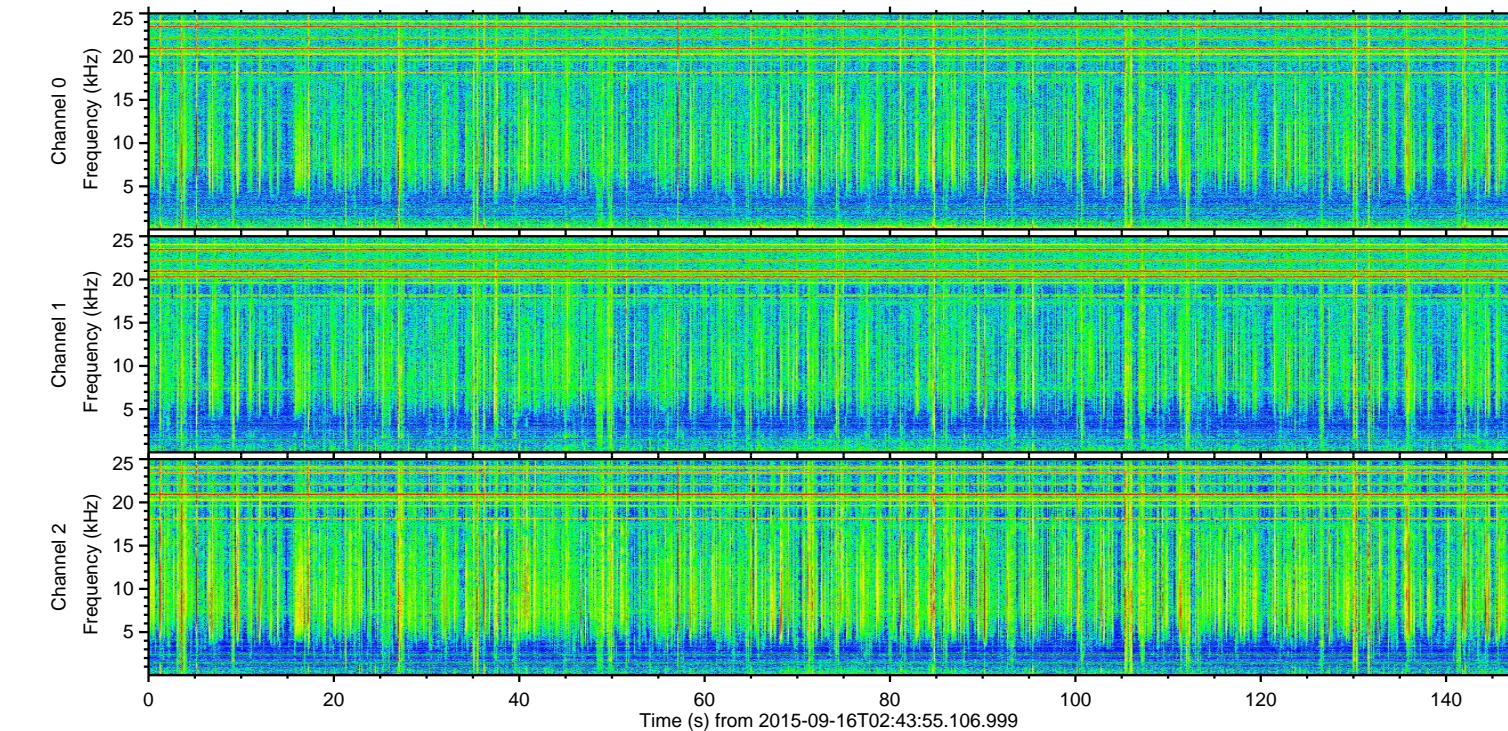
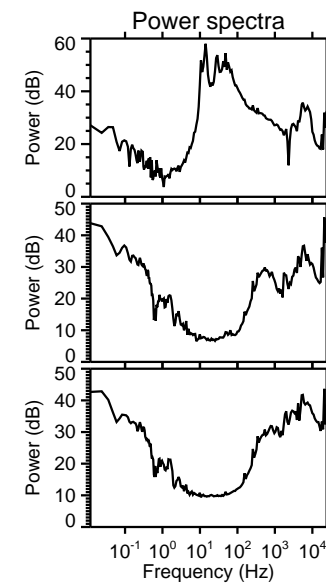
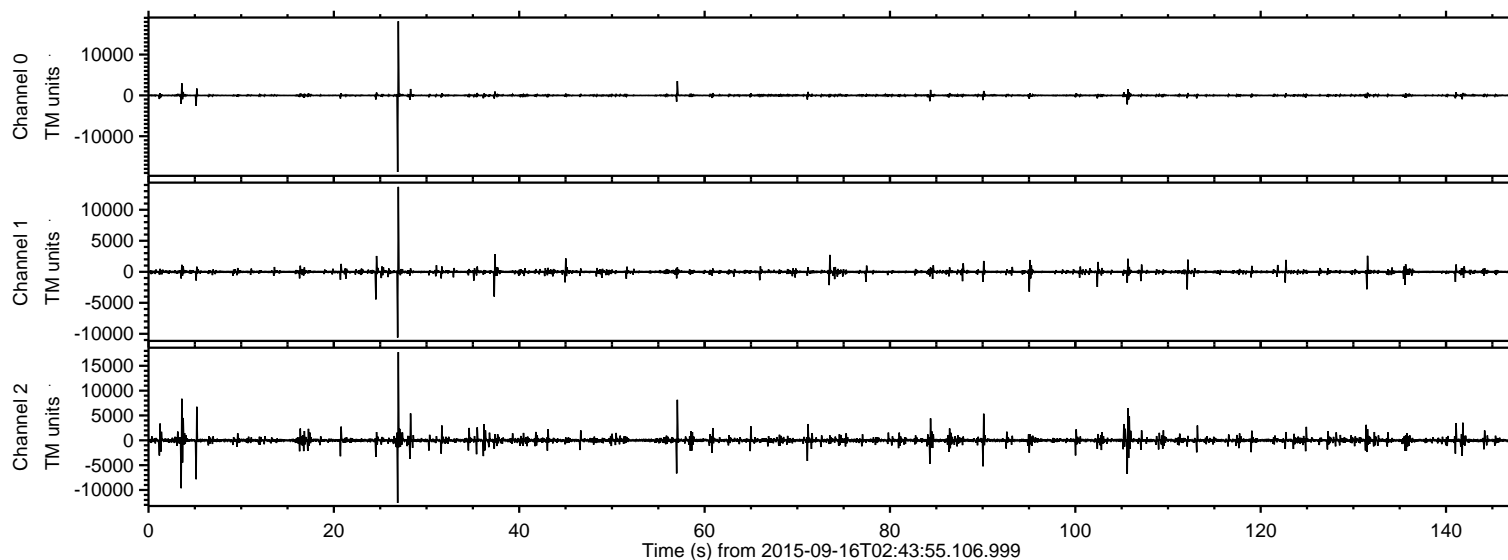


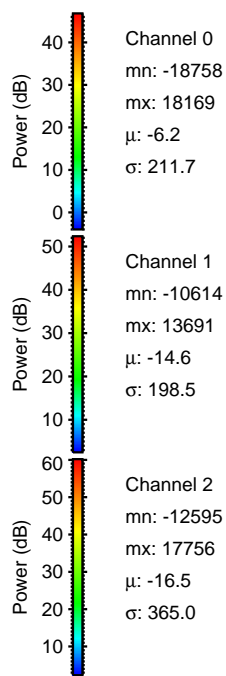
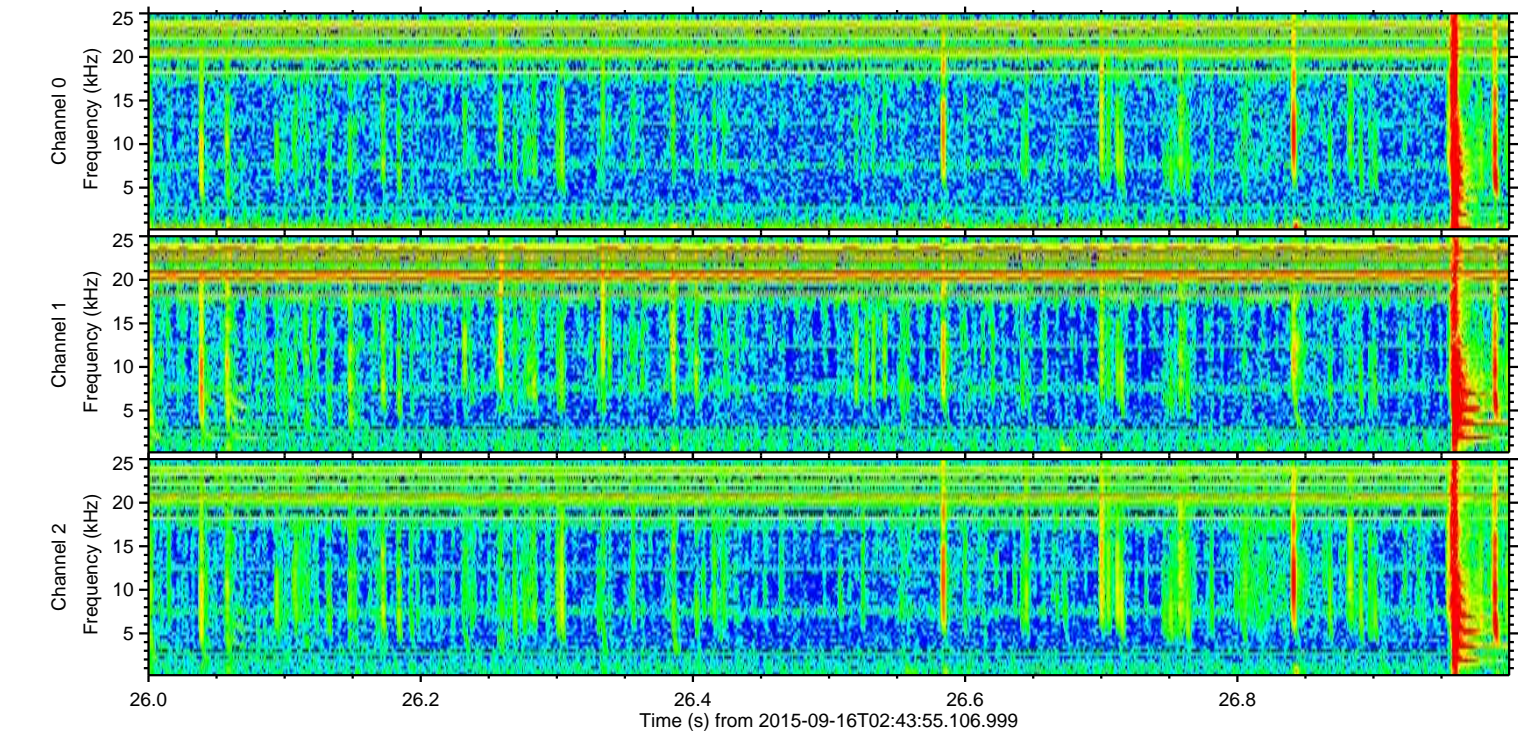
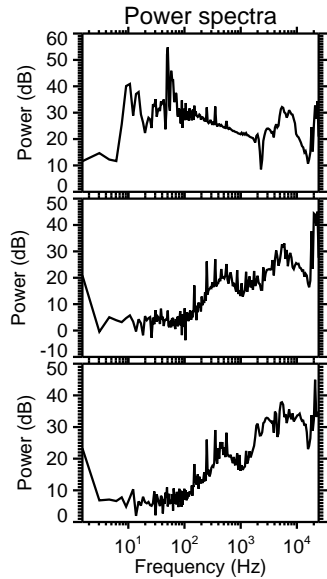
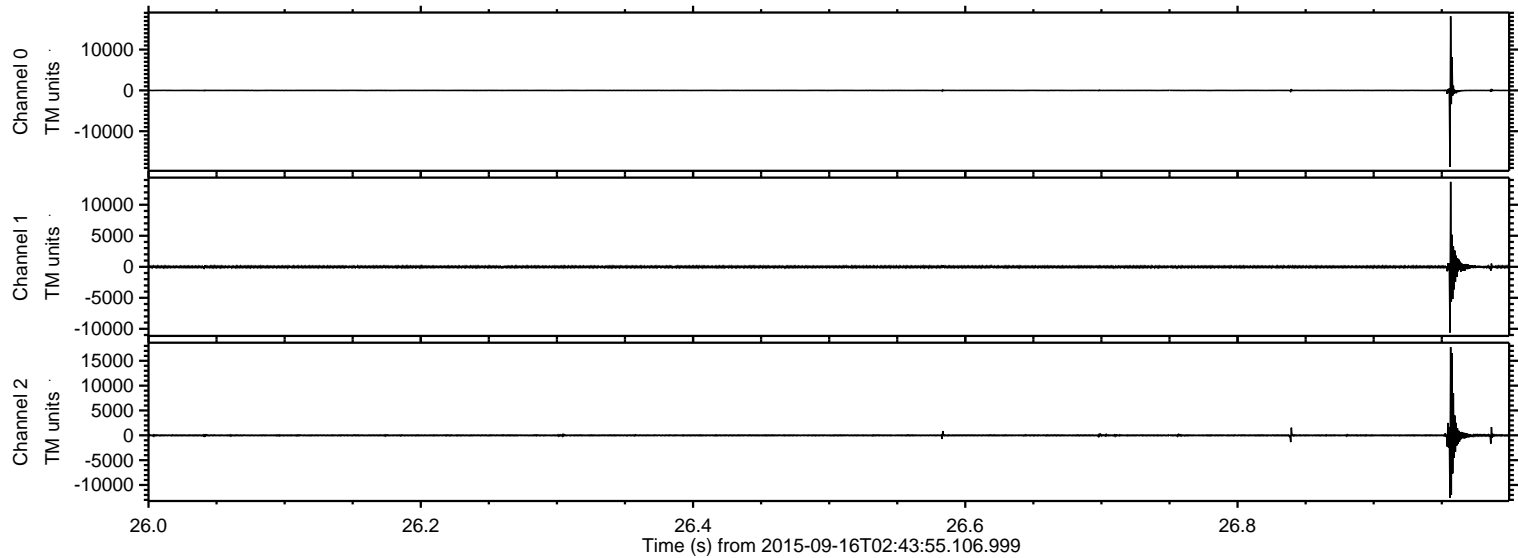
ELMAVAN 3D WAVEFORMS (Measured data sampled at 50 kHz) 51000 packets of 144 samples from 2015-09-16T02:43:55.106.999.

Processed Mon Oct 12 23:16:27 2015 by ELM ver.2012-10-06 from 001__elm20150916_024354__dat00.bin

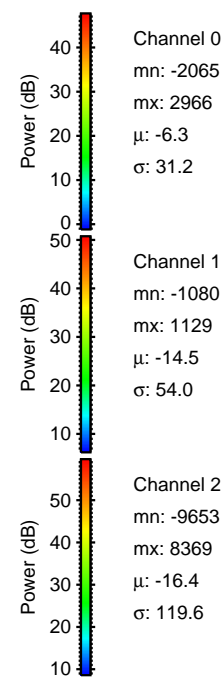
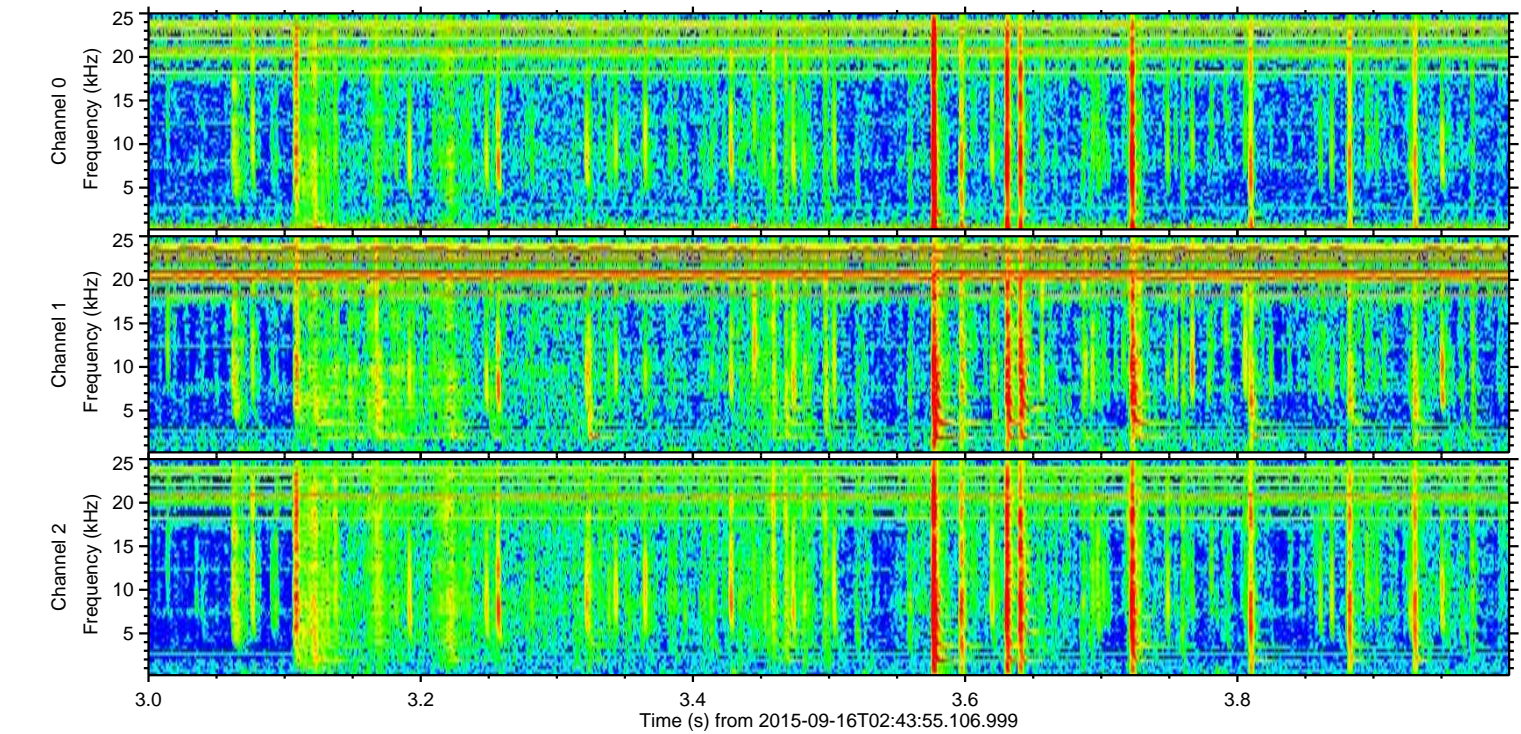
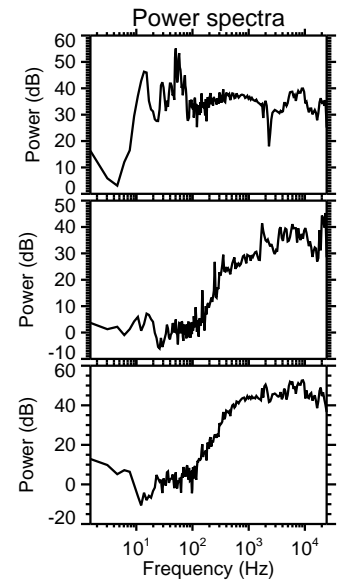
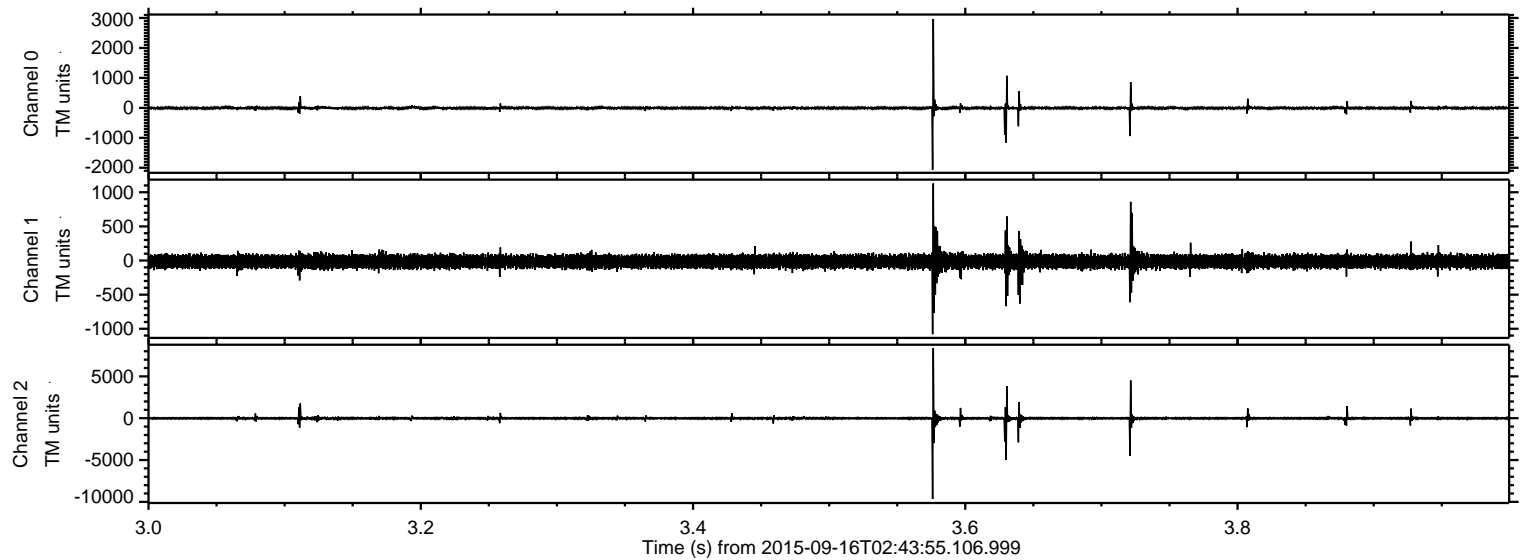


ELMAVAN 3D WAVEFORMS (Measured data sampled at 50 kHz) 51000 packets of 144 samples from 2015-09-16T02:43:55.106.999. Part 27/147

Processed Mon Oct 12 23:16:53 2015 by ELM ver.2012-10-06 from 001__elm20150916_024354__dat00.bin



Processed Mon Oct 12 23:16:55 2015 by ELM ver.2012-10-06 from 001__elm20150916_024354__dat00.bin

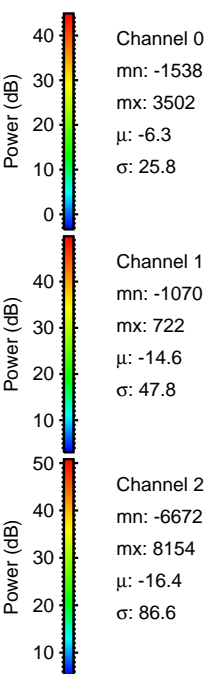
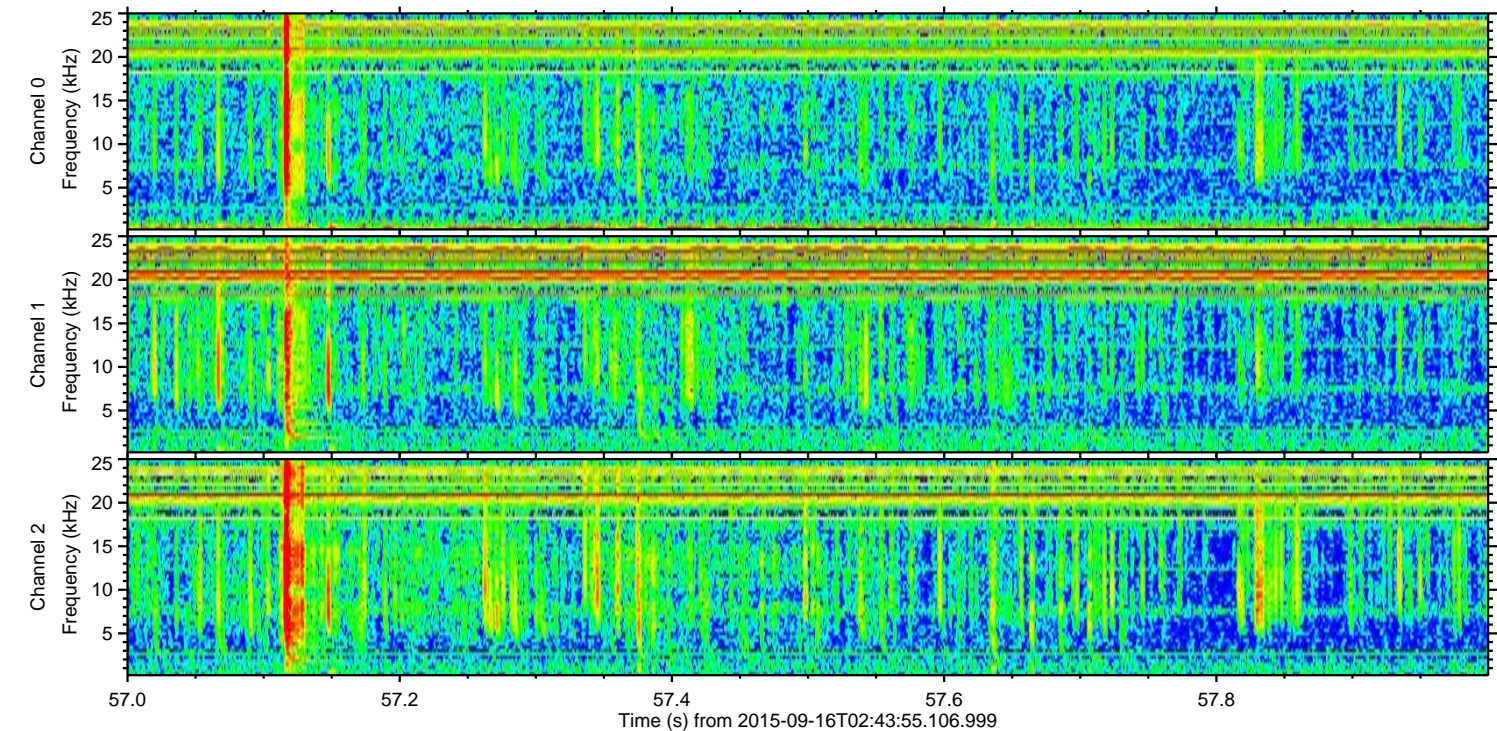
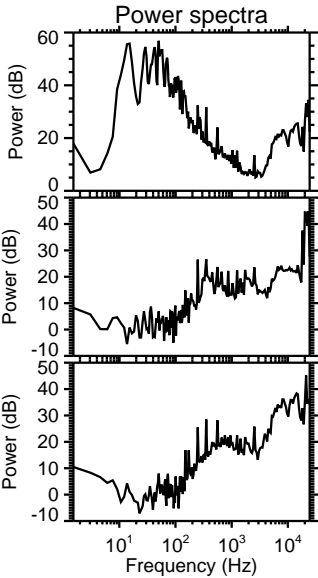
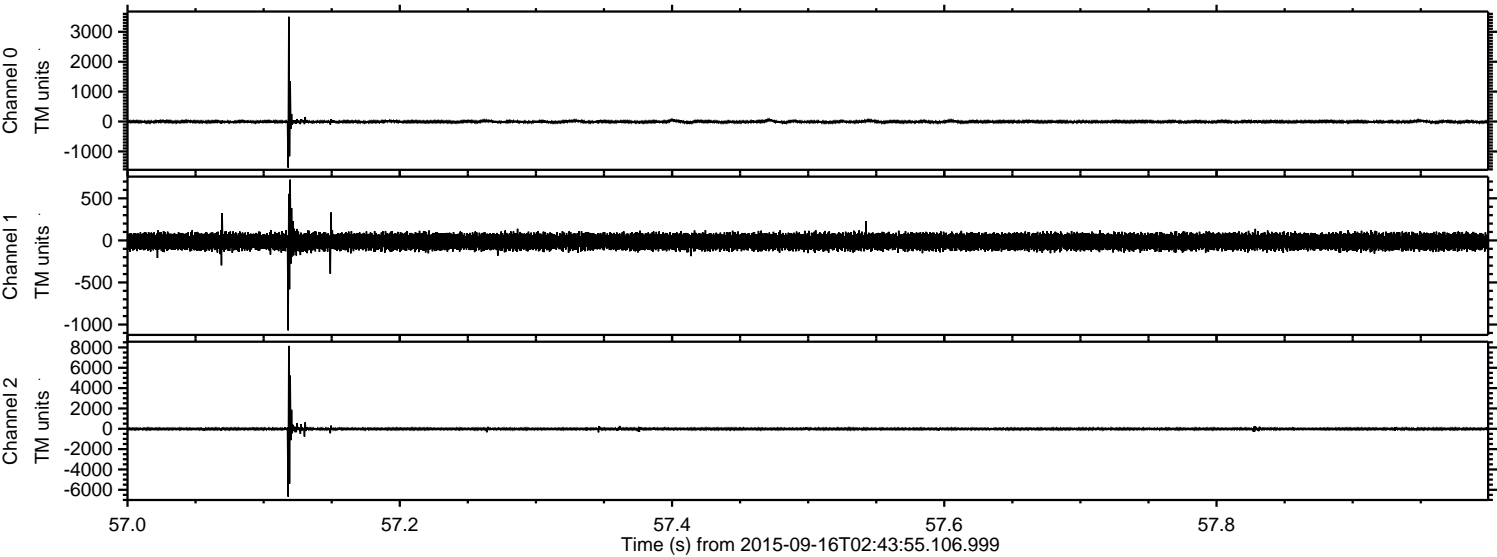


Channel 0
mn: -2065
mx: 2966
 μ : -6.3
 σ : 31.2

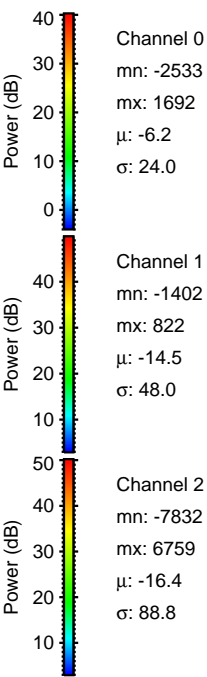
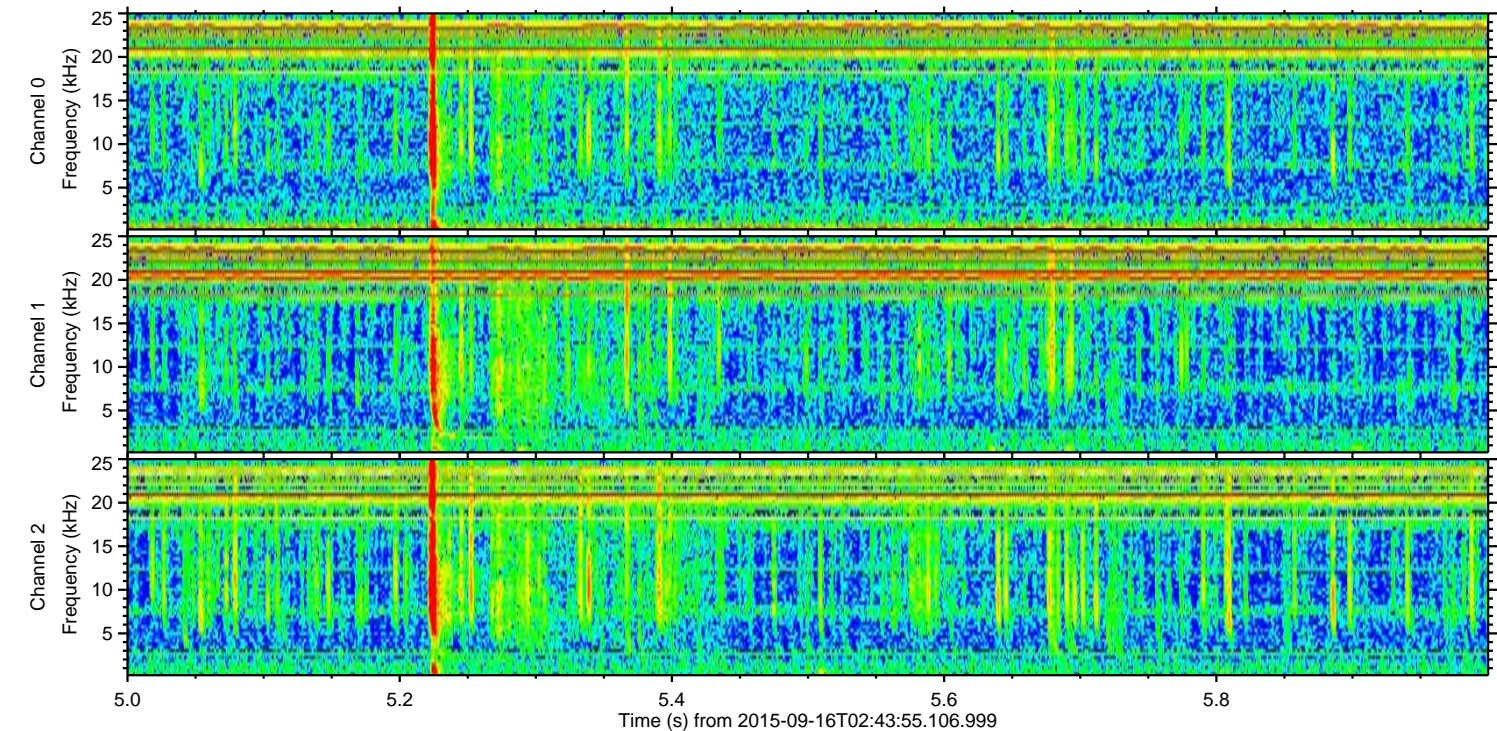
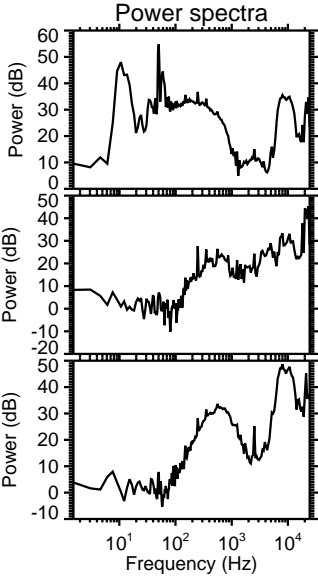
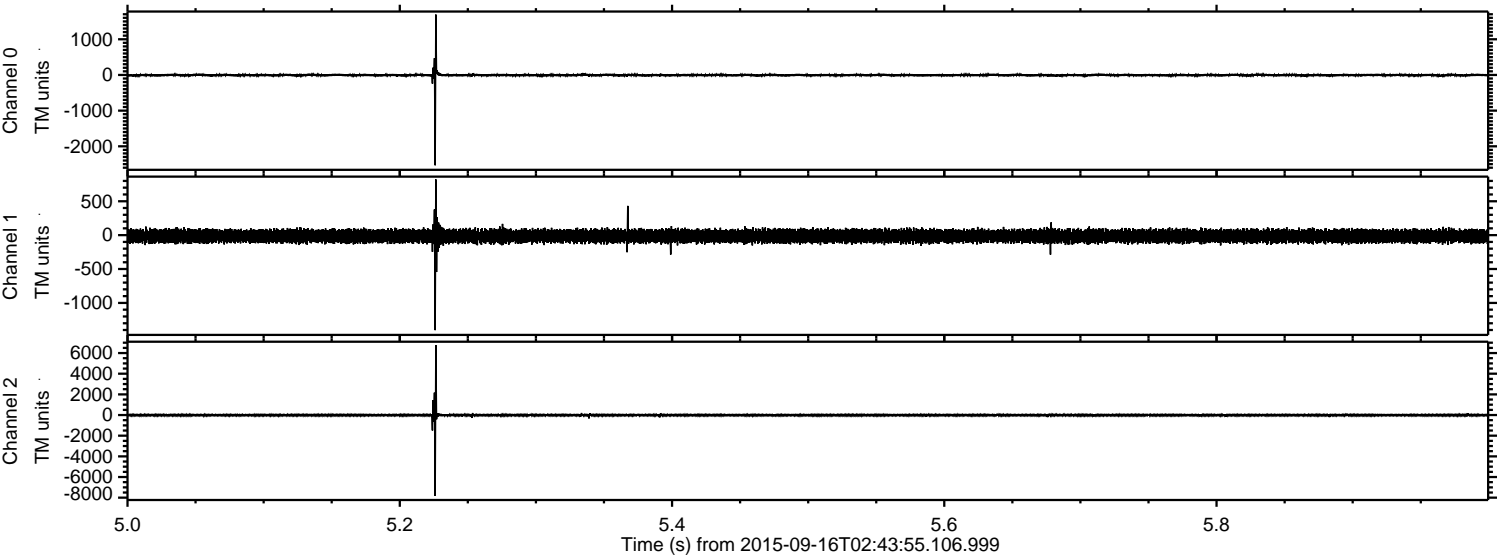
Channel 1
mn: -1080
mx: 1129
 μ : -14.5
 σ : 54.0

Channel 2
mn: -9653
mx: 8369
 μ : -16.4
 σ : 119.6

Processed Mon Oct 12 23:16:56 2015 by ELM ver.2012-10-06 from 001__elm20150916_024354__dat00.bin

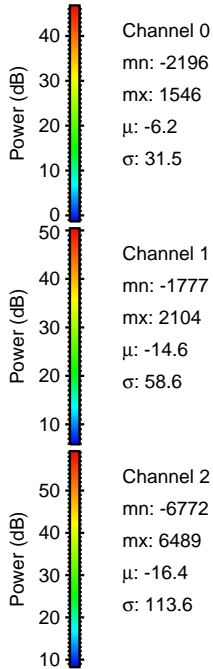
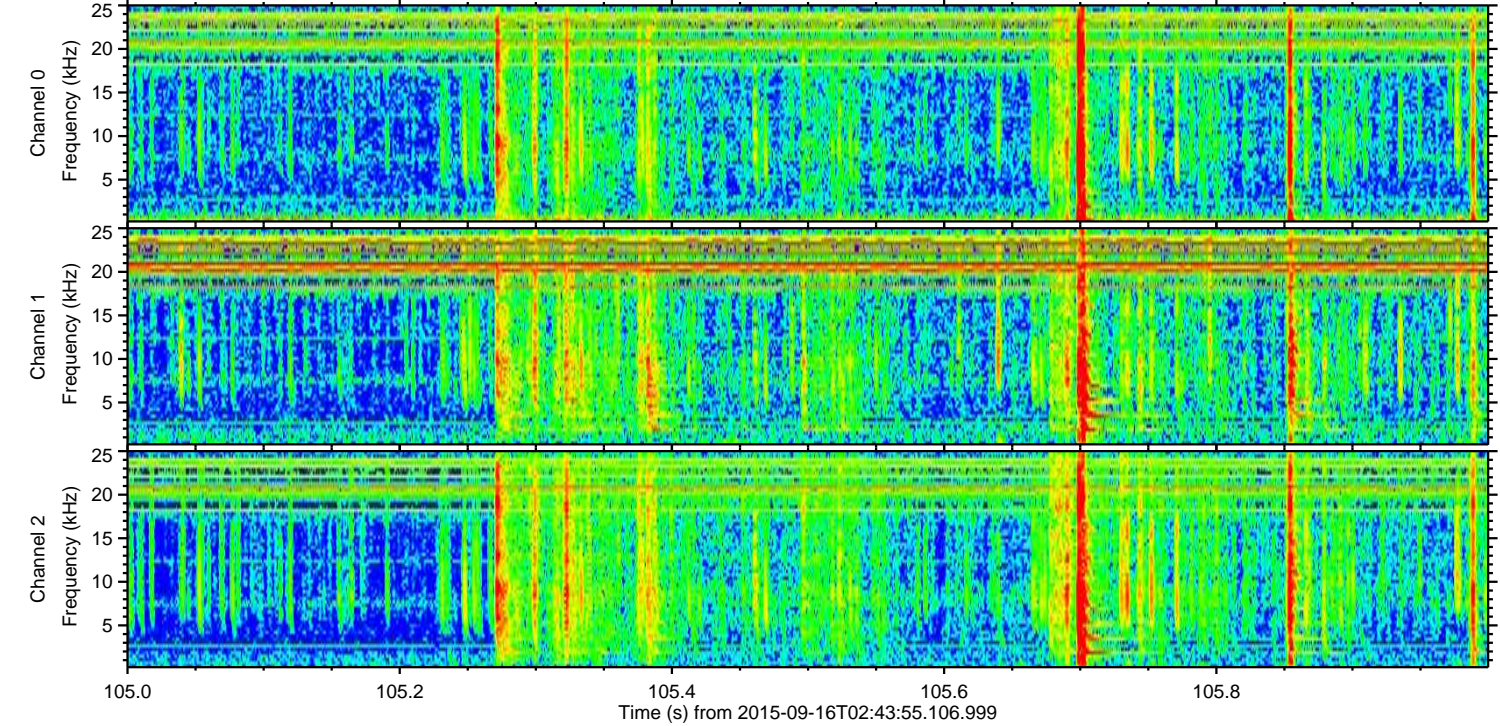
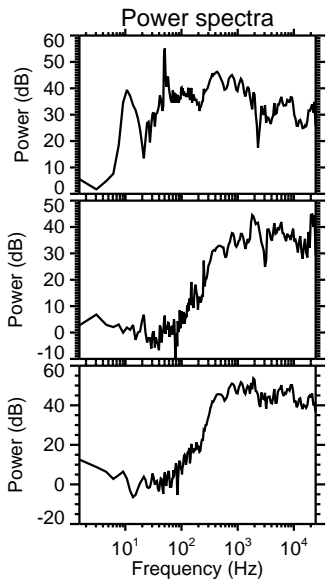
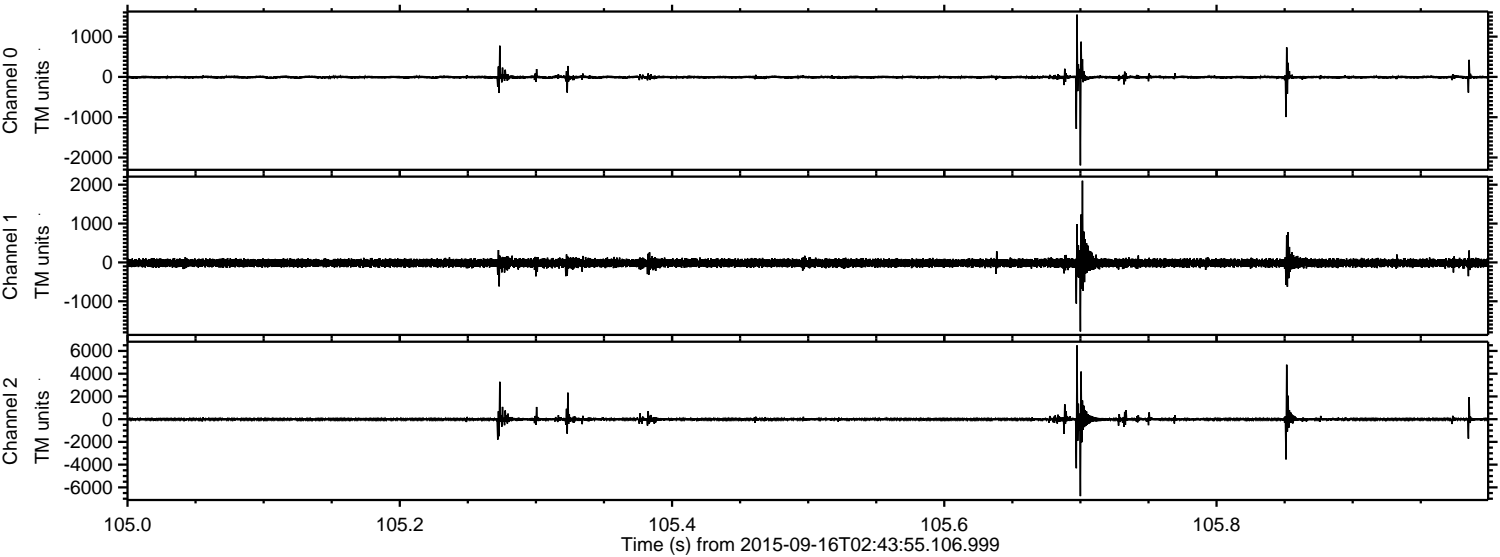


Processed Mon Oct 12 23:16:58 2015 by ELM ver.2012-10-06 from 001__elm20150916_024354__dat00.bin



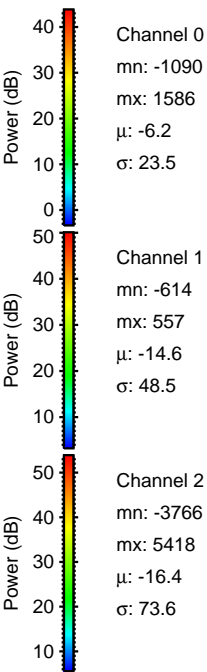
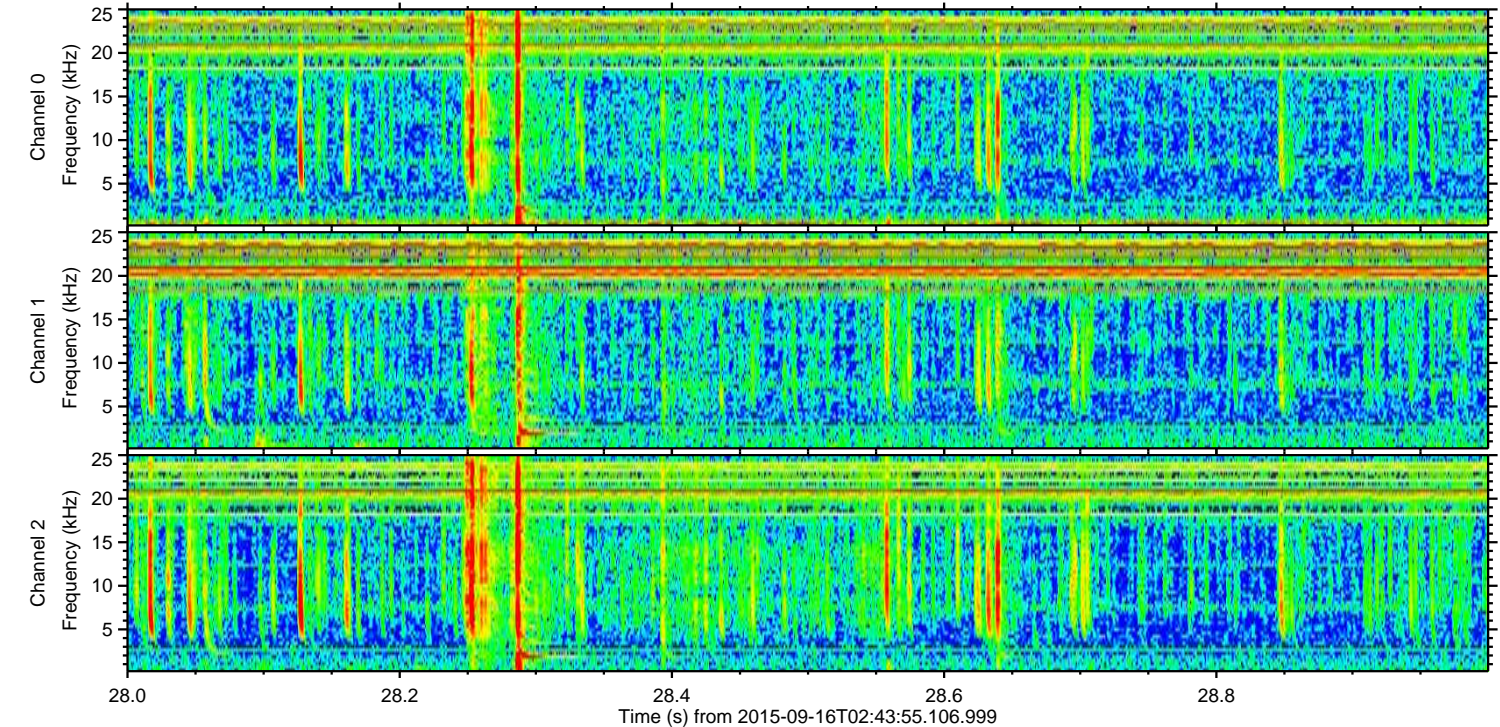
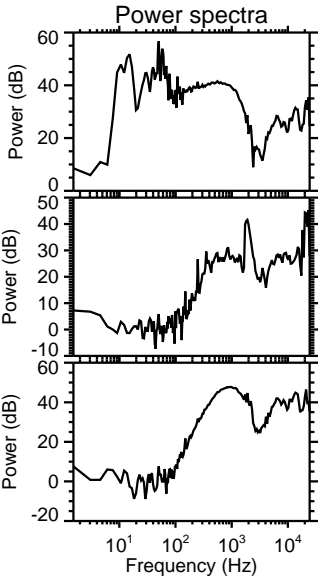
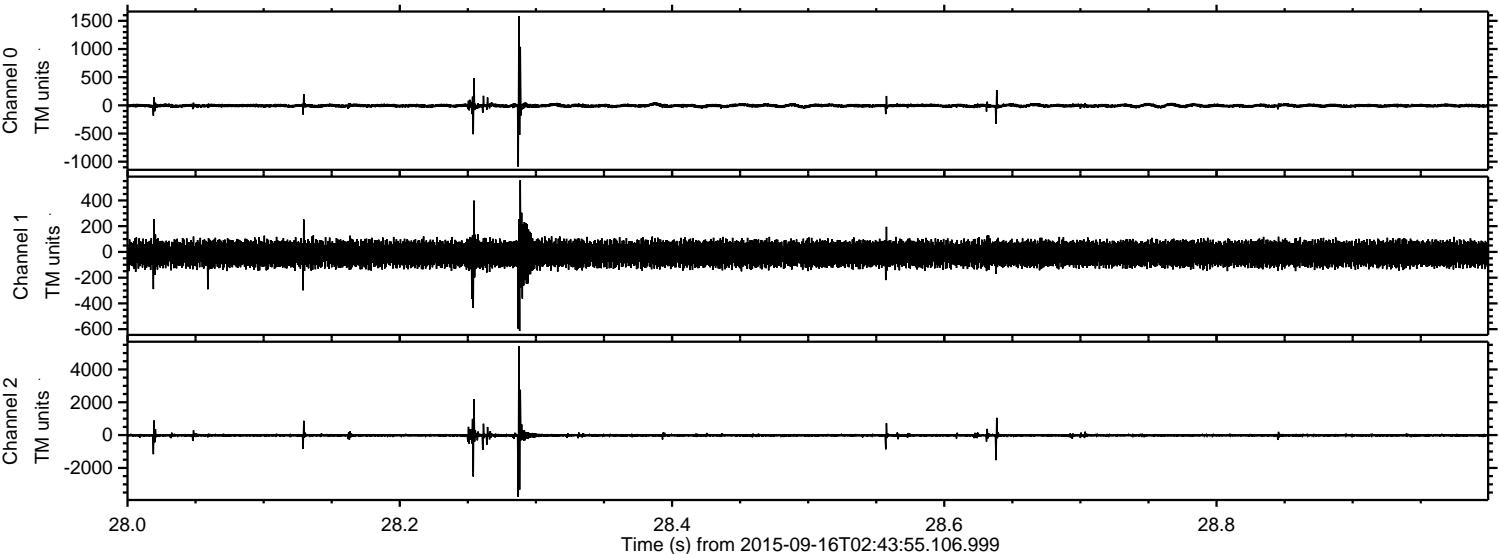
ELMAVAN 3D WAVEFORMS (Measured data sampled at 50 kHz) 51000 packets of 144 samples from 2015-09-16T02:43:55.106.999. Part 106/147

Processed Mon Oct 12 23:17:01 2015 by ELM ver.2012-10-06 from 001__elm20150916_024354__dat00.bin



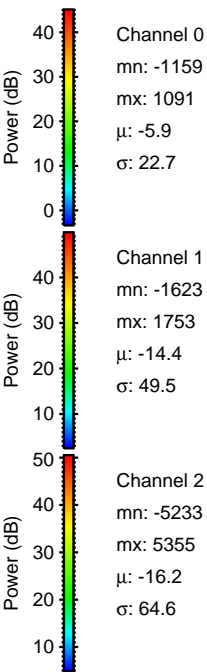
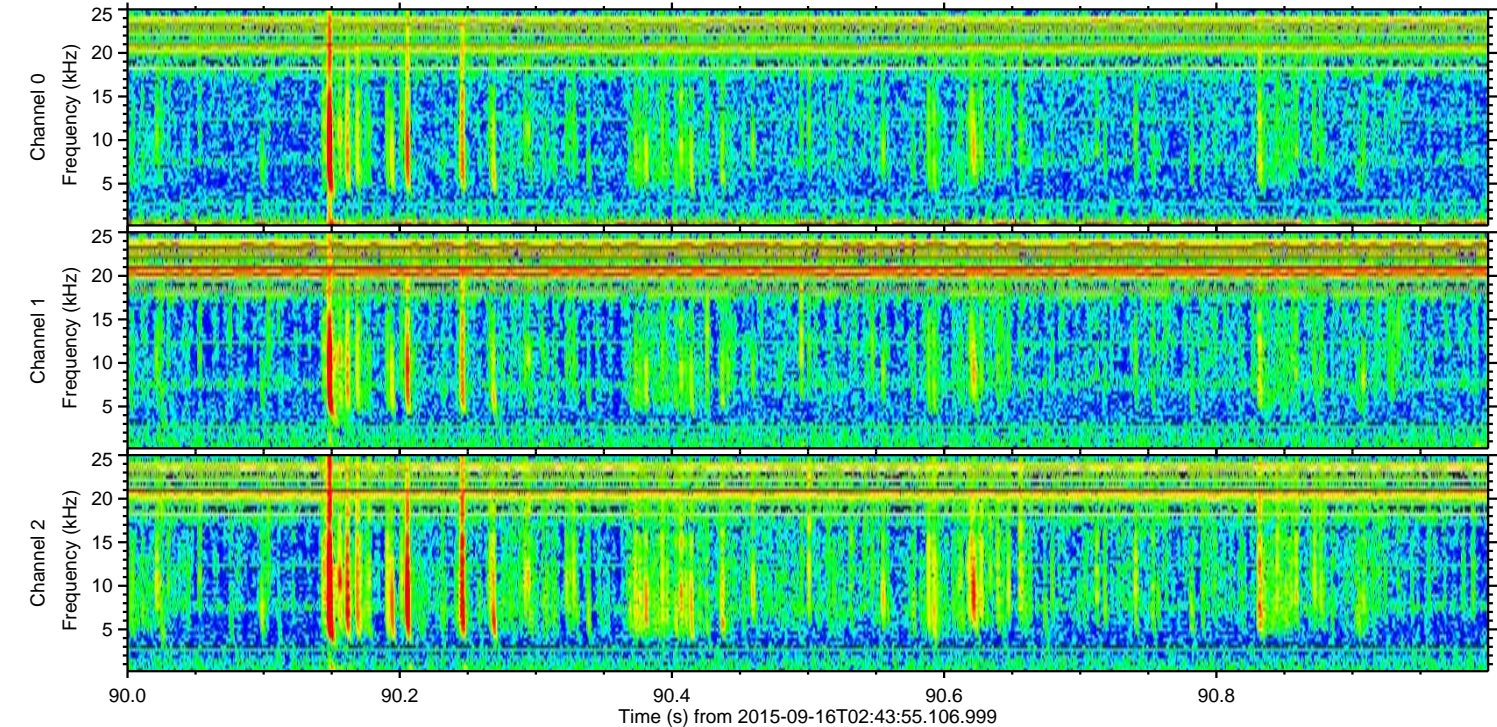
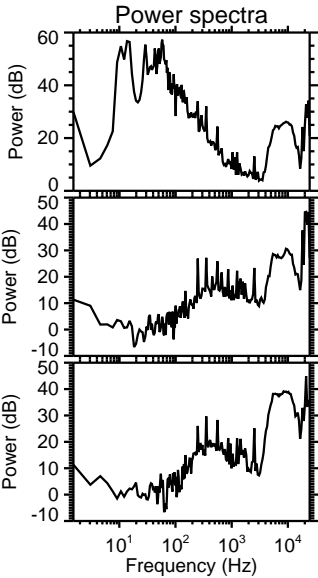
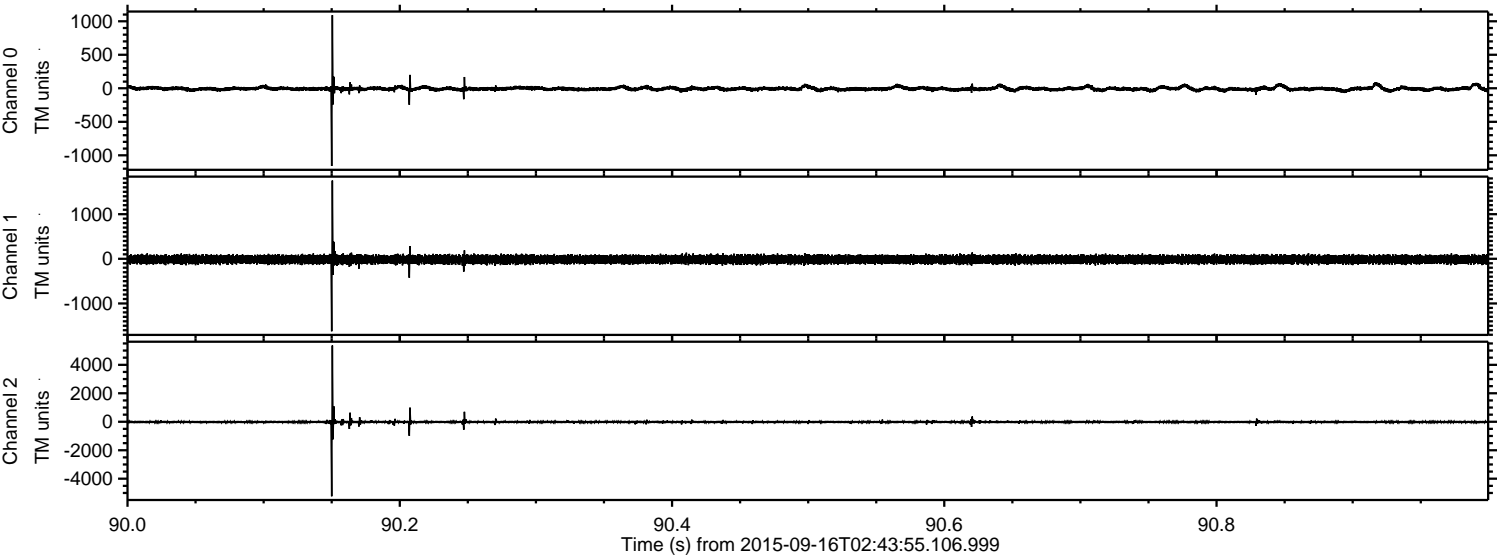
ELMAVAN 3D WAVEFORMS (Measured data sampled at 50 kHz) 51000 packets of 144 samples from 2015-09-16T02:43:55.106.999. Part 29/147

Processed Mon Oct 12 23:17:02 2015 by ELM ver.2012-10-06 from 001__elm20150916_024354__dat00.bin



ELMAVAN 3D WAVEFORMS (Measured data sampled at 50 kHz) 51000 packets of 144 samples from 2015-09-16T02:43:55.106.999. Part 91/147

Processed Mon Oct 12 23:17:04 2015 by ELM ver.2012-10-06 from 001__elm20150916_024354__dat00.bin

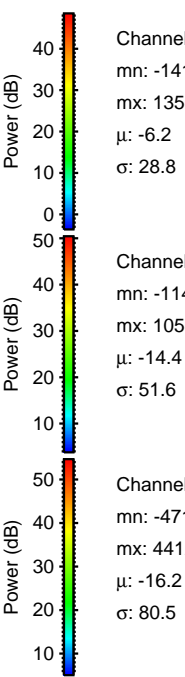
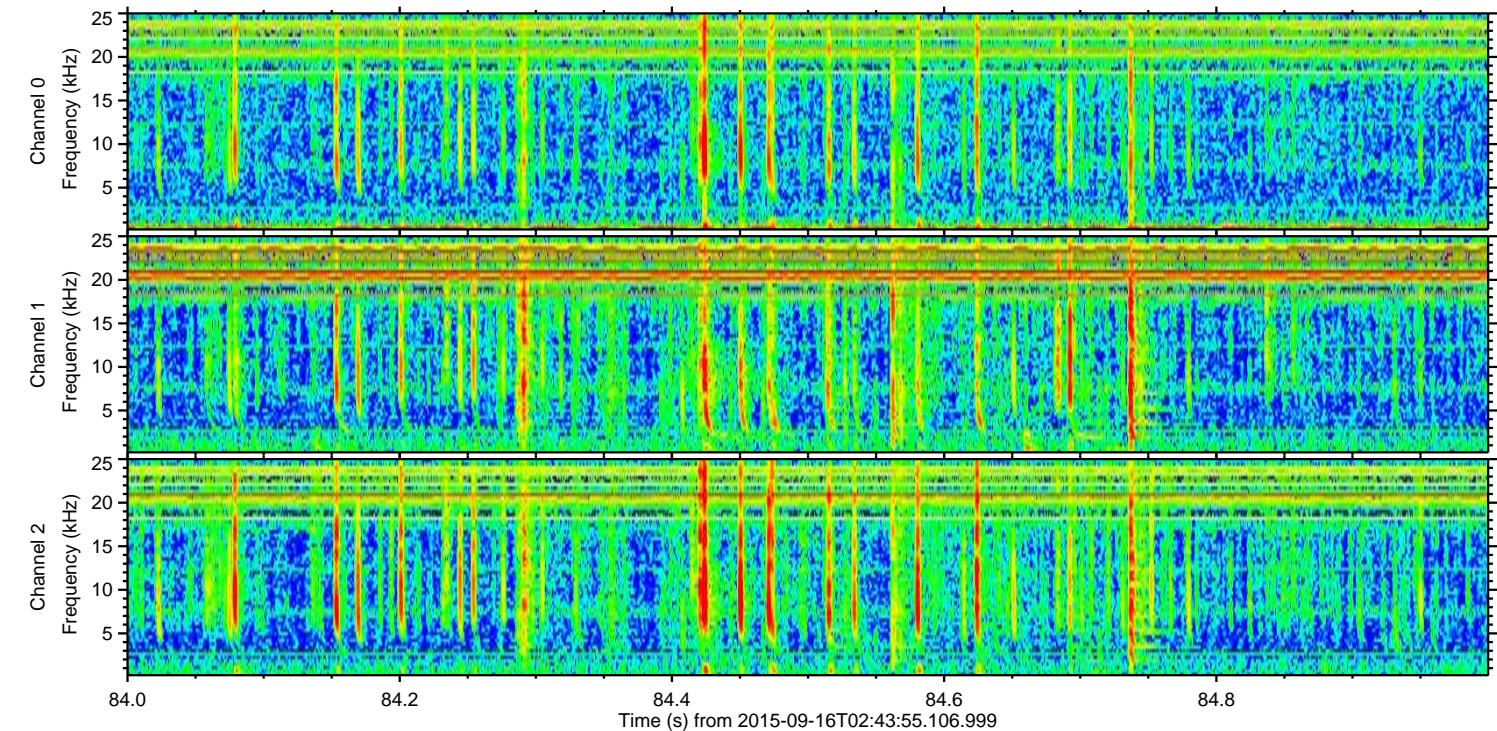
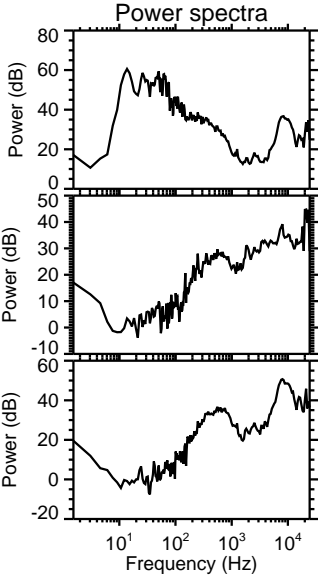
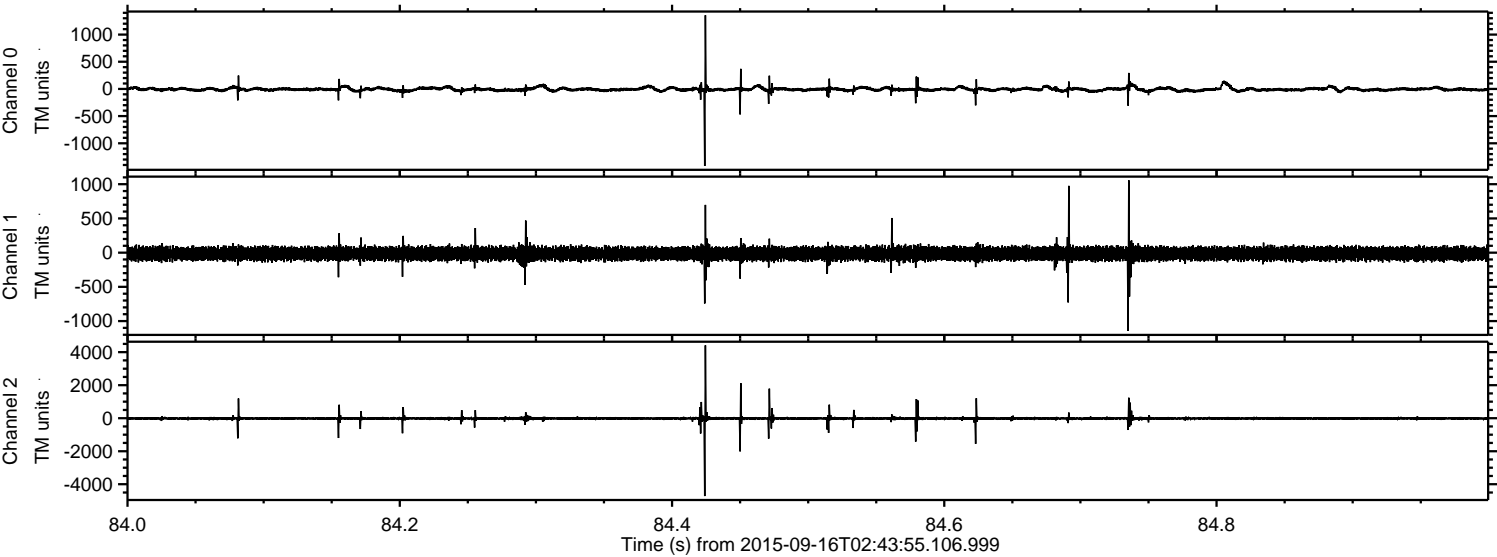


Channel 0
mn: -1159
mx: 1091
 μ : -5.9
 σ : 22.7

Channel 1
mn: -1623
mx: 1753
 μ : -14.4
 σ : 49.5

Channel 2
mn: -5233
mx: 5355
 μ : -16.2
 σ : 64.6

Processed Mon Oct 12 23:17:06 2015 by ELM ver.2012-10-06 from 001__elm20150916_024354__dat00.bin

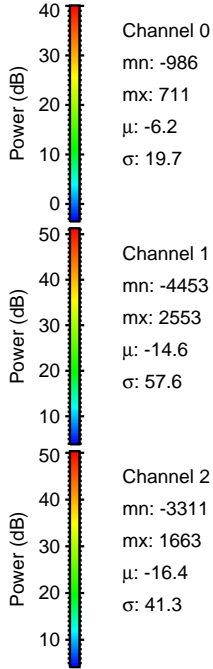
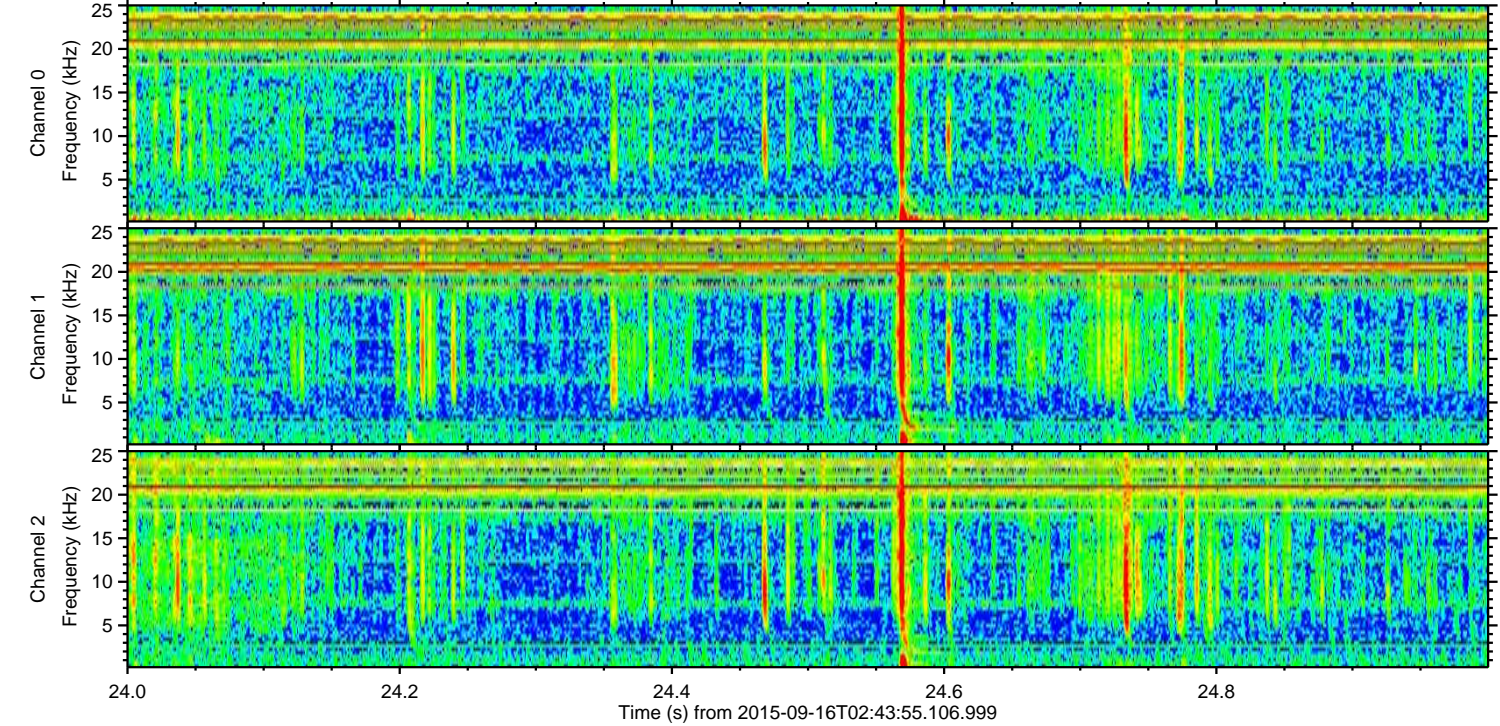
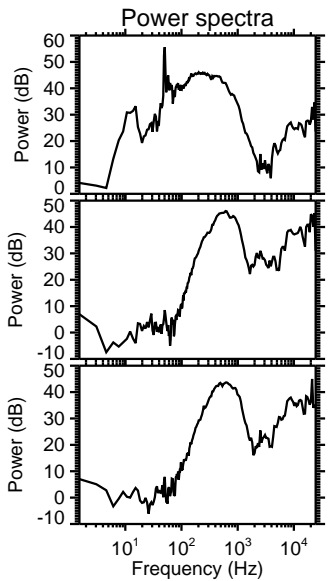
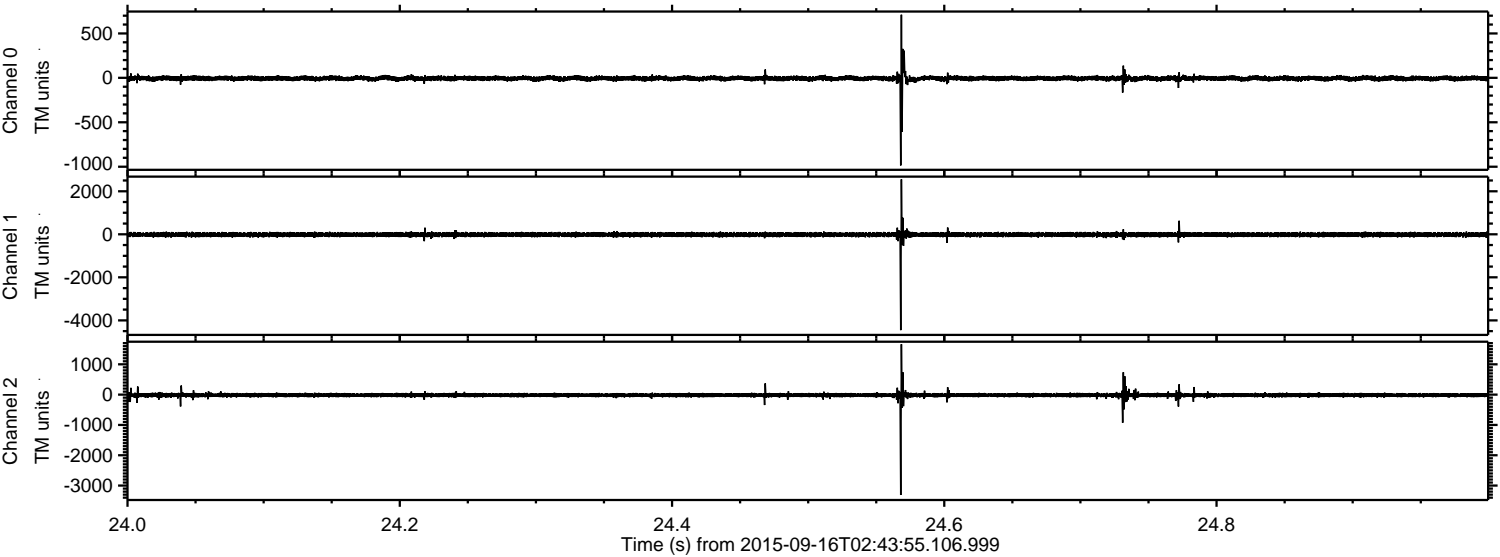


Channel 0
mn: -1418
mx: 1356
 μ : -6.2
 σ : 28.8

Channel 1
mn: -1145
mx: 1058
 μ : -14.4
 σ : 51.6

Channel 2
mn: -4719
mx: 4412
 μ : -16.2
 σ : 80.5

Processed Mon Oct 12 23:17:08 2015 by ELM ver.2012-10-06 from 001__elm20150916_024354__dat00.bin



Channel 0
mn: -986
mx: 711
 μ : -6.2
 σ : 19.7

Channel 1
mn: -4453
mx: 2553
 μ : -14.6
 σ : 57.6

Channel 2
mn: -3311
mx: 1663
 μ : -16.4
 σ : 41.3

Processed Mon Oct 12 23:17:10 2015 by ELM ver.2012-10-06 from 001__elm20150916_024354__dat00.bin

