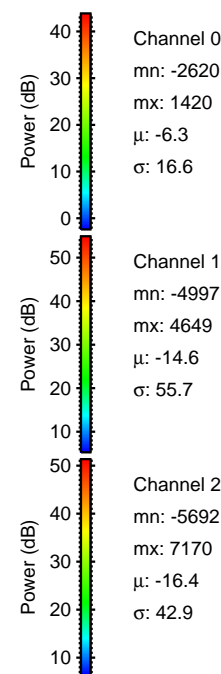
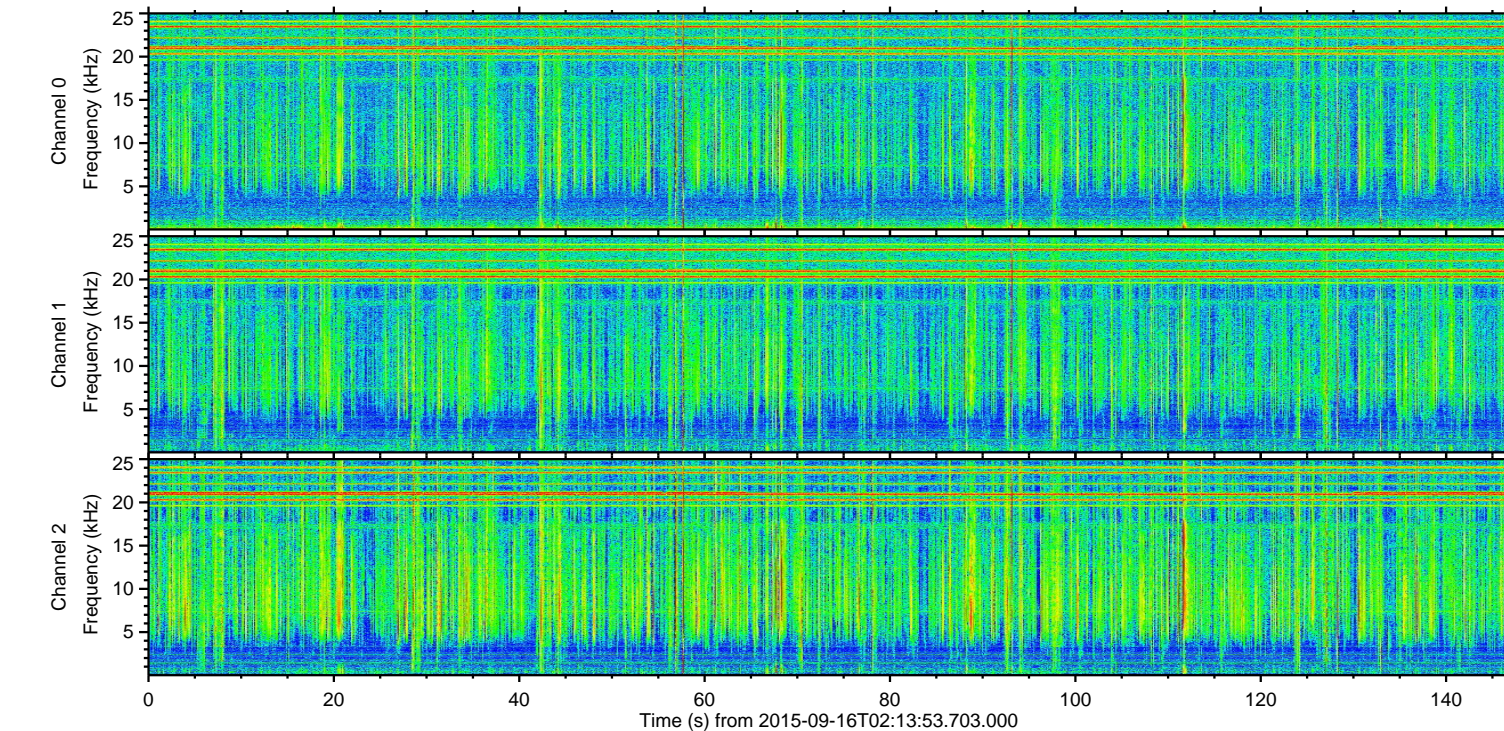
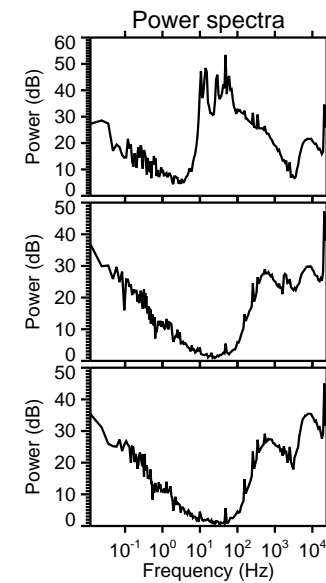
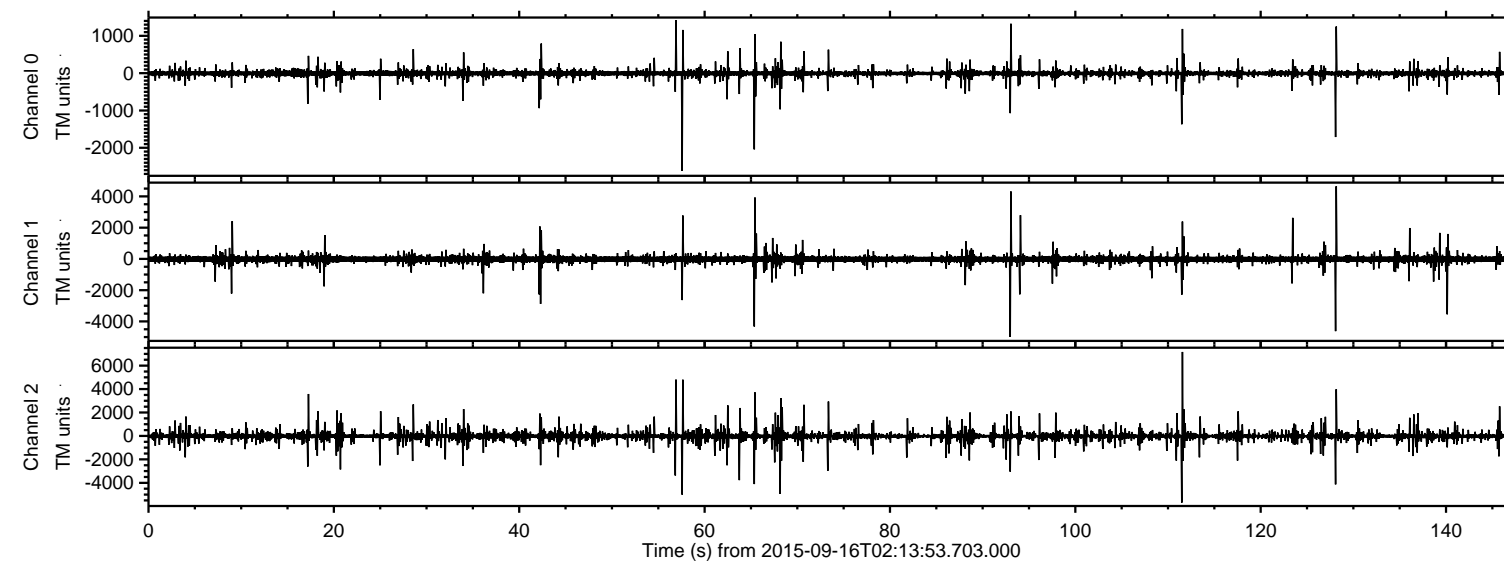


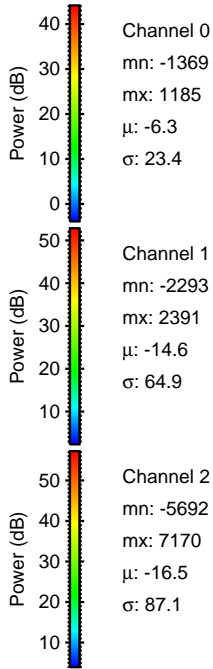
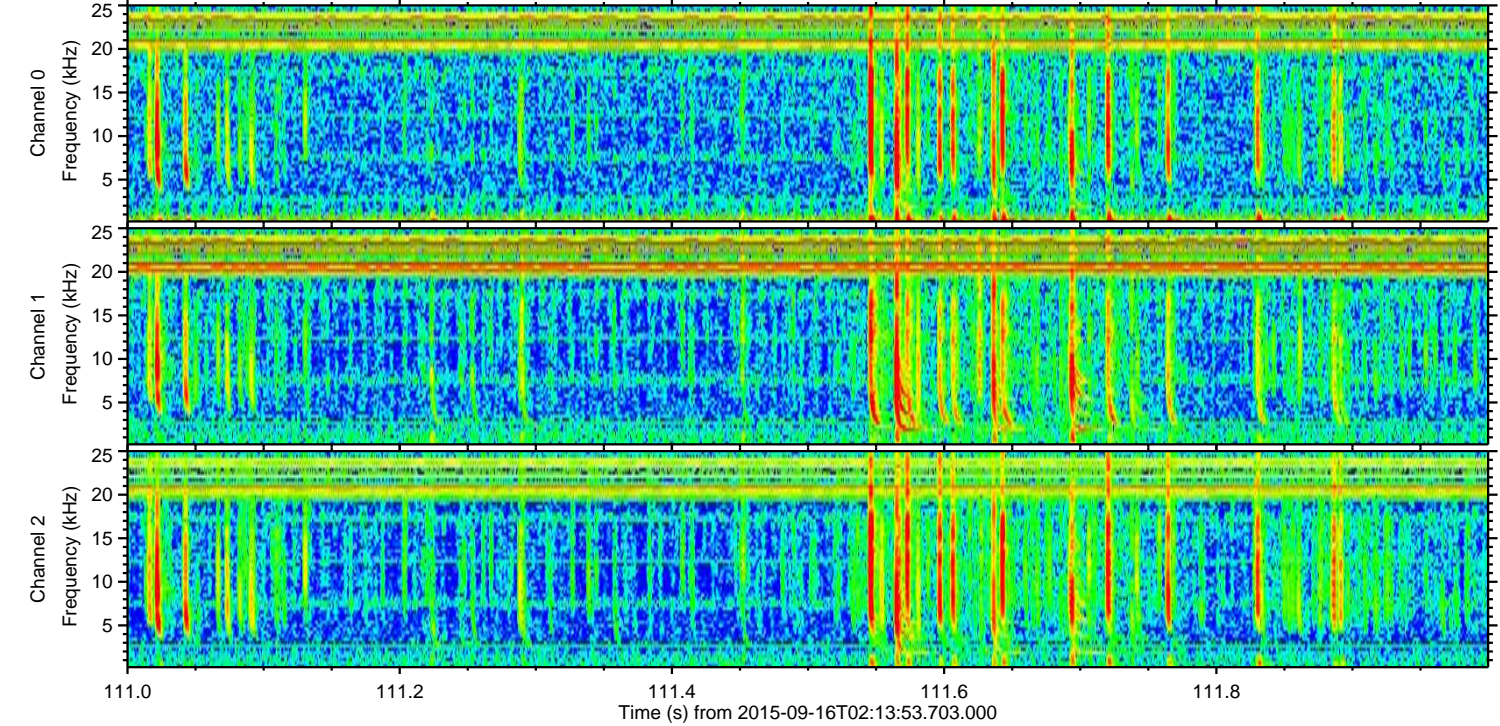
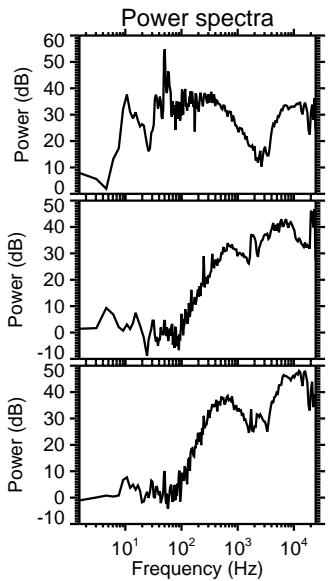
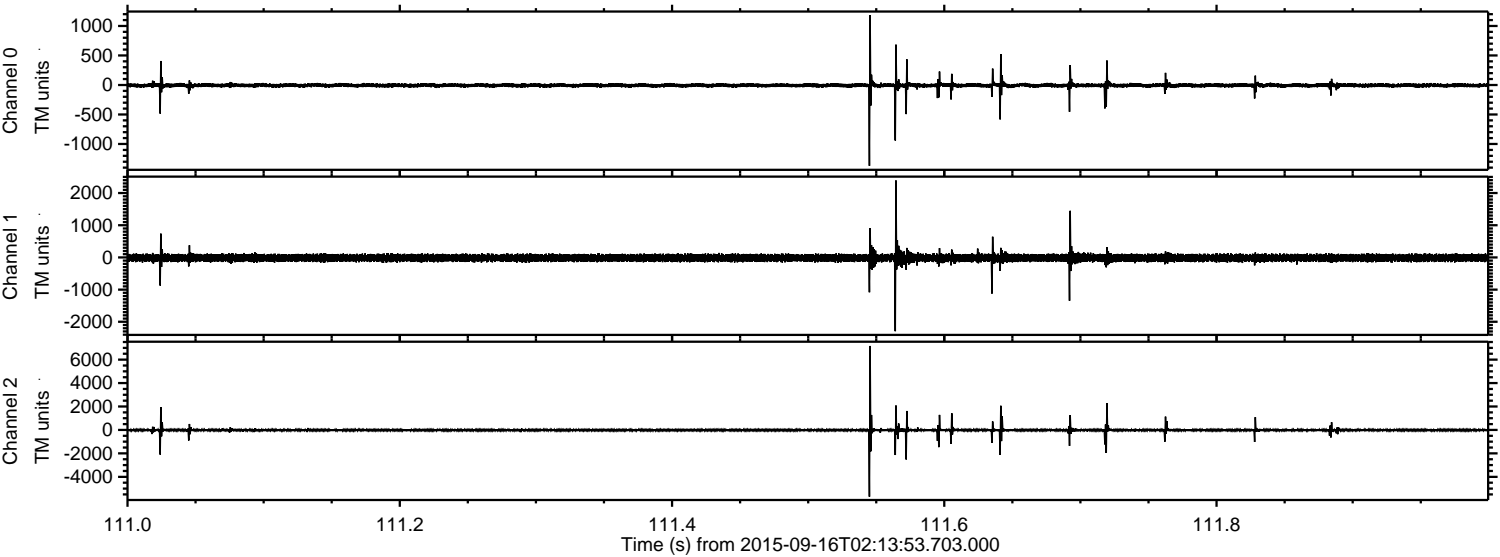
ELMAVAN 3D WAVEFORMS (Measured data sampled at 50 kHz) 51000 packets of 144 samples from 2015-09-16T02:13:53.703.000.

Processed Mon Oct 12 23:04:18 2015 by ELM ver.2012-10-06 from 001__elm20150916_021352__dat00.bin



ELMAVAN 3D WAVEFORMS (Measured data sampled at 50 kHz) 51000 packets of 144 samples from 2015-09-16T02:13:53.703.000. Part 112/147

Processed Mon Oct 12 23:04:43 2015 by ELM ver.2012-10-06 from 001__elm20150916_021352__dat00.bin

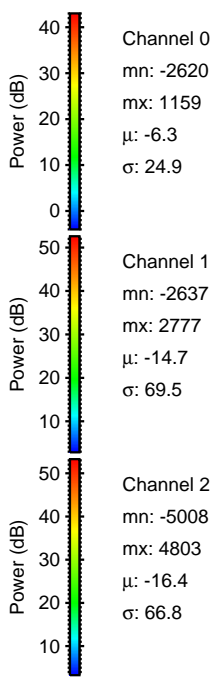
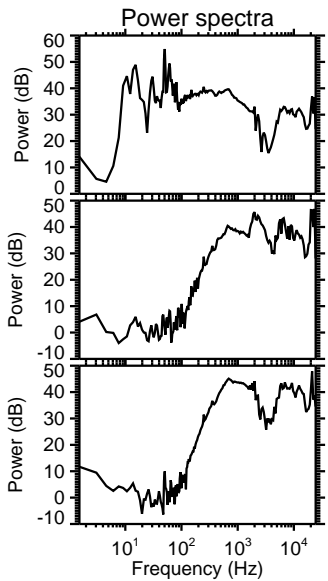
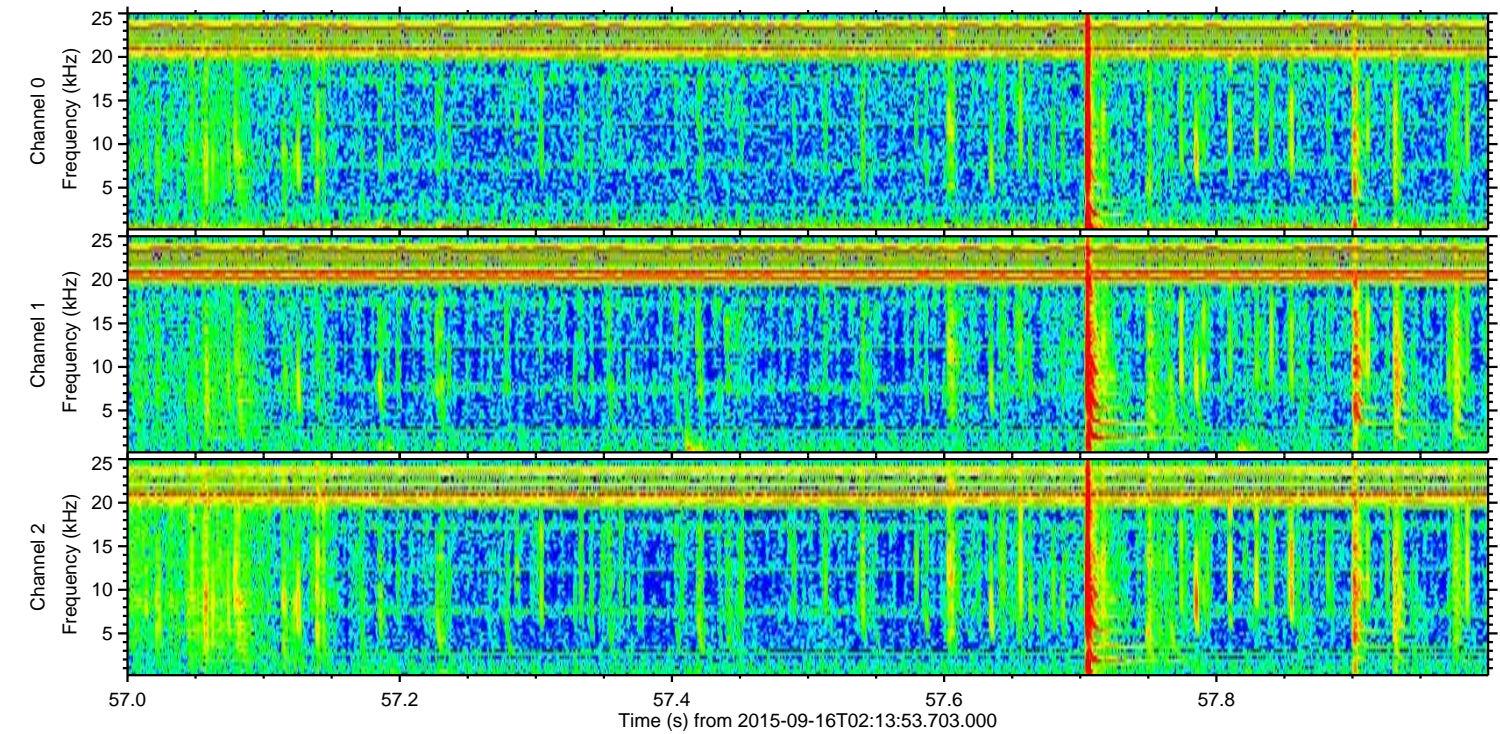
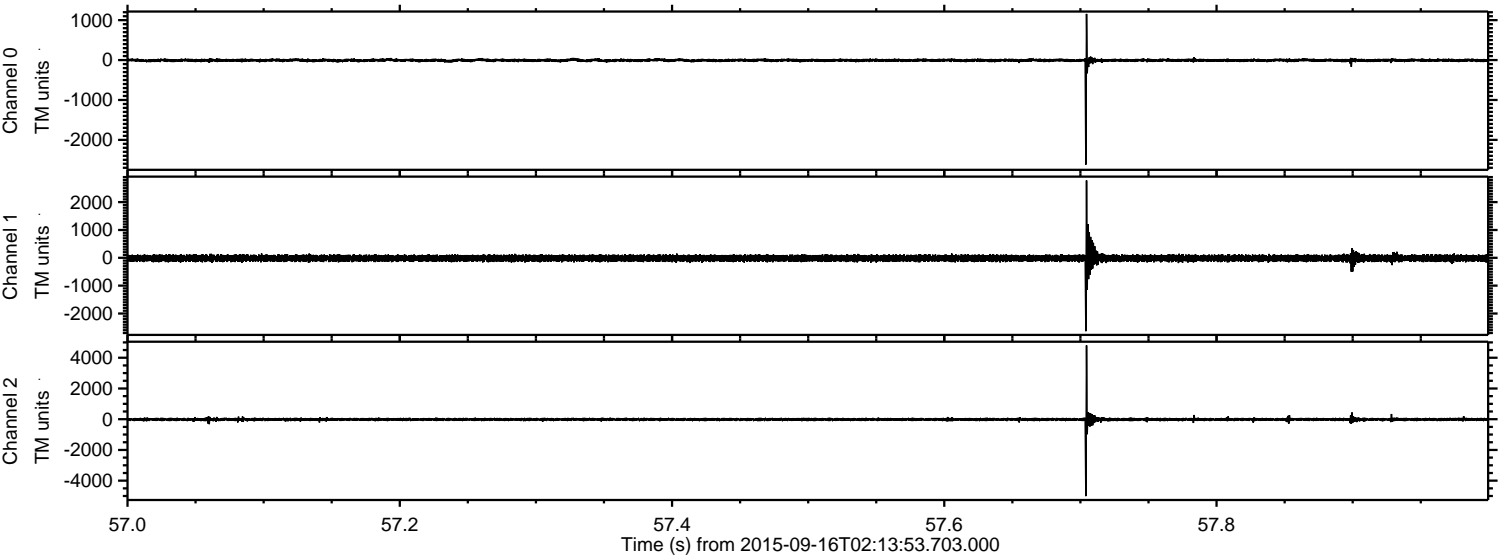


Channel 0
mn: -1369
mx: 1185
 μ : -6.3
 σ : 23.4

Channel 1
mn: -2293
mx: 2391
 μ : -14.6
 σ : 64.9

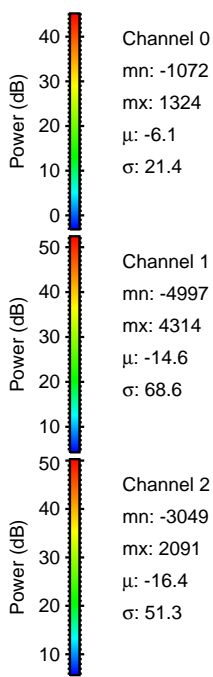
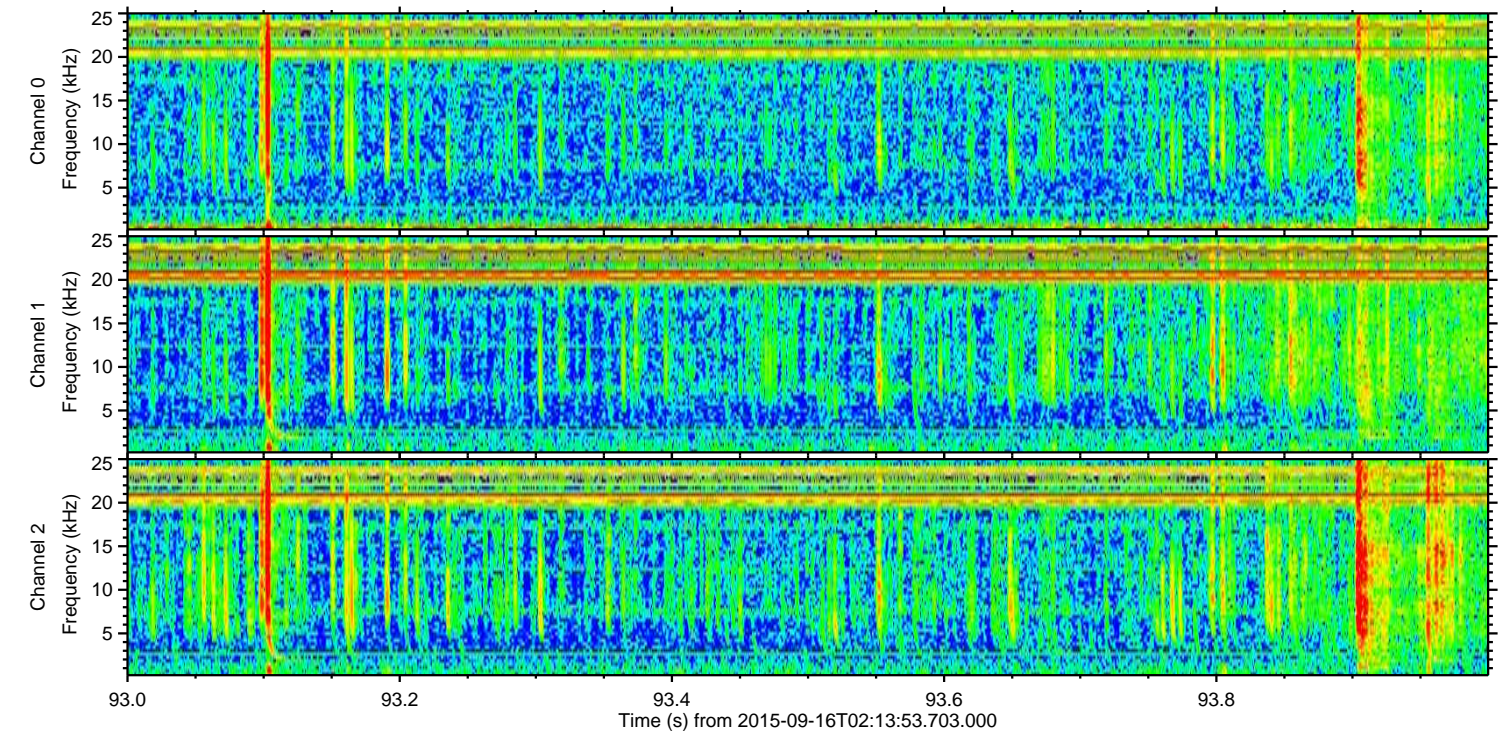
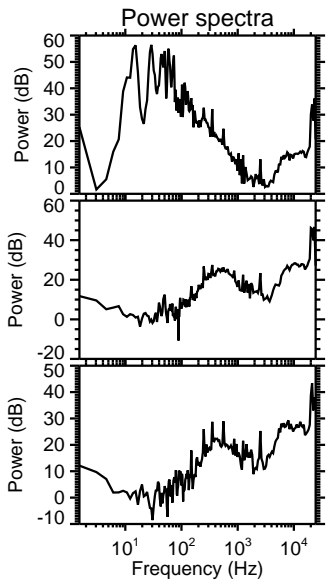
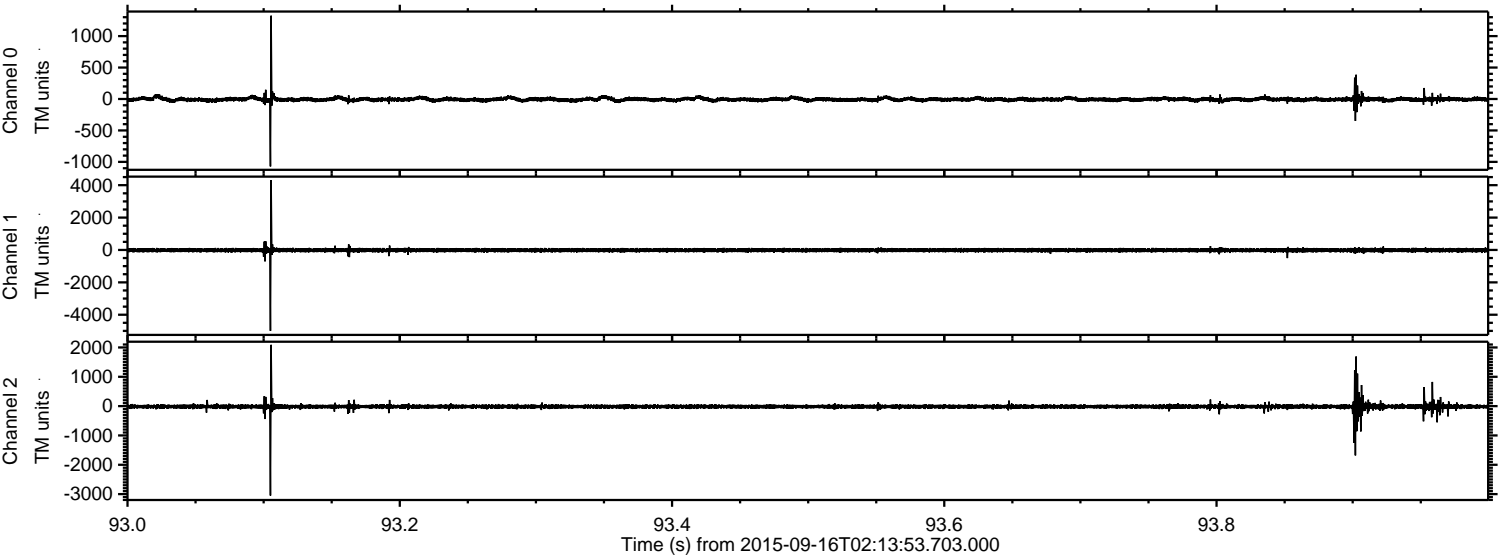
Channel 2
mn: -5692
mx: 7170
 μ : -16.5
 σ : 87.1

Processed Mon Oct 12 23:04:45 2015 by ELM ver.2012-10-06 from 001__elm20150916_021352__dat00.bin



ELMAVAN 3D WAVEFORMS (Measured data sampled at 50 kHz) 51000 packets of 144 samples from 2015-09-16T02:13:53.703.000. Part 94/147

Processed Mon Oct 12 23:04:47 2015 by ELM ver.2012-10-06 from 001__elm20150916_021352__dat00.bin

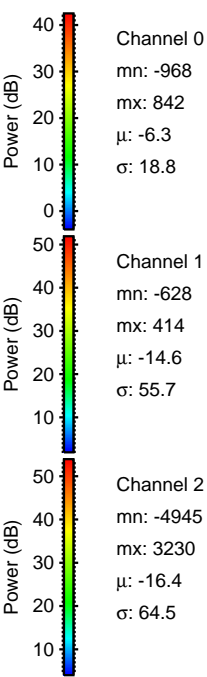
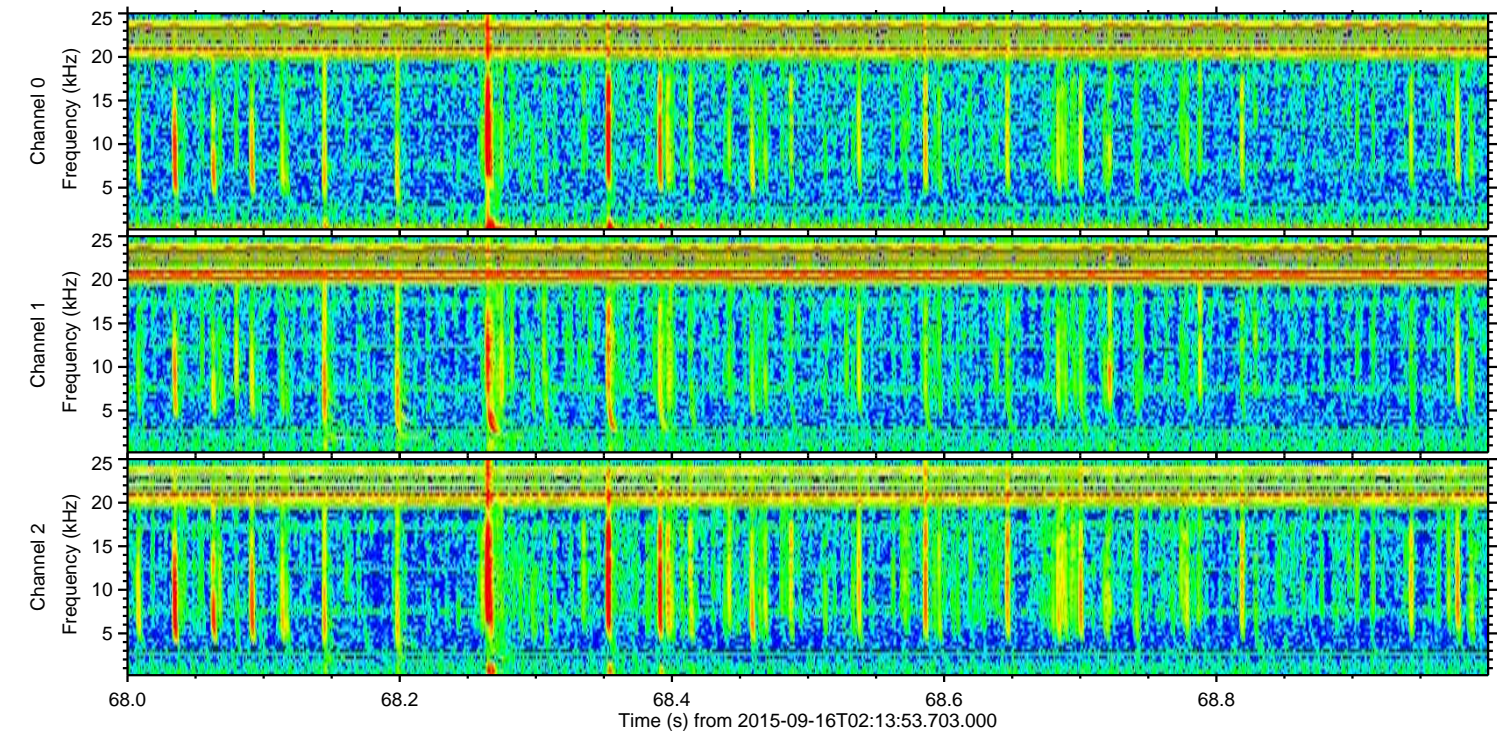
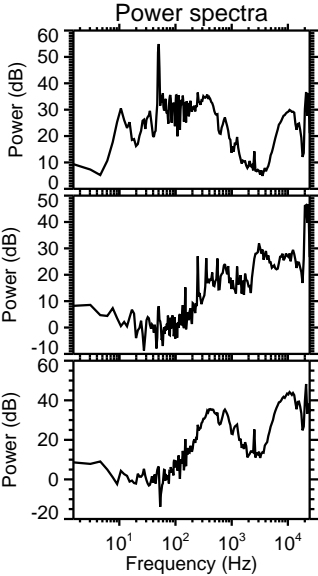
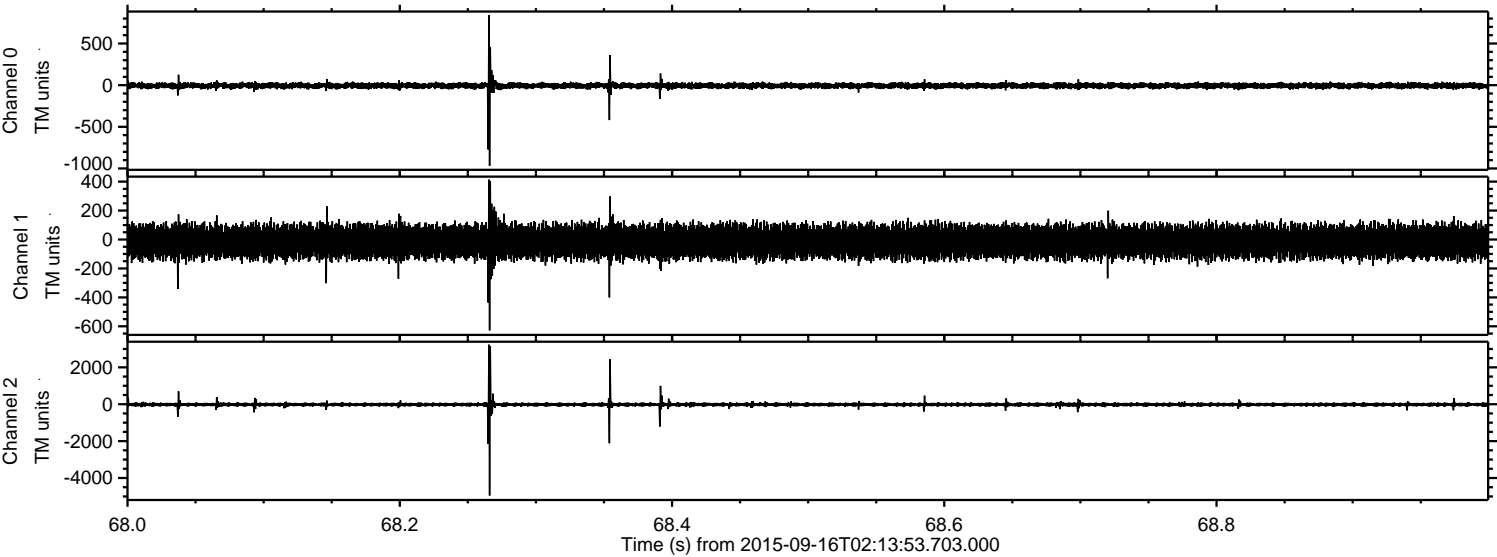


Channel 0
mn: -1072
mx: 1324
 μ : -6.1
 σ : 21.4

Channel 1
mn: -4997
mx: 4314
 μ : -14.6
 σ : 68.6

Channel 2
mn: -3049
mx: 2091
 μ : -16.4
 σ : 51.3

Processed Mon Oct 12 23:04:50 2015 by ELM ver.2012-10-06 from 001__elm20150916_021352__dat00.bin

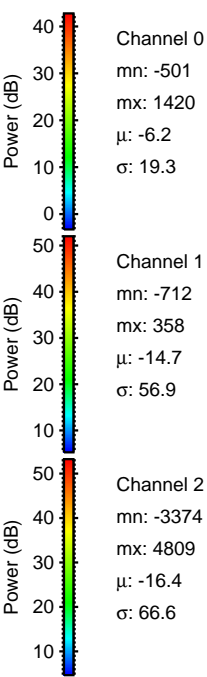
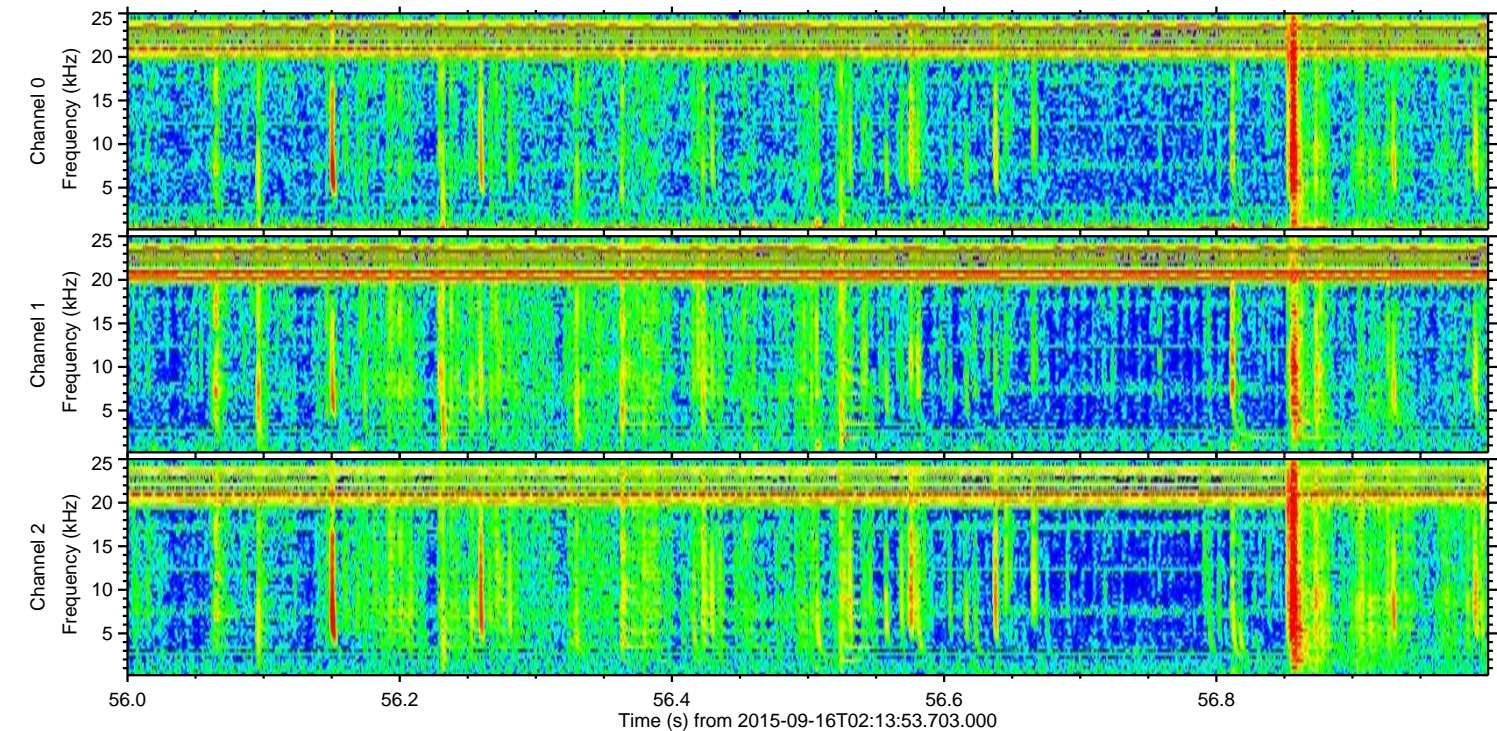
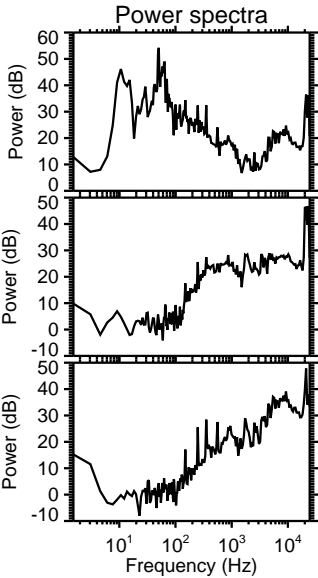
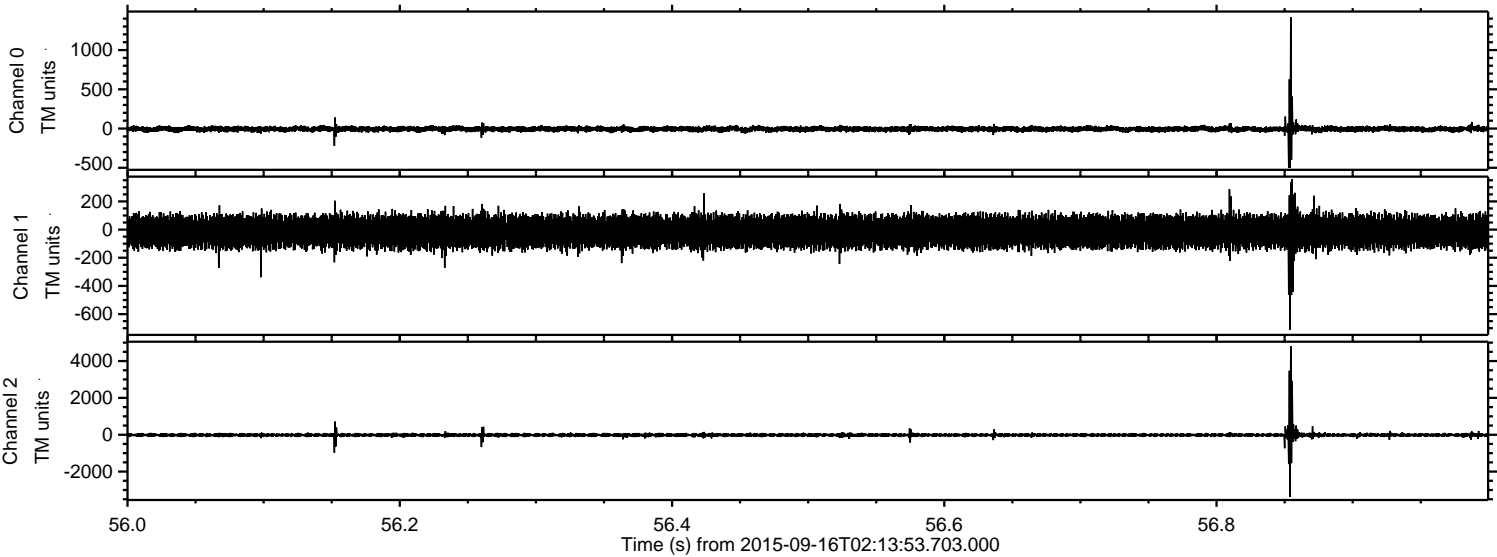


Channel 0
mn: -968
mx: 842
 μ : -6.3
 σ : 18.8

Channel 1
mn: -628
mx: 414
 μ : -14.6
 σ : 55.7

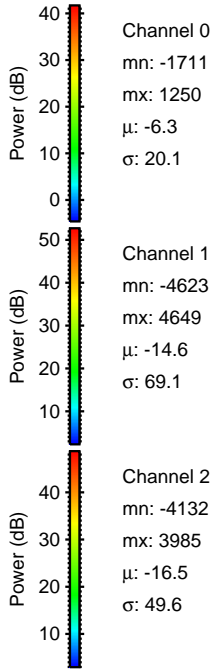
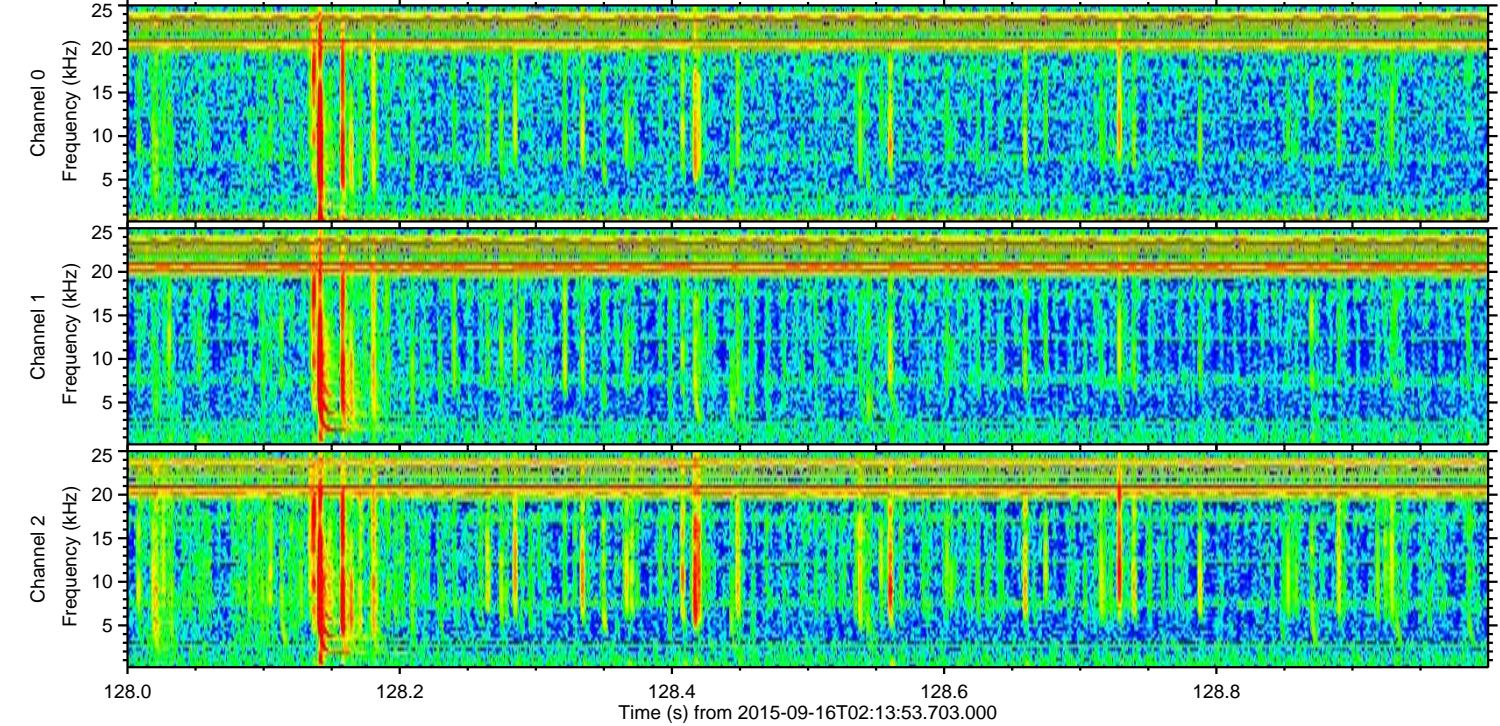
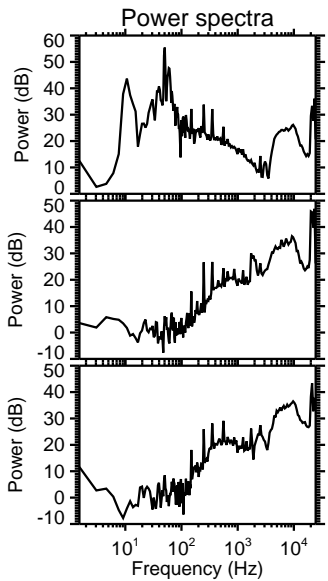
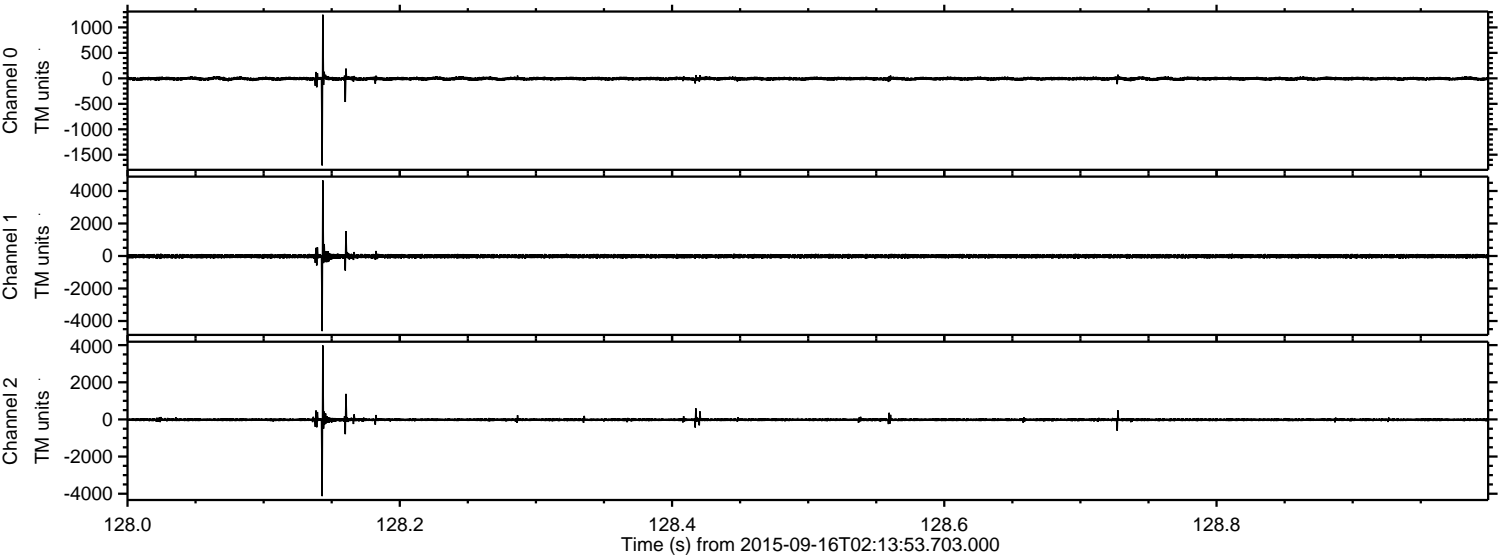
Channel 2
mn: -4945
mx: 3230
 μ : -16.4
 σ : 64.5

Processed Mon Oct 12 23:04:51 2015 by ELM ver.2012-10-06 from 001__elm20150916_021352__dat00.bin

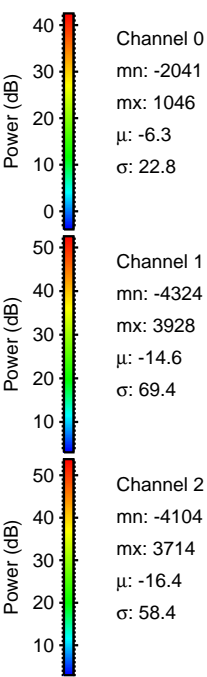
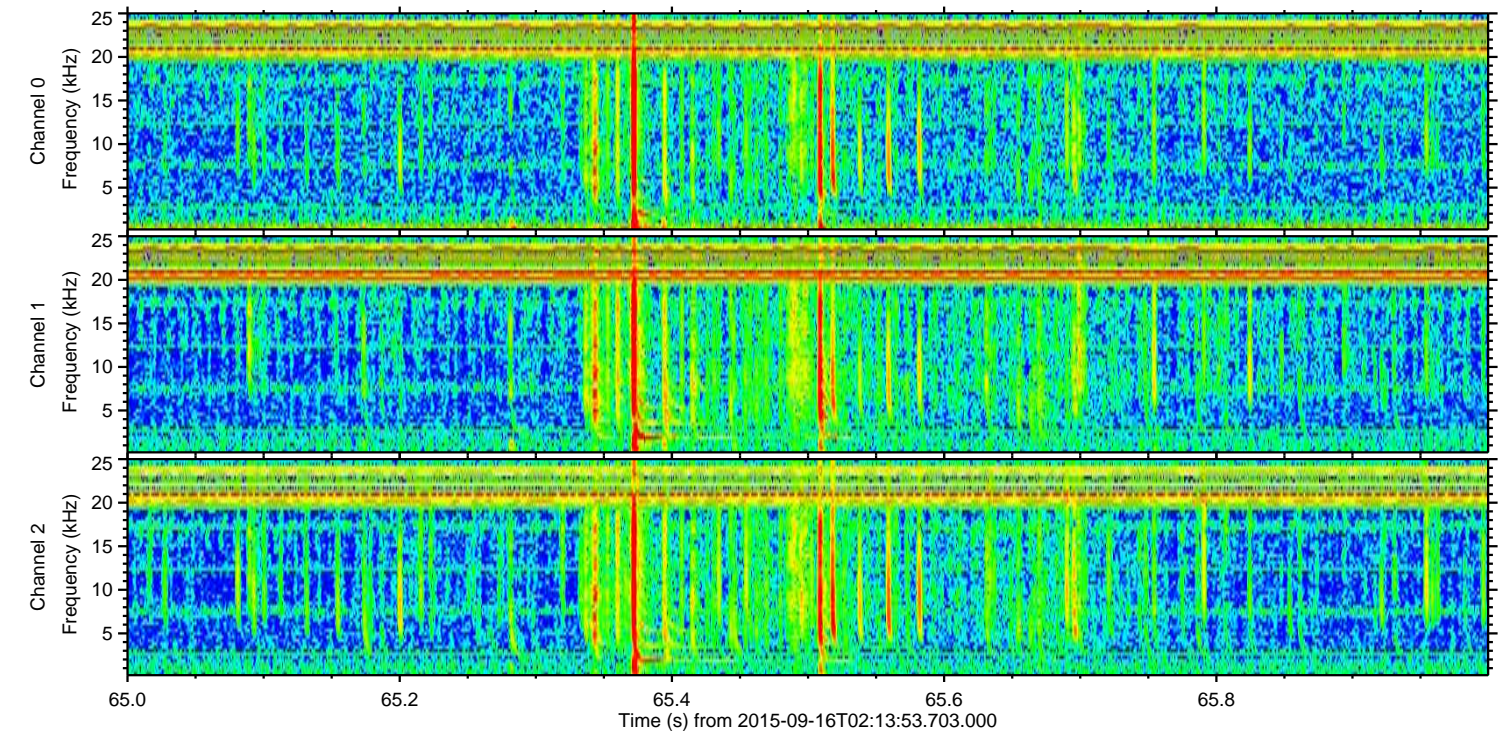
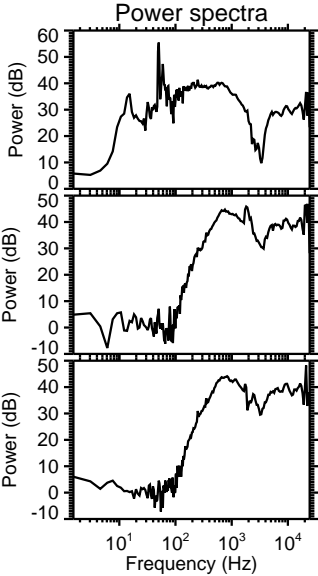
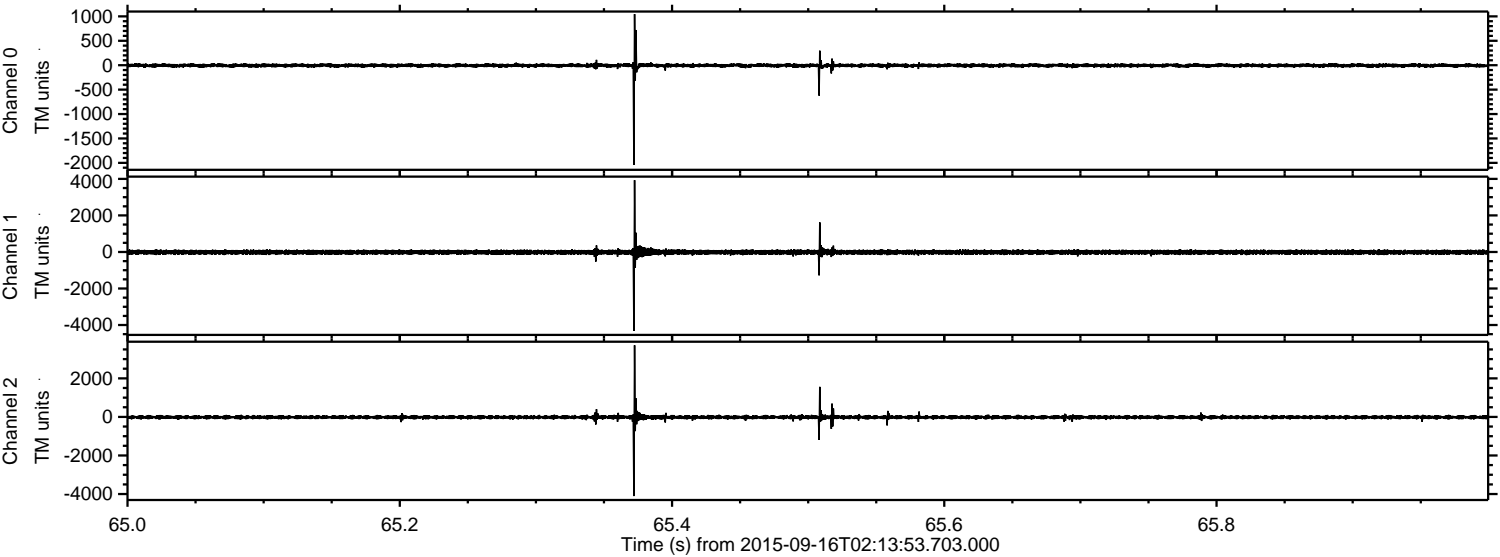


ELMAVAN 3D WAVEFORMS (Measured data sampled at 50 kHz) 51000 packets of 144 samples from 2015-09-16T02:13:53.703.000. Part 129/147

Processed Mon Oct 12 23:04:53 2015 by ELM ver.2012-10-06 from 001__elm20150916_021352__dat00.bin



Processed Mon Oct 12 23:04:55 2015 by ELM ver.2012-10-06 from 001__elm20150916_021352__dat00.bin



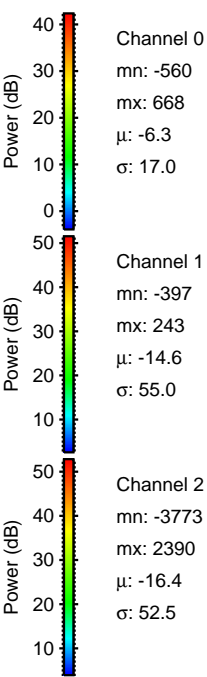
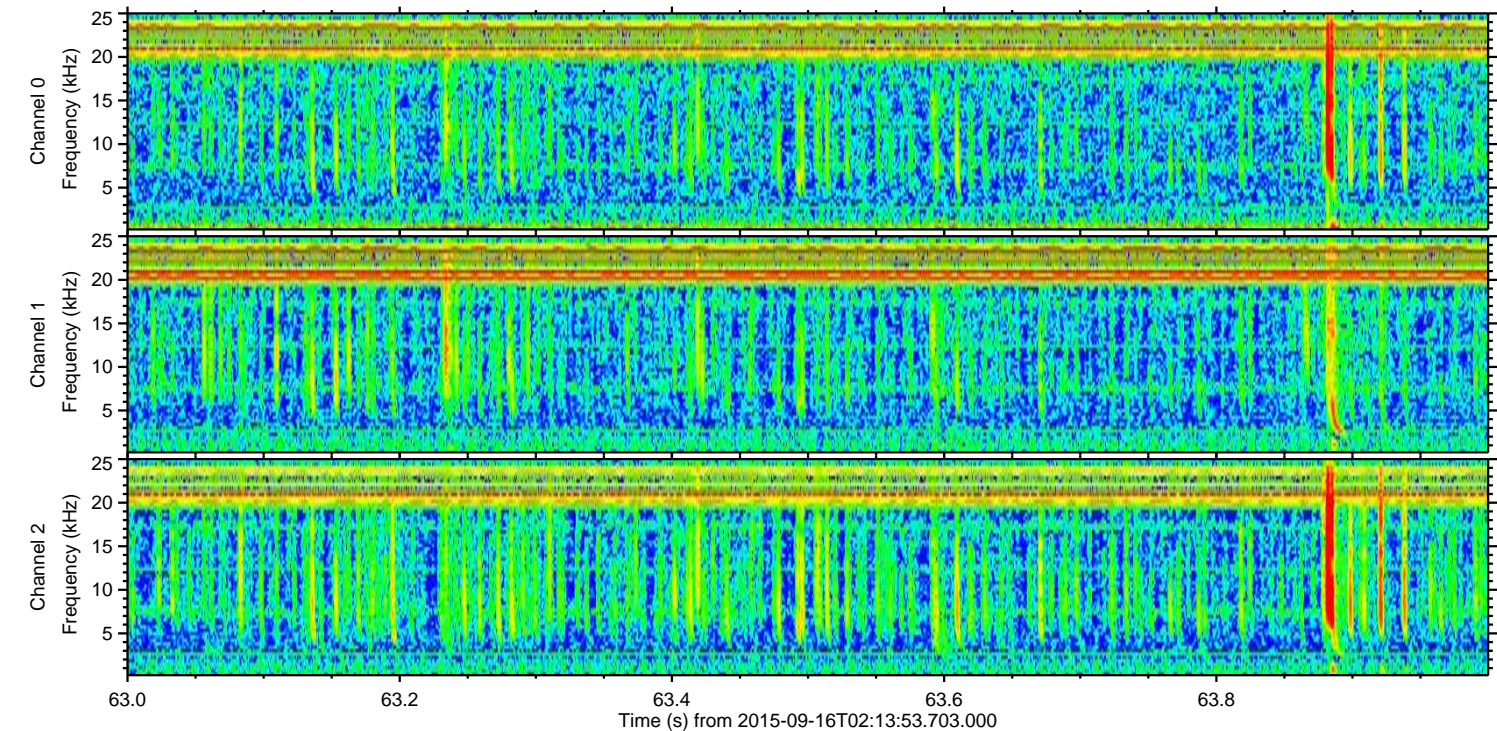
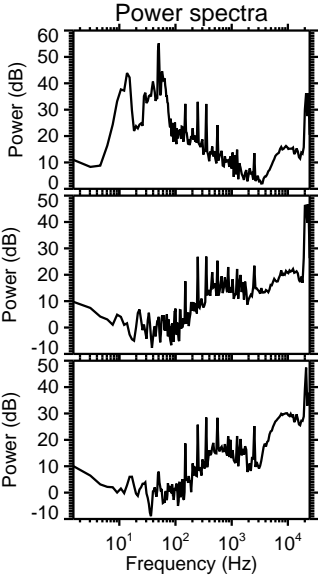
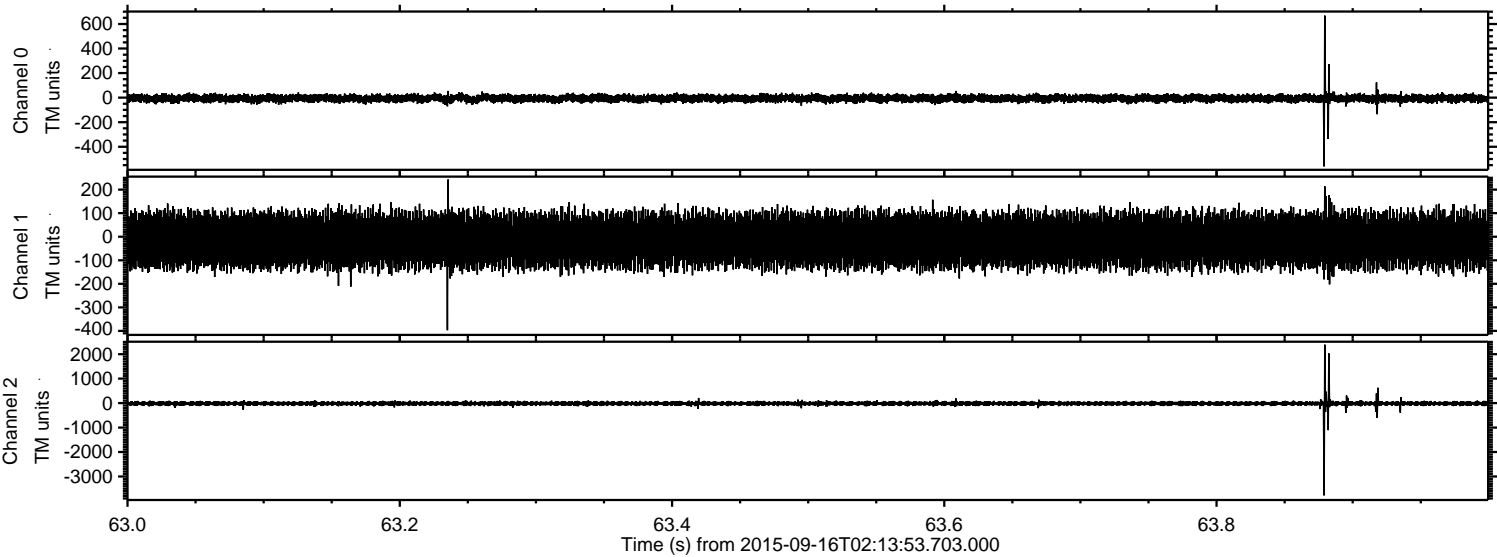
Channel 0
mn: -2041
mx: 1046
 μ : -6.3
 σ : 22.8

Channel 1
mn: -4324
mx: 3928
 μ : -14.6
 σ : 69.4

Channel 2
mn: -4104
mx: 3714
 μ : -16.4
 σ : 58.4

ELMAVAN 3D WAVEFORMS (Measured data sampled at 50 kHz) 51000 packets of 144 samples from 2015-09-16T02:13:53.703.000. Part 64/147

Processed Mon Oct 12 23:04:56 2015 by ELM ver.2012-10-06 from 001__elm20150916_021352__dat00.bin



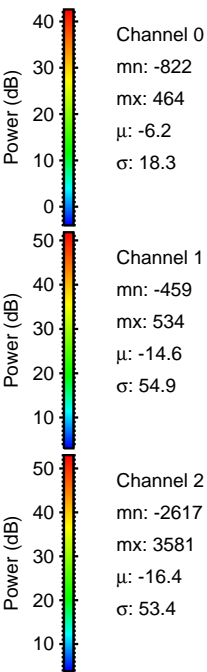
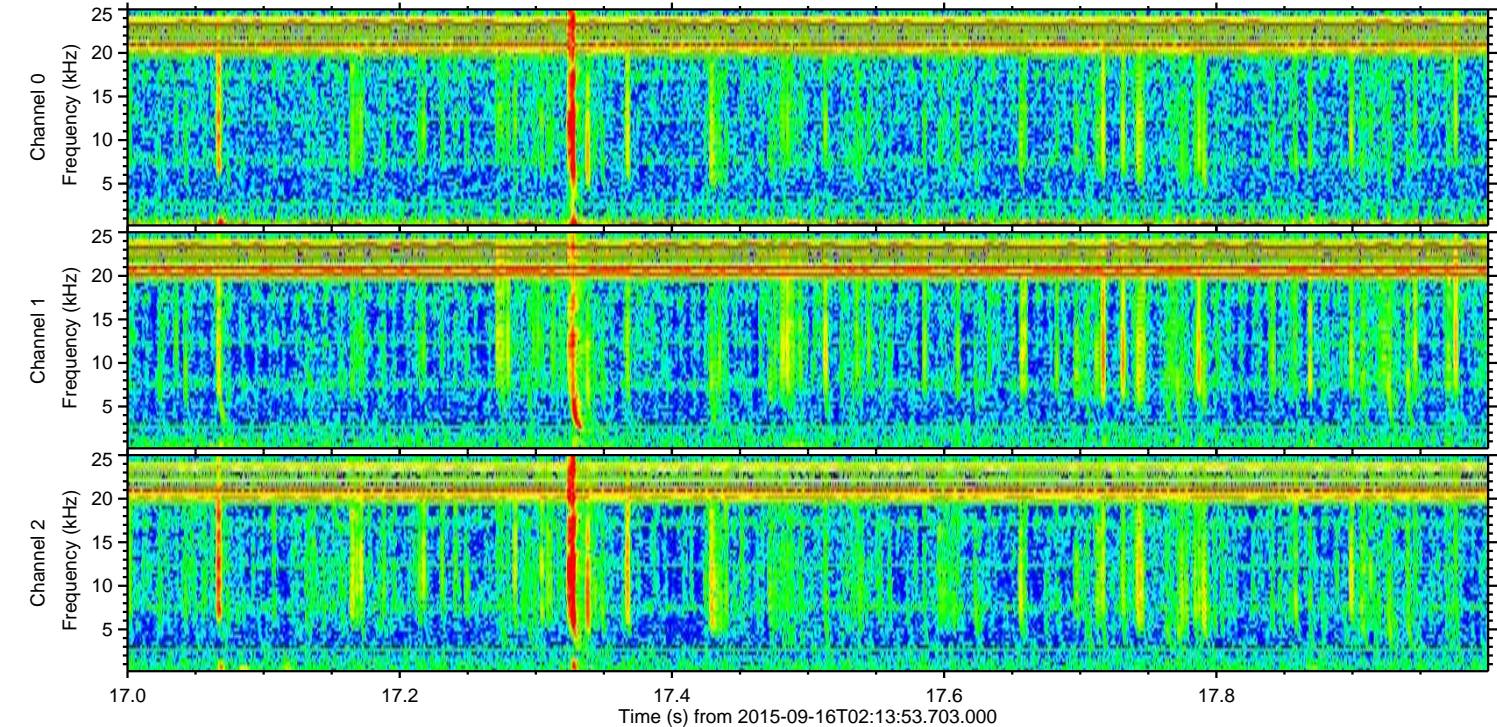
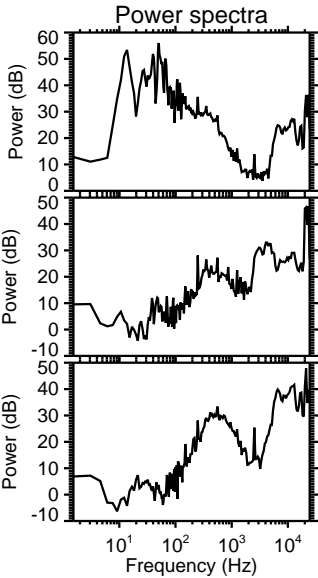
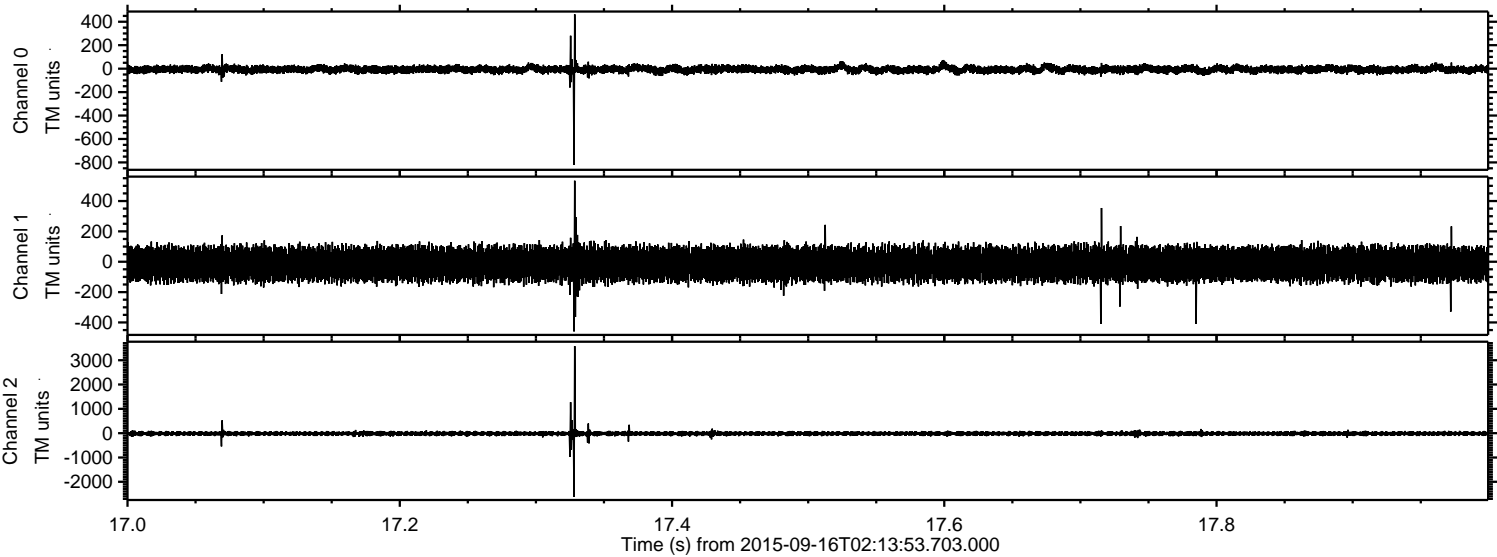
Channel 0
mn: -560
mx: 668
 μ : -6.3
 σ : 17.0

Channel 1
mn: -397
mx: 243
 μ : -14.6
 σ : 55.0

Channel 2
mn: -3773
mx: 2390
 μ : -16.4
 σ : 52.5

ELMAVAN 3D WAVEFORMS (Measured data sampled at 50 kHz) 51000 packets of 144 samples from 2015-09-16T02:13:53.703.000. Part 18/147

Processed Mon Oct 12 23:04:58 2015 by ELM ver.2012-10-06 from 001__elm20150916_021352__dat00.bin



ELMAVAN 3D WAVEFORMS (Measured data sampled at 50 kHz) 51000 packets of 144 samples from 2015-09-16T02:13:53.703.000. Part 134/147

