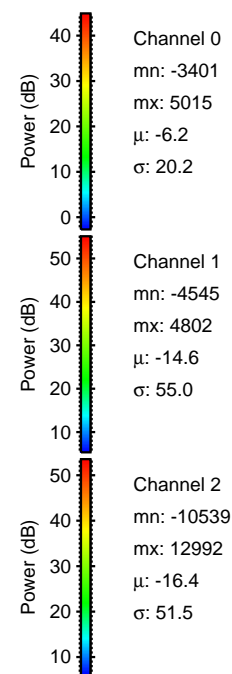
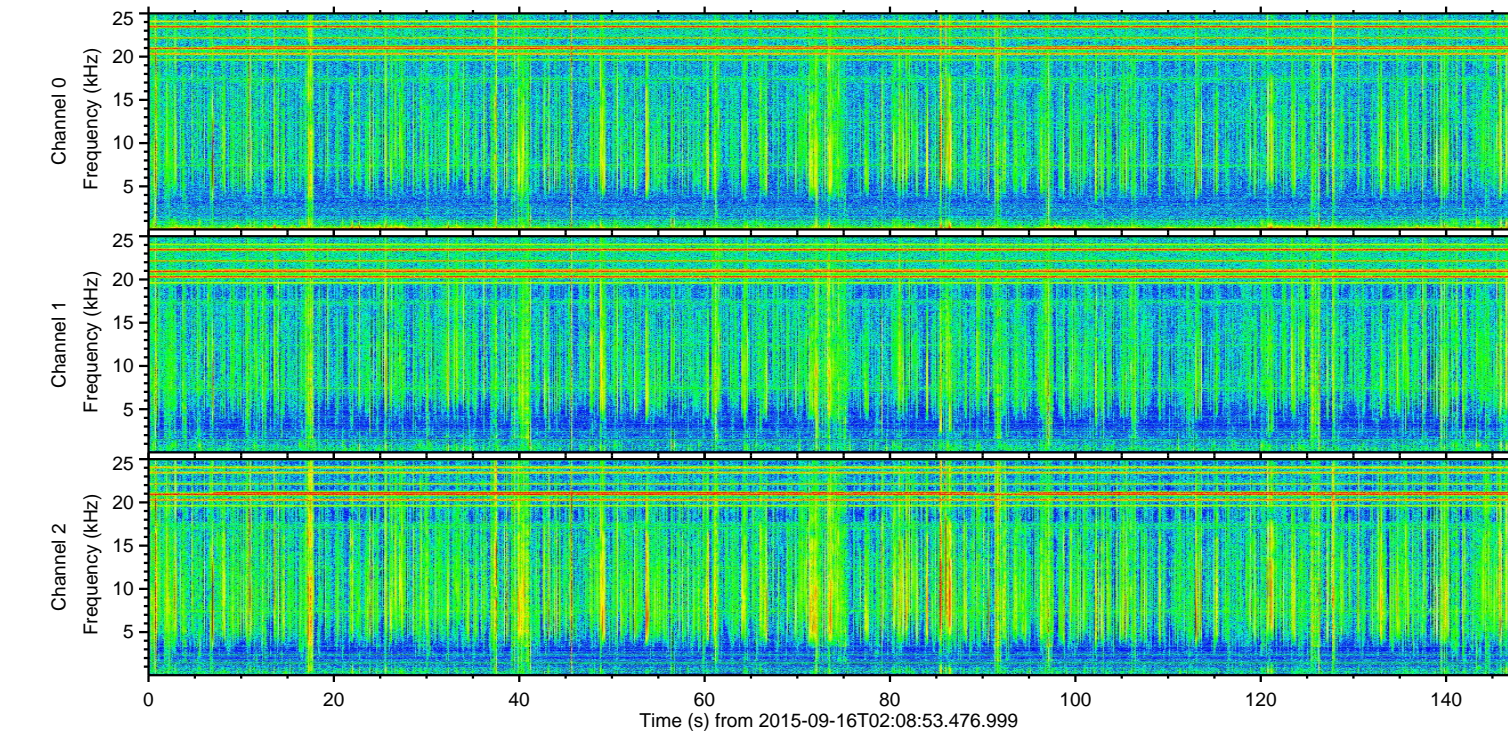
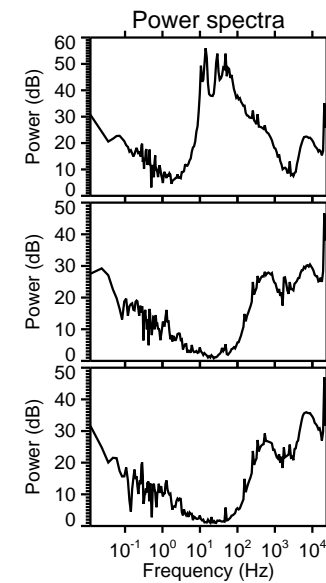
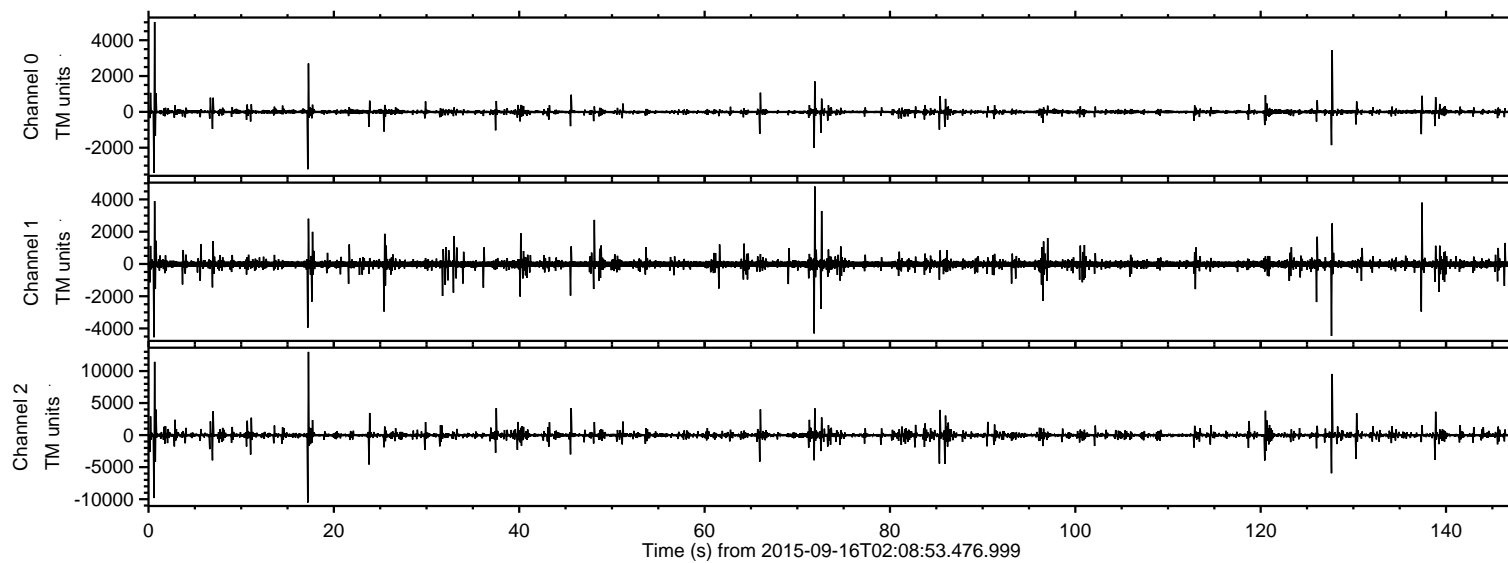


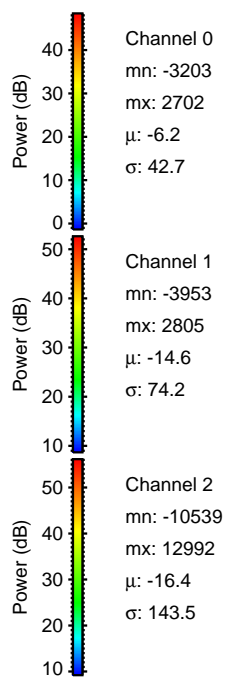
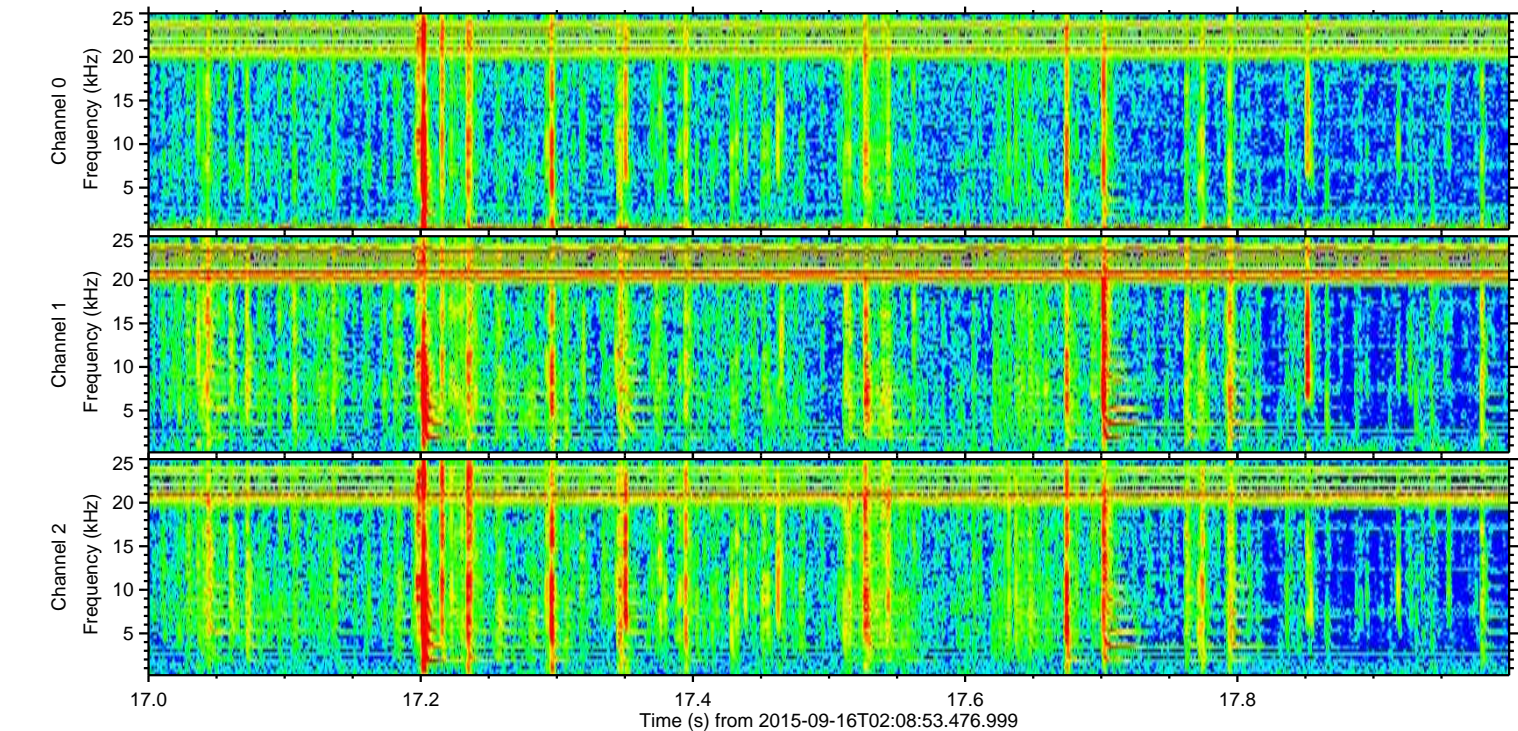
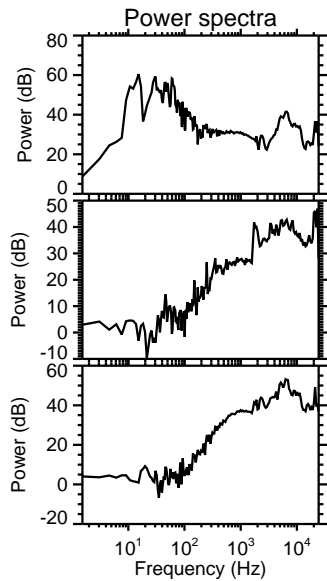
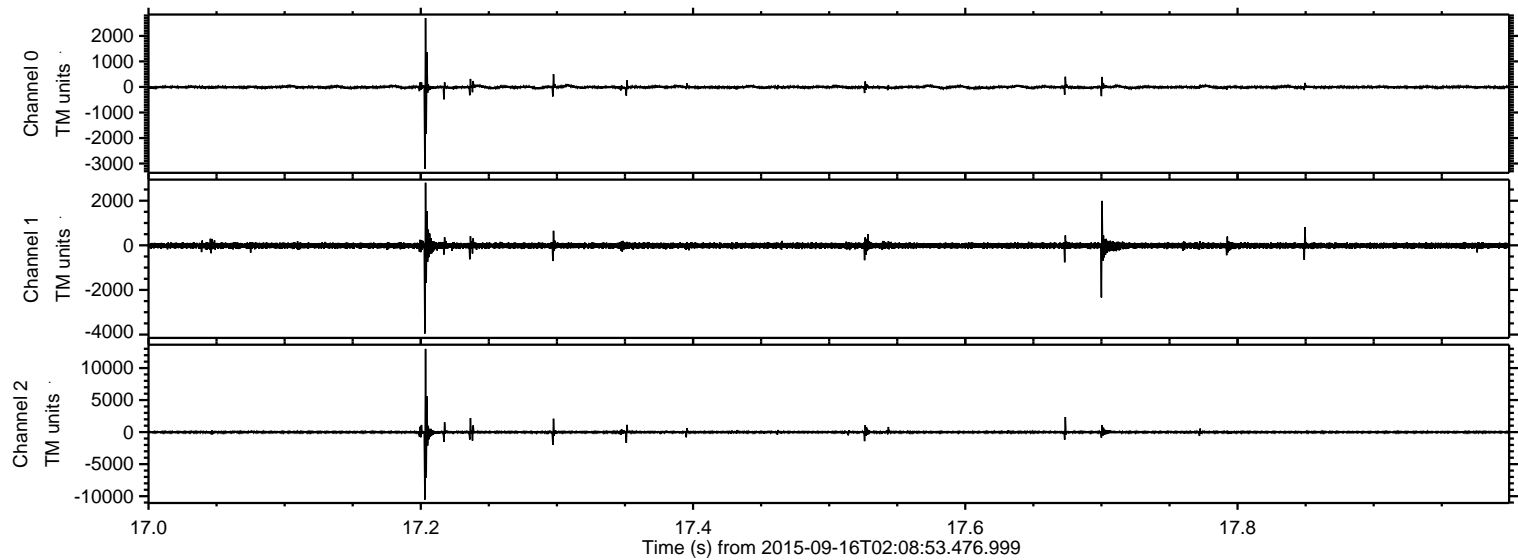
ELMAVAN 3D WAVEFORMS (Measured data sampled at 50 kHz) 51000 packets of 144 samples from 2015-09-16T02:08:53.476.999.

Processed Mon Oct 12 23:02:01 2015 by ELM ver.2012-10-06 from 001__elm20150916_020852__dat00.bin



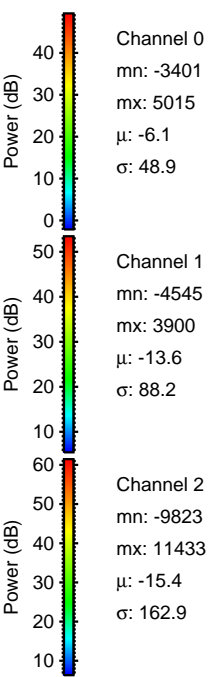
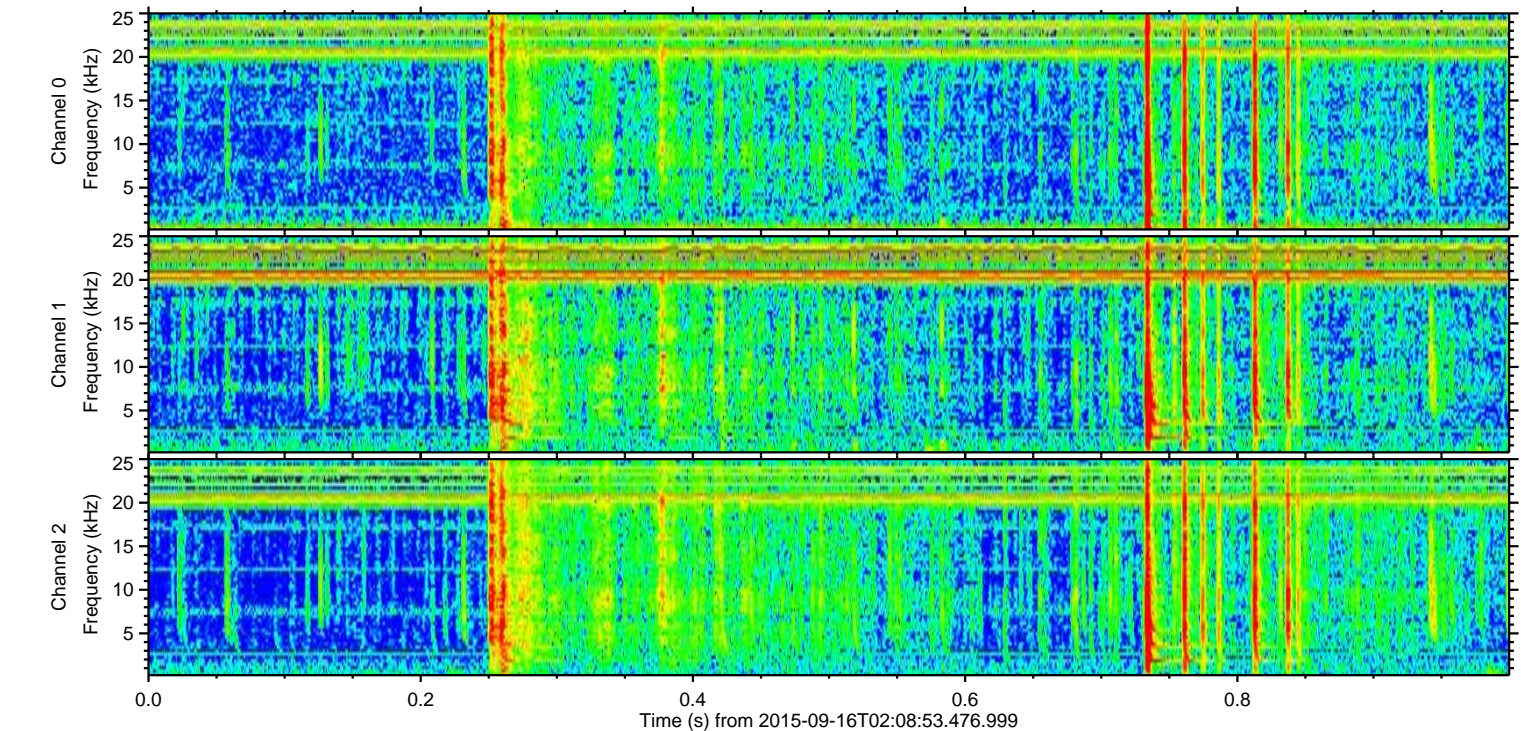
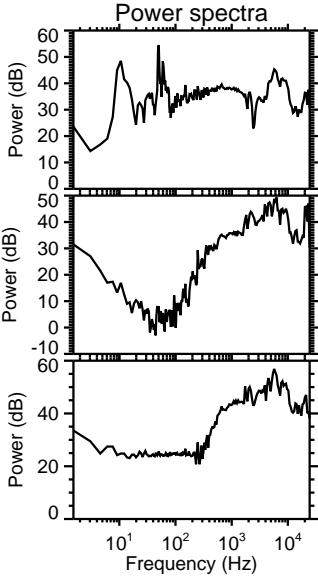
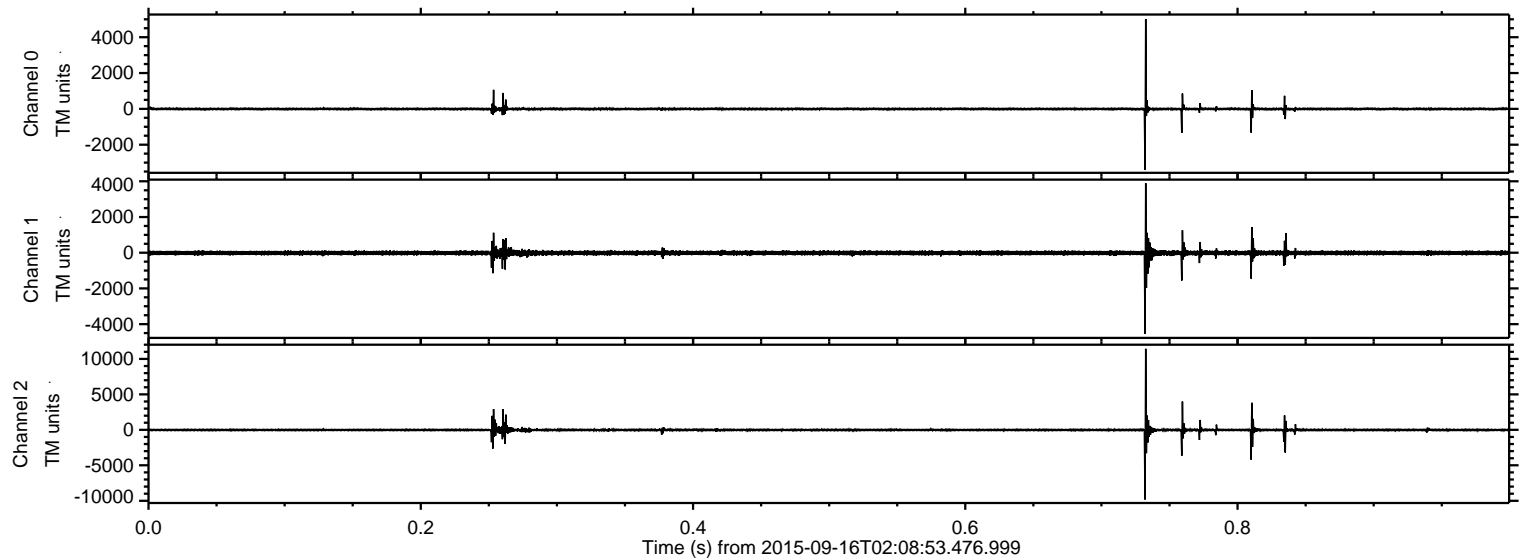
ELMAVAN 3D WAVEFORMS (Measured data sampled at 50 kHz) 51000 packets of 144 samples from 2015-09-16T02:08:53.476.999. Part 18/147

Processed Mon Oct 12 23:02:29 2015 by ELM ver.2012-10-06 from 001__elm20150916_020852__dat00.bin



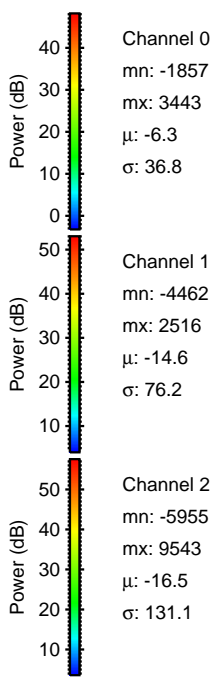
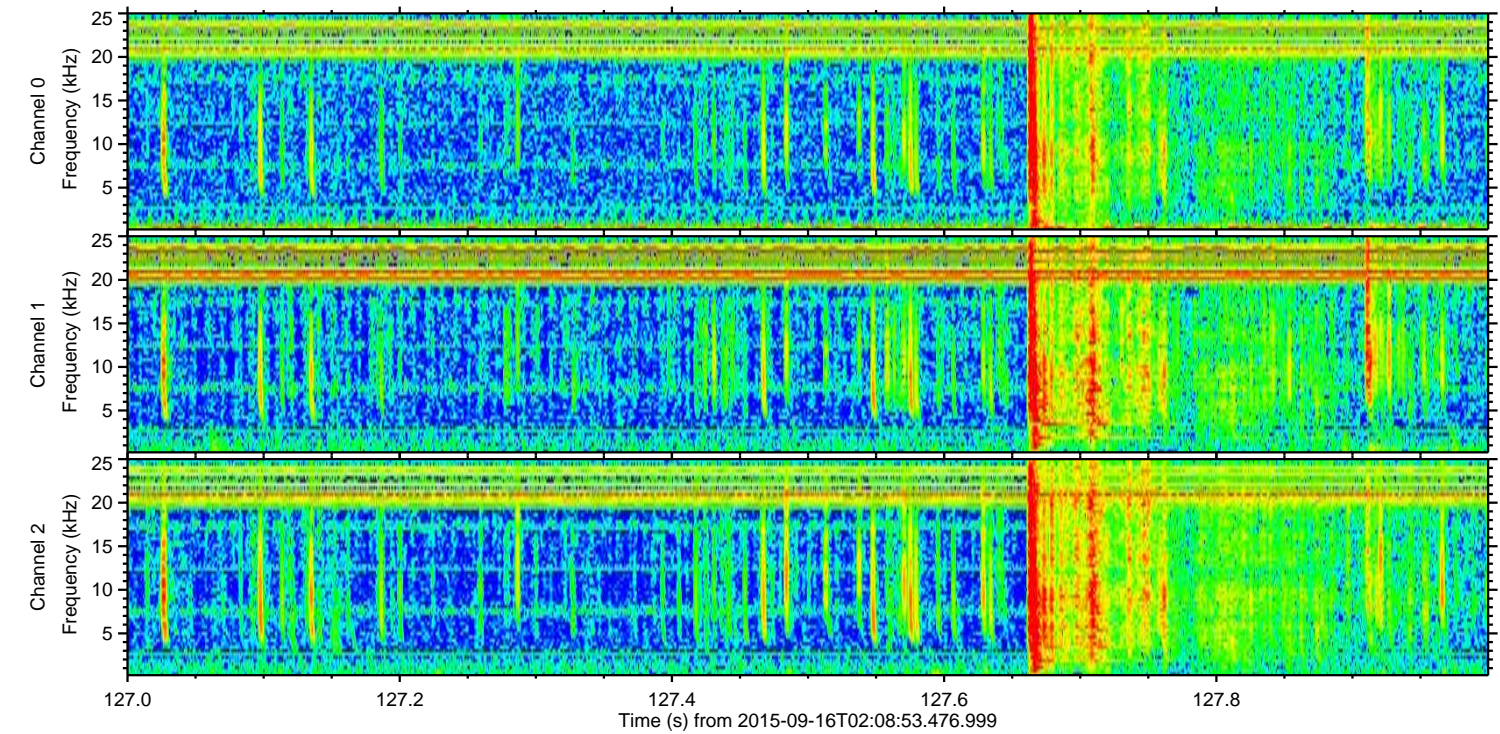
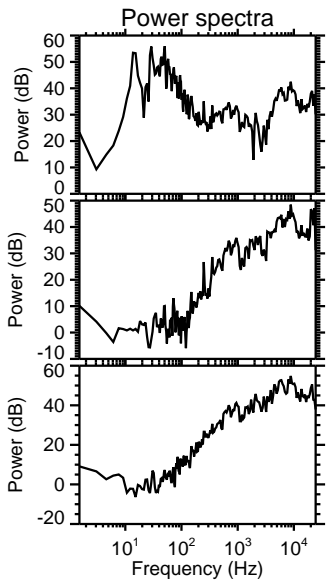
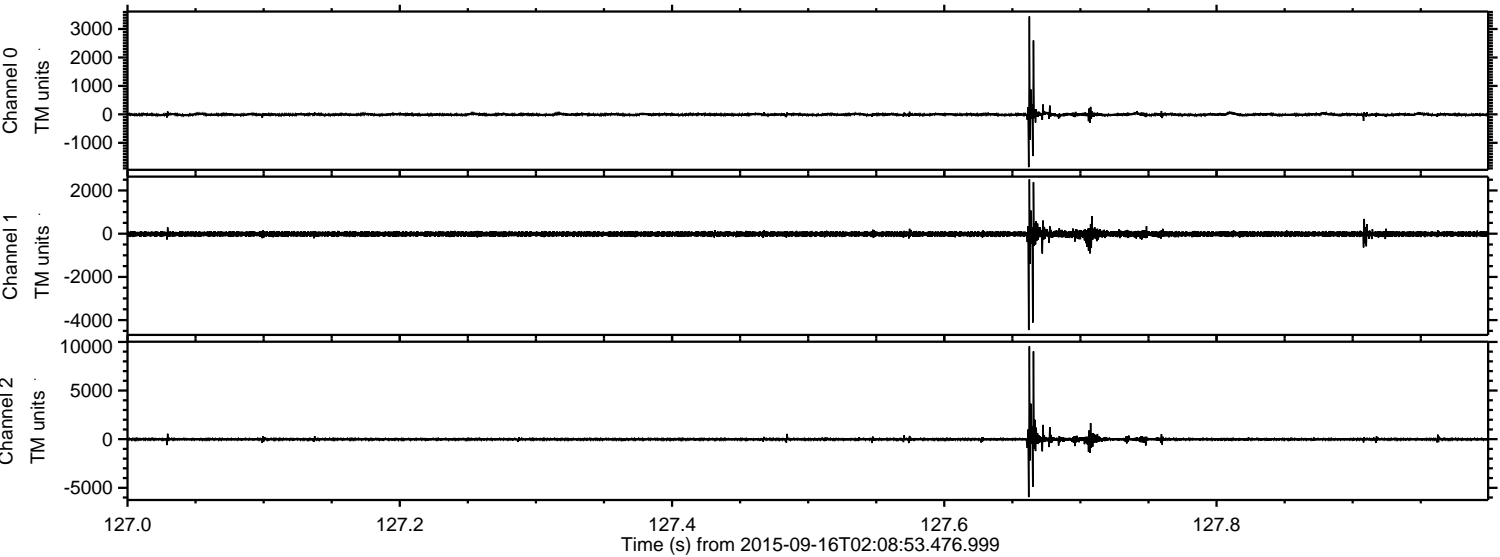
ELMAVAN 3D WAVEFORMS (Measured data sampled at 50 kHz) 51000 packets of 144 samples from 2015-09-16T02:08:53.476.999. Part 1/147

Processed Mon Oct 12 23:02:31 2015 by ELM ver.2012-10-06 from 001__elm20150916_020852__dat00.bin



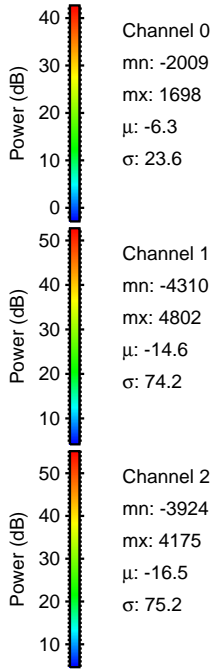
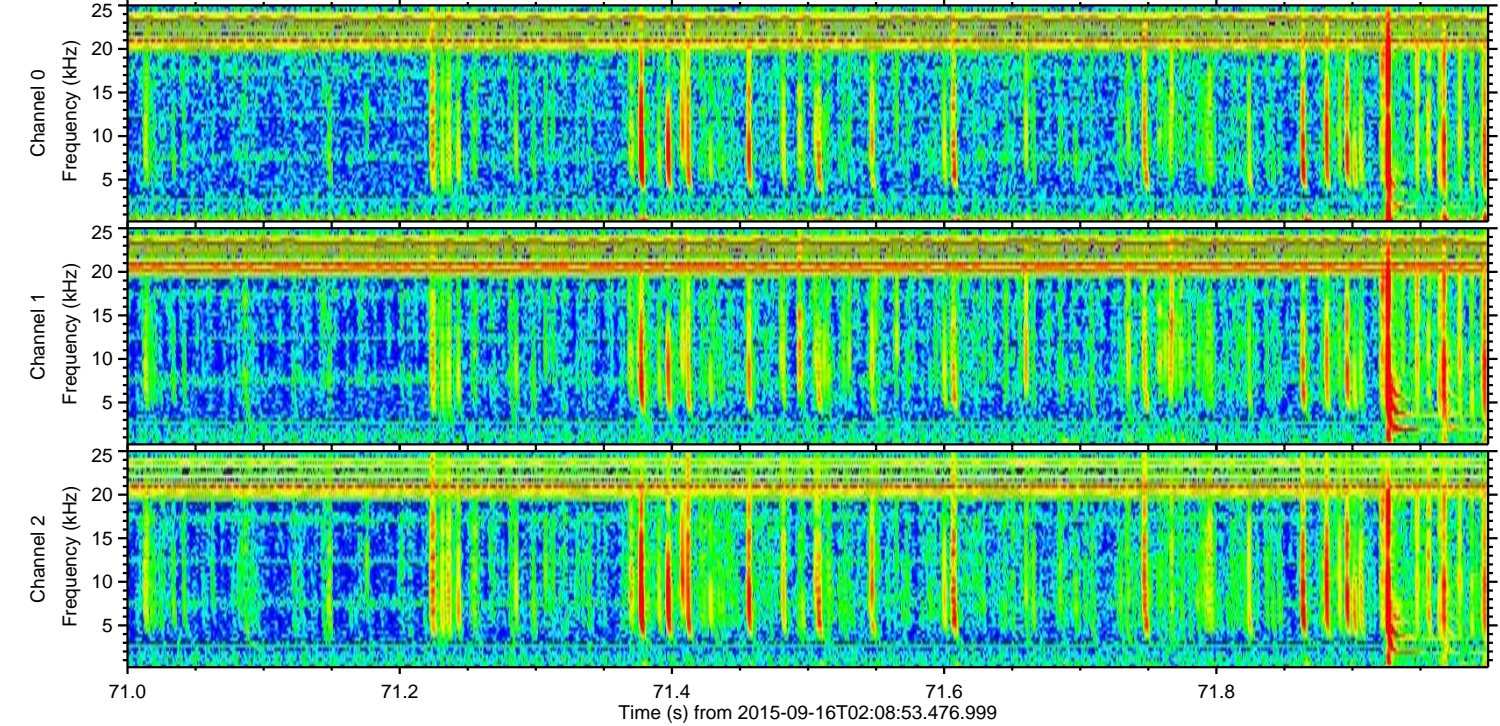
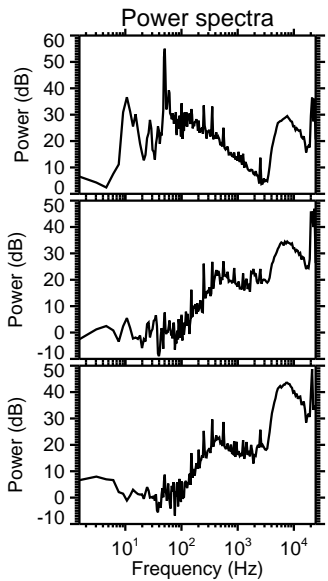
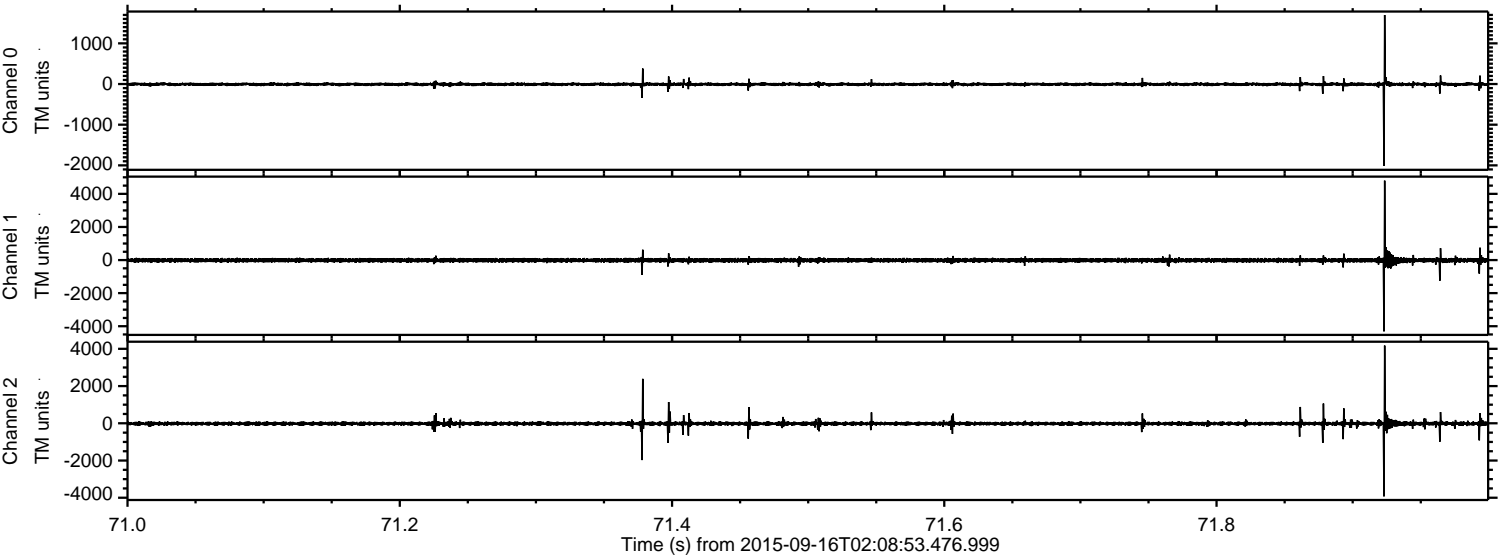
ELMAVAN 3D WAVEFORMS (Measured data sampled at 50 kHz) 51000 packets of 144 samples from 2015-09-16T02:08:53.476.999. Part 128/147

Processed Mon Oct 12 23:02:33 2015 by ELM ver.2012-10-06 from 001__elm20150916_020852__dat00.bin



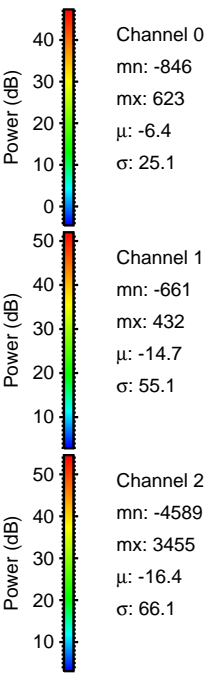
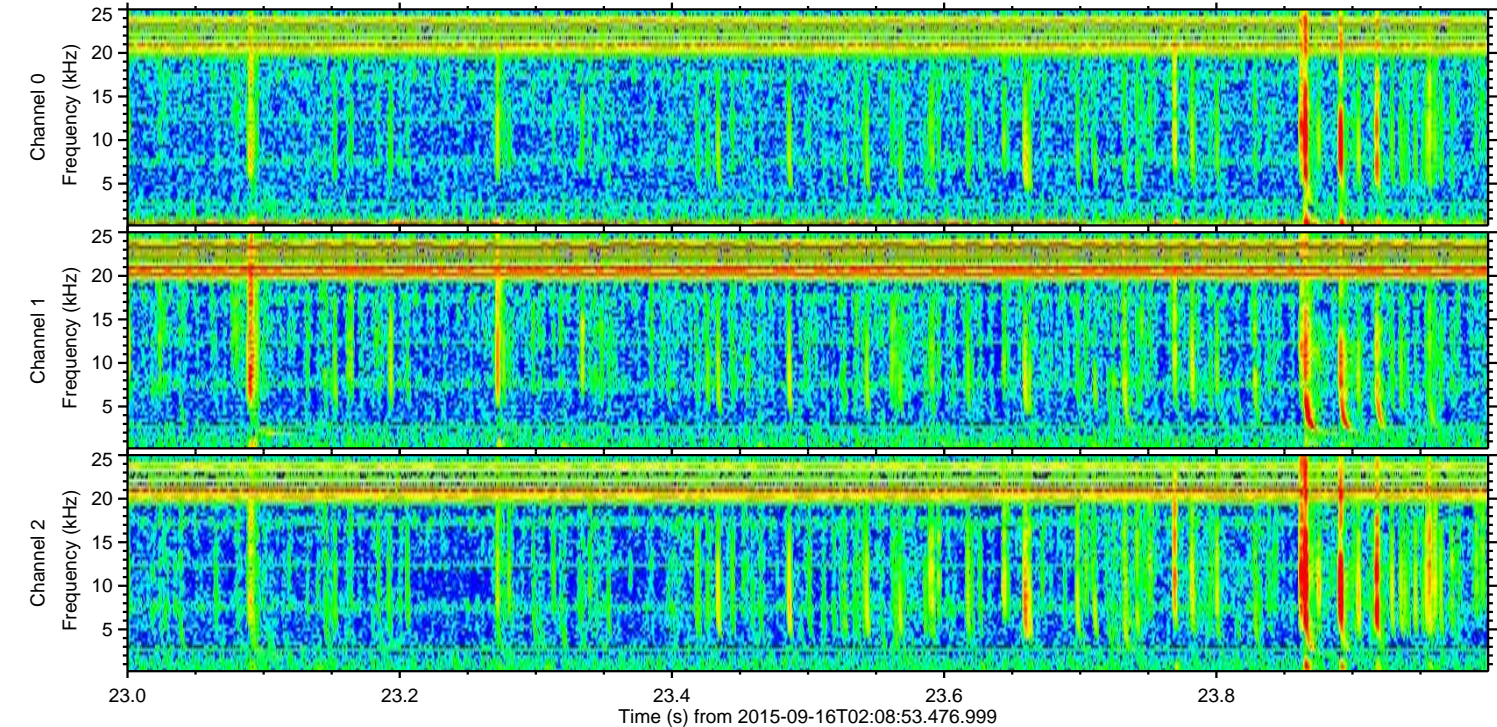
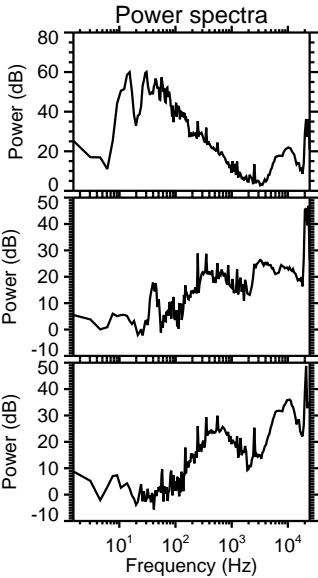
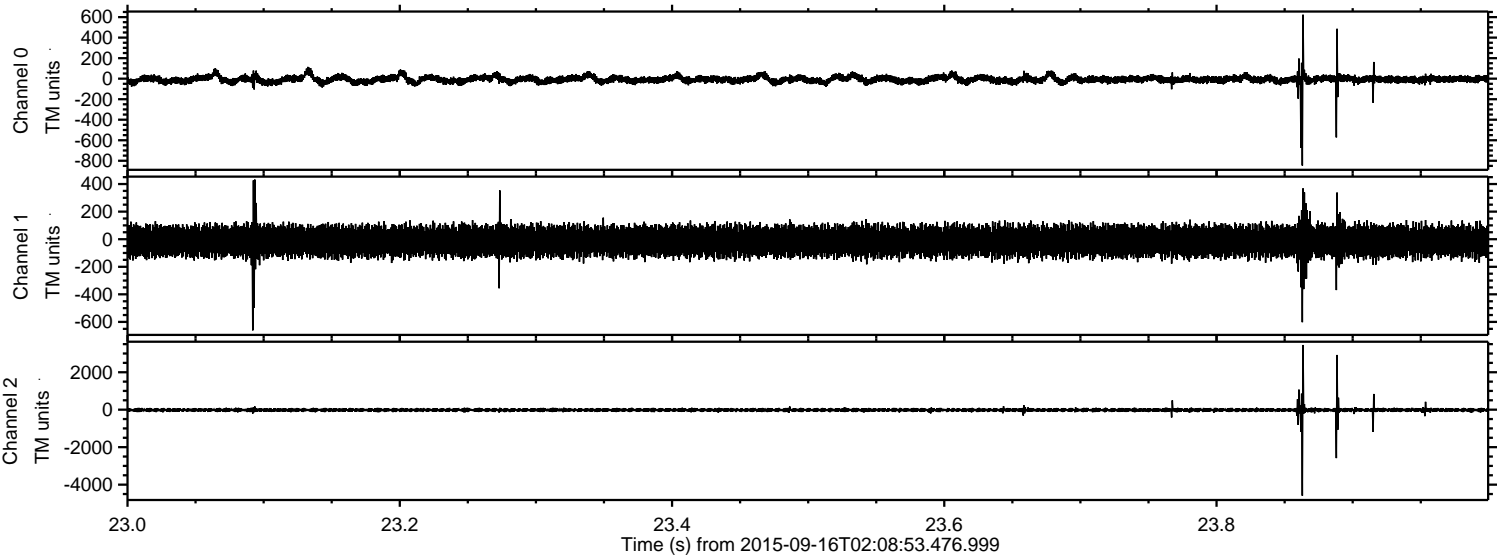
ELMAVAN 3D WAVEFORMS (Measured data sampled at 50 kHz) 51000 packets of 144 samples from 2015-09-16T02:08:53.476.999. Part 72/147

Processed Mon Oct 12 23:02:34 2015 by ELM ver.2012-10-06 from 001__elm20150916_020852__dat00.bin

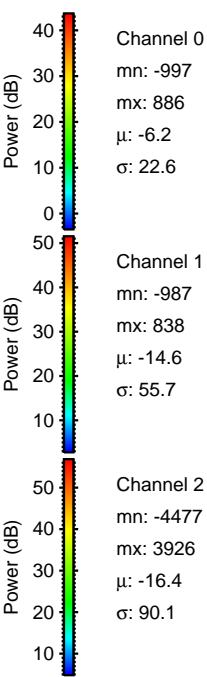
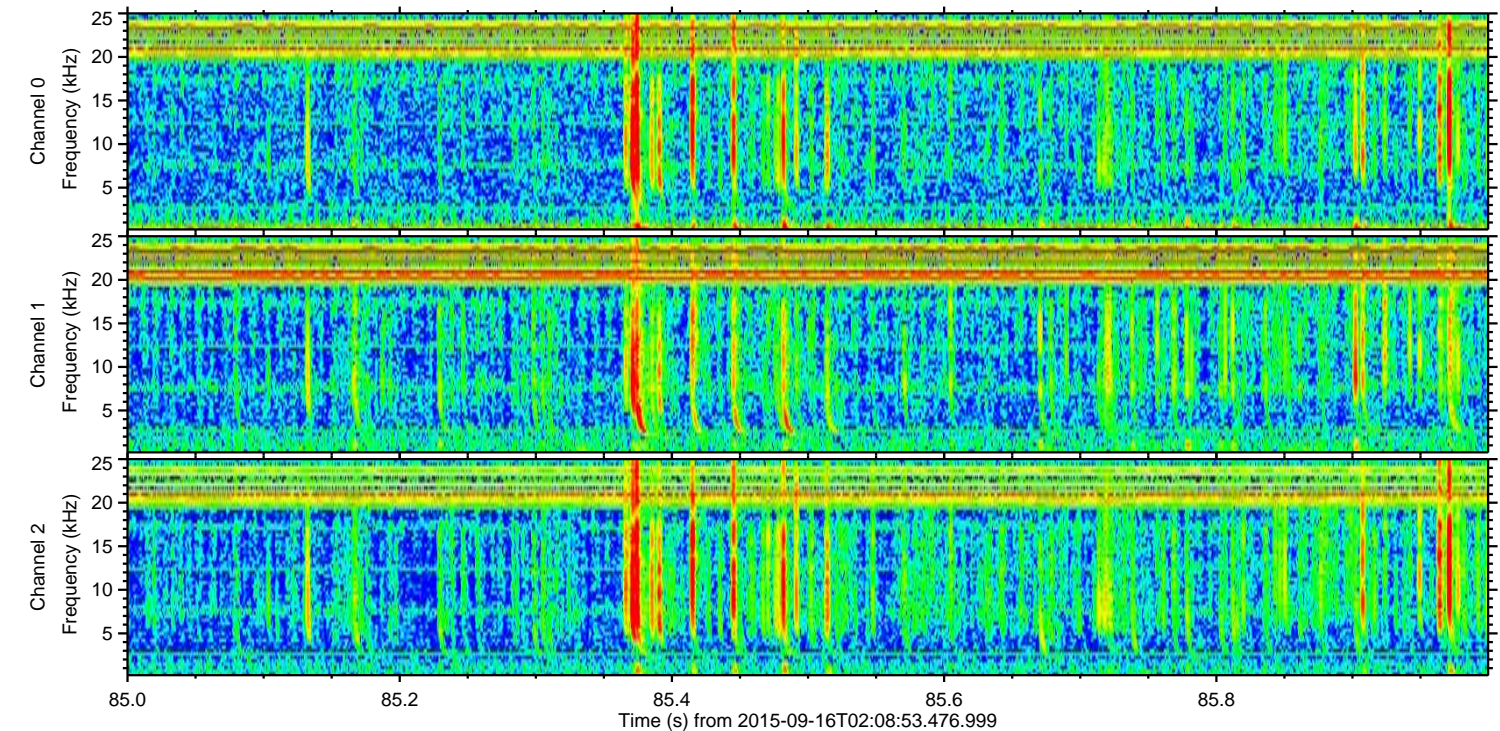
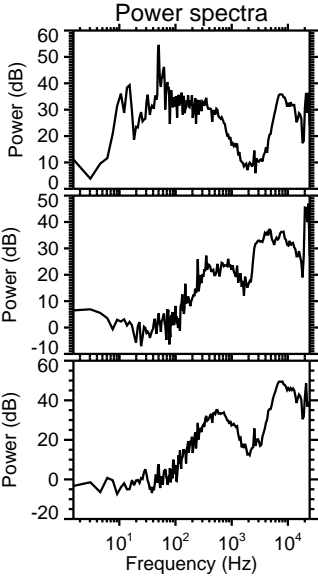
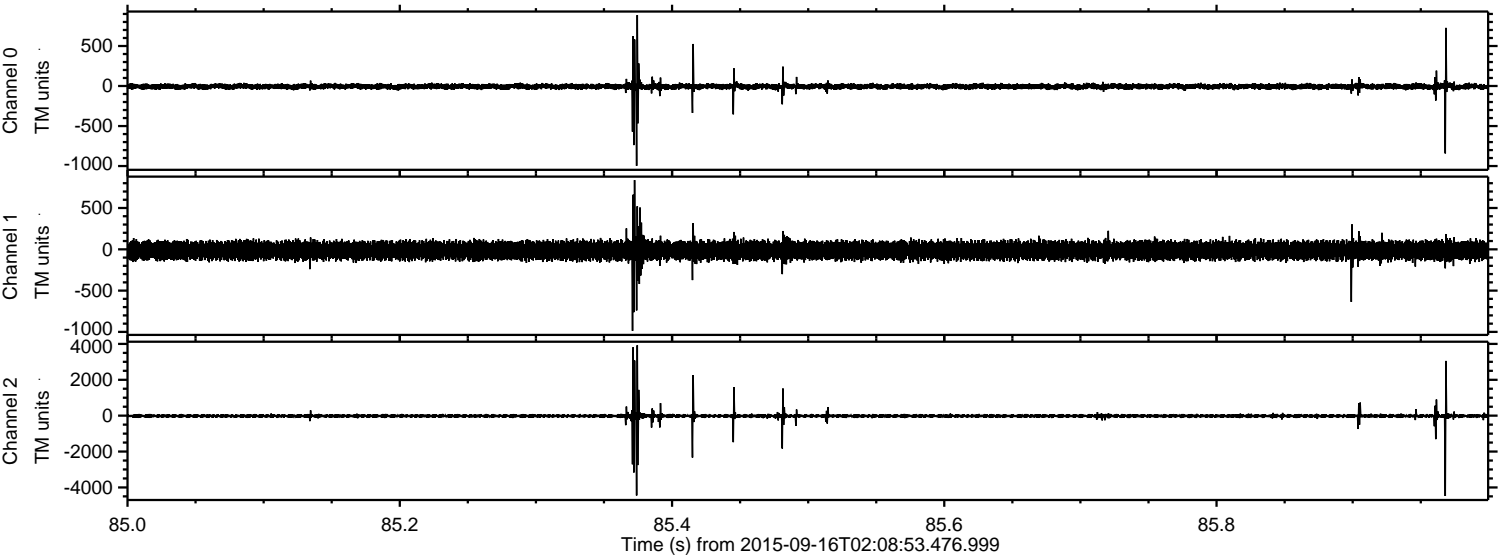


ELMAVAN 3D WAVEFORMS (Measured data sampled at 50 kHz) 51000 packets of 144 samples from 2015-09-16T02:08:53.476.999. Part 24/147

Processed Mon Oct 12 23:02:36 2015 by ELM ver.2012-10-06 from 001__elm20150916_020852__dat00.bin



Processed Mon Oct 12 23:02:39 2015 by ELM ver.2012-10-06 from 001__elm20150916_020852__dat00.bin

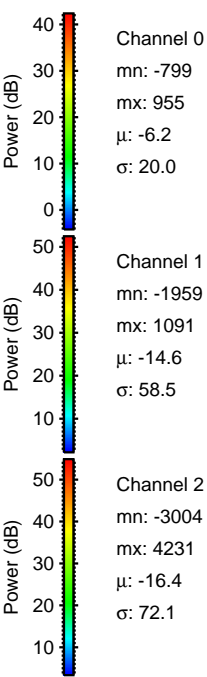
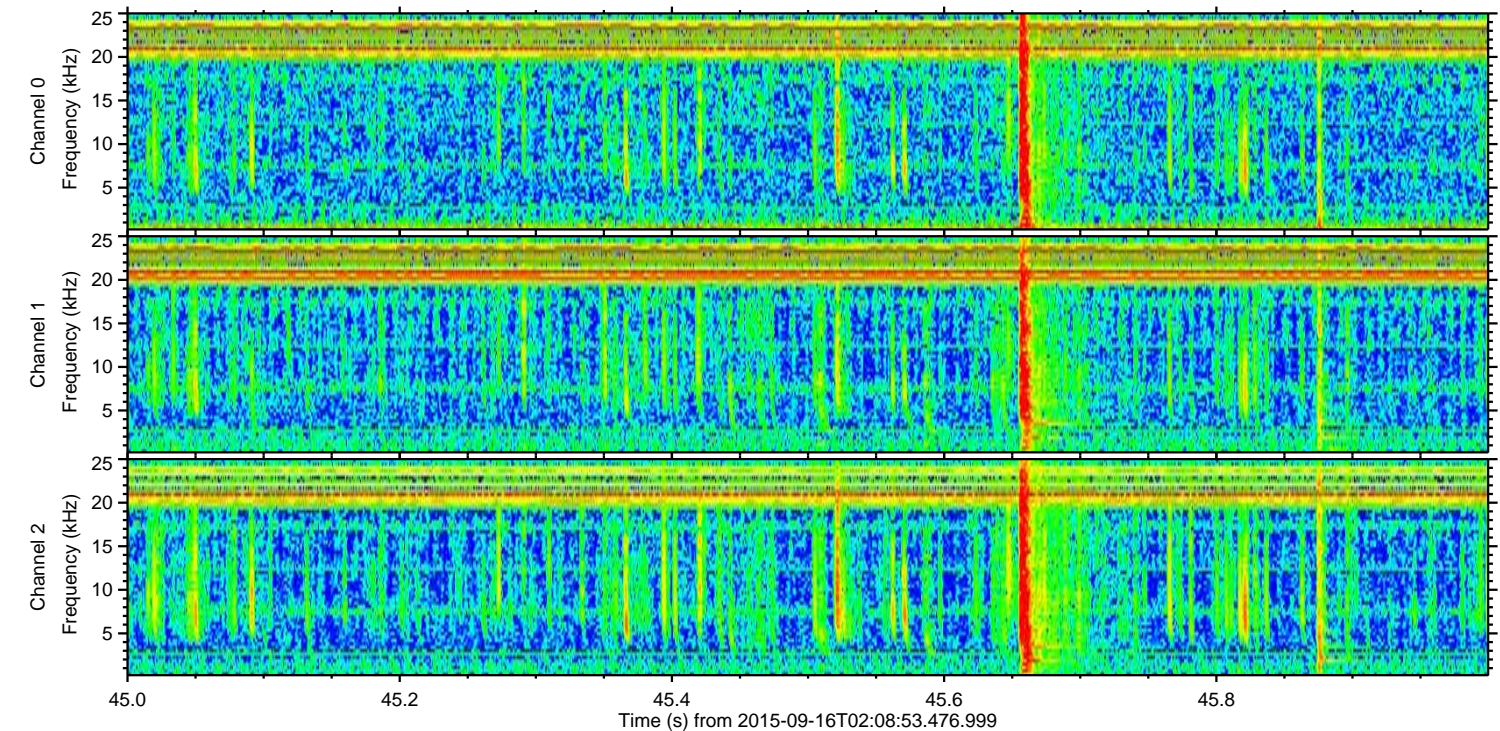
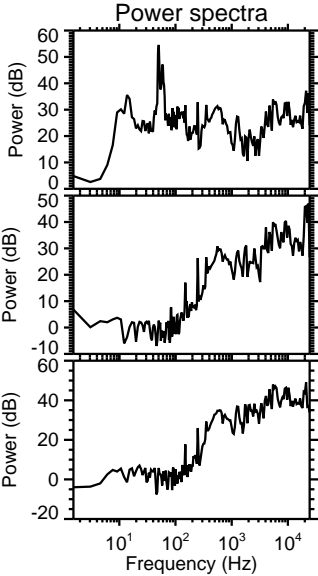
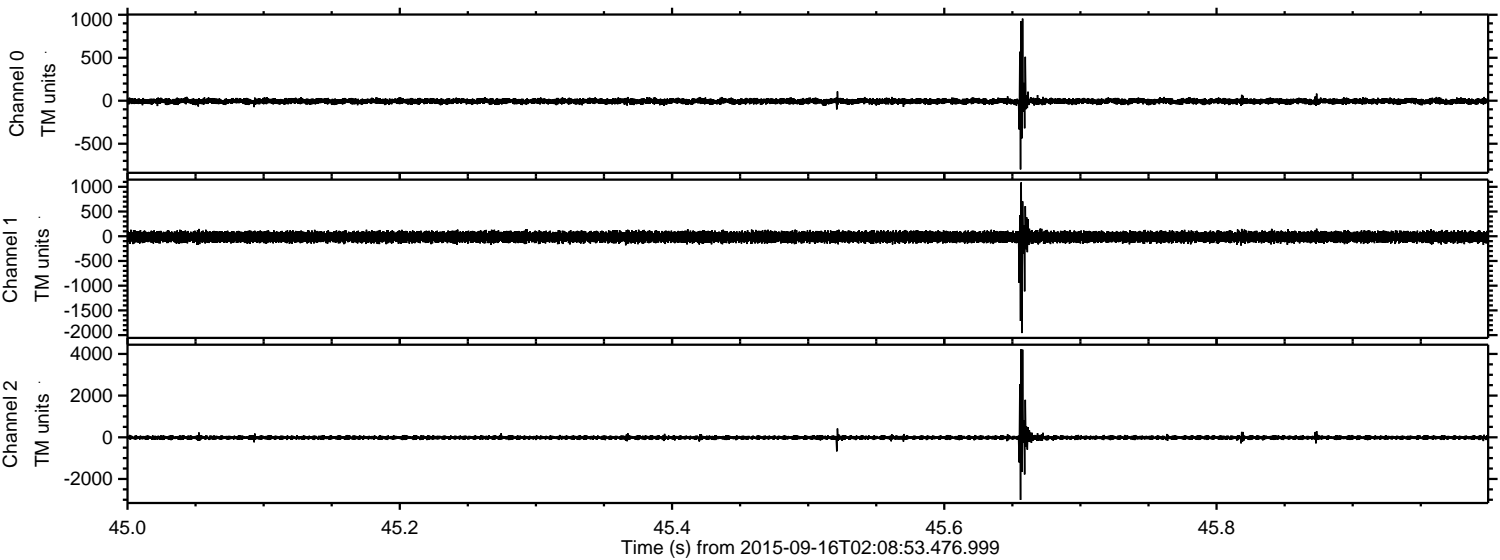


Channel 0
mn: -997
mx: 886
 μ : -6.2
 σ : 22.6

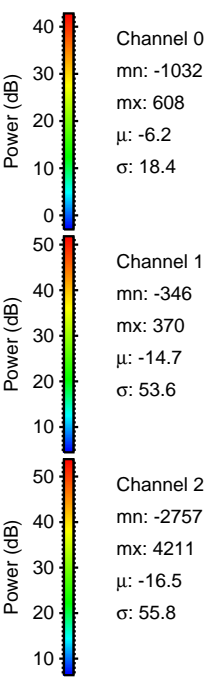
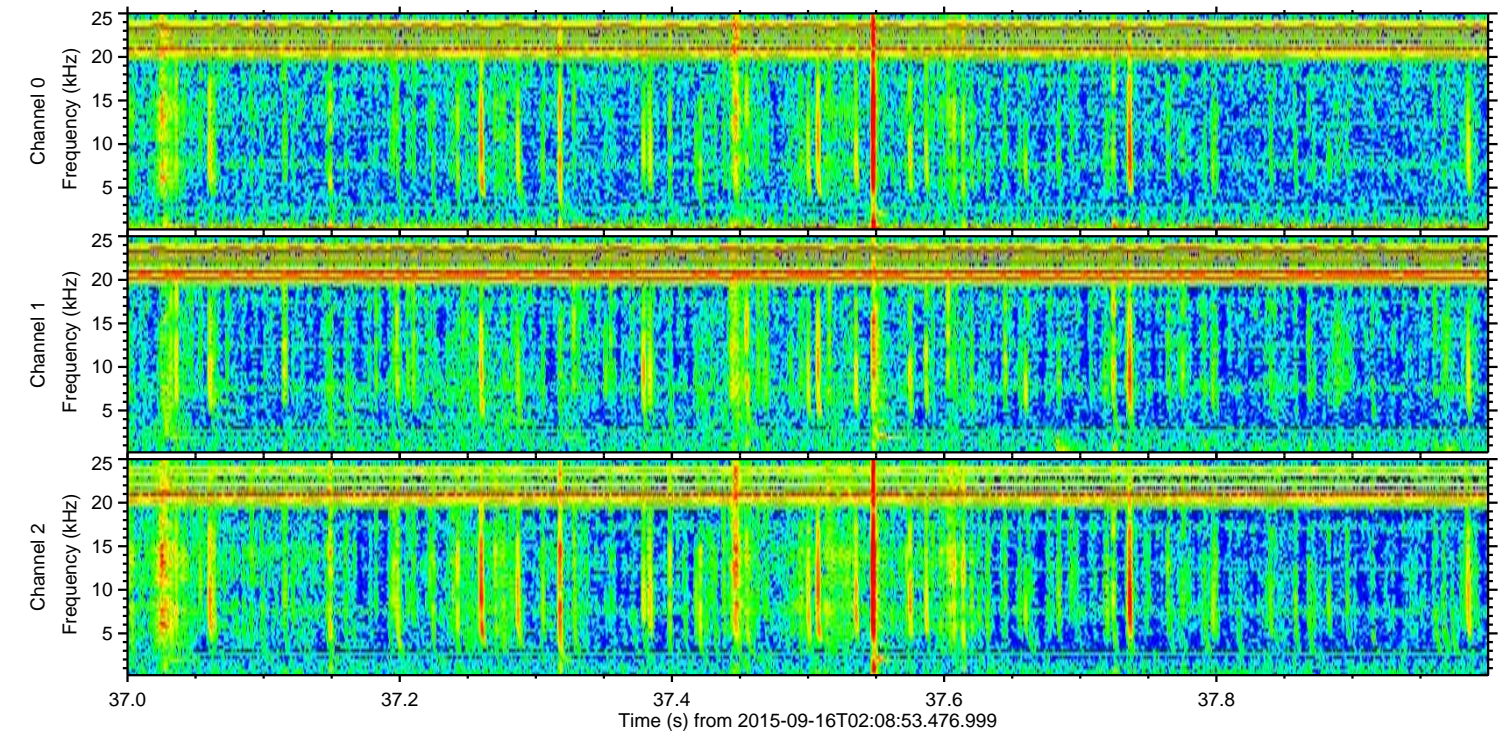
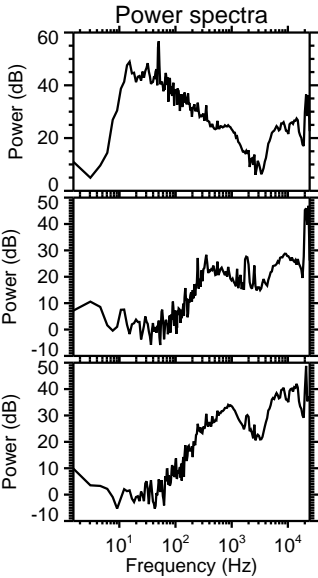
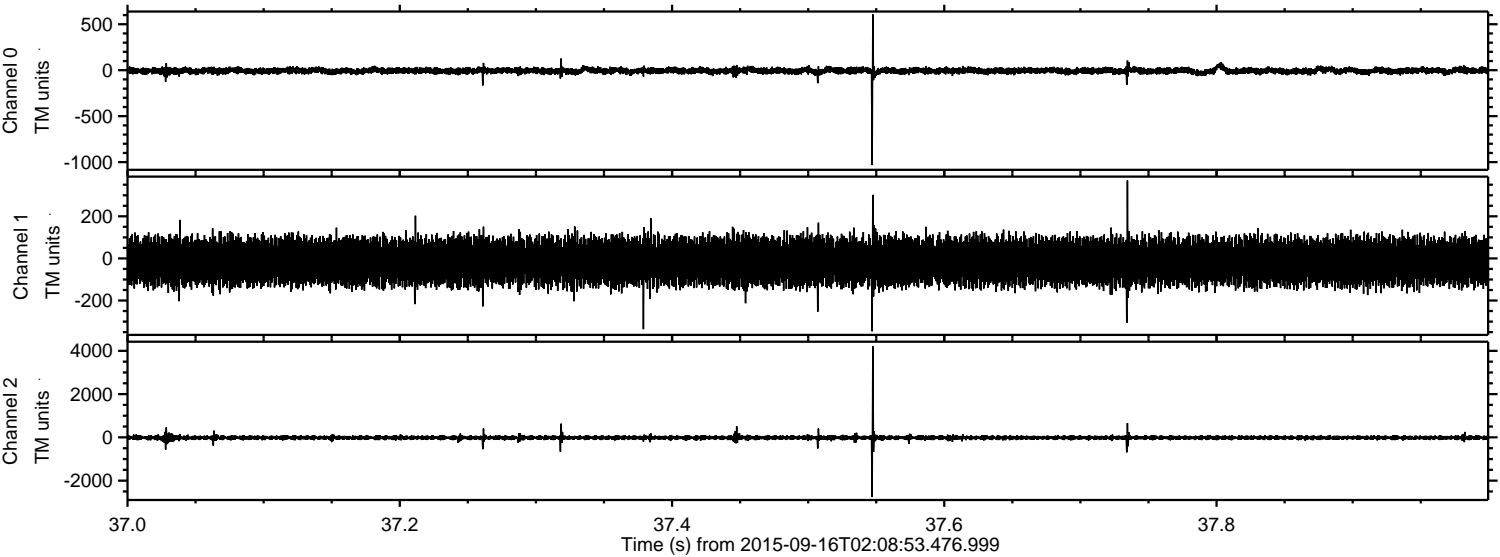
Channel 1
mn: -987
mx: 838
 μ : -14.6
 σ : 55.7

Channel 2
mn: -4477
mx: 3926
 μ : -16.4
 σ : 90.1

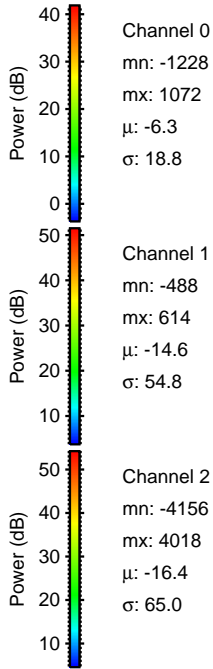
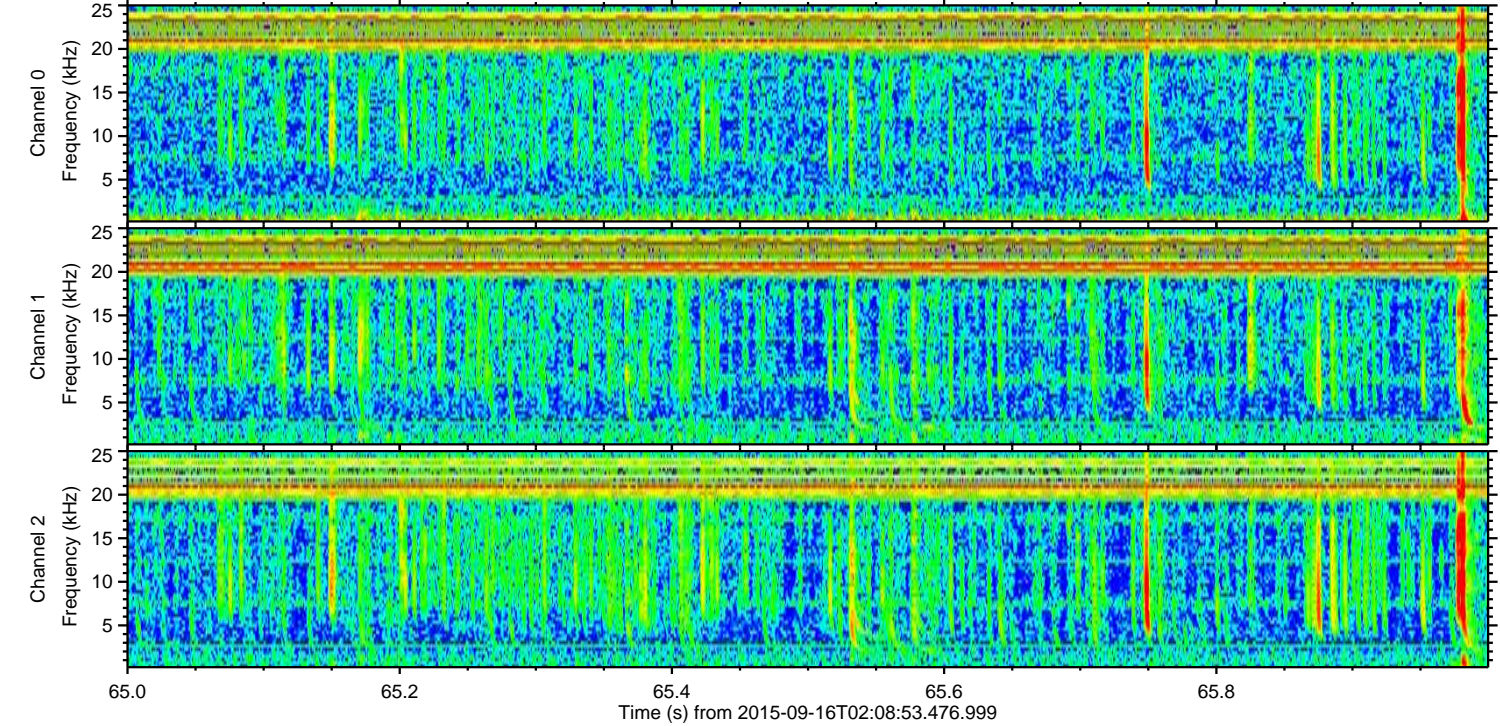
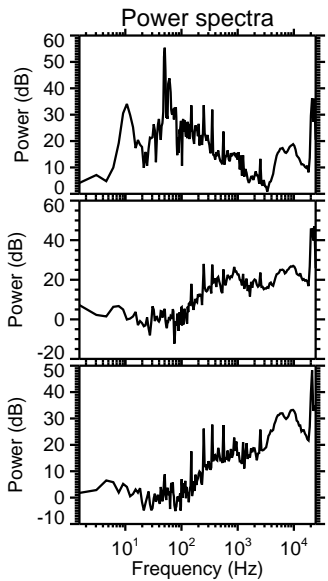
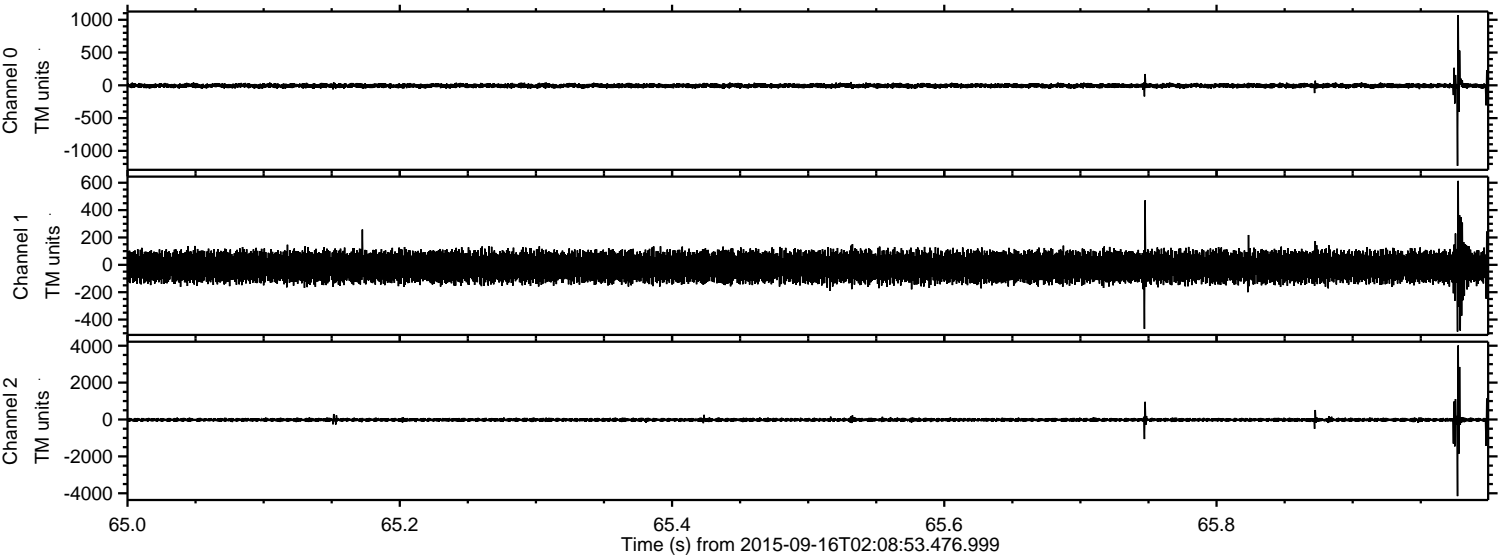
Processed Mon Oct 12 23:02:40 2015 by ELM ver.2012-10-06 from 001__elm20150916_020852__dat00.bin



Processed Mon Oct 12 23:02:42 2015 by ELM ver.2012-10-06 from 001__elm20150916_020852__dat00.bin



Processed Mon Oct 12 23:02:44 2015 by ELM ver.2012-10-06 from 001__elm20150916_020852__dat00.bin



Processed Mon Oct 12 23:02:46 2015 by ELM ver.2012-10-06 from 001__elm20150916_020852__dat00.bin

