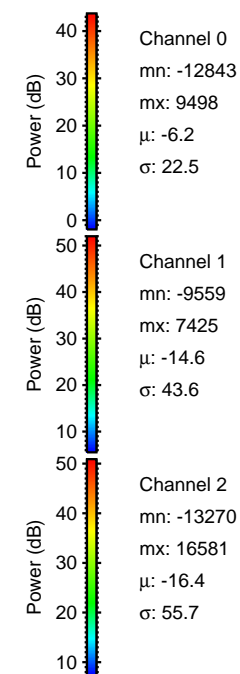
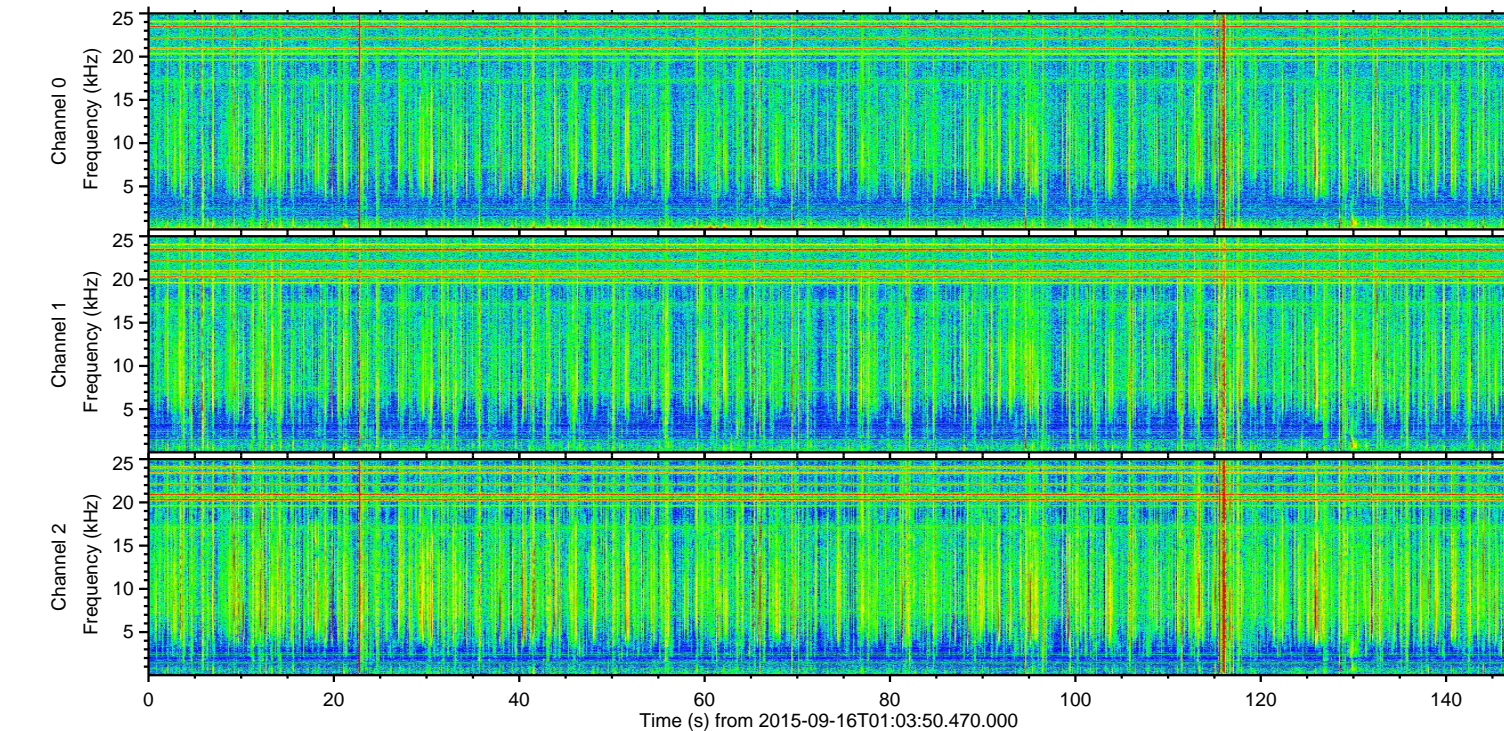
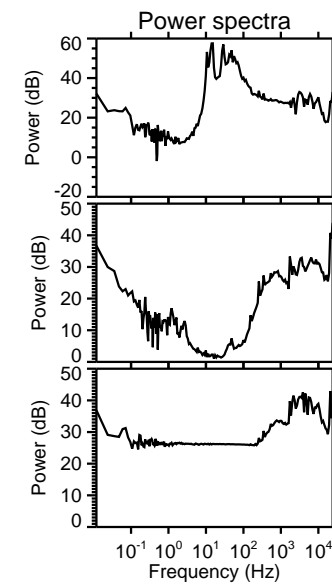
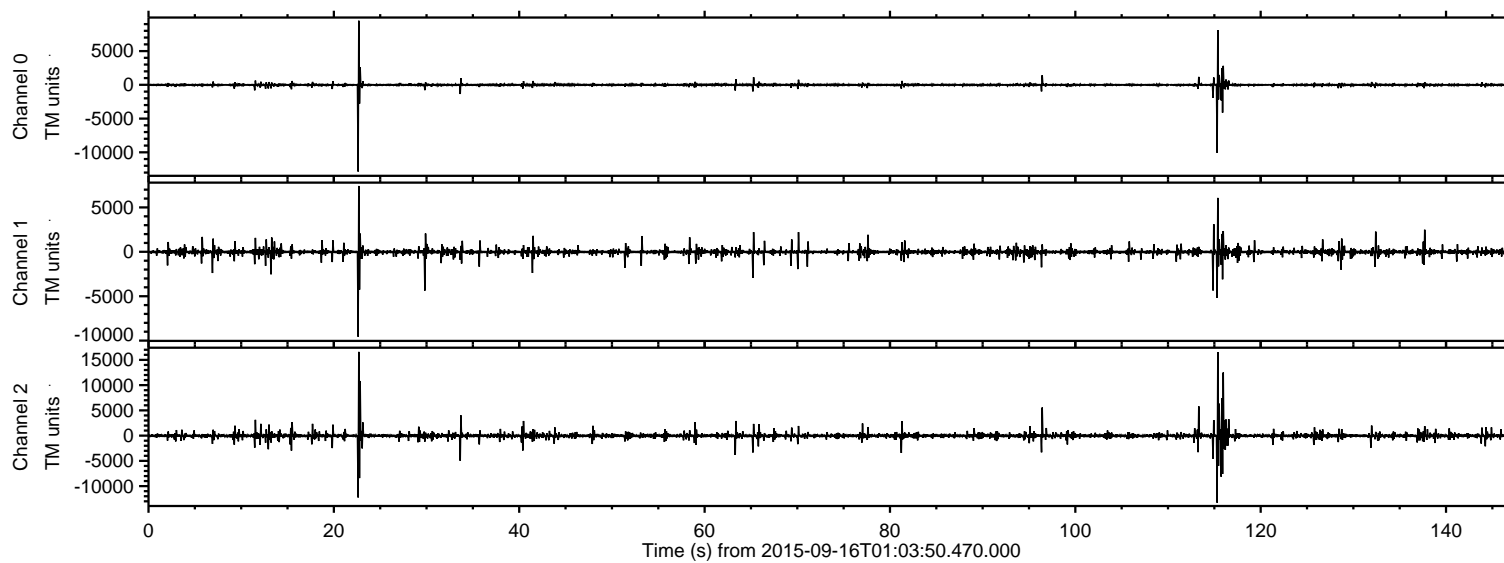
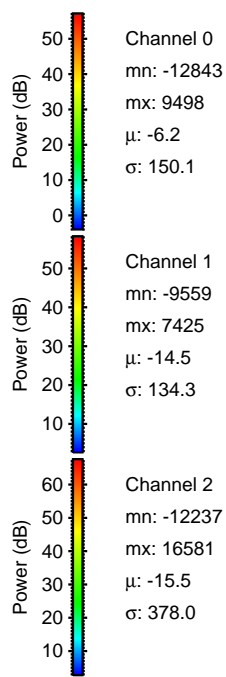
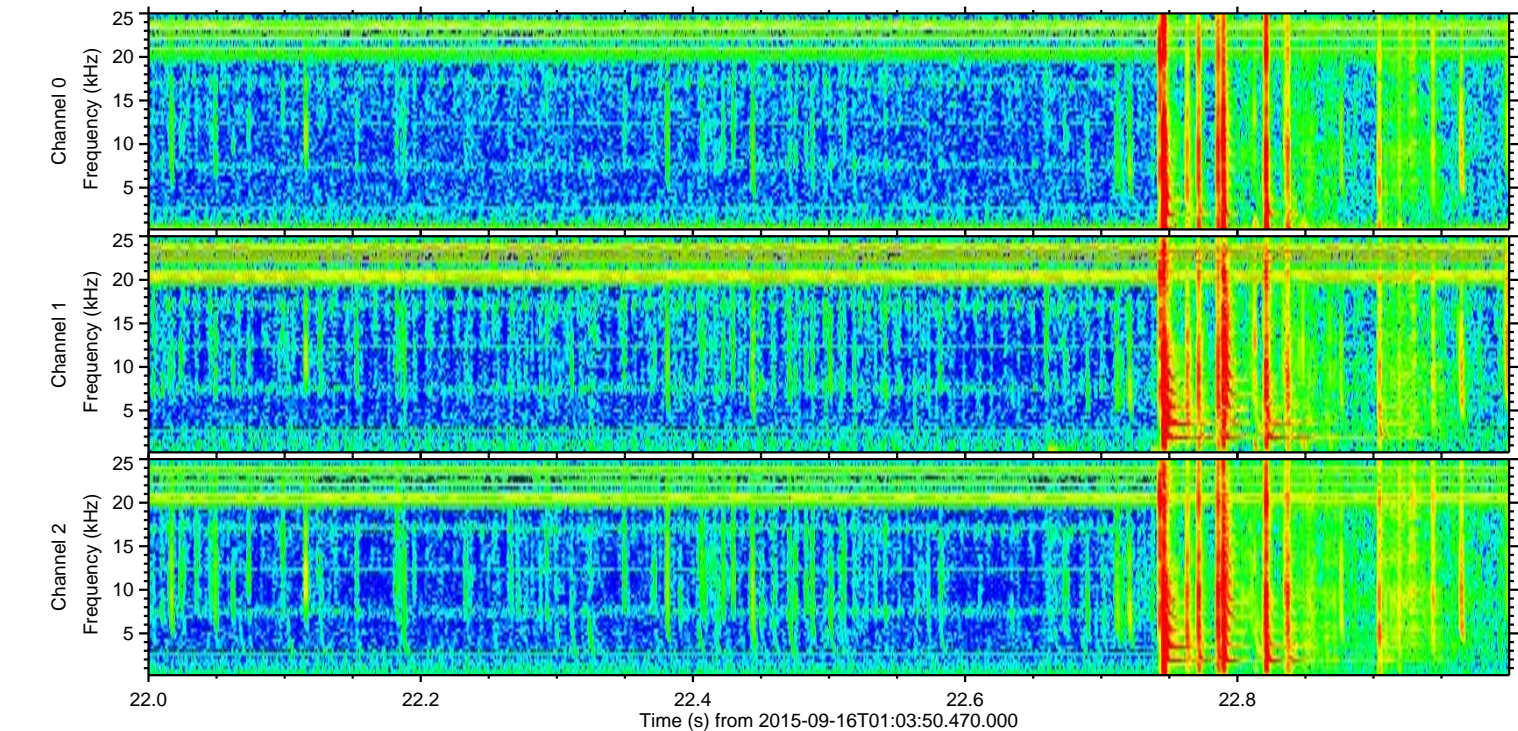
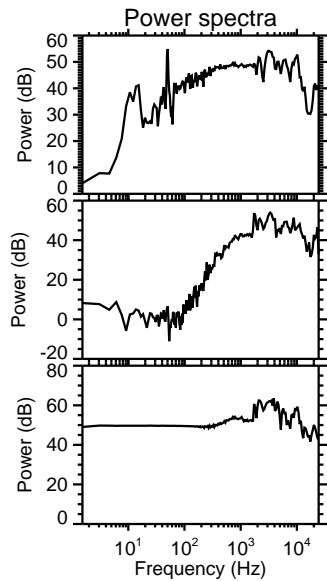
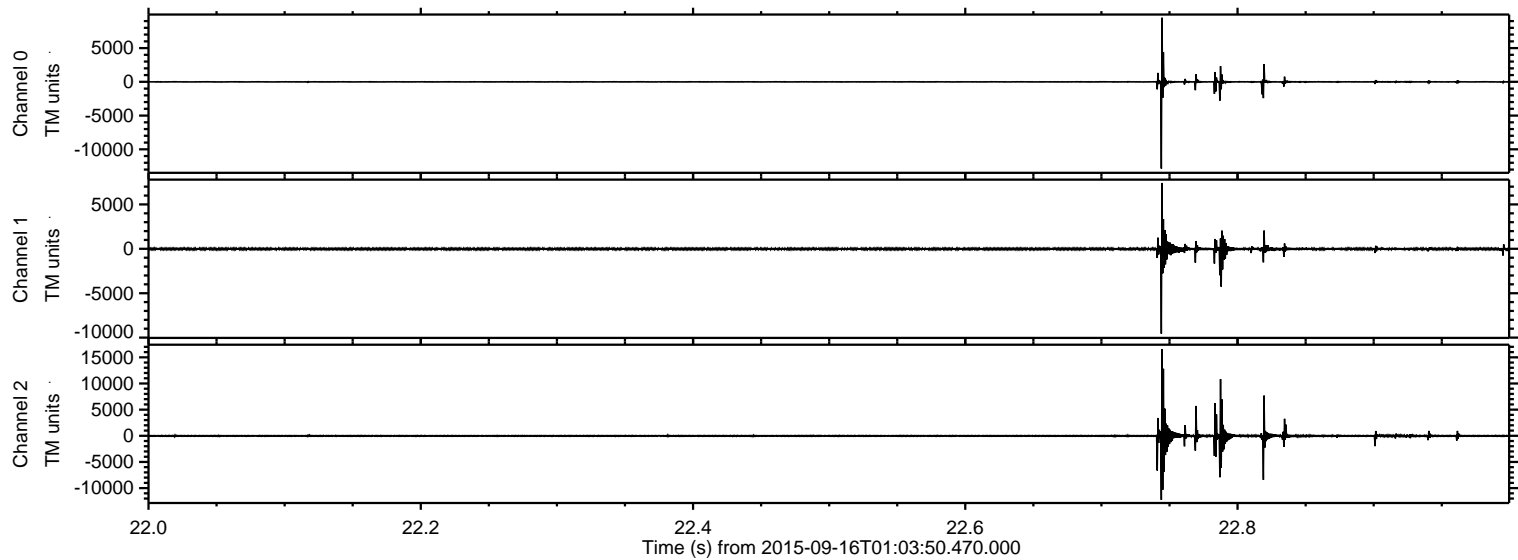


ELMAVAN 3D WAVEFORMS (Measured data sampled at 50 kHz) 51000 packets of 144 samples from 2015-09-16T01:03:50.470.000.

Processed Mon Oct 12 22:35:24 2015 by ELM ver.2012-10-06 from 001__elm20150916_010349__dat00.bin

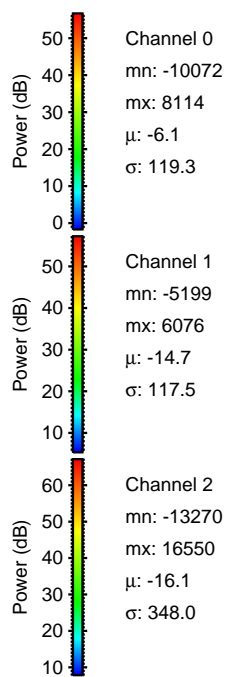
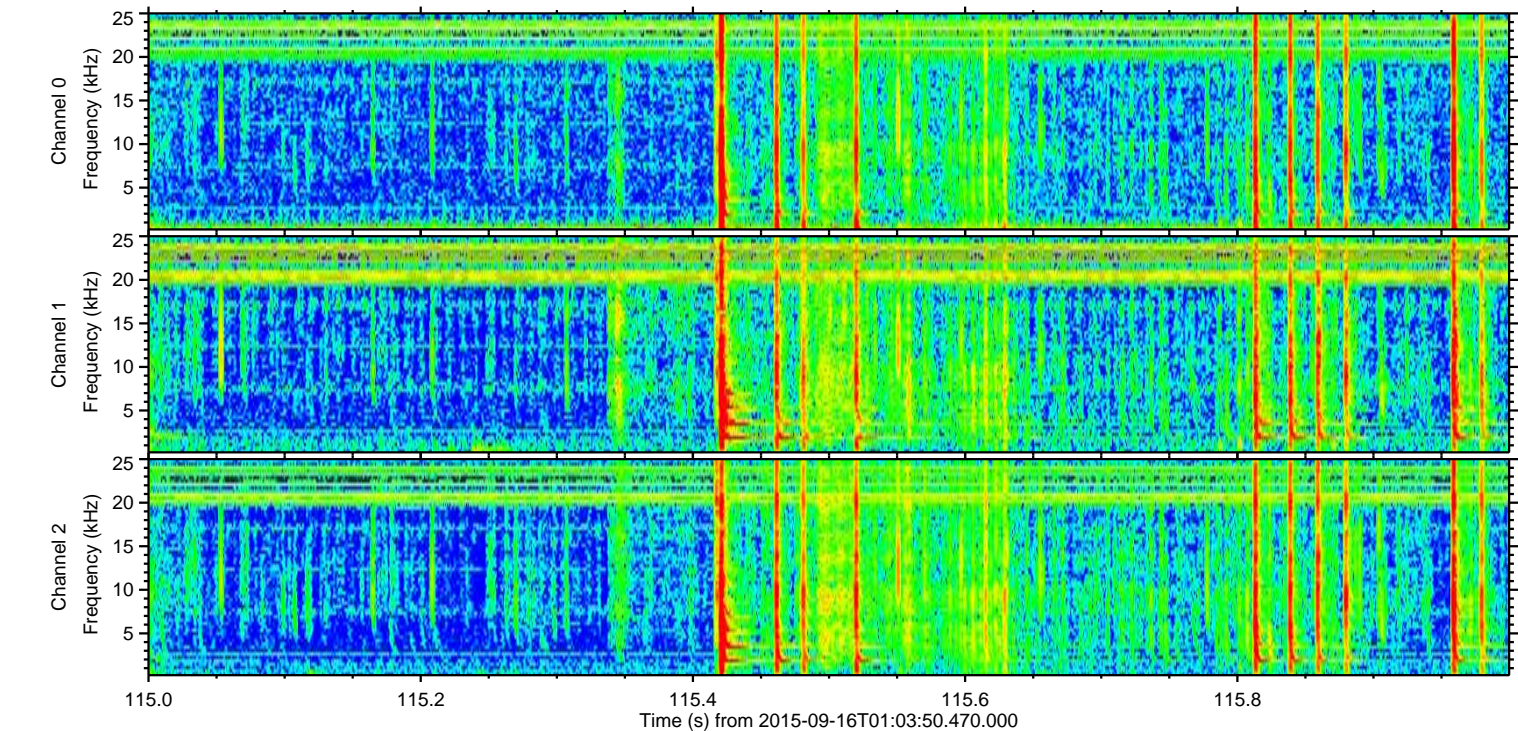
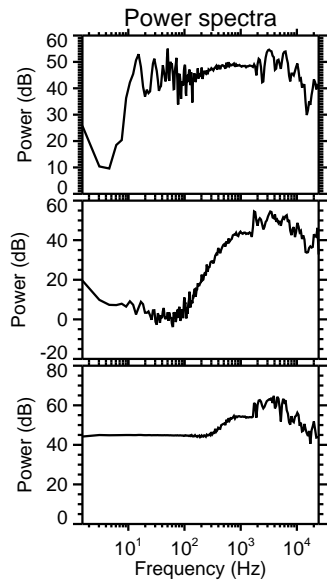
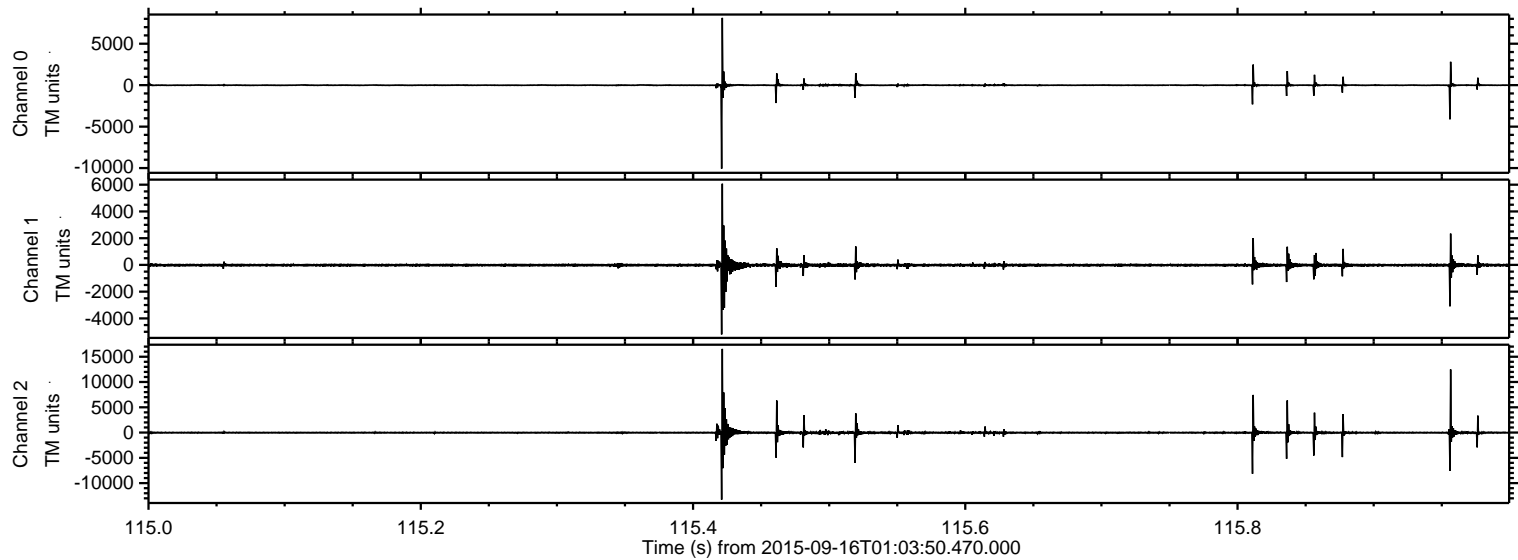


Processed Mon Oct 12 22:35:46 2015 by ELM ver.2012-10-06 from 001__elm20150916_010349__dat00.bin



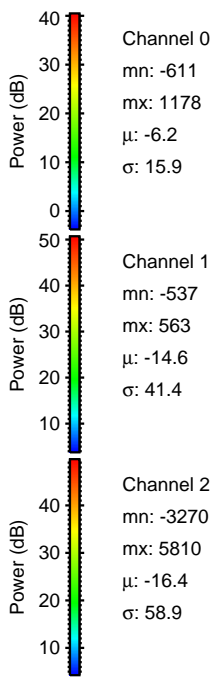
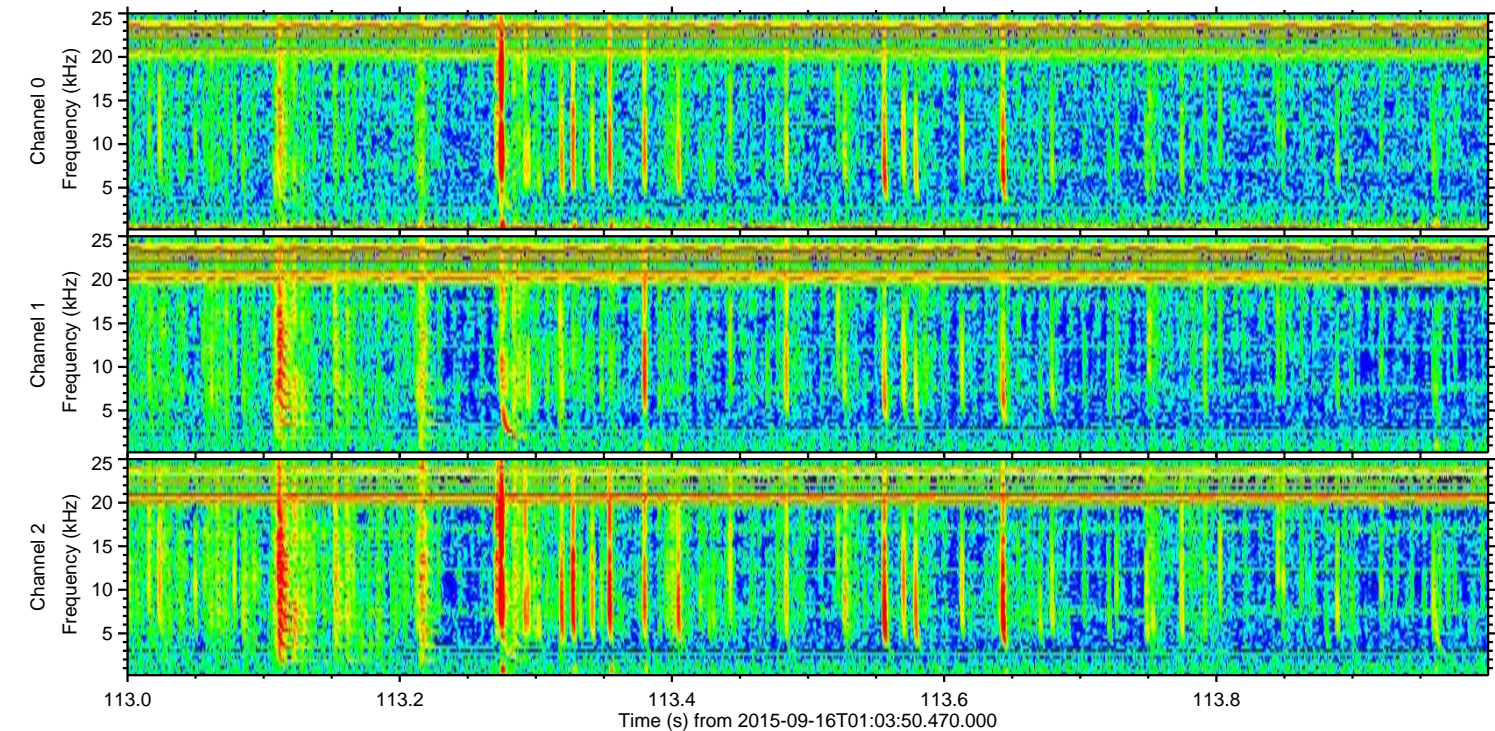
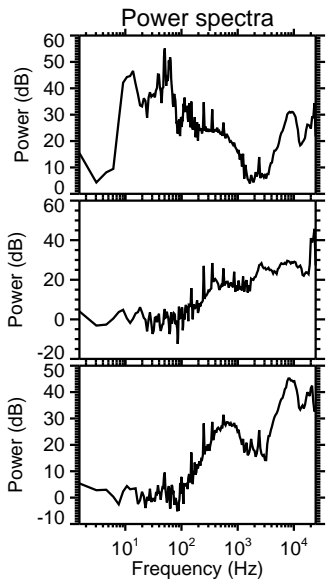
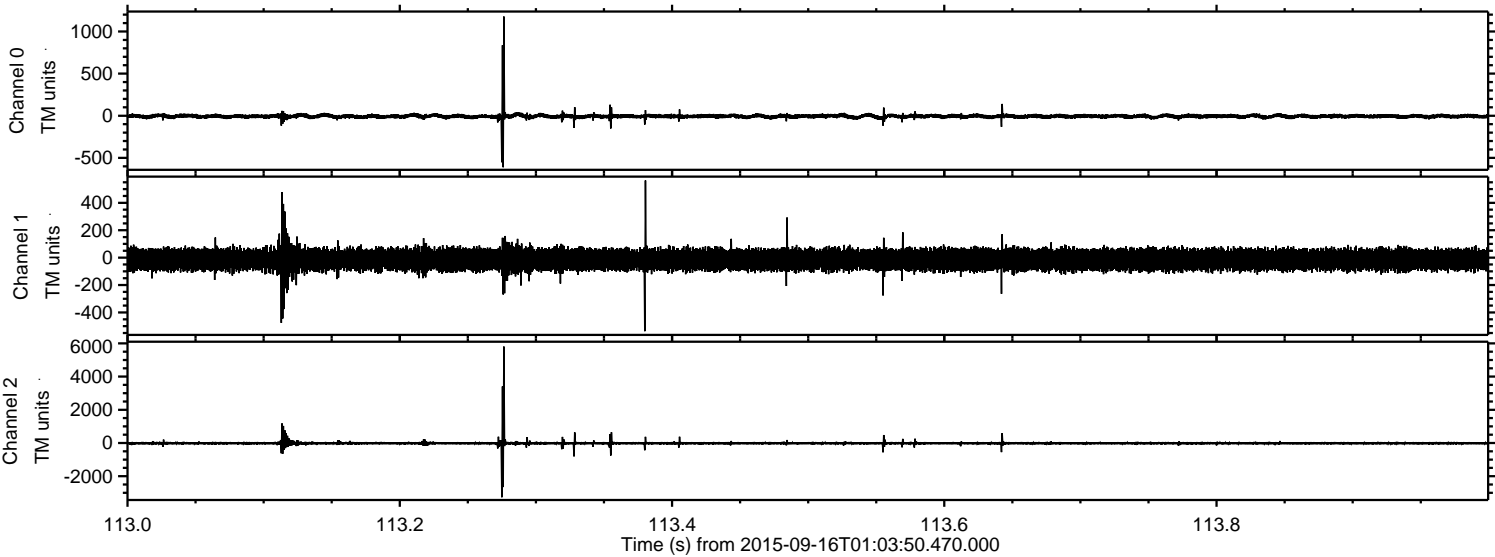
ELMAVAN 3D WAVEFORMS (Measured data sampled at 50 kHz) 51000 packets of 144 samples from 2015-09-16T01:03:50.470.000. Part 116/147

Processed Mon Oct 12 22:35:48 2015 by ELM ver.2012-10-06 from 001__elm20150916_010349__dat00.bin



ELMAVAN 3D WAVEFORMS (Measured data sampled at 50 kHz) 51000 packets of 144 samples from 2015-09-16T01:03:50.470.000. Part 114/147

Processed Mon Oct 12 22:35:49 2015 by ELM ver.2012-10-06 from 001__elm20150916_010349__dat00.bin

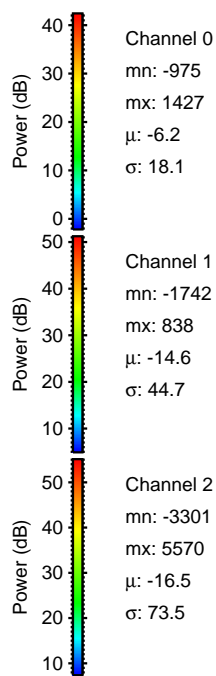
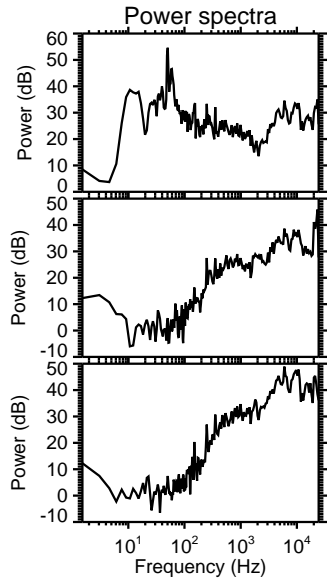
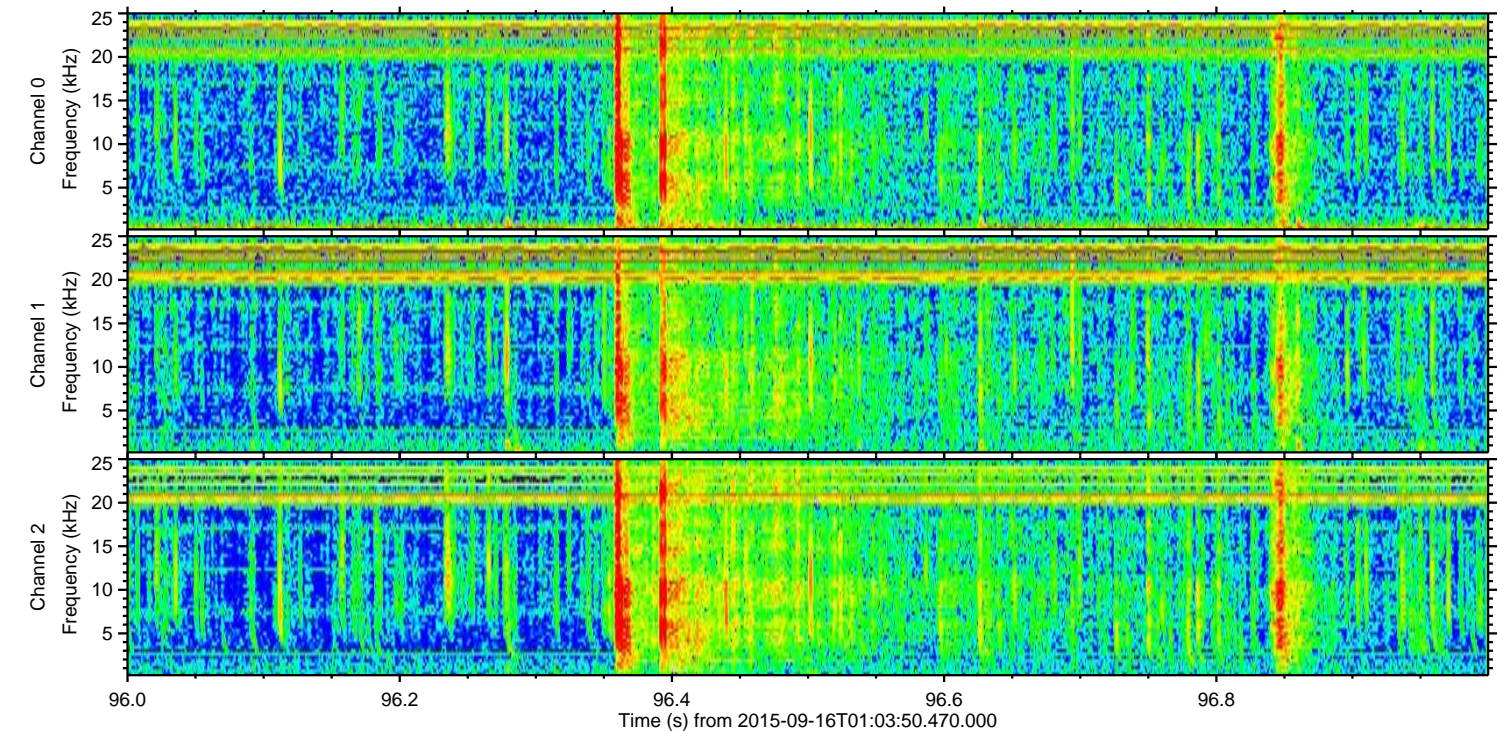
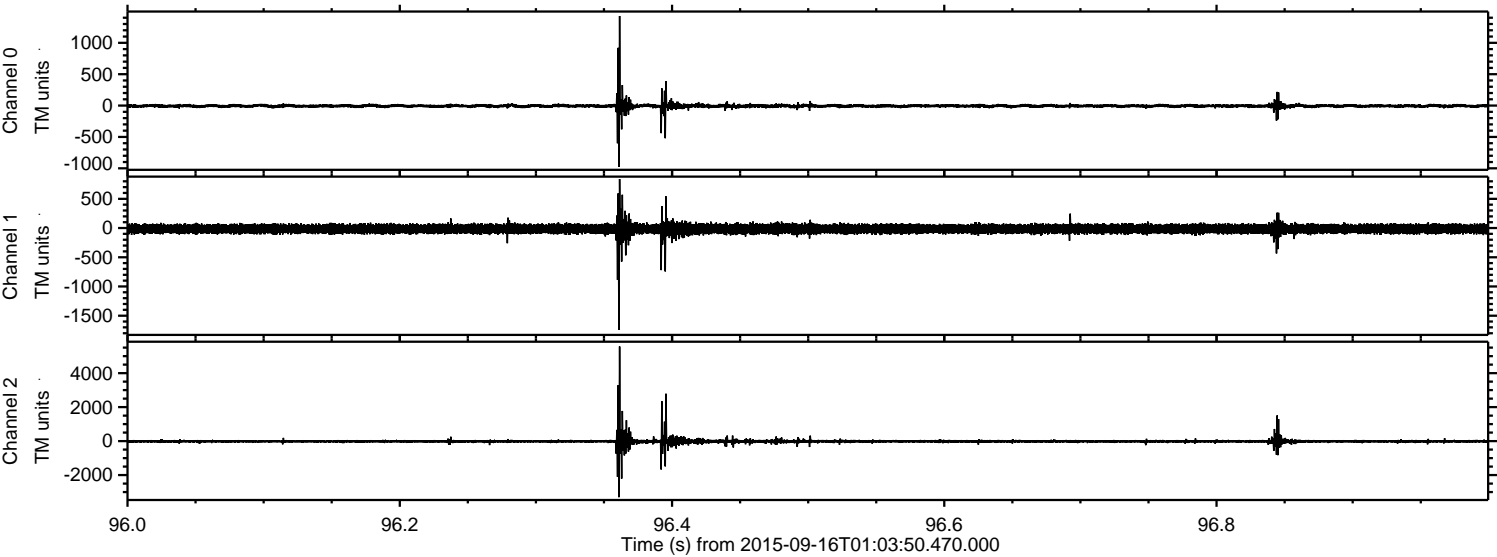


Channel 0
mn: -611
mx: 1178
 μ : -6.2
 σ : 15.9

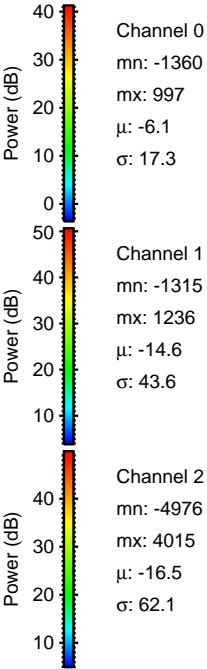
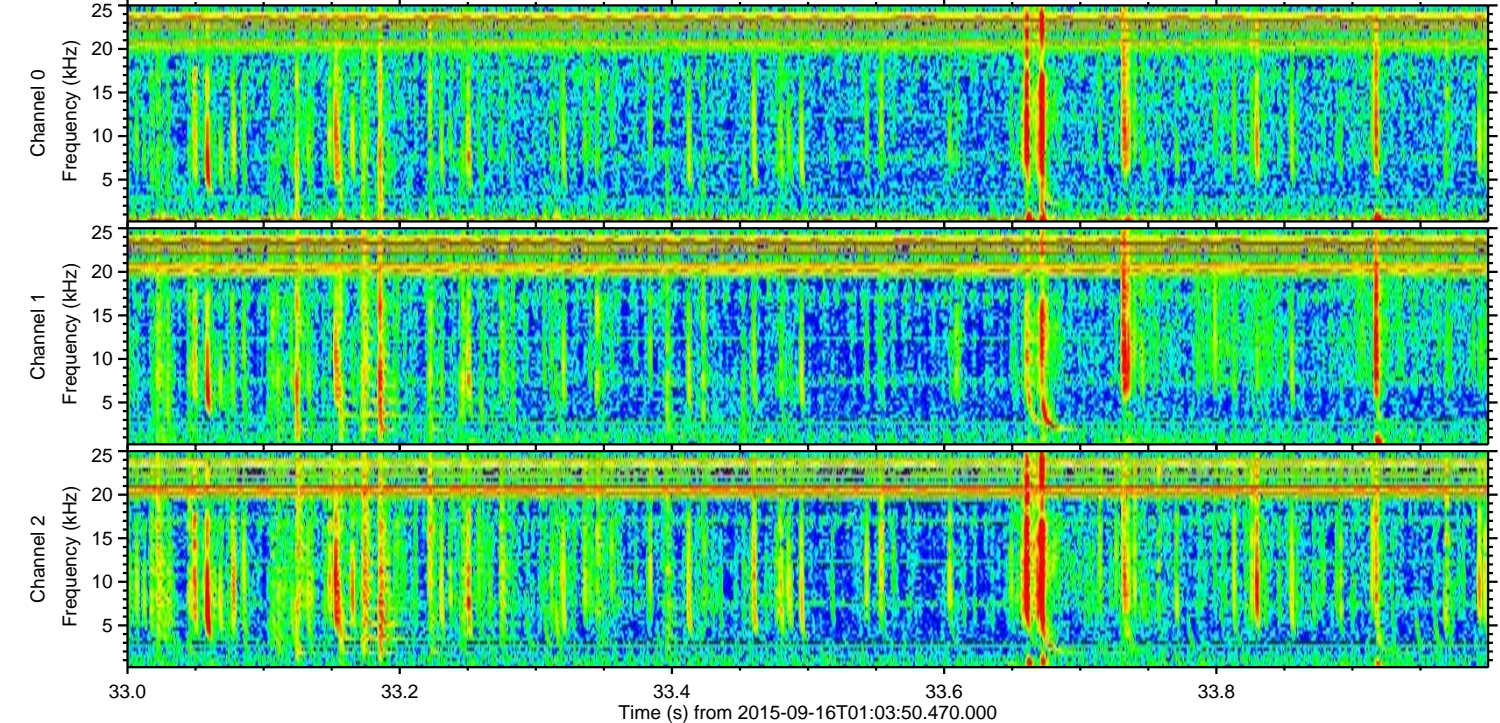
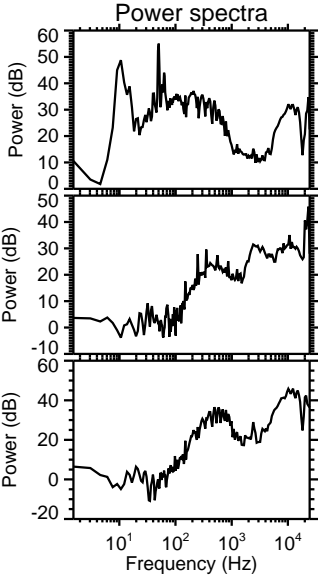
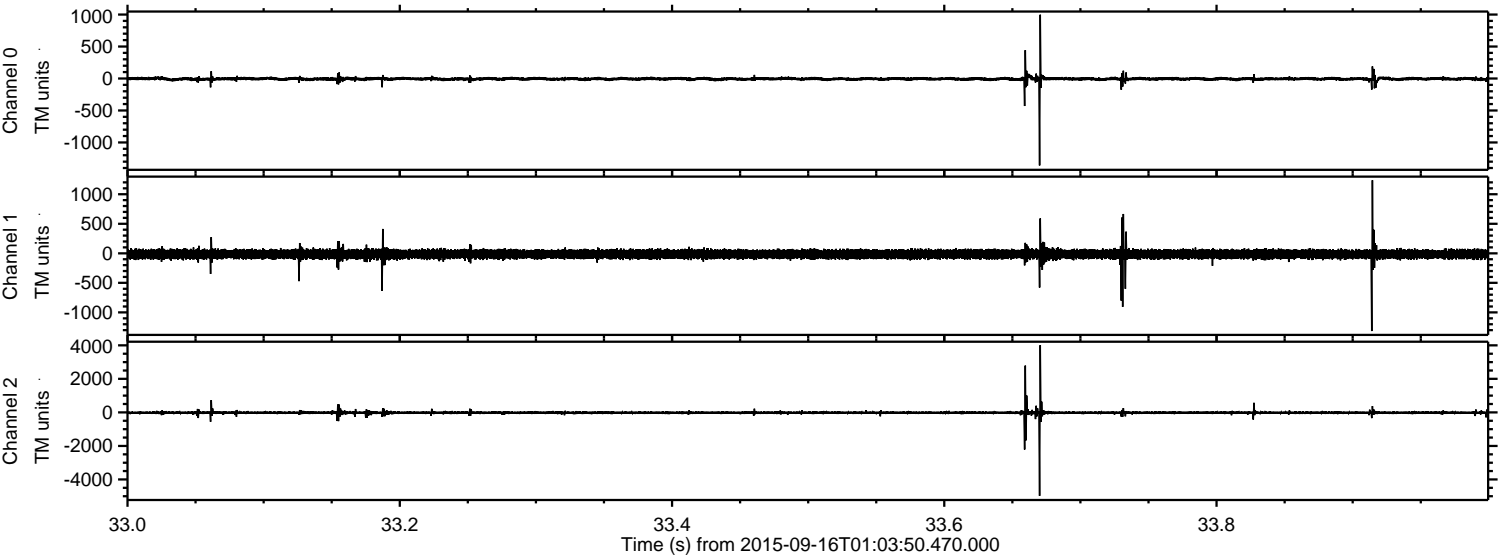
Channel 1
mn: -537
mx: 563
 μ : -14.6
 σ : 41.4

Channel 2
mn: -3270
mx: 5810
 μ : -16.4
 σ : 58.9

Processed Mon Oct 12 22:35:51 2015 by ELM ver.2012-10-06 from 001__elm20150916_010349__dat00.bin

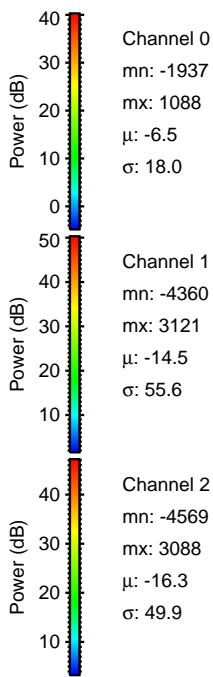
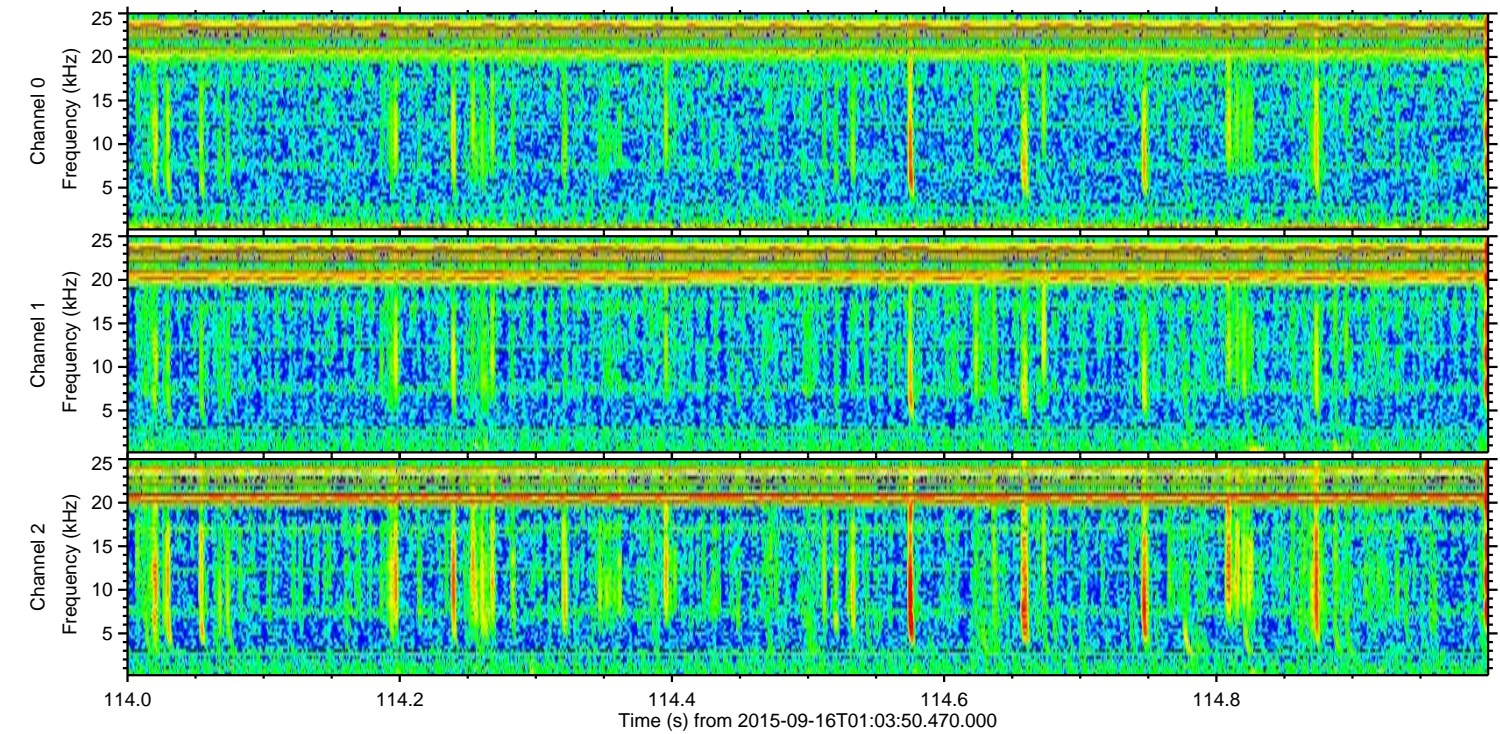
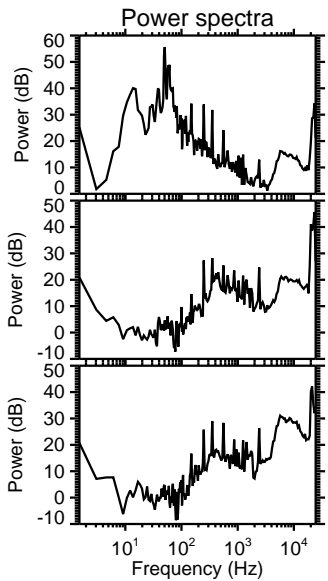
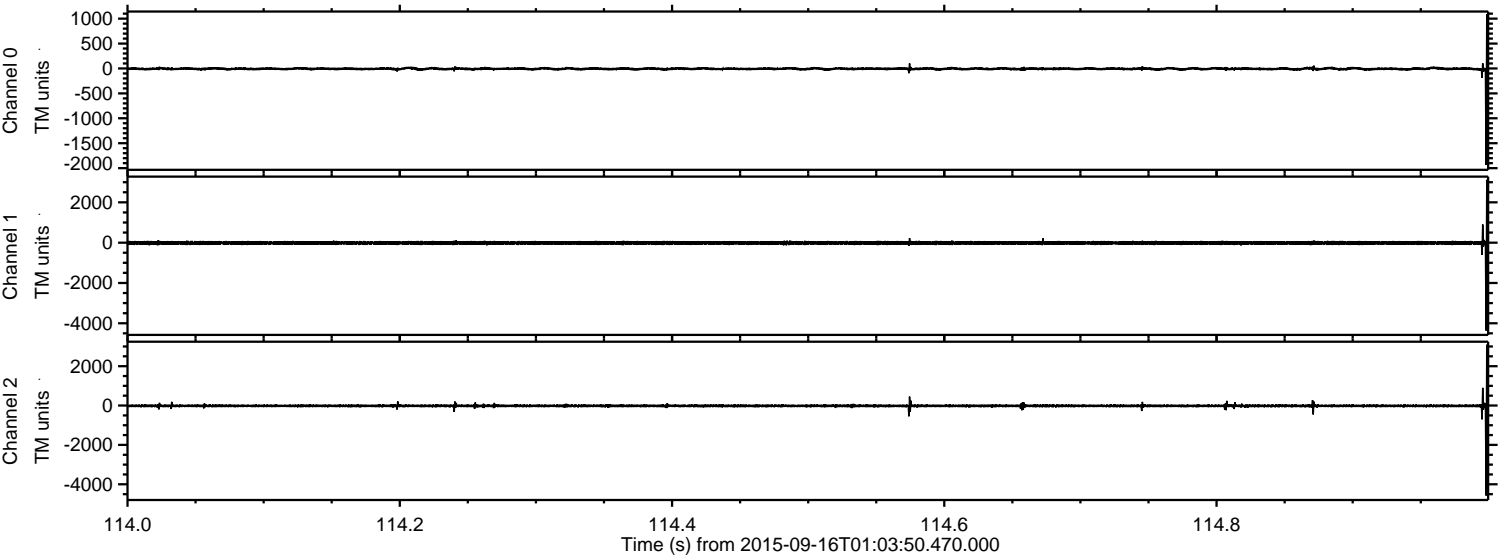


Processed Mon Oct 12 22:35:53 2015 by ELM ver.2012-10-06 from 001__elm20150916_010349__dat00.bin



ELMAVAN 3D WAVEFORMS (Measured data sampled at 50 kHz) 51000 packets of 144 samples from 2015-09-16T01:03:50.470.000. Part 115/147

Processed Mon Oct 12 22:35:55 2015 by ELM ver.2012-10-06 from 001__elm20150916_010349__dat00.bin

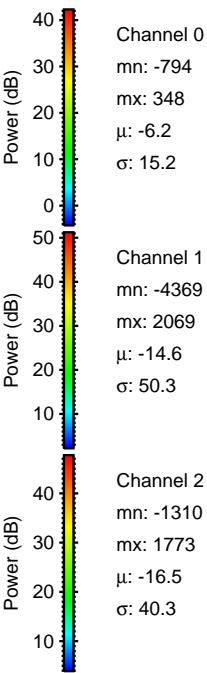
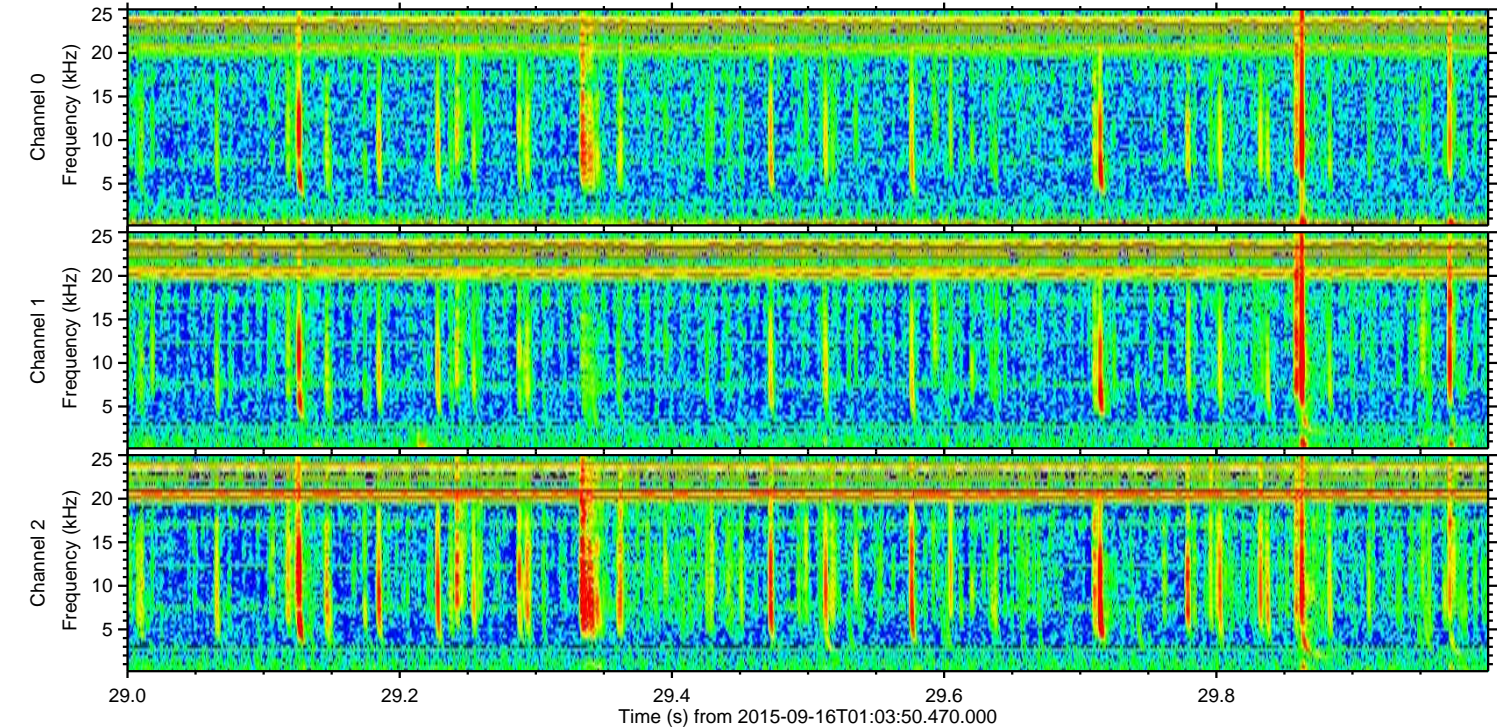
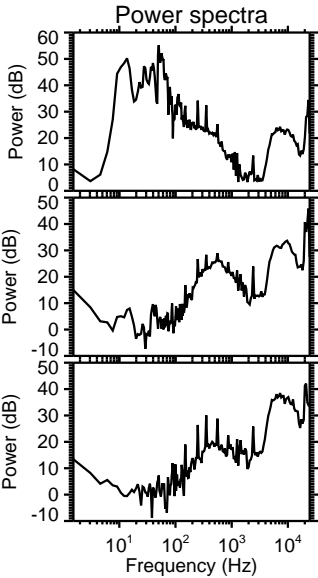
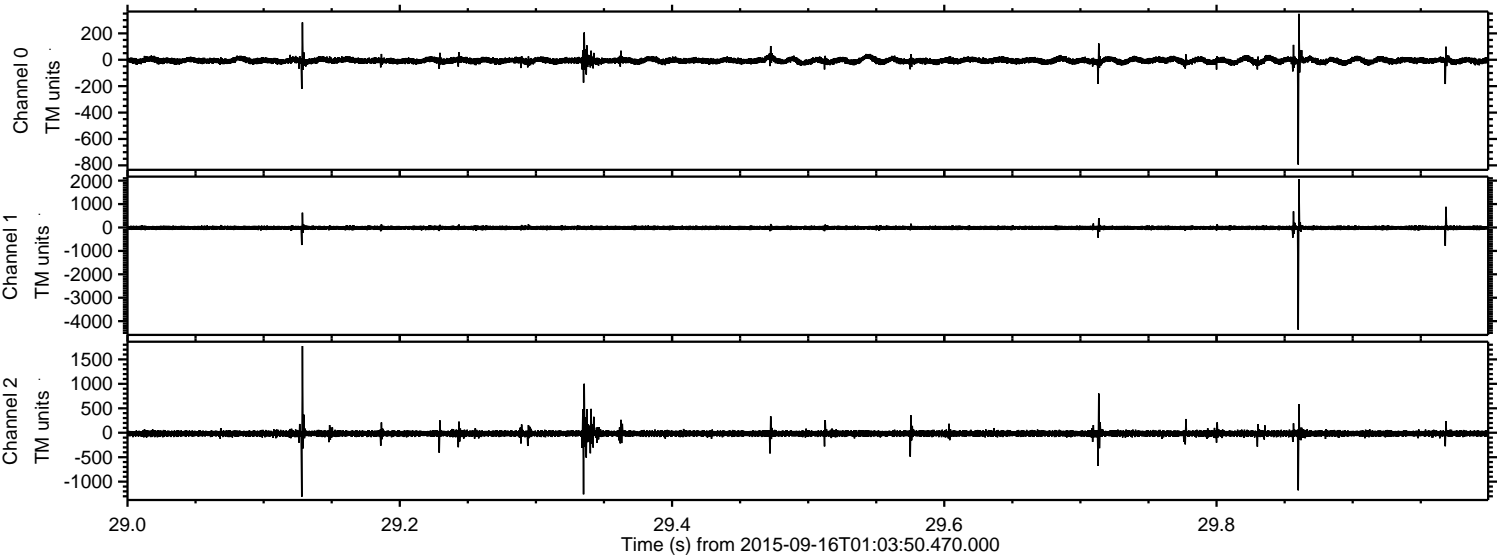


Channel 0
mn: -1937
mx: 1088
 μ : -6.5
 σ : 18.0

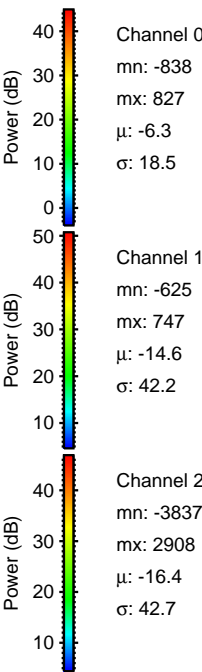
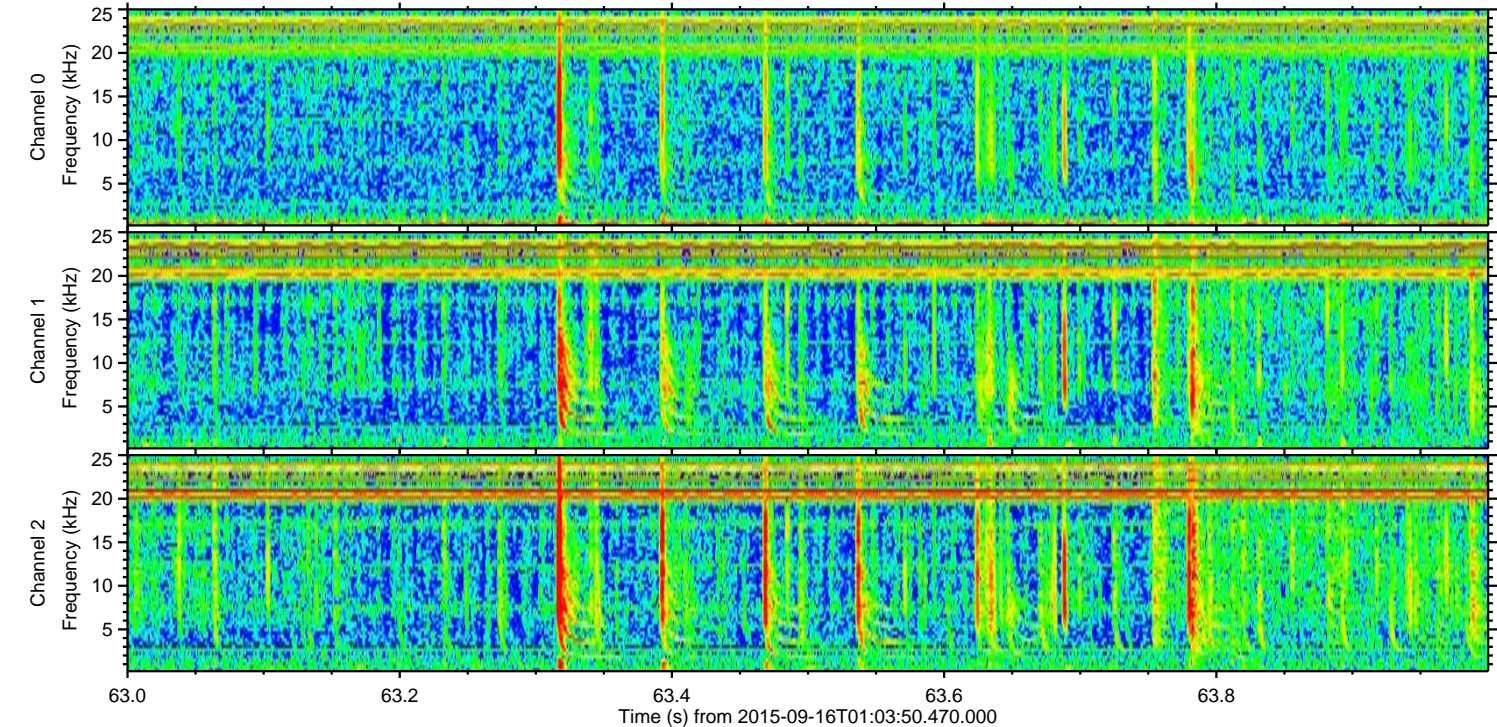
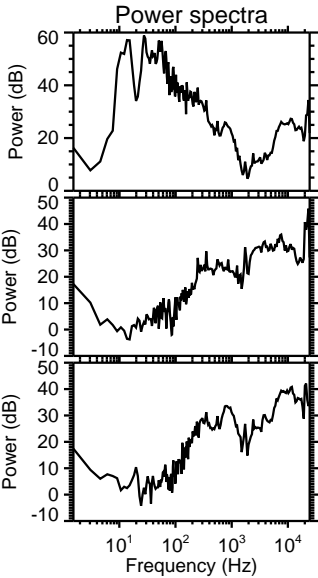
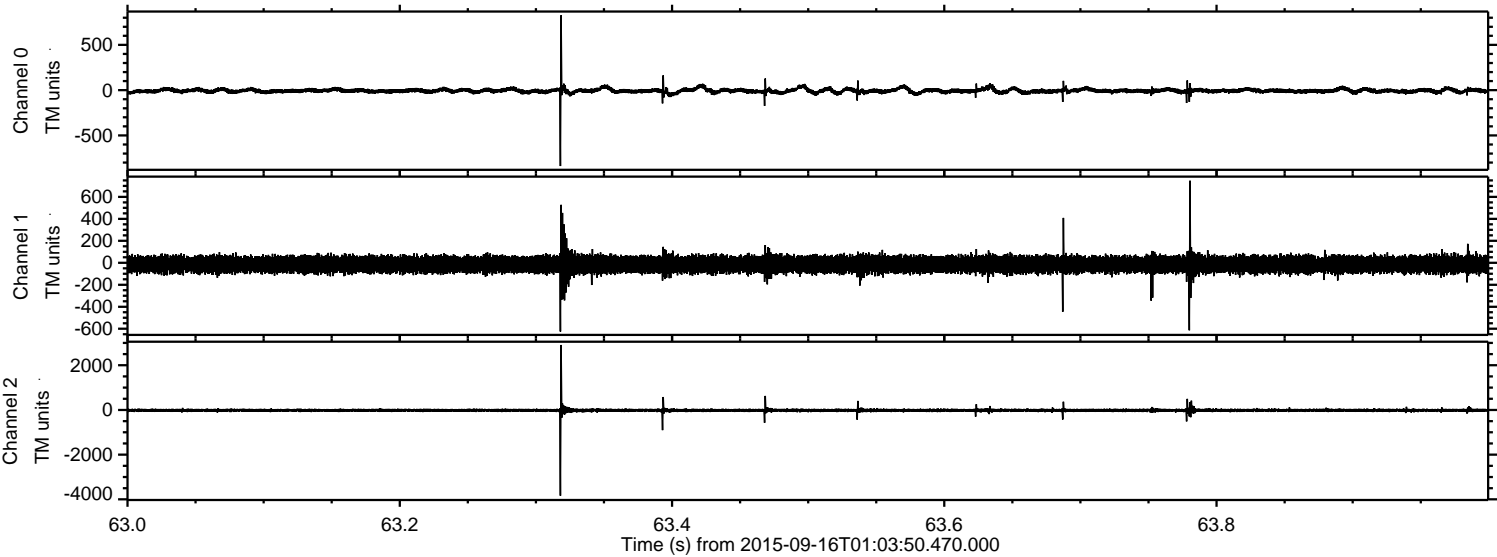
Channel 1
mn: -4360
mx: 3121
 μ : -14.5
 σ : 55.6

Channel 2
mn: -4569
mx: 3088
 μ : -16.3
 σ : 49.9

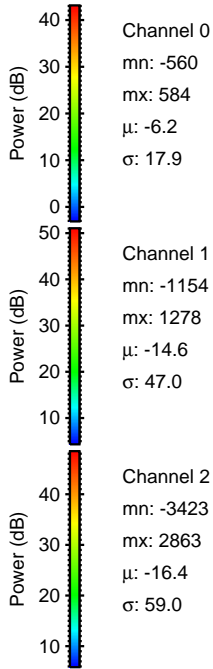
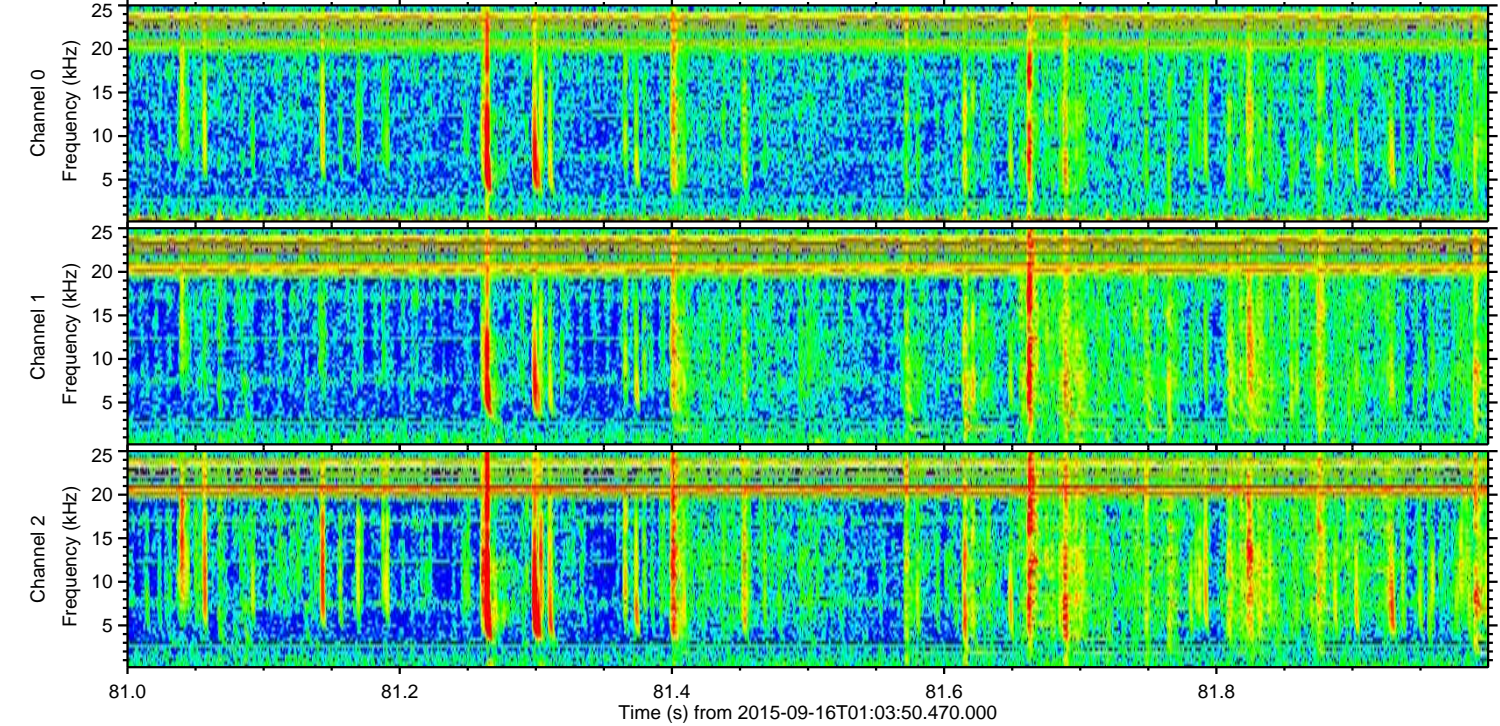
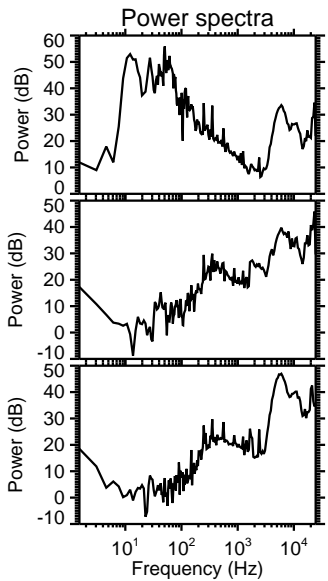
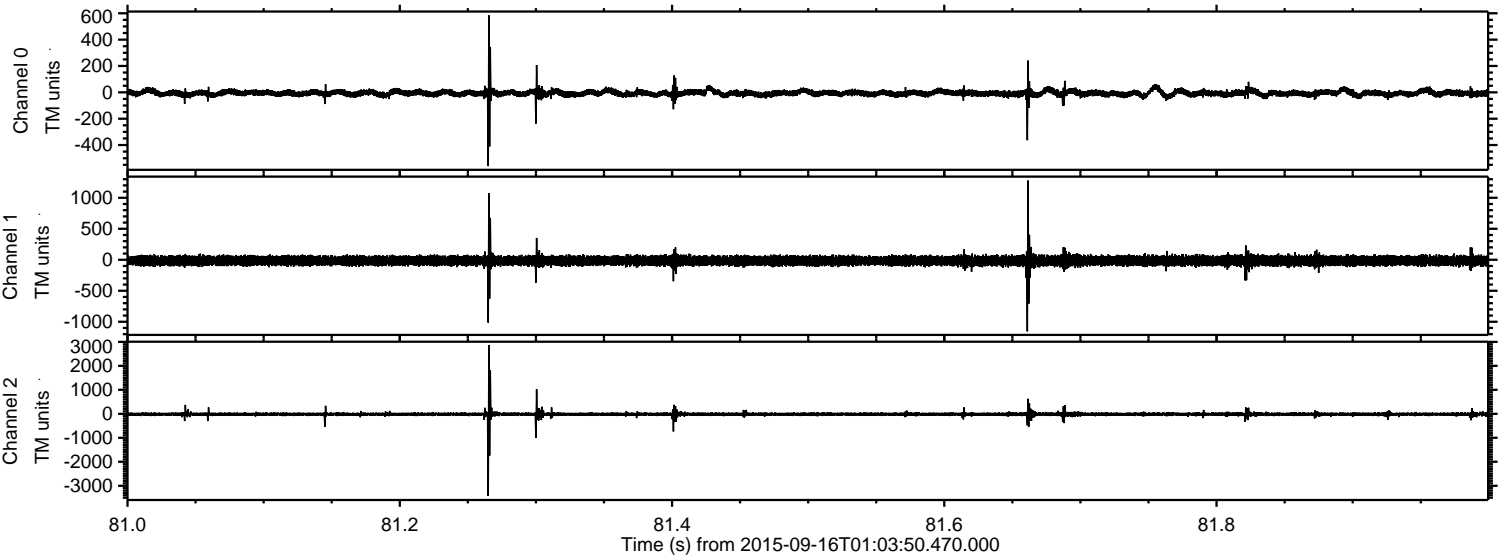
Processed Mon Oct 12 22:35:57 2015 by ELM ver.2012-10-06 from 001__elm20150916_010349__dat00.bin



Processed Mon Oct 12 22:35:59 2015 by ELM ver.2012-10-06 from 001__elm20150916_010349__dat00.bin



Processed Mon Oct 12 22:36:01 2015 by ELM ver.2012-10-06 from 001__elm20150916_010349__dat00.bin



Processed Mon Oct 12 22:36:04 2015 by ELM ver.2012-10-06 from 001__elm20150916_010349__dat00.bin

