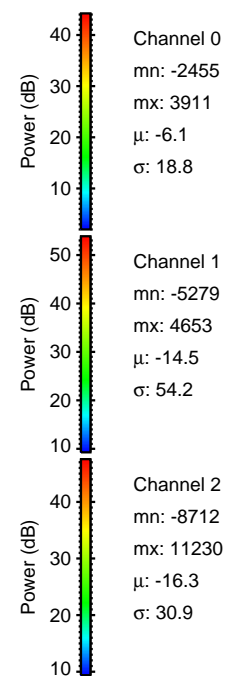
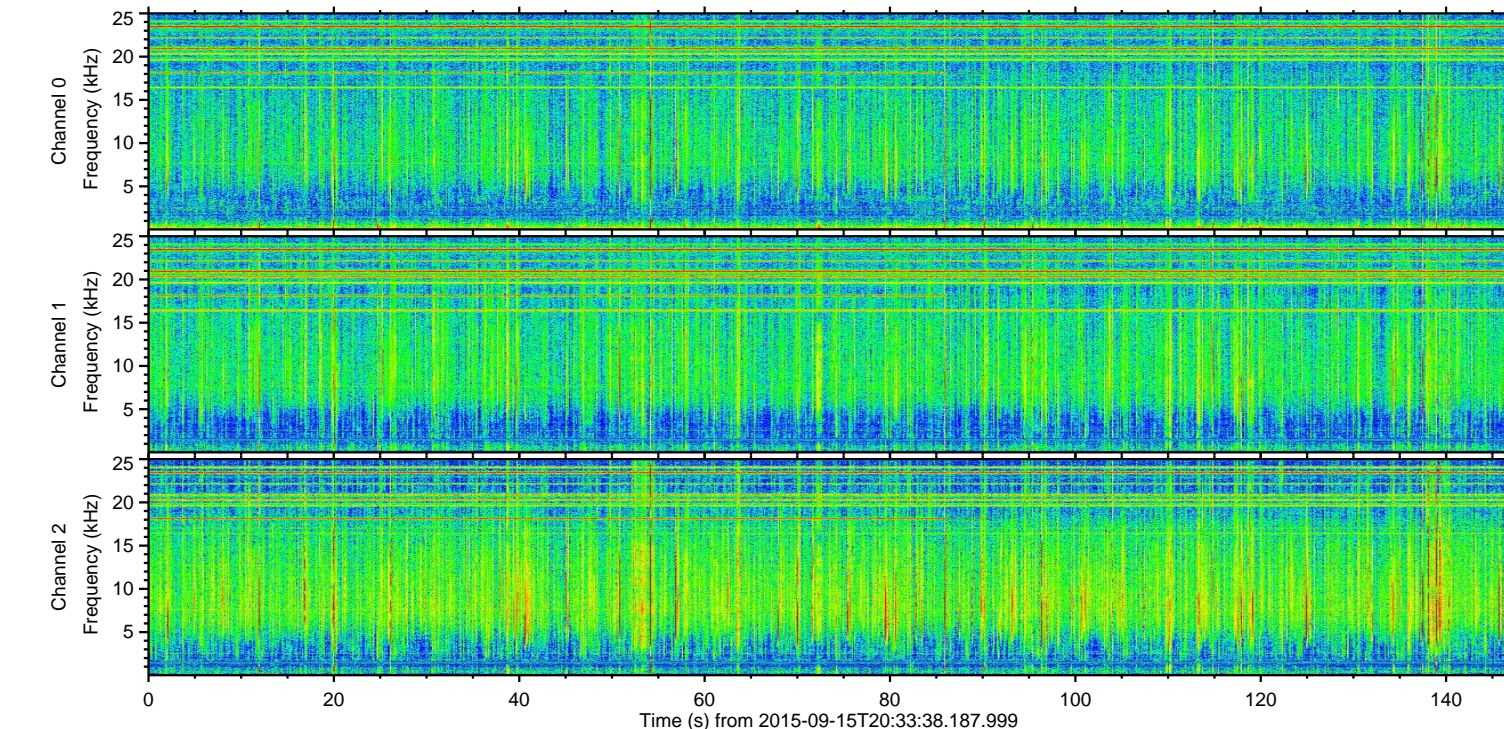
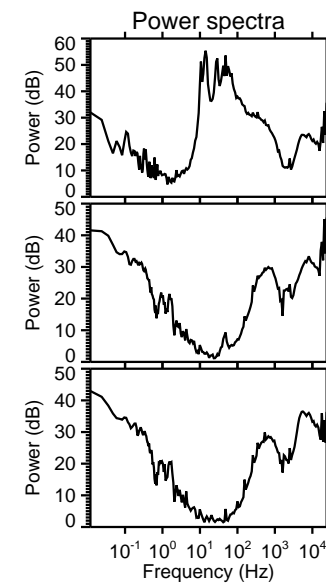
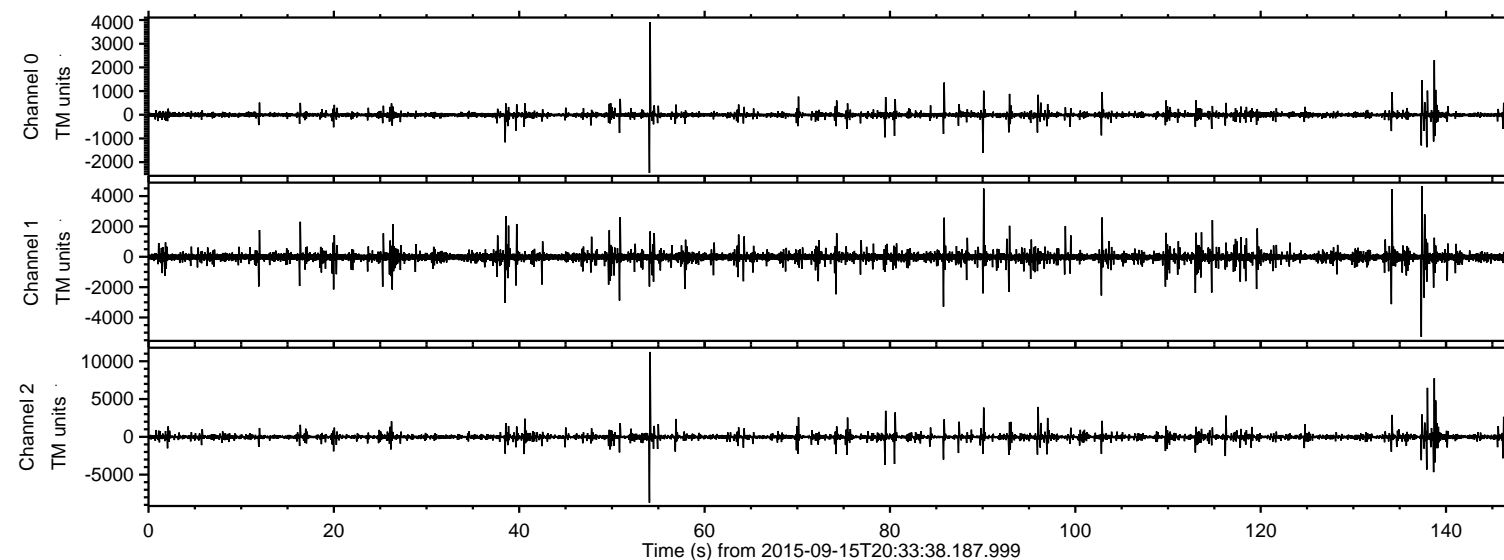


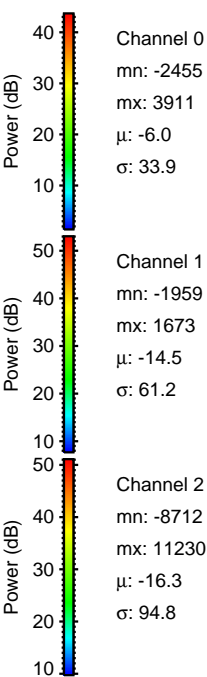
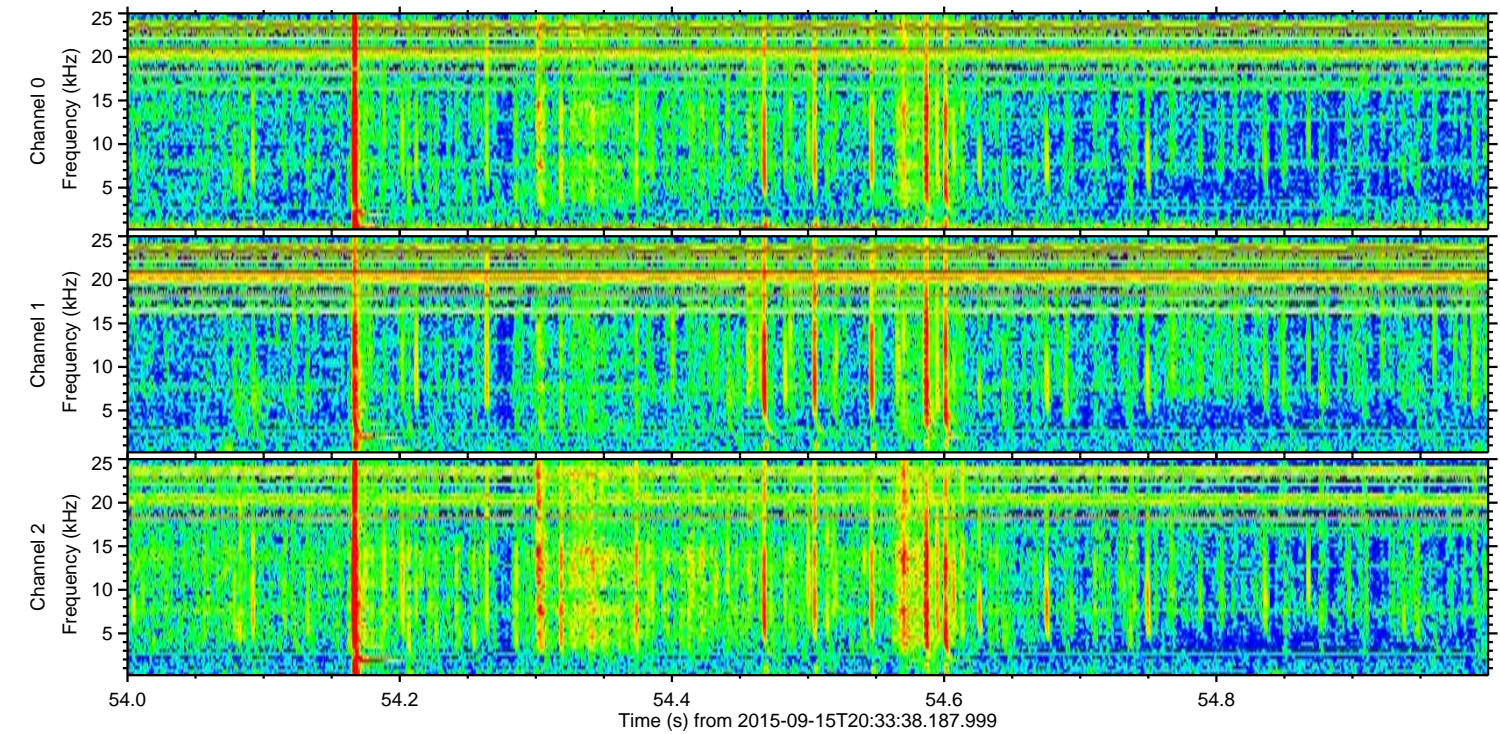
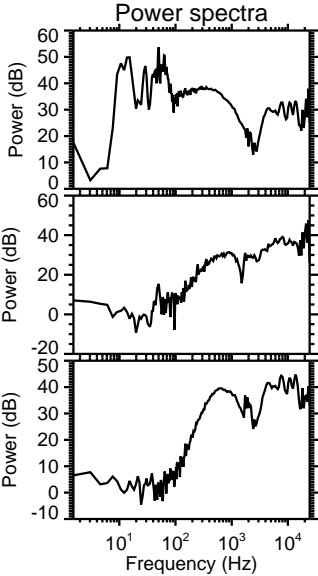
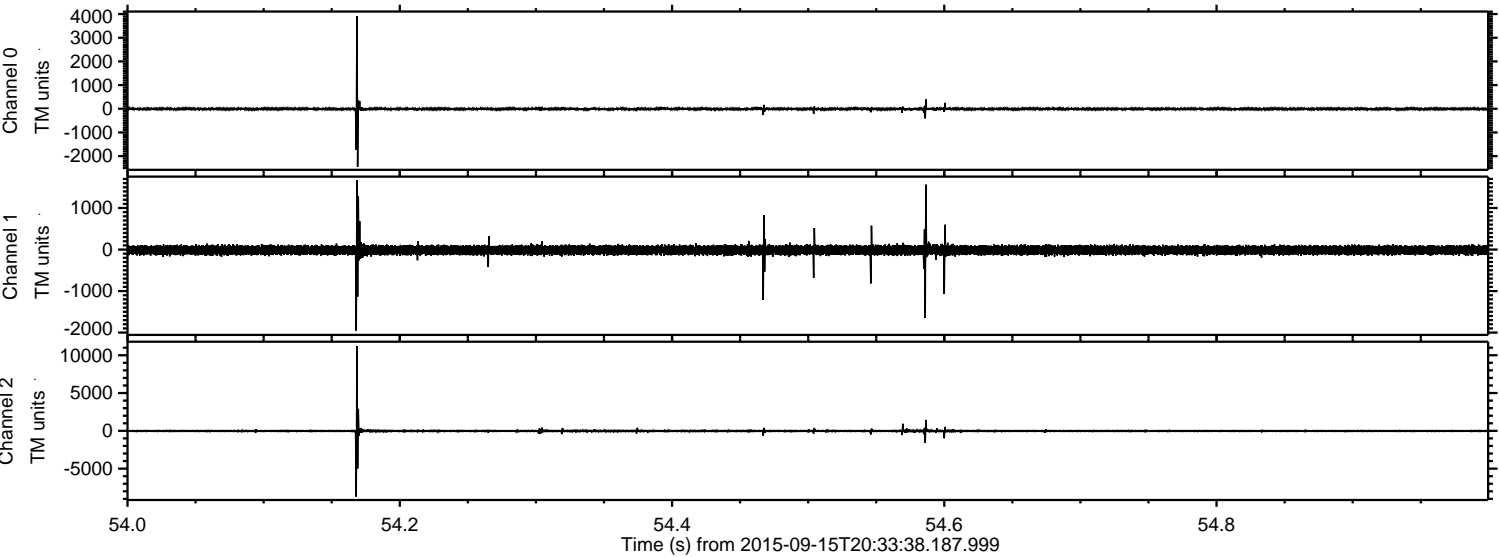
ELMAVAN 3D WAVEFORMS (Measured data sampled at 50 kHz) 51000 packets of 144 samples from 2015-09-15T20:33:38.187.999.

Processed Mon Oct 12 20:46:37 2015 by ELM ver.2012-10-06 from 001__elm20150915_203337__dat00.bin



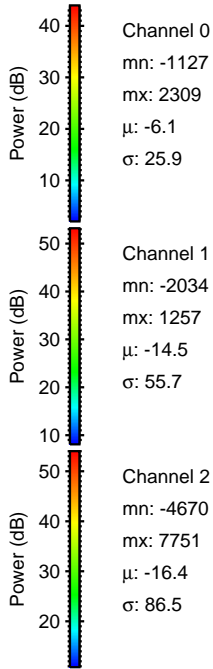
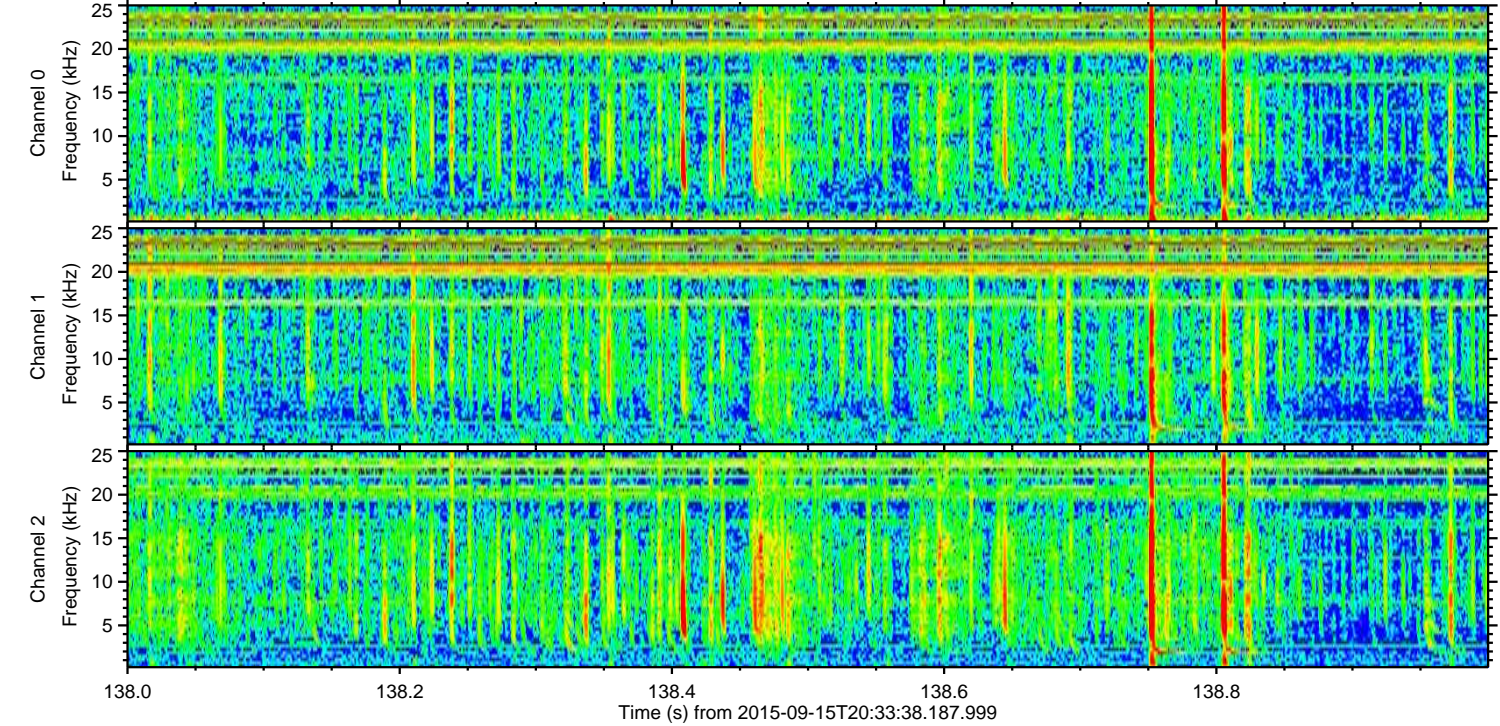
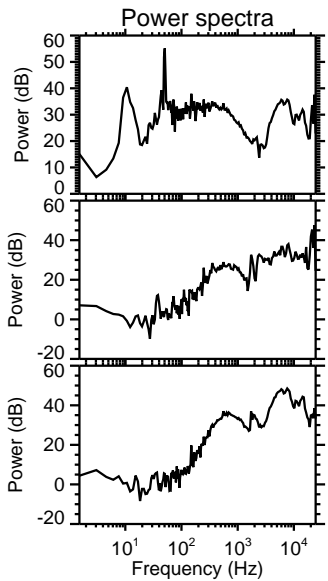
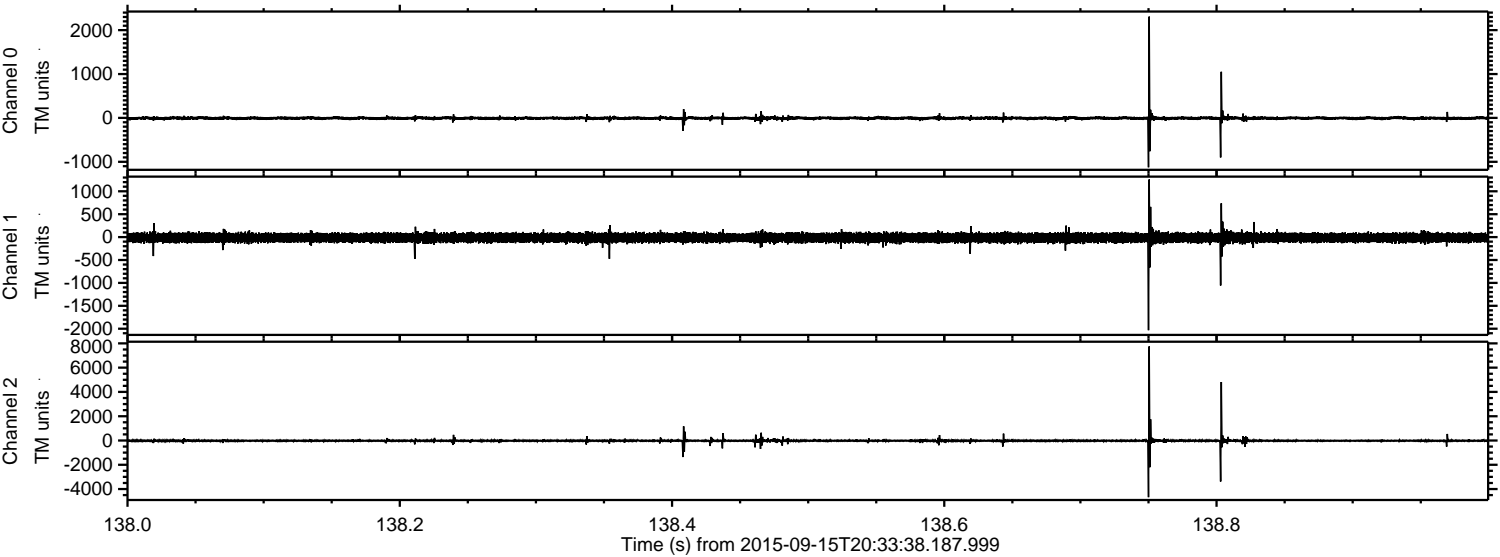
ELMAVAN 3D WAVEFORMS (Measured data sampled at 50 kHz) 51000 packets of 144 samples from 2015-09-15T20:33:38.187.999. Part 55/147

Processed Mon Oct 12 20:46:57 2015 by ELM ver.2012-10-06 from 001__elm20150915_203337__dat00.bin



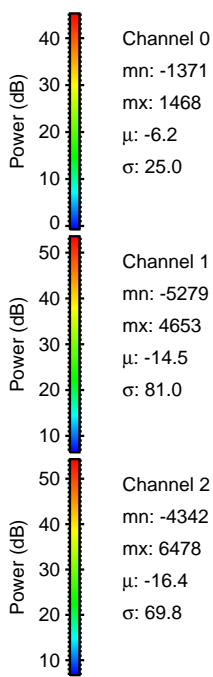
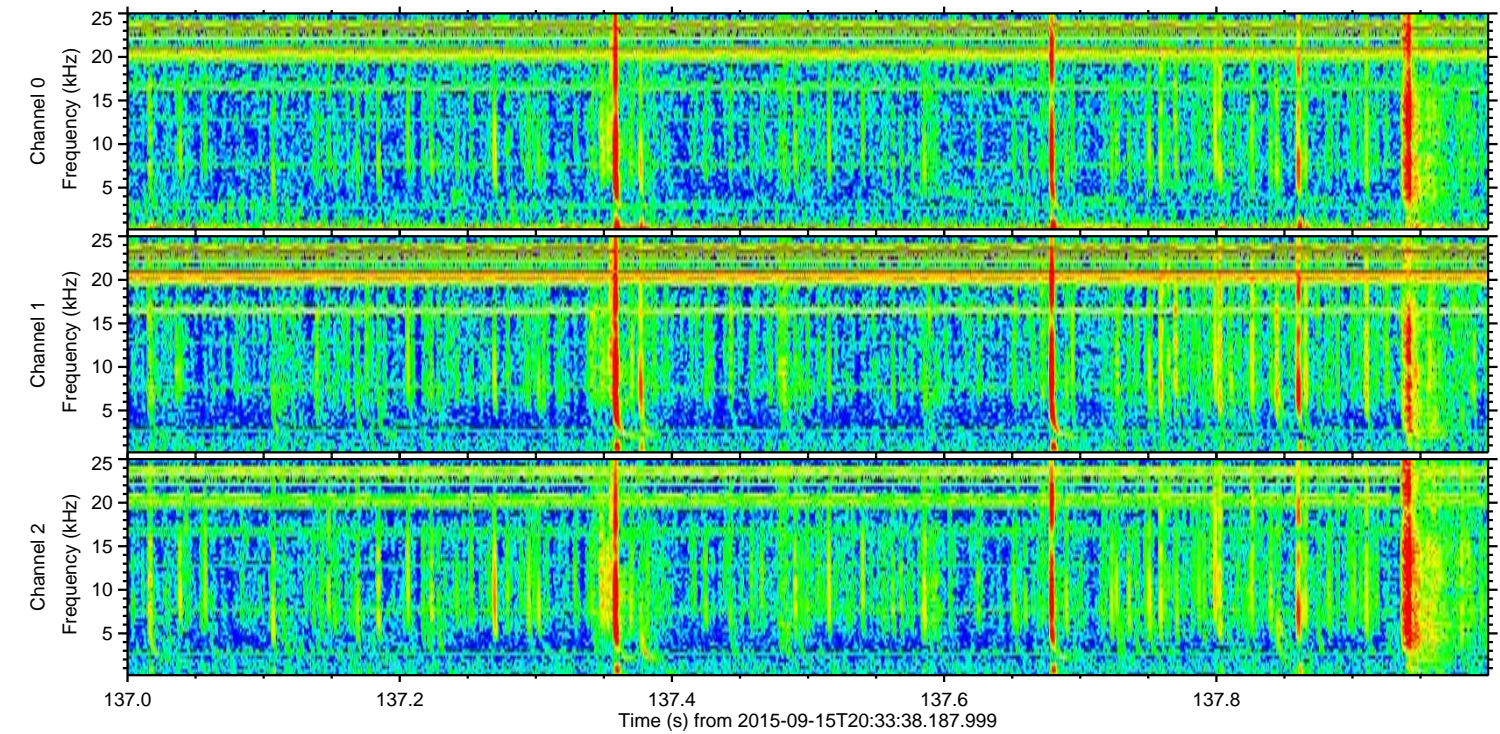
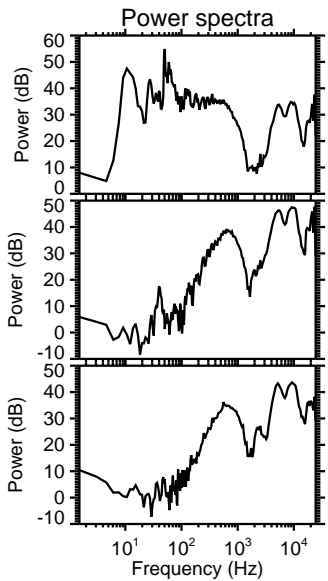
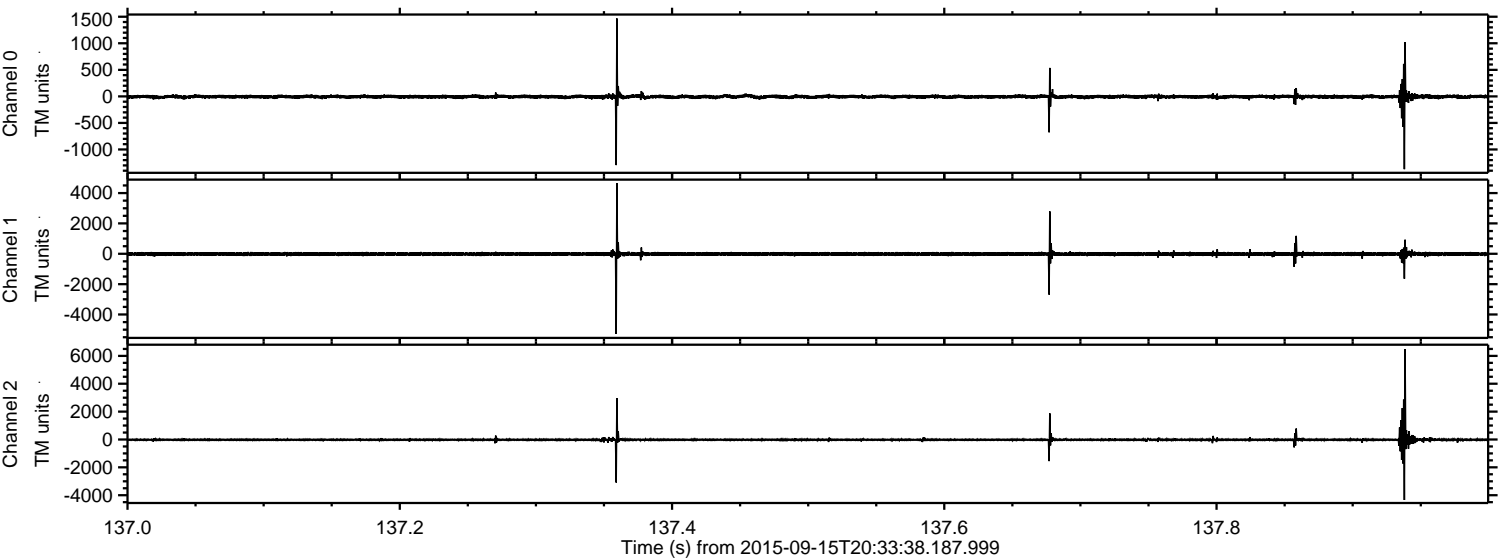
ELMAVAN 3D WAVEFORMS (Measured data sampled at 50 kHz) 51000 packets of 144 samples from 2015-09-15T20:33:38.187.999. Part 139/147

Processed Mon Oct 12 20:46:58 2015 by ELM ver.2012-10-06 from 001__elm20150915_203337__dat00.bin



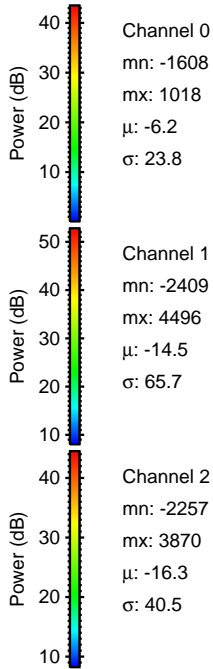
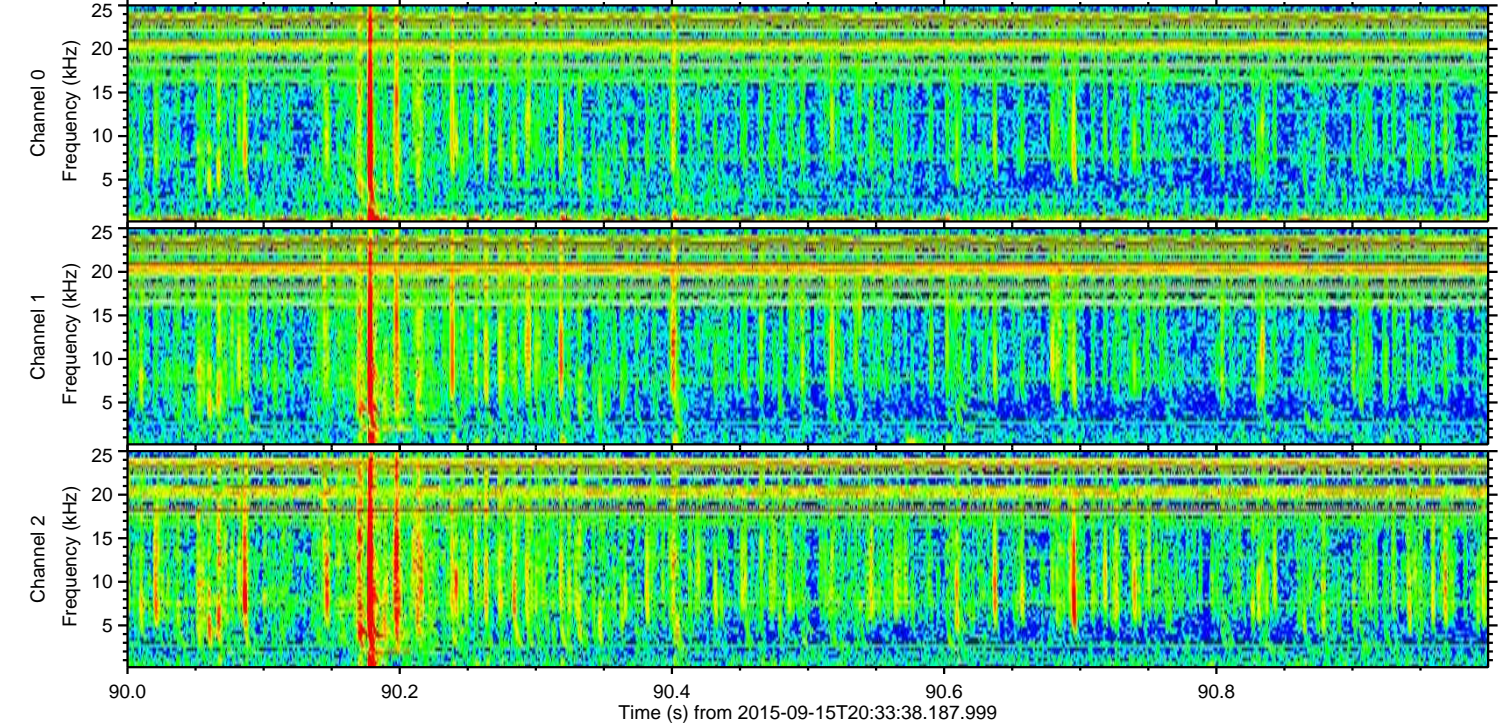
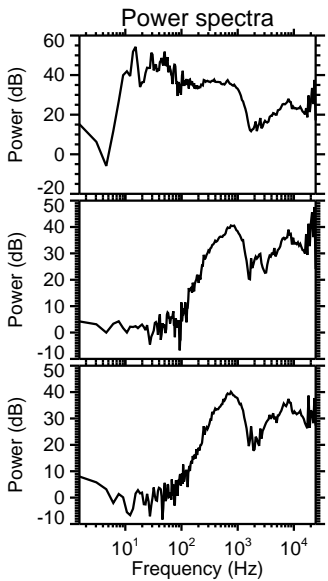
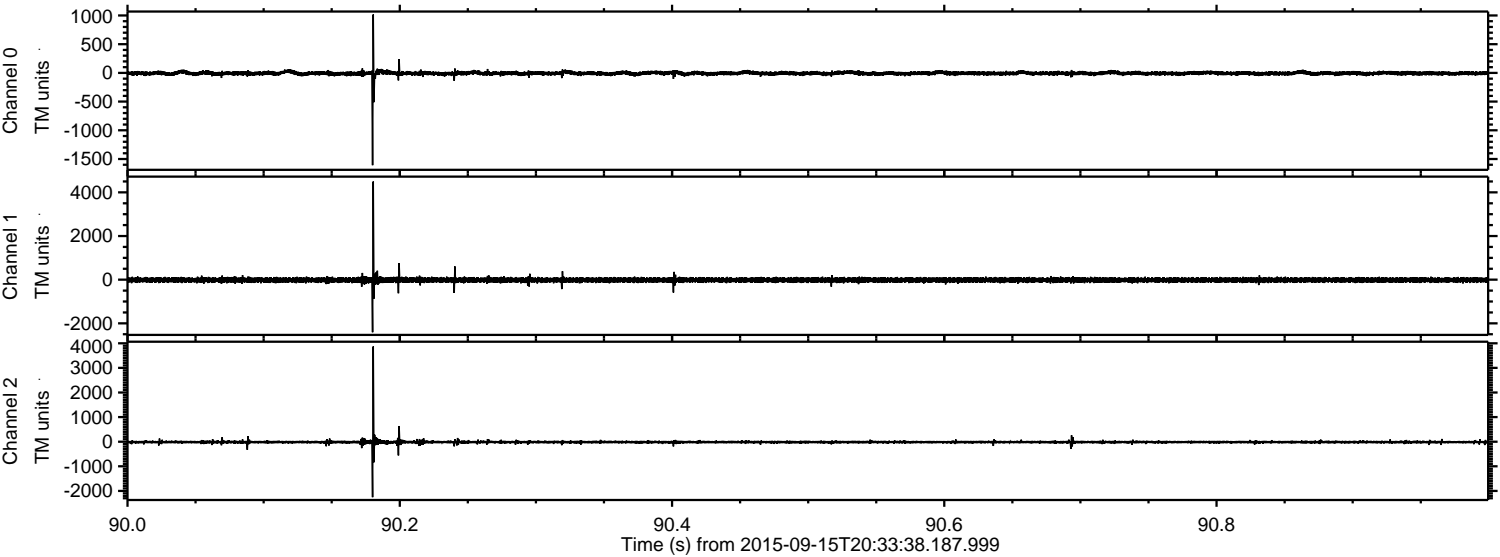
ELMAVAN 3D WAVEFORMS (Measured data sampled at 50 kHz) 51000 packets of 144 samples from 2015-09-15T20:33:38.187.999. Part 138/147

Processed Mon Oct 12 20:47:00 2015 by ELM ver.2012-10-06 from 001__elm20150915_203337__dat00.bin



ELMAVAN 3D WAVEFORMS (Measured data sampled at 50 kHz) 51000 packets of 144 samples from 2015-09-15T20:33:38.187.999. Part 91/147

Processed Mon Oct 12 20:47:02 2015 by ELM ver.2012-10-06 from 001__elm20150915_203337__dat00.bin



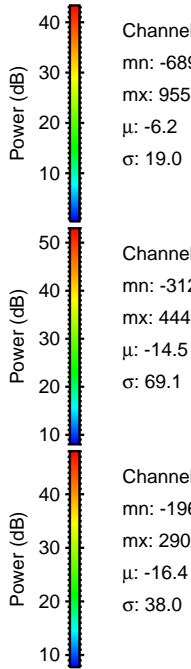
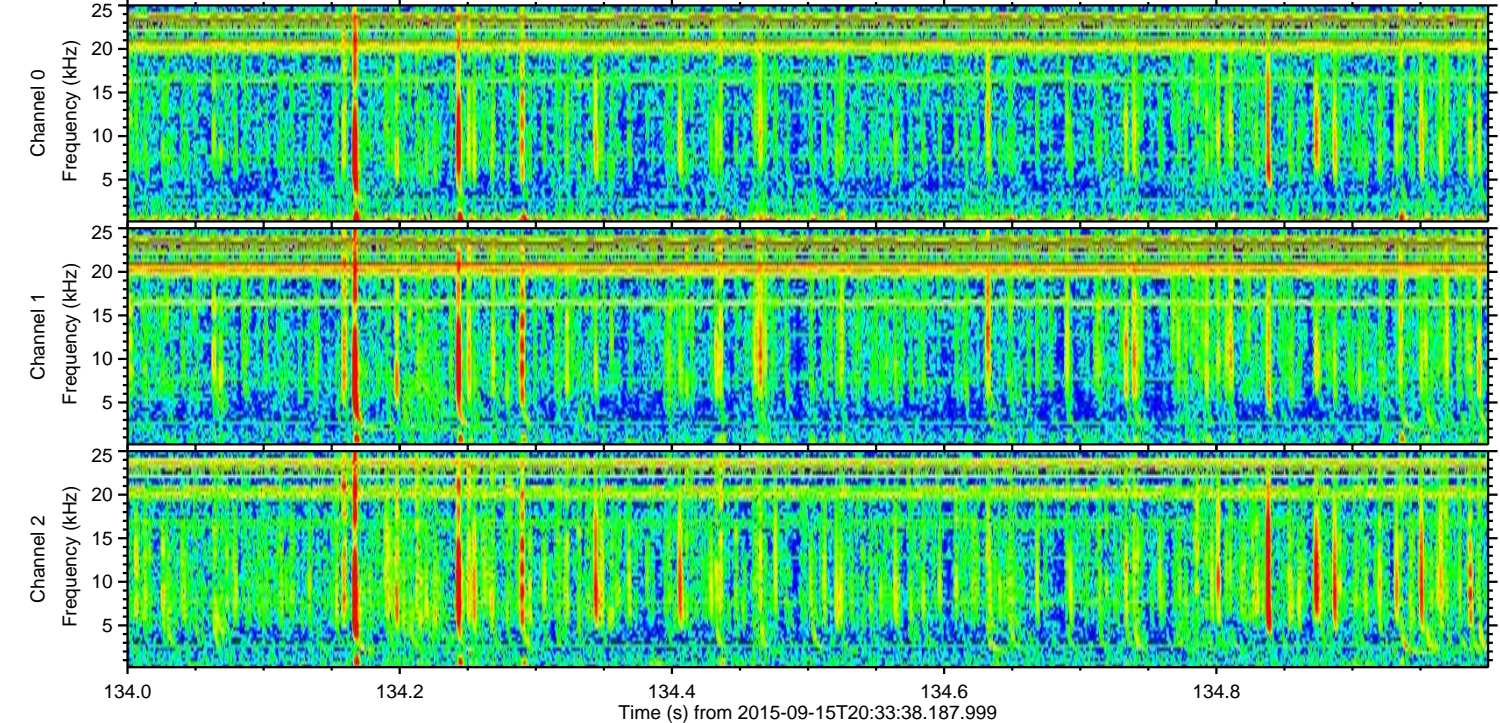
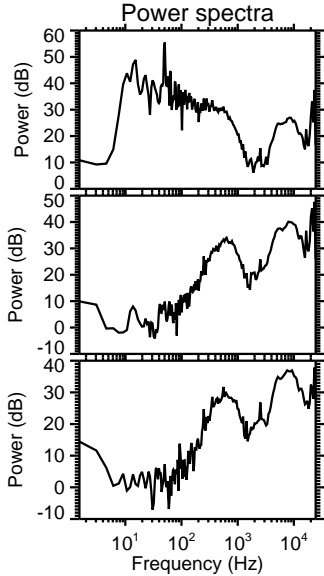
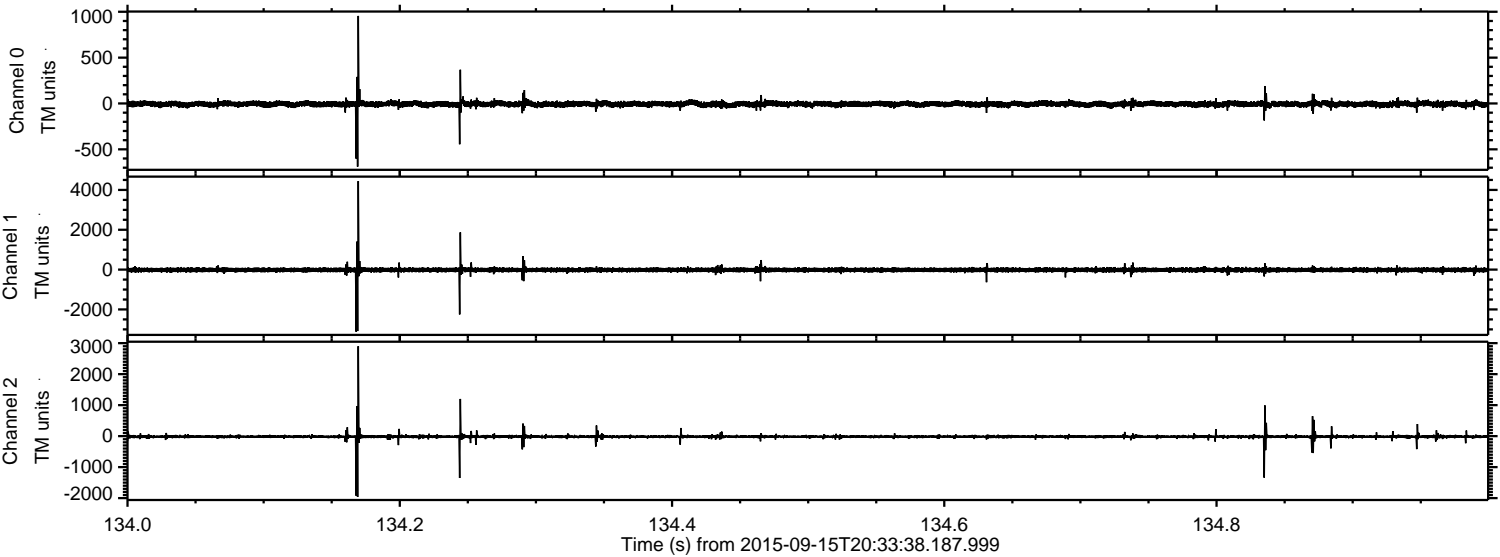
Channel 0
mn: -1608
mx: 1018
 μ : -6.2
 σ : 23.8

Channel 1
mn: -2409
mx: 4496
 μ : -14.5
 σ : 65.7

Channel 2
mn: -2257
mx: 3870
 μ : -16.3
 σ : 40.5

ELMAVAN 3D WAVEFORMS (Measured data sampled at 50 kHz) 51000 packets of 144 samples from 2015-09-15T20:33:38.187.999. Part 135/147

Processed Mon Oct 12 20:47:03 2015 by ELM ver.2012-10-06 from 001__elm20150915_203337__dat00.bin

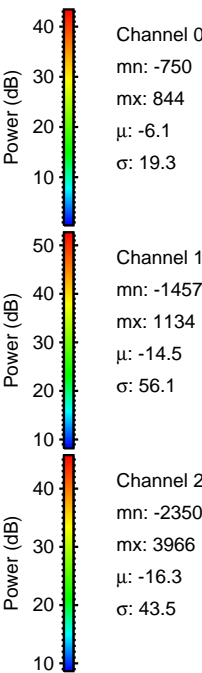
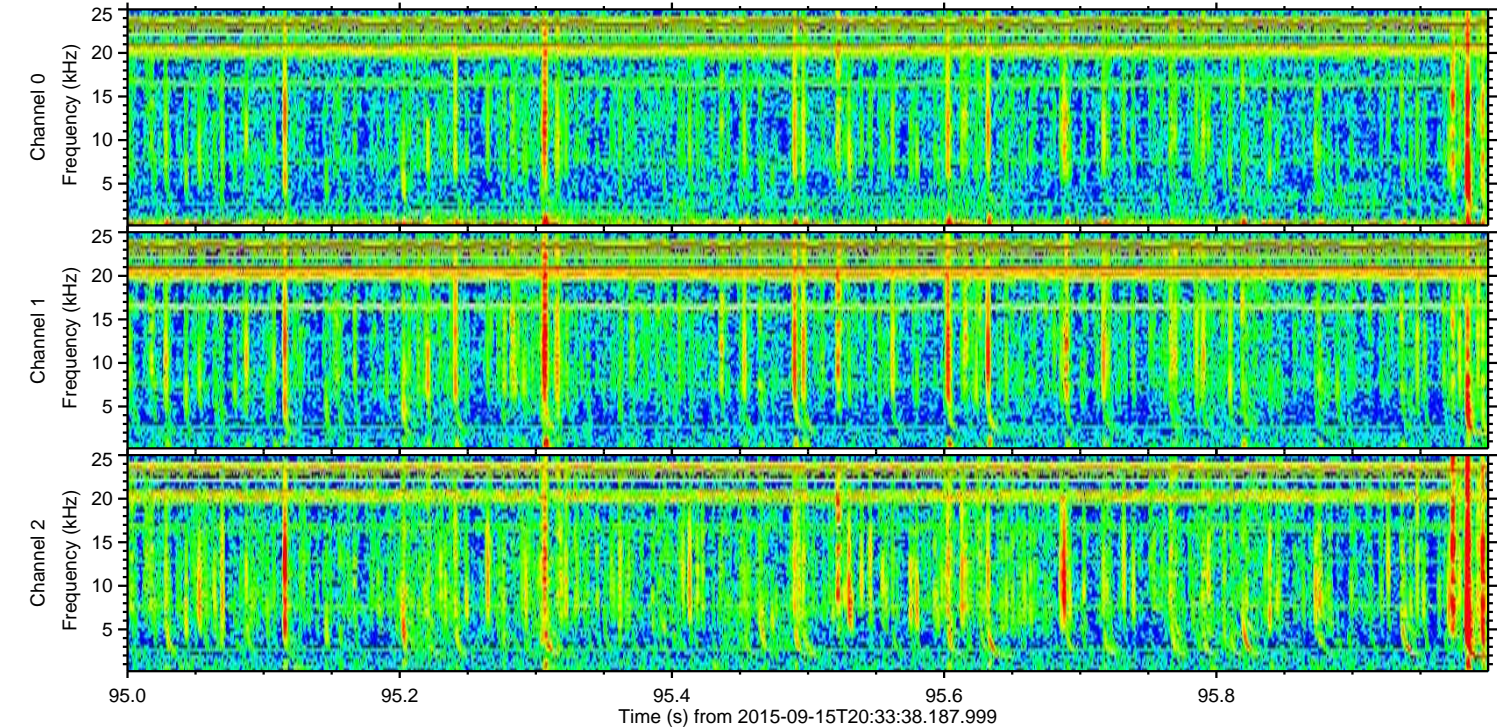
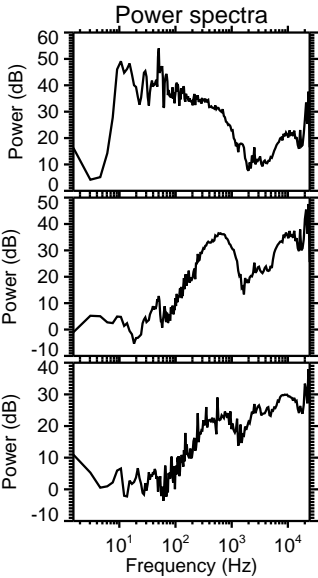
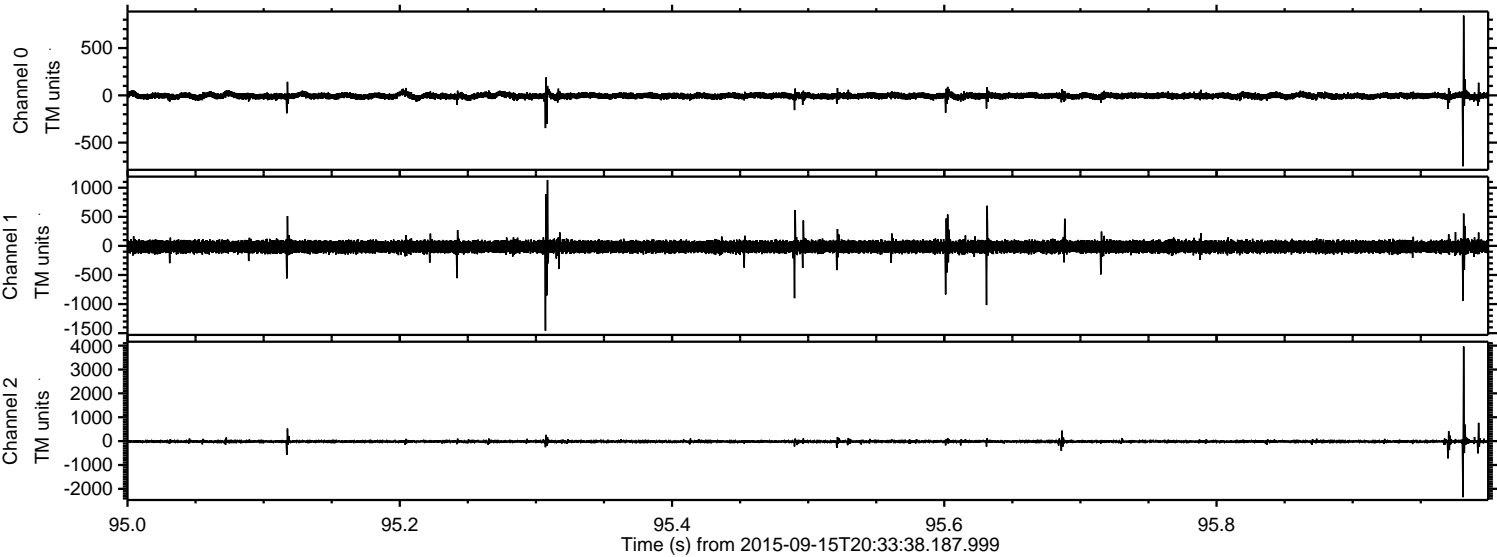


Channel 0
mn: -689
mx: 955
 μ : -6.2
 σ : 19.0

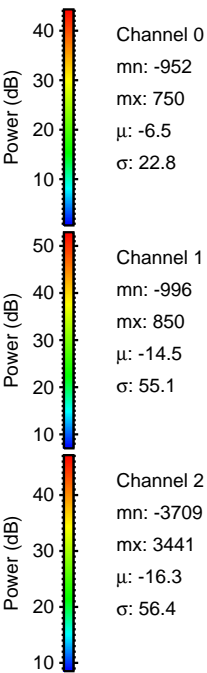
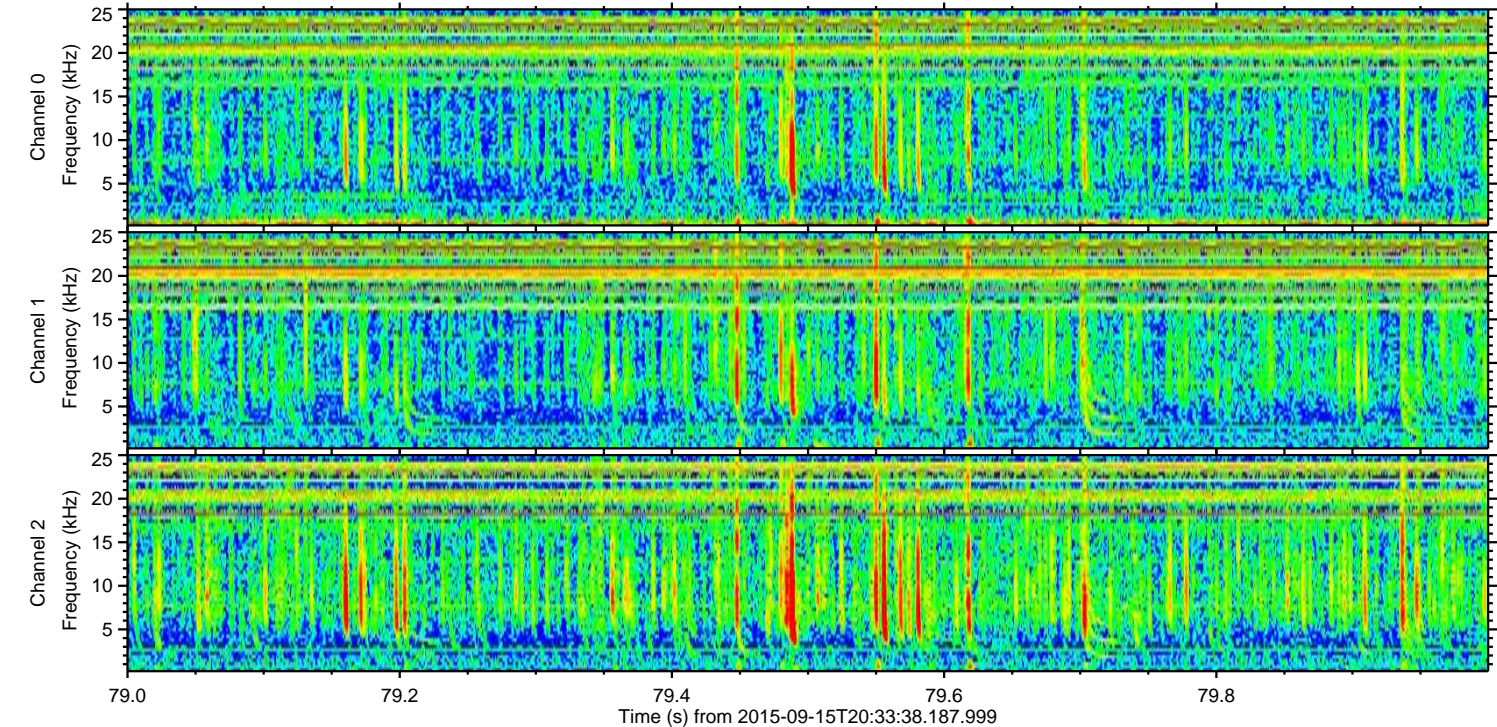
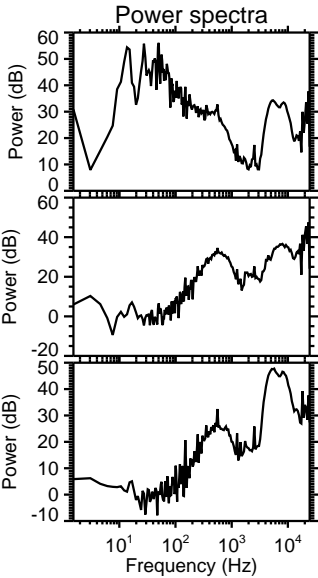
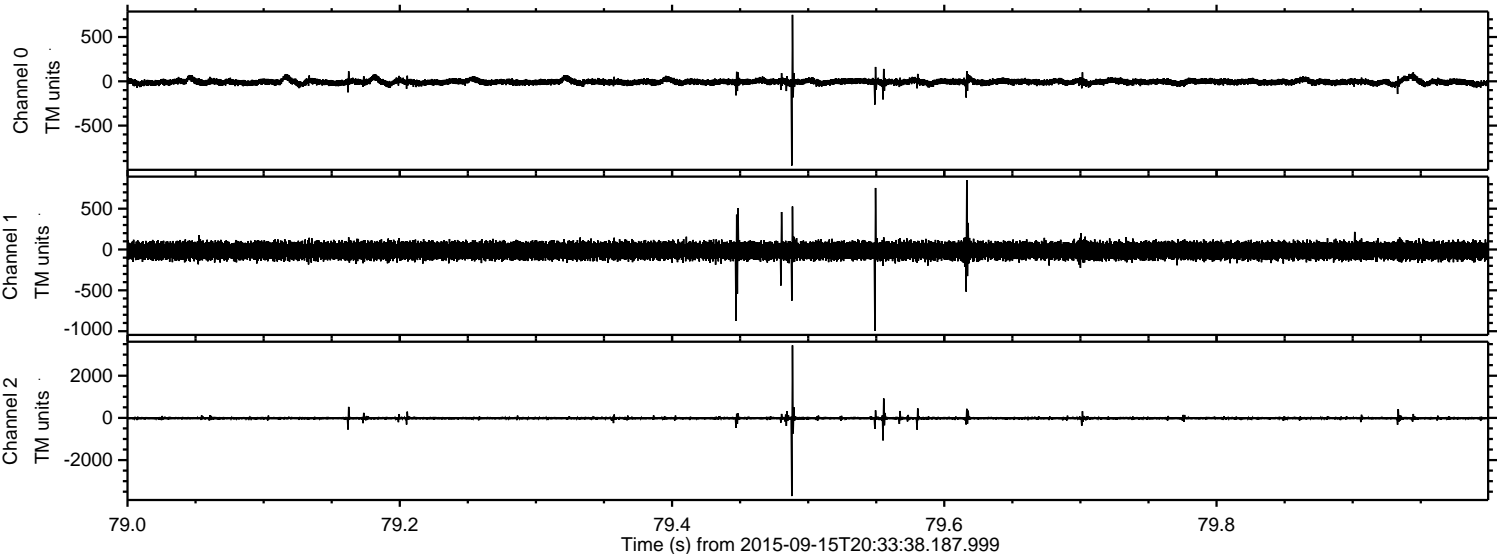
Channel 1
mn: -3121
mx: 4446
 μ : -14.5
 σ : 69.1

Channel 2
mn: -1964
mx: 2902
 μ : -16.4
 σ : 38.0

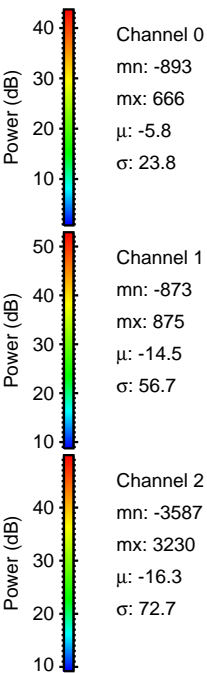
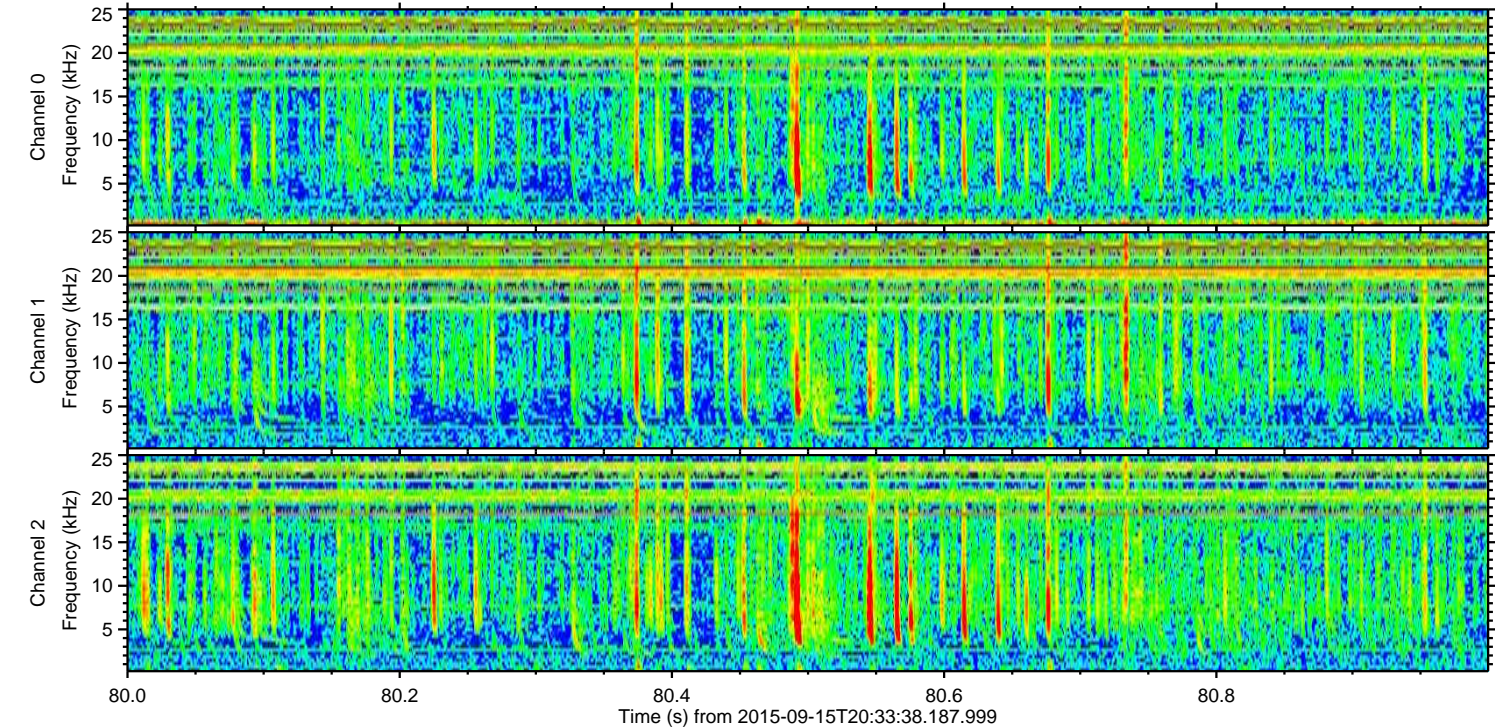
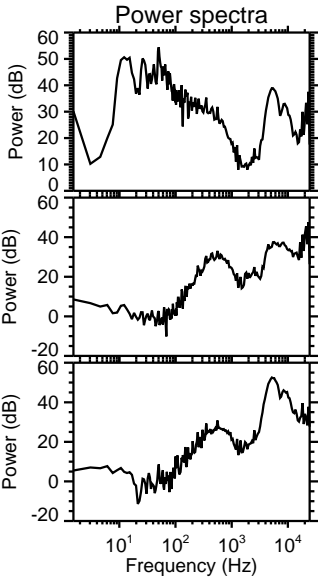
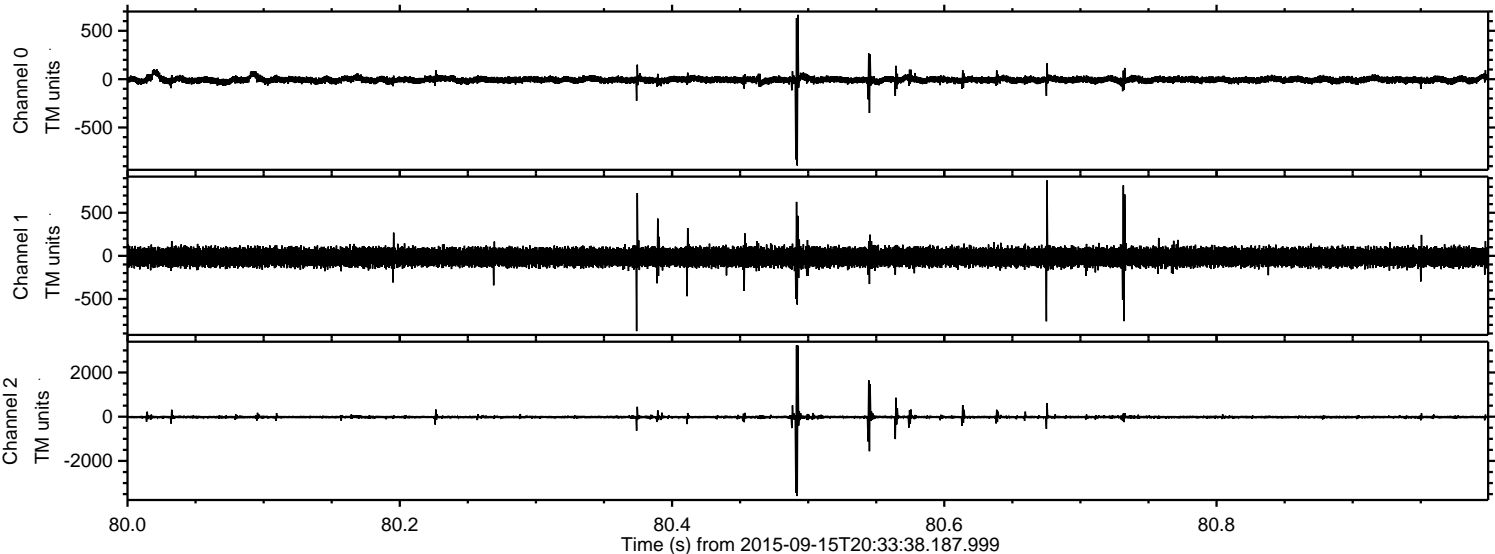
Processed Mon Oct 12 20:47:05 2015 by ELM ver.2012-10-06 from 001__elm20150915_203337__dat00.bin



Processed Mon Oct 12 20:47:06 2015 by ELM ver.2012-10-06 from 001__elm20150915_203337__dat00.bin



Processed Mon Oct 12 20:47:08 2015 by ELM ver.2012-10-06 from 001__elm20150915_203337__dat00.bin

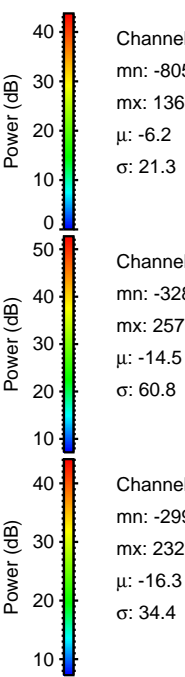
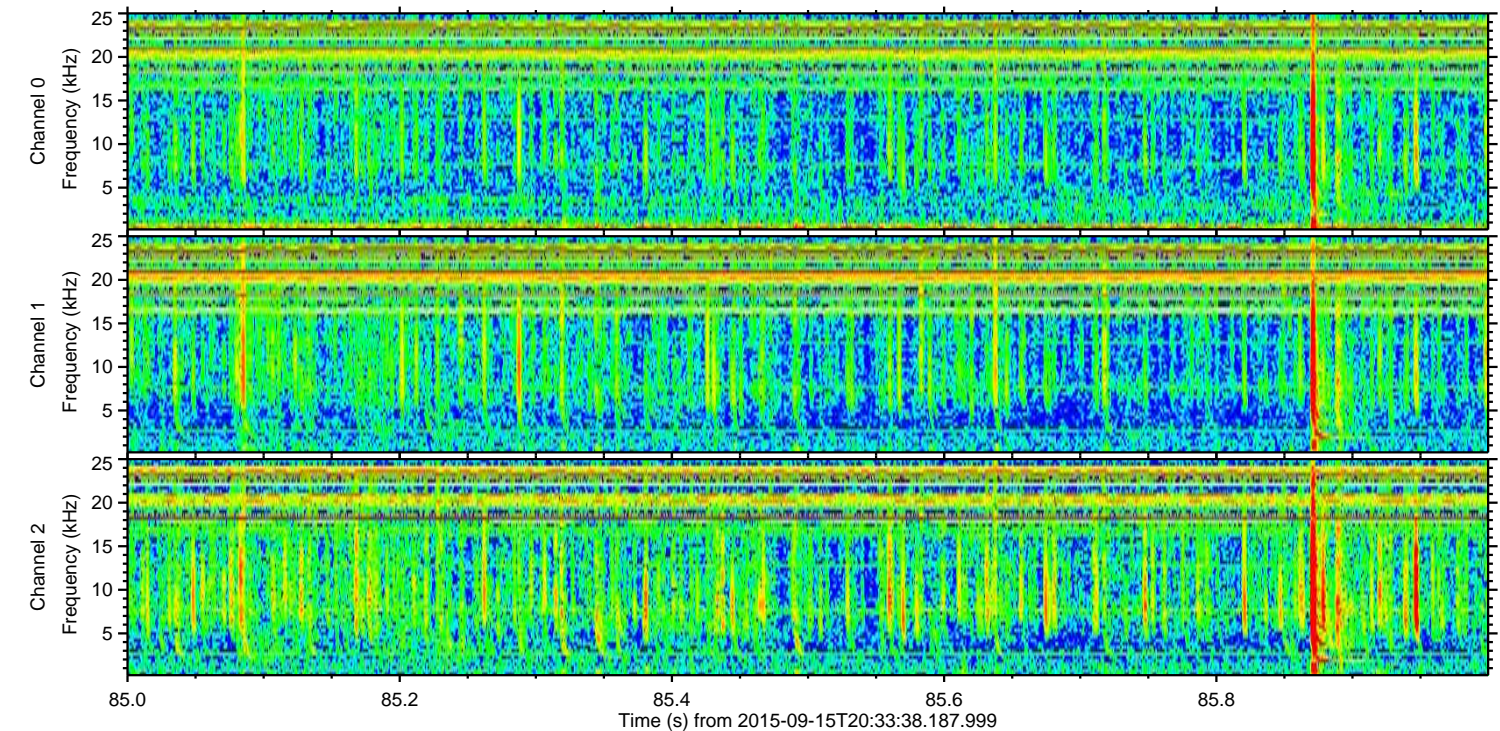
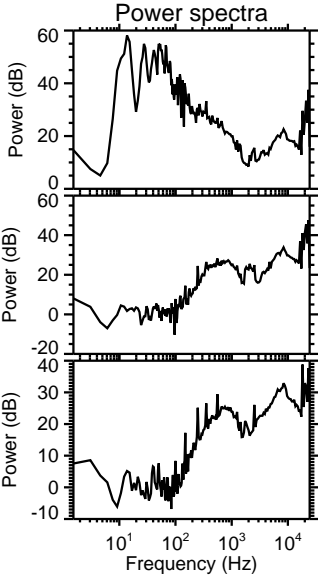
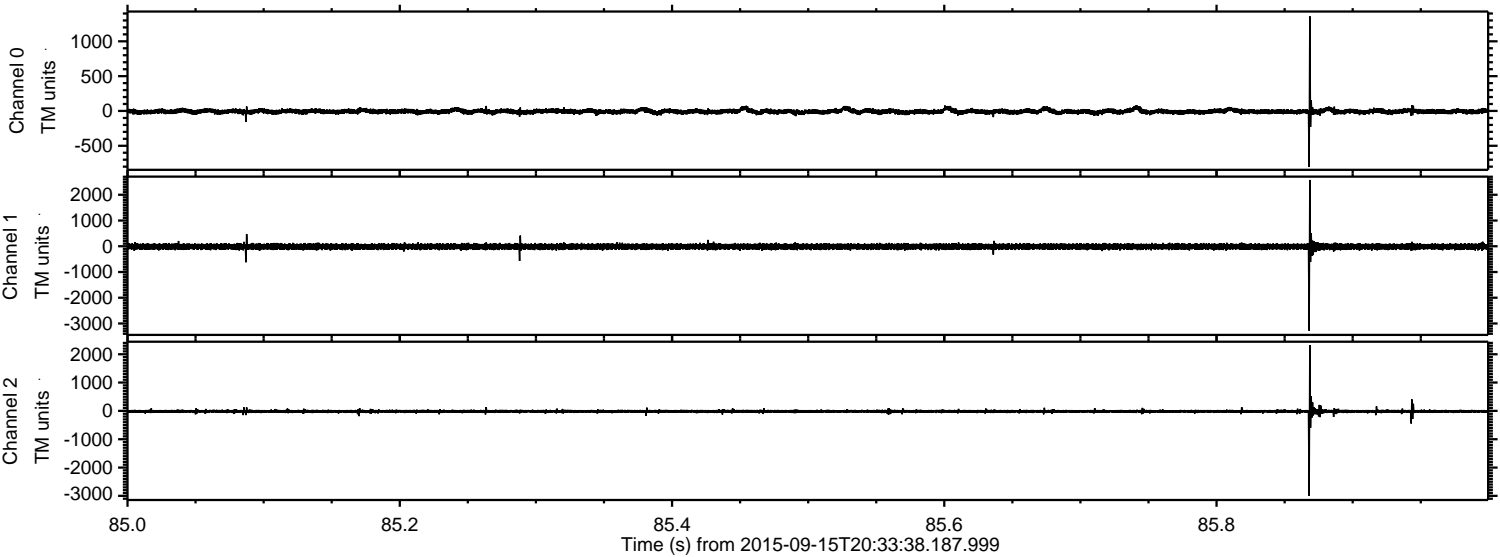


Channel 0
mn: -893
mx: 666
 μ : -5.8
 σ : 23.8

Channel 1
mn: -873
mx: 875
 μ : -14.5
 σ : 56.7

Channel 2
mn: -3587
mx: 3230
 μ : -16.3
 σ : 72.7

Processed Mon Oct 12 20:47:10 2015 by ELM ver.2012-10-06 from 001__elm20150915_203337__dat00.bin



Channel 0
mn: -805
mx: 1360
 μ : -6.2
 σ : 21.3

Channel 1
mn: -3280
mx: 2577
 μ : -14.5
 σ : 60.8

Channel 2
mn: -2996
mx: 2326
 μ : -16.3
 σ : 34.4

ELMAVAN 3D WAVEFORMS (Measured data sampled at 50 kHz) 51000 packets of 144 samples from 2015-09-15T20:33:38.187.999. Part 133/147

