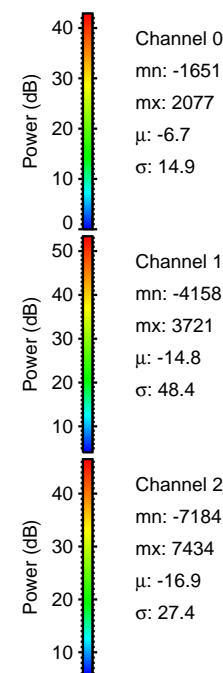
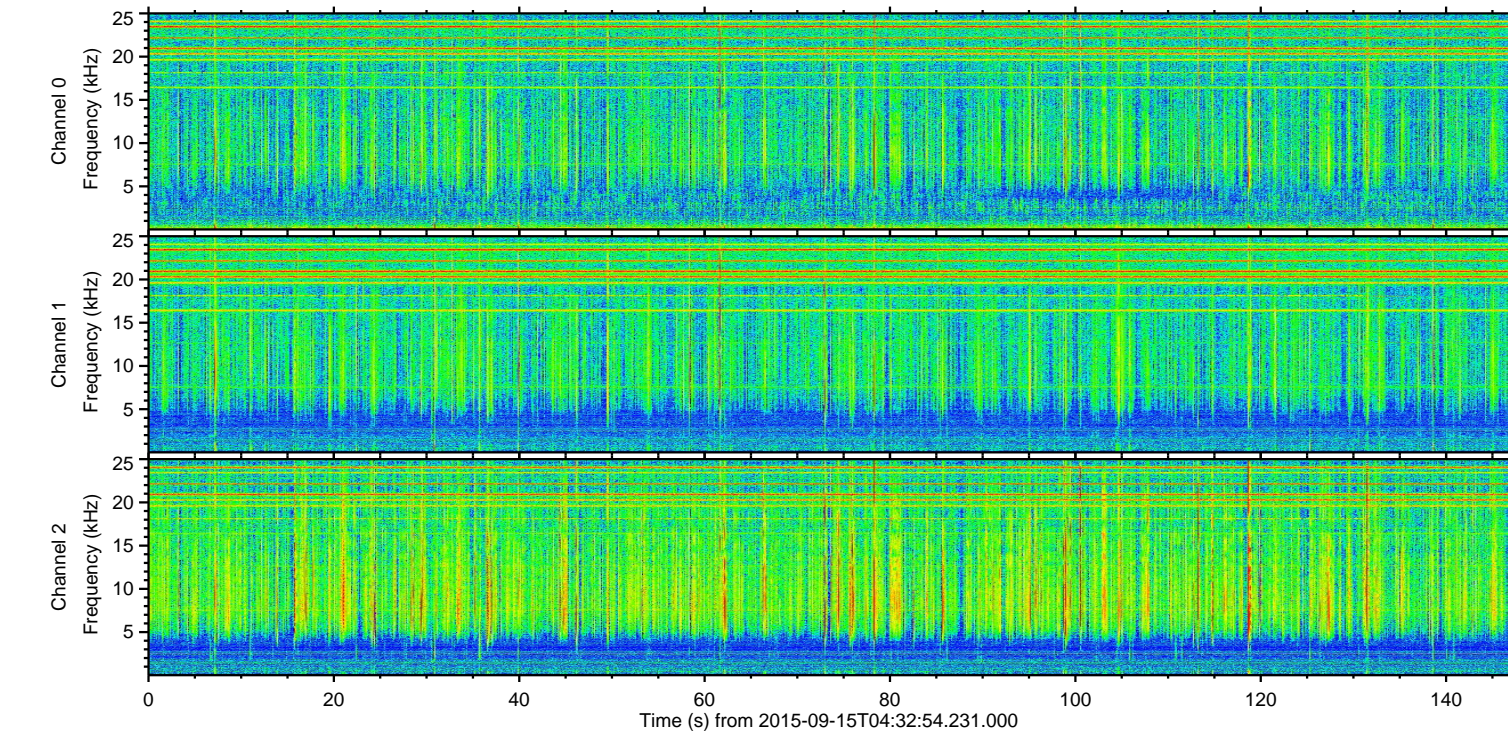
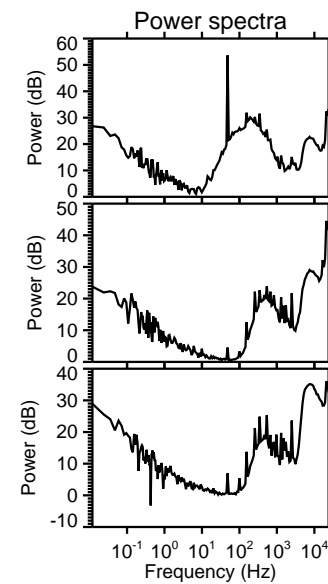
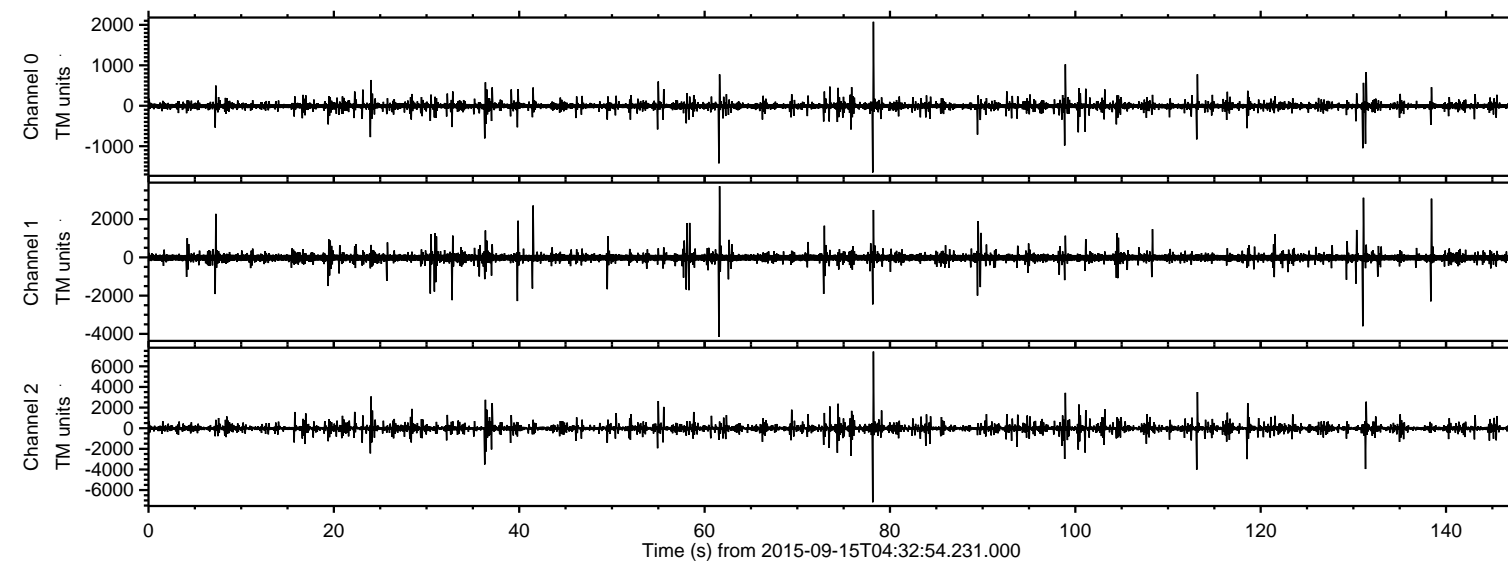


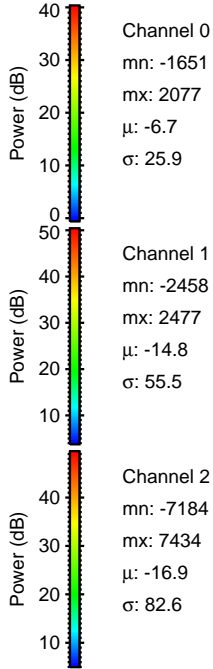
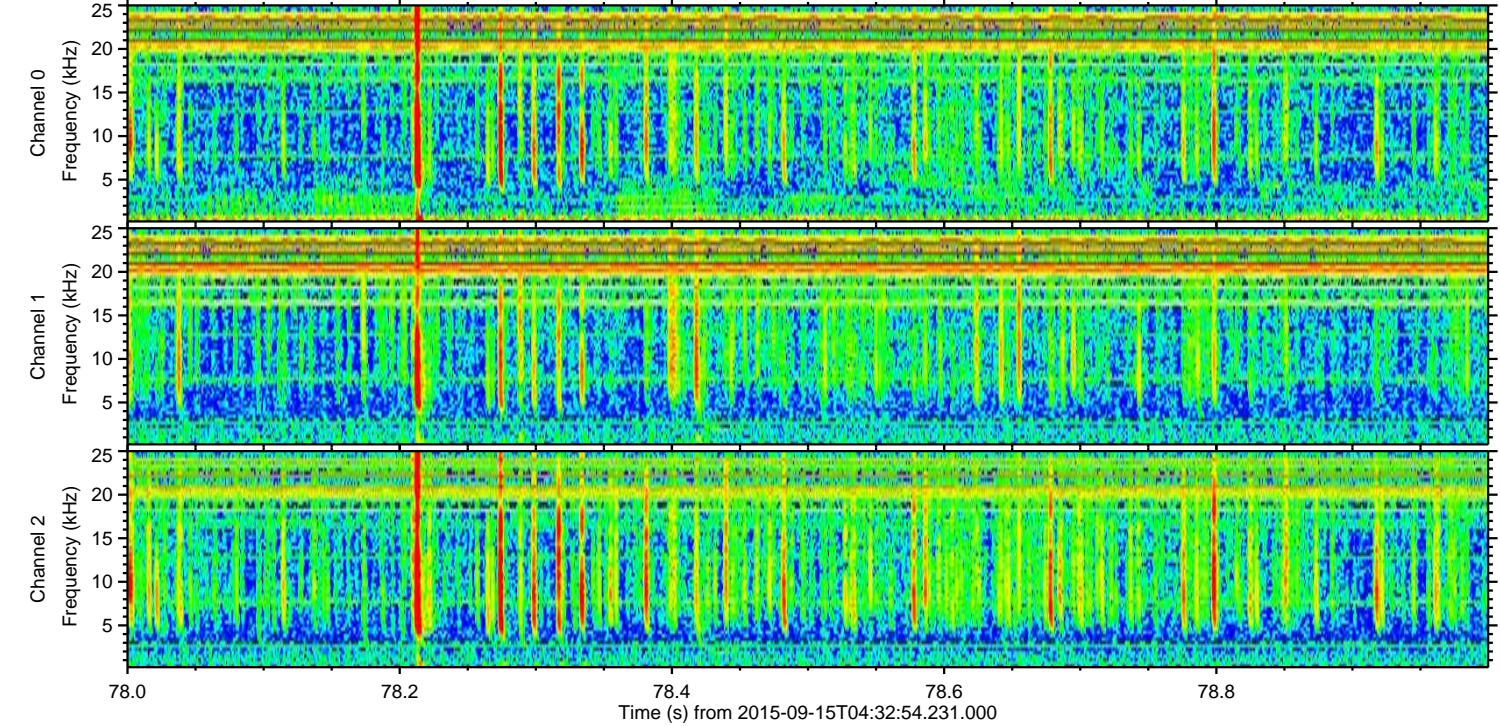
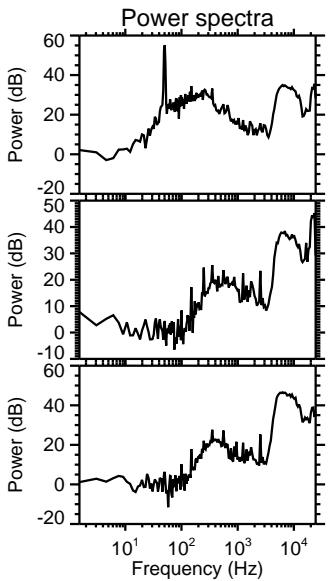
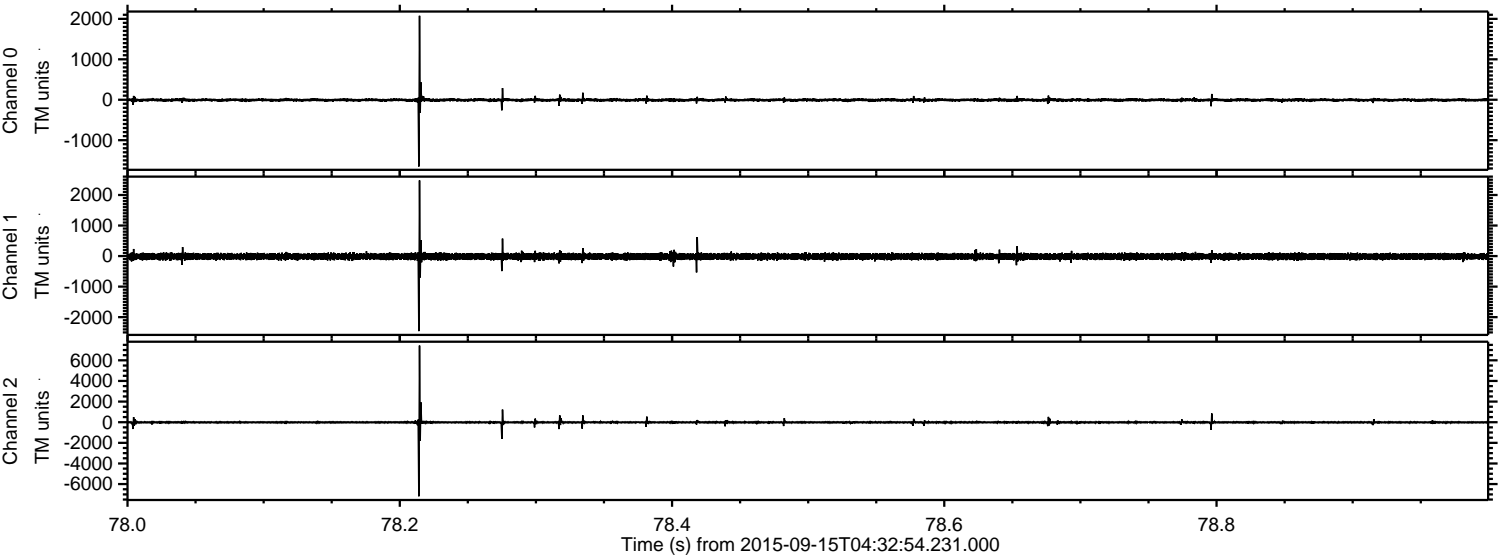
# ELMAVAN 3D WAVEFORMS (Measured data sampled at 50 kHz) 51000 packets of 144 samples from 2015-09-15T04:32:54.231.000.

Processed Mon Oct 12 15:05:24 2015 by ELM ver.2012-10-06 from 001\_\_elm20150915\_043253\_\_dat00.bin





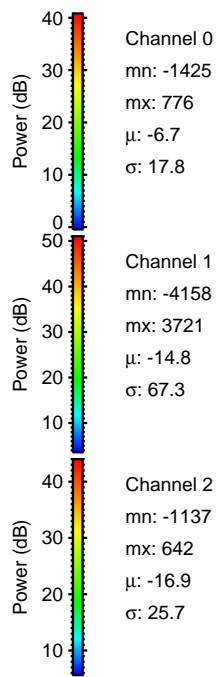
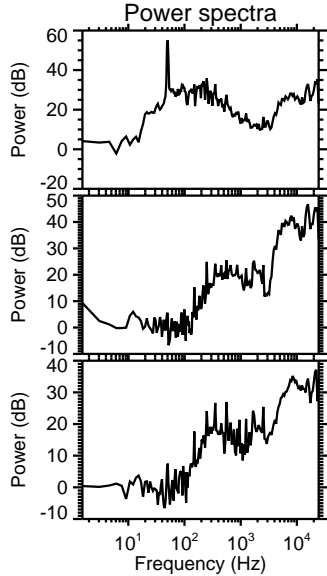
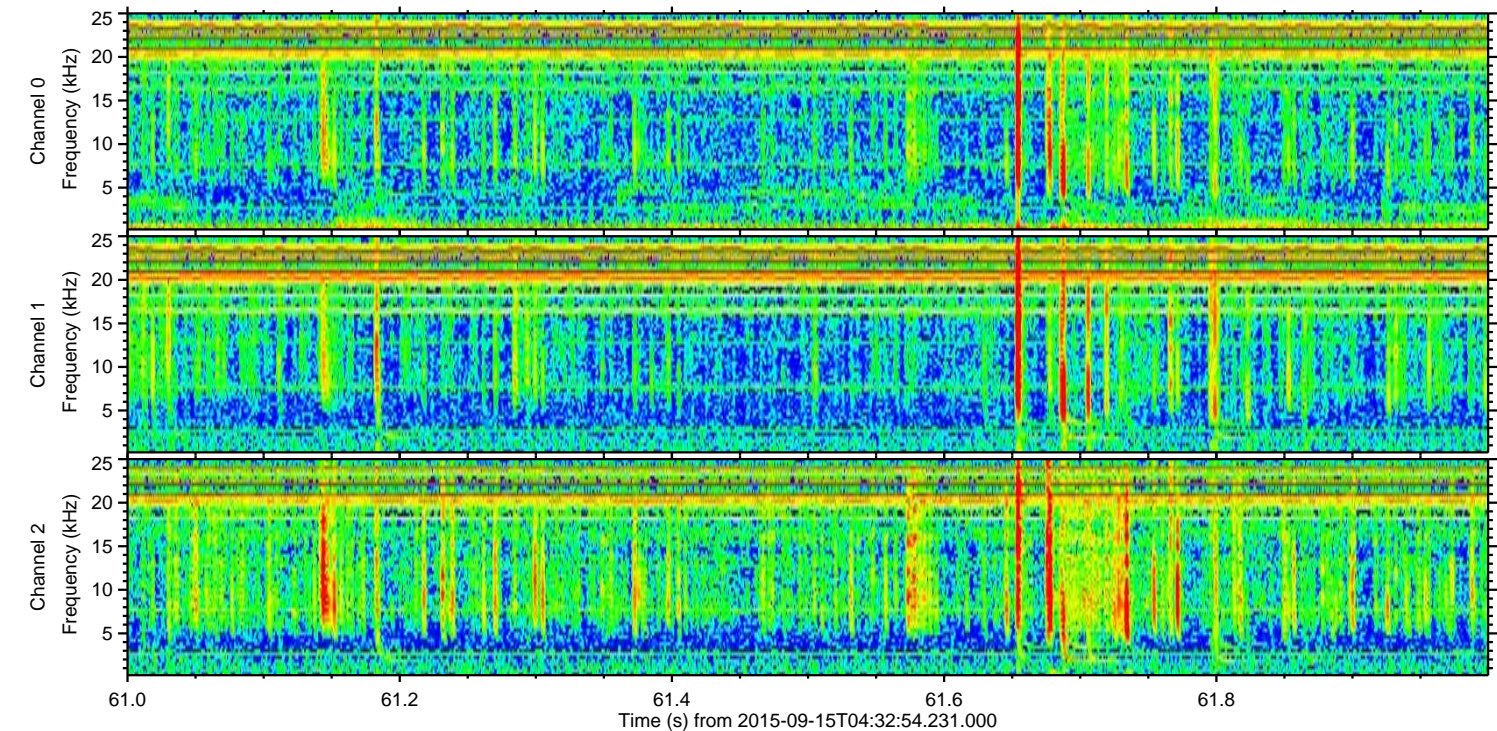
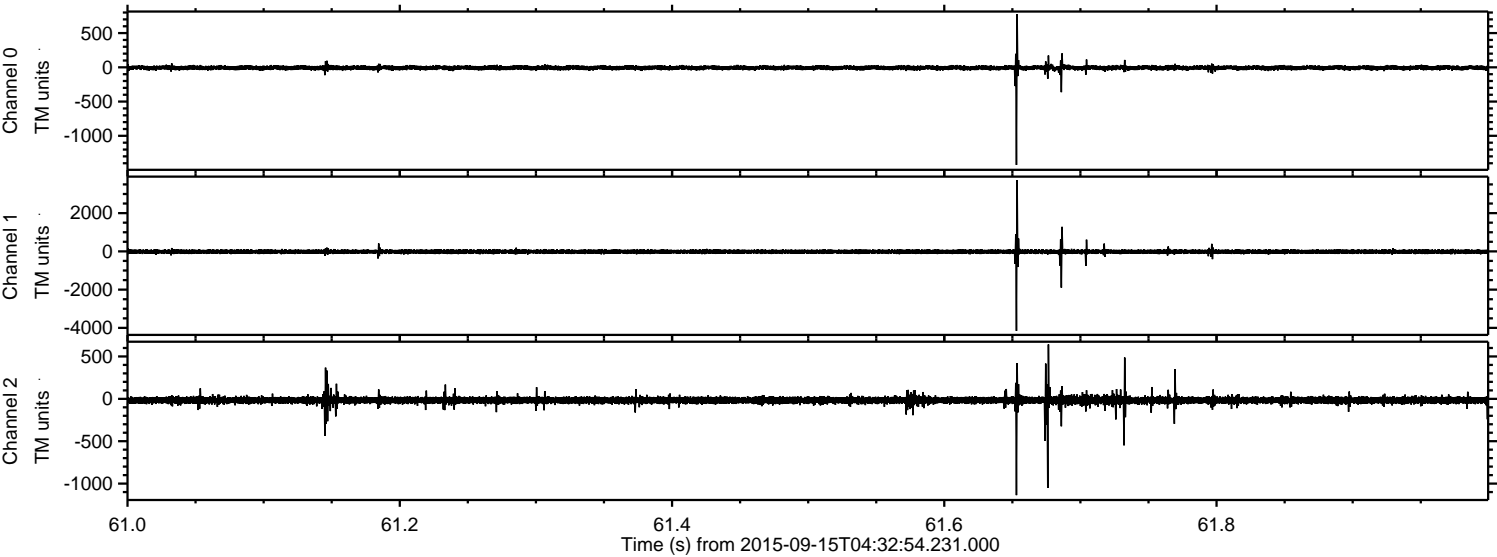
Processed Mon Oct 12 15:05:39 2015 by ELM ver.2012-10-06 from 001\_\_elm20150915\_043253\_\_dat00.bin





ELMAVAN 3D WAVEFORMS (Measured data sampled at 50 kHz) 51000 packets of 144 samples from 2015-09-15T04:32:54.231.000. Part 62/147

Processed Mon Oct 12 15:05:40 2015 by ELM ver.2012-10-06 from 001\_\_elm20150915\_043253\_\_dat00.bin



Channel 0  
mn: -1425  
mx: 776  
 $\mu$ : -6.7  
 $\sigma$ : 17.8

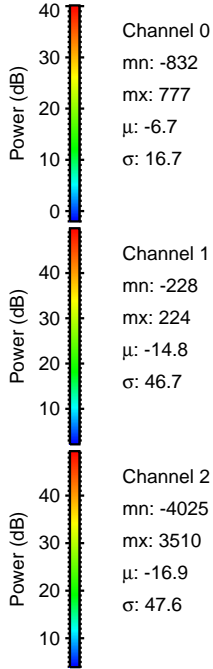
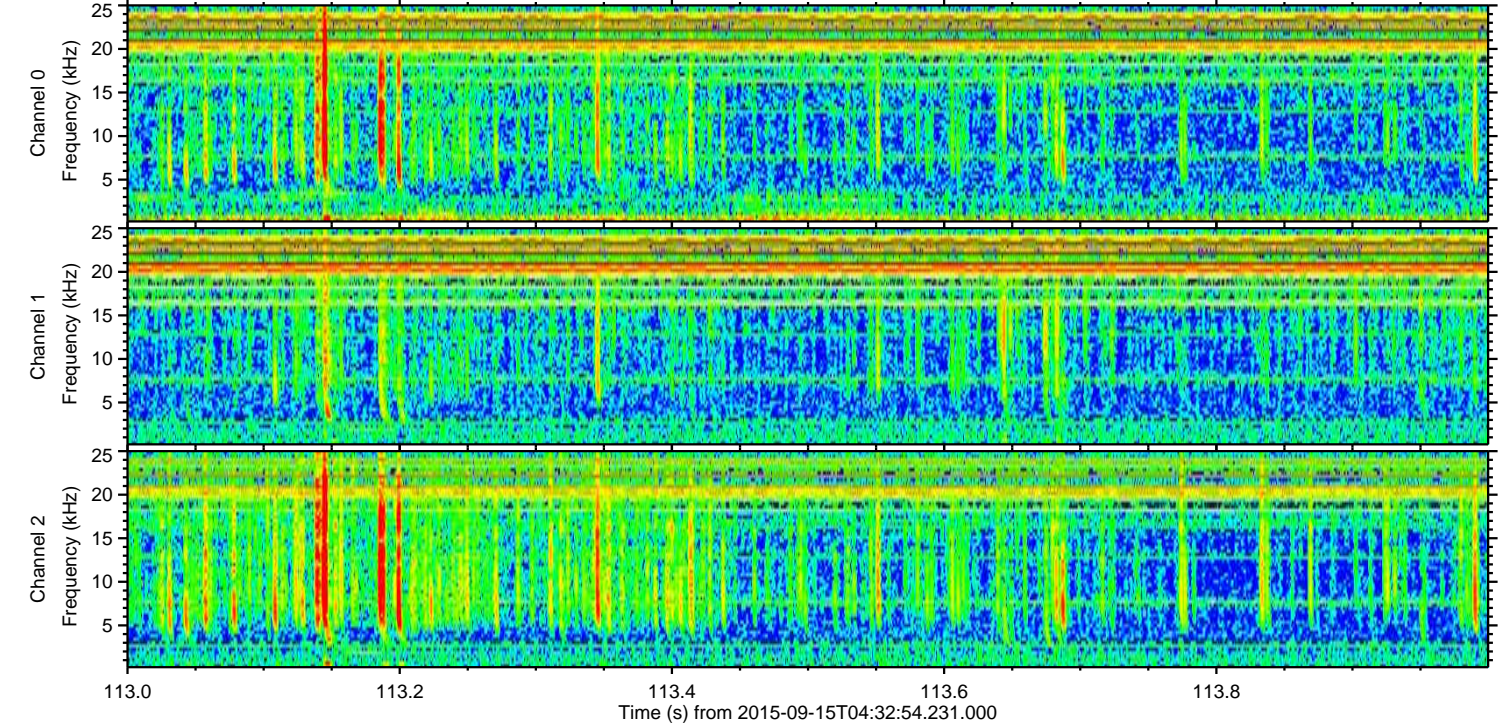
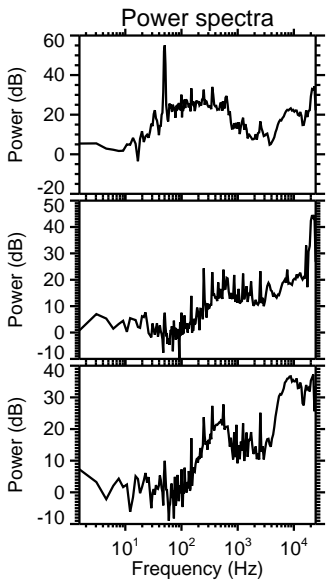
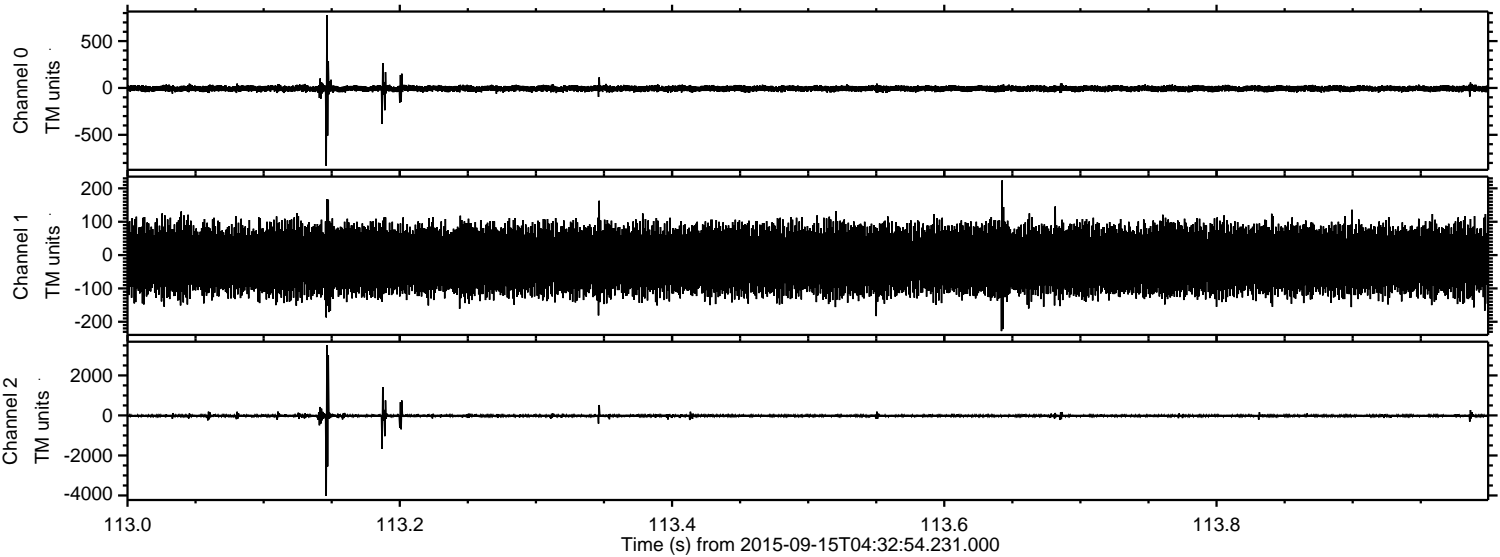
Channel 1  
mn: -4158  
mx: 3721  
 $\mu$ : -14.8  
 $\sigma$ : 67.3

Channel 2  
mn: -1137  
mx: 642  
 $\mu$ : -16.9  
 $\sigma$ : 25.7



ELMAVAN 3D WAVEFORMS (Measured data sampled at 50 kHz) 51000 packets of 144 samples from 2015-09-15T04:32:54.231.000. Part 114/147

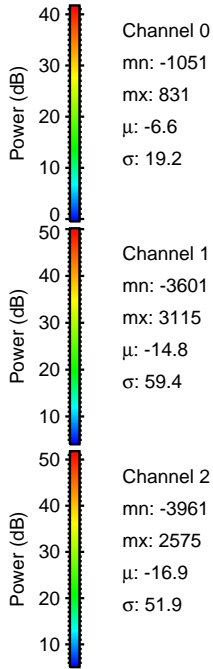
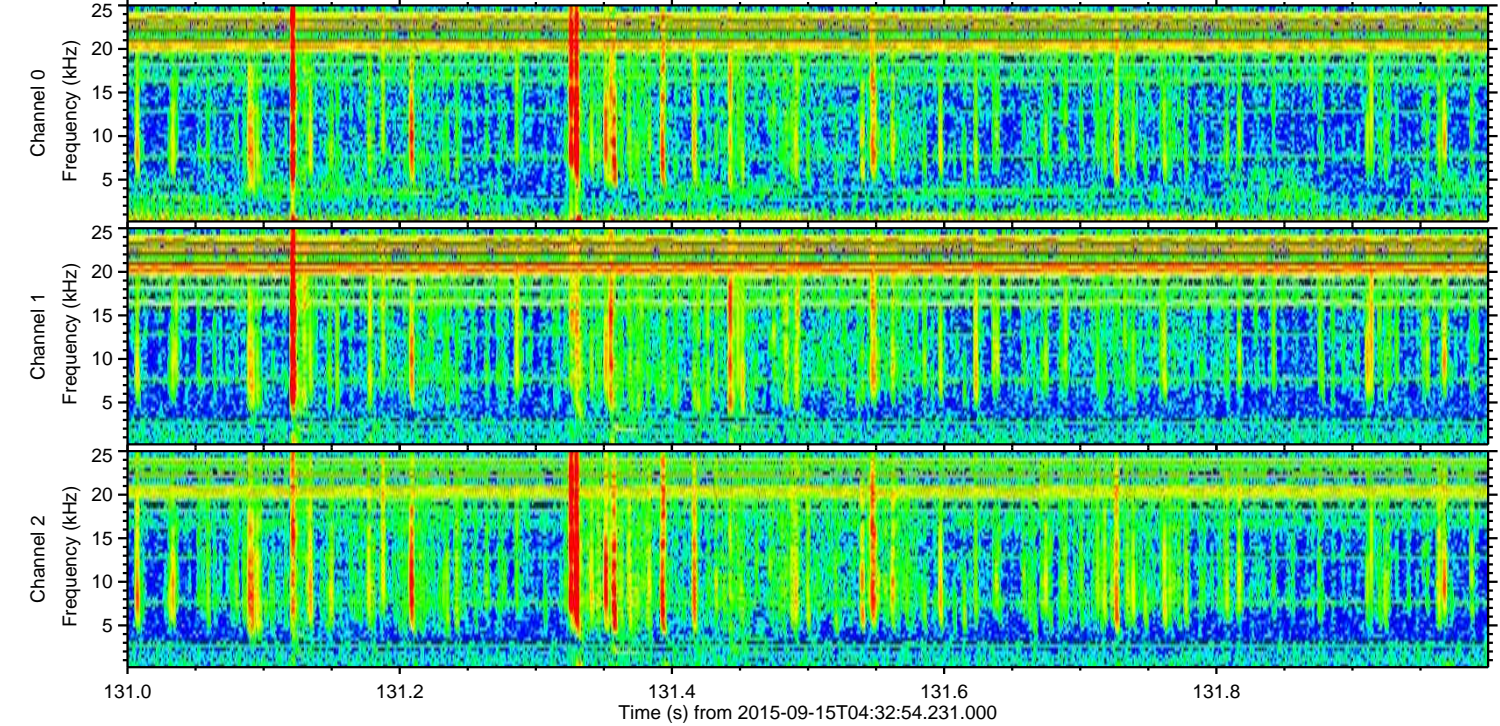
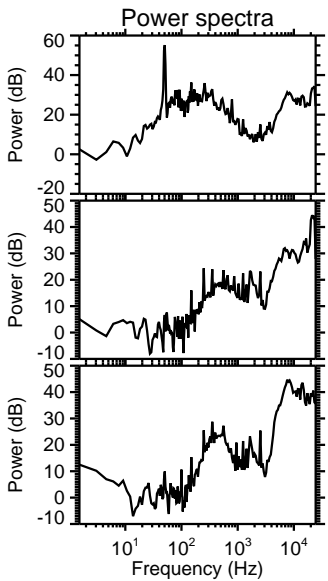
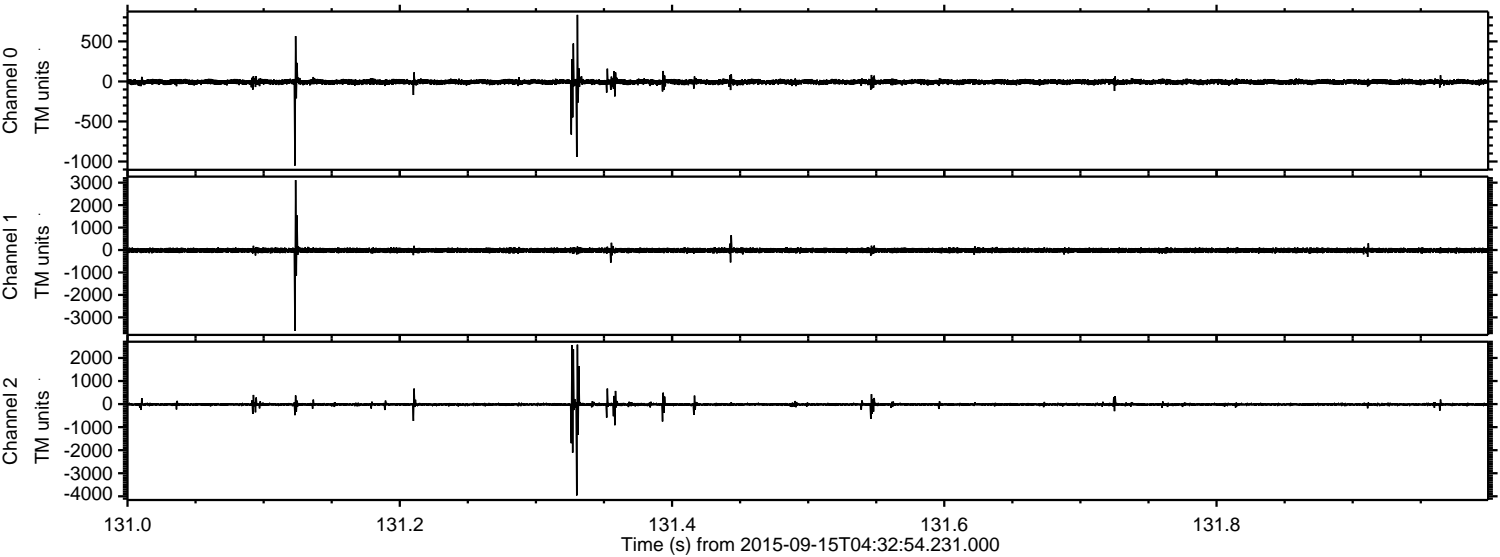
Processed Mon Oct 12 15:05:41 2015 by ELM ver.2012-10-06 from 001\_\_elm20150915\_043253\_\_dat00.bin





ELMAVAN 3D WAVEFORMS (Measured data sampled at 50 kHz) 51000 packets of 144 samples from 2015-09-15T04:32:54.231.000. Part 132/147

Processed Mon Oct 12 15:05:42 2015 by ELM ver.2012-10-06 from 001\_\_elm20150915\_043253\_\_dat00.bin



Channel 0  
mn: -1051  
mx: 831  
 $\mu$ : -6.6  
 $\sigma$ : 19.2

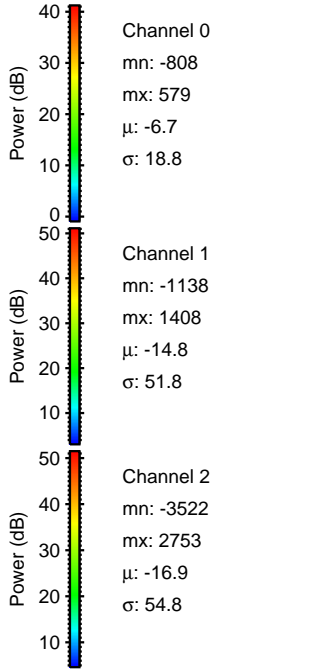
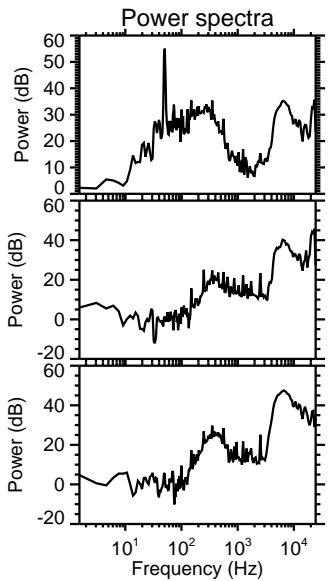
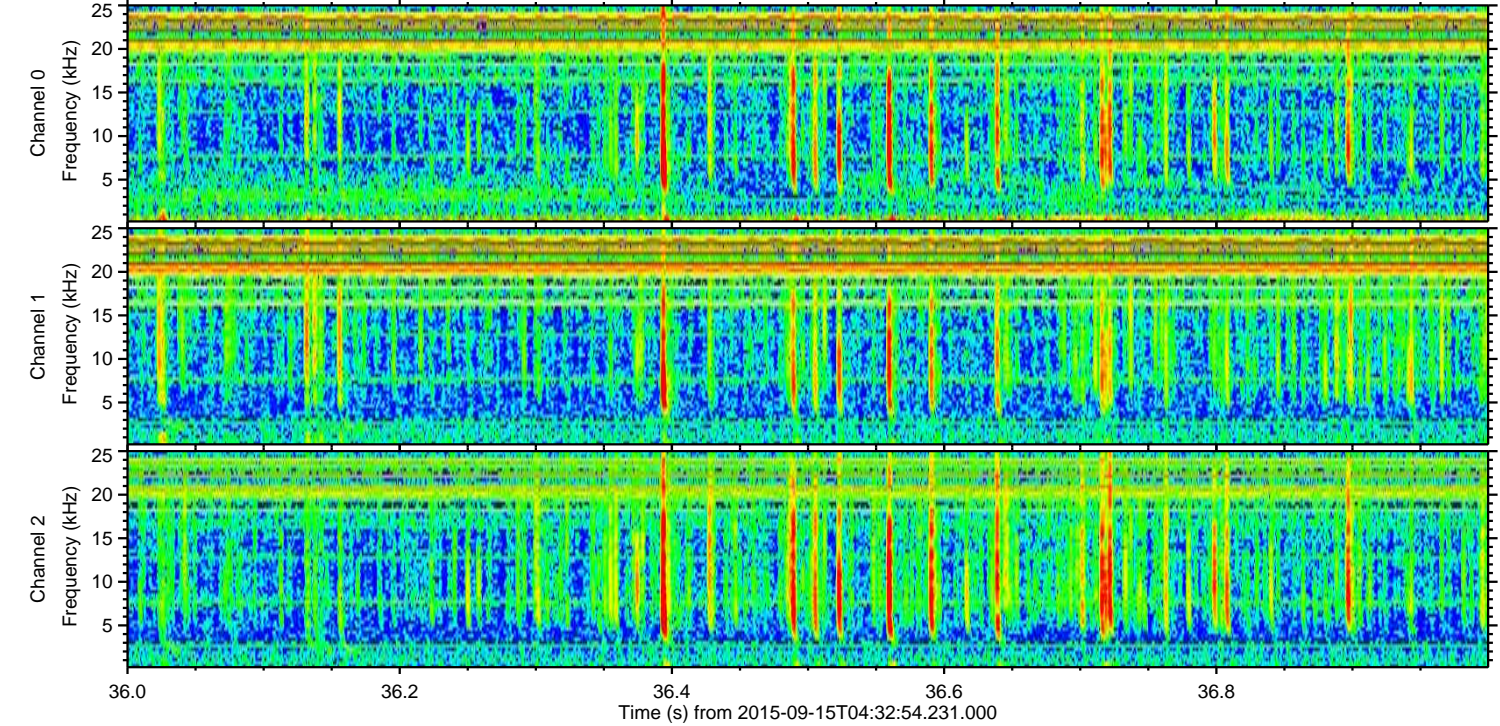
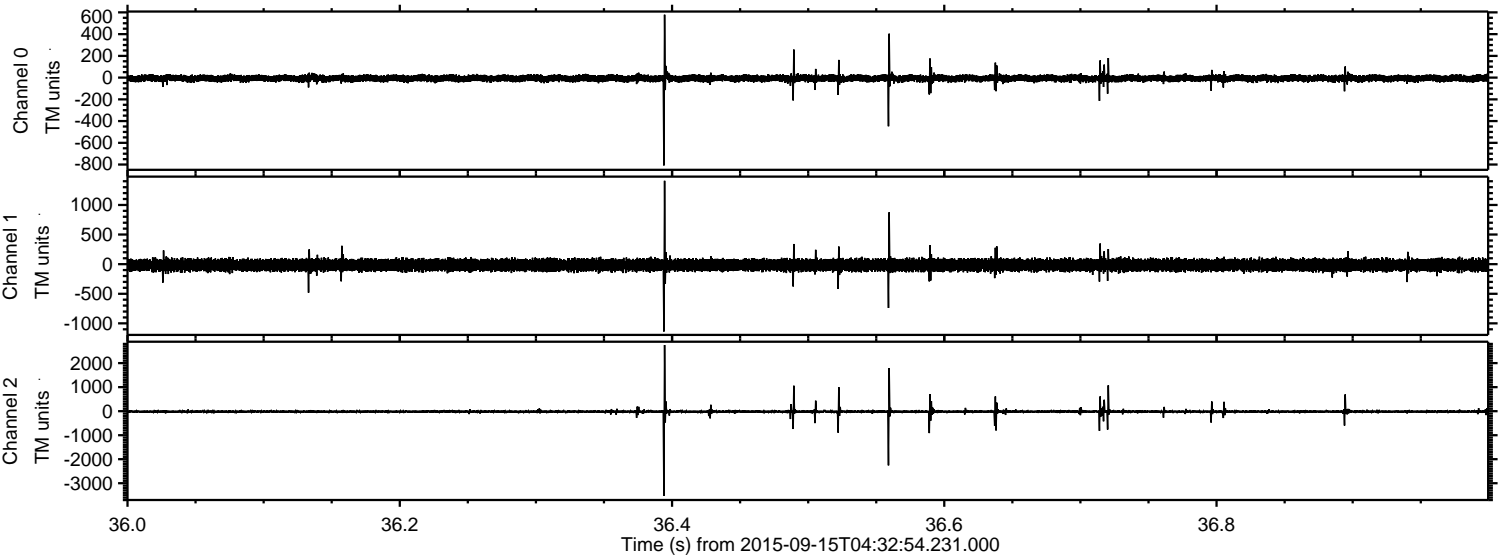
Channel 1  
mn: -3601  
mx: 3115  
 $\mu$ : -14.8  
 $\sigma$ : 59.4

Channel 2  
mn: -3961  
mx: 2575  
 $\mu$ : -16.9  
 $\sigma$ : 51.9



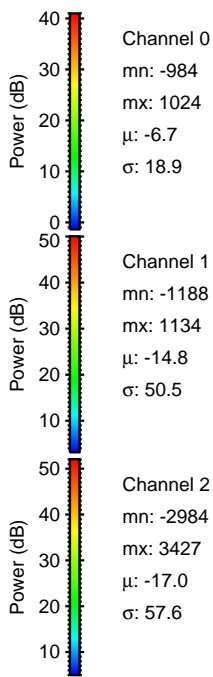
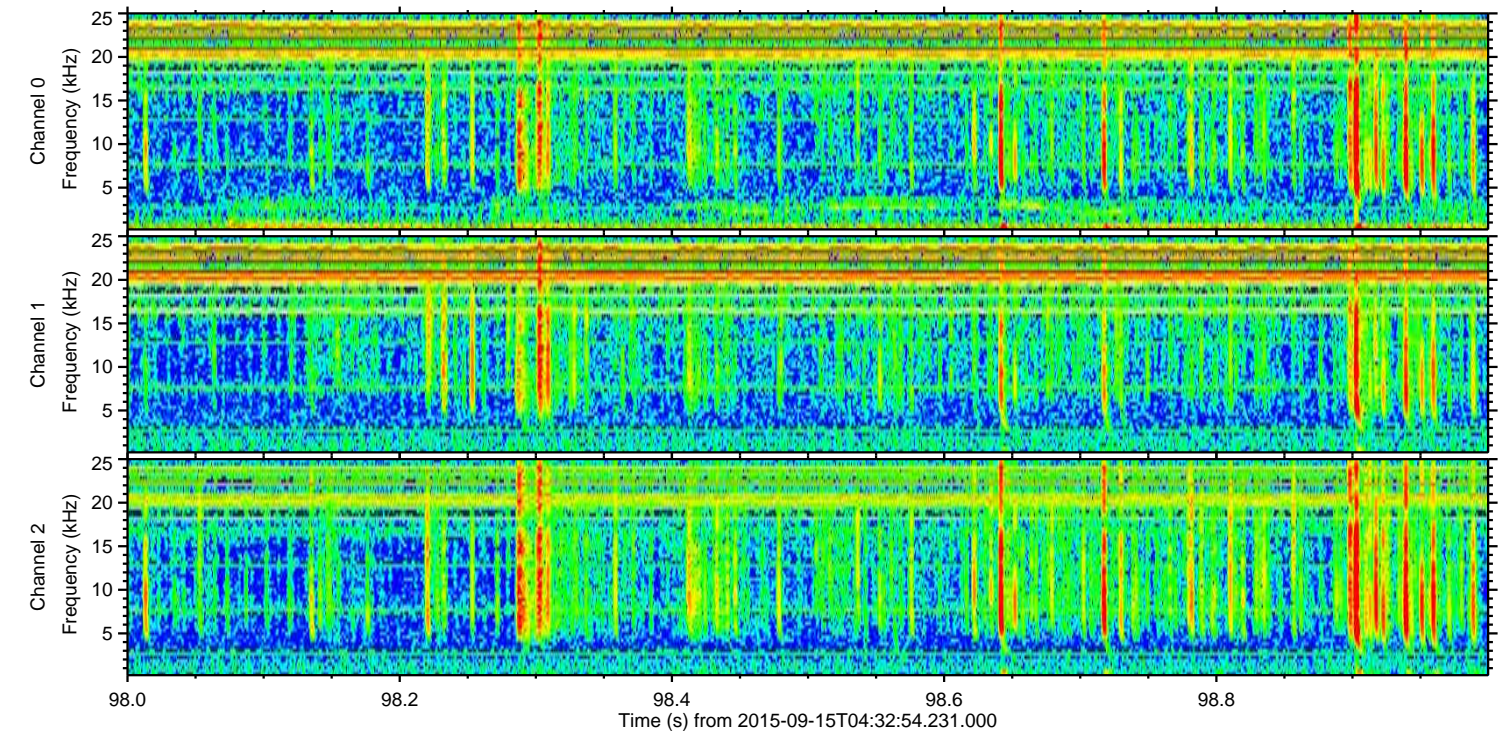
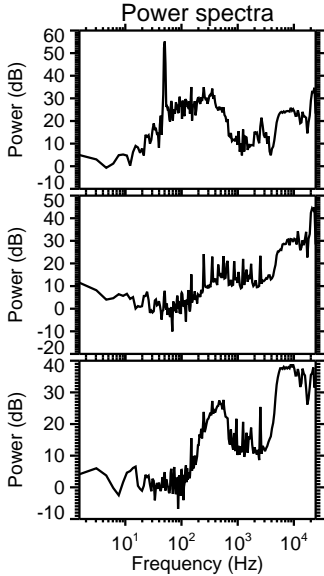
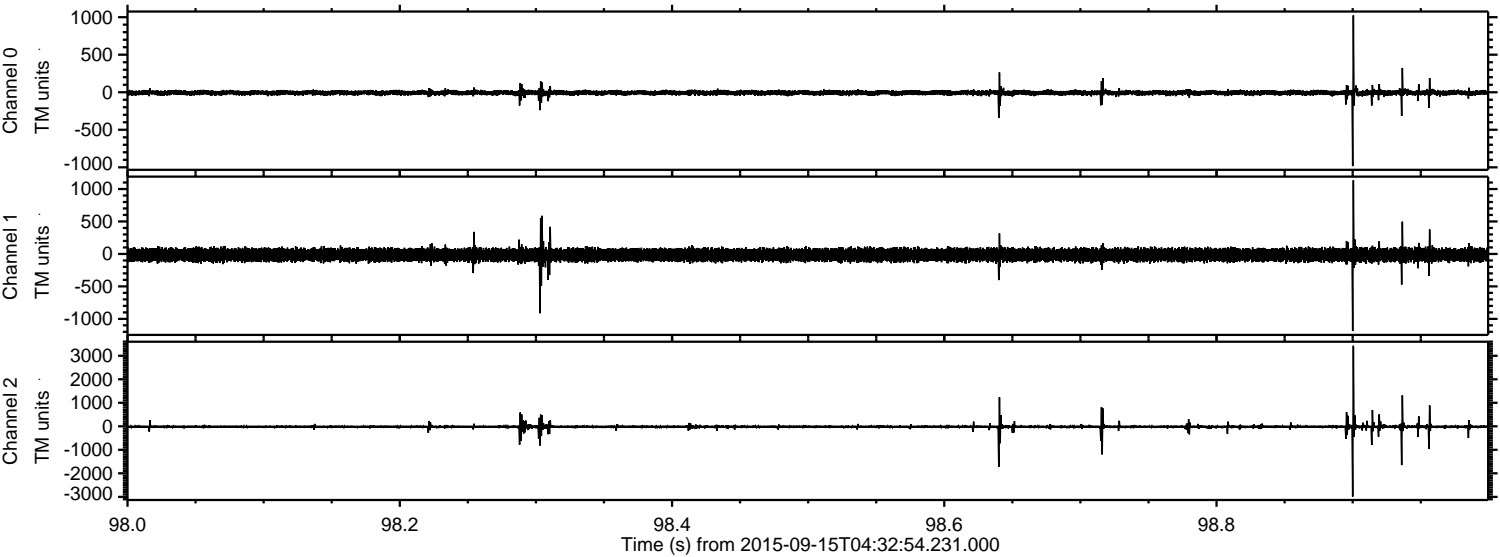
ELMAVAN 3D WAVEFORMS (Measured data sampled at 50 kHz) 51000 packets of 144 samples from 2015-09-15T04:32:54.231.000. Part 37/147

Processed Mon Oct 12 15:05:43 2015 by ELM ver.2012-10-06 from 001\_\_elm20150915\_043253\_\_dat00.bin





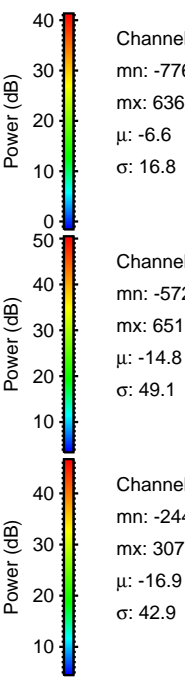
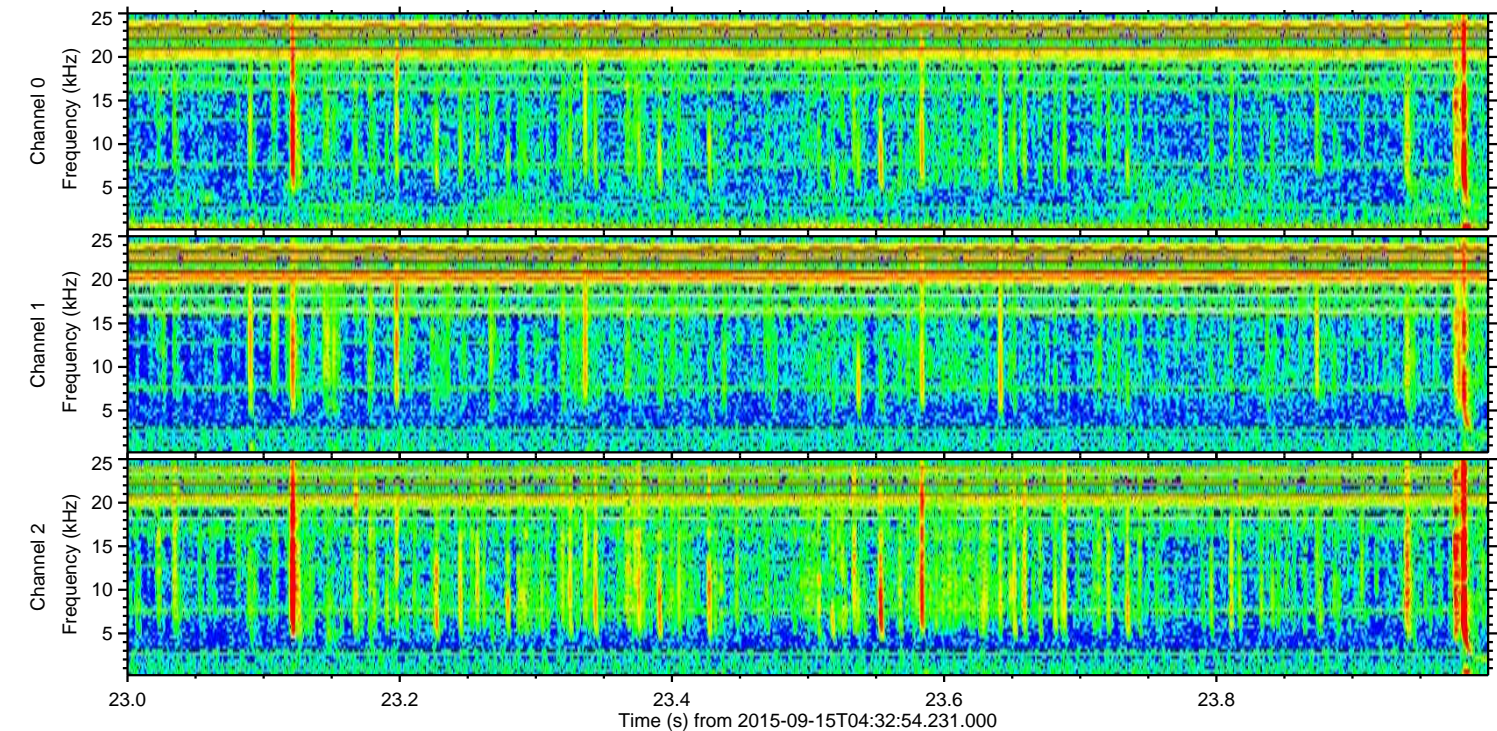
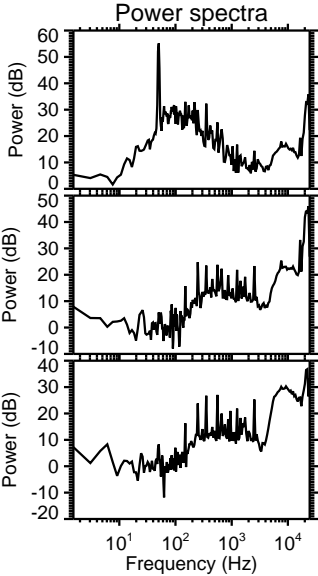
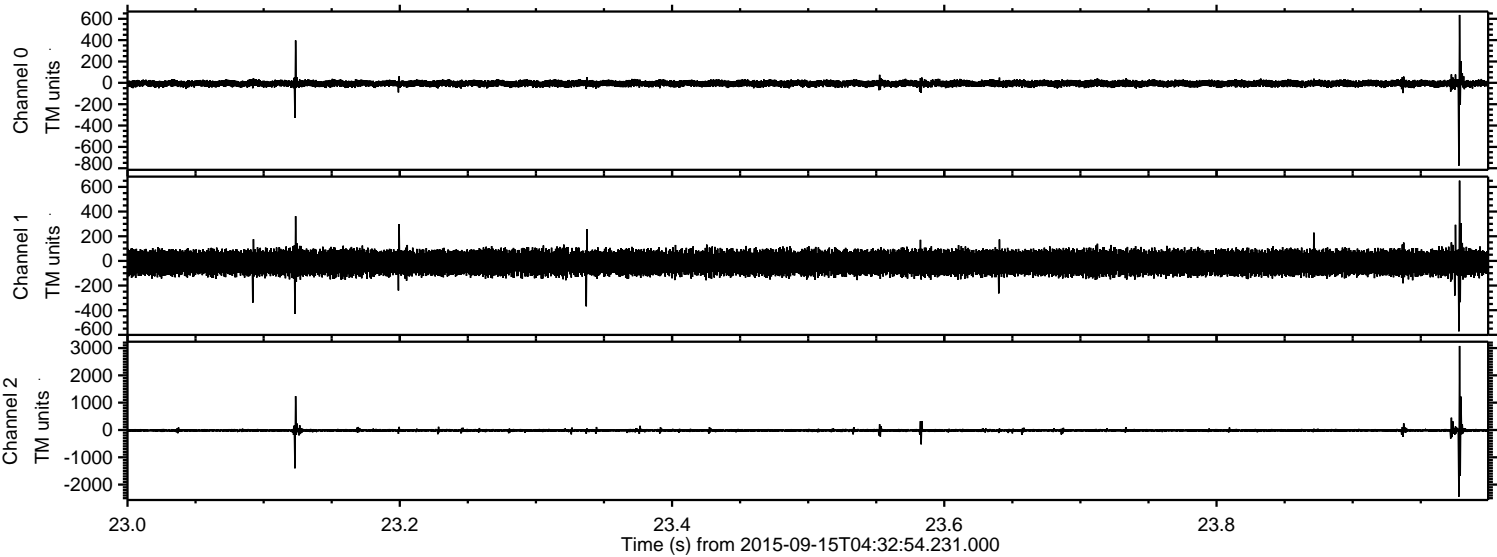
Processed Mon Oct 12 15:05:44 2015 by ELM ver.2012-10-06 from 001\_\_elm20150915\_043253\_\_dat00.bin





ELMAVAN 3D WAVEFORMS (Measured data sampled at 50 kHz) 51000 packets of 144 samples from 2015-09-15T04:32:54.231.000. Part 24/147

Processed Mon Oct 12 15:05:45 2015 by ELM ver.2012-10-06 from 001\_\_elm20150915\_043253\_\_dat00.bin



Channel 0  
mn: -776  
mx: 636  
 $\mu$ : -6.6  
 $\sigma$ : 16.8

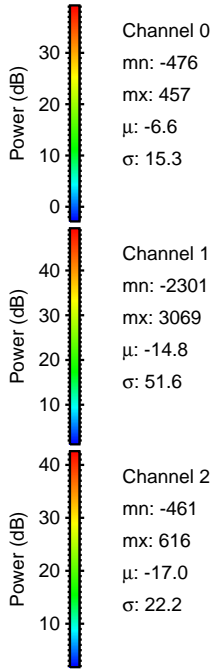
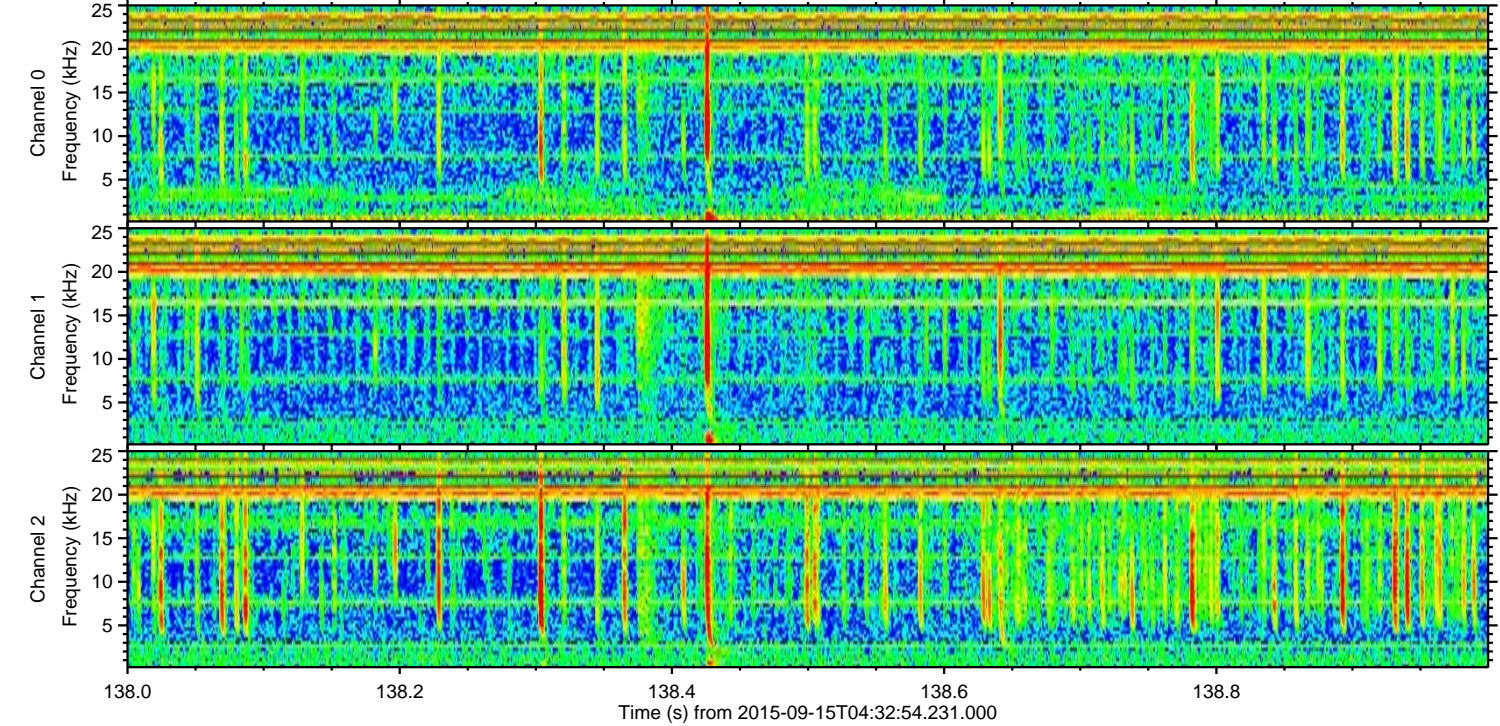
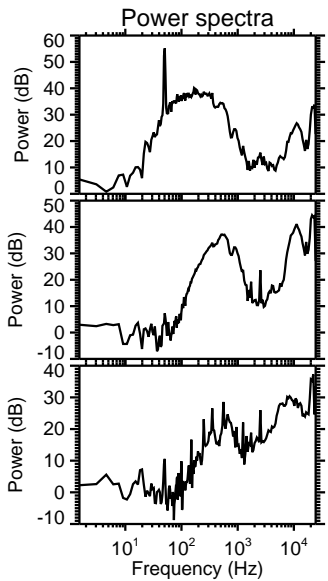
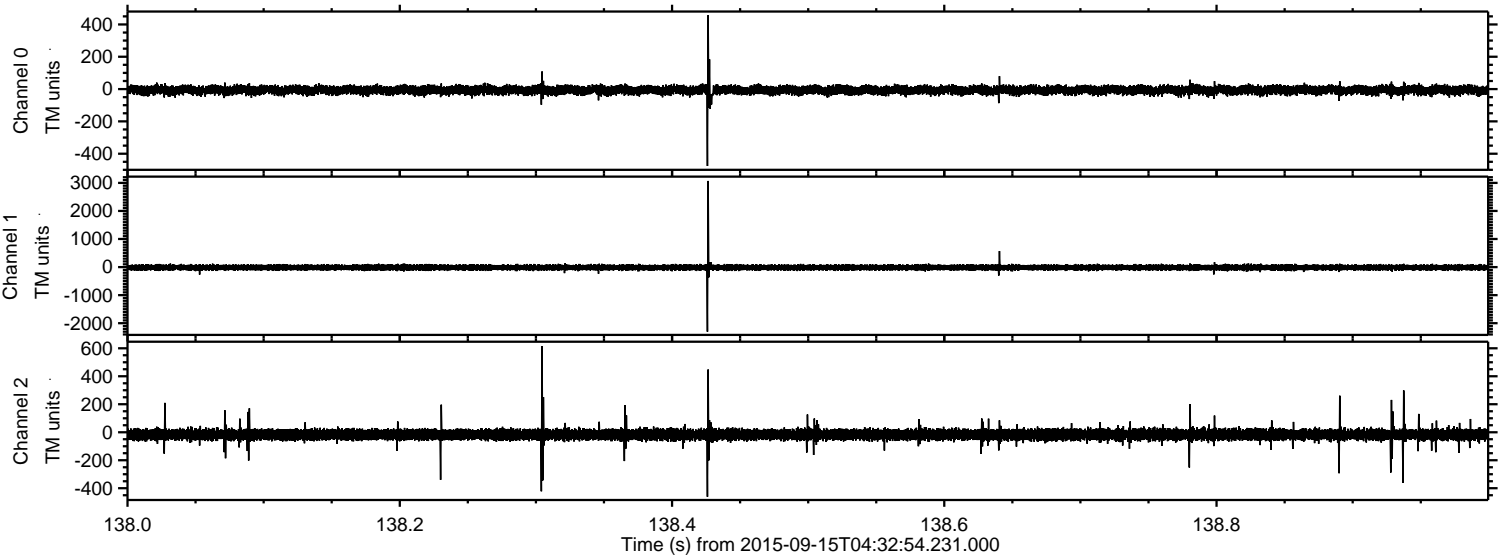
Channel 1  
mn: -572  
mx: 651  
 $\mu$ : -14.8  
 $\sigma$ : 49.1

Channel 2  
mn: -2443  
mx: 3079  
 $\mu$ : -16.9  
 $\sigma$ : 42.9



ELMAVAN 3D WAVEFORMS (Measured data sampled at 50 kHz) 51000 packets of 144 samples from 2015-09-15T04:32:54.231.000. Part 139/147

Processed Mon Oct 12 15:05:46 2015 by ELM ver.2012-10-06 from 001\_\_elm20150915\_043253\_\_dat00.bin





ELMAVAN 3D WAVEFORMS (Measured data sampled at 50 kHz) 51000 packets of 144 samples from 2015-09-15T04:32:54.231.000. Part 119/147

Processed Mon Oct 12 15:05:47 2015 by ELM ver.2012-10-06 from 001\_\_elm20150915\_043253\_\_dat00.bin

