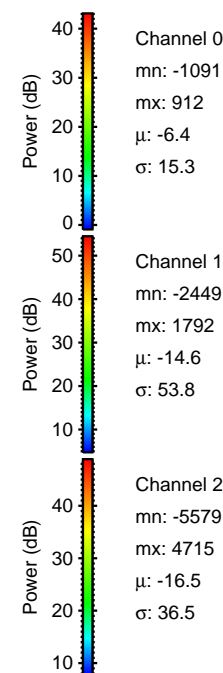
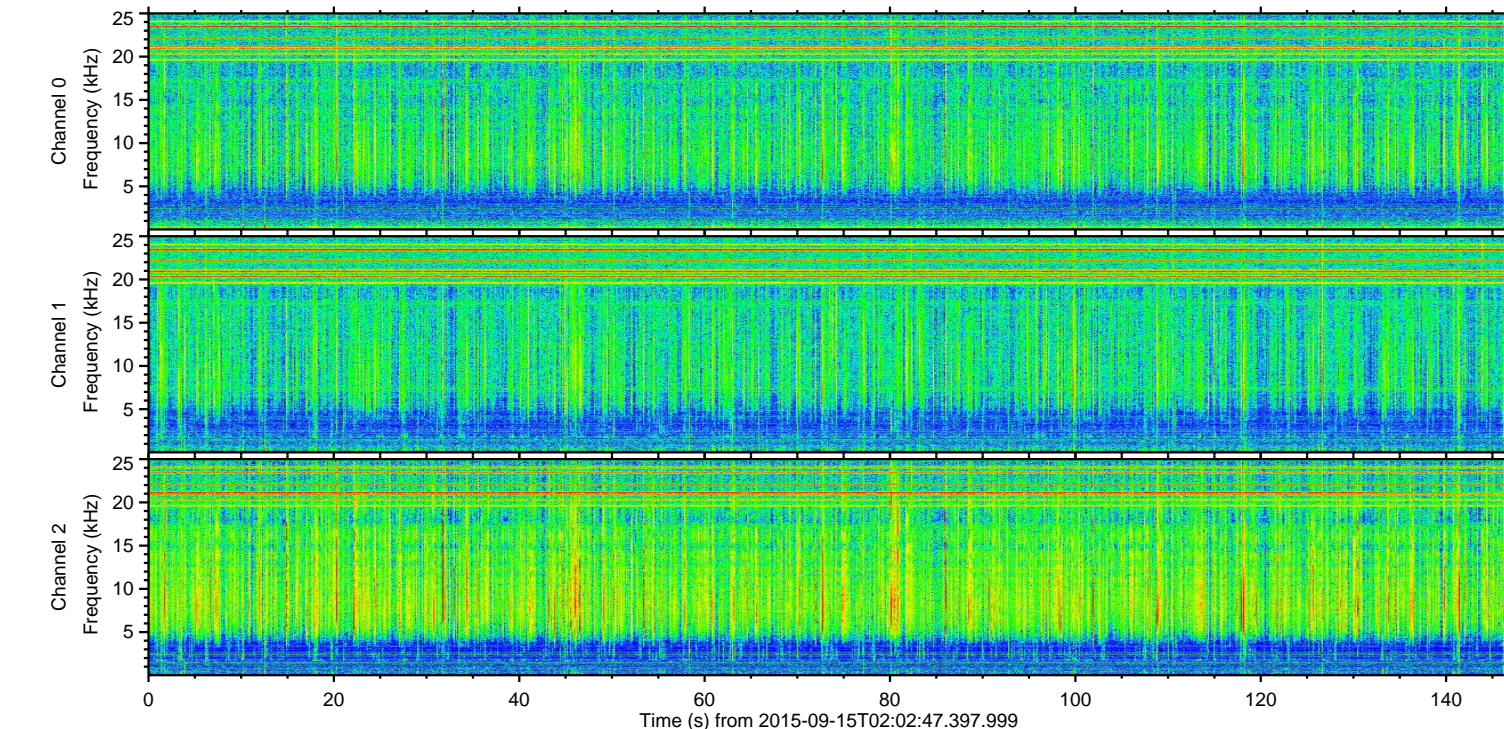
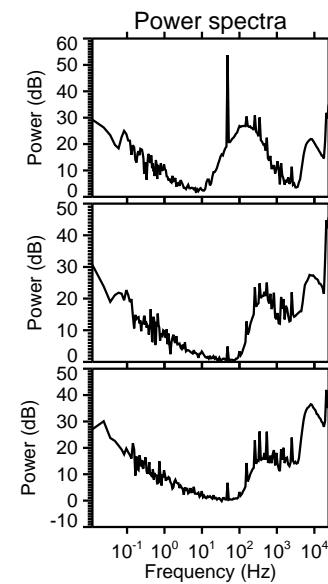
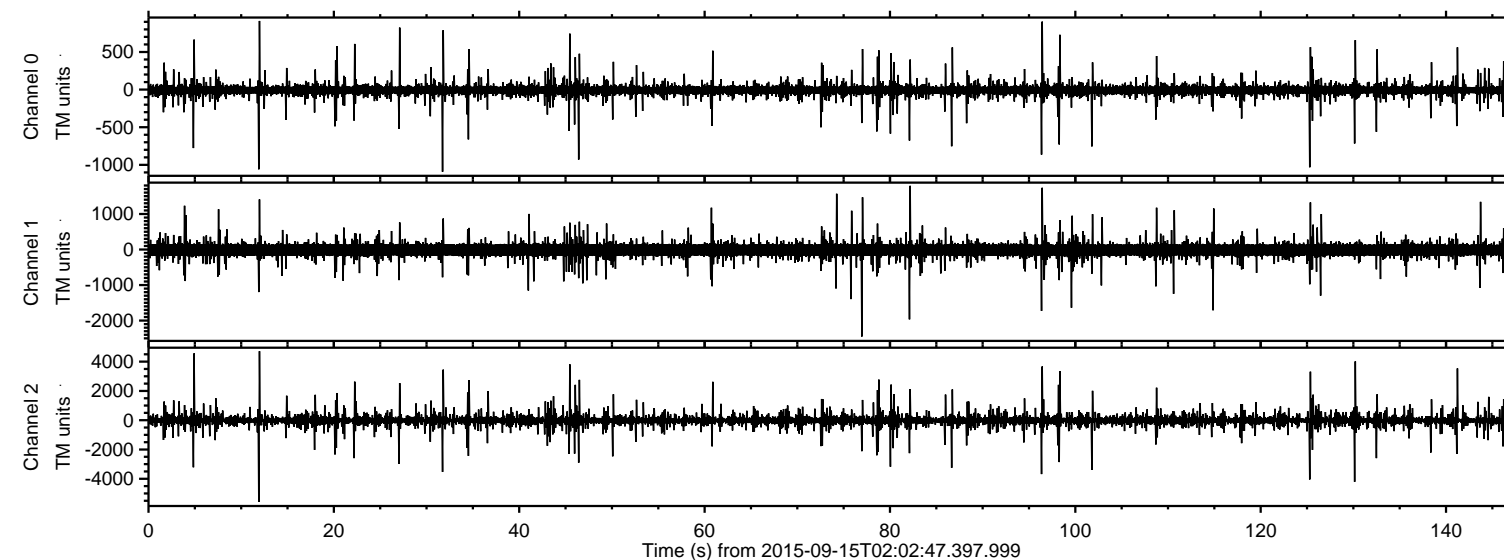


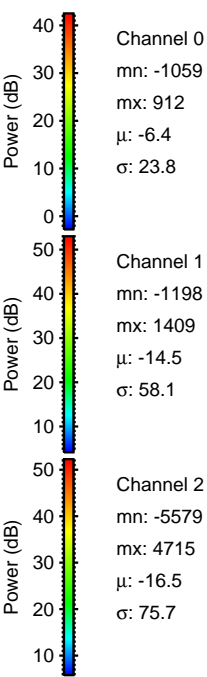
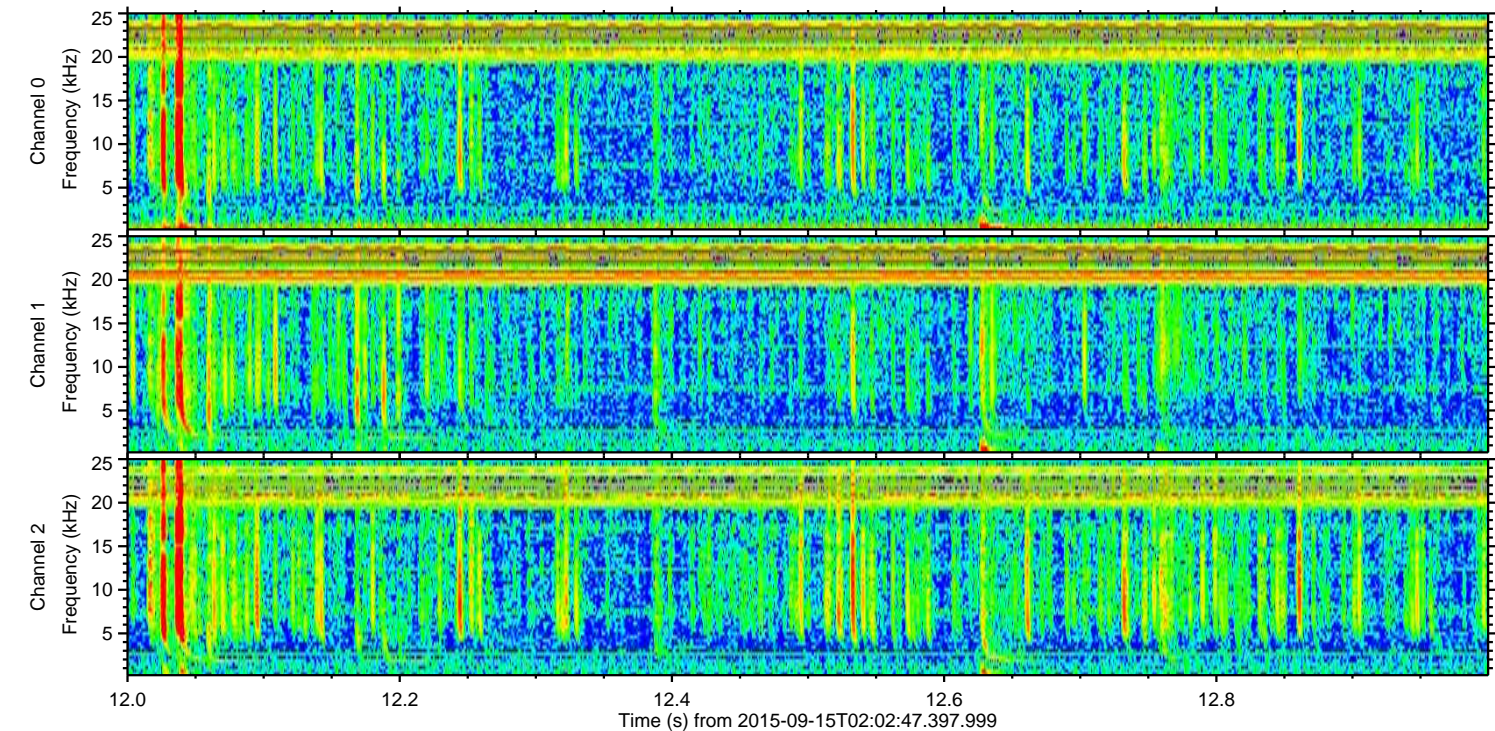
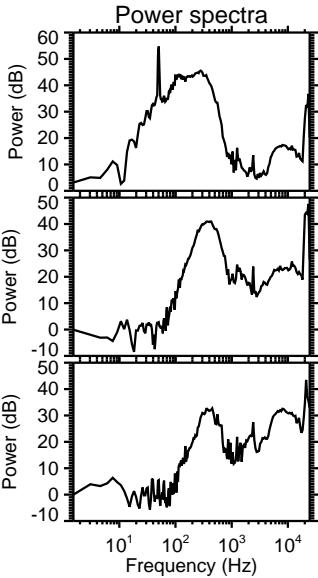
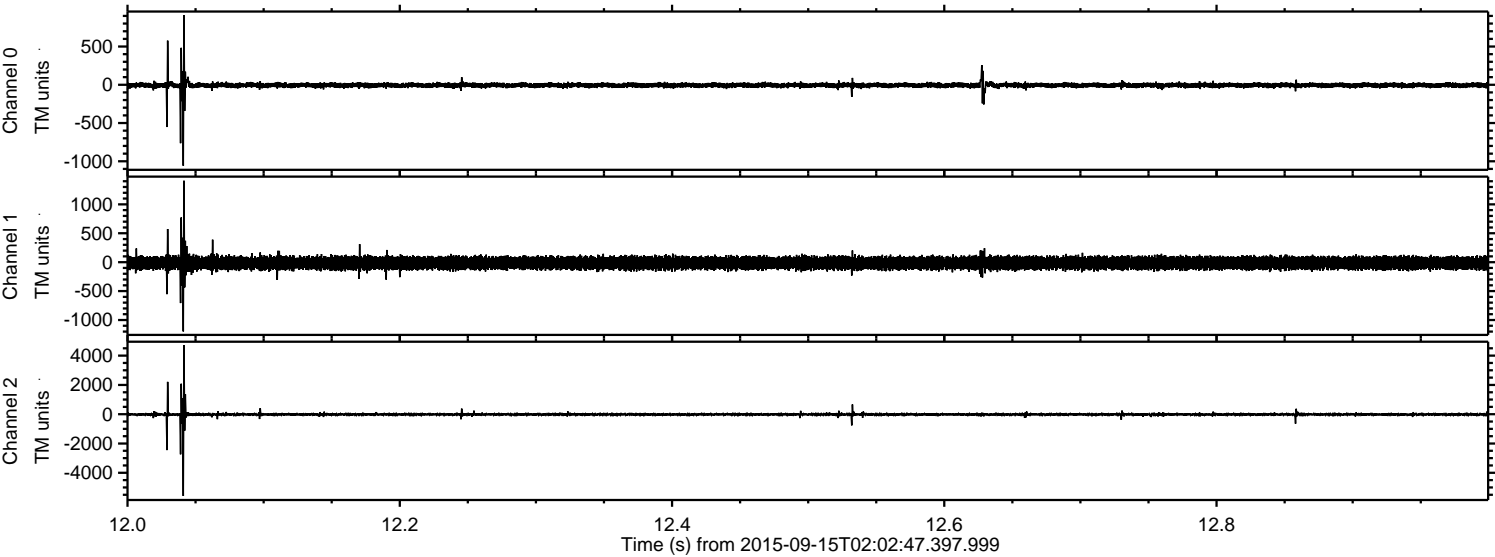
ELMAVAN 3D WAVEFORMS (Measured data sampled at 50 kHz) 51000 packets of 144 samples from 2015-09-15T02:02:47.397.999.

Processed Mon Oct 12 14:25:11 2015 by ELM ver.2012-10-06 from 001__elm20150915_020246__dat00.bin



ELMAVAN 3D WAVEFORMS (Measured data sampled at 50 kHz) 51000 packets of 144 samples from 2015-09-15T02:02:47.397.999. Part 13/147

Processed Mon Oct 12 14:25:26 2015 by ELM ver.2012-10-06 from 001__elm20150915_020246__dat00.bin



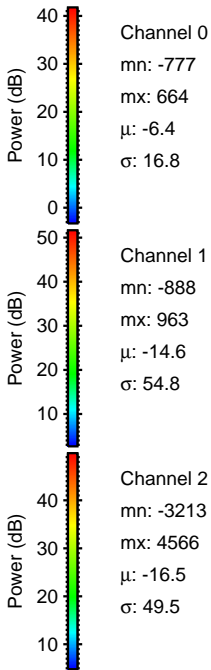
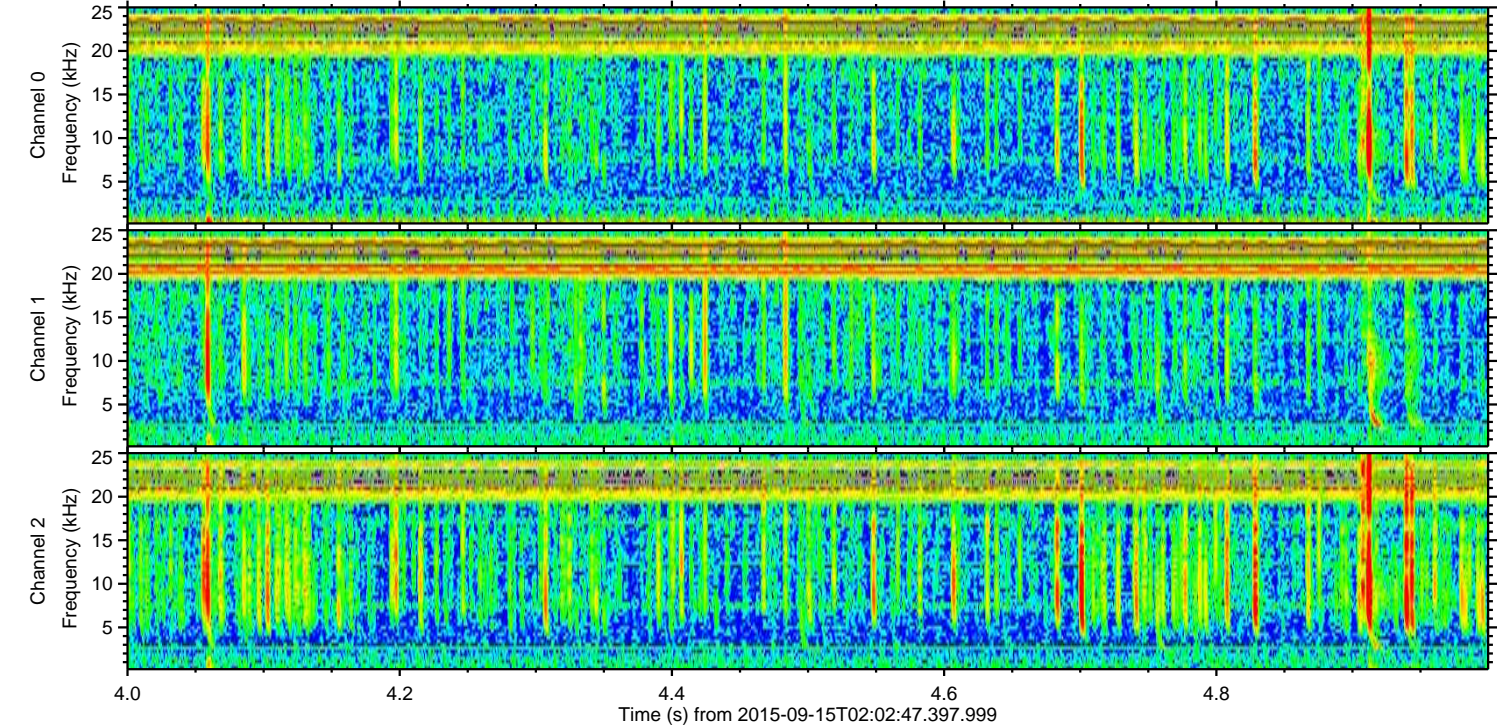
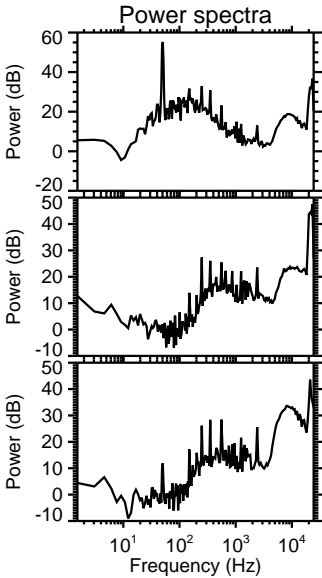
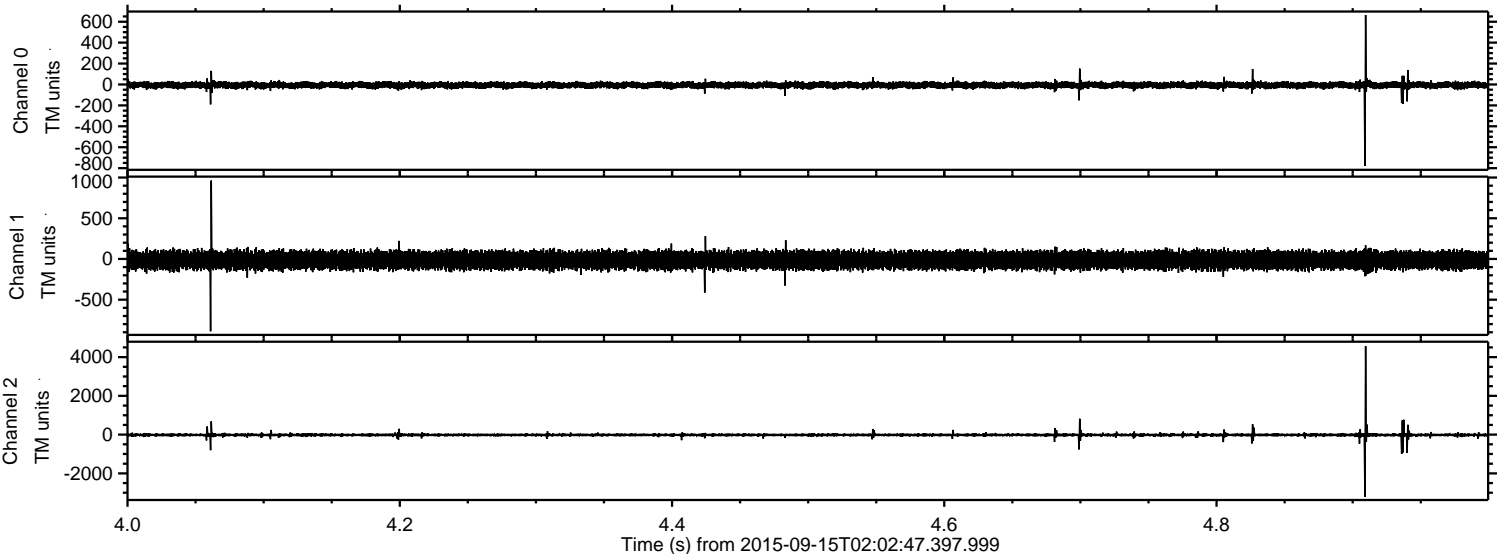
Channel 0
mn: -1059
mx: 912
 μ : -6.4
 σ : 23.8

Channel 1
mn: -1198
mx: 1409
 μ : -14.5
 σ : 58.1

Channel 2
mn: -5579
mx: 4715
 μ : -16.5
 σ : 75.7

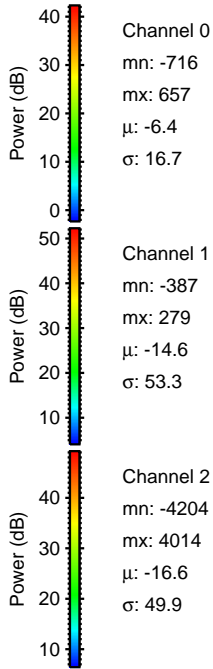
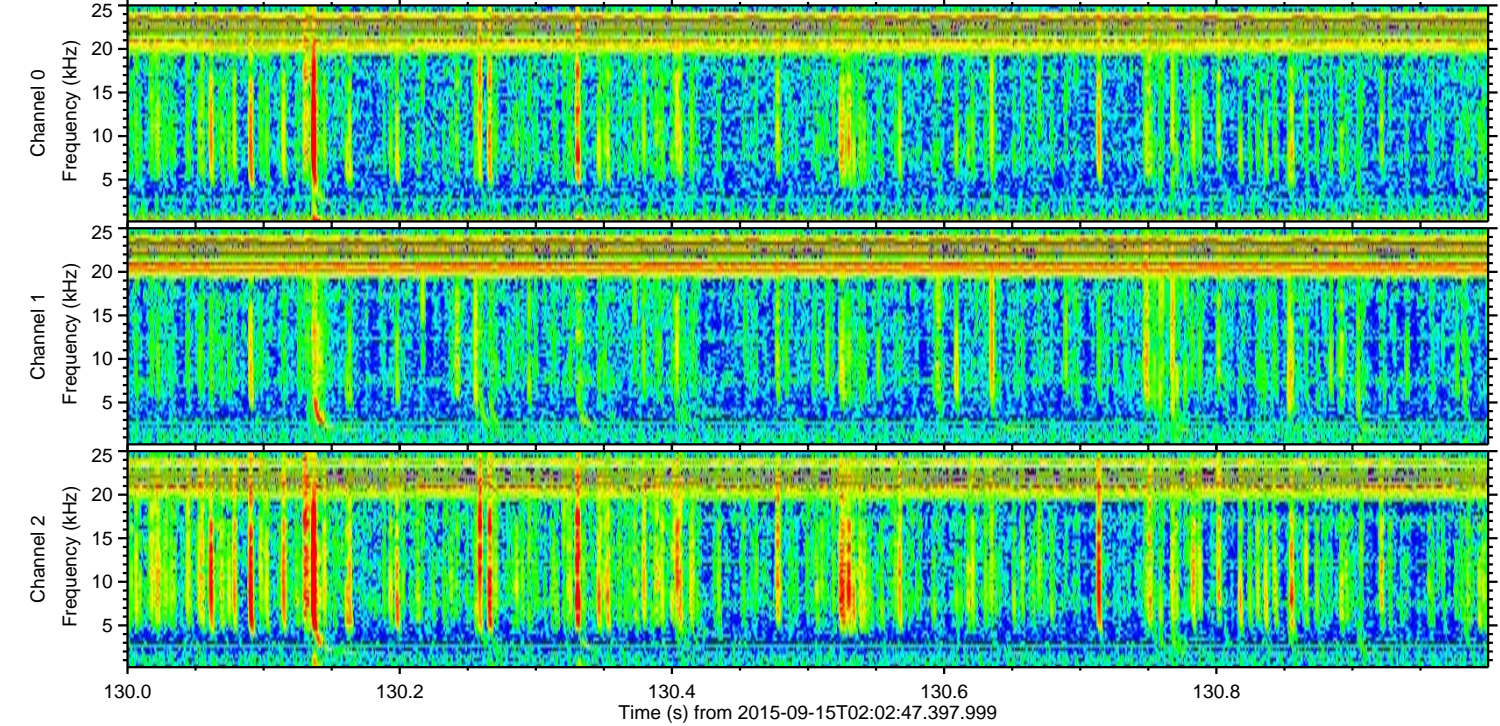
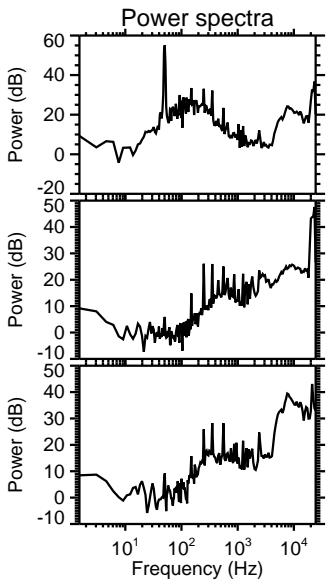
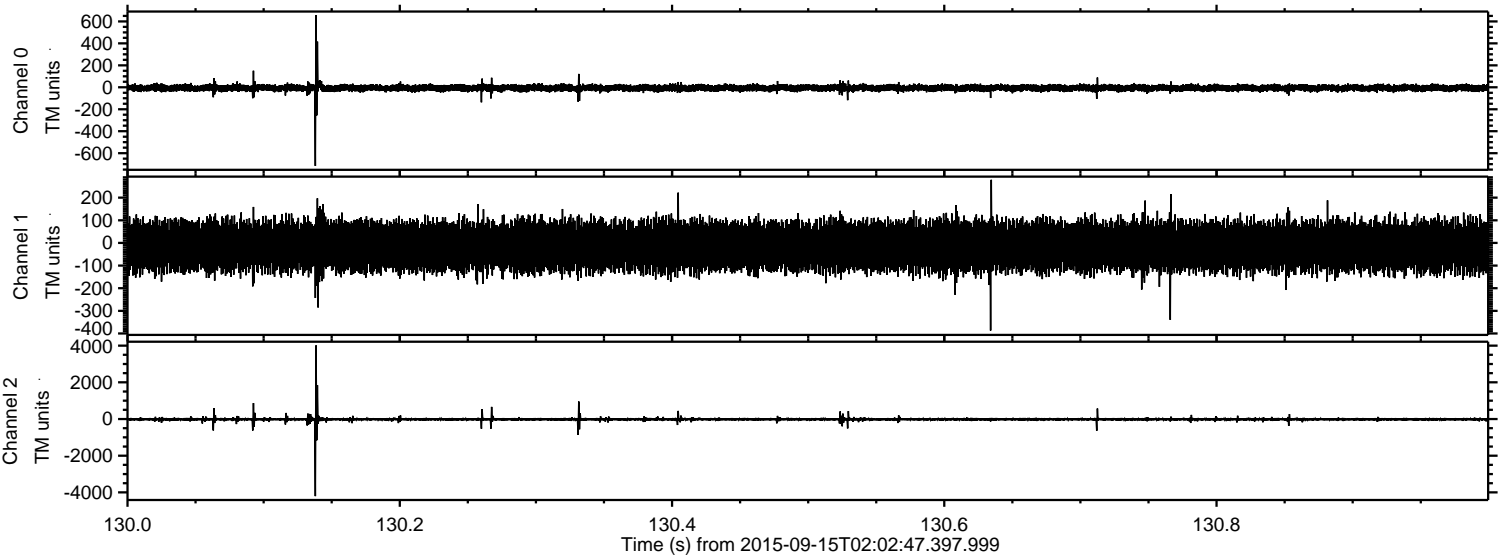
ELMAVAN 3D WAVEFORMS (Measured data sampled at 50 kHz) 51000 packets of 144 samples from 2015-09-15T02:02:47.397.999. Part 5/147

Processed Mon Oct 12 14:25:27 2015 by ELM ver.2012-10-06 from 001__elm20150915_020246__dat00.bin



ELMAVAN 3D WAVEFORMS (Measured data sampled at 50 kHz) 51000 packets of 144 samples from 2015-09-15T02:02:47.397.999. Part 131/147

Processed Mon Oct 12 14:25:28 2015 by ELM ver.2012-10-06 from 001__elm20150915_020246__dat00.bin



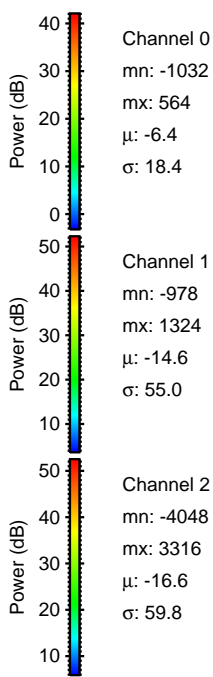
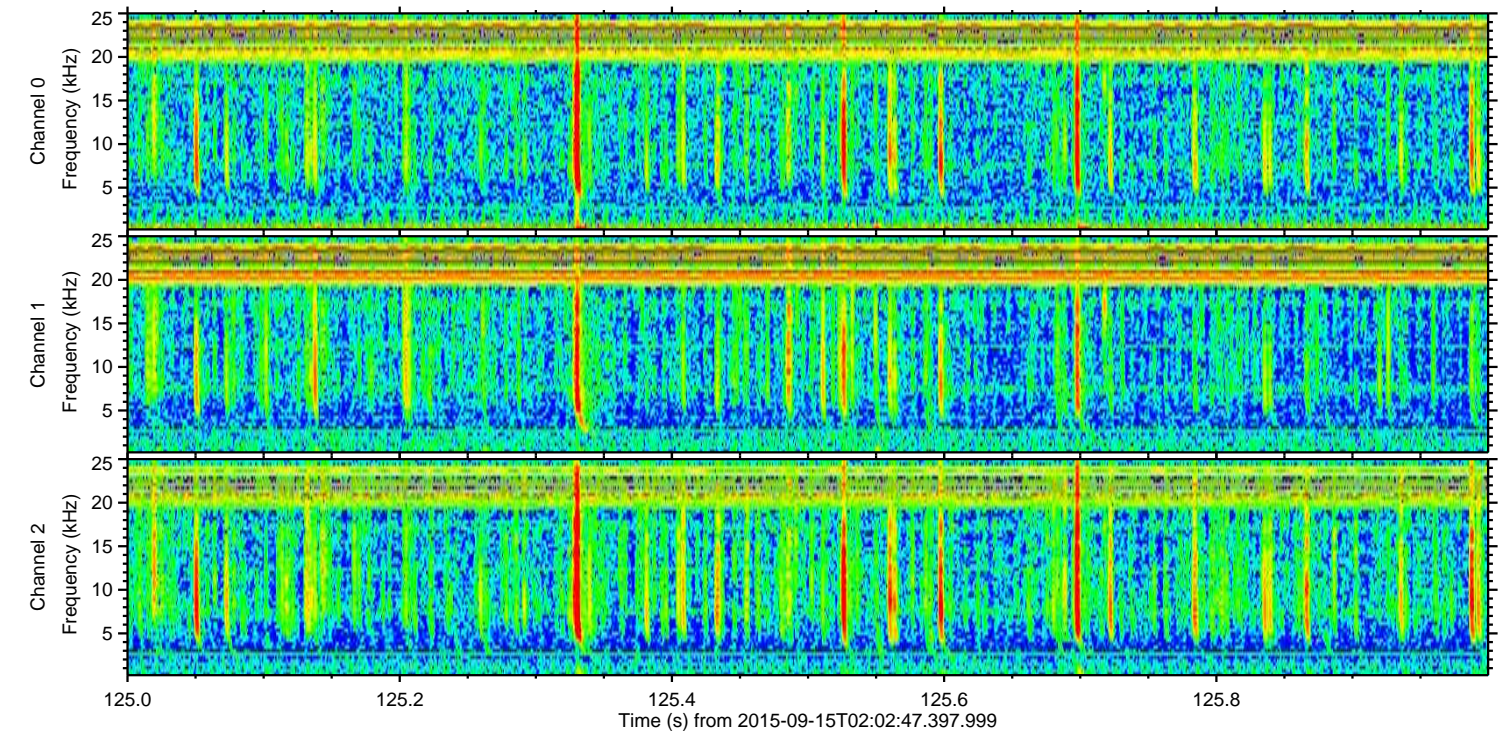
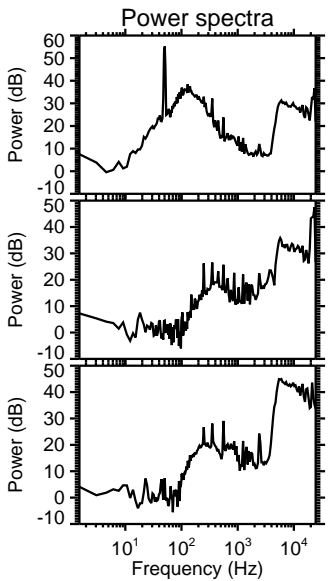
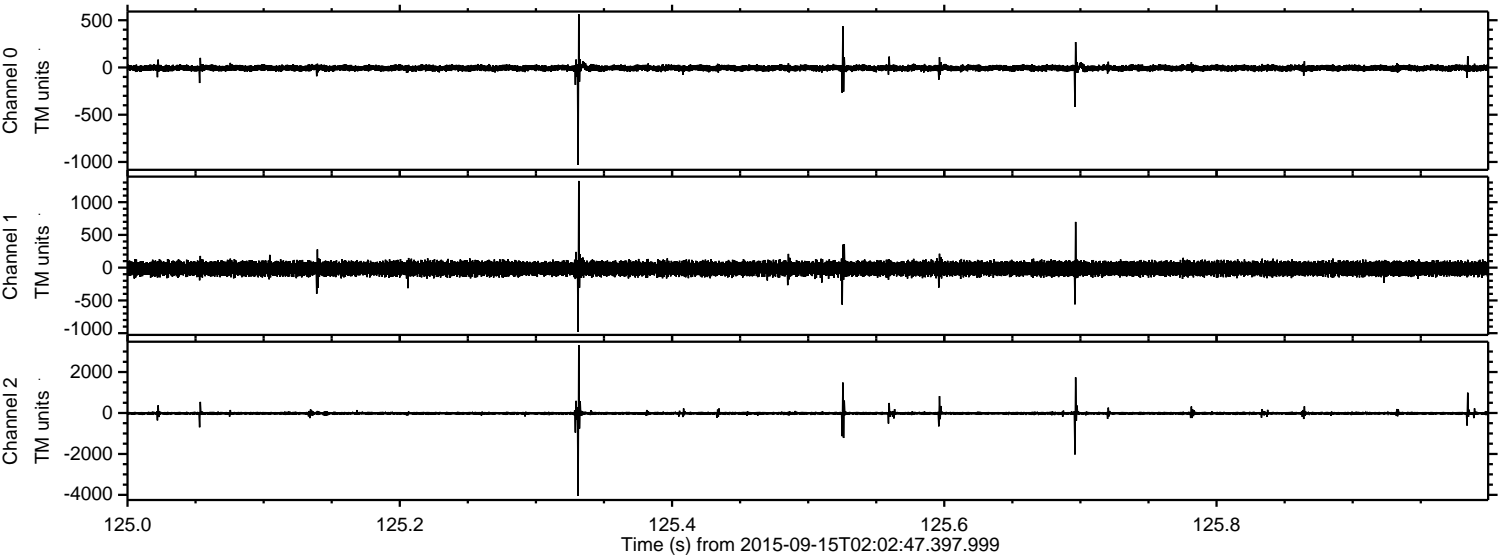
Channel 0
mn: -716
mx: 657
 μ : -6.4
 σ : 16.7

Channel 1
mn: -387
mx: 279
 μ : -14.6
 σ : 53.3

Channel 2
mn: -4204
mx: 4014
 μ : -16.6
 σ : 49.9

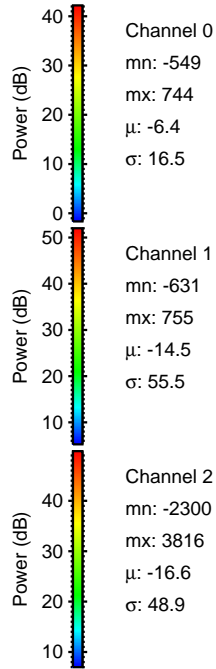
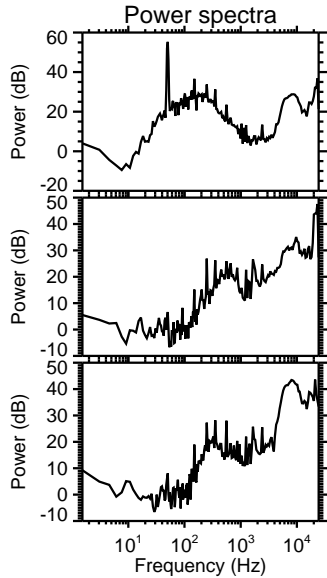
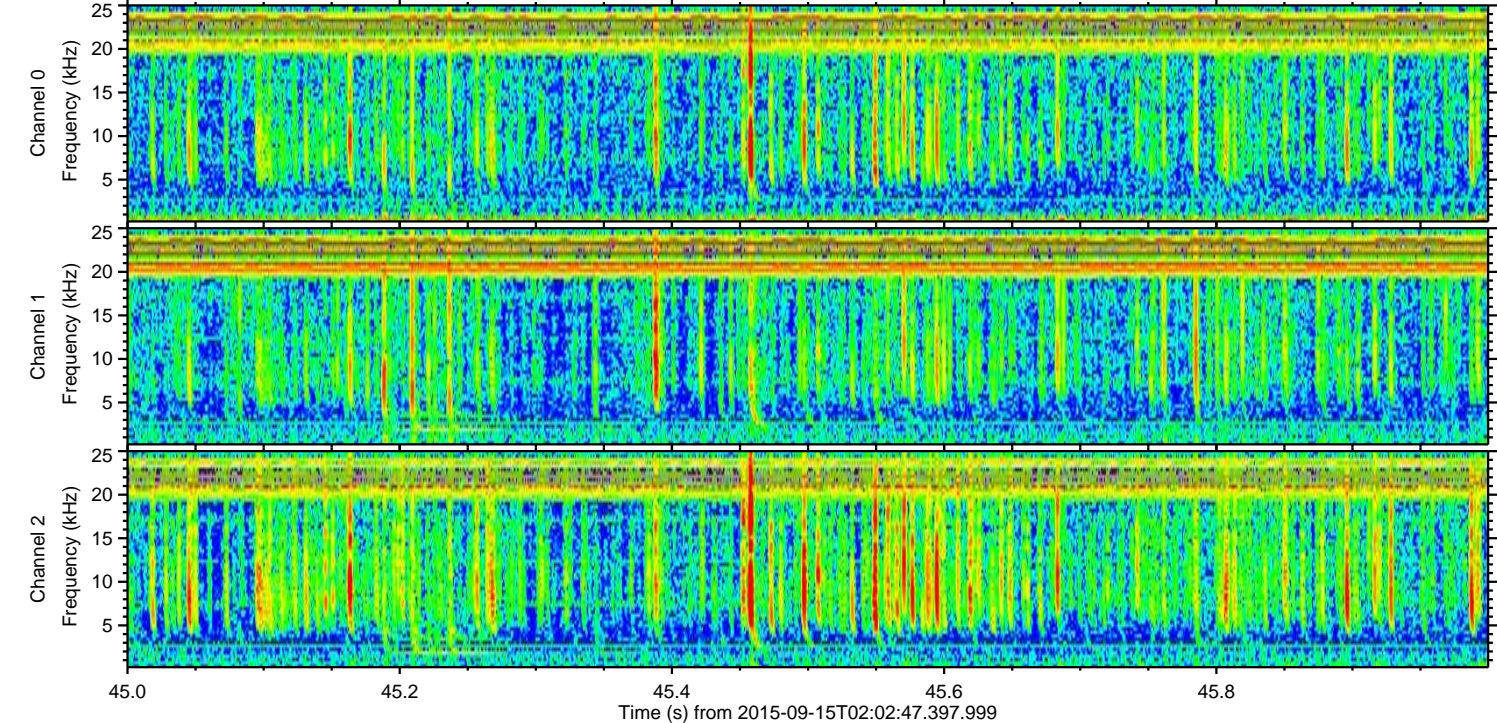
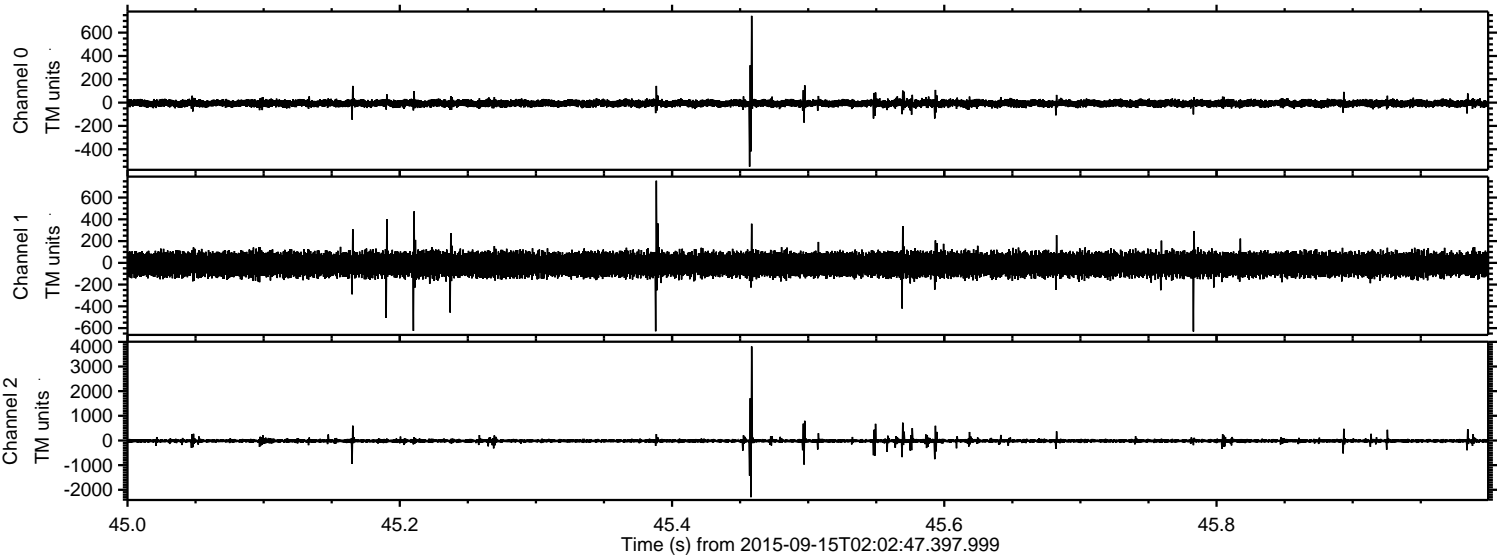
ELMAVAN 3D WAVEFORMS (Measured data sampled at 50 kHz) 51000 packets of 144 samples from 2015-09-15T02:02:47.397.999. Part 126/147

Processed Mon Oct 12 14:25:29 2015 by ELM ver.2012-10-06 from 001__elm20150915_020246__dat00.bin

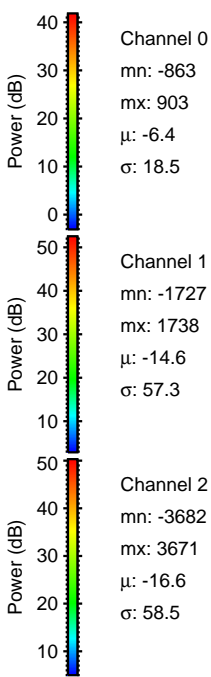
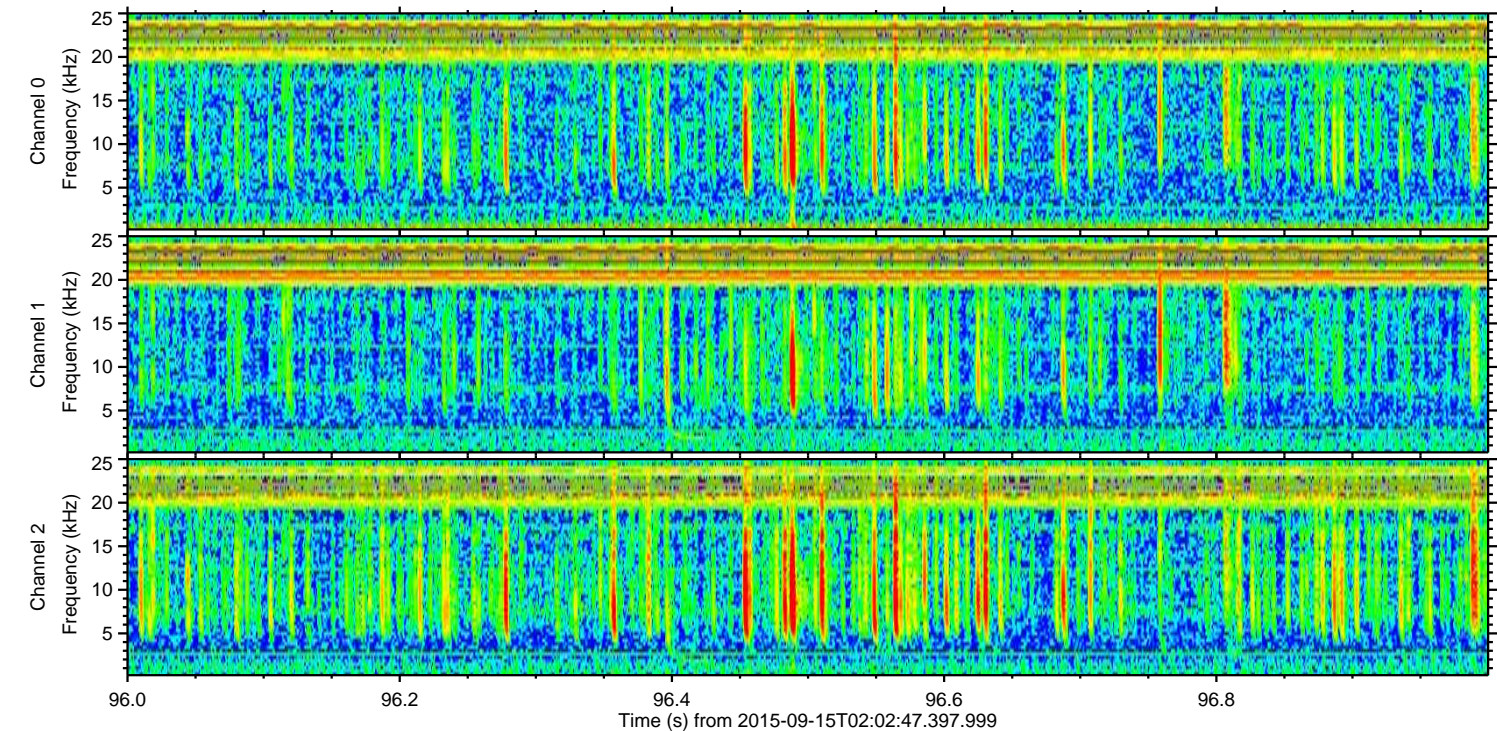
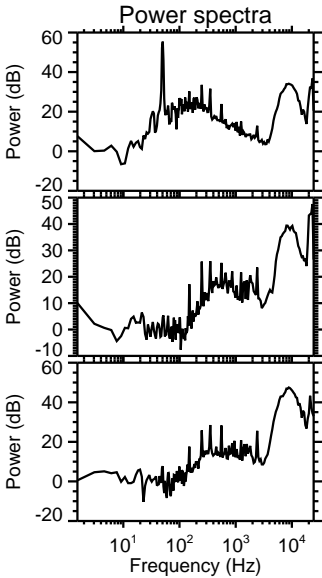
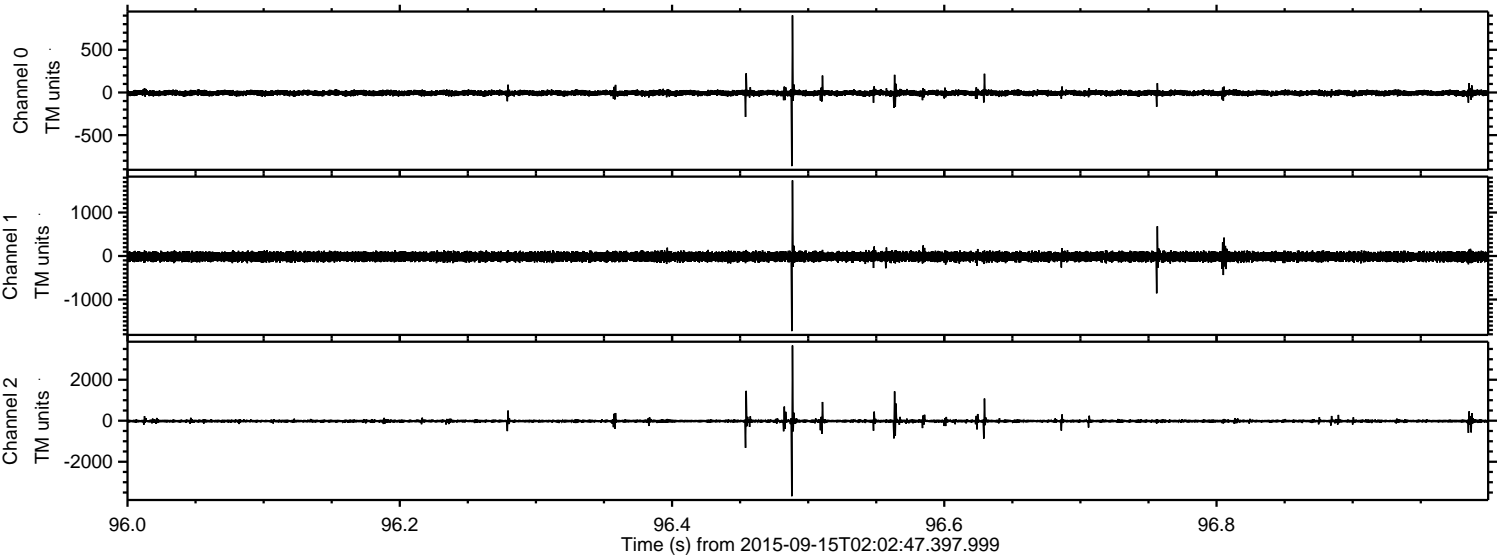


ELMAVAN 3D WAVEFORMS (Measured data sampled at 50 kHz) 51000 packets of 144 samples from 2015-09-15T02:02:47.397.999. Part 46/147

Processed Mon Oct 12 14:25:30 2015 by ELM ver.2012-10-06 from 001__elm20150915_020246__dat00.bin

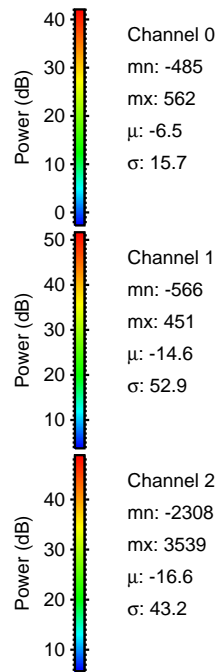
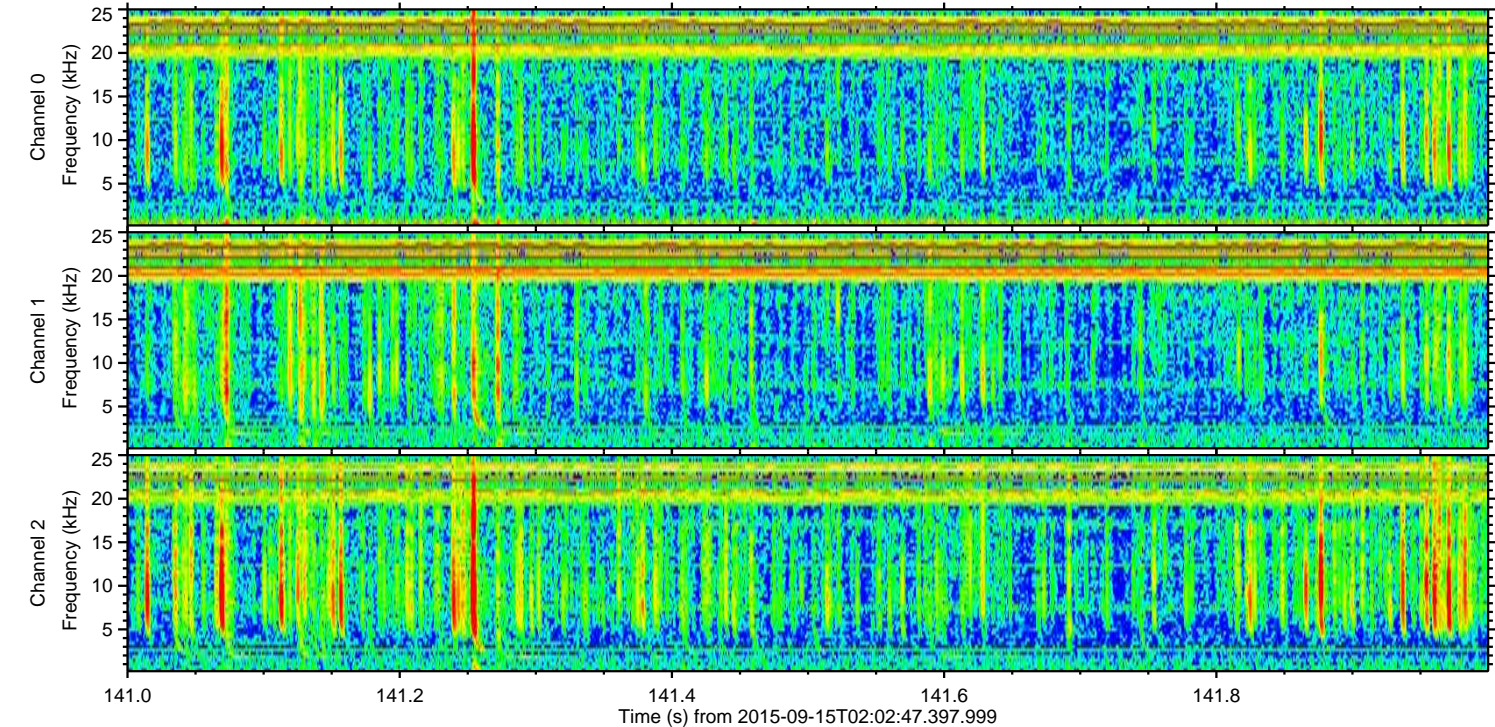
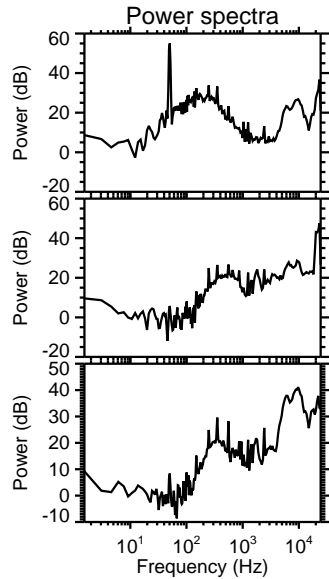
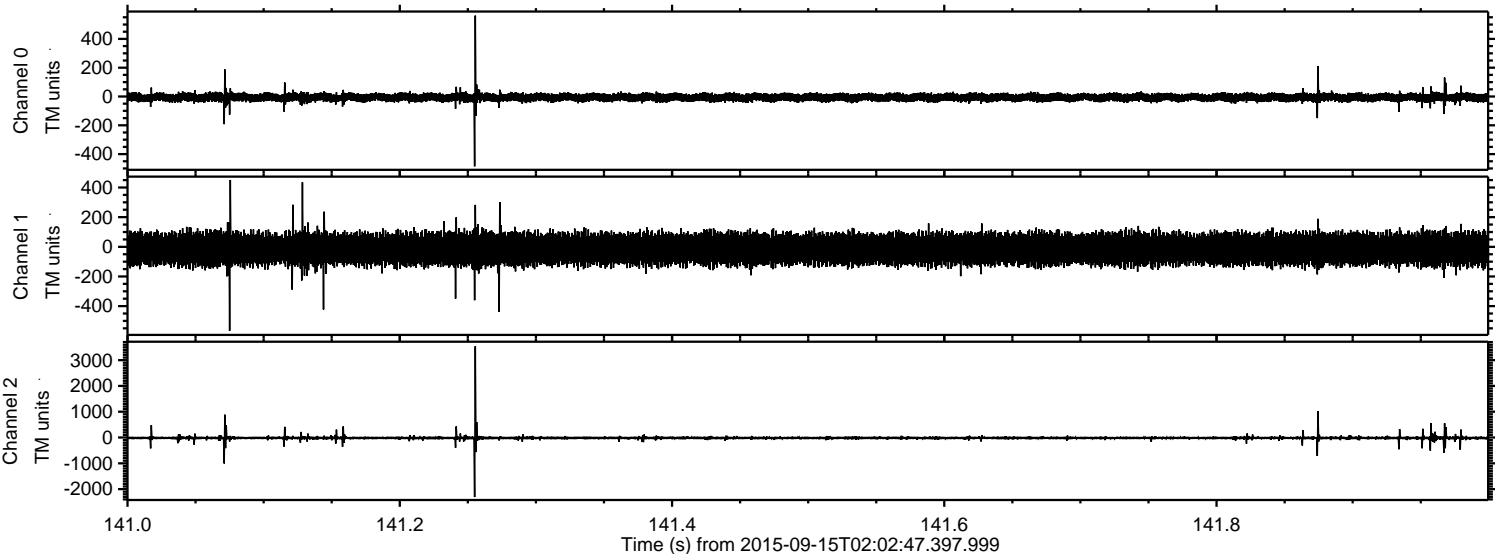


Processed Mon Oct 12 14:25:31 2015 by ELM ver.2012-10-06 from 001__elm20150915_020246__dat00.bin

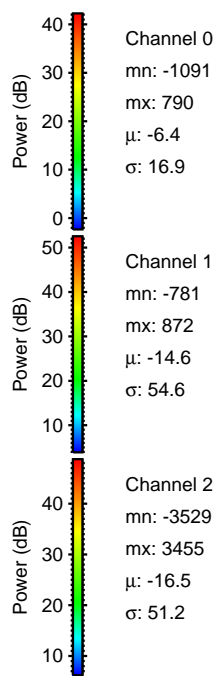
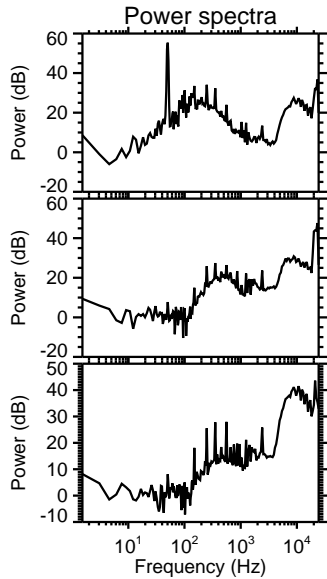
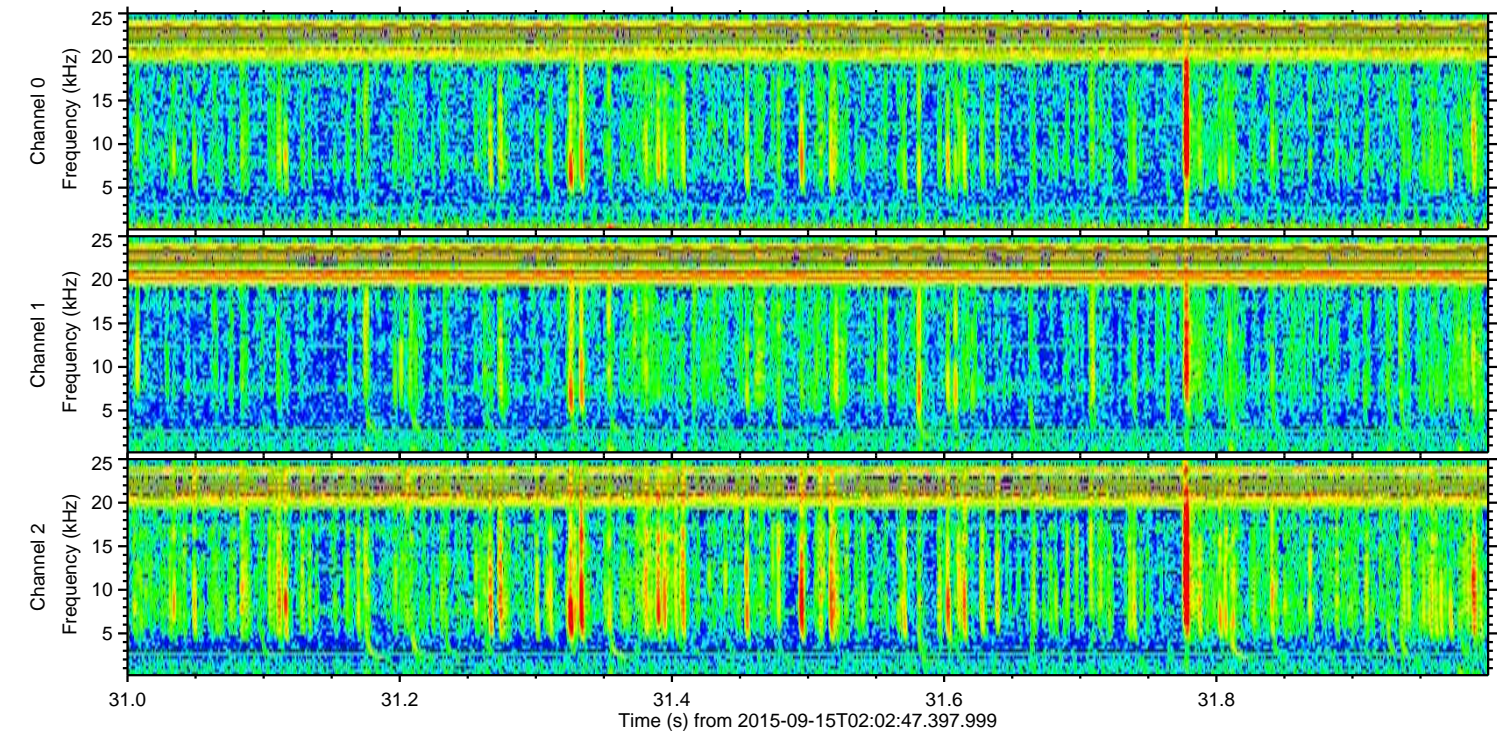
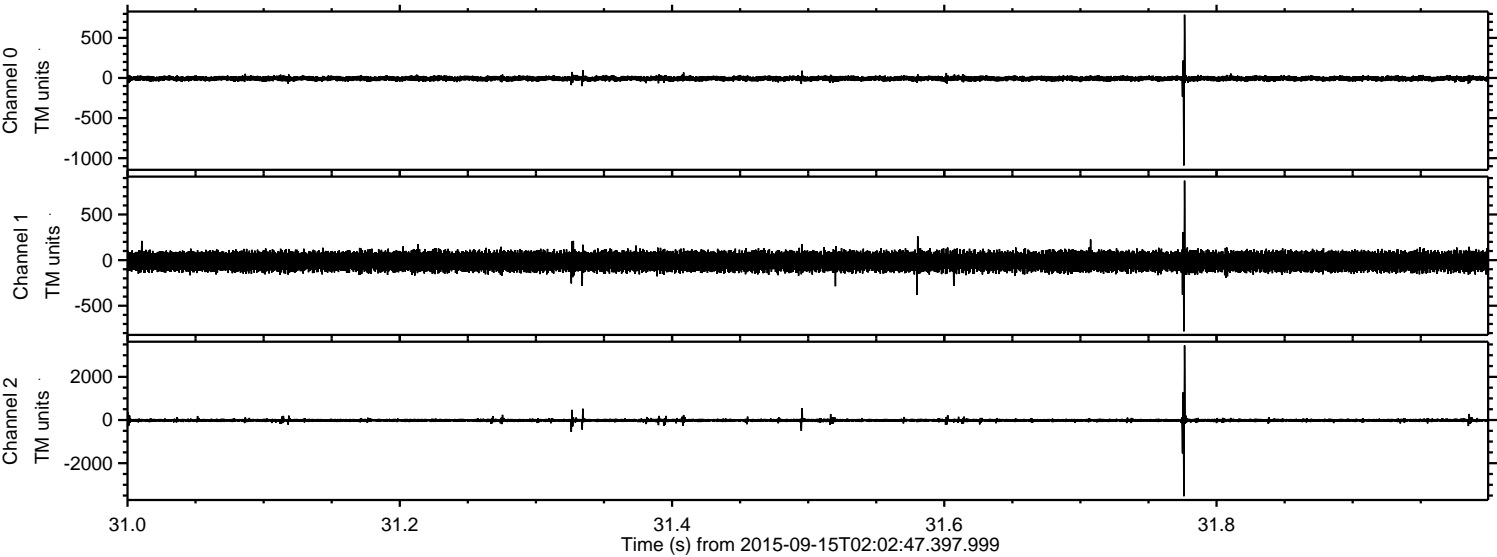


ELMAVAN 3D WAVEFORMS (Measured data sampled at 50 kHz) 51000 packets of 144 samples from 2015-09-15T02:02:47.397.999. Part 142/147

Processed Mon Oct 12 14:25:32 2015 by ELM ver.2012-10-06 from 001__elm20150915_020246__dat00.bin



Processed Mon Oct 12 14:25:33 2015 by ELM ver.2012-10-06 from 001__elm20150915_020246__dat00.bin



Power spectra

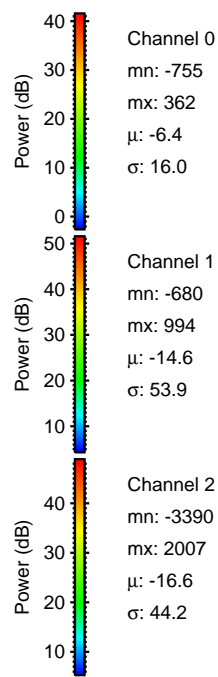
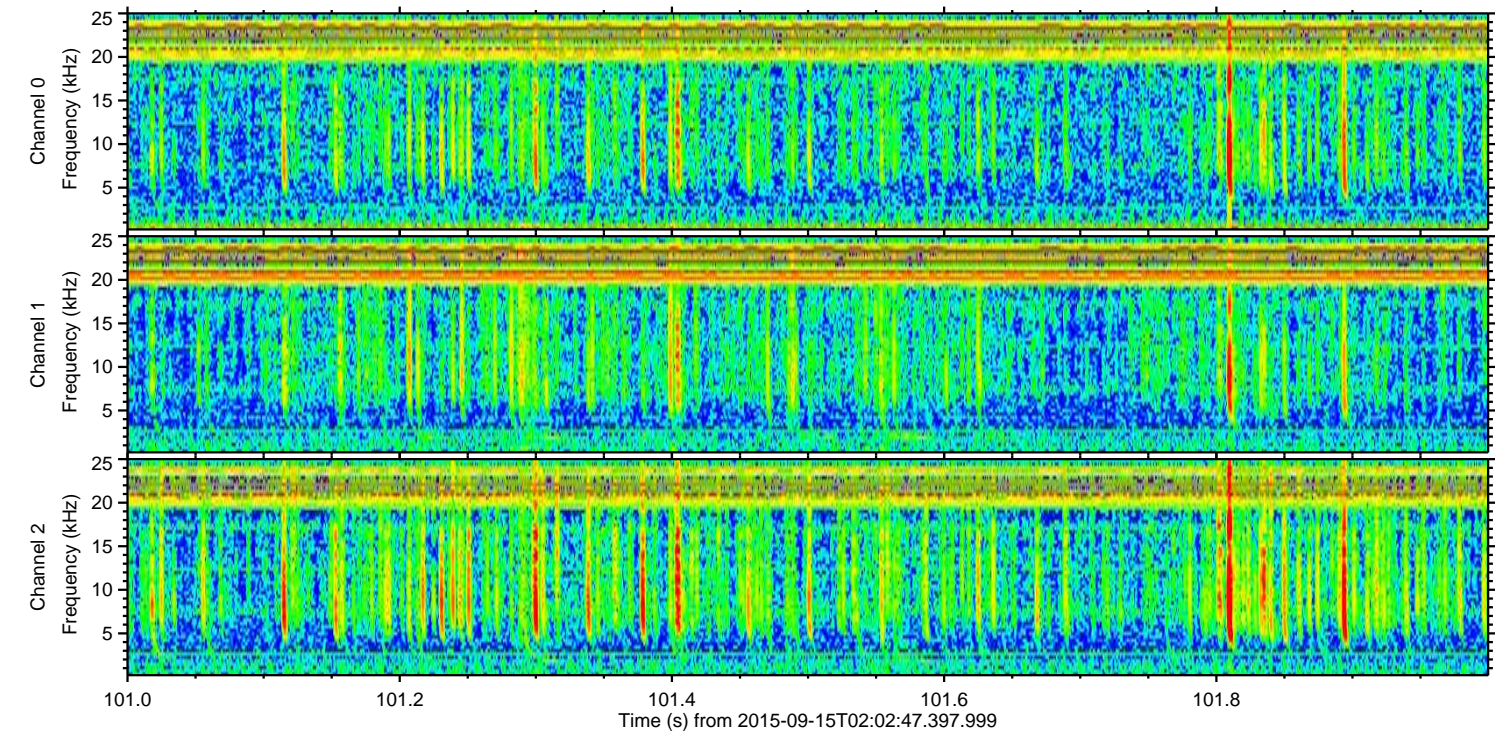
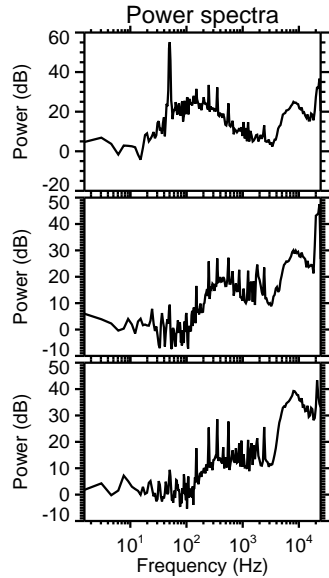
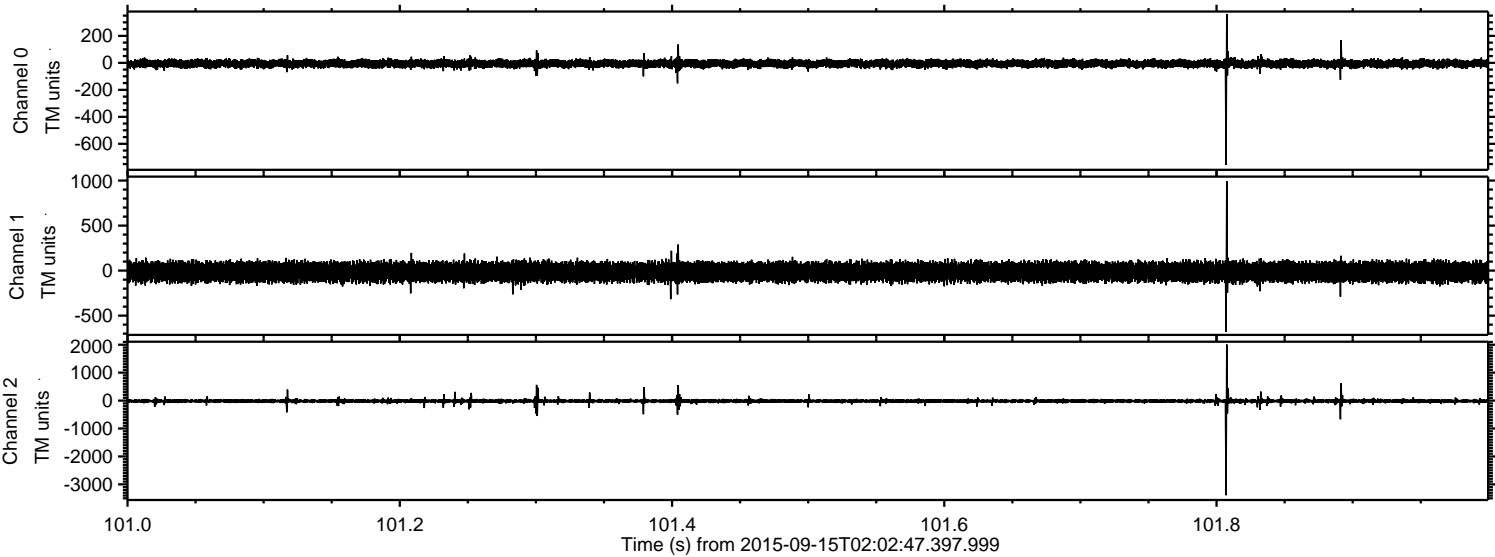
Channel 0
mn: -1091
mx: 790
 μ : -6.4
 σ : 16.9

Channel 1
mn: -781
mx: 872
 μ : -14.6
 σ : 54.6

Channel 2
mn: -3529
mx: 3455
 μ : -16.5
 σ : 51.2

ELMAVAN 3D WAVEFORMS (Measured data sampled at 50 kHz) 51000 packets of 144 samples from 2015-09-15T02:02:47.397.999. Part 102/147

Processed Mon Oct 12 14:25:34 2015 by ELM ver.2012-10-06 from 001__elm20150915_020246__dat00.bin



Processed Mon Oct 12 14:25:35 2015 by ELM ver.2012-10-06 from 001__elm20150915_020246__dat00.bin

