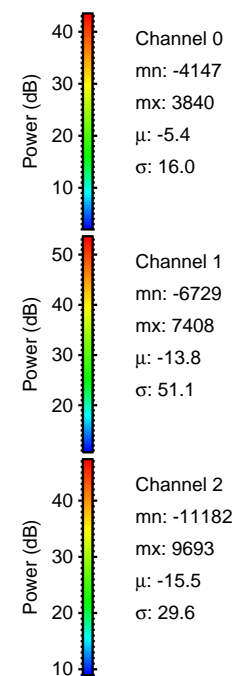
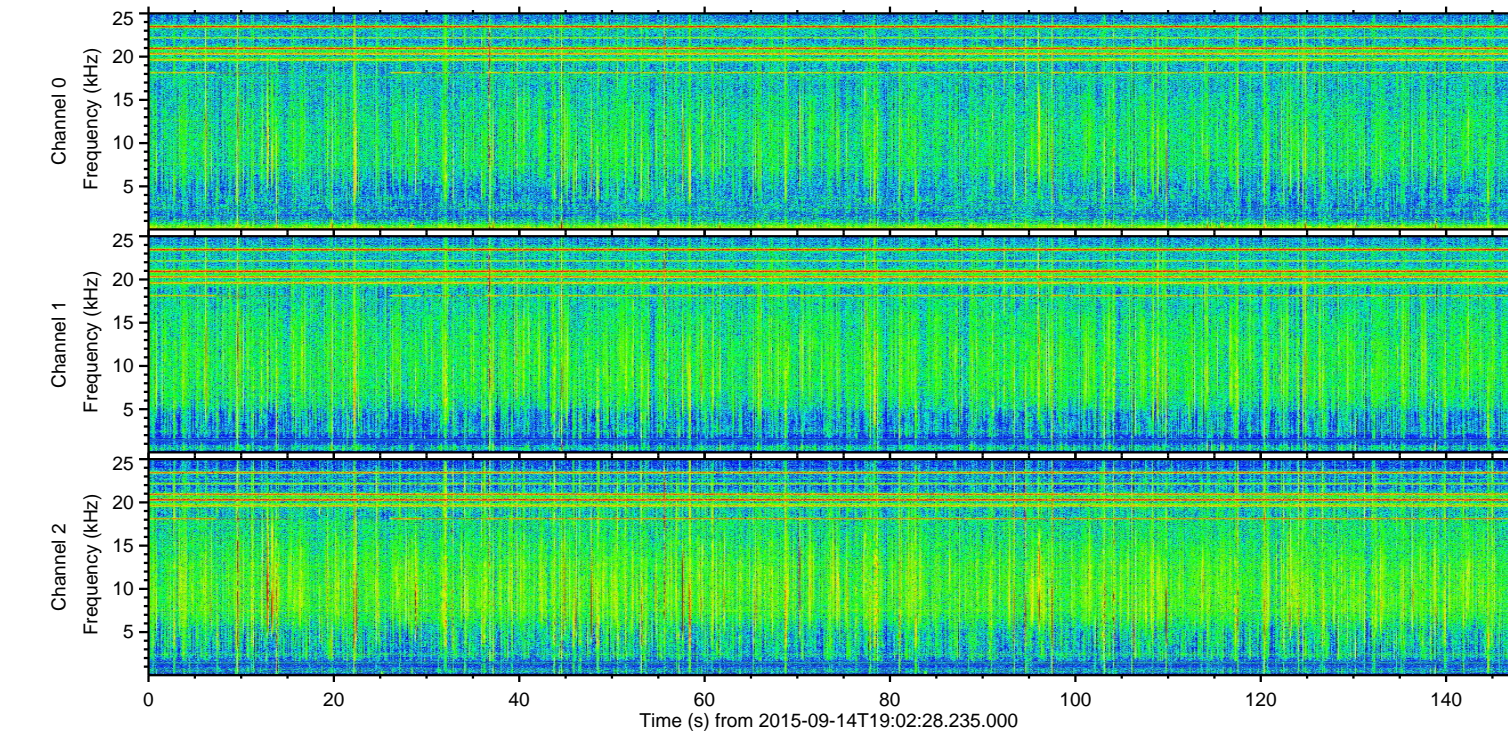
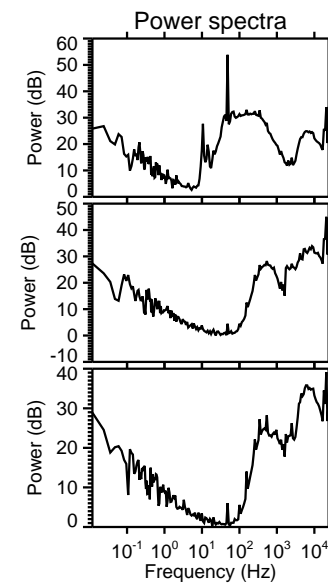
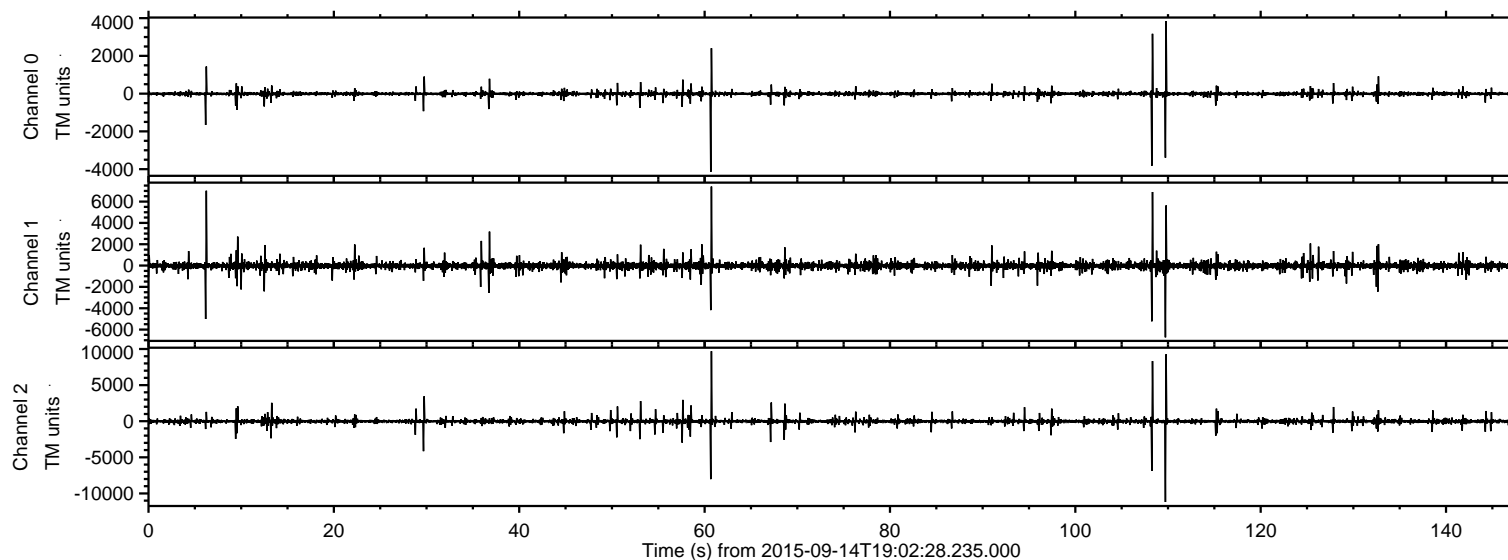


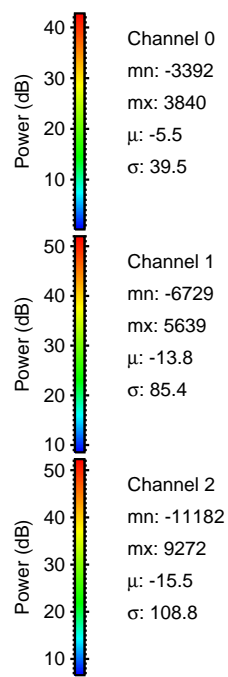
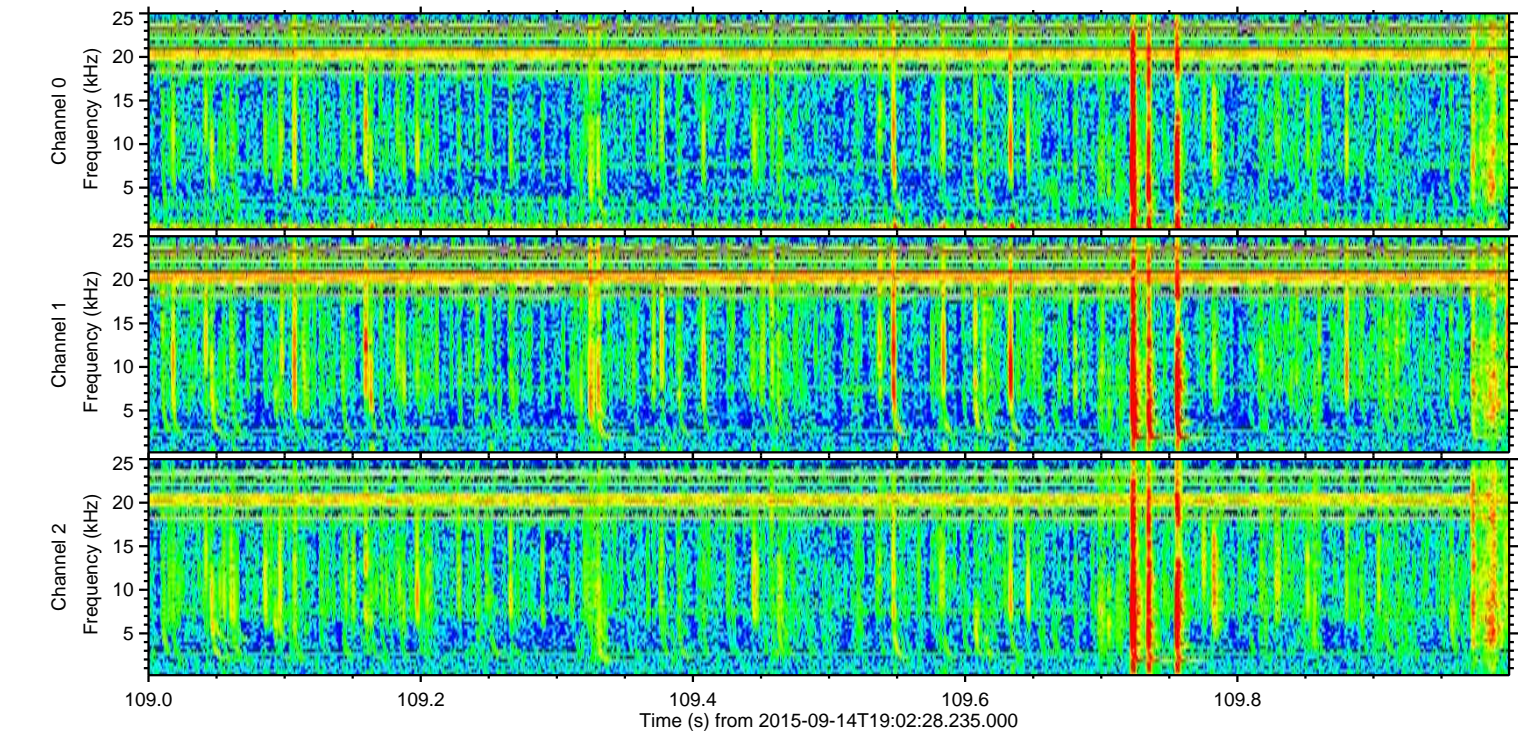
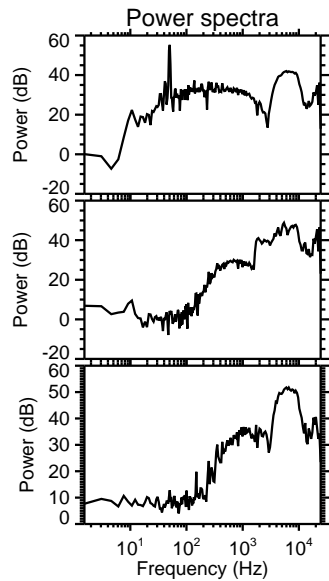
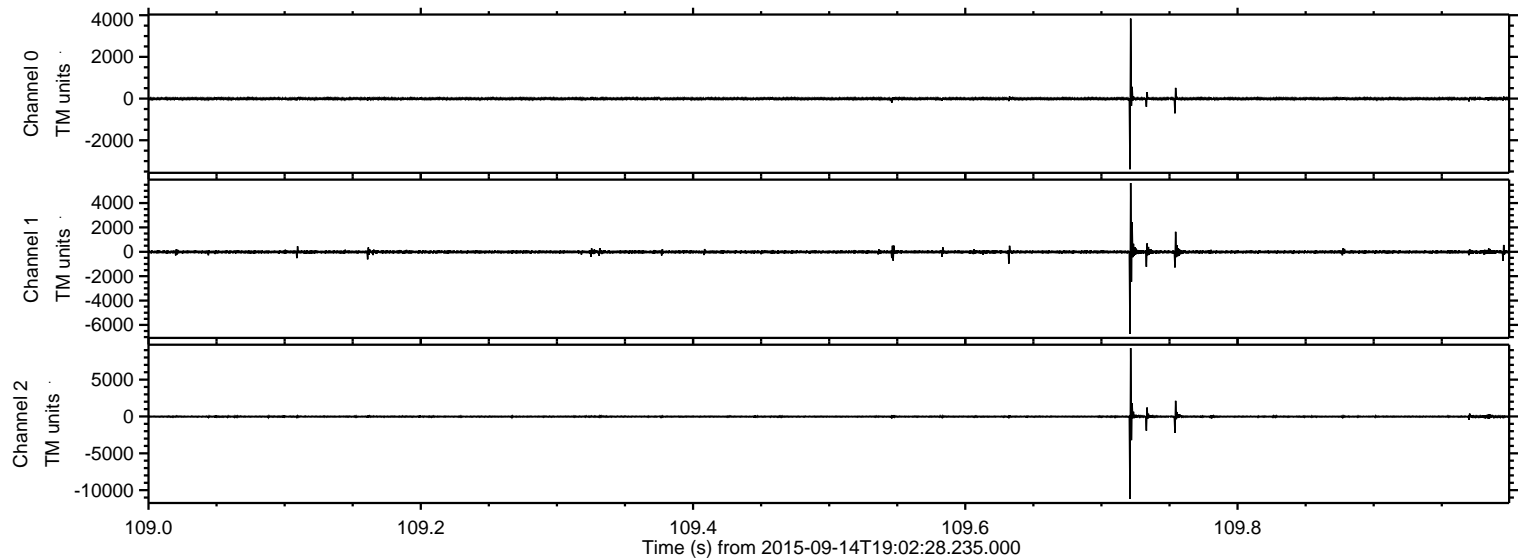
ELMAVAN 3D WAVEFORMS (Measured data sampled at 50 kHz) 51000 packets of 144 samples from 2015-09-14T19:02:28.235.000.

Processed Mon Oct 12 12:31:39 2015 by ELM ver.2012-10-06 from 001__elm20150914_190227__dat00.bin

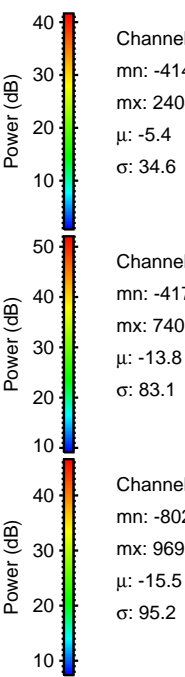
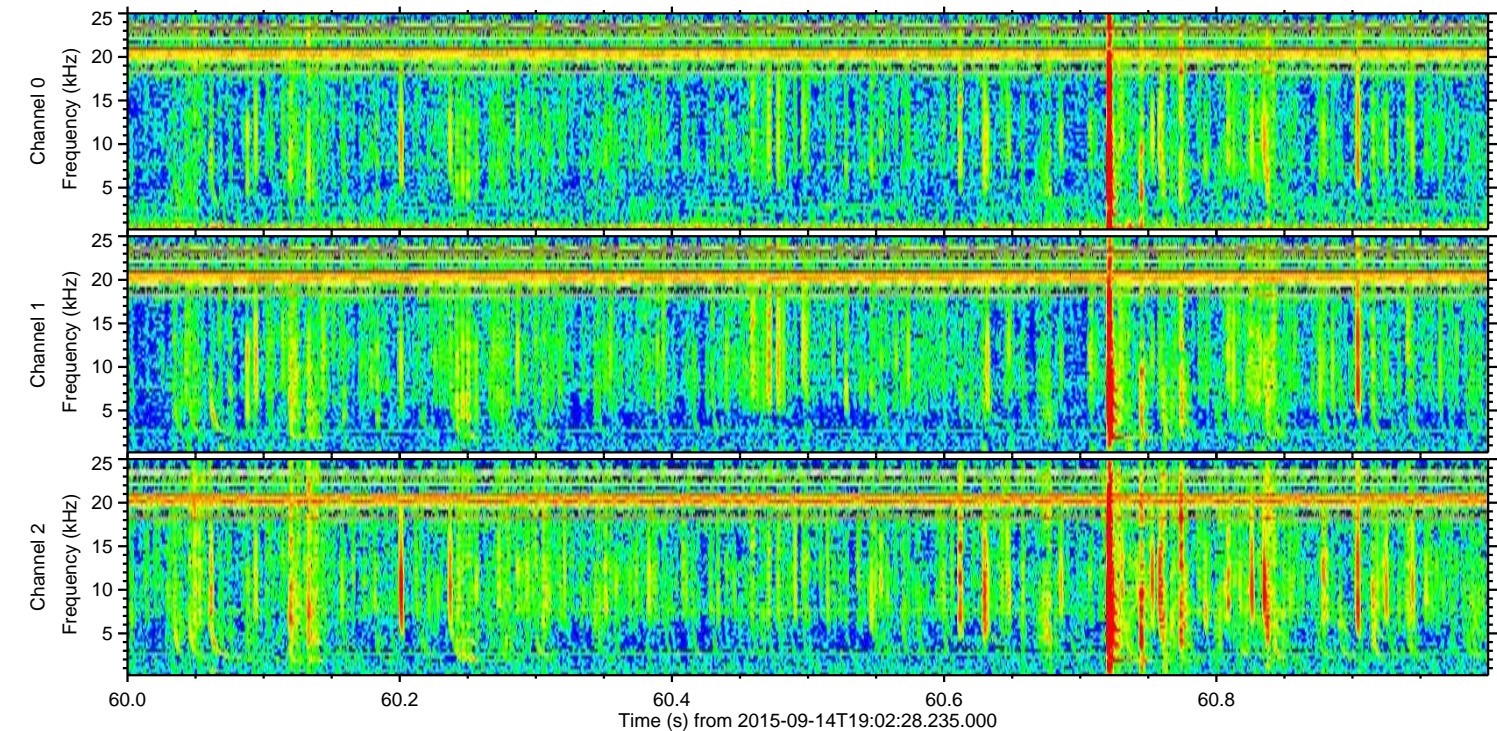
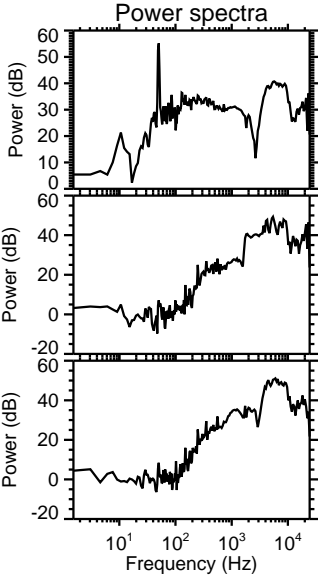
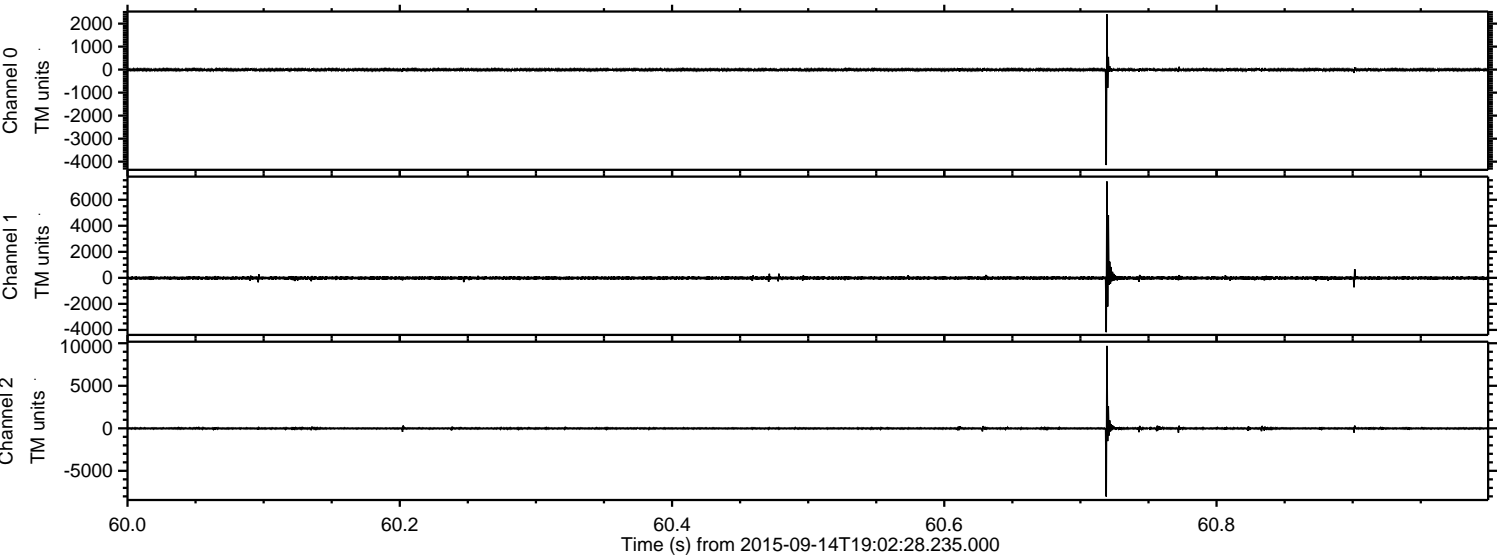


ELMAVAN 3D WAVEFORMS (Measured data sampled at 50 kHz) 51000 packets of 144 samples from 2015-09-14T19:02:28.235.000. Part 110/147

Processed Mon Oct 12 12:31:55 2015 by ELM ver.2012-10-06 from 001__elm20150914_190227__dat00.bin

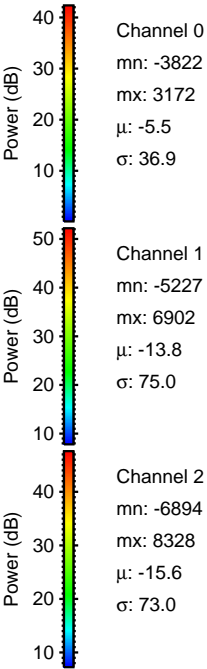
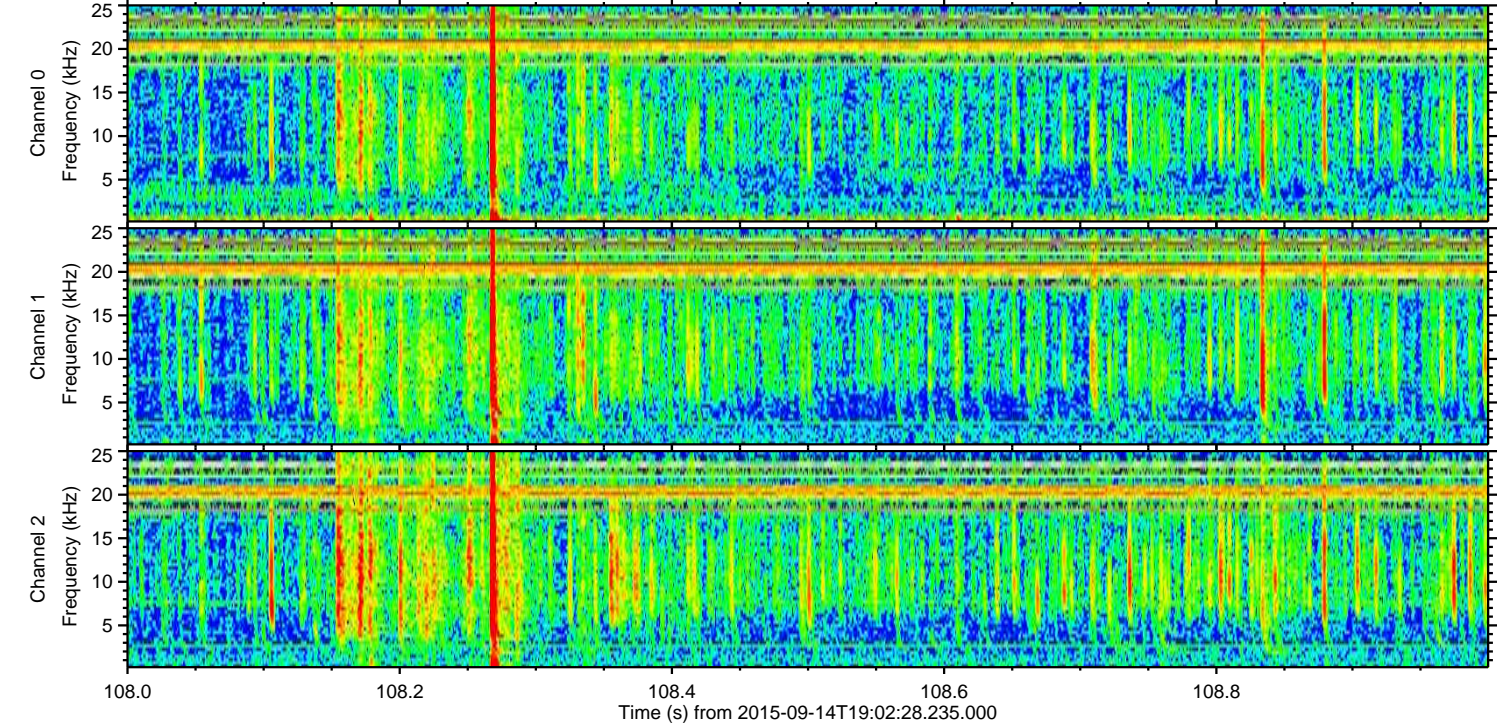
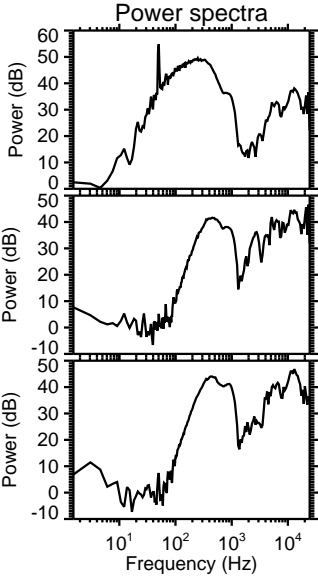
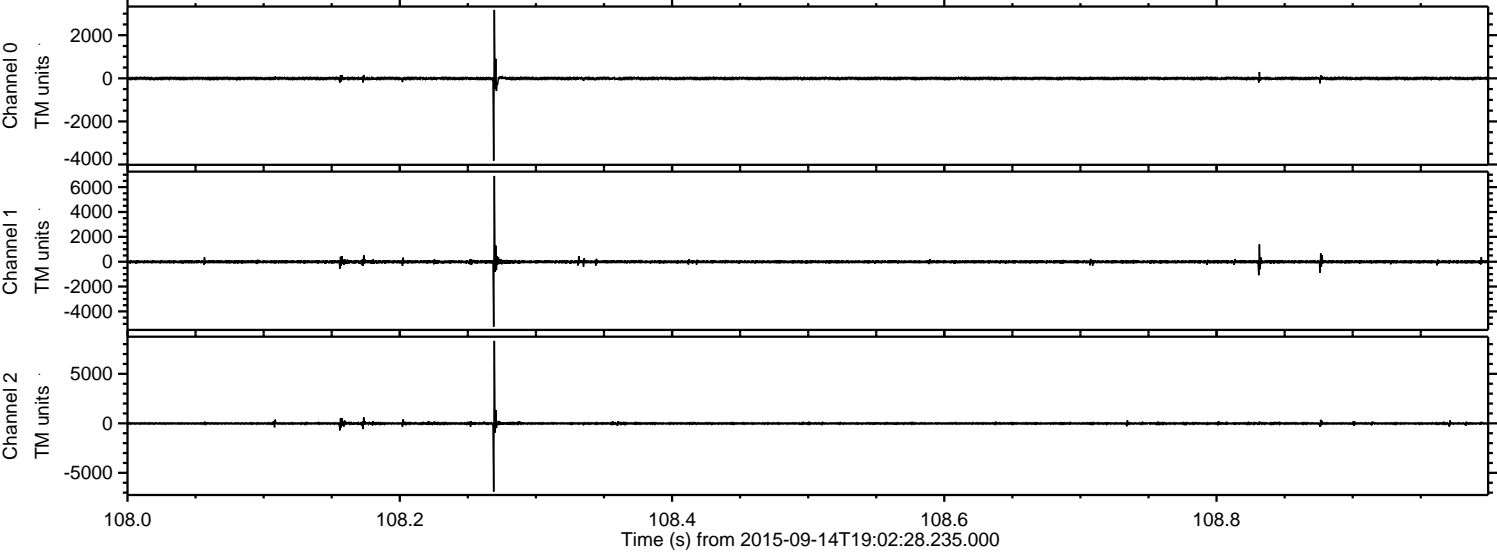


Processed Mon Oct 12 12:31:56 2015 by ELM ver.2012-10-06 from 001__elm20150914_190227__dat00.bin



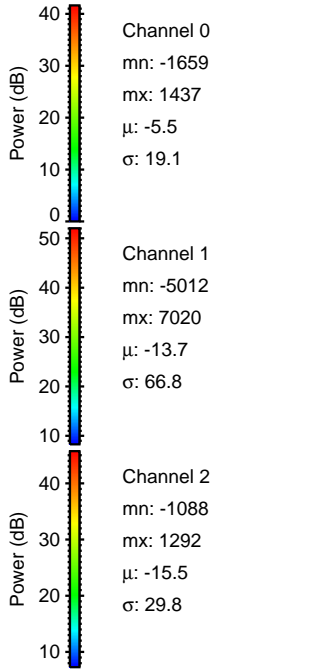
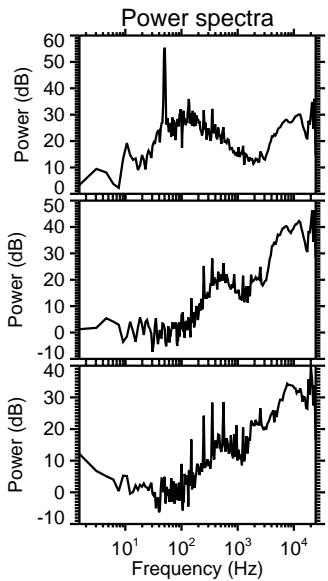
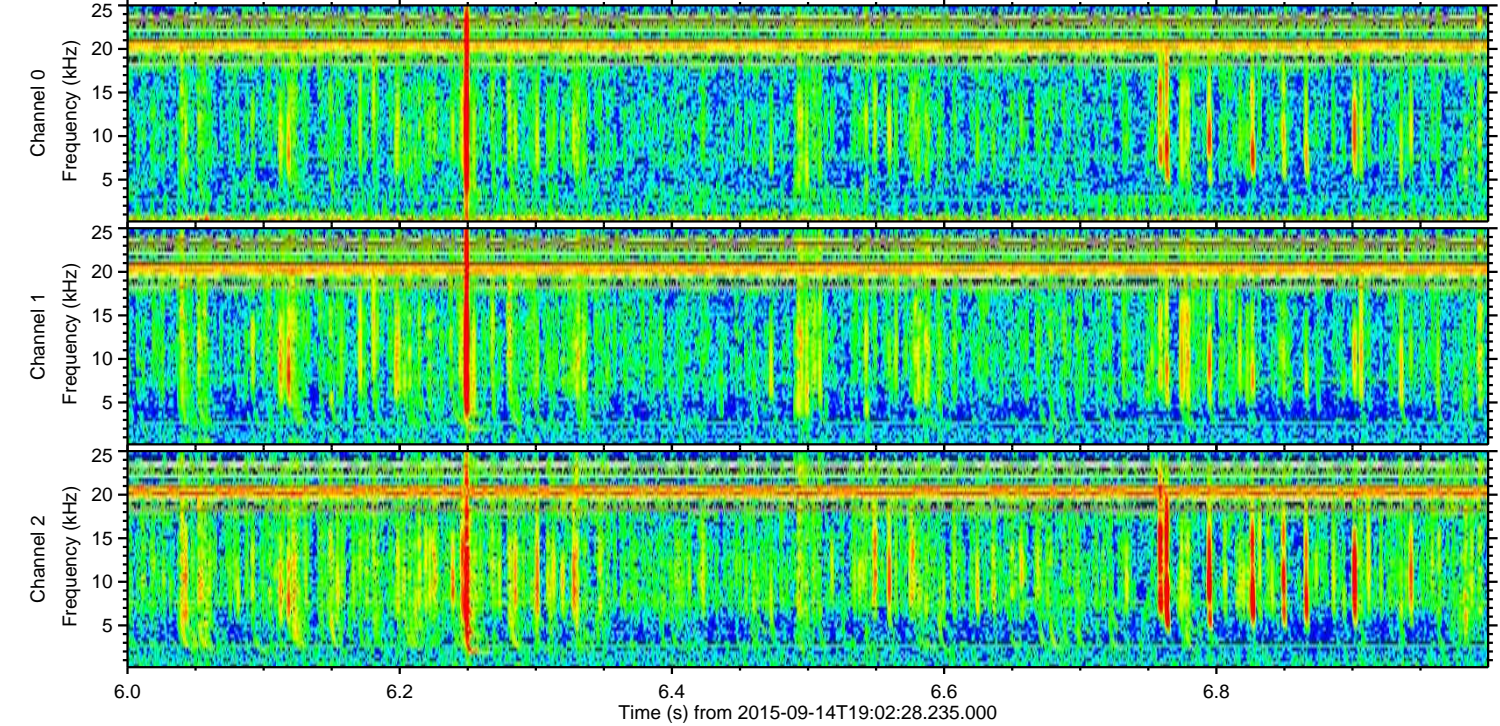
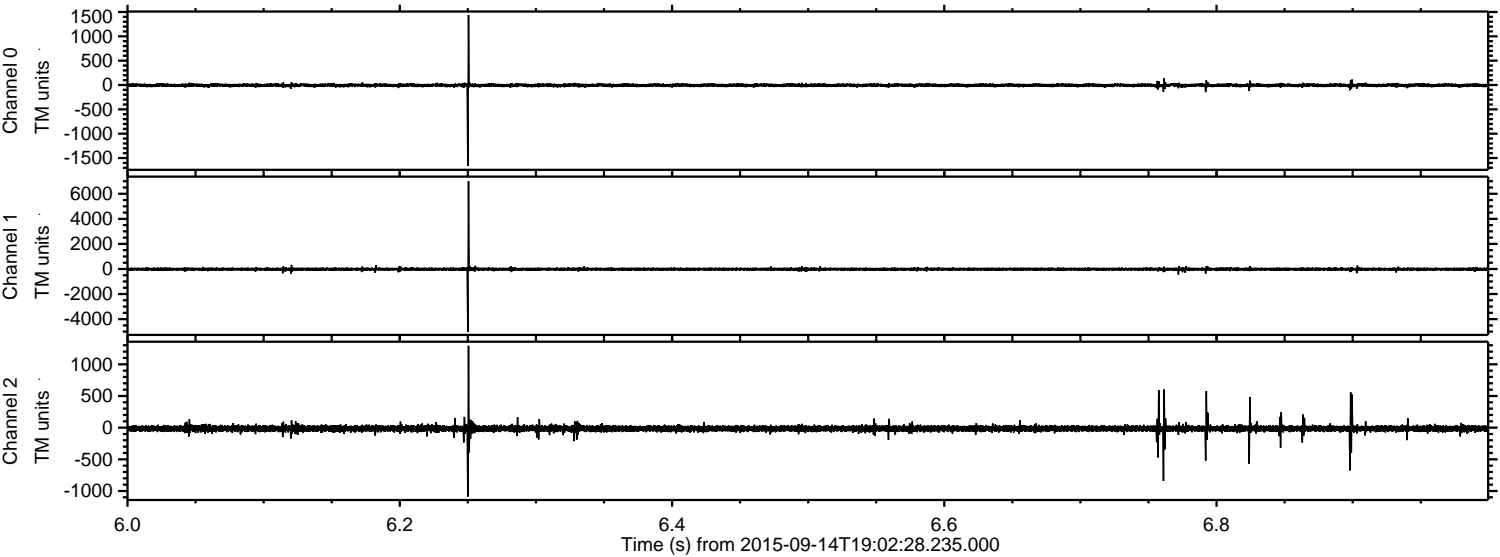
ELMAVAN 3D WAVEFORMS (Measured data sampled at 50 kHz) 51000 packets of 144 samples from 2015-09-14T19:02:28.235.000. Part 109/147

Processed Mon Oct 12 12:31:57 2015 by ELM ver.2012-10-06 from 001__elm20150914_190227__dat00.bin

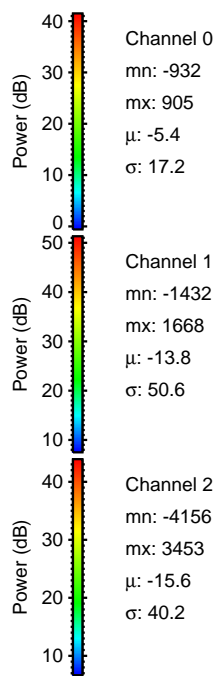
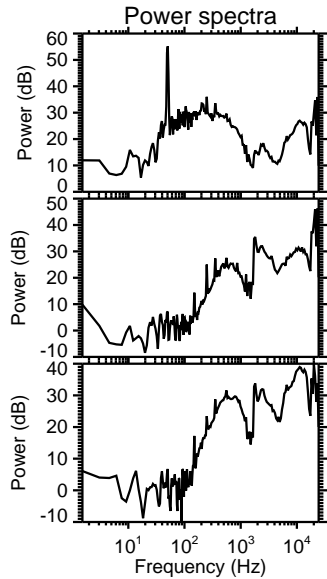
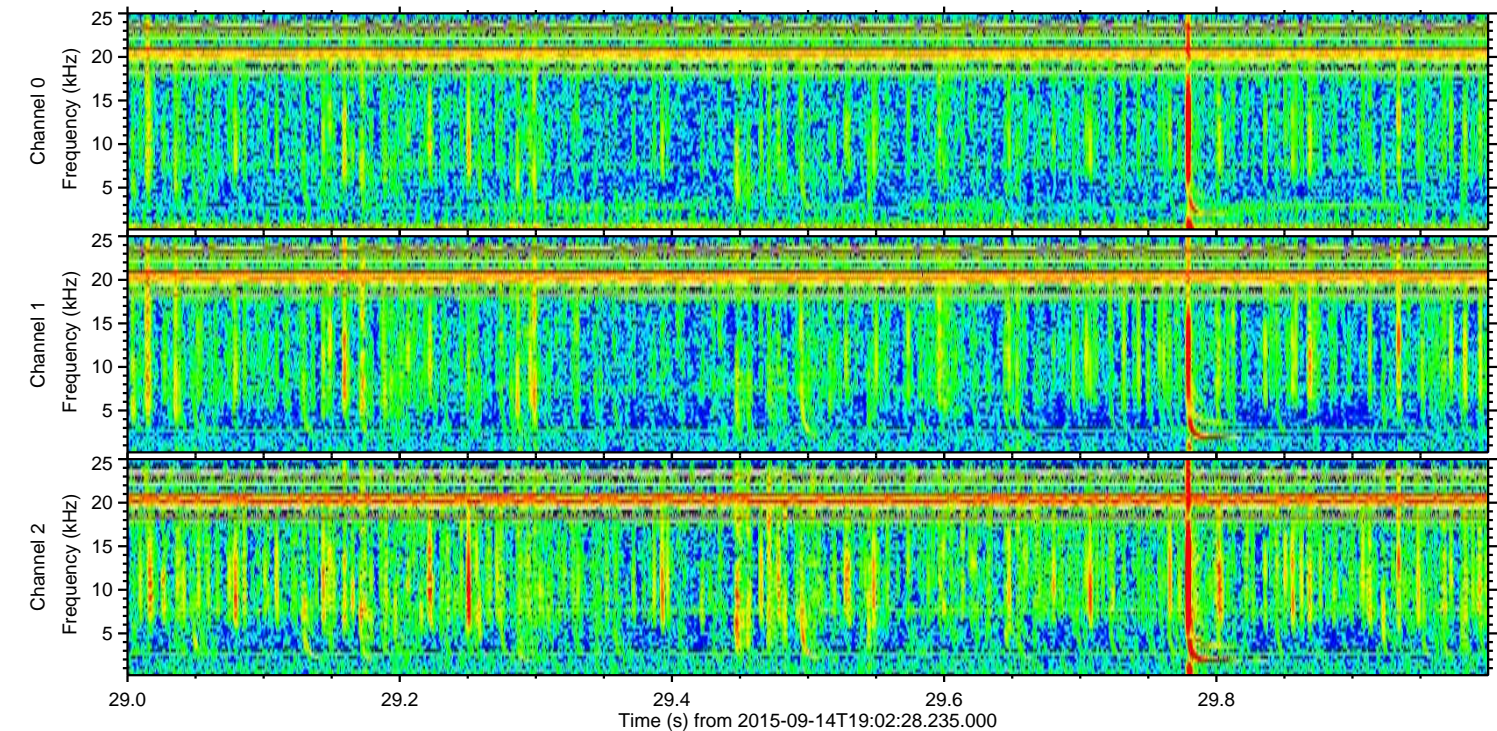
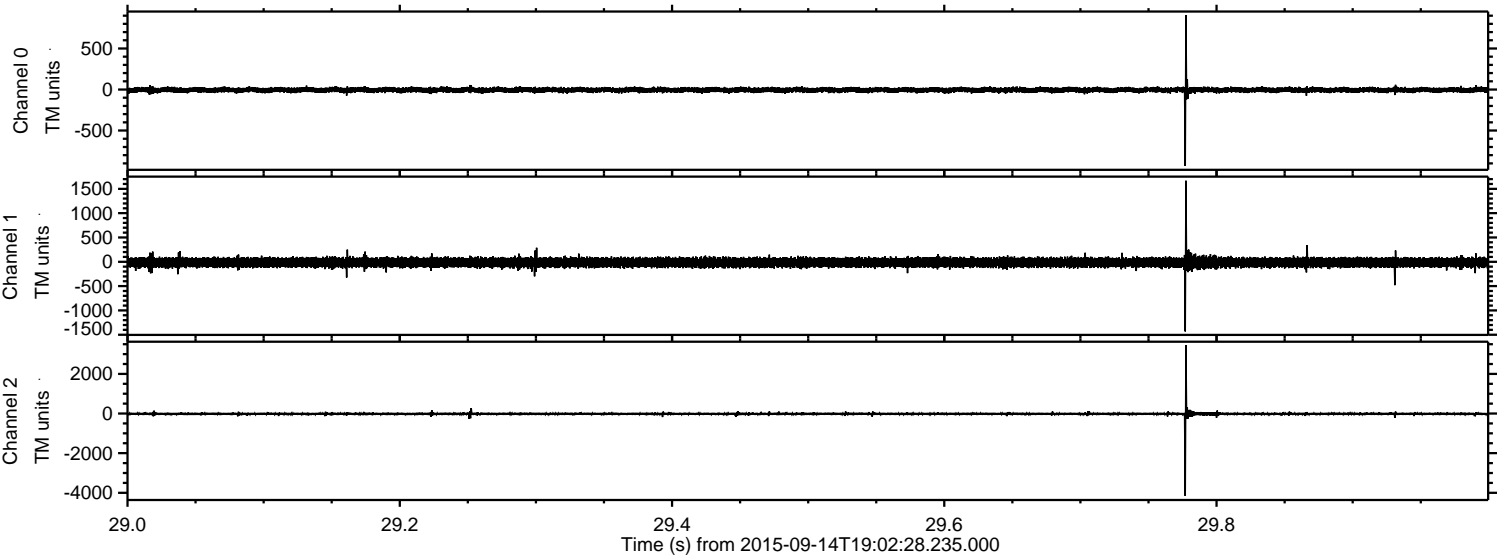


ELMAVAN 3D WAVEFORMS (Measured data sampled at 50 kHz) 51000 packets of 144 samples from 2015-09-14T19:02:28.235.000. Part 7/147

Processed Mon Oct 12 12:31:58 2015 by ELM ver.2012-10-06 from 001__elm20150914_190227__dat00.bin



Processed Mon Oct 12 12:31:58 2015 by ELM ver.2012-10-06 from 001__elm20150914_190227__dat00.bin



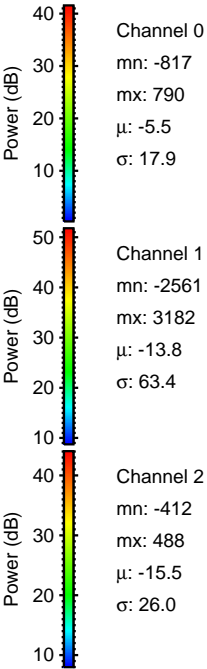
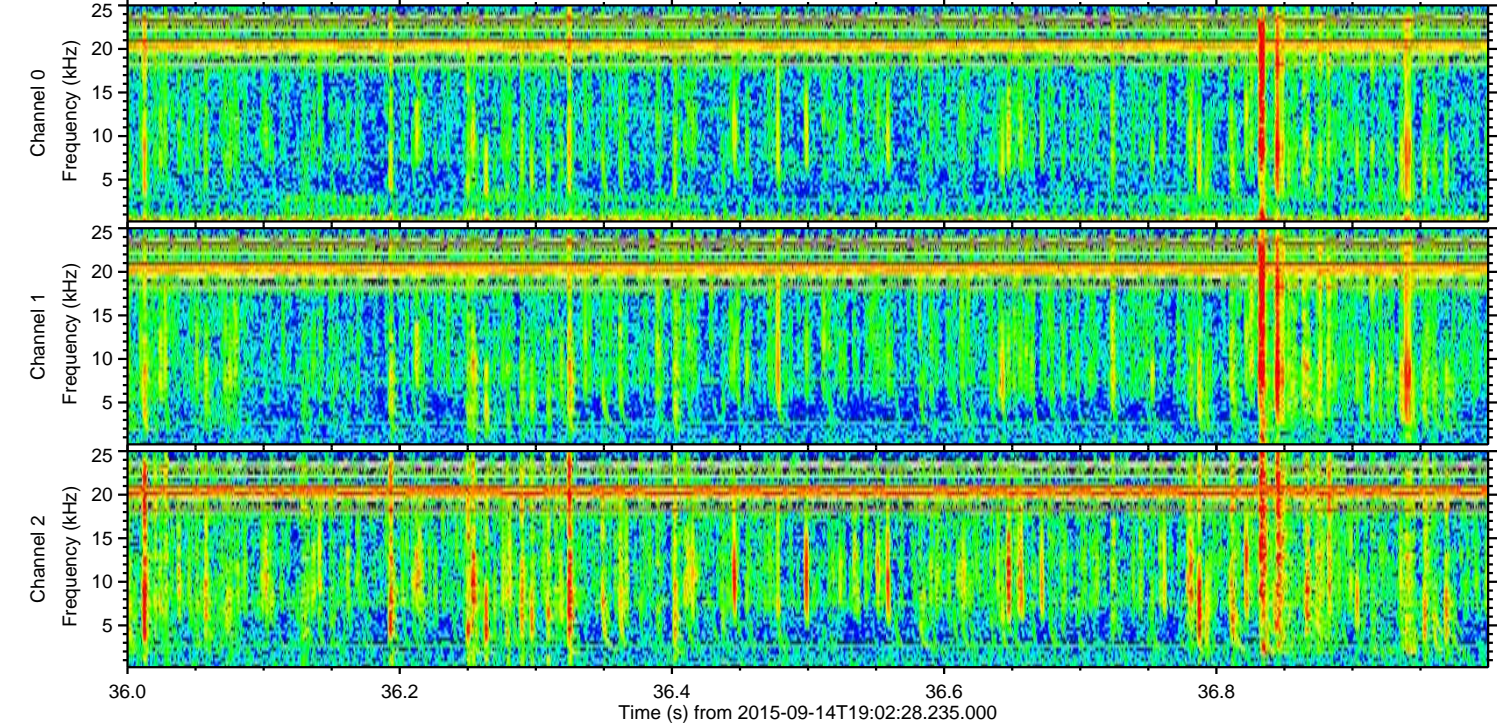
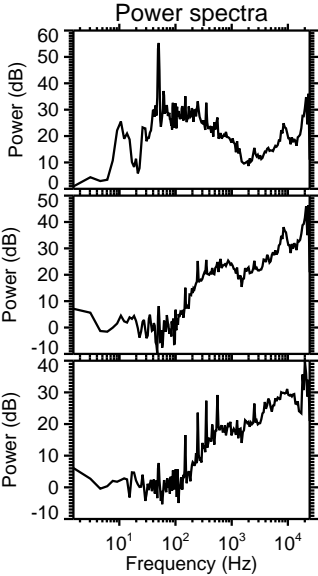
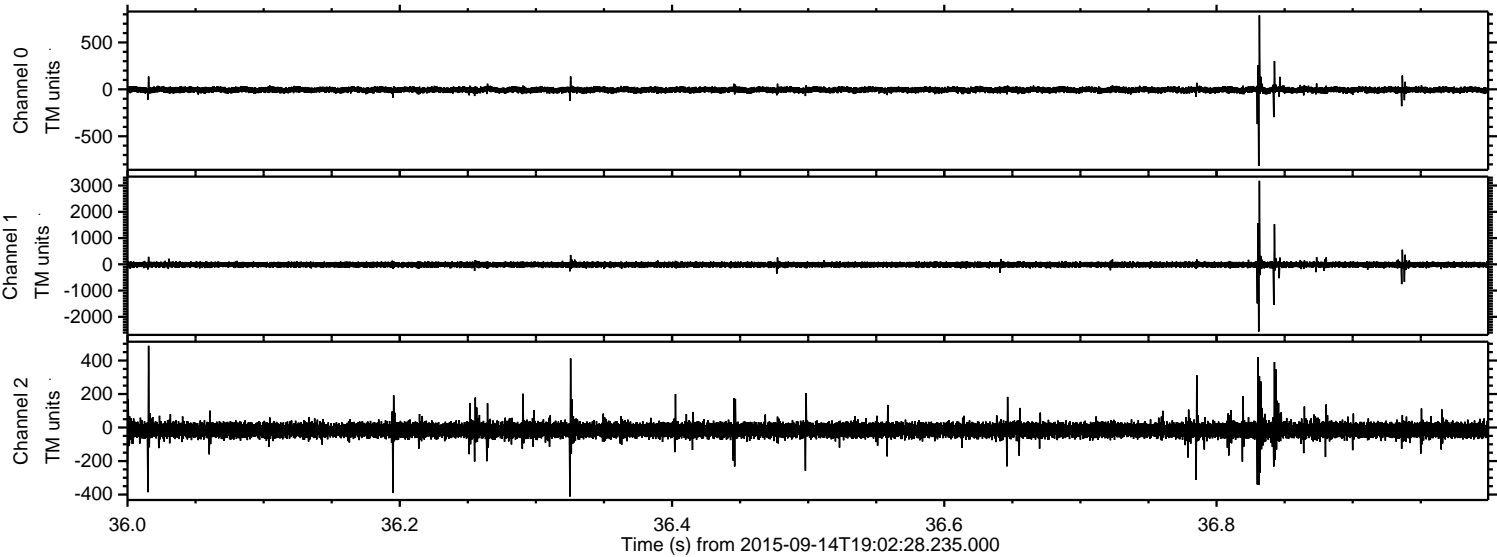
Channel 0
mn: -932
mx: 905
 μ : -5.4
 σ : 17.2

Channel 1
mn: -1432
mx: 1668
 μ : -13.8
 σ : 50.6

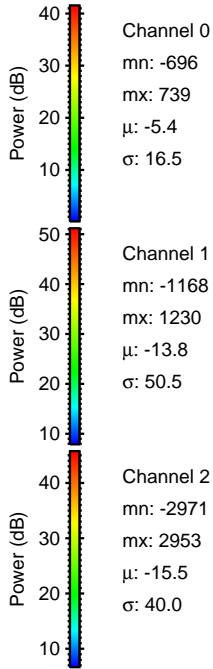
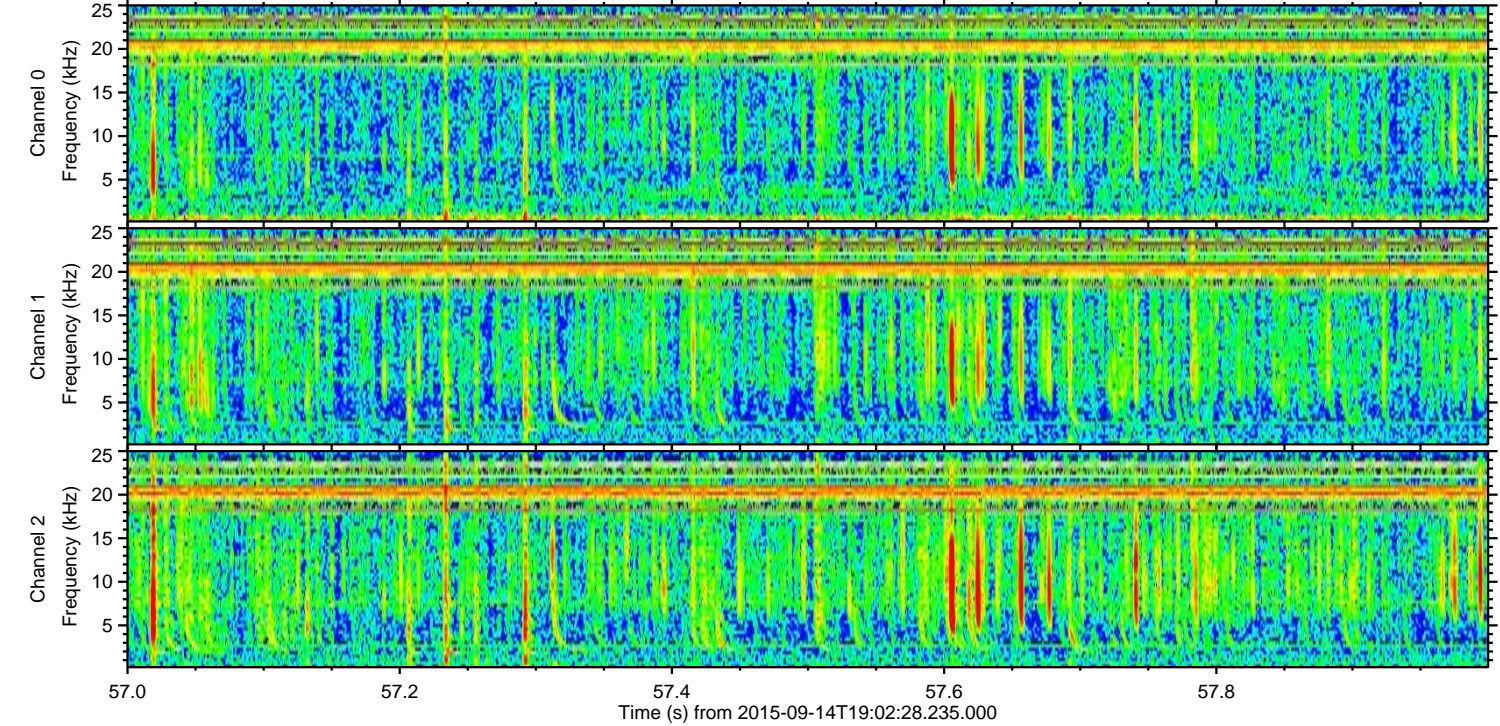
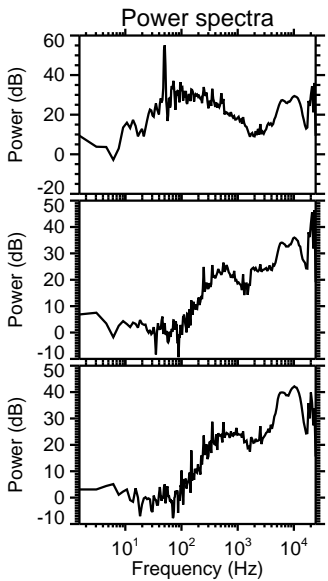
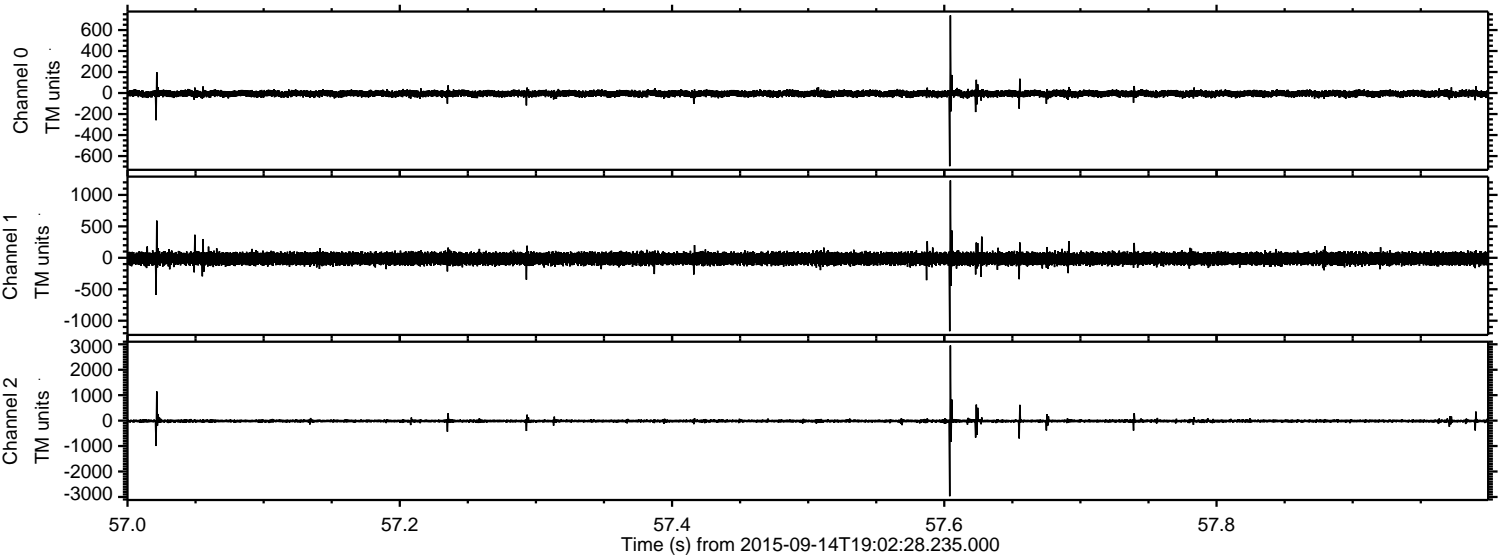
Channel 2
mn: -4156
mx: 3453
 μ : -15.6
 σ : 40.2

ELMAVAN 3D WAVEFORMS (Measured data sampled at 50 kHz) 51000 packets of 144 samples from 2015-09-14T19:02:28.235.000. Part 37/147

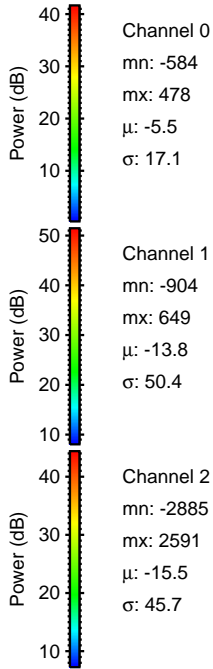
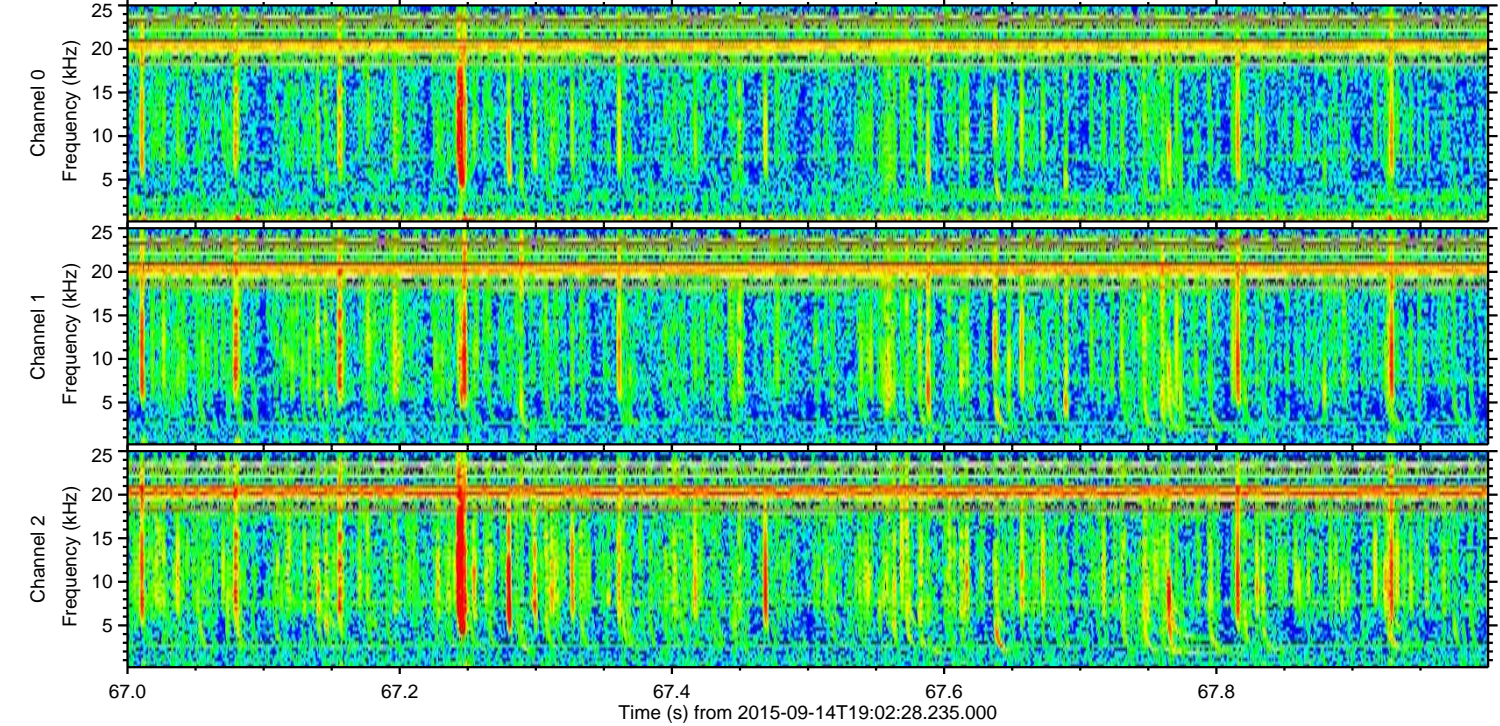
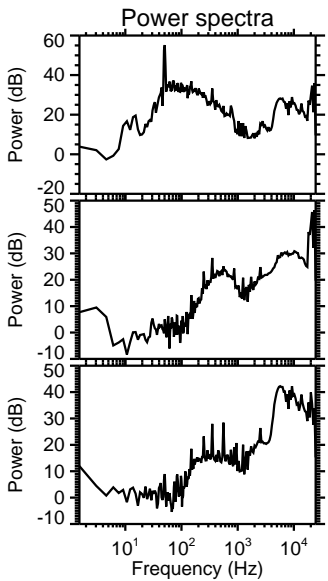
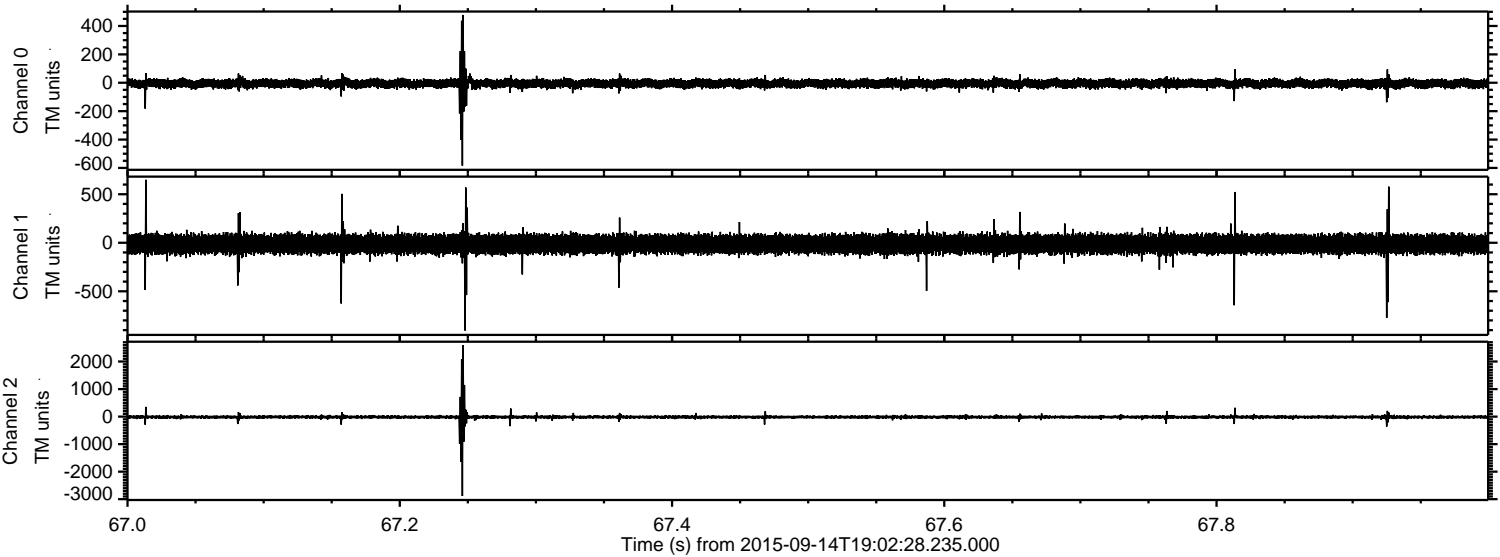
Processed Mon Oct 12 12:31:59 2015 by ELM ver.2012-10-06 from 001__elm20150914_190227__dat00.bin



Processed Mon Oct 12 12:32:00 2015 by ELM ver.2012-10-06 from 001__elm20150914_190227__dat00.bin



Processed Mon Oct 12 12:32:01 2015 by ELM ver.2012-10-06 from 001__elm20150914_190227__dat00.bin



Processed Mon Oct 12 12:32:02 2015 by ELM ver.2012-10-06 from 001__elm20150914_190227__dat00.bin

