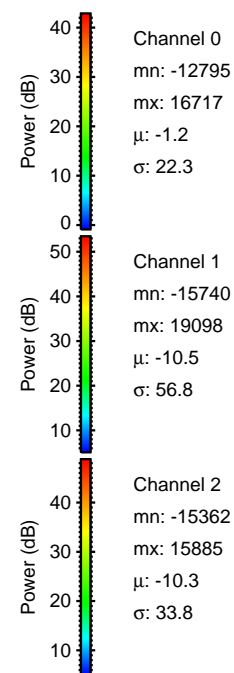
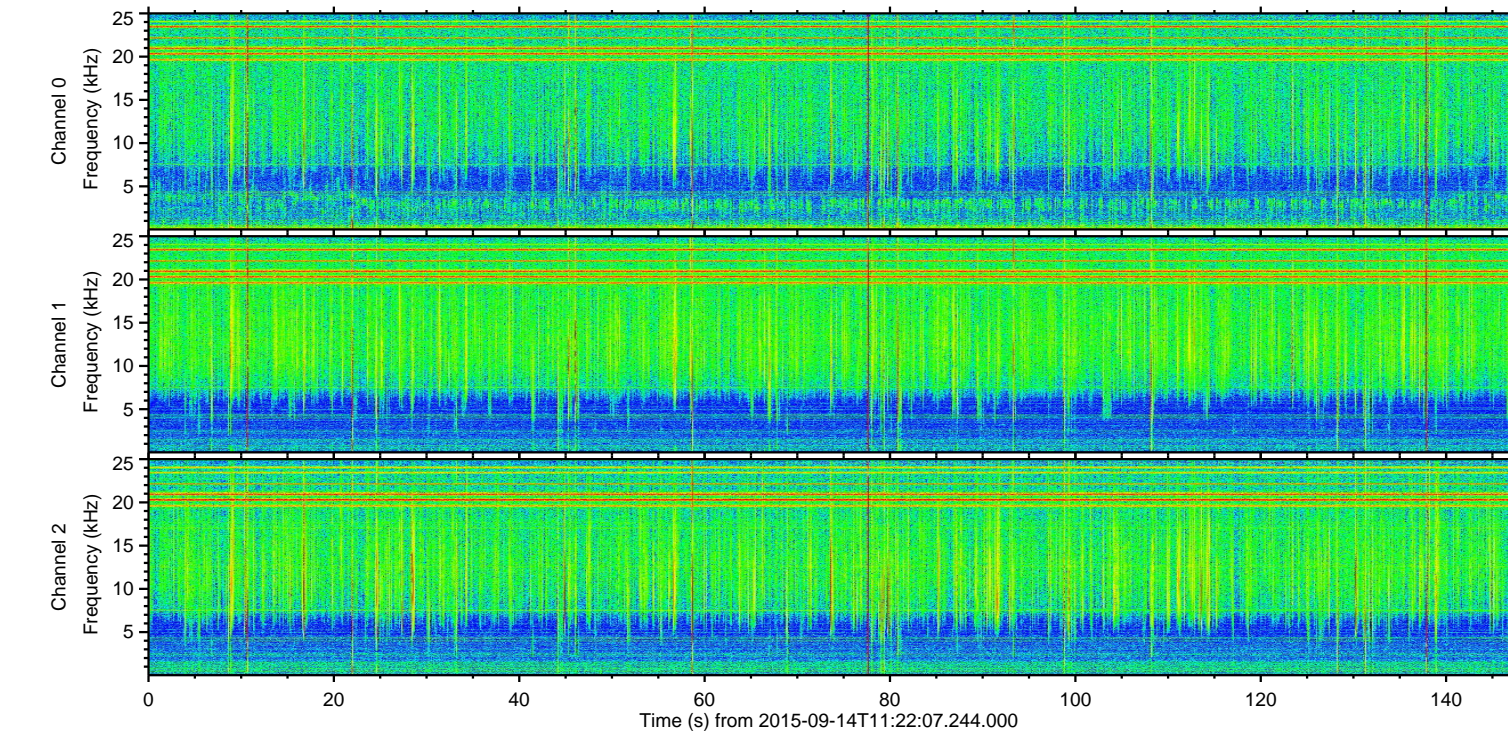
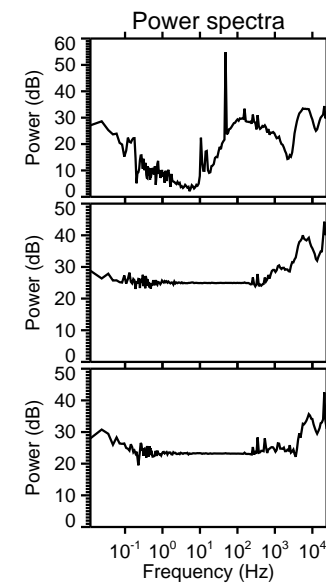
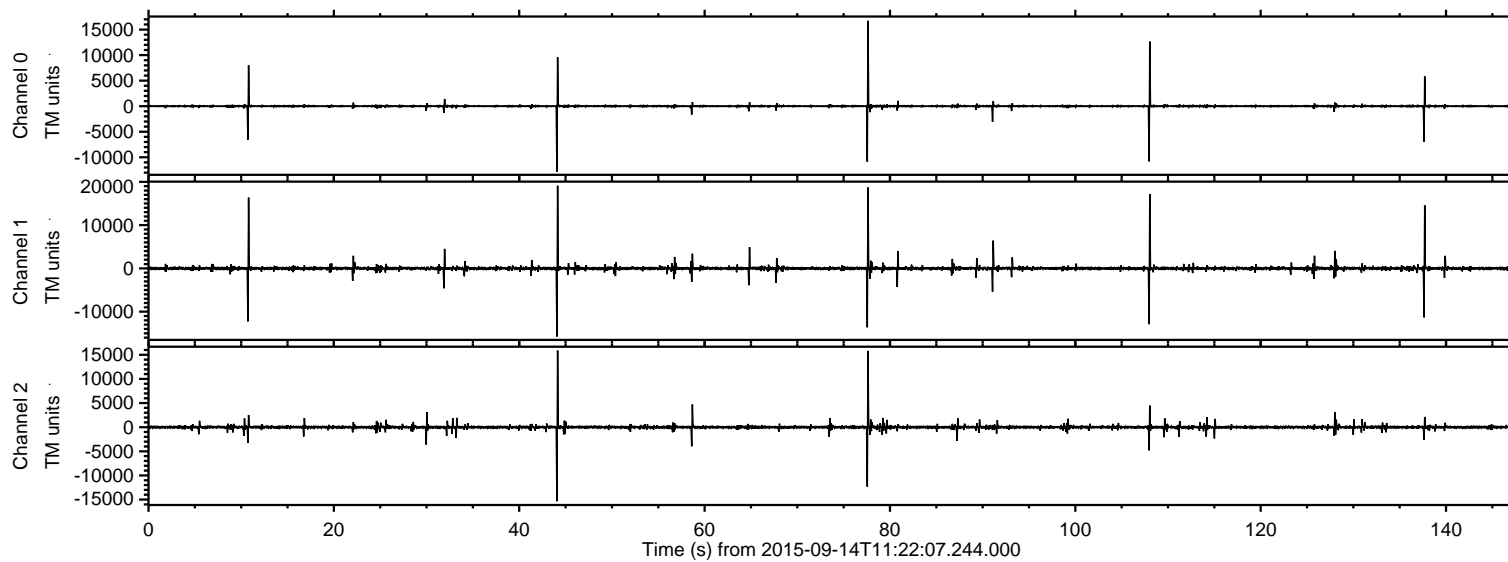
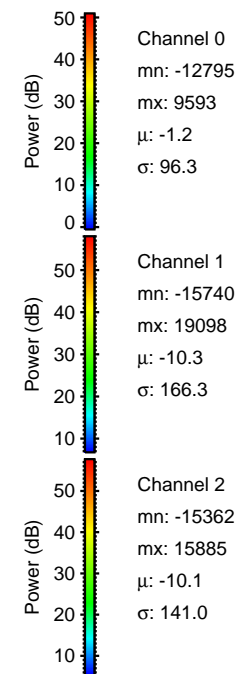
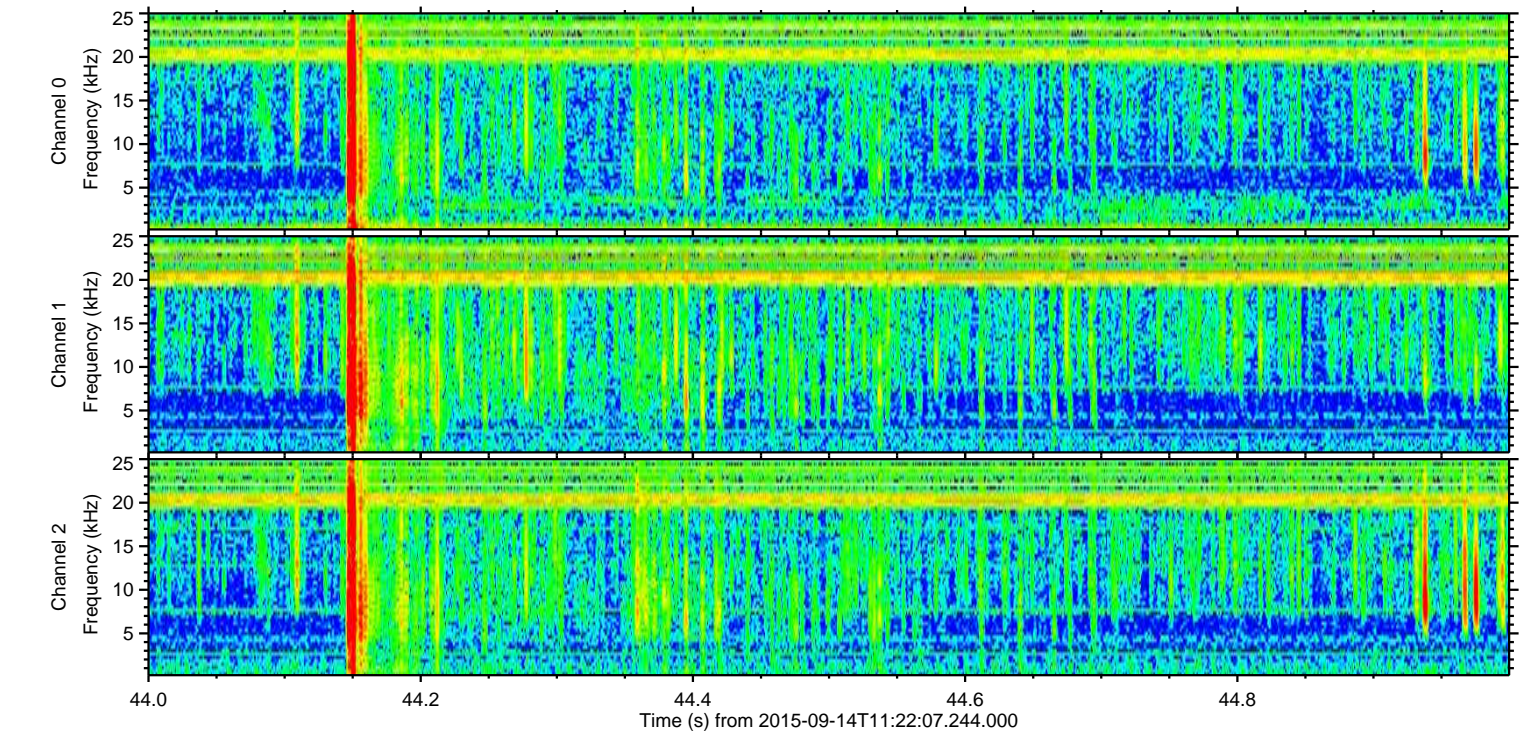
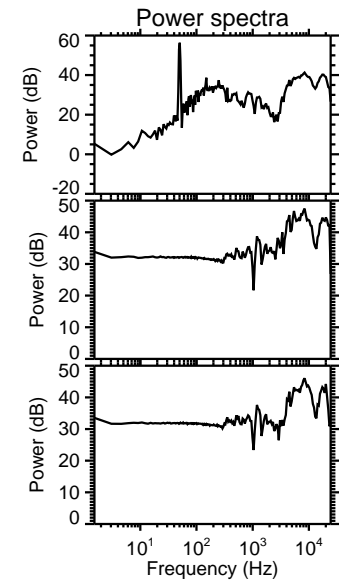
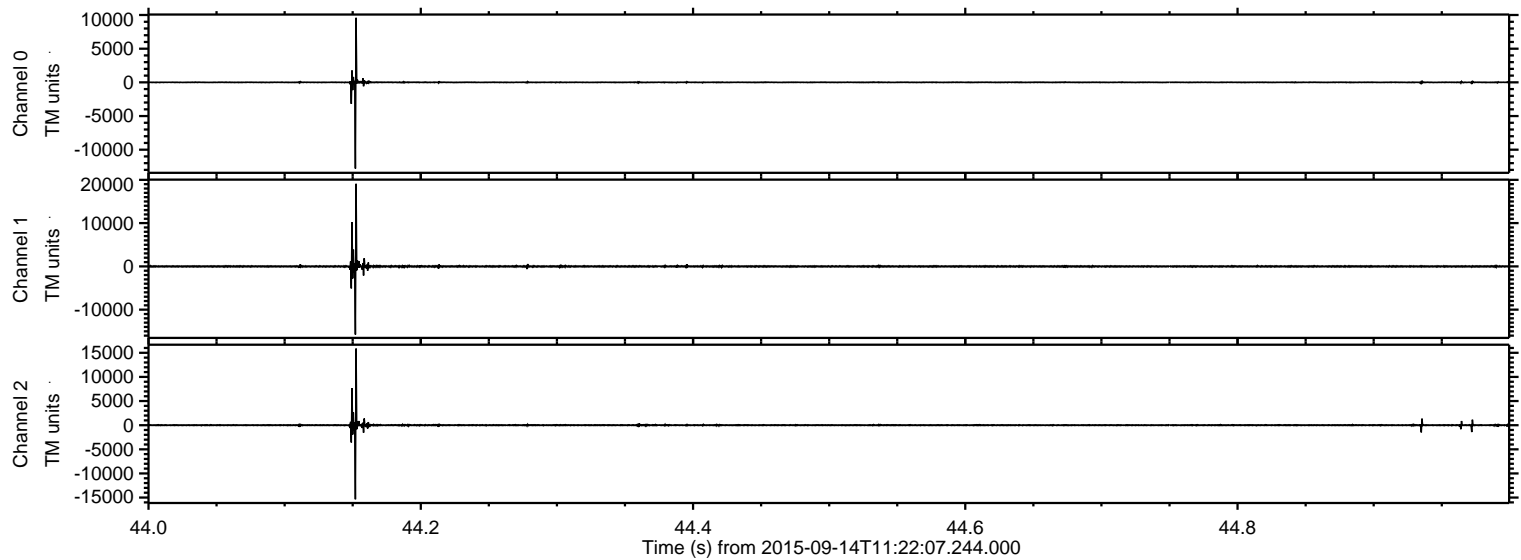


ELMAVAN 3D WAVEFORMS (Measured data sampled at 50 kHz) 51000 packets of 144 samples from 2015-09-14T11:22:07.244.000.

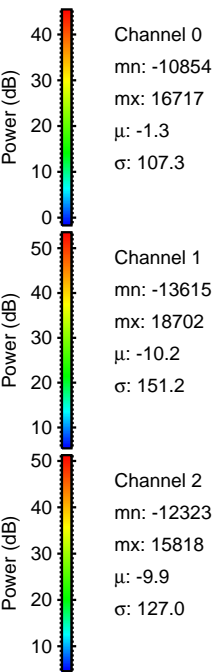
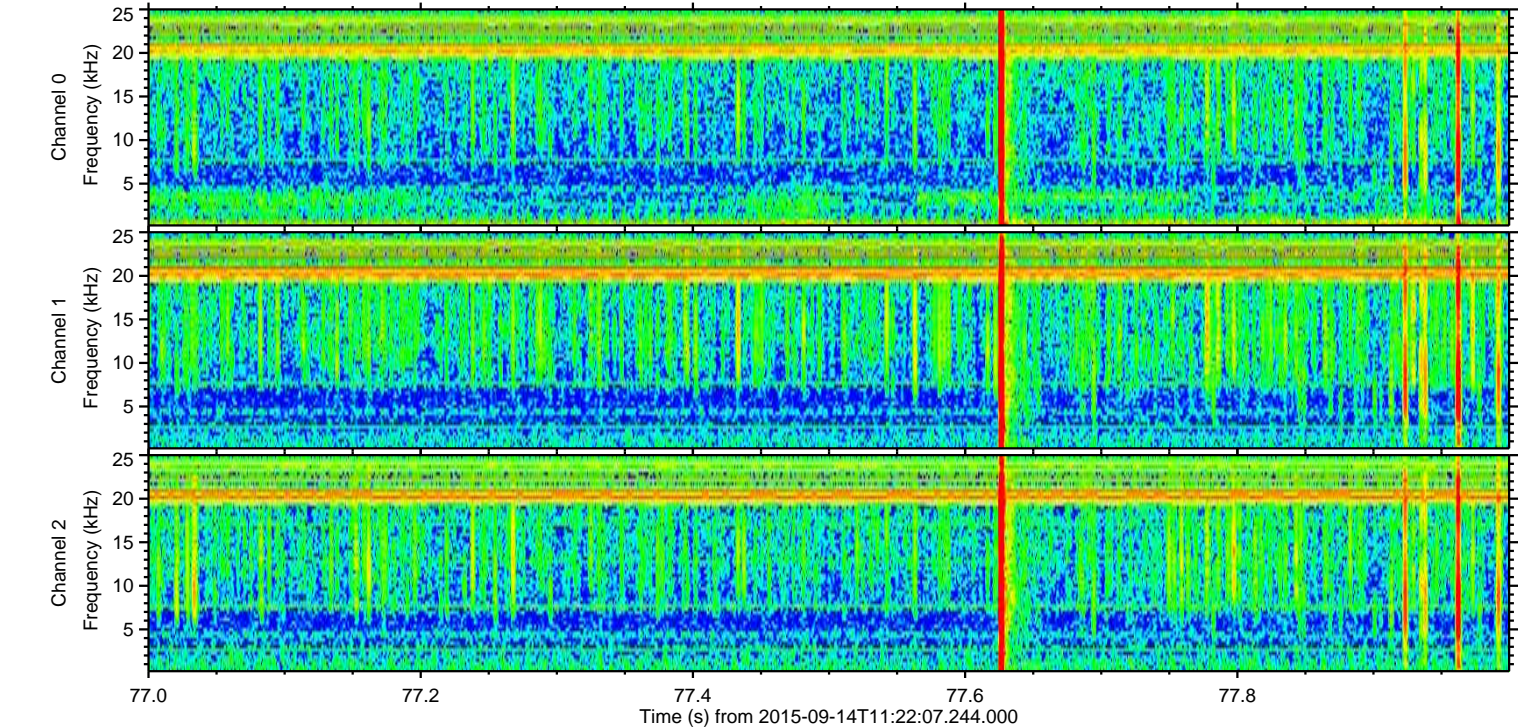
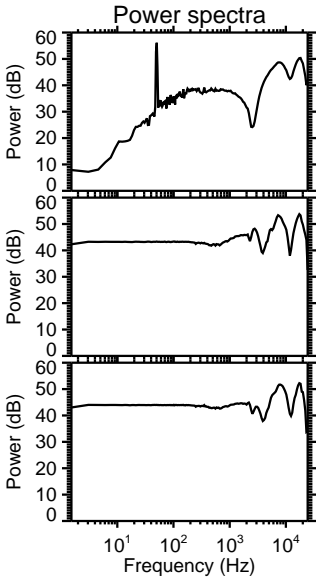
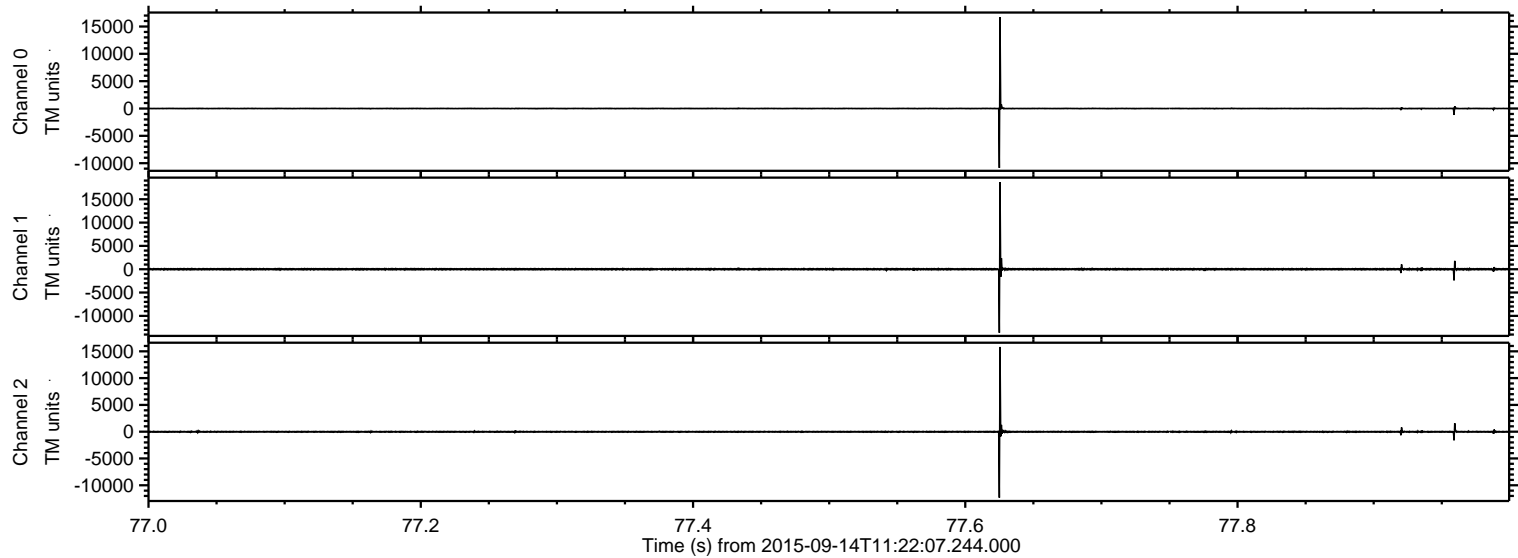
Processed Mon Oct 12 10:25:03 2015 by ELM ver.2012-10-06 from 001__elm20150914_112206__dat00.bin



Processed Mon Oct 12 10:25:21 2015 by ELM ver.2012-10-06 from 001__elm20150914_112206__dat00.bin



Processed Mon Oct 12 10:25:22 2015 by ELM ver.2012-10-06 from 001__elm20150914_112206__dat00.bin



Power spectra

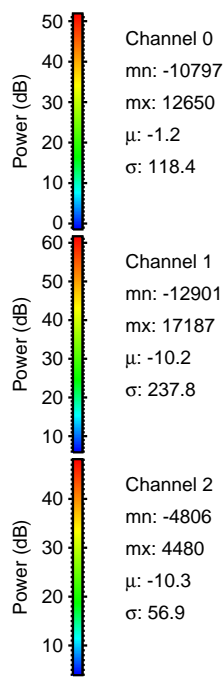
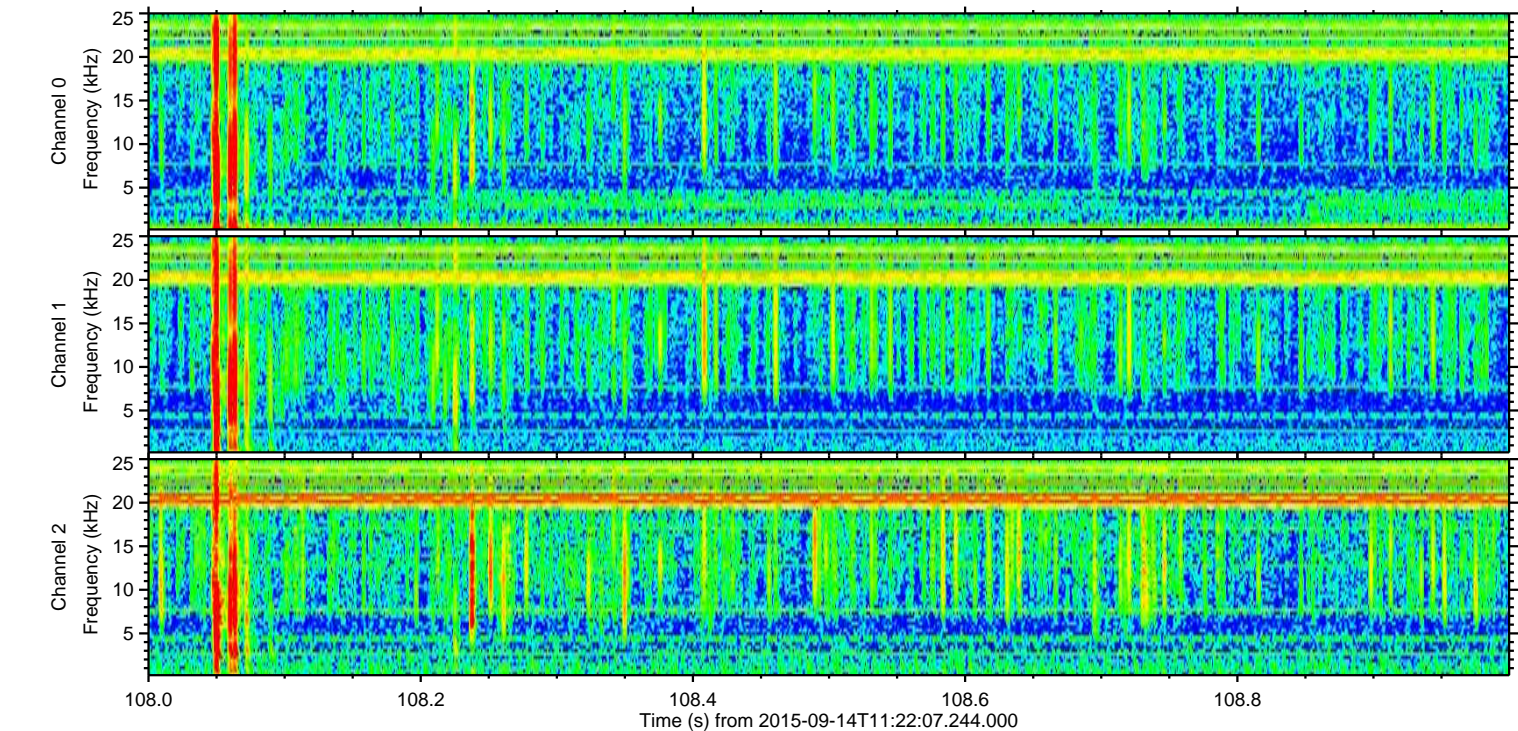
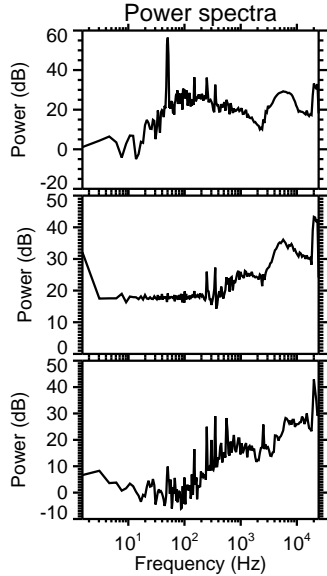
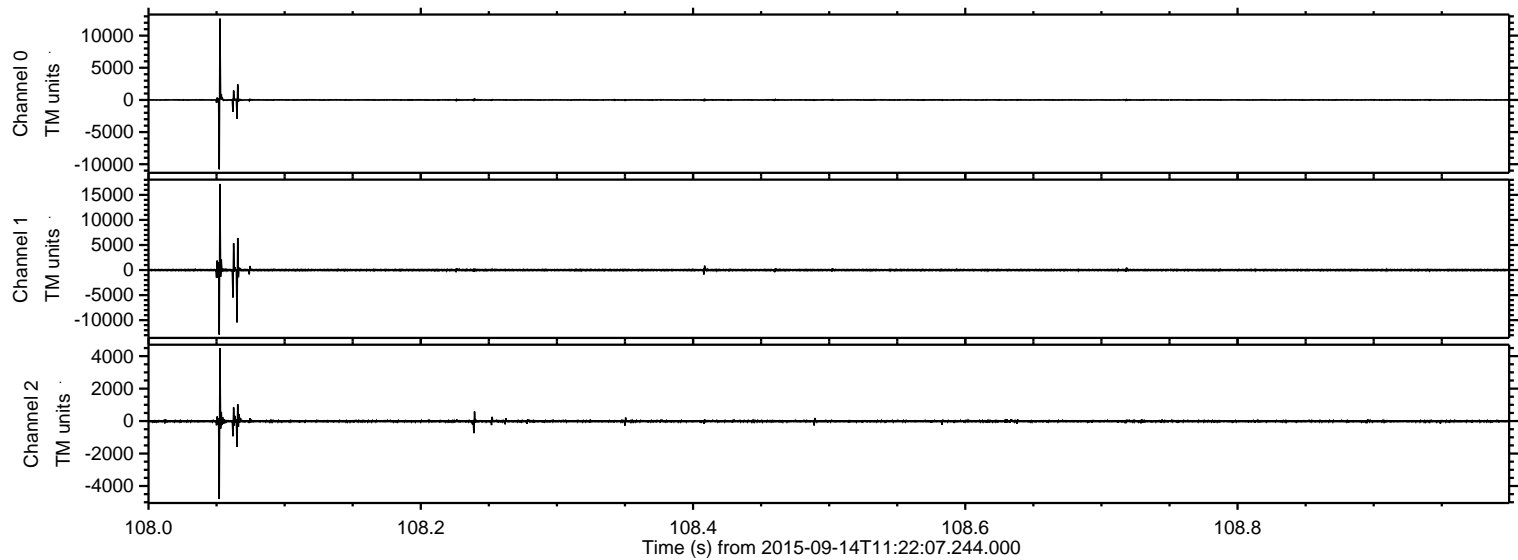
Channel 0
mn: -10854
mx: 16717
 μ : -1.3
 σ : 107.3

Channel 1
mn: -13615
mx: 18702
 μ : -10.2
 σ : 151.2

Channel 2
mn: -12323
mx: 15818
 μ : -9.9
 σ : 127.0

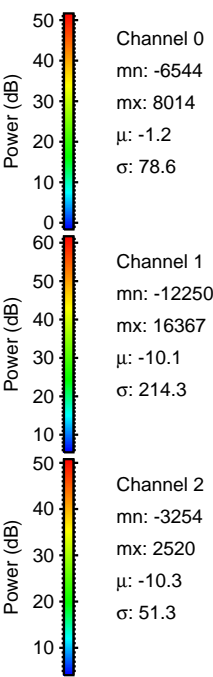
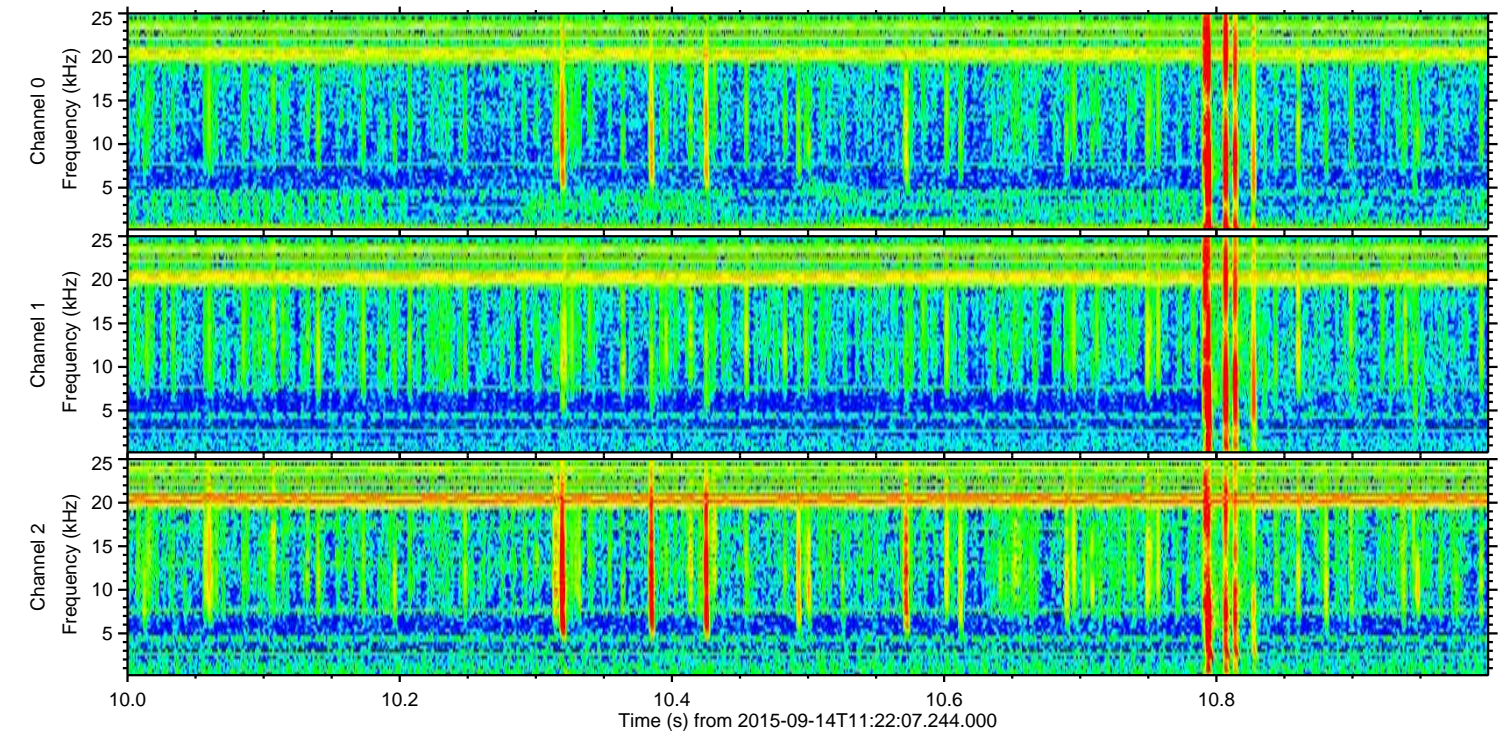
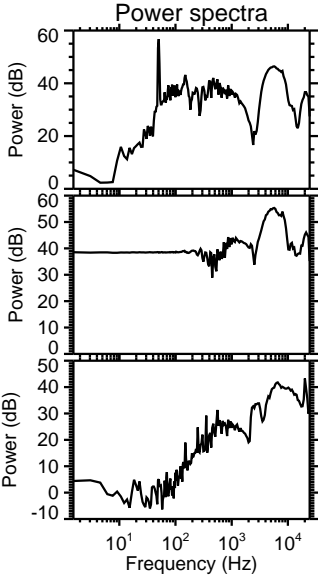
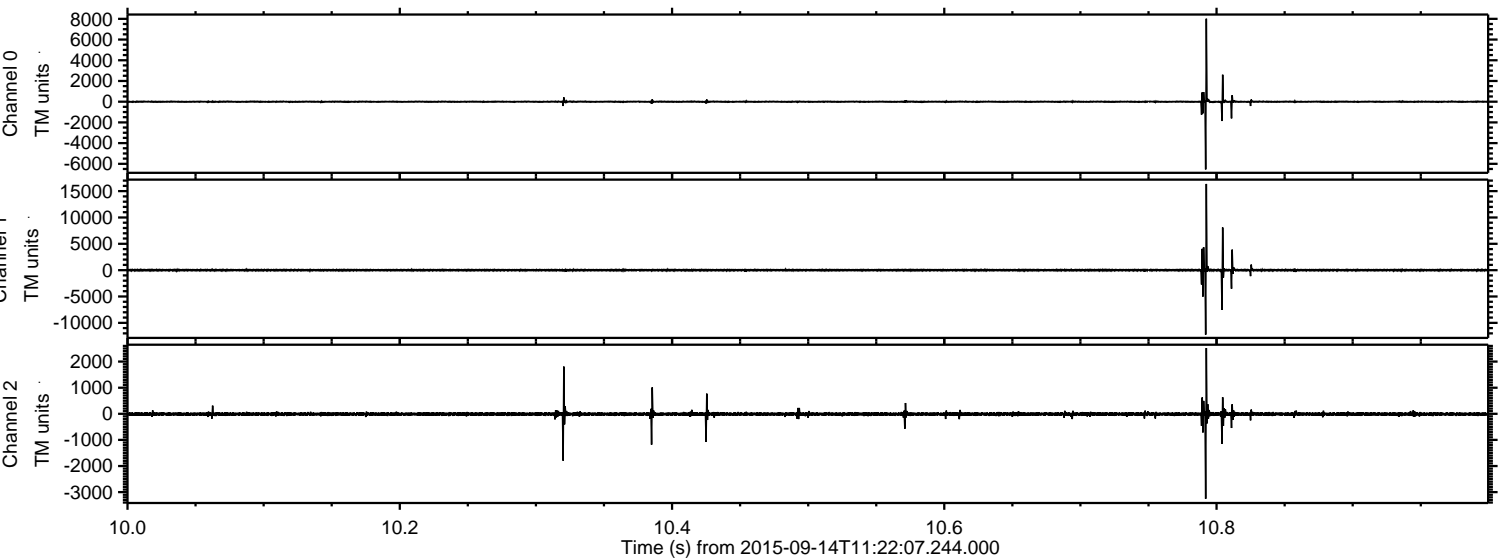
ELMAVAN 3D WAVEFORMS (Measured data sampled at 50 kHz) 51000 packets of 144 samples from 2015-09-14T11:22:07.244.000. Part 109/147

Processed Mon Oct 12 10:25:24 2015 by ELM ver.2012-10-06 from 001__elm20150914_112206__dat00.bin



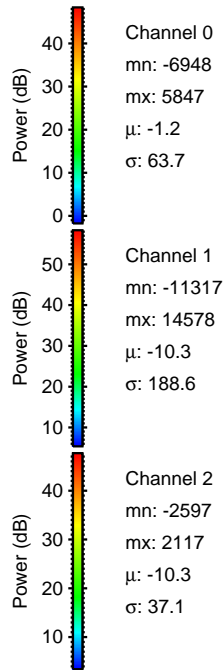
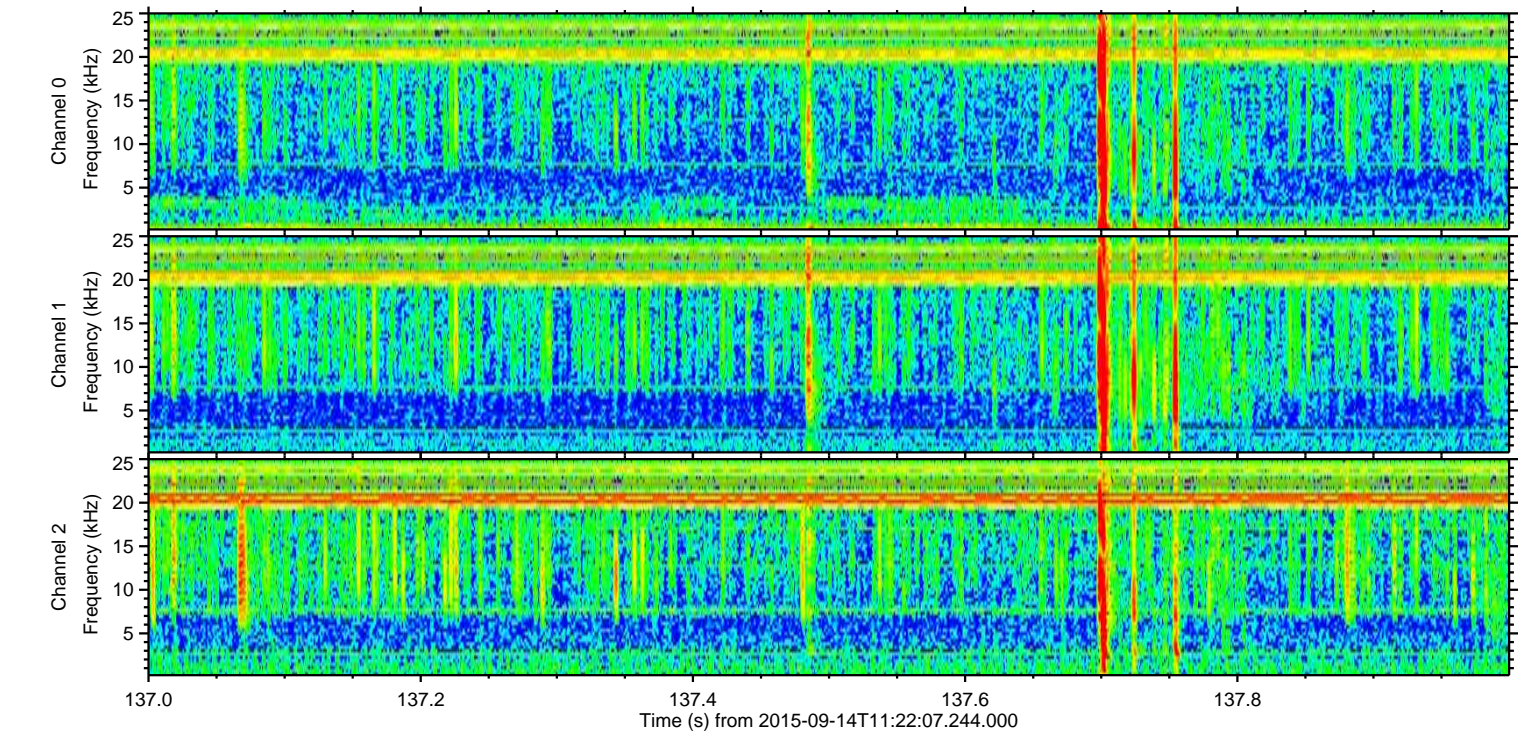
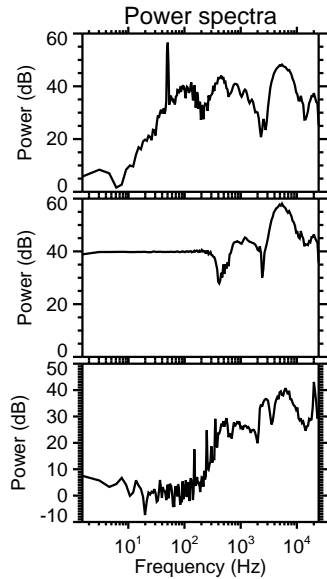
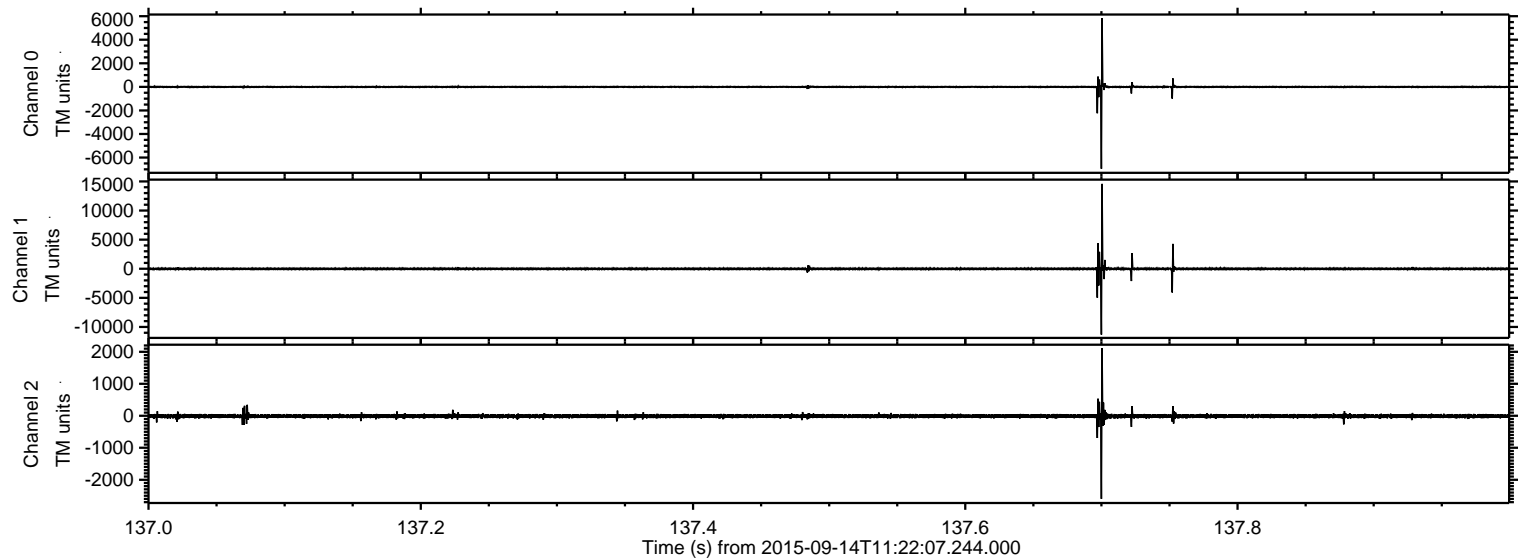
ELMAVAN 3D WAVEFORMS (Measured data sampled at 50 kHz) 51000 packets of 144 samples from 2015-09-14T11:22:07.244.000. Part 11/147

Processed Mon Oct 12 10:25:25 2015 by ELM ver.2012-10-06 from 001__elm20150914_112206__dat00.bin

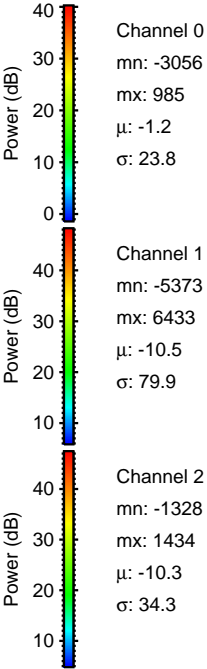
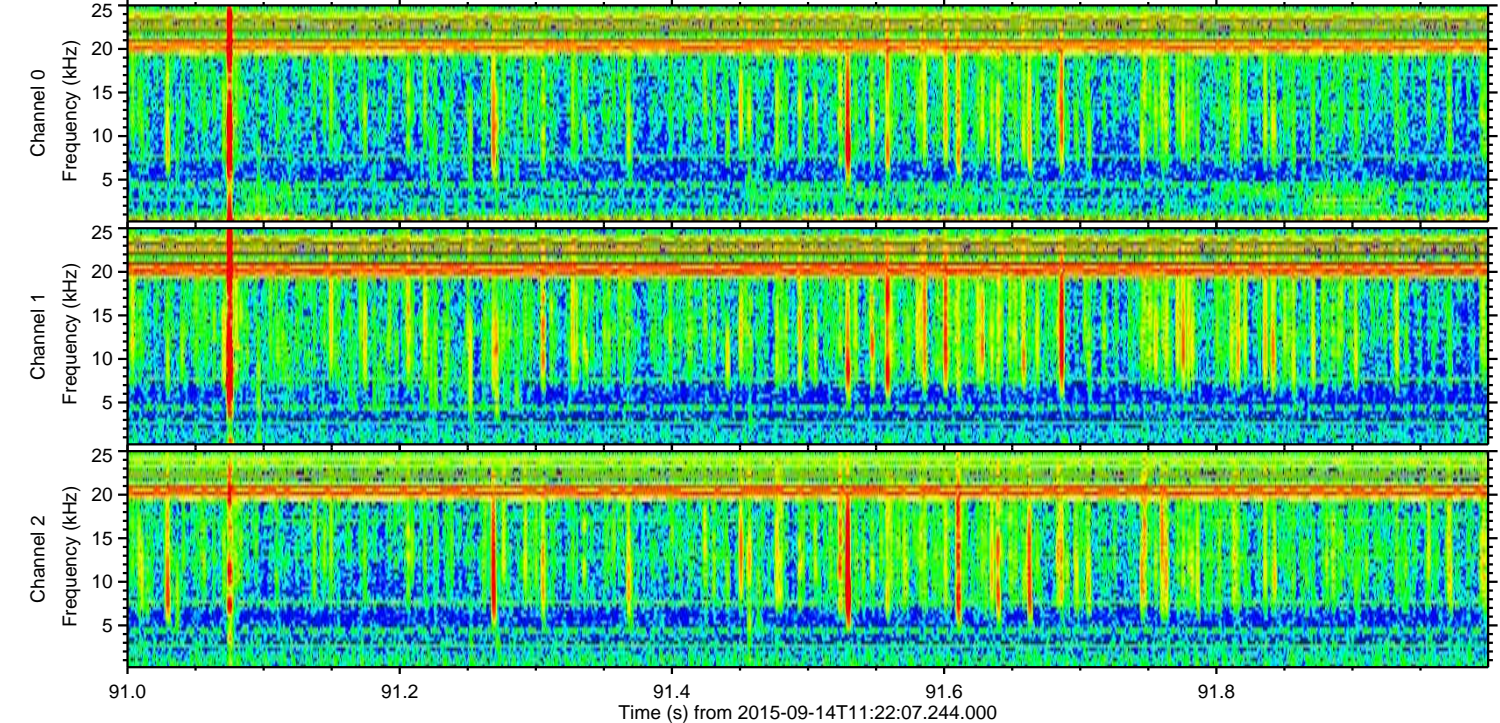
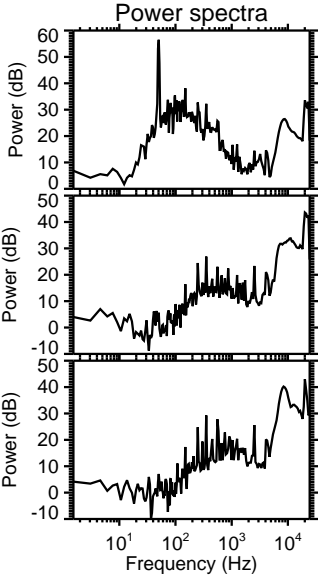
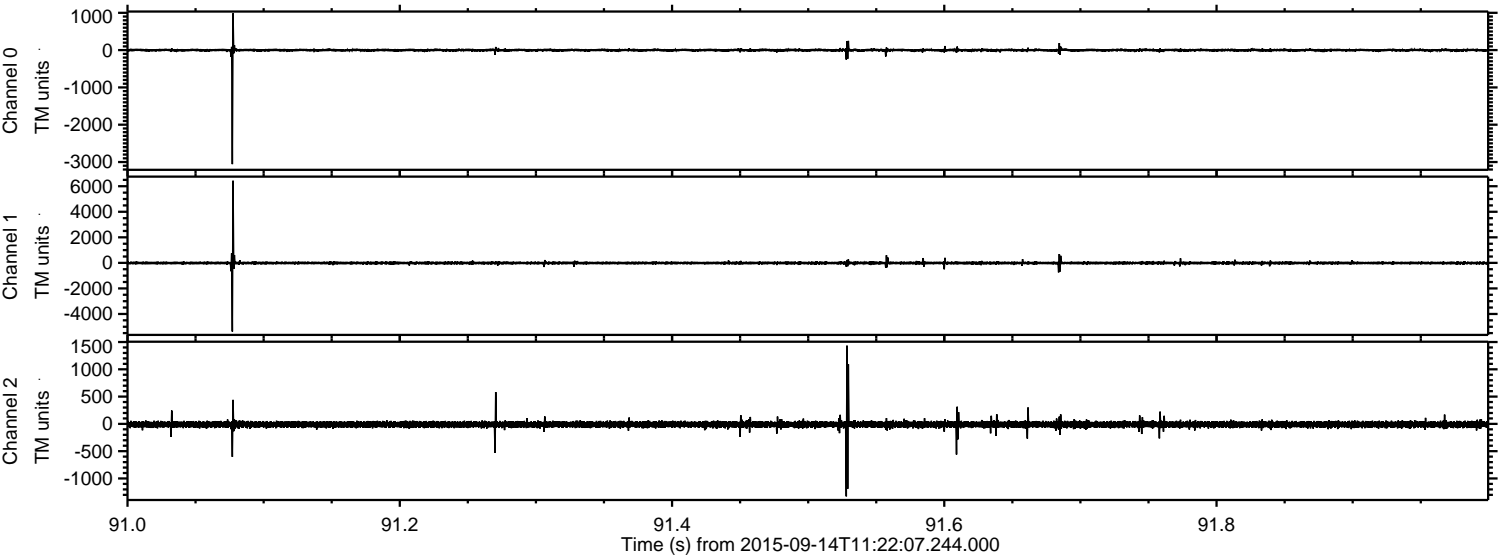


ELMAVAN 3D WAVEFORMS (Measured data sampled at 50 kHz) 51000 packets of 144 samples from 2015-09-14T11:22:07.244.000. Part 138/147

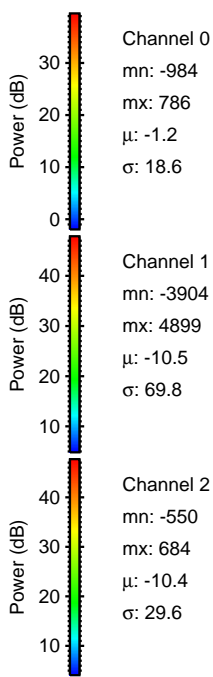
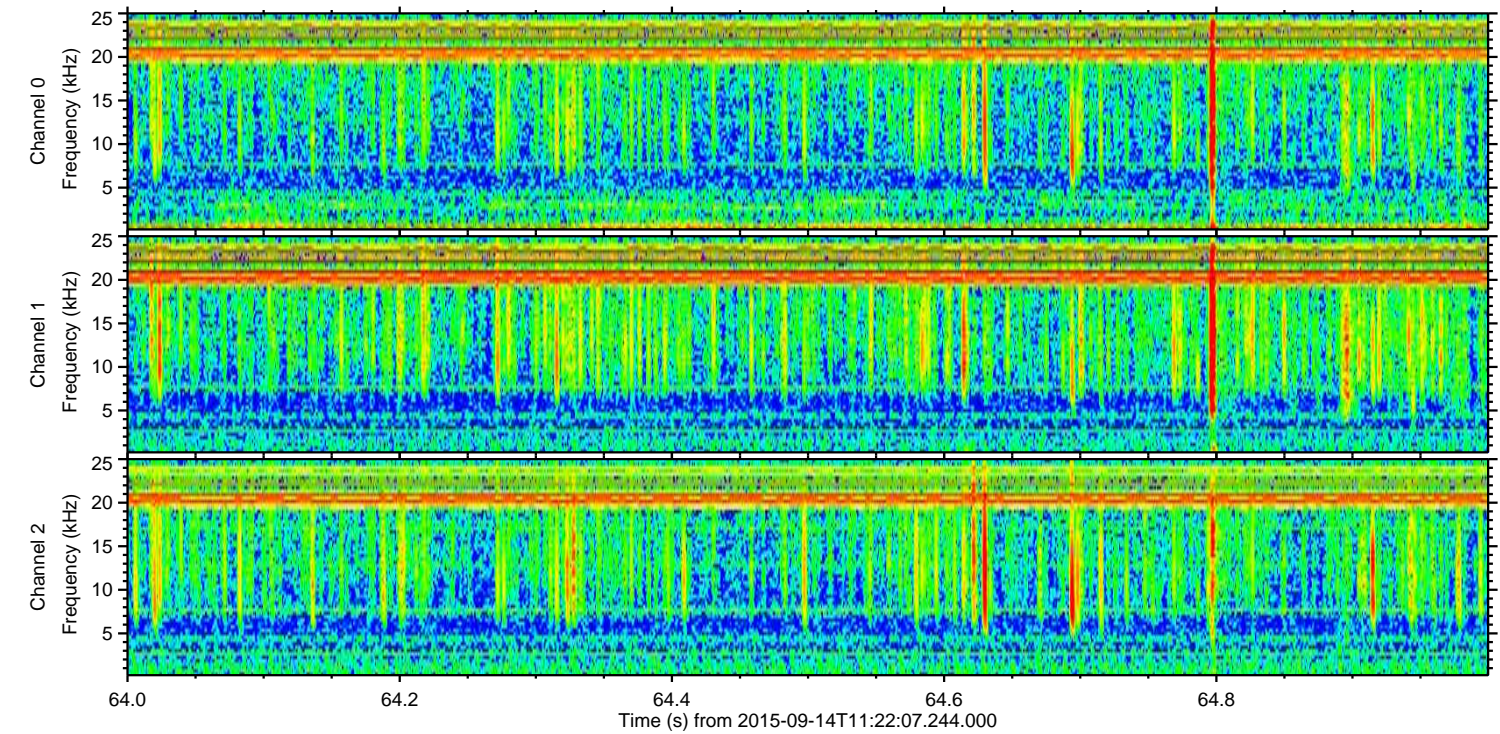
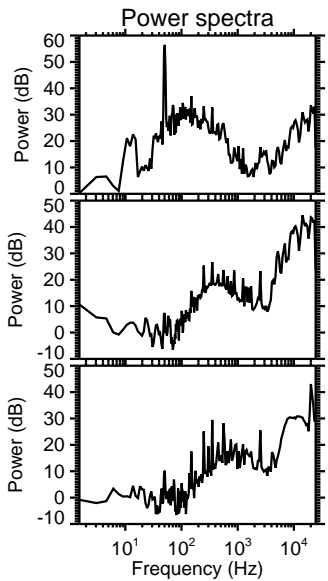
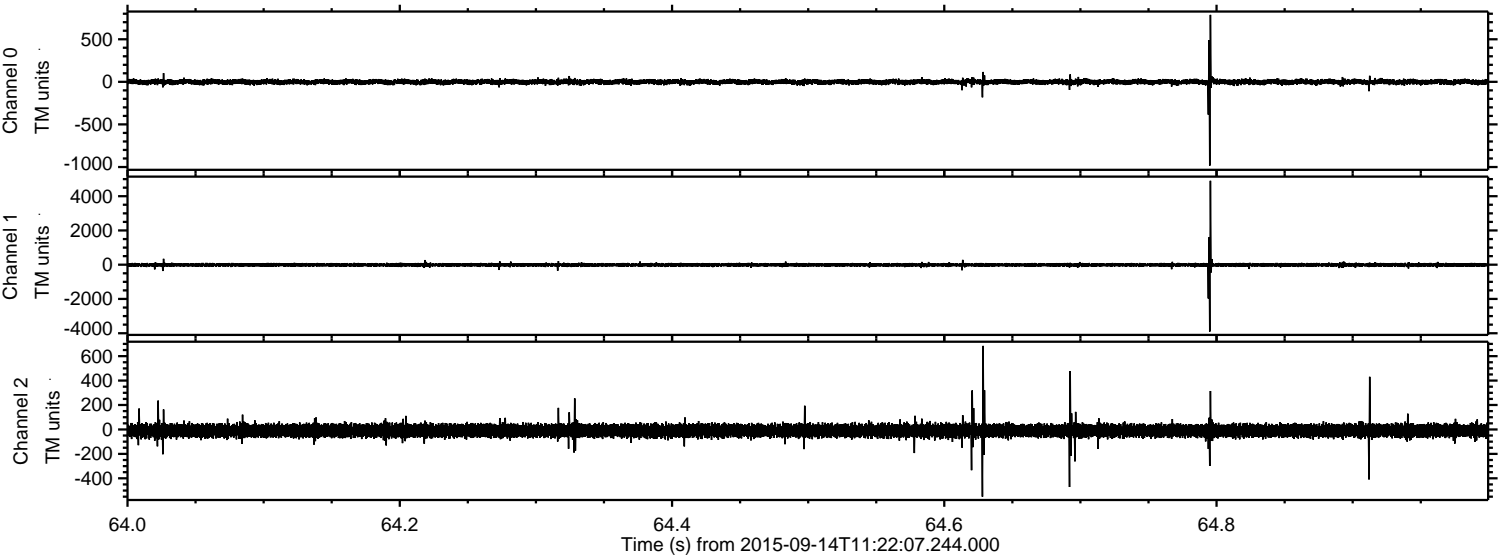
Processed Mon Oct 12 10:25:26 2015 by ELM ver.2012-10-06 from 001__elm20150914_112206__dat00.bin



Processed Mon Oct 12 10:25:27 2015 by ELM ver.2012-10-06 from 001__elm20150914_112206__dat00.bin



Processed Mon Oct 12 10:25:28 2015 by ELM ver.2012-10-06 from 001__elm20150914_112206__dat00.bin

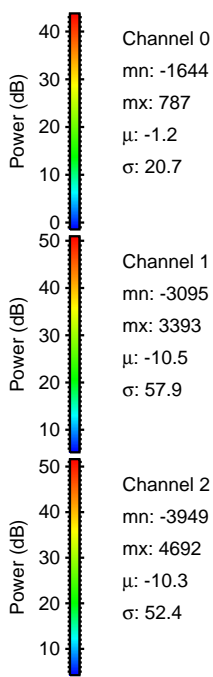
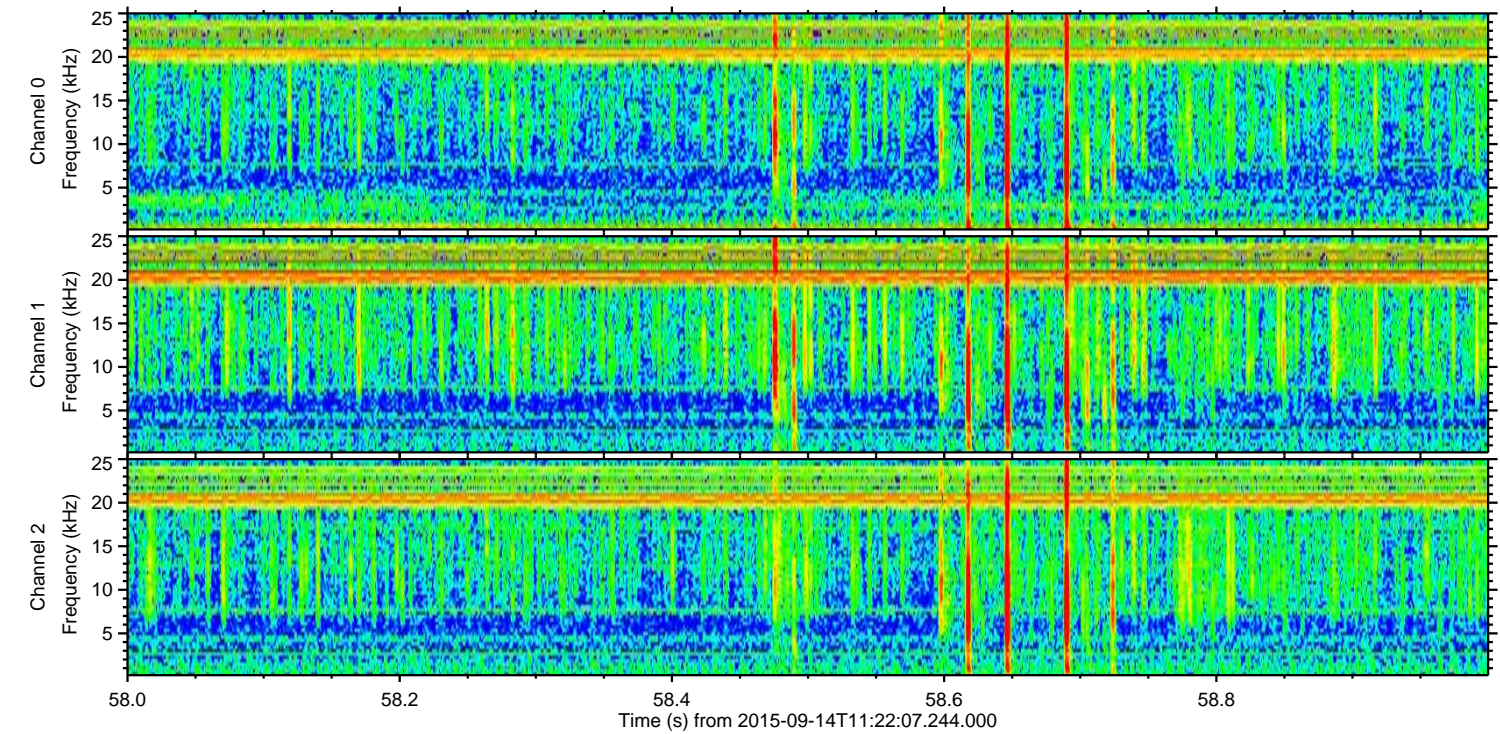
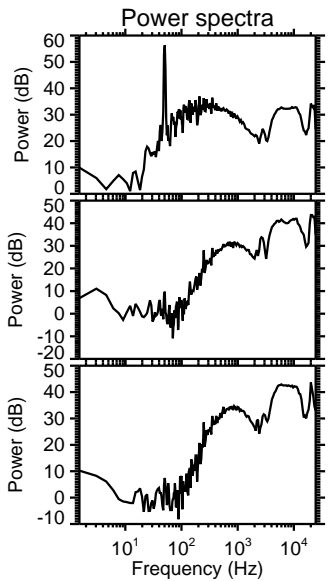
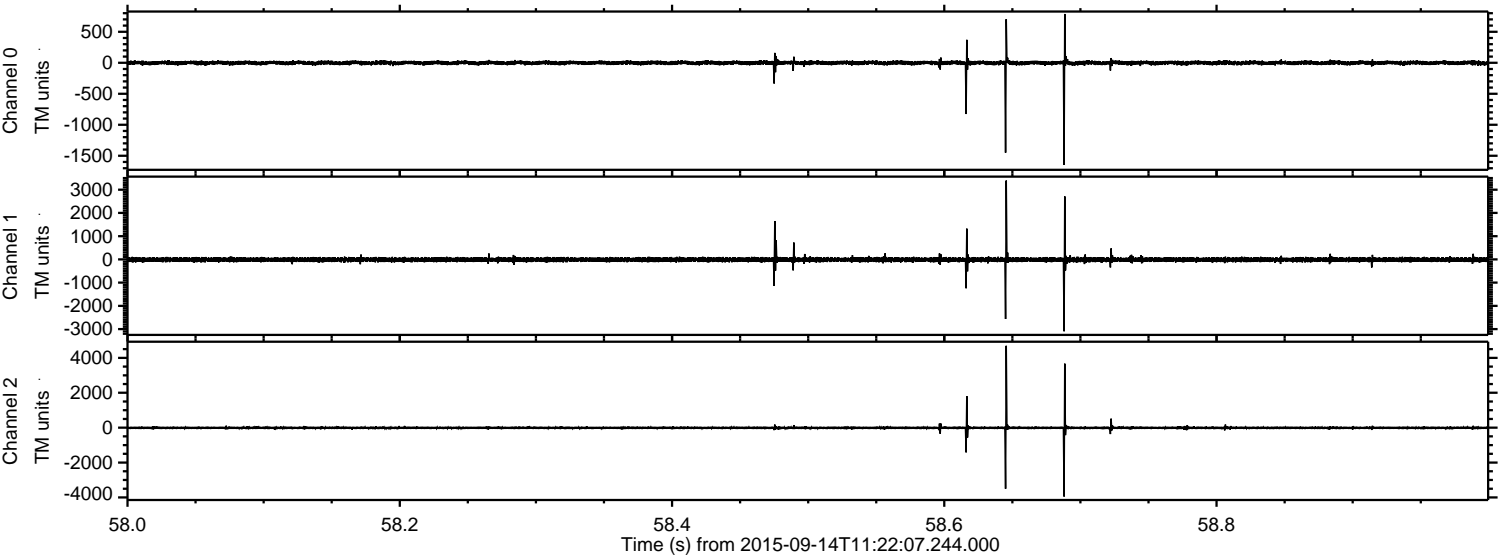


Channel 0
mn: -984
mx: 786
 μ : -1.2
 σ : 18.6

Channel 1
mn: -3904
mx: 4899
 μ : -10.5
 σ : 69.8

Channel 2
mn: -550
mx: 684
 μ : -10.4
 σ : 29.6

Processed Mon Oct 12 10:25:29 2015 by ELM ver.2012-10-06 from 001__elm20150914_112206__dat00.bin

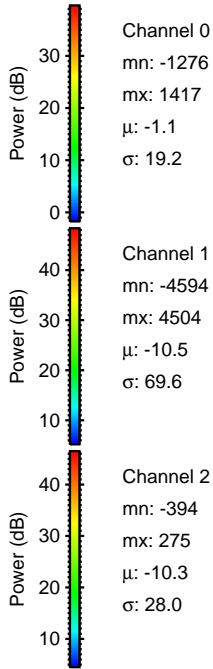
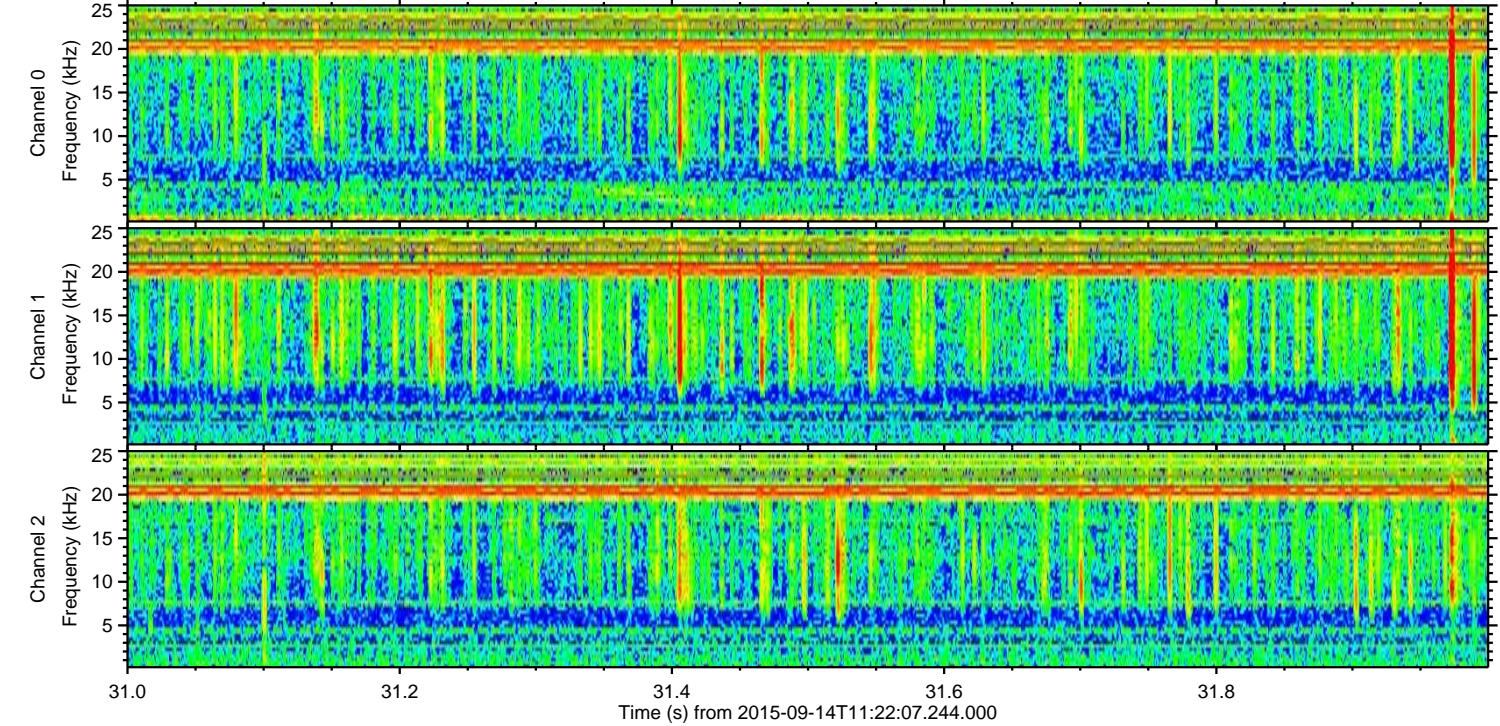
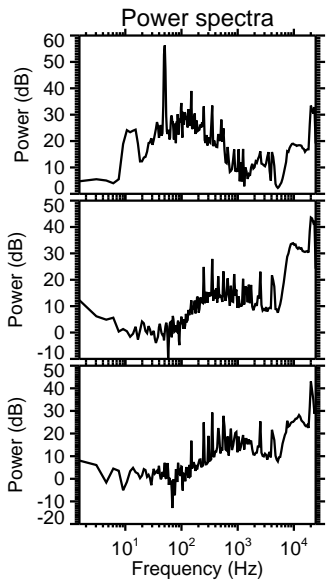
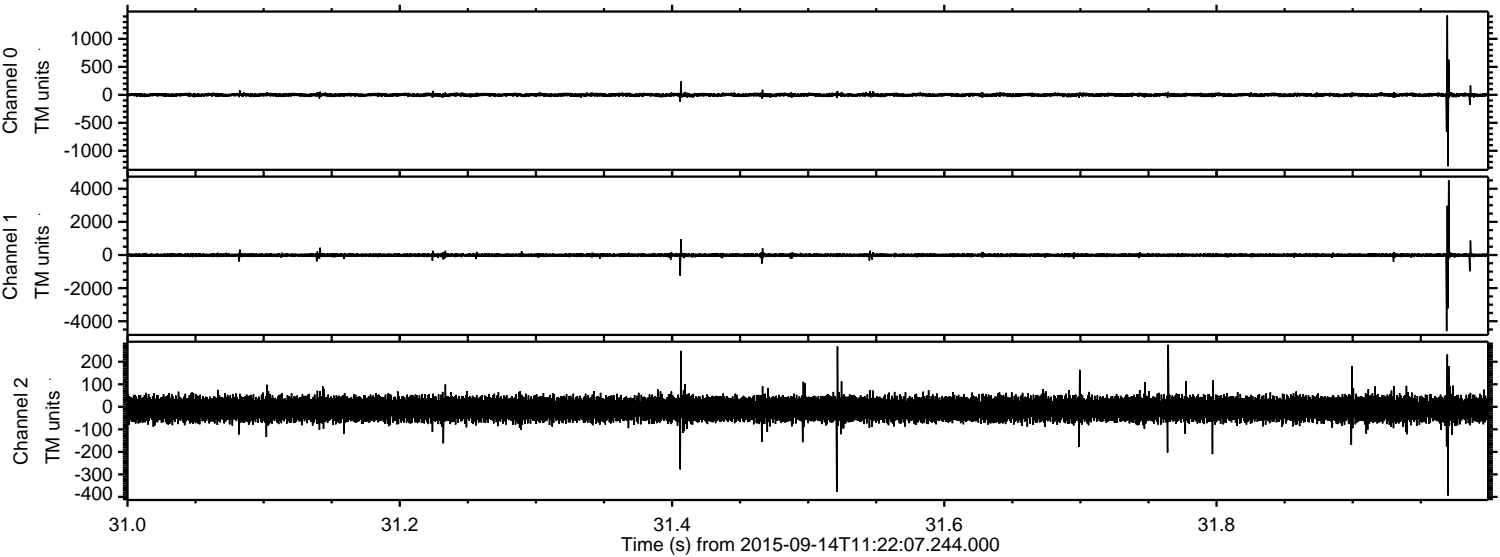


Channel 0
mn: -1644
mx: 787
 μ : -1.2
 σ : 20.7

Channel 1
mn: -3095
mx: 3393
 μ : -10.5
 σ : 57.9

Channel 2
mn: -3949
mx: 4692
 μ : -10.3
 σ : 52.4

Processed Mon Oct 12 10:25:30 2015 by ELM ver.2012-10-06 from 001__elm20150914_112206__dat00.bin



Channel 0
mn: -1276
mx: 1417
 μ : -1.1
 σ : 19.2

Channel 1
mn: -4594
mx: 4504
 μ : -10.5
 σ : 69.6

Channel 2
mn: -394
mx: 275
 μ : -10.3
 σ : 28.0

Processed Mon Oct 12 10:25:31 2015 by ELM ver.2012-10-06 from 001__elm20150914_112206__dat00.bin

