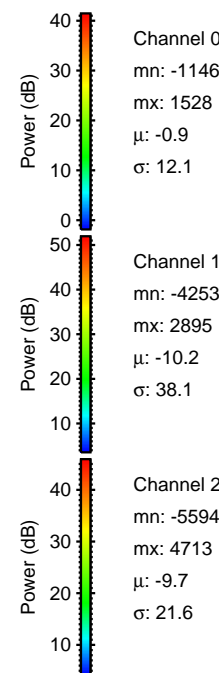
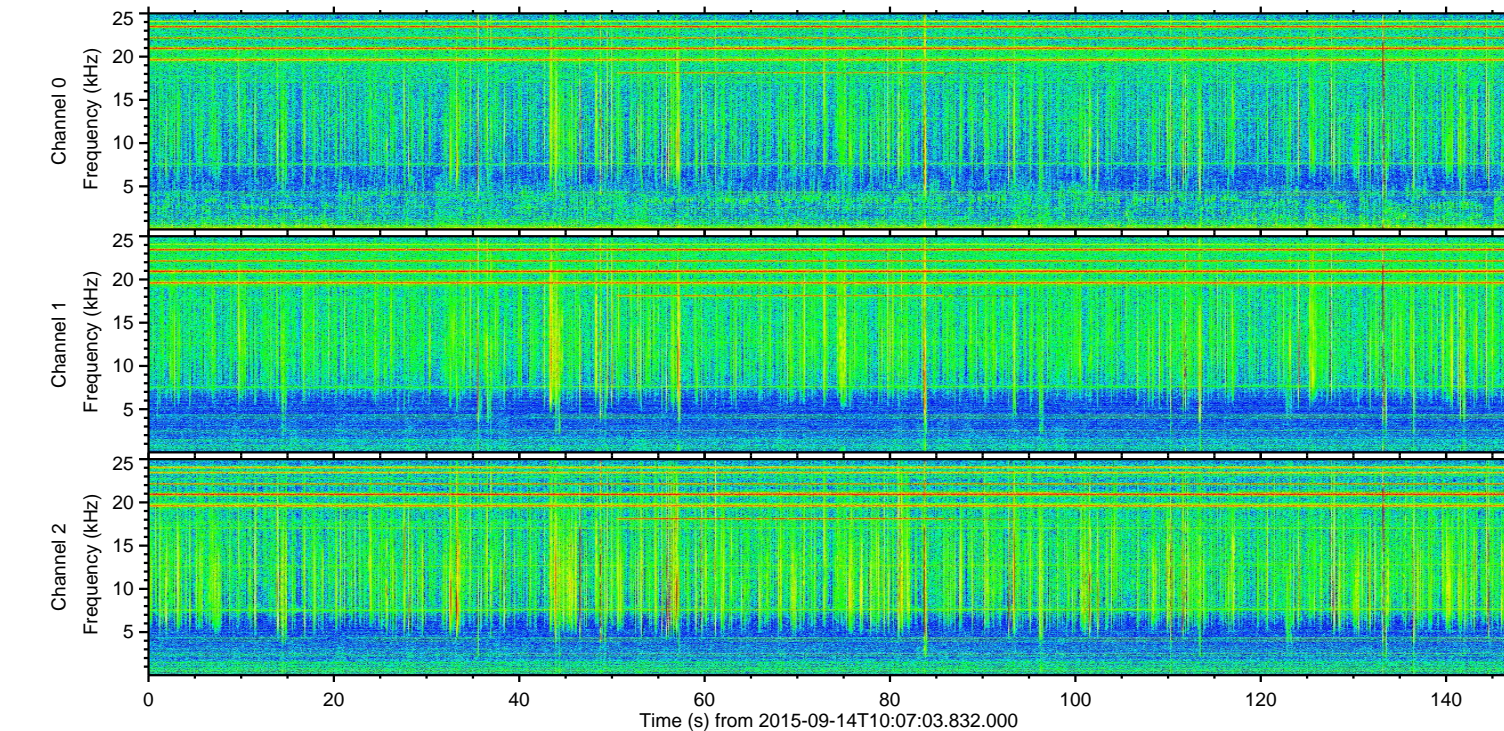
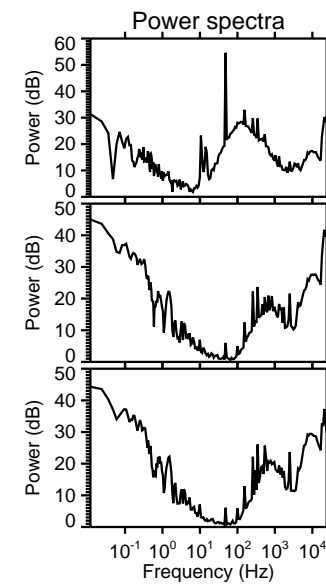
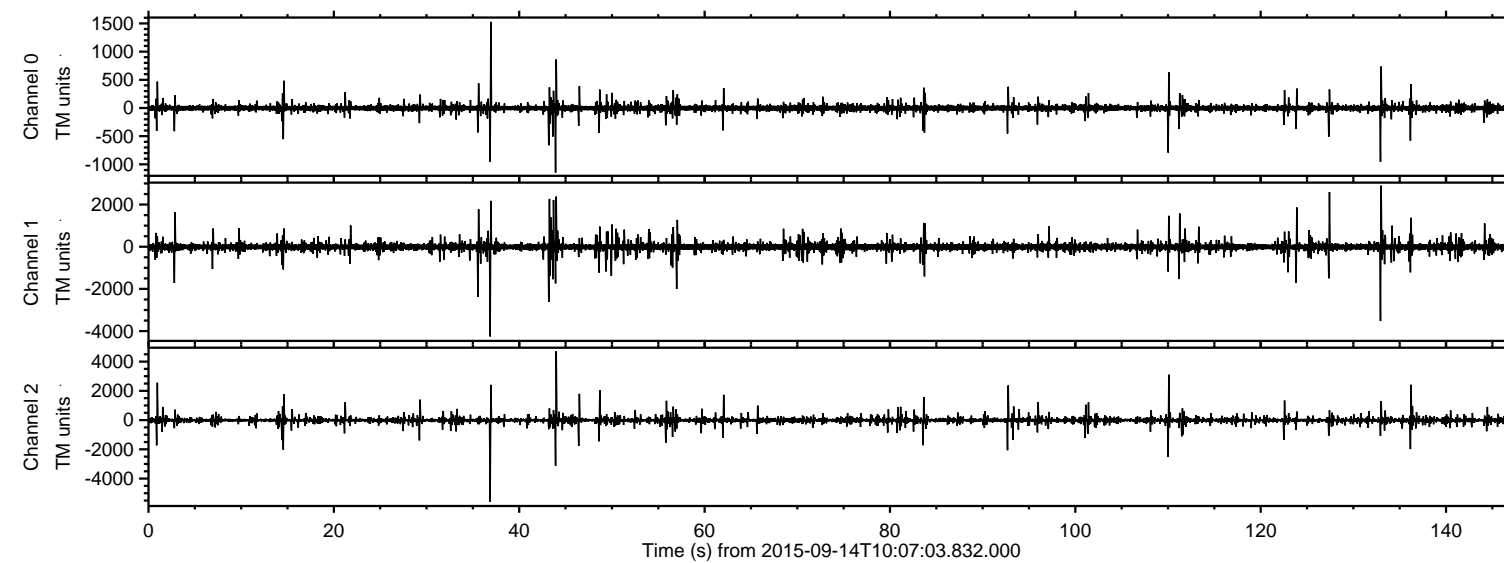
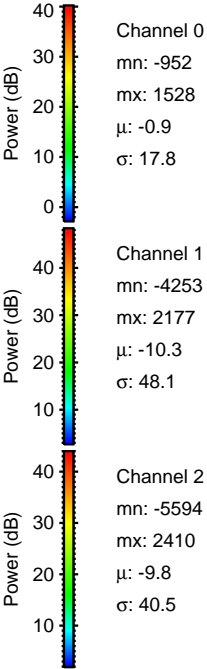
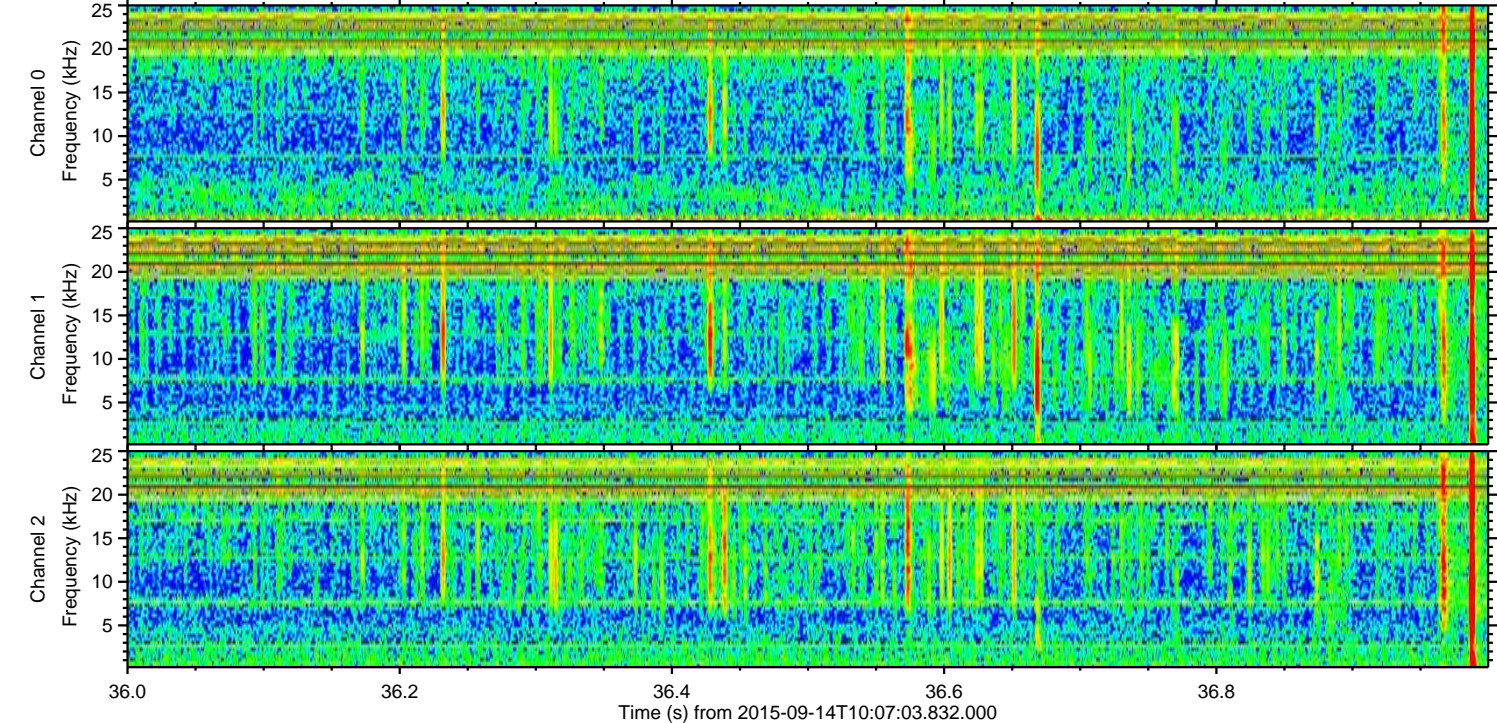
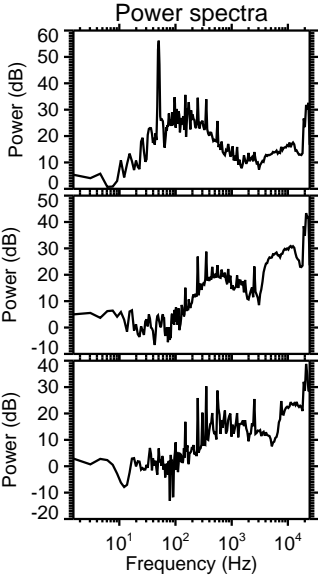
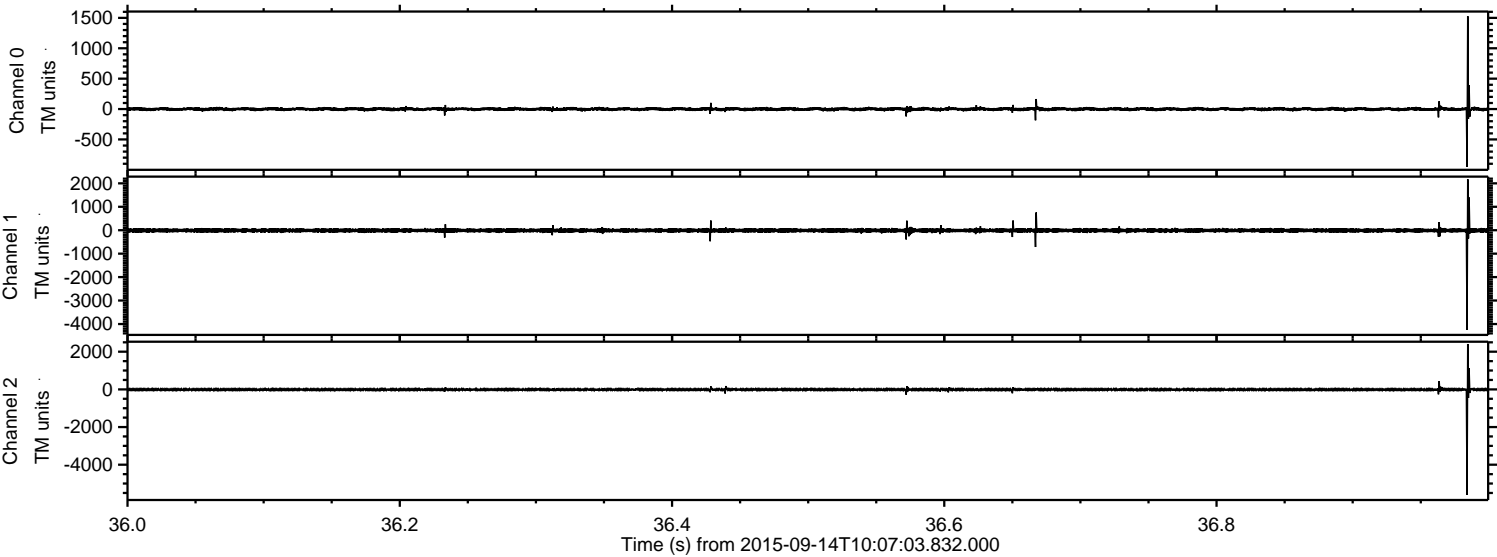


ELMAVAN 3D WAVEFORMS (Measured data sampled at 50 kHz) 51000 packets of 144 samples from 2015-09-14T10:07:03.832.000.

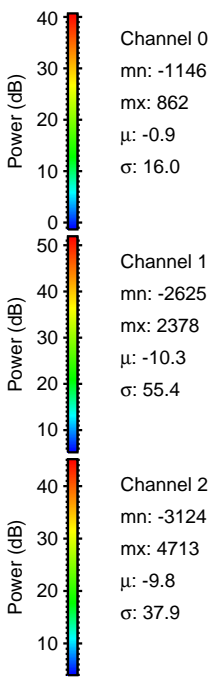
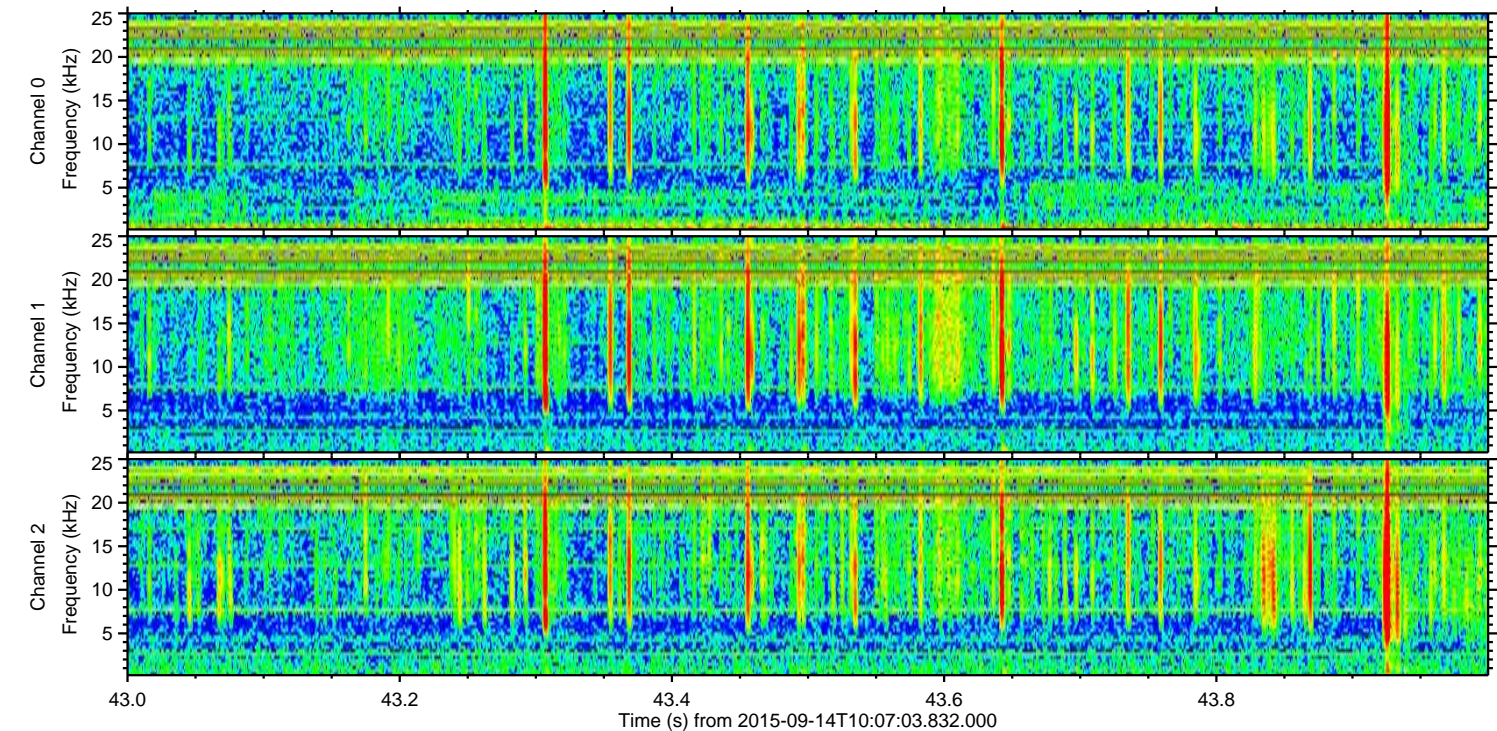
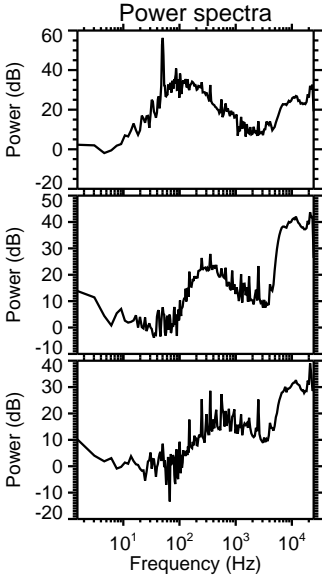
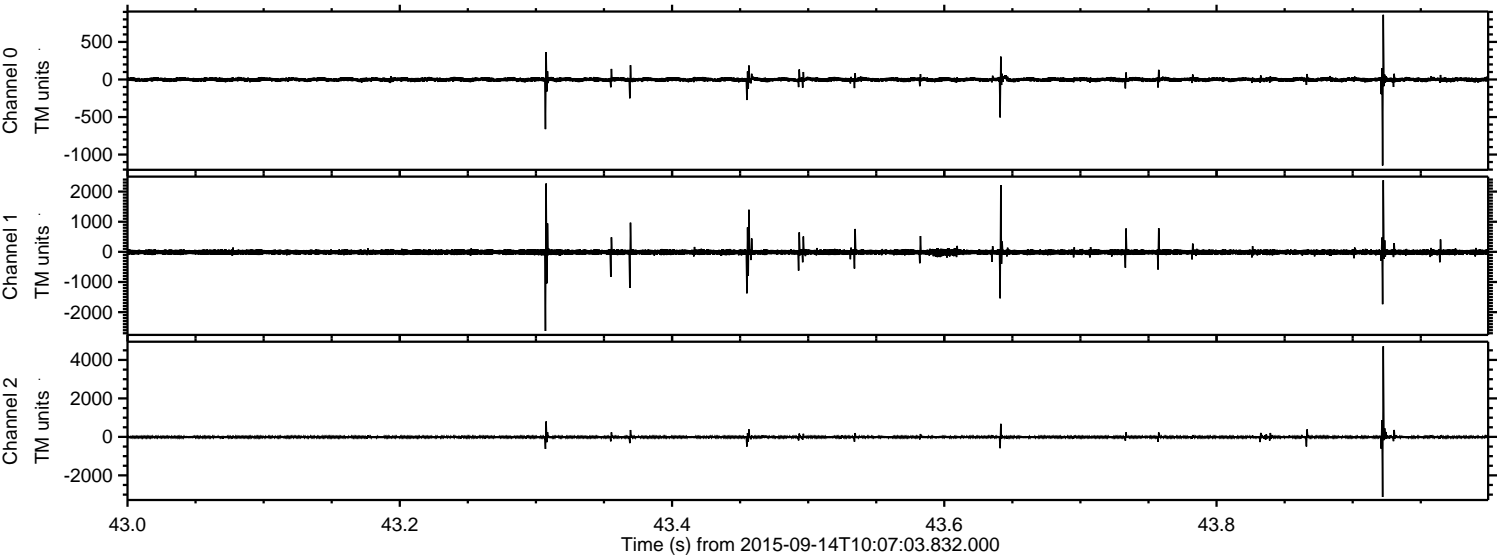
Processed Mon Oct 12 10:03:18 2015 by ELM ver.2012-10-06 from 001__elm20150914_100702__dat00.bin



Processed Mon Oct 12 10:03:33 2015 by ELM ver.2012-10-06 from 001__elm20150914_100702__dat00.bin

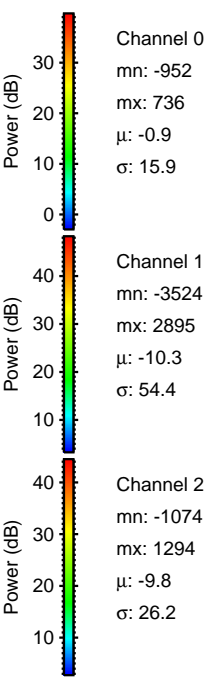
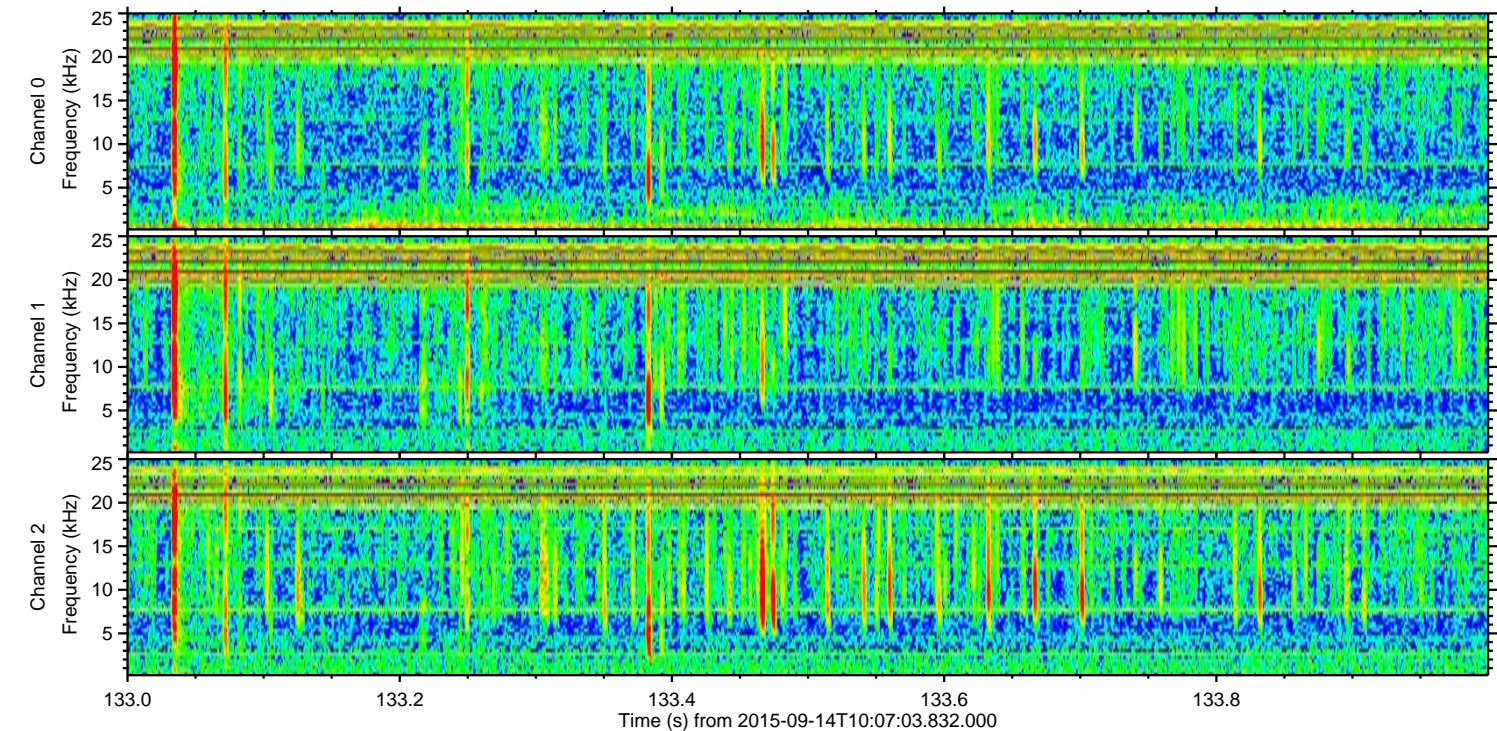
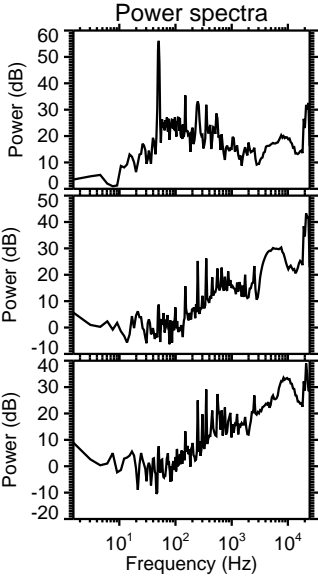
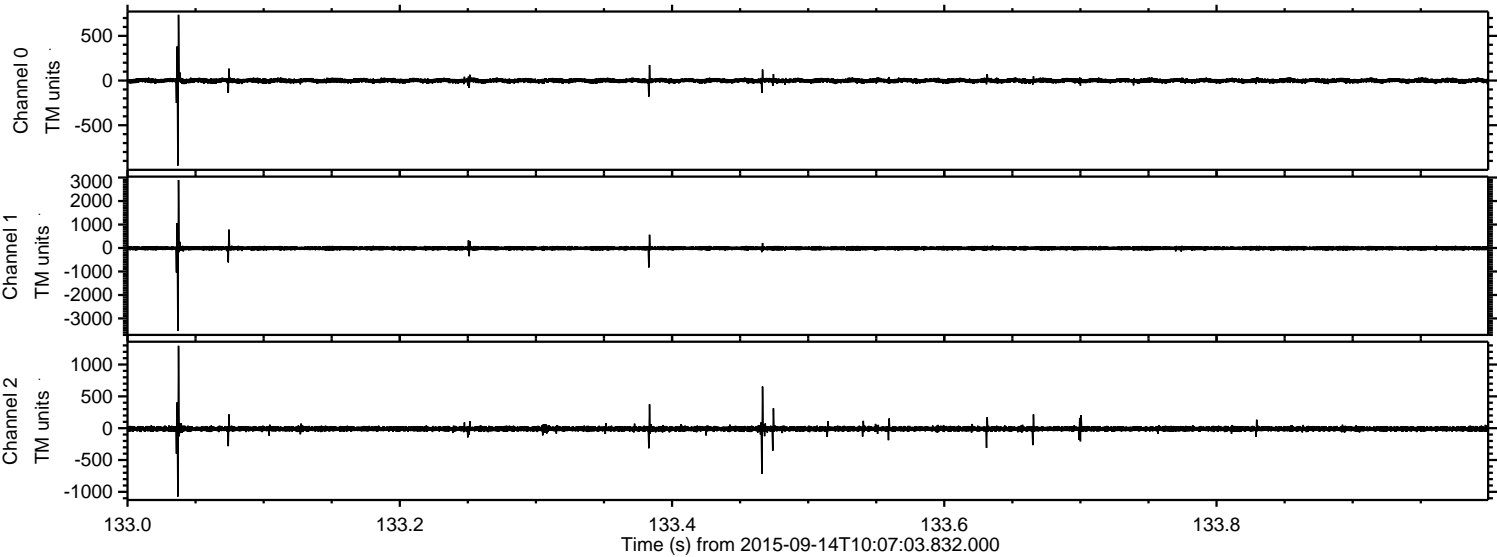


Processed Mon Oct 12 10:03:34 2015 by ELM ver.2012-10-06 from 001__elm20150914_100702__dat00.bin



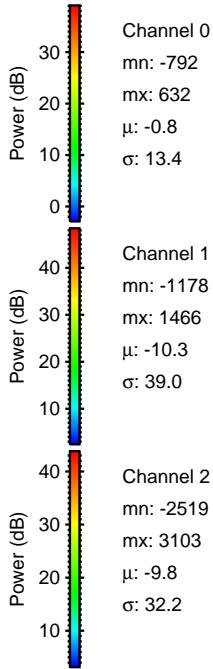
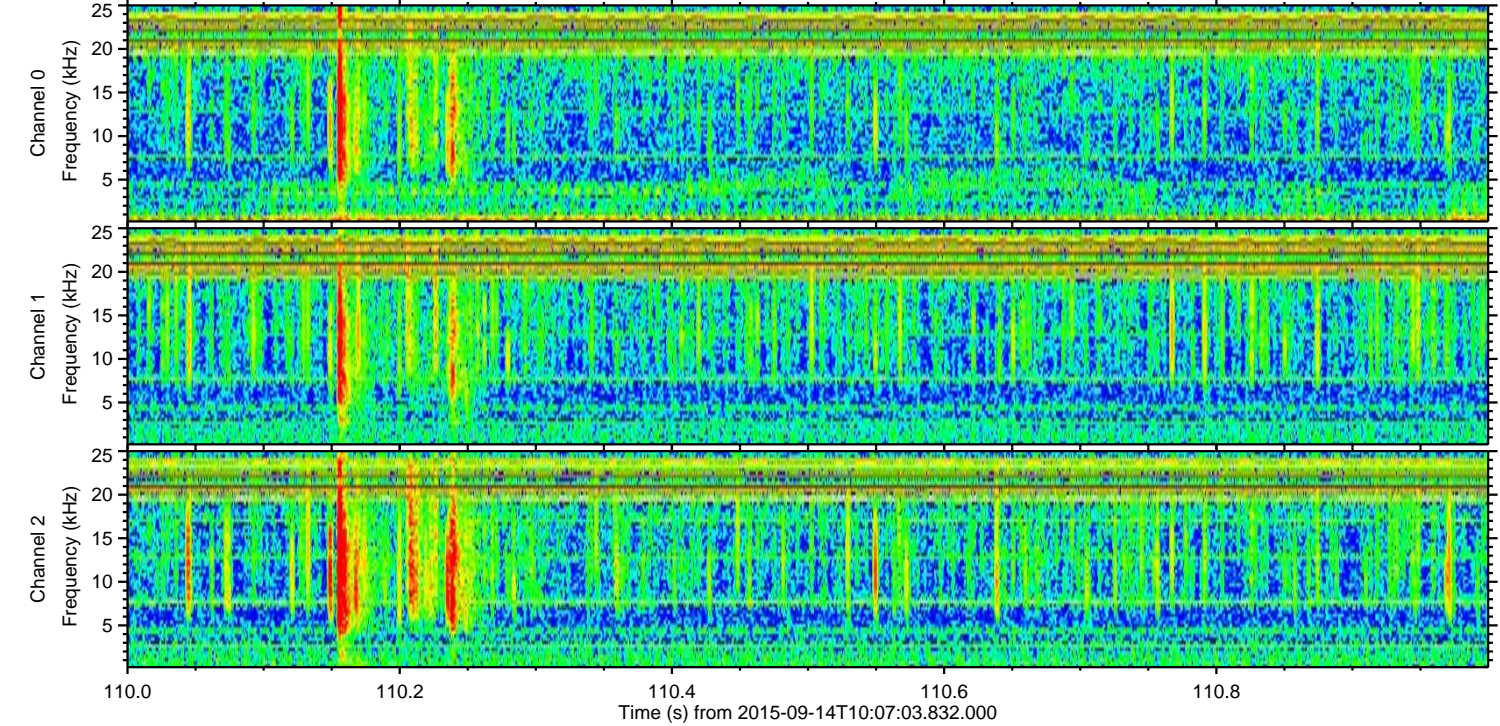
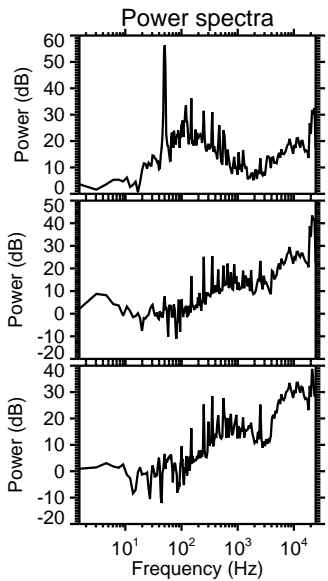
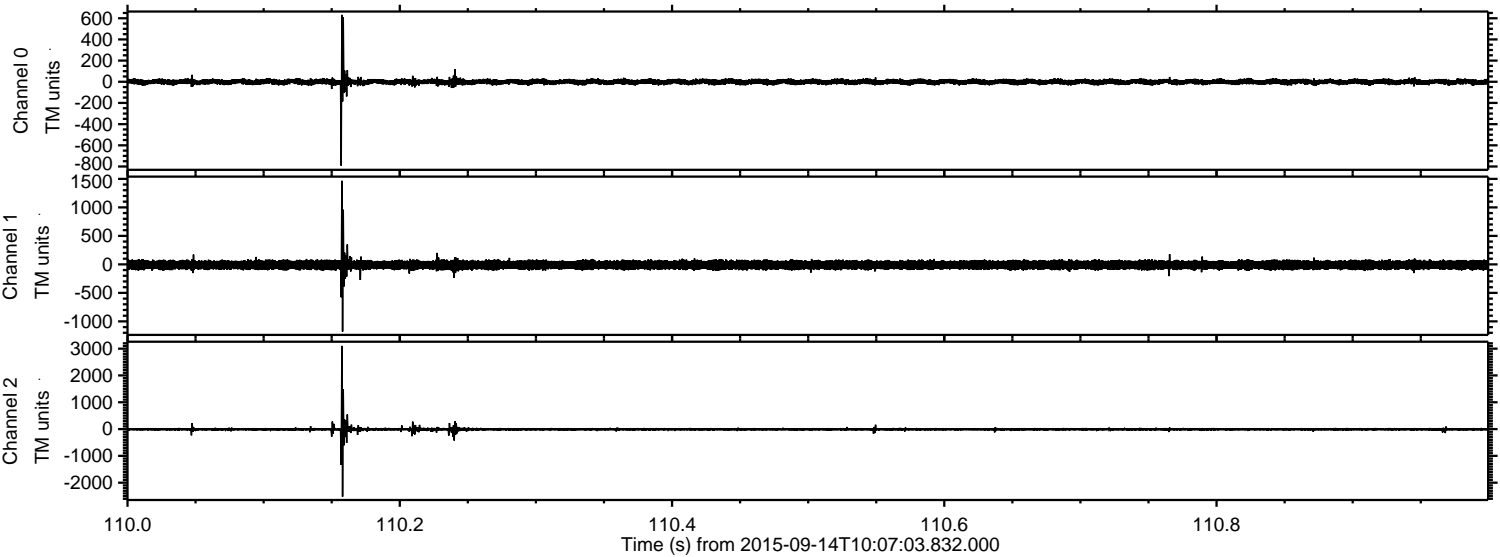
ELMAVAN 3D WAVEFORMS (Measured data sampled at 50 kHz) 51000 packets of 144 samples from 2015-09-14T10:07:03.832.000. Part 134/147

Processed Mon Oct 12 10:03:35 2015 by ELM ver.2012-10-06 from 001__elm20150914_100702__dat00.bin

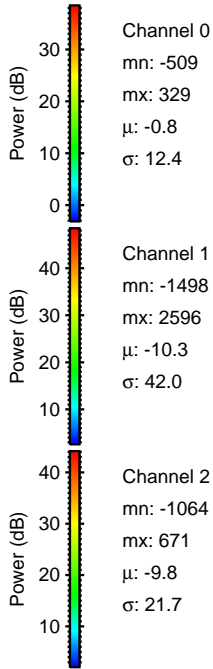
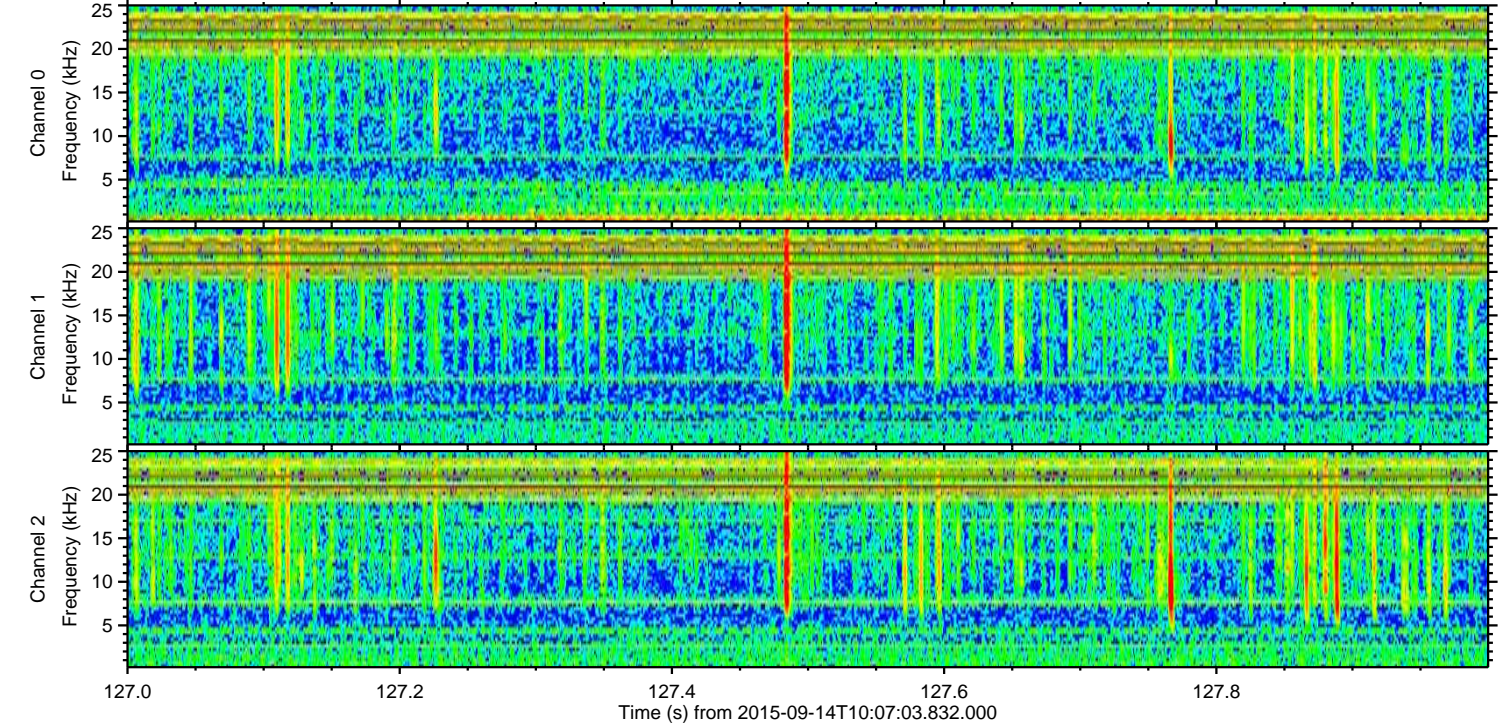
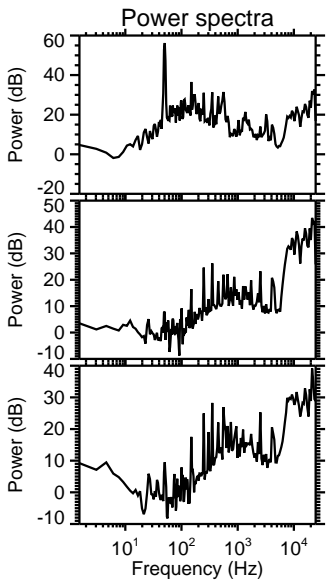
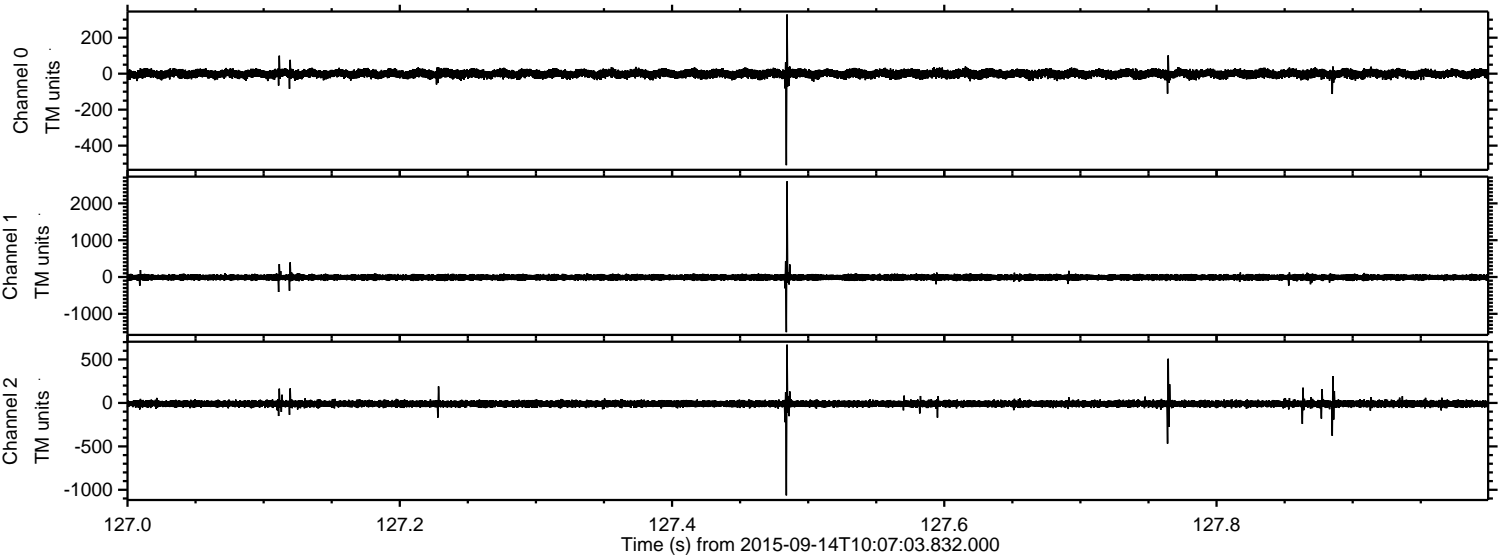


ELMAVAN 3D WAVEFORMS (Measured data sampled at 50 kHz) 51000 packets of 144 samples from 2015-09-14T10:07:03.832.000. Part 111/147

Processed Mon Oct 12 10:03:36 2015 by ELM ver.2012-10-06 from 001__elm20150914_100702__dat00.bin

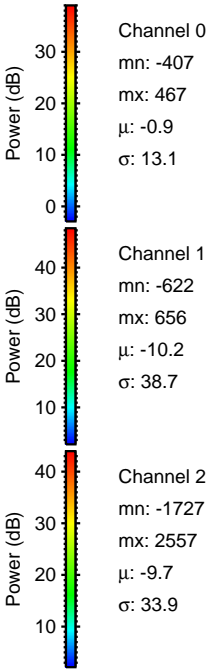
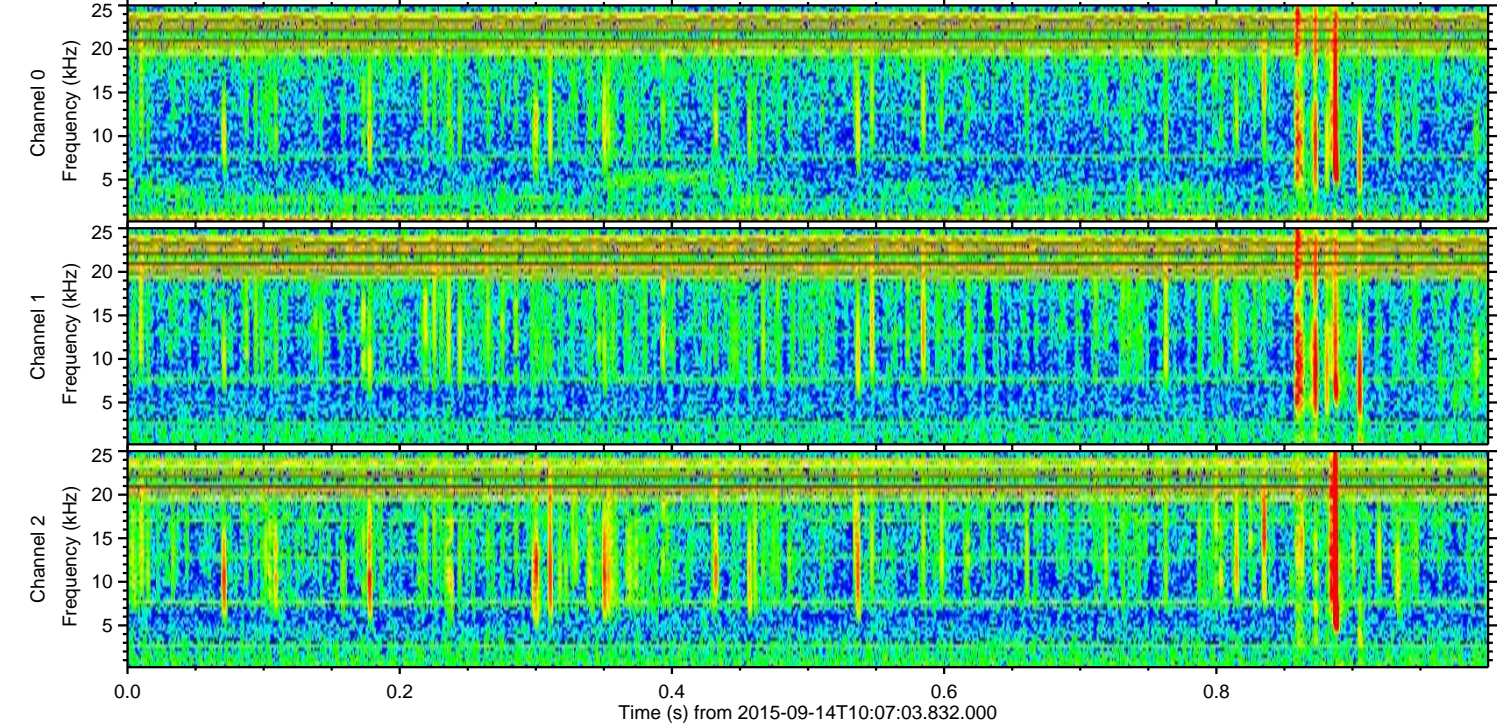
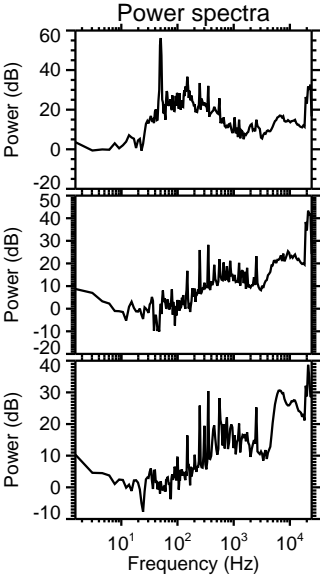
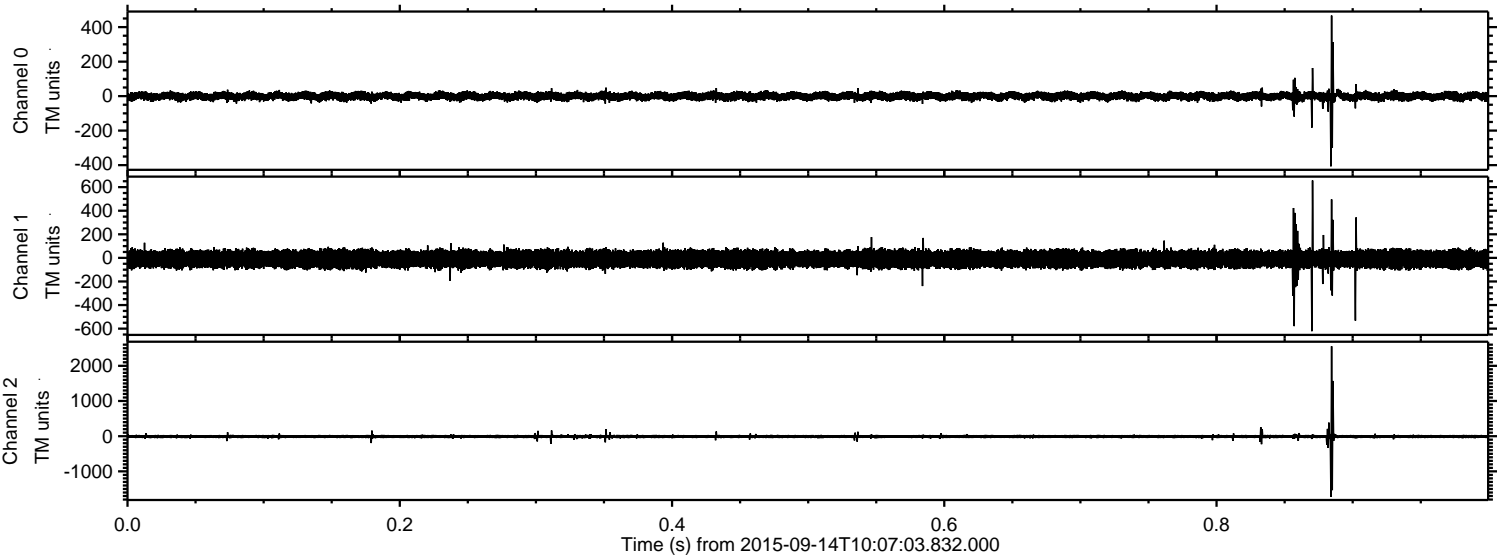


Processed Mon Oct 12 10:03:37 2015 by ELM ver.2012-10-06 from 001__elm20150914_100702__dat00.bin



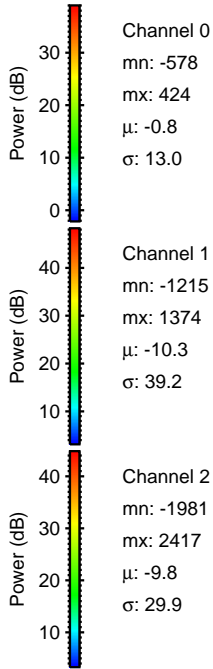
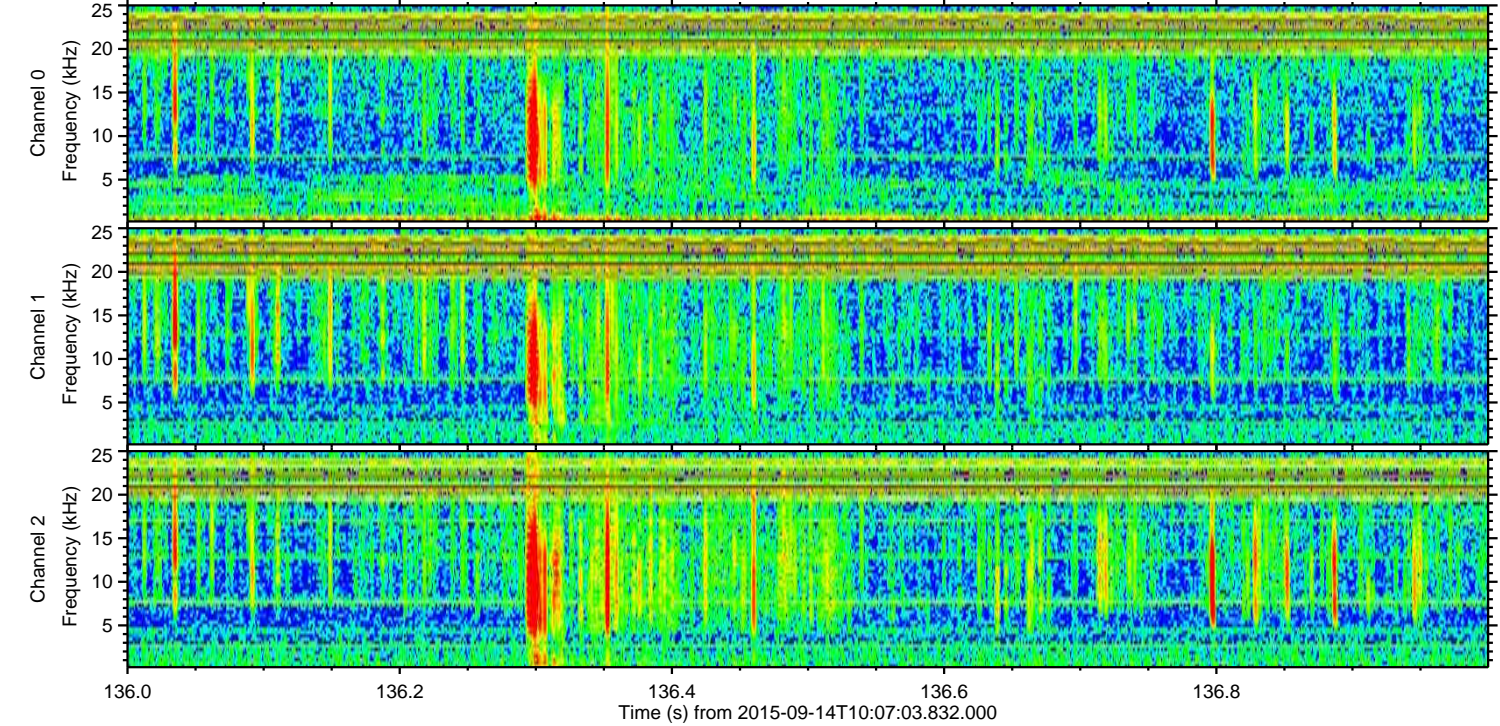
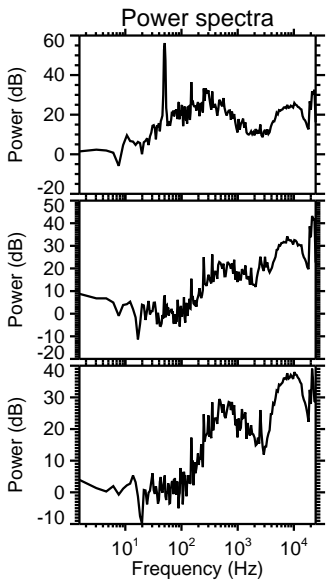
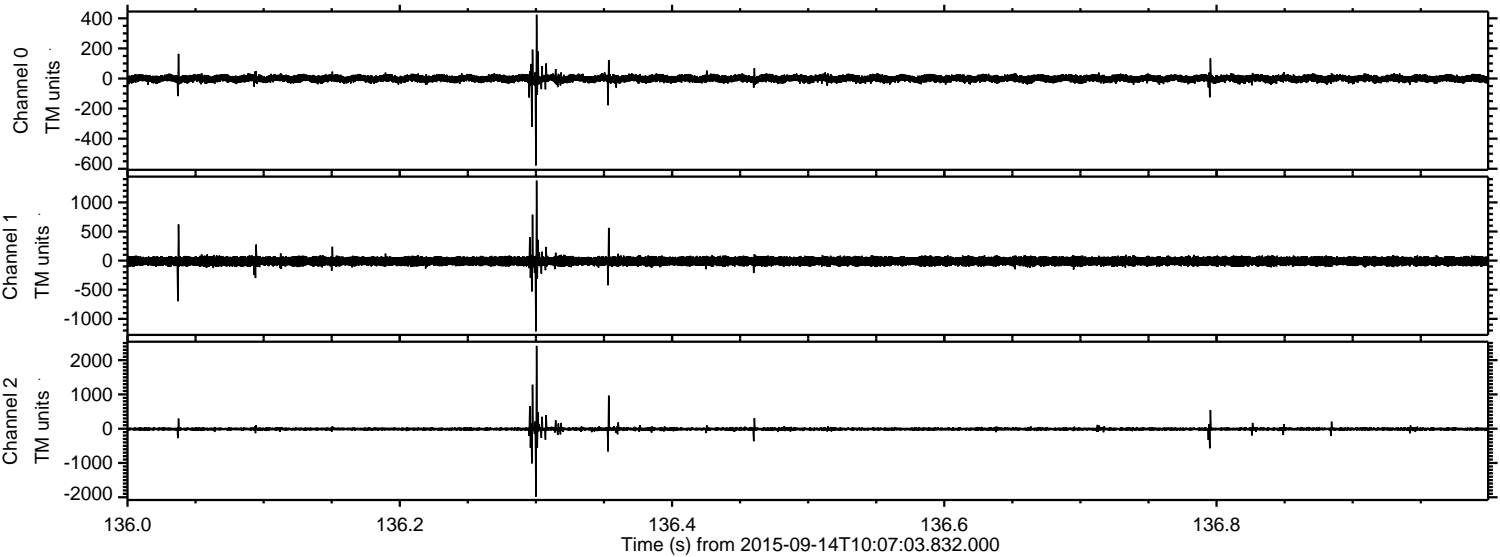
ELMAVAN 3D WAVEFORMS (Measured data sampled at 50 kHz) 51000 packets of 144 samples from 2015-09-14T10:07:03.832.000. Part 1/147

Processed Mon Oct 12 10:03:38 2015 by ELM ver.2012-10-06 from 001__elm20150914_100702__dat00.bin



ELMAVAN 3D WAVEFORMS (Measured data sampled at 50 kHz) 51000 packets of 144 samples from 2015-09-14T10:07:03.832.000. Part 137/147

Processed Mon Oct 12 10:03:39 2015 by ELM ver.2012-10-06 from 001__elm20150914_100702__dat00.bin

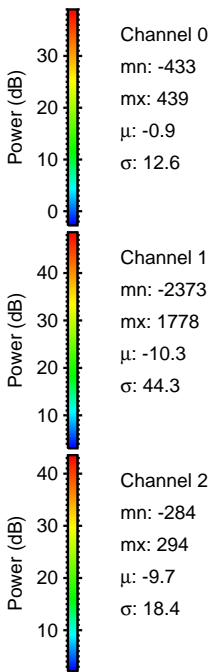
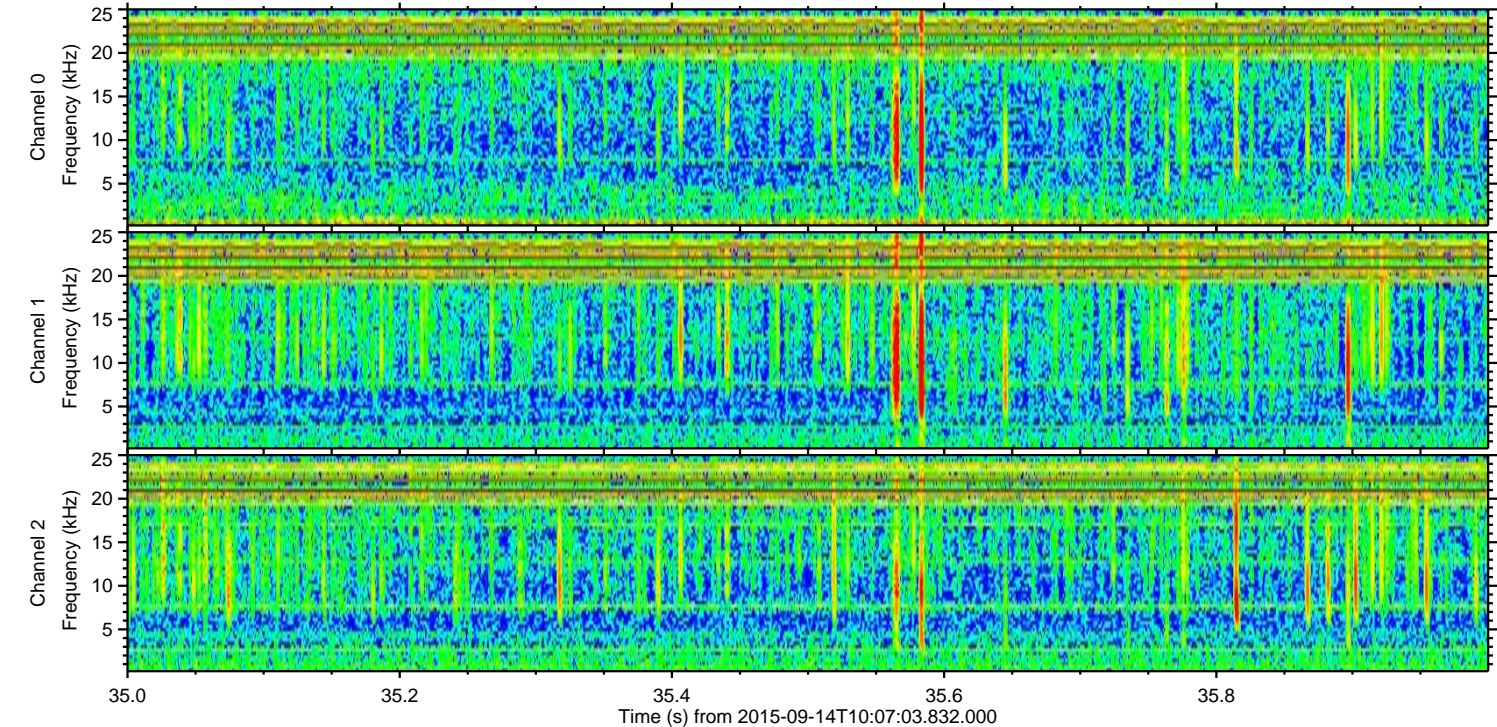
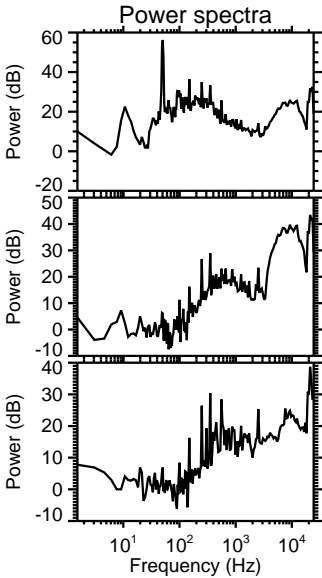
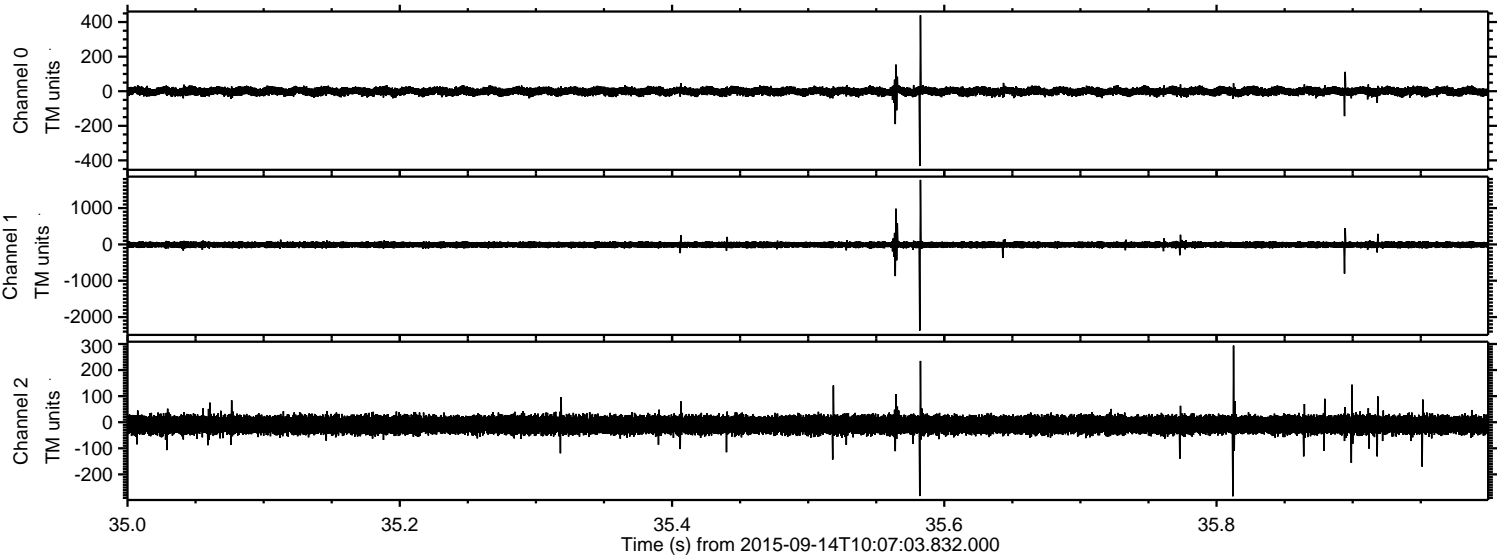


Channel 0
mn: -578
mx: 424
 μ : -0.8
 σ : 13.0

Channel 1
mn: -1215
mx: 1374
 μ : -10.3
 σ : 39.2

Channel 2
mn: -1981
mx: 2417
 μ : -9.8
 σ : 29.9

Processed Mon Oct 12 10:03:40 2015 by ELM ver.2012-10-06 from 001__elm20150914_100702__dat00.bin



Processed Mon Oct 12 10:03:41 2015 by ELM ver.2012-10-06 from 001__elm20150914_100702__dat00.bin

