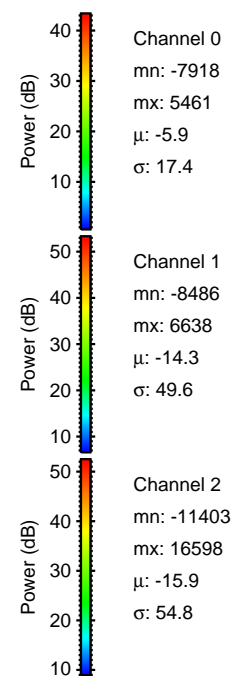
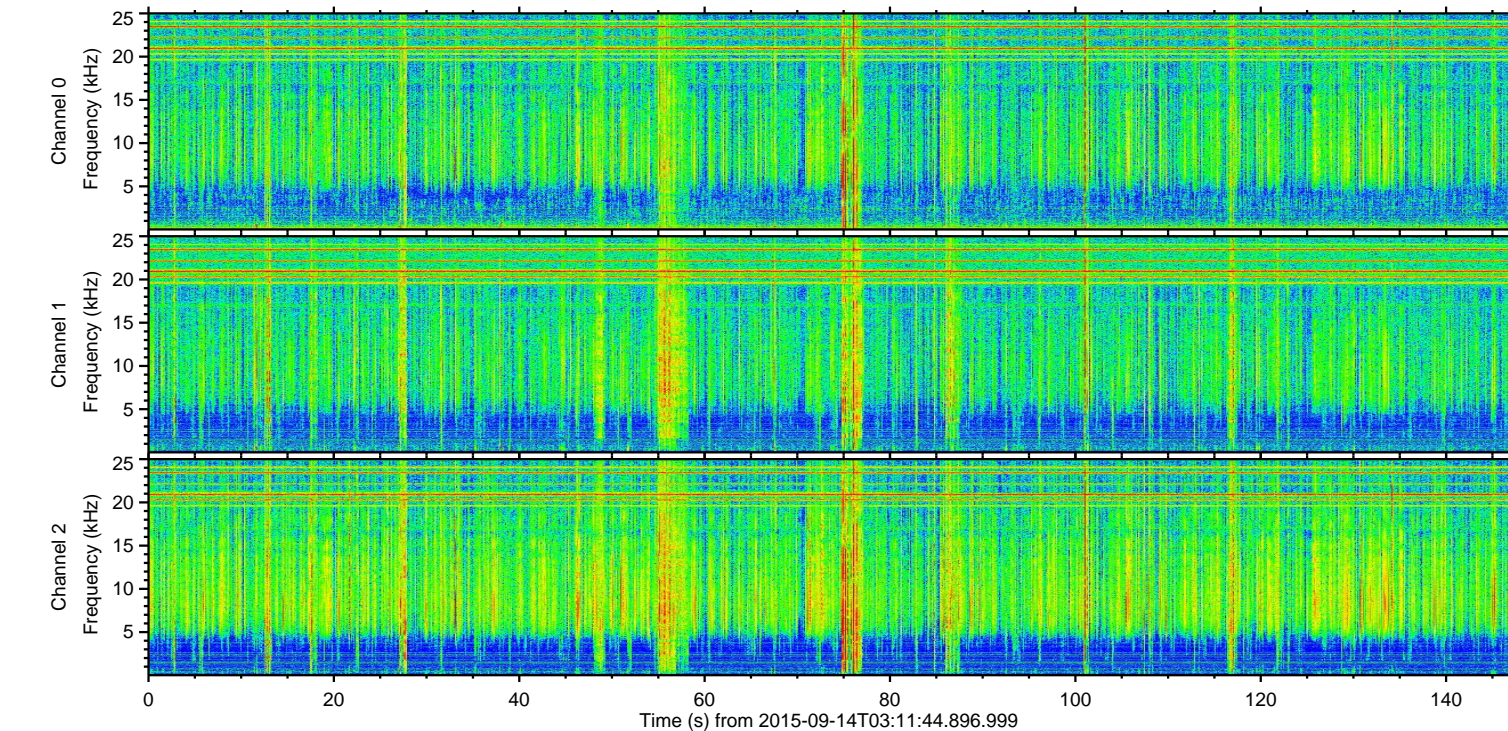
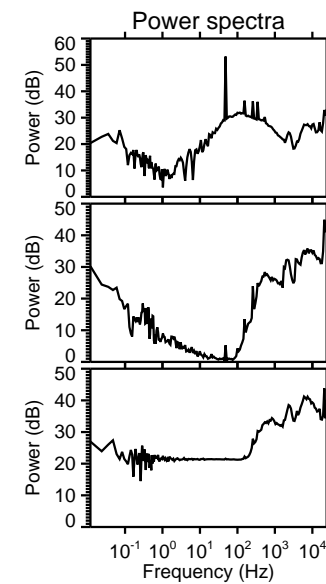
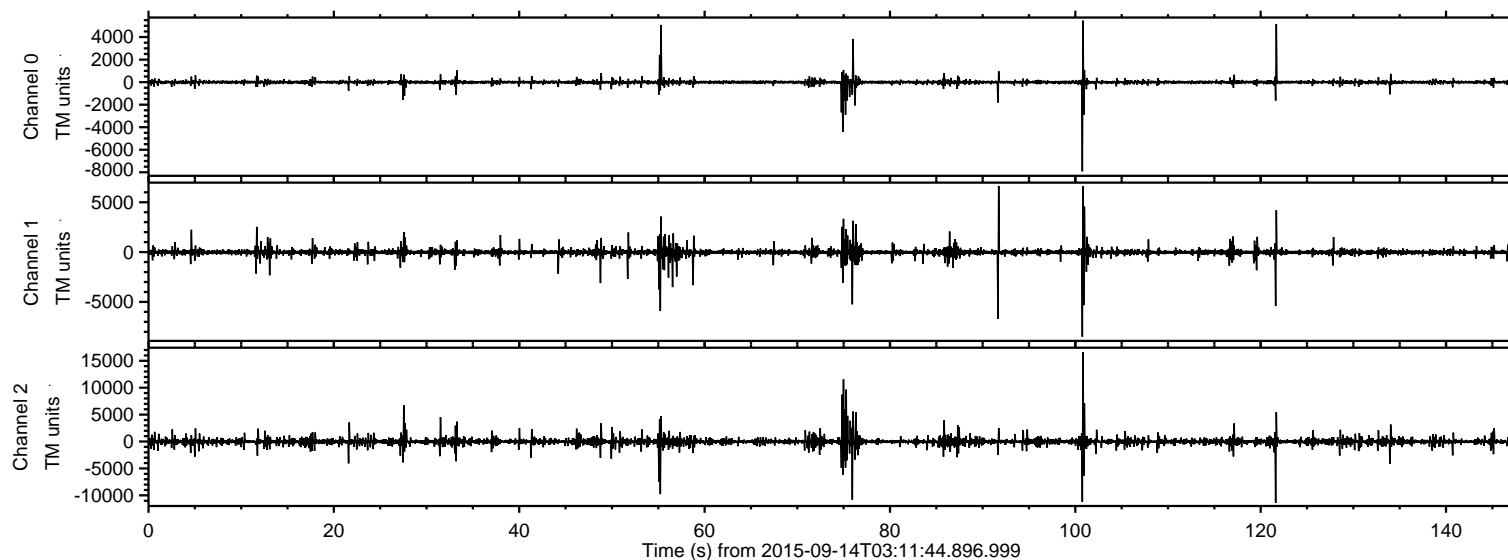


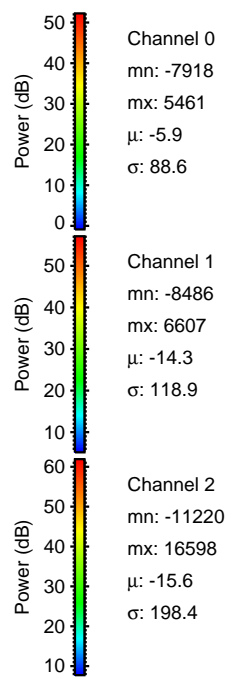
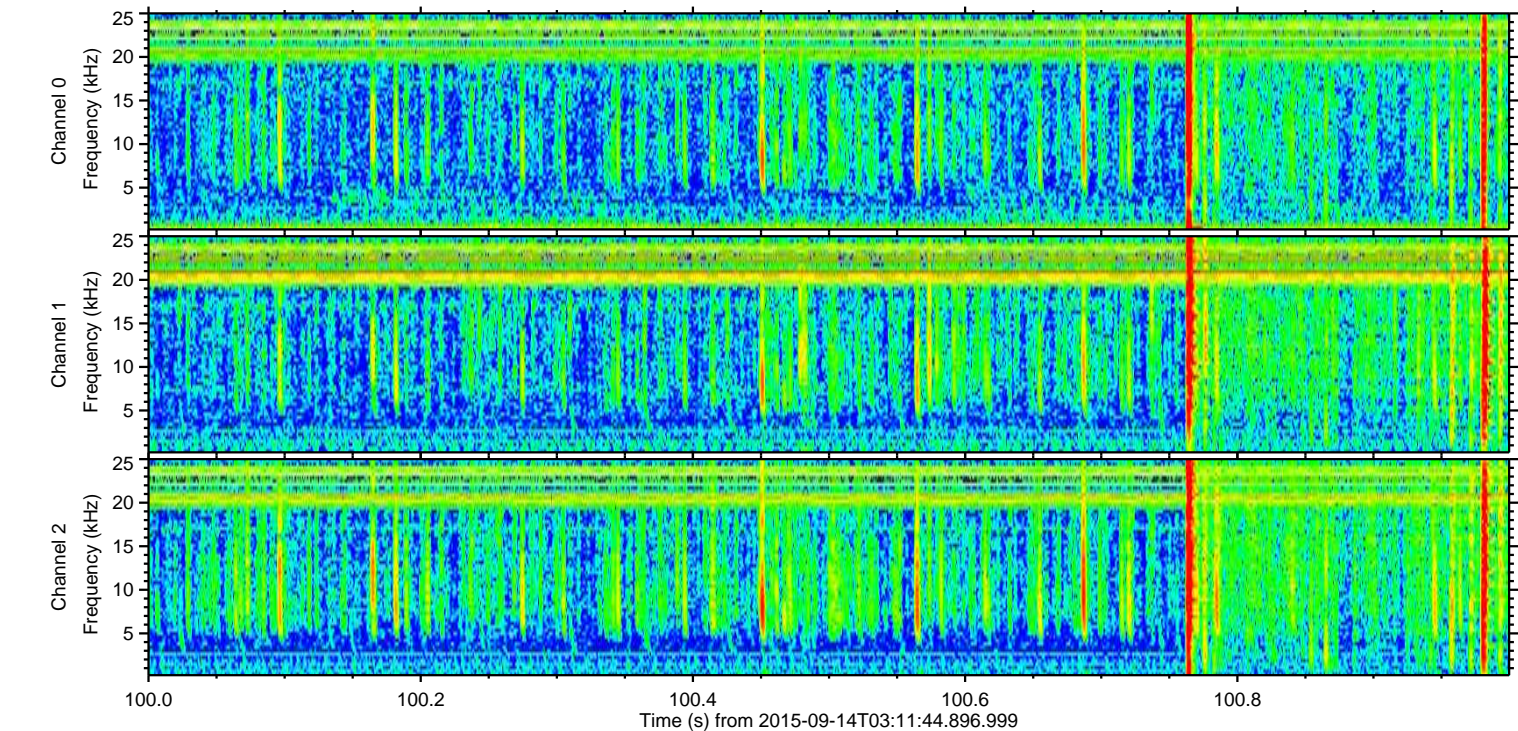
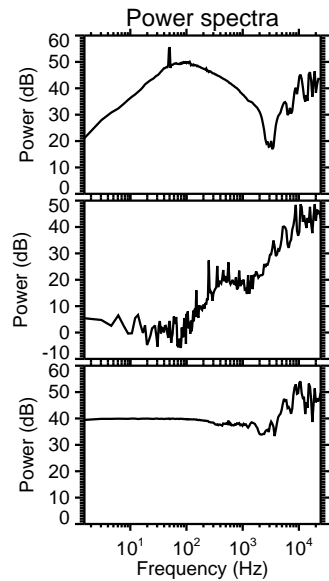
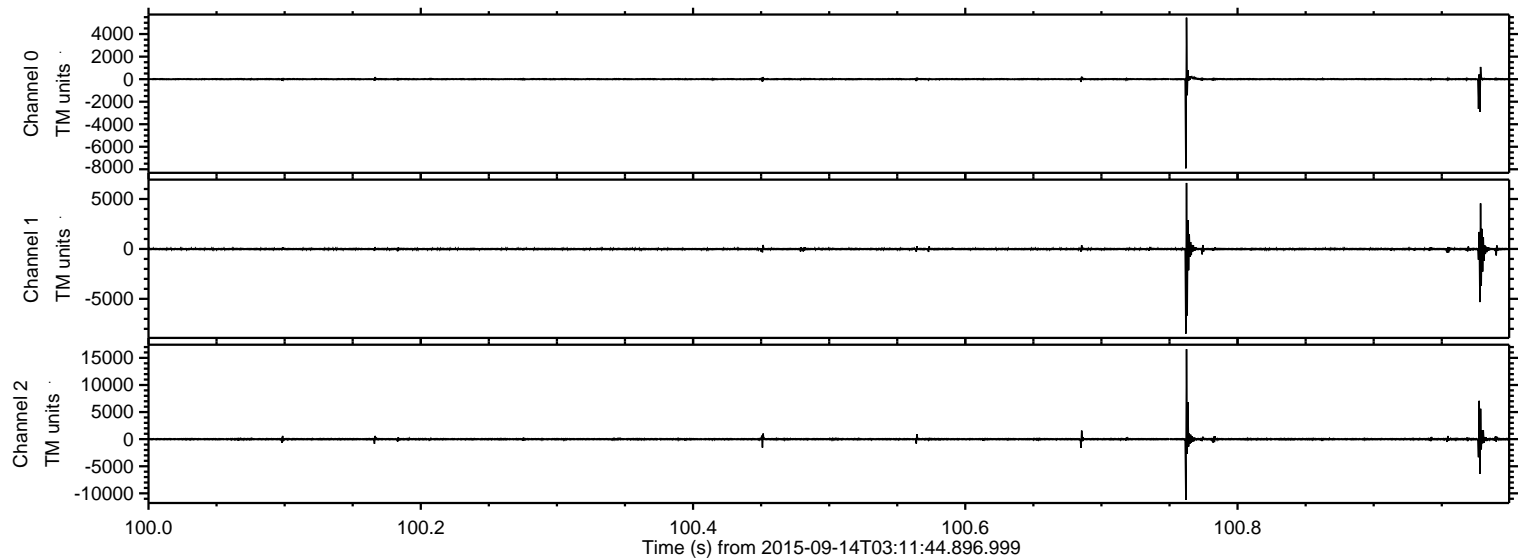
ELMAVAN 3D WAVEFORMS (Measured data sampled at 50 kHz) 51000 packets of 144 samples from 2015-09-14T03:11:44.896.999.

Processed Mon Oct 12 08:12:09 2015 by ELM ver.2012-10-06 from 001__elm20150914_031143__dat00.bin

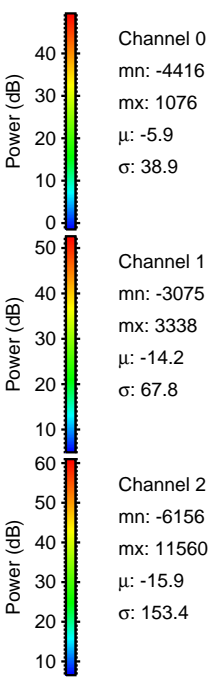
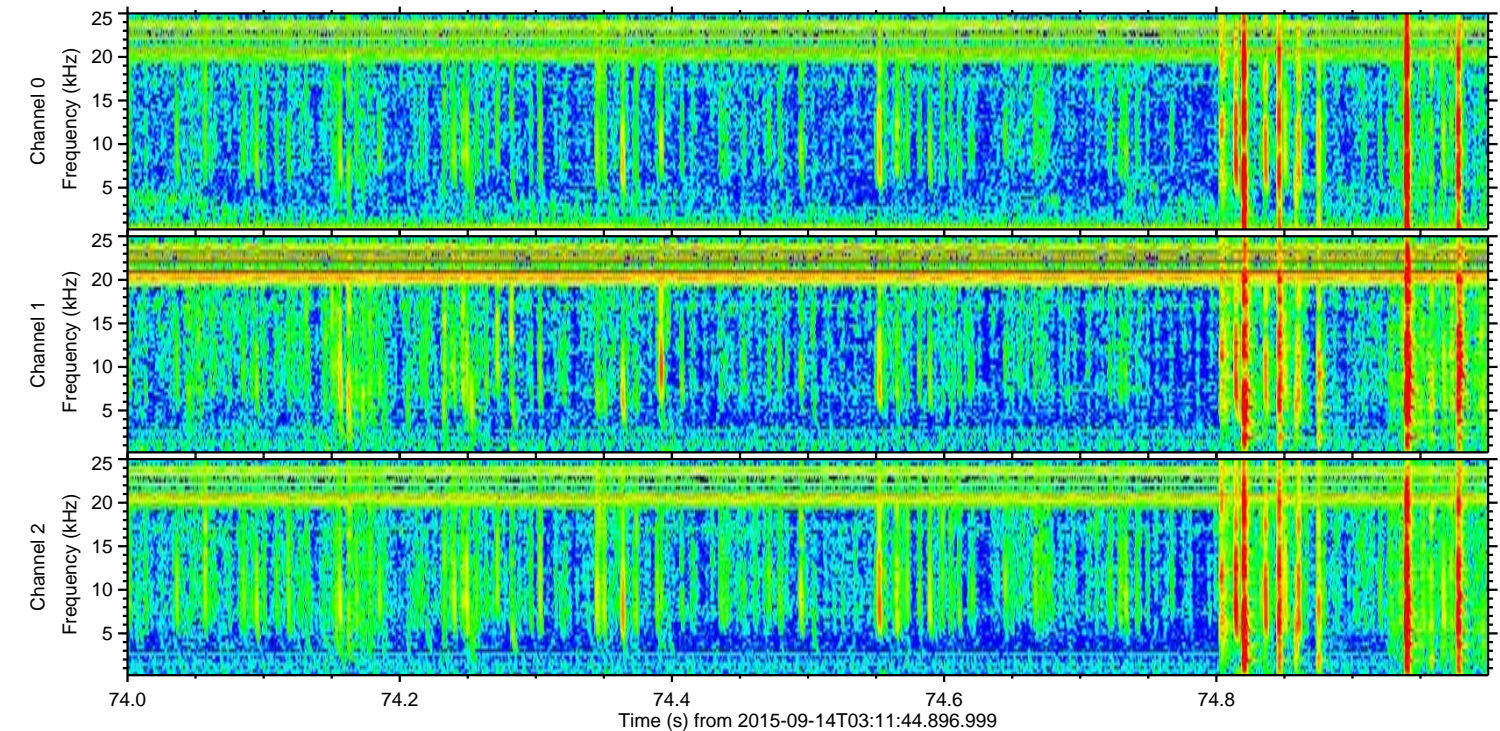
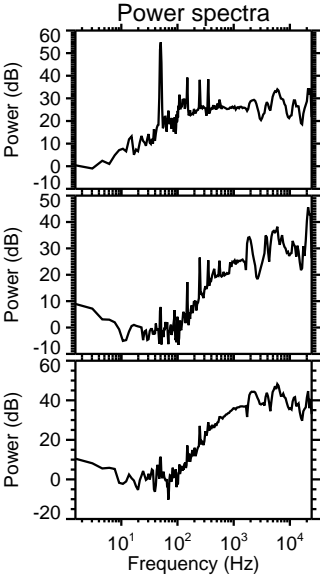
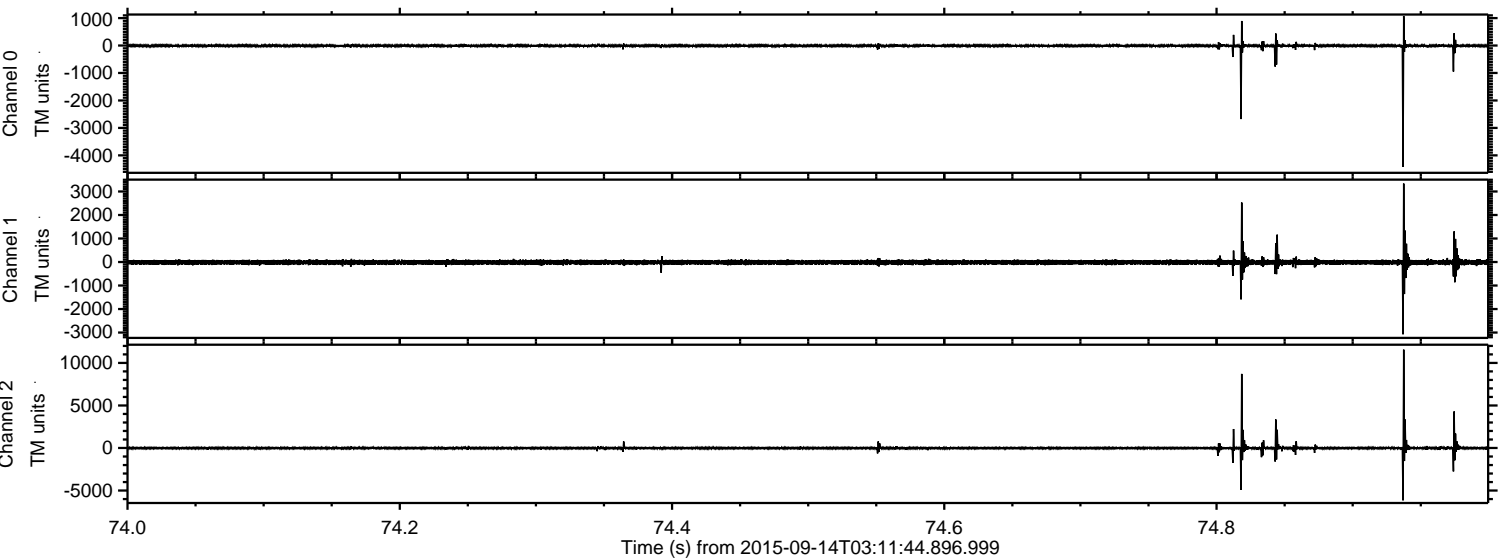


ELMAVAN 3D WAVEFORMS (Measured data sampled at 50 kHz) 51000 packets of 144 samples from 2015-09-14T03:11:44.896.999. Part 101/147

Processed Mon Oct 12 08:12:24 2015 by ELM ver.2012-10-06 from 001__elm20150914_031143__dat00.bin

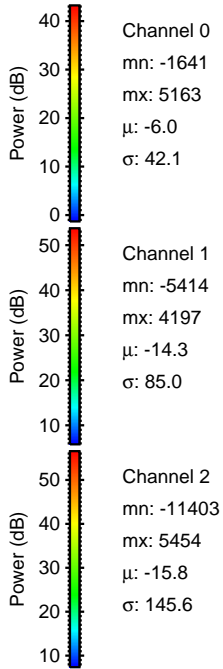
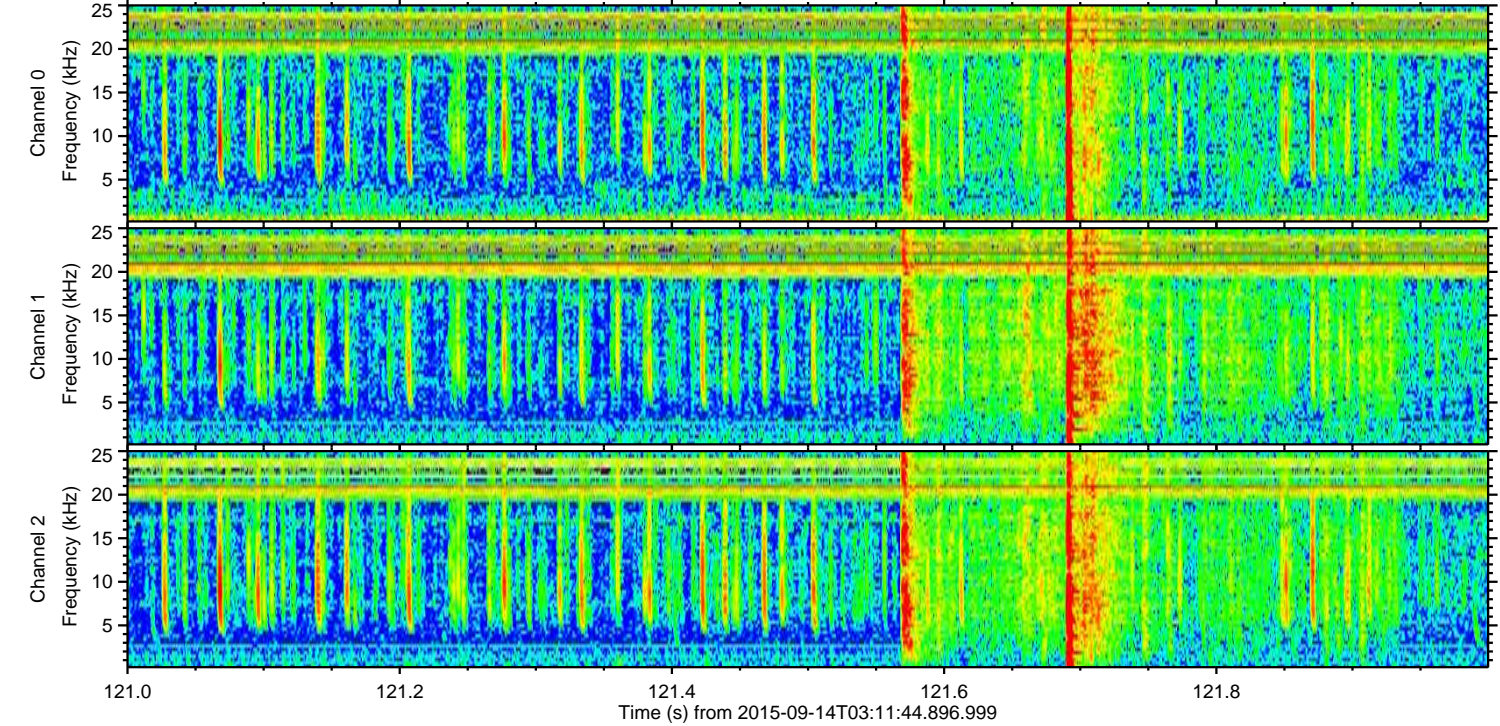
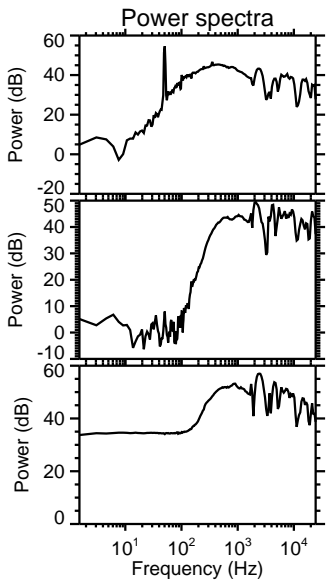
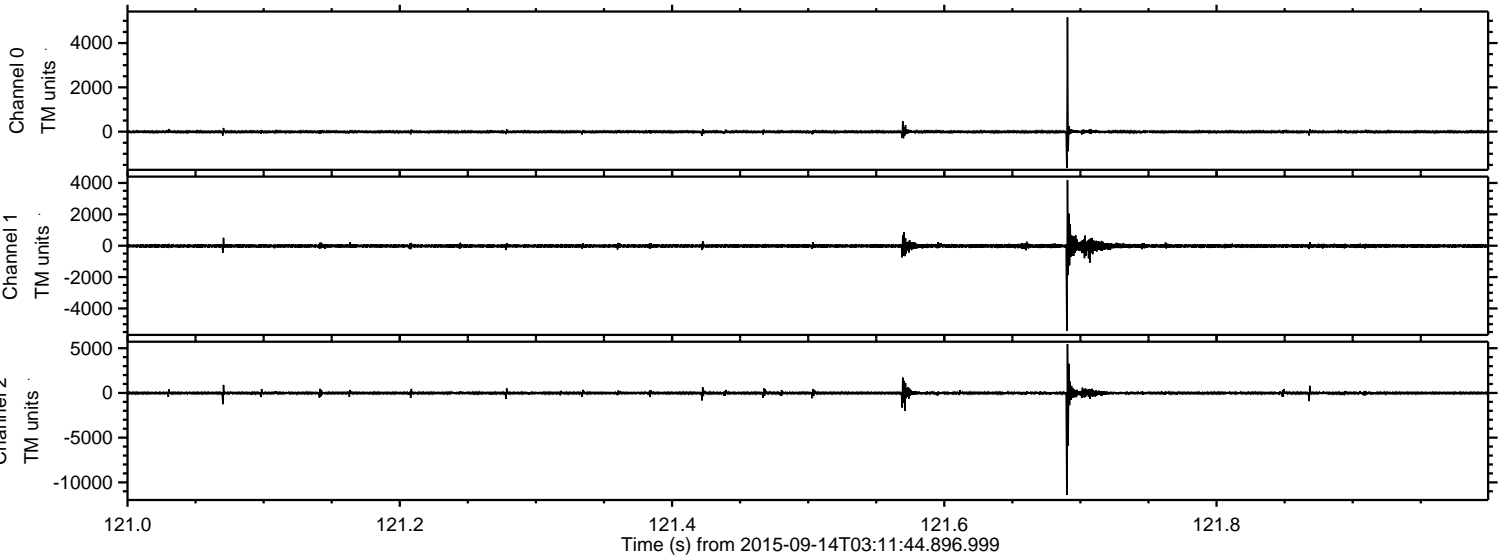


Processed Mon Oct 12 08:12:25 2015 by ELM ver.2012-10-06 from 001__elm20150914_031143__dat00.bin

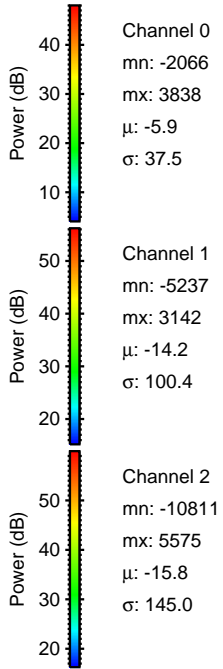
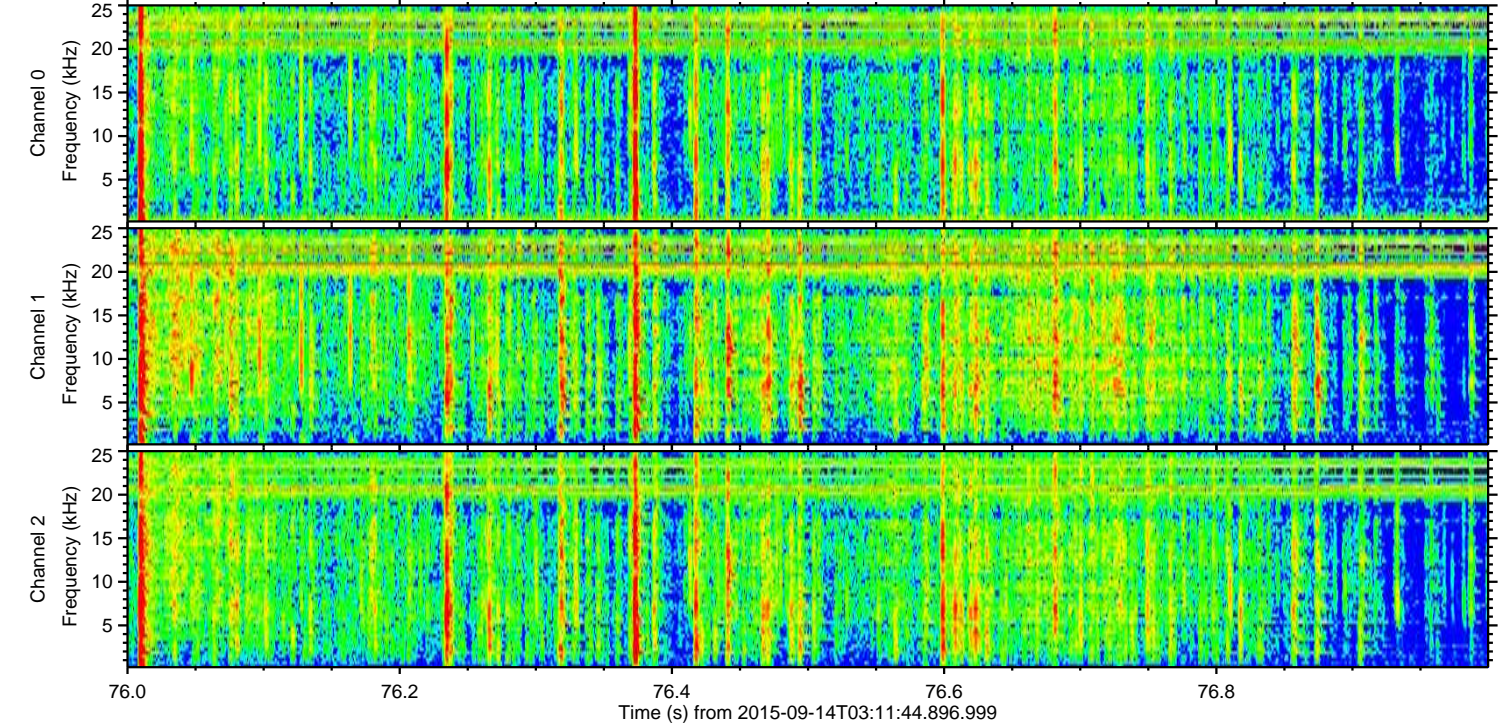
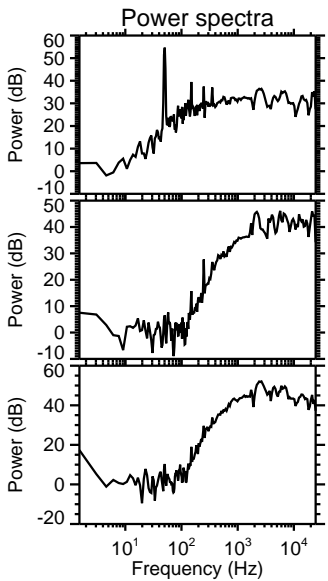
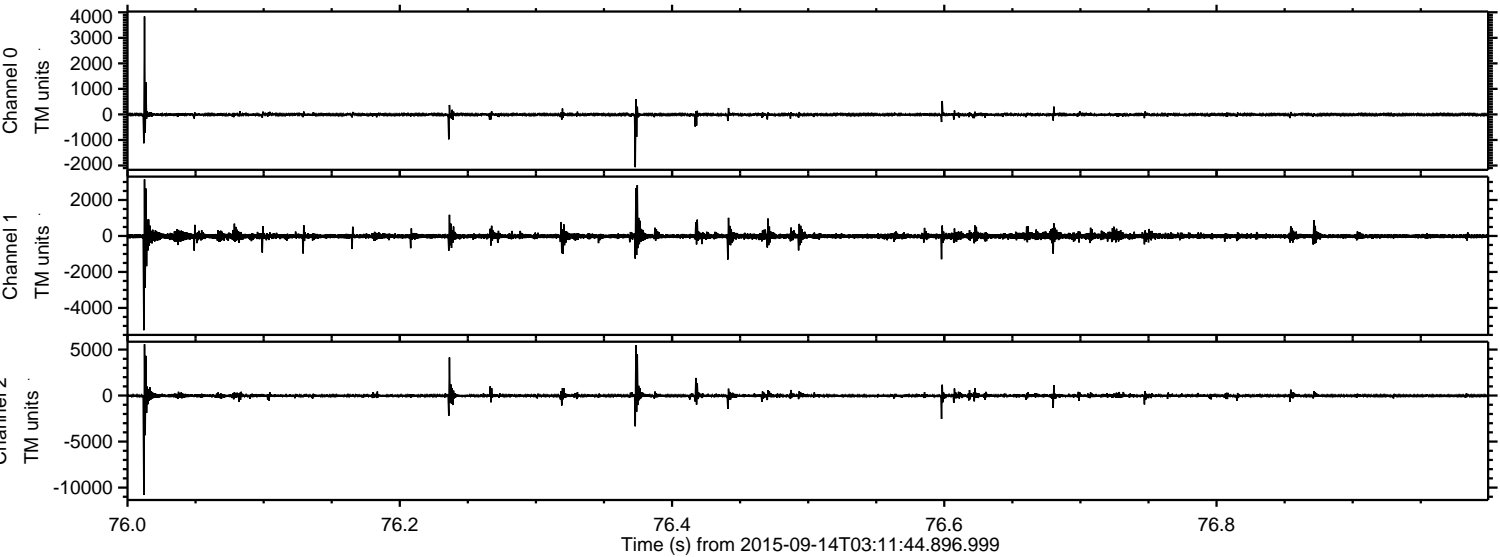


ELMAVAN 3D WAVEFORMS (Measured data sampled at 50 kHz) 51000 packets of 144 samples from 2015-09-14T03:11:44.896.999. Part 122/147

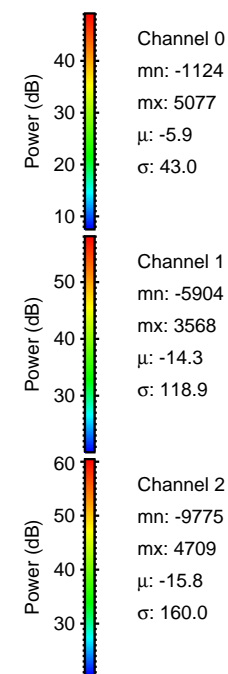
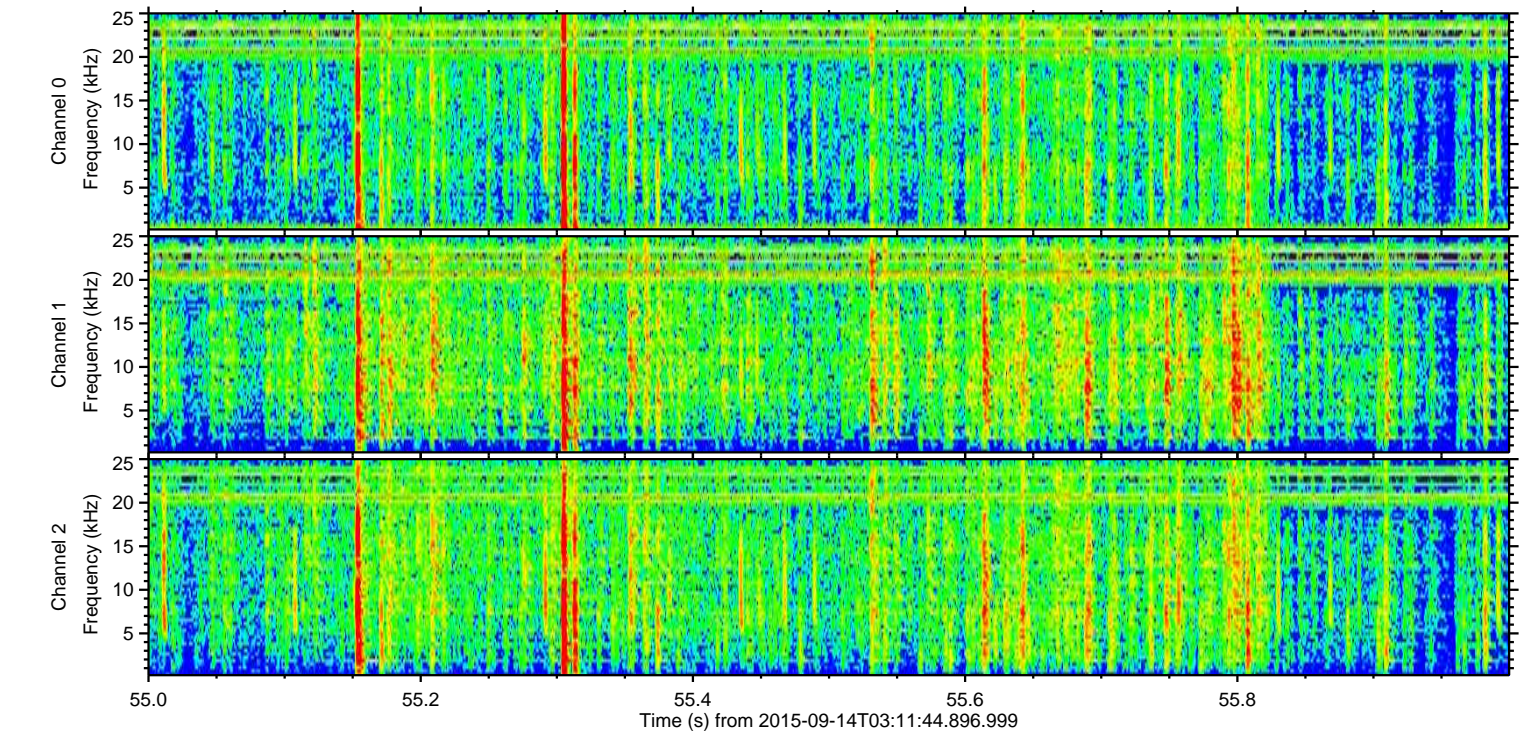
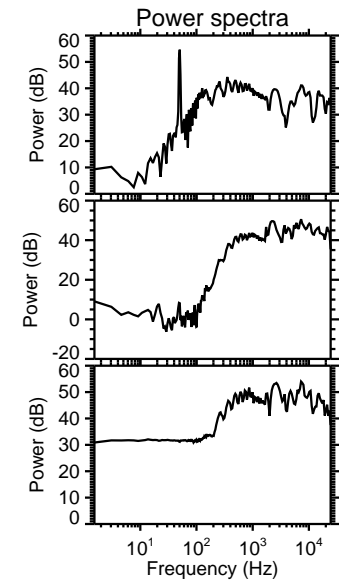
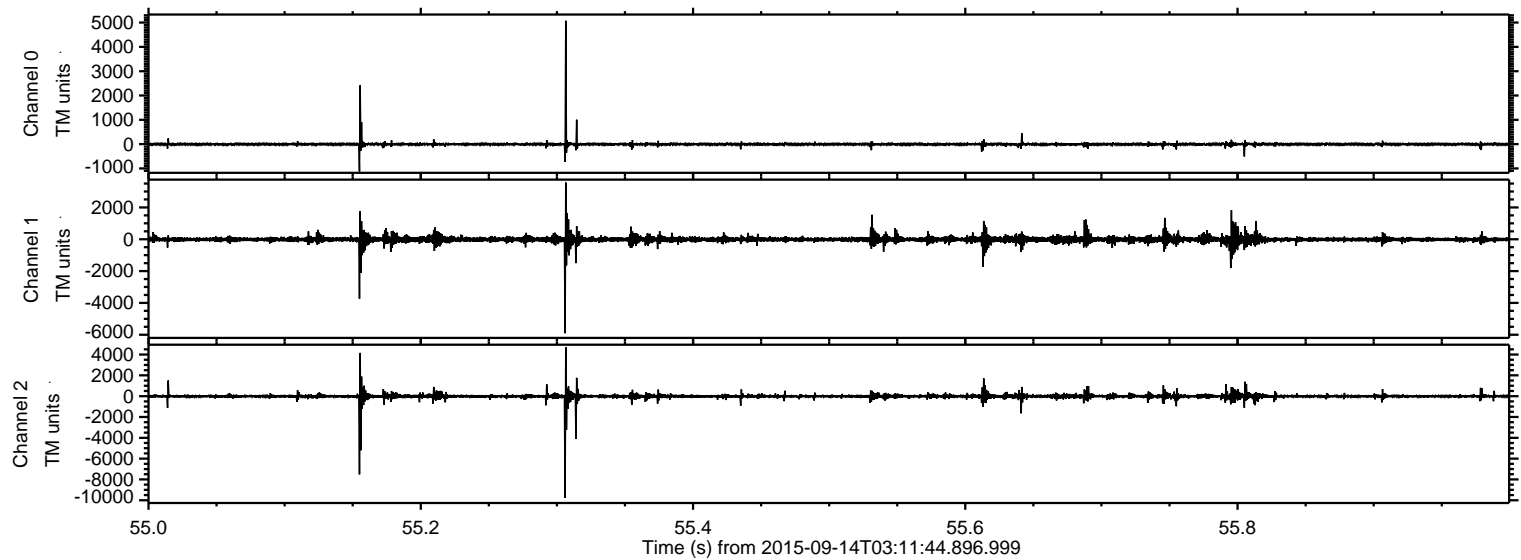
Processed Mon Oct 12 08:12:26 2015 by ELM ver.2012-10-06 from 001__elm20150914_031143__dat00.bin



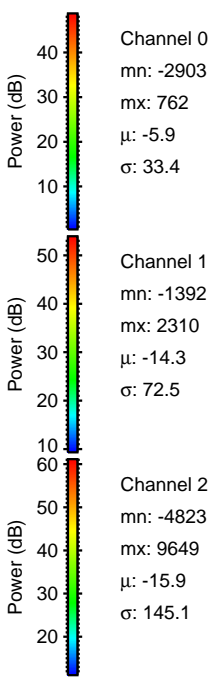
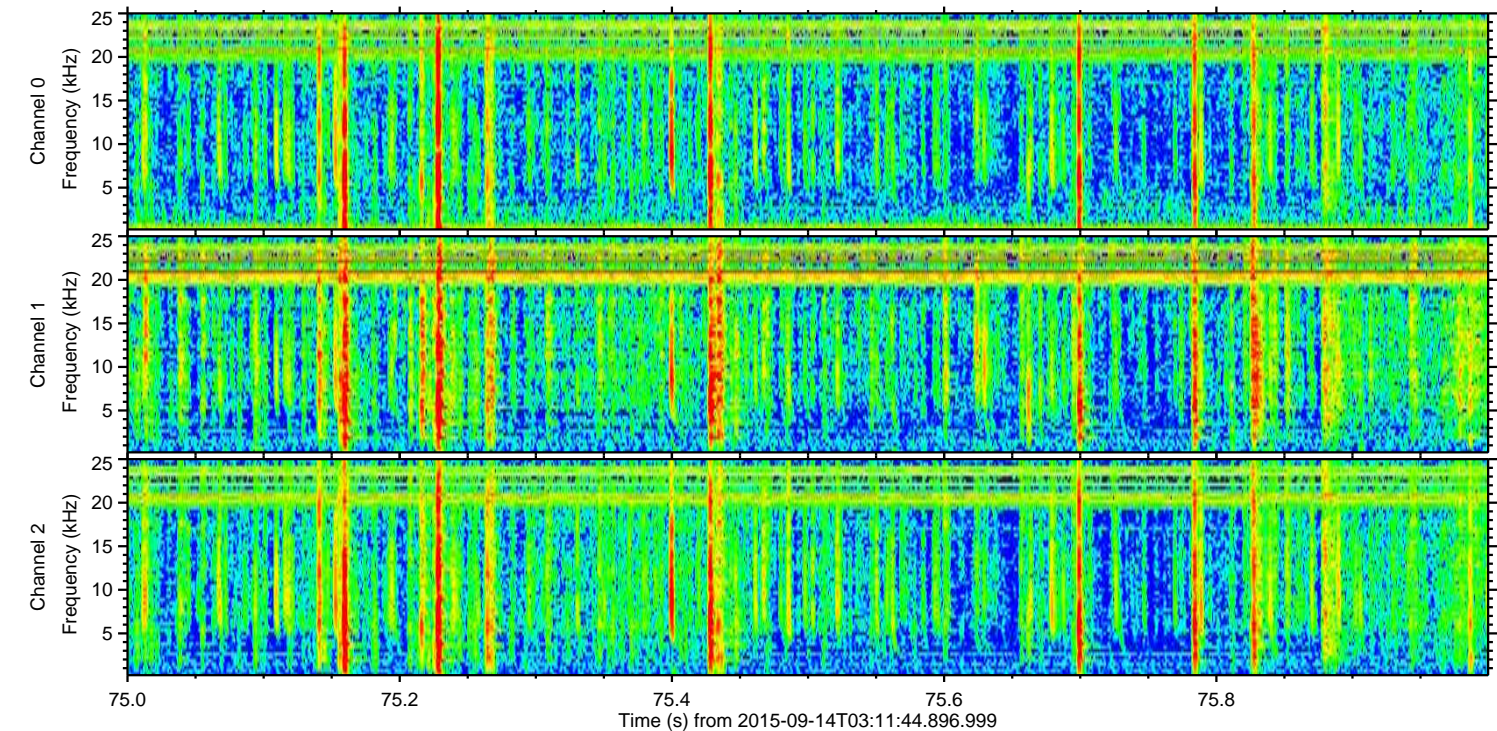
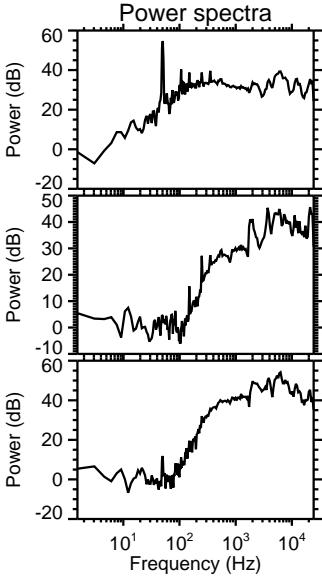
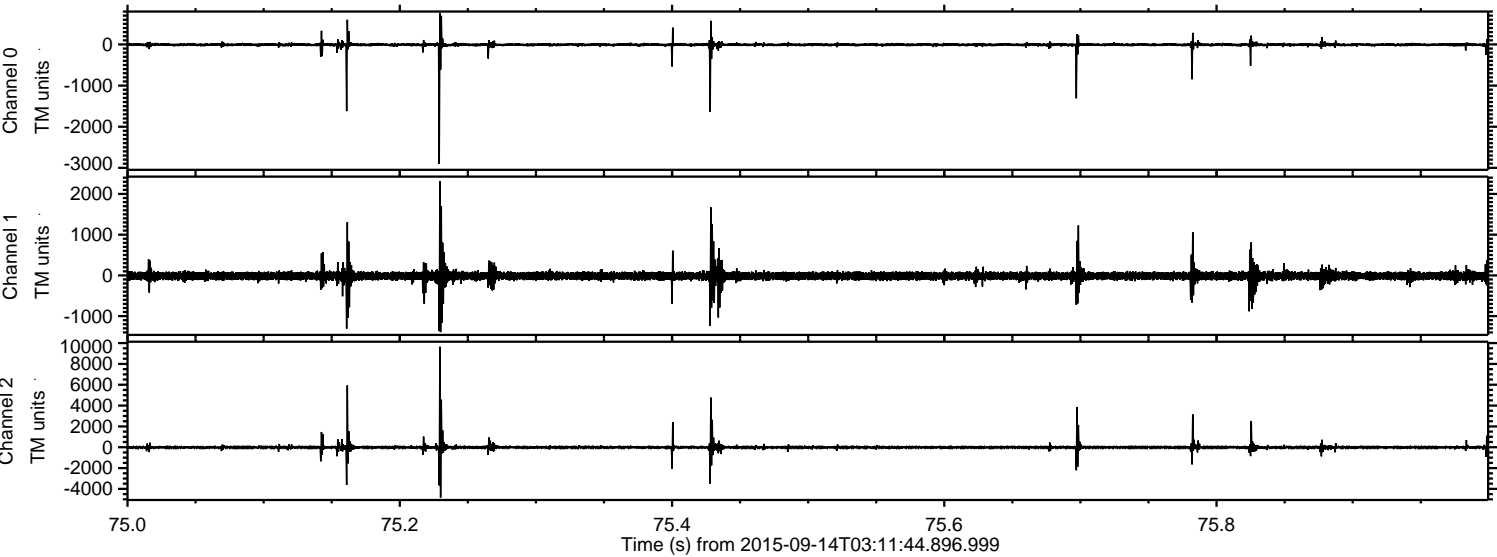
Processed Mon Oct 12 08:12:27 2015 by ELM ver.2012-10-06 from 001__elm20150914_031143__dat00.bin



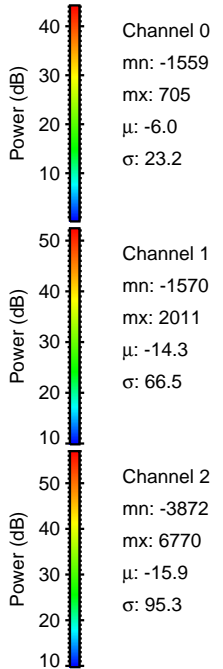
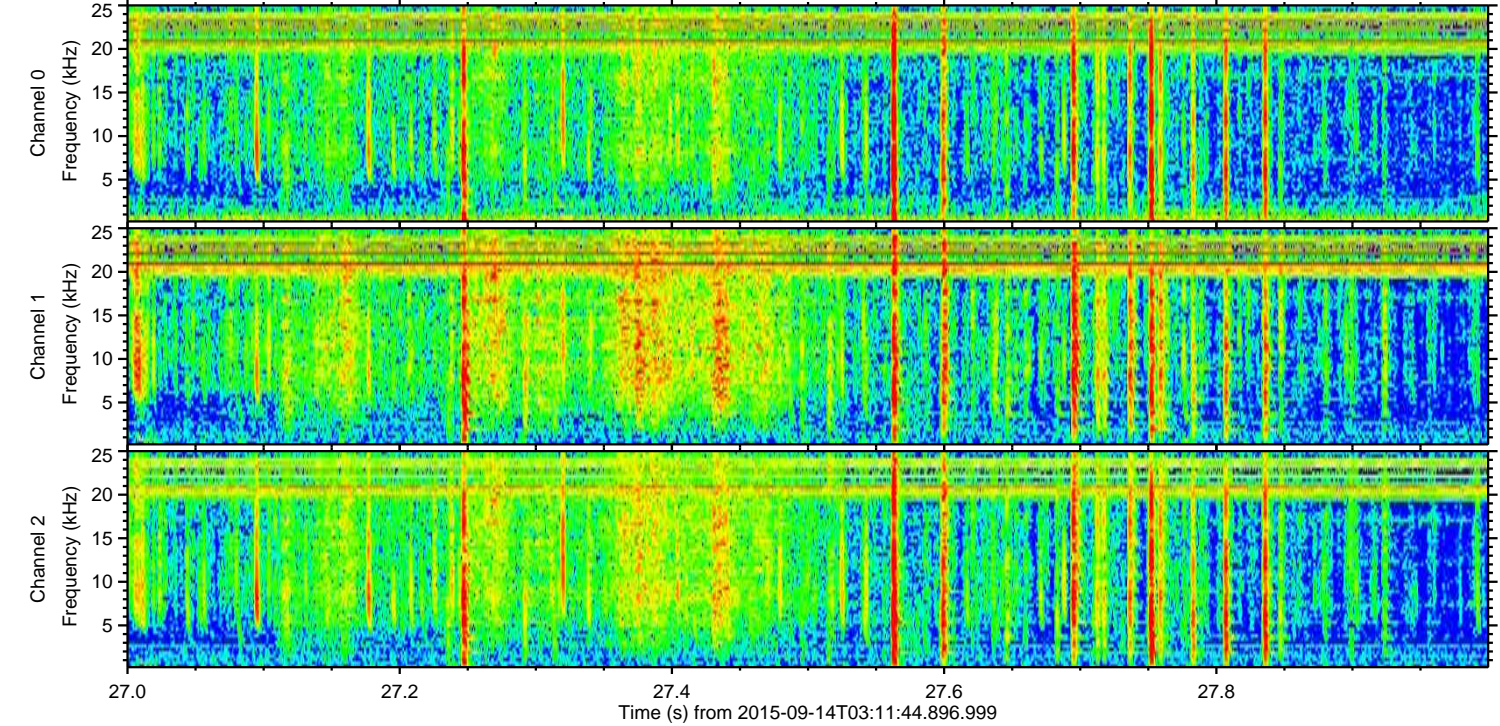
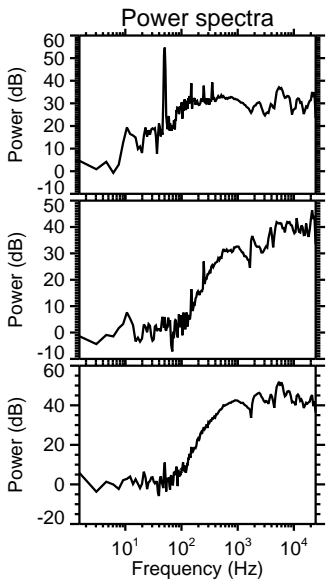
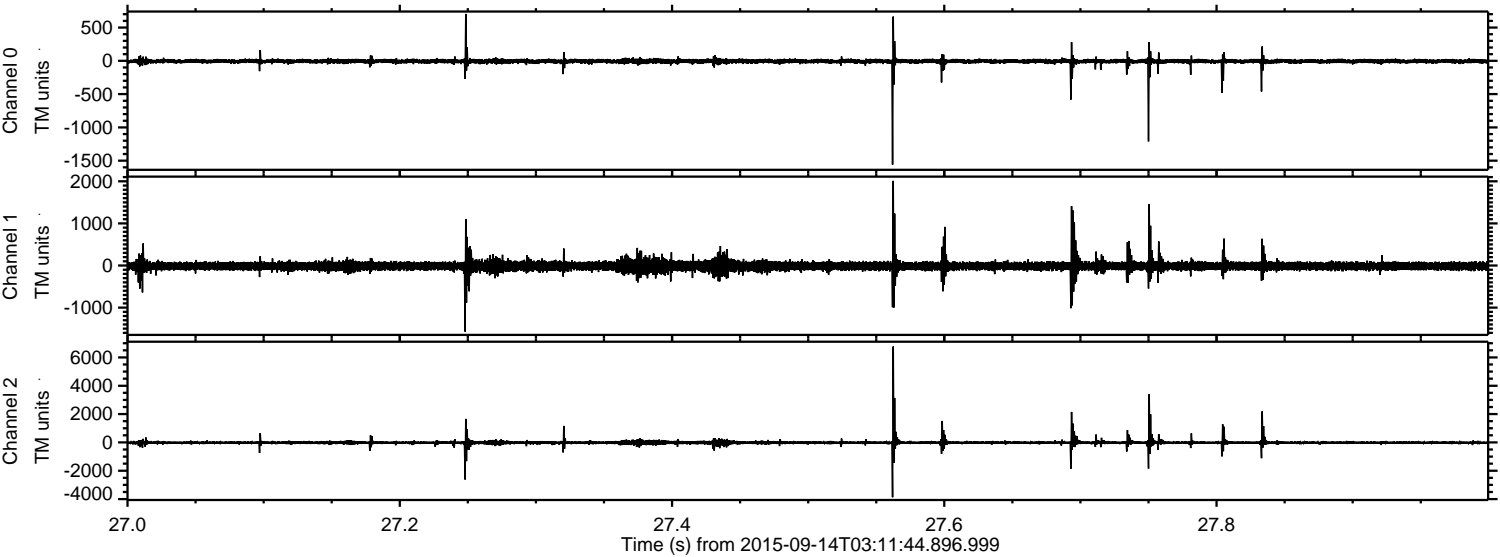
Processed Mon Oct 12 08:12:28 2015 by ELM ver.2012-10-06 from 001__elm20150914_031143__dat00.bin



Processed Mon Oct 12 08:12:29 2015 by ELM ver.2012-10-06 from 001__elm20150914_031143__dat00.bin

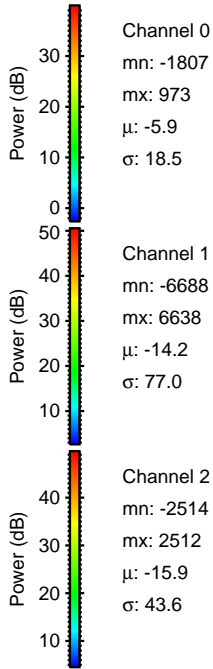
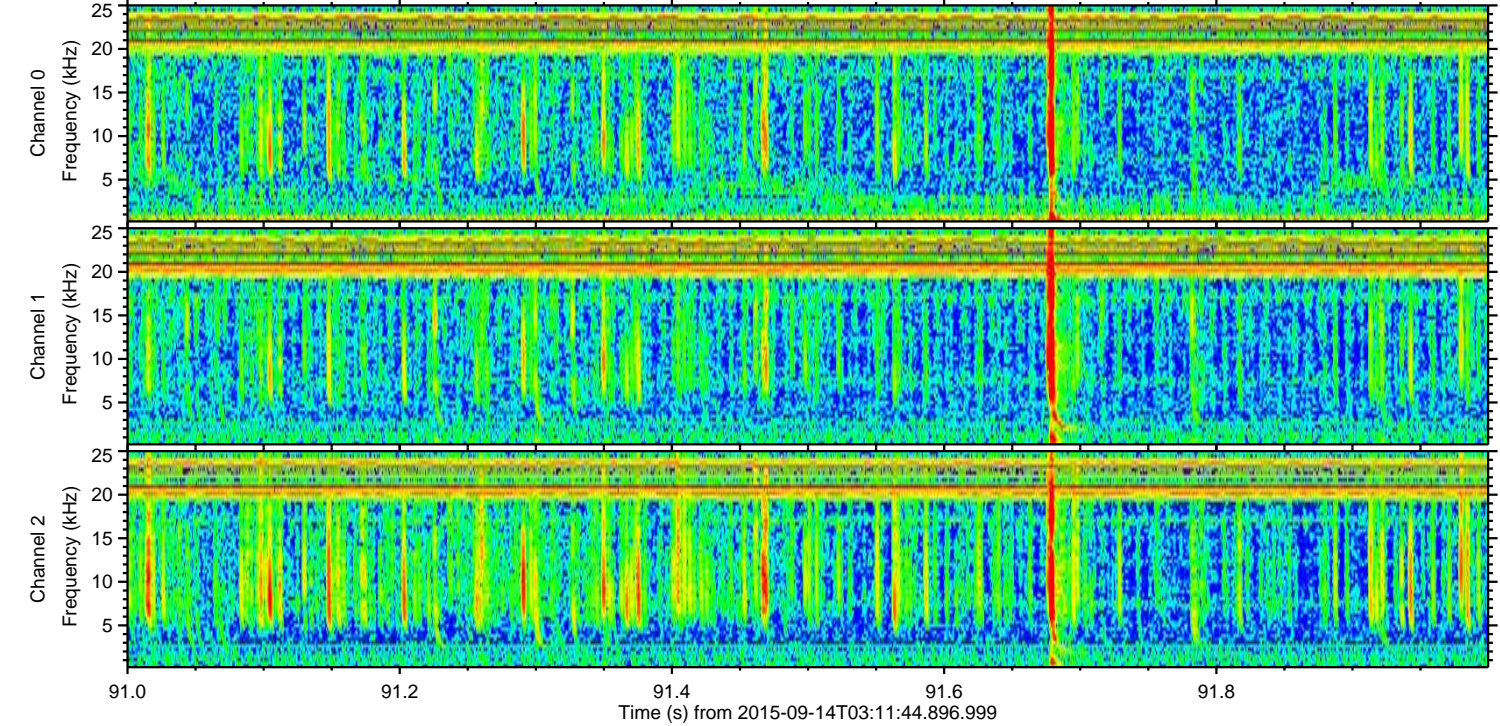
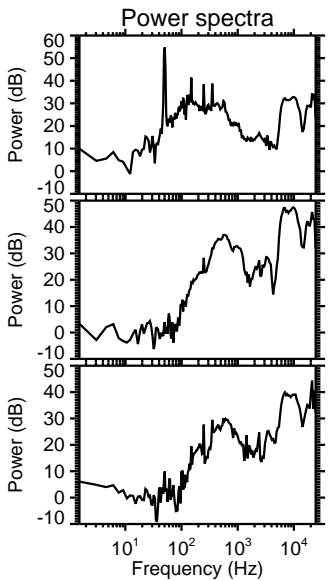
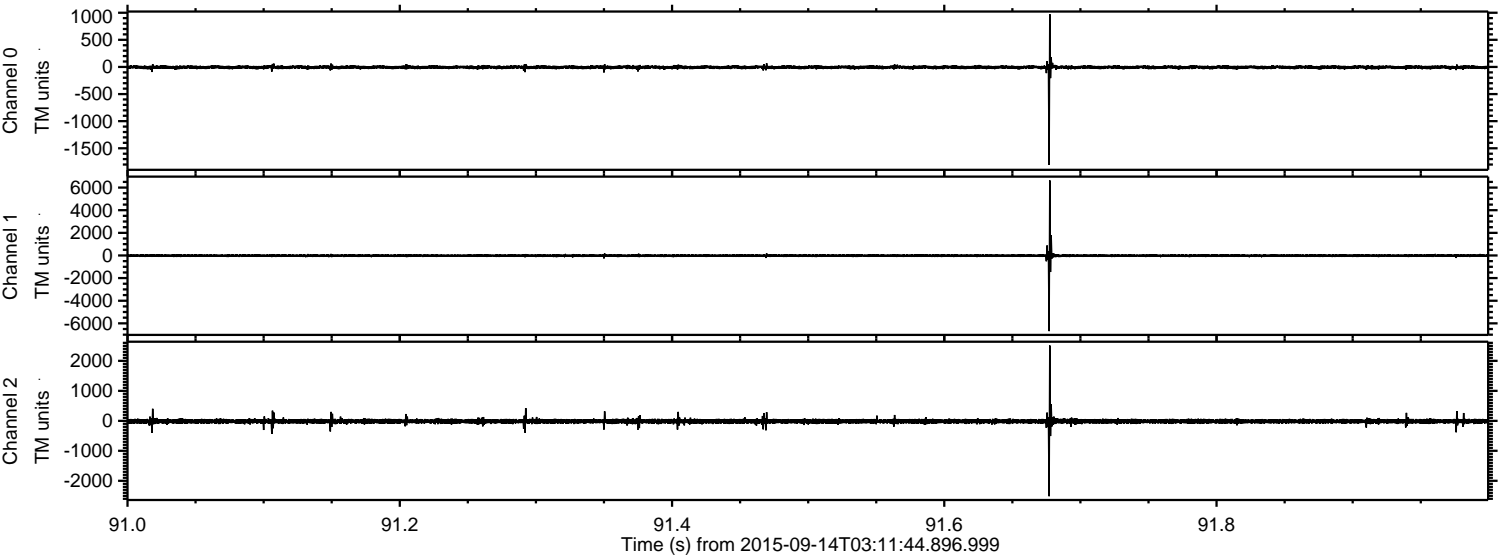


Processed Mon Oct 12 08:12:30 2015 by ELM ver.2012-10-06 from 001__elm20150914_031143__dat00.bin



ELMAVAN 3D WAVEFORMS (Measured data sampled at 50 kHz) 51000 packets of 144 samples from 2015-09-14T03:11:44.896.999. Part 92/147

Processed Mon Oct 12 08:12:31 2015 by ELM ver.2012-10-06 from 001__elm20150914_031143__dat00.bin



Channel 0
mn: -1807
mx: 973
 μ : -5.9
 σ : 18.5

Channel 1
mn: -6688
mx: 6638
 μ : -14.2
 σ : 77.0

Channel 2
mn: -2514
mx: 2512
 μ : -15.9
 σ : 43.6

Processed Mon Oct 12 08:12:32 2015 by ELM ver.2012-10-06 from 001__elm20150914_031143__dat00.bin

