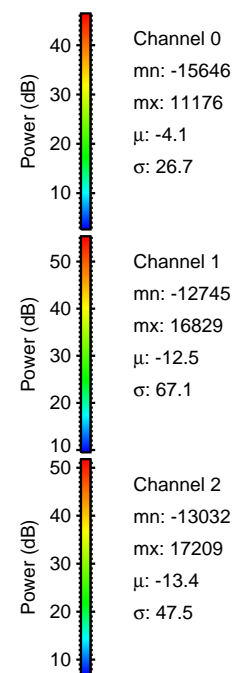
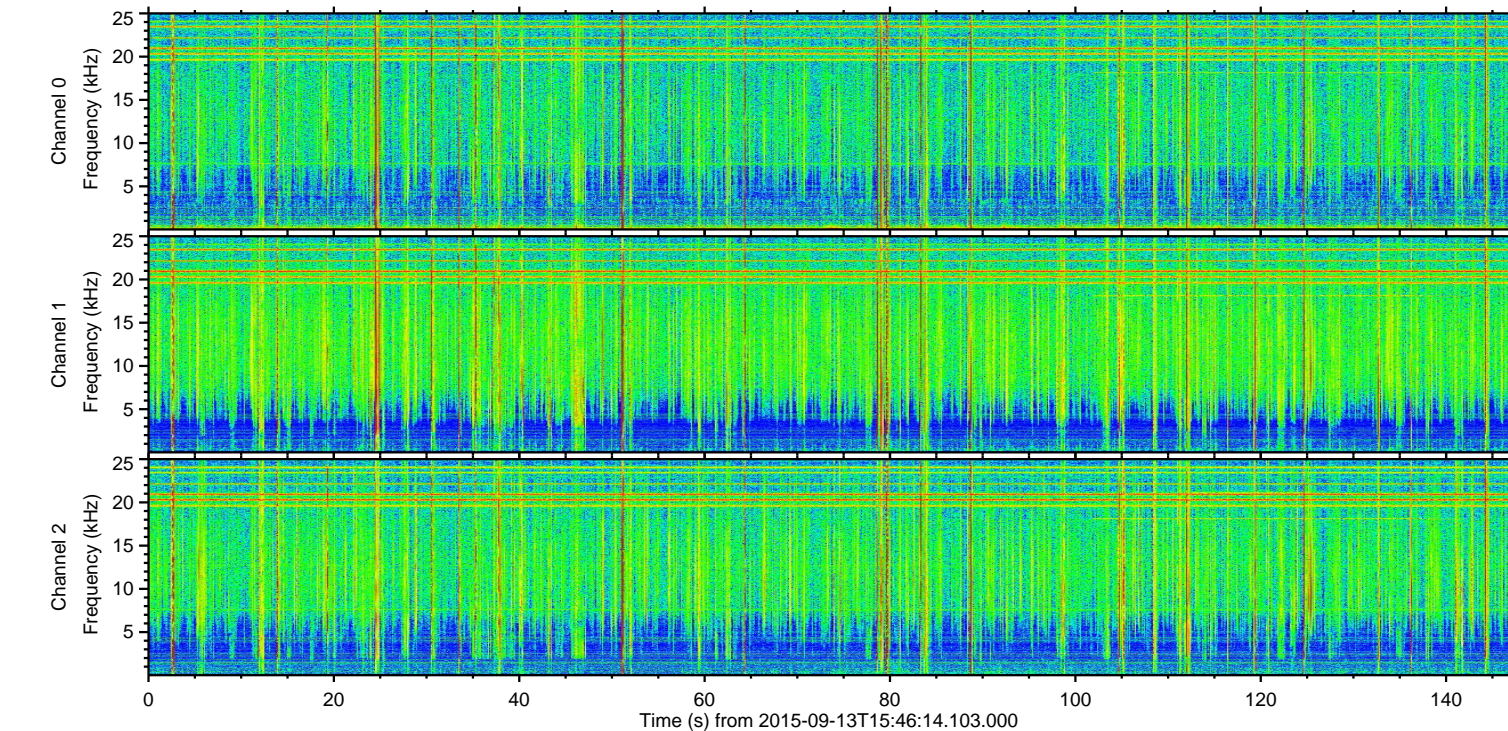
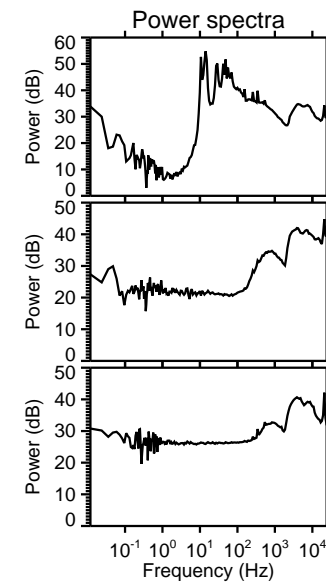
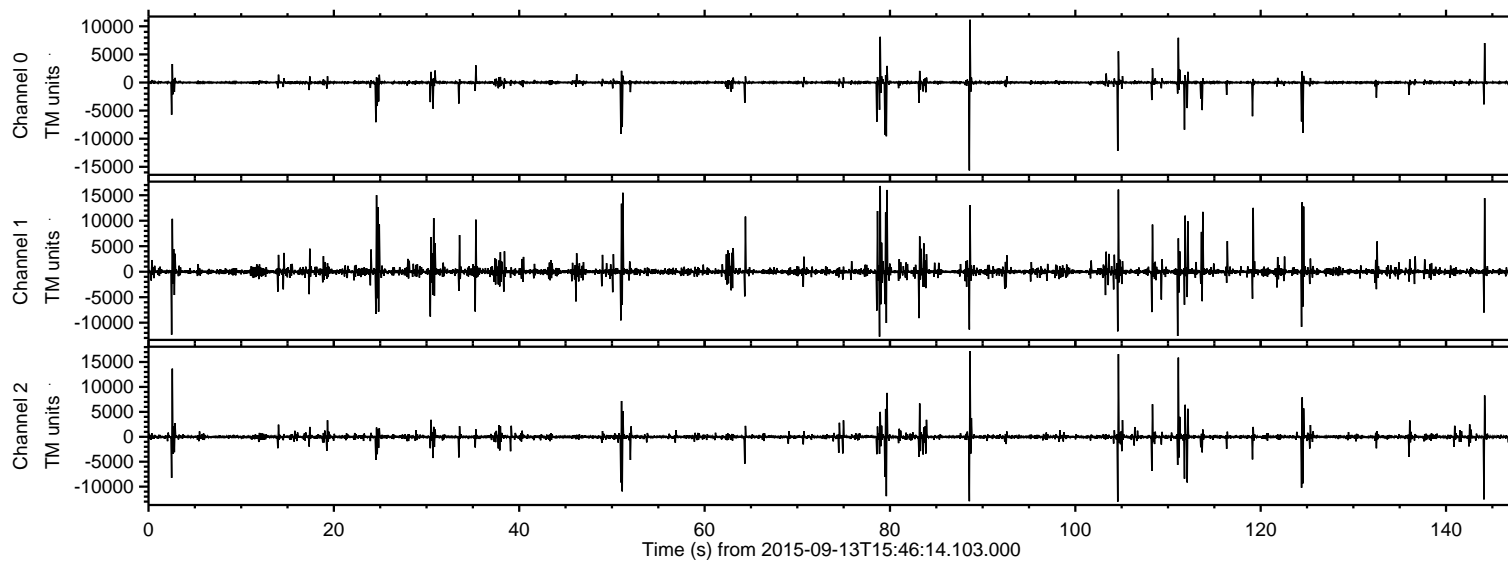
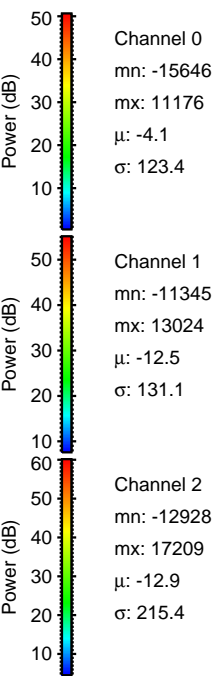
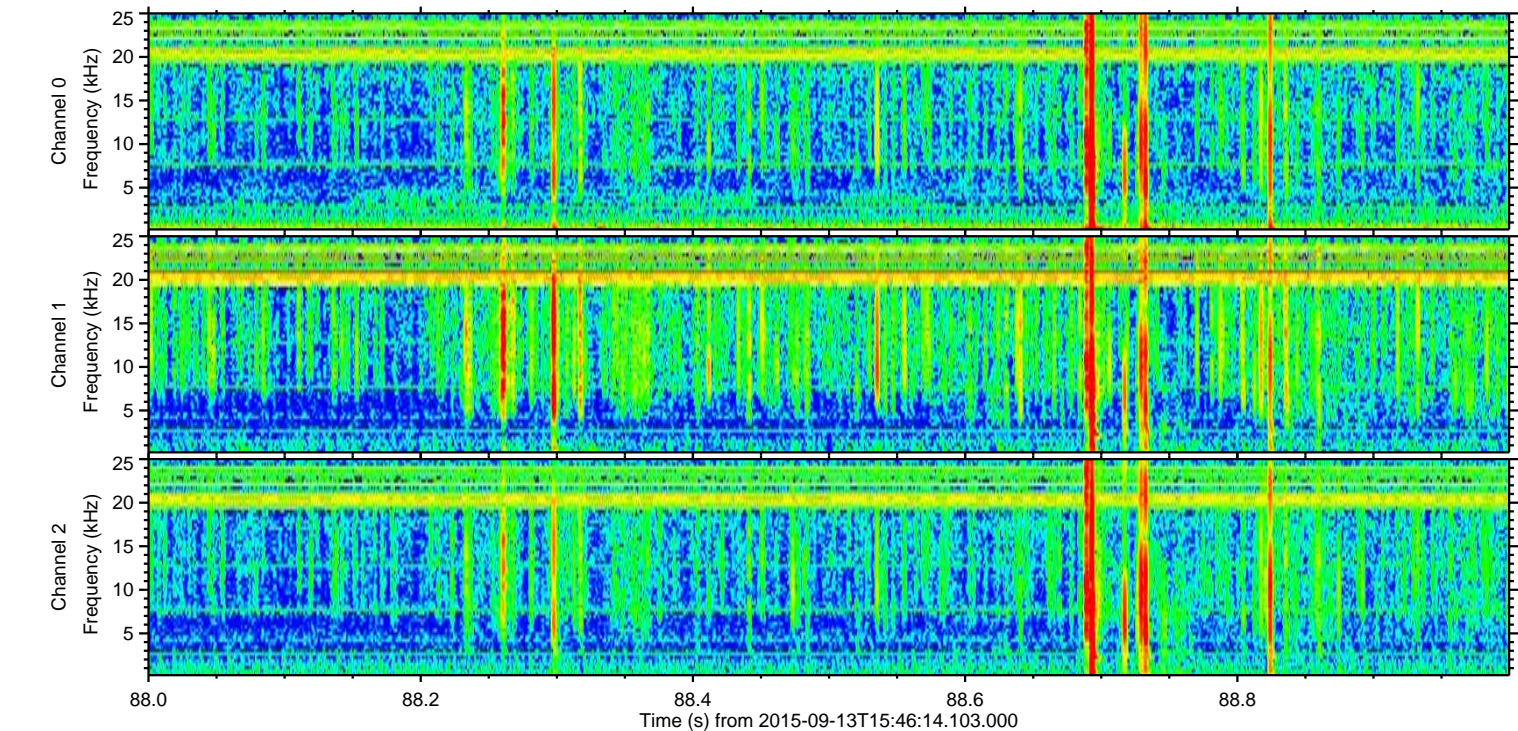
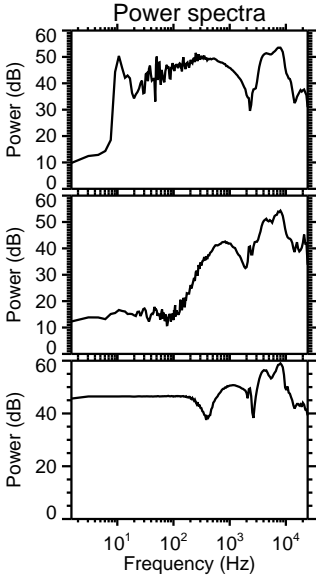
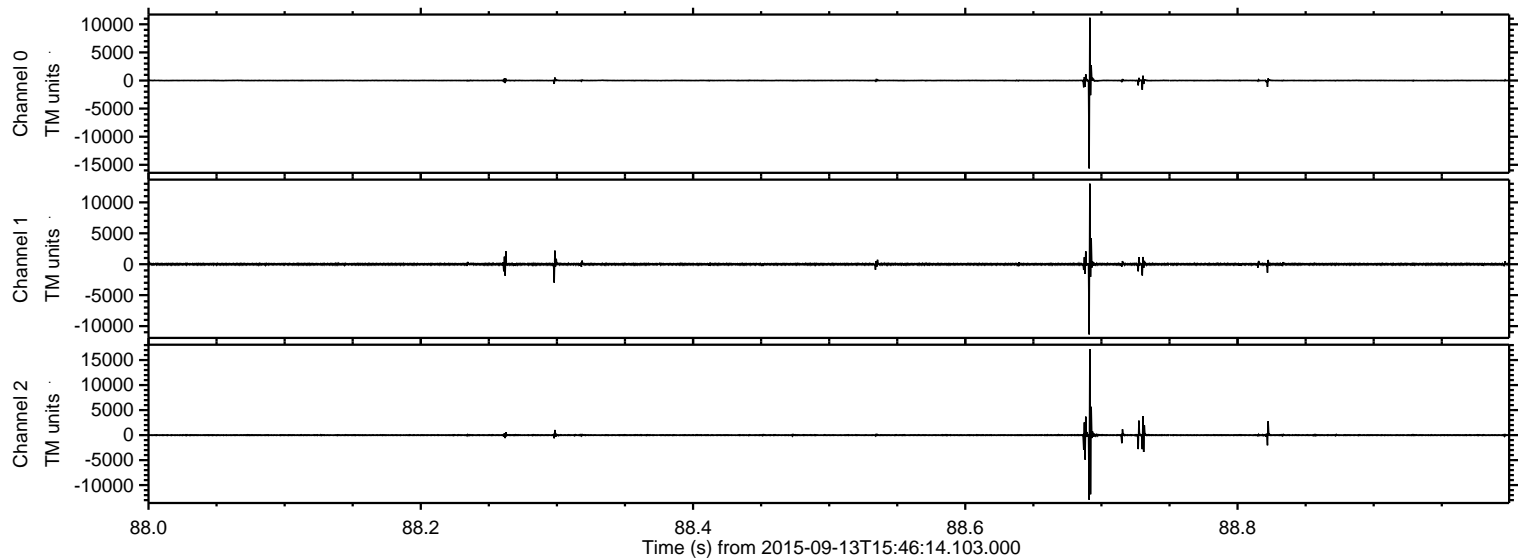


ELMAVAN 3D WAVEFORMS (Measured data sampled at 50 kHz) 51000 packets of 144 samples from 2015-09-13T15:46:14.103.000.

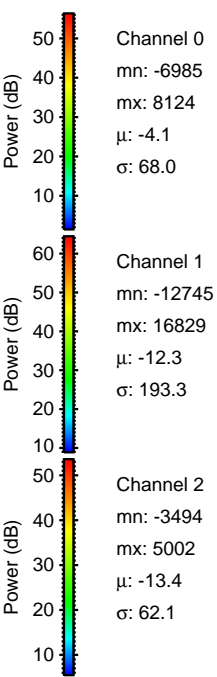
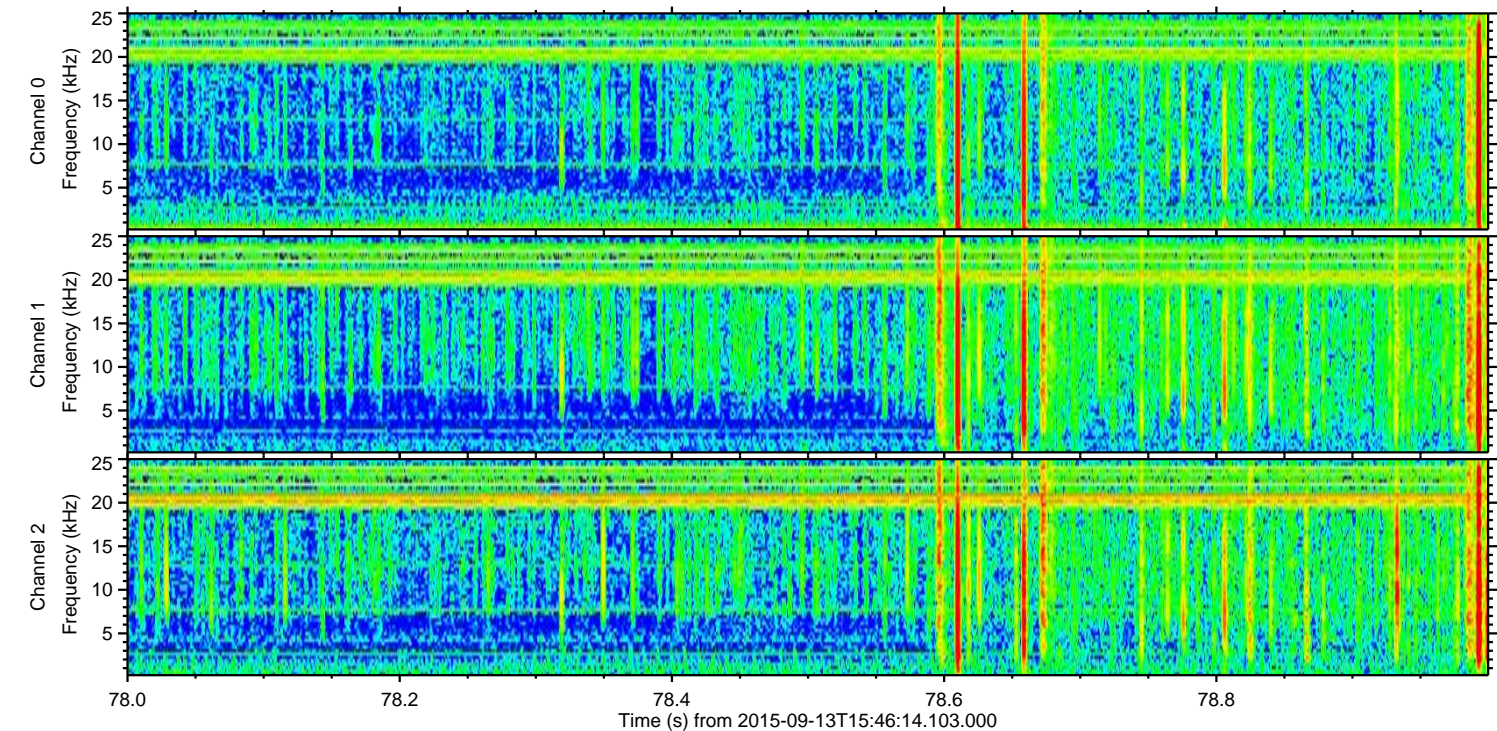
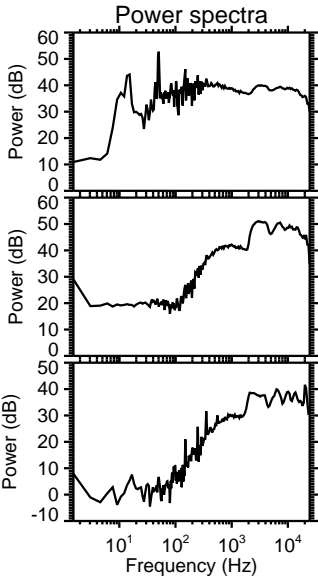
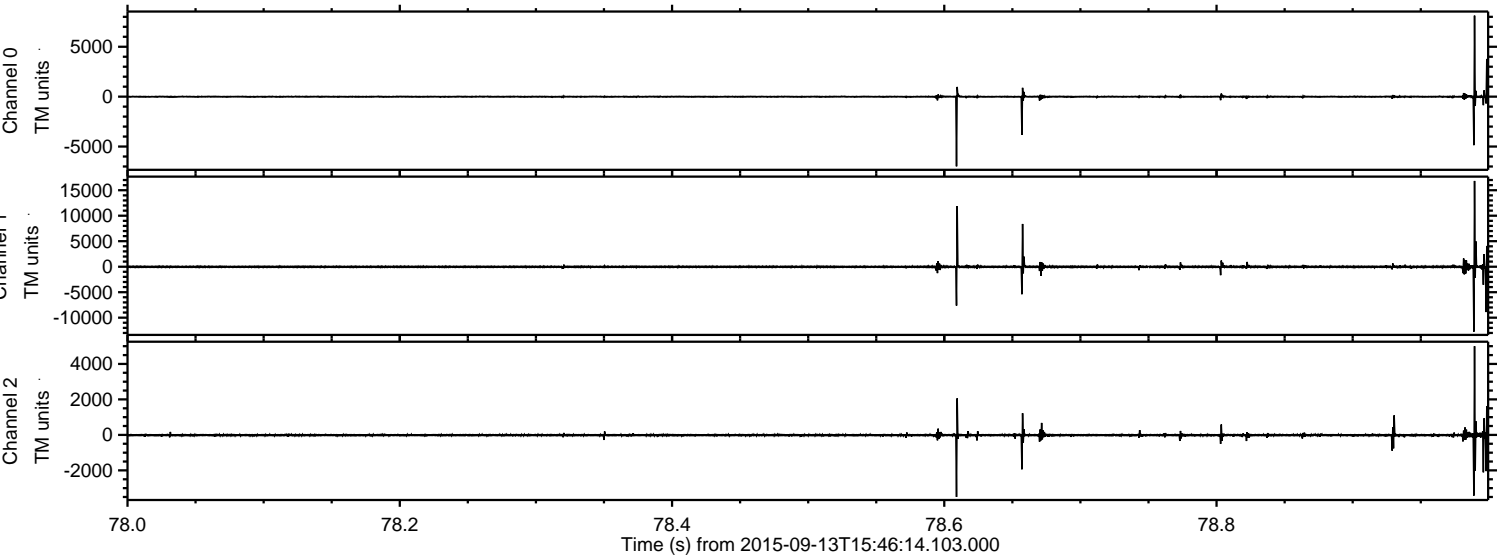
Processed Mon Oct 12 05:07:22 2015 by ELM ver.2012-10-06 from 001__elm20150913_154613__dat00.bin



Processed Mon Oct 12 05:07:37 2015 by ELM ver.2012-10-06 from 001__elm20150913_154613__dat00.bin

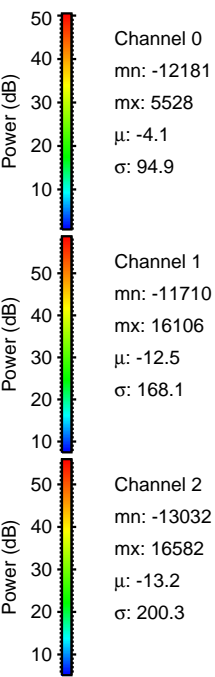
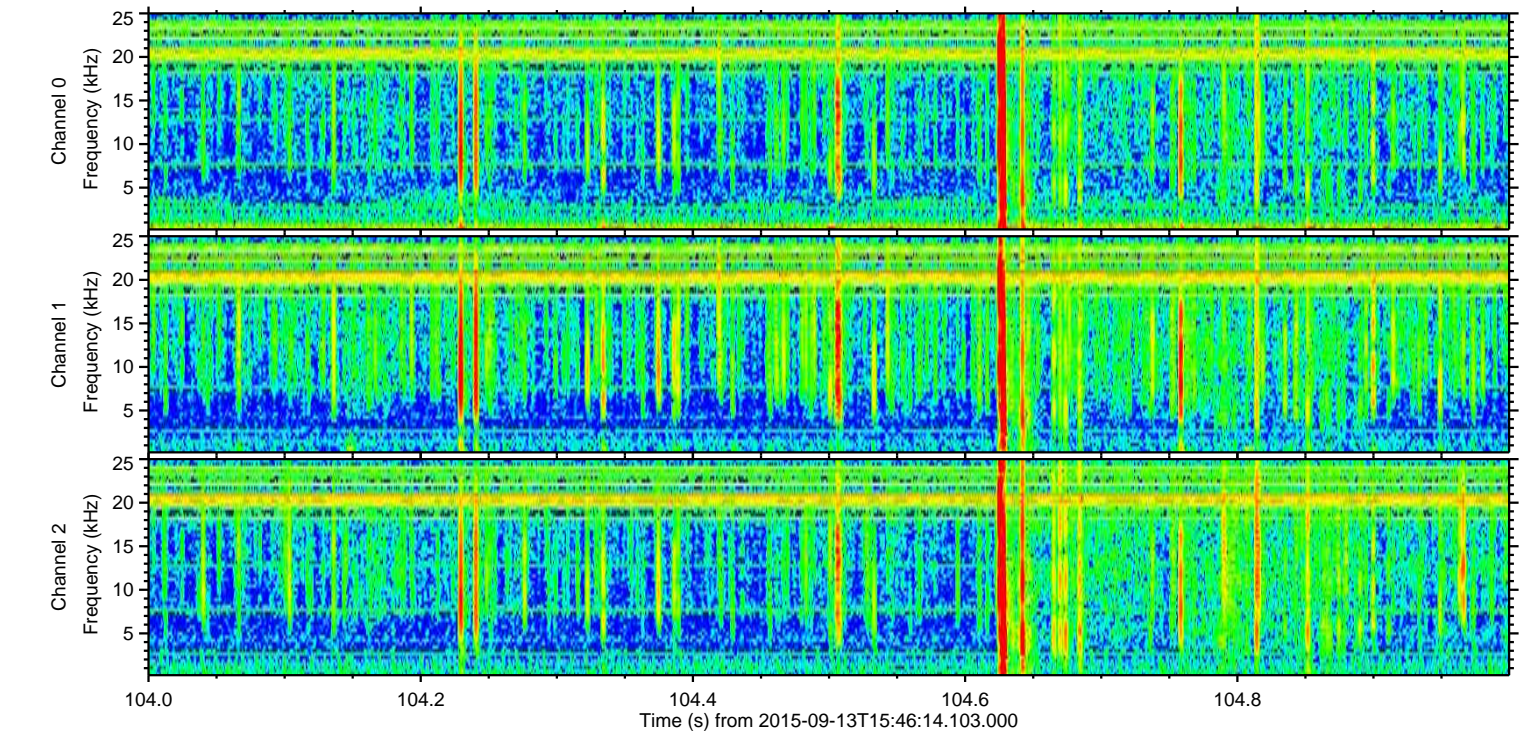
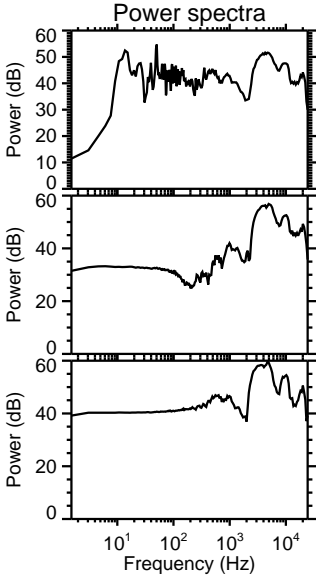
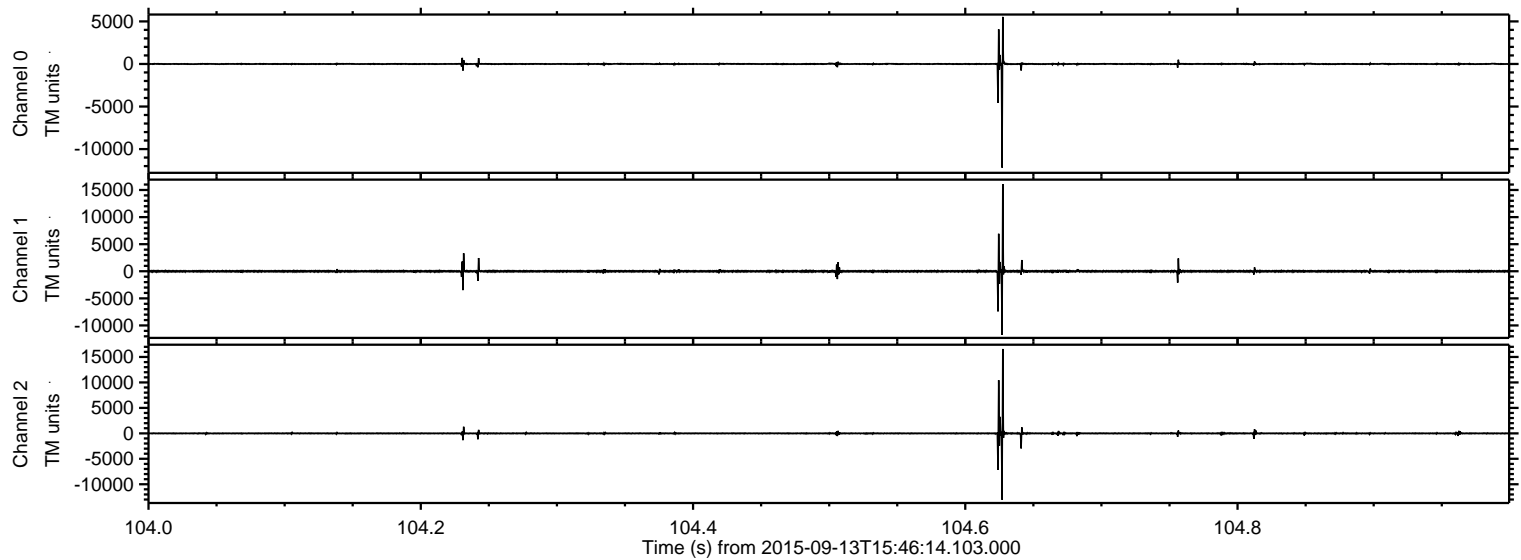


Processed Mon Oct 12 05:07:39 2015 by ELM ver.2012-10-06 from 001__elm20150913_154613__dat00.bin

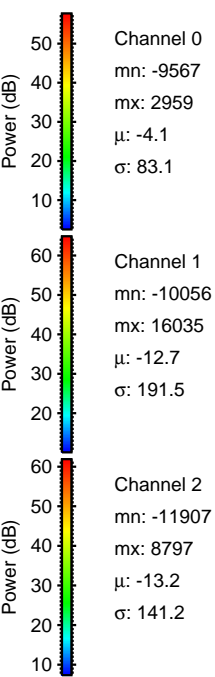
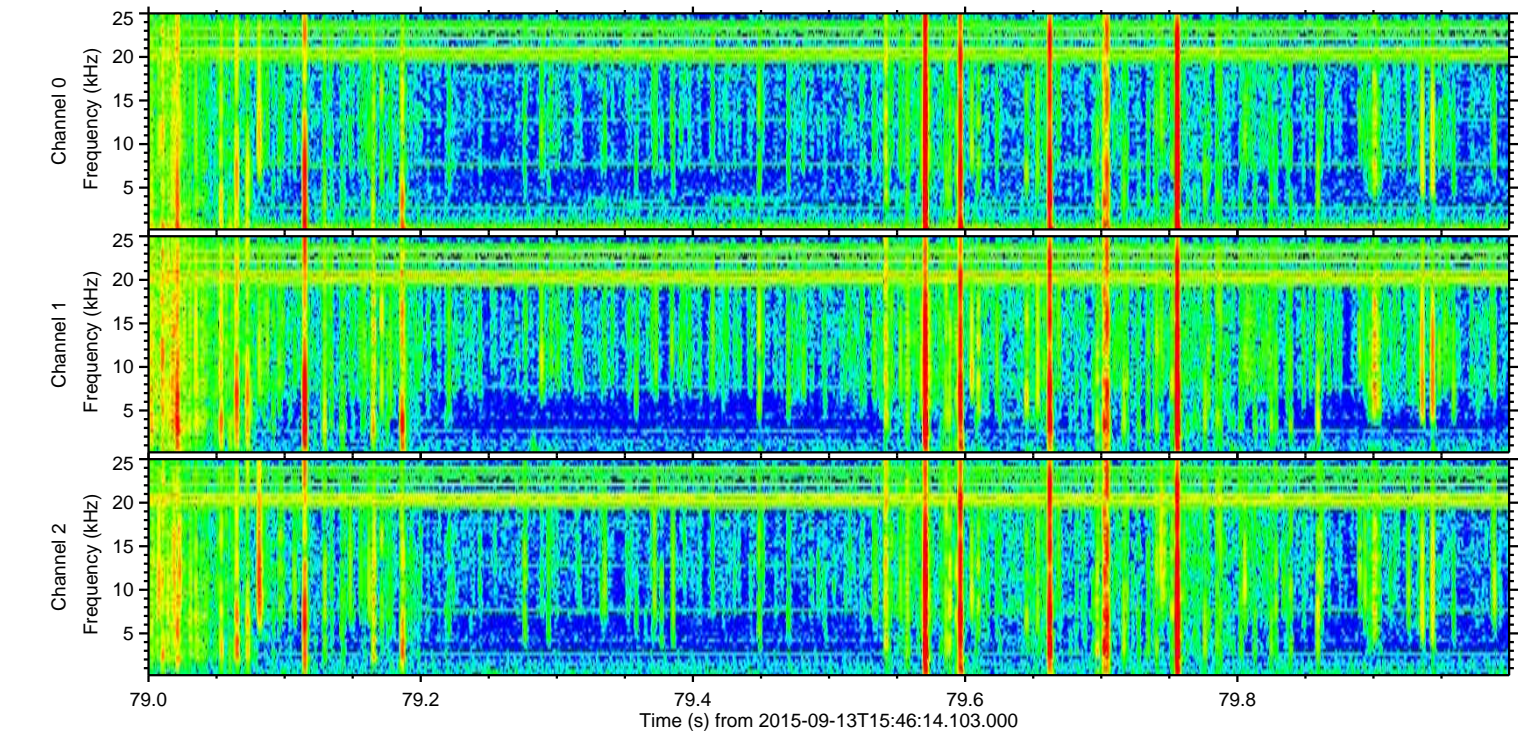
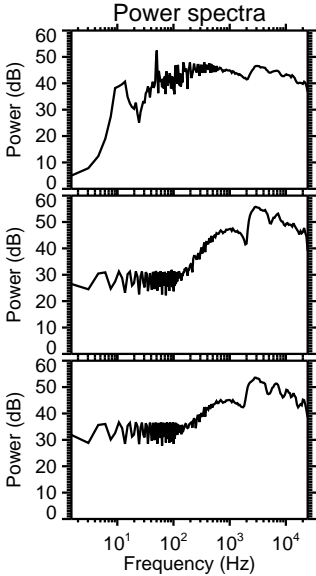
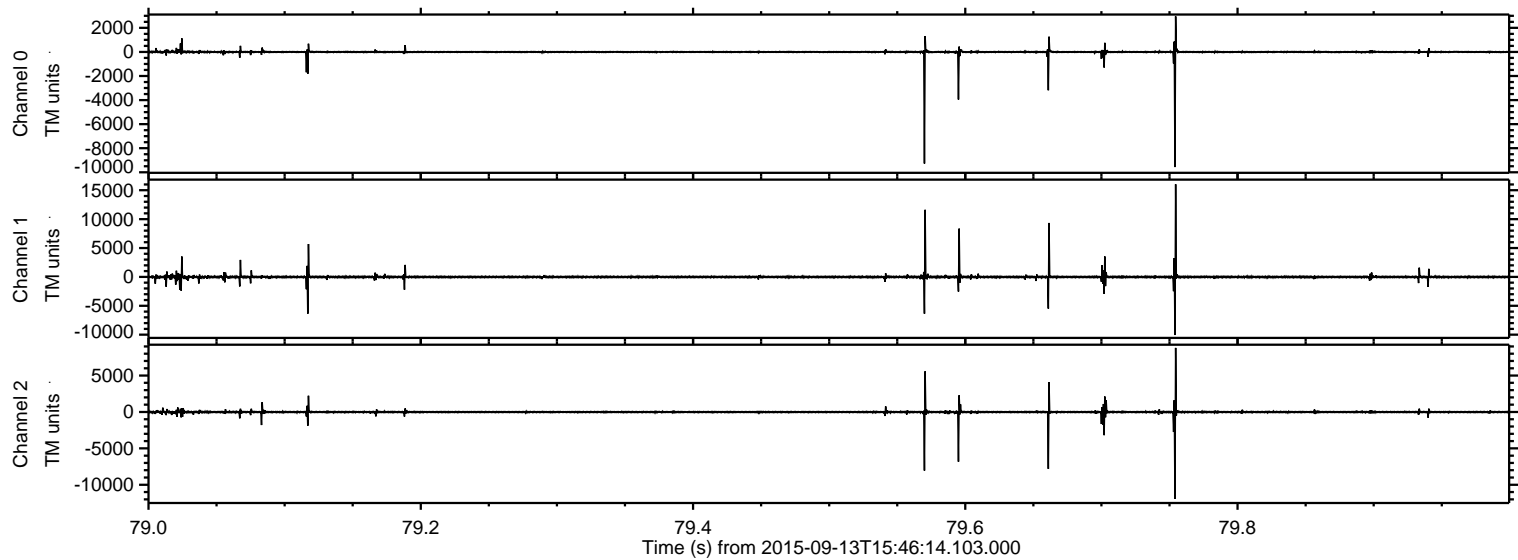


ELMAVAN 3D WAVEFORMS (Measured data sampled at 50 kHz) 51000 packets of 144 samples from 2015-09-13T15:46:14.103.000. Part 105/147

Processed Mon Oct 12 05:07:40 2015 by ELM ver.2012-10-06 from 001__elm20150913_154613__dat00.bin

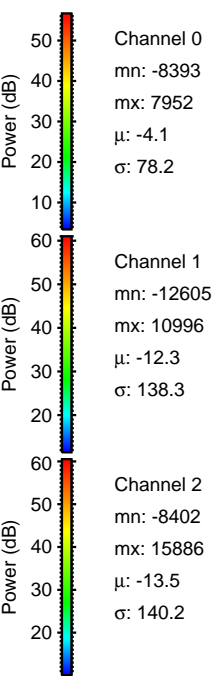
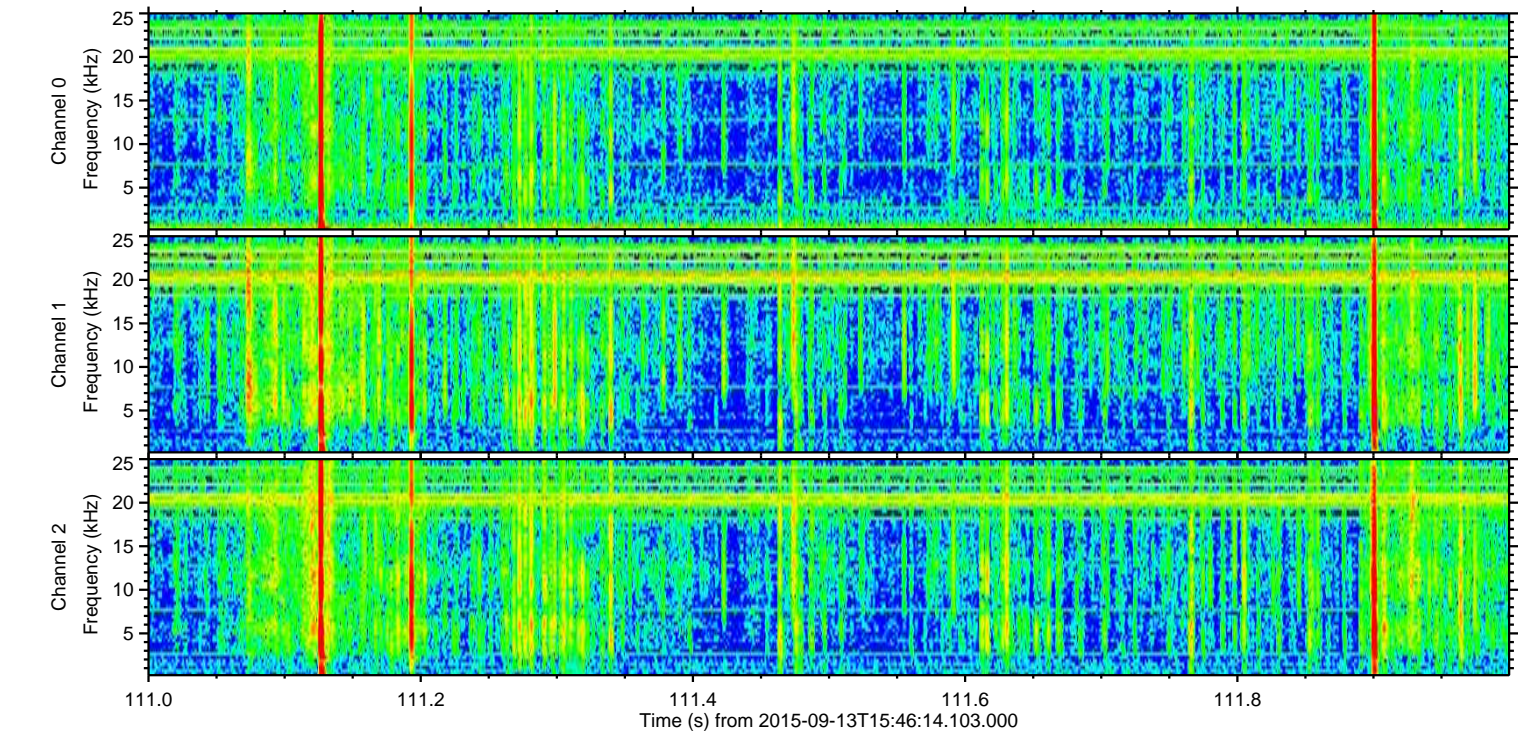
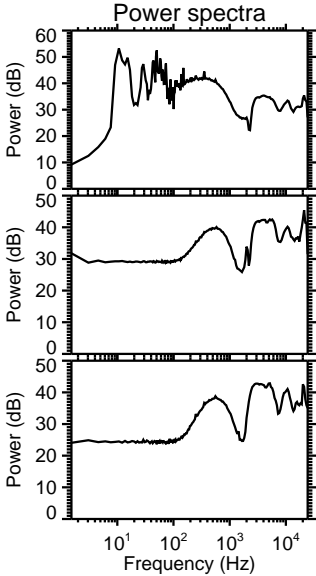
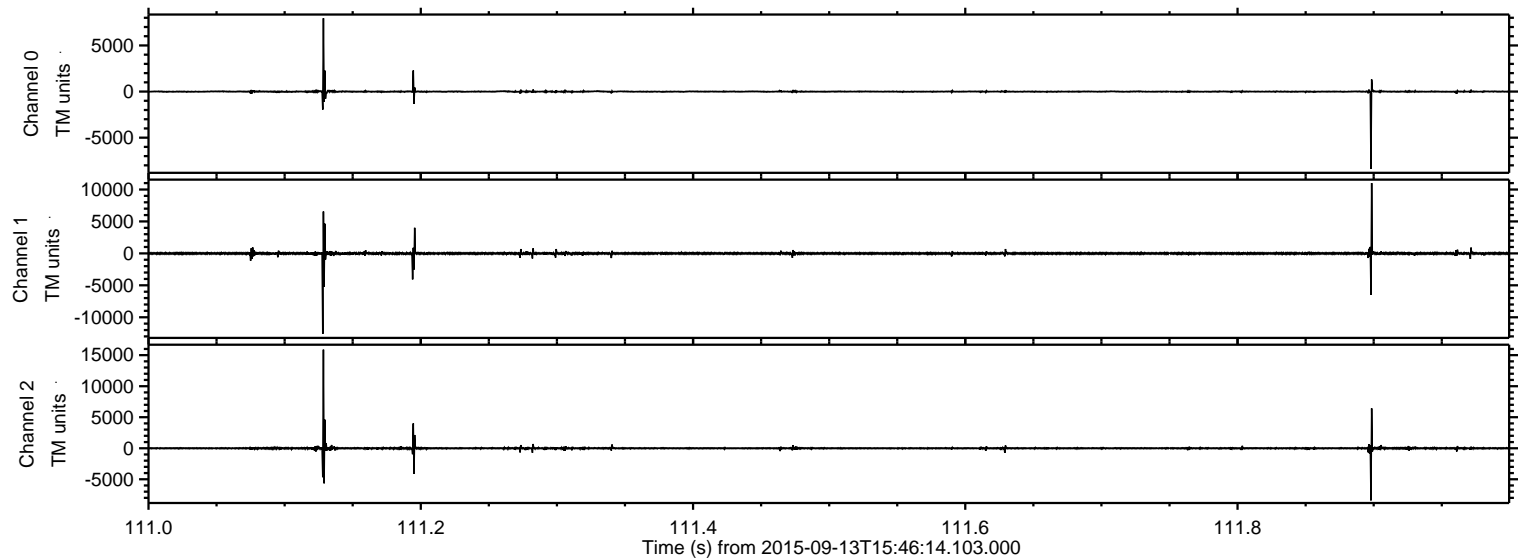


Processed Mon Oct 12 05:07:41 2015 by ELM ver.2012-10-06 from 001__elm20150913_154613__dat00.bin

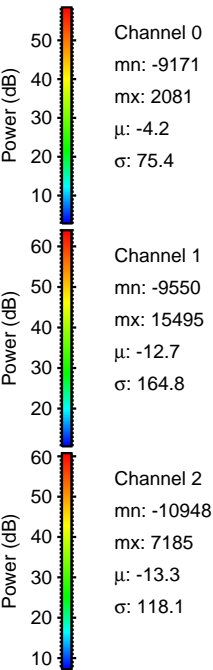
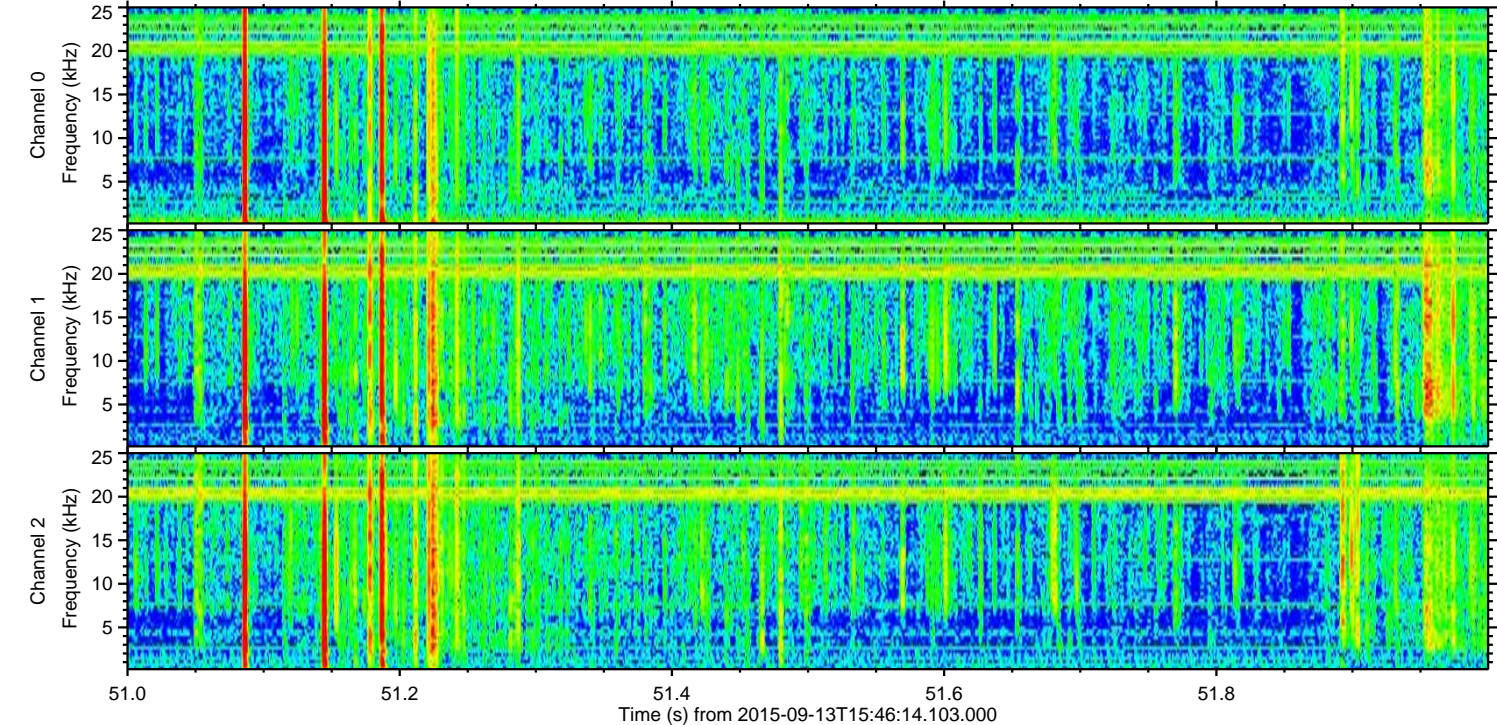
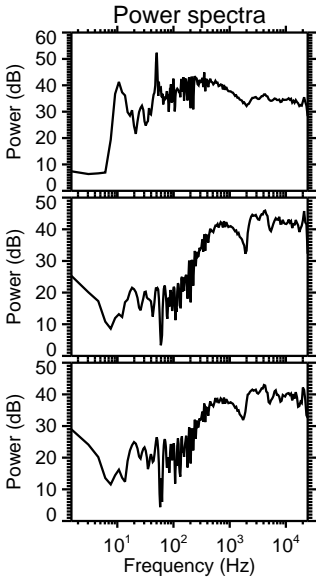
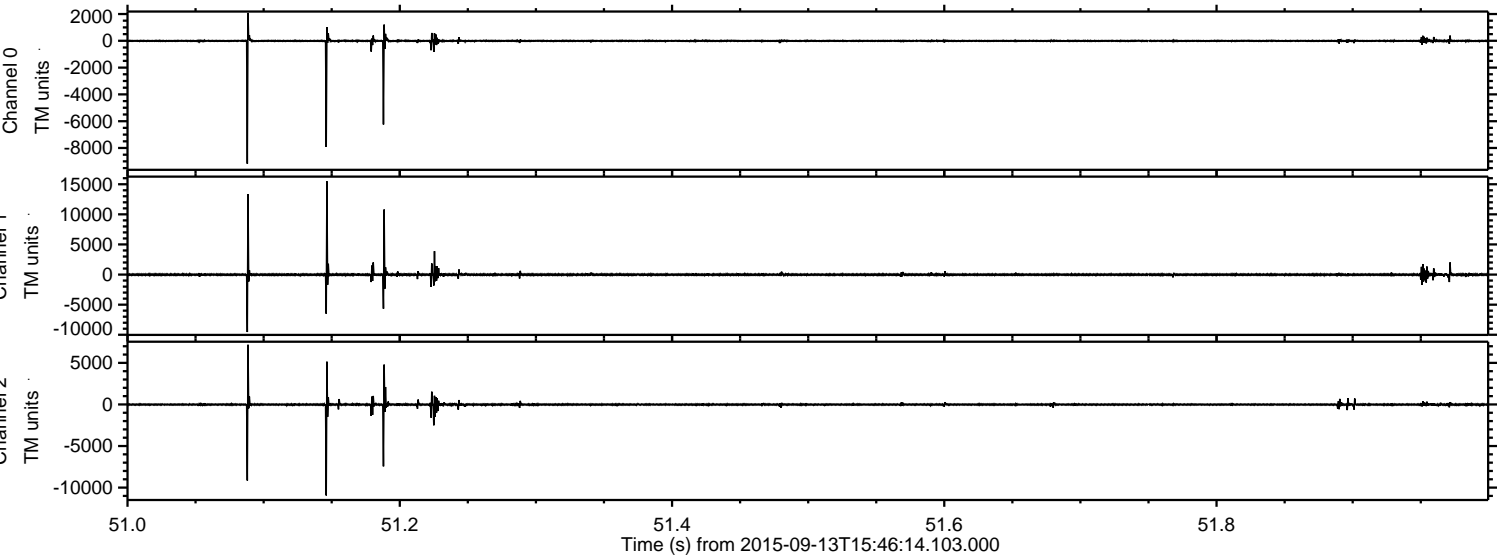


ELMAVAN 3D WAVEFORMS (Measured data sampled at 50 kHz) 51000 packets of 144 samples from 2015-09-13T15:46:14.103.000. Part 112/147

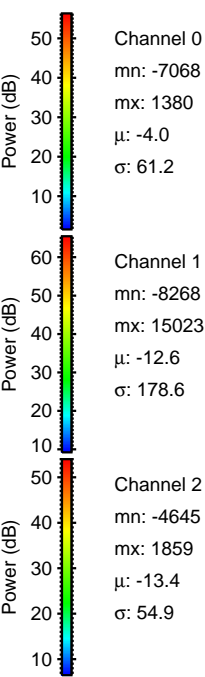
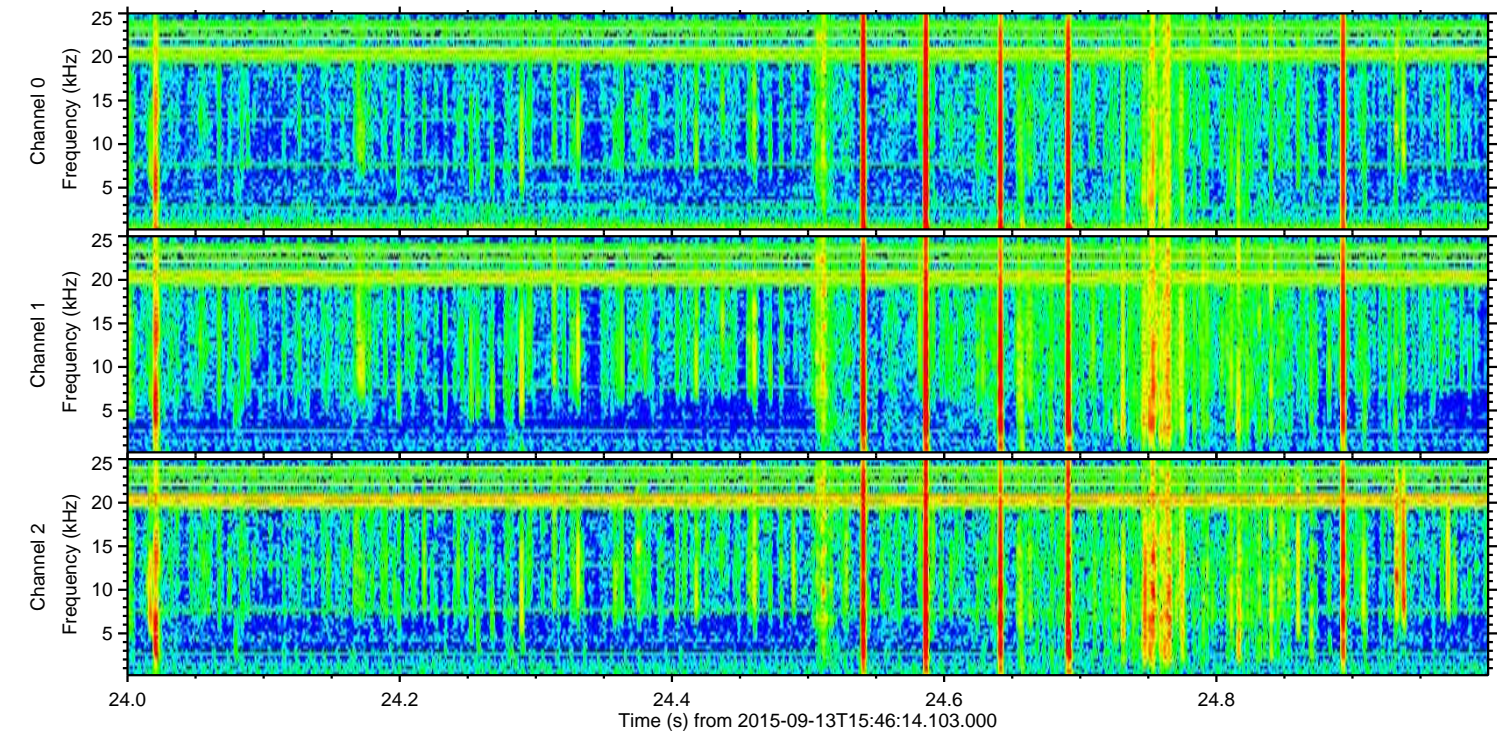
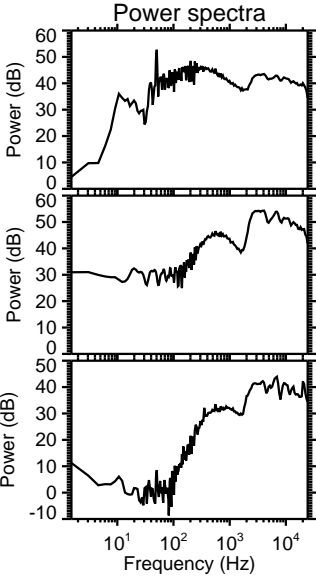
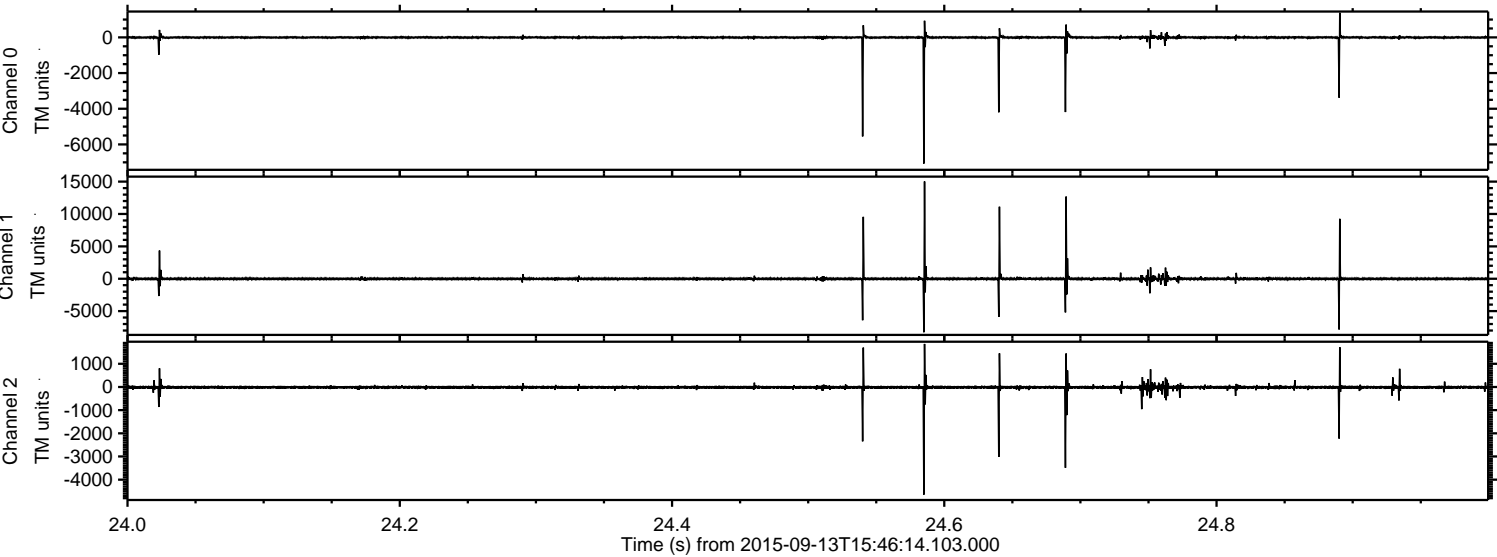
Processed Mon Oct 12 05:07:42 2015 by ELM ver.2012-10-06 from 001__elm20150913_154613__dat00.bin



Processed Mon Oct 12 05:07:43 2015 by ELM ver.2012-10-06 from 001__elm20150913_154613__dat00.bin

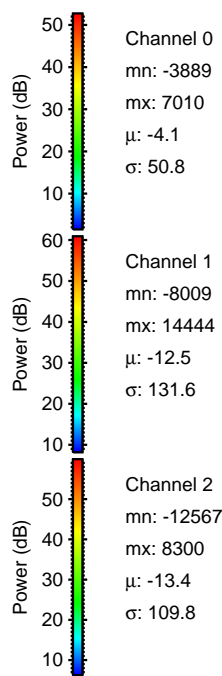
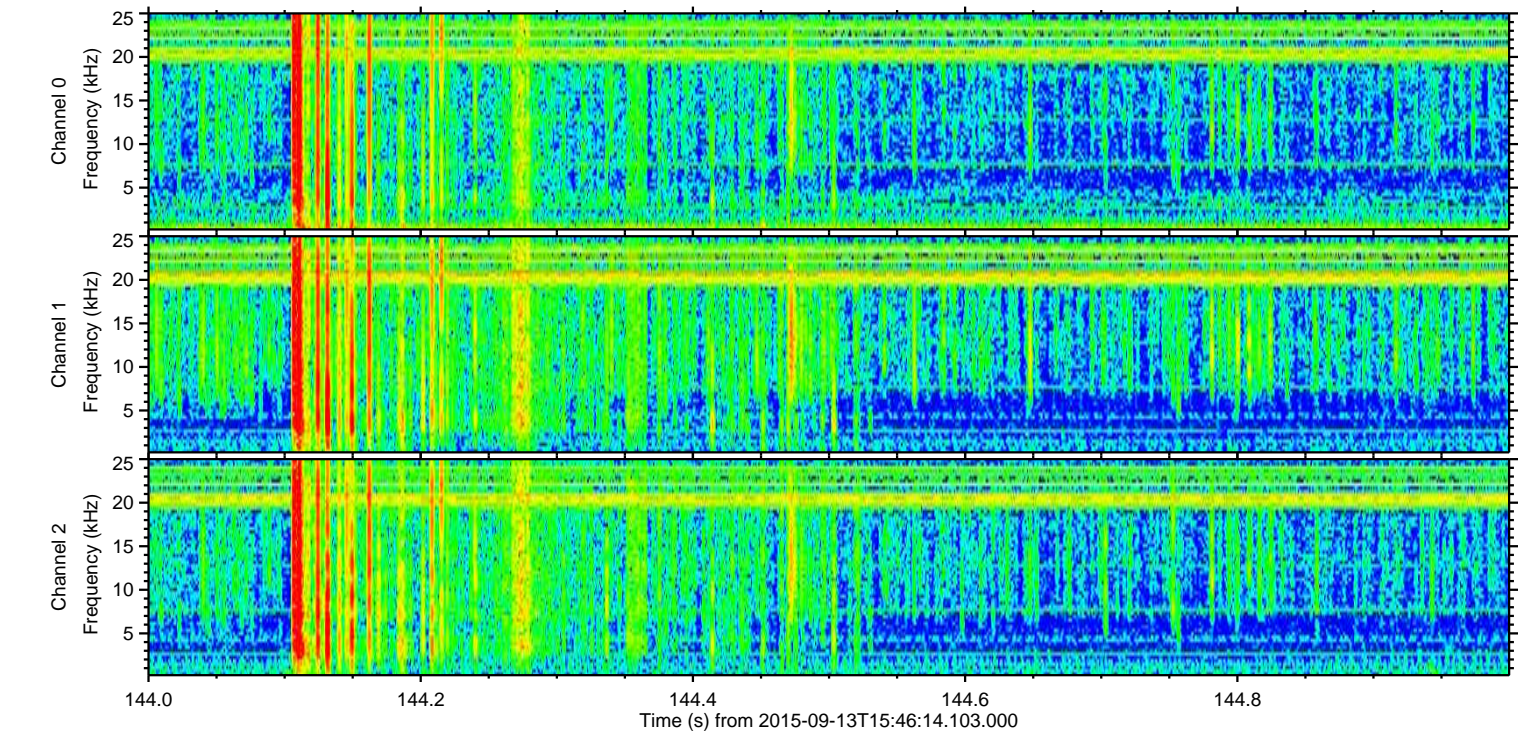
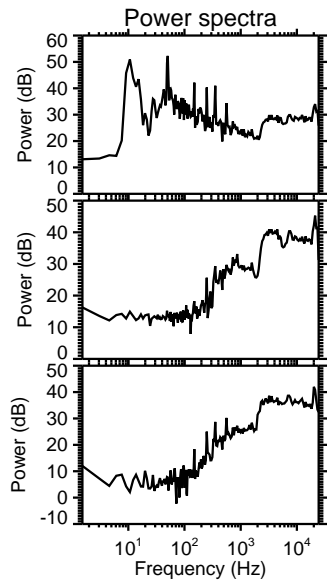
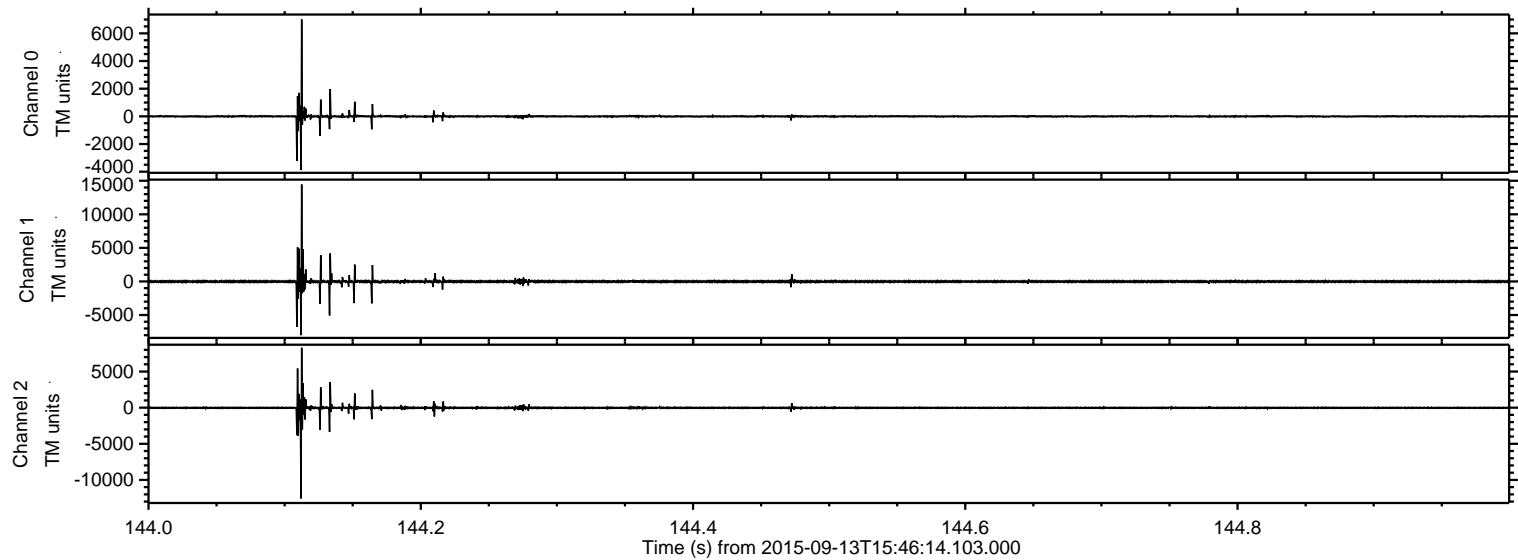


Processed Mon Oct 12 05:07:44 2015 by ELM ver.2012-10-06 from 001__elm20150913_154613__dat00.bin

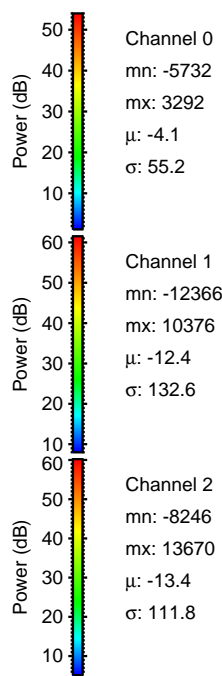
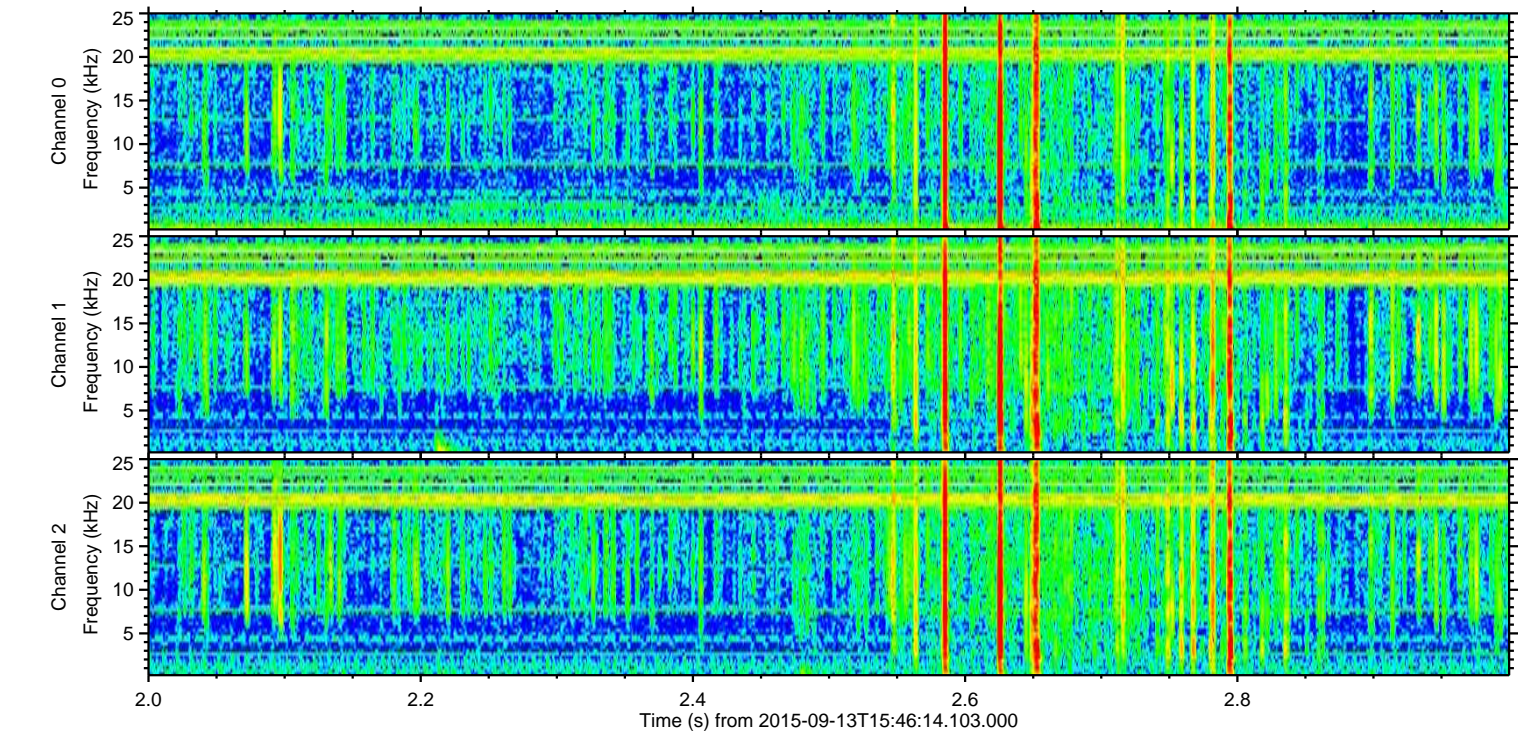
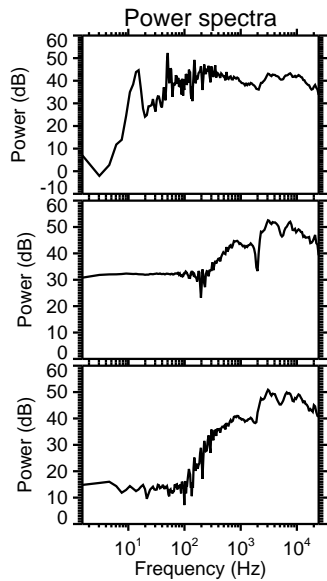
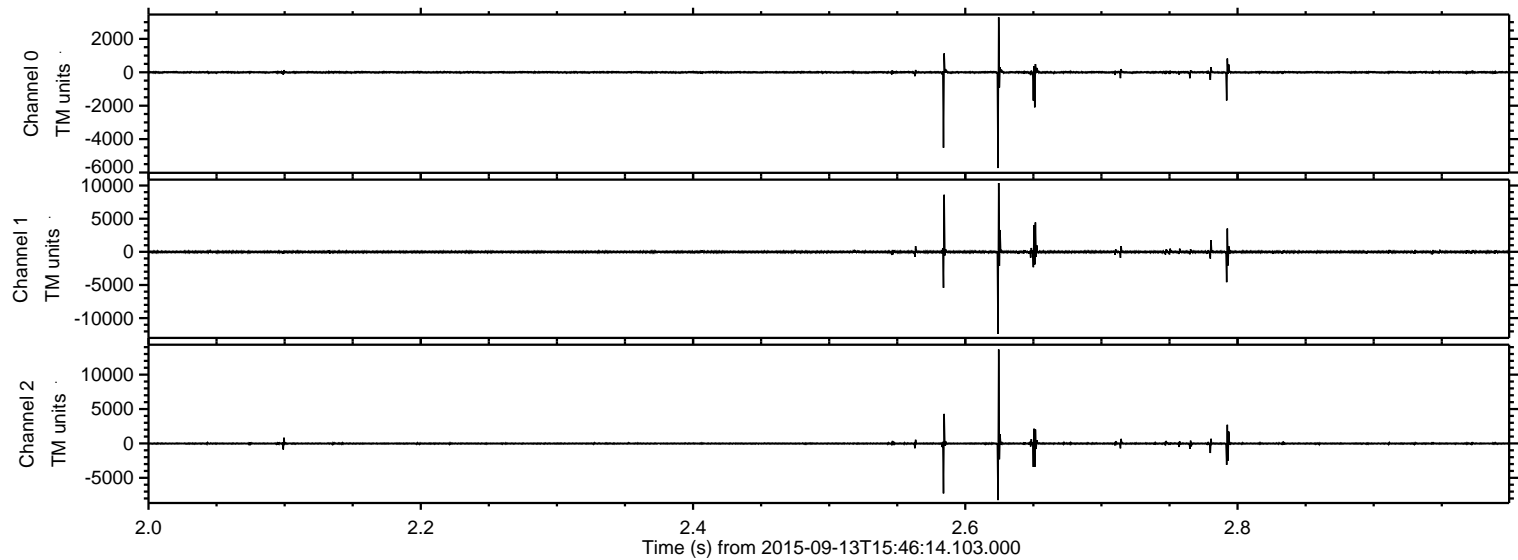


ELMAVAN 3D WAVEFORMS (Measured data sampled at 50 kHz) 51000 packets of 144 samples from 2015-09-13T15:46:14.103.000. Part 145/147

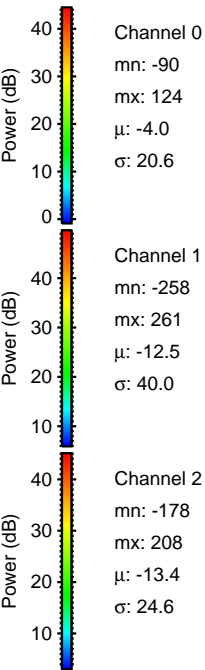
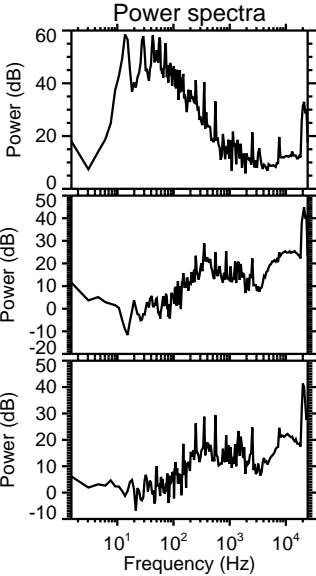
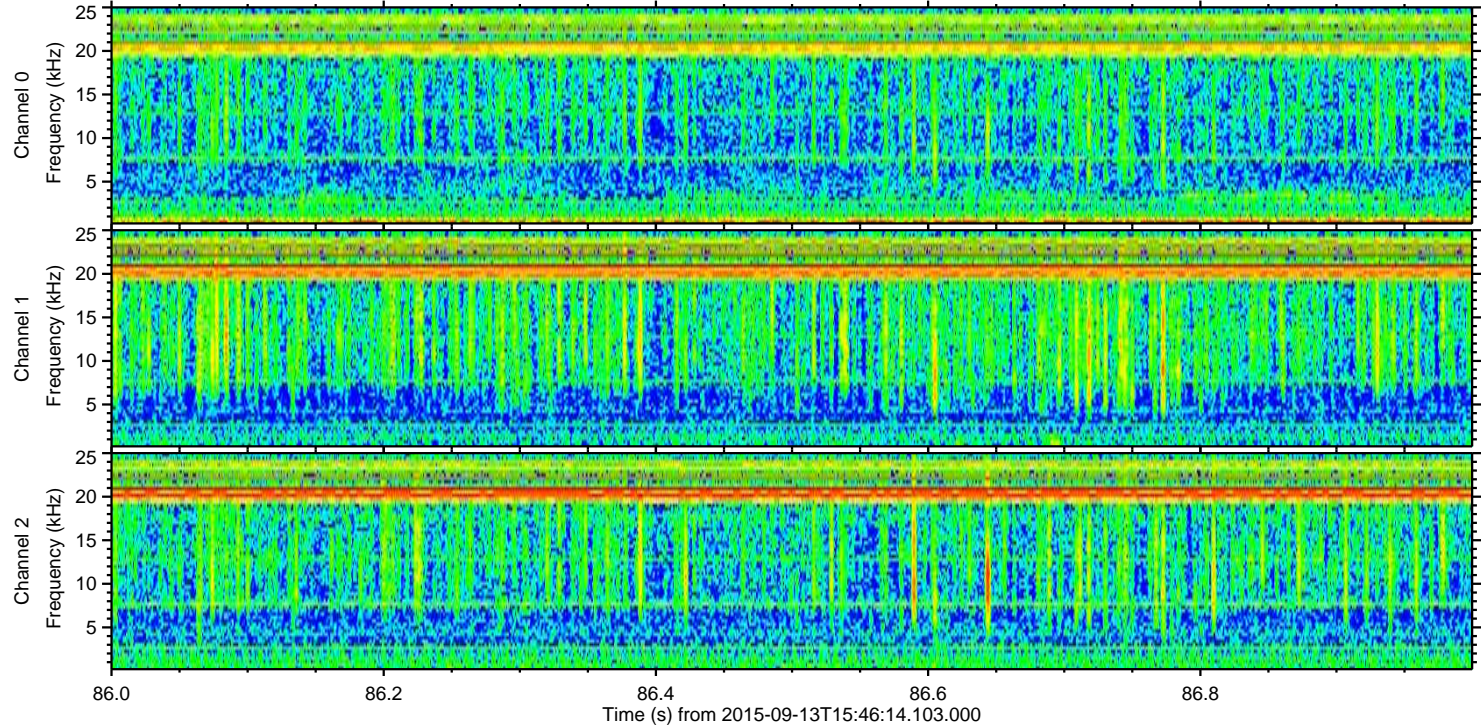
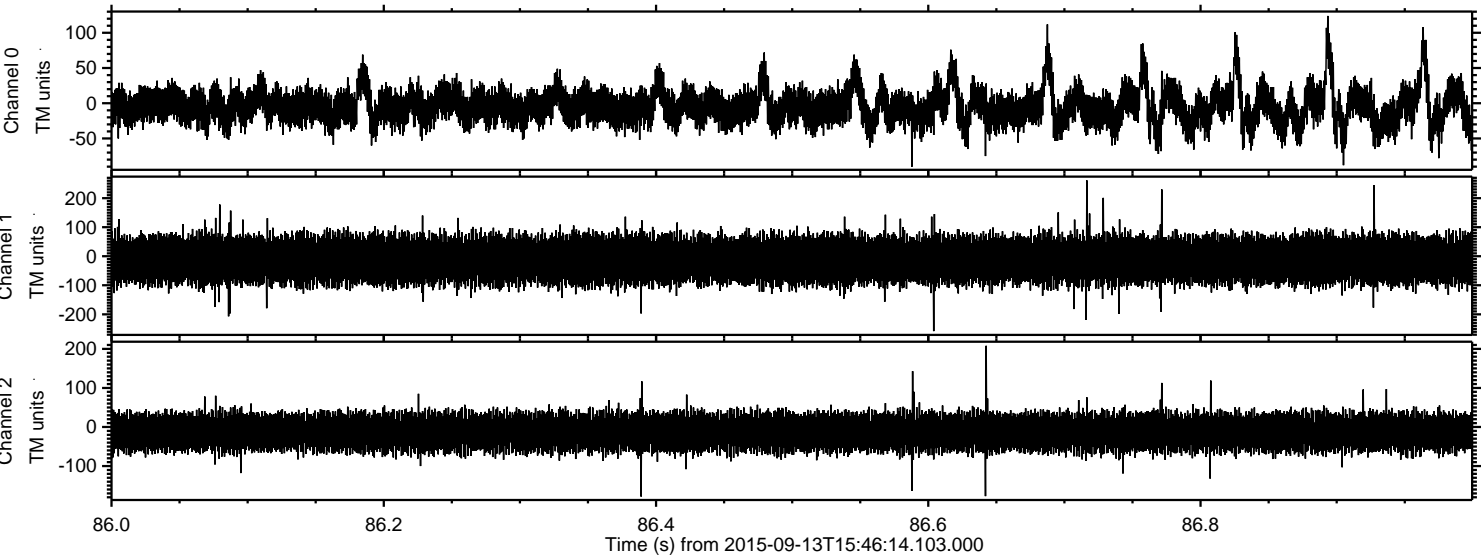
Processed Mon Oct 12 05:07:45 2015 by ELM ver.2012-10-06 from 001__elm20150913_154613__dat00.bin



Processed Mon Oct 12 05:07:46 2015 by ELM ver.2012-10-06 from 001__elm20150913_154613__dat00.bin



Processed Mon Oct 12 05:07:47 2015 by ELM ver.2012-10-06 from 001__elm20150913_154613__dat00.bin



Channel 0
mn: -90
mx: 124
 μ : -4.0
 σ : 20.6

Channel 1
mn: -258
mx: 261
 μ : -12.5
 σ : 40.0

Channel 2
mn: -178
mx: 208
 μ : -13.4
 σ : 24.6