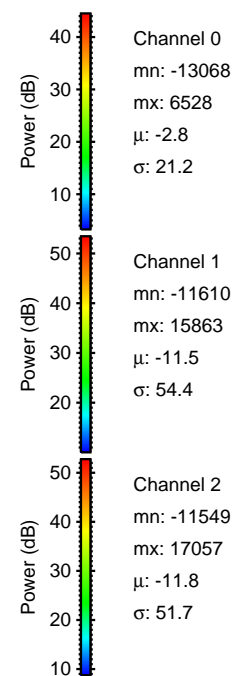
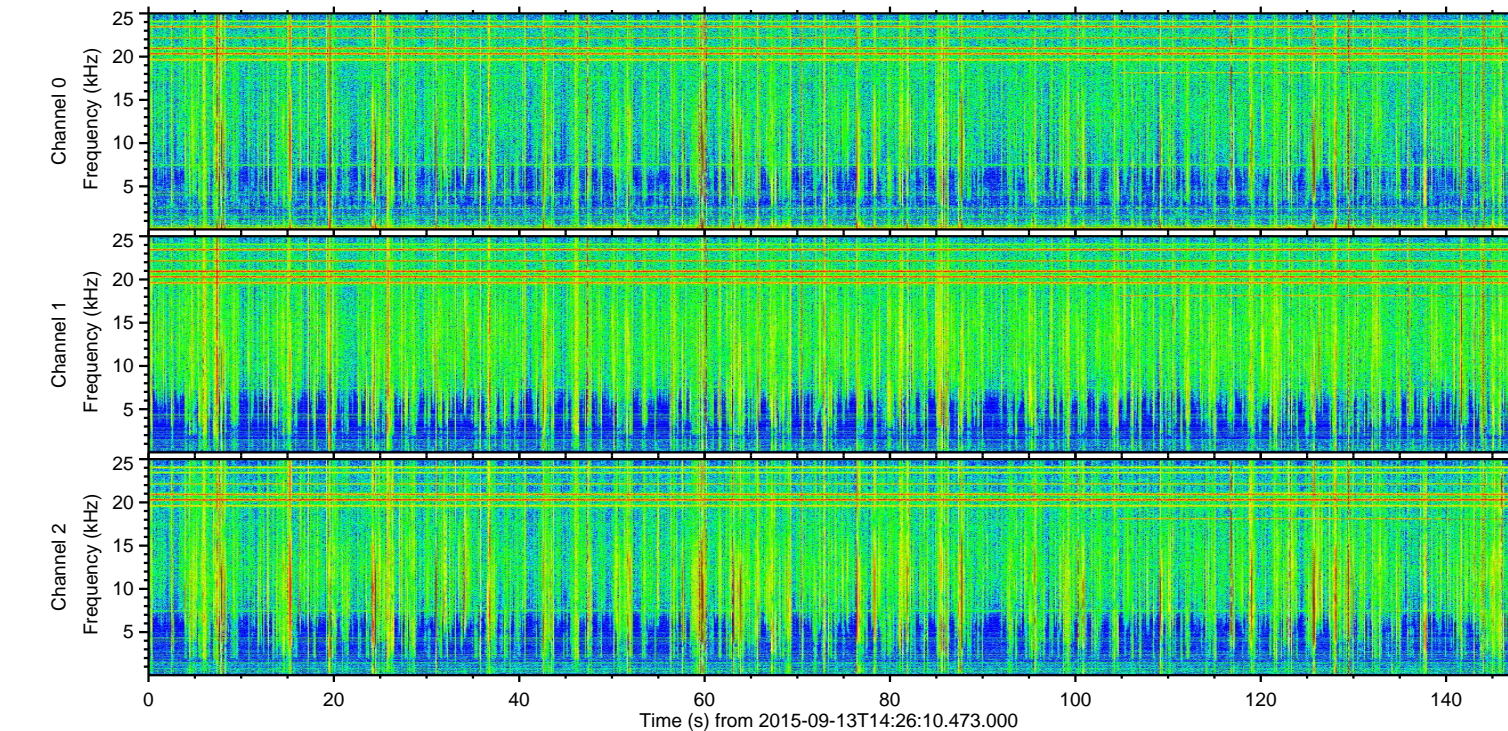
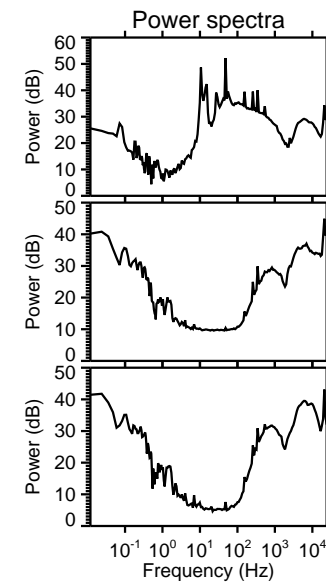
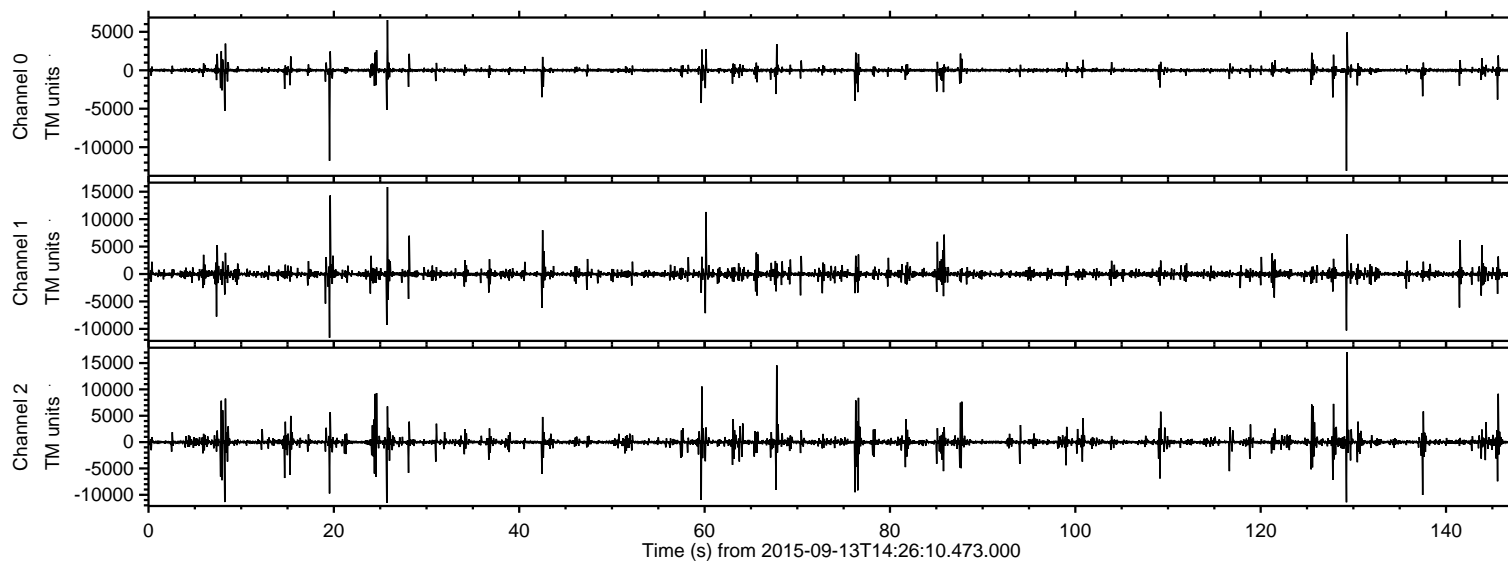


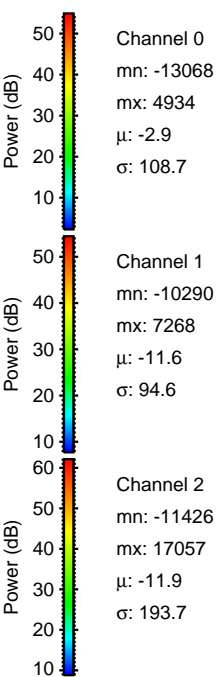
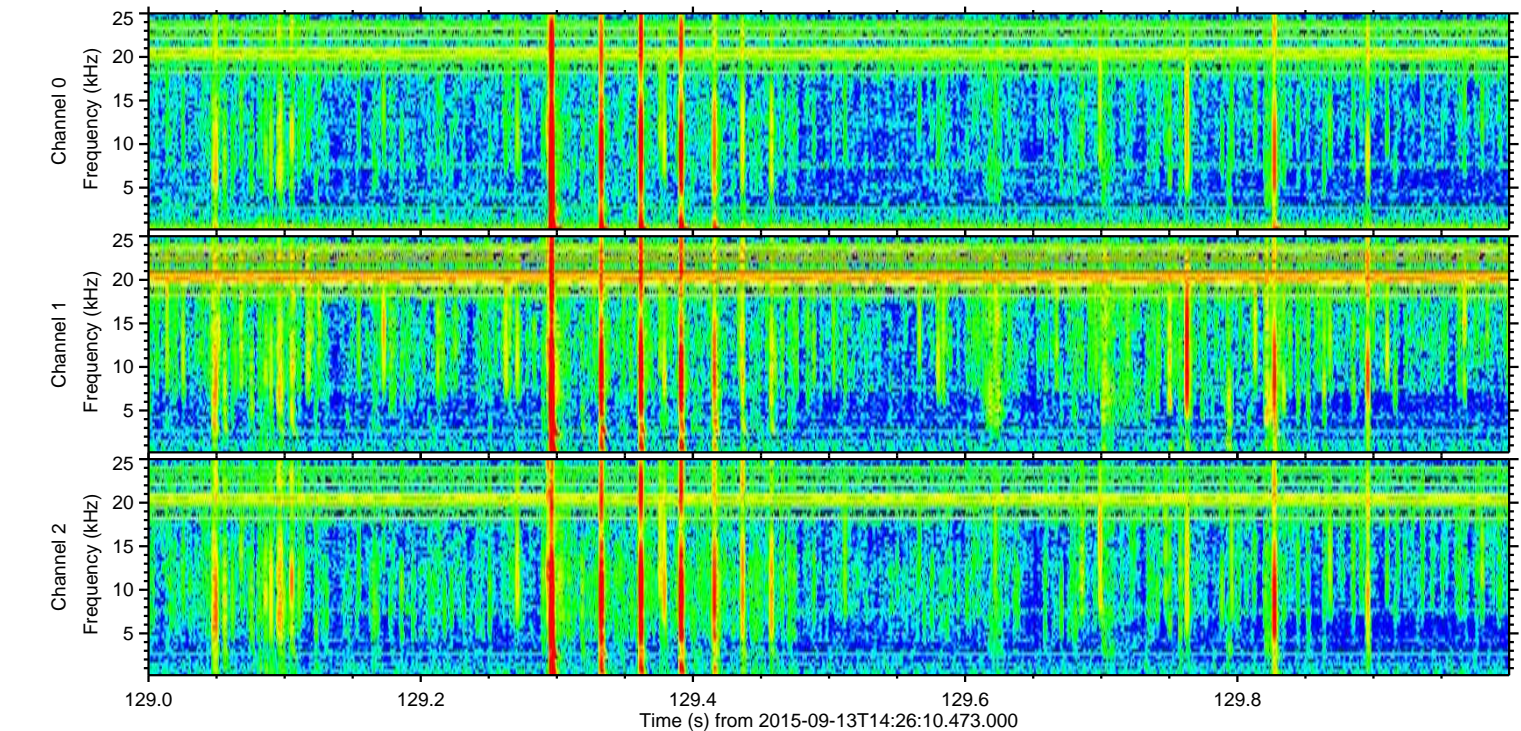
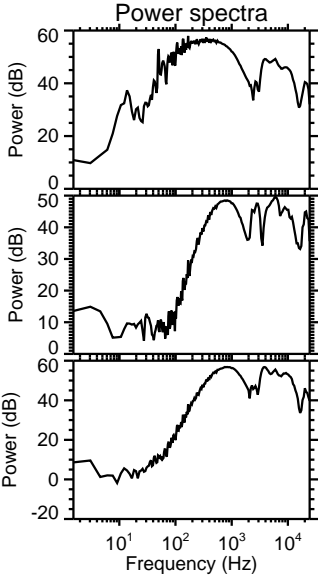
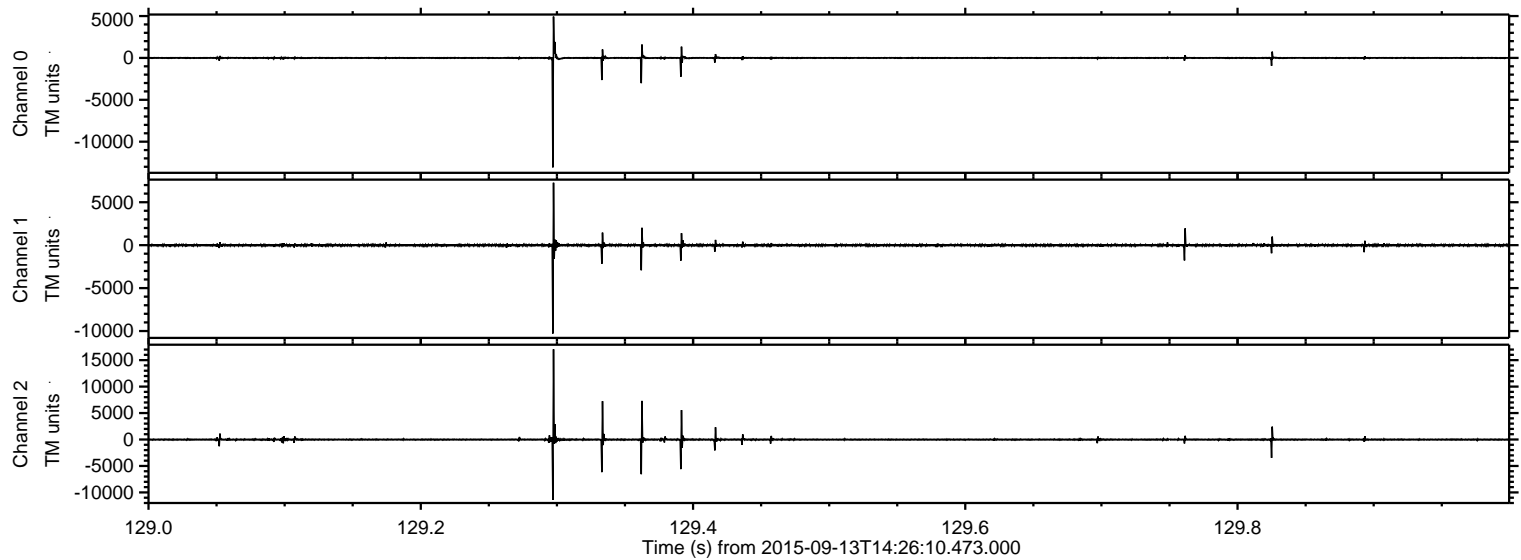
ELMAVAN 3D WAVEFORMS (Measured data sampled at 50 kHz) 51000 packets of 144 samples from 2015-09-13T14:26:10.473.000.

Processed Mon Oct 12 04:45:53 2015 by ELM ver.2012-10-06 from 001__elm20150913_142609__dat00.bin



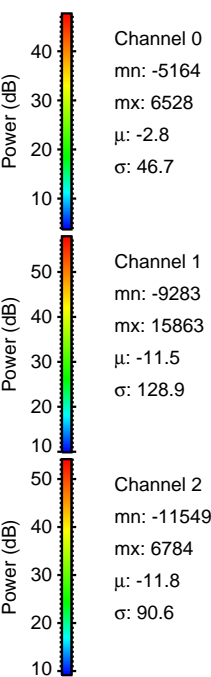
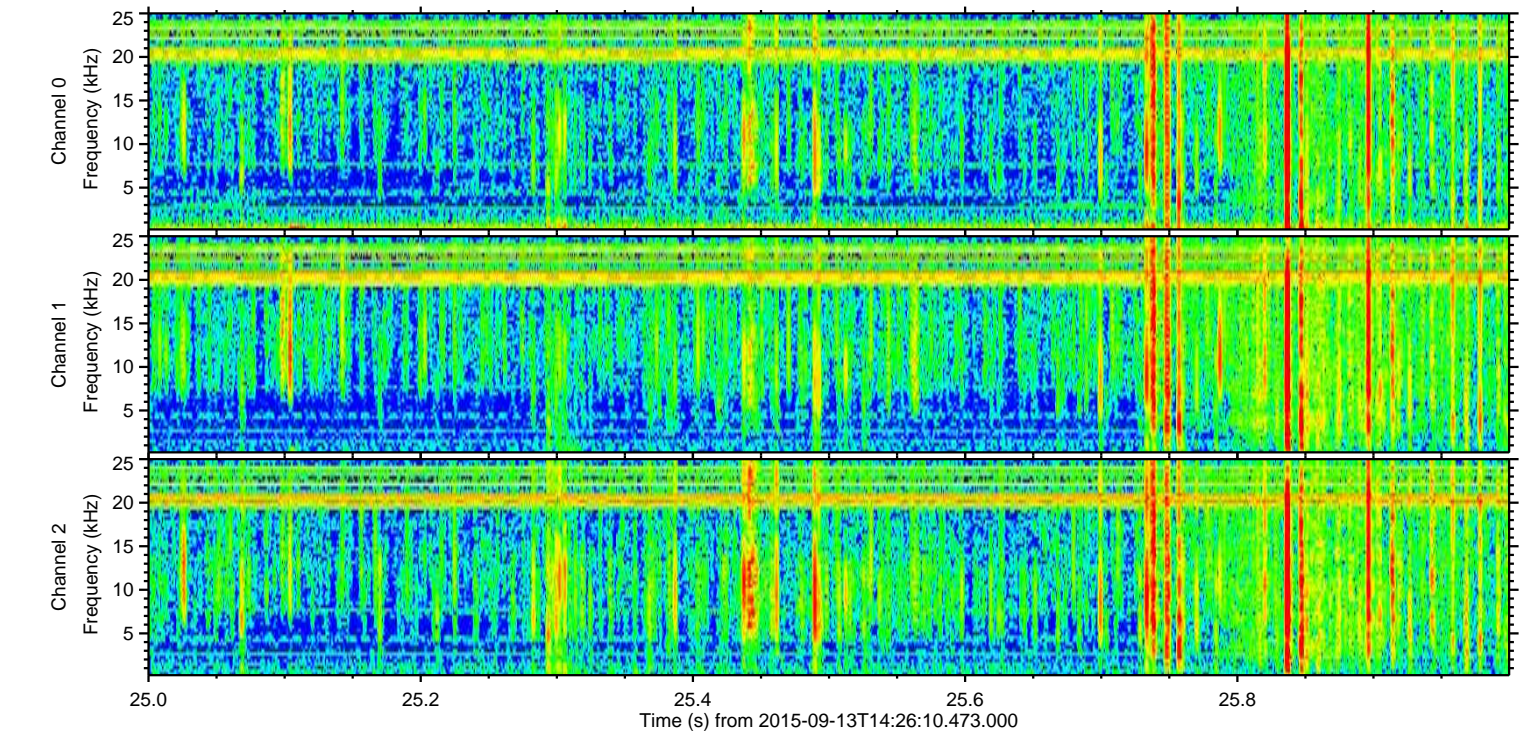
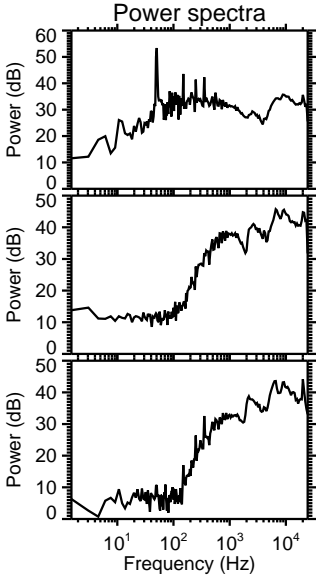
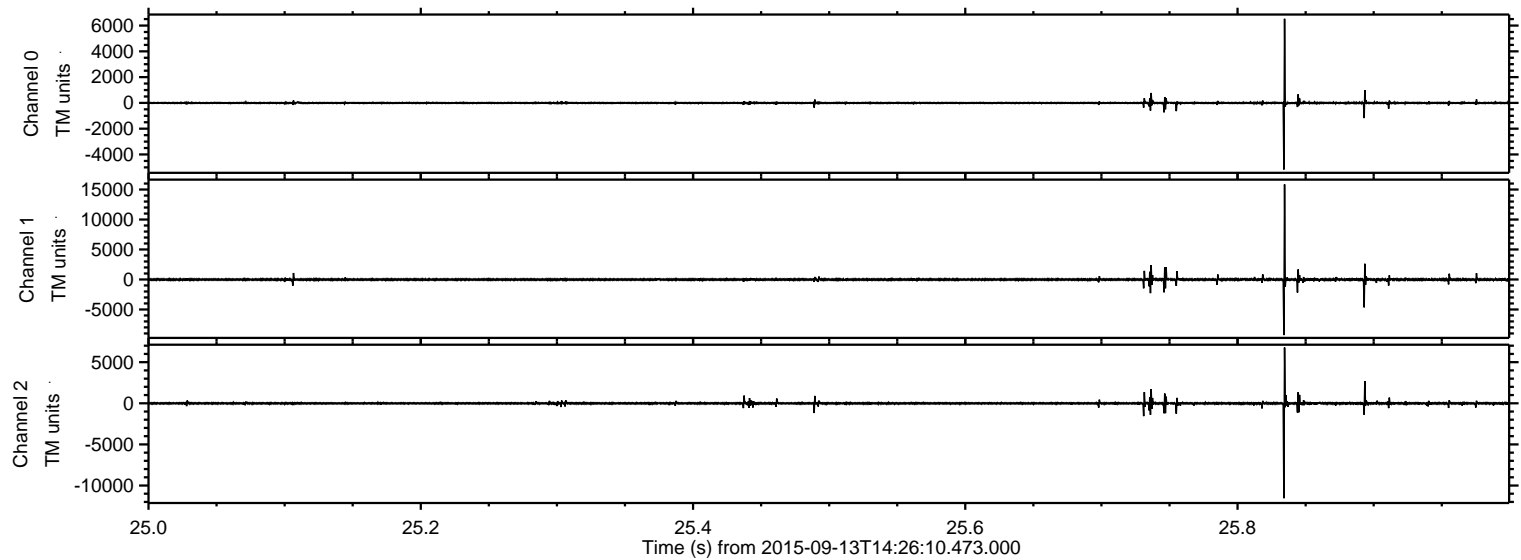
ELMAVAN 3D WAVEFORMS (Measured data sampled at 50 kHz) 51000 packets of 144 samples from 2015-09-13T14:26:10.473.000. Part 130/147

Processed Mon Oct 12 04:46:08 2015 by ELM ver.2012-10-06 from 001__elm20150913_142609__dat00.bin

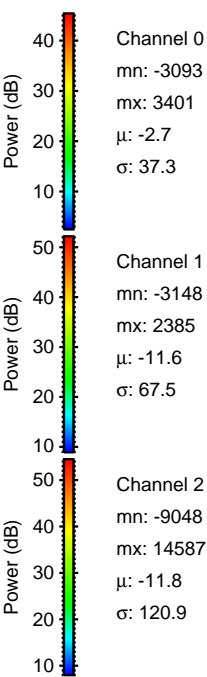
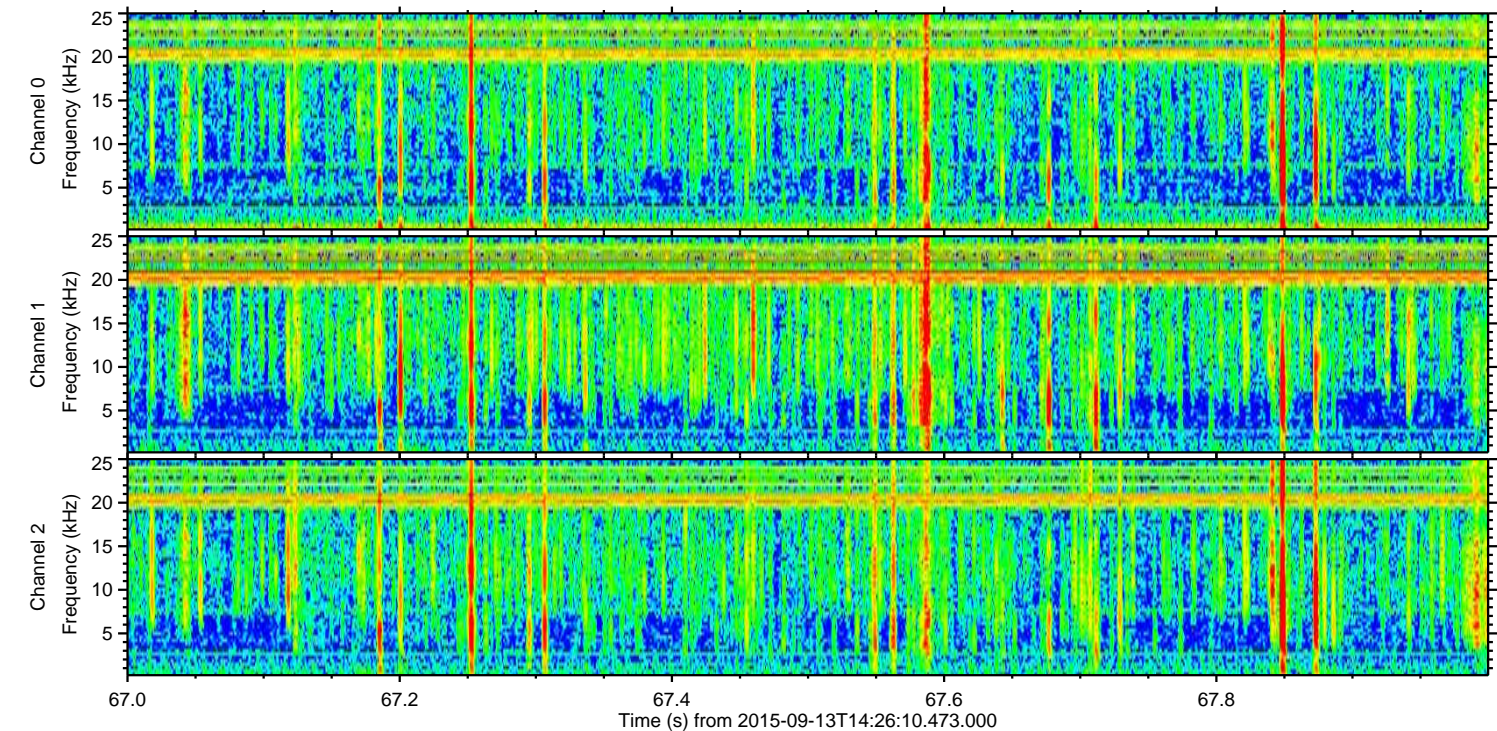
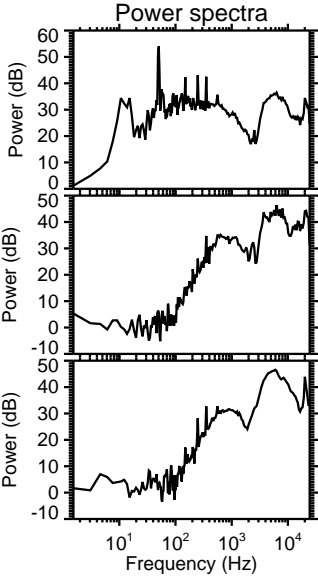
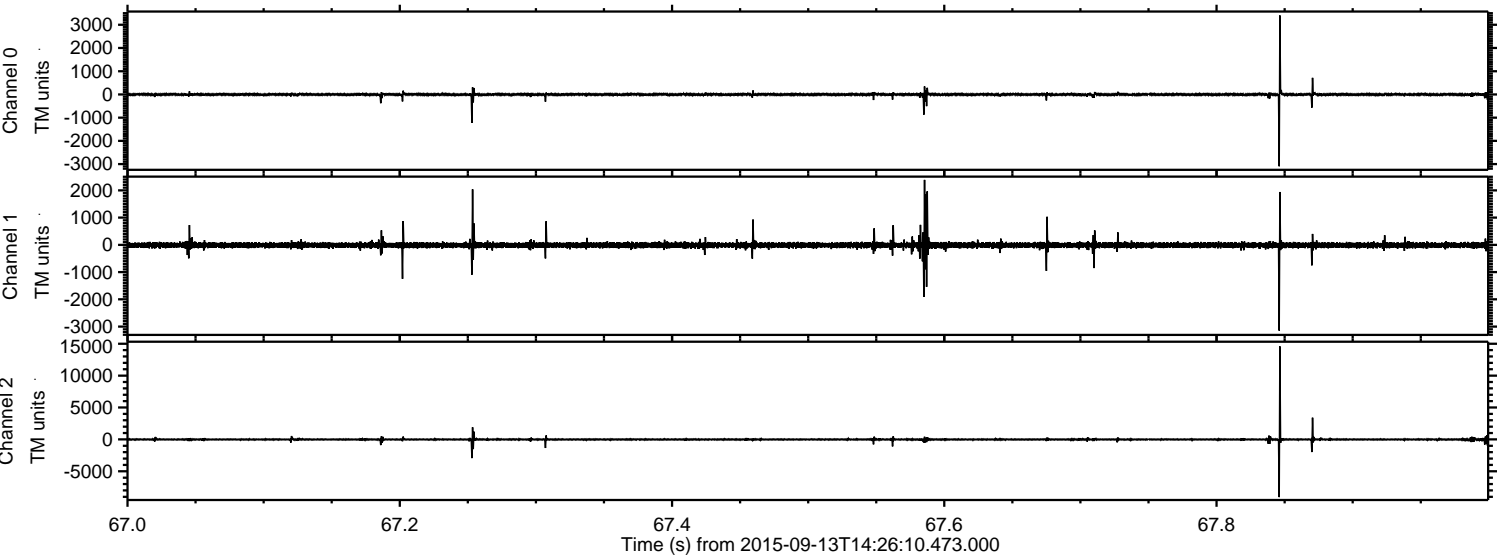


ELMAVAN 3D WAVEFORMS (Measured data sampled at 50 kHz) 51000 packets of 144 samples from 2015-09-13T14:26:10.473.000. Part 26/147

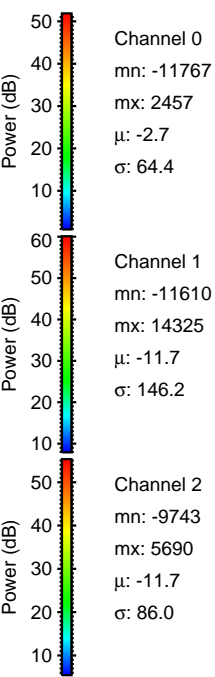
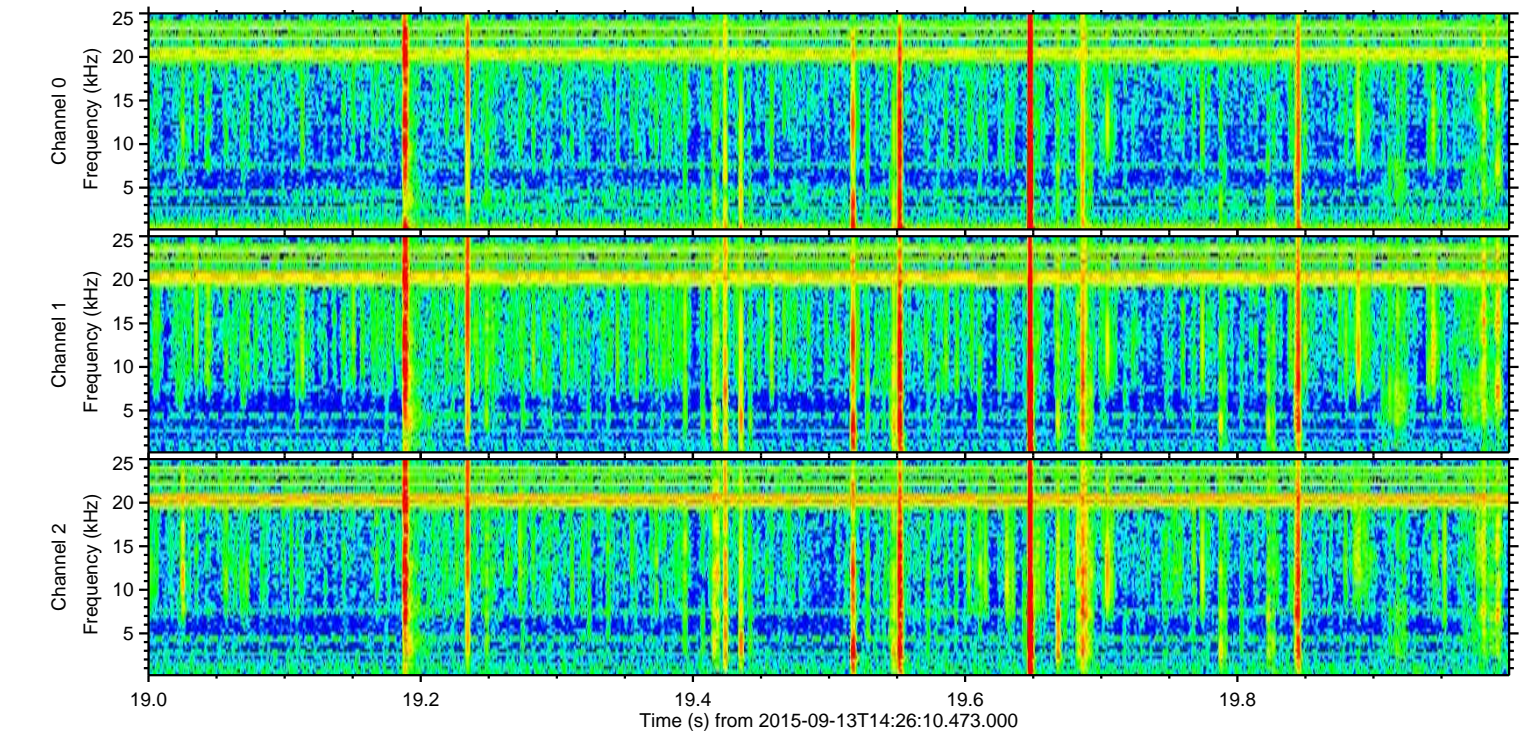
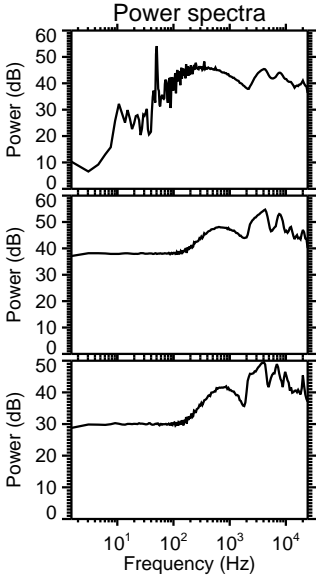
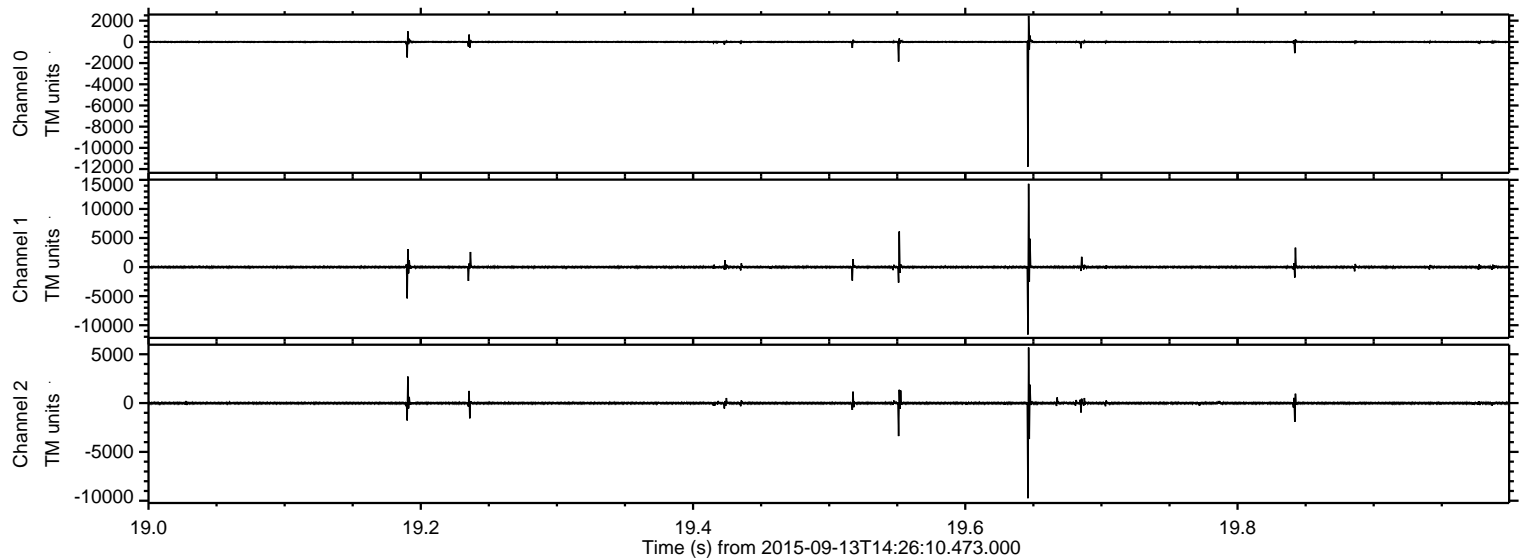
Processed Mon Oct 12 04:46:09 2015 by ELM ver.2012-10-06 from 001__elm20150913_142609__dat00.bin



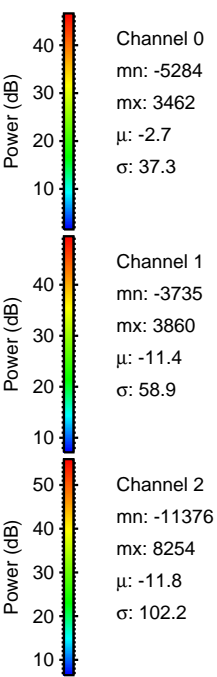
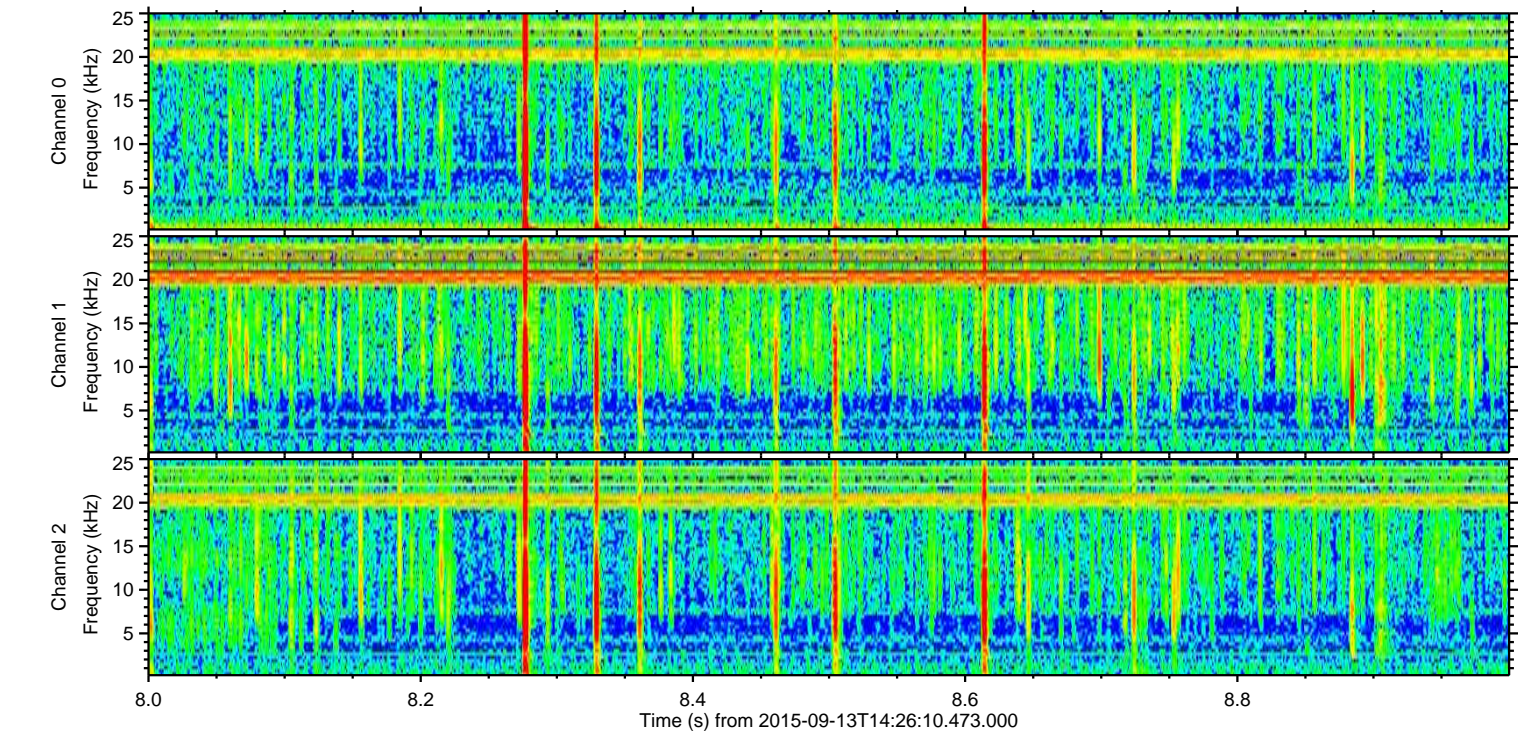
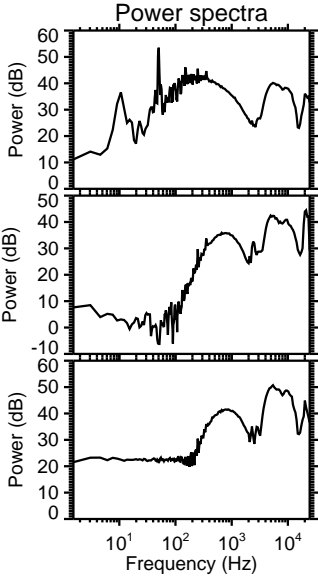
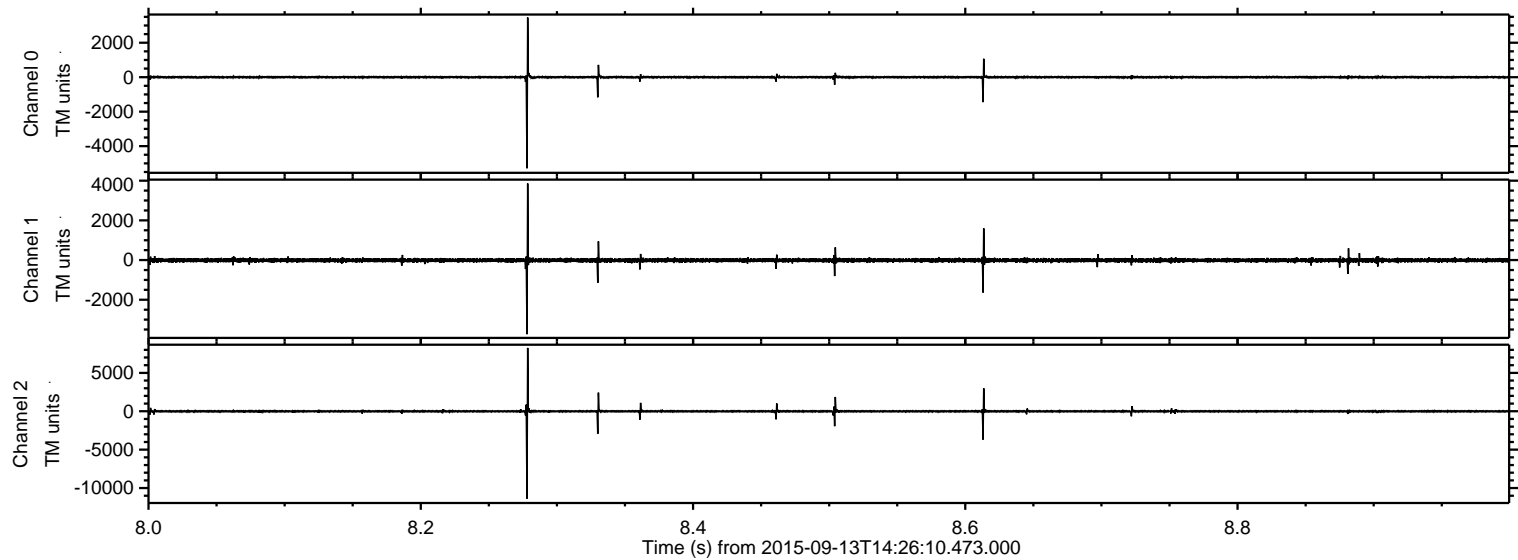
Processed Mon Oct 12 04:46:10 2015 by ELM ver.2012-10-06 from 001__elm20150913_142609__dat00.bin



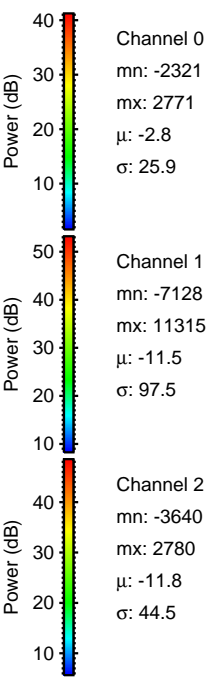
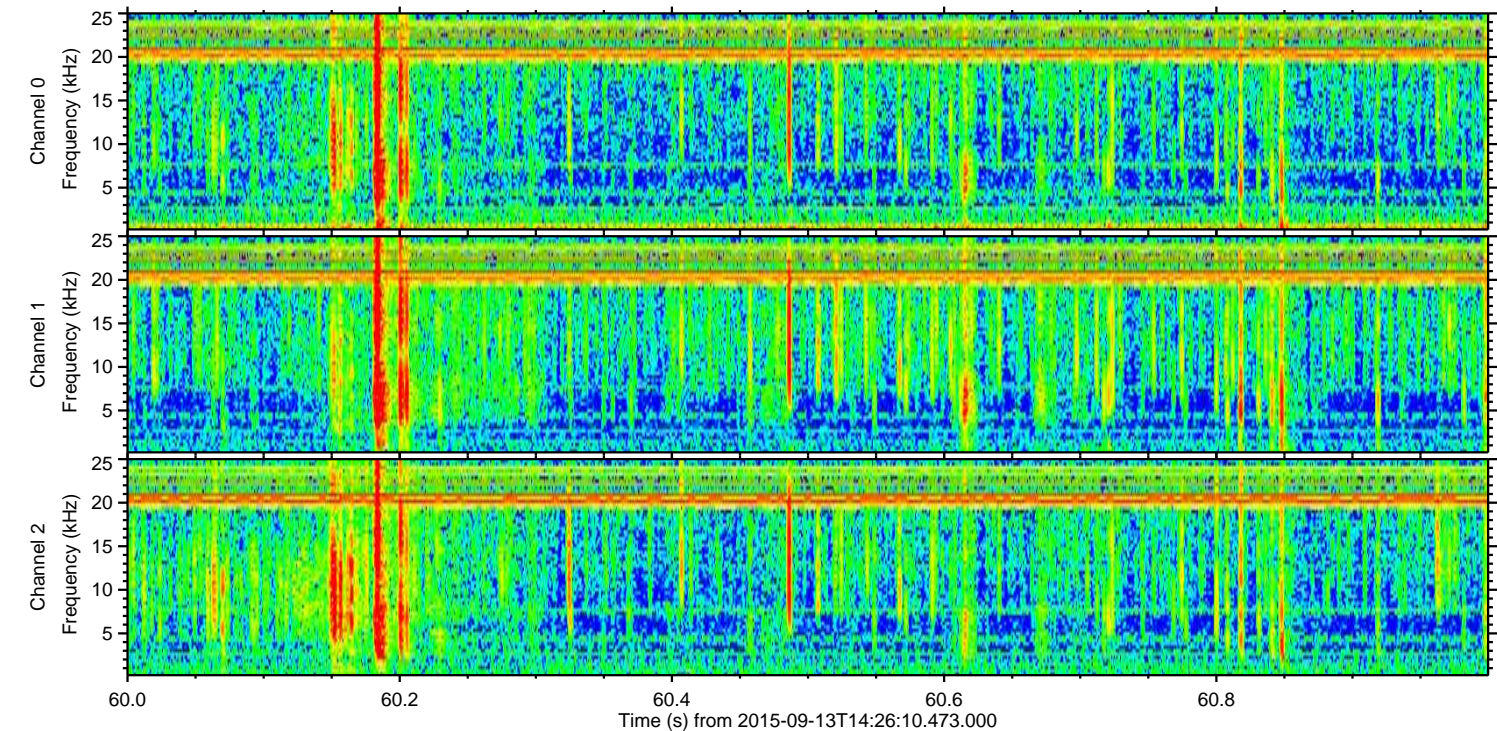
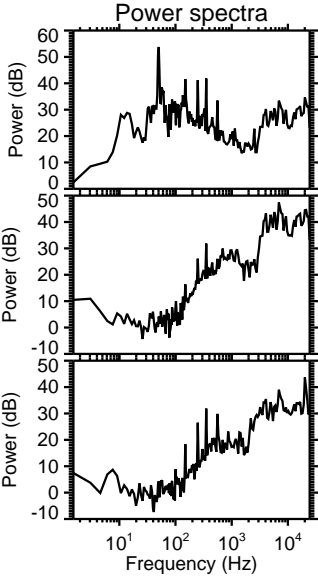
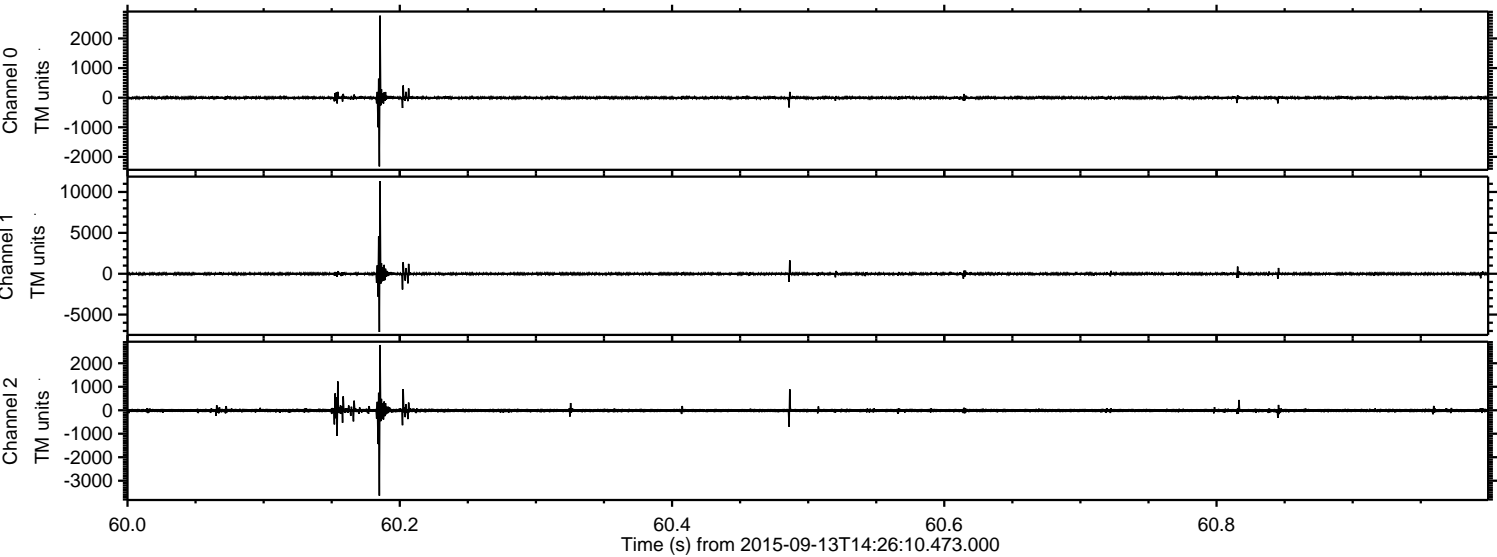
Processed Mon Oct 12 04:46:11 2015 by ELM ver.2012-10-06 from 001__elm20150913_142609__dat00.bin



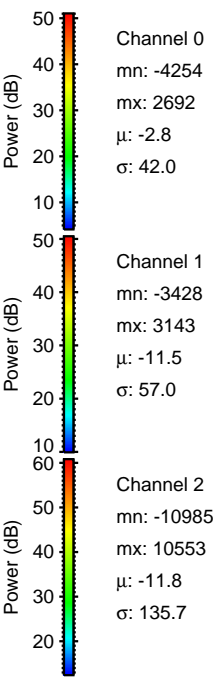
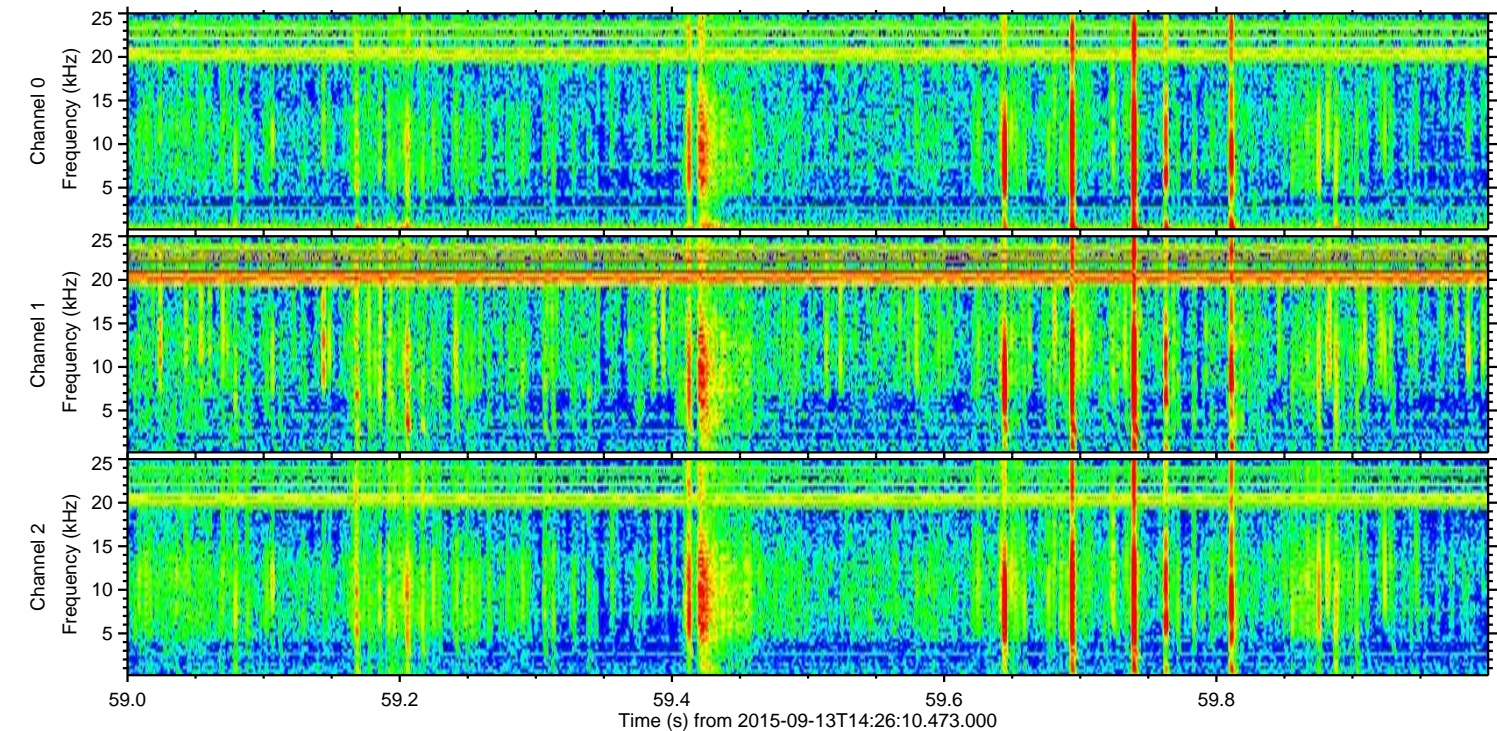
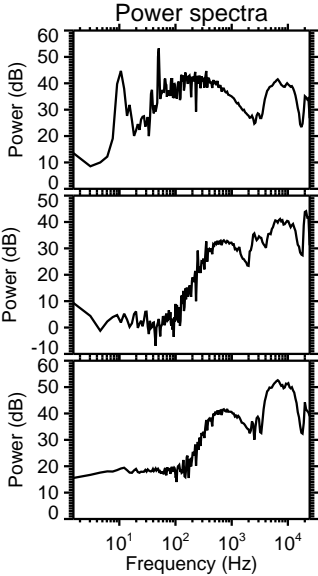
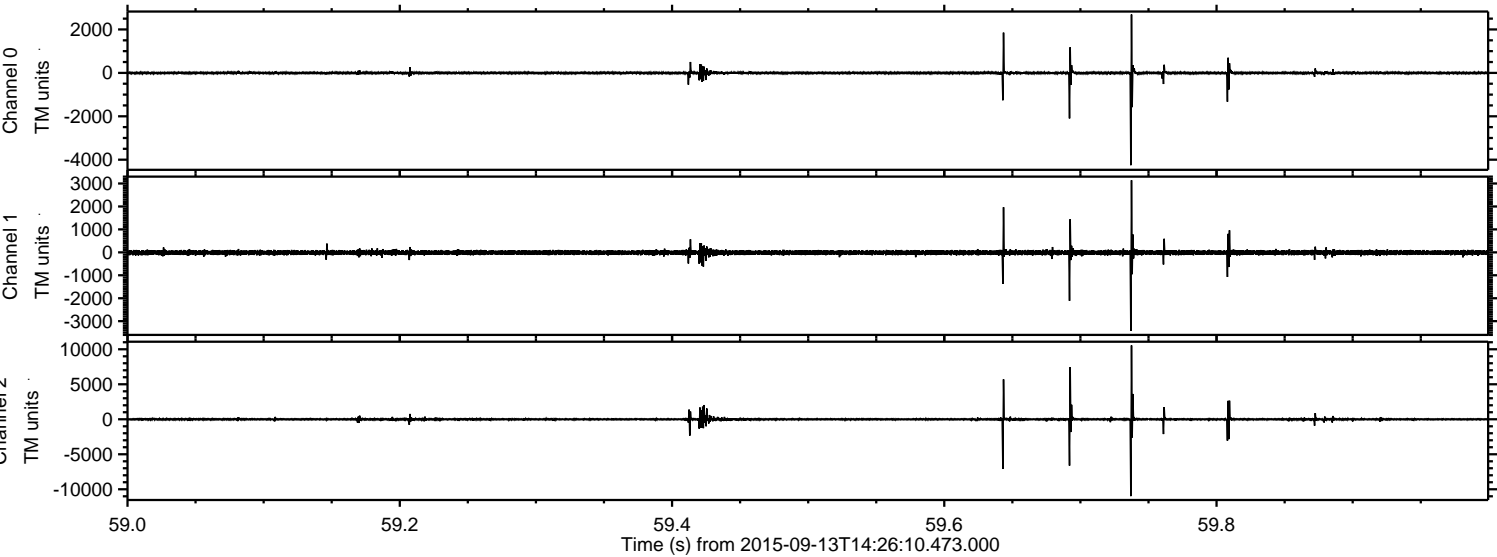
Processed Mon Oct 12 04:46:12 2015 by ELM ver.2012-10-06 from 001__elm20150913_142609__dat00.bin



Processed Mon Oct 12 04:46:13 2015 by ELM ver.2012-10-06 from 001__elm20150913_142609__dat00.bin

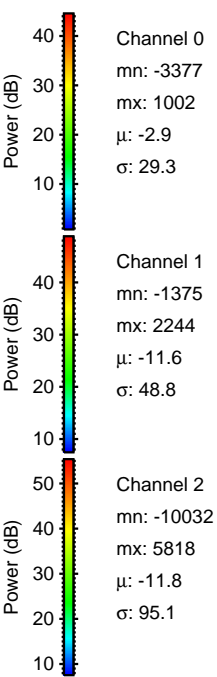
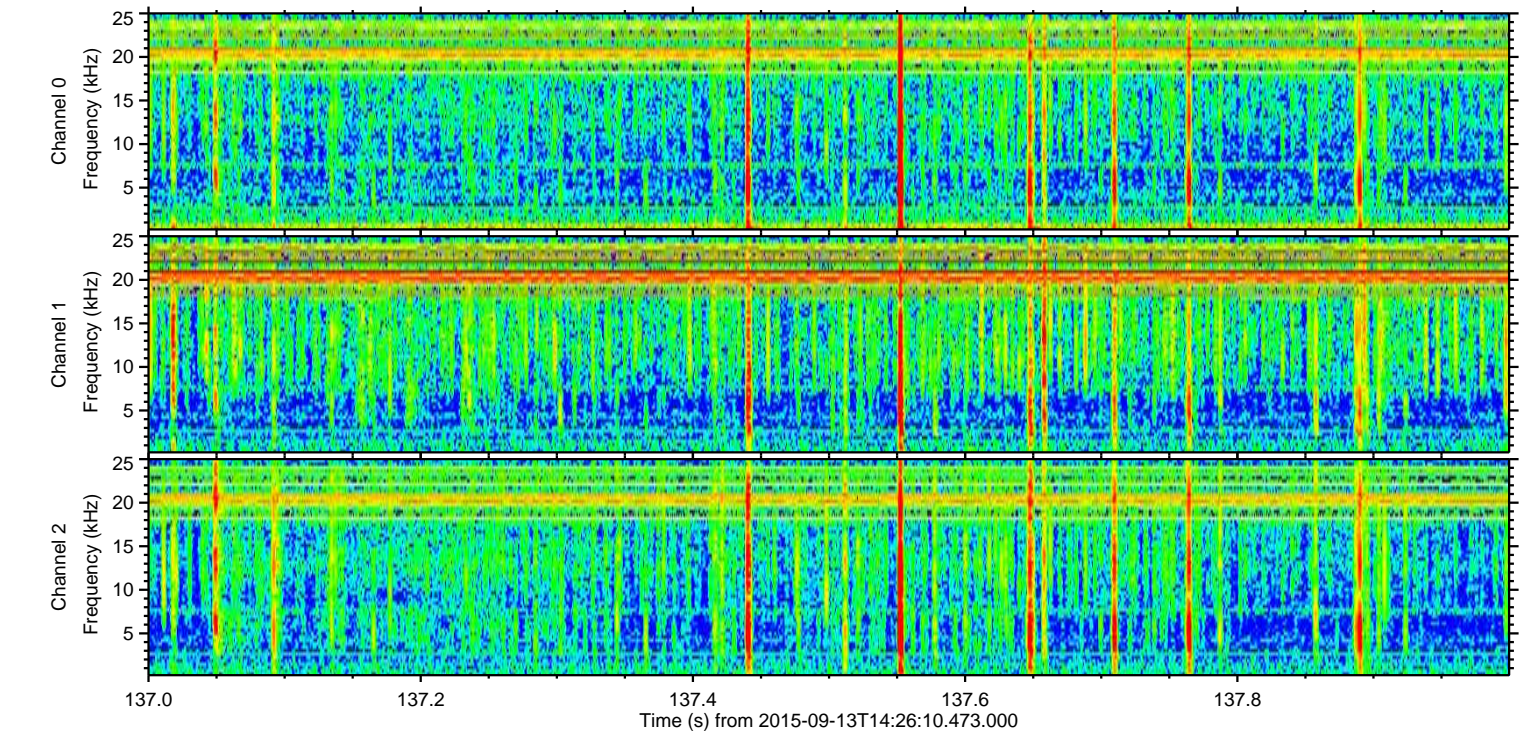
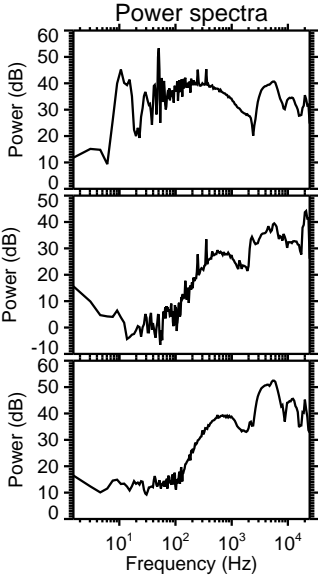
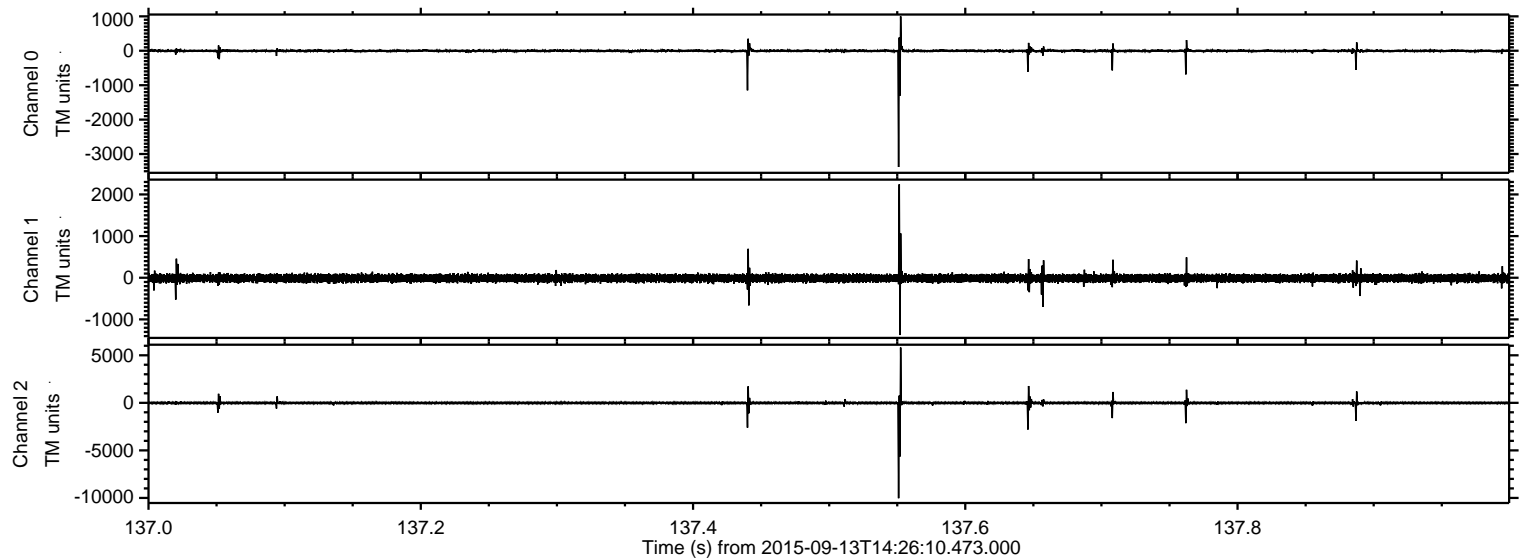


Processed Mon Oct 12 04:46:14 2015 by ELM ver.2012-10-06 from 001__elm20150913_142609__dat00.bin



ELMAVAN 3D WAVEFORMS (Measured data sampled at 50 kHz) 51000 packets of 144 samples from 2015-09-13T14:26:10.473.000. Part 138/147

Processed Mon Oct 12 04:46:15 2015 by ELM ver.2012-10-06 from 001__elm20150913_142609__dat00.bin

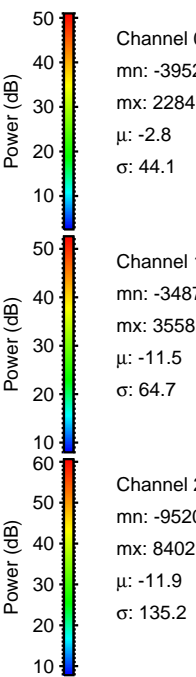
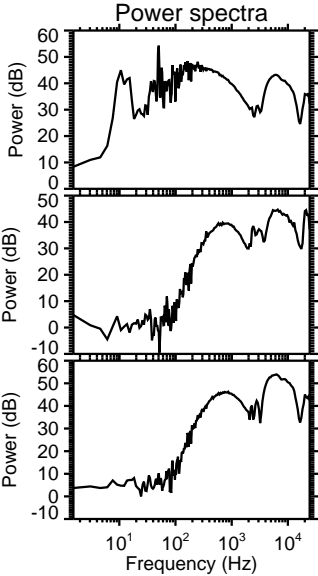
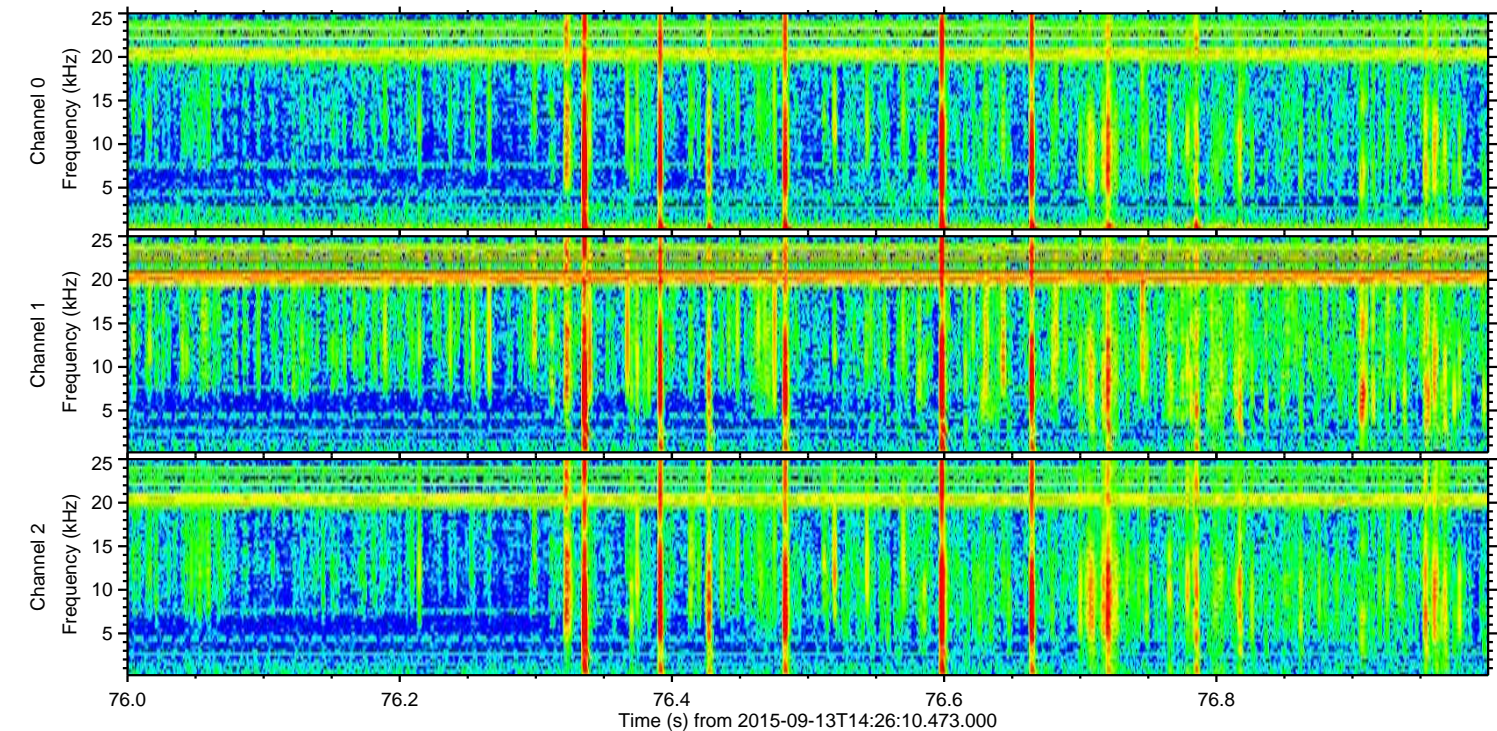
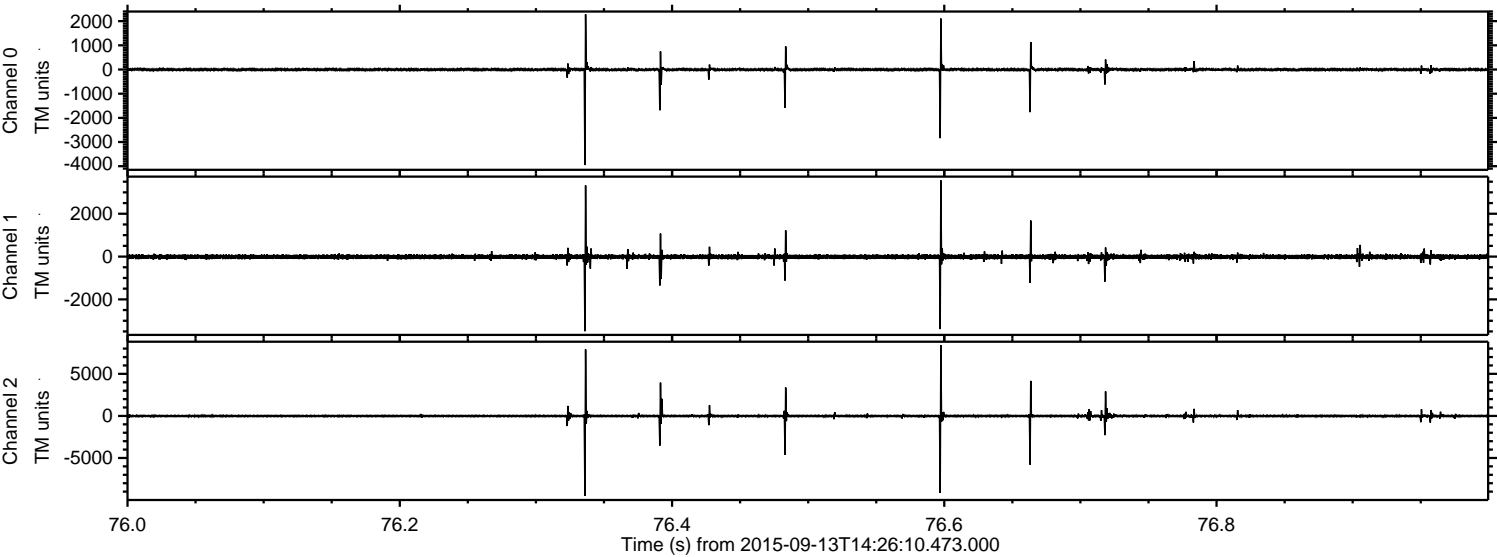


Channel 0
mn: -3377
mx: 1002
 μ : -2.9
 σ : 29.3

Channel 1
mn: -1375
mx: 2244
 μ : -11.6
 σ : 48.8

Channel 2
mn: -10032
mx: 5818
 μ : -11.8
 σ : 95.1

Processed Mon Oct 12 04:46:16 2015 by ELM ver.2012-10-06 from 001__elm20150913_142609__dat00.bin



Channel 0
mn: -3952
mx: 2284
 μ : -2.8
 σ : 44.1

Channel 1
mn: -3487
mx: 3558
 μ : -11.5
 σ : 64.7

Channel 2
mn: -9520
mx: 8402
 μ : -11.9
 σ : 135.2

Processed Mon Oct 12 04:46:17 2015 by ELM ver.2012-10-06 from 001__elm20150913_142609__dat00.bin

