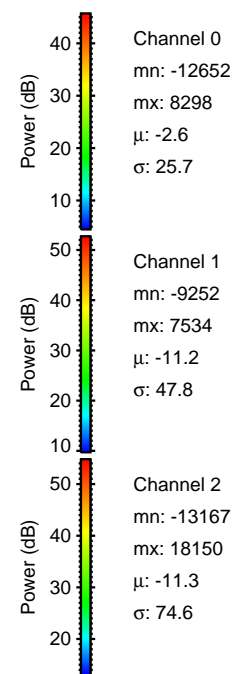
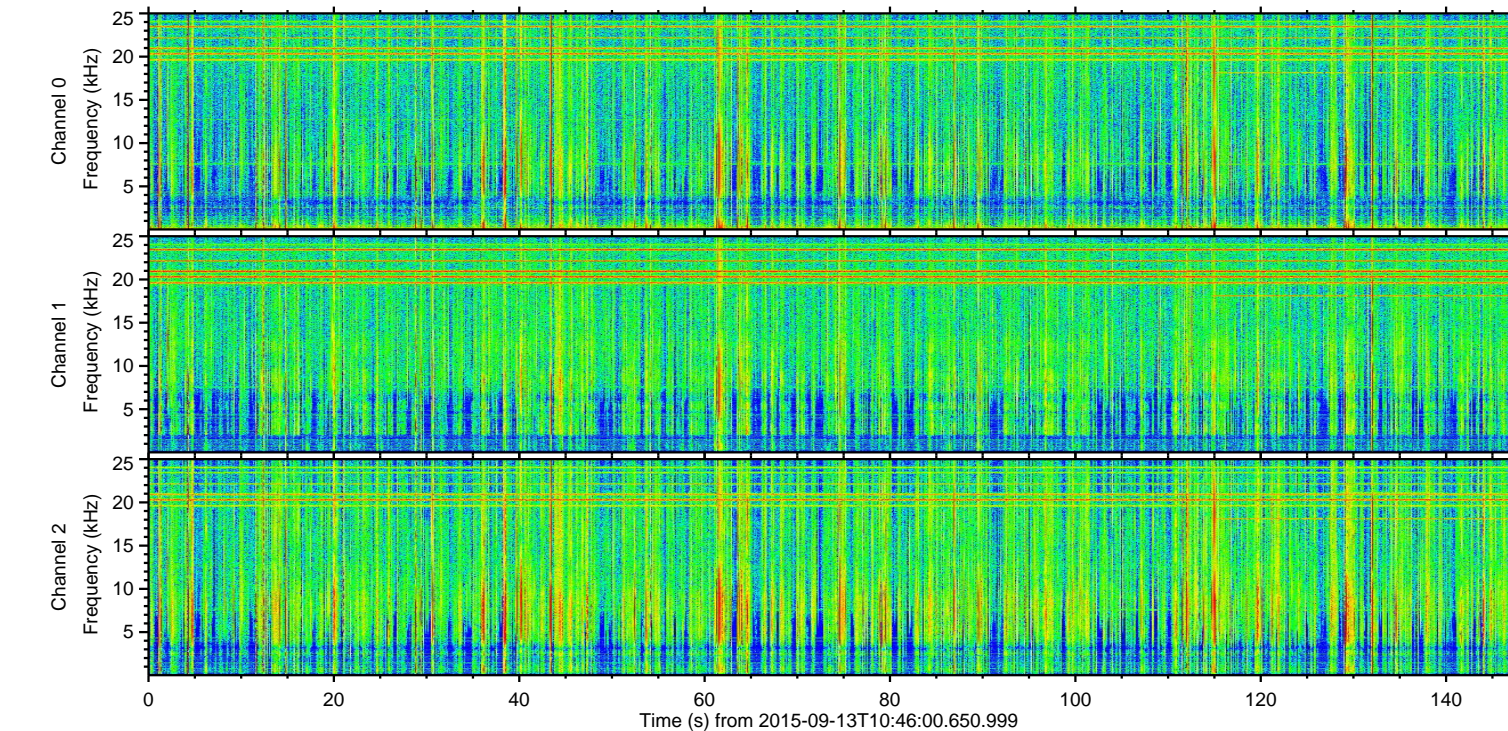
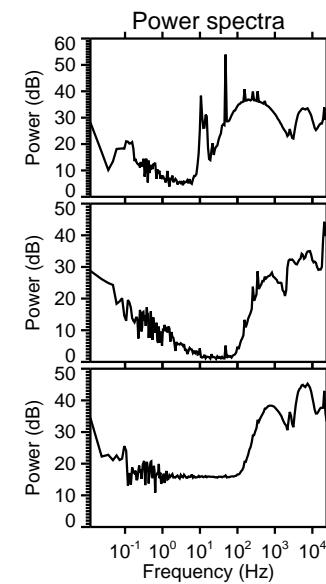
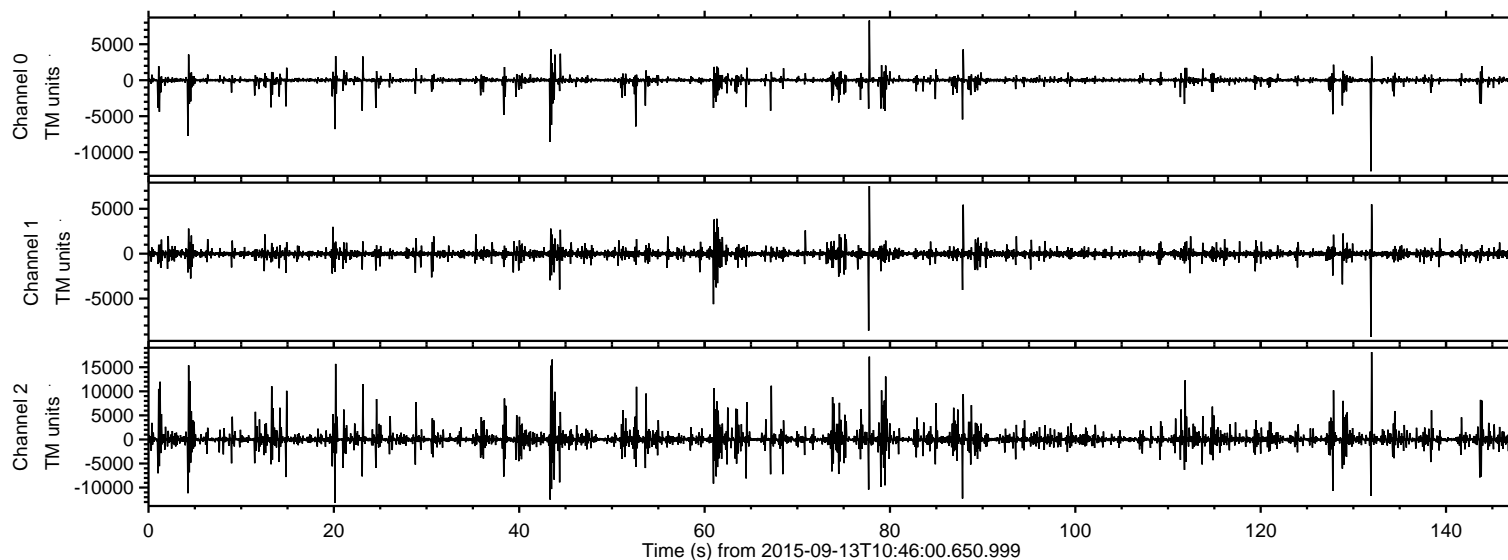


# ELMAVAN 3D WAVEFORMS (Measured data sampled at 50 kHz) 51000 packets of 144 samples from 2015-09-13T10:46:00.650.999.

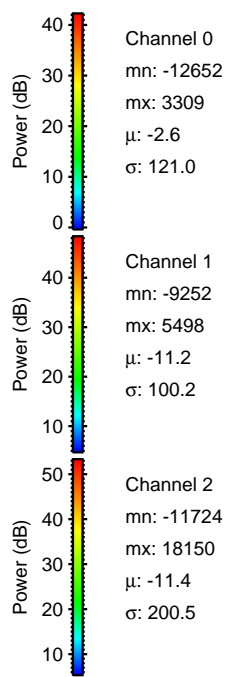
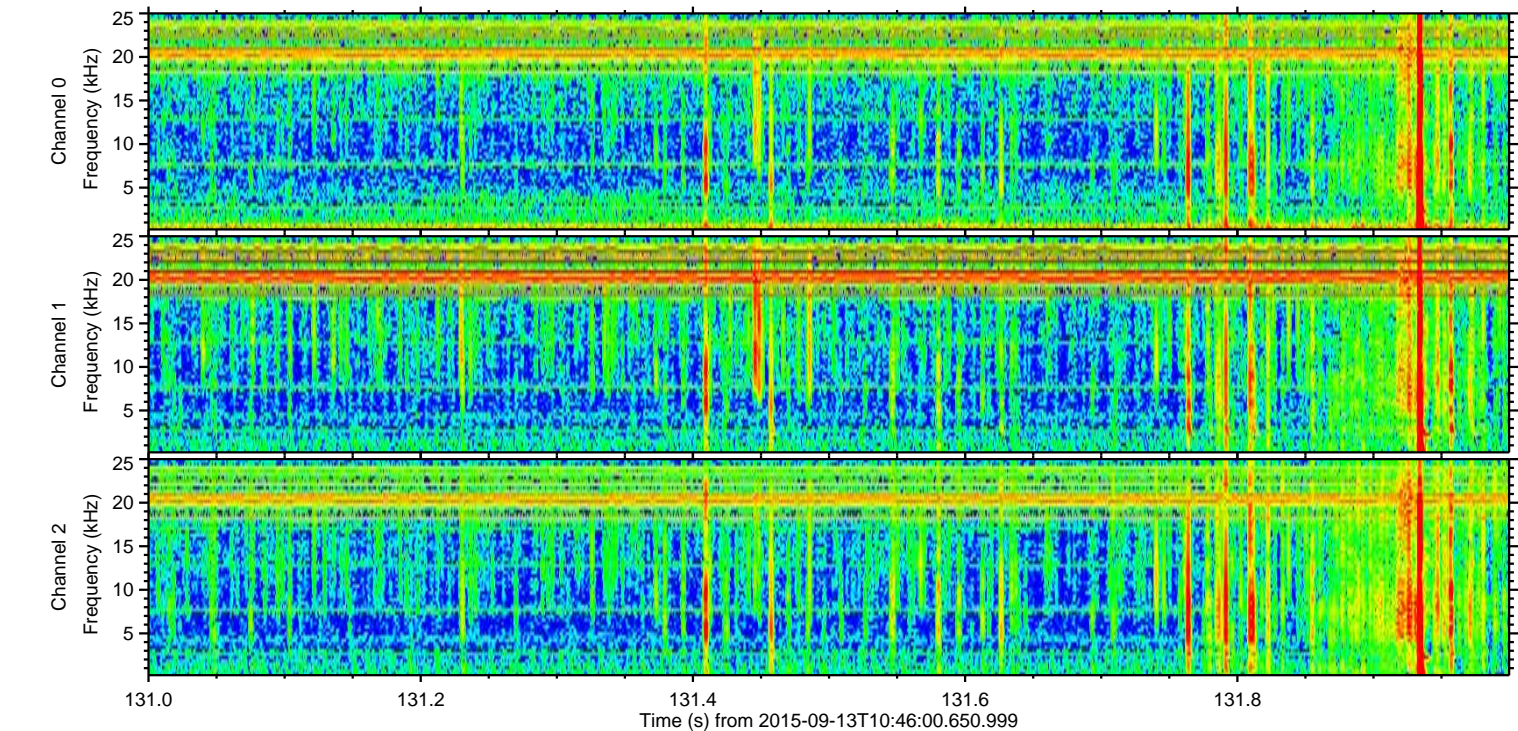
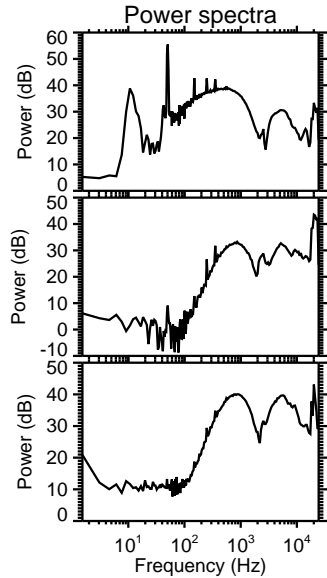
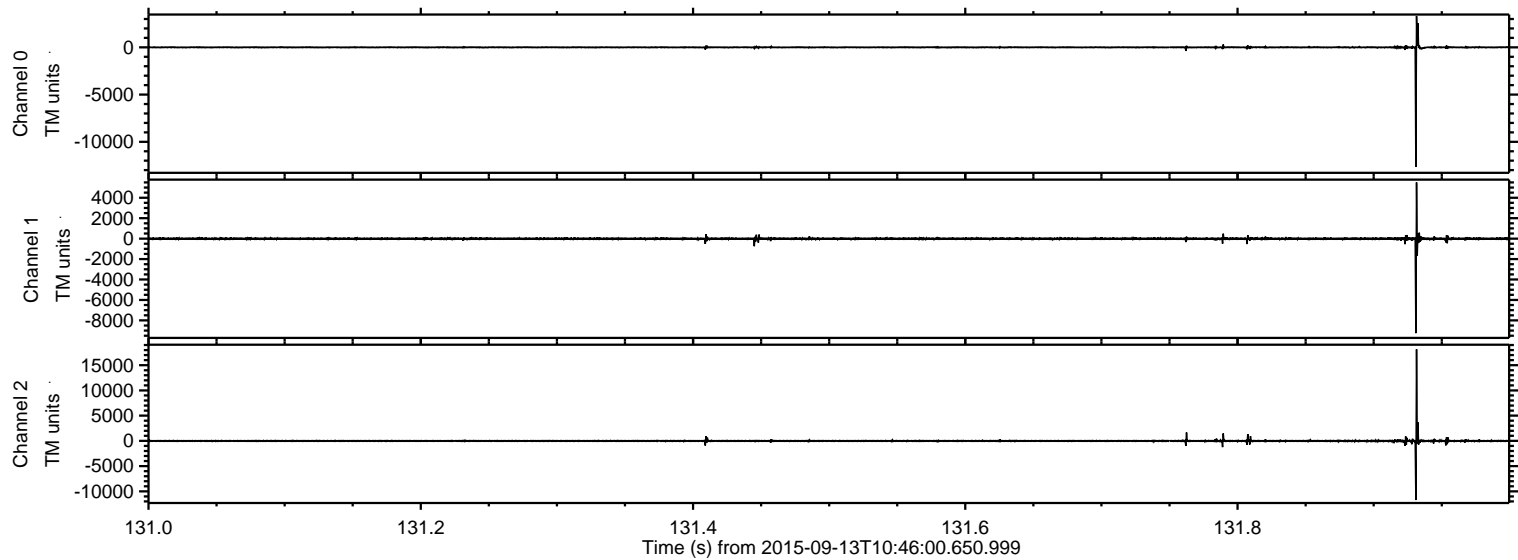
Processed Mon Oct 12 03:46:13 2015 by ELM ver.2012-10-06 from 001\_\_elm20150913\_104559\_\_dat00.bin





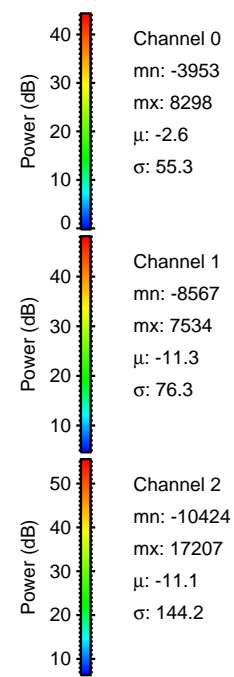
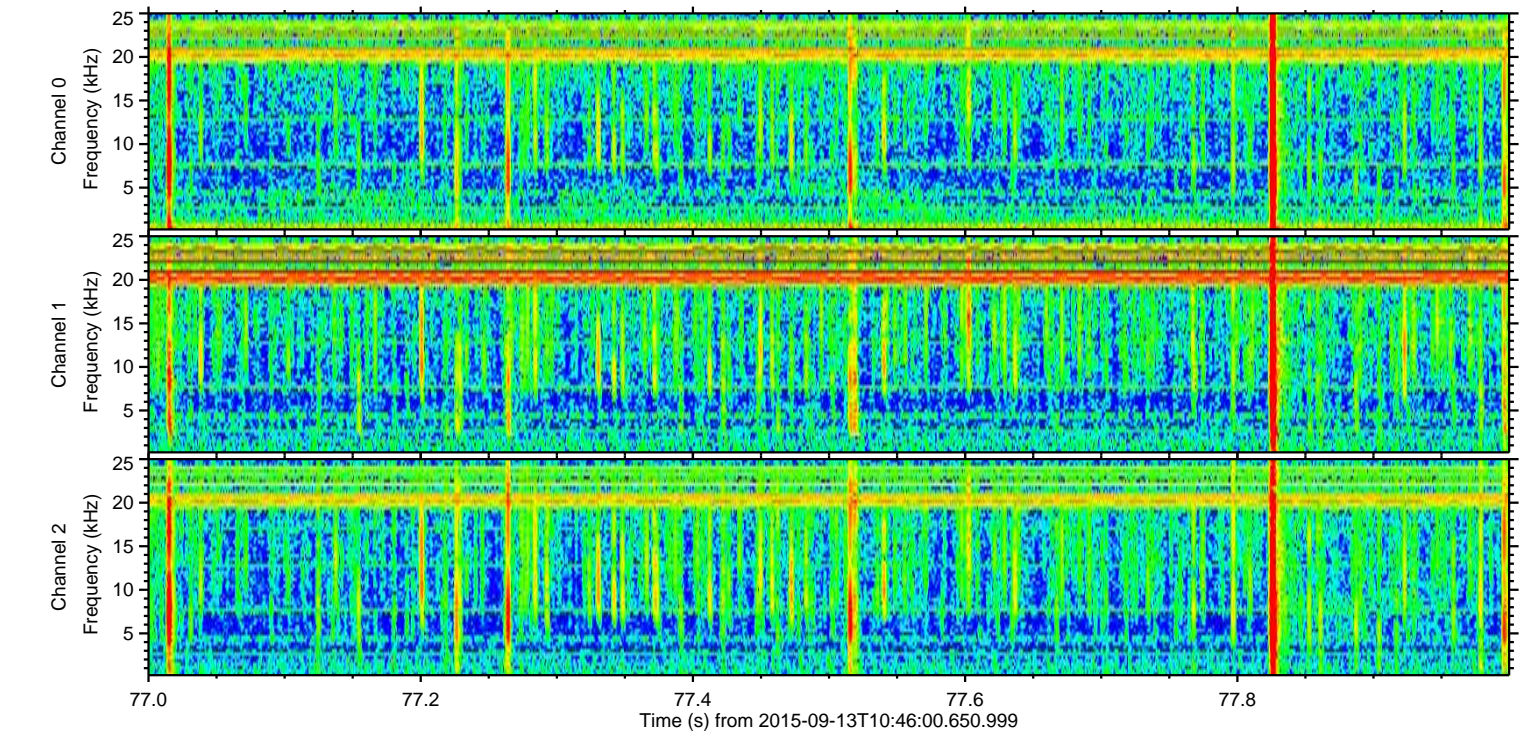
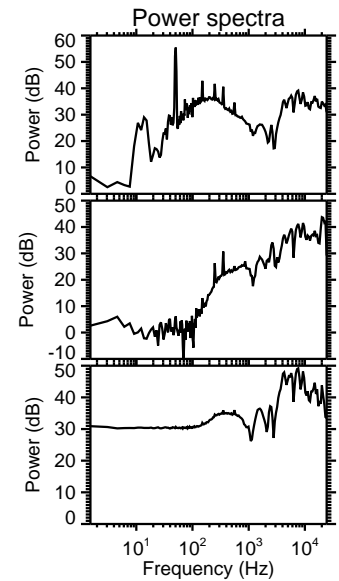
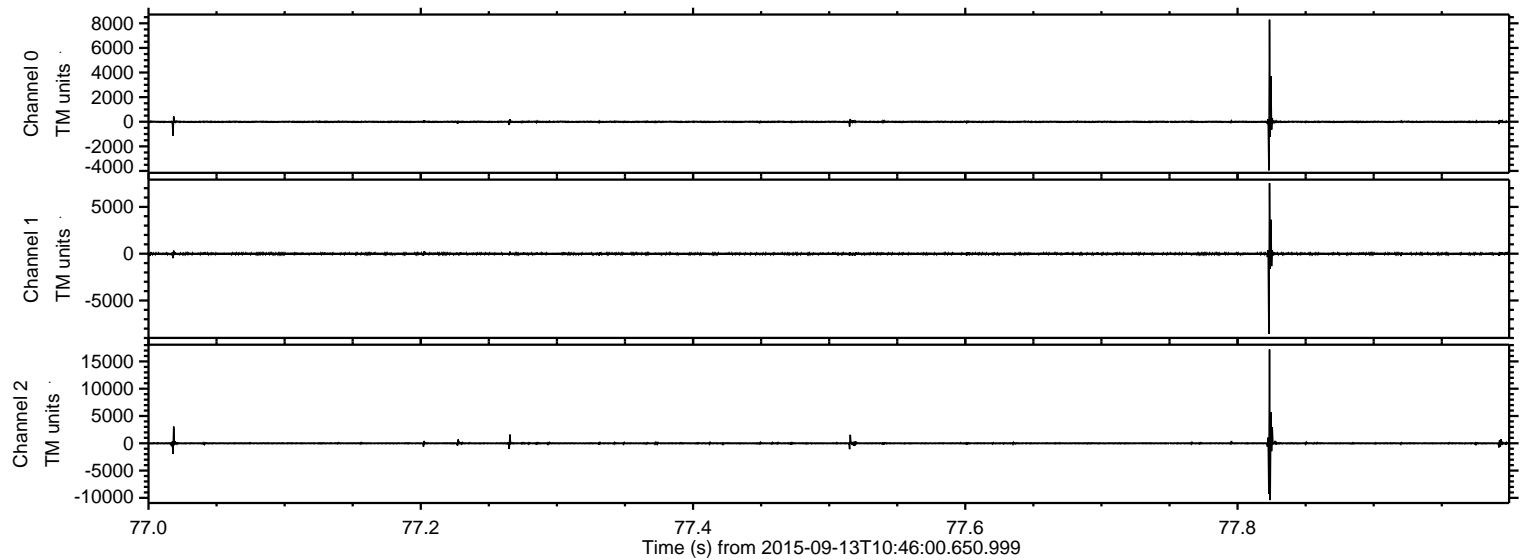
ELMAVAN 3D WAVEFORMS (Measured data sampled at 50 kHz) 51000 packets of 144 samples from 2015-09-13T10:46:00.650.999. Part 132/147

Processed Mon Oct 12 03:46:29 2015 by ELM ver.2012-10-06 from 001\_\_elm20150913\_104559\_\_dat00.bin





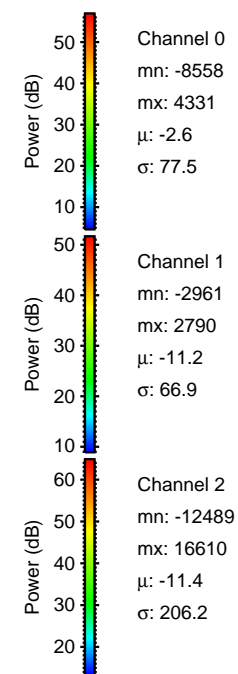
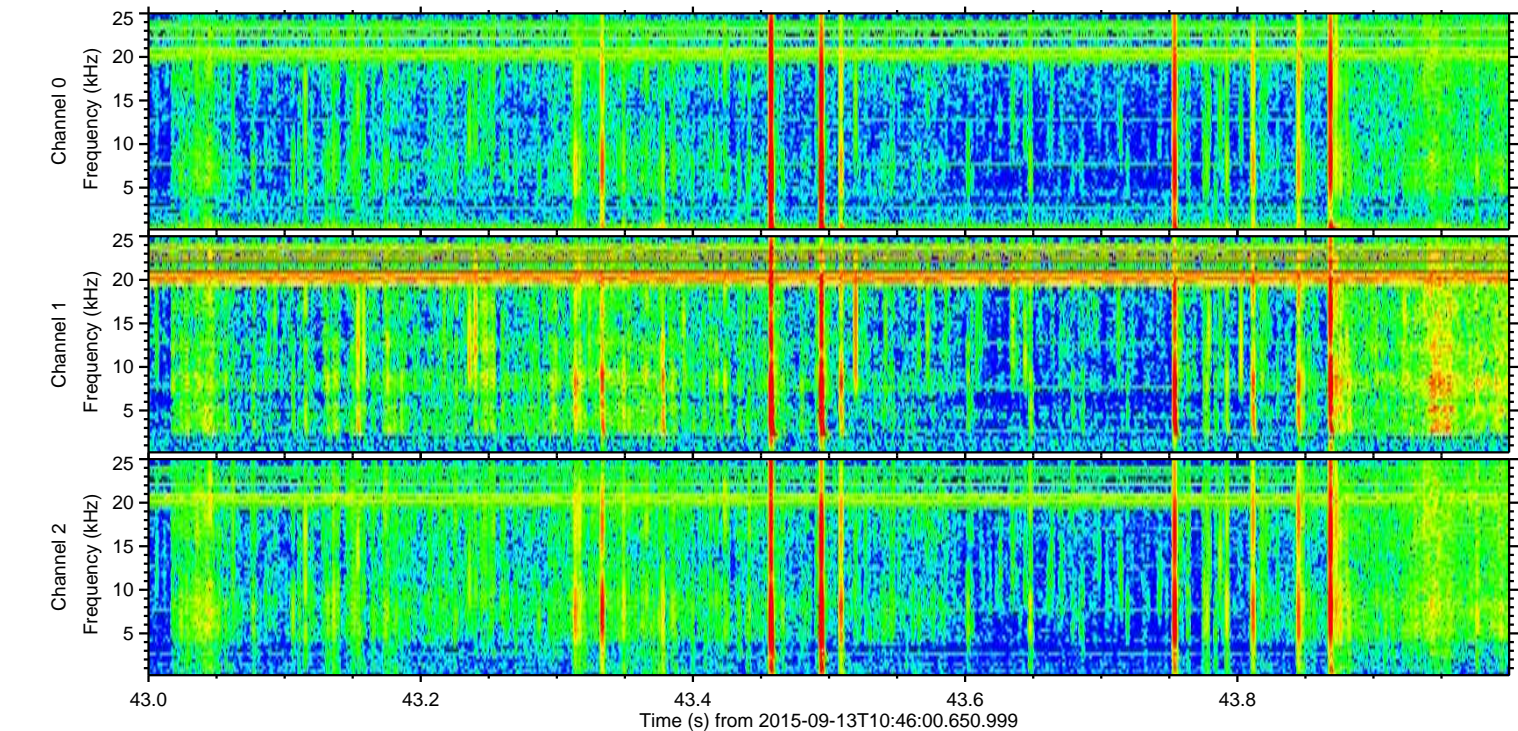
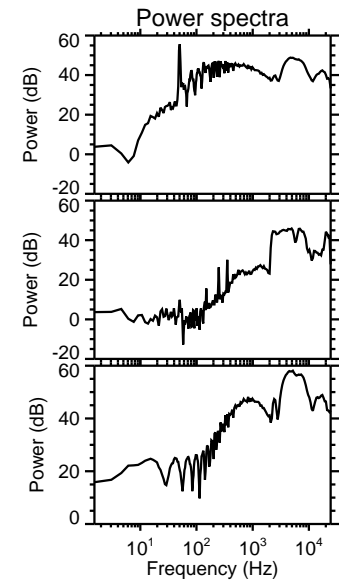
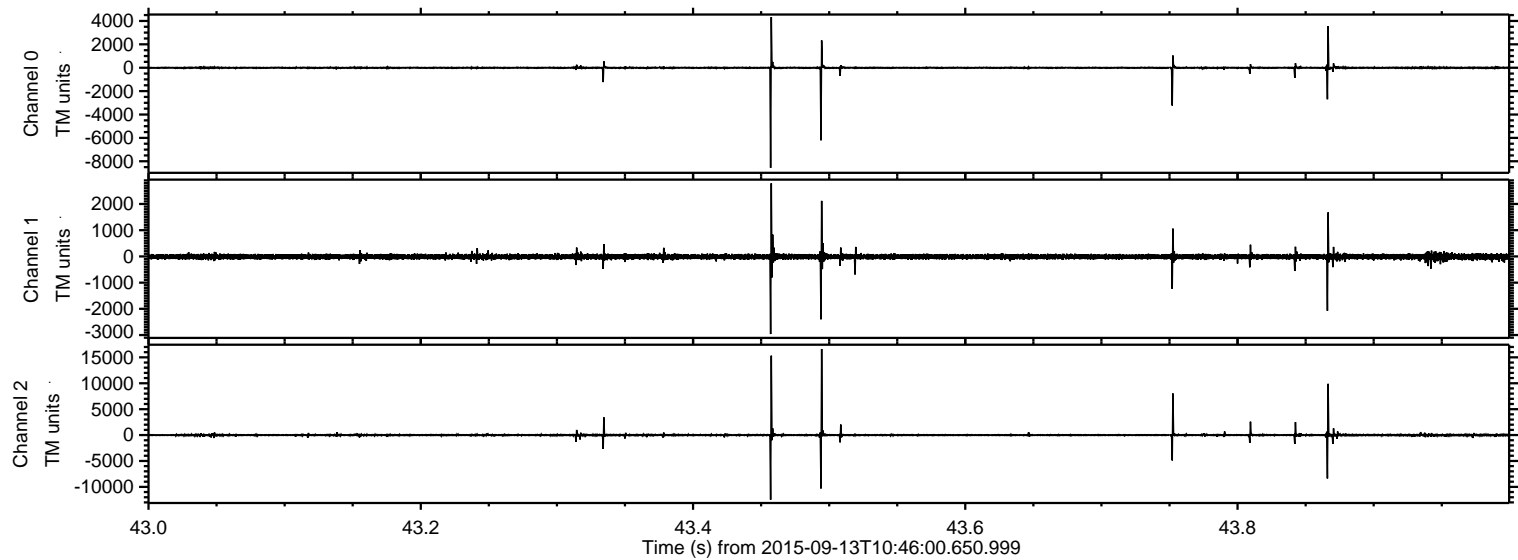
Processed Mon Oct 12 03:46:30 2015 by ELM ver.2012-10-06 from 001\_\_elm20150913\_104559\_\_dat00.bin





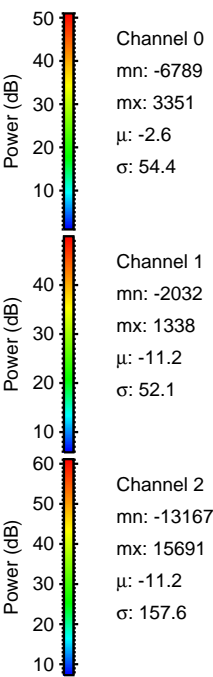
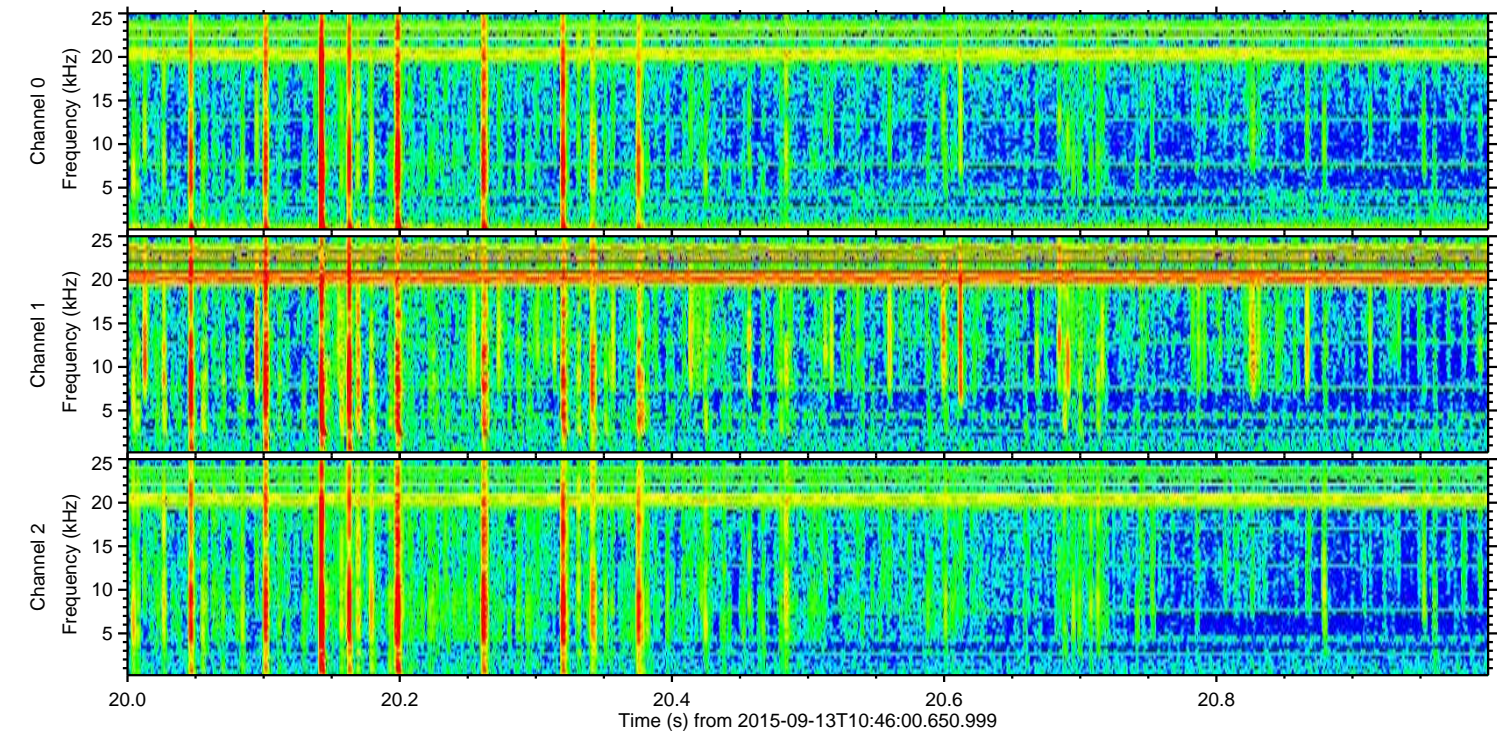
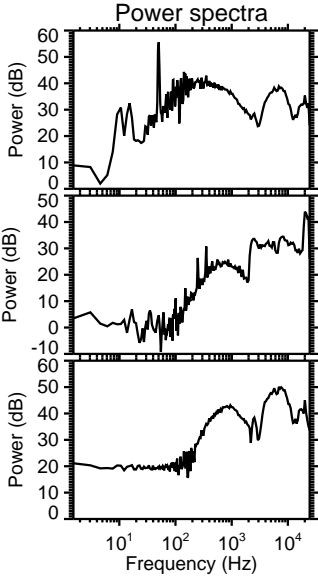
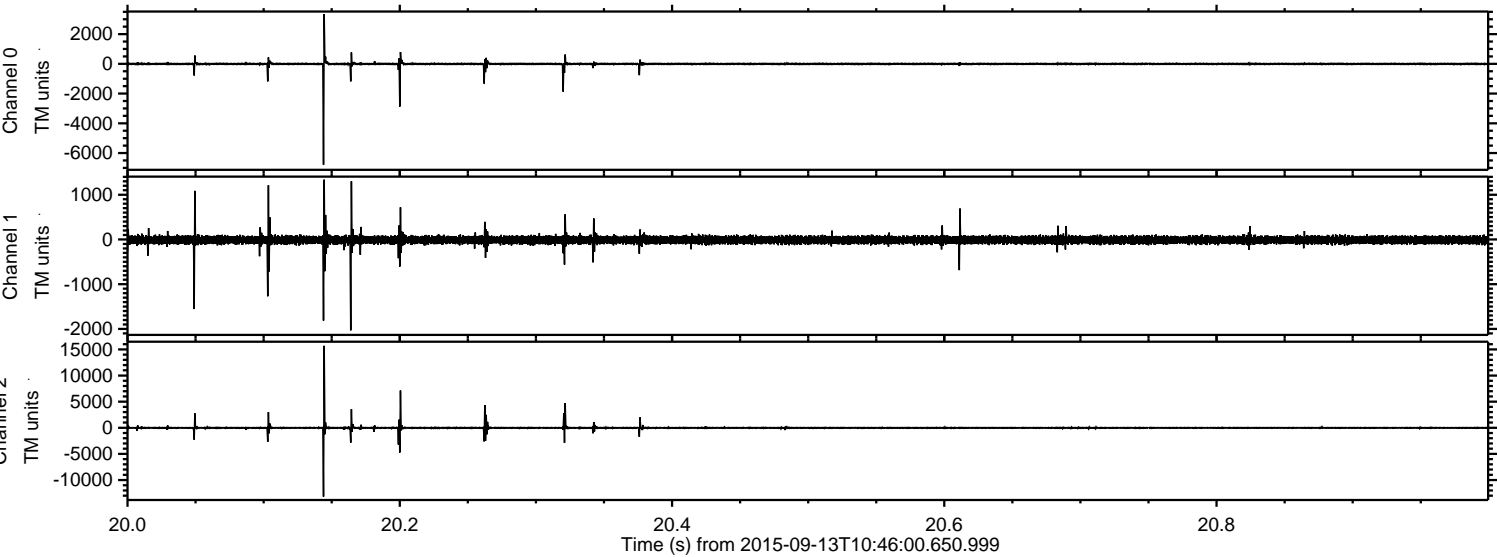
ELMAVAN 3D WAVEFORMS (Measured data sampled at 50 kHz) 51000 packets of 144 samples from 2015-09-13T10:46:00.650.999. Part 44/147

Processed Mon Oct 12 03:46:31 2015 by ELM ver.2012-10-06 from 001\_\_elm20150913\_104559\_\_dat00.bin



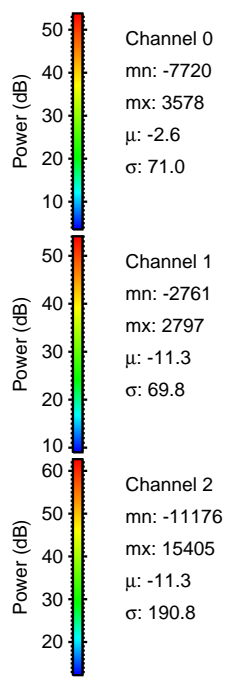
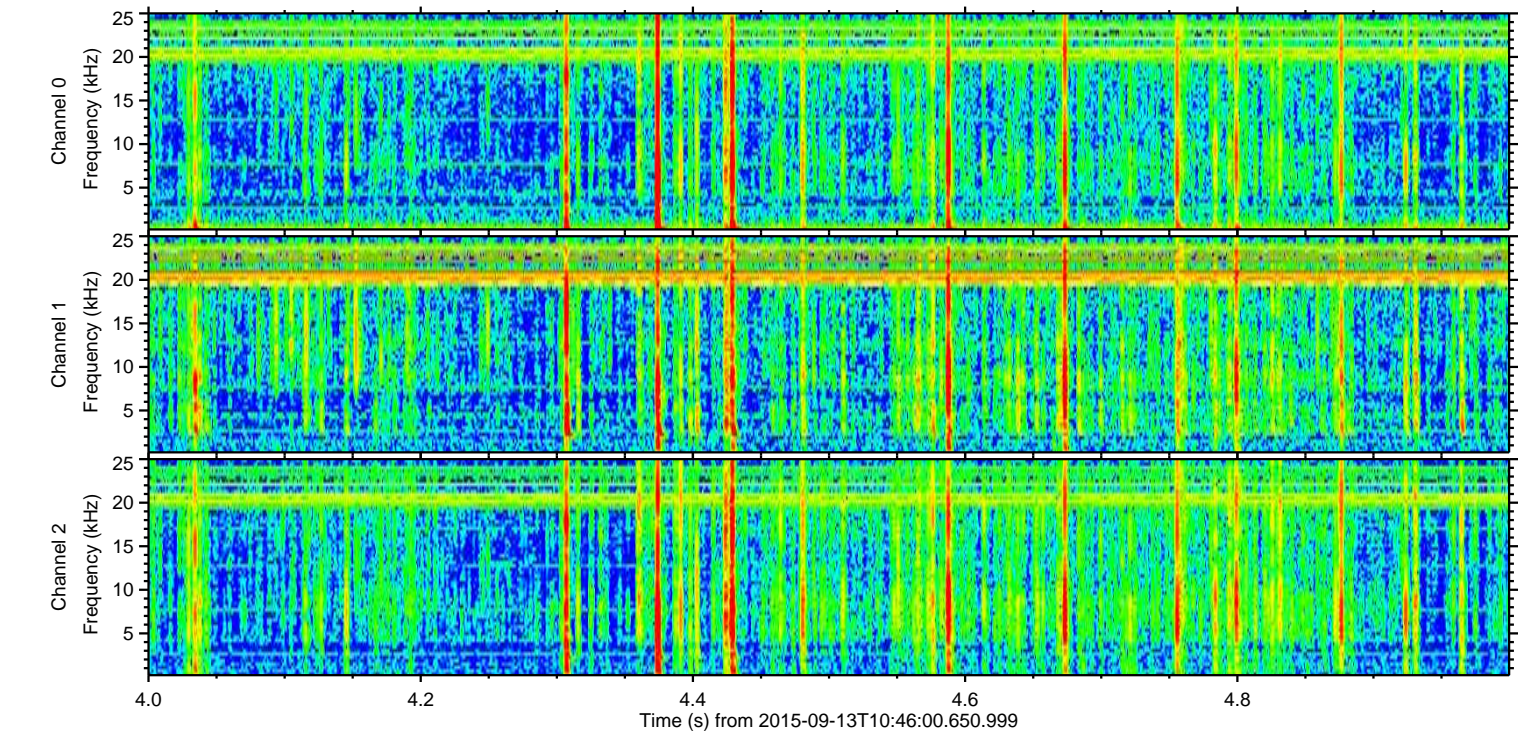
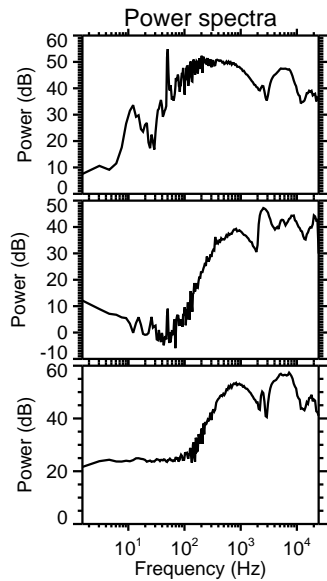
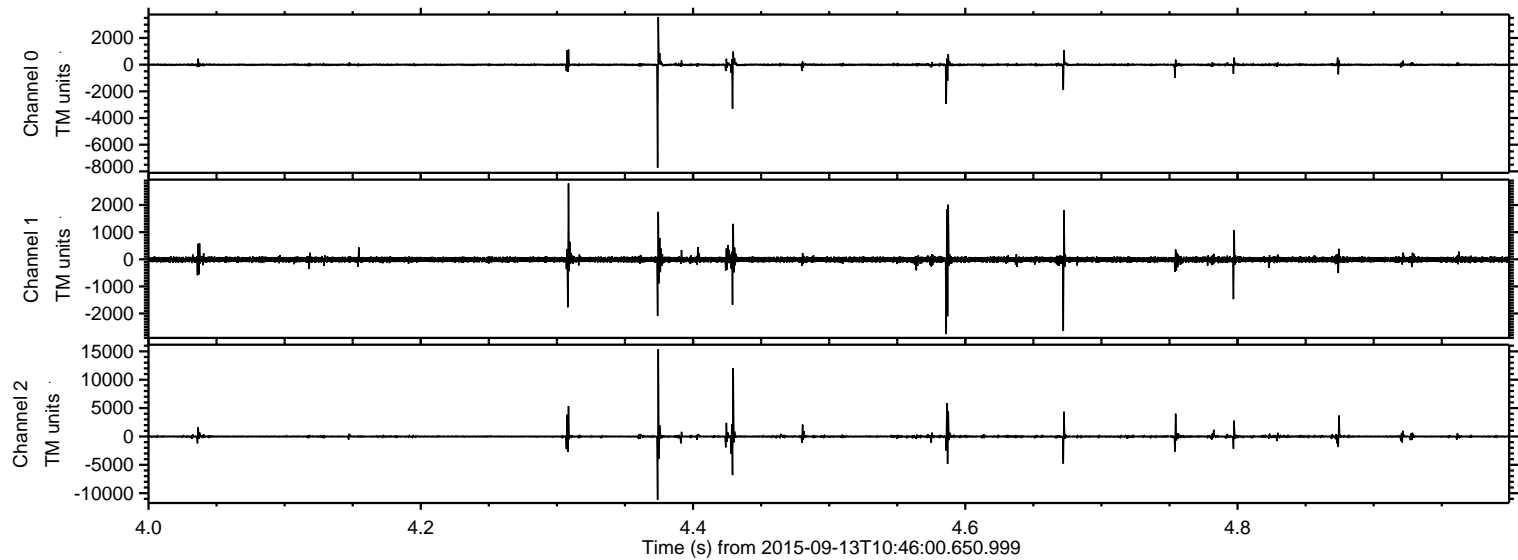


Processed Mon Oct 12 03:46:32 2015 by ELM ver.2012-10-06 from 001\_\_elm20150913\_104559\_\_dat00.bin



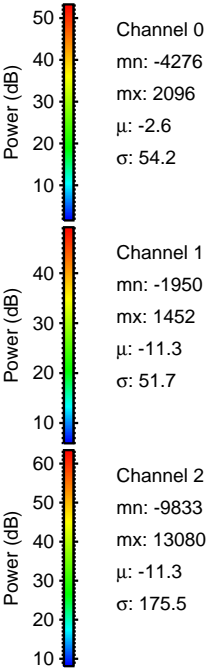
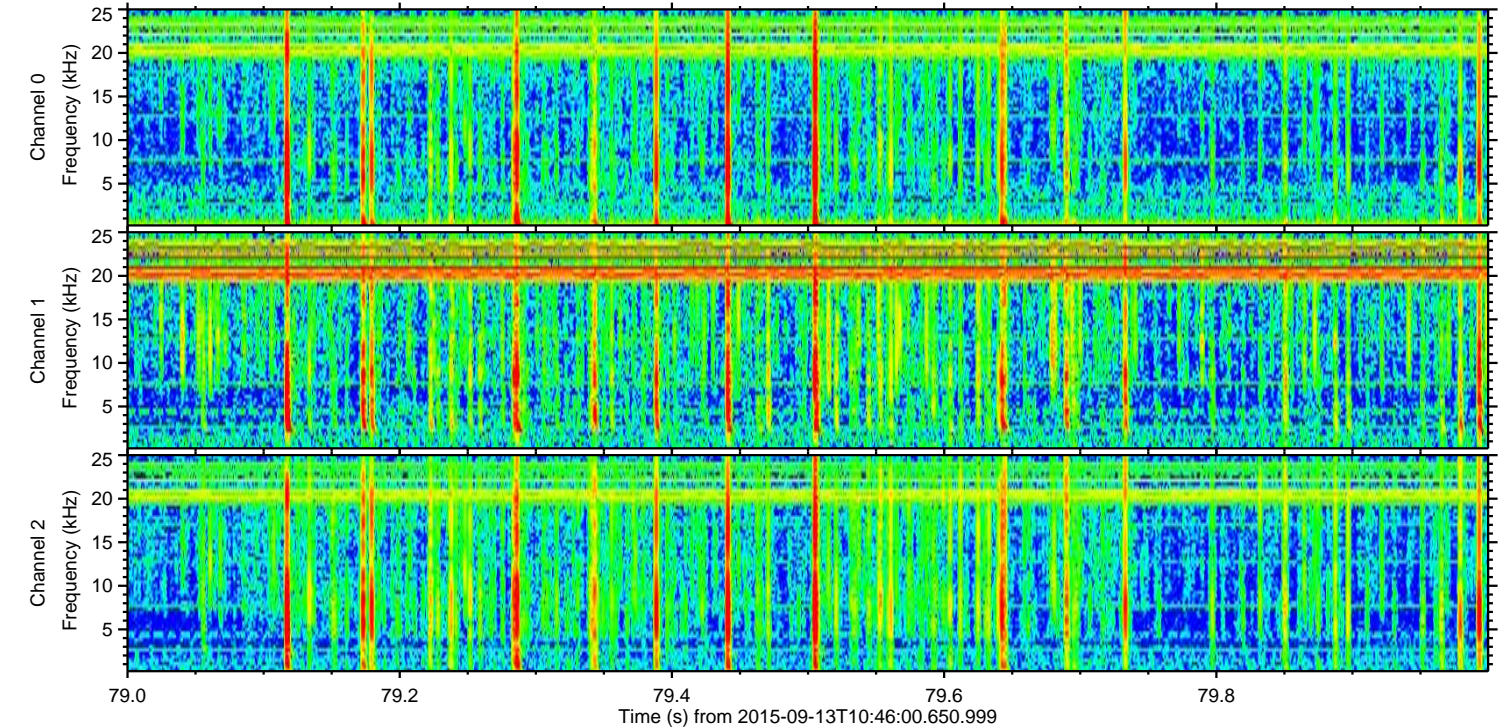
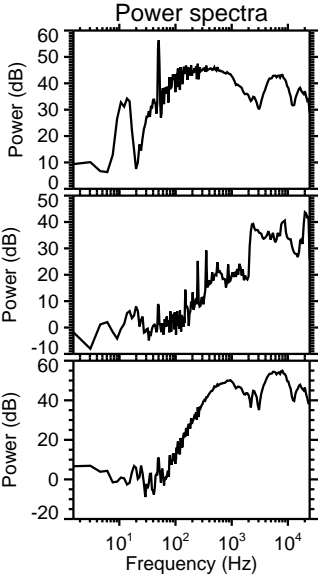
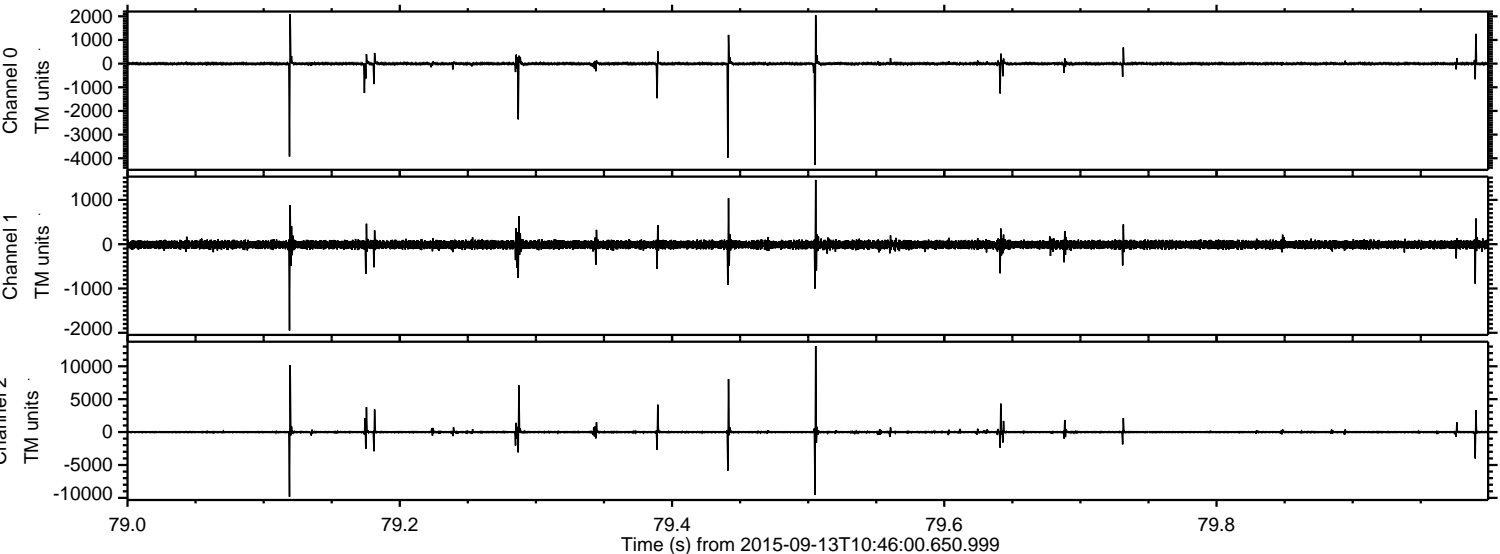


Processed Mon Oct 12 03:46:33 2015 by ELM ver.2012-10-06 from 001\_\_elm20150913\_104559\_\_dat00.bin





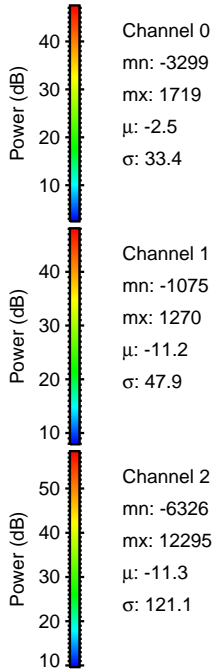
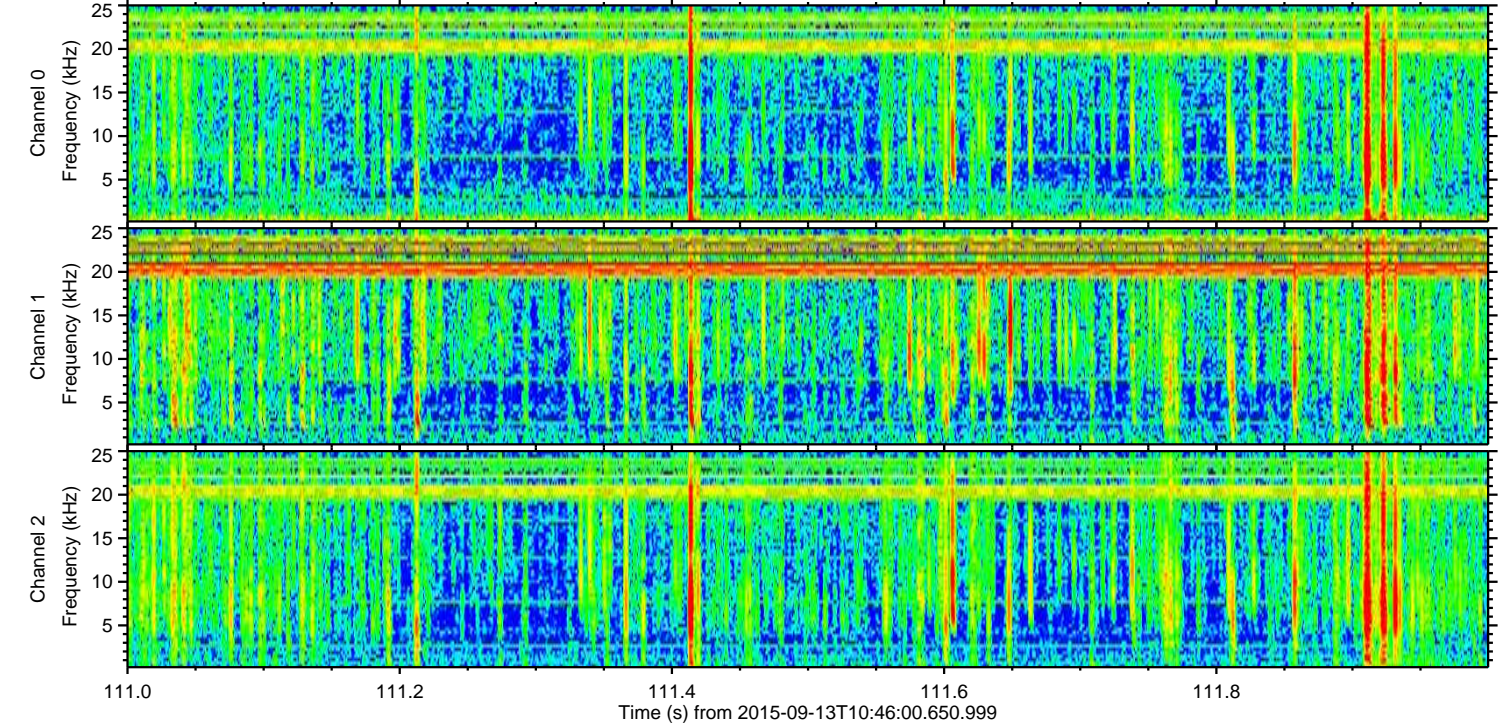
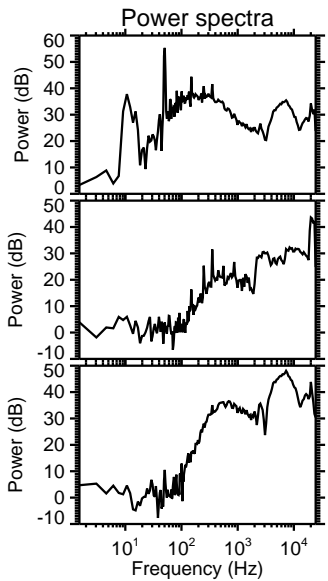
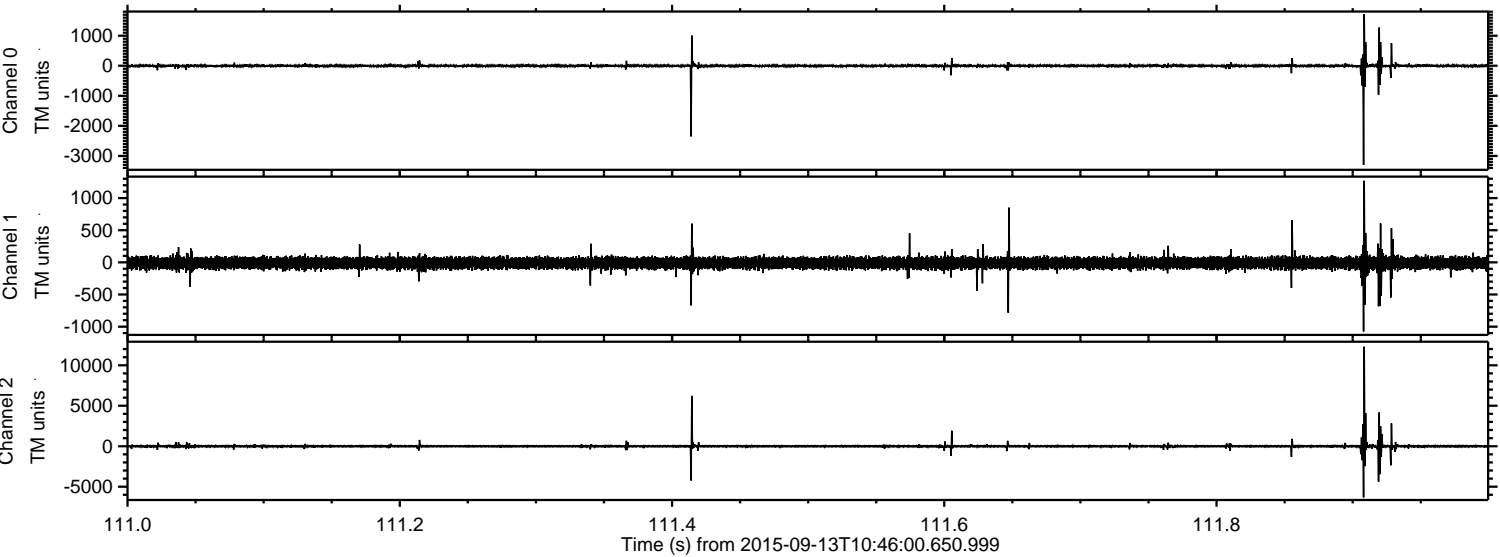
Processed Mon Oct 12 03:46:34 2015 by ELM ver.2012-10-06 from 001\_\_elm20150913\_104559\_\_dat00.bin





ELMAVAN 3D WAVEFORMS (Measured data sampled at 50 kHz) 51000 packets of 144 samples from 2015-09-13T10:46:00.650.999. Part 112/147

Processed Mon Oct 12 03:46:35 2015 by ELM ver.2012-10-06 from 001\_\_elm20150913\_104559\_\_dat00.bin



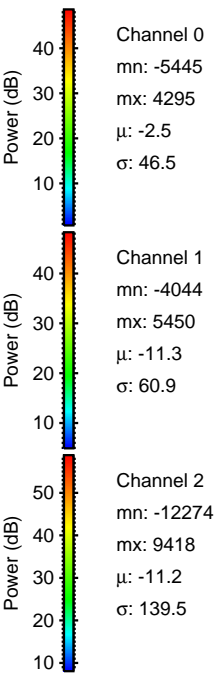
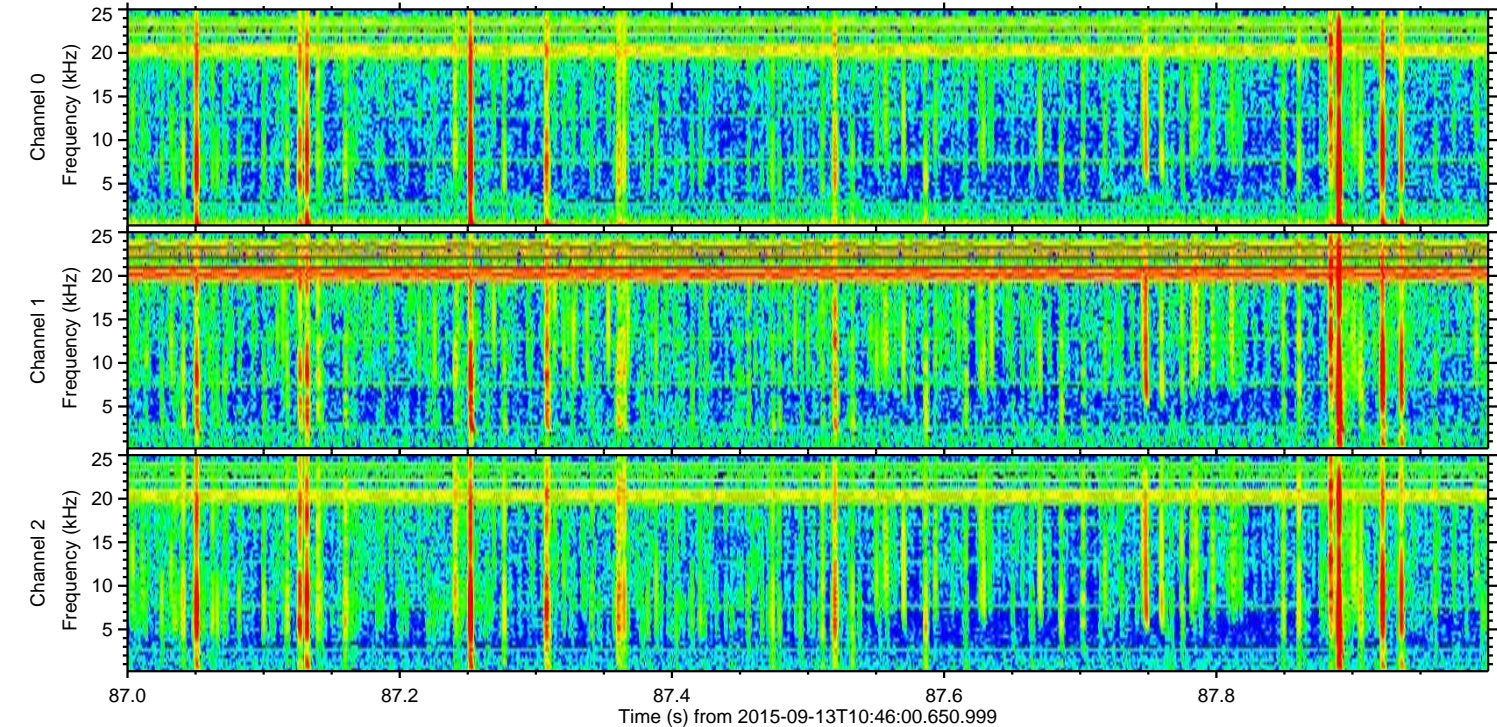
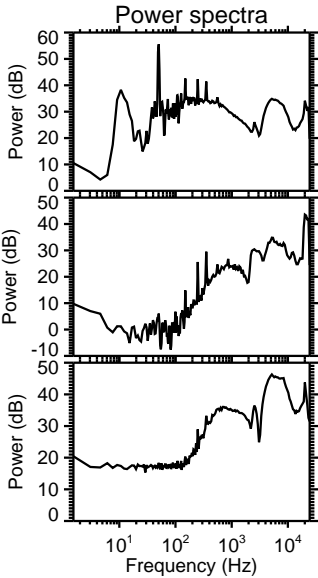
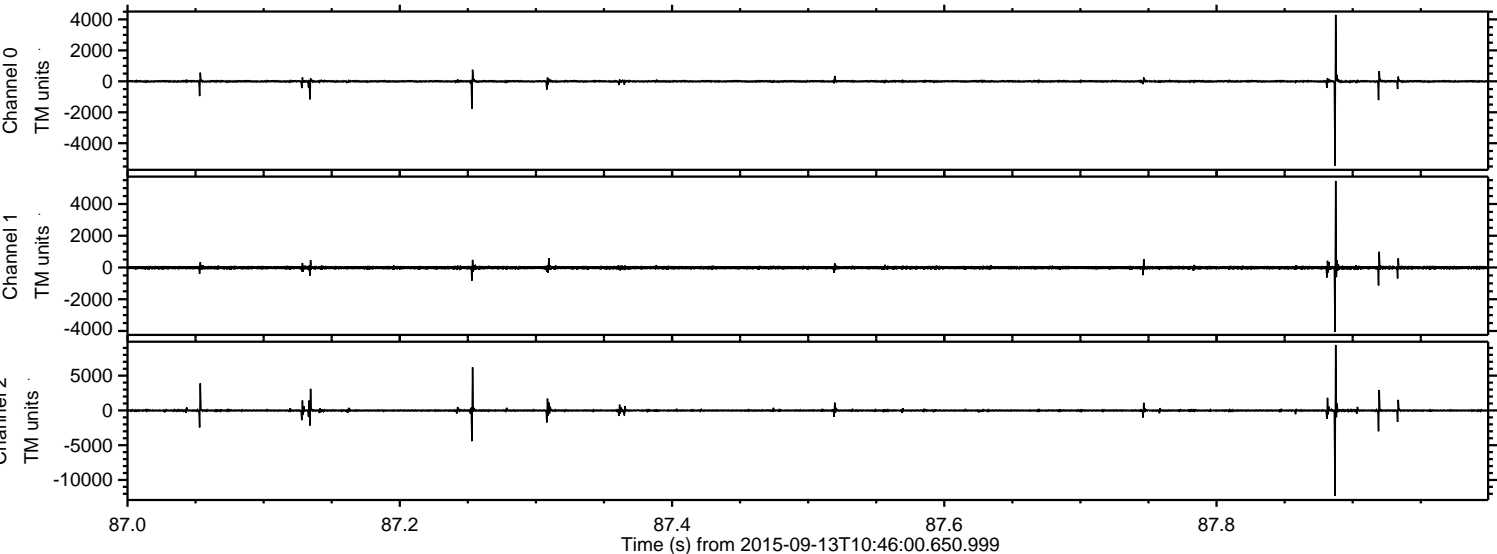
Channel 0  
mn: -3299  
mx: 1719  
 $\mu$ : -2.5  
 $\sigma$ : 33.4

Channel 1  
mn: -1075  
mx: 1270  
 $\mu$ : -11.2  
 $\sigma$ : 47.9

Channel 2  
mn: -6326  
mx: 12295  
 $\mu$ : -11.3  
 $\sigma$ : 121.1

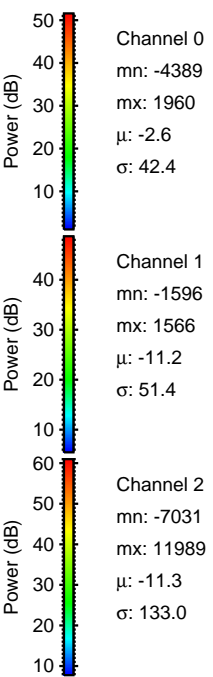
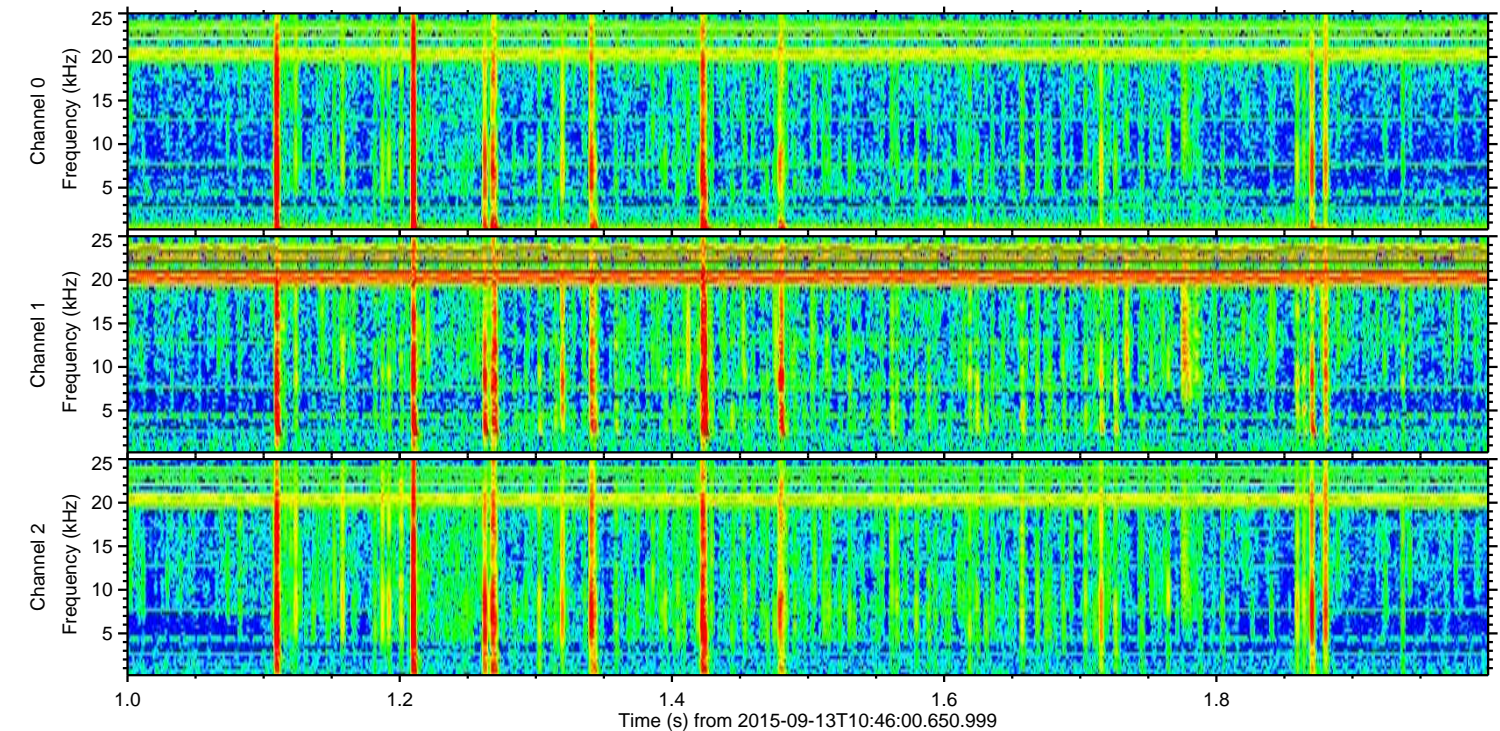
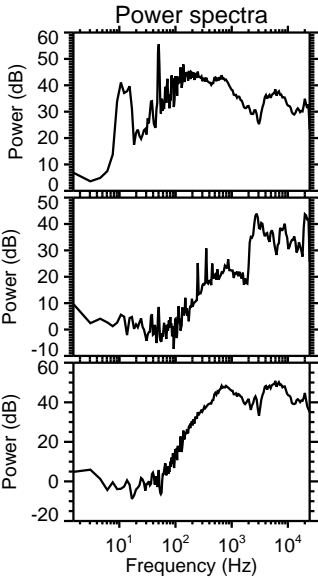
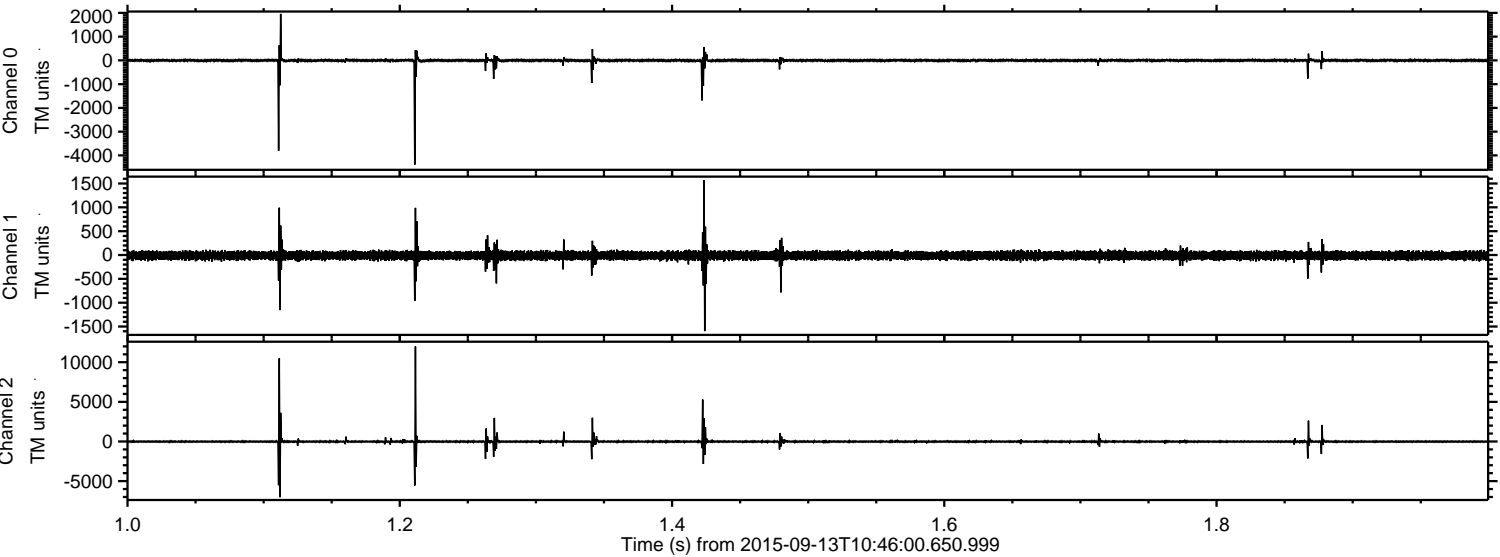


Processed Mon Oct 12 03:46:36 2015 by ELM ver.2012-10-06 from 001\_\_elm20150913\_104559\_\_dat00.bin





Processed Mon Oct 12 03:46:38 2015 by ELM ver.2012-10-06 from 001\_\_elm20150913\_104559\_\_dat00.bin





Processed Mon Oct 12 03:46:39 2015 by ELM ver.2012-10-06 from 001\_\_elm20150913\_104559\_\_dat00.bin

