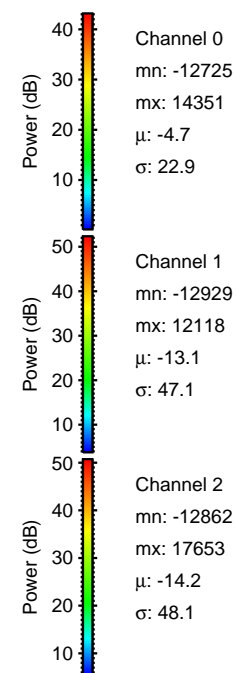
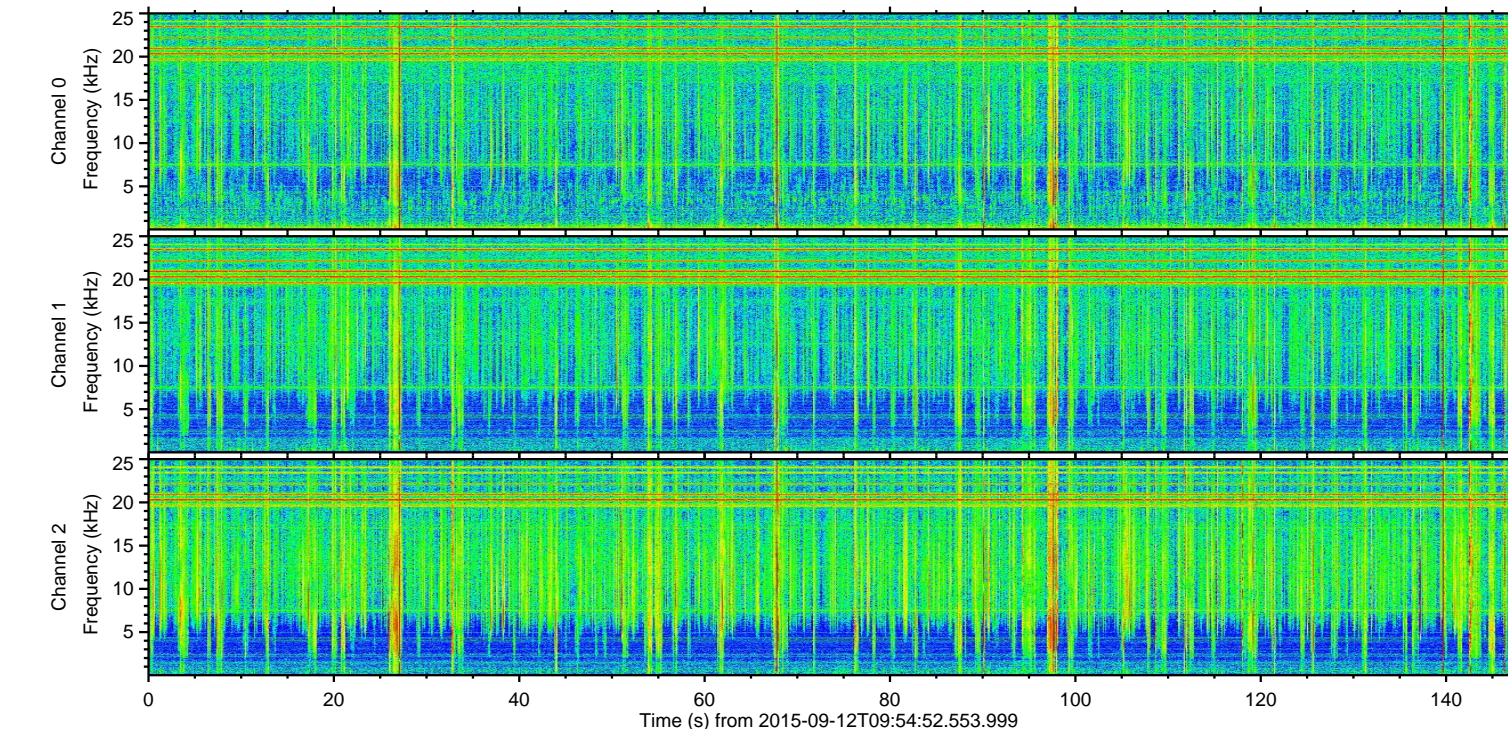
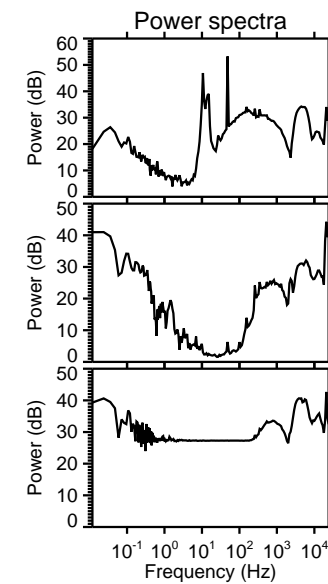
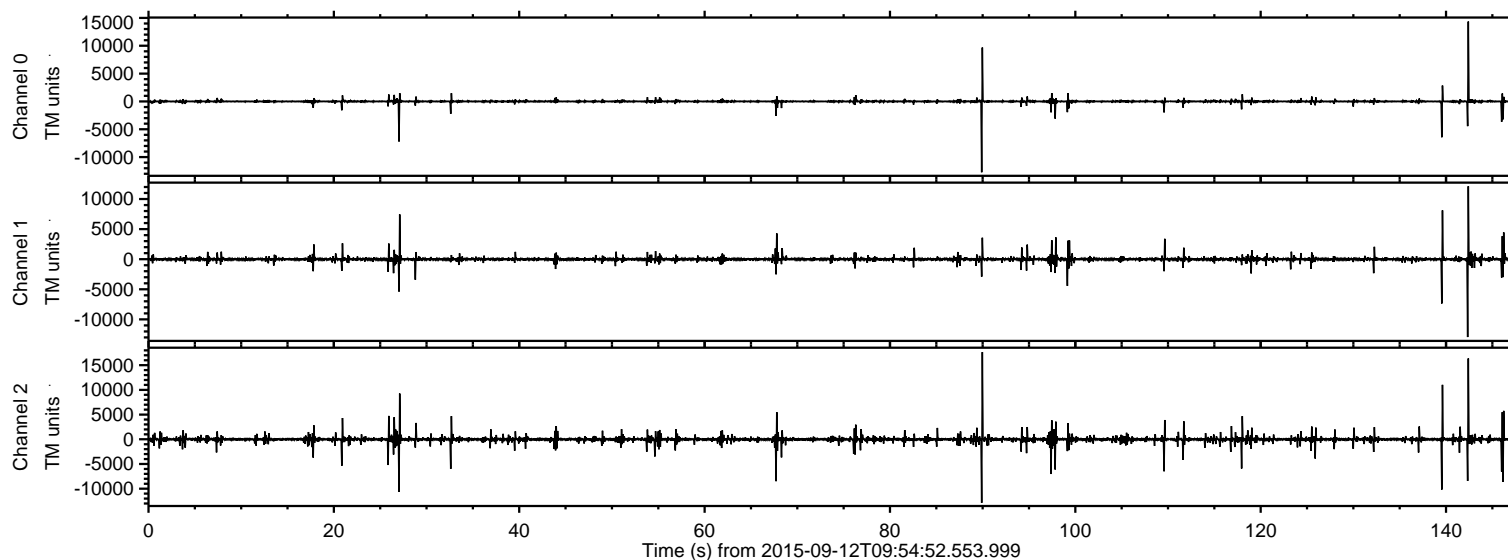
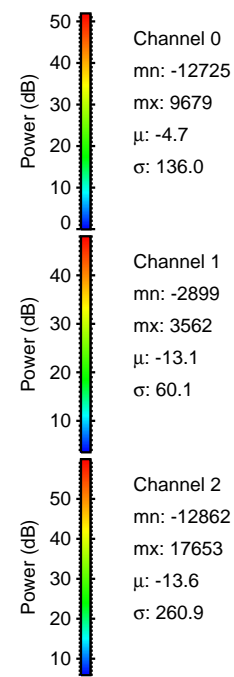
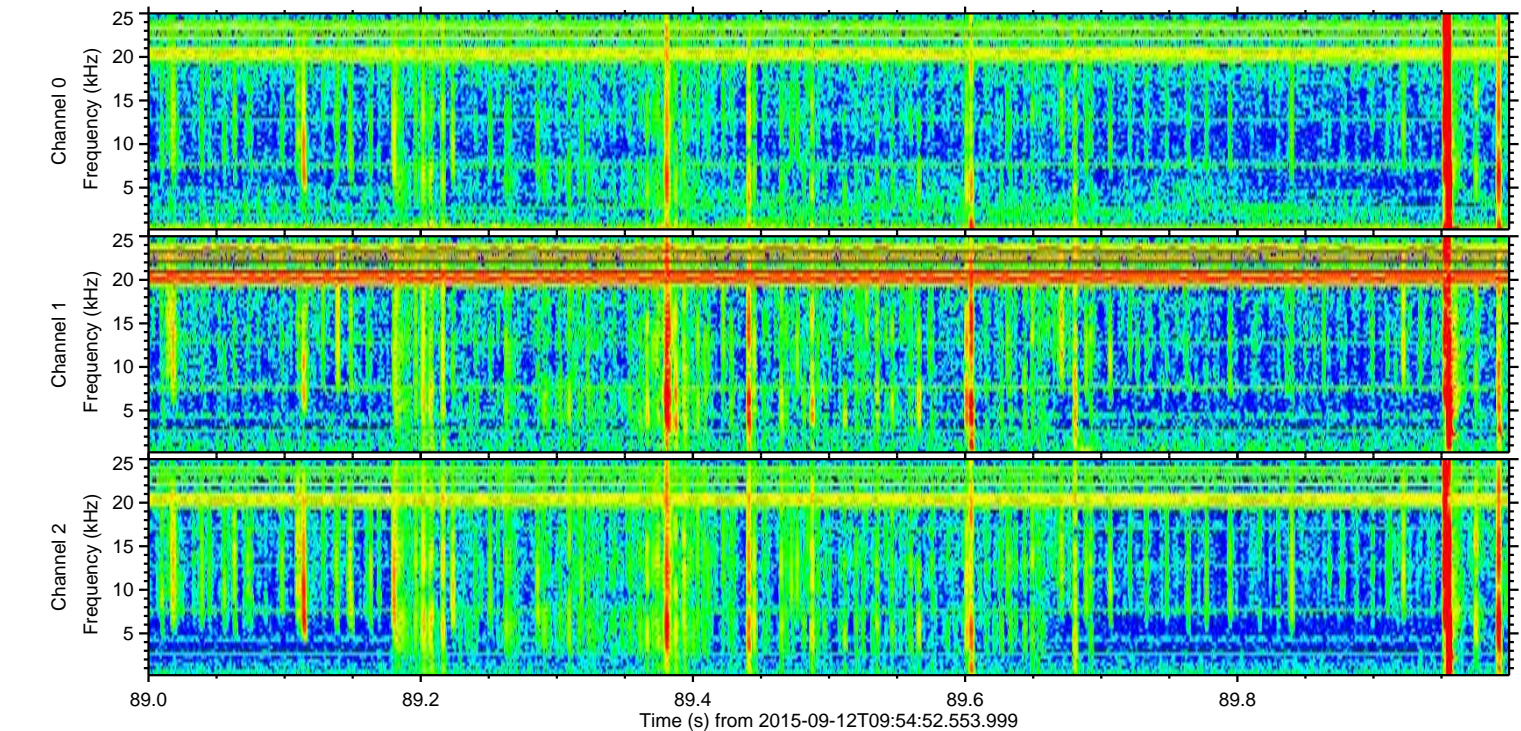
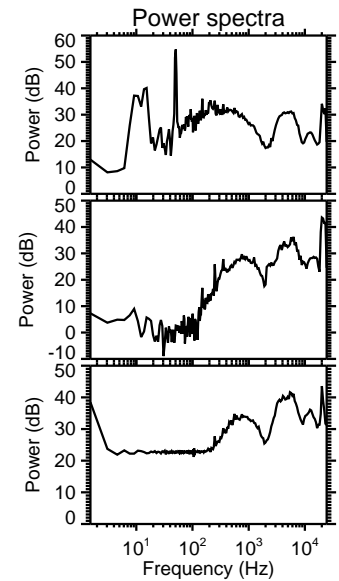
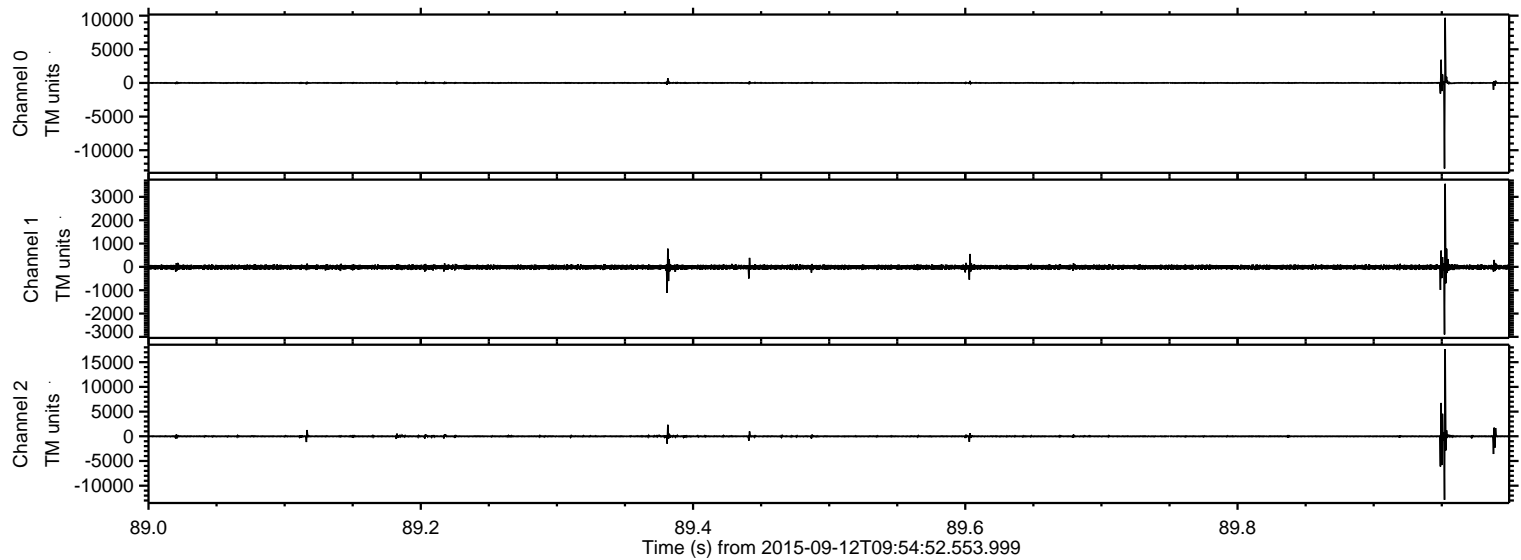


ELMAVAN 3D WAVEFORMS (Measured data sampled at 50 kHz) 51000 packets of 144 samples from 2015-09-12T09:54:52.553.999.

Processed Sun Oct 11 20:54:02 2015 by ELM ver.2012-10-06 from 001__elm20150912_095451__dat00.bin

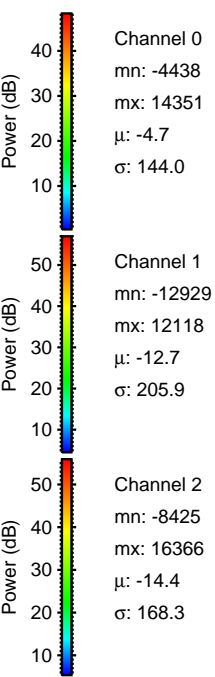
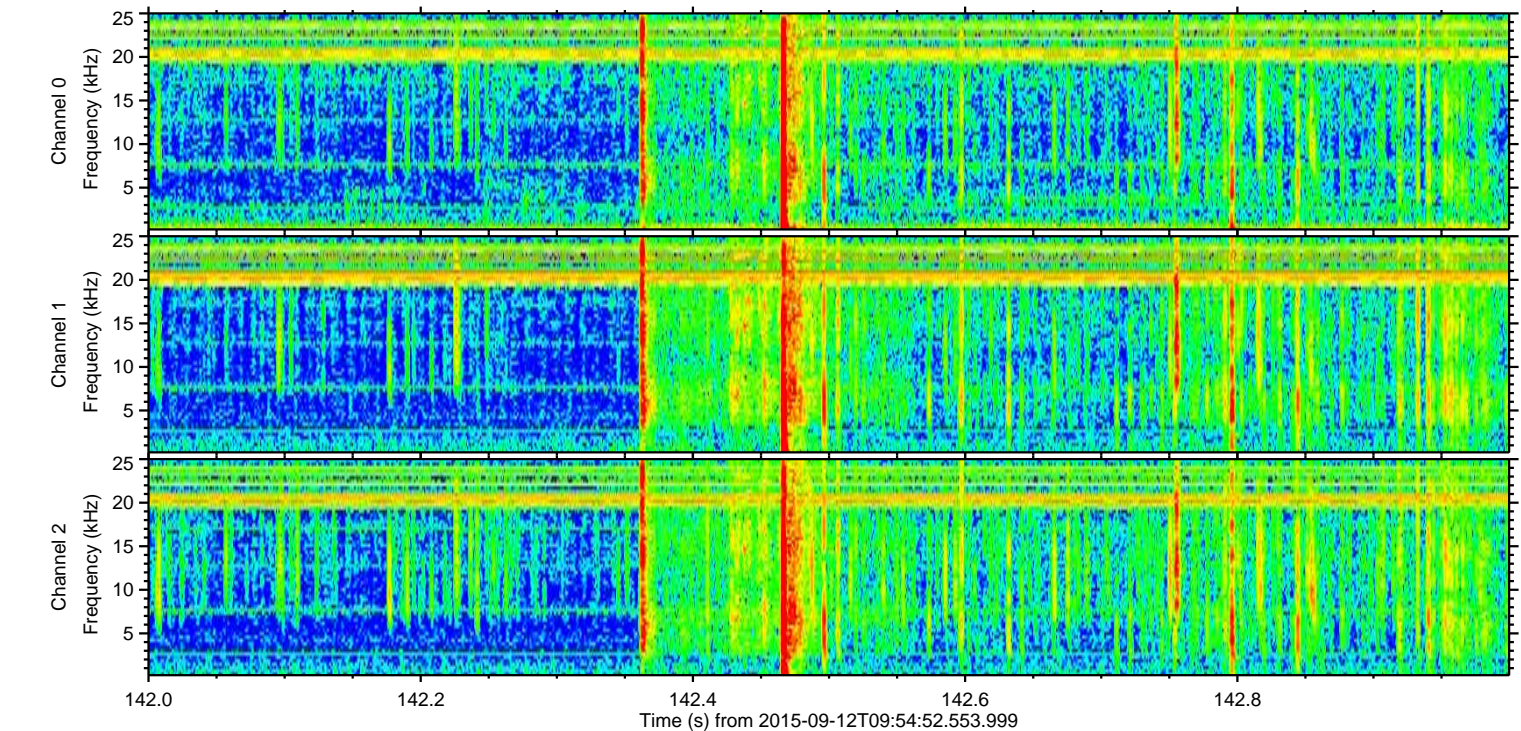
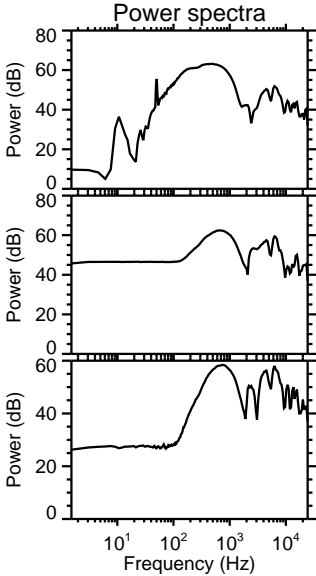
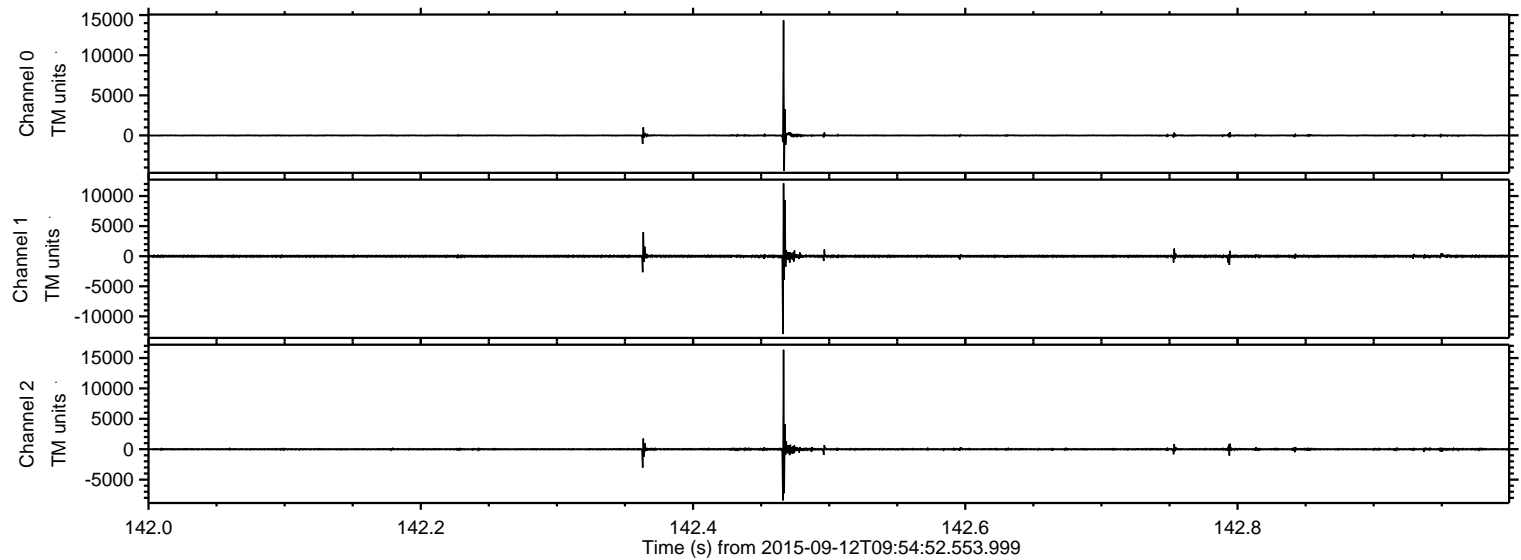


Processed Sun Oct 11 20:54:18 2015 by ELM ver.2012-10-06 from 001__elm20150912_095451__dat00.bin



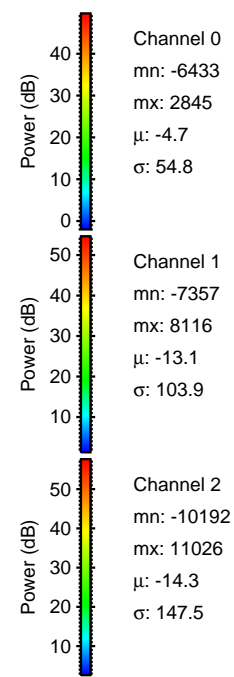
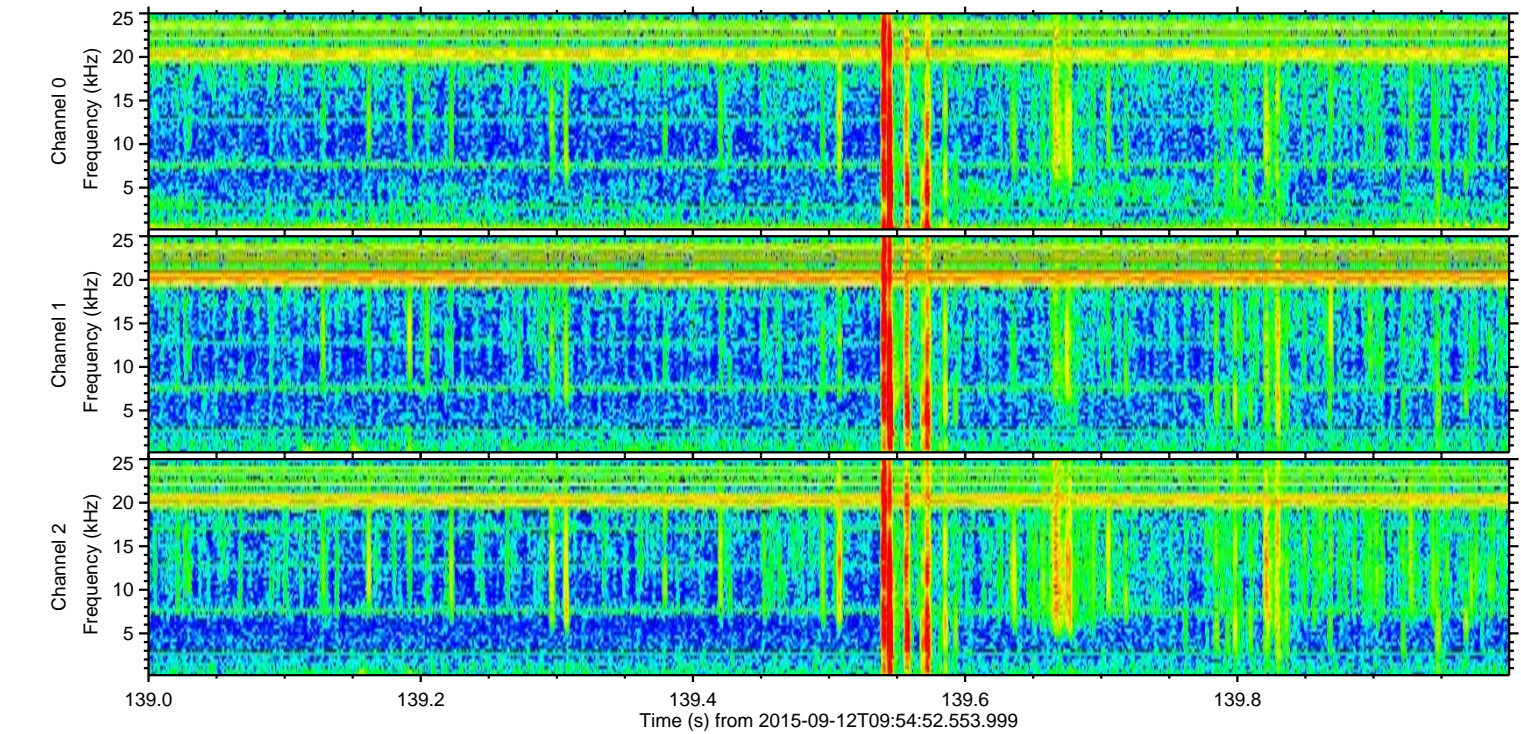
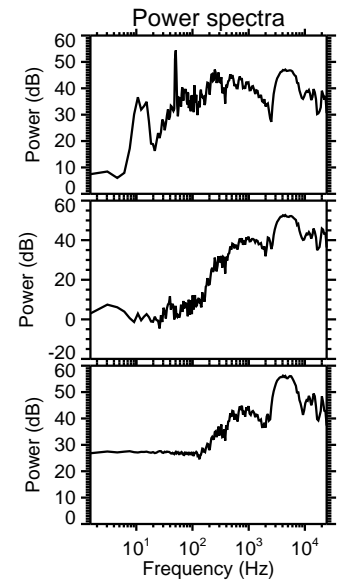
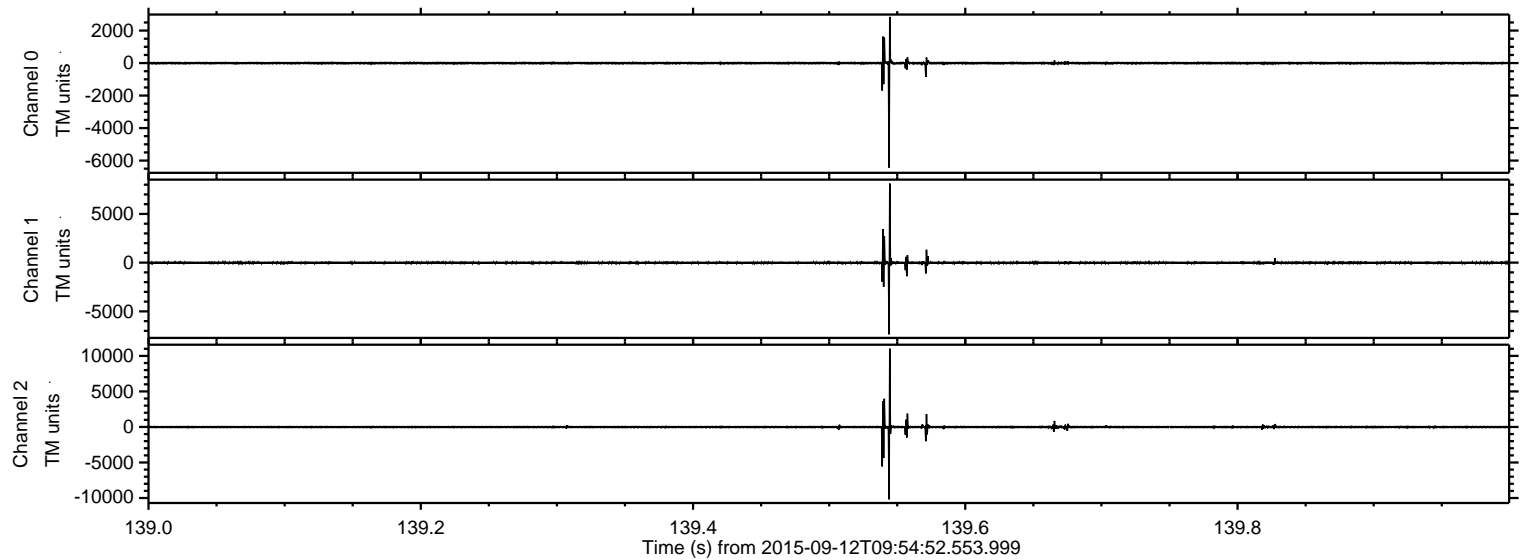
ELMAVAN 3D WAVEFORMS (Measured data sampled at 50 kHz) 51000 packets of 144 samples from 2015-09-12T09:54:52.553.999. Part 143/147

Processed Sun Oct 11 20:54:19 2015 by ELM ver.2012-10-06 from 001__elm20150912_095451__dat00.bin



ELMAVAN 3D WAVEFORMS (Measured data sampled at 50 kHz) 51000 packets of 144 samples from 2015-09-12T09:54:52.553.999. Part 140/147

Processed Sun Oct 11 20:54:20 2015 by ELM ver.2012-10-06 from 001__elm20150912_095451__dat00.bin

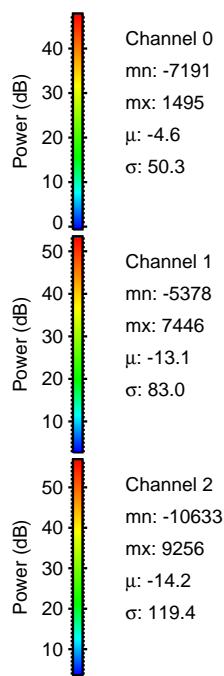
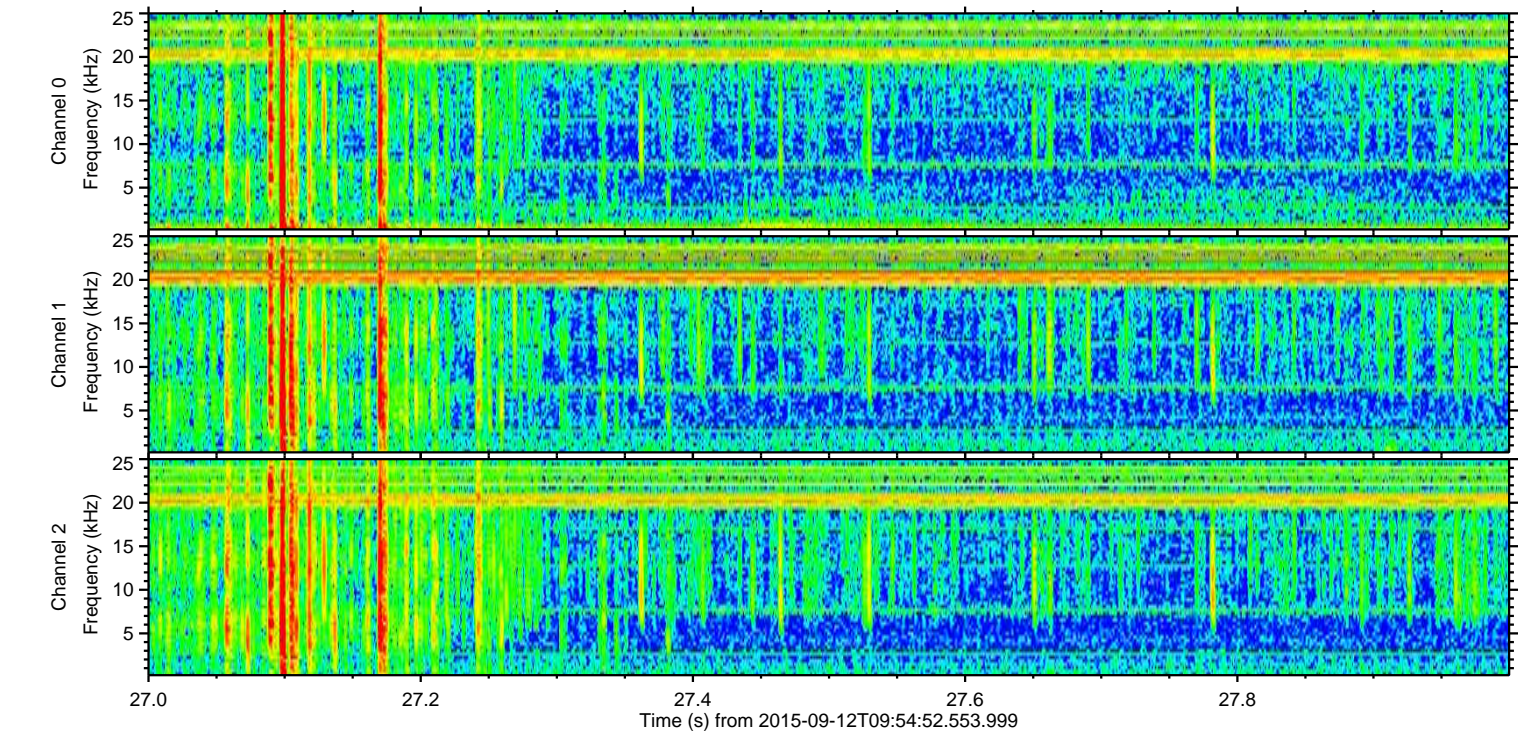
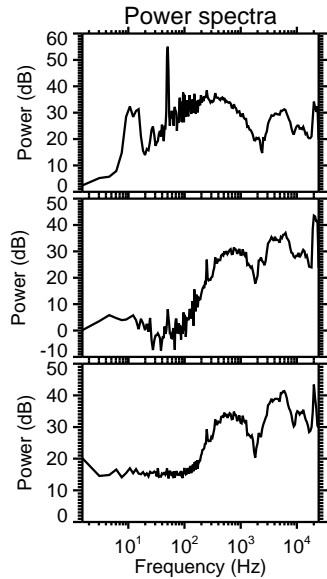
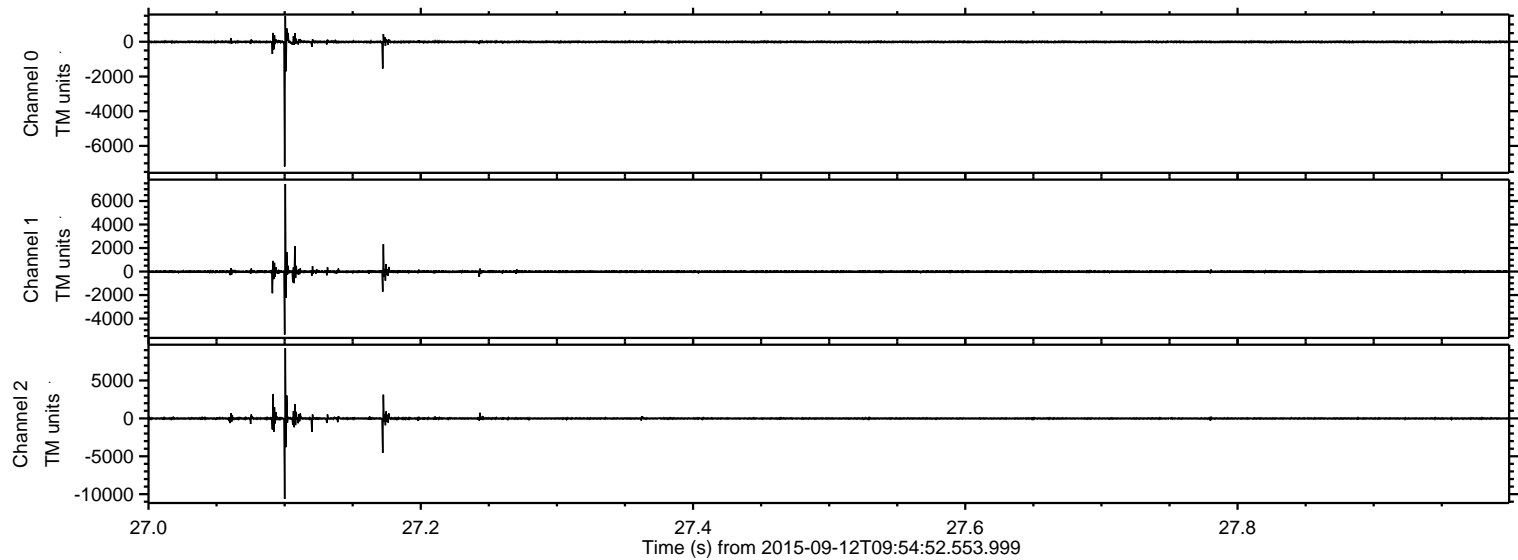


Channel 0
mn: -6433
mx: 2845
 μ : -4.7
 σ : 54.8

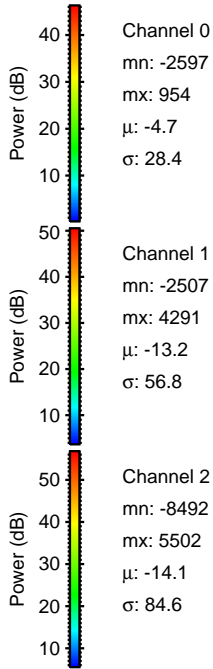
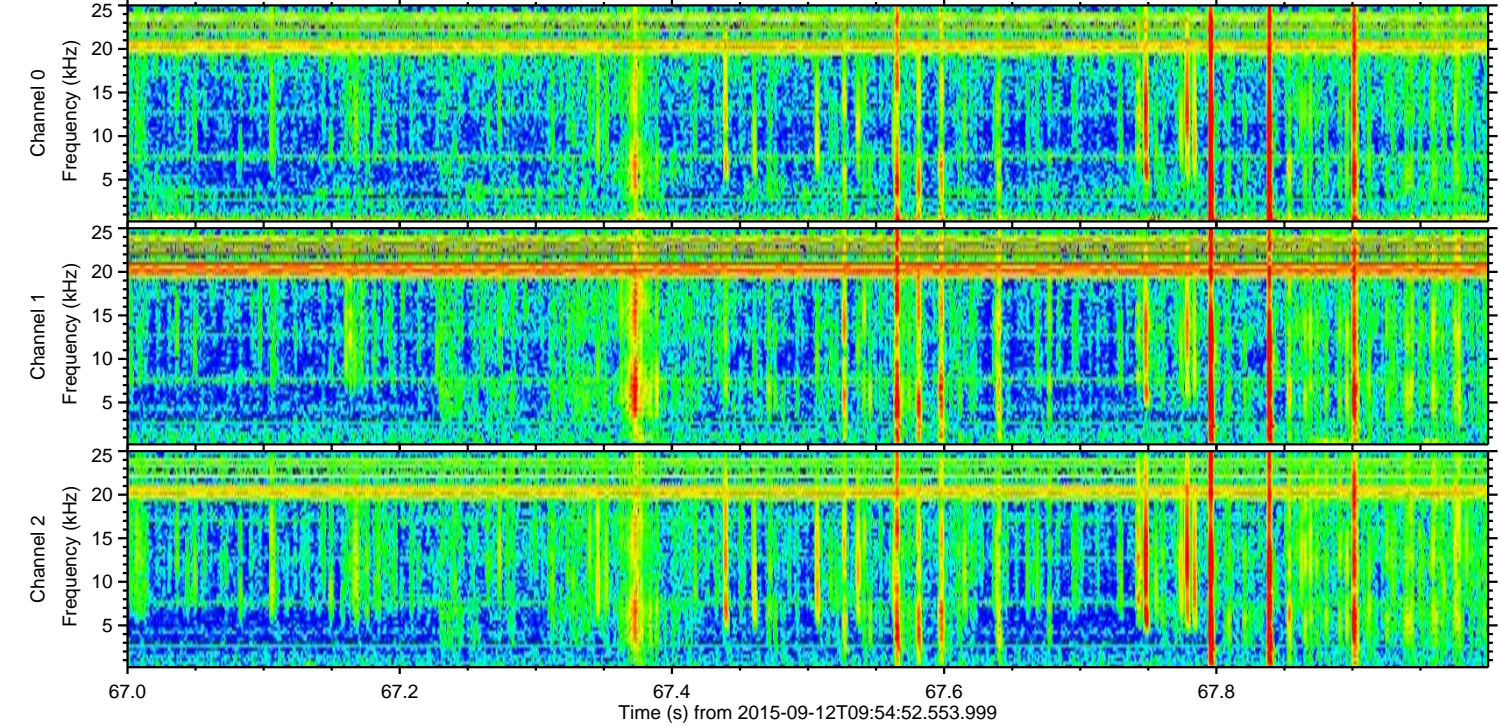
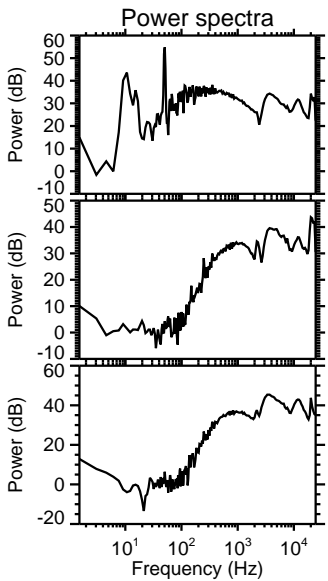
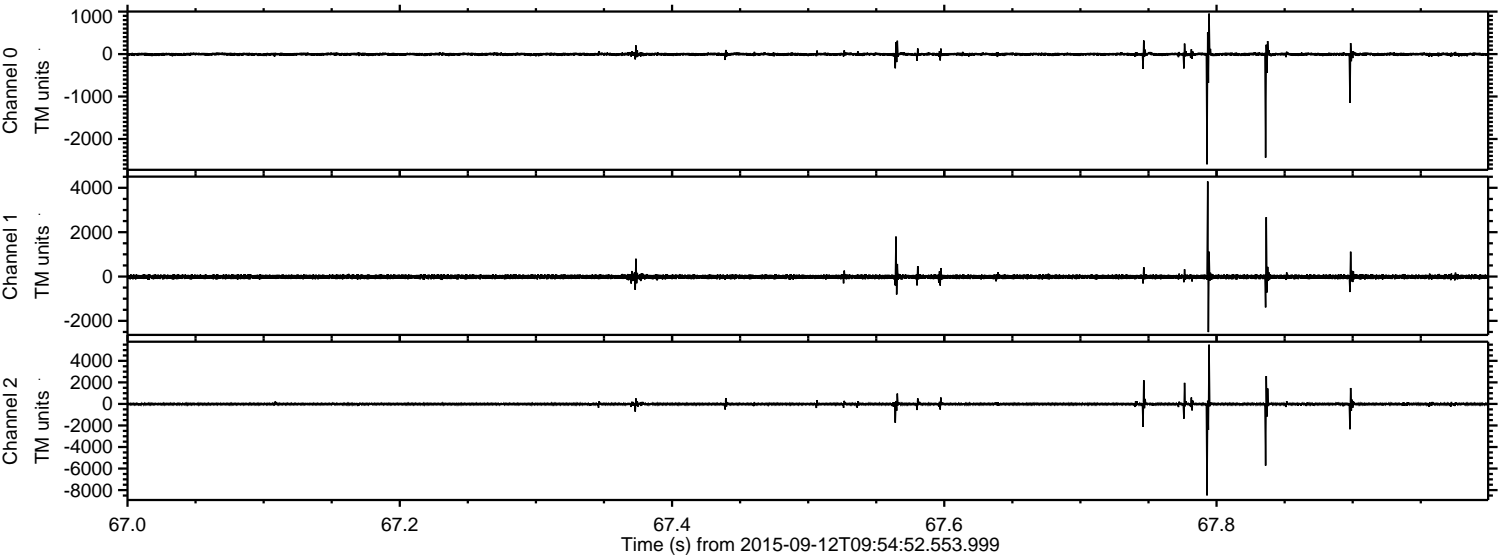
Channel 1
mn: -7357
mx: 8116
 μ : -13.1
 σ : 103.9

Channel 2
mn: -10192
mx: 11026
 μ : -14.3
 σ : 147.5

Processed Sun Oct 11 20:54:21 2015 by ELM ver.2012-10-06 from 001__elm20150912_095451__dat00.bin



Processed Sun Oct 11 20:54:22 2015 by ELM ver.2012-10-06 from 001__elm20150912_095451__dat00.bin

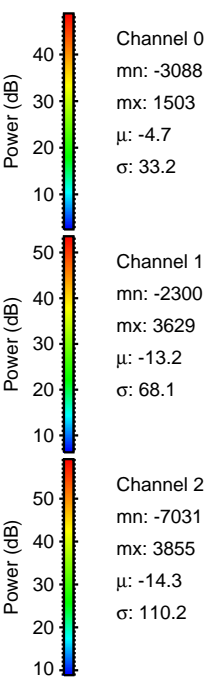
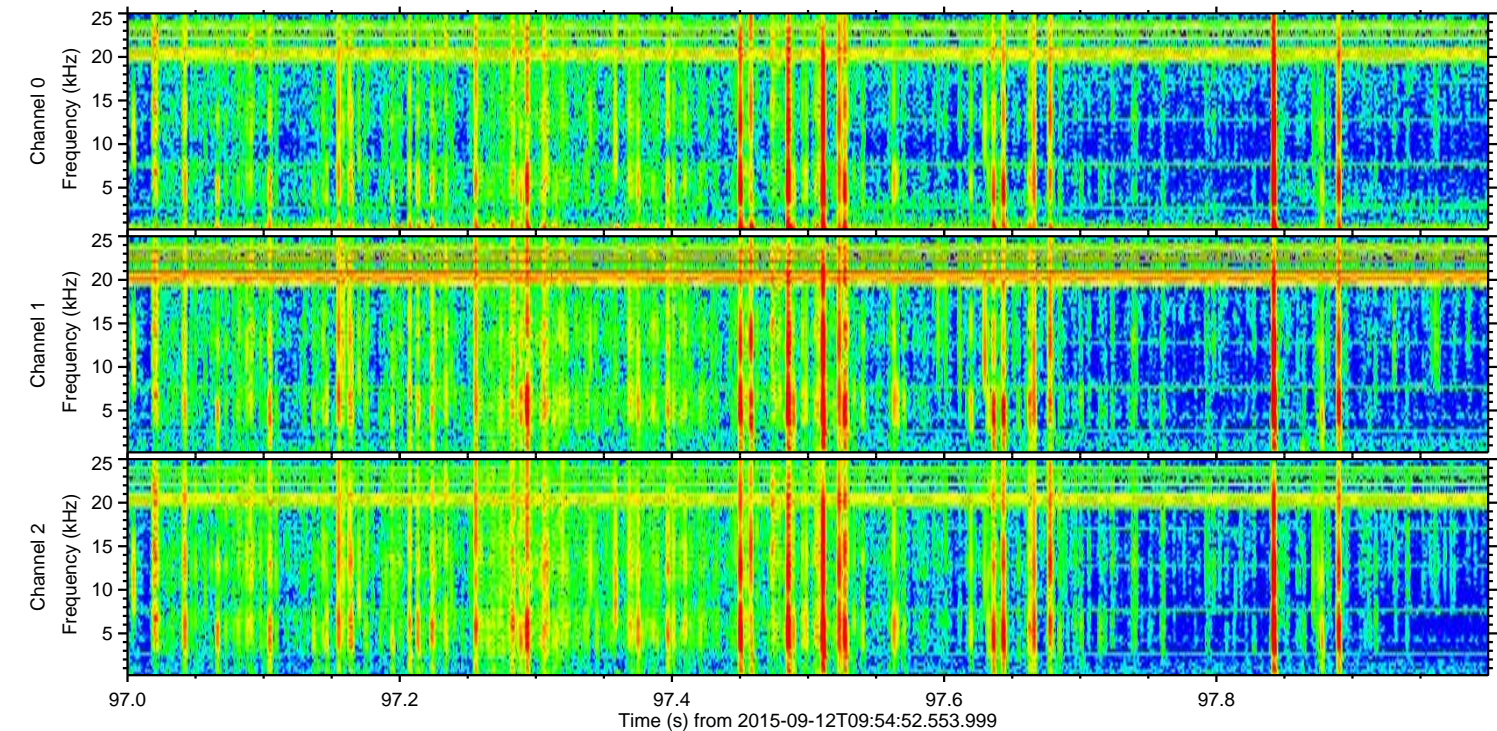
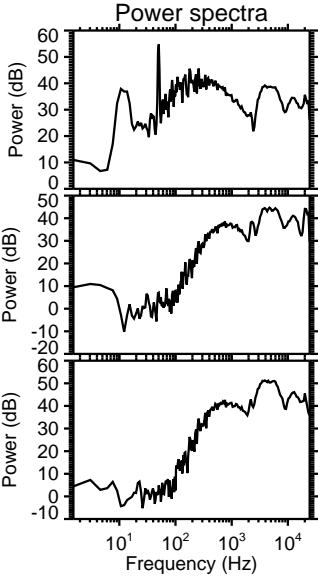
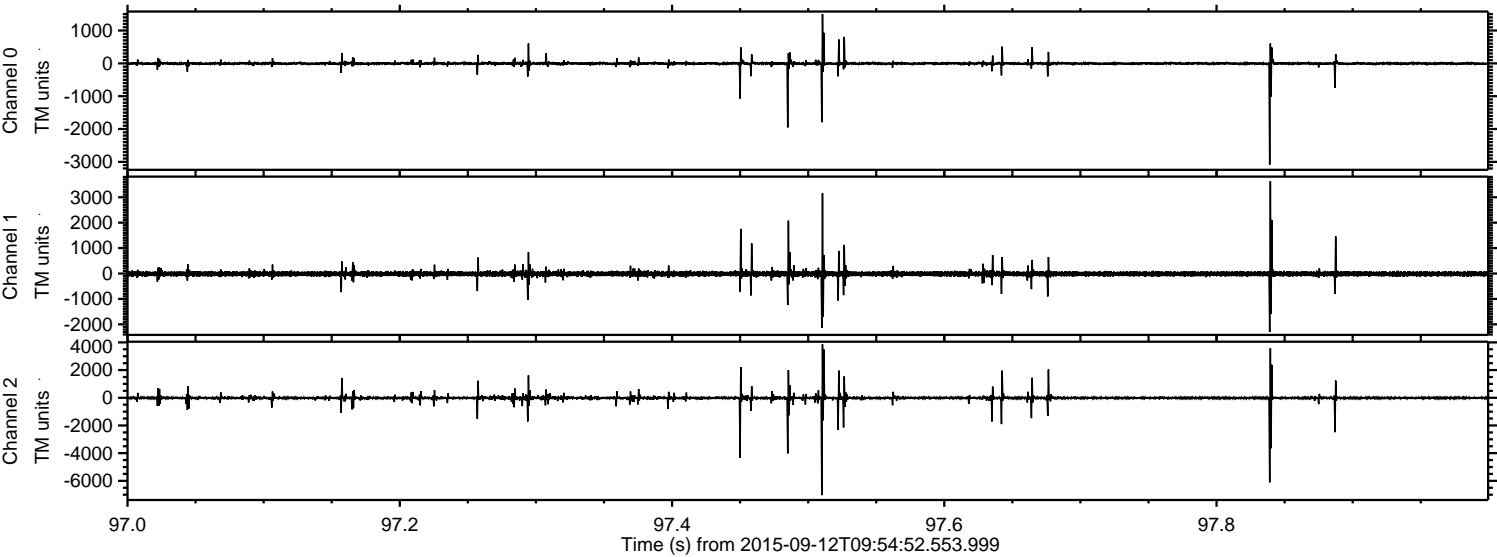


Channel 0
mn: -2597
mx: 954
 μ : -4.7
 σ : 28.4

Channel 1
mn: -2507
mx: 4291
 μ : -13.2
 σ : 56.8

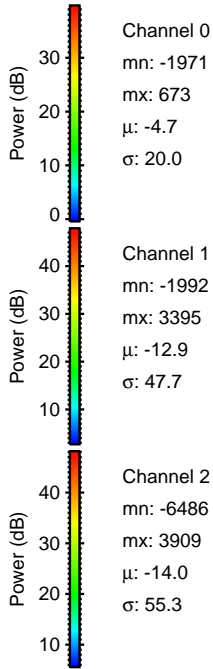
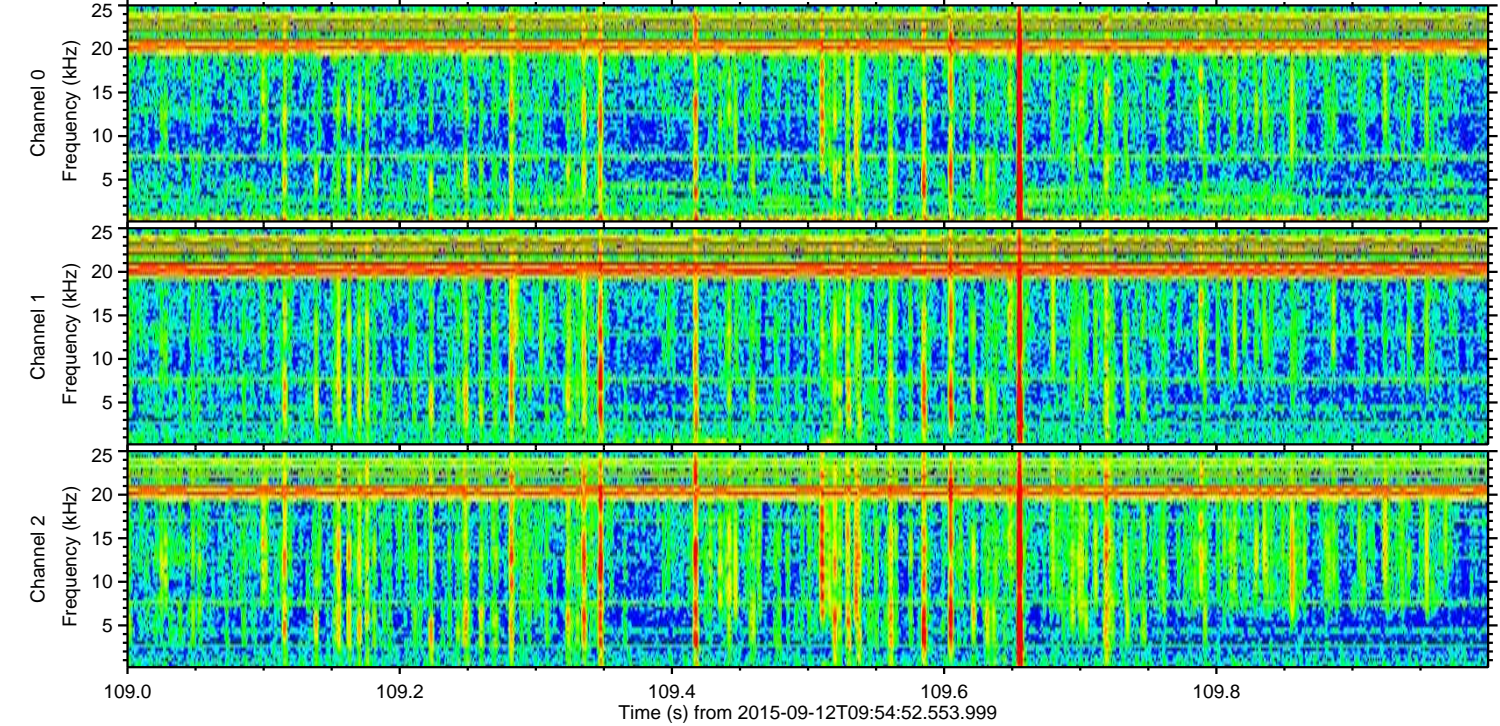
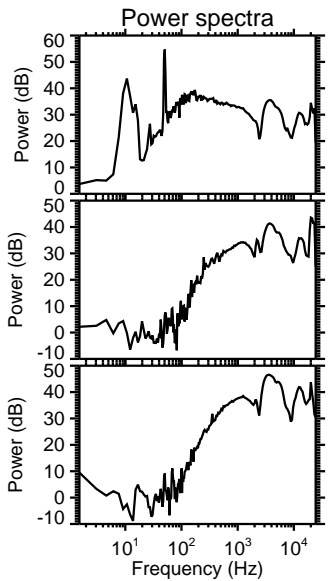
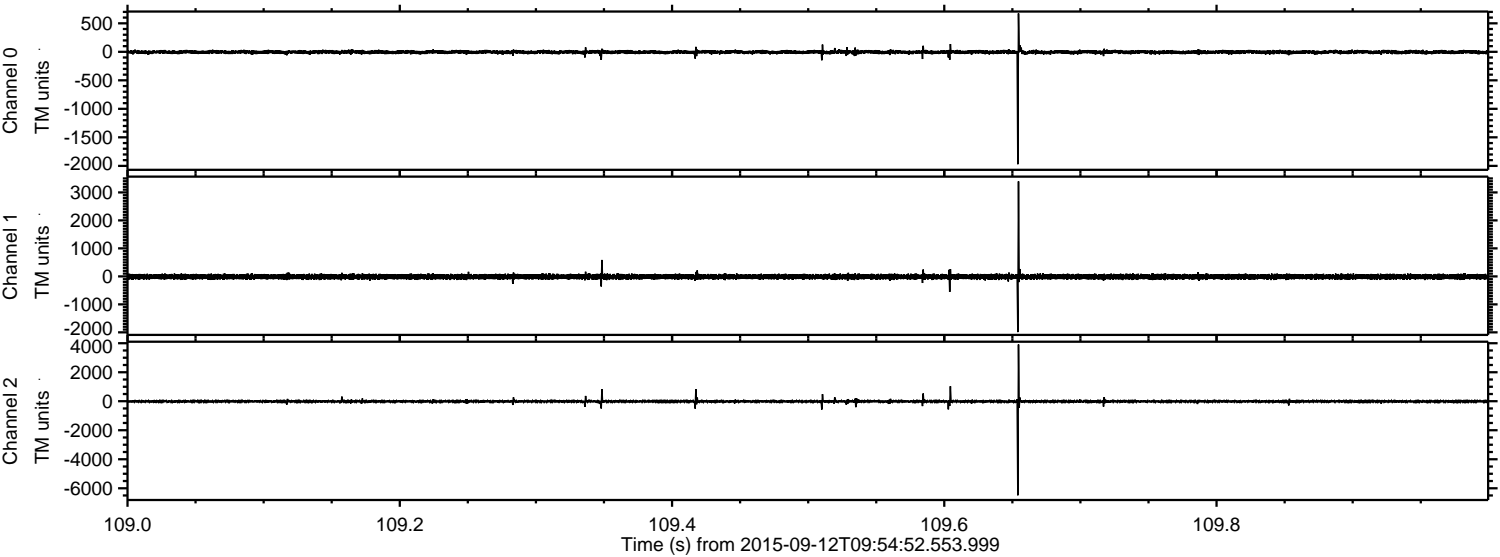
Channel 2
mn: -8492
mx: 5502
 μ : -14.1
 σ : 84.6

Processed Sun Oct 11 20:54:23 2015 by ELM ver.2012-10-06 from 001__elm20150912_095451__dat00.bin



ELMAVAN 3D WAVEFORMS (Measured data sampled at 50 kHz) 51000 packets of 144 samples from 2015-09-12T09:54:52.553.999. Part 110/147

Processed Sun Oct 11 20:54:25 2015 by ELM ver.2012-10-06 from 001__elm20150912_095451__dat00.bin

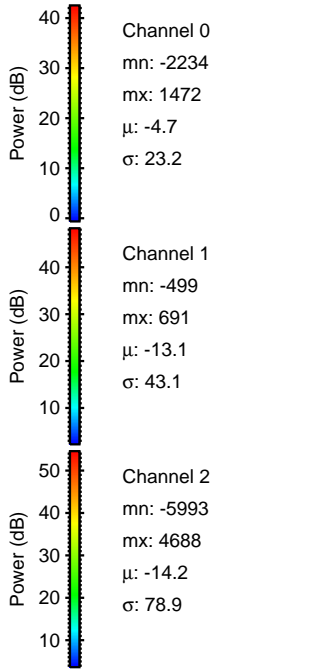
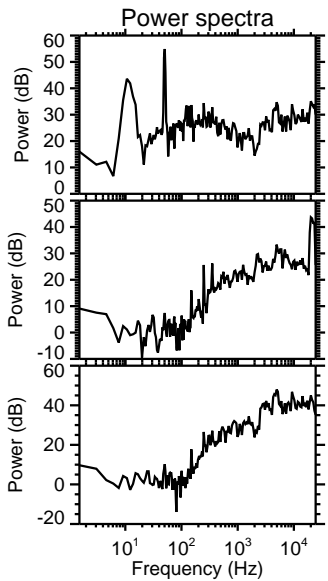
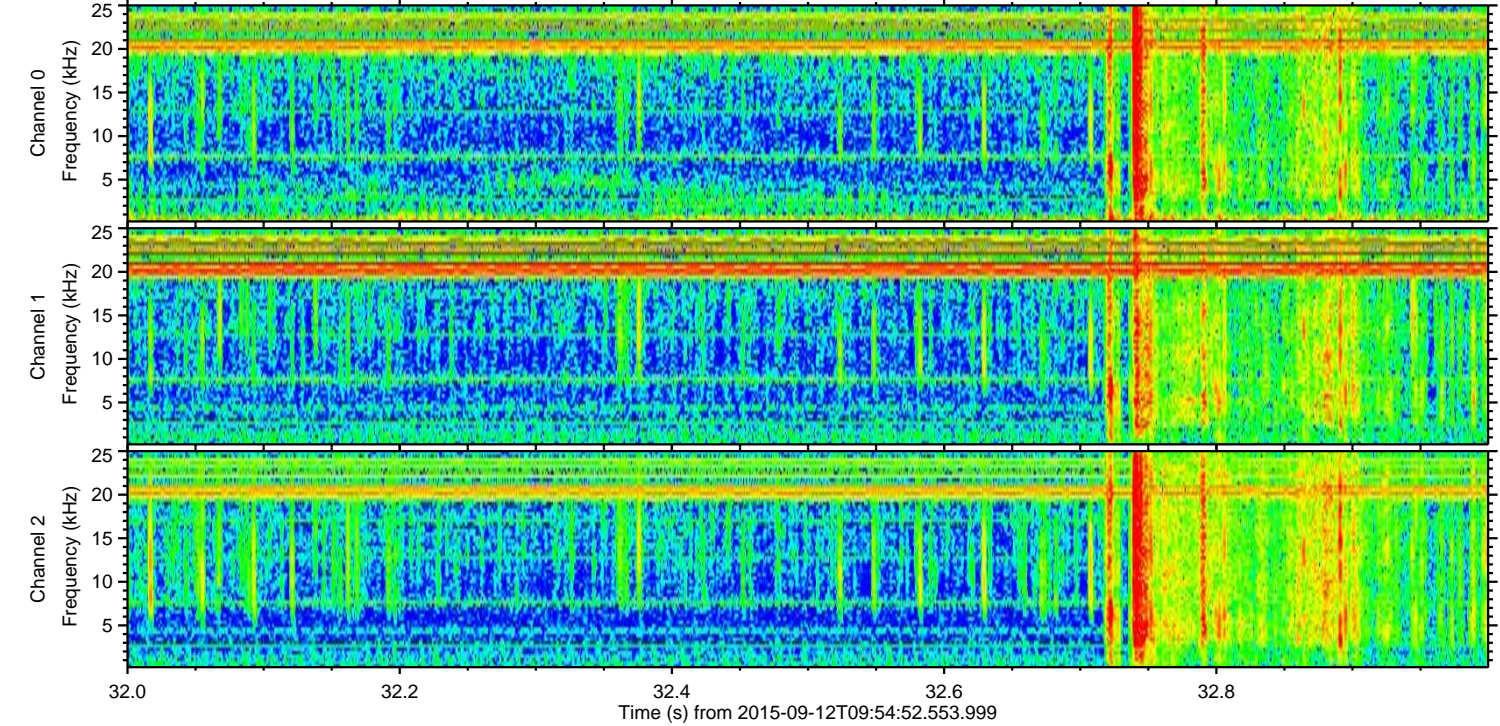
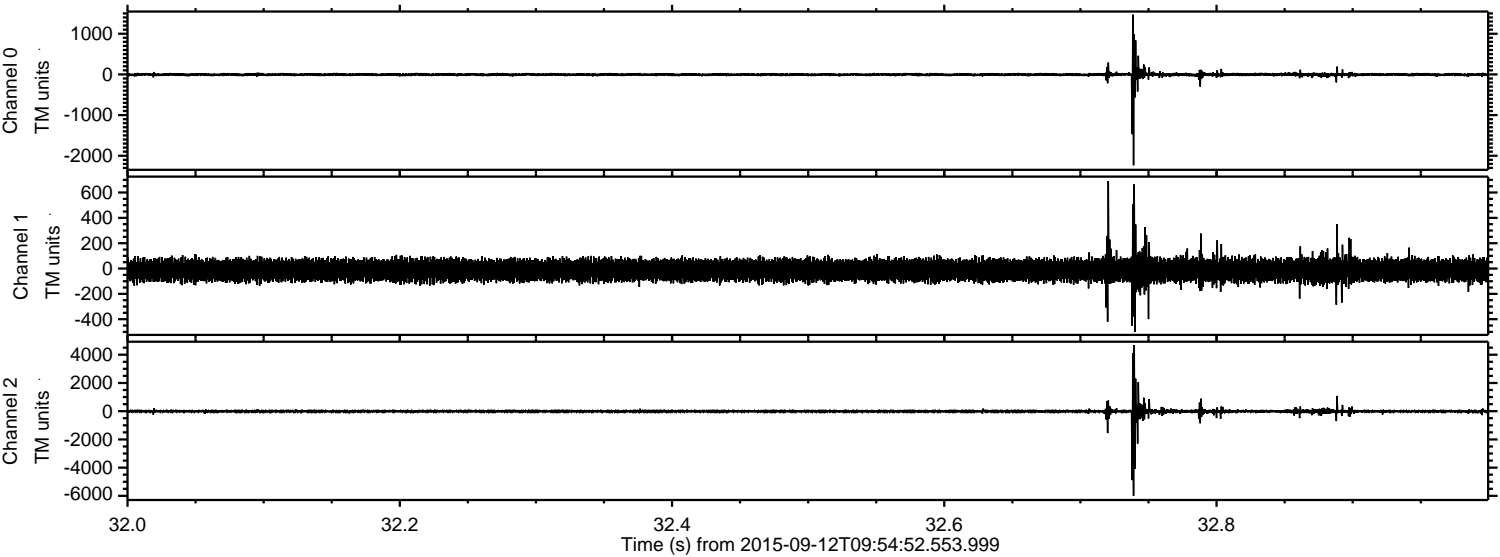


Channel 0
mn: -1971
mx: 673
 μ : -4.7
 σ : 20.0

Channel 1
mn: -1992
mx: 3395
 μ : -12.9
 σ : 47.7

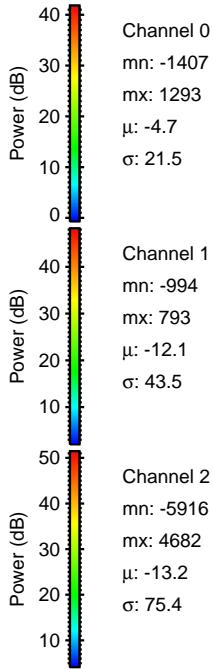
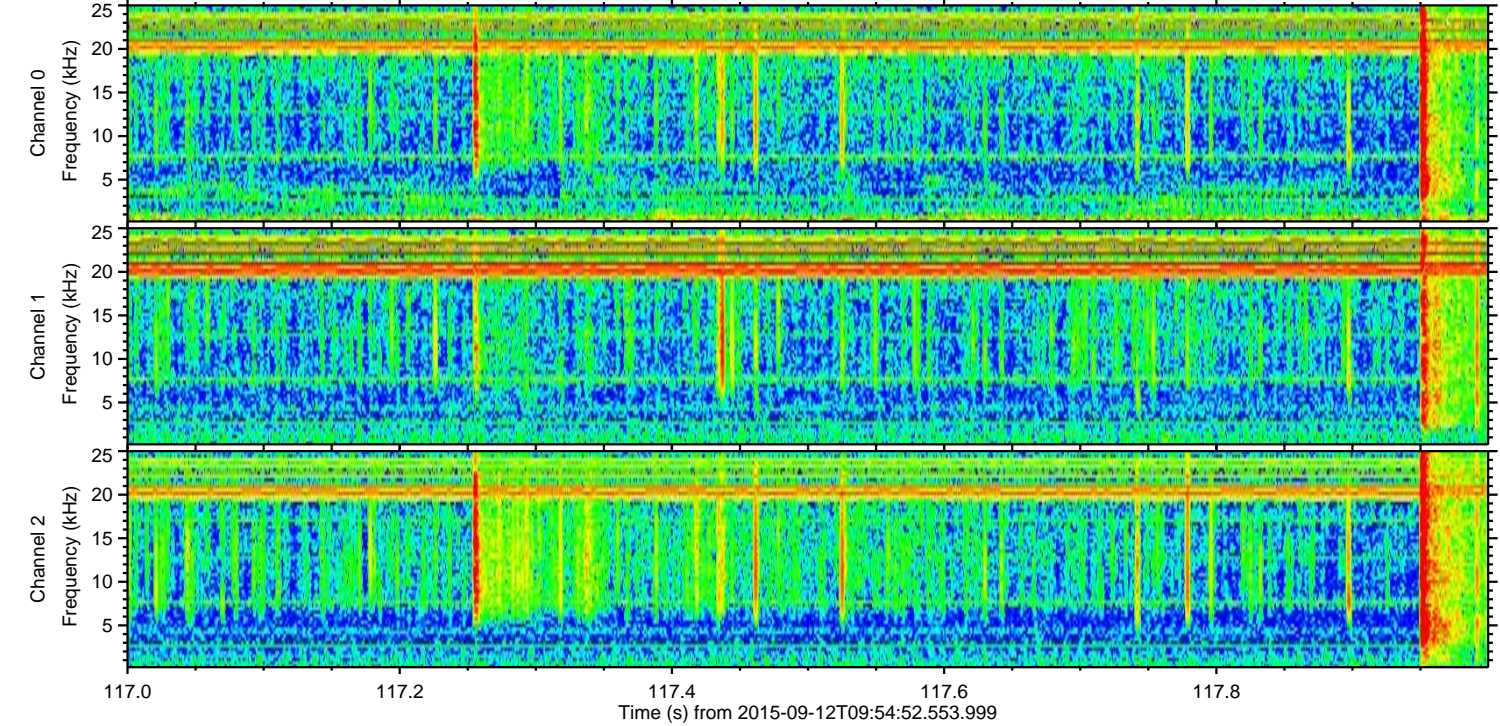
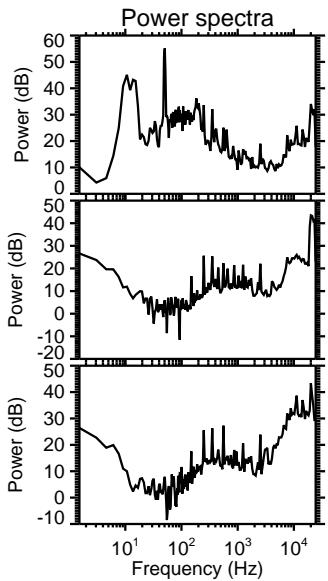
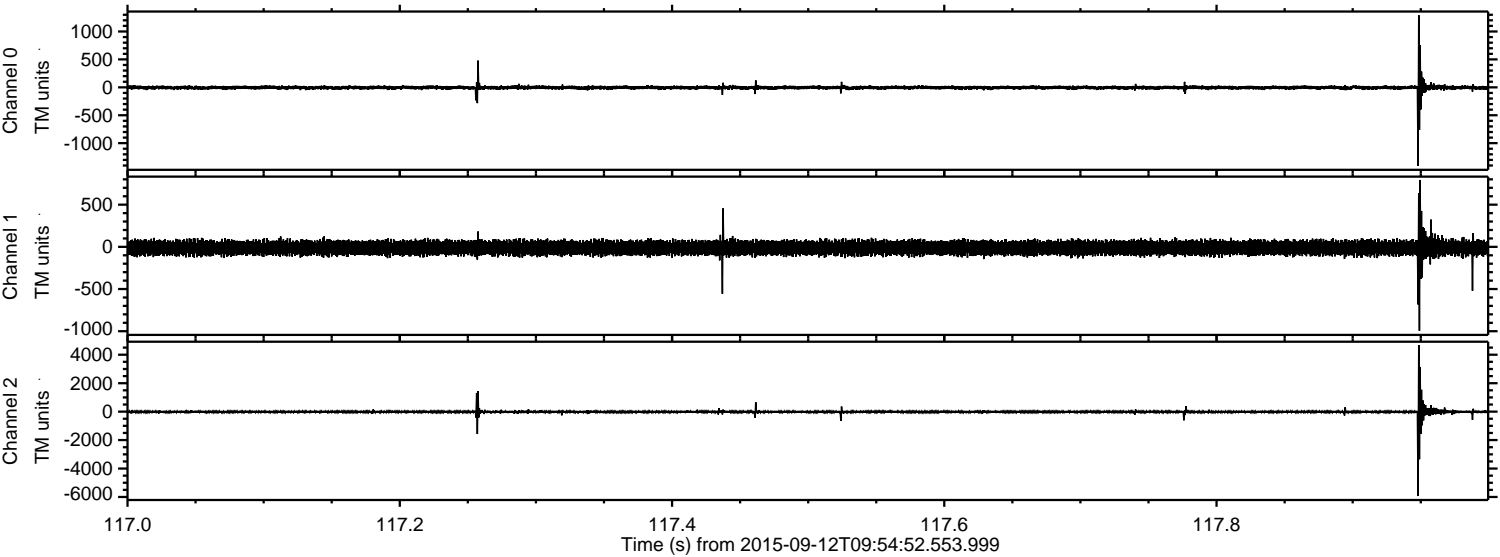
Channel 2
mn: -6486
mx: 3909
 μ : -14.0
 σ : 55.3

Processed Sun Oct 11 20:54:26 2015 by ELM ver.2012-10-06 from 001__elm20150912_095451__dat00.bin



ELMAVAN 3D WAVEFORMS (Measured data sampled at 50 kHz) 51000 packets of 144 samples from 2015-09-12T09:54:52.553.999. Part 118/147

Processed Sun Oct 11 20:54:26 2015 by ELM ver.2012-10-06 from 001__elm20150912_095451__dat00.bin



Channel 0
mn: -1407
mx: 1293
 μ : -4.7
 σ : 21.5

Channel 1
mn: -994
mx: 793
 μ : -12.1
 σ : 43.5

Channel 2
mn: -5916
mx: 4682
 μ : -13.2
 σ : 75.4

Processed Sun Oct 11 20:54:27 2015 by ELM ver.2012-10-06 from 001__elm20150912_095451__dat00.bin

