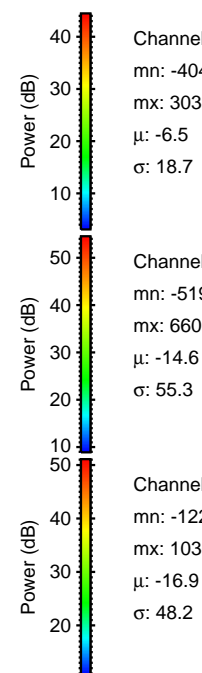
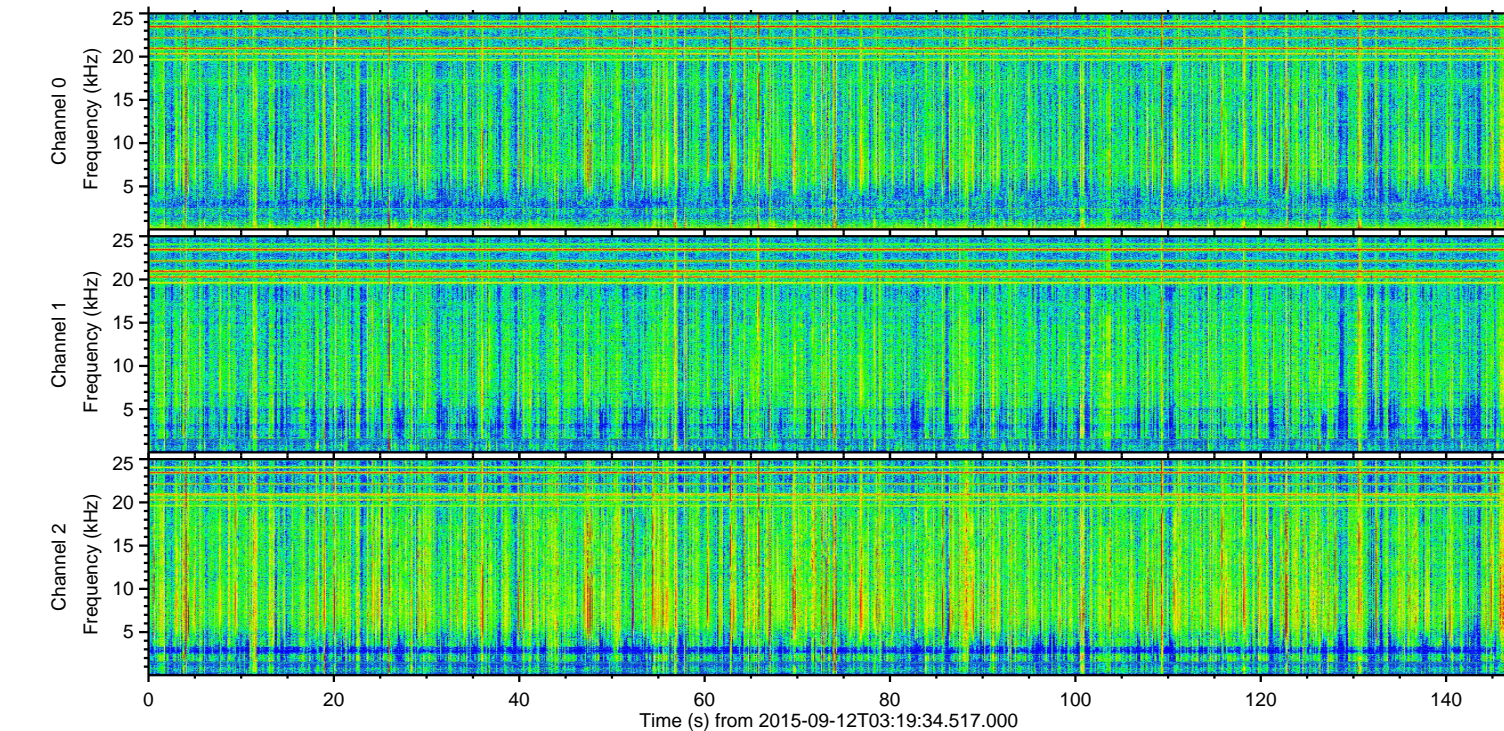
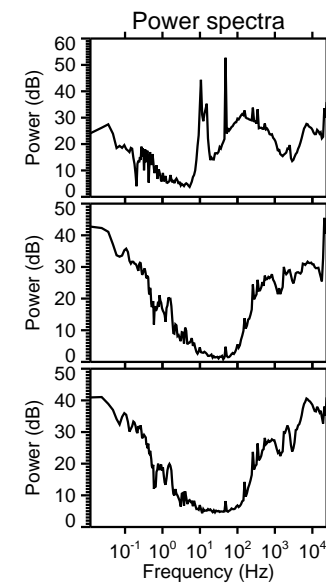
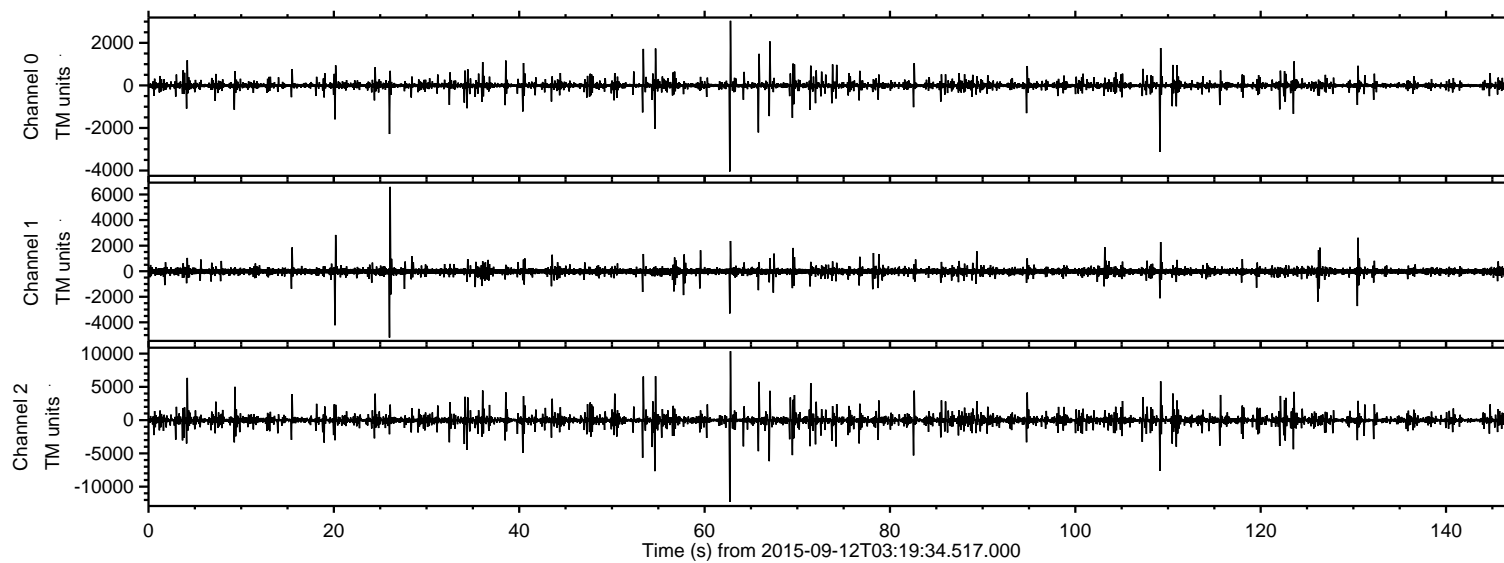


# ELMAVAN 3D WAVEFORMS (Measured data sampled at 50 kHz) 51000 packets of 144 samples from 2015-09-12T03:19:34.517.000.

Processed Sun Oct 11 19:03:42 2015 by ELM ver.2012-10-06 from 001\_\_elm20150912\_031933\_\_dat00.bin



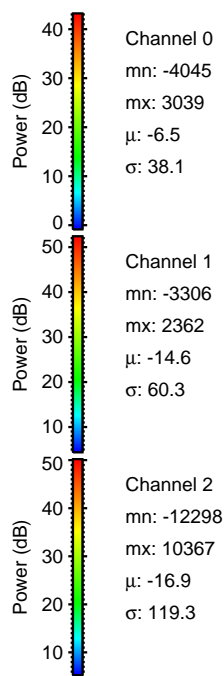
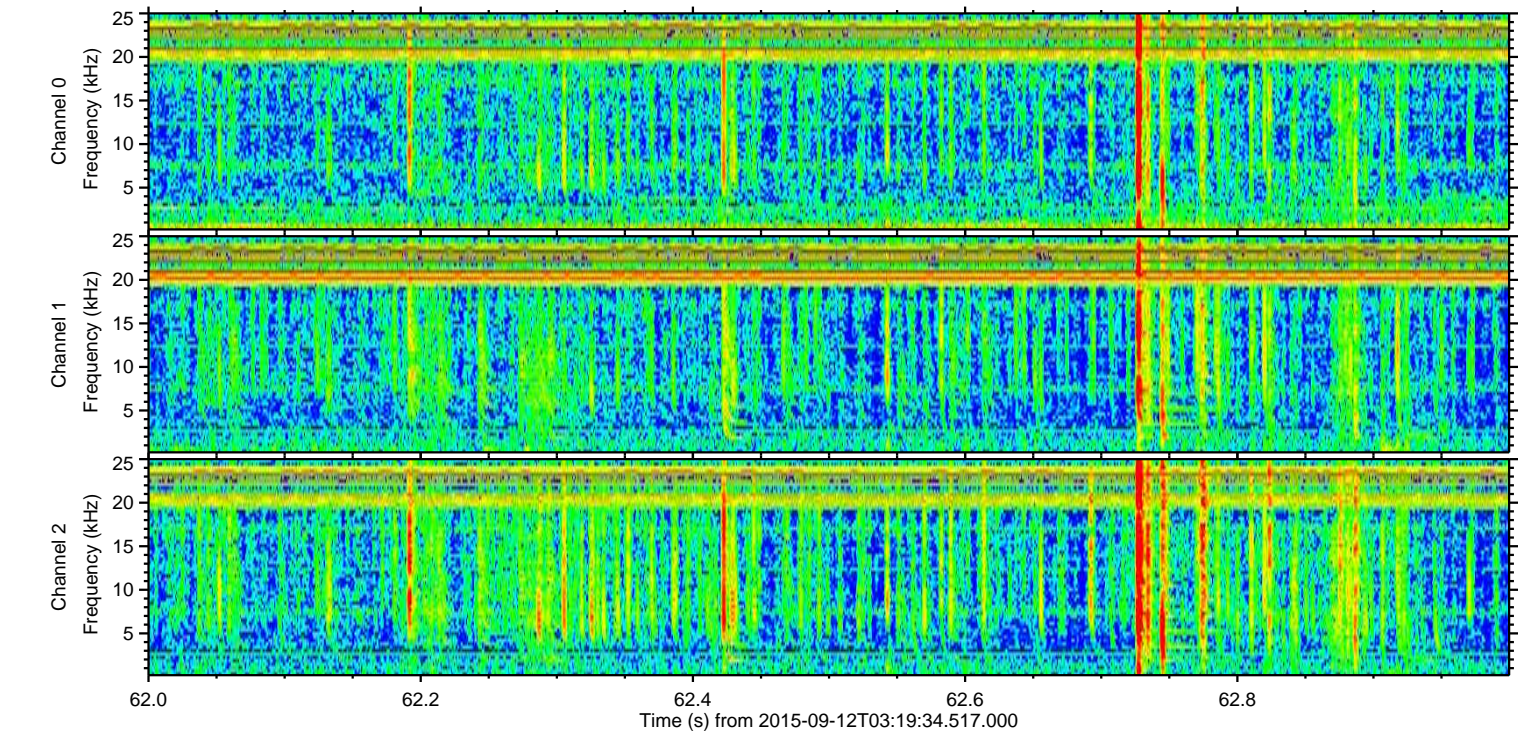
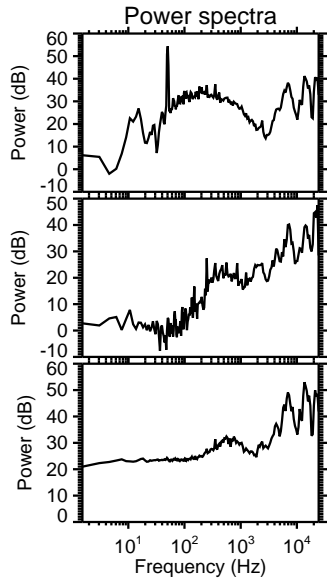
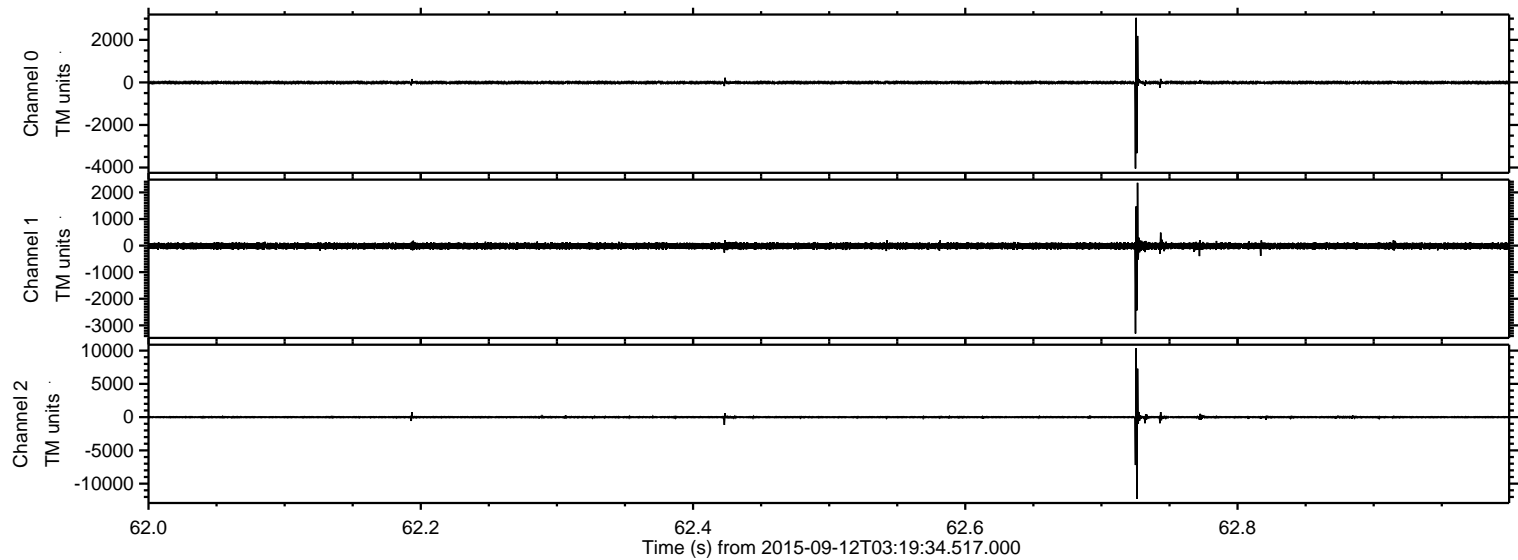
Channel 0  
mn: -4045  
mx: 3039  
 $\mu$ : -6.5  
 $\sigma$ : 18.7

Channel 1  
mn: -5194  
mx: 6600  
 $\mu$ : -14.6  
 $\sigma$ : 55.3

Channel 2  
mn: -12298  
mx: 10367  
 $\mu$ : -16.9  
 $\sigma$ : 48.2

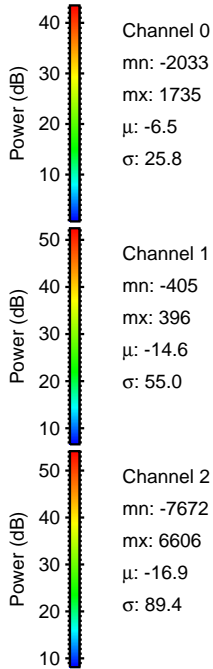
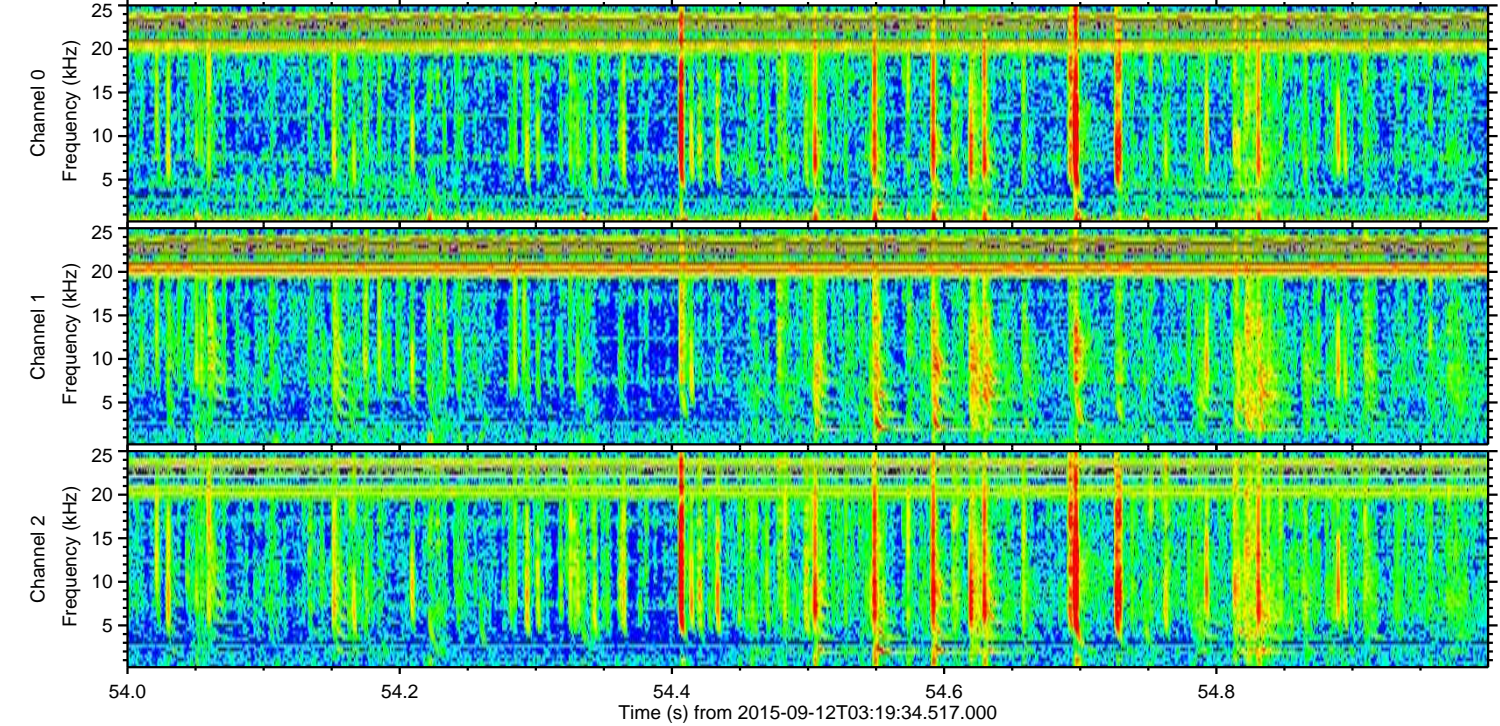
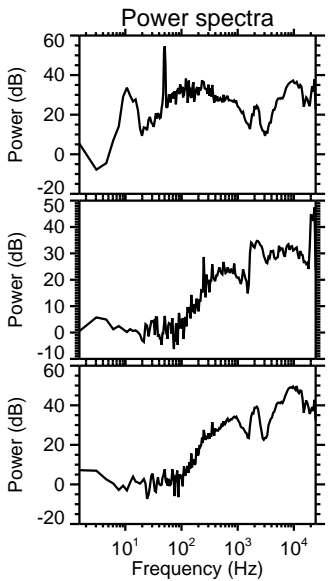
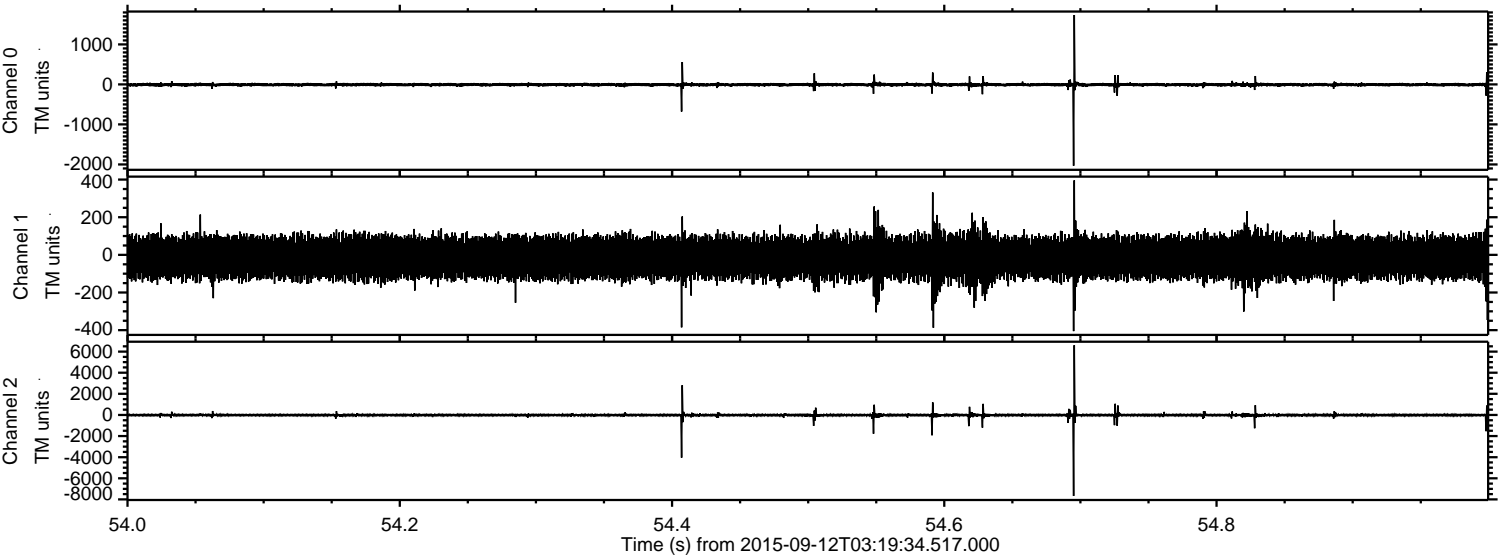


Processed Sun Oct 11 19:03:55 2015 by ELM ver.2012-10-06 from 001\_\_elm20150912\_031933\_\_dat00.bin





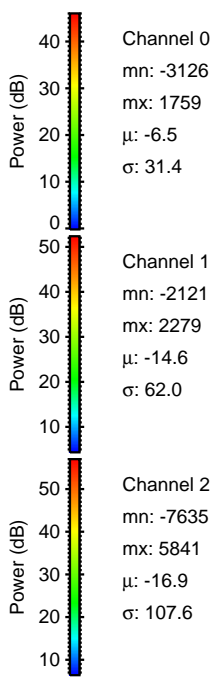
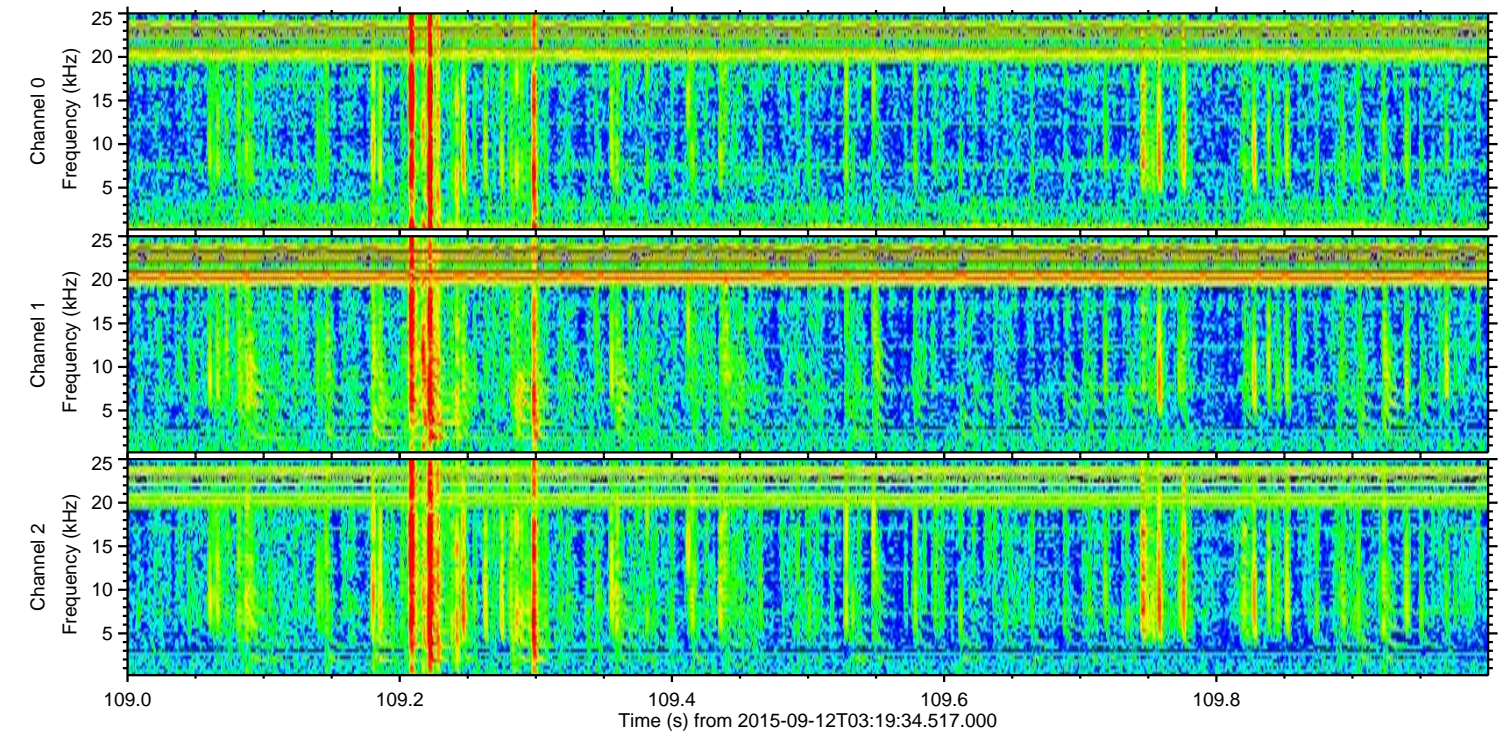
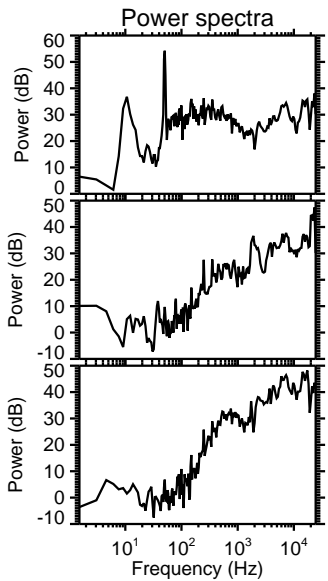
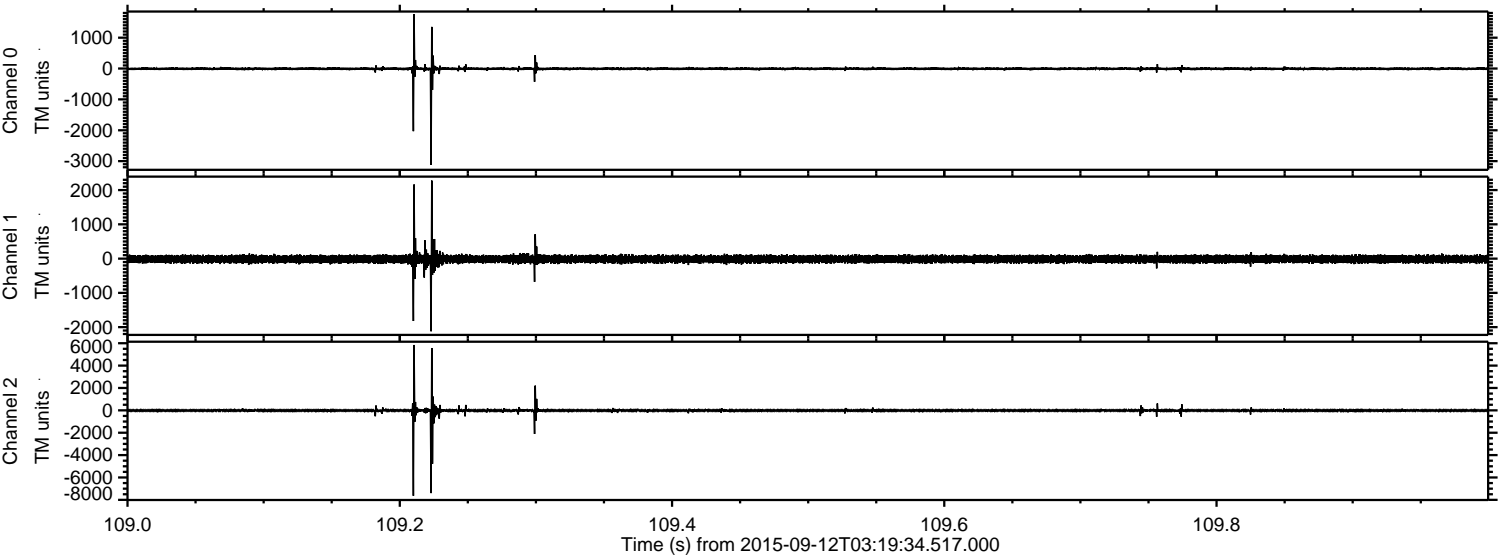
Processed Sun Oct 11 19:03:56 2015 by ELM ver.2012-10-06 from 001\_\_elm20150912\_031933\_\_dat00.bin





ELMAVAN 3D WAVEFORMS (Measured data sampled at 50 kHz) 51000 packets of 144 samples from 2015-09-12T03:19:34.517.000. Part 110/147

Processed Sun Oct 11 19:03:57 2015 by ELM ver.2012-10-06 from 001\_\_elm20150912\_031933\_\_dat00.bin



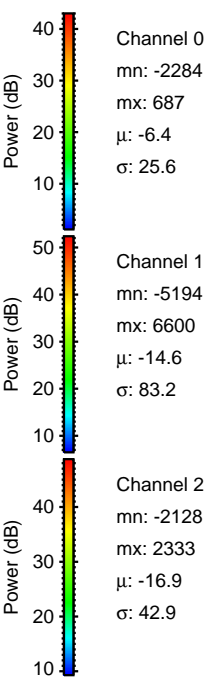
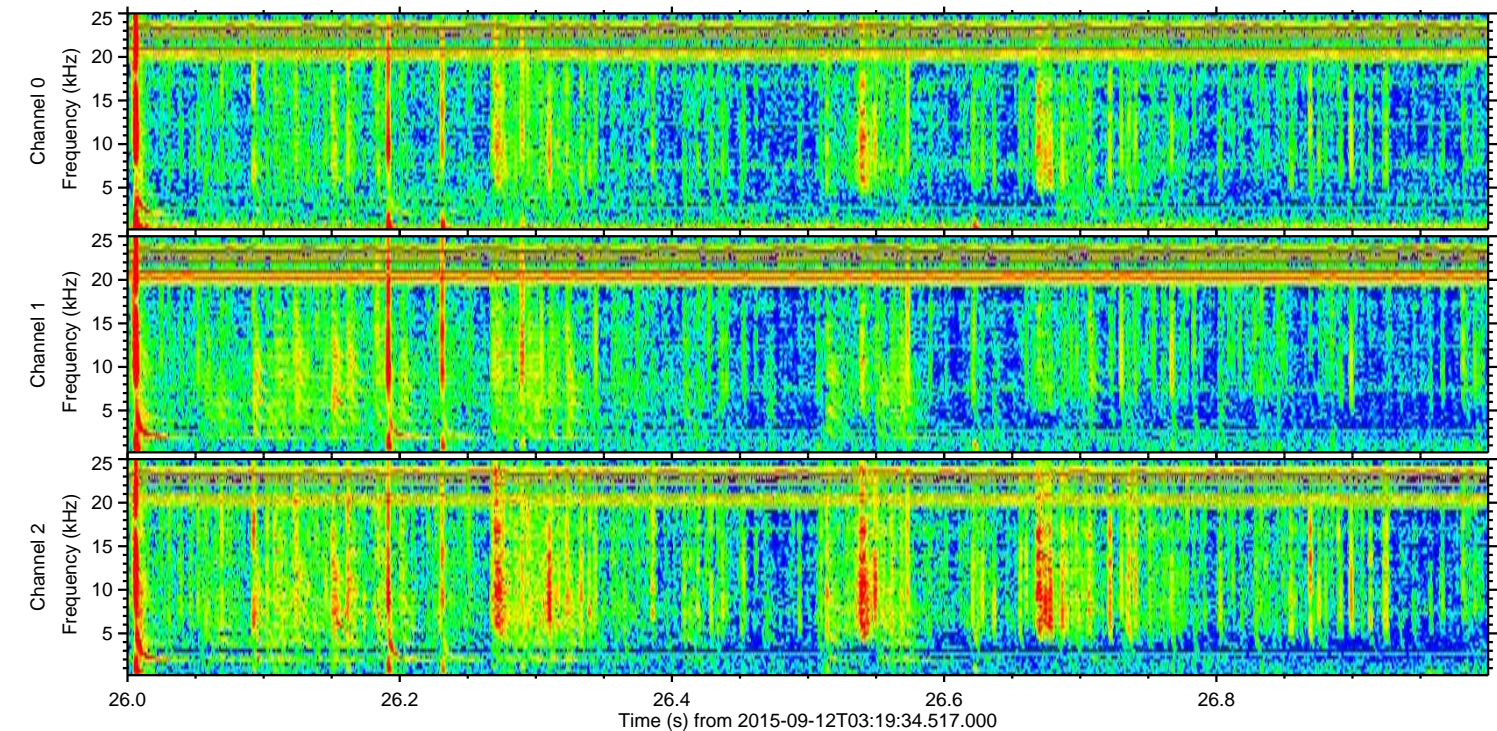
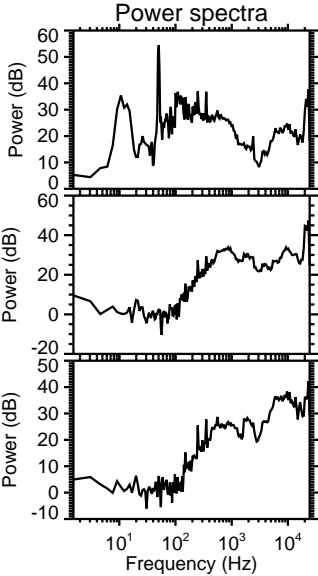
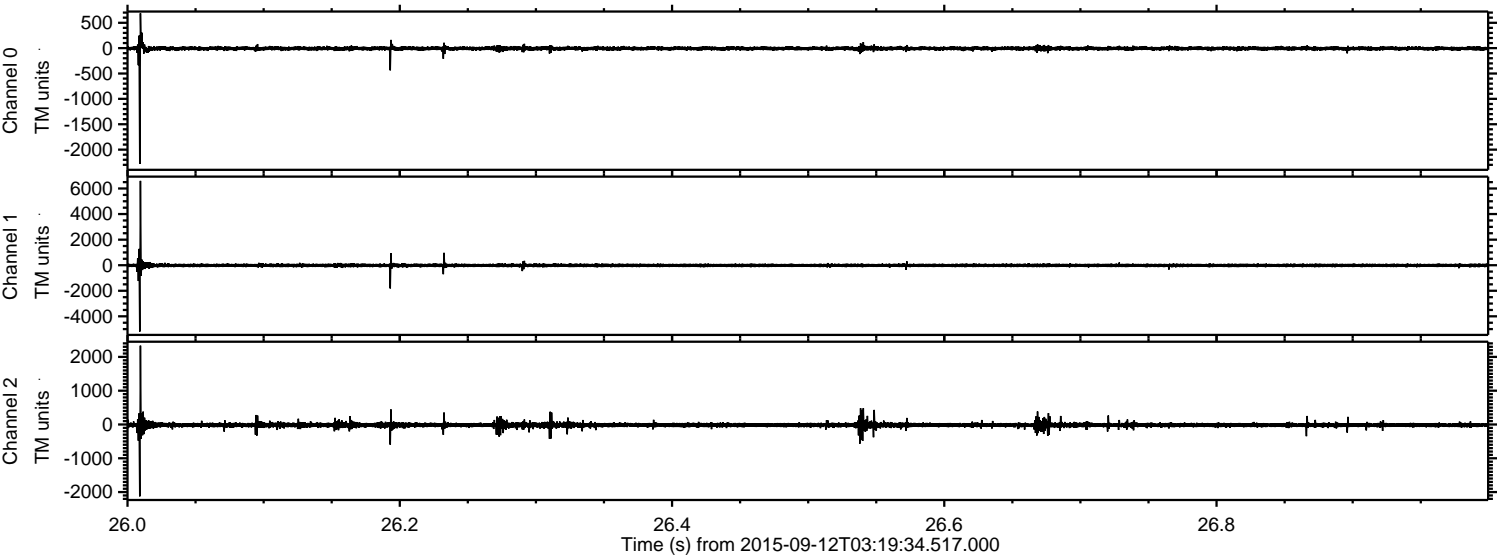
Channel 0  
mn: -3126  
mx: 1759  
 $\mu$ : -6.5  
 $\sigma$ : 31.4

Channel 1  
mn: -2121  
mx: 2279  
 $\mu$ : -14.6  
 $\sigma$ : 62.0

Channel 2  
mn: -7635  
mx: 5841  
 $\mu$ : -16.9  
 $\sigma$ : 107.6



Processed Sun Oct 11 19:03:58 2015 by ELM ver.2012-10-06 from 001\_\_elm20150912\_031933\_\_dat00.bin



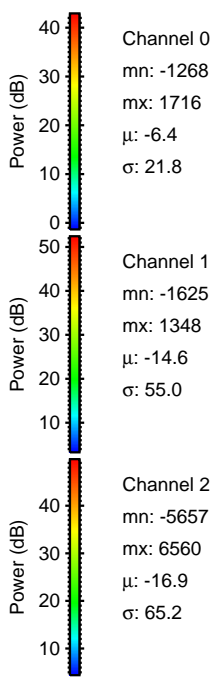
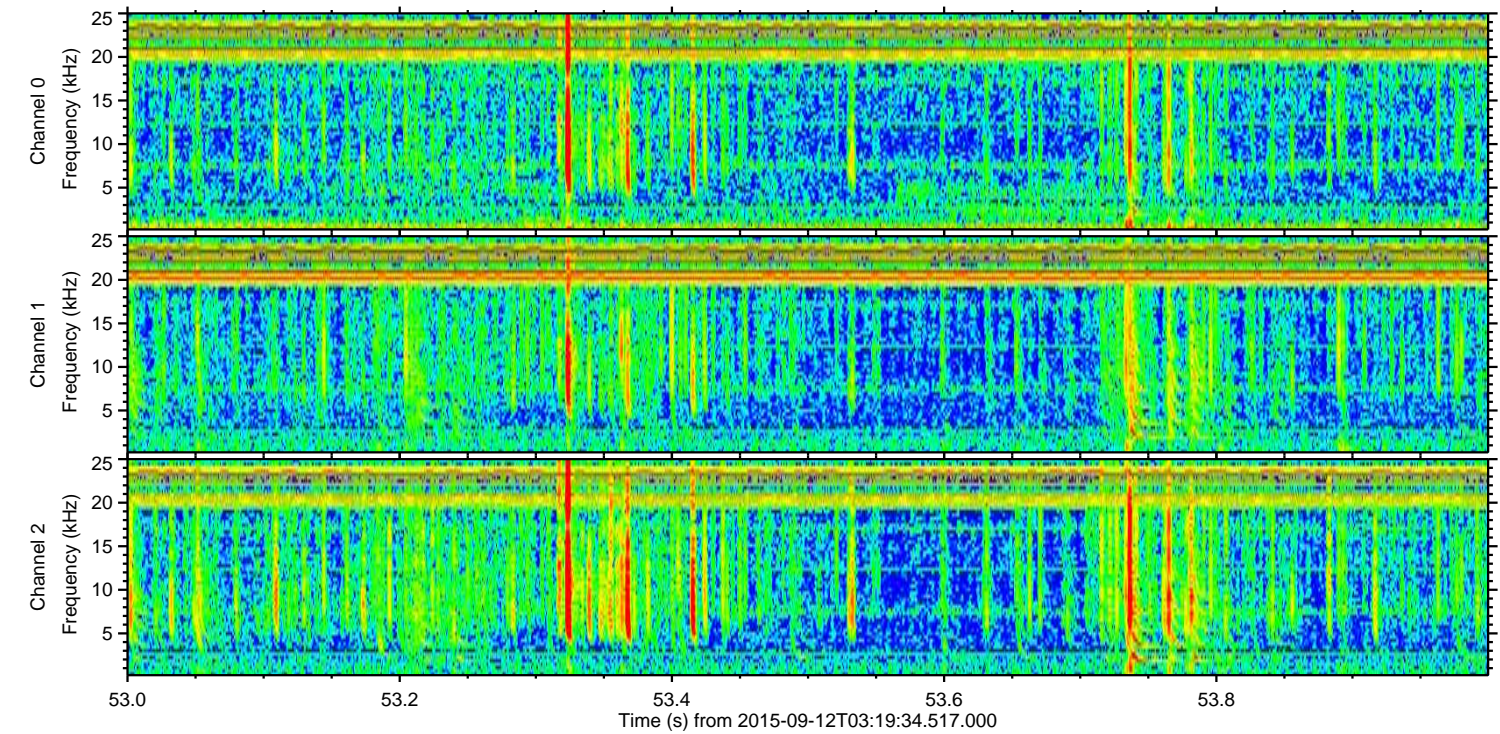
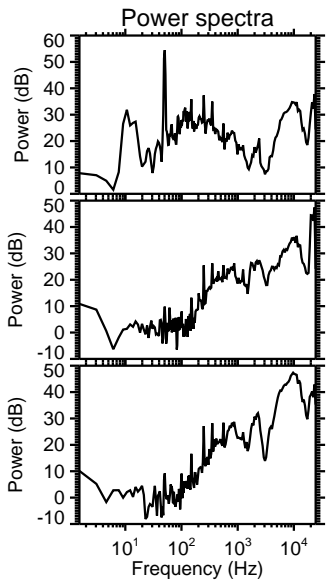
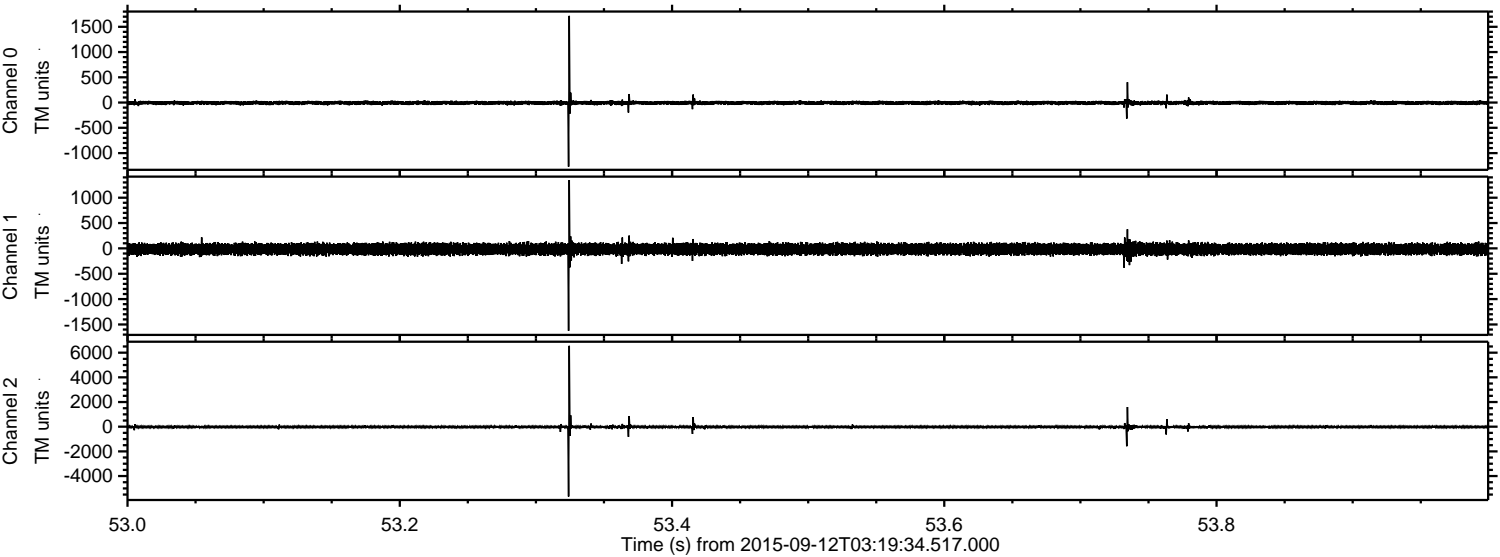
Channel 0  
mn: -2284  
mx: 687  
 $\mu$ : -6.4  
 $\sigma$ : 25.6

Channel 1  
mn: -5194  
mx: 6600  
 $\mu$ : -14.6  
 $\sigma$ : 83.2

Channel 2  
mn: -2128  
mx: 2333  
 $\mu$ : -16.9  
 $\sigma$ : 42.9

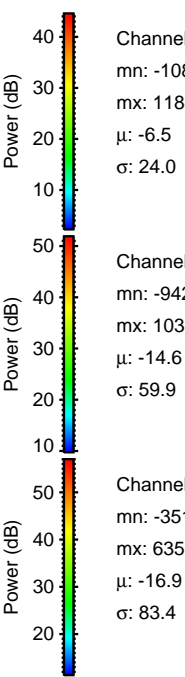
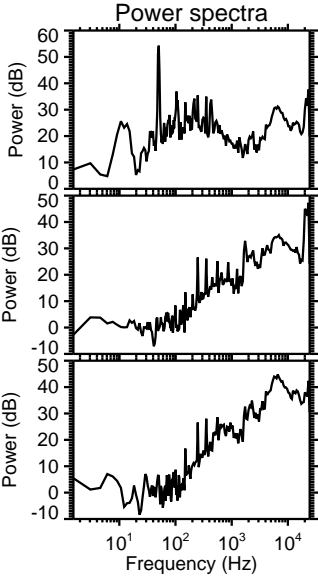
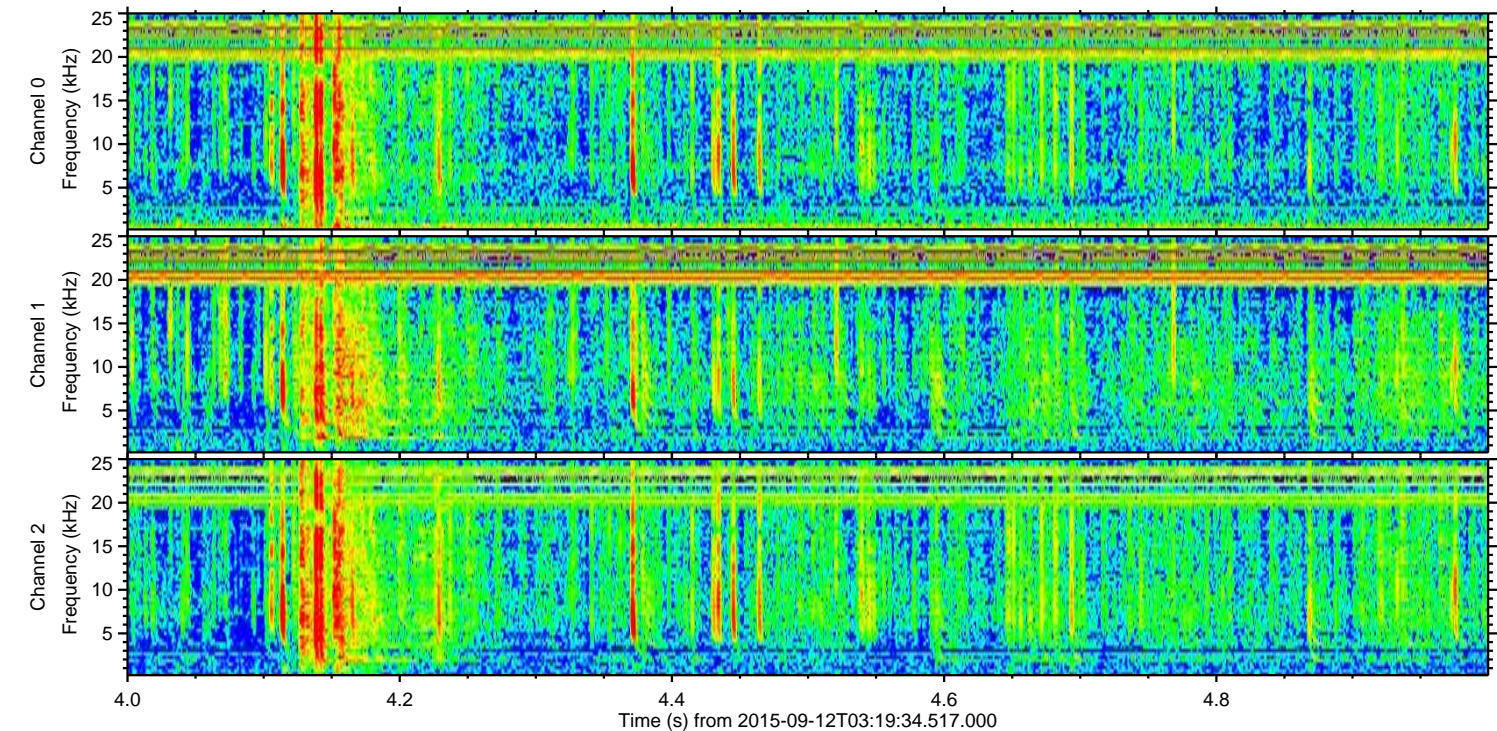
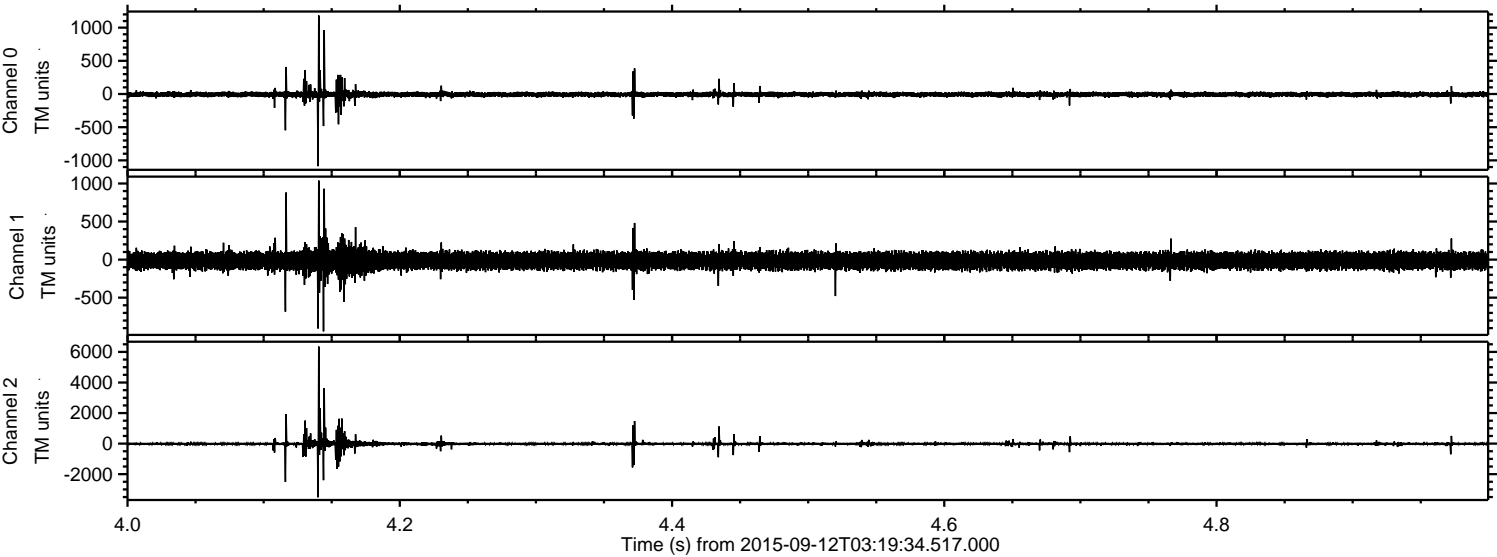


Processed Sun Oct 11 19:03:59 2015 by ELM ver.2012-10-06 from 001\_\_elm20150912\_031933\_\_dat00.bin



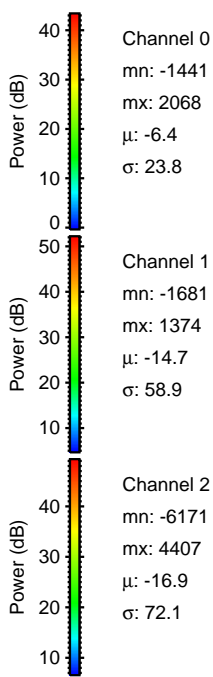
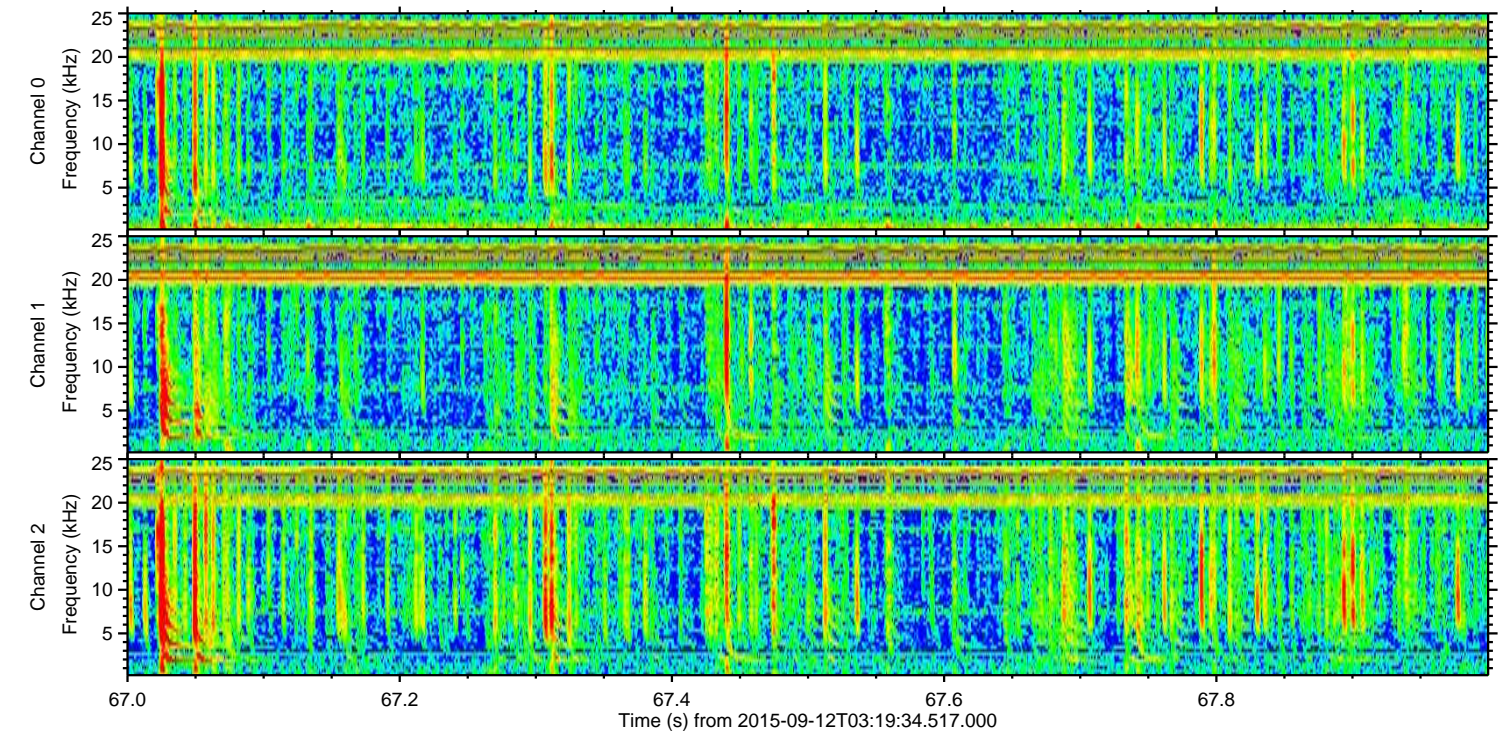
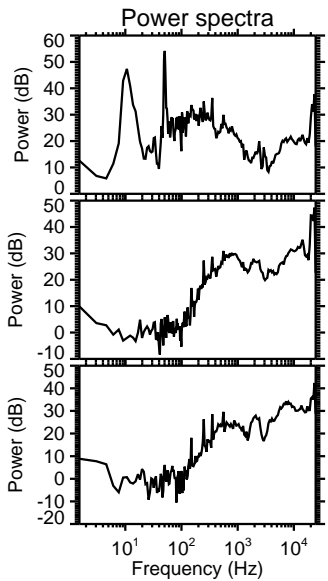
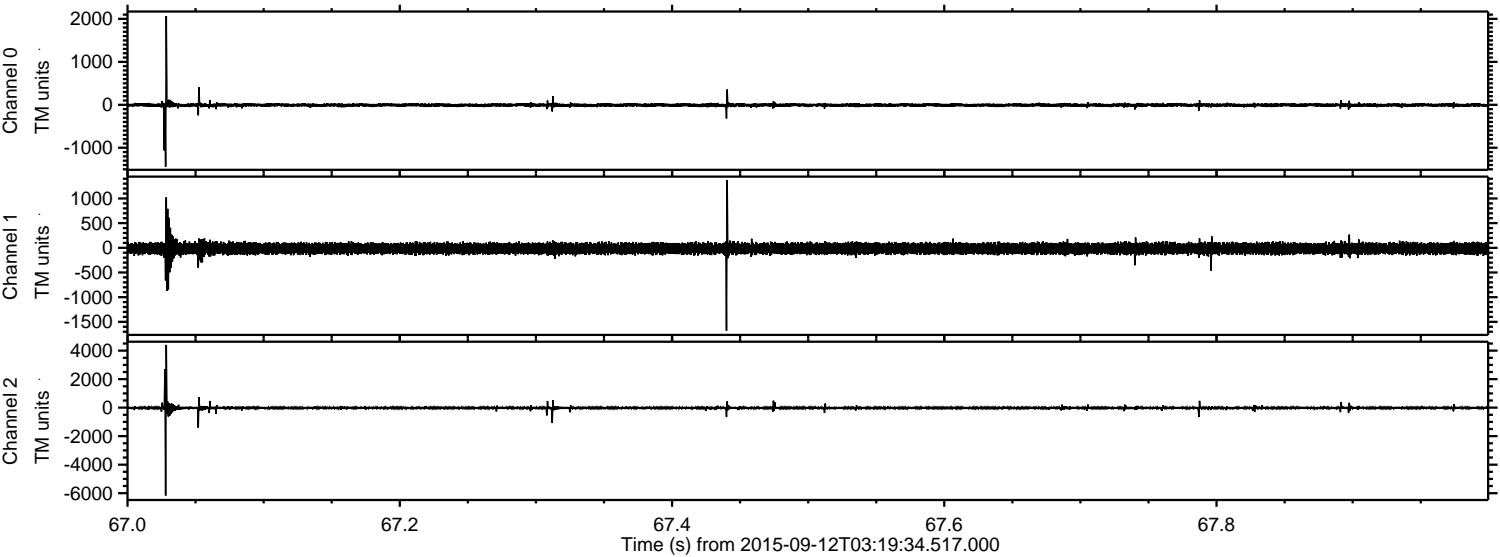


Processed Sun Oct 11 19:04:00 2015 by ELM ver.2012-10-06 from 001\_\_elm20150912\_031933\_\_dat00.bin





Processed Sun Oct 11 19:04:01 2015 by ELM ver.2012-10-06 from 001\_\_elm20150912\_031933\_\_dat00.bin



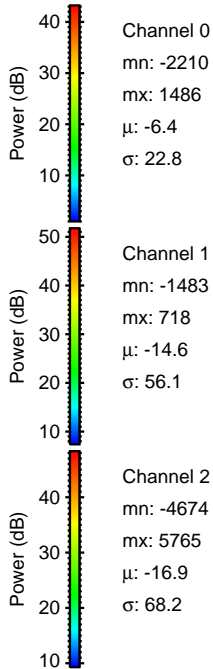
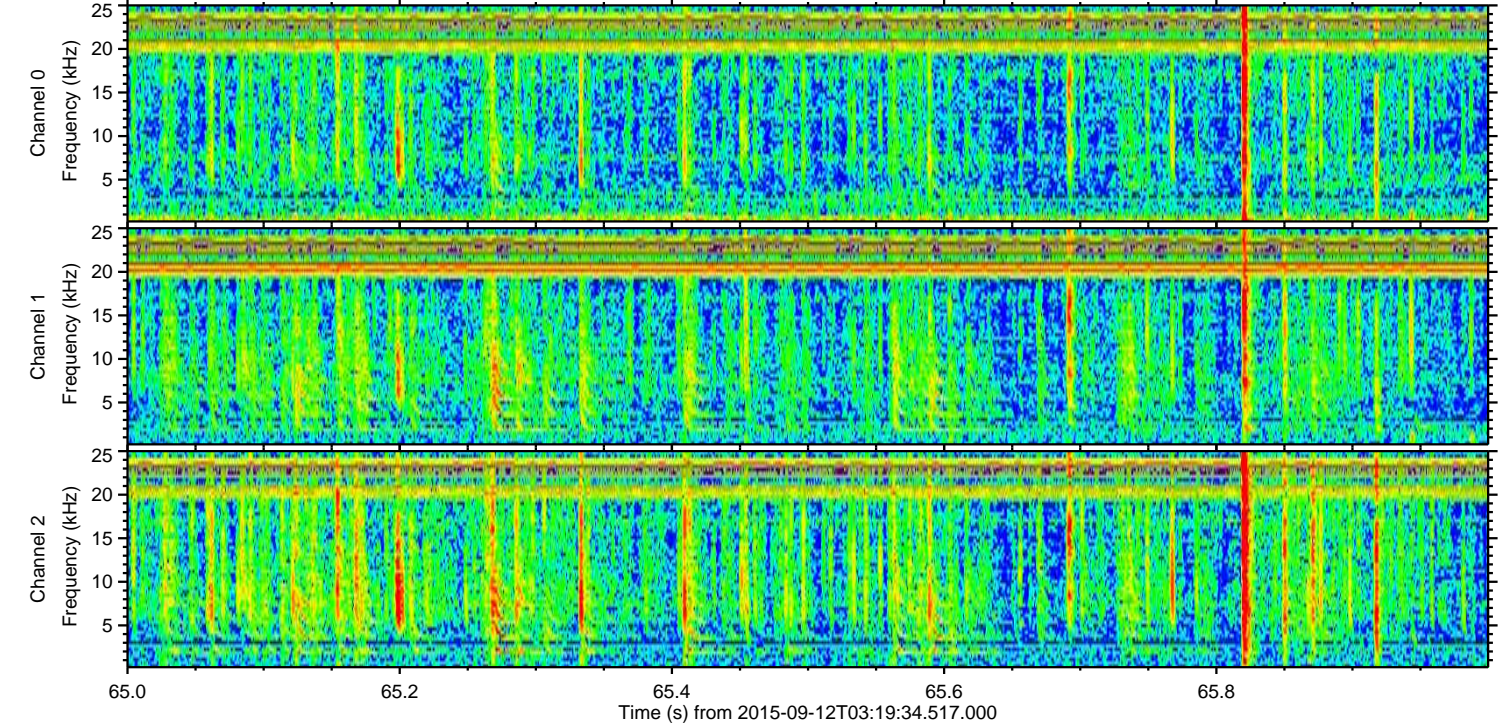
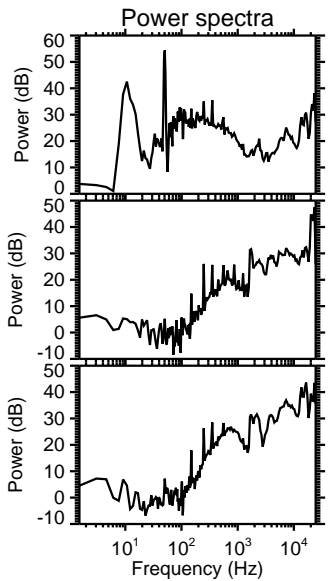
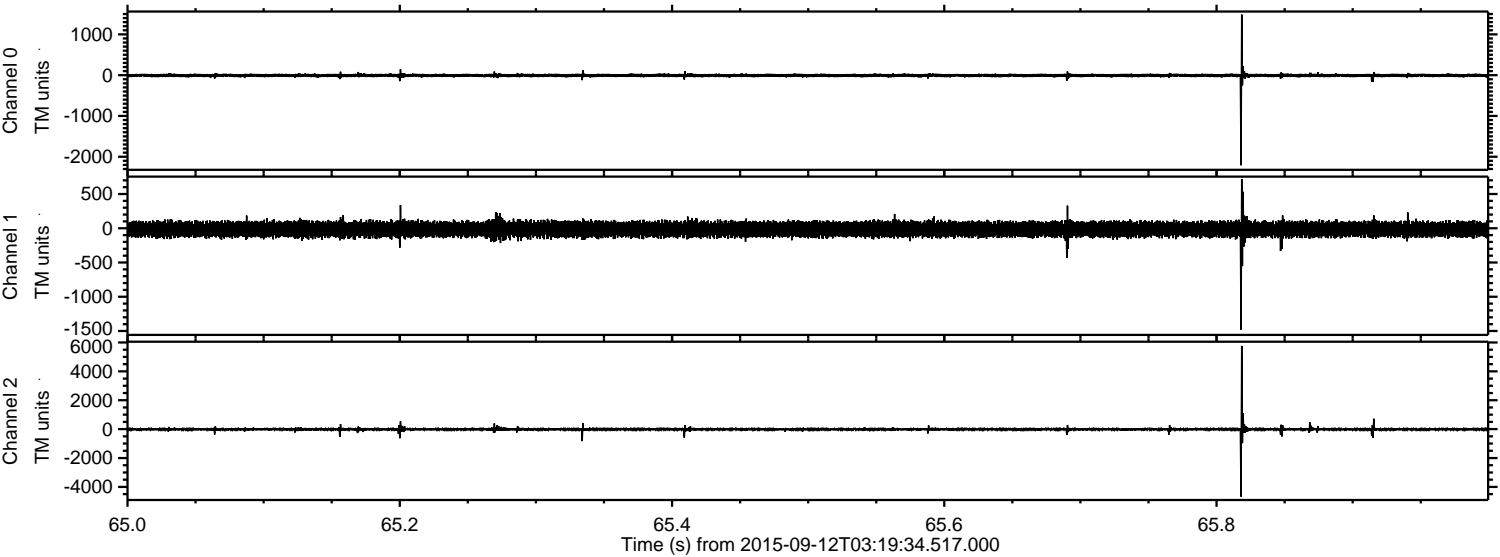
Channel 0  
mn: -1441  
mx: 2068  
 $\mu$ : -6.4  
 $\sigma$ : 23.8

Channel 1  
mn: -1681  
mx: 1374  
 $\mu$ : -14.7  
 $\sigma$ : 58.9

Channel 2  
mn: -6171  
mx: 4407  
 $\mu$ : -16.9  
 $\sigma$ : 72.1

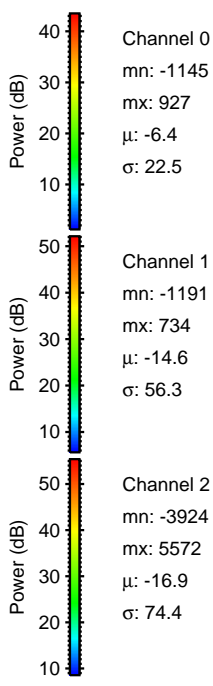
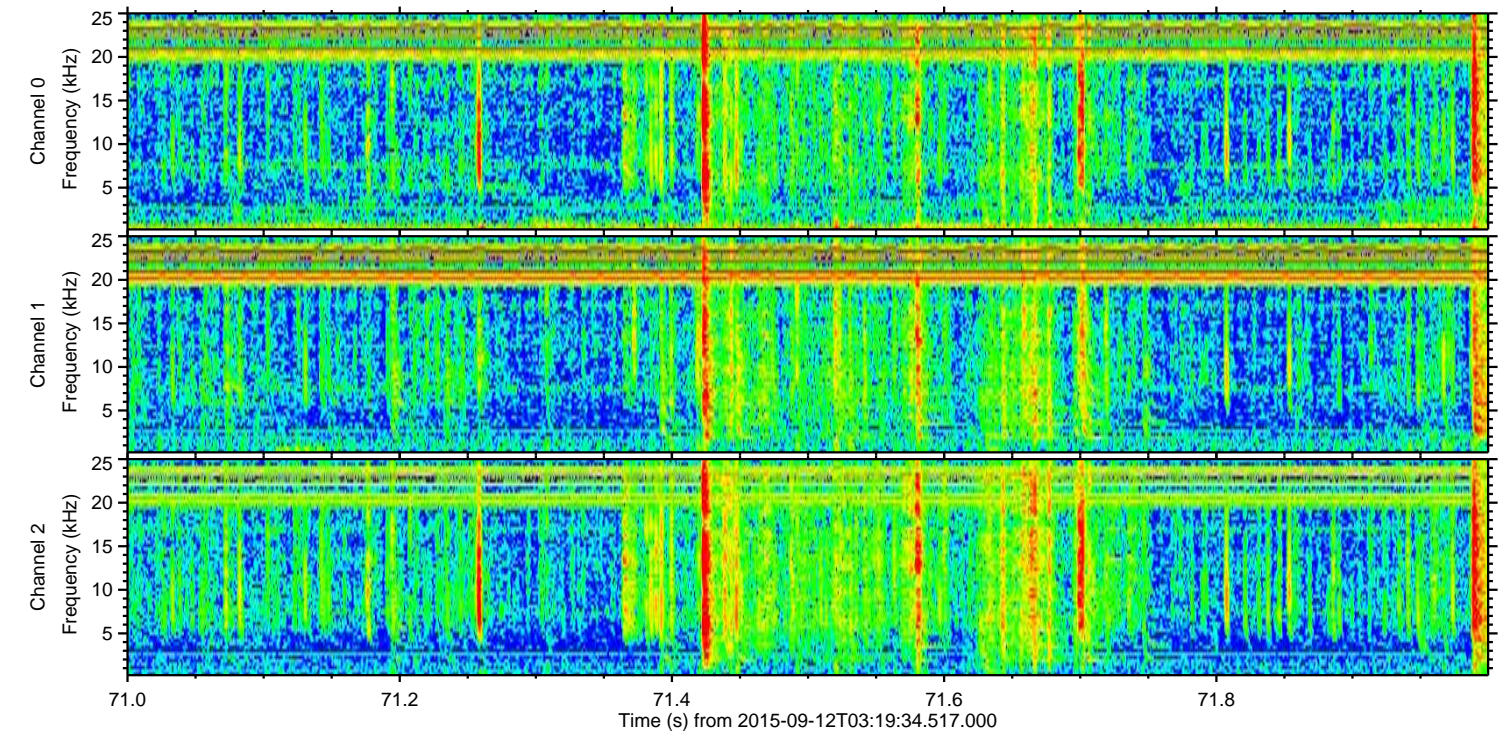
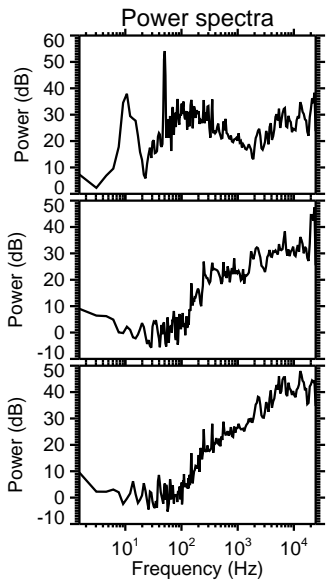
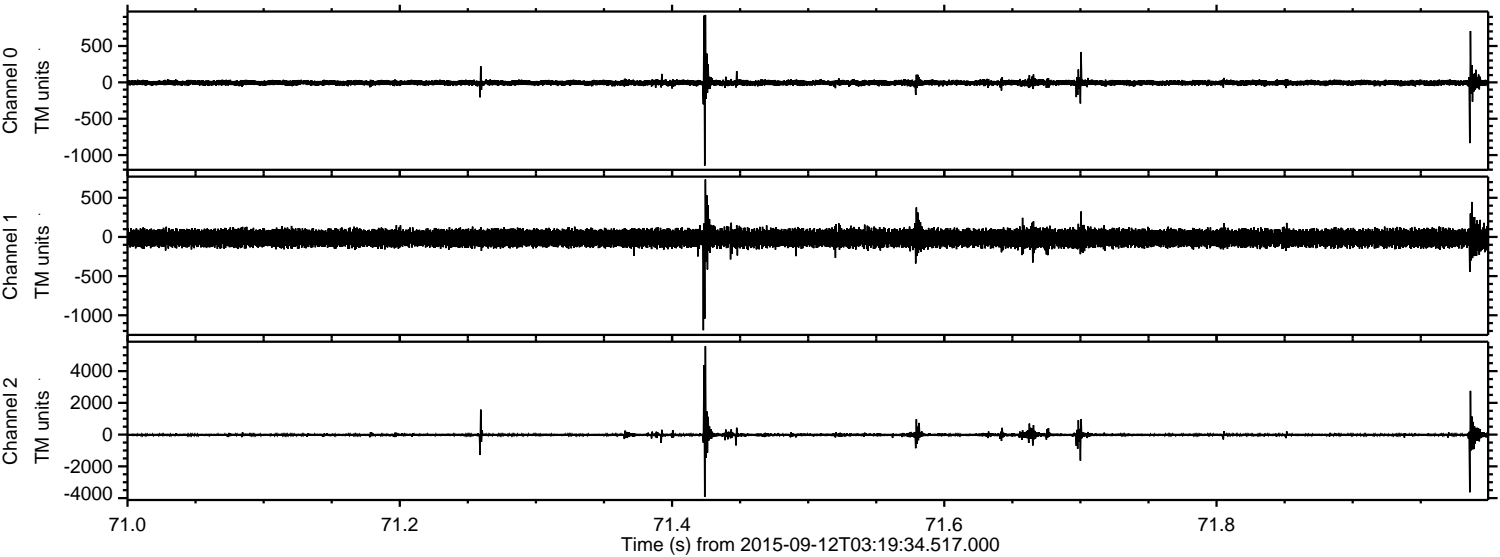


Processed Sun Oct 11 19:04:02 2015 by ELM ver.2012-10-06 from 001\_\_elm20150912\_031933\_\_dat00.bin





Processed Sun Oct 11 19:04:03 2015 by ELM ver.2012-10-06 from 001\_\_elm20150912\_031933\_\_dat00.bin



Channel 0  
mn: -1145  
mx: 927  
 $\mu$ : -6.4  
 $\sigma$ : 22.5

Channel 1  
mn: -1191  
mx: 734  
 $\mu$ : -14.6  
 $\sigma$ : 56.3

Channel 2  
mn: -3924  
mx: 5572  
 $\mu$ : -16.9  
 $\sigma$ : 74.4



ELMAVAN 3D WAVEFORMS (Measured data sampled at 50 kHz) 51000 packets of 144 samples from 2015-09-12T03:19:34.517.000. Part 129/147

