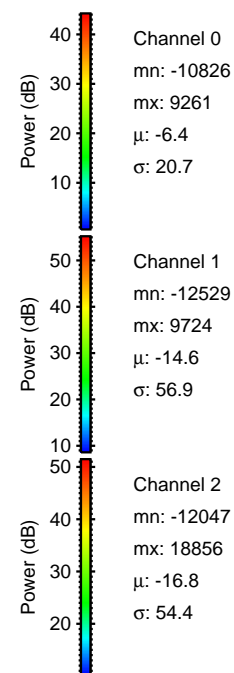
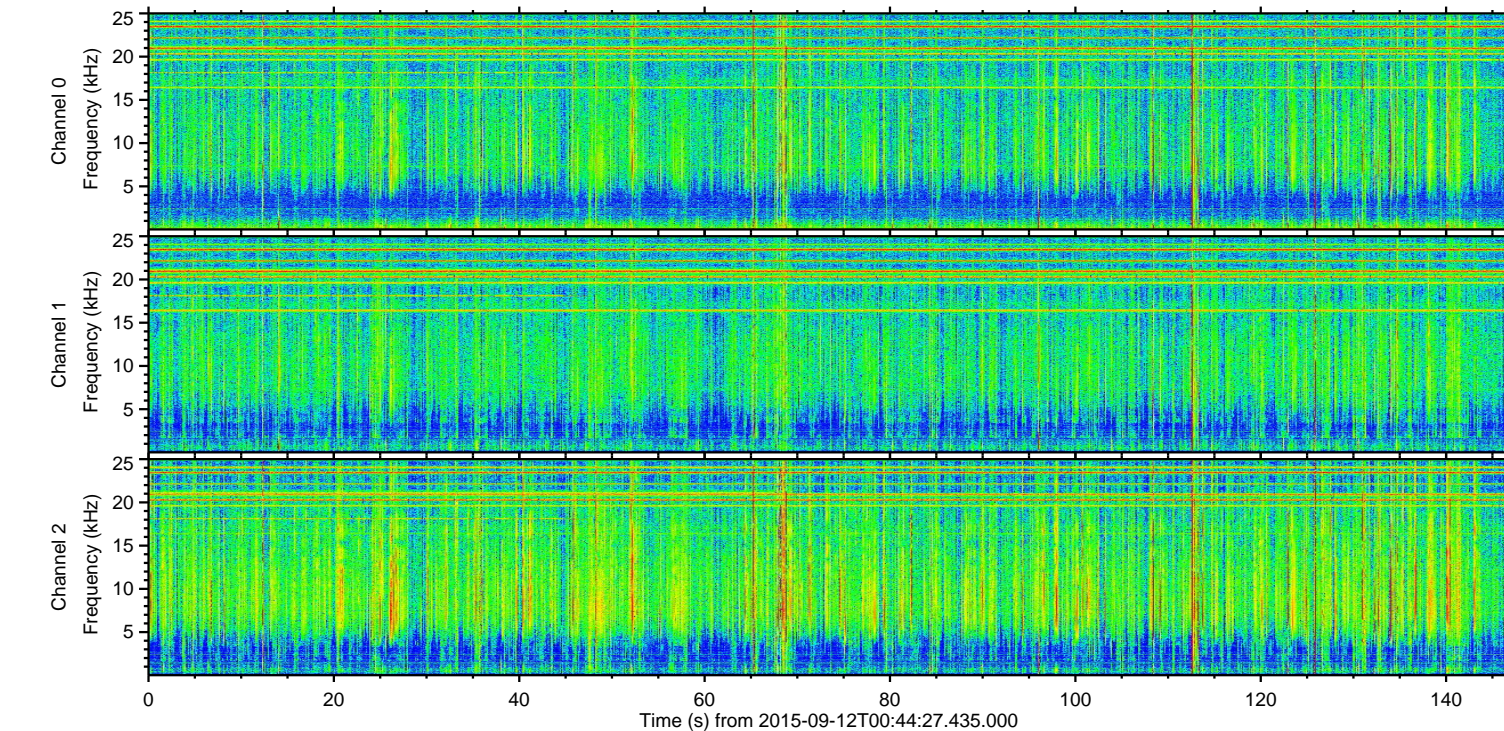
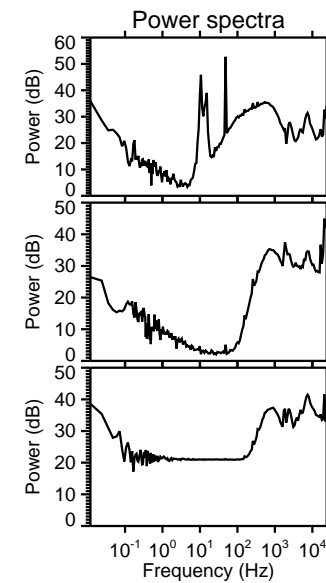
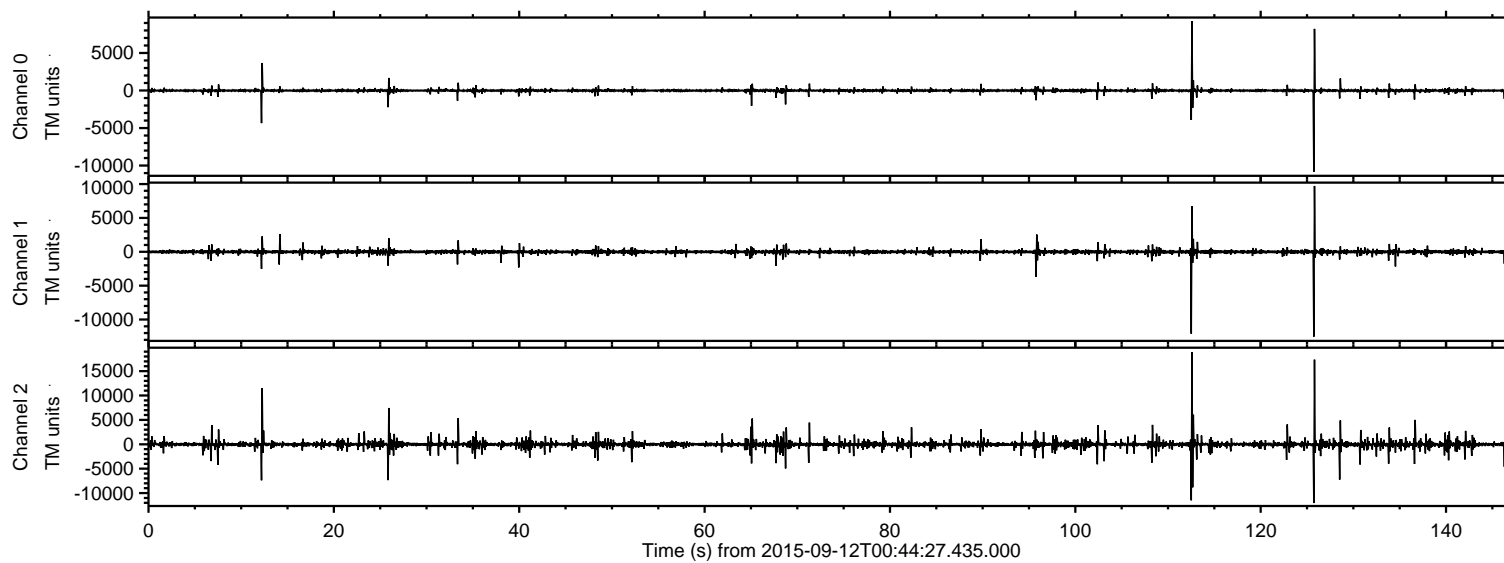


# ELMAVAN 3D WAVEFORMS (Measured data sampled at 50 kHz) 51000 packets of 144 samples from 2015-09-12T00:44:27.435.000.

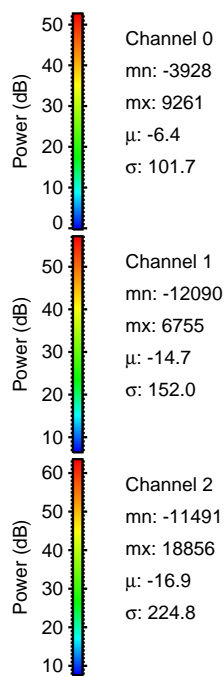
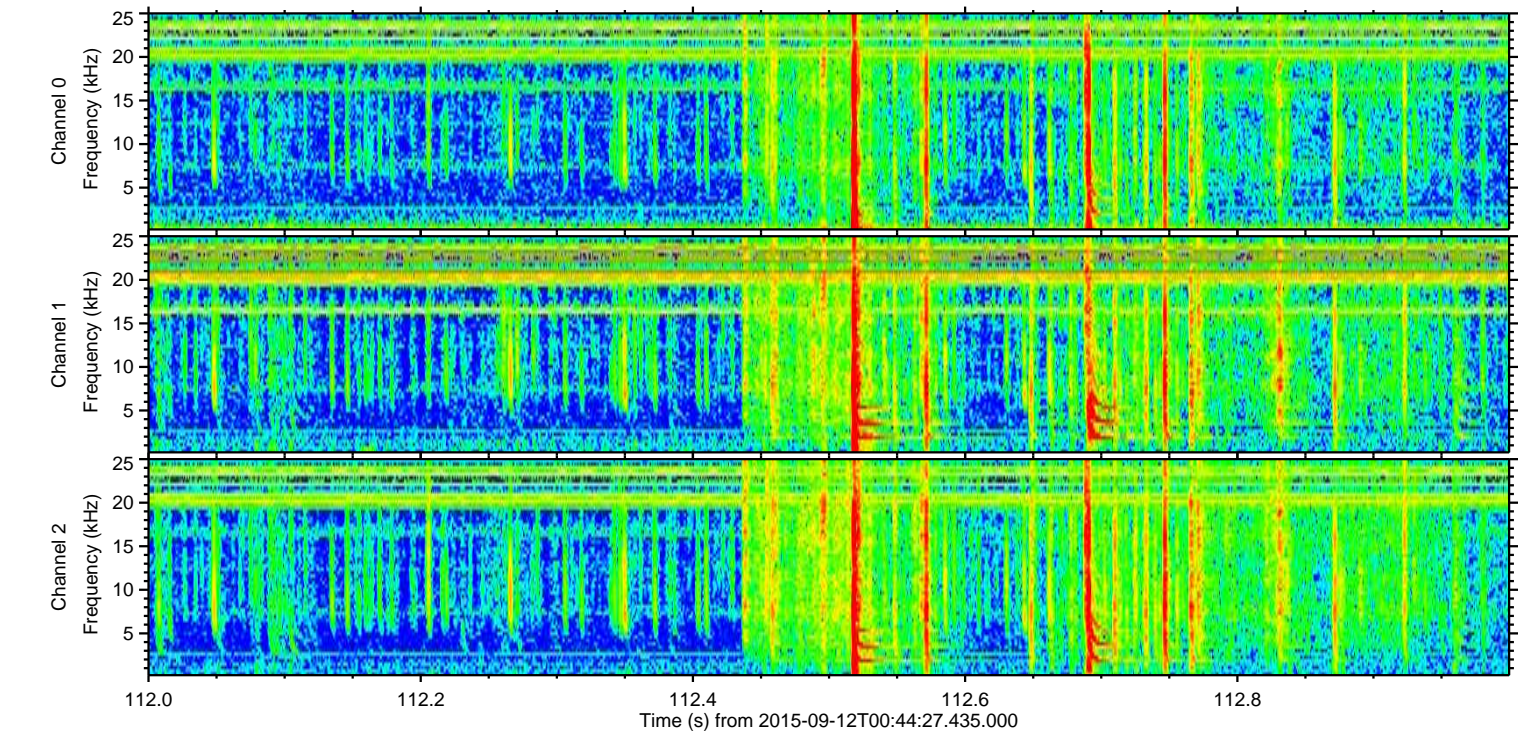
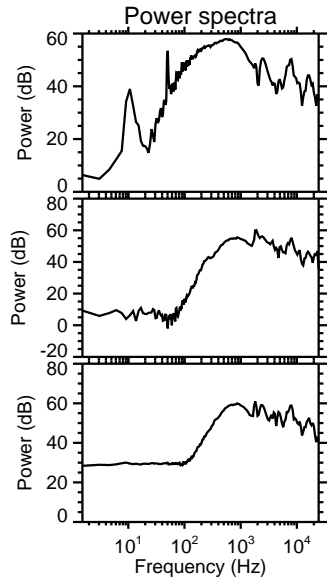
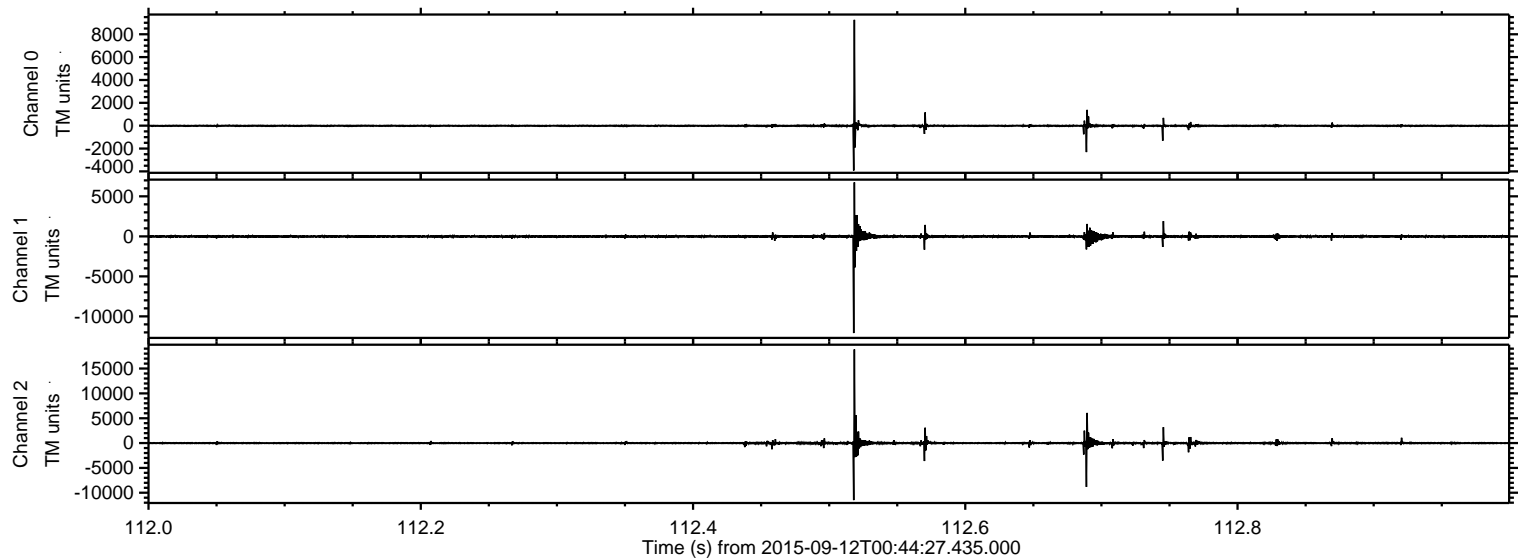
Processed Sun Oct 11 18:20:56 2015 by ELM ver.2012-10-06 from 001\_\_elm20150912\_004426\_\_dat00.bin





ELMAVAN 3D WAVEFORMS (Measured data sampled at 50 kHz) 51000 packets of 144 samples from 2015-09-12T00:44:27.435.000. Part 113/147

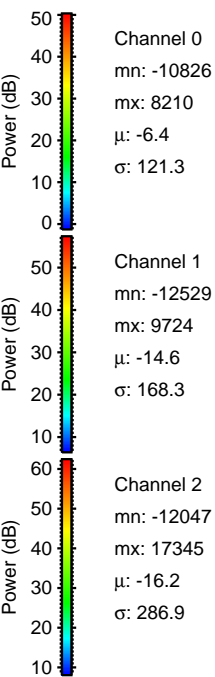
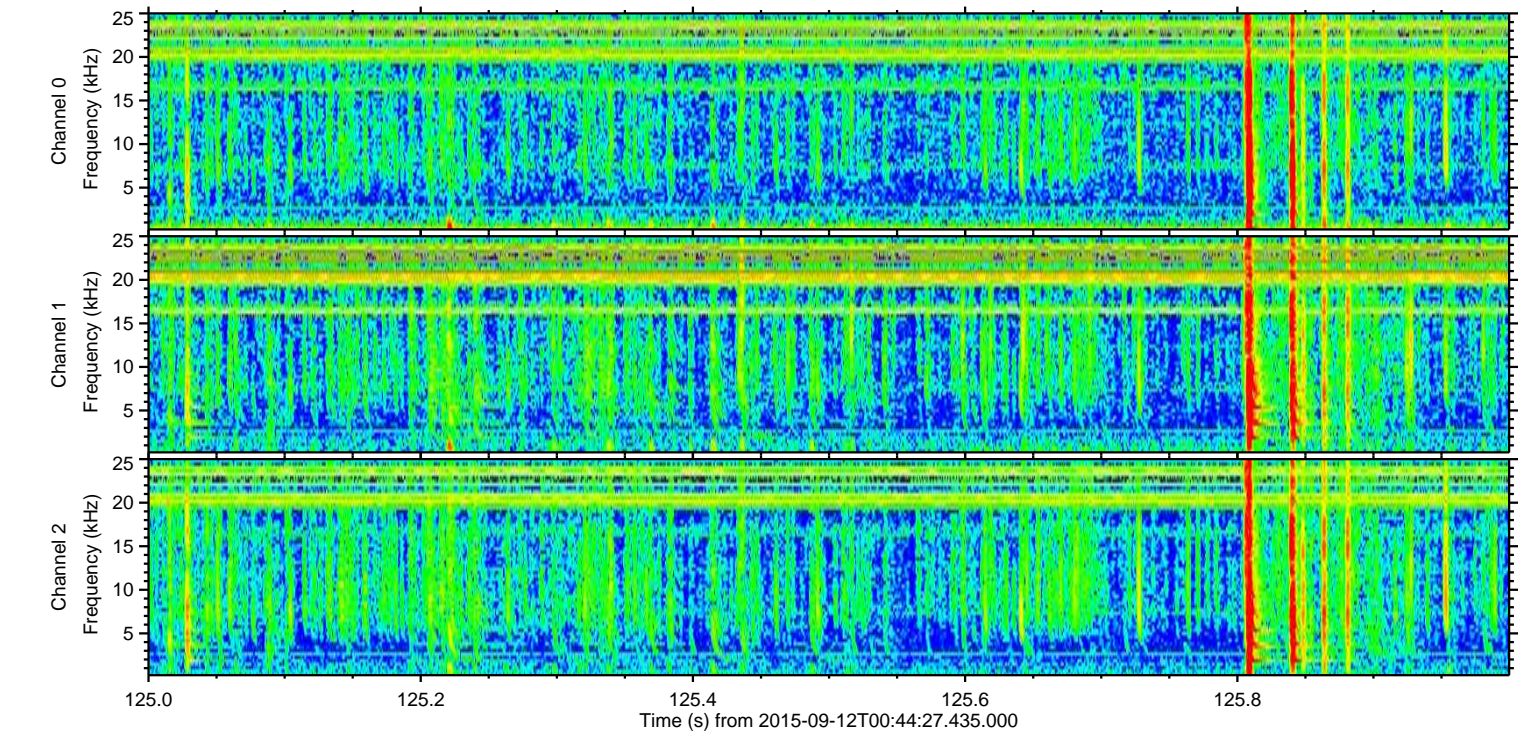
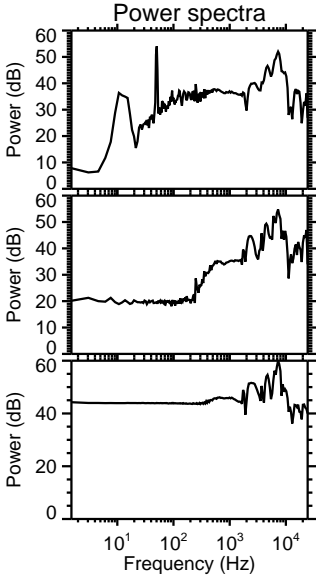
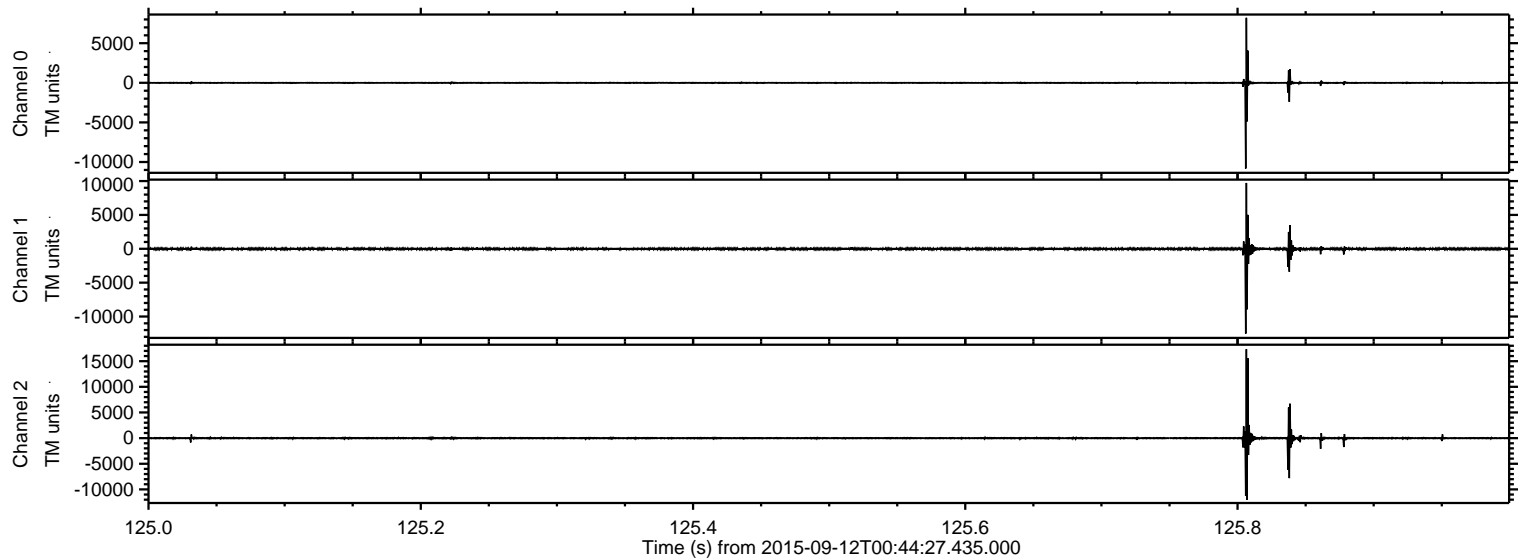
Processed Sun Oct 11 18:21:12 2015 by ELM ver.2012-10-06 from 001\_\_elm20150912\_004426\_\_dat00.bin





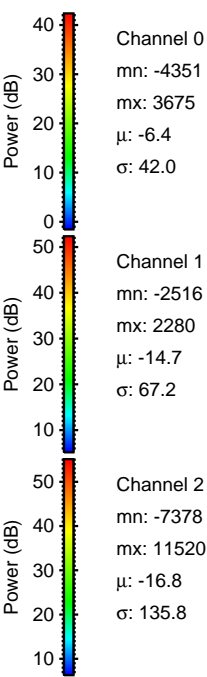
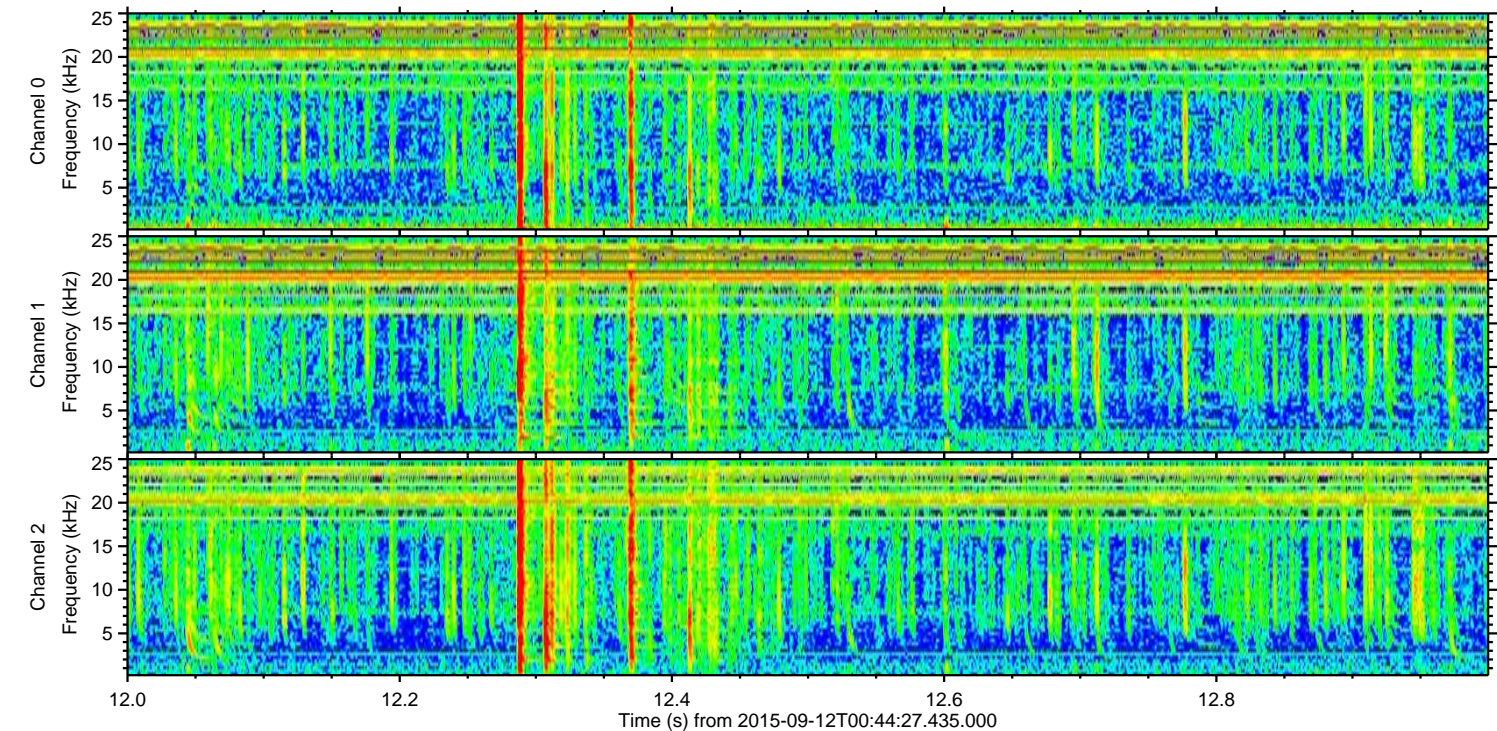
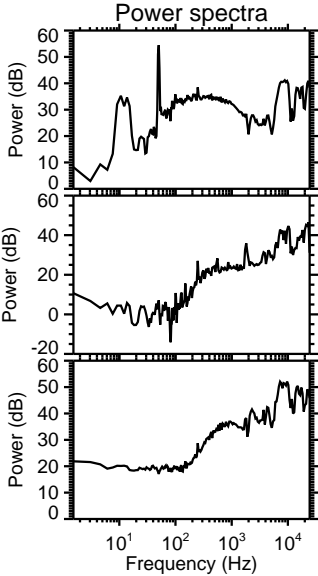
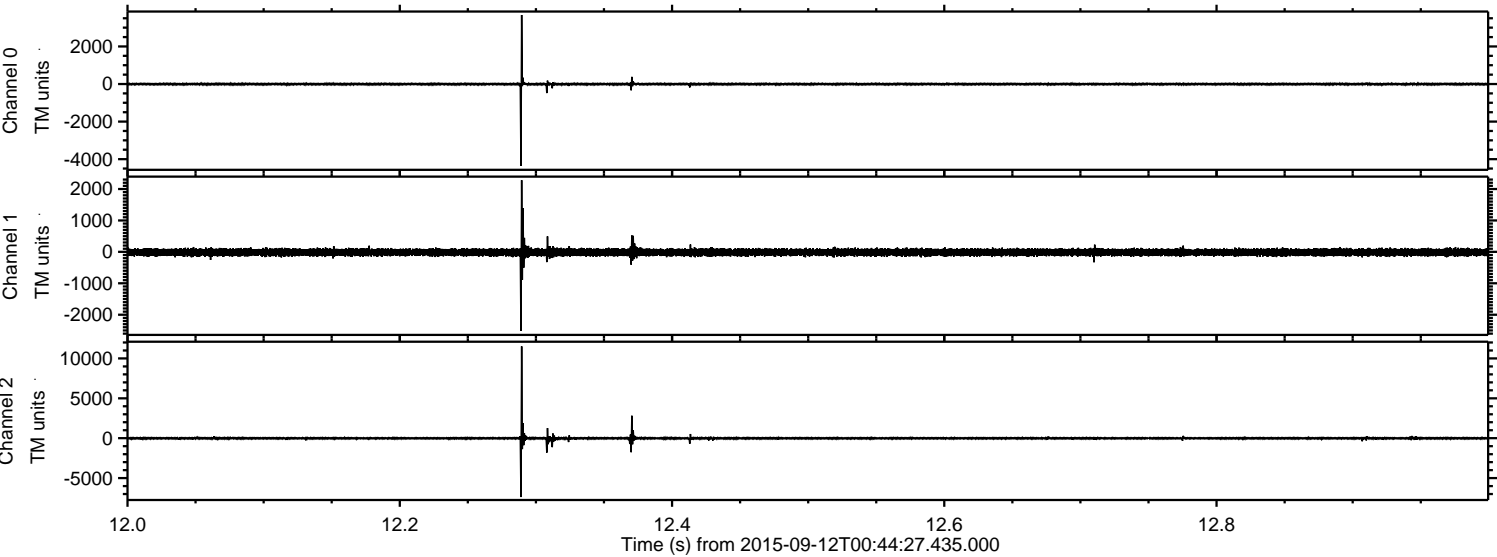
ELMAVAN 3D WAVEFORMS (Measured data sampled at 50 kHz) 51000 packets of 144 samples from 2015-09-12T00:44:27.435.000. Part 126/147

Processed Sun Oct 11 18:21:13 2015 by ELM ver.2012-10-06 from 001\_\_elm20150912\_004426\_\_dat00.bin





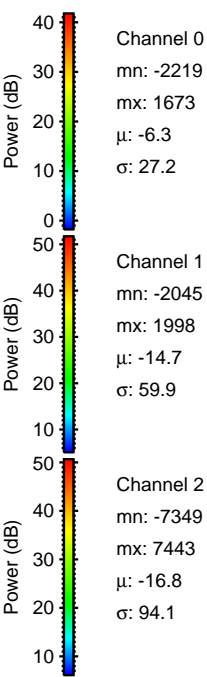
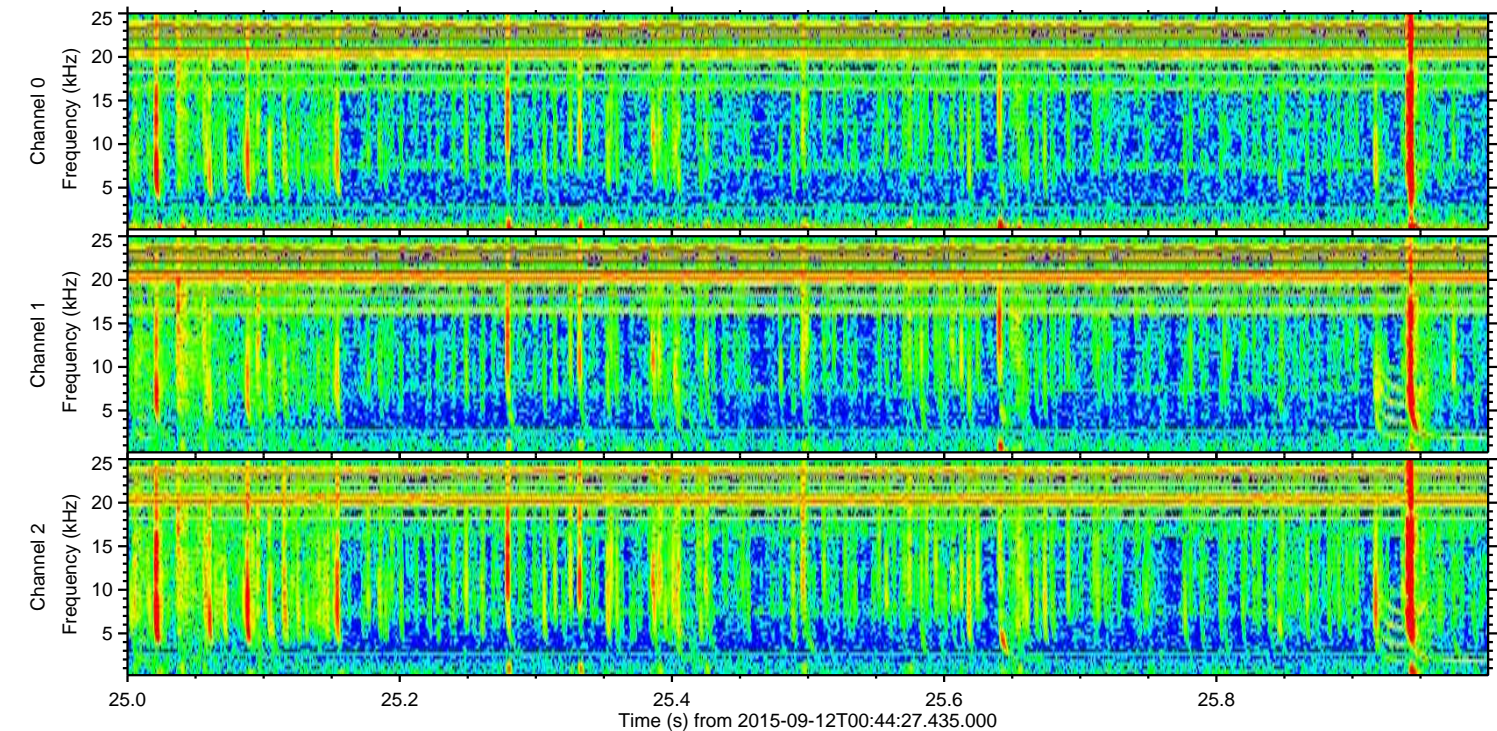
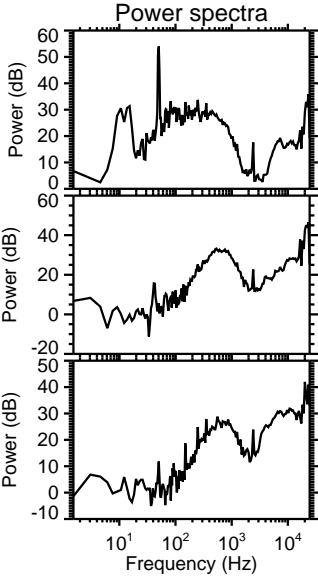
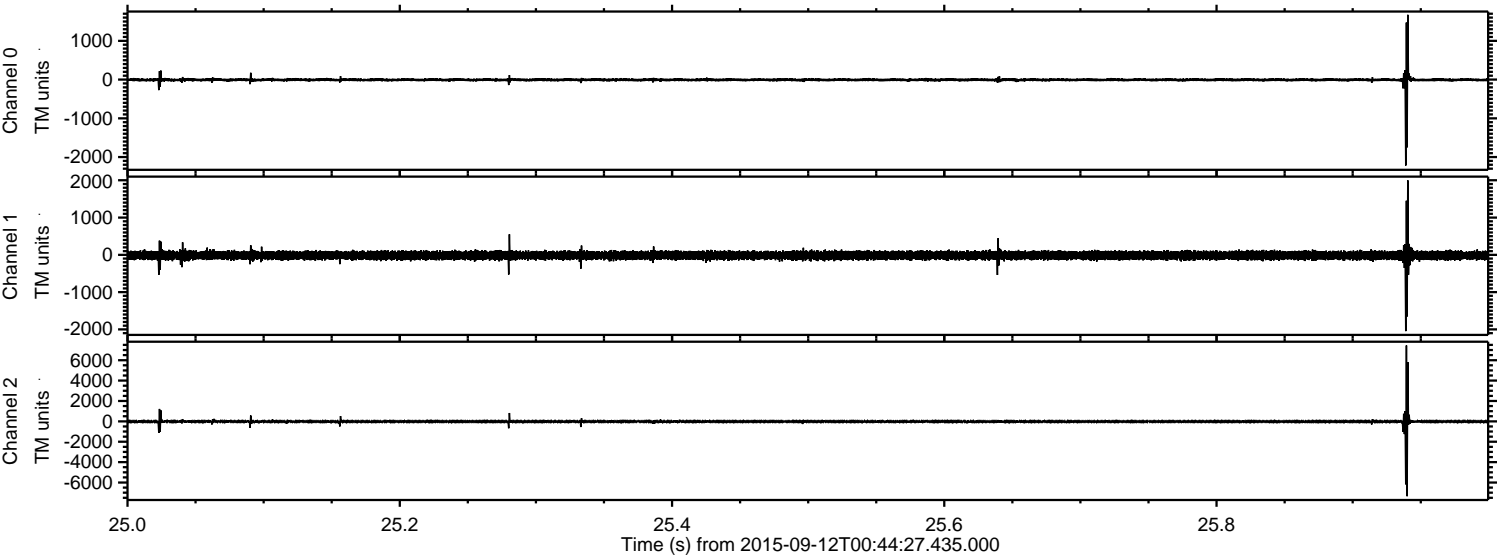
Processed Sun Oct 11 18:21:14 2015 by ELM ver.2012-10-06 from 001\_\_elm20150912\_004426\_\_dat00.bin





ELMAVAN 3D WAVEFORMS (Measured data sampled at 50 kHz) 51000 packets of 144 samples from 2015-09-12T00:44:27.435.000. Part 26/147

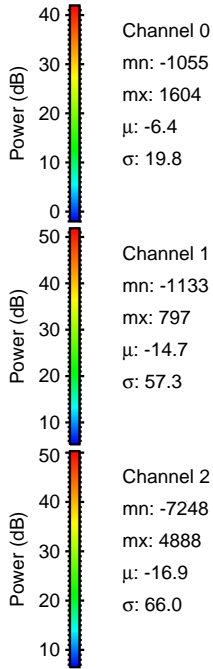
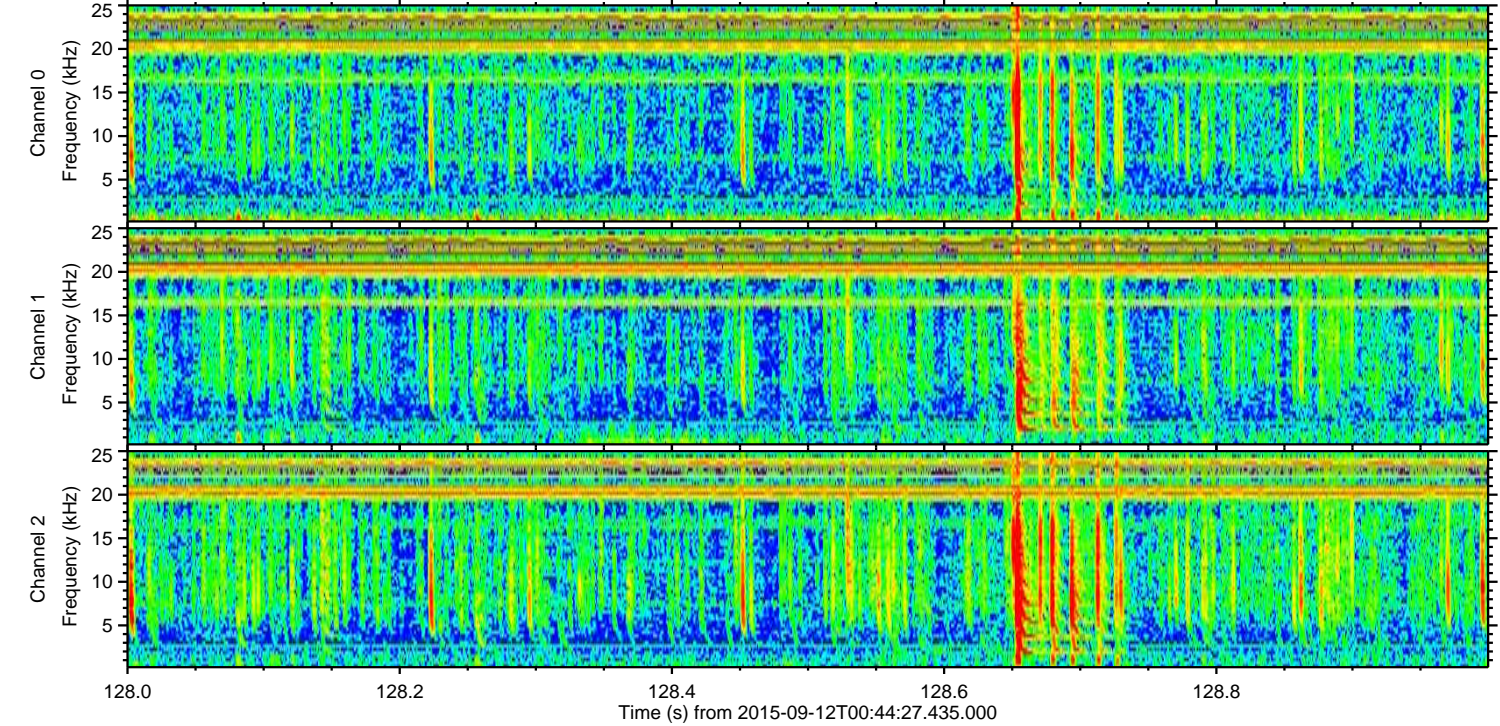
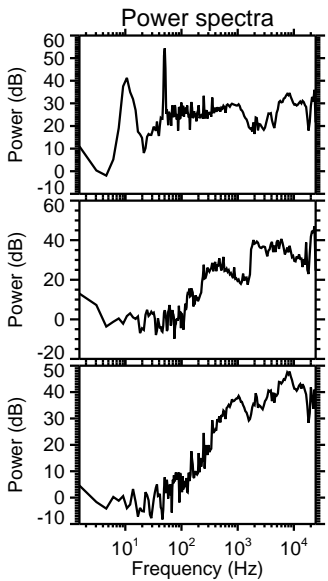
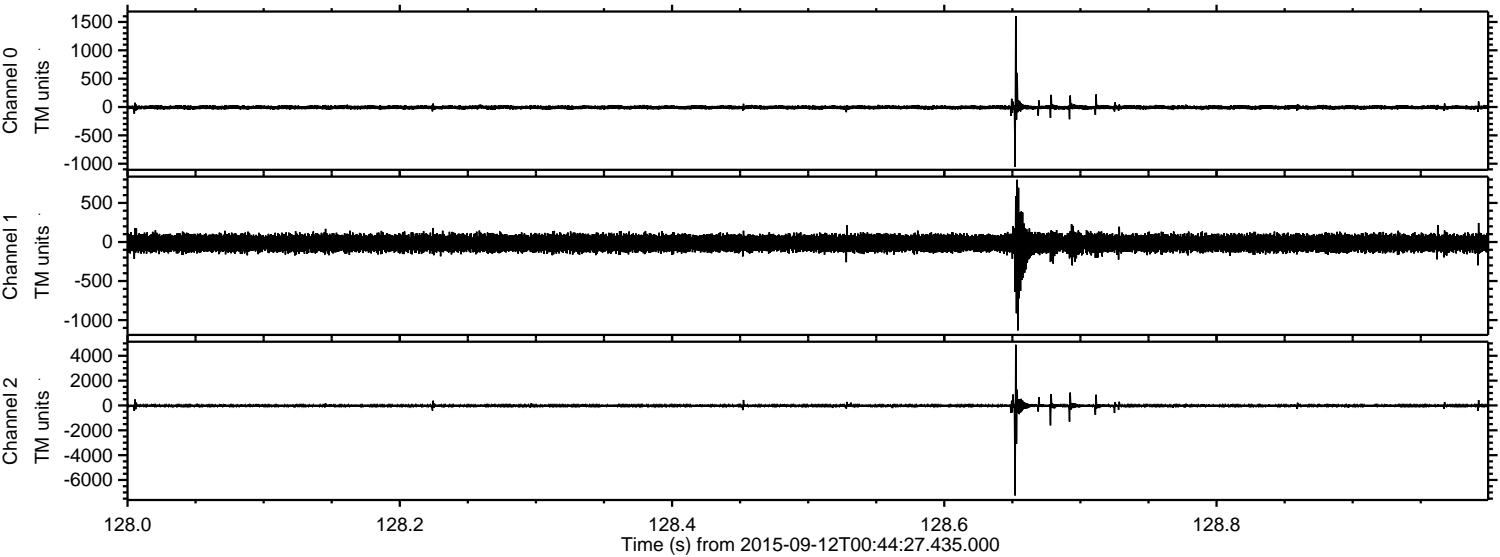
Processed Sun Oct 11 18:21:15 2015 by ELM ver.2012-10-06 from 001\_\_elm20150912\_004426\_\_dat00.bin





ELMAVAN 3D WAVEFORMS (Measured data sampled at 50 kHz) 51000 packets of 144 samples from 2015-09-12T00:44:27.435.000. Part 129/147

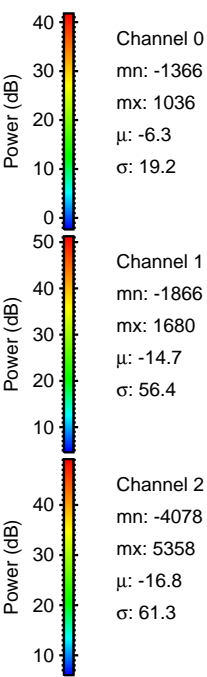
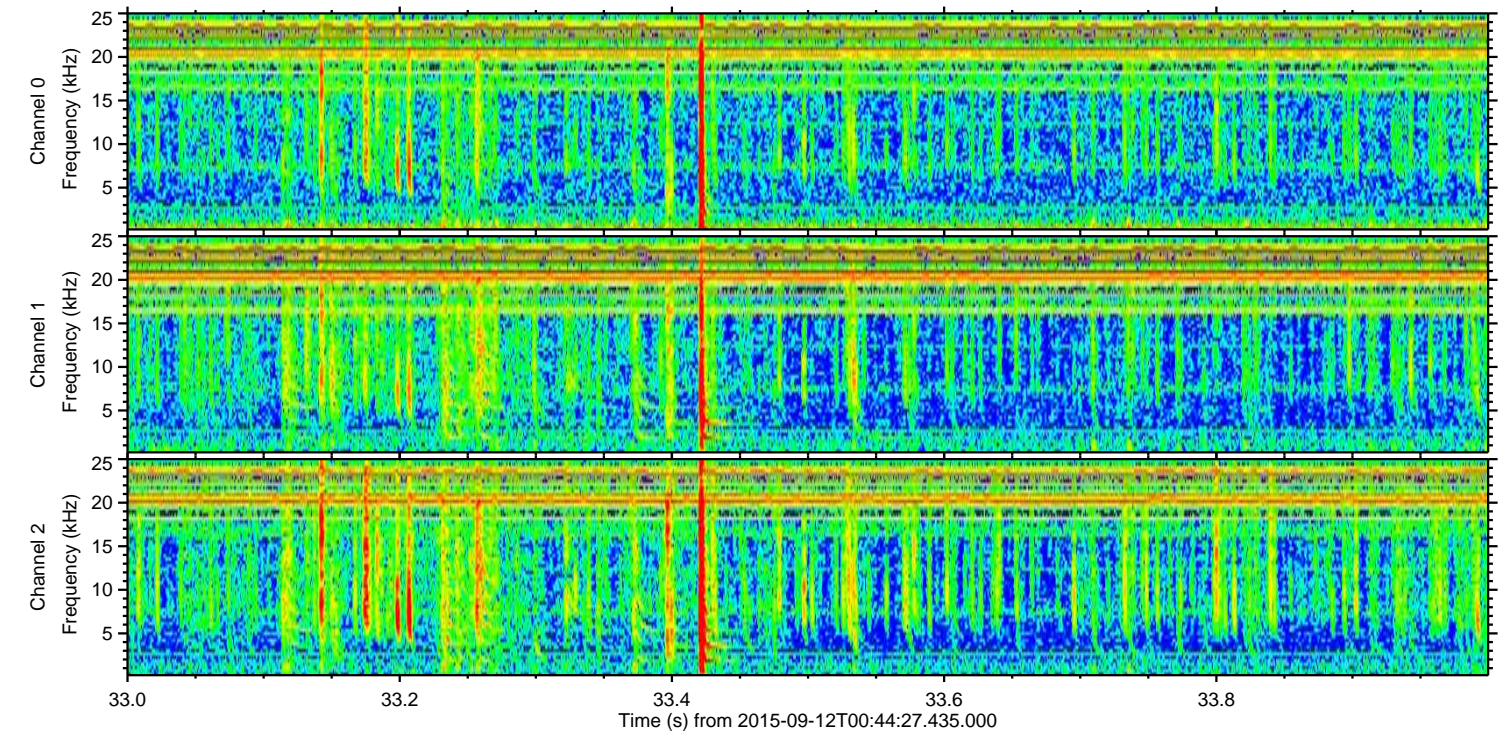
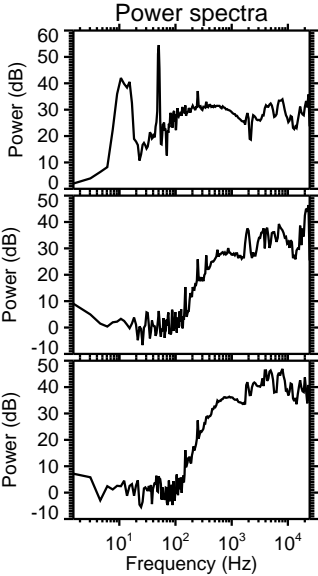
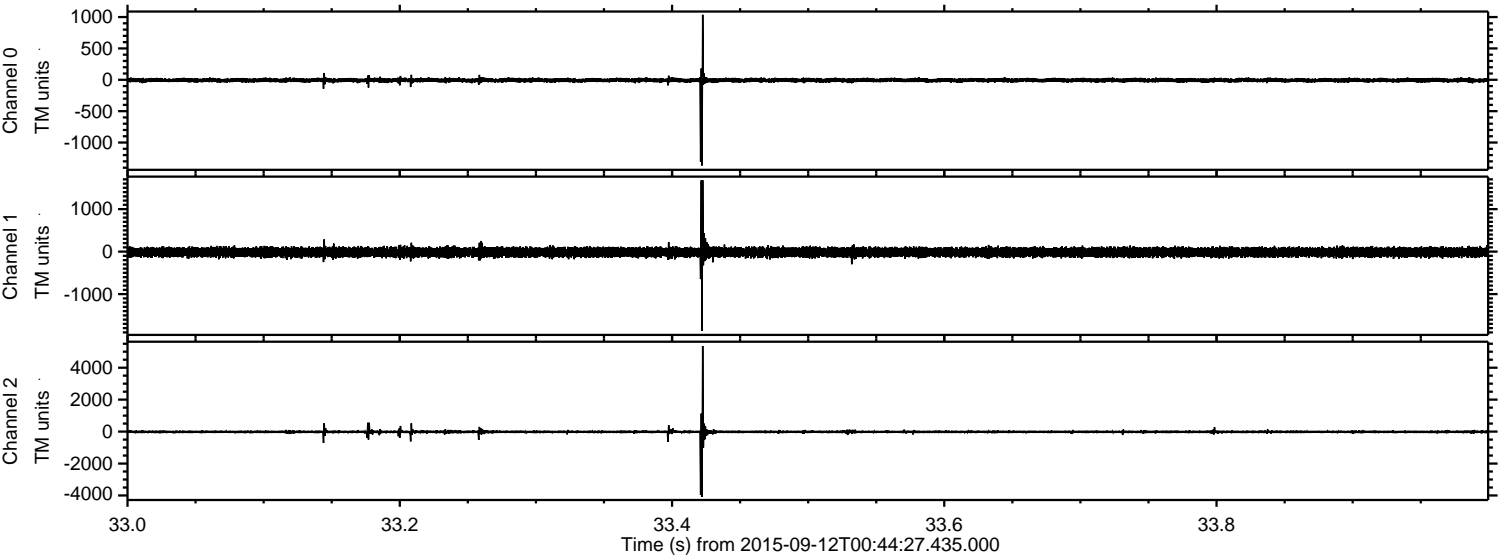
Processed Sun Oct 11 18:21:16 2015 by ELM ver.2012-10-06 from 001\_\_elm20150912\_004426\_\_dat00.bin





ELMAVAN 3D WAVEFORMS (Measured data sampled at 50 kHz) 51000 packets of 144 samples from 2015-09-12T00:44:27.435.000. Part 34/147

Processed Sun Oct 11 18:21:17 2015 by ELM ver.2012-10-06 from 001\_\_elm20150912\_004426\_\_dat00.bin



Channel 0  
mn: -1366  
mx: 1036  
 $\mu$ : -6.3  
 $\sigma$ : 19.2

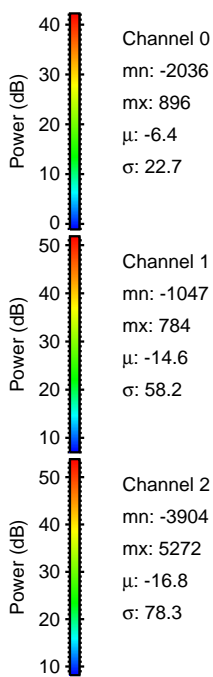
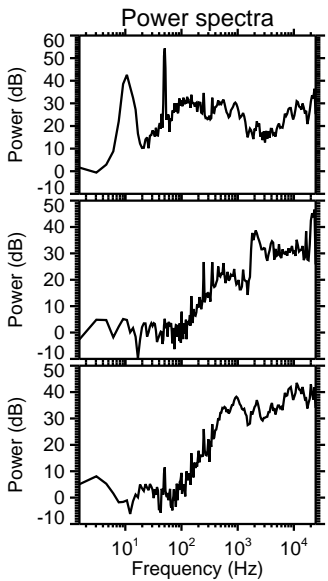
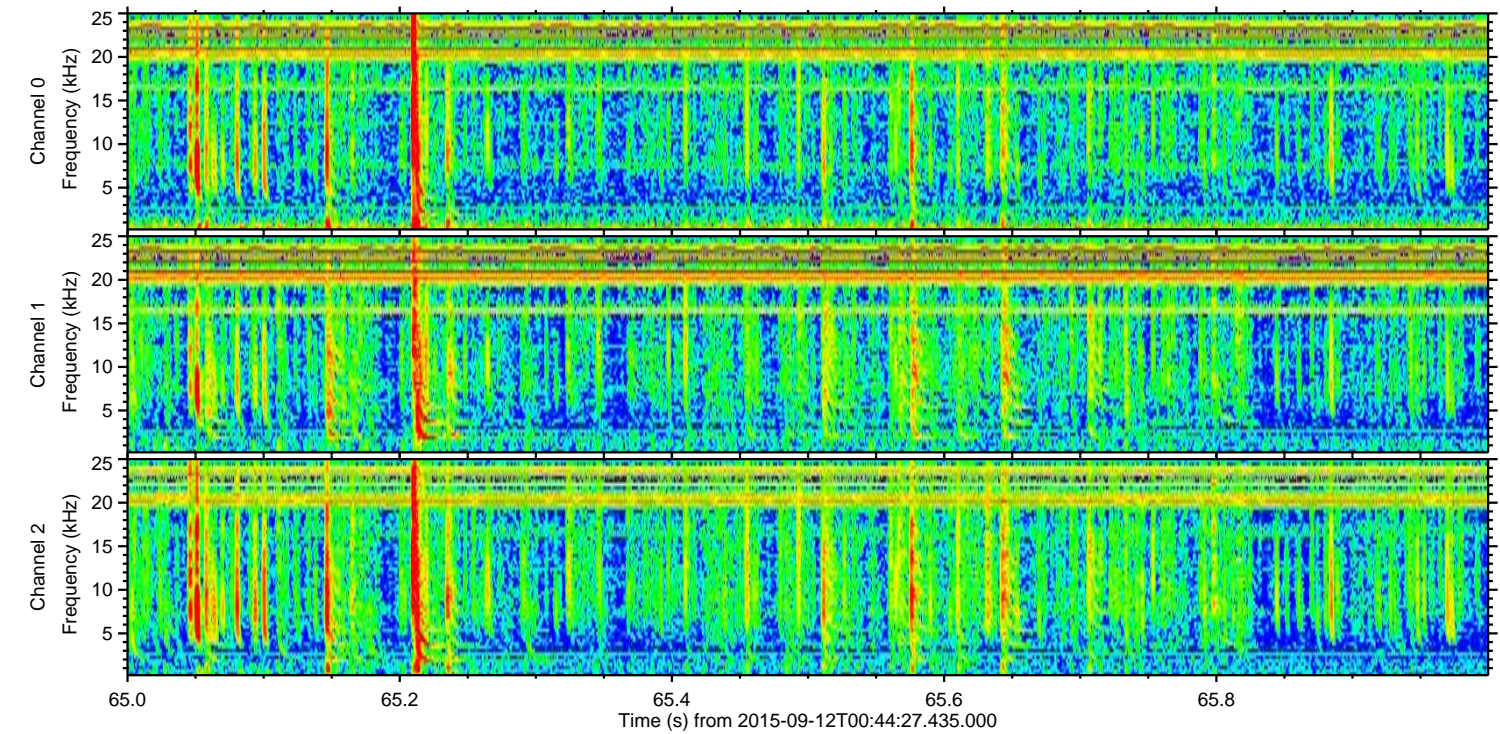
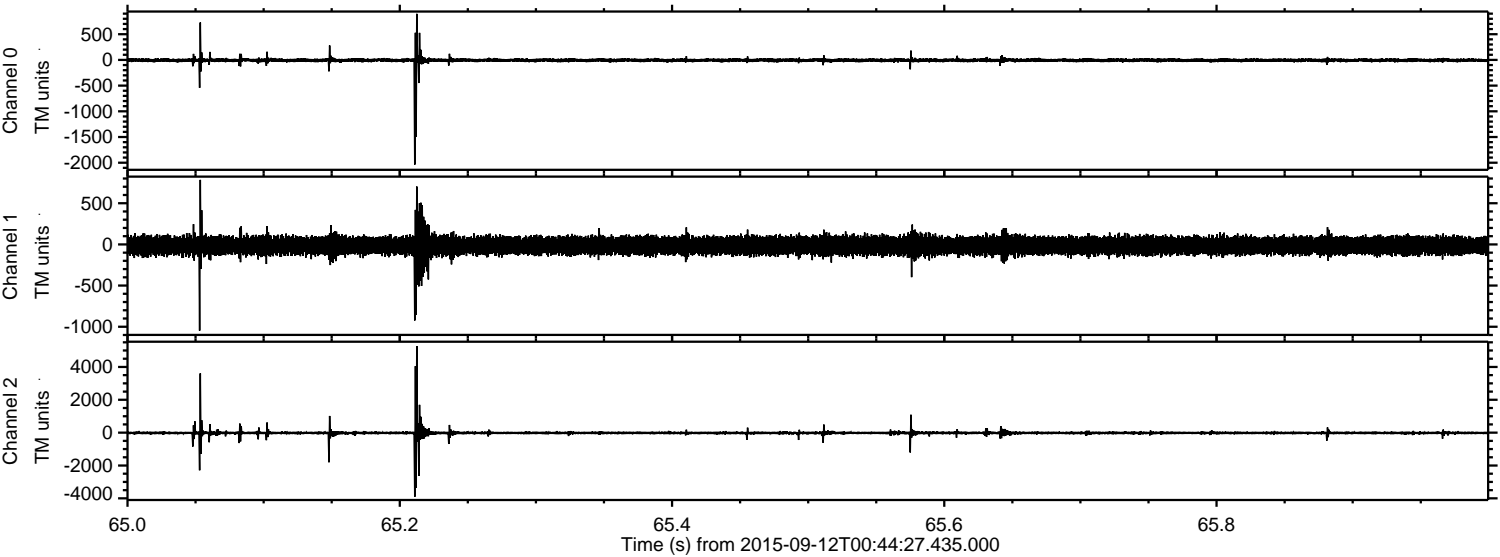
Channel 1  
mn: -1866  
mx: 1680  
 $\mu$ : -14.7  
 $\sigma$ : 56.4

Channel 2  
mn: -4078  
mx: 5358  
 $\mu$ : -16.8  
 $\sigma$ : 61.3



ELMAVAN 3D WAVEFORMS (Measured data sampled at 50 kHz) 51000 packets of 144 samples from 2015-09-12T00:44:27.435.000. Part 66/147

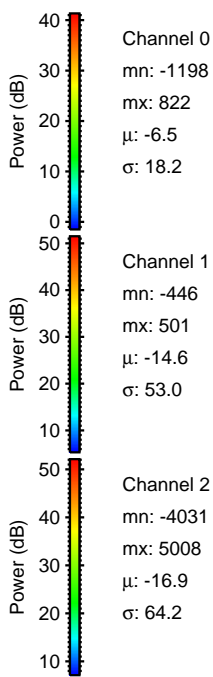
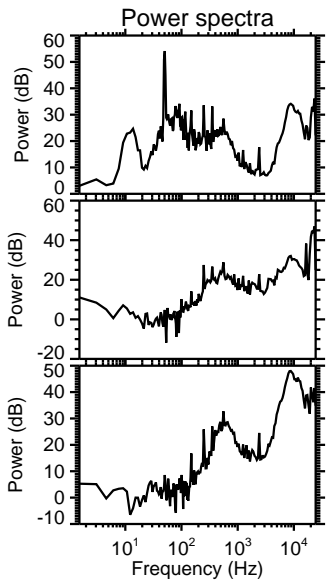
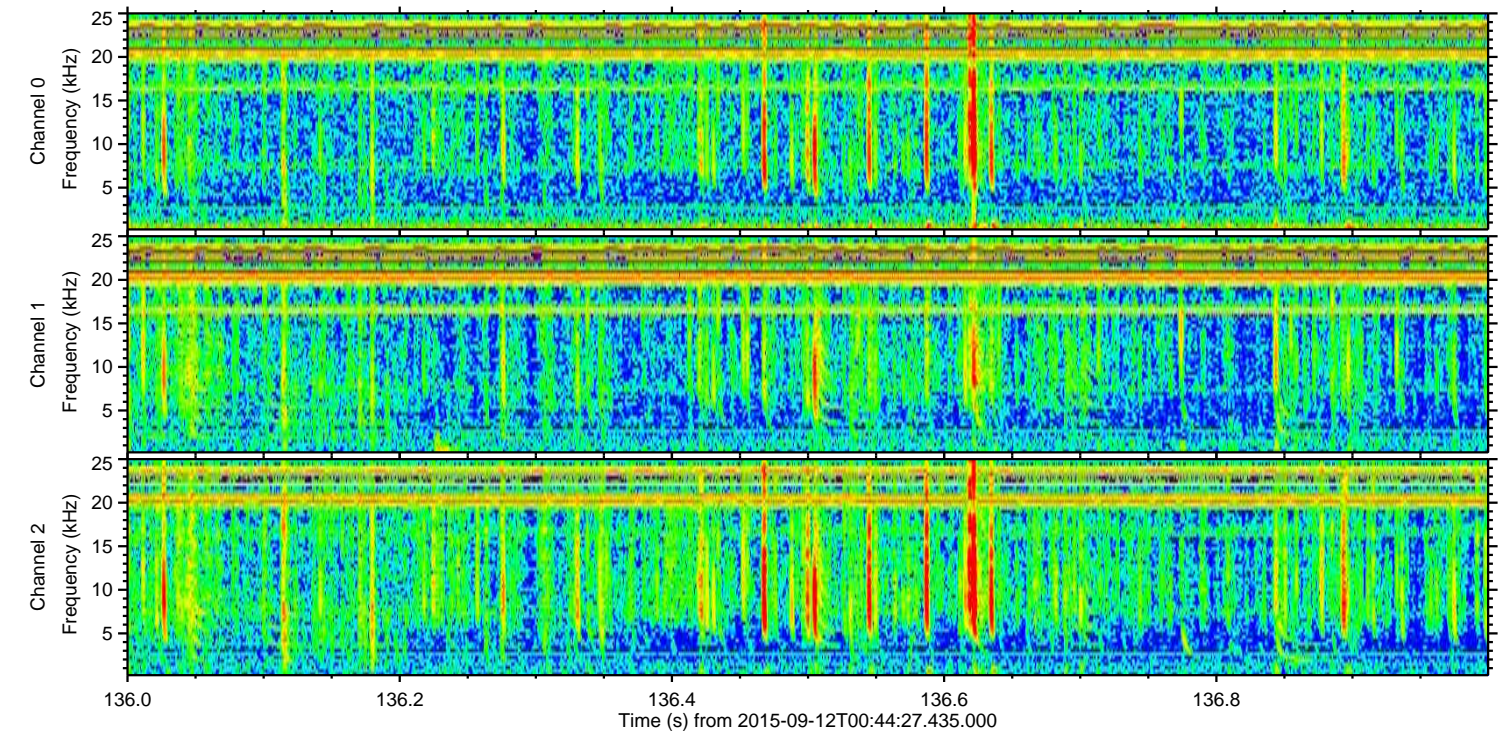
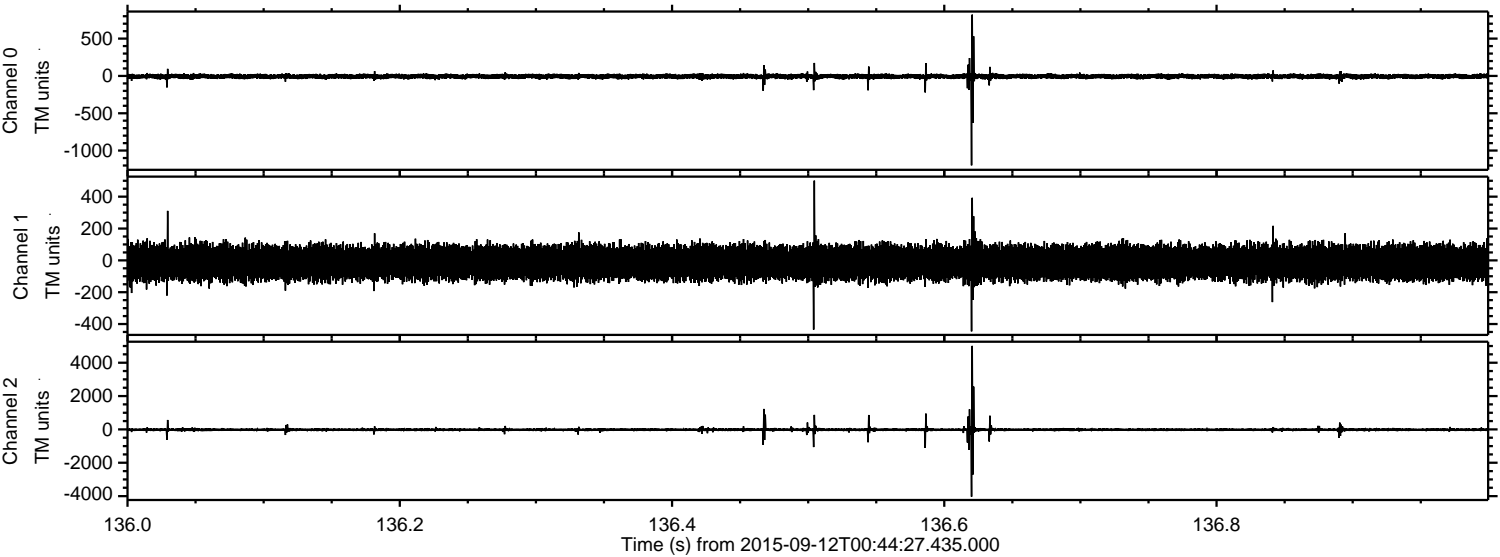
Processed Sun Oct 11 18:21:18 2015 by ELM ver.2012-10-06 from 001\_\_elm20150912\_004426\_\_dat00.bin





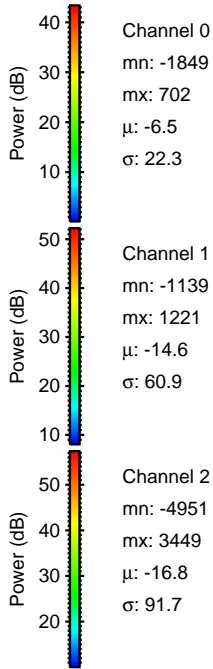
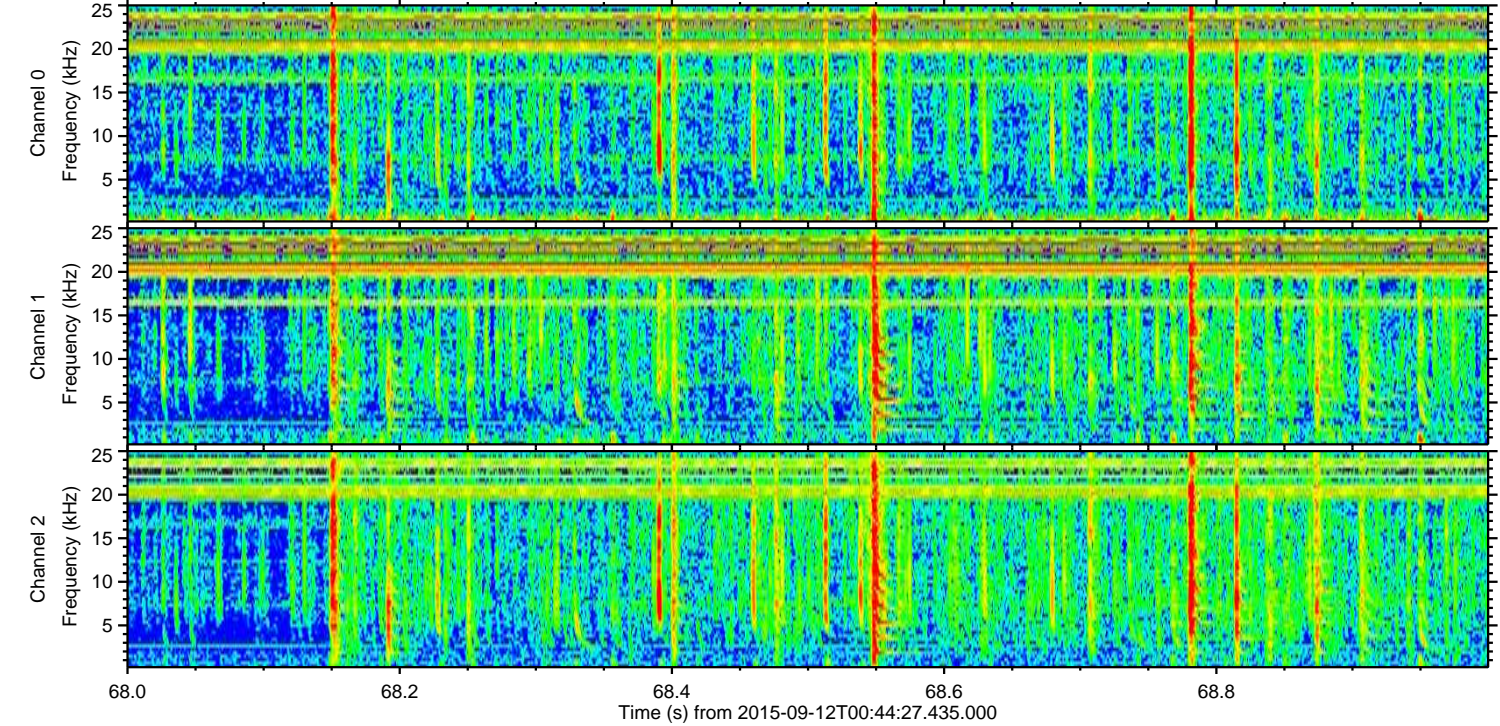
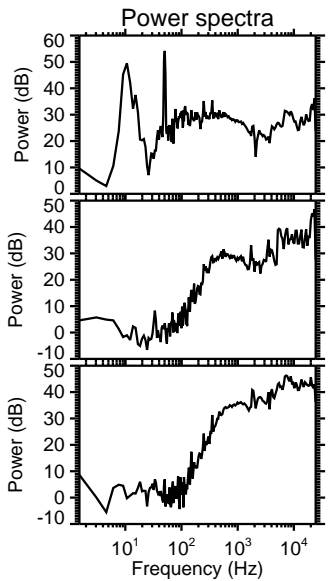
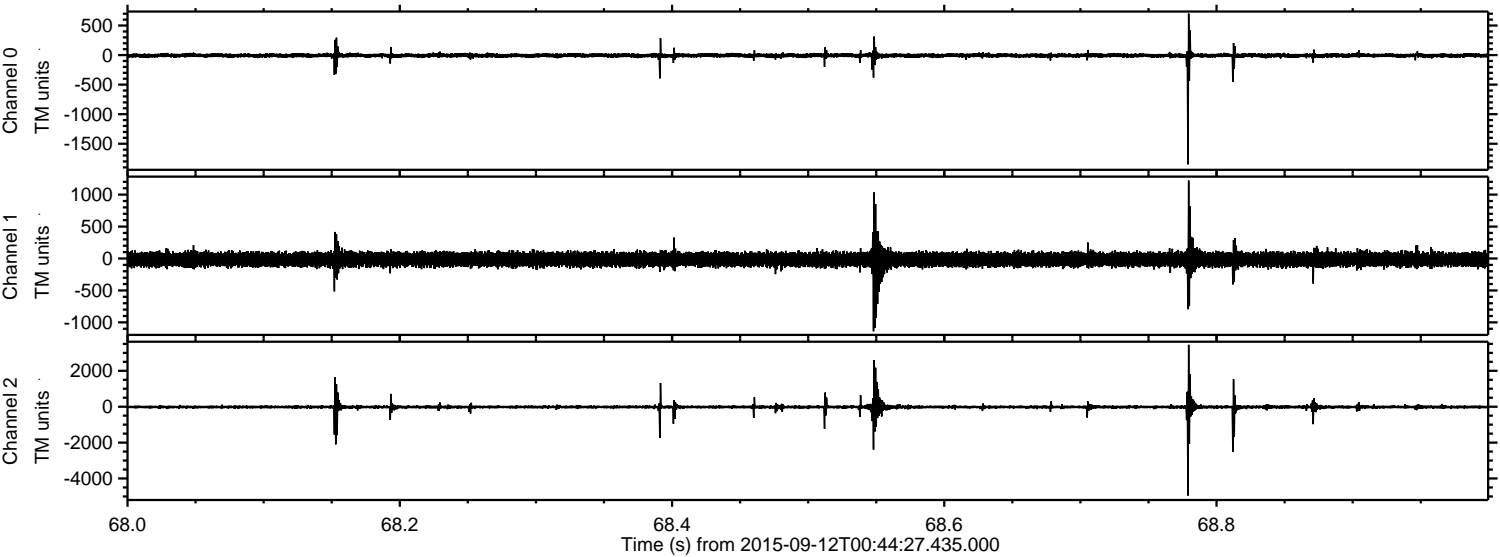
ELMAVAN 3D WAVEFORMS (Measured data sampled at 50 kHz) 51000 packets of 144 samples from 2015-09-12T00:44:27.435.000. Part 137/147

Processed Sun Oct 11 18:21:19 2015 by ELM ver.2012-10-06 from 001\_\_elm20150912\_004426\_\_dat00.bin





Processed Sun Oct 11 18:21:20 2015 by ELM ver.2012-10-06 from 001\_\_elm20150912\_004426\_\_dat00.bin



Channel 0  
mn: -1849  
mx: 702  
 $\mu$ : -6.5  
 $\sigma$ : 22.3

Channel 1  
mn: -1139  
mx: 1221  
 $\mu$ : -14.6  
 $\sigma$ : 60.9

Channel 2  
mn: -4951  
mx: 3449  
 $\mu$ : -16.8  
 $\sigma$ : 91.7



Processed Sun Oct 11 18:21:21 2015 by ELM ver.2012-10-06 from 001\_\_elm20150912\_004426\_\_dat00.bin

