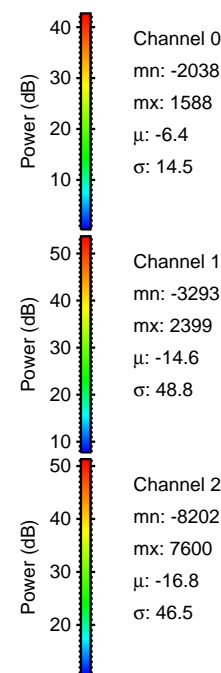
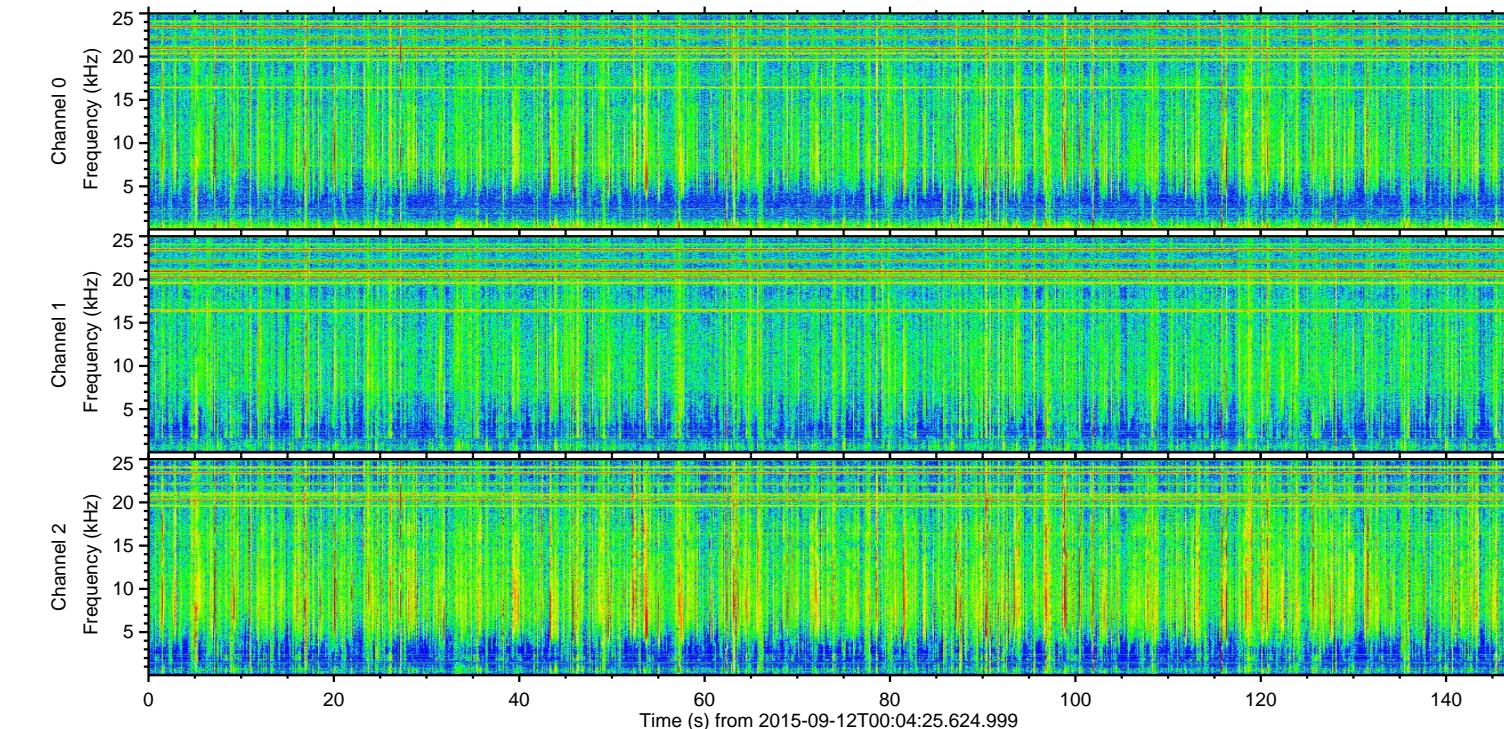
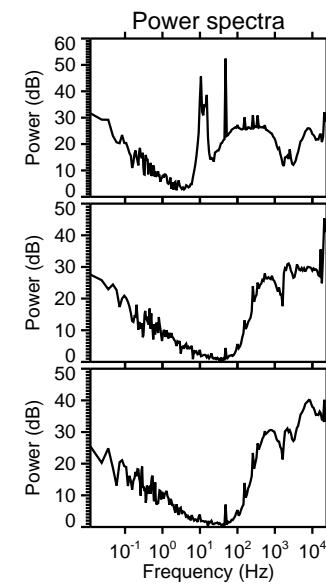
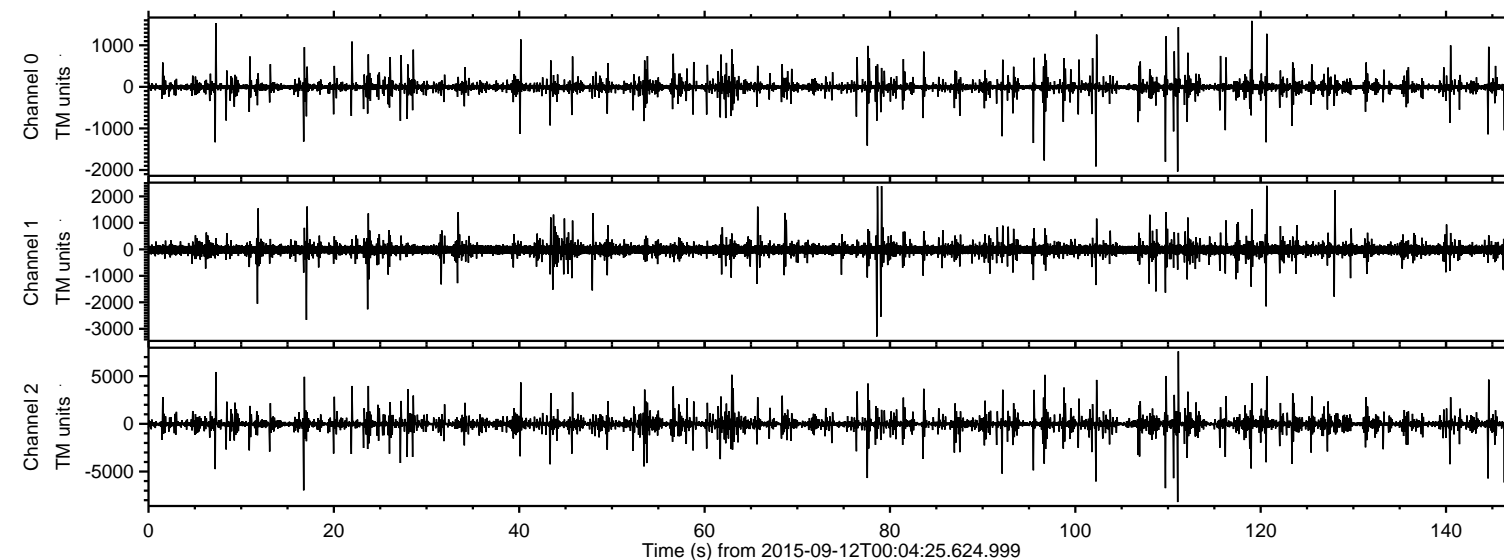


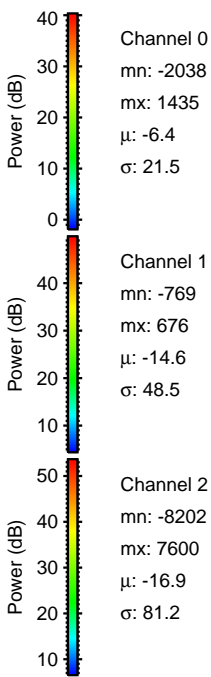
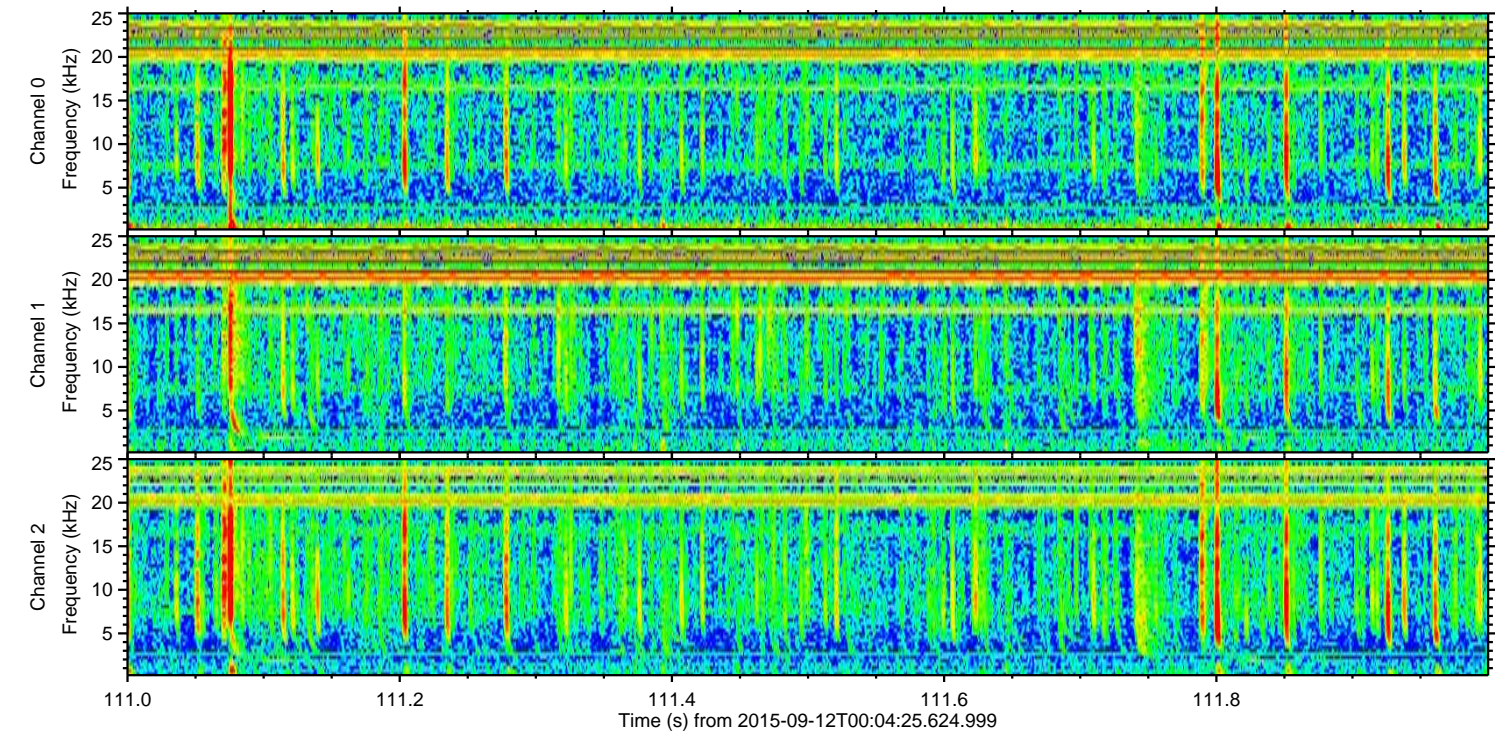
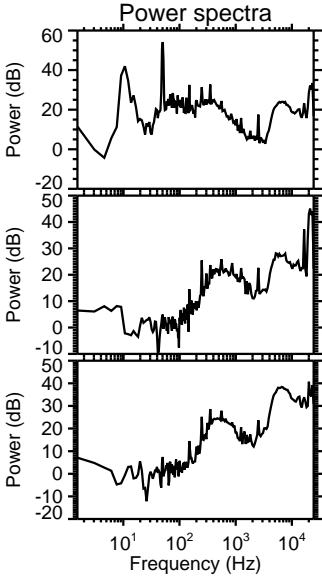
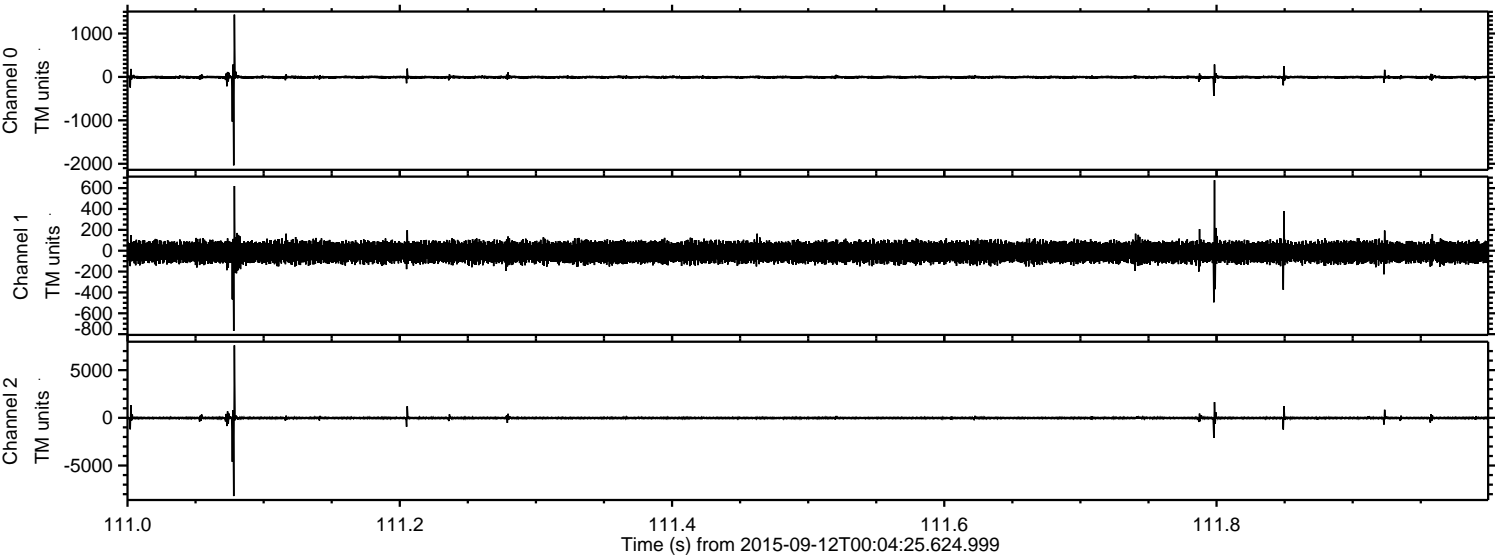
ELMAVAN 3D WAVEFORMS (Measured data sampled at 50 kHz) 51000 packets of 144 samples from 2015-09-12T00:04:25.624.999.

Processed Sun Oct 11 18:09:54 2015 by ELM ver.2012-10-06 from 001__elm20150912_000424__dat00.bin



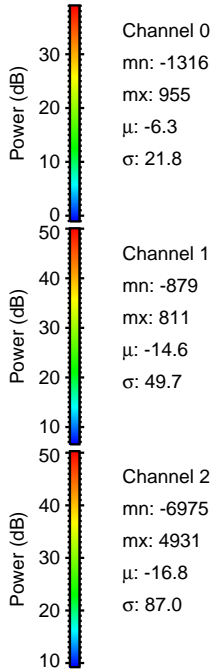
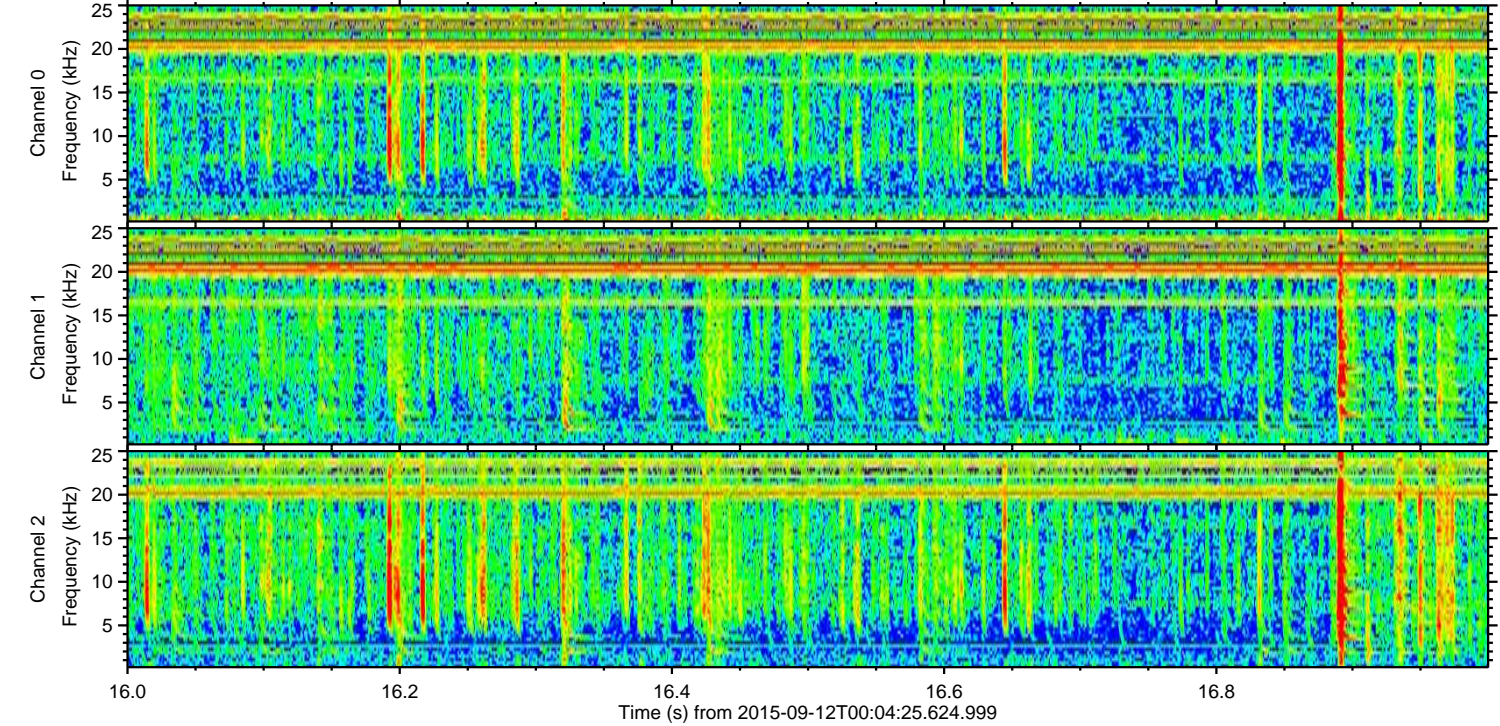
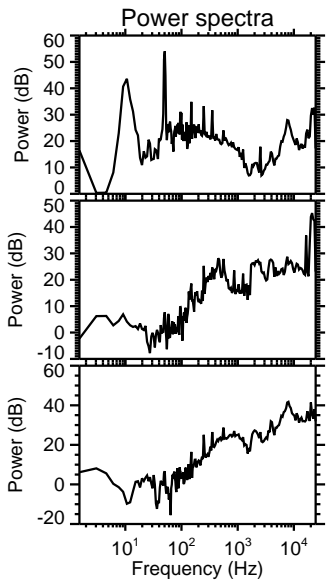
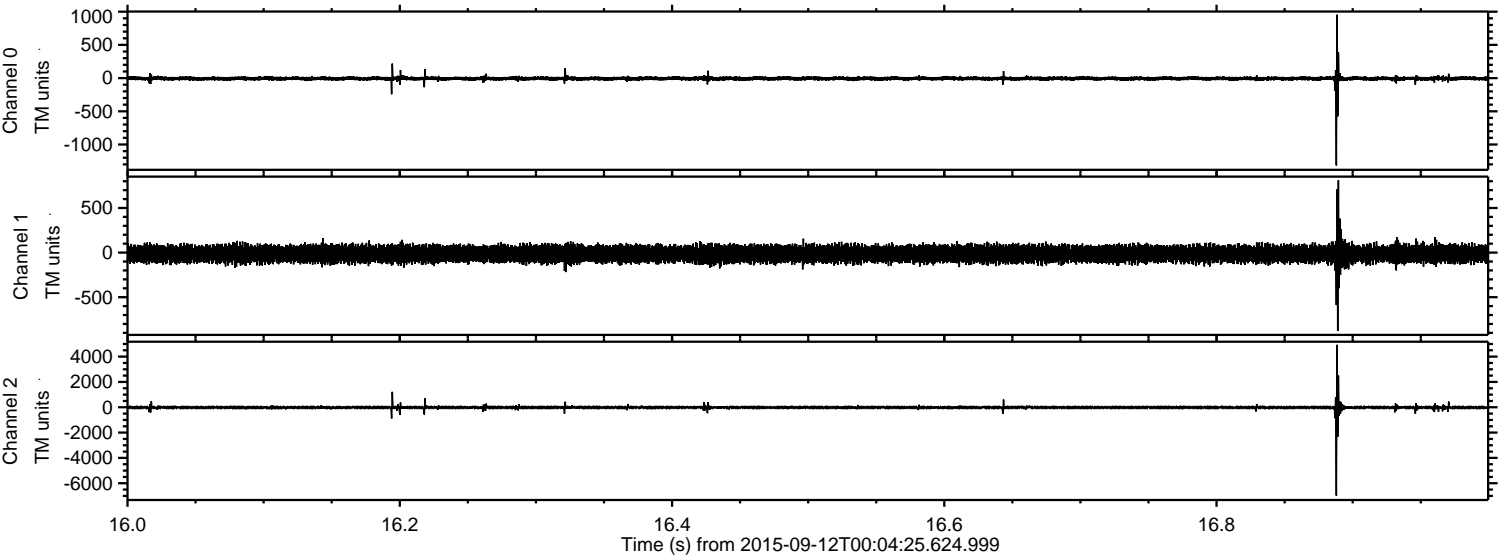
ELMAVAN 3D WAVEFORMS (Measured data sampled at 50 kHz) 51000 packets of 144 samples from 2015-09-12T00:04:25.624.999. Part 112/147

Processed Sun Oct 11 18:10:10 2015 by ELM ver.2012-10-06 from 001__elm20150912_000424__dat00.bin



ELMAVAN 3D WAVEFORMS (Measured data sampled at 50 kHz) 51000 packets of 144 samples from 2015-09-12T00:04:25.624.999. Part 17/147

Processed Sun Oct 11 18:10:11 2015 by ELM ver.2012-10-06 from 001__elm20150912_000424__dat00.bin



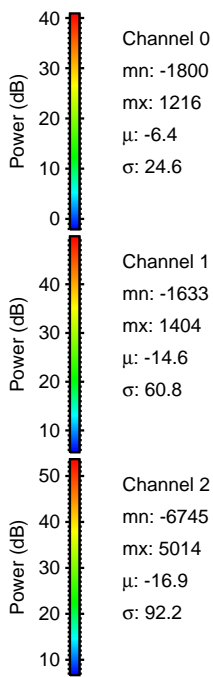
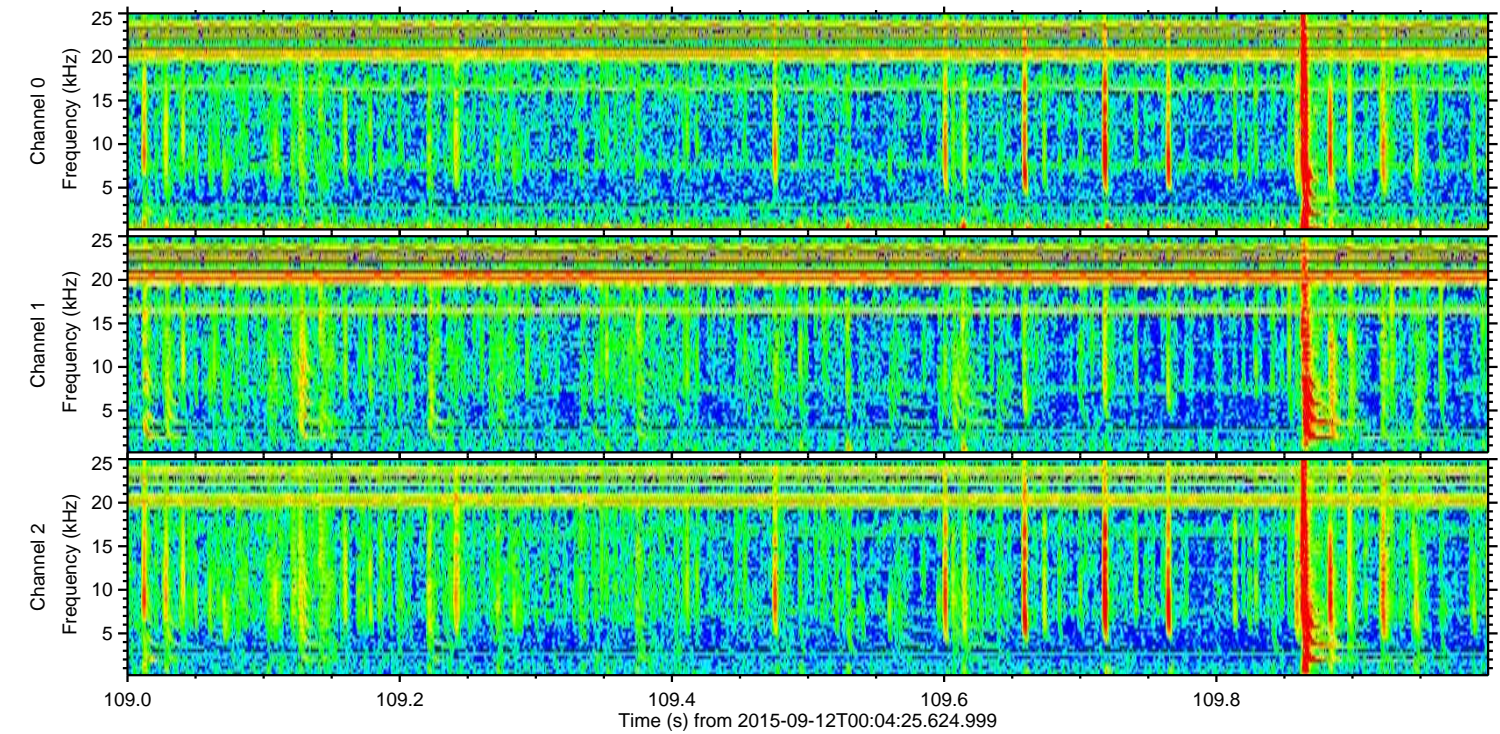
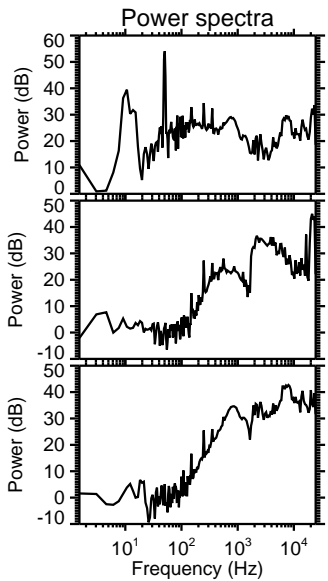
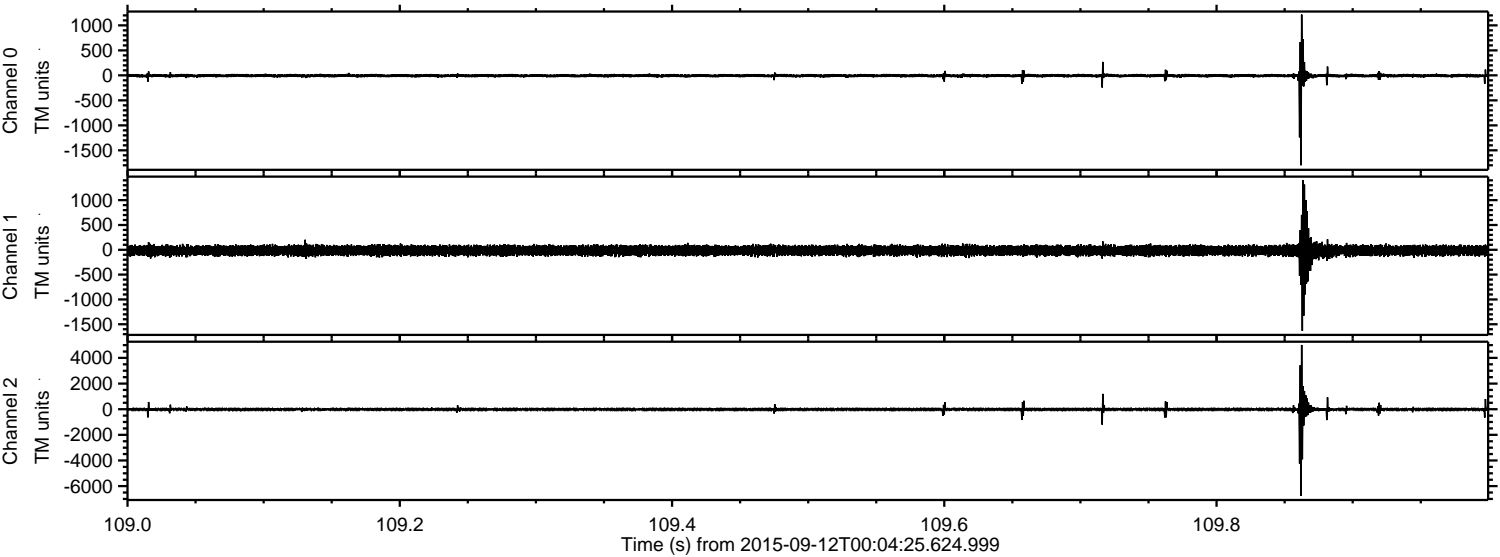
Channel 0
mn: -1316
mx: 955
 μ : -6.3
 σ : 21.8

Channel 1
mn: -879
mx: 811
 μ : -14.6
 σ : 49.7

Channel 2
mn: -6975
mx: 4931
 μ : -16.8
 σ : 87.0

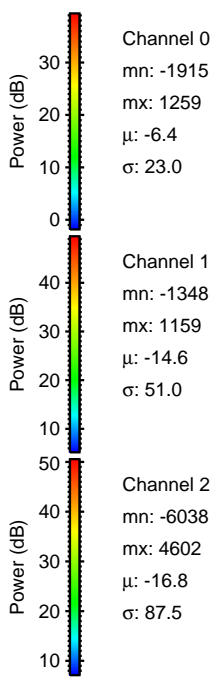
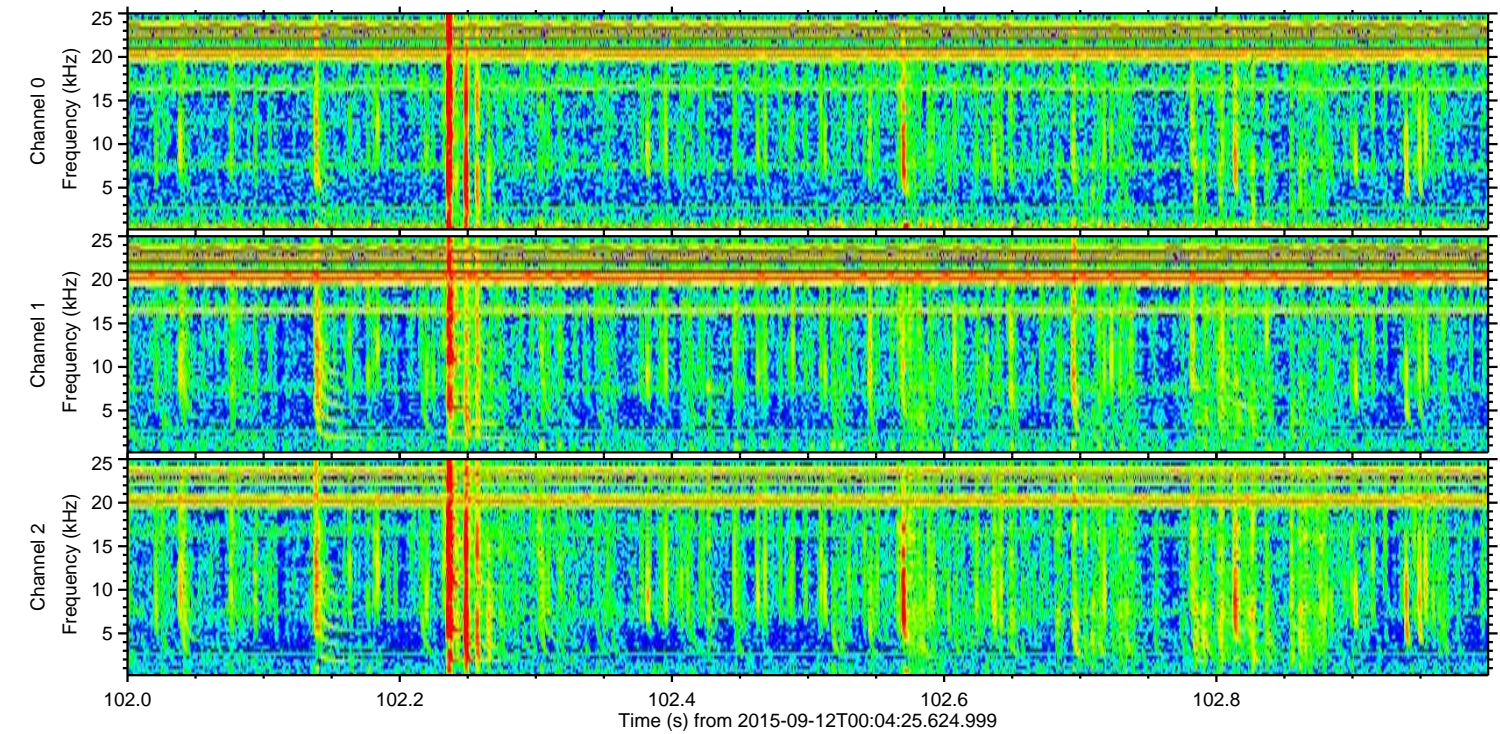
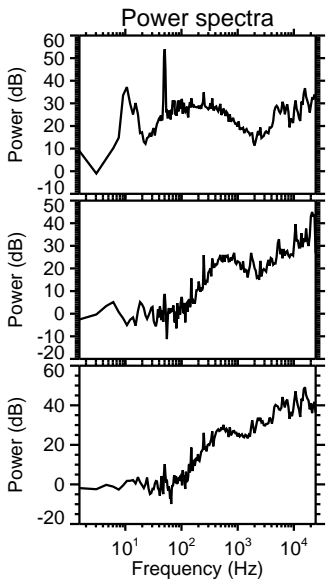
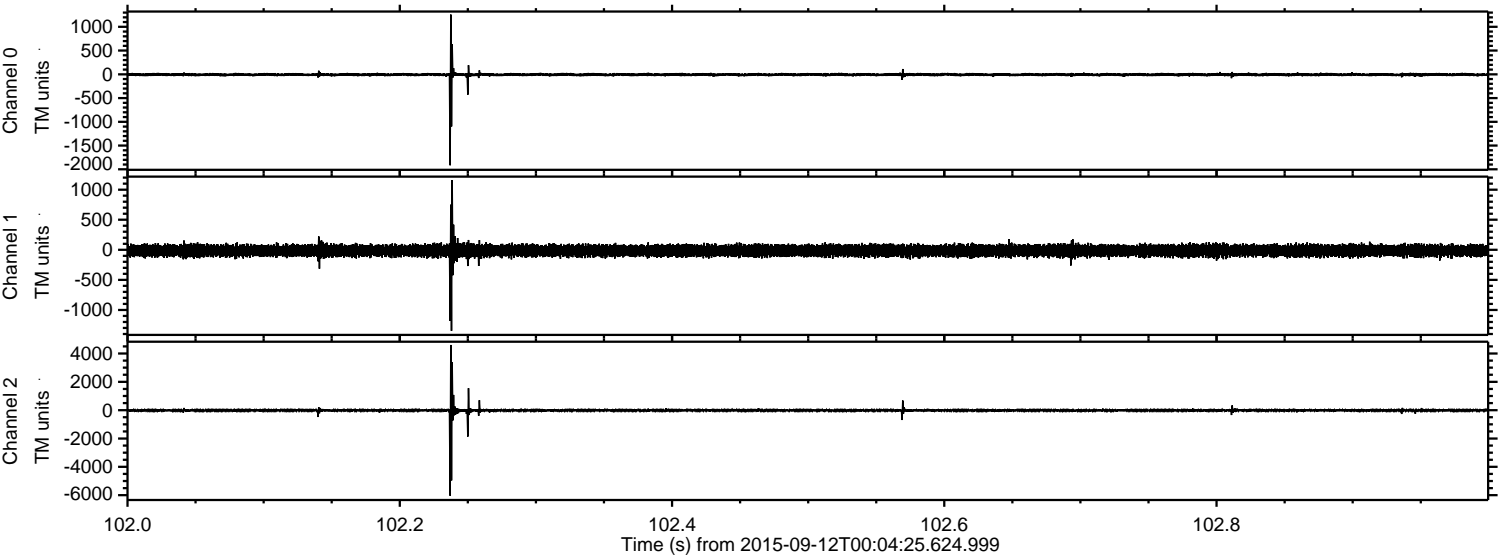
ELMAVAN 3D WAVEFORMS (Measured data sampled at 50 kHz) 51000 packets of 144 samples from 2015-09-12T00:04:25.624.999. Part 110/147

Processed Sun Oct 11 18:10:12 2015 by ELM ver.2012-10-06 from 001__elm20150912_000424__dat00.bin



ELMAVAN 3D WAVEFORMS (Measured data sampled at 50 kHz) 51000 packets of 144 samples from 2015-09-12T00:04:25.624.999. Part 103/147

Processed Sun Oct 11 18:10:13 2015 by ELM ver.2012-10-06 from 001__elm20150912_000424__dat00.bin



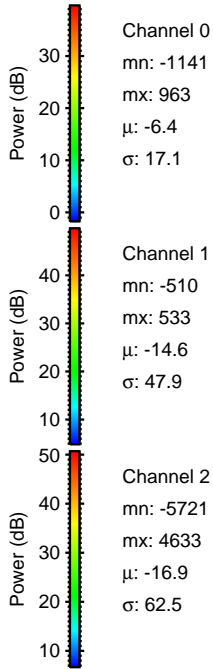
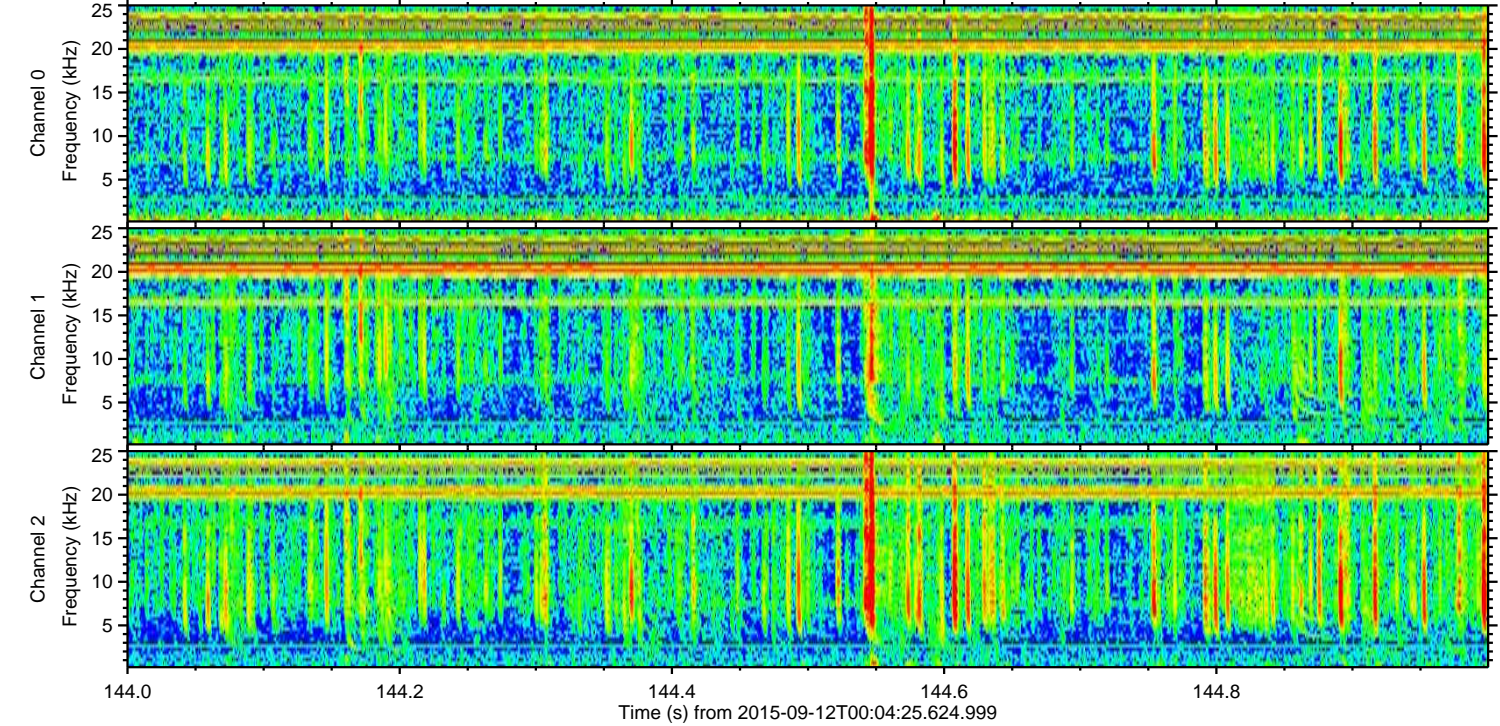
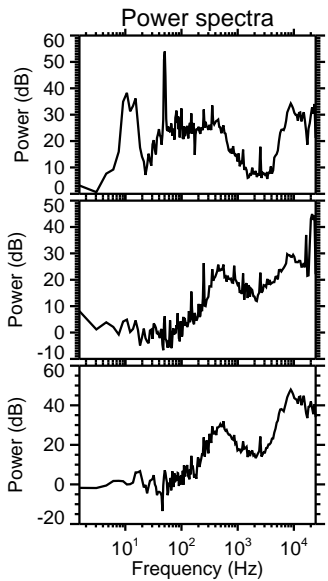
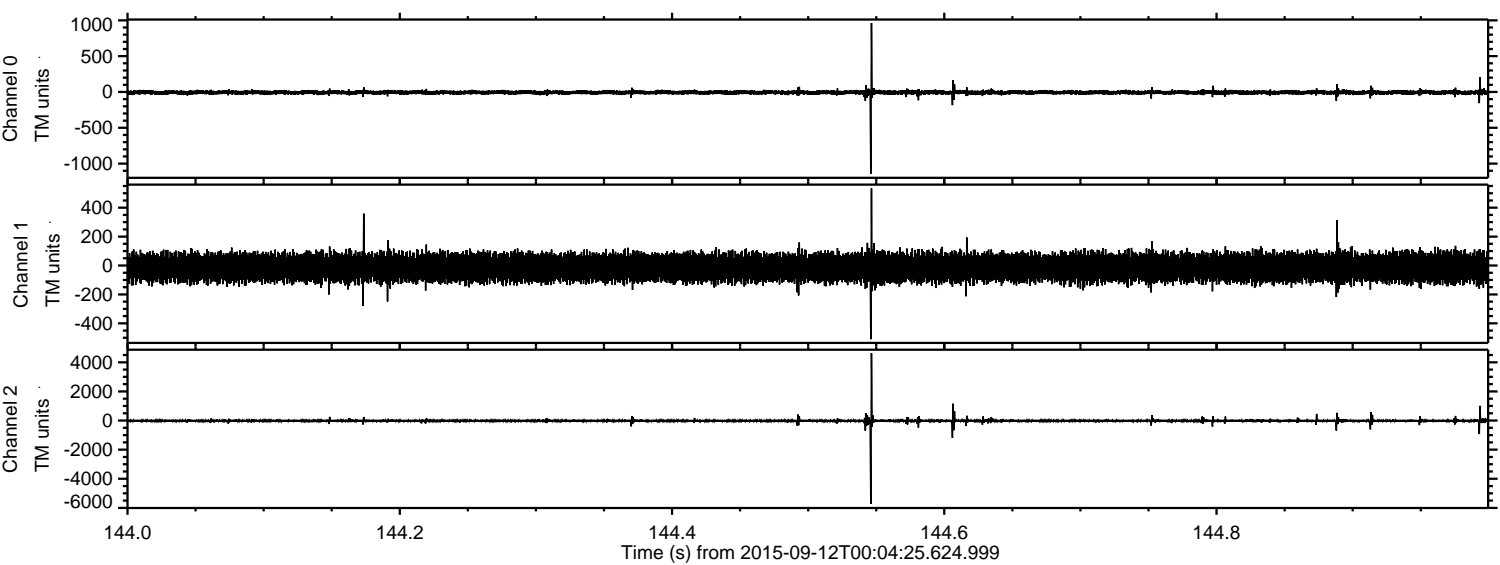
Channel 0
mn: -1915
mx: 1259
 μ : -6.4
 σ : 23.0

Channel 1
mn: -1348
mx: 1159
 μ : -14.6
 σ : 51.0

Channel 2
mn: -6038
mx: 4602
 μ : -16.8
 σ : 87.5

ELMAVAN 3D WAVEFORMS (Measured data sampled at 50 kHz) 51000 packets of 144 samples from 2015-09-12T00:04:25.624.999. Part 145/147

Processed Sun Oct 11 18:10:14 2015 by ELM ver.2012-10-06 from 001__elm20150912_000424__dat00.bin

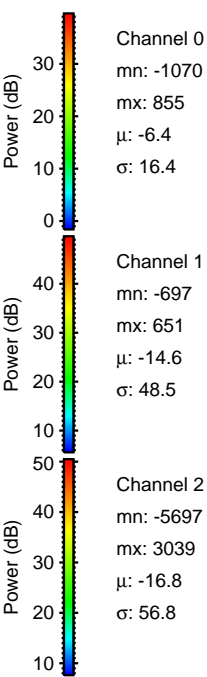
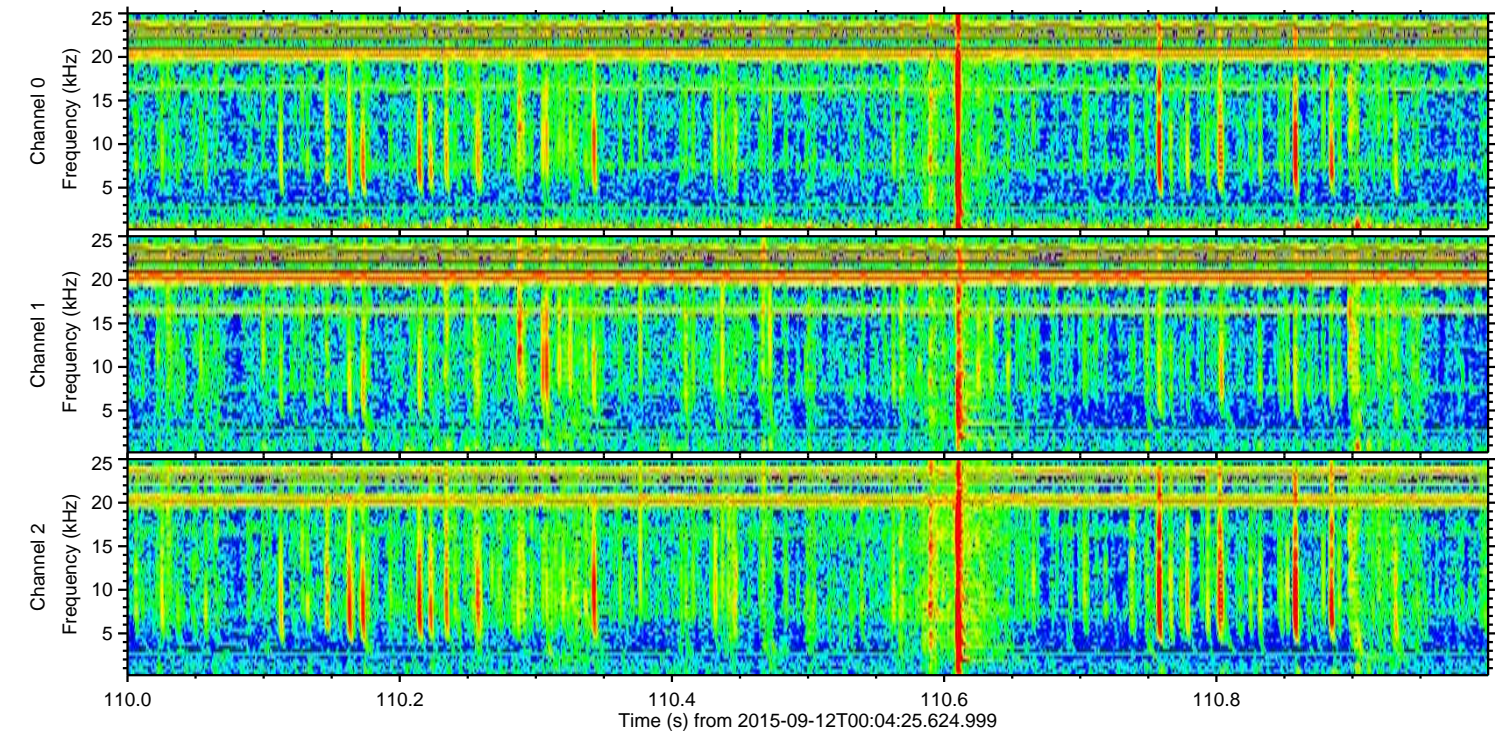
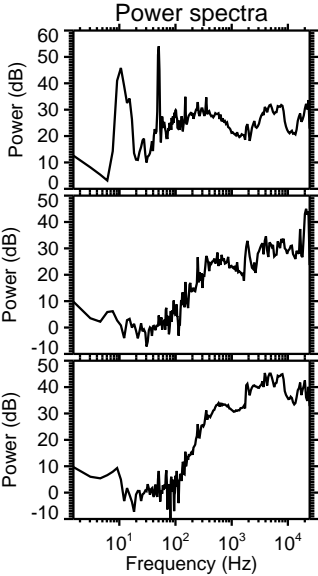
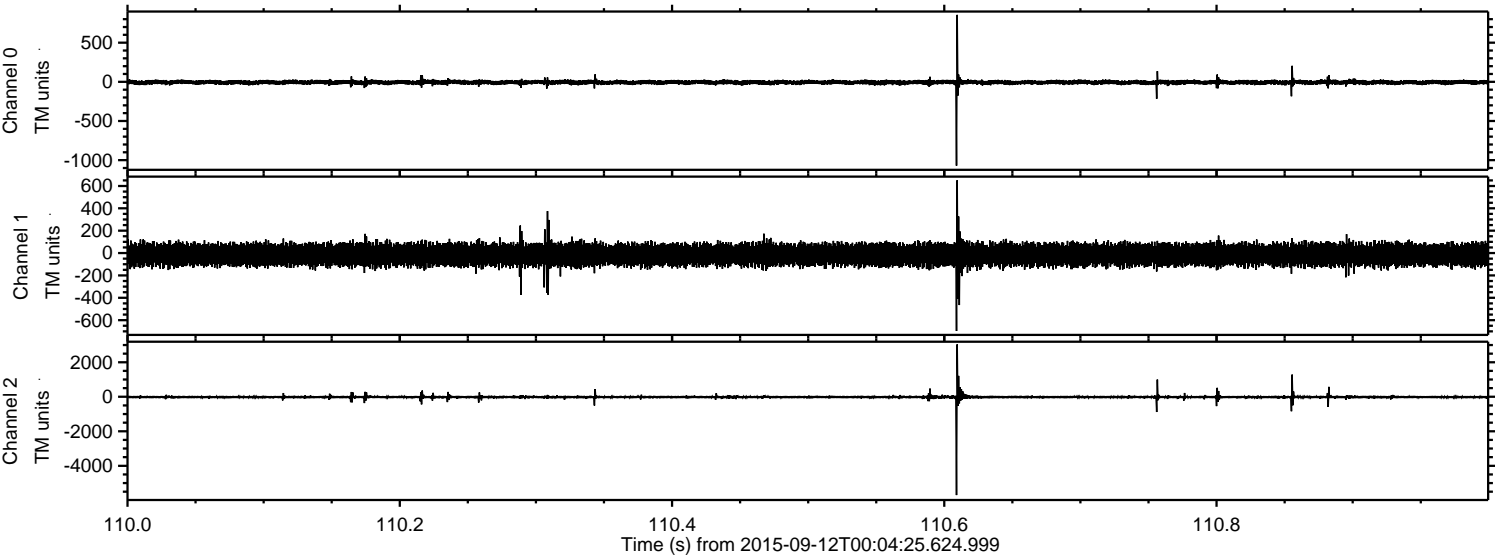


Channel 0
mn: -1141
mx: 963
 μ : -6.4
 σ : 17.1

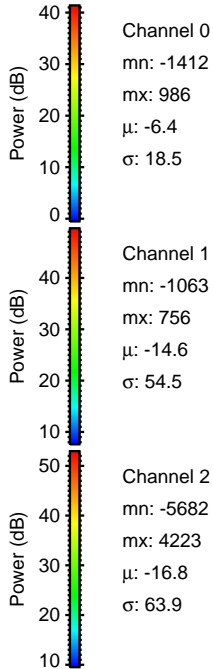
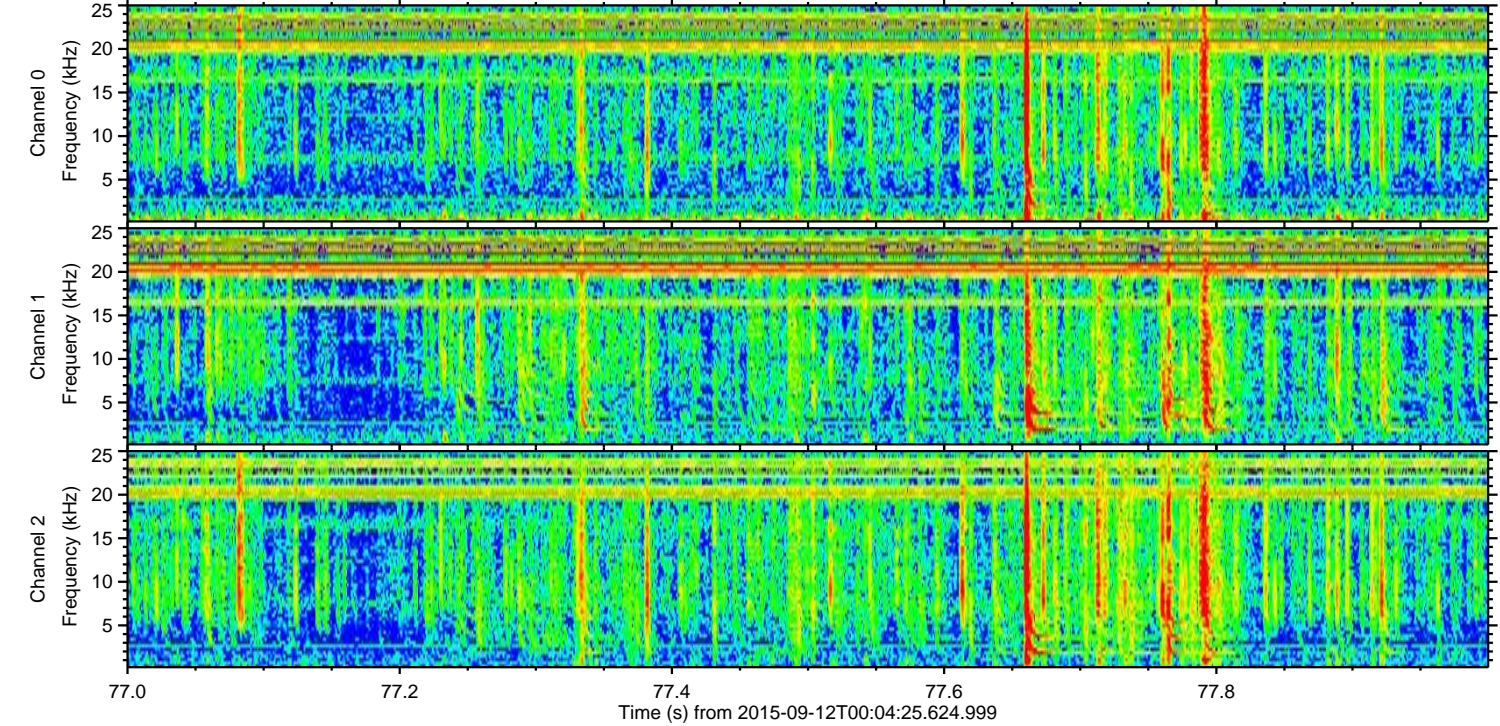
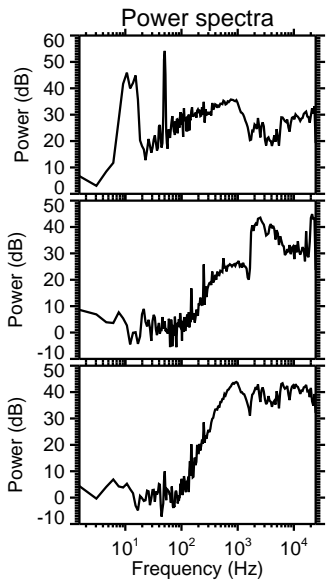
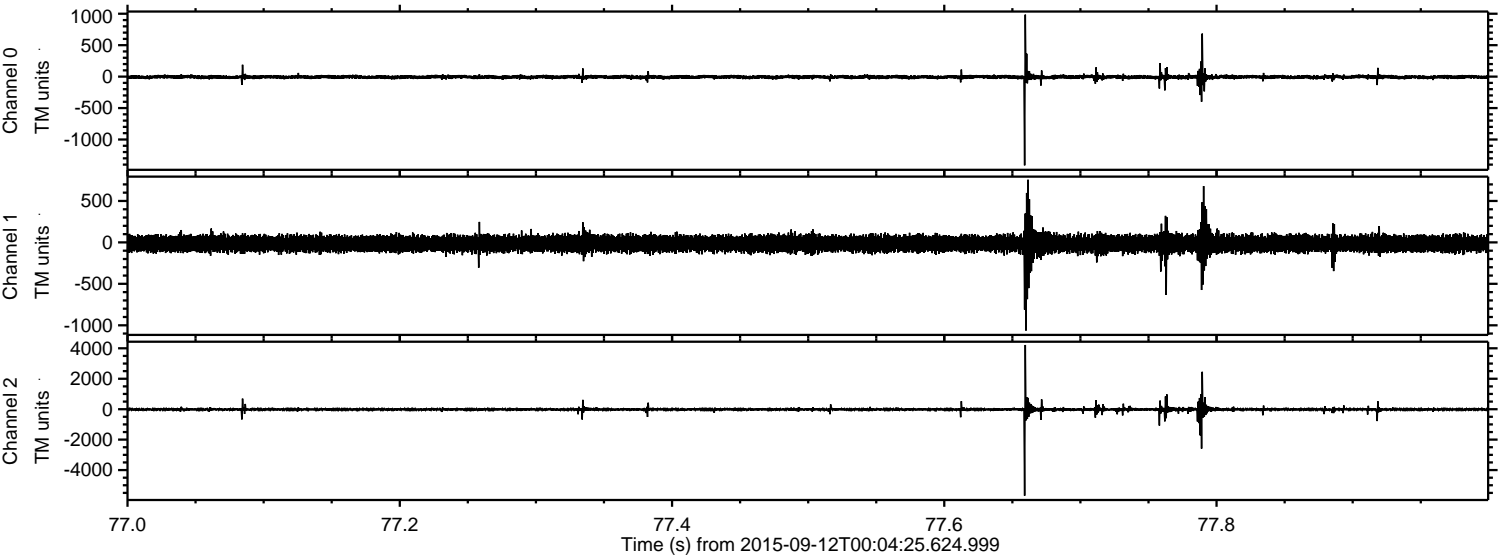
Channel 1
mn: -510
mx: 533
 μ : -14.6
 σ : 47.9

Channel 2
mn: -5721
mx: 4633
 μ : -16.9
 σ : 62.5

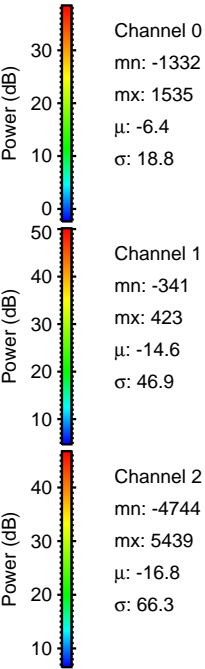
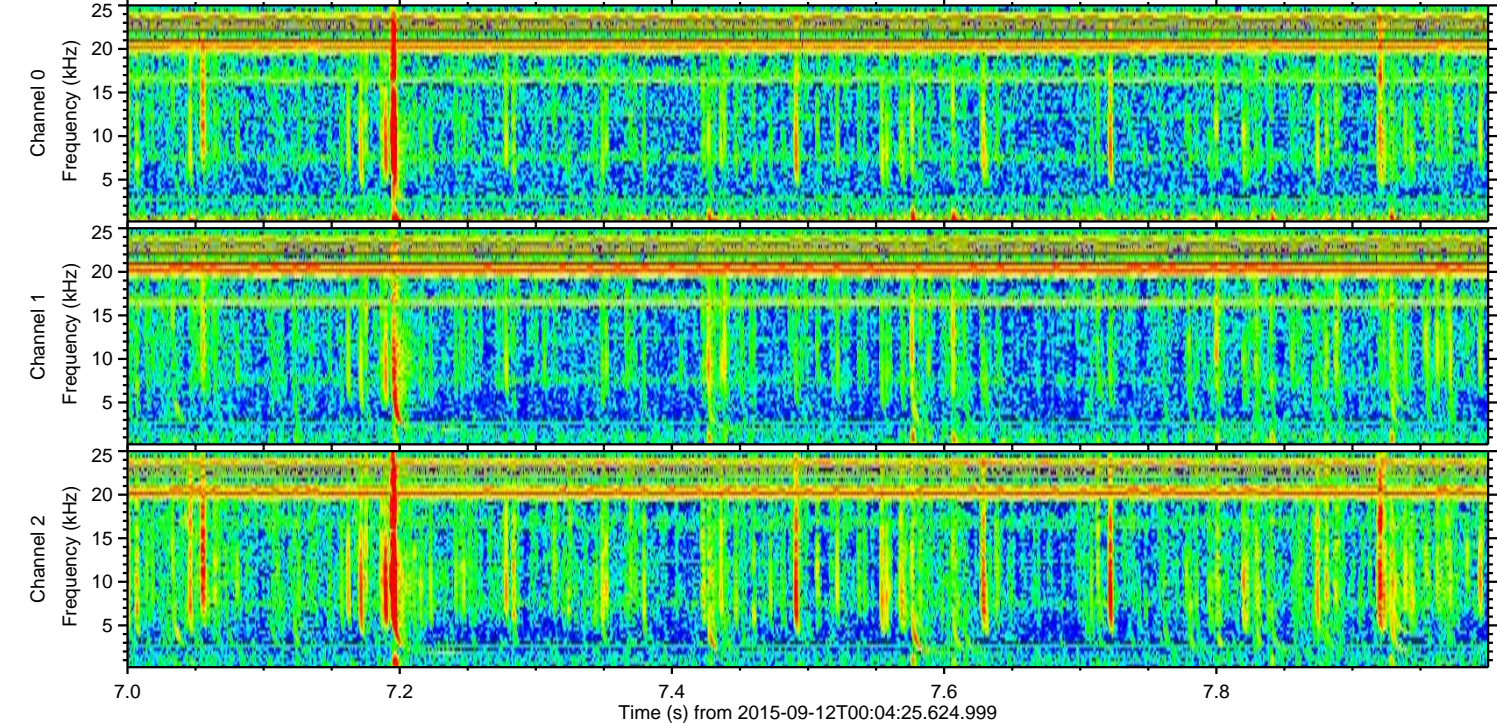
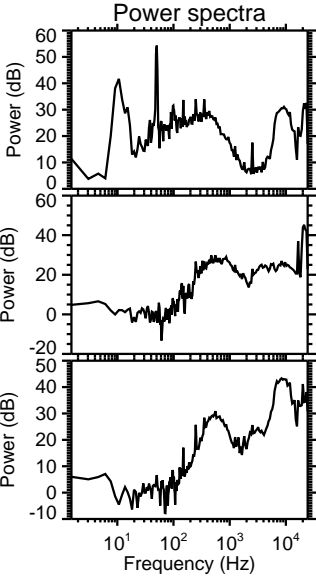
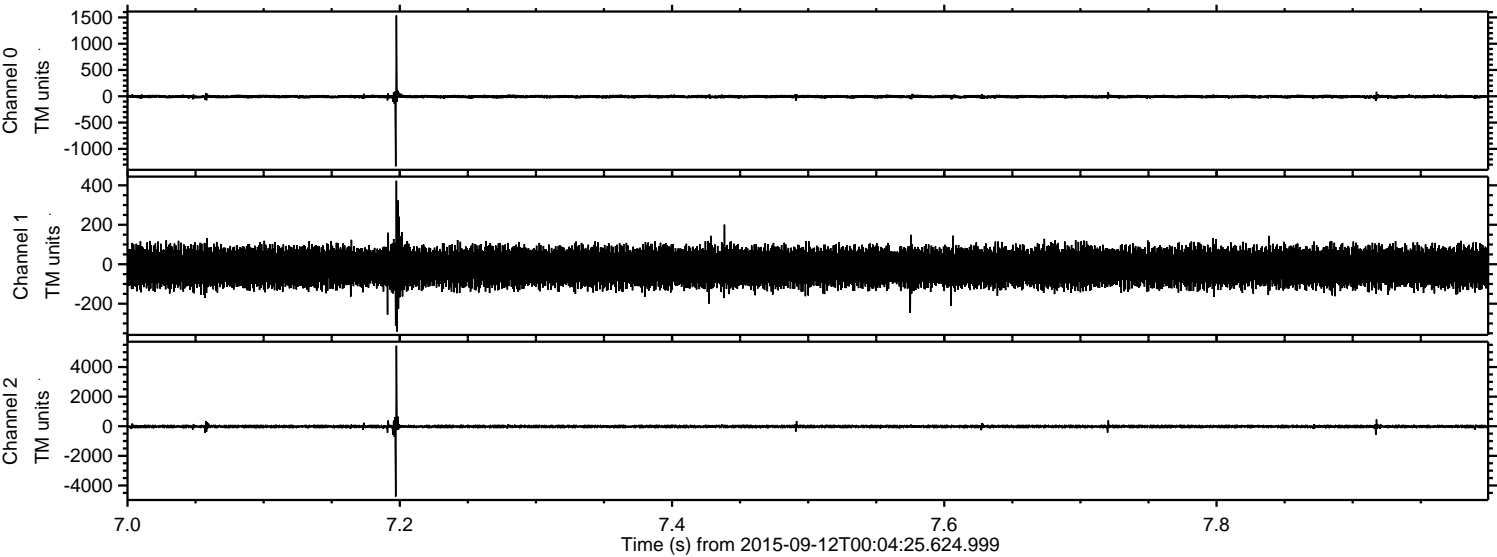
Processed Sun Oct 11 18:10:15 2015 by ELM ver.2012-10-06 from 001__elm20150912_000424__dat00.bin



Processed Sun Oct 11 18:10:16 2015 by ELM ver.2012-10-06 from 001__elm20150912_000424__dat00.bin



Processed Sun Oct 11 18:10:17 2015 by ELM ver.2012-10-06 from 001__elm20150912_000424__dat00.bin

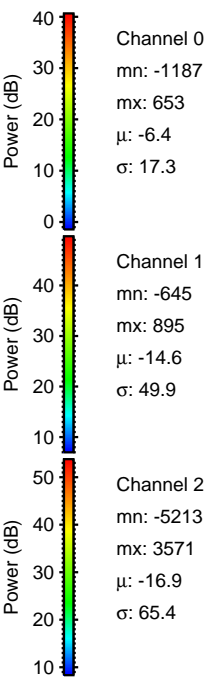
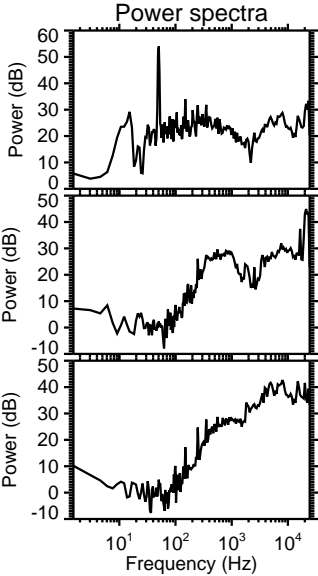
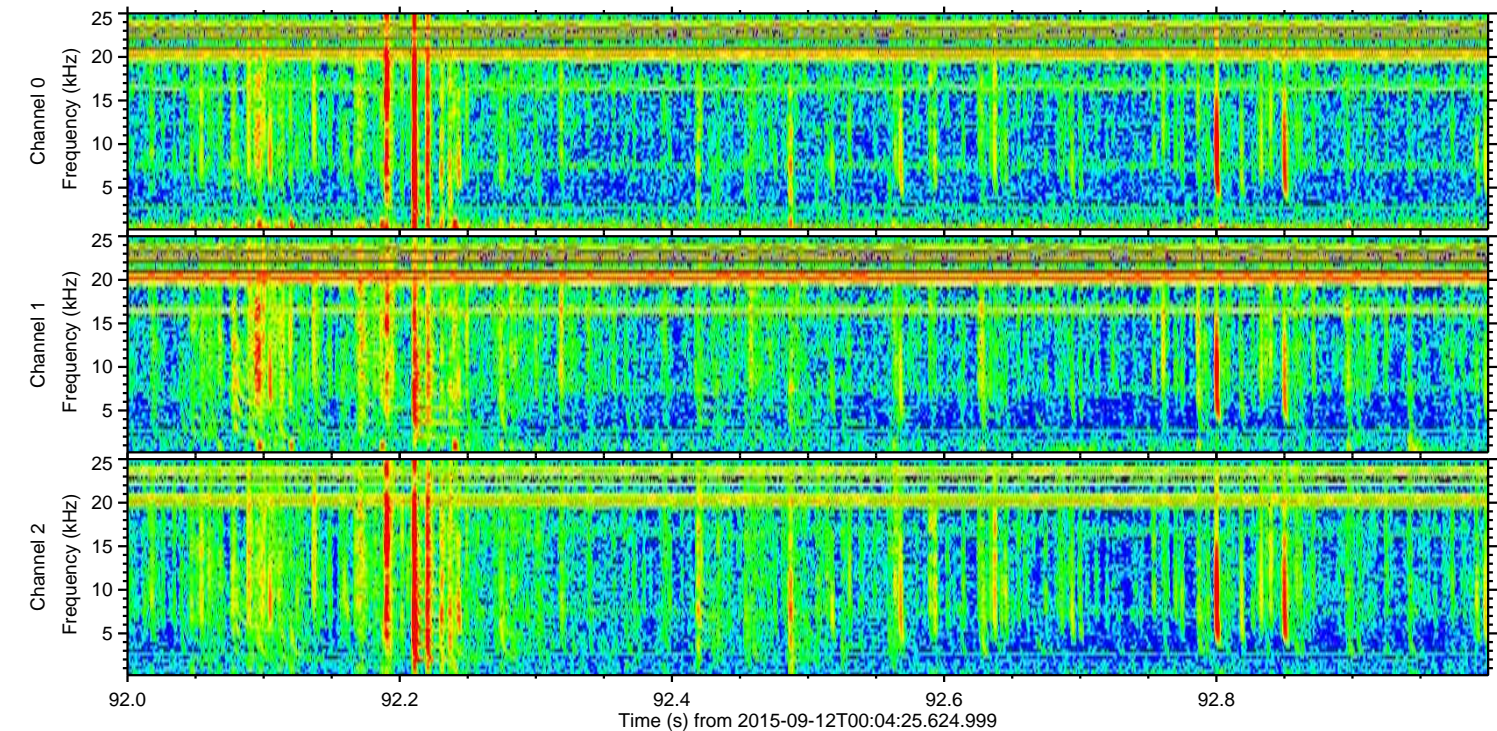
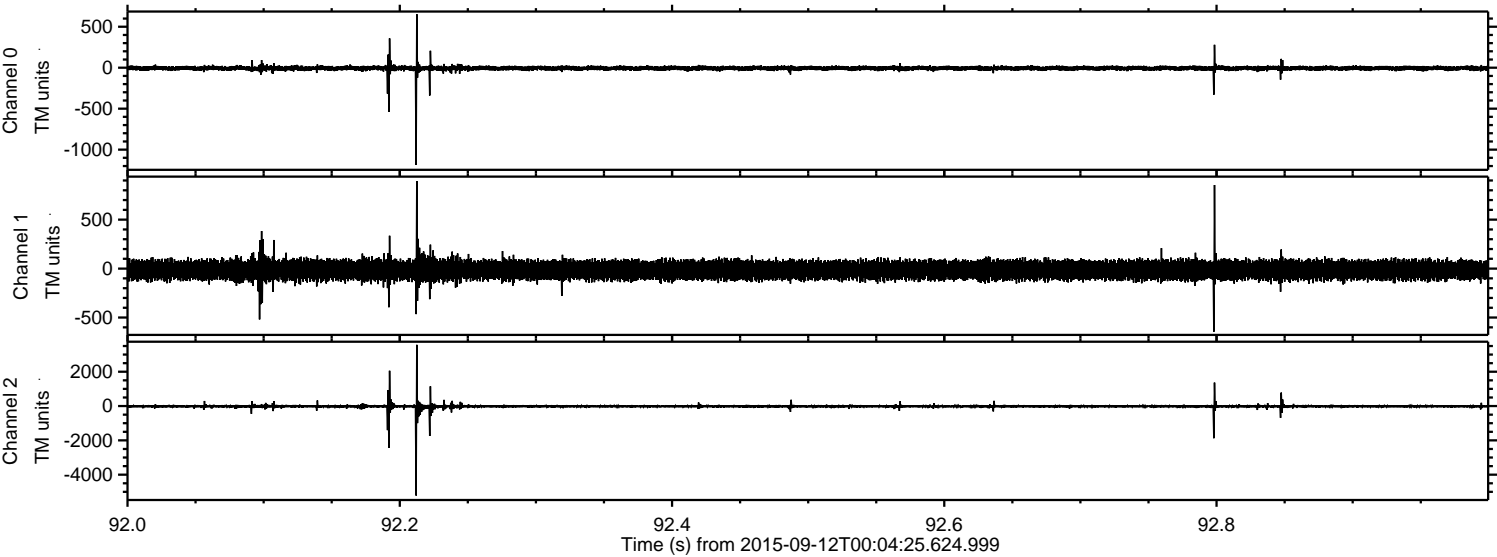


Channel 0
mn: -1332
mx: 1535
 μ : -6.4
 σ : 18.8

Channel 1
mn: -341
mx: 423
 μ : -14.6
 σ : 46.9

Channel 2
mn: -4744
mx: 5439
 μ : -16.8
 σ : 66.3

Processed Sun Oct 11 18:10:18 2015 by ELM ver.2012-10-06 from 001__elm20150912_000424__dat00.bin



Channel 0
mn: -1187
mx: 653
 μ : -6.4
 σ : 17.3

Channel 1
mn: -645
mx: 895
 μ : -14.6
 σ : 49.9

Channel 2
mn: -5213
mx: 3571
 μ : -16.9
 σ : 65.4

