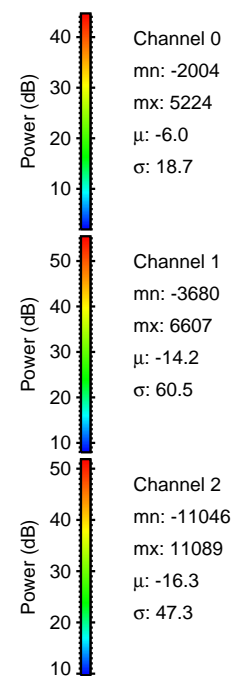
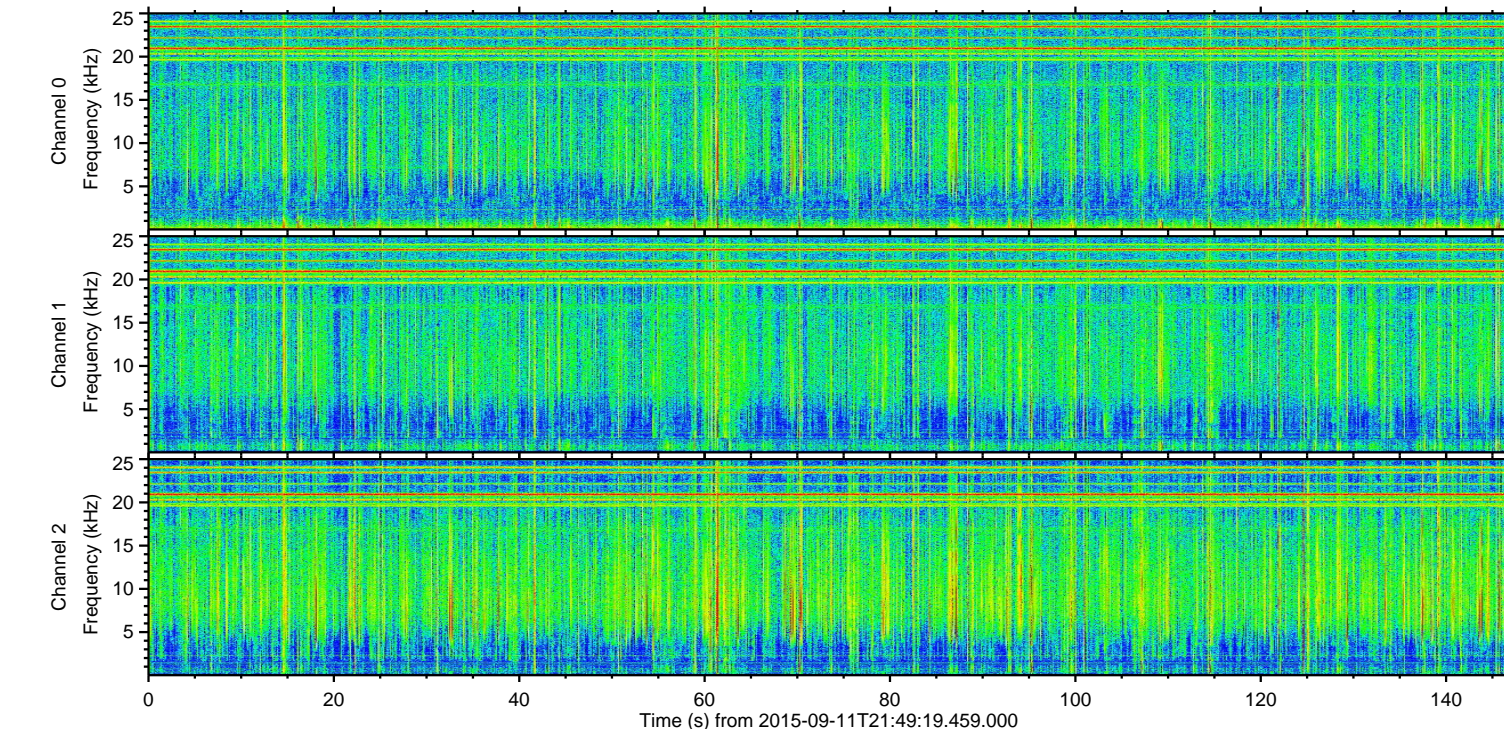
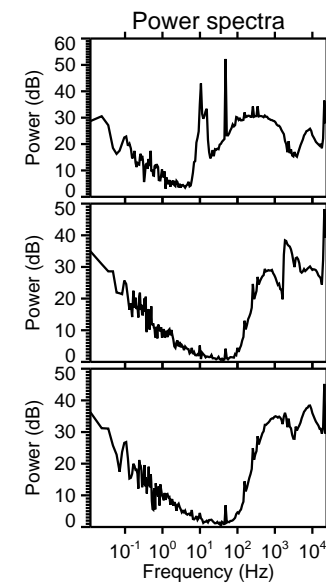
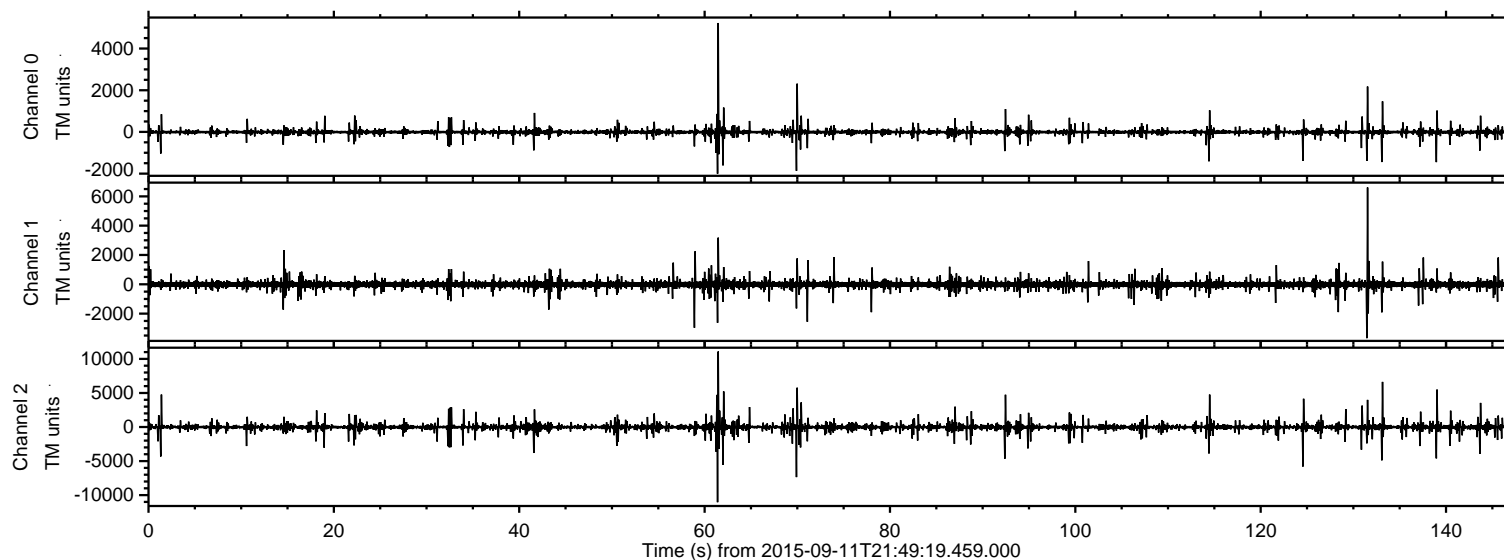
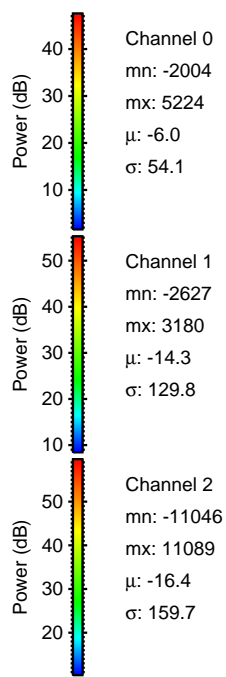
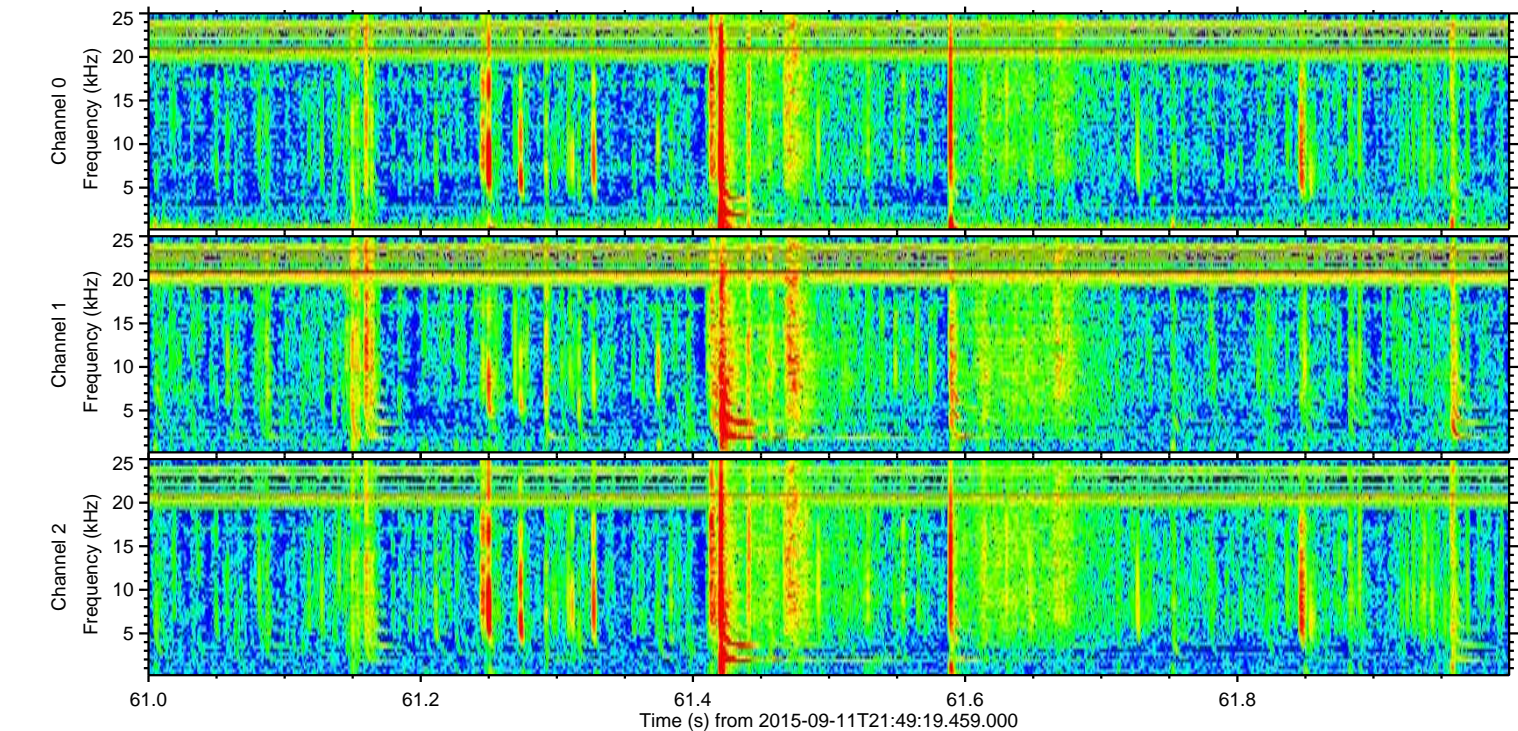
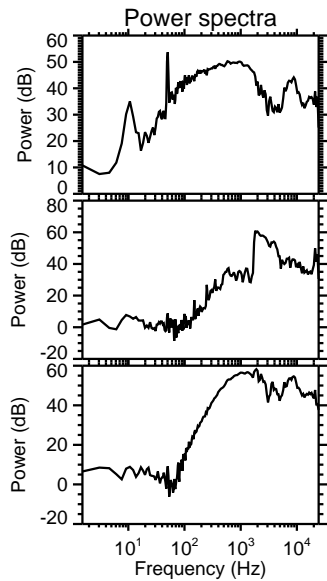
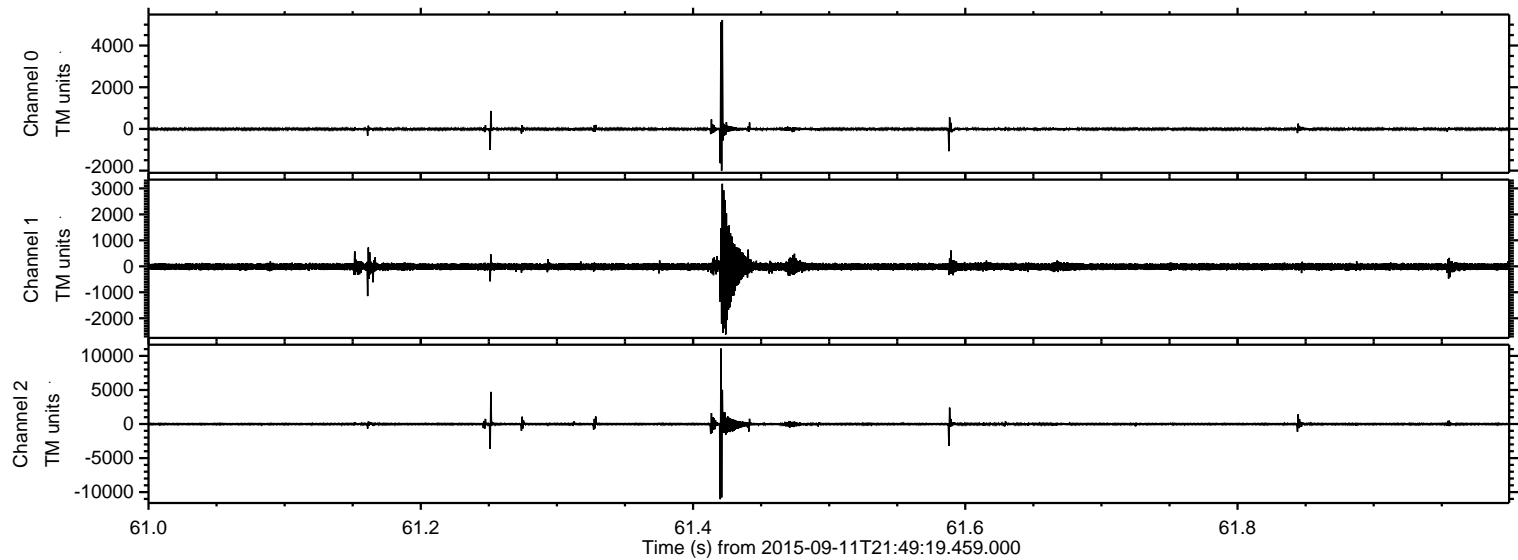


ELMAVAN 3D WAVEFORMS (Measured data sampled at 50 kHz) 51000 packets of 144 samples from 2015-09-11T21:49:19.459.000.

Processed Sun Oct 11 17:32:52 2015 by ELM ver.2012-10-06 from 001__elm20150911_214918__dat00.bin

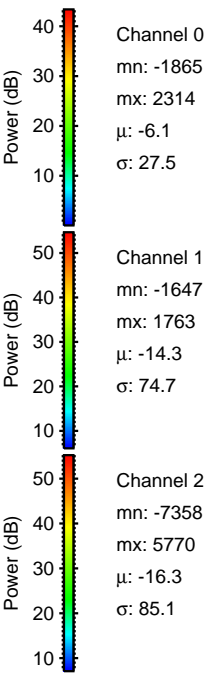
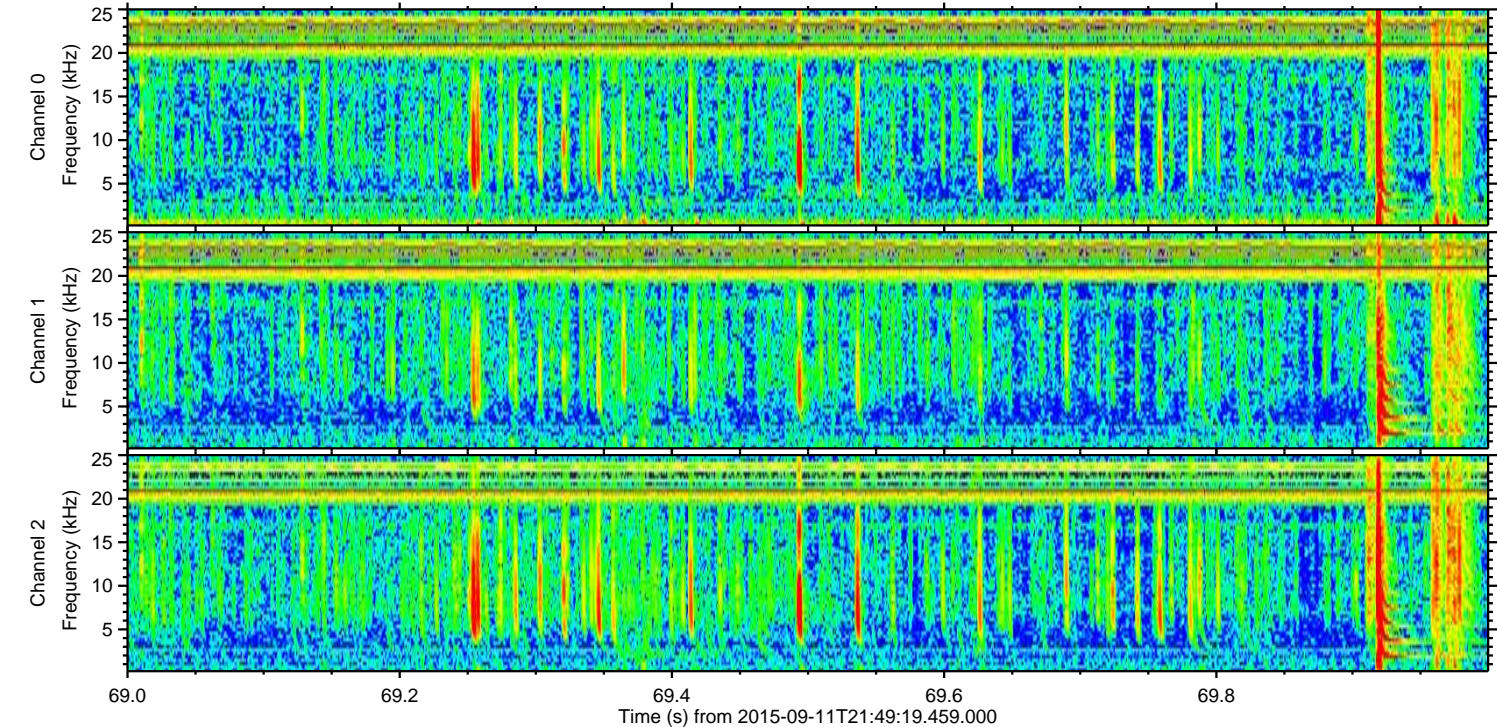
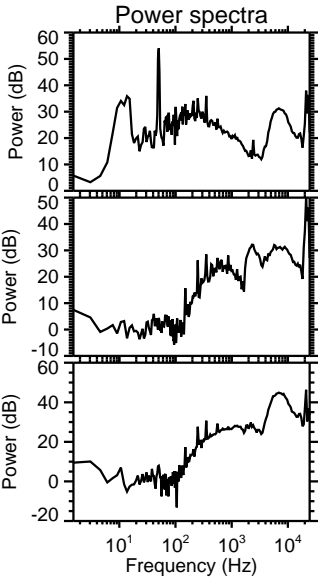
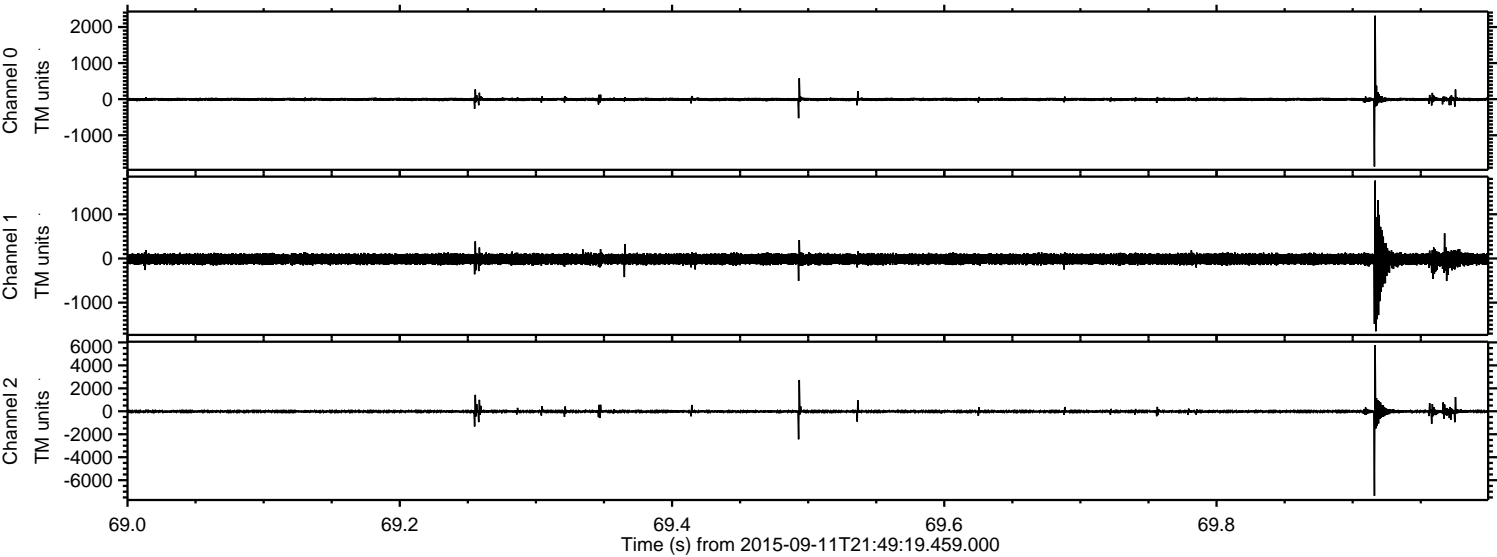


Processed Sun Oct 11 17:33:08 2015 by ELM ver.2012-10-06 from 001__elm20150911_214918__dat00.bin



ELMAVAN 3D WAVEFORMS (Measured data sampled at 50 kHz) 51000 packets of 144 samples from 2015-09-11T21:49:19.459.000. Part 70/147

Processed Sun Oct 11 17:33:09 2015 by ELM ver.2012-10-06 from 001__elm20150911_214918__dat00.bin



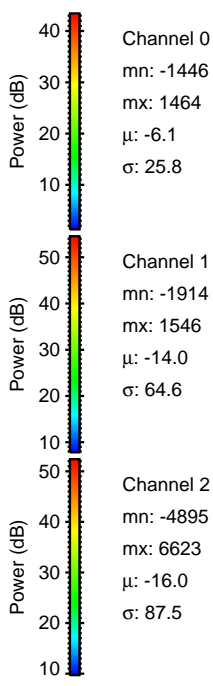
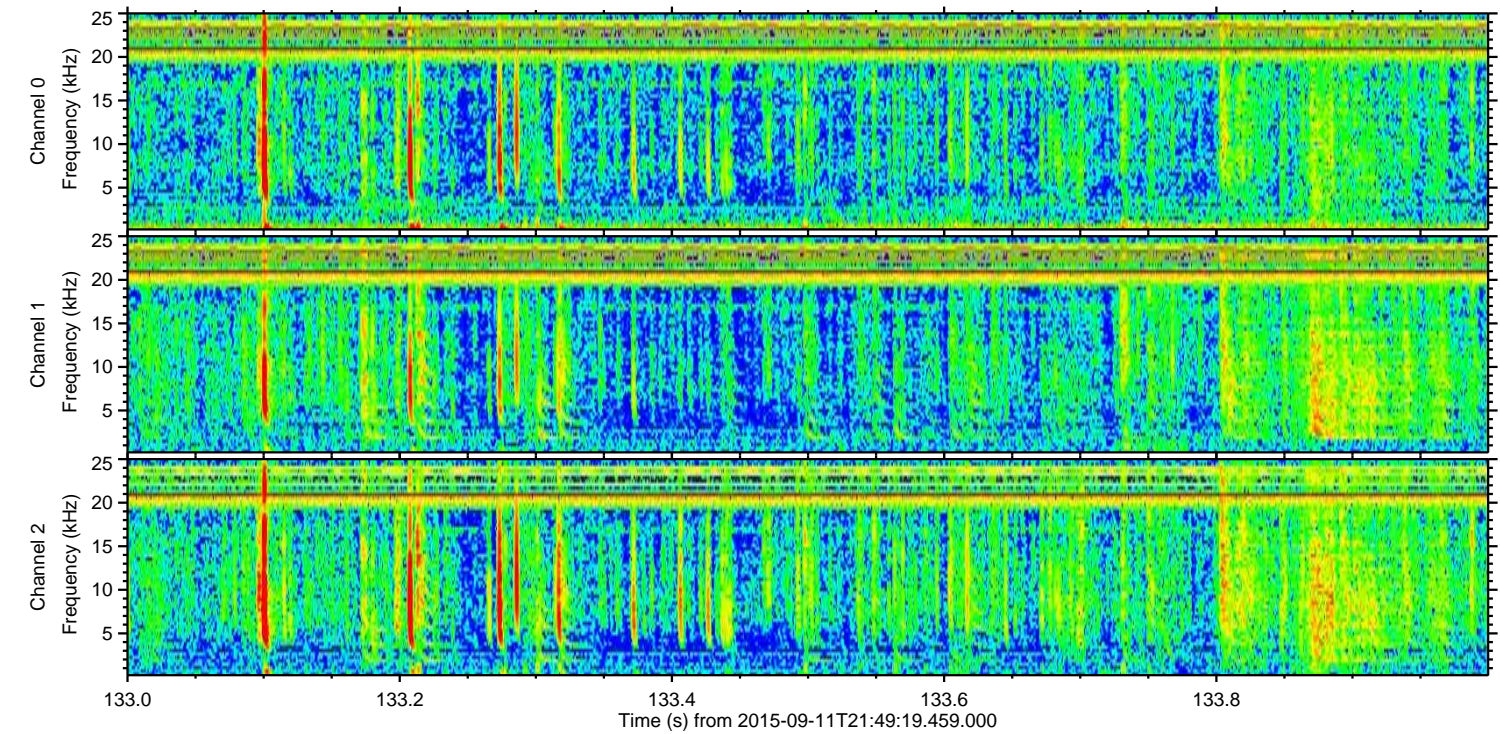
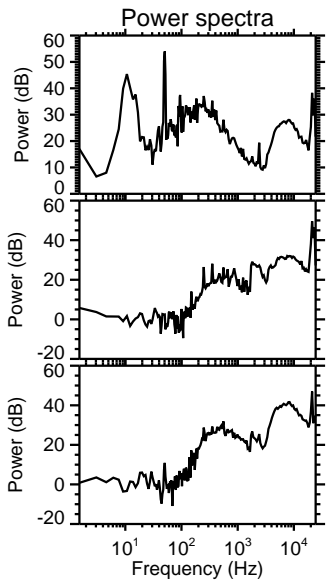
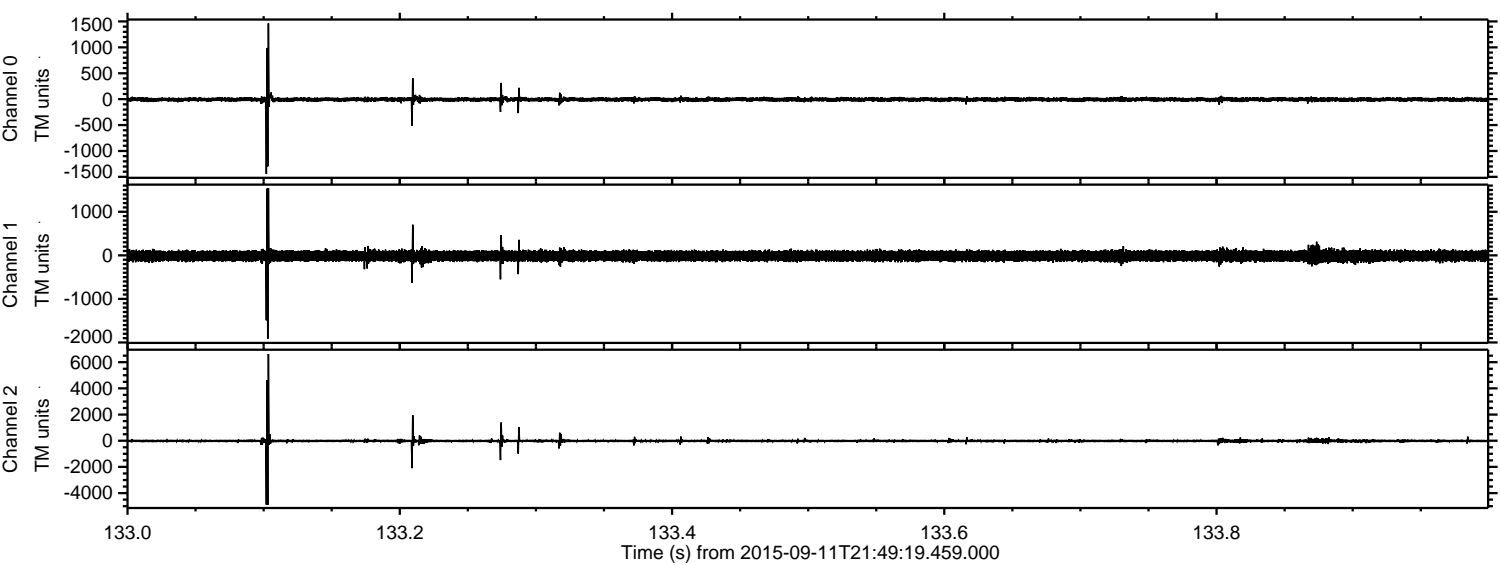
Channel 0
mn: -1865
mx: 2314
 μ : -6.1
 σ : 27.5

Channel 1
mn: -1647
mx: 1763
 μ : -14.3
 σ : 74.7

Channel 2
mn: -7358
mx: 5770
 μ : -16.3
 σ : 85.1

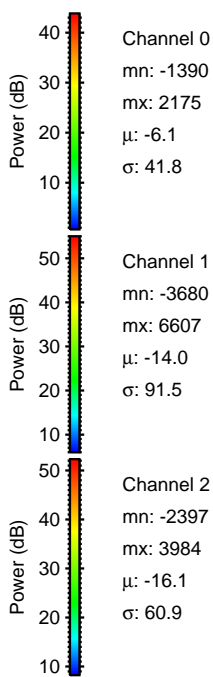
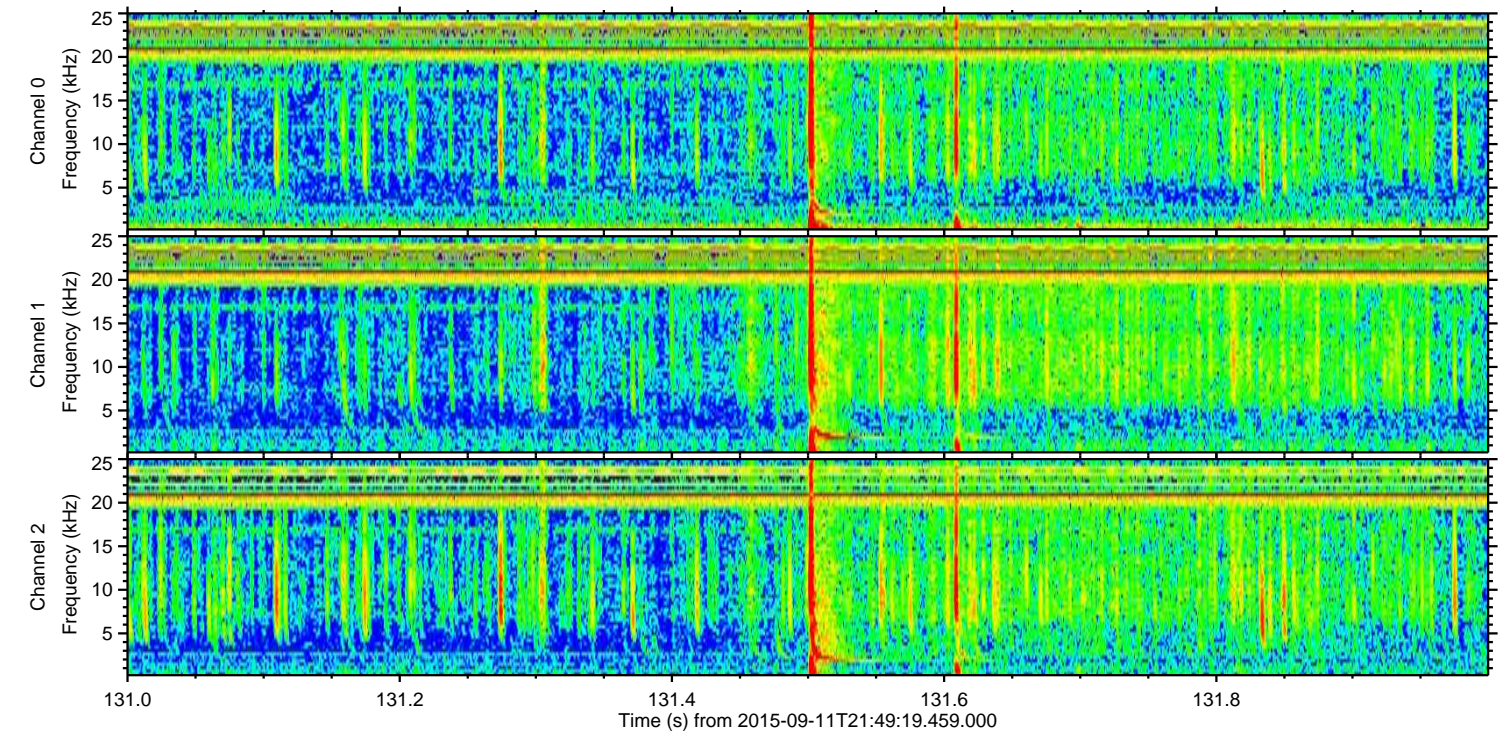
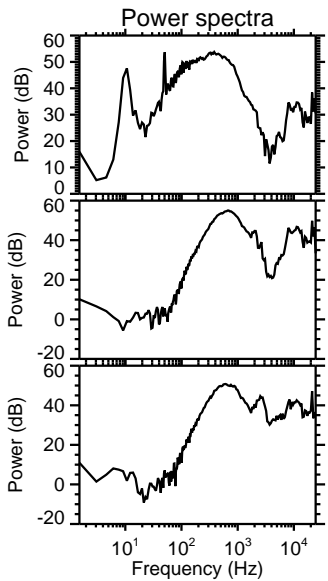
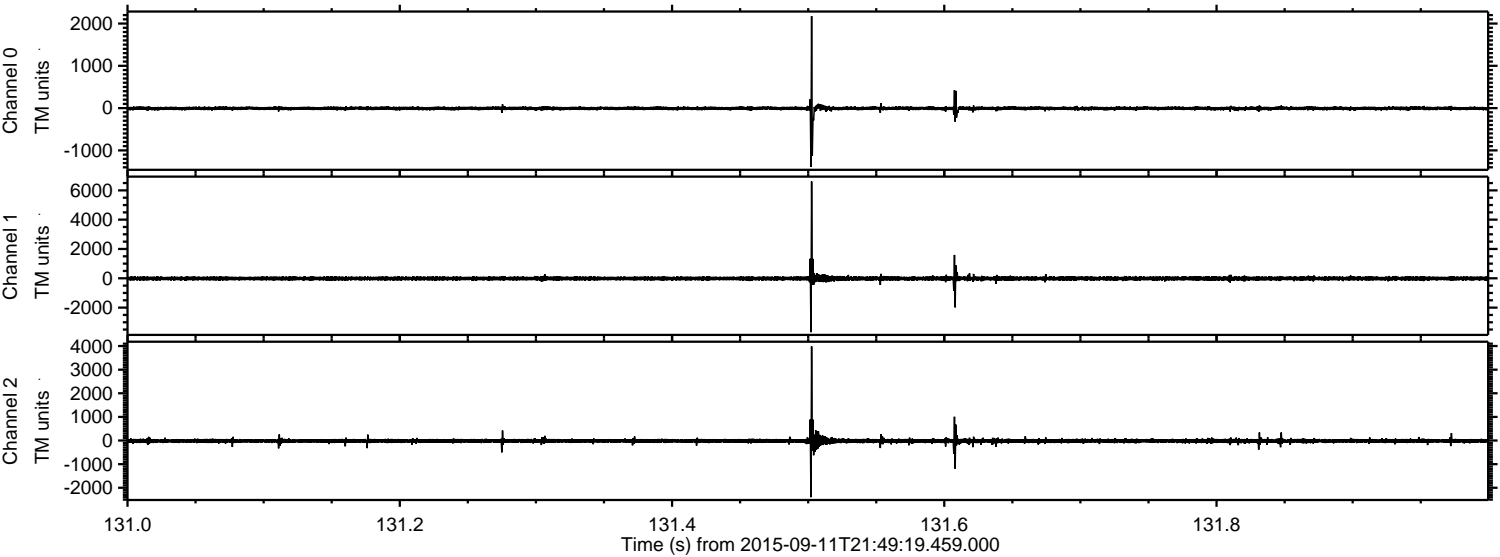
ELMAVAN 3D WAVEFORMS (Measured data sampled at 50 kHz) 51000 packets of 144 samples from 2015-09-11T21:49:19.459.000. Part 134/147

Processed Sun Oct 11 17:33:10 2015 by ELM ver.2012-10-06 from 001__elm20150911_214918__dat00.bin



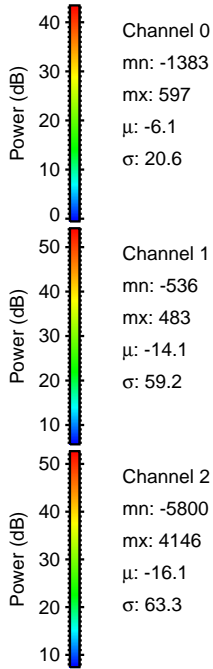
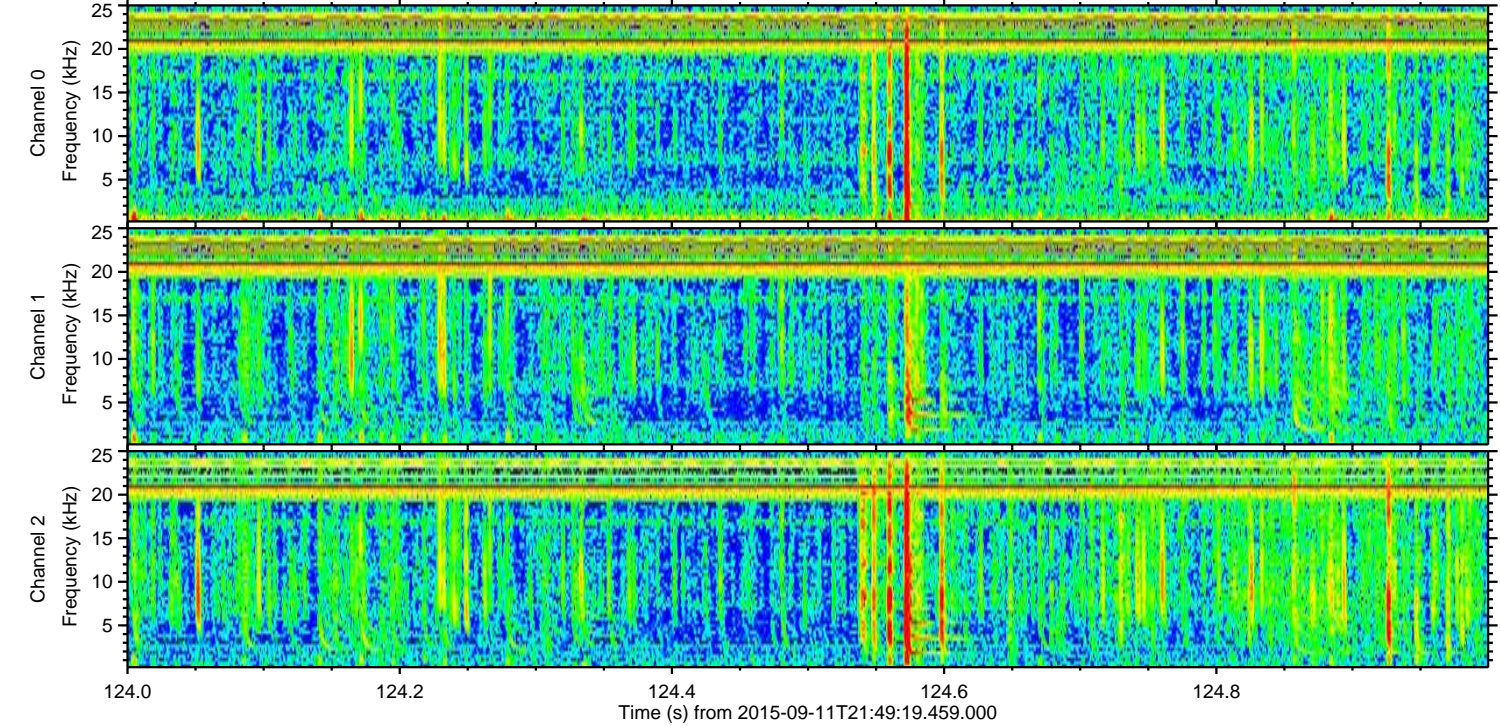
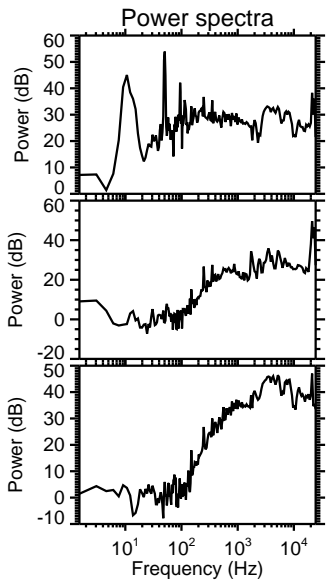
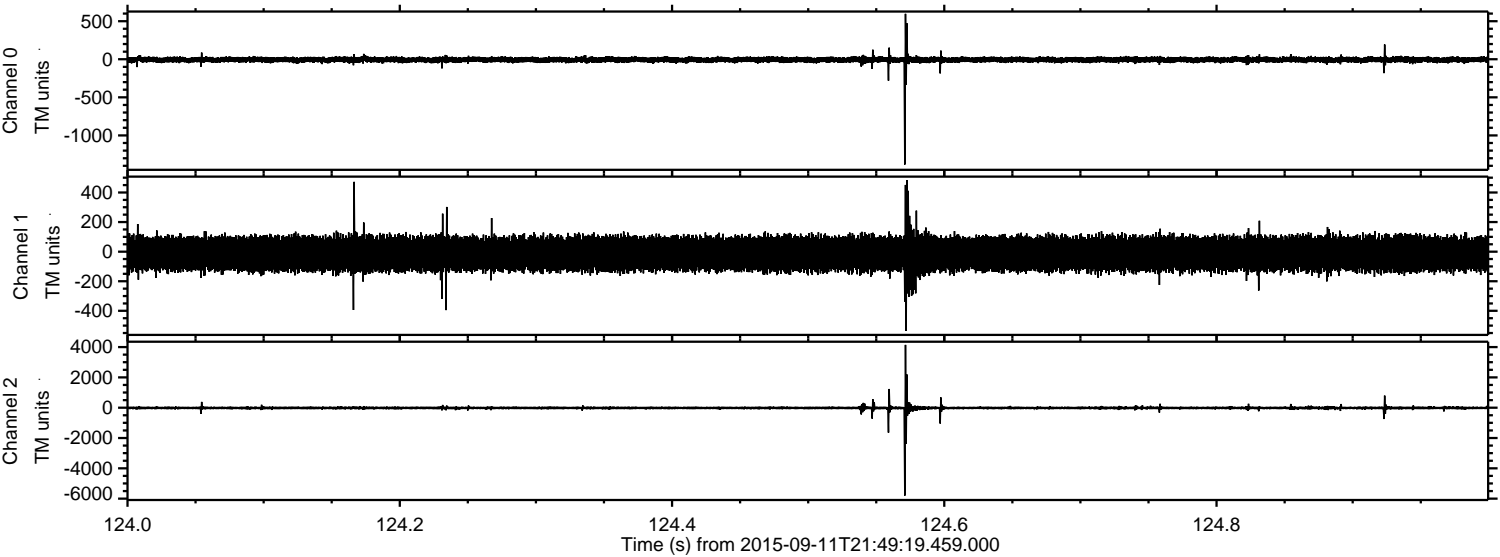
ELMAVAN 3D WAVEFORMS (Measured data sampled at 50 kHz) 51000 packets of 144 samples from 2015-09-11T21:49:19.459.000. Part 132/147

Processed Sun Oct 11 17:33:11 2015 by ELM ver.2012-10-06 from 001__elm20150911_214918__dat00.bin



ELMAVAN 3D WAVEFORMS (Measured data sampled at 50 kHz) 51000 packets of 144 samples from 2015-09-11T21:49:19.459.000. Part 125/147

Processed Sun Oct 11 17:33:12 2015 by ELM ver.2012-10-06 from 001__elm20150911_214918__dat00.bin

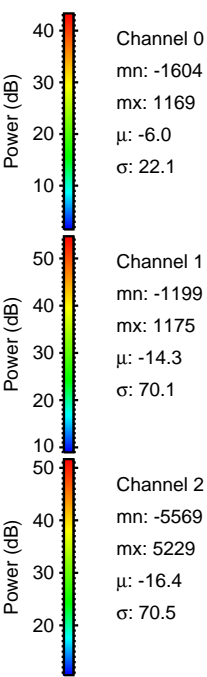
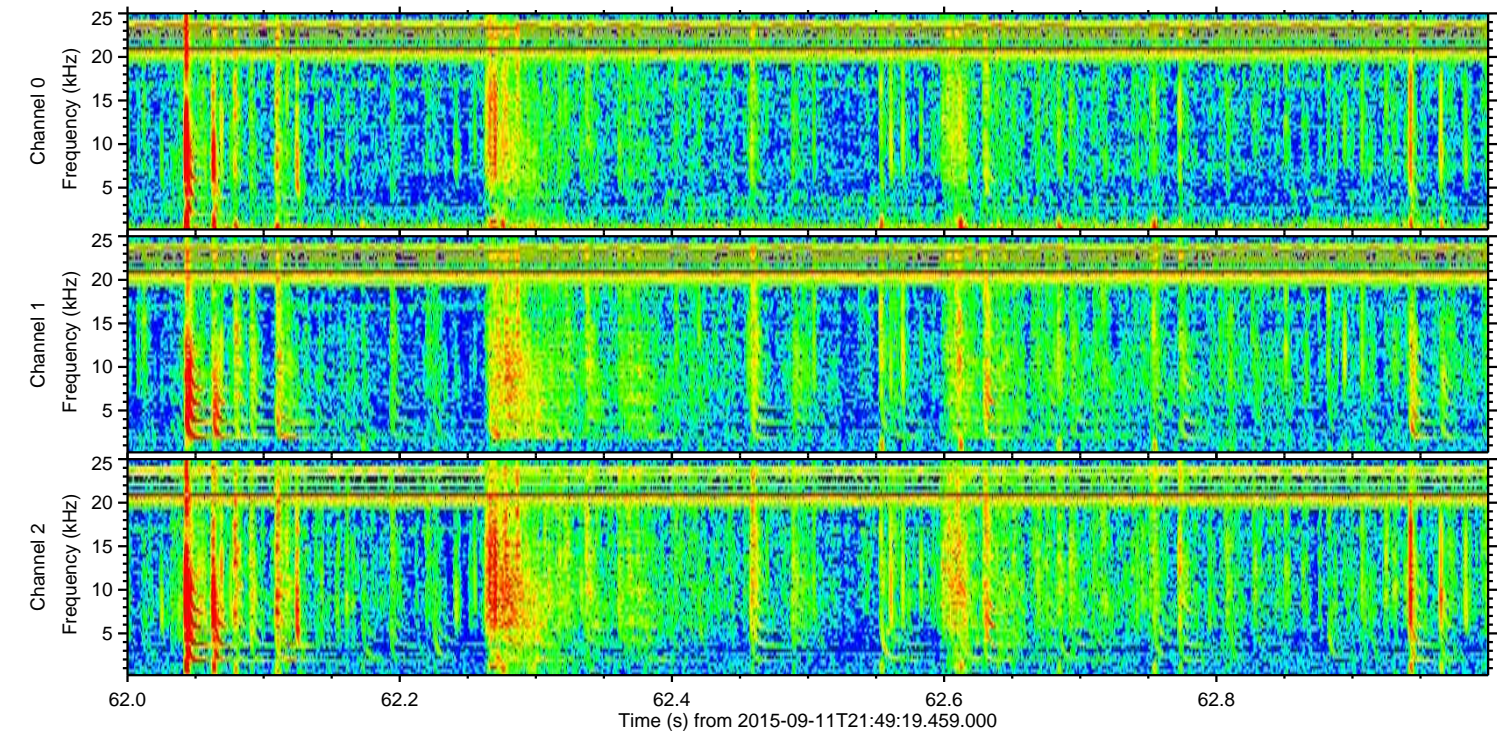
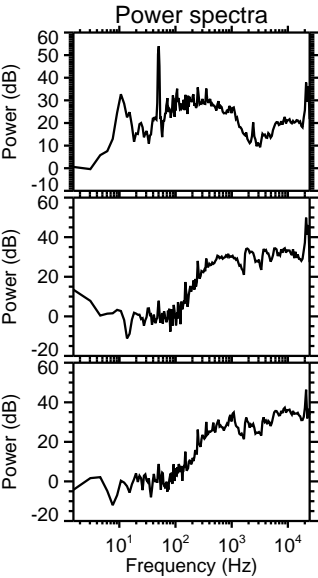
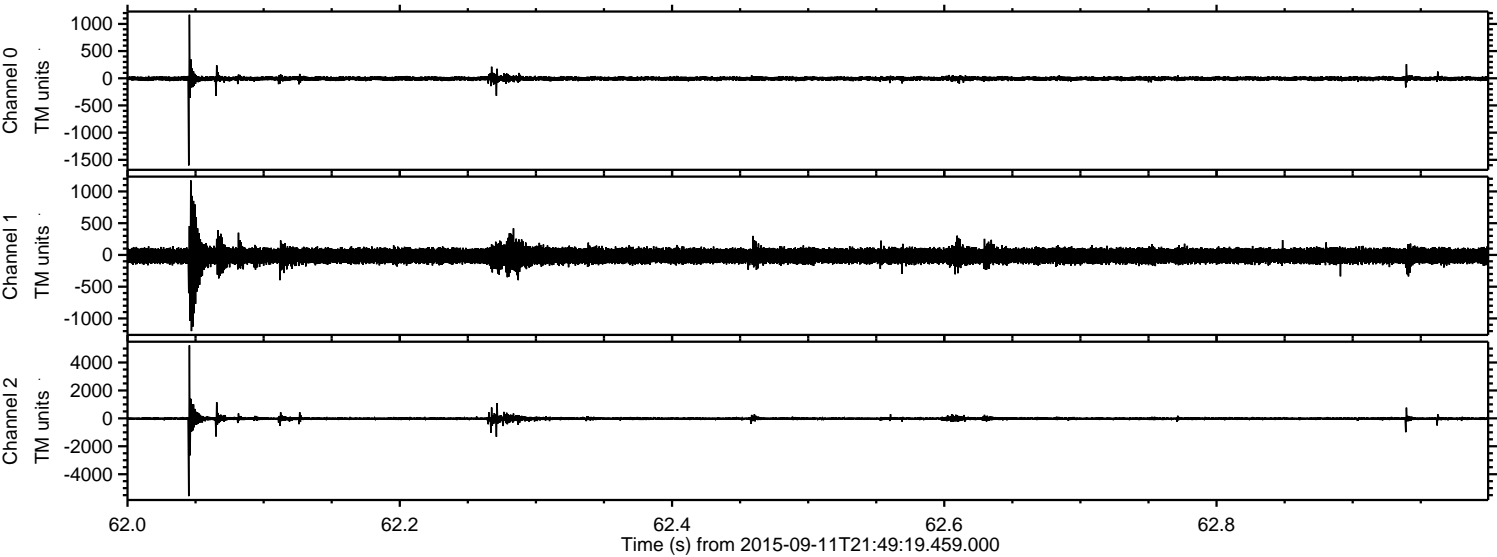


Channel 0
mn: -1383
mx: 597
 μ : -6.1
 σ : 20.6

Channel 1
mn: -536
mx: 483
 μ : -14.1
 σ : 59.2

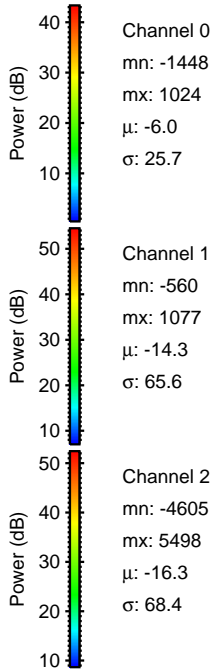
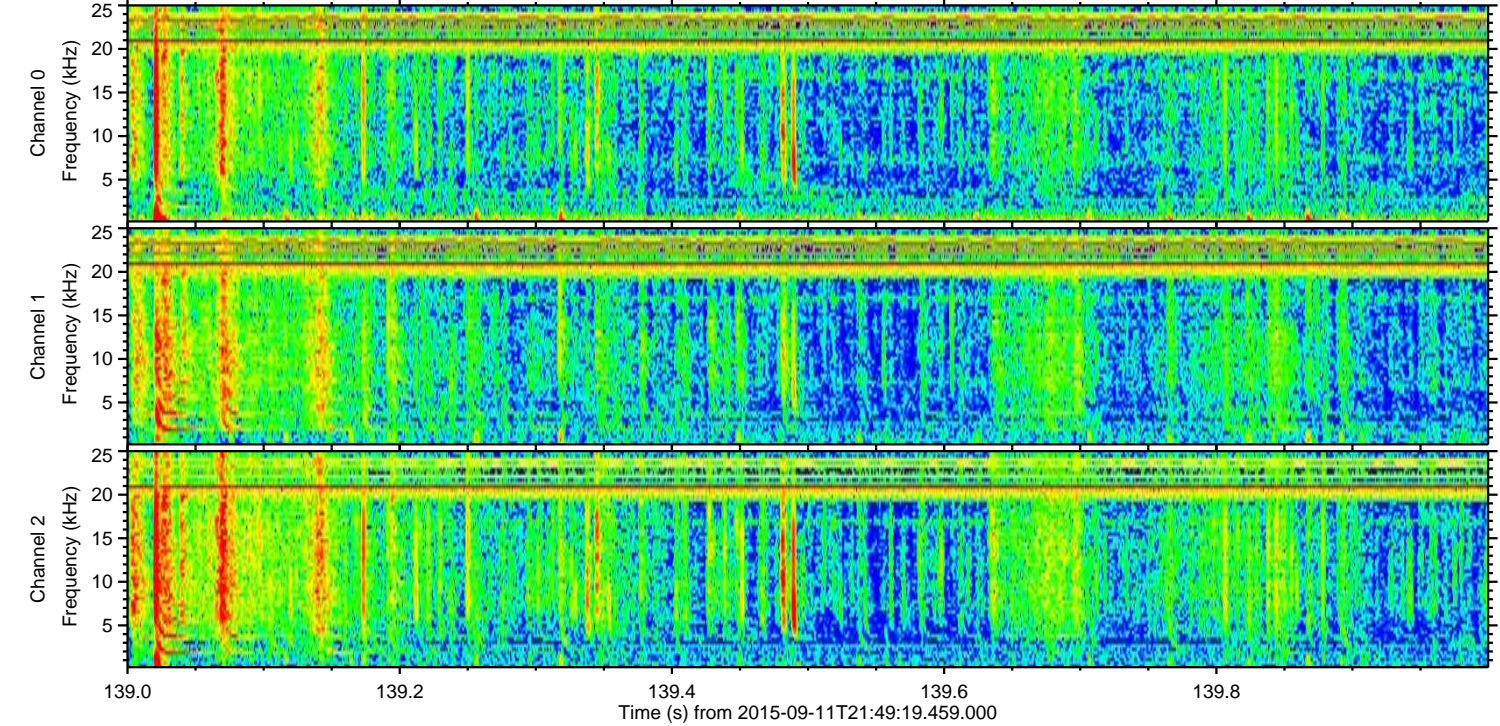
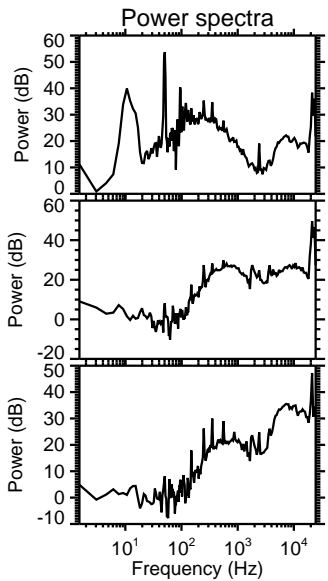
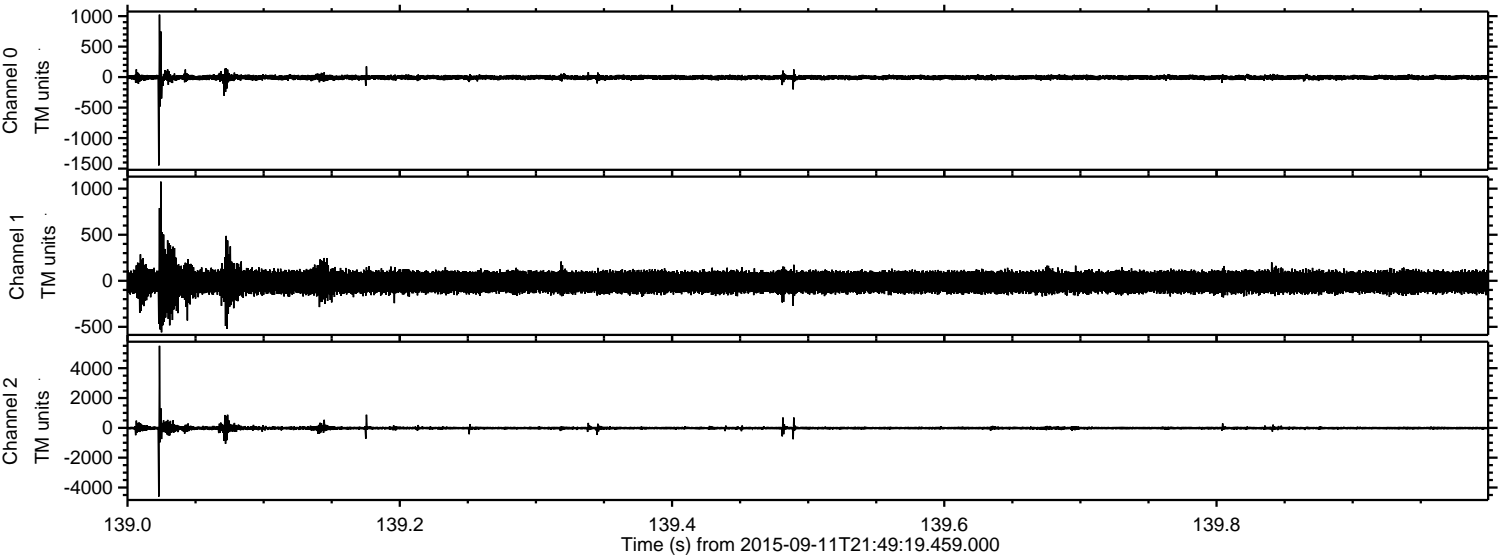
Channel 2
mn: -5800
mx: 4146
 μ : -16.1
 σ : 63.3

Processed Sun Oct 11 17:33:13 2015 by ELM ver.2012-10-06 from 001__elm20150911_214918__dat00.bin

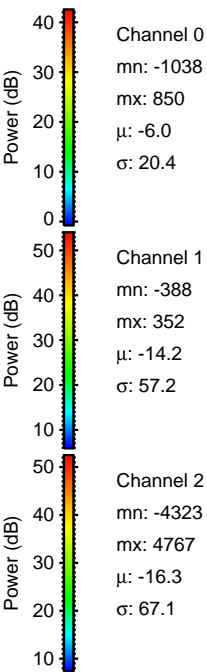
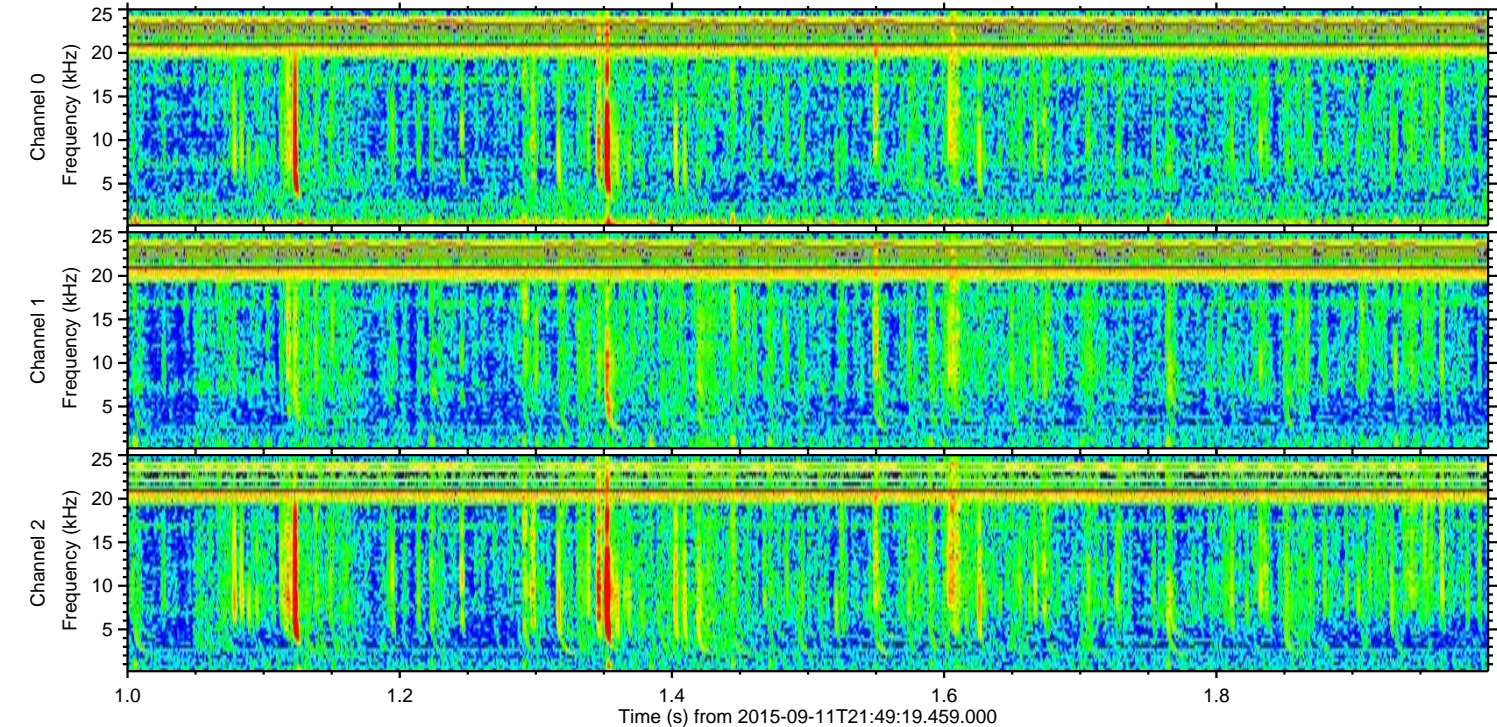
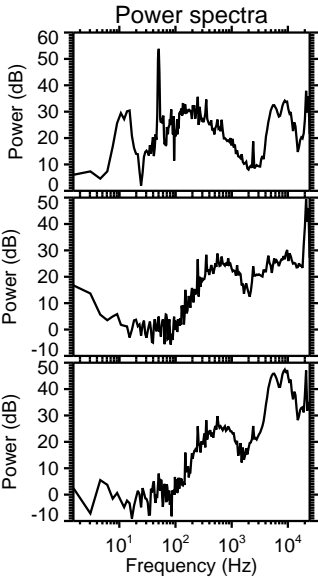
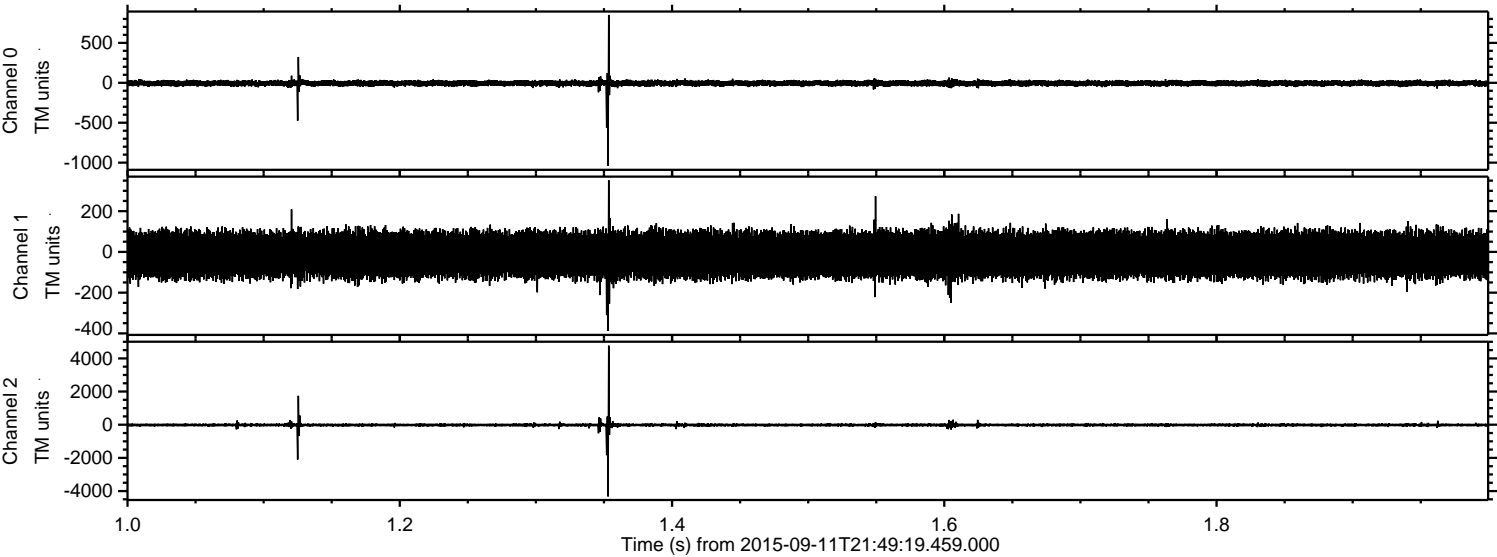


ELMAVAN 3D WAVEFORMS (Measured data sampled at 50 kHz) 51000 packets of 144 samples from 2015-09-11T21:49:19.459.000. Part 140/147

Processed Sun Oct 11 17:33:14 2015 by ELM ver.2012-10-06 from 001__elm20150911_214918__dat00.bin

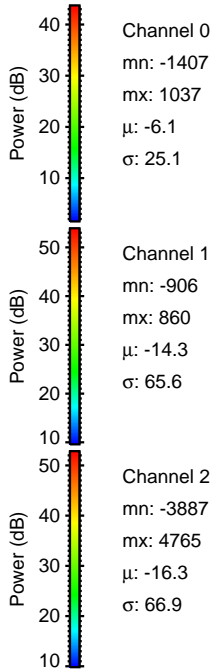
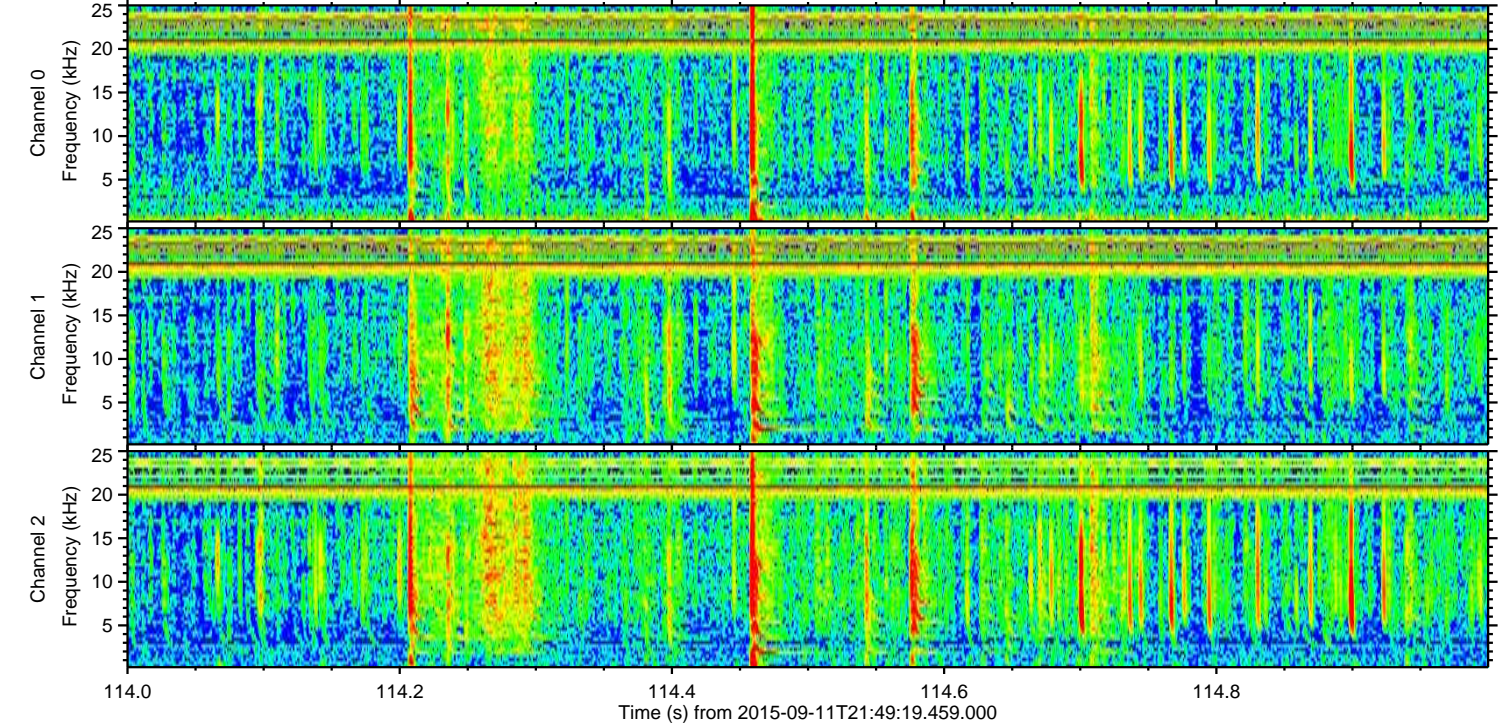
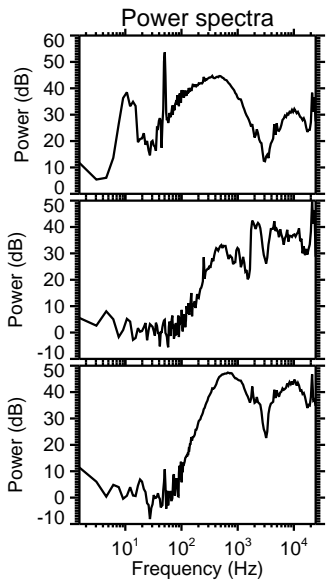
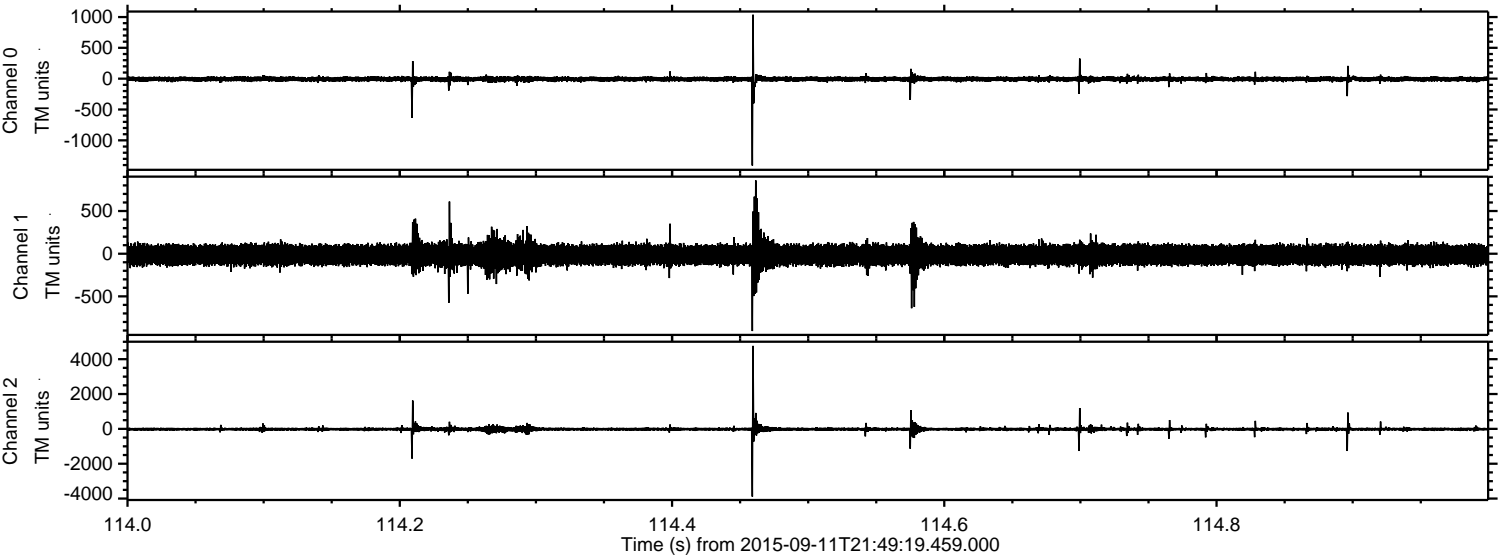


Processed Sun Oct 11 17:33:15 2015 by ELM ver.2012-10-06 from 001__elm20150911_214918__dat00.bin



ELMAVAN 3D WAVEFORMS (Measured data sampled at 50 kHz) 51000 packets of 144 samples from 2015-09-11T21:49:19.459.000. Part 115/147

Processed Sun Oct 11 17:33:16 2015 by ELM ver.2012-10-06 from 001__elm20150911_214918__dat00.bin

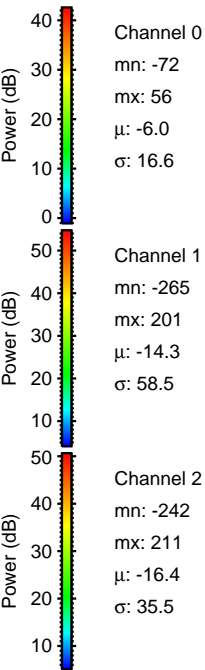
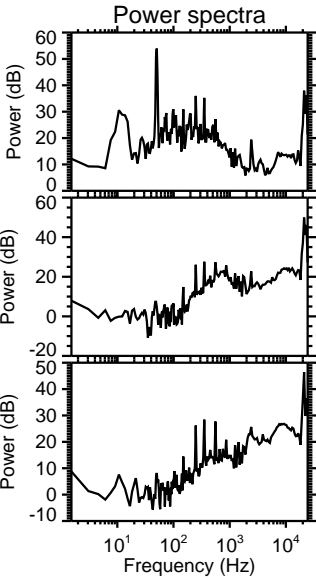
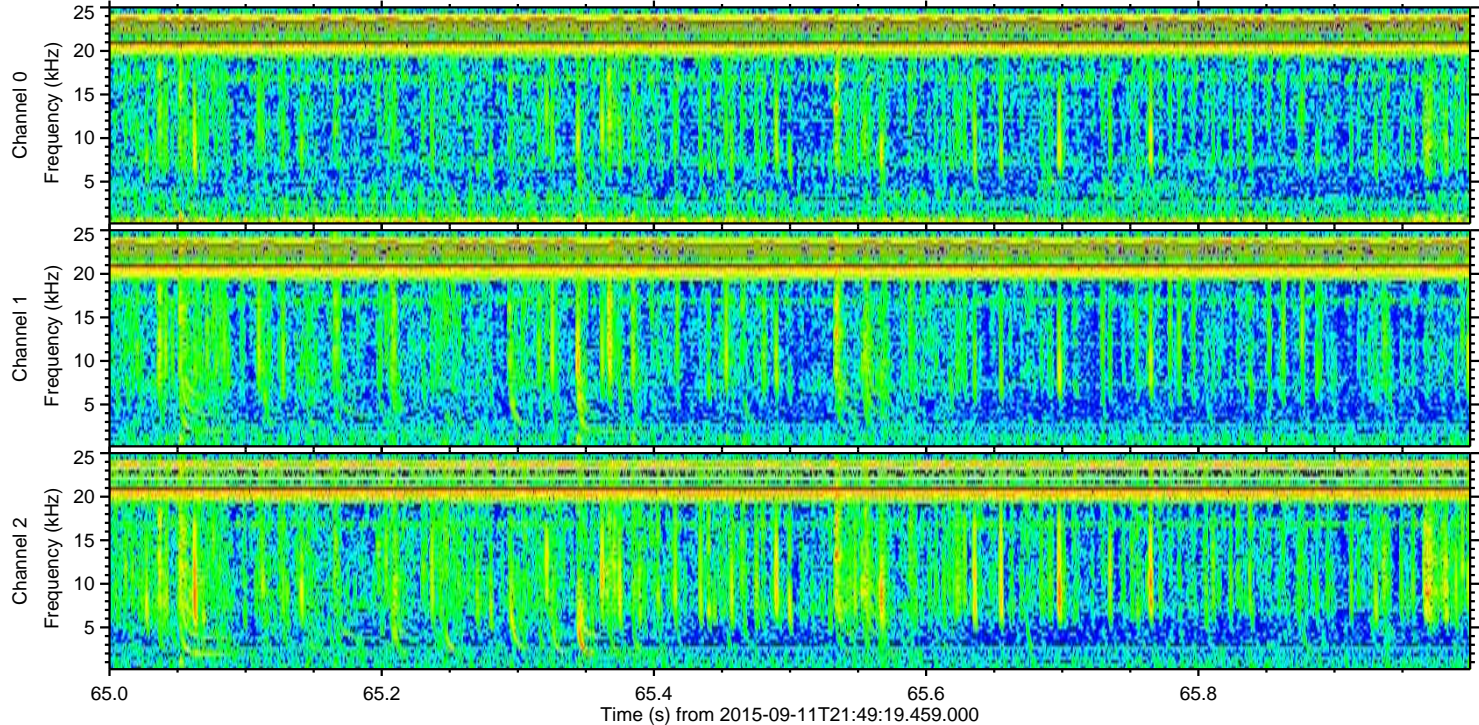
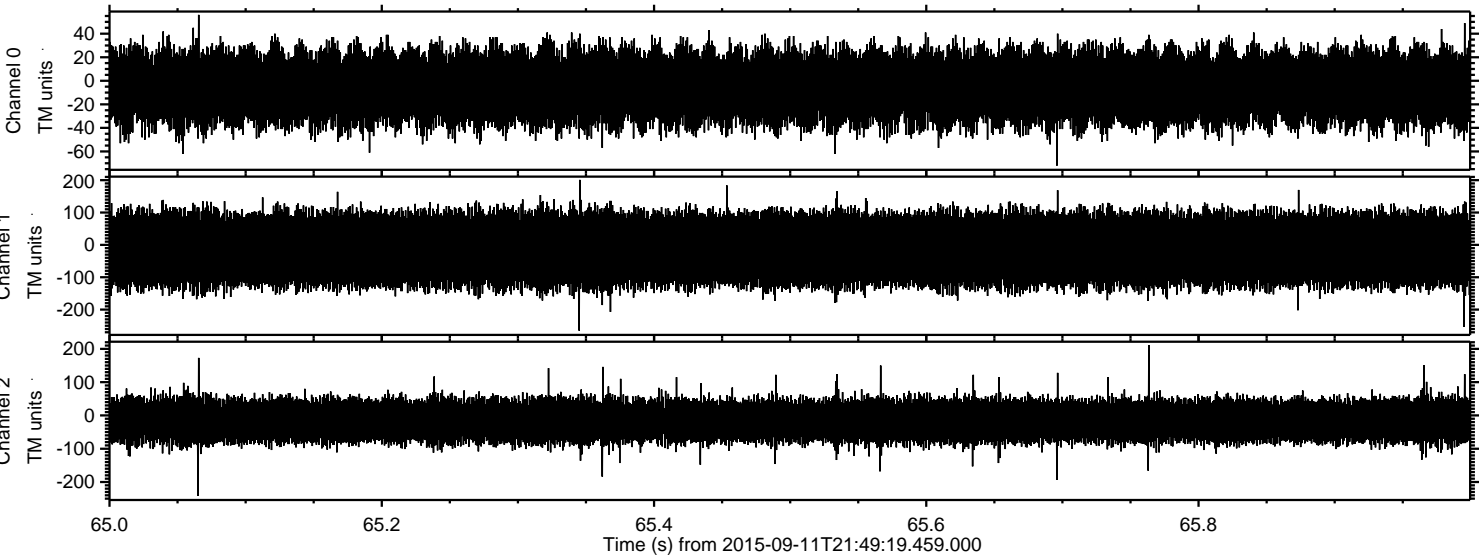


Channel 0
mn: -1407
mx: 1037
 μ : -6.1
 σ : 25.1

Channel 1
mn: -906
mx: 860
 μ : -14.3
 σ : 65.6

Channel 2
mn: -3887
mx: 4765
 μ : -16.3
 σ : 66.9

Processed Sun Oct 11 17:33:17 2015 by ELM ver.2012-10-06 from 001__elm20150911_214918__dat00.bin



Channel 0
mn: -72
mx: 56
 μ : -6.0
 σ : 16.6

Channel 1
mn: -265
mx: 201
 μ : -14.3
 σ : 58.5

Channel 2
mn: -242
mx: 211
 μ : -16.4
 σ : 35.5