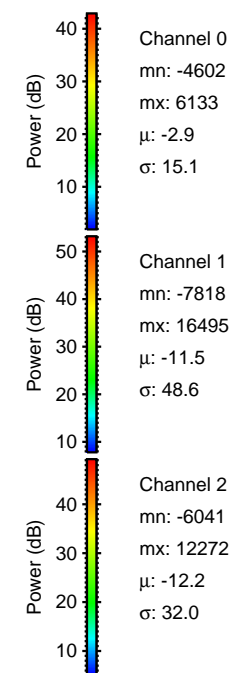
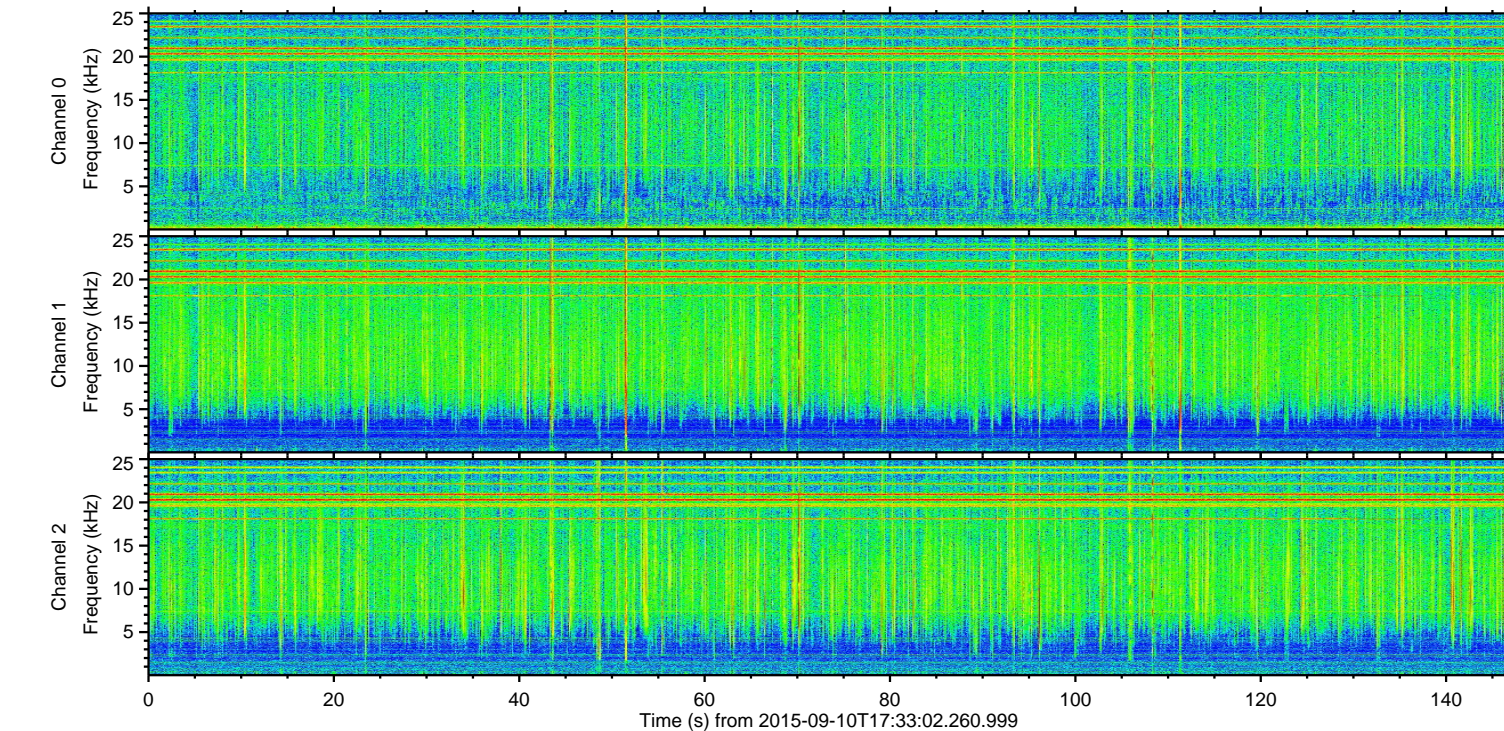
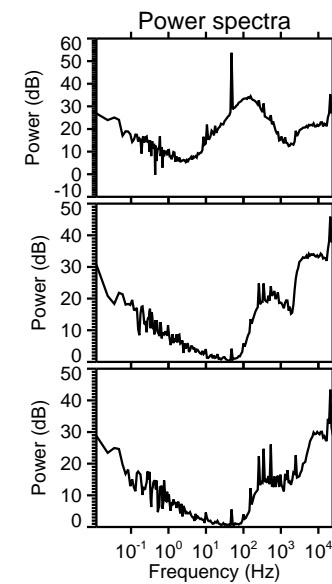
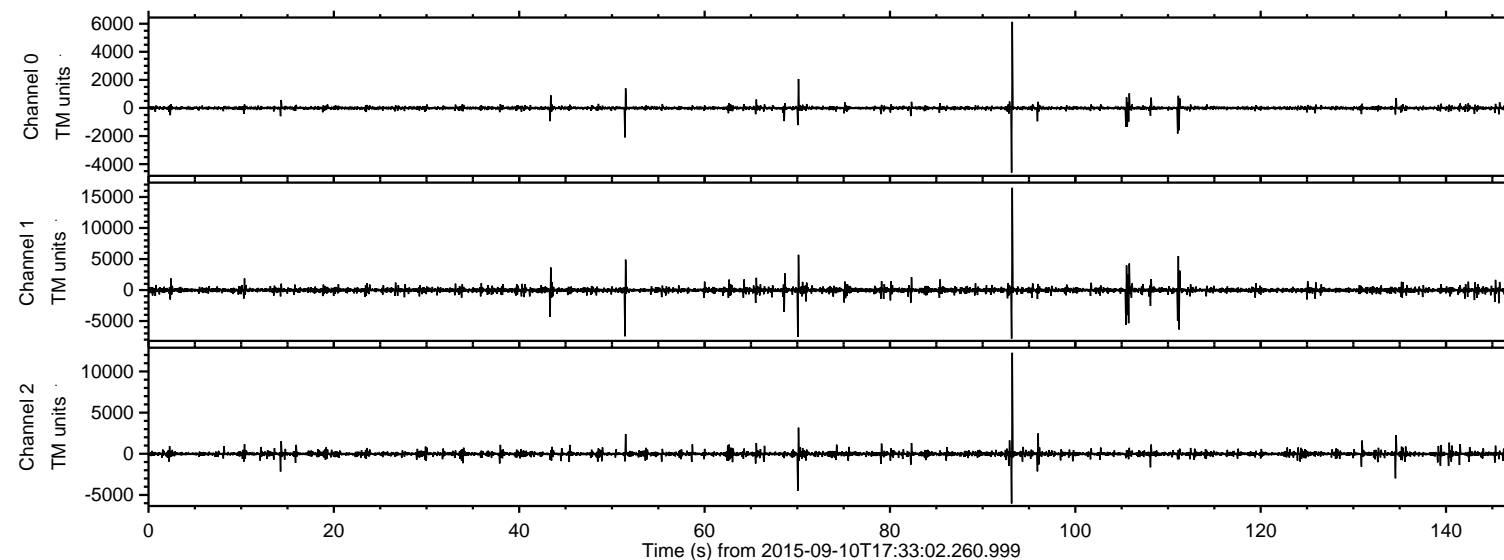
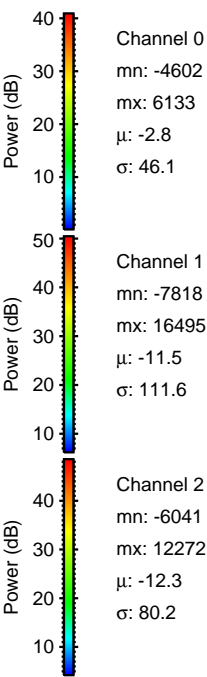
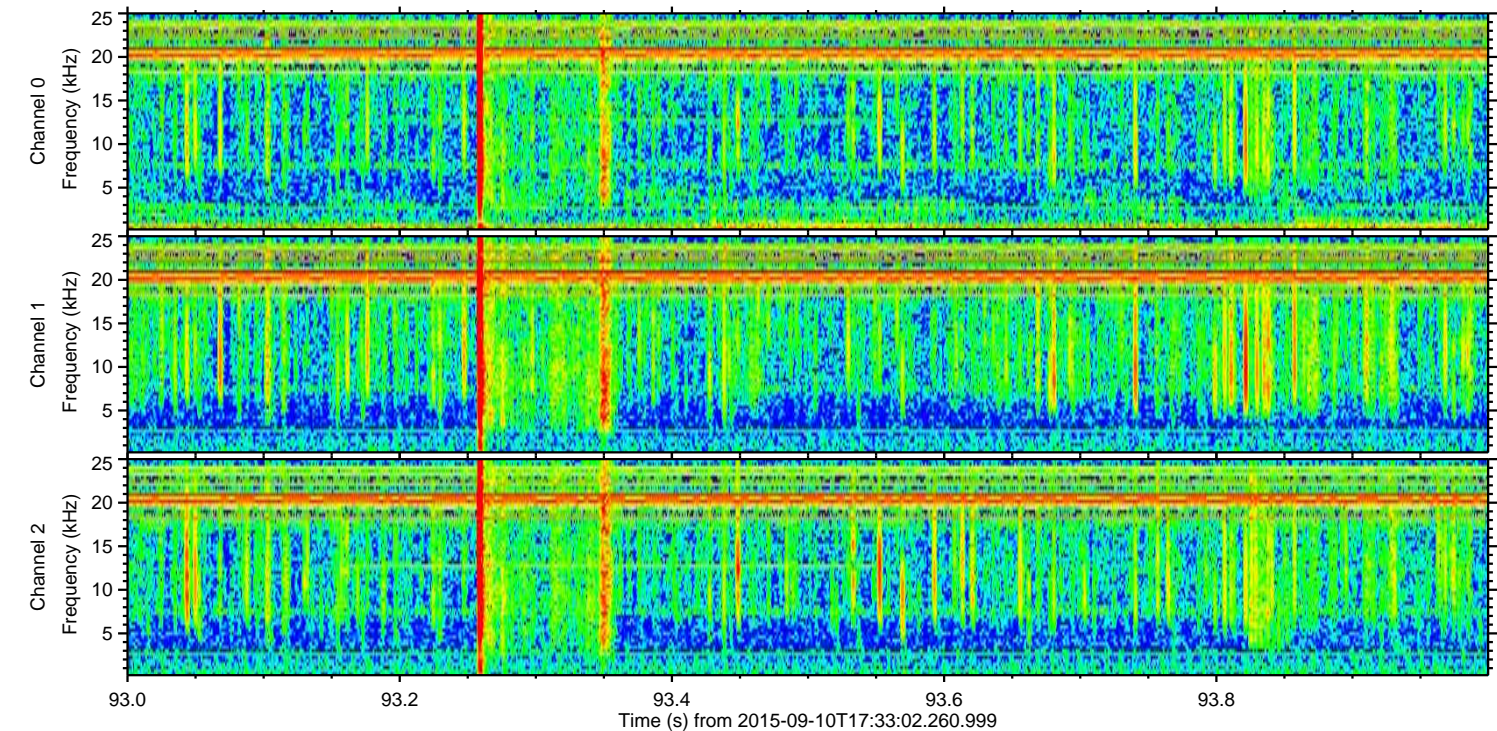
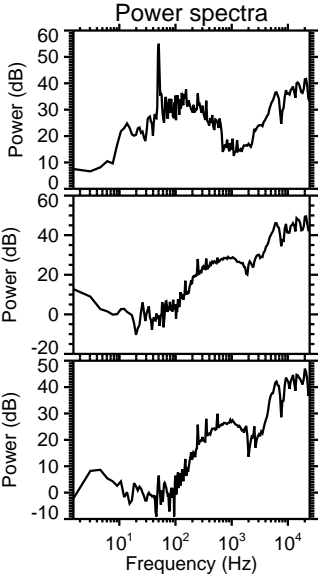
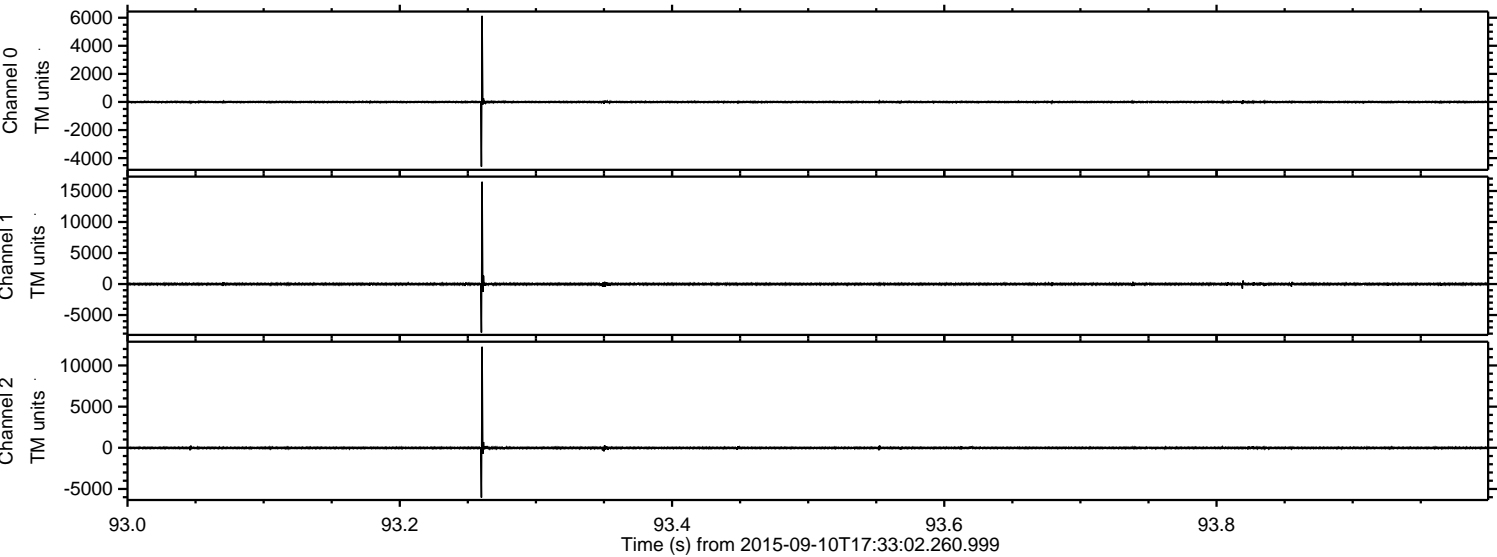


ELMAVAN 3D WAVEFORMS (Measured data sampled at 50 kHz) 51000 packets of 144 samples from 2015-09-10T17:33:02.260.999.

Processed Sun Oct 11 09:37:26 2015 by ELM ver.2012-10-06 from 001__elm20150910_173301__dat00.bin

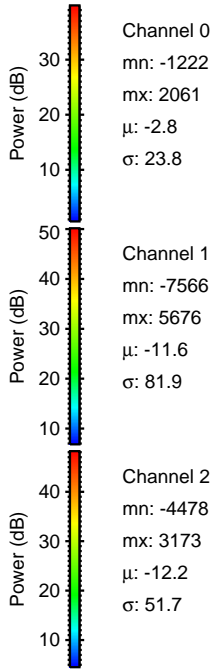
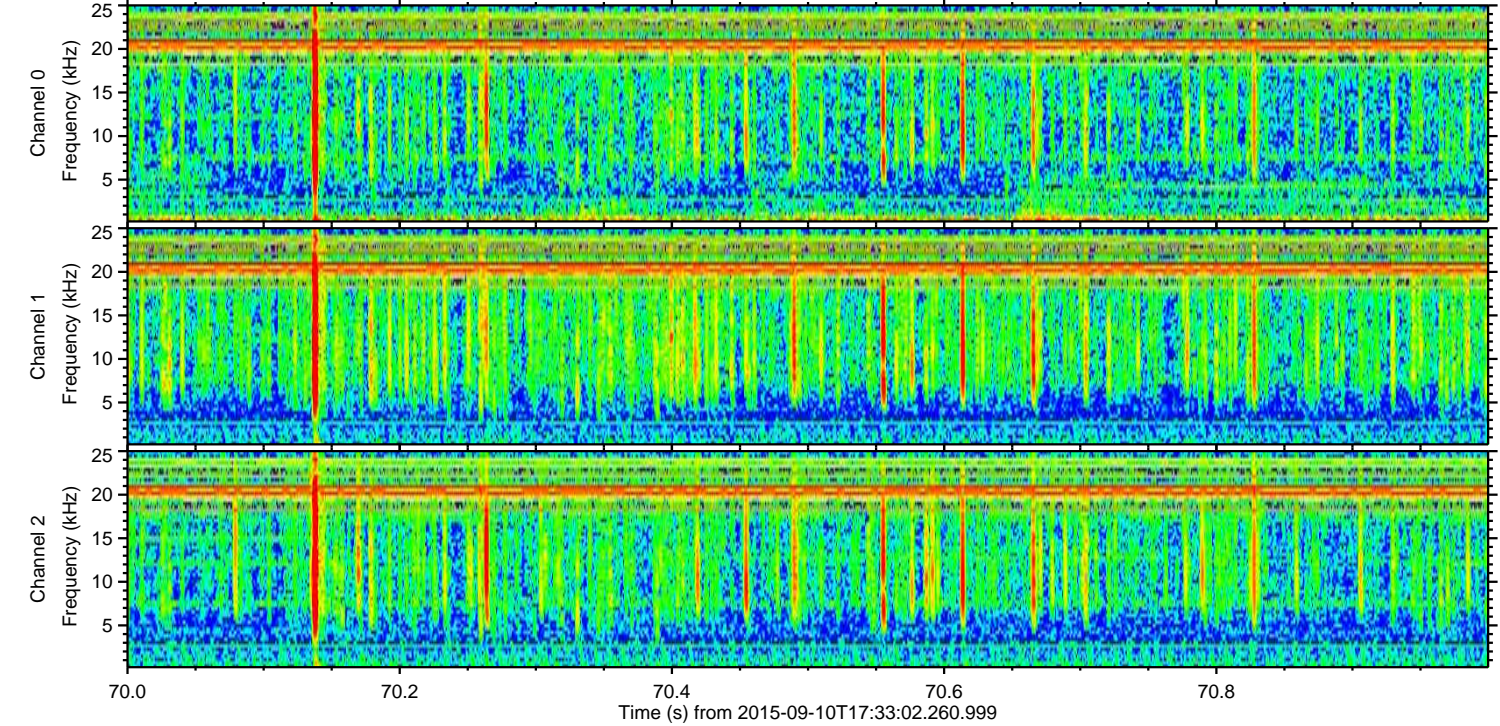
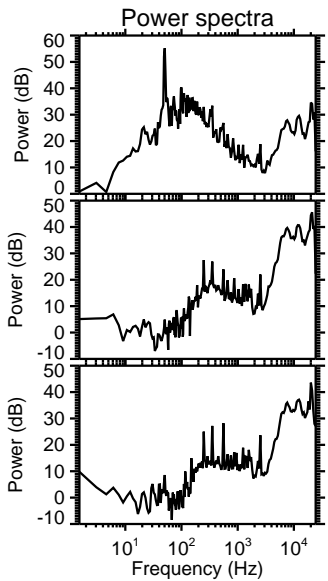
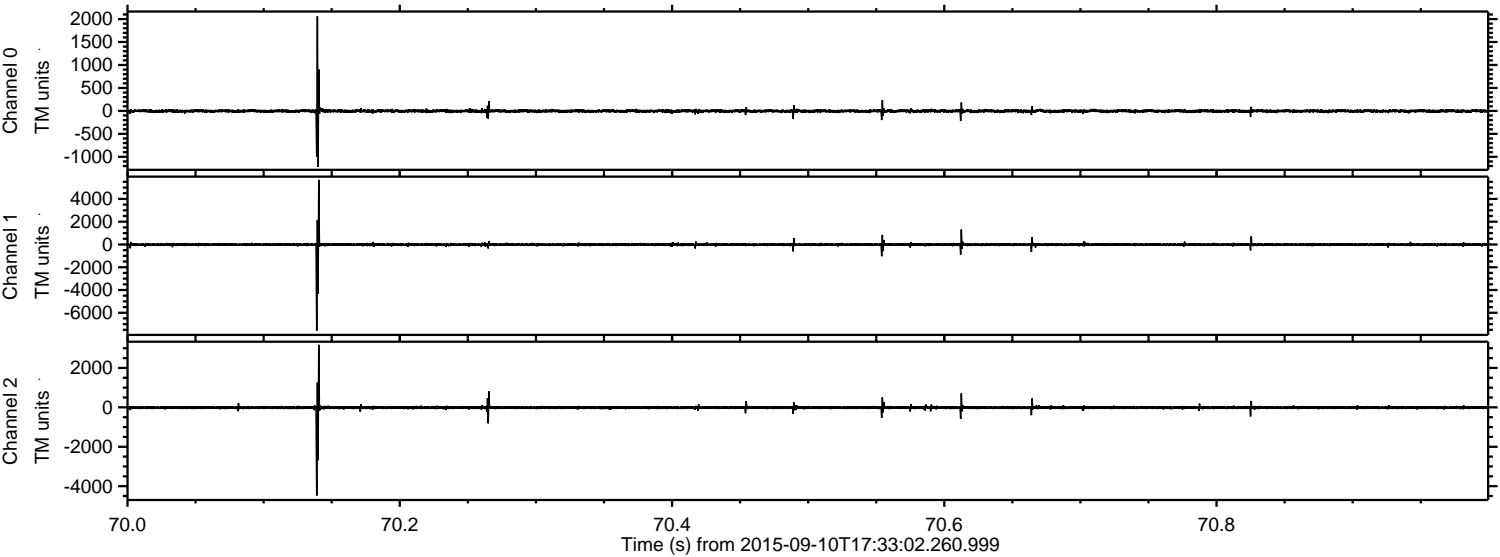


Processed Sun Oct 11 09:37:42 2015 by ELM ver.2012-10-06 from 001__elm20150910_173301__dat00.bin



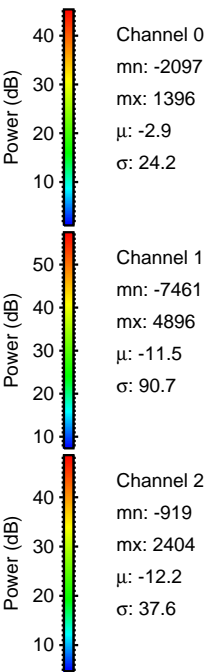
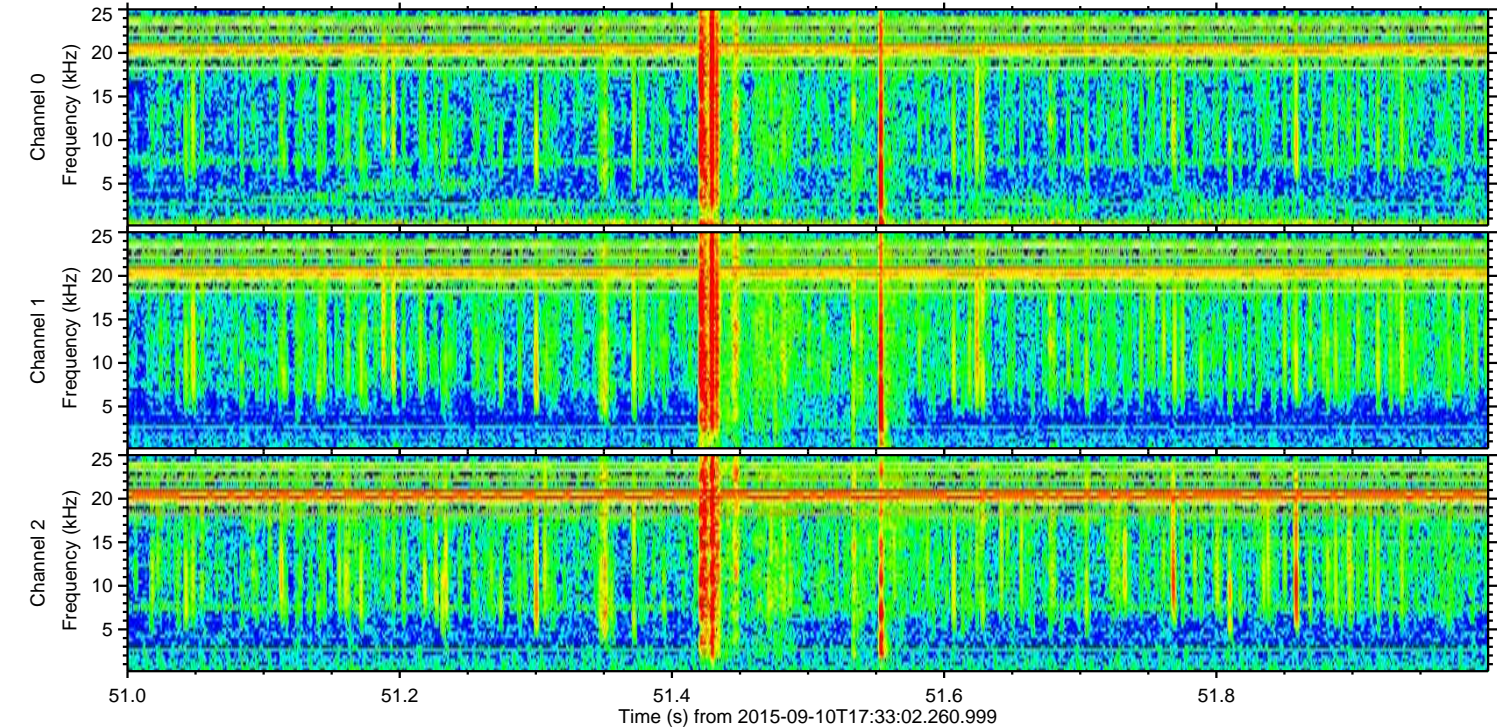
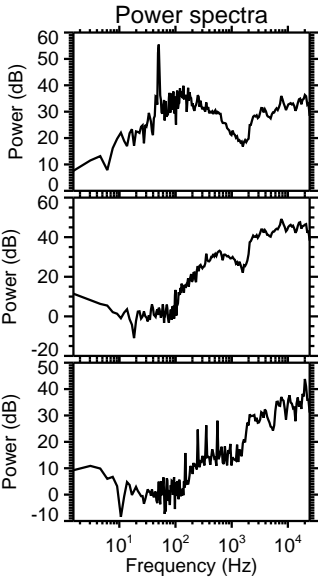
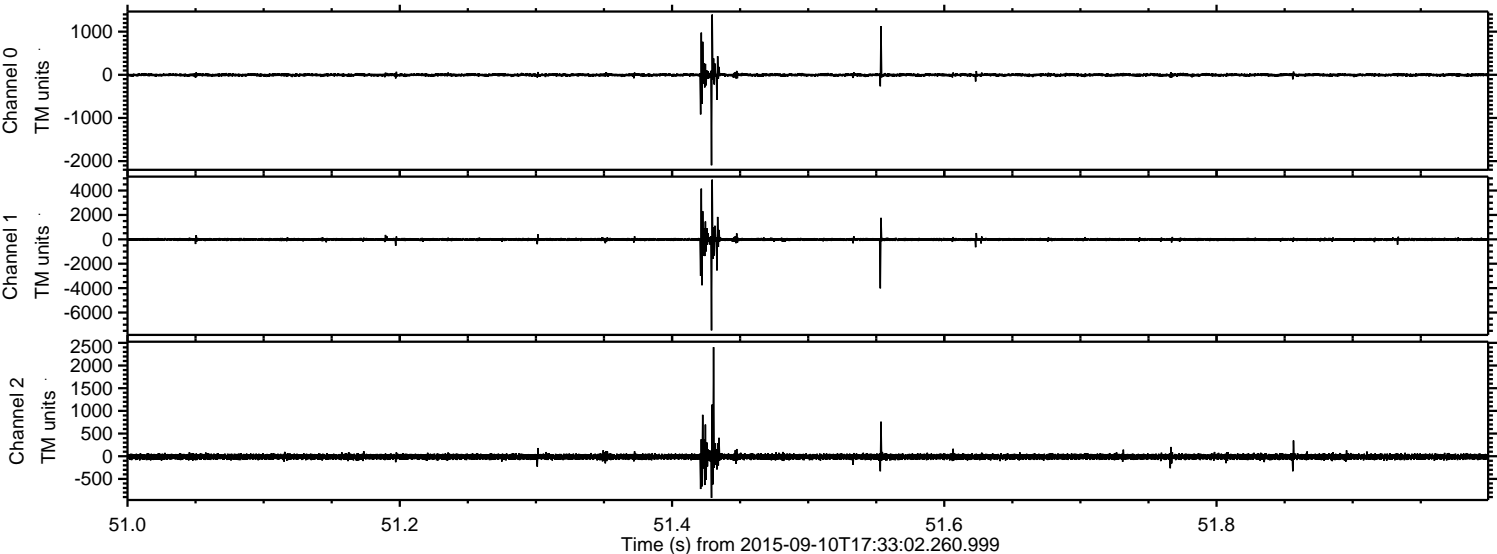
ELMAVAN 3D WAVEFORMS (Measured data sampled at 50 kHz) 51000 packets of 144 samples from 2015-09-10T17:33:02.260.999. Part 71/147

Processed Sun Oct 11 09:37:43 2015 by ELM ver.2012-10-06 from 001__elm20150910_173301__dat00.bin



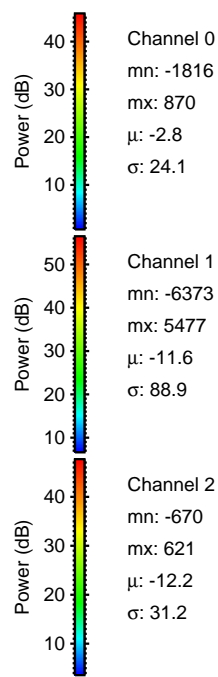
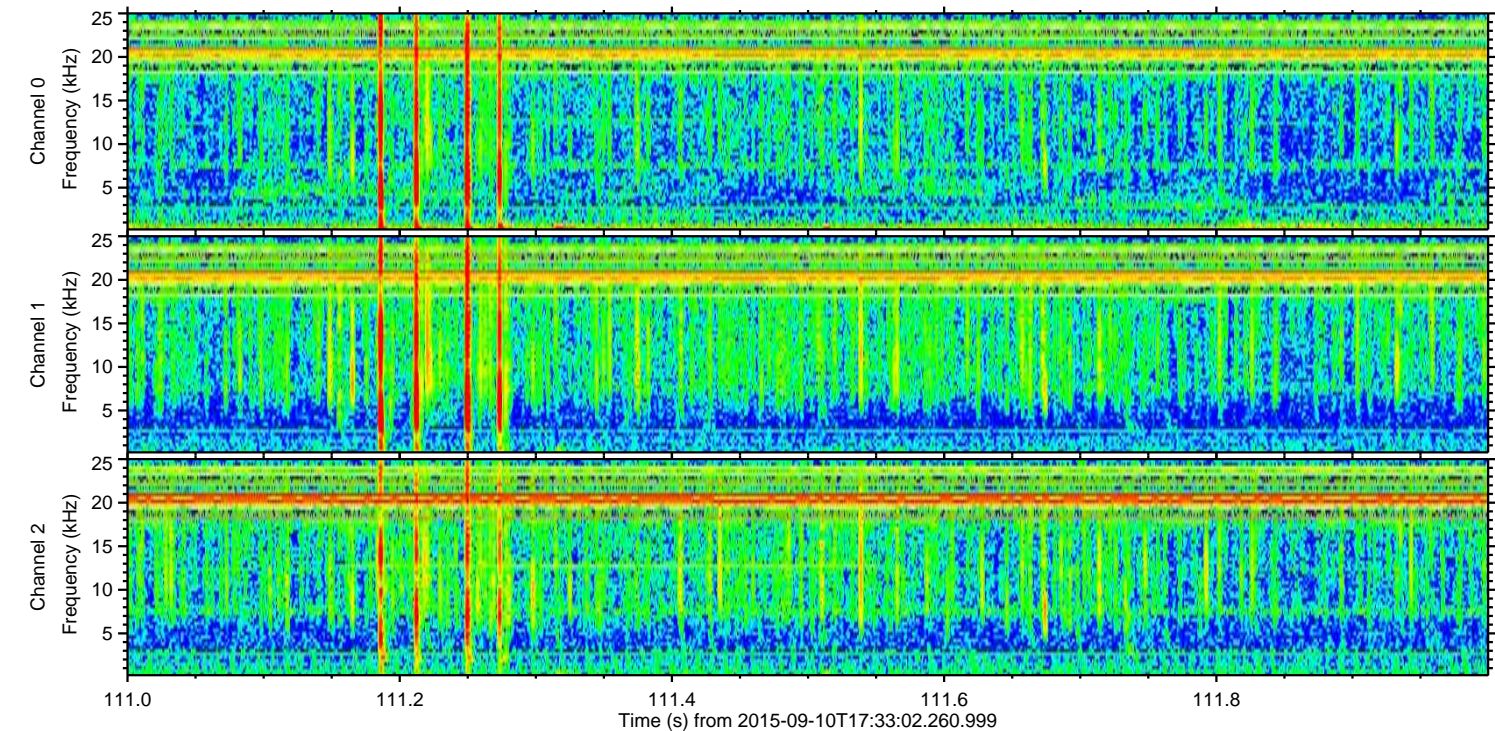
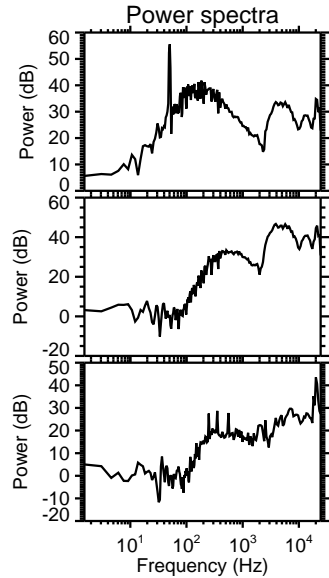
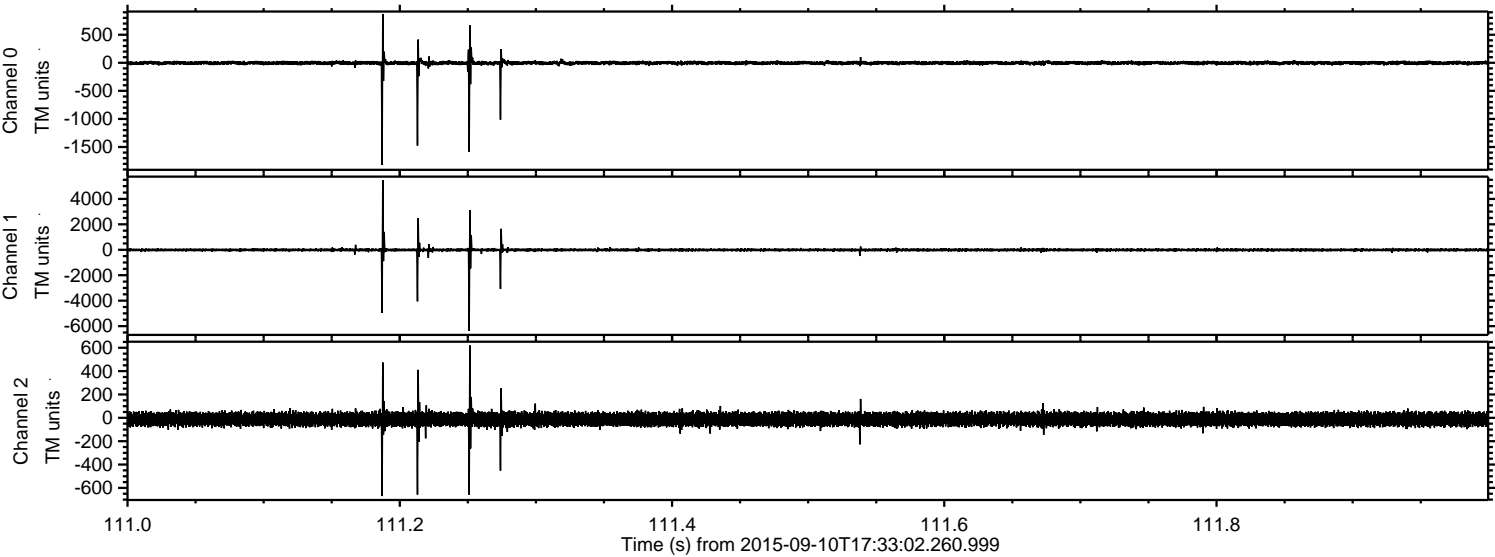
ELMAVAN 3D WAVEFORMS (Measured data sampled at 50 kHz) 51000 packets of 144 samples from 2015-09-10T17:33:02.260.999. Part 52/147

Processed Sun Oct 11 09:37:44 2015 by ELM ver.2012-10-06 from 001__elm20150910_173301__dat00.bin



ELMAVAN 3D WAVEFORMS (Measured data sampled at 50 kHz) 51000 packets of 144 samples from 2015-09-10T17:33:02.260.999. Part 112/147

Processed Sun Oct 11 09:37:45 2015 by ELM ver.2012-10-06 from 001__elm20150910_173301__dat00.bin



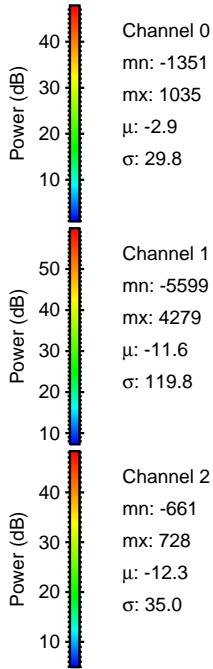
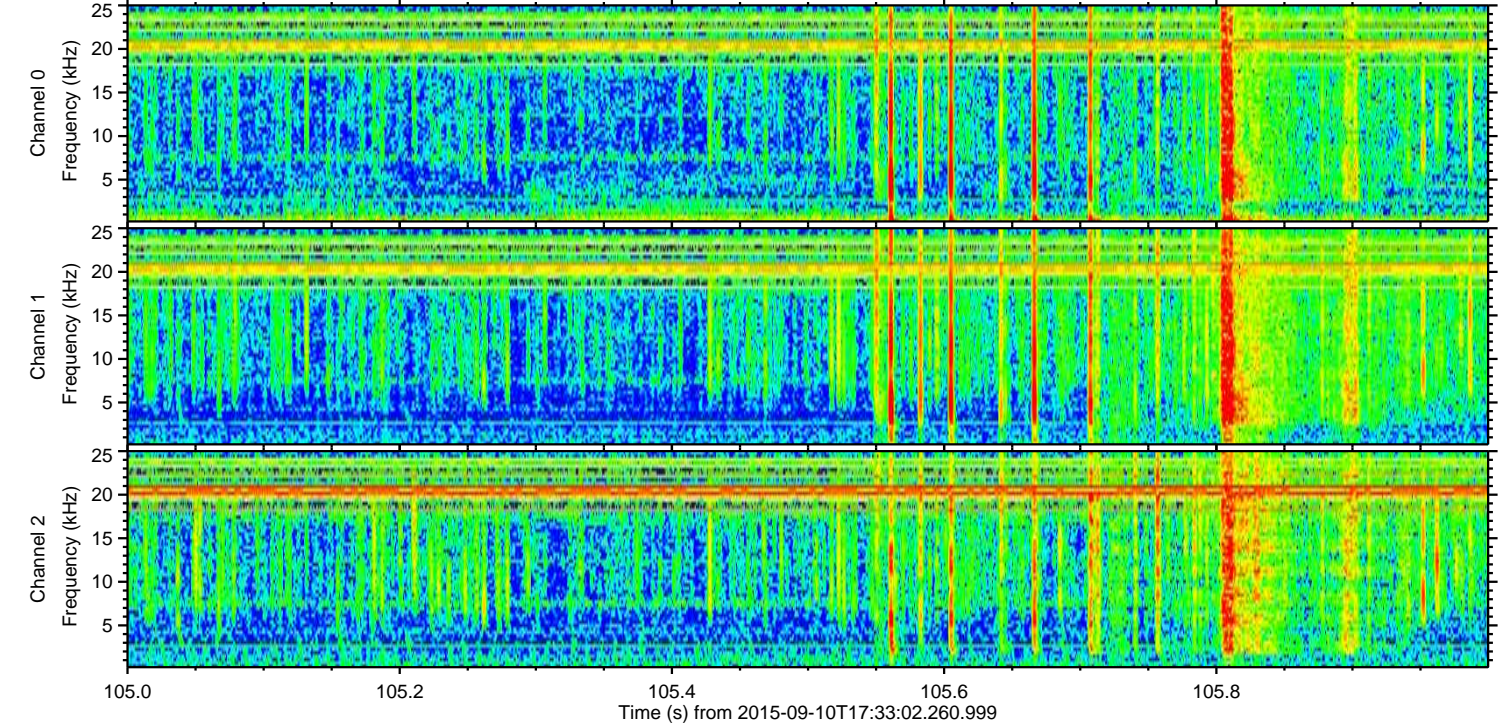
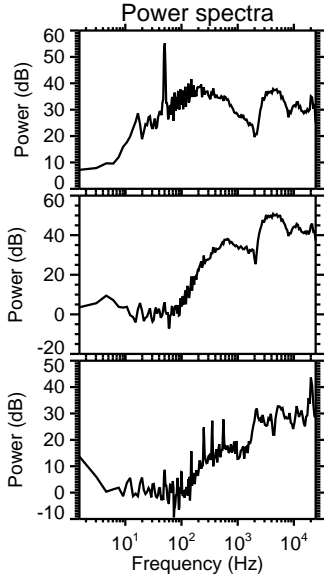
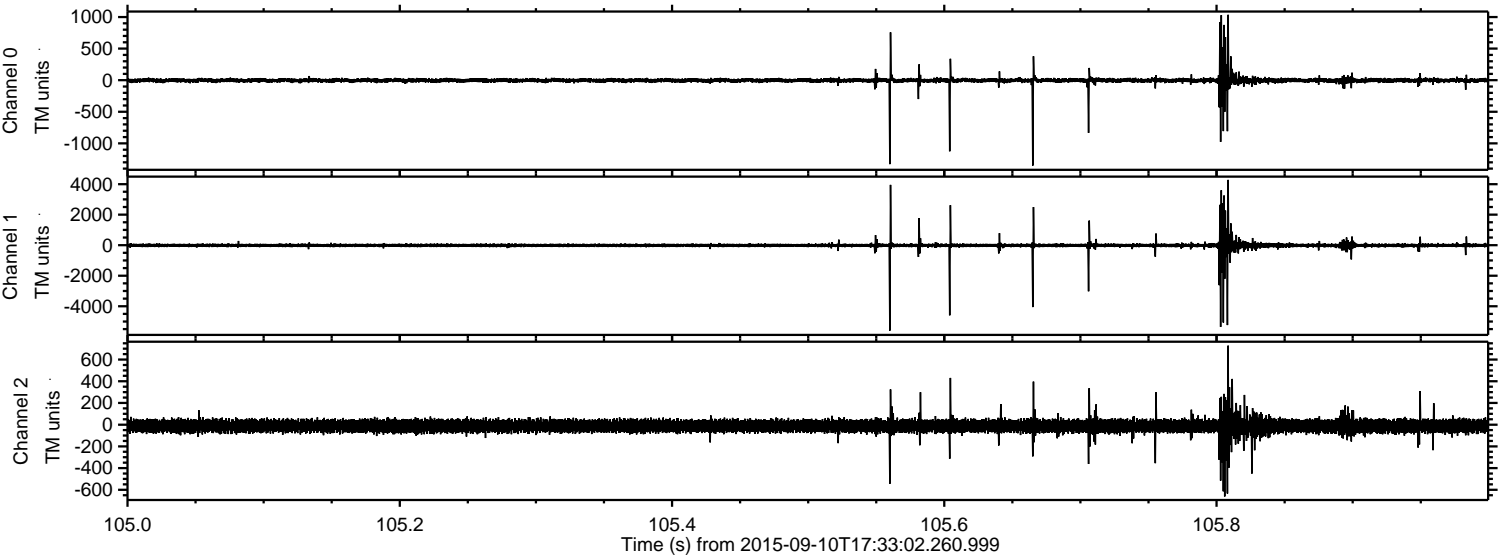
Channel 0
mn: -1816
mx: 870
 μ : -2.8
 σ : 24.1

Channel 1
mn: -6373
mx: 5477
 μ : -11.6
 σ : 88.9

Channel 2
mn: -670
mx: 621
 μ : -12.2
 σ : 31.2

ELMAVAN 3D WAVEFORMS (Measured data sampled at 50 kHz) 51000 packets of 144 samples from 2015-09-10T17:33:02.260.999. Part 106/147

Processed Sun Oct 11 09:37:46 2015 by ELM ver.2012-10-06 from 001__elm20150910_173301__dat00.bin

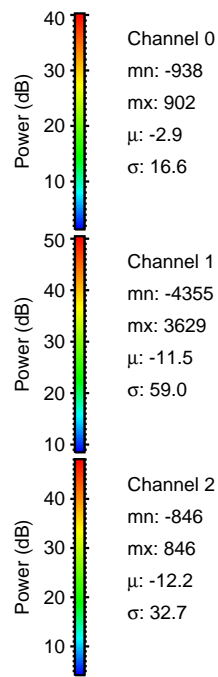
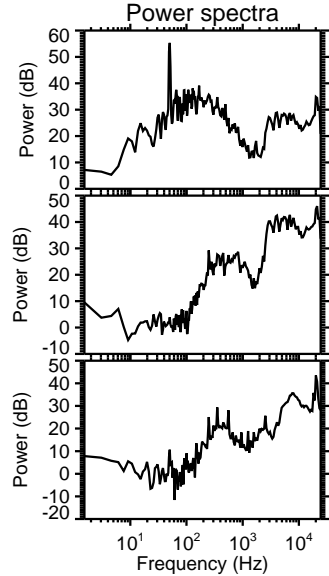
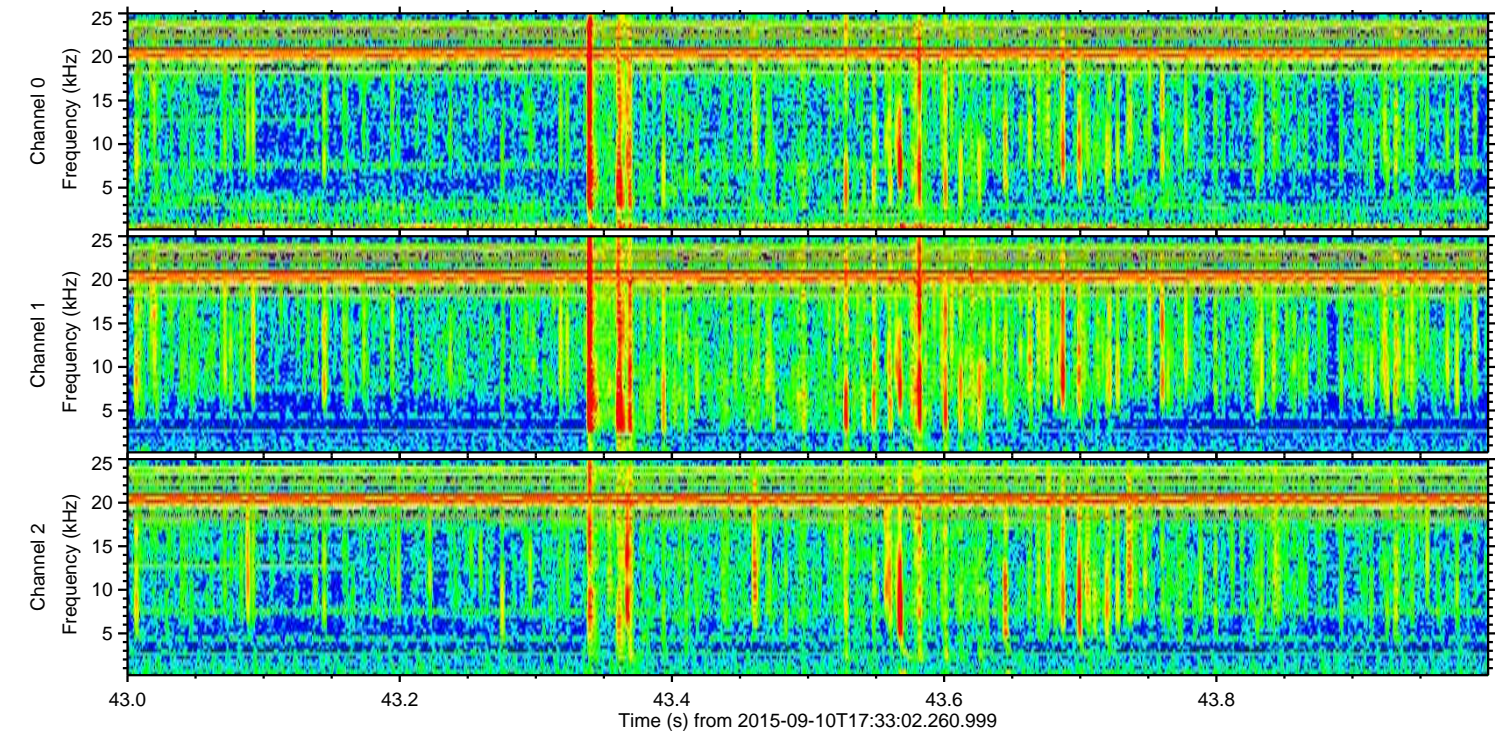
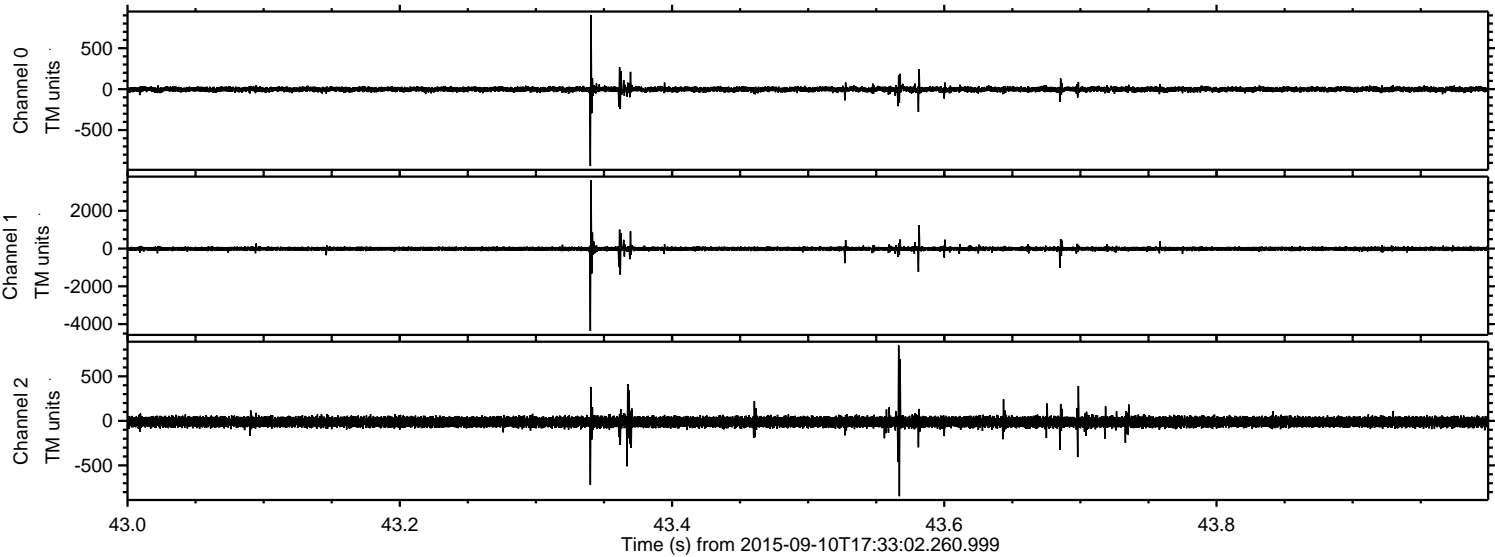


Channel 0
mn: -1351
mx: 1035
 μ : -2.9
 σ : 29.8

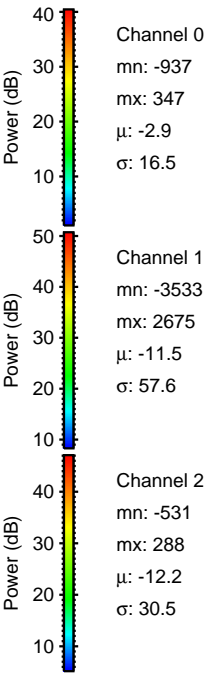
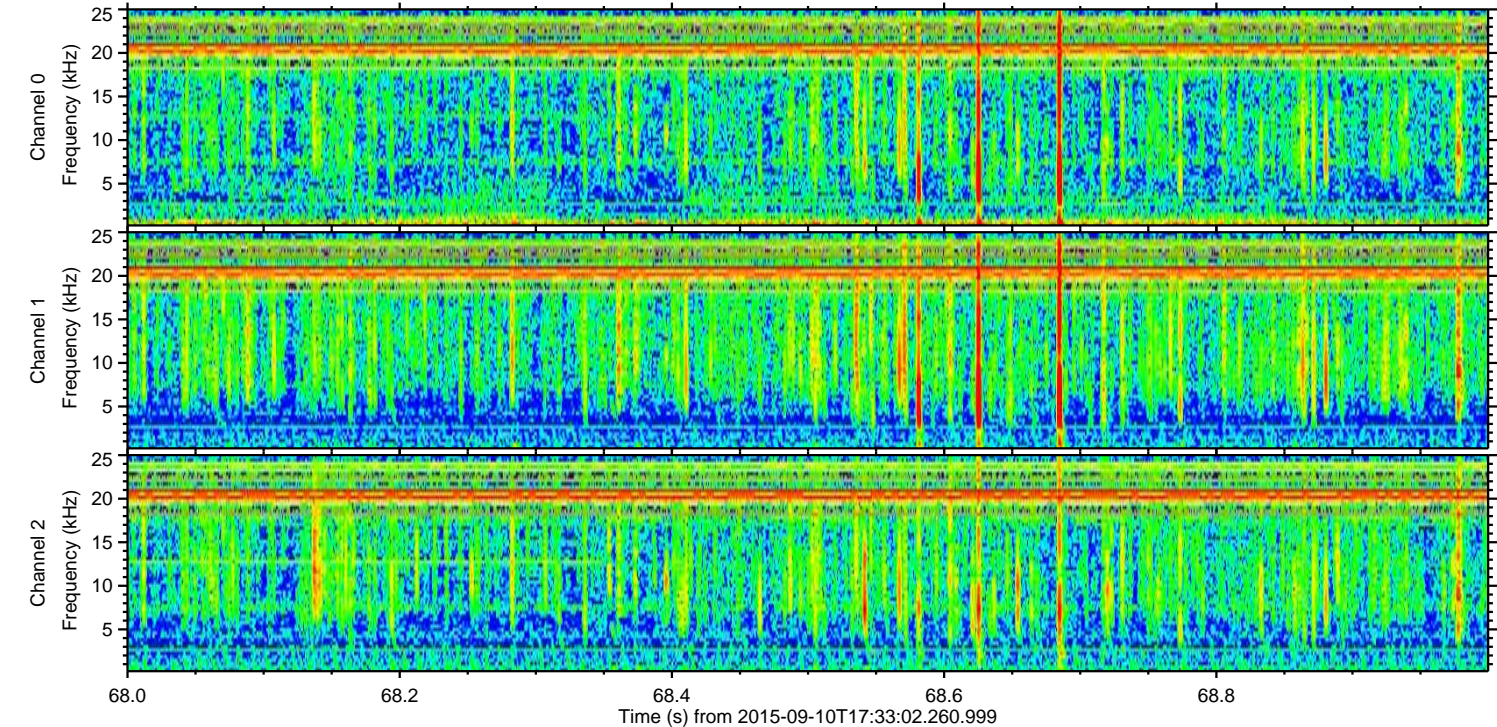
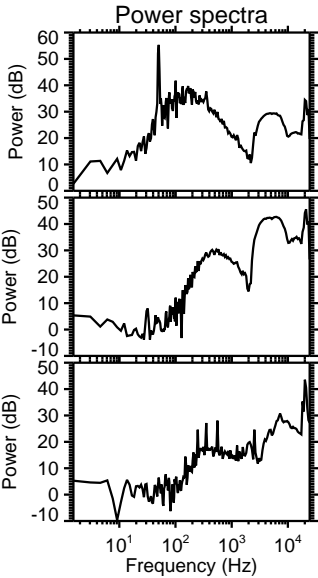
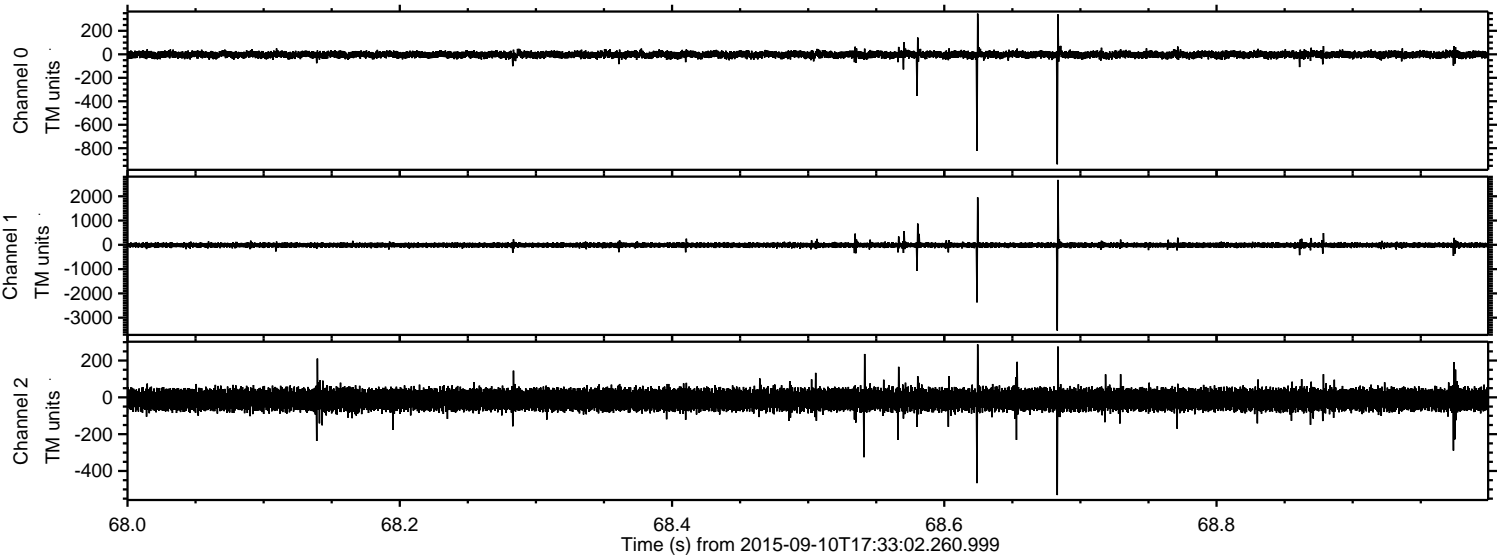
Channel 1
mn: -5599
mx: 4279
 μ : -11.6
 σ : 119.8

Channel 2
mn: -661
mx: 728
 μ : -12.3
 σ : 35.0

Processed Sun Oct 11 09:37:47 2015 by ELM ver.2012-10-06 from 001__elm20150910_173301__dat00.bin

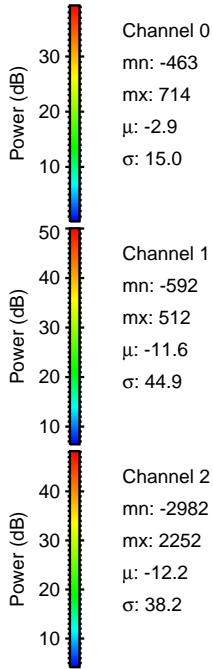
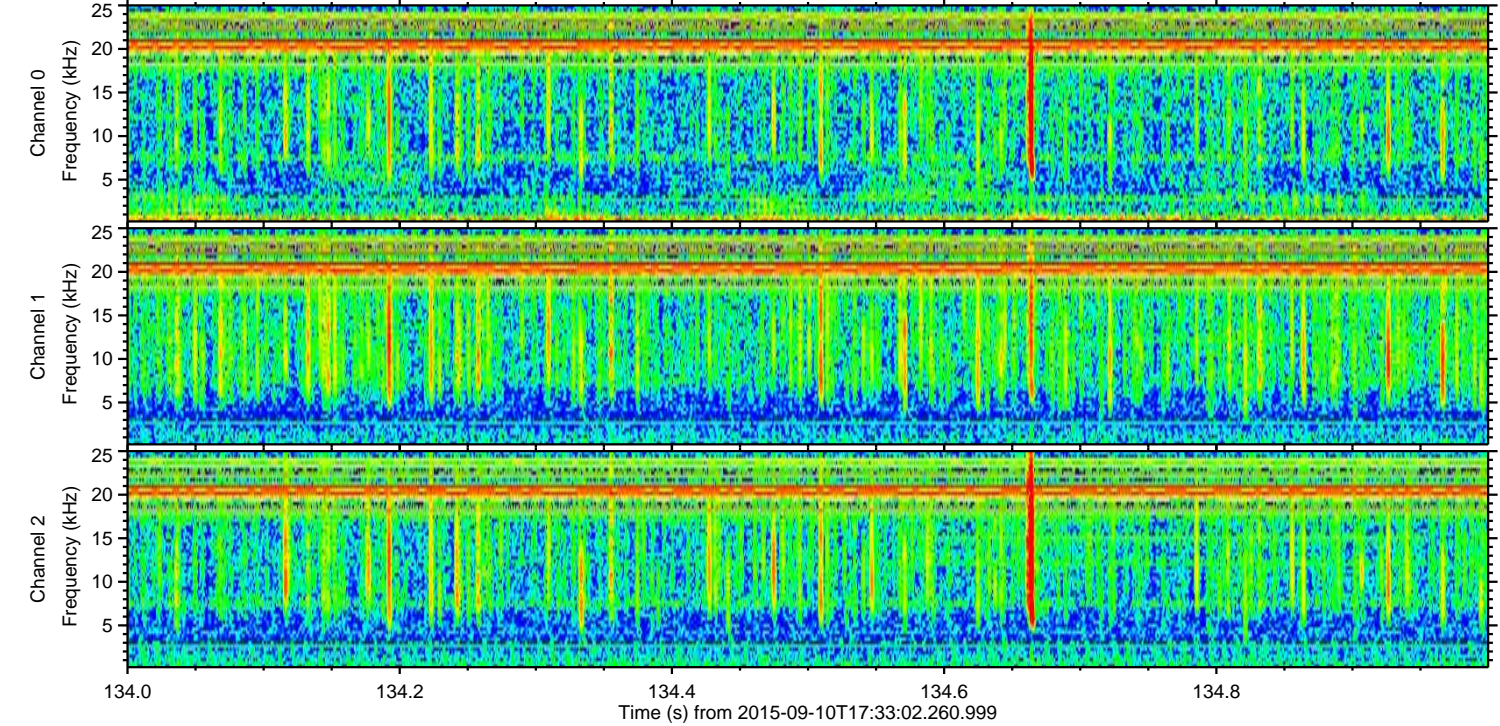
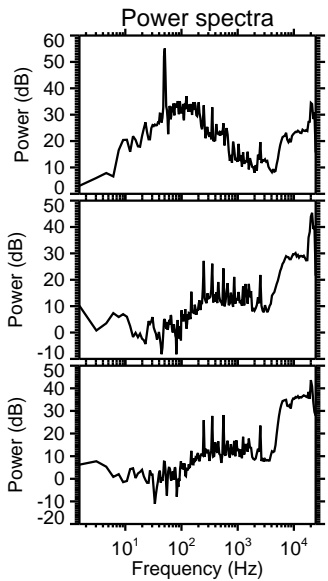
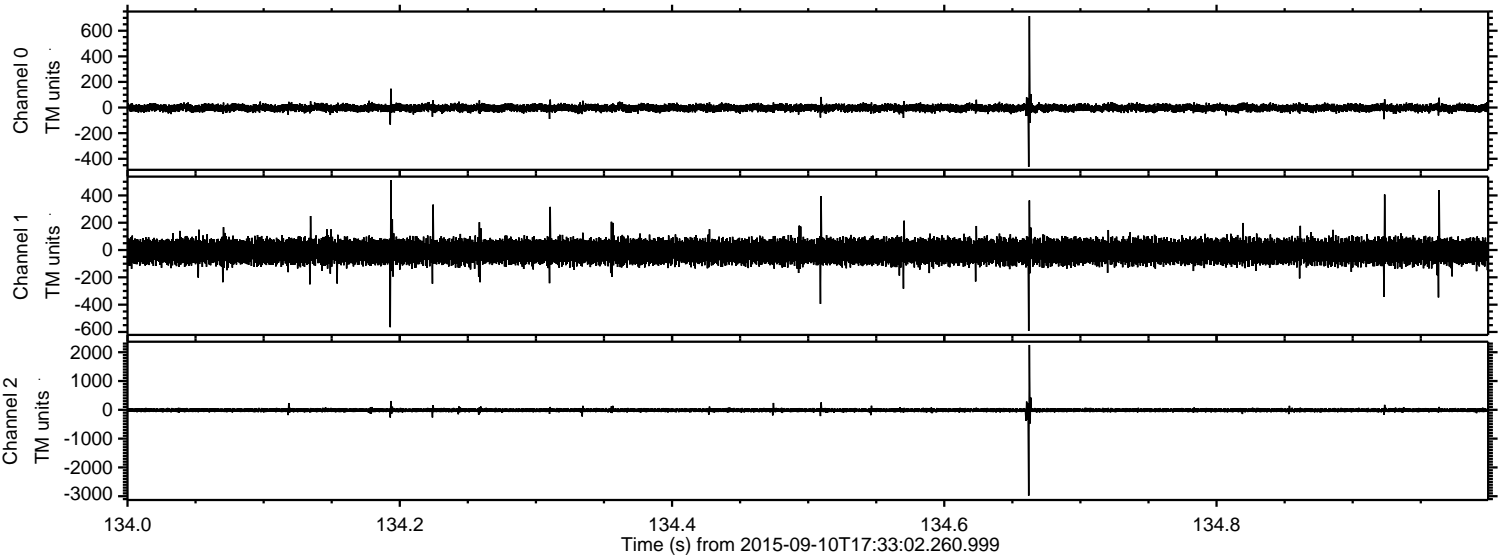


Processed Sun Oct 11 09:37:48 2015 by ELM ver.2012-10-06 from 001__elm20150910_173301__dat00.bin



ELMAVAN 3D WAVEFORMS (Measured data sampled at 50 kHz) 51000 packets of 144 samples from 2015-09-10T17:33:02.260.999. Part 135/147

Processed Sun Oct 11 09:37:49 2015 by ELM ver.2012-10-06 from 001__elm20150910_173301__dat00.bin



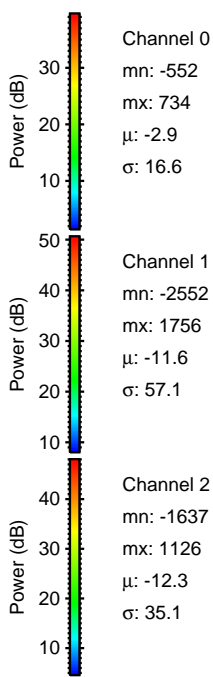
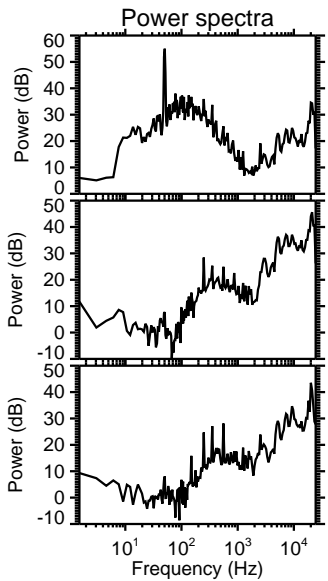
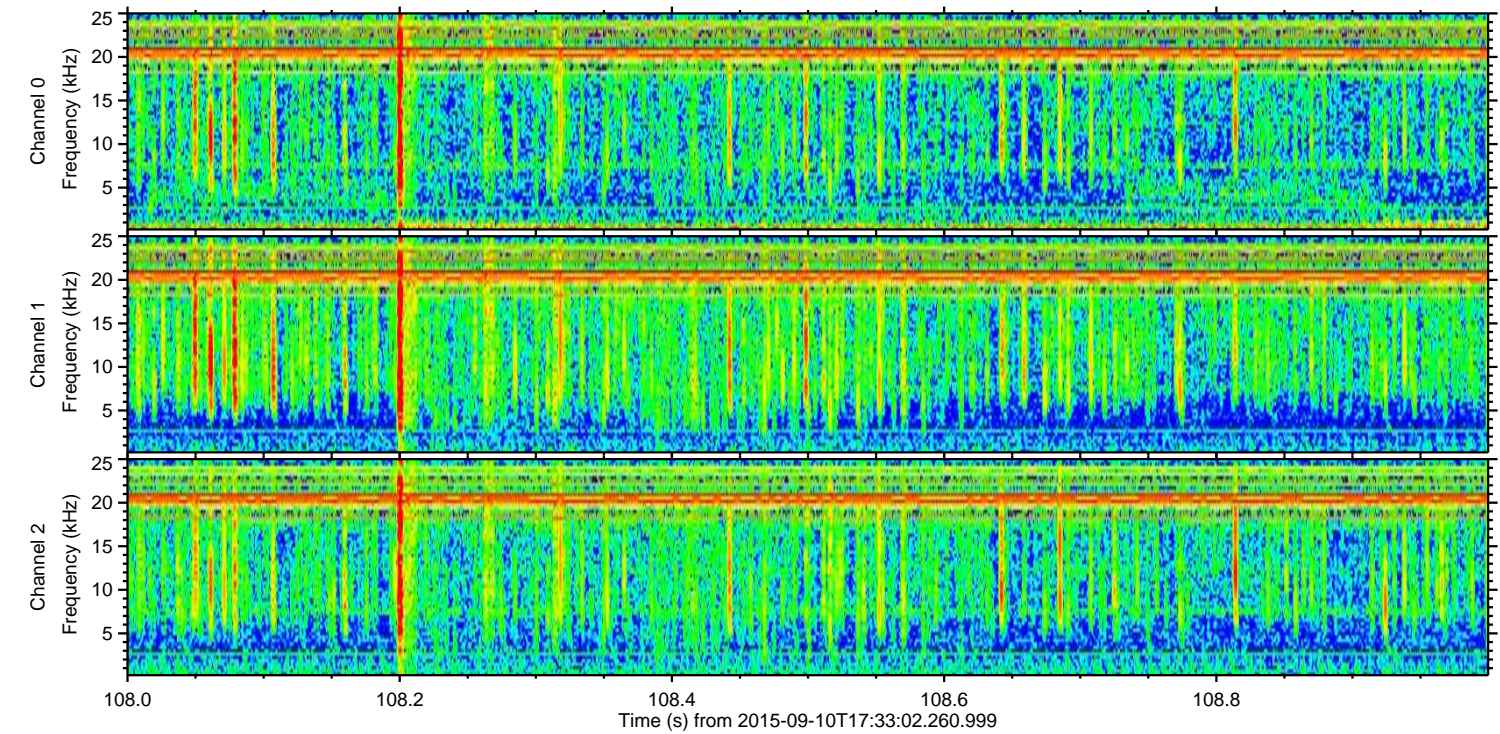
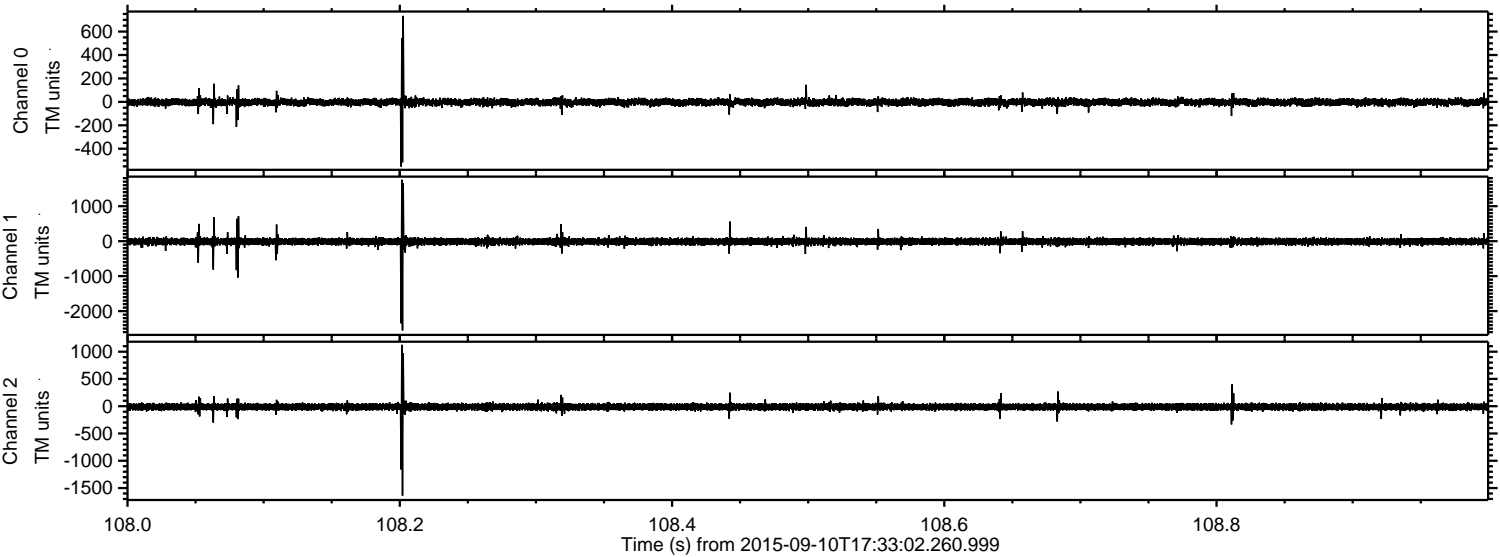
Channel 0
mn: -463
mx: 714
 μ : -2.9
 σ : 15.0

Channel 1
mn: -592
mx: 512
 μ : -11.6
 σ : 44.9

Channel 2
mn: -2982
mx: 2252
 μ : -12.2
 σ : 38.2

ELMAVAN 3D WAVEFORMS (Measured data sampled at 50 kHz) 51000 packets of 144 samples from 2015-09-10T17:33:02.260.999. Part 109/147

Processed Sun Oct 11 09:37:50 2015 by ELM ver.2012-10-06 from 001__elm20150910_173301__dat00.bin



Processed Sun Oct 11 09:37:51 2015 by ELM ver.2012-10-06 from 001__elm20150910_173301__dat00.bin

